

Sepp, Tim Florian; Israel, Karl-Friedrich; Treitz, Benjamin; Hartl, Tom

Working Paper

Monetary policy and the resilience of the German banking system: From Deutsche Bundesbank to ECB

Working Paper, No. 180

Provided in Cooperation with:

University of Leipzig, Faculty of Economics and Management Science

Suggested Citation: Sepp, Tim Florian; Israel, Karl-Friedrich; Treitz, Benjamin; Hartl, Tom (2024) : Monetary policy and the resilience of the German banking system: From Deutsche Bundesbank to ECB, Working Paper, No. 180, Universität Leipzig, Wirtschaftswissenschaftliche Fakultät, Leipzig

This Version is available at:

<https://hdl.handle.net/10419/283608>

Standard-Nutzungsbedingungen:

Die Dokumente auf EconStor dürfen zu eigenen wissenschaftlichen Zwecken und zum Privatgebrauch gespeichert und kopiert werden.

Sie dürfen die Dokumente nicht für öffentliche oder kommerzielle Zwecke vervielfältigen, öffentlich ausstellen, öffentlich zugänglich machen, vertreiben oder anderweitig nutzen.

Sofern die Verfasser die Dokumente unter Open-Content-Lizenzen (insbesondere CC-Lizenzen) zur Verfügung gestellt haben sollten, gelten abweichend von diesen Nutzungsbedingungen die in der dort genannten Lizenz gewährten Nutzungsrechte.

Terms of use:

Documents in EconStor may be saved and copied for your personal and scholarly purposes.

You are not to copy documents for public or commercial purposes, to exhibit the documents publicly, to make them publicly available on the internet, or to distribute or otherwise use the documents in public.

If the documents have been made available under an Open Content Licence (especially Creative Commons Licences), you may exercise further usage rights as specified in the indicated licence.



UNIVERSITÄT
LEIPZIG

Wirtschaftswissenschaftliche
Fakultät
Faculty of Economics and
Management Science

Working Paper, No. 180

Tim Sepp / Karl-Friedrich Israel /
Benjamin Treitz / Tom Hartl

**Monetary Policy and the Resilience of
the German Banking System: From
Deutsche Bundesbank to ECB**

Februar 2024

ISSN 1437-9384

Monetary Policy and the Resilience of the German Banking System: From Deutsche Bundesbank to ECB*

Tim Sepp[†]

Leipzig University
sepp@wifa.uni-leipzig.de

Karl-Friedrich Israel

Saarland University
UCO Angers
kisrael@uco.fr

Benjamin Treitz

BNP Paribas
Montreal
benjamin.treitz@ca.bnpparibas.com

Tom Hartl

Leipzig University
Halle University
hartl@wifa.uni-leipzig.de

15th February 2024

Abstract

The resilience of the German banking system is studied on the semi-aggregated level from 1968 to 2022. We distinguish between Large Banks, Regional Banks, Landesbanken, Sparkassen and Credit Unions and study their z-scores as a measure of resilience in response to the monetary policy stances of the Bundesbank and the ECB, respectively. We estimate two-way fixed effects panel regression models for both periods separately. The results suggest that monetary policy was more effective in enhancing resilience during the period of a national currency controlled by the Deutsche Bundesbank. The effect across bank types is much more heterogeneous after the inception of the ECB. In particular, decreasing resilience of Large Banks is associated with expansionary (un)conventional monetary policy in recent years.

Keywords: Resilience, Monetary Policy, Banking, Financial Stability, Germany, Deutsche Bundesbank, ECB, Credit Union, Sparkasse.

JEL-Codes: E42, E52, G21.

*The authors thank the Stiftung fuer die Wissenschaft, Bonn, Germany, for sponsoring this research.

[†]Corresponding author e-mail address: sepp@wifa.uni-leipzig.de

1 Introduction

Resilience has recently become the new buzzword in business and economics. In Germany it was nominated the economic term of the year (Wirtschaftswort des Jahres 2022). Its etymology lies in the Latin word *resiliere*, which translates to “bounce back”. As such, the word resilience is commonly used to refer to the ability of a system to respond and adapt to internal and external disruptions. It refers to the system’s ability to help itself.

A key aspect of resilience is robustness, which refers to a system’s ability to absorb shocks and recover quickly (Holling, 1973, Holling, 1996, Aligica and Tarko, 2014, Salter and Tarko, 2019). In this sense, the resilience of a system captures how much that system can endure before breaking down.

In a world where crises have become more frequent, financial stability and resilience, especially within the banking sector, have gained significant attention in public discourse and policy debates. The term of financial stability, which is closely related to resilience, is frequently used by representatives of major financial institutions (Lagarde 2021, Lagarde 2022, de Guindos 2023a, de Guindos 2023b, Schnabel 2023). It is often explicitly seen as a monetary policy goal, albeit monetary authorities around the world attach slightly different meanings to the term.

According to the ECB (2007), the financial system is stable when it is capable of withstanding shocks and financial imbalances. The Deutsche Bundesbank (2021) defines financial stability as a state in which the financial system neither causes nor amplifies macroeconomic downturns. According to the IMF (2023), financial stability is ensured when the financial system can perform its key functions of supporting the inter-temporal allocation of resources, assessing and accurately pricing financial risks and absorbing financial and economic shocks. The FED (2021) considers a financial system to be stable when households and businesses are provided with sufficient financing.

Empirical studies confirm the effectiveness of monetary policy, especially in stimulating the economy in “normal” downturns (Bech et al. 2012, Kannan et al. 2009). Nonetheless, the effectiveness of monetary policy seems to weaken during financial crises when both the private sector’s financial health and the mechanisms through which monetary policy operates are compromised (Kannan et al. 2009, Borio 2012, Bech et al. 2012, Sanchez et al. 2015). Two main factors contribute to the diminished impact of monetary policy in financial crises. First, there frequently is a significant number of heavily indebted economic entities who are hesitant to take new loans and increase their spending. Second, a weakened financial system has a reduced capacity to transmit monetary policy measures to the broader economy because of higher risk aversion and uncertainty (Inaba et al. 2015).

During the global financial crisis, unconventional monetary policies were deemed necessary to alleviate the detrimental impact of a collapsing financial system on the real economy (Mishkin 2009, Borio 2012). Excessively loose monetary policies, especially the unprecedented expansion of central banks’ balance sheets, can tame financial stress in the short run, but it can also cause new risks. Prolonged monetary easing can postpone necessary adjustments and extend periods of economic fragility (Borio and Disyatat 2010, Borio 2012, Caruana, 2012, Bouis et al. 2013, Grimm et al. 2023).

This poses the question of the net effect of monetary policy on financial sta-

bility and resilience? Central banks can step in and reduce liquidity shortages at any time, but have monetary policies contributed to the financial system’s resilience? Given its importance, this question is under-researched, especially regarding the potentially heterogeneous effects of conventional and unconventional monetary policies.

An appropriate empirical measure of resilience should quantify the ability to tame disruptive events or to prevent them from becoming worse (Rose and Liao 2005, Erol et al. 2010). In the banking context, such a measure is an adapted version of Altman’s z-score (Altman 1968). It counts the number of standard deviations the return on assets (ROA) can fall before depleting the bank’s equity and thus captures a banks’ loss-absorbing buffers (Boyd and Runkle 1993, Cihak and Hesse 2010). Z-scores as a metric to analyse the stability of individual banks have been widely used in the banking literature (Allen and Gale 2004, Altunbas et al. 2007, Beck et al. 2013, Fu et al. 2014, Fiordelisi and Mare 2014, Mamatzakis and Bermpei 2016), but not in the context of the resilience of a banking system in connection to monetary policy. To the best of our knowledge, there is only one study by Avalos and Mamatzakis (2023) that addresses how bank resilience is affected by monetary policy using z-scores on the level of individual banks. They focus on the whole Euro area, but only for the limited period between 2007 and 2018.

We focus on Germany and study the resilience of its banking system in connection with monetary policy since the late 1960s, for a period of 54 years. We can thus discriminate between the monetary policy of the Deutsche Bundesbank and the European Central Bank (ECB) and are able to estimate if and how conventional and unconventional monetary policies differ in their impact on resilience. We proceed by presenting the data compiled and used in this study in the following section. We then present our panel regression model and estimation results in Section 3. Section 4 presents some robustness checks. The final section concludes.

2 Data and Data Description

We have compiled a panel dataset of semi-aggregated data on the German banking system from December 1968 to December 2021. It consists of monthly balance sheet information and selected items from the profit and loss statements of the major German bank types. The second dataset complements the panel dataset with macroeconomic covariates such as monetary policy variables and indicators of economic activity and price developments from various data sources.¹

2.1 The German Banking System

The German banking system consists of three pillars. The first pillar represents public-sector savings banks, i.e. Sparkassen and Landesbanken organized under public law. The second pillar comprises credit cooperatives, i.e. Credit Unions

¹We use monetary policy indicators from Deutsche Bundesbank, FRED and Krippner (2013). Our monthly output indicator from the IMF covers industrial production. The price indicator is the national consumer price index retrieved from Deutsche Bundesbank. The stock market capitalization indicator is retrieved from FRED.

organized in accordance with the Cooperative Societies Act following the legal form of an economic association. The third pillar are privately organized credit banks (Large and Regional Banks), i.e. Deutsche Bank and ING-DiBa. All bank types are universal banks that participate in many different types of banking activities, such as commercial and investment banking.

Sparkassen (Savings Banks) are credit institutions whose core business is to accommodate the saving behaviour of the broad population, to assist small and medium-sized enterprises in financing their business activities, to promote housing through real estate financing and to support their municipality through municipal loans. Two central principles apply to Sparkassen. First, according to the regional principle a Sparkasse must operate exclusively in its business territory. The regional principle prevents financial resources from flowing exclusively to economically developed regions, thus depriving structurally weaker regions of financing opportunities (Gaertner 2003). Second, according to the subsidiarity principle, each local Sparkasse performs all banking activities independently but cooperates with other Sparkassen or other entities of the Sparkassen-Finanzgruppe² where is needed (Luetke-Uhlenbrock 2007).

Credit Unions were founded as self-help associations of craftsmen and traders. According to §1 of the Cooperatives Act, the statutory objective of credit cooperatives is to promote the business of their members. Thus, the main business activity of credit cooperatives is retail and corporate banking. Credit Unions are regarded as the bank for small and medium-sized enterprises which operate mostly regionally. Credit Unions place their members at the centre of action.

Large Banks (Großbanken) comprise money and credit institutions, such as Deutsche Bank and Commerzbank, traditionally conducting their business activity supra-nationally. Large Banks have a wide branch network, which usually covers an international business area. Regional Banks³, i.e. Volkswagen Bank or ING-DiBa, are credit institutions that conduct(ed) their banking business in a specific geographical region. Both bank types are each managed in the form of a stock company and are thus strongly oriented toward the capital market. In addition to traditional retail and corporate banking, they are particularly active in foreign and securities business as well as investment banking (Eim 2004).

In our analysis we will restrict the focus on Large and Regional Banks, Sparkassen, Landesbanken and Credit Unions as they hold around 80% of total assets of the German banking system. In Figure 1, we can see the share of total bank assets of these bank types in Germany in 1970, 1998⁴ and 2021. We can see that the structure of the German banking system has remained quite stable in times of Deutsche Bundesbank but has changed somewhat since the introduction of the Euro. The most significant change is the rising share of

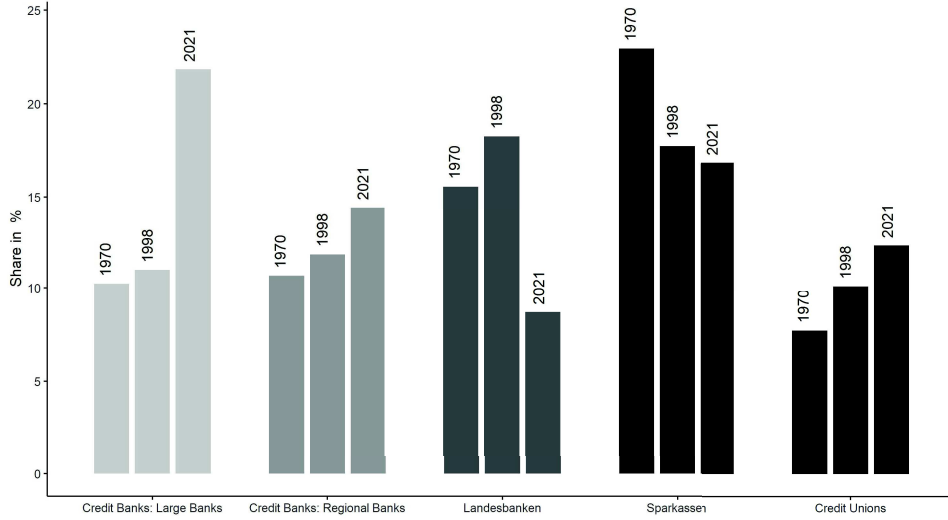
²The Sparkassen-Finanzgruppe is organized in a three-tier system. At the lowest level there are the individual local Sparkassen, which form the foundation of the Sparkassen-Finanzgruppe. The second level comprises the supra-regional Landesbanken, which act as the central banks of the local Sparkassen, as giro centers and as central institutions for the payment transactions of the individual Sparkassen. The central institution of the Sparkassen-Finanzgruppe is Deka Bank, which is the investment bank of the financial group (Ettmann and Wolff 2019).

³Traditionally, Regional Banks conducted their business activity solely in one region. Today, they often operate nation-wide, but are still considered as Regional Banks in the Deutsche Bundesbank statistics. The aggregate “Regional Banks” also comprises direct banks, such as ING-DiBa.

⁴The Euro was introduced as an accounting currency in 1999.

assets held by Large and Regional Banks, which has increased from 20.9% to 36.3%, and the declining share of Landesbanken from 18.2% in 1998 to 8.4% in 2021. The share of the Sparkassen has also declined from 23% in 1970 to 15% in 2021. The share of Credit Unions increased from 8% in 1970 to 11% in 2021.

Figure 1
Share of Total Assets of German Bank Types



Source: Deutsche Bundesbank, own calculations.

In the banking literature, z-scores are widely used to measure the stability of an individual bank (Cihak and Hesse 2010, Fiordelisi and Mare, 2014, Beck et al. 2013, Fu et al. 2014, Avalos and Mamatzakis 2023). The z-score is computed as the sum of the ROA and the equity ratio over the standard deviation of the ROA.⁵ It is inversely related to the probability of a bank's insolvency. The standard deviation of the ROA is a measure of return volatility. The z-score measures the number of standard deviations the return realization can fall before a bank's equity is depleted (Cihak and Hesse 2010).

Augmenting previous research (Beck et al. 2013, Fiordelisi and Mare 2014, Avalos and Mamatzakis 2023), we calculate aggregated z-scores for each bank type instead of individual banks. Therefore, our z-score is suitable to assess the stability and resilience of different bank types in the aggregate and thus the banking system overall. Our z-score measure is given by:

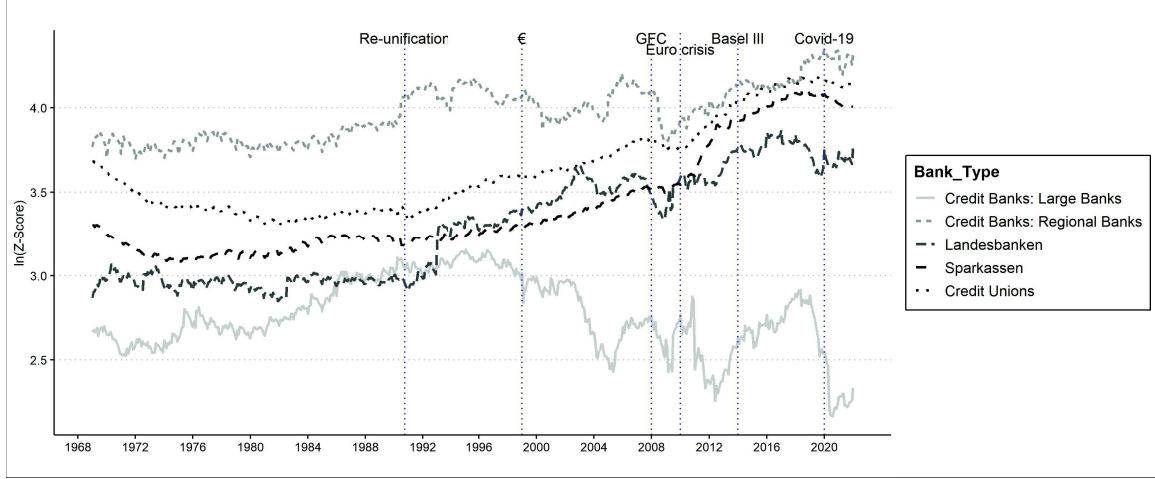
$$z_{i,t} = \frac{roa_{i,t} + er_{i,t}}{\sigma(roa_i)} \quad (1)$$

Where $z_{i,t}$ is the z-score of bank type i at time t , $roa_{i,t}$ is the return on assets of bank type i at time t , $er_{i,t}$ is the equity ratio of bank type i at time

⁵As the profit and loss statements are only available on an annual basis, we approximate the monthly net income by interpolating the values between January and November of each respective year from the annual net income in the year before and the year in question. We then divide the resulting values by the monthly sum of total assets to receive a monthly proxy for the return on assets of each bank type.

t , and $\sigma(roi_i)$ is the standard deviation of the ROA calculated for each bank type over the entire period from 1968 to 2021. We also calculate the standard deviation as a rolling window over time for robustness checks.

Figure 2
Z-scores as Resilience Indicator of Different Bank Types in Germany



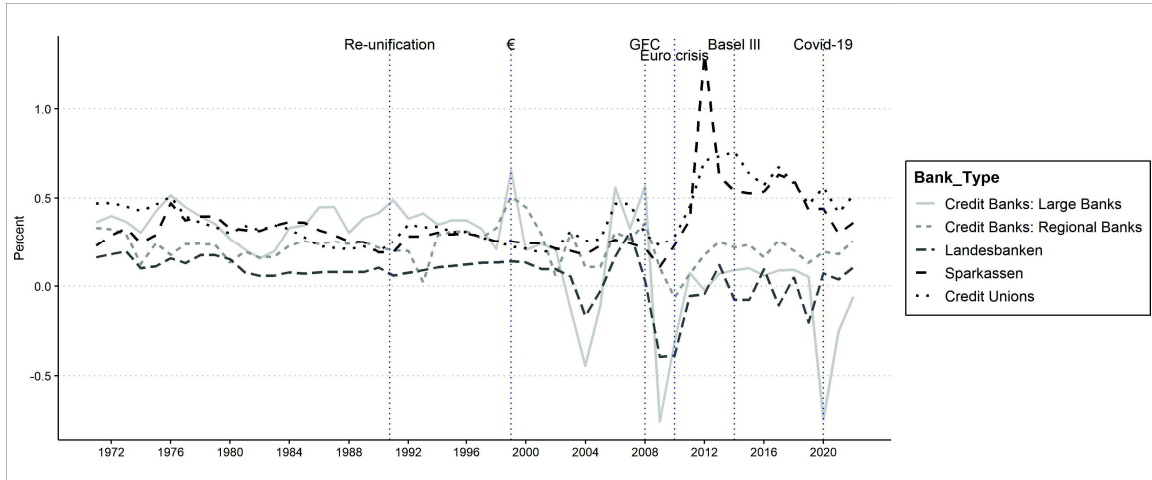
Source: Deutsche Bundesbank, own calculations.

Figure 2 shows the z-score as a measure of resilience for each of the bank types included in our data set. In times of the Deutsche Bundesbank (1957-1998), the resilience indicator was on a rising trajectory with a low variance for each bank type. This speaks for a resilient banking system with pronounced robustness and adaptability. The z-score was highest for the Regional Banks, followed by Credit Unions and Sparkassen. The z-score was lowest for the Large Banks and Landesbanken.

Since the introduction of the Euro in 1999, the resilience score has continued to increase for Regional Banks, Credit Unions, Sparkassen and Landesbanken, but has decreased for Large Banks. Even though the Great Financial Crisis (GFC) hit Regional Banks and Landesbanken significantly, both bank types quickly bounced back and have been on a rising path since. The resilience score of Credit Unions only dropped marginally in response to the GFC and quickly recovered. The resilience score of Sparkassen is not affected at all, neither by the GFC, nor the Euro crisis. For Large Banks, the z-score behaves distinctively different compared to all other bank types. We observe a declining trend in resilience since the introduction of the Euro with a sharp drop during the GFC, the Euro crisis and the Covid-19 crisis. Furthermore, we observe a sharp increase in bank resilience for all bank types between 2012 and 2014, when Basel III was (officially) implemented. The increased volatility of the bank type z-scores during the Euro period speaks for a weakened robustness. However, the mean reversion for all bank types but Large Banks is indicative for a pronounced adaptability of the German banking system. Altogether, it can be assumed that since the introduction of the Euro, the resilience of the German banking system is somewhat weaker than in times of the Deutsche Mark (DM).

We also scrutinize the components of our resilience indicator. In Figure 3,

Figure 3
Return on Assets of German Bank Types



Source: Deutsche Bundesbank, own calculations.

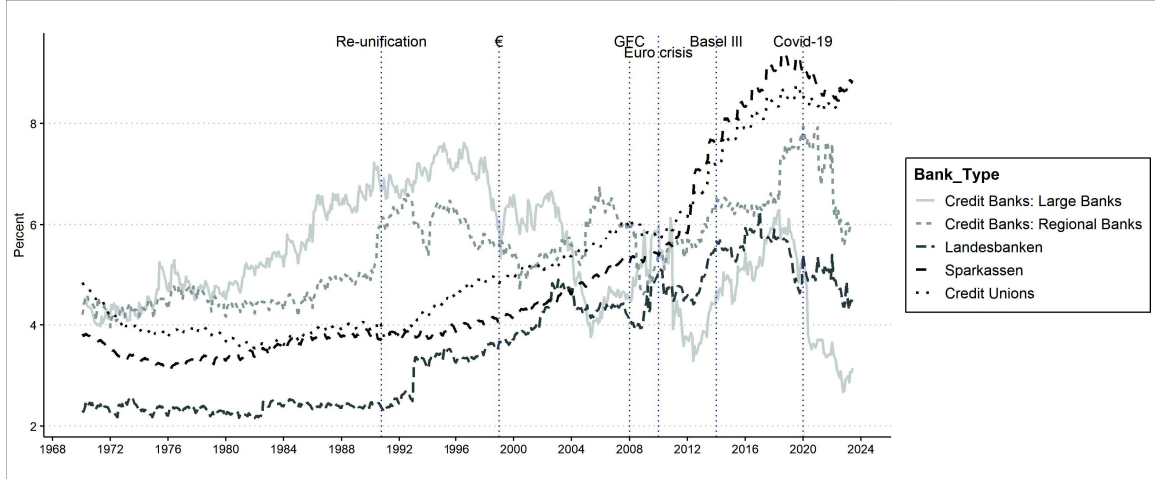
the ROA of each bank type is shown. A clear difference between the DM period and the Euro period is visible regarding the level and volatility of the ROA of each bank type. From 1970 to 1998, the ROA is very stable for all bank types with Large Banks, Sparkassen and Credit Unions having the highest ROA over different sub-periods.

Since the introduction of the Euro, the volatility of the ROA increased for all bank types and we can observe a declining trend for Large Banks and Landesbanken with a negative ROA in 2004, in the aftermath of the GFC and during the Covid-19 pandemic. Credit Unions and Sparkassen performed quite differently as their ROA only slightly decreased in response to the GFC and increased strongly after 2010 to remain on a much higher level than the ROA of all other bank types. Regional Banks' ROA has remained stable during both monetary regimes.

Figure 4 shows the balance sheet equity ratio. During the DM period, the equity ratios of all German bank types increased. Only Sparkassen and Credit Unions had short phases of decreasing equity ratios during the 1970s and the early 1980s. Since the late 1990s, the equity ratio of Large Banks has started to decrease. Credit Unions and Sparkassen have been on a rising trajectory. For Large Banks we can see a declining trend with a more pronounced volatility. Today, Sparkassen and Credit Unions have the highest balance sheet equity ratio of around 9%, while Large Banks have the lowest equity ratio of around 3%.

There is a difference between the balance sheet equity ratio and regulatory capital ratios. The regulatory capital ratio is the percentage of a bank's equity to its risk-weighted assets, while the balance sheet equity ratio is the percentage of a bank's equity to its total assets. According to Basel III, banks are required to hold at least 4.5% of core capital relative to risk-weighted assets. Tier 1 capital must amount to at least 6% (Additional Tier 1 capital of 1.5%), and

Figure 4
Equity Ratio of German Bank Types



Source: Deutsche Bundesbank, own calculations.

total capital (Tier 1 and Tier 2)⁶ must be at least 8% (BIS 2022).

Under Basel III, some asset categories such as government bonds, central bank reserves, deposits with highly rated banks or short-term claims on banks, for instance, receive a risk-weight of zero⁷ which explains the divergence between regulatory capital ratios and balance sheet equity ratios of Large Banks, Regional Banks and Landesbanken in particular.

2.2 Monetary Policy in Germany

In this paper, we cover two different monetary regimes in Germany: The DM and the Euro period. After World War II, Germany went through far-reaching institutional reforms. The 1948 currency and economic reform contributed to Germany's economic miracle. The keystones of the reform were free-market formation of prices, a stable currency and free competition. In 1957, the Bundesbank was established. With the introduction of the Euro in 1999, the Bundesbank was integrated into the European System of Central Banks (ESCB). From 1999 onwards, the ECB sets and conducts the monetary policy for the European Monetary Union (EMU) in coordination with the national central banks of the Euro member states.

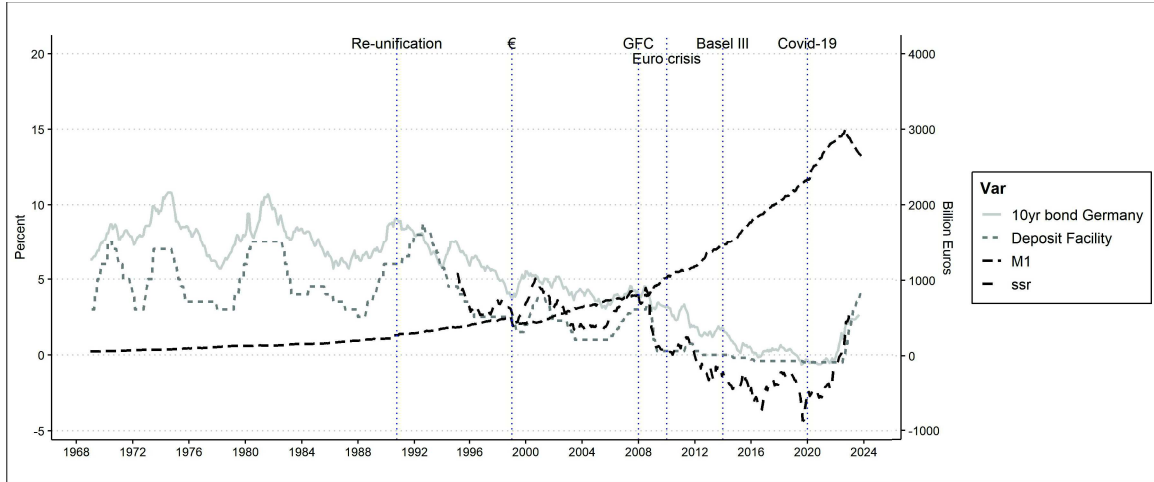
The Bundesbank's primary mandate was to ensure price stability. The commitment to price stability was anchored in the Bundesbank Act of 1957, which established the independence of the institution. The Bundesbank's independence from political influence allowed it to focus on long-term price stability rather than short-term political goals. The credible independence of the Bundesbank was central to anchoring inflation expectations and maintaining trust

⁶Tier 1 capital refers to common equity and retained earnings. Tier 2 capital refers to subordinated debt and hybrid instruments enhancing resilience. For a more detailed description see BIS (2019).

⁷However, it is important to note that a risk-weight of zero does not necessarily mean that these asset categories carry no risk.

of the financial markets. To control inflation, the Bundesbank employed a monetary targeting framework. To ensure long-term economic stability, the Bundesbank pursued a relatively restrictive monetary policy. From 1969 to 1998, the deposit facility rate as the key interest rate averaged 4.8% (Figure 5).

Figure 5
German Monetary Policy Indicators



Source: Deutsche Bundesbank, FRED, Krippner (2013).

According to the Treaty on the Functioning of the European Union, the ESCB's primary objective is price stability (§127). Furthermore, it is an independent system of central banks (§130) prohibited to finance government expenditure (§123) (Schnabl and Sepp 2021).

The central banks' role is to establish a key interest rate that is not too low. It should discourage private commercial banks from funding investment projects with low anticipated profits and higher default risks.⁸ Commercial banks use savings to fund corporate investments based on the evaluation of the expected returns at risk-adjusted loan conditions. To address information asymmetries, small and medium-sized banks have been maintaining long-term relationships (relationship banking) with small and medium-sized enterprises within their business territory (Berger and Udell 2006).

Since the beginning of the European financial and debt crisis in 2009, the ECB's monetary policy changed fundamentally. The ECB lowered the key interest rates to below zero (see Figure 5) and expanded its bond purchases from 2012 onwards. The Euro system's volume of asset purchases has reached about €5,000 billion until the end of 2022. At the same time, the balance sheet of the Euro system and the amount of central bank money M0 grew sharply, increasing by an average annual rate of about 15% between 2012 and 2022.

Long-lasting loose monetary policies pose the danger of undermining the capital allocation function of interest rates (Schnabl 2019). With the advent of unconventional monetary policies, the ECB has introduced tools such as outright purchases of government, corporate and covered bonds as well as the provision

⁸See Schularick and Taylor (2012) and Grimm et al. (2023) on the role of loose monetary policy and the likelihood of (financial) crises.

of long-term credit lines for banks to stimulate the economy. These measures have not only increased the overall volume of credit available to governments, households and businesses but have also created the possibility to steer the economy in line with political goals (Schnabl 2022).

3 Model and Estimation Results

To study the effect of conventional and unconventional monetary policy on the resilience of the German banking system in general, and more specifically on the different bank types constituting the German banking system, we estimate a monthly two-way fixed effects model for the DM period (1968-1998) and the Euro period (1999-2021). We include bank-type fixed effects y_i , which account for unobserved heterogeneities across bank types, and time fixed effects δ_t , which account for unobserved changes over time that affect all bank types.

In the first step, we estimate the effect of monetary policy on the whole German banking system without distinguishing between different bank types. For the period of the DM period, we use the deposit facility rate r_t as an indicator of the monetary policy stance of the Bundesbank:⁹

$$\ln(z_t) = \beta_1 r_t + \beta' X_t + \delta_1 + \epsilon_{i,t} \quad (2)$$

For the Euro period, we use Krippner's short shadow rate (ssr_t) as a monetary policy indicator because it incorporates unconventional monetary policy measures:¹⁰

$$\ln(z_t) = \beta_2 ssr_t + \beta' X_t + \delta_1 + \epsilon_{i,t} \quad (3)$$

In the second step, we estimate the effect of monetary policy on the resilience of various bank types: Large Banks, Regional Banks, Sparkassen, Landesbanken and Credit Unions. This allows us to assess and account for the institutional heterogeneity in the German banking system. We again estimate two separate models for the DM and Euro periods:

$$\ln(z_{i,t}) = \beta_1 r_t + \sum_{j=1}^4 [\beta_{j+2} (bank_{i,t} \times r_t)] + \beta' X_t + \gamma_i + \delta_1 + \epsilon_{i,t} \quad (4)$$

$$\ln(z_{i,t}) = \beta_2 ssr_t + \sum_{j=1}^4 [\beta_{j+6} (bank_{i,t} \times ssr_t)] + \beta' X_t + \gamma_i + \delta_1 + \epsilon_{i,t} \quad (5)$$

⁹The deposit facility rate reflects the interest banks receive for money deposited with the central bank overnight. By adjusting the deposit facility, the central bank can influence the overall level of interest rates in the economy, which in turn affects borrowing, lending, spending and investment. For more details see Borio and Disyatat (2010).

¹⁰The Krippner short-term shadow rate is a suitable summary statistic that incorporates both conventional and unconventional monetary policy measures of the ECB. The influence of asset purchases on the yield curve is translated into changes in the short-term interest rate. This is especially valuable because the zero lower bound often restricts conventional interest rate measures, making it challenging to compare the outcomes of unconventional monetary policy actions with the outcomes of conventional interest rate reductions. For more details, see Krippner (2020).

In the first step (equations (2) and (3)), the explanatory variable z_t corresponds to our resilience measure, the z-score of the whole German banking system in month t . In the second step (equations (4) and (5)), the explanatory variable $z_{i,t}$ corresponds to the z-score of German bank type i in month t . The monthly z-score is transformed with the natural logarithm to reduce the skewness of its distribution. This has the side-effect that we can interpret our results as semi-elasticities.

In the first two regressions, coefficients β_1 and β_2 account for the effect of monetary policy measures on the resilience of the whole banking system during the DM and Euro period. The corresponding coefficients β_1 and β_2 in equations (4) and (5) account for the effect of monetary policy on the resilience of Large Banks which serve as the baseline bank type. The interaction terms of the monetary policy variable and the dummy variables $bank_{i,t}$ isolate the heterogeneous additional effects of monetary policy on other bank types: Credit Unions (β_3 and β_7), Landesbanken (β_4 and β_8), Regional Banks (β_5 and β_9), and Sparkassen (β_6 and β_{10}). For example, the sum of β_1 and β_4 in equation (4), captures the estimated effect of monetary policy on the resilience of Landesbanken during the DM period, while the sum of β_2 and β_{10} from equation (5) captures the estimated effect of unconventional and conventional monetary policy measures on Sparkassen in the Euro period.

We include three additional control variables (X_t) on the price level and the real economic performance. The price level is measured by the year-on-year percentage change of the monthly consumer price index. Real economic performance is captured by the year-on-year percentage change of the industrial production index since the conventional GDP measure is not available on a monthly basis. We also include the stock market capitalization to control for the expectation of future economic activity.

Table 1 summarizes the estimation results of the baseline models (1) to (4) with robust standard errors making the inference robust to heteroskedasticity and auto-correlation. Models (1) and (2) show the estimation results of the baseline estimation without the bank type interaction term, for both the DM period and the Euro period, respectively. In both cases, the effect of the policy rate on banking resilience is statistically significant and negative, that is, a reduction in the policy rate is associated with increased resilience. More precisely, a reduction of the deposit facility rate is on average associated with an increase by a factor of more than 2 ($-\beta_1$) of the resilience of the German banking system during the DM period.

The effect of an expansionary (un)conventional monetary policy on banking resilience during the Euro period, however, is much smaller. A reduction of the Krippner shadow rate by one percentage point is associated with an average increase of only 6% ($-\beta_2$) of the z-score as a resilience indicator. The results suggest that during the DM period, monetary policy might have had a stronger handle on the resilience of the banking system than during the Euro period.

Models (3) and (4) include the interaction terms between the respective monetary policy variable and the bank type dummy variables. The coefficients β_1 and β_2 now account for the effect of (un)conventional monetary policy on the resilience of Large Banks. In Model (3), the effect is statistically significant and comparable in size and sign to the overall effect in model (1). A reduction of the deposit facility by one percentage point is associated with a doubling ($-\beta_1$) of Large Banks' z-score. The effect is slightly less pronounced for Regional

Table 1
Estimation Results for the Baseline Model

	Explained Variable: $\ln(\text{Z-Score})$			
	Model 1 – DM	Model 2 – Euro	Model 3 – DM	Model 4 – Euro
β_1 – deposit facility	–2.6430*** (0.6886)		–2.6492*** (0.6807)	
β_2 – ssr		–0.0583*** (0.0164)		0.0235** (0.0106)
β_3 – df x Credit Unions			0.0062 (0.0044)	
β_4 – df x Landesbanken			–0.0031 (0.0040)	
β_5 – df x Regional Banks			0.0154*** (0.0037)	
β_6 – df x Sparkassen			0.0126*** (0.0039)	
β_7 – ssr x Credit Unions				–0.1118*** (0.0040)
β_8 – ssr x Landesbanken				–0.0800*** (0.0040)
β_9 – ssr x Regional Banks				–0.0704*** (0.0043)
β_{10} – ssr x Sparkassen				–0.1465*** (0.0042)
Time Fixed Effects	Yes	Yes	Yes	Yes
Bank Type Fixed Effects	Yes	Yes	Yes	Yes
Controls	Yes	Yes	Yes	Yes
R ²	0.6165	0.4271	0.6253	0.7871
Adj. R ²	0.5196	0.2818	0.5292	0.7322
Observations	1800	1380	1800	1380
Years	1968-1998	1999-2021	1968-1998	1999-2021

*** p < 0.01, ** p < 0.05, *p < 0.1.

For models with interaction terms, the default bank type is Large Banks. All regressions include time fixed effects and bank type fixed effects. Robust standard errors are applied (White 1980, White 1984, Arellano 1987). Industrial production, CPI and stock market capitalization are controlled for in all regressions.

Banks ($-(\beta_1 + \beta_5)$) and Sparkassen ($-(\beta_1 + \beta_6)$). There is no statistically significant difference between Large Banks, Landesbanken and Credit Unions during the DM period as far as the estimated effects of monetary policy on their resilience is concerned. Hence, overall, there are only minor differences in the estimated effects of monetary policy on the resilience of different bank types. Given the definition of our resilience measure, the increase in resilience can be most likely linked to an increase in the bank type's ROA or a reduction in its volatility. Conventional monetary policy was thus capable of taming financial distress homogeneously across all bank types.¹¹

For the Euro period captured in Model (4), the heterogeneous effects of

¹¹During the DM period, the bank type z-scores indicate that the German banking system was resilient per se. Yet, with a symmetric monetary policy stance, the Deutsche Bundesbank was able to stabilize the German banking system and promote its resilience. Since the introduction of the Euro, however, the ECB pursues an asymmetric monetary policy stance potentially jeopardizing the resilience of the German banking system instead of promoting it. For more details on (a)symmetric monetary policies see Hoffmann and Schnabl (2011).

(un)conventional monetary policy on banking resilience are more pronounced. A one percentage point reduction in the short-term shadow rate is now associated with a 2% reduction in Large Banks' z-score. The decrease in the loss-absorbing buffers is most likely associated with an increase in the volatility of ROA as the result of more risky assets in Large Banks' balance sheets.

The effect of an expansionary (un)conventional monetary policy on banking resilience turns positive for all the other bank types, with the effect being most pronounced for Credit Unions ($9\% = -(\beta_1 + \beta_7)$) and Sparkassen ($12\% = -(\beta_2 + \beta_{10})$). The estimated effects on different bank types thus vary between -3% for Large Banks and +12% for Sparkassen.

This suggests that during the DM period, an expansionary monetary policy stance could positively influence the resilience of the German banking system in general and across all bank types. During the Euro period, however, heterogeneous effects of monetary policy on the resilience of the German banking system are visible. While an expansionary monetary policy stance still affects the resilience of the whole German banking system positively, there are partial adverse effects if the heterogeneity of the banking system is considered. The resilience of Large Banks is negatively related to expansionary monetary policies. The effects on Credit Unions and Sparkassen are positive.

4 Robustness Checks

The estimation results are robust to variations of the monetary policy variable as shown in Table 2. Models 5 and 6 use the 10-year German government bond yield instead of the deposit facility rate and the Krippner shadow rate for the DM and Euro periods, respectively. The main effect of expansionary monetary policy on Large Banks is still highly significant and positive (Model 5). A one percentage point reduction in the 10-year German government bond yield is associated with a 24% ($-\beta_1$) increase of Large Banks' resilience during the DM period. The interaction term with Credit Unions is now significant and positive indicating an attenuated effect of an expansionary monetary policy stance of 20% ($-(\beta_1 + \beta_2)$). There are similar results for Regional Banks ($22\% = -(\beta_1 + \beta_4)$) and Sparkassen ($20\% = -(\beta_1 + \beta_5)$), but no significant difference for Landesbanken. The effects thus vary between 20% and 24%.

The results in Model (6) are comparable in size and significance to the results of the baseline estimation in Model (4). A one percentage point reduction of the 10-year German government bond yield is associated with a 3% decrease ($-\beta_1$) in Large Banks' resilience during the Euro period. Credit Unions and Sparkassen seem to be the main beneficiaries of an expansionary monetary policy stance in terms of their resilience indicator. A one percentage point reduction in the government bond yield is on average associated with a 12% ($-(\beta_1 + \beta_2)$) increase in Credit Unions' resilience and a 16% ($-(\beta_1 + \beta_5)$) increase for Sparkassen. Landesbanken ($-(\beta_1 + \beta_3)$) and Regional Banks ($-(\beta_1 + \beta_4)$) are estimated to become more resilient with a 7% increase in their z-scores.

Models (7) and (8) use the natural logarithm of the monetary base M1 as the monetary policy variable. The sign of the natural logarithm of M1 and its interaction terms is now reversed as compared to the baseline results and again statistically significant. This confirms the previous results as increases in M1, as opposed to decreases in interest rates, are associated with monetary

Table 2
Variations of the Monetary Policy Variable

	MP Var: 10yr Gov. Bond		MP Var: Ln(M1)	
	Model 5 - DM	Model 6 - Euro	Model 7 - DM	Model 8 - Euro
β_1 – Monetary Policy Variable	−0.2439*** (0.0557)	0.0337*** (0.0126)	0.2343*** (0.0164)	−0.3318*** (0.0608)
β_2 – MP x Credit Unions	0.0371*** (0.0049)	−0.1538*** (0.0044)	−0.2760*** (0.0063)	0.9674*** (0.0276)
β_3 – MP x Landesbanken	0.0062 (0.0045)	−0.1062*** (0.0045)	−0.1224*** (0.0079)	0.6448*** (0.0287)
β_4 – MP x Regional Banks	0.0241*** (0.0043)	−0.1020*** (0.0049)	−0.1005*** (0.0067)	0.6277*** (0.0312)
β_5 – MP x Sparkassen	0.0386*** (0.0043)	−0.1985*** (0.0046)	−0.2198*** (0.0064)	1.2359*** (0.0288)
Time Fixed Effects	Yes	Yes	Yes	Yes
Bank Type Fixed Effects	Yes	Yes	Yes	Yes
Controls	Yes	Yes	Yes	Yes
R ²	0.6482	0.8310	0.8305	0.8325
Adj. R ²	0.5581	0.7873	0.7871	0.7892
Observations	1800	1380	1800	1380
Years	1968-1998	1999-2021	1968-1998	1999-2021

*** p < 0.01, ** p < 0.05, *p < 0.1.

For models with interaction terms, the default bank type is Large Banks. All regressions include time fixed effects and bank type fixed effects. Robust standard errors are applied (White 1980, White 1984, Arellano 1987). Industrial production, CPI and stock market capitalization are controlled for in all regressions.

expansion. During the DM period, more expansionary monetary policies are again estimated to stabilize the German banking sector across the board with a somewhat weaker effect on Credit Unions and Sparkassen. Since the introduction of the Euro in 1999 this has changed. An expansion of the money stock is associated with losses in resilience for Large Banks and gains in resilience for all other banks, especially Sparkassen.

The evidence thus far points towards meaningful correlations between monetary policy and bank resilience in Germany. We have included time and bank type fixed effects to absorb unobserved heterogeneity. However, there remains the possibility of endogeneity regarding the monetary policy variables and the error term. To address this, we use an instrumental variable approach. We use the two-stage least square generalization (G2SLS) proposed by Balestra and Varadharajan-Krishnakumar (1987). We instrument the monetary policy variable (deposit facility for the DM period and Krippner shadow rate for the Euro period), the industrial production index and the CPI with their first lags.

Table 3 presents the results of this model specification. By and large, the

Table 3
G2SLS

	Explained Variable: $\ln(\text{Z-Score})$	
	Model 9 - DM	Model 10 - Euro
β_1 – deposit facility	−0.1053** (0.0528)	
β_2 – df x Credit Unions	0.0069 (0.0044)	
β_3 – df x Landesbanken	−0.0031 (0.0040)	
β_4 – df x Regional Banks	0.0156*** (0.0037)	
β_5 – df x Sparkassen	0.0131*** (0.0039)	
β_6 – ssr		0.0149 (0.0114)
β_7 – ssr x Credit Unions		−0.1114*** (0.0040)
β_8 – ssr x Landesbanken		−0.0797*** (0.0040)
β_9 – ssr x Regional Banks		−0.0703*** (0.0043)
β_{10} – ssr x Sparkassen		−0.1460*** (0.0042)
Time Fixed Effects	Yes	Yes
Bank Type Fixed Effects	Yes	Yes
Controls	Yes	Yes
R ²	0.6280	0.7877
Adj. R ²	0.5326	0.7328
Observations	1795	1375
Years	1968-1998	1999-2021

*** p < 0.01, ** p < 0.05, *p < 0.1.

For models with interaction terms, the default bank type is Large Banks. All regressions include time fixed effects and bank type fixed effects. Robust standard errors are applied (White 1980, White 1984, Arellano 1987). Industrial production, CPI and stock market capitalization are controlled for in all regressions.

results are robust to the change in the estimation strategy and comparable in sign and size to the baseline results.

Model 9 shows the results for the DM period. As before, expansionary monetary policy leads to a stabilization and increase in German bank resilience during the DM period. Large banks benefit the most from an expansionary monetary policy stance ($-\beta_1 = 0.1$), while the effect is attenuated for Regional Banks ($-(\beta_1 + \beta_5) = 0.09$) and Sparkassen ($-(\beta_1 + \beta_6) = 0.09$). Model 10 confirms the previous results for the Euro period. Large banks are negatively affected by an (un)conventional monetary policy expansion. A one percentage point reduction in the interest rate leads to a 1% decrease in resilience ($-\beta_2$). Credit Unions and Sparkassen, on the other hand, increase their resilience by 10% ($-(\beta_2 + \beta_7)$) and 13% ($-(\beta_2 + \beta_{10})$), respectively. Landesbanken ($-(\beta_2 + \beta_8)$) and Regional Banks ($-(\beta_2 + \beta_9)$) increase their resilience only slightly in response to an interest rate reduction.

Table 4
Further Controls

	Explained Variable: $\ln(\text{Z-Score})$		Explained Variable: $\ln(\text{Z-Score10})$ (10-year rolling window)	
	Model 11 - DM	Model 12 - Euro	Model 13 - DM	Model 14 - Euro
β_1 – deposit facility	−1.3141*** (0.0768)		−5.4723** (2.2387)	
β_3 – df x Credit Unions	0.0119*** (0.0034)		−0.0049 (0.0112)	
β_4 – df x Landesbanken	0.0229*** (0.0034)		0.1346*** (0.0172)	
β_5 – df x Regional Banks	0.0236*** (0.0031)		0.1005*** (0.0162)	
β_6 – df x Sparkassen	0.0219*** (0.0030)		−0.0541*** (0.0129)	
β_2 – ssr		0.0137 (0.0099)		0.1184*** (0.0375)
β_7 – ssr x Credit Unions		−0.0937*** (0.0040)		−0.0165 (0.0107)
β_8 – ssr x Landesbanken		−0.0782*** (0.0039)		0.0125 (0.0126)
β_9 – ssr x Regional Banks		−0.0698*** (0.0039)		−0.2725*** (0.0119)
β_{10} – ssr x Sparkassen		−0.1448*** (0.0040)		0.1658*** (0.0137)
β_{11} – balance sheet indicator	2.7628*** (0.0901)	−0.9673*** (0.0782)		
Time Fixed Effects	Yes	Yes	Yes	Yes
Bank Type Fixed Effects	Yes	Yes	Yes	Yes
Controls	Yes	Yes	Yes	Yes
R ²	0.7543	0.8049	0.3661	0.7100
Adj. R ²	0.6911	0.7543	0.2016	0.6351
Observations	1805	1380	1210	1380
Years	1968-1998	1999-2021	1968-1998	1999-2021

*** p < 0.01, ** p < 0.05, *p < 0.1.

For models with interaction terms, the default bank type is Large Banks. All regressions include time fixed effects and bank type fixed effects. Robust standard errors are applied (White 1980, White 1984, Arellano 1987). Industrial production, CPI and stock market capitalization are controlled for in all regressions.

Table 4 presents further robustness checks. In Model 11 and 12, we control for the heterogeneous balance sheet characteristics of the German bank types in our baseline estimations. To do so, we have constructed a single indicator¹² combining a variety of balance sheet information based on the related literature on the bank lending channel of monetary policy (i.e. Kashyap and Stein 2000, Bernanke 2007, Ashcraft and Campello 2007, Gambacorta and Marques-Ibanez 2011, De Santis and Surico 2013, Ciccarelli et al. 2013, Buch et al. 2019). The balance sheet indicator is used to control for the bank lending channel of

¹²The balance sheet indicator is constructed by using a variance-equal-weights-approach (see also Illing and Liu 2006, Morales and Estrada 2010 and Cardarelli et al. 2011). It is based on the following balance sheet information: deposit ratio, liquidity ratio, foreign liabilities ratio, foreign assets ratio, real economy funding ratio, government proxy ratio, inter-financial linkage ratio, bank funding gap ratio, investment banking ratio and size.

monetary policy.

In Model 13 and 14, we use a variation of our resilience indicator as a further robustness check. We compute the standard deviation of $roa_{i,t}$ on the basis of a 10-year-rolling window looking back in time.

The results in Model 11 yield different results regarding the interactions between the deposit facility and Credit Unions (β_3) and Landesbanken (β_4), which are now highly statistically significant and positive. The other results are in line with the results of Model 3 regarding size and significance of the coefficients. During the DM period, a more expansive monetary policy stance leads to a more resilient banking system regarding all bank types. Also, the balance sheet indicator is highly significant and positive. Model 12 shows the results of the baseline estimation including our balance sheet indicator for the Euro period. Now, the main effect (β_2) reflecting the effect for Large Banks is insignificant but still positive and comparable in size to the baseline estimation in Model 4. In contrast to the consistently positive effect of an expansionary monetary policy stance during the DM period, the positive sign reflects a negative impact of loose monetary policy on the resilience of Large Banks. The other coefficients for the interactions between monetary policy and the different bank types are almost identical in size and significance compared to the baseline estimation in Model 4. The results underline the heterogeneity of how monetary policy impacts bank type resilience during the DM period and the Euro period.

By and large, the results in Model 13 are in line with the results of Model 3. A reduction in the deposit facility rate leads to a stabilization and increase in German bank resilience during the DM period. The effect is most pronounced for Sparkassen ($-(\beta_1 + \beta_5) = 5.52$). Model 14 yields different results regarding the interaction between the ssr and Credit Unions (β_7) and Sparkassen (β_{10}). Now, a reduction in the short-term shadow rate leads to a decrease in resilience by 11% ($-(\beta_2 + \beta_7)$) for Credit Unions, and 28% ($-(\beta_2 + \beta_{10})$) for Sparkassen. The other results are in line with the baseline estimates in Model 4. Monetary expansion is associated with a reduction in resilience for Large Banks ($-\beta_2 = -0.12$) and Landesbanken ($-(\beta_2 + \beta_8) = -0.13$) and an increase in resilience for Regional Banks ($-(\beta_2 + \beta_9) = 0.15$).

5 Conclusion

The question of whether monetary policy, and especially unconventional monetary policy tools, are an effective means to maintain a more resilient and stable banking system remains a subject of ongoing debate. Recent research suggests that when the monetary policy stance is very accommodative over a long period of time, the probability of financial instability and financial crises increases (Grimm et al. 2023). Abadi et al. (2023) deliver a possible explanation why that is. They show that there exists an interest rate at which accommodative monetary policy is counterproductive for bank lending. Further monetary easing, especially through unconventional monetary policies, reduces bank profitability, constrains credit supply, and jeopardizes banking resilience and financial stability. The presented results provide evidence that conventional monetary policy easing was an appropriate means to increase the resilience of the German banking system during the DM period. However, since the introduction of the Euro, the way monetary policy is conducted changed significantly. Loose monetary

policy can still increase the resilience of the banking system as a whole, but also introduces significant risks. Large banks, which make up 21.8% of the German banking system and are often considered too big to fail, are increasingly negatively affected by unconventional monetary easing. One plausible explanation might be the fact that Large Banks are particularly active in the riskier foreign and securities business as well as investment banking (Eim 2004). In contrast, Sparkassen and Credit Unions have increased their resilience in response to the loose monetary policy stance of the ECB. This might be accredited to their strong and consistent business model. Sparkassen and Credit Unions are characterized as relationship banks which resolve information asymmetries in their banking business more effectively as they have been maintaining consistent relationships (relationship banking) with households and small and medium-sized enterprises within their business territory (Berger and Udell 2006, Shinozaki 2012). Therefore, these banks are less prone to introduce risks to their balance sheets by participating in more risky banking activities such as foreign and securities business or investment banking. This can also be seen in the balance sheets of Sparkassen and Credit Unions which have virtually zero foreign business activities, a very low inter-financial linkage and no investment banking activity. The presented evidence suggests that the low-interest rate environment in recent years has created problems for monetary policy to maintain a stable and resilient banking system. During the DM period, conventional interest rate cuts have been very effective in improving resilience. At the zero-lower bound they have become unfeasible. However, unconventional monetary policies seem to be less effective. Insofar as monetary policy attempts to improve resilience, a transition towards an environment of higher interest rates might be worthwhile.

Bibliography

- Abadi, J., Brunnermeier, M. and Koby, Y. (2023): The Reversal Interest Rate. *American Economic Review*, 113(8), 2084-2120.
- Allen, F. and Gale, D. (2004): Competition and Financial Stability. *Journal of Money, Credit and Banking*, 36(3), 453-480.
- Aligica, P. D. and Tarko, V. (2014): Institutional Resilience and Economic Systems: Lessons from Elinor Ostrom's Work'. *Comparative Economic Studies*, 56(1), 52-76.
- Altman, E. I. (1968): Financial Ratios, Discriminant Analysis and the Prediction of Corporate Bankruptcy. *Journal of Finance*, 23(4), 189-209.
- Altunbas, Y., Carbo, S., Gardener, E. P. and Molyneux, P. (2007): Examining the Relationships Between Capital, Risk and Efficiency in European banking. *European Financial Management*, 13, 49-70.
- Ashcraft, A. B. and Campello, M. (2007): Firm Balance Sheets and Monetary Policy Transmission. *Journal of Monetary Economics*, 54(6), 1515-1528.
- Avalos, F. and Mamatzakis, E. (2023): Is Bank Resilience Affected by Unconventional Monetary Policy in the Euro Area? *Journal of International Money and Finance*, 130, 1-31.
- Balestra, P. and Varadharajan-Krishnakumar, J. (1987): Full Information Estimations of a System of Simultaneous Equations with Error Component Structure. *Econometric Theory*, 3, 223-246.
- Bech, M. L., Gambacorta, L. and Kharroubi, E. (2014): Monetary Policy in

- a Downturn: Are Financial Crises Special?. *International Finance*, 17(1), 99-119.
- Beck, T., De Jonghe, O. and Schepens, G. (2013): Bank Competition and Stability: Cross-Country Heterogeneity. *Journal of Financial Intermediation*, 22, 218-244.
- Berger, A. N. and Udell G. F. (2006): A More Conceptual Framework for SME Finance. *Journal of Banking and Finance*, 30(11), 2945-2966.
- Bernanke, B. S. (2007): The Financial Accelerator and the Credit Channel. Remarks - Credit Channel of Monetary Policy in the Twenty-First Century, Board of Governors of the U.S. Federal Reserve System.
- BIS (2019): Definition of Capital in Basel III – Executive Summary. Retrieved 22.01.2024 from https://www.bis.org/fsi/fsisummaries/defcap_b3.htm.
- BIS (2022): Basel III Monitoring Report. Retrieved 23.10.2023 from <https://www.bis.org/bcbs/publ/d531.htm>.
- Bouis, L., Rawdanowicz, L., Renne, J.-P., Watanabe, S. and Christensen, A. K. (2013): The Effectiveness of Monetary Policy since the Onset of the Financial Crisis. OECD Working Paper No. 1081.
- Borio, C. (2014). The financial cycle and macroeconomics: What Have We Learnt?. *Journal of Banking and Finance*, 45, 182-198.
- Borio, C. and Disyatat, P. (2010): Unconventional Monetary Policies: An Appraisal. *Manchester School*, 78(1), 53-89.
- Boyd, J. H. and Runkle, D. E. (1993): Size and Performance of Banking Firms: Testing the Predictions of Theory. *Journal of Monetary Economics*, 31(1): 47-67.
- Buch, C. M., Bussiere, M., Goldberg, L. and Hills, R. (2019): The International Transmission of Monetary Policy. *Journal of International Money and Finance*, 91, 29-48.
- Bundesbank (2021): Deleveraging-Potenzial im Deutschen Bankensystem und die Auswirkung auf die Finanzstabilität. Bundesbank Technical Paper No. 12/2021.
- Cardarelli, R., Elekdag, S. and Lall, S. (2011): Financial Stress and Economic Contractions. *Journal of Financial Stability*, 7(2), 78-97.
- Caruana, J. (2012): Why Central Bank Balance Sheets Matter. BIS Working Paper No. 66b.
- Ciccarelli, M., Maddaloni, A. and Peydró, J. L. (2013): Heterogeneous Transmission Mechanism: Monetary Policy and Financial Fragility in the Eurozone. *Economic Policy*, 28(75), 459-512.
- Cihak, M. and Hesse, H. (2010): Islamic Banks and Financial Stability: An Empirical Analysis. *Journal of Financial Services Research*, 38, 95-113.
- De Guindos, L. (2023a): A Resilient banking Sector for the Euro Area. Remarks by Luis de Guindos, Vice-President of the ECB, at the 18th edition of the Banking Sector Industry Meeting Banking: Navigating the Wave of Inflation, Madrid, 17 May.
- De Guindos, L. (2023b): Bank Need to Maintain Capital Buffers to Preserve Resilience. The ECB Blog. Retrieved 21.10.2023 from https://www.ecb.europa.eu/press/blog/date/2023/html/ecb.blog230802_5c22c72b25.en.html.
- De Santis, R. A. and Surico, P. (2013): Bank Lending and Monetary Transmission in the Euro Area. *Economic Policy*, 28(75), 423-457.

- ECB (2007): Progress Towards a Framework for Financial Stability Assessment, speech by José-Manuel González-Páramo, Member of the Executive Board of the ECB, OECD World Forum on Statistics, Knowledge and Policy, Istanbul, 28 June.
- Eim, A. (2004): Das Drei-Saeulen-System der deutschen Kreditwirtschaft unter besonderer Beruecksichtigung des genossenschaftlichen Finanzverbundes. Arbeitspapiere des Instituts fuer Genossenschaftswesen an der Westfaelischen Wilhelms-Universitaet, retrieved 23.10.2023 from <https://www.wiwi.uni-muenster.de/06/nd/fleadmin/documents/workingpapers/AP40.pdf>.
- Ettmann, B. and Wolff, K. (2019): Bankbetriebslehre/ Kompaktwissen Bankbetriebslehre. Kompaktwissen, 27, Koeln: Bildungsverlag EINS (Bankbetriebslehre).
- Erol, O., Henry, D., Sauser, B. and Mansouri, M. (2010): Perspectives on Measuring Enterprise Resilience. 2010 IEEE International Systems Conference, San Diego, CA, USA, 2010, 587-592.
- FED (2021): Financial Stability. Retrieved 21.10.2023 from <https://www.federalreserve.gov/financial-stability/what-is-financial-stability.htm>.
- Fiordelisi, F. and Mare, D. S. (2014): Competition and Financial Stability in European Cooperative Banks. *Journal of International Money and Finance*, 45, 1–16.
- Fu, X.M., Lin, Y. R. and Molyneux, P. (2014): Bank Competition and Financial Stability in Asia Pacific. *Journal of Banking and Finance*, 38, 64–77.
- Gambacorta, L., and Marques-Ibanez, D. (2011): The Bank Lending Channel: Lessons From the Crisis. *Economic Policy*, 26(66), 135-182.
- Gaertner, S. (2003): Sparkassen als Akteure einer integrierten Regionalentwicklung. *Graue Reihe des Instituts fuer Arbeit und Technik*, 5, 20.
- Grimm, M., Jorda, O., Schularick, M. and Taylor, A. M. (2023): Loose Monetary Policy and Financial Stability. NBER Working Paper 30958.
- Hoffmann, A. and Schnabl, G. (2023): A Vicious Cycle of Manias, Crises and Asymmetric Policy Responses – An Overinvestment View. *The World Economy*, 34(3), 382-403.
- Holling, C. S. (1973): Resilience and Stability of Ecological Systems. *Annual Review of Ecology and Systematics*, 4, 1–23.
- Holling, C. S. (1996): Engineering Resilience Versus Ecological Resilience, *Engineering with Ecological Constraints*. Washington D.C.: National Academy Press; 31–44.
- IMF (2023): Defining Financial Stability. Retrieved 21.10.2023 from <https://www.elibrary.imf.org/downloadpdf/book/9781589064409/ch005.xml>.
- Inaba, K-I., O’Farrell, R., Rawdanowicz, L. and Christensen, A. K. (2015): The Conduct of Monetary Policy in the Future: Instrument Use. OECD Working Paper No. 1187.
- Illing, M. and Liu, Y. (2003). An Index of Financial Stress for Canada. Bank of Canada Working Paper No. 2003-14.
- Kannan, P., Rabanal, P. and Scott, A. (2009): Macroeconomic Patterns and Monetary Policy in the Run-Up to Asset Price Bursts. IMF Working Paper No. 09/252.
- Kashyap, A. K. and Stein, J. C. (2000): What Do a Million Observations on

- Banks Say About the Transmission of Monetary Policy?. *American Economic Review*, 90(3), 407-428.
- Krippner, L. (2013): Measuring the Stance of Monetary Policy in Zero Lower Bound Environments. *Economics Letters*, 118, 135-38.
- Krippner, L. (2020): Documentation for Shadow Short Rate Estimates. Mimeo, ljkma.
- Lagarde, C. (2021): Learning from Lisbon: Recovery and Resilience in Europe. Speech by Christine Lagarde, President of the ECB, on the Occasion of the 175th anniversary of Banco de Portugal in Lisbon, Lisbon, 3 November.
- Lagarde, C. (2022): Finding Resilience in Times of Uncertainty. Speech by President Christine Lagarde at an Event Organised by the Central Bank of Cyprus, Nicosia, 30 March.
- Luetke-Uhlenbrock, C. (2007): Bewertung oeffentlich-rechtlicher Sparkassen. Frankfurt am Main: Deutscher Universitaetsverlag.
- Mamatzakakis, E. and Bermpei, T. (2016): What is the Effect of Unconventional Monetary Policy on Bank Performance? *Journal of International Money and Finance*, 67, 239-263.
- Mishkin, F. (2009): Is Monetary Policy Effective During Financial Crises?. *American Economic Review*, 99(2), 573-577.
- Morales, M. A. and Estrada, D. (2010). A Financial Stability Index for Colombia. *Annals of Finance*, 6(4), 555-581.
- Rose, A. and Liao, S. (2005): Modeling Regional Economic Resilience to Disasters: A Computable General Equilibrium Analysis of Water Service Disruptions. *Journal of Regional Science*, 45, 75-112.
- Salter, A. W. and Tarko, V. (2019): Governing the Banking System: An Assessment of Resilience Based on Elinor Ostrom's Design Principles. *Journal of Institutional Economics* 15, 505-519.
- Sanchez, C. A., Rasmussen, M. and Roehn, O. (2015): Economic Resilience: What Role for Policies?. OECD Economics Department Working Papers No. 1251.
- Schnabel, I. (2023): Monetary and Financial Stability – Can They be Separated?. Speech by Isabel Schnabel, Member of the Executive Board of the ECB, at the Conference on Financial Stability and Monetary Policy in the Honour of Charles Goodhart, London, 19 May.
- Schnabl, G. (2019): Central Banking and Crisis Management from the Perspective of Austrian Business Cycle Theory. In *The Oxford Handbook of the Economics of Central Banking 2019*, edited by D. Mayes, P. Siklos, and J. E. Sturm, 551-84. Oxford: Oxford University Press.
- Schnabl, G. and Sepp, T. (2021): Inflationsziel und Inflationsmessung in der Eurozone im Wandel. *Wirtschaftsdienst*, 101(8), 615-620.
- Schnabl, G. (2022): EU Taxonomy and ECB Monetary Policy: Moving Towards Centrally-Directed Green Capital Allocation?. *The Economists' Voice*, 19(2), 267-273.
- Schularick, M. and Taylor, A. M. (2012): Credit Booms Gone Bust: Monetary Policy, Leverage Cycles, and Financial Crises, 1870-2008. *American Economic Review*, 102(2), 1029-61.
- Shinozaki, S. (2012): A New Regime of SME Financing in Emerging Asia: Empowering Growth-oriented SME to Build Resilient National Economies. ADB Working Paper Series on Regional Economic Integration.

Wirtschaftswort des Jahres (2022): Wirtschaftswort des Jahres.
<https://www.wirtschaftswort-des-jahres.de/>.

Universität Leipzig

Wirtschaftswissenschaftliche Fakultät

Nr. 1	Wolfgang Bernhardt	Stock Options wegen oder gegen Shareholder Value? Vergütungsmodelle für Vorstände und Führungskräfte 04/1998
Nr. 2	Thomas Lenk / Volkmar Teichmann	Bei der Reform der Finanzverfassung die neuen Bundesländer nicht vergessen! 10/1998
Nr. 3	Wolfgang Bernhardt	Gedanken über Führen – Dienen – Verantworten 11/1998
Nr. 4	Kristin Wellner	Möglichkeiten und Grenzen kooperativer Standortgestaltung zur Revitalisierung von Innenstädten 12/1998
Nr. 5	Gerhardt Wolff	Brauchen wir eine weitere Internationalisierung der Betriebswirtschaftslehre? 01/1999
Nr. 6	Thomas Lenk / Friedrich Schneider	Zurück zu mehr Föderalismus: Ein Vorschlag zur Neugestaltung des Finanzausgleichs in der Bundesrepublik Deutschland unter besonderer Berücksichtigung der neuen Bundesländer 12/1998
Nr. 7	Thomas Lenk	Kooperativer Föderalismus – Wettbewerbsorientierter Föderalismus 03/1999
Nr. 8	Thomas Lenk / Andreas Mathes	EU – Osterweiterung – Finanzierbar? 03/1999
Nr. 9	Thomas Lenk / Volkmar Teichmann	Die fiskalischen Wirkungen verschiedener Forderungen zur Neugestaltung des Länderfinanzausgleichs in der Bundesrepublik Deutschland: Eine empirische Analyse unter Einbeziehung der Normenkontrollanträge der Länder Baden-Württemberg, Bayern und Hessen sowie der Stellungnahmen verschiedener Bundesländer 09/1999
Nr. 10	Kai-Uwe Graw	Gedanken zur Entwicklung der Strukturen im Bereich der Wasserversorgung unter besonderer Berücksichtigung kleiner und mittlerer Unternehmen 10/1999
Nr. 11	Adolf Wagner	Materialien zur Konjunkturforschung 12/1999
Nr. 12	Anja Birke	Die Übertragung westdeutscher Institutionen auf die ostdeutsche Wirklichkeit – ein erfolg-versprechendes Zusammenspiel oder Aufdeckung systematischer Mängel? Ein empirischer Bericht für den kommunalen Finanzausgleich am Beispiel Sachsen 02/2000
Nr. 13	Rolf H. Hasse	Internationaler Kapitalverkehr in den letzten 40 Jahren – Wohlstandsmotor oder Krisenursache? 03/2000
Nr. 14	Wolfgang Bernhardt	Unternehmensführung (Corporate Governance) und Hauptversammlung 04/2000
Nr. 15	Adolf Wagner	Materialien zur Wachstumsforschung 03/2000
Nr. 16	Thomas Lenk / Anja Birke	Determinanten des kommunalen Gebührenaufkommens unter besonderer Berücksichtigung der neuen Bundesländer 04/2000
Nr. 17	Thomas Lenk	Finanzwirtschaftliche Auswirkungen des Bundesverfassungsgerichtsurteils zum Länderfinanzausgleich vom 11.11.1999 04/2000
Nr. 18	Dirk Büttel	Continuous linear utility for preferences on convex sets in normal real vector spaces 05/2000
Nr. 19	Stefan Dierkes / Stephanie Hanrath	Steuerung dezentraler Investitionsentscheidungen bei nutzungsabhängigem und nutzungsunabhängigem Verschleiß des Anlagenvermögens 06/2000
Nr. 20	Thomas Lenk / Andreas Mathes / Olaf Hirschfeld	Zur Trennung von Bundes- und Landeskompetenzen in der Finanzverfassung Deutschlands 07/2000
Nr. 21	Stefan Dierkes	Marktwerte, Kapitalkosten und Betafaktoren bei wertabhängiger Finanzierung 10/2000
Nr. 22	Thomas Lenk	Intergovernmental Fiscal Relationships in Germany: Requirement for New Regulations? 03/2001
Nr. 23	Wolfgang Bernhardt	Stock Options – Aktuelle Fragen Besteuerung, Bewertung, Offenlegung 03/2001
Nr. 24	Thomas Lenk	Die „kleine Reform“ des Länderfinanzausgleichs als Nukleus für die „große Finanzverfassungs-reform“? 10/2001

Nr. 25	Wolfgang Bernhardt	Biotechnologie im Spannungsfeld von Menschenwürde, Forschung, Markt und Moral Wirtschaftsethik zwischen Beredsamkeit und Schweigen 11/2001
Nr. 26	Thomas Lenk	Finanzwirtschaftliche Bedeutung der Neuregelung des bundestaatlichen Finanzausgleichs – Eine allokative und distributive Wirkungsanalyse für das Jahr 2005 11/2001
Nr. 27	Sören Bär	Grundzüge eines Tourismusmarketing, untersucht für den Südraum Leipzig 05/2002
Nr. 28	Wolfgang Bernhardt	Der Deutsche Corporate Governance Kodex: Zuwahl (comply) oder Abwahl (explain)? 06/2002
Nr. 29	Adolf Wagner	Konjunkturtheorie, Globalisierung und Evolutionsökonomik 08/2002
Nr. 30	Adolf Wagner	Zur Profilbildung der Universitäten 08/2002
Nr. 31	Sabine Klinger / Jens Ulrich / Hans-Joachim Rudolph	Konjunktur als Determinante des Erdgasverbrauchs in der ostdeutschen Industrie? 10/2002
Nr. 32	Thomas Lenk / Anja Birke	The Measurement of Expenditure Needs in the Fiscal Equalization at the Local Level Empirical Evidence from German Municipalities 10/2002
Nr. 33	Wolfgang Bernhardt	Die Lust am Fliegen Eine Parabel auf viel Corporate Governance und wenig Unternehmensführung 11/2002
Nr. 34	Udo Hielscher	Wie reich waren die reichsten Amerikaner wirklich? (US-Vermögensbewertungsindex 1800 – 2000) 12/2002
Nr. 35	Uwe Haubold / Michael Nowak	Risikoanalyse für Langfrist-Investments Eine simulationsbasierte Studie 12/2002
Nr. 36	Thomas Lenk	Die Neuregelung des bundesstaatlichen Finanzausgleichs auf Basis der Steuerschätzung Mai 2002 und einer aktualisierten Bevölkerungsstatistik 12/2002
Nr. 37	Uwe Haubold / Michael Nowak	Auswirkungen der Renditeverteilungsannahme auf Anlageentscheidungen Eine simulationsbasierte Studie 02/2003
Nr. 38	Wolfgang Bernhard	Corporate Governance Kodex für den Mittel-Stand? 06/2003
Nr. 39	Hermut Kormann	Familienunternehmen: Grundfragen mit finanzwirtschaftlichen Bezug 10/2003
Nr. 40	Matthias Folk	Launhardtsche Trichter 11/2003
Nr. 41	Wolfgang Bernhardt	Corporate Governance statt Unternehmensführung 11/2003
Nr. 42	Thomas Lenk / Karolina Kaiser	Das Prämienmodell im Länderfinanzausgleich – Anreiz- und Verteilungsmittelnwirkungen 11/2003
Nr. 43	Sabine Klinger	Die Volkswirtschaftliche Gesamtrechnung des Haushaltssektors in einer Matrix 03/2004
Nr. 44	Thomas Lenk / Heide Köpping	Strategien zur Armutsbekämpfung und –vermeidung in Ostdeutschland: 05/2004
Nr. 45	Wolfgang Bernhardt	Sommernachtsfantasien Corporate Governance im Land der Träume. 07/2004
Nr. 46	Thomas Lenk / Karolina Kaiser	The Premium Model in the German Fiscal Equalization System 12/2004
Nr. 47	Thomas Lenk / Christine Falken	Komparative Analyse ausgewählter Indikatoren des Kommunalwirtschaftlichen Gesamt-ergebnisses 05/2005
Nr. 48	Michael Nowak / Stephan Barth	Immobilienanlagen im Portfolio institutioneller Investoren am Beispiel von Versicherungsunternehmen Auswirkungen auf die Risikosituation 08/2005
Nr. 49	Wolfgang Bernhardt	Familiengesellschaften – Quo Vadis? Vorsicht vor zu viel „Professionalisierung“ und Ver-Fremdung 11/2005
Nr. 50	Christian Milow	Der Griff des Staates nach dem Währungsgold 12/2005

Nr. 51	Anja Eichhorst / Karolina Kaiser	The Institutional Design of Bailouts and Its Role in Hardening Budget Constraints in Federations 03/2006
Nr. 52	Ullrich Heilemann / Nancy Beck	Die Mühen der Ebene – Regionale Wirtschaftsförderung in Leipzig 1991 bis 2004 08/2006
Nr. 53	Gunther Schnabl	Die Grenzen der monetären Integration in Europa 08/2006
Nr. 54	Hermut Kormann	Gibt es so etwas wie typisch mittelständige Strategien? 11/2006
Nr. 55	Wolfgang Bernhardt	(Miss-)Stimmung, Bestimmung und Mitbestimmung Zwischen Juristentag und Biedenkopf-Kommission 11/2006
Nr. 56	Ullrich Heilemann / Annika Blaschzik	Indicators and the German Business Cycle A Multivariate Perspective on Indicators of Ifo, OECD, and ZEW 01/2007
Nr. 57	Ullrich Heilemann	“The Soul of a new Machine” zu den Anfängen des RWI-Konjunkturmodells 12/2006
Nr. 58	Ullrich Heilemann / Roland Schuhr / Annika Blaschzik	Zur Evolution des deutschen Konjunkturzyklus 1958 bis 2004 Ergebnisse einer dynamischen Diskriminanzanalyse 01/2007
Nr. 59	Christine Falken / Mario Schmidt	Kameralistik versus Doppik Zur Informationsfunktion des alten und neuen Rechnungswesens der Kommunen Teil I: Einführende und Erläuternde Betrachtungen zum Systemwechsel im kommunalen Rechnungswesen 01/2007
Nr. 60	Christine Falken / Mario Schmidt	Kameralistik versus Doppik Zur Informationsfunktion des alten und neuen Rechnungswesens der Kommunen Teil II Bewertung der Informationsfunktion im Vergleich 01/2007
Nr. 61	Udo Hielscher	Monti della città di firenze Innovative Finanzierungen im Zeitalter Der Medici. Wurzeln der modernen Finanzmärkte 03/2007
Nr. 62	Ullrich Heilemann / Stefan Wappler	Sachsen wächst anders Konjunkturelle, sektorale und regionale Bestimmungsgründe der Entwicklung der Bruttowertschöpfung 1992 bis 2006 07/2007
Nr. 63	Adolf Wagner	Regionalökonomik: Konvergierende oder divergierende Regionalentwicklungen 08/2007
Nr. 64	Ullrich Heilemann / Jens Ulrich	Good bye, Professir Phillips? Zum Wandel der Tariflohdeterminanten in der Bundesrepublik 1952 – 2004 08/2007
Nr. 65	Gunther Schnabl / Franziska Schobert	Monetary Policy Operations of Debtor Central Banks in MENA Countries 10/2007
Nr. 66	Andreas Schäfer / Simone Valente	Habit Formation, Dynastic Altruism, and Population Dynamics 11/2007
Nr. 67	Wolfgang Bernhardt	5 Jahre Deutscher Corporate Governance Kodex Eine Erfolgsgeschichte? 01/2008
Nr. 68	Ullrich Heilemann / Jens Ulrich	Viel Lärm um wenig? Zur Empirie von Lohnformeln in der Bundesrepublik 01/2008
Nr. 69	Christian Groth / Karl-Josef Koch / Thomas M. Steger	When economic growth is less than exponential 02/2008
Nr. 70	Andreas Bohne / Linda Kochmann	Ökonomische Umweltbewertung und endogene Entwicklung peripherer Regionen Synthese einer Methodik und einer Theorie 02/2008
Nr. 71	Andreas Bohne / Linda Kochmann / Jan Slavík / Lenka Slavíková	Deutsch-tschechische Bibliographie Studien der kontingenten Bewertung in Mittel- und Osteuropa 06/2008
Nr. 72	Paul Lehmann / Christoph Schröter-Schlaack	Regulating Land Development with Tradable Permits: What Can We Learn from Air Pollution Control? 08/2008
Nr. 73	Ronald McKinnon / Gunther Schnabl	China's Exchange Rate Impasse and the Weak U.S. Dollar 10/2008
Nr. 74	Wolfgang Bernhardt	Managervergütungen in der Finanz- und Wirtschaftskrise Rückkehr zu (guter) Ordnung, (klugem) Maß und (vernünftigem) Ziel? 12/2008

Nr. 75	Moritz Schularick / Thomas M. Steger	Financial Integration, Investment, and Economic Growth: Evidence From Two Eras of Financial Globalization 12/2008
Nr. 76	Gunther Schnabl / Stephan Freitag	An Asymmetry Matrix in Global Current Accounts 01/2009
Nr. 77	Christina Ziegler	Testing Predictive Ability of Business Cycle Indicators for the Euro Area 01/2009
Nr. 78	Thomas Lenk / Oliver Rottmann / Florian F. Woitek	Public Corporate Governance in Public Enterprises Transparency in the Face of Divergent Positions of Interest 02/2009
Nr. 79	Thomas Steger / Lucas Bretschger	Globalization, the Volatility of Intermediate Goods Prices, and Economic Growth 02/2009
Nr. 80	Marcela Munoz Escobar / Robert Holländer	Institutional Sustainability of Payment for Watershed Ecosystem Services. Enabling conditions of institutional arrangement in watersheds 04/2009
Nr. 81	Robert Holländer / WU Chunyou / DUAN Ning	Sustainable Development of Industrial Parks 07/2009
Nr. 82	Georg Quaas	Realgrößen und Preisindizes im alten und im neuen VGR-System 10/2009
Nr. 83	Ullrich Heilemann / Hagen Findeis	Empirical Determination of Aggregate Demand and Supply Curves: The Example of the RWI Business Cycle Model 12/2009
Nr. 84	Gunther Schnabl / Andreas Hoffmann	The Theory of Optimum Currency Areas and Growth in Emerging Markets 03/2010
Nr. 85	Georg Quaas	Does the macroeconomic policy of the global economy's leader cause the worldwide asymmetry in current accounts? 03/2010
Nr. 86	Volker Grossmann / Thomas M. Steger / Timo Trimborn	Quantifying Optimal Growth Policy 06/2010
Nr. 87	Wolfgang Bernhardt	Corporate Governance Kodex für Familienunternehmen? Eine Widerrede 06/2010
Nr. 88	Philipp Mandel / Bernd Süßmuth	A Re-Examination of the Role of Gender in Determining Digital Piracy Behavior 07/2010
Nr. 89	Philipp Mandel / Bernd Süßmuth	Size Matters. The Relevance and Hicksian Surplus of Agreeable College Class Size 07/2010
Nr. 90	Thomas Kohstall / Bernd Süßmuth	Cyclic Dynamics of Prevention Spending and Occupational Injuries in Germany: 1886-2009 07/2010
Nr. 91	Martina Padmanabhan	Gender and Institutional Analysis. A Feminist Approach to Economic and Social Norms 08/2010
Nr. 92	Gunther Schnabl / Ansgar Belke	Finanzkrise, globale Liquidität und makroökonomischer Exit 09/2010
Nr. 93	Ullrich Heilemann / Roland Schuhr / Heinz Josef Münch	A "perfect storm"? The present crisis and German crisis patterns 12/2010
Nr. 94	Gunther Schnabl / Holger Zemanek	Die Deutsche Wiedervereinigung und die europäische Schuldenkrise im Lichte der Theorie optimaler Währungsräume 06/2011
Nr. 95	Andreas Hoffmann / Gunther Schnabl	Symmetrische Regeln und asymmetrisches Handeln in der Geld- und Finanzpolitik 07/2011
Nr. 96	Andreas Schäfer / Maik T. Schneider	Endogenous Enforcement of Intellectual Property, North-South Trade, and Growth 08/2011
Nr. 97	Volker Grossmann / Thomas M. Steger / Timo Trimborn	Dynamically Optimal R&D Subsidization 08/2011
Nr. 98	Erik Gawel	Political drivers of and barriers to Public-Private Partnerships: The role of political involvement 09/2011
Nr. 99	André Casajus	Collusion, symmetry, and the Banzhaf value 09/2011
Nr. 100	Frank Hüttner / Marco Sunder	Decomposing R^2 with the Owen value 10/2011
Nr. 101	Volker Grossmann / Thomas M. Steger / Timo Trimborn	The Macroeconomics of TANSTAAFL 11/2011

Nr. 102	Andreas Hoffmann	Determinants of Carry Trades in Central and Eastern Europe 11/2011
Nr. 103	Andreas Hoffmann	Did the Fed and ECB react asymmetrically with respect to asset market developments? 01/2012
Nr. 104	Christina Ziegler	Monetary Policy under Alternative Exchange Rate Regimes in Central and Eastern Europe 02/2012
Nr. 105	José Abad / Axel Löffler / Gunther Schnabl / Holger Zemanek	Fiscal Divergence, Current Account and TARGET2 Imbalances in the EMU 03/2012
Nr. 106	Georg Quaas / Robert Köster	Ein Modell für die Wirtschaftszweige der deutschen Volkswirtschaft: Das "MOGBOT" (Model of Germany's Branches of Trade)
Nr. 107	Andreas Schäfer / Thomas Steger	Journey into the Unknown? Economic Consequences of Factor Market Integration under Increasing Returns to Scale 04/2012
Nr. 108	Andreas Hoffmann / Björn Urbansky	Order, Displacements and Recurring Financial Crises 06/2012
Nr. 109	Finn Marten Körner / Holger Zemanek	On the Brink? Intra-euro area imbalances and the sustainability of foreign debt 07/2012
Nr. 110	André Casajus / Frank Hüttner	Nullifying vs. dummifying players or nullified vs. dummified players: The difference between the equal division value and the equal surplus division value 07/2012
Nr. 111	André Casajus	Solidarity and fair taxation in TU games 07/2012
Nr. 112	Georg Quaas	Ein Nelson-Winter-Modell der deutschen Volkswirtschaft 08/2012
Nr. 113	André Casajus / Frank Hüttner	Null players, solidarity, and the egalitarian Shapley values 08/2012
Nr. 114	André Casajus	The Shapley value without efficiency and additivity 11/2012
Nr. 115	Erik Gawel	Neuordnung der W-Besoldung: Ausgestaltung und verfassungsrechtliche Probleme der Konsumtionsregeln zur Anrechnung von Leistungsbezügen 02/2013
Nr. 116	Volker Grossmann / Andreas Schäfer / Thomas M. Steger	Migration, Capital Formation, and House Prices 02/2013
Nr. 117	Volker Grossmann / Thomas M. Steger	Optimal Growth Policy: the Role of Skill Heterogeneity 03/2013
Nr. 118	Guido Heineck / Bernd Süßmuth	A Different Look at Lenin's Legacy: Social Capital and Risk Taking in the Two Germanies 03/2013
Nr. 119	Andreas Hoffmann	The Euro as a Proxy for the Classical Gold Standard? Government Debt Financing and Political Commitment in Historical Perspective 05/2013
Nr. 120	Andreas Hoffmann / Axel Loeffler	Low Interest Rate Policy and the Use of Reserve Requirements in Emerging Markets 05/2013
Nr. 121	Gunther Schnabl	The Global Move into the Zero Interest Rate and High Debt Trap 07/2013
Nr. 122	Axel Loeffler / Gunther Schnabl / Franziska Schobert	Limits of Monetary Policy Autonomy and Exchange Rate Flexibility by East Asian Central Banks 08/2013
Nr. 123	Burkhard Heer / Bernd Süßmuth	Tax Bracket Creep and its Effects on Income Distribution 08/2013
Nr. 124	Hans Fricke / Bernd Süßmuth	Growth and Volatility of Tax Revenues in Latin America 08/2013
Nr. 125	Ulrich Volz	RMB Internationalisation and Currency Co-operation in East Asia 09/2013
Nr. 126	André Casajus / Helfried Labrenz	A property rights based consolidation approach 02/2014
Nr. 127	Pablo Duarte	The Relationship between GDP and the Size of the Informal Economy: Empirical Evidence for Spain 02/2014
Nr. 128	Erik Gawel	Neuordnung der Professorenbesoldung in Sachsen 03/2014
Nr. 129	Friedrun Quaas	Orthodoxer Mainstream und Heterodoxe Alternativen Eine Analyse der ökonomischen Wissenschaftslandschaft 04/2014
Nr. 130	Gene Callahan / Andreas Hoffmann	The Idea of a Social Cycle 05/2014

Nr. 131	Karl Trela	Klimaanpassung als wirtschaftspolitisches Handlungsfeld 06/2014
Nr. 132	Erik Gawel / Miquel Aguado	Neuregelungen der W-Besoldung auf dem verfassungsrechtlichen Prüfstand 08/2014
Nr. 133	Ulf Papenfuß / Matthias Redlich / Lars Steinhauer	Forschend und engagiert lernen im Public Management: Befunde und Gestaltungsanregungen eines Service Learning Lehrforschungsprojektes 10/2014
Nr. 134	Karl Trela	Political climate adaptation decisions in Germany - shortcomings and applications for decision support systems 11/2014
Nr. 135	Ulf Papenfuß / Lars Steinhauer / Benjamin Friedländer	Beteiligungsberichterstattung der öffentlichen Hand im 13-Länder-Vergleich: Erfordernisse für mehr Transparenz über die Governance und Performance öffentlicher Unternehmen 02/2015
Nr. 136	Gunther Schnabl	Japans Lehren für das Schweizer Wechselkursdilemma 02/2015
Nr. 137	Ulf Papenfuß / Christian Schmidt	Determinants of Manager Pay in German State-Owned Enterprises and International Public Policy Implications: 3-Year Study for Sectors, Performance and Gender 02/2015
Nr. 138	Philipp Mandel / Bernd Süßmuth	Public education, accountability, and yardstick competition in a federal system 05/2015
Nr. 139	Gunther Schnabl	Wege zu einer stabilitäts- und wachstumsorientierten Geldpolitik aus österreichischer Perspektive 06/2015
Nr. 140	Ulf Papenfuß / Matthias Redlich / Lars Steinhauer / Benjamin Friedländer	Forschend und engagiert lernen im Public Management: Befunde und Gestaltungsanregungen eines Service Learning Lehrforschungsprojektes – 2. aktualisierte Auflage 08/2015
Nr. 141	Friedrun Quaas / Georg Quaas	Hayeks Überinvestitionstheorie 10/2015
Nr. 142	Bastian Gawellek / Marco Sunder	The German Excellence Initiative and Efficiency Change among Universities, 2001-2011 01/2016
Nr. 143	Benjamin Larin	Bubble-Driven Business Cycles 02/2016
Nr. 144	Friedrun Quaas / Georg Quaas	Effekte des Kapitalmarktzinses auf die Preis- und Produktivitätsentwicklung Eine Analyse der deutschen Volkswirtschaft 1970-2014 02/2016
Nr. 145	Thomas Lenk / Matthias Redlich / Philipp Glinka	Nachhaltige Stadtfinanzen - Akzeptanzsteigerung der bürgerschaftlichen Beteiligung an der Haushaltsplanung 02/2016
Nr. 146	Michael von Prollius / Gunther Schnabl	Geldpolitik, Arabellion, Flüchtlingskrise 10/2016
Nr. 147	David Leuwer / Bernd Süßmuth	The Exchange Rate Susceptibility of European Core Industries, 1995-2010 05/2017
Nr. 148	Gunther Schnabl	Monetary Policy and Wandering Overinvestment Cycles in East Asia and Europe 05/2017
Nr. 149	Ullrich Heilemann / Karsten Müller	Wenig Unterschiede – Zur Treffsicherheit internationaler Prognosen und Prognostiker 07/2017
Nr. 150	Gunther Schnabl / Sebastian Müller	Zur Zukunft der Europäischen Union aus ordnungspolitischer Perspektive 10/2017
Nr. 151	Gunther Schnabl	Ultra-lockere Geldpolitiken, Finanzmarktblasen und marktwirtschaftliche Ordnung 10/2017
Nr. 152	Pablo Duarte / Bernd Süßmuth	Implementing an approximate dynamic factor model to nowcast GDP using sensitivity analysis 02/2018
Nr. 153	Sophia Latsos	Real Wage Effects of Japan's Monetary Policy 03/2018
Nr. 154	Gunther Schnabl / Klaus Siemon	Die EU-Insolvenzrichtlinie zu vorinsolvenzlichen Verfahren aus ordnungspolitischer Perspektive The EU Directive on Preventive Restructuring Frameworks from a Ordoliberal Perspective 07/2018
Nr. 155	Marika Behnert / Thomas Bruckner	Cost effects of energy system stability and flexibility options – an integrated optimal power flow modeling approach 09/2018
Nr. 156	Gunther Schnabl	70 Years after the German Currency and Economic Reform: The Monetary, Economic and Political Order in Europe is Disturbed 10/2018
Nr. 157	Wolfgang Bernhardt	Corporate Governance und Compliance Bunte Streiflichter 2018 11/2018

Nr. 158	Friedrun Quaas	Der spezifische Liberalismus von Hayek im Spektrum des Neoliberalismus 01/2019
Nr. 159	Sophia Latsos	The Low Interest Policy and the Household Saving Behavior in Japan 03/2019
Nr. 160	Gunther Schnabl	Die Verteilungseffekte der Geldpolitik der Europäischen Zentralbank und deren Einfluss auf die politische Stabilität 06/2019
Nr. 161	Wolfgang Bernhardt	30 Jahre nach dem Fall der Mauer Einheit in Zweiheit? 07/2019
Nr. 162	Gunther Schnabl / Tim Sepp	30 Jahre nach dem Mauerfall Ursachen für Konvergenz und Divergenz zwischen Ost- und Westdeutschland 09/2019
Nr. 163	Karl-Friedrich Israel / Sophia Latsos	The Impact of (Un)Conventional Expansionary Monetary Policy on Income Inequality – Lessons from Japan 11/2019
Nr. 164	Wolfgang Bernhardt	30 Jahre nach dem Fall der Mauer am 9. November 1989 Einheit in Zweiheit – Teil II 11/2019
Nr. 165	Friedrun Quaas	Pluralismus in der Ökonomik – verpasste Chance, überfälliges Programm oder normalwissenschaftliche Realität? 03/2020
Nr. 166	Gunther Schnabl / Nils Sonnenberg	Monetary Policy, Financial Regulation and Financial Stability: A Comparison between the Fed and the ECB 04/2020
Nr. 167	Georg Quaas	The reproduction number in the classical epidemiological model 04/2020
Nr.	Wolfgang Bernhardt	Der (ost-)deutsche Witz ist tot - Der Volksmund schweigt. Warum? Zum 3. Oktober 2020 09/2020
Nr. 169	Gunther Schnabl / Taiki Murai	The Japanese Banks in the Lasting Low-, Zero- and Negative-Interest Rate Environment 12/2020
Nr. 170	Friedrun Quaas / Georg Quaas	COVID-19 und das europäische Impfdesaster 02/2021
Nr. 171	Georg Quaas	The measurement of the reproduction number 04/2021
Nr. 172	Gunther Schnabl / Tim Sepp	Inflationsziel und Inflationsmessung in der Eurozone im Wandel 06/2021
Nr. 173	Karl-Friedrich Israel / Tim Sepp / Nils Sonnenberg	Japanese Monetary Policy and Household Saving 07/2021
Nr. 174	Gunther Schnabl / Tim Sepp	Niedrigzinspolitik und Sparkultur in Japan: Implikationen für die Wirtschaftspolitik 08/2021
Nr. 175	Alexander Herborn / Gunther Schnabl	Wohnimmobilienpreise, Inflationsmessung und Geldpolitik im Euroraum 03/2022
Nr. 176	Georg Quaas	Fritz Helmedags saldenmechanisches Modell. Eine kommentierte Rekonstruktion der aktuellen Version 08/2022
Nr. 177	Karl-Friedrich Israel / Tim Florian Sepp / Nils Sonnenberg	The Effects of Unconventional Monetary Policy on Stock Markets and Household Incomes in Japan 02/2023
Nr. 178	Gunther Schnabl	Regulierung, Deglobalisierung und Arbeitskräftemangel als Transmissionskanäle von der Geldpolitik zur Inflation 07/2023
Nr. 179	Wolfgang Bernhardt	Feuermacher statt Feuerwehr - 34 Jahre nach dem Fall der Mauer am 9. November 1989 – Streiflichter 11/2023
Nr. 180	Tim Sepp / Karl-Friedrich Israel / Benjamin Treitz / Tom Hartl	Monetary Policy and the Resilience of the German Banking System: From Deutsche Bundesbank to ECB 11/2023