

Kiessling, Lukas; Pinger, Pia; Seegers, Philipp; Bergerhoff, Jan

Working Paper

Gender differences in wage expectations and negotiation

ECONtribute Discussion Paper, No. 268

Provided in Cooperation with:

Reinhard Selten Institute (RSI), University of Bonn and University of Cologne

Suggested Citation: Kiessling, Lukas; Pinger, Pia; Seegers, Philipp; Bergerhoff, Jan (2023) : Gender differences in wage expectations and negotiation, ECONtribute Discussion Paper, No. 268, University of Bonn and University of Cologne, Reinhard Selten Institute (RSI), Bonn and Cologne

This Version is available at:

<https://hdl.handle.net/10419/283310>

Standard-Nutzungsbedingungen:

Die Dokumente auf EconStor dürfen zu eigenen wissenschaftlichen Zwecken und zum Privatgebrauch gespeichert und kopiert werden.

Sie dürfen die Dokumente nicht für öffentliche oder kommerzielle Zwecke vervielfältigen, öffentlich ausstellen, öffentlich zugänglich machen, vertreiben oder anderweitig nutzen.

Sofern die Verfasser die Dokumente unter Open-Content-Lizenzen (insbesondere CC-Lizenzen) zur Verfügung gestellt haben sollten, gelten abweichend von diesen Nutzungsbedingungen die in der dort genannten Lizenz gewährten Nutzungsrechte.

Terms of use:

Documents in EconStor may be saved and copied for your personal and scholarly purposes.

You are not to copy documents for public or commercial purposes, to exhibit the documents publicly, to make them publicly available on the internet, or to distribute or otherwise use the documents in public.

If the documents have been made available under an Open Content Licence (especially Creative Commons Licences), you may exercise further usage rights as specified in the indicated licence.

ECONtribute
Discussion Paper No. 268

**Gender Differences in Wage Expectations and
Negotiation**

Lukas Kiessling, Pia Pinger, Philipp Seegers, Jan Bergerhoff

December 2023

www.econtribute.de



Gender Differences in Wage Expectations and Negotiation*

Lukas Kiessling¹, Pia Pinger^{2,3}, Philipp Seegers⁴, and Jan Bergerhoff⁴

¹ Max Planck Institute for Research on Collective Goods

² University of Cologne

³ Institute on Behavior and Inequality (briq)

⁴ Maastricht University

Abstract

This paper presents evidence from a large-scale study on gender differences in expected wages before labor market entry. Based on data for over 15,000 students, we document a significant and large gender gap in wage expectations that resembles actual wage differences, prevails across subgroups, and along the entire distribution. Over the life-cycle this gap amounts to roughly half a million Euros. Our findings further suggest that expected wages relate to expected asking and reservation wages and that a difference in plans about “boldness” during prospective wage negotiations pertains to gender difference in expected and actual wages. Given the importance of wage expectations for labor market decisions, household bargaining, and wage setting, our results provide an explanation for persistent gender inequalities.

Keywords: Wage expectations, gender gap, negotiations

JEL-Codes: D81, D84, I21, I23, J13, J30

*Corresponding author: pia.pinger@gmail.com. Funding by the German Research Foundation (DFG) through CRC TR 224 (Project A02), and through Germany’s Excellence Strategy (EXC 2126/1–390838866), as well as funding through the European Regional Development Fund and the state of North Rhine-Westphalia (project FAIR, EFRE no 08011872) is gratefully acknowledged. A previous version of this research was titled “Gender Differences in Wage Expectations: Sorting, Children, and Negotiation Styles” was published as IZA Discussion Paper No. 12522 in August 2019.

1 Introduction

The gender gap in labor earnings ranges among the best documented facts in the empirical economic literature and is subject to regular policy debates.¹ Overall, the unconditional gap ranges from 5 to 35% across different OECD countries and in both absolute and relative terms it tends to be particularly large for individuals with a college degree or higher (OECD, 2015; Collischon, 2019). Moreover, convergence in male-female wages remains slow despite sustained efforts towards achieving gender-based equality of opportunity.

A related gender gap is the gap in *ex-ante* wage *expectations*, i.e., male-female differences in expectations about labor market returns *before* entering the labor market (see, e.g., Blau and Ferber (1991); Brunello, Lucifora, and Winter-Ebmer (2004) for initial and Reuben, Wiswall, and Zafar (2017); Briel et al. (2022); Fernandes, Huber, and Vaccaro (2021); Leibing et al. (2023) for more recent evidence). Such male-female gaps in labor market expectations are important as they may determine education and labor market choices, household bargaining, and wage setting. They are also an important component in financial decision-making, e.g., regarding the optimal choice of retirement and savings plans. Moreover, there may exist important feedback effects whereby expected wages drive actual wage differences (e.g., through wage negotiations), and actual observable wage disparities affect expectations, thus providing a rationale for persistent gender wage gaps.

The aim of this paper is to provide encompassing and large-scale descriptive evidence on the gap in gender wage expectations and to investigate how this gap relates to plans about initial wage bargaining. For this purpose, we have elicited wage expectations for counterfactual study trajectories among more than 15,000 German students from all regions, universities, study fields and over the entire prospective working life. The data contain elicited expectations about future labor force participation, working hours, child-rearing plans, as well as measures related to prospective wage negotiations, such as expectations about prospective asking and reservations wages. In addition, we have conducted long-term follow-up interviews with part of the sample to elicit actual wage outcomes.

In a first instance, we document a range of stylized facts about male-female wage expectations, including unconditional and subgroup-specific gaps in expected wages, distributional differences in ranks and levels, and especially differences in expected life-cycle wage trajectories. We show that the gender gap in expected wages is signifi-

¹For a recent summary of the literature, see Blau and Kahn (2017), Kunze (2018) and Petrongolo and Ronchi (2020).

cant and large across all subgroups and along the entire distribution. These differences are similar to distributional differences in expectations among prospective students (see Briel et al., 2022) and much related to the observed actual wage gap among recent graduates.² In terms of expected life-cycle wage developments, we provide first evidence that females expect flatter wage trajectories, with an initial gap of 14 percent increasing to 27 percent at the age of 55. The observed pattern is thus very similar to what is observed in actual wage data over the life cycle (Schrenker and Zucco, 2020, see). In terms of overall magnitudes, this accumulated life-cycle gap in expected wages amounts more than 500,000 EUR. In terms of magnitude, this “perceived return to being male” is close to the actual return of obtaining a university degree.

In a second instance, we provide empirical evidence on prospective wage negotiations as a link between expected and actual wages, complementing recent evidence on the importance of female wage claims for negotiations and wage outcomes (Rousille, 2020). We document pronounced gender gaps in initial wage claims (19%) and reservation wages (18%). Based on these, we construct a measure of boldness in wage negotiations and show that females plan to act less boldly in wage negotiations. Differences in planned boldness during wage negotiations drive around 14-15% of the gender gap in expected starting wages and thus hold similar importance as differences in major choice or occupational sorting. Moreover, we show that boldness plans relate strongly and significantly to wage outcomes several years later.

This paper makes several contributions. First, the size and diversity of our sample allows us to make claims about the overall magnitude of the gender gap in wage expectations among current students, and to explore heterogeneities across study fields, aspired occupations, regional labor markets, and numerous background characteristics. Second, by asking about expected wages at three points in the future and for different study scenarios, we can construct within-individual life-cycle wage trajectories to obtain expected differences in growth rates, relative ranks, and expected lifetime labor earnings. Third, information about prospective wage negotiations permits us to document the importance of gender differences in anticipated wage negotiations and to relate planned wage claims and envisaged negotiation strategies to overall expected wage outcomes and to actual wages. Since wage negotiations are an important component of the wage-setting process, our results provide an important link between expected and actual wages, and an explanation why the gender gap in expected wages closely mirrors the gender gap in actual wages.

²Among German college graduates, the gender wage gap is 20% overall and reduces to 5-10% after accounting for a large number of controls (Destatis, 2014, 2017; Francesconi and Parey, 2018). It is thus comparatively large.

This study thus relates to a buoyant literature on wage expectations, which, pioneered by Manski (Dominitz and Manski, 1997; Manski, 2004), has repeatedly documented the importance of elicited expectations and beliefs for explaining education choices and labor market behaviors (e.g., Arcidiacono, Hotz, and Kang, 2012; Boneva and Rauh, 2020; Jensen, 2010; Kaufmann, 2014; Stinebrickner and Stinebrickner, 2014; Zafar, 2011). It also relates to a range of prior studies documenting the existence of a gender gap in ex-ante wage expectations in a number of specialized samples, i.e., containing information from students enrolled in particular colleges/universities or fields of study. These studies have identified several potential drivers of the gender gap in wage expectations, including differences in major choice, personality traits, biased beliefs, and economic preferences (Reuben, Wiswall, and Zafar, 2017; Zambre, 2018; Briel et al., 2022; Fernandes, Huber, and Vaccaro, 2021).³

We also speak to a literature on bargaining and male-female wage negotiations. While previous research suggests that females are less likely to initiate negotiations (Bowles, Babcock, and Lai, 2007; Babcock and Laschever, 2009; Leibbrandt and List, 2015; Exley, Niederle, and Vesterlund, 2020; Biasi and Sarsons, 2022), we provide evidence suggesting that females plan to claim lower initial wages and are planning to be less bold in wage negotiations, and that this variation captures an important part of the male-female gap in expected wages. Our findings thus complement recent evidence on gender differences in negotiation behavior from laboratory experiments (Rigdon, 2012; Azmat and Petrongolo, 2014) and the field (Säve-Söderbergh, 2019; Andersen et al., 2020; Roussille, 2020).

The remainder of the paper is organized as follows. In the next section, we discuss the sample, questionnaire measures and construction of life-cycle wage trajectories. Section 3 documents male-female differences in wage expectations both for starting wages and over the life cycle. This section also shows that differences in expected wages relate to differences in actual wages. In Section 4, we then we study the role of boldness in wage negotiations and how it relates to the gender gap in expected and actual wages. Finally, section 5 concludes.

2 Data

This section reports on our sample and questionnaire measures. We start out by describing our sample and questionnaire measures of expected wages, labor supply and children, initial wage claims and reservation wages, sorting, and background

³For related evidence on younger students, i.e., pupils and high school graduates, see (Boneva et al., 2022; Leibing et al., 2023).

characteristics. Then, we explain how we construct expected wage trajectories and measures of negotiation strategies.

2.1 Sample

Our sample comprises 15,348 students and 1,155 recent graduates (since our focus is on student expectations, we will henceforth use the word “students”). All individuals were recruited as part of the German student study “Fachkraft 2020” (now called Fachkraft 2030 Seegers et al., 2016), surveyed in the second half of March 2015. In addition, a subsample of 10,790 students (70.3%) completed a supplementary psychological questionnaire comprising measures of personality traits, economic preferences, and IQ.

Students were contacted via the mailing list of a popular nationwide job board.⁴ They were contacted via email and took part in an online questionnaire.⁵ The sample closely compares to the overall population of German students in terms of their sociodemographic characteristics and major distribution (see Table 1).

Table 1: Descriptive statistics of the sample

	Full sample	Restricted sample	Sozial- erhebung	Statistical Office
<i>Sociodemographic variables</i>				
Female	0.57	0.58	0.48	0.48
Graduated from HS in East Germany	0.18	0.18	0.15	–
Migration background	0.18	0.18	0.20	–
Student assistance (<i>BAföG</i>)	0.25	0.26	0.21	–
<i>Major</i>				
STEM-related majors	0.34	0.34	0.41	0.38
Humanities, Social Sciences, Econ.	0.57	0.58	0.53	0.52
Medical-/Health sciences	0.09	0.08	0.06	0.09
Observations	15348	10790		

Notes: This table presents summary statistics of our student sample (full sample and subsample of respondents who completed the personality questionnaire) and compares these numbers to data from the 21. *Sozialerhebung* (a representative survey of the German Ministry of Education and Research conducted in 2016; Middendorff et al., 2017) and the German Statistical Office (Destatis). We had to aggregate our major categories to obtain consistent definitions across the different data sources.

⁴The job board jobmensa.de is operated by Studitemps GmbH and is the largest platform for student jobs.

⁵The questionnaire was filled in by 8% of contacted students. Participation was incentivized using Amazon vouchers amounting to 5,000 EUR (1 x €1,000, 4 x €250, 10 x €100, 40 x €50 vouchers).

2.2 Measures

Individuals answered a comprehensive questionnaire regarding their own background and university enrollment, expectations about their course of studies, labor market expectations, expectations about child-rearing, and wage negotiation plans.⁶ They also provided information about expected future employment and student jobs. Finally, part of the sample completed a short IQ test, as well as a questionnaire about personality traits and preferences.

Wage expectations We asked subjects to indicate their expected yearly labor earnings in current Euros before taxes and at different points over the life cycle: (i) in their first job after graduation ($w_{i,st}^s$), (ii) at the age of 40 ($w_{i,40}^s$), and (iii) at the age of 55 ($w_{i,55}^s$). We chose these time points for several reasons. First, starting wages are likely to be a natural reference point for many students and most related to their expected labor market negotiations. Starting wages are also most often elicited in the literature on wage expectations (Arcidiacono, Hotz, and Kang, 2012; Webbink and Hartog, 2004). Second, the age of 40 is the time when individuals will have likely completed their prospective family planning, such that child-related differences in expected wage trajectories should become apparent at this point. Third, the age of 55 is close to the time where wages peak but before early retirement sets in (Piopiunik, Kugler, and Wößmann, 2017).

We asked students to state these expected wages under three different scenarios, regarding their course of studies: (a) if they complete their current (*first*) studies ($w_{i,t}^f$), (b) if they change to their second most preferred *alternative* field of study ($w_{i,t}^a$), and (c) if they *dropout* and do not complete any further educational degree ($w_{i,t}^d$). Thus, given three scenarios (a)-(c), denoted by s , and three points over the life cycle (i)-(iii), denoted by t , we elicit a total of nine expected wages ($w_{i,t}^s$). In addition, we ask all individuals to state the probability of each of the respective scenarios materializing ($p_{i,t}^s$).

Assuming these scenarios to be mutually exclusive, i.e., that students either finish, change study fields or drop out, we can use the above information to construct our measure of *overall expected wages* as follows:

$$w_{i,t} = p_{i,t}^f w_{i,t}^f + p_{i,t}^a w_{i,t}^a + p_{i,t}^d w_{i,t}^d \quad \forall t \in \{st, 40, 55\}. \quad (1)$$

We reweigh probabilities in cases where the stated probabilities add up to more than one hundred percent (7 percent). Moreover, we exclude individuals (less than

⁶See section A.9 for the respective questionnaire items.

1%) who indicated implausible large expected wages of more than 1,000,000 EUR per year.

Plans for initial wage claims, prospective reservation wages, and discrimination.

Respondents were asked about plans for the initial salary students would demand as they enter a prospective wage negotiation (initial wage claim, $w_{i,I}$).⁷ We also inquired about the lowest prospective wage rate at which a student would be willing to accept a job after finishing her studies (reservation wage, $w_{i,R}$).⁸ Based on plans for initial wage claims and prospective reservation wages, we construct a measure of negotiation behavior capturing boldness in initial wage claims (see section 4). Moreover, respondents stated whether they would expect to earn the same wage if they were a member of this opposite sex but with identical skills, characteristics, traits, and qualifications. If the answer is “no”, we interpret this as an indicator of perceived gender discrimination.⁹

Realized wages Our data comprise two measures of *realized wages*. First, we elicit labor earnings before taxes reported by the current graduates in our sample.¹⁰ The recent graduates in this sample are similar to our student sample in terms of observed characteristics, but they are different individuals who were born earlier and are slightly older. Second, to investigate how expected wages, planned wage claims, and prospective reservation wages map into actual negotiation behavior and actual wages, we have conducted an eight-year follow-up interview in January 2023 with the students in our main sample. To this end, we have recontacted around 70% of our initial respondents (those who gave us permission to do so) and have asked them to provide us with information about their (i) actual wages in their first job after leaving university, (ii) current wages, as well as (iii) actual negotiation behavior. Despite the long time lag between both interviews we were able to obtain follow-up information

⁷While not all jobs require wage negotiations, Hall and Krueger (2012) show that the incidence of wage negotiations is much higher for highly-educated individuals with college degrees compared to the general population. Moreover, it is common in Germany to state an initial wage claim when applying for a position.

⁸Initial wage claims and reservation wages were elicited using the following question: “You expect to earn XXX Euro in your first job. Now consider the wage negotiations for this first job. What would be your initial wage claim? How much would one have to pay you to accept a job offer?” Individuals are thus asked to state initial wage claims and reservation wages for the same job. We then elicited plans for wage claims and prospective reservations wages similar to expected wages.

⁹The wording of the question is as follows: “If you would be a male/female with identical skills, characteristics, and qualifications, would you also expect to earn XXX Euro upon graduation?” Respondents could answer with “yes” or “no”, where we define an indicator for perceived gender discrimination if the response to this question is “no”.

¹⁰All expected and actual labor earnings variables were winsorized at the 1% and 99% level.

on actual annual gross starting wages and actual annual gross current wages of 479 individuals that were also part of the original survey and who are now working in regular jobs. Besides, we have obtained actual wage claims and reservation wages for 166 individuals who actually negotiated their first wage and remembered these negotiations well enough to provide reliable information. We convert actual starting wages from the follow-up interviews into 2014 Euros to be able to make valid comparisons between expected starting wages as stated in 2014 and actual starting wages.

Additional measures. In addition to these wage expectations, our data include a series of additional variables. First, we elicited measures related to sorting into majors and occupations. Specifically, students could indicate their current field of study from a list of fifteen majors, which we aggregate to five broad fields (Medical/health sciences, STEM, law, economics/business, and humanities), and their aspired occupation out of 429 pre-defined occupations (or a free text field), which we code in terms of the ISCO-08 occupational classification. Second, we elicit measures of expected labor supply for each of the above-mentioned scenarios, as well as child-related career breaks. Third, we collected a rich set of variables related to students' perceived ability, personality traits, cognitive ability, and economic preferences, as research in personality psychology and economics shows that males and females display substantial differences in personality traits, economic and social preferences, and beliefs about one's own ability (Schmitt et al., 2008; Borghans et al., 2009; Bertrand, 2011; Croson and Gneezy, 2009; Bian, Leslie, and Cimpian, 2017). Appendix A.1 describes these measures in more detail.

2.3 Wage trajectories and life-time labor earnings

We use the elicited wage expectations to approximate lifetime wage trajectories as well as total lifetime labor earnings. For this purpose, we assume a Mincer-type earnings function where log-normally distributed wages are a quadratic function of potential experience:

$$\ln w_{i,t} = \alpha_i + \beta_i \text{exp}_{i,t} + \gamma_i \text{exp}_{i,t}^2. \quad (2)$$

Using the elicited information about wage expectations at three different points in time ($w_{i,st}$, $w_{i,40}$ and $w_{i,55}$), we can use equation (2) to determine the parameters α , β and γ for each individual. We then use this relationship to calculate individual-specific expected wages for each year ($\widehat{w}_{i,t} \forall t \notin \{st, 40, 55\}$).¹¹

¹¹Note that the expected starting year ($t = st$) differs across individuals. Since we know each individual's expected year of graduation as well as their age, we calculate $\widehat{w}_{i,t}$ for all years $t > st$. This

Based on these inferred expected wages for each year of an individual's working life, lifetime earnings can be calculated as the sum of expected yearly earnings, i.e.,

$$\widehat{w}_{i,life} = \sum_{st}^{65} \widehat{w}_{i,t}, \quad (3)$$

where all expected wages are given in current Euros and we assume an average retirement age of 65 years.

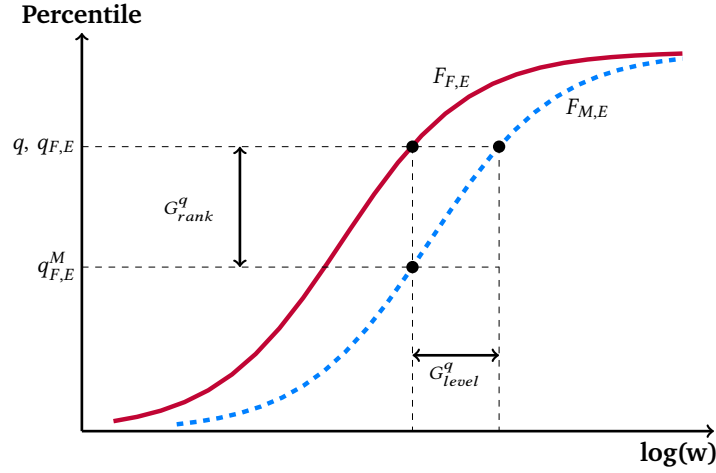
2.4 Distributional differences

Apart from analyzing gender differences at the mean, we also investigate the *gender gap in terms of levels and ranks* along the entire expected wage distribution. While studying differences at different levels or quantiles of the distribution is common, we follow Bayer and Charles (2018) and also analyze the gap in terms of an individual's position in the male and female distribution. An individual with a given wage expectation takes up a different position in the female expected wage distribution than in the distribution of male expected wages. As illustrated in Figure 1, we compare the difference between the position of an individual in these two distributions. For each expected wage, we compute the corresponding percentile $q_{F,E}$ of the female (log) expected wage distribution $F_{F,E}$, as well as the percentile $q_{F,E}^M$ in the male distribution $F_{M,E}$ that corresponds to the same (log) wage level. The difference between an individual's position in the female expected wage distribution and her position in the male expected wage distribution (one of these is hypothetical) is then what we call the rank gap. For a given percentile, the rank gap is then given by $G_{rank}^q = q_{F,E} - q_{F,E}^M$, while the corresponding level gap is given by $G_{level}^q = F_M^{-1}(q) - F_F^{-1}(q)$ (see also Bayer and Charles, 2018, for details on this methodology). This also allows us to express male and female wages on the same underlying scale, namely in terms of the expected wage distribution of males.

The analyses of gender gaps in terms of levels and ranks correspond to two different thought experiments. First, level differences are informative about the absolute gain in wages that a female at a certain percentile could expect to receive if she were male. Second, rank differences reveal how much lower a respective female ranks on the male wage distribution given her respective expected wage. In other terms, if the labor market was a competition with wages as a prize, then rank differences inform

implies that our sample changes during the initial prospective working period, i.e., up to the point where all students in our sample expect to have graduated (see also footnote 19).

Figure 1: Calculation of expected wage ranks



Notes: This figure illustrates the decomposition of the gender gap in terms of ranks and levels. For a given percentile in the female expected wage distribution F_F (red, solid), the rank gap is defined as the difference between a given percentile and the percentile that a respective female expected wage would fall in in the male distribution $F_{M,E}$ (blue, dashed): $G_{rank}^q = q_{F,E} - q_{F,E}^M$. Similarly, the level gap is defined as the expected wage difference between a male and a female both evaluated at the same percentile ($G_{level}^q = F_M^{-1}(q) - F_F^{-1}(q)$).

us about how much worse a female would expect to perform in that competition due to her gender.

3 The gap in male-female wage expectations

We begin our analysis by documenting gender differences in wage expectations across different scenarios (current major, alternative major, dropout) and at different points over the life-cycle (starting wage, age 40, age 55). In a second step, we then present results on the overall gap (weighted by different subjective probabilities for each scenario), and study differences in the distribution of wage expectations as well as individual trajectories over the life-cycle. Finally, we provide evidence on the accuracy of wage expectations. As regards these descriptive statistics, we always focus on overall wages independent of part-time work or the expected number of working hours as we are interested in the overall expected gap from labor earnings.¹²

¹²Not many individuals expect to work part time. E.g. at age 40 only less than 2% report that they expect to be working 20 hours or fewer and less than 10% report to be working 30 hours or fewer.

3.1 The male-female gap in wage expectations

Panel A of Table 2 presents mean expected wages for each of the different scenarios (graduating in one's major, graduating with an alternative major, or dropping out) and at three points over the prospective working life. It shows that regardless of the scenario or age, all male-female differences in expected wages are statistically different from zero and substantial in size. Thus for example, while male students expect to earn on average 40,582 EUR after graduating from their current major, females expect a mere 85% of this amount (34,331 EUR). Moreover, the wage gap increases at higher prospective ages and is more pronounced for the current major choice, where the lifetime gap in expected wages cumulates to almost 600,000 EUR. Besides, for both males and females, expected wages conditional on finishing the current major are higher compared to the starting wages of the alternative major or for dropping out of university.¹³

To simplify the analysis, we henceforth focus on overall expected wages, i.e., by taking into account the notion that with a certain probability students change majors or drop out as shown in equation (1). The resulting overall expected wage rates are presented in panel B of Table 2 and their respective distributions in Figures 2a to 2c. Again, the male-female gap in overall expected wages is statistically significant and large. At the beginning of their careers, male students expect to earn on average 39,076 EUR, while female students expect 33,434 EUR (86%), a gap that is very similar to the 84% observed for prospective students (Briel et al., 2022; Leibing et al., 2023). Moreover, this difference in expectations increases until the age of 40, when most children will be born, and rises further until the age of 55, when wage trajectories tend to peak. Male students expect to earn 58,301 EUR at the age of 40 and 70,518 EUR at the age of 55, whereas females report wage expectations of 45,765 EUR (78%) and 51,291 EUR (73%). Over the life cycle, this gap in expectations cumulates to an average of more than half a million Euros when not taking discounting into account and about 400,000 EUR assuming a discounting rate of 1.5%. To put this number into perspective, the 525,969 EUR lifetime “expected return to being male” is close to the average lifetime return to obtaining a university degree (Piopiunik, Kugler, and Wößmann, 2017).¹⁴

¹³This finding is consistent with recent evidence that students select into majors according to their perceived comparative advantage (Kirkeboen, Leuven, and Mogstad, 2016).

¹⁴Lifetime returns in Piopiunik, Kugler, and Wößmann (2017) are discounted using a net discount rate of 1.5%. We thus approximate gross returns as $3568 \text{ EUR} \times 12 \text{ months} \times 37 \text{ years} - 1891 \text{ EUR} \times 12 \text{ months} \times 45 \text{ years} = 563,052 \text{ EUR}$ using the numbers reported in Table 1 of their paper. Alternatively, we can apply the same discount rate of 1.5% to yearly expected incomes in our sample. Doing so results in a discounted expected lifetime earnings of 392,740 EUR compared to 387,431 EUR for the return to obtaining a university degree.

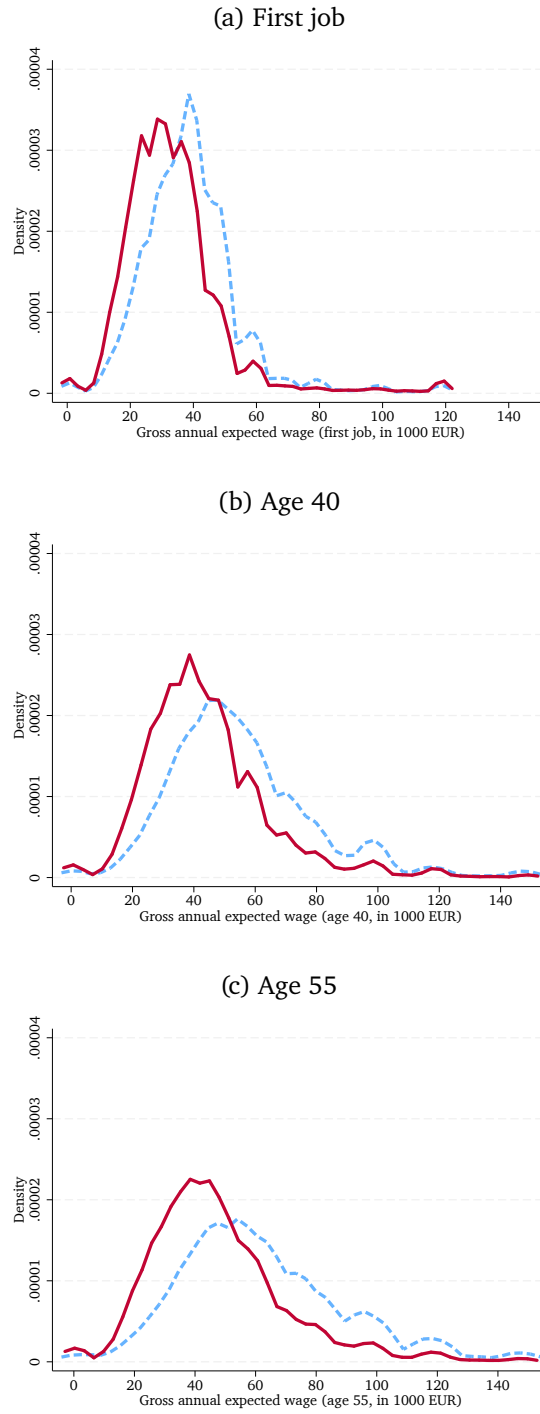
Table 2: Descriptive statistics of expected and actual gross annual wages in current Euros

	Summary statistics					
	Males	Females	Diff.	<i>p</i> -val. Diff.=0	Ratio	N
A. By scenario (expected wages)						
<i>Current major</i>						
Starting	40582	34331	6252	0.00	0.85	15348
Age 40	61475	47514	13961	0.00	0.77	15348
Age 55	74698	53361	21337	0.00	0.71	15348
Lifetime	2482233	1895315	586919	0.00	0.76	12734
Probability to finish major	81	84	-3	0.00	1.04	15348
<i>Alternative major</i>						
Starting	38156	33685	4471	0.00	0.88	15348
Age 40	53225	43665	9559	0.00	0.82	15348
Age 55	64048	48434	15614	0.00	0.76	15348
Lifetime	2165761	1744971	420790	0.00	0.81	12828
Probability to major change	9	7	1	0.00	0.86	15348
<i>Dropout</i>						
Starting	27017	24326	2690	0.00	0.90	15348
Age 40	34296	27980	6316	0.00	0.82	15348
Age 55	38892	30276	8616	0.00	0.78	15348
Lifetime	1369630	1132489	237141	0.00	0.83	12828
Probability of college dropout	11	9	2	0.00	0.82	15348
B. Overall (expected wages)						
Starting	39076	33434	5642	0.00	0.86	15348
Age 40	58301	45765	12536	0.00	0.78	15348
Age 55	70518	51291	19227	0.00	0.73	15348
Lifetime	2356291	1830322	525969	0.00	0.78	12734
C. Actual wages (graduates)						
Starting	38728	33945	4783	0.00	0.88	1155
Lifetime	2621885	1904946	716939	0.00	0.73	825
D. Actual wages (follow-up)						
Starting	40831	34519	6312	0.00	0.85	479

Notes: Ratio refers to the ratio of female to male expected wages/probabilities. Lifetime wages are constructed based on equations (2) and (3). Lifetime wages of graduates are based on actual starting wages and wage expectations at the age of 40 and 55. All wages are winsorized at the 1% and 99% level.

When looking at gender gaps in expectations by major, a similar pattern emerges. While substantial heterogeneity exists in terms of levels – humanities majors on average expect the lowest starting wages, while law students expect the highest – female students always expect to earn less than their male counterparts and the gap in expected wages increases over the life cycle. However, the expected wage gap tends to be smaller in majors with a larger share of females (e.g., medical/health sciences, humanities) relative to majors mostly chosen by males (e.g. STEM, economics/business;

Figure 2: Distributions of expected yearly gross wages



Notes: Figure 2a–2c present kernel densities of expected overall wages upon graduation (2a), at the age of 40 (2b), and at the age of 55 (2c) of female (red, solid) and male (blue, dashed) students in our sample. All expected wages are winsorized at the 1% and 99% level.

see section A.2 for details). Consistent with Goldin (2014), we also observe smaller gender differences for occupations that are characterized by a linear hours-earnings

relationship (e.g. teachers) compared to occupations with nonlinear/convex hours-earnings profiles (e.g. lawyers; see Appendix Table A2).

3.2 Gender gaps along the expected wage distribution in levels and ranks

In the previous section, we described the gender gap at the mean. However, there might also be important distributional heterogeneities if, e.g., most of the gap was driven by differences at the very top or bottom of the distribution. Regarding actual wages, distributional differences are indeed heterogeneous. In Germany, the actual gender gap varies across the wage distribution, and decreases for university graduates with rising wage levels (Antonczyk, Fitzenberger, and Sommerfeld, 2010; Francesconi and Parey, 2018).¹⁵ In the following, we characterize the gap in wage expectations at different points of the expected wage distribution using quantile regressions in terms of both log levels and ranks.¹⁶

Table 3 describes the gender gap at five points along the expected wage distribution, namely the 10th, 25th, 50th, 75th and 90th percentiles. The estimates in the first row of panel A show that the gender gap in levels for lower quantiles is larger than for higher quantiles, decreasing from about 24 to 11 percentage points. This finding differs from the one reported in (Briel et al., 2022) where raw gap in expected own salaries varies rather unsystematically along the distribution among a sample of prospective students from Saarland University. However, the gap in expectations we find among current students in Germany mirrors the actual distributional wage gap among students quite closely (see Figure 4 in Francesconi and Parey, 2018). Panel B characterizes the gap using ranks as introduced in section 2.4, revealing a somewhat larger, hump-shaped difference.¹⁷ While the difference between males and females is on average five ranks at the 10th percentile, it increases to 21 ranks at the median and decreases again to nine ranks at the 90th percentile. However, the smaller rank difference at the lower end of the wage distribution reflects a lack of mass in lower tail of the male wage distribution. We thus conclude that both level and rank differences indicate a somewhat smaller gap at the top end of the distribution compared to the rest. Apart from heterogeneities in sorting, this finding might suggest that women

¹⁵These findings for Germany contrast evidence from Sweden and the United States, where gender gaps are more pronounced at the upper part of the wage distribution, and thus overall larger among college graduates (Albrecht, Björklund, and Vroman, 2003; Bertrand, Goldin, and Katz, 2010).

¹⁶Again, we use ranks of wages as measured in the male log wage distribution, following the approach introduced by Bayer and Charles (2018).

¹⁷This is in line with findings from Bayer and Charles (2018), who find that black-white gaps in earnings are more pronounced when analyzing them in terms of ranks rather than levels.

Table 3: Level and rank gaps

	Quantiles				
	10th	25th	50th	75th	90th
A. Level gap					
Female	-0.236*** (0.012)	-0.221*** (0.003)	-0.238*** (0.009)	-0.138*** (0.005)	-0.108*** (0.011)
<i>Including controls</i>					
+ Majors	-0.178*** (0.012)	-0.148*** (0.010)	-0.129*** (0.006)	-0.137*** (0.009)	-0.121*** (0.012)
+ IQ and personality	-0.156*** (0.017)	-0.114*** (0.012)	-0.103*** (0.009)	-0.091*** (0.010)	-0.071*** (0.014)
+ Perceived ability	-0.154*** (0.018)	-0.108*** (0.012)	-0.098*** (0.009)	-0.082*** (0.009)	-0.077*** (0.015)
B. Rank gap					
Female	-5.2*** (0.3)	-12.6*** (0.5)	-20.6*** (0.7)	-19.1*** (0.8)	-8.5*** (0.8)
<i>Including controls</i>					
+ Majors	-4.0*** (0.4)	-8.1*** (0.6)	-12.4*** (0.7)	-13.7*** (0.9)	-7.0*** (1.0)
+ IQ and personality	-3.9*** (0.5)	-6.3*** (0.7)	-10.3*** (0.9)	-10.3*** (1.1)	-5.3*** (1.3)
+ Perceived ability	-3.9*** (0.6)	-6.4*** (0.7)	-9.8*** (0.9)	-9.5*** (1.0)	-5.1*** (1.3)

Notes: Each cell of this table reports the female coefficient that characterizes the gender differences for different quantiles. Panel A uses log expected wages as an outcome and thus reports level gaps, while panel B uses percentile ranks of expected wages measured in the expected wage distribution of males and therefore reports rank gaps as outlined in section 2.4. Ability measures comprise IQ and personality traits and perceived ability comprises the subjective position in the distribution of academic and job-related skills, respectively. Log gross annual wages are winsorized at the 1% and 99% level. Robust standard errors in parantheses. *, **, and *** denote significance at the 10%, 5%, and 1% level.

at the middle and lower end of the distribution are less confident regarding their perceived or actual abilities. Indeed, after major choice as well perceived and actual ability (IQ, preferences, and personality) are accounted for, the gender gap in wage expectations becomes much more similar across quantiles.¹⁸ The remaining gap thus seems to accrue to male-female differences that exist along the entire distribution.

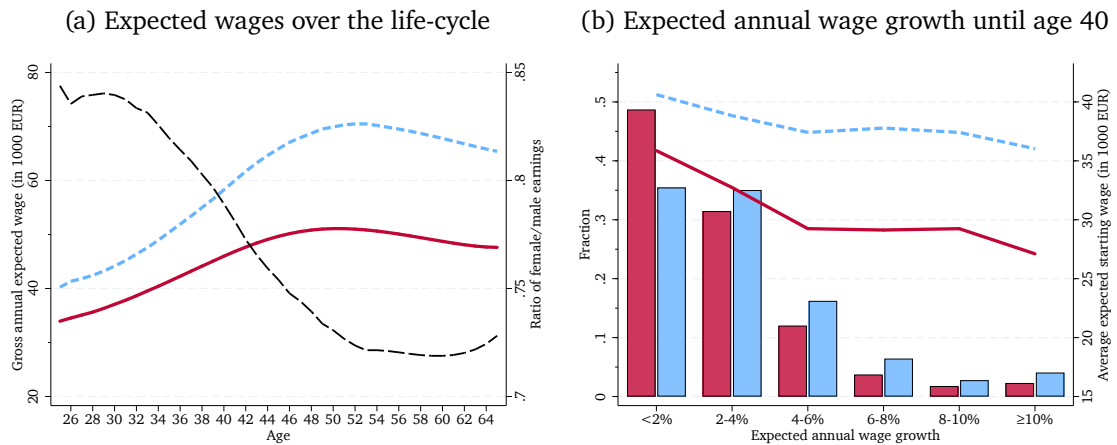
3.3 Life-cycle trajectories in expected wages

The evidence presented in section 3.1 indicates that the gender gap in wage expectations increases with potential experience. To investigate the magnitude and relative importance of rising expected wage gaps over time, we use the three wage expectations (after graduation, at the age of 40, and at the age of 55) to fit individual-specific

¹⁸In Table A3, we document pronounced absolute (measured in levels) and relative (in ranks) gaps across all majors and quantiles.

Mincerian wage trajectories as described in section 2.3. Figure 3a presents how male and female graduates expect earning trajectories to evolve over their respective life-times.¹⁹ The figure reveals that the gender gap increases over time and this increase accelerates in the early-thirties when individuals start a family. Moreover, it increases until the age of 50 and stabilizes at 72% (i.e., females expect to earn 72% of the male wage at the age of 50). Expressed in terms of labor market experience, females need about nine years of prospective experience (from the age of 25 to 34) to reach the wage level that males expect to receive upon graduation (approx. 40,000 EUR). Males in turn expect to earn on average 49,000 EUR after nine years of experience, which is almost as high as the highest average wage level that females expect to earn throughout their entire careers (51,000 EUR at the age of 50).

Figure 3: Life-cycle wage trajectories and wage growth



Notes: Figure 3a shows the evolution of wages over the life cycle (females: red, solid; males: blue, dashed; measured on the left axis), including the female-male ratio (black, long-dashed; measured on the right axis). Figure 3b presents the expected annual wage growth until the age of 40 (bars measured on the left axis) and average expected starting wages (lines measured on the right axis) in each wage growth category separately for female (red, left bars) and male (blue, right bars) students in our sample. All wages are winsorized at the 1% and 99% level.

Figure 3b illustrates the distribution of annual wage growth by growth category (<2%, 2-4%, 4-6%, 6-8%, 8-10%, ≥10%). It shows that the vast majority of students expect annual wage growth rates of less than 4%. However, male students are more likely than females to expect larger growth rates. Thus, almost half of all female

¹⁹Note that Figure 3a expresses all expected wages in terms of a respondent's age while Table 2 presents expected starting wages irrespective of age. As there are students who graduate in their late-twenties or early-thirties, the sample used for this figure thus changes at initial ages. At the age of 25, approximately 39% of all students expect to have graduated from university. At the age of 28, 72%, at 30 this share amounts to 85% and at the age of 32 to 92%. Approximately 98% of all students expect to have graduated from university by the age of 35.

students expect their yearly wages to grow by less than 2%, compared to 35% of males. Moreover, students who expected high starting wages expect lower growth rates, and this pattern is more pronounced for females. Taken together, these patterns imply that expected wage trajectories of male and female students diverge over the life cycle. Nonetheless, while overall the gap in expected wages widens over the prospective life cycle at all parts of the expected starting wage distribution (see Figure A1a), rank differences persist or increase only slightly (Figure A1b). This implies that while the absolute gap in wage expectations increases over the life-cycle, i.e., females expect to earn less for every Euro a male expects to earn, the relative gap and thereby their rank in the distribution remains stable.²⁰

3.4 Comparing expected wages to actual wages

The above-described gender gap in wage expectations might translate into male-female differences in career decisions or family planning. Nonetheless, in terms of distributional concerns, fairness, and policy-making, its empirical relevance also depends on the extent to which these expectations translate into actual gender wage differences.

Several pieces of evidence suggest that this is indeed the case. First, follow-up surveys on graduates who were initially surveyed about their wage expectations during college show a close relation between the expectations and later realizations (Webbink and Hartog, 2004; Wiswall and Zafar, 2021).²¹ Second, the wage gap in expectations that we observe mimics the actual (conditional and unconditional) wage gap in Germany, as well as the fact that women experience much flatter life-cycle wage profiles (Francesconi and Parey, 2018; Destatis, 2017). Thus, for example Francesconi and Parey (2018) report an overall actual gap among recent university graduates in Germany of 19.1%, while we find one of 15.5% in expectations. Besides, they report an actual gap of 10.5% among economics majors, whereas the gap in expectations among economics majors in our sample amounts to 10.45%.

We proceed by investigating how wage expectations in our sample map into actual wage expectations in two samples: (i) A sample of recent graduates who were surveyed as part of our initial survey and (ii) a sample of individuals that took part in our initial survey and who were resurveyed in January 2023. While the first sample is bigger and surveyed soon after graduation, the second sample, albeit small, bears the

²⁰Figure A2 in the Appendix also confirms that the ranks in the starting wage distribution are highly correlated with ranks at the age of 40 and 55.

²¹See also Attanasio and Kaufmann (2014); Filippin and Ichino (2005); Schweri and Hartog (2017) for evidence that expectations predict subsequent real-life outcomes.

advantage that we can compare expectations to actual starting wages of our original respondents, i.e., within individual.

Starting with the sample of recent graduates, we find that the gender gap in starting wage expectations and the gender gap among recent graduates in our data are almost identical, and the same holds true for respective wage levels (see Table 2). Moreover, the respective distributions coincide (see Figure 4), aside from slightly more mass at the lower end of the distribution among recent graduates. In Appendix A.4, we compare log (expected) wages of graduates and students in a regression framework and can show that any of the observed differences stem from non-standard employment relationships after graduation (e.g., initial internships or part-time work). After controlling for gender, field of study, and working hours, there are no statistical differences between expected and actual wages.²²

We now turn to the follow-up sample of individuals that took part in the original survey. The results displayed in part D of Table 2 show that expected wages and realized wage levels are close on average. Males earn significantly more than females in their first job and both absolute wages and the female/male ratio in actual wages correspond almost exactly to the values observed for expected wages. The within-individual difference between realized and expected wages is displayed in Appendix Figure A3. Hence, in this subsample both genders were slightly more pessimistic in their expectations when compared to realized wages. This is especially true for females as can also be seen when comparing the distributions of actual and expected wages in panels (c) and (d) of Figure 4.

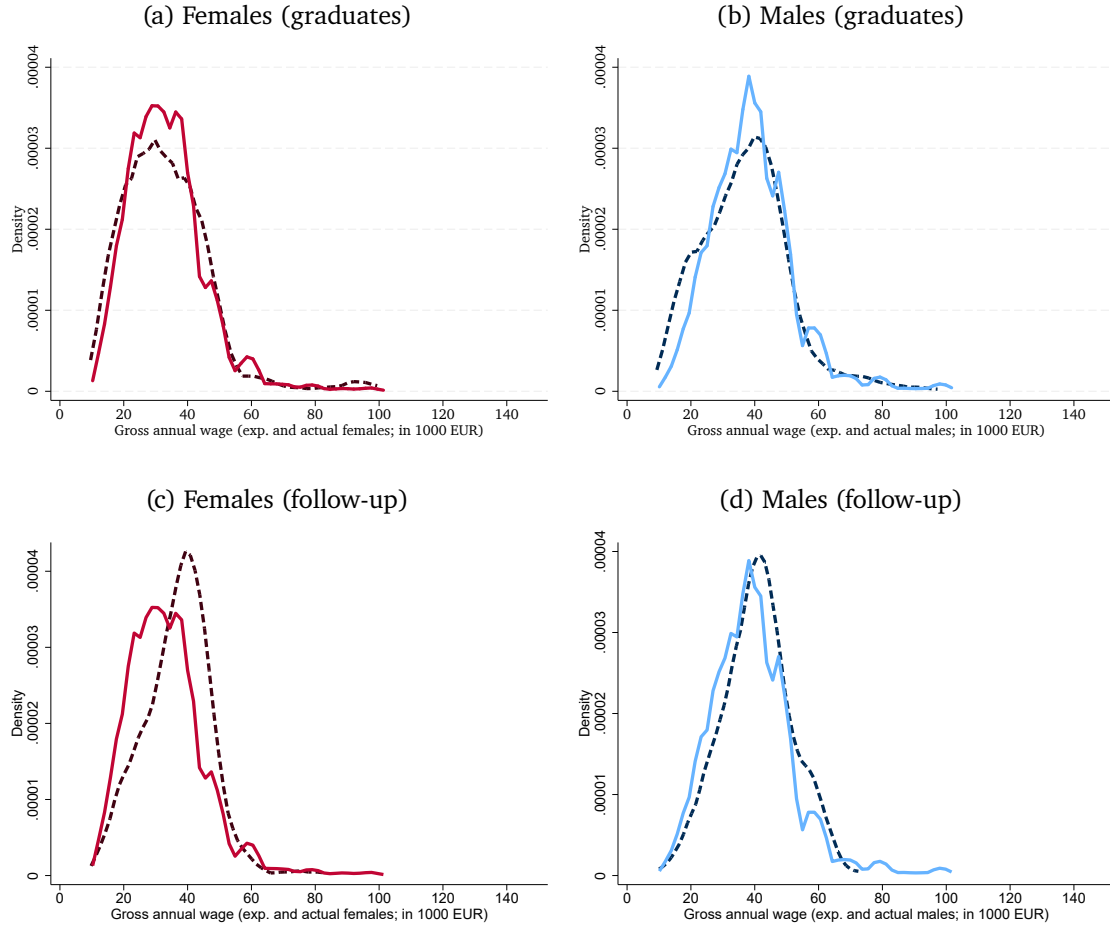
The empirical similarity of wage expectations and actual wages thus suggests that expectations reflect the expected outcome of (future) wage setting (Table A5 shows compelling evidence that this is indeed the case) and that women tend to anticipate lower wages mostly due to factors related to their gender. In the following, we will investigate this claim by shedding particular light on a factor with importance for the wage setting: students' anticipated negotiation behavior.

4 Expectations about prospective wage negotiations

A job interview is the first time when individuals get in touch with the graduate labor market and an important instance for wage setting. Differential plans for wage negotiations may thus provide a rationale for expected wage differences and for the strong link between expected and actual wages documented in section 3.4. In this part,

²²In a sample of prospective students Briel et al. (2022) also find that prospective students make fairly small estimation errors on average.

Figure 4: Comparison of expected and actual wages



Notes: These figures present kernel densities of expected overall wages of female (red, solid; Figure 4c) and male (blue, solid; Figure 4d) students in our sample as well as the same distributions for actual wages of recent graduates (darker colors, dashed) (panels a and b) and the follow-up sample (panels c and d). All wages are winsorized at the 1% and 99% level.

we demonstrate that wage expectations and plans for asking wages or expectations about reservation wages are inherently linked. Moreover, we investigate the extent to which differences in expected wages relate to differential boldness in plans for initial wage claims and how much individuals expect to be negotiated down towards their reservation wages.²³

Panel A of Table 4 presents plans for initial wage claims, expected wages, and expected reservation wages of males and females. Expected wages on average lie between the initial wage claim and the reservation wage, indicating that most individuals expect to start a wage negotiation by claiming salaries above what they expect

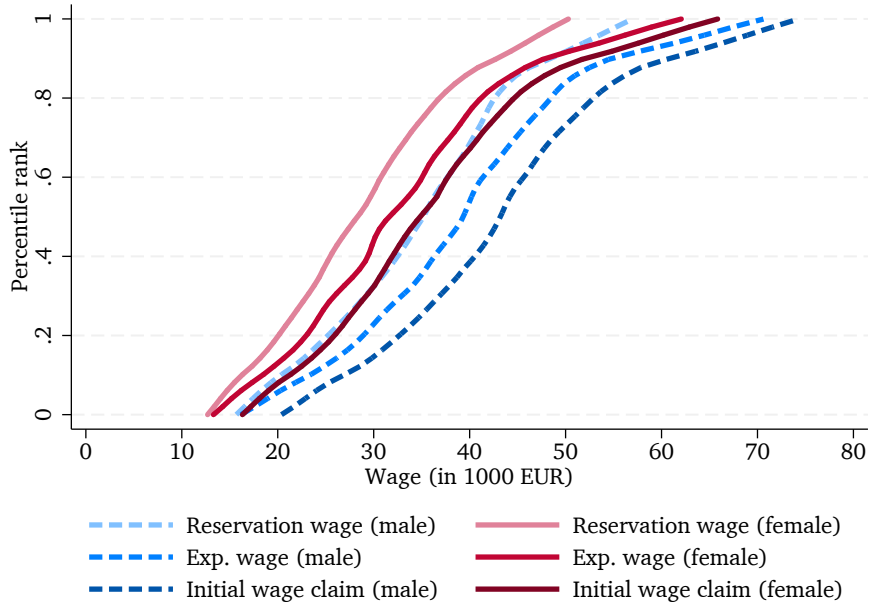
²³Since university graduates are usually asked to state their initial wage claim when applying for a position, we do not investigate differences in entering a negotiation (Babcock and Laschever, 2009; Small et al., 2007).

Table 4: Summary statistics on negotiation patterns

	Negotiation patterns				N
	Males	Females	Diff.	<i>p</i> -val. Diff.=0	
A. Expressed in levels/Euro					
Initial wage claim	41789	33714	8075	0.00	15348
Expected wage	39076	33434	5642	0.00	15348
Reservation wage	34355	28002	6352	0.00	15348
B. Expressed in ranks					
Initial wage claim	58	40	18	0.00	15348
Expected wage	50	37	14	0.00	15346
Reservation wage	42	28	14	0.00	15348
Boldness	16	13	3	0.00	15348

Notes: Panel A reports mean initial wage claims, expected and reservation wages in Euro for both males and females. Panel B expresses these in ranks measured on the male expected wage distribution. See text and section 2.4 for a description of how to calculate these ranks.

Figure 5: Initial wage claims, expected and reservation wages



Notes: Figure 5 presents reservation wages (w_R , light), expected wages (w_{exp} , medium) and initial wage claims (w_I , dark) ordered according to their percentile rank in the expected wage distribution of female (red, solid) and male (blue, dashed) students in our sample. All wages are winsorized at the 1% and 99% level.

to receive. Similarly, they expect to settle on a wage that lies above their reservation

wage.²⁴ This is true for both males and females and along the entire expected wage distribution (see Figure 5).²⁵

We analyze gender differences in initial wage claims in Table 5. Across the sample, females claim 27% lower initial wages when entering a wage negotiation for their first job. Once we control for sorting into specific majors, occupations, and industries, these difference remain roughly 16%, indicating large differences in expected negotiation behavior across genders.²⁶ In columns (3)-(5), we also control for differences in prospective reservation wages. While this reduces the gender gap in initial wage claims, there remains a gap, indicating that males plan to ask for more when stating their initial wage claims, both when compared to their expected and when compared to their prospective reservation wages.[see][for related evidence](Gerhart and Rynes, 1991) Hence, men are planning to act bolder when entering a wage negotiation than females.²⁷

Table 5: Gender gap in initial wage claims

	log(Initial wage claim)				
	(1)	(2)	(3)	(4)	(5)
Female	-0.265*** (0.013)	-0.157*** (0.017)	-0.046*** (0.005)	-0.021*** (0.005)	-0.020*** (0.005)
log(Reservation wage)			0.826*** (0.011)	0.864*** (0.012)	0.846*** (0.019)
log(Expected wage)					0.048** (0.021)
Major	No	Yes	No	Yes	Yes
Occupation and industry	No	Yes	No	Yes	Yes
IQ, personality, econ. prefs.	No	Yes	No	Yes	Yes
R^2 (adj.)	.024	.091	.9	.93	.93
Observations	15348	10790	15348	10790	10788

Notes: All wages are winsorized at the 1% and 99% level. Robust standard errors in parentheses. *, **, and *** denote significance at the 10%, 5%, and 1% level.

To shed more light onto this male-female difference in boldness regarding high initial wage claims, we construct a measure of envisaged negotiation strategies that

²⁴For recent evidence on the importance of male-female differences in reservation wages for the gender gap, see Caliendo, Lee, and Mahlstedt (2017); Le Barbanchon, Rathelot, and Roulet (2019).

²⁵The close association between initial wage claims, reservation wages and expected wages is further confirmed by the results displayed in Appendix Table A5. It indicates that the difference between expected wages and initial wage claims remains constant along the expected wage distribution.

²⁶Note that the explanatory power (R^2) of the analysis displayed in Table 5 is rather low. This is not uncommon as wage expectations tend to be measured with substantial error. Explanatory power in this paper is comparable to other papers in this literature (e.g. Reuben, Wiswall, and Zafar (2017)).

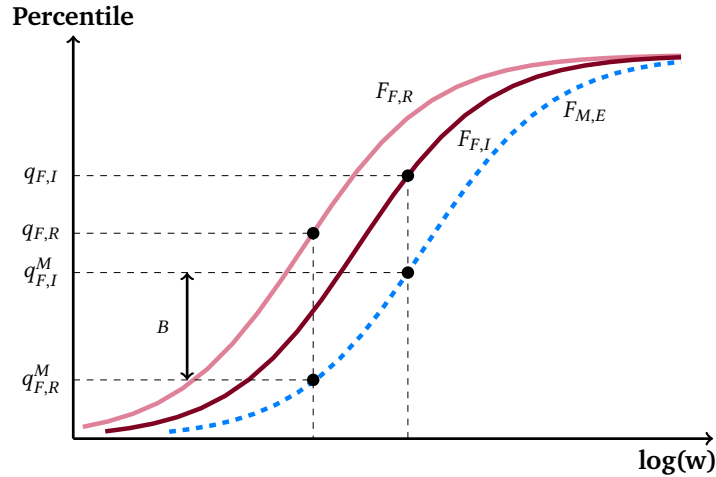
²⁷Women ask for a lower initial claim, but expected to be bargained down less from their initial claim.

is well-defined and comparable across genders. It is based on the methodology introduced in section 2.4. As comparisons across distributions require some form of anchoring, we express initial wage claims and reservation wages of both genders in terms of percentiles of the male wage distribution. That is, given that the initial wage claim (reservation wage) of a given female in our sample lies on a certain quantile $q_{F,I}$ ($q_{F,R}$), we calculate the corresponding quantile in the male expected wage distribution $F_{M,E}$ (see Figure 6). Using this, we then determine the corresponding percentile of initial wage claims and prospective reservation wages with respect to the male wage distribution ($q_{F,I}^M$ and $q_{F,R}^M$). Next, we proceed analogously with the initial wage claims and prospective reservation wages of males. Last, we define boldness of individual i as the difference between the corresponding percentile ranks in initial wage claims and prospective reservation wages distribution:

$$B_i = q_{i,g,I}^M - q_{i,g,R}^M, \quad (4)$$

where $g = F, M$ for females and males, respectively. This definition of boldness in wage negotiations yields a continuous measure between 0 and 100 capturing how much more an individual is planning to ask for, when compared to her minimum acceptable wage. Note that despite being based on initial wage claims, this measure likely captures a general willingness to ask for a relatively higher wage.

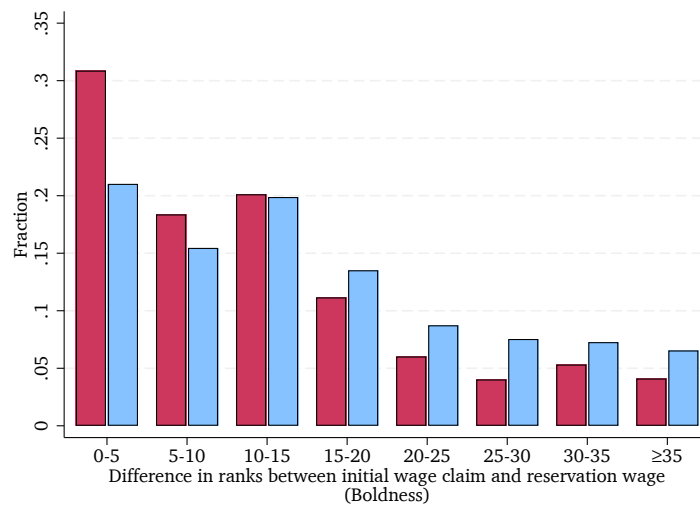
Figure 6: Constructing a measure of boldness in initial wage claims



Notes: This figure illustrates how the rank gap at percentile q of planned initial wage claims (dark red, solid) and prospective reservation wages (light red, solid) of females are calculated using the male (log) expected wage distribution $F_{M,E}$ (blue, dashed). Our measure of envisaged negotiation strategies for individual i is given by the rank gap between her initial wage claim ($q_{i,g,I}^M$) and reservation wage ($q_{i,g,R}^M$): $B_i = q_{i,g,I}^M - q_{i,g,R}^M$ with $g = F, M$ depending on individual i 's gender.

Figure 7 presents the distribution of prospective negotiation patterns. About one third of female students in our sample plan to leave very little scope for negotiations, as there are only five ranks or fewer between their expected initial wage claims and their prospective reservation wages. By contrast, males plan to enter negotiations with much bolder wage claims, with the majority planning to claim a wage that lies fifteen ranks or more above their reservation wage.

Figure 7: Distribution of boldness in initial wage claims



Notes: This figure presents boldness in initial wage claims B_i defined by the difference in ranks measured on the male (log) expected wage distribution between the initial wage claims and reservation wages for both female (red, left bars) and male (blue, right bars) students in our sample.

These differences in envisaged negotiation patterns between males and females prompt the question whether a bolder planned negotiation strategy pays off, and to what extent gender differences in boldness in initial wage claims contribute to gender gaps in wage expectations. While our data do not permit establishing causality, they allow us to provide interesting observational evidence on the relationship between envisaged negotiation strategies and expected wages. The results in Table 6 indicate that our measure of boldness in initial wage claims is positively related to expected wages and specifically so for females. Taken at face value they imply that an increase in boldness by a 20 rank difference (approx. 1.6 SD) between initial wage claims and reservation wages among females is associated with a closing of the gender gap. Next, we investigate how much of the overall gender wage gap is explained by differences in negotiation strategies. The size of the female indicator reduces by 17% once we take boldness in initial wage claims into account, pointing towards an important role of negotiation strategies. Moreover, Oaxaca-Blinder decompositions, displayed in Appendix Table A9 and Appendix Figure A7, confirm their role: Our boldness

measure captures between 14 and 15% of the gender gap in starting wages (9-10% in terms of lifetime wages) after accounting for detailed measures of sorting, labor supply, and family planning.

Table 6: Association of boldness in initial wage claims and expected wages

	log(Expected wages)			
	(1)	(2)	(3)	(4)
Female	-0.184*** (0.009)	-0.152*** (0.009)	-0.155*** (0.009)	-0.077*** (0.012)
Boldness		0.010*** (0.000)	0.005*** (0.001)	0.004*** (0.001)
Boldness × Female			0.008*** (0.001)	0.007*** (0.001)
Major Occupation and industry	No	No	No	Yes
IQ, personality, econ. prefs.	No	No	No	Yes
R^2 (adj.)	.025	.065	.073	.14
Observations	15346	15346	15346	10788

Notes: Boldness is measured by the percentile difference in the planned initial wage claims and prospective reservation wage distributions (see text for a description of how we construct this), which has a standard deviation of 12.2 and is demeaned for these regressions to obtain a comparable female indicator across specifications. All wages are winsorized at the 1% and 99% level. Robust standard errors in parentheses. *, **, and *** denote significance at the 10%, 5%, and 1% level.

What drives these male-female differences in boldness in initial wage claims? We consider three potential explanations. First, there could be differences in the expected ability to perform well on the job, e.g., males may overestimate their abilities in line with their tendency to display overconfidence (Croson and Gneezy, 2009; Niederle and Vesterlund, 2007). Second, females who expect discrimination may negotiate more modestly. This might even be a rational strategy if women anticipate punishment or retaliation for bold “man-like” behavior (Amanatullah and Morris, 2010; Bowles, Babcock, and Lai, 2007; Bowles and Babcock, 2013; Gerhart and Rynes, 1991; Rousille, 2020). Third, having a preference for children may impact negotiation behavior. Especially females who plan to have children rather soon might be less engaged prospective negotiators, either because they anticipate shorter overall labor market participation or higher costs to employers (see Appendix A.6 for evidence that plans for early parenthood reflect lower labor market attachment).

We jointly investigate the above explanations in Table 7. Perceived ability on the job is only loosely related to boldness and similar across genders. An increase of 20 points in perceived ability (corresponds to approx. one standard deviation) is associated with an increase of 0.36-0.52 in boldness corresponding to 11-16% of the

unconditional gender gap. Both this association as well as the distribution of perceived ability is similar across genders. Specifically, males rate their on-the-job ability only two ranks higher than females.

Table 7: Assessing Potential Explanations of Gender Differences in Boldness in Initial Wage Claims

	Boldness					
	(1)	(2)	(3)	(4)	(5)	(6)
Female	-3.334*** (0.200)	-3.858*** (0.730)	-3.012*** (0.228)	-2.758*** (0.299)	-2.956*** (0.766)	-2.000** (0.911)
A. Perceived ability						
Perceived ability (0-100)		0.018** (0.008)			0.018** (0.008)	0.001 (0.010)
Female × Perceived ability (0-100)		0.008 (0.010)			0.008 (0.010)	0.017 (0.012)
B. Expect discrimination						
1{Expect discrimination}			0.848** (0.411)		0.849** (0.410)	0.795* (0.480)
Female × 1{Expect discrimination}			-1.446*** (0.491)		-1.400*** (0.490)	-1.644*** (0.566)
C. Wants to have children before the age of 30						
1{Wants children before age 30}				0.573* (0.317)	0.551* (0.317)	1.081*** (0.367)
Female × 1{Wants children before age 30}				-1.048** (0.408)	-1.015** (0.408)	-1.209** (0.473)
Wants to have children				0.281 (0.335)	0.249 (0.336)	0.084 (0.392)
Major	No	No	No	No	No	Yes
Occupation and industry	No	No	No	No	No	Yes
IQ, personality, econ. prefs.	No	No	No	No	No	Yes
R^2 (adj.)	.018	.019	.019	.018	.02	.067
Observations	15348	15348	15348	15348	15348	10790

Notes: Boldness is measured by the percentile difference in the planned initial wage claims and prospective reservation wage distributions (see text for a description of how we construct this) (see Section 2.4 and the description in this section) with a mean of 14.0 and a standard deviation of 12.2 pooled across genders. Perceived ability is the self-reported perceived on the job ability measured on a scale from 0 to 100. 1{Expected discrimination} is an indicator whether an individual would expect to earn the same if he or she has the opposite gender, but the same skills, traits, and qualifications. 1{Wants children before age 30} denotes an indicator denoting whether a respondent expects to have the first child before the age of 30. All wages are winsorized at the 1% and 99% level. Robust standard errors in parentheses. *, **, and *** denote significance at the 10%, 5%, and 1% level.

Turning to the anticipation of discrimination in the labor market, we define a respondent to expect discrimination if she disagrees with the statement that they would expect to earn the same as a member of the opposite gender with the same skills, traits, and qualifications. Column (3) shows that expecting gender discrimination is associated with more pronounced boldness in initial wage claims for males, but less for females. For those who expect discrimination, the gap in boldness in initial wage claims is 1.5 points larger, corresponding to roughly half of the unconditional gender

gap.²⁸ To the extent that negotiating is expected to pay off in general and in particular for female students, these findings are consistent with the notion that women “know when to ask” (Exley, Niederle, and Vesterlund, 2020).

In column (4) we turn to the preference for bearing and raising children, where we use child birth before age 30 as a proxy for high family preference and lower labor market attachment (see Appendix A.6 for evidence). We find that boldness in initial wage claims regarding prospective negotiations is consistently lower for females with strong family preferences. In column (5), we confirm that these results hold once we control jointly for all three explanations.

One concern might be that potential for boldness in initial wage claims regarding prospective negotiations depend on the career, industry, or occupation individuals want to enter. For instance, highly regulated jobs may not allow for wage negotiations. Similarly, individuals with certain traits or characteristics may have better negotiation skills translating into bolder wage claims. Column (6) therefore also controls for major, occupation and industry fixed effects, as well as a series of personality measures, economic preferences and IQ. These variables jointly capture determinants of sorting or realizations thereof and thus allow us to test whether the results for expected discrimination and child-rearing hold conditional on sorting. We find that our results, displayed in column (6), remain largely unchanged.

We now turn to the important question of whether our major of boldness in prospective wage claims is predictive of actual bargaining behavior and wages several years later. Using evidence from the eight-year follow-up sample, we find that this is indeed the case. First, the results shown in Table A12 suggest that prospective boldness is positively associated with being willing to negotiate down. Similarly, boldness is negatively associated with statements saying that being too bold will result in worse results in terms of being perceived as rude or even in lower wage outcomes (see, e.g., Amanatullah and Morris, 2010; Bowles, Babcock, and Lai, 2007; Bowles and Babcock, 2013, for prior evidence along these lines). Second, boldness in initial wage claims as elicited before labor market entry is significantly and strongly related with actual bargaining behavior and actual wage outcomes several years later. The results displayed in Table 8 suggest that an increase in boldness by one rank results in a statistically significant increase in actual initial wage claims by about 150 EUR. Similarly, it results in a 150 EUR increase in starting wages and in a more than 200 EUR increase in current wages. This implies that an increase in boldness by a 20 rank difference would reduce the gender wage gap by more than half. Moreover,

²⁸The marginal effect of $1\{\text{Expected discrimination}\}$ for females amounts to -0.60 with a p -value of 0.03.

Table 8: Association of boldness in initial wage claims and actual wages

	Initial claim		Bargaining scope		Starting wage		Current wage			
	(1)	(2)	(3)	(4)	(5)	(6)	(7)	(8)	(9m)	(10f)
Boldness	186.52*** (60.21)	146.51** (70.76)	25.15 (24.08)	52.43* (27.96)	174.41** (81.75)	158.54* (89.53)	336.78*** (76.20)	217.97*** (78.32)	105.47 (175.97)	235.92*** (86.09)
Major Industry	No	Yes	No	Yes	No	Yes	No	Yes	Yes	Yes
Yr exam	No	Yes	No	Yes	No	Yes	No	Yes	Yes	Yes
R^2	.04	.39	.01	.17	.01	.10	.03	.22	.3	.25
Observations	166	166	165	165	479	479	453	453	182	271

Notes: Boldness is measured by the percentile difference in the planned initial wage claims and prospective reservation wage distributions (see text for a description of how we construct this) (see text for a description of how we construct this), which has a standard deviation of 12.2 and is demeaned for these regressions to obtain a comparable female indicator across specifications. ‘Initial claim’ are actual initial wage claims from wage negotiations that individuals engaged in before they entered their first job. ‘Bargaining scope’ is the different between actual initial wage claims and actual reservation wages during first job wage negotiations. Wages are actual starting and/or current wages of individuals working between 20 and 55 hours, winsorized at the 1% and 99% level. Column (9) displays current wage results for females, column (10) displays current wage results for males. Robust standard errors in parentheses. *, **, and *** denote significance at the 10%, 5%, and 1% level.

same as for wage expectations, we find that the relation between boldness and actual wages is stronger for females than for males (see columns (9m) and (10f)). Despite the small sample size, these results substantiate the notion that planned boldness regarding initial wage claims in prospective wage negotiations is a significant driver of the male-female wage gap.

Note that the measure of boldness as defined in this paper only refers to boldness in initial wage claims. It conceivable, however, that females are “bold” in a different sense, e.g., in that they start a negotiation with lower initial wage claims, but are then less willing to “negotiate down”, thus being bolder in resulting back-and-forth-negotiations. To assess systematic differences in negotiation strategies between males and females, we regress each of the above negotiation statements on a female dummy. The results of this exercise are displayed in Table A12. We find that there are no gender differences in willingness to “negotiate down”, suggesting that boldness in initial wage claims indeed captures the relevant margin of boldness in wage negotiations. In line with the literature (Bowles, Babcock, and Lai, 2007; Blau and Kahn, 2017) we do, however, find that females are more inclined to fear being viewed as impudent or even risking a lower wage in the end if they act boldly in wage negotiations.

5 Conclusion

This study provides large-scale evidence on the gender gap in wage expectations. In line with previous evidence (Reuben, Wiswall, and Zafar, 2017; Briel et al., 2022; Fernandes, Huber, and Vaccaro, 2021; Leibing et al., 2023), it shows in a large and diverse sample, that even prior to labor market entry women expect much lower wages than men and this gender gap in expected wages is significant and large across all subgroups and along the entire distribution. Moreover, by making use of expectations data over different points in the life cycle, it documents that this gap in expectations increases over the prospective life cycle. In terms of relative magnitudes, our data unveil that females would need to work on average around four hours more per week in the same occupation and industry, or major for instance in medical sciences rather than humanities to catch up with the starting wages of their male peers. Similarly, in expectation, it would take them about nine years more of accumulated work experience to make up for the expected gender penalty.

This paper also documents a striking relationship between expected wages, planned initial wage claims and prospective reservation wages, and use this information to construct a measure of boldness in wage negotiations. Our results reveal that women plan to enter wage negotiations with more modest wage claims relative to their reservation wage, despite the fact that boldness in negotiations is associated with higher expected wages and helps to explain gender differences in wage expectations. Our finding that females plan to be less bold compared to their male counterparts seems to be driven by anticipation of gender discrimination, as well as a preference for having children soon. Women also fear to be viewed as impudent and to risk a lower final wage outcome if they act boldly in wage negotiations. By contrast, perceived on-the-job ability does not explain differential negotiation strategies. That boldness matters for long-term outcomes is further substantiated by the fact that it is significantly associated with actual wage claims, actual starting wages, and current wages several years later. This is especially true for females, supporting the notion that wage claims improve female wage outcomes with little penalty comparable to men (Roussille, 2020).

The above findings have implications for our understanding of wage-setting processes, expectation formation, and economic modeling. In particular, the documented systematic and accurate gender differences in wage expectations and their strong relation with prospective wage claims and reservation wages suggest that expected wages drive actual wage differences and persistent gender wage gaps. Given their size and accuracy, relative expected wage disparities likely matter for financial decision-

making, household bargaining, as well as education and labor market choices. In this respect, our results also inform the economic modeling of such decisions and associated learning processes (see, e.g., Breen and Garcia-Penalosa, 2002; Xia, 2016; Reuben, Wiswall, and Zafar, 2017; Wiswall and Zafar, 2018).

In addition, our results suggest that reluctant negotiation behavior may lead to lower reference points and lower subsequent wage expectations. Our evidence strongly supports the idea that plans for initial negotiation strategies matter for starting wages and that differences in starting wages may lead to different wage trajectories. Our findings may also explain why wage gaps are larger among university students entering labor markets in which unionized wage setting is rare and where employer-employee negotiations hold particular importance in the wage-setting process (Blau and Kahn, 2017; Biasi and Sarsons, 2022).

Our results also deliver insights regarding the effective implementation of policies aimed at leveling the playing field between genders. In particular, our findings suggest that targeted negotiation trainings – rather than encouraging more negotiations per se (Exley, Niederle, and Vesterlund, 2020) – might be an effective measure to improve female labor market outcomes and reduce the gender wage gap (Ashraf et al., 2020; Bowles and Babcock, 2013). In fact, such measures seem to be more effective than policies that encourage women to enter male-dominated fields, for which the gender gap in expectations tends to be somewhat higher.

In future research, it would thus be informative to assess whether randomly-assigned information treatments about negotiation strategies can reduce actual wage gaps to the same extent as suggested in this paper.

References

- Albrecht, James, Anders Björklund, and Susan Vroman. 2003. "Is There a Glass Ceiling in Sweden?" *Journal of Labor Economics* 21 (1):145–177.
- Albrecht, James W., Per-Anders Edin, Marianne Sundström, and Susan B. Vroman. 1999. "Career interruptions and subsequent earnings: A reexamination using Swedish data." *Journal of Human Resources* 34 (2):294–311.
- Altonji, Joseph G. and Charles R. Pierret. 2001. "Employer learning and statistical discrimination." *Quarterly Journal of Economics* 116 (1):313–350.
- Amanatullah, Emily T. and Michael W. Morris. 2010. "Negotiating gender roles: Gender differences in assertive negotiating are mediated by women's fear of backlash and attenuated when negotiating on behalf of others." *Journal of Personality and Social Psychology* 98 (2):256.
- Andersen, Steffen, Julie Marx, Kasper Meisner Nielsen, and Lise Vesterlund. 2020. "Gender Differences in Negotiation: Evidence from Real Estate Transactions." Working Paper.
- Angelov, Nikolay, Per Johansson, and Erica Lindahl. 2016. "Parenthood and the gender gap in pay." *Journal of Labor Economics* 34 (3):545–579.
- Antonczyk, Dirk, Bernd Fitzenberger, and Katrin Sommerfeld. 2010. "Rising wage inequality, the decline of collective bargaining, and the gender wage gap." *Labour Economics* 17 (5):835–847.
- Arcidiacono, Peter, V. Joseph Hotz, and Songman Kang. 2012. "Modeling college major choices using elicited measures of expectations and counterfactuals." *Journal of Econometrics* 166 (1):3–16.
- Ashraf, Nava, Natalie Bau, Corinne Low, and Kathleen McGinn. 2020. "Negotiating a Better Future: How Interpersonal Skills Facilitate Inter-Generational Investment." *Quarterly Journal of Economics* 135 (2):1095–1151.
- Attanasio, Orazio P. and Katja M. Kaufmann. 2014. "Education choices and returns to schooling: Mothers' and youths' subjective expectations and their role by gender." *Journal of Development Economics* 109:203–216.
- Azmat, Ghazala and Barbara Petrongolo. 2014. "Gender and the labor market: What have we learned from field and lab experiments?" *Labour Economics* 30:32–40.
- Babcock, Linda and Sara Laschever. 2009. *Women don't ask: Negotiation and the gender divide*. Princeton University Press.
- Baker, Rachel, Eric Bettinger, Brian Jacob, and Ioana Marinescu. 2018. "The Effect of Labor Market Information on Community College Students' Major Choice." *Economics of Education Review* 65:18 – 30.

- Bayer, Patrick and Kerwin K. Charles. 2018. "Divergent Paths: A New Perspective on Earnings Differences Between Black and White Men Since 1940." *Quarterly Journal of Economics* 133 (3):1459–1501.
- Bertrand, Marianne. 2011. "New perspectives on gender." In *Handbook of Labor Economics*, vol. 4, edited by O. Ashenfelter and D. Card, chap. 17. Elsevier, 1543–1590.
- Bertrand, Marianne, Claudia Goldin, and Lawrence F. Katz. 2010. "Dynamics of the gender gap for young professionals in the financial and corporate sectors." *American Economic Journal: Applied Economics* 2 (3):228–55.
- Bian, Lin, Sarah-Jane Leslie, and Andrei Cimpian. 2017. "Gender stereotypes about intellectual ability emerge early and influence children's interests." *Science* 355 (6323):389–391.
- Biasi, Barbara and Heather Sarsons. 2022. "Flexible wages, bargaining, and the gender gap." *The Quarterly Journal of Economics* 137 (1):215–266.
- Blau, Francine D. and Marianne A. Ferber. 1991. "Career plans and expectations of young women and men: The earnings gap and labor force participation." *Journal of Human Resources* 26 (4):581–607.
- Blau, Francine D. and Lawrence M. Kahn. 2017. "The gender wage gap: Extent, trends, and explanations." *Journal of Economic Literature* 55 (3):789–865.
- Boneva, Teodora, Thomas Buser, Armin Falk, and Fabian Kosse. 2022. "The Origins of Gender Differences in Competitiveness and Earnings Expectations: Causal Evidence from a Mentoring Intervention." CESifo Working Paper.
- Boneva, Teodora and Christopher Rauh. 2020. "Socio-economic gaps in university enrollment: The role of perceived pecuniary and non-pecuniary returns." Working Paper.
- Borghans, Lex, James J. Heckman, Bart H.H. Golsteyn, and Huub Meijers. 2009. "Gender differences in risk aversion and ambiguity aversion." *Journal of the European Economic Association* 7 (2-3):649–658.
- Bowles, Hannah R., Linda Babcock, and Lei Lai. 2007. "Social incentives for gender differences in the propensity to initiate negotiations: Sometimes it does hurt to ask." *Organizational Behavior and Human Decision Processes* 103:84–103.
- Bowles, Hannah Riley and Linda Babcock. 2013. "How can women escape the compensation negotiation dilemma? Relational accounts are one answer." *Psychology of Women Quarterly* 37 (1):80–96.
- Breen, Richard and Cecilia Garcia-Penalosa. 2002. "Bayesian learning and gender segregation." *Journal of Labor Economics* 20 (4):899–922.

- Briel, Stephanie, Aderonke Osikominu, Gregor Pfeifer, Mirjam Reutter, and Sascha Satlukal. 2022. "Gender differences in wage expectations: the role of biased beliefs." *Empirical Economics* :1–26.
- Brunello, Giorgio, Claudio Lucifora, and Rudolf Winter-Ebmer. 2004. "The wage expectations of European business and economics students." *Journal of Human Resources* 39 (4):1116–1142.
- Caliendo, Marco, Wang-Sheng Lee, and Robert Mahlstedt. 2017. "The gender wage gap and the role of reservation wages: New evidence for unemployed workers." *Journal of Economic Behavior & Organization* 136:161–173.
- Collischon, Matthias. 2019. "Is There a glass ceiling over Germany?" *German Economic Review* 20 (4):e329–e359.
- Cortes, Patricia and Jessica Pan. 2018. "Occupation and gender." In *The Oxford Handbook of Women and the Economy*, vol. 4, edited by Susan L. Averett, Laura M. Argys, and Saul D. Hoffman, chap. 17. Oxford University Press, 425–452.
- Croson, Rachel and Uri Gneezy. 2009. "Gender Differences in Preferences." *Journal of Economic Literature* 47 (2):448–474.
- Daniel, Fernández-Kranz, Aitor Lacuesta, and Núria Rodríguez-Planas. 2013. "The motherhood earnings dip: Evidence from administrative records." *Journal of Human Resources* 48 (1):169–197.
- Destatis. 2014. "Auf dem Weg zur Gleichstellung?" Federal Statistical Office Germany.
- . 2017. "Verdienste auf einen Blick." Federal Statistical Office Germany.
- Dominitz, Jeff and Charles F. Manski. 1997. "Using expectations data to study subjective income expectations." *Journal of the American Statistical Association* 92 (439):855–867.
- Eurostat. 2018. "Employment rates of recent graduates." http://ec.europa.eu/eurostat/statistics-explained/index.php/Employment_rates_of_recent_graduates. Accessed: August 14, 2018.
- Exley, Christine L., Muriel Niederle, and Lise Vesterlund. 2020. "Knowing When to Ask: The Cost of Leaning In." *Journal of Political Economy* 128 (3):816–854.
- Falk, Armin, Anke Becker, Thomas Dohmen, David Huffman, and Uwe Sunde. 2023. "The preference survey module: A validated instrument for measuring risk, time, and social preferences." *Management Science* 69 (4):1935–1950.
- Fernandes, Ana, Martin Huber, and Giannina Vaccaro. 2021. "Gender differences in wage expectations." *Plos One* 16 (6):e0250892.
- Filippin, Antonio and Andrea Ichino. 2005. "Gender wage gap in expectations and realizations." *Labour Economics* 12 (1):125–145.

- Firpo, Sergio, Nicole M. Fortin, and Thomas Lemieux. 2009. "Unconditional quantile regressions." *Econometrica* 77 (3):953–973.
- Fouarge, Didier, Ben Kriechel, and Thomas Dohmen. 2014. "Occupational sorting of school graduates: The role of economic preferences." *Journal of Economic Behavior & Organization* 106:335–351.
- Francesconi, Marco and Matthias Parey. 2018. "Early gender gaps among university graduates." *European Economic Review* 109:63–82.
- Gerhart, Barry and Sara Rynes. 1991. "Determinants and consequences of salary negotiations by male and female MBA graduates." *Journal of Applied Psychology* 76 (2):256.
- Goldberg, Lewis R., John A. Johnson, Herbert W. Eber, Robert Hogan, Michael C. Ashton, C. Robert Cloninger, and Harrison G. Gough. 2006. "The international personality item pool and the future of public-domain personality measures." *Journal of Research in Personality* 40 (1):84–96.
- Goldin, Claudia. 2014. "A grand gender convergence: Its last chapter." *American Economic Review* 104 (4):1091–1119.
- Goldin, Claudia and Lawrence F. Katz. 2016. "A most egalitarian profession: pharmacy and the evolution of a family-friendly occupation." *Journal of Labor Economics* 34 (3):705–746.
- Hall, Robert E. and Alan B. Krueger. 2012. "Evidence on the Incidence of Wage Posting, Wage Bargaining, and On-the-Job Search." *American Economic Journal: Macroeconomics* 4 (4):56–67.
- Heineck, Guido and Silke Anger. 2010. "The returns to cognitive abilities and personality traits in Germany." *Labour Economics* 17 (3):535–546.
- Jensen, Robert. 2010. "The (perceived) returns to education and the demand for schooling." *Quarterly Journal of Economics* 125 (2):515–548.
- Kaufmann, Katja M. 2014. "Understanding the income gradient in college attendance in Mexico: The role of heterogeneity in expected returns." *Quantitative Economics* 5 (3):583–630.
- Kirkeboen, Lars J., Edwin Leuven, and Magne Mogstad. 2016. "Field of Study, Earnings, and Self-Selection." *Quarterly Journal of Economics* 131 (3):1057–1111.
- Kleven, Henrik, Camille Landais, and Jakob Egholt Søgaaard. 2019. "Children and Gender Inequality: Evidence from Denmark." *American Economic Journal: Applied Economics* 11 (4):181–209.
- Kunze, Astrid. 2018. "The Gender Wage Gap in Developed Countries." In *The Oxford Handbook of Women and the Economy*, vol. 4, edited by Susan L. Averett, Laura M. Argys, and Saul D. Hoffman, chap. 17. Oxford University Press, 369–394.

- Kuziemko, Ilyana, Jessica Pan, Jenny Shen, and Ebonya Washington. 2020. "The Mommy Effect: Do Women Anticipate the Employment Effects of Motherhood?" Working Paper.
- Le Barbanchon, Thomas, Roland Rathelot, and Alexandra Roulet. 2019. "Unemployment insurance and reservation wages: Evidence from administrative data." *Journal of Public Economics* 171:1–17.
- Leibbrandt, Andreas and John A. List. 2015. "Do Women Avoid Salary Negotiations? Evidence from a Large-Scale Natural Field Experiment." *Management Science* 61 (9):2016–2024.
- Leibing, Andreas, Frauke Peter, Sevrin Waights, and C Katharina Spiess. 2023. "Gender gaps in early wage expectations." *Economics of Education Review* 94:102398.
- Manski, Charles F. 2004. "Measuring expectations." *Econometrica* 72 (5):1329–1376.
- Middendorff, Elke, Beate Apolinarski, Karsten Becker, Philipp Bornkessel, Tasso Brandt, Sonja Heißenberg, and Jonas Poskowsky. 2017. "Die wirtschaftliche und soziale Lage der Studierenden in Deutschland 2016. 21. Sozialerhebung des Deutschen Studentenwerks."
- Niederle, Muriel and Lise Vesterlund. 2007. "Do women shy away from competition? Do men compete too much?" *Quarterly Journal of Economics* 122 (3):1067–1101.
- OECD. 2015. "OECD family database: Gender pay gaps for full-time workers and earnings differentials by educational attainment."
- Petrongolo, Barbara and Maddalena Ronchi. 2020. "Gender gaps and the structure of local labor markets." *Labour Economics* 64:101819.
- Piopiunik, Marc, Franziska Kugler, and Ludger Wößmann. 2017. "Einkommenserträge von Bildungsabschlüssen im Lebensverlauf: Aktuelle Berechnungen für Deutschland." *ifo Schnelldienst* 70 (7):19–30.
- Raven, John C. and John H. Court. 1998. *Raven's progressive matrices and vocabulary scales*. Oxford Psychologists Press.
- Reuben, Ernesto, Matthew Wiswall, and Basit Zafar. 2017. "Preferences and biases in educational choices and labour market expectations: Shrinking the black box of gender." *Economic Journal* 127 (604):2153–2186.
- Rigdon, Mary L. 2012. "An Experimental Investigation of Gender Differences in Wage Negotiations." Working Paper.
- Roussille, Nina. 2020. "The Central Role of the Ask Gap in Gender Pay Inequality." MIT Working Paper.
- Säve-Söderbergh, Jenny. 2019. "Gender gaps in salary negotiations: Salary requests and starting salaries in the field." *Journal of Economic Behavior & Organization* 161:35–51.

- Schmitt, David P, Anu Realo, Martin Voracek, and Jüri Allik. 2008. "Why can't a man be more like a woman? Sex differences in Big Five personality traits across 55 cultures." *Journal of Personality and Social Psychology* 94 (1):168–182.
- Schrenker, Annekatrin and Aline Zucco. 2020. "The gender pay gap begins to increase sharply at age of 30." *DIW Weekly Report* 10 (10):75–82.
- Schweri, Jürg and Joop Hartog. 2017. "Do Wage Expectations Influence the Decision to Enroll in Nursing College?" *Journal of Economic Behavior & Organization* 141:135–150.
- Seegers, Philipp, Jan Bergerhoff, Stephan Hartmann, and Anne Knappe. 2016. *Fachkraft 2020: 5. und 6. Erhebung zur wirtschaftlichen und allgemeinen Lebenssituation der Studierenden in Deutschland*. Studitemps and Maastricht University.
- Small, Deborah A., Michele Gelfand, Linda Babcock, and Hilary Gettman. 2007. "Who goes to the bargaining table? The influence of gender and framing on the initiation of negotiation." *Journal of Personality and Social Psychology* 93 (4):600–613.
- Stinebrickner, Ralph and Todd R. Stinebrickner. 2014. "A Major in Science? Initial Beliefs and Final Outcomes for College Major and Dropout." *Review of Economic Studies* 81 (1):426–472.
- Stinebrickner, Todd R., Ralph Stinebrickner, and Paul J. Sullivan. 2020. "Job Tasks, Task-Specific Work Experience, and the Gender Wage Gap." Working Paper.
- Webbink, Dinand and Joop Hartog. 2004. "Can students predict starting salaries? Yes!" *Economics of Education Review* 23 (2):103–113.
- Wiswall, Matthew and Basit Zafar. 2015. "Determinants of College Major Choice: Identification using an Information Experiment." *Review of Economic Studies* 82 (2):791–824.
- . 2018. "Preference for the Workplace, Investment in Human Capital, and Gender." *Quarterly Journal of Economics* 133 (1):457–507.
- . 2021. "Human capital investments and expectations about career and family." *Journal of Political Economy* 129 (5):1361–1424.
- Xia, Xiaoyu. 2016. "Forming wage expectations through learning: Evidence from college major choices." *Journal of Economic Behavior & Organization* 132:176–196.
- Zafar, Basit. 2011. "Can subjective expectations data be used in choice models? Evidence on cognitive biases." *Journal of Applied Econometrics* 26 (3):520–544.
- . 2013. "College major choice and the gender gap." *Journal of Human Resources* 48 (3):545–595.
- Zambre, Vaishali. 2018. "The Gender Gap in Wage Expectations: Do Young Women Trade off Higher Wages for Lower Wage Risk?" Working Paper.

A Appendix

A.1 Additional measures

In the following, we describe additional measures elicited in the survey.

Major and occupational sorting. Students in Germany are required to enroll for a particular field of studies when they first enter a teaching college or university. Hence, at the time of the survey, students have already selected study fields in line with their academic interests and occupational preferences. We elicited the current study field as a choice out of a list of fifteen majors. In addition, we asked respondents for their career aspirations. They could choose out of 429 pre-defined occupations or make use of a free text field. All indicated occupations were subsequently classified in terms of the ISCO-08 occupational classification reflecting job tasks as well as skills and occupational hierarchies.²⁹

Labor supply and children. Our data contain several measures of expected labor supply and child-related career breaks. First, expected labor supply is captured by the expected number of weekly working hours. To match the information about expected wages, we asked for the expected number of weekly working hours at the same points in time, i.e., right after graduation ($h_{i,st}^s$), at the age of 40 ($h_{i,40}^s$), and at the age of 55 ($h_{i,55}^s$) for each of the three scenarios $s = f, a, d$.³⁰ Second, we elicited whether the students in our sample already have children and, if not, at what age they expect the birth of their first child. Third, we asked how many children students expect to have in total and how many months they are planning to stay home with each child.

Personality traits, economic preferences, beliefs about ability, and IQ. Research in personality psychology and economics shows that males and females display substantial differences in personality traits, economic and social preferences, and beliefs about one's own ability (Schmitt et al., 2008; Borghans et al., 2009; Bertrand, 2011;

²⁹For evidence on the importance of tasks for the gender wage gap, see Stinebrickner, Stinebrickner, and Sullivan (2020).

³⁰We also elicit the subjective probability of not finding a suitable job. However, similar to what has been found in the literature (e.g., Baker et al., 2018), we the reported expected probability of not finding a suitable job is implausibly large in our sample for both males (25 percent at start and 15 percent at the age of 40) and females (32 percent at start and 19 percent at the age of 40) compared to employment rates of 93% for recent university graduates in Germany (Eurostat, 2018). We, therefore, do not use this variable in main part of the paper, acknowledging that this might lead to conservative estimates of the gender wage gap, as males report a 7 percent lower probability of not finding a suitable job at employment start and a 4 percent lower probability of not finding a suitable job at the age of 40.

Croson and Gneezy, 2009; Bian, Leslie, and Cimpian, 2017). Our data allow us to systematically account for these differences. In order to elicit beliefs about own ability, respondents marked their relative position in the distribution of students regarding their (a) perceived academic ability and (b) perceived work-related ability on a scale from 0 to 100. Four fifth of the sample additionally participated in a survey on personality, economic preferences, and IQ. First, we measured IQ based on ten items from a Raven-type Matrices IQ test (Raven and Court, 1998). Second, a student’s Big Five personality traits (agreeableness, conscientiousness, emotional stability, extraversion and openness) were assessed using the 50 item IPIP test (Goldberg et al., 2006). Finally, to elicit altruism, impatience, positive and negative reciprocity, risk aversion and trust, we employed an experimentally-validated survey module (Falk et al., 2023). In the following, we use the term “Perceived/actual ability & personality” to refer to the set of these measures.

A.2 Expected wage gaps by major category and for selected occupations

The gender gap in wage expectations prevails within majors. To determine the respective gaps, we aggregate all majors into five categories (Medicine and health sciences, STEM, Law, Economics and business studies, humanities and social sciences) and present expected overall wages in Table A1. While there exists substantial heterogeneity in levels across majors female students expect to earn less than their male counterparts within each of the respective study fields. This holds both for starting wages and over the life cycle. However, the gender gap is slightly lower in fields that are traditionally chosen by females than in male-dominated subjects. Thus females on average expect to earn only 84% of the average male starting wage in legal studies, as compared to 93% in humanities. At the age of 55, the respective shares decrease to 72–80%.

Additionally, Table A2 presents the gender gap in wage expectations for different occupations. Goldin (2014) suggests that occupations for which earnings are a nonlinear/convex in working hours have larger gender gaps than those with fairly flat/linear relationships. Indeed, we observe the gender gap in wage expectations for occupations with nonlinear hours-earnings profiles (e.g. lawyers) to be larger than for, e.g., teachers, who tend to have very flat hours-earnings profiles.³¹ Along these same lines the gap tends to be smallest for authors and journalists, who might even have de-

³¹The table does not include results for pharmacists, as we cannot distinguish individuals planning to work in pharmacies from those planning to work in the pharmaceutical industry.

Table A1: Descriptive statistics of gross annual expected wages by major

	Med./Health Sci.				STEM			
	Males	Females	Ratio	N	Males	Females	Ratio	N
Starting	38860	34282	0.88	1313	40620	35472	0.87	5234
Age 40	59589	49800	0.84	1313	58214	47314	0.81	5234
Age 55	70977	56474	0.80	1313	69692	52657	0.76	5234
	Law				Econ./Business			
	Males	Females	Ratio	N	Males	Females	Ratio	N
Starting	48511	40670	0.84	676	40352	36345	0.90	3427
Age 40	76524	60519	0.79	676	66612	52688	0.79	3427
Age 55	96180	69487	0.72	676	82717	60698	0.73	3427
	Human./Soc. Sci.				All subjects			
	Males	Females	Ratio	N	Males	Females	Ratio	N
Starting	31808	29480	0.93	4698	39076	33434	0.86	15348
Age 40	44822	38009	0.85	4698	58301	45765	0.78	15348
Age 55	53151	41489	0.78	4698	70518	51291	0.73	15348

Notes: This table shows average expected starting wages as well as expected wages at the age of 40 and 55 for males and females for majors aggregated into five categories. All wages are winsorized at the 1% and 99% level.

creasing hours/earnings profiles due to decreasing marginal productivity. Students thus correctly anticipate that flatter hours-earnings profiles are associated with lower earning gaps.

Table A2: Gender gap in wage expectations by occupations

	Gender gap by occupation				
	Journalists & authors	Teachers	Engineering professionals	Medical doctors	Lawyers
Gap in EUR	-1423	-1792	-3578	-6630	-9824
Gap in log-points	-0.071	-0.130	-0.123	-0.122	-0.225
Gap in ranks	-5.6	-9.7	-12.6	-13.0	-14.1
Observations	729	1141	1470	464	433

Notes: This table presents the gender gap in wage expectations measured in Euro, log-points and ranks for different occupations. Each coefficient corresponds stems from a regression of expected wages, log expected wages or ranks in the male expected wage distribution on an indicator for females. All wages are winsorized at the 1% and 99% level.

In Table A3, we calculate gender gaps across the distribution in terms of levels and ranks. We find that at all quantiles and across all majors, male wage expectations are higher than those of their female counterparts. In absolute terms (i.e., when

looking at gaps in levels), these differences are particularly pronounced for students studying STEM or law (Panel A), whereas pronounced relative differences (i.e., rank differences) also arise for the upper part of students studying medicine and other health sciences (see Panel B).

Table A3: Level and rank gaps by major

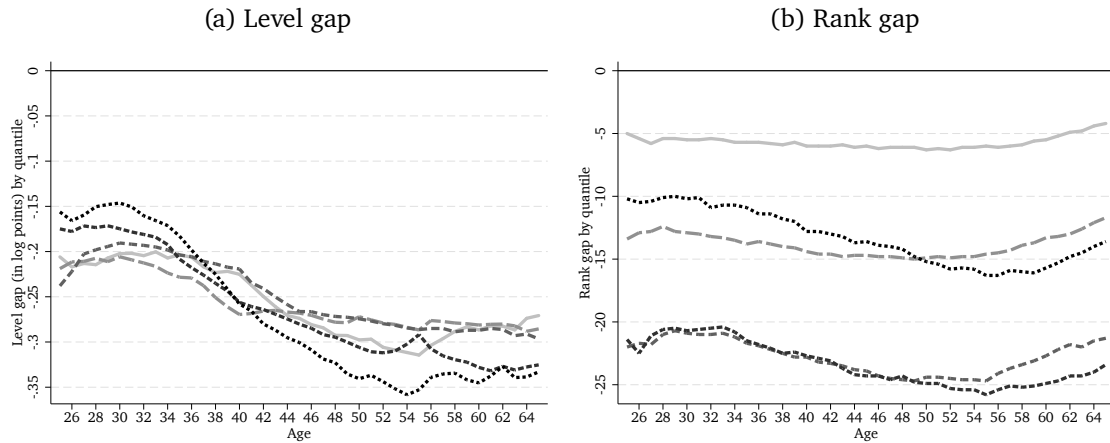
	Quantiles				
	10th	25th	50th	75th	90th
A. Level gap					
Baseline	-0.236 (0.012)	-0.221 (0.003)	-0.238 (0.009)	-0.138 (0.005)	-0.108 (0.011)
Control for majors	-0.178 (0.012)	-0.148 (0.010)	-0.129 (0.006)	-0.137 (0.009)	-0.121 (0.012)
<i>Separately by major</i>					
Med./Health Sciences	-0.135 (0.058)	-0.149 (0.036)	-0.071 (0.031)	-0.183 (0.025)	-0.179 (0.028)
STEM	-0.219 (0.019)	-0.232 (0.022)	-0.134 (0.008)	-0.145 (0.013)	-0.114 (0.015)
Law	-0.116 (0.085)	-0.131 (0.049)	-0.187 (0.036)	-0.220 (0.057)	-0.140 (0.081)
Econ./Business	-0.128 (0.028)	-0.115 (0.017)	-0.109 (0.007)	-0.108 (0.012)	-0.092 (0.020)
Hum./Soc. Sciences	-0.165 (0.032)	-0.124 (0.019)	-0.131 (0.017)	-0.078 (0.020)	-0.106 (0.036)
B. Rank gap					
Baseline	-5.2 (0.3)	-12.6 (0.5)	-20.6 (0.7)	-19.1 (0.8)	-8.5 (0.8)
Control for majors	-4.0 (0.4)	-8.1 (0.6)	-12.4 (0.7)	-13.7 (0.9)	-7.0 (1.0)
<i>Separately by major</i>					
Med./Health Sciences	-3.0 (1.2)	-5.9 (1.8)	-9.5 (3.1)	-20.2 (3.3)	-10.1 (2.5)
STEM	-7.9 (1.0)	-15.2 (1.2)	-17.7 (1.3)	-14.3 (1.2)	-6.3 (1.0)
Law	-2.7 (2.4)	-12.4 (3.9)	-21.0 (4.8)	-14.0 (3.6)	-1.7 (1.1)
Econ./Business	-7.3 (1.1)	-10.7 (1.2)	-12.7 (1.2)	-11.7 (1.4)	-7.5 (1.3)
Hum./Soc. Sciences	-1.3 (0.3)	-2.6 (0.5)	-7.1 (1.0)	-11.0 (1.9)	-10.6 (3.7)

Notes: Each cell of this table reports the female coefficient, which characterizes the gender differences for different quantiles and sample specification. Panel A uses log expected wages as an outcome and thus reports level gaps, while panel B uses percentile ranks of expected wages measured in the expected wage distribution of males and therefore reports rank gaps as outlined in section 2.4. All wages are winsorized at the 1% and 99% level. Robust standard errors in parentheses.

A.3 Evolution of gender gaps over the life-cycle

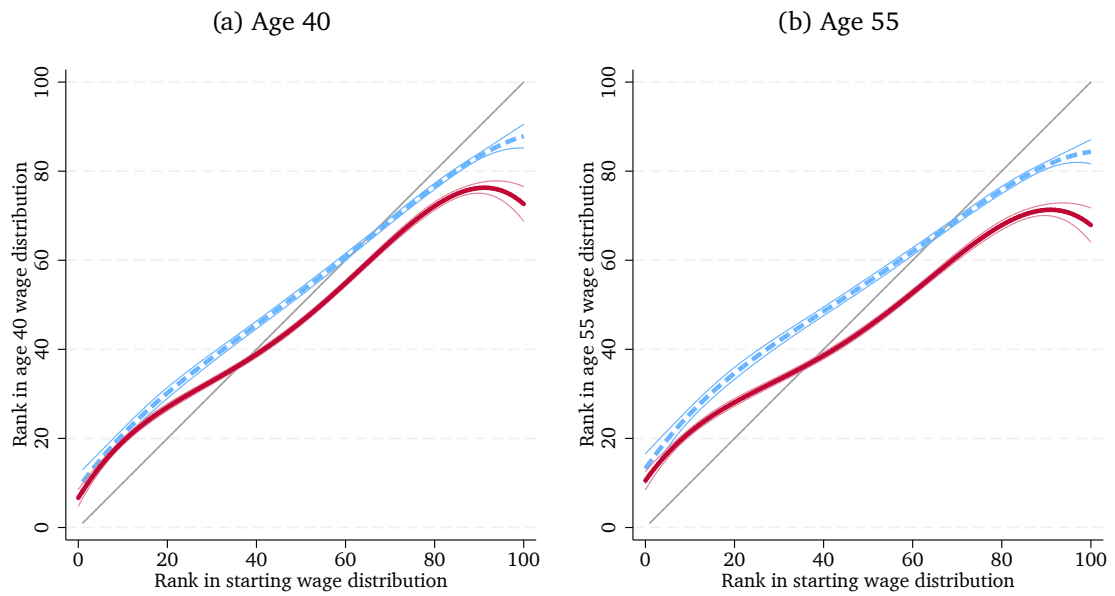
Figure A1 shows that the expected wage gap between male and females widens across the life-cycle (Figure A1a), but that females' ranks are lower, but fairly stable over time (Figure A1b). Figure A2 presents the latter result in a different manner. Using plots of the rank-rank correlation, as often used in studies on the intergenerational mobility, we find that ranks are highly persistent over time, i.e., high correlations between ranks in the distribution of starting wages and ranks later in life.

Figure A1: Rank and level gaps over the life-cycle for different initial quantiles



Notes: This figure presents the evolution of the wage gap measured in levels ranks for females starting at the 10th (very light, solid), 25th (light, long-dashed), 50th (medium, dashed), 75th (dark, short-dashed), and 90th (very dark, dotted) percentile of their wage distribution over the life cycle. Gaps are estimated using quantile regressions at each age, similar to Table 3.

Figure A2: Marginal effects of increases in ranks of starting wages on later earnings



Notes: This figure presents the associations between the an individual's rank in the starting wage distribution (R_{st}) and the rank in the distribution of ranks later in life (R_a , $a = 40, 55$) including 95% confidence intervals. Marginal effects are from regressions of the type $R_{a,i} = \beta_0 + \beta_1 R_{st,i} + \beta_2 R_{st,i}^2 + \beta_3 R_{st,i}^3 + \beta_4 R_{st,i}^4 + \epsilon_i$ ($a = 40, 55$) estimated separately for female (red, solid) and male (blue, dashed) students.

A.4 Comparing expected and actual wages

In this appendix, we present two additional analyses. First, we formally compare expected and actual wages of recent graduates by pooling them in a single regression on an indicator for being an actual graduate. Table A4 reveals that in terms of raw wages, graduates earn 11.2 percentage points lower wages when compared to the expected wages of students.³² Nonetheless, once we control for gender, sorting patterns and hours worked the difference vanishes. In fact, this difference is entirely driven by differences in hours worked as some graduates start working part-time after finishing their studies and thus earn lower wages than graduates in full-time jobs. Similar to what has been found in the literature (e.g., Webbink and Hartog, 2004; Wiswall and Zafar, 2021), the wage expectations of students elicited in our survey thus tracks the distribution of realized earnings very well once we account for hours worked. This suggests that the gender gap in expected wages likely translates into differences in realized wages.

Table A4: Comparison of expected and actual log wages of recent graduates

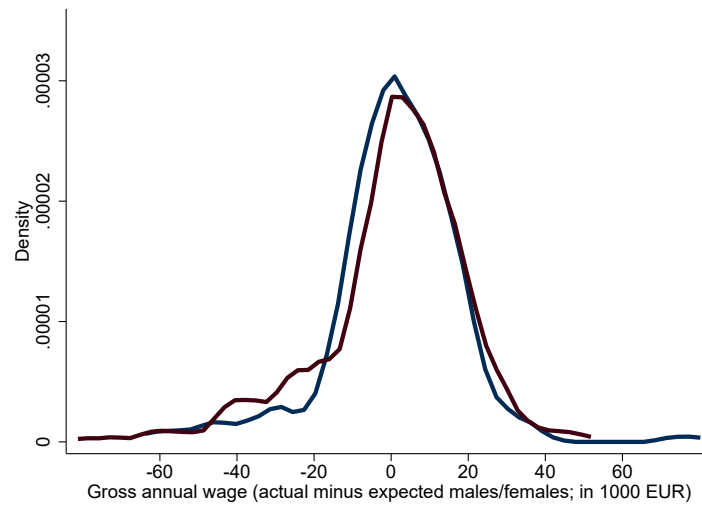
	log wages (pooled)	
	(1)	(2)
Actual graduate	-0.112*** (0.022)	0.016 (0.025)
Gender, major, occupation, industry, labor supply	No	Yes
R^2 (adj.)	.0022	.13
Observations	16501	16400

Notes: Robust standard errors in parentheses. Sample pools over log gross annual wages of both current students using expected wages and actual graduates with realized wages. All wages are winsorized at the 1% and 99% level. Robust standard errors in parentheses. *, **, and *** denote significance at the 10%, 5%, and 1% level.

Second, Figure displays within-individual differences between actual and expected wages. The mean difference in annual starting wages is 3660 EUR for males and 2967 for females (all converted to 2014 EUR). Hence, both males and females are slightly underoptimistic in their expectations compared to the realized wages several years later.

³²Note that we do not observe a difference in mean actual and expected wages but in log wages, given that taking the logarithm gives more weight on the lower end of the wage distribution. As can be seen from Figure 4, this is where the differences between actual and expected wages are more pronounced.

Figure A3: Distribution of the within-individual difference between actual starting wages and expected wages in the follow-up sample



Notes: This figure presents a kernel density graph of the difference between actual and expected wages among individuals who responded to the follow-up interview in 2023. Female individuals are represented by the red line and male respondents by the blue line.

A.5 Initial wage claims, reservation, and expected wages

In Table A5, we investigate the relationship of students' initial wage claims as well as reservation wages with their expected wages. We find that both are strongly correlated, both unconditional and conditional on a rich set of covariates. The relationships hold both pooled across genders, as well as separately by gender.

A.6 Child rearing responsibilities and preferences for early parenthood

Biological and social differences in child bearing and rearing responsibilities are an important factor in explaining male-female differences in actual labor market outcomes (Bertrand, Goldin, and Katz, 2010; Daniel, Lacuesta, and Rodríguez-Planas, 2013; Goldin and Katz, 2016; Kleven, Landais, and Søgaaard, 2019). First, women who intend to have children may select into occupations with flatter earnings profiles or linear pay structures, i.e., in anticipation of child-related wage penalties (Blau and Ferber, 1991; Goldin and Katz, 2016). Moreover, different fertility preferences may affect a woman's household bargaining position regarding her child-rearing responsibilities and prospective labor market attachment. Second, career breaks in the form of parental leave may lead to a reduction in human capital, work-related networks, and experience, inducing females with children to earn lower relative (expected) wages

Table A5: Comparison of initial wage claims, reservation and expected wages

	<u>log(Initial claim)</u>		<u>log(Reserv. wages)</u>	
	(1)	(2)	(3)	(4)
A. Complete sample				
Log average expected wage (starting)	0.954*** (0.016)	0.903*** (0.018)	1.061*** (0.021)	1.012*** (0.023)
Gender, major, occupation, industry, labor supply	No	Yes	No	Yes
R^2 (adj.)	.44	.44	.41	.42
Observations	15346	15346	15346	15346
p-value: Coefficient=1	0.00	0.00	0.00	0.60
	<u>log(Initial claim)</u>		<u>log(Reserv. wages)</u>	
	(1) Females	(2) Males	(3) Females	(4) Males
B. Subsamples by gender				
Log average expected wage (starting)	0.884*** (0.025)	0.931*** (0.023)	1.006*** (0.032)	1.014*** (0.032)
Gender, major, occupation, industry, labor supply	Yes	Yes	Yes	Yes
R^2 (adj.)	.4	.49	.39	.45
Observations	8720	6626	8720	6626
p-value: Coefficient=1	0.00	0.00	0.85	0.65

Notes: This table presents the relation of expected starting wages to initial wage claims and reservation wages. In panel (a), we present results for the whole sample, while we replicate columns (2) and (4) of panel (a) for each gender separately. All wages are winsorized at the 1% and 99% level. Robust standard errors in parentheses. *, **, and *** denote significance at the 10%, 5%, and 1% level.

afterwards (Albrecht et al., 1999). Third, reduced working hours among women with children may exert an additional penalty in (expected) female wages, especially if long hours relate to promotions or increasing marginal returns (Angelov, Johansson, and Lindahl, 2016; Goldin, 2014). Fourth, as regards negotiation strategies women with a strong preference for children might negotiate less aggressively, because they anticipate early career breaks and increased household specialization.

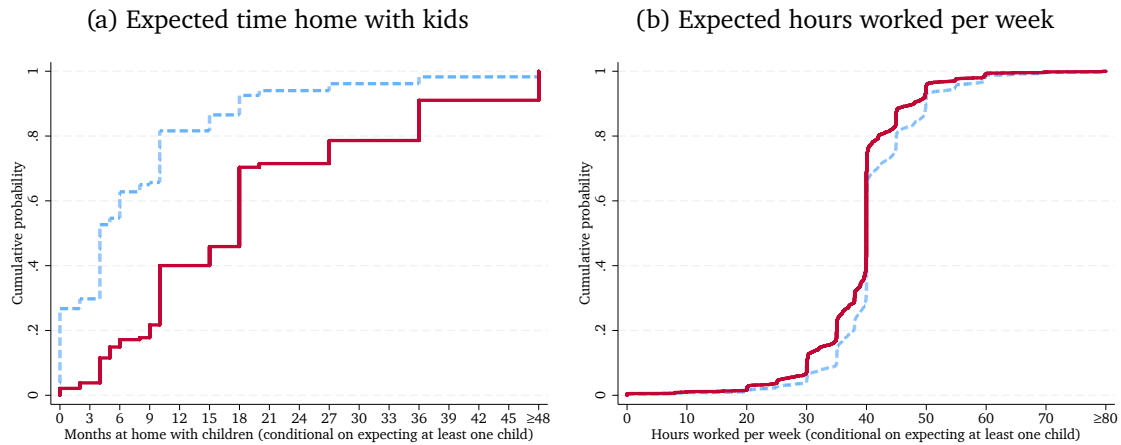
Table A6: Summary statistics on family planning

	Males	Females	Diff.	N
A. All respondents				
Wants to have children	0.88	0.87	0.02	15,348
Already has at least one child	0.03	0.02	0.01	15,256
Exp. working hours per week (age 40)	41.04	39.20	1.85	15,348
B. Conditional on wanting at least one child				
Age at birth of first child	30.59	29.38	1.21	13,370
Early parent (before age 30)	0.54	0.71	-0.16	13,427
Exp. number of children	2.27	2.20	0.07	13,427
Expected months at home per child	4.87	9.65	-4.78	11,666
Exp. working hours per week (age 40)	41.04	39.01	2.03	13,427

Notes: Panel A presents information on family planning and labor supply for all students in the sample, while panel B conditions on those respondents who want to have at least one child.

Table A6 summarizes male-female differences in fertility preferences, expected child-related career breaks, and expected weekly working hours. Regarding fertility preferences, the differences across genders are minor. 87% of females and 88% of males want to have children and conditional on parenthood, both genders prefer to have on average around 2.2 children. However, women expect to have children about one year earlier than men and a much larger fraction (71% versus 54%) would like to have children before turning 30 years old. This age difference matches reality to the extent that males tend to be at least one year older in three quarters of all couples (German microcensus, 2010). Larger differences emerge when it comes to child-related career breaks. Males expect to stay home for around 5 months per child as opposed to females, who estimate that they will stay home for around 10 months with each child (see also Figure A4b). Expected differences in working hours at the age of 40 are again minor. The average expected number of working hours at the age of 40 among all individuals (panel A of Table A6) is almost identical to that for individuals who expect to have children (panel B of Table A6 and Figure A4b) and there is no significant difference if we restrict the sample to individuals with and without (expectant) children. Arguably, the age of 40 might be too late to capture a reduction in working times among individuals who expect to have children in their late-twenties. However,

Figure A4: CDFs of expected time at home with kids and working hours

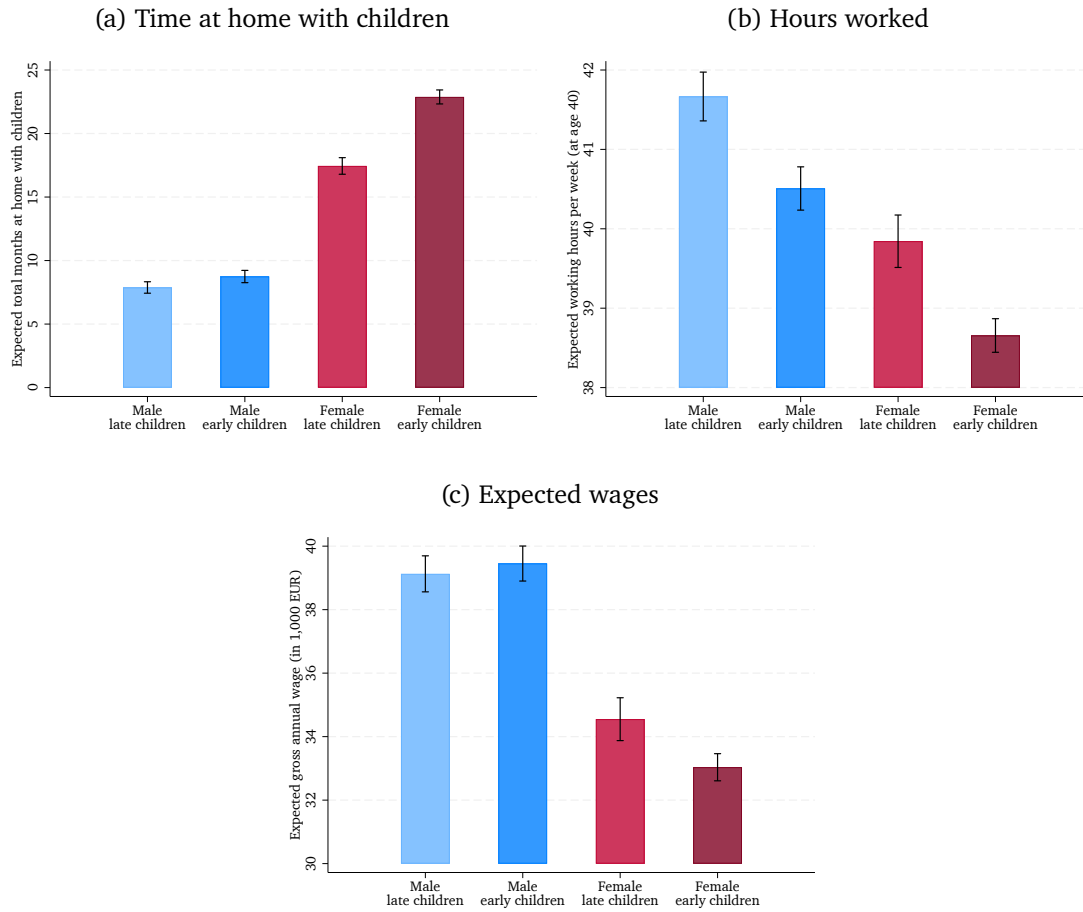


Notes: This figure presents cumulative distribution functions of (a) time spent at home with children (career break) and (b) hours worked per week at the age of 40 conditional on expecting at least one child for both female (red, solid) and male (blue, dashed) students in our sample.

even among individuals who plan to have children in their late-thirties we do not find significant differences.

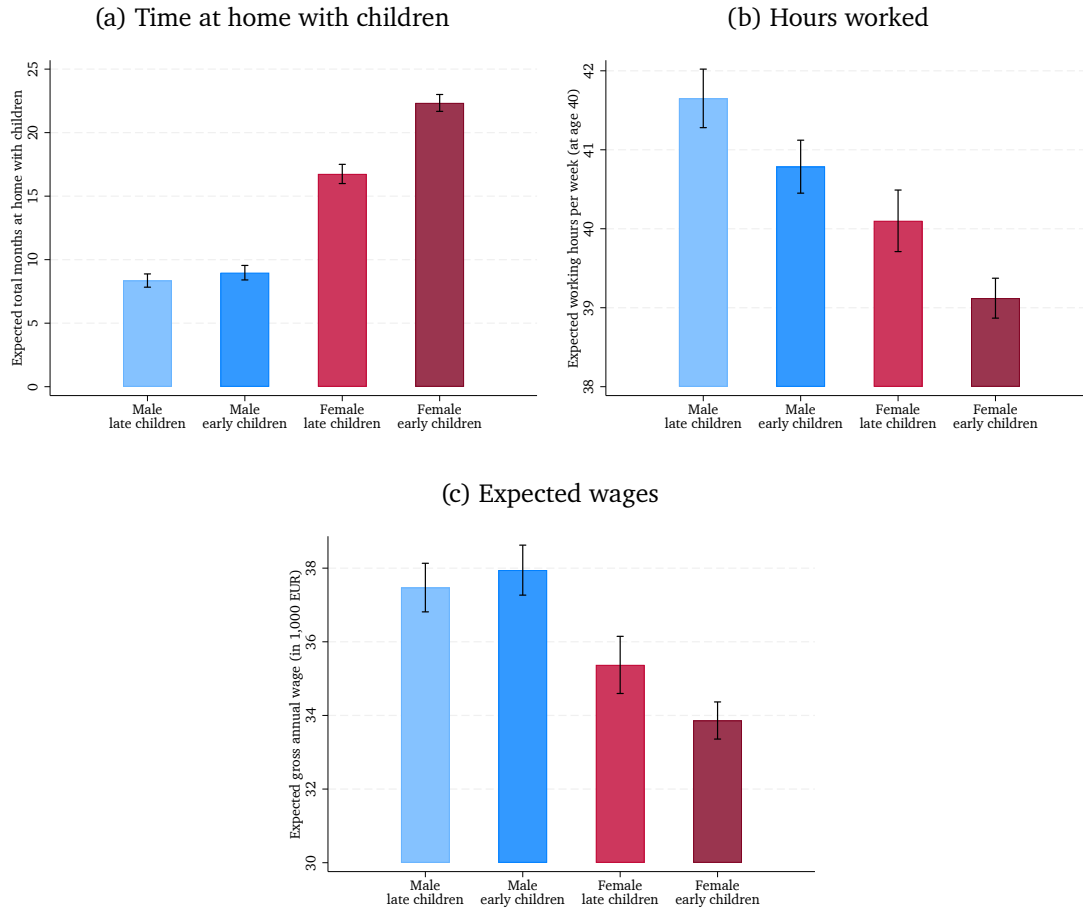
The desired timing of first birth might reflect important differences in how much individuals desire to have children (soon) and this in turn might matter for gender differences in negotiation patterns and expected wages. Figure A5 reveals that both males and females who expect to have children early expect longer career breaks and are also planning to work fewer hours. Young prospective parents thus seem to (rationally) anticipate less time-consuming careers. Nonetheless, as can be seen in panel (c) of Figure A5, females expect a substantial wage penalty for early parenthood (penalty of 1,514 EUR, p -value < 0.01), while for males there is no difference (premium of 324 EUR, p -value = 0.42). In Figure A6, we additionally condition on a rich set of controls for majors, occupations and industries, IQ, personality measures and economic preferences. The results remain virtually unaffected.

Figure A5: Expected time at home with children, working hours, and wages for younger and older parents



Notes: This figure presents bar graphs of (a) time spent at home with children (career break) and of (b) hours worked per week at the age of 40, and (c) expected wages of younger and older parents conditional on expecting at least one child for both female (red) and male (blue, dark lines) students in our sample including 95% confidence intervals. Lighter colors indicate that females or males expect their first child after the age of 30, darker colors before the age of 30.

Figure A6: Expected time at home with children, working hours, and wages for younger and older parents



Notes: This figure presents bar graphs of (a) time spent at home with children (career break) and of (b) hours worked per week at the age of 40, and (c) expected wages of younger and older parents conditional on expecting at least one child for both female (red) and male (blue, dark lines) students in our sample including 95% confidence intervals. In contrast to Figure A5 the estimates presented here are conditional on controls for majors, industries and occupations, as well as IQ, personality measures and economic preferences. Lighter colors indicate that females or males expect their first child after the age of 30, darker colors before the age of 30.

A.7 Decomposing the gender gap in wage expectations

While the main part of the paper documents the extent to which males and females differ in their prospective child-rearing and negotiation patterns, we now want to quantify how much these factors help to explain the gender gap in wage expectations using Oaxaca-Blinder decompositions. We consider several factors that potentially explain expected wage disparities. For example, sorting into specific academic majors has been shown to hold particular importance for expected and actual wage gaps (Francesconi and Parey, 2018; Zafar, 2013), as is sorting into different occupations and industries (Goldin, 2014; Wiswall and Zafar, 2018). Nonetheless, sorting into occupations and industries might not only reflect preferences, but might also be driven by individual perceptions about discrimination or class ceilings (Blau and Kahn, 2017), ability, perceived relative ability, personality or economic preferences (Cortes and Pan, 2018; Fouarge, Kriechel, and Dohmen, 2014), all of which may also have a direct effect on expected wages. We thus subsume all potential drivers of the gender wage gap by forming three groups: (A) sorting into majors, occupations, industries as well as perceived/actual ability and personality, (B) labor supply and family planning, and (C) negotiation strategies.

To obtain relative shares of these factors, we compute the share of the gap that is attributable to sorting (comprised of sorting into majors, occupations, and industries as well as perceived relative ability, personality and economic preferences), family planning, and negotiation strategies based on a twofold Oaxaca-Blinder decomposition using regression coefficients from a pooled regression model.³³ The results of this model suggest that each of the above factors matter for expected wages and that the estimated relationship mimics results of models with actual wages as dependent variable (see Tables A7 and A8). Thus, for example, majors in medical sciences, law, economics/business, and STEM each yield a large and significant premium over a major in humanities. Similarly, conscientiousness and extraversion yield a wage premium, while agreeableness is associated with lower wages (for a comparison using actual wages, see Heineck and Anger, 2010). Finally, working hours are positively associated with expected wages as is boldness in wage negotiations.

Table A9 and Figure A7a present the results from an Oaxaca-Blinder decomposition of the gender gap in wage expectations for both starting wages as well as expected wages earned over the life cycle (see Figure A7b). Consistent with previous research

³³We use pooled coefficients to obtain an estimate about the importance of differences in characteristics rather than their (perceived) prices. Differences in coefficients enter the unexplained difference. Note that this yields a lower bound of the estimated effect of wage negotiations, given our estimates displayed. There are no differences in the pricing of child-related labor force interruptions.

Table A7: Determinants of the gender gap in starting wage expectations

	log(expected starting wage)				
	(1) Pooled	(2) Pooled	(3) Females	(4) Males	(5) p-value
Female	-0.184*** (0.009)	-0.052*** (0.012)			
A. Sorting					
Medical/health sciences		0.107*** (0.033)	0.080* (0.041)	0.167*** (0.048)	0.162 (1.000)
STEM		0.114*** (0.020)	0.066** (0.027)	0.186*** (0.030)	0.002 (0.033)
Law		0.079 (0.050)	0.145*** (0.044)	-0.024 (0.107)	0.137 (1.000)
Economics/business		0.133*** (0.018)	0.112*** (0.023)	0.179*** (0.030)	0.073 (1.000)
Civil servant		-0.020 (0.014)	-0.020 (0.021)	-0.019 (0.019)	0.970 (1.000)
Agreeableness		-0.006 (0.006)	-0.004 (0.009)	-0.006 (0.008)	0.899 (1.000)
Conscientiousness		0.019*** (0.007)	0.016* (0.009)	0.018** (0.009)	0.858 (1.000)
Emotional Stability		-0.003 (0.006)	-0.008 (0.009)	0.001 (0.009)	0.476 (1.000)
Extraversion		0.020*** (0.006)	0.018** (0.008)	0.022*** (0.008)	0.694 (1.000)
Openness		-0.005 (0.005)	-0.006 (0.007)	-0.005 (0.008)	0.952 (1.000)
B. Labor supply/family planning					
Exp. working hours per week		0.015*** (0.002)	0.016*** (0.002)	0.013*** (0.002)	0.407 (1.000)
Exp. number of children		0.011* (0.007)	-0.001 (0.010)	0.023*** (0.009)	0.062 (0.927)
Exp. months at home		-0.000 (0.000)	0.000 (0.000)	-0.001 (0.001)	0.428 (1.000)
Exp. children before age 30		-0.008 (0.010)	-0.016 (0.016)	0.012 (0.013)	0.175 (1.000)
C. Negotiation Strategy					
Boldness		0.007*** (0.000)	0.011*** (0.001)	0.003*** (0.001)	0.000 (0.000)
Occupation and industry	No	Yes	Yes	Yes	No
Subjective ability/perc. discrimination	No	Yes	Yes	Yes	No
IQ and economic preferences	No	Yes	Yes	Yes	No
R ² (adj.)	.025	.18	.16	.18	
Observations	15346	10788	6240	4548	

Notes: This table presents regressions of log expected starting wages on varying sets of controls: variables that relate to (A) sorting based on majors (with humanities as the omitted baseline major category), occupations, industries and standardized measures of personality, (B) labor supply and family planning, and (C) negotiation strategies. Column (5) corresponds to the specification underlying the decomposition in Table A9. Column (5) presents p-values of a test of equality of coefficients in columns (3) and (4). Parantheses present robust standard errors in columns (1)–(4) or Bonferroni-adjusted p-values in column (5). All wages are winsorized at the 1% and 99% level. *, **, and *** denote significance at the 10%, 5%, and 1% level.

Table A8: Determinants of the gender gap in lifetime wage expectations

	log(expected lifetime wage)				
	(1) Pooled	(2) Pooled	(3) Females	(4) Males	(5) p-value
Female	-0.239*** (0.009)	-0.088*** (0.012)			
A. Sorting					
Medical/health sciences		0.182*** (0.023)	0.180*** (0.026)	0.190*** (0.048)	0.857 (1.000)
STEM		0.127*** (0.017)	0.071*** (0.022)	0.212*** (0.031)	0.000 (0.003)
Law		0.131*** (0.051)	0.172*** (0.055)	0.059 (0.095)	0.292 (1.000)
Economics/business		0.165*** (0.017)	0.132*** (0.021)	0.238*** (0.032)	0.005 (0.069)
Civil servant		-0.066*** (0.014)	-0.032* (0.020)	-0.102*** (0.019)	0.010 (0.151)
Agreeableness		-0.020*** (0.006)	-0.015** (0.007)	-0.025*** (0.009)	0.350 (1.000)
Conscientiousness		0.015*** (0.006)	0.008 (0.007)	0.023*** (0.009)	0.196 (1.000)
Emotional Stability		0.000 (0.005)	-0.003 (0.007)	0.002 (0.008)	0.642 (1.000)
Extraversion		0.029*** (0.005)	0.030*** (0.007)	0.027*** (0.009)	0.724 (1.000)
Openness		0.017*** (0.005)	0.016** (0.007)	0.016* (0.008)	0.967 (1.000)
B. Labor supply/family planning					
Exp. working hours per week (age 40)		0.010*** (0.001)	0.008*** (0.001)	0.012*** (0.002)	0.075 (1.000)
Exp. number of children		0.019*** (0.006)	0.004 (0.008)	0.032*** (0.009)	0.018 (0.273)
Exp. months at home		-0.000 (0.000)	0.000 (0.000)	0.000 (0.001)	0.749 (1.000)
Exp. children before age 30		0.036*** (0.010)	0.026* (0.013)	0.057*** (0.015)	0.108 (1.000)
C. Negotiation Strategy					
Boldness		0.006*** (0.000)	0.009*** (0.001)	0.004*** (0.001)	0.000 (0.000)
Occupation and industry	No	Yes	Yes	Yes	No
Subjective ability/perc. discrimination	No	Yes	Yes	Yes	No
IQ and economic preferences	No	Yes	Yes	Yes	No
R^2 (adj.)	.052	.28	.23	.26	
Observations	12734	9146	5236	3910	

Notes: This table presents regressions of log expected starting wages on varying sets of controls: variables that relate to (A) sorting based on majors (with humanities as the omitted baseline major category), occupations, industries and standardized measures of personality, (B) labor supply and family planning, and (C) negotiation strategies. Column (2) corresponds to the specification underlying the decomposition in Table A9. Column (5) presents p-values of a test of equality of coefficients in columns (3) and (4). Parentheses present robust standard errors in columns (1)–(4) or Bonferroni-adjusted p-values in column (5). All wages are winsorized at the 1% and 99% level. *, **, and *** denote significance at the 10%, 5%, and 1% level.

(Arcidiacono, Hotz, and Kang, 2012; Wiswall and Zafar, 2015; Zafar, 2013), we find that a sizable share of the gender gap in wage expectations relates to differential sorting into majors, occupations, and industries, with occupations as the finest category being most important. By contrast, our vast battery of perceived/actual ability, personality and economic preference measures explains only 3% of the male-female difference in expected starting wages.³⁴ However, this share rises to 10% once we decompose expected lifetime wages. We interpret this as suggestive evidence of anticipated employer learning (see, e.g., Altonji and Pierret, 2001), i.e., the idea that employers are unable to fully price a graduate's non-cognitive characteristics at the beginning of the career, but only with increasing experience. The notion that majors explain a smaller share of the gap in lifetime wages relatively to starting wages is also consistent with this idea.

Compared to sorting, labor supply and family planning together make up for a somewhat smaller share of around 12%, where most of the variance is explained by anticipated working hours rather than child-related career breaks. In fact, we observe hardly any expected child penalty after we control for occupations and industries, indicating that women may opt for somewhat more family-friendly occupations (with flatter wage trajectories as described in section 3.3), but then do not experience a relative decline in expected wages due to family planning and child-related career breaks (see Kuziemko et al., 2020, for related evidence). Finally, negotiation strategies explains 14% of the gender gap and this is true on average even within occupation categories and after controlling for measures of perceived and actual ability. Moreover, the importance of negotiation strategies remains similar at 9% over the life cycle, indicating that negotiation strategies set individuals on different initial wage trajectories with important ramification throughout their entire career.

We conduct several additional analyses and robustness checks. First, we notice that the above Oaxaca-Blinder decomposition explains a substantial portion, but not all of the difference in male-female expected starting (lifetime) wages. Given the breadth of available measures on individual characteristics in our data, unmeasured differences in personal characteristics are unlikely to account for the remaining difference. Instead, we investigate the importance of having experienced different degrees of female wage discrimination in previous student jobs. Here, again we find that the wage earned in previous student jobs does not explain the wage differences as shown in Table A10. Third, we replicate Table A9 for students who do not aim to enter the public sector as for them wage negotiations might be more important than for prospective

³⁴Overconfidence, measured by perceived and actual ability, thus proves much less important in our data than suggested by some of the previous evidence on elite students (see, e.g., Reuben, Wiswall, and Zafar, 2017).

Table A9: Oaxaca-Blinder decomposition of the gender gap in wage expectations

	log(Expected starting wage)				log(Expected lifetime wage)			
	(1)		(2)		(3)		(4)	
	with occ. sorting		without occ. sorting		with occ. sorting		without occ. sorting	
Unadjusted difference	0.181 (0.010)	100.000	0.181 (0.010)	100.000	0.230 (0.011)	100.000	0.230 (0.011)	100.000
Explained difference	0.129 (0.009)	71.104	0.101 (0.008)	55.752	0.142 (0.009)	61.812	0.119 (0.008)	51.740
Composition effects attributable to								
A. Sorting								
Major	0.024 (0.005)	13.143	0.044 (0.004)	24.535	0.024 (0.004)	10.504	0.046 (0.004)	19.944
Occupation	0.029 (0.006)	16.165			0.041 (0.006)	17.653		
Industry	0.023 (0.004)	12.708			0.017 (0.004)	7.195		
Perc./actual ability & personality	0.004 (0.005)	2.432	0.005 (0.005)	2.899	0.024 (0.005)	10.443	0.027 (0.005)	11.786
B. Labor supply/family planning								
Hours worked	0.018 (0.003)	9.783	0.018 (0.003)	9.714	0.017 (0.002)	7.299	0.019 (0.003)	8.234
Children	0.005 (0.005)	2.969	0.007 (0.005)	4.065	-0.002 (0.004)	-0.723	0.003 (0.004)	1.388
C. Negotiation strategy								
Boldness	0.025 (0.002)	13.904	0.026 (0.002)	14.539	0.022 (0.002)	9.440	0.024 (0.002)	10.388
Observations	10788		10788		9146		9146	

Notes: This table decomposes the differences in log expected starting or lifetime wages into components attributable to (A) sorting into majors, occupations, and industries as well as perceived ability, personality and economic preferences (perceived ability on the job and in university, IQ, Big Five personality traits, altruism, impatience, positive and negative reciprocity, risk aversion and trust), (B) labor supply and family planning (expected hours per week, expected number of children, months at home with children, indicator for early parenthood), and (C) negotiation strategies (as defined in section 2.4) using Oaxaca-Blinder decompositions. For each decomposition, we also present the share of the difference that is attributable to the respective component and present results with and without controls for sorting into occupation and industries. Robust standard errors in parentheses. Log gross annual wages are winsorized at the 1% and 99% level.

civil servants. As Table A11 documents, we do not find substantial differences when focusing on this subsample. Finally, in Table A8 and A9, we also present unconditional quantile decompositions corresponding to the decompositions in Table A9 at different points along the distribution. The results of these decompositions are similar to the Oaxaca-Blinder decompositions at the mean, with one exception: the importance of negotiation strategies decreases along the distribution, while personality traits become more important in explaining the gap.

Table A10: Oaxaca-Blinder decomposition of the gender gap in wage expectations including past wages in student jobs

	log(Expected starting wage)				log(Expected lifetime wage)			
	(1) with occ. sorting		(2) without occ. sorting		(3) with occ. sorting		(4) without occ. sorting	
Unadjusted difference	0.181 (0.010)	100.000	0.181 (0.010)	100.000	0.230 (0.011)	100.000	0.230 (0.011)	100.000
Explained difference	0.129 (0.009)	71.295	0.102 (0.008)	56.106	0.142 (0.009)	61.832	0.119 (0.008)	51.784
Composition effects attributable to								
A. Sorting								
Major	0.024 (0.005)	13.507	0.045 (0.004)	24.921	0.024 (0.004)	10.535	0.046 (0.004)	19.989
Occupation	0.029 (0.006)	16.052			0.041 (0.006)	17.646		
Industry	0.023 (0.004)	12.673			0.017 (0.004)	7.192		
Perc./actual ability & personality	0.004 (0.005)	2.227	0.005 (0.005)	2.659	0.024 (0.005)	10.421	0.027 (0.005)	11.751
B. Labor supply/family planning								
Hours worked	0.018 (0.003)	9.764	0.018 (0.003)	9.709	0.017 (0.002)	7.302	0.019 (0.003)	8.239
Children	0.005 (0.005)	2.694	0.007 (0.005)	3.766	-0.002 (0.004)	-0.747	0.003 (0.004)	1.354
C. Negotiation strategy								
Boldness	0.025 (0.002)	13.838	0.026 (0.002)	14.477	0.022 (0.002)	9.433	0.024 (0.002)	10.379
D. Student jobs								
Wage in student jobs	0.001 (0.000)	0.538	0.001 (0.001)	0.574	0.000 (0.000)	0.050	0.000 (0.000)	0.072
Observations	10788		10788		9146		9146	

Notes: This table decomposes the differences in log expected starting or lifetime wages into components attributable to (A) sorting into majors, occupations, and industries as well as perceived ability, personality and economic preferences (perceived ability on the job and in university, IQ, Big Five personality traits, altruism, impatience, positive and negative reciprocity, risk aversion and trust), (B) labor supply and family planning (expected hours per week, expected number of children, months at home with children, indicator for early parenthood), (C) negotiation strategies (as defined in section 2.4), and (D) past wages in student jobs using Oaxaca-Blinder decompositions. For each decomposition, we also present the share of the difference that is attributable to the respective component and present results with and without controls for sorting into occupation and industries. All wages are winsorized at the 1% and 99% level. Robust standard errors in parentheses. *, **, and *** denote significance at the 10%, 5%, and 1% level.

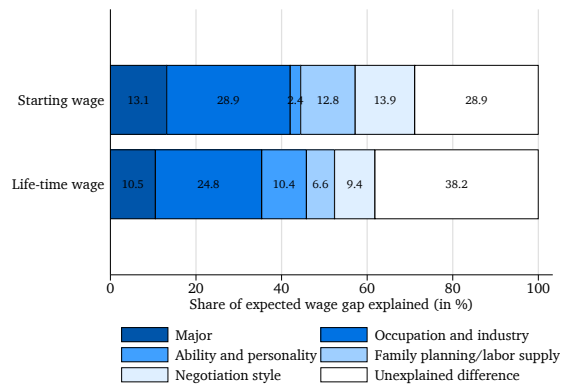
Table A11: Oaxaca-Blinder decomposition of the gender gap in wage expectations for students who want to enter the private sector

	log(Expected starting wage)				log(Expected lifetime wage)			
	(1)		(2)		(3)		(4)	
	with occ. sorting		without occ. sorting		with occ. sorting		without occ. sorting	
Unadjusted difference	0.186 (0.012)	100.000	0.186 (0.012)	100.000	0.252 (0.012)	100.000	0.252 (0.012)	100.000
Explained difference	0.143 (0.011)	77.001	0.114 (0.010)	61.436	0.158 (0.010)	62.583	0.130 (0.010)	51.349
Composition effects attributable to								
A. Sorting								
Major	0.026 (0.006)	14.139	0.051 (0.004)	27.425	0.022 (0.005)	8.816	0.048 (0.004)	19.212
Occupation	0.034 (0.007)	18.483			0.046 (0.007)	18.169		
Industry	0.023 (0.005)	12.096			0.020 (0.005)	7.966		
Perc./actual ability & personality	0.009 (0.006)	5.082	0.011 (0.006)	5.663	0.029 (0.006)	11.639	0.034 (0.006)	13.414
B. Labor supply/family planning								
Hours worked	0.019 (0.004)	10.271	0.019 (0.004)	10.042	0.016 (0.003)	6.508	0.018 (0.003)	7.312
Children	0.008 (0.005)	4.515	0.010 (0.005)	5.206	0.003 (0.004)	1.071	0.005 (0.005)	2.123
C. Negotiation strategy								
Boldness	0.023 (0.002)	12.416	0.024 (0.003)	13.099	0.021 (0.002)	8.414	0.023 (0.003)	9.289
Observations	8340		8340		7079		7079	

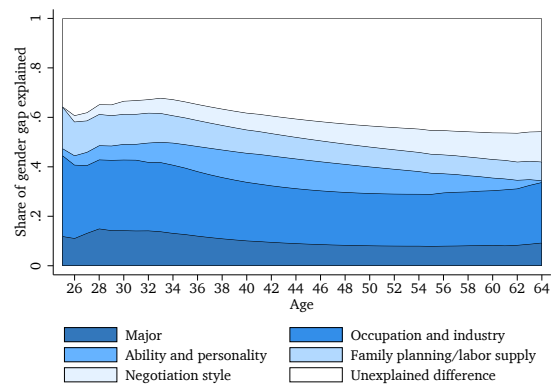
Notes: This table decomposes the differences in log expected starting or lifetime wages into components attributable to (A) sorting into majors, occupations, and industries as well as perceived ability, personality and economic preferences (perceived ability on the job and in university, IQ, Big Five personality traits, altruism, impatience, positive and negative reciprocity, risk aversion and trust), (B) labor supply and family planning (expected hours per week, expected number of children, months at home with children, indicator for early parenthood), and (C) negotiation strategies (as defined in section 2.4) for individuals who want to enter the public sector (i.e., excluding those who aim for the public sector) using Oaxaca-Blinder decompositions. For each decomposition, we also present the share of the difference that is attributable to the respective component and present results with and without controls for sorting into occupation and industries. Robust standard errors in parentheses. Log gross annual wages are winsorized at the 1% and 99% level.

Figure A7: Decomposition of expected wages

(a) Decomposition of starting and lifetime wages



(b) Decomposition over the life-cycle



Notes: Figure A7a illustrates the decomposition of expected starting and lifetime wages presented in Table A9. Figure A7b presents this decomposition for all ages over the life cycle. Categories are aggregated such that labor supply/children corresponds to the sum of hours worked and children, negotiation style/personality corresponds to negotiation strategies, perceived ability/discrimination as well as personality.

Figure A8: Quantile decomposition

	Quantiles							OB	
	10th	25th	50th	75th	90th	Mean			
Unadjusted difference	0.225 (0.016)	100.000 (0.010)	0.208 (0.010)	100.000 (0.008)	0.225 (0.008)	100.000 (0.009)	0.122 (0.009)	100.000 (0.014)	0.181 (0.010)
Difference explained	0.183 (0.013)	81.465 (0.008)	0.124 (0.008)	59.396 (0.007)	0.119 (0.007)	52.743 (0.007)	0.085 (0.007)	67.731 (0.011)	0.129 (0.009)
Composition effects attributable to									
A. Sorting									
Major	0.023 (0.007)	10.302 (0.005)	0.021 (0.005)	10.208 (0.005)	0.026 (0.005)	11.564 (0.005)	0.017 (0.005)	12.933 (0.006)	0.024 (0.005)
Occupation	0.046 (0.008)	20.285 (0.005)	0.028 (0.005)	13.556 (0.005)	0.028 (0.005)	12.279 (0.005)	0.018 (0.005)	19.616 (0.008)	0.029 (0.006)
Industry	0.032 (0.006)	14.308 (0.004)	0.026 (0.004)	12.611 (0.004)	0.024 (0.004)	10.833 (0.004)	0.022 (0.004)	13.607 (0.006)	0.023 (0.004)
Perc./actual ability & personality	0.004 (0.008)	1.951 (0.004)	0.007 (0.004)	3.357 (0.004)	0.013 (0.004)	5.617 (0.004)	0.016 (0.004)	33.793 (0.007)	0.004 (0.005)
B. Labor supply/family planning									
Hours worked	0.014 (0.003)	6.307 (0.002)	0.008 (0.002)	3.824 (0.002)	0.006 (0.001)	2.639 (0.001)	0.005 (0.001)	8.044 (0.002)	0.018 (0.003)
Children	0.009 (0.006)	4.209 (0.004)	-0.001 (0.004)	-0.675 (0.003)	0.002 (0.003)	0.987 (0.003)	0.006 (0.003)	5.563 (0.005)	0.005 (0.005)
C. Negotiation strategy									
Boldness	0.054 (0.004)	24.102 (0.003)	0.034 (0.003)	16.517 (0.003)	0.020 (0.002)	8.824 (0.002)	0.001 (0.001)	-25.825 (0.003)	0.025 (0.002)

Notes: Quantile decomposition (using unconditional quantile regressions based on Firpo, Fortin, and Lemieux, 2009) of the gender gap in expected starting wages using the same variables as in Table A9. The final column presents results from an Oaxaca-Blinder decomposition at the mean for reference. Log gross annual wages are winsorized at the 1% and 99% level. Robust standard errors in parentheses.

Figure A9: Quantile decomposition without sorting

	Quantiles							OB	
	10th	25th	50th	75th	90th	Mean			
Unadjusted difference	0.225 (0.016)	100.000 (0.010)	0.225 (0.008)	100.000 (0.009)	0.086 (0.014)	100.000 (0.010)	0.181 (0.010)	100.000	
Difference explained	0.147 (0.012)	65.167 (0.007)	47.336 (0.006)	40.473 (0.006)	53.260 (0.010)	52.244 (0.010)	0.101 (0.008)	55.752	
Composition effects attributable to									
A. Sorting									
Major	0.060 (0.005)	26.634 (0.003)	0.046 (0.003)	20.542 (0.003)	0.020 (0.004)	23.207 (0.004)	0.044 (0.004)	24.535	
Perc./actual ability & personality	0.005 (0.008)	2.433 (0.005)	4.034 (0.005)	6.259 (0.004)	0.030 (0.007)	34.730 (0.007)	0.005 (0.005)	2.899	
B. Labor supply/family planning									
Hours worked	0.014 (0.003)	6.238 (0.002)	3.817 (0.002)	2.688 (0.001)	0.008 (0.002)	9.024 (0.002)	0.018 (0.003)	9.714	
Children	0.011 (0.006)	5.091 (0.004)	0.006 (0.004)	1.758 (0.003)	0.008 (0.005)	8.969 (0.005)	0.007 (0.005)	4.065	
C. Negotiation strategy									
Boldness	0.056 (0.004)	24.770 (0.003)	0.021 (0.002)	9.226 (0.002)	-0.020 (0.003)	-23.685 (0.003)	0.026 (0.002)	14.539	

Notes: Quantile decomposition (using unconditional quantile regressions based on Firpo, Fortin, and Lemieux, 2009) of the gender gap in expected starting wages using the same variables as in Table A9 without controls for sorting into occupations and industries. The last column presents results from an Oaxaca-Blinder decomposition at the mean for reference. Log gross annual wages are winsorized at the 1% and 99% level. Robust standard errors in parentheses.

A.8 Negotiation Strategies

To assess how boldness relates to negotiation strategies, we have asked individuals in the follow-up survey about the extent to which they agree to the statements “During negotiations, one should be willing to negotiate down”, “If during wage negotiations one’s initial wage claim is too high one risks to be perceived as impudent”, “If during wage negotiations one bargains too high, one risks to be punished and to receive a lower wage in the end”, and “During wage negotiations it is important to state the first number”. Answers were elicited on a 7-point Likert scale. Table A12 displays the results of a regression of each of these statement on planned boldness in wage negotiations as elicited in the initial survey. The results show that boldness is positively associated with being willing to negotiate down. Boldness is negatively associated with statements saying that being too bold will result in worse outcomes in terms of being perceived as rude or even in lower wage outcomes.

Table A12: Negotiation strategy and boldness

	Negotiate down		Risk impudent		Risk lower wage		First number	
	(1)	(2)	(3)	(4)	(5)	(6)	(7)	(8)
Boldness	0.01** (0.01)	0.01* (0.01)	-0.01** (0.01)	-0.01** (0.01)	-0.01* (0.01)	-0.01 (0.01)	0.00 (0.01)	0.00 (0.01)
Major Industry	No	Yes	No	Yes	No	Yes	No	Yes
Time of Exam	No	Yes	No	Yes	No	Yes	No	Yes
R^2	.01	.08	.01	.07	.01	.06	.01	.07
Outcome mean	4.03	4.03	4.05	4.05	2.97	2.97	3.71	3.71
Observations	450	450	434	434	436	436	430	430

Notes: This table presents regressions of statements (on 7-point Likert-scales) related to negotiation strategies on planned boldness in negotiations. (1-2) “During negotiations, one should be willing to negotiate down”, (3-4) “If during wage negotiations one’s initial wage claim is too high one risks to be perceived as impudent” (5-6) “If during wage negotiations one bargains too high, one risks to be punished and to receive a lower wage in the end” (7-8) “During wage negotiations it is important to state the first number”. Robust p-values in parentheses. *, **, and *** denote significance at the 10%, 5%, and 1% level.

Next, we assess whether there exist systematic differences in negotiation strategies between males and females. It might be conceivable for example that females are less bold when it comes to making a high initial wage claim, but bolder when it comes to back-and-forth-negotiations in a sense that they are less willing to be “negotiated down”. Moreover, we might expect that females are strategic in making lower wage claims, e.g., because they expect that otherwise they would be viewed as impudent leading them to potentially even end up with a lower wage offer, if they act boldly in wage negotiations. To this end, we regress each of the above negotiation statements on a female dummy. The results of this exercise are displayed in Table A13. We find that there are no gender differences in willingness to “negotiate down”, suggesting that boldness in initial wage claims captures the relevant margin of boldness in wage negotiations. In line with the literature (Bowles, Babcock, and Lai, 2007; Blau and Kahn, 2017) we do, however, find that females are more inclined to fear being viewed as impudent or even risking a lower wage in the end if they act boldly in wage negotiations.

Table A13: Negotiation strategy and boldness

	Negotiate down		Risk impudent		Risk lower wage		First number	
	(1)	(2)	(3)	(4)	(5)	(6)	(7)	(8)
Female	0.10 (0.16)	0.25 (0.17)	0.37** (0.16)	0.34** (0.17)	0.36** (0.15)	0.42** (0.17)	0.09 (0.17)	0.18 (0.19)
Major	No	Yes	No	Yes	No	Yes	No	Yes
Industry	No	Yes	No	Yes	No	Yes	No	Yes
Time of Exam	No	Yes	No	Yes	No	Yes	No	Yes
R^2	.00097	.075	.012	.068	.012	.071	.0007	.068
Outcome mean	4.03	4.03	4.05	4.05	2.97	2.97	3.71	3.71
Observations	450	450	434	434	436	436	430	430

Notes: This table presents regressions of statements (on 7-point Likert-scales) related to negotiation strategies on a dummy indicating whether a respondent is female. (1-2) “During negotiations, one should be willing to negotiate down”, (3-4) “If during wage negotiations one’s initial wage claim is too high one risks to be perceived as impudent” (5-6) “If during wage negotiations one bargains too high, one risks to be punished and to receive a lower wage in the end” (7-8) “During wage negotiations it is important to state the first number”. Robust p-values in parentheses. *, **, and *** denote significance at the 10%, 5%, and 1% level.

A.9 Questionnaire Items

A.9.1 Wage Expectations & Professional Life

How do you expect your future working life to be after you complete your first choice field of study? Give an estimate of the following variables for each of the different stages of your life.

	Working hrs/week	salary/year (gross in current €)
Career start		
at 40 years		
at 55 years		

How do you expect your future working life to be after you complete your second choice field of study? Give an estimate of the following variables for each of the different stages of your life.

	Working hrs/week	salary/year (gross in current €)
Career start		
at 40 years		
at 55 years		

How do you expect your future working life to be after you leave university and start working without completing a degree? Give an estimate of the following variables for each of the different stages of your life.

	Working hrs/week	salary/year (gross in current €)
Career start		
at 40 years		
at 55 years		

What is your estimated probability that you will switch majors before finishing your studies?

What is your estimated probability that you will leave the university without completing any (further) degree?

Where would you like to work after graduation?

- In Germany
- Abroad

Would you like to become a civil servant?

- Yes
- No

Which occupation would you like to pursue?

If possible, select one of the suggested professions. However, your own entries are also possible. [DROPDOWN MENU WITH OCCUPATIONS] [FREE TEXT]

In which industry would you like to work in?

- Automobile manufacturer
- Automotive supplier
- Banking
- Construction / Civil Engineering
- ...

- Utilities / Energy

A.9.2 Prospective Negotiations

You expect to earn [SALARY] € when you start your career. Imagine your first salary negotiation after graduation. What salary would you ask for at the beginning? And, what is the minimum amount you need to be paid, for you to start the job?

- Salary demand:
- Minimum salary:

A.9.3 Discrimination

If you were [OTHER GENDER] with identical, skills, characteristics and qualifications, would you also expect to earn [SALARY] when you start your job?

- Yes
- No

A.9.4 Perceived Ability

How do you rate your position in the distribution of all university graduates with regard to the following aspects?

Professional skills: [SLIDER 0-100]

Performance in studies: [SLIDER 0-100]

A.9.5 Personal Information

All collected data will be treated strictly confidential and anonymized. They serve the scientific knowledge of this study.

When were you born?

____/____/____ (YYYY/MM/DD)

What is your marital status?

- Married
- Not married, in a relationship
- Not married, without a relationship

Which of your parents has the higher professional degree?

- Mother
- Father
- Identically qualified
- Not known to me

What is the highest professional degree [of your parents]?

- No vocational qualification
- Apprenticeship or skilled worker degree
- Technical school/technician degree
- University degree
- Not known to me

Do you already have children?

- No
- Yes, 1 child

- Yes, 2 children
- Yes, 3 children
- Yes, more than 3 children

How many children would you like to have in the future?

- No
- 1
- 2
- 3
- More than 3

Do you have a German passport?

- Yes
- No, please specify country:

At what age would you like to have the first / next child?

- Younger than 20
- 21-22
- 23-24
- 25-26
- 27-28
- 29-30
- 31-32
- 33-34

- 35-36
- 37-38
- 39-40
- older than 40

On average, how long would you like to stay home / not work per child?

- Not at all
- 1-3 months
- 3-6 months
- 6-12 months
- 12-24 months
- More than 24 months

Do you have a migration background (at least one parent without a German passport)?

- Yes, from the following country/countries:
- No

A.9.6 IQ & Personality

RAVEN IQ-Test (not displayed)

How would you rate your willingness to do the following

1 → Not willing at all; 10 → Very willing

1 2 3 4 5 6 7 8 9 10

Taking risks in general	<input type="radio"/>	<input type="radio"/>	<input type="radio"/>	<input type="radio"/>	<input type="radio"/>	<input type="radio"/>	<input type="radio"/>	<input type="radio"/>	<input type="radio"/>	<input type="radio"/>
Giving up something in order to benefit from it in future when it comes to financial decisions	<input type="radio"/>	<input type="radio"/>	<input type="radio"/>	<input type="radio"/>	<input type="radio"/>	<input type="radio"/>	<input type="radio"/>	<input type="radio"/>	<input type="radio"/>	<input type="radio"/>
To share with others without expecting anything in return when it comes to charitable causes	<input type="radio"/>	<input type="radio"/>	<input type="radio"/>	<input type="radio"/>	<input type="radio"/>	<input type="radio"/>	<input type="radio"/>	<input type="radio"/>	<input type="radio"/>	<input type="radio"/>
Trusting strangers	<input type="radio"/>	<input type="radio"/>	<input type="radio"/>	<input type="radio"/>	<input type="radio"/>	<input type="radio"/>	<input type="radio"/>	<input type="radio"/>	<input type="radio"/>	<input type="radio"/>
To return a favor or help to strangers	<input type="radio"/>	<input type="radio"/>	<input type="radio"/>	<input type="radio"/>	<input type="radio"/>	<input type="radio"/>	<input type="radio"/>	<input type="radio"/>	<input type="radio"/>	<input type="radio"/>
To punish unfair behavior, even if it involves costs associated with it	<input type="radio"/>	<input type="radio"/>	<input type="radio"/>	<input type="radio"/>	<input type="radio"/>	<input type="radio"/>	<input type="radio"/>	<input type="radio"/>	<input type="radio"/>	<input type="radio"/>

How much do the following statements describe you?

1 → That describes me not at all; 10 → That describes me very well

	1	2	3	4	5	6	7	8	9	10
I tend to postpone things until later, even when it would be better to do them immediately	<input type="radio"/>	<input type="radio"/>	<input type="radio"/>	<input type="radio"/>	<input type="radio"/>	<input type="radio"/>	<input type="radio"/>	<input type="radio"/>	<input type="radio"/>	<input type="radio"/>
As long as I am not convinced otherwise, I always assume that other people have only the best in mind	<input type="radio"/>	<input type="radio"/>	<input type="radio"/>	<input type="radio"/>	<input type="radio"/>	<input type="radio"/>	<input type="radio"/>	<input type="radio"/>	<input type="radio"/>	<input type="radio"/>
If someone does me a favor, I am ready to return it	<input type="radio"/>	<input type="radio"/>	<input type="radio"/>	<input type="radio"/>	<input type="radio"/>	<input type="radio"/>	<input type="radio"/>	<input type="radio"/>	<input type="radio"/>	<input type="radio"/>
If someone harms me on purpose, I will try to pay that person back in kind	<input type="radio"/>	<input type="radio"/>	<input type="radio"/>	<input type="radio"/>	<input type="radio"/>	<input type="radio"/>	<input type="radio"/>	<input type="radio"/>	<input type="radio"/>	<input type="radio"/>
I have high self-esteem	<input type="radio"/>	<input type="radio"/>	<input type="radio"/>	<input type="radio"/>	<input type="radio"/>	<input type="radio"/>	<input type="radio"/>	<input type="radio"/>	<input type="radio"/>	<input type="radio"/>
I have high self-esteem	<input type="radio"/>	<input type="radio"/>	<input type="radio"/>	<input type="radio"/>	<input type="radio"/>	<input type="radio"/>	<input type="radio"/>	<input type="radio"/>	<input type="radio"/>	<input type="radio"/>

Imagine that you have won a prize in a competition. You can choose between two payout alternatives. Either you receive a lottery ticket or a secure payout. If you choose the lottery ticket, you will receive 1000 € with 50% probability

and nothing with 50% probability. Please consider: What would be the minimum amount of the safe payout, so that you prefer the safe payout to the lottery ticket?

Imagine the following situation: You have won in a competition 1.000 € won. In your current situation, how much would you donate to a charitable cause?

Please rate the following statements with reference to yourself.

	Does not apply at all	Does not apply	Neutral	Applies	Strongly applies
I bring life to a party	<input type="radio"/>	<input type="radio"/>	<input type="radio"/>	<input type="radio"/>	<input type="radio"/>
I feel comfortable in the company of others	<input type="radio"/>	<input type="radio"/>	<input type="radio"/>	<input type="radio"/>	<input type="radio"/>
I start conversations	<input type="radio"/>	<input type="radio"/>	<input type="radio"/>	<input type="radio"/>	<input type="radio"/>
I talk to many different people at parties	<input type="radio"/>	<input type="radio"/>	<input type="radio"/>	<input type="radio"/>	<input type="radio"/>
I don't mind being the center of attention	<input type="radio"/>	<input type="radio"/>	<input type="radio"/>	<input type="radio"/>	<input type="radio"/>
I do not talk much	<input type="radio"/>	<input type="radio"/>	<input type="radio"/>	<input type="radio"/>	<input type="radio"/>
...	<input type="radio"/>	<input type="radio"/>	<input type="radio"/>	<input type="radio"/>	<input type="radio"/>
I do not have a good imagination	<input type="radio"/>	<input type="radio"/>	<input type="radio"/>	<input type="radio"/>	<input type="radio"/>