

Challet, Damien; Solomon, Sorin; Yaari, Gur

Article

The universal shape of economic recession and recovery after a shock

Economics: The Open-Access, Open-Assessment E-Journal

Provided in Cooperation with:

Kiel Institute for the World Economy – Leibniz Center for Research on Global Economic Challenges

Suggested Citation: Challet, Damien; Solomon, Sorin; Yaari, Gur (2009) : The universal shape of economic recession and recovery after a shock, Economics: The Open-Access, Open-Assessment E-Journal, ISSN 1864-6042, Kiel Institute for the World Economy (IfW), Kiel, Vol. 3, Iss. 2009-36, pp. 1-24,
<https://doi.org/10.5018/economics-ejournal.ja.2009-36>

This Version is available at:

<https://hdl.handle.net/10419/28106>

Standard-Nutzungsbedingungen:

Die Dokumente auf EconStor dürfen zu eigenen wissenschaftlichen Zwecken und zum Privatgebrauch gespeichert und kopiert werden.

Sie dürfen die Dokumente nicht für öffentliche oder kommerzielle Zwecke vervielfältigen, öffentlich ausstellen, öffentlich zugänglich machen, vertreiben oder anderweitig nutzen.

Sofern die Verfasser die Dokumente unter Open-Content-Lizenzen (insbesondere CC-Lizenzen) zur Verfügung gestellt haben sollten, gelten abweichend von diesen Nutzungsbedingungen die in der dort genannten Lizenz gewährten Nutzungsrechte.

Terms of use:

Documents in EconStor may be saved and copied for your personal and scholarly purposes.

You are not to copy documents for public or commercial purposes, to exhibit the documents publicly, to make them publicly available on the internet, or to distribute or otherwise use the documents in public.

If the documents have been made available under an Open Content Licence (especially Creative Commons Licences), you may exercise further usage rights as specified in the indicated licence.



<http://creativecommons.org/licenses/by-nc/2.0/de/deed.en>

The Universal Shape of Economic Recession and Recovery after a Shock

Damien Challet

Université de Fribourg and Institute for Scientific Interchange, Turin

Sorin Solomon

Racah Institute of Physics, Jerusalem, and Institute for Scientific Interchange, Turin

Gur Yaari

Racah Institute of Physics, Jerusalem, and Institute for Scientific Interchange, Turin

Abstract

We show that a simple and intuitive three-parameter equation fits remarkably well the evolution of the gross domestic product (GDP) in current and constant dollars of many countries during times of recession and recovery. We then argue that this equation is the response function of the economy to isolated shocks, hence that it can be used to detect large and small shocks, including those which do not lead to a recession; we also discuss its predictive power. Finally, a two-sector toy model of recession and recovery illustrates how the severity and length of recession depends on the dynamics of transfer rate between the growing and failing parts of the economy.

Special issue [Reconstructing Macroeconomics](#)

JEL: C32, O23, O41

Keywords: Economic growth; GDP; shocks; response function; modelling; prediction; optimal policy

Correspondence

Damien Challet, Multi-Agent Modelling Division, Institute for Scientific Interchange, via S. Severo 65, 10113 Turin, Italy; e-mail: challet@isi.it

The authors thank Vladimir Popov and Paul Ormerod for their public comments, Michel Dacorogna for his hospitality and comments, and David Brée for his critical reading of the first version of this manuscript. This work has been supported in part by the EU projects DAPHNet (ICT grant: 018474-2) and CO3 (NEST grant: 12410).

1 Introduction

Explaining growth and recessions has been central to Economics ever since its beginning (Quesnay, 1888, Smith, 2000, Ricardo, 2004, Keynes, 2007, Solow, 2000, Schumpeter, 1980, Romer, 1990, Robbins, 2000). Since recessions and subsequent recoveries are usually split into distinct episodes in economic analysis, the factors of decline and growth have been investigated separately (e.g. Popov (2006), Kolodko (2000), Cernat (2002)) and little attention has been devoted to the intrinsic relationship between recession and recovery.

Here we argue that

1. Recessions and their subsequent recoveries can be fitted rather well by a single 3-parameter function that contains both the recession and the recovery parts. It assumes that during recession-recovery periods, at any time a fraction of the economy is shrinking exponentially while the rest is growing exponentially. As a consequence the two parts of the GDP curve are intrinsically linked and cannot be considered as separate events. In particular, we show why this yields much better estimates of the decaying and expansion rates.
2. The shape of this function is the *simplest one* that respects the underlying economic process: economic activity grows and shrinks exponentially. A more complex superposition of exponentials or non-constant parameters is of course possible, as discussed below.
3. It is valid as long as no other shock occurs, thus can be used *a contrario* to separate a GDP time series into episodes of economic growth, providing a fascinating new way of reading the fluctuations of GDP time series, even outside times of recessions. This leads to the conclusion that this model is in fact the *response function* of the economy as a whole to rare negative shocks, both exo- and endogeneous.

In Section 2, we consider the yearly evolution of countries having experienced lasting recessions others than those due to wars, which include many of the former communist block economies following their liberalisation. We find that our “universal recession-recovery shape” fits all of them well *between shocks* and that each additional shock brings a new episode fitted by our equation. Its accuracy, and in particular, the smooth shape of GDP evolution between shocks it implies, is confirmed to a high degree by quarterly data for Finland and the United Kingdom. We illustrate how this equation can be used to detect additional shocks automatically.

In Section 3, as a theoretical exercise, we introduce a simple two-sector model of growth with economic transfer. We also discuss why a simple two sector model is able to reproduce faithfully the typical global dynamics of recession-recovery. Then we exploit this understanding in order to find an effective transfer rate that minimises the depth and duration of the recession, and maximises both the GDP value and the final growth rate. We finally propose a means to differentiate static from dynamical effective policies in historical data.

2 Data Analysis

The economic activity of many countries shows dramatic and sudden decreases followed by a slow road to recovery, a pattern commonly known in Economics as L, U or J-shape depending on the state of unfolding of the J shape (Cernat, 2002). Our dataset, taken from <http://data.uno.org>, starts in 1980. We retained the 23 countries having undergone recessions of at least three consecutive years, as we need enough points in the recession part to estimate correctly the rate of decay. Among these countries one finds many of the previously communist Eastern European countries; Finland, because of the strong links between its economy and those of the Eastern Block, suffered from the same crisis; Sweden had a crisis of its own at about the same time, caused by the burst of a real estate and financial bubble. Bolivia, Bahamas and Chile follow the same pattern, at different times, for reasons unknown to us.

2.1 Yearly GDP Data

We focus on gross domestic product (GDP) both in current and constant dollars. The latter is also called real GDP as it discounts inflation and makes it possible to better compare economic activity from year to year and between countries. As we shall see, however, it is more irregular, in part because of the dynamics of currency exchange rates, which in turn reflects partially that of interest rates and differences in budget deficits.

As it turns out, most of these recessions were caused by political and taxation reforms or financial crises; in other words, by events localized in time, that is, sudden shocks. In order to cause long recessions, these shocks must be large and affect much of the economy. One key assumption in the following is that the intrinsic economic parameters (fraction of the economy affected, growth and decay rates) are or appear to be constant ever after a shock. We shall not attempt to model the occurrence and properties of shocks. Figure 1 reports the evolution of the GDP in current dollars of several countries, revealing a common pattern. These recessions can be characterised by their intensity (maximum loss of GDP), the time of the minimum GDP and the time to recover the previous level of economic production. The evolution of the GDP in constant dollars (Figure 2) shows similar patterns.

Remarkably, all previously communist Eastern European and Soviet Union countries have experienced a lasting recession followed by a recovery. Some countries such as Romania, Bulgaria and the Czechia clearly display a double dip (Figures 1 and 2). As it happens, the onsets of the second dips of Romania and Bulgaria is unambiguously related to a change of power, suggesting that wrong economic policies or implementations may be blamed for further degradation of the situation.

The severity and duration of the recession varies widely between the countries: Poland has recovered very quickly (too much so to be shown in Figures 1 and 2), while some countries such as Russia and Latvia have come back to their previous current-dollar GDP in 2006. The Republic of Moldova was still 50% down in 2006. We shall not try to find the causes of such differences, although our fitting equation directly provides information about the fraction of the economy which is decaying,

but shall discuss various ways of optimising a policy with the help of a simple theoretical model in Section 3.

For reasons explained below, we parametrise the GDP shapes as displayed in Figures 1 and 2, in terms of the following formula

$$W(t) = W(t_0)[fe^{\lambda_+(t-t_0)} + (1-f)e^{\lambda_-(t-t_0)}], \quad (1)$$

where

- $W(t_0)$ is the initial GDP at the time t_0 of the reform
- f is the fraction of the economy that grows at rate λ_+ ;
- the rest of the economy $(1-f)$ deflates at rate λ_-

An U,L, or J-shaped W is obtained if $W'(t_0) < 0$, i.e. if $f\lambda_+ + (1-f)\lambda_- < 0$.

The fit of recession and recovery times of 23 countries appears remarkable (the details are reported in appendix A). Since it uses constant parameters, it may a priori suggest a surprising degree of constancy of rates of decline and growth; however, as discussed in Section 4, dynamic effective policies can also be relatively well fitted with the same model: one needs data more detailed than the global GDP time series to detect them.

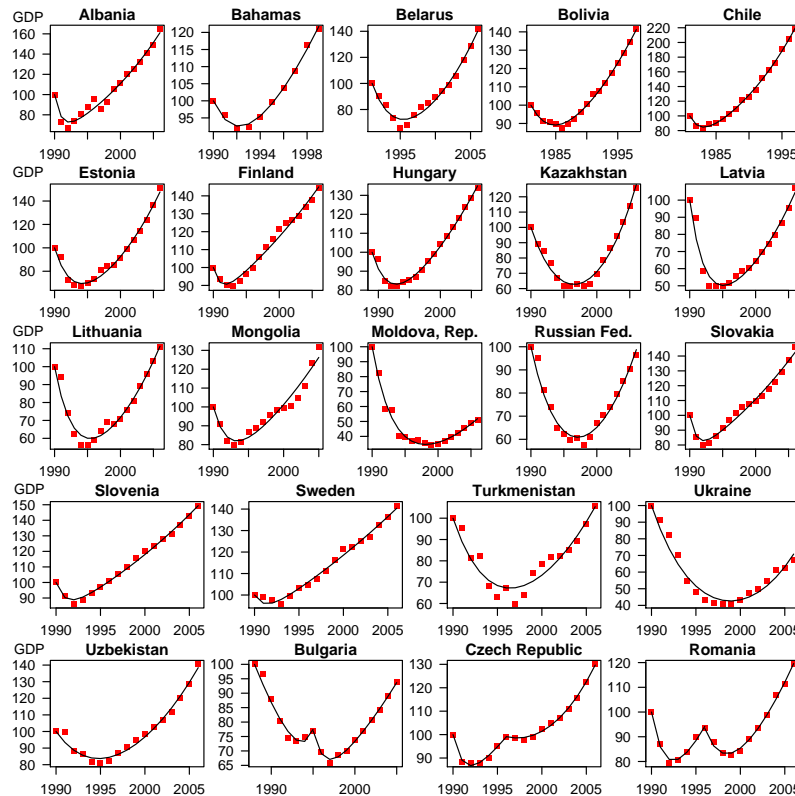


Figure 1: Time Evolution of the GDP in Current Dollars of 23 Countries, and the Fits to Equation (1)

The fitting function of Equation 1 can be considered as the simplest model of recession and recovery that is economically meaningful. Indeed, it only assumes that

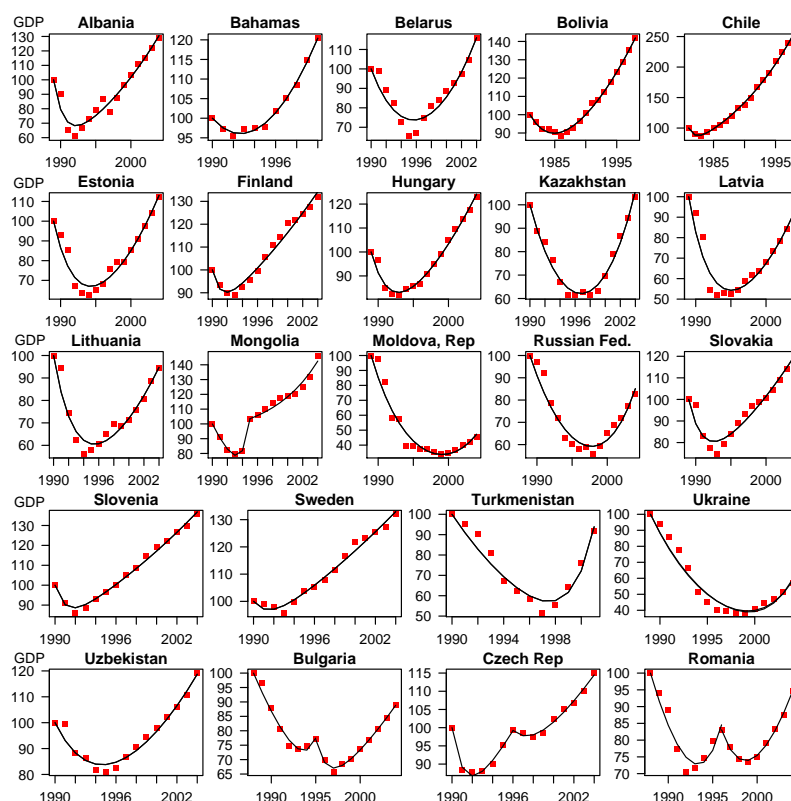


Figure 2: Time Evolution of the GDP in Constant Dollars of 23 Countries and the Fits to Equation (1)

one part of the economy shrinks while the other one grows, both exponentially. It does not include many other *a priori* relevant parameters. It might seem tempting to fit the dips with a parabola, which of course give terrible results as the GDP curves are not symmetric and have an asymptotic constant exponential growth rate. Because of the auto-catalytic nature of economic growth and recessions, only a sum of exponentials makes sense, which also excludes other candidates such as splines (which need many more than 3 parameters).

Given the simplicity of the fitting function and the complexity of the underlying process, it is to be expected that the fits should not be perfect. Beyond gentle noise, one finds two types of deviations. First, during the recession phase, the GDP of some countries (e.g. Albania, Estonia, Hungary, Latvia, Turkmenistan) is concave, especially in the very first part of the recession, which is impossible to achieve with the above equation. This probably comes from the fact that our model implicitly assumes that the economic shock affects all the sectors of the economy at once. A solution would be that the fraction of the deflating part $1 - f(t)$ increases, for instance $1 - f(t) = (1 - f)[1 - e^{-t/\tau}]$ where τ is the typical speed at which the shock propagates throughout the economy.

Another story is told by systematic irregularities in the recovery part: most of them are negative deviations. Many countries experienced a temporary pause in their growth, sometimes a short-lived recession, and a few countries a lasting secondary recession. Because we have only annual data, and since one needs at least three consecutive points for a good fit of the recession part, we chose in some

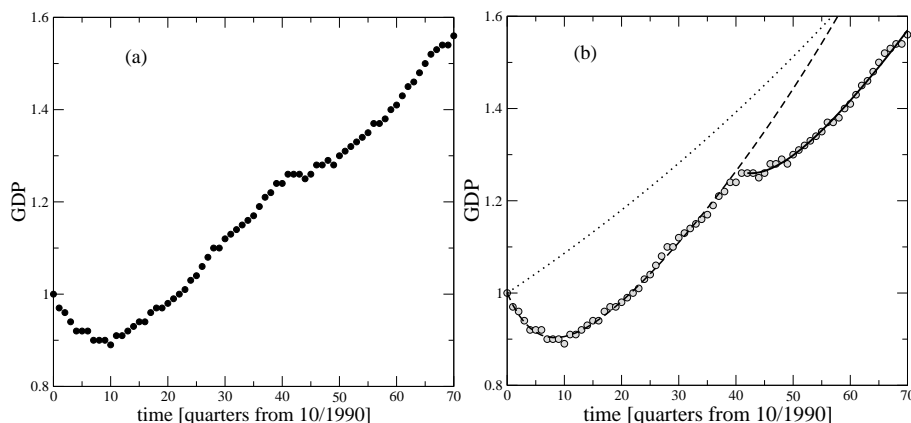


Figure 3: Scaled real quarterly GDP of Finland from 04/1990 without fit (left) and with two fits and the continuation of the pre-1990 growth trend (dotted line).

cases to fit the whole time series instead of fitting these episodes separately. The use of quarterly data solves this problem and, importantly, allows one to uncover additional economic shocks that do not necessarily lead to recessions, as seen in Subsection 2.4. We could trace possible causes of some additional shocks: Albania suffered from a bank crisis in 1996, and Finland from the burst of the 2000 internet bubble (see also Subsection 2.4). The worst secondary shocks were born by Romania and Bulgaria (1996 elections), and Czechia (2000 bank crisis) which resulted into a second dip. This raises the question on whether the second reforms were successful or on the contrary detrimental: comparing the values of λ_+ , λ_- and f before and after the secondary shock, one concludes that, according to our model, the crisis in Czechia had long-term positive effects, both the rates of expansion and decline having much improved, at the cost of the initial fraction of the expanding sector. The case of Romania is best described as *bis repetita (non placuerunt)*: the second crisis leading to almost the same fitting parameters as the first one. Finally, Bulgaria has spurious results regarding the first shock (GDP in constant dollars), which is due to the fact that GDP was mostly decreasing, hence the fit could not assess correctly the growing part of the economy, finding it very small (from 0.2% to 2%), but doing very well. This result is clearly wrong but easily reproduceable with other countries if one restricts the data so as to only include a very small part of the recovery. The figures obtained for the second shock are in line with all the other shocks experienced by the other 22 countries.

2.2 Quarterly Data

Quarterly data is available for the recent history of industrialised countries. Let us first focus on Finland whose 1990 recession was analyzed in the previous Subsection. Figure 3a plots the real GDP of Finland without any fit. While the recession and subsequent recovery are easy to spot with naked eyes, it is much harder to make sense of the fluctuations in the recovery part. As claimed above, the fitting equation that we propose provides a new way to interpret such plots. Figure 3b adds the fit of the 1990 recession, which is even more impressive than for yearly data (note that

Table 1: Result of the Fits of Equation (1) to the Real GDP of Finland.

Finland	f	λ_+	λ_-
-1990	NA	0.0082 ± 0.0001	NA
1990–2001 (0–42)	0.768 ± 0.006	0.0121 ± 0.0002	-0.176 ± 0.010
2001–2008 (42–71)	0.925 ± 0.016	0.0106 ± 0.0006	-0.143 ± 0.040

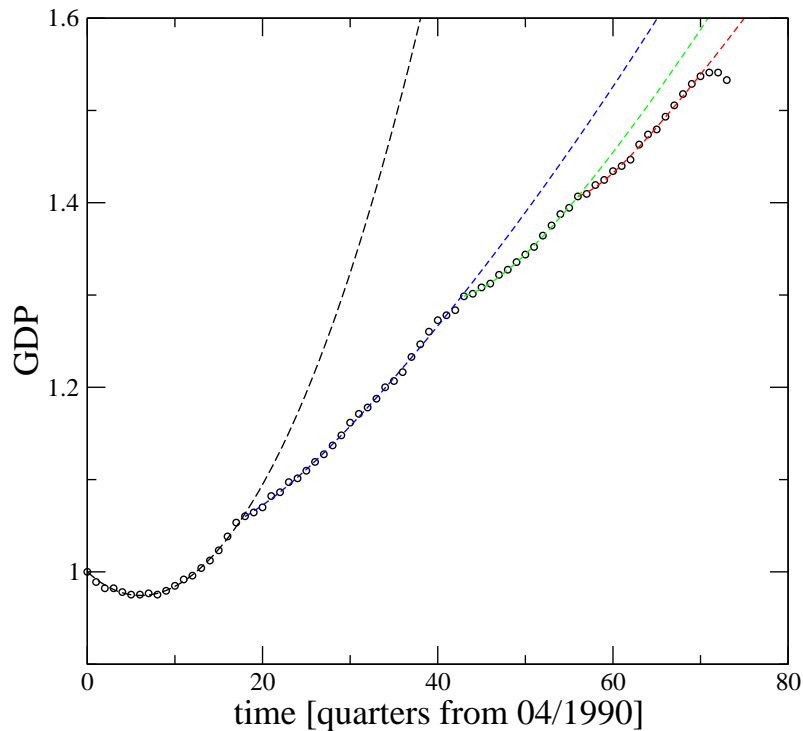


Figure 4: Scaled Real GDP of the United Kingdom with four Fits Corresponding to Different Episodes of Economic Growth.

we do not use lin-log axis, that would make the fit even more impressive). Given the faithfulness of our three-parameter model for the first 41 quarters (more than 8 years), one must conclude that something sudden happened to the GDP dynamics. This can be traced to the burst of the Internet bubble and subsequent weak growth of the world during these years, which resulted in a sharp decrease of demand for paper products and mobile phones, which contributed to half of the exports of the country at the time. Assuming that the shock was restricted in time, we can once again fit the next period as nicely with the same equation. It is revealing to compare the parameters of the fits of the three episodes (before 1990, 1990–2001, 2001–2008) (see Table 1). We have $\lambda_+^{(-1990)} < \lambda_+^{(2001-2008)} < \lambda_+^{(1990-2001)}$: whereas the post-2001 GDP cannot catch up with the asymptotic 1990–2001 trend, there was hope before the current global recession that it would overtake the continuation of the pre-1990 trend.

The analysis of the United Kingdom from 1990 to 2008 tells us the same story (see Figure 4). There a first clear recession/recovery pattern beginning in 1990; the results of the fit are reported in table, which indicate that the growth rate was

Table 2: Result of the Fits of Equation (1) to the Real GDP of the United Kingdom.

UK	f	λ_+	λ_-
1990–1995 (0–18)	0.53 ± 0.09	0.028 ± 0.005	-0.049 ± 0.010
1995–2001 (19–43)	0.98 ± 0.01	0.0092 ± 0.0005	-0.151 ± 0.106
2001–2004 (43–55)	0.96 ± 0.02	0.0090 ± 0.0012	-0.154 ± 0.073
2004–2008 (55–71)	0.98 ± 0.02	0.0074 ± 0.0012	-0.168 ± 0.241

unsustainable; it is in fact related to a real estate bubble. After the latter broke up in 1995, two more shocks can be seen in 2001 and 2004. The fits of these three last parts give consistent results: their asymptotic growth rates $\lambda_+ = 0.0092, 0.0090, 0.0074$ are comparable (see Table 2); they correspond to an annual growth of slightly more than 3%. The point is that none of these three shocks did lead to a recession, but all of them interrupted the trend of the GDP. Each of these negative shocks are not large, but each of them is associated with a loss of absolute GDP in the asymptotic regime. The last shock of the time series corresponds of course to the ongoing recession.

These two examples strongly suggest that economic shocks come in all sizes and that the function we propose is able to capture what happens to the GDP after them, hence the claim that Equation (1) is the dynamical response function of the GDP.

2.3 Making Predictions

Since this model fits well real data between two shocks, it must be able to make predictions assuming that no additional shock occurs, and by extension, should be able to detect an additional shock. Let us first start with noisy synthetic data in order to understand better its predictive power. Generating time series $G(t) = [fe^{\lambda t} + (1-f)e^{\lambda-t}][1 + \nu\eta(t)]$ where $\eta(t)$ are drawn at random from a unit-variance Gaussian distribution with zero average and ν is the strength of the noise. The issue is to determine the minimum length of data needed in order to determine faithfully the parameters, in particular if from a partial time series one can predict the future evolution of the GDP.

Choosing parameters that loosely replicate the evolution of the quarterly real GDP of Finland ($f = 0.75, \lambda_+ = 0.0125, \lambda_- = -0.169$), and $\nu = 0.005$, we generate a single 200-time steps time series (50 years). Taking an in-sample size of $t_0 \in \{5, \dots, 200\}$, we then find in the out-sample $t_{\text{pred}} > t_0$ such that the relative difference between the prediction differs and the data at t_{pred} exceeds the tolerance $p = 0.01, \dots, 0.05$. Even if t_{pred} as a function of t_0 depends on each realisation of the noise, a general pattern arises: at around $t_0 = 15 - 17$ (see Figure 5), which includes a part of the recovery (see Figure 6), the prediction length increases tremendously, although at first with very large fluctuations whose details depend on the noise realisation, and reaches quickly the total length of the generated time series.

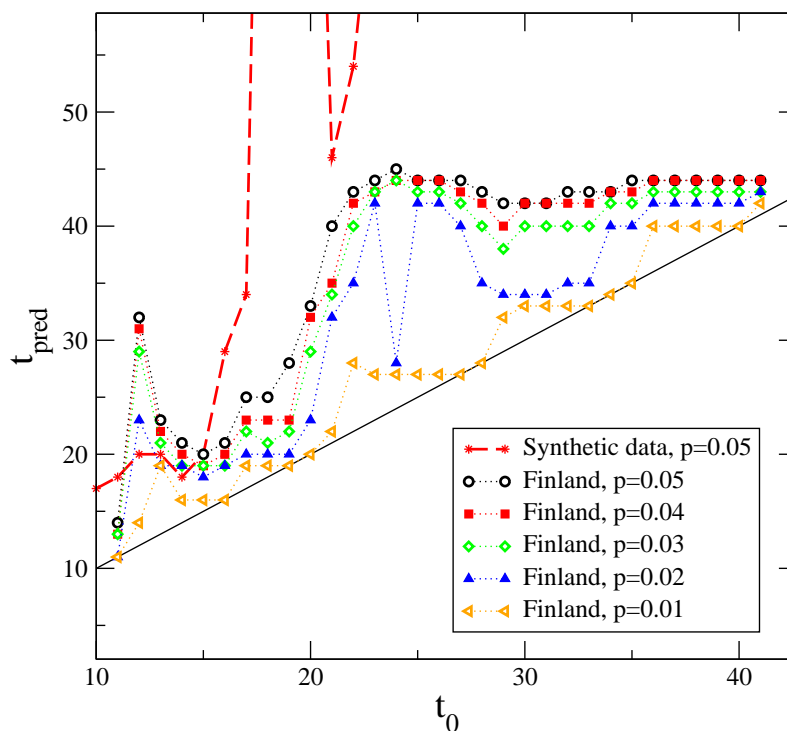


Figure 5: End time t_{pred} of Correct Predictions of Synthetic Data (stars) and Finland's Real GDP as a Function of in-Sample Size t_0 for Various Tolerance Parameter p . Dashed and Dotted Lines are for Eye Guidance only.

2.4 Detecting Additional Shocks

Armed with this positive conclusion, we apply the same procedure to the real quarterly, seasonally-adjusted, GDP of Finland. Figure 5 clearly shows a saturation of $t_{\text{pred}} \simeq 42$ for $t_0 \geq 23$ even when the tolerance p increases (at which point one can predict the GDP five years ahead) whereas the length of the time series is 71. This means that something happens at $t = 42$, and indeed, it corresponds to the shock of the end of the Internet bubble. By decreasing the analysis sensitivity to fluctuations p , additional shocks can be detected. This is clear for $p = 0.01$: additional plateaux at $t = 27$ and 34 can be seen. Where to stop for p is somewhat problematic for the time being and will be addressed in a future work.

2.5 Shape rather than Causes

It is enlightening to look at a few well-known papers in Economics on the transition from communism to capitalism, e.g. Fischer and Sahay (2000), Sachs (1996), Popov (2006), which review the numerous aspects and precepts of economic transition and growth, together with various methodologies. On the one hand they are helpful reminders that an economy is an intricate system with many parameters of unknown influence, each of which being worth discussing, hence, that the parameters in our model are global measures of many processes of different types. On the other hand it is curious to note that, if most of them did plot GDP versus time, to our knowledge nobody tried to fit the time series of the GDP, which is all the more surprising since

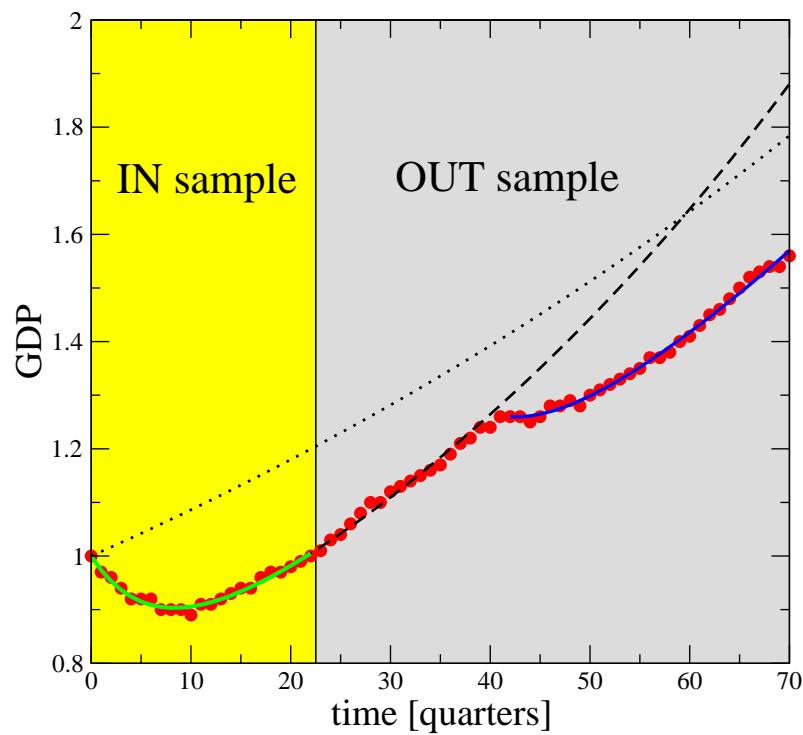


Figure 6: Finland's Real GDP as a Function of Time, Starting in October 1990. Red Circles: Quarterly Data, Green Line: in-Sample Fit, Black Dashed Line : out-Sample Prediction, Blue Line: Fit Starting from the 2001 Slowdown, Black Dotted Line: Continuation of the pre-1990 GDP Trend.

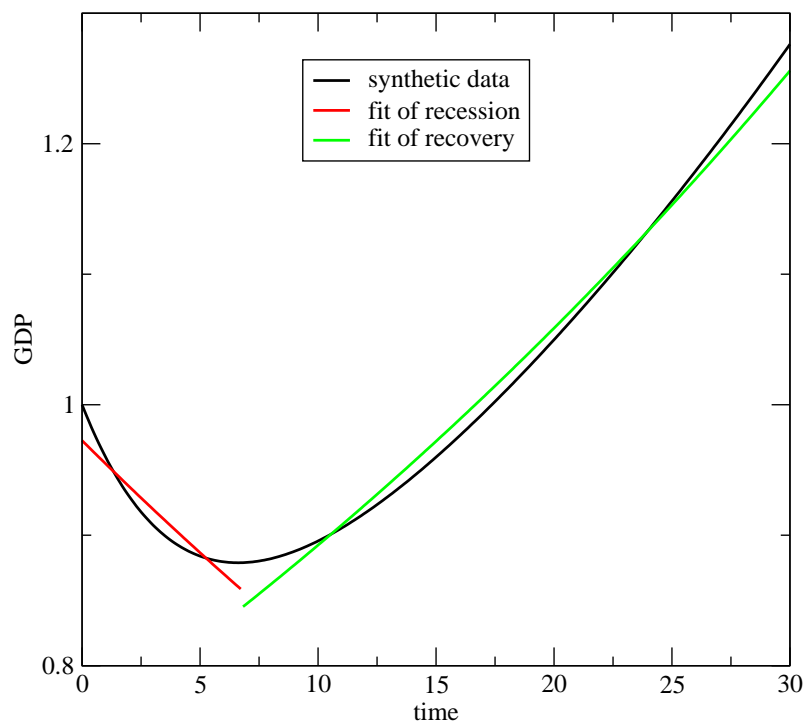


Figure 7: Synthetic GDP Time Series and Two Best Exponential Fits of the Recession and Recovery Parts.

an equation similar *in fine* to Equation (1) (but derived from other hypotheses) is found in an appendix of Popov (2006).

A major difference between the approach of the respected economists cited above and the present fitting function is that we focus on the typical temporal pattern or shape of recession and recovery after a shock (or the second one, when available) whereas, very understandably, the economists are concerned with finding the *causes* of recession and recovery and in particular of the variations between countries. Some means to assess the importance of reforms mostly come from abstract discussions on political economy. For instance, Fischer and Sahay (2000) singles out Uzbekistan and Belarus, noting the apparent contradiction between their economic performance and lack of reforms, nevertheless concluding that “[...] it is reasonable to predict that they will grow more slowly than those who have undertaken more extensive reforms.” However, our fits indicate that their parameters are in line with those of Lithuania in current dollars and Latvia in constant dollars.

One of the other tools widely used is factor analysis (known as multivariate linear fit in other disciplines) of the average growth in the recession and recovery parts (separately), where potentially relevant variables are guessed and then deemed actually relevant or not by statistical tests, yielding a regression coefficient $R^2 \simeq 0.5$; the major problem of this approach is that the decline and growth rates are evaluated on curves that are not exponentials but a superposition of several of them. Thus, neglecting the real curvature of the GDP gives biased estimates of both the decline and recovery rates, as illustrated in Figure 7, which may explain in part the poor R^2 obtained by factor analysis. But it does make sense to apply this method to the

fitted parameters (f , λ_+ , λ_-) in order to determine why the economic initial conditions were so different. It is worth to remark that f does provide an important additional piece of information about the economy. We leave it to forthcoming publications.

Since our model is the simplest one to respect the underlying economic processes, it may not be entirely faithful, but its definition should not be over-interpreted. For instance, its success only says that the economy behaves very similarly to a two-sector approximation. It does not imply that the economy can be split into two parts inside which growth rates are equal (see also Subsection 3.1).

2.6 Current Recessions: V- of U-shaped ?

The shapes of recessions and recoveries are frequently associated with letters such as L, U, J, W (double dip); our model suggests that they are in fact picturesque descriptions of the same shape with different parameters. More puzzlingly, V shapes are also often talked about and are supposed to happen when the recession is large but very short-lived. To achieve a non-smooth first derivative at the bottom of a recession, a country needs to experience a large positive shock at or just before that time.

What is more likely is that such recessions have a continuous first derivative even at their bottom, but that this impression is given by the discreteness of the time series, which is more likely to happen for short recessions studied with yearly, not quarterly, GDP data.

Indeed, our model suggests that the GDP shapes of recessions and recoveries are smooth curves. This result does not depend on the duration of the recession, being valid both for Russia in 1990 and later years and much smaller shocks in Finland and the UK. But of course if a sector¹ is growing extremely rapidly, the recovery can be very fast. Since it needs to be much faster than the average GDP growth rate before the recession, it is not sustainable (see for instance the above discussion about the 1990 recession in the UK): what is likely to happen is a second negative shock, not necessarily leading to a recession, that brings the country back to a more sustainable growth rate.

We can draw a few conclusions with respect to the current recessions: the countries that do not have an exceptionally flourishing sector will not experience such quick recoveries. This means in particular that their GDP will have a well-marked minimum corresponding to several quarters of sluggish growth; therefore, hopes to avoid that part of the curve are misguided. It is also hard to make predictions of the GDP evolution at the moment regarding current recessions for four reasons:

- There are only three or four quarterly GDP estimates and we need to determine 3 parameters.
- These estimates are often revised in sizeable proportions in times of recessions (see e.g. Statistics Finland (2009))

¹Industrial, geographical, etc.

- Currently available quarterly data only begin to show some sign of inflexion, but one needs a small part of the recovery in order to obtain accurate estimates of the three parameters (see the above discussion on prediction)

We thus cannot make sensible predictions with the data currently available to us. Further work will investigate the usefulness of economic indicators available at higher frequencies as regards the three parameters we need to estimate.

3 A Simple Theoretical Model of Economic Activity Transfer

The model used to fit data in the previous section can be derived from a simplification of the so-called AB model (Shnerb et al., 2000, 2001), a reaction-diffusion lattice model where discrete particles of two types diffuse, meet, reproduce and die auto-catalytically. Yaari et al. (2008) applied it recently to explain the temporal and spatial dynamics of economic growth in Poland. Whereas the latter work divided Poland into N interacting geographical parts with diffusing elementary economic units, the present contribution is to show that the same model with $N = 2$ is able to explain the temporal dynamics of many countries in difficult times. This allows us to restrict the number of parameters, hence, to explore more easily the dynamical properties of such models. It should also be noted that a sector can be either geographical, industrial, or abstract.

The rationale behind this model is the following. The after-shock economy is supposed to consist in two sectors, one with activity w_1 , growing intrinsically at rate $\alpha_1 > 0$, and the other one with activity w_2 but intrinsically shrinking ($\alpha_2 < 0$). They interact through economic activity transfer taking place at rate β , according to the difference of activity. Mathematically,

$$\frac{\partial w_1(t)}{\partial t} = \alpha_1 w_1(t) + \beta[\langle w(t) \rangle - w_1(t)] \quad (2)$$

$$\frac{\partial w_2(t)}{\partial t} = \alpha_2 w_2(t) + \beta[\langle w(t) \rangle - w_2(t)], \quad (3)$$

where $\langle w \rangle = (w_1 + w_2)/2$.

The actual result of the government's and investor's various policies is assumed to be equivalent to taking a fraction $\beta/2$ of the difference of activity between the two sectors from the largest sector and giving it to the smallest one. In other words, β may not be the transfer rate wished for by the government, but the actual transfer rate (the distinction is valid for the rest of the discussion). This means in particular that, when the intrinsically expanding sector represents a small part of the economy, resources are transferred to it from the shrinking sector, thereby accelerating the transition. Note that because of redistribution, both sectors end up growing at the same rate. Therefore, it is wrong to think of the dynamics of this model as describing a growing sector and a declining sector since both have a growing and a declining part.

Solving the dynamics of this system is straightforward by computing the eigenvalues and associated eigenvectors of the above coupled dynamical equations, following

standard procedure. The two eigenvalues are

$$\lambda_{\pm} = \frac{\delta[\sigma/\delta - \zeta \pm \sqrt{1 + \zeta^2}]}{2} \quad (4)$$

where $\delta = \alpha_1 - \alpha_2$, $\sigma = \alpha_1 + \alpha_2$ and $\zeta = \beta/\delta$. These eigenvalues correspond to the rates measured in the previous section. The unnormalised eigenvectors are $(\zeta, -1 \pm \sqrt{1 + \zeta^2})$. Let us denote by $\mathbf{v}_{\pm} = (v_{\pm,1}, v_{\pm,2})$ the respective orthonormal eigenvectors. Following standard procedure, one decomposes $\mathbf{w}(t=0)$ into the basis \mathbf{v}_{\pm} , obtaining $\mathbf{w}(t) = \omega_+ \mathbf{v}_+ e^{\lambda_+ t} + \omega_- \mathbf{v}_- e^{\lambda_- t}$ where $\omega_{\pm} = \mathbf{w}(\mathbf{0}) \cdot \mathbf{v}_{\pm}$ are the projections of the initial conditions onto the sector decomposition described above. In other words, both w_1 and w_2 have an increasing and a decreasing part. The steady state is reached when the importance of the negative component is vanishingly small compared to the positive component both for w_1 and w_2 . The typical time for reaching this asymptotic regime is $O(1/(\lambda_+ + |\lambda_-|))$ units of time. Then the two groups grow at the same rate, λ_+ (Figure 11). In this regime, the growth of the negative component is entirely due to the transfer of economic activity from the positive component.

We shall be interested in this paper in the total economic activity $W = w_1 + w_2$ and shall consider the GDP as its proxy. Also we are interested in the dynamics of inequality between the sectors, measured by $\Delta = w_1/w_2$. Note that the empirical data determine only partially the parameters of Equation (1) of previous section: while the rates λ_{\pm} can be measured directly, more detailed information is needed in order to determine all three parameters α_1 , α_2 and β . This is due to the fact that f does not correspond directly to $w_1(0)$ since even at the beginning sector 2 has a growing part (i.e. $v_2^+ \neq 0$).

3.1 Why this Model Works

The contrast between the intricacies of economic policy making and implementation (Fischer and Sahay, 2000) and the simplicity of our model on the one hand, and the quality of our fits and the (relatively) poor explanatory power of factor-based growth analysis (Fischer and Sahay, 2000, Popov, 2006) on the other hand is perplexing. In order to understand the surprisingly good performance of the simple fitting function of Equation (1), one needs to go back to the two-dimensional autocatalytic AB model of Shnerb et al. (2000), which describes spatially-distributed and heterogeneous logistic systems. Its ability to reproduce both the spatial and temporal dynamics of Poland's GDP is striking (Yaari et al., 2008); interestingly, it finds that the local level of education is the most relevant factor in growth, in line with Fischer and Sahay (2000). In the case of Poland, it predicted successfully the pattern of recession and recovery of the parts of Poland: the activity of each part of the country reaches its minimum at different times, while the final growth rate is the same for all parts, strongly suggesting that an economic activity transfer process is at work; in other words, plotting the economic activity evolution of various sectors as a function of time produces a whole variety of J-shaped time series, all ending up with the same growth rate. The simplification to two parts, or two sectors, works because the economy is an autocatalytic, that is, multiplicative, process: the parts

that reach their minima later than the best part often have shrunk so much that their contribution to the total GDP is negligible afterwards. The use of quarterly data for Finland and the UK, as shown above, seems to indicate that the fitting equation we propose describes very well the GDP.

3.2 Static Policy Making

Assume that the rate α_1 and α_2 are constant and fixed by constraints beyond the control of the government. The government's only influence is in the transfer rate through the tax rate policy. This in itself is a very powerful instrument that the government is pressed to use: indeed economic activity is linked to employment, and a fast-shrinking sector implies growing social inequality and voters dissatisfaction. If the rate of shrinking is much faster than the rate of labour transfer between the two sectors, inequality at the sector level translates into growing social inequality. In that sense, the inequality between sectors is an upper bound to social inequality. It should be noted that β is the effective rate of transfer, not the one hoped for by the government; indeed, if the latter is not able to collect taxes or if its authority is undermined by inadequate rule of law due to the collapse of institutions, the effective β may turn out much smaller.

The final growth rate depends much on the policy: increasing β reduces both eigenvalues, hence the total growth rate *in the steady state*: maximal asymptotic economic growth is achieved when there are no transfer of wealth. This seems to substantiate the claims of the so-called supply-side economics (see e.g. Lucas (1990)). However, global growth rate is not the only success measure of a taxation policy: inequality is also to be taken into account.

Indeed, since $\lambda_- < 0$, group 2 would simply disappear in the absence of redistribution. Decision makers who only focus on growth will therefore take β as small as socially responsible and electorally possible. Some others will try to minimise inequality between sectors. Since both w_1 and w_2 end up growing at the same speed, their asymptotic ratio $\Delta = \lim_{t \rightarrow \infty} w_1(t)/w_2(t)$ is a measure of economic inequality. Using basic algebra, one finds that

$$\Delta = v_{+,1}/v_{+,2} = 1/(-1/\zeta + \sqrt{1 + \zeta^2}) \simeq 2/\zeta = 2(\alpha_1 - \alpha_2)/\beta \quad (5)$$

if $\zeta \ll 1$, in which case reducing the sector inequality by a half requires to double the transfer rate; in addition, sector inequality is proportional to the difference of growth rate.

Since the rates are fixed by assumption, sector inequality only depends on the transfer rate, not on initial conditions. Inequality ceases to exist only for large β , at the cost of growth rate.

Therefore, assuming fixed transfer rate, a head of state of a country facing a recession may be able to choose between a small but long recession with anemic final growth, or a large but short-lasting recession with large final growth (Figure 8). A cynical politician would ensure that the wealth of the majority of voters has increased by the end of his tenure or at least that the recovery has begun.

3.3 Gradualism versus Shock Therapy

All the Eastern European countries have experienced economic recession when switching from communism to capitalism. The variety of intrinsic growth and decline rates and policies yielded vast differences between speed of recovery and depth of recession of various countries. Understandably a large corpus of literature investigates what factors could explain this variety of behaviours (Sachs, 1996, Fischer and Sahay, 2000, Popov, 2006, Cernat, 2002). In particular, the technique of making the transition abrupt and short has been labelled as shock therapy (Kolodko, 2000). The concept of shock therapy has been the focus on long debates which have not been settled to this very day (Lucas, 1990). The other approach is called gradualism, and advocates to follow a more gentle rhythm (Kolodko, 2000).

Our model makes it possible to investigate this issue. We shall assume that α_1 and α_2 are intrinsic to the economy and therefore constant; the government influences the economy by trying to adjust the effective transfer rate $\beta(t)$. The shock therapy consists in lowering abruptly β from the high level of communism to the small level of capitalism. Gradualism implies a smoother mathematical function for $\beta(t)$.

3.3.1 Constant Policy: Shock Therapy

Figure 8 plots various scenarios for $W(t)$ at constant β and shows the influence of β on the outcome. The cases with small β correspond to shock therapy. They are characterised by a deep recession and both a faster final growth rate and accordingly a higher GDP. Therefore, after many years, the tenants of this policy are vindicated since their courageous but harsh recommendations are proved correct as regards the growth rate of GDP and value *compared* to other static policies. This view is right, but only in a static context, as it maximises the *final* growth rate, not the instantaneous one, therefore not the actual GDP (see below), and deep recession ensues.

3.3.2 Dynamical Policy: Envelope

Few experiences are more frustrating for a politician than to have implemented a policy that will lead to the recovery of one's country, but too late to be re-elected. Instead of heroically jeopardising one's political career, one should ask how to implement a policy that would avoid most troubles.

There is another way of looking at this figure: what if one could stay on the upper envelope of all the scenarios and thereby avoiding as much as possible difficult times while maximising the final growth rate? This clearly needs a dynamical policy, i.e., $\beta(t)$. Running a thousand scenarios $W_i(t)$ with various β_i , and selecting at each time t the value of β that corresponds to the maximal W yields $\beta_{\text{env}}(t) = \beta_{\arg \max_i W_i(t)}$ shown in Figure 8: redistribution should be kept maximal for a while, then β_{env} decreases exponentially fast in the region encompassing the worst phase of the recession, and then decreases faster than exponentially. Regretfully for a head of state, this view is purely virtual: Figure 9 reports the GDP $W[\beta_{\text{env}}]$ actually obtained by using the policy $\beta_{\text{env}}(t)$, the envelope $\max_i W_i(t)$ of Figure 2 and an

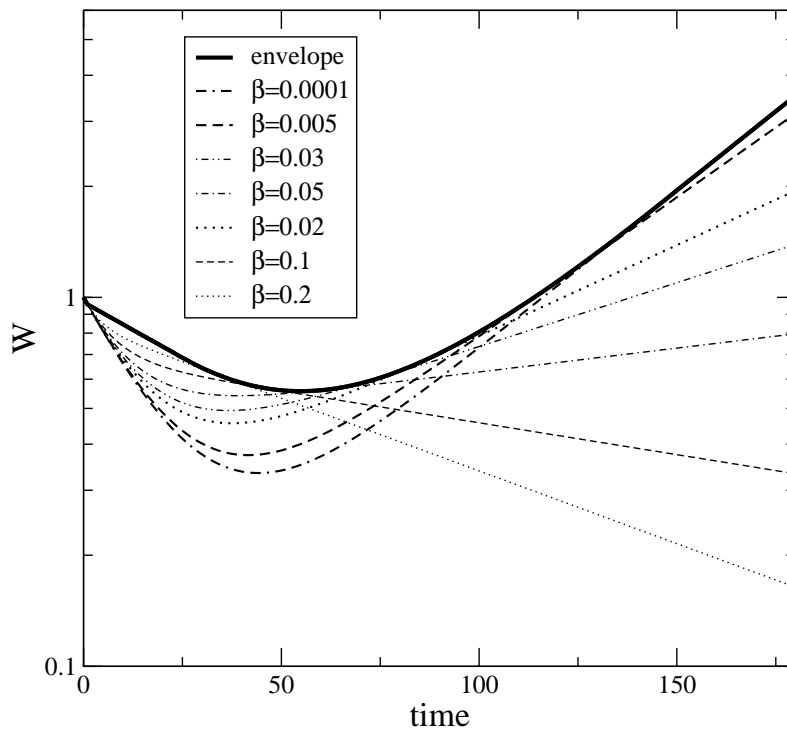


Figure 8: Total Economic Output versus Time for Various Values of the Transfer Rate β ($\alpha_1 = 0.02$, $\alpha_2 = -0.05$, $w_1(0) = 0.1$, $w_2(0) = 0.9$), and the (Virtual) upper Envelope of all Curves (Thick Black Line).

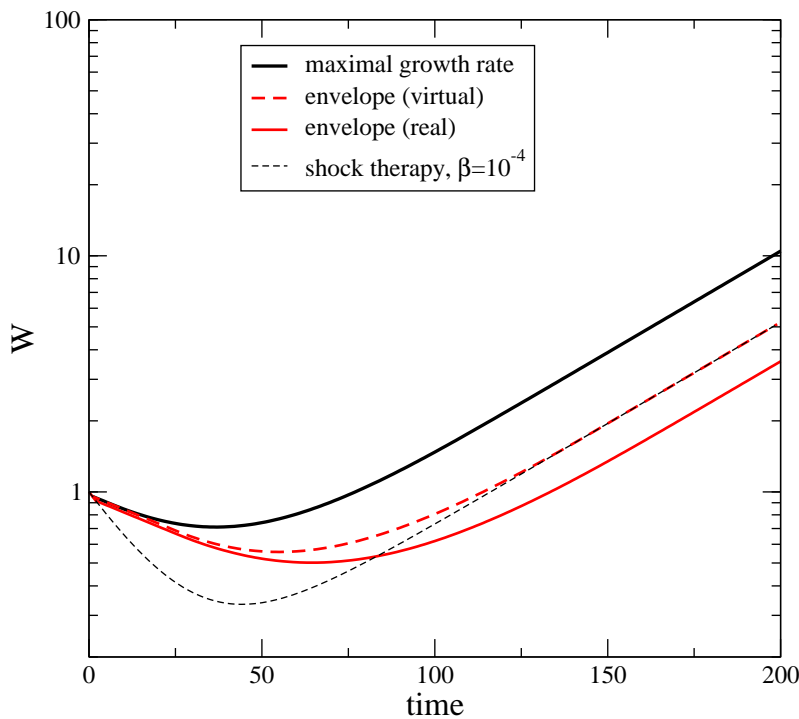


Figure 9: Total Economic Output W for the Optimal Policy (black line), the Envelope-based Gradual Policy (red lines) and the Shock Therapy (dashed black line). Same Parameters as in Figure 2.

example of shock therapy with constant β (forget W_{opt} for the time being). The difference between the virtual and real W come from the fact that it is impossible to stay on the envelope by controlling $\beta(t)$ on the basis of W alone: when $W(t)$ s of two scenarios cross, their components $w_1(t)$ and $w_2(t)$ are not equal. Thus shock therapy works better than trying to stay on the envelope.

Curiously, $W(t)$ actually obtainable by using this method is also relatively well fitted with Equation 1, i.e. with constant parameters, and gives for the curve reported in Figure 8 $\lambda_+ \simeq 0.020$, $\lambda_- \simeq -0.019$, and $f = 0.068$ with uncertainties smaller than a percent, whereas the initial values were 0.02, -0.05 and 0.1, respectively. In other words, the effective shrinking rate is reduced, the rate of growth of the expanding sector remains unchanged (which is needed in order to retain the same final growth rate), while the apparent fraction of the expanding sector decreases considerably; interestingly, the difference between the fits of the envelope itself and the attainable $W(t)$ is limited to f : the envelope has the same apparent f as the individual runs.

3.3.3 Optimal Policy: Maximal W

Another policy is to maximising W at each time step, which reduces to the maximisation of the growth rate with respect to β : $\frac{\partial W}{\partial \beta} = 0$. This leads to a transcendental equation to be solved numerically at each time step. The resulting $W_{\beta_{\text{opt}}}$ is reported in Figure 9, which shows unambiguously the benefits of the proposed optimal dynamical policy, that is, of gradualism with respect to shock therapy. Indeed, the value of the GDP in the recovery phase is increased several times with respect to static policies and with respect to envelope-based dynamical policies, while sharing the same asymptotic growth rate. We therefore claim that shock therapies are unadapted to economies in crises as regards GDP. Patience and gradualism are better solutions in this kind of situations.

Looking at the optimal value of β (Figure 10) reveals that indeed taxes should decrease rapidly, but not instantaneously. This means that the intuition behind shock therapies is correct, but only in the later stages of the time evolution. What matters is the road to minimum taxes, all the more since the economy follows multiplicative processes: optimising it may change tremendously the fate of countries and people, as shown by the results of envelope-based and optimal policies.

Fitting $W_{\beta_{\text{opt}}}$ with Equation (1) yields $f \simeq 0.80$, $\lambda_+ \simeq 0.20$ and $\lambda_- \simeq -0.027$. Therefore, the optimal policy both increases the apparent fraction of the growing part of the economy and decreases the apparent rate of shrinking of the decaying sector, while of course keeping constant the final rate of growth.

3.3.4 Detecting Static, Envelope-based, and Optimal Policies

A somewhat frustrating result of the previous two dynamical policies is the impossibility to distinguish them from a static one. Indeed, in the absence of additional information about the applied economic policies, one cannot reconstruct it from the GDP time series. For that purpose, one would need data about at least two sectors. Plotting $\Delta = w_1/w_2$ as function of time allows one to distinguish a static, envelope-based and optimal policy, as reported in Figure 11: a static policy has a negative

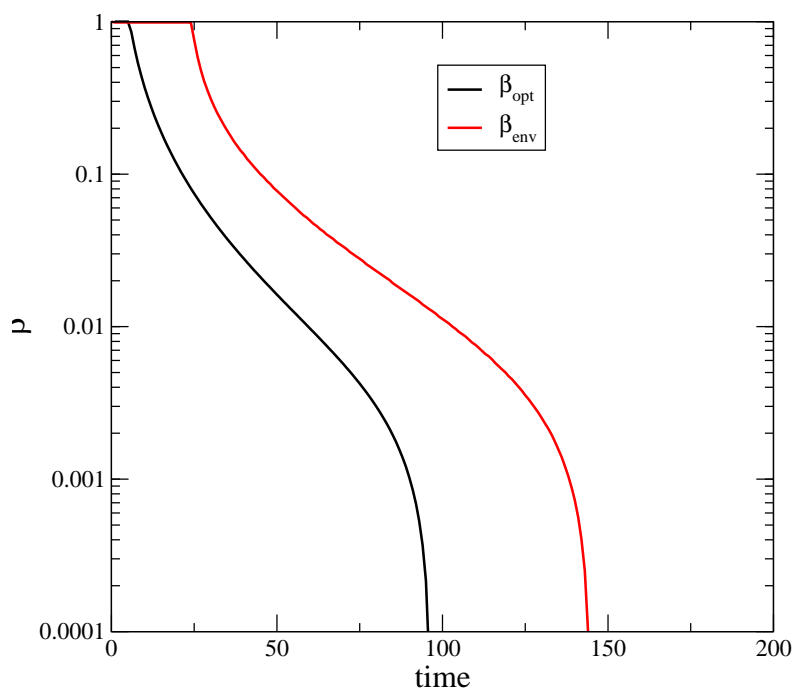


Figure 10: Optimal Value of the Transfer Rate β versus Time for the Envelope-based Policy (red line) and the Optimal Policy (black line). Same Parameters as in Figure 8.

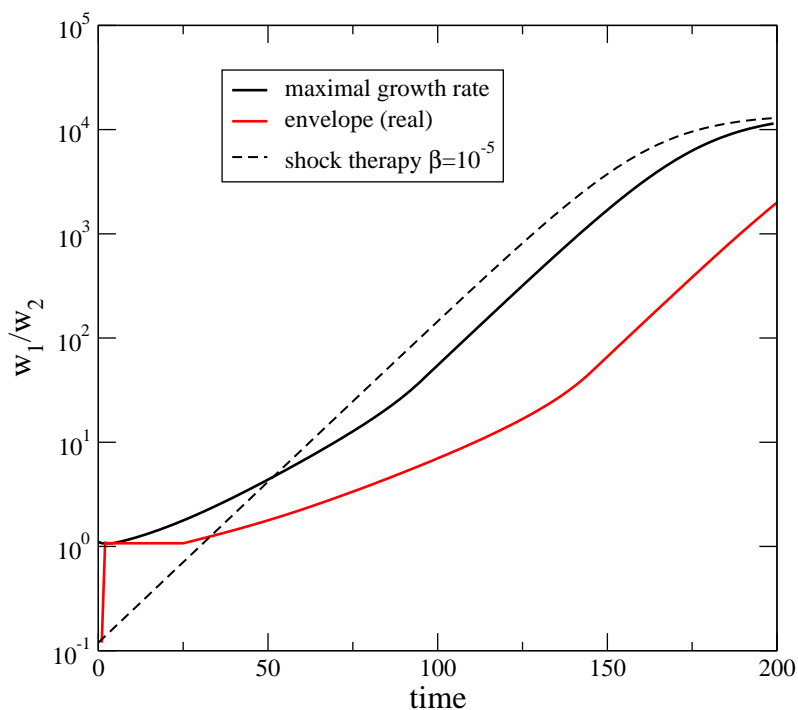


Figure 11: Sector Inequality as a Function of Time for the Optimal Policy (black line), the Envelope-based Gradual Policy (red line) and the Shock Therapy (dashed black line). Same Parameters as in Figure 2.

curvature, while dynamic ones start with a flat line, followed with a positive curvature and then an inflexion point. All of them reach the same asymptotic values since one imposed a minimum $\beta = 0.00001$ in order to compare the three policies. It may be difficult in practice to discriminate with the naked eye an envelope-based policy from the optimal one, but easy to detect a static policy². However, in further investigations one could measure w_1 and w_2 , and thus determine all the parameters of the model, including $\beta_{\text{opt}}(t)$.

4 Discussion

The idea that the dynamics of economies is affected by shocks is by no means new (see e.g. Slutsky (1937)). The contribution of the present work is to show that a rare single negative shock, well defined in time, has a lasting influence on the GDP evolution because of the existence of an intrinsic response function and that it is sufficient to lead to a recession.

We claim that the simple function of Equation (1) is at the very least a very good approximation to the response function: it fits well the GDP of countries in various continents, at various levels of industrialisation, at different times, short and long recessions after large shocks, and even small bumps after small shocks. This is indeed what can be expected from a response function. In addition, it suggests that the GDP time series are quite smooth between infrequent shocks.

It may be argued that relying on shocks to justify deviations of the GDP from the fitting equation is bad practice, hence, that splitting time series into segments, each of them obeying the fitting function amounts to relegate some part of the problem to external causes. This would be the case if the fitting function could not work for more than a few points, i.e. if the pseudo-shocks were relatively frequent. In addition, the fact that the fits are even more impressive for quarterly data is a strong argument in favour of our equation. It remains that the shocks themselves deserve a more thorough study, which is left to future work. In particular, one has to find a statistical criterion for the splitting of a time series into segments, and to address the problem of shocks that propagate gradually to a given economy, yielding a concave GDP at the start of recessions, possibly needing to consider a dynamical fraction f .

Although we gave intuitive and simple theoretical arguments to motivate the mathematical shape of this function, one ideally wishes also to build a model whose response function to external shocks is compatible with our findings. We are not aware of any.

Finally, our model suggests that lasting recessions are smooth curves when viewed at quarterly data level. This means in particular that they have a well-marked minimum corresponding to several quarters of sluggish growth; therefore, hopes to avoid that part of the curve are misguided. It is hard to make predictions of the GDP evolution regarding current recessions first because there are only three or four quarterly data estimates, which are often revised in a sizeable proportion

²It is clear that increasing taxes will also lead to a negative curvature; however, we assume that the transition from communism to capitalism needs a decrease of taxes.

in times of recessions, and also because currently available quarterly data does not show any unambiguous sign of growth.

References

- Cernat, L. (2002). Institutions and Economic Growth: Which Model of Capitalism for Central and Eastern Europe. *Journal for Institutional Innovation, Development and Transition*, 6: 18–34.
- Fischer, S. and Sahay, R. (2000). The Transition Economies After Ten Years. Technical Report. National Bureau of Economic Research, Working Paper 7664.
- Keynes, J. M. (2007). *The General Theory of Employment, Interest and Money*. London: Palgrave Macmillan. First published in 1936.
- Kolodko, G. W. (2000). *From Shock to Therapy: The Political Economy of Post-socialist Transformation*. New-York: Oxford University Press.
- Lucas, R. E. (1990). Supply-Side Economics: An Analytical Review. *Oxford Economic Papers* 293–316.
- Popov, V. (2006). Shock Therapy Versus Gradualism Reconsidered: Lessons From Transition Economies After 15 Years Of Reforms. TIGER working paper 82.
- de Quesnay, F. (1888). *Oeuvres économiques et philosophiques*. Baer.
- Ricardo, D. (2004). *The Principles of Political Economy*. Dover: New-York.
- Robbins, L. (2000). *A History of Economic Thought: The LSE Lectures*. Princeton: Princeton University Press.
- Romer, P. M. (1990). Endogenous Technological Change. *The Journal of Political Economy*, 98 (5): S71–S102.
- Sachs, J. (1996). The Transition at Mid Decade. *American Economic Review*, 86: 128–133.
- Schumpeter, J. A. (1980). *Theory of Economic Development*. Piscataway, NJ: Transaction Publishers. First published in 1911.
- Shnerb, N. M., Louzon, Y., Bettelheim, E., and Solomon, S. (2000). The Importance of Being Discrete: Life Always Wins on the Surface. *Proceedings of the National Academy of Science*, 97 (19): 10322–10324.
- Shnerb, N. M., Bettelheim, E., Louzoun, Y., Agam, O., and Solomon, S. (2001). Adaptation of Autocatalytic Fluctuations to Diffusive Noise. *Physical Review E*, 63 (2): 021103, Jan.
- Slutzky, E. (1937). The Summation of Random Causes as the Source of Cyclical Processes. *Econometrica*, 5 (2): 105–146.

Smith, A. (2000). *Wealth of the Nations*. Harmondsworth: Penguin. First published in 1776.

Solow, R. M. (2000). *Growth Theory: An Exposition*. Oxford: Oxford University Press.

Statistics Finland (2009). Revisions of Data Are Typical in Quarterly Accounts. http://www.stat.fi/til/ntp/ntp_2009-04-08_uut_001_en.html, retrieved on 15/09/2009.

Yaari, G., Solomon, S., Rakocy, K., and Nowak, A. (2008). Microscopic Study Reveals the Singular Origins of Growth; Lessons from the Liberalization of the Soviet Bloc. *European Physical Journal B*, 62: 505–513.

A Model Fitting

In the following tables, SRS stands for square residuals sum, SRM for square residuals mean, RSRS for relative square residuals sum, RSRM for relative square residuals mean; years indicates the number of years along which the fit has been done. The table contains a wealth of data which can be further exploited and whose potential has been only scratched by the present publication.

Table 3: Results of the fit of the GDP in current dollars to Equation (1)

Country	first year	last year	f	$e^{\lambda+}$	$e^{\lambda-}$	SRS	SRM	RSRS	RSRM	years
Albania	1990	2006	59.5	1.064	0.367	301.97	17.763	402.92	23.701	17
Bahamas	1990	1999	70.8	1.061	0.662	4.6524	0.4652	4.4493	0.4449	10
Belarus	1991	2006	38.0	1.089	0.737	151.97	9.4982	241.12	15.070	16
Bolivia	1981	1998	61.9	1.049	0.775	16.529	0.9183	18.257	1.0143	18
Chile	1981	1997	51.2	1.079	0.522	56.499	3.3235	37.112	2.1830	17
Estonia	1990	2006	40.7	1.083	0.688	148.97	8.7630	211.69	12.452	17
Finland	1990	2006	82.1	1.036	0.367	79.249	4.6617	65.940	3.8788	17
Hungary	1989	2006	64.0	1.046	0.694	38.588	2.1438	45.955	2.5530	18
Kazakhstan	1990	2006	84.4	0.837	1.138	105.23	6.1903	186.39	10.964	17
Latvia	1990	2006	27.4	1.087	0.651	245.92	14.466	508.97	29.939	17
Lithuania	1990	2006	31.1	1.082	0.723	214.11	12.594	411.24	24.191	17
Mongolia	1990	2005	64.5	1.045	0.615	156.65	9.7910	143.21	8.9512	16
Moldova	1990	2006	14.6	1.081	0.734	103.41	6.0834	395.19	23.246	17
Russia	1990	2006	20.4	1.100	0.825	102.63	6.0373	181.19	10.658	17
Slovakia	1990	2006	72.9	1.042	0.367	102.28	6.0170	95.323	5.6072	17
Slovenia	1990	2006	79.5	1.040	0.367	29.452	1.7324	27.235	1.6020	17
Sweden	1990	2006	88.1	1.029	0.549	28.900	1.7000	23.565	1.3861	17
Turkmenistan	1990	2006	29.9	1.080	0.809	291.63	17.154	538.89	31.699	17
Ukraine	1990	2006	6.71	1.153	0.835	241.22	14.189	656.64	38.626	17
Uzbekistan	1990	2006	42.6	1.074	0.829	77.763	4.5743	87.654	5.1561	17
Bulgaria	1988	1995	0.17	1.967	0.929	22.261	2.7827	30.514	3.8143	8
Bulgaria	1995	2005	64.5	1.051	0.463	5.0247	0.4567	6.0662	0.5514	11
Czechia	1990	1996	75.0	1.047	0.422	3.3792	0.4827	4.2602	0.6086	7
Czechia	1996	2006	38.1	1.102	0.927	5.8393	0.5308	5.3579	0.4870	11
Romania	1990	1996	60.4	1.075	0.526	6.2065	0.8866	8.4506	1.2072	7
Romania	1996	2006	60.3	1.070	0.656	9.3063	0.8460	9.1387	0.8307	11

Table 4: Results of the fit of the GDP in constant dollars to Equation (1)

Country	first year	last year	f	$e^{\lambda+}$	$e^{\lambda-}$	SRS	SRM	RSRS	RSRM	years
Albania	1989	2004	51.0	1.064	0.514	341.56	21.347	567.59	35.474	16
Bahamas	1990	2000	52.8	1.075	0.863	4.4978	0.4088	4.5325	0.4120	11
Belarus	1990	2004	26.6	1.106	0.834	278.38	18.559	437.38	29.158	15
Bolivia	1981	1998	61.0	1.050	0.793	19.853	1.1029	21.966	1.2203	18
Chile	1981	1998	73.1	1.076	0.367	167.27	9.2928	51.868	2.8815	18
Estonia	1989	2004	35.2	1.080	0.748	204.50	12.781	362.29	22.643	16
Finland	1990	2004	81.2	1.036	0.392	61.378	4.0919	53.024	3.5349	15
Hungary	1989	2004	60.9	1.048	0.701	41.342	2.5838	48.124	3.0077	16
Kazakhstan	1990	2004	10.5	1.170	0.857	71.987	4.7991	129.56	8.6377	15
Latvia	1989	2004	24.9	1.090	0.740	305.80	19.113	655.52	40.970	16
Lithuania	1990	1998	4.42	1.352	0.830	122.13	13.571	217.51	24.167	9
Lithuania	1998	2004	84.9	1.081	0.422	2.3325	0.3332	1.5147	0.2163	7
Mongolia	1990	1995	0.31	2.701	0.899	1.6940	0.2823	2.5702	0.4283	6
Mongolia	1995	2004	11.7	1.173	1	64.007	6.4007	45.001	4.5001	10
Moldova	1989	2004	2.56	1.200	0.843	359.69	22.480	913.24	57.078	16
Russia	1989	2004	5.19	1.185	0.895	191.79	11.987	341.91	21.369	16
Slovakia	1989	1998	37.1	1.106	0.778	91.756	9.1756	122.02	12.202	10
Slovakia	1998	2004	83.5	1.063	0.753	0.2443	0.0349	0.2118	0.0302	7
Slovenia	1990	2004	79.4	1.039	0.367	25.088	1.6725	23.178	1.5452	15
Sweden	1990	2004	89.0	1.029	0.508	32.082	2.1388	26.378	1.7585	15
Turkmenistan	1990	2001	0.12	1.744	0.908	183.33	15.277	359.04	29.920	12
Ukraine	1989	2004	0.61	1.330	0.882	274.88	17.180	812.32	50.770	16
Uzbekistan	1990	2004	49.1	1.063	0.802	69.781	4.6520	83.878	5.5918	15
Bulgaria	1988	1995	0.15	1.968	0.929	22.327	2.7909	30.615	3.8269	8
Bulgaria	1995	2004	74.1	1.050	0.452	4.6503	0.4650	5.8248	0.5824	10
Czechia	1990	1996	74.8	1.047	0.427	3.3822	0.4831	4.2688	0.6098	7
Czechia	1996	2004	86.9	1.035	0.649	4.3757	0.4861	4.0627	0.4514	9
Romania	1988	1996	2.67	1.411	0.901	61.438	6.8265	95.846	10.649	9
Romania	1996	2004	55.3	1.090	0.729	3.6354	0.4039	4.0334	0.4481	9

Please note:

You are most sincerely encouraged to participate in the open assessment of this article. You can do so by either rating the article on a scale from 1 (bad) to 5 (excellent) or by posting your comments.

Please go to:

www.economics-ejournal.org/economics/journalarticles/2009-36

The Editor