

Mueller, Clemens

**Conference Paper**

## Non-Compete Agreements and Labor Allocation Across Product Markets

Beiträge zur Jahrestagung des Vereins für Socialpolitik 2023: Growth and the "sociale Frage"

**Provided in Cooperation with:**

Verein für Socialpolitik / German Economic Association

*Suggested Citation:* Mueller, Clemens (2023) : Non-Compete Agreements and Labor Allocation Across Product Markets, Beiträge zur Jahrestagung des Vereins für Socialpolitik 2023: Growth and the "sociale Frage", ZBW - Leibniz Information Centre for Economics, Kiel, Hamburg

This Version is available at:

<https://hdl.handle.net/10419/277621>

**Standard-Nutzungsbedingungen:**

Die Dokumente auf EconStor dürfen zu eigenen wissenschaftlichen Zwecken und zum Privatgebrauch gespeichert und kopiert werden.

Sie dürfen die Dokumente nicht für öffentliche oder kommerzielle Zwecke vervielfältigen, öffentlich ausstellen, öffentlich zugänglich machen, vertreiben oder anderweitig nutzen.

Sofern die Verfasser die Dokumente unter Open-Content-Lizenzen (insbesondere CC-Lizenzen) zur Verfügung gestellt haben sollten, gelten abweichend von diesen Nutzungsbedingungen die in der dort genannten Lizenz gewährten Nutzungsrechte.

**Terms of use:**

*Documents in EconStor may be saved and copied for your personal and scholarly purposes.*

*You are not to copy documents for public or commercial purposes, to exhibit the documents publicly, to make them publicly available on the internet, or to distribute or otherwise use the documents in public.*

*If the documents have been made available under an Open Content Licence (especially Creative Commons Licences), you may exercise further usage rights as specified in the indicated licence.*

# Non-Compete Agreements and Labor Allocation Across Product Markets

Clemens Mueller<sup>1</sup>

University of Mannheim

## Abstract

I analyze the effect of non-compete agreements (NCAs) on career trajectories of 600,000 inventors in the US. NCAs constrain the choice set of inventors, who are unable to move to competitors. I show that inventors bypass their NCAs by moving to new employers in more distant product markets. I identify causal effects using staggered changes in NCA enforcement across US states. There is significant reallocation as 1.5 in 100 inventors annually move to more distant product markets after higher NCA enforcement. Reallocated inventors are subsequently less productive. Inventors move to new employers who are less reliant on NCAs and they patent in unfamiliar technologies. There is a lower quality match between inventors and their new employers. I highlight regulatory frictions which lead to unintended detrimental reallocation of human capital in the economy.

[This Version: February 26, 2023]

**Keywords:** Non-compete Agreements, Product Markets, Labor Mobility

---

<sup>1</sup>Comments highly appreciated. Please contact Clemens Mueller at [clemens.mueller@uni-mannheim.de](mailto:clemens.mueller@uni-mannheim.de). I would like to thank Anthony Cookson (discussant), Marc Gabarro, Matt Marx, Ernst Maug, Maurizio Montone (discussant), Alexandra Niessen-Ruenzi, Alison Schultz, and Stanislav Sokolinski for helpful comments. I also want to thank seminar participants at the Northern Finance Association, American Economic Association (poster session), Corporate Finance Day, IZA Workshop on Labor Market Institutions, the Frankfurt-Mannheim PhD conference, Erasmus University Rotterdam, and University of Mannheim. This version subsumes an earlier draft with the title "How Reduced Labor Mobility Can Lead to Inefficient Reallocation of Labor". I acknowledge support of the high performance cluster computing facilities and the German Research Foundation (DFG) through grant INST 35/1134-1 FUGG.

## 1. Introduction

Non-compete agreements (NCA) are covenants that restrict employees from working for competitors during and after employment. Employers commonly use NCAs to retain valuable human capital within firm boundaries and to protect trade secrets. There is an ongoing debate in economics and finance about benefits and drawbacks of these agreements.<sup>1</sup> Policy makers are also interested and the FTC, on January 5th 2023, has proposed a ban on non-compete agreements.<sup>2</sup> NCAs can benefit employees, because of increased incentives for employers to retain and invest in employees' human capital (Jeffers 2017). However, the cost is reduced wages (Lipsitz and Starr (2021)) as well as lower labor mobility (Marx et al. 2009).

In this paper, I analyze how inventors react to more enforceable NCAs. I add a novel but important dimension to the literature: product markets. Non-compete agreements effectively constrain the within-industry choice set of inventors. Inventors who want to move to a new employer thus face the following trade-off: either 1) terminate the employment contract and wait until the NCA expires to be able to move to a competitor or 2) "bypass" the NCA and immediately work for a new employer, however in a more distant product market. The evidence provided in this paper supports the existence of this trade-off and extensively analyzes consequences of the latter.

I use data of around 600,000 US corporate inventors from 1976 to 2018. Patent data provides a suitable laboratory to study NCAs and allocation of labor for several reasons: First, patents provide the precise location of inventors and as patent ownership rights are assigned to their employers, they provide detailed employment histories. Second,

---

<sup>1</sup>Among others, see Garmaise (2011); Starr (2019); Marx and Fleming (2012); Samila and Sorenson (2011); He (2021).

<sup>2</sup><https://www.ftc.gov/news-events/news/press-releases/2023/01/ftc-proposes-rule-ban-noncompete-clauses-which-hurt-workers-harm-competition>

corporate employers of these inventors provide measures of industry affiliation. Third, inventors are highly skilled individuals and, as such, are likely affected by NCAs. Fourth, patent data provides measures of a technology dimension as well as a time series measure of productivity (e.g. citations received and the economic value based on employers' market reactions to patent grants) on a granular level.

Staggered changes of NCA enforceability across U.S. states provide variation for estimating causal effects. In a staggered difference-in-differences event time regression, increases in NCA enforcement are positively related to the probability that an inventor moves to a more distant product market. The economic magnitudes of the event study indicate that on average 1.5 out of 100 inventors move to another industry *per year*, an increase of 35%. These results hold using several industry definitions such as SIC and NAICS codes as well as textual-based definitions of product markets. The baseline regression uses inventor and year fixed effects, and thus exploits the staggered timing of 9 NCA enforcement increases across states either in the form of precedent-setting court cases or state laws. There is no effect for decreases in NCA enforcement.

Econometric theory provides guidance on the event study design: I compare treated inventors (i.e. those exposed to an increase in NCA enforceability) to never-treated in an event time framework (Baker et al. 2022; Borusyak et al. 2021, de Chaisemartin and d'Haultfoeuille 2021, Callaway and Sant'Anna 2021, Sun and Abraham 2021). I match treated inventors to control inventors based on their quality as measured by number of patents and the number of citations received, as well as the technology they patent in. Inventors move to more distant product markets after NCAs become more enforceable. Consistent with a causal interpretation of the results, there are no pre-trends.

It would be problematic, if the introduction of state-level legislation is due to economic and potentially unobserved reasons. I address the potential endogeneity of state-level shocks by using within state-year variation in the *intensity* in treatment. Specifically, I

construct and validate a firm-level proxy, based on 10-K and 10-Q filings, whether an employer heavily relies on NCAs. If inventors indeed bypass their NCA and move to more distant product markets, then inventors employed at firms that heavily rely on such agreements should be more affected. In a triple-differences regression, I include state-year fixed effects, and show that the effect is confined to inventors whose employers do rely on NCAs. This is in line with a causal interpretation of the results. I also provide evidence that inventors who move after an increase in the enforcement of NCAs subsequently work for firms that are less likely to rely on NCAs. Inventors seem to avoid NCAs in their future employment.

The natural follow-up question to ask is: What is the effect of NCA-constrained reallocation on the productivity of inventors? On one hand, it might be beneficial to society if increased inter-industry mobility leads to more idea recombination, and thus more innovation. On the other hand, inventors might perform worse after a NCA-constrained industry move. In a difference-in-differences analysis, those inventors who move (i.e. leave) to more distant product markets subsequently perform worse compared to those who do not (i.e. stay). I compare all inventors who are affected by more enforceable NCAs, however one subgroup decides to stay and another leaves to more distant product markets. This result thus does not allow for a causal interpretation as it relies on a revealed choice. Those inventors who stay patent with similar quality before and after. Those inventors who move to another industry subsequently perform worse as measured by the economic value of patents as well as citation-weighted patents. There does not seem to be a negative selection into moving to a more distant product market: inventors who move and those who stay are virtually identical and patent with similar quality before an NCA enforcement increase. Only afterwards a performance gap emerges.

To shed some light on this finding, I subsequently analyze what characterizes NCA-constrained industry movers. I compare NCA-constrained to other, unconstrained, in-

dustry movers. First, I show that inventors who move to more distant product markets also subsequently patent in, what to them are, unfamiliar technologies. Next, I calculate a measure for matching quality between inventors and their new employers based on patent technologies. The technological similarity between inventor and her new employer is reduced by 20% after an increase in NCA enforcement. Regulatory frictions in the form of NCA enforcement and the associated limited choice set of inventors thus leads to a lower matching quality in the labor market.

Since NCAs are usually expiring 1-2 years after the termination of the employment contract, an employee faces the following trade-off: Either be able to move immediately after contract termination to a firm which is further away in the product market. Alternatively, an inventor can terminate the employment contract and wait until the NCA expires to join a close competitor. I confirm the presence of the latter part of this trade-off, as the duration between two employment spells increases after an increase in NCA enforcement, especially for inventors who move to close industry competitors.

I generalize my findings and show that among the universe of all industry switching events, inventors perform *better* when they move across industries. Inventors are subsequently even more productive when there is a high product market as well as technology similarity. From a social planner point of view, to the extent employers retain incentives to invest in their human capital, regulation should foster inventor mobility.

Taken all this evidence together paints the picture that increased NCA enforcement leads to some reallocation of inventors to more distant product markets and detrimental productivity effects. The results emphasize a distinction between ex-ante and ex-post effect of labor market regulation. Ex-ante, NCAs are designed to incentivize employers to invest in their employees. Ex-post however, NCAs create a hold-up problem and shift bargaining power to employers. Inventors cannot credibly threaten to move to another firm and retain industry-specific human capital. It might thus be optimal for them to

leave and retain a higher share of their productivity output.

This paper contributes to several strands of literature. First, on real effects of labor market frictions. Previous research has shown that NCAs lead to lower labor mobility (Fallick et al. (2006); Marx et al. (2009); Balasubramanian et al. (2020)), as well as a brain drain of enforcing states (Marx et al. (2015)). In contrast to lower labor mobility, by focusing on a product market dimension, I instead show *higher* labor market mobility. Inter-mobility increases, as inventors respond to NCAs by moving to firms in other industries. The paper is thus closely related to Marx (2011), who provides survey evidence consistent with the empirical results presented in this paper. My setting allows to analyze long run employment outcomes and an important outcome for society: productivity of labor, in this context innovation output.

I also add to the allocation of labor literature (Babina et al. (2020); Babina (2020); Hombert and Matray (2017); Hombert and Matray (2018)). I show how labor market frictions can lead to some reallocation of labor in the economy, which is likely an unintended consequence for policy makers in the context of NCA enforcement. Lastly, I add to the literature on firm and industry boundaries and show that labor market regulation in the form of NCA can have profound impacts on career choices of employees. In terms of productivity of labor and firm boundaries (Seru (2014); Hacamo and Kleiner (2022)), while unconstrained inter-industry mobility seems to be beneficial for society, NCA-constrained industry mobility is detrimental.

## 2. Data

### *2.1. Employment Histories of Corporate Inventors*

I obtain data on corporate innovation from 1976 until 2020 from two sources. I obtain patents matched to firms from Kogan et al. (2017), commonly referred to as KPSS. This

list is complemented with the DISCERN database of Arora et al. (2021).<sup>3</sup> The first dataset is thus a list of patent numbers and an associated unique corporate identifier. The next step is to match individual inventors to these patents. The United States Patent and Trademark Office (USPTO) provides detailed data on patents such as who invented which patents, the location of the inventor, and the application year which is used to proxy for innovation generation. Most importantly, the USPTO provides disambiguated inventor-level data.<sup>4</sup> Disambiguated data allows researchers to track individual inventors over time. I obtain this data from [patentsview.org](https://patentsview.org).

## *2.2. Non-Compete Agreements: Institutional Details and Data on Enforcement Changes*

What exactly are Non-Compete Agreements? A NCA usually puts limitations on industry, geographic reach (which ranges from a well defined radius, a state, country or even worldwide), and duration (mostly 1-2 years) of an employee. The Appendix lists some examples of NCAs. Microvision states in the annual statement that the firm heavily relies on NCAs. Nuance Communications explicitly mentions that they prohibit employees "from working for an employer who is engaged in activities or offers products that are competitive with the activities and products of the company."

I summarize changes in state-level NCA enforcement in Table 1. I rely on Ewens and Marx (2018), who provide an extensive discussion on court rulings and legislative changes from 1985-2016.<sup>5</sup> Kini et al. (2021) is the second source of data. They extend a score of NCA enforceability across states originally developed by Garmaise (2011) to the years

---

<sup>3</sup>The KPSS data with matched patent data is updated until the end of 2020 and available here: <https://github.com/KPSS2017/Technological-Innovation-Resource-Allocation-and-Growth-Extended-Data>; The DISCERN database includes patents matched to firms (including subsidiaries) until 2015 and is available here: <https://zenodo.org/record/4320782>

<sup>4</sup>The provided data builds on previous efforts such as the NBER patent citation data file as well as disambiguated inventor-level data of Li et al. (2014).

<sup>5</sup>The data is available here: <https://github.com/michaelewens/Non-compete-Law-Changes>



1992-2014.

What happens when NCAs are more enforceable? Restrictions included in a NCA and what is ultimately enforceable can differ strongly. States such as California are famously opposed to enforcing NCAs. Florida is on the other end of the spectrum and enforces NCAs most strictly. Often, NCAs are enforceable conditional on passing a "reasonableness" test. After a 1996 legislative change, NCAs in Florida need to protect "legitimate business interests" in order to be enforceable. This clarified previous uncertainty and shifted power towards employers.<sup>6</sup>

For some specifications, I use data on firm-level reliance on NCAs. I proceed in similar fashion as Kini et al. (2021). First, I obtain form 10-K and form 10-Q filings from EDGAR. I parse and strip the text of figures, pictures and html tags. I obtain identifiers from historical Compustat from WRDS servers, as well as a historical CIK-CUSIP mapping.<sup>7</sup> Form 10-K and form 10-Q filings commonly include NCAs of senior employees at a firm. I use the information to construct a panel of US corporations with an indicator variable equal to 1 if the corporate employer mentions the use of a NCA either in an executive/board contract or mentions the reliance on NCAs in the annual statement. I do this similar to Acikalin et al. (2022) and screen for instances of "non-compete agreement", "covenant not to compete", etc. I compute a panel on a firm-year level and construct a dummy variable equal to one if a firm relies on NCAs. This panel is comprehensive from the year 1996 onwards. I compare the frequency of NCA use with the literature. In

---

<sup>6</sup>There are many other examples on how NCAs become more enforceable. For example, the Ohio Supreme Court decided in 2004 that a sufficient consideration to uphold a NCA was continued employment. Another example is Idaho, which changed to a so-called "blue pencil" rule where a judge can modify the contract to make it more reasonable whereas in other states one invalid part of a NCA renders the whole agreement void. Interested readers should refer to Marx and Fleming (2012) for history and background literature. Ewens and Marx (2018) provide extensive details on individual court cases and legislative changes

<sup>7</sup>Ekaterina Volkova provides this mapping here: <https://sites.google.com/view/evolkova/data-cik-cusip-link>

my sample, 54% of firms rely on NCAs.<sup>8</sup> This is close to previous survey and empirical evidence. To compare, Starr et al. (2021) find that almost one fifth of all employees in the US are bound by NCAs. The share of NCAs for technical workers is around 50% (Marx 2011), 62.5% for CEOs with employment contracts (Kini et al. 2021), and 70% for corporate executives (Garmaise 2011).

### *2.3. Sample Construction and Descriptive Statistics*

The sample construction starts with all corporate innovation from the two sources mentioned previously. This gives a mapping with a unique identifier for each corporation and the patent number assigned by the USPTO. In principle, data on corporate patents is available from 1926, however the USPTO provides digitized patent information with disambiguated inventor data from 1976 onwards, which marks the start of the sample. In a next step, I merge the inventors of all corporate-owned patents with the disambiguated inventor data. The resulting dataset is a panel at the inventor-year level.

I identify industry employment changes as follows: The inventor files two subsequent patent applications for a different employer with a different industry affiliation. I follow the previous literature (Song et al. 2003; Marx et al. 2015) and use the yearly midpoint between two subsequent patents to proxy for the year of employment change.<sup>9</sup> The application year rather than the grant year is used, in order to have a more timely measure of innovation creation<sup>10</sup> and employment changes. I remove inventors from the sample who only patent once in the sample period. All regressions include inventor fixed-effects,

---

<sup>8</sup>This data is available to download on the authors website.

<sup>9</sup>Patent-based measures of employment histories thus include measurement error. On average, there is a gap of 0.9 years between two subsequent patents filed by the same inventor. The median number of years between two filings is zero. When alternatively limiting the sample to patent filings with at most one year between two subsequent patents, the results become stronger.

<sup>10</sup>This avoids a lag between applying for and being granted a patent, which is 4 years at the median.

so these inventors would not provide any meaningful variation on labor market employment.

Innovation is an ideal laboratory for several reasons: First, the universe of corporate patenting in the last 40 years provides tractable employment histories of inventors based on granted patents.<sup>11</sup> In the context of this paper, it also seems plausible that highly skilled human capital such as inventors, are likely to be affected by NCAs.

Second, patent documents also capture the location (on a city level) of each inventor listed on a patent. This greatly improves measurement for empirical research that uses location-based variation in treatment. Previous studies often proxy for location using the headquarter location of the employer.

Third, corporate innovation data allows to look at two distinct but related dimensions: measures of product and technology similarity. Product markets for employers are readily available as SIC and NAICS industry codes, as well as text-based industry classifications following Hoberg and Phillips (2010) and Hoberg and Phillips (2016). The latter is a measure with desirable econometric properties which can be used to measure the similarity between the old and the new employers of inventors. Patent data provides technology classifications of every patent (e.g. CPC, WIPO, IPC). This is useful as it allows researchers to compute technology similarities between the patents of inventors and their employers.

Fourth, and lastly, patent data provides a useful metric on a patent basis to measure the productivity of an inventor over time. A researcher can thus observe the number of patents, the number of citations received<sup>12</sup> Lerner and Seru (2021), and the economic

---

<sup>11</sup>The caveat here is that non-patented innovation is unobserved and thus overall labor mobility is likely underestimated

<sup>12</sup>Newer patents mechanically have less time to accumulate citations than older patents. In order to mitigate this problem I follow Hall et al. (2005), Dass et al. (2017), and Lerner and Seru (2021). When using citations as a measure of innovation output, I adjust all cumulative citations received until June 2022 and perform a truncation adjustment by adjusting with respect to year and technology class.

value of patents (Kogan et al. 2017). The latter measure is available for all patents granted until 2020 and is comprised of a USD value on a patent basis. The measure is calculated using stock market reactions of listed patent assignees on the grant day of a patent. This measure is available before and after an employment change.

Table 2 shows descriptive statistics. The timeframe is from 1976-2018. In total, the matched sample includes 436,382 inventor-year observations. This includes data of around 1.8 million patents of roughly 600,000 inventors. The sample includes 6,345 listed firms as employers. An industry move, defined on a SIC 4-digit industry, appears in 4% of observations. I compare this to the previous numbers in the literature such as Melero et al. (2017) who show based on patent application data, that inventors move employers (without considering industries) at a rate of 10% per year. The mean number of patents granted is 5.5 and the number of truncation adjusted citation-weighted patents is 9.8.

### 3. Staggered State-Level Changes in Non-Compete Enforcement

#### 3.1. Event Study and Dynamic Effects

I estimate the following event study regression:

$$IndustryChange_{i,t+1} = \sum_{k=-5}^{k=+10} \delta_k \times D_k + \sum_{k=-5}^{k=+10} \beta_k \times D_k \times NCAIncrease_{s,t} + \theta_i + \phi_t + \epsilon_{i,t} \quad (1)$$

where  $D_k$  are time dummies relative to the NCA enforcement increase, where  $i$  represent inventor  $i$ , located in state  $s$ , in year  $t$ . The dependent variable  $IndustryChange$  is equal to one if an inventor moves between two firms with different 4-digit SIC industry codes. The variables  $\theta$  and  $\phi$  are inventor and year fixed-effects, respectively. Year fixed-effects account for year-specific shocks to mobility. Inventor fixed-effects control for

time-invariant unobserved factors on the inventor level.

The coefficients of interest are  $\beta_k$  which capture the treatment indicator interacted with 4 pre-treatment dummies and 10 post-treatment dummies. All coefficients, if feasible, are estimated relative to one year before treatment.

I use nearest neighbor matching to compare treated and control inventors. I match inventors based on year of activity (whether they are currently employed at a firm), lagged number of patents, and lagged total citations. I use these two variables to match inventors of a similar quality. I also include patent technology to guarantee that treatment and control inventors are exposed to similar technological shocks. I match the three nearest neighbors with replacement using the Mahalanobis distance. The analysis includes inventor as well as year fixed effects. I cluster standard errors on the inventor and year level. A two-way fixed effect estimation of a staggered difference-in-differences design are weighted averages of all possible two-group difference-in-differences estimators (Goodman-Bacon 2021). A potential problem are dynamic treatment effects when we compare early-treated to late-treated inventors (Baker et al. 2022). I follow recent econometric theory when exploiting state-level changes of Table 1. I compare treated with never-treated inventors. Thus, I compare inventors based in states that experienced increased enforcement of NCAs with clean controls: those inventors that did not experience any changes during the sample period. I use a number of recently proposed estimators such as Borusyak et al. (2021), de Chaisemartin and d’Haultfoeuille (2021), Callaway and Sant’Anna (2021), and Sun and Abraham (2021).

Figure 1 visualizes the results from Equation 1. The probability that an inventor changes industries increases in the first treatment year and we subsequently see a steady increase over time. On average, 1.5 inventors out of 100 move across industries per year, which is a 35% increase in the probability (mean value of SIC 3-digit mobility = 0.043). The alternative estimators are close to the OLS estimates. Figure A5 shows that there is no

effect when looking at decreased NCA enforcement.

### 3.2. *Non-Compete Agreements and Product Market Similarity*

The previous analyses rely on standard, fixed industry classifications such as SIC codes. In the following, I analyze whether the results generalize to a continuous version of industry similarity between two firms. I will rely on the textual based industry scores of Hoberg and Phillips (2016). This provides several improvements, such as 1) the industry definitions are not fixed over time and a continuous measure can vary between two identical firms across years, 2) the measure captures product market proximity irregardless of whether two firms are in the same industry or not. Standard classifications can only provide a 0 or 1, which means either two firms are in the same industry or they are not. The regression analyzes the question: Are inventors moving to employers which are further away from their old employers after an increase in NCA enforcement? Formally, I run the following regression:

$$y_{i,t} = \beta \times NCAIncrease_{i,t} + \phi_t + \epsilon_{i,t} \quad (2)$$

where  $y_{i,t}$  is the product market similarity between the previous and the new employer obtained from Hoberg and Phillips (2016). *NCAIncrease* is a dummy variable equal to one if the inventor is exposed to an increase in NCA enforcement. The sample is thus composed of all inventor mobility events. An inventors move is included in this regression as long as the inventor is based in the US and moves between two publicly listed firms with available data.

The results are shown in Table 3. Indeed, inventors exposed to increased NCA enforcement move to firm that are on average around -1.4% less similar in product market

similarity. To put this into context, within the universe of all inventors mobility events, the average product market similarity is equal to 6.8%. An increase in NCA enforcement thus leads to inventors moving to a firm that is 21% less similar in the product market compared to other inventor mobility events.

### 3.3. *Is the Effect Stronger in the Presence of Non-Compete Agreements?*

If NCA enforcement increases indeed lead to increased inter-industry mobility of inventors, then we would expect this effect to be stronger for inventors that are in fact bound to a NCA. Unfortunately individual level NCAs of inventors are unobserved. However, employers might differ on how much they rely on NCAs. I therefore compute a proxy on a firm level as follows: First, I obtain all annual and quarterly (10-K and 10-Q) reports of the employers in the sample from 1996-2018. These filings often include contract information and NCAs of senior employees. I compute a dummy equal to one if a firm relies on NCAs. The assumption is that to some extent, this firm-level dummy is a proxy for the presence of NCAs on an inventor level.

I formally test whether increased enforcement of NCAs leads to more industry mobility especially for those inventors employed at firms that use NCAs. For this purpose, I run a triple difference-in-differences regression as follows:

$$\begin{aligned} IndustryChange_{i,s,j,t+1} = & \beta \times NCAIncrease_{s,t} \times Post_{s,t} + \\ & \delta \times NCAIncrease_{s,t} \times Post_{s,t} \times EmployerNCA_{j,t} + \theta_i + \phi_t + \epsilon_{i,s,j,t} \end{aligned} \quad (3)$$

where *EmployerNCA* is an indicator variable equal to one if the employer heavily relies on NCAs. The parameter of interest is the triple interaction term  $NCAIncrease \times Post \times EmployerNCA$ . The variable is equal to one only for inventors in years after an increase in NCA enforcement, and additionally employed at firms who rely on NCAs.

Table 4 shows the results. The triple difference-in-differences term is positive and significant throughout. In economic terms, inventors in years following treatment and employed by NCA-relying firms experience an increase in industry mobility of 1.6%. The observed effect seems to be confined to inventors that are likely bound by NCAs. Subject to the constraint that the proxy for NCA on an employer level is imperfect, this is aligned with a causal interpretation of the results.

The regression includes  $State \times Year$  fixed effects, as well as Inventor fixed effects, which absorb many of the included interaction terms. The standard errors in this regression are clustered on an inventor level, however different levels of clustering, such as state or state-year do not change the results.

### *3.4. Does Increased Non-Compete Enforcement Cause Industry Mobility?*

In order to interpret the results as causal, the critical assumption is that treatment and control inventors are equally likely to change industries in the absence of treatment. As a necessary but not sufficient condition, I can visually assess whether treated and control inventors experience parallel pre-trends pre treatment. Reassuringly, the event study in Figure 1 shows that this is the case.

There are several reasons why we should not necessarily expect an immediate response: For example, the Florida law change in 1996 was explicitly only applicable to contracts signed after July 1, 1996.<sup>13</sup> This would mean that only employees that start working after this date are exposed to increased NCA enforcement. To increase the chances of legal protection, Ewens and Marx (2018) note that employers commonly require their employees to sign updated employment contracts, which might not lead to immediate

---

<sup>13</sup>However Ewens and Marx (2018) note that continued employment suffices as consideration.



responses. This is supported (for the Georgia 2010 case) by Ewens and Marx (2018) who interviewed an employment attorney, who stated: “when the new law went into effect (including our firm), many employers revised their employment and restrictive covenant agreements to take advantage of the law”. This practice would not lead to an immediate reaction. Setting the legal point of view aside, there are additional considerations for a delayed response from the point of view of employees. Inventors willing to move might not be well aware of the details of their NCA. They might learn about the increased enforcement of NCAs years after. An employee is prohibited from joining a close competitor 1-2 years *after* the termination of the contract. Assuming that the desire to work for a new employer is uniformly distributed across inventors, an inventor who wishes to move faces the following trade-off: terminate the contract and wait until the NCA expires or alternatively join a firm in a different industry. Thus, there is no reason we should expect sudden effects, but rather an increase over time which leads to a new equilibrium in the labor market.

There is significant uncertainty involved in the variation I use. Bishara (2011) extensively analyzes the legal background on the enforceability on non-compete agreements. He notes that it can be difficult to predict the consequences for a departing employee when she joins an out-of-state competitor. It is thus often an open question to what extent non-compete agreements are enforceable. The observed effects might also show subjective employee behavior rather than clear-cut labor regulatory constraints.

A potential problem for a causal interpretation is whether state legislative changes are correlated with other factors that determine industry mobility. State legislative changes might be problematic if the desired policy change is anticipated. There are two reasons why this is unlikely to be a threat to identification in my setting. First, Jeffers (2017) shows that the state-level shocks are unrelated to macroeconomic conditions and cannot be easily predicted. Given the focus on inter-industry mobility, the positive effect on in-

dustry changes of inventors is a plausible unintended consequence of regulatory changes. Nevertheless, the analysis is repeated and is robust when only considering court cases, which are arguably more exogenous compared to state legislative changes.

Overall, the findings are consistent with interview evidence of Marx (2011), where employees admit to taking career detours given that their NCA prohibited them from working in similar industries for the next 1-2 years. Marx (2011) interviewed one speech recognition professional who left the industry after being fired by his co-founder. "Well, if I'm ever gonna leave, what would I do for 2 years if I couldn't do speech recognition?"

### *3.5. Inventors move to Employers who rely less on NCAs*

If inventors indeed experience NCA-constrained industry mobility, are they more likely to move to firms that do not rely on NCAs? To answer this question, I again estimate equation 2.  $y_{i,t}$  is equal to one if inventor  $i$  in year  $t$  moves to a firm which heavily relies on NCAs. As before, this is a dummy variable equal to one if a firm references such contracts either in firm balance sheet statements (10-Ks) or employment contracts obtained from 10-Q filings. The variable *NCAIncrease* is equal to one if the inventor is located in a state which experiences an increase in NCA enforceability. The sample is composed of all inventors who move across firms, so this specification allows to compare differences in the type of employer inventors move to using the shock as a treatment indicator.

The results are shown in Panel A of Table 5. An inventor exposed to increased NCA enforcement moves to a firm that is around 5% less likely to be NCA intensive. Across all inventor mobility events, the mean value is equal to 47%. The effect thus indicates a 10% decrease in firm-level NCA intensity. Inventors seem to move to firms that are less likely to rely on NCAs. This result is consistent with the interpretation that to some

extent, the mobility events might be NCA-constrained.

#### **4. NCA-Constrained Industry Moves Lead to Lower Productivity**

What are the effects on productivity if inventors are moving industries in response to NCA enforcement increases? On one hand, it might be beneficial to society if increased inter-industry mobility leads to more idea recombination, and thus higher or more high quality innovation output. On the other hand, inventors might perform worse after a NCA-constrained industry move. For this purpose, I visually compare innovation output of inventors.

In a difference-in-differences style visualization, I compare those inventors who move to more distant product markets (leave) to those who do not (stay). All inventors in this specification are treated, e.g. affected by an increase in NCA enforcement. I compare those inventors who move to those who do not, which means that the difference-in-differences compared two groups of inventors based on a revealed choice. Thus the following analysis is unable to make causal inferences, and should therefore rather be seen as purely descriptive.

I plot annual research productivity of inventors in Figure 2. We see a significant divergence in the quality of patents produced by affected inventors. The raw data is visualized in an event time framework, relative to an increase in NCA enforcement. Panel A shows the yearly economic value of patents of the inventor. Panel B shows citation-weighted patents.

Those inventors who move to more distant product markets subsequently perform worse. Inventors who stay are unaffected and patent with similar quality before and after.

Importantly, there does not seem to be a negative selection into moving to a more distant product market: inventors who move and those who stay are virtually identical and patent with similar quality before an NCA enforcement increase. Only afterwards a

performance gap emerges.

## 5. Channels

The following section will analyze how NCA-constrained industry mobility differs from unconstrained (absent any NCA enforceability changes) industry mobility. I define NCA-constrained as those inventors who move after an increase in NCA enforcement. Unconstrained industry mobility are industry mobility events of inventors in states that did not see increases in NCA enforcement. The following subsections will look at several dimensions: 1) how new employer-inventor matching characteristics differ, and 2) how inventors themselves react in terms of patenting and employment choices.

### 5.1. *NCA Enforcement leads to Worse Inventor-Firm Matching Quality*

In the following specification, I analyze whether inventors who experience an increase in NCA enforceability move to firms that are less similar to them not just on the product market, but also in a technology dimension. Patent data provides detailed data on technology subsections on the level of inventor as well as the new employer. Specifically, I calculate the following measure on technological similarity between inventor and employer:

$$techsimilarity(i, f) = \frac{if^T}{||i||||f||} \quad (4)$$

I define two vectors that include the distribution of previous patents across 130 technology subsections. I use the subsection of the Cooperative Patent Classification (CPC) scheme for this purpose, which includes 130 different technology subsections. I use all patents of the inventor up until the year before the industry move and all patents in the previous 5 years of the new employer. The technological similarity is equal to a cosine similarity of the two technology distribution vectors. The measure is bound between zero

and one, so it takes a value of zero if no patent section aligns between the employer and the inventor. It is equal to one if the distribution of the two vectors across technology subsections is identical. Technological similarity here is used as a proxy for matching quality between inventor and the firm. If the patent technology subsections of the firm and the patents of the inventors are similar, I assume it is a good match. I then estimate equation 2, where  $y$  is defined as the technological similarity between inventor  $i$  and firm  $f$ .

Results are shown in Panel B of Table 5. The patent technology cosine similarity is reduced by 0.08 for after an increase in NCA enforceability. Given the mean value of 0.4 of technology similarity, this is a reduction of around 20%. This highlights that the matching quality between inventors and employers seems to be much lower in the presence of increased NCA enforcement.

### 5.2. NCA Enforcement leads to Patenting in Unfamiliar Technologies

In the following, I look at whether inventors patent in technologies that are new to themselves. The specification is similar to the previous, however in an event time framework. Formally:

$$y_{i,t} = \sum_{k=-5}^{k=+10} \delta_k \times D_k + \sum_{k=-5}^{k=+10} \beta_k \times D_k \times NCAIncrease_{i,t} + \theta_i + \phi_t + \epsilon_{i,t} \quad (5)$$

where  $y_{i,t}$  is a dummy variable equal to one if the inventor is granted a patent in a new technology class in which she did not previously own a patent. Each additional patent is compared to all previous patents by the inventor. If the patent includes a technology class that is new, the dummy variable will be set to one, and zero otherwise. The treatment indicator is set to one if the inventor is moving to another firm in another industry after an increase in NCA enforcement. Control inventors are those who move to another firm in another industry, however disregarding any changes in NCA enforcement.

The results are presented in Figure 4. After a constrained industry move, inventors are more likely to patent in unfamiliar technology subsections. The probability of patenting in unfamiliar technology is increased by more than 5% in the years following industry move.

### 5.3. *Non-compete Agreement Enforcement leads to Longer Employment Gaps*

NCA usually have a period of 1-2 years after the end of the employment contract during which employees are not allowed to move to a close competitor. An inventor who wishes to work for another firm faces the following trade-off: Wait until the NCA expires or move to a firm that is further away in the product market. I try to model this trade-off in a regression and hypothesize the following: When NCAs become more enforceable, inventors wait some additional time until they can more easily join a close competitor. This effect should especially be present for within industry moves as they are most likely to be affected by NCAs. I use the following specification:

$$EmploymentGap_{i,t} = \beta \times NCAIncrease_{i,t} + \delta \times Within_{i,t} + \gamma \times NCAIncrease_{i,t} \times Within_{i,t} + \theta_i + \epsilon_{i,t} \quad (6)$$

where *NCAIncrease* is a dummy variable equal to one if the industry move is after an increase in NCA enforcement. *Within* is a dummy variable equal to one if the inventor moves to a firm that is in the same SIC 4-digit industry. *EmploymentGap* is the distance in years when an inventor moved between two firms. This is observed in the data by looking at two subsequent patent filing years to different firms by an inventor.

The results are presented in Table 6. Being constrained by increased NCA enforcement seems to have a general positive impact on employment gaps. This is consistent

with the general purpose of NCAs. Moving within the same industry seems to be associated with a reduction of the gap by a little less than one year on average. Most importantly, and consistent with the hypothesis, the interaction of NCA enforcement increase and within industry move is positive and significant. An increase in NCA enforceability especially leads to longer employment gaps for those inventors who move to close industry peers.

## 6. Industry Mobility and Productivity Across Product and Technology Markets

What are the general effects on productivity if inventors moving across firms? I introduce a new regression, designed to capture productivity changes after employment changes on the level of individual inventors:

$$Productivity_{i,t} = \beta_i \times Post_{i,t} + \theta_i + \epsilon_{i,t} \quad (7)$$

where  $Productivity_{i,t}$  measures the yearly productivity of inventors based on the economic value of patents or citation-weighted patents. The innovation output is firm specific, which means that all patents of the old employer and all patents of the new employer are included in the regression. The dummy variable  $Post$  is equal to one for years after the inventor has moved to another employer. I estimate the regression for each inventor mobility event, i.e. I run all regressions separately. The coefficient  $\beta_i$  thus captures the extent to which the inventor is more or less productive after moving to another employer. This specification has several desirable properties. First, the inclusion of inventor fixed effects removes the non time-varying quality of the inventor. The specification thus uses patent output of the inventor before and after the move to better tease out productivity differences. Second, the specification is not prone to outliers as

each inventor mobility event receives equal weight. Third, the coefficient can be interpreted in an intuitive fashion: How much more/less productive is the inventor after the employment change?

I then use the beta coefficients from these regressions in the following regression:

$$ProductivityCoefficient_{i,f} = \beta_k \times Product_{i,f} + \delta_k \times Technology_{i,f} + \theta_i + \epsilon_{i,f} \quad (8)$$

where  $ProductivityCoefficient_{i,f}$  is defined as the beta coefficient from the inventor productivity regression. It captures to what extent the inventor performs better or worse after moving to another employer. The two variables of interest are product market similarity obtained from Hoberg and Phillips (2016) and the technology similarity calculated from patenting data. I use the last 5 years of patents of the new and the old employer and calculate a cosine similarity based on technology subsections.

The results are shown in Table 7. Both product market as well as technology similarity are positively correlated with future productivity. This is well aligned with the previous evidence. NCA enforcement can be seen as a constraint primarily on the product market dimension. NCA contract limit employees to freely move to close industry peers. The previous evidence also showed that NCA-constrained employment changes are also associated with lower matching quality. Both of these effects are likely to have negative consequences for future productivity.



## 7. Conclusion

Inventors evade their NCAs by moving to new employers in more distant product markets. NCA enforcement increases have a positive causal effect on the probability that an inventor moves across industries. Stronger NCA enforcement leads to some reallocation of human capital in our economy. NCA-constrained industry changes have detrimental effects on future productivity of inventors. This paper highlights negative consequences of human capital reallocation in response to more labor market regulation.

## References

- Acikalin, U., T. Caskurlu, G. Hoberg, and G. M. Phillips (2022). Intellectual property protection lost: The impact on competition and acquisitions. *SSRN Electronic Journal*.
- Arora, A., S. Belenzon, and L. Sheer (2021). Knowledge spillovers and corporate investment in scientific research. *American Economic Review* 111(3), 871–898.
- Babina, T. (2020). Destructive creation at work: How financial distress spurs entrepreneurship. *The Review of Financial Studies* 33(9), 4061–4101.
- Babina, T., P. P. Ouimet, and R. Zarutskie (2020). Ipos, human capital, and labor reallocation. *SSRN Electronic Journal*.
- Baker, A. C., D. F. Larcker, and C. C. Wang (2022). How much should we trust staggered difference-in-differences estimates? *Journal of Financial Economics* 144(2), 370–395.
- Balasubramanian, N., J. W. Chang, M. Sakakibara, J. Sivadasan, and E. Starr (2020). Locked in? the enforceability of covenants not to compete and the careers of high-tech workers. *Journal of Human Resources*, 1218–9931R1.
- Bishara, N. (2011). Fifty ways to leave your employer: Relative enforcement of covenants not to compete, trends, and implications for employee mobility policy. *University of Pennsylvania Journal of Business Law* 13(3), 751.
- Borusyak, K., X. Jaravel, and J. Spiess (2021). Revisiting event study designs: Robust and efficient estimation. *Working Paper*.
- Callaway, B. and P. H. Sant’Anna (2021). Difference-in-differences with multiple time periods. *Journal of Econometrics* 225(2), 200–230.
- Dass, N., V. Nanda, and S. C. Xiao (2017). Truncation bias corrections in patent data: Implications for recent research on innovation. *Journal of Corporate Finance* 44, 353–374.
- de Chaisemartin, C. and X. d’Haultfoeulle (2021). Difference-in-differences estimators of intertemporal treatment effects. *SSRN Electronic Journal*.
- Ewens, M. and M. Marx (2018). Founder replacement and startup performance. *The Review of Financial Studies* 31(4), 1532–1565.
- Fallick, B., C. A. Fleischman, and J. B. Rebitzer (2006). Job-hopping in silicon valley: Some evidence concerning the microfoundations of a high-technology cluster. *The Review of Economics and Statistics* 88(3), 472–481.
- Garmaise, M. J. (2011). Ties that truly bind: Noncompetition agreements, executive compensation, and firm investment. *The Journal of Law, Economics, and Organization* 27(2), 376–425.

- Goodman-Bacon, A. (2021). Difference-in-differences with variation in treatment timing. *Journal of Econometrics* 225(2), 254–277.
- Hacamo, I. and K. Kleiner (2022). Forced entrepreneurs. *The Journal of Finance* 77(1), 49–83.
- Hall, B. H., A. Jaffe, and M. Trajtenberg (2005). Market value and patent citations. *The RAND Journal of Economics* 36(1), 16–38.
- He, Z. (2021). *Motivating Inventors: Non-competes, Innovation Value and Efficiency*.
- Hoberg, G. and G. Phillips (2010). Product market synergies and competition in mergers and acquisitions: A text-based analysis. *The Review of Financial Studies* 23(10), 3773–3811.
- Hoberg, G. and G. Phillips (2016). Text-based network industries and endogenous product differentiation. *Journal of Political Economy* 124(5), 1423–1465.
- Hombert, J. and A. Matray (2017). The real effects of lending relationships on innovative firms and inventor mobility. *The Review of Financial Studies* 30(7), 2413–2445.
- Hombert, J. and A. Matray (2018). *The Long-Term Consequences of the Tech Bubble on Skilled Workers’ Earnings*.
- Jeffers, J. (2017). The impact of restricting labor mobility on corporate investment and entrepreneurship. *SSRN Electronic Journal*.
- Kini, O., R. Williams, and S. Yin (2021). Ceo noncompete agreements, job risk, and compensation. *The Review of Financial Studies* 34(10), 4701–4744.
- Kogan, L., D. Papanikolaou, A. Seru, and N. Stoffman (2017). Technological innovation, resource allocation, and growth. *The Quarterly Journal of Economics* 132(2), 665–712.
- Lerner, J. and A. Seru (2021). The use and misuse of patent data: Issues for finance and beyond. *The Review of Financial Studies*.
- Li, G.-C., R. Lai, A. D’Amour, D. M. Doolin, Y. Sun, V. I. Torvik, A. Z. Yu, and L. Fleming (2014). Disambiguation and co-authorship networks of the u.s. patent inventor database (1975–2010). *Research Policy* 43(6), 941–955.
- Lipsitz, M. and E. Starr (2021). Low-wage workers and the enforceability of noncompete agreements. *Management Science* 68(1).
- Malsberger, B. M., S. M. Brock, and A. H. Pedowitz (2016). *Covenants not to compete: A state-by-state survey* (10 ed.). Bloomberg.
- Marx, M. (2011). The firm strikes back. *American Sociological Review* 76(5), 695–712.

- Marx, M. and L. Fleming (2012). Non-compete agreements: Barriers to entry ... and exit? *Innovation Policy and the Economy* 12, 39–64.
- Marx, M., J. Singh, and L. Fleming (2015). Regional disadvantage? employee non-compete agreements and brain drain. *Research Policy* 44(2), 394–404.
- Marx, M., D. Strumsky, and L. Fleming (2009). Mobility, skills, and the michigan non-compete experiment. *Management Science* 55(6), 875–889.
- Melero, E., N. Palomeras, and D. Wehrheim (2017). The effect of patent protection on inventor mobility. *SSRN Electronic Journal*.
- Samila, S. and O. Sorenson (2011). Noncompete covenants: Incentives to innovate or impediments to growth. *Management Science* 57(3), 425–438.
- Seru, A. (2014). Firm boundaries matter: Evidence from conglomerates and r&d activity. *Journal of Financial Economics* 111(2), 381–405.
- Song, J., P. Almeida, and G. Wu (2003). Learning-by-hiring: When is mobility more likely to facilitate interfirm knowledge transfer? *Management Science* 49(4), 351–365.
- Starr, E. P. (2019). Consider this: Training, wages, and the enforceability of covenants not to compete. *Industrial and Labor Relations Review* 72 (4), 783–817.
- Starr, E. P., J. J. Prescott, and N. D. Bishara (2021). Noncompete agreements in the us labor force. *The Journal of Law and Economics* 64(1), 53–84.
- Sun, L. and S. Abraham (2021). Estimating dynamic treatment effects in event studies with heterogeneous treatment effects. *Journal of Econometrics* 225(2), 175–199.

**Table 1 – Overview of State-Level Changes in Non-Compete Enforceability**

This table provides an overview of changes of enforceability of NCAs. The changes are based on Ewens and Marx (2018) as well as Kini et al. (2021). Ewens and Marx (2018) gather data from Malsberger et al. (2016) and consult lawyers. Kini et al. (2021) extend a score of NCA enforceability across states originally developed by Garmaise (2011) to the years 1992-2014. To do so, they use data provided by the law firm Beck Reed Riden LLP. Those two sources together are a comprehensive list of changes during the years 1985-2016. Panel A includes states that increased the enforceability of NCAs. Panel B includes decreases. Panel C includes states that had several changes in the enforceability of NCAs. Brackets in Panel C indicate the direction of the change, (+) equal to an increase in enforceability.

State	Case	Year
<b>Panel A: Increase of Non-Compete Agreement Enforcement</b>		
AL	Alabama legislature	2016
AR	Arkansas legislature	2016
FL	Florida legislature	1996
GA	Georgia legislature	2011
ID	Idaho legislature	2008
MI	Michigan legislature	1985
OH	Lake Land v. Columber	2004
VT	Summits 7 v. Kelly	2005
VA	Assurance Data Inc. v. Malyevac	2013
<b>Panel B: Decrease of Non-Compete Agreement Enforcement</b>		
MT	Wrigg v. Junkermier	2009
NH	New Hampshire legislature	2011
NV	Golden Rd. Motor Inn. v. Islam	2016
OR	Oregon legislature	2008
SC	Poynter Investments v. Century Builders of Piedmont	2010
UT	Utah legislature	2016
<b>Panel C: Repeated In-/Decreases of Non-Compete Agreement Enforcement</b>		
CO	Luncht's Concrete Pumping v. Horner (+)	2011
CO	see Kini et al. (2021) (-)	2013
IL	Fire Equipment v. Arredondo (+)	2011
IL	Fifield v. Premier Dealership Servs. (-)	2013
KY	Gardner Denver Drum v. Peter Goodier and Tuthill Vacuum and Blower Systems (+)	2006
KY	Creech v. Brown (-)	2014
LA	Shreveport Bossier v. Bond (-)	2001
LA	Louisiana legislature (+)	2003
TX	Light v. Centel Cellular (-)	1994
TX	Baker Petrolite v. Spicer (+)	2006
TX	Mann Frankfort Stein & Lipp Advisors v. Fielding (+)	2009
TX	Marsh v. Cook (+)	2012
WI	Star Direct v. Dal Pra. (+)	2009
WI	Runzheimer International v. Friedlen (-)	2015

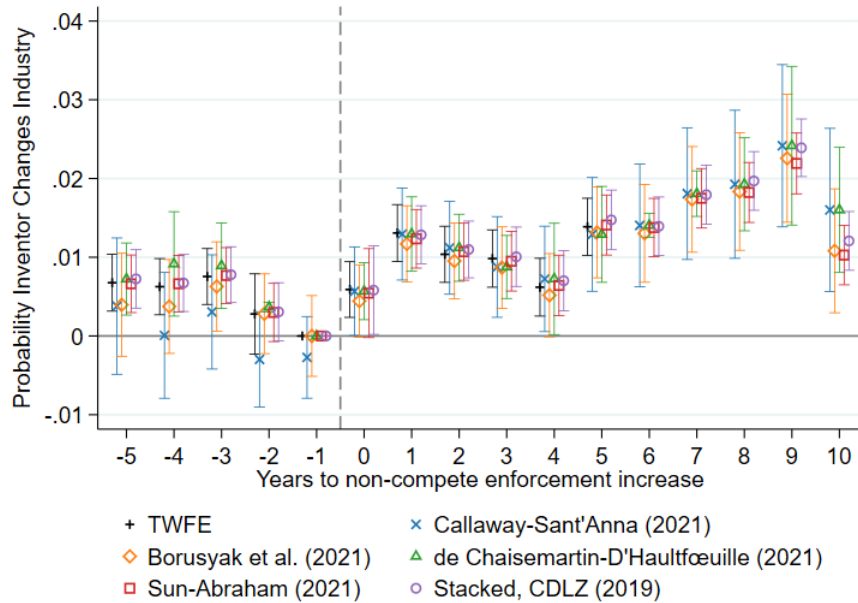
**Table 2 – Summary Statistics**

The unit of observation is on an inventor-year level. Variable definitions are provided in the Appendix.

Variable	N	Mean	SD	Min	25%	50%	75%	Max
SIC-4 Industry Change	436,382	0.048	0.20	0	0	0	0	1
SIC-3 Industry Change	436,382	0.042	0.19	0	0	0	0	1
NAICS-6 Industry Change	436,382	0.044	0.19	0	0	0	0	1
NAICS-5 Industry Change	436,382	0.042	0.19	0	0	0	0	1
Employer NCA	322,896	0.49	0.50	0	0	0	1	1
$\ln(1 + \text{Economic Value of Patents})$	436,382	0.99	1.46	0	0	0	1.98	9.84
$\ln(1 + \text{Citation-Weighted Patents})$	436,382	0.36	0.69	0	0	0	0.37	9.78
Inventor Number Patents	436,382	5.55	13.06	0	1	2	5	1,805
Inventor Total Citations	436,382	9.78	94.23	0	0.25	1.80	6.86	94,890.93

**Figure 1 – Staggered State-Level Increases in Non-Compete Agreement Enforcement: Event Study and Dynamic Effects**

This figure reports the result of the difference-in-differences event study of equation 1. The sample is on an inventor-year level. The figure plots the coefficients of pre and post time dummies, interacted with a treatment indicator equal to one if the state increases NCA enforcement. The y-axis shows the coefficient on a regression on the variable *IndustryChange*, which is a dummy variable equal to one if the inventor moves to a firm in a different SIC 4-digit industry in that year. The sample compares treated to never-treated inventors. Inventors are matched based on employment year, number of patents, number of citations and patent technology class. I match the three nearest neighbors with replacement using the Mahalanobis distance. Variable definitions are provided in the Appendix. All regressions include Inventor and Year fixed effects. Standard errors are clustered by Inventor and Year. Confidence intervals are at the 5% level.



**Table 3 – Increased NCA Enforceability and Product Market Similarity**

This table reports the result of equation 2. The dependent variable is the textual similarity measure of Hoberg and Phillips (2016). The measure captures the similarity between the former and the new employer of each inventor mobility event. *NCAIncrease* is a dummy variable equal to one if the inventor experienced an increase in NCA enforcement. Variable definitions are provided in the Appendix. The regression includes Year fixed effects. Standard errors are clustered by Year. *t*-statistics are displayed in parenthesis. \*\*\*, \*\* and \* represents significance at the 1%, 5%, and 10% level, respectively.

Dependent variable:	Product Market Similarity
<i>NCAIncrease</i>	-0.014*** (-6.52)
Observations	126,124
R-squared	0.04
Year FE	YES

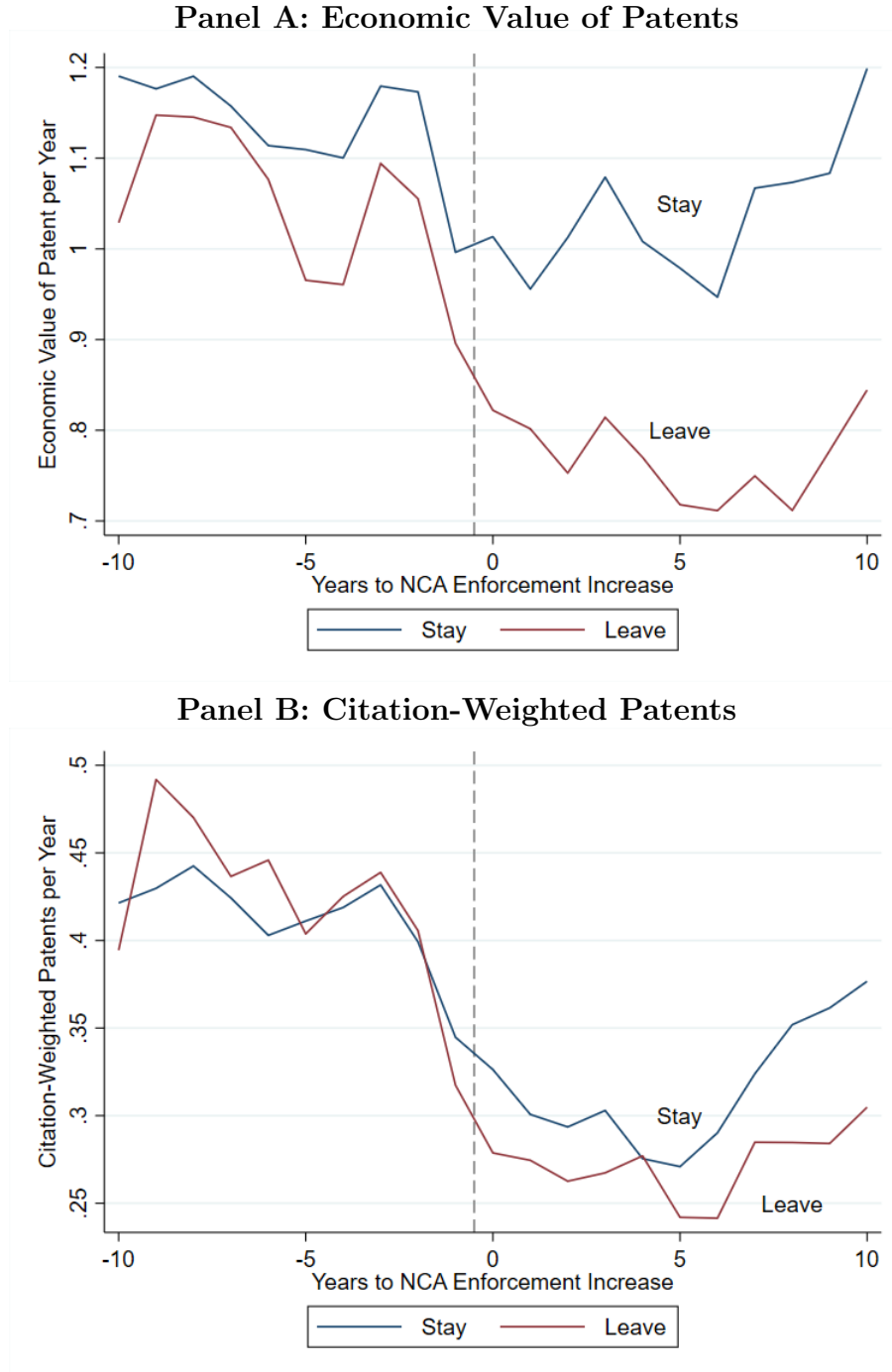
**Table 4 – Triple difference-in-differences: Inventors Employed at NCA Firms**

This table reports the triple-difference-in-differences fixed effect panel regression of equation 3. The sample is on an inventor-year level. *IndustryChange<sub>t+1</sub>* is a dummy variable equal to one if the inventor moves to a firm in a different industry. *NCAIncrease* is a dummy variable equal to 1 if the state increased the enforceability of NCAs. *EmployerNCA* is a dummy variable equal to one if the firm relies on NCA. This variable is obtained from 10-K and 10-Q filings where firms mention the use of NCA or senior level employee contracts are filed on EDGAR. In column (1) industry is defined on a SIC 4-digit level, in column (2) on a SIC 3-digit level, in column (3) on a NAICS 6-digit level and in (4) on a NAICS 5-digit level. Variable definitions are provided in the Appendix. All regressions include Inventor, as well as *State×Year* fixed effects. Standard errors are clustered by *State×Year*. *t*-statistics are displayed in parenthesis. \*\*\*, \*\* and \* represents significance at the 1%, 5%, and 10% level, respectively.

Dependent variable:	<i>IndustryChange<sub>t+1</sub></i>			
	(1)	(2)	(3)	(4)
<i>NCAIncrease×Post×EmployerNCA</i>	0.016*** (3.64)	0.016*** (3.82)	0.013*** (2.70)	0.012*** (2.61)
Observations	308,517	308,517	308,517	308,517
R-squared	0.13	0.13	0.13	0.13
Industry Definition	SIC 4-digit	SIC 3-digit	NAICS 6-digit	NAICS 5-digit
Inventor FE	YES	YES	YES	YES
<i>State×Year</i> FE	YES	YES	YES	YES

### Figure 2 – Productivity of Inventors: Stay vs. Leave

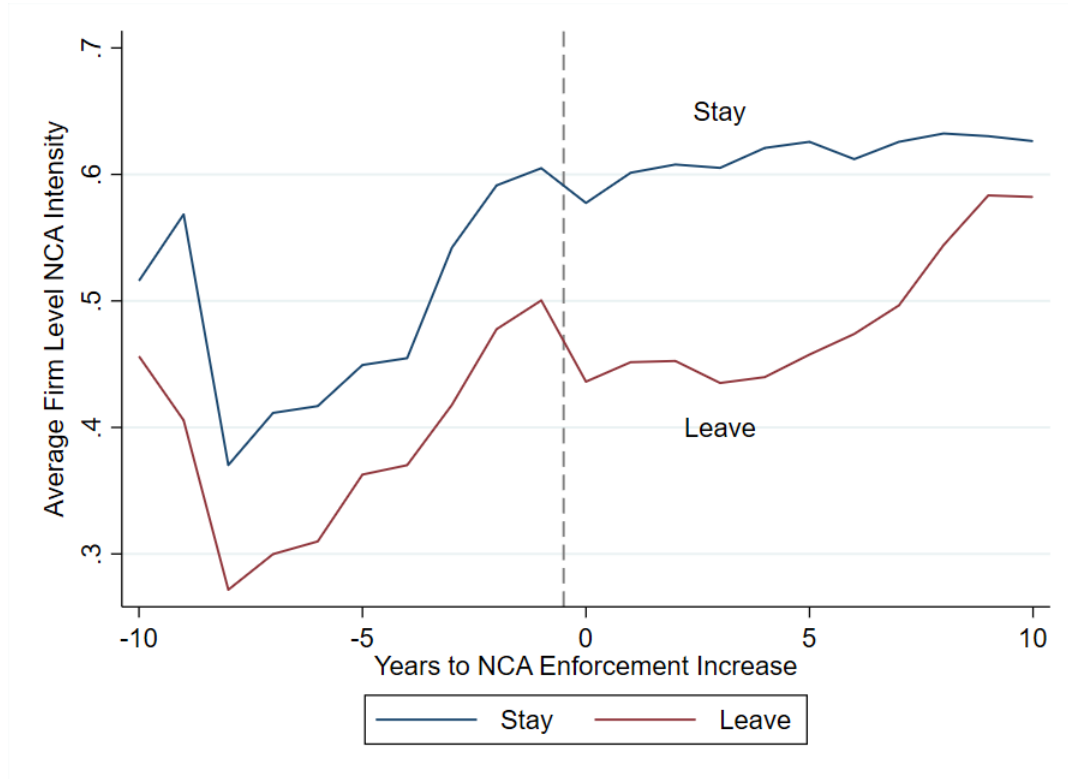
This figure visualized innovation output on an inventor-year level. Innovation output is measured by the economic value of patents (stock market reaction to patent grants) in Panel A, and citation-weighted patents in Panel B. Time is relative to *NCAIncrease*, which is the year when the state increased NCA enforcement. The graphs are visualizing raw data. Inventors are assigned into two groups: those who move to another more distant product market (leave) and those who do not (stay). A line is drawn at  $x = -0.5$ , between -1, the last untreated year and 0, the first treatment year. Variable definitions are provided in the Appendix.





**Figure 3 – Employer NCA Intensity: Stay vs. Leave**

This figure visualizes employer NCA intensity on an inventor-year level. Employer NCA intensity is a dummy variable equal to one if the employer explicitly mentions the use of NCAs in 10-Ks or 10-Qs. Time is relative to *NCAIncrease*, which is the year when the state increased NCA enforcement. The graphs are visualizing raw data. Inventors are assigned into two groups: those who move to another more distant product market (leave) and those who do not (stay). A line is drawn at  $x = -0.5$ , between -1, the last untreated year and 0, the first treatment year. Variable definitions are provided in the Appendix.



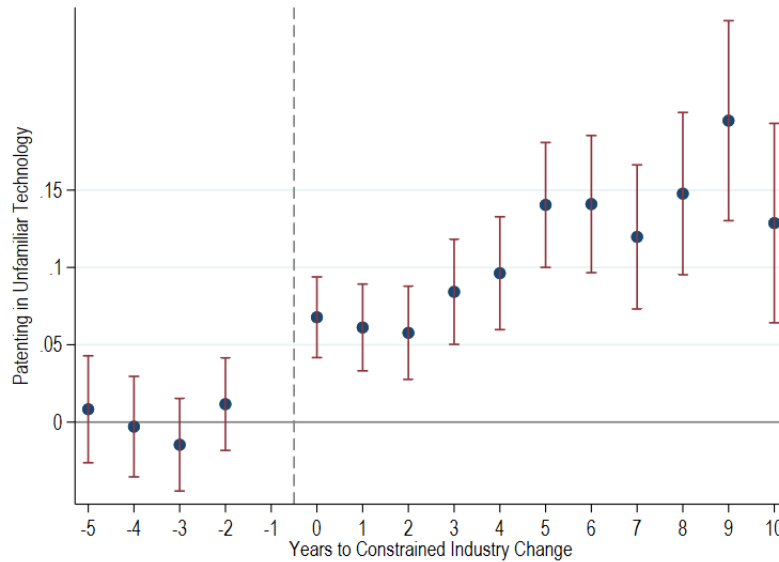
**Table 5 – Inventor-Employer Matching Quality**

This table reports the results of equation 2. For Panel A, *EmployerNCA*, a proxy for firm-level use of NCAs, based on information from form 10-Ks and 10-Qs. The variable is equal to one if the firm states that it relies on NCA or whether senior employees sign NCAs. For Panel B, *TechnologyCosineSimilarity* is the cosine similarity between the distribution of patent technology subsections of the inventor and the new employer. I use all previous patents of the inventor up until one year before the move and the last 5 years of patents for the new employer. Variable definitions are provided in the Appendix. *t*-statistics are displayed in parenthesis. \*\*\*, \*\* and \* represents significance at the 1%, 5%, and 10% level, respectively.

Technological Similarity	
Dependent variable:	Technology Cosine Similarity
<i>NCAIncrease</i>	-0.08*** (-6.67)
Observations	53,179
R-squared	0.03
Year FE	YES

**Figure 4 – Unfamiliar Technology**

This figure reports the result of equation 5. The dependent variable of interest is unfamiliar technology class, which is a variable equal to one if the inventor patents in a three digit patent technology class in which she did not patent previously. Variable definitions are provided in the Appendix. All regressions include inventor and year fixed effects. Standard errors are clustered by inventor. Confidence intervals are at the 5% level.



**Table 6 – NCA Enforceability and Employment Gap**

This table reports the result of equation 6. The dependent variable of interest is employment gap, which is the number of years between two patent filings for each employment move event in the sample. *NCAIncrease* is a dummy variable equal to one if the inventor moves from a state after an increase in NCA enforcement. *WithinIndustry* is a dummy variable equal to one if the industry move is within SIC 4-digit industries. Variable definitions are provided in the Appendix. *t*-statistics are displayed in parenthesis. \*\*\*, \*\* and \* represents significance at the 1%, 5%, and 10% level, respectively.

Dependent variable:	Employment Gap
<i>NCAIncrease</i>	0.89*** (9.70)
<i>WithinIndustry</i>	-0.95*** (-34.34)
<i>NCAIncrease</i> × <i>WithinIndustry</i>	0.48** (2.09)
Observations	263,838
R-squared	0.01
Year FE	YES
State FE	YES

**Table 7 – Inventor Productivity, Technology, and Product Market Similarity**

This table reports the result of equation 2. The dependent variable of interest is productivity, which captures to what extent the inventor is more productive after changing employers. This variable is measured by economic value of patents and citation-weighted patents following equation 7. *TechDistance* is a variable which captures the patent technology cosine similarity of the inventor and her new employer. *ProductDistance* captures the extent to which the old employer and the new employer are similar to each other following Hoberg and Phillips (2016). Variable definitions are provided in the Appendix. *t*-statistics are displayed in parenthesis. \*\*\*, \*\* and \* represents significance at the 1%, 5%, and 10% level, respectively.

Dependent variable:	Future Productivity (KPSS)	Future Productivity (Citations)
<i>TechDistance</i>	0.35* (1.80)	0.34*** (2.78)
<i>ProductDistance</i>	0.06* (1.72)	0.32*** (14.01)
Observations	18,429	18,429
R-squared	0.00	0.01
Year FE	YES	YES

# APPENDIX

## A. Variable Definitions

This section provides the variable definitions and the sources of the data.

1. *IndustryChange* – Equal to one if an inventor moves from one firm to another with a different industry classification. Obtained from employment histories of inventors from patentsview.org, patents assigned to corporations from Kogan et al. (2017) and Arora et al. (2021). SIC and NAICS industry codes are obtained from Compustat.
2. *NCA Increase/Decrease* – Equal to one if the state decreased, or increased the enforceability of NCAs. Obtained from Ewens and Marx (2018) and Kini et al. (2021).
3. *EmployerNCA* – Equal to one if the firm has mentioned the use of NCAs either in their annual statement or in employment contracts of senior executives. Obtained from 10-K and 10-Q filings downloaded from EDGAR.
4. *Product Market Similarity* – The cosine similarity of the textual product market descriptions between two listed corporations. Obtained from Hoberg and Phillips (2016) on the Hoberg and Phillips Data Library website:  
<https://hobergphillips.tuck.dartmouth.edu/>
5. *Employment Gap* – The difference in years between two subsequent filing years of two patents. The variable is defined when an inventor moves between two firms.
6. *Patent technology* – The Cooperative Patent Classification (CPC) section was used, which groups patents into 9 different patent sections. Obtained from patentsview.org.
7. *Patent technology subsection* – The Cooperative Patent Classification (CPC) subsection was used, which groups patents into 130 different patent subsections. Obtained from patentsview.org.
8. *Number of patents* – The number of patents of each inventor one year before treatment. Lagged by one year. Obtained from patentsview.org.

9. *Economic Value of Patents, or KPSS* – The economic value of patents, based on stock market reactions to patent grants. Obtained from Kogan et al. (2017), available here:  
<https://github.com/KPSS2017/Technological-Innovation-Resource-Allocation-and-Growth-Extended-Data>
10. *Patent Citations* – The number of received (forward) citations of all patents of an inventor one year before treatment. Citations were truncation adjusted using year and technology fixed effects on a patent basis. See Hall et al. (2005) and Lerner and Seru (2021) for details. Obtained from patentsview.org.
11. *Technology Cosine Similarity* – The cosine similarity of the patent technology subsection distributions. The measure includes all previous patents of an inventor and the patents in the last 5 years of the new employer. Obtained from patentsview.org.
12. *Unfamiliar Technology* – A dummy variable equal to one if the inventor did not previously patent in the technology subsection. Obtained from patentsview.org.
13. *Employment Gap* – The difference in years between two subsequent filing years of two patents. The variable is defined when an inventor moves between two firms.
14. *Future Productivity* – Obtained from inventor level regressions. The specification runs separate regressions on each inventor mobility event. The regression includes an inventor fixed-effect as well as a post dummy, which captures the extent to which the inventor is more/less productive after moving to a new employer. Productivity is either measured by the economic value of patents or citation-weighted patents.
15. *Technology Distance* – The cosine similarity of the patent technology subsection distributions. The measure includes all patents in the last 5 years of the old employer and the new employer. Obtained from patentsview.org.

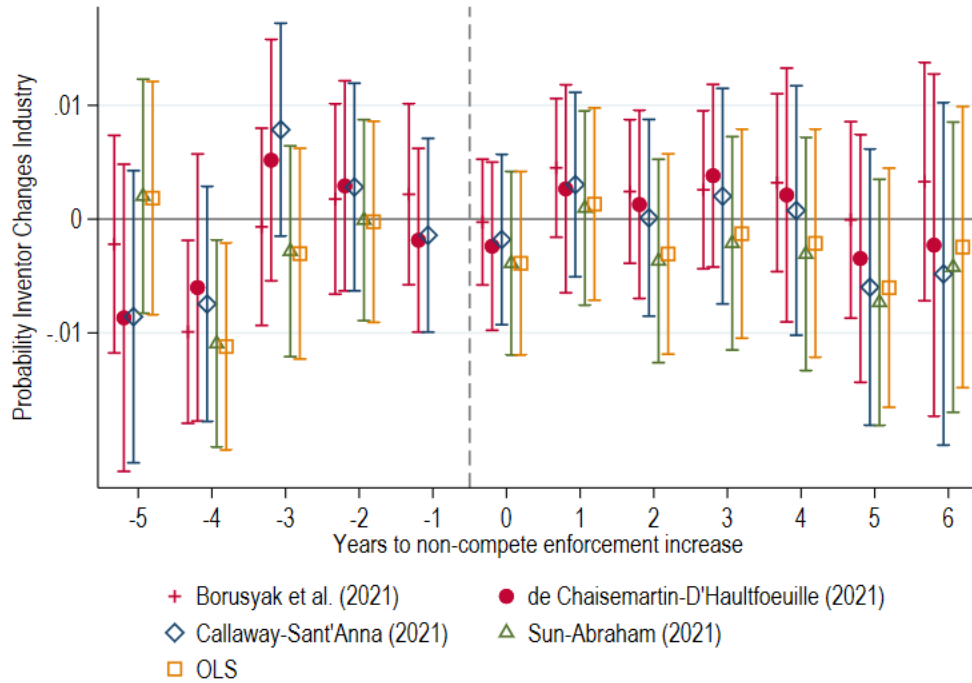
**Table A1 – Most Frequent Industry Mobility**

This table shows the 5 most common industries ranked according to industry mobility. The table lists the departure industry and the joining industry, a brief description of the industry and the fraction of mobility events compared to the total number of mobility events. Variable definitions are provided in the Appendix.

Rank	Leaving Industry (SIC 3)	Joining Industry (SIC 3)	Fraction
1	Office, Computing, Accounting Mach.	Comp. Programming, Data Process.	4.4%
2	Office, Computing, Accounting Mach.	Electronic Components and Accessor.	3.8%
3	Comp. Programming, Data Process.	Office, Computing, Accounting Mach.	2.4%
4	Electronic Components and Accessor.	Comp. Programming, Data Process.	2.3%
5	Communications Equipment	Electronic Components and Accessor.	2.1%

**Figure A5 – Staggered Difference-in-Differences: NCA Enforcement Decreases**

This table reports the result of the staggered difference-in-differences event study of equation 1. The sample is on an inventor-year level. The figure plots the coefficient of *NCADecrease*, which is a treatment indicator equal to one for a state that decreases non-compete enforcement. The y-axis shows the effect on the likelihood that an inventor moves across SIC 4-digit industries. The point estimates are normalized to time = -1, the year before treatment. Never-treated inventors are propensity matched based on year, age, number of patents, number of citations and patent technology class. Variable definitions are provided in the Appendix. All regressions include Inventor and Year fixed effects. Standard errors are clustered by Inventor and Year. Confidence intervals are at the top/bottom 5%.



## **Appendix B: Examples of non-compete agreements**

The following are three samples drawn from the sample of innovating firms (those that are assigned patents), of which 54% have references on the use of non-compete agreements. The universe of 10-K and 10-Q filings were obtained from EDGAR and parsed to make them readable using textual analysis.

### **NUANCE COMMUNICATIONS INC**

"In exchange for the severance pay and other consideration under the Severance Agreement to which Executive would not otherwise be entitled, Executive agrees that for a period of one (1) year after the Termination Date, Executive will not, without the express written consent of the Company, in its sole discretion, enter, engage in, participate in, or assist, either as an individual on your own or as a partner, joint venturer, employee, agent, consultant, officer, trustee, director, owner, part-owner, shareholder, or in any other capacity, in the United States of America, directly or indirectly, any other business organization whose activities or products are competitive with the activities or products of the Company then existing or under development. Nothing in this Agreement shall prohibit Executive from working for an employer who is engaged in activities or offers products that are competitive with the activities and products of the Company so long as Executive does not work for or with the department, division, or group in that employer's organization that is engaging in such activities or developing such products. Executive recognizes that these restrictions on competition are reasonable because of the Company's investment in goodwill, its customer lists, and other proprietary information and Executive's knowledge of the Company's business and business plans."

10-Q filing available here:

<https://www.sec.gov/Archives/edgar/data/1002517/000100251714000013/nuan12-31x2013ex104.htm>



## **MICROVISION INC**

”We also rely on unpatented proprietary technology. To protect our rights in these areas, we require all employees and, where appropriate, contractors, consultants, advisors and collaborators, to enter into confidentiality and non-compete agreements. There can be no assurance, however, that these agreements will provide meaningful protection for our trade secrets, know-how or other proprietary information in the event of any unauthorized use, misappropriation or disclosure of such trade secrets, know-how or other proprietary information.”

10-K filing available here:

<https://www.sec.gov/Archives/edgar/data/65770/000113626115000080/body10k.htm>

## **LOCKHEED MARTIN CORPORATION**

”This Post Employment Conduct Agreement dated [...] (this “PECA”), together with the Release of Claims being entered into contemporaneous with this PECA, is entered into in consideration of the payment (“Severance Payment”) to be made to me under the Lockheed Martin Corporation Severance Benefit Plan for Certain Management Employees (“Severance Plan”). By signing below, I agree as follows:

Covenant Not To Compete - Without the express written consent of the [Chief Executive Officer/Senior Vice President, Human Resources] of the Company, during the [two/one]-year period following the date of my termination of employment with the Company (“Termination Date”), I will not, directly or indirectly, be employed by, provide services to, or advise a “Restricted Company” (as defined in Section 6 below), whether as an employee, advisor, director, officer, partner or consultant, or in any other position, function

or role that, in any such case, oversees, controls or affects the design, operation, research, manufacture, marketing, sale or distribution of “Competitive Products or Services” (as defined in Section 6 below) of or by the Restricted Company [...]

Exhibit of 10-Q filing available here:

<https://www.sec.gov/Archives/edgar/data/936468/000119312508156357/dex107.htm>