

Faraji, Amir; Rashidi, Maria; Eftekhari, Navid Ahmadi; Perera, Srinath; Man, Saba

## Article

A Bid/Mark-Up decision support model in contractor's tender strategy development phase based on project complexity measurement in the downstream sector of petroleum industry

Journal of Open Innovation: Technology, Market, and Complexity

## Provided in Cooperation with:

Society of Open Innovation: Technology, Market, and Complexity (SOItmC)

*Suggested Citation:* Faraji, Amir; Rashidi, Maria; Eftekhari, Navid Ahmadi; Perera, Srinath; Man, Saba (2022) : A Bid/Mark-Up decision support model in contractor's tender strategy development phase based on project complexity measurement in the downstream sector of petroleum industry, Journal of Open Innovation: Technology, Market, and Complexity, ISSN 2199-8531, MDPI, Basel, Vol. 8, Iss. 1, pp. 1-28,  
<https://doi.org/10.3390/joitmc8010033>

This Version is available at:

<https://hdl.handle.net/10419/274338>

## Standard-Nutzungsbedingungen:

Die Dokumente auf EconStor dürfen zu eigenen wissenschaftlichen Zwecken und zum Privatgebrauch gespeichert und kopiert werden.

Sie dürfen die Dokumente nicht für öffentliche oder kommerzielle Zwecke vervielfältigen, öffentlich ausstellen, öffentlich zugänglich machen, vertreiben oder anderweitig nutzen.

Sofern die Verfasser die Dokumente unter Open-Content-Lizenzen (insbesondere CC-Lizenzen) zur Verfügung gestellt haben sollten, gelten abweichend von diesen Nutzungsbedingungen die in der dort genannten Lizenz gewährten Nutzungsrechte.

## Terms of use:

*Documents in EconStor may be saved and copied for your personal and scholarly purposes.*

*You are not to copy documents for public or commercial purposes, to exhibit the documents publicly, to make them publicly available on the internet, or to distribute or otherwise use the documents in public.*

*If the documents have been made available under an Open Content Licence (especially Creative Commons Licences), you may exercise further usage rights as specified in the indicated licence.*



<https://creativecommons.org/licenses/by/4.0/>



Article

# A Bid/Mark-Up Decision Support Model in Contractor's Tender Strategy Development Phase Based on Project Complexity Measurement in the Downstream Sector of Petroleum Industry

Amir Faraji <sup>1,2,\*</sup> , Maria Rashidi <sup>2</sup>, Navid Ahmadi Eftekhari <sup>3</sup> , Srinath Perera <sup>2</sup> and Saba Mani <sup>3</sup>

<sup>1</sup> Construction Project Management Department, Faculty of Architecture, Khatam University, Tehran 1991633357, Iran

<sup>2</sup> School of Engineering, Design and Built Environment, Western Sydney University, Penrith, NSW 2751, Australia; m.rashidi@westernsydney.edu.au (M.R.); Srinath.perera@westernsydney.edu.au (S.P.)

<sup>3</sup> Faculty of Architecture and Urban Planning, University of Art, Tehran 1136813518, Iran; navid.eftekhari@hotmail.com (N.A.E.); saba.mani@hotmail.com (S.M.)

\* Correspondence: a.faraji@khatam.ac.ir or a.faraji@westernsydney.edu.au

**Abstract:** The tender process is an inseparable step of the contract award process in the public sector, and from the other point of view, it is one of the crucial elements of the core business of construction contractors. Reviewing previous research reveals a gap in the application of a project's detailed features and historical data to support the bid/no-bid decision and to determine the cost and time contract mark-ups. In this study, a prescriptive project complexity-based model is proposed to support the bid decision in the tender strategy development phase of a contractor for the downstream sector of the petroleum industry in Iran. For this purpose, regression analysis of historical data is adopted to configure the model and to infer from previous actual trends by exploring relationships between the contractor's bid decision and proposed mark-ups with the project's inherent and surrounding complexity factors. Hence, using experts' opinions and historical data from 139 previous contracts as training and test data, a model was developed to make a decision on a bid and mark-up problem. The results of the model validation show that the credibility of the model is 74.67% and 75.36% for time and cost, respectively, and the reliability of model outputs is approximately 90% overall in predicting the bid mark-ups in accordance with the project complexity index (PCI). The main contribution of this research to current knowledge has two aspects: utilizing the complexity concept for the tender problem in the form of a project complexity index (PCI) and considering both time and cost mark-ups (TMU–CMU) in the contractor's bid simultaneously. In addition, the results show that the more complex the project is, the higher the bid rate is.

**Keywords:** bid mark-ups; tender strategy; project complexity; construction management; public sector; open innovation dynamics



**Citation:** Faraji, A.; Rashidi, M.; Eftekhari, N.A.; Perera, S.; Mani, S. A Bid/Mark-Up Decision Support Model in Contractor's Tender Strategy Development Phase Based on Project Complexity Measurement in the Downstream Sector of Petroleum Industry. *J. Open Innov. Technol. Mark. Complex.* **2022**, *8*, 33. <https://doi.org/10.3390/joitmc8010033>

Received: 17 October 2021

Accepted: 10 December 2021

Published: 3 February 2022

**Publisher's Note:** MDPI stays neutral with regard to jurisdictional claims in published maps and institutional affiliations.



**Copyright:** © 2022 by the authors. Licensee MDPI, Basel, Switzerland. This article is an open access article distributed under the terms and conditions of the Creative Commons Attribution (CC BY) license (<https://creativecommons.org/licenses/by/4.0/>).

## 1. Introduction

To develop their business and to maximize their revenue, construction contractors can follow the two options of direct negotiation with potential clients or participation in competitive bids [1]. Based on government reports, on average, more than 400 to 500 tender advertisements are published daily in Iran and mainly by public bodies; therefore, having knowledge about preparing appropriate bid proposals is vital for contractors. The tender method is one of the most common ways of buying implementation services in the construction industry, especially where the client side of the project is the government or the public sector [2,3]. Additionally, the tender technique is well known as the second critical stage in a traditional approach of a project delivery system called design–bid–build (DBB), which is the predominant method of construction delivery in the public sector in Iran. Although a tender can be fulfilled in different ways, such as public or limited, with

one stage or two stages and by considering many factors, the main principles of a tender have remained unchanged. The bid or no-bid and the tender mark-up percentage are key decisions that must be made repeatedly by qualified contractors involved in projects in the Iranian downstream sector [4]. The above-mentioned decision includes two major parts: preparation and presentation of a proposal and refusal to participate in the tender; and in the case of a decision to submit a bid, the determination of the relevant time and cost should be proposed. Generally, the term mark-up refers to an allowance for profit plus general overhead [5]. Therefore, the proposal mark-up will act as the coverage for contractors' risk in terms of time and cost factors. However, in the context of this research, a tender strategy from the contractor's point of view [6–8], the effective factors of a bid/no-bid decision [9,10] and the model development for improving bid/no-bid and mark-up percentage decision making [9,11,12] are investigated. Nevertheless, reviewing the preceding investigations shows that a lack of application of a project complexity assessment to support the bid/no-bid decision and consequently the determination of the mark-up percentage is apparent especially in the domain of time. Therefore, to bridge the above-mentioned gap, an investigation with two major steps was planned. In the first step, a model was developed to evaluate the complexity degree of a planned project. In the second step, a model was proposed to support a bid/no-bid decision by contractors, which, in the case of selecting the bid option, will determine the appropriate mark-ups. Additionally, for this purpose and for the presentation of a novel approach to a bid/no-bid decision through complexity analysis of petroleum industry projects, based on a previous research's approach, a three-step methodology, including literature review to recognize complexity factors, experts' judgment to customize the criteria in the petroleum industry, and analysis of historical data to set mark-up spectrums, was programmed. Accordingly, the principal objective of the current study is to investigate the application of complexity measurements in the construction project's tender administration from the contractor's point of view. Due to the above-mentioned lack of studies from the project complexity analysis's point of view for a contractor who intends to offer a bid in a tender, the current study aims to:

1. Develop a model that can take into account all project-inherent complexity factors in a quantitative way, and
2. Propose time/cost mark-ups based on the complexity analysis.

Such decision support system can be a very advantageous model for contractors who are not familiar with some types of projects, may not have enough time to consider all impressive factors, or even tend to have basic estimations besides their available in-house systems. Thus, the main users of this study are construction contractors who define their core business based on the project-based tenders in a competitive environment. Therefore, the main questions of the study are framed as follows:

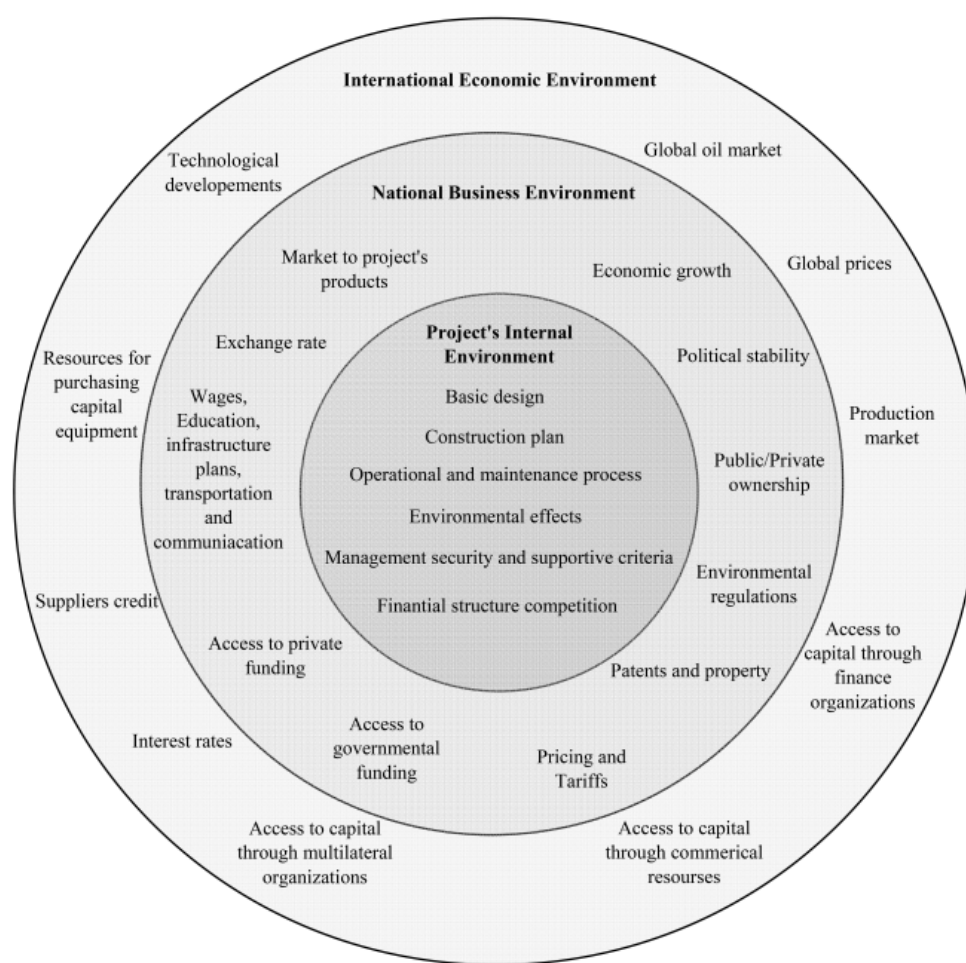
1. What are the effective criteria to assess the complexity of projects in the context of the petroleum industry?
2. How can the selected criteria be formulated to demonstrate the project complexity in an appropriate manner?
3. What are the quantitative correlations between the project complexity and the decision to propose a bid or no-bid and bid mark-ups?

However, in the following section, the literature of project selection and complexity of projects is reviewed, and project complexity factors in the construction industry are presented. In the next sections, the methodology of the current investigation is described. Finally, the findings are presented.

## 2. Literature Review

The project system is surrounded with dozens of factors that can be leveled into three different areas, as shown in Figure 1. The international, national, and project level parameters are defined by the total situation of an investment in the form of project development [4]. However, this study goes to identify these determinant factors first and

then aims to convert them into quantitative measures for the tender strategy development phase in the context of the downstream sector of the petroleum industry. The following subsections are divided into three parts. In the first subsection, the project selection in the form of a bid/no-bid decision from the perspective of the contractor is addressed. In the second part, the most related previous investigations are studied to focus on the decision factors, methodology, and findings. The third subsection examines the complexity of various projects, especially in the construction industry; thereafter, the concept of complexity and its various definitions are discussed. In addition, complexity factors and complexity assessment tools are collected from the research literature, and in this way, a framework for providing a quantitative model for evaluating the complexity of construction industry projects is provided.



**Figure 1.** Different levels of characteristics surrounding a construction project (adapted from [4]).

### 2.1. Project Selection and Contractor's Tender Strategy

One of the most crucial decisions regularly exercised by construction contractors is determining whether to bid on a certain project [13–15]. This decision is so complicated due to the complexity and uncertainty surrounding this determination, which is influenced by many factors [16,17]. The bidding process is highly complex and unsystematic, requiring numerous factors to be considered simultaneously [18], which have a high degree of complicated interrelations [19–21]. If a contractor opts to bid, the pricing of the bid normally comprises a two-stage formulation process consisting of a baseline cost estimate and subsequent mark-up (e.g., overheads, profit, and risk) [22,23]. Contractors adopt various strategies to enhance their chances of winning work. In 1975, Fine identified several strategies, including random bidding when work levels are low, selective bidding, and

severely competitive bidding with claim back options within the limits of the contract [24]. Drew offered a model focused on modeling the lowest bid/cost estimate ratio and its regression against the size of construction work, type of construction work, and client type. The bid model offered in this paper shows the effect on a bidding strategy of three of its factors, namely, size and value of the project, type of client, and type of project [12]. Lin et al. adopted a fuzzy logic approach, which helps contractors to make a bid/no-bid decision faster in a timely manner. They indicated that among these factors, those that were related to the clients' characteristics, for example, payment record and size and type of client, were the most important factors [25]. Lee and Chang concentrated on determining the bid mark-up for microtunneling projects that are associated with uncertainties. They developed a decision support system based on survey results, which assists the contractor in selecting an appropriate mark-up [26]. Additionally, Egemen developed an algorithm that can assist contractors reach those decisions by considering different factors. In their decision-making process, they factored in attributes related to the firm itself, to the market, and to the project [11]. Based on a similar rationale, factors influencing bidding behavior were grouped by Drew into those affecting the behavior of contractors as a group, such as market conditions; the individual contractor's behavior, such as contractor size; and the behavior toward the characteristics of the contract, such as type and size of construction work [27]. Flanagan and Norman identified that bidding behavior, in general terms, is likely to be affected by five major factors: the size and value of the project, the construction and managerial complexity required to complete it, the regional market conditions, the current and projected workload of the tenderer, and the type of client and type of project [28]. According to Laryea and Hughes, contractors acknowledge those risks, which they ensure will be paid for [29]; therefore, identifying all relevant risk factors and assessing them appropriately is essential [30]. Additionally, according to Kumar and Raj, the amount of possible upcoming profitable projects in the future, the current financial condition, having qualified material suppliers, project type, experience, and familiarity with the specific work also constitute important influencing factors [9].

## 2.2. Previous Models and Methodologies

Since developing a tender strategy is categorized in decision-making problems, it is not surprising to face a vast spectrum of methodologies, models, and solutions provided in this regard. As one of the first researchers, Ahmad and Minkarah utilized a survey method and questionnaire in the United States to develop a reasoning model for contractors. In the above research, focusing on effective factors of the mark-up size and bid/no-bid decision, the opinions of 400 contractors who were engaged in public sector projects were gathered and prioritized. One of the weaknesses of the findings of this research is the subjectivity of the results so that they are not presented a clear model for the bid/no-bid decision and the size of the mark-up. The effective factors in this study include type of job, need for work, owner, historic profit, degree of hazard, location, degree of difficulty, uncertainty in estimate, and current workload [7]. Additionally, Shash distributed questions among contractors about the factors affecting bid/no-bid in construction projects in the UK. In the first part of the questionnaire, using a Likert scale, the importance of factors in a bid/no-bid decision was determined, and in the second part of the questionnaire, a mark-up size strategy was asked by Shash (1993). The results of this research almost confirm the previous research and again present a conceptual model instead of a practical one. In 1998, Young and Duffield surveyed Australian civil engineering contractors to identify the factors influencing a bid/no-bid decision and improve their mark-up size, and described the tendering practices of Australian construction contractors. The result of this research is a descriptive list of factors that are harvested using a questionnaire and interview. The factors presented in this research are project type, availability of resources and people, experience, need for work, location of a project, desire for a project, need for work, amount of contingency in estimate, experience of a similar project, and likelihood of a winning project [31]. In another attempt, Cagno investigated the factors affecting a mark-



up size and bid/no-bid decision through a questionnaire using Monte Carlo simulation. In this research based on the analytic hierarchy process (AHP), a model was proposed to predict the probability of winning the tender. This model in the tender stage allows the contractor to evaluate the probability of winning in comparison with other contractors, so it helps contractors to define a strategy in participating in the tender. Evaluation criteria in this model are divided into four general categories: service level, performance, financial conditions, and contractual conditions. Nevertheless, the factors considered in the model are not comprehensive, but the presented model is objective and practical [32]. Dikmen et al. conducted a research on international construction projects in Turkey and developed a decision support tool using a reasoning model. In this research, factors affecting the level of risk, opportunity, and competition were identified, and a decision support tool was developed using a case-based reasoning model (CBR). Experts' judgment were used to prioritize each factor and to identify the lower and upper limits and average values of mark-ups. The introduced framework is an applied model taking into account the general characteristics, risk, and competitive characteristics of projects [33]. Additionally, in the context of Saudi construction projects, Bageis and Fortune identified and prioritized six factors influencing the bid/no-bid decision through 91 received questionnaires, which included the client financial capacity, the prompt payment habit of the client, the project payment system, the clarity of the work and specifications, the project cash flow, and the ability for project execution [34]. Marzouk and Mohamed used a fuzzy fault tree to simulate a bidding decision. In this regard, by reviewing the literature and distributing the questionnaire, 38 factors affecting the contractor's mark-up size were evaluated and prioritized through experts and experienced contractor judgment. Finally, using 15 factors as input, the fuzzy fault tree model was developed and tested by feedback from three contractors. The output of this quantitative model does not include the mark-up size and comprehensiveness input factors [35]. Furthermore, Perera et al., using semistructured interviews and content analysis, identified and weighted the factors influencing the bid/no-bid and mark-up through a questionnaire and the relative importance index. The considered factors in the model are not comprehensive, and the model output does not support the mark-up size decision [36]. Moreover, Kalan and Ozbek in their research developed a decision support tool to assist contractors in bid/no-bid decisions in a construction project. The research methodology of this research has two phases: in the first phase, factors were extracted using a literature review, and in the second phase, using the AHP method, project bidding decision-making tools were developed [8]. However, a comparative study of 12 selected previous research studies in comparison with the current study, to highlight a gap analysis, is shown in Table 1.

**Table 1.** Comparative study of selected previous research studies and the current study.

Ref.	Country/Context	Methodology	Tools/Techniques	Some of the Factors Affect Bid/No Bid Decision	Bid No Bid	Mark-Up Size	Decision Model
[7]	USA/general contractors	In this study, through a questionnaire, 400 public sector contractors were asked to rate the factors influencing the bid/no-bid and mark-up decisions, and based on this, the author prioritized and presented the influential factors.	Reasoning model	Type of job, need for work, owner, historic profit, degree of hazard, location, degree of difficulty, uncertainty in estimate, current workload	✓	✓	-
[1]	United kingdom/construction	The author examined data from 85 projects through a questionnaire and asked the contractor to prioritize the factors affecting the bid/no-bid and the mark-up extracted from the literature.	Reasoning model	Degree of difficulty, risk involved owing to the nature of the work, current workload	✓	✓	-

Table 1. Cont.

Ref.	Country/ Context	Methodology	Tools/ Techniques	Some of the Factors Affect Bid/No Bid Decision	Bid No Bid	Mark-Up Size	Decision Model
[31]	Australia/civil engineering construction	In this study, in addition to presenting the factors influencing bid/no-bid and mark-up decisions through a survey questionnaire, Australian civil engineering contractors' tendering practices were described using interviews.	Reasoning model	Project type, availability of resources and people, experience, need for work, location of project, desire for project, amount of contingency in estimate, experience in similar project, likelihood of winning the project	✓	✓	-
[32]	Process plants/ design and construction	In this study, in addition to presenting the factors influencing bid/no-bid and mark-up decisions through a survey questionnaire, a model using a multicriteria assessment of the probability of winning was presented.	(MADM) AHP	Delivery time, technical assistance, technology transfer, safety, price, dependability, process, technology, terms of payment, financial package, liquidated damages clause, conformity to tender documents, contractor cooperation, utilization of local vendors	✓	✓	✓
[34]	Saudi Arabia/ construction	The author examined data from 91 contractors through a questionnaire and asked them to prioritize the factors affecting the bid/no-bid decision using the relative importance index. In order to be able to select the most important factors, the principal component analysis (PCA) was conducted.	Principal component analysis (PCA)	Client financial capacity, prompt payment habit of the client, project payment system, clarity of the work and specifications, project cash flow, ability of project execution	✓	✓	-
[37]	Nigeria/ construction	Through 50 questionnaires, factors affecting the bid/no-bid decisions were ranked and presented.	Reasoning model	Financial capability of clients, availability of capital, availability of materials, fulfilling the "to tender" condition, chances of obtaining the job	✓	-	-
[16]	Saudi Arabia/ construction	A total of 67 questionnaires were distributed, and through this, the factors affecting the bid/no-bid decision were presented. These factors by the median and relative importance index (RII) were weighted.	Reasoning model	Size of the job, type of job, company's strength in the industry, designer, design quality, rate of return, project cash flow	✓	-	-
[38]	India/ construction	The factors influencing the bid decisions were collected through a structured questionnaire survey, and factors were ranked based on the survey results, and in the end, the bid decision framework using the data envelopment analysis was developed.	Data envelopment analysis	Amount of possible upcoming profitable projects in the future, current financial condition of the company, having qualified material suppliers, project type, experience and familiarity with the specific work	✓	-	✓
[35]	Egypt/ construction	The factors influencing the bid decisions were collected through a questionnaire and used to build a fuzzy fault tree model to simulate the bidding decision.	Fuzzy fault tree	Project characteristic, business benefits, client characteristic, contract characteristic, project finance, contractor characteristic, firm's previous experience, bidding characteristic, economic characteristic, competition characteristic	✓	-	✓

Table 1. Cont.

Ref.	Country/ Context	Methodology	Tools/ Techniques	Some of the Factors Affect Bid/No Bid Decision	Bid No Bid	Mark-Up Size	Decision Model
[36]	Sri Lanka/ infrastructure	Factors influencing the bid/no-bid and mark-up decision were identified from the literature; they were customized using semistructured interviews and content analysis. These factors were weight-ranked through a questionnaire and the relative importance index. Finally, the results were tested through a case study, and recommendations were presented.	Reasoning model	Estimated direct costs, competitiveness of other bids, type of work, project duration, ability to predict a pre-tender estimate	✓	✓	-
[8]	construction	The methodology of this research has two phases. In the first phase, factors were extracted using literature review. In the second phase, using the AHP method, construction project bidding decision-making tools were developed.	(MADM) AHP	Current workload; experience with similar projects; availability of equipment, materials, and human resources; financial ability; need for work; technical know-how; compliance with the business plan; project size; project duration; project location; project type; contract condition and type; owner identity; competition	✓	-	✓
[10]	Tanzania/small building	Data collected through a survey were analyzed using SPSS. The 30 factors influencing the bid or no-bid decision, in 5 groups, were ranked separately and in groups.	Reasoning model	Project characteristic related, contractor related, market criteria related, contract criteria related, client criteria related	✓	-	-
The current study	Iran/petroleum	Recognition, categorization, and weighting of the effective factors on a bid/no bid decision approach of complexity analysis of a project. Determining the most appropriate mark-up sizes in the two aspects of time and cost.	Complexity analysis	Duration of project, number of activities, capital expenditure	✓	✓	✓

### 2.3. Project Complexity Analysis

The science of complexity is a broad concept that encompasses a number of different scientific fields and industries [39–41]. As it is obvious in the literature of project complexity, projects in the construction industry are one of the most complex and risky projects in various industries [42–44]. Despite the various definitions of project complexity, it is surprising that there is no unanimous definition that all researchers agree on [45–47]. However, project complexity is the feature of a project that makes it difficult to understand, foresee, and keep under control its overall behavior, even when reasonably complete information about the project system is available [45–47]. The main focus of the literature in this area, after defining complexity, is to address the complexity factors. One of the first project classifications based on complexity is made by Gerardo Santana. In this classification, projects were divided into three categories based on complexity and simplicity: normal, complex, and singular [48]. Furthermore, there are dozens of research studies about project complexity factors: Turner and Cochran, in 1993, introduced “the uncertainty in the objectives and methods of achieving projects” as an important factor in project complexity [49]; Baccarini found structural complexity as one of the dimensions of complexity [44]; and William introduced structural complexity and uncertainty in objectives and methods as the two main factors of complexity in projects [50].

Brockmann and Girmscheid divided complexity into five categories: task, society, culture, operation, and cognition complexity [51]; Vidal and Marle introduced a different category of complexity in the four dimensions of project size, project interdependencies,



project variety, and elements of context [52]; complexity indicators were divided into five categories by Geraldi, Maylor, and Williams: structural complexity, uncertainty, pace, dynamic, and sociopolitical [53]; Ramasesh addressed various factors, such as structural, dynamic, pace, and uncertainty, and introduced a new complexity factor called “unk unks”, which is a type of uncertainty that is completely unknown and unpredictable [54]; Qinghua put all the complexity factors in six categories: technological, informational, organizational, environmental, goal, and cultural [55]; Luis Carral et al., in a review of the state of the art, classified different types of complexity into seven general categories: organizational, technological, uncertainty, pace novelty, dynamic, regulative, and sociopolitical [56].

Nevertheless, 68 project complexity factors as general parameters were recognized and categorized by reviewing the literature of project complexity between 1990 and 2020 (Table 2). It should be noted that many of the complexity factors mentioned above cannot be assessed before the tendering stage of the project. Regardless the type of performed classification, turning the complexity factors into a tool for measuring the complexity of projects has been the goal of some studies. In connection with project classification tools through complexity factors, in 2007 a global alliance introduced the Crawford–Ishikura factor table for evaluating roles using seven items of project management complexity factors [57]. A similar tool was jointly published by the International Project Management Association (IPMA) and the Australian Institute of Project Management (AIPM). In this matrix, complexity criteria are organized into 10 groups and 40 complexity subfactors [58]. In 2018, Poveda-Bautista, using the above-mentioned method and the matrix model, measured the complexity of IT projects and categorized projects from low complexity to high complexity [59]. In a relevant study, Dao developed a framework that can be used to assess and manage the project complexity of industrial projects. A framework named Project Complexity Assessment Management Tools (PCAM Tools) was structured with 37 project complexity indicators that belonged to 11 categories from the project management perspective [60]. However, the outline of the literature review in the context of project complexity analysis in this study is summarized in Table 3.

**Table 2.** General categorization of project complexity factors in the construction industry based on the literature review.

No.	Category	Factors	References
1	Size	Duration of the project	[44,48,50,54,61–71]
2		Number of deliverables/disciplines	
3		Number of activities	
4		Largeness of capital investment	
5		Number of project management methods and tools applied	
6		Number of different occupational specializations	
7		Number of stakeholders	
8		Largeness of scope (number of components, etc.)	
9		Number of structures/groups/teams to be coordinated	
10		Number of objectives or goals	
11		Number of investors	
12		Staff quantity	
13		Number of hierarchical levels	
14		Number of information systems	
15		Number of joint-venture partners	
16		Number of funding phases	
17		Total number of permits	
18		Size of project team	

Table 2. Cont.

No.	Category	Factors	References
19	Context	Degree of project flexibility (in scope, process, organization)	[52,56,60–62,70–74]
20		Repetition of similar type of projects	
21		Internal politics issue (ambiguity, hidden information)	
22		Cultural configuration	
23		Contract specifications	
24		New laws and regulations	
25		Local laws and regulations	
26		Number of organizational risks	
27		Geological condition/difficulty of location	
28		External politics issue	
29		Impact on the environment	
30		Form of contract	
31		Organizational degree of innovation	
32		Lack of experience with partners	
33		Government environmental regulations	
34	Diversity	Variety of financial resources	[48,50,52,62,64,66–68,70,73,75–79]
35		Diversity of tasks	
36		Diversity of staff (experience, social span)	
37		Variety of stakeholders	
38		Cultural variety	
39		Number of different languages	
40		Variety of technologies used during the project	
41		Multiple participating countries/location	
42		Geographic location of the stakeholders	
43		Weather conditions	
44	Connectivity	Number of external stakeholders	[52,62,63,77]
45		Number of interfaces in the project organization	
46		Percentage of design completed at the start of construction	
47	Autonomy	Communication between different parts of the organization	[44,50,52,62–64,70,73,74,77]
48		Availability of people, material, and any resources due to sharing	
49		Team/partner cooperation and communication	
50		Dynamic and evolving team structure	
51		Interdependencies between sites, departments, and companies	
52		Interdependencies of objectives/interests	
48		Interdependencies between actors	
53		Percentage of PM staff who work on the project vs. planned staff	
54		Resource and raw material interdependence	
55		Dependencies between schedules	
56	53	Number of governmental people who are involved in projects	
53		Process interdependence	

Table 2. Cont.

No.	Category	Factors	References
54	Belonging	Dependencies between schedules	[52,56,62,65,67,74]
55		Interdependence between components of the product	
56		Level of interrelation of between phases	
57		Cost restraint (cost and financing)	
58		Requirement specifications	
59		Technical capability of team	
60		Technological newness of the project	
61		Use of a technology that has not yet been fully developed	
62		Equipment specifications	
63		Specifications of systems	
64	Emergence	Dynamics of the task activities	[49,50,62,67,70,72,74,76,80]
65		Uncertainties of scope	
66		Uncertainty and clarity of objectives or goals	
67		Uncertainty in technical methods	
68		Information uncertainty	

Table 3. Overview of the selected papers of literature focused on project complexity.

Ref.	Paper Type	Industry	Project Complexity Definition	Categories and Factors of Complexity/Characteristic	Cited by (Google Scholar on 20 February 2021)
[49]	Conceptual	General	Degree of whether the goals and methods of achieving them are well defined	Uncertainty of objectives/uncertainty of methods	785
[44]	Review	Construction	Project complexity consisting of many varied interrelated parts can be operationalized in terms of “differentiation and interdependency or connectivity”	Organizational/technological	1518
[50]	Review	General	-	Structural (number of elements, interdependence of elements), uncertainty in goals, uncertainty in methods	993
[53]	Systematic review	General	Provide definitions of previous research	Structural, uncertainty, dynamics, pace, sociopolitical	480
[71]	Empirical study	Construction	The complexity of building projects defined as a characteristic that are complicated, multifaceted, and composed of many interconnected parts	Building structure and function, construction method, urgency of project schedule, project size, geological condition, neighboring environment	161
[65]	Report	General	Complexity has different meanings for different people and in different organizations	Multiple stakeholders; ambiguity of project features, resources, phases, etc.; significant politics; authority influences; unknown project features, resources, phases, etc.; dynamic (changing) project governance; significant external influences; use of a technology that is new to the organization; use of a technology that has not yet been fully developed; significant internal interpersonal or social influences; highly regulated environment; project duration exceeds the cycle of relevant technologies	5
[81]	Case study	Construction	Consisting of many varied interrelated parts and has dynamic and emerging features	Task complexity, organizational complexity	129
[55]	Case study	Construction	-	A total of 28 factors divided into 6 categories include: technological, organizational, goal, environmental, cultural, informational	177
[70]	Empirical study	Construction, IT, textile, automobile, R&D	-	This study focused on organizational complexity: project size, project variety, interdependencies within the project, elements of context	183

Table 3. Cont.

Ref.	Paper Type	Industry	Project Complexity Definition	Categories and Factors of Complexity/Characteristic	Cited by (Google Scholar on 20 February 2021)
[62]	Systematic review	General	Define project complexity as an intricate arrangement of the varied interrelated parts in which the elements can change and evolve constantly with effect on the project objectives	From the PMI view, this study divided the complexity factors into 9 categories, which include: content, context, organizational, interdependencies, technology, information, product or service, client, external environment	172
[63]	Empirical study	Construction	Project complexity is the degree of interrelatedness between project attributes and interfaces and their consequential impact on predictability and functionality	This study classified 10 complexity indicators into 9 groups, including: interfaces, scope definition, project resources, design and technology, scope definition, location, governance, project resources, stakeholder management	48
[64]	Empirical study	Construction	-	This study classified 28 complexity factors into 3 categories: technological, organizational, environmental	4
[82]	Empirical study	General	According to a previous study conducted in 2011	Structural, sociopolitical, emergent	60
[56]	Review of the state of the art/case study	engineering	-	This research focuses on the organizational and technological complexity of a shipbuilding project and evaluates the project complexity according to the project definition, design, and production phases	-
[83]	Empirical study	General	Project complexity is the interrelatedness of elements causing an emergent nature of the project and challenging the project management	Element, political, diversity, difficulty, goals, ambiguity, control, method, rigid, trust, experience	-
[84]	Empirical study	Construction	-	This study classified 27 complexity indicators into 11 groups, including: stakeholder, management, governance, fiscal planning, quality, legal, interfaces, execution target, design and technology, location, scope definition, project resources	-

### 3. Research Methodology

The different steps of the research process, which were adopted to achieve the project objectives are summarized in the following paragraphs:

**Step 1.** The first stage of step 1 in the current investigation was the study and recognition of the complexity factors inquired by previous researchers. At this stage, by examining English language research between 1990 and 2020 in scientific databases, more than 150 complexity factors related to different industries were recognized. It is worth mentioning that project complexity has been studied in different project-based industries, such as information and communications technology (ICT), and taking their projects' raised factors into account in the construction industry can enrich investigations of this industry. In the second stage, to identify and select the most compatible factors with downstream petroleum projects in Iran, the extracted factors were judged by six experts from this industry who had experience in cooperating in several complex projects in the construction industry. The above experts were selected based on one of the following factors: professional person with more than 10 years' experience in projects in the downstream sector as client, consultant, or contractor, and/or academic person expert in the field of construction management, contract administration, or petroleum projects (Table 4). It should be noted that these experts were chosen in such a way that has no relation to 139 projects used to develop the model.

Table 4. Descriptive data and demography of the selected experts.

Area of Expertise	Number of Experts	Age			Average Years of Work Experience	Area of Profession			Education		
		35–40	40–45	>45		Client	Contractor	Consultant	Ph.D.	M.S.	B.S.
Academic	2		2 (33.5%)		11.8	-	-	-	2	-	-
Professional	4	1 (16.5%)		3 (50%)	18.2	1	1	2	1	2	1

**Step 2.** These recognized factors were refined through two processes: first, a raw list of extracted factors was delivered to experts for review, in which 68 related and compatible parameters within the construction industry were determined based on the content analysis of the received questionnaires, and second, the 68 revised, improved, and categorized factors by the research team, considering projects in the downstream sector, were resent to the experts for final comments. The result of this step led to the identification and categorization of 54 complexity factors, which can be considered the most effective factors of complexity recognition in projects in the petroleum downstream sector in Iran. In the next stage, in order to analyze complexity factors and determine the criteria weightings, related references, and their metrics, a two-round reciprocal Delphi technique was used. It is worth mentioning that since the complexity factors may have countereffects on each other, the determination of such dependencies can be very helpful in ranking and weighting them by experts. Therefore, before this stage, using a comparative matrix, the interdependency of criteria was measured relative to each other to have the lowest interdependency (Figure 2). To have the above interdependency of 54 criteria, prior to the Delphi process, the experts were asked to review the factors and mark their counterimpacts on each other with 1 indicating high and 0 indicating low. The final result shown in Figure 2 is the average of opinions of six experts. However, the result of this step was a quantitative model for measuring the complexity of projects based on their characteristics. The input of this model is the estimation of the metrics of a given project and, subsequently, the calculation of its complexity. To rate each project based on the complexity factors, Equation (1), which includes a simple average in each category and a weighted average of all subcategories, was used:

$$PCI(P_t) = \frac{\sum_{i=1}^a pw_{ij} \sum_{j=1}^b (k_i \cdot w_j) / b}{a} \quad (1)$$

where:

$PCI$  is the overall complexity index of the  $t$ -th project ( $P_t$ );

$pw_i$  is the percentage weight of the  $i$ -th category of  $k$ ,  $i = \{1, 2, \dots, a = 6\}$ ;

$k_i$  is the  $i$ -th main category of factors;

$w_j$  is the weight of the  $j$ -th factor in each main category,  $j = \{1, 2, \dots, b\}$ ; and

$b$  is the number of factors in each of the six main categories.

	1	2	3	4	5	6	7	8	9	10	11	12	13	14	15	16	17	18	19	20	...	51	52	53	54
1	1																								
2	0.048	1																							
3	0.057	0.046	1																						
4	0.032	0.052	0.012	1																					
5	0.014	0.043	0.021	0.011	1																				
6	0.025	0.001	0.036	0.033	0.005	1																			
7	0.031	0.025	0.016	0.021	0.013	0.012	1																		
8	0.038	0.037	0.005	0.017	0.018	0.004	0.016	1																	
9	0.045	0.035	0.019	0.008	0.024	0.038	0.005	0.019	1																
10	0.034	0.049	0.027	0.011	0.017	0.033	0.024	0.036	0.012	1															
11	0.011	0.011	0.019	0.024	0.002	0.009	0.013	0.018	0.024	0.056	1														
12	0.014	0.021	0.025	0.006	0.022	0.013	0.011	0.002	0.027	0.004	0.027	1													
13	0.036	0.018	0.009	0.021	0.001	0.031	0.005	0.022	0.024	0.031	0.012	0.024	1												
14	0.046	0.024	0.038	0.013	0.039	0.017	0.036	0.009	0.017	0.009	0.017	0.018	0.019	1											
15	0.023	0.012	0.016	0.017	0.011	0.018	0.03	0.008	0.014	0.033	0.021	0.004	0.005	0.031	1										
16	0.047	0.035	0.002	0.022	0.034	0.005	0.016	0.021	0.022	0.023	0.012	0.031	0.027	0.029	0.024	1									
17	0.029	0.007	0.008	0.019	0.024	0.017	0.031	0.006	0.036	0.005	0.032	0.022	0.012	0.012	0.011	0.027	1								
18	0.013	0.019	0.017	0.018	0.012	0.004	0.013	0.024	0.018	0.017	0.012	0.011	0.028	0.003	0.028	0.012	0.019	1							
19	0.025	0.013	0.026	0.03	0.022	0.002	0.008	0.012	0.038	0.012	0.019	0.028	0.022	0.019	0.022	0.028	0.024	0.003	1						
20	0.012	0.024	0.035	0.025	0.015	0.028	0.009	0.035	0.028	0.009	0.011	0.008	0.012	0.018	0.011	0.009	0.017	0.031	0.016	1					
...																									
51	0.03	0.008	0.021	0.003	0.009	0.011	0.014	0.036	0.028	0.017	0.025	0.038	0.027	0.015	0.011	0.015	0.024	0.004	0.011	0.015		1			
52	0.022	0.004	0.004	0.011	0.015	0.022	0.017	0.028	0.012	0.056	0.018	0.026	0.019	0.011	0.026	0.003	0.016	0.008	0.018	0.011			1		
53	0.019	0.012	0.017	0.028	0.012	0.003	0.011	0.008	0.011	0.011	0.012	0.018	0.017	0.025	0.028	0.026	0.014	0.019	0.004	0.028				1	
54	0.031	0.002	0.036	0.004	0.017	0.012	0.026	0.009	0.016	0.019	0.034	0.033	0.015	0.003	0.027	0.022	0.017	0.024	0.016	0.022					1

Figure 2. Measurement of the interdependency of 54 factors.



**Step 3.** To respond to the next question of the study, relative mark-ups had to be estimated in order to prepare the contractor's proposals in a logical manner. Since the main aspects of the contractor's proposal in a hard bid of the traditional system are price and schedule, the mark-ups were defined in the two categories of cost and time. Therefore, in this step and to offer a formula for calculating the cost and time mark-ups of the proposal as the main risk mitigation factors of the agreement for the contractor, nonlinear regression analysis of successful previous projects was employed. Regression analysis, as a credible method for recognizing the relationship between variables and discovering trends, is frequently utilized for tender analysis in the construction industry [85–88]. Regression analysis reveals how a variable or a set of parameters as input, complexity factors in this study, affect an output, time/cost mark-ups [89]. Disclosure of relationships between studied parameters provides the trend prediction ability and basic knowledge of decision making [90]. There is a correlation of variables in the regression measures of both strength as the severity of dependence and direction as the orientation of relationship [91].

For this purpose, data from 139 previous implemented projects in the petroleum industry in Iran were gathered, and 80% of them (111) were applied to model development, and the remaining 28 projects (20%) were considered to test and assess the model. The data from the 139 previous projects were stacked up from eight major Iranian contractors who were taken into account as major companies with first rank (out of five) in the national contractor ranking system. As shown in Table 5, the available contracts can fall into one of the six categories of development projects in oil refineries, gas processing units, petrochemical plants, pipeline, oil/gas storage tanks, and fuel facilities. All of the above projects are recognized as large projects, which means that they are based on the client's estimation of cost of more than USD 500 million. Based on the complexity analysis of 111 previously implemented projects and mapping them with the favorable profit margins, definitely from the contractor's viewpoint, the ranges of mark-ups were proposed in the areas of cost and time. Therefore, the input of the model in this step is the project complexity index, and the output is the cost and time mark-ups for the contractor's proposal, which will be submitted to the client. Finally, to assess the proposed model, data from 28 downstream projects were considered as test data. These projects were selected in such a way as to include all types of projects illustrated in Table 5 in a balanced method. Actual data from the above projects were fed to the model, and the calculated mark-ups were compared with the contractors' opinion. The results show that the deviation of the presented model from the contractors' average opinions is 75.36% and 74.67% for cost and time, respectively. Figure 3, demonstrates the different steps of the research methodology.

**Table 5.** Historical data from 139 projects employed to develop and assess the proposed model.

Contractors	Types of Projects						Total
	Oil Refinery	Gas Processing	Petrochemical Plant	Pipeline	Oil/Gas Storage Tanks	Fuel Facilities	
C1	2	2	2	3	8	4	21
C2	0	2	1	3	4	7	17
C3	1	0	2	1	2	4	10
C4	2	2	1	3	7	6	21
C5	2	2	2	3	5	7	21
C6	1	2	0	2	7	5	17
C7	1	0	2	1	5	4	13
C8	2	2	2	3	4	6	19
Total	11	12	12	19	42	43	139

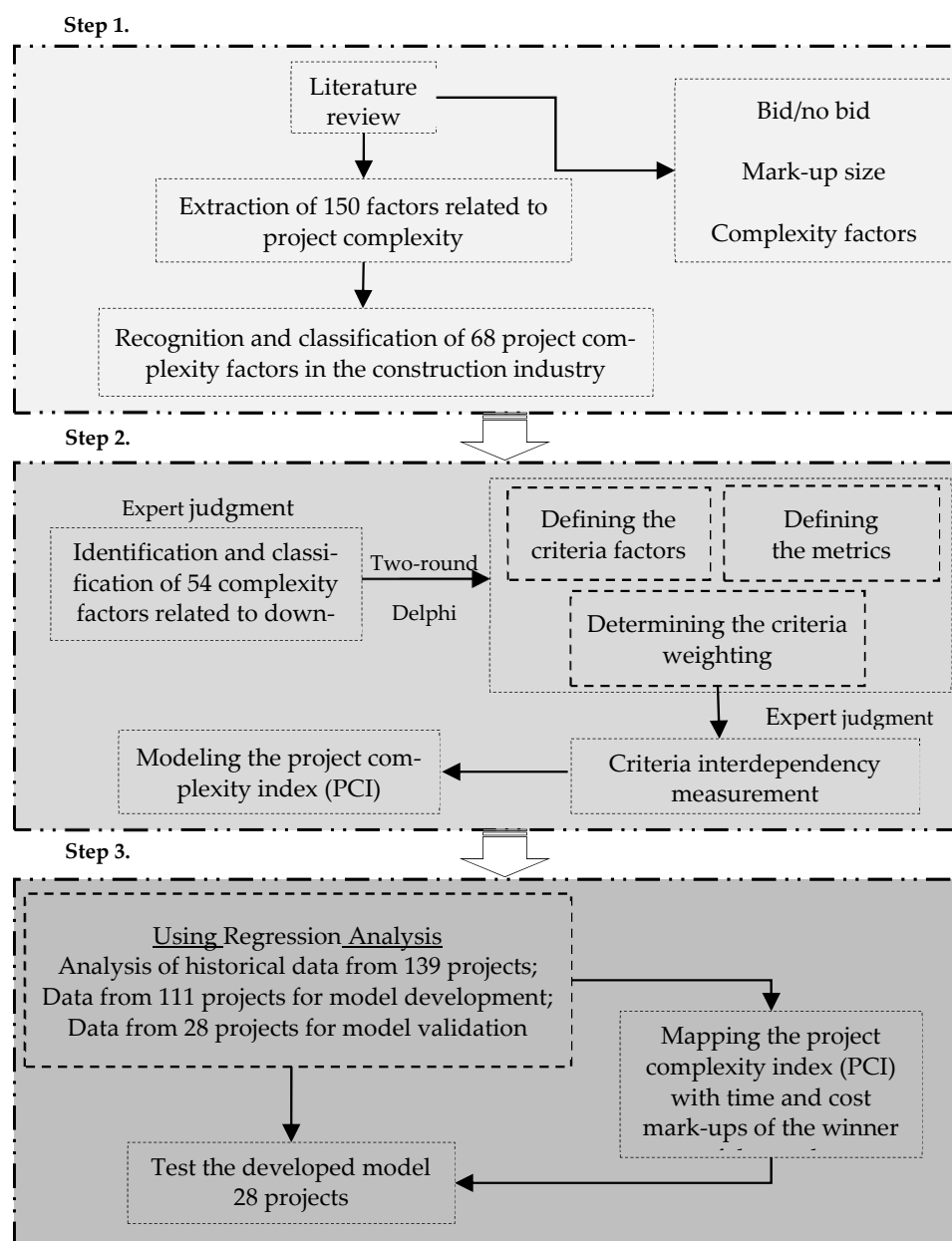


Figure 3. Research methodology.

## 4. Data Analysis and Results

### 4.1. Project Complexity Index (PCI)

As mentioned earlier, project complexity can be measured with some factors investigated in previous research. Since projects in the construction industry can be defined in a wide range, from housing to buildings and industrial projects, it is important to identify and to tailor-make the effective factors in a specified category. The scope of this study included downstream projects in the petroleum industry, and therefore, the effective factors of project complexity were investigated with the main characteristics of these projects. The extracted factors from the literature review using experts' judgment were purified, customized, and categorized based on the requirements of the downstream projects in the petroleum industry. In this process, a total of 54 factors were identified, in which 14 of them were specifically proposed by the experts (Table 6). Subsequently, the above recognized factors were analyzed in a two-round Delphi method, and the following were determined:

1. To improve the precision of the complexity calculations based on a weighted method, the factors were classified into 6 main categories.
2. Obviously, the main categories had no equal significance in project complexity calculations, and therefore, the percentage weight of each category was determined. Additionally, to have more precise results, the importance of each factor was characterized independently.
3. To score each factor against project complexity, the document that should be considered main reference was specified. The usage of the same documents for factors' complexity calculation is very crucial, because in this case, the comparison between different projects will be realistic.
4. Having a reasonable quantitative range for each of the factors was another parameter that should be ascertained. For this purpose, a metric, graded from 1 to 10, was defined for each factor, based on which the factor will be quantified.

**Table 6.** Effective factors on the project complexity index (PCI), their weights, references, and metrics.

Main Category	Percentage Weight ( $pw_i$ )	Factors	Weight ( $w_j$ )	Reference	Metrics Spectrum (Low Complexity: 1; High Complexity: 10)	Description	
1	0.29	Project content (CN)	The duration of the project	0.800	Project time estimation	Equal to or less than 6 months: 1 More than 36 months: 10	-
			The number of activities	0.787	Project schedule	Equal to or less than 3000 activities: 1 More than 10,000 activities: 10	-
			The capital expenditure (CAPEX)	0.812	Project cost estimation	Equal to or less than USD 500 million: 1 More than USD 4 billion: 10	-
			The number of overall human resources required in the implementation phase	0.800	Project plan	Equal to or less than 500 persons: 1 More than 5000 persons: 10	-
			The number of critical objectives of the project	0.837	Project plan	Equal to or less than 3 main objectives: 1 More than 10 main objectives: 10	-
			The probability of scope creep	0.950	Project risk plan	Low probability: 1 High probability: 10	Based on previous experience
			The number of required occupational specialized areas	0.850	Project basic design	Equal to or less than 5 areas: 1 More than 12 areas: 10	-
			The probability of change of project objectives	0.962	Project risk plan	Low probability: 1 High probability: 10	Based on previous experience
			The implementation intricacy	0.837	Project design	Low intricacy: 1 High intricacy: 10	Based on previous experience
			The importance of project completion date	0.737	Contract	Low importance: 1 High importance: 10	Changeability of timing
2	0.14	Project context (CX)	The level of design errors	0.787	Project basic design	Low number of errors: 1 High number of errors: 10	Basic design done by client organization
			The number of investors	0.837	Project plan	Equal to or less than 1 investor: 1 More than 8 investors: 10	-
			The number of key stakeholders	0.987	Project plan	Equal to or less than 3 key stakeholders: 1 More than 8 key stakeholders: 10	-
			The precision of primary studies	0.850	Project basic design	High precision: 1 Low precision: 10	Primary studies done by the client organization
			The impact of the internal policies of the client on the project implementation process	0.750	Investigating the client organization	Low level of interference: 1 High level of interference: 10	-
			The project contract pricing method	0.762	Project document	Cost reimbursable = 1 Time and material = 5 Fixed price = 10	-
			The accessibility of key stakeholders	0.825	Project plan	High level of accessibility: 1 Low level of accessibility: 10	Availability of stakeholders for the meeting
	The project financing method	0.700	Project document	Corporate finance = 1 Finance = 5 Project finance = 10	-		

Table 6. Cont.

Main Category	Percentage Weight ( $pw_i$ )	Factors	Weight ( $w_j$ )	Reference	Metrics Spectrum (Low Complexity: 1; High Complexity: 10)	Description
3	0.18	Technological (Tech)	The accessibility of technical human resources locally	0.775	Investigating the local suppliers	Low accessibility: 1 High accessibility: 10 What percentage of the total need will be met by local resources
			The technological newness level of the project	0.975	Project plan	Low level of newness: 1 High level of newness: 10 Based on previous experience in using technology
			The technological level of the required equipment	0.925	Project basic design	Low level of technology: 1 High level of technology: 10 -
			The availability of the project technologies locally	0.812	Investigating the local weather records	High level of availability: 1 Low level of availability: 10 -
4	0.09	Contractor organization (CoO)	The previous experience with the client	0.912	Internal documents	Equal to or more than 5 projects: 1 Less than 2 projects: 10 Number of previous projects
			The number of joint-venture/consortium partners required	0.862	Project plan	Equal to or less than 1 partner: 1 More than 8 partners: 10 -
			The familiarity with the general conditions of the contract	0.662	Internal knowledge	High level of familiarity: 1 Low level of familiarity: 10 Published by the management and planning organization
			The previous experience in project type (contractor)	0.887	Internal documents	Equal to or more than 8 projects: 1 Less than 3 projects: 10 -
5	0.22	Client organization (CIO)	The technical level of the client staff	0.65	Investigating the client organization	High level of technical staff: 1 Low level of technical staff: 10 -
			The Contractor selection method	0.700	Project document	Negotiation = 1 Limited bid = 5 Public bid = 10 Methods of selecting a contractor in government projects
			The credibility and rank of the project designer consultant	0.867	The corporations' ranking bodies	Degree 1 = 1 Degree 2 = 5 Degree 3 = 10 Based on the list of qualified consultants (national program and budget organization)
			The level of confidence in the financial strength of the client	0.885	Investigating the client organization	High financial strength: 1 Low financial strength: 10 -
			The typology of the project system in the client organization	0.687	Investigating the client organization	Project: 1 Balanced matrix = 5 Functional = 10 -
			The previous experience of the consultant with the client	0.862	Investigating the client organization	Equal to or more than 5 projects: 1 Less than 2 projects: 10 Number of previous projects
			The financial instability of the investors	0.637	Investigating the investors organization	High instability: 1 Low instability: 10 -
			The bureaucratic level of the client organization	0.737	Investigating the client organization	Simple organizational pyramid: 1 Complex organizational pyramid: 10 -
			The presence of the construction manager or program manager	0.675	Project document	No CMA or PM: 1 CMA or PM: 10 -

Table 6. Cont.

Main Category	Percentage Weight ( $pw_i$ )	Factors	Weight ( $w_j$ )	Reference	Metrics Spectrum (Low Complexity: 1; High Complexity: 10)	Description
6	0.08	The geophysical conditions	0.600	Project design	Conventional: 1 Unconventional: 0	-
		The number of required approvals from government entities	0.575	Project plan	Equal to or less than 15 approvals: 1 More than 45 partners: 10	-
		The impact of national politics on the project	0.762	Investigating the national records	Low level of impact: 1 High level of impact: 10	Changes in the rules
		The accessibility of the material sources	0.750	Investigating the local suppliers	Low accessibility: 10 High accessibility: 1	-
		The amount of long lead item (LLI)	0.787	Project document	Low numbers of LLI: 1 High numbers of LLI: 10	-
		The environmental impact assessment	0.537	Project plan	Low level of impact: 1 High level of impact: 10	Positive or negative, direct or indirect, etc.
		The social and cultural environment of the project	0.800	Investigating the local of the project site	Low level of diversity: 1 High level of diversity: 10	Variety of different languages
		The accessibility of the craftsmen or labors locally	0.750	Investigating the local suppliers	Low accessibility: 1 High accessibility: 10	-
		The weather severity	0.487	Investigating the local weather records	Low level of severity: 1 High level of severity: 10	-
		The geological conditions and accessibility of the site	0.600	Project plan	Conventional and accessible: 1 Unconventional and out of access: 10	-
		The level of government binding standards	0.500	Internal knowledge	Low number standards: 1 High number standards: 10	-
		Competition for the project (market attractiveness)	0.787	Market research	Equal to or more than 15 competitors: 1 less than 4 partners: 10	-
		The records of local protests in the region	0.612	Investigating the local protest records	Low level of previous records: 1 High level of previous records: 10	Protests that disrupt the project process
		The local content regulations	0.512	Investigating the local regulations	Low regulations: 1 High regulations: 10	-
		Project location	0.612	Project plan	Operational areas = 1 Rural areas = 3 Urban areas = 7 Urban area with restrictions = 10	-
		The degree of project dependency on foreign purchases	0.812	Project plan and BoM	Equal to or less than USD 100 million: 1 More than USD 1.2 billion: 10	Purchase of equipment or services abroad
		The level of supervision of the local entities	0.525	Investigating the local entities	Low supervision: 1 High supervision: 10	General supervision or detail control
		The geographical distribution of the project's site	0.662	Project basic design	Equal to or less than 1 legal area (province): 1 More than 5 legal areas (province): 10	-
		The probability of alteration in project rules and regulations	0.762	Investigating the local entities	Low probability: 1 High probability: 10	-

Consequently, using Equation (1), a model was developed in which, based on it, the complexity of a given project can be estimated. The input of this model is characteristics of the project, and the output will be the project complexity index (PCI), which is a real number between 1 for the lowest complexity and 10 for the highest complexity. As pointed out earlier, a vast number of criteria in different levels may be involved in the contractor's decision about a prospective tender such as an international and/or national economic situation and considerations of the intended sector in the industry. The focus of this study is on the features of a project, and the other factors are considered fixed variables. However, in the next step the connection between the PCI spectrum and the size of the project mark-up is investigated.

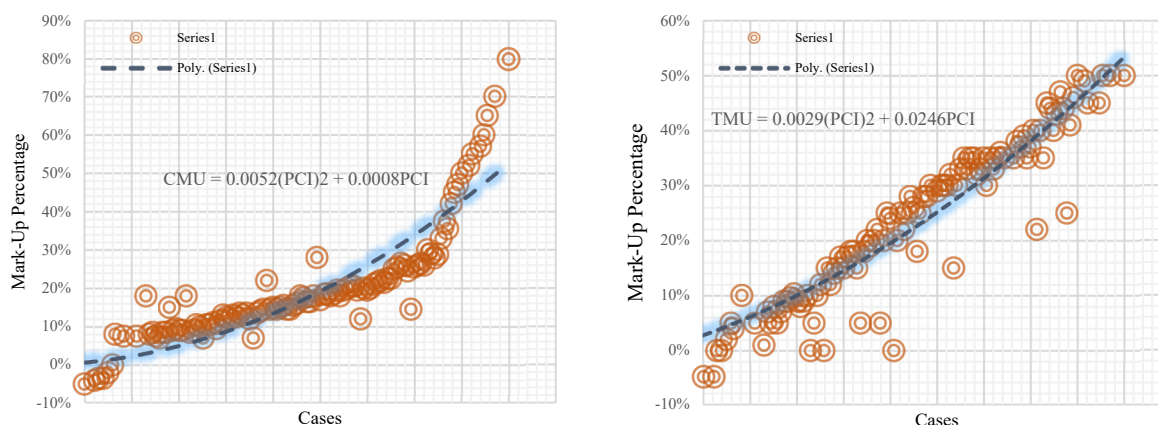


#### 4.2. Mark-Ups of Contractor's Proposal

The legal procedure for contracting through the tender method concludes through an objective process called offer (from the client as offeror) and acceptance (with the contractor as offeree). The proposal of the contractor as the acceptance side of the contract includes the two significant aspects of time and cost, which must be exactly determined to cover the contractual risk of the contractor appropriately and at the same time support the competitiveness in comparison with the other bids. Therefore, to win the tender, the determination of the cost and time mark-ups in a systematic way is crucial for contractors. The contractors of the construction industry traditionally propose their bids, taking into account many factors and parameters that were summarized in the project complexity index in this study. It is worth mentioning that in addition to the PCI, the contractor may consider the other parameters from outside the project level, such as political or other related considerations, to prepare a bid. For instance, it is not uncommon for a contractor to provide a proposal that is underestimated and under the price of the market for many reasons, such as continuing to be present in a growing sector of the economy, improving relationships with a famous client, and/or preserving the expert personnel of the organization. It is obvious that these subjective and case-based criteria were not included in the current research, and therefore, they are considered constant factors in this investigation. However, to point to the second question of this study, utilizing a regression method based on historical data from 139 projects implemented by 8 well-known Iranian contractors in the last 12 years, the proposed bids in terms of time and cost were analyzed. In accordance with available data from these projects, the PCI was determined for each project, and based on the mapping with times and costs of the selected projects, the relations between the PCI and cost-time mark-ups were determined. Finally, the functions that define the relation between the PCI and CMU or TMU were determined through curve fitting with the winners' bids as the following form:  $CMU = F(PCI)$ ;  $TMU = F(PCI)$ .

Since the obtained functions were not accurate enough at the first overall curve fitting (Figure 4), they were subdivided into quadratic exponential subfunctions until the accuracy of each of them reached more than 80%. These functions were formed as eight models for CMU (Table 7) and seven models for TMU (Table 8). As mentioned earlier, data from 111 projects were utilized to develop the CMU and TMU generator functions based on the PCI. Analysis of the above-mentioned data shows that if the PCI becomes more than 8.38 for CMU and more than 8.85 for TMU, there are no supportive data to turn out the mark-ups. This fact may be due to two reasons:

1. Substantially, there are no projects in this section of the industry with this level of complexity; or
2. The contractors decide not to participate in the tender with high complexity (no-bid decision).



**Figure 4.** Cost (left) and time (right) mark-up data used for curve fitting and for developing the primary model.

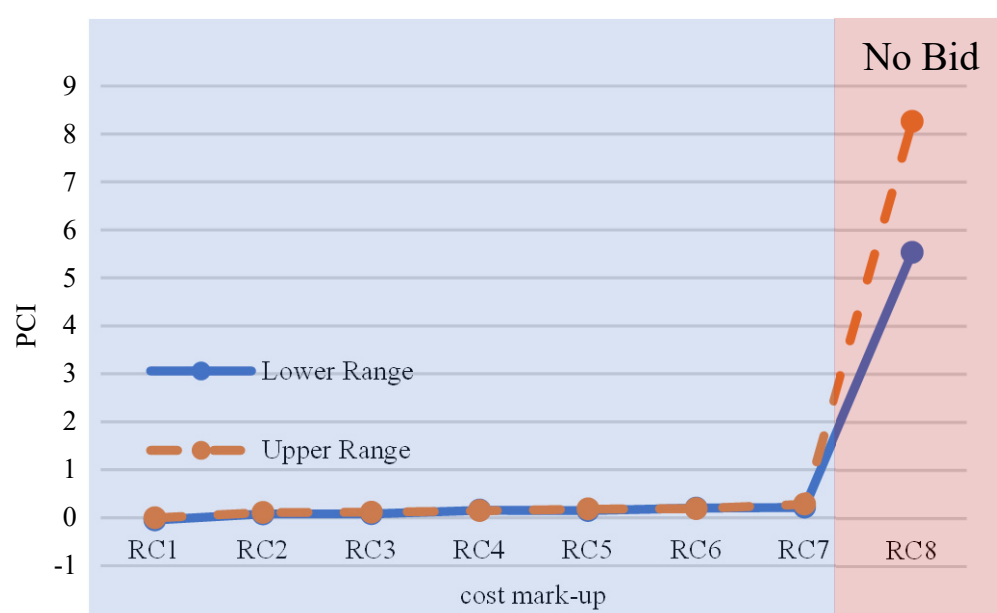
**Table 7.** Relation between the PCI and CMU based on data from 111 projects.

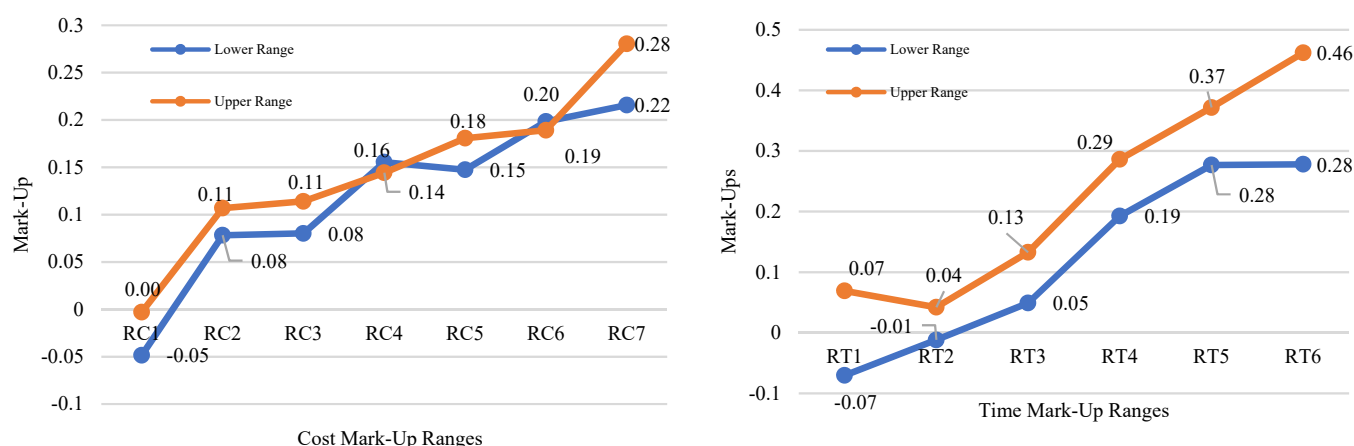
Ranges	PCI		First Decision	Time Mark-Up (CMU) Model	Accuracy	CMU	
	Lower Limit	Upper Limit				Lower Limit	Upper Limit
RC1	1	1.6	Bid	$CMU1 = 0.1391(PCI)^2 - 0.2857(PCI) + 0.0981$	86.3%	-0.0485	-0.0029
RC2	1.61	3.30	Bid	$CMU2 = -0.0047(PCI)^2 + 0.04(PCI) + 0.0261$	87.2%	0.0783	0.1069
RC3	3.31	4.65	Bid	$CMU3 = -0.0515(PCI)^2 + 0.4352(PCI) - 0.796$	87.7%	0.0802	0.1141
RC4	4.66	5.43	Bid	$CMU4 = -0.0378(PCI)^2 + 0.3669(PCI) - 0.7334$	86.6%	0.1555	0.1443
RC5	5.44	6.28	Bid	$CMU5 = -0.1756(PCI)^2 + 2.0976(PCI) - 6.0668$	91.7%	0.1475	0.1807
RC6	6.29	7.06	Bid	$CMU6 = 0.0411(PCI)^2 - 0.5606(PCI) + 2.0985$	87.8%	0.1984	0.1892
RC7	7.07	8.37	Bid	$CMU7 = 0.0262(PCI)^2 - 0.3548(PCI) + 1.4146$	85.4%	0.2157	0.2804
RC8	8.38	10	No Bid	$CMU8 = 0.0083(PCI)^2 + 0.1553(PCI) - 1.5929$	85.5%	5.5371	8.2601

**Table 8.** Relation between the PCI and TMU based on data from 111 projects.

Ranges	PCI		First Decision	Time Mark-Up (TMU) Model	Accuracy	TMU	
	Lower Limit	Upper Limit				Lower Limit	Upper Limit
RT1	1	2.11	Bid	$TMU1 = -0.1141(PCI)^2 + 0.4805(PCI) - 0.4367$	82.1%	-0.0703	0.0691
RT2	2.12	3.37	Bid	$TMU2 = -0.1912(PCI)^2 + 1.0928(PCI) - 1.4692$	85.6%	-0.0117	0.0420
RT3	3.37	4.44	Bid	$TMU3 = -0.2121(PCI)^2 + 1.7347(PCI) - 3.3881$	86.4%	0.0490	0.1327
RT4	4.45	5.78	Bid	$TMU4 = 0.109(PCI)^2 - 1.0447(PCI) + 2.6831$	83.3%	0.1926	0.2862
RT5	5.79	7.83	Bid	$TMU5 = -0.003(PCI)^2 + 0.0874(PCI) - 0.1286$	85.3%	0.2768	0.3718
RT6	7.84	8.84	Bid	$TMU6 = -0.5722(PCI)^2 + 9.7284(PCI) - 40.822$	83.5%	0.2780	0.4621
RT7	8.85	10	No Bid	$TMU7 = 0.0429(PCI)^2 - 0.786(PCI) + 4.0699$	80.4%	0.4738	0.4999

Both of these two reasons lead the model to define the no-bid area for the above-mentioned project complexity factors (Figure 5). Note that the no-bid area in Figure 5 means that in these levels of complexity, considering all affecting factors, in which majority of them are related to project-inherent characteristics and the contractor appropriateness for the project's overall surrounding system and its client organization, it is not logical for the contractor to move forward. The other remarkable point here is the dumping price of the contractors in comparison with the client estimations in the case of low complexity projects. Clearly, based on available data, this phenomenon occurs in the complexity indices at less than 1.6 and 2.12 for the CMU and TMU, respectively. It is worth mentioning that the CMU and TMU are not following the same trends for growth versus the PCI (Figure 6).

**Figure 5.** The no-bid area based on the analyzed data.

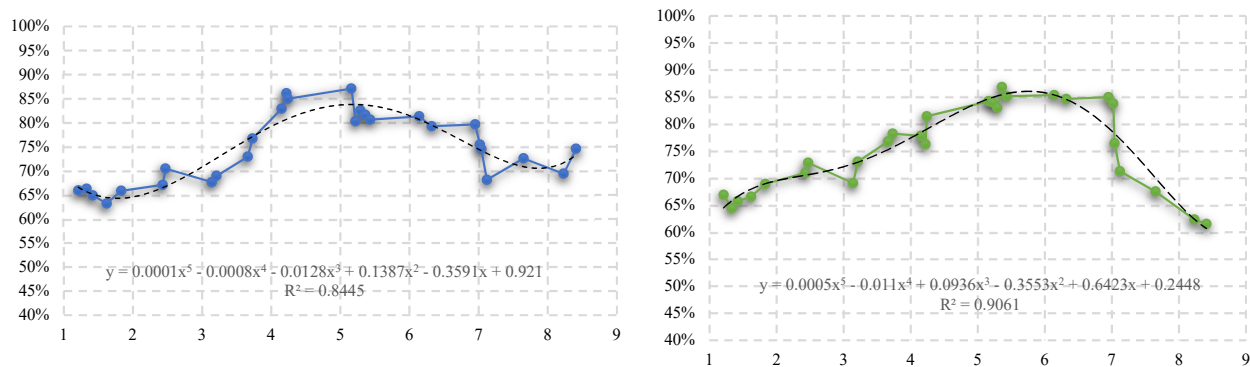


**Figure 6.** Trend of changing the upper and lower limits of the CMU (left) and TMU (right) without the no-bid area.

#### 4.3. Model Validation and Research Limitations

As mentioned earlier, data from 28 projects were considered to assess the developed model. These projects were selected in such a way that there are all kinds of projects in the composition of the test data. For this purpose, the PCI of each project was estimated using the available data, and subsequently based on this index and the developed models, the CMU and TMU were calculated for each project. Eventually, the calculated mark-ups as outcome of the proposed model were compared with the actual amounts of bid winners (Table 9). Results reveal that the complexity-based model to support the bid/no-bid decision and afterward to figure out the mark-ups for the time and cost of project, in the context of the downstream sector of the petroleum industry of Iran, can lead to reliable outputs. The average accuracy calculated for the time and cost mark-up is 74.670% and 75.364%, respectively; and the error rate for these two indices is 11.096% and −9.239%, respectively. The above results, which are expressed as percentage of accuracy and error, can be interpreted as follows:

1. Accuracy in both aspects of time and cost is close to 75%. Based on this fact, it can be inferred that the process of model development based on the discovery of the relation between project complexity and bid mark-ups makes sense overall. Otherwise, the calculated accuracy of the two separate datasets would have to be notably separated from each other.
2. The model results are higher or lower than the actual data, and this can be seen in the positive and negative sign of the errors. The mean of the errors, regardless of their signs, is about 10% at both the time and cost mark-ups, meaning that the data collected for model development in both respects behaved similarly, and therefore, the results are reliable at around 90%.
3. It can be inferred from the rate of accuracy against the PCI that this trend almost follows a normal distribution (Figure 7). This fact means that the reliability of the developed model is lower in low and high complexities and higher in complexities diffused around the mean. In fact, in the case of projects with high or low complexity, the contractors' bids do not necessarily fully follow the logical pattern of the relationship between coefficients' determination and subjective understanding of the complexity of the project.



**Figure 7.** Correlation between the PCI and the percentage of the results' accuracy time mark-up (left) and cost mark-up (right).

**Table 9.** Accuracy of the outputs of the proposed model versus the actual data.

Test Data	PCI	Actual		Model		Accuracy		Error	
		TMU	CMU	TMU	CMU	T	C	T	C
Project 01	2.43	4.31%	6.78%	5.73%	9.56%	67.076%	70.957%	32.924%	29.043%
Project 02	7.12	50.14%	30.39%	34.16%	21.66%	68.129%	71.273%	−31.871%	−28.727%
Project 03	1.21	−3.39%	−2.94%	−2.24%	−4.39%	65.929%	66.909%	34.071%	−33.091%
Project 04	3.14	5.82%	15.25%	7.70%	10.54%	67.628%	69.088%	32.372%	−30.912%
Project 05	1.62	3.09%	5.23%	4.23%	7.86%	63.203%	66.564%	36.797%	33.436%
Project 06	4.22	18.02%	16.18%	15.52%	12.34%	86.109%	76.273%	−13.891%	−23.727%
Project 07	1.33	−0.08%	−2.31%	0.05%	−3.58%	66.250%	64.471%	33.750%	−35.529%
Project 08	3.73	10.08%	14.16%	13.14%	11.08%	76.706%	78.234%	23.294%	−21.766%
Project 09	7.02	25.43%	22.50%	33.71%	18.85%	75.435%	83.782%	24.565%	−16.218%
Project 10	2.47	9.02%	7.01%	6.35%	9.62%	70.452%	72.846%	−29.548%	27.154%
Project 11	5.16	16.95%	18.21%	19.46%	15.34%	87.083%	84.217%	12.917%	−15.783%
Project 12	5.22	16.04%	13.76%	19.98%	15.18%	80.264%	84.000%	19.736%	16.000%
Project 13	3.21	5.23%	14.52%	6.85%	10.61%	68.948%	73.051%	31.052%	−26.949%
Project 14	5.29	17.08%	18.03%	20.69%	14.97%	82.552%	83.028%	17.448%	−16.972%
Project 15	7.04	45.36%	24.71%	33.80%	18.89%	74.515%	76.446%	−25.485%	−23.554%
Project 16	6.14	23.98%	22.54%	29.49%	19.24%	81.304%	85.363%	18.696%	−14.637%
Project 17	4.15	13.05%	9.58%	15.80%	12.31%	82.897%	77.810%	17.103%	22.190%
Project 18	6.32	24.09%	23.29%	30.39%	19.71%	79.259%	84.645%	20.741%	−15.355%
Project 19	5.43	18.08%	12.29%	22.42%	14.43%	80.631%	85.142%	19.369%	14.858%
Project 20	8.23	70.03%	43.18%	48.60%	26.92%	69.398%	62.343%	−30.602%	−37.657%
Project 21	5.36	17.55%	16.95%	21.50%	14.72%	81.616%	86.849%	18.384%	−13.151%
Project 22	6.95	26.59%	22.07%	33.39%	18.76%	79.629%	84.984%	20.371%	−15.016%
Project 23	8.41	70.17%	46.88%	52.32%	28.38%	74.561%	61.537%	−25.439%	−38.463%
Project 24	1.42	1.15%	−1.78%	1.55%	−2.71%	64.869%	65.732%	35.131%	−34.268%
Project 25	1.83	4.51%	5.76%	6.05%	8.36%	65.831%	68.932%	34.169%	31.068%
Project 26	3.66	9.42%	8.21%	11.97%	10.70%	72.929%	76.757%	27.071%	23.243%
Project 27	7.65	50.21%	34.61%	36.44%	23.37%	72.575%	67.523%	−27.425%	−32.477%
Project 28	4.24	18.12%	10.05%	15.40%	12.34%	84.977%	81.445%	−15.023%	18.555%
Average						74.670%	75.364%	11.096%	−9.239%

Although the findings confirm that the developed model based on the complexity factors and the model definitely has a strong capacity to expand to other sectors in the construction industry in different countries, the following should be kept in mind as model limitations, which may affect the final results:

1. The model was established based on gathered data from: (a) projects in the downstream sector of the petroleum industry and (b) professionals in construction projects in Iran. Therefore, any effort to adapt the model to other sectors may need to re-review the complexity factors and modify the mark-up scales, and may necessitate considering specific parameters of the selected sector to develop a customized a model.
2. Another limiting factor in the validation process is that decision making by the contractor in the tender process is a complicated multilateral problem that needs to reckon several attributes, which are held by those in the organization as vital internal or maybe even tacit knowledge. Therefore, it is not surprising that a wide range of quantitative, qualitative, and mixed approaches with different methodologies for modeling, inference, or reasoning can be observed in previous studies. Accordingly, comparing results with previous research is actually impossible, because any attempt in this regard will lead to a comparison of apples and oranges.
3. Another limitation of the study is the number of projects (139) that were applied for both model training in the regression analysis and for testing of the developed model. Consequently, it is obvious that the resulting mathematical model was vigorously curbed by the volume of the database, which can be improved in the next investigations by expanding the input information for model training.

## 5. Discussion

### 5.1. A Bid/Mark-Up Decision Support Model and Firm Strategy under Complexity

The current study aims to examine one of the key decisions in the preproject phase, tendering strategy, by exploring the relationship between the inherent project characteristics and a key feature of a bid from the perspective of the contractor. Although there are dozens of research studies in the literature that have investigated this key decision of the contractor [8,10,35,36], the two-folded gap including modeling the complexity factors of the project and considering the schedule parameter of the project is obvious in previous studies. Accordingly, the current study models the complexity of a project as a foundation for the development of the contractor's bid strategy. Therefore, in the current study a model was developed to support key decisions for the bid proposal preparation phase (Figure 8).

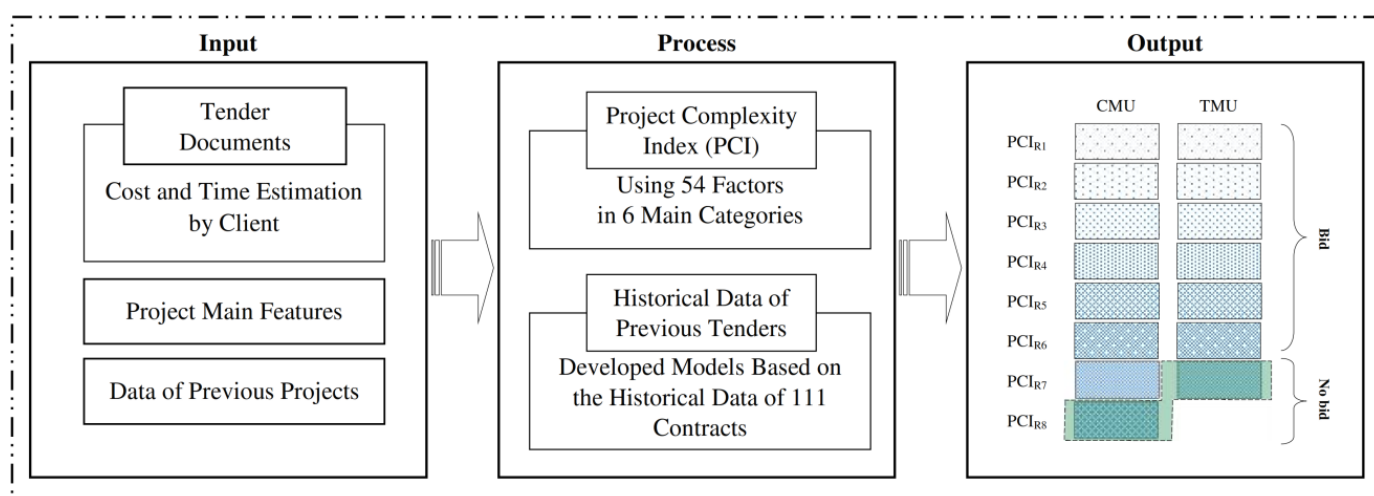


Figure 8. Schematic view of the proposed model.



The proposed model supports the decision to bid or not bid and the determination of appropriate mark-ups regarding project-specific features using the estimation of project complexity. The model was formed using historical data from 139 previous successful projects, utilizing regression analysis to develop the mathematical patterns and to test the model. Results show that there are meaningful relationships between project-complexity-measuring factors and the tender strategy with a reliability of around 90%. The input of the introduced model includes tender documents announced by the client of the project, which normally encompass the estimations on the client side. Additionally, the other features of the project and data related to previous projects are considered as the input of the model. The process of the provided model is to calculate the project complexity index (PCI) based on the historical data using 54 factors, which are organized into 6 main categories. The output of the model is to present cost and time mark-ups as the coefficients that the contractor will propose in the bid proposal. As shown in the output in Figure 8, where the complexity index rises above the defined ranges, it is recommended to refrain from offering a bid.

### 5.2. A Bid/Mark-Up Decision Support Model and Open Innovation Dynamics

From another perspective, it is important to analyze the developed decision support model from the viewpoint of complexity science and open innovation. This area of knowledge has deep application and novel approaches for problem solving in a wide range of domains—for instance, technology transfer performance [92]; adoption of new technologies, such as blockchain, big data, artificial intelligence, 3D printing, and virtual and augmented reality [93,94]; dynamics of business models [95–97]; quality analysis of complex products [98,99]; performance of corporate entrepreneurship [100–102]; design rules and modular architectures [103]; digital transformation in the banking sector [104]; and R&D innovation [105,106].

It is notable that results reveal that the complexity index of a project has a direct correlation with the bid mark-ups of time and cost. This can be interpreted as a fact that when a project becomes more complex, the overall risk of a project proceeds to go higher, and the contractors, to cover uncertainties, propose greater profit/schedule coefficients. The other fact here is that in the case of projects with the highest and lowest complexities, the accuracy of the project mark-up is lower, and medium ranges of the PCI the TMU and CMU are more accurate. This interesting fact may happen due to the higher unfamiliarity of contractors with out-of-normal ranges or unusual projects. However, contractors should be aware that the probability of error in the lowest and the highest ranges of the PCI is larger, and they should scrutinize more the process of bid development in these cases. Tendering is a mandatory step to award projects in the public and government sector of Iran following a rigid predefined process and procedures, which must be fulfilled within a bound deadline. Additionally, contractors must go through the prequalification process and afterwards have to submit a bid bond to guarantee the proposed cost and time. The above-mentioned hard tendering process on the one hand and the probability of occurrence of tremendous mistakes in the bid proposal on the other hand make decision making and bid coefficients' determination doubly important. It is not unusual that an underestimated bid proposal leads to winning in a tender, a proposal that is not practical in the implementation phase, or an overestimated bid causes the long relations with a prospective client to deteriorate. Therefore, holding forth the benefit margin of the company and at the same time keeping mutual relations with the client must be considered in the bid submission. Accordingly, the proposed model can be effectively used to determine the level of complicity of a project and can be applied as a quantitative method to support a critical decision about a risk assessment of a venture. Furthermore, to estimate the profit margin in the form of cost and time mark-ups, the provided model can be helpful. Note that this model is capable of approximating the complexity of a project and, thereafter, of proposing the mark-ups based on a series of developed equations empowered by historical data. The decision support model described above can be represented and concluded as a decision tree, as shown in

Figure 9. It is worth mentioning that the model can be adopted by all contractors in the downstream sector of the petroleum industry in other countries and nations, the presented methodology can be applied to all other projects, and the illustrated results have strong compatibility with other types of projects in the construction industry and also in other regions by adjusting/adding the specific complexity factors.

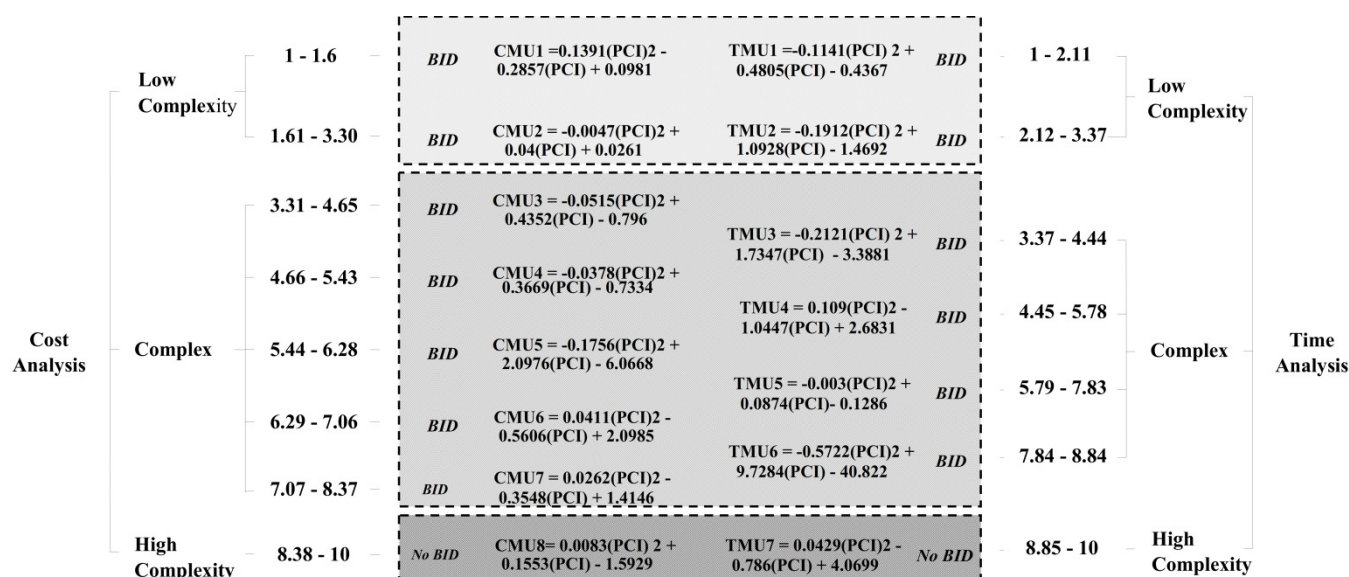


Figure 9. The presented model in the form of a decision tree of bid/no-bid and mark-up sizes.

## 6. Implication and Future Research Topic

In the current study, an investigation was conducted to address the problem of a bid or no-bid decision by the contractor side of a probabilistic contract in the context of the downstream sector of the petroleum industry, and eventually a two-stage model was proposed as the finding of the research. Using the proposed model and based on 54 effective factors, the complexity of a prospective project will be indexed. This parameter as the project complexity factor (PCI) can be used to predict the cost and time mark-ups, which are recognized as the most critical coefficient in the contractor technical-commercial bid.

Tenders in the downstream sector of the petroleum industry in Iran and all over the world are very tight, time-driven, and costly processes, and this competitive procedure can be considered one of the crucial business processes of contractorship; for that reason, the tender department is one of the main and constant sections in all contractors' organizational chart all over this industry. However, nowadays neither price nor time is the sole criterion for selecting a contractor by a client; and normally, a vast number of criteria are employed for contractor selection, from early screenings to rigid qualifications, but the cost effectiveness of the contractor's bid is still a critical factor in tenders' process in the construction industry. The price offer of the contractor must take into account factors, many of which are difficult to express in a quantitative manner. A vast part of these factors is considered by the contractor in a subjective judgement process, and it is even not uncommon for some of them to be overlooked in complicated, time-consuming, and costly efforts to participate in construction tenders. It is common in the society of Iranian contractors to apply the terms plus (when the contractor's offer is greater than the client's released estimation) and minus (when the contractor's offer is less than the client's released estimation) to explain the appropriateness of a mark-up in competitive tenders in the construction industry. For example, a bid with 5% plus or 8% minus means a proposed coefficient of 0.95 or 1.08 to the customer estimate. It is obvious that the determination of such coefficient can be vital for a contractor. Developing a tender strategy can be deemed one of the core organizational assets of prosperous contractors that probably will never be revealed, because the main

stream of business of a construction corporation is vigorously tied up to this knowledge. Thus, it is vital for new companies entering the market to have competent knowledge about the principles of tendering as a core organizational competency.

In practice, the contractor considers a certain price range and will only consider bids in that range and, using previous experience and a subjective sense of the executive and commercial environment, prepares a reasonable price offer. The above process is not systematic, does not include all parameters, and can lead to tender failure or profit loss, especially for those who are recognized as newly established businesses in the field of tenders. Therefore, it is highly recommended that contractors, using historical data and available information about the defined project, evaluate the project complexity level and, on the basis of this assessment, determine the mark-up sizes. It is obvious that there are other factors that may need to be taken into account by the contractor in the tender strategy development phase, such as maintaining relations with a client or remaining in a competitive sector of a market. Additionally, according to major strategy shifts in the petroleum industry, to diversify energy baskets in recent years, including solar, hydropower, wind, and the other renewable source of energies, it seems inevitable that the downstream sector, including oil and gas refineries and petrochemicals, take into account broader factors to expand their business models. Therefore, it will be worthwhile to have future studies on the following: (1) bid mark-up sizes in other sectors of the construction industry and (2) risk analysis of bid proposals from the standpoints of the contractor and the client.

**Author Contributions:** Conceptualization, A.F.; methodology, A.F., M.R. and S.P.; validation, A.F., M.R. and N.A.E.; investigation, A.F. and N.A.E.; resources, S.M.; writing—original draft preparation, A.F. and N.A.E.; writing—review and editing, A.F., N.A.E. and S.P.; supervision, M.R.; project administration, M.R. All authors have read and agreed to the published version of the manuscript.

**Funding:** This research received no internal or external funding from any commercial or noncommercial source.

**Institutional Review Board Statement:** Not applicable.

**Informed Consent Statement:** Not applicable.

**Data Availability Statement:** All data have been presented in the text.

**Conflicts of Interest:** The authors declare no conflict of interest.

## References

1. Shash, A.A. Factors considered in tendering decisions by top UK contractors. *Constr. Manag. Econ.* **1993**, *11*, 111–118. [\[CrossRef\]](#)
2. Soltaninejad, M.; Faraji, A.; Noorzai, E. Recognizing the effective factors in managing fire incidents to reduce the collateral damages and casualties. *Facilities* **2021**. ahead-of-print. [\[CrossRef\]](#)
3. Faraji, A.; Rashidi, M.; Tezangi, M.R.; Perera, S. Multihybrid Dispute Resolution Framework for Projects of Downstream Sector of Petroleum Industry. *J. Leg. Aff. Disput. Resolut. Eng. Constr.* **2021**, *13*, 4521026. [\[CrossRef\]](#)
4. Golabchi, M.; Faraji, A. *Project Strategic Management*; Press University of Tehran: Tehran, Iran, 2010.
5. Tavakoli, A.; Utomo, J. Bid markup assistant: An expert system. *Cost Eng.* **1989**, *31*, 28.
6. Carr, R.I.; Sandahl, J.W. Bidding strategy using multiple regression. *J. Constr. Div.* **1978**, *104*, 15–26. [\[CrossRef\]](#)
7. Ahmad, I.; Minkarah, I. An expert system for selecting bid markups. In *Proceedings of the Computing in Civil Engineering: Microcomputers to Supercomputers*; ASCE: Reston, VA, USA, 1988; pp. 229–238.
8. Kalan, D.; Ozbek, M.E. Development of a Construction Project Bidding Decision-Making Tool. *Pract. Period. Struct. Des. Constr.* **2020**, *25*, 04019032. [\[CrossRef\]](#)
9. Kumar, J.K.; Raj, V. A Study on Key Factors Influencing Bid Decision Model for Construction Projects. In *IOP Conference Series: Materials Science and Engineering*; IOP Publishing: Bristol, UK, 2019; Volume 574, p. 12004.
10. Chileshe, N.; Kavishe, N.; Edwards, D.J. Critical factors influencing the bid or no-bid decision of the indigenous small building contractors in Tanzania. *Constr. Innov.* **2020**, *21*, 182–202. [\[CrossRef\]](#)
11. Egemen, M.; Mohamed, A. SCBMD: A knowledge-based system software for strategically correct bid/no bid and mark-up size decisions. *Autom. Constr.* **2008**, *17*, 864–872. [\[CrossRef\]](#)
12. Drew, D.; Skitmore, M.; Lo, H.P. The effect of client and type and size of construction work on a contractor's bidding strategy. *Build. Environ.* **2001**, *36*, 393–406. [\[CrossRef\]](#)
13. El-Mashaleh, M.S.; Al-Jundi, A.; Mattar, S.; Abu Ali, R.; Al-Hammad, J. Understanding key bidding factors considered by top Jordanian contractors. *Jordan J. Civ. Eng.* **2014**, *159*, 1–10.

14. Faraji, A.; Rashidi, M.; Sorooshnia, E. An Integrated Organizational System for Project Source Selection in the Major Iranian Construction Companies. *Buildings* **2020**, *10*, 251. [\[CrossRef\]](#)
15. Faraji, A. Smart Contract Based Conceptual Model for Optimizing Risk Distribution in Construction Industry. In Proceedings of the 3rd International Conference on Applied Researches in Structural Engineering and Construction Management, Chicago, IL, USA, 20–25 May 2019.
16. Alsaedi, M.; Assaf, S.; Hassanain, M.A.; Abdallah, A. Factors affecting contractors' bidding decisions for construction projects in Saudi Arabia. *Buildings* **2019**, *9*, 33. [\[CrossRef\]](#)
17. Faraji, A.; Rashidi, M.; Khadir, P.; Perera, S. A Risk Analysis-Best Worst Method Based Model for Selection of the Most Appropriate Contract Strategy for Onshore Drilling Projects in the Iranian Petroleum Industry. *Buildings* **2021**, *11*, 97. [\[CrossRef\]](#)
18. Ravanshadnia, M.; Rajaie, H.; Abbasian, H.R. A comprehensive bid/no-bid decision making framework for construction companies. *Iran. J. Sci. Technol. Trans. B Eng.* **2011**, *35*, 95–103.
19. Chua, D.K.H.; Li, D.Z.; Chan, W.T. Case-based reasoning approach in bid decision making. *J. Constr. Eng. Manag.* **2001**, *127*, 35–45. [\[CrossRef\]](#)
20. Vale, J.; Barbosa, N.; Bertuzzi, R.; Bandeira, A.M.; Vale, V.T. Intellectual Capital Change Management in the Construction Industry—The Case of an Inter-Organisational Collaboration. *J. Open Innov. Technol. Mark. Complex.* **2021**, *7*, 199. [\[CrossRef\]](#)
21. Teodorescu, M.; Korchagina, E. Applying Blockchain in the Modern Supply Chain Management: Its Implication on Open Innovation. *J. Open Innov. Technol. Mark. Complex.* **2021**, *7*, 80. [\[CrossRef\]](#)
22. Fellows, R.F.; Langford, D.A. Decision theory and tendering. *Build. Technol. Manag.* **1980**, *18*, 36–39.
23. Faraji, A.; Rashidi, M.; Perera, S. Text Mining Risk Assessment-Based Model to Conduct Uncertainty Analysis of the General Conditions of Contract in Housing Construction Projects: Case Study of the NSW GC21. *J. Archit. Eng.* **2021**, *27*, 4021025. [\[CrossRef\]](#)
24. Fine, B. Tendering strategy. *Building* **1975**, 115–121.
25. Lin, C.-T.; Chen, Y.-T. Bid/no-bid decision-making—A fuzzy linguistic approach. *Int. J. Proj. Manag.* **2004**, *22*, 585–593. [\[CrossRef\]](#)
26. Lee, S.; Chang, L.-M. Bid-markup determination for microtunneling projects. *Tunn. Undergr. Sp. Technol.* **2004**, *19*, 151–163. [\[CrossRef\]](#)
27. Drew, D.S.; Skitmore, R.M. Prequalification and C-competitiveness. *Omega* **1993**, *21*, 363–375. [\[CrossRef\]](#)
28. Flanagan, R.; Norman, G. Risk analysis—an extension of price prediction techniques for building Work. *Constr. Pap.* **1982**, *1*, 27–34.
29. Laryea, S.; Hughes, W. How contractors price risk in bids: Theory and practice. *Constr. Manag. Econ.* **2008**, *26*, 911–924. [\[CrossRef\]](#)
30. Cheaitou, A.; Larbi, R.; Al Housani, B. Decision making framework for tender evaluation and contractor selection in public organizations with risk considerations. *Socioecon. Plann. Sci.* **2019**, *68*, 100620. [\[CrossRef\]](#)
31. Fayek, A.; Young, D.M.; Duffield, C.F. A survey of tendering practices in the Australian construction industry. *Eng. Manag. J.* **1998**, *10*, 29–34. [\[CrossRef\]](#)
32. Cagno, E.; Caron, F.; Mancini, M. A Bayesian Approach for the Bidding Phase to Estimate the Cause Probability of an Uncertain Event. *Proj. Manag.* **2002**, *8*, 83.
33. Dikmen, I.; Birgonul, M.T.; Gur, A.K. A case-based decision support tool for bid mark-up estimation of international construction projects. *Autom. Constr.* **2007**, *17*, 30–44. [\[CrossRef\]](#)
34. Bageis, A.S.; Fortune, C. Factors affecting the bid/no bid decision in the Saudi Arabian construction contractors. *Constr. Manag. Econ.* **2009**, *27*, 53–71. [\[CrossRef\]](#)
35. Marzouk, M.; Mohamed, E. Modeling bid/no bid decisions using fuzzy fault tree. *Constr. Innov.* **2017**, *18*, 90–108. [\[CrossRef\]](#)
36. Perera, B.; Wijewickrama, M.; Ranaweera, W.; Gamage, I.S.W. Significant factors influencing the bid mark-up decision of infrastructure projects in Sri Lanka. *Int. J. Constr. Manag.* **2019**, *21*, 1–15. [\[CrossRef\]](#)
37. Oyeyipo, O.; Odusami, K.T.; Ojelabi, R.A.; Afolabi, A.O. Factors affecting contractors' bidding decisions for construction projects in Nigeria. *J. Constr. Dev. Ctries.* **2016**, *21*, 21–35. [\[CrossRef\]](#)
38. Kumar, J.K.; Raj, S.V. Bid decision model for construction projects—A review. *Mater. Today Proc.* **2020**, *22*, 688–690. [\[CrossRef\]](#)
39. Pereira, L.; Fernandes, A.; Sempiterno, M.; Dias, Á.; Lopes da Costa, R.; António, N. Knowledge Management Maturity Contributes to Project-Based Companies in an Open Innovation Era. *J. Open Innov. Technol. Mark. Complex.* **2021**, *7*, 126. [\[CrossRef\]](#)
40. Tereshko, E.; Romanovich, M.; Rudskaya, I. Readiness of Regions for Digitalization of the Construction Complex. *J. Open Innov. Technol. Mark. Complex.* **2021**, *7*, 2. [\[CrossRef\]](#)
41. Kleber, D.M.; Juusola, K. Open Innovation—An Explorative Study on Value Co-Creation Tools for Nation Branding and Building a Competitive Identity. *J. Open Innov. Technol. Mark. Complex.* **2021**, *7*, 206. [\[CrossRef\]](#)
42. Mills, A. A systematic approach to risk management for construction. *Struct. Surv.* **2001**, *9*, 245–252. [\[CrossRef\]](#)
43. Mulholland, B.; Christian, J. Risk assessment in construction schedules. *J. Constr. Eng. Manag.* **1999**, *125*, 8–15. [\[CrossRef\]](#)
44. Baccarini, D. The concept of project complexity—A review. *Int. J. Proj. Manag.* **1996**, *14*, 201–204. [\[CrossRef\]](#)
45. Romero, M.C.; Lara, P.; Villalobos, J. Evolution of the Business Model: Arriving at Open Business Model Dynamics. *J. Open Innov. Technol. Mark. Complex.* **2021**, *7*, 86. [\[CrossRef\]](#)
46. Hadi, N.; Udin, U. Testing the Effectiveness of CSR Dimensions for Small Business Entrepreneurs. *J. Open Innov. Technol. Mark. Complex.* **2021**, *7*, 6. [\[CrossRef\]](#)
47. Butt, A.S.; Arshi, T.A.; Rao, V.; Tewari, V. Implications of Belt and Road Initiative for Supply Chain Management: A Holistic View. *J. Open Innov. Technol. Mark. Complex.* **2020**, *6*, 136. [\[CrossRef\]](#)



48. Santana, G. Classification of construction projects by scales of complexity. *Int. J. Proj. Manag.* **1990**, *8*, 102–104. [\[CrossRef\]](#)
49. Turner, J.R.; Cochrane, R.A. Goals-and-methods matrix: Coping with projects with ill defined goals and/or methods of achieving them. *Int. J. Proj. Manag.* **1993**, *11*, 93–102. [\[CrossRef\]](#)
50. Williams, T.M. The need for new paradigms for complex projects. *Int. J. Proj. Manag.* **1999**, *17*, 269–273. [\[CrossRef\]](#)
51. Girmscheid, G.; Brockmann, C. The inherent complexity of large scale engineering projects. *Proj. Perspect.* **2008**, *29*, 22–26.
52. Vidal, L.; Marle, F. Understanding project complexity: Implications on project management. *Kybernetes* **2008**, *37*, 1094–1110. [\[CrossRef\]](#)
53. Geraldi, J.; Maylor, H.; Williams, T. Now, let's make it really complex (complicated). *Int. J. Oper. Prod. Manag.* **2011**, *31*, 966–990. [\[CrossRef\]](#)
54. Ramasesh, R.V.; Browning, T.R. A conceptual framework for tackling knowable unknown unknowns in project management. *J. Oper. Manag.* **2014**, *32*, 190–204. [\[CrossRef\]](#)
55. He, Q.; Luo, L.; Hu, Y.; Chan, A.P.C. Measuring the complexity of mega construction projects in China—A fuzzy analytic network process analysis. *Int. J. Proj. Manag.* **2015**, *33*, 549–563. [\[CrossRef\]](#)
56. Carral, L.; Tarrío-Saavedra, J.; Iglesias, G.; San-Cristobal, J.R. Evaluation of the structural complexity of organisations and products in naval-shipbuilding projects. *Ships Offshore Struct.* **2020**, *16*, 670–685. [\[CrossRef\]](#)
57. GAPPS. Crawford-Ishikura Factor Table for Evaluating Roles. 2007. Available online: [https://www.projectmanagement.com/content/attachments/Primus1\\_201011023434.pdf](https://www.projectmanagement.com/content/attachments/Primus1_201011023434.pdf) (accessed on 1 October 2007).
58. IPMA & AIPM. *Complexity Matrix*, 2015.
59. Poveda-Bautista, R.; Diego-Mas, J.-A.; Leon-Medina, D. Measuring the project management complexity: The case of information technology projects. *Complexity* **2018**, *2018*, 6058480. [\[CrossRef\]](#)
60. Dao, B.; Kermanshachi, S.; Shane, J.; Anderson, S. Project complexity assessment and management tool. *Procedia Eng.* **2016**, *145*, 491–496. [\[CrossRef\]](#)
61. Luo, L.; He, Q.; Xie, J.; Yang, D.; Wu, G. Investigating the relationship between project complexity and success in complex construction projects. *J. Manag. Eng.* **2017**, *33*, 4016036. [\[CrossRef\]](#)
62. Bakhshi, J. Exploring Project Complexities and Their Problems: A Critical Review of the Literature. Doctoral Dissertation, University of Adelaide, Adelaide, Australia, 2016.
63. Kermanshachi, S.; Dao, B.; Shane, J.; Anderson, S. Project complexity indicators and management strategies—A Delphi study. *Procedia Eng.* **2016**, *145*, 587–594. [\[CrossRef\]](#)
64. Abdou, S.M.; Yong, K.; Othman, M. Categorization of project complexity factors in Malaysian construction industry. *Int. J. Prop. Sci. (E-ISSN 2229-8568)* **2017**, *7*, 1–15. [\[CrossRef\]](#)
65. Cooke-Davies, T. Navigating Complexity. Proj. Manag. Institute, PMI.org/Pulse. 2013. Available online: <https://www.pmi.org/learning/thought-leadership/pulse/navigating-complexity> (accessed on 1 December 2021).
66. Gidado, K.I. Project complexity: The focal point of construction production planning. *Constr. Manag. Econ.* **1996**, *14*, 213–225. [\[CrossRef\]](#)
67. Zolin, R.; Turner, R.; Remington, K. A model of project complexity: Distinguishing dimensions of complexity from severity. In Proceedings of the International Research Network of Project Management Conference (IRNOP), Berlin, Germany, 11–13 October 2009; pp. 1–30.
68. Maylor, H.; Vidgen, R.; Carver, S. Managerial complexity in project-based operations: A grounded model and its implications for practice. *Proj. Manag. J.* **2008**, *39*, S15–S26. [\[CrossRef\]](#)
69. Gransberg, D.D.; Shane, J.S.; Strong, K.; del Puerto, C.L. Project complexity mapping in five dimensions for complex transportation projects. *J. Manag. Eng.* **2013**, *29*, 316–326. [\[CrossRef\]](#)
70. Qureshi, S.M.; Kang, C. Analysing the organizational factors of project complexity using structural equation modelling. *Int. J. Proj. Manag.* **2015**, *33*, 165–176. [\[CrossRef\]](#)
71. Xia, B.; Chan, A.P.C. Measuring complexity for building projects: A Delphi study. *Eng. Constr. Archit. Manag.* **2012**, *19*, 7–24. [\[CrossRef\]](#)
72. He, Q.; Luo, L.; Wang, J.; Li, Y.; Zhao, L. Using analytic network process to analyze influencing factors of project complexity. In Proceedings of the 2012 International Conference on Management Science & Engineering 19th Annual Conference Proceedings, Dallas, TX, USA, 20–22 September 2012; pp. 1781–1786.
73. Azim, S.W. *Understanding and Managing Project Complexity*; University of Manchester: Manchester, UK, 2010.
74. Bosch-Rekvelde, M.; Jongkind, Y.; Mooi, H.; Bakker, H.; Verbraeck, A. Grasping project complexity in large engineering projects: The TOE (Technical, Organizational and Environmental) framework. *Int. J. Proj. Manag.* **2011**, *29*, 728–739. [\[CrossRef\]](#)
75. Lee, G.; Xia, W. *An Empirical Study on the Relationships between the Flexibility, Complexity and Performance of Information Systems Development Projects*; University of Minnesota: Minneapolis, MN, USA, 2003.
76. Müller, R.; Turner, R. The influence of project managers on project success criteria and project success by type of project. *Eur. Manag. J.* **2007**, *25*, 298–309. [\[CrossRef\]](#)
77. Vidal, L.-A.; Marle, F.; Bocquet, J.-C. Measuring project complexity using the Analytic Hierarchy Process. *Int. J. Proj. Manag.* **2011**, *29*, 718–727. [\[CrossRef\]](#)
78. Davis, K. Different stakeholder groups and their perceptions of project success. *Int. J. Proj. Manag.* **2014**, *32*, 189–201. [\[CrossRef\]](#)



79. Gardoni, P.; Reinschmidt, K.F.; Kumar, R. A probabilistic framework for Bayesian adaptive forecasting of project progress. *Comput. Civ. Infrastruct. Eng.* **2007**, *22*, 182–196. [\[CrossRef\]](#)
80. Geraldi, J.G. What complexity assessments can tell us about projects: Dialogue between conception and perception. *Technol. Anal. Strateg. Manag.* **2009**, *21*, 665–678. [\[CrossRef\]](#)
81. Lu, Y.; Luo, L.; Wang, H.; Le, Y.; Shi, Q. Measurement model of project complexity for large-scale projects from task and organization perspective. *Int. J. Proj. Manag.* **2015**, *33*, 610–622. [\[CrossRef\]](#)
82. Maylor, H.; Turner, N. Understand, reduce, respond: Project complexity management theory and practice. *Int. J. Oper. Prod. Manag.* **2017**, *37*, 1076–1093. [\[CrossRef\]](#)
83. Mikkelsen, M.F. Perceived project complexity: A survey among practitioners of project management. *Int. J. Manag. Proj. Bus.* **2020**, *14*, 680–698. [\[CrossRef\]](#)
84. Kermanshachi, S.; Dao, B.; Rouhanizadeh, B.; Shane, J.; Anderson, S. Development of the project complexity assessment and management framework for heavy industrial projects. *Int. J. Constr. Educ. Res.* **2020**, *16*, 24–42. [\[CrossRef\]](#)
85. Aznar, B.; Pellicer, E.; Davis, S.; Ballesteros-Perez, P. Factors affecting contractor's bidding success for international infrastructure projects in Australia. *J. Civ. Eng. Manag.* **2017**, *23*, 880–889. [\[CrossRef\]](#)
86. Leśniak, A. Statistical Methods in Bidding Decision Support for Construction Companies. *Appl. Sci.* **2021**, *11*, 5973. [\[CrossRef\]](#)
87. Sonmez, R.; Sözgen, B. A support vector machine method for bid/no bid decision making. *J. Civ. Eng. Manag.* **2017**, *23*, 641–649. [\[CrossRef\]](#)
88. Dello, A.; Yoshida, C. Online tendering and evaluation for public procurement in Tanzania. In Proceedings of the 2017 18th IEEE/ACIS International Conference on Software Engineering, Artificial Intelligence, Networking and Parallel/Distributed Computing (SNPD), Kanazawa, Japan, 26–28 June 2017; pp. 137–141.
89. Arkes, J. *Regression Analysis: A Practical Introduction*; Routledge: London, UK, 2019; ISBN 135101109X.
90. Westfall, P.H.; Arias, A.L. *Understanding Regression Analysis: A Conditional Distribution Approach*; CRC Press: Boca Raton, FL, USA, 2020; ISBN 1000069419.
91. Frost, J. *Regression Analysis: An Intuitive Guide for Using and Interpreting Linear Models*; Jim Publishing: Costa Mesa, CA, USA, 2019; ISBN 1735431184.
92. Ko, S.; Kim, W.; Lee, K. Exploring the Factors Affecting Technology Transfer in Government-Funded Research Institutes: The Korean Case. *J. Open Innov. Technol. Mark. Complex.* **2021**, *7*, 228. [\[CrossRef\]](#)
93. Argumedo-García, M.; Salas-Navarro, K.; Acevedo-Chedid, J.; Ospina-Mateus, H. Bibliometric Analysis of the Potential of Technologies in the Humanitarian Supply Chain. *J. Open Innov. Technol. Mark. Complex.* **2021**, *7*, 232. [\[CrossRef\]](#)
94. Tripathi, V.; Chattopadhyaya, S.; Mukhopadhyay, A.K.; Sharma, S.; Singh, J.; Pimenov, D.Y.; Giasin, K. An Innovative Agile Model of Smart Lean–Green Approach for Sustainability Enhancement in Industry 4.0. *J. Open Innov. Technol. Mark. Complex.* **2021**, *7*, 215. [\[CrossRef\]](#)
95. Kamp, L.M.; Meslin, T.A.J.; Khodaei, H.; Ortt, J.R. The Dynamic Business Model Framework—Illustrated with Renewable Energy Company Cases from Indonesia. *J. Open Innov. Technol. Mark. Complex.* **2021**, *7*, 231. [\[CrossRef\]](#)
96. Ali, M.A.; Hussin, N.; Haddad, H.; Al-Araj, R.; Abed, I.A. A Multidimensional View of Intellectual Capital: The Impact on Innovation Performance. *J. Open Innov. Technol. Mark. Complex.* **2021**, *7*, 216. [\[CrossRef\]](#)
97. Matisone, A.; Lace, N. Effective Venture Capital Market Development Concept. *J. Open Innov. Technol. Mark. Complex.* **2021**, *7*, 218. [\[CrossRef\]](#)
98. Drozd, R.; Wolniak, R. Systematic Assessment of Product Quality. *J. Open Innov. Technol. Mark. Complex.* **2021**, *7*, 235. [\[CrossRef\]](#)
99. Lim, C.S.; Mohamed, M.Z. Criteria of project success: An exploratory re-examination. *Int. J. Proj. Manag.* **1999**, *17*, 243–248. [\[CrossRef\]](#)
100. Abdissa, G.; Ayalew, A.; Illés, C.B.; Dunay, A. Effects of Corporate Entrepreneurship Dimensions on Organizational Performance: Case of Small and Medium Enterprises in Holeta Town, Ethiopia. *J. Open Innov. Technol. Mark. Complex.* **2021**, *7*, 234. [\[CrossRef\]](#)
101. Millers, M.; Gaile-Sarkane, E. Management Practice in Small and Medium-Sized Enterprises: Problems and Solutions from the Perspective of Open Innovation. *J. Open Innov. Technol. Mark. Complex.* **2021**, *7*, 214. [\[CrossRef\]](#)
102. Marchena Sekli, G.F.; De La Vega, I. Adoption of Big Data Analytics and Its Impact on Organizational Performance in Higher Education Mediated by Knowledge Management. *J. Open Innov. Technol. Mark. Complex.* **2021**, *7*, 221. [\[CrossRef\]](#)
103. Sanchez, R.; Shibata, T. Modularity Design Rules for Architecture Development: Theory, Implementation, and Evidence from the Development of the Renault-Nissan Alliance “Common Module Family” Architecture. *J. Open Innov. Technol. Mark. Complex.* **2021**, *7*, 242. [\[CrossRef\]](#)
104. Kitsios, F.; Giatsidis, I.; Kamariotou, M. Digital Transformation and Strategy in the Banking Sector: Evaluating the Acceptance Rate of E-Services. *J. Open Innov. Technol. Mark. Complex.* **2021**, *7*, 204. [\[CrossRef\]](#)
105. Jin, S.; Kim, D. The Effects of Patents on the Relationship between R&D Activities and Business Management Performance: Focus on South Korean Venture Companies. *J. Open Innov. Technol. Mark. Complex.* **2021**, *7*, 210. [\[CrossRef\]](#)
106. Yuana, R.; Prasetyo, E.A.; Syarif, R.; Arkeman, Y.; Suroso, A.I. System Dynamic and Simulation of Business Model Innovation in Digital Companies: An Open Innovation Approach. *J. Open Innov. Technol. Mark. Complex.* **2021**, *7*, 219. [\[CrossRef\]](#)