

Chen, Shanquan et al.

Working Paper

Trends in Gender and Racial/Ethnic Disparities in Physical Disability and Social Support among U.S. Older Adults with Cognitive Impairment Living Alone, 2000–2018

IZA Discussion Papers, No. 16004

Provided in Cooperation with:

IZA – Institute of Labor Economics

Suggested Citation: Chen, Shanquan et al. (2023) : Trends in Gender and Racial/Ethnic Disparities in Physical Disability and Social Support among U.S. Older Adults with Cognitive Impairment Living Alone, 2000–2018, IZA Discussion Papers, No. 16004, Institute of Labor Economics (IZA), Bonn

This Version is available at:

<https://hdl.handle.net/10419/272631>

Standard-Nutzungsbedingungen:

Die Dokumente auf EconStor dürfen zu eigenen wissenschaftlichen Zwecken und zum Privatgebrauch gespeichert und kopiert werden.

Sie dürfen die Dokumente nicht für öffentliche oder kommerzielle Zwecke vervielfältigen, öffentlich ausstellen, öffentlich zugänglich machen, vertreiben oder anderweitig nutzen.

Sofern die Verfasser die Dokumente unter Open-Content-Lizenzen (insbesondere CC-Lizenzen) zur Verfügung gestellt haben sollten, gelten abweichend von diesen Nutzungsbedingungen die in der dort genannten Lizenz gewährten Nutzungsrechte.

Terms of use:

Documents in EconStor may be saved and copied for your personal and scholarly purposes.

You are not to copy documents for public or commercial purposes, to exhibit the documents publicly, to make them publicly available on the internet, or to distribute or otherwise use the documents in public.

If the documents have been made available under an Open Content Licence (especially Creative Commons Licences), you may exercise further usage rights as specified in the indicated licence.

DISCUSSION PAPER SERIES

IZA DP No. 16004

**Trends in Gender and Racial/Ethnic Disparities
in Physical Disability and Social Support
among U.S. Older Adults with Cognitive
Impairment Living Alone, 2000–2018**

Shanquan Chen
Huanyu Zhang
Benjamin R. Underwood

Dan Wang
Xi Chen
Rudolf N. Cardinal

MARCH 2023

DISCUSSION PAPER SERIES

IZA DP No. 16004

Trends in Gender and Racial/Ethnic Disparities in Physical Disability and Social Support among U.S. Older Adults with Cognitive Impairment Living Alone, 2000–2018

Shanquan Chen

*University of Cambridge and London School
of Hygiene & Tropical Medicine*

Huanyu Zhang

Chinese University of Hong Kong

Benjamin R. Underwood

University of Cambridge

MARCH 2023

Dan Wang

Ontario Tech University

Xi Chen

Yale University and IZA

Rudolf N. Cardinal

University of Cambridge

Any opinions expressed in this paper are those of the author(s) and not those of IZA. Research published in this series may include views on policy, but IZA takes no institutional policy positions. The IZA research network is committed to the IZA Guiding Principles of Research Integrity.

The IZA Institute of Labor Economics is an independent economic research institute that conducts research in labor economics and offers evidence-based policy advice on labor market issues. Supported by the Deutsche Post Foundation, IZA runs the world's largest network of economists, whose research aims to provide answers to the global labor market challenges of our time. Our key objective is to build bridges between academic research, policymakers and society.

IZA Discussion Papers often represent preliminary work and are circulated to encourage discussion. Citation of such a paper should account for its provisional character. A revised version may be available directly from the author.

ISSN: 2365-9793

IZA – Institute of Labor Economics

Schaumburg-Lippe-Straße 5–9
53113 Bonn, Germany

Phone: +49-228-3894-0
Email: publications@iza.org

www.iza.org

ABSTRACT

Trends in Gender and Racial/Ethnic Disparities in Physical Disability and Social Support among U.S. Older Adults with Cognitive Impairment Living Alone, 2000–2018

Informal care is a primary source of support for older adults with cognitive impairment but is less available to those who live alone. We leverage the U.S. Health and Retirement Survey 2000-2018 to examine trends in the prevalence of physical disability and social support among older adults with cognitive impairment living alone, and their gender and racial/ethnic disparities. Information on physical disability and social support was collected through measures of basic and instrumental activities of daily living (BADLs, IADLs). Logistic and Poisson regression were adopted to estimate linear trends over time for binary and integer outcomes, respectively. Among those who reported BADL/IADL disability, the proportion unsupported for BADLs decreased significantly over time, while the proportion unsupported for IADLs increased significantly over time. Among those who received IADL support, the number of unmet IADL support needs increased significantly over time. Over time, Black respondents had a relatively increasing trend of being BADL-unsupported, and Hispanic and Black respondents had a relatively increasing trend in the number of unmet BADL needs, compared to the corresponding trends in White respondents. Our findings may prompt customized interventions to reduce disparities and unmet support needs.

JEL Classification: I10, J11, J14, J15, J16

Keywords: gender disparity, racial/ethnic disparity, physical disability, social support, cognitive impairment

Corresponding author:

Shanquan Chen, PhD.
University of Cambridge
The Old Schools
Trinity Lane
Cambridge
CB2 1TN
United Kingdom

E-mail: shanquan.chen@ishtm.cam.ac.uk

Introduction

Cognitive impairment, including memory loss and other cognitive dysfunction, may form part of a dementia syndrome or prodrome. The majority of cases of dementia are caused by Alzheimer's disease¹. It was estimated that 58 million people in the United States had Alzheimer's disease in 2021, and this number is projected to reach 88 million by 2050¹. The American Academy of Neurology estimated that about 8 per cent of people aged 65 to 69 have a mild cognitive impairment, about 15 per cent of 75 to 79, about 25 per cent of those aged 80 to 84, and about 37 per cent of people 85 years of age and older².

Cognitive impairment is associated with functional impairment in daily life, independent of the effects of depression, fatigue, and motor disability³. Deficit in cognitive ability can impair day-to-day decision-making, motivation, and new learning sufficient to affect self-care in both higher-order and basic activities of daily living as well as to impact capacity for gainful employment and promote the transition to permanent disability status³⁻⁵. A recent US study indicated that nearly 70% of people with cognitive impairment developed physical disability over 10 years of follow-up, which may be a further cause of impairment in daily living⁶. With an increasingly ageing society, cognitive impairment and its associated care needs are likely to become a greater public health problem.

Currently, informal care (mainly from families and friends) is the primary source of care for cognitively impaired Americans, accounting for 83% of all care¹. However, this form of care is often not available for those who live alone, as people living alone experience greater isolation associated with a diminished social network of available family or friend caregivers¹. Older adults living alone have significantly more unmet needs in the domains of housework and community living and are at greater risks of adverse health outcomes compared with those living with others⁷⁻⁹. Given that a considerable proportion of the elderly population lives alone (almost one-third of US older adults with cognitive impairment)⁵, meeting the needs of cognitively impaired US older adults living alone is an important issue.

Gender and racial disparities in the prevalence of cognitive impairment and corresponding physical disabilities and social support were widely documented^{5,10-17}. For instance, Mexican American older adults who live alone experience dual risks of both greater cognitive impairment and receiving low support from others when compared to Mexican American older adults who live with others¹⁵; compared to white Americans, blacks and Hispanics were reported to have a higher prevalence of dementia and less access to health services^{10,11,16}; females were more likely to experience racial/ethnic differences in physical disabilities and corresponding support among older adults living alone with cognitive impairment than males¹⁷. Recent studies^{12,18} also estimated the time trend of gender and racial/ethnic disparities on the prevalence of cognitive impairment, however, the time trend in physical disabilities and social support has not been quantified over time to our best knowledge.

This study aimed to examine temporal trends in the prevalence of physical disability and social support among older adults living alone with cognitive impairment from 2000 to 2018 in the US, with a focus on gender and racial/ethnic disparities. Such evidence might be expected to help address the concerns of cognitively impaired older adults living alone via targeting vulnerable subgroups and supporting the development of interventions and public policies to eliminate

inequalities^{8,10}. We hypothesized that 1) the prevalence of physical disability would be increasing over time; 2) the probability of receiving no social support would be decreasing over time; and 3) gender and racial/ethnic disparities may exist in the above trends.

Methods

Data source and participants

This study used data from the Health and Retirement Survey (HRS), a nationally representative and biennial study of US adults aged 50 years or older. Each participant completed a standardised questionnaire, face-to-face or via internet/telephone assessments, described elsewhere¹⁹. Data included sociodemographic characteristics, health information, and testing of cognitive performance for those able to perform the tests, or proxy-reported information on cognitive ability for those unable to do the tests as well as those unwilling to answer for themselves.

We utilised ten waves of HRS data spanning 2000 through 2018. Eligible people were those aged ≥ 65 , having cognitive impairment (as defined below), and living alone.

The data are publicly available. The use of secondary de-identified data makes this study exempt from institutional review board review. This study follows the Strengthening the Reporting of Observational Studies in Epidemiology (STROBE) reporting guideline²⁰.

Outcome and measures

Individuals with cognitive impairment. Considering the reversion of the cognitive impairment²¹, the cognitive impairment was judged for each wave, and was identified by using a validated algorithm designed for HRS-based studies of dementia^{12,13,22,23}. The algorithm incorporates performance scores of Telephone Interview for Cognitive Status (TICS), and scores of proxy-reported information on cognitive impairment and functional limitations (proxy index). The TICS is a 27-point cognitive scale that included an immediate and delayed 10-noun free recall test, a serial sevens subtraction test, and a backwards-count-from-20 test. The proxy index is an 11-point scale, covering the subject's memory, limitations in five instrumental activities of daily living (IADLs) (defined below), and difficulty completing the interview because of a cognitive limitation. Subjects were classified as having probable dementia if they scored 6 or lower on the TICS or scored 6 or more on the proxy index. Subjects with cognitive impairment but not dementia (CIND) were those who scored 7–11 on the TICS or 3–5 on the proxy index. Full details about the TICS and proxy assessment can be found elsewhere^{12,13,22,23}.

Physical disability includes disability identified from basic activities of daily living (BADL) and instrumental ADLs (IADL). Participants with BADL disability were defined as those who reported difficulty in one or more of six BADL items (dressing, walking across a room, bathing, eating, getting in and out of bed, toileting). Participants with IADL disability were defined as those who reported difficulty in one or more of five IADL items (preparing a hot meal, shopping for groceries, making phone calls, taking medications, and managing money)^{17,24,25}. We distinguished BADL disability from IADL disability because disability in activities is developed in a progressive manner associated with cognitive decline⁴. BADLs are related to basic activities that allow people to care for themselves, while IADLs are related to more complex activities that allow an individual to live independently in a community. The distinction between BADL and IADL disability can inform customized interventions to meet the needs of patients with physical disability²⁶.

Social support was assessed by questionnaire items corresponding to the 11 BADLs/IADLs listed above. For each item, respondents were asked if they received help from others. To gain insight into the social support received by respondents, we adopted two concepts used in the evaluation of health care utilisation, namely a “contact process” (is support provided?) and a “frequency process” (how often or how much is support provided?)²⁷. In this study, to examine any unmet needs for social support, the contact process corresponded to two binary (yes/no) variables indicating whether respondents with physical disability received no BADL or (separately) no IADL support. We refer to someone as “BADL-unsupported” if they report some BADL disability but received no support for BADLs, and “IADL-unsupported” likewise. The frequency process corresponds to a counting variable indicating the number of unmet social support needs, assessed by calculating the difference between the number of BADL or IADL difficulties and the number of BADLs/IADLs for which some support was provided.

Statistical analysis

To describe the baseline characteristics, categorical variables were reported as number (percentage), and continuous variables were reported as mean (standard deviation, SD).

For binary outcomes, to estimate linear trends over time, we fitted logistic regression models by including year as the key predictor, controlling for age, gender, racial/ethnic status, whether a proxy response was required (yes vs no), and dementia status (probable CIND vs probable dementia) (**Equation 1**).

$$\text{Logit}(P) = \alpha + \beta * \text{year} + \gamma_1 * x_1 + \dots + \gamma_n * x_n + \varepsilon \quad \text{Equation 1}$$

Where $\text{Logit}(P)$ is the log odds probability of happening of a binary outcome (like reporting of BADL disability); year is a continuous variable; $x_1 + \dots + x_n$ are the covariates controlled. The odds ratio (OR) associated with “year” represents, for example, the change in the odds of BADL disability, per year; OR>1 indicates an increasing quantity across the study period, and OR<1 the converse.

To estimate gender disparities in trends, we fitted a similar model but added the interaction between gender and year (**Equation 2**). We tested for racial/ethnic disparity similarly.

$$\begin{aligned} \text{Logit}(P) = \alpha + \beta * \text{year} + \theta * \text{year} \times \text{gender} + \gamma_1 * x_1 + \dots + \gamma_n * x_n \\ + \varepsilon \quad \text{Equation 2} \end{aligned}$$

Equivalent Poisson regressions were conducted for integer (counting) outcomes, but changed the outcome into $\text{Log}(\lambda)$, where λ is the average number of occurrences.

Survey weights were used to account for sampling design (including the unequal probability of selection, clustering, and stratification) and study attrition. The weight values were provided directly in the HRS datasets. Details of how the weights were calculated can be found elsewhere²⁸.

All analyses were completed using R, version 3.6.0. We report two-tailed p values and 95% confidence intervals (CIs) throughout. $P < .05$ was considered to be statistically significant.

Results

Basic description, including BADL/IADL impairment and support

From the HRS 2000–2018, a total of 20,070 eligible respondents aged 65+ with cognitive

impairment who lived alone were included in this study, including 12,466 (62.1%) respondents having probable CIND and 9,190 (45.8%) respondents having probable dementia. **Table 1** summarises their basic characteristics. Participants' mean (SD) age was 80.9 (8.6) years, and the majority were women (75.4%) and White (59.5%).

Overall, 47.8% of eligible respondents reported some BADL disability, of whom 32.9% received no BADL support. Among those who received BADL support, the mean (SD) number of unmet BADL support needs was 0.58 (0.88).

Overall, 49% of the eligible respondents reported some IADL disability, of whom 12.1% received no IADL support. Among those who received IADL support, the mean (SD) number of unmet IADL support needs was 0.98 (1.35).

Gender or racial/ethnic differences in BADL/IADL impairment

Females had a higher likelihood of reporting BADL disability (OR 1.43, CI 1.31–1.56) and IADL disability (OR 1.37, CI 1.25–1.49) compared with males (**Table 2, model 1**). Compared with White respondents, Hispanic and Black respondents had a higher likelihood of reporting BADL disability (OR 1.45, CI 1.3–1.63; OR 1.22, CI 1.11–1.33, respectively) and IADL disability (OR 1.36, CI 1.22–1.53; OR 1.13, CI 1.03–1.24, respectively) (**Table 2, model 1**).

BADL/IADL impairment over time, with gender or racial/ethnic differences

From 2000 to 2018, no significant linear trends were found in the overall prevalence of BADL disability (OR 1.0, CI 0.99–1.01) or IADL disability (OR 1.0, CI 0.99–1.01) (**Table 2, model 1; Figure 1**). No gender disparities were found for these trends (**Table 2, model 2; Table 3, model 2**). Compared with White respondents, Hispanic and Black respondents had relatively increasing trends in BADL disability (OR 1.03, CI 1.01–1.05 and OR 1.02, CI 1.0–1.03 respectively) (**Table 2, model 3**). Hispanic respondents also had a relatively increasing trend in IADL disability (OR 1.04 CI 1.01–1.06) (**Table 2, model 3**).

Gender or racial/ethnic differences in BADL/IADL support

Among those who reported disability, females were less likely to be BADL-unsupported (OR 0.68, CI 0.59–0.78) and IADL-unsupported (OR 0.56, CI 0.46–0.68), compared with males. Hispanic and Black respondents were less likely to be BADL-unsupported (OR 0.57, CI 0.48–0.67; OR 0.73, CI 0.63–0.84, respectively), compared with White respondents; and Hispanic respondents were also less likely to be IADL-unsupported (OR 0.58, CI 0.44–0.78) (**Table 2, model 1**).

Among those who reported disability and receipt of BADL/IADL support, no gender difference was found in the number of unmet BADL support needs (RR 0.96, CI 0.85–1.08) or unmet IADL support needs (RR 0.92, CI 0.83–1.02). Hispanic and Black respondents had no difference in the number of unmet BADL support needs (RR 1.00, CI 0.92–1.08 and RR 0.97, CI 0.90–1.04 respectively), but had significantly fewer unmet IADL support needs (RR 0.61, CI 0.52–0.71 and RR 0.77, CI 0.69–0.87 respectively), compared to White respondents (**Table 3, model 1**).

BADL/IADL support over time, with gender or racial/ethnic differences

The proportion of people unsupported for BADL needs decreased significantly over time (OR 0.98, CI 0.97–0.99), but the proportion of people unsupported for IADL needs increased (OR 1.02, CI

1.01–1.04) (**Table 2, model 1; Figure 1**). No significant trend was found in the number of unmet BADL support needs amongst those receiving BADL support (RR 1.00, CI 0.99–1.00), but amongst those receiving IADL support, the number of unmet IADL support needs increased over time (RR 1.04, CI 1.03–1.05) (**Table 3, model 1; Figure 2**).

No gender disparities were found for these trends (**Table 2, model 2; Table 3, model 2**). No racial/ethnic disparities were found in the trends for receipt of BADL or IADL support, except that Black respondents had a relatively increasing trend of being BADL-unsupported (OR 1.03, CI 1.0–1.05) (**Table 2, model 3; Supplementary Figure 7**) and Hispanic and Black respondents had a relatively increasing trend in the number of unmet BADL needs (RR 1.02, CI 1.00–1.03 and RR 1.01, CI 1.00–1.02 respectively) (**Table 3, model 3; Supplementary Figure 8**), compared to the corresponding trends in White respondents. Note, however, the overall differences discussed above: the relatively worse trend of a lesser reduction in support for BADL over time among Black respondents relative to White respondents was on the background of a better situation overall (that Black respondents, like Hispanic respondents, were overall more likely than White respondents to be supported—less likely to be unsupported—for BADL needs, discussed above), which is compatible with a slight narrowing of racial/ethnic disparity over time. For the number of unsupported BADL needs, there was greater deterioration over time amongst Hispanic/Black respondents than White respondents; for the number of IADL needs, there was an increase across racial/ethnic groups but a better situation (fewer unmet needs) for Black/Hispanic respondents independent of time.

Sub-group by cognitive impairment no dementia (CIND) and dementia

Subgroup analyses (**Supplementary tables 1–4**) indicated that the above racial/ethnic disparities in the trend of reporting BADL disability, being BADL-unsupported, and the number of unmet BADL support needs were mainly identified among those with dementia rather than CIND, while IADL-related disparities were identified among both people with CIND and dementia.

Unmet support needs by items of ADL and IADL

The proportions of respondents with unmet support needs are reported for each BADL/IADL item in **Supplementary Figures 1–6**. Compared to males, females reported more unmet support needs for toileting, walking, preparing a hot meal, and shopping for groceries; while compared to females, males had more unmet support needs for dressing (**Supplementary Figure 1**). Compared to White and Black respondents, Hispanic people reported more unmet needs for getting in/out of bed, dressing, and eating. Compared to White and Hispanic respondents, Black people reported more unmet needs for dressing, toileting, walking, preparing a hot meal, and shopping for groceries. Compared to Black and Hispanic respondents, White people reported more unmet needs for preparing a hot meal, taking medications, making phone calls, and shopping for groceries (**Supplementary Figure 4**). People with CIND had more unmet BADL support needs than unmet IADL support needs, while people with dementia had more unmet IADL support needs than unmet BADL support needs (**Supplementary Figures 2–3 and 5–6**).

Discussion

Statement of principal findings

This study assessed trends in BADL and IADL disability and social support among cognitively impaired US older adults living alone, and the influence of gender and racial/ethnic disparities.

Overall, between 2000 and 2018, the proportion of people who were BADL-unsupported decreased, while those who were IADL-unsupported increased. Females had a higher likelihood of reporting BADL and IADL disability compared to males. Hispanic and Black respondents had a higher likelihood of reporting BADL and IADL disability compared to White respondents. Among those who reported BADL or IADL disability, female, Hispanic, and Black respondents were more likely to be in receipt of BADL or IADL support. Among those receiving BADL or IADL support, there were no gender disparities in the number of unmet BADL or IADL support needs, and Hispanic and Black respondents had a lower number of unmet IADL support needs compared to White respondents.

Over time, fewer people with BADL disability reported being BADL-unsupported, but more respondents with IADL disability reported being IADL-unsupported, and among those who did receive IADL support, the number of unmet IADL support needs increased over time. There were no gender disparities in the trends in proportion of being BADL- or IADL-unsupported, or in number of unmet BADL or IADL support needs. Overall improvements in BADL support were seen over time, but less so in Black respondents. The number of unmet BADL needs increased more in Black and Hispanic respondents over time, relative to White respondents. Unmet support needs by specific BADL/IADL items were also reported (**Supplementary Figures 1–6**).

Interpretation

Our study identified some gender disparities, including that females had a higher likelihood of suffering BADL and IADL disability compared to males. The results are consistent with another recent study that showed females were more likely to suffer from impairment in BADLs caused by cognitive impairment than males¹⁷. Nevertheless, females were more likely to receive BADL or IADL support. This is consistent with other findings from the USA^{29,30} and other countries³¹, which indicated that females are more likely to receive social support than males. We also found that among those receiving BADL/IADL support, there were no gender disparities in the number of unmet BADL/IADL support needs. The above findings indicated that the gender disparity may be a result of difficulties in a “contact” rather than a “frequency” process (described below). Possible explanations might be that females are, on average, more active in neighborhood social networks and are more likely to ask for help or to contact other people, when in need^{25,32}. A customized intervention aiming at the contact process may be more effective in eliminating this gender disparity.

We identified racial/ethnic disparities in the prevalence of BADL and IADL disability, as well as the provision of corresponding social support. Black and Hispanic respondents were more likely to suffer from BADL/IADL disability than their White counterparts. This finding is in accordance with prior studies conducted in the US that found Black and Hispanic people were at greater risk for dementia and functional disability¹⁰⁻¹⁶. However, compared to White people, Black and Hispanic people were also more likely to receive BADL or IADL support, and had a lower number of unmet IADL needs. Racial/ethnic disparities were also identified in the time trends in the prevalence of BADL disability and corresponding receipt of BADL support. Given the baseline higher probability of reporting BADL disability among Hispanic and Black respondents than White, the identified relatively increasing trend in the prevalence of BADL disability among Hispanic and Black than White respondents revealed that an increasing number of Hispanic and Black respondents reported BADL disability over time. Compared to the corresponding trends in White respondents, we also identified a relatively increasing trend of being BADL-unsupported

among Black respondents, but no such difference was identified among Hispanic respondents. Given the baseline difference of a lower likelihood of being BADL-unsupported among Hispanic and Black communities than White, these differences in the time trends of being BADL-unsupported are compatible with some narrowing of disparity over time. We display these trends in **Supplementary Figure 7**, showing that they resulted from an improvement in the receipt of BADL support among White and Hispanic communities while there was almost no improvement among the Black community. Similarly, **Supplementary Figure 8** indicates that the relatively increasing trend in the number of unmet BADL support needs among Hispanic and Black (versus White) respondents was primarily because that Hispanic and Black respondents have been facing increasing numbers of unmet BADL support needs over time. These findings indicate that from 2000 to 2018, ethnic minorities with cognitive impairment living alone had greater or unimproved unmet needs for BADL support, both in terms of a “contact” process (Black community) and a “frequency” process (Hispanic and Black communities). A customized intervention aiming at the different processes for different race/ethnicity communities may be more effective in eliminating this racial/ethnic disparity.

The possible reasons for the change in the above racial/ethnic disparities could be the entanglement of potential risk factors, protective factors, and resilience among racial/ethnic groups. Ethnic minorities were more likely to be exposed to high occupational risks and thus had a higher probability of suffering disability at the older age³³. Given that informal care (mainly from families and friends) is the primary source for US older adults with cognitive impairment¹, people from ethnic minorities were more likely to devote time to informal care than those of White ethnicity. According to a caregiving report in the US, caregivers of ethnic minorities report higher average hours of care to their older recipients than White caregivers and are more likely to provide 21 or more hours of care weekly³⁴. Extensive costs for long-term care have been a challenge to those in need to access to formal care³⁵. Medicaid programs in many states have expanded home care and shifted funds toward home and community-based services in recent decades could also facilitate some Ethnic minorities to benefit from the above expansion. However, the shortage of long-term care workforce may disproportionately allocate a limited workforce to those who were covered by private long-term care insurance, where Whites may have some advantages in terms of affordability^{36,37}.

Our subgroup analyses on CIND and dementia indicated that these BADL-related racial/ethnic disparities mainly occurred in people with dementia but not those with CIND. This difference between people with dementia and those with CIND is to some extent in keeping with recent research showing that caregivers for an adult aged ≥ 50 years with Alzheimer’s disease are more likely to have difficulties assisting their recipients with BADLs than those who provide care to someone without Alzheimer’s disease³⁴. Intervention programs could be targeted and used to narrow these racial/ethnic disparities in the unmet BADL-related needs, especially in vulnerable subgroups with dementia.

As for the receipt of IADL social support, no corresponding gender or racial/ethnic disparities were found, but more people with IADL disabilities faced unmet IADL support needs across the period 2000–2018. This was observed both in the “contact” process (do people in need receive some sort of care?) and the “frequency” process (when in receipt of help, does this meet the need?). In particular, there were indications that number of unmet IADL support needs has increased more

sharply recent years (**Figure 2**). Further, our subgroup analyses on CIND and dementia indicated that among people with CIND, the above unmet IADL support manifested mostly in support “frequency” (received support does not meet the need), while among people with dementia, the IADL need were less well met both in terms of contact (cannot connect with supporter) and frequency. This highlights the potential necessity of customized interventions for people with CIND and dementia separately.

We also found that the unmet supports present obvious variation between gender, race/ethnicity, and people with CIND or dementia (e.g., females reported more unmet support needs for toileting, walking, preparing a hot meal, and shopping for groceries, while males reported more unmet support needs for dressing). This variation suggests that it may come from people's personalities (how well they get along with outsiders), their acceptance of personal services (especially services involving personal privacy), and the type of service personnel (formal or informal)⁴. In practice, this variation suggests that it is necessary to provide targeted and personalized services for specific service objects. For instance, mobility equipment and devices tailored to individual needs and circumstances, for example, could substitute for human assistance and facilitate self-care in daily activities³⁸. Adequate provision of home and community-based services, such as home-visit medical services, self-help support groups, and respite care, could also reduce the unmet needs among vulnerable subgroups with dementia³⁹. Furthermore, the needs that people with cognitive impairment require are complex and the coordination between different agencies in the health and social care systems is not always efficient, leading to inadequate measures of unmet needs among this population^{1,40}. Therefore, to ensure the integrity of services provided to people with cognitive impairment, it is important to conduct needs assessment regularly and determine what types of services, or combination of service types, will meet their needs.

Strength and limitations

To our knowledge, this is the first study to assess systematically the influence of gender and race/ethnicity on disabilities relating to activities of daily living, and social support for them, among US older adults living alone with cognitive impairment using population-based and nationally representative data. One strength of our study is that we give separate attention to BADL and IADL; the former is related to basic activities and the latter is related to more complex activities²⁶. Another strength is that we divided the process of receiving social support into “contact” and “frequency” processes. Further, we reported unmet support needs by individual BADL/IADL items. All of these contribute to our understanding of how any gender and racial/ethnic disparities may arise, and provide detailed evidence to more nuanced and practical public health policy strategies.

A key study limitation is the lack of clinical diagnosis of cognitive impairment or dementia. However, prior validation studies showed at least 91% concordance for dementia when using algorithm adopted above compared with the detailed Aging, Demographics and Memory study (ADAMS) clinical evaluation²³. Another limitation is an inevitable potential for bias resulting from self-reported and proxy-reported outcomes of disability and social support, as either might under- or overestimate difficulty or support received; however both measures have also been validated previously⁴¹. Thirdly, for our measure of unmet social support, we used the difference between the number of BADL or IADL difficulties and the number of items for which support was received. However, this may underestimate unmet needs, as the underlying hypothesis for this measurement

is that each item of support people received totally met their corresponding needs (e.g. receiving some support for making phone calls may not imply that all such needs are met in practice). Fourthly, some people who receive certain support might not suggest that they need such support. Thus, when we explore the association between overall disability and overall social support, it is possible that the disability items may not correspond with the support items. This will also underestimate the unmet needs.

One unanswered question is the interaction between gender and race/ethnicity. Although this study identified a higher likelihood for Hispanic and Black people to receive BADL or IADL support, a recent study showed that Black women were less likely to receive BADL/IADL support than comparable White women, whereas this difference in the outcome was not significant in men¹⁷. A future study is needed with a focus on the interaction between gender and race/ethnicity.

Conclusion

Among US older adults with cognitive impairment living alone, although the overall prevalence of BADL and IADL disability remained steady between 2000 and 2018, fewer people received IADL support and the extent of unmet IADL support needs increased, over time. Gender disparities were seen in the prevalence of BADL or IADL disability, and lack of corresponding support, while racial/ethnic disparities were seen both in the prevalence of reported BADL/IADL disability and unmet needs for BADL/IADL support, and these racial/ethnic disparities appeared to be getting worse with the majority ethnicity (White) group improving or minority ethnicity groups (Hispanic and Black) getting worse or no improvement. Data such as these allow for identifying groups most in need, and therefore the potential to target support interventions to have the greatest impact.

Funding: SC's research was supported by the Medical Research Council (grant MC_PC_17213) (<https://cambridgebrc.nihr.ac.uk/>) and the UK Alzheimer's Society (grant AS-PG-16-006) (<https://www.alzheimers.org.uk/>). RNC's research was supported by the Medical Research Council (grant MR/W014386/1) (<https://cambridgebrc.nihr.ac.uk/>). This research was supported in part by the UK National Institute for Health Research (NIHR) Cambridge Biomedical Research Centre (BRC-1215-20014) (<https://cambridgebrc.nihr.ac.uk/>) and NIHR Applied Research Centre. BRU is part-funded by a donation from Gnodde Goldman Sachs Giving to the University of Cambridge. XC acknowledges research funding from the U.S. PEPPER Center Scholar Award (P30AG021342) (<https://www.feinberg.northwestern.edu/sites/cahra/pepper-center/index.html>), and two grants (R01AG077529; K01AG053408) from the U.S. National Institute on Aging (<https://www.nia.nih.gov/>). XC also reported serving under a contract with the World Bank to lead a report that assesses demand for and supply of home-based support for elders with disabilities in 31 countries (compensated). The views expressed are those of the authors and not necessarily those of the NHS and the NIHR.

Role of the Funder/Sponsor: The funder had no role in the design and conduct of the study; collection, management, analysis, and interpretation of the data; preparation, review, or approval of the manuscript; or decision to submit the manuscript for publication.

Conflict of Interest:

Authors of this article have the following competing interests:

- SC, HZ, BRU, DW, and XC declare no conflict of interest with this work.
- RNC consults for Campden Instruments Ltd and receives royalties from Cambridge University Press, Cambridge Enterprise, and Routledge.

Data Availability: Data are publicly available and can be accessed in <https://www.rand.org/well-being/social-and-behavioral-policy/centers/aging/dataproduct/hrs-data.html>.

References

1. Alzheimer's association. *Race, Ethnicity and Alzheimer's in America*. 2021. *2021 Alzheimer's Disease Facts and Figures*. <https://www.alz.org/media/Documents/alzheimers-facts-and-figures.pdf>
2. Petersen RC, Lopez O, Armstrong MJ, et al. Practice guideline update summary: Mild cognitive impairment: Report of the Guideline Development, Dissemination, and Implementation Subcommittee of the American Academy of Neurology. *Neurology*. Jan 16 2018;90(3):126-135. doi:10.1212/WNL.0000000000004826
3. Borson S. Cognition, aging, and disabilities: conceptual issues. *Phys Med Rehabil Clin N Am*. May 2010;21(2):375-82. doi:10.1016/j.pmr.2010.01.001
4. Arrighi HM, Gelinas I, McLaughlin TP, Buchanan J, Gauthier S. Longitudinal changes in functional disability in Alzheimer's disease patients. *Int Psychogeriatr*. Jun 2013;25(6):929-37. doi:10.1017/S1041610212002360
5. Amjad H, Roth DL, Samus QM, Yasar S, Wolff JL. Potentially Unsafe Activities and Living Conditions of Older Adults with Dementia. *J Am Geriatr Soc*. Jun 2016;64(6):1223-32. doi:10.1111/jgs.14164
6. Feger DM, Willis SL, Thomas KR, et al. Incident Instrumental Activities of Daily Living Difficulty in Older Adults: Which Comes First? Findings From the Advanced Cognitive Training for Independent and Vital Elderly Study. *Front Neurol*. 2020;11:550577. doi:10.3389/fneur.2020.550577
7. Cermakova P, Nelson M, Secnik J, et al. Living Alone with Alzheimer's Disease: Data from SveDem, the Swedish Dementia Registry. *J Alzheimers Dis*. 2017;58(4):1265-1272. doi:10.3233/JAD-170102
8. Miranda-Castillo C, Woods B, Orrell M. People with dementia living alone: what are their needs and what kind of support are they receiving? *Int Psychogeriatr*. Jun 2010;22(4):607-17. doi:10.1017/S104161021000013X
9. Holt-Lunstad J, Smith TB, Layton JB. Social relationships and mortality risk: a meta-analytic review. *PLoS Med*. Jul 27 2010;7(7):e1000316. doi:10.1371/journal.pmed.1000316
10. Chen C, Zissimopoulos JM. Racial and ethnic differences in trends in dementia prevalence and risk factors in the United States. *Alzheimers Dement (N Y)*. 2018;4:510-520. doi:10.1016/j.trci.2018.08.009
11. Mayeda ER, Glymour MM, Quesenberry CP, Whitmer RA. Inequalities in dementia incidence between six racial and ethnic groups over 14 years. *Alzheimers Dement*. Mar 2016;12(3):216-24. doi:10.1016/j.jalz.2015.12.007
12. Power MC, Bennett EE, Turner RW, et al. Trends in Relative Incidence and Prevalence of Dementia Across Non-Hispanic Black and White Individuals in the United States, 2000-2016. *JAMA Neurol*. Mar 1 2021;78(3):275-284. doi:10.1001/jamaneurol.2020.4471
13. Langa KM, Larson EB, Crimmins EM, et al. A Comparison of the Prevalence of Dementia in the United States in 2000 and 2012. *JAMA Intern Med*. Jan 1 2017;177(1):51-58. doi:10.1001/jamainternmed.2016.6807
14. Hudomiet P, Hurd MD, Rohwedder S. Dementia Prevalence in the United States in 2000 and 2012: Estimates Based on a Nationally Representative Study. *J Gerontol B Psychol Sci Soc Sci*. Apr 16 2018;73(suppl_1):S10-S19. doi:10.1093/geronb/gbx169
15. Rote SM, Angel JL, Kim J, Markides KS. Dual Trajectories of Dementia and Social Support in the Mexican-Origin Population. *Gerontologist*. Apr 3 2021;61(3):374-382. doi:10.1093/geront/gnaa100

16. Cooper C, Tandy AR, Balamurali TB, Livingston G. A systematic review and meta-analysis of ethnic differences in use of dementia treatment, care, and research. *Am J Geriatr Psychiatry*. Mar 2010;18(3):193-203. doi:10.1097/JGP.0b013e3181bf9caf
17. Edwards RD, Brenowitz WD, Portacolone E, et al. Difficulty and help with activities of daily living among older adults living alone with cognitive impairment. *Alzheimers Dement*. Aug 2020;16(8):1125-1133. doi:10.1002/alz.12102
18. Farina MP, Zhang YS, Kim JK, Hayward MD, Crimmins EM. Trends in Dementia Prevalence, Incidence, and Mortality in the United States (2000-2016). *J Aging Health*. Jan 2022;34(1):100-108. doi:10.1177/08982643211029716
19. Sonnega A, Faul JD, Ofstedal MB, Langa KM, Phillips JW, Weir DR. Cohort Profile: the Health and Retirement Study (HRS). *Int J Epidemiol*. Apr 2014;43(2):576-85. doi:10.1093/ije/dyu067
20. STROBE. STROBE checklist for cohort studies. Accessed 07/30, 2020. https://www.strobe-statement.org/fileadmin/Strobe/uploads/checklists/STROBE_checklist_v4_cohort.pdf
21. Koepsell TD, Monsell SE. Reversion from mild cognitive impairment to normal or near-normal cognition: risk factors and prognosis. *Neurology*. Oct 9 2012;79(15):1591-8. doi:10.1212/WNL.0b013e31826e26b7
22. Plassman BL, Langa KM, Fisher GG, et al. Prevalence of dementia in the United States: the aging, demographics, and memory study. *Neuroepidemiology*. 2007;29(1-2):125-32. doi:10.1159/000109998
23. Gianattasio KZ, Wu Q, Glymour MM, Power MC. Comparison of Methods for Algorithmic Classification of Dementia Status in the Health and Retirement Study. *Epidemiology*. Mar 2019;30(2):291-302. doi:10.1097/EDE.0000000000000945
24. Bousquet G, Falgarone G, Deutsch D, et al. ADL-dependency, D-Dimers, LDH and absence of anticoagulation are independently associated with one-month mortality in older inpatients with Covid-19. *Aging (Albany NY)*. Jun 23 2020;12(12):11306-11313. doi:10.18632/aging.103583
25. Jang HY, Ko Y, Han SY. The Effects of Social Networks of the Older Adults with Limited Instrumental Activities of Daily Living on Unmet Medical Needs. *Int J Environ Res Public Health*. Dec 23 2020;18(1)doi:10.3390/ijerph18010027
26. Edemekong PF, Bomgaars DL, Sukumaran S, Schoo C. Activities of Daily Living. *StatPearls*. 2022.
27. Chen S, Chen X, Law S, et al. How and to what extent can pensions facilitate increased use of health services by older people: evidence from social pension expansion in rural China. *BMC Health Serv Res*. Nov 4 2020;20(1):1008. doi:10.1186/s12913-020-05831-0
28. Bugliari D, Campbell N, Chan C, et al. RAND HRS longitudinal file 2018 (V1) documentation. RAND Center for the Study of Aging. https://www.rand.org/content/dam/rand/www/external/labor/aging/dataproducts/randhrs1992_2018v1.pdf
29. Kendler KS, Myers J, Prescott CA. Sex differences in the relationship between social support and risk for major depression: a longitudinal study of opposite-sex twin pairs. *Am J Psychiatry*. Feb 2005;162(2):250-6. doi:10.1176/appi.ajp.162.2.250
30. Pettus-Davis C, Veeh CA, Davis M, Tripodi S. Gender differences in experiences of social support among men and women releasing from prison. *Journal of Social and Personal Relationships*. Oct 2017;35(9):1161-1182. doi:10.1177/0265407517705492
31. Uzuki T, Konta T, Saito R, et al. Relationship between social support status and mortality in

- a community-based population: a prospective observational study (Yamagata study). *BMC Public Health*. Oct 29 2020;20(1):1630. doi:10.1186/s12889-020-09752-9
32. Caetano SC, Silva CM, Vettore MV. Gender differences in the association of perceived social support and social network with self-rated health status among older adults: a population-based study in Brazil. *BMC Geriatr*. Nov 15 2013;13:122. doi:10.1186/1471-2318-13-122
 33. Seabury SA, Terp S, Boden LI. Racial And Ethnic Differences In The Frequency Of Workplace Injuries And Prevalence Of Work-Related Disability. *Health Aff (Millwood)*. Feb 1 2017;36(2):266-273. doi:10.1377/hlthaff.2016.1185
 34. National Alliance for Caregiving and American Association of Retired Persons. *Caregiving in the U.S. 2020: A Focused Look at Family Caregivers of Adults Age 50+ 2020*. https://www.caregiving.org/wp-content/uploads/2021/05/AARP1340_RR_Caregiving50Plus_508.pdf
 35. Werner RM, Konetzka RT. Reimagining Financing and Payment of Long-Term Care. *J Am Med Dir Assoc*. Feb 2022;23(2):220-224. doi:10.1016/j.jamda.2021.11.030
 36. Brown JR, Goda GS, McGarry K. Long-term care insurance demand limited by beliefs about needs, concerns about insurers, and care available from family. *Health Aff (Millwood)*. Jun 2012;31(6):1294-302. doi:10.1377/hlthaff.2011.1307
 37. Cornell PY, Grabowski DC. The Impact of Policy Incentives on Long-Term Care Insurance and Medicaid Costs: Does Underwriting Matter? *Health Serv Res*. Oct 2018;53(5):3728-3749. doi:10.1111/1475-6773.12870
 38. Allen SM, Piette ER, Mor V. The adverse consequences of unmet need among older persons living in the community: dual-eligible versus Medicare-only beneficiaries. *J Gerontol B Psychol Sci Soc Sci*. Nov 2014;69 Suppl 1(Suppl 1):S51-8. doi:10.1093/geronb/gbu124
 39. Moholt JM, Friberg O, Blix BH, Henriksen N. Factors affecting the use of home-based services and out-of-home respite care services: A survey of family caregivers for older persons with dementia in Northern Norway. *Dementia (London)*. Jul 2020;19(5):1712-1731. doi:10.1177/1471301218804981
 40. Black BS, Johnston D, Rabins PV, Morrison A, Lyketsos C, Samus QM. Unmet needs of community-residing persons with dementia and their informal caregivers: findings from the maximizing independence at home study. *J Am Geriatr Soc*. Dec 2013;61(12):2087-2095. doi:10.1111/jgs.12549
 41. Chan KS, Kasper JD, Brandt J, Pezzin LE. Measurement equivalence in ADL and IADL difficulty across international surveys of aging: findings from the HRS, SHARE, and ELSA. *J Gerontol B Psychol Sci Soc Sci*. Jan 2012;67(1):121-32. doi:10.1093/geronb/gbr133

Table 1. Basic description of the sample.

Variable	N (%)	Mean (SD)
Number (total)	20,070 (100.0)	
Age (years)		80.9 (8.6)
Gender (female)	15,123 (75.4)	
Race/ethnicity		
Hispanic	2,426 (12.1)	
Non-Hispanic Black	5,222 (26.0)	
Non-Hispanic other	475 (2.4)	
Non-Hispanic White	11,945 (59.5)	
Proxy response (yes)	4,766 (23.7)	
Physical disability		
BADL disability (yes)	9,596 (47.8)	
IADL disability (yes)	9,830 (49.0)	
Both BADL and IADL disability (yes)	7,543 (37.6)	
Whether in receipt of BADL/IADL social support, amongst those with corresponding disability		
BADL-unsupported (yes)	3,155 (32.9)	
IADL-unsupported (yes)	1,188 (12.1)	
Unmet BADL/IADL support needs, among those receiving BADL/IADL support		
Number of unmet BADL support needs		0.58 (0.9)
Number of unmet IADL support needs		0.98 (1.4)
Probable CIND or dementia	20,070 (100)	
Probable CIND (yes)	12,466 (62.1)	
Probable dementia (yes)	9,190 (45.8)	

Notes. BADL=basic activity of daily living; CIND=cognitive impairment but no dementia; IADL= instrumental activity of daily living. SD, standard deviation.

Table 2. Regression analyses of time trends in the prevalence of BADL or IADL disability and social support.

Outcome	Variable	Model 1		Model 2		Model 3	
		OR (95%CI)	p	OR (95%CI)	p	OR (95%CI)	p
BADL disability	Year	1.00 (0.99, 1.01)	0.8653	1.00 (0.98, 1.01)	0.6703	0.99 (0.99, 1.00)	0.1068
	Age	1.04 (1.04, 1.05)	<0.0001	1.04 (1.04, 1.05)	<0.0001	1.04 (1.04, 1.05)	<0.0001
	Gender (female)	1.43 (1.31, 1.56)	<0.0001	1.39 (1.19, 1.62)	<0.0001	1.43 (1.31, 1.56)	<0.0001
	Race/ethnicity (Ref: Non-Hispanic White)						
	Hispanic	1.45 (1.3, 1.63)	<0.0001	1.45 (1.30, 1.63)	<0.0001	1.13 (0.91, 1.39)	0.265
	Non-Hispanic Black	1.22 (1.11, 1.33)	<0.0001	1.22 (1.11, 1.33)	<0.0001	1.02 (0.88, 1.19)	0.8046
	Non-Hispanic other	1.06 (0.85, 1.33)	0.5964	1.06 (0.85, 1.33)	0.602	1.18 (0.79, 1.78)	0.4146
	Proxy response (yes)	3.03 (2.69, 3.41)	<0.0001	3.03 (2.69, 3.42)	<0.0001	3.03 (2.69, 3.42)	<0.0001
	Probable CIND versus dementia (dementia)	1.09 (1.0, 1.19)	0.0622	1.08 (1.00, 1.19)	0.0623	1.09(1.00, 1.20)	0.0500
	Year × gender (female)			1.00 (0.99, 1.02)	0.6846		
	Year × race/ethnicity (Hispanic)					1.03 (1.01, 1.05)	0.0119
	Year × race/ethnicity (non-Hispanic Black)					1.02 (1.00, 1.03)	0.0158
	Year × race/ethnicity (non-Hispanic other)					0.99 (0.95, 1.03)	0.6065
IADL disability	Year	1.00 (0.99, 1.01)	0.9453	1.00 (0.98, 1.01)	0.6818	0.99 (0.99, 1.00)	0.1545
	Age	1.06 (1.05, 1.06)	<0.0001	1.06 (1.05, 1.06)	<0.0001	1.06 (1.05, 1.06)	<0.0001
	Gender (female)	1.37 (1.25, 1.49)	<0.0001	1.31 (1.13, 1.53)	0.0005	1.36 (1.25, 1.49)	<0.0001
	Race/ethnicity (Ref: Non-Hispanic White)						
	Hispanic	1.36 (1.22, 1.53)	<0.0001	1.36 (1.21, 1.53)	<0.0001	0.96 (0.78, 1.18)	0.7001
	Non-Hispanic Black	1.13 (1.03, 1.24)	0.0072	1.13 (1.03, 1.24)	0.0072	1.01 (0.87, 1.18)	0.8559
	Non-Hispanic other	1.13 (0.90, 1.41)	0.2904	1.13 (0.90, 1.41)	0.2952	1.11 (0.74, 1.66)	0.6121
	Proxy response (yes)	4.62 (4.10, 5.26)	<0.0001	4.62 (4.10, 5.26)	<0.0001	4.66 (4.10, 5.31)	<0.0001
	Probable CIND versus dementia (dementia)	1.46 (1.34, 1.60)	<0.0001	1.46 (1.34, 1.60)	<0.0001	1.48 (1.35, 1.62)	<0.0001
	Year × gender (female)			1.00 (0.99, 1.02)	0.6016		
	Year × race/ethnicity (Hispanic)					1.04 (1.01, 1.06)	0.0007
	Year × race/ethnicity (non-Hispanic Black)					1.01 (1.00, 1.03)	0.1389
	Year × race/ethnicity (non-Hispanic other)					1.00 (0.96, 1.04)	0.915
BADL-unsupported among those with BADL disability	Year	0.98 (0.97, 0.99)	<0.0001	0.99 (0.97, 1.01)	0.2761	0.97 (0.96, 0.98)	<0.0001
	Age	0.95 (0.94, 0.95)	<0.0001	0.95 (0.94, 0.95)	<0.0001	0.95 (0.94, 0.95)	<0.0001
	Gender (female)	0.68 (0.59, 0.78)	<0.0001	0.78 (0.60, 1.00)	0.052	0.68 (0.59, 0.78)	<0.0001
	Race/ethnicity (Ref: Non-Hispanic White)						
	Hispanic	0.57 (0.48, 0.67)	<0.0001	0.57 (0.48, 0.68)	<0.0001	0.57 (0.41, 0.79)	0.0007
	Non-Hispanic Black	0.73 (0.63, 0.84)	<0.0001	0.73 (0.63, 0.84)	<0.0001	0.56 (0.44, 0.72)	<0.0001
	Non-Hispanic other	0.78 (0.55, 1.10)	0.1609	0.79 (0.56, 1.11)	0.173	0.56 (0.30, 1.03)	0.0632
	Proxy response (yes)	0.18 (0.15, 0.23)	<0.0001	0.18 (0.15, 0.23)	<0.0001	0.18 (0.15, 0.23)	<0.0001
	Probable CIND versus dementia (dementia)	0.73 (0.64, 0.84)	<0.0001	0.73 (0.64, 0.84)	<0.0001	0.73 (0.64, 0.84)	<0.0001
	Year × gender (female)			0.99 (0.96, 1.01)	0.3015		
	Year × race/ethnicity (Hispanic)					1.00 (0.97, 1.03)	0.9659
	Year × race/ethnicity (non-Hispanic Black)					1.03 (1.00, 1.05)	0.0271
	Year × race/ethnicity (non-Hispanic other)					1.04 (0.98, 1.10)	0.2334
Year	1.02 (1.01, 1.04)	0.0022	1.04 (1.02, 1.07)	0.0023	1.02 (1.00, 1.04)	0.0472	
Age	0.95 (0.94, 0.96)	<0.0001	0.95 (0.94, 0.96)	<0.0001	0.95 (0.94, 0.96)	<0.0001	

Outcome	Variable	Model 1		Model 2		Model 3	
		OR (95%CI)	p	OR (95%CI)	p	OR (95%CI)	p
IADL-unsupported among those with IADL disability	Gender (female)	0.56 (0.46, 0.68)	<0.0001	0.99 (0.96, 1.01)	0.3015	0.56 (0.46, 0.68)	<0.0001
	Race/ethnicity (Ref: Non-Hispanic White)						
	Hispanic	0.58 (0.44, 0.78)	0.0002	0.59 (0.44, 0.78)	0.0003	0.68 (0.40, 1.13)	0.1342
	Non-Hispanic Black	0.93 (0.75, 1.14)	0.478	0.92 (0.75, 1.14)	0.4543	0.76 (0.52, 1.09)	0.1405
	Non-Hispanic other	0.99 (0.61, 1.61)	0.9719	1.01 (0.62, 1.64)	0.9697	0.68 (0.25, 1.82)	0.4422
	Proxy response (yes)	0.22 (0.15, 0.30)	<0.0001	0.22 (0.16, 0.30)	<0.0001	0.22 (0.15, 0.30)	<0.0001
	Probable CIND versus dementia (dementia)	0.77 (0.63, 0.95)	0.0141	0.77 (0.63, 0.95)	0.0134	0.78 (0.63, 0.95)	0.0155
	Year × gender (female)			0.97 (0.94, 1.00)	0.0753		
	Year × race/ethnicity (Hispanic)					0.99 (0.94, 1.03)	0.5805
	Year × race/ethnicity (non-Hispanic Black)					1.02 (0.98, 1.06)	0.2693
Year × race/ethnicity (non-Hispanic other)					1.04 (0.95, 1.13)	0.4125	

Notes. BADL=basic activity of daily living. IADL=instrumental activity of daily living. Trends were measured by the adjusted odds ratio (OR) and its 95% confidence interval (CI), which was obtained from the coefficient of the “year” predictor in the logistic regression, controlling for age, gender, race/ethnicity, whether a proxy response was required, and dementia status. OR>1 indicates an increasing trend in the quantity across the study years, and OR<1 a decreasing trend.

Table 3. Regression analyses of time trends in the number of unmet BADL or IADL support needs for those receiving BADL or IADL support.

Outcome	Variable	Model 1		Model 2		Model 3	
		RR (95%CI)	<i>p</i>	RR (95%CI)	<i>p</i>	RR (95%CI)	<i>p</i>
Number of unmet BADL support needs	Year	1.00 (0.99, 1.00)	0.6037	1.00 (0.99, 1.01)	0.7679	0.99 (0.99, 1.00)	0.0343
	Age	0.98 (0.97, 0.98)	<0.0001	0.98 (0.97, 0.98)	<0.0001	0.98 (0.97, 0.98)	<0.0001
	Gender (female)	0.96 (0.85, 1.08)	0.5076	0.83 (0.66, 1.04)	0.0986	0.95 (0.84, 1.07)	0.4419
	Race/ethnicity (Ref: Non-Hispanic White)						
	Hispanic	1.00 (0.92, 1.08)	0.9928	1.00 (0.92, 1.08)	0.9946	0.83 (0.70, 0.97)	0.0185
	Non-Hispanic Black	0.97 (0.90, 1.04)	0.3913	0.97 (0.90, 1.04)	0.3933	0.86 (0.77, 0.96)	0.0083
	Non-Hispanic other	0.97 (0.83, 1.14)	0.7279	0.97 (0.83, 1.15)	0.7472	0.83 (0.63, 1.08)	0.1736
	Proxy response (yes)	0.51 (0.47, 0.56)	<0.0001	0.51 (0.47, 0.56)	<0.0001	0.51 (0.47, 0.56)	<0.0001
	Probable CIND versus dementia (dementia)	0.93 (0.88, 0.99)	0.0293	0.93 (0.88, 0.99)	0.0294	0.93 (0.88, 0.99)	0.0254
	Year × gender (female)			1.00 (0.99, 1.01)	0.5288		
	Year × race/ethnicity (Hispanic)					1.02 (1.00, 1.03)	0.0138
	Year × race/ethnicity (non-Hispanic Black)					1.01 (1.00, 1.02)	0.0258
	Year × race/ethnicity (non-Hispanic other)					1.02 (0.99, 1.04)	0.189
Number of unmet IADL support needs	Year	1.04 (1.03, 1.05)	<0.0001	1.04 (1.03, 1.06)	<0.0001	1.04 (1.03, 1.05)	<0.0001
	Age	0.99 (0.98, 0.99)	<0.0001	0.99 (0.98, 0.99)	<0.0001	0.99 (0.98, 0.99)	0.0001
	Gender (female)	0.92 (0.83, 1.02)	0.1127	0.92 (0.75, 1.14)	0.4636	0.91 (0.83, 1.02)	0.1025
	Race/ethnicity (Ref: Non-Hispanic White)						
	Hispanic	0.61 (0.52, 0.71)	<0.0001	0.61 (0.52, 0.71)	<0.0001	0.76 (0.56, 1.03)	0.076
	Non-Hispanic Black	0.77 (0.69, 0.87)	<0.0001	0.77 (0.69, 0.87)	<0.0001	0.88 (0.70, 1.08)	0.2222
	Non-Hispanic other	0.96 (0.71, 1.31)	0.8163	0.96 (0.71, 1.31)	0.8174	0.55 (0.27, 1.09)	0.0874
	Proxy response (yes)	1.35 (1.19, 1.54)	<0.0001	1.35 (1.19, 1.54)	<0.0001	1.35 (1.19, 1.54)	<0.0001
	Probable CIND versus dementia (dementia)	0.84 (0.76, 0.94)	0.0023	0.84 (0.76, 0.94)	0.0023	0.84 (0.76, 0.94)	0.0024
	Year × gender (female)			1.00 (0.98, 1.02)	0.9623		
	Year × race/ethnicity (Hispanic)					0.98 (0.96, 1.01)	0.1299
	Year × race/ethnicity (non-Hispanic Black)					0.99 (0.97, 1.01)	0.2455
	Year × race/ethnicity (non-Hispanic other)					1.05 (0.99, 1.11)	0.1035

Notes. BADL=basic activity of daily living. IADL=instrumental activity of daily living. Trends were measured by the adjusted relative ratio (RR) and its 95% confidence interval (CI), which was obtained from the coefficient of the “year” predictor in the Poisson regression, controlling for age, gender, race/ethnicity, whether a proxy response was required, and dementia status. RR>1 indicates an increasing trend in the number of unmet BADL or IADL support needs across the study years, and RR<1 a decreasing trend.

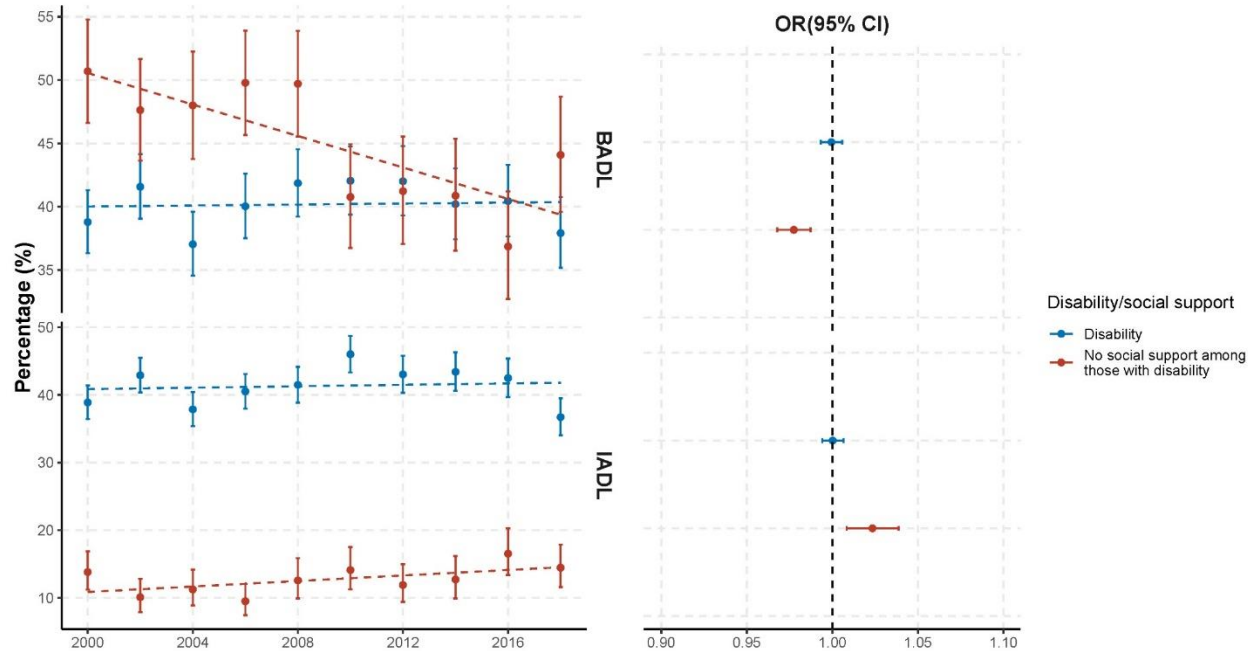


Figure 1. Time trends in the prevalence of BADL or IADL disability and social support among cognitively impaired older adults living alone in the US, biennially from 2000 to 2018.

Notes. BADL=basic activity of daily living. IADL=instrumental activity of daily living. The left panel presents the weighted percentage of BADL or IADL disability estimated from raw data, with error bars represent 95% confidence intervals (CI). The dotted lines in the left panel show linear regression on the weighted percentage of BADL or IADL disability. The right panel shows the estimated time trend in the prevalence of BADL or IADL disability. Trends were measured via the adjusted odds ratio (OR) and its 95% CI, obtained from the coefficient of the “year” predictor in the logistic regression, controlling for age, gender, race/ethnicity, whether a proxy response was required, and dementia status. OR>1 indicates an increasing trend in the prevalence across the study years, and OR<1 a decreasing trend.

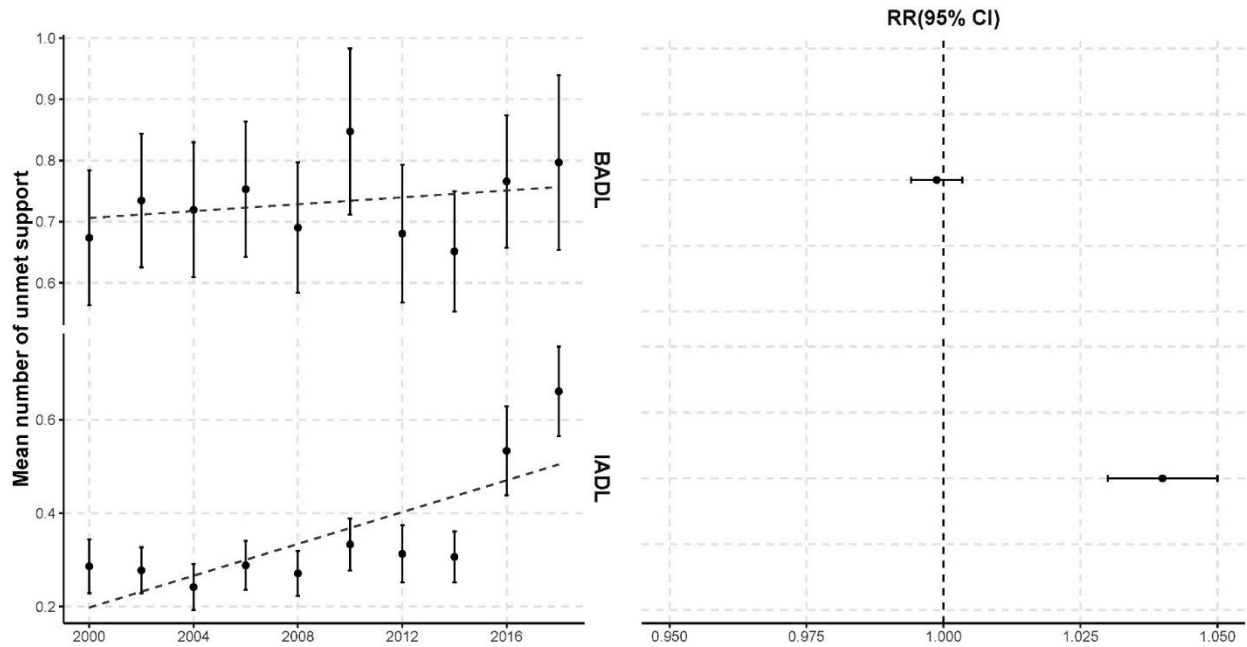


Figure 2. Time trends in the number of unmet BADL or IADL support needs among cognitively impaired adults living alone who were receiving BADL or IADL support, biennially from 2000 to 2018.

Notes. BADL=basic activity of daily living. IADL=instrumental activity of daily living. The left panel presents the weighted mean number of unmet BADL or IADL support needs estimated from raw data, with error bars representing 95% confidence intervals. The dotted lines in the left panel show linear regression on the weighted mean number of unmet BADL or IADL support needs. The right panel shows the estimated time trend in the number of unmet BADL or IADL support needs. Trends were measured via the adjusted relative risk (RR) and its 95% CI, which was obtained from the coefficient of the “year” predictor in the Poisson regression, controlling for age, gender, race/ethnicity, whether a proxy response was required, and dementia status. $RR > 1$ indicates an increasing trend in the number of unmet BADL or IADL support needs across the study years, and $RR < 1$ the converse.

Supplementary Table 1. Regression analyses of time trends in the prevalence of BADL/IADL disability and social support (among those with CIND living alone).

Outcome	Variable	Model 1		Model 2		Model 3	
		OR (95%CI)	<i>p</i>	OR (95%CI)	<i>p</i>	OR (95%CI)	<i>p</i>
BADL disability	Year	1.01 (1.00, 1.01)	0.1439	1.01 (0.99, 1.02)	0.5052	1.00 (0.99, 1.01)	0.6505
	Age	1.02 (1.02, 1.03)	<0.0001	1.02 (1.02, 1.03)	<0.0001	1.02 (1.02, 1.03)	<0.0001
	Gender (female)	1.43 (1.28, 1.62)	<0.0001	1.43 (1.16, 1.77)	0.0006	1.43 (1.28, 1.62)	<0.0001
	Race/ethnicity (non-Hispanic White)						
	Hispanic	1.36 (1.17, 1.60)	0.0001	1.36 (1.17, 1.60)	0.0001	1.23 (0.93, 1.65)	0.141
	non-Hispanic Black	1.19 (1.05, 1.35)	0.0057	1.19 (1.05, 1.35)	0.0057	1.04 (0.84, 1.27)	0.7428
	non-Hispanic other	1.17 (0.86, 1.62)	0.3064	1.17 (0.86, 1.62)	0.3066	1.15 (0.63, 2.12)	0.6551
	Year × gender (female)			1.00 (0.98, 1.02)	0.9931		
	Year × race/ethnicity (Hispanic)					1.01 (0.98, 1.04)	0.4516
	Year × race/ethnicity (non-Hispanic Black)					1.01 (0.99, 1.03)	0.1768
Year × race/ethnicity (non-Hispanic other)					1.00 (0.95, 1.06)	0.9208	
IADL disability	Year	1.01 (1.00, 1.02)	0.0022	1.01 (0.99, 1.03)	0.2842	1.00 (0.99, 1.02)	0.3483
	Age	1.04 (1.03, 1.04)	<0.0001	1.04 (1.03, 1.04)	<0.0001	1.04 (1.03, 1.04)	<0.0001
	Gender (female)	1.35 (1.20, 1.52)	<0.0001	1.30 (1.05, 1.62)	0.016	1.35 (1.20, 1.52)	<0.0001
	Race/ethnicity (non-Hispanic White)						
	Hispanic	1.20 (1.02, 1.40)	0.0261	1.20 (1.02, 1.40)	0.0265	0.80 (0.59, 1.08)	0.1531
	non-Hispanic Black	1.03 (0.90, 1.17)	0.6643	1.03 (0.90, 1.17)	0.6624	0.85 (0.68, 1.06)	0.1518
	non-Hispanic other	0.89 (0.64, 1.22)	0.4594	0.89 (0.64, 1.22)	0.4537	0.59 (0.30, 1.19)	0.142
	Year × gender (female)			1.00 (0.98, 1.02)	0.712		
	Year × race/ethnicity (Hispanic)					1.04 (1.01, 1.07)	0.0058
	Year × race/ethnicity (non-Hispanic Black)					1.02 (1.00, 1.04)	0.0771
Year × race/ethnicity (non-Hispanic other)					1.04 (0.98, 1.11)	0.2297	
BADL disability without receipt of corresponding support	Year	0.96 (0.95, 0.97)	<0.0001	0.95 (0.91, 0.98)	0.0039	0.96 (0.94, 0.98)	<0.0001
	Age	0.97 (0.96, 0.98)	<0.0001	0.97 (0.96, 0.98)	<0.0001	0.97 (0.96, 0.98)	<0.0001
	Gender (female)	0.66 (0.53, 0.81)	0.0001	0.57 (0.38, 0.84)	0.0053	0.66 (0.54, 0.81)	0.0001
	Race/ethnicity (non-Hispanic White)						
	Hispanic	0.58 (0.45, 0.76)	<0.0001	0.58 (0.45, 0.75)	<0.0001	0.69 (0.44, 1.09)	0.114
	non-Hispanic Black	0.76 (0.62, 0.93)	0.0094	0.76 (0.62, 0.93)	0.0091	0.70 (0.49, 1.01)	0.0541
	non-Hispanic other	0.97 (0.61, 1.54)	0.8846	0.96 (0.60, 1.54)	0.8691	1.28 (0.46, 3.53)	0.6331
	Year × gender (female)			1.01 (0.98, 1.05)	0.4717		
	Year × race/ethnicity (Hispanic)					0.98 (0.94, 1.03)	0.4834
	Year × race/ethnicity (non-Hispanic Black)					1.01 (0.97, 1.04)	0.6872
Year × race/ethnicity (non-Hispanic other)					0.97 (0.90, 1.06)	0.5729	
IADL disability without receipt of corresponding support	Year	1.01 (0.99, 1.03)	0.4789	1.02 (0.99, 1.06)	0.216	1.01 (0.98, 1.03)	0.6307
	Age	0.97 (0.96, 0.99)	0.0001	0.97 (0.96, 0.99)	0.0001	0.97 (0.96, 0.99)	0.0001
	Gender (female)	0.56 (0.44, 0.71)	<0.0001	0.71 (0.45, 1.13)	0.1491	0.56 (0.44, 0.71)	<0.0001
	Race/ethnicity (non-Hispanic White)						

Outcome	Variable	Model 1		Model 2		Model 3	
		OR (95%CI)	<i>p</i>	OR (95%CI)	<i>p</i>	OR (95%CI)	<i>p</i>
	Hispanic	0.79 (0.55, 1.13)	0.1904	0.79 (0.55, 1.14)	0.2033	0.76 (0.39, 1.49)	0.4334
	non-Hispanic Black	1.11 (0.83, 1.46)	0.5042	1.09 (0.83, 1.45)	0.5201	1.02 (0.63, 1.67)	0.937
	non-Hispanic other	1.20 (0.62, 2.32)	0.6003	1.21 (0.63, 2.34)	0.5687	1.55 (0.36, 6.82)	0.5564
	Year × gender (female)			0.98 (0.93, 1.02)	0.2722		
	Year × race/ethnicity (Hispanic)					1.00 (0.94, 1.06)	0.9345
	Year × race/ethnicity (non-Hispanic Black)					1.01 (0.96, 1.05)	0.7639
	Year × race/ethnicity (non-Hispanic other)					0.98 (0.86, 1.11)	0.7252

Notes. BADL=basic activity of daily living; IADL=instrumental activity of daily living; CIND=cognitive impairment, no dementia. Trends were measured by the adjusted odds ratio (OR) and its 95% confidence interval (CI), which was obtained from the coefficient of the “year” predictor in the logistic regression, controlling for age, gender, and race/ethnicity. Whether need proxy response was not controlled, as all people with probable CIND response by themselves. OR>1 indicates an increasing trend in the prevalence across the study years, and OR<1 the converse.

Supplementary Table 2. Regression analyses of time trends in the prevalence of BADL/IADL disability and social support (among those with dementia living alone).

Outcome	Variable	Model 1		Model 2		Model 3	
		OR (95%CI)	<i>p</i>	OR (95%CI)	<i>p</i>	OR (95%CI)	<i>p</i>
BADL disability	Year	0.99 (0.98, 1.00)	0.01	0.98 (0.97, 1.00)	0.1294	0.98 (0.96, 0.99)	0.0002
	Age	1.06 (1.05, 1.06)	<0.0001	1.06 (1.05, 1.06)	<0.0001	1.06 (1.05, 1.06)	<0.0001
	Gender (female)	1.46 (1.28, 1.68)	<0.0001	1.42 (1.13, 1.80)	0.0032	1.46 (1.28, 1.68)	<0.0001
	Race/ethnicity (non-Hispanic White)						
	Hispanic	1.31 (1.09, 1.55)	0.0024	1.30 (1.09, 1.55)	0.0025	0.80 (0.58, 1.09)	0.1634
	non-Hispanic Black	1.04 (0.91, 1.19)	0.5602	1.04 (0.91, 1.19)	0.5598	0.78 (0.62, 0.98)	0.0303
	non-Hispanic other	0.77 (0.55, 1.07)	0.1217	0.77 (0.55, 1.07)	0.1207	0.90 (0.52, 1.58)	0.7321
	Proxy response (yes)	2.92 (2.59, 3.29)	<0.0001	2.92 (2.59, 3.29)	<0.0001	2.94 (2.61, 3.32)	<0.0001
	Year × gender (female)			1.00 (0.98, 1.03)	0.7815		
	Year × race/ethnicity (Hispanic)					1.05 (1.02, 1.08)	0.0017
	Year × race/ethnicity (non-Hispanic Black)					1.03 (1.01, 1.05)	0.0066
	Year × race/ethnicity (non-Hispanic other)					0.98 (0.92, 1.04)	0.5144
IADL disability	Year	0.98 (0.97, 0.99)	<0.0001	0.98 (0.96, 1.00)	0.0635	0.97 (0.96, 0.98)	<0.0001
	Age	1.07 (1.06, 1.08)	<0.0001	1.07 (1.06, 1.08)	<0.0001	1.07 (1.06, 1.08)	<0.0001
	Gender (female)	1.51 (1.32, 1.73)	<0.0001	1.57 (1.23, 1.97)	0.0003	1.51 (1.32, 1.73)	<0.0001
	Race/ethnicity (non-Hispanic White)						
	Hispanic	1.20 (1.01, 1.42)	0.042	1.20 (1.01, 1.43)	0.0414	0.81 (0.58, 1.13)	0.2096
	non-Hispanic Black	0.96 (0.84, 1.11)	0.6061	0.96 (0.84, 1.11)	0.6053	0.79 (0.63, 1.00)	0.0524
	non-Hispanic other	1.12 (0.80, 1.55)	0.5032	1.12 (0.80, 1.57)	0.5015	1.00 (0.57, 1.77)	0.9979
	Proxy response (yes)	4.48 (3.94, 5.10)	<0.0001	4.48 (3.94, 5.10)	<0.0001	4.53 (3.97, 5.16)	<0.0001
	Year × gender (female)			1.00 (0.97, 1.02)	0.7811		
	Year × race/ethnicity (Hispanic)					1.04 (1.01, 1.07)	0.0148
	Year × race/ethnicity (non-Hispanic Black)					1.02 (1.00, 1.04)	0.0728
	Year × race/ethnicity (non-Hispanic other)					1.01 (0.96, 1.07)	0.6824
BADL disability without receipt of corresponding support	Year	0.99 (0.98, 1.01)	0.3972	1.02 (0.99, 1.05)	0.2445	0.98 (0.96, 1.00)	0.0444
	Age	0.94 (0.93, 0.95)	<0.0001	0.94 (0.93, 0.95)	<0.0001	0.94 (0.93, 0.95)	<0.0001
	Gender (female)	0.63 (0.52, 0.78)	<0.0001	0.87 (0.59, 1.26)	0.4551	0.63 (0.51, 0.77)	<0.0001
	Race/ethnicity (non-Hispanic White)						
	Hispanic	0.70 (0.54, 0.90)	0.0061	0.70 (0.54, 0.90)	0.0071	0.52 (0.32, 0.86)	0.0113
	non-Hispanic Black	0.87 (0.71, 1.06)	0.1774	0.87 (0.71, 1.06)	0.1696	0.58 (0.40, 0.83)	0.0029
	non-Hispanic other	0.72 (0.42, 1.22)	0.2258	0.74 (0.44, 1.26)	0.2615	0.43 (0.19, 0.99)	0.048
	Proxy response (yes)	0.19 (0.16, 0.23)	<0.0001	0.19 (0.16, 0.23)	<0.0001	0.19 (0.16, 0.23)	<0.0001
	Year × gender (female)			0.97 (0.93, 1.00)	0.0653		
	Year × race/ethnicity (Hispanic)					1.03 (0.98, 1.07)	0.223
	Year × race/ethnicity (non-Hispanic Black)					1.04 (1.01, 1.08)	0.0111
	Year × race/ethnicity (non-Hispanic other)					1.06 (0.98, 1.15)	0.159
IADL disability without receipt of	Year	1.05 (1.02, 1.07)	0.0004	1.07 (1.03, 1.12)	0.0016	1.04 (1.01, 1.08)	0.0112
	Age	0.93 (0.91, 0.94)	<0.0001	0.93 (0.91, 0.94)	<0.0001	0.93 (0.91, 0.95)	<0.0001

Outcome	Variable	Model 1		Model 2		Model 3	
		OR (95%CI)	<i>p</i>	OR (95%CI)	<i>p</i>	OR (95%CI)	<i>p</i>
corresponding support	Gender (female)	0.51 (0.37, 0.69)	<0.0001	0.73 (0.41, 1.32)	0.2976	0.51 (0.37, 0.70)	<0.0001
	Race/ethnicity (non-Hispanic White)						
	Hispanic	0.47 (0.28, 0.78)	0.0038	0.47 (0.28, 0.79)	0.0043	0.81 (0.36, 1.84)	0.6196
	non-Hispanic Black	0.92 (0.66, 1.28)	0.6355	0.92 (0.66, 1.27)	0.6133	0.73 (0.41, 1.34)	0.3117
	non-Hispanic other	1.09 (0.51, 2.32)	0.8184	1.11 (0.52, 2.36)	0.7848	0.58 (0.15, 2.16)	0.4167
	Proxy response (yes)	0.23 (0.16, 0.32)	<0.0001	0.23 (0.16, 0.32)	<0.0001	0.22 (0.16, 0.31)	<0.0001
	Year × gender (female)			0.97 (0.91, 1.02)	0.193		
	Year × race/ethnicity (Hispanic)					0.95 (0.88, 1.02)	0.1602
	Year × race/ethnicity (non-Hispanic Black)					1.02 (0.97, 1.08)	0.4194
Year × race/ethnicity (non-Hispanic other)					1.06 (0.94, 1.20)	0.3109	

Notes. BADL=basic activity of daily living; IADL=instrumental activity of daily living. Trends were measured by the adjusted odds ratio (OR) and its 95% confidence interval (CI), which was obtained from the coefficient of the “year” predictor in the logistic regression, controlling for age, gender, race/ethnicity, and whether need proxy response. OR>1 indicates an increasing trend in the prevalence across the study years, and OR<1 the converse.

Supplementary Table 3. Regression analyses of time trends in the number of unmet BADL/IADL support needs for those receipt of BADL/IADL support (among those with CIND living alone).

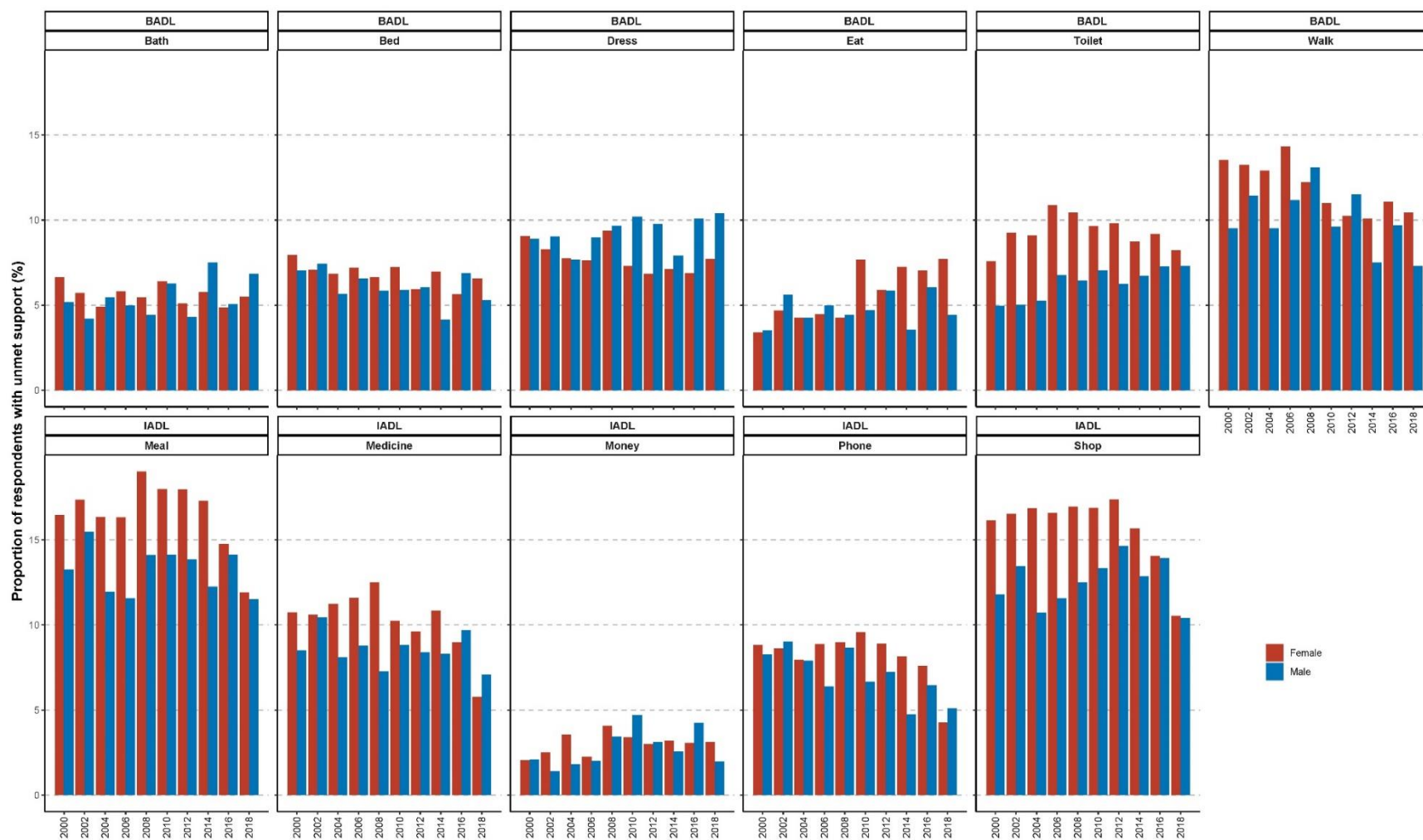
Outcome	Variable	Model 1		Model 2		Model 3	
		RR (95% CI)	p	RR (95% CI)	p	RR (95% CI)	p
Number of unmet BADL support needs	Year	1.00 (0.99, 1.00)	0.6895	1.01 (1.00, 1.02)	0.2226	1.00 (0.99, 1.00)	0.292
	Age	0.99 (0.98, 0.99)	<0.0001	0.99 (0.98, 0.99)	<0.0001	0.99 (0.98, 0.99)	<0.0001
	Gender (female)	0.94 (0.86, 1.02)	0.1351	1.06 (0.91, 1.22)	0.4388	0.93 (0.86, 1.02)	0.1258
	Race/ethnicity (Ref: non-Hispanic White)						
	Hispanic	1.04 (0.92, 1.16)	0.5312	1.04 (0.92, 1.16)	0.5133	0.90 (0.73, 1.11)	0.3056
	non-Hispanic Black	1.01 (0.92, 1.11)	0.7777	1.01 (0.92, 1.11)	0.7645	0.97 (0.85, 1.12)	0.672
	non-Hispanic Other	1.13 (0.94, 1.34)	0.1926	1.13 (0.95, 1.35)	0.1732	1.01 (0.76, 1.34)	0.9716
	Year × gender (female)			0.99 (0.97, 1.00)	0.1049		
	Year × race/ethnicity (Hispanic)					1.01 (0.99, 1.03)	0.1709
	Year × race/ethnicity (non-Hispanic Black)					1.00 (0.99, 1.02)	0.5325
	Year × race/ethnicity (non-Hispanic other)					1.01 (0.98, 1.04)	0.4484
Number of unmet IADL support needs	Year	1.02 (1.01, 1.03)	0.0022	1.02 (1.00, 1.04)	0.0164	1.01 (1.00, 1.02)	0.0953
	Age	0.98 (0.97, 0.99)	<0.0001	0.98 (0.97, 0.99)	<0.0001	0.98 (0.97, 0.99)	<0.0001
	Gender (female)	0.92 (0.79, 1.06)	0.2665	1.03 (0.79, 1.35)	0.7987	0.91 (0.79, 1.06)	0.241
	Race/ethnicity (Ref: non-Hispanic White)						
	Hispanic	0.79 (0.65, 0.97)	0.025	0.79 (0.65, 0.97)	0.0273	0.73 (0.50, 1.08)	0.1177
	non-Hispanic Black	0.84 (0.70, 1.00)	0.0471	0.84 (0.70, 1.00)	0.0451	0.73 (0.55, 0.98)	0.0359
	non-Hispanic Other	1.17 (0.72, 1.92)	0.5305	1.17 (0.72, 1.92)	0.5149	0.25 (0.07, 0.94)	0.0404
	Year × gender (female)			0.99 (0.97, 1.01)	0.3529		
	Year × race/ethnicity (Hispanic)					1.01 (0.98, 1.04)	0.6049
	Year × race/ethnicity (non-Hispanic Black)					1.01 (0.99, 1.04)	0.3206
	Year × race/ethnicity (non-Hispanic other)					1.13 (1.02, 1.23)	0.0204

Notes. BADL=basic activity of daily living; IADL=instrumental activity of daily living; CIND=cognitive impairment, no dementia. Trends were measured by the adjusted relative ratio (RR) and its 95% confidence interval (CI), which was obtained from the coefficient of the “year” predictor in the Poisson regression, controlling for age, gender, and race/ethnicity. Whether need proxy response was not controlled, as all people with probable CIND response by themselves. RR>1 indicates an increasing trend in the number of unmet BADL or IADL support needs across the study years, and RR<1 the converse. BADL, basic activity of daily living.

Supplementary Table 4. Regression analyses of time trends in the number of unmet BADL or IADL support needs for those receipt of BADL or IADL support (among those with dementia living alone).

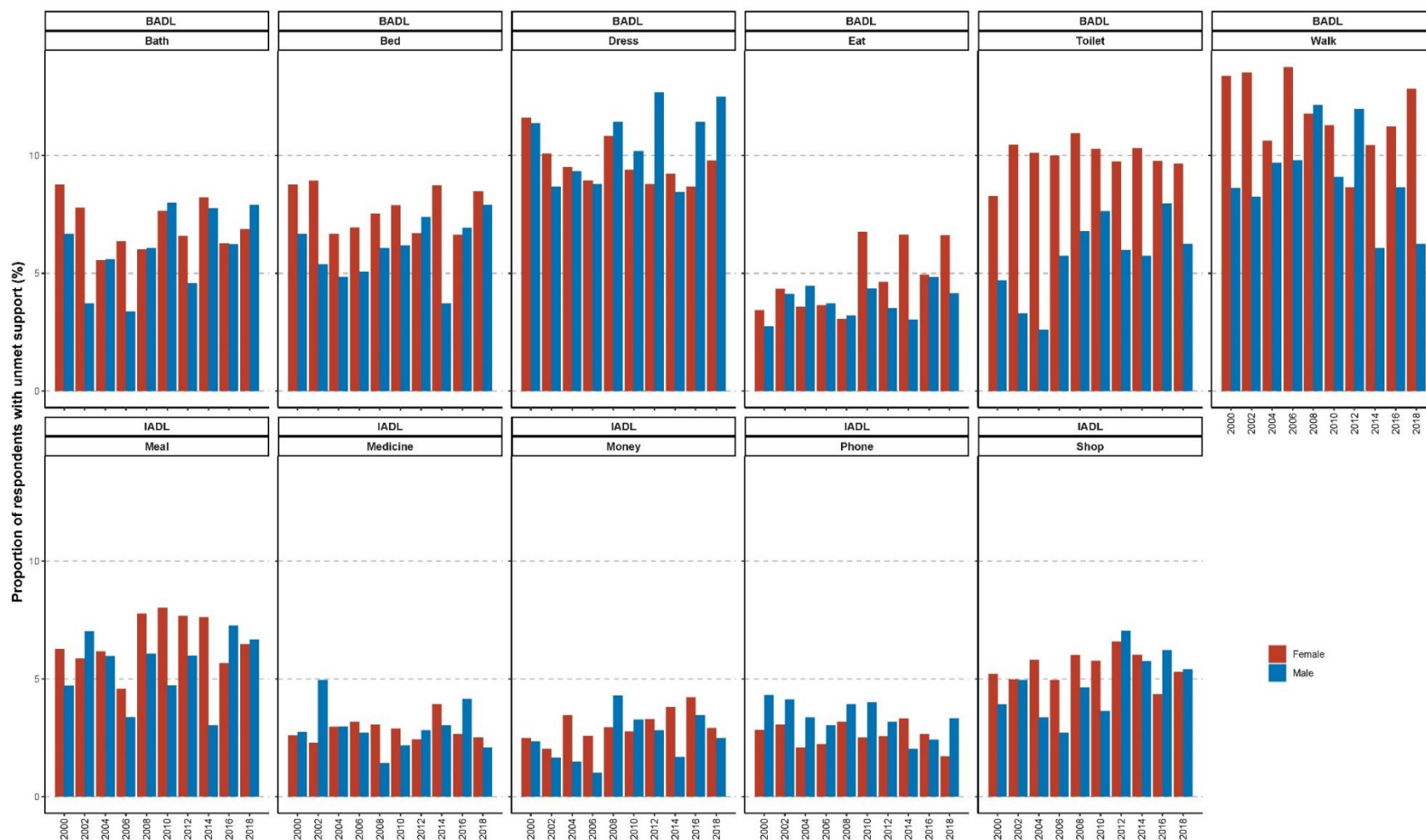
Outcome	Variable	Model 1		Model 2		Model 3	
		RR (95%CI)	p	RR (95%CI)	p	RR (95%CI)	p
Number of unmet BADL support needs	Year	1.00 (0.99, 1.01)	0.5655	0.99 (0.98, 1.00)	0.1365	0.99 (0.98, 1.00)	0.0476
	Age	0.97 (0.97, 0.98)	<0.0001	0.97 (0.97, 0.98)	<0.0001	0.97 (0.97, 0.98)	<0.0001
	Gender (female)	0.87 (0.79, 0.96)	0.0061	0.78 (0.65, 0.94)	0.0086	0.87 (0.79, 0.96)	0.0059
	Race/ethnicity (ref: non-Hispanic White)						
	Hispanic	1.06 (0.94, 1.20)	0.3444	1.06 (0.93, 1.20)	0.3659	0.79 (0.61, 1.02)	0.0704
	non-Hispanic Black	1.00 (0.90, 1.11)	0.9427	1.00 (0.90, 1.11)	0.9496	0.83 (0.68, 0.99)	0.0358
	non-Hispanic other	0.77 (0.57, 1.03)	0.0814	0.76 (0.57, 1.03)	0.0745	0.77 (0.49, 1.21)	0.2552
	Proxy response (yes)	0.52 (0.47, 0.57)	<0.0001	0.52 (0.47, 0.57)	<0.0001	0.52 (0.47, 0.57)	<0.0001
	Year × gender (female)			1.01 (0.99, 1.03)	0.1777		
	Year × race/ethnicity (Hispanic)					1.03 (1.01, 1.05)	0.0113
	Year × race/ethnicity (non-Hispanic Black)					1.02 (1.00, 1.04)	0.017
Year × race/ethnicity (non-Hispanic other)					1.00 (0.96, 1.04)	0.93	
Number of unmet IADL support needs	Year	1.06 (1.05, 1.07)	<0.0001	1.05 (1.03, 1.08)	<0.0001	1.07 (1.06, 1.09)	<0.0001
	Age	1.00 (0.99, 1.01)	0.9155	1.00 (0.99, 1.01)	0.9135	1.00 (0.99, 1.01)	0.9675
	Gender (female)	0.90 (0.78, 1.04)	0.1558	0.81 (0.59, 1.13)	0.2134	0.90 (0.78, 1.04)	0.1568
	Race/ethnicity (ref: non-Hispanic White)						
	Hispanic	0.46 (0.37, 0.58)	<0.0001	0.46 (0.36, 0.58)	<0.0001	0.82 (0.51, 1.30)	0.389
	non-Hispanic Black	0.71 (0.61, 0.83)	<0.0001	0.71 (0.61, 0.83)	<0.0001	1.08 (0.79, 1.49)	0.6398
	non-Hispanic other	0.84 (0.60, 1.20)	0.3378	0.84 (0.59, 1.19)	0.3295	0.91 (0.41, 2.03)	0.818
	Proxy response (yes)	1.32 (1.16, 1.51)	<0.0001	1.32 (1.16, 1.51)	<0.0001	1.31 (1.15, 1.49)	<0.0001
	Year × gender (female)			1.01 (0.98, 1.04)	0.5291		
	Year × race/ethnicity (Hispanic)					0.95 (0.91, 0.99)	0.0149
	Year × race/ethnicity (non-Hispanic Black)					0.96 (0.93, 0.99)	0.0061
Year × race/ethnicity (non-Hispanic other)					0.99 (0.93, 1.06)	0.8569	

Notes. BADL=basic activity of daily living; IADL=instrumental activity of daily living. Trends were measured by adjusted relative ratio (RR) and its 95% confidence interval (CI), which was obtained from the coefficient of the “year” predictor in the Poisson regression, controlling for age, gender, race/ethnicity, and whether need proxy response. RR>1 indicates an increasing trend in the number of unmet BADL or IADL support needs across the study years, and RR<1 the converse.



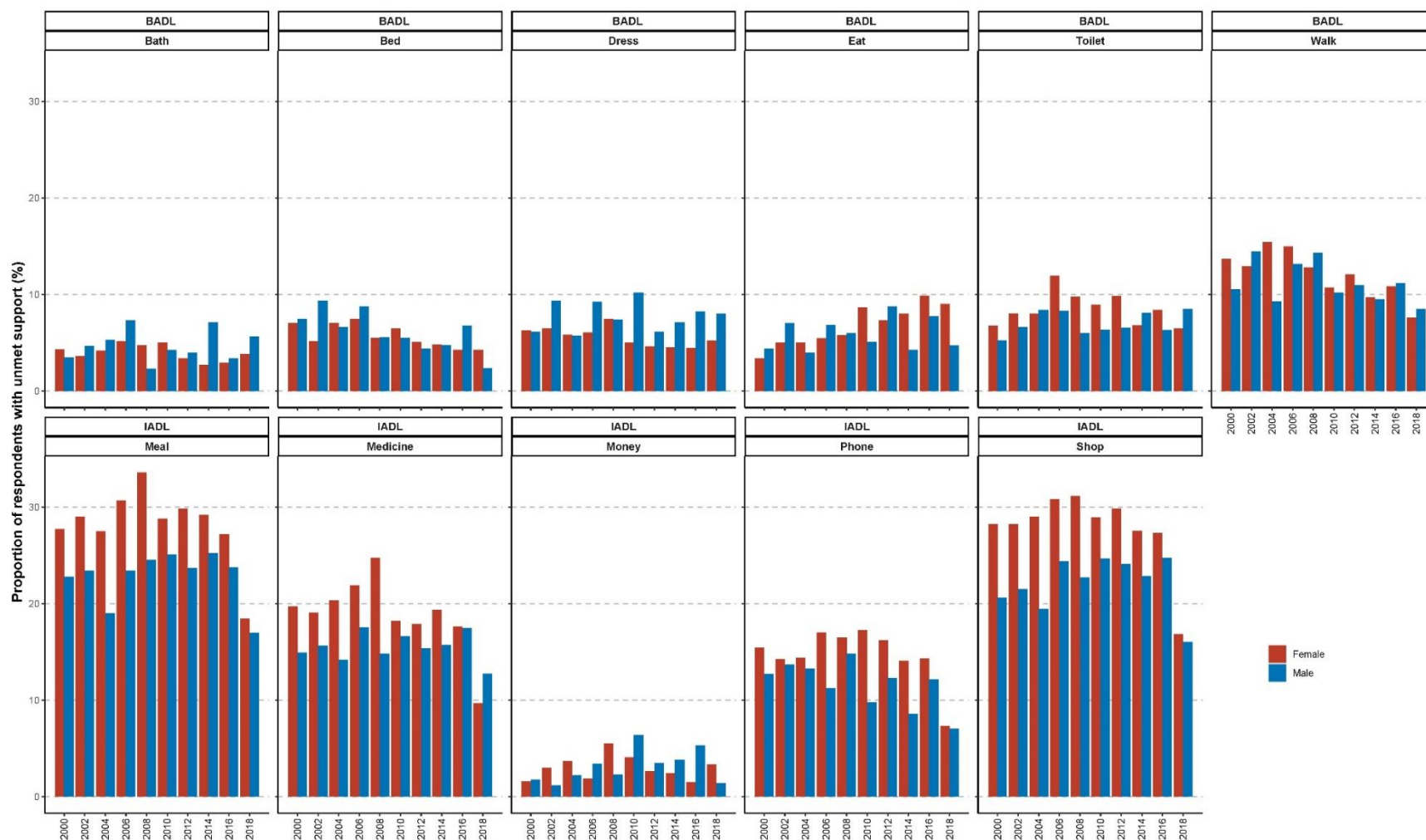
Supplementary Figure 1. Proportion of respondents with unmet support needs by gender and by BADL and IADL items, among those with CIND or dementia living alone.

Notes. BADL=basic activity of daily living; IADL=instrumental activity of daily living; CIND=cognitive impairment, no dementia.



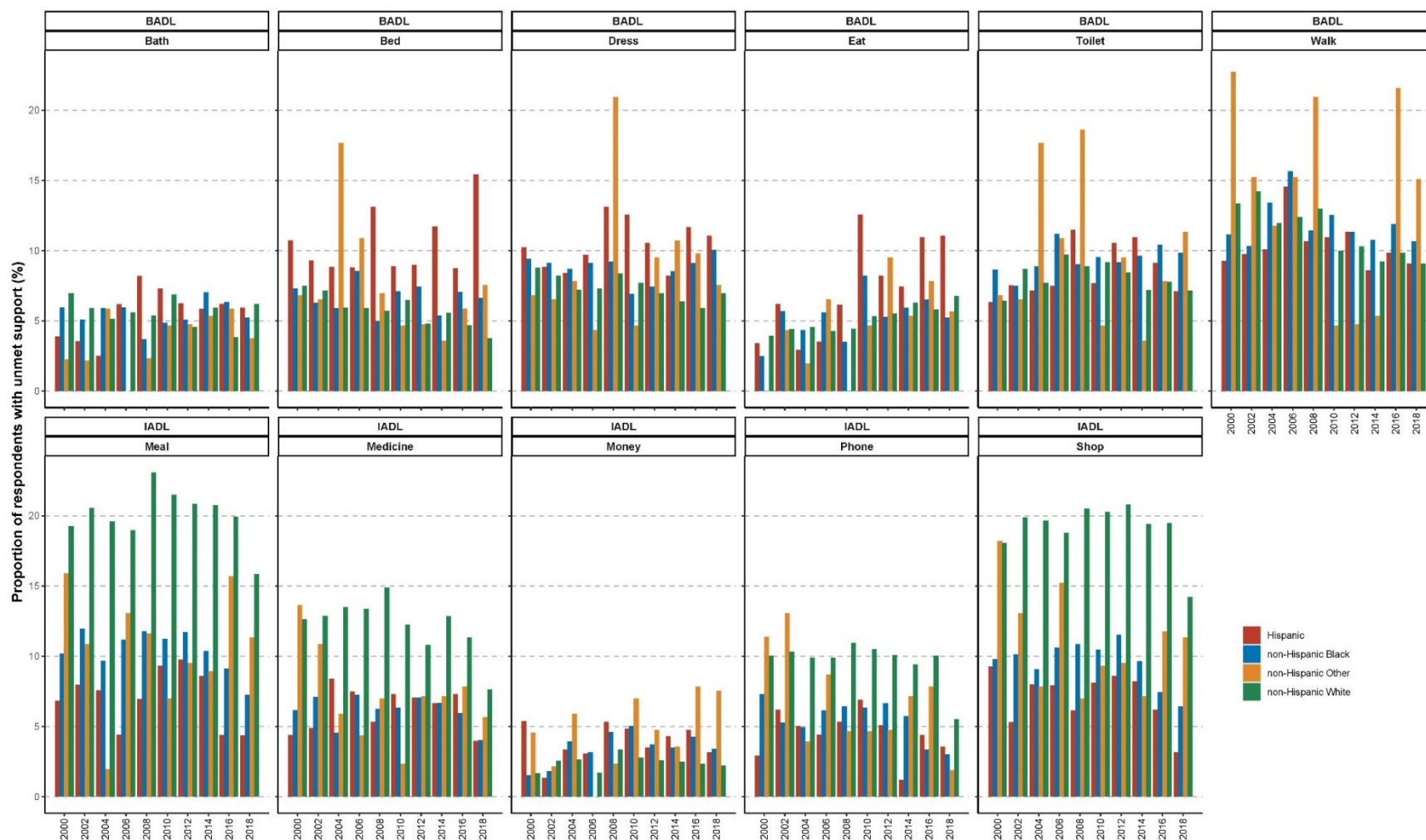
Supplementary Figure 2. Proportion of respondents with unmet support needs by gender and by BADL and items, among those with CIND living alone.

Notes. BADL=basic activity of daily living; IADL=instrumental activity of daily living; CIND=cognitive impairment, no dementia.



Supplementary Figure 3. Proportion of respondents with unmet support needs by gender and by items of ADL and IADL, among those with dementia living alone.

Notes. BADL=basic activity of daily living; IADL=instrumental activity of daily living; CIND=cognitive impairment, no dementia.



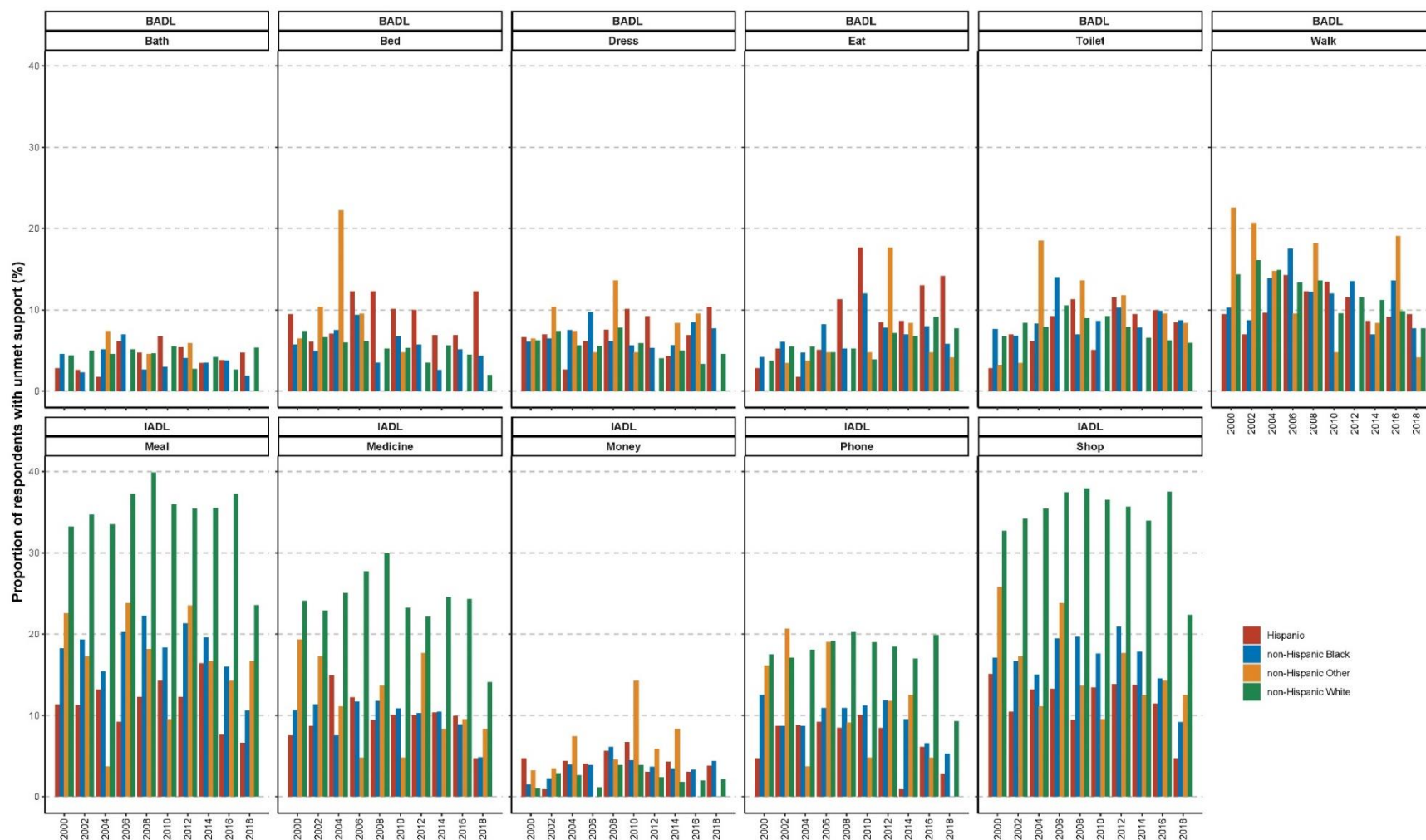
Supplementary Figure 4. Proportion of respondents with unmet support needs by race/ethnicity and by BADL and IADL items, among those with CIND or dementia living alone.

Notes. BADL=basic activity of daily living; IADL=instrumental activity of daily living; CIND=cognitive impairment, no dementia.



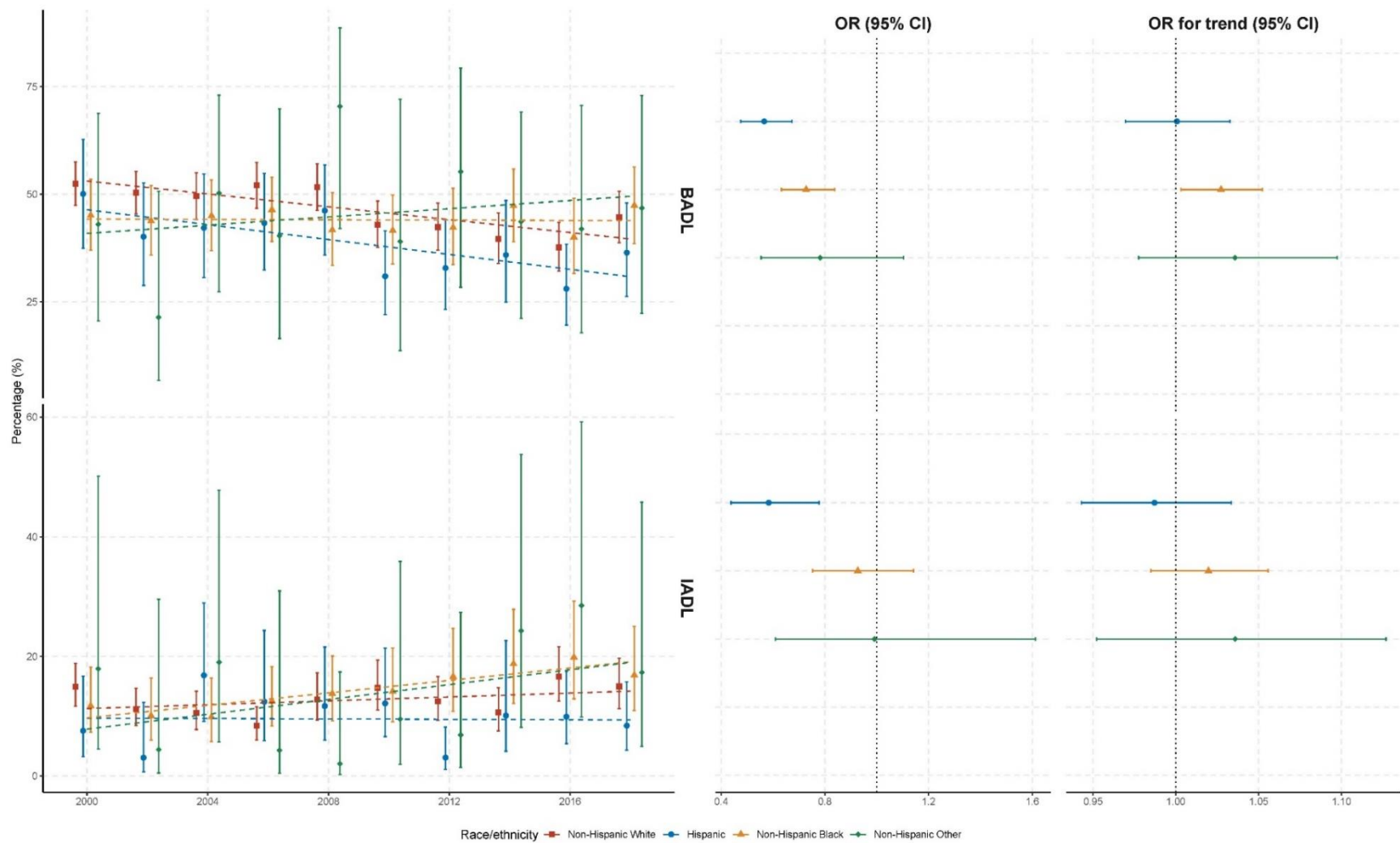
Supplementary Figure 5. Proportion of respondents with unmet support needs by race/ethnicity and by BADL and IADL items, among those with CIND living alone.

Notes. BADL=basic activity of daily living; IADL=instrumental activity of daily living; CIND=cognitive impairment, no dementia.



Supplementary Figure 6. Proportion of respondents with unmet support needs by race/ethnicity and by BADL and IADL items, among those with dementia living alone.

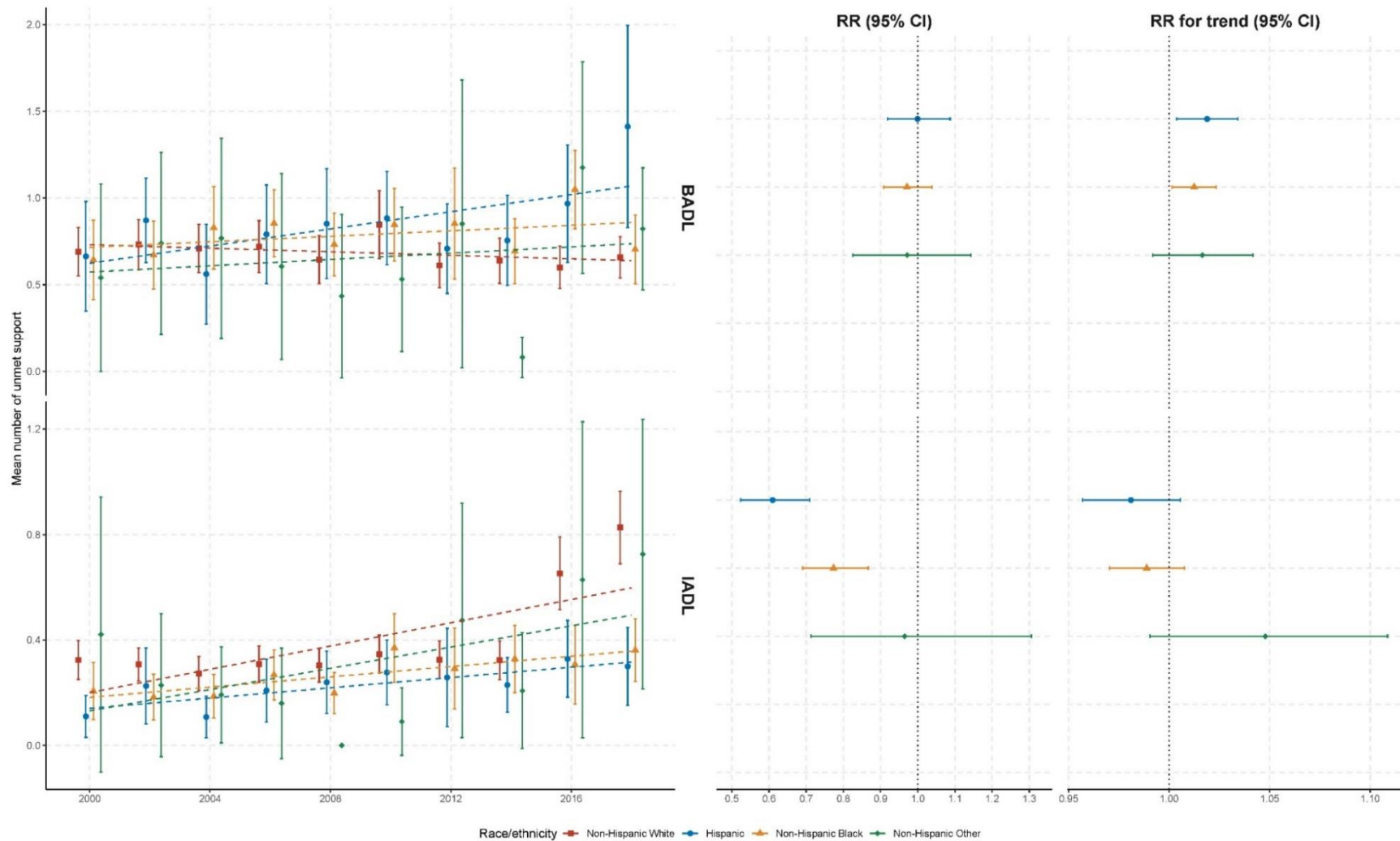
Notes. BADL=basic activity of daily living; IADL=instrumental activity of daily living; CIND=cognitive impairment, no dementia.



Supplementary Figure 7. The prevalence of unsupported BADL/IADL disability among cognitively impaired older adults living alone in the US, biennially from 2000 to 2018, by race/ethnicity.

Notes. The left presents the weighted percentage of having BADL or IADL disability without corresponding support, estimated from raw data, with error bars representing 95% confidence intervals (CI). The dotted lines in the left panel show linear regressions on the weighted percentage of having unsupported BADL or IADL disability. The middle panel shows the race/ethnicity disparities in the

probability of having unsupported BADL/IADL disability, measured via the adjusted odds ratio (OR) and its 95% CI, which was obtained from the coefficient for race/ethnicity (relative to the non-Hispanic White reference category) in the logistic regression, controlling for age, gender, whether a proxy response was required, and dementia status. The right panel shows the estimated time trend in the probability of having unsupported BADL/IADL disability. Trends were also measured for the adjusted OR (with 95% CI) from the coefficient for the year \times race/ethnicity interaction, controlling for the same covariates. A trend OR >1 indicates an increasing trend in the prevalence across the study years, relative to any overall trend, and <1 a decreasing trend. BADL, basic activity of daily living. IADL, instrumental activity of daily living.



Supplementary Figure 8. The number of unmet BADL or IADL support needs among cognitively impaired older adults living alone in the US, biennially from 2000 to 2018, by race/ethnicity.

Notes. The left panel presents the weighted mean number of unmet BADL or IADL support needs estimated from raw data, with error bars representing 95% confidence intervals (CI). The dotted lines in the left panel show linear regressions on the weighted mean number of unmet BADL or IADL support needs. The middle panel shows the race/ethnicity disparities in the number of unmet BADL or IADL

support needs, measured via the adjusted relative ratio (RR) and its 95% CI, which was obtained from the coefficient of the race/ethnicity term (with the non-Hispanic White group as the reference) in the Poisson regression, controlling for age, gender, whether a proxy response was required, and dementia status. The right panel shows the estimated time trend in the number of unmet BADL or IADL support needs. Trends were also measured via the adjusted relative ratio (RR) and its 95% CI, which was obtained from the coefficient of the year \times race/ethnicity interaction, controlling for the same covariates. A trend RR >1 indicates an increasing trend in the number of unmet BADL or IADL support needs across the study years, relative to any overall trend, and <1 the converse. BADL, basic activity of daily living. IADL, instrumental activity of daily living.