

Yamaguchi, Shintaro; Ito, Hirotake; Nakamuro, Makiko

Working Paper

Month-of-Birth Effects on Skills and Skill Formation

IZA Discussion Papers, No. 15895

Provided in Cooperation with:

IZA – Institute of Labor Economics

Suggested Citation: Yamaguchi, Shintaro; Ito, Hirotake; Nakamuro, Makiko (2023) : Month-of-Birth Effects on Skills and Skill Formation, IZA Discussion Papers, No. 15895, Institute of Labor Economics (IZA), Bonn

This Version is available at:

<https://hdl.handle.net/10419/272522>

Standard-Nutzungsbedingungen:

Die Dokumente auf EconStor dürfen zu eigenen wissenschaftlichen Zwecken und zum Privatgebrauch gespeichert und kopiert werden.

Sie dürfen die Dokumente nicht für öffentliche oder kommerzielle Zwecke vervielfältigen, öffentlich ausstellen, öffentlich zugänglich machen, vertreiben oder anderweitig nutzen.

Sofern die Verfasser die Dokumente unter Open-Content-Lizenzen (insbesondere CC-Lizenzen) zur Verfügung gestellt haben sollten, gelten abweichend von diesen Nutzungsbedingungen die in der dort genannten Lizenz gewährten Nutzungsrechte.

Terms of use:

Documents in EconStor may be saved and copied for your personal and scholarly purposes.

You are not to copy documents for public or commercial purposes, to exhibit the documents publicly, to make them publicly available on the internet, or to distribute or otherwise use the documents in public.

If the documents have been made available under an Open Content Licence (especially Creative Commons Licences), you may exercise further usage rights as specified in the indicated licence.

DISCUSSION PAPER SERIES

IZA DP No. 15895

**Month-of-Birth Effects on Skills
and Skill Formation**

Shintaro Yamaguchi
Hirotake Ito
Makiko Nakamuro

JANUARY 2023

DISCUSSION PAPER SERIES

IZA DP No. 15895

Month-of-Birth Effects on Skills and Skill Formation

Shintaro Yamaguchi

University of Tokyo and IZA

Hirotake Ito

CyberAgent Inc.

Makiko Nakamuro

Keio University

JANUARY 2023

Any opinions expressed in this paper are those of the author(s) and not those of IZA. Research published in this series may include views on policy, but IZA takes no institutional policy positions. The IZA research network is committed to the IZA Guiding Principles of Research Integrity.

The IZA Institute of Labor Economics is an independent economic research institute that conducts research in labor economics and offers evidence-based policy advice on labor market issues. Supported by the Deutsche Post Foundation, IZA runs the world's largest network of economists, whose research aims to provide answers to the global labor market challenges of our time. Our key objective is to build bridges between academic research, policymakers and society.

IZA Discussion Papers often represent preliminary work and are circulated to encourage discussion. Citation of such a paper should account for its provisional character. A revised version may be available directly from the author.

ISSN: 2365-9793

IZA – Institute of Labor Economics

Schaumburg-Lippe-Straße 5–9
53113 Bonn, Germany

Phone: +49-228-3894-0
Email: publications@iza.org

www.iza.org

ABSTRACT

Month-of-Birth Effects on Skills and Skill Formation*

We estimate month-of-birth effects on cognitive and noncognitive skills, as well as factors relevant to skill formation. Our estimates indicate that younger students in a given grade cohort have lower cognitive and noncognitive skills. To shed light on the underlying mechanisms, we also examine children's time use and interpersonal relationships. We find evidence of compensatory investment in cognitive skills by younger children, however, they are also more likely to have poor-quality relationships with their classmates and teachers, which may harm the long-term development of noncognitive skills. Our findings on skill formation have implications for efficiency and equity.

JEL Classification: I20, I24, J24

Keywords: relative age effect, cognitive skill, noncognitive skill

Corresponding author:

Shintaro Yamaguchi
Faculty of Economics
University of Tokyo
Hongo 7-3-1
Bunkyo-ku
Tokyo 113-0033
Japan
E-mail: syamaguchi@e.u-tokyo.ac.jp

* This paper uses confidential data from the department of education of Saitama Prefecture. The data can be obtained by filing a request directly. We gratefully acknowledge financial support from Saitama Prefecture, MEXT KAKENHI (16H02022), JSPS KAKENHI (20H01510), and administrative support for Research Institute of Economy, Trade and Industry. We thank seminar participants at various universities and conferences for their comments and especially Daiji Kawaguchi and Michihito Ando for their invaluable comments on our draft.

1 Introduction

Month of birth affects one's well-being in not only school, but also in adulthood as it influences relative age in a grade cohort. Many papers have documented that relatively younger students in a given cohort perform more poorly in academic tests (Bedard and Dhuey (2006)), playing sports (Helsen et al. (2005)), and other school activities (Dhuey and Lipscomb (2008)). In addition, some studies have reported that month of birth affects long-term outcomes including university enrollment (Bedard and Dhuey (2006)), labor earnings (Kawaguchi (2011)), and top management (Du et al. (2012)) and political positions (Muller and Page (2016)).

While the negative consequences of being among the youngest in class have been well documented, what remains less known is how children and their parents respond to disadvantages caused by being relatively young beyond delaying school enrollment (known as redshirting). Do parents of a younger student in a cohort make a compensatory investment to catch up with the child's peers? Teachers and peer students can also influence the skill formation of younger students. Do teachers provide younger students with a support so that younger students perform at their best? Do school peers help younger students or bully them instead? These questions are important for understanding how skill formation through own investment and influences from others varies by birth month.

The objectives of this paper are to estimate the effects of month of birth on cognitive and noncognitive skills as well as high school quality, and to examine possible mechanisms for the finding that birth month (or relative age) is correlated with long-run outcomes. More specifically, we estimate the month-of-birth gaps in time use, prep school attendance, participation in sports, and the quality of relationships with teachers and peer students.

Our analysis is based on longitudinal data of all fourth to ninth graders in public schools in the province¹ of Saitama, Japan in 2015-2018. The quality of our data is arguably superior to many data sources in the literature and hence strength of the paper. First, our data include noncognitive

¹The actual administrative term used by the government is prefecture, but we use province as it is more intuitive for most readers.

skill measures for more than one million student-year observations, which enables us to estimate parameters precisely enough to detect nuanced patterns. It is true that other administrative data sets are larger than ours, but they do not have noncognitive skill measures as far as we know. Second, because the data include all public school students, we have very little concerns about potential biases arising from attrition, which is often the case with panel data such as ECLS-K and NLSY.

The timing of school enrollment in Japan is strictly determined by birth date, which differs from many countries, such as the USA, but is similar to institutions in England, Norway, and Iceland. Because redshirting is virtually impossible in Japan, only the month of birth determines whether a student is one of the youngest in his/her grade cohort. We estimate the month-of-birth effects by assuming that the month of birth is exogenous. We validate this assumption by showing that family socioeconomic status (SES) and birth outcomes such as birth weight are largely uncorrelated with the month of birth.

Our estimation results indicate that the month of birth affects both cognitive and noncognitive skills. High school is not a part of compulsory education in Japan, and students must pass a competitive entrance exam to enter a high-quality high school. Consequently, there is also a significant gap in high school quality by birth month. The youngest students in grade four have test scores about 0.35 standard deviations lower than those of the oldest students; however, these gaps in test score decrease to 0.13-0.18 by grade nine. Findings for noncognitive skills such as conscientiousness are particularly interesting. Consistent with existing psychological studies on adolescence, noncognitive skills tend to decrease with grade in our data. However, the youngest students in a given grade have noncognitive skills about 0.1 standard deviations lower than the oldest students in the same grade. Because noncognitive skills do not improve with grade, the gap between the oldest and youngest students in the same grade suggests that relative age influences the formation of noncognitive skills. In addition, this month-of-birth gap in noncognitive skills remains nearly constant over time, which is in contrast with the dynamics of the cognitive skill gap.

We then examine how younger students and their parents respond to their disadvantages, and find that the youngest students in the ninth grade work 0.3 more hours per week outside of school

than the oldest students. They also read for more hours and are more likely to attend a prep school. Overall, younger students and their parents make compensatory investment in cognitive skills; however, they spend 0.2 fewer hours per week on sports, arts, and music, which may lead to lower noncognitive skills, in light of the findings of psychological studies (Ishihara et al. (2018); Moreno et al. (2011)). Another important factor that may influence children's noncognitive skills is interpersonal relationships. Our estimates indicate that the youngest students suffer about 0.06 standard deviations poorer relationships with their teachers and 0.09-0.12 standard deviations poorer relationships with their school peers, which may lead to lower noncognitive skills for younger children (Leary and Baumeister (2000); Reitz et al. (2016); Wu et al. (2018)). Poor interpersonal relationships may lead to persistent month-of-birth effects on noncognitive skills.

This paper contributes to the literature on month-of-birth effects in two ways. First, we show a set of evidence for compensatory investment by younger students in a grade cohort, which has implications for efficiency and equity. Younger children and their parents seem to decide on skill investment through comparisons with exactly the same grade cohort; however, they will be compared with individuals not only in the same but also in a different grade cohort once they enter the labor market. Compensatory skill investment may be individually optimal given their environment, but it may not maximize children's human capital in the long run. In this sense, the existing school cutoff date may distort students' and their parents' skill investment behavior. Our finding is also relevant for equity. Even though month-of-birth gaps may narrow over time, the cost of catching up with peers may be paid by younger students and their parents through their compensatory investment. Policies mitigating month-of-birth effects could correct the distortion in skill investment and improve equity.

Second, taking advantage of the large data set with over 1 million observations, we provide precise estimates for the month-of-birth effects on noncognitive skills. Unlike academic test scores, evidence for the month-of-birth effects on noncognitive skills is relatively scarce despite the growing recognition of returns to such skills. Datar and Gottfried (2015) find that being relatively old in a kindergarten in the U.S. is associated with better social-behavioral outcomes during elementary

school. Peña and Duckworth (2018) and Peña (2020) also showed that older children in a grade cohort score higher in grit, empathy, and decision-making among Mexican students at age 18. Our evidence from Japan complements the previous studies because the month-of-birth effects can vary across countries because of differential education systems. In addition, our data are much larger than the previous studies, which gives added confidence in the results.

Our results also provide a possible explanation for why month of birth has long-term consequences in some countries. For example, Kawaguchi (2011) finds that the youngest men in a grade cohort in Japan earn 4% less income when aged 30-34 years. Although month-of-birth effects on cognitive skills may disappear because of maturation and compensatory skill investment, less sports and music experience, as well as poorer interpersonal relationships with teachers and peers, may harm the long-term development of noncognitive skills, which might account for the lower earnings seen in adulthood. Although we do not observe noncognitive skills after grade nine in our data, this hypothesis is consistent with findings by Chetty et al. (2011), Heckman et al. (2013), and Baker et al. (2019), who find that interventions during childhood affect noncognitive skills in adulthood.

The rest of the paper is structured as follows. In Section 2, we provide a conceptual framework. In Section 3, we outline the empirical strategy to identify month-of-birth effects and validate our identifying assumptions. In Section 4, we describe our data. In Section 5, we estimate month-of-birth effects on skills and high school quality. In Section 6, we estimate month-of-birth gaps in time use and interpersonal relationships. In Section 7, we discuss the results in the context of the literature. We conclude in Section 8. The appendix includes an extended literature review, details of the data, and additional analysis.

2 Conceptual Framework

This section provides our conceptual framework to facilitate interpreting our empirical analysis. Following Cunha et al. (2010), we consider the following technology of skill formation with mul-

multiple periods of childhood $t \in \{1, 2, \dots, T\}$,

$$\theta_{t+1} = f_t(\theta_t, I_t), \quad (1)$$

where θ_t is a vector of skills (e.g., cognitive and noncognitive skills so that $\theta_t = (\theta_t^C, \theta_t^N)$) at period t and I_t is an investment. We assume that f_t is strictly concave and strictly increasing in I_t and twice continuously differentiable in all of its arguments. Almond et al. (2018) show that when the skill endowment θ_t and the current investment are perfectly complementary, the optimal parental skill investment increases in the skill endowment, $\partial I_t^* / \partial \theta_t > 0$, under a reasonable preference over parental consumption and child's human capital. In the opposite extreme case where the skill endowment θ_t and the current investment are perfect substitutes, the optimal parental skill investment decreases in the skill endowment, $\partial I_t^* / \partial \theta_t < 0$. Adult outcomes j , such as educational attainment and labor earnings, is produced by a combination of different skills at period T :

$$Q_j = g_j(\theta_T^C, \theta_T^N). \quad (2)$$

The outcome equation captures the concept that cognitive and noncognitive skills affect adult outcomes to different extents.

In the context of the present paper, we interpret a period as a grade. An individual relatively younger in a given grade tends to have lower skills θ_t than her peers, perhaps because of immaturity and/or other factors. Parents make a reinforcing or compensatory investment depending on whether the existing skills and investments are complements or substitutes. This is an empirical question and will be addressed later in the paper.

We are particularly interested in the roles of noncognitive skills. Cunha et al. (2010) find that noncognitive skills are cross-productive for cognitive skills ($\partial \theta_{t+1}^C / \partial \theta_t^N > 0$), implying that noncognitive skills help one acquire cognitive skills. In addition, noncognitive skills directly affect adult outcomes such as labor earnings. For example, Cunha et al. (2010) find that adolescent cognitive and non-cognitive capabilities account for the variation in educational attainment 16% and

12%, respectively. Lindqvist and Vestman (2011) also find that a one-standard-deviation increase in cognitive and noncognitive skills is associated with an increase in wages by 8.9% and 6.9%, respectively. These results imply that non-cognitive skills have effects only slightly weaker than cognitive skills. In addition, Weinberger (2014) and Deming (2017) find that returns to noncognitive skills rose in the 2000s, implying that the month-of-birth effects on noncognitive skills have more economic relevance in the modern economy than ever.

3 Empirical Strategy

3.1 Econometric Model

The school year in Japan runs from April to March. Children who have their sixth birthday on or before April 2 enter the first grade of elementary school of that year, which implies that the youngest children in a given grade were born in March and the oldest in April.² This law on school entry is strictly enforced, and hence, delaying school entry or redshirting is exceptionally rare. Because grade retention is also extremely uncommon, the timing of school entry and grade promotion in Japan is therefore completely determined by birth date. These rules are not quite common among OECD countries; however, England, Iceland, and Norway also have a school entry rule similar to that in Japan (Bedard and Dhuey, 2006).

We estimate gaps between the oldest and youngest students within the same grade in several outcomes using the following econometric model, which is estimated separately for each grade,

$$Y_{it} = \beta_0 + \beta_1 AGE_{it} + \beta_2 AGE_{it}^2 + \beta_3 X_{it} + \varepsilon_{it}, \quad (3)$$

where Y_{it} is an outcome for student i in year t , AGE_{it} is age at test measured in months, X_{it} is a vector of control variables, including gender, number of books at home as a proxy for SES, year,

²Strictly speaking, students born on April 1 are the youngest and those born on April 2 are the oldest. Our data include the month of birth, not the exact date of birth, and hence, we refer to April-born students as the oldest. It is true that this group includes those born on April 1, who are actually the youngest, but we believe this classification error is negligible.

and school fixed effects, and ε_{it} is an error term. The variable AGE_{it} is normalized so that the youngest students in a given grade have the value of 0 while the oldest students have the value of 11. Using the estimated model, we then calculate the estimated gap between the oldest and youngest students, which is given by

$$\widehat{\Delta Y} = \hat{\beta}_1 \cdot 11 + \hat{\beta}_2 \cdot 11^2. \quad (4)$$

Although this parametric model is our preferred specification because of efficiency, a possible alternative specification is to include a set of dummy variables for birth month instead of a polynomial of age. As a robustness check, we estimate this nonparametric model and report estimates in Appendix C.1.

Crawford et al. (2014) argue that the gap is influenced by three factors. First, it captures the absolute age or age-at-test effect. Because all of our outcomes are measured in April, students born in different months take tests at different absolute ages. Second, this parameter also captures the effect of age at school entry. Learning at school may not be effective if children are too young to study at school; hence, age at school entry may have consequences for student outcomes at an older age. These two factors cannot be disentangled because age at test is the sum of the school starting age and the length of schooling (i.e., perfect collinearity). The third factor is relative age. Because it is hard to disentangle these factors separately, we do not attempt to identify the relative age effect separately.

The identifying assumption is conditional mean independence, i.e., $E(\varepsilon_{it} | Age_{it}, X_{it}) = E(\varepsilon_{it} | X_{it})$. One might be concerned that parents that are enthusiastic for education may time the birth to give their child the advantage of being among the oldest in his/her grade, which leads to endogeneity bias. We discuss this issue in the following subsection.

3.2 Assessing Exogeneity of Month of Birth

Our main data set is drawn from Saitama skill assessments in Saitama, which is near Tokyo, and covers nearly all students from grades four to nine in public schools for 2015-2018. The number of student-year observations is over one million. Although the data are rich in terms of coverage of students, the main limitation is that they include very few family/parental background variables, which prevents us from assessing exogeneity of month of birth directly. To overcome this limitation, we conduct two sets of exercises. In the first set, vital statistics that record month of birth, parental characteristics, and birth outcomes for all births in the province for the birth cohort in the main data set, i.e., all births from April 2000 to March 2011. In the second set, we use administrative data from a municipality in the province for 2015 and 2018. These data include information on whether a family is on welfare, receives an education subsidy as a low-income family, and/or is a single-parent household.

Figure 1 presents the birth month shares after adjustment for unequal number of days in each month using vital statistics. Specifically, we divide the unadjusted relative frequency by the number of days and then multiply by 30. If all births are completely random, the share is 8.3% for each month. Thanks to a large number of observations, the share is statistically significantly different from 8.3% for some months, but the magnitudes of the differences are small. The biggest deviation from the average is found for September, with a share of 8.7%. Importantly, the gaps in the shares of March-born (youngest) children and April-born (oldest) children are tiny (7.9% and 8.0%, respectively).

We next examine the association between birth month and parental characteristics as well as birth outcomes. We plot these variables by birth month to assess month-of-birth differences graphically and nonparametrically in Figure 9 in Appendix B.1. To formally test the exogeneity of birth month, we regress parental characteristics and birth outcomes on age, age squared, and birth-year dummies using equation (3) and estimate the gaps between March- and April-born children using equation (4). Because we test multiple hypotheses simultaneously, we adjust the p-values throughout the paper using the method proposed by Benjamini and Hochberg (1995), which controls for

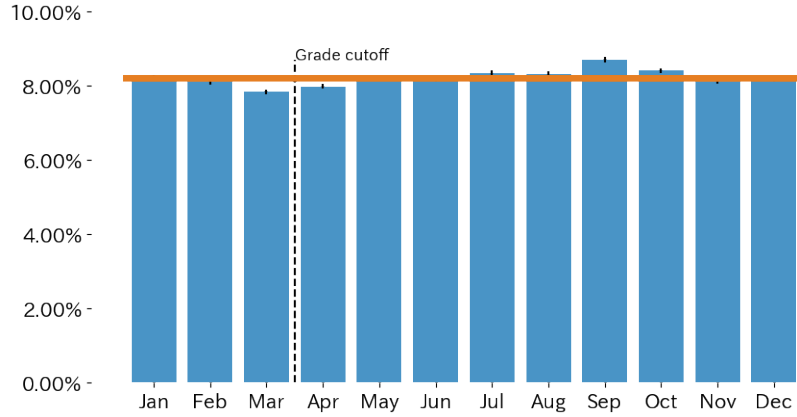


Figure 1: Relative Frequency of Birth Month (Adjusted for Number of Days)

Source: Vital Statistics from April 2000 to March 2011.

Note: The relative frequency of birth months is shown. We adjust for differences in the number of days across months as follows; we divide the unadjusted relative frequency by the number of days in the month and then multiply this by 30. The horizontal bar is drawn at 8.3%, which is the relative frequency of a birth month under the assumption that births are completely random. April-born children are the oldest, while March-born children are the youngest in a given grade.

a false discovery rate for independent hypotheses and provides more power than the Bonferroni correction. Table 1 reports the results with adjusted p-values for 15 hypotheses. The first set of outcomes is parents' characteristics, such as age, marital status, and household occupation. The average age of mothers is 29.941 years and that of fathers is 32.053 years. Mothers and fathers of April-born (oldest) children are 0.107 and 0.125 years younger, respectively, than those of March-born (youngest) children. One might expect that older mothers try to time birth so that their child is born in April instead of March, but this is not the case. We find no significant gap by birth month in mother's marital status.

Occupation of household head, which is usually father if present, is classified into one of seven categories: farmer, self-employment, regular employment at a small firm, regular employment at a large firm, non-regular employment, none, and unknown. We say a firm is small if it hires fewer than 100 employees and large if it hires 100 employees or more. Large employers tend to pay higher wages and offer generous fringe benefits, although healthcare is universal in Japan. Compared with regular employment, non-regular employment is lower paid and unstable. We find no

Table 1: Gaps in Parental Characteristics and Birth Outcomes Between April- and March-born Children

Dependent variables	Mean	Estimates	Adjusted p-values
Parental characteristics			
Mother's age	29.941	-0.107 (0.021)	0.000
Father's age	32.053	-0.125 (0.023)	0.000
Unmarried (%)	1.910	-0.059 (0.072)	0.561
Occupation of household head			
Farmer (%)	0.690	-0.002 (0.039)	0.953
Self-employed (%)	7.185	-0.186 (0.106)	0.199
Regular employment (small firm) (%)	34.691	-0.033 (0.238)	0.953
Regular employment (large firm) (%)	41.608	-0.204 (0.179)	0.425
Non-regular employment (%)	8.749	0.499 (0.121)	0.000
No job (%)	1.723	-0.155 (0.050)	0.005
Unknown (%)	5.354	0.081 (0.192)	0.840
Birth outcomes			
Birth weight (gram)	3016.116	2.383 (1.909)	0.398
Gestational age (week)	38.897	-0.002 (0.009)	0.913
Singleton (%)	97.951	-0.076 (0.082)	0.528
First child (%)	49.229	-1.007 (0.259)	0.000
Girl (%)	48.710	-0.312 (0.239)	0.398
No. obs.	569983		

Source: Vital Statistics from April 2000 to March 2011.

Note: We present differences in the estimated means of family background and birth outcomes between April- and March-born children (e.g. $E(Y|\text{April}) - E(Y|\text{March})$). To do so, We regress parental characteristics and birth outcomes on age, age squared, and birth-year dummies using equation (3) and estimate the gaps between April- and March-born children using equation (4). Occupation of household head (father if present) is reported. We say a firm is small if it hires 1-99 employees and large if it hires 100 employees or more. Standard errors are in parentheses. Because we test 15 hypotheses simultaneously, we adjust the p-values for multiple testing using the method proposed by Benjamini and Hochberg (1995), which controls for a false discovery rate.

statistically significant gap in the fractions of farmers, self-employment, regular employment at a small firm, regular employment at a large firm, and unknown. More nonregular employment is observed among families of April-born (oldest) than among March-born (youngest) children, which is consistent with the fact that parents of April-born are younger. We also find that joblessness is slightly less prevalent among families of April-born than March-born children.

We also examine children's health at birth. Currie and Schwandt (2013) find that not only parental characteristics, but also seasonal environmental factors, such as flu prevalence, influence birth outcomes and may eventually lead to poor child development. Motivated by their findings, we examine the association of birth month with birth weight, gestation, and other birth outcomes. The regression results indicate no association between birth month and these infant health measures, being singleton, and gender; however, April-born (oldest) children are about one percentage point less likely to be a first child (mean, 49.2%). According to the literature, first-born children tend to perform better than their younger siblings. Although the magnitude is small, this first-born advantage is likely to bias downward, instead of upward, our estimated month-of-birth effects, if any.

Our second set of exercises use administrative data from a municipality in Saitama that conducted the skill assessment (our main data). These data include whether the family is on welfare, receives an education subsidy for low-income households, and is a single-parent household for 11,942 students in 2015 and 2018. We regress these family SES variables on age, age-squared, and grade dummies and then calculate the gap between April- and March-born students. The p-values are adjusted using the method proposed by Benjamini and Hochberg (1995) as there are three hypotheses. The results are reported in Table 2. We do not find any significant correlation between birth month and these family SES measures. To determine the extent to which we can generalize these results for the municipality to the whole province, we compare key variables between the two in Appendix B.2. Most importantly, little statistical and economic difference is seen between the two in terms of average family SES, which is proxied by the number of books in our main data set.

Table 2: Gaps in Family Background Between April- and March-born Students

	Mean	Estimates	Adjusted p-values
Education subsidy (%)	14.797	0.041 (1.214)	0.973
Single parent (%)	5.393	1.030 (0.727)	0.470
Welfare (%)	0.729	0.217 (0.265)	0.617
No. obs.		11942	

Source: Administrative data from a municipality in Saitama that conducted the skill assessment.

Note: Note: We present differences in the estimated means of family background and birth outcomes between April- and March-born children (e.g. $E(Y|\text{April}) - E(Y|\text{March})$). To do so, we regress the family SES measures on age, age squared, and birth-year dummies using equation (3) and estimate the gaps between March- and April-born children using equation (4). Standard errors are in parentheses. We adjust the p-values for multiple testing using the method proposed by Benjamini and Hochberg (1995), which controls for a false discovery rate, as there are three hypotheses.

Overall, we do not find clear evidence that the oldest children in a grade cohort have more advantages from parental characteristics and birth outcomes than the youngest children. A few statistically significant differences are observed by birth month, but these are mostly because we have a large number of observations, and the magnitude does not seem economically large enough to change our substantive findings in this paper. As robustness checks, we compare the characteristics of April- and March-born children nonparametrically (see Tables 15 and 16 in Appendix), but the results are essentially the same. In addition, we are not aware of any consistent story of bias running through them. That being said, we admit that the oldest children may be at a slight disadvantage, if any, which implies that our estimates for month-of-birth effects may be biased downward if this is the case.

A possible explanation for why month of birth may be uncorrelated with parental SES is that Japanese parents have a limited ability to time the birth or they do not attempt to choose the season of birth of their children. It is true that delaying birth for a few days by cesarean section is feasible (Shigeoka, 2016), but changing the birth date by more than a few days may not be straightforward³. Parents might want to time the conception so that their child is born in April, but waiting for the

³Although Japanese parents do not seem to choose the season of birth of their children, Buckles and Hungerman (2013) find evidence that American women with high SES time their fertility and avoid childbirth in Winter.

right time to have an April-born baby can be costly. Given that the average childbearing age is high, at 29.941 years, postponing conception can lower the chance of pregnancy.

4 Data

4.1 Overview

Our main data set is derived from standardized achievement tests and accompanied questionnaires that measure noncognitive skills and ask about student life in and outside the school. The tests have been administered by the school board in Saitama, a suburb of Tokyo, every April since 2015, which is the beginning of the academic year. Virtually all students in grades four through nine in public schools in the province take this test and answer the questionnaire, although only the city of Saitama does not participate in the skill assessment. Only 2-3% of them did not take the exam for reasons such as illness.⁴ In total, 708 elementary schools (grades one to six) and 356 junior high schools (grades seven to nine) in 62 municipalities are included in the data set. Overall, 99.3% of the elementary schools and 93.0% of the junior high schools are public in the province; only a few are private institutions.

Table 3 reports the descriptive statistics. The data cover the period 2015-2018 and include about 1.1 million student-year observations. For each grade, we have about 180,000 observations when pooled across years. From one year to the next, about 2% of students exit from the data set because they move out of the province or enter private schools. The attrition rates are 2.25% for the transitions from grades four to five, 1.96% for grades five to six, 7.88% for grades six to seven, and 2.81% for grades seven to eight. The attrition rate is notably high for the transition from grades six to seven when some students enter selective private junior high schools. We compare the attrition rate of March-born (youngest) and that of April-born (oldest) in all grades and find the differences are modest. We do not find evidence that more April-born students exit from the

⁴This participation rate is comparable to that for National Assessments of Academic Ability administered by the Ministry of Education, Culture, Sports, Science and Technology (MEXT).

survey than March-born students (or the opposite) in a systematic way. In addition, we confirm that the distributions of birth month are stable across grade. See Appendix B.5 for more detailed discussion on possible attrition biases.

Although we have little information on family background, we use the number of books at home as a proxy for family SES because questions about parental income or educational background would have resulted in a low response rate and/or substantial measurement error. It is true that this is potentially an outcome influenced by educational achievement, but it is commonly used in sociology and education research.⁵ As reported in Table 3, 10.896% of students have 0-10 books at home in the period 2016-8, but this variable is unavailable for 2015.

⁵TIMSS (Woessmann, 2008) and PISA (Ammermueller, 2005) also use the number of books at home as a measure of family SES. Kawaguchi (2016) shows that the number of books at home is correlated with parental income and educational background in Japan.

Table 3: Descriptive Statistics

Count			
	All	1096062	
	Grade 4	179820	
	Grade 5	182261	
	Grade 6	186091	
	Grade 7	179281	
	Grade 8	182818	
	Grade 9	185791	
Demographics			
	Female (%)	49.658	
	0-10 books at home (%)	10.896	
		Mean	Std. Dev.
Cognitive skills			
	Math	0.192	1.344
	Japanese	0.233	1.666
	English	0.461	1.345
Noncognitive skills			
	Conscientiousness	3.734	0.628
	Self-control	2.649	0.438
	Self-efficacy	2.247	0.490
Time use & activities			
	Weekly hours of studying outside school	9.639	6.404
	Weekly hours of reading	4.153	3.786
	Prep school participation rate	0.584	0.493
	Weekly hours of playing outside and sports	3.989	3.028
	Weekly hours of arts, music, and sports	1.818	1.842
Interpersonal relationships			
	With teachers	2.430	0.600
	With peers	2.410	0.740

Source: Saitama Skill Assessment 2015-2018.

Note: Noncognitive skills, number of books at home, relationship with peers are available for 2016-2018. Relationship with teachers is available for 2017-2018. Weekly hours of reading, hours of playing outside and sports, and hours of arts, music, and sports are available only for 2015. All other variables are available for 2015-2018.

4.2 Variable Definitions

4.2.1 Cognitive Skills

All students in our data set took math and Japanese tests, and the eighth and ninth graders also took an English test for 2015-2018. Employing item response theory (IRT; see Embretson and Reise (2000) for details), the tests are designed to enable comparisons of scores across different grades and test dates. IRT is implemented by including a few identical questions for anchoring in tests for different grades and years. This methodology is also used by the Programme for International Student Assessment (PISA) and TIMSS. We report the mean and standard deviation of test scores⁶ for the pooled sample reported in Table 3.

4.2.2 Noncognitive Skills

In a 40-minute questionnaire following the achievement test, the provincial school board has collected information on students' noncognitive skills, including conscientiousness, self-control, and self-efficacy, since 2016. To reduce the students' test burden, they measure one of the three noncognitive skills for each birth cohort. Figure 2 illustrates the survey structure. Consider the cohort who was in grade four in 2016 (born in 2006/2007). The school board measured their self-control from 2016 to 2018, but not other noncognitive skills. Similarly, the cohort who was in grade five in 2016 (born in 2005/2006) answered questions to measure their self-efficacy only. This survey structure is intended to measure the time evolution of noncognitive skills. As such, each of the noncognitive skills is measured by an identical set of questions across grades and survey years. The questions for noncognitive skills were translated into English, and are listed in Table 10 in the appendix.

Conscientiousness is defined as “the propensity to follow socially prescribed norms for impulse control, to be goal directed, to plan, and to be able to delay gratification” (Roberts et al., 2009) and is known as the most robust predictor of academic achievement among the Big Five personality

⁶The Saitama school board provides us with normalized test scores so that the mean and standard deviation of the sixth graders for math and Japanese are zero and one in 2015. Similarly, they also normalize the English test scores so that the mean and standard deviation for the eighth graders are zero and one in 2015.

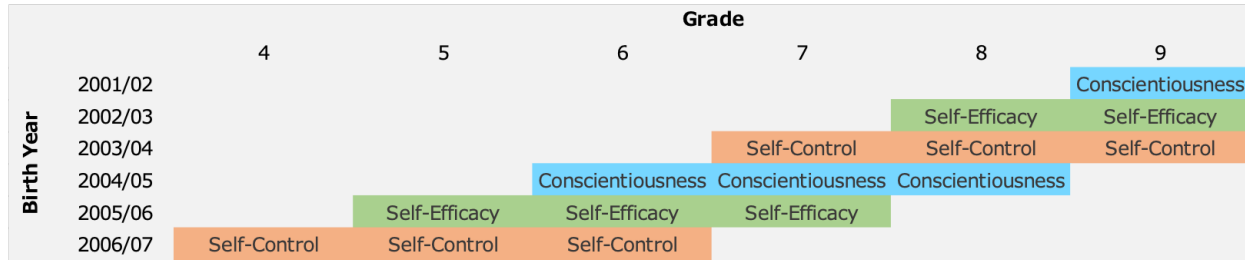


Figure 2: The Survey Structure for Noncognitive Skills

Note: The figure illustrates the structure of the survey for noncognitive skills. Only one noncognitive skill is measured for each birth cohort. Consider the cohort who was grade four in 2016 (born in 2006/2007). The school board measured their self-control from 2016 to 2018, but not other noncognitive skills.

traits.⁷ Students answered 13 questions about conscientiousness on a five-point Likert scale.

Self-control is a psychological state defined as “the tendency to regulate impulses and resist immediately rewarding temptations in the service of long-term goals” (Duckworth et al., 2013). Moffitt et al. (2011) show that childhood self-control predicts physical health, substance dependence, personal finances, and criminal offences in adulthood. Our measure of self-control is based on students’ answers to eight questions developed by Tsukayama et al. (2013). These questions are designed specifically for academic and school contexts.

Self-efficacy is defined as “people’s judgments of their capabilities to organize and execute courses of action required to attain designated types of performances (Bandura, 1986). Previous studies (Pintrich et al., 1991; Pajares and Miller, 1994; Pajares and Kranzler, 1995; Pajares and Graham, 1999) find that self-efficacy is strongly correlated with academic test scores, particularly with math.

Following the convention in psychometrics, we take the averages of all the relevant responses for each of the three noncognitive skills after correcting reverse-coded items. Table 3 reports the mean and standard deviation of the raw scores for each noncognitive skill for the pooled sample.

⁷For example, Poropat (2009) meta-analysis on the relation among the Big Five personality traits reveals that the both raw and partial correlations between conscientiousness and GPA are almost as large as those between GPA and IQ. Barbaranelli et al. (2003) examine the Big Five using factor analysis for adulthood to childhood to measure the personality ratings of children. They carefully investigate whether the children’s self-reporting reliably replicates parental and teacher descriptions of children’s personality and validate their scale as useful for measuring the Big Five personality traits through self-reporting by children aged 9-13 years.

4.2.3 Human Capital Investment and Interpersonal Relationships

The questionnaire also asks about students' time use, prep school participation, and quality of relationships with teachers and peers. Time use and prep school participation are direct measures of human capital investment. The quality of interpersonal relationships is also relevant for human capital formation because teachers and peers can influence a student's behavior and skills.

We construct weekly hours of study outside of school for years 2015-2018 by combining average daily hours of study on weekdays and on weekends. The original response is provided as an interval, but we construct a point estimate by taking the midpoint of each interval and assuming 21×1.25 hours if students responded that they study 21 hours or more per week. Only in 2015, weekly hours are measured for reading, playing outside and sports, and organized out-of-school activities, including sports, music, and arts. Again, interval responses are converted into point estimates.

We also use whether a student attends a prep school as a measure of educational input for 2015-2018. Attending a prep school is a form of shadow education and is common in Japan⁸. Students attend a prep school to improve their academic skills and prepare for school entrance exams. While only about 5% of sixth graders take entrance exams for private junior high schools, nearly all ninth graders take entrance exams for high schools.⁹ The average household expenditure on prep schools in 2018 was 82,469 Japanese yen (≈ 756 USD) for public elementary students, and 243,589 yen ($\approx 2,235$ USD) for public junior high school students, according to MEXT (2018). Moreover, prep schools have long been a huge commercial industry in Japan. According to Yano Research Institute, the estimated annual revenue for prep schools reached 975 billion Japanese yen (≈ 10 billion USD) in 2019, which has been still growing for past ten years, while the numbers of school-aged children in the country has been significantly decreased.

The means and standard deviations of these variables are reported in Table 3. Students study

⁸Shadow education is defined as private tutoring to supplement academic activities in mainstream schooling, such as attending a prep school, one-to-one tutoring, distance learning, etc. (Bray, 1999; 2009; 2011). Although it has been very popular in Asian countries, it is becoming a major part of education in many developed and developing countries including US, UK, Romania, Singapore, Egypt, Morocco, Cambodia, and Kenya (Dang and Rogers, 2008).

⁹The high school enrollment rate was 98.8% in 2018.

9.639 hours per week outside of school and read 4.153 hours per week. Attendance at prep school is common, with 58.4% of students enrolled. Students play outside and/or sports for 3.989 hours per week and participate in organized arts, music, and sports activities outside of school for 1.818 hours per week.

To measure the quality of relationships with teachers, we use three questions asked in 2017-2018: “Did your teacher(s) assist you adequately?”, “Did your teacher(s) recognize your strengths?”, and “Did your teacher(s) help you understand content in class that you found confusing?”. To measure the quality of relationships with peer students, we use the question “Did your friend(s) recognize your strengths?” asked in 2016-2018. Students responded to these questions on a four-point scale. For the index for relationship with teachers, we sum scores of the three questions. The means and standard deviations of these variables are reported in Table 3.

5 Month-of-Birth Effects on Skills and High School Quality

5.1 Cognitive Skills

We begin by examining graphically how average test scores change with age. Figure 3 shows the age-profiles for math, Japanese, and English test scores. We note two important features. First, average test scores increase with age at a decreasing rate. In a given grade, older students achieve higher test scores than do younger students, but the gap between younger and older students is smaller for upper-grade students. Second, mean test scores rise discontinuously at the grade cutoff for some grades. The jump between eighth and ninth grades is particularly large, presumably because ninth graders work much harder to get ready for entrance exams for high school. In the following, the focus is on the first feature or within-grade skill differences, while the second feature of the data is extensively analyzed in Appendix C.4.

We regress test scores on age and estimate the difference between the oldest and youngest students (i.e., the average of the oldest minus that of the youngest) for each grade. Note that the test scores in the regression analysis are normalized for each grade and year, which facilitates a

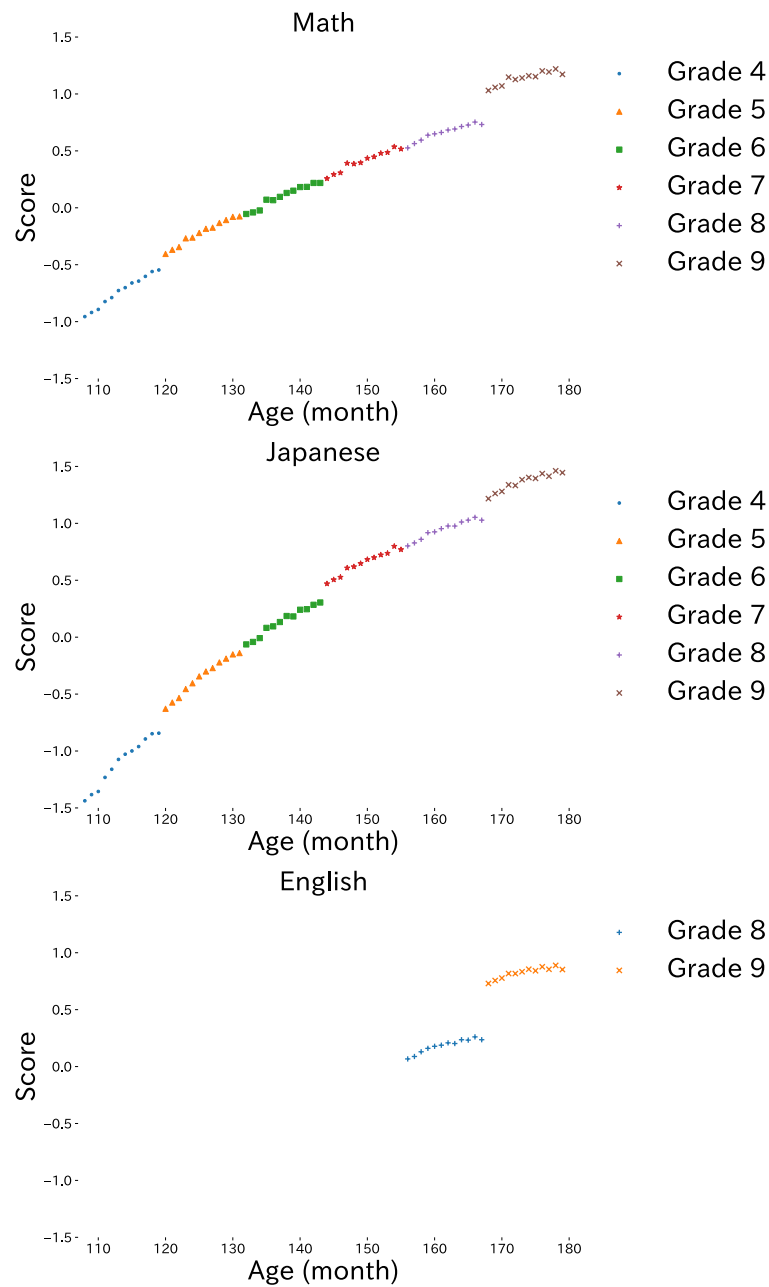


Figure 3: Mean Test Scores by Age

Source: Saitama Skill Assessment 2015-2018.

Note: Math and Japanese test scores are normalized so that the mean and standard deviation are 0 and 1 for sixth graders in 2015. English test scores are normalized similarly for eighth graders in 2015. Each dot represents an average of about 50,000 children. In the Japanese educational system, the youngest students in each grade are born in March and the oldest in April. Therefore, the first (leftmost) dot in this figure is the child born in March, and the last (rightmost) dot is the child born in April.

Table 4: Month-of-Birth Gaps in Test Scores

	Math (1)	Math (2)	Math (3)	Japanese (4)	Japanese (5)	Japanese (6)	English (7)	English (8)	English (9)
Grade 4	0.350 (0.008)	0.343 (0.009)	0.350 (0.011)	0.355 (0.008)	0.346 (0.008)	0.357 (0.011)			
Obs.	179163	133921	112137	179150	133912	112129			
Grade 5	0.297 (0.008)	0.290 (0.009)	0.293 (0.011)	0.319 (0.008)	0.320 (0.009)	0.321 (0.011)			
Obs.	181597	135727	113479	181577	135713	113465			
Grade 6	0.248 (0.008)	0.244 (0.009)	0.254 (0.011)	0.275 (0.008)	0.276 (0.008)	0.278 (0.011)			
Obs.	182472	138057	115580	182473	138050	115576			
Grade 7	0.228 (0.008)	0.225 (0.009)	0.224 (0.011)	0.245 (0.008)	0.242 (0.008)	0.248 (0.011)			
Obs.	178234	132467	110963	178244	132461	110959			
Grade 8	0.178 (0.007)	0.183 (0.008)	0.186 (0.011)	0.206 (0.007)	0.215 (0.008)	0.227 (0.011)	0.141 (0.007)	0.153 (0.008)	0.158 (0.011)
Obs.	181490	134458	112878	181448	134434	112858	181462	134433	112856
Grade 9	0.125 (0.008)	0.131 (0.008)	0.143 (0.011)	0.173 (0.008)	0.181 (0.008)	0.181 (0.010)	0.103 (0.008)	0.112 (0.008)	0.119 (0.010)
Obs.	137612	137506	115455	137587	137481	115436	137638	137532	115478
Control variables		✓	✓		✓	✓		✓	✓
Excl. Mar & Apr			✓			✓			✓

Note: The gaps between the oldest and youngest students are based on equations (3) and (4). Each estimate in the cell is obtained from a separate regression. Test scores in the regression analysis are normalized for each grade and year. The control variables include school fixed effects, survey year fixed effects, gender, and number of books at home. Standard errors are in parentheses. All estimates in this table are statistically significant at the 1% level when p-values are adjusted for multiple testing, using a method that controls for a false discovery rate (see Benjamini and Hochberg (1995)). We have 14 (6 + 6 + 2) hypotheses for each econometric specification.

comparison of estimates with those in other studies. Column (1) of Table 4 shows the estimated gaps in the mean math test scores between the oldest and youngest students in a given grade, using a quadratic function with no control variables except for age (see equations (3) and (4)). The gap is 0.350 standard deviations for grade four, but decreases as students move through higher grades. The gap is 0.125 standard deviations for grade nine, and is statistically significant and smaller than that for grade four. Column (2) presents the estimated gaps when test year and school fixed effects, as well as students' gender and number of books at home, are controlled. The estimates are essentially the same as those in column (1). This is not surprising given that the month of

birth is not correlated with most observed characteristics. Column (3) reports the estimates when March- and April-born students are excluded from the regression sample, which is motivated by the concern that parents may manipulate the timing of birth so that their children can take advantage of being the oldest in the class, rather than the youngest. The control variables are the same as those in column (2). The estimates are essentially the same as those in columns (1) and (2). Note that all estimates in Table 4 are statistically significant at the 1% level when p-values are adjusted by a method that controls for a false discovery rate (see Benjamini and Hochberg (1995)), as we test 14 ($= 6 + 6 + 2$) hypotheses simultaneously.

The estimated gaps in Japanese test scores are similar to those for math test scores. The gaps are 0.355 standard deviations for grade four, decreasing with grade, and 0.173 for grade nine. The estimates are robust across different specifications. The gaps in English test scores also decrease with grade, but are smaller than those in math and Japanese test scores. Given that English classes begin from grade seven, the smaller age gap in English test scores might imply that age effects are cumulative; by contrast, it could be because of the different nature of the subjects.

5.2 Noncognitive Skills

We plot the means of noncognitive skills by age in Figure 4. Note that students in different grades and survey years respond to identical questions that measure noncognitive skills, and hence, no gaps are driven by the questions themselves. The striking feature is that older students within the same grade have better noncognitive skills, despite the fact that noncognitive skills do not monotonically increase with grade. Indeed, noncognitive skills tend to decrease with grade, which contrasts with cognitive skills, which grow monotonically with grade.

Negative trends in psychological maturity during adolescence have been reported in previous psychological studies. For example, using a large-scale cross-sectional sample from English-speaking countries across the world, Soto et al. (2011) find that conscientiousness and other desirable psychological traits decrease when individuals transit from late childhood (age 10-12 years) into adolescence (age 13-17 years). Robins et al. (2002) find a similar negative trend for self-

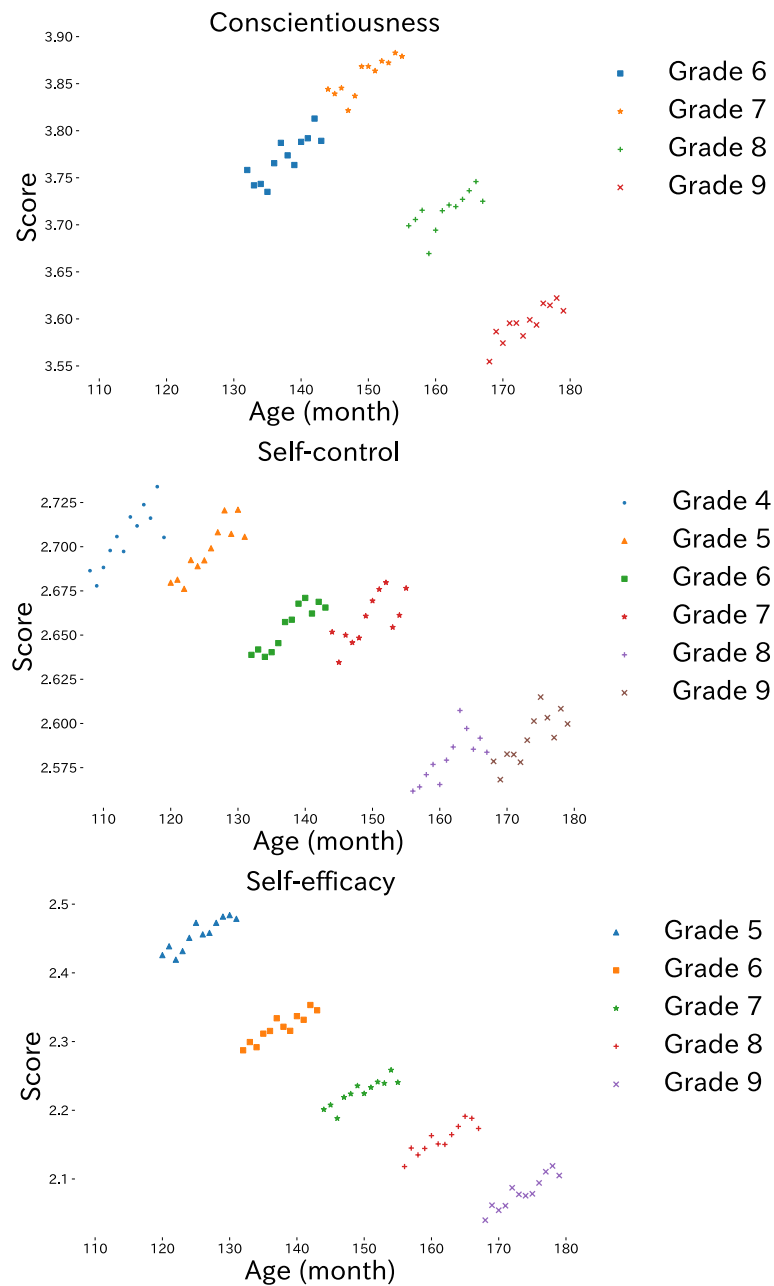


Figure 4: Noncognitive Skills by Age

Source: Saitama Skill Assessment 2016-2018.

Note: Raw scores are reported. Each dot represents an average of about 50,000 children. In the Japanese educational system, the youngest students in each grade are born in March and the oldest in April. Therefore, the first (leftmost) dot in this figure is the child born in March, and the last (rightmost) dot is the child born in April.

Table 5: Month-of-Birth Gaps in Noncognitive Skills by Grade

	Conscientiousness		Self-control		Self-efficacy	
	Estimates	Adj. p-val.	Estimates	Adj. p-val.	Estimates	Adj. p-val.
Grade 4			0.092 (0.015)	0.000		
Obs.			43119			
Grade 5			0.090 (0.015)	0.000	0.140 (0.016)	0.000
Obs.			46082		43968	
Grade 6	0.098 (0.015)	0.000	0.078 (0.015)	0.000	0.126 (0.015)	0.000
Obs.	44949		45940		44893	
Grade 7	0.079 (0.015)	0.000	0.074 (0.014)	0.000	0.110 (0.015)	0.000
Obs.	43756		44705		42376	
Grade 8	0.073 (0.015)	0.000	0.074 (0.014)	0.000	0.130 (0.015)	0.000
Obs.	42794		45115		45457	
Grade 9	0.088 (0.014)	0.000	0.079 (0.014)	0.000	0.144 (0.015)	0.000
Obs.	46104		44392		45473	
Control variables	✓		✓		✓	

Note: The gaps between the oldest and youngest students in a given grade are reported. Each estimate in the cell is obtained from a separate regression. In the regression analysis, noncognitive skill measures are normalized so that the mean is 0 and standard deviation is 1 for each grade. The control variables include school fixed effects, survey year fixed effects, gender, and number of books at home. Standard errors are in parentheses. We adjust p-values for multiple testing of 15 hypotheses, using a method that controls for a false discovery rate (see Benjamini and Hochberg (1995)).

esteem. Denissen et al. (2013) provide a theoretical explanation in development psychology for these negative trends. On one hand, as children grow, their parents and teachers increasingly expect responsible behavior, which is referred to as a shift in the reference value. On the other hand, children change corresponding behavior in a desirable direction by internalizing new values and developing a behavioral repertoire to accommodate them. During late childhood and early adolescence, reference value shifts faster than children can change their behavior, which results in declining perceived maturity.

To focus on the gaps within grades, we normalize the noncognitive skills for each grade and then regress the normalized measures on age and other control variables. The results are presented

in Table 5. Remember that we measure only one noncognitive skill for each birth cohort, and hence, not all noncognitive skills are measured for some grades. Column (1) shows the estimated gaps in conscientiousness between the oldest and youngest students. The estimate for grade six implies that the oldest students have 0.098 standard deviations better conscientiousness than the youngest students. The estimated gaps remain about the same in grades seven through nine. Column (2) presents the estimates for self-control. The estimated gaps are about 0.074-0.092 and are nearly constant across grades. Column (3) reports the estimates for self-efficacy. The estimates are 0.110-0.144 and do not change with grade. Note that the estimates are precisely estimated and the insignificant differences in the estimates across grades are not driven by large standard errors.

The month-of-birth effects show different patterns on noncognitive than on cognitive skills. First, the effect size for noncognitive skills is about one-tenth of the standard deviations, which is smaller than the effect size for cognitive skills. Second, the month-of-birth effect on noncognitive skills remains nearly constant across grades, which is in contrast with the month-of-birth effect on cognitive skills, which decreases with grade.

5.3 High School Quality

One might argue that students may not take the academic tests and questionnaire for noncognitive skills seriously because there is no incentive to do so. To address this concern, we estimate month-of-birth effects on a high-stake academic outcome, which is the quality of high school that students enter after grade nine. High school education is not compulsory in Japan, but 98% of students enter high school immediately after the ninth grade¹⁰. Students can apply for only one public high school in the province and any private high schools in/outside the province. Oversubscribed schools select students based on performance of paper-and-pencil tests at the entrance exam and grade point average. Very few schools interview candidates. The quality of high school in Japan is

¹⁰To help understand how students are admitted to high schools in Japan, we describe the application process. When applying to high schools, prospective students must choose only one public high school in the province, while they can apply many private schools. The entrance exam is administered by each school. Prior to taking the entrance exams, students often take mock exams administered by prep schools and understand their relative positions on academic performance within a province, which is important information for students to decide on what high schools to apply.

often measured by the mean performance of entering students at the entrance exam.

A municipality in Saitama provided us with information on the high school their students entered after grade nine. We link these data with the main skill assessment data and the quality of high school published by a private firm.¹¹ The measured quality was originally scaled to a mean of 50 and a standard deviation of 10. The sample size is 937, as the data cover only one municipality in the province.

Figure 5 shows clearly that high school quality increases with month of birth. We also regress high school quality on age and other control variables using equation 3. Table 6 presents the estimated gap in high school quality between the oldest and youngest students among the ninth graders (see equation 4). Without the control variables, the oldest students enter 4.653 points higher quality high schools than the youngest students in the same class (see column 1). Controlling for school fixed effects, family SES, and gender does not change the estimate (see column 2). Additionally controlling for math, Japanese, and English test scores conducted at the beginning of the ninth grade reduces the gap substantially, but the remaining gap is still sizable and statistically significant (see column 3). The estimate implies that about two-thirds of the month-of-birth gaps in high school quality are explained by cognitive skills. Finally, we control for self-efficacy as a noncognitive skill in addition to all other control variables, but the estimate in column 4 does not change relative to that without controlling self-efficacy. We also note that the results do not change when we use the quality of high school for which students applied instead of the high school they entered because they match most of the cases.

To put the estimates in context, we also report estimated test score gaps for the ninth graders in this municipality. The estimates indicate that the oldest students have 0.381, 0.329, and 0.253 standard deviations higher scores than the youngest students in math, Japanese, and English, respectively. These gaps are about twice as large as those for the whole province (see Table 4), which suggests that the high school quality gap may also be substantially greater than that for

¹¹The data were downloaded from minkou.jp in October 2018. A marketing research company claims that this website is the most viewed among those providing information on schools in Japan. Other firms also publish high school quality data, but they are similar to each other. We also confirm that teachers, students, and their parents often referred to the website during informal interviews.

other municipalities in the province.

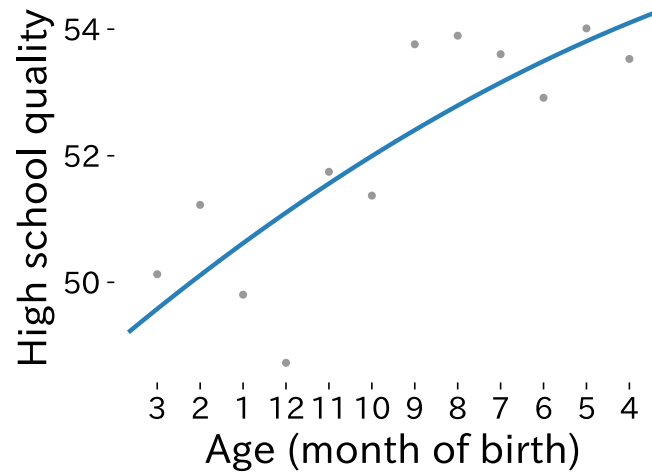


Figure 5: Average High School Quality by Month of Birth

Source: Administrative data in 2017 from a municipality in the province.

Note: High school quality is normalized so that the mean is 50 and the standard deviation is 10. The number of observations is 937.

Table 6: Month-of-Birth Effects on High School Quality

	(1)	(2)	(3)	(4)	(5)	(6)	(7)
Dependent var.		High school quality			Math	Japanese	English
Month of birth effect	4.653 (1.110)	4.521 (1.040)	1.422 (0.699)	1.327 (0.688)	0.381 (0.099)	0.329 (0.099)	0.253 (0.102)
School FE, SES, gender		✓	✓	✓	✓	✓	✓
Test scores			✓	✓			
Self-efficacy				✓			
No. of obs.	937	931	930	916	961	961	961

Source: Administrative data from a municipality in the province that conducted the skill assessment.

Note: The estimated differences between the oldest (April-born) and youngest (March-born) students in the same grade are reported. High school quality is normalized so that the mean is 50 and the standard deviation is 10. The standard errors are in parentheses.

5.4 Robustness and Additional Analysis

Our preferred specification is a parametric model for efficiency, but we also estimate the month-of-birth differences nonparametrically as a robustness check. As reported in Tables 15 and 16 in Appendix C.1, the nonparametric estimates are very similar to the estimates from our preferred parametric model.

We also briefly present the main findings from a few additional sets of analysis. They are extensively discussed in Appendix C. In Section C.3, we examine heterogeneity in the month-of-birth effects by gender and family SES, but find no evidence for heterogeneity in these respects. In addition, using quantile regressions, we estimate month-of-birth effects across different quantiles in an ability distribution. We find that the effects are larger in the right tail of the distribution, but the magnitude is modest.

6 Month-of-Birth Effects on Human Capital Investment and Interpersonal Relationships

We have shown that month of birth affects cognitive and noncognitive skills as well as high school quality significantly. In this section, we examine children’s time use and activities outside of school to clarify whether and how the youngest students and their parents make compensatory investments. We also examine children’s interpersonal relationships with their teachers and peers because these are likely to influence human capital formation both directly and indirectly.

6.1 Human Capital Investment

The top of Figure 6 shows the average weekly hours of study outside of school. While hours of study largely increase with grade, younger students in a given grade study longer hours, which suggests that relative age affects hours of study outside of school. A decline in hours of study is observed from grades six to seven, which might be explained by a composition change, as

some students exit the survey from grade seven to enter private junior high school. The middle and bottom of Figure 6 show the average weekly hours of reading and enrollment rate for a prep school; both present patterns similar to hours of studying. Namely, they largely increase with grade, but younger students in a given grade are more likely to enroll in a prep school and read more.

The top panel of Figure 7 presents average hours per week playing sports and/or outside. Students in grades eight and nine play sports and/or outside more than elementary schoolers because school-based sports teams are more common in junior high school. According to the National Survey on Sports and Physical Activities 2018 by the Japan Sports Agency, the participation rate in school-based sports teams is 67.5% among junior high school students, compared with 24.1% among elementary school students. Although hours playing sports and/or outside change non-monotonically with grade, younger students in a given grade do so for fewer hours than older students in any grade. The bottom panel of Figure 7 shows the average hours for organized art, music, and sports activities outside of school. Unfortunately, we are unable to disentangle hours for sports from those for art and music activities. The hours for these activities decrease with grade because students shift to prep school. Within each grade, younger students spend fewer hours on organized art, music, and sports outside of school.

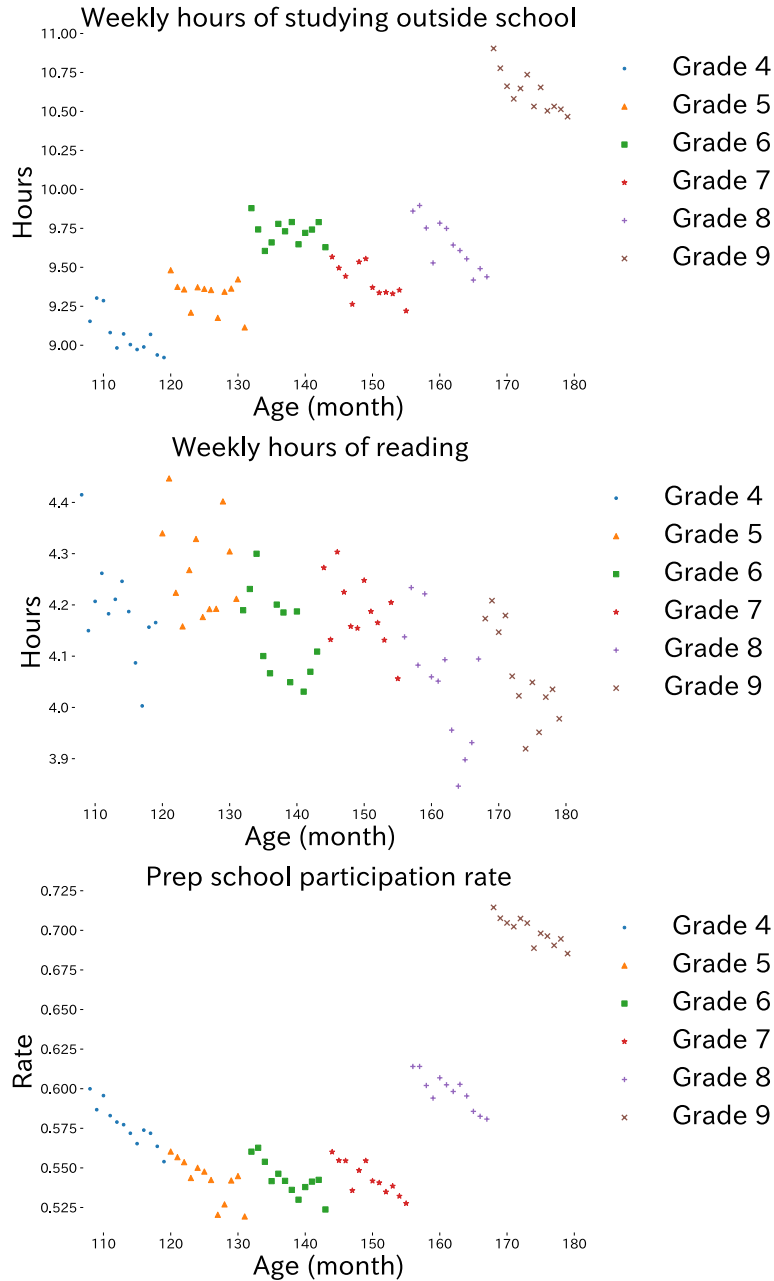


Figure 6: Human Capital Investment Outside of School (1)

Source: Saitama Skill Assessment 2015-2018.

Note: Hours of studying and prep school participation rates are available for 2015-2018. Hours of reading are available for 2015 only. Each dot represents an average of about 50,000 children. In the Japanese educational system, the youngest students in each grade are born in March and the oldest in April. Therefore, the first (leftmost) dot in this figure is the child born in March, and the last (rightmost) dot is the child born in April.

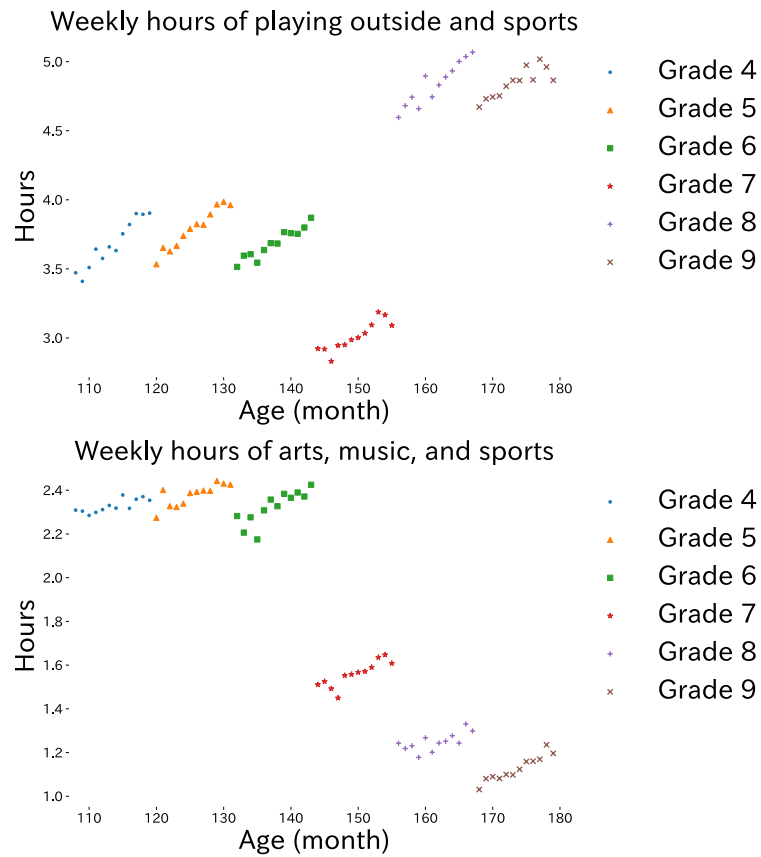


Figure 7: Human Capital Investment Outside of School (2)

Source: Saitama Skill Assessment 2015.

Note: Hours of playing sports and/or outside and hours of art, music, and sports are available for 2015 only. Each dot represents an average of about 50,000 children. In the Japanese educational system, the youngest students in each grade are born in March and the oldest in April. Therefore, the first (leftmost) dot in this figure is the child born in March, and the last (rightmost) dot is the child born in April.

Table 7: Month-of-Birth Effects on Human Capital Investment Outside of School

		Studying (1)	Reading (2)	Prep school (3)	Play outside/sports (4)	Arts, music, and sports (5)
Grade 4	Estimates	-0.361 (0.061)	-0.179 (0.069)	-0.039 (0.004)	0.517 (0.045)	0.077 (0.028)
	Adj. p-val.	0.000	0.012	0.000	0.000	0.007
	Obs.	127890	35765	130177	43372	43554
Grade 5	Estimates	-0.145 (0.060)	-0.047 (0.065)	-0.032 (0.004)	0.459 (0.045)	0.140 (0.027)
	Adj. p-val.	0.018	0.470	0.000	0.000	0.000
	Obs.	132189	37566	132762	45568	45723
Grade 6	Estimates	-0.048 (0.056)	-0.140 (0.065)	-0.028 (0.004)	0.307 (0.043)	0.192 (0.026)
	Adj. p-val.	0.402	0.034	0.000	0.000	0.000
	Obs.	135871	37614	136219	47470	47588
Grade 7	Estimates	-0.241 (0.050)	-0.114 (0.061)	-0.027 (0.004)	0.296 (0.043)	0.153 (0.026)
	Adj. p-val.	0.000	0.066	0.000	0.000	0.000
	Obs.	130936	36666	131201	46168	46266
Grade 8	Estimates	-0.402 (0.051)	-0.250 (0.072)	-0.028 (0.004)	0.441 (0.041)	0.085 (0.025)
	Adj. p-val.	0.000	0.001	0.000	0.000	0.001
	Obs.	133209	33236	133731	47511	47611
Grade 9	Estimates	-0.295 (0.057)	-0.224 (0.074)	-0.022 (0.004)	0.285 (0.046)	0.164 (0.025)
	Adj. p-val.	0.000	0.003	0.000	0.000	0.000
	Obs.	136604	32076	136851	47667	47744
Gender & school FE & year FE		✓	✓	✓	✓	✓
No. of books		✓		✓		

Source: Saitama Skill Assessment 2015-2018.

Note: Gaps between the oldest and youngest students are reported using equations (3) and (4). Each estimate in the cell is obtained from a separate regression. The variables Studying and Prep School are available for 2015-2018, while other dependent variables are available only for 2015. Standard errors are in parentheses. We adjust the p-values for multiple testing of 30 hypotheses, using a method that controls for a false discovery rate (see Benjamini and Hochberg (1995)).

We now turn to a regression analysis in which the variables for human capital investment are regressed on age, age squared, gender, and school and year fixed effects. The number of books at home is also controlled, if available. Table 7 reports the estimated gaps between the oldest and youngest students based on the regression model (see Equations 3 and 4) with p-values adjusted for multiple testing. Column (1) shows the results for hours of studying outside the home. The estimates are negative and statistically significant, except for grade six. Among ninth graders, the youngest students study 0.295 hours per week longer than the oldest students. We also find that the youngest students read at most 0.250 more hours and are 3.9 percentage points more likely to go to prep school than the oldest students in the same grade (see columns 2 and 3). By contrast, the youngest students spend at most 0.517 fewer hours per week playing sports and/or outside and 0.192 fewer hours per week on art, music, and sports activities outside of school.

6.2 Interpersonal Relationships

Figure 8 shows self-assessed relationships with teachers (top) and peers (bottom). Exactly the same questions are used across grades. The striking feature is that older students have better relationships with teachers and peers, even though the relationships with teachers worsen with grade and those with peers change nonmonotonically with grade. Again, the positive slopes within grade suggest that relative age influences relationships with teachers and peers.

Table 8 presents the estimated gap between the oldest and youngest students in a given grade, based on the regression model (see equations 3 and 4). In the regression, we normalize the outcome variables for each grade to facilitate interpretation. We find that younger students suffer 0.052-0.089 standard deviations poorer relationships with teachers and 0.096-0.127 standard deviations poorer relationships with peers. All of the estimates are statistically significant when the p-values are adjusted for multiple testing.

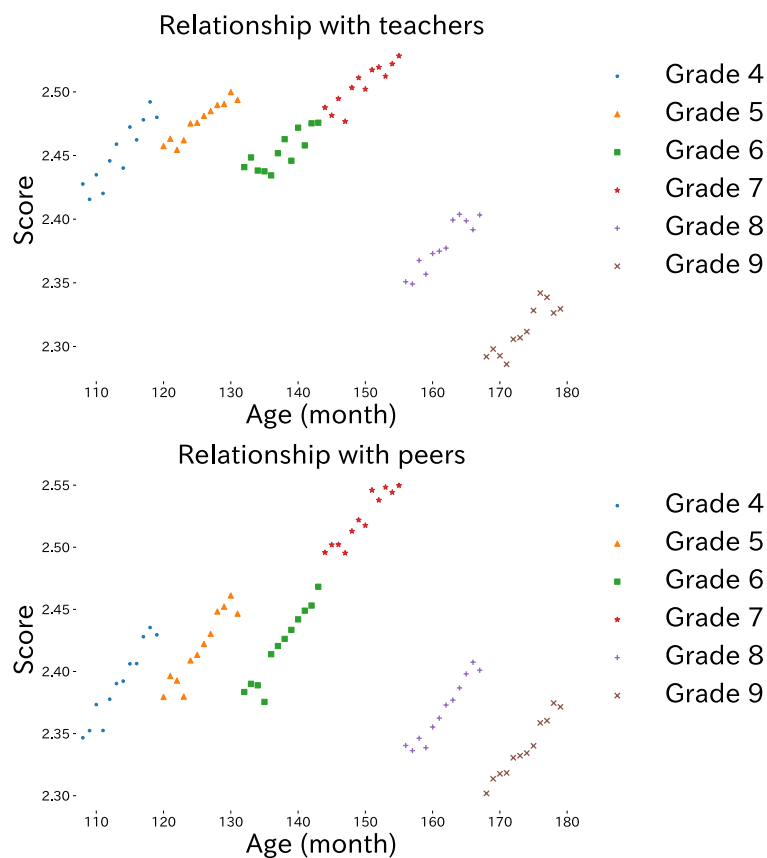


Figure 8: Quality of Relationships with Teachers and Peers

Source: Saitama Skill Assessment 2016-2018.

Note: Raw scores are reported. Relationship with teachers is available for 2017-2018, while that for peers is available for 2016-2018. Each dot represents an average of about 50,000 children. In the Japanese educational system, the youngest students in each grade are born in March and the oldest in April. Therefore, the first (leftmost) dot in this figure is the child born in March, and the last (rightmost) dot is the child born in April.

Table 8: Month-of-Birth Effects of Relationships with Teachers and Peers

		Teachers (1)	Peers (2)
Grade 4	Estimates	0.089 (0.008)	0.122 (0.009)
	Adj. p-val.	0.000	0.000
	Obs.	89648	133759
Grade 5	Estimates	0.059 (0.008)	0.110 (0.008)
	Adj. p-val.	0.000	0.000
	Obs.	89648	133759
Grade 6	Estimates	0.052 (0.008)	0.127 (0.008)
	Adj. p-val.	0.000	0.000
	Obs.	91882	137988
Grade 7	Estimates	0.064 (0.009)	0.117 (0.009)
	Adj. p-val.	0.000	0.000
	Obs.	87432	132427
Grade 8	Estimates	0.078 (0.009)	0.100 (0.009)
	Adj. p-val.	0.000	0.000
	Obs.	88721	134229
Grade 9	Estimates	0.068 (0.008)	0.096 (0.009)
	Adj. p-val.	0.000	0.000
	Obs.	90560	137436
Control variables		✓	✓

Source: Saitama Skill Assessment 2016-2018.

Note: The gaps in the quality of interpersonal relationships between April- and March-born students are reported. Therefore, all values shown in each cell of the table are estimates obtained by another regression. The dependent variables are normalized for each grade and year to have a zero mean and a standard deviation of one. Control variables include school fixed effects, survey year fixed effects, gender, and number of books at home. Standard errors are in parentheses. The p-values are adjusted for multiple testing of 12 hypotheses, using a method that controls for a false discovery rate (see Benjamini and Hochberg (1995)).

7 Discussion

Our estimates indicate that the youngest students in grade four achieve 0.35 standard deviations lower test scores than the oldest students; however, by grade nine, this gap diminishes to 0.13-0.18 standard deviations. The magnitude of month-of-birth effects is similar to the previous estimates across different countries. The most comparable study to the current paper is Bedard and Dhuey (2006), who use TIMSS, which includes data from Japan. They find that the impact of month-of-birth is 0.25-0.31 standard deviations for grade four and 0.23 standard deviations for grade eight among Japanese students.

We also find that month-of-birth effects on noncognitive skills are significant, and the gap between the oldest and youngest students in the same grade is about 0.1 standard deviations. Interestingly, month-of-birth effects on noncognitive skills remain constant from grade four to nine. Existing evidence for month-of-birth effects on noncognitive skills is somewhat mixed. Crawford et al. (2014) find that the youngest students value their own scholastic competence less than other students, but observe no month-of-birth effects on self-esteem and locus of control among UK students at age 8 years. Datar and Gottfried (2015) and Lubotsky and Kaestner (2016) find that the youngest students have weaker social-behavioral outcomes during kindergarten and elementary school in the USA, but the negative effect on young students disappears before high school. Page et al. (2017) examine Australian students and find that the youngest male students dislike competition more than do the oldest students, but observe no month-of-birth effects on risk attitude or self-confidence. Peña and Duckworth (2018) show that the youngest students in grades six and nine in Mexico have less grit. We contribute to the literature by providing a clearer picture of the dynamics of month-of-birth effects on noncognitive skills, thanks to the high quality data. As far as we know, existing data sets that include noncognitive skill measures are not large. By contrast, our panel data include over one million observations, which enables us to estimate parameters precisely enough to detect the nuanced pattern.

We depart previous contributions by examining human capital investment and interpersonal relationships, both of which are relevant for children's skill formation. We find evidence of com-

pensatory investment by the youngest children and their parents. Namely, the youngest students study and read more hours and are more likely to go to a prep school than are the oldest students in the same grade. Although our data do not allow us to test whether these inputs improve test scores, we find hours of study outside of school and prep school attendance to be positively correlated with test scores after controlling for student fixed effects (see Appendix C.5). Moreover, Stinebrickner and Stinebrickner (2008) find causal evidence that hours of studying improve the GPA of first year students at a US college. In a randomized controlled trial (RCT), Akabayashi et al. (2018) find that attending prep schools improve Japanese students' test scores.

Regarding noncognitive skills, we suspect that the youngest students' low participation at sports, music, and art activities and poor-quality relationships with peers and teachers exacerbate their disadvantage in noncognitive skills development relative to the oldest students. Weinberger (2014) and Deming (2017) find that participation to sports or other club activities in high school is positively associated with earnings because these activities foster leadership and teamwork skills. Psychologists also argue that sports, music, and art improve noncognitive skills. For example, Ishihara et al. (2018) find a strong association between sports experience and noncognitive skills. Moreno et al. (2011) find causal evidence in an RCT that music training enhances noncognitive skills.

In addition, psychologists find evidence that poor interpersonal relationships negatively affect noncognitive skills.¹² In a recent study, Wu et al. (2018) find strong association between teacher-child relation and children's social skills. Reitz et al. (2016) find that popularity among peers predicts self-esteem, but the opposite is not true, which provides evidence in support of sociometer theory,¹³ which argues that self-esteem reflects an individual's perceptions of how they are viewed by others, mediated by self-perceived popularity. The current paper also finds that personal relationships are positively correlated with noncognitive skills after controlling for student fixed effects (see Appendix C.5), although this does not necessarily imply causal effects as reverse

¹²Davis (2003) synthesizes several psychological studies and finds that both attachment and motivation theories predict that teacher-child relationships improve children's social and cognitive outcomes.

¹³Leary and Baumeister (2000) develop the sociometer theory, which argues that self-esteem reflects an individual's perceptions of how they are viewed by others, mediated by self-perceived popularity.

causality cannot be excluded. The observed patterns of time use and interpersonal relationships between children with different birth months may explain why month-of-birth gaps in noncognitive skills do not disappear as students grow.

Our findings on time use and prep school attendance suggest that skill investment is distorted by the existing school cutoff. They imply that parents decide on skill investment by comparing their children with exactly the same grade cohort; however, their children will be compared with individuals from different grade cohorts once they are out of school. Compensatory skill investment in cognitive skills may be an optimal strategy in the short run, but may not maximize lifetime earnings by underinvesting in noncognitive skills. Note that the same argument applies to older students because they may underinvest in cognitive skills. Hence, correcting the distortion may improve the aggregate human capital stock and benefit all students in the long run. While this issue has not been raised in the relative age literature, Kinsler and Pavan (forthcoming) also show evidence that parental investment is distorted by local information.¹⁴

Our results indicate that month of birth has negative consequences in the short run. First, the youngest students suffer poor relationships with teachers and peers, which is a serious concern. Second, the evidence for compensatory investment implies that younger students and their parents pay the cost to fill the month-of-birth gaps, although maturation may also be an important factor for convergence. Our results suggest that, even if part of the month-of-birth gaps disappear by adulthood, month of birth hurts the welfare of younger children in a given grade cohort. Indeed, Matsubayashi and Ueda (2015) find that month of birth affects the suicide rate among young Japanese aged 15-25 years.

Furthermore, these findings may account for the month-of-birth effects on adulthood outcomes reported in some countries. Specifically, noncognitive skill gaps may be one of key driving forces behind the month-of-birth effects on earnings at age 30-34 years reported by Kawaguchi (2011) using data from Japanese Labor Force Survey. Noncognitive skills not only help one acquire cognitive skills, but also have independent effects on labor market outcomes (Heckman et al., 2006).

¹⁴They find that parents form a belief about their child's skill by comparing the child with those in the same school, rather than those of the same age.

If month-of-birth effects on noncognitive skills remain in adulthood, they are likely to translate into an earnings gap. Of course, this is only a hypothesis because our data do not follow individuals after grade nine¹⁵; however it is consistent with Dhuey and Lipscomb (2008), who find that relatively older students take leadership activities in high school. In addition, Chetty et al. (2011), Heckman et al. (2013), and Baker et al. (2019) find that noncognitive skills formed in childhood influence outcomes in adulthood.¹⁶ It is true that month-of-birth effects on cognitive skills may also be preserved into adulthood through a high school entrance exam (see Appendix 5.3) and eventually influence earnings in adulthood, but our findings offer an alternative explanation for the persistent effect of month-of-birth.

Note that our findings should be interpreted in the particular context that birth date dictates school starting age. In many other countries where students can delay school entry, the month-of-birth effects are likely to be mitigated. In this sense, the month-of-birth effect found in this paper probably serves as the upper bound in many settings.

8 Conclusion

We estimated month-of-birth effects on cognitive skills, noncognitive skills, and high school quality using a large longitudinal data set for students in grades four through nine. We find statistically and economically significant effects of month-of-birth on all of these outcomes. While the effects on cognitive skills diminish over time, those on noncognitive skills remain constant throughout elementary and junior high schools, which has not been reported in the literature. Our large number of observations enables us to detect the nuanced pattern.

We explored children’s time use and interpersonal relationships, both of which are relevant to

¹⁵The Preference Parameters Study of Osaka University measures noncognitive skills for Japanese adults, but the sample size is only about 2000, which is too small to detect the small gap in noncognitive skills found in this paper.

¹⁶Deming (2017) estimate that a one-standard-deviation increase in noncognitive skill is associated with a wage increase by 10.7%. If this estimate is applicable to the individuals in our data, the month-of-birth difference in noncognitive skill translates into about 1% wage difference, which is more than a quarter of the earnings gap reported by Kawaguchi (2011). The unexplained proportions of the earnings gap may be due to cognitive and other aspects of noncognitive skills because the survey measured only one type of noncognitive skills.

their skill formation. On the one hand, we find evidence of compensatory investment in cognitive skills by younger students in a given cohort. Younger students spend more hours studying and reading and are more likely to attend private prep schools. On the other hand, they are less likely to participate in sports, music, and arts, and have poorer relationships with teachers and peers, all of which may harm the long-term development of noncognitive skills. This finding offers an alternative explanation for why the month of birth affects adulthood outcomes in some countries, including Japan.

Our findings raise a greater concern about equity than previously thought. Even though the month-of-birth effects on cognitive skills may fade over time, younger students and their parents pay the cost to catch up by compensatory investment. In addition, younger students suffer the disadvantage of poor-quality interpersonal relationships. Given that the school cutoff date is arbitrarily determined, we believe this is unfair to younger children in a grade cohort.

A solution to this problem commonly used in other countries is to allow delayed school entry or redshirting, although this could also be potentially problematic for equity as the rich parents tend to hold their children one more year. In addition, it would make sense to take into account birth month explicitly in high school entrance exams. Indeed, admission quotas by birth month are common among private and national elementary schools in Japan. Given that month-of-birth effects are substantial at high school entry, using quotas might be a reasonable fix.¹⁷

There are at least two limitations of this paper. First, our data do not include skills and other outcomes in adulthood. Second, our data do not allow us to estimate the causal effects of time use and interpersonal relationships on skills because we are unable to find exogenous variations in these factors, although other papers have established causality for some. These issues should be addressed in future research.

¹⁷Our findings also have implications for the current policy debate regarding whether to change the school starting date in Japan from April to September. Due to the COVID-19 pandemic, the Japanese government closed schools from March to May 2020. Some politicians argue for deferring the school starting date from April to September commencing in 2021 to make up for the lost school days. One of the possible consequences is an increase in cohort size, because children born between April 2014 and August 2015 would start school together. This would increase the maximum age gap from 11 to 17 months and exacerbate the disadvantages of younger students in the cohort. If they change the school starting date, the government should minimize the growth of cohort size and provide necessary assistance to younger students.

Bibliography

- Akabayashi, Hideo, Hiroko Araki, and Ryuichi Tanaka. 2018. Effects of After-School Education Vouchers on Children's Academic and Behavioral Outcomes: Evidence from a Randomized Experiment. Tech. Rep. 48, University of Tokyo.
- Almond, Douglas, Janet Currie, and Valentina Duque. 2018. Childhood circumstances and adult outcomes: Act ii. Journal of Economic Literature 56 (4):1360–1446.
- Attar, Itay and Danny Cohen-Zada. 2018. The effect of school entrance age on educational outcomes: Evidence using multiple cutoff dates and exact date of birth. Journal of Economic Behavior & Organization 153:38–57.
- Baker, Michael, Jonathan Gruber, and Kevin Milligan. 2019. The long-run impacts of a universal child care program. American Economic Journal: Economic Policy 11 (3):1–26.
- Bandura, Albert. 1986. The explanatory and predictive scope of self-efficacy theory. Journal of social and clinical psychology 4 (3):359–373.
- Barbaranelli, Claudio, Gian Vittorio Caprara, Annarita Rabasca, and Concetta Pastorelli. 2003. A questionnaire for measuring the big five in late childhood. Personality and Individual Differences 34 (4):645–664.
- Bedard, Kelly and Elizabeth Dhuey. 2006. The persistence of early childhood maturity: International evidence of long-run age effects. The Quarterly Journal of Economics 121 (4):1437–1472.
- Benjamini, Yoav and Yosef Hochberg. 1995. Controlling the false discovery rate: a practical and powerful approach to multiple testing. Journal of the Royal statistical society: series B (Methodological) 57 (1):289–300.
- Black, Sandra E, Paul J Devereux, and Kjell G Salvanes. 2011. Too young to leave the nest? the effects of school starting age. The Review of Economics and Statistics 93 (2):455–467.
- Buckles, Kasey S and Daniel M Hungerman. 2013. Season of birth and later outcomes: Old questions, new answers. Review of Economics and Statistics 95 (3):711–724.

- Chetty, Raj, John N. Friedman, Nathaniel Hilger, Emmanuel Saez, Diane Whitmore Schanzenbach, and Danny Yagan. 2011. How does your kindergarten classroom affect your earnings? Evidence from project star. Quarterly Journal of Economics 126 (4):1593–1660.
- Crawford, Claire, Lorraine Dearden, and Ellen Greaves. 2014. The drivers of month-of-birth differences in children’s cognitive and non-cognitive skills. Journal of the Royal Statistical Society: Series A (Statistics in Society) 177 (4):829–860.
- Cunha, Flavio, James J Heckman, and Susanne M Schennach. 2010. Estimating the technology of cognitive and noncognitive skill formation. Econometrica 78 (3):883–931.
- Currie, Janet and Hannes Schwandt. 2013. Within-mother analysis of seasonal patterns in health at birth. Proceedings of the National Academy of Sciences 110 (30):12265–12270.
- Datar, Ashlesha and Michael A Gottfried. 2015. School entry age and children’s social-behavioral skills: Evidence from a national longitudinal study of us kindergartners. Educational evaluation and policy analysis 37 (3):333–353.
- Davis, Heather A. 2003. Conceptualizing the role and influence of student-teacher relationships on children’s social and cognitive development. Educational psychologist 38 (4):207–234.
- Dawid, Herbert and Gerd Muehlheusser. 2015. Repeated selection with heterogeneous individuals and relative age effects. Journal of Economic Behavior & Organization 116:387–406.
- Deming, David J. 2017. The growing importance of social skills in the labor market. The Quarterly Journal of Economics 132 (4):1593–1640.
- Denissen, Jaap J.A., Marcel A.G. van Aken, Lars Penke, and Dustin Wood. 2013. Self-Regulation Underlies Temperament and Personality: An Integrative Developmental Framework. Child Development Perspectives 7 (4):255–260.
- Dhuey, Elizabeth and Stephen Lipscomb. 2008. What makes a leader? relative age and high school leadership. Economics of Education Review 27 (2):173–183.

- Dobkin, Carlos and Fernando Ferreira. 2010. Do school entry laws affect educational attainment and labor market outcomes? Economics of education review 29 (1):40–54.
- Du, Qianqian, Huasheng Gao, and Maurice D Levi. 2012. The relative-age effect and career success: Evidence from corporate ceos. Economics Letters 117 (3):660–662.
- Duckworth, Angela L, Eli Tsukayama, and Teri A Kirby. 2013. Is it really self-control? examining the predictive power of the delay of gratification task. Personality and Social Psychology Bulletin 39 (7):843–855.
- Dustmann, Christian, Patrick A Puhani, and Uta Schönberg. 2017. The long-term effects of early track choice. The Economic Journal 127 (603):1348–1380.
- Embretson, Susan E and Steven Paul Reise. 2000. Item response theory for psychologists. maheah.
- Fredriksson, Peter and Björn Öckert. 2014. Life-cycle effects of age at school start. The Economic Journal 124 (579):977–1004.
- Grenet, Julien. 2009. Academic performance, educational trajectories and the persistence of date of birth effects. evidence from france. Unpublished manuscript .
- Heckman, James, Rodrigo Pinto, and Peter Savelyev. 2013. Understanding the mechanisms through which an influential early childhood program boosted adult outcomes. American Economic Review 103 (6):2052–86.
- Heckman, James J., Jora Stixrud, and Sergio Urzua. 2006. The Effects of Cognitive and Noncognitive Abilities on Labor Market Outcomes and Social Behavior. National Bureau of Economic Research 24 (3):1689–1699.
- Helsen, Werner F, Jan Van Winckel, and A. Mark Williams. 2005. The relative age effect in youth soccer across Europe. Journal of Sports Sciences 23 (6):629–636.
- Ishihara, Toru, Shigemi Sugawara, Yusuke Matsuda, and Masao Mizuno. 2018. Relationship between sports experience and executive function in 6-12-year-old children: independence from physical fitness and moderation by gender. Developmental Science 21 (3):1–13.

- Kawaguchi, Daiji. 2011. Actual age at school entry, educational outcomes, and earnings. Journal of the Japanese and International Economies 25 (2):64–80.
- . 2016. Fewer school days, more inequality. Journal of the Japanese and International Economies 39:35–52.
- Kinsler, Josh and Ronni Pavan. forthcoming. Local distortions in parental beliefs over child skill. Journal of Political Economy .
- Larsen, Erling Røed and Ingeborg F Solli. 2017. Born to run behind? persisting birth month effects on earnings. Labour Economics 46:200–210.
- Leary, Mark R and Roy F Baumeister. 2000. The nature and function of self-esteem: Sociometer theory. In Advances in experimental social psychology, vol. 32. Elsevier, 1–62.
- Lee, David S. 2009. Training, wages, and sample selection: Estimating sharp bounds on treatment effects. The Review of Economic Studies 76 (3):1071–1102.
- Lindqvist, Erik and Roine Vestman. 2011. The labor market returns to cognitive and noncognitive ability: Evidence from the swedish enlistment. American Economic Journal: Applied Economics 3 (1):101–28.
- Lubotsky, Darren and Robert Kaestner. 2016. Doskills beget skills’? evidence on the effect of kindergarten entrance age on the evolution of cognitive and non-cognitive skill gaps in childhood. Economics of Education Review 53:194–206.
- Matsubayashi, Tetsuya and Michiko Ueda. 2015. Relative Age in School and Suicide among Young Individuals in Japan: A Regression Discontinuity Approach. PLOS ONE 10 (8):e0135349.
- Matta, Rafael, Rafael P Ribas, Breno Sampaio, and Gustavo R Sampaio. 2016. The effect of age at school entry on college admission and earnings: a regression-discontinuity approach. IZA Journal of Labor Economics 5 (1):9.
- McEwan, Patrick J and Joseph S Shapiro. 2008. The benefits of delayed primary school enrollment discontinuity estimates using exact birth dates. Journal of human Resources 43 (1):1–29.

- Moffitt, Terrie E, Louise Arseneault, Daniel Belsky, Nigel Dickson, Robert J Hancox, HonaLee Harrington, Renate Houts, Richie Poulton, Brent W Roberts, Stephen Ross et al. 2011. A gradient of childhood self-control predicts health, wealth, and public safety. Proceedings of the National Academy of Sciences 108 (7):2693–2698.
- Moreno, Sylvain, Ellen Bialystok, Raluca Barac, E. Glenn Schellenberg, Nicholas J. Cepeda, and Tom Chau. 2011. Short-term music training enhances verbal intelligence and executive function. Psychological Science 22 (11):1425–1433.
- Mühlenweg, Andrea M and Patrick A Puhani. 2010. The evolution of the school-entry age effect in a school tracking system. Journal of human Resources 45 (2):407–438.
- Muller, Daniel and Lionel Page. 2016. Born leaders: political selection and the relative age effect in the us congress: D. muller and l. page. Journal of the Royal Statistical Society: Series A (Statistics in Society) 179 (3):809–829.
- Nam, Kigon. 2014. Until when does the effect of age on academic achievement persist? evidence from korean data. Economics of Education Review 40:106–122.
- Page, Lionel, Dipanwita Sarkar, and Juliana Silva-Goncalves. 2017. The older the bolder: Does relative age among peers influence children,Äôs preference for competition? Journal of Economic Psychology 63:43–81.
- Pajares, Frank and Laura Graham. 1999. Self-efficacy, motivation constructs, and mathematics performance of entering middle school students. Contemporary educational psychology 24 (2):124–139.
- Pajares, Frank and John Kranzler. 1995. Self-efficacy beliefs and general mental ability in mathematical problem-solving. Contemporary educational psychology 20 (4):426–443.
- Pajares, Frank and M David Miller. 1994. Role of self-efficacy and self-concept beliefs in mathematical problem solving: A path analysis. Journal of educational psychology 86 (2):193.
- Peña, Pablo A. 2017. Creating winners and losers: Date of birth, relative age in school, and outcomes in childhood and adulthood. Economics of Education Review 56:152–176.

- . 2020. Relative age and investment in human capital. Economics of Education Review 78:102039.
- Peña, Pablo A and Angela L Duckworth. 2018. The effects of relative and absolute age in the measurement of grit from 9th to 12th grade. Economics of Education Review 66:183–190.
- Pintrich, Paul R et al. 1991. A manual for the use of the motivated strategies for learning questionnaire (mslq). ERIC.
- Poropat, Arthur E. 2009. A meta-analysis of the five-factor model of personality and academic performance. Psychological bulletin 135 (2):322.
- Puhani, Patrick A. and Andrea M. Weber. 2007. Does the early bird catch the worm? Empirical Economics 32 (2-3):359–386.
- Reitz, Anne K., Frosso Motti-Stefanidi, and Jens B. Asendorpf. 2016. Me, us, and them: Testing sociometer theory in a socially diverse real-life context. Journal of Personality and Social Psychology 110 (6):908–920.
- Roberts, B. W., J. J. Jackson, J. V. Fayard, G. Edmonds, and J. Meints. 2009. Conscientiousness. In Handbook of individual differences in social behavior, ed. M. R. Leary & R. H. Hoyle. The Guilford Press, 369–381.
- Robins, Richard W., Kali H. Trzesniewski, Jessica L. Tracy, Samuel D. Gosling, and Jeff Potter. 2002. Global self-esteem across the life span. Psychology and Aging 17 (3):423–434.
- Shigeoka, Hitoshi. 2016. School entry rule and the timing of births. Tech. rep., Simon Fraser University.
- Soto, Christopher J., Oliver P. John, Samuel D. Gosling, and Jeff Potter. 2011. Age Differences in Personality Traits From 10 to 65: Big Five Domains and Facets in a Large Cross-Sectional Sample. Journal of Personality and Social Psychology 100 (2):330–348.
- Stinebrickner, Ralph and Todd R. Stinebrickner. 2008. The causal effect of studying on academic performance. B.E. Journal of Economic Analysis and Policy 8 (1).
- Tsakayama, Eli, Angela Lee Duckworth, and Betty Kim. 2013. Domain-specific impulsivity in school-age children. Developmental Science 16 (6):879–893.

- Tukiainen, Janne, Tuomas Takalo, and Topi Hülkkonen. 2017. Gender specific relative age effects in politics and football. Working Papers 94, VATT Institute for Economic Research.
- Weinberger, Catherine J. 2014. The increasing complementarity between cognitive and social skills. Review of Economics and Statistics 96 (4):849–861.
- Wu, Zhongling, Bi Ying Hu, Xitao Fan, Xiao Zhang, and Juan Zhang. 2018. The associations between social skills and teacher-child relationships: A longitudinal study among Chinese preschool children. Children and Youth Services Review 88 (March):582–590.
- Zweimüller, Martina. 2013. The effects of school entry laws on educational attainment and starting wages in an early tracking system. Annals of Economics and Statistics/ANNALES D'ÉCONOMIE ET DE STATISTIQUE :141–169.

A Extended Literature Review

This paper contributes to a large literature on the effects of month of birth. It has been widely documented that the younger children in a grade cohort perform more poorly in academic tests; examples include, but are not limited to, Bedard and Dhuey (2006), Puhani and Weber (2007), McEwan and Shapiro (2008), Mühlenweg and Puhani (2010), Crawford et al. (2014), Nam (2014), Matta et al. (2016), Peña (2017), and Attar and Cohen-Zada (2018). For example, Bedard and Dhuey (2006) find that the youngest students of each cohort score 4-12 percentiles lower than the oldest students in grade four and 2-9 percentiles lower in grade eight, using Trends in International Mathematics and Science Study (TIMSS), which covers 19 Organisation for Economic Co-operation and Development (OECD) countries. The month-of-birth gaps in test scores seem to be largely explained by absolute age effects because the gaps diminish with grade. In fact, Black et al. (2011) find no month-of-birth effects on IQ tests measured around the 18th birthday. Nevertheless, little remains known about why month-of-birth effects decrease with absolute age. Maturation is obviously an important reason, but the youngest students' compensatory behavior can also explain the catching-up process, which has been paid scant attention in the literature.

Several papers estimate month-of-birth effects on educational attainment and labor market outcomes, but the evidence is mixed. Black et al. (2011) and Larsen and Solli (2017) find no month-of-birth effects on prime-age earnings in Norway. Dobkin and Ferreira (2010) report similar results for California and Texas in the USA. Nam (2014) and Dustmann et al. (2017) find no month-of-birth effects on educational attainment or earnings in Korea and Germany, respectively.

Many other papers report significant month-of-birth effects on educational attainment and labor market outcomes. Most importantly for this paper, Kawaguchi (2011) finds that the youngest individuals in grade cohorts received 0.13 fewer years of education and earned about 4% less income at ages 30-34 years in Japan. Bedard and Dhuey (2006), Grenet (2009), Zweimüller (2013),

Matta et al. (2016), and Peña (2017) find significant month-of-birth effects on university attainment and/or earnings in Canada and the USA, France, Austria, Brazil, and Mexico, respectively. It is also worth mentioning that Fredriksson and Öckert (2014) report significant month-of-birth effects on educational attainment and earnings of women and individuals with poorly-educated parents in Sweden. Lastly, the month of birth also affects the chance of occupying highly competitive positions, including the CEOs of US S&P 500 companies (Du et al., 2012) and top political positions in the USA (Muller and Page, 2016) and Finland (Tukiainen et al., 2017).

Although these papers find that month-of-birth effects are adverse on labor market outcomes at a certain point in time, the effect on lifetime income is not immediately apparent. While younger individuals within the grade cohort may perform more poorly in school, they enter the labor market earlier than their peers, enabling them to earn more over the life cycle. Fredriksson and Öckert (2014) Use Swedish administrative data to estimate the month-of-birth effects on earnings beyond the nominal retirement age (65). They find that the month of birth shifts the timing of labor supply over the life cycle but does not affect prime-age earnings. Consequently, younger individuals within the grade cohort earn higher discounted lifetime earnings despite their poorer performance at school. Although this result may not apply to other countries such as Japan, where the month of birth affects prime age earnings, the life-cycle effects of the month of birth may be substantially different from its effects in school.

Finally, while numerous papers document month-of-birth gaps in short- and long-run outcomes, more remains to be known about factors that mitigate or exacerbate these gaps. One of the most common explanations for why month-of-birth effects are persistent is early school tracking. The youngest children in a grade cohort are less likely to be selected for a higher quality academic program because they perform worse than their older peers, which exacerbates the gap between the oldest and youngest students. Dawid and Muehlheusser (2015) theoretically show that early school tracking can result in an erroneous selection. Fredriksson and Öckert (2014) estimate the effect of tracking using a Swedish compulsory school reform as a natural experiment that changed a selective system with early tracking to a comprehensive system. They find that the

month-of-birth effects are more pronounced by early tracking. Our contribution to the literature is to offer an alternative explanation for why month-of-birth effects persist by showing how parents, teachers, and peers influence the skill formation of children.

B Details of The Data

B.1 Parental Characteristics and Birth Outcomes by Birth Month

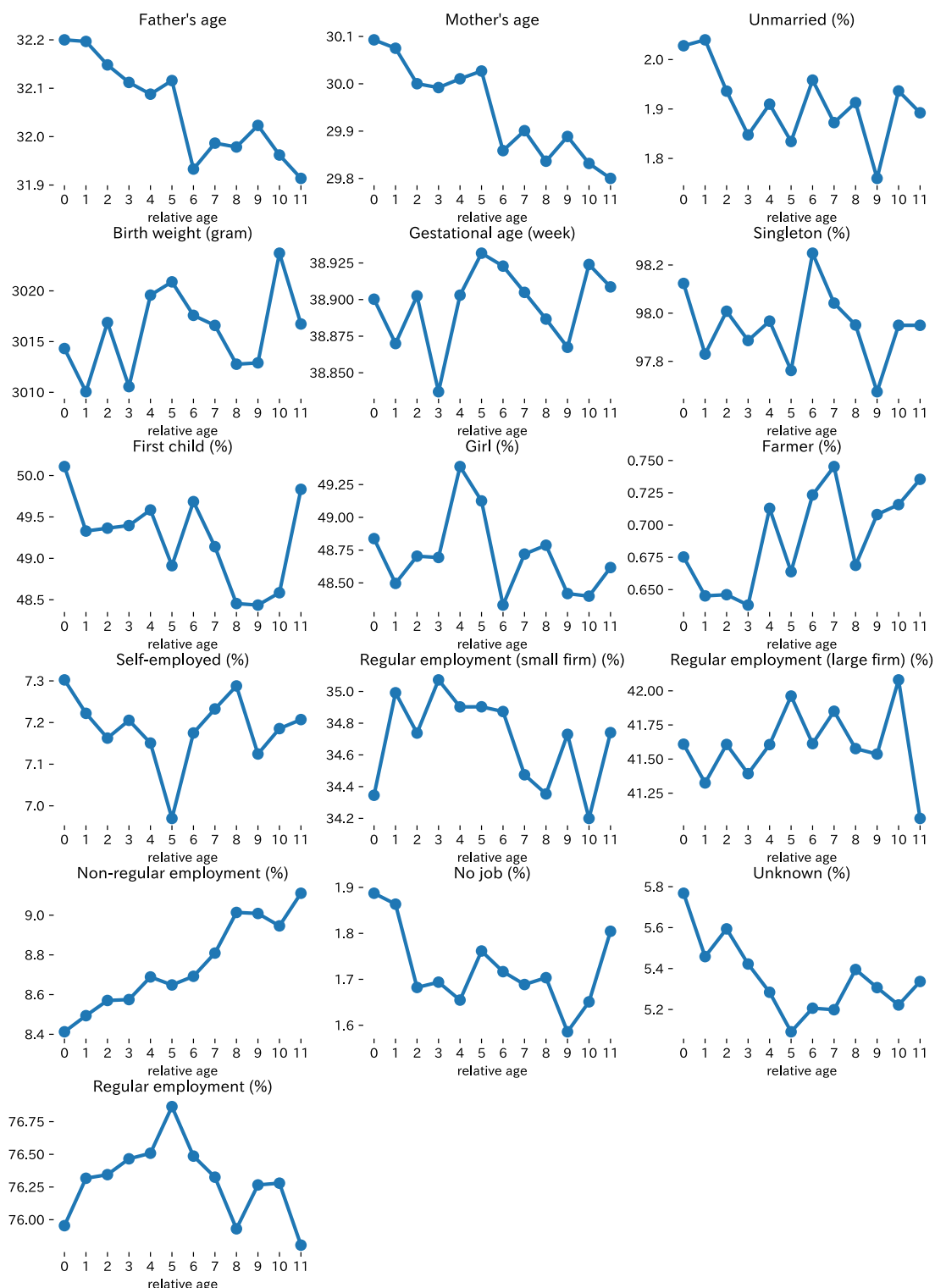


Figure 9: Parental Characteristics and Birth Outcomes by Birth Month

Source: Vital Statistics from April 2000 to March 2011.

B.2 Supplementary Administrative Data

An anonymous municipality in Saitama provided administrative data on family SES and the names of high schools that students applied for and entered after grade nine. To examine the external validity of our analysis relying on the administrative data from the municipality, we compare the municipality and province in terms of key variables in our main data set. Table 9 summarizes the differences between the two for ninth graders. We omit the results for students in other grades because they do not differ substantially from those for grade nine. Cognitive and noncognitive skills as well as interpersonal relationships measures are normalized to have a mean of zero and a standard deviation of one for the whole province for the ninth graders.

Students in the municipality have about 0.2 standard deviations higher test scores than the provincial average, but lower self-control skills and poorer interpersonal relationships. In terms of the number of books at home, which is a proxy for family SES, the municipality is not significantly different from the provincial average. While the prep school attendance rate is slightly higher than the average, we find very little difference in time use.

Table 9: Difference Between the Province and Municipality

Subject	The province (A)	The municipality (B)	Difference (A-B)	Adjusted p-values
Japanese	0.000	0.187	-0.187	0.000
Math	0.000	0.223	-0.223	0.000
English	0.000	0.228	-0.228	0.000
Self-control	0.000	-0.298	0.298	0.000
Self-efficacy	0.000	-0.029	0.029	0.446
Conscientiousness	0.000	-0.053	0.053	0.129
Relative age	5.563	5.535	0.029	0.644
Girl	0.492	0.487	0.005	0.633
# of books: 0 ~ 10	0.135	0.124	0.011	0.094
Weekly hours of studying outside school	10.624	10.879	-0.255	0.062
Prep school	0.699	0.724	-0.024	0.007
Weekly hours of reading	4.060	3.843	0.216	0.220
Weekly hours of arts, music, and sports	1.128	1.115	0.013	0.840
Weekly hours of playing outside and sports	4.848	4.792	0.055	0.637
Peers	0.000	-0.054	0.054	0.002
Teachers	0.000	-0.190	0.190	0.000

Source: Saitama Skill Assessment 2015-2018.

Note: We compare the means of the key variables for the ninth grade students in the Skill Assessment between the municipality that provided administrative data and the province that conducted the Saitama Skill Assessment. Cognitive and noncognitive skills as well as interpersonal relationships measures are normalized to have a mean of zero and a standard deviation of one for the whole province for the ninth graders. The p-values are adjusted by a method that controls for a false discovery rate (see Benjamini and Hochberg (1995)) because there are 16 hypotheses.

B.3 Questions Measuring Noncognitive Skills

Table 10 lists questions used to measure noncognitive skills. The original questions are written in Japanese and translated into English by the authors.

Table 10: Questionnaire on Noncognitive Ability

Group	Question items
Self-control	I forgot something I needed for school.
	I interrupted other people.
	I said something rude.
	I could not find something because of the mess.
	I lost my temper.
	I did not remember what someone told me to do.
	My mind wandered.
	I talked back when upset.
Self-efficacy	I believe I will receive an excellent grade in this class.
	I'm certain I can understand the most difficult material presented in the readings for this course.
	I'm confident I can understand the basic concepts taught in this course.
	I'm confident I can understand the most complex material presented by the instructor in this course.
	I'm confident I can do an excellent job on the assignments and tests in this course.
	I expect to do well in this class.
Conscientiousness	I'm certain I can master the skills being taught in this class.
	Considering the difficulty of this course, the teacher, and my skills, I think I will do well in this class.
	I do my job without carelessness and inattention.
	I work hard and with pleasure.
	I engage myself in the things I do.
	During class time, I concentrate on the tasks given to me.
	When I finish my homework, I check it many times to see if I did it correctly.
	I respect the rules and help maintain order.
	If I make an appointment, I keep it.
	My room is in order.
	When I start to do something I have to finish it at all costs.
	I like to keep all my school things in good order.
	I play only when I have finished my homework.
	It is unlikely that my attention will be diverted.
	I take care of my responsibilities.

B.4 Correlations Between Cognitive and Noncognitive Skills

Table 11 reports the correlation coefficients between test scores and noncognitive skills. All three types of noncognitive skills are positively and significantly correlated with test scores in grades six and nine. The correlation with conscientiousness is about 0.15-0.20. The correlation with self-control is slightly weaker, at 0.10-0.20, and decreases with grade. The correlation with self-efficacy is much stronger than that for the other two noncognitive skills and becomes increasingly strong with grade. The correlation coefficients are in the range of 0.30-0.50. Of course, correlation by no means indicates causation, but does demonstrate that it is useful in predicting cognitive skills.

Table 11: Correlation Coefficients Between Cognitive and Noncognitive Skills

		Conscientiousness	Self-control	Self-efficacy
		(1)	(1)	(2)
Grade 6	Math	0.171 (0.005)	0.140 (0.005)	0.375 (0.004)
	Japanese	0.181 (0.005)	0.139 (0.005)	0.260 (0.005)
Grade 9	Math	0.172 (0.005)	0.103 (0.005)	0.478 (0.004)
	Japanese	0.152 (0.005)	0.104 (0.005)	0.372 (0.004)
	English	0.196 (0.005)	0.098 (0.005)	0.450 (0.004)

Source: Saitama Skill Assessment 2016-2018. Standard errors are in parentheses.

B.5 Attrition

Our data include all students in grades four to nine in public schools in Saitama. Nevertheless, our estimates may still be biased due to non-random attrition from and selection into public schools in the province. Some students move out of the province or enter private schools particularly when they begin junior high school at grade seven. In this section we document attrition patterns by birth month over years.

Table 12 shows the attrition rates for March-born and April-born students. The most notable pattern is the high attrition rate for the sixth graders because many students enter private junior high schools from grade seven. The attrition rate for March-born students is 0.078, while that for April-born students is 0.082. The attrition rate at grade six is slightly higher for April-born than March-born students, but the difference is modest and only about 0.4 percentage points. For grades four, five, and eight, the attrition rate of March-born is higher higher than that of April-born students, while the opposite is true for grade seven. In addition, the magnitude of the differences in attrition rate seem modest in all grades. We do not find evidence that more April-born students exit from the survey than March-born students (or the opposite) in a systematic way.

We also examine the proportions of March- and April-born students and how they change over

time. For both, as shown in Table 13, the proportions are stable between 0.080 and 0.083 from grade four to nine. Additionally, we test whether the distribution of birth month significantly change from one grade to another. Table presents the results of Kolmogorov-Smirnov test. We do not reject in any grade the null hypothesis that the distributions of birth month are identical for two adjacent grades. Finally, using the method proposed by Lee (2009), we estimate bounds of month-of-birth effects (results are available on request) and find that attrition can have very little effects on our estimates.

Table 12: Attrition Rate: March (Youngest) vs April (Oldest)

Month-of-birth	Grade				
	4	5	6	7	8
4	1.77	1.90	8.21	2.72	2.87
3	2.27	2.06	7.84	2.61	3.53

Source: Saitama Skill Assessment 2016-2018. Numbers in the cells are percent.

Table 13: Proportions of March-born (Youngest) and April-born (Oldest) Students

Month-of-birth	Grade				
	4	5	6	7	8
4	8.320	8.233	8.179	8.084	8.064
3	7.966	8.166	8.098	8.147	7.990

Source: Saitama Skill Assessment 2016-2018. Numbers in the cells are percent.

Table 14: Testing Whether the Distribution of Birth Month Significantly Change From One Grade to Another by Kolmogorov-Smirnov Test

Grade 4 vs Grade 5	Grade 5 vs Grade 6	Grade 6 vs Grade 7	Grade 7 vs Grade 8
0.000 (1.000)	0.001 (0.997)	0.001 (0.906)	0.001 (0.996)

Source: Saitama Skill Assessment 2016-2018. Test statistics are reported and p-values are in parenthesis. The null hypothesis is that the distributions of birth month are identical for two adjacent grades.

C Additional Analysis

C.1 Nonparametric Comparisons Between March and April

Table 15: Nonparametric Comparisons Between March and April

	Math	Japanese	English	Self-control	Self-efficacy	Conscientiousness
	(1)	(2)	(3)	(4)	(5)	(6)
Grade 4	0.336 (0.014)	0.335 (0.013)		0.062 (0.025)		
Grade 5	0.288 (0.013)	0.324 (0.013)		0.053 (0.023)	0.123 (0.026)	
Grade 6	0.232 (0.014)	0.272 (0.013)		0.046 (0.024)	0.133 (0.025)	0.051 (0.025)
Grade 7	0.223 (0.015)	0.231 (0.014)		0.063 (0.023)	0.088 (0.024)	0.060 (0.024)
Grade 8	0.177 (0.013)	0.198 (0.013)	0.144 (0.013)	0.049 (0.023)	0.128 (0.024)	0.035 (0.026)
Grade 9	0.112 (0.013)	0.180 (0.013)	0.103 (0.014)	0.052 (0.024)	0.142 (0.024)	0.081 (0.023)

Source: Vital Statistics from April 2000 to March 2011.

Table 16: Nonparametric Comparisons Between March and April

	Studying	Reading	Prep school	Play outside/sports	Arts, music, and sports	Teachers	Peers
	(1)	(2)	(3)	(4)	(5)	(6)	(7)
Grade 4	-0.259 (0.097)	-0.270 (0.123)	-0.048 (0.006)	0.409 (0.077)	0.031 (0.044)	0.068 (0.013)	0.116 (0.015)
Grade 5	-0.323 (0.093)	-0.109 (0.109)	-0.040 (0.007)	0.467 (0.074)	0.153 (0.044)	0.046 (0.013)	0.093 (0.013)
Grade 6	-0.236 (0.087)	-0.123 (0.109)	-0.037 (0.007)	0.331 (0.077)	0.151 (0.046)	0.045 (0.014)	0.122 (0.013)
Grade 7	-0.347 (0.079)	-0.199 (0.100)	-0.033 (0.007)	0.141 (0.067)	0.086 (0.046)	0.057 (0.014)	0.118 (0.014)
Grade 8	-0.395 (0.090)	-0.026 (0.116)	-0.032 (0.007)	0.469 (0.070)	0.070 (0.040)	0.075 (0.013)	0.080 (0.014)
Grade 9	-0.401 (0.098)	-0.213 (0.115)	-0.028 (0.006)	0.236 (0.077)	0.169 (0.041)	0.052 (0.013)	0.098 (0.014)

Source: Vital Statistics from April 2000 to March 2011.

C.2 Month-of-Birth Gaps in Skill Growth

A potential problem with the regression analysis is that the composition of students differs across grades because some students move in or out of the province or switch between private and public schools. While the annual attrition rate is low (see Section 4.1), some of the observed convergence in the test score gaps might be driven by changes in the composition of the individuals in the tests. To address this concern, taking advantage of the panel structure of the data, we regress the growth (i.e., 1-year difference) as opposed to the level of test scores on age and other control variables. Table 19 shows the estimated gap between the oldest and youngest students (see Equation 4). The growth in test scores is faster for the youngest than for the oldest children in most grades, which implies that month-of-birth gaps in the test scores diminish over time. Note that all estimates in columns (1)-(3) of Table 19 are statistically significant at the 1% level when p-values are adjusted for multiple testing of 11 hypotheses.

We again address biases arising from possible changes of student composition. We regress the growth of noncognitive skills on age and other control variables. Table 19 indicates that there is no significant gap in the growth of noncognitive skills in all grades, which implies that month-of-birth gaps in noncognitive skills do not converge over time. Again, these estimates are precisely estimated.

Table 17: Nonparametric Comparisons Between March and April

Dependent variables	Estimates
Parental characteristics	
Mother's age	-0.125 (0.038)
Father's age	-0.148 (0.041)
Unmarried (%)	-0.093 (0.111)
Occupation of household head	
Farmer (%)	-0.006 (0.061)
Self-employed (%)	-0.247 (0.157)
Regular employment (small firm) (%)	0.724 (0.365)
Regular employment (large firm) (%)	-0.980 (0.272)
Non-regular employment (%)	0.589 (0.163)
No job (%)	-0.096 (0.086)
Unknown (%)	0.017 (0.189)
Birth outcomes	
Birth weight (gram)	-0.214 (3.187)
Gestational age (week)	-0.012 (0.020)
Singleton (%)	-0.187 (0.126)
First child (%)	-0.590 (0.355)
Girl (%)	-0.198 (0.350)

Source: Vital Statistics from April 2000 to March 2011.

Table 18: Nonparametric Comparisons Between March and April

Dependent variables	Estimates
Education subsidy (%)	-0.135 (1.583)
Single parent (%)	0.144 (0.980)
Welfare (%)	0.396 (0.357)

Source: Vital Statistics from April 2000 to March 2011.

Table 19: Month-of-Birth Gaps in the Growth of Test Scores and Noncognitive Skills

	Japanese (1)	Math (2)	English (3)	Conscientiousness (4)	Self-control (5)	Self-efficacy (6)
G4 to G5	-0.097 (0.009)	-0.080 (0.009)			-0.010 (0.015)	
G5 to G6	-0.114 (0.009)	-0.055 (0.009)			-0.009 (0.014)	-0.014 (0.015)
G6 to G7	-0.063 (0.009)	-0.016 (0.009)		-0.011 (0.015)		-0.010 (0.015)
G7 to G8	-0.095 (0.010)	-0.085 (0.008)		-0.006 (0.015)	-0.003 (0.015)	
G8 to G9	-0.010 (0.008)	-0.062 (0.009)	-0.052 (0.008)		0.008 (0.013)	0.020 (0.015)
Control variables	✓	✓	✓	✓	✓	✓

Note: The gaps in 1-year growth of an outcome between the oldest and youngest students are reported. Control variables include school fixed effects, survey year fixed effects, gender, and number of books at home. Standard errors are in parentheses. All estimates in columns (1)-(3) are statistically significant at the 1% level when p-values are adjusted for multiple testing of 11 hypotheses using a method that controls for a false discovery rate (see Benjamini and Hochberg (1995)). None of the estimates in columns (4)-(6) are statistically significant at any conventional level when p-values are adjusted.

C.3 Heterogeneity of Month-of-Birth Effects

C.3.1 By Gender and SES

The literature shows that boys mature more slowly than girls and are more susceptible to negative family and school environments, which suggests that month-of-birth effects may be stronger for boys than for girls. Similarly, children from low-SES families may be more susceptible to month-of-birth effects because they have fewer resources to fund compensatory behavior. Although some papers find that month-of-birth effects tend to be stronger for boys and/or low-SES children, the overall evidence is mixed.¹⁸ We provide an additional piece of evidence about the existence of heterogeneous effects by gender and SES.

Table 20 reports the estimated girl vs. boy gaps in the month-of-birth effects, i.e., the gap between ΔY for girls and that for boys (see equation (4)). None of the estimates are statistically significant when we adjust p-values for multiple testing with 29 ($6 + 6 + 2 + 4 + 6 + 5$) hypotheses. The results do not change when we pool observations across grades as long as the p-values are adjusted for six hypotheses. We conclude that there is no evidence in our data of gender heterogeneity in month-of-birth effects on cognitive and noncognitive skills.

Table 21 reports the estimated gap in month-of-birth effects ΔY between low-SES and other students. Our proxy for being a low-SES student is having 0-10 books at home. Again, none of the estimates are statistically significant when p-values are adjusted for multiple testing. When we pool observations across grades, only the estimated effect on math is statistically significant, even if the p-values are adjusted. The estimate implies that the month-of-birth effect for low-SES students is 0.033 standard deviations smaller than that for other students.

Table 22 shows estimates using an alternative measure of low SES. Here, we use administrative data from the municipality in the province and define low SES by whether the student's family receives an education subsidy for low-income households. We find that the month-of-birth effects

¹⁸Puhani and Weber (2007), McEwan and Shapiro (2008), and Matta et al. (2016) find stronger month-of-birth effects for boys than for girls, while Peña (2017) and Attar and Cohen-Zada (2018) find that the gender gap is insignificant. Only a few papers examine heterogeneity by family SES. Matta et al. (2016) find that the effects are stronger for low-SES children, while Attar and Cohen-Zada (2018) find no heterogeneity by family SES.

on self-efficacy is significantly stronger for low-income households in this subsample. We find no evidence for heterogeneous treatment effects on other outcomes.

Table 20: Heterogeneous Month-of-Birth Effects by Gender

	Math	Japanese	English	Conscientiousness	Self-control	Self-efficacy
	(1)	(2)	(3)	(4)	(5)	(6)
Grade 4	-0.008 (0.017)	0.011 (0.016)			-0.017 (0.030)	
Grade 5	0.005 (0.016)	0.013 (0.016)			0.007 (0.031)	0.051 (0.029)
Grade 6	0.008 (0.017)	0.008 (0.017)		0.040 (0.030)	0.004 (0.030)	0.028 (0.030)
Grade 7	0.004 (0.017)	-0.018 (0.018)		0.059 (0.027)	-0.007 (0.030)	0.045 (0.031)
Grade 8	-0.003 (0.017)	-0.008 (0.019)	-0.002 (0.017)	0.011 (0.029)	-0.005 (0.031)	-0.003 (0.028)
Grade 9	-0.002 (0.017)	-0.004 (0.017)	-0.011 (0.017)	-0.041 (0.030)	-0.020 (0.031)	0.031 (0.028)
All	0.000 (0.009)	0.001 (0.009)	-0.006 (0.015)	0.015 (0.016)	-0.006 (0.018)	0.030 (0.016)
Controls	✓	✓	✓	✓	✓	✓

Source: Saitama Skill Assessment 2015-2018.

Note: The gaps in month-of-birth effects (based on equation 2) between boys and girls are reported. The control variables include school fixed effects, survey year fixed effects, gender, and number of books at home. Standard errors are in parentheses. None of the estimates are statistically significant when p-values are adjusted for multiple testing, using a method that controls for a false discovery rate (see Benjamini and Hochberg (1995)).

C.3.2 Quantile Regression

Du et al. (2012), Muller and Page (2016), and Tukiainen et al. (2017) find that month of birth affects the probability of occupying top management and political positions, which suggests that month-of-birth effects might be stronger at the right tail of an ability distribution. To address this issue, we estimate month-of-birth effects on test scores using quantile regressions. Unfortunately, quantile regression for noncognitive skills turns out to be uninformative because it takes only a few distinct values, and hence, many estimates are exactly zero.

Table 23 presents the estimated gaps between the oldest and youngest students in the same cohort for the 10th, 50th, and 90th percentiles. We pool elementary school students (grades 4-6)

Table 21: Heterogeneous Month-of-Birth Effects by SES (No. of Books at Home)

	Math (1)	Japanese (2)	English (3)	Conscientiousness (4)	Self-control (5)	Self-efficacy (6)
Grade 4	-0.029 (0.023)	-0.001 (0.026)			0.061 (0.053)	
Grade 5	-0.005 (0.030)	-0.044 (0.030)			-0.046 (0.054)	-0.033 (0.057)
Grade 6	-0.023 (0.030)	0.008 (0.030)		-0.097 (0.063)	0.082 (0.059)	-0.050 (0.060)
Grade 7	-0.036 (0.028)	-0.025 (0.026)		-0.060 (0.049)	-0.010 (0.051)	-0.059 (0.049)
Grade 8	-0.011 (0.027)	0.001 (0.026)	-0.014 (0.026)	0.107 (0.053)	0.008 (0.047)	-0.067 (0.045)
Grade 9	-0.060 (0.027)	-0.052 (0.026)	-0.048 (0.024)	0.041 (0.045)	-0.034 (0.049)	-0.023 (0.044)
All	-0.035 (0.013)	-0.026 (0.013)	-0.032 (0.020)	0.001 (0.027)	0.006 (0.024)	-0.046 (0.025)
Controls	✓	✓	✓	✓	✓	✓

Source: Saitama Skill Assessment 2015-2018.

Note: The gaps in month-of-birth effects (based on equation 4) between low-SES students and others are reported. We define low-SES students as those who have 0-10 books at home. The control variables include school fixed effects, survey year fixed effects, gender, and number of books at home. Standard errors are in parentheses. All but one of the estimates are statistically significant when p-values are adjusted for multiple testing, using a method that controls for a false discovery rate (see Benjamini and Hochberg (1995)). The exception is the estimate for math when observations are pooled across grades (labeled as All).

Table 22: Heterogeneous Month-of-Birth Effects by SES (Family Income)

	Math (1)	Japanese (2)	English (3)	Conscientiousness (4)	Self-control (5)	Self-efficacy (6)
All	0.095 (0.069)	0.088 (0.067)	-0.100 (0.153)	0.049 (0.081)	-0.049 (0.229)	0.346 (0.097)
Adjusted p-values	0.376	0.376	0.651	0.651	0.829	0.002
No. of obs	11698	11695	2985	1001	2066	988
Controls	✓	✓	✓	✓	✓	✓

Source: Saitama Skill Assessment and administrative data from a municipality in 2015 and 2018.

Note: The gaps in month-of-birth effects (based on equation 4) between low-SES students and others are reported. We define low-SES students by whether their family receives an education subsidy for low-income households. The control variables include school fixed effects, survey year fixed effects, gender, and number of books at home. Standard errors are in parentheses.

and junior high school students (grades 7-9) to reduce noise. For math and Japanese test scores, month-of-birth effects are more pronounced toward the right tail of the distribution. While the gaps between percentiles are statistically significant (see Table 24), the magnitude does not seem very large. For example, the month-of-birth gaps in math score between the oldest and youngest junior high school students for the 10th and 90th percentiles are 0.151 and 0.202, respectively.

C.4 Comparison of Different Grades for Same Age

We also estimate cognitive and noncognitive skill gaps between students born before and after the cutoff date. Because all students take the tests in the same month, the former or March-born students have been in school a year longer than the latter or April-born students, while both are nearly the same absolute age. The gaps are estimated using the regression discontinuity design (RDD), and the econometric model is given by:

$$Y_{it} = \gamma_0 + \gamma_1 M_{it} + \gamma_2 M_{it}^2 + \gamma_3 D_{it} + \gamma_4 D_{it} M_{it} + \gamma_5 D_{it} M_{it}^2 + \gamma_6 X_{it} + v_{it}, \quad (5)$$

where Y_{it} is an outcome of student i in year t , M_{it} represents the distance from the cutoff measured in months, D_{it} is an indicator that equals one if student i was born before the cutoff date and zero otherwise, X_{it} is a vector of control variables that include gender and year and school fixed effects, and v_{it} is an error term.

The parameter of interest here is γ_3 , which reflects three different factors. First, this parameter captures the effect of 1-year schooling. Students born before the cutoff have been in school a year longer than those born after the cutoff. Second, it captures the effect of school starting age. Students born before the cutoff started schooling a year earlier. We cannot identify these two effects separately because of perfect collinearity. Third, the parameter reflects relative age effects. Students born before the cutoff are the youngest in their grade, while those born after the cutoff are the oldest in their grade. It is hard to disentangle the relative age effect from other factors because

Table 23: Month-of-Birth Effects for 10th, 50th, and 90th Percentiles

		10 th	50 th	90 th
Japanese	G4-G6	0.284	0.297	0.324
		(0.007)	(0.005)	(0.004)
	G7-G9	0.202	0.222	0.230
		(0.009)	(0.006)	(0.004)
Math	G4-G6	0.274	0.258	0.352
		(0.007)	(0.005)	(0.010)
	G7-G9	0.151	0.164	0.202
		(0.007)	(0.005)	(0.008)
English	G4-G6			
	G7-G9	0.098	0.133	0.046
		(0.009)	(0.007)	(0.005)

Table 24: 10th-50th and 50th-90th Percentile Gaps in Month-of-Birth Effects

		10th - 50th	50th - 90th
Japanese	G4-G6	-0.013	-0.027
		(0.007)	(0.010)
		(-0.033 -0.005)	(-0.053 -0.013)
	G7-G9	-0.020	-0.007
		(0.011)	(0.009)
		(-0.029 0.016)	(-0.037 -0.001)
Math	G4-G6	0.016	-0.094
		(0.008)	(0.009)
		(0.001 0.034)	(-0.110 -0.077)
	G7-G9	-0.013	-0.038
		(0.008)	(0.013)
		(-0.021 0.007)	(-0.053 -0.011)
English	G7-G9	-0.035	0.088
		(0.014)	(0.013)
		(-0.070 -0.017)	(0.066 0.117)

Note: Month-of-birth effects are estimated using quantile regression. All models include school fixed effects, survey year fixed effects, gender, and number of books at home. The standard errors for the gaps in the estimates are based on nonparametric bootstrap with 100 replications.

there is little variation in relative age.

The key identifying assumption for this RDD model is that students' characteristics other than birth month must be continuous at the school-entry cutoff. This assumption is violated if parents manipulate children's birth month, which is the same as the identifying assumption for the regression model (3).

Figure 10 shows graphically the estimated test score gaps between two adjacent grades for students of the same age. The estimates, or the coefficients for grade dummy (γ_3) in equation (5), are also reported in Table 25. For the math test, the gap between grades four and five is 0.095, the gaps are insignificant for grades five to eight, and the gap is 0.253 between grades eight and nine. For the Japanese test, the grade gaps are small in magnitude except for the gap between grades eight and nine. Finally, for the English test, the gap between grades eight and nine is 0.530, which is greater than the gaps for the math and Japanese tests.

For all subjects, the gap between grades eight and nine is largest, presumably because ninth graders work more hours per week and are more likely to go to prep school to get ready for high school entrance exams. To be specific, 70% of ninth graders go to prep school, compared with 60% of eighth graders. Ninth graders study 10.6 hours per week outside of school, compared with 9.6 hours for eighth graders. The gap in the English test is greater than that for the math and Japanese tests, which reflects the gap in accumulated years of studying the subjects. Eighth graders have studied English for only a year, which is half the accumulated years of studying English for ninth graders. By contrast, eighth graders have studied math and Japanese for 7 years, which is seven-eighths of the accumulated years of studying for ninth graders.

Table 25: Test Score Gaps Between Grades for the Same Age

	Math (1)	Japanese (2)	English (3)
G4 vs. G5	0.095 (0.014)	0.062 (0.020)	
G5 vs. G6	-0.003 (0.014)	0.064 (0.017)	
G6 vs. G7	0.010 (0.015)	0.088 (0.016)	
G7 vs. G8	0.023 (0.014)	0.045 (0.014)	
G8 vs. G9	0.253 (0.015)	0.211 (0.015)	0.550 (0.015)

Source: Saitama Skill Assessment 2015-2018.

Note: Test score gaps for students in different grades but of the same age are reported using equation (5). The controls include school fixed effects, survey year fixed effects, gender, and number of books at home. Standard errors are in parentheses.

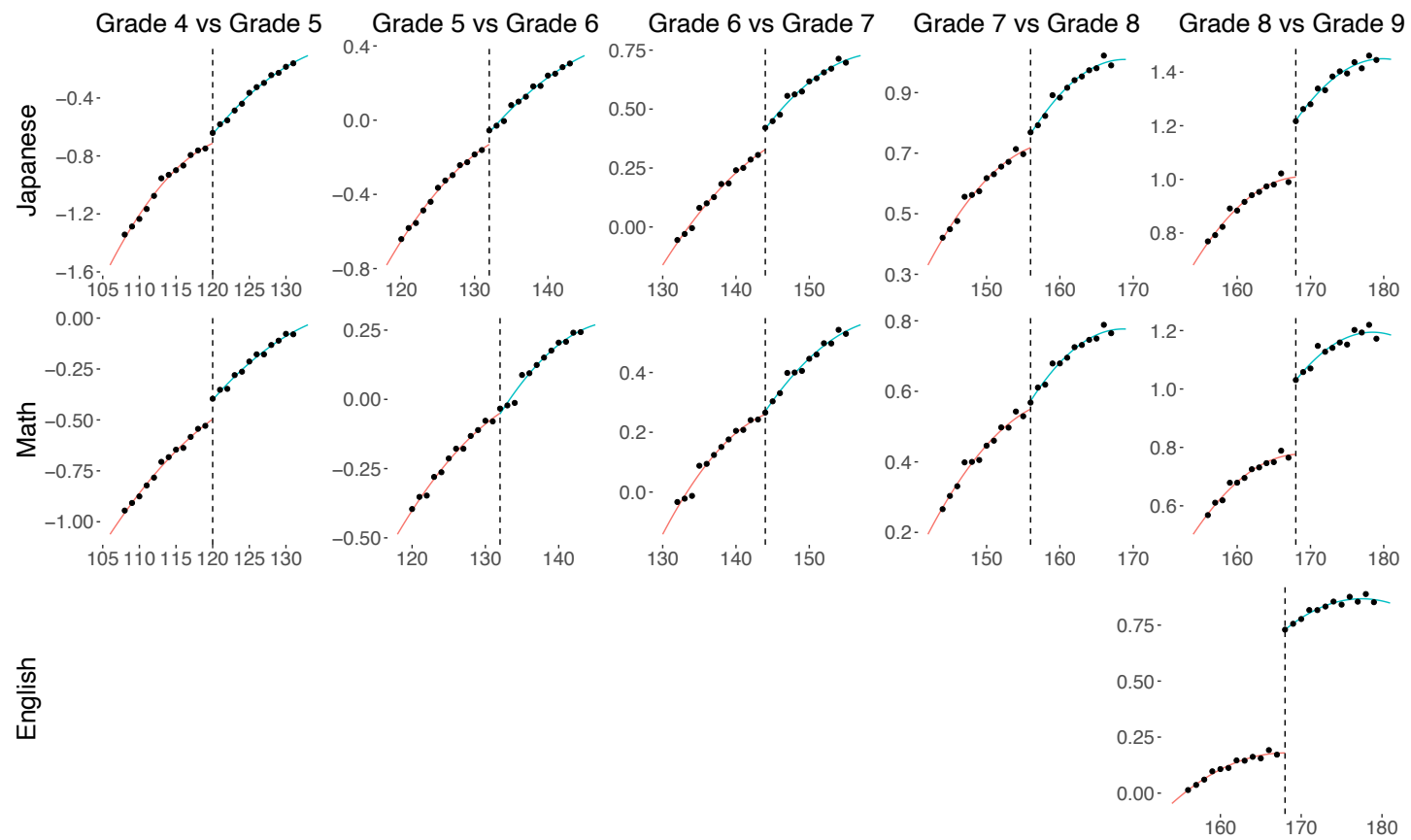


Figure 10: Test Score Gaps Between Grades for the Same Age

Source: Saitama Skill Assessment 2015-2018.

C.5 Correlation Between Time Use and Interpersonal Relationships

We estimate how time use and interpersonal relationships are associated with cognitive and noncognitive skills. We regress these skills on hours of study, prep school attendance, relationships with teachers, and relationships with peers along with other control variables, including gender, number of books at home, and school and year fixed effects. In addition, we also estimate models with student fixed effects. Other time use variables, such as hours of reading, are available only for 2015, and hence, cannot be included in a fixed-effect regression. All models are estimated separately for elementary and junior high schools and by subject.

The regression results for test scores are summarized in Table 26. We focus on results with student fixed effects, but OLS results are also reported for reference. For both math and Japanese and for both elementary and junior high school, all the educational inputs and interpersonal relationships are positively correlated with test scores given student fixed effects. Table 26 also shows the results for regressions of noncognitive skills. Hours of study, relationship with teachers, and relationship with peers are positively associated with noncognitive skills, whereas only prep school attendance is negatively associated with these three noncognitive skills. These results are at best suggestive and should be carefully interpreted because they by no means imply causality.

Table 26: Regressions of Cognitive and Noncognitive Skills on Inputs and Personal Relationships

	Grade 4-6				Grade 7-9			
	Math (1)	(2)	Japanese (3)	(4)	Math (5)	(6)	Japanese (7)	(8)
Hours of studying	0.025 (0.001)	0.006 (0.001)	0.024 (0.001)	0.004 (0.000)	0.026 (0.000)	0.009 (0.000)	0.023 (0.000)	0.005 (0.000)
Prep school	-0.001 (0.004)	0.024 (0.005)	-0.086 (0.004)	0.021 (0.005)	0.163 (0.006)	0.081 (0.005)	-0.039 (0.006)	0.004 (0.005)
Teachers	0.012 (0.002)	0.007 (0.003)	0.025 (0.002)	0.007 (0.002)	-0.009 (0.002)	0.008 (0.002)	0.001 (0.002)	0.006 (0.003)
Peers	0.078 (0.002)	0.008 (0.003)	0.102 (0.002)	0.004 (0.002)	0.074 (0.002)	0.006 (0.002)	0.088 (0.002)	0.004 (0.002)
Control variables	✓	✓	✓	✓	✓	✓	✓	✓
Individual fixed effect		✓		✓		✓		✓
	Conscientiousness		Self-control		Self-efficacy			
	(1)	(2)	(3)	(4)	(5)	(6)		
Studying	0.042 (0.001)	0.018 (0.001)	0.027 (0.000)	0.011 (0.000)	0.043 (0.000)	0.018 (0.001)		
Prep school	-0.121 (0.005)	-0.021 (0.008)	-0.077 (0.005)	-0.023 (0.006)	0.052 (0.005)	0.020 (0.006)		
Teachers	0.114 (0.003)	0.058 (0.004)	0.141 (0.002)	0.070 (0.003)	0.066 (0.003)	0.050 (0.003)		
Peers	0.182 (0.003)	0.067 (0.004)	0.194 (0.002)	0.067 (0.003)	0.190 (0.003)	0.076 (0.003)		
Control variables	✓	✓	✓	✓	✓	✓		
Individual fixed effect		✓		✓		✓		

Source: Saitama Skill Assessment 2015-2018.

Note: Control variables include gender, number of books at home, and school and year fixed effects. Standard errors are in parentheses.

C.6 Regressions of Parents' Ages on Birth Month and Time Trend

Table 27: Regressions of Parents' Ages on Birth Month and Time Trend

Specifications	Year FE	Year Trend
Dependent variables		
Mother's age	-0.107 (0.021)	-0.101 (0.021)
Father's age	-0.125 (0.023)	-0.116 (0.023)