

Pickard, Harry; Dohmen, Thomas; van Landeghem, Bert

Working Paper

Inequality and Risk Preference

IZA Discussion Papers, No. 15854

Provided in Cooperation with:

IZA – Institute of Labor Economics

Suggested Citation: Pickard, Harry; Dohmen, Thomas; van Landeghem, Bert (2023) : Inequality and Risk Preference, IZA Discussion Papers, No. 15854, Institute of Labor Economics (IZA), Bonn

This Version is available at:

<https://hdl.handle.net/10419/272481>

Standard-Nutzungsbedingungen:

Die Dokumente auf EconStor dürfen zu eigenen wissenschaftlichen Zwecken und zum Privatgebrauch gespeichert und kopiert werden.

Sie dürfen die Dokumente nicht für öffentliche oder kommerzielle Zwecke vervielfältigen, öffentlich ausstellen, öffentlich zugänglich machen, vertreiben oder anderweitig nutzen.

Sofern die Verfasser die Dokumente unter Open-Content-Lizenzen (insbesondere CC-Lizenzen) zur Verfügung gestellt haben sollten, gelten abweichend von diesen Nutzungsbedingungen die in der dort genannten Lizenz gewährten Nutzungsrechte.

Terms of use:

Documents in EconStor may be saved and copied for your personal and scholarly purposes.

You are not to copy documents for public or commercial purposes, to exhibit the documents publicly, to make them publicly available on the internet, or to distribute or otherwise use the documents in public.

If the documents have been made available under an Open Content Licence (especially Creative Commons Licences), you may exercise further usage rights as specified in the indicated licence.

DISCUSSION PAPER SERIES

IZA DP No. 15854

Inequality and Risk Preference

Harry Pickard
Thomas Dohmen
Bert van Landeghem

JANUARY 2023

DISCUSSION PAPER SERIES

IZA DP No. 15854

Inequality and Risk Preference

Harry Pickard

Newcastle University

Thomas Dohmen

University of Bonn and IZA

Bert van Landeghem

University of Sheffield and IZA

JANUARY 2023

Any opinions expressed in this paper are those of the author(s) and not those of IZA. Research published in this series may include views on policy, but IZA takes no institutional policy positions. The IZA research network is committed to the IZA Guiding Principles of Research Integrity.

The IZA Institute of Labor Economics is an independent economic research institute that conducts research in labor economics and offers evidence-based policy advice on labor market issues. Supported by the Deutsche Post Foundation, IZA runs the world's largest network of economists, whose research aims to provide answers to the global labor market challenges of our time. Our key objective is to build bridges between academic research, policymakers and society.

IZA Discussion Papers often represent preliminary work and are circulated to encourage discussion. Citation of such a paper should account for its provisional character. A revised version may be available directly from the author.

ISSN: 2365-9793

IZA – Institute of Labor Economics

Schaumburg-Lippe-Straße 5–9
53113 Bonn, Germany

Phone: +49-228-3894-0
Email: publications@iza.org

www.iza.org

ABSTRACT

Inequality and Risk Preference*

This paper studies the relationship between income inequality and risk taking. Increased income inequality is likely to enlarge the scope for upward comparisons and, in the presence of reference-dependent preferences, to increase willingness to take risks. Using a globally representative dataset on risk preference in 76 countries, we empirically document that the distribution of income in a country has a positive and significant link with the preference for risk. This relationship is remarkably precise and holds across countries and individuals, as well as alternate measures of inequality. We find evidence that individuals who are more able to understand inequality and individuals who fall behind their inherent point of reference increase their preference for risk. Two complementary instrumental variable approaches support a causal interpretation of our results.

JEL Classification: D91, O15, D81, D01

Keywords: income inequality, risk preference, risk sensitivity

Corresponding author:

Harry Pickard
Newcastle University Business School
Newcastle University
Newcastle upon Tyne
Tyne and Wear
NE1 7RU
United Kingdom
E-mail: harry.pickard@newcastle.ac.uk

* We have benefited from comments and suggestions from Jytte Nielsen, Nicolas Van de Sijpe and from the participants of research seminars at Sheffield and Newcastle University. Dohmen gratefully acknowledges funding by the Deutsche Forschungsgemeinschaft (DFG, German Research Foundation) under Germany's Excellence Strategy – EXC 2126/1 – 390838866.

1 Introduction

There is abundant evidence that individuals do not only derive utility from absolute consumption levels or income levels, but also care about consumption and income relative to comparison groups or reference points (Festinger, 1954; Fliessbach et al., 2007; Kuhn et al., 2011; Card et al., 2012). These can be social, i.e. stem from social comparison, or based on private outcomes, i.e. based on comparisons to one's own (lagged) status quo (see, e.g., Loomes and Sugden, 1982, 1986) or expectations (e.g. Kőszegi and Rabin, 2006, 2007, 2009). A widely acknowledged direct consequence of reference-dependent utility is that falling below the reference point is accompanied by a loss of utility that exceeds the pure loss of utility due to reduced consumption possibilities. However, falling below the reference point can have additional consequences, namely changes in risk appetite. Risk sensitivity theory (RST) as well as prospect theory and its various refinements typically predict increased risk taking below a reference point.¹ For example, individuals whose reference point corresponds to the lagged status quo, will take excessive risks if they fall below their reference point in order to regain their status quo (see, e.g., theoretical accounts of Thaler and Johnson (1990) and Gomes (2005) as well as empirical evidence by Odean (1998)). Recent evidence from laboratory experiments and survey data confirm the implication of theory that individuals' risk appetite increases when falling behind. Dohmen et al. (2021) document that participants in a laboratory experiment whose expected earnings would fall below the reference point in a risk-free environment behave risk seeking in risky environments. Schwerter (2022) manipulates a social reference point in a laboratory experiment and shows that participants make less risk averse choices when their peers' earnings are larger, arguably to catch up or surpass these peers. Likewise, Mishra et al. (2015) induce random variation in absolute and relative earnings by varying show-up fees in their experiment and show that this leads those with low expected earnings to be more risk taking in lottery choice tasks. Mishra et al. (2012) demonstrate that individuals who were given a high target goal for returns of financial investments made riskier choices than those with a lower target. Notably, Linde and Sonnemans (2012) find evidence that individuals make more risk averse

¹Reference-dependent risk attitudes are a feature of a wide range of models that depart from expected utility (e.g. Bell, 1985; Loomes and Sugden, 1986; Thaler and Johnson, 1990; Gul, 1991; Gomes, 2005; Kőszegi and Rabin, 2006, 2007, 2009).

choices when they cannot surpass their referent even if they win the lottery. Fehr and Reichlin (2021) find that lower perceived relative wealth leads to a higher degree of risk-taking in monetary incentivized lottery tasks. Panunzi et al. (2021) show that voter behaviour is consistent with the idea that economically disappointed voters become more risk loving, using data from the German Socio-economic Panel (SOEP). Similarly, Dohmen et al. (2016) find suggestive evidence that job loss is associated with increases in willingness to take risks.

As the perception of falling behind is strongly related to income inequality, these theoretical insights and empirical findings give rise to the conjecture that the distribution of earnings in a country affects risk-taking. We hypothesize that higher income inequality is associated with increased risk lovingness. This hypothesis is not least motivated by convincing empirical evidence that social comparison is asymmetric, and that individuals tend to engage disproportionately in upward comparisons (Boyce et al., 2010; Card et al., 2012; Ferrer-i Carbonell, 2005; Payne et al., 2017).² An increase in the total income share accrued by those higher in the income ranking might hence trigger a higher aspiration level and hence a fall below one's reference point.³ Income inequality may also increase social comparisons by increasing both the frequency and the consequence of comparison, thereby highlighting relative disadvantage (Cheung and Lucas, 2016). Finally, observing a larger discrepancy in upward comparison might increase perceived needs, and according to risk sensitivity theory, increase willingness to take risk. Risk sensitivity theory was developed in evolutionary biology to explain animal foraging behavior that is risky when animals fall short of their daily energy intake but is marked by risk aversion when foragers have met their daily target (Caraco et al., 1980; Stephens, 1981). Notwithstanding, humans have been consistently shown to conform to the predictions of risk sensitivity theory, i.e. when faced with need, via disparity, they will shift their risk preference from aversion to taking.⁴ Despite these considerations and

²The asymmetry has in fact been validated by Fliessbach et al. (2007) who used an MRI machine to detect that upward comparisons have slightly stronger effects in the brain, i.e., the negative effect in the reward center triggered by receiving less than a reference person is larger in absolute terms than the positive effect triggered by receiving more than the reference person.

³Some indirect empirical evidence is provided, for example, by Powdthavee et al. (2017) who document a negative relationship between a country's average happiness score and the income share accrued by the richest percentile of its population.

⁴Humans acting in accordance with risk sensitivity theory has been found in a variety of domains (see, e.g., Rode et al., 1999; Ermer et al., 2008; Searcy and Pietras, 2011; Mishra and Fiddick, 2012; Mishra and Lalumière, 2010; Mishra et al., 2014, 2015; Payne et al., 2017; Gonzales et al., 2017).

the empirical findings, the hypothesis that income inequality increases risk appetite has not been rigorously scrutinized using comparable data on risk preferences and income inequality across a large sample of countries.⁵

In this paper, we endeavour to reduce this gap in the literature, by analyzing the relationship between individual risk attitudes and measures of income inequality within countries. In order to investigate and to provide global evidence on the relationship between a country's income inequality and individuals' risk preferences, we combine data from the Global Preferences Survey on risk preferences in 76 countries with country-level inequality measures constructed based on data from the Standardized World Income Inequality Database (SWIID) and the World Bank. The Global Preferences Survey was conducted as part of the Gallup World Poll in 2012 and covers 76 countries (Falk et al., 2018). It is representative at the country level with a median sample size of 1,000 respondents per country, whilst covering countries that hold 90% of the world's population and income. In this survey, risk taking was measured through the combination of two survey questions: a qualitative self-assessment and a quantitative series of fixed odds lottery choices. The SWIID constitutes the pre-eminent source of inequality data for cross-national comparisons (Solt, 2020). Our principal measure of inequality is the Gini index of disposable income, which captures the degree of inequality after taxes and transfers have been deducted from income. While the Gini coefficient is a very common and widely-used inequality measure which captures the entire income distribution, the comparison of a Gini of two countries is not always obvious, if for example at quantile 1 the accumulated share of total income for country 1 is lower than for country 2, while the reverse holds at a higher quantile. This is one reason why we will also use four other well-known inequality measures, which only consider part of the income distribution but which might however be more suitable to test whether patterns are in line with our hypothesis. These are: the income share held by the top and bottom 10th percentile, the Palma ratio (the share of income held by top 10th percentile divided by the share held by the bottom 40th) and the 80/20 income share ratio.

⁵Payne et al. (2017) provide some evidence for a relationship between inequality and risk preferences from a laboratory in which subjects are shown at random one out of three earnings distributions which have different variances but the same mean, and are informed that it is the distribution of earnings of previous players of a gambling game that they are about to play. Being confronted with a higher distribution leads to higher risk-taking in the gambling game.

We acknowledge that individuals might not be fully aware of the objective level of inequality they face, so that it is likely the *perceived* level of inequality (cf. Brown-Iannuzzi and McKee, 2019) that affects risk-preferences. Norton and Ariely (2011) reveal that participants significantly underestimate how much wealth is owned by the richest quintile in the US and overestimate how much wealth was owned by the poorest two quintiles. This suggests that the participants perceive more equality than what exists in society. This misperception is even present in a more granular context. Jäger et al. (2022) demonstrate that workers misperceive their rank within their firm's pay distribution: beliefs are compressed around the 50th percentile. Perceptions likely deviate from objective reality through a kaleidoscope of individual biases and imperfect information, all of which determine the extent to which we "experience inequality" (Roth and Wohlfart, 2018). One possible explanation for such a divergence is that the very concept of inequality is difficult to grasp (Eriksson and Simpson, 2012). Principally because it requires an understanding about the variance, not just the mean levels, of income. Indeed these perceptions and experiences with inequality have real world effects. For instance, Alesina et al. (2018) find that more pessimistic beliefs about the inequality of opportunity increases support for redistribution. To this end, we must consider that the effect of inequality on individuals is by no means homogeneous. We hypothesise that the risk preference of individuals who are better placed to read or interpret the objective degree of inequality should be more affected.

The analysis of our combined data reveals a robust relationship between inequality and the willingness to take risk, across the entire sample and various subsamples. At both the individual and country-level, we find a precise, stable estimate that indicates higher inequality is significantly associated with a greater degree of risk taking. This finding holds after controlling for a host of potential confounding factors and irrespective of the measure of inequality we use. Two complementary instrumental variable approaches indicate a causal link running from inequality to the willingness to take risk. Following Acemoglu et al. (2019) we construct a spatially weighted instrument that exploits the levels of inequality across countries in the same region and with common political histories. We pay specific attention to the identifying assumptions made regarding this instrument and the criticism they have faced recently (Betz et al., 2018). In light of this, we

employ a complementary approach that relies on a different set of identifying assumptions: the Bartik ‘shift-share’ instrument. Here, we exploit the changes in inequality in a country’s immediate neighbourhood. The resulting estimates from both approaches indicate that higher inequality is causally linked to greater risk taking at both layers of analysis. These findings become particularly important against the background of rising inequalities in many countries. Blundell et al. (2018), for example, find an increasing gap in labour income for males between the top and bottom decile of the income distribution (an increasing 90/10 ratio) for both the United Kingdom and the United States.⁶

With our focus on the relationship between country-level inequality and individuals’ willingness to take risk we do not only complement studies based on lab experiments cited above that indicate a link between income inequality and risk taking behaviour, but we also contribute to a better understanding of the sources of risk preferences. This is important as myriad behaviours and outcomes result from decision-making under risk or uncertainty. While a large strand of empirical literature has emerged to study what individual characteristics determinants of risk preferences⁷, much less is known about the role of macroeconomic conditions and macroeconomic outcomes for individual risk taking behaviour. Bucciol and Miniaci (2018) provided evidence that willingness to take risks varies over the business cycle. Our findings do not only highlight the role of another macroeconomic outcome, namely income inequality, for risk taking behaviour but also indicates that policies that affect the income distribution may also affect risk attitudes.

The remainder of the paper is as follows. In section 2, we discuss the data and in section 3, we provide empirical evidence on the global relationship between inequality and risk-taking for several subgroups and using various inequality measures. In section 4, we present the two instrumental variable approaches to argue that there is a causal link going from inequality to risk-taking, and section 5 contains further extensions which explore the importance of perceptions and reference points. Finally, section 6 offers a concluding discussion.

⁶Note, however, that the 90/10 ratio has been decreasing for family income in the United Kingdom, underlining the significant impact of social policies.

⁷For example, gender, age, and cognitive ability have been shown to explain differences in risk attitudes across individuals (see, e.g., Croson and Gneezy, 2009; Dohmen et al., 2011; Sahm, 2012; Benjamin et al., 2013; Golsteyn and Schildberg-Hörisch, 2017).

2 Data

2.1 Risk preference

Our analysis uses data from the Global Preference Survey (GPS), a dataset on economic preferences from representative samples across the globe. The data are collected as part of the 2012 Gallup World Poll in 76 countries that were chosen to be globally representative. The GPS was created by including a set of survey items specifically designed to measure a respondent's economic preferences. For more details on the GPS, see Falk et al. (2018).

There are four key characteristics of this dataset that make it attractive to this study. First, the preference measures have been elicited in a way that is comparable across countries using a standardized protocol. Second, the preferences are representative at the country-level (unlike small or medium-scale experimental work) which allows for across-country inferences about preferences. The median sample size was 1,000 respondents per country and a total of approximately 80,000 individuals in total. Respondents were selected through probability sampling and interviewed face-to-face or via telephone by a professional interviewer. The third factor is that the GPS reflects geographical representativeness. The 76 sampled countries span all continents, cover various cultures and are of differing levels of development. Specifically, our sample includes 15 countries from the Americas, 24 from Europe, 22 from Asia and Pacific, as well as 14 nations in Africa, 11 of which are Sub-Saharan. The countries account for around 90% of the world's population and global income. Fourth, the preference measures are based on experimentally validated survey items for eliciting preferences. In order to ensure behavioural relevance, the underlying survey items were designed, tested, and selected through an ex-ante experimental validation procedure (see Falk et al., 2022, for more details). In this validation exercise, those survey items were selected that jointly performed best in explaining observed behaviour in standard financially incentivized experimental tasks to elicit preference parameters. In order to make these items cross-culturally applicable, (i) all items were translated back and forth by professionals; (ii) monetary values used in the survey were adjusted based on the median household income for each country; and (iii) pretests were conducted in 22 countries of various cultural heritage to ensure comparability.

Risk preference is derived from the combination of responses to two survey items: one with a qualitative self-assessment format and the other with a quantitative format. The subjective self-assessment question asks for an individual’s willingness to take risks: *“Generally speaking, are you a person who is willing to take risks, or are you not willing to do so? Please indicate your answer on a scale from 0 to 10, where a 0 means “not willing to take risks at all” and a 10 means “very willing to take risks”. You can also use the values in between to indicate where you fall on the scale.”* This question has been shown to be successful in predicting risk-taking behaviour in the field in a representative sample (Dohmen et al., 2011) and incentivized experimental risk-taking across countries in student samples (Vieider et al., 2015). The quantitative measure consists of a series of five binary lottery choices, which is commonly known as the “staircase procedure”. Choices were between a fixed-odds lottery, where the individual has a 50-50 chance to win x or nothing, and a varying guaranteed payment of y . The question is posed as follows: *“Please imagine the following situation. You can choose between a sure payment of a particular amount of money, or a draw, where you would have an equal chance of getting amount x or getting nothing. We will present to you five different situations. What would you prefer: a draw with a 50% chance of receiving amount x , and the same 50% chance of receiving nothing, or the amount of y as a sure payment?”* Selecting the lottery resulted in an increase in the guaranteed payment in the next round, and vice versa. This allows us to “zoom in” on the individual’s certainty equivalent. This question elicits risk preference as 1 of 32 ordered outcomes. The two survey items are linearly combined into a single risk preference measure using weights obtained from an experimental validation procedure.⁸ The analysis is based on the individual-level risk preference measure that is then standardized, that is, we compute z-scores at the individual-level. We then calculate the country-level risk preference by averaging responses using sampling weights provided by Gallup. The risk preference measure is scaled throughout the paper so that higher values indicate a stronger preference for risk, i.e., the individual is more risk taking. Figure 1 presents the spatial distribution of risk preference across the globe, relative to the world’s average

⁸Responses to both items were standardised (z-score) at the individual-level and then aggregated:

$$\text{Risk preference} = 0.4729985 \times \text{Staircase risk} + 0.5270015 \times \text{Will. to take risks} ,$$

with weights based on OLS estimates of a regression of observed behaviour in financially incentivized laboratory experiments on the two survey measures. See Falk et al. (2018) for more details.

individual. Darker (lighter) areas indicate a greater (weaker) preference for risk. A visual inspection of the map reveals that African countries are particularly risk taking, whereas Europeans are typically more risk averse relative to the mean.

[Figure 1 about here.]

2.2 Inequality

Our principal measure of inequality comes from the Standardised World Income Inequality Database (SWIID) by Solt (2020). The SWIID is the pre-eminent source of inequality for cross-national research and the latest version provides estimates that are more reliable than previous versions, which is shown via k -fold cross-validation. The SWIID uses the Luxembourg Income Study and the World Inequality Indicators Database in order to construct a comprehensive country-year panel of Gini coefficients that are standardized across sources and measures and has been used in numerous studies (see, e.g. Acemoglu et al., 2015). In order to limit the gaps in the data set, the SWIID uses multiple imputation procedures to recover missing values. Because of this, 100 values of inequality are provided for each country-year cell. Following the standard in the literature, we use the simple mean of these values (see, e.g., Kotschy and Sunde, 2017). Our preferred measure of inequality is the Gini of disposable income, that is, the income that remains after taxes and transfers have been deducted.⁹ The Gini index ranges from 0 to 100, where higher values indicate a more unequal income distribution. We aggregate the country-year cells to the country-level average over the 2002 to 2012 period - we stick with this convention wherever we face temporal variation unless stated otherwise. Figure 2 depicts the cross-country variation in the Gini coefficient used in our analysis. We can observe that Latin America and Africa are especially unequal in terms of income, whereas European countries and other developed nations have a relatively more equal distribution of disposable incomes.

[Figure 2 about here.]

⁹We chose the net Gini rather than the pre-tax and transfers market Gini as it is reasonable that individuals primarily make decisions and form expectations and preferences based on their disposable income (see, e.g., Kerr, 2014).

We also consider four alternate measures of inequality. These are: the income share held by the top and bottom 10th percentile, the Palma ratio (the share of income held by top 10th percentile divided by the share held by the bottom 40th) and the 80/20 income share ratio. All of which are obtained or derived from the World Bank’s Development Indicators. These type of measures are used by Piketty and Saez (2014) to capture income inequality.

3 Inequality and risk: empirical evidence

As a first step in our analysis, we present associative evidence on the relationship between inequality at two different levels of aggregation: across countries and across individuals.¹⁰ It is worth noting that for the individual-level analysis our measure of inequality remains fixed at the country-level whilst risk preferences vary at the individual-level.

3.1 Cross-country evidence

Table 1 presents the results of a set of OLS regressions of risk preference on inequality. Column (1) shows that a 1 standard deviation (approximately 8.49 points) increase in inequality is associated with a 0.11 standard deviation increase in risk preference and is significant at the 5% level. Column (2) to (4) progressively adds economic, climatic, geographic and political controls. Column (2) introduces GDP per capita. Column (3) contains additional controls for the average precipitation, temperature, ruggedness of the land, distance to the nearest waterway and whether the country is an island. Finally, column (4) adds a control for whether the country is a democracy. Despite adding a broad set of controls, the coefficient remains remarkably stable across specifications and statistically significant. This gives us confidence that these findings are not driven by unobservables, which would attenuate the inequality coefficient.¹¹ The raw correlation (ρ) between risk preference and inequality is 0.35 and this relationship is illustrated in Figure 3.

¹⁰We also performed analysis across sub-national regions by aggregating the risk-preference data to this level. To ensure a degree of representativeness at the region-level, we excluded regions with less than 15 respondents and apply techniques used in Chetty and Hendren (2018) by shrinking regional risk preference to the sample mean by its signal-to-noise ratio. Our results, available on request, remain qualitatively the same as the individual and country-level findings.

¹¹We provide a formal test of this in the robustness checks section.

We now examine how our four alternate measures of inequality affect risk preference by repeating the specifications used in Table 1. The results are presented in Table 2. Panel A (B) shows the effect of the income share held by the top (bottom) 10 percentile on risk preference. Panel C and D contain the results for the Palma and 80/20 ratio. As with the Gini, we find that more inequality is significantly associated with a greater degree of risk-taking, irrespective of the measure.

[Table 1 about here.]

3.2 Individual-level evidence

Now we consider the relationship between inequality and risk preference at the individual-level. This exercise is particularly important as we are able to control for a huge variety of individual factors that may drive risk preferences, whilst examining the effect of inequality at the country-level.

Table 3 presents the results of a set of OLS regressions with the standard error clustered at the country-level. In column (1) we control for GDP per capita and a basic set of individual-level controls: gender; age; age squared; and a set of income quintile dummies. In column (2) we add a comprehensive range of individual covariates: marital status fixed effects; highest education level dummies; an indicator for high self-assessed maths skills; religious fixed effects; whether the respondent has children; household size; whether the individual has health problems; whether the individual smokes; and whether they are self-employed. Column (3) adds the remaining country-level variables from Table 1 column (4) instead of the extended individual controls. Lastly, column (4) saturates the regression equation with all possible country- and individual-level information. We find that a 1 unit increase in inequality is associated with an 0.012 standard deviation increase in risk preference. Throughout the table the coefficient for inequality remains stable and statistically significant at the conventional levels. A striking finding here is that the relationship between inequality and risk preference is very similar at the individual and country-level, that is, there are no aggregation effects. This makes sense as there are no accumulation or price effects in operation (see, e.g., Sunde et al., 2022, where disaggregation of the time preference leads to attenuation).

[Table 3 about here.]

3.3 Robustness checks

The key finding that emerges from our analysis thus far is that higher levels of inequality are associated with a higher propensity to take risks. To provide further support for this finding, we perform a series of robustness tests, which are reported in the Appendix.

In Table A.2, we include the degree of fiscal redistribution, country size, land suitability for agriculture and family ties, as motivated by Falk et al. (2018). By doing so, our findings are not qualitatively affected. In Table A.3, we assess how sensitive the results are to an alternate disposable income Gini index, from the World Bank. The SWIID and World Bank Ginis are quite similar ($\rho = 0.87$). The coefficient is almost identical despite a reduced sample size and is statistically significant throughout. The GPS contains information on 5 other preferences: patience; altruism; positive reciprocity; negative reciprocity; and trust. In Table A.4 we repeat our analysis using each of these preferences as the outcome measure and we find no significant relationship with inequality. We also assess the role of outliers in the data by using robust regressions and Cook's distance¹², our result is unaffected. Whilst we observe that the effect of inequality is stable when further observables are included, we address what role unobservables may play. We employ the method proposed by Oster (2019) to investigate the importance of unobservables. In Table A.6, we reproduce our results for all inequality measures and include the bias adjusted coefficient (the upper bound), where $Rmax$ is 1.3 times the R-squared in the specification that controls for observables. We also present Oster's delta, which indicates the degree of selection on unobservables relative to observables that would be needed to fully explain our results by omitted variable bias. In all cases, the results show very little movement in the coefficients and have delta values that are comfortably above the rule of thumb value 1, which gives us confidence that our result would not be explained away by unobservables.

¹²We exclude observations with a Cook's distance above the common rule-of-thumb threshold: four divided by the number of observations.

4 Addressing endogeneity concerns

Our empirical results thus far have an associative interpretation. A causal reading of the results would perhaps be ill-advised given the usual endogeneity concerns. We are not especially concerned about omitted variable bias as we have shown remarkable coefficient stability of inequality across- and within-analysis and passed the Oster test of unobservables, but reverse causality remains an issue. It is entirely plausible that risk taking behaviour may increase the degree of inequality. A simple scenario to illustrate this occurs in capitalist societies; individuals (firm owners) are incentivized to take on risk in order to generate substantial returns for themselves, which, in turn, can exacerbate existing inequalities. In order to alleviate this concern, and any lingering worries about omitted variables, we use an instrumental variable approach to get as close as possible to a causal interpretation.

4.1 Approach

The challenge we face is to find an instrument that is suitably correlated with the level of inequality and also unrelated to risk preference in country i . We take inspiration from Acemoglu et al. (2019) who use the degree of democracy in a country's neighbourhood as a source of exogenous variation for the domestic democratic status. We apply the same rationale to our context. With the GPS data, however, we do not have a temporal dimension to exploit which may lead to a weaker first-stage. We posit the demand for (in)equality in the domestic country is affected by the supply in foreign countries. To illustrate the existence of this concept, Figure 2 displays a stark spatial correlation of inequality within-regions. Formulaically, we can write that inequality in country i is influenced by inequality in the set of countries:

$$I_i = \{j : j \neq i, R_i = R_j\} \quad (1)$$

where R denotes the seven regions defined in Acemoglu et al. (2019) in which the countries share a common political history. These regions are Africa, East Asia and the Pacific, Eastern Europe and Central Asia, Western Europe and other developed countries, Latin America and the Caribbean,

the Middle East and the North of Africa, and South Asia. Using these sets, we define our instrument as:

$$Z_i = \frac{1}{|I_i|} \frac{\sum_{j \in I_i} \text{'Inequality'}_j \times W_{ij}}{\sum_{j \in I_i} W_{ij}} \quad (2)$$

where 'Inequality'_{*j*} is the disposable Gini index in foreign country *j*; and W_{ij} is the inverse distance between country *i* and *j*'s most populous cities. We apply this inverse distance weighting formula in order to assign a higher weight to inequality in more proximate countries and generate more variation in the instrument for each country. For instance, for the UK, the instrument gives more prominence to inequality in Europe than in North America despite being a member of the same region. It is also important to note that we use a global sample of 178 countries to derive the instrument for the 76 GPS countries. Crucially, the instrument is constructed so that an increase in inequality in the foreign countries increases the value of Z_i , which can influence inequality in the domestic country.¹³

We acknowledge that spatial instruments like this have faced some criticism (Betz et al., 2018). Hence, we also use a complementary Bartik 'shift-share' instrument. The intuition here is that countries differ in their current level of inequality, for historical reasons, and these differences can determine the degree to which a country is affected by regional changes in inequality. Specifically, our instrument is constructed as follows:

$$Z_i^{Bartik} = \text{'Inequality'}_{i,1990-2001} \times g_{t,j \in I_i} \quad (3)$$

we define the initial level of inequality in country *i* as the 1990-2001 average and interact this with the growth rate of inequality in country *i*'s region (as defined in Eq. 1), whilst excluding *i*, from 1990-2001 to 2002-2012 (*t*). In other words, variation in the instrument comes from the interaction between the initial exposure to inequality (the 'share' term) and the changing pattern of foreign

¹³As in Acemoglu et al. (2019) we construct three related instruments to test the sensitivity of our results to instrument construction: (i) the jackknifed average of inequality in the region; (ii) the jackknifed average of inequality in contiguous countries; and (iii) inequality weighted by proximity for all countries across the globe. The results can be found in Table C.1 and our findings persist irrespective of the instrument used. We also explored robustness to constructing our instrument using the 1990-2000 values of inequality, that is, we used the temporal lag of Z , Z_{t-1} . The results are shown in Table A.7 and our findings remain the same.

inequality in a given country's region (the 'shift' term). By definition the Bartik instrument is a complementary approach to the spatial instrument since we now exploit *changes* in foreign inequality. Specifically, identification in this setting is motivated by exogenous jackknifed regional 'shocks' (changes in the amount of foreign inequality over time), even when exposure shares are assumed to be endogenous (Borusyak et al., 2021). Thus, we continue with the jackknifed (leave-one-out) approach in constructing the growth rates.

4.2 Empirical evidence

We estimate the IV regressions for both the country- and individual-level. Table 4 and 5 present the results for the country- and individual-level, respectively, and we consider the findings in tandem. The first-stage results are reported at the bottom of each panel in the tables. The coefficient for 'inequality abroad', Z , is positive as expected and significant at the 1% level in all specifications. The instrument is strong, as captured by the KP test statistic values. The second-stage results reported in the Tables once again show a positive effect of inequality on risk preference. The IV estimates of inequality are highly significant and generally not so different from the OLS ones, pointing to the absence of a strong endogeneity bias. As with our OLS estimates, the IV estimates are almost identical between the two layers, which further substantiates that there are no aggregation effects. Turning now to our Bartik IV results in Panel B, the instrument performs very well and, in all specifications, we find a positive and significant effect of inequality on risk preference. The smaller sample size is due to the data intensive construction of the instrument, that is, we require full inequality data back to the 1990's. This is likely the reason for a smaller coefficient magnitude.

Overall, the picture is clear: inequality is associated with risk taking and the evidence is in favour of a causal relationship.

[Table 4 about here.]

[Table 5 about here.]

4.3 Threats to instrument validity

The key assumption for our spatial instrument to be valid requires that inequality in foreign countries does not affect risk preferences in the domestic country. There are two such channels that may violate this: spillovers and interdependence (Betz et al., 2018).

Interdependence here means that foreign inequality (X_j) could directly affect domestic risk preference (Y_i). This patently does not make sense. It is difficult to argue that domestic individuals would change their risk taking preferences because of a change in inequality elsewhere. Especially so since individuals very assessment of inequality is based on their income compared to other individuals in the distribution. It is unreasonable that this comparison would be made beyond the level at which policies can affect inequality, i.e. the nation state. The scenario in which this may be plausible is when one's network and peers are based outside of their residing country, recent migrants for instance. To this end, we exclude several groups of individuals from the analysis in Appendix Tables B.3 and B.4, our results are unchanged.

The more pernicious channel, however, is spillovers. This follows the argument that inequality abroad (X_j) affects foreign risk preference (Y_j), which in turn, has a spillover effect on the domestic risk preference (Y_i). To block this channel, we control for the inverse distance weighted average of risk preference in a country's region. The results are presented in Appendix Table A.9 and the effect of inequality reassuringly remains correctly signed and significant throughout.¹⁴

Finally, we reiterate that our results are robust to the use of a Bartik instrument. The jackknifed regional growth rate of inequality circumvents the criticisms of the spatial instrument since we are now relying on *changes* in foreign inequality for identification.

5 Extensions: Perceptions and references

In this section we explore two sources of heterogeneity that may ratchet the relationship between inequality and risk preference as predicted in our theoretical framework. We return to our individual-

¹⁴As a further check, we verify that our results are not driven by correlated regional shocks to income by adding a control for the inverse distance weighted average of GDP in a country's region. The results are presented in Appendix Table A.8 and the effect of inequality remains significant throughout.

level analysis to provide valuable insights the role of one's reference point and their perception of the level of inequality.¹⁵

5.1 Perceptions of inequality

Our theoretical framework outlined the notion that the effect of inequality on risk preference may vary by how accurately one perceives the level of inequality in their country. As we discussed, perceptions may deviate from the true level of inequality given that inequality is a measure of variance and requires some numeracy skills to accurately interpret the signals from society. Indeed, any measure would only be a proxy for interpretability quality since this can be affected by media consumption or place of residence, for instance. With this motivation in hand, we exploit a survey item contained in the Gallup World Poll that asks respondents about their subjective math skills to assess how this perception alters risk preference. Respondents answer on a 11-point scale, and we create a dichotomous variable for the top two categories and 0 otherwise. We denote this variable 'High maths'.

We estimate the effect of perceptions by interacting the dummy with 'Inequality'. The estimates are displayed in Appendix Table 6. In the first five columns we proceed as we previously have with model specifications. The final column, however, presents a specification with country fixed effects, which is possible since our interaction term varies within-countries. Throughout the table we observe a positive and statistically significant interaction between inequality and our 'High maths' proxy of perception. Bear in mind, that the 'High maths' interaction with inequality is significant even after controlling for the objective level of education. The results support our hypothesis that when an individual has the ability to better perceive inequity, the effect of inequality is even larger on one's risk preference.

[Table 6 about here.]

¹⁵In Appendix B.2, we implement a machine learning approach, a classification and regression tree (CART), and, fascinatingly, we reach the same conclusions as in this section. We direct the interested reader there for a more detailed explanation.

5.2 Reference point

Finally, in accordance with reference dependent utility theories discussed in the introduction, individuals move from a state of risk aversion to one of risk taking when they fall below a reference point.

We estimate the role of the reference point as a ratcheting factor by interacting the dummy with 'Inequality'. The estimates are displayed in Table 7. We follow the same specifications as in the previous subsection. Throughout the table we observe a positive and statistically significant interaction between inequality and income dissatisfaction. The interpretation is in line with our hypothesis: when individuals are below their reference point and inequality increases, this is further associated with an increase in one's preference for taking risk.

Our final contribution is to show the effect of 'Inequality' over all categories of income dissatisfaction. We depict the marginal effects in Figure 4. We clearly observe that there is only a significant effect when an individual is dissatisfied with their household income.

All in all, this is quite compelling first evidence that reference-dependent risk preferences are important drivers of the relationship studied throughout this paper.

[Table 7 about here.]

[Figure 4 about here.]

6 Concluding discussion

In this paper, we present a global snapshot of the relationship between inequality and risk-taking. Using survey data for around 80,000 people across 76 countries representing the global population, we find that there is a strong and robust relationship between a country's measure of post-tax income inequality and experimentally validated measures of willingness to take risk at the individual and country-level. A higher level of inequality in a country relates to a higher willingness-to-take risk both in the raw data and conditional on standard socioeconomic controls. Moreover, two complementary instrumental variable strategies come to the same conclusion that there appears to be a

causal relationship running from income inequality to risk preferences, and we provided evidence that reference-dependent utility might be an important driver of this relationship.

Our baseline measure of inequality is the post-tax Gini coefficient of income inequality. A Gini coefficient summarises the entire income distribution and takes the value of zero for the most extreme form of inequality and the value one for complete equality. We acknowledge that any value in between these extreme outcomes can represent completely different income distributions, but at least in the sampled era it appears that country-level Gini coefficients are highly correlated with income polarisation. That is, in our common sample of 76 countries, the Gini is strongly positively correlated with the total percentage of national income held by the top-10 percent earners and strongly negatively correlated with the share of total income held by the bottom 10-percent earners. Our empirical models then also lead to similar conclusions when replacing the Gini coefficient with the latter two measures, or alternative measures which do not consider the entire income distribution but which are sensitive to income polarisation.

Our paper uses survey data that were collected in 2012 and inequality data averaged over the period from 2002 to 2012. There is evidence that in the subsequent years, at least in the advanced world, inequality and polarisation have further increased or at least, not diminished (Hoffmann et al., 2020). Moreover, the recent and on-going shocks to the global economy, are characterised by features such as high inflation, recessions and innovation, which have proven to be potentially important determinants of inequality and polarisation. Given the large number of behaviours that risk attitudes can affect, as discussed in the introduction, the results of this paper are of importance to allow policymakers a more complete picture of the costs and benefits of policies related to inequality, or to allow firms and individuals to better assess future macroeconomic and political developments given current levels and predicted trends in inequality.

7 References

- Acemoglu, D., Naidu, S., Restrepo, P., and Robinson, J. A. (2015). Democracy, redistribution, and inequality. In *Handbook of Income Distribution*, volume 2, pages 1885–1966. Elsevier.
- Acemoglu, D., Naidu, S., Restrepo, P., and Robinson, J. A. (2019). Democracy does cause growth. *Journal of Political Economy*, 127(1):47–100.
- Alesina, A., Stantcheva, S., and Teso, E. (2018). Intergenerational mobility and preferences for redistribution. *American Economic Review*, 108(2):521–54.
- Bell, D. E. (1985). Disappointment in decision making under uncertainty. *Operations Research*, 33(1):1–27.
- Benjamin, D. J., Brown, S. A., and Shapiro, J. M. (2013). Who is ‘behavioral’? cognitive ability and anomalous preferences. *Journal of the European Economic Association*, 11(6):1231–1255.
- Betz, T., Cook, S. J., and Hollenbach, F. M. (2018). On the use and abuse of spatial instruments. *Political Analysis*, 26(4):474–479.
- Blundell, R., Joyce, R., Keiller, A. N., and Ziliak, J. P. (2018). Income inequality and the labour market in Britain and the US. *Journal of Public Economics*, 162:48–62.
- Borusyak, K., Hull, P., and Jaravel, X. (2021). Quasi-Experimental Shift-Share Research Designs. *The Review of Economic Studies*.
- Boyce, C. J., Brown, G. D., and Moore, S. C. (2010). Money and happiness: Rank of income, not income, affects life satisfaction. *Psychological Science*, 21(4):471–475.
- Brown-Iannuzzi, J. L. and McKee, S. E. (2019). Economic inequality and risk-taking behaviors. In *The Social Psychology of Inequality*, pages 201–212. Springer.
- Buccioli, A. and Miniaci, R. (2018). Financial risk propensity, business cycles and perceived risk exposure. *Oxford Bulletin of Economics and Statistics*, 80(1):160–183.
- Caraco, T., Martindale, S., and Whittam, T. S. (1980). An empirical demonstration of risk-sensitive foraging preferences. *Animal Behaviour*, 28(3):820–830.
- Card, D., Mas, A., Moretti, E., and Saez, E. (2012). Inequality at work: The effect of peer salaries on job satisfaction. *American Economic Review*, 102(6):2981–3003.
- Chetty, R. and Hendren, N. (2018). The impacts of neighborhoods on intergenerational mobility ii: County-level estimates. *The Quarterly Journal of Economics*, 133(3):1163–1228.

- Cheung, F. and Lucas, R. E. (2016). Income inequality is associated with stronger social comparison effects: The effect of relative income on life satisfaction. *Journal of Personality and Social Psychology*, 110(2):332.
- Crosen, R. and Gneezy, U. (2009). Gender differences in preferences. *Journal of Economic literature*, 47(2):448–74.
- Dohmen, T., Falk, A., Huffman, D., Sunde, U., Schupp, J., and Wagner, G. G. (2011). Individual risk attitudes: Measurement, determinants, and behavioral consequences. *Journal of the European Economic Association*, 9(3):522–550.
- Dohmen, T., Lehmann, H., and Pignatti, N. (2016). Time-varying individual risk attitudes over the great recession: A comparison of germany and ukraine. *Journal of Comparative Economics*, 44(1):182–200.
- Dohmen, T., Non, A., and Stolp, T. (2021). Reference points and the tradeoff between risk and incentives. *Journal of Economic Behavior & Organization*, 192:813–831.
- Eriksson, K. and Simpson, B. (2012). What do americans know about inequality? it depends on how you ask them. *Judgment and decision making*, 7(6):741–745.
- Ermer, E., Cosmides, L., and Tooby, J. (2008). Relative status regulates risky decision making about resources in men: Evidence for the co-evolution of motivation and cognition. *Evolution and Human Behavior*, 29(2):106–118.
- Falk, A., Becker, A., Dohmen, T., Enke, B., Huffman, D., and Sunde, U. (2018). Global evidence on economic preferences. *The Quarterly Journal of Economics*, 133(4):1645–1692.
- Falk, A., Becker, A., Dohmen, T. J., Huffman, D., and Sunde, U. (2022). The preference survey module: A validated instrument for measuring risk, time, and social preferences. *Management Science*, forthcoming.
- Fehr, D. and Reichlin, Y. (2021). Perceived relative wealth and risk taking.
- Ferrer-i Carbonell, A. (2005). Income and well-being: an empirical analysis of the comparison income effect. *Journal of Public Economics*, 89(5-6):997–1019.
- Festinger, L. (1954). A theory of social comparison processes. *Human Relations*, 7(2):117–140.
- Fliessbach, K., Weber, B., Trautner, P., Dohmen, T., Sunde, U., Elger, C. E., and Falk, A. (2007). Social comparison affects reward-related brain activity in the human ventral striatum. *Science*, 318(5854):1305–1308.

- Golsteyn, B. and Schildberg-Hörisch, H. (2017). Challenges in research on preferences and personality traits: Measurement, stability, and inference. *Journal of Economic Psychology*, 60:1–6.
- Gomes, F. J. (2005). Portfolio choice and trading volume with loss-averse investors. *The Journal of Business*, 78(2):675–706.
- Gonzales, J., Mishra, S., and Camp, R. D. (2017). For the win: Risk-sensitive decision-making in teams. *Journal of Behavioral Decision Making*, 30(2):462–472.
- Gul, F. (1991). A theory of disappointment aversion. *Econometrica*, pages 667–686.
- Hoffmann, F., Lee, D. S., and Lemieux, T. (2020). Growing income inequality in the United States and other advanced economies. *Journal of Economic Perspectives*, 34(4):52–78.
- Jäger, S., Roth, C., Roussille, N., and Schoefer, B. (2022). Worker beliefs about outside options. Technical report, National Bureau of Economic Research.
- Kerr, W. R. (2014). Income inequality and social preferences for redistribution and compensation differentials. *Journal of Monetary Economics*, 66:62–78.
- Kőszegi, B. and Rabin, M. (2006). A model of reference-dependent preferences. *The Quarterly Journal of Economics*, 121(4):1133–1165.
- Kőszegi, B. and Rabin, M. (2007). Reference-dependent risk attitudes. *American Economic Review*, 97(4):1047–1073.
- Kőszegi, B. and Rabin, M. (2009). Reference-dependent consumption plans. *American Economic Review*, 99(3):909–36.
- Kotschy, R. and Sunde, U. (2017). Democracy, inequality, and institutional quality. *European Economic Review*, 91:209–228.
- Kuhn, P., Kooreman, P., Soetevent, A., and Kapteyn, A. (2011). The effects of lottery prizes on winners and their neighbors: Evidence from the dutch postcode lottery. *American Economic Review*, 101(5):2226–47.
- Linde, J. and Sonnemans, J. (2012). Social comparison and risky choices. *Journal of Risk and Uncertainty*, 44(1):45–72.
- Loomes, G. and Sugden, R. (1982). Regret theory: An alternative theory of rational choice under uncertainty. *The Economic Journal*, 92(368):805–824.
- Loomes, G. and Sugden, R. (1986). Disappointment and dynamic consistency in choice under uncertainty. *The Review of Economic Studies*, 53(2):271–282.

- Mishra, S., Barclay, P., and Lalumière, M. L. (2014). Competitive disadvantage facilitates risk taking. *Evolution and Human Behavior*, 35(2):126–132.
- Mishra, S. and Fiddick, L. (2012). Beyond gains and losses: the effect of need on risky choice in framed decisions. *Journal of Personality and Social Psychology*, 102(6):1136.
- Mishra, S., Gregson, M., and Lalumiere, M. L. (2012). Framing effects and risk-sensitive decision making. *British Journal of Psychology*, 103(1):83–97.
- Mishra, S., Hing, L. S. S., and Lalumiere, M. L. (2015). Inequality and risk-taking. *Evolutionary Psychology*, 13(3):1474704915596295.
- Mishra, S. and Lalumière, M. L. (2010). You can't always get what you want: The motivational effect of need on risk-sensitive decision-making. *Journal of Experimental Social Psychology*, 46(4):605–611.
- Norton, M. I. and Ariely, D. (2011). Building a better america—one wealth quintile at a time. *Perspectives on Psychological Science*, 6(1):9–12.
- Odean, T. (1998). Are investors reluctant to realize their losses? *The Journal of Finance*, 53(5):1775–1798.
- Oster, E. (2019). Unobservable selection and coefficient stability: Theory and evidence. *Journal of Business & Economic Statistics*, 37(2):187–204.
- Panunzi, F., Pavoni, N., and Tabellini, G. (2021). Economic shocks and populism: The political implications of reference-dependent preferences. *SSRN 3680459*.
- Payne, B. K., Brown-Iannuzzi, J. L., and Hannay, J. W. (2017). Economic inequality increases risk taking. *Proceedings of the National Academy of Sciences*, 114(18):4643–4648.
- Piketty, T. and Saez, E. (2014). Inequality in the long run. *Science*, 344(6186):838–843.
- Powdthavee, N., Burkhauser, R. V., and De Neve, J.-E. (2017). Top incomes and human well-being: Evidence from the Gallup World Poll. *Journal of Economic Psychology*, 62:246–257.
- Rode, C., Cosmides, L., Hell, W., and Tooby, J. (1999). When and why do people avoid unknown probabilities in decisions under uncertainty? Testing some predictions from optimal foraging theory. *Cognition*, 72(3):269–304.
- Roth, C. and Wohlfart, J. (2018). Experienced inequality and preferences for redistribution. *Journal of Public Economics*, 167:251–262.
- Sahm, C. R. (2012). How much does risk tolerance change? *The Quarterly Journal of Finance*, 2(04):1250020.

- Schwerter, F. (2022). Social reference points and risk taking. Technical report.
- Searcy, G. D. and Pietras, C. J. (2011). Optimal risky choice in humans: Effects of amount of variability. *Behavioural Processes*, 87(1):88–99.
- Solt, F. (2020). Measuring income inequality across countries and over time: The standardized world income inequality database. *Social Science Quarterly*, 101(3):1183–1199.
- Stephens, D. (1981). The logic of risk-sensitive foraging preferences. *Animal Behaviour*, 29(2):628–629.
- Sunde, U., Dohmen, T., Enke, B., Falk, A., Huffman, D., and Meyerheim, G. (2022). Patience and comparative development. *The Review of Economic Studies*, 89(5):2806–2840.
- Thaler, R. H. and Johnson, E. J. (1990). Gambling with the house money and trying to break even: The effects of prior outcomes on risky choice. *Management Science*, 36(6):643–660.
- Vieider, F. M., Chmura, T., Fisher, T., Kusakawa, T., Martinsson, P., Thompson, F. M., and Sunday, A. (2015). Within-versus between-country differences in risk attitudes: implications for cultural comparisons. *Theory and Decision*, 78(2):209–218.

Figures and tables

Figure 1: Risk preference around the globe

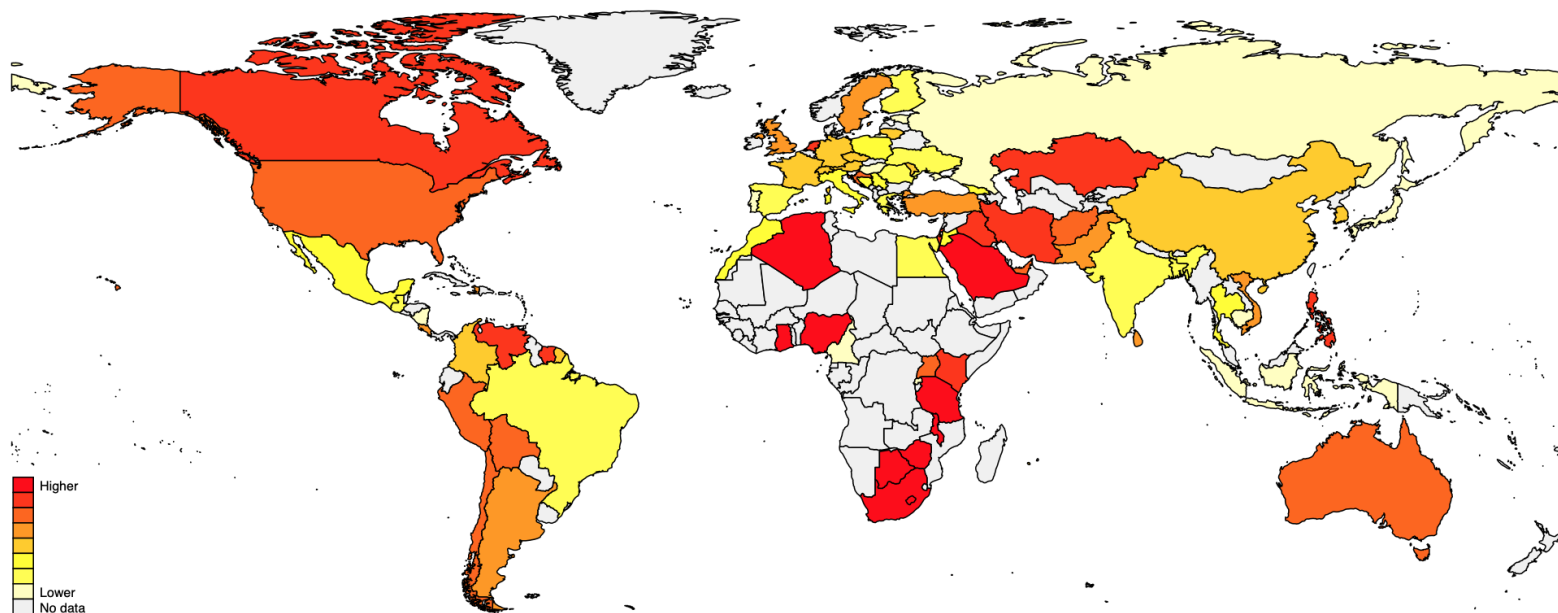


Figure 2: Inequality around the globe

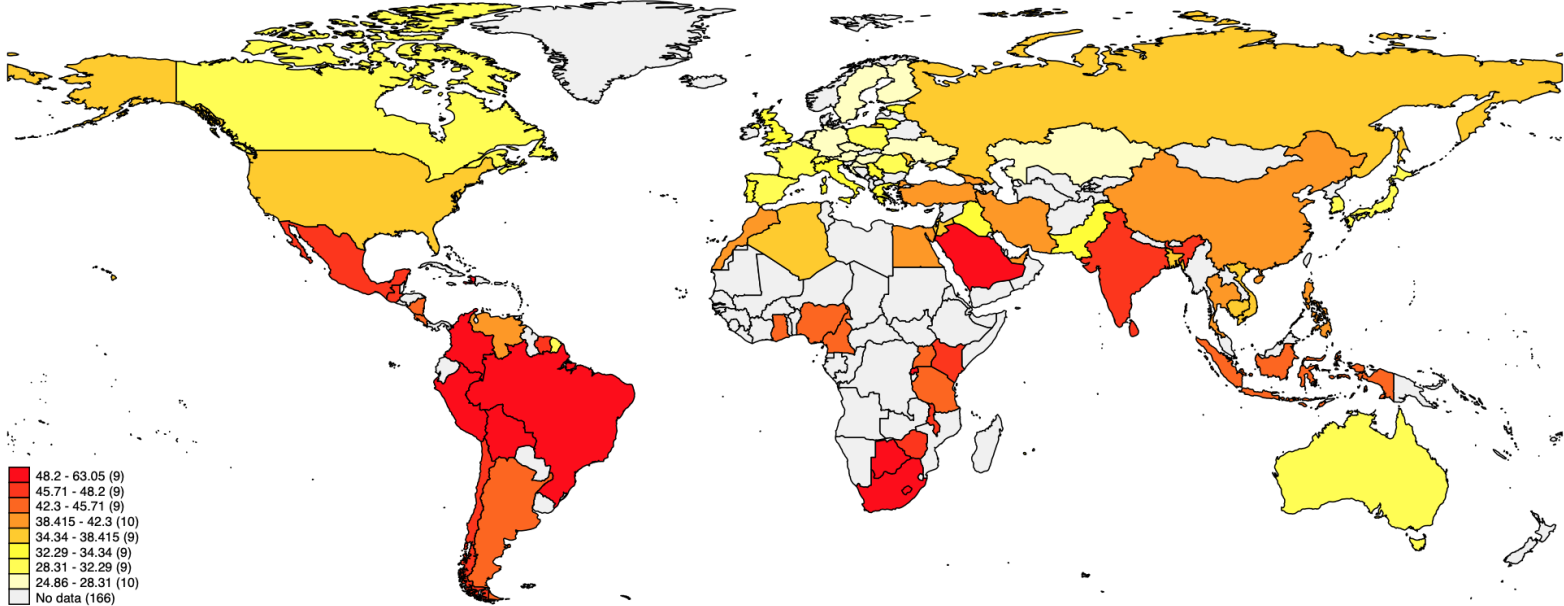


Table 1: Inequality and risk preference: country-level

	Risk preference			
	(1)	(2)	(3)	(4)
Inequality	0.012** (0.005)	0.015*** (0.005)	0.014** (0.006)	0.012** (0.006)
Ln of GDP p/c		0.027 (0.028)	0.038 (0.026)	0.030 (0.028)
Precipitation			-0.002*** (0.001)	-0.002*** (0.001)
Temperature			0.008* (0.005)	0.012** (0.006)
Ruggedness			-0.013 (0.027)	-0.006 (0.029)
Dist. to nearest waterway			0.099 (0.085)	0.148 (0.092)
Island			0.037 (0.105)	0.047 (0.104)
Democracy				0.096 (0.115)
R-squared	0.123	0.136	0.287	0.296
Observations	76	76	76	76

Notes: Standard errors are in parentheses. ***, **, * Statistically significant at the 1%, 5% and 10% level respectively.

Figure 3: Inequality and risk preference

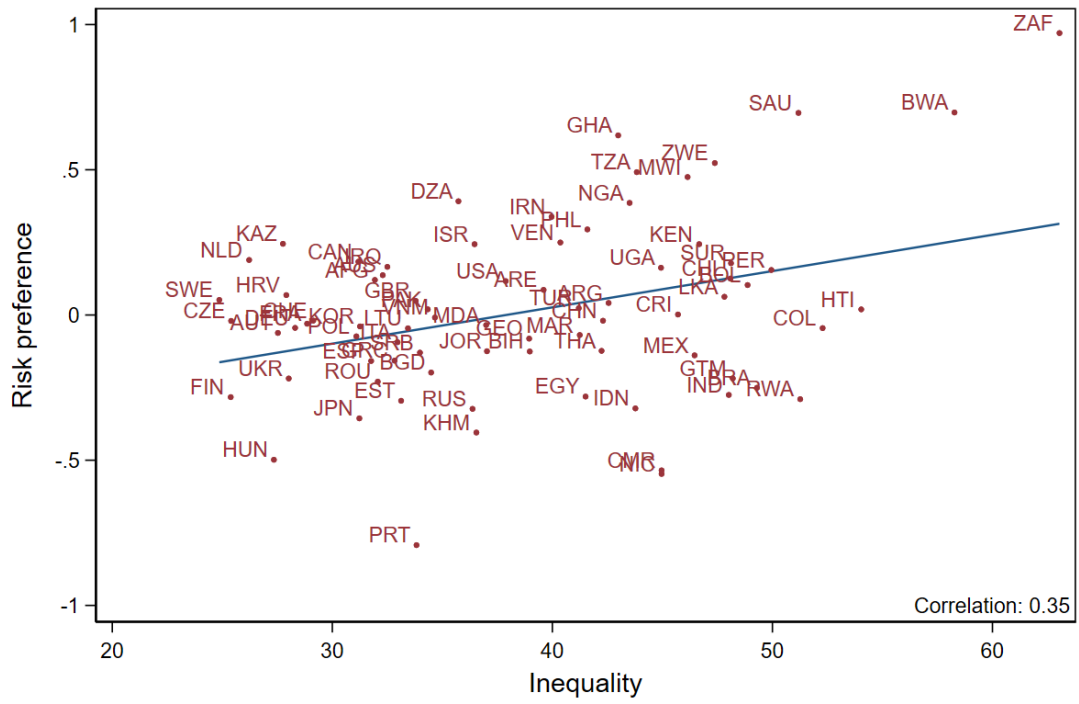


Table 2: Income shares and risk preference

	Risk preference			
	(1)	(2)	(3)	(4)
Panel A				
Income share [top 10%]	0.014** (0.007)	0.014* (0.008)	0.016** (0.007)	0.015* (0.008)
Income		✓	✓	✓
Controls			✓	✓
Democracy				✓
R-squared	0.105	0.105	0.258	0.258
Observations	71	71	71	71
Panel B				
Income share [bottom 10%]	-0.080* (0.042)	-0.077* (0.043)	-0.099** (0.040)	-0.092** (0.040)
Income		✓	✓	✓
Controls			✓	✓
Democracy				✓
R-squared	0.055	0.071	0.248	0.250
Observations	71	71	71	71
Panel C				
Palma ratio	0.099*** (0.035)	0.096** (0.037)	0.099*** (0.032)	0.099*** (0.037)
Income		✓	✓	✓
Controls			✓	✓
Democracy				✓
R-squared	0.153	0.156	0.296	0.296
Observations	71	71	71	71
Panel D				
80th/20th	0.022** (0.009)	0.021** (0.009)	0.023*** (0.008)	0.022** (0.009)
Income		✓	✓	✓
Controls			✓	✓
Democracy				✓
R-squared	0.132	0.139	0.288	0.288
Observations	71	71	71	71

Notes: Standard errors are in parentheses. ***, **, * Statistically significant at the 1%, 5% and 10% level respectively.

Table 3: Inequality and risk preference: individual-level

	Risk preference			
	(1)	(2)	(3)	(4)
Inequality	0.0114** (0.005)	0.0130** (0.005)	0.0105* (0.006)	0.0123* (0.006)
Income	✓	✓	✓	✓
Individual controls	✓	✓	✓	✓
Additional individual controls		✓		✓
Country controls			✓	✓
R-squared	0.086	0.106	0.095	0.117
Observations	79,439	68,415	79,439	68,415

Notes: Standard errors, clustered at the country-level, are in parentheses. ***, **, * Statistically significant at the 1%, 5% and 10% level respectively.

Table 4: Inequality and risk preference: Country-level IV estimates

	Risk preference			
	(1)	(2)	(3)	(4)
Panel A				
Inequality	0.015*** (0.005)	0.020*** (0.006)	0.024*** (0.006)	0.024*** (0.007)
Income		✓	✓	✓
Controls			✓	✓
Democracy				✓
Z	1.008	1.062	1.069	1.008
Z p-value	0.000	0.000	0.000	0.000
F-stat	186.113	76.658	44.868	46.062
Observations	76	76	76	76
Panel B				
Inequality	0.011** (0.005)	0.013** (0.006)	0.013** (0.006)	0.011* (0.006)
Income		✓	✓	✓
Controls			✓	✓
Democracy				✓
Z^{Bartik}	0.969	0.945	0.945	0.945
Z^{Bartik} p-value	0.000	0.000	0.000	0.000
F-stat	1245.862	599.427	423.551	335.556
Observations	72	72	72	72

Notes: F-stat is the Kleibergen-Paap weak instrument statistic. Standard errors are in parentheses. ***, **, * Statistically significant at the 1%, 5% and 10% level respectively.

Table 5: Inequality and risk preference: Individual-level IV estimates

	Risk preference			
	(1)	(2)	(3)	(4)
Panel A				
Inequality	0.017*** (0.006)	0.018*** (0.005)	0.024*** (0.009)	0.025*** (0.008)
Income	✓	✓	✓	✓
Individual controls	✓	✓	✓	✓
Additional individual controls		✓		✓
Country controls			✓	✓
Z	1.005	1.024	0.942	0.986
Z p-value	0.000	0.000	0.000	0.000
F-stat	57.568	68.596	31.853	46.306
Observations	75,450	66,473	75,450	66,473
Panel B				
Inequality	0.011* (0.006)	0.012** (0.006)	0.010 (0.007)	0.011* (0.006)
Income	✓	✓	✓	✓
Individual controls	✓	✓	✓	✓
Additional individual controls		✓		✓
Country controls			✓	✓
Z^{Bartik}	0.930	0.933	0.935	0.921
Z^{Bartik} p-value	0.000	0.000	0.000	0.000
F-stat	509.733	580.753	297.307	341.699
Observations	75,450	66,473	75,450	66,473

Notes: F-stat is the Kleibergen-Paap weak instrument statistic. Standard errors, clustered at the country-level, are in parentheses. ***, **, * Statistically significant at the 1%, 5% and 10% level respectively.

Table 6: Inequality, perceptions and risk preference

	Risk preference				
	(1)	(2)	(3)	(4)	(5)
Inequality	0.011** (0.005)	0.012** (0.005)	0.010* (0.005)	0.011* (0.006)	
High maths	-0.055 (0.091)	-0.071 (0.087)	-0.072 (0.087)	-0.071 (0.081)	-0.065 (0.070)
Inequality × High maths	0.006** (0.002)	0.006** (0.002)	0.006*** (0.002)	0.006*** (0.002)	0.005*** (0.002)
GDP	✓	✓	✓	✓	
Individual controls	✓	✓	✓	✓	✓
Additional individual controls		✓		✓	✓
Country controls			✓	✓	
Country FEs					✓
R-squared	0.090	0.106	0.099	0.118	0.172
Observations	79,439	68,415	79,439	68,415	68,415

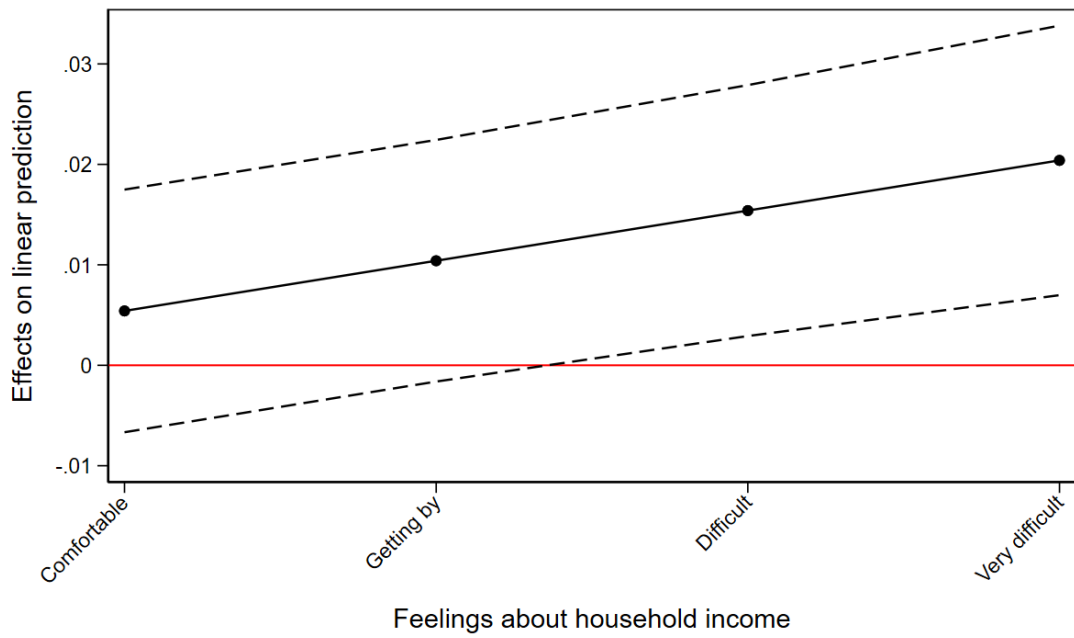
Notes: Standard errors, clustered at the country-level, are in parentheses. ***, **, * Statistically significant at the 1%, 5% and 10% level respectively.

Table 7: Inequality, income dissatisfaction and risk preference

	Risk preference				
	(1)	(2)	(3)	(4)	(5)
Inequality	0.009* (0.005)	0.010* (0.005)	0.007 (0.005)	0.008 (0.006)	
Income dissatisfaction	-0.430*** (0.129)	-0.418*** (0.104)	-0.476*** (0.116)	-0.457*** (0.106)	-0.239*** (0.051)
Inequality × Income dissatisfaction	0.008** (0.003)	0.009*** (0.002)	0.009*** (0.003)	0.009*** (0.002)	0.004*** (0.001)
GDP	✓	✓	✓	✓	
Individual controls	✓	✓	✓	✓	✓
Additional individual controls		✓		✓	✓
Country controls			✓	✓	
Country FEs					✓
R-squared	0.092	0.111	0.102	0.124	0.178
Observations	76,285	65,511	76,285	65,511	65,511

Notes: Standard errors, clustered at the country-level, are in parentheses. ***, **, * Statistically significant at the 1%, 5% and 10% level respectively.

Figure 4: Inequality, the reference point and risk preference



Notes: Dashed lines indicate 95% confidence intervals