

Dietrich, Alexander M.; Müller, Gernot J.; Schoenle, Raphael

Working Paper

Big news: Climate change and the business cycle

University of Tübingen Working Papers in Business and Economics, No. 158

Provided in Cooperation with:

University of Tuebingen, Faculty of Economics and Social Sciences, School of Business and Economics

Suggested Citation: Dietrich, Alexander M.; Müller, Gernot J.; Schoenle, Raphael (2023) : Big news: Climate change and the business cycle, University of Tübingen Working Papers in Business and Economics, No. 158, University of Tübingen, Faculty of Economics and Social Sciences, Tübingen, <https://doi.org/10.15496/publikation-80003>

This Version is available at:

<https://hdl.handle.net/10419/271523>

Standard-Nutzungsbedingungen:

Die Dokumente auf EconStor dürfen zu eigenen wissenschaftlichen Zwecken und zum Privatgebrauch gespeichert und kopiert werden.

Sie dürfen die Dokumente nicht für öffentliche oder kommerzielle Zwecke vervielfältigen, öffentlich ausstellen, öffentlich zugänglich machen, vertreiben oder anderweitig nutzen.

Sofern die Verfasser die Dokumente unter Open-Content-Lizenzen (insbesondere CC-Lizenzen) zur Verfügung gestellt haben sollten, gelten abweichend von diesen Nutzungsbedingungen die in der dort genannten Lizenz gewährten Nutzungsrechte.

Terms of use:

Documents in EconStor may be saved and copied for your personal and scholarly purposes.

You are not to copy documents for public or commercial purposes, to exhibit the documents publicly, to make them publicly available on the internet, or to distribute or otherwise use the documents in public.

If the documents have been made available under an Open Content Licence (especially Creative Commons Licences), you may exercise further usage rights as specified in the indicated licence.

University of Tübingen
Working Papers in
Business and Economics

No. 158

Big News:

Climate Change and the Business Cycle

by

Alexander M. Dietrich, Gernot J. Müller and Raphael S. Schoenle

Faculty of Economics and Social Sciences
www.wiwi.uni-tuebingen.de



Big News: Climate Change and the Business Cycle

Alexander M. Dietrich, Gernot J. Müller and Raphael S. Schoenle*

March 20, 2023

Abstract

News drive expectations about the economy’s future fundamentals. Climate change is big news: it will impact the economy profoundly but the effect will take some time to materialize in full. Climate-change expectations thus offer a unique opportunity to study the impact of news on the business cycle. We measure these expectations in a representative survey of US consumers. Respondents expect not much of an impact on GDP growth, but perceive a high probability of costly, rare disasters—suggesting they are salient of climate change. Furthermore, expectations vary systematically with socioeconomic characteristics, media consumption, various information treatments and over time. We calibrate a New Keynesian model with rare disasters to key results of the survey and find that shifts in climate change expectations operate like demand shocks and cause sizeable business cycle fluctuations.

Keywords: Climate change, Disasters, Expectations, Survey,
Monetary policy, Business Cycle, Natural rate of interest

JEL-Codes: E43, E52, E58

*Dietrich: University of Tübingen, Email: alexander.dietrich@uni-tuebingen.de; Müller: University of Tübingen, CEPR and CESifo, gernot.mueller@uni-tuebingen.de; Schoenle: Brandeis University, CEPR and CESifo, Email: schoenle@brandeis.edu. A earlier draft of this paper was circulated as “The Expectations Channel of Climate Change: Implications for Monetary Policy”. We thank François Gourio and Gregor von Schweinitz for generous discussions and Harald Uhlig for an insightful conversations which helped us to get this project started. We also thank Lydia Cox, Edward S. Knotek, Willi Mutschler, Johannes Pfeifer, Ricardo Reis, Michael Weber, Mirko Wiederholt, and various seminar audiences for very useful comments. Dietrich gratefully acknowledges support by Deutscher Akademischer Austauschdienst (DAAD, German Academic Exchange Service). The views stated in this paper are those of the authors and are not necessarily those of the Federal Reserve Bank of Cleveland or the Board of Governors of the Federal Reserve System. The randomized controlled trial is registered at the AER RCT Registry (#AEARCTR-0006848).

1 Introduction

Climate change is on peoples' mind and there is an emerging consensus that it will profoundly alter peoples' way of life and, not least among it, the economy. Rising temperatures are, among other things, influencing productivity and growth; they are also making extreme weather events and rare disasters more likely (Dell et al., 2012; IPCC, 2012; Somanathan et al., 2021). At the same time, it will take a long time for the full impact of climate change to materialize. In this sense, the economic impact of climate change represents *news* about the future—anticipated changes of the economy's fundamentals. As such they also have the potential to drive economic activity in the short run, that is, the business cycle (Beaudry and Portier, 2006; Jaimovich and Rebelo, 2009; Schmitt-Grohé and Uribe, 2012). Yet measuring news and identifying their effect on business cycles is challenging and remains controversial to date (Barsky and Sims, 2012; Blanchard et al., 2013; Enders et al., 2021). After all, news are not directly observable and, what's more, it is equally difficult to see to what extent news capture peoples' attention.

Against this background, we exploit the fact that climate change—perhaps the biggest news of all times—comes with certain salient features whose impact we can gauge by surveying consumers. Specifically, in the first part of the paper, we measure expectations about the economic impact of climate change in a large survey representative of US consumers. We find that while expectations vary systematically with socioeconomic characteristics, media consumption and various information treatments, respondents tend to assign large probabilities to climate-change related natural disasters—a salient feature of climate change. Expectations of climate-change related natural disasters are an example of rare-disaster expectations, which in turn, have been identified as an important driver of asset prices and the business cycle (Barro, 2006; Gourio, 2012; Kozłowski et al., 2020).

In the second part of the paper, we therefore zoom in on climate-change related disaster expectations and study their business-cycle implications. For this purpose we rely on a New Keynesian model with rare disasters as put forward by Fernández-Villaverde and Levintal (2018). We show analytically for a simplified model that disaster expectations—along both the intensive and the extensive margin—lower the natural rate of interest. Intuitively, a perceived increase of disaster expectations represents bad news about the future and depresses current economic activity. Once we map the results of the survey into a calibrated version of the full model, we find that climate-change related disaster expectations make a sizeable contribution to the business cycle. Assuming a standard monetary-policy reaction function, we find that they account for close to 10 percent of the volatility of inflation and the output gap.

The starting point for the analysis lies in measuring climate-change expectations. To measure these expectations, we rely on a representative survey of approximately 30,000 US consumers, conducted between October 2020 and July 2021. Among other things, we ask whether respondents expect climate change to impact output growth, either adversely, for

example, due to stricter regulation or positively, for example, due to technological innovation. We find that on average the *expected* impact on growth is negligible.¹ At the same time, respondents expect median disaster costs due to climate change over the next 12 months that amount to 1.5% in terms of GDP. Moreover, the median respondent assigns a 10% probability to a large natural disaster with damages amounting to 5% of GDP. This number is very high in light of the historical record: In the period from 1980 to 2019 there was no natural disaster in the US of that size (NCEI, 2020). Still, we obtain very similar responses once we consider only respondents who display a high degree of probability literacy and once we inform respondents of the fact that US GDP declined by about 5% during the global financial crisis.

To assess the information contained in these survey responses, first it is helpful to realize that the responses likely represent genuine information rather than measurement error: We find that they relate in a meaningful way to various respondent characteristics such as age, gender or political affiliations. Furthermore, validation of our survey responses as reflecting true subjective beliefs about climate change comes from the finding that respondents’ perceived probabilities correlate with behavioral adjustments at the individual level in reaction to climate change. Respondents are more likely to report adjustment of their investments, mobility and other decisions when they think that disasters due to climate change are more likely.

Second, while the measured probability of disasters may appear high, it may be so for a good reason. There are various possibilities: For instance, respondents may think we have been lucky in the past, just like in the case of “peso problems” and the past is therefore a bad guide for the future: in the relatively short sample under consideration, adverse events have simply materialized less often than one would find in a longer time series. Alternatively, natural disasters due to climate change may be more frequent in the future because we may have reached so-called “tipping points” where dynamics change in a highly non-linear way (Emanuel, 2018).

Third, and perhaps most likely, survey respondents may overestimate the probability of rare disasters, consistent with findings in other contexts which suggest that tail events and/or salient traits tend to be assigned excessively large probability weights (Barberis, 2013b; Heimer et al., 2019; Lichtenstein et al., 1978). There are various attempts to operationalize this phenomenon (Bordalo et al., 2019, 2020; Tversky and Kahneman, 1973). Most important for our analysis is the finding in earlier work that peoples’ subjective beliefs are relevant for their actions (Fox and Tversky, 1998; Tversky and Kahneman, 1992).

We find evidence from several survey results that indeed natural disasters are salient factors for the formation of expectations in the context of climate change: First, salient individual experiences seem to matter for the formation of climate change beliefs, just like macroeconomic experiences influence financial risk taking and inflation expectations (Malmendier and Nagel,

¹For the actual impact of temperature on output and output growth, based on historical data, see the estimates of Dell et al. (2012), Burke et al. (2015), and Colacito et al. (2019).

2011, 2015): respondents exposed to hurricanes or floods in their counties report 2 to 3 percentage point higher probabilities of future large disasters. Media consumption also correlates positively with disaster expectations. Second, a number of information treatments which make natural disasters salient in the context of climate change cause responses to shift in the expected direction. For instance, a “Newspaper treatment,” provides respondents with sections of a USA Today newspaper article on the 2020 wildfire and hurricane season. We find that in response to this treatment, respondents show a statistically significant, up to 0.8 percentage point higher expected disaster probability. A “Lagarde treatment,” confronts respondents with a recent statement by ECB President Lagarde on the importance of climate change for the ECB’s monetary policy; this treatment, too, shifts perceived disaster expectations upwards. This finding is reminiscent of information effects that have been documented in the context of traditional monetary policy communications (Nakamura and Steinsson, 2018). Third, we find evidence from assessing the question wording that natural disasters are indeed a salient feature of climate change evoked in the probability assessments of the survey: When we remove any reference to climate change in the elicitation of probability beliefs about rare natural disasters, probability estimates decrease. Our main question thus not only captures the effect of climate change in the assessment of rare disaster probabilities. It also makes natural disasters salient in the context of climate change.

In the second part of the paper, we assess the business-cycle impact of these climate-change expectations through the lens of a New Keynesian model which allows for rare disasters and is extended in order to account for time-varying disaster probabilities. As a limiting case the model nests the textbook version of the New Keynesian model (Galí, 2015). For this case, we derive a number of results in closed form. In particular, we show that expectations of a rare disaster lower the natural rate of interest today, reflecting both the probability of a disaster and the extent of the disaster. Intuitively, as the expected costs of a disaster go up, people increase their savings. The natural rate has to fall for markets to equilibrate. This effect is first-order and obtains even in linearized version of the model because disaster risk is one sided. Shifts of disaster expectations thus operate very much like sentiment or noise shocks (Enders et al., 2021; Lorenzoni, 2009).

We also rely on the simplified version of the model to spell out the implications for monetary policy in some detail: By tracking the natural rate, monetary policy can in principle fully stabilize the economy at its natural level in the face of disaster expectations. Under a conventional monetary policy rule, an adverse shift in disaster expectations instead is contractionary, and even more so if monetary policy is unresponsive to the shift, say because it is constrained by the effective lower bound. Because shifts in disaster expectations operate just like other adverse demand shocks they call for monetary accommodation. Within the confines of the model, monetary policy simply needs to track the natural rate, irrespective of the nature of the shock to achieve full stabilization. Still, as the natural rate is unobservable,

monetary policymakers need to understand the fundamental drivers of the business cycle, not least to get a sense of the likely persistence of the disturbances to which the economy is exposed at a given point in time. That this is particularly challenging in the context of climate change has been noted by central banks (Cœuré, 2018). And shifts in climate-change expectations are likely to become increasingly relevant in this regard.

We support this conjecture with a numerical analysis for which we map the responses of the survey into a calibrated version of the full model. We solve the model numerically using Taylor projections and verify that it captures key features of the business cycle. Under the baseline we assume that monetary policy follows a standard interest-rate feedback rule. A number of findings are noteworthy. First, climate-change related disaster expectations reduce the natural rate by 45 basis points in the risky steady state of the model. This is a sizable number given that recent estimates suggest an overall decline of the natural rate by about 2 percentage points in the wake of the global financial crisis (Federal Reserve Bank of New York, 2020). Moreover, shifts in climate-change related expectations (which we calibrate in line with a close proxy, Google search queries for “natural disasters”) make a sizeable contribution to the business cycle. They account for 7 and 8 percent of the volatility of inflation and the output gap, respectively.

Finally, we provide external evidence in support of the mechanism which operates at the heart of our model. Specifically, we estimate a VAR model on monthly times-series observations for the period from 2004-2020. For this purpose we proxy climate-change related disaster expectations with Google search queries for “natural disasters” because we find these to co-move strongly with the probability assigned to disasters by the respondents of our survey during the 9 months for which it ran daily. Our VAR model identifies shocks to disaster expectations recursively as variations in Google search queries and trace out their effects on other variables included in the VAR model, such as consumption, the CPI and unemployment. The dynamic adjustment to disaster expectations shocks apparent in the data confirms the predictions of our New Keynesian model as regards the effects of shifts in disaster expectations.

More broadly, our paper also relates to the literature on the interaction of climate change and macroeconomic performance following the influential work by Nordhaus (1994), Mendelsohn et al. (1994) and Nordhaus (2006), see Hassler and Krusell (2018) for a recent review of the “macroeconomics and climate” literature. This literature also studies the optimal policy response to climate change (e.g. Barro, 2015; Golosov et al., 2014). We focus on the reverse: how (expected) climate change impacts the business cycle and what that means for policy. Related work investigates the extent of directed technological change in response to (actual) natural resource scarcity or to (actual) carbon taxes (Aghion et al., 2016; Hassler et al., 2020; Heutel, 2012). Other work contrasts the effects of climate-change related risks to those of actual disasters, distinguishing demand and supply side effects (Batten et al., 2020; Cantelmo, 2020). Related work on the implication of climate change for asset prices shares our focus on

expectations (Bansal et al., 2019; Bauer and Rudebusch, 2020; Gollier, 2020). A recent survey of experts suggests that regulatory risk is also perceived as a key issue, at least in the short run (Stroebe and Wurgler, 2021).

There is also evidence that natural disasters trigger an adjustment of both expectations and economic behavior. While Baker et al. (2020) document the adjustment of professional forecasters to actual disasters on the basis of a large cross-country data set, Hu (2022) finds that households purchase more insurance policies in response to information about flood risk. Hong et al. (2020) study how the arrival of natural disasters affects disaster beliefs, disaster mitigation policy and the economy. Fried et al. (2021) study the effect of climate policy risk on firm investment. Finally, we note that our results underscore the importance of news media for both the expectation formation process and, more generally, for understanding the business cycle (Carroll, 2003; Chahrour et al., 2021; Larsen et al., 2021).

The remainder of this paper is organized as follows. We introduce our survey in the next section and discuss the main results. Section 3 outlines our New Keynesian model. We present analytical results and spell out the implications for monetary policy using a simplified version of the model in Section 4. In Section 5 we map the main results from the survey into the full model to quantify the macroeconomic impact of climate-change related disaster expectations. Section 6 illustrates the external validity of the mechanism which operates at the heart of the model. A final section concludes.

2 The Survey

In what follows we first provide some basic information about the survey. We subsequently present the main survey results. Then, using the survey data, we study through the lens of climate change expectation what deeper factors and mechanisms affect the formation of expectations.

2.1 Survey Design

Our data come from a large, nationally representative daily survey of consumers sponsored by the Federal Reserve Bank of Cleveland that has been running since March 10, 2020. The survey is described in detail in Dietrich et al. (2022) and Knotek et al. (2020). We add a number of questions on climate change to the survey, complementing the regular survey questions on consumers' demographic characteristics, their expectations, and consumers' perceptions surrounding COVID-19 and its impact on their behavior. These questions have been included during the period from October 1, 2020 to July 11, 2021. During that period we collected 28,284 responses.

The survey is administered by Qualtrics Research Services, which representatively draws re-

spondents from several actively managed, double-opt-in market research panels, complemented using social media (Qualtrics, 2019). The survey includes filters to eliminate respondents who write in gibberish for one response or more, or who complete the survey in less (more) than five (30) minutes. Our analysis uses iterative proportional fitting to create respondent weights after completion of the survey (“raking”, see for example Bishop et al. (1975) or Idel (2016)) to ensure that our sample is representative of the U.S. population by gender, age, income, education, ethnicity, and Census region. Table 1 provides a detailed breakdown of our sample. It shows that our sample even before weighting is approximately representative of the U.S. population according to the sampling criteria such as age, gender and race. It is also representative from a geographical point of view, as well as in terms of income and education. As we document below, climate-change expectations vary systematically with these characteristics. We provide a list of all questions in Appendix B.

Table 1: Survey Respondent Characteristics

	Survey	US pop.		Survey	US popu.
Age			Race		
18-34	33.55%	29.8%	non-Hispanic white	72.81%	60.1%
35-55	34.78%	32.4%	non-Hispanic black	9.87%	12.5%
>55	31.67%	37.8%	Hispanic	9.95%	18.5%
			Asian or other	7.35%	8.9%
Gender			Household Income		
female	50.12%	50.8%	less than 50k\$	39.35%	37.8%
male	49.49%	49.2%	50k\$ - 100k\$	38.64%	28.6%
other	0.39%	-%	more than 100k\$	22.01%	33.6%
Region			Education		
Midwest	20.80%	20.7%	some college or less	50.09%	58.3%
Northeast	21.16%	17.3%	bachelors degree or more	49.91%	41.7%
South	40.54%	38.3%			
West	17.50%	23.7%			
N=28,284					

Notes: Entries report statistics for the Survey respondents and the US population, as obtained from the US Census Bureau (Household income: CPS ASEC, 2021; gender, education: ACS, 2019 which does not report gender other than “male” and “female”; age, race, region: National Population Estimate, 2019).

In what follows we focus on the three main questions that relate to the expected effect of climate change on GDP growth, on the magnitude of economic damages and the probability of a costly large natural disaster. In doing so our focus is on the impact of climate-change expectations regarding the near term, as is relevant for business-cycle analysis. Table 2 lists our main questions. Our first question asks respondents how they expect climate change to impact economic growth over the next 12 months. The second question on climate change elicits

Table 2: Survey Questions

Q1	The average growth rate of real GDP in the US between 2009 and 2019 has been about 2 percent. Climate change might influence future growth rates positively, say, because it triggers technological innovation or negatively because of regulation and taxes. What do you think is the overall impact of climate change on economic growth over the next 12 months? [...]	Due to climate change, economic growth, compared to what it would be otherwise, will be . . . <i>[Participants assign probabilities to 7 bins from more than 2% lower to more than 2% higher]</i>
Q2	Recently, the economic damage due to natural disasters amounted to about 1% of GDP per year (Source: National Center for Environmental Information). In your view, will these damages be larger or smaller because of climate change? [...]	Specifically, what would you say is the percent chance that, over the next 12 month there will be . . . <i>[Participants assign probabilities to 7 options (verbally described and numerically defined) from no damage to around 5% of GDP]</i>
Q3	As a result of climate change, the risk of natural disasters (such as hurricanes, tropical cyclones, droughts, wildfires, or flooding) is likely to increase. The economic damage of such disasters may be sizeable. Considering the next 12 months, what do you think is the probability of a large disaster causing damage of about 5 percent of GDP?	The probability of a large disaster will be _____ percent.”

Notes: Appendix B provides the full set of questions asked in the survey.

beliefs about economic damages due to natural disasters over the next 12 months. Respondent answer choices are both verbally described as well as numerically defined (for example, “more damage than in the past (say, 2% of GDP)”). Our third question asks respondents about how likely they perceive natural disasters to be. Specifically, we ask them about a large disaster causing damage of about 5 percent of GDP.²

We add to the three main questions three sets of complementary questions. The first set of complementary questions aims at validating that respondent answers are not only measurement error and in fact relate to behavioral choices. For example, we elicit if climate

²In the past, years with high natural disaster damages were usually associated with one extremely large disaster, such as Hurricane Katrina in 2005.

change has lead respondents to adjust their investments, mobility or other choices. In addition, because a correct understanding of probabilities is key to answering our main questions, we assess respondents’ probability literacy. To this purpose, the survey features a question that requires respondents to infer the probability of drawing a black rather than a white ball from an urn, given a number of past observations and drawing with replacement. For what follows, we define a group of respondents with particularly high probability literacy, namely those respondents who answer the question with a margin of error of 2 percentage points. As a way to verify that our results are not driven by lack of probability literacy, we separately report results for this group of respondents.

The second set of complementary questions aims at validating that responses reflect economically relevant respondent beliefs. It also gauges the salient nature of natural disasters in the context of climate change. First, we use standard survey questions about socio-economic demographics to establish basic correlations with beliefs. Finding meaningful variation of beliefs with economic covariates can help rule out measurement error. Second, the survey also records respondent zip codes, which allows us to study the role of salient geographic features as a potential driver of climate-change beliefs. We also measure media use which tends to relate natural disasters as salient features of climate change.

The third set of complementary questions varies the setup of the questions to further establish the salient nature of natural disasters in the context of climate change, as well as the robustness to specifics of the setup. One variant for the question setup thus removes any reference to climate change in the elicitation of probability beliefs about rare natural disasters. Another variant reduces the reference to climate change to a minimum, both in the elicitation of probabilities, disaster costs and economic growth. To avoid mechanically biasing estimates up or down, a third variant uses an equal-sized set of bins in the assessment of probabilities. A final set of variants allows for longer horizons in the probability assessment (10, 20 and 30 years ahead) and specifies lower as well as higher damages in terms of GDP (2% and 10%). Appendix B.2 reports these additional question variants.

Finally, we also provide several information treatments before asking Questions 1 to 3. These treatments help gauge the extent to which salient information related to climate change and natural disasters can causally affect the formation of beliefs. The information treatment comes in several variants, summarized in Table 3. The “Newspaper treatment” shows to respondents sections of a USA Today newspaper article on the 2020 wildfire and hurricane season. The “Lagarde treatment” is a recent statement by ECB President Lagarde on the importance of climate change for the ECB’s monetary policy. The “Historic disaster probability treatment” informs respondents that in the past 20 years, there was no disaster in the U.S. that caused damage in the vicinity of 5% of GDP. A variant of this question is our “Historic disaster frequency treatment” which was only asked early on in the survey. It is therefore not included in all subsequent regression analyses. It informs respondents that in the past 20

Table 3: Information Treatments

Control Group (T0)	No information treatment ($N=10.790$)
Newspaper treatment (T1)	Extract from an USA Today article summarizing the 2020 hurricane season on the east cost and in the gulf region and the wildfires on the west cost. The article links both developments to global warming. ($N=4.805$)
Historic disaster size (T2)	“Over the past 20 years there have been 197 natural disasters in the United States, but even the largest caused damages of less than 1% of GDP (Source: National Center for Environmental Information).” ($N=4.847$)
Lagarde treatment (T3)	Respondents are given the following quote by ECB President Lagarde: “I think when it comes to climate change, it’s everybody’s responsibility. Where I stand, where I sit here as head of the European Central Bank, I want to explore every avenue available in order to combat climate change.” ($N=4.826$)
Historic disaster frequency (T4)	“Over the past 20 years there have been 197 natural disasters in the United States. Two of them caused damage of more than 0.5 percent of GDP (Source: National Center for Environmental Information).” ($N=1.065$)
GDP Loss Info (T5)	“The next question asks about potential damages due to climate change, expressed in percent of GDP. To put these damages in perspective, note that U.S. GDP declined by approximately 5 percent in 2008-09 in response to the global financial crisis.” ($N=1.323$)

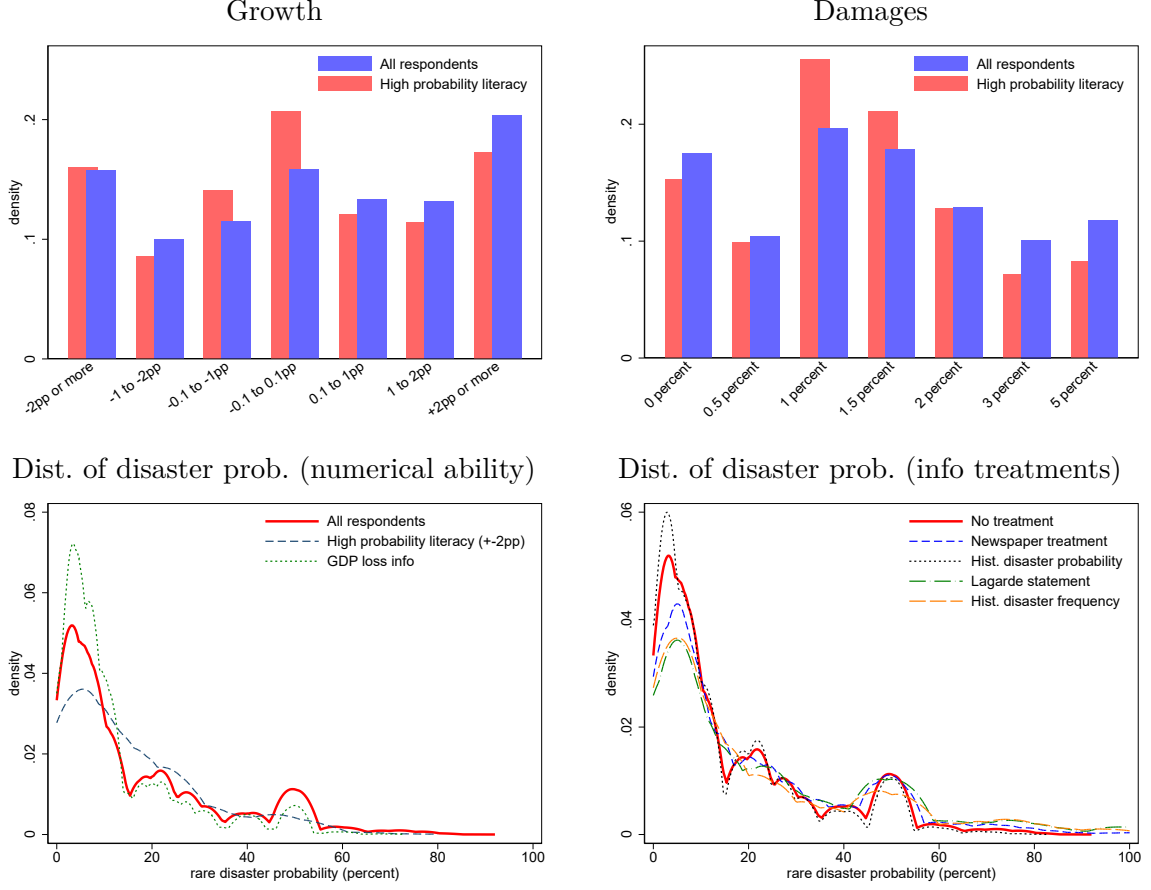
Notes: Appendix B provides the full set of questions and information treatments.

years, there were two large disasters in the U.S., both with damages of more than 0.5% of GDP. As a last treatment, we provide participants with information about an economic loss of similar magnitude, namely the 2008–2009 Global Financial Crisis.

2.2 Survey Results

This subsection presents the results of the survey. As a background observation, we note that respondents consider climate change an important issue, almost as important as the COVID-19

Figure 1: Expected Impact of Climate Change



Notes: The top-left panel shows mean probability assigned to each scenario for Question 1, the top-right panel the mean probability assigned to each scenario for Question 2. High numerical ability respondents answer a question on probabilities with an error margin of at most 2 percentage points (Q6 in survey appendix). Bottom panels show the distribution of responses to Question 3: probability of a rare disaster with damage of 5% of GDP within the next 12 months. The red solid line represents the distribution for the full sample, other lines are based on subgroups with info treatments and/ or numerical ability.

pandemic. When asked to rank the importance of both on a scale from 0 to 10 (most severe), climate change scores 6.53 and COVID-19 7.75 out of 10 (see also Figure C.2 in the appendix). This perception is in line with a recent survey by the United Nations Development Program which documents that respondents with a university degree, including in low-income countries all recognize a “climate emergency.”³

Turning to our main results, we first note that respondents on average expect a slightly

³Among the 18 climate policies suggested to respondents “investing more money in green businesses and jobs” is approved by 50% of responds. This amounts to rank 4; “Conserve forests and land” is the most popular policy, supported by 54% of the respondents (UNDP and University of Oxford, 2021).

Table 4: Survey Summary Statistics

All Respondents	Mean	Median	Std. Dev.	N
Growth Impact (Question 1)	0.20 pp	0.01 pp	1.30 pp	8395
Disaster Costs (Question 2)	1.47%	1.50%	0.81%	6921
Disaster Probability (Question 3)	16.37%	10.00%	17.24%	6839
High Probability Literacy Respondents	Mean	Median	Std. Dev.	N
Growth Impact (Question 1)	0.07 pp	0.00 pp	1.26 pp	806
Disaster Costs (Question 2)	1.36%	1.35 %	0.70%	782
Disaster Probability (Question 3)	14.44%	10.00%	14.19%	966

Notes: Statistics are weighted using survey weights as well as Huber-robust weights. High probability literacy respondents answer a question on probabilities with a margin of error of at most 2 percentage points (Q6 in survey appendix).

positive impact of climate change on economic growth, with an average increase of GDP growth by 0.20 percentage points over the next 12 months. However, there is a lot of mass in the distribution for both positive and negative outcomes. We show this distribution in the top-left panel of Figure 1. The blue bars represent the answers of all respondents, while the red bars represent those of respondents with high probability literacy. For example, we find that nearly 20% of all respondents expect a boost to growth by more than 2 percentage points over the next 12 months due to climate change while more than 15% expect a growth decline by more than 2 percentage points. For respondents with high probability literacy there is somewhat less mass in the tails. The standard deviation across all respondents is 1.30 percentage points. Table 4 provides summary statistics for all three main questions both for all respondents (top panel), and respondents with high probability literacy (bottom panel). The first row in each panel summarizes the answers to Question 1.

This estimated effect of climate change on economic growth, moreover, also turns out to indistinguishably small and negative across variations of asking the question. Whether the question uses equal-sized bins, is set up only in terms of natural disaster without mention of climate change, or only uses a minimal reference to climate change (see Appendix B.2 “Alternative question setup”) makes no difference relative to the baseline. All estimates are not statistically significantly different from each other. Figure C.4 illustrates this finding in the top left panel.

Second, we find that survey respondents expect substantial economic damages due to climate change, amounting to approximately 1.5% of GDP on average over the next 12 months. The top-right panel in Figure 1 shows these responses, again for the full sample (in blue) and respondents with high probability literacy only (red). Again, expectations are widely dispersed over loss scenarios in both instances but, as before, there is less mass in the tails for respondents with high probability literacy. Approximately 15% of all respondents expect no

loss, while the fraction among those with high numerical ability is slightly lower. Overall, the standard deviation of expected losses is at 0.81% as Table 4 summarizes.

Third, we find that respondents perceive very high probabilities for natural disasters due to climate change that inflict damages of 5% of GDP over the next 12 months. These beliefs are widely dispersed as was the case with the preceding questions. The mean probability is at 16.37% while the median is at 10%. In fact, as the high mean probability suggests, there is a heavy right tail of probabilities. For example, almost 10% of respondents believe that such a rare disaster can occur with more than 75% probability.⁴

The same conclusions hold for this third question if we consider high probability literacy respondents only. In fact, if anything, while distributions of all respondents and those with high probability literacy appear similar, perhaps surprisingly respondents with high probability literacy expects large natural disasters to have even *higher* probability: As the lower-left panel of Figure 1 shows, high probability literacy respondents place more mass on probabilities between 15 to 30 percent. Their median response is equal to the response in the full sample as Table 4 shows. At the same time, high probability literacy ability is associated with less mass in the extreme right tail bringing down the mean to 14.44%, but not in a statistically significant fashion relative to the full sample. It thus seems understanding probabilities is not a major issue for respondents as the answers by high probability literacy respondents suggest across our three main questions.

The same conclusion emerges once we consider respondents which have been subjected to the information treatment that compares the magnitude of the probability event in Question 3 to the Great Recession. Clarifying the magnitude of the event in this way does not materially affect expectations. The distribution of responses is shown by the green dotted line the bottom-left panel of Figure 1. While the treatment (“GDP loss info”) draws mass from the extreme right tails to the left, the distribution has a similar shape as in the baseline. The Huber-robust weighted mean probability under the treatment is 11.88% while it is 16.37% in the full sample; however, the mode of distribution remains unchanged.

Likewise, comparing the magnitude of the event to a 2% loss of GDP in the wording of the question does not lead to a statistically significantly lower probability assessment though the point estimate is 1pp. lower. Only an increase in the comparison to a 10% GDP loss leads to an economically and statistically significant drop in the probability estimate, underlining through this variation the meaningful information contained in the responses. Questions that ask about longer 10-, 20- and 30-year horizons do not imply statistically significantly different estimates from each other although the 10-year horizon has a point estimate which is a bit less

⁴The message from this third question is the same as when we elicit the probability of disaster costs by bins in Question 2 (top-right panel of Table 1): The probability of a large natural disaster is extremely large and statistically indistinguishable across the two questions. Respondents assign a 12.58% probability in Question 2 to a disaster bin that corresponds to damages amounting to 5% of GDP compared to the mean probability of 16.37% in direct response to Question 3.

than 2% higher relative to the baseline. Figure C.3 illustrates these findings in the top panel.

2.3 Covariates and Determinants of Climate-Change Expectations

Arguably, the expectations of survey participants seem to be large: Even though we do not know *objective* probabilities for a disaster similar to our question Q3—that creates losses of 5% of GDP—the true probability is very likely to be smaller than what households suggest. However, the overestimation of rare disaster probabilities is a well documented fact in the literature. Lichtenstein et al. (1978) show that individuals tend to overestimate the probability of potentially lethal events such as cancer or car accidents. Both Heimer et al. (2019) and Fischhoff et al. (2010) report similar results for general survival probabilities of young individuals. In a different setting, the probability of lung cancer for smokers is overestimated by the general public (Viscusi, 1990, 2016). Importantly, while individuals’ subjective beliefs may give too much weight to the risk of certain rare disasters, the two-stage model of rare events by Fox and Tversky (1998) suggests that it is those subjective beliefs that households act upon. Indeed, prospect theory (Tversky and Kahneman, 1992) implies that households might even overweight their expected probability for a rare negative event when making (financial) decisions (Barberis, 2013a).⁵

The availability heuristic (Tversky and Kahneman, 1973) has been understood to explain such overestimation of small objective rare disaster probabilities: Individuals overstate the probability of events for which they have a more frequent or salient recall from memory. Indeed, Lichtenstein et al. (1978) show that subjective probability judgements increase in media coverage of the respective event or personal experience. More recently, Bordalo et al. (2019) operationalize this heuristic based on a model for recall from a personal memory database. In a dynamic setting, their model of “diagnostic expectations” implies that the perceived probability of an event increases after a realization due to extrapolation (Bordalo et al., 2020).⁶

The results of our survey corroborate this notion: Responses vary in an intuitive way with a range of indicators and potential determinants, such as self reported experiences, local conditions and media consumption habits as well as information treatments—providing evidence for salience effects and the availability heuristic. At the same time, their close link to

⁵Prospect theory suggest that individuals’ overweight rare disasters probabilities in their real life actions. Barberis (2013b) provides a review of prospect theory and insurance decisions. At the same time, Barron and Yechiam (2009) suggest that rare disasters are often overestimated in their frequency but become under-weighted in decision functions by households, as individuals build their decision on the most recent realizations, where the disaster has probably not occurred.

⁶Moreover, Bordalo et al. (2022) show that selective, automatic memory can account for both over- and underestimation of novel risk: While younger individuals with an arguably low risk of a lethal Covid infection overestimate the risk, older respondents underestimate their personal death probability. Relevant experiences can help with simulating the scenario for which the probability is assessed while irrelevant experiences trigger interference in that simulation.

Table 5: Reported Probability of Disaster and Media Usage

	(1)	(2)	(3)
no major TV Station	-3.308*** (-3.98)		
no major Newspaper		-3.059*** (-5.16)	
consume major TV station×no major newspaper			-2.154*** (-3.30)
no major TV station×consume major newspaper			0.762 (0.37)
no major TV station×no major newspaper			-4.952*** (-5.45)
Constant	17.10*** (6.85)	17.45*** (7.00)	17.77*** (7.12)
State and Month FE	yes	yes	yes
Demographic Controls	yes	yes	yes
N	7143	7128	7125
r ²	0.0587	0.0607	0.0619

Notes: Regression relates reported probability of disaster to media usage; only data for respondents that did not receive any treatment considered in regression; *t* statistics in parentheses, based on robust standard errors; * $p < 0.05$, ** $p < 0.01$, *** $p < 0.001$; regression adjusted with survey weights and Huber-robust weights to ensure that sample is representative and independent of outliers, respectively.

beliefs provides a basis for the variation over time which we subsequently. relate to economic fluctuations.

Further, by manipulating the wording of the question, we verify that natural disasters are indeed the salient feature evoked by the probability assessments in the survey. When we remove the reference to climate change completely from the question (see Appendix B), we find a decrease in the respondents' probability estimate of a large, rare natural disaster. Their effect is statistically and economically significant and holds independently of the disaster size, as illustrated in the bottom left panel of Figure C.3. This insight validates our measurements: While our question captures the effect of climate change in the assessment of rare disaster probabilities, response magnitudes are affected by the salience of natural disasters in the context of climate change. We next go through several channels that reflect such salience of natural disasters.

2.3.1 Media Consumption

First, in line with earlier work cited above, we find that risk perception and expectations formation are governed by attention and salience effects. There is an important role of media consumption—TV and newspapers—for the perception of disaster risks and other economic variables (see for example Carroll (2003)). To establish this point, we relate the reported probability of a rare natural disasters to measures of respondents’ preferred TV stations and newspapers.

Table 5 reports the results for media consumption. Respondents who consume news from neither a major TV Station nor a major newspaper exhibit approximately 5 percentage points lower rare disaster probabilities. This effect corresponds to a reduction of the perceived mean disaster probability by almost a third. By contrast, respondents who watch the news instead have more than 3.3 percentage point higher disaster beliefs. There is also some evidence that individual TV Stations/Newspapers impact the perceived disaster probability of respondents, even though systematic differences between different stations are not readily obvious. For example, readership of the Wall Street Journal or the Los Angeles Times has a negative association with perceived disaster probabilities, but readership of USA Today has a positive association. Consumption of TV channels always tends to raise probabilities, see Table C.4. When we consider economic damages and the growth impact of climate change as outcomes (instead of the perceived disaster probabilities), we find that respondents who do not watch TV and do not read newspapers expect significantly lower disaster costs and somewhat higher GDP growth, see Tables C.5 and C.6. By and large, these results support the relevance of the availability heuristic: reporting on climate change or natural disasters in the US and the rest of the world, these incidences are easier to recall for individuals that consume media.

2.3.2 Geographic Exposure

Second, salient personal exposure to climate-change events also matters for climate-change expectations. For our data, in particular, we find a strong association between the exposure to certain types of rare natural disasters and climate-change beliefs.

To measure such exposure, we rely on official data for natural disaster declarations at the county level for the last 10 years from the Federal Emergency Management Agency (FEMA, Federal Emergency Management Agency, 2020). Within our sample 15.7% of respondents live in a county with a wildfire-related disaster over the last 5 years, 27.1% with a hurricane, tornado, or typhoon event and 28.1% with a flood in the past. From the same data source, we also construct a more aggregate measure using the total number of events (fire, flood and hurricane, etc.) within a state during the last 5 years, divided by the total land area of the state in square miles. We relate the reported probability of a disaster not only to respondents’

disaster experience but also to a measure of “official” disaster risk.⁷ For the latter we use the U.S. Natural Hazards Index, provided by the National Center for Disaster Preparedness of Columbia University (NCDP, 2020). For each county, the index categorizes the risk of a given type of natural disaster as either “None”, “Low”, “Medium” or “High.”

Three findings stand out: First, respondents within counties with a past record of natural disasters tend to expect higher disaster probabilities than respondents without a disaster experience, by up to 3 percentage points, for counties that experienced a hurricane in the last 5 years. Second, concerning future risks, in particular the increased possibility of hurricanes drives up expectations of a future large disaster by up to 4.7 percentage points. Third, when we include the total number of disasters of a type for a given state—which should be a good proxy for how common a disaster type is within the state, both in the past and future—it is still the local experience that drives the results. Only the frequency of wildfires within a state—relative to its size—seems to have an significantly positive impact on the expected disaster probability, see Table C.7 for details. These results suggest that exposure to disaster risk influences disaster expectations, consistent with findings from other contexts, such as inflation or house-price expectations (Kuchler and Zafar, 2019; Malmendier and Nagel, 2011).

2.3.3 Socioeconomic Characteristics and Experiences

Third, we provide evidence that demographic and socioeconomic characteristics – which may proxy various individually different (salient) experiences – relate to climate-change expectations. This insight is based on simple regressions which control for state and time fixed effects. We find that those aged 55 and above expect climate change to boost growth, while highly educated respondents and those with middle and higher income tend to report an expected adverse impact of climate change on growth, though not significantly for high income respondents, see Table C.2. Relative to the youngest age group, those aged 55 and above instead expect significantly lower damages due to climate change in the future. Women tend to expect larger damages and report more more pessimistic expectations when it comes to disasters. For instance, on average they believe large disasters to be 4 percentage points more likely than men. This finding echos earlier findings according to which women tend to be more risk averse than men (e.g., Borghans et al., 2009; Charness and Gneezy, 2012; Gustafson, 1998; Jianakoplos and Bernasek, 1998).⁸

In addition, we consider how self-reported disaster experiences and political attitudes impact expectations and report in Table C.3. Democrats, all else equal, believe that a very large rare disaster is more likely, by 1.6 percentage points, compared to independent voters.

⁷Due to data limitations, we focus on the reported disaster probability (Question 3), rather than our other expectation measures.

⁸Our findings are consistent with an earlier assessment of climate change risk perceptions, more broadly defined: according to van der Linden (2015) cognitive, experiential and sociocultural factors account for up to 70% of the variance across respondents in an online survey.

Table 6: Reported Probability of Disaster and Information Treatment

	(1) Growth	(2) Disaster Costs	(3) Disaster Prob.	(4) Disaster Prob.
Newspaper (T1)	-0.0301 (-0.79)	0.0113 (0.43)	0.733 (1.56)	0.810* (2.48)
Historic Disaster Size (T2)	-0.0502 (-1.33)	-0.0715** (-2.74)	-1.466** (-3.24)	-0.875** (-2.81)
Lagarde Treatment (T3)	-0.0909* (-2.37)	-0.0596* (-2.30)	1.376** (2.90)	0.906** (2.75)
Historic Disaster Freq. (T4)			-1.557 (-1.57)	-1.822** (-2.68)
GDP Loss Info (T5)	-0.000173 (-0.00)	0.0290 (0.72)	0.368 (0.51)	0.127 (0.27)
Constant	-0.000896 (-0.01)	1.351*** (13.68)	18.80*** (12.75)	14.67*** (12.69)
State Fixed Effect	yes	yes	yes	yes
Demographic Controls	yes	yes	yes	yes
Drop largest 25% probabilities	no	no	no	yes
N	16917	16915	23775	20126
r2	0.0165	0.0546	0.0473	0.0453

Notes: regression relates reported probability of disaster to information treatment (one treatment per respondent); *t* statistics in parentheses, based on robust standard errors; * $p < 0.05$, ** $p < 0.01$, *** $p < 0.001$; regression adjusted with survey weights and Huber-robust weights to ensure that sample is representative and independent of outliers, respectively. For the treatments, refer to table 3 or Appendix B. Climate Change Scale refers to question Q4, where respondents are asked to rate the threat of climate change for the U.S. on a scale from 0 to 10.

Republicans perceive damages to be 0.14pp lower relative to Independents. There seems to be a clear division in beliefs between Democrats and Republicans, once it comes to natural disasters, with democrats holding more pessimistic beliefs. Survey participants that have experienced either a natural disaster or indicate that they have felt the impact of climate change report disaster probabilities that are 5.8pp and 4.1pp higher respectively.

2.3.4 Treatments

Finally, we also look beyond correlations and present the causal effects of information treatments on climate-change expectations analogous to different kinds of (salient) news that may reach individuals over time. Table 6 presents the main results. We find that in response to the newspaper treatment, respondents show an up to 0.8 percentage points higher expected

probability which is also significant if we remove extreme outliers. Relaying the intention of the ECB to tackle climate change raises the probability of disaster risk by almost 1.4 percentage points. This finding is consistent with recent work on monetary policy which has stressed the information effects according to which market participants update their view on the economy in response to monetary policy action and/or communication (Coibion et al., 2022; Nakamura and Steinsson, 2018).

The historic information treatments lower expected probabilities as expected. Column 4 reports results when we remove extreme outliers with the top 25% of responses—who report a disaster probability of 50% or higher.

Once we perform these regressions on a subsample for respondents with high probability literacy, we find no effect of the treatments, except in the case in which we provide information about the size of disasters in the past. This lowers the reported probability of a large disaster considerably, by more than 1.6 percentage points, see Table C.8. These findings suggest that respondents with high probability literacy react more selectively to suggestive information in assessing disaster probabilities.

3 A New Keynesian Model with Rare Disasters

In what follows, we rely on a New Keynesian model to study how climate-change expectations can impact the business cycle. According to our survey, respondents do not expect much of an effect of climate change on growth. Yet they assign a high probability to climate-change related large disasters. For this reason we rely on a version of the New Keynesian model that features rare disasters, as put forward by Fernández-Villaverde and Levintal (2018). Earlier work on rare disasters assumes an exogenous process for output to study the implications of rare disasters for asset prices (Barro, 2006, 2015). Gourio (2012) uses a real business cycle model to show that variations in disaster risk can play a significant role for the business cycle. Our New Keynesian model, in turn, allows us to spell out the implications of climate-change related disaster expectations for monetary policy.

We first establish a number of results in closed form using a simplified version of the model. While the full model features Epstein-Zin preferences and an endogenous capital stock, the simplified version of the model does not. In fact, the simplified version of the model corresponds to the textbook version of the model as, for instance, developed in Galí (2015), except that it features rare disasters. In what follows, we provide a compact exposition of the general model. Section 4, in turn, uses the simplified version of the model to derive analytical results. We specify and calibrate the full model and report simulation results in Section 5.

3.1 Households

A representative households purchases a consumption basket, C_t , and an investment good, X_t , both composite goods of the same varieties, $Y_t(i)$, with $i \in [0, 1]$:

$$C_t + X_t = \left[\int_0^1 Y_t(i)^{1-\frac{1}{\epsilon}} di \right]^{\frac{\epsilon}{\epsilon-1}} \equiv Y_t. \quad (1)$$

Here Y_t is aggregate output and $\epsilon > 1$ is the elasticity of substitution across varieties. The household saves via a nominally riskless bond, B_t , which trades at price Q_t , or by accumulating capital, K_t , which it rents to firms, earning the rental rate R_t^K . The law of motion for capital is given by

$$K_t = \left\{ (1 - \delta)K_{t-1} + \left[1 - S \left(\frac{X_t}{X_{t-1}} \right) \right] X_t \right\} e^{d_t \log(1-\mu)}. \quad (2)$$

Here the function $S(\cdot)$ represents investment adjustment costs which we assume to be prohibitively large in the simplified version of the model. $\delta \in [0, 1)$ denotes the depreciation rate. Importantly, d_t is a binary random variable which takes the value of 1 in the event of a rare disaster and zero otherwise. A rare disaster in period t takes place with pre-determined probability ω_{t-1} which, in turn, follows an exogenous AR(1) process:

$$\omega_t = \bar{\omega}^{(1-\rho_\omega)} \omega_{t-1}^{\rho_\omega} e^{\sigma_\omega \epsilon_{\omega,t}}, \quad (3)$$

where $\epsilon_{\omega,t} \sim N(0, 1)$ is a Gaussian innovation to the disaster probability. In the event of a disaster a fraction $\mu \in (0, 1)$ of the capital stock is destroyed.

Letting $U(C_t, N_t)$ denote period utility, the objective of the household is to

$$\max V_t^{1-\psi} = U(C_t, N_t)^{1-\psi} + \beta E_t \left(V_{t+1}^{1-\gamma} \right)^{\frac{1-\psi}{1-\gamma}} \quad (4)$$

subject to (1), (2), a budget constraint:

$$\int_0^1 P_t(i) Y_t(i) di + Q_t B_t \leq B_{t-1} + W_t N_t + R_t^K K_t + D_t, \quad (5)$$

as well as a solvency constraint. In the expression above E_t is the expectations operator, $\beta \in (0, 1)$ is the discount factor, $P_t(i)$ is the price of variety i , and D_t are dividends.

The optimal intra-temporal allocation of expenditures across varieties implies that the demand function for a generic variety i is given by

$$Y_t(i) = \left(\frac{P_t(i)}{P_t} \right)^{-\epsilon} (C_t + X_t), \quad (6)$$

where $P_t \equiv \left[\int_0^1 P_t(i)^{1-\epsilon} di \right]^{\frac{1}{1-\epsilon}}$ is the price index for the composite goods.

3.2 Firms

Varieties are produced by monopolistically competitive firms. Firms change prices only infrequently and adjust production in order to satisfy the demand at posted prices, given by (6). A generic firm i operates the following production function:

$$Y_t(i) = A_t K_t(i)^\alpha N_t(i)^{1-\alpha}, \quad (7)$$

where $N_t(i)$ and $K_t(i)$ are labor and capital employed by firm i , A_t is total factor productivity common to all firms and $\alpha \in [0, 1)$. For productivity we assume the following process

$$A_t = A_{t-1} e^{d_t(1-\alpha) \log(1-\mu) + \sigma_A \epsilon_A}, \quad (8)$$

where the term $d_t(1-\alpha) \log(1-\mu)$ captures the adverse effect of a disaster on productivity growth. The TFP growth shock $\epsilon_{A,t} \sim N(0, 1)$ is a Gaussian innovation with zero mean.

In each period a fraction $\theta \in [0, 1]$ of firms is unable to adjust its price. Firms which do adjust prices face an identical decision problem. Specifically, they set P_t^* to solve

$$\max \sum_{k=0}^{\infty} \theta^k E_t \left\{ Q_{t,t+k} \left[P_t^* \left(\frac{P_{t-1+k}}{P_{t-1}} \right)^\chi Y_{t+k|t} - \mathcal{C}(Y_{t+k|t}) \right] \right\}, \quad (9)$$

where $Y_{t+k|t}$ is the demand in period $t+k$, given prices set in period t , $Q_{t,t+k}$ is the stochastic discount factor and $\mathcal{C}(\cdot)$ is the cost function. The parameter χ measures the extent of price indexation. Defining $\Pi_t = \frac{P_t}{P_{t-1}}$ and $\Pi_t^* = \frac{P_t^*}{P_{t-1}}$, the price level evolves such that the following holds:

$$1 = \theta \left(\frac{\Pi_{t-1}^\chi}{\Pi_t} \right)^{1-\epsilon} + (1-\theta)(\Pi_t^*)^{1-\epsilon}. \quad (10)$$

3.3 Market Clearing and Monetary Policy

Good markets clear at the level of varieties. Labor market clearing, in turn, implies

$$N_t = \int_0^1 N_t(i) di = \left(\frac{Y_t}{A_t K_t^\alpha} \right)^{\frac{1}{1-\alpha}} \int_0^1 \left(\frac{P_t(i)}{P_t} \right)^{-\frac{\epsilon}{1-\alpha}} di. \quad (11)$$

The risk-free bond B_t is in zero net supply. Lastly, we specify monetary policy in terms of interest-rate feedback rules, considering different variants in what follows. In each instance the central bank is assumed to adjust the short-term nominal interest rate, given by $i_t = -\log Q_t$.

4 Analytical Results

In this section we consider a simplified version of the model and derive the familiar canonical representation of the New Keynesian model, based on a first-order approximation of the equilibrium conditions. Based on this representation we are able to obtain a number of closed-form results. We solve the full model numerically in Section 5.

4.1 Canonical Representation

To obtain the canonical representation of the model, we make a number of simplifying assumptions. First, we assume that $\psi = \gamma$ so that households maximize expected utility. At the same time, we assume for period utility:

$$U_t = \left(\frac{C_t^{1-\sigma} - 1}{1-\sigma} - \frac{N_t^{1+\varphi}}{1+\varphi} \right)^{\frac{1}{1-\psi}}. \quad (12)$$

As a result, we can rewrite the household objective (4)

$$\max Z_t = \left(\frac{C_t^{1-\sigma} - 1}{1-\sigma} - \frac{N_t^{1+\varphi}}{1+\varphi} \right) + \beta E_t Z_{t+1}, \quad (13)$$

where $Z_t \equiv V_t^{1-\psi}$. This specification boils down to the textbook version in Galí (2015). Second, we assume that investment adjustments costs are prohibitively high and that the capital stock does not depreciate. We also assume that capital is not subject to a disaster shock and constant over time: $K_t = \bar{K}$. Last, we assume that shocks to the disaster probability are purely transitory shocks ($\rho_\omega = 0$).

We list the optimality conditions for the simplified version of the model in Appendix A.1 and focus in what follows on the log-linear approximation of the equilibrium conditions around the deterministic steady state. Specifically, using small-scale letters to denote logs, we obtain the following familiar canonical representation of the model:

$$\pi_t = \beta E_t \pi_{t+1} + \kappa \tilde{y}_t, \quad (14)$$

$$\tilde{y}_t = E_t \tilde{y}_{t+1} - \frac{1}{\sigma} (i_t - E_t \pi_{t+1} - r_t^n). \quad (15)$$

Equation (14) is the New Keynesian Phillips curve, with parameter restrictions $\kappa = \lambda(\sigma + \frac{\varphi+\alpha}{1-\alpha})$ and $\lambda = \frac{(1-\theta)(1-\beta\theta)}{\theta} \frac{1-\alpha}{1-\alpha+\alpha\epsilon}$. It links inflation, π_t , to expected inflation and the output gap, $\tilde{y}_t \equiv y_t - y_t^n$. Here y_t^n is potential output, that is, the output level that would obtain if prices were perfectly flexible. Equation (15) is the dynamic IS equation. In addition to the output gap and inflation it features the nominal interest rate, i_t , and the natural rate of interest, r_t^n , that is, the interest rate that would obtain if prices were fully flexible. It is a natural

benchmark for the policy rate and takes center stage in the analysis and implementation of monetary policy (Woodford, 2003).

4.2 Model Solution

In what follows we solve the model starting from the canonical representation. Our focus is on the impact of disaster expectations on the natural rate of interest. The following proposition states the solution for the natural rate as well as for potential output.

Proposition 1. *Given the simplified model, as represented by equations (14) and (15), the solution for the natural rate and for potential output is given by:*

$$r_t^n = \rho - \Omega(1 - \alpha)\mu\omega_t \quad \text{and} \quad y_t^n = \begin{cases} 0, & \text{if } d_t = 0, \\ \Xi_\mu\mu, & \text{if } d_t = 1, \end{cases}$$

where $\rho = -\log(\beta)$, $\Omega = \frac{\sigma(1+\varphi)}{\sigma(1-\alpha)+\alpha+\varphi} > 0$ and $\Xi_\mu = -\frac{\sigma(1-\varphi)(1-\alpha)}{\sigma(1-\alpha)+(\alpha+\varphi)} < 0$.

Proof. See Appendix A.2. ■

Proposition 1 shows that the natural rate declines in the probability ω_t and the size of a disaster μ , that is, in its extensive and intensive margins, respectively. Intuitively, the more likely and the larger a disaster, the larger the desire to save in order to stabilize consumption over time and across states of the world. Since there is no vehicle to save in the simplified economy—an assumption we relax in the next section—the natural rate of interest declines in order for markets to clear (in the flex-price equilibrium). Potential output, in turn, declines only in the event of an actual disaster. The mere expectation of disaster does not impact the supply side of the simplified economy.

Instead, all else equal, disaster expectations impact aggregate demand adversely and monetary policy plays a key role for how the economy adjusts. To see this, we solve the model under a flexible interest rate rule which allows for a systematic response of the policy rate to both the natural rate and inflation:

$$i_t = \rho + \phi_r r_t^n + \phi_{\pi,t} \pi_t. \tag{16}$$

Here, the parameter $\phi_r \in \{0, 1\}$ captures the response of the policy rate to the natural rate. We focus on two limiting cases: the monetary authority may either tracks the natural rate perfectly ($\phi_r = 1$) or not at all ($\phi_r = 0$). Of course, intermediate cases are conceivable, but our results carry over to such cases in a straightforward way. In addition, we assume throughout that the response of the interest rate to inflation is sufficiently strong to ensure the existence of a locally unique equilibrium. In case the response is constant over time, this

requires $\phi_{\pi,t} = \phi_\pi > 1$ (Taylor Principle). But specification (16) is more general and allows the response to inflation to be time-varying. In this way, we can capture the possibility that monetary policy is temporarily unresponsive to inflation and set $\phi_{\pi,t} = 0$, but assume that it switches to being active with sufficiently high probability in a later period.⁹ Such temporary inaction appears plausible in times of low interest rates when central banks are constrained by the effective lower bound (ELB) on the policy rate.

In order to solve the model under alternative scenarios for monetary policy, we rely on an approximation of the driving process for the disaster probability (3). In this way, we can define the deviation of the disaster probability from its mean, $\hat{\omega}_t \equiv \omega_t - \bar{\omega} = \bar{\omega}\sigma_\omega\epsilon_{\omega,t}$ and arrive at

Proposition 2. *Given the simplified model, as represented by equations (14) and (15), the interest-rate feedback rule given by (16), the unique and stable solution for the output gap and inflation is given by:*

$$\tilde{y}_t = \begin{cases} 0, & \text{if } \phi_r = 1 \text{ and } \phi_{\pi,t} = \phi_\pi > 1 \\ \Pi_y^0 + \Pi_y^1 \hat{\omega}_t, & \text{if } \phi_r = 0 \text{ and } \phi_{\pi,t} = \phi_\pi > 1 \\ \Gamma_y^0 + \Gamma_y^1 \hat{\omega}_t, & \text{if } \phi_r = 0 \text{ and } \phi_{\pi,t} = 0; \end{cases} \quad \pi_t = \begin{cases} 0, & \text{if } \phi_r = 1 \text{ and } \phi_{\pi,t} = \phi_\pi > 1 \\ \Pi_\pi^0 + \Pi_\pi^1 \hat{\omega}_t, & \text{if } \phi_r = 0 \text{ and } \phi_{\pi,t} = \phi_\pi > 1 \\ \Gamma_\pi^0 + \Gamma_\pi^1 \hat{\omega}_t, & \text{if } \phi_r = 0 \text{ and } \phi_{\pi,t} = 0; \end{cases}$$

where $\Pi_y^0, \Pi_\pi^0, \Pi_y^1, \Pi_\pi^1 \leq 0$ and $\Gamma_y^0, \Gamma_\pi^0, \Gamma_y^1, \Gamma_\pi^1 \leq 0$. It holds that $\Gamma_x^0 < \Pi_x^0$ and $\Gamma_x^1 < \Pi_x^1$ for $x \in \{y, \pi\}$. If $\phi_\pi \rightarrow \infty$, $\Pi_y^0 \rightarrow 0$, $\Pi_y^1 \rightarrow 0$ as well as $\Pi_\pi^0 \rightarrow 0$ and $\Pi_\pi^1 \rightarrow 0$.

Proof. See Appendix A.3. ■

Proposition 2 shows that monetary policy can fully stabilize inflation and the output gap ($\pi_t = \tilde{y}_t = 0$) if it tracks the natural rate of interest perfectly ($\phi_r = 1$), see the top line in the proposition. This is a result well-known from the textbook version of the New Keynesian model (Galí, 2015). Here we show that it carries over to our setup. Intuitively, disaster expectations induce a contraction of aggregate demand which may be offset by monetary policy to the extent that the policy rate is lowered in sync with the natural rate (see Proposition 1).

This policy is challenging for two reasons. First, the natural rate is a counterfactual object and as such unobserved. We account for this complication by considering the case $\phi_r = 0$. In this case monetary policy no longer responds to the natural rate, but only to inflation. The second line of Proposition 2 shows that the result is a contraction of output and inflation. Importantly, as the terms Π_y^0 and Π_π^0 indicate, there is a permanent downward effect on the output gap and inflation, even if disaster risk is at its mean value ($\hat{\omega}_t = 0$). This is because disaster risk is one-sided: A constant disaster risk depresses the economy permanently relative

⁹Specifically, in order to ensure the existence of a (locally) unique equilibrium we require $P(\phi_{\pi,t+1} > 1) = 1 - \zeta$, where ζ needs to satisfy the following inequalities: $(1 - \zeta)(1 - \beta\zeta)\sigma > \kappa\zeta > 0$. Note moreover that whenever the response to inflation is non-zero, we assume it to be sufficiently aggressive to satisfy local equilibrium determinacy, see Appendix A.3 for details.

to a steady state which features no disasters in case monetary policy does not track the natural rate. Actual interest rates are too high. Time-varying upward shifts in the disaster probability, likewise induce a further contraction because they are not fully stabilized (and conversely for downward shifts), as the non-positive terms Π_y^1 and Π_π^1 indicate. Still, in the limiting case where the response to inflation is infinitely aggressive ($\phi_\pi \rightarrow \infty$), monetary policy does effectively insulate the economy from the adverse impact of disaster expectations.

A second complication is that since the natural rate declines in response to disaster expectations, monetary policy may find itself constrained by the ELB. We capture this possibility in a stylized manner by assuming that upon impact monetary policy is not responsive to a shift in inflation ($\phi_{\pi,t} = 0$), and sufficiently responsive only later (see again footnote 9). The result is a stronger decline of inflation and the output gap, as the third line in Proposition 2 shows: Note that the Γ -terms are more negative than the Π -terms. We conclude that the ELB will generally amplify the adverse impact of disaster expectations, a result that is akin to what has been established elsewhere, notably in the context of government spending shocks (e.g., Woodford, 2011).

More generally, and in line with the results of Gourio (2012), disaster expectations cause business cycle fluctuations—unless they are offset by monetary policy. The following proposition establishes this point formally by linking the volatility of disaster risk, $var(\hat{\omega}_t) = \sigma_\omega^2$, to the volatility of the output gap and inflation:

Proposition 3. *Given the simplified model, as represented by equations (14) and (15), the variance of inflation and the output gap are functions of σ_ω^2 :*

$$var(\tilde{y}_t) = \begin{cases} 0 \\ \Pi_y^1 \sigma_\omega^2, \\ \Gamma_y^1 \sigma_\omega^2, \end{cases} \quad var(\pi_t) = \begin{cases} 0, & \text{if } \phi_r = 1 \text{ and } \phi_{\pi,t} = \phi_\pi > 1 \\ \Pi_\pi^1 \sigma_\omega^2, & \text{if } \phi_r = 0 \text{ and } \phi_{\pi,t} = \phi_\pi > 1 \\ \Gamma_\pi^1 \sigma_\omega^2, & \text{if } \phi_r = 0 \text{ and } \phi_{\pi,t} = 0; \end{cases}$$

where for $\phi_r = 0$ it holds that $\frac{\partial var(\pi_t)}{\partial \phi_\pi} < 0$ and that $\frac{\partial var(\tilde{y}_t)}{\partial \phi_\pi} < 0$. The above follows directly from the solution for \tilde{y}_t and π_t shown in Proposition 2. ■

5 Quantitative Model Analysis

We now turn to a quantitative analysis in order to assess the implications of climate-change expectations for monetary policy. For this purpose we map the results of the survey into the full model. In a first step, we specify functional forms and calibrate the model. Then we present results.

5.1 Model Solution

To solve the model, all equations are detrended with a measure for the level of technology. We then rely on the Taylor projection algorithm proposed by Fernández-Villaverde and Levintal (2018) to solve the model numerically.¹⁰ We extend the original model by Fernández-Villaverde and Levintal (2018) in that we allow for time variation in the probability of a disaster.¹¹ As a result, the model features an additional state variable. Yet in our analysis, disaster risk only matters via the expected value of future disasters. Following Isoré and Szczerbowicz (2017), we may thus replace the expectations operator over future disasters in the first-order conditions in the following way:

$$E_t d_{t+1} = \omega_t = \bar{\omega}^{(1-\rho_\omega)} \omega_{t-1}^{\rho_\omega} e^{\sigma_\omega \epsilon_{\omega,t}}, \quad (17)$$

where the second equality uses equation (3). Our assumptions about the information flow is key to arrive at equation (17): While the realization of the disaster is only known in the respective period, the probability of a disaster in $t + 1$ is known in period t .¹²

We run the model for $T = 10,000$ periods and report average results over 100 simulations. In case the simulated time-series are non-stationary (due to the unit root in TFP), we apply an HP-filter with smoothing parameter of 1,600 before computing standard deviations. We report the mean of key variables and business-cycle statistics for the risky steady state, defined by the values to which variables converge in the absence of disaster shocks (see, for example Fernández-Villaverde and Levintal, 2018; Gourio, 2012).¹³ Specifically, we simulate shocks to the probability of disaster based on the exogenous process (3) while setting the actual disaster dummy to zero $\{d_t\}_{t=0}^T = 0$. This approach, in addition to allowing us to focus on the role of expectations, has two further advantages. First, it ensures consistency as we compare the model predictions to actual time-series observations for a sample where no large disaster (with GDP losses of 5%) took place. Second, it allows us to remain agnostic about the objective probability of disasters which is arguably unknown. All that matters for our analysis are disaster expectations, as measured in our survey.

¹⁰Fernández-Villaverde and Levintal (2018) compare alternative strategies to solve rare-disaster models and find that Taylor projections perform particular well along the speed-accuracy trade-off. Under this approach, one first approximates the policy functions of the model with polynomial functions and inserts these into the system of first-order conditions. Next, one minimizes the resulting residual function in order to find the coefficients that best approximate the policy functions, see also Fernandez-Villaverde et al. (2016) for further details.

¹¹Their setup allows for time variation in the size of disaster which we keep constant. In addition, compared to the model by Fernández-Villaverde and Levintal (2018), we abstract from TFP trend growth.

¹²Isoré and Szczerbowicz (2017) employ perturbation methods to solve their disaster model.

¹³We compute impulse responses around the deterministic steady state to keep the analysis of a constant-interest-rate policy tractable. In this case we feed into the model a sequence of monetary policy shocks which offsets the endogenous response implied by the interest rate feedback rule.

5.2 Calibration

In specifying functional forms we follow the original formulation of Fernández-Villaverde and Levintal (2018) as closely as possible. First, we assume for period utility:

$$U_t = C_t(1 - N_t)^\nu. \quad (18)$$

Given the weight ν of leisure and the degree of risk aversion γ (in equation (4) above), the intertemporal elasticity of substitution is given by $\sigma = [1 - (1 + \nu)(1 - \psi)]^{-1}$. The investment adjustment costs $S(\cdot)$ in equation (2) take the form:

$$S\left(\frac{X_t}{X_{t-1}}\right) = \frac{\kappa_k}{2} \left(\frac{X_t}{X_{t-1}}\right)^2, \quad (19)$$

where κ_k is a positive constant. Last, we specify a fairly standard interest rate rule that allows for a response of the interest rate to output growth (with response coefficient ϕ_y) in addition to inflation as well as for interest-rate smoothing:

$$1 + i_t = \left[\frac{1 + i_{t-1}}{1 + i}\right]^\gamma \left[\left(\frac{\Pi_t}{\bar{\Pi}}\right)^{\phi_\pi} \left(\frac{Y_t}{Y_{t-1}}\right)^{\phi_y}\right]^{1-\gamma}. \quad (20)$$

Here, i is the nominal interest rate in steady state. $\bar{\Pi}$ is the inflation target. The parameter γ governs the degree of interest-rate smoothing.

We calibrate the model to quarterly frequency and report parameter values in Table 7. In line with our survey we set the disaster size to $\mu = 0.05$. Next, we set $\bar{\omega} = 0.025$, implying an annual average disaster probability of 10% in line with responses to our survey. We further assume $\rho_\omega = 0.9$ as in Fernández-Villaverde and Levintal (2018). We set the standard deviation of the disaster probability, σ_ω , to 0.12, consistent with the extent of the time-series variation that we observe for google search queries for “natural disaster” over the period from 2004 until 2021. We opt for this strategy because for the 9-month period for which our survey ran daily there is a high degree of co-movement of these search queries and the probability assigned to rare disasters, as shown in Figure 3.¹⁴

For the other parameters we largely follow Fernández-Villaverde and Levintal (2018). We adjust a few parameters, however, such that the model predictions align well with a number of key empirical business cycle statistics, reported in Table 8 below. Most importantly in this regard, we want to make sure that the model predicts a plausible value for the natural rate of interest. The natural rate has been declining for some time and has been exceptionally low during the last decade. We set the discount factor β to match the average value of the

¹⁴The standard deviation of the (log) Google search data, which we use as a proxy for the expected disaster probability is 0.27. We obtain $\sigma_\omega = std(\log(\omega_t))\sqrt{1 - \rho_\omega^2} \approx 0.12$.

Table 7: Model Calibration

Parameter	Value	Source/Target
<i>Disaster expectations</i>		
μ Disaster size	0.05	Survey
$\bar{\omega}$ Mean disaster probability	0.025	Survey, 10% p.a., see Table ??
ρ_{ω} Persistence of disaster risk shock	0.9	FVL
σ_{ω} Standard deviation of (log) disaster prob.	0.12	Google search queries
<i>Preferences</i>		
β Discount factor	0.99653	$r_n \approx 0.86\%$, see Table ??
σ Intertemporal elasticity of substitution	2	FVL
ν Leisure preference	2.33	FVL
γ Risk aversion	3.8	FVL
<i>Production</i>		
α Capital share in production	0.21	FVL
δ Depreciation	0.0153	$X_t/Y_t \approx 0.15$
ϵ Elasticity of substitution	10	FVL
κ_k Capital adjustment costs parameter	0.75	Business cycle vol., see Table ??
σ_A Standard deviation of technology shock	0.013	Business cycle vol., see Table ??
<i>Monetary policy and pricing</i>		
ϕ_{π} Taylor rule parameter inflation	1.3	FVL
ϕ_y Taylor rule parameter output growth	0.2458	FVL
γ Interest rate smoothing parameter	0.5	FVL
$\bar{\Pi}$ Inflation target	1.005	2% annual inflation
θ Calvo price setting parameter	0.92	Business cycle vol., see Table ??
χ Price indexation parameter	0.6186	FVL

Notes: Model calibrated to quarterly frequency. FVL: Fernández-Villaverde and Levintal (2018).

estimate reported by the New York Fed for the period 2010–2019, based on the approach by Laubach and Williams (2003). Next, in order to match the investment to GDP ratio of $X/Y \approx 0.15$, we assume for the depreciation rate $\delta = 0.0153$.

We further target the volatility of output, investment, and inflation for the pre-crisis period 1983Q1–2007Q4, computed based on quarterly time-series observations from which we remove an HP-filtered trend. Setting $\kappa_k = 0.75$ allows the model to predict a volatility of investment in the right ballpark. The same holds for the volatility of output and inflation, as we set standard deviation of TFP growth to $\sigma_A = 0.013$ and the Calvo parameter to $\theta = 0.92$. This value implies an average price duration of 10 quarters. The value for σ_A is also in line with evidence by Fernald (2014). Lastly, we set the inflation target to 2% in accordance with Fed policies.

Table 8: Model Predictions

	Data	Model		
		Standard deviation		
		Baseline, with disaster expectations	No disaster expectations	Contribution of disaster expectation
Inflation π_t	0.22	0.20 (0.007)	0.19 (0.007)	+7.03%
Investment X_t	3.86	3.43 (0.092)	3.18 (0.096)	+7.20%
Output Y_t	1.16	1.25 (0.021)	1.23 (0.023)	+1.31%
Output Gap \tilde{y}_t		1.23 (0.039)	1.13 (0.037)	+8.12%
		Mean		
Natural rate r^n	0.68%	0.68%	1.13%	-0.45pp
Inflation π	1.73%	1.43%	1.49%	-0.06pp
Output gap \tilde{y}		-0.19pp	0.00pp	-0.19pp

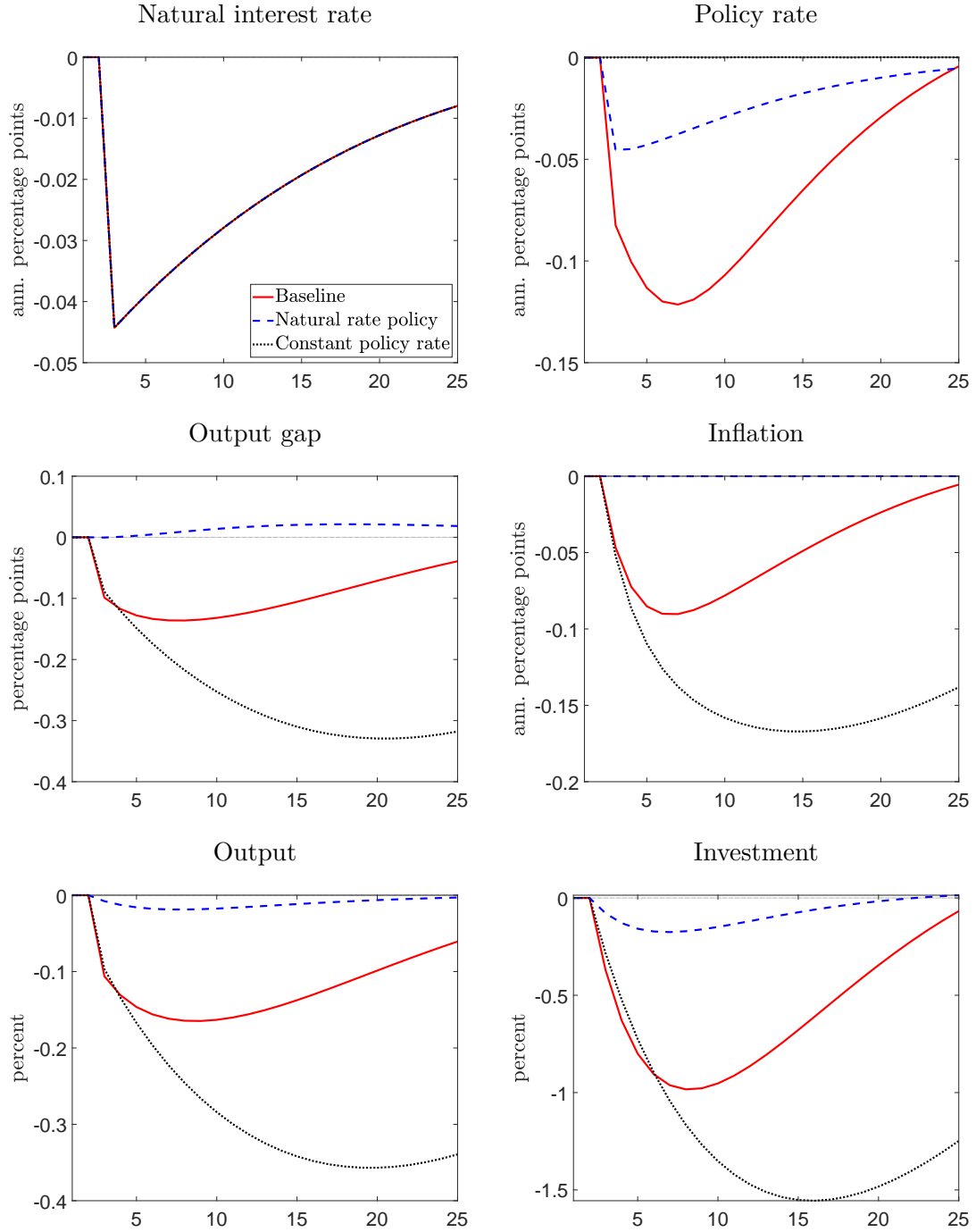
Notes: Standard deviation computed on pre-crisis sample 1983Q1–2007Q4; source: FRED (OUTNFB for real GDP, GPDIC1 for real investments, GDPDEF for inflation). GDP and Investment are in logs. Data are HP-filtered with filter weight of 1,600. Natural rate and inflation are average values for 2010–2019; estimate for natural rate by New York Fed based on approach by Laubach and Williams (2003). Model counterparts: average over 100 simulations for 10,000 periods each (standard errors in parenthesis). Statistics for the risky steady state are reported for annualized variables.

5.3 Simulation Results

We present the results of the model simulations in Table 8. The top panel reports the standard deviation of inflation, investment, output and the output gap. It contrasts the empirical moments (left) to the predictions of the model under the baseline calibration (second column). The predicted standard deviations align well with their empirical counterparts. This alignment is by construction: Our stylized model is calibrated to capture key features of the business cycles. This is the prerequisite for quantifying the contribution of climate-change related disaster expectations to the business cycle. A second purpose of our quantitative analysis is to establish that the mechanisms of the simplified model also operate in the full model which allows for investment.

To set the stage, we first consider the effects of a disaster expectation shock in isolation.

Figure 2: Impulse responses to disaster expectation shock



Notes: response to increase of disaster probability by one standard deviation. Vertical axis measures deviation from deterministic state; horizontal axis measures time in quarters. Red solid line: baseline policy as specified in equation (20); blue dashed line: policy tracks natural rate; black dotted line: constant interest rate policy.

Figure 2 shows the impulse response functions assuming alternative scenarios for monetary policy. In each instance, we consider a one-standard-deviation shock to the perceived disaster probability, implying a temporary increase in the quarterly disaster risk from 2.5% to 2.8%. In the figure, the vertical axis measures deviations from the deterministic steady state, while the horizontal axis measures time in quarters. The red solid line shows the responses for the baseline model in which monetary policy follows the interest rate rule specified in equation (20) above. The blue dashed lines, instead, show the adjustment under the assumption that monetary policy tracks the natural rate, a scenario analyzed in Section 4.2 above. Last, the black dotted line shows the adjustment for a scenario under which monetary policy does not respond to the shift in climate-change related disaster expectations, for instance, because it is constrained by the effective lower bound.¹⁵

As discussed in Section 4.2 above, the response of the natural rate is central to the transmission of the shock. It is shown in the upper-left panel of the figure and by definition independent of the monetary policy rule in place. The natural rate drops by some 4 basis points relative to the pre-shock level. The effect is gradually reversed as the expected probability of disaster converts back to its pre-shock level (with persistence parameter $\rho_\omega = 0.9$). The response of the rest of the economy crucially depends on how monetary policy adjusts short-term interest rates. We show the response of the policy rate in the upper-right panel. The case where monetary policy tracks the natural rate (blue dashed lines) provides a benchmark. Here inflation (shown in the middle-right panel) is perfectly stabilized and the output gap remains almost closed (middle-left panel).¹⁶ In contrast, we observe a sizeable output gap and inflation under the baseline policy. This is the result of insufficient monetary accommodation under the baseline policy rule (20). While the short-term policy rate initially declines more strongly compared to what happens under the natural-rate policy, the order is later reversed.¹⁷ And, eventually, it is the entire path of (real) short term rates which determines the monetary stance in the New Keynesian model (e.g., Corsetti et al., 2012). In the last scenario under consideration, that is, when monetary policy is not responding to the shock at all, there is further amplification of the shock: The contraction of the output gap and inflation is even more pronounced.

These responses offer a quantitative illustration of the results established in Section 4.2 above, see Proposition 2 in particular. The bottom panels of Figure 2 offer additional insights. They display the adjustment of output and investment, respectively. Recall that the simplified

¹⁵We approximate such a scenario by specifying a sequence of monetary policy shocks which offset the endogenous policy response to the disaster-probability shock.

¹⁶In Section 4.2 the output gap is zero in case monetary policy tracks the natural rate. This is because divine coincidence is obtained in the New Keynesian model only when inflation is stabilized at exactly zero (Alves, 2014). In addition, reduced investment decreases the capital stock and thus potential output. Investment declines due to the increased expected risk of a disaster.

¹⁷At the end of the time horizon considered in Figure 2 the policy rate under the baseline rises considerably more than in the case of the natural-rate policy.

model does not allow for investment dynamics. Now we observe for the full model that the shock triggers a sizeable contraction of investment. Intuitively, as disaster risk goes up, the expected return to capital declines. Hence the decline of investment. However, even though investment declines, this does not alter the transmission mechanism of disaster expectations in a fundamental way. First, we note that the natural rate declines in the full model just as in the simple model. Second, we observe that the adjustments of output and the output gap are very similar, implying that movements in potential output (not shown) are quite moderate in all policy scenarios. Against this background we conclude that shifts in disaster expectations operate mainly via aggregate demand—not only in the simple but also in the full model.

We are finally in a position to quantify the contribution of climate-change related disaster expectations to the business cycle. Recall that we calibrate these expectations to capture the results of our survey. We now simulate a version of the model without disaster expectations, reported in the third column of Table 8. The rightmost column of the table shows the difference between the baseline and the model without disaster expectations: It turns out that climate-change related disaster expectations—as measured by our survey—make a sizeable contribution to the business cycle. In particular, they raise the volatility of inflation and the output gap by 7-8 percent.¹⁸

Climate-change related disaster expectations also alter the first moments of key variables. We established this formally in Proposition 2 above. Now we report key statistics for the risky steady state of the full model. We report these second moments in the bottom panel of Table 8. Again, the calibration of the model ensures that the natural rate of interest in the risk steady state is 0.68% on an annualized basis, in line with the evidence for the decade since the Global Financial Crisis. Quantitatively, the model without disaster expectations features a considerably higher natural rate in the risky steady state (Column 3): We find that disaster expectations lower the natural rate by about half a percentage point from 1.13% to 0.68%. This is a sizeable effect, given that the level of the natural rate is already quite low. We also observe that inflation in the risky steady state is quite a bit below the 2% target which rule (20) mandates, just like in the data for the period 2010–19. The output gap is also negative in the risky steady state because of disaster expectations (see our discussion of Proposition 2 in Section 4.2 above).¹⁹ In sum, the model captures key features of the business cycles in terms of both standard deviations and means of key macroeconomic indicators. Disaster expectations contribute in a quantitatively non-negligible way to this performance.

¹⁸Their contribution to the volatility of output is more limited. Nevertheless they raise the volatility of the output gap while leaving the volatility of potential output almost unchanged (not shown). This is because shocks to disaster expectations lower the covariance of output and potential output because, as argued above, the mostly operate via aggregate demand.

¹⁹In the absence of disaster expectations inflation is still below target because TFP shocks impact the economy asymmetrically.

6 Macroeconomic Impact

Do climate-change exchange expectations matter for actual economic choices? Before taking up this question in a business-cycle model, we provide suggestive evidence along two lines about the macroeconomic impact of the climate change beliefs from the survey.

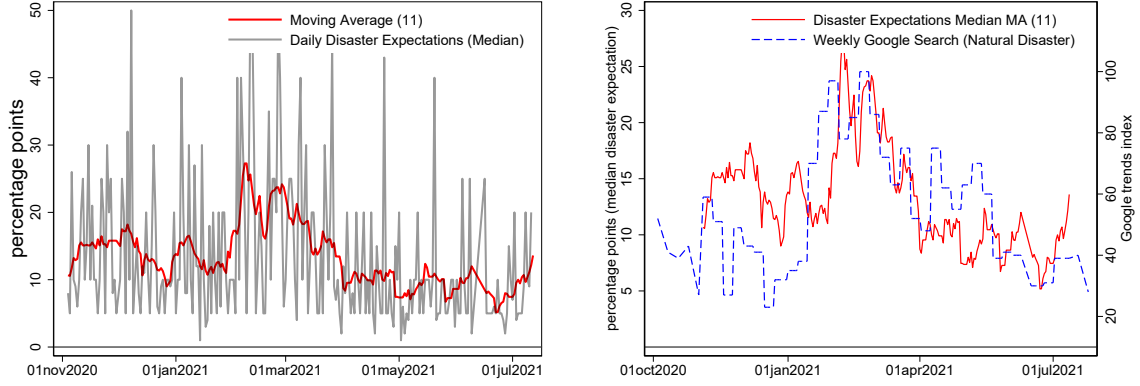
First, we consider within the survey the responses to the behavioral questions and show that they co-move with climate-change beliefs in ways that supports the notion that climate-change beliefs matter for actual behavior. We note first that a substantial fraction of respondents indicates that they have changed their mobility or other lifestyle decisions due to climate change. For example, 31% of respondents say they have changed their mobility decisions or 25% indicate that they try to avoid products made from plastic, due to environmental concerns. A probit regression shows that decisions are statistically significantly related to the perceived probabilities of large natural disaster, reported in response to Question 3. A 1 percentage point higher perceived probability, for instance, is associated with a 0.25 percentage point higher probability of not taking a flight, see Table C.1.

The impact individual beliefs about natural disaster probabilities have on financial decisions is of particular importance for macroeconomic trends, both on an intensive, that is, the risk aversion of investments, as well as an extensive margin, that is, the consumption savings decision. Indeed, we find on the intensive margin of investments that the individual disaster probability has a significant impact on the probability to both refrain from investments that are considered harmful to the climate and to divest ones' portfolio, due to potential climate change risks. Balasubramaniam (2021) reports similar results, namely that households that experienced natural disasters—either directly or indirectly via friends or relatives—shift their portfolio choices away from risky assets. In similar instances, Fier and Carson (2015) report a higher demand for life insurance policies. Likewise, several studies find that experienced disasters or disaster expectations increase the demand for disaster related insurance, such as flood or home owner insurance policies (see, for example Gallagher, 2014).

Second, we obtain evidence suggestive of a macroeconomic impact of our beliefs by exploiting the behavior of a proxy that captures the time series variation in beliefs in a VAR. Our survey ran for 9 months and responses show considerable variation over this time period. We illustrate this in Figure 3: The left panel shows the daily median the reported probability of a large disaster in grey (Question 3). The series is very volatile, presumably reflecting the moderate number of daily responses. The red line in the same panel represents the 11-day moving average across daily medians. This series is considerably smoother, but still shows considerable variation over time. In the right panel we reproduce this series jointly with a weekly Google search index for “Natural Disaster”. Both series show a strong co-movement during our sample period.

The Google search index is available since 2004. In what follows we exploit the variation

Figure 3: Disaster expectations: Variation over time



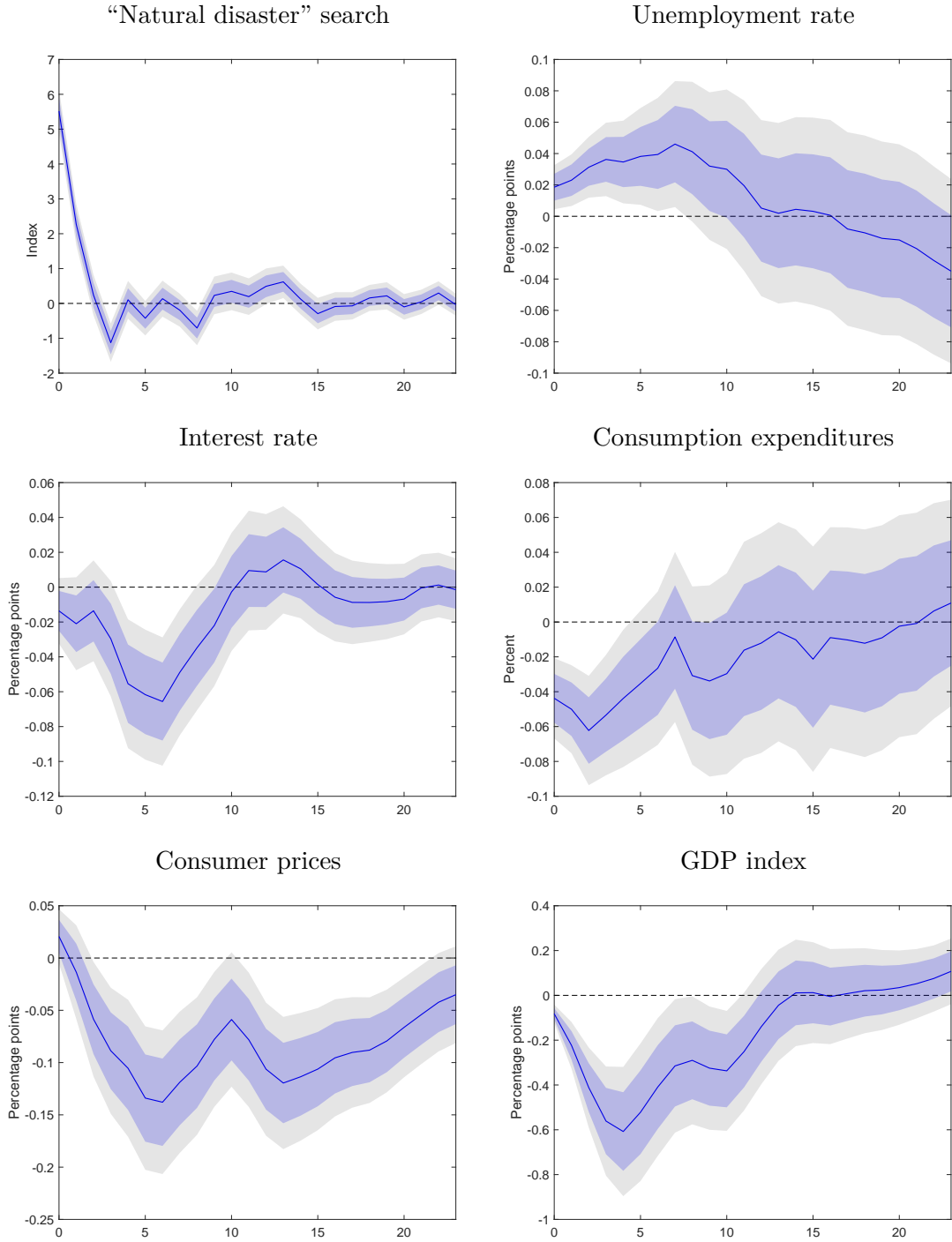
Notes: left panel shows time series for the daily median of disaster expectations (black line). The red line shows 11-day moving average, based on Huber robust and survey weights. Right panel shows the weekly median disaster expectation (left axis) as well as an index for Google searches for “Natural Disaster” (right axis).

in this variable as a proxy for the variation in disaster probability beliefs. In particular, we estimate a VAR model on monthly observation for the period 2004:M1 to 2019:M12, that is, on data up until the Corona-induced recession. The baseline VAR model includes the Google search index for “natural disasters” as well as as three macroeconomic indicators: the unemployment rate (FRED: UNRATE) as a monthly measure of real activity, long-term interest rates (FRED: DGS10), and the log of real personal consumption expenditures (FRED: PCEC96). The VAR model includes 12 lags of the endogenous variables, a constant and a linear time trend. In addition, the model includes a time series of actual disaster costs as an exogenous variable, both its contemporary value as well as 12 lags. We obtain these data from NCEI (2020) and scale them by GDP, see also Figure C.1.

We identify exogenous shifts in search queries for “natural disasters” through a recursive identification scheme where we order the search series first. In this way we rule out a contemporaneous impact of macroeconomic indicators on search queries. This restriction appears fairly mild because there is no obvious link from the economy to “natural disaster” search, notably at monthly frequency. However, because the VAR features current and lagged values of disaster costs, the innovations in disaster search are likely orthogonal to current disasters. Hence, our interpretation as shocks to disaster expectations. Under our identification scheme these shocks may impact the macroeconomic indicators in the VAR immediately.

Figure 4 shows the impulse response functions to a shift in natural disaster expectations, as measured by the Google search query—that is, the responses to a shock to disaster expectations. In the figure, the vertical axis measures the deviation from the pre-shock level, the horizontal axis measures time in months. The solid line represents the point estimate to a one-standard deviation shock, while shaded areas indicate 68% and 90% confidence bounds,

Figure 4: Macroeconomic Impact of Disaster Expectations



Notes: impulse responses to identified disaster expectation shocks. Solid line represents point estimate, shaded areas 68% and 90% confidence bounds. Shock size: one standard deviation; horizontal axis measures time in months, vertical axis deviation from pre-shock level.

respectively. The shift in the search query, shown in the upper-left panel, is rather short lift. It triggers a persistent increase of the unemployment rate (upper-right panel) which lasts for about a year. Interest rates, shown in the middle-left panel, decline during that year and personal consumption expenditures also drop (middle-right panel). In sum, the shift in disaster expectations has a contractionary impact on the macroeconomy.

We further corroborate this notion as we reestimate the VAR model while replacing the time series for consumption with, in turn, the log of the CPI (FRED: CPIAUCSL) and an index for GDP that we compute based on the Brave-Butters-Kelley measure of monthly real GDP growth (FRED: BBKM GDP). Including these time series in the VAR rather than consumption does not alter the impulse responses of the other variables in a meaningful way but allows us to economize on the degrees of freedom while fleshing out the transmission mechanism in more detail. We show the responses of the additional variables in the bottom row of Figure 4. We observe that consumer prices and GDP decline persistently as well in response to a shock to disaster expectations. Overall, the VAR evidence suggests that disaster expectations matter: An upward shift in disaster expectations induces an economic contraction which resembles that induced by adverse demand (or sentiment) shock (e.g., Enders et al., 2021).

7 Conclusion

Central banks have started to become involved in the debate about climate change and are devising measures in order to respond appropriately to challenges raised by climate change. What comes out of this debate and what measures will play a significant role in the future is highly uncertain, just like the consequences of climate change itself. Against this background, we stress a channel through which climate change impacts economic activity in a fairly conventional way—namely via expectations. Yet, while fairly conventional, the *expectations channel of climate change* has thus far been overlooked and central banks risk ignoring it at their own peril—as we illustrate in this paper.

In a first step, we measure climate-change expectations, or more specifically, beliefs about the economic impact of climate change on the basis of a representative consumer survey in the U.S. We find that respondents perceive a high probability of costly, rare disasters due to climate change, but not much of an impact on GDP growth. Our findings are consistent with the notion that natural disasters are salient of climate change and, hence, capture peoples’ mind when thinking about climate change. In a second step, we calibrate a New Keynesian model with rare disasters to capture the main results of the survey. We show that shifts in climate-change related disaster expectations make a sizeable contribution to the business cycle. In principle, monetary policy may stabilize the economy in the face of such shifts. Our model simulations show, however, that a conventional interest rate rule fails to do so. This

underscores the relevance of climate-change expectations for monetary policy.

We conclude by noting that while the challenges raised by climate change for society are quite exceptional, the way climate-change expectations impact the economy are most likely not. To the extent that climate-change expectations fluctuate as media coverage and the focus of social debates shifts over time, they epitomize a notion that is at the heart of “narrative economics” (Shiller, 2017): Certain stories go viral at different points in time—quite independent of fundamentals. Still, this makes them all the more relevant for monetary policy, not less.

References

- Aghion, Philippe, Antoine Dechezleprêtre, David Hémous, Ralf Martin, and John Van Reenen (2016). “Carbon Taxes, Path Dependency, and Directed Technical Change: Evidence from the Auto Industry”. *Journal of Political Economy* 124 (1), 1–51.
- Alves, Sergio (2014). “Lack of Divine Coincidence in New Keynesian Models”. *Journal of Monetary Economics* 67, 33–46.
- Baker, Scott R., Tucker S. McElroy, and Xuguang S. Sheng (2020). “Expectation Formation Following Large, Unexpected Shocks”. *Review of Economics and Statistics* 102 (2), 287–303.
- Balasubramaniam, Vimal (2021). “Lifespan Expectations and Financial Decisions: Evidence from Mass Shootings and Natural Disaster Experiences”. *Working Paper*.
- Bansal, Ravi, Dana Kiku, and Marcelo Ochoa (2019). “Climate Change Risk”. *Working Paper*.
- Barberis, Nicholas (2013a). “The Psychology of Tail Events: Progress and Challenges”. *The American Economic Review* 103 (3), 611–616.
- Barberis, Nicholas C (2013b). “Thirty Years of Prospect Theory in Economics: A Review and Assessment”. *Journal of Economic Perspectives* 27 (1), 173–96.
- Barro, Robert J. (2006). “Rare Disasters and Asset Markets in the Twentieth Century”. *The Quarterly Journal of Economics* 121 (3), 823–866.
- (2015). “Environmental Protection, Rare Disasters and Discount Rates”. *Economica* 82 (325), 1–23.
- Barron, G. and E. Yechiam (2009). “The Coexistence of Overestimation and Underweighting of Rare Events and the Contingent Recency Effect”. *Judgment and Decision Making* 4 (6), 447–460.
- Barsky, Robert B. and Eric R. Sims (2012). “Information, animal spirits, and the meaning of innovations in consumer confidence”. *American Economic Review* 102 (4), 1343–77.

- Batten, Sandra, Rhiannon Sowerbutts, and Misa Tanaka (2020). “Ecological, Societal, and Technological Risks and the Financial Sector”. Chap. *Climate Change: Macroeconomic Impact and Implications for Monetary Policy*.
- Bauer, Michael and Glenn Rudebusch (2020). “The Rising Cost of Climate Change: Evidence from the Bond Market”. *Federal Reserve Bank of San Francisco Working paper 2020-25*.
- Beaudry, Paul and Franck Portier (2006). “Stock Prices, News, and Economic Fluctuations”. *American Economic Review* 96 (4), 1293–1307.
- Bishop, Yvonne, Stephen Fienberg, and Paul Holland (1975). “Discrete Multivariate Analysis: Theory and Practice.” *MIT Press*.
- Blanchard, Olivier J., Jean-Paul L’Huillier, and Guido Lorenzoni (2013). “News, Noise, and Fluctuations: An Empirical Exploration”. *American Economic Review* 103 (7), 3045–70.
- Bordalo, P., B. Giovanni, K. Coffman, N. Gennaioli, and A. Shleifer (2022). “Imagining the Future: Memory, Simulation and Beliefs about COVID”. Working paper.
- Bordalo, Pedro, Katherine Coffman, Nicola Gennaioli, Frederik Schwerter, and Andrei Shleifer (2019). “Memory and Representativeness”. NBER Working Papers 25692. National Bureau of Economic Research, Inc.
- Bordalo, Pedro, Nicola Gennaioli, Yueran Ma, and Andrei Shleifer (2020). “Overreaction in Macroeconomic Expectations”. *American Economic Review* 110 (9), 2748–82.
- Borghans, Lex, Bart H. H. Golsteyn, James J. Heckman, and Huub Meijers (2009). “Gender Differences in Risk Aversion and Ambiguity Aversion”. *Journal of the European Economic Association* 7 (2), 649–658.
- Boykoff, M., M. Daly, McNatt, and A. Nacu-Schmidt (2020). *United States Newspaper Coverage of Climate Change or Global Warming*. Online.
- Burke, Marshall, Solomon Hsiang, and Edward Miguel (2015). “Global Non-linear Effect of Temperature on Economic Production”. *Nature, Research Letter*.
- Cantelmo, Alessandro (2020). “Rare Disasters, the Natural Interest Rate and Monetary Policy”. *Bank of Italy Working Paper Series* (1309).

- Carroll, Christopher D. (2003). “Macroeconomic Expectations of Households and Professional Forecasters”. *Quarterly Journal of Economics* 118 (1), 269–298.
- Chahrour, Ryan, Kristoffer Nimark, and Stefan Pitschner (2021). “Sectoral Media Focus and Aggregate Fluctuations”. *American Economic Review* 111 (12), 3872–3922.
- Charness, Gary and Uri Gneezy (2012). “Strong Evidence for Gender Differences in Risk Taking”. *Journal of Economic Behavior & Organization* 83 (1), 50–58.
- Cœuré, Benoît (2018). *Monetary Policy and Climate Change*. Speech.
- Coibion, Olivier, Yuriy Gorodnichenko, and Michael Weber (2022). “Monetary Policy Communications and their Effects on Household Inflation Expectations”. *Journal of Political Economy*, forthcoming.
- Colacito, Riccardo, Bridget Hoffmann, and Toan Phan (2019). “Temperature and Growth: A Panel Analysis of the United States”. *Journal of Money, Credit and Banking* 51 (2-3), 313–368.
- Corsetti, Giancarlo, André Meier, and Gernot J. Müller (2012). “Fiscal Stimulus with Spending Reversals”. *The Review of Economics and Statistics* 94 (4), 878–895.
- Dell, Melissa, Benjamin F. Jones, and Benjamin A. Olken (2012). “Temperature Shocks and Economic Growth: Evidence from the Last Half Century”. *American Economic Journal: Macroeconomics* 4 (3), 66–95.
- Dietrich, Alexander, Keith Kuester, Gernot J. Müller, and Raphael Schoenle (2022). “News and Uncertainty about COVID-19: Survey Evidence and Short-Run Economic Impact”. *Journal of Monetary Economics* 129, S35–S51.
- Emanuel, Kerry A. (2018). *Climate Science and Climate Risk: A Primer*. MIT.
- Enders, Zeno, Michael Kleemann, and Gernot J. Müller (2021). “Growth Expectations, Undue Optimism, and Short-Run Fluctuations”. *The Review of Economics and Statistics* 103 (5), 905–921.
- Federal Emergency Management Agency, FEMA (2020). *Disaster Declarations Summaries*. Online. <https://www.fema.gov/api/open/v2/DisasterDeclarationsSummaries>.

- Federal Reserve Bank of New York (2020). *Measuring the Natural Rate of Interest*.
- Fernald, John (2014). “A Quarterly, Utilization-Adjusted Series on Total Factor Productivity”. Federal Reserve Bank of San Francisco Working Paper Series.
- Fernández-Villaverde, J. and O. Levintal (2018). “Solution Methods for Models with Rare Disasters”. *Quantitative Economics* 9 (2).
- Fernandez-Villaverde, Jesus, J.F. Rubio-Ramírez, and F. Schorfheide (2016). “Solution and Estimation Methods for DSGE Models”. *Handbook of Macroeconomics*. Ed. by John B. Taylor and Harald Uhlig. Vol. 2A. Elsevier. Chap. 9, 527–724.
- Fier, Stephen G. and James M. Carson (2015). “Catastrophes and the Demand for Life Insurance”. *Journal of Insurance Issues* 38 (2), 125–156.
- Fischhoff, Baruch, Wändi Bruine de Bruin, Andrew Parker, Susan Millstein, and Bonnie Halpern-Felsher (2010). “Adolescents’ Perceived Risk of Dying”. *The Journal of adolescent health : official publication of the Society for Adolescent Medicine* 46, 265–9.
- Fox, Craig R. and Amos Tversky (1998). “A Belief-Based Account of Decision Under Uncertainty”. *Management Science* 44 (7), 879–895.
- Fried, Stephanie, Kevin Novan, and William B. Peterman (2021). “The Macro Effects of Climate Policy Uncertainty”. Mimeo. Working Paper.
- Galí, Jordi (2015). *Monetary Policy, Inflation, and the Business Cycle: An Introduction to the New Keynesian Framework and Its Applications*. 2nd ed. Princeton University Press.
- Gallagher, Justin (2014). “Learning about an Infrequent Event: Evidence from Flood Insurance Take-Up in the United States”. *American Economic Journal: Applied Economics* 6 (3), 206–33.
- Gollier, Christian (2020). “The Cost-Efficiency Carbon Pricing Puzzle”. *Toulouse School of Economics Working Paper*.
- Golosov, Michael, John Hassler, Per Krusell, and Aleh Tsyvinski (2014). “Optimal Taxes on Fossil Fuel in Equilibrium”. *Econometrica* 82 (1), 41–88.

- Gourio, F. (2012). “Disaster Risk and Business Cycles”. *American Economic Review* 102 (6).
- Gustafson, Per E. (1998). “Gender Differences in Risk Perception: Theoretical and Methodological Perspectives”. *Risk Analysis* 18 (6).
- Hassler, John and Per Krusell (2018). *Environmental Macroeconomics: the Case of Climate Change*. mimeo.
- Hassler, John, Per Krusell, and Conny Olovsson (2020). *On the Effectiveness of Climate Policies*. mimeo.
- Heimer, Rawley Z., Kristian Myrseth, and Raphael S. Schoenle (2019). “YOLO: Mortality Beliefs and Household Finance Puzzles”. *The Journal of Finance* 74 (6), 2957–2996.
- Heutel, Garth (2012). “How Should Environmental Policy Respond to Business Cycles? Optimal Policy under Persistent Productivity Shocks”. *Review of Economic Dynamics* 15 (2), 244–264.
- Hong, Harrison, Neng Wang, and Jinqiang Yang (2020). “Mitigating Disaster Risks in the Age of Climate Change”. NBER Working Papers 27066. National Bureau of Economic Research, Inc.
- Hu, Zhongchen (2022). “Social interactions and households’ flood insurance decisions”. *Journal of Financial Economics* 144 (2), 414–432.
- Idel, Martin (2016). “A Review of Matrix Scaling and Sinkhorn’s Normal Form for Matrices and Positive Maps”. *arXiv: Rings and Algebras*.
- IPCC (2012). “Managing the Risks of Extreme Events and Disasters to Advance Climate Change Adaptation”. Report. Intergovernmental Panel On Climate Change.
- Isoré, Marlène and Urszula Szczerbowicz (2017). “Disaster Risk and Preference Shifts in a New Keynesian Model”. *Journal of Economic Dynamics & Control* 79 (C), 97–125.
- Jaimovich, Nir and Sergio Rebelo (2009). “Can News about the Future Drive the Business Cycle?” *American Economic Review* 99 (4), 1097–1118.

- Jianakoplos, Nancy Ammon and Alexandra Bernasek (1998). “Are Women more Risk Averse?” *Economic Inquiry* XXXVI, 620–630.
- Knotek, Edward et al. (2020). *Consumers and COVID-19: A Real-Time Survey*. Federal Reserve Bank of Cleveland Economic Commentary Number 2020-08.
- Kozlowski, Julian, Laura Veldkamp, and Venky Venkateswaran (2020). “The Tail That Wags the Economy: Beliefs and Persistent Stagnation”. *Journal of Political Economy* 128 (8), 2839–2879.
- Kuchler, Theresa and Basit Zafar (2019). “Personal Experiences and Expectations about Aggregate Outcomes”. *The Journal of Finance* 74 (5), 2491–2542.
- Larsen, Vegard H., Leif Anders Thorsrud, and Julia Zhulanova (2021). “News-driven Inflation Expectations and Information Rigidities”. *Journal of Monetary Economics* 117, 507–520.
- Laubach, Thomas and John C. Williams (2003). “Measuring the Natural Rate of Interest”. *The Review of Economics and Statistics* 85 (4), 1063–1070.
- Lichtenstein, Sarah, Paul Slovic, Baruch Fischhoff, Mark Layman, and Barbara Combs (1978). “Judged Frequency of Lethal Events”. *Journal of Experimental Psychology: Human Learning and Memory* 4, 551–578.
- Lorenzoni, Guido (2009). “A Theory of Demand Shocks”. *American Economic Review* 99 (5), 2050–84.
- Malmendier, Ulrike and Stefan Nagel (2011). “Depression Babies: Do Macroeconomic Experiences Affect Risk Taking?” *The Quarterly Journal of Economics* 126 (1), 373–416.
- (2015). “Learning from Inflation Experiences”. *The Quarterly Journal of Economics* 131 (1), 53–87.
- Mendelsohn, Robert, William Nordhaus, and Dai Gee Shaw (1994). “The Impact of Global Warming on Agriculture: A Ricardian Approach”. *American Economic Review* 84 (4), 753–771.
- Nakamura, Emi and Jón Steinsson (2018). “High-Frequency Identification of Monetary Non-Neutrality: The Information Effect”. *Quarterly Journal of Economics* 133 (3), 1283–1330.

- NCDP, National Center for Disaster Preparedness (2020). *Us natural hazard index*. Online. Columbia University, <https://ncdp.columbia.edu/library/mapsmapping-projects/us-natural-hazards-index/>.
- NCEI, NOAA National Centers for Environmental Information (2020). *U.S. Billion-Dollar Weather and Climate Disasters*. <https://www.ncdc.noaa.gov/billions/>, DOI: 10.25921/stkw-7w73.
- Nordhaus, William (1994). *Managing the Global Commons: The Economics of Climate Change*. MIT Press.
- (2006). “Geography and Macroeconomics: New Data and New Findings”. *Proceedings of the National Academy of Sciences* 103 (10), 3510–3517.
- Qualtrics (2019). *Esomar 28: 28 questions to help buyers of online samples*.
- Schmitt-Grohé, Stephanie and Martín Uribe (2012). “What’s News in Business Cycles”. *Econometrica* 80 (6), 2733–2764.
- Shiller, Robert J. (2017). “Narrative Economics”. *American Economic Review* 107 (4), 967–1004.
- Somanathan, E., Rohini Somanathan, Anant Sudarshan, and Meenu Tewari (2021). “The Impact of Temperature on Productivity and Labor Supply: Evidence from Indian Manufacturing”. *Journal of Political Economy* 129 (6), 1797–1827.
- Stroebel, Johannes and Jeffrey Wurgler (2021). “What Do You Think About Climate Finance?” *Journal of Financial Economics* 142 (2), 487–498.
- Tversky, A. and D. Kahneman (1992). “Advances in Prospect Theory: Cumulative Representation of Uncertainty”. *Journal of Risk and Uncertainty* volume 5 (6), 297–323.
- Tversky, Amos and Daniel Kahneman (1973). “Availability: A Heuristic for Judging Frequency and Probability”. *Cognitive Psychology* 5 (2), 207–232.
- UNDP and University of Oxford (2021). *Peoples’ climate vote*. Report.

- van der Linden, Sander (2015). “The Social-Psychological Determinants of Climate Change Risk Perceptions: Towards a Comprehensive Model”. *Journal of Environmental Psychology* 41, 112–124.
- Viscusi, W. Kip (1990). “Do Smokers Underestimate Risks?” *Journal of Political Economy* 98 (6), 1253–1269.
- (2016). “Risk Beliefs and Preferences for E-cigarettes”. *American Journal of Health Economics* 2 (2), 213–240.
- Woodford, Michael (2003). *Interest and Prices*. Princeton University Press.
- (2011). “Simple Analytics of the Government Expenditure Multiplier”. *American Economic Journal: Macroeconomics* 3 (1), 1–35.

A Details on Model

A.1 First Order Conditions of Simplified Model

The first order conditions for the household problem in the simplified model (Section 4) are:

$$\frac{W_t}{P_t} = C_t^\sigma N_t^\varphi, \quad (21)$$

$$Q_t = \beta E_t \left\{ \left(\frac{C_{t+1}}{C_t} \right)^{-\sigma} \frac{P_t}{P_{t+1}} \right\}. \quad (22)$$

Here we assume prohibitively high investment adjustment costs and no depreciation; specifically, we assume $K_t = \bar{K}$ and $X_t = 0$ for all t . At the aggregate level, the goods market equilibrium collapses to $Y_t = C_t$. The first order conditions of firms are:

$$0 = \sum_{t=0}^{\infty} \theta^k E_t \left\{ Q_{t,t+k} Y_{t+k|t} \left(P_t^* - \mathcal{M} \Psi_{t+k|t} \right) \right\}, \quad (23)$$

$$\frac{\bar{K}}{N_t} = \frac{\alpha}{1-\alpha} \frac{W_t}{R_t^K}, \quad (24)$$

$$\Psi_t = \left(\frac{1}{1-\alpha} \right)^{1-\alpha} \left(\frac{1}{\alpha} \right)^\alpha \frac{W_t^{1-\alpha} R_t^{K\alpha}}{P_t A_t}. \quad (25)$$

where $\Psi_{t+k|t} = \mathcal{C}'_{t+k}(Y_{t+k|t})$ denotes marginal costs and $\mathcal{M} \equiv \frac{\epsilon}{\epsilon-1}$ is the markup in steady state.

A.2 Proof of Proposition 1

The proposition establishes the solution for the natural rate of interest and for potential output (or “natural output”). These are the outcomes if prices are flexible, that is, if $\theta = 0$. We solve the simplified model under this assumption. From (23), it follows that the optimal price (in logs) is a constant markup over marginal costs:

$$p_t = \tau + \psi_t, \quad (26)$$

where τ is the log of the steady state markup. ψ_t gives the log marginal costs. Using the log of equations (24) and (25), we obtain:

$$\psi_t = w_t - p_t - a_t + \alpha n_t - \log(1-\alpha) - \alpha \log(\bar{K}).$$

Inserting into (??) gives:

$$\tau = -w_t + a_t - \alpha n_t + \log(1-\alpha) + \alpha \log(\bar{K}).$$

Combining this expression, the labor supply relation (21) and the goods market clearing condition, we obtain the following solution for potential output:

$$\hat{y}_t^n = \Xi_a a_t + \Lambda,$$

where $\Xi_a = \frac{1+\varphi}{\sigma(1-\alpha)+(\alpha+\varphi)} > 0$ and $\Lambda = \frac{(1-\alpha)(\log(1-\alpha)+\alpha\log(\bar{K})-\tau)}{\sigma(1-\alpha)+\alpha+\varphi} > 0$.

Inserting the process for technology in logs $a_t = a_{t-1} + \sigma_A \epsilon_{A,t} - (1-\alpha)d_t\mu$ gives:

$$\hat{y}_t^n = \Xi_\mu d_t\mu + \Xi_a a_{t-1} + \Xi_a \sigma_A \epsilon_{A,t} + \Lambda.$$

With $\Xi_\mu = -\frac{\sigma(1-\varphi)(1-\alpha)}{\sigma(1-\alpha)+(\alpha+\varphi)} < 0$. Potential output thus depends on d_t , that is, the realization of the disaster.

Linearizing the Euler equation (22) and substituting for consumption using goods market clearing yields:

$$y_t = E_t y_{t+1} - \frac{1}{\sigma}(i_t - E_t \pi_{t+1} - \rho).$$

Defining the output gap as $\tilde{y}_t = y_t - y_t^n$ and using the solution for the potential output, we obtain the dynamic IS equation (15) as well as the expression for the natural rate of interest which is stated in Proposition 1:

$$\begin{aligned} r_t^n &= \rho + \Omega E_t \Delta a_{t+1} \\ &= \rho - \Omega(1-\alpha)\omega_t\mu, \end{aligned} \tag{27}$$

where $\Omega = \frac{\sigma(1+\varphi)}{\sigma(1-\alpha)+\alpha+\varphi} > 0$.

A.3 Proof of Proposition 2

The proposition considers three alternative scenarios for monetary policy. For each, we solve the model given by (14), (15) and (16). We use the method of undetermined coefficients to solve for the endogenous variables as linear functions of the natural rate of interest r_t^n , which itself depends on the exogenous parameters of the model, namely the disaster size μ and probability p_t , as formally shown in Proposition 1 and equation (27).

A.3.0.1 Full Stabilization First, we assume that the central bank stabilizes the economy by tracking the natural rate of interest, that is, the interest rate rule is given by (16) with $\phi_r = 1$, that is, $i_t = \rho + r_t^n + \phi_\pi \pi_t$. Using this in (15) and combining with (14), we find that $\{\tilde{y}_t, \pi_t\} = 0$ for all t is a stable solution. The solution is unique, provided the Taylor principle is satisfied: $\phi_\pi > 1$.

A.3.0.2 Taylor Rule Second, we assume $\phi_r = 0$ and that $\phi_{\pi,t} = \phi_\pi$ such that (16) implies $i_t = \rho + \phi_\pi \pi_t$. We first substitute in the expression for natural rate of interest using $\omega_t = \bar{\omega} + \hat{\omega}_t$. We next use the method of undetermined coefficients, starting from the observation that the output gap and inflation will linear functions of the disaster probability, that is, $\tilde{y}_t = \Pi_y^0 + \Pi_y^1 \hat{\omega}_t$ and $\pi_t = \Pi_\pi^0 + \Pi_\pi^1 \hat{\omega}_t$. Substituting in the equilibrium conditions, we obtain:

$$\begin{aligned}\Pi_\pi^0 \bar{\omega} &= \beta \Pi_\pi^0 \bar{\omega} + \kappa \Pi_y^0 \bar{\omega}, \\ \Pi_y^0 \bar{\omega} &= \Pi_y^0 \bar{\omega} - \frac{1}{\sigma} \left(\Pi_\pi^0 \phi_\pi \bar{\omega} - \Pi_\pi^0 \bar{\omega} + \Omega(1 - \alpha) \mu \bar{\omega} \right), \\ \Pi_\pi^1 \hat{\omega}_t &= \kappa \Pi_y^1 \hat{\omega}_t, \\ \Pi_y^1 \hat{\omega}_t &= -\frac{1}{\sigma} \left(\Pi_\pi^1 \phi_\pi \hat{\omega}_t + \Omega(1 - \alpha) \mu \hat{\omega}_t \right).\end{aligned}$$

Solving for the undetermined coefficients Π_y and Π_π gives the solution stated in proposition 2:

$$\Pi_y^0 = -\frac{(1 - \beta)}{\kappa(\phi_\pi - 1)} \Omega \mu (1 - \alpha) \bar{\omega} < 0, \quad (28)$$

$$\Pi_\pi^0 = -\frac{1}{\phi_\pi - 1} \Omega \mu (1 - \alpha) \bar{\omega} < 0, \quad (29)$$

$$\Pi_y^1 = -\frac{1}{\sigma + \kappa \phi_\pi} \Omega \mu (1 - \alpha) < 0, \quad (30)$$

$$\Pi_\pi^1 = -\frac{\kappa}{\sigma + \kappa \phi_\pi} \Omega \mu (1 - \alpha) < 0. \quad (31)$$

Note that as $\phi_\pi \rightarrow \infty$ the outcome for the Taylor rule is equivalent to full stabilization, since $\lim_{\phi_\pi \rightarrow \infty} \Pi_y^0 = 0$, $\lim_{\phi_\pi \rightarrow \infty} \Pi_y^1 = 0$, $\lim_{\phi_\pi \rightarrow \infty} \Pi_\pi^0 = 0$ and $\lim_{\phi_\pi \rightarrow \infty} \Pi_\pi^1 = 0$. Again, the solution in (28) and (31) is unique given that the Taylor principle holds, that is $\phi_\pi > 1$.

A.3.0.3 Unresponsive Monetary Policy Here we assume that monetary policy is unresponsive to the disaster expectations ($\phi_{\pi,t} = 0$) in period t and with probability ζ for another period. With probability $1 - \zeta$ monetary policy reverts back to follow a Taylor rule in the next period. In that case, since there are no endogenous state variables, the solution in period $t + 1$ is given by (28)-(31). In terms of notation, we use superscript U to index variables to the state in which monetary policy is unresponsive. We write, for instance, π_t^U . Using the Markov structure for the responsiveness of monetary policy outlined above, we can rewrite the expectations operators in (14) and (15) - given that monetary policy is unresponsive in t - as:

$$\begin{aligned}E_t(\pi_{t+1}|U) &= \zeta E_t \pi_{t+1}^U + (1 - \zeta) \left[\Pi_\pi^0 \right], \\ E_t(\tilde{y}_{t+1}|U) &= \zeta E_t \tilde{y}_{t+1}^U + (1 - \zeta) \left[\Pi_y^0 \right].\end{aligned}$$

due to $E_t \hat{\omega}_{t+1} = 0$. Using these expectations operators, we can express (14) and (15) in matrix form:

$$E_t \begin{bmatrix} \tilde{y}_{t+1}^U \\ \pi_{t+1}^U \end{bmatrix} = C + A \begin{bmatrix} \tilde{y}_t^U \\ \pi_t^U \end{bmatrix} + B \hat{\omega}_t,$$

where

$$A = \frac{1}{\zeta} \begin{bmatrix} 1 + \frac{\kappa}{\beta\sigma} & -\frac{1}{\beta\sigma} \\ -\frac{\kappa}{\beta} & \frac{1}{\beta} \end{bmatrix}, \quad B = \frac{1}{\zeta} \begin{bmatrix} \frac{(1-\alpha)}{\sigma} \Omega \mu \\ 0 \end{bmatrix}, \quad C = \frac{1-\zeta}{\zeta} \begin{bmatrix} -\Pi_y^0 + \frac{1-\alpha}{(1-\zeta)\sigma} \Omega \mu \\ -\Pi_\pi^0 \end{bmatrix}.$$

Following the method proposed by Woodford (2003) it can be shown that in our model a solution is determinate as long as both eigenvalues of A are outside the unit circle. This condition is fulfilled if (32) holds:

$$(1 - \zeta)(1 - \beta\zeta)\sigma - \kappa\zeta > 0. \quad (32)$$

Given that result, we solve again by the method of undetermined coefficients. To find the solution for the period t , we assume that the output gap and inflation are linear functions of $\hat{\omega}_t$ and a constant, that is, we assume that $\tilde{y}_t^U = \Gamma_y^0 + \Gamma_y^1 \hat{\omega}_t$ and $\pi_t^U = \Gamma_\pi^0 + \Gamma_\pi^1 \hat{\omega}_t$. Solve for Γ_y^0 , Γ_y^1 , Γ_π^0 and Γ_π^1 :

$$\begin{aligned} \Gamma_y^0 &= \frac{(1 - \beta\zeta)(1 - \zeta)\sigma}{(1 - \zeta)(1 - \beta\zeta)\sigma - \kappa\zeta} \Pi_y^0 \\ &\quad + \frac{1 - \zeta}{(1 - \zeta)(1 - \beta\zeta)\sigma - \kappa\zeta} \Pi_\pi^0 + \frac{(1 - \beta\zeta)}{(1 - \zeta)(1 - \beta\zeta)\sigma - \kappa\zeta} \mu \Omega (1 - \alpha), \\ \Gamma_\pi^0 &= \frac{(1 - \zeta)\kappa\sigma}{(1 - \zeta)(1 - \beta\zeta)\sigma - \kappa\zeta} \Pi_y^0 \\ &\quad + \frac{1 - \zeta}{1 - \beta\zeta} \left[\beta + \frac{\kappa}{(1 - \zeta)(1 - \beta\zeta)\sigma - \kappa\zeta} \right] \Pi_\pi^0 + \frac{\kappa}{(1 - \zeta)(1 - \beta\zeta)\sigma - \kappa\zeta} \mu \Omega (1 - \alpha), \\ \Gamma_y^1 &= -\frac{1}{\sigma} (1 - \alpha) \mu \Omega \bar{\omega}, \\ \Gamma_\pi^1 &= -\frac{\kappa}{\sigma} (1 - \alpha) \mu \Omega \bar{\omega}. \end{aligned}$$

Using (28), (31) and (32) it can now also be shown that $\Gamma_y^0 < \Pi_y^0$ and $\Gamma_\pi^0 < \Pi_\pi^0$, as stated in proposition 2. $\kappa\phi_\pi > 0$ ensures that $\Gamma_y^1 < \Pi_y^1$ and $\Gamma_\pi^1 < \Pi_\pi^1$.

B Survey Appendix

B.1 Demographic Questions

First, we ask all respondents the following demographic questions:

D1: Please enter your age.

D2 Please indicate your gender.

- O Male*
- O Female*
- O Other*

D3: How would you identify your ethnicity? Please select all that apply.

- O Asian/Asian American*
- O Black/African American*
- O White/Caucasian*
- O Other*
- O Prefer not to say*

D4: Do you consider yourself of Hispanic, Latino or Spanish origin?

- O Yes*
- O No*

D5: Please indicate the range of your yearly net disposable income.

- O Less than \$10,000*
- O \$10,000 - \$19,999*
- O \$20,000 - \$34,999*
- O \$35,000 - \$49,999*
- O \$50,000 - \$99,999*
- O \$100,000 - \$199,999*
- O More than \$200,000*

D6: In which state do you currently reside?

D7: What is the postal (zip) code for the address of your permanent residence?

D8: What is the highest level of school you have completed, or the highest degree you have achieved?

- O Less than high school*
- O High school diploma or equivalent*
- O Some college, but no degree*
- O Bachelor's degree*
- O Master's degree*
- O Doctorate or Professional Degree*

B.2 Questions on Climate Change

Q1: The average growth rate of real GDP in the US between 2009 and 2019 has been about 2 percent. Climate change might influence future growth rates positively, say, because it triggers technological innovation or negatively because of regulation and taxes.

What do you think is the overall impact of climate change on economic growth over the next 12 months? Please assign probabilities to each scenario listed below:

Due to climate change, economic growth, compared to what it would be otherwise, will be ...

- ... 2 percentage points higher or more (say, more than 4 percent rather than 2) _____%*
- ... 1 - 2 percentage points higher (say, between 3 and 4 percent rather than 2) _____%*
- ... 0.1 - 1 percentage points higher (say, between 2.1 and 3 percent rather than 2) _____%*
- ... different by -0.1 to 0.1 percentage points. _____%*
- ... 0.1 - 1 percentage points lower (say, between 1 and 1.9 percent rather than 2) _____%*
- ... 1 - 2 percentage points lower (say, between 0 and 1 percent rather than 2) _____%*
- ... 2 percentage points lower or more (say, less than 0 percent rather than 2) _____%*

Q2: Recently, the economic damage due to natural disasters amounted to about 1% of GDP per year (Source: National Center for Environmental Information). In your view, will these damages be larger or smaller because of climate change? Please assign probabilities to each scenario listed below:

Specifically, what would you say is the percent chance that, over the next 12 month there will be ...

- ... no damage. _____%*
- ... less damage than in the past. (say, around 0.5% of GDP) _____%*
- ... the same as in the past. (say, 1% of GDP) _____%*
- ... more damage than in the past. (say, 1.5% of GDP) _____%*
- ... considerably more than in the past. (say, 2% of GDP) _____%*
- ... much more than in the past. (say, 3% of GDP) _____%*
- ... extremely rare disasters, with damage in an order of 5% of GDP. _____%*

Q3: As a result of climate change, the risk of natural disasters (such as hurricanes, tropical cyclones, droughts, wildfires, or flooding) is likely to increase. The economic damage of such disasters may be sizeable. Considering the next 12 months, what do you think is the probability of a large disaster causing damage of about 5 percent of GDP?

The probability of a large disaster will be _____ percent.

Q4: On a slider from 0 (not important at all) to 10 (very important) how severe a problem do you consider climate change?

Q5: On a slider from 0 (not important at all) to 10 (very important) how severe a problem do you consider the COVID-19 pandemic?

Q6: Imagine there are white and black balls in a ballot box. You draw a ball for 70 times. 56 times, you have drawn a white ball, 14 times a black ball.

Given this record, what would you say is the probability of drawing a black ball the next time? The probability is _____ percent.

The following set of questions are variations of the initial survey questions Q1 to Q3, asked in a later robustness survey, between November 4 and 11, 2022.

Q1a: The average growth rate of real GDP in the US between 2009 and 2019 has been about 2 percent. Climate change might influence future growth rates positively, say, because it triggers technological innovation or negatively because of regulation and taxes.

What do you think is the overall impact of climate change on economic growth over the next 12 months? Please assign probabilities to each scenario listed below:

Due to climate change, economic growth, compared to what it would be otherwise, will be . . .

- ... 2.5 percentage points higher or more (say, more than 4.5 percent rather than 2) —%*
- ... 1.5 - 2.5 percentage points higher (say, between 3.5 and 4.5 percent rather than 2) —%*
- ... 0.5 - 1.5 percentage points higher (say, between 2.5 and 3.5 percent rather than 2) —%*
- ... different by -0.5 to 0.5 percentage points. —%*
- ... 0.5 - 1.5 percentage points lower (say, between 0.5 and 1.5 percent rather than 2) —%*
- ... 1.5 - 2.5 percentage points lower (say, between -0.5 and 0.5 percent rather than 2) —%*
- ... 2.5 percentage points lower or more (say, less than -0.5 percent rather than 2) —%*

Q1b: The average growth rate of real GDP in the US between 2009 and 2019 has been about 2 percent. Natural disasters might influence future growth rates negatively, say, because of potential damage to the infrastructure or private property or positively because of reconstruction work and technological innovations.

What do you think is the overall impact of natural disasters on economic growth over the next 12 months? Please assign probabilities to each scenario listed below:

Due to natural disasters, economic growth, compared to what it would be otherwise, will be

...

- ... 2 percentage points higher or more (say, more than 4 percent rather than 2) _____%
- ... 1 - 2 percentage points higher (say, between 3 and 4 percent rather than 2) _____%
- ... 0.1 - 1 percentage points higher (say, between 2.1 and 3 percent rather than 2) _____%
- ... different by -0.1 to 0.1 percentage points. _____%
- ... 0.1 - 1 percentage points lower (say, between 1 and 1.9 percent rather than 2) _____%
- ... 1 - 2 percentage points lower (say, between 0 and 1 percent rather than 2) _____%
- ... 2 percentage points lower or more (say, less than 0 percent rather than 2) _____%

Q1c: Climate change may impact economic growth.

What do you think is the overall impact of climate change on economic growth over the next 12 months? Please assign probabilities to each scenario listed below:

Due to climate change, economic growth, compared to what it would be otherwise, will be ...

- ... 2 percentage points higher or more (say, more than 4 percent rather than 2) _____%
- ... 1 - 2 percentage points higher (say, between 3 and 4 percent rather than 2) _____%
- ... 0.1 - 1 percentage points higher (say, between 2.1 and 3 percent rather than 2) _____%
- ... different by -0.1 to 0.1 percentage points. _____%
- ... 0.1 - 1 percentage points lower (say, between 1 and 1.9 percent rather than 2) _____%
- ... 1 - 2 percentage points lower (say, between 0 and 1 percent rather than 2) _____%
- ... 2 percentage points lower or more (say, less than 0 percent rather than 2) _____%

Q2a: Every year, natural disasters cause economic damage in the US.

Please assign probabilities to each scenario listed below:

Specifically, what would you say is the percent chance that, over the next 12 month there will be ...

- ... no damage. _____%
- ... less damage than in the past. (say, around 0.5% of GDP) _____%
- ... the same as in the past. (say, 1% of GDP) _____%
- ... more damage than in the past. (say, 1.5% of GDP) _____%
- ... considerably more than in the past. (say, 2% of GDP) _____%
- ... much more than in the past. (say, 3% of GDP) _____%
- ... extremely rare disasters, with damage in an order of 5% of GDP. _____%

Q3a: Consider natural disasters in the US.

In the next 12 months, what do you think is the probability of a large disaster causing damage of about 5 percent of GDP?

The probability of a large disaster will be _____ percent.

Q3b: Consider natural disasters in the US.

In the next 12 months, what do you think is the probability of a large disaster causing damage of about 2 percent of GDP?

The probability of a large disaster will be _____ percent.

Q3c: Consider natural disasters in the US.

In the next 12 months, what do you think is the probability of a large disaster causing damage of about 10 percent of GDP?

The probability of a large disaster will be _____ percent.

Q3d: Consider natural disasters in the US.

Ten years from now, in 2032, rather than this year, what do you think is the probability of a large disaster causing damage of about 5 percent of GDP?

The probability of a large disaster will be _____ percent.

Q3e: Consider natural disasters in the US.

Twenty years from now, in 2042, rather than this year, what do you think is the probability of a large disaster causing damage of about 5 percent of GDP?

The probability of a large disaster will be _____ percent.

Q3f: Consider natural disasters in the US.

Thirty years from now, in 2052, rather than this year, what do you think is the probability of a large disaster causing damage of about 5 percent of GDP?

The probability of a large disaster will be _____ percent.

Q3g: As a result of climate change, the risk of natural disasters (such as hurricanes, tropical cyclones, droughts, wildfires, or flooding) is likely to increase. The economic damage of such disasters may be sizeable.

In the next 12 months, what do you think is the probability of a large disaster causing damage of about 2 percent of GDP?

The probability of a large disaster will be _____ percent.

Q3h: As a result of climate change, the risk of natural disasters (such as hurricanes, tropical cyclones, droughts, wildfires, or flooding) is likely to increase. The economic damage of such disasters may be sizeable.

In the next 12 months, what do you think is the probability of a large disaster causing damage of about 10 percent of GDP?

The probability of a large disaster will be _____ percent.

Q3i: As a result of climate change, the risk of natural disasters (such as hurricanes, tropical cyclones, droughts, wildfires, or flooding) is likely to increase. The economic damage of such disasters may be sizeable.

Ten years from now, in 2032, rather than this year, what do you think is the probability of a large disaster causing damage of about 5 percent of GDP?

The probability of a large disaster will be _____ percent.

Q3j: As a result of climate change, the risk of natural disasters (such as hurricanes, tropical cyclones, droughts, wildfires, or flooding) is likely to increase. The economic damage of such disasters may be sizeable.

Twenty years from now, in 2042, rather than this year, what do you think is the probability of a large disaster causing damage of about 5 percent of GDP?

The probability of a large disaster will be _____ percent.

Q3k: As a result of climate change, the risk of natural disasters (such as hurricanes, tropical cyclones, droughts, wildfires, or flooding) is likely to increase. The economic damage of such disasters may be sizeable.

Thirty years from now, in 2052, rather than this year, what do you think is the probability of a large disaster causing damage of about 5 percent of GDP?

The probability of a large disaster will be _____ percent.

B.3 Treatments

T1: We have just a few more questions. But next, before you give us your responses, we would like you to know the following. On September 17, 2020, USA Today summarized information about wildfires and hurricanes as follows:

This extraordinarily busy Atlantic hurricane season – like the catastrophic wildfire season on the West Coast – has focused attention on the role of climate change. [...]

Federal government forecasters from the National Oceanic and Atmospheric Administration announced La Niña’s formation last week. It’s expected to exacerbate both the hurricane and wildfire seasons.

In the West, climate scientists say rising heat and worsening droughts in California consistent with climate change have expanded what had been California’s autumn wildfire season to year-round, sparking bigger, deadlier and more frequent fires like the ones we’ve seen this year. [...]

And as for hurricanes, scientists also say global warming is making the strongest of them, those with wind speeds of 110 mph or more, even stronger. Also, warmer air holds more moisture, making storms rainier, and rising seas from global warming make storm surges higher and more damaging.

T2: Over the past 20 years there have been 197 natural disasters in the United States, but even the largest caused damages of less than 1% of GDP. (Source: National Center for Environmental Information).

T3: You are doing well with the survey. We have just a few more questions. But before you give us your responses, we would like you to read the following extract from an interview with Christine Lagarde, president of the European Central Bank (ECB) from July 08, 2020:

“I think when it comes to climate change, it’s everybody’s responsibility. Where I stand, where I sit here as head of the European Central Bank, I want to explore every avenue available in order to combat climate change.”

T4: Over the past 20 years there have been 197 natural disasters in the United States. Two of them caused damage of more than 0.5 percent of GDP. (Source: National Center for Environmental Information).

T5: The next question asks about potential damages due to climate change, expressed in percent of GDP. To put these damages in perspective, note that U.S. GDP declined by approximately 5 percent in 2008-09 in response to the global financial crisis.

B.4 Questions on Media Usage and Political Affiliation

Some respondents were additionally given the following questions:

P1: What would you say is your political affiliation?

- O Democrat*
- O Independent*
- O Republican*
- O Other*

P2: Please select your preferred news station from the list below: (you might pick more than one answer)

- O ABC*
- O CBS*
- O CNN*
- O Fox*
- O MSNBC*
- O NBC*
- O PBS*
- O Other*
- O I do not watch any of these TV/news stations.*

P3: Please select your preferred newspaper (print or online) from the list below: (you might pick more than one answer)

- O Washington Post*
- O Wall Street Journal*
- O New York Times*
- O USA Today*
- O Los Angeles Times*
- O Other*
- O I do not read any of those newspapers.*

C Additional Tables and Figures

Table C.1: Behavioral Adjustments

	Probit regression		Descriptive Statistics			
	Marginal effect	p-value	Yes	Sometimes	No	N
Investment						
Have you divested your investment decisions due to the fear of climate change related risk?	0.161***	0.000	27%	-	73%	14.433
Have you refrained from certain investments you consider harmful to the climate?	0.220***	0.000	33%	-	67%	14.433
Mobility						
Have you changed your decisions on personal mobility due to concerns about climate change?	0.247***	0.000	31%	-	69%	14.433
Has climate change altered your decision on owning a car?	0.212***	0.000	27%	-	73%	14.433
Do you refrain from flight travel due to concerns about climate change?	0.253***	0.000	18%	23%	59%	14.433
Other						
Did you stop eating meat due or reduce meat in your diet because of concerns about climate change?	0.682***	0.000	17%	26%	57%	14.433
Do you try to avoid products made from plastic?	0.628***	0.000	25%	37%	38%	14.433

Notes: Marginal effect of probit regression relates to the marginal effect of the subjective disaster probability; both disaster probability and probability for answers in percentage points. Only untreated respondents used in regressions; t statistics in parentheses, based on robust standard errors; * $p < 0.05$, ** $p < 0.01$, *** $p < 0.001$; regression adjusted with survey weights to ensure that sample is representative. If respondents were able to choose a “Sometimes”, an ordered probit model was estimated. Each regression controls for demographics and state as well as month fixed effects. Questions on behavioral decisions asked before any treatments. Descriptive statistics on the right are computed on all answers, probit model only estimated on those respondents that did not receive a treatment before stating their disaster probability. $N = 4,093$ for probit regressions.

Table C.2: Climate Change Expectations - Demographic Effects

	(1) Growth	(2) Damage	(3) Disaster Prob.
Female	0.0589 (1.53)	0.117*** (4.09)	3.958*** (6.92)
35 to 44 years	0.0712 (1.38)	0.0511 (1.18)	1.009 (1.31)
45 to 54 years	0.0275 (0.44)	0.0172 (0.36)	-1.278 (-1.39)
above 55 years	0.277*** (5.47)	-0.163*** (-4.31)	-0.970 (-1.28)
High Educated	-0.0968* (-2.07)	0.0853* (2.52)	0.296 (0.46)
Middle Income	-0.0920* (-2.11)	-0.108** (-3.25)	-0.308 (-0.48)
High Income	-0.0182 (-0.30)	-0.0668 (-1.47)	0.544 (0.63)
White	-0.163 (-1.55)	-0.0482 (-0.70)	0.353 (0.25)
Black	-0.236* (-2.01)	-0.0304 (-0.37)	0.936 (0.57)
Asian	-0.174 (-1.43)	-0.187* (-2.18)	-2.954 (-1.79)
Hispanic	-0.0545 (-0.48)	-0.0586 (-0.74)	-1.373 (-0.90)
Constant	0.407* (2.06)	1.480*** (9.69)	16.11*** (6.45)
State FE	yes	yes	yes
N	8393	7277	7133
r ²	0.0366	0.0418	0.0435

Notes: This table presents cross section regression results on the impact of demographics on the climate change expectations. We use weighted regressions with robust standard errors. Weights used are the product of survey weights and calculated Huber robust weights. *t* statistics in parentheses, * $p < 0.05$, ** $p < 0.01$, *** $p < 0.001$;

Table C.3: Climate Change Expectations - Beliefs and Experiences

	(1) Growth	(2) Damage	(3) Disaster Prob.
Republican	-0.0408 (-0.54)	-0.135** (-2.85)	-0.581 (-0.70)
Democrat	0.103 (1.53)	0.0258 (0.57)	1.631* (1.98)
Personal Disaster Experience	0.152* (2.03)	0.231*** (4.91)	5.874*** (6.73)
Personal Climate Change Experience	-0.0918 (-1.31)	0.213*** (4.74)	4.117*** (4.89)
Constant	-0.503 (-1.63)	1.171*** (6.02)	13.07*** (3.73)
State FE	yes	yes	yes
Demographic Controls	yes	yes	yes
N	4126	4126	3916
r ²	0.0524	0.0940	0.119

Notes: This table presents cross section regression results on the impact of demographics on the climate change expectations. We use weighted regressions with robust standard errors. Weights used are the product of survey weights and calculated Huber robust weights. t statistics in parentheses, * $p < 0.05$, ** $p < 0.01$, *** $p < 0.001$; Personal Climate Change Experience: Do you think your personal life has already been affected by climate change? Yes/No; Personal Disaster Experience: Do you think your personal life has already been affected by natural disasters? Yes/No

Table C.4: Disaster Probability and Individual News Stations

	(1)	(2)	(3)
Multiple News Stations	5.324*** (5.97)		3.654*** (3.78)
Fox	0.0192 (0.02)		-0.244 (-0.23)
CNN	1.657 (1.37)		1.645 (1.28)
ABC	1.470 (1.17)		1.245 (0.96)
MSNBC	2.558 (1.34)		2.398 (1.22)
PBS	-0.185 (-0.09)		-0.702 (-0.31)
NBC	3.234* (2.29)		2.869* (1.98)
CBS	4.734** (3.11)		4.692** (2.97)
Multiple Newspapers		5.547*** (7.84)	4.056*** (5.23)
New York Times		0.340 (0.34)	-0.340 (-0.33)
Washington Post		2.305 (1.52)	1.761 (1.17)
Wall Street Journal		-2.473** (-2.60)	-3.052** (-3.12)
USA Today		3.210** (2.87)	2.545* (2.23)
Los Angeles Times		-2.306 (-1.16)	-3.173 (-1.59)
Constant	13.72*** (5.43)	14.49*** (5.85)	13.40*** (5.29)
State Fixed Effect	yes	yes	yes
Demog. and Pol. Affiliation Controls	yes	yes	yes
N	7166	7169	7193
r ²	0.0686	0.0734	0.0785

Notes: Regression relates reported probability of disaster to use of specific news stations; only respondents who did not receive any treatment used in regression; *t* statistics in parentheses, based on robust standard errors; * $p < 0.05$, ** $p < 0.01$, *** $p < 0.001$; regression adjusted with survey weights and Huber-robust weights to ensure that sample is representative and independent of outliers, respectively.

Table C.5: Expected Disaster Cost and Media Usage

	(1) Costs	(2) Costs	(3) Costs
no major TV Station	-0.299*** (-5.34)		
no major Newspaper		-0.128*** (-3.47)	
consume major TV station×no major newspaper			-0.0592 (-1.56)
no major TV station×consume major newspaper			-0.136 (-1.56)
no major TV station×no major newspaper			-0.364*** (-5.65)
Constant	1.529*** (8.55)	1.483*** (8.24)	1.545*** (8.60)
State and Month FE	yes	yes	yes
Demographic Controls	yes	yes	yes
N	4915	4916	4915
r2	0.0691	0.0620	0.0711

Notes: Regression relates reported probability of disaster to media usage; only respondents who did not receive any treatment used in regression; t statistics in parentheses, based on robust standard errors; * $p < 0.05$, ** $p < 0.01$, *** $p < 0.001$; regression adjusted with survey weights and Huber-robust weights to ensure that sample is representative and independent of outliers, respectively.

Table C.6: Reported Growth Impact of Climate Change and Media Usage

	(1) Growth	(2) Growth	(3) Growth
no major TV Station	-0.0353 (-0.45)		
no major Newspaper		0.217*** (3.91)	
consume major TV station×no major newspaper			0.251*** (4.20)
no major TV station×consume major newspaper			-0.119 (-0.92)
no major TV station×no major newspaper			0.101 (1.10)
Constant	0.138 (0.52)	0.0320 (0.12)	0.0675 (0.26)
State and Month FE	yes	yes	yes
Demographic and Treatment Controls	yes	yes	yes
N	4916	4916	4916
r ²	0.0490	0.0538	0.0543

Notes: Regression relates reported probability of disaster to media usage; only respondents who did not receive any treatment used in regression; t statistics in parentheses, based on robust standard errors; * $p < 0.05$, ** $p < 0.01$, *** $p < 0.001$; regression adjusted with survey weights and Huber-robust weights to ensure that sample is representative and independent of outliers, respectively.

Table C.7: Reported Probability of Disaster and Experience

	(1)	(2)	(3)	(4)	(5)
Fire experience	-1.672 (-1.14)		-2.480 (-1.67)		-1.941 (-1.18)
Flood experience	1.795* (2.02)		1.723 (1.92)		1.187 (1.32)
Wind experience	3.078** (3.27)		3.060** (3.22)		1.404 (1.36)
Hurricane Events in State		225.0 (0.95)	169.5 (0.70)		
Flood Events in State		-10.36 (-0.06)	-30.49 (-0.19)		
Fire Events in State		6947.0* (2.25)	8011.8* (2.47)		
High wildfire risk				1.121 (1.02)	1.344 (1.19)
High landslide risk				2.061* (2.02)	1.896 (1.84)
High earthquake risk				-0.654 (-0.32)	0.384 (0.18)
High hurricane risk				4.737*** (4.20)	3.923*** (3.31)
High flood risk				0.0503 (0.07)	-0.00201 (-0.00)
Constant	16.90*** (6.68)	18.12*** (7.22)	17.20*** (6.76)	12.95*** (4.85)	12.74*** (4.73)
State FE	yes	no	no	yes	yes
Demographic Controls	yes	yes	yes	yes	yes
N	7127	7084	7082	7156	7155
r ²	0.0645	0.0643	0.0676	0.0702	0.0711

Notes: Regression relates reported probability of disaster to personal experience; only respondents who did not receive any treatment used in regression; regressions control for state, month, demographics, media usage and political affiliation. *t* statistics in parentheses, based on robust standard errors; * $p < 0.05$, ** $p < 0.01$, *** $p < 0.001$; regression adjusted with survey weights and Huber-robust weights to ensure that sample is representative and independent of outliers, respectively.

Table C.8: Treatment Regressions High Numerical Ability

	(1)	(2)	(3)	(4)
	Growth	Disaster Costs	Disaster Prob.	Disaster Prob.
Newspaper (T1)	0.101 (1.32)	0.114* (2.27)	1.009 (1.26)	1.131 (1.63)
Historic Disaster Size (T2)	0.102 (1.27)	0.0276 (0.52)	-1.652* (-2.03)	-1.169 (-1.63)
Lagarde Treatment (T3)	0.137 (1.72)	0.0474 (0.92)	0.650 (0.78)	0.348 (0.49)
GDP Loss info (T5)	-0.132 (-0.95)	0.109 (1.49)	-1.754 (-1.27)	-1.241 (-1.06)
Constant	-0.715** (-2.74)	1.168*** (7.50)	15.31*** (6.14)	14.69*** (6.45)
State Fixed Effect	yes	yes	yes	yes
Demographic Controls	yes	yes	yes	yes
Drop largest 25% probabilities	no	no	no	yes
N	2798	2716	3478	3253
r2	0.0771	0.0958	0.142	0.141

Notes: t statistics in parentheses, * $p < 0.05$, ** $p < 0.01$, *** $p < 0.001$; this table presents regression results on the impact of several treatments on the expected disaster probability. Only data from respondents who were able to answer Q6 correctly by a margin of 2 percentage points was used. We use weighted regressions with robust standard errors. Weights used are the product of survey weights and calculated Huber robust weights.

Table C.9: Risk Factors and Sources of Information

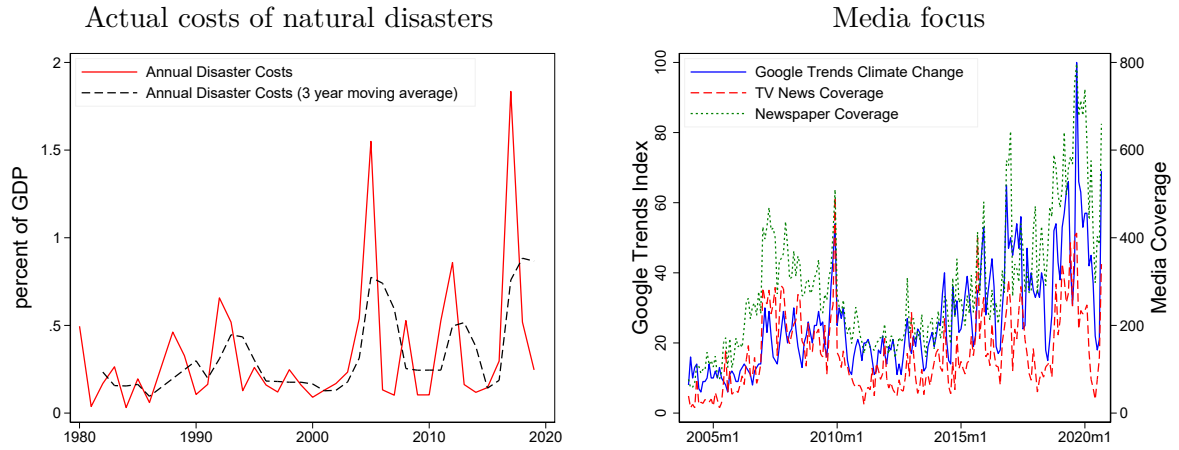
A) Risk Factors						
<i>“When you assessed the overall disaster probability, to what extent did you place weight on the following risk factors? (0 to 100 Scale)”</i>						
	raw weights			normalized weights		
	mean	median	std dev	mean	median	std dev
Hurricanes	51.38	53	29.98	14.99	14.62	4.37
Severe wind events	49.92	50	28.54	14.81	14.50	3.82
Floods	50.87	52	29.05	15.20	14.72	4.06
Wildfires	52.00	53	30.22	15.23	14.68	4.66
Meteorite impacts	34.60	26	31.81	9.56	11.69	6.30
Extreme snowfall	43.53	43	30.89	12.67	13.95	4.85
Earthquakes	45.50	47	30.89	13.34	14.15	4.43

B) Regional Expectations						
<i>“When you thought about these risk factors, did you relate to disaster risks in your own region or in other parts of the US? (-10 only own region, 10 only other parts of US)”</i>						
	raw weights					
	mean	median	std dev			
Hurricanes	0.22	0.20	6.56			
Severe wind events	-0.05	0.00	5.60			
Floods	0.26	0.40	5.83			
Wildfires	0.56	0.60	6.39			
Meteorite impacts	-1.42	-0.20	6.50			
Extreme snowfall	-0.27	0.00	6.21			
Earthquakes	-0.11	0.20	6.40			

C) Source of Information						
<i>“When you assessed the overall disaster probability, to what extent did you place weight on the following sources of information? (0 to 100 Scale)”</i>						
	raw weights			normalized weights		
	mean	median	std dev	mean	median	std dev
Experiences w. disasters in the past	46.43	49	31.13	9.87	10.46	4.46
Articles I read in newspapers	44.83	47	30.03	10.11	10.55	4.14
Programs on TV/ the news	50.33	51	30.11	11.26	11.12	4.05
Statements by elected officials	40.49	41	30.67	8.96	10.00	4.12
Statements by experts in the media	46.93	49	30.41	10.61	10.90	4.01
Information by friends or family	42.49	43	31.25	9.28	10.24	4.36
Own projections based on past	50.27	51	29.80	10.77	11.01	3.79
Information from statistical agencies or the government	46.45	49	30.28	10.48	10.87	3.85
Activist campaigns	40.37	40	32.34	8.74	10.17	4.66
Others	9.65	0	24.42	1.75	0.00	4.51

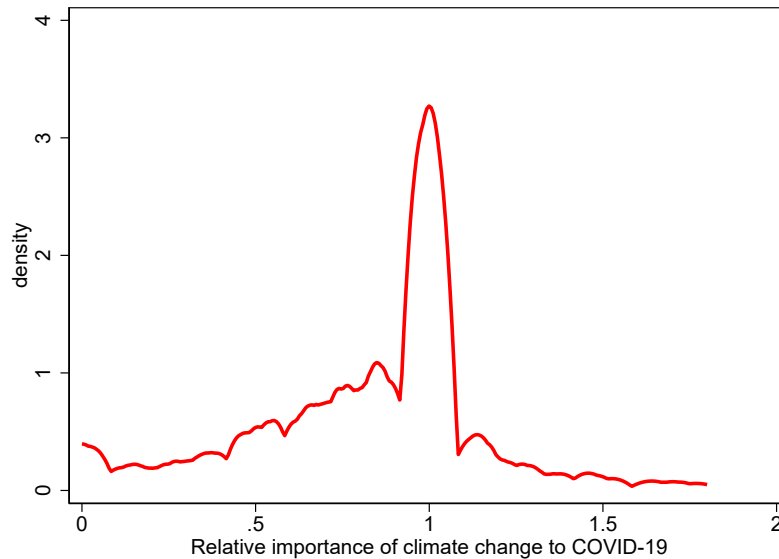
Notes: Weights displayed are weighted with demographic and Huber robust weights. Normalization done within each respondent.

Figure C.1: Disaster costs



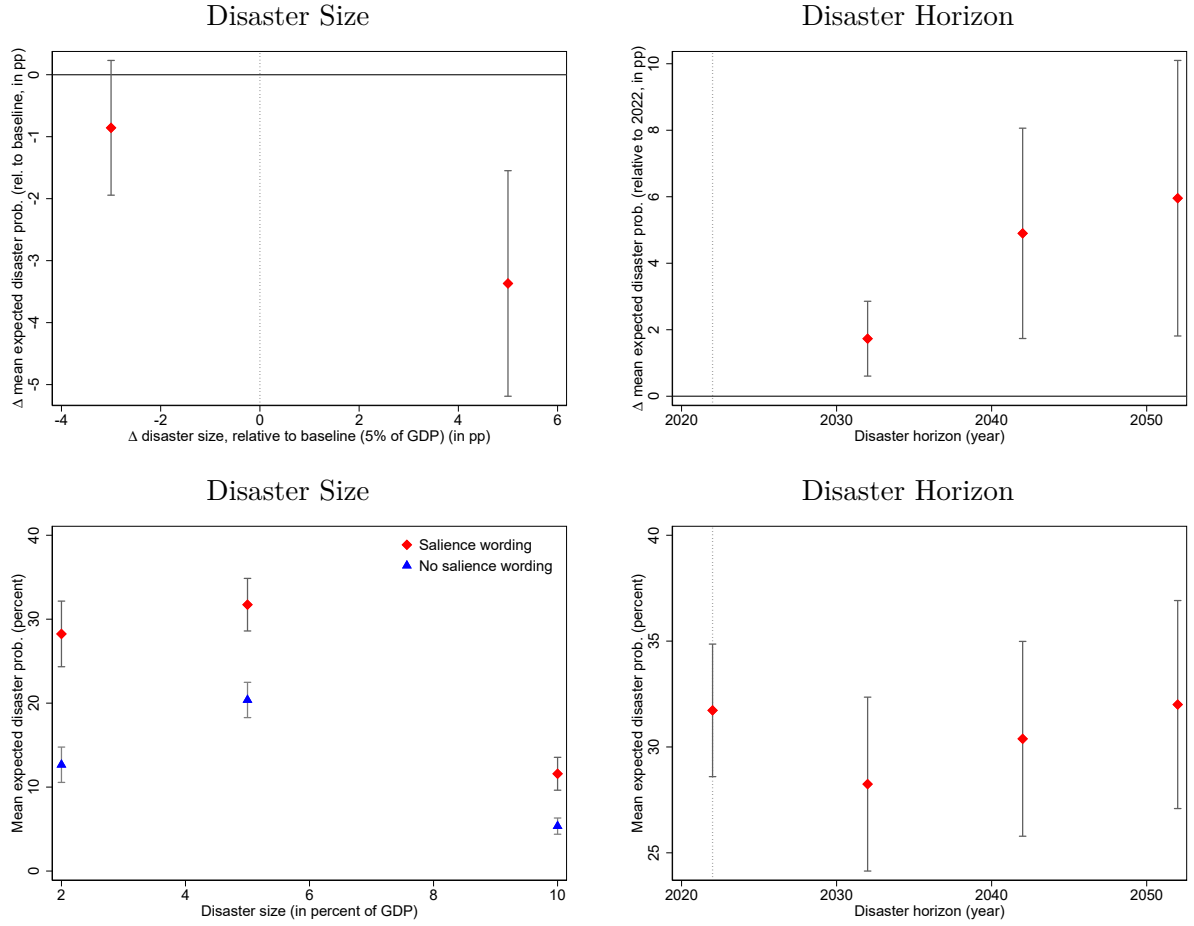
Notes: The figure shows annual damages due to natural disasters in the U.S. between 1980 and 2019 in percent of GDP (red solid line), black line is a three year moving average, Source: NCEI (2020). In the right panel, the blue solid line shows monthly averages of Google search queries for “climate change”, source: Google Trends; the red dashed (green dotted) line shows media coverage of climate change by seven major news stations (five major newspapers), Source: Boykoff et al. (2020).

Figure C.2: Relative Importance Climate Change to COVID-19



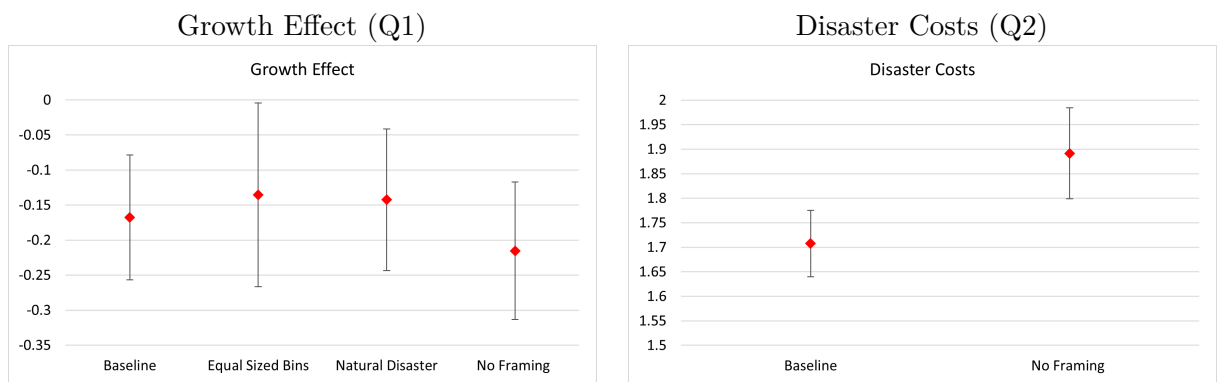
Notes: The figure shows the relative importance assigned to climate change relative to the COVID-19 pandemic by respondents. Respondents were asked to rate on a scale from 0 to 10 how severe Climate Change or COVID-19 is a problem to the US.

Figure C.3: Robustness: Disaster Size and Horizon



Notes: The figure shows results of a complementary survey on disaster expectations. Relative to the baseline question (Q3) left panels vary the disaster size while right panels vary the disaster horizon. Top left: Mean difference in expected disaster probability, relative to baseline (5% of GDP damage) question. Bottom left: Mean expected disaster probability, for different disaster sizes and question wordings. Top right: Mean difference in expected disaster probability, relative to baseline (disaster in 2022) question. Bottom right: Mean expected disaster probability, for different disaster horizons.

Figure C.4: Robustness: Growth Effect and Disaster Costs



Notes: The figure shows results of a complementary survey on disaster expectations. Left panel: Different question wordings on Q1 (growth effect of climate change). Right panel: Different question wordings on Q2 (climate change related disaster costs).