

Ojea-Ferreiro, Javier; Reboredo, Juan Carlos; Ugolini, Andrea

Working Paper

The impact of climate transition risks on financial stability: A systemic risk approach

JRC Working Papers in Economics and Finance, No. 2022/1

Provided in Cooperation with:

Joint Research Centre (JRC), European Commission

Suggested Citation: Ojea-Ferreiro, Javier; Reboredo, Juan Carlos; Ugolini, Andrea (2022) : The impact of climate transition risks on financial stability: A systemic risk approach, JRC Working Papers in Economics and Finance, No. 2022/1, European Commission, Ispra

This Version is available at:

<https://hdl.handle.net/10419/268925>

Standard-Nutzungsbedingungen:

Die Dokumente auf EconStor dürfen zu eigenen wissenschaftlichen Zwecken und zum Privatgebrauch gespeichert und kopiert werden.

Sie dürfen die Dokumente nicht für öffentliche oder kommerzielle Zwecke vervielfältigen, öffentlich ausstellen, öffentlich zugänglich machen, vertreiben oder anderweitig nutzen.

Sofern die Verfasser die Dokumente unter Open-Content-Lizenzen (insbesondere CC-Lizenzen) zur Verfügung gestellt haben sollten, gelten abweichend von diesen Nutzungsbedingungen die in der dort genannten Lizenz gewährten Nutzungsrechte.

Terms of use:

Documents in EconStor may be saved and copied for your personal and scholarly purposes.

You are not to copy documents for public or commercial purposes, to exhibit the documents publicly, to make them publicly available on the internet, or to distribute or otherwise use the documents in public.

If the documents have been made available under an Open Content Licence (especially Creative Commons Licences), you may exercise further usage rights as specified in the indicated licence.



<https://creativecommons.org/licenses/by/4.0/>

The impact of climate transition risks on financial stability. A systemic risk approach.

Javier Ojea-Ferreiro¹ Juan C. Reboredo² Andrea Ugolini³

¹Joint Research Centre of the European Commission (JRC-EC), ²Universidade de Santiago de Compostela, ³University of Milano-Bicocca

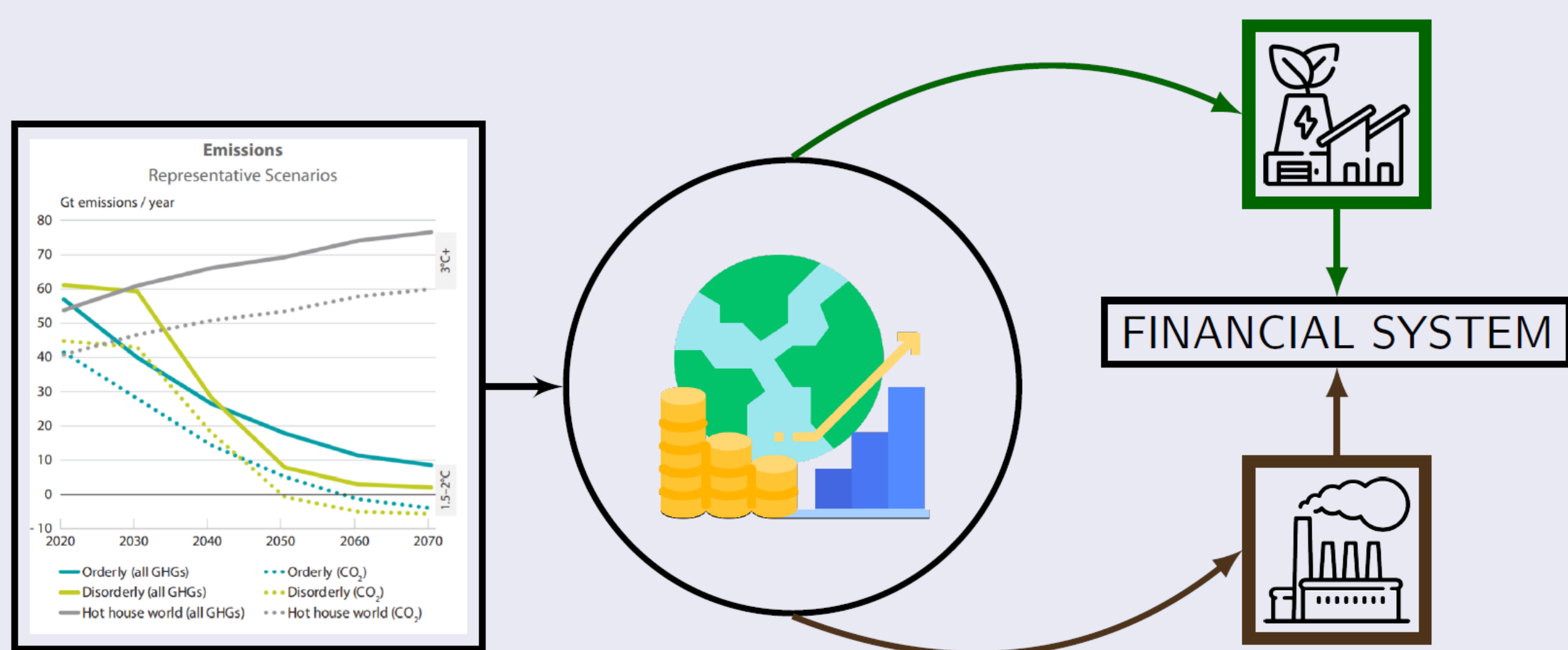
Motivation: EU Sustainable Finance Strategy

Key role of the financial system in the low-carbon transition

- ▶ **Monitor and address systemic risks stemming from climate challenges.** Systemic risk measures adapted to climate transition (CT) scenarios ([1],[2]).
- ▶ **Integrate climate transition risk in the risk management of financial institutions.** Change in benchmark risk measures and potential capital needs under different climate scenarios.
- ▶ **Develop a robust monitoring framework to measure the systemic risk coming from climate transition risk.** Analysis based on public available data and easily replicable methodology.

The NGFS climate transition narrative:

Different transition scenarios imply changes in the speed of the process that modify current expectation of the economic agents, leading to asset price adjustments. Disruption to current business models coming from a change in the timing and speed of the adjustment towards a low-carbon economy.



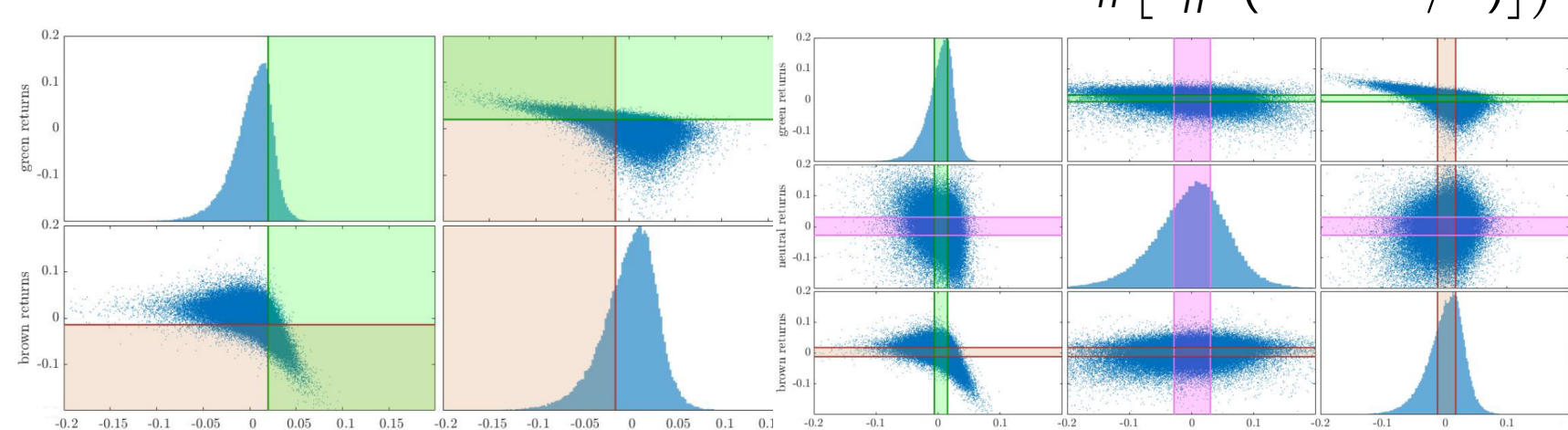
CLIMATE TRANSITION SCENARIOS

Climate transition scenarios translated into a coherent combination of green, neutral and brown stock portfolios

Disorderly transition

Green portfolio value surges and brown portfolio value plunges.

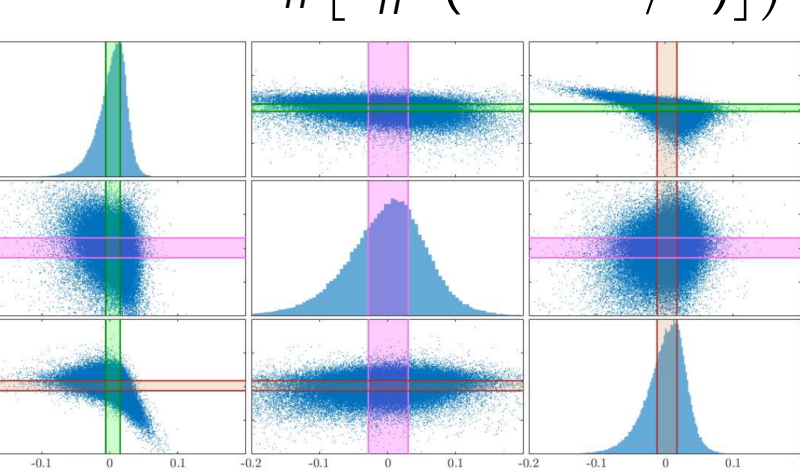
$$P(r_g > F_g^{-1}(1 - \beta), r_b < F_b^{-1}(\alpha))$$



Orderly transition

Green, neutral and brown portfolios are around their median returns.

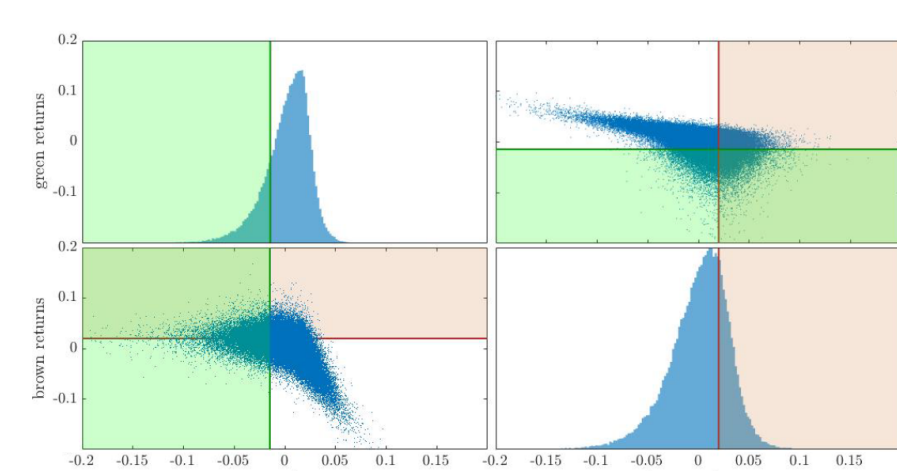
$$P(r_g \in [F_g^{-1}(50 \pm \beta/2)], r_b \in [F_b^{-1}(50 \pm \alpha/2)], r_n \in [F_n^{-1}(50 \pm \delta/2)])$$



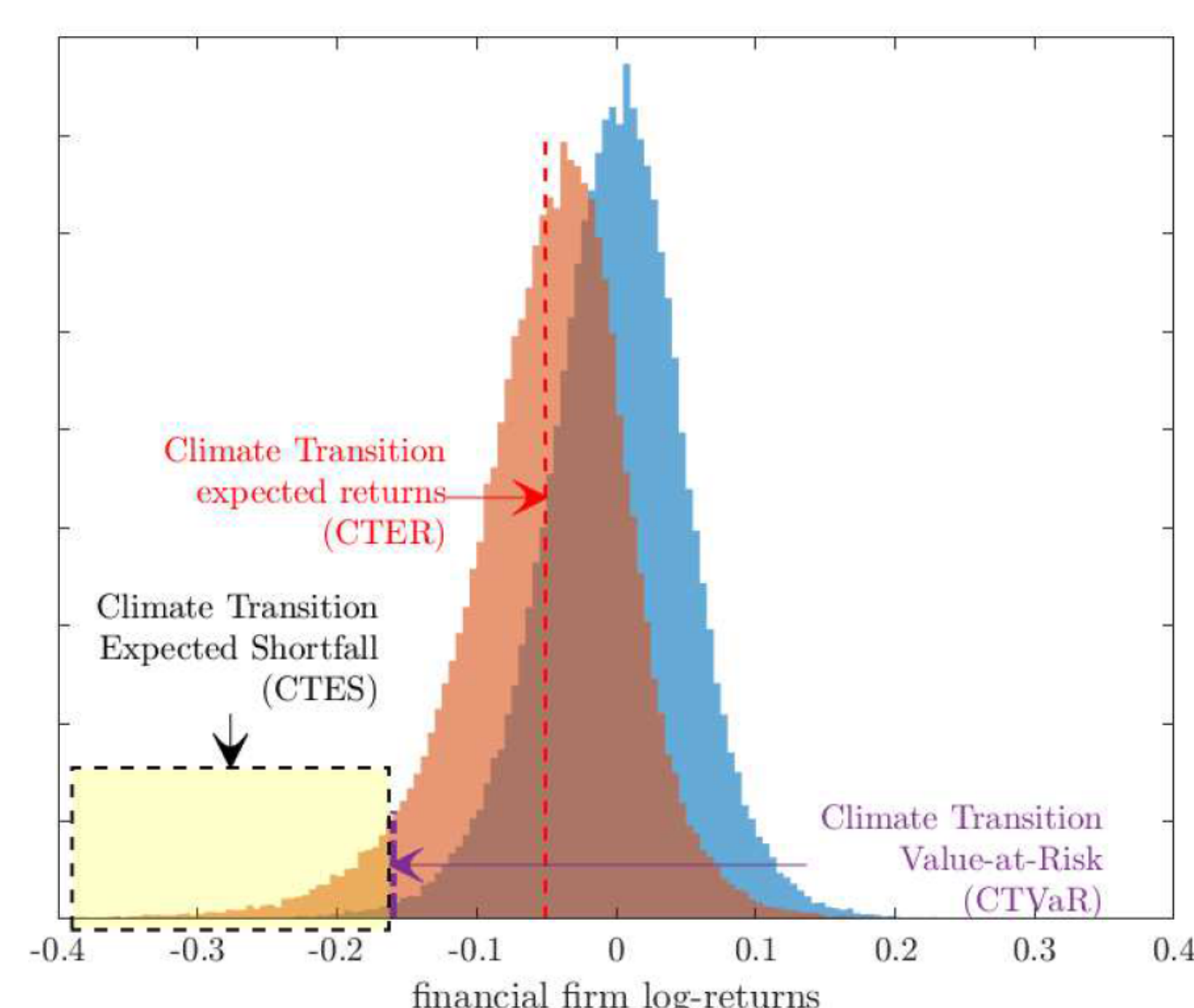
Hot house world

Green portfolio sharply decreases and brown portfolio experiences an acute increase.

$$P(r_b > F_b^{-1}(1 - \beta), r_g < F_g^{-1}(\alpha))$$



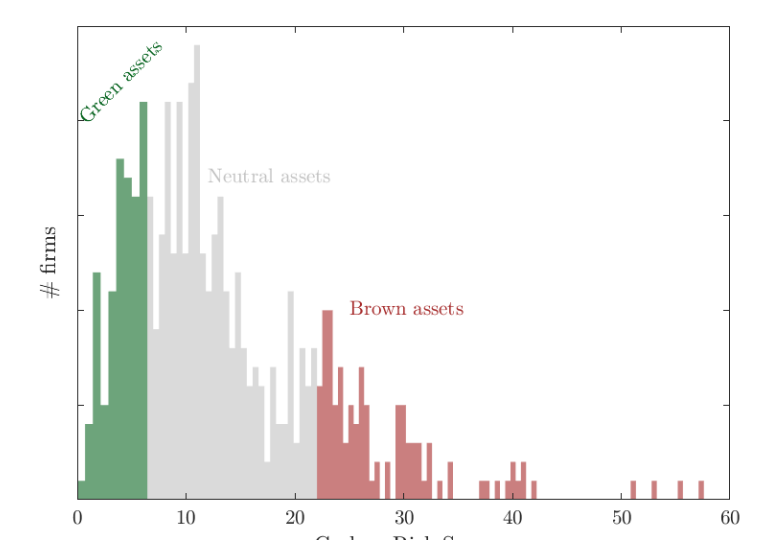
The materialization of each climate transition scenario implies a change in the returns distribution of the financial firms.



- ▶ **Climate Transition Expected Return (CTER)**
 $CTER_i = E(r_i | CT \text{ scenario})$
- ▶ **Climate Transition Value-at-Risk (CTVaR)**
 $CTVaR_i = \min\{r_i | F(r_i | CT \text{ scenario}) \geq \gamma\}$
- ▶ **Climate Transition Expected Shortfall (CTES)**
 $CTES_i = E(r_i | r_i < CTVaR_i, CT \text{ scenario})$
- ▶ **Capital needs: CTRISK** Adaptation of SRISK formula from [3] for a climate transition scenario.

Data

- ▶ **+900 European listed firms** employed to build green, neutral and brown portfolios based on their Carbon Risk Score (CRS) from Sustainalytics.
- ▶ **190 European financial firms** (22% banks, 19% insurance, 27% diversified financials, 31% real estate).
- ▶ Period: 04 January 2013 to 25 December 2020 (417 obs.)



Results

CTES by subsector

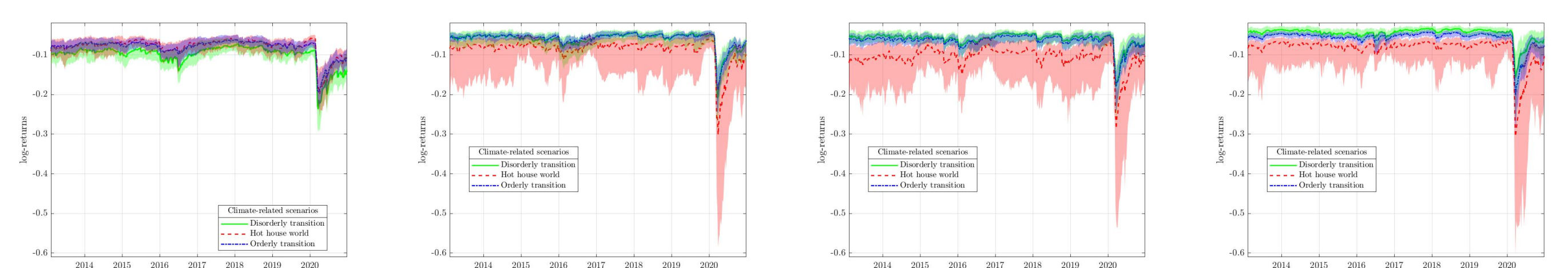


Figure: Banks

Figure: Insurance companies

Figure: Financial services

Figure: Real estate

CTER by country

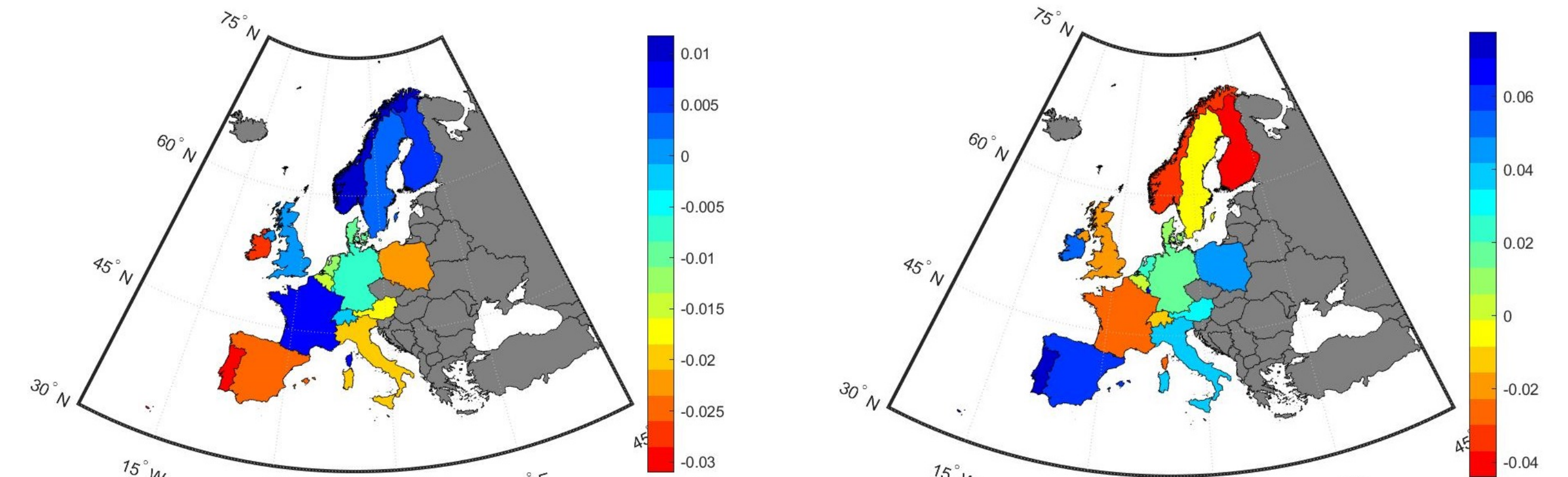


Figure: Disorderly transition

Figure: Hot house world

CTRISK in the banking sector

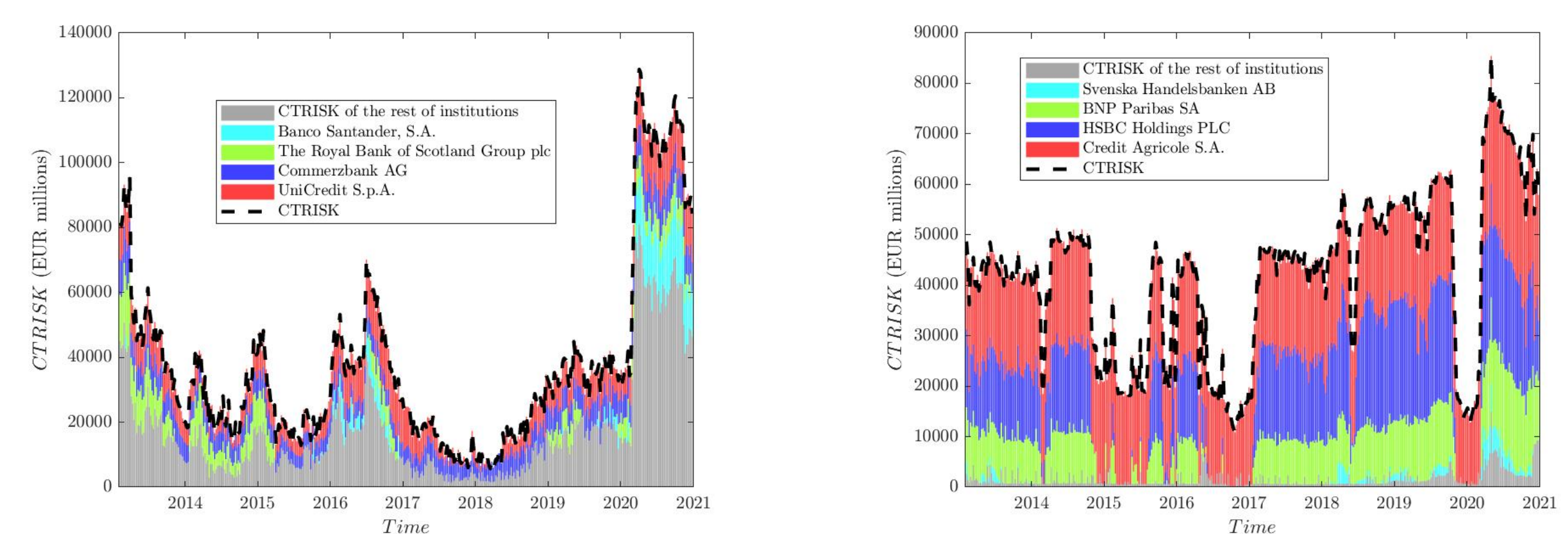


Figure: Disorderly transition

Figure: Hot house world

Conclusions

- ▶ Banks are negative exposed to the disorderly transition scenario while the remainder sectors are mainly exposed to hot house scenario.
- ▶ There is a larger heterogeneity in the cross-section performance of risk measures, specially for the non-banking system.
- ▶ Southern Europe experiences the largest financial losses in a disorderly transition scenario. United Kingdom, France and Northern Europe obtain the largest financial losses in a hot house world scenario.
- ▶ Capital needs are led by different firms depending on the scenario, while being manageable by the financial system.

Reference

- ▶ Tobias Adrian and Markus K Brunnermeier. CoVaR. *The American Economic Review*, 106(7):1705, 2016.
- ▶ G. Girardi and A.T. Ergün. Systemic risk measurement: Multivariate GARCH estimation of CoVaR. *Journal of Banking & Finance*, 37(8):3169–3180, 2013.
- ▶ Christian Brownlees and Robert F Engle. SRISK: A conditional capital shortfall measure of systemic risk. *The Review of Financial Studies*, 30(1):48–79, 2017.

Contacts: Javier Ojea-Ferreiro
European Commission - Joint Research Centre
Via Enrico Fermi 2749, BL58/143, 21027 Ispra (VA), Italy
E-mail: javier.ojea-ferreiro@ec.europa.eu

Disclaimer: The views expressed are those of the author and do not necessarily reflect those of the JRC.

Methodology

- ▶ **Marginal distribution:** ARMA-GJR-GARCH with Skewed Student t innovations.
- ▶ **Dependence structure:** Vine Copula with Patton's dynamics

The European Commission's science and knowledge service
Joint Research Centre

EU Science Hub: ec.europa.eu/jrc @EU_ScienceHub Joint Research Centre
EU Science Hub - Joint Research Centre EU Science Hub