

Heinisch, Katja et al.

**Research Report**

## The IWH Forecasting Dashboard: From forecasts to evaluation and comparison

IWH Technical Reports, No. 1/2023

**Provided in Cooperation with:**

Halle Institute for Economic Research (IWH) – Member of the Leibniz Association

*Suggested Citation:* Heinisch, Katja et al. (2023) : The IWH Forecasting Dashboard: From forecasts to evaluation and comparison, IWH Technical Reports, No. 1/2023, Leibniz-Institut für Wirtschaftsforschung Halle (IWH), Halle (Saale)

This Version is available at:

<https://hdl.handle.net/10419/268728>

**Standard-Nutzungsbedingungen:**

Die Dokumente auf EconStor dürfen zu eigenen wissenschaftlichen Zwecken und zum Privatgebrauch gespeichert und kopiert werden.

Sie dürfen die Dokumente nicht für öffentliche oder kommerzielle Zwecke vervielfältigen, öffentlich ausstellen, öffentlich zugänglich machen, vertreiben oder anderweitig nutzen.

Sofern die Verfasser die Dokumente unter Open-Content-Lizenzen (insbesondere CC-Lizenzen) zur Verfügung gestellt haben sollten, gelten abweichend von diesen Nutzungsbedingungen die in der dort genannten Lizenz gewährten Nutzungsrechte.

**Terms of use:**

*Documents in EconStor may be saved and copied for your personal and scholarly purposes.*

*You are not to copy documents for public or commercial purposes, to exhibit the documents publicly, to make them publicly available on the internet, or to distribute or otherwise use the documents in public.*

*If the documents have been made available under an Open Content Licence (especially Creative Commons Licences), you may exercise further usage rights as specified in the indicated licence.*



Halle Institute for Economic Research  
Member of the Leibniz Association

# IWH Technical Reports

No. 1/2023

February 2023

## The IWH Forecasting Dashboard



### From Forecasts to Evaluation and Comparison

Katja Heinisch, Christoph Behrens, Jörg Döpke, Alexander Foltas, Ulrich Fritsche,  
Tim Köhler, Karsten Müller, Johannes Puckelwald, Hannes Reichmayr

Contact:

Katja Heinisch  
Tel + 49 345 77 53 836  
katja.heinisch@iwh-halle.de

Authors:

Katja Heinisch (IWH), Christoph Behrens (Freie und Hansestadt Hamburg),  
Jörg Döpke (Hochschule Merseburg), Alexander Foltas (Helmut-Schmidt-Universität  
Hamburg), Ulrich Fritsche (Universität Hamburg), Tim Köhler (Hochschule Merseburg),  
Karsten Müller (Deutsches Zentrum für Luft- und Raumfahrt; Institut für Vernetzte  
Energiesysteme), Johannes Puckelwald (Deutsches Maritimes Zentrum Hamburg),  
Hannes Reichmayr (IWH)

Issuer:

Halle Institute for Economic Research (IWH) –  
Member of the Leibniz Association

Executive Board:

Professor Reint E. Gropp, PhD  
Professor Dr Oliver Holtemöller  
Professor Michael Koetter, PhD  
Dr Tankred Schuhmann

Address:

Kleine Maerkerstrasse 8  
D-06108 Halle (Saale)

Postal address:

P.O. Box 11 03 61  
D-06017 Halle (Saale)

Tel +49 345 7753 60  
Fax +49 345 7753 820

[www.iwh-halle.de](http://www.iwh-halle.de)

All rights reserved

Citation:

*Katja Heinisch, Christoph Behrens, Jörg Döpke, Alexander Foltas, Ulrich Fritsche, Tim  
Köhler, Karsten Müller, Johannes Puckelwald, Hannes Reichmayr: The IWH Forecasting  
Dashboard – From Forecasts to Evaluation and Comparison. IWH Technical Reports  
1/2023. Halle (Saale) 2023.*

ISSN 2365-9076

# The IWH Forecasting Dashboard – From Forecasts to Evaluation and Comparison\*

## Abstract

The paper describes the “Halle Institute for Economic Research (IWH) Forecasting Dashboard (ForDas)”. This tool aims at providing, on a non-commercial basis, historical and actual macroeconomic forecast data for the Germany economy to researchers and interested audiences. The database renders it possible to directly compare forecast quality across selected institutions and over time. It is partly based on data collected in the DFG-funded project “Macroeconomic Forecasts in Great Crises”.

\* We thank Ida Rockenbach, Ronny Ehlen, Aurora Li, Max Weinig, Sebastian Przetak, Christopher Gluth, Tim Bernutz and Kay Felix Domke for data support. Further, we thank Oliver Holtemöller for his useful comments on implementing the dashboard.

## Table of contents

1	Introduction.....	5
2	Contents of the Database.....	5
2.1	Forecasters Covered.....	6
2.2	Variables Included.....	7
2.3	Realisations (Actual Data) and Forecast Horizons .....	7
3	Recent and Possible Applications.....	9
4	IWH Forecasting Dashboard – Data Access.....	10
5	Future Plans.....	12
	References.....	13

## 1 Introduction

Macroeconomic forecasting is one of the areas of economics that receives the most attention from the media and public discourse. For example, forecast competitions are quite popular: Several newspapers and database providers evaluate forecasters more or less regularly (see Döhrn, 2015, for an overview of German rankings). Also, point forecasts by institutions gain a lot of attention from the media and politics. Data providers such as Consensus Economics or Focus Economics use the institutions' forecasts to produce a mean forecast across several forecasters. As a result, a significant part of the scientific literature is focused on evaluating these forecasts.

However, typically forecasts are evaluated against a theoretical benchmark like a naive forecast but rarely across forecasting institutions. One reason for the relative scarcity of such analyses is the lack of non-commercial databases that include several institutions, macroeconomic indicators, and forecast periods. The IWH Forecasting Dashboard (ForDas) by the Halle Institute for Economic Research aims to fill the data gap by providing historical and actual data for this purpose.<sup>1</sup> Furthermore, one can directly compare forecasting quality of institutions. The dashboard relies partly on data collected within the DFG project “Macroeconomic forecasts in great crisis”<sup>2</sup>. The IWH took over the data collection process in 2020, continues with it, and has implemented a tool to visualize the data. Due to data gaps and different dimensions (for example, growth vs. level predictions) provided by several institutions, the dashboard only shows a selection of variables. In the following, we describe the main contents<sup>3</sup> of the database and the IWH Forecasting Dashboard.

Since the database was initiated first within the context of economic history, we aimed at collecting all *quantitative* forecasts made for the German economy by institutions relevant to economic policy. As Antholz (2006) points out, these forecasts started in the early 1960s. While it was possible to find texts describing the prospects of the German economy before, they rarely included any concrete numbers for GDP growth or inflation. Hence, analyses and comparisons based on ForDas data can start in 1965 at the earliest for selected forecasters.<sup>4</sup>

## 2 Contents of the Database

The main objective of the DFG project was to build a macroeconomic forecast database, including a broad set of forecasts for Germany over the longest possible period, achieving consistency within the dataset as far as possible. In combination with user-friendliness and free access to the data, the database supplies a new instrument for forecast evaluation, made for the scientific community, media, or the public in general.

To this end, the forecast database covers the key macroeconomic variables at each point in time, including variables related to national accounts, financial and monetary variables, and also variables related to labor and (un-)employment. We choose the institutions according to their long-term experience in forecasting and their relevance for economic policy support in Germany. The field of macroeconomic forecasting has markedly grown over time. Therefore, the quantity of forecasts and forecasters has also increased substantially. To give an impression of the growth of the “fore-

<sup>1</sup> <https://www.iwh-halle.de/fordas>.

<sup>2</sup> This project has been part of the Priority Programme “Experiences and Expectations: Historical Foundations of Economic Behaviour” (SPP 1859) funded by the Deutsche Forschungsgemeinschaft (DFG).

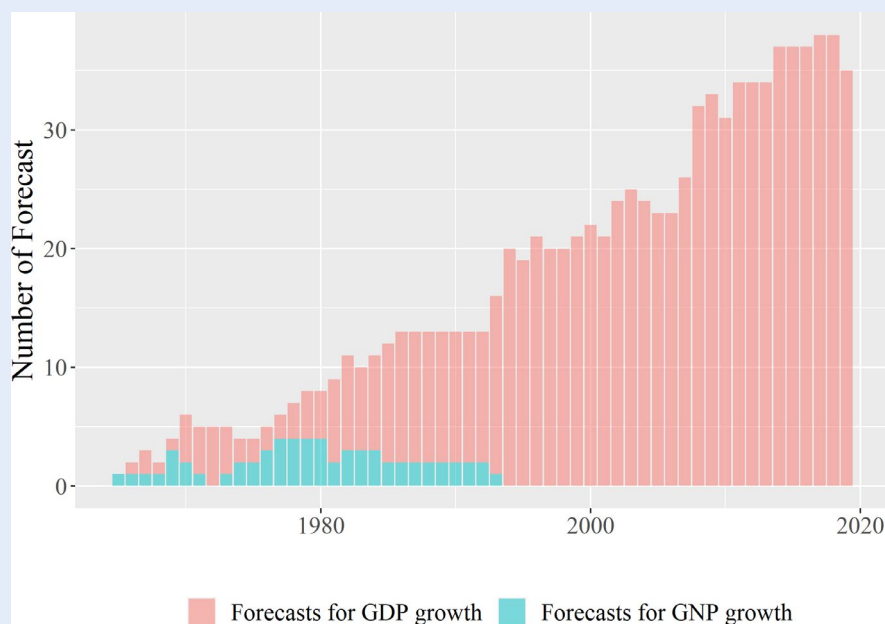
<sup>3</sup> Please note that ForDas does not yet contain the full forecast text reports. This is however planned for the future.

<sup>4</sup> In the 1970s, figures were often provided as a fractional number and not decimal number, which is line with a so called forecast confidence interval. For instance, a value of  $3\frac{1}{2}$  is rewritten to 3.5 during the data collection, however, policy makers should have in mind a range between 3.35 and 3.65.

casting industry” during the period covered, Figure 1 shows the sheer number of forecasts regarding the headline measure of economic growth per year included in the database. For the larger part of the period, this headline measure was the rate of change of real GDP. In a smaller part of the sample, however, real GNP growth served as the most prominent figure in this context and is, thus, also taken into account. The number of forecasts is both driven by the number of forecasting institutions as well as the forecast frequency per year. While at the beginning of the sample, forecasts are published once per year, while up to four forecasts are published recently by forecasters. The number of variables of interest for the forecasters also grew over time. Definitions and names of variables varied over time as well, which to some extent reflected changes in the system of national accounts.

**Figure 1**

Number of forecasts for the headline figure of economic growth in the database, 1965 to 2019



Source: IWH compilation.

## 2.1 Forecasters Covered

The database includes forecast data on the German economy covered by 15 national and international institutions with different institutional backgrounds:

- the six largest German economic research institutes: German Institute for Economic Research (DIW), ifo Institute for Economic Research (ifo), RWI – Leibniz Institute for Economic Research (RWI), Halle Institute for Economic Research (IWH), Hamburg Institute of International Economics (HWWA, since 2007 HWWI), and Kiel Institute for the World Economy (IfW)
- research institutes related to trade unions or employers’ associations: Macroeconomic Policy Institute (IMK) and German Economic Institute (IW).<sup>5</sup>

<sup>5</sup> Institutions formerly involved in forecasting are also covered, i.e. the Wirtschafts- und Sozialwissenschaftliches Institut in der Hans-Boeckler-Stiftung (WSI) up to 2004. Although still existing, the WSI institute has not provided business cycle forecasts since the IMK came into existence. Second, the Hamburger Weltwirtschaftsarchiv (HWWA) until 2006. This institute was mainly funded by public money. From 2007 onwards, the institute was renamed to HWWI and functions as a privately funded institute.

- institutions related to policy or policy advice: the Deutsche Bundesbank (German central bank BBK), the joint forecast (GD) of the leading research institutes, and the German Council of Economic Experts (SVR)
- international organisations, namely: the Organisation for Economic Cooperation and Development (OECD), the International Monetary Fund (IMF), and the European Commission (EC)<sup>6</sup>

## 2.2 Variables Included

The database covers key macroeconomic variables (see Table). In addition, financial and monetary variables as well as data related to trade, labor, employment, and unemployment are included.<sup>7</sup> However, note that not all forecasting institutions mentioned above provide forecasts for all variables in all periods.<sup>8</sup> Furthermore, institutions might provide forecasts either in levels or growth rates.

## 2.3 Realisations (Actual Data) and Forecast Horizons

For the comparison of the forecast data with the actual economic development, the so-called “real-time” data problem is an important issue (Stark and Croushore, 2002) in economic forecasting and forecast evaluation. Since time series are prone to revisions, the database provides realisations for selected important series in two variants: first, the initial publication (first release) and, second, the revised data (current data vintage) by the German statistical office, if available.

The database includes information on three possible forecast horizons: the current year, i.e. the year in which the forecast is released (labeled  $t_0$  in the database), a forecast for the next year ( $t_1$ ), and the year after the next year ( $t_2$ ). Hence, following the practice of the institutions covered, the forecasts in the database are “fixed event” rather than “fixed horizon” predictions (see, e.g., Knüppel and Vladu, 2016).

However, most of the institutions publish multiple forecasts per year (forecast rounds). Therefore, the exact date of forecast publication is stored, to distinguish different forecast rounds (e.g. quarters, months). In addition, if available, the date on which the forecast was completed is reported. Generally, the database refers to the name of a variable as it was at the date of the production of the forecast.<sup>9</sup> In a similar vein, all dimensions refer to the date of the forecasts. Thus, variables are expressed in Deutsche Mark up to 2000, and in Euros after. Real variables usually refer to the respective base year. Around German reunification, the switch from forecasts referring to West Germany to predictions for Germany as a whole differs by series and by the institution and is, hence, noted similarly for each series.<sup>10</sup>

---

<sup>6</sup> Note, that the forecasts of the EC are part of the IWH Forecasting Dashboard, but not of the data set used in the DFG project

<sup>7</sup> For the sake of brevity, in this paper we describe the most recent version of the database only, namely the one accessible over the IWH homepage as explained below. Therefore, in the IWH Forecasting Dashboard, only a selection of variables is chosen that is covered by most of the forecasters. A version with a broader dataset, in particular older data, collected for the DFG project, can be found in the project’s data repository “Emporion”, see: <https://emporion.gswg.info>.

<sup>8</sup> See the data availability section of the IWH Forecasting Dashboard to see the time span and missing observations for selected variables and institutions.

<sup>9</sup> This is important for cases in which the official name in the national accounts has changed. For example, until a certain date, the database refers to “Gross national product”, followed by “Gross National Income” in later years.

<sup>10</sup> The disentanglement from West German to German forecasts is not uniform in the period of unification across forecasters. Therefore, we excluded the year 1991 for the calculation of forecast errors in the IWH Forecasting Dashboard.

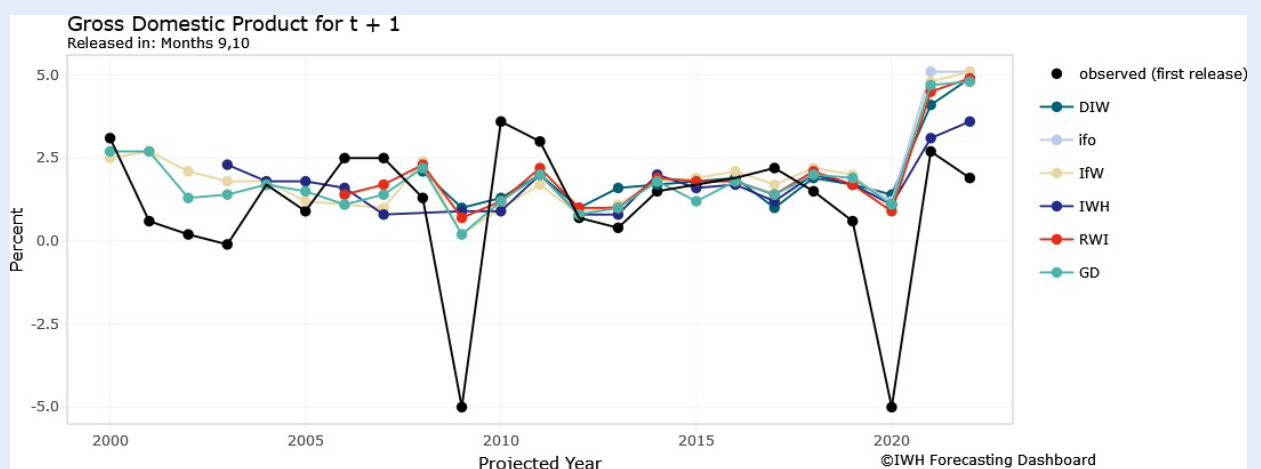


**Table**  
Overview of the variables in ForDas

<i>Components of real GDP</i>
Gross Domestic Product (constant prices)
Final Consumption Expenditure of Households and NPISHs (constant prices)
Government Final Consumption Expenditure (constant prices)
Gross Fixed Capital Formation (constant prices)
Gross fixed capital formation in Machinery and Equipment (constant prices) <sup>a</sup>
Construction (constant prices)
Gross fixed capital formation in other fixed assets (constant prices) (since 2005)
Exports of goods and services (constant prices)
Imports of goods and services (constant prices)
<i>Labor market</i>
Persons in Employment
Unemployment registered (persons) according to “Bundesagentur für Arbeit”
Unemployment registered (ratio)
Unemployment according to International Labor Organisation
Unemployment Rate
<i>Memorandum items</i>
Consumer Price Index GDP Deflator
Unit Labor Costs
Net lending/net borrowing as a percentage of GDP
Current account balance as a percentage of GDP
<i>Technical assumptions</i>
Oil Price
Exchange Rate
Policy Interest Rate
World Trade Growth

<sup>a</sup> Note that forecasters have often summarised Gross fixed capital formation in machinery and equipment and gross fixed capital formation in other products until 2005.  
Source: IWH compilation.

**Figure 2**  
Realised growth rate and forecasts, 2000 to 2022



Source: IWH Forecasting Dashboard, 2023.

Figure 2 shows the real GDP growth forecasts for Germany, provided by the economic research institutes as well as the realised values from 2001 to 2022. The forecasts have been conducted in autumn (months 9, 10) of the previous year. The black line represents the realised growth rate.

The figure illustrates, at first glance, some key insights regarding economic forecast evaluation. First, the forecasts are relatively close to each other, and it seems that they do not differ significantly over time. Second, the prediction of economic turning points (and/or recessions) is still a big challenge in economic forecasting. Different forecasting dates and diverging information sets seem to be important in determining forecast accuracy.

### 3 Recent and Possible Applications

The IWH Forecasting Dashboard provides the basis for various potential research questions, most obviously evaluating German business cycle forecasts based on their accuracy or efficiency. Potential other uses could be the investigation of the institutes themselves, their behavior, and change after economically significant events or due to paradigmatic shifts. An additional research field concerns assessing business cycle forecasts' benefits for economic agents. Several studies have already produced scientific findings based on the data available on the IWH Forecasting Dashboard.

Köhler and Döpke (2023) use the IWH Forecasting Dashboard to conduct an overall ranking of 14 institutions from 1993 to 2019 according to their forecast accuracy. They report substantial long-run differences in forecasting quality, which they mostly attribute to distinct average forecast horizons. Therefore, they cannot single out institutions as being superior at predicting the German economy. Engelke et al. (2019) examine the extent to which initial assumptions that prove incorrect ex-post drive economic forecast errors. Based on an unbalanced panel of annual forecasts from different institutions forecasting German GDP and the underlying assumptions, they found that over 75% of squared errors of the GDP forecast co-move with the squared errors in their underlying assumptions. This finding implies that the accuracy of the assumptions is of great importance and that forecasters should reveal the framework of their assumptions in order to obtain useful policy recommendations based on economic forecasts. The impact of the Great Recession on forecast accuracy for growth and inflation and forecaster behaviour are investigated by Döpke et al. (2019) using a data panel from 1971 to 2017. The authors report stable accuracy for growth forecasts, but slightly lower precision for inflation forecasts. More significantly, they report that the loss function has changed after the Great Recession, leading to more pessimistic forecasts from German professional forecasters.

Behrens et al. (2018a) evaluate whether growth and inflation forecasts are efficient or optimal, which requires that the information available at the time of forecast creation has no explanatory power for the corresponding forecast error. The joint forecast efficiency evaluation shows heterogeneity across the institutes, with different institutes conducting inefficient forecasts for different prognosis horizons. Behrens et al. (2020) confirm this result, which extends the previous study with various scenarios and robustness checks, rejecting strong and weak forecast efficiency of growth and inflation forecasts in multiple cases. Additionally, the authors show in an out-of-sample experiment that a Bayesian additive regression trees (BART) model produces significantly more accurate forecasts. Behrens (2020) finds trade forecasts similarly heterogeneously inefficient. Remarkably, the forecasters include typical trade predictors more efficiently than macroeconomic variables in their export and import forecasts.

Further research examines forecast efficiency while assuming a flexible instead of a symmetric (quadratic) loss function. For this purpose, the researchers test whether the set of predictors has predictive value for the sign of the forecast error using random decision forests. Re-evaluating inflation forecast optimality, Behrens et al. (2018b) suggest that short-term inflation forecasts are suboptimal for some institutes while failing to reject the null hypothesis for long-term forecasts. Reconsidering trade forecasts, Behrens (2019) rejects optimality only in one case, thus supporting a more favorable assessment of forecasts if flexible loss functions are assumed. Several studies have implemented textual

business cycle reports using natural language processing (NLP) in their forecast efficiency analyses. While the written reports are not part of the IWH ForDas itself, they are source and rationale of the forecasts, making a combined analysis reasonable. Müller (2022) transforms the written accounts of forecasters' expectations into sentiment indices using nine different methods. The author demonstrates that several indices can improve the accuracy of German business cycle forecasts proving that forecasters do not fully exploit the information content of their business cycle reports for their numerical point forecasts. Foltas (2022) uses the Word2Sense-LDA topic model developed specifically for this task to measure the proportions of different economic topics in each business cycle report and uses their shift to test investment forecast efficiency. In some cases, the author rejects forecast efficiency with topics as the most important predictors supporting the thesis that institutes inefficiently incorporate qualitative information discussed in their business cycle reports into point forecasts. With an approach using topics as the sole predictors of the forecast error, Foltas and Pierdzioch (2022a) affirm the usefulness of topic modeling for forecast efficiency analysis. The authors find several interpretable topics related to the forecast error under symmetric and flexible loss functions. Lastly, Foltas and Pierdzioch (2022b) utilise a mixed sample of indicators and topics to predict growth forecast errors using quantile random forests and out-of-sample density forecasts. Even though none of the topics are among the top predictors, their aggregated relative importance varied between roughly 30-50%.

Currently, most studies based on the IWH Forecasting Dashboard evaluate economic forecasts and analyse the performance of forecasters. Only a few papers focus on the forecasts' economic value. Döpke et al. (2018) dive into this field when testing an investment portfolio approach that actively reacts to macroeconomic predictions. While their approach does not systematically outperform passively managed portfolios, they propose several ways to extend their analysis.

#### 4 IWH Forecasting Dashboard – Data Access

The IWH Forecasting Dashboard (IWH ForDas) is an online tool in R Shiny that makes use of the database described above in order to present the data publicly and in an interactive way. So far a preselection of data has been used to allow a suitable comparison across institutions. The dashboard provides both historical and recent forecast data as well as official data from the German statistical office (Destatis) and Bundesbank, including both first releases (real-time data) and current values (pseudo-real-time data) for the target years.<sup>11</sup>

The IWH ForDas includes several forecasting institutions and macroeconomic variables allowing for a direct comparison of the figures, both graphically and numerically. Furthermore, the tool allows for forecast error calculations.

The user has the choice between a simplified view, where only the latest forecasts are shown for a preselection of forecasters and an extended view option, where researchers can assemble data according to specific needs. As an example for the extended view, Figure 3a shows the autumn forecasts conducted by the Joint Forecast (GD) during the years 1999-2022, i.e. the depiction range for the target of the next year's forecast ( $t + 1$ ) runs from 2000 until 2023. The last available year published by the Federal Statistical Office (Destatis) is currently 2022. The figure displays both forecast and first-release data.<sup>12</sup>

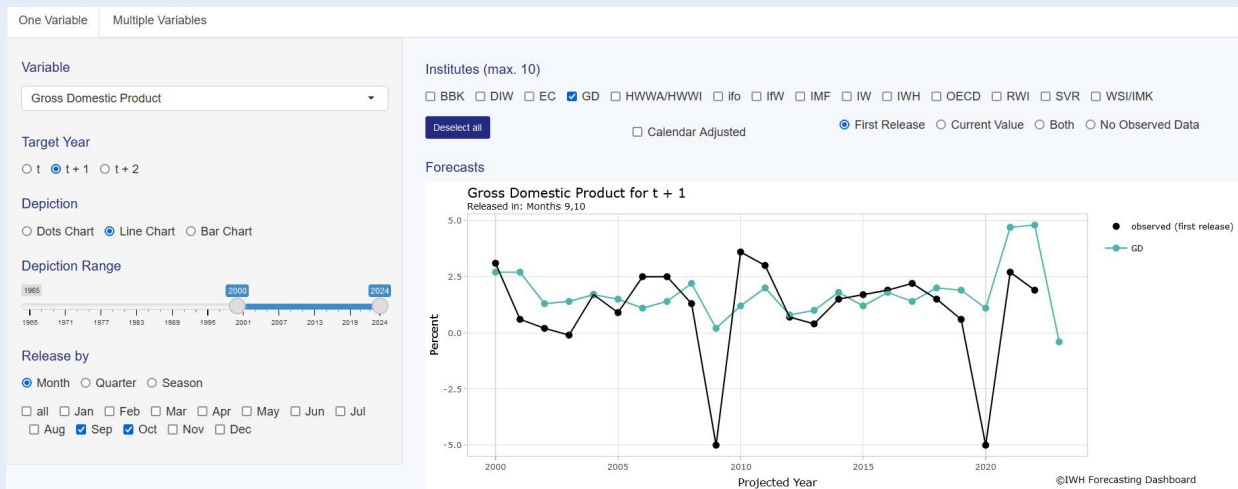
---

<sup>11</sup> First release data refer to the first publication of national accounts data by the Federal Statistical Office of Germany (in January of the next year to the target), Fachserie 18 R1-1. For, e.g. current account data, publications by the Bundesbank in February on Balance of Payment Statistics (Statistical supplement to monthly report 3) are used as the first reference. On request, the forecaster has access to real-time data from the end of February.

<sup>12</sup> Both forecast and the first release data cover only the respective year and should not be interpreted as a full time series.

**Figure 3**  
Previews of the IWH Forecasting Dashboard

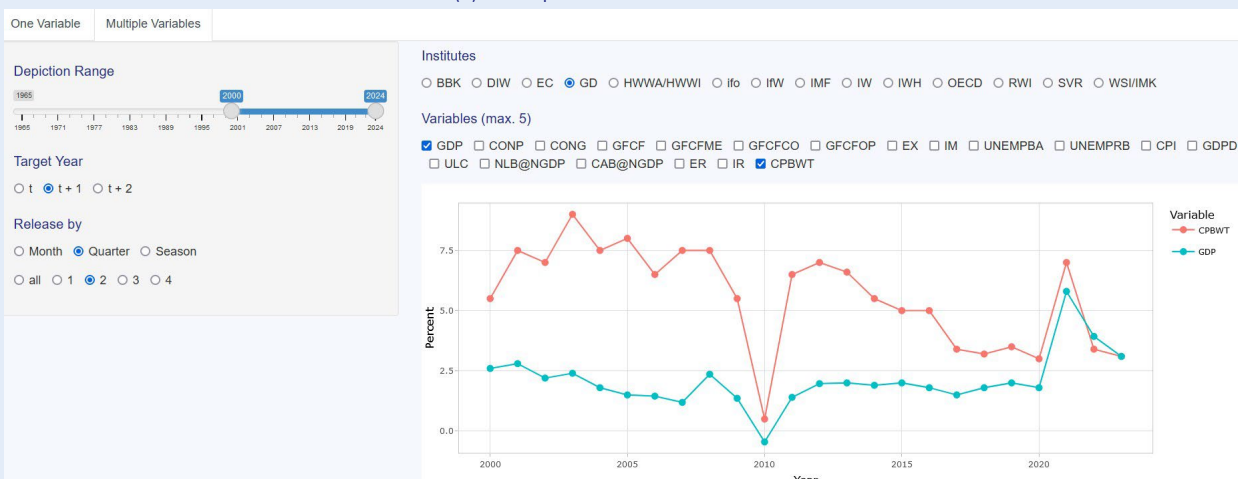
(a) One indicator



(b) Multiple indicators



(c) Multiple indicators over time



Source: IWH Forecasting Dashboard.

Furthermore, the user can use the IWH ForDas to calculate the forecast errors for a selected variable (forecast target) and sample, and even compare the errors across institutes. The option “comparable errors” compares forecasts that have been conducted in the same month (quarter) within a year. In addition, forecast figures and real-time data can be viewed, compared, and stored.

Another option is to compare the forecasts for two different variables and also across multiple institutions. Figure 3b shows the relationship between GDP growth and world trade growth assumptions (scatter plot) for a selection of two forecasters, the Joint Forecast and OECD.

In addition to allowing for comparison of forecast and forecast errors across institutions, the dashboard also allows for the analysis of the individual forecaster performance. It provides a graphical illustration of forecasts for a selected variable over time, e.g. covering all forecast target years at a particular time (porcupine graph). Furthermore, forecasts for various indicators over time can be depicted. Figure 3c shows an example of forecasts on GDP growth and world trade growth by the Joint Forecast (GD) conducted in the spring (second quarter) of a particular year for the next year.

The website offers support to the user via a detailed tutorial as well as a FAQ section.

## 5 Future Plans

The IWH ForDas is usually updated by the end of January, April, July, and October to cover the most recent forecasts. Further variables will be added in the months to come. It is also planned to make an effort to include predictions on quarterly forecasts. Naturally, it would be desirable to include additional forecasters, e.g. in particular with a commercial background.

## References

- Antholz, B.*: Geschichte der quantitativen Konjunkturprognose-Evaluation in Deutschland, in: Vierteljahrshefte zur Wirtschaftsforschung, Vol. 75 (2), 2006, 12–33.
- Behrens, C.*: A Nonparametric Evaluation of the Optimality of German Export and Import Growth Forecasts under Flexible Loss, in: *Economies*, Vol. 7 (3), 2019, 93.
- Behrens, C.*: Evaluating the Joint Efficiency of German Trade Forecasts – A Nonparametric Multivariate Approach, in: *Applied Economics*, Vol. 52 (34), 2020, 3732–3747.
- Behrens, C.; Pierdzioch, C.; Risse, M.*: A Test of the Joint Efficiency of Macroeconomic Forecasts Using Multivariate Random Forests, in: *Journal of Forecasting*, Vol. 37 (5), 2018a, 560–572.
- Behrens, C.; Pierdzioch, C.; Risse, M.*: Testing the Optimality of Inflation Forecasts under Flexible Loss with Random Forests, in: *Economic Modelling*, Vol. 72 (C), 2018b, 270–277.
- Behrens, C.; Pierdzioch, C.; Risse, M.*: Do German Economic Research Institutes Publish Efficient Growth and Inflation Forecasts? A Bayesian Analysis, in: *Journal of Applied Statistics* 47 (4), 2020, 698–723.
- Döhrn, R.*: Der Prognostiker des Jahres: Ein Zufallsergebnis? Möglichkeiten einer mehrdimensionalen Evaluierung von Konjunkturprognosen. Diskussionsbeitrag 208, Universität Duisburg-Essen, Institut für Betriebswirtschaft und Volkswirtschaft (IBES), 2015.
- Döpke, J.; U. Fritsche, U.; Müller, K.*: Has Macroeconomic Forecasting Changed after the Great Recession? Panel-based Evidence on Forecast Accuracy and Forecaster Behavior from Germany, in: *Journal of Macroeconomics*, Vol. 62, December 2019, 103–135.
- Döpke, J.; Müller, K.; Tegtmeier, L.*: The Economic Value of Business Cycle Forecasts for Potential Investors – Evidence from Germany, in: *Research in International Business and Finance*, Vol. 46, December 2018, 445–461.
- Engelke, C.; Heinisch, K.; Schult, C.*: How Forecast Accuracy Depends on Conditioning Assumptions. IWH Discussion Papers No. 18/2019. Halle (Saale) 2019.
- Foltas, A.*: Testing Investment Forecast Efficiency with Forecasting Narratives, in: *Jahrbücher für Nationalökonomie und Statistik*, Vol 242 (2), 2022, 191–222.
- Foltas, A.; Pierdzioch, C.*: Business-cycle Reports and the Efficiency of Macroeconomic Forecasts for Germany, in: *Applied Economics Letters*, Vol. 29 (10), 2022a, 867–872.
- Foltas, A.; Pierdzioch, C.*: On the Efficiency of German Growth Forecasts: An Empirical Analysis Using Quantile Random Forests and Density Forecasts, in: *Applied Economics Letters*, Vol. 29 (17), 2022b, 1644–1653.
- Knüppel, M.; Vladu, A.*: Approximating Fixed-horizon Forecasts Using Fixed-event Forecasts. Bundesbank Discussion Paper 28/2016, Deutsche Bundesbank.
- Köhler, T.; Döpke, J.*: Will the Last be the First? Ranking German Macroeconomic Forecasters Based on Different Criteria, in: *Empirical Economics*, Vol. 64, 2023, 797–832.
- Müller, K.*: German Forecasters' Narratives: How Informative are German Business Cycle Forecast Reports?, in: *Empirical Economics*, Vol. 62 (5), 2022, 2373–2415.
- Stark, T.; Croushore, D.*: Forecasting with a Real-time Data Set for Macroeconomists, in: *Journal of Macroeconomics* 24 (4), 2002, 507–531.

Halle Institute for Economic Research (IWH) –  
Member of the Leibniz Association

Kleine Maerkerstrasse 8  
D-06108 Halle (Saale), Germany

P.O. Box 11 03 61  
D-06017 Halle (Saale), Germany

Tel +49 345 7753 60  
Fax +49 345 7753 820  
[www.iwh-halle.de](http://www.iwh-halle.de)

ISSN: 2365-9076