

Heinrich, Torsten; Yang, Jangho

**Working Paper**

## Innovation in times of Covid-19

Chemnitz Economic Papers, No. 058

**Provided in Cooperation with:**

Chemnitz University of Technology, Faculty of Economics and Business Administration

*Suggested Citation:* Heinrich, Torsten; Yang, Jangho (2022) : Innovation in times of Covid-19, Chemnitz Economic Papers, No. 058, Chemnitz University of Technology, Faculty of Economics and Business Administration, Chemnitz

This Version is available at:

<https://hdl.handle.net/10419/267867>

**Standard-Nutzungsbedingungen:**

Die Dokumente auf EconStor dürfen zu eigenen wissenschaftlichen Zwecken und zum Privatgebrauch gespeichert und kopiert werden.

Sie dürfen die Dokumente nicht für öffentliche oder kommerzielle Zwecke vervielfältigen, öffentlich ausstellen, öffentlich zugänglich machen, vertreiben oder anderweitig nutzen.

Sofern die Verfasser die Dokumente unter Open-Content-Lizenzen (insbesondere CC-Lizenzen) zur Verfügung gestellt haben sollten, gelten abweichend von diesen Nutzungsbedingungen die in der dort genannten Lizenz gewährten Nutzungsrechte.

**Terms of use:**

*Documents in EconStor may be saved and copied for your personal and scholarly purposes.*

*You are not to copy documents for public or commercial purposes, to exhibit the documents publicly, to make them publicly available on the internet, or to distribute or otherwise use the documents in public.*

*If the documents have been made available under an Open Content Licence (especially Creative Commons Licences), you may exercise further usage rights as specified in the indicated licence.*



Chemnitz University of Technology  
Faculty of Economics and Business Administration  
Thüringer Weg 7  
09107 Chemnitz, Germany

Phone +49 (0)371 531 26000

Fax +49 (0371) 531 26019

<https://www.tu-chemnitz.de/wirtschaft/index.php.en>

[wirtschaft@tu-chemnitz.de](mailto:wirtschaft@tu-chemnitz.de)

# Innovation in times of Covid-19

Torsten Heinrich <sup>\*1,2,3</sup> and Jangho Yang <sup>†4,2,3</sup>

<sup>1</sup>*Department of Economics and Business Administration, Chemnitz University of Technology*

<sup>2</sup>*Institute of New Economic Thinking at the Oxford Martin School, University of Oxford*

<sup>3</sup>*Oxford Martin Programme on Technological and Economic Change, University of Oxford*

<sup>4</sup>*Management Sciences, Faculty of Engineering, University of Waterloo*

December 29, 2022

## Abstract

Did the Covid-19 pandemic have an impact on innovation? Past economic disruptions, anecdotal evidence, and the previous literature suggest a decline with substantial differences between industries. We leverage USPTO patent application data to investigate and quantify the disturbance. We assess differences by field of technology (at the CPC subclass level) as well as the impact of direct and indirect relevance for the management of the pandemic. Direct Covid-19 relevance is identified from a keyword search of the patent application fulltexts; indirect Covid-19 relevance is derived from past CPC subclass to subclass citation patterns. We find that direct Covid-19 relevance is associated with a strong boost to the growth of the number of patent applications in the first year of the pandemic at the same order of magnitude (in percentage points) as the percentage of patents referencing Covid-19. We find no effect for indirect Covid-19 relevance, indicating a focus on applied research at the expense of more basic research. Fields of technology (CPC mainsections) have an additional significant impact, with, e.g., mainsections A (human necessities) and C (chemistry, metallurgy) having a strong performance.

## 1 Introduction

1918, as the world was reeling from the effects of World War I and a devastating influenza pandemic, a sudden decline in patent applications and grants - in the US at least - went mostly unnoticed (Berkes et al., 2020). Did it harm the economic development of the world? Did it delay the recovery after the war? It is difficult to tell for sure in the absence of detailed data. But it is certain that these two events had a significant impact on the technological development of the world - the two world wars precipitated many designs of future civilian products (aircraft, computers, rocketry) and may have accelerated progress through investment and experience curves (Lafond et al., 2020), while also disrupting the research - and indeed the lives - of many innovators and researchers. As for the pandemic - locally different effects on future patent output have been shown (Berkes et al., 2020), hence a profound effect seems likely.

Almost 100 years on, in late 2019 and early 2020, a new pandemic disrupted both economic and social life at a scale previously unknown to this generation. Again, the effects on research, development,

---

\*torsten.heinrich@wiwi.tu-chemnitz.de

†j634yang@uwaterloo.ca

and innovation may be profound, but have yet to be analyzed. What are the determining factors? Do the effects differ from one field of technology to another? Are government interventions necessary and expedient and, if so, what kind of interventions? The present paper contributes to answering these questions.

We leverage the public patent application data<sup>1</sup> provided by the United States Patent and Trademark Office (USPTO) to investigate both the trends by field of technology and any effect Covid-19 may have in particular fields. Of course, there are caveats to working with patent application data: Patents are not the same as innovations. Inventors may decide against patenting an invention since patenting is costly and also requires the specifications to be made public. Some patents, in turn, may not represent actual innovations but patent trolling, non-feasible ideas,<sup>2</sup> minor changes, etc. Patent applications come with the additional caveat that not every patent application has to be granted and that there is a time delay between the patent application being filed and it being made public (see figure 6 in appendix A). However, patent applications afford us a very early window into the development of new technologies. In addition, patents are expensive, and so patent applications indicate that the applicant believed they had made a discovery that merited patenting in terms of both novelty and potential revenue. This is mostly free of strategic maneuvering, pretence, and public-relations endeavours that may bias other data sources on innovation. Once all patent applications filed at a certain time have been made public, they also provide a full view of the population of patent applications in the USA, not just a sample.

Several recent studies have examined the impact of Covid-19 on innovation (Brem et al., 2021; Dahlke et al., 2021; Wen et al., 2022; Bachmann and Frutos-Bencze, 2022; Agarwal and Gaule, 2022; Guderian et al., 2021), but little attention has been paid to its direct impact on invention activities and studies often only cover very specific fields of research.<sup>3</sup> Our study fills this gap and provides empirical evidence on patenting in general during the Covid 19 pandemic. We identify Covid-19 relevant patents by performing keyword searches in the patent application fulltexts. According to our analysis, direct Covid-19 relevance has a strong, positive, and highly significant effect on the growth of patent applications during the first year of the pandemic, in contrast to an overall decline in patenting activity during that period. However, indirect Covid-19 relevant patents, which are derived from past CPC<sup>4</sup> subclass to subclass citation patterns, are not particularly associated with the increase in the number of patent applications. Additionally, we find that there is significant variation in the baseline growth of patent applications across different fields. As an example, CPC mainsections A (human necessities) and C (chemistry, metallurgy) perform very well, whereas mainsections B (operations, transport) and F (engineering) perform less well.

Considering the serious efforts being made in the development of technology to aid and guide the response to Covid-19 - vaccines in particular (Florio, 2022) - the positive effect of direct Covid-19 relevance, that we identify here, is somewhat predictable. Nonetheless, it is not immediately apparent that it would be reflected in patent application numbers. This implies that Covid-19 relevant inventions were quickly developed and were patented and hence shared with competitors during the pandemic. Based on the full public USPTO patent application data for the timeframe, this paper reconsiders hypotheses from anec-

---

<sup>1</sup><https://bulkdata.uspto.gov/>

<sup>2</sup>The patent office will check for novelty, obviousness, prior art, etc., but not for feasibility. That is up to the patent owner.

<sup>3</sup>Alexopoulos et al. (2021) study the impact of Covid-19 on patent applications. Nevertheless, they only consider innovations in artificial intelligence, and the period of consideration ends in June 2021. To the best of our knowledge, our paper is the first attempt to analyze the full population of USPTO patent applications in a timeframe with the potential to cover a significant part of patents applications filed in the time period after the onset of the pandemic in early 2020.

<sup>4</sup>CPC is the Cooperative Patent Classification system, a system of classifying patents and patent applications, that has been jointly developed by the European Patent Office and the USPTO and is in use since 2013 U.S. Patent and Trademark Office and European Patent Office (2017).

total and fragmented discussions on how the pandemic affected innovation. It provides potential avenues to fine-tune innovation policy so that post-pandemic research activities can be stimulated, particularly in only indirectly Covid-19 relevant fields (such as CPC classes C07 - organic chemistry, G06 - computing, or H04 - electric communication), which have suffered during the pandemic.

The following sections discuss the literature (section 2) and our data sources and data preprocessing (section 3). Section 4 presents our empirical approach and results and section 5 concludes.

## 2 Literature

**Heterogeneous effects of the pandemic on patenting** Early accounts from trade publications, e.g. Gaudry and Gianola (2020), warn of a substantial decline in patent applications, especially in fields like chemistry and life sciences. At the same time, an unprecedented effort was under way to develop the vaccines and other pharmaceutical technology to manage, control, and prevent Covid-19 infections (Sampat and Shadlen, 2021). Because of the short time span since the start of the pandemic, the number of detailed empirical papers on the topic is limited. Researchers either had to work with very incomplete patent application data sets (Bloom et al., 2021; Yoon, 2021) or they had to leverage other data sources (Han and Qian, 2020), that come with problems of their own. The available research does, however, consistently highlight significant differences between different industry sectors (or fields of technology) in the development of innovation:

Bloom et al. (2021) find that the number of patent applications related to work-from-home technologies doubled in the first six months of 2020. They conduct a keyword search for terms related to remote work. Their findings are plausible considering the timeframe - a time when most employees in office jobs, but also teachers, community organizers, contract negotiators, and people in many other occupations had to work from home, and the economic potential of those technologies became evident. However, as the study acknowledges, coming just a few months into the pandemic and hence only being able to include patent applications published within a few months, it has to make due with an incomplete data set. This data may be subject to bias, e.g. because of eagerness of inventors in some fields to have their work in the public record (for signaling for acquiring further funding) or because of intentional or unintentional preferential processing of some fields by the patent office for a variety of reasons.

Han and Qian (2020), analyzing iFinD data on Chinese public listed companies, find that R&D investment has increased during the pandemic. This holds across all sectors, but they also identify substantial differences between industries with IT at the low end and finance at the high end. They conjecture that R&D investment can be used as a proxy for R&D capabilities, hence potentially future innovation.

Working with data from the Korea Intellectual Property Rights Information Service (KIRPIS), Yoon (2021) finds that the number of patent applications in Korea has not significantly declined during the Covid-19 crisis. There were, however, significant differences between fields of technology with a surge in remote collaboration technology driven by innovations by small companies. As KIRPIS also only includes published patent applications and South Korean law defines the same 18-months-term that applies to the USA (see section 3 below), this paper cannot have had access to the full (or even an almost complete) population of South Korean patent applications though.

**Disruptions of innovation** Another literature tradition considers disruptions of technological development in general, e.g. as a result of economic crises (Yamashita, 2021; Brem et al., 2020; Archibugi et al., 2013; Amore, 2015) or standardization events like the emergence of patent pools (Kim et al., 2016).

The overall effect of economic crises on innovation is unsurprisingly negative (Yamashita, 2021). However, there are secondary effects to the innovation system: consolidation of designs (Brem et al., 2020) as well as concentration of innovation to fewer highly-innovative firms (Archibugi et al., 2013) and to those that have built resilience conducting R&D in past crises (Amore, 2015). It remains to be seen, if similar patterns emerge during and in the aftermath of the Covid-19 pandemic.

**Innovation policy response to the pandemic** Finally, another important line of research assesses the innovation policy response to the Covid-19 pandemic. In a Science editorial written in the early days of the pandemic, Zerhouni et al. (2020) suggest the creation of milestone-based subsidies to expedite the development of Covid-19 related technologies - drugs, diagnostics, vaccines. In a conceptual paper drawing on earlier empirical results, Gross and Sampat (2021) consider innovation policy in normal and crisis times. They take World War II and the Covid-19 pandemic as examples for crises and look at the policies and funding programs of the World-War-II-time U.S. Office of Scientific Research and Development (OSRD) in particular. Starting from Arrow’s (1962) and Nelson’s (1959) principal features of innovation in normal times (indivisibility, inappropriability, uncertainty), they find that crisis times’ need for quick results suggests prioritizing applied research, encouraging redundancy (e.g., funding multiple vaccines), and loosening appropriability guidelines. While the Covid-19-pandemic did not see anything like the OSRD, there were aggressive public funding programmes in the USA and multiple other countries. Gross and Sampat (2021) do not make predictions regarding the development of innovation, but their analysis would suggest an acceleration of innovation (and patenting) in fields related to Covid-19 treatment and vaccine deployment etc. with a focus on practical applications over further theoretical groundwork.

Florio (2021; 2022) also finds that Covid-19 related innovations were funded publically to a substantial part. What is more, the immediate development of treatments and vaccines is based on overwhelmingly publically funded basic research. His analysis concludes, however, that in the presence of subsidies at this scale, patents as instruments for the protection of intellectual property rights may not be necessary. At least one open-source vaccine is in existence.

## 3 Data

### 3.1 Data sources

To assess the effect of the pandemic on innovation we use patent application data from the first year of the Covid-19 pandemic, i.e. the year starting when the pandemic was first commonly recognized as a major global public health crisis and when nearly all governments including the United States introduced severe containment measures such as stay-at-home orders, work-from-home orders, closure of entertainment venues, restrictions on travel, etc. This is the year from April 2020 to March 2021. We contrast this period to the previous years, in various analyses the year immediately preceding it (April 2019 - March 2020), and average data across the years from April 2014 through March 2020. We make the simplifying assumption that the Covid-19 pandemic was the single dominant event occurring in this period and the reason precipitating basically all empirical changes between the years preceding the pandemic and the first year of the pandemic.

We use patent application bulk data<sup>5</sup> provided by the USPTO (United States Patent and Trademark Office). Following 35 U.S. Code Section 122 all patent applications have to be published within 18 months of being filed, except for specific exceptions (subject to confidentiality, design patent applications, with-

---

<sup>5</sup><https://bulkdata.uspto.gov/>

drawn patent applications). We only consider patent applications that were published within 18 months (specifically 555 days<sup>6</sup>), both for patent applications during and before the pandemic for consistency. This constitutes the bulk of all patent applications; of the patent applications published in the relevant period, a majority of 76.67% were published within 18 months (555 days) after being filed (see figure 6 in Appendix A). With this limit, we also have a complete picture of the patent applications in the first year of the pandemic as of October 2022.

## 3.2 Preprocessing

In total, we have 2,079,876 patent applications between April 2014 and March 2021 that were published within 18 months. Figures 1 and 2 show the number of patent applications by year and by day (corrected for the weekly cycle with a moving average filter) between 2014 and 2020. It is clear that the increasing trend has ceased and the total number has gone down slightly with the pandemic, but with substantial variation over the year - and also across fields, as shown below.

To assess the effect for specific fields, we aggregate the number of patents to the level of CPC subclasses (U.S. Patent and Trademark Office and European Patent Office, 2017) as listed on the patent application and weighted with the total number of subclasses on a patent. I.e., a patent application with the following three codes (two of which belong to the same subclass A61K), A61K 9/50 (Preparations for medical purposes - Microcapsules)<sup>7</sup>, A61K 47/68 (Medicinal preparations - modifying agents chemically bound to the active ingredient - antibody or immunoglobulin), and C12N 5/00 (Microorganisms or enzymes - undifferentiated human, animal or plant cells) is counted to the two subclasses A61K and C12N with 50% weight each.<sup>8</sup>

---

<sup>6</sup>One and a half years plus seven days, since patent applications are published only once a week.

<sup>7</sup>The descriptions are shortened for clarity; the full descriptions can be found on for instance on the website of the USPTO, <https://www.uspto.gov/web/patents/classification/cpc/html/>.

<sup>8</sup>The weights are evenly split between the subclasses the patent application belongs to and sum to one. E.g., a patent application with 5 subclasses counts with 20% to each of those. Multiple codes of the same subclass do not shift the weights.



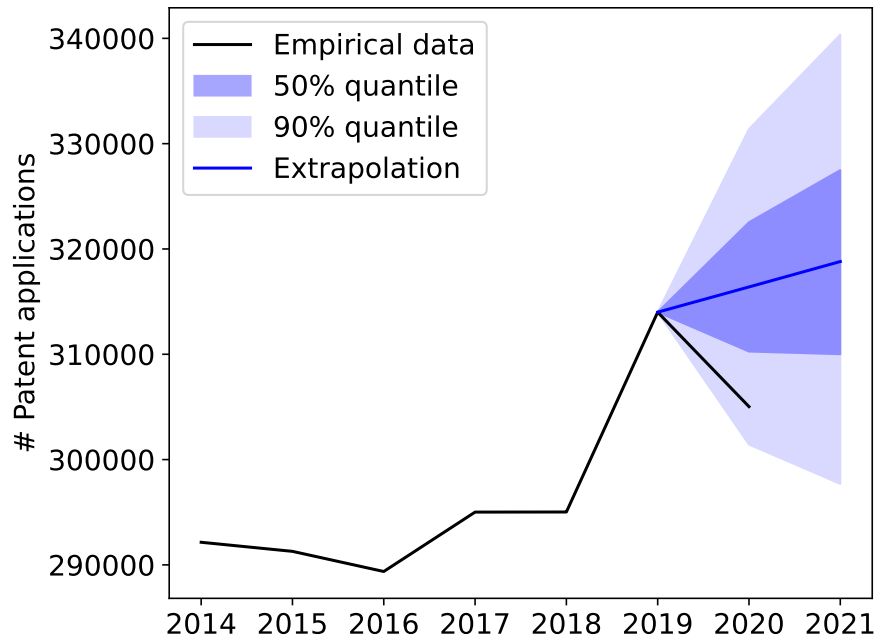


Figure 1: Patent applications by year and mainsection, extrapolation and realization for 2020 and 2021.

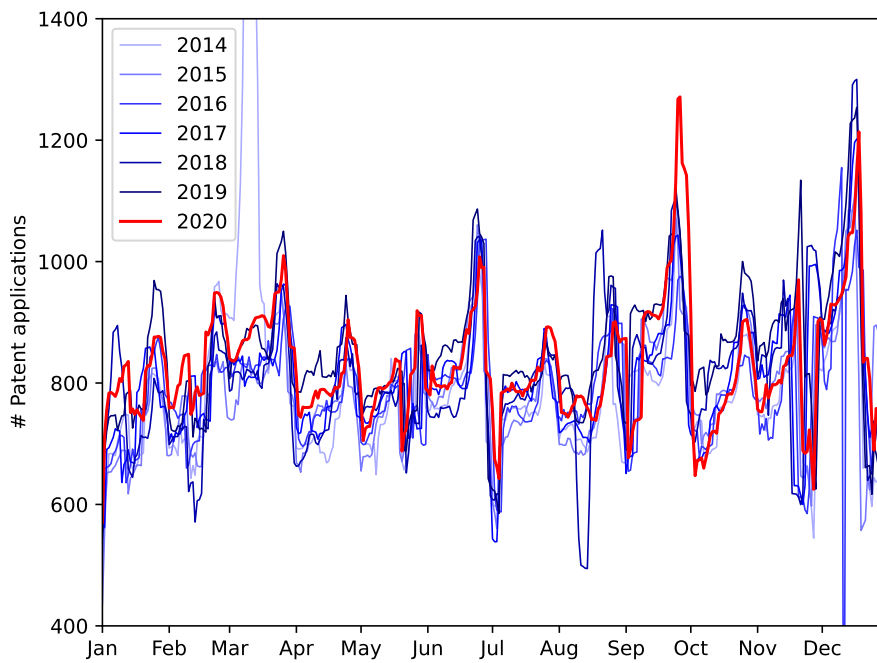


Figure 2: Number of patent applications filed by day and year 2014-2020, that were published within 18 months.

### 3.3 Variable construction

**Direct Covid-19 relevance** To identify the patent applications that are directly relevant for the response to the Covid-19 pandemic, we perform a keyword search in the full text of the patent applications for the following keywords:

- “Covid-19”
- “Covid19”
- “2019-nCov”
- “SARS-CoV-2”
- “Pandemic” and “Coronavirus”
- “Pandemic” and “Covid”

The text is transformed to lower case for the keyword search, so different capitalization conventions will have no effect.

We then compute the share of directly Covid-19 relevant patent applications per subclass, yielding the vector *CovidRelevant* that indicates direct Covid-relevance by CPC subclass. As above, patent applications  $i$  assigned to  $n_i$  subclasses are counted as  $1/n_i$  for each of those subclasses, thus

$$CovidRelevant_j = \sum_i \frac{I(i, j)}{n_i}, \quad (1)$$

where  $I(i, j)$  is the indicator that patent application  $i$  belongs to subclass  $j$  (assuming value 1 if it does, 0 otherwise). A list of the 50 subclasses with the highest values of this variable can be found in table 7 in appendix C

We also define a binary variable that assigns value 1 to the 50 subclasses with the highest continuous Covid-19 relevance variables (*CovidRelevant*) and value 0 to all others:

$$BinaryCovidRelevant_i = \begin{cases} 1 & \text{if } D(CovidRelevant_i) \\ 0 & \text{otherwise} \end{cases}$$

where  $D$  is the indicator function, indicating that the subclass is among the 50 with the highest *CovidRelevant* values.

We do this to complement our regressions, that use continuous Covid-19 relevance, with equivalent ones with a binary variable in section 4.3. Those with binary regressors make the scale of the impact of the coefficient more illustrative and easier to interpret. E.g., predicted growth for Covid-19 relevant subclasses is positive, if the sum of the regression intercept and the coefficient corresponding to *CovidRelevant* is positive, unless other continuous variables are present and significant.<sup>9</sup> For mainsection fixed effects, their coefficients can be added.

---

<sup>9</sup>We shall see that the contributions of other continuous variables will be relatively minor in scale.

**Indirect Covid-19 relevance** In addition, we use the full subclass to subclass citation frequency matrix  $\mathbb{C}$  computed from USPTO patent data to assess which subclasses are indirectly relevant for Covid-19. Matrix  $\mathbb{C}$  is defined as follows: An entry  $c_{i,j}$  in row  $i$ , column  $j$  is the share of the backward citations from subclass  $i$  patents that goes to subclass  $j$ , where multiple citations from the same subclass to the same subclass on the same patent are counted as only one citation.<sup>10</sup> The vector of indirect Covid-19 relevance by subclass is simply computed as:

$$\text{IndirectCovidRelevant} = \text{CovidRelevant}^T \times \mathbb{C}. \quad (2)$$

where  $T$  stands for the transpose. Equation 2 multiplies a  $(1 \times m)$ -matrix (direct Covid-19 relevance vector transposed) with a  $(m \times m)$ -matrix (subclass-to-subclass citation matrix) to yield a  $(m \times 1)$ -matrix (indirect Covid-19 relevance vector). A list of the 50 subclasses with the highest values of this variable can be found in table 8 in appendix C.

## 4 Empirical results

### 4.1 Empirical method

We aggregate the values to the level of CPC subclasses (667 in total) to gain more statistical power. The dependant variable we are interested in is the annual growth of the number of patent applications (by subclass) in the year after the start of the most severe phase of the pandemic and the pandemic response measures in most countries: the year from April 2020 to March 2021 (compared to April 2019 to March 2020). We consider the following regression model:

$$\begin{aligned} \text{Growth2020} = \beta_0 & + \beta_1 \log(\text{NumberPreCovid}) + \beta_2 \text{PastGrowth} + \beta_3 \text{CovidRelevant} \\ & + \beta_4 \text{IndirectCovidRelevant} + \text{MainsectionFE} + \varepsilon \end{aligned} \quad (3)$$

For *PastGrowth*, we consider the annual growth in the year before the pandemic (April 2019 to March 2020 compared to the period April 2018 to March 2019). However, we perform a robustness check, in which we use the average annual growth in the 5 years leading up to the pandemic (always April to March) instead.<sup>11</sup>

We perform regressions both using ordinary least squares (OLS) fitting and a robust regression with Huber’s norm [Huber \(1973\)](#) using the implementation from Python Statsmodels ([Seabold and Perktold, 2010](#)). To assess the viability of the OLS regression, we consider the residual skew and kurtosis as well as the Jarque-Bera statistic ([Jarque and Bera, 1980](#)), all of which can be used to test for the normality of the residuals. For the robust regression, we report the following goodness statistics<sup>12</sup>:

- Root mean square error  $RMSE = \sqrt{\mathbb{E}(\hat{y} - y)}$ , an extension of the standard deviation of the estimator to biased samples.

<sup>10</sup>Multiple such citations may occur, because there may be citations to different finer classification levels that belong to the same subclass. We choose to count them only once, as they indicate utilization of very similar types of prior knowledge for the new innovation the patent represents.

<sup>11</sup>Either of these two measures could plausibly have an effect on *Growth2020*, either a positive effect because of rigidity (autocorrelation) or a negative one because of saturation. However, the two measures would be expected to be strongly correlated (one featuring in the computation of the other), and should thus not be used in the same model but considered separately. Pearson correlation is  $\rho = 0.41$ , Spearman rank correlation is  $r = -0.22$ .

<sup>12</sup>The usual (adjusted)  $R^2$  is not a good metric for the goodness of robust regressions since it is can also be dominated by the tails of the distribution, just like the OLS fit.

- Mean absolute deviation  $MAD = \mathbb{E}(|\hat{y} - y|)$
- Median absolute deviation  $MAD = \mathbb{E}(|\text{Median}(y) - y|)$
- Error inter-quartile range  $EIQR = QF(0.75) - QF(0.25)$ , where  $QF$  is the quantile function (inverse of the cumulative distribution function) of the sample of  $\hat{y} - y$ .

All these measures should be as small as possible for a good fit. For our purposes, it is not problematic that the measures are not normalized, as our regressions are performed on almost the same samples (except for a handful cases in which we have some missing observations).

## 4.2 Primary results

**OLS fit leads to non-normal residuals** The OLS regressions in tables 1 shows highly significant and positive coefficients for Covid-19 relevance in all seven models considered. Indirect Covid-19-relevance may be significant in model (7), but barely, with a p-value of 9.5%. The control variables considered are also found to be significant in most cases,  $\log(\text{NumberPreCovid})$  with a negative coefficient,  $\text{PastGrowth}$  with varying signs and varying degrees of significance.

	(1)	(2)	(3)	(4)	(5)	(6)	(7)
(Intercept)	-0.0415** (0.0135)	0.1149** (0.0427)	0.1584** (0.0587)	0.1001* (0.0453)	0.1092* (0.0433)	0.1469* (0.0587)	0.2463*** (0.0596)
$\log(\text{Number pre-Covid})$		-0.0257*** (0.0067)	-0.0284*** (0.0071)	-0.0238** (0.0075)	-0.0250*** (0.0067)	-0.0263*** (0.0072)	-0.0418*** (0.0079)
Growth 2019					0.0134*** (0.0035)	0.0133*** (0.0035)	-0.2265*** (0.0280)
Covid-relevant	75.3934** (26.2604)	93.1178*** (26.3862)	95.9183*** (27.1556)	83.5170** (26.2676)	84.5140*** (26.2213)	87.2576*** (27.0070)	101.7010*** (25.5949)
Indirectly Covid-relevant				8.5799 (51.2511)			87.8901* (52.5284)
Mainsection FE			O			O	O
N	645	645	645	643	641	641	640
df	643	642	634	639	637	629	627
Adj R <sup>2</sup>	0.0111	0.0320	0.0361	0.0243	0.0511	0.0556	0.1246
p-value (F-Statistic)	0.004	0.000	0.000	0.000	0.000	0.000	0.000
AIC	414.8	402.0	407.2	380.7	376.9	381.8	310.8
Jarque-Bera	$3.5 \times 10^4$	$3.0 \times 10^4$	$3.0 \times 10^4$	$3.4 \times 10^4$	$3.5 \times 10^4$	$3.5 \times 10^4$	$3.1 \times 10^4$
Residual skew	4.3	3.8	3.8	3.9	4.0	4.0	3.7
Residual kurtosis	38.3	35.3	35.7	37.6	38.1	38.2	36.1

Signif. codes: \*\*\*  $p < 0.001$ , \*\*  $p < 0.01$ , \*  $p < 0.05$ , ·  $p < 0.1$

Table 1: OLS regression with growth 2019 (in the year before the pandemic, i.e. 04/2019-03/2020) as PastGrowth.

However, the normality tests for the residuals (Jarque-Bera statistic, kurtosis, and skew<sup>13</sup>) consistently show that the residuals are not Gaussian. The OLS fit is therefore most likely invalid and possibly misleading. The distribution of the residuals in model (7) is shown in figure 7 in appendix B; it is clear that the non-normality is due to both outliers (or heavy tails), left-skewedness, and high kurtosis. We therefore perform the fit again using a robust regression with Huber's T norm Huber (1973). Alternative approaches, such as exclusion of outliers, would not only require manipulating the data, they would also fail to address other problems such as the skew and the kurtosis.

<sup>13</sup>For normality, the Jarque-Bera statistic should be low, skew should be near 0, and kurtosis should be 3.

**Robust regression fit** The robust regressions in tables 2 shows strong significance for direct Covid-relevance (at the 99.9% level) with a positive coefficient for all seven models. Evidently, the (directly) Covid-relevant fields of research saw a substantially better growth performance in the first year of the pandemic compared to other fields of inquiry. E.g., in model (6), an increase of the share of the patents addressing Covid-19 in a subclass by 1 percentage point is associated with an increase of the growth rate in 2020 by 0.706 percentage points.<sup>14</sup> This raises the baseline expectation to positive growth with direct Covid-19 relevance. We will return to this point in section 4.3.

	(1)	(2)	(3)	(4)	(5)	(6)	(7)
(Intercept)	-0.0734*** (0.0075)	-0.0648** (0.0239)	-0.0022 (0.0323)	-0.0916*** (0.0257)	-0.0683** (0.0243)	-0.0096 (0.0324)	0.0421 (0.0349)
log(Number pre-Covid)		-0.0013 (0.0037)	-0.0052 (0.0039)	0.0034 (0.0043)	-0.0009 (0.0038)	-0.0041 (0.0040)	-0.0112* (0.0046)
Growth 2019					0.0166*** (0.0020)	0.0163*** (0.0019)	-0.1413*** (0.0164)
Covid-relevant	78.8502*** (14.6076)	79.6360*** (14.7884)	75.3077*** (14.9298)	75.6079*** (14.9083)	74.6908*** (14.7132)	70.6229*** (14.9215)	82.5384*** (14.9656)
Indirectly Covid-relevant				-38.5379 (29.0879)			18.9492 (30.7139)
Mainsection FE			O			O	O
N	645	645	645	643	641	641	640
df	643	642	634	639	637	629	627
RMSE	0.3342	0.3338	0.3311	0.3282	0.3273	0.3249	0.3096
Mean Abs. Deviation	0.1823	0.1823	0.1783	0.1792	0.1785	0.1746	0.1696
Median Abs. Deviation	0.1079	0.1070	0.1008	0.1073	0.1055	0.0995	0.1017
Error IQR	0.2142	0.2140	0.2027	0.2150	0.2102	0.1985	0.2031

Signif. codes: \*\*\*  $p < 0.001$ , \*\*  $p < 0.01$ , \*  $p < 0.05$ , ·  $p < 0.1$

Table 2: Robust regression with Huber’s T norm with growth 2019 (in the year before the pandemic, i.e. 04/2019-03/2020) as PastGrowth.

Indirect Covid-relevance, on the other hand, is not a significant influence - different from what the OLS fit suggested. This difference in growth patterns between directly and indirectly Covid-19 relevant subclasses is also clearly visible in figure 3

<sup>14</sup>I.e. 70.6229 growth percentage points for 100 percentage points in Covid-19 relevance, corresponding to the coefficient of 70.6229 in table2.

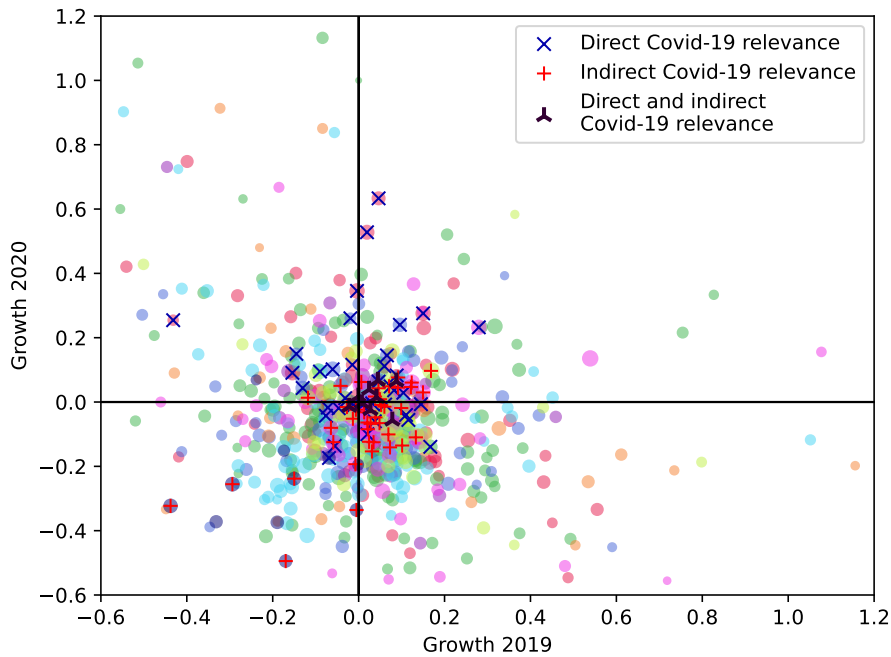


Figure 3: Growth 2019 vs. growth 2020 by subclass with the size of the dot indicating the (weighted) number of patent applications per class (logarithmic scale). Different colors indicate different mainsections (see also figure 5). Only the center of the distribution is shown. The 50 most directly and 50 most indirectly Covid-19 relevant subclasses are marked.

The size of the technological field -  $\log(\text{NumberPreCovid})$  - also lost its significance for all models except model (7). This suggests an interaction of this variable with both indirect Covid-19 relevance and mainsection fixed effects. *PastGrowth* in its specification as growth in the year before the pandemic (April 2019 to March 2020) is highly significant, but with different signs: The effect is positive in models (5) and (6), but negative in model (7). This again suggests an interaction with both indirect Covid-19 relevance and mainsection fixed effects.

	(1)	(2)	(3)	(4)	(5)	(6)	(7)
Mainsection[T.B]			-0.0454 <sup>*</sup>			-0.0435 <sup>*</sup>	-0.0430 <sup>*</sup>
			(0.0247)			(0.0244)	(0.0244)
Mainsection[T.C]			-0.0399			-0.0385	-0.0495 <sup>*</sup>
			(0.0281)			(0.0277)	(0.0278)
Mainsection[T.D]			-0.0499			-0.0400	-0.0188
			(0.0368)			(0.0366)	(0.0368)
Mainsection[T.E]			-0.0163			-0.0166	-0.0183
			(0.0383)			(0.0377)	(0.0378)
Mainsection[T.F]			-0.0696 <sup>*</sup>			-0.0702 <sup>**</sup>	-0.0730 <sup>**</sup>
			(0.0272)			(0.0268)	(0.0269)
Mainsection[T.G]			-0.0111			-0.0204	-0.0165
			(0.0283)			(0.0283)	(0.0285)
Mainsection[T.H]			-0.0084			-0.0109	-0.0021
			(0.0329)			(0.0325)	(0.0328)
Mainsection[T.Y]			-0.2694 <sup>***</sup>			-0.2643 <sup>***</sup>	-0.3204 <sup>***</sup>
			(0.0580)			(0.0572)	(0.0617)

Signif. codes: \*\*\*  $p < 0.001$ , \*\*  $p < 0.01$ , \*  $p < 0.05$ , ·  $p < 0.1$

Table 3: Mainsection fixed effect coefficients in robust regressions with Huber’s T norm with growth 2019 (in the year before the pandemic, i.e. 04/2019-03/2020) as PastGrowth.

CPC mainsection<sup>15</sup> fixed effects (see table 3) show significant differences between mainsection A and B, A and F, A and Y, as well as, for model (7) only, A and C. Since mainsection A, human necessities, is one of the fields of research that did continue to grow into the pandemic (see figure 4), it is no surprise that all these effects are negative (i.e., B, F, Y, and perhaps C perform less well than A). The marginal significance (at the 10% level) of the mainsection C fixed effect in model (7) is likely another interaction with indirect Covid-19 relevance as well as the PastGrowth term and is thus to be taken with a grain of salt. The differences in performance between the mainsections is also visible in figures 4 and 5.

<sup>15</sup>We provide the list of the mainsections in table 6; for details on the CPC classification system, see U.S. Patent and Trademark Office and European Patent Office (2017).

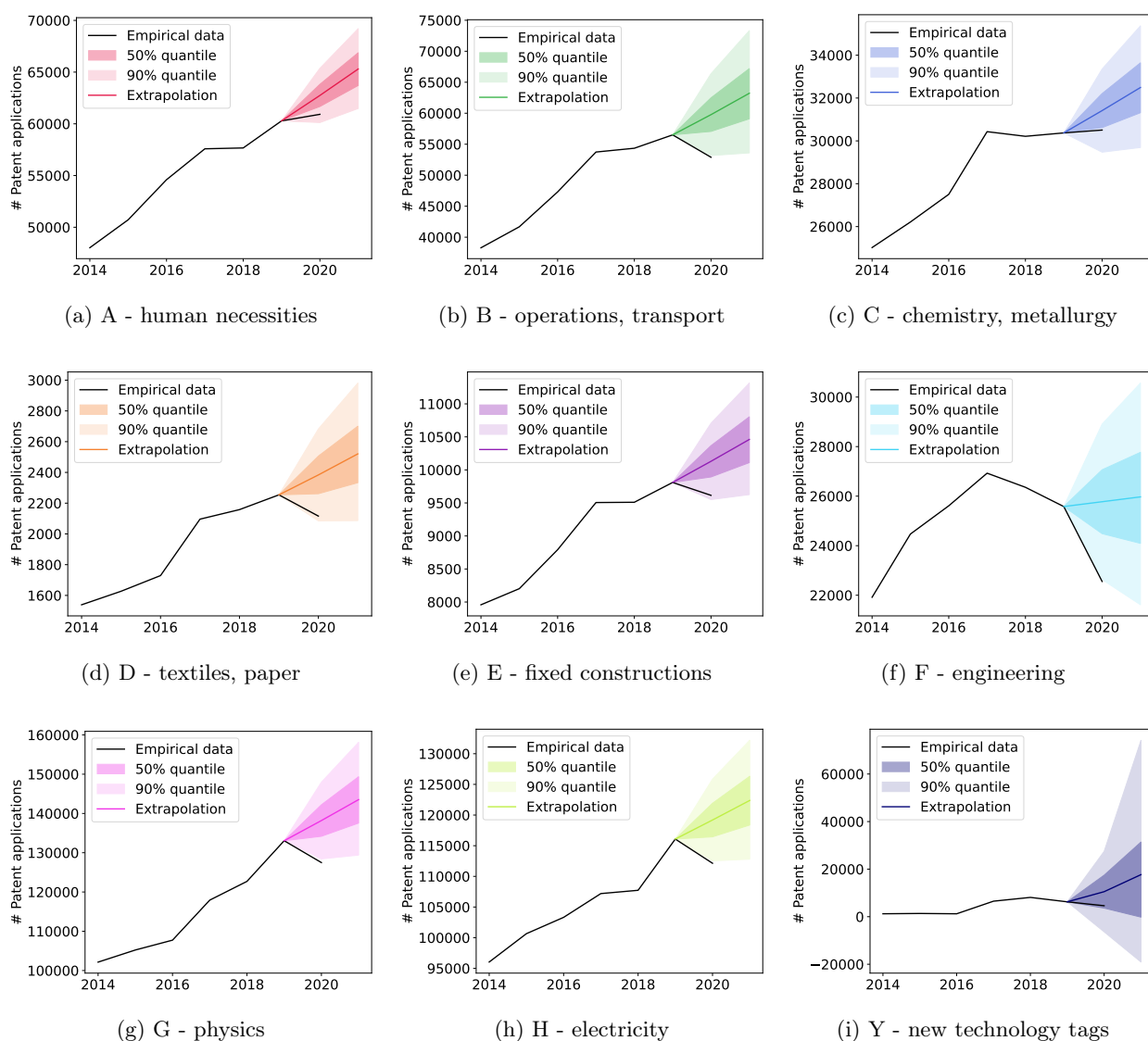


Figure 4: Patent applications by year and mainsection, extrapolation and realization for 2020 and 2021.



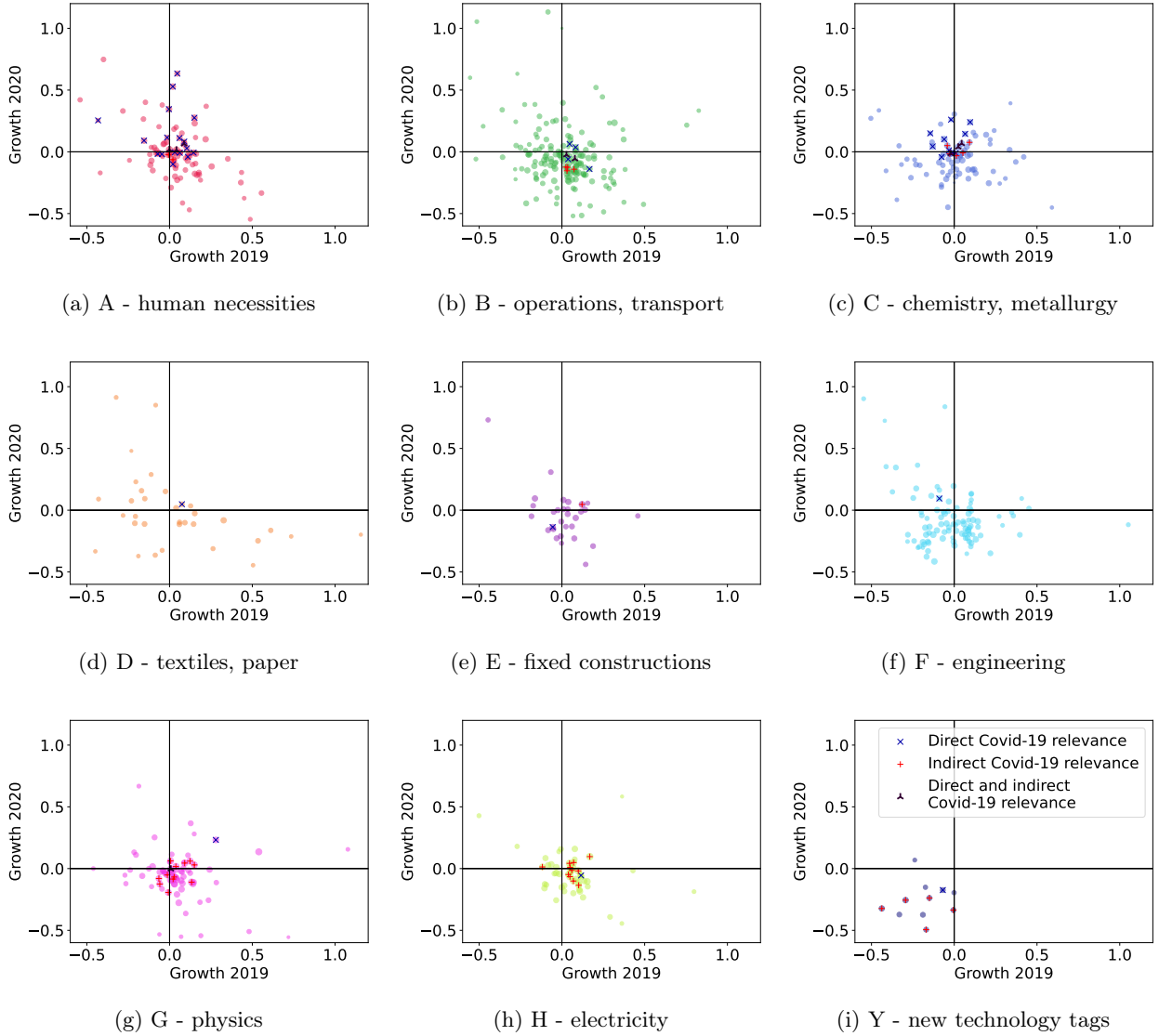


Figure 5: Growth 2019 vs. growth 2020 by subclass and mainsection (except Y) with the size of the dot indicating the (weighted) number of patent applications per class (logarithmic scale). Only the center of the distribution is shown. The 50 most directly and 50 most indirectly Covid-19 relevant subclasses are marked.

We find that additional regressors tend to improve all four goodness variables we consider (RMSE, mean and median absolute deviation, and error IQR) except in case of model (7). Median absolute deviation and error IQR increase again in model (7). In fact, according to these two measures, model (7) performs worse than model (3), indicating that there is a problem here and the sign change of *PastGrowth* (in the specification of growth in 2019) should also be treated with scepticism.

### 4.3 Robustness check

	(1)	(2)	(3)	(4)	(5)	(6)	(7)
(Intercept)	-0.0762*** (0.0075)	-0.0698** (0.0238)	-0.0153 (0.0320)	-0.0679** (0.0256)	-0.0728** (0.0242)	-0.0209 (0.0322)	-0.0088 (0.0343)
log(Number pre-Covid)		-0.0010 (0.0037)	-0.0049 (0.0039)	-0.0013 (0.0042)	-0.0005 (0.0038)	-0.0038 (0.0040)	-0.0058 (0.0044)
Growth 2019					0.0155*** (0.0020)	0.0152*** (0.0020)	0.0152*** (0.0020)
Covid-relevant	0.1396*** (0.0271)	0.1406*** (0.0275)	0.1353*** (0.0279)	0.1401*** (0.0276)	0.1308*** (0.0277)	0.1247*** (0.0284)	0.1234*** (0.0286)
Indirectly Covid-relevant				0.0049 (0.0309)			0.0237 (0.0312)
Mainsection FE			O			O	O
N	645	645	645	645	641	641	641
df	643	642	634	641	637	629	628
RMSE	0.3339	0.3335	0.3311	0.3335	0.3276	0.3256	0.3251
Mean Abs. Deviation	0.1823	0.1824	0.1785	0.1823	0.1786	0.1750	0.1749
Median Abs. Deviation	0.1069	0.1080	0.1002	0.1063	0.1052	0.0998	0.0982
Error IQR	0.2110	0.2128	0.2013	0.2130	0.2040	0.1986	0.1948

Signif. codes: \*\*\*  $p < 0.001$ , \*\*  $p < 0.01$ , \*  $p < 0.05$ , ·  $p < 0.1$

Table 4: Robust regression with Huber’s T norm with growth 2019 (in the year before the pandemic, i.e. 04/2019-03/2020) as *PastGrowth* and binary indicators for Covid-19 relevance.

**A binary indicator for Covid-19 relevance** While continuous Covid-19 relevance measures (regression table 2) carry more detailed information and should therefore generally be preferred, we do consider regressions with binary Covid-19 measures (regression table 4) as a point of comparison, since these allow for a more illustrative interpretation. The intercept in table 4 is negative where it is significant (models (1), (2), (4), (5)), even in the simplest model without other effects (model (1)), indicating a generally negative growth in 2020. As Covid-19 relevance is binary, the sum of the two coefficients yields the growth estimate for directly Covid-19 relevant fields of technology. Since the coefficient for Covid-19 relevance is positive and, indeed, positive by roughly double the amount that of the intercept is negative, the model predicts solid growth in patenting for directly Covid-19 relevant fields. The signs and magnitudes of the two coefficients remain about the same for models (1), (2), (4), and (5). It should also be noted that the other remaining significant coefficients, that for *PastGrowth* in the specification as growth in 2019 in models (5), (6), and (7), is relatively small compared to the intercept and the coefficient of Covid-19 relevance. In order to offset these larger effects, the growth rate in 2019 would have to reach several hundred percent.

	(1)	(2)	(3)	(4)	(5)	(6)	(7)
(Intercept)	-0.0734*** (0.0075)	-0.0648** (0.0239)	-0.0022 (0.0323)	-0.0916*** (0.0257)	-0.0649** (0.0244)	-0.0057 (0.0324)	-0.0037 (0.0345)
log(Number pre-Covid)		-0.0013 (0.0037)	-0.0052 (0.0039)	0.0034 (0.0043)	-0.0013 (0.0038)	-0.0045 (0.0040)	-0.0051 (0.0045)
Average growth 2014-2019					0.0000 (0.0009)	0.0003 (0.0009)	-0.0003 (0.0010)
Covid-relevant	78.8502*** (14.6076)	79.6360*** (14.7884)	75.3077*** (14.9298)	75.6079*** (14.9083)	75.9746*** (16.2776)	69.2170*** (16.5956)	74.3049*** (16.8415)
Indirectly Covid-relevant				-38.5379 (29.0879)			8.6341 (30.7899)
Mainsection FE			O			O	O
N	645	645	645	643	641	641	640
df	643	642	634	639	637	629	627
RMSE	0.3342	0.3338	0.3311	0.3282	0.3313	0.3286	0.3230
Mean Abs. Deviation	0.1823	0.1823	0.1783	0.1792	0.1798	0.1757	0.1736
Median Abs. Deviation	0.1079	0.1070	0.1008	0.1073	0.1049	0.0993	0.0990
Error IQR	0.2142	0.2140	0.2027	0.2150	0.2100	0.1988	0.1977

Signif. codes: \*\*\*  $p < 0.001$ , \*\*  $p < 0.01$ , \*  $p < 0.05$ , ·  $p < 0.1$

Table 5: Robust regression with Huber’s T norm with average growth 2015-2019 as *PastGrowth*.

**PastGrowth as 5 year average** For another robustness check, we use the average annual growth in the 5 years leading up to the pandemic for the *PastGrowth* variable. The results mostly stay the same except that the average annual growth loses significance.

#### 4.4 Discussion

Our analysis shows in line with what scholars expected (Gaudry and Gianola, 2020) that growth in patenting took a substantial hit during the pandemic. As shown in figure 4, this is directly evident in all mainsections except A (human necessities) and C (chemistry, metallurgy). Of course, these two are the fields, in which vaccines, drugs, chemicals used for testing disinfectants (mainsection C) as well as the techniques to deploy these in medicine (mainsection A) would be registered, so their relatively strong performance might, in fact, be related to Covid-19 relevance. We were able to show that this holds definitely at the subclass level: directly Covid-19 relevant subclasses performed significantly better in terms of growth in the number of patents in the first year of the pandemic. The effect was found to be strong enough to raise the baseline expectations of growth to positive levels for directly Covid-19 relevant subclasses. This does, however, not extend to indirectly Covid-19 relevant subclasses, for which there is no significant effect.

The effect of past growth is significant and positive (likely an indicator of autocorrelation), but not large compared to the dominant effects of direct Covid-19 relevance and mainsection fixed effects.

It is debatable whether continuous and strong development of medical and other Covid-19 relevant technology aided the later response to the pandemic. While there is a strong Pearson correlation between *CovidRelevant* and *PastGrowth* in the specification as average growth 2015-2019 (correlation coefficient  $\rho = 0.42$ ), this correlation disappears in the more robust Spearman rank correlation (coefficient  $r = -0.07$ ).

## 5 Conclusion

Efforts to quickly and redundantly deploy applications of earlier groundwork in response to the Covid-19 pandemic would have been primary objectives of innovation policy in crisis mode (Gross and Sampat, 2021). Such efforts are evident in the difference between the effects of direct and indirect Covid-19 relevance found above, and they seem to have been successful.

In this paper, we provided measures for direct and indirect relevance of technological fields to managing the Covid-19 pandemic at the CPC subclass level. While we found no effect for indirect Covid-19 relevance, direct Covid-19 relevance has a strong, positive, and highly significant effect. The order of magnitude of this effect, measured in terms of the percentage point increase in annual growth of patent application numbers per CPC subclass, is on par with the share of patent applications in the subclass that do refer to Covid-19 explicitly.

We found an additional fixed effect of technological fields - in this case the CPC mainsection. Mainsections A (human necessities) and C (chemistry, metallurgy), for instance, had a stronger performance than others like B (operations, transport) or F (engineering). This could indicate spillovers in fields that are intuitively relevant to, e.g., vaccine development (mainsection C) and deployment (mainsection A). It could also indicate that our keyword search does not capture all innovations relevant to pandemic management (this is evident) and introduces a slight bias (which is less evident).

Of course, it is known that there were efforts to develop technology to guide and aid the response to Covid-19 - vaccines in particular - as is analyzed in Florio (2022). However, it is by no means obvious that this would be visible and significant in patent application numbers. Should the generated knowledge indeed be published - a requirement for most patent applications after 18 months - and thus shared with the competition? Do the developers see it as possible and expedient to gainfully implement their technology themselves to license it to others? The answers are, evidently, yes.

Our analysis suggests that efforts to re-focus the innovation system on quickly providing applied solutions to urgent problems of the management of the pandemic were successful. At the same time, other fields have taken a hit, including more basic research that is - indirectly - relevant to the management of the pandemic. The continuing threat Covid-19 and potentially other pandemics pose emphasizes that it is important that research and innovation in these indirectly pandemic-relevant fields regains the strength it had before 2020. Our analysis does not permit us to give an estimate, to what extent innovation related to the management of Covid-19 was publicly funded and should therefore be in the public domain, as other authors Florio (2022) suggest. However, the instruments for this - requiring placing patents from publicly funded research in the public domain - would be available for future efforts of short-term innovation guidance, if desired.

The question remains - what are the mid- and long-term effects? Will basic research, including indirectly Covid-19 relevant subsections, resume its former pace? Are current developments shaping the vaccination (and remote work?) technologies for decades to come, similar to the research conducted in World War II (Lafond et al., 2020)? Time - and careful observation of patent applications as they become public - will tell.

## Acknowledgements

Moritz Wilke has contributed to the publicly available code on <https://github.com/xOrange/Covid19PatentApplications>, that has been used for the analysis. We are grateful for many helpful

comments to Kerstin Hötte, Sujung Jee, Mariia Shkolnykova, and Iciar Dominguez Lacasa as well as other participants of the EAEPE conference 2022. All remaining errors are our own.

## References

- Agarwal, R. and Gaule, P. (2022). What drives innovation? lessons from covid-19 r&d. *Journal of Health Economics*, 82:102591.
- Alexopoulos, M., Lyons, K., Mahetaji, K., and Chiu, K. (2021). Evaluating the disruption of covid-19 on ai innovation using patent filings. In *2021 IEEE International Symposium on Technology and Society (ISTAS)*, pages 1–6. IEEE.
- Amore, M. D. (2015). Companies learning to innovate in recessions. *Research Policy*, 44(8):1574–1583.
- Archibugi, D., Filippetti, A., and Frenz, M. (2013). Economic crisis and innovation: is destruction prevailing over accumulation? *research Policy*, 42(2):303–314.
- Arrow, K. (1962). *Economic Welfare and the Allocation of Resources for Invention*, pages 609–626. Princeton University Press.
- Bachmann, P. and Frutos-Bencze, D. (2022). R&d and innovation efforts during the covid-19 pandemic: The role of universities. *Journal of Innovation & Knowledge*, 7(4):100238.
- Berkes, E., Deschenes, O., Gaetani, R., Lin, J., and Severen, C. (2020). Lockdowns and innovation: Evidence from the 1918 flu pandemic. Working Paper 28152, National Bureau of Economic Research.
- Bloom, N., Davis, S. J., and Zhestkova, Y. (2021). Covid-19 shifted patent applications toward technologies that support working from home. *AEA Papers and Proceedings*, 111:263–66.
- Brem, A., Nylund, P., and Viardot, E. (2020). The impact of the 2008 financial crisis on innovation: A dominant design perspective. *Journal of Business Research*, 110:360–369.
- Brem, A., Viardot, E., and Nylund, P. A. (2021). Implications of the coronavirus (covid-19) outbreak for innovation: Which technologies will improve our lives? *Technological forecasting and social change*, 163:120451.
- Dahlke, J., Bogner, K., Becker, M., Schlaile, M. P., Pyka, A., and Ebersberger, B. (2021). Crisis-driven innovation and fundamental human needs: A typological framework of rapid-response covid-19 innovations. *Technological Forecasting and Social Change*, 169:120799.
- Florio, M. (2021). Patents for covid-19 vaccines are based on public research: a case study on the privatization of knowledge. *CIRIEC International, Université de Liège Working Paper*, (WP2021-03).
- Florio, M. (2022). To what extent patents for covid-19 mrna vaccines are based on public research and taxpayers’ funding? a case study on the privatization of knowledge. *Industrial and Corporate Change*, 31(5):1137–1151.
- Gaudry, K. and Gianola, A. (2020). Technology-specific patent filing trends during the pandemic. *ipwatchdog.com*. <https://www.ipwatchdog.com/2020/11/01/technology-specific-patent-filing-trends-pandemic/id=126901/>.

- Gross, D. P. and Sampat, B. N. (2021). The economics of crisis innovation policy: A historical perspective. *AEA Papers and Proceedings*, 111:346–50.
- Guderian, C. C., Bican, P. M., Riar, F. J., and Chattopadhyay, S. (2021). Innovation management in crisis: patent analytics as a response to the covid-19 pandemic. *R&D Management*, 51(2):223–239.
- Han, H. and Qian, Y. (2020). Did enterprises’ innovation ability increase during the covid-19 pandemic? evidence from chinese listed companies. *Asian Economics Letters*, 1(3).
- Huber, P. J. (1973). Robust regression: Asymptotics, conjectures and monte carlo. *The Annals of Statistics*, 1(5):799–821.
- Jarque, C. M. and Bera, A. K. (1980). Efficient tests for normality, homoscedasticity and serial independence of regression residuals. *Economics letters*, 6(3):255–259.
- Kim, B., Kim, E., Miller, D. J., and Mahoney, J. T. (2016). The impact of the timing of patents on innovation performance. *Research Policy*, 45(4):914–928.
- Lafond, F., Greenwald, D. S., and Farmer, J. D. (2020). Can stimulating demand drive costs down? world war ii as a natural experiment. *INET Working Paper 2020-02, University of Oxford*.
- Nelson, R. R. (1959). The simple economics of basic scientific research. *Journal of Political Economy*, 67(3):297–306.
- Sampat, B. N. and Shadlen, K. C. (2021). The covid-19 innovation system. *Health Affairs*, 40(3):400–409. PMID: 33539184.
- Seabold, S. and Perktold, J. (2010). statsmodels: Econometric and statistical modeling with python. In *9th Python in Science Conference*.
- U.S. Patent and Trademark Office and European Patent Office (2017). Guide to the cpc (cooperative patent classification), revision 4.00. Available online, <https://www.cooperativepatentclassification.org/publications/Miscellaneous>, Accessed 27 Dec 2022.
- Wen, J., Wang, S., Yang, X., and Zhou, X. (2022). Impacts of epidemics on innovation: An empirical analysis. *Technovation*, page 102634.
- Yamashita, N. (2021). Economic crisis and innovation capacity of japan: Evidence from cross-country patent citations. *Technovation*, 101:102208.
- Yoon, C. (2021). How does covid-19 affect digital innovation and transformation? *KDI School of Pub Policy & Management Paper SSRN*, (4054290).
- Zerhouni, W., Nabel, G. J., and Zerhouni, E. (2020). Patents, economics, and pandemics. *Science*, 368(6495):1035–1035.

## A Age at patent publication

Figure 6 shows the cumulative distribution of age at publication for patent applications published 2014-2022. More than three-quarters of patents are published within 18 months of filing.

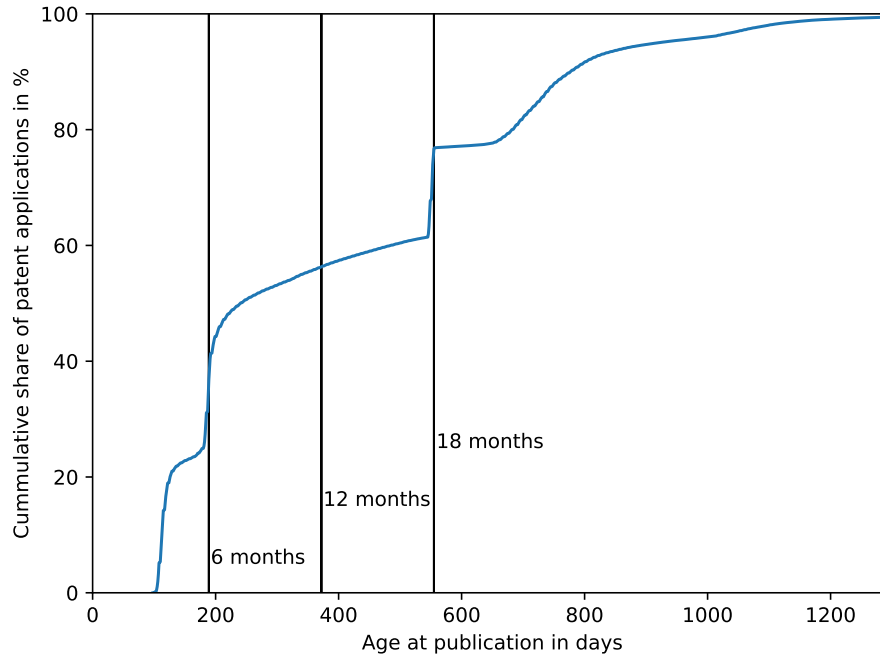


Figure 6: Cumulative distribution of age at publication for patent applications published 2014-2022. A majority of 76.67% is published within 18 months.

## B OLS residual plot

Figure 7 shows the distribution of the residuals in model (7) in table 1. The distribution exhibits the non-normality with high skewness and kurtosis, suggesting that the OLS fit is most likely invalid and possibly misleading.

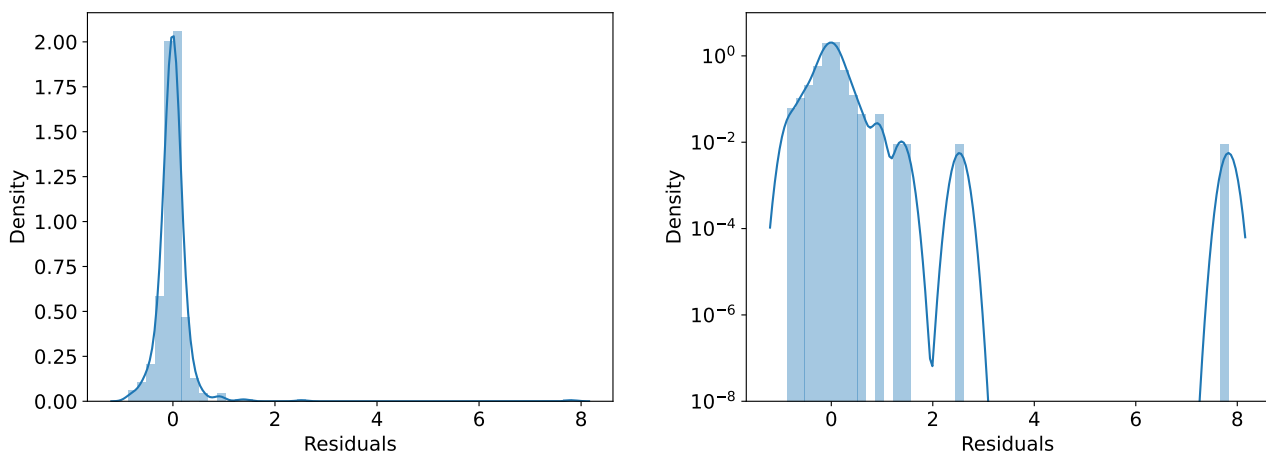


Figure 7: Distribution of OLS residuals in model (7); linear (left) and logarithmic scale (right).

## C Directly and indirectly most Covid-19 relevant CPC subclasses

To give an indication of the makeup of the variables *CovidRelevant* and *IndirectCovidRelevant*, we show the 50 subclasses with the highest values for each in tables 7 (direct Covid-19 relevance) and 8 (indirect Covid-19 relevance). For most entries (albeit not for all) it is immediately obvious why this field of technology would be directly/indirectly relevant for the management of the pandemic situation. It is also clear that the table for indirect Covid-19 relevance contains fields more associated with basic technologies, e.g. from classes C07 (organic chemistry), C08 (organic macromolecular compounds) G06 (computing, calculating, counting), H01 (basic electric elements), H04 (electric communication technique), etc.

Table 6 lists the descriptions of the nine CPC mainsections.

<b>CPC Mainsection</b>	<b>Description</b>
A	Human necessities
B	Performing operations, transporting
C	Chemistry, metallurgy
D	Textiles, paper
E	Fixed constructions
F	Mechanical engineering, lighting, heating, weapons, blasting
G	Physics
H	Electricity
Y	New technology tags

Table 6: CPC (Cooperative Patent Classification System) mainsections



CPC Subclass	Description	Share in Percent
A61P	Specific therapeutic activity of chemical compounds or medicinal preparations	0.605
Y02A	Technologies for adaptation to climate change	0.411
A61K	Preparations for medical, dental, or toilet purposes	0.379
A62B	Devices, apparatus or methods for life-saving	0.370
C12Q	Measuring, testing processes involving enzymes, nucleic acids, microorganisms, etc.	0.353
A41D	Outerwear; protective garments; accessories	0.326
G16B	Bioinformatics	0.289
C12N	Microorganisms or enzymes; compositions thereof; genetic engineering; etc.	0.287
A01N	Preservation of bodies of humans, animals, plants; biocides, etc.	0.260
C07K	Peptides	0.252
G16H	Healthcare informatics	0.239
B01L	Chemical or physical laboratory apparatus for general use	0.181
G16Z	Information and comm. technology adapted for other specific application fields	0.179
A61L	Methods or apparatus for sterilising materials or objects	0.176
C07D	Heterocyclic compounds	0.144
G01N	Investigating materials by determining chemical or physical properties	0.142
G16C	Computational chemistry; chemoinformatics; computational materials science	0.138
C07H	Sugars; derivatives thereof; nucleosides; nucleotides; nucleic acids	0.128
F24F	Air-conditioning; ventilation; etc.; use of air currents for screening	0.097
C12R	Indexing scheme associated with C12C-Q, relating to microorganisms	0.095
C40B	Combinatorial chemistry; libraries, e.g. chemical libraries	0.088
A61H	Physical therapy apparatus	0.086
A23Y	Indexing scheme relating to lactic etc. bacteria used in food	0.083
C11D	Detergent compositions; soap; resin soaps; recovery of glycerol; etc.	0.082
D06M	Treatment of fibres, threads, yarns, etc. not provided for elsewhere in D06	0.080
B82Y	Specific uses, applications, measurement, manufacture of nanostructures	0.076
A61M	Devices for introducing media into, or onto, the body, etc.	0.073
A61N	Electrotherapy; magnetotherapy; radiation therapy; etc.	0.073
C12Y	Enzymes	0.073
A23K	Fodder	0.072
B03C	Magnetic or electrostatic separation of solid materials	0.068
C12M	Apparatus for enzymology or microbiology	0.067
A21D	Treatment, e.g. preservation, of flour or dough	0.048
C05D	Inorganic fertilisers not covered by C05B-C; Fertilisers producing CO <sub>2</sub>	0.046
B60H	Arrangements of heating, cooling, ventilating passenger spaces, etc.	0.041
G16Y	Information and comm. technology specially adapted for the internet of things	0.040
A23B	Preserving, e.g. by canning, meat, etc.; chemical ripening, etc.	0.037
H05H	Plasma technique (other electric techniques)	0.037
A01K	Animal husbandry	0.037
B01J	Chemical or physical processes, e.g. catalysis	0.037
C12P	Fermentation or enzyme-using processes to synthesise a chemical compound, etc.	0.035
A61B	Diagnosis; surgery; identification	0.034
A61G	Transport, personal conveyances, etc. for patients or disabled persons	0.034
A24D	Cigars; cigarettes; tobacco smoke filters; etc.	0.032
A45C	Purses; luggage; hand carried bags	0.030
A23L	Foods, etc. not covered by A21D, A23B-J; Preservation of foods	0.028
B01D	(Chemical) separation	0.028
E05B	Locks; accessories therefor; handcuffs	0.028
C07B	General methods of organic chemistry; apparatus therefor	0.027
A47L	Domestic washing or cleaning; suction cleaners	0.026

Table 7: 50 top CPC subclasses in terms of direct Covid-19 relevance

CPC Subclass	Description	Share in Percent
Y10T	Technical subjects covered by former US classification	0.380
G06F	Electric digital data processing	0.296
Y10S	Subjects covered by former USPC cross-reference art collections and digests	0.256
H01L	Semiconductor devices; electric solid state devices not otherwise provided for	0.243
H04L	Transmission of digital information, e.g. telegraphic communication	0.181
H04N	Pictorial communication, e.g. television	0.141
A61K	Preparations for medical, dental, or toilet purposes	0.129
A61B	Diagnosis; surgery; identification	0.107
G01N	Investigating materials by determining chemical or physical properties	0.104
G02B	Optical elements, systems or apparatus	0.091
C07D	Heterocyclic compounds	0.089
G11B	Information storage based on relative movement between record carrier and transducer	0.081
H04W	Wireless communication networks	0.080
G06Q	Data processing systems or methods, for administrative, commercial, etc. purposes	0.073
C07C	Acyclic or carbocyclic compounds	0.067
C08L	Compositions of macromolecular compounds	0.060
H04B	Transmission (electric communication)	0.059
H05K	Printed circuits; casings or constructional details of electric apparatus; etc.	0.058
G11C	Static stores (information storage)	0.058
B29C	Shaping or joining of plastics, etc.	0.057
B01D	(Chemical) separation	0.053
G06K	Graphical data reading; presentation of data; record carriers; etc.	0.052
C07K	Peptides	0.052
A61F	Filters implantable into blood vessels, etc.	0.051
Y02T	Climate change mitigation technologies related to transportation	0.051
H04M	Telephonic communication	0.051
G01R	Measuring electric or magnetic variables	0.049
H01R	Electrically-conductive connections; coupling devices; current collectors; etc.	0.049
A61M	Devices for introducing media into, or onto, the body, etc.	0.048
B01J	Chemical or physical processes, e.g. catalysis	0.047
G06T	Image data processing or generation, in general	0.047
B65D	Containers for storage or transport of articles or materials	0.047
C12N	Microorganisms or enzymes; compositions thereof; genetic engineering; etc.	0.047
Y02E	Reduction of greenhouse gas emissions, related to energy	0.046
Y02P	Climate change mitigation technologies in production etc.	0.046
C08G	Macromolecular compounds obtained not by reactions of only unsatur. C-to-C bonds	0.045
G03G	Electrography; electrophotography; magnetography	0.044
B41J	Typewriters; selective printing mechanisms, etc.	0.039
H01J	Electric discharge tubes or discharge lamps	0.039
G02F	Optical devices for the control of light; non-linear optics; etc.	0.038
B60R	Vehicles, vehicle fittings, or vehicle parts, not otherwise provided for	0.036
E21B	Earth drilling, e.g. deep drilling; obtaining oil, gas, water, etc.	0.035
C08F	Macromolecular compounds obtained by reactions of only c-to-c unsaturated bonds	0.034
H01M	Direct conversion of chemical energy into electrical energy, e.g. batteries	0.034
H03K	Pulse technique (electronic circuitry)	0.033
G03F	Photomechanical production of textured or patterned surfaces	0.033
G01S	Radio direction-finding; radio navigation; etc.	0.032
A63B	Apparatus for physical training, etc.	0.032
C23C	Coating of or with metallic material; surface treatment by chemical conversion, etc.	0.032
G09G	Arrangements or circuits for control of indicating devices	0.032

Table 8: 50 top CPC subclasses in terms of indirect Covid-19 relevance