

Lange, Ann-Kathrin; Nellen, Nicole; Jahn, Carlos

Conference Paper

Truck appointment systems: How can they be improved and what are their limits?

Provided in Cooperation with:

Hamburg University of Technology (TUHH), Institute of Business Logistics and General Management

Suggested Citation: Lange, Ann-Kathrin; Nellen, Nicole; Jahn, Carlos (2022) : Truck appointment systems: How can they be improved and what are their limits?, In: Kersten, Wolfgang Jahn, Carlos Blecker, Thorsten Ringle, Christian M. (Ed.): Changing Tides: The New Role of Resilience and Sustainability in Logistics and Supply Chain Management – Innovative Approaches for the Shift to a New Era. Proceedings of the Hamburg International Conference of Logistics (HICL), Vol. 33, ISBN 978-3-756541-95-9, epubli GmbH, Berlin, pp. 615-655, <https://doi.org/10.15480/882.4706>

This Version is available at:

<https://hdl.handle.net/10419/267201>

Standard-Nutzungsbedingungen:

Die Dokumente auf EconStor dürfen zu eigenen wissenschaftlichen Zwecken und zum Privatgebrauch gespeichert und kopiert werden.

Sie dürfen die Dokumente nicht für öffentliche oder kommerzielle Zwecke vervielfältigen, öffentlich ausstellen, öffentlich zugänglich machen, vertreiben oder anderweitig nutzen.

Sofern die Verfasser die Dokumente unter Open-Content-Lizenzen (insbesondere CC-Lizenzen) zur Verfügung gestellt haben sollten, gelten abweichend von diesen Nutzungsbedingungen die in der dort genannten Lizenz gewährten Nutzungsrechte.

Terms of use:

Documents in EconStor may be saved and copied for your personal and scholarly purposes.

You are not to copy documents for public or commercial purposes, to exhibit the documents publicly, to make them publicly available on the internet, or to distribute or otherwise use the documents in public.

If the documents have been made available under an Open Content Licence (especially Creative Commons Licences), you may exercise further usage rights as specified in the indicated licence.



<https://creativecommons.org/licenses/by-sa/4.0/>

Ann-Kathrin Lange, Nicole Nellen and Carlos Jahn

Truck Appointment Systems – How Can They Be Improved and What Are Their Limits?



CC-BY-SA4.0

Published in: Changing Tides
Wolfgang Kersten, Carlos Jahn, Thorsten Blecker and Christian M. Ringle (Eds.)
ISBN 978-3-756541-95-9, September 2022, epubli

Truck Appointment Systems – How Can They Be Improved and What Are Their Limits?

Ann-Kathrin Lange¹, Nicole Nellen¹ and Carlos Jahn¹

1 – Hamburg University of Technology

Purpose: *Rising handling volumes and increasingly profound disruptions of global transport chains are placing severe stresses on container terminal processes. This affects landside handling in particular. In order to relieve this burden, more and more truck appointment systems have been introduced over the past 20 years, but they have only partially fulfilled the hopes placed in them. This study identifies the potential for improvement but also shows the limitations of this approach.*

Methodology: *In order to highlight the different approaches used both in academia and in practice to adapt truck appointment systems to the respective requirements and to arm them against disruptions, a structured literature review was conducted. A total of 136 scientific publications were classified and the results were evaluated in detail.*

Findings: *The developed solution approaches often only refer to individual sub-problems of container terminals instead of including the entire terminal or even the entire port with all its stakeholders. Furthermore, combinations of different methods are rarely used, where the weaknesses of individual methods could be compensated.*

Originality: *The massive disruption of the global transportation chain has created new challenges for truck appointment systems. A structured analysis of the possibilities and limits has not yet taken place from this point of view.*

First received: 20. Mar 2022

Revised: 12. Aug 2022

Accepted: 15. Aug 2022

1 Introduction

The volumes of containerized goods transported worldwide as well as the size of container vessels have been rising steadily since the economic crisis of 2011 (UNITED NATIONS CONFERENCE ON TRADE AND DEVELOPMENT, 2022). As a consequence, several challenges have arisen in recent years for maritime transport chains, especially for the container terminals. A serious issue has been the heavy peak loads at the gate and on the containeryard caused by arriving means of transport. These were mainly caused by the opening hours of other actors in the supply chain or the arrivals or departures of large means of transport (Giuliano and O'Brien, 2007; Huynh, 2009). In practice, the use of truck appointment systems (TAS) to control truck arrivals and thus smooth truck arrival rates at the terminal gate has become the solution to this problem (Huynh, Smith and Harder, 2016; Shiri and Huynh, 2016; Nordsieck, Buer and Schönberger, 2017). After initial challenges in designing TAS, certain characteristics have emerged over time that have been similarly implemented by most terminal operators (Huiyun, et al., 2018; Lange, et al., 2019b). However, severe disruptions to maritime transportation chains in the wake of the Covid19 pandemic and international conflicts have shown that maritime logistics in general, and TAS in particular, have not been able to adapt quickly and reliably enough to meet new challenges. Consequences of this included accumulations of containers in the yard that could not be moved out due to delayed vessels. At the same time, containers were delivered too early because of incompletely information flows in the transport chain (for a description of the processes in seaport container terminals, see Chapter 2). This led to considerable inefficiencies resulting from the higher container yard utilization and the increased number of necessary reshuffles. In turn, this resulted in longer waiting times of trucks in front of the gate and at the terminal, and thus in poorer plannability of shipments.

Thus, contrary to previous opinions in the maritime world, TAS are not yet mature and need further improvement. In order to identify existing research gaps, the first step is to systematically elaborate (see Chapter 3) the means and methods used to scientifically study TAS (Chapter 4). From this analysis, it can be deduced how TAS can be adapted to the recent challenges (Chapter 5).

2 Landside Handling at Container Terminals

Seaport container terminals basically have a seaside and a landside interface to the environment (Gharehgozli, Zaerpour and Koster, 2019; Kastner, Lange and Jahn, 2020). On the seaside, seagoing and inland vessels are loaded and unloaded, and on the landside, mostly trains and trucks are loaded and unloaded. The requirements placed on the seaside and landside from a terminal perspective differ significantly in some cases. Figure 1 shows a schematic representation of a container terminal with rail-mounted gantry cranes and automated guided vehicles as an exemplary case and indicates important target variables of the respective terminal areas.

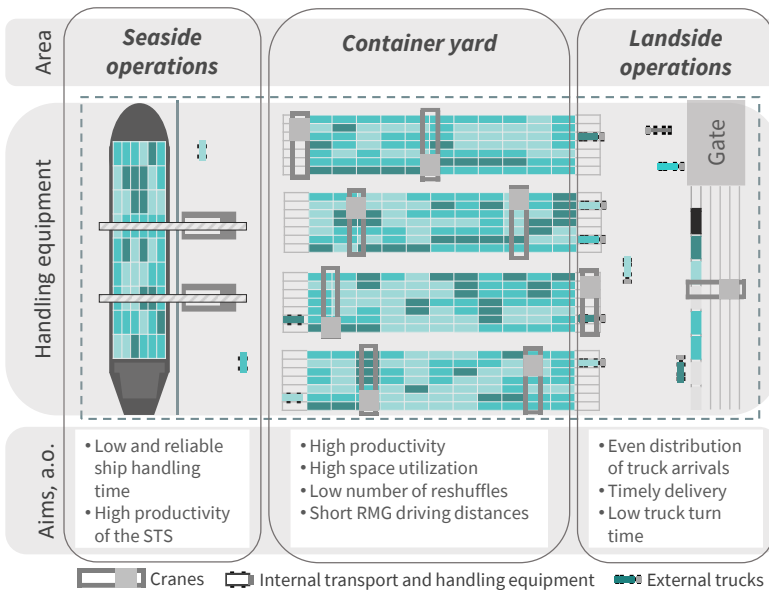


Figure 1: Schematic structure of an exemplary RMG/AGV container terminal

The players on the seaside, the shipping companies, are given a very high priority by the terminal operator as "paying customers". Thus, a high level of service and on-time

Truck Appointment Systems

delivery at the seaside are expected from the terminal. The most important goals are to keep up low and reliable handling times and to ensure a high seaside productivity, especially of the ship-to-shore cranes (STS) (Speer, 2017). The landside, on the other hand, is usually given a lower priority. This is due, among other things, to the significantly higher number of individual players and the resulting severely limited market power. On the landside, peaks in truck arrivals in particular are to be prevented, which could possibly cause a backlog on public roads and thus jeopardize on-time delivery or collection of the containers. The reduction in truck turn time of trucks on the terminal site resulting from these efforts to smooth truck arrival times is often of secondary importance (Rashidi and Tsang, 2013). The intervening container yard acts as a buffer, decoupling seaside and landside handling. There, containers are handled by large storage cranes (rail-mounted gantry cranes or rubber-tired gantry cranes) or equipment (often straddle carriers or reach stackers). The container yard must not exceed a certain fill level (approximately 80%) for the equipment to operate efficiently. (Carlo, Vis and Roodbergen, 2014a) Horizontal transport between the different terminal areas is mostly performed by manned tractors (terminal trucks) or automated-guided vehicles) and is mainly aimed to minimize the waiting time for the cranes and the driven distances of the vehicles (Carlo, Vis and Roodbergen, 2014b; Schwientek, Lange and Jahn, 2020). A more detailed overview of the structures and operations at container terminals with various handling equipment is given in Stahlbock and Voß (2007), Kastner, Pache and Jahn (2019) and Nellen, et al. (2020).

The focus of this study is on truck traffic and its handling. Investigated solutions to manage truck arrivals and increase the efficiency of their handling mostly focused on: (1) adapting and managing the infrastructure at the terminal gate and to the yard (new lanes, allocation of trucks to lanes, automation technologies) (Maguire, et al., 2012; Kulkarni, et al., 2017; Moszyk, Deja and Dobrzynski, 2021), (2) informing trucking companies/truck drivers of potential congestion through cameras, web pages, traffic light systems, information boards (Heilig and Voß, 2017; Riaventin and Kim, 2019) and (3) implementing and improving an access management by using various (digital) services (Jacobsson, Arnäs and Stefansson, 2018).

The alternative solutions under 1. and 2. have been principally displaced in science by the third category, and especially TAS, in the last 10 years. In industry, they usually occur at seaport container terminals only in addition to TAS, if at all. For an overview of the improvement approaches container terminals apply in general, please refer to the publications of Steenken, Voß and Stahlbock (2004), Stahlbock and Voß (2007), Dragović, Tzannatos and Park (2017), and Gharehgozli, Roy and Koster (2016). Good overviews of research done concerning TAS at container terminals are provided by Huynh, Smith and Harder (2016), Huiyun, et al. (2018) and Abdelmagid, Gheith and Eltawil (2022). From the perspective of the trucking companies, other priorities arise. Thus, approaches to route planning and route finding are examined in particular. Due to the specific framework conditions in the port area, only publications that focus on trucking in the port (called interterminal transport (ITT)) as a use case and specifically examine truck arrivals at container terminals in conjunction with TAS will be considered in the further course (e.g. Zhang and Zhang (2017)). This elaboration builds in particular on the results of Lange, Schwientek and Jahn (2017) but goes beyond its focus and those of the other known publications by showing the improvement possibilities of TAS and explicitly elaborating the limitations of TAS.

3 Development of the Research Methodology

In order to answer the research questions, a structured literature review was conducted first, followed by a classification of the relevant literature. The literature search is based on the approach of Vom Brocke, et al. (2009), particularly with regard to the selection of sources and databases and their coverage, the identification of key terms and the development of the search term as well as conducting an additional reverse search. The way in which the screening and analysis of the retrieved publications is based on the PRISMA statement of Liberati, et al. (2009) and was adapted as described below.

The search was conducted in April 2022 using electronic databases for scientific publications. A total of six electronic databases were searched: Springer Nature Switzerland AG's database (link.springer.com), Google's search engine for scientific publications with the German interface (scholar.google.de), Elsevier's Scopus database

Truck Appointment Systems

(scopus.com), Elsevier's ScienceDirect database (sciencedirect.com), and IEEE's Xplore database (ieeexplore.ieee.org). The search was divided into two strings. The first string includes publications on TAS in seaports and the second publications on ITT. For the search on TAS at seaports, the terms truck appointment, congestion, and container terminal were used. For ITT, the terms were port, truck, and transport. These search terms were expanded to include similar or possibly synonymously used terms to provide additional hits. Each of the above databases was searched using the search terms. In total, the search yielded 19,025 entries. In order to be able to review this large number of publications, the methodological procedure shown in Figure 2 was defined.

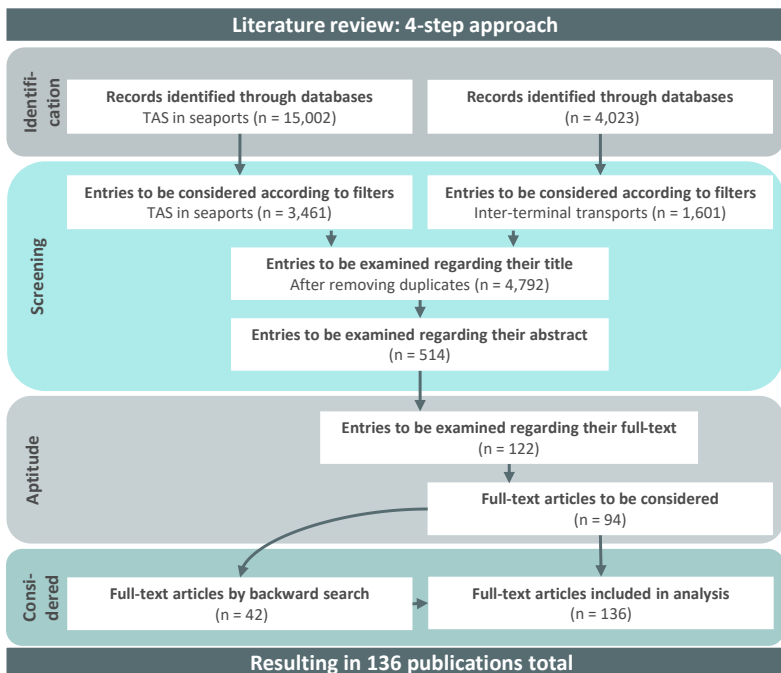


Figure 2: 4-step approach for the literature review

First, the search results were filtered. Since it was not until 2004 that a TAS was mentioned in a scientific publication for the first time (Lange, Schwientek and Jahn, 2017), it was possible to narrow down the period under consideration from 2004 to the time of the search in April 2022. Older publication, which were considered, are the result of the reverse search. With this restriction, the search still yielded 16,679 results. Subsequently, all publications were excluded that, according to the respective databases, could not be assigned to the application area of logistics. This reduced the number of publications to be considered to 5,062. Merging the two search strands resulted in some duplications, which were removed from further analysis. To further condense the selection and increase relevance, the titles of these 4,792 publications were examined. All papers that did not allow a clear reference to one of the two search strands according to their title were sorted out. In a further step, the remaining 514 publications were evaluated based on their abstracts and keywords. To reach the next level of summarization, the abstract had to deal with either landside handling at container terminals in the seaport or hinterland, the design of a time slot booking system, the scheduling of trucking companies, or traffic routing in the seaport. This was the case for 122 studies. The subsequent analysis of the full texts ultimately revealed relevance in relation to the topic for 94 publications. In order to broaden the data base, an extensive reverse search found 42 additional suitable publications (Webster and Watson, 2002; Vom Brocke, et al., 2009). In total, 136 publications were considered in the classification scheme. Figure 3 shows the distribution of the publications per year.

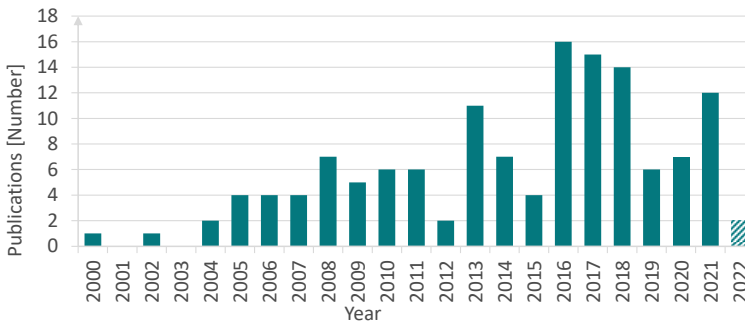


Figure 3: Number of relevant publications per year since 2000

Truck Appointment Systems

The diagram shows that the number of relevant publications increased almost continuously from 2004 to 2016 and has remained at a high level until 2018. Most peaks are caused by special issues with several publications on TAS. The publications before 2014 deal with congestion in front of the terminal gate and possible alternative solutions without explicitly considering TAS. In the years between 2014 and 2018, most authors take a TAS at the terminals for granted and try to optimize it. Fewer publications on TAS have been published in 2019 and 2020, which may be due to the tendency of authors to view TAS as sufficiently widely researched. However, recent crises have shown that there is still a lot of potential for further development of TAS. Publication counts are expected to rise again accordingly. The slightly lower number of publications in 2022 is due to the fact that the literature search was completed at the end of April 2022.

The classification scheme is a central element for the analysis of the 136 publications. It is an extension of the literature analysis presented in Lange, Schwientek and Jahn (2017). In addition to bibliographic information (authors, year), the schema has eight content-related categories (see Figure 4). The eight categories can be characteristically assigned to the three areas *research design*, *framework conditions* and *solution procedures*.

Research Design		Framework conditions			Solution procedure		
Aim	Mean	Stakehol.	Foc.	TAM	Method	Validat.	Application
Reduce system costs							
Reduce port congestion							
Reduce emissions							
Increase trucking efficiency							
Reduce truck turn time							
Reduce truck waiting time							
Increase node productivity							
Improve traffic control							
Increase cooperation in the port							
Improve truck dispatching							
Improve route finding in the port							
Influence truck arrivals							
Improve TAM							
Improve yard management							
Other means							
		Container terminal					
		Trucking company					
		Empty depot/ packing station					
		Other stakeholders					
		Container terminals					
		Trucking companies					
		TAM used					
		VDTW					
		TAS					
		Negotiated time windows					
		Study					
		Queuing theory					
		Prognosis					
		Mathematical optimization					
		Simulation					
		Other methods					
		No validation					
		Numerical experiments					
		Simulation					
		Comparison with real data					
		Asia					
		Australia					
		Europe					
		North America					
		South America					
		No application					

Figure 4: Categories of the classification scheme

The large number of different approaches in the analyzed publications requires them to be classified according to their aims. Seven characteristics are assigned to the *aims* category. The first three concern the entire transportation network (*reduce system costs*, *reduce port congestion*, *reduce emissions*). The next two relate to trucking companies (*increase trucking efficiency*, *reduce truck turn time*), and the last two to container

terminals/ other logistics nodes (*reduce truck waiting time, increase node productivity*). Since these goals can be achieved in different ways, the second category in the research design section is the *means* used. It also relates to the entire transportation network (*improve traffic control, increase cooperation in the port*), trucking companies (*improve truck dispatching, improve route finding in the port*) and container terminals and logistics nodes (*influence truck arrivals, improve truck arrival system (TAM), improve yard management*). Any means that could not be allocated were collected under *other means*.

The first of three categories in the area of *framework conditions* concerns the *stakeholders* considered. In the 136 publications, the following *stakeholders* were identified: *Container terminal, trucking company, empty depot/ packing station*. Empty container depots and packing stations are summarized, since in all publications with packing stations also empty container depots and vice versa were considered. All *stakeholders* that could not be assigned to the above-mentioned characteristics are collected under *other stakeholders*. These are mainly port authorities, customers and inland terminals. The second category highlights the stakeholder on which the publication *focuses*. In all the publications considered, the *focus* was either on the *container terminal* or the *trucking company*. The third category first identifies whether a *TAM is used* and then further distinguishes between the two most common types (*VDTW, TAS*). Additionally, it is indicated whether the time windows are *negotiated between the stakeholders*.

In the area of *solution procedures*, the first category is the *method* used in the publications. A total of five procedures were identified: *study, queuing theory, forecasting, mathematical optimization, and simulation*. All other procedures were grouped under *other methods*. Queuing theory could also be counted among mathematical optimization. However, due to its importance in this research area, it seemed reasonable to treat it separately. The second category is the selected *validation* with the characteristics: *No validation, numerical experiments, simulation, and comparison with real data*. The last category is the practical *application* and thus the continent of the port to which the approach of the publication was applied. Only those explicitly mentioned in the publications were used. Therefore, the characteristics are *Asia, Australia, Europe, North America* and *South America*. Since some publications do not base their approach on an existing port, *no application* was added.

4 Literature Review

The classification of the publications follows the scheme described in Chapter 3. The results of the classification scheme are shown in Figure 11, Figure 12 and Figure 13 in the appendix. A colored box indicates the mention of a corresponding expression. Since there are several characteristics in each category and more than one characteristic may be selected, the total number of mentions can significantly exceed the number of publications. The analysis of the results follows in the further course of this chapter.

Research Design

Figure 5 shows the shift in research interest since 2000. The number of publications for the respective aims is broken down by the year of publication. Here and in the further literature analysis, there is always a division of the time since 2000 four areas of five years and 2.5 years for the last range, in order to increase readability.

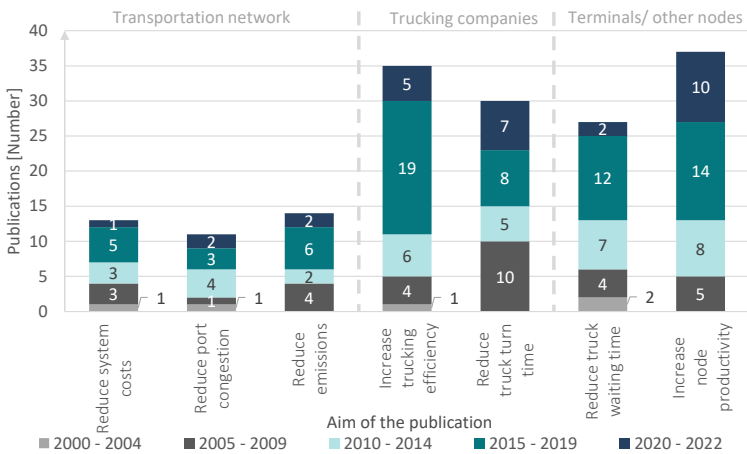


Figure 5: Frequency of aims over time

The most frequently mentioned aim is to improve node productivity (37 publications). This is followed by increasing the efficiency of trucking companies (35 publications) and

reducing truck turn time (30 publications) and waiting times (27 publications). The least attention is paid to reducing congestion in the port (eleven publications). In the years up to 2009, the focus was particularly on reducing the truck turn time. Since 2010, there has been a significant interest in increasing the efficiency of trucking companies. This may be related, among other things, to the still ongoing trend of digitalization, which then also reached the transportation industry. This facilitates process simplification through increased data availability and transparency.

Figure 6 shows the number of publications per resource used. As already described, the temporal progression is color-coded in five areas.

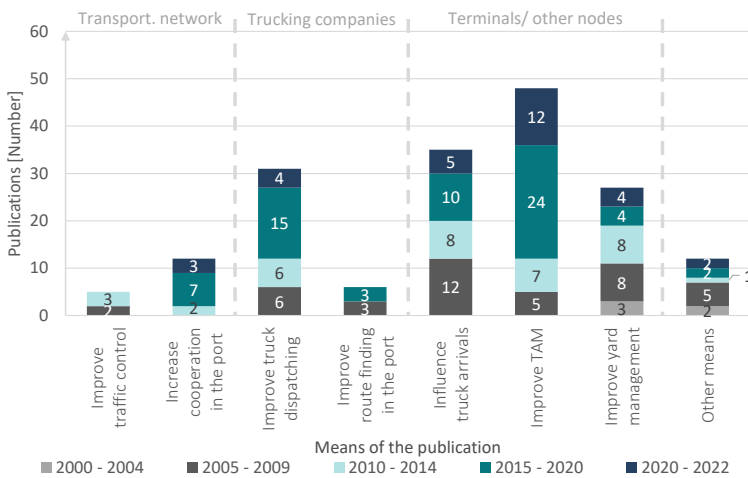


Figure 6: Frequency of means over time

Until 2004, the focus was on improving yard management and other means, which have since been pursued only marginally. Between 2005 and 2009, the focus was primarily on influencing truck arrivals and improving yard management. Many different ways to influence truck arrivals were explored and initial analyses of TAM and its design options were conducted. Dispatching at trucking companies was also looked at in more detail for the first time during this period. Between 2010 and 2014, the interest in TAM increased

Truck Appointment Systems

and remained similar for yard management, truck arrivals, and dispatching. Since 2015, there has been a particular focus on improving TAM, followed by scheduling. In particular, the cooperation between container terminals and trucking companies has been studied in more detail. Over the entire reporting period, there are the most mentions on TAM with 48 publications, followed by influencing the truck arrivals with 35 publications. The least mentioned means are improvements in traffic control and route finding, with five and six publications, respectively. This might be due in part to the fact that route finding was not specifically considered in the defined search terms.

Figure 7 shows the allocation of the means used to the respective aims. The x-axis shows the aims under consideration and the primary y-axis shows the proportions of the means used for each aim. The percentages are given to ensure better comparability. For example, 22% of the publications that have set themselves the aim to reduce system costs want to achieve this by improving scheduling. So that the absolute number of mentions can also be considered in the interpretation, they are plotted on the secondary y-axis. In the example given, 13 publications pursue the aim to reduce costs.

The distribution of means for the various aims is naturally heterogeneous. Not all means are represented for all aims. In order to reduce system costs, the dispatching of trucks and truck arrivals in particular are improved (22% each). More favorable route finding is not considered at all. To reduce congestion in the port, traffic control and the truck arrivals are improved in particular (23% each). Improving the yard management is considered in 15% of the publications. All remaining means are applied in 8% of the cases. To reduce emissions, improving TAM is mentioned most frequently (33%). Influencing truck arrivals is second with 28% of the publications. This can be justified by the fact that many publications have identified trucks in general, and in particular waiting times before and on nodes, as a significant source of emissions in the port. Route finding and other means are not mentioned.

By far the most commonly cited means of increasing trucking efficiency is improving the dispatching (43%), as this has the greatest impact on making operations as smooth as possible. Traffic control and yard management are not considered.

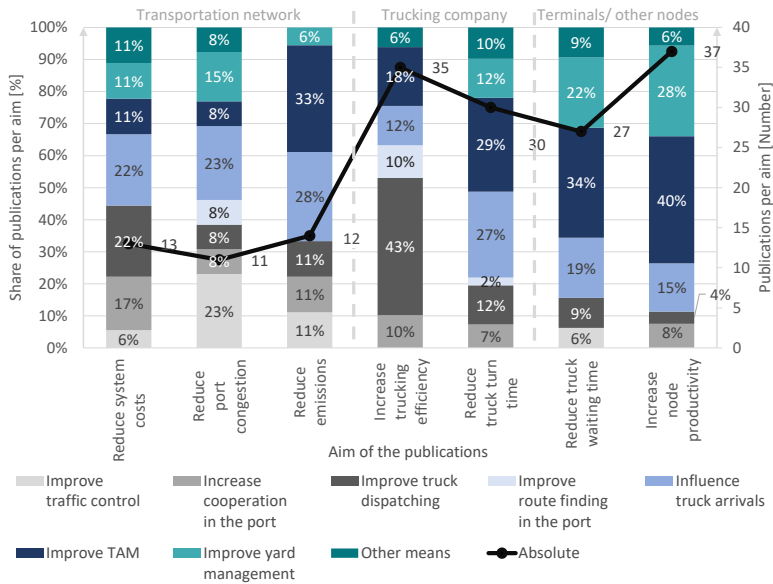


Figure 7: Mean of publications studied per aim

To reduce the truck turn time, improving TAM (29 %) is used in addition to influencing truck arrivals (27 %). This is followed by yard management improvement (12 %). The use of these three means is easy to understand, as these directly influence the terminal area and TTT mostly describes the time trucks spend on the terminal site. Accordingly, traffic management is not considered. The waiting time reduction targets especially the area in front of the gate. Therefore, the TAM in particular is improved here (34 %) and truck arrivals are influenced (19%). Furthermore, 22 % of the publications also considered the yard management, which might be a sign of an increasing integration of the different research foci. Port cooperation and route finding are not used. Node productivity depends on truck arrivals and congestion in front of the gate as well as on yard equipment management. This is also reflected in the percentages of resources used. 40 % of the mentions are related to improving TAM and 28 % are related to yard management. Traffic control and route finding are not considered here.

Truck Appointment Systems

Framework conditions

The second group of categories are the framework conditions. Its first category are the stakeholders. Here, mainly container terminals and trucking companies are considered and less frequently empty container depots and packing stations. Other stakeholders in the port environment, such as railroad operators or customs stations, are very rarely examined. In most publications, both container terminals and trucking companies are considered, at least superficially. This is due to the fact that neither can be completely neglected in the issues under consideration. Nevertheless, there is often a clear focus on one of the two main players. It is of particular interest to determine which stakeholders are the main focus for which questions (see Figure 8).

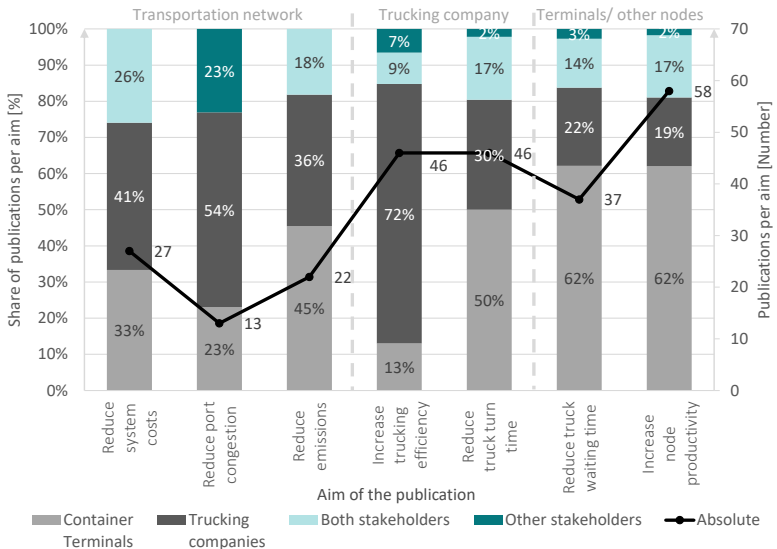


Figure 8: Stakeholders of publication per aim

In Figure 8, the aims are again plotted on the x-axis. The primary y-axis shows the shares of publications focusing on a particular stakeholder as a percentage of the total number of publications with that aim. The secondary y-axis shows the absolute number of

publications with the particular aim. In an average of 15 % of the publications, both container terminals and trucking companies are considered. Furthermore, only 4 % focus on other stakeholders. Container terminals are the main focus in 110 publications and trucking companies in 92 publications. Container terminals and their processes are in the foreground especially in publications dealing with the reduction of the waiting time (62 %), truck turn time (50 %) and emissions (45 %) as well as with the increase of node productivity (62 %). Trucking companies are particularly considered in reducing system costs (41 %) and port congestion (54 %), and increasing trucking efficiency (72 %).

In 67 % of the publications, TAMs are used to achieve the set targets. In most cases, these are individually booked time slots (e.g., one hour per delivery or pickup). Four publications consider VDTW. This type of time slot is used in practice, especially in Asia. In the last decade, there has been a particular increase in the study of negotiated time windows. In these time windows, the goal is to find the best possible solution for both process partners, both the container terminals and the trucking companies. In total, twelve publications consider negotiated time windows.

Solution procedure

The first category in the area of solution procedures are the methods used. The distribution of methods in the five-year blocks is shown in Figure 9. The absolute number of publications is plotted on the secondary y-axis.

The decrease in the proportion of study-based investigations is striking. While they still accounted for 40 % between 2000 and 2004, they accounted for only 4 % between 2020 and 2022. The proportion of publications using queuing theory or simulation remained comparatively stable over the years. Simulation is used on average in 24 % and queuing theory in 12 %. The use of mathematical optimization methods increased from 20% between 2000 and 2004 to 52 % between 2020 and 2022. Furthermore, forecasting methods have also been used since 2010.

Truck Appointment Systems

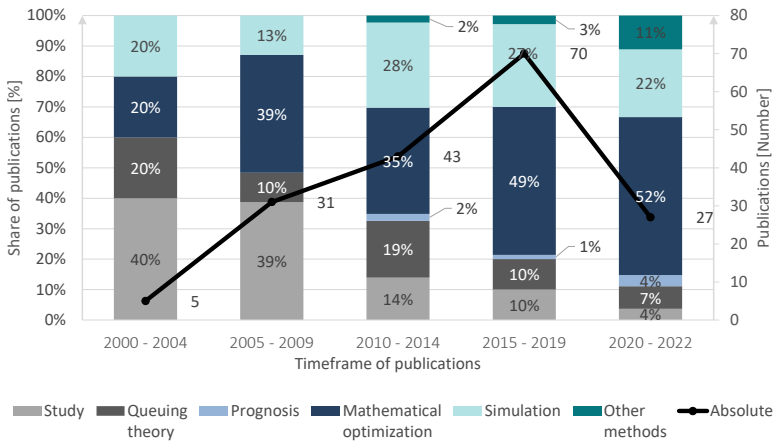


Figure 9: Relative frequency of methods over time

The methods used illustrate the development that research on port-internal container transport and related TAS has taken. Since related research questions were first raised in the early 2000s, the initial focus was on the analysis of the use case, the framework conditions, and possible solution variants. Since then, knowledge and expectations about TAS at container terminals and related processes have increased significantly in both academia and practice. For this reason, a shift to more detailed problems took place, which allowed the increased use of mathematical optimization methods. Furthermore, artificial intelligence methods have increasingly become the focus of science and practice, which is reflected here in the wider range of methods used.

The second category in the solution procedures is validation. Of the publications considered (see Figure 11: Classification scheme Part A and Figure 12: Classification scheme Part B), 90 % have at least touched on their validation procedure. Whether and how the remaining 10 % have validated their procedure cannot be seen in the corresponding publications. For validation, mainly numerical experiments with mostly quite small problem instances were performed (45 % on average). 7 % of the publications use simulation and still 37 % have compared their results with data from practice.

Figure 10 depicts the third category of solution methods, spatial practical application. The percentages of publications with practical relevance per continent are plotted. Again, the proportions are shown in five-year blocks.

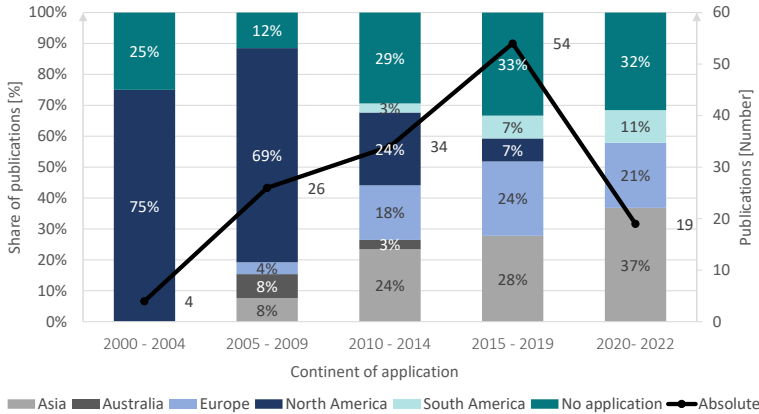


Figure 10: Relative frequency of spatial practical application over time.

Papers from the years 2000 to 2004 either had no practical relevance or referred to North America (75%). The sharp increase in the volumes transported in international maritime freight traffic during this period posed major challenges for the ports. Stimulated by this, considerations by container terminal operators and port authorities from the USA and Canada, to reduce congestion at the terminal gate and to lower emissions, gained prominence. This particularly affected the ports of Los Angeles and Long Beach. The following five years saw the addition of isolated publications related to Asia (8%), Australia (8%), and Europe (4%). However, the focus remained North America between 2005 and 2009, at 69%. Between 2010 and 2014, the share of publications on Asia caught up with those from North America (24% each). During this period, the first publications on South America were also added. As ports in Asia have become increasingly important and now clearly dominate the comparison of global container ports by throughput volume, the years between 2015 and 2019 have seen a particular focus on Asia (28%) followed by Europe (24%). The proportion of publications without direct practical

Truck Appointment Systems

relevance has risen to 33 %. In the last 2.5 years, these trends increased even more. 37 % of all the publications focused on Asia and no publication referred to North America or Australia. 21 % of the publication related to Europe and 11 % to South America.

5 Promising Improvement Possibilities of TAS

ITT with TAS have proven in the literature analysis to be a very complex research area with a multitude of sub-problems. In order to clarify the wide range of issues, different methods have been used, resources have been employed and individual actors, mostly container terminals and trucking companies, have been considered in detail. The effects of differently designed TAS on container terminals have been the subject of extensive research. Here, the effects on upstream and downstream logistics nodes for internal port transports were hardly considered. Thus, mainly either the route planning of trucking companies with fixed time windows at container terminals and at customers was investigated or studies on suitable booking processes with time window systems were carried out. The combination of these two issues leads to very complex dependencies, which have only been dealt with to a limited extent so far. Delays caused by traffic jams or obstructions on public roads and delays at upstream logistics nodes have also hardly been taken into account. For the transferability of the results into practice, it is important to consider such delays. This is especially true since even small delays can add up in the course of a tour to such an extent that previously booked time slots can no longer be adhered to and the tour can thus no longer be completed. To avoid such chains of scheduling errors, it is desirable to use flexibility options such as rebooking, adding or swapping time slots (Lange, et al., 2019a; Beck, Lange and Jahn, 2020). Rebooking is mostly possible at short notice and only affects the slot time of the respective transport. In the case of swapping, the time slots of two transports are exchanged with each other, and in the case of adding, another container is added to an existing time slot booking. However, this is only used sporadically in practice and has been almost completely neglected in the scientific discourse.

The overall port system with its various stakeholders has been little studied due to the complexity involved. Apart from the two main actors, container terminals and trucking

companies, other stakeholders, such as empty container depots, packing stations or rail terminals, have only been marginally considered. In particular, the impact of TAS on their operational processes and efficiency has hardly been studied.

The methods used have shifted more and more towards mathematical optimization in recent years due to the increasing detail of the subject under investigation. However, even with the increased use of heuristics, it is mostly not possible to model complex dependencies and solve larger problem instances. This is another reason why the focus on single subproblems has increased. The integration of several methods for the extension of the observation space has been done only very rarely so far. Especially the combination of simulation and optimization offers promising possibilities.

In terms of content, the publications often referred to North American or Asian ports. Due to regional differences in the equipment used and the associated terminal and port processes, a targeted investigation for European ports appears to be necessary.

6 Conclusion and Outlook

In the literature analysis presented here, 136 publications related to ITT and TAS in ports were thoroughly examined. Their most important characteristics were classified and the interdependencies between these characteristics were analyzed.

It has become clear that there are still significant research gaps, both in terms of content and methodology. In particular, the combination of different questions or different methods offers considerable potential, which is still far too little exploited at the present time. For example, the individual planning problems of container terminals are usually considered in isolation and their interdependencies are thus mostly ignored. Furthermore, rigid approaches are often considered, which do not provide sufficient flexibility for the actors involved in the transport chain. The use of more flexible approaches can reduce barriers for smaller companies in particular and thus achieve greater participation and thus transparency for all.

Covering these research gaps could enable a more stable transport chain in practice, even in crisis situations, and thus ensure good care for all parties involved.

Truck Appointment Systems

	Research design		Framework conditions			Solution procedures		
	Aim	Mean	Stakeh.	Foc.	TAM	Method	Validat.	Application
	Reduce system costs	Increase cooperation in the port	Container terminal	Trucking company	Empty depot/packing station	Study	Queueing theory	
	Reduce port congestion	Increase trucking efficiency	Other stakeholders	Trucking companies	Trucking terminals	Progress	Mathematical optimization	
	Increase trucking efficiency	Reduce truck turn time			TAM used	Simulation	Other methods	
	Reduce truck turn time	Increase node productivity			VDTW	No validation	Numerical experiments	
	Increase node productivity	Improve traffic control			TAS	Simulation	Comparison with real data	
	Improve traffic control	Increase cooperation in the port			Negotiated time windows		Asia	
	Increase cooperation in the port	Increase trucking efficiency					Australia	
	Increase trucking efficiency	Influence truck arrivals					Europe	
	Reduce truck turn time	Improve rate finding in the port					North America	
	Increase node productivity	Improve TAM					South America	
	Improve traffic control	Improve yard management					No application	
	Increase cooperation in the port	Other means						
Nordsiek, 2017								
Nossack, 2013								
Ozbay, 2006								
Phan, 2015								
Phan, 2016								
Qu, 2021								
Rajamanickam, 2015								
Ramirez-Nafarrate, 2017								
Regan, 2000								
Reinhardt, 2016								
Riaventin, 2018								
Schepler, 2017								
Schulte, 2015								
Schulte, 2017								
Sharif, 2011								
Shiri, 2016								
Shiri, 2017								
Song, 2017								
Torkjazi, 2018								
van Asperen, 2012								
Veloqui, 2014								
Wang, 2013								
Wasesa, 2017								
Wasesa, 2021								
Xu, 2021								
Yang, 2010								
Yang, 2018								
Yi, 2019								
Yu, 2014								
Zehendner, 2014								
Zhang, 2009								
Zhang, 2010								
Zhang, 2012								
Zhang, 2013								
Zhang, 2018 [1]								
Zhang, 2018 [2]								
Zhang, 2019								
Zhang, 2020								
Zhao, 2010 [1]								
Zhao, 2010 [2]								
Zhao, 2011								
Zhao, 2013								
Zhou, 2018								
Zouhaier, 2016								
Zouhaier, 2017								

Figure 13: Classification scheme Part C

References

- Abdelmagid, A. M., Gheith, M. S. and Eltawil, A. B., 2020. A Binary Integer Programming Formulation and Solution for Truck Appointment Scheduling and Reducing Truck Turnaround Time in Container Terminals. In: *2020 IEEE 7th International Conference on Industrial Engineering and Applications (ICIEA)*. Bangkok, Thailand, 2020-04-16/2020-04-21: IEEE, pp. 149–153.
- Abdelmagid, A. M., Gheith, M. S. and Eltawil, A. B., 2022. A comprehensive review of the truck appointment scheduling models and directions for future research. *Transport reviews*, 42(1), pp. 102–126. doi: 10.1080/01441647.2021.1955034.
- Adi, T. N., Bae, H. and Iskandar, Y. A., 2021. Interterminal Truck Routing Optimization Using Cooperative Multiagent Deep Reinforcement Learning. *Processes*, 9(10), p. 1728–1728. doi: 10.3390/pr9101728.
- Ambrosino, D. and Peirano, L., 2016. Truck Arrival Management at Maritime Container Terminals. In: T. Claus, F. Herrmann, M. Manitz, and O. Rose, eds. 2016. *30th European Conference on Modelling and Simulation (ECMS 2016)*. Regensburg, Germany, 31 May-3 June 2016. Red Hook, NY: Curran Associates, Inc.
- Ascencio, L. M., González-Ramírez, R. G., Bearzotti, L. A., Smith, N. R. and Camacho-Vallejo, J. F., 2014. A Collaborative Supply Chain Management System for a Maritime Port Logistics Chain. *Journal of Applied Research and Technology*, 12(3), pp. 444–458. doi: 10.1016/S1665-6423(14)71625-6.
- Azab, A., Karam, A. and Eltawil, A., 2017. A Dynamic and Collaborative Truck Appointment Management System in Container Terminals. In: *Proceedings of the 6th International Conference on Operations Research and Enterprise Systems*. Porto, Portugal, 2017-02-23/2017-02-25: SCITEPRESS - Science and Technology Publications, pp. 85–95.
- Azab, A., Karam, A. and Eltawil, A., 2018. Impact of Collaborative External Truck Scheduling on Yard Efficiency in Container Terminals. In: G. H. Parlier, F. Liberatore, and M. Demange, eds. 2018. *Operations Research and Enterprise Systems*. Cham: Springer International Publishing, pp. 105–128.

Truck Appointment Systems

- Azab, A., Karam, A. and Eltawil, A., 2020. A simulation-based optimization approach for external trucks appointment scheduling in container terminals. *International Journal of Modelling and Simulation*, 40(5), pp.321–338. doi: 10.1080/02286203.2019.1615261.
- Azab, A. and Morita, H., 2022a. Coordinating truck appointments with container relocations and retrievals in container terminals under partial appointments information. *Transportation Research Part E: Logistics and Transportation Review*, 160, p. 102673–102673. doi: 10.1016/j.tre.2022.102673.
- Azab, A. and Morita, H., 2022b. The block relocation problem with appointment scheduling. *European Journal of Operational Research*, 297(2), pp. 680–694. doi: 10.1016/j.ejor.2021.06.007.
- Azab, A. E. and Eltawil, A. B., 2016. A Simulation Based Study Of The Effect Of Truck Arrival Patterns On Truck Turn Time In Container Terminals. In: *30th Conference on Modelling and Simulation*, 2016-05-31/2016-06-03, pp. 80–86.
- Beck, K., Lange, A.-K. and Jahn, C., 2020. Die Auswirkungen der Stornier- und Umbuchfunktion in Truck Appointment Systemen. In: C. Deatcu, D. Lückerrath, O. Ullrich, and U. Durak. Proceedings ASIM SST 2020. 25. ASIM Symposium Simulationstechnik, 14.10. - 15.10.2020: ARGESIM Publisher Vienna, pp. 403–410.
- Bentolila, D. J., Ziedeneber, R. K., Hayuth, Y. and Notteboom, T., 2016. Off-peak truck deliveries at container terminals: the Good Night program in Israel. *Maritime Business Review*, 1(1), pp. 2–20. doi: 10.1108/MABR-03-2016-0005.
- Caballini, C., Mar-Ortiz, J., Gracia, M. D. and Sacone, S., 2018. Optimal truck scheduling in a container terminal by using a Truck Appointment System. In: *2018 21st International Conference on Intelligent Transportation Systems (ITSC)*. Maui, HI, 2018-11-04/2018-11-07: IEEE, pp. 2525–2530.
- Caballini, C. and Sacone, S. Simulation of novel algorithms to reduce truck congestion at container terminals. In: *2021 7th International Conference 2021*, pp. 1–6.
- Caballini, C., Sacone, S. and Saeednia, M., 2016. Cooperation among truck carriers in seaport containerized transportation. *Transportation Research Part E: Logistics and Transportation Review*, 93, pp. 38–56. doi: 10.1016/j.tre.2016.05.007.

- Carlo, H. J., Vis, I. F. A. and Roodbergen, K. J., 2014a. Storage yard operations in container terminals: Literature overview, trends, and research directions. *European Journal of Operational Research*, 235(2), pp. 412–430. doi: 10.1016/j.ejor.2013.10.054.
- Carlo, H. J., Vis, I. F. A. and Roodbergen, K. J., 2014b. Transport operations in container terminals: Literature overview, trends, research directions and classification scheme. *European Journal of Operational Research*, 236(1), pp. 1–13. doi: 10.1016/j.ejor.2013.11.023.
- Chamchang, P. and Niyomdecha, H., 2021. Impact of service policies on terminal gate efficiency: a simulation approach. *Cogent Business & Management*, 8(1). doi: 10.1080/23311975.2021.1975955.
- Chen, G., Govindan, K. and Golias, M. M., 2013. Reducing truck emissions at container terminals in a low carbon economy: Proposal of a queueing-based bi-objective model for optimizing truck arrival pattern. *Transportation Research Part E: Logistics and Transportation Review*, 55, pp. 3–22. doi: 10.1016/j.tre.2013.03.008.
- Chen, G., Govindan, K. and Yang, Z., 2013. Managing truck arrivals with time windows to alleviate gate congestion at container terminals. *International Journal of Production Economics*, 141(1), pp. 179–188. doi: 10.1016/j.ijpe.2012.03.033.
- Chen, G., Govindan, K., Yang, Z.-Z., Choi, T.-M. and Jiang, L., 2013. Terminal appointment system design by non-stationary $M(t)/Ek/c(t)$ queueing model and genetic algorithm. *International Journal of Production Economics*, 146(2), pp. 694–703. doi: 10.1016/j.ijpe.2013.09.001.
- Chen, G. and Jiang, L., 2016. Managing customer arrivals with time windows: a case of truck arrivals at a congested container terminal. *Annals of Operations Research*. doi: 10.1007/s10479-016-2150-3.
- Chen, G. and Yang, Z., 2010. Optimizing time windows for managing export container arrivals at Chinese container terminals. *Maritime Economics & Logistics*, 12(1), pp. 111–126. doi: 10.1057/mel.2009.21.
- Chen, G. and Yang, Z.-Z., 2014. Methods for estimating vehicle queues at a marine terminal: A computational comparison. *International Journal of Applied Mathematics and Computer Science*, 24(3). doi: 10.2478/amcs-2014-0044.

Truck Appointment Systems

- Chen, R., Chen, S., Cui, H. and Meng, Q., 2021. The container drayage problem for heterogeneous trucks with multiple loads: A revisit. *Transportation Research Part E: Logistics and Transportation Review*, 147, p.102241–102241. doi: 10.1016/j.tre.2021.102241.
- Chen, X., Zhou, X. and List, G. F., 2011. Using time-varying tolls to optimize truck arrivals at ports. *Transportation Research Part E: Logistics and Transportation Review*, 47(6), pp. 965–982. doi: 10.1016/j.tre.2011.04.001.
- Covic, F., 2017. Re-marshalling in automated container yards with terminal appointment systems. *Flexible Services and Manufacturing Journal*, 29(3-4), pp. 433–503. doi: 10.1007/s10696-017-9278-6.
- Davies, P. Container Terminal Reservation Systems. Paper presented at the 3rd Annual METRANS National Urban Freight Conference.
- Davies, P. Container Terminal Reservation Systems Design and Performance. Paper presented at the METRANS International Urban Freight Conference.
- Davies, P. and Kieran, M. E., 2015. Port Congestion and Drayage Efficiency. Paper presented at the METRANS International Urban Freight Conference.
- Dekker, R., van der Heide, S., van Asperen, E. and Ypsilantis, P., 2013. A chassis exchange terminal to reduce truck congestion at container terminals. *Flexible Services and Manufacturing Journal*, 25(4), pp. 528–542. doi: 10.1007/s10696-012-9146-3.
- Dhingra, V., Kumawat, G. L., Roy, D. and Koster, R. de, 2018. Solving semi-open queuing networks with time-varying arrivals: An application in container terminal landside operations. *European Journal of Operational Research*, 267(3), pp. 855–876. doi: 10.1016/j.ejor.2017.12.020.
- Do, N. A. D., Nielsen, I. E., Chen, G. and Nielsen, P., 2016. A simulation-based genetic algorithm approach for reducing emissions from import container pick-up operation at container terminal. *Annals of Operations Research*, 242(2), pp. 285–301. doi: 10.1007/s10479-014-1636-0.

- Dotoli, M. and Epicoco, N., 2016. A technique for the optimal management of containers' drayage at intermodal terminals. In: *2016 IEEE International Conference on Systems, Man, and Cybernetics (SMC)*. Budapest, Hungary, 2016-10-09/2016-10-12: IEEE, pp. 566–571.
- Dragović, B., Tzannatos, E. and Park, N. K., 2017. Simulation modelling in ports and container terminals: Literature overview and analysis by research field, application area and tool. *Flexible Services and Manufacturing Journal*, 29(1), pp. 4–34. doi: 10.1007/s10696-016-9239-5.
- Fan, Ren, Guo and Li, 2019. Truck Scheduling Problem Considering Carbon Emissions under Truck Appointment System. *Sustainability*, 11(22), p. 6256–6256. doi:10.3390/su11226256.
- Froyland, G., Koch, T., Megow, N., Duane, E. and Wren, H., 2007. Optimizing the landside operation of a container terminal. *OR Spectrum*, 30(1), pp. 53–75. doi: 10.1007/s00291-007-0082-7.
- Gharehgozli, A., Zaerpour, N. and Koster, R. de, 2019. Container terminal layout design: transition and future. *Maritime Economics & Logistics*, 82(4), p. 101–101. doi: 10.1057/s41278-019-00131-9.
- Gharehgozli, A. H., Koster, R. de and Jansen, R., 2017. Collaborative solutions for inter terminal transport. *International Journal of Production Research*, 55(21), pp. 6527–6546. doi: 10.1080/00207543.2016.1262564.
- Gharehgozli, A. H., Roy, D. and Koster, R. de, 2016. Sea container terminals: New technologies and OR models. *Maritime Economics & Logistics*, 18(2), pp. 103–140. doi: 10.1057/mel.2015.3.
- Giuliano, G., Hayden, S., Dell'aquila, P. and O'Brien, T., 2008. *Evaluation of the Terminal Gate Appointment System at the Los Angeles/Long Beach Ports: Final report METRANS Project 04-06*.
- Giuliano, G. and O'Brien, T., 2007. Reducing port-related truck emissions: The terminal gate appointment system at the Ports of Los Angeles and Long Beach. *Transportation Research Part D: Transport and Environment*, 12(7), pp. 460–473. doi: 10.1016/j.trd.2007.06.004.

Truck Appointment Systems

- Giuliano, G. and O'Brien, T., 2008. *Responding to Increasing Port-related Freight Volumes: Lessons from Los Angeles / Long Beach and Other US Ports and Hinterlands*. Paris: OECD Publishing.
- Goodchild, A. and Mohan, K., 2008. The Clean Trucks Program: Evaluation of Policy Impacts on Marine Terminal Operations. *Maritime Economics & Logistics*, 10(4), pp. 393–408. doi: 10.1057/mel.2008.13.
- Gracia, M. D., González-Ramírez, R. G. and Mar-Ortiz, J., 2016. The impact of lanes segmentation and booking levels on a container terminal gate congestion. *Flexible Services and Manufacturing Journal*, 244(3), p. 675–675. doi: 10.1007/s10696-016-9256-4.
- Guan, C. and Liu, R., 2009a. Container terminal gate appointment system optimization. *Maritime Economics & Logistics*, 11(4), pp. 378–398. doi: 10.1057/mel.2009.13.
- Guan, C. and Liu, R., 2009b. Modeling Gate Congestion of Marine Container Terminals, Truck Waiting Cost, and Optimization. *Transportation Research Record: Journal of the Transportation Research Board*, 2100, pp. 58–67. doi: 10.3141/2100-07.
- Harrison, R., Hutson, N., West, J. and Wilke, J., 2007. Characteristics of Drayage Operations at the Port of Houston, Texas. *Transportation Research Record: Journal of the Transportation Research Board*, 2033, pp. 31–37. doi: 10.3141/2033-05.
- Heilig, L., Lalla-Ruiz, E. and Voß, S., 2017a. Multi-objective inter-terminal truck routing. *Transportation Research Part E: Logistics and Transportation Review*, 106, pp. 178–202. doi: 10.1016/j.tre.2017.07.008.
- Heilig, L., Lalla-Ruiz, E. and Voß, S., 2017b. port-IO: An integrative mobile cloud platform for real-time inter-terminal truck routing optimization. *Flexible Services and Manufacturing Journal*, 29(3-4), pp. 504–534. doi: 10.1007/s10696-017-9280-z.
- Heilig, L. and Voß, S., 2017. Information systems in seaports: A categorization and overview. *Information Technology and Management*, 18(3), pp. 179–201. doi: 10.1007/s10799-016-0269-1.

- Hill, A. and Böse, J. W., 2016. A decision support system for improved resource planning and truck routing at logistic nodes. *Information Technology and Management*, 22(2–3), p. 109–109. doi: 10.1007/s10799-016-0267-3.
- Huiyun, Y., Xin, L., Lixuan, X., Xiangjun, L., Zhihong, J. and Zhan, B., 2018. Truck appointment at container terminals: Status and perspectives. In: *2018 Chinese Control And Decision Conference (CCDC)*. Shenyang, 2018-06-09/2018-06-11: IEEE, pp. 1954–1960.
- Huynh, N., 2005. *Methodologies for Reducing Truck Turn Time at Marine Container Terminals*. Dissertationsschrift. The University of Texas.
- Huynh, N., 2009. Reducing Truck Turn Times at Marine Terminals with Appointment Scheduling. *Transportation Research Record: Journal of the Transportation Research Board*, 2100, pp. 47–57. doi: 10.3141/2100-06.
- Huynh, N., Harder, F., Smith, D., Sharif, O. and Pham, Q., 2011. Truck Delays at Seaports. *Transportation Research Record: Journal of the Transportation Research Board*, 2222, pp. 54–62. doi: 10.3141/2222-07.
- Huynh, N. and Hutson, N., 2008. Mining the Sources of Delay for Dray Trucks at Container Terminals. *Transportation Research Record: Journal of the Transportation Research Board*, 2066, pp. 41–49. doi: 10.3141/2066-05.
- Huynh, N. and Minh, C. C., 2017. Optimal design of container terminal gate layout. *International Journal of Shipping and Transport Logistics*, 9(5), p. 640–640. doi: 10.1504/IJSTL.2017.10005707.
- Huynh, N., Smith, D. and Harder, F., 2016. Truck Appointment Systems: Where We Are and Where to Go from Here. *Transportation Research Record: Journal of the Transportation Research Board*, 2548, pp. 1–9. doi: 10.3141/2548-01.
- Huynh, N. and Walton, C. M., 2007. Evaluating truck turn time in grounded operations using simulation. *World Review of Intermodal Transportation Research*, 1(4), p. 357–357. doi: 10.1504/WRITR.2007.017093.
- Huynh, N. and Walton, C. M., 2008. Robust Scheduling of Truck Arrivals at Marine Container Terminals. *Journal of Transportation Engineering*, 134(8), pp. 347–353. doi: 10.1061/(ASCE)0733-947X(2008)134:8(347).

Truck Appointment Systems

- Huynh, N. and Walton, C. M., 2011. Improving Efficiency of Drayage Operations at Seaport Container Terminals Through the Use of an Appointment System. In: J. W. Böse, ed. 2011. *Handbook of Terminal Planning*. New York, NY: Springer New York, pp. 323–344.
- Ioannou, P., Chassiakos, A., Jula, H. and Valencia, G., 2006. *Cooperative Time Window Generation for Cargo Delivery/Pick up with Application to Container Terminals: Final Report METRANS Project 03-18*.
- Islam, S., 2018. Simulation of truck arrival process at a seaport: evaluating truck-sharing benefits for empty trips reduction. *International Journal of Logistics Research and Applications*, 21(1), pp. 94–112. doi: 10.1080/13675567.2017.1353067.
- Islam, S., Olsen, T. and Daud Ahmed, M., 2013. Reengineering the seaport container truck hauling process. *Business Process Management Journal*, 19(5), pp. 752–782. doi: 10.1108/BPMJ-Jun-2012-0059.
- Iyoob, M. Z. and van Niekerk, B., 852021. CAUDUS: An Optimisation Model To Reducing Port Traffic Congestion. In: *2021 International Conference on Artificial Intelligence, Big Data, Computing and Data Communication Systems (icABCD)*. Durban, South Africa, 05.08.2021 - 06.08.2021: IEEE, pp. 1–7.
- Jacobsson, S., Arnäs, P. O. and Stefansson, G., 2018. Differentiation of access management services at seaport terminals: Facilitating potential improvements for road hauliers. *Journal of Transport Geography*, 70, pp. 256–264. doi: 10.1016/j.jtrangeo.2018.06.009.
- Jin, Z., Li, N., Xu, Q. and Bian, Z., 2018. Modern Heuristics of MCDM for the Operation Optimization in Container Terminals. In: P. T.-W. Lee, and Z. Yang, eds. 2018. *Multi-Criteria Decision Making in Maritime Studies and Logistics*. Cham: Springer International Publishing, pp. 271–322.
- Jin, Z., Lin, X., Zang, L., Liu, W. and Xiao, X., 2021. Lane Allocation Optimization in Container Seaport Gate System Considering Carbon Emissions. *Sustainability*, 13(7), p. 3628–3628. doi: 10.3390/su13073628.
- Jula, H., Dessouky, M., Ioannou, P. and Chassiakos, A., 2005. Container movement by trucks in metropolitan networks: Modeling and optimization. *Transportation Research Part E: Logistics and Transportation Review*, 41(3), pp. 235–259. doi: 10.1016/j.tre.2004.03.003.

- Karam, A., Azab, A. E., Eltawil, A. B. and Reinau, K. H., 2019. Collaboration in Truck Appointment System in Container Terminals. Proceedings from the Annual Transport Conference at Aalborg University, Vol. 26 No. 1 (2019): Proceedings from the Annual Transport Conference at Aalborg University. doi: 10.5278/ojs.td.v26i1.5093.
- Kastner, M., Lange, A.-K. and Jahn, C., 2020. Expansion Planning at Container Terminals. In: M. Freitag, H.-D. Haasis, H. Kotzab, and J. Pannek, eds. 2020. *Dynamics in Logistics*. Cham: Springer International Publishing, pp. 114–123.
- Kastner, M., Pache, H. and Jahn, C., 2019. Simulation-based optimization at container terminals: a literature review. In: C. Jahn, W. Kersten, and C. M. Ringle. *Digital transformation in maritime and city logistics. smart solutions for logistics. HICL: epubli GmbH*, pp. 111–135.
- Kiani, M., Sayareh, J. and Nooramin, S., 2010. A simulation framework for optimizing truck congestions in marine terminals. *Journal of Maritime Research*, (7 (1)), pp. 55–70.
- Kim, K. H. and Kim, H. B., 2002. The optimal sizing of the storage space and handling facilities for import containers. *Transportation Research Part B: Methodological*, 36(9), pp. 821–835. doi: 10.1016/S0191-2615(01)00033-9.
- Kourouniotti, I. and Polydoropoulou, A., 2018. Application of aggregate container terminal data for the development of time-of-day models predicting truck arrivals. *European Journal of Transport and Infrastructure Research*, Vol 18 No 1 (2018). doi: 10.18757/ejtir.2018.18.1.3220.
- Ku, D., 2014. Rehandling Problem of Pickup Containers under Truck Appointment System. In: D. Hwang, J. J. Jung, and N.-T. Nguyen, eds. 2014. *Computational Collective Intelligence. Technologies and Applications*. Cham: Springer International Publishing, pp. 272–281.
- Ku, D. and Arthanari, T. S., 2016. Container relocation problem with time windows for container departure. *European Journal of Operational Research*, 252(3), pp. 1031–1039. doi: 10.1016/j.ejor.2016.01.055.

Truck Appointment Systems

- Kulkarni, K., Tran, K. T., Wang, H. and Lau, H. C., 2017. Efficient gate system operations for a multipurpose port using simulation-optimization. In: *2017 Winter Simulation Conference (WSC). 2017 Winter Simulation Conference (WSC)*. Las Vegas, NV, 2017-12-03/2017-12-06: IEEE, pp. 3090–3101.
- Lam, S. F., Park, J. and Pruitt, C., 2007. *An accurate monitoring of truck waiting and flow times at a terminal in the Los Angeles/Long Beach ports*. [Los Angeles, Calif.]: [METRANS].
- Lange, A.-K., Grafelmann, M., Schwientek, A. and Jahn, C., 2019a. Effizientes Tauschen der Zeitfenster von Transportaufträgen in Truck Appointment Systems. In: M. Putz, and A. Schlegel, eds. 2019. *Simulation in Produktion und Logistik 2019. Chemnitz, 18.-20. September 2019*. Auerbach /Vogtl.: Wissenschaftliche Scripten, pp. 295–304.
- Lange, A.-K., Krüger, S., Schwientek, A. K. and Jahn, C., 2019b. Potential of non-port slot booking systems for TAS. In: C. Jahn, W. Kersten, and C. M. Ringle. *Digital transformation in maritime and city logistics. smart solutions for logistics. HICL: epubli GmbH*.
- Lange, A.-K., Schwientek, A. and Jahn, C., 2017. Reducing truck congestion at ports – classification and trends. In: C. Jahn, W. Kersten, and C. M. Ringle. *Digitalization in maritime and sustainable logistics. City logistics, port logistics and sustainable supply chain management in the digital age*: epubli, pp. 37–58.
- Le-Griffin, H. D., Mai, L. and Griffin, M., 2011. Impact of container chassis management practices in the United States on terminal operational efficiency: An operations and mitigation policy analysis. *Research in Transportation Economics*, 32(1), pp. 90–99. doi: 10.1016/j.retrec.2011.06.007.
- Li, N., Chen, G., Govindan, K. and Jin, Z., 2018. Disruption management for truck appointment system at a container terminal: A green initiative. *Transportation Research Part D: Transport and Environment*. doi: 10.1016/j.trd.2015.12.014.
- Li, N., Chen, G., Ng, M., Talley, W. K. and Jin, Z., 2020. Optimized appointment scheduling for export container deliveries at marine terminals. *Maritime Policy & Management*, 47(4), pp. 456–478. doi: 10.1080/03088839.2019.1693063.

- Liberati, A., Altman, D. G., Tetzlaff, J., Mulrow, C., Gøtzsche, P. C., Ioannidis, J. P. A., Clarke, M., Devereaux, P. J., Kleijnen, J. and Moher, D., 2009. The PRISMA statement for reporting systematic reviews and meta-analyses of studies that evaluate healthcare interventions: explanation and elaboration. *BMJ (Clinical research ed.)*, 339, b2700. doi: 10.1136/bmj.b2700.
- Ma, M., Fan, H., Jiang, X. and Guo, Z., 2019. Truck Arrivals Scheduling with Vessel Dependent Time Windows to Reduce Carbon Emissions. *Sustainability*, 11(22), p. 6410–6410. doi: 10.3390/su11226410.
- Maguire, A., Ivey, S., Golias, M. and Lipinsk, M., 2012. Relieving congestion at intermodal marine container terminals: Review of tactical/operational strategies. In: *Annual Transportation Research Forum. 51st Annual Transportation Research Forum 2010. Arlington, Virginia, 11 - 13 March, 2010*. Red Hook, NY: Curran.
- Mar-Ortiz, J., Castillo-García, N. and Gracia, M. D., 2020. A decision support system for a capacity management problem at a container terminal. *International Journal of Production Economics*, 222, p. 107502–107502. doi: 10.1016/j.ijpe.2019.09.023.
- Minh, C. C. and van Noi, N., 2021. Optimising truck arrival management and number of service gates at container terminals. *Maritime Business Review*. doi: 10.1108/MABR-08-2021-0060.
- Moghaddam, M., Pearce, R. H., Mokhtar, H. and Prato, C. G., 2020. A generalised model for container drayage operations with heterogeneous fleet, multi-container sizes and two modes of operation. *Transportation Research Part E: Logistics and Transportation Review*, 139, p. 101973–101973. doi: 10.1016/j.tre.2020.101973.
- Monaco, K. and Grobar, L., 2004. *A Study of Drayage at the Ports of Los Angeles and Long Beach*.
- Morais, P. and Lord, E., 2006. *Terminal Appointment System Study*.
- Moszyk, K., Deja, M. and Dobrzynski, M., 2021. Automation of the Road Gate Operations Process at the Container Terminal—A Case Study of DCT Gdańsk SA. *Sustainability*, 13(11), p. 6291–6291. doi: 10.3390/su13116291.

Truck Appointment Systems

- Motono, I., Furuichi, M., Ninomiya, T., Suzuki, S. and Fuse, M., 2016. Insightful observations on trailer queues at landside container terminal gates: What generates congestion at the gates? *Research in Transportation Business & Management*, 19, pp. 118–131. doi: 10.1016/j.rtbm.2016.04.001.
- Murty, K. G., Liu, J., Wan, Y. and Linn, R., 2005a. A decision support system for operations in a container terminal. *Decision Support Systems*, 39(3), pp. 309–332. doi: 10.1016/j.dss.2003.11.002.
- Murty, K. G., Wan, Y., Liu, J., Tseng, M. M., Leung, E., Lai, K.-K. and Chiu, H. W. C., 2005b. Hongkong International Terminals Gains Elastic Capacity Using a Data-Intensive Decision-Support System. *Interfaces*, 35(1), pp. 61–75. doi: 10.1287/inte.1040.0120.
- Nabais, J. L., Negenborn, R. R., Carmona Benítez, Rafael B. and Ayala Botto, M., 2013. Setting Cooperative Relations Among Terminals at Seaports Using a Multi-Agent System. In: *16th International IEEE Conference on Intelligent Transportation Systems (ITSC), 2013. 6-9 Oct. 2013, Kurhaus, The Hague, The Netherlands*. Piscataway, NJ: IEEE, pp. 1731–1736.
- Nadi, A., Sharma, S., Snelder, M., Bakri, T., van Lint, H. and Tavasszy, L., 2021. Short-term prediction of outbound truck traffic from the exchange of information in logistics hubs: A case study for the port of Rotterdam. *Transportation Research Part C: Emerging Technologies*, 127, p. 103111–103111. doi: 10.1016/j.trc.2021.103111.
- Namboothiri, R., 2006. *Planning Container Drayage Operations at Congested Seaports*. Dissertationsschrift. Georgia Institute of Technology.
- Namboothiri, R. and Erera, A. L., 2008. Planning local container drayage operations given a port access appointment system. *Transportation Research Part E: Logistics and Transportation Review*, 44(2), pp. 185–202. doi: 10.1016/j.tre.2007.07.004.
- Nasution, A. R. and Arviansyah, 2019. Container terminal landside operation analysis and discrete event simulation in container terminal in port: a case study of Terminal 3 Ocean-going PT Pelabuhan Tanjung Priok. *IOP Conference Series: Materials Science and Engineering*, 567, p. 12033–12033. doi: 10.1088/1757-899X/567/1/012033.

- Nellen, N., Poeting, M., Bschorer, K., Jahn, C. and Clausen, U., 2020. Impact of Port Layouts on Inter-Terminal-Transportation Networks. In: C. Jahn, W. Kersten, and C. M. Ringle. *Data science in maritime and city logistics : data-driven solutions for logistics and sustainability*: epubli.
- Nieuwkoop, F., Corman, F., Negenborn, R. R., Duinkerken, M. B., van Schuylenburg, M. and Lodewijks, G., 2014. Decision support for vehicle configuration determination in Inter Terminal Transport system design. In: *Proceedings of the 11th IEEE International Conference on Networking, Sensing and Control.*. Miami, FL, USA, 2014-04-07/2014-04-09: IEEE, pp. 613–618.
- Nordsieck, N., Buer, T. and Schönberger, J., 2017. Potential of Improving Truck-Based Drayage Operations of Maritime Terminals Through Street Turns. In: M. Freitag, H. Kotzab, and J. Pannek. *Dynamics in Logistics. Proceedings of the 5th International Conference LDIC, 2016 Bremen, Germany*. Cham: Springer International Publishing; Imprint: Springer, pp. 433–443.
- Nossack, J. and Pesch, E., 2013. A truck scheduling problem arising in intermodal container transportation. *European Journal of Operational Research*, 230(3), pp. 666–680. doi: 10.1016/j.ejor.2013.04.042.
- Ozbay, K., Yanmaz-Tuzel, O. and Holguin-Veras, J., 2006. The Impact of Time-of-day Pricing Initiative of NY/NJ Port Authority Facilities Car and Truck Movements. In: *Transportation Research Board's 85th Annual Meeting*. Washington, D.C.
- Phan, M.-H. and Kim, K. H., 2015. Negotiating truck arrival times among trucking companies and a container terminal. *Transportation Research Part E: Logistics and Transportation Review*, 75, pp. 132–144. doi: 10.1016/j.tre.2015.01.004.
- Phan, M.-H. and Kim, K. H., 2016. Collaborative truck scheduling and appointments for trucking companies and container terminals. *Transportation Research Part B: Methodological*, 86, pp. 37–50. doi: 10.1016/j.trb.2016.01.006.
- Qu, W., Tao, T., Xie, B. and Qi, Y., 2021. A State-Dependent Approximation Method for Estimating Truck Queue Length at Marine Terminals. *Sustainability*, 13(5), p. 2917–2917. doi: 10.3390/su13052917.
- Rajamanickam, G. D. and Ramadurai, G., 2015. Simulation of truck congestion in Chennai port. In: *2015 Winter Simulation Conference (WSC)*. Huntington Beach, CA, USA, pp. 1904–1915.

Truck Appointment Systems

- Ramírez-Nafarrate, A., González-Ramírez, R. G., Smith, N. R., Guerra-Olivares, R. and Voß, S., 2017. Impact on yard efficiency of a truck appointment system for a port terminal. *Annals of Operations Research*, 258(2), pp.195–216. doi: 10.1007/s10479-016-2384-0
- Rashidi, H. and Tsang, E. P. K., 2013. Novel constraints satisfaction models for optimization problems in container terminals. *Applied Mathematical Modelling*, 37(6), pp. 3601–3634. doi: 10.1016/j.apm.2012.07.042.
- Regan, A. C. and Golob, T. F., 2000. Trucking industry perceptions of congestion problems and potential solutions in maritime intermodal operations in California. *Transportation Research Part A: Policy and Practice*, 34(8), pp. 587–605. doi: 10.1016/S0965-8564(99)00042-7.
- Reinhardt, L. B., Pisinger, D., Spoorendonk, S. and Sigurd, M. M., 2016. Optimization of the drayage problem using exact methods. *INFOR: Information Systems and Operational Research*, 54(1), pp. 33–51. doi: 10.1080/03155986.2016.1149919.
- Riaventin, V. and Kim, K. H., 2019. Scheduling Appointments of Truck Arrivals at Container Terminals. *International Journal of Industrial Engineering: Theory, Applications and Practice*, 25(5).
- Schepler, X., Balev, S., Michel, S. and Sanlaville, ?, 2017. Global planning in a multi-terminal and multi-modal maritime container port. *Transportation Research Part E: Logistics and Transportation Review*, 100, pp.38–62. doi: 10.1016/j.tre.2016.12.002.
- Schulte, F., González, R. G. and Voß, S., 2015. Reducing Port-Related Truck Emissions: Coordinated Truck Appointments to Reduce Empty Truck Trips. In: F. Corman, S. Voß, and R. R. Negenborn, eds. 2015. *Computational Logistics*. Cham: Springer International Publishing, pp. 495–509.
- Schulte, F., Lalla-Ruiz, E., González-Ramírez, R. G. and Voß, S., 2017. Reducing port-related empty truck emissions: A mathematical approach for truck appointments with collaboration. *Transportation Research Part E: Logistics and Transportation Review*, 105, pp. 195–212. doi: 10.1016/j.tre.2017.03.008.

- Schwientek, A., Lange, A.-K. and Jahn, C., 2020. Simulation-based Analysis of Dispatching Methods on Seaport Container Terminals. In: C. Deatcu, D. Lückerath, O. Ullrich, and U. Durak. *Proceedings ASIM SST 2020. 25. ASIM Symposium Simulationstechnik*, 14.10. - 15.10.2020: ARGESIM Publisher Vienna, pp. 357–364.
- Sharif, O., Huynh, N. and Vidal, J. M., 2011. Application of El Farol model for managing marine terminal gate congestion. *Research in Transportation Economics*, 32(1), pp. 81–89. doi: 10.1016/j.retrec.2011.06.004.
- Shiri, S. and Huynh, N., 2016. Optimization of drayage operations with time-window constraints. *International Journal of Production Economics*, 176, pp. 7–20. doi: 10.1016/j.ijpe.2016.03.005.
- Shiri, S. and Huynh, N., 2017. Assessment of U.S. chassis supply models on drayage productivity and air emissions. *Transportation Research Part D: Transport and Environment*. doi: 10.1016/j.trd.2017.04.024.
- Song, Y., Zhang, J., Liang, Z. and Ye, C., 2017. An exact algorithm for the container drayage problem under a separation mode. *Transportation Research Part E: Logistics and Transportation Review*, 106, pp. 231–254. doi: 10.1016/j.tre.2017.07.010.
- Speer, U., 2017. *Optimierung von automatischen Lagerkransystemen auf Containerterminals*. Wiesbaden: Springer Fachmedien Wiesbaden.
- Stahlbock, R. and Voß, S., 2007. Operations research at container terminals: a literature update. *OR Spectrum*, 30(1), pp. 1–52. doi: 10.1007/s00291-007-0100-9.
- Steenken, D., Voß, S. and Stahlbock, R., 2004. Container terminal operation and operations research - a classification and literature review. *OR Spectrum*, 26(1), pp. 3–49. doi: 10.1007/s00291-003-0157-z.
- Torkjazi, M., Huynh, N. and Shiri, S., 2018. Truck appointment systems considering impact to drayage truck tours. *Transportation Research Part E: Logistics and Transportation Review*, 116, pp. 208–228. doi: 10.1016/j.tre.2018.06.003.
- UNITED NATIONS CONFERENCE ON TRADE AND DEVELOPMENT, 2022. *Review of maritime Transport 2021*. [S.l.]: UNITED NATIONS, Division on Technology and Logistics.

Truck Appointment Systems

- van Asperen, E., Borgman, B. and Dekker, R., 2013. Evaluating impact of truck announcements on container stacking efficiency. *Flexible Services and Manufacturing Journal*, 25(4), pp. 543–556. doi: 10.1007/s10696-011-9108-1.
- Veloqui, M., Turias, I., Cerbán, M. M., González, M. J., Buiza, G. and Beltrán, J., 2014. Simulating the Landside Congestion in a Container Terminal. The Experience of the Port of Naples (Italy). *Procedia - Social and Behavioral Sciences*, 160, pp. 615–624. doi: 10.1016/j.sbspro.2014.12.175.
- Vom Brocke, J., Simons, A., Niehaves, B., Riemer, K., Plattfaut, R. and Cleven, A., 2009. Reconstructing the giant: On the importance of rigour in documenting the literature search process. In: *ECIS*.
- Wang, W. F. and Yun, W. Y., 2013. Scheduling for inland container truck and train transportation. *International Journal of Production Economics*, 143(2), pp. 349–356. doi: 10.1016/j.ijpe.2011.10.016.
- Wasesa, M., Ramadhan, F. I., Nita, A., Belgiawan, P. F. and Mayangsari, L., 2021. Impact of overbooking reservation mechanism on container terminal's operational performance and greenhouse gas emissions. *The Asian Journal of Shipping and Logistics*, 37(2), pp. 140–148. doi: 10.1016/j.ajsl.2021.01.002.
- Wasesa, M., Stam, A. and van Heck, E., 2017. The seaport service rate prediction system: Using drayage truck trajectory data to predict seaport service rates. *Decision Support Systems*, 95, pp. 37–48. doi: 10.1016/j.dss.2016.11.008.
- Webster, J. and Watson, R. T., 2002. Analyzing the Past to Prepare for the Future: Writing a Literature Review. *MIS Quarterly*, 26(2), pp. xiii–xxiii.
- Xu, B., Liu, X., Yang, Y., Li, J. and Postolache, O., 2021. Optimization for a Multi-Constraint Truck Appointment System Considering Morning and Evening Peak Congestion. *Sustainability*, 13(3), p. 1181–1181. doi: 10.3390/su13031181.
- Yang, H., Wang, L., Xu, Q. and Jin, Z., 2018. Collaborative optimization of container allocation and yard crane deployment based on truck appointment system. *Journal of Physics: Conference Series*, 1074, p. 12185–12185. doi: 10.1088/1742-6596/1074/1/012185.

- Yang, Z., Chen, G. and Moodie, D. R., 2010. Modeling Road Traffic Demand of Container Consolidation in a Chinese Port Terminal. *Journal of Transportation Engineering*, 136(10), pp. 881–886. doi: 10.1061/(ASCE)TE.1943-5436.0000152.
- Yi, S., Scholz-Reiter, B., Kim, T. and Kim, K. H., 2019. Scheduling appointments for container truck arrivals considering their effects on congestion. *Flexible Services and Manufacturing Journal*, 31(3), pp. 730–762.
- Yu, B., Zhang, C., Kong, L., Bao, H.-L., Wang, W.-S., Ke, S. and Ning, G., 2014. System dynamics modeling for the land transportation system in a port city. *Simulation: Transactions of the Society for Modeling and Simulation International*, (90(6)), pp. 706–716.
- Zehendner, E. and Feillet, D., 2014. Benefits of a truck appointment system on the service quality of inland transport modes at a multimodal container terminal. *European Journal of Operational Research*, 235(2), pp. 461–469. doi: 10.1016/j.ejor.2013.07.005.
- Zhang, C., Liu, Z. and Chen, Y., 2018. Simulation analysis of multi-stage gate operation in container terminals. In: *2018 Chinese Control And Decision Conference (CCDC). 2018 Chinese Control And Decision Conference (CCDC)*. Shenyang, 2018-06-09/2018-06-11: IEEE, pp. 1504–1509.
- Zhang, H., Zhang, Q. and Chen, W., 2019. Bi-level programming model of truck congestion pricing at container terminals. *Journal of Ambient Intelligence and Humanized Computing*, 10(1), pp. 385–394. doi: 10.1007/s12652-017-0641-y.
- Zhang, J., Xiao, P., Zhang, X. and Lin, H., 2012. A Study on the Relations between Port Container Throughput and Truck Trips in Different Logistics Modes. In: *The Twelfth COTA International Conference of Transportation Professionals*. Beijing, China, 2012-08-03/2012-08-06, pp. 412–421.
- Zhang, Q., Kwabla, A. C., Zhuang, Y., Ling, M., Wei, Y. and Yang, H., 2020. Research on Loading and Unloading Resource Scheduling and Optimization of Rail–Road Transportation in Container Terminal Based on “Internet +” —for Ghana Container Port Development Planning. *Journal of Advanced Transportation*, 2020(1), pp. 1–13. doi: 10.1155/2020/6972123.

Truck Appointment Systems

- Zhang, R., Yun, W. Y. and Kopfer, H., 2010. Heuristic-based truck scheduling for inland container transportation. *OR Spectrum*, 32(3), pp. 787–808. doi: 10.1007/s00291-010-0193-4.
- Zhang, R., Yun, W. Y. and Moon, I., 2009. A reactive tabu search algorithm for the multi-depot container truck transportation problem. *Transportation Research Part E: Logistics and Transportation Review*, 45(6), pp. 904–914.
- Zhang, X., Zeng, Q. and Chen, W., 2013. Optimization Model for Truck Appointment in Container Terminals. *Procedia - Social and Behavioral Sciences*, 96, pp. 1938–1947. doi: 10.1016/j.sbspro.2013.08.219.
- Zhang, X., Zeng, Q. and Yang, Z., 2018. Optimization of truck appointments in container terminals. *Maritime Economics & Logistics*, pp. 1–21. doi: 10.1057/s41278-018-0105-0.
- Zhang, Y. and Zhang, R., 2017. Appointment of container drayage services: A primary literature review. In: *2017 International Conference on Service Systems and Service Management*. Dalian, China, 2017-06-16/2017-06-18: IEEE, pp. 1–5.
- Zhao, W. and Goodchild, A., 2010a. Impact of Truck Arrival Information on System Efficiency at Container Terminals. *Transportation Research Record: Journal of the Transportation Research Board*, 2162, pp. 17–24. doi: 10.3141/2162-03.
- Zhao, W. and Goodchild, A. V., 2010b. The impact of truck arrival information on container terminal rehandling. *Transportation Research Part E: Logistics and Transportation Review*, 46(3), pp. 327–343. doi: 10.1016/j.tre.2009.11.007.
- Zhao, W. and Goodchild, A. V., 2011. Truck travel time reliability and prediction in a port drayage network. *Maritime Economics & Logistics*, 13(4), pp. 387–418. doi: 10.1057/mel.2011.24.
- Zhao, W. and Goodchild, A. V., 2013. Using the truck appointment system to improve yard efficiency in container terminals. *Maritime Economics & Logistics*, 15(1), pp. 101–119. doi: 10.1057/mel.2012.23.

- Zhou, Y. and Ge, Y., 2018. Managing Reversible Lanes with Truck Arrival Information to Alleviate Gate Congestion at Smart Container Terminals. In: Y. Wang, and M. T. McNerney. *Selected papers from the International Conference on Transportation and Development 2018: Pittsburgh, Pennsylvania, USA, 15-18 July 2018*. Red Hook, NY: Curran Associates Inc, pp. 179–185.
- Zouhaier, H. and Ben Said, L., 2016. An Application Oriented Multi-Agent Based Approach to Dynamic Truck Scheduling at Cross-Dock. In: *2016 17th International Conference on Parallel and Distributed Computing, Applications and Technologies (PDCAT)*. Guangzhou, China, pp. 233–239.
- Zouhaier, H. and Said, L. B., 2017. Robust scheduling of truck arrivals at a cross-docking platform. In: *The Australasian Computer Science Week Multiconference*. Geelong, Australia, pp. 1–9.