

Raunig, Burkhard; Scheicher, Martin

Working Paper

Are Banks Different? Evidence from the CDS Market

Working Paper, No. 152

Provided in Cooperation with:

Oesterreichische Nationalbank (OeNB), Vienna

Suggested Citation: Raunig, Burkhard; Scheicher, Martin (2009) : Are Banks Different? Evidence from the CDS Market, Working Paper, No. 152, Oesterreichische Nationalbank (OeNB), Vienna

This Version is available at:

<https://hdl.handle.net/10419/264744>

Standard-Nutzungsbedingungen:

Die Dokumente auf EconStor dürfen zu eigenen wissenschaftlichen Zwecken und zum Privatgebrauch gespeichert und kopiert werden.

Sie dürfen die Dokumente nicht für öffentliche oder kommerzielle Zwecke vervielfältigen, öffentlich ausstellen, öffentlich zugänglich machen, vertreiben oder anderweitig nutzen.

Sofern die Verfasser die Dokumente unter Open-Content-Lizenzen (insbesondere CC-Lizenzen) zur Verfügung gestellt haben sollten, gelten abweichend von diesen Nutzungsbedingungen die in der dort genannten Lizenz gewährten Nutzungsrechte.

Terms of use:

Documents in EconStor may be saved and copied for your personal and scholarly purposes.

You are not to copy documents for public or commercial purposes, to exhibit the documents publicly, to make them publicly available on the internet, or to distribute or otherwise use the documents in public.

If the documents have been made available under an Open Content Licence (especially Creative Commons Licences), you may exercise further usage rights as specified in the indicated licence.

WORKING PAPER 152

Are Banks Different? Evidence from the CDS Market

Burkhard Raunig and Martin Scheicher

Editorial Board of the Working Papers

Martin Summer, Coordinating Editor
Ernest Gnan,
Günther Thonabauer
Peter Mooslechner
Doris Ritzberger-Gruenwald

Statement of Purpose

The Working Paper series of the Oesterreichische Nationalbank is designed to disseminate and to provide a platform for discussion of either work of the staff of the OeNB economists or outside contributors on topics which are of special interest to the OeNB. To ensure the high quality of their content, the contributions are subjected to an international refereeing process. The opinions are strictly those of the authors and do in no way commit the OeNB.

Imprint: Responsibility according to Austrian media law: Günther Thonabauer, Secretariat of the Board of Executive Directors, Oesterreichische Nationalbank

Published and printed by Oesterreichische Nationalbank, Wien.

The Working Papers are also available on our website (<http://www.oenb.at>) and they are indexed in RePEc (<http://repec.org/>).

Editorial

This paper uses regression analysis to compare the market pricing of the default risk of banks to that of other firms. The authors study how CDS traders discriminate between banks and other type of firms and how their judgement changes over time, in particular, since the start of the recent financial turmoil. The authors use monthly data on the Credit Default Swaps (CDS) of 41 major banks and 162 non-banks. By means of panel analysis, they decompose the CDS premia into the expected loss and the risk premium. The authors' primary result is that market participants indeed viewed banks differently and that they drastically changed their mind during the recent turmoil that started in August 2007.

February 16, 2009

Are Banks Different? Evidence from the CDS Market

Burkhard Raunig¹ and Martin Scheicher²

January 2009

Abstract

This paper uses regression analysis to compare the market pricing of the default risk of banks to that of other firms. We study how CDS traders discriminate between banks and other type of firms and how their judgement changes over time, in particular, since the start of the recent financial turmoil. We use monthly data on the Credit Default Swaps (CDS) of 41 major banks and 162 non-banks. By means of panel analysis, we decompose the CDS premia into the expected loss and the risk premium. Our primary result is that market participants indeed viewed banks differently and that they drastically changed their mind during the recent turmoil that started in August 2007.

JEL classification: E43, G12, G13;

Keywords: Credit default swap, market discipline, default risk, risk premium

¹ Oesterreichische Nationalbank, Otto-Wagner-Platz 3, A – 1011, Vienna, Austria. Tel: +43 1 40420 7219; Email: burkhard.raunig@oenb.at

² European Central Bank, Kaiserstrasse 29, D – 60311, Frankfurt am Main, Germany. Tel: +49 69 1344 8337; Email: martin.scheicher@ecb.int

The opinions in this paper do not necessarily reflect those of the OeNB or ECB. This paper has been presented at the Bank of England, ECB, OeNB and Fitch Ratings. We would like to thank seminar participants for helpful comments.

1 Introduction

In order to prevent bank runs, contagion and related damages to the economy banks are heavily regulated in most countries. Another justification for intensive supervision is that banks tend to be more opaque than other firms. It is often argued that high leverage, the unique nature of bank assets as well as trading activities create uncertainty and agency problems which cannot easily be resolved by market discipline alone. By investigating the disagreement between rating agencies on the riskiness of bank debt Morgan (2002) concludes that banks are indeed inherently more opaque than other firms. Quite to the contrary, by studying the microstructure properties of U.S. bank stocks Flannery et al. (2004) find that banking assets are not unusually opaque. Moreover, they argue that large bank holding companies are probably easier to evaluate than other firms.

How do investors in credit risky instruments judge the riskiness of the banking business? Do they discriminate between banks and other type of firms? Has their judgement changed over time? In particular, how has the recent financial turmoil affected their view? We investigate these questions using information from the Credit Default Swap (CDS) market. CDS contracts are over the counter derivative securities providing insurance against default of bonds or loans. Their “market price” is the so called CDS premium. Due to a standardized contract design and the relatively high liquidity in the market the CDS premium is arguably the best measure of credit risk currently available (O’Kane and Sen, 2005). Our sample comprises monthly data on the CDS premium of 41 major banking groups and 162 non-banks for the period January 2003 to December 2007.

Using the Moody’s KMV EDF as a real-world measure of default risk, we decompose the CDS premia into expected loss and risk premia. Our aim is to

understand market pricing rather than to study the performance of alternative models for pricing CDS. Thus, our econometric specification is motivated by a commonly used approach, which while simple, captures the main features of CDS pricing.

Research on the determinants of CDS premia and credit spreads in general does either not distinguish between banks and other firms or excludes financial firms altogether. However, if market participants really think that the drivers of the default risk of banks are different then components of bank CDS premia should reflect this fact. This research includes Collin-Dufresne et al. (2001) on the determinants of bond-based credit spreads, Campbell and Taksler (2003) on the linkage between equity volatility and credit spreads, Zhang et al. (2005) on the linkage between jumps and credit spreads and Ericsson et al. (2008) on the determinants of CDS. Berndt et al. (2005) use intensity modelling to estimate default risk premia.

Our paper is also related to the literature on the market discipline of banks.³ Market prices of banks' debt are available on a much higher frequency than accounting variables and aggregate the market's perception of a bank's credit risk. Hence, markets may provide valuable forward-looking information not revealed otherwise. Therefore, many supervisors have incorporated market prices into their early warning models.

From a financial stability perspective, understanding the specific factors and their role in driving the variation in CDS premia is important because changes in the weight of credit- and non-credit related elements have different policy implications. For instance, indications about rising aversion to credit risk provide a different signal of market perceptions than forecasts of rising future expected losses in the banking system. The sharp increase in banks' CDS which is a central feature of the turmoil in

³ Flannery (2001) offers a conceptual discussion, see also Gropp et al. (2006).

credit markets since summer 2007 has underlined the importance of understanding the market pricing of banks' credit risk.⁴ Our empirical findings suggest that market participants indeed viewed banks differently and that they drastically changed their mind during the recent turmoil that started in August 2007. We also find considerable variation in the explanatory power of our factors over time.

The rest of this paper is organised as follows. Section 2 describes the mechanics of CDS contracts and the decomposition of the CDS premium. Section 3 summarises our sample. Section 4 provides a time series perspective on CDS premia of banks and non banks. Section 5 contains our econometric analysis and section 6 concludes.

2 The CDS premium

In a standard single name CDS two parties enter into a contract terminating either at the stated maturity or earlier at the time when a specified credit event occurs. Typical credit events include failure to meet payment obligations when they are due, bankruptcy and some more technical credit events which are defined along with other terms of the contract by the International Swaps and Derivatives Association (ISDA). If a default event occurs the protection seller compensates the protection buyer for the incurred loss by either paying the face value of the bond in exchange for the defaulted bond (physical settlement) or by paying the difference between the post-default market value of the bond and the par value (cash settlement) where the post-default value of the bond is fixed by a dealer poll.

The annual insurance premium (in basis points as a fraction of the underlying notional) that the buyer pays for protection against default is the CDS premium. Like

⁴ BIS (2008) offers a detailed analysis of the subprime crisis.

in a standard swap this premium is set such that the CDS has zero value at the time of origination of the contract. The CDS premium (C) can be split up into an expected loss (EL) component, which depends on the recovery rate (R) and the probability of default (PD) plus a risk premium (RP). This (approximate) decomposition (derived in appendix 1) can be written as

$$C = EL + RP = (1 - R)PD + RP. \quad (1)$$

In (1) the probability of default may depend on general economic conditions as well as on sector and firm specific conditions. Recovery rates may also vary with macroeconomic conditions, debt type, seniority and industry and may display a negative relationship with default rates (Altman et al., 2005). The risk premium compensates for the exposure to default risk, liquidity risk and possibly other non diversifiable sources of risk.

3 Data

We focus on single name CDS contracts with a tenor of five years because this is the most frequently traded type of contract in the CDS market. For this tenor we collected end of month CDS premia from the Bloomberg database for the period from January 2003 to December 2007. Decomposition (1) suggests that default probabilities should be closely related to CDS premia. Hence we need estimates of default probabilities. The empirical default probabilities (EDF) from the KMV database provide such estimates on a monthly basis. The EDF is an estimate of the probability of default based on the model of Merton (1974) and widely used in the financial industry.

Kealhofer (2003) outlines the methodology to obtain the EDF in some detail but KMV does not fully disclose their procedure.⁵

After eliminating sovereign entities, companies not listed at a stock exchange and companies who disappeared through merger or went bankrupt we were able to match CDS premia for 213 firms with corresponding firm specific EDF's from the KMV database. Data on other control variables that we use in the regression analysis are also collected from the Bloomberg database.

From the 213 companies in the dataset 41 belong to the banking industry.⁶ They are among the largest banks in the US and Europe. We list them in Table A1 in the appendix. The remaining firms belong to a broad range of different industries, including many industrial firms but also other financial firms such as insurers or investment banks. Table 1 provides some statistics about the CDS premium on the industry level over the entire sample period. The average CDS premium in the sample is about 58 basis points and the median is around 37 basis points. In nearly all industries the median CDS premium is lower than the average premium reflecting the fact that the distribution of the premia is skewed to the right. It is striking that the average and median CDS premium of banks is only about 21 and 15 basis points, respectively, and hence among the lowest across all the industries in the sample.

4 CDS premia of banks and non banks over time

Figure 1 displays how the CDS premium of banks and non banks evolved over time. Throughout the sample period the average CDS premium for banks was lower than the average premium for non banks. Both premia dropped sharply at the start of the sample period reflecting the recovery from the economic downturn at the beginning of

⁵ Bharath and Shumway (2008) examine the accuracy of a simplified version of the KMV model.

⁶ Hence, we use a narrow definition of banks as deposit-taking institutions.

the decade. Then between October 2003 and June 2007 the CDS premium was in both sectors rather stable. Finally, during the last six months of the sample the premium rose sharply in both sectors due to the turmoil that originated in the US sub-prime market. Moreover, the difference between the average CDS premium of the banking and non banking sector shrunk markedly in the turmoil months. Figure 2 shows the median of the CDS premia in both sectors. Unlike the mean this measure is robust to extreme observations. The message remains basically the same but here the difference in the premia essentially disappears during the turmoil.

Figure 3 shows the median CDS premia for banks and non banks together with the corresponding median EDF's (expressed in basis points) from KMV. Two observations are striking. First, the EDF of non banks while clearly larger during the first half of the sample period converges more or less to the EDF of banks during the second part of the sample period. Second, the median EDF tracks the median CDS premium quite closely until the start of the turmoil in both industry sectors. But during the turmoil in both sectors a wide gap opens between the EDF and the CDS premium suggesting that the market demanded a huge risk premium for holding credit risk in general.

The EDF from KMV is an estimate of the real-world or actual probability of default but the pricing of credit risk requires risk-neutral default probabilities. Risk-neutral probabilities are typically larger than real-world probabilities to compensate for risk aversion (see Duffie and Singleton (2003), Ch. 5 for further discussion). The ratio between the risk-neutral and the actual default probabilities should therefore inform us about the risk perception of investors. Alternatively to (1) we can express the observed CDS premium C as

$$C = (1 - R)\lambda \quad (2)$$

where λ is the risk-neutral default probability (e.g. Hull et al., 2005). Making the simplifying but standard assumption of a constant recovery rate we can approximate the risk-neutral default probability by the quantity $C/(1-R)$.

Figure 4 displays the ratio of the risk-neutral to the empirical default probability for banks and non banks. In the approximation of the risk-neutral probabilities we use the median CDS premium and set the recovery rate R to 40% as is commonly done by market participants. In both sectors the ratio rose from a value of about 4 to a value of roughly 20. Thus, although the actual default probabilities declined market participants became relatively more concerned about credit risk over time.

Note that the risk-neutral/empirical default probability ratio is about the same for bank and non banks during the recovery phase at the beginning of the sample period. Afterwards, during the stable phase, the ratio is most of the time markedly larger for non banks, however. Thus, the market either believed that banks are inherently less risky or the market expected to obtain a significantly higher recovery rate in case of a bank default. The CDS premium of banks *and* non banks shot up dramatically during the turmoil where announcements of spectacular losses of banks and other financial institutions were frequently released. During this time banks were even reluctant to lend money to each other as reflected by the sharp increase in overnight interest rates and the accompanying interventions of central banks to avoid a dry up of the inter bank market.

In order to illustrate the extent of the repricing of banks, figure 5 shows a histogram of the relative change in median CDS premia between period 2 and period

3. The chart indicates both the size of the repricing as well as the heterogeneity with 8 banks recording an increase of up to 80 % and 6 banks recording an increase between 150 and 170 %.

5 Regression analysis

5.1 Baseline model

The CDS premium can be decomposed into a loss given default component times the probability of default plus a risk premium. Using our sample of firm level data we now assess statistically whether this decomposition differs for banks and non banks. We start with a simple empirical model which we refine later. Assuming a constant risk premium, substituting the empirical default probability for the true but unobservable PD in (1), accounting for unobserved firm specific fixed effects ν_i , error terms ε_{it} as well as for differences between banks and non banks we obtain the empirical model

$$C_{it} = \alpha + \beta_1 EDF_{it} + \beta_2 BANK * EDF_{it} + \nu_i + \varepsilon_{it}. \quad (3)$$

In (3) C is the CDS premium, EDF is the empirical default probability and $BANK$ is a dummy variable that takes on the value of one if the firm is a bank (as defined above) and zero otherwise. The coefficients β_1 and β_2 have an interesting interpretation. The coefficient β_1 may be viewed as an estimate of the loss given default LGD for non banks and β_2 measures the difference in the estimated LGD for banks.

The baseline model that we will extend later on is admittedly simple. For example, figure 4 suggests that the risk premium varies over time. The assumption of

a constant risk premium may therefore be unrealistic when the model is estimated over the full sample period and may still be too restrictive when the model is estimated over different sub-periods. The model just serves as a benchmark to see later to what extent various variables associated with the risk premium are able to explain the variation in CDS premia in addition to the EDF.

Table 2 shows the model coefficients estimated over the entire sample period as well as over the three sub periods which we distinguished in section 4. To account for possible presence of autocorrelation and heteroskedasticity we use panel robust estimates of the asymptotic variance-covariance matrix for inference (Cameron and Trivedi, 2005, Ch 21 provide details). The first column in table 2 contains the regression coefficients estimated over the full sample period. The simple model is able to explain about 50% of the variation in the CDS premium. The coefficient on the EDF implies an estimated LGD of about 60 % (i.e. a recovery rate of about 40%) for non banks. This estimate is quite close to the standard assumption made by market participants. The insignificance of the bank dummy variable implies that the coefficient on the EDF for banks is about the same as for non banks.

The analysis in section 4 suggests that the relationship between the EDF and the CDS premium may not be stable over time and the regression results obtained for the three sub periods confirm this conjecture. During the first period (1/2003 - 9/2003) we do not find statistically significant differences between banks and non banks. But in the second period (10/2003 - 6/2007) where CDS premia are relatively stable both β coefficients are lower. The coefficient for non banks is around 45 and the coefficient for banks is only about half as large. This difference is statistically significant at the 10% level. The last period (7/2007 - 12/2007) covers the first six months of the turmoil. Here both coefficients are extremely high. The coefficient for

non banks is slightly above 100 and therefore already larger than theory permits but the coefficient on the bank dummy times the EDF is even four times larger. However, as the standard error of 280 indicates the coefficient is very imprecisely estimated and therefore not statistically significant. Moreover, the ability of the model to explain the cross sectional variation in the CDS premium drops sharply.

Table 3 provides summary statistics concerning the CDS premium and the EDF for banks in the three sub-periods. If we compare period 2 with period 3 it can be seen that the variability of the CDS premium measured by the standard deviation or the more robust inter-quartile range rises in the later turmoil period. At the same time the variability of the EDF declines quite a lot in the turmoil period. This helps to explain why the coefficient on the bank dummy times the EDF is estimated so imprecisely in the third period.

5.2. Determinants of risk premia

In the simple model we assume that the risk premium is constant over the estimation period. If this assumption is violated the coefficients on the EDF may pick up effects from variables related to time varying risk premia that are correlated with the EDF. We now extend the model to account for the possibility of time varying components of the risk premium. The enlarged model is

$$C_{it} = \alpha + \beta_1 EDF_{it} + \beta_2 BANK * EDF_{it} + \gamma \mathbf{x}_t + v_i + \varepsilon_{it}, \quad (4)$$

where γ is a vector of parameters and \mathbf{x} denotes a vector of additional control variables. The control variables are the risk-free five year interest rate, the slope of the yield curve, the implied stock market volatility, a measure of idiosyncratic equity

volatility and the swap spread. The selection of these variables is based on the results in Campbell and Taksler (2003).

Risk-free rate: Changes in the risk-free rate in general are negatively related to credit spreads. The theoretical explanation within the Merton (1974) framework proceeds as follows: First, a rising risk-free rate decreases the present value of expected future cash flows, i.e. the price of the put option decreases. Second, a rising risk-free rate tends to raise the expected growth rate of the firm value and hence a higher firm value becomes more likely. In turn, this implies a lower price of the put option on the firm value. Both effects decrease the costs of insurance against default, which implies a lower credit spread. We use the five-year swap rate because interest rate swaps are commonly seen as the market participants' preferred measure of the risk-free rate (cf. Longstaff et al., 2005).

Slope of the yield curve: In the Longstaff and Schwarz (1995) structural credit risk model with stochastic interest rates, a rising slope of the term structure lowers credit spreads. In this model, in the long run, the short rate converges to the long rate. Hence an increasing slope of the term structure should lead to an increase in the expected future spot rate. This in turn, will decrease credit spreads through its effect on the drift of the asset value process. We define the slope of the term structure as the difference between the ten-year and the one-year euro and US dollar swap rates, respectively.

Stock market volatility: Spreads for credit-risky products compensate investors for more than pure expected losses from default (Berndt et al, 2005). These risk premia are typically assumed to be correlated with investor attitudes towards risk. Given its forward-looking character, the VIX implied volatility index derived from option prices on the S&P 500 equity index is commonly used to capture these effects

(Coudert and Gex, 2008). For the European market, we use the VSTOXX index, which represents the implied volatility of the Euro Stoxx 50 index.

Idiosyncratic equity volatility: Campbell and Taksler (2003) find that the variation in the spreads on US corporate bonds is more strongly linked to idiosyncratic stock price volatility rather than aggregate stock price volatility. Like these authors we define a firm's idiosyncratic stock returns as the difference between its stock return and the market-wide stock return as represented by the S&P 500 or the EuroStoxx 50, respectively. The idiosyncratic volatility is then calculated as the monthly average of squared idiosyncratic stock returns. Idiosyncratic volatility measured in this way implicitly assumes a beta of one. Campbell and Taksler (2003) find that adjusting for beta has no effect on their findings.

Swap spread: Longstaff et al. (2005) show that risk premia in credit spreads are positively related to average bid-ask spreads, which in turn capture changes in market liquidity. As individual bid-ask spreads for the CDS are not readily available, we use US dollar and Euro 10 year swap spreads. These are known to contain a liquidity premium, along with a premium reflecting the default risk embedded in the Libor rate (which is known to have risen during the crisis), due to banks' funding operations in the interbank market (Huang and Neftci, 2003).

Table 4 reports the results from the fixed effects panel regressions of model (4). The first column contains the estimates over the entire sample period. The estimates for β_1 and β_2 in (4) differ slightly from the estimates in the simple model (3) but β_2 is again not significantly different from zero. The coefficients on the additional control variables are statistically different from zero at conventional significance levels. The only exception is the coefficient on the slope of the yield curve. Hence variables related to time varying risk premia help to explain CDS

spreads but the modest increase of only 3% in the overall explanatory power suggests that their contribution relative to the EDF is rather small.

The other columns in table 4 show the estimates for the three sub periods. The results are again qualitatively similar to the ones for the simpler model (3). The coefficient β_2 is statistically insignificant in the first period, significantly lower in the second period and extremely large but imprecisely estimated in the turmoil period. The variables related to the risk premium help again to explain CDS spreads to some extent during the sub periods. Their additional explanatory power is rather modest in the first two periods. During the turmoil period, however, their contribution is quite large in relative terms. In particular, the simple model can only explain about 12% of the overall variation in the CDS spread during the turmoil period whereas the extended model can explain about 20%.

Finally, the explanatory value of factors also sheds some light on changes in the market perception of corporate credit risk. Figure 6 shows the variation in the R-squared measure across subperiods. Here, model 1 represents the specification with the EDF as the only right-hand side variable (table 2). In contrast, model 2 also contains the additional explanatory factors (table 4). We find a sharp decline in the R-squared measure with the lowest values observed in the last period.

One possible explanation of this finding is in terms of the "credit spread puzzle" (see, for example, Amato and Remolona (2003)), which describes the observation that fundamental factors are usually found to explain only a small fraction of observed credit spreads. A similar result is documented by Collin-Dufresne et al. (2001) for US corporate bonds. They show that the residuals from regressions on the spreads of individual bonds are heavily correlated. Their interpretation is that US corporate bond markets are segmented from stock and Treasury markets and driven

by large supply/demand shocks. This interpretation could also be applied to CDS. Given that the market has only been active for a few years, supply – demand imbalances and technical factors, which are not captured by the liquidity proxies in the equations, may be present. In addition, the market may exhibit “clienteles” effects, i.e. demand may differ across firms due to investors’ risk appetite. Similar clientele effects based on heterogeneous investors have also been observed in other segments of the credit market.⁷

5.3 Bank specific risk premia

In (4) we assume that the variables that help to determine the risk premium affect the CDS premia of banks and non banks to the same extent. Now we relax this assumption and allow for differences between both types of firms. Thus we estimate the model

$$C_{it} = \alpha + \beta_1 EDF_{it} + \beta_2 BANK * EDF_{it} + \gamma \mathbf{x}_t + \delta \mathbf{x}_t BANK + \nu_i + \varepsilon_{it} \quad (5)$$

in which we interact all explanatory variables with the bank dummy. Table 4 summarizes the results for this model.

When we estimate (5) over the full sample period only the interaction term on idiosyncratic volatility is statistically significant. The estimated coefficient on the idiosyncratic volatility for non banks is about plus one and the estimated coefficient on the associated bank interaction term is about minus one suggesting that idiosyncratic volatility does not affect the CDS premia for banks. However, the pattern on the interaction terms differs over the three sub periods. In period 1 no

⁷ For a study of these effects in the commercial paper market see Covitz and Downing (2007).

interaction term is statistically significant. We find significant interaction terms on the risk free rate, the market volatility and the idiosyncratic volatility in period 2. The size and sign of the estimated interaction coefficients suggest that these three variables affect bank CDS premia only to a small extent in the second sub period. Only the interaction term on the slope of the yield curve is significant in period 3 and the associated coefficient again suggests that this variable is less important for the CDS premia of banks.

Up to now we accounted for unobserved heterogeneity of firms in a fixed effects panel regression framework. This has the advantage that the coefficients can be consistently estimated if some of the explanatory variables are correlated with the unobserved effects. However, the fixed effects specification prevents the identification of marginal effects of qualitative variables. Thus we cannot assess whether the simple fact of being a bank helps to explain differences in the CDS premium for banks and non banks.

In order to assess this possibility we estimate the model

$$C_{it} = \alpha_1 + \alpha_2 BANK + \beta_1 EDF_{it} + \beta_2 BANK * EDF_{it} + \gamma \mathbf{x}_t + \delta \mathbf{x}_t BANK + v_i + \varepsilon_{it} \quad (6)$$

in which we treat unobserved heterogeneity v_i as a random effect (i.e. v_i is assumed to be random and uncorrelated with the explanatory variables). This enables us to use the random effects estimator which allows for qualitative variables. We can therefore include the bank dummy variable $BANK$ as an additional qualitative explanatory variable in (6).

Table 6 reports the results from the random effects model. The coefficient on the bank dummy variable is negative and statistically significant when the model is

estimated over the full sample period. Its numerical value suggests that the CDS premium is about 35 basis points lower for banks. However, this effect results mainly from the second sub period. In the first period the bank dummy is much smaller and statistically insignificant. Interestingly, the bank dummy is positive and numerically large in the third period. However, similar to the coefficient on the EDF for banks the estimate is very imprecise and therefore not statistically significant. The results for the other coefficients are very similar to the results from the fixed effects model (5) as reported in table 5. Only the coefficient on the swap spread is quantitatively but not qualitatively different in period 1 and period 3.

5.4 Robustness tests

We perform a number of robustness tests. First, the results of the regression analysis are similar if we add the investment banks to our group of banking companies. Second, we use the money market spread (defined as the difference between unsecured rates and the yields on short term government paper) instead of the swap spread. Again, results are materially unchanged.

A striking observation is that the EDF does not increase with CDS spreads at the end of the sample period (see e.g. figure 1). Given that the KMV model is proprietary it is difficult to exactly explain why this is the case. Ideally, we therefore would like to re-estimate our model with a second proxy for the real world default probability. However, this is not feasible as, to the best of our knowledge, KMV is the only provider of real world default probability estimates for banks as well as non-banks.⁸

⁸ For instance, Fitch offers estimates of the real world default probability through its Equity Implied Rating and Probability of Default methodology but the database does not cover banks (cf. Liu et al., 2007).

6. Conclusions

The existing literature emphasizes a number of major differences between banks and non-banks. First, solvent commercial banks always have access to central bank discount window operations, where they can obtain emergency liquidity when they are unable to raise funding on the interbank market. Hence the central bank as a lender of last resort has no equivalent among industrial firms. Second, the opacity in banks' assets makes them different from plain-vanilla industrials. In particular, bank loans are an example for an asset category which makes exogenous bank valuation particularly difficult. This argument can be summarised as the view that "Banks are black boxes" (cf. Morgan, 2002). Furthermore, the capital structure of banks and non-bank differs due to the fact that a part of banks' liabilities are government guaranteed retail deposits. However, despite these structural differences, the CDS remain comparable as market prices of banks' default risk as they always reference senior unsecured debt.

By means of regression analysis we study how CDS traders discriminate between banks and other type of firms and how their assessment has varied over time. Our results illustrate the substantial repricing of banks' CDS relative to the CDS of other firms during the subprime turmoil. In contrast to previous episodes of financial market stress such as the LTCM collapse in 1998 the subprime crisis has had a particularly severe and protracted impact on the banking system. This rise in systemic risk was to a large extent due to the fact that reliable pricing for the large exposures to securitisation instruments which banks had built up during the boom period of the credit risk transfer markets had become almost impossible.⁹ Hence, banks were faced with the problem that they were holding large positions on their books for which no

⁹ Examples are asset-backed securities or collateralised debt obligations (cf. Scheicher, 2008).

reliable valuation was available and selling into the market was also impossible due to the collapse in market liquidity.¹⁰ Depending on the quality of a bank's risk management, the extent of these positions varied considerably across banks. The uncertainty about the value as well as about the size of these credit market exposures led to general uncertainty about the valuation of banks themselves. This general reassessment of credit risk spilt over money markets in August 2007.¹¹

Our analysis captures some of the main features of the market turmoil. First, we find that the market unconditionally perceived banks to have lower default risk only in the second period. Second, the regressions as well as the time series plots show from August 2007 onwards that the perception of bank credit risk approached the level of non-banks which in our second sample period had been seen as being more risky.

Third, the increased valuation uncertainty is illustrated by the increase in the standard error of the coefficient on Bank x EDF. In this context, an alternative interpretation is that investors may also have had increasing doubt about the quality of the KMV EDF as a predictor of default risk. Thus, part of the increase in the coefficient on Bank x EDF may also be due to the fact that investors attached a higher likelihood to a bank default than the estimate of the KMV model. Support for this argument is provided by the fact that the EDF is an estimate for the probability of default whereas the CDS also provides insurance for other adverse credit events such as restructuring.

Finally, we find that the risk premium which investors require for exposure to bank credit risk differs across time as well as across the two types of firms. In

¹⁰ See e.g. Borio (2008) or Gorton (2008).

¹¹ Given the importance of counterparty risk in money markets, interbank rates rose sharply, making bank funding ever more difficult (Taylor and Williamson, 2008).

particular, effects on the risk premium of banks are weaker than on the risk premium of non-banks.

Appendix 1: Decomposition of the CDS premium

A standard CDS contract has two legs. The fee leg consists of the present value of the CDS premium payments that a protection buyer makes to the protection seller. The contingent leg is the present value of the payment that the protection seller makes in case of default. We assume for simplicity that the hazard rate λ (i.e. the probability of default per year conditional on no earlier default) is constant. We further assume no counterparty default risk and continuous premium payment. The value of the contingent leg at time $s > t$ is then

$$\int_t^T (1 - R)\lambda D(s)S(s)ds$$

where $S(s) = \exp(-\lambda s)$ is the survival probability, R is the recovery rate and $D(s)$ is the discount factor. The value of the fee leg is

$$C \int_t^T D(s)S(s)ds$$

where C is the CDS premium per annum. Subtracting the fee leg from the contingent leg yields

$$V(t) = [(1 - R)\lambda - C] \int_t^T D(s)S(s)ds.$$

At origination of the contract at $t = 0$ the present value of both legs are equated and the CDS has a market value $V(0) = 0$. Consequently the CDS premium is

$$C = (1 - R)\lambda.$$

Note that λ is a risk neutral probability which incorporates the risk aversion of investors. Risk neutral probabilities are therefore usually larger than actual default probabilities denoted as PD. Hence using PD instead of λ for pricing would lead to CDS premium C^* that is smaller than the one actually observed in the market. The difference between C and C^* is just the risk premium RP that the market requires for holding credit risk. Thus

$$C = (1 - R)PD + RP$$

is a decomposition of the CDS premium if we use objective probabilities. This decomposition is of course only approximate if we relax the assumption of a constant hazard rate and a deterministic recovery rate. Hull and White (2000) and Duffie and Singleton (2003) provide further details on CDS pricing.

Appendix 2: Banking companies in the dataset

Table A1: Banks included in the dataset

company name	country
ERSTE BANK	aut
FORTIS BANK A.S.	bel
DEXIA	bel
CREDIT SUISSE GROUP	che
UBS AG	che
DANSKE BANK AS	dnk
BNP PARIBAS	fra
SOCIETE GENERALE	fra
CREDIT AGRICOLE SA	fra
BARCLAYS PLC	gbr
HSBC HOLDINGS PLC	gbr
ROYAL BANK OF SCOTLAND GROUP PLC	gbr
STANDARD CHARTERED PLC	gbr
LLOYDS TSB GROUP PLC	gbr
BAYERISCHE HYPO- UND VEREINSBANK AG	ger
COMMERZBANK AKTIENGESELLSCHAFT	ger
DEUTSCHE BANK AKTIENGESELLSCHAFT	ger
ALLIED IRISH BANKS PLC	irl
BANK OF IRELAND	irl
UNICREDITO ITALIANO SPA	ita
MEDIOBANCA SPA	ita
INTESA SANPAOLO SPA	ita
BANCA POPOLARE DI MILANO	ita
CAPITALIA SPA	ita
BANCA MONTE DEI PASCHI DI SIENA SPA	ita
BANCA POPOLARE ITALIANA	ita
ABN AMRO HOLDING N.V.	nld
BANCO ESPIRITO SANTO SA	prt
BANCO COMERCIAL PORTUGUES, S.A.	prt
BANCO SABADELL	sm
BANCO BILBAO VIZCAYA ARGENTARIA SA	sp
BANCO POPULAR ESPANOL	sp
BANKINTER, S.A.	sp
SKANDINAVISKA ENSKILDA BANKEN	swe
JPMORGAN CHASE & CO	us
WACHOVIA CORP	us
BANK OF AMERICA CORP	us
WELLS FARGO & CO	us
CITIGROUP INC	us
WASHINGTON MUTUAL INC	us
CAPITAL ONE FINANCIAL CORP	us

Appendix 3: Variables used in the regression analysis

Table A2 : Variables in dataset

variable	description	source
CDS	Annual premium for a five year credit default swap	Bloomberg
EDF	Empirical Default Frequency (in percent)	KMV
RF	Risk free five year interest rate (swap rate, in percent)	Bloomberg
YSLOPE	Slope of the yield curve (difference between ten year and three month yield, in percent)	Bloomberg
VOLM	Implied stock market volatility (S&P 500, STOXX)	Bloomberg
VOLID	Idiosyncratic equity volatility	Bloomberg
SWAP	Spread between 10 year swap rate and government bond rate	Bloomberg
BANK	Dummy variable for banks	

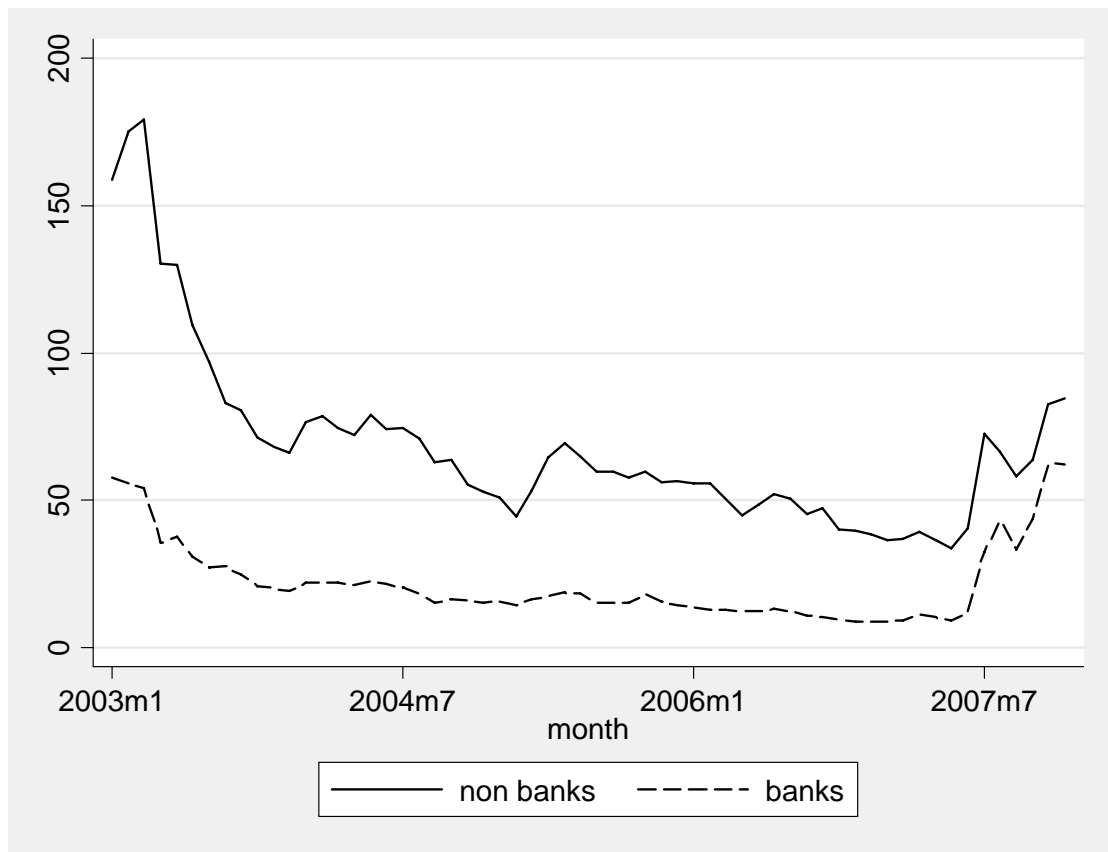
Figures

Figure 1: Average CDS premium of banks and non banks

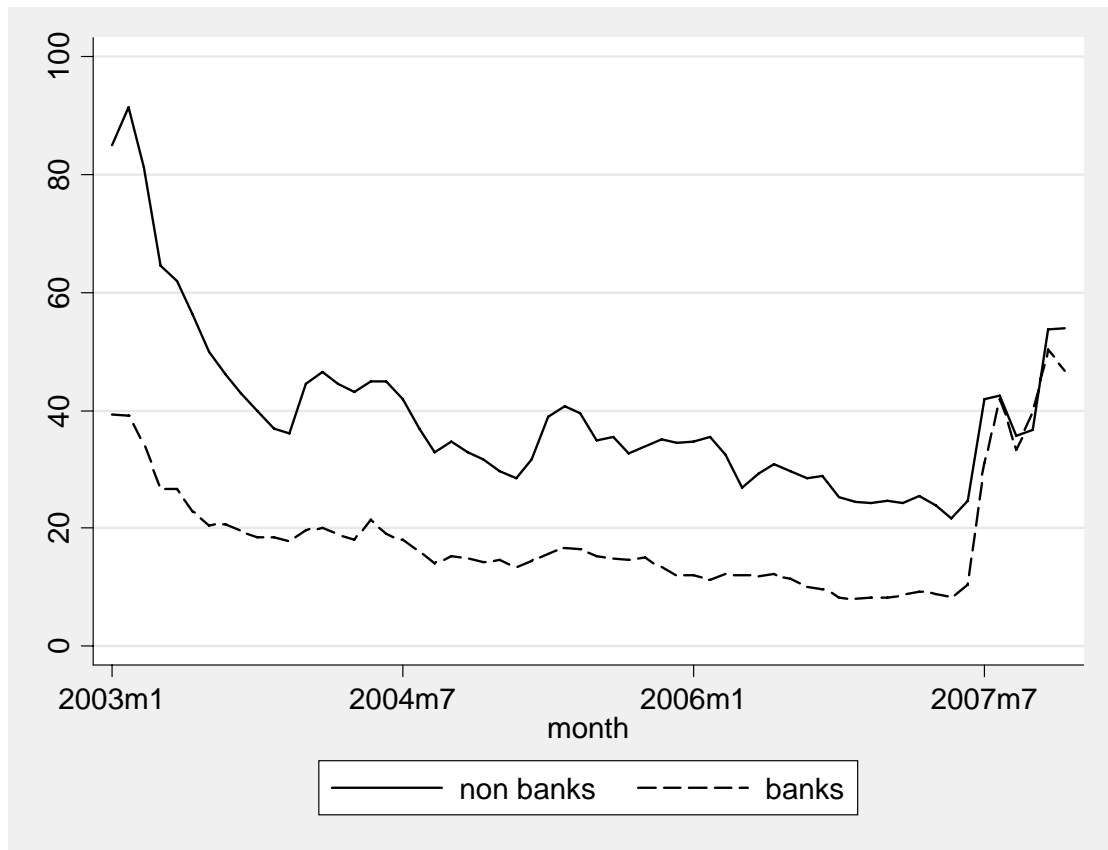


Figure 2: Median CDS premium of banks and non banks

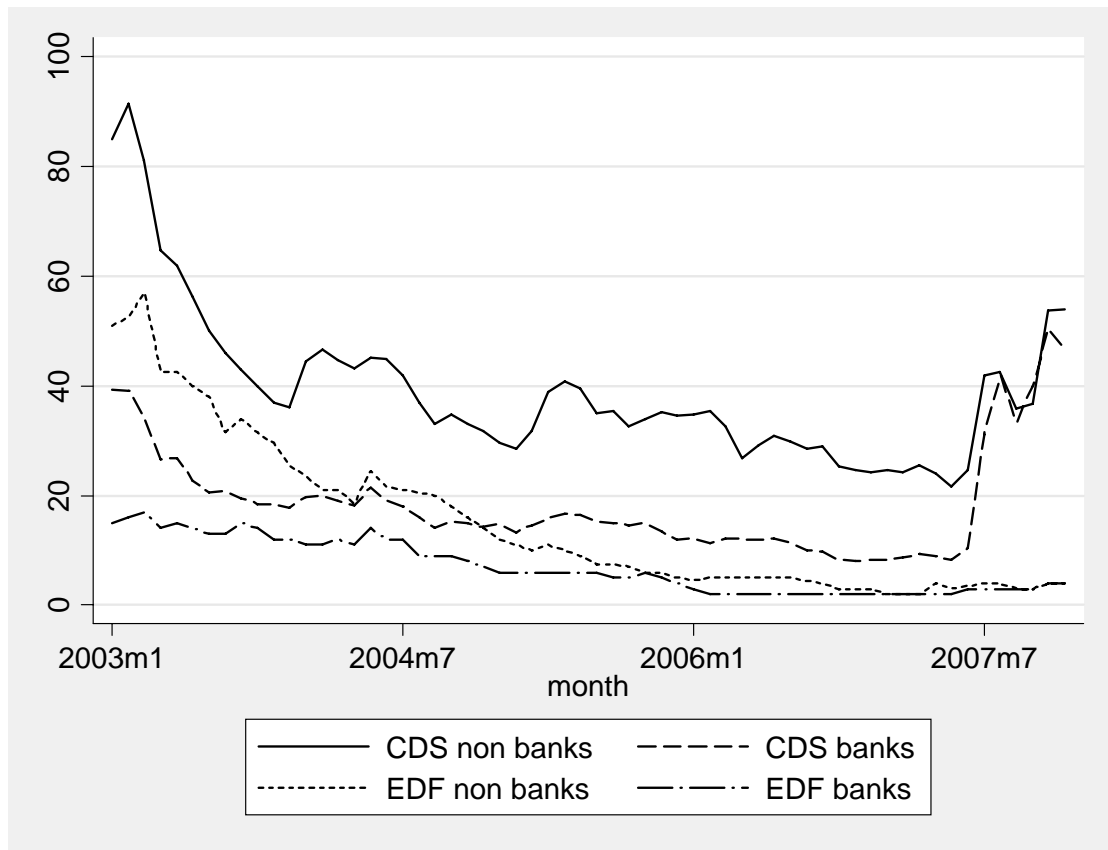


Figure 3: Median CDS premia and EDF's of banks and non banks

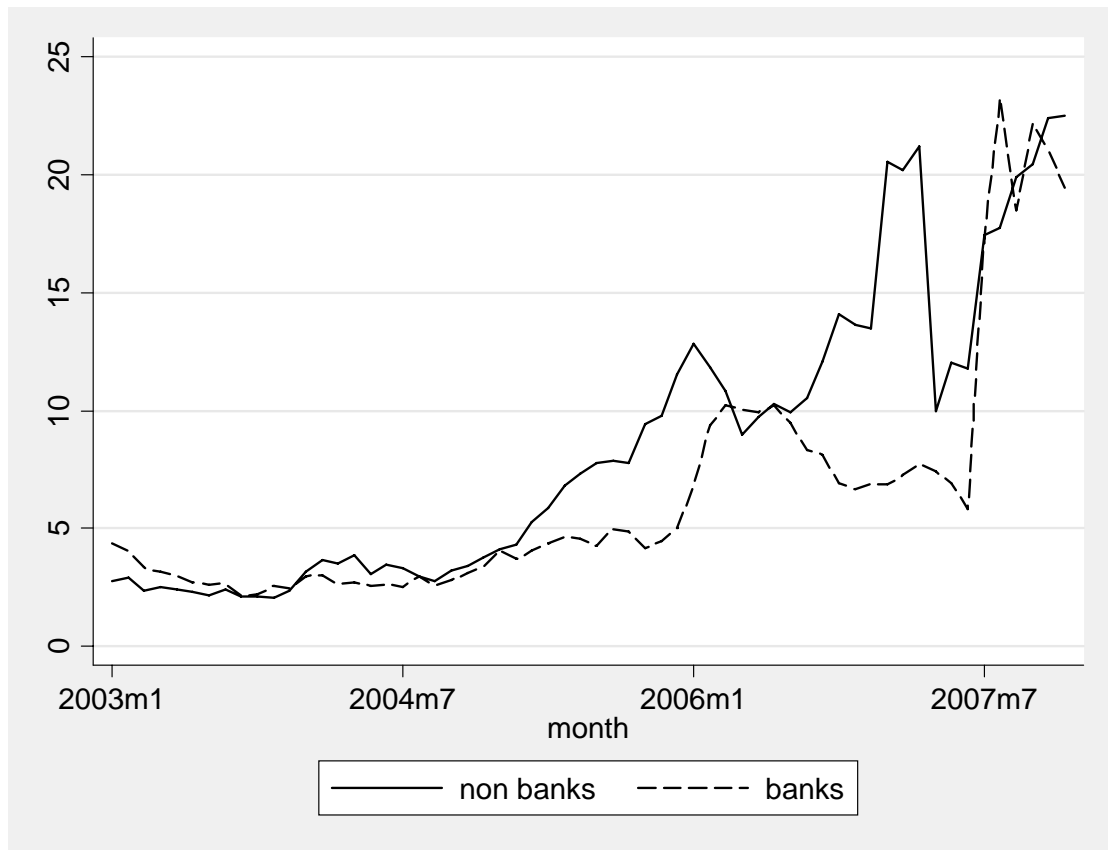


Figure 4: Ratio of risk-neutral to real-world default probabilities

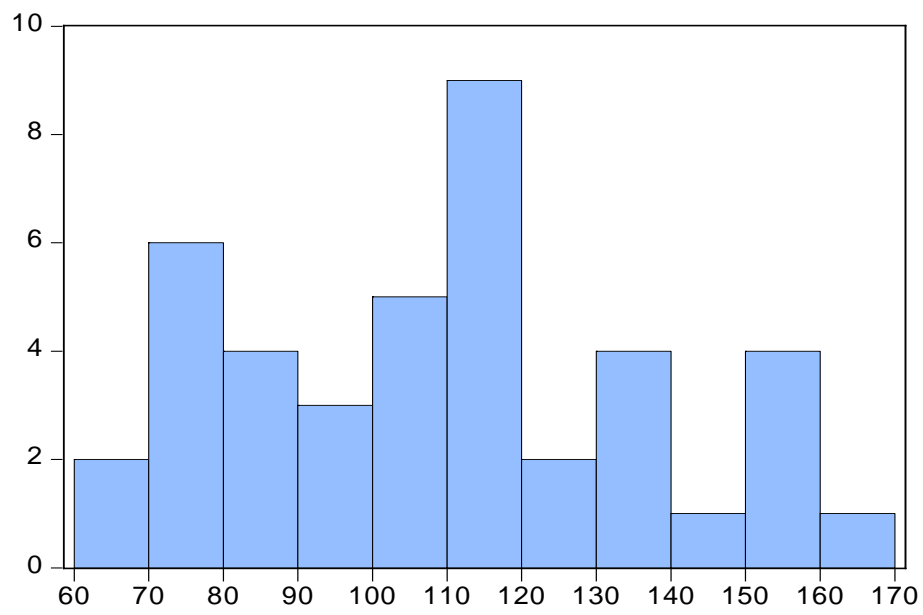


Figure 5: Histogram of changes in banks' CDS premia (log changes of period 2 vs. period 3)

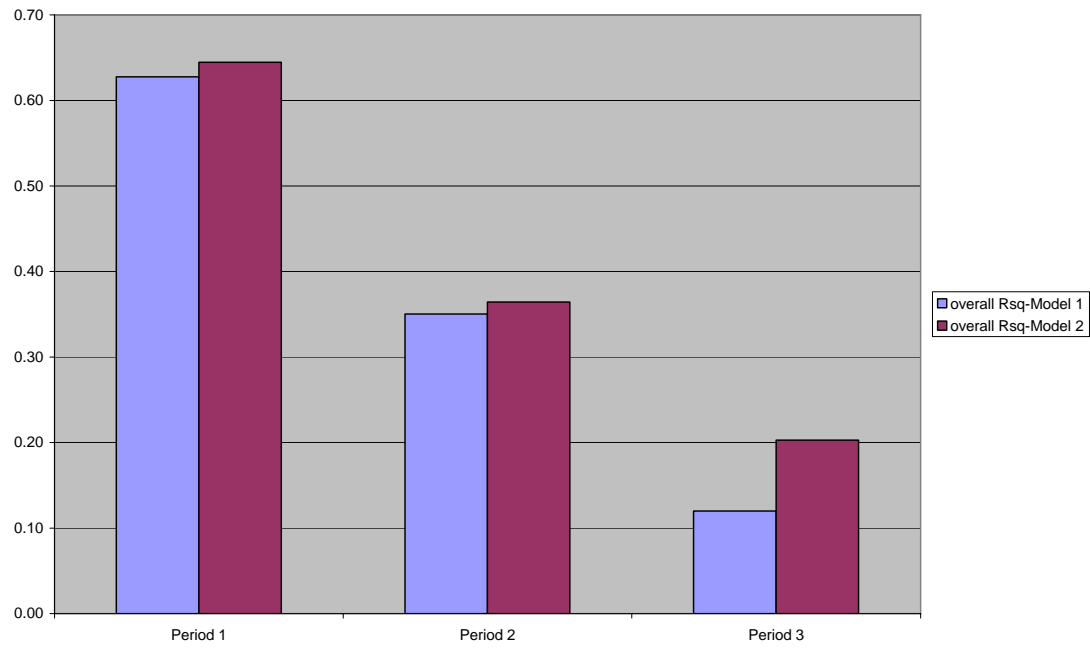


Figure 6: Comparison of R-squared measures across sub-periods. Model 1 includes only the EDF, model 2 also the risk appetite proxies.

Tables

Table 1: Summary statistics of CDS premia

industry	mean	median	min	max	N
aerospace&defense	41.5	32.4	12.9	288.3	289
air transportation	205.9	107.2	35.0	925.0	240
automotive	75.0	43.9	8.9	893.8	588
banks and s&lb	21.4	15.0	3.8	394.3	2332
business products whsl	30.0	28.3	19.4	57.0	48
business services	78.6	45.7	15.6	450.0	279
chemicals	79.2	30.0	8.8	739.6	466
construction	38.3	34.9	17.2	101.7	119
construction materials	74.0	45.9	20.3	515.0	274
consumer durables	40.6	34.5	15.2	125.2	60
consumer durables retl/whsl	59.0	53.0	27.0	155.9	120
consumer product	82.9	61.1	23.0	336.3	120
electrical equipment	62.4	65.1	32.2	115.9	60
electronic equipment	69.4	39.1	8.6	1062.5	349
entertainment & leasure	225.4	182.0	119.7	555.0	56
finance nec	47.9	30.2	9.0	324.7	171
food & beverage	31.1	29.0	3.4	82.8	347
food & beverage retl/whsl	74.4	49.3	7.7	1084.4	360
furniture & appliances	42.9	42.3	28.5	63.8	60
hotels & restaurants	84.1	60.2	19.1	756.3	240
insurance-life	25.8	23.4	6.1	118.8	567
insurance-prop/cas/health	51.0	36.3	6.5	605.2	1061
investment management	25.8	23.8	17.4	45.0	60
machinery & equipment	165.5	117.1	20.0	1525.0	162
measure & test equipment	418.4	419.4	88.5	1120.8	60
mining	23.0	21.7	10.5	98.3	106
oil refining	22.0	14.6	3.7	166.5	240
oil, gas & coal	27.6	19.9	5.6	97.5	120
paper	94.5	45.0	14.7	640.5	279
pharmaceuticals	21.1	13.2	4.1	170.8	180
publishing	45.3	41.1	17.5	159.0	240
real estate	39.7	36.3	15.2	115.0	120
real estate investment trusts	45.9	42.8	16.5	122.0	60
security brokers & dealers	37.9	31.2	16.2	179.8	300
semiconductors	35.9	30.7	21.5	115.0	60
steel & metal products	188.1	151.8	8.7	2001.8	228
telephone	74.2	42.4	17.5	825.0	645
tobacco	49.6	47.1	7.7	115.6	180
transportation	163.3	148.3	27.5	475.0	108
trucking	31.5	27.5	19.3	83.7	58
unassigned	24.3	23.2	9.7	54.3	51
utilities electric	32.0	26.1	8.2	180.0	480
utilities gas	27.5	24.2	13.0	62.7	60
utilities nec	34.0	27.9	10.2	146.6	282
Total	57.9	32.6	3.4	2001.8	12285

Notes: Mean, cv, min, max and N denote the mean, median, minimum, maximum and number of observations, respectively.

Table 2: Fixed effects panel regression of CDS premium on empirical default probability

	Full sample	Period 1	Period 2	Period 3
EDF	61.20*** (9.63)	68.92*** (8.22)	44.50*** (8.84)	113.54*** (28.49)
EDF x BANK	-7.11 (12.12)	0.17 (8.47)	-20.54* (11.43)	414.73 (280.29)
Const.	40.21*** (2.59)	47.16*** (6.93)	38.93*** (1.81)	54.99*** (3.09)
R-sq:				
within	0.51	0.58	0.26	0.36
between	0.49	0.63	0.46	0.09
overall	0.48	0.63	0.35	0.12
N firms	213	183	213	209
N obs	12237	1537	9462	1238

This table shows the estimated coefficients of the regression $C_{it} = \alpha + \beta_1 EDF_{it} + \beta_2 BANK * EDF_{it} + v_i + \varepsilon_{it}$. EDF denotes the empirical default probability and BANK is a dummy variable which takes on the value 1 if the firm is a bank and zero otherwise. Heteroskedasticity and autocorrelation robust standard errors are in parenthesis below coefficients. The full sample period ranges from 1/2003 – 12/2007. Period 1 ranges from 1/2003 – 9/2003, period 2 ranges from 10/2003 – 6/2007 and period 3 ranges from 8/2007 – 12/2007.

Table 3: Summary statistics of CDS premia and empirical default frequencies for banks in the three sub periods

	Period 1		Period 2		Period 3	
	CDS	EDF	CDS	EDF	CDS	EDF
mean	38.2	0.28	15.3	0.10	46.4	0.05
std	43.5	0.53	9.3	0.15	36.0	0.06
median	25.7	0.14	13.0	0.05	40.3	0.03
iqr	20.7	0.20	8.1	0.08	17.5	0.03
min	12.4	0.02	3.8	0.01	9.3	0.01
max	363.3	5.3	116.3	1.83	394.3	0.49

Notes: CDS denotes the CDS premium and EDF denotes the empirical default probability of banks. Mean, std, median, iqr, min and max denote the mean, standard deviation, median, inter-quartile range, minimum and maximum, respectively. Period 1 ranges from 1/2003 – 9/2003, period 2 ranges from 10/2003 – 6/2007 and period 3 ranges from 8/2007 – 12/200

Table 4: Fixed effects panel regression of CDS premium on empirical default probability and control variables

	Full sample	Period 1	Period 2	Period 3
EDF	54.71*** (9.75)	60.34*** (6.45)	40.11*** (8.49)	86.98*** (19.60)
EDF x BANK	-14.54 (12.51)	-2.42 (7.64)	-34.25*** (8.50)	318.89 (243.96)
RF	-15.80*** (1.80)	21.53** (8.60)	-10.18*** (1.89)	-16.45*** (5.03)
YSLOPE	-0.64 (1.18)	-39.26*** (10.94)	2.41** (1.12)	21.63*** (2.95)
VOLM	0.99*** (0.32)	0.47* (0.28)	0.72*** (0.17)	-0.58** (0.29)
VOLID	0.66** (0.30)	0.61 (0.38)	0.24 (0.15)	0.69** (0.27)
SWAP	103.33*** (17.82)	42.31* (24.19)	28.99 (18.69)	114.39*** (20.93)
Const.	46.51*** (7.19)	19.60 (17.52)	52.88*** (6.78)	74.59*** (25.40)
R-sq:				
within	0.56	0.63	0.29	0.49
between	0.52	0.64	0.49	0.16
overall	0.50	0.64	0.36	0.20
N firms	213	183	213	207
N obs	12219	1537	9454	1228

This table shows the estimated coefficients of the regression $C_{it} = \alpha + \beta_1 EDF_{it} + \beta_2 BANK * EDF_{it} + \gamma_1 RF_t + \gamma_2 x_t + v_i + \varepsilon_{it}$. EDF denotes the empirical default probability and BANK is a dummy variable which takes on the value 1 if the firm is a bank and zero otherwise. The vector x contains the risk free rate (RF), the slope of the yield curve (YSLOPE), the implied stock market volatility (VOLM), the idiosyncratic volatility (VOLID) and the swap spread (SWAP). Heteroskedasticity and autocorrelation robust standard errors are in parenthesis below coefficients. The full sample period ranges from 1/2003 – 12/2007. Period 1 ranges from 1/2003 – 9/2003, period 2 ranges from 10/2003 – 6/2007 and period 3 ranges from 8/2007 – 12/2007.

Table 5: Fixed effects panel regression of CDS premium on empirical default probability, control variables and interaction terms

	Full sample	Period 1	Period 2	Period 3
EDF	52.21*** (9.77)	59.57*** (6.43)	38.67*** (8.48)	88.19*** (19.84)
EDF x BANK	-2.88 (12.50)	4.90 (6.70)	-28.61*** (9.88)	279.25 (233.62)
RF	-16.40*** (2.10)	23.28** (10.28)	-12.08*** (2.29)	-11.80** (5.18)
YSLOPE	-0.81 (1.42)	-43.68*** (13.36)	2.25* (1.34)	25.29*** (3.40)
VOLM	0.88** (0.34)	0.56* (0.33)	0.68*** (0.19)	-0.80** (0.32)
VOLID	1.08*** (0.23)	0.64 (0.40)	0.62*** (0.11)	0.67** (0.31)
SWAP	94.19*** (21.06)	47.59* (27.57)	34.61 (23.14)	126.58*** (24.24)
RF x BANK	4.35 (2.83)	-12.08 (10.64)	10.07*** (2.36)	-27.72 (18.18)
YSLOPE x BANK	1.36 (1.83)	21.17 (14.11)	0.83 (1.42)	-19.13*** (5.09)
VOLM x BANK	-0.22 (0.38)	-0.45 (0.35)	-0.43** (0.19)	1.09 (0.73)
VOLID x BANK	-0.97*** (0.25)	-0.52 (0.40)	-0.60*** (0.11)	-0.03 (0.45)
SWAP x BANK	29.30 (25.41)	-3.98 (34.29)	-37.13 (24.23)	-57.01 (37.47)
Const.	44.21*** (6.84)	22.63 (16.40)	50.25*** (6.50)	78.05*** (27.01)
R-sq:				
within	0.57	0.63	0.29	0.50
between	0.53	0.65	0.43	0.10
overall	0.51	0.65	0.34	0.13
N firms	213	183	213	207
N obs	12219	1537	9454	1228

This table shows the estimated coefficients of the regression $C_{it} = \alpha + \beta_1 EDF_{it} + \beta_2 BANK * EDF_{it} + \gamma_1 RF_t + \gamma_2 x_t + \delta_1 x_t * BANK + v_i + \varepsilon_{it}$. EDF denotes the empirical default probability and BANK is a dummy variable which takes on the value 1 if the firm is a bank and zero otherwise. The vector x contains the risk free rate (RF), the slope of the yield curve (YSLOPE), the implied stock market volatility (VOLM), the idiosyncratic volatility (VOLID) and the swap spread (SWAP). Heteroskedasticity and autocorrelation robust standard errors are in parenthesis below coefficients. The full sample period ranges from 1/2003 – 12/2007. Period 1 ranges from 1/2003 – 9/2003, period 2 ranges from 10/2003 – 6/2007 and period 3 ranges from 8/2007 – 12/2007.

Table 6: Random effects panel regression of CDS premium on empirical default probability, control variables and interaction terms

	Full sample	Period 1	Period 2	Period 3
EDF	52.38*** (9.71)	60.22*** (6.64)	39.28*** (8.50)	89.82*** (21.72)
EDF x BANK	-3.07 (12.47)	4.77 (6.97)	-29.02*** (9.89)	251.51 (228.14)
RF	-16.16*** (2.09)	19.01** (8.77)	-12.07*** (2.28)	-11.21** (4.93)
YSLOPE	-1.13 (1.42)	-40.28*** (12.54)	2.01 (1.37)	22.91*** (3.31)
VOLM	0.88** (0.34)	0.48 (0.34)	0.68*** (0.19)	-0.66** (0.33)
VOLID	1.11*** (0.23)	0.68* (0.39)	0.65*** (0.12)	0.74** (0.31)
SWAP	89.52*** (20.25)	81.07*** (31.21)	32.61 (21.85)	108.25*** (20.10)
RF x BANK	4.24 (2.84)	-10.71 (9.39)	9.92*** (2.35)	-28.38 (17.75)
YSLOPE x BANK	1.47 (1.83)	19.77 (13.34)	1.28 (1.44)	-14.99** (5.83)
VOLM x BANK	-0.20 (0.38)	-0.39 (0.36)	-0.46** (0.19)	0.84 (0.66)
VOLID x BANK	-1.00*** (0.25)	-0.54 (0.39)	-0.63*** (0.12)	-0.06 (0.46)
SWAP x BANK	30.86 (24.85)	-19.57 (34.43)	-30.79 (23.00)	-29.02 (31.62)
BANK	-34.13*** (10.26)	-13.52 (19.68)	-44.89*** (10.25)	93.39 (80.05)
Const.	51.37*** (9.14)	27.46 (17.03)	58.96*** (10.09)	61.88** (24.45)
R-sq:				
within	0.57	0.63	0.29	0.50
between	0.54	0.65	0.45	0.22
overall	0.53	0.65	0.39	0.25
N firms	213	183	213	207
N obs	12219	1537	9454	1228

This table shows the estimated coefficients of the regression $C_{it} = \alpha_1 + \alpha_2 \text{BANK} + \beta_1 \text{EDF}_{it} + \beta_2 \text{BANK} * \text{EDF}_{it} + \gamma_1 \text{RF}_t + \gamma \mathbf{x}_t + \delta \mathbf{x}_t \text{BANK} + v_i + \varepsilon_{it}$. EDF denotes the empirical default probability and BANK is a dummy variable which takes on the value 1 if the firm is a bank and zero otherwise. The vector \mathbf{x} contains the risk free rate (RF), the slope of the yield curve (YSLOPE), the implied stock market volatility (VOLM), the idiosyncratic volatility (VOLID) and the swap spread (SWAP). Heteroskedasticity and autocorrelation robust standard errors are in parenthesis below coefficients. The full sample period ranges from 1/2003 – 12/2007. Period 1 ranges from 1/2003 – 9/2003, period 2 ranges from 10/2003 – 6/2007 and period 3 ranges from 8/2007 – 12/2007.

References

- Altman, E. I., Brooks, B., Resti, A. and Sironi, A. (2005). The link between default and recovery rates: theory, empirical evidence, and implications. *Journal of Business*, 78, 2203-2227.
- Amato, J and E Remolona (2003). The credit spread puzzle. *BIS Quarterly Review*, December, December, 51–63.
- Bank for International Settlements (2008). 78th Annual Report. June, Basel.
- Bharath, S. and T. Shumway (2008). Forecasting Default with the Merton Distance to Default Model. Forthcoming, *Review of Financial Studies*.
- Berndt, A, R Douglas, D Duffie, M Ferguson and D Schranz (2005). Measuring default risk premia from default swap rates and EDFs. *BIS Working Papers*, no 173.
- C. Borio (2008) The financial turmoil of 2007–?: a preliminary assessment and some policy considerations. BIS Working Paper No 251.
- Cameron, C. A. and Trivedi, P. K. (2005). *Microeconometrics: methods and applications*, Cambridge University Press.
- Campbell, J and G. Taksler (2003). Equity Volatility and Corporate Bond Yields. *Journal of Finance*, 58, 2321 – 2349.
- Collin-Dufresne, P, R Goldstein and JS Martin (2001). The Determinants of Credit Spread Changes. *Journal of Finance*, 56, 2177-2207.
- Coudert, V and M Gex (2008). Does risk aversion drive financial crises? Testing the predictive power of empirical indicators. *Journal of Empirical Finance*, 15, 167-184.
- Duffie, D., L. Saita and K. Wang (2007). Multi-period corporate default prediction with stochastic covariates. *Journal of Financial Economics*, 83, 635–665.

- Duffie, D. and Singleton, K. J. (2003). *Credit Risk: Pricing, Measurement, and Management*, Princeton University Press.
- Ericsson, J, K Jacobs and R Oviedo-Helfenberger (2008). The Determinants of Credit Default Swap Premia. Forthcoming, *Journal of Financial & Quantitative Analysis*.
- Flannery, M. J. (2001) The Faces of “Market discipline of banks”. *Journal of Financial Services Research*, 20, 107 - 119.
- Flannery, M. J., Kwan, S. H. and Nimalendran, M. (2004). Market evidence on the opaqueness of banking firms’ assets. *Journal of Financial Economics*, 71, 419-460.
- Gorton, G (2008): “The panic of 2007”, paper prepared for the Federal Reserve Bank of Kansas City Jackson Hole Conference, Yale School of Management, August.
- Gropp, R., J. Vesala and G. Vulpes (2006) Equity and Bond Market Signals as Leading Indicators of Bank Fragility. *Journal of Money, Credit and Banking* 38 (2), March 2006.
- Hull, J. and White, A. (2000). Valuing credit default swaps I: no counterparty default risk, *Journal of Derivatives*, 8, Fall, 29-40.
- Hull, J., Predescu, M. and White, A. (2005). Bond prices, default probabilities and risk premiums, *Journal of Credit Risk*, 1, Spring, 53-60.
- Kealhofer, S. (2003). Quantifying credit risk I: default prediction, *Financial Analysts Journal*, Jan/Feb, 30-44.
- Liu, B., A. Kocagil and G. Gupton (2007) Fitch Equity Implied Rating and Probability of Default Model. FitchSolutions paper.

- Longstaff, F, S Mithal and E Neis (2005). Corporate yield spreads: default risk or liquidity? New evidence from the credit default swap market. *Journal of Finance*, 60, 2213-2253.
- F. Longstaff and E. Schwartz (1995) A simple approach to valuing risky, fixed and floating rate debt. *Journal of Finance* 50, 789-821.
- Merton, R. (1974). On the Pricing of Corporate Debt: The Risk Structure of Interest Rates. *Journal of Finance* 29, 449-470.
- Morgan, D. P. (2002). Rating banks: risk and uncertainty in an opaque industry, *American Economic Review*, 92, 874-888.
- O’Kane, D. and Sen, S. (2005). Credit spreads explained, *Journal of Credit Risk*, 1, 61-78.
- Taylor, J. B. and Williams, J.C. (2008) A Black Swan in the Money Market. Mimeo, Federal Reserve Bank of San Francisco.
- Scheicher, M (2008) How has CDO market pricing changed during the turmoil? Evidence from CDS index tranches. *ECB Working Paper* no 910, June, Frankfurt.
- Zhang, B. H. Zhou and H. Zhu (2005). Explaining Credit Default Swap Spreads with Equity Volatility and Jump Risks of Individual Firms. BIS Working Paper No 181.

Index of Working Papers:

March 24, 2006	Gerhard Fenz, Martin Spitzer	119	An Unobserved Components Model to forecast Austrian GDP
April 28, 2006	Otmar Issing (comments by Mario Blejer and Leslie Lipschitz)	120	Europe's Hard Fix: The Euro Area
May 2, 2006	Sven Arndt (comments by Steve Kamin and Pierre Siklos)	121	Regional Currency Arrangements in North America
May 5, 2006	Hans Genberg (comments by Jim Dorn and Eiji Ogawa)	122	Exchange-Rate Arrangements and Financial Integration in East Asia: On a Collision Course?
May 15, 2006	Petra Geraats	123	The Mystique of Central Bank Speak
May 17, 2006	Marek Jarociński	124	Responses to Monetary Policy Shocks in the East and the West of Europe: A Comparison
June 1, 2006	Josef Christl (comment by Lars Jonung and concluding remarks by Eduard Hochreiter and George Tavlas)	125	Regional Currency Arrangements: Insights from Europe
June 5, 2006	Sebastian Edwards (comment by Enrique Alberola)	126	Monetary Unions, External Shocks and Economic Performance
June 9, 2006	Richard Cooper Michael Bordo and Harold James (comment on both papers by Sergio Schmukler)	127	Proposal for a Common Currency among Rich Democracies One World Money, Then and Now
June 19, 2006	David Laidler	128	Three Lectures on Monetary Theory and Policy: Speaking Notes and Background Papers

July 9, 2006	Ansgar Belke, Bernhard Herz, Lukas Vogel	129	Are Monetary Rules and Reforms Complements or Substitutes? A Panel Analysis for the World versus OECD Countries
August 31, 2006	John Williamson (comment by Marc Flandreau)	130	A Worldwide System of Reference Rates
September 15, 2006	Sylvia Kaufmann, Peter Kugler	131	Expected Money Growth, Markov Trends and the Instability of Money Demand in the Euro Area
September 18, 2006	Martin Schneider, Markus Leibrecht	132	AQM-06: The Macroeconomic Model of the OeNB
November 6, 2006	Erwin Jericha and Martin Schürz	133	A Deliberative Independent Central Bank
December 22, 2006	Balázs Égert	134	Central Bank Interventions, Communication and Interest Rate Policy in Emerging European Economies
May 8, 2007	Harald Badinger	135	Has the EU's Single Market Programme fostered competition? Testing for a decrease in markup ratios in EU industries
May 10, 2007	Gert Peersman	136	The Relative Importance of Symmetric and Asymmetric Shocks: the Case of United Kingdom and Euro Area
May 14, 2007	Gerhard Fenz and Martin Schneider	137	Transmission of business cycle shocks between unequal neighbours: Germany and Austria
July 5, 2007	Balázs Égert	138	Real Convergence, Price Level Convergence and Inflation Differentials in Europe
January 29, 2008	Michał Brzoza- Brzezina, Jesus Crespo Cuaresma	139	Mr. Wicksell and the global economy: What drives real interest rates?
March 6, 2008	Helmut Stix	140	Euroization: What Factors drive its Persistence? Household Data Evidence for Croatia, Slovenia and Slovakia

April 28, 2008	Kerstin Gerling	141	The Real Consequences of Financial Market Integration when Countries Are Heterogeneous
April 29, 2008	Aleksandra Riedl and Silvia Rocha-Akis	142	Testing the tax competition theory: How elastic are national tax bases in Western Europe?
May 15, 2008	Christian Wagner	143	Risk-Premia, Carry-Trade Dynamics, and Speculative Efficiency of Currency Markets
June 19, 2008	Sylvia Kaufmann	144	Dating and forecasting turning points by Bayesian clustering with dynamic structure: A suggestion with an application to Austrian data.
July 21, 2008	Martin Schneider and Gerhard Fenz	145	Transmission of business cycle shocks between the US and the euro area
September 1, 2008	Markus Knell	146	The Optimal Mix Between Funded and Unfunded Pensions Systems When People Care About Relative Consumption
September 8, 2008	Cecilia García-Peñalosa	147	Inequality and growth: Goal conflict or necessary prerequisite?
September 30, 2008	Fabio Rumler and Maria Teresa Valderrama	148	Comparing the New Keynesian Phillips Curve with Time Series Models to Forecast Inflation
January 30, 2009	Claudia Kwapil, Johann Scharler	149	Expected Monetary Policy and the Dynamics of Bank Lending Rates
February 5, 2009	Thomas Breuer, Martin Jandačka, Klaus Rheinberger, Martin Summer	150	How to find plausible, severe, and useful stress scenarios
February 11, 2009	Martin Schneider, Christian Ragacs	151	Why did we fail to predict GDP during the last cycle? A breakdown of forecast errors for Austria
February 16, 2009	Burkhard Raunig, Martin Scheicher	152	Are Banks Different? Evidence from the CDS Market