

Cuaresma, Jesus Crespo; Gnan, Ernest; Ritzberger-Grünwald, Doris

Working Paper

Searching for the Natural Rate of Interest: a Euro-Area Perspective

Working Paper, No. 84

Provided in Cooperation with:

Oesterreichische Nationalbank (OeNB), Vienna

Suggested Citation: Cuaresma, Jesus Crespo; Gnan, Ernest; Ritzberger-Grünwald, Doris (2003) : Searching for the Natural Rate of Interest: a Euro-Area Perspective, Working Paper, No. 84, Oesterreichische Nationalbank (OeNB), Vienna

This Version is available at:

<https://hdl.handle.net/10419/264676>

Standard-Nutzungsbedingungen:

Die Dokumente auf EconStor dürfen zu eigenen wissenschaftlichen Zwecken und zum Privatgebrauch gespeichert und kopiert werden.

Sie dürfen die Dokumente nicht für öffentliche oder kommerzielle Zwecke vervielfältigen, öffentlich ausstellen, öffentlich zugänglich machen, vertreiben oder anderweitig nutzen.

Sofern die Verfasser die Dokumente unter Open-Content-Lizenzen (insbesondere CC-Lizenzen) zur Verfügung gestellt haben sollten, gelten abweichend von diesen Nutzungsbedingungen die in der dort genannten Lizenz gewährten Nutzungsrechte.

Terms of use:

Documents in EconStor may be saved and copied for your personal and scholarly purposes.

You are not to copy documents for public or commercial purposes, to exhibit the documents publicly, to make them publicly available on the internet, or to distribute or otherwise use the documents in public.

If the documents have been made available under an Open Content Licence (especially Creative Commons Licences), you may exercise further usage rights as specified in the indicated licence.

The background of the cover features a detailed, classical-style illustration of three figures. On the left, a figure in a white, draped garment is shown in profile, looking towards the center. In the middle, a figure wearing a white turban and a dark, patterned robe stands with hands clasped. On the right, a figure in a white, flowing dress and a white headscarf stands with hands clasped. The style is reminiscent of a historical painting or engraving.

WORKING PAPER 84

SEARCHING FOR THE

NATURAL RATE OF INTEREST:

A EURO-AREA PERSPECTIVE

JESUS CRESPO CUARESMA

ERNEST GNAN

DORIS RITZBERGER-GRUENWALD

Editorial Board of the Working Papers

Eduard Hochreiter, Coordinating Editor
Ernest Gnan,
Wolfdietrich Grau,
Peter Mooslechner
Kurt Pribil

Statement of Purpose

The Working Paper series of the Oesterreichische Nationalbank is designed to disseminate and to provide a platform for discussion of either work of the staff of the OeNB economists or outside contributors on topics which are of special interest to the OeNB. To ensure the high quality of their content, the contributions are subjected to an international refereeing process. The opinions are strictly those of the authors and do in no way commit the OeNB.

Imprint: Responsibility according to Austrian media law: Wolfdietrich Grau, Secretariat of the Board of Executive Directors, Oesterreichische Nationalbank

Published and printed by Oesterreichische Nationalbank, Wien.

The Working Papers are also available on our website:

<http://www.oenb.co.at/workpaper/pubwork.htm>

Editorial

In the present paper, a time-varying natural rate of interest is estimated for the euro area using a multivariate unobserved components model. The problem of aggregating interest rate data for the pre-EMU period is directly addressed, and a simple method in order to adjust the risk premia in the interest rate data prior to 1999 is proposed. The authors show that, for the pre-EMU period, using risk-unadjusted policy rates leads to periods of high risk premia being erroneously taken as monetary policy replies to the output gap; by contrast, using risk-adjusted policy rates yields an estimate of the reaction of monetary policy to the output gap corresponding approximately to an increase of 40 basis points for a 1% positive deviation of output from potential output. A positive deviation of inflation from its trend of 1% is estimated to have triggered approximately a 1.2% increase in short-term interest rates.

July 21, 2003

Searching for the Natural Rate of Interest: a Euro-Area Perspective

Jesus Crespo Cuaresma, Ernest Gnan and Doris Ritzberger-Gruenwald¹

Abstract

A time-varying natural rate of interest is estimated for the euro area using a multivariate unobserved components model. The problem of aggregating interest rate data for the pre-EMU period is directly addressed, and a simple method in order to adjust the risk premia in the interest rate data prior to 1999 is proposed. We show that, for the pre-EMU period, using risk-unadjusted policy rates leads to periods of high risk premia being erroneously taken as monetary policy replies to the output gap; by contrast, using risk-adjusted policy rates yields an estimate of the reaction of monetary policy to the output gap corresponding approximately to an increase of 40 basis points for a 1% positive deviation of output from potential output. A positive deviation of inflation from its trend of 1% is estimated to have triggered approximately a 1.2% increase in short-term interest rates.

JEL Classification Numbers: E43, E52, C32.

Keywords: Natural rate of interest, unobserved components models, monetary policy, Taylor rule.

¹Jesus Crespo Cuaresma (jesus.crespo-cuaresma@univie.ac.at), Corresponding author. Department of Economics, University of Vienna, Brünnerstrasse 72, A-1210 Vienna (Austria); Ernest Gnan (ernest.gnan@oenb.at) and Doris Ritzberger-Gruenwald (doris.ritzberger-gruenwald@oenb.at), Oesterreichische Nationalbank. The authors would like to thank Maria-Teresa Valderrama, Michal Brzoza-Brzezina and an anonymous referee as well as participants at an internal OeNB seminar, at the BIS Autumn 2002 Central Bank Economists' Meeting and at the Annual Meeting of the Austrian Economic Association, NOEG 2003, in Klagenfurt for valuable suggestions on an earlier version of the paper. We appreciate the efficient research assistance by Elisabeth Augustin, Ernst Glatzer and Beate Resch.

1. Introduction

Estimates of the “natural rate of interest” or “equilibrium rate of interest” are a prerequisite for calculating many popular monetary policy rules and monetary stance indicators. Feedback rules such as Taylor’s (1993) use the natural rate as the intercept term. Another recently much-discussed indicator of the stance of monetary policy, the “real interest-rate gap” (see e.g. Neiss and Nelson, 2001), is defined as the deviation of the actual short-term rate from the natural rate of interest. Obviously, to the extent that such rules were to be considered by monetary authorities, a “correct” estimate of the natural rate is central for successful macroeconomic stabilisation. This paper offers alternative estimates for the euro area, based on time-series analysis, with a special focus on the complications and potential pitfalls due to the regime change and the resulting break triggered by the inception of EMU.

The concept of the natural rate of interest goes back to Wicksell (1936) (see Woodford (2002) for a reinterpretation of the Wicksellian concept), who stated that “there is a certain rate of interest on loans which is neutral in respect to commodity prices, and tends neither to raise nor to lower them”. Following Laubach and Williams (2001), the natural rate of interest may be defined as the real interest rate consistent with output equalling potential and stable inflation. As the growth of potential output varies, also the natural rate of interest rate varies.

In monetary policy regimes where the short-term interest rate is the primary policy instrument, the natural rate of interest provides a measure of the stance of monetary policy. In this context, it is useful to define the natural rate of interest in terms of the real *short-term*² interest rate where output converges to potential and inflation is stable (cf. Bomfim, 1997). In such a setting, the natural rate of interest is seen as a medium-run “anchor” for monetary policy.

² As pointed out in Laubach and Williams (2001), further advantages of using short-term, rather than bond, rates are (1) that inflation expectations are much less prone to measurement error for money-market rates than for a multi-year horizon. (2) The time-preference of money and thus the term premium may itself be time-varying and would thus have to be estimated. Other studies, e.g. those prepared in the mid-nineties by the OECD (see Orr, Edey and Kennedy, 1995, and Christiansen and Pigott, 1997) and the G10 (for a summary see Jenkinson, 1996) addressed the evolution of long-term interest rates. These studies identified a number of economic variables (rate of return on capital and the associated level of desired investment; falling public and private savings and the level of public debt; the history of a country’s inflation; and the movement of oil prices) which drive the trend change in real bond rates. However, they explained very little of the shorter-run movements, which was attributed by the authors to bond rates being driven by largely unobservable shifts in market expectations, including international spillovers. In addition, in the run-up to EMU, expectations about future EMU participation (“convergence plays”) became a major determinant for prospective euro area countries’ bond market rates. Obviously, using short-term rates largely avoids the latter three types of complications associated with a study of long-term real interest rates.

Various methods have been explored to estimate time-varying natural rates of interest (TVNRI). Several authors have developed estimated stochastic dynamic general equilibrium (SDGE) models with sticky prices and wages, within which the behavior of the natural rate of interest and the real interest rate gap in the face of various shocks is simulated. The SDGE model for the euro area in Smets and Wouters (2002) generates a natural real rate that covaries strongly with the actual real interest rate, but is substantially *more* volatile. In fact, their estimated natural rate fluctuates widely between +10 and -7 during the nineties, which appears somewhat counter-intuitive.

Laubach and Williams (2001) employed a small-scale macroeconomic model to estimate a TVNRI for the US. By jointly estimating the natural-rate of interest, potential output and the trend growth rate using the Kalman filter, they found significant variation of the natural rate of interest, driven by changes in trend growth, over the past four decades.³ They conclude that policy makers' mismeasurement of the NRI can substantially deteriorate macroeconomic stabilisation policy. Carrying this work further, Orphanides and Williams (2002) investigate the performance and robustness of various forms of extended Taylor-type rules in the face of an unknown degree of uncertainty about the "true" real-time values of the natural rates of unemployment and interest. As uncertainty about the unemployment gap increases, optimal policy involves far more interest-setting inertia; the role of the natural rate of interest as a benchmark for policy rates diminishes sharply and converges towards zero. Instead, a "difference rule", deriving the policy-rate level from its past level, the divergence of inflation from target and the change in the rate of unemployment – with no reference to the natural rates - becomes preferable. If there is uncertainty about the magnitude of misperceptions on the natural rates, they show that it is advisable to err on the side of greater uncertainty.

The present paper pursues yet another approach for estimating a time-varying natural rate of interest for the euro area, based exclusively on the statistical characteristics of the data, without imposing any conditions derived from economic theory, and aiming for a dynamic model as parsimonious as possible. Multivariate structural time-series models provide a flexible framework for the dynamic specification of unobserved components (the natural rate of interest being one) and allow for exploiting the potential cross-correlation across the series studied and its unobservables. Furthermore, given the fact that the general dynamic

³ Recently, Brzoza-Brzezina (2003) compares the Kalman filtering estimates of the natural rate of interest for Poland with those resulting from structural vector-autoregressive (SVAR) models and finds little difference between them.

specification nests a wide variety of models, testing down to the model for which the data gives more evidence can be done in a straightforward manner.

The remainder of the paper is structured as follows. Section 2 describes the data, motivates and explains the multivariate unobserved components technique, and presents a first set of estimates for the natural rate of interest and the real interest-rate gap. Section 3 presents a method for constructing a risk-premium adjusted three-month money market interest-rate series for the euro area prior to EMU. Section 3 discusses the additional uncertainty generated by real-time estimation and the implications of relatively wide confidence bands around the estimates. Section 4 tests our TVNRI estimates for leading-indicator properties with regard to euro-area inflation. Section 5 estimates feedback rules, using our TVNRI estimates, for the euro area and compares the estimates of the aggregate responses of monetary policy to changes in inflation expectations and the output gap across specifications of the pre-EMU interest rate series. Section 6 concludes.

2. Multivariate unobserved components estimates

2.1 Data

European monetary union started just three and a half years ago, which, from an economic point of view, means that the cyclical behaviour of the euro area economy has not fully unfolded. From an econometric point of view, three and a half years do not – even with monthly data - provide a sufficient number of observations for medium-run economic analysis. Therefore, empirical work seeks to extend the time series into the past by generating synthetic aggregate euro area data. The issue is how to appropriately calculate aggregate series backwards⁴ as there are a number of complications and potential pitfalls which may seriously distort econometric estimates.

For our estimates, we require output, inflation and a short-term market interest rate. We approximate output by seasonally adjusted industrial production (source Eurostat), the reason being mainly the monthly availability of this series, as opposed to quarterly national accounts data. For inflation, we use the euro-area Harmonized Index of Consumer Prices (HICP) excluding energy and unprocessed food as published by Eurostat backwards to

⁴ This question has been addressed extensively in various official fora (inter alia, Eurostat and the European Monetary Institute/ECB) before the start of EMU.

January 1991. Taking a measure of “core inflation” is in line with the literature and aims at eliminating – to the extent possible – price disturbances not driven by demand shocks. For the short-term interest rate, we use monthly averages of the three-month money market interest rate as compiled backwards by the ECB.⁵

2.2 Specification of the multivariate unobserved components model

In the spirit of the methodology developed mainly in Harvey (1989), we specify a multivariate unobserved components model in order to extract the trend component of the ex-ante real interest rate. Consider the vector $z_t = (r_t \ y_t \ \pi_t)'$ composed by real interest rates (r_t),⁶ (logged) industrial production (y_t) and inflation (π_t). We are interested in decomposing z_t into a trend component, a cyclical component and an irregular component in an additive fashion, such that

$$z_t = \mu_t + \phi_t + u_t; \quad u_t \sim \text{NID}(\mathbf{0}, \Sigma_u), \quad (1)$$

where μ_t , the multivariate trend component, is assumed to follow a (multivariate) random walk with drift, where the drift itself follows a random walk, that is,

$$\mu_t = \mu_{t-1} + \kappa_{t-1} + \tau_t; \quad \tau_t \sim \text{NID}(\mathbf{0}, \Sigma_\tau), \quad (2)$$

$$\kappa_t = \kappa_{t-1} + \psi_t; \quad \psi_t \sim \text{NID}(\mathbf{0}, \Sigma_\psi). \quad (3)$$

The errors in the specification of the trend, τ_t and ψ_t , are assumed to be mutually uncorrelated and uncorrelated with u_t . The cyclical component is specified as a sine-cosine wave with time-evolving parameters,

$$\begin{pmatrix} \phi_t \\ \phi_t^* \end{pmatrix} = \rho \left[\begin{pmatrix} \cos \lambda & \sin \lambda \\ -\sin \lambda & \cos \lambda \end{pmatrix} \otimes I \right] \begin{pmatrix} \phi_{t-1} \\ \phi_{t-1}^* \end{pmatrix} + \begin{pmatrix} \omega_t \\ \omega_t^* \end{pmatrix}, \quad (4)$$

⁵ The ECB computes euro area three-month money market rates prior to 1999 from national data, using PPP-adjusted GDP weights (base-year 1995). We also considered a series from Reuters, which uses ECU money market rates prior to 1999. The two series differ considerably, the reasons being, inter alia, that the ECU currency basket did not coincide 1:1 (in terms of both currency basket range and weights) with the currencies included in the euro from 1 January 1999, and that the ECU market rate at times diverged – for various reasons - substantially from its theoretical value (defined as the weighted average of the rates of its basket currencies). For these conceptual weaknesses of the ECU-based series, we opted for the ECB aggregate three-month money market series (monthly averages).

⁶ We use ex-ante real interest rates, defined as the prevailing interest rate in period t minus the inflation rate between period $t-1$ and t . This implies that the monetary authority assumes that inflation follows a random walk.

where $(\omega, \omega^*)' \sim \text{NID}(\mathbf{0}, I \otimes \Sigma_\omega)$, $\rho \in (0,1)$ and $\lambda \in (0,\pi)$. The error in the cyclical component is furthermore assumed to be uncorrelated with the errors in the other components. The cyclical frequency, λ , and the cycle damping factor, ρ , are thus assumed to be equal across variables.

The structural time-series model described above is able to exploit the common statistical features of the series to be studied simultaneously by allowing correlation across the individual error processes in a given unobserved component. The estimation of the parameters of interest can be carried out using maximum likelihood methods after setting the prediction error decomposition using Kalman filtering (for details see Harvey, 1989).

Furthermore, the prediction error decomposition enables us to retrieve the “smoothed” and “filtered” estimates of the unobservable states. The smoothed unobservable states are just $\alpha_t^s = E(\alpha_t | \{z_t\}_{t=0}^T)$, while the filtered states are $\alpha_t^f = E(\alpha_t | \{z_t\}_{t=0}^t)$. That is, the smoothed estimates exploit the information contained in the whole sample, while the filtered estimates form conditional expectations on the unobservable state at time t using information up to $t-1$. The filtered estimates will be also referred to as “real time” estimates.⁷ The specification of a smooth trend in the multivariate unobserved components model (which implies that the trend component does not contain the error term τ_t) improved the fit significantly and was therefore imposed for the estimation using euro area data.

Notice that the identification – in economic terms - of the TVNRI (and of potential output as well as equilibrium inflation) is based on the notion that the estimated cyclical component should correspond to the business cycle. The starting values for the parameters of the cycle in the optimisation algorithm were thus specified to lie in intervals corresponding to plausible business cycle frequencies and persistence.⁸ The three trends extracted by means of this estimation procedure can be interpreted as potential output, trend inflation and the (time-varying) natural rate of interest. Notice that the econometric setting implicitly assumes that the variables involved in the analysis are I(1). Although the assumption could seem unreasonable for the real interest rate (and possibly for inflation) in long samples, for the

⁷ It should be noticed that our concept of “real time” estimates does not coincide with that of e.g. Orphanides (2001), who used actual forecasts and projections available in the period considered in order to evaluate monetary policy.

⁸ Starting values for the cyclical frequency λ were set such that the corresponding cyclical period lies between three and five years, and the ρ parameter was initiated at values ranging between 0.8 and 0.99. The estimated parameters were robust to the choice of starting values for λ and ρ in this range. An unreasonably short-lived cycle was isolated if the starting values of λ was chosen to be too large.

sample given Augmented Dickey Fuller tests could not reject the null of a unit root in the series involved in the analysis at any reasonable significance level.

2.3 Estimation results

The estimation of the multivariate unobserved components model using the original nominal interest rate dataset isolates a cycle with a frequency, λ , of 0.18 radians, corresponding to a cyclical period of around three years. The estimated damping factor, ρ , for the cycle is 0.97, a result that matches the range of cyclical persistence of economic variables reported in the literature (see, e.g., Harvey and Jaeger, 1993). While the residuals present no significant first-order autocorrelation (as measured by the Durbin-Watson test statistic) for any of the series included in the multivariate specification, the residuals from the real interest-rate series reject the null hypothesis of normality for the Jarque-Bera test at any reasonable significance level.⁹

Figure 1 shows the estimated natural rate of interest. The natural rate reflects the trend of the actual real rate, which is strong but gradually flattening over the nineties. Since the start of EMU, the behavior of the natural rate is rather flat, slightly above 2%. The TVNRI contrasts sharply against a fixed estimate based on the simple sample average of 3.8%. The medium-run dynamics of the TVNRI in the 1994-2002 period are relatively similar to the results of Giammarioli and Valla (2003), who used a calibrated SDGE model.

The amplitude of the output gap resulting from the estimation (the smoothed cyclical component of industrial production) is considerably smaller than that obtained by Hodrick-Prescott filtering industrial production series. This feature has been widely documented in the literature (see e.g. Harvey and Jaeger, 1993, or Cogley and Nason, 1995) and seems to be due to the fact that the Hodrick-Prescott filter tends to isolate spurious cycles.

The real interest-rate gap, i.e. the difference between the actual and time-varying natural real interest rates, broadly mirrors the estimated evolution of the output gap. According to this measure, monetary policy was rather tight in late-1992 and early-1993, and less so in 1995 and in 2000. It was loose in 1991, 1993/1994, in 1999 and from late-2001 onwards. A real interest-rate gap based on the simple sample average yields a sharply different assessment;

⁹ For detailed results of the estimation of the structural time-series models see Appendix.

according to such a measure, monetary policy would have been mostly restrictive up to the mid-nineties and consistently expansionary ever since.

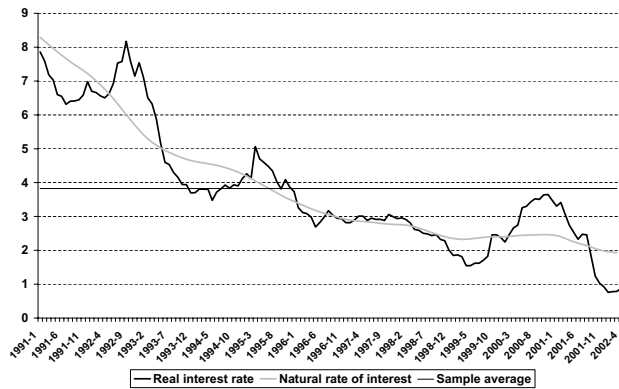


Figure 1: Real interest rate with time-varying natural rate of interest: smoothed estimate and sample average.

3. Adjusting for risk premia prior to EMU

One major feature of the above estimates was a very high TVNRI in the first half of the nineties and a much lower level since then. We suspect that the high level of rates in the first half of the nineties is (at least partly) attributable to risk premia linked to the exchange rate tensions within the ERM and unsustainable fiscal positions prior to EMU. If the aim is to estimate a TVNRI and a derived real interest rate gap suitable for monetary policy analysis in EMU, risk premia which no longer exist in the new regime of EMU should be excluded from the estimation. These risk premia would be expected to include exchange rate risk premia (as experienced at various occasions within the Exchange Rate Mechanism of the European Monetary System) and (probably to a lesser extent, given the short run nature of the interest rate used in the estimations) default risk premia to the extent that they may have been reduced by the Stability and Growth pact. In other words, we seek to generate a TVNRI exclusively driven by output and inflation.¹⁰ We therefore develop a method to eliminate these risk premia from national nominal money market rates, which we in turn use to

¹⁰ We abstract from modelling other general factors driving real interest rates, such as time preference parameters.

construct a new, risk-adjusted synthetic time series for aggregate euro area three-month money-market rates prior to 1999.

In our model, the risk premium on each national money market rate is defined to be the part of the (nominal) interest rate spread with the German short term-interest rate that cannot be explained by differentials in inflation expectations and/or business cycle desynchronization. The adjustment of the series is done as follows. First, the risk premium (which need not be assumed to be constant through time) is extracted for each country. Given the working definition of the interest-rate risk premium above, the interest rate spread with Germany is regressed on the output gap differential between the country of interest and Germany and the inflation forecast differential. That is, for country k ,

$$s_t^k = \beta_0 + \beta_1(g_t^k - g_t^{GER}) + \beta_2[E(\pi_{t+12}^k | \{\pi_s^k\}_{s=1}^t) - E(\pi_{t+12}^{GER} | \{\pi_s^{GER}\}_{s=1}^t)] + \gamma_t, \quad (7)$$

where s_t^k is the interest rate spread between country k and Germany, g_t^k is the output gap¹¹ of country k , the inflation forecasts are obtained by computing the conditional expectation after fitting an autoregressive process¹² to the inflation data ranging up to period t , γ_t is assumed to be a random shock and $E(\cdot)$ is the expectation operator. Notice that all other factors affecting the risk premium different from differentials in inflation expectations and the business cycle indicator are assumed to be captured by γ_t .

After estimating equation (7), the original series of nominal interest rates (i_t^k) are adjusted by subtracting the estimated constant and the residuals from the estimation. The adjusted series is thus

$$i_t^{adj,k} = i_t^k - \hat{\beta}_0 - \hat{\gamma}_t. \quad (8)$$

Given the potential correlation between the error and the regressors (in the sense of correlation between inflation expectations and exchange rate-driven risk premium, for instance), lags ranging between six and twelve months of the output gap and inflation differentials were used as instruments in the estimation of (7). Durbin-Wu-Hausman tests

¹¹ The output gap series used for each country corresponds to the cyclical component of industrial production resulting from estimating a multivariate unobserved components model using data on real interest rates, inflation and industrial production.

¹² The lag length of the autoregressive process that is fitted to the inflation data is chosen to be the one that minimizes the Akaike Information Criterion for the data available at each time point t . The lag length is thus revised with each realization of inflation, so as to model changes in the persistence of inflation through time. In all cases the range of lags taken into account for the choice was between one and twelve.

and Sargan tests confirm both the need for instruments and the validity of the instruments used. The only exception is Portugal, where the Durbin-Wu-Hausman indicated that no instrumental variable estimation was necessary and OLS estimation was used. The source of national data is BIS for the national money market rates and Eurostat for inflation and industrial production. Incomplete datasets for Portugal and Finland were augmented using data from the Bank of Portugal and the Bank of Finland, respectively.



Figure 2: Interest-rate risk premium (euro-area aggregate), risk-adjusted and unadjusted real interest-rate series.

The left panel of Figure 2 shows the estimated aggregated risk premium for the countries of the euro area prior to 1999, revealing the suspected high risk premia of up to 2½% and more around the ERM crisis of 1992/1993 and the exchange rate tensions of 1995. It also shows that, as to be expected, the risk premia virtually vanished until the end of 1998. The right panel of Figure 2 compares the adjusted 3-month nominal interest rate for the euro area¹³ with the original unadjusted series. The adjusted real interest-rate series shown in the left panel of Figure 3 fluctuated between slightly less than 1% and 3½% from 1994 until spring 2002.¹⁴

¹³ The aggregation has been done using weights based on the relative GDP (at PPP prices) of each country in the EMU aggregate. The relative GDP data is annual, so it is left unchanged across months in a given year.

¹⁴ Thus, given our definition of the interest rate risk premium, only premia relative to Germany are taken into account. Therefore, the aggregated series may as well contain extra (potentially time-varying) risk premia with respect to the rest of the world that need not be symmetric across countries.

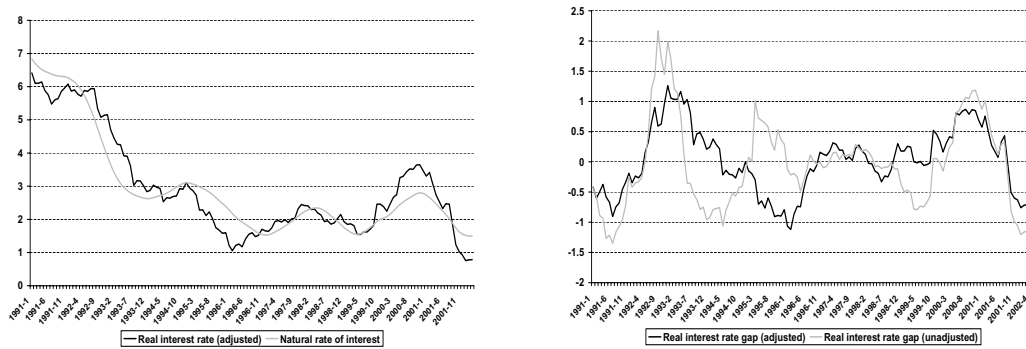


Figure 3: Natural rate of interest for risk-adjusted real interest-rate data;
real interest rate gap for risk-adjusted and unadjusted data

Using the risk-adjusted euro-area three-month money-market series, we re-estimate the TVNRI. The cyclical frequency estimated for the multivariate unobserved components model with the adjusted interest rate series is 0.11 radians, which corresponds to a cyclical period of around four and a half years. None of the residual series present significant first-order autocorrelation, and the null of normal distribution of the residuals cannot be rejected at 5% significance level for any of the series.

The risk-adjusted natural rate of interest is shown in the left panel of Figure 3. Leaving aside the start of the estimate, the natural rate now fluctuates between 1½% and 3¼% between 1994 and now. The average of the real interest rate over the sample period at slightly below 3% is much lower and more in line with rule-of-thumb estimates. Compared to the risk-unadjusted estimates, the TVNRI now traces the actual real market rate more closely, its cyclical behaviour is far more pronounced; as a corollary to this, the real interest-rate gap fluctuates less now. Comparing the risk-adjusted and unadjusted real interest rate gaps (see right panel of Figure 3) reveals substantial differences in the first half of the nineties, but also non-negligible differences particularly in 1999 (up to 80 basis points), in 2000 and in 2002 (30-40 basis points each). In several instances (1993/1994, 1995/1996, 1999), even the sign of the risk-adjusted real interest-rate gap estimate is opposite from the unadjusted one. In other words, the risk-adjusted real interest-rate gap and the unadjusted one would have yielded opposite monetary policy advice during these periods. Contrary to the unadjusted estimate, euro area monetary policy is now no longer qualified as expansionary in 1999 and is also considered less expansionary in 2002. On the other hand, the adjusted real interest-

rate gap suggests a lesser degree of restrictiveness during the upswing in 2000/2001. More generally, the adjusted estimates suggest smoother and more cautious changes in the Eurosystem’s policy stance.

4. Real-time estimates and confidence bands

For practical monetary-policy purposes, estimates of the natural rate need to be done “real time”, i.e. on the basis of data available only up to the point in time where the monetary-policy decision is taken. As new data become available, the original estimates are continuously revised reflecting the richer information set available. Figure 4 shows the divergence between real-time estimates of the TVNRI (“filtered”) and those based on the entire sample (“smoothed”) since the start of EMU.¹⁵ The left panel is based on the unadjusted interest-rate series, the right panel uses the risk-adjusted money-market series as derived in Section 3. The real-time estimation error reaches up to half a percentage point for both series. This is also reflected in the real interest-rate gaps derived from these four natural-rate series. Our estimates confirm the finding pointed out in the literature (see e.g. Orphanides, 2001, Orphanides and Williams, 2002, Laubach and Williams, 2001) that policy rules based on unobserved macroeconomic variables, such as the natural rates of output, unemployment or interest rate – or the derived “gaps” - involve a substantial margin of error if applied “real-time” and should thus be used cautiously.

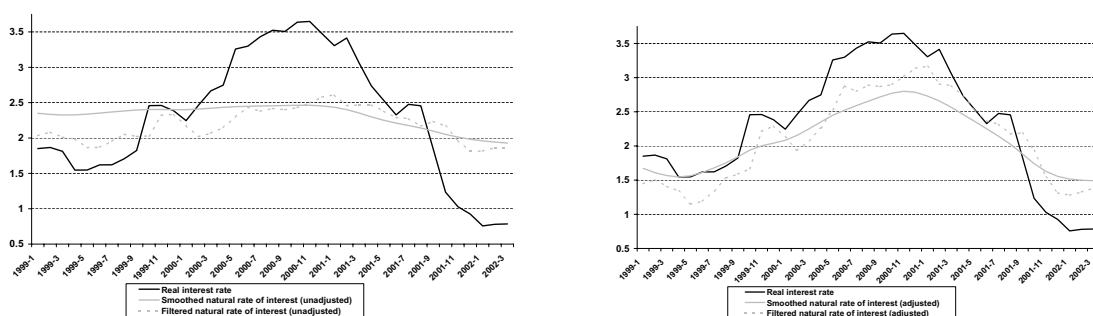


Figure 4: Filtered and smoothed TVNRIs, original and risk-adjusted data.

¹⁵ We abstain from showing and interpreting the - even bigger - divergencies for the period before 1999 since the number of data points available for these real-time estimates becomes quite small, given our initial choice of investigating only data starting from January 1991.

But even the smoothed series, based on the full-sample estimates, suffer from substantial uncertainty, as shown in Figure 5. Wrapping a 75% confidence band around our estimates of the TVNRI, deviations between the actual and natural real rates of interest are shown to be insignificant during most of the nineties and up to most recently. In EMU, the estimate based on the unadjusted interest-rate series (left panel) signals periods of loose monetary policy in 1999 and from late-2001 and a restrictive stance in 2000. However, after adjusting for risk-premia (right panel), the Eurosystem's monetary policy can no longer be qualified as either significantly expansionary or restrictive, except for some months of tightness in the year 2000.

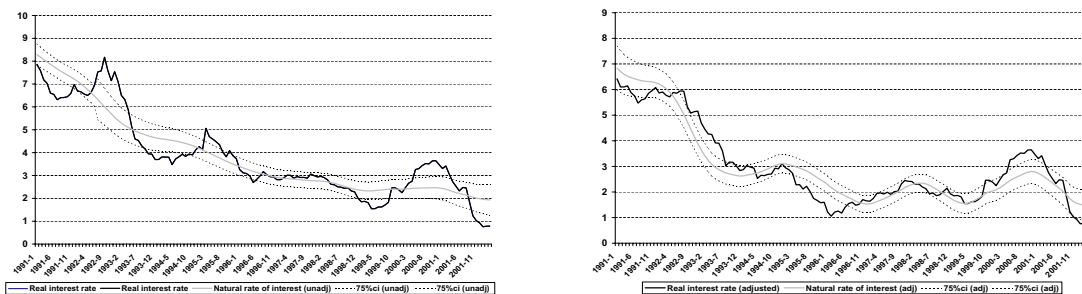


Figure 5: TVNRIs and 75% confidence intervals (original and risk-adjusted data), as compared to the real interest rate (original or risk-adjusted)

5. Leading indicator properties of the real interest rate gaps for inflation

The real interest-rate gap is a widely used measure of the monetary policy stance. However, the analysis carried out so far illustrates clearly that the point estimates of the real interest-rate gap may differ substantially depending upon the statistical technique used in identifying the natural rate of interest. Significant differences about the stance of monetary policy arise as well if the euro-area interest rate series is adjusted for interest-rate premia in the pre-EMU period. On this last point, we are interested in the advantages or disadvantages of using the adjusted series for monetary policy evaluation. This section compares the adjusted and unadjusted series in terms of the properties of the real interest-rate gap emerging from both datasets as a leading indicator of inflation in the euro area.

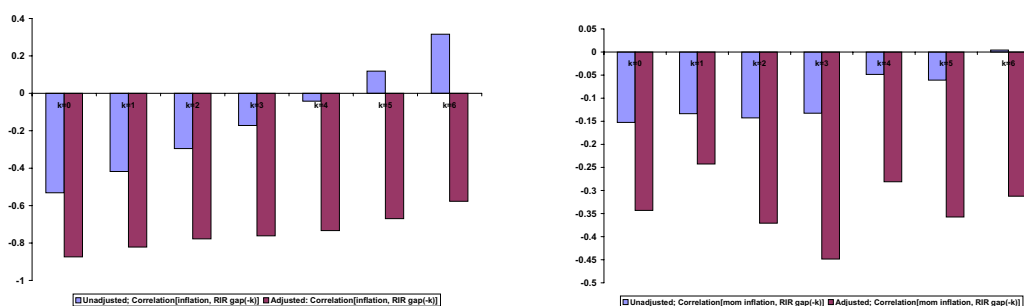


Figure 6: Leading indicator properties:
Risk-unadjusted and adjusted real interest-rate gaps

Figure 6 shows the correlation between monthly (right part) and annual (left part) inflation and the real-time (i.e. filtered) estimates of the ex-ante real interest gap¹⁶ at different lags, k , ranging from zero to six months. The correlations refer to the period between January 1999 and March 2002.¹⁷ The correlation up to a lag of six months appears always negative for the risk-adjusted real interest gap series, while the correlation between the real interest gap emerging from the unadjusted series and inflation turns positive for lags of more than five (monthly inflation rate) or four (annual inflation rate) months. The correlation is higher in absolute terms for the adjusted series at all evaluated lags, giving a clear indication of the superior leading-indicator properties of the adjusted real interest-rate gap. The negative correlation between the (adjusted) real interest-rate gap and inflation is consistent with economic theory (see e.g. Neiss and Nelson, 2001). This suggests that the real interest rate gap resulting from the adjusted interest-rate series may serve better as an indicator of the monetary policy stance than the one calculated from the original series of aggregated EMU short-term interest rates.

6. Risk-premium adjustment and euro-area feedback rule estimates

The aim of this section is to investigate the differences in the ex-post assessment of monetary policy induced by the use of risk-adjusted interest rate data.¹⁸ In this section we assume that

¹⁶ The filtered estimates of the real interest rate gap were computed using the multivariate unobserved components approach for both series.

¹⁷ The complete sample of national interest rates up to 1998:12 is required to perform the adjustment, so real-time estimates based on adjusted data prior to 1999 would be misleading as it would not be representative of the information that is available to the monetary policy authority at a given point in time.

¹⁸ For similar exercises using raw interest rate data see e.g. Gerdesmeier and Roffia (2003) and Kwapil (2003).

monetary policy in the euro area can be represented by an interest-rate feedback rule à la Clarida, Gali and Gertler (1998), such that the central bank sets the short-term interest rate (\tilde{i}_t) according to the following rule:¹⁹

$$\tilde{i}_t = i_t^* + \delta[E(\pi_{t+12} - \pi_{t+12}^* | \Omega_t)] + \gamma[E(g_t | \Omega_t)], \quad (9)$$

where i_t^* is the time varying nominal interest rate targets. Monetary policy reacts to changes in the deviation of expected inflation from some bliss value (π_t^*) and to changes in the expected output gap, g_t . We further assume interest rate smoothing, so that the actual interest rate is given by

$$i_t = (1 - \eta)\tilde{i}_t + \eta i_{t-1} + \zeta_t, \quad (10)$$

where $\eta \in [0,1]$ is the smoothing parameter and ζ_t is an i.i.d. error. Combining (9) and (10), we can write

$$i_t = (1 - \eta)r_t^* + (1 - \eta)\delta(\pi_{t+12} - \pi_{t+12}^*) + (1 - \eta)\gamma g_t + (1 - \eta)\pi_{t+12} + \varphi_t, \quad (11)$$

where r_t^* is the natural, time varying, real interest rate (defined as the natural nominal interest rate minus expected inflation), and the error term, φ_t , is a linear combination of the error in (10) and the forecast errors in predicting the inflation rate, its “normal rate”, π_t^* , and the output gap. The estimation of equation (11) was carried out using the general method of moments, as suggested in Clarida, Gali and Gertler (1998). The instruments used were past values of inflation, interest rate and the output gap. The output gap is taken to be the smoothed estimates of the cyclical components of output and inflation in the multivariate unobserved components model for the risk-unadjusted interest-rate data. The natural rate of interest data correspond to the smoothed estimates of the TVNRI and the inflation target is taken to be the smoothed estimate of the trend in inflation extracted from the multivariate unobserved components model with the original interest rate data.

Table 1 reports the estimates of the structural parameters in (11) using risk-unadjusted and adjusted data (and thus unadjusted and adjusted TVNRIs). The estimated parameters corresponding to reactions of monetary policy to inflation and the output gap are higher for

¹⁹ For the pre-EMU period, this amounts to the assumption that the (weighted) average of euro area central banks' monetary policies can be represented by means of an aggregate reaction function.

risk-unadjusted interest rate data than for adjusted data, although there is no statistically significant difference for the reaction to inflation deviations from trend. Notice that there is a basic difference in the interpretation of the parameter associated to the reaction to inflation in our specification compared to that of Clarida, Gali and Gertler (1998). In the case of targeting a fixed level of inflation (as in Clarida, Gali and Gertler, 1998), disinflationary monetary policy corresponds to an estimate of δ significantly greater than one. In contrast, when the targeted level of inflation is assumed variable, as in our case, a δ parameter not significantly different from one (as is the case in the setting with adjusted interest rate data) is still consistent with disinflation, given the decreasing trend of inflation.

Monetary policy reaction functions, euro area 1991:01-2002:03		
Parameter	Risk-unadjusted interest rate data	Risk-adjusted interest rate data
η	0.825*** (0.009)	0.831*** (0.013)
δ	1.515*** (0.272)	1.232*** (0.374)
γ	0.979*** (0.374)	0.386*** (0.118)
Sargan test	16.921 (p-value=0.963)	16.399 (p-value= 0.971)

* (**) [***] stands for significance at the 10% (5%) [1%] significance level. Estimation carried out by GMM, using past values of interest rates, inflation and the output gap as instruments.

Table 1: Estimated reaction functions (euro area, 1991:01-2002:3)

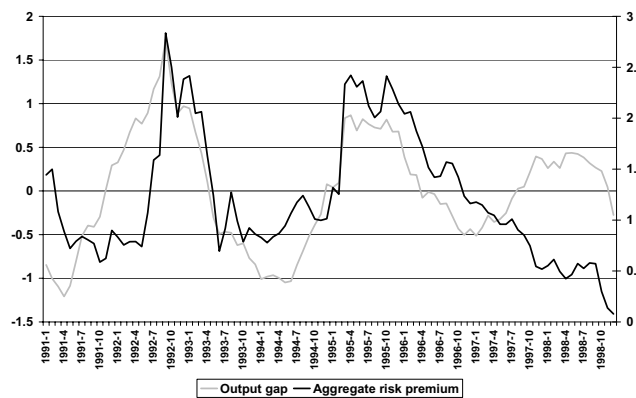


Figure 7: Aggregate risk premium and the output gap

Substantial differences, however, appear in the estimate of the reaction of aggregate monetary policy in EMU to the output gap. For unadjusted data the results imply that monetary policy reacted in a one-to-one fashion to the output gap, an estimate more than twice greater than the one corresponding to the adjusted interest rate data. The source of these contradictory results appears to lie in the risk-premium component of the aggregate interest rate data in the pre-EMU period. The time variation of the interest rate risk premium happens to coincide closely with the cyclical variation in the output gap (see Figure 7).²⁰ Thus, if a reaction function as above is estimated for pre-EMU aggregate euro area monetary policy using non-risk-adjusted nominal interest rates, the dynamics of policy interest rates which are actually driven by risk premia are *erroneously* taken to be reactions of monetary policy to the output gap. This is confirmed by our finding that the correlations between the national interest-rate risk premia and the corresponding output gaps are negative or not significantly different from zero in all individual euro area countries, with the exception of Finland.²¹ The high response coefficient of monetary policy to the output gap when using risk-unadjusted data seems to be thus a statistical artefact. The coefficients estimated on the basis of risk-adjusted interest rate data are more in line with the estimates reported, e.g., by Clarida, Gali and Gertler (1998).

7. Summary and conclusions

This paper pursued five objectives: first, to estimate time-varying natural rates of interest for the euro area, using a structural statistical model; second, to explore the consequences of pre-EMU national interest-rate risk premia on TVNRI estimates; third, to evaluate the robustness of such estimates in real-time settings and when bearing in mind the wide confidence bands of such estimates; fourth, to explore the leading indicator properties of our real interest rate gap estimates for euro area inflation; and to estimate feedback rules for monetary policy in EMU, focusing on the differences implied by the use of raw aggregate interest rate data for the pre-EMU period.

We estimate the TVNRI by means of a multivariate unobserved components approach, with aggregate monthly euro area data (January 1991 to March 2002) on ex-ante real interest

²⁰ The correlation between the aggregate risk premium and the output gap is 0.685.

²¹ The correlations range between -0.66 for Netherlands and 0.35 for Finland. The lack of synchronization across national business cycles explains, thus, the coincidence of expansions and risk premium in the pre-EMU aggregate series and therefore the relatively higher response of monetary policy to the output gap implied by the estimation of feedback rules for the euro area using raw aggregated interest rate data.

rates, core inflation and industrial production; the (unobserved) trend component in the real interest rate for the euro area is taken to be the natural rate of interest. Our first estimate is based on simple aggregated money market rates for the pre-EMU part of our sample and yields a TVNRI that falls from 8% in early 1991 to around 2% by the start of EMU and has remained there ever since. This contrasts sharply against a fixed estimate based on the sample average of 3.8%.

However, simple aggregate money-market interest rate data were, in particular until the mid-nineties, distorted by various risk premia no longer relevant in the new regime of the euro area. We extract those risk premia from national interest rate data and derive a synthetic measure of the aggregate euro area money market interest rate. The risk premium is hypothesized to be the part of each country's (nominal) interest-rate spread with Germany unexplained by differentials in inflation expectations and output gap desynchronization. The estimated risk premium is found to have coincided closely with the bouts of ERM tensions in the early and mid-nineties and converges towards zero by end-1998. On the basis of the regime-change-adjusted interest-rate series, we re-estimate the TVNRI: it now fluctuated between 1 and 3½% between 1994 and Spring 2002. The average over the full sample period is close to 3%.

The real interest-rate gaps derived from the unadjusted and adjusted TVNRIs differ substantially in terms of the derived real interest-rate gaps, thus yielding different ex post assessments of European monetary policies pre-EMU and in EMU. In several instances (1993/1994, 1995/1996, 1999), the risk-adjusted and the unadjusted real-rate gap would have yielded opposite monetary policy advice. Contrary to the unadjusted estimate, euro area monetary policy is now no longer qualified as expansionary in 1999 and is also considered less expansionary in 2002. On the other hand, the adjusted real interest gap suggests a lesser degree of restrictiveness during the upswing in 2000/2001. More generally, the adjusted estimates suggest smoother and more cautious changes in the Eurosystem's policy stance. For practical monetary policy estimates we also explore to what extent "real-time" estimates deviate from full sample estimates. We find that the real-time estimation error reaches up to half a percentage point for both the risk premia-unadjusted and adjusted series. This confirms the finding in the literature that policy rules based on unobserved macroeconomic variables, such as the natural rates of output, unemployment or interest rate – or the derived "gaps" – involve a substantial margin of error if applied "real-time" and should thus be used

cautiously. The rather wide 75% confidence bands around our TVNRI estimates further add to practical difficulties in applying TVNRI-based monetary stance indicators or feedback rules.

We conclude the paper with two policy applications. First, we find the risk-adjusted real interest gap to perform considerably better as a leading indicator for euro area inflation than the non-adjusted series. Second, using our TVNRI estimates, we estimate monetary policy feedback rules for the euro area, in order to assess ex post the relative weights attached to inflation and output stabilisation by the ECB Governing Council and by its predecessor pre-EMU euro area central banks. We show that, for the pre-EMU period, using risk-unadjusted policy rates leads to periods of high risk premia being erroneously taken as monetary policy replies to the output gap; by contrast, using risk-adjusted policy rates yields an estimate of the reaction of monetary policy to the output gap corresponding approximately to an increase of 40 basis points for a 1% positive deviation of output from potential output. A positive deviation of inflation from its trend of 1% is estimated to have triggered approximately a 1.2% increase in short-term interest rates.

Appendix: Estimation results for the multivariate unobserved components models

A) Results using original interest rate data:

Hyperparameter	Estimate
ρ	0.969
λ	0.178
Σ_u	$\begin{bmatrix} 0.005 & & \\ -0.001 & 0.0005 & \\ -7.27 \times 10^{-5} & -7.64 \times 10^{-5} & 3.23 \times 10^{-5} \end{bmatrix}$
Σ_ψ	$\begin{bmatrix} 0.0002 & & \\ -0.0003 & 0.0004 & \\ 1.94 \times 10^{-5} & -2.69 \times 10^{-5} & 1.90 \times 10^{-6} \end{bmatrix}$
Σ_ω	$\begin{bmatrix} 0.032 & & \\ -0.004 & 0.005 & \\ 0.0002 & 5.44 \times 10^{-5} & 1.97 \times 10^{-6} \end{bmatrix}$

Residual analysis:

	Real interest rate	Inflation	Industrial production
Standard error	0.218	0.094	0.008
Jarque-Bera statistic	26.85	2.306	1.655
Durbin-Watson statistic	2.019	1.892	1.926

B) *Results using adjusted interest rate data*

Hyperparameter	Estimate
ρ	0.961
λ	0.11
Σ_u	$\begin{bmatrix} 0 & & \\ 0 & 0 & \\ 0 & 0 & 3.26 \times 10^{-5} \end{bmatrix}$
Σ_ψ	$\begin{bmatrix} 0.002 & & & \\ -0.0001 & 0.0001 & & \\ 6.55 \times 10^{-5} & -6.48 \times 10^{-6} & 2.51 \times 10^{-6} & \\ & & & \end{bmatrix}$
Σ_ω	$\begin{bmatrix} 0.027 & & & \\ -0.007 & 0.007 & & \\ 0.0001 & -8.42 \times 10^{-5} & 1 \times 10^{-6} & \end{bmatrix}$

Residual analysis:

	Real interest rate	Inflation	Industrial production
Standard error	0.182	0.093	0.008
Jarque-Bera statistic	3.726	2.666	0.542
Durbin-Watson statistic	1.962	1.917	1.846

References

- Bomfim**, Antulio (1997), The Equilibrium Fed Funds Rate and the Indicator Properties of Term-Structure Spreads, *Economic Inquiry*, October, 35 (4), 830-46.
- Brzoza-Brzezina**, Michal (2003), The information content of the natural interest rate for central bankers, Mimeo. National Bank of Poland and Warsaw School of Economics.
- Christiansen**, Hans, and Charles **Pigott** (1997), Long-Term Interest Rates in Globalised Markets, OECD working papers, No. 175.
- Clarida**, Richard, Jordi **Gali** and Mark **Gertler** (1998), Monetary Policy Rules in Practice – Some International Evidence, *European Economic Review*, 42, 1033 – 1067.
- Cogley**, Timothy, and James M. **Nason** (1995), Effects of the Hodrick-Prescott filter on trend and difference stationary time series: Implications for business cycle research. *Journal of Economic Dynamics and Control*, 19, 253-278.
- Gerdesmeier**, Dieter, and Barbara **Roffia** (2003), Empirical Estimates of Reaction Functions for the Euro Area. European Central Bank Working Paper No. 206.
- Giammarioli**, Nicola and Natacha **Valla** (2003), The natural real rate of interest in the euro area. European Central Bank Working Paper No. 233.
- Harvey**, Andrew C. (1989), *Forecasting, structural time series and the Kalman filter*, Cambridge University Press, Cambridge.
- Harvey**, Andrew C., and Albert **Jaeger** (1993): Detrending, stylized facts and the business cycle. *Journal of Applied Econometrics*, vol 8. pp 231-247.

Hodrick, Robert J., and Edward C. **Prescott** (1997): Postwar US business cycles: An empirical investigation. *Journal of Money, Credit and Banking*, 29, 1-16.

Jenkinson, Nigel (1996), Saving, Investment, and Real Interest Rates, Bank of England, Quarterly Bulletin, February.

Kwapil, Claudia (2003), Is there a Difference in the Conduct of Monetary Policy in the euro area before and after the start of Monetary Union?. Mimeo. Oesterreichische Nationalbank. Paper presented at the Annual Meeting of the Austrian Economic Association, NOEG 2003, Klagenfurt, May 2003.

Laubach, Thomas, and John C. **Williams** (2001), Measuring the Natural Rate of Interest, Board of Governors of the Federal Reserve System, November.

Neiss, Katharine S., and Edward **Nelson** (2001), The real interest rate gap as an inflation indicator, Bank of England Working Paper No. 148, December.

Orphanides, Athanasios (2001), Monetary Policy Rules Based on Real-Time Data, *American Economic Review*, September.

Orphanides, Athanasios, and John C. **Williams** (2002), Robust Monetary Policy Rules with Unknown Natural Rates, *Brookings Papers on Economic Activity* (forthcoming).

Orr, Adrian, Malcolm **Edey** and Michael **Kennedy** (1995), Real Long-Term Interest Rates: The Evidence from Pooled-Time-Series, *OECD Economic Studies* No. 25.

Smets, Frank, and Raf **Wouters** (2002), An Estimated Stochastic Dynamic General Equilibrium Model of the Euro Area, ECB Working Paper no. 171, August.

Taylor, John (1993): "Discretion versus policy rules in practice". *Carnegie-Rochester Conference Series on Public Policy*, 39, pp. 195-214.

Wicksell, Knut (1936), *Interest and Prices*, London: Macmillan. (Translation of the 1898 edition by R.F.Kahn.)

Woodford, Michael (2002), A neo-Wicksellian framework, in: *Interest and Prices: Foundations of a Theory of Monetary Policy*, Chapter 4, mimeo, <http://www.princeton.edu/~woodford/>.

Index of Working Papers:

August 28, 1990	Pauer Franz	1 ¹⁾	Hat Böhm-Bawerk Recht gehabt? Zum Zusammenhang zwischen Handelsbilanzpassivum und Budgetdefizit in den USA ²⁾
March 20, 1991	Backé Peter	2 ¹⁾	Ost- und Mitteleuropa auf dem Weg zur Marktwirtschaft - Anpassungskrise 1990
March 14, 1991	Pauer Franz	3 ¹⁾	Die Wirtschaft Österreichs im Vergleich zu den EG-Staaten - eine makroökonomische Analyse für die 80er Jahre
May 28, 1991	Mauler Kurt	4 ¹⁾	The Soviet Banking Reform
July 16, 1991	Pauer Franz	5 ¹⁾	Die Auswirkungen der Finanzmarkt- und Kapitalverkehrsliberalisierung auf die Wirtschaftsentwicklung und Wirtschaftspolitik in Norwegen, Schweden, Finnland und Großbritannien - mögliche Konsequenzen für Österreich ³⁾
August 1, 1991	Backé Peter	6 ¹⁾	Zwei Jahre G-24-Prozess: Bestandsaufnahme und Perspektiven unter besonderer Berücksichtigung makroökonomischer Unterstützungsleistungen ⁴⁾
August 8, 1991	Holzmann Robert	7 ¹⁾	Die Finanzoperationen der öffentlichen Haushalte der Reformländer CSFR, Polen und Ungarn: Eine erste quantitative Analyse
January 27, 1992	Pauer Franz	8 ¹⁾	Erfüllung der Konvergenzkriterien durch die EG-Staaten und die EG-Mitgliedswerber Schweden und Österreich ⁵⁾
October 12, 1992	Hochreiter Eduard (Editor)	9 ¹⁾	Alternative Strategies For Overcoming the Current Output Decline of Economies in Transition
November 10, 1992	Hochreiter Eduard and Winckler Georg	10 ¹⁾	Signaling a Hard Currency Strategy: The Case of Austria

1) vergriffen (out of print)

2) In abgeänderter Form erschienen in Berichte und Studien Nr. 4/1990, S 74 ff

3) In abgeänderter Form erschienen in Berichte und Studien Nr. 4/1991, S 44 ff

4) In abgeänderter Form erschienen in Berichte und Studien Nr. 3/1991, S 39 ff

5) In abgeänderter Form erschienen in Berichte und Studien Nr. 1/1992, S 54 ff

March 12, 1993	Hochreiter Eduard (Editor)	11	The Impact of the Opening-up of the East on the Austrian Economy - A First Quantitative Assessment
June 8, 1993	Anulova Guzel	12	The Scope for Regional Autonomy in Russia
July 14, 1993	Mundell Robert	13	EMU and the International Monetary System: A Transatlantic Perspective
November 29, 1993	Hochreiter Eduard	14	Austria's Role as a Bridgehead Between East and West
March 8, 1994	Hochreiter Eduard (Editor)	15	Prospects for Growth in Eastern Europe
June 8, 1994	Mader Richard	16	A Survey of the Austrian Capital Market
September 1, 1994	Andersen Palle and Dittus Peter	17	Trade and Employment: Can We Afford Better Market Access for Eastern Europe?
November 21, 1994	Rautava Jouko	18 ¹⁾	Interdependence of Politics and Economic Development: Financial Stabilization in Russia
January 30, 1995	Hochreiter Eduard (Editor)	19	Austrian Exchange Rate Policy and European Monetary Integration - Selected Issues
October 3, 1995	Groeneveld Hans	20	Monetary Spill-over Effects in the ERM: The Case of Austria, a Former Shadow Member
December 6, 1995	Frydman Roman et al	21	Investing in Insider-dominated Firms: A Study of Voucher Privatization Funds in Russia
March 5, 1996	Wissels Rutger	22	Recovery in Eastern Europe: Pessimism Confounded ?
June 25, 1996	Pauer Franz	23	Will Asymmetric Shocks Pose a Serious Problem in EMU?
September 19, 1997	Koch Elmar B.	24	Exchange Rates and Monetary Policy in Central Europe - a Survey of Some Issues
April 15, 1998	Weber Axel A.	25	Sources of Currency Crises: An Empirical Analysis

May 28, 1998	Brandner Peter, Diebalek Leopold and Schuberth Helene	26	Structural Budget Deficits and Sustainability of Fiscal Positions in the European Union
June 15, 1998	Canzeroni Matthew, Cumby Robert, Diba Behzad and Eudey Gwen	27	Trends in European Productivity: Implications for Real Exchange Rates, Real Interest Rates and Inflation Differentials
June 20, 1998	MacDonald Ronald	28	What Do We Really Know About Real Exchange Rates?
June 30, 1998	Campa José and Wolf Holger	29	Goods Arbitrage and Real Exchange Rate Stationarity
July 3, 1998	Papell David H.	30	The Great Appreciation, the Great Depreciation, and the Purchasing Power Parity Hypothesis
July 20, 1998	Chinn Menzie David	31	The Usual Suspects? Productivity and Demand Shocks and Asia-Pacific Real Exchange Rates
July 30, 1998	Cecchetti Stephen G., Mark Nelson C., Sonora Robert	32	Price Level Convergence Among United States Cities: Lessons for the European Central Bank
September 30, 1998	Christine Gartner, Gert Wehinger	33	Core Inflation in Selected European Union Countries
November 5, 1998	José Viñals and Juan F. Jimeno	34	The Impact of EMU on European Unemployment
December 11, 1998	Helene Schuberth and Gert Wehinger	35	Room for Manoeuvre of Economic Policy in the EU Countries – Are there Costs of Joining EMU?
December 21, 1998	Dennis C. Mueller and Burkhard Raunig	36	Heterogeneities within Industries and Structure-Performance Models
May 21, 1999	Alois Geyer and Richard Mader	37	Estimation of the Term Structure of Interest Rates – A Parametric Approach
July 29, 1999	José Viñals and Javier Vallés	38	On the Real Effects of Monetary Policy: A Central Banker's View
December 20, 1999	John R. Freeman, Jude C. Hays and Helmut Stix	39	Democracy and Markets: The Case of Exchange Rates

March 01, 2000	Eduard Hochreiter and Tadeusz Kowalski	40	Central Banks in European Emerging Market Economies in the 1990s
March 20, 2000	Katrin Wesche	41	Is there a Credit Channel in Austria? The Impact of Monetary Policy on Firms' Investment Decisions
June 20, 2000	Jarko Fidrmuc and Jan Fidrmuc	42	Integration, Disintegration and Trade in Europe: Evolution of Trade Relations During the 1990s
March 06, 2001	Marc Flandreau	43	The Bank, the States, and the Market, A Austro-Hungarian Tale for Euroland, 1867-1914
May 01, 2001	Otmar Issing	44	The Euro Area and the Single Monetary Policy
May 18, 2001	Sylvia Kaufmann	45	Is there an asymmetric effect of monetary policy over time? A Bayesian analysis using Austrian data.
May 31, 2001	Paul De Grauwe and Marianna Grimaldi	46	Exchange Rates, Prices and Money. A Long Run Perspective
June 25, 2001	Vítor Gaspar, Gabriel Perez-Quiros and Jorge Sicilia	47	The ECB Monetary Strategy and the Money Market
July 27, 2001	David T. Llewellyn	48	<i>A Regulatory Regime</i> For Financial Stability
August 24, 2001	Helmut Elsinger and Martin Summer	49	Arbitrage Arbitrage and Optimal Portfolio Choice with Financial Constraints
September 1, 2001	Michael D. Goldberg and Roman Frydman	50	Macroeconomic Fundamentals and the DM/\$ Exchange Rate: Temporal Instability and the Monetary Model
September 8, 2001	Vittorio Corbo, Oscar Landerretche and Klaus Schmidt-Hebbel	51	Assessing Inflation Targeting after a Decade of World Experience
September 25, 2001	Kenneth N. Kuttner and Adam S. Posen	52	Beyond Bipolar: A Three-Dimensional Assessment of Monetary Frameworks

October 1, 2001	Luca Dedola and Sylvain Leduc	53	Why Is the Business-Cycle Behavior of Fundamentals Alike Across Exchange-Rate Regimes?
October 10, 2001	Tommaso Monacelli	54	New International Monetary Arrangements and the Exchange Rate
December 3, 2001	Peter Brandner, Harald Grech and Helmut Stix	55	The Effectiveness of Central Bank Intervention in the EMS: The Post 1993 Experience
January 2, 2002	Sylvia Kaufmann	56	Asymmetries in Bank Lending Behaviour. Austria During the 1990s
January 7, 2002	Martin Summer	57	Banking Regulation and Systemic Risk
January 28, 2002	Maria Valderrama	58	Credit Channel and Investment Behavior in Austria: A Micro-Econometric Approach
February 18, 2002	Gabriela de Raaij and Burkhard Raunig	59	Evaluating Density Forecasts with an Application to Stock Market Returns
February 25, 2002	Ben R. Craig and Joachim G. Keller	60	The Empirical Performance of Option Based Densities of Foreign Exchange
February 28, 2002	Peter Backé, Jarko Fidrmuc, Thomas Reininger and Franz Schardax	61	Price Dynamics in Central and Eastern European EU Accession Countries
April 8, 2002	Jesús Crespo- Cuaresma, Maria Antoinette Dimitz and Doris Ritzberger- Grünwald	62	Growth, Convergence and EU Membership
May 29, 2002	Markus Knell	63	Wage Formation in Open Economies and the Role of Monetary and Wage-Setting Institutions
June 19, 2002	Sylvester C.W. Eijffinger (comments by: José Luis Malo de Molina and by Franz Seitz)	64	The Federal Design of a Central Bank in a Monetary Union: The Case of the European System of Central Banks

July 1, 2002	Sebastian Edwards and I. Igal Magendzo (comments by Luis Adalberto Aquino Cardona and by Hans Genberg)	65	Dollarization and Economic Performance: What Do We Really Know?
July 10, 2002	David Begg (comment by Peter Bofinger)	66	Growth, Integration, and Macroeconomic Policy Design: Some Lessons for Latin America
July 15, 2002	Andrew Berg, Eduardo Borensztein, and Paolo Mauro (comment by Sven Arndt)	67	An Evaluation of Monetary Regime Options for Latin America
July 22, 2002	Eduard Hochreiter, Klaus Schmidt-Hebbel and Georg Winckler (comments by Lars Jonung and George Tavlas)	68	Monetary Union: European Lessons, Latin American Prospects
July 29, 2002	Michael J. Artis (comment by David Archer)	69	Reflections on the Optimal Currency Area (OCA) criteria in the light of EMU
August 5, 2002	Jürgen von Hagen, Susanne Mundschenk (comments by Thorsten Polleit, Gernot Doppelhofer and Roland Vaubel)	70	Fiscal and Monetary Policy Coordination in EMU
August 12, 2002	Dimitri Boreiko (comment by Ryszard Kokoszcyński)	71	EMU and Accession Countries: Fuzzy Cluster Analysis of Membership
August 19, 2002	Ansgar Belke and Daniel Gros (comments by Luís de Campos e Cunha, Nuno Alves and Eduardo Levy-Yeyati)	72	Monetary Integration in the Southern Cone: Mercosur Is Not Like the EU?
August 26, 2002	Friedrich Fritzer, Gabriel Moser and Johann Scharler	73	Forecasting Austrian HICP and its Components using VAR and ARIMA Models

September 30, 2002	Sebastian Edwards	74	The Great Exchange Rate Debate after Argentina
October 3, 2002	George Kopits (comments by Zsolt Darvas and Gerhard Illing)	75	Central European EU Accession and Latin American Integration: Mutual Lessons in Macroeconomic Policy Design
October 10, 2002	Eduard Hochreiter, Anton Korinek and Pierre L. Siklos (comments by Jeannine Bailliu and Thorvaldur Gylfason)	76	The Potential Consequences of Alternative Exchange Rate Regimes: A Study of Three Candidate Regions
October 14, 2002	Peter Brandner, Harald Grech	77	Why Did Central Banks Intervene in the EMS? The Post 1993 Experience
October 21, 2002	Alfred Stiglbauer, Florian Stahl, Rudolf Winter-Ebmer, Josef Zweimüller	78	Job Creation and Job Destruction in a Regulated Labor Market: The Case of Austria
October 28, 2002	Elsinger, Alfred Lehar and Martin Summer	79	Risk Assessment for Banking Systems
November 4, 2002	Helmut Stix	80	Does Central Bank Intervention Influence the Probability of a Speculative Attack? Evidence from the EMS
June 30, 2003	Markus Knell, Helmut Stix	81	How Robust are Money Demand Estimations? A Meta-Analytic Approach
July 7, 2003	Helmut Stix	82	How Do Debit Cards Affect Cash Demand? Survey Data Evidence
July 14, 2003	Sylvia Kaufmann	83	The business cycle of European countries. Bayesian clustering of country-individual IP growth series.
July 21, 2003	Jesus Crespo Cuaresma, Ernest Gnan, Doris Ritzberger-Gruenwald	84	Searching for the Natural Rate of Interest: a Euro-Area Perspective