

Elsinger, Helmut; Lehar, Alfred; Summer, Martin

**Working Paper**

## Risk Assessment for Banking Systems

Working Paper, No. 79

**Provided in Cooperation with:**

Oesterreichische Nationalbank (OeNB), Vienna

*Suggested Citation:* Elsinger, Helmut; Lehar, Alfred; Summer, Martin (2002) : Risk Assessment for Banking Systems, Working Paper, No. 79, Oesterreichische Nationalbank (OeNB), Vienna

This Version is available at:

<https://hdl.handle.net/10419/264671>

**Standard-Nutzungsbedingungen:**

Die Dokumente auf EconStor dürfen zu eigenen wissenschaftlichen Zwecken und zum Privatgebrauch gespeichert und kopiert werden.

Sie dürfen die Dokumente nicht für öffentliche oder kommerzielle Zwecke vervielfältigen, öffentlich ausstellen, öffentlich zugänglich machen, vertreiben oder anderweitig nutzen.

Sofern die Verfasser die Dokumente unter Open-Content-Lizenzen (insbesondere CC-Lizenzen) zur Verfügung gestellt haben sollten, gelten abweichend von diesen Nutzungsbedingungen die in der dort genannten Lizenz gewährten Nutzungsrechte.

**Terms of use:**

*Documents in EconStor may be saved and copied for your personal and scholarly purposes.*

*You are not to copy documents for public or commercial purposes, to exhibit the documents publicly, to make them publicly available on the internet, or to distribute or otherwise use the documents in public.*

*If the documents have been made available under an Open Content Licence (especially Creative Commons Licences), you may exercise further usage rights as specified in the indicated licence.*



OESTERREICHISCHE NATIONALBANK

WORKING PAPER 79

RISK ASSESSMENT FOR BANKING SYSTEMS

HELMUT ELSINGER, ALFRED LEHAR, MARTIN SUMMER

## **Editorial Board of the Working Papers**

Eduard Hochreiter, Coordinating Editor  
Ernest Gnan,  
Wolfdietrich Grau,  
Peter Mooslechner  
Kurt Pribil

## **Statement of Purpose**

The Working Paper series of the Oesterreichische Nationalbank is designed to disseminate and to provide a platform for discussion of either work of the staff of the OeNB economists or outside contributors on topics which are of special interest to the OeNB. To ensure the high quality of their content, the contributions are subjected to an international refereeing process. The opinions are strictly those of the authors and do in no way commit the OeNB.

Imprint: Responsibility according to Austrian media law: Wolfdietrich Grau, Secretariat of the Board of Executive Directors, Oesterreichische Nationalbank

Published and printed by Oesterreichische Nationalbank, Wien.

The Working Papers are also available on our website:

<http://www.oenb.co.at/workpaper/pubwork.htm>

## **Editorial**

In this paper, Helmut Elsinger, Alfred Lehar and Martin Summer suggest a new approach to risk assessment for banks. Rather than looking at them individually they try to undertake an analysis at the level of the banking system. Such a perspective is necessary because the complicated network of mutual credit obligations can make the actual risk exposure of banks invisible at the level of individual institutions. Using standard risk management techniques in combination with a network model of interbank exposures, the authors analyze the consequences of macroeconomic shocks for bank insolvency risk. In particular, they consider interest rate shocks, exchange rate and stock market movements as well as shocks related to the business cycle. The feedback between individual banks and potential domino effects from bank defaults are taken explicitly into account. The model determines endogenously probabilities of bank insolvencies, recovery rates and a decomposition of insolvency cases into defaults that directly result from movements in risk factors and defaults that arise indirectly as a consequence of contagion.

October 28, 2002



# Risk Assessment for Banking Systems\*

Helmut Elsinger<sup>†</sup>

University of Vienna  
Department of Business Studies

Alfred Lehar<sup>‡</sup>

University of British Columbia  
Faculty of Commerce

Martin Summer<sup>§</sup>

Oesterreichische Nationalbank  
Economic Studies Division

First version February 2002

This version October 2002

---

\*We have to thank Ralf Dobringer, Bettina Kunz, Franz Partsch and Gerhard Fiam for their help and support with the collection of data. We thank Klaus Duellmann, Phil Davis, Eduard Hochreiter, George Kaufman, Markus Knell, David Llewellyn, Matt Pritsker, Christian Upper and Andreas Worms for helpful comments. We also thank seminar and conference participants at OeNB, Technical University Vienna, Board of Governors of the Federal Reserve System, the IMF, the 2002 WEA meetings, the 2002 European Economic Association Meetings, the 2002 European Econometric Association Meetings, and the CESifo workshop on Financial Regulation and Financial Stability for their comments. The views and findings of this papers are entirely those of the authors and do not necessarily represent the views of Oesterreichische Nationalbank.

<sup>†</sup>Brünner Strasse 71, A-1210 Wien, Austria, e-mail: helmut.elsinger@univie.ac.at, Tel: +43-1-4277 38057, Fax: +43-1-4277 38054

<sup>‡</sup>2053 Main Mall, Vancouver, BC, Canada V6T 1Z2, e-mail: alfred.lehar@commerce.ubc.ca, Tel: (604) 822 8344, Fax: (604) 822 4695

<sup>§</sup>corresponding author, Otto-Wagner-Platz 3, A-1011 Wien, Austria, e-mail: martin.summer@oenb.co.at, Tel: +43-1-40420 7212, Fax: +43-1-40420 7299

# Risk Assessment for Banking Systems

## Abstract

In this paper we suggest a new approach to risk assessment for banks. Rather than looking at them individually we try to undertake an analysis at the level of the banking system. Such a perspective is necessary because the complicated network of mutual credit obligations can make the actual risk exposure of banks invisible at the level of individual institutions. We apply our framework to a cross section of individual bank data as they are usually collected at the central bank. Using standard risk management techniques in combination with a network model of interbank exposures we analyze the consequences of macroeconomic shocks for bank insolvency risk. In particular we consider interest rate shocks, exchange rate and stock market movements as well as shocks related to the business cycle. The feedback between individual banks and potential domino effects from bank defaults are taken explicitly into account. The model determines endogenously probabilities of bank insolvencies, recovery rates and a decomposition of insolvency cases into defaults that directly result from movements in risk factors and defaults that arise indirectly as a consequence of contagion.

**Keywords:** Systemic Risk, Interbank Market, Financial Stability, Risk Management

**JEL-Classification Numbers:** G21, C15, C81, E44

# 1 Introduction

Risk management at the level of individual financial institutions has been substantially improved during the last twenty years. These improvements have been very much spurred by the pressure to cope with a more volatile and dynamic financial environment after the breakdown of the Bretton Woods system compared to the postwar period. Pressure has however not only come from the markets. Regulators have undertaken great efforts since the eighties to impose new risk management standards on banks. To gain public support for these measures it has frequently been argued that they are necessary to attenuate dangers of systemic risk and to strengthen the stability of the financial system. But is current regulatory and supervisory practice designed appropriately to achieve these goals? There are reasons to doubt this. Regulators and supervisors are at the moment almost entirely focused on individual institutions. Assessing the risk of an entire banking *system* however requires an approach that goes beyond the individual institution perspective.

One of the major reasons why the individual institutions approach is insufficient is the fact that modern banking systems are characterized by a fairly complex network of mutual credit exposures. These credit exposures result from liquidity management on the one hand and from OTC derivative trading on the other hand. In such a system of mutual exposures the actual risk borne by the banking system as a whole and the institutions embedded in it may easily be hidden at the level of an individual bank. The problem of hidden exposure is perhaps most easily seen in the case of counterparty risk. Judged at the level of an individual institution it might look rather unspectacular. By the individual institution perspective it can however remain unnoticed that a bank is part of a chain of mutual obligations in which credit risks are highly correlated. Its *actual* risk exposure thus might indeed be quite substantial. Another example of hidden exposure has been pointed out in the literature by Hellwig (1995). In Hellwig's example the network of mutual credit obligations makes substantial exposure of the system to interest rate risk invisible at the level of an individual bank because the individual maturity transformation looks short, whereas the maturity transformation of the system as a whole is rather extreme. To uncover hidden exposure and to appropriately assess risk in the banking system, rather than looking at individual institutions, risk assessment should therefore make an attempt to judge the risk exposure of the system as a whole. A '*system perspective*' on banking supervision has for instance been actively advocated by Hellwig (1997). Andrew Crockett (2000), the general manager of the BIS, has even coined a new word - *macroprudential* -



to express the general philosophy of such an approach.<sup>1</sup>

The open issue then of course is: What exactly does it mean to take a '*system perspective*' or a macroprudential viewpoint, for the risk assessment of banks? In our paper we provide an answer to this question. We develop a methodology to assess the risk of a banking system taking into account the major macroeconomic risk factors simultaneously as well as the complex network of interbank dealings. The method is designed in such a way that it can be applied to data as they are usually collected at a central bank. So rather than asking what data we would ideally like to have, we want to know how far we can get with data already available.

Our basic idea is to look at cross sections of individual bank balance sheet and supervisory data from the perspective of a network model describing bilateral interbank relations in some detail. The model allows us to assess the insolvency risk of banks for different scenarios of macroeconomic shocks like interest rate shocks, exchange rate and stock market movements as well as shocks related to the business cycle. Therefore the contribution of our paper is a risk management model that thinks about the risk exposure of banks at the level of the banking system rather than at the level of individual institutions. Our approach can thus be seen as an attempt to assess '*systemic risk*'.<sup>2</sup>

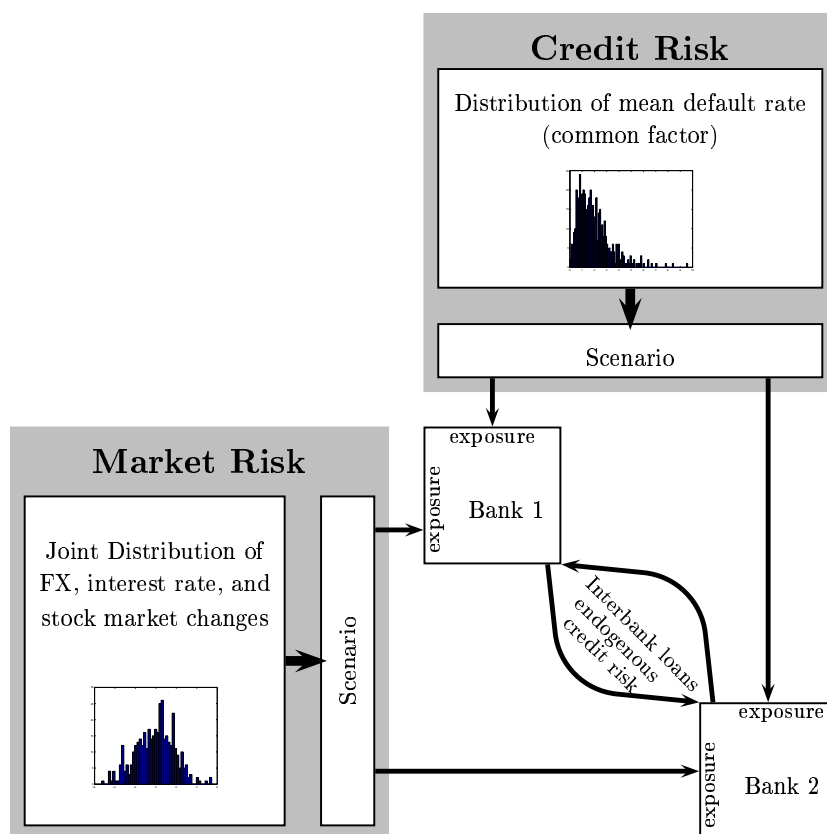
## 1.1 An Overview of the Model

The basic framework is a model of a banking system with a detailed description of the structure of interbank exposures. The model explains the feasible payment flows between banks endogenously from a given structure of interbank liabilities, net values of the banks arising from all other bank activities and an assumption about the resolution of insolvency in different states of the world. States of the world are described as follows: We expose the banks financial positions apart from interbank relations to interest rate, exchange rate, stock market and business cycle shocks. For each state of the world, the network model uniquely determines endogenously actual interbank payment flows. Taking the feedback between banks from mutual credit exposures and mutual exposures to aggregate shocks explicitly into account we can calculate default frequencies of individual banks

---

<sup>1</sup>See also Borio (2002).

<sup>2</sup>Note that though the term *systemic risk* belongs to the standard rhetoric of discussions about banking regulation it does not have a precise definition (see Summer (2003) for a discussion). We invoke the term here because we think that our approach captures some of the issues frequently discussed under this header, in particular the problem of contagious default.



**Figure 1.** The graph shows the basic structure of the model. Banks are exposed to shocks from credit risk and market risk according to their respective exposures. Interbank credit risk is endogenously explained by the network model.

across states. The endogenously determined vector of feasible payments between banks also determines the recovery rates of banks with exposures to an insolvent counterparty. We are able to distinguish bank defaults that arise directly as a consequence of movements in the risk factors and defaults which arise indirectly because of contagion. The model therefore yields a decomposition into fundamental and contagious defaults. Our approach is illustrated in Figure 1 which shows the various elements of our risk assessment procedure.

The main data source we use for our model are bank balance sheet data and supervisory data reported monthly to the Austrian Central Bank (Monatsausweis, MAUS). In particular these data give us for each bank in the system an aggregate number of on balance sheet claims and liabilities towards other banks in the system banks abroad and

the central bank.<sup>3</sup> From this partial information we *estimate* the matrix of bilateral exposures for the entire system. For the estimation of bilateral exposures we can exploit information that is revealed by the sectoral organization of the Austrian banking system.<sup>4</sup> Scenarios are created by exposing the positions on the balance sheet that are not part of the interbank business to interest rate, exchange rate, stock market and loan loss shocks. In order to do so we undertake a historic simulation using market data, except for the loan losses where we employ a credit risk model. In the scenario part we use data from Datastream, the major loans statistics produced at the Austrian Central Bank (Großkreditvidenz, GKE) as well as statistics of insolvency rates in various industry branches from the Austrian rating agency Kreditschutzverband von 1870. For each scenario the estimated matrix of bilateral exposures and the income positions determine via the network model a unique vector of feasible interbank payment and thus a pattern of insolvency. It is the analysis of these data that we rely on to assess the risk exposure of all banks at a system level.<sup>5</sup>

Using a cross section of data for September 2001 we get the following main results: The Austrian banking system is very stable and default events that could be classified as a "systemic crisis" are unlikely. We find that the median default probability of an Austrian bank to be below one percent. Perhaps the most interesting finding is that only a small fraction of bank defaults can be interpreted as *contagious*. The vast majority of defaults is a direct consequence of macroeconomic shocks.<sup>6</sup> Furthermore we find the median endogenous recovery rates to be 66%, we show that the Austrian banking system is quite stable to shocks from losses in foreign counterparty exposure and we find no clear

---

<sup>3</sup>Note that these data cover only the on balance sheet part of interbank transactions and do not include off balance sheet items.

<sup>4</sup>The sector organization has mainly historic roots and partitions the banks into joint stock banks, savings banks, state mortgage banks, Raiffeisen Banks, Volksbanken, construction savings and loans associations and special purpose banks. The system is explained in detail in Section 3.

<sup>5</sup>Why do we treat the vector income positions apart from interbank dealings as state contingent whereas we treat the matrix of bilateral exposures as uncontingent? First of all note that the actual interbank payments are in fact *not* uncontingent because they are determined by the network model and thus interbank payments vary across states of the world. Treating bilateral exposures as state contingent directly with respect to risk factors would mean to have all of them in present values and then to look at consequences of changes in risk factors such as interest rate risk. Such an analysis is not possible - or only at the cost of a set of strong and arbitrary assumptions - for the data we have at the moment. We therefore treat bilateral interbank exposures by looking at given nominal liabilities and claims as we can reconstruct them from the balance sheet data. As shown in Figure 1 we think of this as a model where the income risk of non-interbank positions is driven by exogenous risk factors whereas interbank credit risk is endogenously explained by the network model.

<sup>6</sup>This confirms some of the conclusions drawn in a paper by Kaufman (1994) about the empirical (ir)relevance of contagious bank defaults.

evidence that the interbank market either increases correlations among banks or enables banks to diversify risk. Using our model as a simulation tool, we show that market share in the interbank market alone is not a good predictor of the relevance of a bank for the banking system.

## 1.2 Related Research

To our best knowledge this is the first attempt in the literature to design a framework for the assessment of the risk exposure of an entire banking system taking into account the detailed micro information usually available in central banks.<sup>7</sup> For the different parts of the model we rely on some results in the literature. The network model we use as the basic building block is due to Eisenberg and Noe (2001). These authors give an abstract analysis of a static clearing problem. We rely on these results in the network part of our model. For our analysis we extend this model to a simple uncertainty framework. The idea to recover bilateral interbank exposures using bank balance sheet data has first been systematically pursued by Sheldon and Maurer (1998) for Swiss data on a sectorally aggregated level. They use an entropy optimization procedure to estimate bilateral exposures from partial information. Upper and Worms (2002) analyze bank balance sheet data for German banks. Applying modern techniques from applied mathematics<sup>8</sup> they are able to deal with a much larger problem than Sheldon and Maurer (1998) and estimate bilateral exposures on an entirely disaggregated level.<sup>9</sup> We use similar methods for reconstructing bilateral exposures for the Austrian data. Using disaggregated data has the advantage that much of bilateral exposures can be exactly recovered by exploiting structural information about the banking system under consideration.<sup>10</sup> The estimation procedure has then to be applied only to a relatively small part of exposures for which structural information does not give any guidelines. The credit risk model we use is a version of the CreditRisk+

---

<sup>7</sup>There have however been various theoretical attempts to conceptualize such a problem. These papers are Allen and Gale (2000), Freixas, Parigi, and Rochet (2000), and Dasgupta (2000).

<sup>8</sup>These techniques are outlined in Blien and Graef (1997) as well as in a book by Fang, Rajasekara, and Tsao (1997).

<sup>9</sup>Upper and Worms (2002) rely on a combination of exploiting structural information and entropy optimization for the reconstruction of bilateral exposures.

<sup>10</sup>This structural information is of course dependent on the country specific features of the reporting systems. While we can make use of the fact that many banks have to decompose their reports with respect to certain counterparties (see section 4) Upper and Worms (2002) can use the fact that in Germany banks have to break down their reports between sectors and within this information also with respect to maturities. Since many banks only borrow or lend in the interbank market at specific maturities these authors can identify many bilateral positions.

model of Credit Suisse (1997). We have to adapt this framework to deal with a *system* of loan portfolios simultaneously rather than with the loan portfolio of a single bank.

There is a related literature that deals with similar questions for payment and banking systems. Humphery (1986) and Angelini, Maresca, and Russo (1996) deal with settlement failures in payment systems. Furfine (1999) and Upper and Worms (2002) deal with banking systems. What is common to all of these studies is that they are concerned with the contagion of default following the simulated failure of one or more counterparties in the system. Our study in contrast undertakes a systematic analysis of risk factors and their impacts on bank income. Bank failures and contagion are studied as a consequence of these economic shocks to the entire banking system. Thus while the studies cited above are based on a thought experiment that tries to work out the implications of the structure of interbank lending on the assumed failure of particular institutions our analysis is built on a fully fledged model of the banking system's risk exposure. The consequences of this exposure is then studied systematically within the framework of the network model. The main innovation of our model is therefore the combination of a systematic scenario analysis for risk factors with an analysis of contagious default. We can of course use our framework to undertake similar simulation exercises as the previous literature on contagious default by letting some institution fail and study the consequences for other banks in the system. Complementing our analysis by such an exercise is interesting because all of the studies cited above get rather different results on the actual importance of contagion effects due to simulated idiosyncratic failure of individual institutions.<sup>11</sup>

The paper is organized as follows: Section 2 describes the network model of the banking system. Section 3 gives a detailed description of our data. Section 4 explains our estimation procedure for the matrix of bilateral interbank exposures. Section 5 explains our approach to the creation of scenarios. Section 6 contains our simulation results for a cross section of Austrian banks with data from September 2001. Section 7 demonstrates how the framework can be used for thought experiments and contrasts our empirical findings with other results in the literature. The final section contains conclusions. Some of the technical and data details are explained in an appendix.

---

<sup>11</sup>The study by Humphery (1986) found the contagion potential from settlement failures in the payment system to be rather significant. Angelini, Maresca, and Russo (1996) studying settlement failure in the Italian payment system find a low incidence of contagious defaults. Sheldon and Maurer (1998) conclude from their study that failure propagation due to a simulated default of a single institution is low. Furfine (1999) finds low contagion effects using exact bilateral exposures from Fedwire. Upper and Worms (2002) find potentially large contagion effects once loss rates exceed a certain threshold, estimated by them at around 45%.

## 2 A Network Model of the Interbank Market

The conceptual framework we use to describe the system of interbank credits has been introduced to the literature by Eisenberg and Noe (2001). These authors study a centralized static clearing mechanism for a financial system with exogenous income and a given structure of bilateral nominal liabilities. We build on this model and extend it to include uncertainty.

Consider a finite set  $\mathcal{N} = \{1, \dots, N\}$  of nodes. Each node  $i \in \mathcal{N}$  is characterized by a given income  $e_i$  and nominal liabilities  $l_{ij}$  against other nodes  $j \in \mathcal{N}$  in the system. The entire system of nodes is thus described by an  $N \times N$  matrix  $L$  and a vector  $e \in \mathbb{R}^N$ . We denote this system by the pair  $(L, e)$ .<sup>12</sup>

We can interpret the pair  $(L, e)$  as a model of a *system* of bank balance sheets with a detailed description of interbank exposures: Each node  $i \in \mathcal{N}$  in the system corresponds to a bank. The income positions resulting from each bank's activities is decomposed into two parts: The interbank positions, described by  $L$ , and the net wealth position resulting from other activities of the bank.<sup>13</sup>

Let us illustrate this interpretation of the network model by an example: Consider a system with three banks. The interbank liability structure is described by the matrix

$$L = \begin{pmatrix} 0 & 0 & 2 \\ 3 & 0 & 1 \\ 3 & 1 & 0 \end{pmatrix} \quad (1)$$

In our example, bank 3 has - for instance - liabilities of 3 with bank 1 and liabilities of 1 with bank 2. It has of course no liabilities with itself. The total interbank liabilities for each bank in the system is given by a vector  $d = (2, 4, 4)$ . With actual balance sheet data the components of the vector  $d$  correspond to the position *due to banks* for bank 1, 2 and 3 respectively. If we alternatively look at the column sum of  $L$  we get the position *due from banks*. Assume that we can summarize the net wealth of the banks that is generated

---

<sup>12</sup>Note that the liabilities of one node  $i \in \mathcal{N}$  are the claims of some other node  $j \in \mathcal{N}$ . Thus rows are liabilities of the nodes whereas columns are claims.

<sup>13</sup>Note that the network description is quite flexible and also allows for a richer interpretation. Some banks in  $\mathcal{N}$  could for instance describe the central bank or the world outside the banking system. One could also append to the system a node that Eisenberg and Noe (2001) call the "sink node". It has an  $e_i$  of zero and no obligations to other banks. Liabilities of banks to employees, to the tax authorities etc. can then be viewed as claims of this node to the system.

form all other activities by a vector  $e = (1, 1, 1)$ . This vector corresponds to the difference of asset positions such as bonds, loans and stock holdings and liability positions such as deposits and securitized liabilities.

To determine *feasible* payments between banks we have to say something about situations where a bank is not able to honor its interbank promises. To make liabilities and claims mutually consistent a simple mechanism to resolve situations of insolvency is in place. This clearing mechanism is basically a redistribution scheme. If the total net value of a bank - i.e. the income received from other banks plus the income position of non interbank activities minus the bank's own interbank liabilities - becomes negative, the bank is insolvent. In this case the claims of creditor banks are satisfied proportionally. This is a stylized and simplified description of a bankruptcy procedure. In this procedure the following properties are taken into account: Banks have limited liability and default is resolved by proportional sharing of the value of the debtor bank among its creditor banks. Therefore the exogenous parameters  $(L, e)$  together with the assumption about the resolution of insolvency *endogenously* determine the *actual payments* between banks.

In Eisenberg and Noe (2001) these ideas are formalized as follows: Denote by  $d \in \mathbb{R}_+^N$ <sup>14</sup> the vector of total obligations of banks towards the rest of the system i.e., we have  $d_i = \sum_{j \in \mathcal{N}} l_{ij}$ . Proportional sharing of value in case of insolvency is described by defining a new matrix  $\Pi \in [0, 1]^{N \times N}$ . This matrix is derived from  $L$  by normalizing the entries by total obligations. We write:

$$\pi_{ij} = \begin{cases} \frac{l_{ij}}{d_i} & \text{if } d_i > 0 \\ 0 & \text{otherwise} \end{cases} \quad (2)$$

With these definitions we can describe a financial system with a clearing mechanism that respects limited liability of banks and proportional sharing as a tuple  $(\Pi, e, d) \in [0, 1]^{N \times N} \times \mathbb{R}^N \times \mathbb{R}_+^N$  for which we explain endogenously a so called *clearing payment vector*  $p^* \in \mathbb{R}_+^N$ . It denotes the total payments made by the banks under the clearing

---

<sup>14</sup> $\mathbb{R}_+^N = \{x \in \mathbb{R}^N | x_i \geq 0, i = 1, \dots, N\}$

mechanism. We have:

**Definition 1** A clearing payment vector for the system  $(\Pi, e, d) \in [0, 1]^{N \times N} \times \mathbb{R}^N \times \mathbb{R}_+^N$  is a vector  $p^* \in \times_{i=1}^N [0, d^i]$  such that for all  $i \in \mathcal{N}$

$$p_i^* = \min[d_i, \max(\sum_{j=1}^N \pi_{ji} p_j^* + e_i, 0)] \quad (3)$$

Applied to our example the normalized liability matrix is given by

$$\Pi = \begin{pmatrix} 0 & 0 & 1 \\ \frac{3}{4} & 0 & \frac{1}{4} \\ \frac{3}{4} & \frac{1}{4} & 0 \end{pmatrix}$$

For an arbitrary vector of actual payments  $p$  between banks the net values of banks can then be written as

$$\Pi^T p + e - p$$

Under the clearing mechanism - given the payments of all counterparties in the inter-bank market - a bank either honors all its promises and pays  $p_i^* = d_i$  or it is insolvent and pays

$$p_i^* = \max(\sum_{j=1}^N \pi_{ji} p_j^* + e_i, 0) \quad (4)$$

The clearing payment vector thus directly gives us two important insights. First: For a given structure of liabilities and bank values  $(\Pi, e, d)$  it tells us which banks in the system are insolvent. Second: It tells us the recovery rate for each defaulting bank in each state.

To find a clearing payment vector we have to find a solution to a system of inequalities. Eisenberg and Noe (2001) prove that under mild regularity conditions a unique clearing payment vector for  $(\Pi, e, d)$  always exists. These results extend - with slight modifications - to our framework as well.<sup>15</sup>

The clearing algorithm contains even more information that is interesting for the assessment of credit risk in the interbank market and for issues of systemic stability. This can be seen by an explanation of the method by which we *calculate* clearing payment

---

<sup>15</sup>In Eisenberg and Noe (2001) the vector  $e$  is in  $\mathbb{R}_+^N$  whereas in our case the vector is in  $\mathbb{R}^N$ .



vectors. This method is due to Eisenberg and Noe (2001). They call their procedure the "*fictitious default algorithm*". This term basically describes what is going on in the calculation. For a given  $(\Pi, e, d)$  the procedure starts under the assumption that all banks fully honor their promises, i.e.  $p^* = d$ . If under this assumption all banks have positive value, the procedure stops. If there are banks with a negative value, they are declared insolvent and the clearing mechanism calculates their payment according to the clearing formula (4) and keeps the payments of the positive value banks fixed. Now it can happen that banks that had a positive value in the first iteration have a negative value in the second because they lose on their claims on the insolvent banks. Then these banks have to be cleared and a new iteration starts. Eisenberg and Noe (2001) prove that this procedure is well defined and converges after at most  $N$  steps to the unique clearing payment vector  $p^*$ .<sup>16</sup>

This procedure thus generates interesting information in the light of systemic stability. A bank that is insolvent in the first round of the fictitious default algorithm is fundamentally insolvent. Bank defaults in consecutive rounds can be considered as contagious defaults.<sup>17</sup>

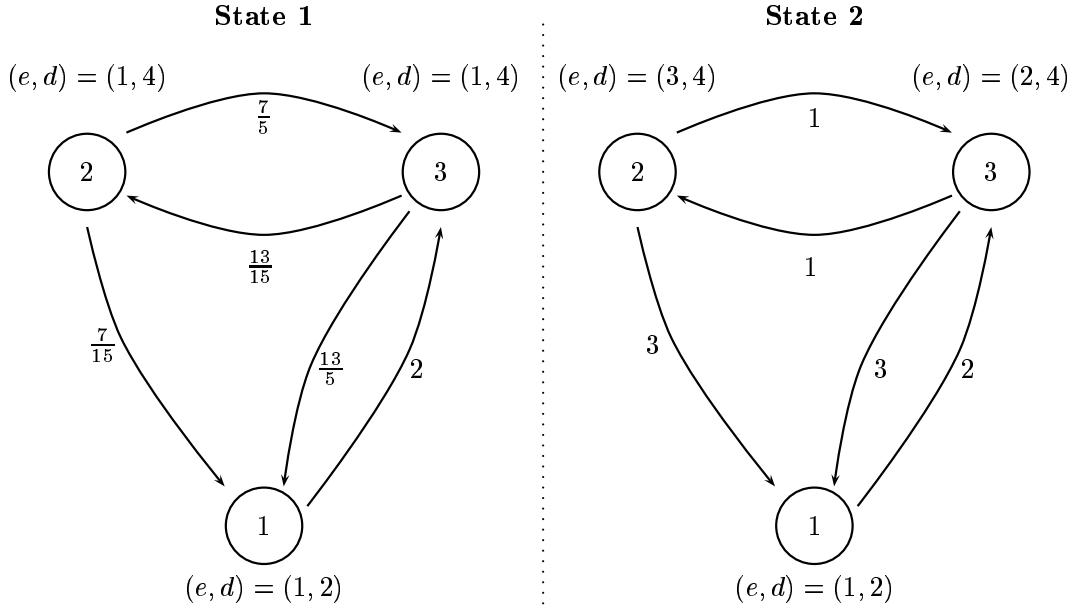
An application of the fictitious default algorithm to our example leads to a clearing payment vector of  $p^* = (2, \frac{28}{15}, \frac{52}{15})$ . It is easy to check that bank 2 is fundamentally insolvent whereas bank 3 is "dragged into insolvency" by the default of bank 2.

To extend the model of the clearing system to a simple uncertainty framework we work with a basic event tree. Assume that there are two dates  $t = 0$  and  $t = 1$ . Think of

---

<sup>16</sup>Note that our setup implicitly contains a seniority structure of different debt claims of banks. By interpreting  $e_i$  as net income from all bank activities except the interbank business we assume that interbank debt claims are junior to other claims, like depositors or bond holders. However interbank claims have absolute priority in the sense that the owners of the bank get paid only after all debts have been paid. In reality the legal situation is much more complicated and the seniority structure might very well differ from the simple procedure we employ here. For our purpose it gives us a convenient simplification that makes a rigorous analysis of interbank defaults tractable.

<sup>17</sup>At this point it is perhaps useful to point out that the clearing payment vector is a fixed point of the map  $\times_{i=1}^N [0, d^i] \rightarrow \times_{i=1}^N [0, d^i]$ ,  $p \mapsto ((\Pi^T p + e - p) \vee 0) \wedge d$  whereas the dynamic interpretation is derived from the iterative procedure by which the fixed point is actually *calculated*. We therefore hesitate to follow Eisenberg and Noe (2001) by interpreting insolvencies at later rounds of the fictitious default algorithm as indicating higher "systemic stability" of a bank. Of course one can define such a measure. Since there are other ways to calculate the clearing payment vector, the order of rounds in the fictitious default algorithm does not have a meaningful economic interpretation. The fictitious default algorithm nevertheless allows for a meaningful decomposition between defaults directly due to shocks or indirectly due to default of other banks in the system. No matter how the clearing vector is calculated the interpretation of fundamental insolvency has a clear economic interpretation and the classification of all other defaults as contagious does not depend on the particular calculation procedure, i.e. the fictitious default algorithm.



**Figure 2.** Graphical representation of the simple toy-model network of interbank liabilities.

$t = 0$  as the *observation period*, where  $(L, e_0)$  is observed. Then economic shocks affect the income vector  $e_0$ . The shocks lead to a realization of one state  $s$  in a finite set  $\mathcal{S}$  of states of the world at  $t = 1$ . Each state is characterized by a particular  $e_{s1}$ . Think of  $t = 1$  as a hypothetical clearing date where all interbank claims are settled according to the clearing mechanism. By the theorem of Eisenberg and Noe (2001) we know that such a clearing payment vector is uniquely determined for each pair  $(L, e_{s1})$ . Thus from an ex-ante perspective we can assess expected default frequencies from interbank credits across states as well as the expected severity of losses from these defaults given we have an idea about  $(L, e_{s1})$  for all  $s \in \mathcal{S}$ . We can furthermore decompose insolvencies across states into fundamental and contagious defaults.

Going back to our example we could think of a situation with two states described by two vectors  $e_{11} = (1, 1, 1)$  and  $e_{21} = (1, 3, 2)$ . Given in the observation period we have seen the matrix  $L$ , in the first state banks 2 and 3 default whereas in the second state no bank is insolvent. The clearing payment vectors and the network structure for this example are illustrated in Figure 2.

An application of the network model for the assessment of credit risk from interbank positions therefore requires mainly two things. First, we have to determine  $L$  from the data. Second, we have to come up with a plausible framework to create meaningful

scenarios or states of the world.

## 3 The Data

In the following we give a short description of our data. Our main sources are bank balance sheet and supervisory data from the Monatsausweis (MAUS) database of the Austrian Central Bank (OeNB) and the database of the OeNB major loans register (Großkreditveridenz,GKE). We use furthermore data on default frequencies in certain industry groups from the Austrian rating agency Kreditschutzverband von 1870. Finally we use market data from Datastream.

### 3.1 The Bank Balance Sheet Data

Banks in Austria report balance sheet data to the central bank on a monthly basis<sup>18</sup>. On top of balance sheet data MAUS contains a fairly extensive amount of other data that are relevant for supervisory purposes. They include among others numbers on capital adequacy statistics on times to maturity and foreign exchange exposures with respect to different currencies. We can use this information to learn more about the structure of certain balance sheet positions.

In our analysis we use a cross section from the MAUS database for September 2001 which we take as our observation period. We want to use these data to get an estimate of the matrix  $L$  as well as to determine the vector  $e_0$ . All items are broken down in Euro exposures and into foreign exchange exposures.

A particular institutional feature of the Austrian banking system helps us with the estimation of bilateral interbank exposures. It has a sectoral organization for historic reasons. Banks belong to one of the seven sectors: joint stock banks, savings banks, state mortgage banks, Raiffeisen banks, Volksbanken, housing construction savings and loan associations and special purpose banks. This sectoral organization of banks left traces in the data requirements of OeNB. Banks have to break down their MAUS reports on claims and liabilities with other banks according to the different banking sectors, central bank and foreigners. This practice of reporting on balance interbank positions reveals some

---

<sup>18</sup>This report called Monatsausweis (MAUS) is regulated in §74 Abs. 1 and 4 of the Austrian banking law, Bankwesengesetz (BWG).

structure of the  $L$  matrix. The savings banks and the Volksbanken sector are organized in a two tier structure with a sectoral head institution. The Raiffeisen sector is organized by a three tier structure, with a head institution for every federal state of Austria. The federal state head institutions have a central institution, Raiffeisenzentralbank (RZB) which is at the top of the Raiffeisen structure. Banks with a head institution have to disclose their positions with the head institution. This gives us additional information on  $L$ . From the viewpoint of banking activities the sectoral organization is today not particularly relevant. The activities of the sectors differ only slightly and only a few banks are specialized in specific lines of business. The 908 independent banks in our sample are to the largest extent universal banks.

Total assets in the Austrian banking sector in September 2001 were 567,071 Million Euro. The sectoral shares are: 22% joint stock banks, 35% savings banks, 6% state mortgage banks, 21% Raiffeisen banks, 5% Volksbanken, 3% housing construction savings and loan associations and 8% special purpose banks. The banking system is dominated by a few big institutions: 57% of total assets are concentrated with the 10 biggest banks. The share of total interbank liabilities in total assets of the banking system is 33%.

Statistics for the data on domestic interbank exposures are displayed in Table 1, which shows sectoral aggregates of the domestic on balance sheet exposures for the Austrian interbank market. About two thirds of all Austrian banks belong to the Raiffeisen sector which consists mainly of small, independent banks in rural areas. From the fraction of liabilities in the won sector we can see that some sectors form a fairly closed system holding about three quarters of the liabilities within the sector, while the construction S&Ls have no liabilities to banks in their sector. We can also see that banks in a sector with a head institution do the major share of their interbank activities with their own head institution. This is in particular true for many of the smaller banks. The special purpose banks are quite diversified in their liabilities.

## 3.2 The Credit Exposure Data

We can get a rough breakdown for the banks' loan portfolio to non-banks by making use of the major loans register of OeNB (Großkreditevidenz, GKE). This database contains all loans exceeding a volume of 364,000 Euro. For each bank we use the amount of loans

	Joint stock banks	Savings banks	State mortgage banks	Raiffeisen banks	Volksbanken	Construction S&Ls	Special purpose banks
Number of banks	61	67	8	617	71	5	79
Fraction of liabilities in own sector	74%	35%	10%	75%	73%	0%	7%
Exposure to central institution as share of total exposure	-	60%	-	77%	71%	-	-
Exposure to central institution as share of sector exposure	-	79%	-	88%	89%	-	-
Joint stock banks	9291.8510	606.4400	77.4930	438.1340	123.3800	15.1310	1929.6130
Savings banks	9176.8560	6201.8740	208.2580	326.1450	55.2190	3.2040	1636.9970
State Mortgage b.	269.5640	61.2650	76.9350	110.2090	8.4670	4.9470	265.5170
Raiffeisen banks	761.8140	265.9590	121.1780		35.2130	692.4990	3313.8260
				15166.3870			
Volksbanken	467.2920	10.0400	58.9800	313.3170	2848.4250	21.4760	205.5010
Construction S&Ls	0.0000	22.7740	0.0000	222.2600	0.0000	0.0000	34.4030
Special purpose b.	2044.3760	1083.3340	131.7620	660.3960	93.4950	0.0020	278.1220

**Table 1.** Sectoral decomposition of interbank liabilities. The table shows the number of banks in each sector, the average fraction of interbank liabilities towards banks in the own sector as share of total exposure, the average fraction of interbank liabilities towards banks in the own sector as share of their sector exposure as well as the average liability of sectorally organized banks with their head institution. The first row in the lower block shows liabilities of joint stock banks against joint stock banks, of joint stock banks against savings banks etc.. The next row is to be read in the same way. These numbers are in Million Euro.

to enterprises from 35 sectors classified according to the NACE standard.<sup>19</sup> It gives us the volume as well as the number of credits to these different industry branches. Combining this information with data from the Austrian Rating Agency Kreditschutzverband von 1870 (KSV) we can estimate the riskiness of a loan in a certain industry. The KSV database gives us time series of default rates for the different NACE branches. From this statistics we can produce an average default frequency and its standard deviation for each NACE branch. These data serve as our input to the credit risk model.<sup>20</sup>

<sup>19</sup>We use the classification according to ÖNACE 1995. This is the Austrian version of NACE Rev. 1, a European classification scheme, which has to be applied according to VO (EWG) Nr. 3037/ 90 for all member states. NACE is an acronym for Nomenclature générale des activités économiques dans les communautés européennes.

<sup>20</sup>The matching procedure we apply suffers from some data inconsistencies. Though the data come in principle from the same sources the reporting procedures are not rooted in exactly the same legal base. So there might be discrepancies in the numbers. MAUS is legally based on the Austrian law on banking, Bankwesengesetz (BWG) whereas the legal base for GKE is the BWG plus a special regulation for loans

For the part of loans we can not allocate to industry sectors we have no default statistics and no numbers of loans. To construct an insolvency statistics for the residual sector we take averages from the data that are available. To construct a number of loans figure for the residual sector we assume the share of loan numbers in industry and in the residual sector is proportional to the share of loan volume between these sectors. We have chosen this approach for a lack of better alternatives. We should also note that the insolvency series is very short. The series are available semi-annually beginning with January 1997 which gives us 8 observations per sector. Thus the estimate of mean default rates and their standard deviation we can get from these data is noisy.<sup>21</sup> We display average default frequencies and their standard deviation that we get from these data in Table 10 in Appendix A.

### 3.3 Market Data

Some positions on the banks' asset portfolios are subject to market risk. We collect market data corresponding to the exposure categories over twelve years from September 1989 to September 2001 from Datastream. These data are used for the creation of scenarios. Specifically we collect exchange rates of USD, JPY, GBP and CHF to the Austrian Schilling (Euro) to compute exchange rate risk. As we only have data on domestic and international equity exposure we include the Austrian index ATX and the MSCI-world index in our analysis. To account for interest rate risk, we compute zero bond prices for three month, one, five and ten years, from collected zero rates for EUR, USD, JPY, GBP and CHF.<sup>22</sup>

---

with volume above a certain threshold (Großkreditmeldungsverordnung GKMVO).

<sup>21</sup>In particular the data don't contain a business cycle. Again we have to live with this short series because this is the most we can get at the moment. These estimates will become better in the future however as more observations are collected.

<sup>22</sup>Sometimes a zero bond series is not available for the length of the period we need for our exercise. In these cases we took swap rates.

## 4 Estimating Interbank Liabilities from Partial Information

If we want to apply the network model to our data we have the problem that they contain only partial information about the interbank liability matrix  $L$ . The bank by bank record of assets and liabilities with other banks gives us the column and row *sums* of the matrix  $L$ . Furthermore we know some structural information. For instance we know that the diagonal of  $L$  (and thus of  $\Pi$ ) must contain only zeros since banks do not have claims and liabilities against themselves.

The sectoral structure of the Austrian banking system gives us additional information we can exploit for the reconstruction of the  $L$  matrix. The bank records contain claims and liabilities against the different sectors. Hence we know the column and row sums of the submatrices of the sectors. Two sectors have a two tier and one sector has a three tier structure. Banks in these sectors break down their reports further according to the amount they hold with the central institution. Due to the fact that there are many banks that hold all their claims and liabilities within their sector or only against the respective central institution these pieces of information determine already 72% of all entries of the matrix  $L$  *exactly*. Therefore by exploiting the sectoral information, we actually know a major part of  $L$  from our data.

We would like to *estimate* the remaining 28% of the entries of  $L$  by optimally exploiting the information we have. Our ignorance about the unknown parts of the matrix should be reflected in the fact that all these entries are treated uniformly in the reconstruction process. The procedure should be furthermore adaptable to include any new information that might get available in the process of data collection. In the following we use a procedure that formulates the reconstruction of the unknown parts of the  $L$  matrix as an *entropy optimization problem*.<sup>23</sup>

---

<sup>23</sup>This procedure has been applied already to the problem of reconstructing unknown bilateral interbank exposures from aggregate information by Upper and Worms (2002) and Sheldon and Maurer (1998). Entropy optimization is applied in a wide range of practical problems. For a detailed description see Fang, Rajasekra, and Tsao (1997) or Blien and Graef (1997). As we have explained above entropy optimization can be justified on informational grounds. There are counterarguments to this as well. One might criticize that entropy optimization is not a very attractive procedure for the risk analysis of our paper because it makes exposures maximally diversified among the unknown cells of  $L$  and one would presumably be much more interested in extremer structures. On the other hand our knowledge about 'critical' liability structures is at the moment very poor and any assumption would be even more arbitrary than the entropy procedure. We should however stress that these considerations are not so important for our case since we are able to identify a very large set of entries in  $L$  exactly. Thus it is the combination

What this procedure does can intuitively be explained as follows: It finds a matrix that fulfills all the constraints we know of and treats all other parts of the matrix as balanced as possible. This can be formulated as minimizing a suitable measure of distance between the estimated matrix and a matrix that reflects our a priori knowledge on large parts of bilateral exposures. It turns out that the so called *cross entropy* measure is a suitable concept for this task (see Fang, Rajasekara, and Tsao (1997) or Blien and Graef (1997)).

Assume we have in total  $K$  constraints that include all constraints on row and column sums as well as on the value of particular entries. Let us write these constraints as

$$\sum_{i=1}^N \sum_{j=1}^N a_{kij} l_{ij} = b_k \quad (5)$$

for  $k = 1, \dots, K$  and  $a_{kij} \in \{0, 1\}$ .

We want to find the matrix  $L$  that has the least discrepancy to some a priori matrix  $U$  with respect to the (generalized) cross entropy measure

$$\mathcal{C}(L, U) = \sum_{i=1}^N \sum_{j=1}^N l_{ij} \ln\left(\frac{l_{ij}}{u_{ij}}\right) \quad (6)$$

among all the matrices fulfilling (5) with the convention that  $l_{ij} = 0$  whenever  $u_{ij} = 0$  and  $0 \ln\left(\frac{0}{0}\right)$  is defined to be 0.

Due to data inconsistencies the application of entropy optimization is not straightforward. For instance the liabilities of all banks in sector  $k$  against all banks in sector  $l$  do typically not equal the claims of all banks in sector  $l$  against all banks in sector  $k$ .<sup>24</sup> We solve this problem by using constructing a start matrix for the entropy maximization, which reflects all our a priori knowledge. The procedure is described in detail in Appendix B

We see three main advantages of this method to deal with the incomplete information problem raised by our data. First the method is able to include all kinds of constraints we might find out about the matrix  $L$  maybe from different sources. Second, as more information becomes available the approximation can be improved. Third, there exist computational procedures that are easy to implement and that can deal efficiently with of structural knowledge plus entropy optimization which gives the estimation of bilateral exposures some bite.

---

<sup>24</sup>We do not know the reasons for these discrepancies. Some of the inconsistencies seem to suggest that the banks assign some of their counterparties to the wrong sectors.



very large problems (see Fang, Rajasekara, and Tsao (1997) or Blien and Graef (1997)). Thus problems similar to ours can be solved efficiently and quickly on an ordinary personal computer, even for very large banking systems.

## 5 Creating Scenarios

Our model of the banking sector uses different *states of the world* or scenarios to model uncertainty. In each scenario banks face gains and losses due to market risk and credit risk. Some banks may fail which possibly causes subsequent failures of other banks, as it is modeled in our network clearing framework. In our approach the credit risk in the interbank network is modeled endogenously while all other risks - like gains and losses from FX and interest rate changes as well as from equity price changes losses from loans to non-banks - are reflected in the position  $e_i$ . The perspective taken in our analysis is to ask, what are the consequences of different scenarios for  $e_i$  on the whole banking system.

We choose a standard risk management framework to model the shocks to banks. To simulate scenario losses that are due to exposures to market risk we conduct a historical simulation and to capture losses from loans to non-banks we use a credit risk model.

Table 2 shows, which balance sheet items are included in our analysis and how the risk exposure is modeled. Market risk (stock price changes, interest rate movements and FX rate shifts) are captured by a historical simulation approach (HS) for all items except other assets and other liabilities, which includes long term major equity stakes in not-listed companies, non financial assets like property and IT-equipment and cash on the asset side and equity capital and provisions on the liability side. Credit losses from non-banks are modeled via a credit risk model. The credit risk from bonds is not included since most banks hold only government bonds. The credit risk in the inter-bank market is determined endogenously.

### 5.1 Market Risk: Historical Simulation

We use a historical simulation approach as it is documented in the standard risk management literature (Jorion (2000)) to assess the market risk of the banks in our system. This methodology has the advantage that we do not have to specify a certain parametric

<b>Assets</b>	Interest rate/ stock price risk	Credit risk	FX risk
short term government bonds and receivables	Yes (HS)	No	Yes (HS)
loans to other banks	Yes (HS)	endogenous by clearing	Yes (HS)
loans to non banks	Yes (HS)	credit risk model	Yes (HS)
bonds	Yes (HS)	no as mostly government	Yes (HS)
stock holdings	Yes (HS)	No	Yes (HS)
other assets	No	No	No
<b>Liabilities</b>			
liabilities other banks	Yes (HS)	endogenous by clearing	Yes (HS)
liabilities non banks	Yes (HS)	No	Yes (HS)
securitized liabilities	Yes (HS)	No	Yes (HS)
other liabilities	No	No	No

**Table 2.** The table shows how risk of the different balance sheet positions is covered in our scenarios. HS is a shortcut for historic simulation.

distribution for our returns. Instead we can use the empirical distribution of past observed returns and thus capture also extreme changes in market risk factors. From the return series we draw random dates. By this procedure we capture the joint distribution of the market risk factors and thus take correlation structures between interest rates, stock markets and FX markets into account.

To estimate shocks on bank capital stemming from market risk, we include positions in foreign currency, equity and interest rate sensitive instruments. For each bank we collect foreign exchange exposures for USD, JPY, GBP and CHF only as no bank in our sample has open positions of more than 1% of total assets in any other currency. From the MAUS database we get exposures to foreign and domestic stocks, which is equal to the market value of the net position held in these categories. The exposure to interest rate risk can not be read directly from the banks' monthly reports. We have information on net positions in all currencies combined for different maturity buckets (up to 3 month but not callable, 3 month to 1 year, 1 to 5 years, more than 5 years). These given maturity bands allow only a quite coarse assessment of interest rate risk.<sup>25</sup> Nevertheless the available data

---

<sup>25</sup>We would like to have a finer granularity in the buckets, because right now a wide range of maturities is grouped together. We would prefer more buckets especially in the longer maturities. As the maturity buckets in the banks' exposure reports are quite broad, there will be instruments of different maturities in each bucket. As we consider only the net position within each bucket for our risk analysis, we might have some undesired netting effects that will result in an underestimation of market risk. Consider for example a five year loan that is financed by one year deposits. As both assets fall into the same bucket,

allow us to estimate the impact of changes in the term structure of interest rates. To get an interest rate exposure for each of the five currencies EUR, USD, JPY, GBP and CHF we split the aggregate exposure according to the relative weight of foreign currency assets in total assets. This procedure gives us a vector of 26 exposures, 4 FX, 2 equity, and 20 interest rate, for each bank. Thus we get a  $N \times 26$  matrix of market risk exposure.

We collect daily market prices over 3,219 trading days for the risk factors as described in subsection 3.3. From the daily prices of the 26 risk factors we compute daily returns. We rescale these to monthly returns assuming twenty trading days and construct a  $26 \times 3219$  matrix  $R$  of monthly returns.

For the historical simulation we draw 10,000 scenarios from the empirical distribution of returns. To illustrate the procedure let  $R_s$  be one such scenario, i.e. a column vector from the matrix  $R$ . Then the profits and losses that arise from a change in the risk factors as specified by the scenario are simply given by multiplying them with the respective exposures. Let the exposures that are directly affected by the risk factors in the historical simulation be denoted by  $a$ . The vector  $aR_s$  contains then the profits or losses each bank realizes under the scenario  $s \in \mathcal{S}$ . Repeating the procedure for all 10000 scenarios, we get a distribution of profits and losses due to market risk.

## 5.2 Credit Risk: Calculating Loan Loss Distributions

For the modeling of loan losses we can not apply a historical simulation as there are no published time series data on loan defaults. We employ one of the standard modern credit risk models - CreditRisk+ - to estimate a loan loss distribution for each bank in our sample.<sup>26</sup> We rely on this estimated loss distribution to create for each bank the loan losses across scenarios. While CreditRisk+ is designed to deal with a single loan portfolio we have to deal with a *system* of portfolios since we have to consider all banks simultaneously. The adaptation of the model to deal with such a system of loan portfolios turns out to be straightforward.

The basic inputs CreditRisk+ needs to calculate a loss distribution is a set of loan

---

the net exposure is zero despite of the fact that there is some obvious interest rate risk. We compensate for this effect by choosing as risk factors for each bucket a zero bond with a maturity at the upper bound of the respective maturity band.

<sup>26</sup>A recent overview on different standard approaches to model credit risk is Crouhy, Galai, and Mark (2000). CreditRisk+ is a trademark of Credit Suisse Financial Products (CSFP). It is described in detail in CSFP Credit Suisse (1997)

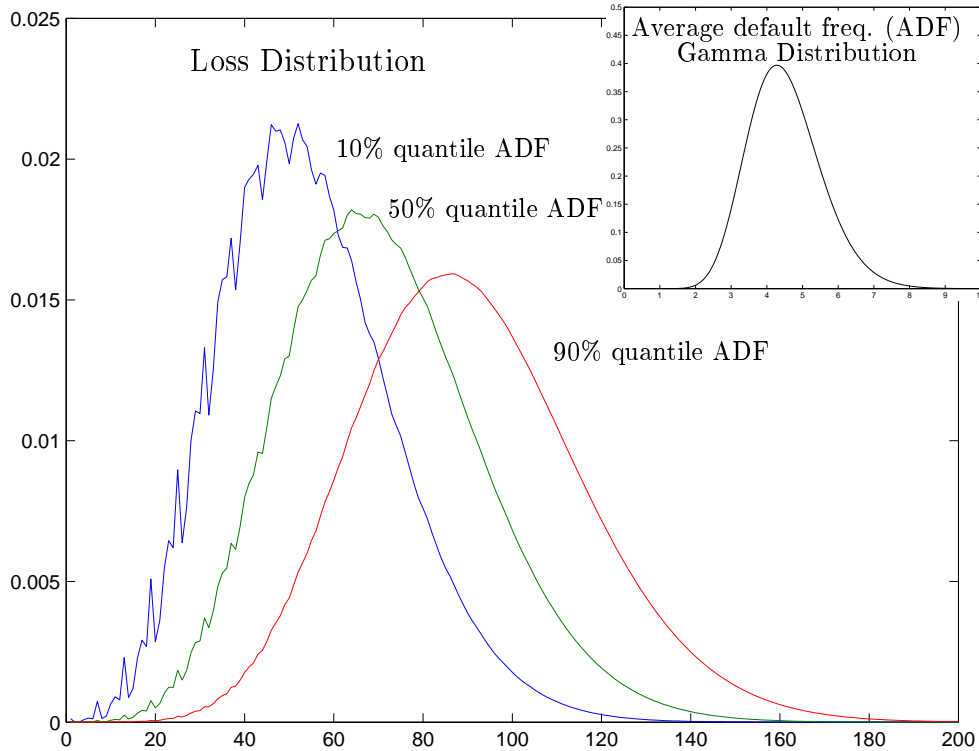
exposure data, the average number of defaults in the loan portfolio of the bank and its standard deviation. Aggregate shocks are captured by estimating a distribution for the average number of loan defaults for each bank.<sup>27</sup> This models business cycle effects on average industry defaults. The idea is that these default frequencies increase in a recession and decrease in booms. Given this common shock, defaults are assumed to be conditionally independent. We construct the bank loan portfolios by decomposing the bank balance sheet information on loans to non banks into volume and number of loans in different industry sectors according to the information from the major loan register. The rest is summarized in a residual position as described in Section 3. Using the KSV insolvency statistics for each of the 35 industry branches and the proxy insolvency statistics for the residual sector, we can assign an average default frequency and a standard deviation of this frequency to the different industry sectors. The riskiness of a loan in a particular industry is then assumed to be described by these parameters. Based on this information we can calculate the average default frequency and its standard deviation for each individual bank portfolio. From these data we then construct the distribution of the aggregate shock (i.e. the average default frequency of the bank portfolio), for each bank in our sample.

With these data we are now ready to create loan loss scenarios. First we draw for each bank a realization from each bank's individual distribution of average default frequencies. To model this as an economy wide shock, we draw the same quantile for all banks in the banking system. Given the average default frequency, defaults are assumed to be conditionally independent. We can then calculate a conditional loss distribution for each bank, from which we then draw loan losses.<sup>28</sup> In Figure 3 we show an arbitrary bank from our sample and draw the gamma distribution of average default frequencies for this bank's loan portfolio as well as its conditional loss distribution for a default frequency from the 10%, 50% and 90% quantile realization of the economy wide shock.

---

<sup>27</sup>In CreditRisk+ this distribution is specified as a gamma distribution. The parameters of the gamma distribution can be determined by the average number of defaults in the loan portfolio and its standard deviation.

<sup>28</sup>To reduce the variance in our Monte Carlo simulation, we go through the quantiles of the distribution of average default frequencies at a step length of 0.01. Thus, we draw hundred economy wide shocks from each of which we draw 100 loan loss scenarios, yielding a total number of 10,000 scenarios.



**Figure 3.** Distribution of average default frequency (upper right corner) and corresponding loss distributions. To model the macroeconomic shock, the same quantile from each bank’s average default frequency distribution is drawn. Depending on this draw, the bank’s loss distribution can be calculated. Three loss distributions corresponding to the 10%, 50% and 90% quantile of the average default frequency distribution for a specific bank are shown.

### 5.3 Combining Market Risk, Credit Risk, and the Network Model

The credit losses across scenarios are combined with the results of the historic simulations to create the total scenarios for  $e_s$  for each bank. By the network model the interbank payments for each scenario are then endogenously explained by the model for any given realization of  $e_s$  (see Figure 1). Thus we get endogenously a distribution of clearing vectors, default frequencies, recovery rates and a statistics on the decomposition into fundamental and contagious defaults.

	Minimum	10% Quantile	Median	90%Quantile	Maximum
Joint stock banks	0%	0%	0.02%	3.70%	69.00%
Savings banks	0%	0.01%	0.27%	2.80%	7.43%
State Mortgage banks	0%	0.01%	0.42%	2.16%	2.64%
Raiffeisen banks	0%	0.01%	0.97%	13.50%	72.57%
Volksbanken	0%	0.01%	0.33%	7.19%	84.75%
Construction S&Ls	0.09%	0.088%	6.05%	13.46%	13.46%
Special purpose banks	0%	0%	0%	0.69%	34.61%
Entire banking system	0%	0%	0.51%	10.68%	84.75%

**Table 3.** Default probabilities of individual banks, grouped by sectors and for the entire banking system.

## 6 Results

### 6.1 Default frequencies

From the network model we get a distribution of clearing vectors  $p^*$  and therefore also a distribution of insolvencies for each individual bank across states of the world. This is because whenever a component in  $p^*$  is smaller than the corresponding component in  $d$  the bank has not been able to honor it's interbank promises. We can thus generate a distribution of default frequencies for individual sectors and for the banking system as a whole. The relative frequency of default across states is then interpreted as a *default probability*. The distribution of default probabilities is described in Table 3. It shows minimum, maximum the 10 and 90 percent quantiles as well as the median of individual bank default probabilities grouped by sectors and for the entire banking system.

We can see from the table that some banks are extremely safe as default probabilities in the 10 percent quantile are very low and often even zero. Also the median default probability is below 1 percent for every sector except the Construction S&Ls. Default probabilities increase as we go to the 90% quantile but they stay fairly low. Very few banks however have a very high probability of default. For a supervisor, running this model such banks could be identified from our calculations and looked at more closely to get a more precise idea, of what the problem might be.

	Minimum	10% Quantile	Median	90%Quantile	Maximum
Joint stock banks	0%	0%	51.00%	94.96%	99.70%
Savings banks	0%	11.00%	70.57%	90.15%	98.69%
State Mortgage banks	0.74%	2.63%	59.45%	93.99%	95.56%
Raiffeisen banks	0%	0.75%	65.42%	93.49%	99.22%
Volksbanken	0%	7.23%	73.80%	91.26%	96.82%
Construction S&Ls	0%	0%	0.37%	48.76%	48.76%
Special purpose banks	0%	0%	8.66%	97.70%	98.30%
Entire banking system	0%	0%	65.97%	93.49%	99.70%

**Table 4.** Individual bank recovery rates of interbank credits grouped by sectors and for the entire banking system.

## 6.2 Severity of losses: Recovery rates

For the severity of a crises of course default frequencies are not the only thing that counts. We also want to judge the severity of losses. An advantage of the network model is that it yields for each bank *endogenous* recovery rates, i.e. the fraction of actual payments relative to promised payments in the case of default.<sup>29</sup> Of course these recovery rates must not be taken literally because they are generated by the clearing mechanism of the model under very specific assumptions. If in reality a bank would become insolvent and sent into bankruptcy, bankruptcy costs or other sharing rules than assumed in this paper could affect recovery rates. However the network model can give a good impression on the order of magnitudes that might be available in such an event. We report expected recovery ratios in Table 4.

As we can see, the median recovery rate in the banking system is 66 %. Thus for more than half of the banks in the entire banking system the value of their interbank claims is not reduced by more than a third in case of default of a counterparty. If we look at the sectoral grouping of the median recovery rate we see that in the savings bank sector we have a rate of 90%. The recovery rate for the Construction S&Ls is low.

## 6.3 Systemic stability: Fundamental versus Contagious Defaults

Let us now turn to the decomposition into fundamental and contagious defaults. This decomposition is particularly interesting from the viewpoint of systemic stability. It is also interesting to get an idea about contagion of bank defaults from a real dataset since

---

<sup>29</sup>In terms of the network model, it is the ratio  $\frac{p_i^*}{d_i} \forall i \in \mathcal{N}$  with  $0 \leq p_i^* \leq d_i$ .

the empirical importance of domino effects in banking has been controversial in the literature.<sup>30</sup> Bank defaults may be driven by large exposures to market and credit risk or from an inadequate equity base. Bank defaults may however also be initiated by contagion: as a consequence of a chain reaction of other bank failures in the system. The fictitious default algorithm allows us to distinguish these different cases.

Non-contagious bank defaults lead to insolvency in the first round of the fictitious default algorithm. These defaults are a direct result from shocks to fundamental risk factors of the banks' businesses. As the iterations of the algorithm increase other banks may become insolvent as a *result* of bank failures elsewhere in the system. These cases may be classified as contagious defaults. These risks are not visible by a regulatory setup that focuses on individual banks' "soundness". Table 5 summarizes the probabilities of fundamental and contagious defaults in our data.

We list the probabilities of 0 – 10 banks defaulting fundamentally and the probability of banks defaulting contagiously as a consequence of this event. The next row shows similar information for the event that 11 – 20 banks get insolvent and the probability that other banks default contagiously as a consequence of this etc. What is remarkable in this table is that the relative importance of contagious default events as compared to the importance of contagious defaults is relatively low. In fact approximately 94% of default events are directly due to movements in risk factors whereas 6% can be classified as contagious.

The number of default cases by its own does not provide a full picture of the effects of insolvency. It is interesting to look also at the size of institutions that are affected. Describing bank size by total assets, we see that the average bank affected by fundamental default holds 0.8% of the assets in the banking system. In the worst case of our scenarios we find that banks holding 38.9% of the assets in the banking system default fundamentally. Looking at contagious defaults across all scenarios total assets of banks affected are on average 0.05%, whereas in the worst scenario banks with a share of 36.9% in total assets are affected. In total we have the numbers 0.9% and 37%. Plotting a histogram of bank defaults by total assets confirms the picture we get from this statistics. Smaller banks are more likely to fail than the larger banks as we can see in Figure 4.

Our finding that the risk of contagion is relatively small is in line with findings in Furfine (1999). Upper and Worms (2002), letting one bank fail at a time, find that, while

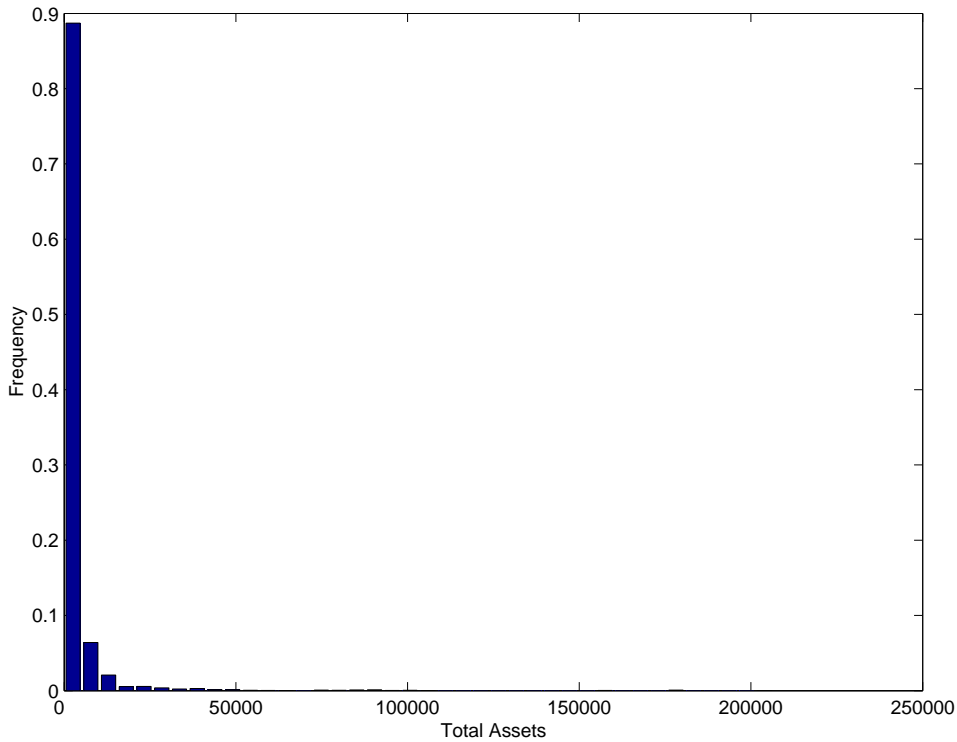
---

<sup>30</sup>See in particular the detailed discussion in Kaufman (1994).



	Fundamental	Contagious	Total
0-10	6.06%	0.02%	6.08%
11-20	24.62%	0.12%	24.74%
21-30	26.16%	0.22%	26.38%
31-40	18.11%	0.28%	18.39%
41-50	9.36%	0.40%	9.76%
51-60	4.50%	0.50%	5.00%
61-70	2.24%	0.27%	2.51%
71-80	1.31%	0.42%	1.73%
81-90	0.68%	0.48%	1.16%
91-100	0.38%	0.38%	0.76%
more	0.86%	2.63%	3.49%
Total	94.28%	5.72%	100.00%

**Table 5.** Probabilities of fundamental and contagious defaults. A fundamental default is due to the losses arising from exposures to market risk and credit risk to the corporate sector, while a contagious default is triggered by the default of another bank who cannot fulfill its promises in the interbank market.



**Figure 4.** Histogram of bank defaults by total assets.

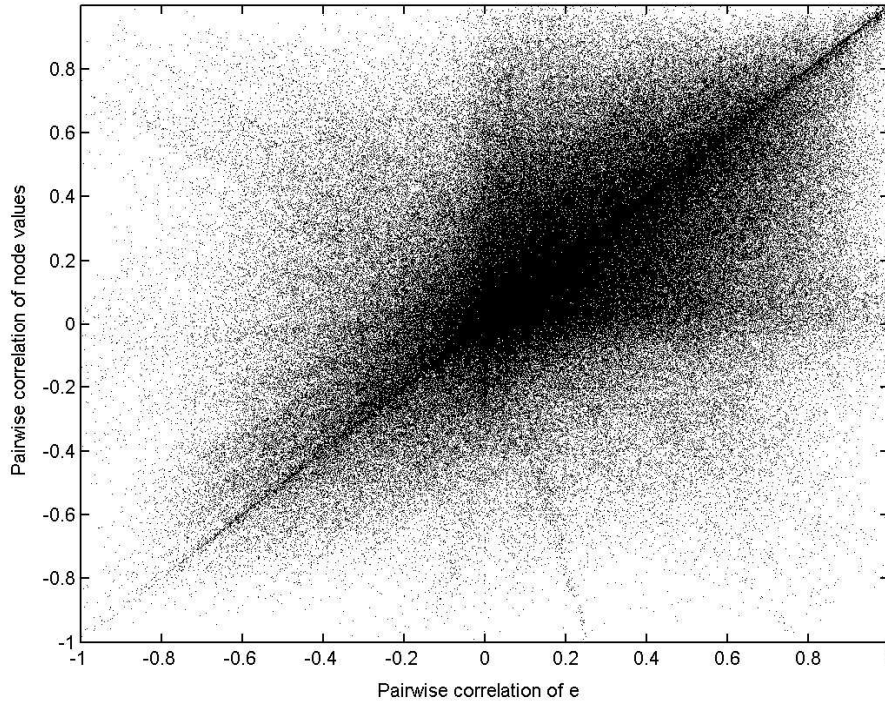
the average contagion effect following the simulated default of a single institution, is small, the *maximum* contagion effect increases steeply once the loss ratio has exceeded a critical threshold of about 45% of total assets. Note that this result is probably strongly driven by the simulated failure of big institutions on the one hand and the exogenous loss ratios on the other hand.

Finally it might be interesting to look whether the interbank market actually increases correlations between banks or whether it allows banks to diversify risk which reduces correlation. Remember that in our model, we describe the banking system by separately considering interbank business and all other bank activities. In Figure 5 we look at the pairwise correlations across scenarios of bank values generated by all activities apart from interbank business (the vector  $e$ ) and plot them against the pairwise correlations of bank values once we take the interbank part (after clearing) into account. Interbank relations can in principle lead to lower or higher correlations or they may have no effect. No effect would imply that all values were clustered around the diagonal, a diversification effect of the interbank market would cause the correlations to be below the diagonal. We can see that the interbank market changes the pairwise correlations of many bank values considerably, but there is no obvious trend. This picture thus gives further evidence that the network of mutual credit obligations has indeed an effect on the risk structure of the banking system.

## 7 Using the Model as an Experimentation Tool

While our model's main focus is an integrated risk analysis for a banking system it can of course also be used in the traditional way of the previous contagion literature discussed in the beginning. This use basically consists of thought experiments that try to figure out the consequences of certain *hypothetical events* like the idiosyncratic failure of a big institution. In the following we want to demonstrate some such exercises with our model and the Austrian data. This will also give us the opportunity to further discuss the relation of our study to previous results on systemic risk and contagion of default.

In our first thought experiment we consider the possibility that bank insolvencies actually destroy some fraction of total assets. Note that the analysis so far, ignored this possibility. The clearing procedure distributed the entire value of an insolvent institution proportionally among the creditor banks. In the context of our model, the assumption



**Figure 5.** Correlation of bank values with (node values) and without interbank positions ( $e$ ) across different scenarios.

of zero losses makes sense because the model just tries to assess technical insolvency of institutions that is implied by the data and the risk analysis. It is *not* a model that predicts bankruptcies. Still it might be interesting to ask, what would be the consequences if the technical insolvencies actually turned out to be true bank breakdowns that destroy asset values. In line with James (1991) who found that realized losses in bank failures can be estimated at around 10% of total assets we chose our range of loss rates from 0, 10%, 25% up to 40% of total assets as our estimate of bankruptcy costs. The results are shown in Table 6.

Assuming loss rates different from zero percent has little consequences for the 'typical' scenario. In 77% of the scenarios there are no contagious defaults irrespective of the assumed bankruptcy costs. Yet for some scenarios the consequences can be fairly dramatic. The maximum number of contagious defaults increases sharply once we assume loss rates different from zero. For instance at a loss rate of 10% of total assets, the maximum number of contagious defaults is 413 (45% of all banks) compared to 46 (5%) with a loss rate of 0%. As we can see, low bankruptcy costs are crucial to systemic stability of the

<b>Assumed loss rate</b>	0%	10 %	25%	40 %
Scenarios without Contagious Default	96%	91%	87%	77%
Average Number of Contagious Defaults	0.13	1.36	14.06	21.2
Maximum Number of Contagious Defaults	46	413	624	629

**Table 6.** Consequences of different loss rates: The first row displays different assumed loss ratios as a percentage of total assets. In the second row we see the percentage of scenarios without any contagious defaults. The next two rows show the average and the maximum number of contagious defaults for the different loss rate assumptions.

<b>Quantiles</b>	90%	95 %	99%	100 %
Fundamental Default	215	472	1732	8527
Contagious Default	0	0	6	753

**Table 7.** Costs of avoiding fundamental and contagious defaults: In the first row we give estimates for the amount of funds required to avoid fundamental defaults in 90, 95, 99 and 100 percent of the scenarios. The second row shows the amounts necessary to avert contagious defaults once fundamental defaults have occurred. Costs are in million Euro.

banking system.

Another important issue is the question of how much funds the regulator needs to avoid fundamental or contagious defaults in each and every scenario. Being slightly less ambitious it could also be interesting to calculate the funds needed for insolvency avoidance in 90, 95, 99 percent of the scenarios very much in the spirit of a value at risk model. Our framework can be used for such estimations. As shown in Table 7, a complete avoidance strategy amounts to about 8.5 billion Euro, which corresponds to 1.5 % of all the assets held by the banks in the system. By only focusing on avoiding fundamental defaults in 99% of the scenarios the regulator can decrease this amount to about 1.7 billion Euro (or 0.31 % of all total assets). The complete avoidance of contagion - in contrast - has costs of 753 million Euro (0.13 %) which is comparatively low.

Our analysis so far has assumed that foreign counterparties will always fulfill their obligations completely. Especially banks which are the most active institutions in the domestic interbank market have sometimes considerable foreign exposures. To study the consequences of default of international counterparties we assume that 5, 10, 25 and 40% of foreign exposures will be lost. We re-run our analysis assuming different loss rate and record the number of banks that are affected by contagious default in each scenario. Table 8 reports the minimum and the maximum number of banks affected by contagious default in one scenario as well as quantiles across scenarios.

<b>Quantiles of Scenarios</b>	Min	25 %	50%	75 %	Max
0% loss	0	0	0	0	46
5% loss	0	2	2	3	56
10% loss	2	4	5	6	78
25% loss	4	6	7	8	313
40% loss	7	13	15	17	472

**Table 8.** Effects of losses from foreign counterparties: Number of banks that are affected by contagious default. Each row displays a different assumption on the loss rate on promised payments. The columns are the various quantiles of the distribution across scenarios.

Panel A: assumed loss rate 5% of promised payments.

<b>Quantiles</b>	Min	25 %	50%	75 %	Max
Most significant bank	0	0	0	0	72
Second most significant bank	0	0	0	0	75
10th most significant bank	0	0	1	2	91
2 most significant banks	0	0	0	1	78

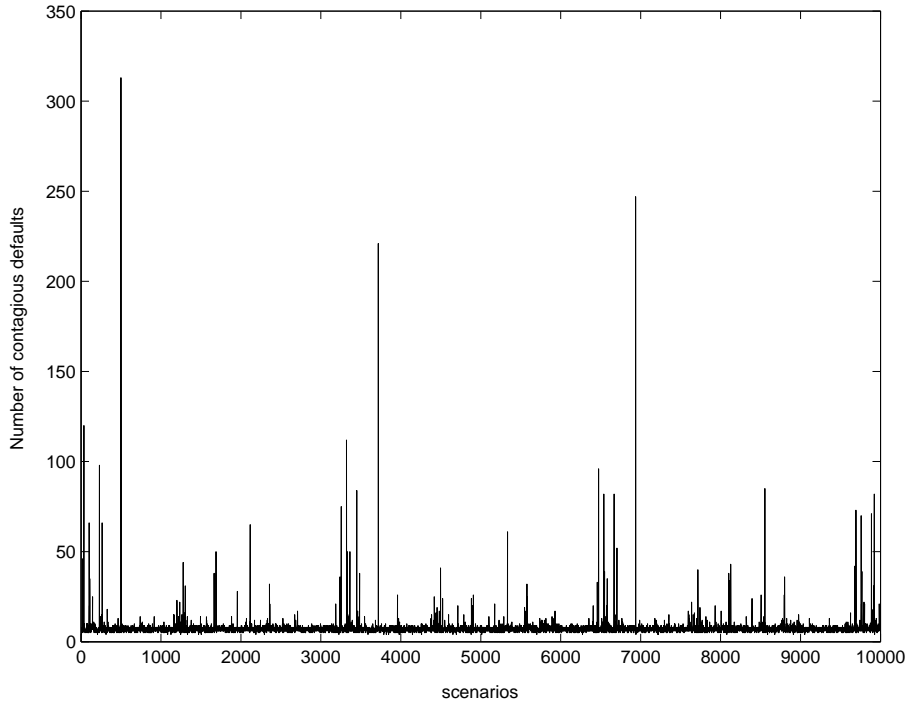
Panel B: assumed loss rate 40% of promised payments.

	Min	25 %	50%	75 %	Max
Most significant bank	1	6	6	7	607
Second most significant bank	0	3	5	8	641
10th most significant bank	6	54	65	73	581
2 most significant banks	6	15	17	20	649

**Table 9.** Number of contagious defaults following a breakdown of significant institutions, where significance is measured as market share in the domestic interbank market. Quantiles across the 10,000 scenarios are shown.

The banking system shows reasonable resilience to losses of 5% and 10%. However the number of defaults grows dramatically with increasing foreign losses. A scenario plot is shown in Figure 6. It displays for each scenario, 1 to 10000 the number of contagious defaults under the assumption that 25% of foreign interbank claims will be lost.

In a similar way as the previous analysis, we can analyze the hypothetical default of significant institutions in the banking system. This approach has been taken for instance by Furfine (1999). Following his experiments we calculate the consequences of default of significant institutions for loss rates of 5% (Table 9, Panel A) and 40% (Table 9, Panel B). We take the exposure in the interbank market as a measure the significance of an institution. Table 9 shows that the consequences to the banking system are moderate in the case where the selected banks are only able to honor 95% of their promised payments (5% loss). In most scenarios no, or only one bank defaults.



**Figure 6.** Number of banks affected by contagious default, across the 10,000 scenarios in the simulation of shocks to the banks' net worth under the assumption that 25% of all claims on foreign financial institutions will be lost.

Not surprisingly for the case where they are able to fulfill only 60% (loss rate 40%) we get quite a different picture. The median number of banks facing contagious default is between 5 and 65 and in the maximum contagion can affect even up to 649 (71%) banks. This finding is in line with results of Upper and Worms (2002) who find dramatic maximum contagion effects once a certain threshold of loss ratios is exceeded. Qualitatively our numbers also confirm the findings of Furfine (1999). Note that the assumption that a significant institution is able to fulfill only 60% is rather extreme, especially with respect to our findings on interbank recovery rates in Section 6.2. The fact that the results of the 5% case experiment are very much in line with our findings for the case without exogenous losses provides evidence for the robustness of our results. One of the most important findings from Table 9 is perhaps, that is not easy for regulators to identify the system relevant banks, i.e. those banks that will cause the most disruption in the banking system, when they fail. Activity in the interbank market is not the right criterion to determine the system relevance of a bank. In the 40% loss rate simulation, we find

that the medium number of contagious defaults is larger for the tenth most significant bank than for the first two combined. Again, to identify banks that are a threat financial stability, supervisors will have to look at the problem from a system perspective and not at the level of individual banks.

## 8 Conclusions

In this paper we have developed a new framework for bank risk assessment. The innovation is that we judge risk at the level of the entire banking system rather than at the level of an individual institution.

Conceptually it is possible to take this perspective by a systematic analysis of the impact of a set of macroeconomic risk factors on banks in combination with a network model of mutual credit relations. Empirically the framework can be applied to real banking systems because it is designed in such a such a way that it requires data input that is usually available in one form or another at central banks. This is exactly the institution for which an assessment method like the one suggested here is of crucial interest. Among the empirical results we derive for an Austrian dataset perhaps the most interesting is that contagious default from interbank relations plays only a minor role. It would be interesting to check the robustness of this empirical result with other observation periods and with datasets from other countries. We hope to be able to do this in our future research.

Since our method is a first step, there are certainly many issues that have to be further discussed to get a firm judgment how much we can trust assessments generated with the help of our model. We want to point out at this stage, what we see as the main advantages of our general approach. First the system perspective can uncover exposures to aggregate risk that are invisible for banking supervision relying on the assessment of single institutions only. It can furthermore give some idea how to disentangle the risk that comes from fundamental shocks and the risks that come from contagious bank failures. As we gain experience with the model for more cases and maybe also for other banking systems this might create a possibility to qualify the actual importance of contagion effects that have received so much attention in the theoretical debate. Second we think that our framework can redirect the discussion about systemic risk in banking from continuous refinements and extensions of capital adequacy regulation for individual banks to the

crucial issue of how much risk is actually borne by the banking system. In this discussion the framework might be useful to get a clearer picture of actual risk exposure because it allows for thought experiments. We can relatively easily ask *what if* questions and with some further work even develop the framework into a potentially useful stress testing model. Third the model does not rely on a sophisticated theory of economic behavior. In fact the model is really a tool to read certain data in a particular way. All it does is to make the *consequences* of a given liability and asset structure in combination with realistic shock scenarios *visible* in terms of implied technical insolvencies of institutions. We think that in this context this feature is a definitive advantage because it makes it easier to validate the model. Fourth the model is designed to exploit *existing* data sources. Of course these sources are not ideal because it would be better if we knew more about actual bilateral exposures and about the important off balance sheet positions. We hope however that our approach shows that we can start to think about financial stability at the system level with existing data already. Thus we demonstrate that we do not necessarily have to wait until reporting systems have been fundamentally reformed. Of course our approach could perhaps initiate a discussion about such a reform of reporting systems. As we learn more about the systemic approach to judge risk in the banking system we might get new ideas about which are the really important pieces of information we need to know for an analysis of financial stability.

We hope that our ideas will turn out useful for regulators and central bankers by offering a practicable way to read the data they have at their very doorsteps in the light of aggregate risk exposure of the banking system. We therefore hope to have given a perspective of how a 'macroprudential' approach to banking supervision could proceed. We also do hope, however, that our paper turns out to be interesting for theoretical work in financial stability and banking as well and that the questions it raises will contribute in a fruitful way to the debate about the system approach to banking supervision and risk assessment.



## References

- Allen, F., and D. Gale, 2000, Financial Contagion, *Journal of Political Economy* 108, 1–34.
- Angelini, P., G. Maresca, and D. Russo, 1996, Systemic Risk in the Netting System, *Journal of Banking and Finance* 20, 853–886.
- Blien, U., and F. Graef, 1997, Entropy Optimizing Methods for the Estimation of Tables, in I. Balderjahn, R. Mathar, and M. Schader, eds.: *Classification, Data Analysis, and Data Highways* (Springer Verlag, Berlin ).
- Borio, C., 2002, Towards a Macro-Prudential Framework for Financial Supervision and Regulation?, CESifo Lecture, Summer Institute: Banking Regulation and Financial Stability, Venice.
- Credit Suisse, 1997, *Credit Risk+: A Credit Risk Management Framework*. (Credit Suisse Financial Products).
- Crockett, A., 2000, Marrying the Micro- and Macro-Prudential Dimensions of Financial Stability, Speech at the Eleventh International Conference of Banking Supervisors, Basel.
- Crouhy, M., D. Galai, and R. Mark, 2000, A comparative analysis of current credit risk models, *Journal of Banking and Finance* 24, 59–117.
- Dasgupta, A., 2000, Financial Contagion through Capital Connections: A model of the Origin and Spread of Bank Panics, mimeo.
- Eisenberg, L., and T. Noe, 2001, Systemic Risk in Financial Systems, *Management Science* 47, 236–249.
- Fang, S.C., J.R. Rajasekara, and J. Tsao, 1997, *Entropy Optimization and Mathematical Programming*. (Kluwer Academic Publishers Boston, London, Dordrecht).
- Freixas, X., L. Parigi, and J.C. Rochet, 2000, Systemic Risk, Interbank Relations and Liquidity Provision by the Central Bank, *Journal of Money Credit and Banking* 32.
- Furfine, C., 1999, Interbank Exposures: Quantifying the Risk of Contagion, BIS Working Paper, 70.
- Hellwig, M., 1995, Systemic Aspects of Risk Management in Banking and Finance, *Schweizerische Zeitschrift fuer Volkswirtschaft und Statistik/Swiss Journal of Economics and Statistics* 131, 723–737.
- Hellwig, M., 1997, Systemische Risiken im Finanzsektor, in D. Duwendag, eds.: *Finanzmärkte im Spannungsfeld von Globalisierung, Regulierung und Geldpolitik* (Duncker & Humblot, Berlin ).

- Humphery, D.B., 1986, Payments Finality and Risk of Settlement Failure, in A.S. Saunders, and L.J. White, eds.: *Technology and Regulation of Financial Markets: Securities, Futures and Banking* (Lexington Books, MA ).
- James, C., 1991, The Losses Realized in Bank Failures, *Journal of Finance* 46, 1223–1242.
- Jorion, P., 2000, *Value-at-Risk*. (McGraw-Hill) second edn.
- Kaufman, G., 1994, Bank Contagion: A Review of the Theory and Evidence, *Journal of Financial Service Research* 8, 123–150.
- Luenberger, D., 1969, *Optimization by Vector Space Methods*. (Wiley & Sons).
- Sheldon, G., and M. Maurer, 1998, Interbank Lending and Systemic Risk, *Swiss Journal of Economics and Statistics* 134, 685–704.
- Summer, M., 2003, Banking Regulation and Systemic Risk, *Open Economies Review*, *forthcoming*.
- Upper, C., and A. Worms, 2002, Estimating bilateral exposures in the German Interbank Market: Is there a Danger of Contagion?, Deutsche Bundesbank, Discussion paper 09/02.

## A Data

We use bank balance sheet data from the OeNB MAUS database. The detailed description of these data are available in an extensive manual on the internet at the OeNB website. (See [http://www2.oenb.at/rel/melde4\\_p.htm](http://www2.oenb.at/rel/melde4_p.htm), item 4.5. "Positionsnummern". The data are a cross section of 908 banks from September 2001. The details of the position number are described in the OeNB document on the website. The description is only available in German. All numbers are in million Euros up to three digits.

The major loan register of OeNB is also described in a manual available from the web at [http://www2.oenb.at/groevi\\_p.htm](http://www2.oenb.at/groevi_p.htm). The major loans register contains all credits exceeding a volume of 363364 Euro. Thus some banks are not contained in this sample. Their exposure to the different industry groups is counted as zero and any positive exposure they might have is assigned to the difference position as described in the text. 92% of the banks in our sample have positions in the credit exposure statistics. All numbers are in Million Euros up to three digits.

The OeNACE industry categories are formed according to the international NACE norm. The industry sectors are Agriculture and Fishing; Forestry; Mining and quarrying of energy producing materials; Manufacture of food products, beverages and tobacco; Manufacture of textiles and textile products; Manufacture of cloths; Manufacture of leather and leather products; Manufacture of wood and wood products; Manufacture of pulp, paper and paper products; Publishing and printing; Manufacture of chemicals, chemical products and man-made fibers; Manufacture of Rubber and synthetics and plastics; Manufacture of basic metals and fabricated metal products; Manufacture of machinery and equipment n.e.c.; Manufacture of electrical and optical equipment; Broadcasting; Manufacture of transport equipment; Manufacturing of toys n.e.c.; Electricity, gas and water supply; Construction; Wholesale and repair of vehicles; Wholesale and retail trade; Hotels and restaurants; Transport, storage and communication; Services for travel; Real estate, renting and business activities; Databases and Data Administration; Research and Development; Enterprise specific services; Education; Health and social services; Recycling; Sports and Entertainment; Syndicated loans; Other Services;

We have furthermore for all these industry groups the number of outstanding credits per bank. This allows us to calculate average exposures.

From the KSV database we have for each industry group described above time series of active firms and total number of insolvencies. The observations are on a half year base starting from January 1997, reaching to July 2001. This gives us eight observations per sector. From these observations we calculate average number of defaults and their standard deviation. Combining these data with the number of credits in each sector, we can calculate the expected number of default for each bank in each sector. We use furthermore averages of available data to replace missing observations as well as the data for the residual position resulting of the difference between total loans per bank and the aggregate exposure from the credit exposure statistics. Average Default frequencies and their standard deviation are displays in Table 10.

<b>Sector Name</b>	$\mu$	$\sigma$
Agriculture, Fishing, Forestry	0.023	0.015
Mining, quarrying of energy producing materials	0.019	0.01
Manufacture of food products, beverages and tobacco	0.026	0.004
Manufacture of textiles and textile products	0.04	0.01
Manufacture of cloths	0.05	0.01
Manufacture of leather and leather products	0.04	0.005
Manufacture of wood and wood products	0.02	0.002
Manufacture of pulp and paper	0.01	0.01
Publishing and printing	0.03	0.005
Petroleum processing;	0.02	0.01
Manufacture of chemicals and man-made fibers	0.02	0.01
Manufacture of Rubber and synthetics and plastics	0.03	0.01
Manufacture of glass	0.02	0.01
Manufacture of basic metals and fabricated metal products	0.03	0.02
Manufacture of machinery and equipment	0.03	0.003
Manufacture of electrical and optical equipment	0.02	0.005
Manufacture of toys and furniture	0.02	0.003
Recycling	0.01	0.004
Electricity, gas and water supply	0.004	0.004
Construction	0.04	0.002
Transport, storage and communication;	0.023	0.004
Wholesale and retail trade	0.02	0.003
Wholesale and repair of vehicles	0.03	0.002
Hotels and restaurants;	0.05	0.006
Services for travel;	0.04	0.01
Broadcasting	0.03	0.01
Real estate	0.02	0.005
Renting and Business activities	0.03	0.008
Holding companies	0.02	0.001
Databases	0.02	0.006
Education	0.01	0.003
Health and Social Services	0.009	0.001
Other Services	0.03	0.002
Residual Sector	0.03	0.006

**Table 10.** Estimated average default frequencies  $\mu$  for GKE sectors and their standard deviation  $\sigma$ .

## B Inconsistent Constraints for the matrix $L$

The constraints for the estimations of the matrix  $L$  are not always consistent. For instance the liabilities of all banks in sector  $k$  against all banks in sector  $l$  do typically not equal the claims of all banks in sector  $l$  against all banks in sector  $k$ . We deal with this problem by applying a two step procedure.

In a first step we replace an a priori matrix  $U$  reflecting only possible links between banks by an a priori matrix  $V$  that takes actual exposure levels into account. As there are seven sectors we partition  $V$  and  $U$  into 49 submatrices  $V^{kl}$  and  $U^{kl}$  which describe the liabilities of the banks in sector  $k$  against the banks in sector  $l$  and our a priori knowledge. Given the bank balance sheet data we define  $u_{ij} = 1$  if bank  $i$  belonging to sector  $k$  might have liabilities against bank  $j$  belonging to sector  $l$  and  $u_{ij} = 0$  otherwise. The (equality) constraints are that the liabilities of bank  $i$  against the sector  $l$  equal the row sum of the submatrix and that the claims of bank  $j$  against the sector  $k$  equal the column sum of the submatrix, i.e.

$$\sum_{j \in l} v_{ij} = \text{liabilities of bank } i \text{ against sector } l \quad (7)$$

$$\sum_{i \in k} v_{ij} = \text{claims of bank } j \text{ against sector } k \quad (8)$$

For the matrices describing claims and liabilities within a sector (i.e.  $V^{kk}$ ) which has a central institution we get further constraints. Suppose that bank  $j^*$  is the central institution. Then

$$v_{ij^*} = \text{liabilities of bank } i \text{ against central institution} \quad (9)$$

$$v_{j^*i} = \text{claims of bank } i \text{ against central institution} \quad (10)$$

Though these constraints are inconsistent given our data, we use the information to get a revised matrix  $V$  which reflects our a priori knowledge better than the initial matrix  $U$ . Contrary to  $U$  which consists only of zeroes and ones, the entries in  $V$  are adjusted to the actual exposure levels.<sup>31</sup>

In a second step we recombine the results of the 49 approximations  $V^{kl}$  to get an entire  $N \times N$  improved a priori matrix  $V$  of interbank claims and liabilities. Now we replace the original constraints by just requiring that the sum of *all* (interbank) liabilities of each bank equals the row sum of  $L$  and the sum of *all* claims of each bank equals the column sum of  $L$ .

$$\sum_{j=1}^N l_{ij} = \text{liabilities of bank } i \text{ against all other banks} \quad (11)$$

---

<sup>31</sup>Note that the algorithm that calculates the minimum entropy entries does not converge to a solution if data are inconsistent. Thus to arrive at the approximation  $V$  we terminate after 10 iterations immediately after all row constraints are fulfilled.

$$\sum_{i=1}^N l_{ij} = \text{claims of bank } j \text{ against all other banks} \quad (12)$$

Again we face the problem that the sum of all liabilities does not equal the sum of all claims but corresponds to only 96% of them. By scaling the claims of each bank by 0.96 we enforce consistency.<sup>32</sup> Given these constraints and the prior matrix  $V$  we estimate the matrix  $L$ .

Finally we can use the information on claims and liabilities with the central bank and with banks abroad. By adding two further nodes and by appending the rows and columns for these nodes to the  $L$  matrix, we get a closed (consistent) system of the interbank network.

## C Approximation of $L$

To approximate  $L$  we solve the problem

$$\begin{aligned} \min_{l_{ij}} C(L, U) &= \sum_{i=1}^N \sum_{j=1}^N l_{ij} \ln\left(\frac{l_{ij}}{u_{ij}}\right) \\ \sum_{i=1}^N \sum_{j=1}^N a_{kij} l_{ij} &\leq b_k \quad \text{for } k = 1, \dots, K \text{ and } a_{kij} \in \{0, 1\} \\ l_{ij} &\geq 0 \quad \text{for all } i, j \in N \end{aligned}$$

The Lagrangian for this problem is

$$L(L, \lambda, \mu) = \sum_{i=1}^N \sum_{j=1}^N l_{ij} \ln\left(\frac{l_{ij}}{u_{ij}}\right) - \sum_{k=1}^K \lambda_k \left(b_k - \sum_{i=1}^N \sum_{j=1}^N a_{kij} l_{ij}\right) - \sum_{i=1}^N \sum_{j=1}^N \mu_{ij} l_{ij}$$

For this problem the Kuhn-Tucker Conditions (See Luenberger (1969)) can be stated as:

$$\begin{aligned} \ln\left(\frac{l_{ij}}{u_{ij}}\right) + 1 + \sum_{k=1}^K \lambda_k a_{kij} - \mu_{ij} &= 0 \\ \lambda_k \left(b_k - \sum_{i=1}^N \sum_{j=1}^N a_{kij} l_{ij}\right) &= 0 \\ \mu_{ij} l_{ij} &= 0 \end{aligned} \quad (13)$$

---

<sup>32</sup>The remaining 4 % of the claims are added to the vector  $e$ . Hence they are assumed to be fulfilled exactly.

A computationally efficient method to solve this problem is Bregman's Balancing Procedure, described in Fang, Rajasekara, and Tsao (1997) and also referred to as entropy projection method in the literature (Blien and Graef (1997)). In our case we have only equality constraints and thus the solution to (13) can be calculated by the RAS algorithm which is a special case of the entropy projection method. In our case the constraints are given as

$$\sum_{j=1}^N l_{ij} = b_i^r \quad \text{for all } i \quad \text{and} \quad \sum_{i=1}^N l_{ij} = b_j^c \quad \text{for all } j$$

In this case an iterative procedure that calculates

$$l_{ij}^{t+1} = \frac{l_{ij}^t b_j^c}{\sum_r l_{rj}^t} \quad \text{and} \quad l_{ij}^{t+1} = \frac{l_{ij}^t b_j^r}{\sum_c l_{ic}^t}$$

solves (13) for any prescribed level of accuracy  $\varepsilon > 0$ . Convergence of the procedure is shown in (Fang, Rajasekara, and Tsao (1997)).

## Index of Working Papers:

August 28, 1990	Pauer Franz	1 <sup>1)</sup>	Hat Böhm-Bawerk Recht gehabt? Zum Zusammenhang zwischen Handelsbilanzpassivum und Budgetdefizit in den USA <sup>2)</sup>
March 20, 1991	Backé Peter	2 <sup>1)</sup>	Ost- und Mitteleuropa auf dem Weg zur Marktwirtschaft - Anpassungskrise 1990
March 14, 1991	Pauer Franz	3 <sup>1)</sup>	Die Wirtschaft Österreichs im Vergleich zu den EG-Staaten - eine makroökonomische Analyse für die 80er Jahre
May 28, 1991	Mauler Kurt	4 <sup>1)</sup>	The Soviet Banking Reform
July 16, 1991	Pauer Franz	5 <sup>1)</sup>	Die Auswirkungen der Finanzmarkt- und Kapitalverkehrsliberalisierung auf die Wirtschaftsentwicklung und Wirtschaftspolitik in Norwegen, Schweden, Finnland und Großbritannien - mögliche Konsequenzen für Österreich <sup>3)</sup>
August 1, 1991	Backé Peter	6 <sup>1)</sup>	Zwei Jahre G-24-Prozess: Bestandsaufnahme und Perspektiven unter besonderer Berücksichtigung makroökonomischer Unterstützungsleistungen <sup>4)</sup>
August 8, 1991	Holzmann Robert	7 <sup>1)</sup>	Die Finanzoperationen der öffentlichen Haushalte der Reformländer CSFR, Polen und Ungarn: Eine erste quantitative Analyse
January 27, 1992	Pauer Franz	8 <sup>1)</sup>	Erfüllung der Konvergenzkriterien durch die EG-Staaten und die EG-Mitgliedswerber Schweden und Österreich <sup>5)</sup>
October 12, 1992	Hochreiter Eduard (Editor)	9 <sup>1)</sup>	Alternative Strategies For Overcoming the Current Output Decline of Economies in Transition
November 10, 1992	Hochreiter Eduard and Winckler Georg	10 <sup>1)</sup>	Signaling a Hard Currency Strategy: The Case of Austria

1) vergriffen (out of print)

2) In abgeänderter Form erschienen in Berichte und Studien Nr. 4/1990, S 74 ff

3) In abgeänderter Form erschienen in Berichte und Studien Nr. 4/1991, S 44 ff

4) In abgeänderter Form erschienen in Berichte und Studien Nr. 3/1991, S 39 ff

5) In abgeänderter Form erschienen in Berichte und Studien Nr. 1/1992, S 54 ff



March 12, 1993	Hochreiter Eduard (Editor)	11	The Impact of the Opening-up of the East on the Austrian Economy - A First Quantitative Assessment
June 8, 1993	Anulova Guzel	12	The Scope for Regional Autonomy in Russia
July 14, 1993	Mundell Robert	13	EMU and the International Monetary System: A Transatlantic Perspective
November 29, 1993	Hochreiter Eduard	14	Austria's Role as a Bridgehead Between East and West
March 8, 1994	Hochreiter Eduard (Editor)	15	Prospects for Growth in Eastern Europe
June 8, 1994	Mader Richard	16	A Survey of the Austrian Capital Market
September 1, 1994	Andersen Palle and Dittus Peter	17	Trade and Employment: Can We Afford Better Market Access for Eastern Europe?
November 21, 1994	Rautava Jouko	18 <sup>1)</sup>	Interdependence of Politics and Economic Development: Financial Stabilization in Russia
January 30, 1995	Hochreiter Eduard (Editor)	19	Austrian Exchange Rate Policy and European Monetary Integration - Selected Issues
October 3, 1995	Groeneveld Hans	20	Monetary Spill-over Effects in the ERM: The Case of Austria, a Former Shadow Member
December 6, 1995	Frydman Roman et al	21	Investing in Insider-dominated Firms: A Study of Voucher Privatization Funds in Russia
March 5, 1996	Wissels Rutger	22	Recovery in Eastern Europe: Pessimism Confounded ?
June 25, 1996	Pauer Franz	23	Will Asymmetric Shocks Pose a Serious Problem in EMU?
September 19, 1997	Koch Elmar B.	24	Exchange Rates and Monetary Policy in Central Europe - a Survey of Some Issues
April 15, 1998	Weber Axel A.	25	Sources of Currency Crises: An Empirical Analysis

May 28, 1998	Brandner Peter, Diebalek Leopold and Schuberth Helene	26	Structural Budget Deficits and Sustainability of Fiscal Positions in the European Union
June 15, 1998	Canzeroni Matthew, Cumby Robert, Diba Behzad and Eudey Gwen	27	Trends in European Productivity: Implications for Real Exchange Rates, Real Interest Rates and Inflation Differentials
June 20, 1998	MacDonald Ronald	28	What Do We Really Know About Real Exchange Rates?
June 30, 1998	Campa José and Wolf Holger	29	Goods Arbitrage and Real Exchange Rate Stationarity
July 3, 1998	Papell David H.	30	The Great Appreciation, the Great Depreciation, and the Purchasing Power Parity Hypothesis
July 20, 1998	Chinn Menzie David	31	The Usual Suspects? Productivity and Demand Shocks and Asia-Pacific Real Exchange Rates
July 30, 1998	Cecchetti Stephen G., Mark Nelson C., Sonora Robert	32	Price Level Convergence Among United States Cities: Lessons for the European Central Bank
September 30, 1998	Christine Gartner, Gert Wehinger	33	Core Inflation in Selected European Union Countries
November 5, 1998	José Viñals and Juan F. Jimeno	34	The Impact of EMU on European Unemployment
December 11, 1998	Helene Schuberth and Gert Wehinger	35	Room for Manoeuvre of Economic Policy in the EU Countries – Are there Costs of Joining EMU?
December 21, 1998	Dennis C. Mueller and Burkhard Raunig	36	Heterogeneities within Industries and Structure-Performance Models
May 21, 1999	Alois Geyer and Richard Mader	37	Estimation of the Term Structure of Interest Rates – A Parametric Approach
July 29, 1999	José Viñals and Javier Vallés	38	On the Real Effects of Monetary Policy: A Central Banker's View
December 20, 1999	John R. Freeman, Jude C. Hays and Helmut Stix	39	Democracy and Markets: The Case of Exchange Rates

March 01, 2000	Eduard Hochreiter and Tadeusz Kowalski	40	Central Banks in European Emerging Market Economies in the 1990s
March 20, 2000	Katrin Wesche	41	Is there a Credit Channel in Austria? The Impact of Monetary Policy on Firms' Investment Decisions
June 20, 2000	Jarko Fidrmuc and Jan Fidrmuc	42	Integration, Disintegration and Trade in Europe: Evolution of Trade Relations During the 1990s
March 06, 2001	Marc Flandreau	43	The Bank, the States, and the Market, A Austro-Hungarian Tale for Euroland, 1867-1914
May 01, 2001	Otmar Issing	44	The Euro Area and the Single Monetary Policy
May 18, 2001	Sylvia Kaufmann	45	Is there an asymmetric effect of monetary policy over time? A Bayesian analysis using Austrian data.
May 31, 2001	Paul De Grauwe and Marianna Grimaldi	46	Exchange Rates, Prices and Money. A Long Run Perspective
June 25, 2001	Vítor Gaspar, Gabriel Perez-Quiros and Jorge Sicilia	47	The ECB Monetary Strategy and the Money Market
July 27, 2001	David T. Llewellyn	48	<i>A Regulatory Regime</i> For Financial Stability
August 24, 2001	Helmut Elsinger and Martin Summer	49	Arbitrage Arbitrage and Optimal Portfolio Choice with Financial Constraints
September 1, 2001	Michael D. Goldberg and Roman Frydman	50	Macroeconomic Fundamentals and the DM/\$ Exchange Rate: Temporal Instability and the Monetary Model
September 8, 2001	Vittorio Corbo, Oscar Landerretche and Klaus Schmidt-Hebbel	51	Assessing Inflation Targeting after a Decade of World Experience
September 25, 2001	Kenneth N. Kuttner and Adam S. Posen	52	Beyond Bipolar: A Three-Dimensional Assessment of Monetary Frameworks

October 1, 2001	Luca Dedola and Sylvain Leduc	53	Why Is the Business-Cycle Behavior of Fundamentals Alike Across Exchange-Rate Regimes?
October 10, 2001	Tommaso Monacelli	54	New International Monetary Arrangements and the Exchange Rate
December 3, 2001	Peter Brandner, Harald Grech and Helmut Stix	55	The Effectiveness of Central Bank Intervention in the EMS: The Post 1993 Experience
January 2, 2002	Sylvia Kaufmann	56	Asymmetries in Bank Lending Behaviour. Austria During the 1990s
January 7, 2002	Martin Summer	57	Banking Regulation and Systemic Risk
January 28, 2002	Maria Valderrama	58	Credit Channel and Investment Behavior in Austria: A Micro-Econometric Approach
February 18, 2002	Gabriela de Raaij and Burkhard Raunig	59	Evaluating Density Forecasts with an Application to Stock Market Returns
February 25, 2002	Ben R. Craig and Joachim G. Keller	60	The Empirical Performance of Option Based Densities of Foreign Exchange
February 28, 2002	Peter Backé, Jarko Fidrmuc, Thomas Reininger and Franz Schardax	61	Price Dynamics in Central and Eastern European EU Accession Countries
April 8, 2002	Jesús Crespo- Cuaresma, Maria Antoinette Dimitz and Doris Ritzberger- Grünwald	62	Growth, Convergence and EU Membership
May 29, 2002	Markus Knell	63	Wage Formation in Open Economies and the Role of Monetary and Wage-Setting Institutions
June 19, 2002	Sylvester C.W. Eijffinger (comments by: José Luis Malo de Molina and by Franz Seitz)	64	The Federal Design of a Central Bank in a Monetary Union: The Case of the European System of Central Banks

July 1, 2002	Sebastian Edwards and I. Igal Magendzo (comments by Luis Adalberto Aquino Cardona and by Hans Genberg)	65	Dollarization and Economic Performance: What Do We Really Know?
July 10, 2002	David Begg (comment by Peter Bofinger)	66	Growth, Integration, and Macroeconomic Policy Design: Some Lessons for Latin America
July 15, 2002	Andrew Berg, Eduardo Borensztein, and Paolo Mauro (comment by Sven Arndt)	67	An Evaluation of Monetary Regime Options for Latin America
July 22, 2002	Eduard Hochreiter, Klaus Schmidt-Hebbel and Georg Winckler (comments by Lars Jonung and George Tavlas)	68	Monetary Union: European Lessons, Latin American Prospects
July 29, 2002	Michael J. Artis (comment by David Archer)	69	Reflections on the Optimal Currency Area (OCA) criteria in the light of EMU
August 5, 2002	Jürgen von Hagen, Susanne Mundschenk (comments by Thorsten Polleit, Gernot Doppelhofer and Roland Vaubel)	70	Fiscal and Monetary Policy Coordination in EMU
August 12, 2002	Dimitri Boreiko (comment by Ryszard Kokoszcyński)	71	EMU and Accession Countries: Fuzzy Cluster Analysis of Membership
August 19, 2002	Ansgar Belke and Daniel Gros (comments by Luís de Campos e Cunha, Nuno Alves and Eduardo Levy-Yeyati)	72	Monetary Integration in the Southern Cone: Mercosur Is Not Like the EU?
August 26, 2002	Friedrich Fritzer, Gabriel Moser and Johann Scharler	73	Forecasting Austrian HICP and its Components using VAR and ARIMA Models

September 30, 2002	Sebastian Edwards	74	The Great Exchange Rate Debate after Argentina
October 3, 2002	George Kopits (comments by Zsolt Darvas and Gerhard Illing)	75	Central European EU Accession and Latin American Integration: Mutual Lessons in Macroeconomic Policy Design
October 10, 2002	Eduard Hochreiter, Anton Korinek and Pierre L. Siklos (comments by Jeannine Baillu and Thorvaldur Gylfason)	76	The Potential Consequences of Alternative Exchange Rate Regimes: A Study of Three Candidate Regions
October 14, 2002	Peter Brandner, Harald Grech	77	Why Did Central Banks Intervene in the EMS? The Post 1993 Experience
October 21, 2002	Alfred Stiglbauer, Florian Stahl, Rudolf Winter-Ebmer, Josef Zweimüller	78	Job Creation and Job Destruction in a Regulated Labor Market: The Case of Austria
October 21, 2002	Elsinger, Alfred Lehar and Martin Summer	79	Risk Assessment for Banking Systems