

Omotor, Douglasson Godwin

**Article**

## Economic growth and emissions: Testing the Environmental Kuznets Curve hypothesis for ECOWAS countries

West African Journal of Monetary and Economic Integration

**Provided in Cooperation with:**

West African Monetary Institute (WAMI), Accra

*Suggested Citation:* Omotor, Douglasson Godwin (2017) : Economic growth and emissions: Testing the Environmental Kuznets Curve hypothesis for ECOWAS countries, West African Journal of Monetary and Economic Integration, ISSN 0855-594X, West African Monetary Institute (WAMI), Accra, Vol. 17, Iss. 2, pp. 25-56

This Version is available at:

<https://hdl.handle.net/10419/264244>

**Standard-Nutzungsbedingungen:**

Die Dokumente auf EconStor dürfen zu eigenen wissenschaftlichen Zwecken und zum Privatgebrauch gespeichert und kopiert werden.

Sie dürfen die Dokumente nicht für öffentliche oder kommerzielle Zwecke vervielfältigen, öffentlich ausstellen, öffentlich zugänglich machen, vertreiben oder anderweitig nutzen.

Sofern die Verfasser die Dokumente unter Open-Content-Lizenzen (insbesondere CC-Lizenzen) zur Verfügung gestellt haben sollten, gelten abweichend von diesen Nutzungsbedingungen die in der dort genannten Lizenz gewährten Nutzungsrechte.

**Terms of use:**

*Documents in EconStor may be saved and copied for your personal and scholarly purposes.*

*You are not to copy documents for public or commercial purposes, to exhibit the documents publicly, to make them publicly available on the internet, or to distribute or otherwise use the documents in public.*

*If the documents have been made available under an Open Content Licence (especially Creative Commons Licences), you may exercise further usage rights as specified in the indicated licence.*

# ECONOMIC GROWTH AND EMISSIONS: TESTING THE ENVIRONMENTAL KUZNETS CURVE HYPOTHESIS FOR ECOWAS COUNTRIES.<sup>1</sup>

Douglason G. Omotor<sup>2,3</sup>

## Abstract

---

*The objective of this paper is to establish whether the estimated relationship between environmental degradation and per capita income corroborates the inverted U-shape hypothesis as exemplified by the Environmental Kuznets curves (EKC) in selected ECOWAS countries. Considering two variants of emissions-sulfur dioxide (SO<sub>2</sub>) and carbon dioxide (CO<sub>2</sub>) and using panel fixed and random effects estimation techniques, the study indicates the existence of EKCs for the two variants of environmental quality. Experimentation with augmented quadratic equations, however, does not in some cases produce consistent results for SO<sub>2</sub>; while cubic polynomial forms suggest N-shaped EKCs for CO<sub>2</sub>. The turning points estimated for the two indicators of environmental quality are relatively low, which suggests a demonstration of the low level of development in the sub-region that may be related to high incidence of poverty. The major drivers of SO<sub>2</sub> in the sub-region are fuel processing and fuel combustion led by Nigeria. For CO<sub>2</sub> emissions, it is driven by rapid population growth that is equally induced by Nigeria. The polity variable which interacted significantly with the income variable to create the inverted-U shape EKC signals the importance of public institutions in the enhancement of environmental quality. Although ECOWAS countries may have benefited from early learning effects and environmental awareness, the implication is that policymakers must be proactive to sustain the current trend as the region enters the phase of industrialization and may not necessarily wait for a long time to improve environmental conditions as is the case with developed countries. This can be accomplished by using environmental tax instruments such as fuel tax which has been advised to be progressive for some African countries. By way of recommendation, a functional population policy should be implemented particularly in Nigeria.*

---

**JEL Classification:** I15, O13, O44, Q50, Q53

**Keywords:** Environmental Kuznets Curve, ECOWAS, Economic growth, Emissions, Sulfur dioxide, Carbon dioxide.

---

<sup>1</sup> This research work was carried out with the aid of a grant from the Centre of Environmental Economics and Policy in Africa (CEPA – [www.cepa.co.za](http://www.cepa.co.za)), financed by the Swedish Development Cooperation Agency (SIDA) and the International Development Research Centre (IDRC). The work benefitted immensely from review comments of various resource persons among them, Wisdom Akpalu, David Starrett, Edwin Muchapondwa, Joe Cook, Marty Luckert and other participants at the 25 – 29 August, 2014 CEPA's 15<sup>th</sup> Research and Training Workshop, Pretoria, South Africa. I also wish to thank Sam Omoruyi for the editorial review.

<sup>2</sup> West African Institution for Financial and Economic Management, Nigeria

<sup>3</sup> Delta State University, Abraka, Nigeria  
Email : yomotor@yahoo.com and domotor@wajfem-cbp.org

## 1.0 INTRODUCTION

History of economic discourse on the environment-growth relationship which underpins the Environmental Kuznets Curve (EKC) dates back to the 1970s when some scientists began to question the compatibility of natural resource availability with sustained economic growth (Meadows et al., 1972). The other strand of the divide championed by neoclassical economists such as Beckerman (1974) and Jahoda (1973) among others; opposed the limits to growth aphorism due to challenges of resource limitation. More importantly, as the perception of general interdependence between ecosystems and economies gains traction, economists broaden their view on the links between them.

A comprehensible hypothesis about the relationship between environmental quality and economic growth was formally first mentioned by Grossman and Krueger (1991); in their remarks, they posit that during the early stages of economic development, a country experiences increased environmental degradation which will increase until a certain level of income is reached (known as the turning point). At that level, environmental improvement will occur. What is implied in this analysis is that at the early stage of economic development when agriculture and allied activities as well as light manufacturing dominate the typical economy, pollution intensity will be generally low. However, as the economy shifts to heavy industry, pollution will tend to increase. Besides, as the economy shifts into high technology and services, pollution intensity will tend to decline. According to Grossman and Krueger, this produces an inverted U-shaped curve, analogous to that proposed by Kuznets (1955) in the relationship that exists between income inequality and average national income. Kuznets hypothesizes that economic inequality increases over time and then after a threshold becomes more equal as per capita income increases; hence the income-environment nexus is dubbed the “environmental Kuznets curve” (EKC).

Since the seminal works of Grossman and Krueger’s (1991) particularly on the potential environmental impacts of NAFTA, and the 1992 World Bank Report, interest in studies on the environment-income relationship has been aroused. Many studies on the subject have come on stream in efforts to estimate, interpret and understand the existence and shape of the EKCs with respect to various emissions and greenhouse gases. In the light of those studies that followed the thought provoking Grossman and Krueger’s findings, EKCs are now known to have different shapes and signs depending on the distinctive measurement of environmental degradation and datasets employed (see Cole and Neumayer, 2005; Stern, 2004; Yandle et al., 2004 for overviews). In all and as can easily be anticipated, the statistical and econometric evidence of the EKC relationship is mixed and its interpretation ambiguous. Consequently, little may be done in breaking new ground in an attempt to synthesize the evidence and assess where matters stand. However, the contribution of this paper to the EKC- SO<sub>2</sub> and CO<sub>2</sub> empirical literature, to the author’s mind, is novel in its application to the ECOWAS sub-region.

Second, in their quest for economic integration and diversification, ECOWAS economies move into the next stage of economic growth with probable increase in per capita income, mitigating environmental degradation in the sub-region through appropriate policy design becomes inevitable. Third, the reality of rapid population growth (Nigeria is Africa’s most populous country) coupled with increased urbanization in the sub-region are matters of concern as both can, on the one hand, contribute to over-exploitation of the ecosystems through complex feedbacks that have important implications for sustainable resource use, and on the other hand, further deteriorate the relationship between their levels of economic growth and emission of pollutants (Jiang et al., 2008; Cumming et al., 2014; Apergis and Ozturk, 2015).

Fourth, Nigeria (Africa’s biggest oil producer and 13th largest producer of oil in the world with daily production reaching about 2.4 million barrels) is the only member of the Organization of Oil Exporting Countries (OPEC) in ECOWAS and accounts for over 76% of the sub-region’s GDP. Its enjoyment of relatively cheaper price of fossil fuels, reflecting government resource subsidies, implies that the sub-

region could experience relatively higher rates of atmospheric fossil fuel and irreversible environmental damage. The prognosis however, is a matter of empiricism which this study seeks to address. Nigeria alone is ranked among the top 50 CO<sub>2</sub> emitter countries in the world (The Guardian, 2011) and this attracts attention.

The significance of testing for the existence of an EKC therefore stems from the fact that, it is beyond a mere academic exercise. An EKC as a generalized phenomenon is an indication, *ceteris paribus*, that environmental degradation will inevitably fall in the long run as incomes rise. Nevertheless, if the EKC proposition does not hold, this would be an indication that policy intervention would be necessary to curb pollution and make sustainable development a reality. A wide variance would be an indication that policy action is still required to reduce current pollution intensities even as income rises. The modifying effects would therefore provide the framework for a holistic approach to environmental policy design (Orubu and Omotor, 2011; Omotor, 2016).

The dawn of the EKC has so far raised some questions: do all aspects of environmental quality deteriorate or improve systematically with economic development? Can the pattern of growth versus environmental impact as established by the developed countries' EKCs be replicated for developing countries path? For how long will developing countries wait before tunneling the EKC? Are there policy implications for poor countries to grow themselves out of environmental problems rather than implement stricter regulations?

Although the study addresses these questions raised about the EKCs, it nonetheless acknowledges that there have been scores of empirical EKC publications since Grossman and Krueger's path-breaking work. The major focus of the study, however, is to estimate EKCs for ECOWAS countries using two specific measures of environmental indicators: sulfur dioxide (SO<sub>2</sub>) and carbon dioxide (CO<sub>2</sub>) emissions. The choice of these indicators is partly influenced by the fact that some studies on the EKC with respect to developing countries though exist for some pollutants, detailed studies that deal specifically with ECOWAS countries using sulfur dioxide emission are few and far between. Second, the existence of a relatively consistent country level data series for the ECOWAS countries selected for the study, also informed the choice.

The specific objectives of this study are thus to:

- estimate the EKCs model based on the emissions and determine a threshold income level for ECOWAS countries; and
- ascertain the effect of other control variables such as population density and policy influences on the quality of the environment.

The study is limited to analyzing the relationship between environmental emissions and per capita income as espoused in the environmental Kuznets Curve hypothesis. The EKCs would precisely be estimated for two indicators of air quality (AQI), using panel data for some selected ECOWAS countries based on data availability. These environmental emissions (AQI) are sulfur dioxide (SO<sub>2</sub>) and carbon dioxide (CO<sub>2</sub>).

The effects of policy variables such as population density, quality of institutions, population growth and trade openness on the selected AQI are also explored. The expectation is that such policy variables which could lower pollution concentration if adequately captured in the analyses should strengthen the policy implications of the study. The analysis is limited in scope to time series of the ECOWAS countries for which relevant data is steadily available.

## 2.0 REVIEW OF RELATED LITERATURE

The basic hypothesis of the environmental Kuznets curve is that there exists an inverted “U”- shape relationship between economic growth and environmental degradation. The explanation is that in the early stages of economic growth, environmental quality improves until it reaches the peak, afterwards it declines when the income per capita increases. Subsequently, economic development would eventually lead to environmental improvement (de Groot et al., 2004).

Series of studies have developed theoretical models on how preferences and technology interact to result in different time paths of environmental quality (Selden and Song, 1994; Andreoni and Levinson, 2001) among others. This, notwithstanding, the EKC though an essentially empirical phenomenon, is in much of the literature provocative (Stern, 2003) and their results inconclusive.

Studies that confirm the EKC hypothesis for different pollutants are Shafik and Bandyopadhyay (1992) and Aldy (2005). In the literature, studies have questioned the real existence of an inverse-U-shaped curve by empirical evidence. Khanna’s (2002) result is a U-shaped relationship instead of the inverted-U-shaped EKC. Akbostanci et al. (2009) find an N-shaped curve for Carbon Dioxide (CO<sub>2</sub>) and; Particulate Matter (PM<sub>10</sub>) and Sulfur Dioxide (SO<sub>2</sub>), respectively. Lekakis (2000), however, finds no relation between economic growth and environmental degradation.

The techniques of analyzing the EKC relationship over time have also varied, so also are the various forms of dataset ranging from time series, cross-sectional, cross-country to panel or longitudinal analyses with a set of control variables widely used in the empirical literature. Examples of such control variables are literacy rate (Orubu and Omotor, 2011); trade and structural change (Suri and Chapman, 1998), technology and technological progress (Baiardi, 2012), corruption (Leitao, 2010), among others.

At some other instances, there exist studies which have also designed economic instruments for environmental regulation. Examples of such are Orubu (2004), Ziramba et al. (2009), among others. As West (2004) further suggests, environmental taxes particularly gasoline tax is mildly regressive and may not be popular options in policy design. Ziramba, et.al, conclusion in the case of South Africa is that fuel expenditures are not regressive and as such, fuel tax would be an effective and desirable instrument for pollution control.

Other than OECD countries, some recent studies have concentrated on Africa and Asia regions. Examples are Osabuohien et al. (2014) and Apergis and Ozturk (2015). For the sake of emphasis, Osabuohien et al. (2014) study aim to establish the applicability of the EKC hypothesis in 50 African countries, using data from 1995–2010. The extension includes the application of panel cointegration to address some concerns of the econometric challenges. The empirical results suggest the existence of a long-term relationship between CO<sub>2</sub> and particulate matter emissions jointly with per capita income and other variables, including institutional factors and trade. The study recommends the need for African countries to reduce the level of environmental pollution at higher levels of economic development. Apergis and Ozturk (2015) focusing on income and policies, investigate the existence of the EKC hypothesis for 14 Asian countries spanning the period 1990–2011. The study employed the Generalized Method Moments (GMM) on panel dataset to test the EKC hypothesis. The multivariate framework includes CO<sub>2</sub> emissions, GDP per capita, population density, land, industry shares in GDP, and four indicators that measure the quality of institutions. The estimates have the expected signs and are statistically significant; yielding empirical support to the presence of an EKC hypothesis. The study proposes measures to enact regulations related with reducing the greenhouse gas arising from industry, transport and heating. Other suggested measures according to the study are implementing carbon sequestration technologies in power plants and supporting green investments through the application

of environmental technologies. Table A1 in Appendix 1 presents a chronological summary of EKC studies for both developed and developing countries.

### **3.0 ENVIRONMENTAL ISSUES IN ECOWAS AND GLOBAL ENVIRONMENTAL AGREEMENTS: SOME STYLIZED FACTS**

As noted earlier, the two emissions used in this study are Sulfur Dioxide (SO<sub>2</sub>) and Carbon Dioxide (CO<sub>2</sub>). SO<sub>2</sub> is emitted when fuels containing sulfur are combusted. In the air, it can form tiny particles called aerosols, creating new ones or building up old ones. Aerosol particles help form cloud drops and potentially changes the amount of rainfall. Both clouds and the aerosols reduce the amount of energy that the planet can absorb (Smith, et.al; 2011). As for SO<sub>2</sub>, it has the potential to acidify rain, soil and lakes, and it can counteract some of the warming effects of carbon dioxide. The acidic deposition of such subsequent impacts can be significant, and they include adverse effects on aquatic ecosystems in rivers and lakes which damage forests, crops and other vegetation (EEA, 2013). These concerns no doubt are worrisome and have aided the shift in the frontier of environment-development treatise.

The environment-development paradigm which shifted to sustainable development began in the 1970s with the aim of formulating sustainable development policies that will curtail emissions in the development process. The dialogues which followed the discourse were to conserve the deteriorating environment and these resulted in a series of government commitments covering at least nine treaties. Chief among those action plans are the Convention on Biological Diversity Earth Summit in 1992, United Nations Framework Convention on Climate Change also known as the Kyoto Protocol in 1997, the United Nations Convention to Combat Desertification, 1994 and 1996 and the most recent in this group; the Stockholm Convention which is an international legally binding instrument to protect human health and the environment from persistent organic pollutants. The Stockholm Convention was adopted in 2001 but put into force in 2004 (World Development Report, 2010:211).

Multilateral Environmental Agreements and Modifications are well up to 1,257 (Mitchell, 2018). Among these are 540 Agreements and 222 Protocols. These numbers are still counting; however, as observed in the World Development Report (2010: 211), signing of these treaties does not always guarantee that governments will comply with the treaty obligations. This notwithstanding a fundamental question is how the ECOWAS sub-region has fared relatively in some of these environmental agreements and profile in the midst of industrialized nations?

Although all ECOWAS countries have participated in signing most of the treaties since the 1990s, the United States of America for instance, did not sign some of the international treaties and agreements launched in the wake of the 1972 United Nations Conference on Human Environment in Stockholm and the 1992 United Nations Conference on Environment and Development (Earth Summit) in Rio de Janeiro. It was only recently in 2012 surprisingly the United States became the first major industrialized nation in the world to meet the United Nation's original Kyoto Protocol 2012 with target for CO<sub>2</sub> reductions without ever ratifying it (Watts, 2013). It became international law when Russia ratified it in November 2004. The United States never ratified the Kyoto Protocol even though the then Vice President Al Gore of the US signed it. A second observation is that Germany and Japan are probably yet to prepare national environmental profiles and biodiversity strategies and profiles. It is also worthy of note that there exist an ECOWAS Environmental Policy (2008) which signals commitment and appreciation of the consequences of environmental problems by political leaders of the region.

### ***3.1. Profile of SO<sub>2</sub> emissions in ECOWAS countries***

The main sources of SO<sub>2</sub> emissions in the ECOWAS region as reported in Figure 1 are fuel processing (wholly contributed by Nigeria) which accounts for 78 per cent of total anthropogenic SO<sub>2</sub> and petroleum combustion 18 per cent. While coal combustion contributed a paltry 1 per cent of the total share of sulfur emissions; Nigeria accounted for the total coal combustion during the period under review; but has now drastically declined probably reflecting increased demand for petroleum combustion. In essence, fuel processing is the major driver of sulfur dioxide composition in the region and solely contributed by Nigeria, which can be related to the growth in the activities of the oil industry. A comparative examination of the data (Smith et.al, 2011) shows that SO<sub>2</sub> emission in ECOWAS countries ranked relatively lower than what obtained in some industrial countries; though not surprising. For example, the mean or average SO<sub>2</sub> concentration for the period, 1960-2005 for Benin, Cote d'Ivoire, Ghana, Nigeria, Senegal and Togo stood at 2.5, 20.1, 18.8, 361.7, 20.5 and 202 Gg, respectively; while those of China, Germany, Japan, UK and USA, stood at 14224.6, 5597.1, 2057.6, 4070.7 and 22147.7 Gg, respectively (Smith et.al, 2011). A fundamental lesson to be deduced from Figure 2 when SO<sub>2</sub> concentrations for the selected ECOWAS countries are compared with the selected Industrial nations is that, ECOWAS countries may have the benefit of learning early and by involving in environmental activism and awareness may not need to wait for too long for per capita income to improve to the levels recorded in industrial nations before they begin to appreciate cleaner environment. In other words, the challenge developing countries including those in the ECOWAS region face is how to improve the EKC for instance by pressing it downward, or by reaching the turning point faster, in their future development (Kander, 2002).

### ***3.2. Profile of CO<sub>2</sub> emissions in ECOWAS countries***

It has been argued that, given the current level of economic development in the ECOWAS region, recorded carbon dioxide per capita may be rising in recent years. This fear is buttressed by the fact that as the region's economy grows; carbon dioxide per capita may escalate as a result of industrialization. In 1960 the rate of increase per year was 0.71 PPM (parts per million) while the rate of increase was 2.14 PPM per year in 2005 (Ernst-Georg, 2010). Comparatively, average measures of CO<sub>2</sub> per capita for ECOWAS countries are relatively low, compared to the numbers recorded for industrial countries. For example, CO<sub>2</sub> for China, Japan, UK and USA stood at 2.23, 8.41, 10.08 and 19.81, respectively in 1965-2009 (World Bank, 2013). These figures may be compared with those of Benin, Burkina Faso, Cote d'Ivoire, Gambia The, Ghana, Liberia, Mali, Niger, Nigeria, Senegal, Sierra Leone and Togo measured at 0.19, 0.06, 0.48, 0.19, 0.29, 0.46, 0.05, 0.09, 0.60, 0.42, 0.33 and 0.21, respectively (World Bank, 2013).

The ECOWAS carbon dioxide emission intensity per capita averages are equally less than the SSA average and seem to be declining as portrayed in Figure 3. This notwithstanding, recent attitudinal change and concern in the climate change challenges particularly by China and the United States who hitherto were adamant in reduction of their emissions of CO<sub>2</sub>, further provide the impetus for curbing CO<sub>2</sub> emissions by developing countries. This interest is informed by the fact that the ECOWAS region is in quest for rapid industrialization and carbon per capita may increase as the region industrializes. African countries may therefore, do better, by deliberately coming up with measures to curb the trend towards increased carbon intensity. An unanswered question that comes to bear is what the complex drivers of CO<sub>2</sub> emissions in the ECOWAS region are even at its present level of development?

In applying an accounting methodology based on a log mean Divisia Index, Kojima and Bacon (2009) in their analysis decompose countries' absolute levels of CO<sub>2</sub> emissions from the combustion of fossil fuels as well as the levels of emissions per capita and per unit of gross domestic product (GDP). The

six ECOWAS countries' (with consistent dataset) performance ranges closely (probably given that they relatively belong to the same income group) depending on metric used, as reported in Table 1.

The methodology provides for changes in emissions which are separated into five factors:

- $C_{eff}$  = carbon intensity of fossil fuels consumed;
- $S_{eff}$  = share of fossil fuels in total energy used (fossil fuel intensity of energy);
- $I_{eff}$  = energy required to produce a unit of GDP (energy intensity);
- $G_{eff}$  = GDP per capita; and
- $P_{eff}$  = Population

Some inferences can be made from the decomposition of the selected ECOWAS countries emissions illustrated in Table 1 and Figure 4 during the period 1994-1996 to 2000-2004. First, the net increase in CO<sub>2</sub> emissions for the ECOWAS countries over the period is 30.98 million metric tonnes. Second, the rapid growth of population and GDP per capita contributed most of the net increase in CO<sub>2</sub> emissions in the region. This was closely followed by fossil fuel intensity of energy. Third, carbon intensity of fossil fuels and fossil fuel intensity of energy increased CO<sub>2</sub> by 6.65 million metric tonnes and 8.5 million metric tonnes, respectively. Fourth, offsetting these increases was a marked reduction in energy intensity of total energy which reduced total CO<sub>2</sub> emissions in the selected ECOWAS countries by 8.25 million tonnes (equally a sign of economic underdevelopment). Fifth and very strongly, Nigeria alone is the major emitter of CO<sub>2</sub> emissions in the region based on the selected ECOWAS countries' figures and accounted for almost 64 per cent of the emissions during the period with a 0.00 conversion efficiency ( $V_{eff}$ ) level. Sixth, as energy intensity in the ECOWAS countries is falling, fossil fuel intensity in contrast increased (probably due to declining traditional use of biomass that require hours of manual collection). On a separate note, Spence (2009) argues that a bracket of low income countries in which the ECOWAS countries belong, be permitted to increase their emissions into the foreseeable future. In contrast, it is the view of this paper that this set of countries should rather be encouraged to mitigate the factors that contribute to rising emissions by their own planning and policy efforts. This can be achieved through energy conservation, energy efficiency improvement via low-carbon energy sources, strengthening institutions, structural changes in their economies and population control, especially in the case of Nigeria.

#### 4.0 THEORETICAL FRAMEWORK AND MODEL SPECIFICATION

Although many environmental economists take the EKC as a stylised fact that needs to be explained by theory despite the pieces of evidence that it may not apply to all pollutants or environmental impacts (Stern, 2004), some substantial efforts have been made to provide a theoretical framework that rationalizes the subsistence of the EKC as an observable fact. The rest of this section which draws heavily on Orubu et.al. (2009), offers an interesting micro-structure from Levinson (2000). The Levinson micro model which is derived from a polynomial pollution-income curve is based on the utility maximizing behaviour of economic agents in which pollution rises at lower levels of income, but falls at higher levels. In the modified Levinson's Model, the EKC explanation can be presented in five basic equations (a social utility function, a pollution function, a modified pollution function, an abatement function, and a constraint, respectively);

$$U = U(C, P), P = P(C, F), P = C - C^\alpha F^\beta, A = C^\alpha F^\beta, C + F = Y \dots\dots\dots(1)$$

Where U = total utility, C = consumption, P = Pollution effect of the processes of production and consumption in the economy, F = effort expended in abating pollution, A = total abatement, Y = income, while  $\alpha$  and  $\beta$  are parameters. From these equations, the consumption-income, and pollution-income equations are derived as in Equation 2:



$$\frac{\partial P}{\partial Y} = \frac{\alpha}{\alpha + \beta} - (\alpha + \beta) \left(\frac{\alpha}{\alpha + \beta}\right)^\alpha \left(\frac{\beta}{\alpha + \beta}\right)^\beta Y^{(\alpha + \beta - 1)} \dots\dots\dots(2)$$

The sign of which depends on the parameters  $\alpha$  and  $\beta$ .

From Equation (2), note that if  $(\alpha + \beta) > 1$ , abatement will reflect increasing returns to scale, and the pollution curve will correspond to the EKC in Figure 4(b). If  $(\alpha + \beta) < 1$ , then abatement exhibits diminishing returns to scale; EKC is convex and when,  $(\alpha + \beta) = 1$ , effort spent abating pollution has constant returns to scale, and income-pollution is constant, as in Figure 4a.

**4.1 Model Specification**

With the foregoing, and given the framework already considered above, the basic foundation of the EKC formulation is that pollution intensity worsens as income levels rise, but eventually falls once income crosses some threshold. By this postulation, the prime quadratic EKC equation in logarithms can be specified as:

$$\ln(e_t) = \alpha_1 + \beta_1 \ln(y)_t + \beta_2 \ln(y_t)^2 + \mu_t \dots\dots\dots(3)$$

where  $e$  = indicator of environmental degradation or indicator  
 $y$  = GDP per capita at constant prices (US\$2000)  
 $t$  = time

$\ln$  = natural logarithm of the relevant variable  
 $\mu$  = stochastic disturbance term with zero mean and finite variance

For the EKC hypothesis to be established,  $\beta_1 > 0$ ;  $\beta_2 < 0$ , and both must be statistically significant. In a longitudinal data analysis, a parametric specification of Equation (3) would be formulated as:

$$\ln(e_{it}) = \alpha_i + \gamma_t + \beta_1 \ln(y_{it}) + \beta_2 \ln(y_{it})^2 + \mu_{it} \dots\dots\dots(4)$$

In this specification, the focus is still on the logarithms of both per capita GDP, denoted by  $y_{it}$ , and per capita of the emission or environmental degradation index, denoted by  $e_{it}$ . Within this framework and in this paper  $i = 1, \dots, N$  indicates the country and  $t = 1, \dots, T$  is the time mark. In qualitative terms, similar results have also been obtained when using levels instead of logarithms (Wagner and Müller-Fürstenberger, 2005). The stochastic error term of Equation (4) is denoted by  $\mu_{it}$  with the appropriate assumptions concerning serial correlation. The first two terms on the right hand side in Equation (4), are intercept parameters that vary across countries ( $i$ ), and years ( $t$ ). The above formulation of the EKC posits a strong *homogeneity* assumption which implies that although environmental degradation may vary among countries at any given level of income, the income elasticity is the same for all countries at a given level of income. In a further strand, the time specific intercepts take care of time-varying variables that are omitted from the model, including stochastic shocks. Panel data analysis combine the features of both time series and cross-sectional analysis and are often specified to take care of fixed and random effects (for details, see Torres-Reyna, 2007). Fixed effects (FE) models treat  $\alpha_i$  and  $\gamma_t$  as regression parameters, while random effects (RE) models treat them as components of the random disturbance.

In the literature, some theoretical discourses and studies have also included a cubic term in their estimations (see for example, Martinez-Zarzoso and Bengochea-Morancho, 2004; and Stern, 2014). In some of such specifications, the cubic model is cast as:

$$\ln(e_{it}) = \alpha_i + \gamma_t + \beta_1 \ln(y_{it}) + \beta_2 \ln(y_{it})^2 + \beta_3 \ln(y_{it})^3 + \mu_{it} \dots\dots\dots(5)$$

If  $\beta_3 > 0$  in equation (5), this would be symptomatic of an N-shaped curve. In modelling the EKC relationship, Shafik (1994) expands the variables considered; thus suggesting that income is only one of the several factors which help to determine declining environmental quality generally. Other determinants of environmental quality in any country according to Shafik are: 1) endowment such as climate or location; 2) the structure of production, urbanization, and consumption patterns of private goods, 3) exogenous factors such as technology that are available to all countries but change over time; and 4) policies that reflect social decisions about the provision of environmental public goods depending on institutions. Khanna (2002) also identifies such other critical factors that may influence the EKC existence as race, education, population density, housing tenure and the structural composition of the workforce.

In the strict case, establishing an EKC in the presence of other moderate factors provides a more convincing basis for validation of the hypothesis. We, therefore, experiment by expanding the basic model to include such factors as population density (PDEN), trade openness (IPN), and political economy (POEC). The higher the population density, the greater will be the intensity of pollution, as well as the pressure brought to bear on environmental services and resources. If the cubic term in Equation (5) is dropped, for simplicity and building on Levinson's (2000) micro-foundation, the estimable equation is,

$$\ln(e_{it}) = \alpha_i + \gamma_t + \beta_1 \ln(y_{it}) + \beta_2 \ln(y_{it})^2 + \sum_{j=1}^n \varphi_j (X_{jit}) + \mu_{it} \dots \dots \dots (6)$$

where,

$X$  = vector of other explanatory variables (or control variables).

**4.2 Sources of the Data**

The data for the two indicators of environmental quality and other variables used in the study are obtained from the World Bank *World Development Indicators* (2012, 2013) source, and Smith et.al. (2011), *Anthropogenic Sulfur Dioxide Emissions: 1850–2005*; and Marshall and Jagers (2010), *Polity IV*. The African Development Bank's publication, *Gender, Poverty and Environmental Indicators on African Countries* (2007) was used to complement some gaps in the data series. The definition of variables and their sources are summarized in Table 2.

**4.3 Description of the Data**

Issues on the time series properties of the variables are highlighted in sub-section 5.1, while the ECOWAS countries used in the analysis are presented in Table 3. The time frame for the analysis is influenced by data availability and consistency, but range from 1960 to 2005 for SO<sub>2</sub> and 1965 to 2009 for CO<sub>2</sub>.

**4.3.1 Sulfur dioxide (SO<sub>2</sub>)**

A consistent annual data series for SO<sub>2</sub> is available for 6 ECOWAS countries for the period 1960 – 2005, as indicated in Table 3. This makes a total of 46 observations for each ECOWAS country, and total balanced panel observations of 276 for the selected ECOWAS countries included in the sample. SO<sub>2</sub> emission on the average has been on the decline in the ECOWAS countries included in the study sample over time. Data on Sulfur Dioxide measured in Gigagrams of SO<sub>2</sub> was collected from Smith et.al (2011).

**4.3.2 Carbon dioxide (CO<sub>2</sub>)**

The CO<sub>2</sub> variable for all countries used in the study is measured in metric tons per capita/per annum in order to adjust for the population size of the countries used for the analysis. ECOWAS member average per capita carbon dioxide emissions range from 0.05 tons to 0.59 tons for Mali and Nigeria

respectively. CO<sub>2</sub> data was collected for the period 1965 – 2009 for the twelve selected countries used in the analysis; thus, making a total of 45 cross-sectional observations for each country and total balanced panel observations of 540.

The total per capita CO<sub>2</sub> for the twelve ECOWAS states is 5.35; this is about four times less than the US average and equal to the average total emissions of Canada per annum. The relatively low per capita CO<sub>2</sub> emissions for the ECOWAS countries would obviously suggest that these levels should be sustained by increasingly enhancing other ways of reducing emissions, for example through the use of environmental regulations. CO<sub>2</sub> emissions data was obtained from the World Bank, *World Development Indicators*, 2013.

#### **4.3.3 Income per capita**

Among the numerous variables that affect per capita carbon dioxide production, per capita income is the factor which has prompted the largest amount of theoretical and empirical analysis. Our measure of income per capita is GDP per capita at constant prices (US 2000) since this measure of GDP is more reliable and available than the measure of GNP and both measures are highly correlated. GDP is even more relevant to developing countries than Gross National Product (GNP) as a measure of output. There is an abundance of economic literature and empirical support of the EKC for series of pollutants. Economic Growth and the Environment by Grossman and Krueger (1995), formed the fundamental basis for many econometric tests of the EKC done over time (Peterson, 2009).

#### **4.3.4 Population density**

Population density is measured as people per sq. km of land. The supposition as earlier noted is that countries with less dense, dispersed populations emit high levels of CO<sub>2</sub>, due to the high transportation costs (Neumayer, 2003; Emrath and Liu, 2008; Grazi et al., 2008; Peterson, 2009). In urban areas where the population is denser, on the other hand, there is a tendency to produce relatively less CO<sub>2</sub>, as people travel less distance and may make use of public transportation. The variable may have ambiguous effects as some have also argued that more dense areas will make for greater use of coal and non-commercial fuels (Panayotou, 1997) and people exerting pressure more on economic and environmental resources. Population density data is extracted from the World Bank WDI (2013) data set.

#### **4.3.5 Openness**

Openness is proxied as trade as a percent of GDP and is measured in this instance as the ratio of the sum of exports and imports to the nominal GDP. Trade as suggested in the literature is a major determinant of international technology adoption and diffusion. This occurs through imports of intermediate input, learning-by-exporting experience, foreign direct investment (FDI), communication, etc (Kinda, 2011). These processes encourage the use of modern technology that promotes pollution abatement. The trade as a percent of GDP data is obtained from the World Bank, *World Development Indicators* (2013) data set.

#### **4.3.6 Population growth**

Population growth may result in growth of emissions (independently of the growth in per capita incomes) via the demand for public goods that are pollution-intensive, such as infrastructure and defense, as argued, for example, by Ravallion and Jalan (1997) and (Mitsis, 2012). Population growth statistics for the selected countries show the average growth rate in the region to be 4.93%. This is explained by the pollution concentration growth of 7.2%, 4.07%, 6.44%, 2.96%, 3.53 % and 5.04% of Togo, Senegal, Nigeria, Ghana, Cote d'Ivoire and Benin, respectively. It is also noted that more densely populated countries relatively emit higher levels of SO<sub>2</sub> concentration.

#### 4.3.7 Polity variable

The polity variable captures the quality of institutions and the data is obtained from Marshall and Jaggers (2010), *Polity IV*. Polity IV contains, amongst many other variables, yearly composite indicators measuring both “institutionalized democracy” and “autocracy”. A summary “polity” measure is then defined as the difference between the democracy and autocracy scores, with 10 indicating “strongly democratic” and -10 indicating “strongly autocratic” Farzin and Bond (2006). The specification assumes that the quality of institutions, political regime and openness of the state to environmental preferences of the public can be captured using this index. The relationship between environmental quality and economic growth is consummated with political institutions in sharpening policy formulation. As often aptly underscored, *“The connection between environmental protection and civil and political rights is a close one. As a general rule, political and civil liberties are instrumentally powerful in protecting the environmental resource-base, at least when compared with the absence of such liberties in countries run by authoritarian regimes”* (Dasgupta and Maler, 1995). During the period under review, most of the countries in the ECOWAS region were either under authoritarian regimes or just emerging from civil crises.

## 5.0 EMPIRICAL RESULTS

### 5.1 Time-Series Properties of the data

As a first step to estimating the relevant equations, a panel unit root tests are performed for each of the two pollutants and the underlying income covariates using panel unit root test and possibly the panel cointegration test. The frameworks for implementation of unit root tests in panel data are credited to Levin et al., 2002; Breitung, 2000; Im, Pasaran and Shin, 2003; Maddala and Wu, 1999; 2001 and Hadri, 2000. Utilizing series of these tests, though relatively, proffers the possibility of improving on the weaknesses such as low-power and large-size distortions that may be associated with a single time series tests. As has been argued elsewhere, the EKC hypothesis is a non-linear function of income, thus making it inappropriate to subject it to panel unit root tests and possibly a waste (Coplien, 2014). However, Perman and Stern (2003) had argued earlier that such non-linear function can be analysed using linear cointegration methods. The linear cointegration method further suffers another drawback in the EKC relation as no cointegration can be expected between income and income squared. Again, Perman and Stern (2003) argued that cointegration test in this circumstance should be analysed from the perspective that the relation is between emissions and the two variables not for a relation between the two income variables themselves. Others who have joined in this debate in recent times are Warne (2014) and Holy (2015), among others. In order not to be enmeshed in the ensuing debate and attendant controversies, we have systematically in this study followed the standard practice of analyzing EKC panel dataset without testing for the time-series properties of the data panel cointegration. This is reserved for future application.

### 5.2. Panel FE, RE and OLS estimates for SO<sub>2</sub>

The variants regression approaches to the test of the EKC model using the quadratic form in the sulfur (SO<sub>2</sub>) model are displayed in Tables 4 - 6. The regressors here are the per capita income (Per capita GDP and its squares (Per capita GDP<sup>2</sup>). These techniques of analysis enable us to test whether the economic growth and SO<sub>2</sub> emission consistently hold for the ECOWAS countries used in the panel.

All slope parameters are statistically significant at 5% as *‘a priori’* expected and rightly signed; indicating that income per capita is an important factor in the estimation of SO<sub>2</sub> emissions. The implication is that the EKC hypothesis holds for local pollutants such as SO<sub>2</sub>.

Specifically, the random effect model displays similar results in terms of signs of coefficients. Income per capita and income per capita square coefficients are respectively 28.31 and -2.25 and are significant. However, the effects of income per capita and per capita square appeared to have greater impacts in

the random effect model. The coefficients of determination are not to be worried about as they give highly negligible explanatory power of the regressors. This may reflect the omission of other fundamental variables from the basic model. The panel OLS results are not different from the random effect model. However, as for the choice between the fixed and random effects which becomes academic in a situation such as this, the paper has identified itself with and accepted the results of the Fixed Effects (though equally supported by the various Hausman statistics) because Random Effects models are generally considered inappropriate for most economic applications as nearly all economic cases encountered, the time-invariant component of the error term,  $a_i$ , is correlated with one or more of the independent variables, rendering the Fixed Effects more appropriate (Hilmer and Hilmer, 2014). On the basis of the expected coefficients, the turning point of the income per capita of the chosen model (fixed effects) is estimated as:  $\tau = \exp[-\beta_1/(2\beta_2)]$ . The income per capita turning point of the SO<sub>2</sub> FE model is about \$5,650 dollars over the period and, thus, is the income that exists at the inverted U-shaped EKC. The turning point value though on average is higher than the region's average gross domestic product (GDP) per capita, which ranges from USD 800 in Niger to USD 4,400 in Cape Verde, are not too distant away from current levels of income. This suggests that regulation of this pollutant may not be very difficult to achieve if left to income alone and that current environmental policy action is required to stem emission. This result generally agrees with the findings of some earlier studies (for example, Stern 2004; Markandya et al., 2006; Apergis and Ozturk, 2015, among others).

The robustness of the EKC hypothesis is examined by estimating the pooled panel cubic EKC using the FE, RE and OLS. The results are poor as they were not significant, though correctly signed. The behaviour of the augmented quadratic EKC results for SO<sub>2</sub> when other control variables were included in the analysis similarly indicates the existence of an inverted-U relationship with income. The parsimonious results are mostly devoid of insignificant variables. The GDP per capita has positive effect on SO<sub>2</sub> emission and statistically significant, while the parameter of the squared GDP per capita is negative and significant at 5 percent level.

The political institution variable (DEM) though not significantly different from zero and does not have the expected a priori constraining sign, the asymmetries reported in Figure 7 suggest that the period under review in the ECOWAS region may have been marred by political violence, civil wars and lack of political openness and public voice. While a rise in income alone is not enough to drive climate change policies, what may be playing out is that the ECOWAS countries require higher levels of democratization in conjunction with improved behavior of other economic agents to mitigate rising emission as they move to the next stage of higher level of industrialization. The non-significance of this variable may suggest that other deliberative processes are required to address issues of environmental quality. Population density in ECOWAS countries tends to intensify pollution from SO<sub>2</sub> concentration more than any other sources in the estimations, suggesting deliberate policy intervention in urban planning. As Figure 5 depicts, population density trends are on the increase in the ECOWAS region.

The openness variable, as trade literature suggests, is a major determinant of international technology adoption and diffusion. This variable has a positive, significant impact on emissions with a coefficient greater than zero; implying a monotonically increasing trend connoting that increasing trade is accompanied by a rise in the level of the emission. This evidence gives credence to the pollution haven hypothesis which suggests that developing countries are the destinations for dirty industries or dumping sites of richer nations. Thus, the argument that trade through imports of intermediate input, learning-by-exporting experience, etc. could encourage the use of modern technology, promotes pollution abatement and increased use of resource efficiency may not necessarily be correct. Rather, the presence of externalities and trade openness could inhibit environmental quality and sustainable development.

### 5.3. Panel FE, RE and OLS estimates for CO<sub>2</sub>

Tables 7-9 report different variants of the panel fixed, random and the pooled OLS results for carbon dioxide (CO<sub>2</sub>) emission. The main results of the CO<sub>2</sub> as in SO<sub>2</sub> are robust to specifications of income per capita and income per capita square given that they have the expected signs (0.001 and  $-6.74E^{-07}$ ) and significant at the conventional level. Consequently, it can be concluded that the behavior of CO<sub>2</sub>, a measure of global emission supports the EKC hypothesis of an inverted-U shaped relationship. The behavior of the other variables in the augmented estimations is not strikingly different from their SO<sub>2</sub> counterparts.

However, given that the polity variable which captures the quality of institutions, voice and accountability of the state to the environmental preferences of the populace is not significant, the CO<sub>2</sub> equation is re-estimated by interacting it with the income per capita variable. The underlining argument is that economic growth alone may be insufficient to improve environmental quality (Fazin and Bond, 2004). The augmented results from all the classes of estimation of this interaction report evidence of an unambiguous EKC relationship between income per capita, income per capita square and CO<sub>2</sub>, while CO<sub>2</sub> is negatively related to environmental polity variable (through the Per Capita GDP\*Polity interaction variable). This affirmative finding that the quality of public institutions matters in achieving environmental quality implies that deliberate and conscious choices of environmental policy efforts are required for cleaner environment as income per capita rises. This corroborates the findings for 14 Asian countries by Apergis and Ozturk (2015); who further suggest that the association of higher income per capita with better political systems and institutions would improve environmental quality, leading to less emission. The optimum turning point value of US\$ 4.0475E<sup>-114</sup> for CO<sub>2</sub> which fell outside the original data is not strange with the EKC phenomenon (Stern, 2004). In addition, to strenuously argue for a higher turning point value will amount to “income determinism” (Unruh and Moomaw, 1998). CO<sub>2</sub> turning points at best only represent the average among all the countries rather than a deterministic summit that marks the start of the downward phase of the curve (Poudel et al., 2009). From the CO<sub>2</sub> augmented interactive results; the Hausman test favoured the FE model. This also carries the support of Hilmer and Hilmer (2014) as FE being more appropriate in economic applications.

The cubic polynomial model of CO<sub>2</sub> where the income per capita appears in cubic form differs from the cubic form equation of the sulfur model. The expected sign ( $4.29 E^{-09}$  and  $4.40E^{09}$ ) and significance of income per capita cube is really an appreciation of the ‘N’ shaped EKC hypothesis for the ECOWAS countries. The very rapid growing pattern of income seems to have further increased the degradation turning the scenario to the first case. This also points to the fact that higher income levels alone cannot automatically improve the environment (Beck and Joshi 2015), and as such, abatement effort by the ECOWAS governments against pollution is good to the environment.

## 6.0 CONCLUSIONS

In this study, the relationship between per capita income and environmental degradation in the ECOWAS countries has been investigated, using longitudinal data spread generally between 1960 and 2009. Recognizing the often-cited income-environmental quality relationship, the specific objective is to estimate environmental Kuznets curves for two indicators of environmental quality, namely: sulfur dioxide (SO<sub>2</sub>) and carbon dioxide (CO<sub>2</sub>) and to establish whether the estimated relationships conform to the inverted U-shape hypothesis.

The results of the empirical investigation generally suggest the existence of environmental Kuznets curves for environmental quality indicators. Other factors such as population density; which is the most significant explanatory variable, openness, and income-policy interaction variable are also found to affect environmental quality. Specifically, population density has a positive effect on environmental degradation, particularly for SO<sub>2</sub>, while openness tends to reduce global pollution (CO<sub>2</sub>). An N-shaped pollution – income curve was also indicated for CO<sub>2</sub> – an indication that more stringent policy measures may be required to stem pollution from this source, as incomes rise to higher bounds. The N-shape is,

however, inverted for the case of  $\text{SO}_2$ . The turning points estimated for the different indicators of environmental quality are relatively low, thus, suggesting a demonstration of the low level of industrial development in the sub-region occasioned by the high incidence of poverty. Second, when these turnings are compared to evidence from extant literature on the environmental Kuznets curve, they suggest that ECOWAS countries may be turning the corner of the environmental Kuznets curve, much faster, and at lower levels of income than expected. Third, fuel processing is the major driver of anthropogenic  $\text{SO}_2$  in the region (solely accounted for by Nigeria) followed by petroleum combustion. As for  $\text{CO}_2$ , the major driver is growth in rapid population followed by GDP. Nigeria accounts for 77 per cent of total  $\text{CO}_2$  emissions due to growth in population and GDP, whilst these two factors contribute a total change of 78 percent  $\text{CO}_2$  emissions in the region. This calls for an urgent functional population policy intervention, especially in Nigeria.

The polity variable, which interacted significantly with the income variable to create the inverted-U shape EKC signals, the importance of public institutions in environmental protection. Although, ECOWAS countries may have benefited from early learning effects and environmental awareness in their appreciation of various Protocols and Agreement they are committed to, there must be frantic efforts in the sub-region to enact and enforce enabling laws that would curtail firms' productive processes and consumption behaviour of other economic agents. To amplify this point further, policymakers, Non-Governmental Organizations, Civil Society Organizations, etc. in the sub-region must be proactive to step up a sustainable roadmap and framework that would enhance emission abatement as the sub-region enters the phase of industrialization and may not need to wait for too long as the case with developed countries and developing Asia to improve environmental conditions. One of such ways is through the use of environmental tax instruments like fuel tax which has been found to be effective in some African countries (not ECOWAS countries).

The influence of other factors such as population density, population growth and trade openness on environmental quality provides justification for mainstreaming the environment into the entire process of planning for development in order to ensure environmental sustainability in the ECOWAS region. Although the estimates do not identify the underlying structural actions required to effectively tackle the reduction of these emissions, particularly  $\text{CO}_2$ , the study at least has demonstrated that ECOWAS countries do not need to be fully developed like those of the West with high GDP per capita before they appreciate cleaner environment and implement environmental sustainability policies that should include population control measures. To further strengthen this, policymakers and players in the ECOWAS countries (among them other stakeholders; non-market and non-state organizations, development partners, corporate institutions) must deliberately advocate and adopt energy policies that reduce carbon intensity in the match towards economic integration. Since fuel processing and fuel combustion are the major drivers of anthropogenic  $\text{SO}_2$  in the region, fuel tax may be introduced in the countries of the region as an environmental instrument to curb environmental emissions. Extended research will be undertaken to determine whether the use of such environmental tax instrument (fuel tax) in the region particularly Nigeria (which is seen to have a bearing impact in both the emissions and income covariates of the region) will be effective. In that research, issues of unit root in panel dataset for the EKC study of the ECOWAS will be taken into account.

## REFERENCES

- African Development Bank (2007), *Gender, Poverty and Environmental Indicators on African Countries*.
- Ahmed, K., Long, W. (2012), "Environmental Kuznets curve and Pakistan: An Empirical Analysis", *Procedia Economics and Finance* 1: 4-13.
- Akbostanci, E., Turut-Asik, S., and Tunc, G. I. (2009). "The relationship between income and environment in Turkey: Is there an environmental Kuznets curve?", *Energy Policy*, 37(3), 861-867.
- Aldy, J.E. (2005), "Per Capita Carbon Dioxide Emissions Convergence or Divergence?", *RFF DP* 05-53.
- Andreoni, J. and A. Levinson (2001), "The Simple Analytics of the Environmental Kuznets Curve". *Journal of Public Economics* 80: 269–286.
- Apergis, N. and I. Ozturk (2015), "Testing Environmental Kuznets Curve Hypothesis in Asian Countries", *Ecological Indicators*, 52: 16-22.
- Aslanidis, Nektarios (2009), *Environmental Kuznets Curves for Carbon Emissions: A Critical Survey*. FEEM Working Paper No. 75.2009
- Baiardi, D. (2012), "Innovation and the environmental Kuznets curve: the case of CO<sub>2</sub>, NMVOCs and SO<sub>x</sub> in the Italian regions"; *Quaderni di Dipartimento* 156, University of Pavia, Department of Economics and Quantitative Methods.
- Bartoszczuk, P., Ma, T., Nakamori, Y. (2002), "Environmental Kuznets curve for some countries regression and agent-based approach". *Air Pollution- International Conference* 10: 93-102.
- Beck, K. A. and P. Joshi (2015), "An Analysis of the Environmental Kuznets Curve for Carbon Dioxide Emissions: Evidence for OECD and Non-OECD Countries", *European Journal of Sustainable Development* 4(3): 33-45.
- Beckerman, W. (1974), "In Defence of Economic Growth". London: Cape (US edition, *Two Cheers for the Affluent Society*, St Martins Press, 1975).
- Borhan, H. and E.M. Ahmed (2012), "Green Environment: Assessment of Income and Water Pollution in Malaysia", *Procedia-Social Behavioral Sciences*, 42: 166-174.
- Breitung, J. (2000), "The local power of some unit root tests for panel data". *Advances in Econometrics*, Volume 15: Nonstationary Panels, Panel Cointegration, and Dynamic Panels, ed., B. H. Baltagi, 161–178. Amsterdam: JAY Press.
- Carson, R. and R. McCubbin (1997), "The relationship between air pollution emissions and income: US data", *Environment and Development Economics*, 2: 433-450
- Cole, M. A. and R.J.R. Elliott (2003), "Determining the trade-environment composition effect: the role of capital, labor and environmental regulations", *Journal of Environmental Economics and Management*, 46(3): 363-383.
- Cole, M. A. and E. Neumayer (2005), "Environmental policy and the environmental Kuznets curve: can developing countries escape the detrimental consequences of economic growth?", In P. Dauvergne



(Ed.), *International Handbook of Environmental Politics*: 298-318. Cheltenham and Northampton: Edward Elgar.

Coplien, J.O. (2014) Why Most Unit Testing is Waste. <http://www.rbc-us.com/documents/Why-Most-Unit-Testing-is-Waste.pdf> [download 20-09-15].

Cumming, G. S., A. Buerkert, E. M. Hoffmann, E. Schlecht, S. von Cramon-Taubadel and T. Tschardt (2014), "Implications of agricultural transitions and urbanization for ecosystem services", *Nature* 515, 50–57 doi:10.1038/nature13945

Dasgupta, P. and K.G. Mäler (1995), "Poverty, Institutions, and the Environmental Resource-Base," in J. Behrman and T.N. Srinivasan eds., *Handbook of Development Economics*, Vol. IIIA (Amsterdam: North Holland).

de Groot, H.L. F., G. Linders, P. Rietveld and U. Subramanian (2004). The Institutional Determinants of Bilateral Trade Patterns, *Kyklos*. 57(1): 103–123, DOI: 10.1111/j.0023-5962.2004.00245.x

de Bruyn, S.M, van den Bergh J.C.J.M. and J.B. Opschoor (1998), "Economic growth and emissions: reconsidering the empirical basis of environmental Kuznets curves", *Ecological Economics*, 25(2), 161–175.

Dinda, S., Coondoo, D. and M. Pal (2000), "Air quality and economic growth: an empirical study", *Ecological Economics*, 34 (3), 409– 423.

ECOWAS Environmental Policy (2008). <http://cmsdata.iucn.org/downloads/politique-environnementale-de-la-cedeao.pdf>

EEA, (2013). 'Environmental Indicator Report 2013. Natural Resources and Human Well-Being in a Green Economy' (<http://www.eea.europa.eu/publications/environmental-indicator-report-2013>).

Emrath, Paul, and Fei Liu. (2008), "Vehicle Carbon Dioxide Emissions and the Compactness of Residential Development." *Cityscape: A Journal of Policy Development and Research* 10.3 (2008): 185-202. EconLit [www.huduscr.org/p/periodicals/cityscape.html](http://www.huduscr.org/p/periodicals/cityscape.html).

Ernst-Georg Beck (2010), "The Real History of CO<sub>2</sub> Gas Analysis 2006-2010"; <http://www.biominde.de/realCO2/> [12-11-2015 downloaded].

Farzin, Y, H., and C.A. Bond (2006), "Democracy and Environmental Quality", *Journal of Development Economics* 81: 213 – 235.

Grazi, Fabio, van den Bergh, Jeroen C J M, and Jos N. van Ommeren (2008), "An Empirical Analysis of Urban Form, Transport, and Global Warming," *Energy Journal* 29.4: 97-122.

Grossman, G. M., and A.B. Krueger (1991), "Environmental impacts of the North American Free Trade Agreement", In NBER (Ed.), *Working Paper* 3914.

Grossman, G.M. and A.B. Krueger (1995), 'Economic Growth and the Environment', *Quarterly Journal of Economics*, 112, 353–78.

Hadri, K. (2000), "Testing for Stationarity in Heterogeneous Panel Data", *Econometrics Journal* 3: 148–161.

- Hilmer, C.E. and M.J. Hilmer (2014), *Practical Econometrics: Data Collection, Analysis and Application*. New York: McGraw-Hill.
- Holy, J. (2015) *Challenging Myself with Coplien's Why Most Unit Testing is Waste*. <https://theholjava.wordpress.com/2015/01/26/challenging-myself-with-copliens-why-most-unit-testing-is-waste/> [download 21-09-15]
- Im, K.S., M.H. Pesaran, and Y. Shin. (2003). Testing for Unit Roots in Heterogeneous Panels. *Journal of Econometrics* 115: 53–74.
- Jahoda, M. (1973), “Postscript on social change”, In H. S. D. Cole, C. Freeman, M. Jahoda & K. L. R. Pavitt (Eds.), *Thinking about the future*. A critique of The limits to growth (pp. 209-215). London: Chatto & Windus, for Sussex University Press.
- Jiang, Y., Lin, T., Zhuang, J., (2008), “Environmental Kuznets Curves in the People’s Republic of China: Turning Points and Regional Differences”, *Asian Development Bank, Working Paper*: 141.
- Kander, A. (2002), “Economic growth, energy consumption and CO<sub>2</sub> emissions in Sweden 1800–2000”, *Lund Studies in Economic History*, 19, University of Lund, Lund.
- Khanna, N. (2002), “The Income Elasticity of Non-point Source Air Pollutants: Revisiting the Environmental Kuznets Curve,” *Economics Letters*, 77: 387-392.
- Kinda, S.R.(2011), “Democratic Institutions and Environmental Quality: Effects and Transmission Channels”. [http://econstor.eu/bitstream/10419/48347/1/46\\_kind.pdf](http://econstor.eu/bitstream/10419/48347/1/46_kind.pdf)
- Kojima, Masami and Robert Bacon (2009), *Changes in CO<sub>2</sub> Emissions from Energy Use: A Multicountry Analysis*. World Bank: Extractive Industries for Development Series #11.
- Kohler, M. (2013), “CO<sub>2</sub> Emissions, Energy Consumption, Income and Foreign Trade: A South African Perspective”, *Economic Research Southern Africa (ERSA)* working paper 356.
- Kunnas, J., Myllyntaus, T. (2010), “Anxiety and technological change-Explaining the inverted U-curve of sulphur dioxide emissions in late 20th century Finland”, *Ecological Economics* 69: 1586-1593.
- Kuznets, S. (1955), “Economic Growth and Income Inequality”, *American Economic Review*, 45: 1-28.
- Leitão, A. 2010. “Corruption and the Environmental Kuznets Curve: Empirical evidence for Sulfur,” *Ecological Economics* 69(11): 2191–2201.
- Lekakis, J.N. (2000), “Environment and Development in a Southern European Country: Which Environmental Kuznets Curves?” *Journal of Environmental Planning and Management*, 43(1): 139-153.
- Levinson, A. (2000), “The ups and downs of the environmental Kuznets Curve”. UCF/Center Conference on Environment, Orlando, FL.
- Maddala, G.S. and Wu, S. (1999), “A Comparative Study of Unit Root Tests with Panel Data and a New Simple Test”, *Oxford Bulletin of Economics and Statistics*, special issue, 631-652.
- Markandya, A., A. Golub and S.E. Galinator, (2006), “Empirical Analysis of National Income and SO<sub>2</sub> Emissions in Selected European Countries”, *Environmental and Resource Economics* 35(3): 221-257.

Marshall, M.G. and K. Jagers (2010), "Polity IV Project: Political Regime Characteristics and Transitions, 1800-2009", Center for Systemic Peace, George Mason University.

Martinez-Zarzoso, I., Bengochea-Morancho, A. (2004), "Pooled Mean Group Estimation of an Environmental Kuznets Curve for CO<sub>2</sub>", *Economics Letters* 82: 121-126.

Meadows, D., Meadows, D., Zahn, E., and Milling, P. (1972), *The Limits to Growth*. New York: Universe Books.

Mitchell, Ronald B. (2018) 2002-2018. International Environmental Agreements Database Project (Version 2018.1). Available at: <http://iea.uoregon.edu/> Date accessed: 22 July 2018.

Neumayer, E. (2003), *Weak versus strong sustainability: Exploring the limits of two opposing paradigms* (Second Revised Edition). Cheltenham and Northampton: Edward Elgar, UK. 1843764881.

Omotor, G. Douglasson (2016). Economic Growth and Emissions: Testing the Environmental Kuznets Curve Hypothesis for ECOWAS Countries. The Centre for Environmental Economics and Policy in Africa (CEEPA), University of Pretoria, South Africa, Discussion Paper No.63. ISSN 978-1-920160-63-0, September 2016.

Orubu, C.O and D.G. Omotor (2011), "Environmental Quality and Economic Growth: Searching for Environmental Kuznets Curves for Air and Water Pollutants in Africa". *Energy Policy* 39 (7): 4178-4188.

Orubu, C.O., D.G. Omotor and P. Awopegba (2009), "Economic Growth and Environmental Quality: Searching for Environmental Kuznets Curves in Africa", *Final Report* Submitted to the African Research Economic Consortium, Nairobi, Kenya.

Orubu, C. O. (2004), "Using transportation measures and economic instruments to reduce pollution due to automobile emissions". *Journal of Social Sciences*, 2: 227-236.

Osabuohien, E. S., U. R. Efobi and C. M. Gitau (2014), "Beyond the Environmental Kuznets Curve in Africa: Evidence from Panel Cointegration", *Journal of Environmental Policy and Planning*, DOI: 10.1080/1523908X.2013.867802

Panayotou, T. (1997). Demystifying the environmental Kuznets curve: Turning a black box into a policy tool. *Environment and Development Economics*, 2(4), 465-484.

Panayotou, T. (1993), "Empirical Tests and Policy Analysis of Environmental Degradation at Different Stages of Economic Development", Working Paper WP238 *Technology and Employment Programme*, Geneva: International Labor Office.

Perman, R., and Stern, D. I. (2003), "Evidence from panel unit root and cointegration tests that the environmental Kuznets curve does not exist", *Australian Journal of Agricultural and Resource Economics*, 47: 325-347.

Peterson, A. (2009), "Estimating Standard Errors in Panel Data Sets", *Review of Financial Studies*, 22: 435-480.

Poudel, B. N., K. P. Paudel, and K. Bhattarai (2009), "Searching for an Environmental Kuznets Curve in Carbon Dioxide Pollutant in Latin American Countries", *Journal of Agricultural and Applied Economics*, 41(1):13-27.

- Ravallion, M.H., and J. Jalan (1997), "A Less Poor World, but a Hotter One? Carbon Emissions, Economic Growth and Income Inequality", World Bank, October 15.
- Selden, T. M., and Song, D. (1994), "Environmental Quality and Development: Is there a Kuznets Curve for Air Pollution Emissions?", *Journal of Environmental Economics and Management*, 27: 147-162.
- Shafik N. (1994), "Economic Development and Environmental Quality: an Econometric Analysis", *Oxford Economic Papers*, 46: 757-773.
- Shafik, N. and Bandyopadhyay, S. (1992), Economic Growth and Environmental Quality: Time Series and Cross-country Evidence. Background Paper for the World Development Report 1992. Washington, DC: The World Bank.
- Shahbaz, M., Mutascu, M., Azim, P. (2013), "Environmental Kuznets curve in Romania and the role of energy consumption", *Renewable and Sustainable Energy Reviews*, 18: 165-173.
- Smith, S.J, J van Aardenne, Z Klimont, RJ Andres, A Volke, and S Delgado Arias. (2011). "Anthropogenic Sulfur Dioxide Emissions, 1850–2005: National and Regional Data Set by Source Category, Version 2.86". Data distributed by the NASA Socioeconomic Data and Applications Center (SEDAC), CIESIN, Columbia University, Palisades, New York. Available at <http://sedac.ciesin.columbia.edu/data/set/haso2-anthro-sulfur-dioxide-emissions-1850-2005-v2-86> [date of download 20-05-13].
- Song, T., Zheng, T., Tong, L. (2008), "An empirical test of the environmental Kuznets curve in China: A panel cointegration approach", *China Economic Review*, 19: 381-392.
- Spence, Michael. (2009). *Climate Change, Mitigation, and Developing Country Growth*. Commission on Growth and Development Working Paper 64. Washington, DC: World Bank. [www.growthcommission.org/storage/cgdev/documents/gcwp064812web.pdf](http://www.growthcommission.org/storage/cgdev/documents/gcwp064812web.pdf).
- Stern, D. I. (2014), "The Environmental Kuznets Curve: A Primer", Centre for Climate Economic and Policy (CCEP) *Working Paper* 1404.
- Stern, D.I. (2004), "The Rise and Fall of Environmental Kuznets Curve", *World Development*, 32(8): 1419–1439.
- Stern, D. I. (2003), "The Environmental Kuznets curve, Online Encyclopedia of Ecological Economics", <http://iea.uoregon.edu/>.
- Stern, D. I., and Common, M. S. (2001), "Is there an environmental Kuznets curve for sulfur?", *Journal of Environmental Economics and Management*, 41: 162-178.
- Suri, V., and Chapman, D. (1998), "Economic Growth, Trade and Energy: Implications for the Environmental Kuznets Curve", *Ecological Economics*, 25: 195-208.
- Torres-Reyna, O. (2007), "Panel Data Analysis Fixed and Random Effects using Stata (v. 4.2)", <https://www.princeton.edu/~otorres/Panel101.pdf>.
- The Guardian (2011). "World carbon dioxide emissions data by country: China speeds ahead of the rest". <https://www.theguardian.com/news/datablog/2011/jan/31/world-carbon-dioxide-emissions-country-data-co2>

Unruh, G. C. and Moomaw, W. R. (1998), “An alternative analysis of apparent EKC-type transitions”, *Ecological Economics*, 25: 221-229.

Vehmas, J., Luukkanen, J., Kaivo-oja, J. (2007), “Linking analyses and environmental Kuznets curves for aggregated material flows in the EU”, *Journal of Cleaner Production*, 15: 1662-1673.

Wagner, M., and Müller-Fürstenberger, G. (2005). *The Carbon Kuznets Curve: A Cloudy Picture Emitted by Bad Econometrics?* : University of Bern, Department of Economics.

Warne, H. (2014), *A Response to “Why Most Unit Testing is Waste.* <http://henrikwarne.com/2014/09/04/a-response-to-why-most-unit-testing-is-waste/>. [download 23-9-15].

Watts, A. (2013). USA meets Kyoto protocol goal – without ever embracing it. <http://bbs.clutchfans.net/showthread.php?t=238396>

West, Sarah. (2004), “Distributional effects of alternative vehicle pollution control policies,” *Journal of Public Economics*, 88: 735– 757.

World Bank (2010, 2012, 2013), *World Development Indicators Database*. [databank.worldbank.org/wdi](http://databank.worldbank.org/wdi).  
World Development Report (2010). *Development and Climate Change*. The International Bank for Reconstruction and Development / The World Bank 1818 H Street NW Washington DC 20433.

Yandle, B., M. Bhattarai, and M. Vijayaraghavan (2004), “Environmental Kuznets Curves: A Review of Findings, Methods, and Policy Implications”, *PERC Research Study* No. 02-1.

Ziramba E, W Kumo and O Akinboade (2009), *Economic instruments for regulation in Africa: an analysis of the efficacy of fuel taxation for pollution control in South Africa*. *CEEPA Discussion Paper No 44*, Centre for Environmental Economics and Policy in Africa, University of Pretoria.

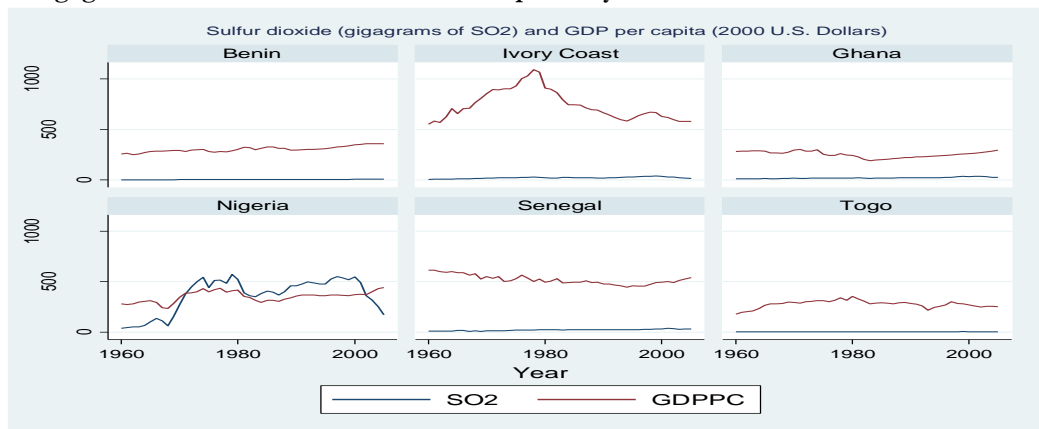
**Table 1: Decomposition Analysis between 1994 - 1996 and 2004 – 2006 based on International Energy Agency (IEA) Data (million tonnes of CO<sub>2</sub>)**

Country	$C_{eff}$	$S_{eff}$	$I_{eff}$	$G_{eff}$	$P_{eff}$	$\Delta E$	X(%)	$V_{eff}$
Benin	0.1	1.8	-0.2	0.2	0.4	2.3	-297	0.0
Ivory Coast	0.1	1.2	0.7	-0.3	1.0	2.7	-295	-0.8
Ghana	0.3	2.0	-0.7	1.1	1.2	3.9	-69	0.2
Nigeria	6.0	3.0	-8.0	8.0	11.0	20.0	-10	0.0
Senegal	0.1	0.6	-0.1	0.6	0.9	2.1	-42	0.1
Togo	0.05	-0.09	0.05	0.00	0.27	0.28	-4	0.0
<b>Total</b>	<b>6.65</b>	<b>8.51</b>	<b>-8.25</b>	<b>9.6</b>	<b>14.77</b>	<b>31.28</b>		

$\Delta E$  is change in a country's emission between the two periods.  $V_{eff}$  is conversion efficiency

Source: Extracted from Kojima and Bacon (2009).

**Figure 1: Graphs of Anthropogenic Sulfur Dioxide Emissions and GDP per capita of Selected ECOWAS in Gigagrams of SO<sub>2</sub> and 2000 U.S. Dollars respectively**



**Figure 2: Sources of SO<sub>2</sub> in Selected ECOWAS Countries**

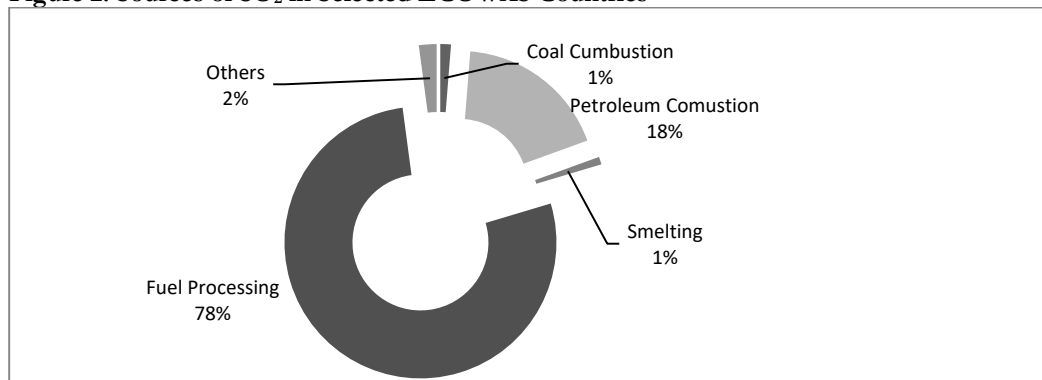


Figure 3: Box Plot of Anthropogenic Sulfur Dioxide Emissions of ECOWAS and Industrial Countries in Gigagrams of SO<sub>2</sub>

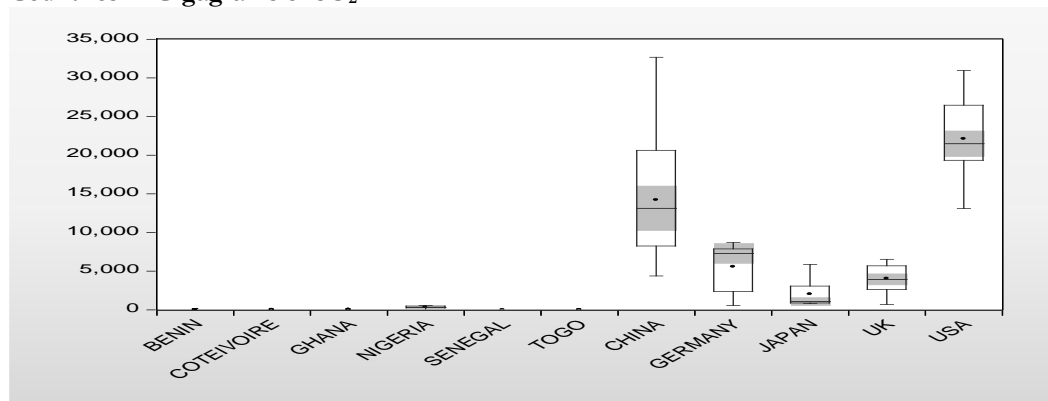


Figure 4: Graphs of Carbon Dioxide Emissions and GDP per capita of Selected ECOWAS Countries

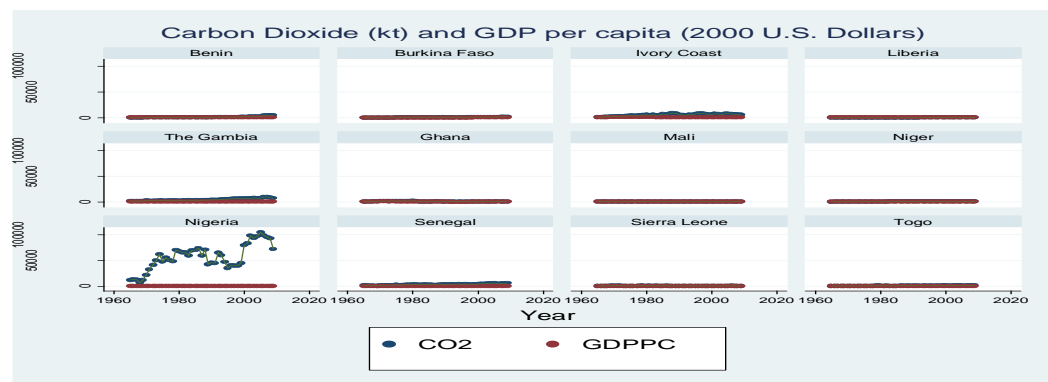


Figure 5: Graphs of Carbon Dioxide (kt) and GDP per capita of Selected ECOWAS Countries

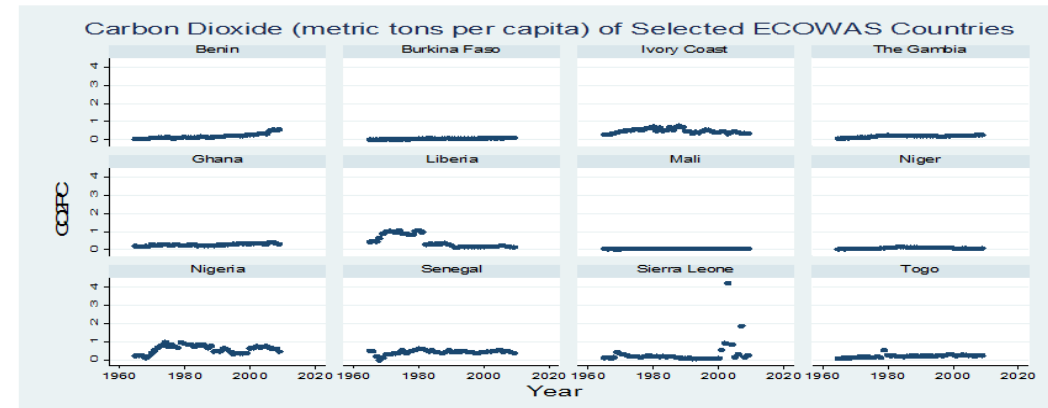


Figure 6: Decomposition Analysis between 1994-1996 and 2004-2006 (Million tonnes of CO<sub>2</sub>)

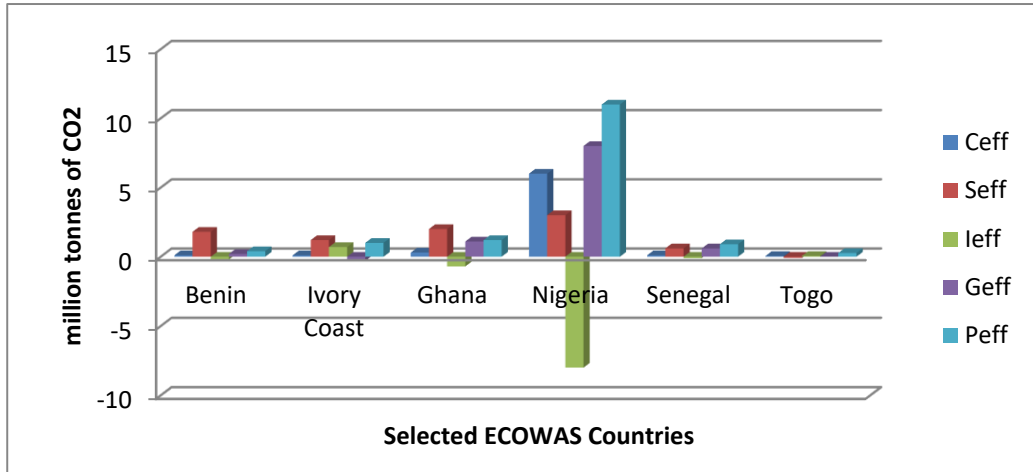
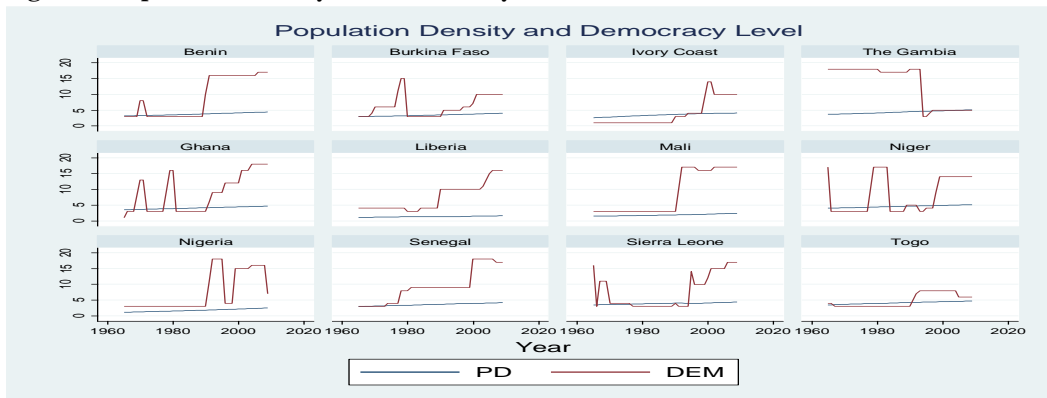


Figure 7: Population Density and Democracy Level of Selected ECOWAS Countries





**Table 2: Definition of Variables and Sources of Data**

Variable	Description	Source
GDP per capita (GDPPC)	GDP per capita (constant 2005 US\$)	The World Bank, World Development Indicators, 2013
Sulfur Dioxide (SO <sub>2</sub> )	Sulfur Dioxide measured Gigagrams of SO <sub>2</sub> . This variable enters the estimable equation in form of concentrations.	Smith, et.al.' 2011
Carbon Dioxide (CO <sub>2</sub> )	The CO <sub>2</sub> variable is measured in metric tons per capita/per annum. This variable enters the estimable equation in per capita form.	The World Bank, World Development Indicators, 2013
Democracy (DEM)	Polity2 indicator to examine the extent to which democracy level and stock have significant, independent effects on SO <sub>2</sub> and CO <sub>2</sub> emissions.	Polity IV, Marshall, M.G. and K. Jaggers (2010). Polity IV contains, amongst many other variables, yearly composite indicators measuring both "institutionalized democracy" and "autocracy". A summary "polity" measure is then defined as the difference between the democracy and autocracy scores, with 10 indicating "strongly democratic" and -10 indicating "strongly autocratic" Farzin and Bond (2006).
Population Growth (PG)	Population Growth Rates	The World Bank, World Development Indicators, 2013
Population Density (POD)	People per sq. km of land	The World Bank, World Development Indicators, 2013
Openness (OPN)	Trade (% GDP)	The World Bank, World Development Indicators, 2013

*All independent variables are lagged by one year, except for democracy stock, which is lagged by two years (to separate it from the stock variable). Source: Marshall, M.G. and K. Jaggers Polity IV (2010).*

**Table 3: West African Countries Covered in the Study for the Two Environmental Indicators (marked)**

Country	Benin	Burkina Faso	Cote d'Ivoire	Gambia	Ghana	Liberia	Mali	Niger	Nigeria	Senegal	Sierra Leone	Togo
SO <sub>2</sub>	*		*		*				*		*	*
CO <sub>2</sub>	*	*	*	*	*	*	*	*	*	*	*	*

Sources: *World Development Indicators* (World Bank, 2013), Smith, et.al. (2011)

**Table 4. Quadratic FE, RE and OLS estimates for ECOWAS countries (SO<sub>2</sub> as dependent variable)**

Independent variables	FE	RE	OLS
Constant	-75.86(-3.20)	-85.89(-3.77)	-85.89(-4.01)**
GDPPC	25.02(3.20)**	28.31(3.75)**	28.31(3.99)**
GDPPC <sup>2</sup>	-1.20 (3.06)**	-2.25(-3.84)**	-2.25(-3.84)**
Hausman Test		0.23	
Fixed Red. Test	1.00		
R <sup>2</sup>	0.16	0.11	0.11
Turning Point	\$5,650		
Observations	276	276	276

\*\*Indicates significance at 5%. Figures in parentheses denote t-statistics

**Table 5. Cubic FE, RE and OLS estimates for ECOWAS countries (SO<sub>2</sub> as dependent variable)**

Independent. variables	FE	RE	OLS
Constant	102.92(0.36)	-16.71(-0.06)	-16.71(-0.07)
GDPPC	-63.72(-0.45)	-6.03(-0.05)	-6.03(-0.05)
GDPPC <sup>2</sup>	12.66(0.54)	3.42(0.16)	3.42(0.17)
GDPPC <sup>3</sup>	-0.80(-0.62)	-0.31(-0.26)	-0.31(-0.28)
Hausman Test		0.30	
Fixed Red. Test	1.00		
R <sup>2</sup>	0.16	0.11	0.11

Figures in parentheses denote t-statistics

**Table 6. Augmented Parsimonious Quadratic FE, RE and OLS estimates for ECOWAS countries (SO<sub>2</sub> as dependent variable)**

	FE	RE	OLS	FE	RE	OLS
Constant	-45.39 (-3.04)	-35.79 (-2.47)	-35.79 (-2.17)**	-12.79 (-0.74)	-8.05 (-2.93)**	-6.82 (-3.41)**
GDPPC	5.77 (2.17)**	5.90 (2.23)**	5.90 (2.08)**	3.59 (1.61)***	11.49 (2.13)**	11.49 (1.75)***
GDPPC <sup>2</sup>	-0.10 (-3.24)**	-0.19 (-3.48)**	-0.19 (-3.42)	-0.58 (-1.64)***	-0.74 (-1.68)***	-0.74 (-1.93)***
DEM	0.06 (1.67)	0.02 (1.51)	0.02 (1.33)	-0.59 (-2.29)**	0.12 (1.67)***	
PG	-0.51 (-4.37)**	-0.59 (-5.47)**	-0.59 (-4.81)**			
POD	4.25 (21.53)**	2.96 (19.79)**	2.96 (17.40)**	4.22 (20.35)*	2.13 (16.56)*	2.31 (13.62)*
OPN	0.51 (4.88)**	0.21 (2.09)**	0.21 (1.84)**			
GDPPC*DEM				0.11 (2.49)**	-0.03 (-1.62)***	-0.03 (-1.66)***
Hausman Test	0.00				0.00	
Fixed Red Test		0			0	
R <sup>2</sup>	0.74	0.6	0.6			
SE	0.97	1.11	1.11	0.64	0.48	0.64
F-stat	12.55**	58.45*	58.45*	11.13**	51.73*	51.73*

*\*, \*\* and \*\*\* Indicate significance at 1%, 5% and 10% respectively. Figures in parentheses denote t-statistics*

**Table (7). Quadratic FE, RE and OLS estimates for ECOWAS countries (CO<sub>2</sub> as dependent variable)**

	FE	RE	OLS
Constant	-0.05(-0.87)	-0.07(-1.22)	-0.07(-1.22)
GDPPC	0.001(4.34)**	0.001(4.78)**	0.001(4.78)**
GDPPC <sup>2</sup>	-6.74E-07** (3.68)	-7.63E-07** (3.74)	-7.63E-07** (3.63)
Hausman Test		0.11	
Fixed Red Test	0.38		
R <sup>2</sup>	0.23	0.15	0.15

*\*\*Indicates significance at 5%. Figures in parentheses denote t-statistics*

**Table (8).** Cubic FE, RE and OLS estimates for ECOWAS countries (CO<sub>2</sub> as dependent variable)

	FE	RE	OLS
Constant	-0.47(-3.91)	0.50(-4.26)	-0.50(-4.26)**
GDPPC	0.004(5.11)**	0.005(5.45)**	0.005(5.45)**
GDPPC <sup>2</sup>	-7.66E-06** (3.88)	-7.97E-06** (4.02)	-7.97E-06** (4.14)
GDPPC <sup>3</sup>	4.29E-09** (4.05)	4.40E-09** (4.28)	4.40E-09** (4.26)
Hausman Test		0.12	
Fixed Redundant Test	0.38		
R <sup>2</sup>	0.26	0.18	0.18
Turning Point	\$4.0475E-114		
Observations	540	540	540

**\*\*Indicates significance at 5%. Figures in parentheses denote t-statistics**

**Table (9):** Augmented Quadratic FE, RE and OLS estimates for ECOWAS countries (CO<sub>2</sub> as dependent variable)

	FE	RE	OLS	FE	RE	OLS
Constant	-0.15 (-1.95)	-0.11 (-1.60)	-0.11 (-1.60)	-0.36 (-3.34)**	-0.26 (-3.20)**	-0.26 (-3.49)**
GDPPC	0.001 (2.79)**	0.001 (2.31)**	0.001 (2.31)**	0.001 (4.57)*	0.001 (3.98)*	0.001 (3.97)*
GDPPC <sup>2</sup>	-3.05E-07 (-0.99)	-2.24E-07 (-0.74)	-2.24E-07 (-0.74)	-8.94E-07 (-2.62)**	-6.96E-07 (2.08)**	-6.96E-07 (-2.07)**
DEM	0.003 (1.10)	0.002 (0.80)	0.002 (0.80)	0.03 (5.23)*	0.02 (4.63)*	0.02 (4.62)*
DUMCC	0.25 (2.66)**	0.02 (0.74)	0.02 (0.74)			
OPN	-0.004 (-3.93)**	-0.003(- 3.23)**	-0.003 (-3.23)**			
POD	-0.003 (5.64)**	0.002 (5.86)**	0.002 (5.86)**	0.002 (6.20)*	0.002 (6.24)*	0.002 (6.22)*
PG	0.044 (2.36)**	0.06 (3.55)**	0.06 (3.55)**			
GDPPC*DEM				-7.73 (-5.64)*	-6.03E-05 (-4.88)*	-6.03 (-4.86)*
Hausman Test		0.00			0.02	
Fixed Red. Test	0.38					
R <sup>2</sup>	0.23	0.26	0.26	0.25	0.24	0.24
F-stat	3.9***	22.31**	22.31**	4.11***	30.82**	30.81**

**\*, \*\* and \*\*\*** Indicate significance at 1%, 5% and 10% respectively. Figures in parentheses denote t-statistics

## Appendix 1

Table A1: Selected Studies on the Environmental Kuznets Curve

Authors	Time Period	Countries/Cities	Estimation Methods	Other Variables used	Findings
+Grossman and Krueger (1991)	1977, 1982, 1988	27-52 cities in 14-32 countries,	Panel data (Random effect)		First paper discussing the pollution-income relationship. Peak: \$5000 Trough: \$14000 (1985 USD).N curve
+Panayotou (1993)	1982-1994	55 developed and developing countries,	OLS	Population density	Inverted U. \$3137 (1990 USD, nominal exchange rate) . First paper coined the pollution-income relationship by Environmental Kuznets Curve
+Selden and Song (1994)	1973-1975, 1979-1981, 1982-1984	30 countries (22 high-income, 6 middle-income and 2 low-income countries),	Panel data estimators (pooling, fixed and random effect)	Population density and period fixed effect	Inverted U curve OLS: no results FE:\$8916-8709 ; RE: \$10500 (1985 USD). Although find EKC, the authors believe the total emission will not decrease in very long term, as most of the population are living in the relatively poor countries
+Carson et al. (1997)	1990	US	OLS for cross-country data	Population density, percentage of urban population	Monotonically decreasing relationship. It is more interesting to see percentage change instead

					of absolute change of emission in EKC studies as different initial pollution situation induce difficulties of different level in pollution reduction
+De Bruyn et al. (1998)	1960-1993	4 countries, Netherlands, UK, USA and Western Germany,	OLS	Composition changes, energy price, economic growth path,	EKC does not generally fit for all countries, each country has its own technological, structural, energy price and economic growth path, so specific emission situation
+Perman and Stern (1999)	1960-1990	74 countries (25 developed and 49 developing countries)	Unit Roots and cointegration		Each country has its EKC curve, monotonically increasing
+Dinda et al. (2000)	1979-1982, 1983-1986 and 1987-1990	39 cities in 33 countries. 6 low-income, 11 middle-income and 16 high-income countries	OLS and least absolute error method	Sectoral composition (capital abundance, K/L), growth rate and time effect, distinguishing site characters (commercial, residential, etc.)	U curve. Trough: \$12500 (1985 USD). Study includes the scale, composition and technique effects defined by Grossman and Krueger (1995) into estimation of EKC curve
*Stern and Common, 2001	1960-90	73 developed and developing countries	Time and country effects		\$101166
++Bartoszczuk et al. (2002)	1960-1996	Developed European countries	Agent based model	Per capita CO2 emissions, GDP per capita	Hesitant agreement with EKC. Turning points vary

					between countries.
+Cole and Elliott (2003)	1975-1990	26 countries	Panel data estimator (Fixed and random effect),	Trade impact, relative capital abundance (K/L), multiplicative terms between trade and other determinants of emission, GINI, literacy rate	Inverted U or N curve Global data: FE: \$5367-\$7483; RE: \$8406-11168. Only OECD: \$5431-\$10521.
++Martinez-Zarzoso and Bengochea-Morancho (2004)	1975-1998	22 OECD countries	Pooled mean group estimator	CO2 emissions per capita, GDP per capita 1993 PPP)	N-shape EKC for majority of countries Turning point: \$4914- \$18364.
++Focacci (2005)	1975-1997, except India 1970-1997	Brazil, India, China	Macroeconomic indicators	CO2 emissions levels, per capita GDP, energy intensity	EKC doesn't hold true for developing countries
++Vehmas et al. (2007)	1980-2000	EU countries	Linking analysis	Domestic extraction (DE), Direct Material Input (DMI), Domestic Material Consumption (DMC), Physical Trade Balance (PTB)	Some support for the existence of the EKC.
++Song et al. (2008)	1985-2005	China (29 Provinces)	Dynamic OLS and within OLS	GDP per capita, waste gas emissions per capita, solid wastes generated per capita, waste water	Inverse U-shape between per capita pollution and per capita GDP for waste gas emissions (turning point: 29017 yuan)

				emissions per capita	and solid wastes (turning point: 9705 yuan). Inverse N-shape for waste water (turning point: 28296 yuan).
**Aslanidis and Iranzo (2009)	1971-1997	77 non-OECD countries	Smooth transition regression models		Positive but at a slower rate after some income threshold
++Kunnas and Myllyntaus (2010)	1950-2001	Finland	Generalised least squares (GLS)	Per capita GDP, SO2 emissions per capita	Inverted U-shape curve, with a turning point of \$13000, at 37kg.
++Orubu and Omotor (2011)	SPM: 1990-2002, OWP: 1980-2002	SPM:47 African countries, OWP:6 African countries	Ordinary Least Squares (OLS), Random Effects (RE), Fixed Effects (FE)	Suspended particle matter (SPM), Organic water pollutants (OWP), per capita income, population density, education	SPM: inverted U-shape exists, thus supporting EKC hypothesis. Turning point: \$84.32-\$366.39. OWP: Results mixed. OLS-conventional EKC (turning point \$739.93), FE and RE-U-shape EKC (turning point \$822.71-\$2030.81), Cubic form-N-shaped EKC (turning point \$133.91-\$232.42). Evidence more in favour of rising pollution as per capita income increases.
++Ahmed and Long (2012)	1971-2008	Pakistan	ARDL bounds	Per capita CO2 emissions, per capita	Confirms inverted U-shaped EKC in long-run.



				real GDP, energy consumption per capita, trade openness ratio, population growth	
++Borhan and Ahmed (2012)	1996- 2006	Malaysia	Two stage least squares (2SLS)	Biochemical Oxygen demand (BOD), Cadmium (CD), Arsenic (AS)	The EKC relationship is found to exist for BOD and GDP per capita.
++Kohler (2013)	1960- 2009	South Africa	ARDL, Granger causality tests, Impulse response (IR)	commercial energy use per capita, foreign trade	Long-run: energy consumption, income, foreign trade, squared income all CO <sub>2</sub> . IRV: income has no effect on CO <sub>2</sub> .
++Shahbaz et al. (2013)	1980- 2010	Romania	ARDL bounds	Energy emissions per capita, energy consumption per capita	Confirms EKC in both long- run and short- run.

**Abstracted from:**

\*David I. Stern (2003). *The Environmental Kuznets Curve*. International Society for Ecological Economics Internet Encyclopaedia of Ecological Economics

\*\* Aslandis, N. (2009) *Environmental Kuznets Curve for Carbon Emissions: A Critical Survey*. Fondazione Eni Enrico Mattei, Nota Di Lavoro 75.

+ He, J. (2007). *Is the Environmental Kuznets Curve hypothesis valid for developing countries? A survey*. Cabier de recherche Working Paper 07-03

++ Inglesi-Lotz, R. and J. Bohlmann (2014). *Environmental Kuznets curve in South Africa: To confirm or*