

Jochimsen, Beate; Fendel, Tanja

Conference Paper

Home Care Allowance and Labor Market Participation of Immigrant and Native-Born Mothers

Beiträge zur Jahrestagung des Vereins für Socialpolitik 2022: Big Data in Economics

Provided in Cooperation with:

Verein für Socialpolitik / German Economic Association

Suggested Citation: Jochimsen, Beate; Fendel, Tanja (2022) : Home Care Allowance and Labor Market Participation of Immigrant and Native-Born Mothers, Beiträge zur Jahrestagung des Vereins für Socialpolitik 2022: Big Data in Economics, ZBW - Leibniz Information Centre for Economics, Kiel, Hamburg

This Version is available at:

<https://hdl.handle.net/10419/264104>

Standard-Nutzungsbedingungen:

Die Dokumente auf EconStor dürfen zu eigenen wissenschaftlichen Zwecken und zum Privatgebrauch gespeichert und kopiert werden.

Sie dürfen die Dokumente nicht für öffentliche oder kommerzielle Zwecke vervielfältigen, öffentlich ausstellen, öffentlich zugänglich machen, vertreiben oder anderweitig nutzen.

Sofern die Verfasser die Dokumente unter Open-Content-Lizenzen (insbesondere CC-Lizenzen) zur Verfügung gestellt haben sollten, gelten abweichend von diesen Nutzungsbedingungen die in der dort genannten Lizenz gewährten Nutzungsrechte.

Terms of use:

Documents in EconStor may be saved and copied for your personal and scholarly purposes.

You are not to copy documents for public or commercial purposes, to exhibit the documents publicly, to make them publicly available on the internet, or to distribute or otherwise use the documents in public.

If the documents have been made available under an Open Content Licence (especially Creative Commons Licences), you may exercise further usage rights as specified in the indicated licence.

Home care allowance and labor market participation of immigrant and native-born mothers

Tanja Fendel
Institute for Employment Research (IAB)
Email: Tanja.Fendel@iab.de
ORCID iD: [0000-0002-8259-0926](https://orcid.org/0000-0002-8259-0926)

Beate Jochimsen
Berlin School of Economics and Law (HWR)
Email: Beate.Jochimsen@hwr-berlin.de
ORCID iD: 0000-0001-6950-3026

Abstract

Most countries still have a significant gender gap in labor force participation, and this gap is especially large for immigrants. Despite this gap, Germany introduced various forms of home care allowances in the last decade. From 2013 to 2015, a nationwide home care allowance existed for parents who did not use public child care for children aged one or two years. After 2015, home care allowances continued to exist in several German federal states. Some politicians strongly criticized this transfer for allegedly decreasing work incentives, particularly for mothers with lower labor market integration, such as immigrant mothers. Using federal state differentiated data obtained from the German Socio-Economic Panel, we investigate the impacts of a home care allowance on the labor market participation of mothers. For both immigrant and native-born mothers, the effects are significantly negative. We conclude that a home care allowance reduces the labor supply of mothers.

Keywords: Home care allowance, mothers' labor supply, integration of immigrants, family policy, Germany

JEL-Classification: J13, J22, H31

1 Introduction

The majority of adult men in industrial countries participate in the labor market, and their employment behavior is quite stable across the life course. However, the employment pattern of women is quite different. Most part-time workers are women, and the growth in the labor supply of women in recent decades has mainly been in part-time jobs (Deschacht 2017). Del Boca (2015) emphasizes that poverty risk is closely related to the non-employment rates of mothers. Most industrial countries still have a significant gender gap in labor force participation, and this gap is especially large for immigrants. According to data from the German Socio-Economic Panel (GSOEP), the gender gap in full- or part-time work participation in Germany in 2019 was 12 percent among immigrants and 8 percent among native-born individuals. Many studies have provided evidence for the negative effects of family migration on wives' employment rates (for an overview, see Shauman and Noonan 2007). However, other studies suggest that the pattern of employment among recent migration cohorts changed. It apparently no longer fits the assumption of female immigrants as secondary workers (Adserà and Ferrer 2016; Blau et al 2003; Duleep and Dowhan 2002). Furthermore, Boos-Nünning (2020) emphasized the challenge employed immigrant mothers face in overcoming the conservative image of women in Germany.

A recent child care reform in Germany was highly criticized for reinforcing this image. In August 2013, Germany introduced a nationwide child care reform that included a new fiscal benefit called 'Betreuungsgeld' (home care allowance), intended to financially compensate families for not using public child care for their children aged one or two years. Some politicians strongly criticized this reform for allegedly decreasing work incentives, particularly for immigrant mothers or, in general, mothers with low labor market integration. In addition, the public discussed the reform's impact on children of immigrant families, as not attending public child care has negative effects on early education and integration, as several studies have shown (e.g.,

Klein and Sonntag 2017; Magnuson, Lahaie and Waldfogel 2006). The nationwide home care allowance was ruled unconstitutional in 2015 and consequently abolished. Nevertheless, discussions of the impacts of such policy tools have continued at the national and international levels. As several German states continue to pay a (form of) home care allowance, we are able to evaluate the impact of such allowances by comparing mothers' labor supply between different German federal states from 2015 onwards.

Several studies have evaluated recent reforms in Germany aimed at increasing either the labor force participation of women or fertility. Schönberg and Ludsteck (2014) examine the effects of expansions in maternity leave coverage since 1979 and show that every expansion led to mothers delaying their return to work. Spieß and Wrohlich (2008) and Bergemann and Riphahn (2010) show that the modification of family support in 2007 (introduction of the 'Elterngeld' (parental allowance)) increased the working hours of mothers in the second year of a child's life. Stahl and Schober (2018) find that education is relevant to work-care arrangements and that employment and child care use increased more among families with moderately and highly educated mothers than among families with less educated mothers. Furthermore, Boll and Lage-mann (2019) focus on the impact of several child care expansions on maternal employment and show that a rising child care coverage rate significantly correlates with the intensive margin of maternal employment. Microlevel indicators and regional differences seem to strongly influence work decisions.

To date, empirical evidence on the impact of a home care allowance in Germany is mixed. Müller and Wrohlich (2016) evaluate the effects of child care reforms of 2013.¹ They use the GSOEP and a corresponding dataset on families in Germany ('Familien in Deutschland', FiD)

¹ In addition to the home care allowance, a legal claim for public child care for children aged one or two years (Kinderförderungsgesetz, 10.12.2008; Sozialgesetzbuch VIII, § 24, Abs. 1) was part of the 2013 child care reform. This second part of the reform was intended to have positive effects on the labor market paIn addition to the home

from 2010 to simulate labor supply effects after 2013. Their results assume that the reforms lead to a small increase in mothers' labor supply. In contrast, using GSOEP data from 2002-2006, Beninger et al. (2010) simulate a reduction in labor supply and child care usage due to the home care allowance together with the expansion of publicly funded child care. Moreover, based on 'Kifög-Länderstudie 2015', Alt et al. (2015) apply event data analyses to show that the probability of returning to work after childbirth varies between those who did and did not claim the home care allowance.

To the best of our knowledge, we are the first among studies on German child care reforms to exploit the fact that only one state, namely, Bavaria, continued to pay a home care allowance after 2015. Furthermore, in contrast to the studies from Beninger et al. (2010), Alt et al. (2015) and Müller and Wrohlich (2016), who considered joint effects of both reform components, we purely focus on the effects of a home care allowance examining federal state differentiated labor supply effects. We compare GSOEP data before and after the nationwide reform period from 2013 to 2015 and apply multivariate analyses based on a difference-in-difference (DiD) approach. Therefore, we assess how responsive immigrant and native-born mothers are to changes in economic incentives regarding labor market participation in Germany.

The remainder of this paper is organized as follows. The next section provides information on the institutional background of the home care allowance and further family policies in Germany. In section 3, we discuss theoretical foundations and international experiences and derive our hypotheses. Section 4 introduces the dataset and provides descriptive statistics. Section 5 describes the identification strategy, and section 6 discusses the estimation results. Section 7 concludes the paper.

2 Institutional background: Home care allowance and other family policies in Germany

In recent years, the German government has put much effort into improving the compatibility of labor market participation and family life for parents, particularly for mothers. Policy instruments incorporated direct transfers to parents to bridge income losses due to child care periods as well as infrastructure investments, namely, the expansion of child daycare centers.

From 2007 onwards, the parental allowance (*Elterngeld*) was paid as a direct transfer for up to 14 months after the birth of the child to bridge income losses. It amounts to up to two-thirds of the net income of the parent staying at home with the child until a maximum of 1.800 €. The minimum parental allowance is 300 €, which is paid to parents with no income before birth.²

With the nationwide child care reform in August 2013, Germany launched an additional fiscal benefit called ‘*Betreuungsgeld*’ (home care allowance). In contrast to the parental allowance, only parents of children aged 15 to 36 months not using public child care facilities were eligible. These 36 months are equal to a maximum unpaid parental leave, i.e., a legal entitlement to return to one’s job, with a maximum of three years after birth of the child.³

The home care allowance amounted to 100 € per month prior to August 2014 and 150 € thereafter, regardless of parents’ income (*Betreuungsgeldgesetz*). In July 2015, the Federal Constitutional Court ruled that the nationwide home care allowance was unconstitutional and therefore had to be abolished. Following this decision, the state of Bavaria implemented a state home care allowance almost equivalent to the former nationwide allowance.⁴ Consequently, only mothers living in Bavaria were able to apply for a home care allowance from then onwards.

² *Bundeselterngeld- und Elternzeitgesetz* 01.01.2007. From 2015 onwards, the parental allowance could be used partly for up to 28 months after the child’s birth.

³ It is also possible to split these three years into two years directly after birth and the third year any time before the eight’s birthday of the child.

⁴ The Bavarian home care allowance was limited to an income threshold of 250.000€ per parent.

In four states, Baden-Württemberg, Thuringia, Saxony and Bavaria, education benefits ('Landeserziehungsgeld'), including elements of the former nationwide home care allowance, existed. This education benefit was abolished in Baden-Württemberg in 2012 but continued to be paid in Thuringia until July 2016;⁵ in Saxony, it still existed. In Bavaria, it existed in parallel with the Bavarian home care allowance, and a similar family benefit ('Familiengeld') has replaced the education benefit since 2018. Similar to the former nationwide home care allowance, the education benefit in Thuringia did not depend on parents' income. However, children of the relevant age were allowed to visit a public child care facility up to 5 hours a day.⁶ In Saxony, on the contrary, only mothers of young children up to three years not using public child care facilities at all are eligible, but the education benefit depended/still depends on parents' income. In the relevant period, parents' income in Saxony must have been below 17.100 €. In Bavaria, the education benefit also depended on parents' income, and the use of public child care facilities was possible. Except for Saxony, none of these benefits is comparable to the Bavarian or nationwide home care allowance in terms of being paid only to parents not using public child care. In the empirical analysis, we control for these state education benefits.

Apart from direct transfers to parents, German family policies included the expansion of day-care and the establishment of legal entitlements to it. With the day expansion act (*Tagesbetreuungsausbaugesetz, TAG*) coming into effect in 2005, 230,000 additional child care facilities were established until the end of 2010. Despite these efforts, the availability and use of public child care for children under three years of age remained low, especially in West Germany. In 2011, approximately 20 percent of children under three years of age in West Germany and 47 percent of such children in East Germany visited child care centers. According to the Childcare

⁵ The respective law was abolished in 2015, but payments continued to be paid until July 2016.

⁶ Gathmann and Sass (2018) find that the child care allowance in Thuringia negatively affected female labor force participation, with the strongest effects for single parents and low-income households.

Funding Act (*Kinderförderungsgesetz*), coming into effect in 2008, states had to offer child care places for 35 percent of all children under the age of three by 2013. From August 2013 onwards, there was even a legal claim for public child care for children aged one or two years (*Kinderförderungsgesetz*, 10.12.2008; Sozialgesetzbuch VIII, § 24, Abs. 1). Although visiting child care centers increased to 29 percent in West Germany and 51 percent in East Germany in 2017 (Statistisches Bundesamt 2018), there are still different propensities for public child care usage in East and West Germany. They can best be explained by historical developments. In the former German Democratic Republic, it was normal and expected that mothers would return to work soon after they gave birth, whereas in former West Germany, it was more common for mothers to stay at home for at least three years. Even 30 years after unification, these sociological preferences remain in place to a certain extent. We therefore also control for potential differences in mothers' participation rates between former East and West Germany in our empirical analysis. Because the treatment group of the empirical analysis is Bavarian mothers – hence one Western German state – we however cannot compare the effect of the home care allowance between East and West Germany.

Descriptive analysis of the GSOEP data shows that the use of public child care for children under three years of age has increased in the last ten years among both native-born and immigrant mothers.⁷ However, Boll and Lagemann (2019) emphasize that the German child care market is still characterized by excess demand, including for children under three years of age. In 2017, the demand was approximately 13 percentage points higher than the supply in Western Germany and 7 percentage points higher in Eastern Germany. The importance of regional characteristics is also emphasized by Alt et al. (2015), who show that the decision to use public

⁷ According to the GSOEP, the use of child care centers for children below the age of three increased from 2003-2008 to 2009-2018 by approximately 60 percentage points among both immigrant and native mothers.

child care or claim the nationwide home care allowance is related to child care supply at the regional level (German states).

The expansion of publicly funded day care has been steadily ongoing in Germany over a longer period of time. This institutional part of German family policy was intended to have positive effects on the labor market participation of mothers. However, the political intention of direct transfers was ambivalent. Whereas the parental allowance intends to bridge a relatively short income loss of 14 months after birth, thereby having negative work incentives as a side effect, the home care allowance is far lower but paid for a longer period, and the negative effect on participation results directly by explicitly only being paid to those parents not using public day care. Put differently, it is not meant as an income bridge but as a compensation payment. We, therefore, would expect the home care allowance to have negative work incentives despite the legally supported expansion of publicly funded child care. In the following chapter, we will address this idea from a more theoretical point of view and compare it to international evidence.

3 Theoretical foundations, international evidence, and hypotheses

A home care allowance decreases the relative price of caring for one's own children and therefore reduces the incentives of mothers to work. Following Schøne (2004), Figure 1 illustrates possible substitution and income effects within a standard labor market model. Here, a mother chooses a maximum value of consumption (C) and leisure (L) subject to budget constraints. The home care allowance positively affects budget constraints. We distinguish between mothers who work outside the home and use privately paid child care and mothers who do not work outside the home.

B_0 and the chosen combination of L_0 and C_0 illustrate the situation before the introduction of the home care allowance, assuming that the non-working mother has a minimum level of non-labor income. After introduction of the allowance, the maximum possible level of consumption

increases because both mothers who work and hire a privately paid childminder and mothers who do not work are able to claim the allowance and hence gain a financial benefit. Given a parallel shift in the budget line, Figure 1 shows no substitution effect and only an income effect, determined by the size of the benefit.

For non-working mothers, the benefit poses a negative incentive to participate in the labor market. For employed mothers, the benefit leads to a reduction in working time outside the home when leisure is a normal good. The preferences of employed mothers for leisure and consumption will determine the size of the reduction in working time outside the home.

Figure 1
Labor supply before and after the introduction of a home care allowance for mothers using a childminder or mothers who do not work outside the home

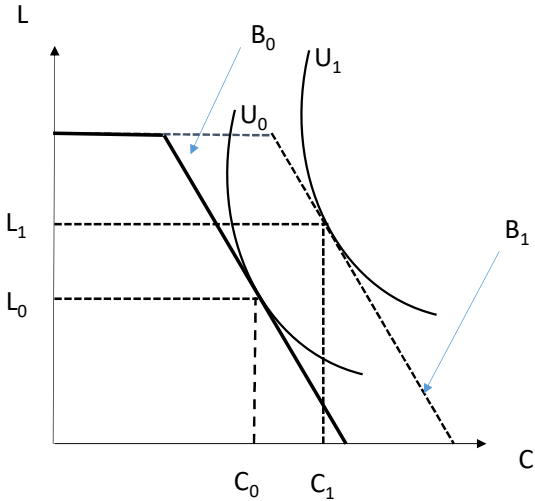


Fig. 1 Optimal choice of leisure (L) and consumption (C) within a model comparing indifference curves and budget constraints. Source: Schöne (2004).

Concerning the effects for immigrant mothers, the benefit will also influence the decision of whether to enter the labor market after migration. To make entering the labor market attractive, the potential wage must be equal to or larger than the reservation wage. The home care allowance increases the opportunity costs of working outside the home, which are already higher for immigrant mothers than for native-born mothers due to problems of labor market integration. Shauman and Noonan (2007) explain problems of labor market integration of immigrant

women by their higher probability of moving for their partner's employment prospects. For Mincer (1978), a tied mover's individual migration gain (or loss) is smaller in absolute value than the gain (or loss) of the other partner. According to human capital theory, married women have more discontinuous employment histories on average than men; they are therefore less able to develop in their career and tend to work in lower-paid jobs (Halfacree 1995). Although studies have shown that women who recently migrated have similar labor market behaviors as native-born women (Adserà/Ferrer 2016; Blau et al 2003; Duleep/Dowhan 2002), on average, for immigrant women in Germany, the assumption of inferior integration is still valid. Table 1 in section 5 indicates two factors determining lower average earnings of immigrants compared to native-born mothers: the higher share of immigrant women without an educational degree and their lower work experience in years. These problems of labor market integration should result in particularly weak work incentives for immigrant mothers for whom the home care allowance is available.

In Sweden, Norway and Finland, a home care allowance has existed for many years for children under three years of age whose parents do not or only partly use public child care. Several studies provide empirical evidence on its effects on mothers' labor market participation.⁸ In all three countries, mothers with low income, low educational levels or an immigrant background are overrepresented in receiving the allowance (Ellingsaeter 2012). As Giuliani and Duvander (2016) point out, Sweden's cash-for-care benefit had negative effects on mothers' employment, but primarily in rural areas. Naz (2004), Rønsen (2009) and Hardoy and Schøne (2010) show that the introduction of the home care allowance in Norway has negatively affected mothers' labor market participation. These results are confirmed by Kornstad and Thoresen (2007) using a discrete choice model. Hardoy and Schøne (2010) also find much stronger effects for non-

⁸ Other studies concentrate on different family policies. Rønsen and Sundström (2002), for example, find that leave extensions delay the return to work among entitled mothers.

Western immigrant mothers than for native-born mothers. In contrast to Ellingsaeter (2012), Naz (2004) identifies a stronger negative participation effect for highly educated women. In contrast, Drange and Rege (2013) find negative effects on earnings and full-time employment, particularly for mothers without a university degree or with below median earnings after the introduction of the Cash-for-Care program, even if there was no eligibility for this transfer anymore, i.e., when the child was four or five years. However, this effect vanished by the child's age of six.

For Finland, Kosonen (2014) provides evidence that the home care allowance reduces mothers' labor market participation, and Österbacka and Räsänen (2021) identify that a higher level of home care allowance combined with low labor market attachment and low earnings potential before birth extends home care lengths. Nevertheless, as Drange and Rege (2013) show for Norway, this effect diminishes over time.

The German reforms may also affect the labor supply of fathers. Their employment decisions are an important contribution to fertility, as shown by Faria and Wang (2007). Nevertheless, in this study, we only focus on the labor market effects of immigrants compared to native-born mothers.

Applying the theoretical foundations and the knowledge gained from international experiences, we derive the following hypotheses:

H1: A home care allowance has a negative effect on the labor market participation of mothers in Germany even if there is a parallel expansion of child care provisions.

H2: The negative effects of a home care allowance are higher for immigrant mothers due to their—as a consequence of integration problems—higher opportunity costs of working outside the house.

4 Identification strategy

We analyze the effects of a home care allowance on mothers' employment, that is, the possibility of receiving additional financial support when not using public child care. In the data used, we do not observe whether the mothers received the home care allowance and therefore cannot analyze its direct effects. If the labor supply function of mothers of young children is stable over time, one could identify the reform's effect by comparing participation rates of mothers whose children were of the relevant age for mothers to be eligible for the allowance before and after the nationwide allowance's introduction in 2013. However, we cannot ensure the absence of contemporaneous shocks to labor market outcomes during these two periods, considering, among other factors, the worldwide economic and financial crisis in 2008-09, which may have long-term effects. Therefore, comparable to Dustmann and Schönberg (2012), we apply a DiD approach that compares behavioral changes in the period after 2015 (i.e., the federal state reform period in Bavaria) between two groups with similar characteristics in which only one group is affected by the policy change, namely, eligible mothers in Bavaria. As mentioned before, the nationwide home care allowance did not exist after 2015. Only the state of Bavaria continued to pay a state home care allowance until mid-2018. To account for potential differences in labor market participation between women in Bavaria and the rest of Germany, we also compare the labor market participation rates of women in these two groups before they gave birth. The basic formula of the DiD approach is given by (1).

$$DiD = \{ (Y_{after}^C - Y_{after}^T) - (Y_{before}^C - Y_{before}^T) \} \quad (1)$$

We examine how labor market participation rates differ between mothers eligible for the home care allowance in Bavaria (treatment group, T) and mothers with children of the same age but not eligible because they live in another German state (control group, C) in the years the home

care allowance existed for the treatment group (*after*), relative to the years the allowance did not exist for any group and none of the women had children (*before*).⁹ We consider participation rates in 2011 and 2012 as points of reference *before* the nationwide and the Bavarian home care allowance existed. From 2013-2015, the allowance was equally accessible nationwide for all mothers with children of the relevant age, and no straightforward control group existed. *After* 2015, i.e., after the nationwide home care allowance was abolished due to its unconstitutionality, in 2016 and 2017, the home care allowance – as identified in section two – existed only in the German federal state Bavaria. To address our second hypothesis, we also examine effects separately for immigrant and native-born mothers.

We assume that the treatment and control groups face a similar labor market situation. For both groups, we consider only mothers whose children were between 15 and 36 months of age in 2016/17. As all mothers with young children in 2016/17 gave birth in the three years between the two observation periods, for both groups, the employment rates change greatly during this time (see Figure 2 on employment rates before and after birth of the first child (i.e., by age of the first child)).

⁹ We exclude Saxony from the analysis because here a comparable benefit that forbids recipients from external child care usage has existed since 1992 (see section 2).

Figure 2: Employment rates of the treatment and control groups by age of the first child

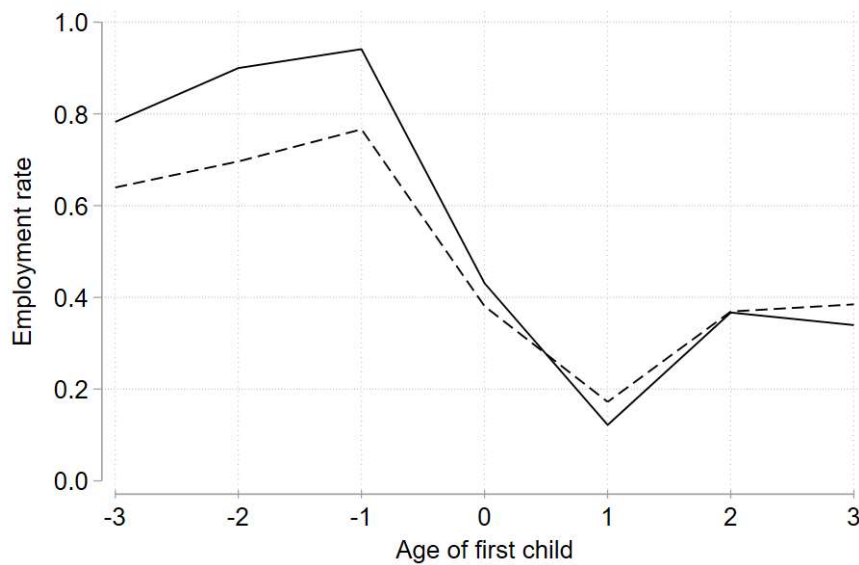


Fig. 2 Employment rates of women whose children were 15-36 months in 2016/17. The solid black line represents the treatment group, while the dashed black line represents the control group of the analytical sample. Women living in Saxony are excluded. Source: GSOEP, 2010-2018.

To estimate an unbiased average treatment effect on the treated (ATT) based on the DiD method, several assumptions must be fulfilled. First, there should be no correlation between implementation and outcome for the treatment group. A reason why Bavaria implemented a home care allowance equivalent to the former nationwide allowance could have been a higher demand for external child care and higher employment rates among mothers in Bavaria than in other federal states, hence lower expected costs due to a benefit-related reduction in maternal labor force participation. As shown in Figure 3, we find no evidence for deviation of Bavaria from the other German federal states in terms of external child care take-up and labor force participation of mothers with young children. Concerning the use of public child care of young mothers, all shares greatly increased in 2009 due to the integration of family-specific samples into the GSOEP.

Figure 3a and b
Child care take-up rates and labor force participation of mothers with young children over time in Bavaria compared to other German federal states

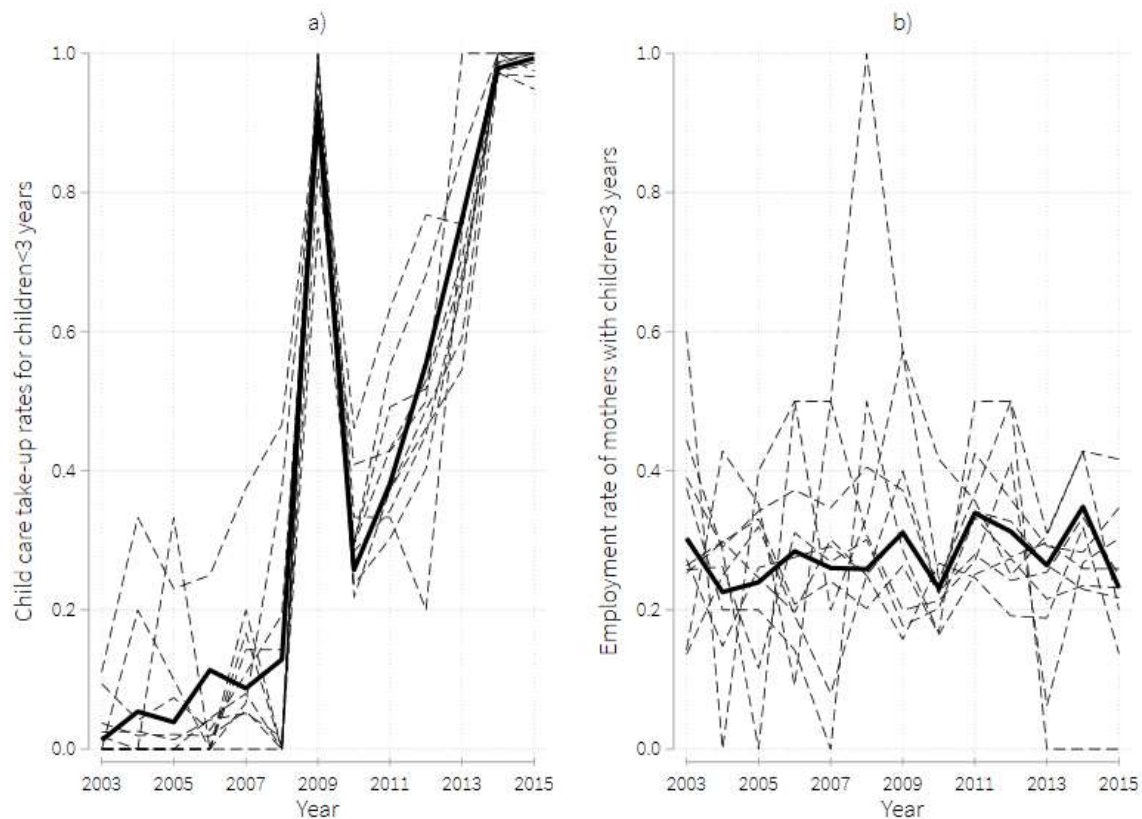


Fig. 3a Development of child care take-up rates from 2003-2015 among mothers of children below three years of age. The solid thick black line represents mothers in Bavaria, while the 16 thin dashed black lines represent mothers in other German federal states.

Fig. 3b Development of employment rates from 2003-2015 among mothers of children below three years of age. The solid thick black line represents mothers in Bavaria, while the 16 thin dashed black lines represent mothers in other German federal states.

Source: GSOEP, 2010-2018.

Second, the DiD relies on the absence of spillover effects assumption, based on the idea that territorial borders separate treatment from the control group, with only the former having access to the treatment. After 2015, the home care allowance was only available for parents residing in Bavaria. Spillover effects may exist when a significant number of parents (probably especially those living close to the Bavarian border) changed residence to receive home care allowance for their children of respective age. Since a change in residence includes direct costs as well as possible indirect costs such as an increase in living expenses, longer commuting ways or higher distances to the common environment, we assume that the number of households who

moved to receive the home care allowance was negligibly low. Remember that the home care allowance was only 150 € per month. In an additional robustness check, we excluded all federal states directly neighboring Bavaria (e.g., Saxony, Thuringia, Hesse and Baden-Württemberg). The results (not included but available on request) were very similar to those of the main specification presented in Table 2.

Third, to estimate an unbiased ATT, it is necessary that labor supply would have evolved similarly in both groups in the absence of a treatment effect; hence, as O’Neil et al. (2016) emphasize, the outcome variable is independent of whether the unit is assigned to the treated group (after conditioning on observables). Considering the similar developments of the labor supply of the treatment and control groups shortly before and after birth, as presented in Figure 2, the parallel trends assumption appears to apply.

As the figure further shows, before the birth of the first child, future mothers in Bavaria have a higher average employment rate, but between the first and second years of the child’s life, they have a slightly lower average employment rate. This difference may be a first hint of a negative effect of the home care allowance on the one hand or reflect regional factors, such as more traditional behavior in Western compared to Eastern German federal states, on the other hand. Thus, the differences between the treatment and control groups may reflect a treatment effect or be systematic. Apart from regional factors, systematic differences in participation rates may occur due to differences in individual characteristics (e.g., age, education, family status). Therefore, it is important to control for observable labor supply determinants. To prevent a biased DiD resulting from simultaneity, observable control variables should, on the one hand, not influence the outcome after the treatment (such as a good or bad health status influencing labor supply but possibly also be influenced by the home care allowance). On the other hand, the consideration of control variables measured as close before the treatment as possible is important to have the intended effect of controls in the regression analysis. Therefore, we use for

the time after the treatment in 2016/17 information of the control variables measured in 2015 or if 2015 is not available than from 2014. Because the DiD compares average participation rates, we do not restrict the data to mothers who are observed in all four years or to mothers who are observed in both periods. We estimate a probit model in the form presented in (2) for the whole sample of mothers in the treatment and control groups as well as separately for immigrant and native-born mothers, considering only the relevant years 2011, 2012, 2016 and 2017:

$$Y_{i,t} = \alpha_1 + \alpha_2 TREAT_{it} + \alpha_3 R1617_i + \alpha_4 (R1617_i * TREAT_{it}) + \alpha_5 Z_{i,t} + \varepsilon_i \quad (2)$$

where i indexes mothers and t indexes the observation year. $TREAT_{it}$ is an indicator variable equal to one if mother i belongs to the “treated” cohort living in Bavaria. $R1617_i$ is an indicator variable equal to one if mother i is observed in 2016 or 2017 or zero for 2011 and 2012. $R1617_i * TREAT_{it}$ is the interaction term between these two variables and thus equals one for Bavarian mothers in 2016/17. The coefficient of the interaction term α_4 identifies a possible causal effect of the home care allowance on labor market participation. It measures the variations in the labor supply for the Bavarian reform period relative to the period before an allowance existed and relative to mothers with children of the same age but not eligible for the Bavarian home care allowance. $Z_{i,t}$ includes the observable characteristics of mother i in year t affecting her labor supply. This vector contains her age and—to consider nonlinear effects of age—her age squared, her work experience in years and her educational degree in three categories (no degree, vocational, or university degree). Work experience and education are suitable proxies for earnings. As we do not observe earnings for non-working mothers, a variable on ‘earnings’ would create an endogeneity problem and is therefore not included. The vector also

considers whether she receives unemployment benefit II (ALGII¹⁰), whether she lives with or without an official partner, whether she has a good health status and the number of own children younger than six years of age in her household. In the specification of the whole sample, we further include a variable stating whether the mother migrated to or was born in Germany. For the separate estimation on immigrants, the function includes a variable on the country group of origin that differentiates among 1. countries of the European Union (EU) and other high-income countries, 2. former Soviet Union (USSR) or former Yugoslavia, 3. Turkey and Arabic countries, and 4. other countries in Asia, Africa and Central/South America. We further control for living in East Germany and for year fixed effects. In a robustness check, we control instead of living in East or West Germany for state fixed effects. Fitzenberger et al. (2013) emphasize that employment behavior after childbirth highly depends on pre-birth employment. Because the DiD analysis is based on *differences* in labor supply before and after the treatment between the treatment and control variables, in a robustness check, we additionally control for the mothers' absolute pre-birth employment rate in the before-treatment period. In this robustness check, the sample is reduced to mothers appearing in both periods before and after the treatment. There might also be further unobservable time constant and variable factors influencing employment decisions such as gender values or individual taste for work for which we cannot control with the applied approach. Therefore, we interpret the estimated effects on labor force participation as indicating correlations rather than causality.

5 Data and descriptive statistics

The analysis is based on data obtained from the GSOEP, an ongoing representative panel survey of private households in Germany starting in 1984 in West Germany and including data from

¹⁰ In Germany, individuals who are long-term unemployed (longer than one year) or who are not able to secure living expenses with their earned income are entitled to receive unemployment benefit II.

the East German federal states after unification in 1990. The data contain detailed information on employment behavior and sociodemographic characteristics as well as household-oriented information on children, their time of birth and use of child care (Wagner et al. 2007).

We restrict the analytical sample to the years 2011, 2012, 2016 and 2017 and to the treatment and control group, that is, mothers with a 15- to 36-month-old child in 2016 or 2017 from Bavaria or another German federal state¹¹. If possible, we control for missing values with an additional category (which applies to education and living together with a partner variable) and exclude observations with missing values in other variables (work experiences, living in East Germany and German federal state indicator variable) whose share was below one percent of all observations. The sample then contains 2,537 observations of 856 mothers. The share of mothers with a direct migration background (being born outside Germany) is 30 percent of observations in the data. The share of immigrants is not representative of the German population or GSOEP participants because immigrants have a higher probability of living in households with children than native-born women in Germany. The composition by country group is also not representative of the entire population or of women in general since the probability of having a child is higher among non-Western immigrants than Western immigrants. The highest share (40 percent) of the sample's immigrant mothers were born in the former USSR or former Yugoslavia, 35 percent in the EU or in another high-income country, 15 percent in Turkey or an Arabic country and 11 percent in Asia, Africa or Central/South America. Twenty percent of mothers (of the control group) live in East Germany.

Table 1 displays the main characteristics of the mothers in the treatment and control groups pooled over the observation years 2011, 2012, or 2015 (or 2014 if 2015 was not available) as lagged information for 2016 and 2017 by migration background. For the analysis, we restrict

¹¹ Except Saxony.

the sample to mothers between 18 and 64 years of age; the average *age* is 33 years. With respect to education, 30 percent of immigrants and 18 percent of native-born mothers have no educational degree. Both considered groups of mothers have approximately 5 years of *work experience*, and 14 percent of immigrants and 11 percent of native-born mothers receive unemployment benefit II. Among both groups, 90 percent of mothers evaluated their *health* as (very) good or satisfactory. For 18 percent of the immigrant and 39 percent of native-born mothers, there is no official partner in the household (*living with no partner in the household*). In the treatment and control groups, immigrant mothers live with approximately 1.4 and native-born mothers with approximately 1.2 own children (*number of children in HH* [the household]) younger than six years of age in one household.

Table 1
Socioeconomic characteristics of mothers considered in the analysis

	Immigrant mothers		Native-born mothers	
	Mean/ Share	SD	Mean/ Share	SD
Age	33.42	5.54	32.58	5.58
Educational level				
No education	0.30	0.46	0.18	0.38
Vocational education	0.34	0.47	0.47	0.50
University education	0.33	0.47	0.32	0.47
Work experience in years	4.71	4.49	5.21	4.36
Unemployment benefit II	0.14	0.35	0.11	0.31
Health is (very) good/satisfactory	0.90	0.29	0.90	0.30
Living with no partner in the household	0.18	0.39	0.39	0.49
Number of children in HH <6 years	1.37	0.74	1.18	0.79
Living in Eastern Germany	0.08	0.27	0.25	0.43
Number of observation	764		1773	

Notes: Only mothers with children aged 15-36 month in 2016/17, excluding mothers from Saxony.

Source: GSOEP, 2011/12/15 (or 2014 if 2015 not available) unweighted data.

Figure 4 analyzes in four panels the employment rates of women three years before to three years after the birth of the first child. For all analyses in this study, we consider full- and part-time employment covered by social security or self-employment. Interns, mothers in vocational training or marginally/irregularly employed are coded as not employed. We compare the analytical sample of mothers who had children aged 15-36 months in 2016/17 (the treatment and

control groups) with all mothers who gave birth between 2003-2018, hence considering a long period of time in which no home care allowance existed. Analogous to the treatment and control groups, we divide all mothers who gave birth since 2003 into Bavarian mothers and mothers living in other federal states. On the one hand, this procedure highlights the relevance of controlling for individual characteristics. On the other hand, a difference between the treatment and control groups that does not exist between Bavarian mothers and other German mothers who gave birth since 2003 may be a descriptive indicator of a treatment effect. Lower participation rates for some mothers in the second and third years after childbirth may be the consequence of an additional childbirth. Figures 4a and 4b show the sample of mothers whose children were aged 15-36 months in 2016/17. Figures 4c and 4d show any mother from Bavaria or another federal state in the GSOEP from 2003-2018 who gave birth since 2003. Therefore, instead of ‘treatment group’, Figures 4c and 4d name the relevant group more generally ‘Bavaria’ and the other group ‘Other federal state’ instead of ‘control group’. As an extension of Figures 4a and 4c, Figures 4b and 4d differentiate both groups by migration status. Figure 4a shows that the average employment rate is much higher for the treatment group than for the control group in the years before childbirth. Figure 4b indicates that this effect is more or less alike for immigrant and native-born mothers. Figure 4c further shows that the average employment of Bavarian women compared to women living in another German state in the time before giving birth is also higher when a longer period of time is analyzed. Again, this holds for immigrant and native-born mothers. The opposite is true for the time during which their first child is between one and two years of age. Here, the treatment group mothers have a slightly lower participation rate than those in the control group (see Figure 4a), while in Figure 4c, the average employment rate of mothers of young children does hardly differ between mothers from Bavaria or other federal states. The difference between the treatment and control groups relative to the difference between any mother living in Bavaria or another federal state is a clear descriptive indicator of

a treatment effect. Figures 4b and 4d further show that foreign-born mothers have, on average, lower employment rates than respective native-born mothers, with differences similar to those between Figures 4a and 4c. The high employment rate two years before childbirth of immigrant mothers in the treatment group has to be considered cautiously, as the rate is based on only twenty-seven observations. However, Figures 4b and 4d show that immigrant mothers living in Bavaria (among the treated or any other mothers) have no lower employment rate after birth compared to immigrant mothers outside of Bavaria.

Figure 4a and b
Employment rates of the treatment and control groups by age of the first child

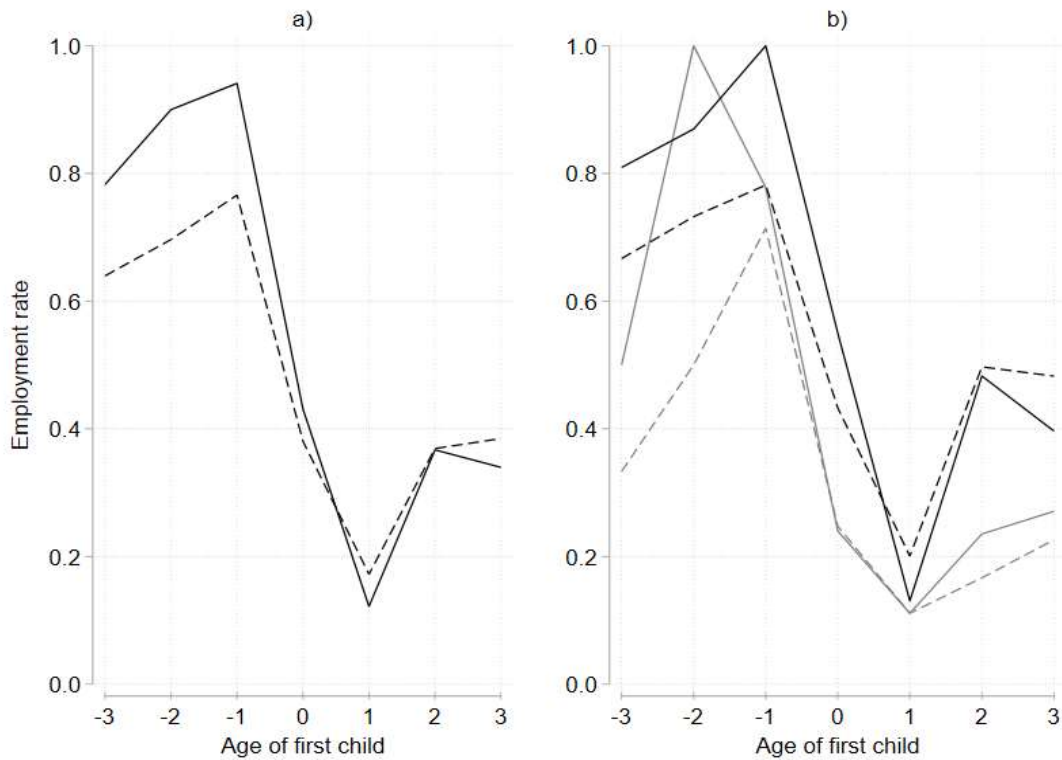


Fig. 4a Employment rates of women whose children were 15-36 months in 2016/17. The solid black line represents the treatment group, while the dashed black line represents the control group.

Fig. 4b Employment rates of women whose children were 15-36 months in 2016/17 by migration background. The solid gray line represents immigrant mothers of the treatment group, while the dashed gray line represents immigrant mothers of the control group. The solid black line represents native mothers of the treatment group, while the dashed black line represents native mothers of the control group. Saxony is excluded from the analysis. Source: GSOEP, 2010-2018.

Figure 4c and d
Employment rates of women who gave birth since 2003 by age of the first child

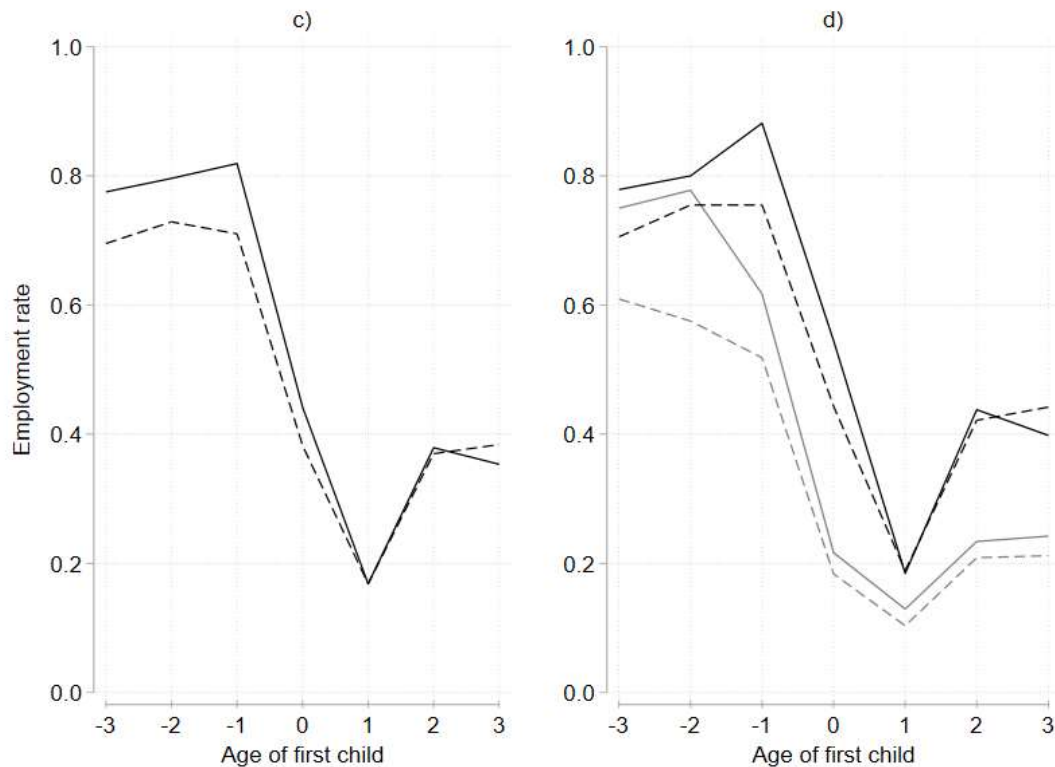


Fig. 4c Employment rates of women who gave birth since 2003. The solid black line represents Bavarian mothers, while the dashed black line represents mothers from other states.

Fig. 4d Employment rates of women who gave birth since 2003 by migration status. The solid gray line represents immigrant mothers from Bavaria, while the dashed gray line represents immigrant mothers from other states. The solid black line represents native mothers from Bavaria, while the dashed black line represents native mothers from other states.

Saxony is excluded. Source: GSOEP, ab: 2010-2018, cd: 2003-2018.

6 Results

We estimate a probit model to identify the probability of participating in the labor market, as presented in equation (2). Table 2 reports the estimation results, differentiating between the overall sample, immigrant mothers and native-born mothers. The models include the explanatory variables presented in Table 1. As described in section 5, the interaction term of R1617 and TREAT represents the DiD estimate indicating the effect of a state home care allowance on Bavarian mothers' labor supply. As presented in Table 2, the coefficient of the interaction

term is significantly negative for the whole sample as well as for the separate groups of immigrant and native-born mothers. The effect is particularly large for immigrant mothers. Due to the reform in Bavaria, immigrant mothers' average employment rate is 78 percentage points lower than the employment rate of immigrant mothers not eligible for the reform, i.e., living outside of Bavaria in the respective period. For the whole sample and native-born mothers, the employment rate is 36 percentage points lower. The results of the DiD confirm hypotheses H1 and H2. We find a negative impact of a home care allowance on the employment of mothers, and this effect is larger for immigrant mothers.

Table 2
Labor market participation of mothers, probit model

	Total	Immigrant mothers	Native-born mothers
1.R1617	-0.044 (0.067)	0.042 (0.143)	-0.053 (0.080)
1.TREAT	0.165 (0.116)	0.379 (0.243)	0.069 (0.134)
1.R1617_TREAT	-0.491** (0.151)	-0.779** (0.292)	-0.363* (0.181)
Foreign-born	-0.334*** (0.068)		
Age	0.163** (0.054)	0.054 (0.106)	0.160** (0.062)
Age squared	-0.002** (0.001)	-0.001 (0.002)	-0.003** (0.001)
Education (Ref. no education)			
Vocational degree	0.501*** (0.089)	0.173 (0.141)	0.749*** (0.119)
University degree	0.776*** (0.096)	0.300* (0.147)	1.080*** (0.131)
Work experiences in years	0.051*** (0.008)	0.025 (0.014)	0.062*** (0.010)
Unemployment benefit	-0.949*** (0.127)	-0.543* (0.212)	-1.178*** (0.156)
Good health status	0.305** (0.100)	0.032 (0.203)	0.416*** (0.111)
No partner in household	0.155* (0.071)	0.110 (0.162)	0.161* (0.082)
Number of children below six years in HH	-0.400*** (0.044)	-0.480*** (0.089)	-0.388*** (0.050)
Living in Eastern Germany	0.320*** (0.076)	0.321 (0.186)	0.380*** (0.087)
N	2537	764	1773
Pseudo R ²	0.217	0.154	0.231

* p<0.05, ** p<0.01, *** p<0.001 (2-tailed). Notes: The analysis excludes mothers from Saxony and additionally controls for year and home country fixed effects. Source: GSOEP 2011/12/16/17 (not balanced). Control variables for the years 2016/17 are lagged, we use information from 2015 or, if not available from 2014.

The coefficients of the other control variables are also significant and point in the expected direction concerning the effect on maternal labor force participation, but some vary between the groups. We find that the probability of working increases with the mother's age (with a decreasing age effect), a vocational or university degree, work experience, good health status and living with no partner in the household. However, the significant increases in labor market participation based on these variables (with the exception of a university degree) seem to be mainly driven by native-born mothers.

As expected, the number of children younger than six years of age and receiving unemployment benefit II have negative effects on the employment probability in both groups. Reverse causality probably influences the latter variable, although it is important to control for indigence. We also include a dummy variable for living in East Germany because there are high content-specific historical cultural differences in the availability of child care facilities and maternal labor force participation. As expected, for the whole sample, native-born mothers living in East Germany had an increased probability of working among the treatment and control groups.

Robustness checks

Thus far, we have excluded Saxony from the analysis because it has been paying an educational benefit similar to the nationwide home care allowance, which does not allow the use of external public child care since 1992. Until 2016, Thuringia paid a comparable education benefit, but in contrast to the home care allowance paid in Bavaria in 2016 and 2017, this benefit did not (completely) forbid the use of external child care. In Thuringia, children of the relevant age were allowed to attend public child care for a maximum of five hours per day. Such a benefit also existed in Baden-Württemberg in the prereform period of 2011 and 2012. To account for these special institutional settings, we apply a robustness check where we exclude, in addition to mothers from Saxony, mothers from Thuringia and Baden-Württemberg. The results are presented in Table S1 in the supplementary material. Our results are robust to this modification.

In a further robustness check, we control for regional differences at the level of the German federal states by including sixteen federal state indicator variables instead of an indicator variable for living in East Germany. We cannot identify any systematic differences in mothers' regional labor market supply for native-born or migrant mothers among the federal German states. All other results are robust to this control (see Table S2 in the supplementary material).

Finally, in another robustness check, we control for pre-birth labor force participation. In this case, the effect of the home care allowance increased to -120 percentage points for immigrant mothers. This increase may not only result from the consideration of the pre-birth labor force participation rate as a control variable but also from the required drop out of immigrant mothers only participating in the after period and hence the focus on immigrant women migrating to Germany not recently, such as during the high inflow of refugees since 2014 (see Table S3 in the supplementary material).

7 Discussion and outlook

This study evaluates the effect of a home care allowance on mothers' labor supply. From 2013 to 2015, a nationwide home care allowance was paid to families not using public or publicly subsidized child care for their young children in Germany. This benefit may have demotivated mothers to return to work after childbirth. In particular, parents with low labor market integration, such as immigrant mothers, may have been discouraged from using external child care to (re)enter the labor market. In 2016 and 2017, a home care allowance existed only in the state of Bavaria, as the nationwide allowance was ruled unconstitutional after two years in force. We apply a DiD approach to compare changes in employment rates between the *after* (nationwide home care allowance) reform and *before* reform periods between treatment and control group mothers who have at least one child aged 15-36 months in the after reform period. Descriptively, we find that the average employment rate of the treatment group mothers (Bavarian mothers for whom the home care allowance was available) is lower than that of control group mothers (comparable mothers from other German states) when the first child is 1-2 years old in 2016/17, i.e., when the state home care allowance existed in Bavaria. As systematic differences between treatment and control groups may yield biased results, we control for these potential

differences in multivariate analyses. Here, our results are confirmed with higher negative effects of the home care allowance for immigrants than for native-born mothers. The control variables show the expected effects, such as higher mothers' labor force participation in East Germany over the entire period. Overall, our results show that home care allowance—as expected—decreased the labor supply of mothers in general and of immigrant mothers in particular.

The German context can give two important contributions to the literature, supplementing existing studies – especially using Scandinavian data – having shown that home care allowance has negative effects on the labor force participation of mothers. First, in the years prior to the introduction of the state home care allowance in Bavaria in 2015, publicly financed child day care was heavily extended in Germany, including a legal claim for it for one-year-old children from 2013 onwards. Thus, our results show that home care allowances continue to have negative effects on the labor force participation of young mothers irrespective of the legal claim for and the extension of public child care. Second, we can see that even after 25 years, neither the extended childcare facilities nor other family policies have overcome the differences in labor market participation of young mothers between Western and Eastern Germany. For historical reasons, labor force participation and child care use have always been and are still higher in Eastern federal states than in Western German federal states. This indicates that historical experience and cultural reasons might play a larger role in the labor force participation of mothers than policy measures and institutional settings.

There are several potential reasons why the negative effects of the home care allowance are higher for immigrants than for native-born mothers. The media and policy often attribute problems such as modernization deficits and backward looking to immigrant families. Apitzsch (2014) emphasizes that immigrants build tradition and reflect their culture during the process of integration and orientation in a new environment. However, low public child care take-up rates may rather than be due to a focus on traditional values resulting from immigrants' lack of

knowledge about their child care rights. Several studies emphasize that immigrants' unfamiliarity with the receiving country's child care system is a major barrier to formal childcare access, especially when language skills and social ties are low (Seibel 2020). Nevertheless, it is questionable whether the lack of knowledge then also applies to the take-up of home care allowance. Another more plausible reason for the high negative effects of the home care allowance for immigrant mothers may be employer discrimination. Employers may have promoted immigrant women who live together with a partner more slowly before birth due to a higher assumed commitment to family and household responsibilities compared to immigrant men. This may reduce young mothers' incentives to return to work early after childbirth, increase the probability of taking up home care allowance and therefore result in high negative effects of the benefit on their labor force participation.

Irrespective of potential reasons, our results suggest that immigrant mothers in Germany may on average have higher barriers to the use of external child care than native-born mothers. Any sort of public benefit tied to the non-usage of public child care seems to increase this effect and is, therefore, counterproductive to integration of the mother.

Furthermore, Klein and Sonntag (2016) emphasize that the duration of institutional child care for children younger than three has a positive impact on the German language skills of immigrant children and children from mixed ethnic families. Magnuson, Lahaie and Waldfogel (2006) show that preschool raises reading and math scores as much for children of immigrants as it does for other children. The authors of both studies conclude that institutional child care can reduce ethnicity-related differences in educational achievements. Hence, for immigrants' children, a home care allowance that increases incentives for mothers not to use public child care is counterproductive to integration.

Data sources

[Dataset] German Socio-Economic Panel (GSOEP), data for the years 2007-2014, version 31, <http://dx.doi.org/10.5684/soep.v31>

Gesetz zur Einführung eines Betreuungsgeldes (Betreuungsgeldgesetz), 15. Februar 2013, Bundesgesetzblatt Jg. 2013, Teil I Nr. 8.

Gesetz zum Elterngeld und zur Elternzeit (BGEE), 01. Januar 2007: online <https://www.gesetze-im-internet.de/beeg/>, accessed 21. April 2021

Gesetz zur Förderung von Kindern unter drei Jahren in Tageseinrichtungen und in Kindertagespflege (Kinderförderungsgesetz – KiföG), 10. Dezember 2008, Bundesgesetzblatt Jg. 2008, Teil 1 Nr. 57.

Sozialgesetzbuch VIII - Kinder- und Jugendhilfe; online https://www.gesetze-im-internet.de/sgb_8/, accessed 21. April 2021.

Statistisches Bundesamt (2018), Statistiken der Kinder- und Jugendhilfe: 2017. Kinder und tätige Personen in Tageseinrichtungen und in öffentlich geförderter Kindertagespflege am 01.03.2017. Statistisches Bundesamt, Wiesbaden.

Acknowledgments

We gratefully acknowledge the helpful comments and suggestions from participants of the IAB lunch seminar, the EEA annual meeting in 2018, the IIPF annual meeting in 2019 and the 9th Workshop on Labour Economics of the IAAEU Trier. We would also like to thank Johann Ludsteck and two anonymous referees for helpful advice.

References

- Adserà A, Ferrer A (2016) Occupational skills and labour market progression of married imimmigrant women in Canada. *Labour Econ* 39:88-98. DOI: 10.1016/j.labeco.2016.02.003.
- Apitzsch U (2014) Transnationale Familienkooperation. In: Geisen T, Studer T, Yildiz E (ed) *Migration, Familie und Gesellschaft. Beiträge zu Theorie, Kultur und Politik*. Springer VS, Wiesbaden, pp 13-26. DOI: 10.1007/978-3-531-94126-4.
- Alt C, Hubert S, Jehles N, Lippert K, Meiner-Teubner C, Schilling C, et al. (2015) *Datenbericht Betreuungsgeld - Auswertung amtlicher Daten und der Kifög-Länderstudien aus den Jahren 2013/2014/2015*. Forschungsverbund Deutsches Jugendinstitut & Technische Universität Dortmund.
- Beninger D, Bonin H, Horstschräer J, Mühler G (2010) Wirkungen eines Betreuungsgeldes bei bedarfsgerechtem Ausbau frühkindlicher Kindertagesbetreuung: eine Mikrosimulationsstudie. *Vierteljahrshefte zur Wirtschaftsforschung* 79:147-68. DOI: 10.3790/vjh.79.3.147.
- Bergemann A, Riphahn RT (2010) Female labour supply and parental leave benefits—the causal effect of paying higher transfers for a shorter period of time. *Appl Econ Lett* 18:17-20. DOI: 10.1080/13504850903425173.
- Blau FD, Kahn LM, Moriarty JY, Souza AP (2003) The role of the family in imimmigrants' labour market activity: an evaluation of alternative explanations: Comment. *Am Econ Rev* 93(1):429–447. DOI: 10.1257/000282803321455403.
- Boll C, Lagemann A (2019) Public Childcare and Maternal Employment - New Evidence for Germany. *Labour* 33(2):212-39. DOI: org/10.1111/labr.12143.
- Boos-Nünning U (2020). Mädchen und junge Frauen mit Migrationshintergrund, in: Genkova P, Riecken A (ed), *Handbuch Migration und Erfolg: Psychologische und sozialwissenschaftliche Aspekte*, Springer, Wiesbaden, pp 221-223.

- Del Boca D (2015): The impact of child care costs and availability on mothers' labor supply. ImPRovE Working Paper 15/04.
- Deschacht N (2017) Part-time work and women's careers: a decomposition of the gender promotion gap. *J Labor Res* 38:169-186. DOI: 10.1007/s12122-017-9242-y.
- Drange, N, Rege M (2013). Trapped at home: The effect of mothers' temporary labor market exits on their subsequent work career. *Labour Economics* 24, 125-136.
- Duleep H, Dowhan DJ (2002) Revisiting the Family Investment Model with Longitudinal Data: The Earnings Growth of Immigrant and U.S.-Born Women, IZA Discussion Papers 568, Institute of Labor Economics (IZA).
- Dustmann C, Schönberg U (2012) Expansions in maternity leave coverage and children's long-term outcomes. *Am Econ J: Applied Economics* 4:190-224. DOI: 10.1257/app.4.3.190.
- Ellingsaeter A (2012) Cash for childcare – Experiences from Finland, Norway and Sweden. Friedrich-Ebert-Stiftung. Stockholm/Berlin.
- Faria JR, Wang L (2007) Employment and fertility choice: A differential game approach. *Econ Bull* 10(8):1-8.
- Fitzenberger B, Sommerfeld K, Steffes S (2013) Causal effects on employment after first birth - A dynamic treatment approach. *Labour Economics* 25: 49-62. DOI: <http://dx.doi.org/10.1016/j.labeco.2013.05.003>
- Gathmann C, Sass B (2018) Taxing Childcare: Effects on Childcare Choices, Family Labor Supply and Children. *J Labor Econ* 36(3):665-709. <http://dx.doi.org/10.1086/696143>.
- Giuliani G, Duvander AZ (2017). Cash-for-care policy in Sweden: An appraisal of its consequences on female employment. *International Journal of Social Welfare* 26 (1), 49-62.
- Halfacree K (1995) Household Migration and the Structuration of Patriarchy: Evidence from the USA. *Prog Hum Geogr* 19(2):159-182. DOI: <https://doi.org/10.1177/030913259501900201>

- Hardoy I, Schöne P (2010) Incentives to work? The impact of a 'Cash-for-Care' benefit for immigrant and native mothers labour market participation. *Labour Econ* 17:963-974. DOI: 10.1016/j.labeco.2010.02.008.
- Klein O, Sonntag N (2017) Ethnische Unterschiede der Wirkung institutioneller U3-Kinderbetreuung. *Z Erziehungswiss* 20: 41-60. DOI: 10.1007/s11618-016-0683-5.
- Kornstad T, Thoresen TO (2007). A discrete choice model for labor supply and childcare. *Journal of Population Economics* 20 (4), 781-803.
- Kosonen T (2014) To Work or Not to Work? The Effect of Childcare Subsidies on the Labour Supply of Parents. *B.E. J Econ Anal Policy* 14(3):817-848. DOI:10.1515/bejeap-2013-0073.
- Le AT, Miller PW (2010) Glass ceiling and double disadvantage effects: women in the US labour market. *Appl Econ* 42:603-613. DOI: 10.1080/00036840701704501.
- Magnuson K, Lahaie C, Waldfogel J (2006) Preschool and school readiness of children of immigrants, *Soc Sci Q* 87(5), 1241-1262.
- Mincer J (1978) Family Migration Decision. *J Polit Econ* 86:749-73. DOI: 10.3386/w0199.
- Müller KU, Wrohlich K (2016) Two Steps Forward–One Step Back? Evaluating Contradicting Child Care Policies in Germany. *CESifo Econ Stud* 62:672-698. DOI: 10.1093/cesifo/ifv020.
- Naz, G (2004). The impact of cash-benefit reform on parents' labour force participation. *Journal of Population Economics* 17 (2), 369-383.
- Österbacka, E, Räsänen T (2021). Back to work or stay at home? Family policies and maternal employment in Finland. *Journal of Population Economics*, forthcoming.
- Rønsen M (2009) Long-term Effects of Cash for Childcare on Mothers' Labour Supply. *Labour* 23(3):507-533. DOI: 10.1111/j.1467-9914.2009.00456.x.

- Rønsen M, Sundström M (2002). Family policy and after-birth employment among new mothers - a comparison of Finland, Norway and Sweden. *European Journal of Population* 18 (2), 121-152.
- Stahl J, Schober P (2018) Convergence or Divergence? Educational Discrepancies in Work-Care Arrangements of Mothers with Young Children in Germany. *Work, Empl Soc* 32(4):629-649. DOI: <https://doi.org/10.1177/0950017017692503>.
- Schönberg U, Ludsteck J (2014) Expansions in maternity leave coverage and mothers' labor market outcomes after childbirth. *J Labor Econ* 32:469-505. DOI: 10.1086/675078.
- Schøne P (2004) Labour supply effects of a cash-for-care subsidy. *J Popul Econ* 17:703-27. DOI: 10.1007/s00148-003-0176-8.
- Seibel V (2021) What do migrants know about their childcare rights? A first exploration in West Germany. *J Int Migr Integr* 22:1181-1202. DOI: <https://doi.org/10.1007/s12134-020-00791-0>
- Shauman KA, Noonan MC (2007) Family migration and labor force outcomes: Sex differences in occupational context. *Soc Forces* 85:1735-64. DOI: 10.1353/sof.2007.0079.
- Spieß CK, Wrohlich K (2008). The Parental Leave Benefit Reform in Germany: Costs and Labour Market Outcomes of Moving towards the Nordic Model. *Popul Res Policy Rev* 27:575-591. DOI: 10.1007/s11113-008-9086-5.
- Wagner G, Frick J, Schupp J (2007) The German Socio-Economic Panel Study (SOEP) – Scope, Evolution and Enhancements, *Schmollers Jahrbuch* 127:139–69. DOI: 10.2139/ssrn.1028709.