

Ben-Bassat, Avi; Dahan, Momi

**Working Paper**

## Social identity and voter turnout

CESifo Working Paper, No. 2331

**Provided in Cooperation with:**

Ifo Institute – Leibniz Institute for Economic Research at the University of Munich

*Suggested Citation:* Ben-Bassat, Avi; Dahan, Momi (2008) : Social identity and voter turnout, CESifo Working Paper, No. 2331, Center for Economic Studies and ifo Institute (CESifo), Munich

This Version is available at:

<https://hdl.handle.net/10419/26376>

**Standard-Nutzungsbedingungen:**

Die Dokumente auf EconStor dürfen zu eigenen wissenschaftlichen Zwecken und zum Privatgebrauch gespeichert und kopiert werden.

Sie dürfen die Dokumente nicht für öffentliche oder kommerzielle Zwecke vervielfältigen, öffentlich ausstellen, öffentlich zugänglich machen, vertreiben oder anderweitig nutzen.

Sofern die Verfasser die Dokumente unter Open-Content-Lizenzen (insbesondere CC-Lizenzen) zur Verfügung gestellt haben sollten, gelten abweichend von diesen Nutzungsbedingungen die in der dort genannten Lizenz gewährten Nutzungsrechte.

**Terms of use:**

*Documents in EconStor may be saved and copied for your personal and scholarly purposes.*

*You are not to copy documents for public or commercial purposes, to exhibit the documents publicly, to make them publicly available on the internet, or to distribute or otherwise use the documents in public.*

*If the documents have been made available under an Open Content Licence (especially Creative Commons Licences), you may exercise further usage rights as specified in the indicated licence.*

# Social Identity and Voter Turnout

AVI BEN-BASSAT  
MOMI DAHAN

CESIFO WORKING PAPER NO. 2331  
CATEGORY 1: PUBLIC FINANCE  
JUNE 2008

PRESENTED AT CESIFO AREA CONFERENCE ON PUBLIC SECTOR ECONOMICS, APRIL 2008

*An electronic version of the paper may be downloaded*

- *from the SSRN website:* [www.SSRN.com](http://www.SSRN.com)
- *from the RePEc website:* [www.RePEc.org](http://www.RePEc.org)
- *from the CESifo website:* [www.CESifo-group.org/wp](http://www.CESifo-group.org/wp)

# Social Identity and Voter Turnout

## Abstract

This paper uses the unique social structure of Arab communities to examine the effect of social identity on voter turnout. We first show that voters are more likely to vote for a candidate who shares their social group (signified by last name) as compared to other candidates. Using last name as a measure of group affiliation, we find an inverted U-shaped relationship between group size and voter turnout which is consistent with theoretical models that reconcile the paradox of voting by incorporating groups behavior.

JEL Code: H0, D70, D72.

Keywords: voter turnout, paradox of voting, social identity, local elections.

*Avi Ben-Bassat*  
*Department of Economics*  
*The Hebrew University of Jerusalem*  
*and Israel Democracy Institute*  
*Mount Scopus*  
*Jerusalem 91905*  
*Israel*  
*avibb@mssc.huji.ac.il*

*Momi Dahan*  
*School of Public Policy*  
*The Hebrew University of Jerusalem*  
*and Israel Democracy Institute*  
*Mount Scopus*  
*Jerusalem 91905*  
*Israel*  
*momidahan@mssc.huji.ac.il*

May 2008

We are very grateful to Asher Arian, Michael Beenstock, Cindy Kam, Moshe Hazan, Esteban Klor, Jenny Oser, Daniele Paserman, Erez Refaeli, Yaniv Reingewertz, Adit Sadan-Samet, Raanan Sulitzeanu-Kenan and Stanly Winer for their valuable comments and discussions. We also benefited from the comments of seminar participants at the Friday meeting at the Israel Democracy Institute, Applied Seminar in the Economics Department at the Hebrew University, School of Public Policy at the Hebrew University, Research Department at the Bank of Israel, Economics Department of Tel-Aviv University, CES Area Conference on Public Sector Economics in Munich and Economics Department of Copenhagen University (EPRU). We thank Yulia Unger, Liza Teper and Ori Sharf for excellent research assistance. We thank Orit Wessely from the Interior Ministry and Ahmad Ehlichal from the Central Bureau of Statistics for providing us with the data.

## Introduction

Introducing the role of group membership in determining the decision to vote seems to be one of the more promising routes to reconcile the voting paradox. The pure self-interest approach fails to account for actual political participation because the probability that a single vote would affect elections results is very small in large populations. In contrast, acting as part of a particular group, as suggested by social identity theory, may fundamentally change the probability of affecting an election outcome or the benefits from the act of voting and therefore the incentive to vote.

Attempts to explain the relatively high political participation in the real world by taking into consideration the importance of groups have been made by both economists and political scientists.<sup>2</sup> Yet, to date there is scarce empirical evidence on the importance of groups for voter turnout.

Based on three congressional elections, Uhlaner (1989) presented indicative evidence that is in line with the group membership hypothesis by showing that individual that are associated with a particular group- union households- tend to vote more than non-union households. In a more systematic empirical examination, Filer *et al* (1993) found that turnout first declines and then increases along with increases in relative income and conclude that this finding is consistent with a rational model of voting that incorporates group behavior.<sup>3</sup> Coate and Conlin (2004) share the same conclusion based on a structural estimation of a group-utilitarian model using voter turnout in liquor referenda in Texas. While these last two empirical works are suggestive, the effect of group membership on actual political participation has not yet been tested directly.<sup>4</sup>

The goal of this paper is to examine directly the effect of social identity on voter turnout in local elections in Israel. The unique social grouping of Arab communities, unlike the

---

<sup>2</sup> In Economics, two recent papers, inspired by Harsanyi (1980), explore the effect of groups on individuals' decisions to vote in a general and large election (Feddersen and Sandroni, 2006 and Coate and Conlin, 2004). In Political Science, the role of groups appears in Uhlaner (1989), Morton (1991) and Filer *et al* (1993).

<sup>3</sup> See also Shamir and Arian (1999) who have shown that social cleavages are important in structuring the vote in Israel.

<sup>4</sup> Fowler and Kam (2007) present a direct test on the effect of social identity on voter turnout using laboratory experiments.

Western structure of Jewish society, offers an almost ideal “experiment” to directly test the effect of group membership on voter turnout.

The social structure of a typical Arab village/town in the Middle East, including the Arab population in Israel, is commonly composed of several distinct groups called *hamulas* (plural of *hamula*. Later we use *hamulas* instead of *hamulas*). A *hamula* is defined by anthropologists as a group of large number of families that share a common great-grandfather and are organized in a lineage of separate type.<sup>5</sup> The *hamula* has a long history of rich relations among its members, such as intra-marriage and a substitute arrangement for capital and insurance markets (Cohen, 1965).

Frequently, an Arab community consists of two to four *hamulas* where each *hamula* lives in a different geographical quarter. The unique social structure in Arab communities should be expected to have a noteworthy effect on voting patterns and voter turnout in local elections if the *hamula* is an influential social group. There is suggestive evidence that indeed a *hamula* is an important component of self-concept for many Arab individuals, consistent with Tajfel (1981) definition of social identity.<sup>6</sup>

Tajfel (1981) define social identity as, "that part of an individual's self-concept which derives from his knowledge of his membership in a social group together with the value and emotional significance attached to the membership" (p.255). The social identity theory suggests that individuals care not only about their own benefits but also about the benefits to their affiliated group members. Benefits are of a symbolic nature, such as respect and perceived status according to this theory (Huddy, 2003).

Do *hamula* members actually vote for a seemingly *hamula*-based list in local elections as would be predicted by social identity theory? In the first part of our empirical investigation we test whether voters with a particular last name, which serves as a proxy for *hamula* affiliation, are more likely to vote for a candidate with the same last name as compared to other candidates. We find strong empirical support for *hamula*-based-voting behavior. *Hamula*-based candidates receive significantly more votes from their

---

<sup>5</sup> See Cohen (1965), Rosenfeld (1974) and Al-Haj (1988) for more detailed definition of a hamula.

<sup>6</sup> In some cases it takes the extreme form of assigning children to different classes in a school by their *hamula* affiliation.

affiliated *hamula* members. This suggests that a *hamula* is indeed a meaningful social group in the political arena.

The second main prediction of social identity theory with regard to political behavior is that individuals who feel part of a group are more likely to participate in elections (Fowler and Kam, 2007).<sup>7</sup> The implication in our context is that voter turnout in Arab municipalities should be higher than that in Jewish municipalities, which have relatively similar social structures to typical Western communities. The second part of our empirical investigation shows that actual voter turnout in Arab municipalities is significantly higher than in Jewish municipalities even after controlling for the standard factors influencing political participation.

Then, using last name as a measure of *hamula* affiliation, we construct the distribution of group size in all Arab localities in Israel. It allows us to test the more subtle prediction of group membership models with regard to the effect of group size on voter turnout. For example, Feddersen and Sandroni (2006) show that social group size has an inverted U-shape impact on voter turnout in a two-party system. This prediction is based on the assumption that part of the population is ethical type of individuals (social identifiers) that care also about the welfare of their own social group. The intuition of that result is that if one social group is large enough it would be more efficient for a small share of that group to show up to win the elections in contrast to the case where the two social groups are of equal size.

However, the relationship between social group size and voter turnout becomes more complicated in multi-party elections. In fact, Coate and Conlin (2004) show that even in a two-party system, relations between group size and voter turnout is unclear but their simulation nevertheless generates an inverted U-shape similar to Feddersen and Sandroni (2006). We find evidence that voter turnout is affected by *hamula* size: voter turnout is positively associated with *hamula* size at lower levels and then it declines as *hamula* size increases, which is in line with the inverted U-shape hypothesis.

---

<sup>7</sup> Note that unlike altruist agents who care about the benefits of all other members in society, social identifiers care about the welfare of a particular group of individuals. Fowler and Kam (2007) present a very neat framework where altruism and social identity political motives are separated.

The relatively low impact of Arab citizens on national elections outcome is another factor that may play a role in understanding their political participation in local elections. According to the compensation hypothesis, the Arab citizens in Israel tend to vote at lower rates in general elections because they feel less attached to Jewish nature of Israel than Jewish citizens. It results in compensating behavior which may affect participation in local elections. This hypothesis is rejected by the data.

In the next section we present the voter turnout puzzle in Israeli local elections and in Section 3 we provide the theoretical background to guide our empirical investigation. In Section 4 we examine the two main hypotheses that stem from social identity theory. In Section 5 the compensation hypothesis is presented and tested. Section 6 concludes the paper.

## **2. The voter turnout puzzle in Israeli local elections**

Comparative data on political participation in developed countries shows that voter turnout in local elections is in general lower than that of general elections for parliament or presidency. The gap between national and local elections is noticeable in developed countries and on average is around 14 percent (Blais, 2000). There is relatively wide variance in that the gap is large in English-speaking countries (US, UK and New Zealand), while it is small in continental Europe. Japan (and to some extent Belgium) represents an exceptional case where voter turnout in local elections is higher than in national elections.

The greater importance of national elections is the common explanation for its higher voter turnout (Morlan, 1984). In national elections citizens elect a body which makes decisions that have more significant impact on their welfare as compared to local elections, and therefore they tend to vote at higher rates.

Voter turnout in local elections in Israel is lower relative to national elections, as in most developed countries. The voter turnout in the Israeli national elections held in 2003 was approximately 68 percent, as compared to 51 percent in local elections in the same year (but not the same day). Similar to English-speaking countries the gap in favor of voter turnout in national elections is around 20 percentage points (last three election campaigns).

However, the average voter turnout in local elections hides substantial differences in political participation between Arab and Jewish municipalities. Voter turnout in Jewish municipalities is lower than that of Jewish citizens in national elections as found for most developed countries. In contrast, Arab citizens tend to vote at much higher rates in local elections relative to national elections.

In the last local elections (2003) voter turnout in Arab municipalities stood at close to 90 percent, while the average participation in national elections in those same municipalities was 63 percent only (Table 1a). The high voter turnout of Arab municipalities is not unique to the last elections; in fact it has been incredibly high since the first local elections (Chart 1).

The very high voter turnout in Arab municipalities is puzzling in light of two factors. First, those municipalities tend to experience recurrent financial crises (associated with low quality of local services) which may tend to deter potential voters. Second, the high voter turnout implies very active participation of Arab women, who are usually discouraged to be that active in other areas of life such as labor force participation.<sup>8</sup> Moreover, not even a single female is found among hundreds of mayoral candidates despite the very high voter turnout among women.

It is commonly hypothesized that the high political participation rate in Arab municipalities is related to the unique social structure of Arab communities.<sup>9</sup> Most of the literature on the link between voter turnout in local elections and social structure of Arab communities is of a descriptive nature. Two exceptions are the studies by Cohen (1965) and Al-Haj (1988), who have explored the strength of *hamula* throughout most of the twentieth century. They both provide descriptive evidence that lend support for the *hamula*-based-voting hypothesis, although their investigation was limited to one municipality. Another hypothesis is that voter turnout in local elections is high because of lower turnout in national elections. We will come back to this in Section 5.

---

<sup>8</sup> The average labor force participation of Arab women in Israel is around 20 percent- much lower than that of Jewish women which is close to 60 percent.

<sup>9</sup> See Cohen (1965), Al-Haj (1988), Landau (1993), Goldberg (2001) and Ozechki-Lazar (2005).



### 3. Theoretical background and econometric models

According to social identity theory, individuals derive utility from affiliating with social groups (Tajfel, 1981). There are two empirical implications of social identity theory that will be presented in the form of hypotheses and examined in the empirical section. First, some people act politically for the benefit of their groups by voting for candidates that favor their social group's interests (i.e., the *hamula*-based-voting-hypothesis). These individuals are instrumental, but only as part of a group. Second, people with a sense of attachment to a certain social group are expected to participate in elections more than those individuals who are mainly self-interested. However, political participation should be affected by the size of a social group (i.e., the *group size* hypothesis).

#### 3.1 Hypothesis I: *hamula*-based-voting hypothesis

A key feature of the *hamula* throughout its history, which dates back to the period of Ottoman Empire, is a marriage between paternal cousins that has been the basic channel by which different branches of the *hamula* link themselves and form a descent group. For example, Al-Haj (1988) found that in the town of Sefaram the majority of (large) *hamula* members marry within the *hamula*. The intra-marriage in *hamulas* of 500 members or more is 57%.

The *hamula* has also an economic role. In the last century, the economic role played by the *hamula* has been transformed as more and more Arab communities became urbanized. In the agrarian economy period, the *hamula* provided to some extent a substitute for capital and insurance markets (Cohen, 1965). However, in recent decades monetary transfers between *hamula* members play a negligible role (Al-Haj, 1988).

As Arab communities became more urbanized, and in particular after democratic local elections were introduced in Israeli Arab villages/towns (in the late 1950s), *hamula* economics has become in those early years more linked to local elections. The winning *hamula*-based-party could gain not only reputation and honor but also the opportunity of channeling municipal resources. They may have provided a better infrastructure to their *hamula* district and lower effective local taxes to some of its members. In recent years, using municipal resources to benefit *hamula* members seems to be more limited due to effective monitoring by the Ministry of Interior (Stacklov, 2008).

In such a social environment it would be natural to expect the emergence of *hamula*-based-candidates, and the obvious prediction of social identity theory is that *hamula* members would be more likely to vote for *hamula*-based-candidates in local elections. If indeed the *hamula* is an important social group, a member of a particular *hamula*-represented by a certain last name is expected to vote for a candidate that is affiliated with that particular *hamula*. This can be summarized in the following econometric model to be estimated below:

$$(1) \quad y_{ijm} = a + b_m + cD_{ijm} + v_{ijm}$$

where  $y_{ijm}$  represent the votes (in percentage points) for a candidate with a certain last name  $i$  in a ballot box  $j$  in a municipality  $m$  and  $b_m$  denotes a fixed effect for a municipality.  $D_{ijm}$  gets a value of one if the last name of a candidate  $i$  match the last name of part or all of the residents who are assigned to vote in ballot box  $j$  (in municipality  $m$ ), and zero otherwise. We expect that the coefficient  $c$  would be positive and quantitatively meaningful if indeed social identity plays a key role in voting behavior of *hamula* members.

### 3.2 Hypothesis II: the group size hypothesis

We first explore the unambiguous prediction of social identity theory according to which social identifiers are more likely to participate in elections (Fowler and Kam, 2007). The estimated model is:

$$(2) \quad Y_m = \alpha_0 + \alpha_1 X_m + \alpha_2 D_m + \varepsilon_m,$$

where  $Y_m$  is the natural logarithm of the ratio of voter turnout in a municipality  $m$  over 1 minus voter turnout, as is often done in the voter turnout literature.  $X_m$  reflects a vector of explanatory variables that are frequently used to explain voter turnout in local elections.  $D_m$  is a dummy variable that gets a value of one for an Arab municipality which is hypothesized to be more social identifiers type of community and receives a value of zero for a Jewish municipality which is assumed to be a more self-interested type of community.

Then, the ambiguous prediction regarding the effect of group size on voter turnout is estimated which completes our investigation. Feddersen and Sandroni (2006) show that in a two-party system the relation between the size of a social group and voter turnout is of inverted U-shape form. In their theoretical framework, there are two groups of individuals where each group consists of both ethical agents and self-interested individuals.

The incentive to participate on part of an ethical individual is affected by the chances of winning of his or her affiliated group. Obviously, the probability of winning the election is influenced by the relative size of the two social groups. The voter turnout tends to zero if one group is close to 100%. In that case, political participation of a small fraction of the large group is enough to win the election. In contrast, political participation is expected to be relative high if the two groups are of identical size (50%).

It would be easy to show that using social identifiers instead of ethical agents (or “doing their part” type of individuals) generates the same implication concerning the inverted U-shape relations between political participation and group size. As with the previous econometric model, group size, or in our context *hamula* size, is not the only factor affecting voter turnout and other variables should be included in our analysis. We would estimate the following model:

$$(3) \quad Y_m = \beta_0 + \beta_1 X_m + \beta_3 S_m + \beta_4 S_m^2 + e_m$$

where  $Y_m$  and  $X_m$  are exactly the same as before (Equation 2) and  $S_m$  denotes a measure of *hamula* size in municipality  $m$ . The inverted U-shape relations between group size and voter turnout, following our interpretation of Feddersen and Sandroni (2006) to the case of social identity, implies that  $\beta_3$  should be positive and  $\beta_4$  negative.

We would use various measures to explore the effect of group size on voter turnout. Our main measure is the relative size of the biggest *hamula*. For a robustness check we use also the biggest two, three and four *hamulas* as alternative measures of group size. These simple measures of group size have the advantage of being not sensitive to the municipality's population size. However, these measures do not summarize the whole

distribution of group size as does the Herfindhal-Hirschman index. For this reason, we also employ a Herfindhal-Hirschman index (normalized) of *hamula* concentration as a measure of group size.

The main factors, in addition to social identity, that are likely to explain voter turnout in local elections include the number of eligible voters, income per capita, the extent of political competition and voter turnout in general elections. These variables are measured at the municipality level. In earlier stages of this work several other variables (such as demographic composition, population density and income inequality) were included, but none of them appears to generate a robust effect on voter turnout.

The size of municipality population and political competition both represent indicators for the probability of casting a decisive vote and should have a positive effect on voter turnout in light of the instrumental view of voting. Income level often reflects the potential benefits of voting in individual-based research. However, in our context the average resident in a wealthy municipality should not benefit necessarily more or less than the average resident in a poor municipality. Residents in municipalities with higher levels of income may vote at higher rates to the extent that wealthier residents are also better informed. Income per capita may also capture the value of time to participate in local elections and that has a negative effect on voter turnout.

Political competition is measured here as the difference between the votes for the winner and those for the candidate next to him/her, divided by the total number of votes in the mayoral elections. In a similar fashion, a political competition index is computed for the previous two elections campaigns to deal with the risk of endogeneity. Candidates may wish to invest more resources to attract more voters if they expect the race to be very close (Shachar and Nalebuff, 1999). Thus, voter turnout might be higher in a close race not only because of the perceived likelihood of casting a decisive vote, (supply side effect) but also due to more funds spent by candidates (demand side effect).

In this paper, the average national voter turnout in each municipality represents an indicator for a sense of civic duty of the average municipality resident. A municipality with a high voter turnout in general elections may indicate a higher benefit from the act of voting for citizens in that locality according to the expressive view of voting.

However, the variation in national voter turnout across municipalities may also capture differences in omitted variables. That risk is limited here given that our list of explanatory variables includes two important municipality characteristics: population size and per capita income.

## **4. The empirical analysis**

### 4.1 Local elections in Israel

Voting in local or national elections is not legally required in Israel. In local elections the voter may cast two votes (in two different colors), one for a mayor and one for a municipality council. The elections for mayor and council members are held on the same day. Local and national elections took place on the same day in the first three decades of the State of Israel. Since 1978, however, local elections have been held every five years and are separate from national elections.

In 1978, direct and personal elections for mayor were inaugurated while elections for council members continue to take place according to proportional representation rules. To win the mayoral election a candidate has to receive at least 40 percent of the vote. Otherwise a second round between the two candidates who received the largest number of votes must take place, and the winning candidate is the one receiving the majority of the votes.

### 4.2 The data

We developed two different data sets to test each of these two hypotheses described above. The unit of observation in the first data set is a ballot box while it is a municipality in the second. The first data set comprises local elections results in 354 ballot boxes in 35 Arab municipalities. Almost half (49%) of the Arab population in Israel lives in those 35 municipalities and the average voter turnout in those same municipalities is similar to that in the general Arab population (Tables 1a and 1b).

In those municipalities, the eligible residents are allocated to ballot boxes according to the first letter of their last name, unlike all other Arab and Jewish municipalities where residents are assigned by place of residence.<sup>10</sup> In a particular ballot box a few letters are assigned and thus more than one surname is included in that ballot box. The average

---

<sup>10</sup> In some of those municipalities, residents are assigned to ballot boxes according to the first two letters of their last name or a combination of the first letter in their first and last names.

number of eligible residents assigned to a ballot box is more than 700 (Table 1b). This assignment of residents has a long history and is done solely by the Ministry of the Interior.

Our data set also includes the last name of each candidate in those 35 municipalities. For each ballot box we have the actual number of votes that each candidate receives. The unique way by which residents in those municipalities are assigned to ballot boxes allows us to test directly the first hypothesis of whether residents in these municipalities vote for *hamula*-based candidates.

The full dataset covers 394 ballot boxes in 44 municipalities but in five municipalities the first letters of two different last names of two (or more) candidates both appear in the same ballot box. In those cases, it would not be possible to use our identification strategy to estimate the importance of *hamula*-base voting. Our identification strategy could not be useful also if there are exactly two candidates and they both have the same last name. There are four such municipalities in our data. Therefore, we exclude these nine municipalities and the regression analysis is based on 354 ballot boxes in 35 municipalities.

The other 31 Arab municipalities, where residents are assigned by geographical criterion, could not be used due to lack of information on the joint distribution of voters' last names and place of residence (within municipality).

The second data set that is employed here covers 186 municipalities that consist of 111 Jewish localities and 75 Arab localities.<sup>11</sup> Some municipalities consist of both Jews and Arabs and a municipality is defined here as Jewish if more than a half of its population is of Jewish origin; likewise, a municipality is defined as Arab if more than a half of its population is of Arab origin.

This paper uses voter turnout in the first round in mayoral elections that took place in the year 2003.<sup>12</sup> Employing panel data is not an option given that the Interior Ministry

---

<sup>11</sup> There are 210 regular municipalities and 54 regional municipalities (a collection of several villages, mainly agricultural) in Israel, but due to data limitations our research covers 186 (elections results are missing for 10 municipalities and income per capita data does not exist for the other 14 municipalities).

<sup>12</sup> We include also those municipalities that for various reasons held elections one and two years before or after 2003.

provided us with data on the key variables (such as the distribution of last names) for only one point in time (2003). As can be seen from Figure 2, voter turnout is fairly stable over time. In contrast, the variation in voter turnout across municipalities is relatively large. In addition, focusing on cross section variation opens the possibility of using lag variables to deal with the risk of endogeneity in estimating the effect of political competition on voter turnout.

A histogram of voter turnout in local elections separately for Jewish and Arab municipalities is presented in Figure 3. While the variation in voter turnout is large in the general population, this is not the case when the population is divided into two sub-groups. In particular, the variation in voter turnout is relatively low across Arab municipalities and that might indicate that a common and important factor plays a role in shaping voter turnout in the Arab population.

As can be seen from Table 1a, Arab municipalities are less populated, characterized by a higher degree of political competition and much poorer in terms of income per capita as compared to Jewish municipalities. At the outset, those three characteristics should generate higher voter turnout in Arab relative to Jewish municipalities. However, voter turnout in general elections in Jewish municipalities is higher in comparison with Arab ones, which is expected to work in the opposite direction in case voter turnout in general elections is a reasonable proxy for the intensity of civic duty.

## 4.3 The results

### 4.3.1 *Hamula*-based-voting

The first stage of our empirical investigation is exploring the voting patterns of Arab communities in Israel. People who go to vote on an election day are seeking to increase the chances that their favorite candidate will win the race. Thus, examining whether voting behavior is influenced by *hamulas* is a prerequisite test that social groups are important in determining political participation.

We use the last name of candidates and eligible voters as our proxy for social identity. Given that candidates' last names are public knowledge it is possible to explore the linkage between voters and candidate group affiliation in those municipalities where the Ministry of Interior allocates eligible voters to ballot boxes according to their last name.

The dependent variable is the share of votes that a certain candidate in a specific ballot box receives relative to the total number of votes in that same ballot box. In the standard race between two candidates each ballot box would have appeared once in our data set. However, each ballot box appears in the current empirical analysis more than once according to the number of candidates in that particular municipality given that more than two candidates could run for mayor. In general, the number of observations is the product of the number of ballot boxes and number of candidates. For example, the number of observations in a municipality that has 3 candidates and 3 ballot boxes equals 9.

Table 2 presents regressions that test the *hamula*-based-voting hypothesis. As can be seen, a candidate with a certain last name receives around 13.5 percentage points more votes in a specific ballot box if the eligible voters who are assigned to that particular ballot box share that same last name. The coefficient of the last name variable is not very sensitive to the inclusion of fixed effects dummies for municipalities. This implies a quantitatively large effect given that the actual gap in terms of votes between the winner and the next candidate in line is 11.8 percentage points on average.

Table 2 also includes a test of whether the voting behavior of *hamula* members is influenced by the probability of winning the election. We use two proxies for that probability: ex-post election results and *hamula* size.<sup>13</sup> The coefficient of group identity, as measured by voters' last name, is somewhat lower when an interaction between (ex-post) winners and voters' last name is used.<sup>14</sup> While voters are sensitive to the probability of winning (to the extent that ex-post results are correlated with ex-ante probability) they do vote more significantly for *hamula*-based-candidates that have lower chance of winning.

We also use *hamula* size to test whether people with a sense of social identity would be likely to vote for *hamula*-based-candidates regardless of the probability of winning. Table 2 shows that the coefficient of the interaction between *hamula* size and last name is negative and quantitatively non-negligible. Voters are more likely to vote for “their

---

<sup>13</sup> The way *hamula* size has been constructed is explained in the next section.

<sup>14</sup> This specification also includes an interaction between the winner dummy and municipality fixed effects.



candidates” if they are members of a large *hamula* as compared to a small *hamula* but even a member of small *hamula* (smaller chance of winning) still tend to vote for their affiliated candidate. This finding suggests that a significant share of the voters is not completely instrumental which is in line with the social identity argument.

In 31 out of 75 municipalities, the mayoral race is between two (or more) candidates that have the same last name (i.e., the same *hamula*). This indicates that while the social structure of several *hamulas* plays an important role in local elections, a *hamula* is not the only factor. The estimated coefficients of last name in Table 2 capture that competition within the *hamula*.<sup>15</sup>

One more indication that local elections are affected by other factors in addition to *hamula* affiliation is the fact that not all *hamulas* are represented in the mayoral race. In particular, in 17 out of 75 municipalities, the biggest *hamula* fielded no candidate in the mayoral race.

#### 4.3.2 Interpretation of the results

An alternative interpretation of *hamula*-based voting could be that individuals support people with the same last name because they expect to receive material benefits as a consequence. While we could not exclude completely the suggestion that material benefits might be involved in the decision of individuals to vote for *hamula*-based candidates, the evidence raise doubts on the significance of this assertion.

One possible channel of directing material benefits to *hamula* members might be by lowering the effective local tax rate. While there is anecdotal evidence published in the popular press that some members associated with the mayor's *hamula* receive illegal tax treatment, the Interior Ministry imposes strict control on such behavior. A mayor who is caught favoring a particular group of people is removed from office. Furthermore, the existing evidence suggests that local tax collection in Arab municipalities that are characterized by stronger sense of *hamula* affiliation – indicated by the size of the biggest *hamula* – is similar to other Arab municipalities (Ben-Bassat *et al.*, 2008).

---

<sup>15</sup> Members of a certain *hamula* have to split their votes in case two or more candidates come from that same *hamula*. Consequently, the share of votes for each of the two (or more) candidates with a certain last name in a ballot box where voters share the same last name should be lower (relative to other ballot boxes) than the case of one candidate from each *hamula*.

Appointing relatives to various positions in a municipality might be another channel through which *hamula* members may expect to gain benefits from voting for *hamula*-based candidates. However, the Israeli law strictly forbids hiring relatives of a mayor defined very broadly (the long list of relatives includes even cousin, son in law and grand children).

Moreover, individuals should be organized by economic groups if voting behavior is mainly affected by the expected material benefits. The wealthier members of each *hamula* in a certain community might have more in common in terms of tax/expenditure policy than members of a particular *hamula* because unlike a tribe, a *hamula* consists of independent property-owning families. The claim that *hamula*-based voting could be the result of self-interested material benefits leaves open the question of why individuals are grouped specifically by *hamula* lines to achieve monetary goals.

In contrast, our interpretation of social identity is consistent with additional external evidence. The rich relationship between *hamula* members has important non-material dimensions such as intra-marriage that has been discussed above and practices of blood vengeance. In Arab society blood revenge, which is culturally tolerable behavior, is not an individual matter. By killing a person from the other *hamula*, the murderer makes each and every member of his own *hamula* a justified death target.

Several hundreds of court verdicts related to *hamula* conflicts were found in online law library in Israel. These verdicts are commonly colored in words such as honor, respect, loyalty and identity. In a recent case of violent *hamula* clash brought to court, Judge Aminof wrote, "*the violent struggle taking place in the village of Tuba, that is basically driven by the pursuit of honor and recognition by hamulas, introduced blaze and unrest also in young people*". (November 2005)

Voting by *hamula* lines could be also consistent with social pressure argument. According to this argument, people might vote for *hamula*-based candidate because of the expected social sanctions the *hamula* imposes on those who do not show up to vote. In our context, it is easier to verify participation given that eligible voters are assigned to ballot boxes according to their last name, and as a result the social pressure argument might be even more important. The problem with this argument, however, is that a *hamula* cares about for whom an individual votes rather than participation and that act

is unobservable. In fact, voters with a certain last name do vote for candidates with different last name: the average share of votes to candidates in ballot boxes that do not contain their last name is about 18 percent (Table 1b).

#### 4.3.3 Constructing group size

Following the previous empirical examination it would be natural to use the last name of an individual as our measure of social group affiliation. The Interior Ministry, with the help of Central Bureau of Statistics, provided us with data on the distribution of last names of all individuals age 20 years or over in 75 Arab municipalities in the year 2003.

The raw data must be adjusted to account for differences between Arab and Hebrew transcription since the Arab last names are registered in Hebrew transcription in the Interior Ministry's files. Therefore, the same Arab last name could appear in several different spellings in Hebrew, which may introduce biases in *hamula*/group size that is based on last name. We have done extensive work to merge all individuals with different last name in Hebrew transcription into a particular *hamula* if they share the same last names in Arab transcription.

The size of the group/*hamula* is the ratio of the number of individuals in a particular locality who are 20 years of age or older that share a certain last name divided by the total number of people in that same age group in that particular locality. To a large extent, that age group overlaps with those individuals who are eligible to vote in local elections (a person aged 17 or older is entitled to vote in local elections). The constructed group size approximately reflects the upper boundary of the size of *hamula*'s constituency.<sup>16</sup> Note that the absolute size of *hamula* could be relatively large. The average number of members of the biggest *hamula* is 918, using our definition of *hamula*.

#### 4.3.3 Voter turnout and group size

Table 3 presents the benchmark regression for voter turnout in the 2003 local elections. It is comprised of the following explanatory variables: national voter turnout, political

---

<sup>16</sup> Hamula size has been used in the past to explore the social and political roles of the hamula. Comprehensive research on the evolution of hamula strength between the years 1910 to 1983 in the town of Shfara'am has found that hamula size (self-reported) is positively correlated with the tendency to vote for hamula-based lists in elections held in Shfara'am in the year 1983 (Al-Haj, 1988). Shavit and Pierce (1991) show that educational achievements are associated with hamula size.

competition, the log of eligible population and the log of income per capita. All variables including voter turnout were measured for the year 2003.

As expected, the effect of national voter turnout on participation in local elections is positive and statistically significant. The coefficient of political competition is negative, which implies that a close race (lower difference in terms of votes between the winner and candidate next in line) tend to attract more voters to ballot boxes. A similar finding has been established by many (but not all) of those who have previously studied political participation (Matsusaka and Palda, 1993).

Table 3 also explores the possible bias in political competition coefficient due to candidates' response to an expected close race. As can be seen from Table 3 the coefficient is negative, as before, when political competition for the previous two elections (the average of 1993 and 1998 local elections) is employed instead of the current index of political competition. The use of a lag variable, however, generates a lower coefficient as would be predicted.

The political competition indicator that is often calculated in terms of the percentages of total votes might be misleading in large elections as Schwartz (1987) suggested.<sup>17</sup> In contrast, there are 22 municipalities in our data base with a difference of less than 100 votes between the winner and candidate next in line. In two of those municipalities there was a tie. We nevertheless use a variable for political competition in terms of percentages rather than the absolute number of votes to allow the inclusion of population size. Otherwise, multicollinearity between political competition and population size is likely to occur.

The estimated coefficient of eligible population size is negative and significant, which is consistent with the instrumental view of voting. The size of that coefficient implies a large effect. For example, voter turnout in a municipality populated by 7,500 eligible voters, which replicates the average eligible population in Arab municipalities, is higher

---

<sup>17</sup> Schwartz (1987, p.118) has used a compelling metaphor: "Saying that closeness increases the probability of being pivotal is like saying that tall men are more likely to bump their head on the moon."

by 12 percentage points as compared to a municipality with 37,000 eligible voters, which is the average eligible population in Jewish municipalities.<sup>18</sup>

This regression also shows that the effect of (log) income per capita on voter turnout in local elections is negative and significant, which is somewhat surprising.<sup>19</sup> A similar result with regard to the effect of income on voter turnout has been found for local elections in the US (Filer et al, 1993) and Belgium (Ashworth et al, 2006). This coefficient implies a large effect, but as will be evident below its size is very sensitive to the inclusion of additional variables and especially to our measure of social group size.

This standard list of four variables has impressive explanatory power in accounting for voter turnout in local elections in Israel according to the adjusted  $R^2$  (Table 3).<sup>20</sup> However, the explanatory power of that list is substantially lower if the analysis is limited to Arab municipalities only (Table 4).

The voting behavior of residents in Arab municipalities that are characterized by a unique social structure provides a quasi-natural experiment to test the hypothesis that social identity plays an important role in reconciling the paradox of voting. Naturally, examining the effect of social groups on voter turnout is limited to Arab localities, but we first start our investigation by comparing political participation in Arab and Jewish municipalities.

Table 3 shows that voter turnout in Arab localities is significantly higher (the implied effect is around 17 percentage points) as compared to Jewish localities, controlling for the list of variables included in the basic regression. There is some variation within Arab municipalities, in that voter turnout among the Arab-Christian population is higher by “only” 13 percentage points in comparison to Jewish municipalities while it is higher by 19 percentage points in Druze municipalities.<sup>21</sup>

---

<sup>18</sup> Those estimates are based on a regression where voter turnout is used as a dependent variable instead of logistic transformation (not reported here).

<sup>19</sup> The results are similar using education level instead of income level (not reported here).

<sup>20</sup> Table 3 shows an interesting result: unlike the general elections where two particular sectors (Orthodox Jews and Jewish settlers beyond the Green Line) tend to participate at higher rates (12.5 and 9 percentage points above the national average, respectively) Orthodox and non-Orthodox Jewish municipalities have similar voter turnout in local elections and Jewish settlers have even lower voter turnout.

<sup>21</sup> These estimates are based on a specification that uses voter turnout as a dependent variable, instead of logistic transformation (not presented in the tables).

In the rest of this section we combine Arab-Muslim, Arab-Christian and Druze municipalities given the relatively small differences among Arab municipalities of various religious origins in terms of voting behavior. In fact, the variance of voter turnout in Arab municipalities is only around 5 percent.

While all other coefficients remain highly significant and preserve their signs, the quantitative effects implied by most coefficients are sensitive to the inclusion of the Arab dummy variable. For example, the coefficient of income per capita is much smaller when a dummy for Arab municipality is added to the basic regression.

The highly significant coefficient of Arab municipalities suggests that we should delve into the distinctive characteristics of the Arab population. Its social structure is a natural candidate to explain the high voter turnout in local elections. Table 4 presents results of regressions that include various measures of group size in addition to the standard control variables. Obviously, the analysis is restricted to Arab municipalities (75 observations).

In Table 4 both a linear and a quadratic form of the size of the biggest *hamula* is used as a measure of group size. The coefficient of measure is positive and significant whereas the coefficient of the square of that index is negative and almost significant. A similar picture emerges if we use the Herfindhal-Hirschman index instead of the size of the biggest *hamula* as a measure of group size.<sup>22</sup> Those results are consistent with the comparative static prediction of recent theoretical models that grants social groups an important role in shaping individuals' voting behavior (See for example, Feddersen and Sandroni, 2006).

According to the estimated coefficient, a rise of one standard deviation in the Herfindhal-Hirschman index would lead to an increase of 1.5 percentage points in voter turnout. This estimated impact of social identity on voter turnout may seem relatively small, but recall that the variance of voter turnout in Arab municipalities is approximately 5 percent only.

---

<sup>22</sup> In fact, our findings are not sensitive to other measures of group size that have been employed such as the two, three and four biggest hamulas (not reported here).

Three out of the standard four variables are still statistically significant and with the expected signs even when the empirical analysis is limited to Arab municipalities. While the income per capita coefficient keeps its sign, it is no longer significant when the regressions are based on Arab municipalities only. Note that the coefficient of political competition implies larger effect on voter turnout in Arab municipalities.

## **5. The compensation hypothesis**

An additional hypothesis was put forward to account for the intensive political participation of Arab residents in local elections. Both researchers and popular commentators have suggested that the very high voter turnout of Arab voters in local elections is the result of their relatively low turnout in general elections. However, this hypothesis has never been tested in a systematic way.

There are two different channels through which compensation might work. First, the marginality of Arab voters in national elections may induce them to use local elections as their main field of political expression. Since the establishment of the State of Israel, Arabs have been allowed to vote and run as candidates for the Israeli parliament. However, Arab political parties were never asked to join the coalition and be part of the government. Some Arab parliament members were part of the coalition but only if they were associated with Zionist-based lists. Thus, it seems plausible to assume that the Arab population in Israel has less chance to affect political outcomes. According to this first channel, the benefit from the act of voting in local elections is seemingly higher due to the low probability of shaping the results in national elections.

The second channel through which compensation voting occurs stems from the weak attachment of some Arab citizens may feel towards the Jewish nature of the state of Israel. Some of these Arab citizens may even deny the existence of Israel. As a result, some Arab citizens do not vote in general elections because they do not benefit from the act of voting in general elections, and for some of them voting may even reduce their utility.

The stated boycott of two Arab political movements (the Islamic Movement and Bnei Ha-Kfar) that persuaded their supporters to refrain from voting in national elections provides direct evidence that indeed a small part of the Arab population in Israel does

perceive voting in national elections as a negative act that may lend legitimacy to the State of Israel. While these movements discourage their followers from voting in national elections, they do participate in local elections. In fact, the Islamic Movement even won elections for mayor in a few Arab municipalities.

The compensation hypothesis states that some Arab voters benefit more from the act of voting in local elections because of their absence from general elections. Recall, however, that most eligible Arab voters do actually vote in national elections (Table 1a) and this type of compensation voting behavior should not apply to the majority of Arab population.

According to the compensation hypothesis, we should expect different behavior in Arab municipalities with respect to the relations between local and national voter turnout. Unlike Jewish municipalities, we expect a negative correlation between local and national voter turnout in Arab municipalities (*ceteris paribus*) if indeed compensation voting behavior plays an important role.

In Table 5 we introduce an interaction term between municipality origin and national voter turnout to account for different behavior. We also run the baseline regression separately for Arab and Jewish municipalities. The regression results strongly reject the compensation hypothesis. Even the sign of the coefficient is not in line with that hypothesis.

## **6. Conclusion**

This paper exploits the unique social structure of the Arab population in Israel to test whether social identity has a noticeable effect on voter turnout. Voter turnout in Arab municipalities in Israel has been around 90 percent since the first local elections. It is commonly hypothesized that the high political participation rate in Arab municipalities is related to the unique social structure of Arab communities.

The *hamula*, which is a well-known social group in Arab communities, is our main social group. *Hamula* affiliation is measured in this paper by individuals' last names. All individuals who share the same last name form a social group or *hamula*. We find that *hamula* members tend to vote for *hamula*-based-candidates in local elections. In



particular we show that voters are more likely to vote for a candidate who shares their last name as compared to other candidates. This finding suggests that the *hamula* is a meaningful social group in terms of political behavior.

Based on this finding, social groups in Arab communities are constructed using the last name as a measure of group affiliation. We find empirical evidence of an inverted U-shaped relationship between social group size and voter turnout, which is consistent with recent theoretical models that incorporate social groups in the decision to vote (for example, Feddersen and Sandroni, 2006).

Our finding, which is based on actual voting behavior, lends empirical support to the recent direction in voter turnout literature that attempts to explain the voting paradox by adding the benefits that an individual may gain by improving the welfare of his/her social group.

We do not find empirical support for the compensation hypothesis, which attributes the high voter turnout of Arab residents in local elections to their marginality in national arena. Arab municipalities that are characterized by lower rates of voter turnout in national elections tend also to exhibit low levels of political participation in local elections.

**Table 1a: Descriptive Statistics – Municipality level, 2003**

|                                     | All municipalities | Jewish municipalities | Arab municipalities |
|-------------------------------------|--------------------|-----------------------|---------------------|
| Voter turnout in local elections    | 72.4<br>(17.2)     | 61.0<br>(12.4)        | 89.2<br>(5.3)       |
| Voter turnout in national elections | 68.6<br>(10.4)     | 72.4<br>(7.5)         | 63.1<br>(12.3)      |
| Political competition index         | 18.9<br>(19.2)     | 24.0<br>(21.4)        | 11.4<br>(12.1)      |
| Number of eligible voters           | 24,064<br>(54,671) | 36,937<br>(68,140)    | 7,493<br>(6,795)    |
| Income per capita                   | 2,490<br>(1,302)   | 3,262<br>(1,138)      | 1,347<br>(302)      |
| Herfindhal-Hirschman Index          | -                  | -                     | 0.089<br>(0.096)    |
| Biggest <i>hamula</i>               | -                  | -                     | 19.1<br>(13.5)      |
| Number of municipalities            | 186                | 111                   | 75                  |

Standard deviations are in parentheses.

**Table 1b: Descriptive Statistics – Ballot box level, 2003**

(35 Arab municipalities)

|  | Average and standard deviation |
|--|--------------------------------|
| Number of eligible residents per ballot box                                      | 737<br>(77)                    |
| Number of voters per ballot box  | 652<br>(81)                    |
| Voter turnout (%)  | 88.5<br>(6.35)                 |
| Number of candidates   | 4.43<br>(2.16)                 |
| Size of biggest <i>hamula</i> (%)  | 16.2<br>(10.16)                |
| Share of votes to candidates in ballot boxes that contain their last name        | 31.5<br>(25.01)                |
| Share of votes to candidates in ballot boxes that do not contain their last name | 18.1<br>(18.21)                |
| Number of ballot boxes   | 354                            |

Standard deviations are in parentheses.

**Table 2: Effect of voter's last name on elections outcome**

Dependent variable: share of votes for candidates in 2003 local election

|   | (1)                       | (2)                       | (3)                       | (4)                        |
|---|---------------------------|---------------------------|---------------------------|----------------------------|
| Constant  | <b>18.1***</b><br>(31.11) |                           |                           |                            |
| Last name of candidate i appears in ballot j      | <b>13.5***</b><br>(11.66) | <b>13.3***</b><br>(12.50) | <b>11.8***</b><br>(12.45) | <b>19.1***</b><br>(13.24)  |
| Winner*last name                                  |                           |                           | <b>8.6***</b><br>(4.04)   |                            |
| <i>Hamula</i> less than 7.73% (median) *last name |                           |                           |                           | <b>-11.9***</b><br>(-5.77) |
| Fixed effects                                     | No                        | yes                       | yes                       | yes                        |
| Observations                                      | 1612                      | 1612                      | 1612                      | 1612                       |
| Adjusted R <sup>2</sup>                           | 0.077                     |                           |                           |                            |
| R <sup>2</sup> – Within                           |                           | 0.090                     | 0.148                     | 0.113                      |
| Between   |                           | 0.017                     | 0.162                     | 0.011                      |
| Overall   |                           | 0.078                     | 0.139                     | 0.093                      |

\*\*\* Significance at 1%.

\*\* Significance at 5%.

\* Significance at 10%.

**Table 3: Baseline regression**Dependent variable:  $\log[\text{turnout}/(1-\text{turnout})]$  in 2003 local election

|                                     | (1)                          | (2)                          | (3)                          | (4)                          | (5)                          |
|-------------------------------------|------------------------------|------------------------------|------------------------------|------------------------------|------------------------------|
| Constant                            | <b>4.625***</b><br>(10.52)   | <b>4.762***</b><br>(10.87)   | <b>1.870***</b><br>(4.95)    | <b>1.777***</b><br>(4.88)    | <b>1.736***</b><br>(4.64)    |
| Voter turnout in national elections | <b>0.014***</b><br>(3.38)    | <b>0.020***</b><br>(4.72)    | <b>0.025***</b><br>(8.20)    | <b>0.024***</b><br>(8.28)    | <b>0.024***</b><br>(8.13)    |
| Political competition index         | <b>-0.008***</b><br>(-3.82)  |                              | <b>-0.006***</b><br>(-4.14)  | <b>-0.006***</b><br>(-4.23)  | <b>-0.006***</b><br>(-4.05)  |
| Eligible population (log)           | <b>-0.358***</b><br>(-10.72) | <b>-0.393***</b><br>(-12.35) | <b>-0.266***</b><br>(-10.27) | <b>-0.256***</b><br>(-10.62) | <b>-0.250***</b><br>(-10.08) |
| Income per capita (log)             | <b>-1.219***</b><br>(-13.67) | <b>-1.468***</b><br>(-16.54) | <b>-0.441***</b><br>(-4.61)  | <b>-0.396***</b><br>(-4.63)  | <b>-0.431***</b><br>(-5.05)  |
| Competition-lag                     |                              | <b>-0.006***</b><br>(-2.85)  |                              |                              |                              |
| Orthodox Jews                       |                              |                              | 0.015<br>(0.07)              |                              |                              |
| Settlers                            |                              |                              | <b>-0.289**</b><br>(-2.39)   |                              |                              |
| Arabs                               |                              |                              | <b>1.252***</b><br>(11.77)   |                              | <b>1.298***</b><br>(13.65)   |
| Christians                          |                              |                              |                              | <b>0.910***</b><br>(5.90)    |                              |
| Muslims                             |                              |                              |                              | <b>1.315***</b><br>(13.04)   |                              |
| Druze                               |                              |                              |                              | <b>1.559***</b><br>(12.26)   |                              |
| Observations                        | 186                          | 146                          | 186                          | 186                          | 186                          |
| Adjusted R <sup>2</sup>             | 0.762                        | 0.836                        | 0.885                        | 0.890                        | 0.882                        |

\*\*\* Significance at 1%.

\*\* Significance at 5%.

\* Significance at 10%.

**Table 4: Effect of social identity,**Dependent variable:  $\log [\text{turnout}/(1-\text{turnout})]$  in 2003 local election

|  | (1)                         | (2)                         | (3)                         | (4)                        | (5)                         |
|--|-----------------------------|-----------------------------|-----------------------------|----------------------------|-----------------------------|
| Constant                                 | <b>2.734***</b><br>(4.00)   | <b>1.967**</b><br>(2.70)    | <b>1.793**</b><br>(2.44)    | <b>1.782**</b><br>(2.33)   | <b>1.561**</b><br>(2.00)    |
| Voter turnout in national elections      | <b>0.026***</b><br>(5.48)   | <b>0.029***</b><br>(6.16)   | <b>0.030***</b><br>(6.33)   | <b>0.030***</b><br>(6.18)  | <b>0.030***</b><br>(6.26)   |
| Political competition index              | <b>-0.014***</b><br>(-3.07) | <b>-0.014***</b><br>(-3.37) | <b>-0.015***</b><br>(-3.46) | <b>-0.014**</b><br>(-3.31) | <b>-0.014***</b><br>(-3.34) |
| Eligible population (log)                | <b>-0.221***</b><br>(-3.13) | <b>-0.173***</b><br>(-2.45) | <b>-0.173**</b><br>(-2.46)  | <b>-0.167**</b><br>(-2.33) | <b>-0.164**</b><br>(-2.29)  |
| Income per capita (log)                  | -0.173<br>(-0.73)           | -0.105<br>(-0.45)           | -0.037<br>(-0.16)           | -0.100<br>(-0.43)          | -0.044<br>(-0.19)           |
| Herfindhal-Hirschman Index               |                             | <b>1.434**</b><br>(2.48)    | <b>3.722**</b><br>(2.12)    |                            |                             |
| Herfindhal-Hirschman Index <sup>^2</sup> |                             |                             | -6.047<br>(-1.38)           |                            |                             |
| Biggest <i>hamula</i>                    |                             |                             |                             | <b>0.011**</b><br>(2.46)   | 0.027*<br>(1.94)            |
| Biggest <i>hamula</i> <sup>^2</sup>      |                             |                             |                             |                            | -0.000<br>(-1.24)           |
| Observations                             | 75                          | 75                          | 75                          | 75                         | 75                          |
| Adjusted R <sup>2</sup>                  | 0.367                       | 0.410                       | 0.418                       | 0.410                      | 0.414                       |

\*\*\* Significance at 1%.

\*\* Significance at 5%.

\* Significance at 10%.

**Table 5: Effect of compensation motive**

Dependent variable: log [turnout/(1-turnout)] in 2003 local election

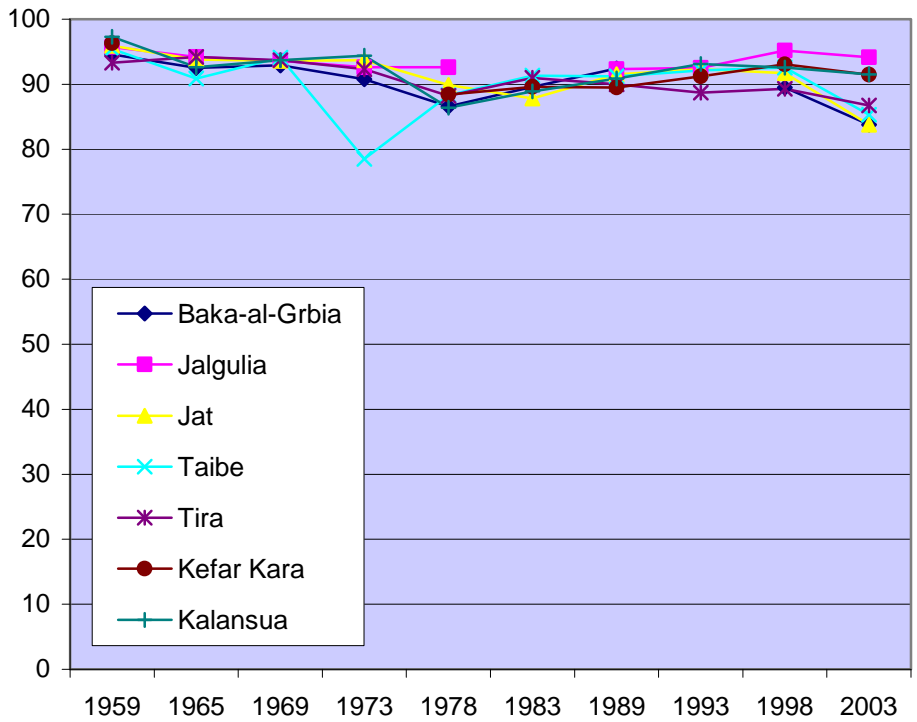
|  | All municipalities          | Jewish municipalities        | Arab municipalities         |
|--|-----------------------------|------------------------------|-----------------------------|
|  | (1)                         | (2)                          | (3)                         |
| Constant                                   | <b>2.113***</b><br>(3.76)   | <b>2.381***</b><br>(5.22)    | <b>2.734***</b><br>(4.00)   |
| Voter turnout in national elections        | <b>0.020***</b><br>(3.87)   | <b>0.019***</b><br>(4.67)    | <b>0.026***</b><br>(5.48)   |
| Political competition index                | <b>-0.006***</b><br>(-4.02) | <b>-0.004***</b><br>(-3.56)  | <b>-0.014**</b><br>(-3.07)  |
| Eligible population (log)                  | <b>-0.260***</b><br>(-9.48) | <b>-0.276***</b><br>(-11.83) | <b>-0.221***</b><br>(-3.13) |
| Income per capita (log)                    | <b>-0.423***</b><br>(-4.94) | <b>-0.478***</b><br>(-6.80)  | -0.173<br>(-0.73)           |
| Arabs                                      | <b>1.186***</b><br>(7.55)   |                              |                             |
| Arabs* Voter turnout in national elections | 0.127<br>(0.90)             |                              |                             |
| Observations                               | 186                         | 111                          | 75                          |
| Adjusted R <sup>2</sup>                    | 0.882                       | 0.786                        | 0.367                       |

\*\*\* Significance at 1%.

\*\* Significance at 5%.

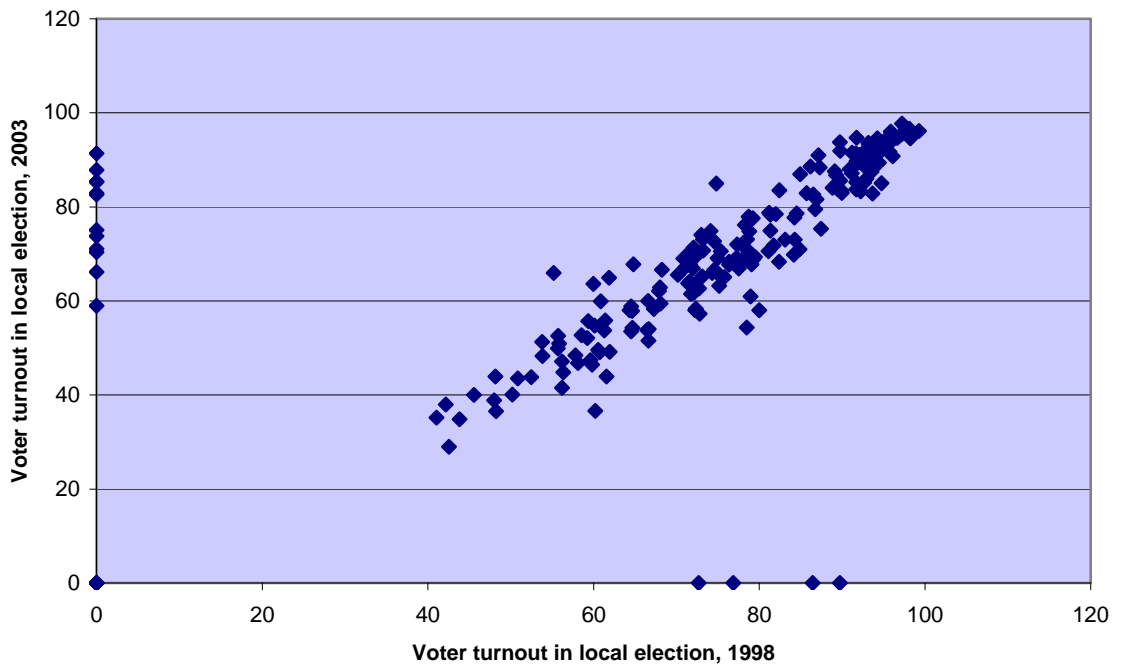
\* Significance at 10%.

Figure 1: Voter turnout in selected Arab towns/villages, 1959-2003



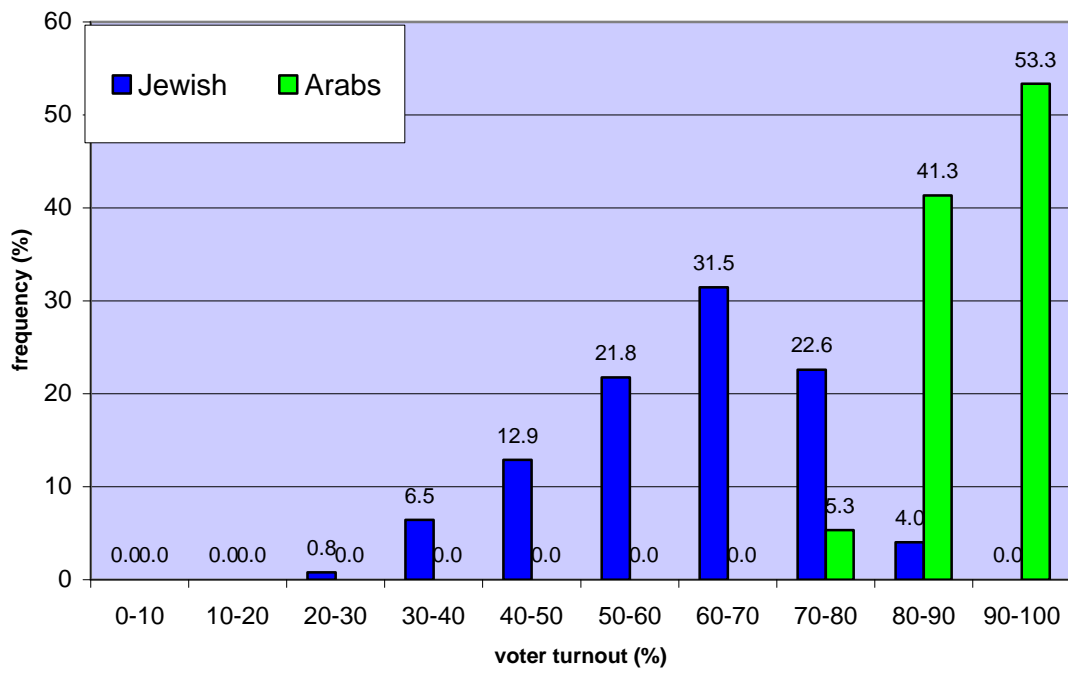
Source: Ministry of the Interior

Chart 2: Voter turnout in the last two elections



Source: Ministry of the Interior

**Chart 3: Voter turnout distribution, 2003 local elections**



Source: Ministry of the Interior



## References

Al-Haj Majid, "The Changing Arab Kinship Structure: The Effect of Modernization in an Urban Community," *Economic Development and Cultural Change*, Jan 1988, 36, 2, 237-258.

Ashworth John, Geys Benny and Heyndels Bruno, "Everyone Likes a Winner: An Empirical Test of the Effect of Electoral Closeness on Turnout in a Context of Expressive Voting," *Public Choice*, 2006, **128**: 383-405.

Ben-Bassat Avi, Dahan Momi and Reingewertz Yaniv, (2008) "The Political Economy of Local Government Crisis in Israel", mimeo.

Blais Andre, **To Vote Or Not To Vote: The Merits and Limits of Rational Choice Theory**, Pittsburgh: University of Pittsburgh Press, 2000.

Coate Stephen and Conlin Michael, "A Group Rule-Utilitarian Approach to Voter Turnout: Theory and Evidence," *American Economic Review*, vol. 94, no. 5, December 2004, 1476-1504.

Cohen Abner, **Arab Border-Villages in Israel**, Manchester University Press, 1965.

Feddersen Timothy and Sandroni Alvaro, "A Theory of Participation in Elections," *American Economic Review*, vol. 96, no. 4, September 2006, 1271-1282.

Fowler James H. and Kam Cindy D., "Beyond the Self: Social Identity, Altruism, and Political Participation," *The Journal of Politics*, vol. 69, no. 3, Aug 2007, 813-827.

Goldberg Giora (2001), "The Changes in the Behavior of Israeli Voter in Local Election," in **Local Government in Israel**, edited by Daniel Elazar and Chaim Klchheim, Jerusalem Center for Public Policy, 249-275.

Filer John E., Kenny Lawrence W. and Morton Rebecca B., "Redistribution, Income, and Voting," *American Journal of Political Science*, vol. 37, no. 1, Feb 1993, 63-87.

Harsanyi John C., "Rule Utilitarianism, Rights, Obligations and the Theory of Rational Behavior," *Theory and Decision*, vol. 12, no. 2, June 1980, 115-133.

Huddy Leonie, "Group Identity and Political Cohesion", in **Oxford Handbook of Political Psychology**, by David O. Sears, Leonie Huddy, Robert Jervis, 2003

Landau Yaakov (1993), **The Arab Minority in Israel, 1967-1991: Political Dimensions**. Am Oved, Eshkol/Hebrew University.

Matusaka John G. and Palda Filip, "The Downsian Voter Meets the Ecological Fallacy," *Public Choice*, vol. 77, 1993, 855-878.

Morton Rebecca B., "Groups in Rational Turnout Models," *American Journal of Political Science*, vol. 35, no. 3, Aug.1991, 758-776.

Morlan Robert L., "Municipal vs. National Election Voter Turnout: Europe and the United States," *Political Science Quarterly*, vol. 99, no. 3, Autumn 1984, 457-470.

Ozacky-Lazar Sara (2005). "2003 Local Election in Arab Municipalities – An Overview" in **Local Elections in Arab and Druze Municipalities (2003): Hamulote, Ethnic Groups and Political Parties**, edited by Rekhess Eli and Ozacky-Lazar Sara, Tel Aviv University, 11-17.

Rosenfeld Henry, "Hamula," *The Journal of Peasant Studies*, vol. 1, no. 2, Jan 1974, 43-244.

Schwartz Thomas. (1987), "Your Vote Counts on Account of the Way it is Counted: An Institutional Solution to the Paradox of Not Voting," *Public Choice* 54: 101-121.

Shachar R. and Nalebuff B. (1999) "Follow the Leader: Theory and Evidence on Political Participation," *American Economic Review* 89: 525-547.

Shamir Michal and Arian Asher, "Collective Identity and Electoral Competition in Israel," *American Political Science Review*, vol. 93, no. 2, June 1999, 265-277.

Shavit Yossi and Jennifer Pierce, (1991) "Sibship Size and Educational Attainment in Nuclear and Extended Families: Arabs and Jews in Israel," *American Sociological Review*, vol. 56, no. 3. June, pp. 321-330.

Stacklov Oded, (2008), "On the Effectiveness of Central Government Control on Fiscal Performance of Local Government in Israel", mimeo.

Tajfel Henri, **Human Groups and Social Categories**. Cambridge, England: Cambridge University Press, 1981.

Uhlener Carole J., "Rational Turnout: The Neglected Role of Groups," *American Journal of Political Science*, vol. 33, no. 2, May 1989, 390-422.

# CESifo Working Paper Series

for full list see [www.cesifo-group.org/wp](http://www.cesifo-group.org/wp)

(address: Poschingerstr. 5, 81679 Munich, Germany, [office@cesifo.de](mailto:office@cesifo.de))

---

- 2269 Thomas Aronsson and Erkki Koskela, Outsourcing and Optimal Nonlinear Taxation: A Note, April 2008
- 2270 Gary E. Bolton, Claudia Loebbecke and Axel Ockenfels, How Social Reputation Networks Interact with Competition in Anonymous Online Trading: An Experimental Study, April 2008
- 2271 Nikolaus Wolf, Scylla and Charybdis. Explaining Europe's Exit from Gold, January 1928 – December 1936, April 2008
- 2272 Michael Funke and Marc Gronwald, The Undisclosed Renminbi Basket: Are the Markets Telling us something about where the Renminbi – US Dollar Exchange Rate is Going?, April 2008
- 2273 Thor Olav Thoresen and Annette Alstadsæter, Shifts in Organizational Form under a Dual Income Tax System, April 2008
- 2274 Helge Berger and Volker Nitsch, Too many Cooks? Committees in Monetary Policy, April 2008
- 2275 Yin-Wong Cheung and Eiji Fujii, Deviations from the Law of One Price in Japan, April 2008
- 2276 Michael S. Michael, Sajal Lahiri and Panos Hatzipanayotou, Integrated Reforms of Indirect Taxes in the Presence of Pollution, April 2008
- 2277 Bas Jacobs, Is Prescott Right? Welfare State Policies and the Incentives to Work, Learn and Retire, April 2008
- 2278 Burkhard Heer and Alfred Maußner, Value Function Iteration as a Solution Method for the Ramsey Model, April 2008
- 2279 Jarko Fidrmuc and Christa Hainz, Integrating with their Feet: Cross-Border Lending at the German-Austrian Border, April 2008
- 2280 Kristof Dascher and Alexander Haupt, The Political Economy of Regional Integration Projects at Borders where Rich and Poor Meet: The Role of Cross-Border Shopping and Community Sorting, April 2008
- 2281 Katrin Assenmacher-Wesche and M. Hashem Pesaran, A VECX\* Model of the Swiss Economy, April 2008
- 2282 Christophe Rault, Robert Sova and Ana Maria Sova, Modeling International Trade Flows between CEEC and OECD Countries, April 2008

- 2283 Timo Boppart, Josef Falkinger, Volker Grossmann, Ulrich Woitek and Gabriela Wüthrich, Qualifying Religion: The Role of Plural Identities for Educational Production, April 2008
- 2284 Armin Falk, David Huffman and W. Bentley MacLeod, Institutions and Contract Enforcement, April 2008
- 2285 Axel Dreher and Stefan Voigt, Does Membership in International Organizations Increase Governments' Credibility? Testing the Effects of Delegating Powers, April 2008
- 2286 Xavier Freixas and Bruno M. Parigi, Lender of Last Resort and Bank Closure Policy, April 2008
- 2287 Regina Dionisius, Samuel Muehleemann, Harald Pfeifer, Günter Walden, Felix Wenzelmann and Stefan C. Wolter, Cost and Benefit of Apprenticeship Training – A Comparison of Germany and Switzerland, April 2008
- 2288 Francesco Daveri and Cecilia Jona-Lasinio, Off-Shoring and Productivity Growth in the Italian Manufacturing Industries, April 2008
- 2289 Mikael Priks, Do Surveillance Cameras Affect Unruly Behavior? A Close Look at Grandstands, April 2008
- 2290 Marianna Belloc and Daniela Federici, A Two-Country NATREX Model for the Euro/Dollar, April 2008
- 2291 Nicolas Treich, The Value of a Statistical Life under Ambiguity Aversion, April 2008
- 2292 J. Atsu Amegashie, Socially-Tolerable Discrimination, April 2008
- 2293 M. Hashem Pesaran and Andreas Pick, Forecasting Random Walks Under Drift Instability, April 2008
- 2294 Steven Brakman, Gus Garita, Harry Garretsen and Charles van Marrewijk, Unlocking the Value of Cross-Border Mergers and Acquisitions, May 2008
- 2295 Eric O'N. Fisher and Kathryn G. Marshall, The Structure of the American Economy, May 2008
- 2296 Claudia M. Buch and Martin Schlotter, Regional Origins of Employment Volatility: Evidence from German States, May 2008
- 2297 Helmuth Cremer, Philippe De Donder, Dario Maldonado and Pierre Pestieau, Taxing Sin Goods and Subsidizing Health Care, May 2008
- 2298 Reinhilde Veugelers and Frederick van der Ploeg, Reforming European Universities: Scope for an Evidence-Based Process, May 2008

- 2299 Jon H. Fiva and Lars J. Kirkebøen, Does the Housing Market React to New Information on School Quality?, May 2008
- 2300 Tina Klautke and Alfons J. Weichenrieder, Interest Income Tax Evasion, the EU Savings Directive, and Capital Market Effects, May 2008
- 2301 Harald Badinger and Peter Egger, GM Estimation of Higher Order Spatial Autoregressive Processes in Panel Data Error Component Models, May 2008
- 2302 Jan K. Brueckner, Slot-Based Approaches to Airport Congestion Management, May 2008
- 2303 Sören Blomquist, Vidar Christiansen and Luca Micheletto, Public Provision of Private Goods and Nondistortionary Marginal Tax Rates, May 2008
- 2304 Dan Anderberg and Alessandro Balestrino, The Political Economy of Post-Compulsory Education Policy with Endogenous Credit Constraints, May 2008
- 2305 Tomer Blumkin, Yoram Margalioth and Efraim Sadka, The Role of Stigma in the Design of Welfare Programs, May 2008
- 2306 Vesa Kannianen and Paolo M. Panteghini, Tax Neutrality: Illusion or Reality? The Case of Entrepreneurship, May 2008
- 2307 Thomas Dohmen, Armin Falk, David Huffman and Uwe Sunde, The Intergenerational Transmission of Risk and Trust Attitudes, May 2008
- 2308 Guglielmo Maria Caporale and Mario Cerrato, Using Chebyshev Polynomials to Approximate Partial Differential Equations, May 2008
- 2309 Peter Egger and Doina Maria Radulescu, Labour Taxation and Foreign Direct Investment, May 2008
- 2310 Laurent Linnemer, Dissipative Advertising Signals Quality even without Repeat Purchases, May 2008
- 2311 Jordi Jofre-Monseny and Albert Solé-Ollé, Which Communities should be afraid of Mobility? The Effects of Agglomeration Economies on the Sensitivity of Firm Location to Local Taxes, May 2008
- 2312 Andreas Haufler and Ferdinand Mittermaier, Unionisation Triggers Tax Incentives to Attract Foreign Direct Investment, May 2008
- 2313 Ronel Elul and Piero Gottardi, Bankruptcy: Is it enough to Forgive or must we also Forget?, May 2008
- 2314 Andreas Irmen and Johanna Kuehnel, Productive Government Expenditure and Economic Growth, May 2008

- 2315 Beate Henschel, Carsten Pohl and Marcel Thum, Demographic Change and Regional Labour Markets: The Case of Eastern Germany, May 2008
- 2316 Gabriel Felbermayr, Wido Geis and Wilhelm Kohler, Restrictive Immigration Policy in Germany: Pains and Gains Foregone?, May 2008
- 2317 Michael Hofmann, Gerhard Kempkes and Helmut Seitz, Demographic Change and Public Sector Budgets in a Federal System, May 2008
- 2318 Paul De Grauwe, Macroeconomic Modeling when Agents are Imperfectly Informed, June 2008
- 2319 Johann K. Brunner and Susanne Pech, Optimum Taxation of Inheritances, June 2008
- 2320 Thomas Eichner and Marco Runkel, Corporate Income Taxation of Multinationals in a General Equilibrium Model, June 2008
- 2321 Rainald Borek and Matthias Wrede, Subsidies for Intracity and Intercity Commuting, June 2008
- 2322 Patricia Apps and Ray Rees, Testing the Pareto Efficiency of Household Resource Allocations, June 2008
- 2323 Amihai Glazer, Vesa Kannianen and Panu Poutvaara, Firms' Ethics, Consumer Boycotts, and Signalling, June 2008
- 2324 Claudia M. Buch, Jörg Döpke and Kerstin Stahn, Great Moderation at the Firm Level? Unconditional vs. Conditional Output Volatility, June 2008
- 2325 Helmuth Cremer, Philippe De Donder, Dario Maldonado and Pierre Pestieau, Forced Saving, Redistribution and Nonlinear Social Security Schemes, June 2008
- 2326 M. Hashem Pesaran and Paolo Zaffaroni, Optimal Asset Allocation with Factor Models for Large Portfolios, June 2008
- 2327 Harald Badinger and Peter Egger, Horizontal versus Vertical Interdependence in Multinational Activity, June 2008
- 2328 Jan K. Brueckner and Harris Selod, A Theory of Urban Squatting and Land-Tenure Formalization in Developing Countries, June 2008
- 2329 Paolo M. Panteghini, Corporate Debt, Hybrid Securities and the Effective Tax Rate, June 2008
- 2330 Guglielmo Maria Caporale, Juncal Cuñado and Luis A. Gil-Alana, Modelling Long-Run Trends and Cycles in Financial Time Series Data, June 2008
- 2331 Avi Ben-Bassat and Momi Dahan, Social Identity and Voter Turnout, June 2008