

Li, Hongbin; Li, Lei; Ma, Hong

**Working Paper**

## China's Skill-Biased Imports

IZA Discussion Papers, No. 15423

**Provided in Cooperation with:**

IZA – Institute of Labor Economics

*Suggested Citation:* Li, Hongbin; Li, Lei; Ma, Hong (2022) : China's Skill-Biased Imports, IZA Discussion Papers, No. 15423, Institute of Labor Economics (IZA), Bonn

This Version is available at:

<https://hdl.handle.net/10419/263639>

**Standard-Nutzungsbedingungen:**

Die Dokumente auf EconStor dürfen zu eigenen wissenschaftlichen Zwecken und zum Privatgebrauch gespeichert und kopiert werden.

Sie dürfen die Dokumente nicht für öffentliche oder kommerzielle Zwecke vervielfältigen, öffentlich ausstellen, öffentlich zugänglich machen, vertreiben oder anderweitig nutzen.

Sofern die Verfasser die Dokumente unter Open-Content-Lizenzen (insbesondere CC-Lizenzen) zur Verfügung gestellt haben sollten, gelten abweichend von diesen Nutzungsbedingungen die in der dort genannten Lizenz gewährten Nutzungsrechte.

**Terms of use:**

*Documents in EconStor may be saved and copied for your personal and scholarly purposes.*

*You are not to copy documents for public or commercial purposes, to exhibit the documents publicly, to make them publicly available on the internet, or to distribute or otherwise use the documents in public.*

*If the documents have been made available under an Open Content Licence (especially Creative Commons Licences), you may exercise further usage rights as specified in the indicated licence.*

DISCUSSION PAPER SERIES

IZA DP No. 15423

**China's Skill-Biased Imports**

Hongbin Li  
Lei Li  
Hong Ma

JULY 2022

## DISCUSSION PAPER SERIES

IZA DP No. 15423

# China's Skill-Biased Imports

**Hongbin Li**

*Stanford University and IZA*

**Lei Li**

*University of Mannheim and IZA*

**Hong Ma**

*Tsinghua University*

JULY 2022

Any opinions expressed in this paper are those of the author(s) and not those of IZA. Research published in this series may include views on policy, but IZA takes no institutional policy positions. The IZA research network is committed to the IZA Guiding Principles of Research Integrity.

The IZA Institute of Labor Economics is an independent economic research institute that conducts research in labor economics and offers evidence-based policy advice on labor market issues. Supported by the Deutsche Post Foundation, IZA runs the world's largest network of economists, whose research aims to provide answers to the global labor market challenges of our time. Our key objective is to build bridges between academic research, policymakers and society.

IZA Discussion Papers often represent preliminary work and are circulated to encourage discussion. Citation of such a paper should account for its provisional character. A revised version may be available directly from the author.

ISSN: 2365-9793

**IZA – Institute of Labor Economics**

Schaumburg-Lippe-Straße 5–9  
53113 Bonn, Germany

Phone: +49-228-3894-0  
Email: [publications@iza.org](mailto:publications@iza.org)

[www.iza.org](http://www.iza.org)

## ABSTRACT

---

### China's Skill-Biased Imports\*

China has witnessed rapid increases in the skill premium over the last few decades. In this paper, we study the short-run effect of capital goods imports on skill premium in China. The surge in capital goods imports, which embody advanced technology, can explain the rising demand for skills in China. We exploit regional variations in capital goods import exposure stemming from initial differences in import structure and instrument for the capital goods import growth using exchange rate movements. A city at the 75th percentile of the distribution of capital goods imports growth has a higher skill premium by 5 percentage points (0.38 standard deviation) over the one at the 25th percentile. To explore the underlying mechanism, we provide firm-level evidence and show that imported capital goods are skill-complementary.

**JEL Classification:** F16, J20, J31, O33

**Keywords:** imported capital goods, skill-biased technological change, skill premium

**Corresponding author:**

Lei Li

University of Mannheim

68131 Mannheim

Germany

E-mail: lei.li@uni-mannheim.de

---

\* We thank Pietro Biroli, Lorenzo Casaburi, David Dorn, Peter Egger, David Hémous, Nir Jaimovich, Will Kohler, Devashish Mitra, Ralph Ossa, Dina Pomeranz, Ariell Reshef, Hannes Schwandt, Xinzheng Shi, Asha Sundaram, Yongjin Wang, Fabrizio Zilibotti, Josef Zweimüller and participants in various seminars and conferences for valuable comments. We thank the China Data Center of Tsinghua University and Qiong Zhang for data support. Fundings by the German Research Foundation (DFG) through CRC TR 224 (Project B06) and the Swiss National Science Foundation (grant BSSGIO\_155804) are gratefully acknowledged by Lei Li.

# 1 Introduction

This paper studies the labor market consequences of capital goods imports, an important measure of imported technology (Burstein, Cravino and Vogel, 2013; Parro, 2013; Raveh and Reshef, 2016). While skill-biased technological change has been identified as one of the major driving forces for the rising demand for skills in developed countries (e.g., Katz and Murphy, 1992; Katz and Autor, 1999), its impact on the labor markets in developing countries is less known. For developing countries, technological advances mainly come from the adoption of foreign technologies. In this paper, we show that imported capital goods, which embody advanced technology, increase skill premium in developing countries like China.<sup>1</sup>

We show that importing skill-complementary capital goods drives up the demand for skilled workers and increases skill premium, as capital and skill are complementary in production (Krusell et al., 2000). China offers a particularly suitable setting to study this topic, as it is the largest developing country that has witnessed rises in both capital goods imports and demand for skilled labor. Indeed, Figure 1 shows a simultaneous rise in the skill wage premium, i.e., the wage gap between workers with a college degree and those without, and the amount of high-skilled workers in China during the 1990s and 2000s, implying an increasing demand for skilled workers. Figure 2 shows some macro trends, suggesting that the imports of capital goods took off in the 1990s, around the same time when the skill premium started to rise.

Empirically, we exploit city-level variations in skill premium using the Urban Household Survey data and import exposure using the administrative trade record from China’s Customs Office. To tackle causality, we use the city-level exchange rate exposure as the instrumental variable for capital goods imports. Because RMB was pegged to USD, a change in the exchange rate between the U.S. dollar and Euro would cause the RMB/Euro exchange rate to move exogenously. As different cities import from different countries, they are subject to exchange

---

<sup>1</sup>Katz and Murphy (1992); Berman, Bound and Griliches (1994); Bekman, Bound and Machin (1998); Acemoglu (1998, 2003); Autor, Levy and Murnane (2003) show that skill-biased technical change is one of the major driving forces for U.S.’s rising skill premium. The trade literature stresses that trade in intermediate inputs and offshoring can also drive up demand for skills in both developed and developing countries (Feenstra and Hanson, 1996, 1997, 1999; Grossman and Rossi-Hansberg, 2008; Hummels et al., 2014; and Acemoglu, Gancia and Zilibotti, 2015). In particular, Burstein, Cravino and Vogel (2013); Parro (2013); Fan (2018) discuss the imported capital goods channel from theoretical perspective, and Raveh and Reshef (2016) use cross-country data and Koren and Csillag (2019) use firm-worker data to examine this channel.

rate shocks to different degrees, which is the source of identification in our empirical work. In the robustness check, we exclude China's imports from the United States and trade partners whose currencies are pegged to the U.S. dollars. Our first-stage regression results demonstrate that exchange rate movements are highly correlated with China's capital goods imports, and they pass the weak instrument tests.

We find that importing capital goods is indeed a key factor driving up the skill premium in China. An increase in local penetration of capital imports, defined as the share of the accumulated capital imports over total capital stock, by one standard deviation increases the skill premium by 14 percentage points. Specifically, a city at the 75th percentile of the distribution of capital goods import intensity would have a skill premium 5.3 percentage points higher (0.38 standard deviation) than that of a city at the 25th percentile. The effect on the skill wage premium is larger for capital goods sourced from R&D-intensive countries, echoing the work of Raveh and Reshef (2016). Using a cross-country sample, Raveh and Reshef (2016) show that countries importing more R&D-intensive capital goods have higher skill premium.

Employing firm-level data, we provide direct evidence that imported capital equipment drives up demand for skills. By linking the Annual Survey of Industrial Production (ASIP) data with the administrative record from China's Customs Office, we show that firms importing more capital goods hire more skilled workers, use computers more intensively, pay higher wages, and have higher labor productivity. These findings confirm capital-skill complementarity, as documented in Griliches (1969); Goldin and Katz (1998); Krusell et al. (2000). To further confirm the complementarity between skill and imported capital equipment, we use the employer-employee matched data in 2015 to show that operators of imported machines earn more than domestic machine operators in the same firm. In Hungary, imported machine operators also enjoy wage premium. Koren and Csillag (2019) show that Hungarian workers who operate imported machines earn more than ordinary workers.

Can other trade-related channels explain the rising skill premium in China?<sup>2</sup> While we focus on imported technology or how technological change has happened in China, previ-

---

<sup>2</sup>Standard trade models, such as the Stolper-Samuelson theorem, would predict a narrowing wage gap in a labor-abundant developing country such as China.

ous trade literature can explain why China has imported technology (Goldberg and Pavcnik, 2007; Goldberg, 2015; Pavcnik, 2017). Offshoring or FDI could increase the demand for skilled workers if the offshored parts or tasks are relatively more skill-intensive in the recipient developing countries (Feenstra and Hanson, 1996, 1997, 1999; Hsieh and Woo, 2005). Access to foreign markets may also encourage exporters to upgrade technology (Zhu and Treffer, 2005; Verhoogen, 2008; Bustos, 2011*a,b*). The above theories do not contradict our explanation because importing capital goods could facilitate the offshoring practices in developing countries by multinationals. Empirically, both offshoring and exports would predict exporting firms to be more skill-intensive than other firms. In Table 1, we find that exporting firms were indeed more skill-intensive than non-exporting firms in 2014. However, they were less skill-intensive than non-exporting firms in 2004. Results in Table 4 also suggest that during our sample period (1998–2009) when China was at the early stage of globalization and exports were labor-intensive, imported capital goods were more likely to be the driving force for the rising skill premium in China.<sup>3</sup> Besides, skill improvements due to importing inputs (Crinò, 2012; Chen, Yu and Yu, 2017) and technology upgrades due to access to the foreign market and import competition (Wood, 1995; Pavcnik, 2003; Attanasio, Goldberg and Pavcnik, 2004; Bloom, Draca and Van Reenen, 2016; Lu and Ng, 2013; Autor et al., 2017) may also drive up demand for skills. In the robustness checks, we will address these concerns.

The rest of the paper is organized as follows. Section 2 illustrates the empirical model and the identification strategy. Section 3 introduces the data and documents the data patterns. Section 4 and section 5 present the empirical results. Section 6 concludes.

---

<sup>3</sup>In Table 1, the skill share of capital goods importers was much higher than other firms, while the skill shares of exporting firms and non-exporting firms were similar in 2004. In 2014, however, exporters' skill share were much higher than non-exporters. The descriptive evidence suggests that both offshoring and export were not the major driving forces for the rising skill premium in China during the early stage of trade openness, while they have played growing role in driving up the skill premium as time goes by.

## 2 Empirical approach

### 2.1 Econometric specification

We rely on city-level variations to identify the impact of capital goods imports on the local skill premium by estimating the following equation:

$$y_{it} = \alpha \frac{K_{it}^{IM}}{K_{it}} + X_{it}\delta + Z_{jt}\lambda + \mu_i + \gamma_t + \varepsilon_{it}, \quad (1)$$

where subscripts  $i$  and  $t$  denote city and year, respectively.  $y_{it}$  is the skill premium at the city-year level.  $\frac{K_{it}^{IM}}{K_{it}}$ , the capital goods imports intensity, is defined as the share of the accumulated capital imports  $K_{it}^{IM}$  over total capital stock  $K_{it}$ .  $X_{it}$  includes a rich set of city-level covariates.  $\mu_i$  and  $\gamma_t$  are city and year fixed effects, respectively, which capture time-invariant city characteristics and macro shocks. To capture region-specific time-varying characteristics, we also include a measure for regional time trends,  $z_{jt}$ . Models are weighted by the start-of-period city-level population. Standard errors are clustered at the city level. A positive coefficient  $\alpha$  would indicate that imported capital goods have a positive impact on the skill premium.

### 2.2 Skill premium

To measure the city-level skill premium in equation (1), we estimate a Mincerian wage regression (Mincer, 1974) separately for each city in each year:

$$\ln(w_j^{it}) = \beta_1^{it} S_j^{it} + \beta_2^{it} E_j^{it} + \beta_3^{it} (E_j^{it})^2 + \beta_4^{it} M_j^{it} + \mu_j^{it} + \gamma_j^{it} + \varepsilon_j^{it}, \quad (2)$$

where  $\ln(w_j^{it})$  is the log value of wage for individual  $j$  in city  $i$  and year  $t$ .<sup>4</sup>  $S_j^{it}$  is an indicator for college education (i.e.,  $S_j^{it}=1$  if worker  $j$  holds a college degree or above, and 0 otherwise).  $E_j^{it}$  denotes an individual's working experience.  $M_j^{it}$  is an indicator for males.  $\mu_j^{it}$  indicates the employer's ownership type (state, collective or private).  $\gamma_j^{it}$  includes a set of dummies indicating the sector that worker  $j$  is in. Based on equation (2), the estimated coefficient  $\hat{\beta}_1^{it}$

---

<sup>4</sup>Wage is deflated to the 1992 price level.



gives the skill premium for city  $i$  in year  $t$ —i.e., the dependent variable for equation (1).

### 2.3 Import intensity of capital goods

The key independent variable  $\frac{K_{it}^{IM}}{K_{it}}$  in equation (1), the import intensity of capital goods, is defined as the share of the accumulated capital imports over total capital stock. We employ a perpetual inventory method to calculate it:

$$\frac{K_{it}^{IM}}{K_{it}} = \frac{(1 - \rho) K_{it-1}^{IM} + K_{it}^{IM:flow}}{K_{it}} \quad (3)$$

where the accumulated capital imports  $K_{it}^{IM}$  is the sum of the current year’s imports of capital goods and the previous year’s accumulated imports of capital goods after depreciation. The rate of depreciation is set at 10% (Kydlund and Prescott, 1982). We set 1997 as the initial year since it is the earliest year for which we have city-level trade data.<sup>5</sup> The city-level total capital stock data  $K_{it}$  is the aggregate capital stock of industrial enterprises above designated size, obtained from the Annual Surveys of Industrial Production (ASIP).

### 2.4 Instrumental-variable strategy

Two concerns emerge regarding the OLS estimation of equation (1). First, other economic forces may also affect changes in the skill premium. If these factors are also correlated with the choice to import capital goods, this would generate a spurious relationship between capital goods imports and the skill premium. One possible confounding factor is domestic innovation: a region that imports capital equipment may also happen to conduct more R&D itself, resulting in an increase/decrease in skill premium if the R&D activities are skill/unskilled-complementary. If this is the case, and domestic innovation is left in the error term, we will over/under-estimate the true impact of capital goods imports. Second, causality may go in the opposite direction. For example, regions with cheaper unskilled workers have less incentive

---

<sup>5</sup>This means that we assume that the imports of capital goods before 1997 were negligible, which is reasonable since the capital goods imports in China began to surge in 2002 and the total capital goods imports in 1997 was only 37% of that in 2002.

to import skill-complementary capital goods, and thus in this example, it is the skill premium that causes imported capital goods to change. If this is the case, then the OLS estimation may overstate the true effect of capital goods imports on the skill premium.

To address these endogeneity concerns, we identify the impact of imported capital goods on the skill premium by employing the exchange rate as the instrumental variable.<sup>6</sup> The exchange rate movement could be understood as a cost shock due to exchange rate changes: an appreciation of RMB against currencies of city  $i$ 's source countries lowers the price of imported capital goods, and therefore induces city  $i$  to import more foreign capital equipment. As a consequence, the demand for skills will rise because of capital-skill complementarity. To be specific, we use the multilateral real effective exchange rate movements to capture the change in costs of capital goods imports.

Specifically, we estimate the following equation,

$$\frac{K_{it}^{IM}}{K_{it}} = \theta \ln(REER_{it}) + X_{it}\delta + Z_{jt}\lambda + \mu_i + \gamma_t + \varepsilon_{it}, \quad (4)$$

where subscripts  $i$  and  $t$  denote city and year, respectively.  $X_{it}$  includes a set of city-level covariates that may also affect the decision to import capital goods.  $z_{jt}$  includes regional time trends. Finally,  $\mu_i$  and  $\gamma_t$  are city and year fixed effects, respectively.

The instrument variable,  $\ln(REER_{it})$ , is the log value of the real effective exchange rate between RMB and a basket of currencies of city  $i$ 's trading partners, defined as:

$$\ln(REER_{it}) = \sum_c [\varphi_{i,c,t-i} \times \ln(RER_{c,t})] = \sum_c \left[ \frac{k_{i,c,t-1}}{\sum_c k_{i,c,t-1}} \times \ln \left( \frac{e_{c,t}}{P_{China,t}/P_{c,t}} \right) \right], \quad (5)$$

where subscripts  $i$ ,  $c$ , and  $t$  denote city, country, and year, respectively.<sup>7</sup> Thus,  $REER_{it}$  is a geometrically weighted average of the bilateral real exchange rate,  $RER_{c,t}$ . The weight  $\varphi_{i,c,t-1}$  is city  $i$ 's lagged import shares of capital goods stock  $k_{i,c,t-1}$  from country  $c$ , which measures

<sup>6</sup>Exchange rate movements are generally considered as exogenous shocks affecting trade flows and are widely used in trade literature (Park et al., 2010; Campbell, 2016; Alfaro et al., 2017; Bustos and Rotemberg, 2017; Dai and Xu, 2017; Bastos, Silva and Verhoogen, 2018).

<sup>7</sup>Similar instruments using exchange rate fluctuation have been adopted in previous research such as Bastos, Silva and Verhoogen (2018).

the importance of capital goods imported from country  $c$ .  $RER_{c,t}$  is the real exchange rate between RMB and country  $c$ 's currency in year  $t$ , calculated as the bilateral nominal exchange rate  $e_{c,t}$  deflated by relative price indices. Note that  $e_{c,t}$  is defined as foreign currency per unit of RMB. Therefore, a higher RER indicates that RMB appreciates against the currency of foreign country  $c$ .

Clearly, the exposure to exchange rate shocks varies across cities. This variation arises from two sources. First, different cities import from different sources; for example, cities in Northeastern China import relatively more from Japan and Korea, while cities in South China import more from Southeast Asia countries. Second, different cities also have different industry structures and therefore the import weights change across cities.<sup>8</sup>

### 3 Data

Our empirical investigation is built on a rich set of micro-level data, including information on wages and employment status, exports, imports, and balance sheet information for manufacturing firms.

#### 3.1 Household survey and skill premium

We draw on the Urban Household Survey (UHS) from 1992 to 2009 for information on wages and jobs. The UHS is by far the most comprehensive household survey with the most extended time coverage in China. It offers detailed records on demographics, employment, income, taxes, and social security information for urban households. To ensure representativeness, the National Bureau of Statistics of China (NBSC) adopts a probabilistic and stratified multistage sampling method when selecting households. Because similar sampling methods and ques-

---

<sup>8</sup>In Figure 6, we show that a city with increasing REER (i.e., appreciating against trade partners) tends to import more capital goods. Appendix Table A.2 shows that the correlation of city's import share from major source countries are generally very low. For example, the correlation between import share from Japan versus Korea is about -0.02. These correlations suggest that cities have their own major sourcing countries and therefore are exposed to exchange rate shocks.

tionnaires have been used for each wave of the survey, the data is comparable over time and across regions. We obtain access to the UHS covering 18 provinces, which are representative in terms of geographic location and the level of economic development.<sup>9</sup> For our purposes, we focus on individuals who are between 16 and 60 years old and have labor income. In the empirical analysis, we use data from 1998 due to the limitation of trade data.

The wage premium for skilled workers shot up in China between 1992 and 2009. It remained around 20% in the late 1990s and then rose rapidly to 44% in 2009 (Figure 1). Note that the wage premium for skilled workers increased despite a dramatic increase in the supply of skilled workers due to the massive college expansion since 1999 (Li et al., 2012, 2017). The change in skill premium also diverges across regions. Figure 3 shows the return to college education across three different regions (i.e., the East, Central, and West). Before 2001, changes in skill premium manifest a similar trend across regions. For example, in 1992, skilled workers (workers with college degrees) earned about 13% more than unskilled workers (workers without college degrees), regardless where they resided, while in 2001 skilled workers in different locations earned about 29% more than unskilled workers. The skill premium, however, started to diverge across regions in 2001 when China entered the WTO. In 2009, for example, the skill premium in eastern cities reached 46%, while that of central and western China stayed at around 31% and 38%, respectively.

For the city-level skill premium used in the empirical analysis, we present the summary statistics in Table 2. From 1998 to 2009, the average skill premium in urban China is about 32% (standard deviation: 14%), with an inter-quartile range of 0.23 to 0.41.<sup>10</sup>

## 3.2 Trade data and import intensity

### 3.2.1 Trade data

---

<sup>9</sup>The 18 provinces include coastal provinces (Beijing, Guangdong, Jiangsu, Liaoning, Shandong, Shanghai, and Zhejiang), and inland provinces (Anhui, Chongqing, Gansu, Heilongjiang, Henan, Hubei, Jiangxi, Sichuan, Shaanxi, Shanxi, and Yunnan).

<sup>10</sup>For the rising skill premium in China, related literature includes Hsieh and Woo (2005); Han, Liu and Zhang (2012); Chen, Yu and Yu (2017); Ge, Yang and Tech (2014); Sheng and Yang (2017).

Data on imports of capital goods and intermediate goods by Chinese cities from different source countries, as well as exports, at six-digit HS categories, are collected by the General Administration of China Customs (GACC), for the period 1997 to 2009. For a sub-period of 2000–2006, we also have firm-level export and import information. In later extensions, we match the firm-level trade data with balance sheet and production information provided in the Annual Surveys of Industrial Production (ASIP). Finally, for the purpose of comparison, we also collect trade data for other countries from the UN Comrade Database.

Capital goods—such as computers and machinery—are durable goods that are used in the production of goods or services. We follow Burstein, Cravino and Vogel (2013) and define capital goods based on the International Standard Industrial Classification (ISIC-rev.3) and Broad Economic Classification (BEC).<sup>11</sup>

China has seen some very fast growth in capital goods imports in the last few decades. As shown in Figure 2, China only imported capital goods with a value of 27 billion U.S. dollars in 1992, but the value increased rapidly to 702 billion U.S. dollars in 2017. During our sample period (1998–2009), the average annual growth rate was over 20%, with accelerated growth since 1998.<sup>12</sup>

As a result, China has become one of the largest importers of capital goods in the world. As shown in Figure 4, in 1992, the share of capital goods in China’s total value of imports was 34%, which is 9 percentage points larger than the average of seven developed countries, including France, Germany, Italy, Japan, Korea, the United Kingdom, and the United States. By 2017, the gap rose to 13%. China’s share is also well above the average level of the other four BRICS countries, including Brazil, India, Mexico, and Russia.

China imports capital goods mainly from advanced economies, with imports from Japan, Taiwan, Korea, the United States, and Germany accounting for nearly 70% of the total value

---

<sup>11</sup>Specifically, capital goods include products that belong to the ISIC Rev. 3 codes 29-33, excluding those that are not belong to Broad Economic Classification (BEC) industry 41 (capital goods) and BEC industry 42 (Parts and accessories of capital goods) and adding those that belong to BEC industry 521 (transportation equipment used for industry). In ISIC Rev. 3, 29 refers to manufacture of machinery and equipment n.e.c; 30 refers to manufacture of office, accounting and computing machinery; 31 refers to manufacture of electrical machinery and apparatus n.e.c; 32 refers to manufacture of radio, television and communication equipment and apparatus; 33 refers to manufacture of medical, precision and optical instruments, watches and clocks.

<sup>12</sup>Between 1992 and 2017, the average annual growth rate was 14%. China is also one of the major producers of capital goods. However, more than 50% of Chinese exports in capital goods are processing trade. For example, the computers industry, processing exports account for over 95% of total exports. Furthermore, products exported by industrial countries appear to be higher quality than those from developing countries such as China (Schott, 2008).

of capital goods imports from 1997 to 2009 (Appendix Table A.1).

### *3.2.2 Firm-level data*

To provide additional evidence for capital-skill complementarity, we examine firms' usage of capital goods using two firm-level surveys. The first survey is the Annual Survey of Industrial Production (ASIP), collected by the NBSC. This dataset contains the balance sheet and production information for all state-owned enterprises (SOEs) and all non-state firms with annual sales above 5 million RMB, in mining, manufacturing, and public utility sectors.<sup>13</sup> In addition, the 2004 version of the survey, as part of the 2004 industrial census of China, reports employment by workers' education and also the number of computers used by each firm.

The second firm survey we use is the China Employer-Employee Survey (CEES), which is an employer-employee linked survey conducted in China. We have access to the 2015 wave, which was conducted in Guangdong province and included about 500 firms and 4000 employees. One advantage of this data is that we can directly observe the wages of machine operators and other workers, the value of machines, and whether the machines are imported.

### *3.2.3 Macro Data*

To construct our instrumental variables, we need to use the country-to-country bilateral real exchange rates, as well as city-level macro indicators. We collect real exchange rates from the Penn World Table (PWT 7.0, 1997–2009). In addition, we collect the city-level gross regional product (GRP), city-level capital stock, provincial-level FDI inflow, and consumer price index (CPI) from China Statistical Yearbooks and China City Statistical Yearbooks (1998–2009).

## **4 Capital goods imports and skill premium**

In this section, we examine whether capital goods imports can explain the rising demand for skilled workers by exploring city-level variations. Before reporting city-level regressions, we first present how skill wage premia and capital goods imports vary across the three regions of

---

<sup>13</sup>As documented in Brandt, Van Biesebroeck and Zhang (2012), firms in the ASIP dataset account for 90%, 91%, 97% and 70% of the gross asset, sales, export, and employment respectively in the manufacturing sector.

China (i.e., the East, Central, and West).

There are large variations in both the skill wage premia and capital goods imports across regions, and the two seem to be related. At the regional level, there are substantial variations in the imports of capital goods. The share of capital goods in total imports is much larger in Eastern China than in Central and Western China, and the trends of growth in different regions are also quite divergent (Figure 5). Skill premia also started to diverge across regions in the early 2000s as shown in Figure 3, with those in Eastern China becoming much higher than those in other regions.

#### **4.1 Exchange rates and imported capital goods**

The identification idea is that an exogenous appreciation of RMB against other currencies will increase China's imports of capital goods. This relationship is clear in Figure 6. For example, as shown in the top left panel, China's imports of capital goods from the U.S. relative to France (dashed line) follow closely the exchange rate movement of the U.S. dollar against the Euro (the solid line) from 1997 to 2009. The patterns are similar for the U.S. vs. Germany, Japan vs. Germany, and the U.S. vs. Korea, indicating that more capital goods are imported from one country relative to the other when it is cheaper to do so.

Our estimation of Equation (4), the first-stage equation, yields similar results; i.e., appreciating RMB vs. USD increases China's imports of capital goods. Column (1) of Table 3 reports a simple regression with capital goods imports as the dependent variable and REER as the key independent variable. City fixed effects, year fixed effects, and regional time trends are also controlled. The coefficient on REER is positive and significant at the 1% level, suggesting that the city-level weighted exchange rate is positively associated with the intensity of capital goods imports.

To test the validity of the instrumental variable, the capital-goods-import-weighted exchange rate, we run two sets of counterfactual tests. First, we test whether exchange rates weighted using exports or non-capital goods imports can also explain capital goods imports. If they do, then our IV is likely to be invalid. In Column (2), we add as an independent

variable the export-weighted exchange rate. Supposedly, the export-weighted exchange rate should not affect imports of capital goods, especially when we also have capital-goods-import-weighted exchange rate included in the regression. Indeed, only our IV can explain capital goods imports, but not the export-weighted exchange rate, which is not statistically significantly different from zero. In Column (4), we also include the non-capital-goods-weighted exchange rate, and again it cannot explain the variation of capital goods imports, while the result for the capital-goods-weighted exchange rate remains. These results suggest that our IVs are valid.

Second, we test whether our IV is correlated with other trade variables such as exports or imports of non-capital goods. In Column (3), we switch to the dependent variable, exports as a percent of the cities' total value-added, or GRP (Gross Regional Product). As expected, RMB appreciation reduces exports, but the capital-goods-import-weighted exchange rate is uncorrelated to exports. The results are similar when we use non-capital goods imports relative to GRP (Gross Regional Product) as the dependent variable (Column (5)). These results again show that the capital-goods-import-weighted exchange rate is a viable instrumental variable.

Finally, our instrumental variables pass the tests for under-identification and weak instruments. We first report the heteroscedasticity-robust Kleibergen-Paap LM statistic (Kleibergen and Paap, 2006) in Column (2) for under-identification and weak instruments. The test statistics reject the null hypothesis that the model is under-identified. We run four tests for weak instruments: the Cragg and Donald (1993) Wald F statistics under the assumption of homoscedasticity, the Kleibergen and Paap (2006) Wald F statistic under the assumption of heteroscedasticity, the Anderson and Rubin (1949) Wald test F statistic, and Stock and Wright (2000) LM statistic. The test statistics reject the null hypothesis that the excluded instruments are jointly equal to zero.<sup>14</sup>

## 4.2 Capital goods imports and skill premium

We first present the ordinary least squares (OLS) results as a benchmark. In Column (1) of

---

<sup>14</sup>While the Cragg-Donald Wald F statistic has critical values tabulated by Stock and Yogo (2005), the Kleibergen and Paap Wald F statistic does not have corresponding critical values. A common practice is to use the Stock-Yogo critical values as benchmarks for both of the two tests.



Table 4, we report an OLS regression with the city-level skill wage premium as the dependent variable, and we control for city fixed effects, year fixed effects, and regional time trends. The coefficient on capital goods import intensity is positive and significantly different from zero, suggesting that imports of capital goods have a positive and significant effect on the city-level skill premium. The magnitude of the coefficient is 0.03.

IV regression results confirm that the imports of capital goods have a positive effect on the skill wage premium at the city level. In Column (2) of Table 4, we report the 2SLS results. The coefficient on the imported capital goods intensity variable is positive and significantly different from zero, suggesting that importing capital goods into a city has a positive impact on the city-level skill wage premium. Moreover, the coefficient of the IV estimate is much larger than the OLS estimate, suggesting that the OLS estimate is downward-biased.

The point estimate of 0.21 is also quite large economically. This means when imported capital goods intensity increases by one standard deviation, the skill premium increases by 14 percentage points. Putting this into context, considering a city at the 25th percentile of the distribution of capital goods imports, its skill premium will rise by 5 percentage points  $((0.29-0.04)*0.21)$  or 0.38 of a standard deviation  $((0.29-0.04)*0.21/0.14)$  if its import intensity increases to the level of a city at the 75th percentile. This finding is consistent with a cross-country study by Raveh and Reshef (2016), who finds that an increase in skill-complementary capital goods from the 25th to the 75th percentile could explain about two-thirds of the inter-quartile rise in the skill premium.

One concern with the simple regression reported in Column (2) is that the imported capital goods intensity may have picked up the effect of exports, as cities that import a lot of capital goods may also be large exporters at the same time. The direction of potential bias is ambiguous since the impact of exports on the skill wage premium could go either way. On the one hand, as we discussed before, if a city specializes in exporting labor-intensive goods, then exports may drive up demand for unskilled labor and therefore reduce the skill premium. On the other hand, as shown in Verhoogen (2008); Bustos (2011*a*), foreign markets may be more sophisticated to the extent that exporters tend to hire more skilled workers, driving up

the demand for skilled workers.

Controlling for the effect of exports in the skill premium regressions, we find that our result for the impact of imported capital goods does not change much. In Column (3), we augment the baseline regression by including exports as an additional regressor, and we instrument exports using an export-weighted exchange rate. The estimated effect on capital goods imports does not change much, implying the impact is not through exports. Meanwhile, there is no evidence of exports having a separate impact on the skill wage premium in China, as the coefficient of exports is not precisely estimated.

Another concern is that the exchange rate movement may also affect the imports of intermediate inputs, which also correlate with the skill wage premium. For example, if imported intermediate inputs are more sophisticated to work with, factories may need skilled workers to work with them and, therefore, imported intermediate goods may have a positive effect on the skill premium. Controlling for imports of intermediate inputs, however, encounters us with the problem of multi-collinearity. So we sum up exports and non-capital goods imports (relative to GRP) as a general control for openness and then construct an appropriate exchange rates instrument accordingly. As shown in Column (4), the result is essentially unchanged.

The capital-goods-import-weighted exchange rate may also be correlated with foreign direct investment (FDI), which may also affect the skill premium. For example, foreign multinationals may invest more in skill-intensive sectors and favor skilled workers at the same time.<sup>15</sup> In this example, FDI just provides us with a channel of how imported capital goods have affected the skill wage premium. Nevertheless, to test whether FDI has an additional impact on the skill wage premium, in Column (5), we further control for provincial FDI stock relative to its total value added (gross regional production, GRP).<sup>16</sup> Again, the impact of capital goods imports does not change much, while that of FDI is not precisely estimated.

In addition, we also conduct two other robustness checks. First, we expect capital goods

---

<sup>15</sup>The offshoring model by Feenstra and Hanson (1996, 1997, 1999), for example, shows that firms in developed countries tend to offshore their less skill-intensive production or activities to developing countries. Those activities, however, are more skill-intensive than the local activities or tasks. Thus offshoring leads to higher skill premium in both home and host countries.

<sup>16</sup>Unfortunately, due to data limitations, we do not have access to FDI data at the city level. We also do not have data at the province-country level to construct corresponding instruments.

imports from more advanced countries to have a larger impact on the skill premium than those from other countries because most technological changes happen in these countries (Eaton and Kortum, 2001). Table 5 confirms this prediction. We focus on capital goods imported from the seven most advanced countries, including France, Germany, Italy, Japan, Korea, the United Kingdom, and the United States. As expected, the impact of capital goods imports from these countries is substantially larger than the impact of those from an average country. More specifically, a 10 percentage point increase in the import intensity of capital goods can increase the skill premium by 3.8 percentage points (columns 1 & 2).

Second, the assumption for identification is that our instrumental variable, the capital-goods-import-weighted exchange rate, is not correlated with the Chinese labor market through other omitted variables. This assumption held for non-USD currencies (or equivalents) for the period before 2005 when RMB was pegged to the U.S. dollar. During that period, the bilateral exchange rate changes between RMB and non-USD currencies actually reflect the exchange rate changes of these countries' currencies against the US dollar, which is exogenous to the Chinese local labor market. Using the pre-2005 sample and excluding the United States as the import origins, we find the main regression results do not change qualitatively (Table 6).

## 5 Mechanism

In the previous section, we have shown that cities that have imported more capital goods tend to pay a higher wage premium for skilled workers. The above results rely on the variations in cities' exposures to exogenous exchange rate changes. This section will provide more direct evidence that skill and imports of capital goods are complementary.

### 5.1 The wage premium of operating imported machines

First, we employ the China Employer-Employee Survey (CEES), which interviewed workers and employers from 500 manufacturing firms in Guangdong province in 2015. The advantage of using CEES is that it records individual workers' job responsibilities within each firm, thus allowing us to estimate within-firm wage inequality by controlling for firm fixed effects. In particular, besides their education level, the CEES asked about whether a worker is operating

a machine and, if he does, whether the machine is imported or domestically made. The disadvantage is that the CEES is a cross-sectional sample of firms, so the estimates may be subject to endogenous concerns. With the aforementioned factors in mind, we run the following specification:

$$\ln(w_{jk}) = \beta_1 S_j + \beta_2 \sum_{g=1}^3 M_{jg} + X_j \delta + Z_k \lambda + \varepsilon_{jk}, \quad (6)$$

where  $w_{jk}$  denotes the wage rate for worker  $j$  in firm  $k$ , and  $S_j$  is an indicator which equals 1 if the worker has a college degree or above and 0 otherwise.  $\sum_{g=1}^3 M_{jg}$  contains a set of indicators:  $M_{j1}$  indicates whether the worker is an operator of imported machinery,  $M_{j2}$  indicates whether the worker is an operator of domestic machinery, and  $M_{j3}$  indicates whether the worker uses a computer at work.  $X_j$  contains a set of individual characteristics such as gender, occupation, working experience, and its squared term.  $Z_k$  controls for firm ownership (state, collective or private). In the most rigorous regression, we also include firm fixed effects to control for any firm-level factors that may affect workers' wages. All regressions are weighted by the inverse of the sampling probability.<sup>17</sup>

Table 7 presents the results. We first test in Column (1) workers' college premium after controlling for workers' characteristics, including gender, work experience (and its squared term). The result shows that college workers earn 29 percentage points more than workers without college degrees. Column (2) considers machine operators. It shows that operating a domestic machine does not raise the pay; however, operating an imported machine does. Furthermore, if a worker uses a computer at work, she will also be paid better. The college premium is now down to 25 percentage points, implying that part (about 14%) of the college premium comes from the fact that more educated workers tend to operate imported machines or use computers. Column (3) further controls workers' occupations. College premium drops by another 4 percentage points. Not surprisingly, managers, technicians, and salespersons earn more relative to production workers (the benchmark group), though the estimate of the

---

<sup>17</sup>The sampling probability is calculated as the share of workers being surveyed relative to the total number of workers in the same occupation within the same firm.

salesperson premium is not statistically significant. Column (4) controls for firm ownership. The results remain similar to those in Column (3). Finally, in Column (5), we use firm fixed effects to account for all unobserved firm-level characteristics. The college premium is about 20 percentage points. Operators of imported machines earn 7.5 percentage points more while operating a domestic machine or using a computer does not raise wages significantly. Thus, in all specifications, we find that operators of imported machines have higher wages within firms, echoing the work of Koren and Csillag (2019), who find that Hungarian workers who operate imported machines earn more than other workers.

We can also use the CEES data to examine the differences in employment structure between firms that import machines and those that do not. Table 8 shows that firms that import more machines tend to employ a higher proportion of workers who have college degrees and a smaller proportion of workers with junior high school education or less (Column 1–3). Meanwhile, they also tend to hire more technicians and fewer salesperson (Column 4–8).

## 5.2 Imported capital goods and firm performance

Will firms that import capital equipment perform better? To answer this question, we merge a national representative firm survey, the Annual Survey of Industrial Firms (ASIF), with the Chinese Customs’ record of firm imports. Compared with the CEES dataset, the merged sample of the ASIF data and the Customs’ data enables us to examine the between-firm differences. We first use the firm census data in year 2004. It provides information on firms’ employment structure (i.e., the number of workers with different education level) and usage of computers. Then we extend the sample to cover the period from 2000 to 2007. Table 9 presents the results using the following specification:

$$y_{ikmt} = \beta_1 K_{ikmt} + X_{ikmt} \delta + \mu_i + \gamma_m + \gamma_t + \varepsilon_{ikmt} \quad (7)$$

where  $y_{ikmt}$  includes a set of dependent variables for firm  $k$  in industry  $m$  at city  $i$  in year  $t$ ,  $K_{ikmt}$  is the ratio of imported capital goods to its capital stock,  $X_{ikmt}$  is a set of firm-level controls, and  $\mu_i$  and  $\gamma_m$  are city fixed effects and industry fixed effects, respectively. For

regressions where data are available for more than one year, we also control for year fixed effects and firm fixed effects.

Column (1) of Table 9 shows that firms with more capital goods imports have a higher share of skilled workers (as measured by the share of workers with college degrees or above out of total employment). While the coefficient on imported input intensity is also positive, the effect is more pronounced for capital goods imports. Export intensity, however, has a negative association with the share of college workers, consistent with the observation that Chinese manufacturers' comparative advantage is labor-intensive.

Column (2) shows that firms that use imported capital goods importers also use more computers. More specifically, an increase of capital import intensity by 10 percentage points is associated with 1.8 percentage point increase in computer use per worker, as shown in Column (2) with data from 2004. A large body of the literature has examined how the computerization of U.S. firms reflects skill-biased technology change (Berman, Bound and Griliches, 1994; Autor, Levy and Murnane, 2003). The findings in Column (2) confirm the skill complementarity of capital goods imports.

In Column (3) and (4), we expand the sample to cover the period between 2000 and 2007. After controlling for firm fixed effects, we find that capital goods importers pay higher wages and have higher labor productivity. These findings are consistent with the findings by Bernard and Jensen (1997), who show that more capital-intensive plants hire a greater proportion of skilled workers and offer higher wages. In addition, both the export share of total revenue and import share of total inputs are positively associated with firm wage and labor productivity after we control for firm fixed effects. These findings are consistent with the finding of Dai, Maitra and Yu (2016).

In all specifications of Table 9, we control for firm size using total employment city fixed effect, and industry fixed effects factors. Although we cannot rule out the possibility of endogeneity in the OLS regressions, the results indicate that imported capital goods are skill-biased and thus increase demand for skills.

## 6 Conclusion

Importing capital goods is an important way of technology diffusion because advanced technology is embedded in capital goods. Recent technologies are usually skill-based, so capital goods import could be an important driver of the rising demand for skills among developing countries. To test this hypothesis, we use Chinese data and provide both regional and firm-level evidence to show that importing capital goods increases the demand for skills. Specifically, a city at the 75th percentile of the distribution of capital goods imports has a skill premium 5 percentage points higher than a city at the 25th percentile. Furthermore, firm-level evidence shows that the operators of imported machines have higher wages. Firms using imported capital goods hire more skilled workers, use more computers more intensively, pay higher wages, and have higher labor productivity.

Our paper contributes to a growing body of literature that examines the impacts of globalization on wage inequality. While our focus has been on China, the existing literature suggests that capital goods imports could also be an important driver of the skill premium in other developing countries.

## References

- Acemoglu, Daron.** 1998. “Why Do New Technologies Complement Skills? Directed Technical Change and Wage Inequality.” *The Quarterly Journal of Economics*, 113(4): 1055–1089.
- Acemoglu, Daron.** 2003. “Patterns of skill premia.” *Review of Economic Studies*, 70(2): 199–230.
- Acemoglu, Daron, Gino Gancia, and Fabrizio Zilibotti.** 2015. “Offshoring and directed technical change.” *American Economic Journal: Macroeconomics*, 7(3): 84–122.
- Alfaro, Laura, C Alejandro, Harald Fadinger, and Yanping Liu.** 2017. “The Real Exchange Rate, Innovation and Productivity: A Cross-country Firm-level Analysis.” mimeo.
- Anderson, Theodore W, and Herman Rubin.** 1949. “Estimation of the Parameters of a Single Equation in a Complete System of Stochastic Equations.” *The Annals of Mathematical Statistics*, 20(1): 46–63.
- Attanasio, Orazio, Pinelopi K. Goldberg, and Nina Pavcnik.** 2004. “Trade Reforms and Wage Inequality in Colombia.” *Journal of Development Economics*, 74(2): 331–366.
- Autor, David, David Dorn, Gordon Hanson, Gary Pisano, and Pian Shu.** 2017. “Foreign Competition and Domestic Innovation: Evidence from U.S. Patents.”
- Autor, David H, F. Levy, and R.J. J Murnane.** 2003. “The Skill Content of Recent Technological Change: An empirical exploration.” *Quarterly Journal of Economics*, 118(4): 1279–1333.
- Bastos, Paulo, Joana Silva, and Eric Verhoogen.** 2018. “Export Destinations and Input Prices.” *American Economic Review*, 108(2): 353–392.
- Bekman, Eli, John Bound, and Stephen Machin.** 1998. “Implications of Skill-biased Technological Change: International Evidence.” *The Quarterly Journal of Economics*, 113(4): 1245–1279.



- Berman, Eli, John Bound, and Zvi Griliches.** 1994. "Changes in the Demand for Skilled Labor within US Manufacturing: Evidence from the Annual Survey of Manufactures." *The Quarterly Journal of Economics*, 109(2): 367–397.
- Bernard, Andrew B., and J. Bradford Jensen.** 1997. "Exporters, Skill Upgrading, and the Wage Gap." *Journal of International Economics*, 42(1-2): 3–31.
- Bloom, Nicholas, Mirko Draca, and John Van Reenen.** 2016. "Trade Induced Technical Change? The Impact of Chinese Imports on Innovation, IT and Productivity." *Review of Economic Studies*, 83(1): 87–117.
- Brandt, Loren, Johannes Van Biesebroeck, and Yifan Zhang.** 2012. "Creative accounting or creative destruction? Firm-level productivity growth in Chinese manufacturing." *Journal of Development Economics*, 97(2): 339–351.
- Burstein, Ariel, Javier Cravino, and Jonathan Vogel.** 2013. "Importing Skill-biased Technology." *American Economic Journal: Macroeconomics*, 5(2): 32–71.
- Bustos, Paula.** 2011a. "The Impact of Trade Liberalization on Skill Upgrading: Evidence from Argentina."
- Bustos, Paula.** 2011b. "Trade Liberalization, Exports, and Technology Upgrading: Evidence on the Impact of MERCOSUR on Argentinian Firms." *American Economic Review*, 101(1): 304–340.
- Bustos, Sebastian, and Martin Rotemberg.** 2017. "Elasticity Pessimism: Economic Consequences of Black Wednesday."
- Campbell, Douglas L.** 2016. "Relative Prices, Hysteresis, and the Decline of American Manufacturing."
- Chen, Bo, Miaojie Yu, and Zhihao Yu.** 2017. "Measured Skill Premia and Input Trade Liberalization: Evidence from Chinese Firms." *Journal of International Economics*, 109: 31–42.

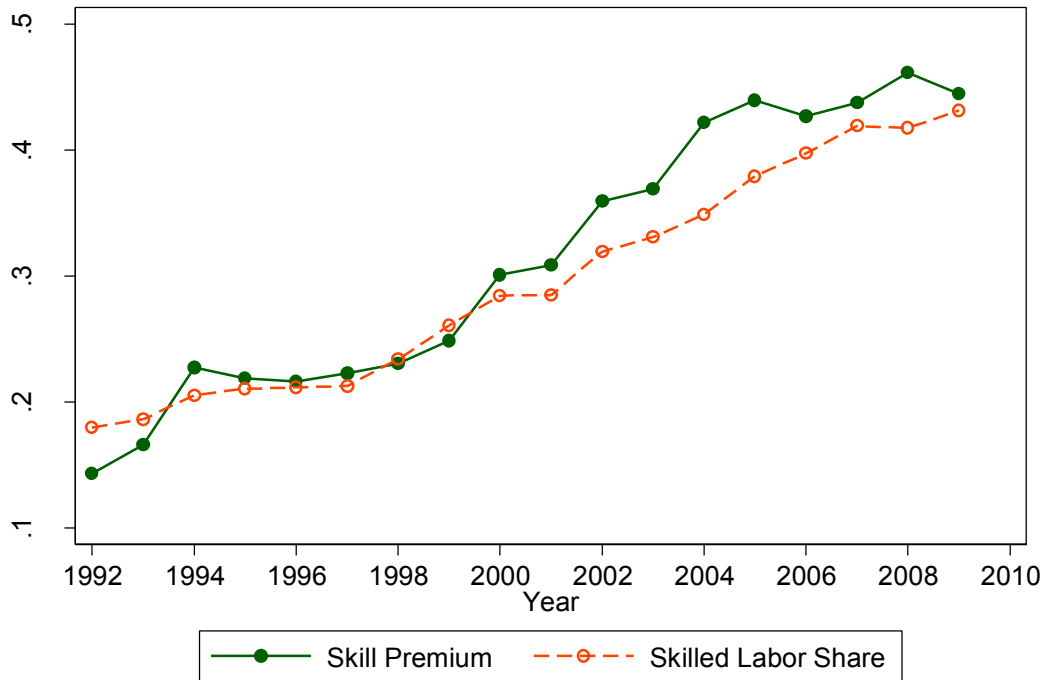
- Cragg, John G, and Stephen G Donald.** 1993. “Testing Identifiability and Specification in Instrumental Variable Models.” *Econometric Theory*, 9(2): 222–240.
- Crinò, Rosario.** 2012. “Imported inputs and skill upgrading.” *Labour Economics*, 19(6): 957–969.
- Dai, Mi, and Jianwei Xu.** 2017. “Firm-specific Exchange Rate Shocks and Employment Adjustment: Evidence from China.” *Journal of International Economics*, 108: 54–66.
- Dai, Mi, Madhura Maitra, and Miaojie Yu.** 2016. “Unexceptional Exporter Performance in China? The Role of Processing Trade.” *Journal of Development Economics*, 121: 177–189.
- Fan, Jingting.** 2018. “Internal Geography, Labor Mobility, and the Distributional Impacts of Trade.” *American Economic Journal. Macroeconomics (forthcoming)*.
- Feenstra, Robert C, and Gordon H Hanson.** 1996. “Globalization, Outsourcing, and Wage Inequality.” *The American Economic Review*, 86(2): 240–245.
- Feenstra, Robert C, and Gordon H Hanson.** 1997. “Foreign Direct Investment and Relative wages: Evidence from Mexico’s Maquiladoras.” *Journal of International Economics*, 42(3-4): 371–393.
- Feenstra, Robert C., and Gordon H. Hanson.** 1999. “The Impact of Outsourcing and High-technology Capital on Wages: Estimates for the United States, 1979-1990.” *Quarterly Journal of Economics*, 114(3): 907–940.
- Ge, Suqin, Dennis Tao Yang, and Virginia Tech.** 2014. “Changes in China’s Wage Structure.” *Journal of the European Economic Association*, 12(2): 300–336.
- Goldberg, Pinelopi Koujianou.** 2015. “Introduction.” In *Trade and Inequality*. , ed. Pinelopi Koujianou Goldberg. Edward Elgar Research Collections.
- Goldberg, Pinelopi Koujianou, and Nina Pavcnik.** 2007. “Distributional Effects of Globalization in Developing Countries.” *Journal of Economic Literature*, 45(1): 39–82.

- Goldin, Claudia, and Lawrence F Katz.** 1998. “The Origins of Technology-Skill Complementarity.” *The Quarterly Journal of Economics*, 113(3): 693–732.
- Griliches, Zvi.** 1969. “Capital-Skill Complementarity.” *The Review of Economics and Statistics*, 51(4): 465.
- Grossman, Gene M, and Esteban Rossi-Hansberg.** 2008. “Trading tasks: A Simple Theory of Offshoring.” *American Economic Review*, 98(5): 1978–1997.
- Han, Jun, Runjuan Liu, and Junsen Zhang.** 2012. “Globalization and wage inequality: Evidence from urban China.” *Journal of International Economics*, 87(2): 288–297.
- Hsieh, Chang-Tai, and Keong T Woo.** 2005. “The Impact of Outsourcing to China on Hong Kong’s Labor Market.” *American Economic Review*, 95(5): 1673–1687.
- Hummels, David, Rasmus Jørgensen, Jakob Munch, and Chong Xiang.** 2014. “The Wage Effects of Offshoring: Evidence from Danish Matched Worker-firm Data.” *American Economic Review*, 104(6): 1597–1629.
- Katz, Lawrence, and David Autor.** 1999. “Changes in the Wage Structure and Earnings Inequality.” *Handbook of Labor Economics*, 3: 1463–1555.
- Katz, Lawrence F., and Kevin M. Murphy.** 1992. “Changes in Relative Wages, 1963–1987: Supply and Demand Factors.” *The Quarterly Journal of Economics*, 107(1): 35–78.
- Kleibergen, Frank, and Richard Paap.** 2006. “Generalized Reduced Rank Tests Using the Singular Value Decomposition.” *Journal of Econometrics*, 133(1): 97–126.
- Koren, Miklós, and Marton Csillag.** 2019. “Machines and Machinists: Importing Skill-biased Technology.” *mimeo, Central European University*.
- Krusell, Per, Lee Ohanian, José-víctor Ríos-rull, and Giovanni L Violante.** 2000. “Capital Skill Complementarity and Inequality: A Macroeconomic Analysis.” *Econometrica*, 68(5): 1029–1054.

- Kydland, Finn E, and Edward C Prescott.** 1982. “Time to Build and Aggregate Fluctuations.” *Econometrica: Journal of the Econometric Society*, 1345–1370.
- Li, Hongbin, Lei Li, Binzhen Wu, and Yanyan Xiong.** 2012. “The End of Cheap Chinese Labor.” *Journal of Economic Perspectives*, 26(4): 57–74.
- Li, Hongbin, Prashant Loyalka, Scott Rozelle, and Binzhen Wu.** 2017. “Human Capital and China’s Future Growth.” *Journal of Economic Perspectives*, 31(1): 25–48.
- Lu, Yi, and Travis Ng.** 2013. “Import Competition and Skill content in US Manufacturing Industries.” *Review of Economics and Statistics*, 95(4): 1404–1417.
- Mincer, Jacob.** 1974. “Schooling, Experience, and Earnings. Human Behavior & Social Institutions No. 2.”
- Park, Albert, Dean Yang, Xinzheng Shi, and Yuan Jiang.** 2010. “Exporting and Firm Performance: Chinese Exporters and the Asian Financial Crisis.” *Review of Economics and Statistics*, 92(4): 822–842.
- Parro, Fernando.** 2013. “Capital-skill Complementarity and the Skill Premium in a Quantitative Model of Trade.” *American Economic Journal: Macroeconomics*, 5(2): 72–117.
- Pavcnik, Nina.** 2003. “What Explains Skill Upgrading in Less Developed Countries?” *Journal of Development Economics*, 71(2): 311–328.
- Pavcnik, Nina.** 2017. “The Impact of Trade on Inequality in Developing Countries.” In *Proceedings of Jackson Hole Economic Symposium*. 61–114.
- Raveh, Ohad, and Ariell Reshef.** 2016. “Capital Imports Composition, Complementarities, and the Skill Premium in Developing Countries.” *Journal of Development Economics*, 118: 183–206.
- Schott, Peter K.** 2008. “The Relative Sophistication of Chinese Exports.” *Economic Policy*, 23(53): 6–49.

- Sheng, Liugang, and Dennis Tao Yang.** 2017. “Offshoring and Wage Inequality: Theory and Evidence from China.”
- Stock, James H, and Jonathan H Wright.** 2000. “GMM with Weak Identification.” *Econometrica*, 68(5): 1055–1096.
- Stock, James H, and Motohiro Yogo.** 2005. “Testing for Weak Instruments in Linear IV Regression.” In *Identification and Inference for Econometric Models: Essays in Honor of Thomas Rothenberg.*, ed. Donald W. K. Andrews and James H. Stock, Chapter Chapter 5, 80–108. Cambridge: Cambridge University Press.
- Verhoogen, Eric A.** 2008. “Trade, Quality Upgrading, and Wage Inequality in the Mexican Manufacturing Sector.” *The Quarterly Journal of Economics*, 123(2): 489–530.
- Wood, Adrian.** 1995. “How Trade Hurt Unskilled Workers.” *Journal of Economic Perspectives*, 9(3): 57–80.
- Zhu, Susan Chun, and Daniel Trefler.** 2005. “Trade and inequality in developing countries: A general equilibrium analysis.” *Journal of International Economics*, 65(1): 21–48.

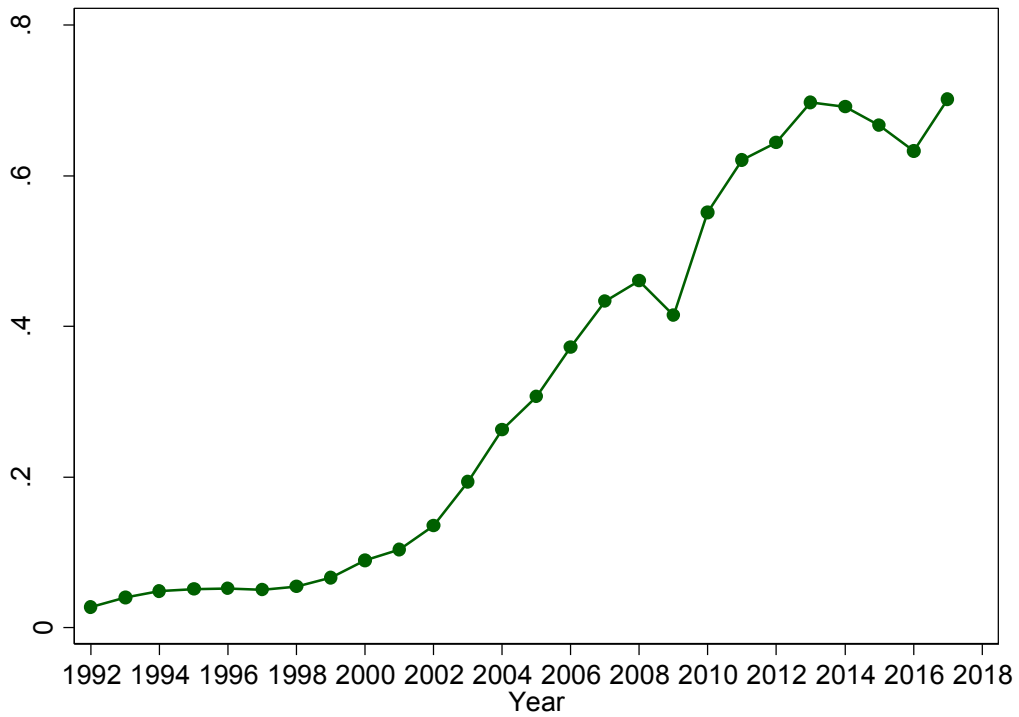
**Figure 1: Skilled Labor Share and Skill Premium**



Data: Urban Household Survey, 1992-2009

Note: Skilled labors are defined as workers (aged between 16 and 60) with college degree or above (15 years education or more). Skill labor share is defined as share of skilled workers among all employed workers in urban China. People who are not in the labor force or remain unemployed are not included. College premium is estimated based on Mincer-style OLS regression after we control for gender, working experience and its square term, employer ownership type, and industry dummies.

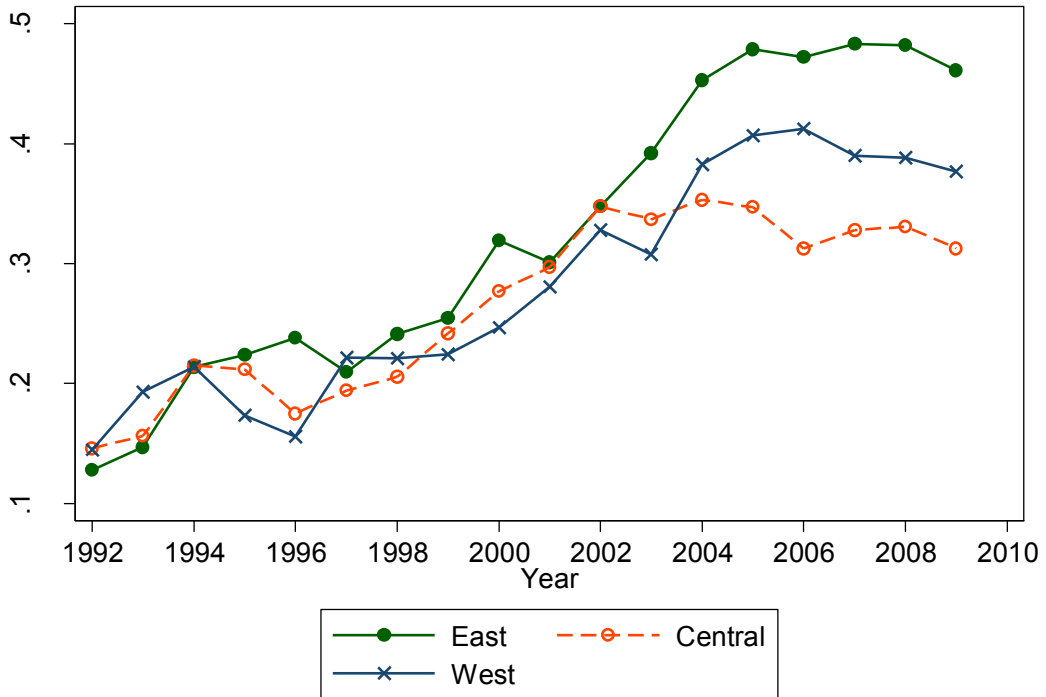
**Figure 2: China's Import of Capital Goods**



Data: UN Comtrade Database, 1992-2017

Note: This figures show the pattern of Chinese total imported capital goods (unit: 1 trillion US\$). We define capital goods to be the sum of ISIC Rev. 3 codes 29-33, excluding those that are not belong to Broad Economic Classification (BEC) industry 41 (capital goods) and BEC industry 42 (Parts and accessories of capital goods) and adding those that belong to BEC industry 521 (transportation equipment used for industry).

**Figure 3: College Premium by Region**

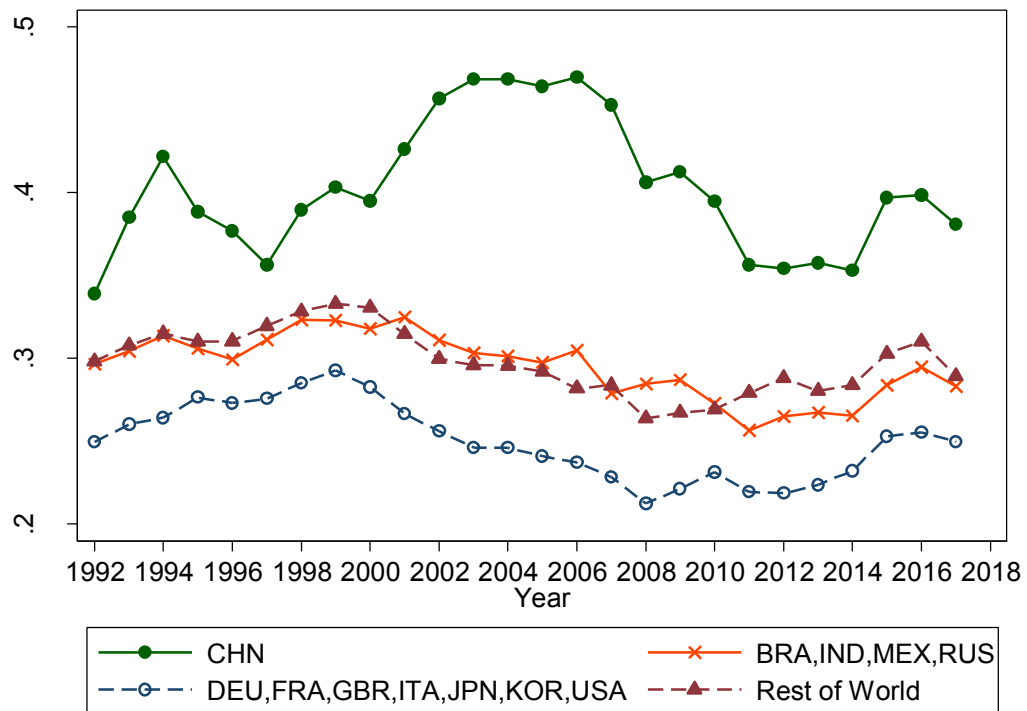


Data: Urban Household Survey, 1992-2009

Note: College workers are defined as workers (aged between 16 and 60) with college degree or above (15 years education or more). College premium is calculated based on Mincer-style OLS regression after we control for gender, working experience and its square term, firm ownership type, and industry dummies. Following the regional classification by China's National Bureau of Statistics, Eastern China includes Beijing, Guangdong, Jiangsu, Liaoning, Shandong, Shanghai, and Zhejiang, central China includes Anhui, Heilongjiang, Henan, Hubei, Jiangxi, and Shanxi, and western China includes Chongqing, Gansu, Sichuan, Yunnan and Shaanxi.



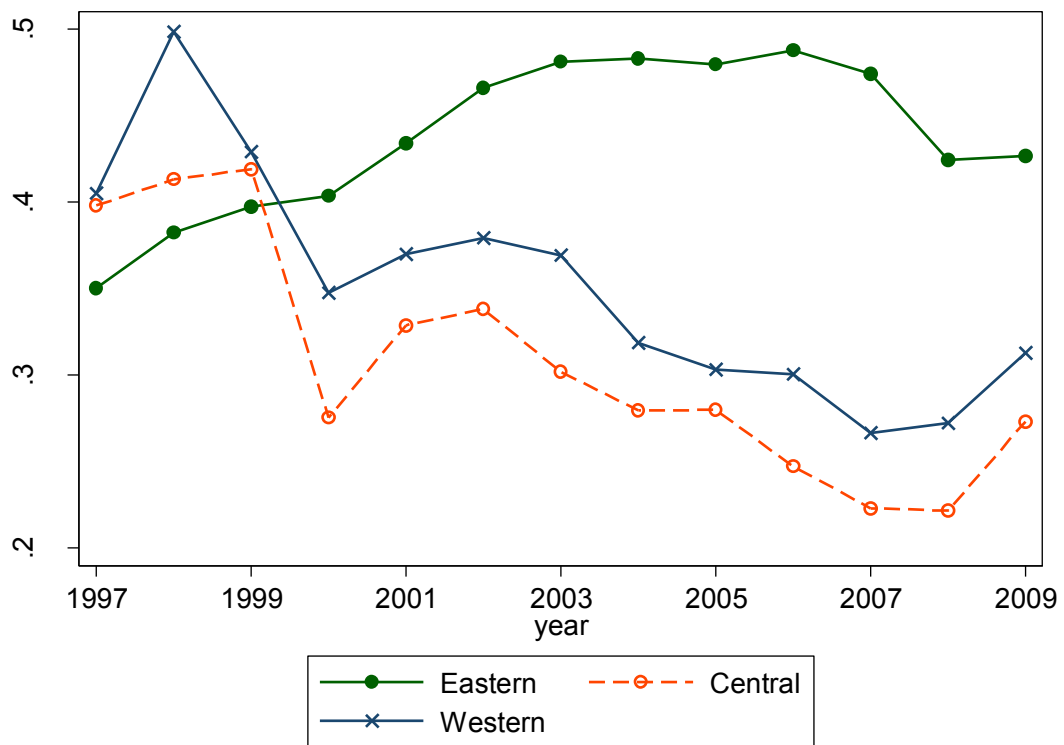
**Figure 4: Cross Country Comparison of Imported Capital Goods as Share of Total Imports**



Data: UN Comtrade Database, 1992-2017

Note: Capital goods are defined as the sum of ISIC Rev. 3 codes 29-33, excluding those that are not belong to Broad Economic Classification (BEC) industry 41 (capital goods) and BEC industry 42 (Parts and accessories of capital goods) and adding those that belong to BEC industry 521 (transportation equipment used for industry). The seven developed countries include France (FRA), Germany (DEU), Italy (ITA), Japan (JPN), Republic of Korea (KOR), the United Kingdom (GBR), and the United States (USA). The four developing countries include Brazil (BRA), India (IND), Mexico (MEX), and Russia (RUS).

**Figure 5: The share of Capital Goods in Total Imports by Region, 1997-2009**

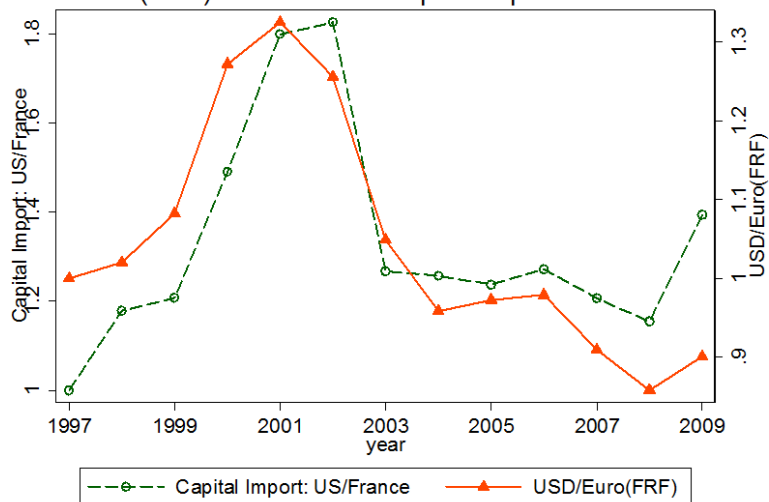


Data: China General Administration of Customs, 1997-2009

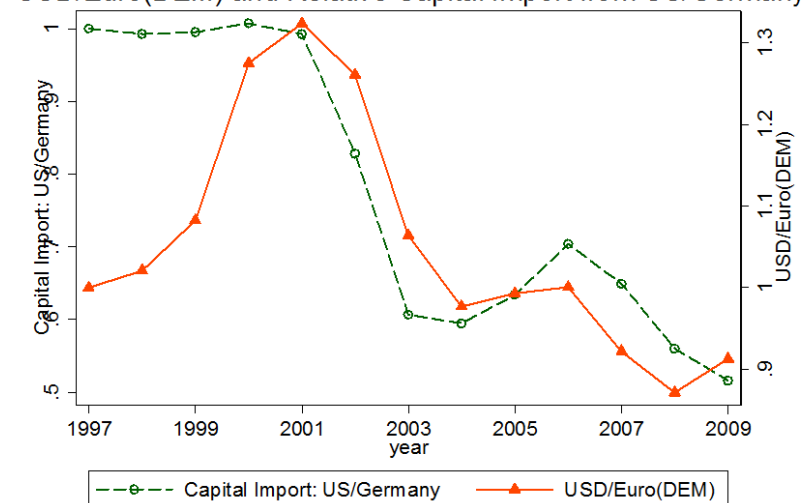
Note: Following the regional classification by China's National Bureau of Statistics, Eastern China includes Beijing, Guangdong, Jiangsu, Liaoning, Shandong, Shanghai, and Zhejiang, central China includes Anhui, Heilongjiang, Henan, Hubei, Jiangxi, and Shanxi, and western China includes Chongqing, Gansu, Sichuan, Yunnan and Shaanxi.

**Figure 6: Relative Exchange rates and China's relative imports of capital goods**

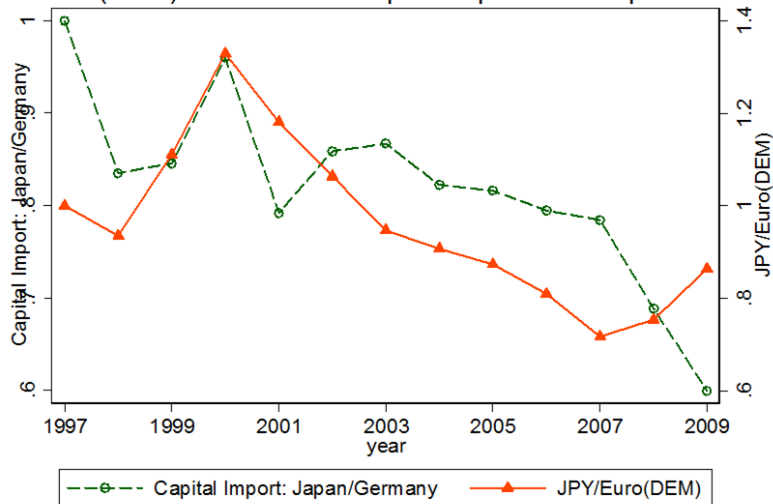
USD/Euro(FRF) and Relative Capital Import from US/France



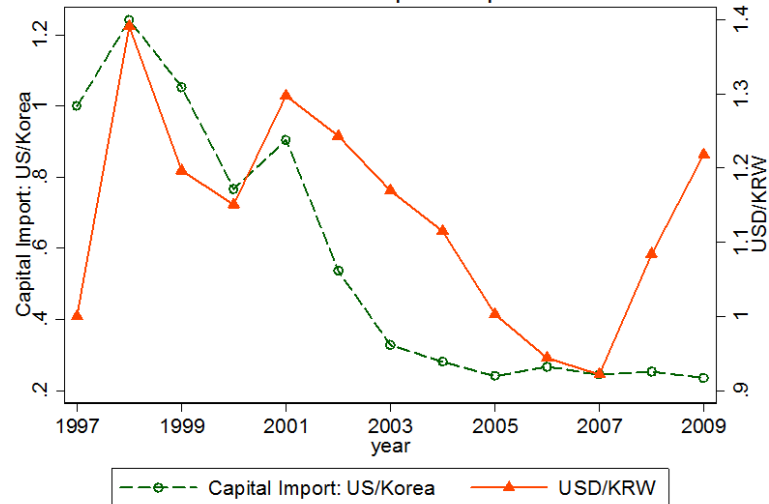
USD/Euro(DEM) and Relative Capital Import from US/Germany



JPY/Euro(DEM) and Relative Capital Import from Japan/Germany



USD/KRW and Relative Capital Import from US/Korea



Data: Penn World Table (PWT 7.0) and China General Administration of Customs, 1997-2009

Note: the red solid line presents the exchange rate movement between China's two trading partners (right axis) from 1997 to 2009, and the green dash line shows China's relative imports of capital goods from the two countries (left axis) over the same period.

**Table 1: Employment Structure by Education among Manufacturing Firms**

	College degree or above	Senior high school degree	Junior high school degree or below
<b>Panel A: ASIP 2004</b>			
Firms with imported machine	0.19	0.37	0.44
Firms without imported machine	0.11	0.32	0.57
<b>Panel B: CEES 2014</b>			
Firms with imported machine	0.18	0.33	0.49
Firms without imported machine	0.14	0.34	0.52
<b>Panel C: ASIP 2004</b>			
Exporting Firm	0.11	0.31	0.59
Non-exporting Firm	0.12	0.33	0.55
<b>Panel D: CEES 2014</b>			
Exporting Firm	0.17	0.32	0.51
Non-exporting Firm	0.14	0.36	0.50

Data: Annual Survey of Industrial Production (ASIP, 2004) and China Employer-Employee Survey (CEES, 2014)

Note: ASIP data is the Annual Survey of Industrial Production data in 2004. CEES data is the China Employer-Employee Survey data in 2014.

**Table 2: Summary Statistics**

Variable	Mean	sd	P25	Median	P75	N
<b>Panel A: City-level (UHS &amp; CGAC, 1998-2009)</b>						
Skill Premium	0.32	0.14	0.23	0.32	0.41	1,670
Imported Capital Goods Intensity	0.33	0.67	0.04	0.11	0.29	1,670
Export/GDP	0.15	0.28	0.03	0.06	0.17	1,670
(Export+Non-Capital Goods Import)/GDP	0.23	0.41	0.04	0.10	0.28	1,670
<b>Panel B: Firm data (CEES, 2014)</b>						
Ln(Monthly wage), thousand RMB	1.24	0.35	1.10	1.22	1.39	3,959
Share of College Workers	0.24	0.43	0.00	0.00	0.00	3,959
Operator of imported machine (dummy)	0.09	0.28	0.00	0.00	0.00	3,959
Operator of machine (dummy)	0.37	0.48	0.00	0.00	1.00	3,959
Use PC at work (dummy)	0.66	0.47	0.00	1.00	1.00	3,959
<b>Panel C: Firm Data (ASIP, 2004)</b>						
Share of College Workers	0.11	0.16	0.02	0.06	0.15	216,932
Number of Computer per Worker	0.07	0.12	0.01	0.04	0.09	216,932
Ln(Average Wage), thousand RMB	2.47	0.62	2.11	2.49	2.84	1,482,241
Ln (Value-added per Worker)	4.01	1.00	3.32	3.93	4.63	1,482,241
Imported Capital Goods (flow)/Capital	0.01	0.06	0.00	0.00	0.00	1,482,241
Export/Sales	0.16	0.33	0.00	0.00	0.03	1,482,241
Non-capital goods import/Input	0.02	0.10	0.00	0.00	0.00	1,482,241
Ln (Employee)	4.72	1.08	3.95	4.61	5.35	1,482,241

Data: Urban Household Survey (UHS, 1998-2009), China General Administration of Customs (CGAC, 1998-2009), Annual Survey of Industrial Production (ASIP, 2004), and China Employer-Employee Survey (CEES, 2014)

Note: The statistics in Panel A are weighted by each city's population in 1998. We use the inversed sampling probability as weights for statistics in Panel B. In Panel C, data about share of college workers and number of computer per worker are only available in 2004. The time span for expenditure on new product or R&D to output ratio is from 2005 to 2007. The time span for the rest is from 2000 to 2007.

**Table 3: First Stage**

	(1)	(2)	(3)	(4)	(5)
Dependent Variable	Imported Capital Goods Intensity	Imported Capital Goods Intensity	Export /GDP	Imported Capital Goods Intensity	(Non-Capital Goods Import & Export)/GDP
Ln(Exchange Rate) <sub>Kstock</sub>	1.38*** (0.50)	1.41*** (0.49)	0.12 (0.14)	1.41*** (0.49)	0.17 (0.22)
Ln(Exchange Rate) <sub>Export</sub>		-0.14 (0.35)	-0.49*** (0.17)	-0.14 (0.35)	-0.69** (0.27)
Ln(Exchange Rate) <sub>Non-Kimport</sub>				-0.01 (0.07)	0.03 (0.06)
Kleibergen-Paap rk LM statistic	6.88***	6.58**	6.58**	5.43*	5.43*
Cragg-Donald Wald F statistic	54.46	6.99	6.99	3.98	3.98
Kleibergen-Paap rk Wald F statistic	7.55	3.36	3.36	1.77	1.77
Anderson-Rubin Wald test F statistic	7.35***	3.70**	3.70**	2.93**	2.93**
Stock-Wright LM statistic	7.11***	7.13**	7.13**	8.65**	8.65**

Data: Urban Household Survey (1998-2009), China General Administration of Customs (1997-2009), China Statistical Yearbook (1998-2009) and Penn World Table (PWT 7.0, 1998-2009)

Note: N=1670. Column (1) shows the first stage results of column (2) in Table 4, column (2) and (3) show the corresponding first stage results of column (3) in Table 4, and column (4) to (5) show the corresponding first stage results of column (4) in Table 4. City fixed effects, year fixed effects and regional time trend are controlled in all the regressions. Models are weighted by the start-of-period city-level population. Reported standard errors are robust and are clustered by city. \*\*\* p<0.01, \*\* p<0.05, \* p<0.1.

**Table 4: The Impacts of Imported Capital Goods on Skill Premium**

Dependent Variable	(1)	(2)	(3)	(4)	(5)
Skill Premium	OLS	IV			
Imported Capital Goods Intensity	0.03** (0.02)	0.21*** (0.07)	0.21*** (0.08)	0.21*** (0.08)	0.22*** (0.09)
Export/GDP			-0.14 (0.27)		
(Non-Capital Goods Import& Export)/GDP				-0.09 (0.19)	-0.13 (0.25)
FDI/GDP					0.98 (1.20)
Kleibergen-Paap rk LM statistic		6.88***	6.58**	5.43*	4.95*
Cragg-Donald Wald F statistic		54.46	6.99	3.98	2.10
Kleibergen-Paap rk Wald F statistic		7.55	3.36	1.77	4.58
Anderson-Rubin Wald test F statistic		7.35***	3.70**	2.93**	2.77**
Stock-Wright LM statistic		7.11***	7.13**	8.65**	8.47**

Data: Urban Household Survey (1998-2009), China General Administration of Customs (1997-2009), China Statistical Yearbook (1998-2009) and Penn World Table (PWT 7.0, 1998-2009)

Note: N=1670. City fixed effects, year fixed effects and regional time trend are controlled in all the regressions. Models are weighted by the start-of-period city-level population. Reported standard errors are robust and are clustered by city. \*\*\* p<0.01, \*\* p<0.05, \* p<0.1.



**Table 5: The Impacts of Capital Goods Imported from Seven Developed Countries on Skill Premium**

Dependent Variable	(1)	(2)	(3)	(4)	(5)
	Second Stage Skill Premium		First Stage		
			Imported Capital Goods Intensity	Imported Capital Goods Intensity	(Non-Capital Goods Import & Export)/GDP
Imported Capital Goods Intensity	0.38***	0.38***			
	(0.14)	(0.15)			
(Non-Capital Goods Import & Export)/GDP		-0.16			
		(0.22)			
Ln(Exchange Rate) <sub>Kstock</sub>			1.00***	1.02***	0.34
			(0.38)	(0.37)	(0.25)
Ln(Exchange Rate) <sub>Export</sub>				-0.11	-0.68**
				(0.19)	(0.28)
Ln(Exchange Rate) <sub>Non-Kimport</sub>				-0.01	0.01
				(0.05)	(0.05)
Kleibergen-Paap rk LM statistic	6.40**	4.74*			
Cragg-Donald Wald F statistic	46.70	3.56			
Kleibergen-Paap rk Wald F statistic	6.78	1.53			
Anderson-Rubin Wald test F statistic	7.35***	2.93**			
Stock-Wright LM statistic	7.11***	8.65**			

Data: Urban Household Survey (1998-2009), China General Administration of Customs (1997-2009), China Statistical Yearbook (1998-2009), and Penn World Table (PWT 7.0, 1998-2009)

Note: N=1670. Imported capital goods intensity is the ratio of the accumulated capital goods imported from seven developed countries (France, Germany, Italy, Japan, Korea, the United Kingdom, and the United States) to capital stock. Column (3) is the corresponding first stage results of column (1), and column (4) and (5) is the corresponding first stage results of column (2). City fixed effects, year fixed effects and regional time trend are controlled in all the regressions. Models are weighted by the start-of-period city-level population. Reported standard errors are robust and are clustered by city. \*\*\* p<0.01, \*\* p<0.05, \* p<0.1

**Table 6: The Impacts of Capital Goods Imported on Skill Premium: Excluding the U.S. and Hong Kong**

	(1)	(2)	(3)	(4)	(5)
Delete imports from Hong Kong and the United States, 2000-2004		Second Stage		First Stage	
		Skill Premium	Imported Capital Goods Intensity	Imported Capital Goods Intensity	(Non-Capital Goods Import & Export)/GDP
Imported Capital Goods Intensity	0.25*	0.69			
	(0.15)	(0.51)			
(Non-Capital Goods Import & Export)/GDP		-2.35			
		(2.41)			
Ln(Exchange Rate) <sub>Kstock</sub>			1.82***	1.91***	0.39***
			(0.53)	(0.53)	(0.15)
Ln(Exchange Rate) <sub>Export</sub>				-0.73**	-0.18**
				(0.30)	(0.07)
Ln(Exchange Rate) <sub>Non-Kimport</sub>				0.04	-0.03
				(0.08)	(0.02)
Kleibergen-Paap rk LM statistic	6.97***	3.07			
Cragg-Donald Wald F statistic	30.10	0.66			
Kleibergen-Paap rk Wald F statistic	6.99	1.17			
Anderson-Rubin Wald test F statistic	2.48	2.39*			
Stock-Wright LM statistic	2.78*	6.98*			

Data: Urban Household Survey (1998-2009), China General Administration of Customs (1997-2009), China Statistical Yearbook (1998-2009), and Penn World Table (PWT 7.0, 1998-2009)

Note: N=661. City fixed effects, year fixed effects and regional time trend are controlled in all the regressions. Models are weighted by the start-of-period city-level population. Reported standard errors are robust and are clustered by city. \*\*\* p<0.01, \*\* p<0.05, \* p<0.1.

**Table 7: Foreign Machines and Wage Premium of Machine Operator, CEES**

Ln(monthly wage)	(1)	(2)	(3)	(4)	(5)
College	0.29*** (0.04)	0.25*** (0.04)	0.21*** (0.04)	0.21*** (0.04)	0.20*** (0.05)
Operator of imported machine		0.07** (0.04)	0.06* (0.03)	0.06** (0.03)	0.08** (0.03)
Operator of machine		-0.02 (0.03)	-0.00 (0.03)	0.01 (0.03)	0.03 (0.02)
Use PC at work		0.10*** (0.03)	0.07** (0.03)	0.06** (0.03)	0.013 (0.03)
Manager			0.09*** (0.03)	0.09*** (0.02)	0.130** (0.03)
Technician			0.13*** (0.04)	0.13*** (0.04)	0.13*** (0.04)
Salesman			0.06 (0.07)	0.06 (0.07)	0.11 (0.07)
Firm Characteristics	N	N	N	Y	Y
Firm FE	N	N	N	N	Y
Observations	3,959	3,959	3,959	3,959	3,959
R-squared	0.218	0.236	0.248	0.259	0.506

Data: China Employer-Employee Survey (CEES), 2014

Note: All the regressions control for individual characteristics including gender, working experience and working experience square. The above regressions are weighted OLS, where weight for each interviewee is the firm's total number of employee who have the same occupation as the interviewee divided by the firm's total number of surveyed employee who are in the same occupation. Reported standard errors are robust and are clustered by firm. \*\*\* p<0.01, \*\* p<0.05, \* p<0.1.

**Table 8: Foreign Machines and Employment Structure, CEES**

	(1)	(2)	(3)	(4)	(5)	(6)	(7)	(8)
Dependent Variable	Employment Share by Education			Employment Share by Occupation				
	Junior High School or Below	Senior High School	College or Above	Manager	Technician	Salesman	Production worker	Other stuff
Imported Machine per Worker	-0.06*	0.02	0.03*	0.01	0.02**	-0.02**	-0.02	0.00
	(0.03)	(0.02)	(0.02)	(0.01)	(0.01)	(0.01)	(0.02)	(0.01)
Machine per Worker	-0.03	0.03	0.01	0.02***	0.00	-0.00	-0.00	-0.01
	(0.03)	(0.03)	(0.02)	(0.01)	(0.01)	(0.01)	(0.02)	(0.02)
Exporter Dummy	0.04	-0.03	-0.01	-0.00	-0.02**	-0.02***	0.04**	-0.00
	(0.03)	(0.02)	(0.02)	(0.01)	(0.01)	(0.01)	(0.02)	(0.01)
Ln(Employment)	-0.01	-0.01	0.02***	-0.02***	0.00*	0.00	0.02***	-0.00
	(0.01)	(0.01)	(0.00)	(0.00)	(0.00)	(0.00)	(0.01)	(0.00)
K/L	-0.02***	0.01***	0.01***	-0.00***	-0.00***	-0.00	0.01***	0.00
	(0.00)	(0.00)	(0.00)	(0.00)	(0.00)	(0.00)	(0.00)	(0.00)
R2	0.02	0.02	0.05	0.24	0.03	0.03	0.05	0.00
N	551	551	551	551	551	551	551	551
Summary Statistics of dependent variables:								
P1	0.00	0.00	0.00	0.00	0.00	0.00	0.10	0.00
Median	0.52	0.30	0.10	0.06	0.05	0.02	0.70	0.13
Mean	0.51	0.33	0.16	0.07	0.07	0.04	0.66	0.15
P99	0.96	0.90	0.66	0.32	0.35	0.43	0.93	0.53

Data: China Employer-Employee Survey (CEES), 2014

Note: Imported machine per worker and machine per worker are measured in 10,000 RMB per worker. Reported standard errors are robust and are clustered by firm. \*\*\* p<0.01, \*\* p<0.05, \* p<0.1.

**Table 9: Imported Capital Goods and Firm Characteristics**

	(1)	(2)	(3)	(4)
Dependent Variable	Share of Workers with College Degree	Computer per Worker	Ln (Wage)	Ln(Value- added per Worker)
Imported Capital Goods Intensity	0.15*** (0.01)	0.18*** (0.01)	0.04*** (0.01)	0.17*** (0.01)
Export/Sales	-0.01*** (0.00)	0.00*** (0.00)	0.03*** (0.00)	0.01*** (0.00)
Non-Capital Goods Import/Inputs	0.06*** (0.00)	0.07*** (0.00)	0.07*** (0.01)	0.19*** (0.01)
Ln(Employment)	-0.01*** (0.00)	-0.01*** (0.00)	-0.15*** (0.00)	-0.42*** (0.00)
Firm Fixed Effects	N	N	Y	Y
Year Fixed Effects	N	N	Y	Y
CIC 4-digit Industry Fixed Effects	Y	Y	N	N
City Fixed Effects	Y	Y	N	N
Observations	216,932	216,932	1,482,241	1,482,241

Data: China General Administration of Customs (2004) and Annual Survey of Industrial Production (ASIP, 2004)

Note: Skilled worker is defined as people with a college degree or above. Imported capital goods intensity is defined as the share of imported capital goods out of capital stock. Reported standard errors are robust and are clustered by firm. \*\*\* p<0.01, \*\* p<0.05, \* p<0.1.

**Table A.1: China's top 5 capital goods importing countries/regions: 1997-2009**

Rank	Country/Region code	Country/Region	Imported capital goods (billion USD)	Share as China's total imported capital goods between 1997 and 2009
1	116	Japan	542	21%
2	143	Taiwan, China	420	16%
3	133	South Korea	360	14%
4	502	United States	241	9%
5	304	Germany	199	8%

Data: China General Administration of Customs, 1997-2009

**Table A.2: Correlation between each city's share of capital goods imports from major sourcing countries/regions**

	Japan	Korea	U.S.	Germany	U.K.	France	Taiwan
Japan	1.00						
Korea	-0.02	1.00					
U.S.	-0.21	-0.14	1.00				
Germany	-0.25	-0.14	-0.16	1.00			
U.K.	-0.08	-0.06	-0.00	-0.03	1.00		
France	-0.12	-0.06	-0.04	-0.07	-0.01	1.00	
Taiwan	-0.03	0.04	-0.16	-0.19	-0.06	-0.08	1.00

Data: China General Administration of Customs, 1997-2009