

Borgschulte, Mark; Molitor, David; Zou, Eric Yongchen

**Working Paper**

## Air Pollution and the Labor Market: Evidence from Wildfire Smoke

IZA Discussion Papers, No. 15373

**Provided in Cooperation with:**

IZA – Institute of Labor Economics

*Suggested Citation:* Borgschulte, Mark; Molitor, David; Zou, Eric Yongchen (2022) : Air Pollution and the Labor Market: Evidence from Wildfire Smoke, IZA Discussion Papers, No. 15373, Institute of Labor Economics (IZA), Bonn

This Version is available at:

<https://hdl.handle.net/10419/263589>

**Standard-Nutzungsbedingungen:**

Die Dokumente auf EconStor dürfen zu eigenen wissenschaftlichen Zwecken und zum Privatgebrauch gespeichert und kopiert werden.

Sie dürfen die Dokumente nicht für öffentliche oder kommerzielle Zwecke vervielfältigen, öffentlich ausstellen, öffentlich zugänglich machen, vertreiben oder anderweitig nutzen.

Sofern die Verfasser die Dokumente unter Open-Content-Lizenzen (insbesondere CC-Lizenzen) zur Verfügung gestellt haben sollten, gelten abweichend von diesen Nutzungsbedingungen die in der dort genannten Lizenz gewährten Nutzungsrechte.

**Terms of use:**

*Documents in EconStor may be saved and copied for your personal and scholarly purposes.*

*You are not to copy documents for public or commercial purposes, to exhibit the documents publicly, to make them publicly available on the internet, or to distribute or otherwise use the documents in public.*

*If the documents have been made available under an Open Content Licence (especially Creative Commons Licences), you may exercise further usage rights as specified in the indicated licence.*

DISCUSSION PAPER SERIES

IZA DP No. 15373

**Air Pollution and the Labor Market:  
Evidence from Wildfire Smoke**

Mark Borgschulte  
David Molitor  
Eric Yongchen Zou

JUNE 2022

## DISCUSSION PAPER SERIES

IZA DP No. 15373

# Air Pollution and the Labor Market: Evidence from Wildfire Smoke

**Mark Borgschulte**

*University of Illinois and IZA*

**David Molitor**

*University of Illinois and NBER*

**Eric Yongchen Zou**

*University of Oregon and NBER*

JUNE 2022

Any opinions expressed in this paper are those of the author(s) and not those of IZA. Research published in this series may include views on policy, but IZA takes no institutional policy positions. The IZA research network is committed to the IZA Guiding Principles of Research Integrity.

The IZA Institute of Labor Economics is an independent economic research institute that conducts research in labor economics and offers evidence-based policy advice on labor market issues. Supported by the Deutsche Post Foundation, IZA runs the world's largest network of economists, whose research aims to provide answers to the global labor market challenges of our time. Our key objective is to build bridges between academic research, policymakers and society.

IZA Discussion Papers often represent preliminary work and are circulated to encourage discussion. Citation of such a paper should account for its provisional character. A revised version may be available directly from the author.

ISSN: 2365-9793

**IZA – Institute of Labor Economics**

Schaumburg-Lippe-Straße 5–9  
53113 Bonn, Germany

Phone: +49-228-3894-0  
Email: [publications@iza.org](mailto:publications@iza.org)

[www.iza.org](http://www.iza.org)

## ABSTRACT

---

# Air Pollution and the Labor Market: Evidence from Wildfire Smoke\*

We study how air pollution impacts the U.S. labor market by analyzing effects of drifting wildfire smoke that can affect populations far from the fires themselves. We link satellite smoke plume with labor market outcomes to estimate that an additional day of smoke exposure reduces quarterly earnings by about 0.1 percent. Extensive margin responses, including employment reductions and labor force exits, can explain 13 percent of the overall earnings losses. The implied welfare cost of lost earnings due to air pollution exposure is on par with standard valuations of the mortality burden. The findings suggest that labor market channels warrant greater consideration in policy responses to air pollution.

**JEL Classification:** J21, Q51, Q52, Q53, Q54

**Keywords:** air pollution, labor market, wildfires

**Corresponding author:**

Mark Borgschulte  
Department of Economics  
University of Illinois, Urbana-Champaign  
1407 W Gregory Drive  
Urbana, IL 61801  
USA

E-mail: [markborg@illinois.edu](mailto:markborg@illinois.edu)

---

\* We thank David Card, Olivier Deschênes, Don Fullerton, Michael Greenstone, Matthew Kotchen, Darren Lubotsky, Max Moritz, Edson Severnini, and seminar participants at the American Economic Association Annual Meetings, Carnegie Mellon, the Hong Kong University of Science and Technology, the IZA Conference on Labor Market Effects of Environmental Policies, the Midwestern Economics Association Annual Meeting, the National Tax Association Annual Meeting, the NBER EEE Program Meeting, the Population Association of America Annual Meeting, the Society of Labor Economists Annual Meeting, the University of California at Davis, the University of Chicago, the University of Illinois at Chicago, the University of Illinois at Urbana-Champaign, the University of Michigan, and the W.E. Upjohn Institute for helpful comments and suggestions, and the W.E. Upjohn Institute for financial support. Molitor acknowledges support by the National Institute on Aging of the National Institutes of Health under award number R01AG053350; the content is solely the responsibility of the authors and does not necessarily represent the official views of the National Institutes of Health.

Ambient air pollution imposes large costs on human well-being. Among the most widely documented effects are those on health, such as increases in hospital use and premature mortality among children and the elderly (Chay and Greenstone, 2003; Jayachandran, 2009; Chen et al., 2013; Deryugina et al., 2019; Anderson, 2020). Air pollution exposure can also reduce adult labor supply and productivity (Graff Zivin and Neidell, 2012; Hanna and Oliva, 2015). However, the extent of the impact of air pollution on the labor market remains largely unknown and is often cast as limited. For example, major assessments of the economic benefits of air pollution reductions have attributed a small fraction of the benefits to labor market effects (e.g., U.S. Environmental Protection Agency, 2011; OECD, 2016). However, these assessments typically have considered only limited effects, such as lost days of work due to illness or premature mortality, potentially missing important effects arising through productivity while at work or job separations. Quantifying the broader effects of air pollution on labor market outcomes matters greatly for understanding how pollution affects human welfare and for designing optimal air quality policies.

This paper examines the medium-run effects of transitory air pollution shocks on U.S. labor income and employment. A key challenge for measuring the causal effect of air pollution on nationwide labor market outcomes is finding geographically widespread fluctuations in pollution that are not themselves driven by factors that directly impact economic activity. To sidestep the joint determination of air quality and economic activity, our analysis leverages variation in air quality induced by wildfire smoke. Wildfires account for about 20 percent of the fine particulate matter emitted in the United States (U.S. Environmental Protection Agency, 2014). Wind can carry wildfire smoke for thousands of miles, generating plausibly exogenous air pollution events that are geographically dispersed, widespread, and unconnected to economic factors such as regulations (Langmann et al., 2009). Wildfires have increased in frequency and intensity in recent years, making wildfire smoke of increasing concern as a source of pollution nationwide.

In our analysis, we exploit variation in wildfire smoke exposure at the county level to estimate the impacts of transient air pollution events on labor market outcomes. Our analysis relies on linking three primary data sources from 2007 to 2019: high-resolution remote sensing data from satellites that show the locations of wildfire smoke plumes in the United States,<sup>1</sup> air quality data

---

<sup>1</sup>We use wildfire smoke exposure data developed by Miller, Molitor and Zou (2021) and adapt it to fit the unit of analysis for the labor market data.

from ground-level pollution monitors, and labor market data for all counties in the continental United States. To facilitate comparison of our estimates to those from prior studies, we report both reduced form effects of wildfire smoke and instrumental variables (IV) models which use smoke exposure as an instrument for local fine particulate matter (PM<sub>2.5</sub>) concentrations. We then benchmark the welfare cost of lost earnings due to pollution by comparing them to mortality costs derived from established estimates in the literature.

Several features of wildfire smoke combine to create a useful natural experiment for studying the effects of air quality on labor market outcomes. Wildfire smoke events occur regularly throughout the United States. During our study period, U.S. counties were fully covered by wildfire smoke for an average of 20.2 days per year on a population-weighted basis, and nearly every county experienced some exposure. Drifting wildfire smoke plumes create sharp air pollution shocks that have magnitudes typical of daily variation in U.S. air quality. At the daily level, an additional day of wildfire smoke increases concentrations of ground-level fine particulate matter (PM<sub>2.5</sub>) by an average of 2.2  $\mu\text{g}/\text{m}^3$ , about one-third of the daily standard deviation. The relationship between smoke exposure and PM<sub>2.5</sub> can also be detected at the quarterly level, which is the time frequency at which we conduct labor market analysis. We show that an additional day of smoke raises a county's quarterly average PM<sub>2.5</sub> concentration by about 0.06  $\mu\text{g}/\text{m}^3$ . When we control flexibly for wind direction, we find that these estimates remain largely unaffected, indicating that wildfire smoke rather than other upwind pollution sources are responsible for the variation in air quality.

Our study has three primary results. First, we find that wildfire smoke exposure leads to statistically and economically significant losses in labor income, employment, and labor force participation (LFP). We estimate that each day of smoke reduces quarterly per capita earnings by \$5.2, or about 0.10 percent. Multiplying this effect by the average number of smoke days each year, we calculate that wildfire smoke reduces earnings by nearly 2 percent of U.S. annual labor income (\$125 billion in 2018 dollars) per year on average between 2007–2019. We find that the effect of smoke is larger than average among older workers, suggesting that age and related poor health may amplify the negative labor market effects of air pollution.<sup>2</sup> On the extensive margin, we show that

---

<sup>2</sup>Medical and public health studies find that vulnerability to respiratory and circulatory illness rises with age, suggesting older workers may be particularly responsive to air pollution (e.g., [Bentayeb et al., 2012](#); [Schlenker and Walker, 2016](#)). For examples of the mortality literature, see [Dockery et al. \(1993\)](#) and [Pope et al. \(2009\)](#). See [Chan and Stevens \(2001\)](#) for evidence related to job search at older ages.

an additional day of smoke exposure reduces employment by 80 employees per million residents aged 16 and older, which can explain 13% of the total earnings effect of smoke exposure assuming those who lost employment earn average incomes. We further document a reduction in LFP of 39 per million people, consistent with some employment losses resulting in labor force exit. These results provide novel evidence linking air pollution to extensive margin labor responses and indicate a channel through which short-run changes in air quality may have sustained impacts on the labor market.

Second, we leverage plausibly exogenous variation in wildfire smoke exposure to provide one of the first national estimates of the causal effect of ambient air pollution exposure on labor market outcomes. Our baseline estimates imply that a  $1 \mu\text{g}/\text{m}^3$  increase in quarterly  $\text{PM}_{2.5}$  concentrations reduces per capita earnings in the quarter by \$103, reduces employment by 1,750 workers per million residents aged 16 and older, and reduces LFP by 791 individuals per million people. All three estimates are an order of magnitude larger than their OLS counterparts, reinforcing the importance of a research design that addresses measurement error and endogeneity.<sup>3</sup> Our estimates capture medium-run effects of transitory air pollution shocks, which differ from the shorter-run effects that have been the focus of most prior studies of air pollution and the labor market, particularly among piece-rate workers in agricultural, manufacturing, or service settings. While our findings are based on national data covering income from nearly every industry, our baseline estimate of the effect of air pollution on earnings is typical of effects found in prior studies, suggesting that air pollution affects labor markets broadly, and not just in narrowly defined settings.

Third, we benchmark the welfare cost of lost earnings to the cost of premature mortality due to smoke exposure. To do so, we first develop a stylized model of health and labor supply, which allows us to gauge social welfare losses based on our IV estimate of the earnings effect of  $\text{PM}_{2.5}$ . We provide a back-of-envelope estimate that the annual social welfare cost of lost earnings is on the order of \$92 billion per  $1 \mu\text{g}/\text{m}^3$  annual increase in  $\text{PM}_{2.5}$ . Next, we quantify the mortality costs of

---

<sup>3</sup>One caveat that we discuss further in Section 3.3 involves the interpretation of the IV estimate as the causal effect of an *independent* increase in  $\text{PM}_{2.5}$ , as air pollutants tend to correlate with each other, an issue that applies generally to studies of the impact of air pollution. In our study context, we document that wildfire smoke indeed generates an omnibus increase of multiple pollutants, though most predominantly for ground level  $\text{PM}_{2.5}$  and to a smaller degree for  $\text{PM}_{10}$  and  $\text{O}_3$ . We interpret the IV broadly as the effect of bad air quality as proxied by  $\text{PM}_{2.5}$ . While our IV design does not pin down the effect of individual pollutants, in Appendix Table B.3, we report a multivariate OLS analysis which provides supportive evidence that  $\text{PM}_{2.5}$  appears to be the strongest predictor for earnings losses among criteria pollutants recognized by the U.S. EPA.

PM<sub>2.5</sub> using established estimates from [Deryugina et al. \(2019\)](#), who leverage quasi-random variation in wind patterns to identify causal effects of PM<sub>2.5</sub> on elderly mortality at the daily frequency for the entire U.S.<sup>4</sup> Using a range of commonly used values of a statistical life, we calculate the premature mortality cost of PM<sub>2.5</sub> from wildfire smoke to be \$8.1–31.3 billion annually, which is lower than our estimated effects of smoke on lost labor market earnings (\$123 billion) and the welfare cost (\$92 billion) of these lost earnings. Our findings contrast sharply with prior air pollution assessments that put labor market costs of air pollution at less than 5 percent of the premature mortality costs in the United States ([U.S. Environmental Protection Agency, 2011](#); [OECD, 2016](#); [World Bank, 2016](#)). These assessments have generally focused only on lost work due to illness or premature mortality, and they have relied on strong modeling assumptions in lieu of direct estimation. For example, the Environmental Protection Agency’s (EPA) usual method multiplies estimates of the effects of pollution on a selection of health endpoints (such as cardiovascular or respiratory hospitalizations) by the typical number of lost work days (usually survey-collected) associated with each endpoints ([U.S. Environmental Protection Agency, 2011](#)). By contrast, our results are based on administrative measures of income and provide a direct comparison of mortality and labor market effects that arise from quasi-experimental variation in pollution exposure.

In addition to providing novel empirical evidence on the aggregate effects and relative importance of labor market channels in the evaluation of the costs of air pollution, our paper makes several other contributions. First, for pollution abatement policy, the pollution variation we study primarily occurs below regulatory standards set by the EPA. Nevertheless, our findings indicate that such pollution may significantly reduce labor market earnings. Failure to consider labor market costs may therefore lead to inefficient pollution standards and regulations. Second, our findings suggest the possibility of a “double dividend” that capitalizes on the potential for reductions in air pollution to increase labor income and associated tax revenue, either through improvements in health or increased productivity, allowing for lower tax rates and the distortions they impose ([Williams III, 2003](#)). Moreover, our findings suggest that the magnitude of the positive income effects from other air pollution regulations may be greater than previously has been recognized.

---

<sup>4</sup>While our preferred calculation is based on existing estimates from independent studies, we also provide a complementary analysis by leveraging the smoke quasi-experiment again and directly estimating the mortality effect of smoke (and the resulting pollution increases) using mortality data available at the monthly frequency. Though less powered than [Deryugina et al. \(2019\)](#)’s daily analysis, our estimates are broadly in line with the literature, and produce similar conclusions on the mortality costs of PM<sub>2.5</sub> exposure.



Our findings also provide evidence of how changes in health can lead to changes in employment and earnings and understanding about the conditions under which these effects are largest. The propagation of short-run labor market shocks, especially those that generate job loss, are of long-standing interest in labor and macroeconomics ([Jacobson, LaLonde and Sullivan, 1993](#); [Neal, 1995](#); [Jarosch, 2021](#)). Our findings that pollution shocks reduce labor income and employment add to a small but growing literature that documents the lasting impacts of changes in health on labor supply using quasi-experimental evidence ([Coile, 2004](#); [Stephens Jr and Toohey, 2018](#)). We also find evidence that workers in certain regions bear a disproportionate burden from such air pollution, including regions with a higher Black population share.

Finally, our research adds to a growing body of literature on the economic and social costs of natural disasters and on how policies can be designed to mitigate disaster impacts. While damages from many natural disasters tend to be localized, our findings show that drifting smoke from wildfires creates an externality that can inflict significant losses in locations far from the fires themselves. These social costs should be considered alongside traditional considerations of wildfire damages to property, natural resources, and the costs of firefighting when designing policies for local land use and fire management.<sup>5</sup> In addition, our findings contribute to a growing body of literature on trans-boundary pollution with international implications, as an important share of wildfire smoke in the U.S. originates in Canada or Mexico ([Lipscomb and Mobarak, 2016](#); [Monogan, Konisky and Woods, 2017](#); [Yang and Chou, 2017](#)). Climate model predictions that wildfire events will increase in frequency and severity underscore the importance of advancing our understanding of the impacts of these events.<sup>6</sup>

---

<sup>5</sup>[Kochi et al. \(2010\)](#) survey this literature, finding only six studies that have quantified the economic cost of wildfire smoke, and none that include economic costs manifested through the labor market.

<sup>6</sup>Climate change is projected to increase temperatures and reduce precipitation, leading to longer and more intense fire seasons; for example, every one-degree-Celsius increase in global temperature is projected to quadruple acreage burned by wildfires. See [National Research Council \(2011\)](#) for more details on this projection, and [Moritz et al. \(2012\)](#) for more on modeling of climate-and-wildfire linkages. Consistent with predictions generated by these models, recent fire seasons have set records in number of fires, acreage burned, and property damage.

# 1 Background and Conceptual Framework

## 1.1 Pollution Effects on Health and Productivity

How do transient air pollution events, such as wildfire smoke exposure, affect labor market earnings? Wildfire smoke, like other forms of air pollution, contains particulate matter that enters the lungs and can pass into the bloodstream. Smoke also carries other pollutants, such as ozone, carbon monoxide, atmospheric mercury, and a range of VOCs. A large literature in biomedical sciences, public health, and economics demonstrates negative effects of air pollution exposure on human health (e.g., [Deryugina et al., 2019](#)). While wildfire smoke is understood to operate through the same channels as other sources of air pollution, the composition of wildfire smoke may make it more or less harmful to human health per unit of measured particulate matter.<sup>7</sup> Studies of the health effects of wildfire smoke have linked exposure to increases in adult mortality ([Miller, Molitor and Zou, 2021](#)), increases in infant mortality ([Jayachandran, 2009](#)), elevated risk of low birthweight ([McCoy and Zhao, 2016](#)), and reductions in lung capacity ([Pakhtigian, 2022](#)).

Air pollution can also affect non-health outcomes (see [Aguilar-Gomez et al., 2022](#), for a review). For example, air pollution may cause individuals to take costly avoidance or defensive actions ([Chay and Greenstone, 2005](#); [Moretti and Neidell, 2011](#); [Graff Zivin and Neidell, 2013](#); [Deschênes, Greenstone and Shapiro, 2017](#); [Barwick et al., 2019](#)). For wildfire smoke in particular, survey research has documented various behavioral responses, such as spending more time indoors, running air conditioners for longer times, and missing work ([Jones et al., 2015](#)). [Burke et al. \(2021\)](#) documents a host of awareness and behavior changes, including health-protective behaviors, mobility, and sentiment, in response to increasing wildfire pollution. A growing literature in economics has shown that air pollution exposure can also lead to missed work days and reduced productivity.<sup>8</sup> Most of these studies have focused on specific settings chosen to minimize simul-

---

<sup>7</sup>Research on the differences in the composition of smoke from biomass burning and car exhaust finds higher reactivity of VOCs in smoke, which is consistent with the incomplete burning of the carbon material in a fire relative to internal combustion (e.g., [Verma et al., 2009, 2015](#); [Bates et al., 2015](#)). Wildfires have also been found to produce higher levels of gaseous and particulate pollutants than prescribed burns ([Liu et al., 2017](#)).

<sup>8</sup>See [Hanna and Oliva \(2015\)](#) and [Aragón, Miranda and Oliva \(2017\)](#) for air pollution effects on hours worked; [Hausman, Ostro and Wise \(1984\)](#), [Hansen and Selte \(2000\)](#) and [Holub, Hospido and Wagner \(2020\)](#) for sick leave; [Graff Zivin and Neidell \(2012\)](#) and [Chang et al. \(2016\)](#) for the productivity of agricultural workers; [He, Liu and Salvo \(2018\)](#) and [Adhvaryu, Kala and Nyshadham \(2022\)](#) for the productivity of Chinese and Indian manufacturers, respectively; [Chang et al. \(2019\)](#) for the productivity of indoor call center workers; [Lichter, Pestel and Sommer \(2017\)](#) and [Archsmith, Heyes and Saberian \(2018\)](#) for the performance of soccer players and baseball umpires, respectively;

taneity issues such as reverse causality, making it difficult to assess the incidence of air pollution on workers more generally.

While many studies of air pollution have focused on short-run effects, more significant losses may occur if short-run pollution effects catalyze longer-run health and labor market responses. Relatively little is known about the long-run effects of transient air pollution shocks in adulthood on either health or labor markets. Theoretically, short-run health effects of air pollution may result in lasting earnings losses over a longer time through either health channels or interactions with the labor market. Biomedical mechanisms exist through which short-run exposure may affect medium- and long-run health. Most directly, once particulate matter enters the body, it may take weeks or months for it to clear. In addition, transient exposure may result in adverse health events, such as heart attacks or the onset of asthma, reducing health capital and leaving exposed individuals more vulnerable to future health shocks. Looking at very long-run effects of health on income, exposure to adverse economic and environmental conditions in early childhood can lower educational attainment and earnings later in life (Case, Lubotsky and Paxson, 2002; Sanders, 2012; Isen, Rossin-Slater and Walker, 2017).

Temporary labor market disruptions can also have lasting impacts on earnings and welfare, as shown in numerous studies of displaced workers and labor market entrants (Jacobson, LaLonde and Sullivan, 1993; Kahn, 2010; Oreopoulos et al., 2012; Borgschulte and Martorell, 2017). Many workers in the United States have weak job protections when they or family members fall ill.<sup>9</sup> Wages may respond to more serious illnesses due to lasting changes in workers' productivity or employment. We know of no evidence on the effects of such responses to air pollution, though previous researchers have relied on such effects to motivate models of health and labor market linkages. For example, lower wages may be an important source of earnings losses following hospitalization (Dobkin et al., 2018).

---

and Ebenstein, Lavy and Roth (2016) and Roth (2016) for test score performance. See Graff Zivin and Neidell (2009) and Aldy and Bind (2014) for effects on demand for goods and services, such as for entertainment and tourism.

<sup>9</sup>The Family Medical Leave Act covered 59% of workers in 2012 and allowed them to take up to 12 weeks of unpaid leave for their own serious health condition, or that of a spouse, parent, or child (Klerman, Daley and Pozniak, 2012).

## 1.2 Conceptual Model of Health and Labor Supply

To illustrate the multiple channels of action implied by the combination of direct health effects, behavioral responses, and long-run wage effects, we build a stylized model of health and labor supply to connect exposure to airborne pollutants with labor market earnings, our primary outcome measure. We model the utility of a representative agent in response to a fixed dose-response function,  $s(c)$ , relating exposure to pollution concentration,  $c$ , to sick days,  $s$ . Pollution concentration may represent a vector of harmful components in wildfire smoke. An agent maximizes utility that depends on consumption,  $X$ , leisure,  $l$ , sick days,  $s$ , and exposure,  $c$ :

$$\begin{aligned} & \mathbf{max}_{X,l} U(X, l, s, c) \\ & \text{s.t. } Y + wh \geq X \\ & l = T - s - h \end{aligned}$$

Consumption will equal non-labor income,  $Y$ , and earnings,  $wh$ . Wages respond to pollution,  $w = w(c)$ , due to a combination of responses through three channels: changes in the returns to work arising from a decay in human capital after an illness, the incidence of labor demand changes on workers, and direct productivity effects during periods of high pollution.  $T$  reflects the total time endowment, from which days of illness,  $s \equiv s(c)$ , are directly subtracted. Hours of work,  $h \equiv h(w(c), c)$ , respond to wages and direct avoidance of high pollution.

The resulting earnings function is  $E(c) = w(c) \cdot h(w(c), s(c), c)$ . Taking derivatives and rearranging yields a decomposition of the reduced-form effect:

$$\frac{dE(c)}{dc} = w \left[ \frac{\partial h}{\partial s} \frac{ds}{dc} + \frac{\partial h}{\partial c} \right] + h \left[ \frac{dw}{dc} \right] (1 + \eta_s) \quad (1)$$

The first bracketed term in equation (1) captures the direct effects of pollution on labor supply. The first term inside the brackets,  $\frac{\partial h}{\partial s} \frac{ds}{dc}$ , denotes the loss of hours of work to illness, and the second term,  $\frac{\partial h}{\partial c}$ , reflects avoidance behavior. The second bracketed term,  $\frac{dw}{dc}$ , captures the effect of pollution on wages. The final term,  $(1 + \eta_s)$ , scales the endogenous labor supply response to changes in the wage; as wages fall with pollution exposure, workers may reduce their hours of work. Thus, we expect the effect of air pollution on earnings to be the sum of the effects working through the direct

effect on hours, and the combined effects on wages and endogenous labor supply response.

The primary focus of the paper is on estimating  $\frac{dE(c)}{dc}$ , the total response of earnings to variation in air quality. We also examine evidence for the components of the losses, especially the response of hours through a labor force participation channel. Following our main estimates, in Section 5 we revisit equation (1) to guide our analysis of the welfare effects of lost earnings.

## 2 Data

Our analysis relies on a nationwide linkage of data on wildfire smoke exposure, air pollution, weather conditions, and labor market outcomes. These data derive from a variety of sources, including satellite imagery, environmental monitors, and federal income statistics. This section describes the construction of the database and the definitions of our key variables used in the analysis.

### 2.1 Wildfire Smoke Data

A key innovation of our analysis is to link labor market outcomes to wildfire smoke exposure at the county level. The daily smoke exposure data were originally developed by [Miller, Molitor and Zou \(2021\)](#) using wildfire smoke analysis produced by the National Oceanic and Atmospheric Administration’s Hazard Mapping System (HMS). The HMS uses observations from the Geostationary Operational Environmental Satellite, which produces imagery at a 1-km resolution for visual bands and a 2-km resolution for infrared bands, to identify fire and smoke emissions over the contiguous United States ([Ruminski et al., 2006](#)). Smoke analysts process the satellite data to draw georeferenced polygons that represent the spatial extent of wildfire smoke plumes detected each day. Plumes are typically drawn twice per day, once shortly before sunrise and once shortly after sunset. We use the HMS smoke plume data from 2007 to 2019 to construct smoke exposure at the county level for each day in this period. Our primary measure of smoke exposure is an indicator for a county being fully covered by a smoke plume on a day. In Section 4.4, we describe robustness checks where we calculate smoke exposure based on the fraction of county’s area being covered by smoke plumes.

## 2.2 Pollution Data

We obtain ambient air pollution data from the EPA’s Air Quality System. We use daily ground monitor readings for EPA “criteria pollutants,” including fine particulate matter ( $PM_{2.5}$ ), coarse particulate matter ( $PM_{10}$ ), ozone ( $O_3$ ), carbon monoxide (CO), nitrogen dioxide ( $NO_2$ ), and sulfur dioxide ( $SO_2$ ). The EPA recognizes these pollutants as the most detrimental to human health.

To measure air pollution for a county, we take the weighted average of all valid readings for each pollutant from monitors that fall within 20 miles of a county’s centroid, where the weights are the inverse of the distance between the monitor and the county centroid. This pollution measure is missing for counties in which the nearest pollution monitor with a valid reading is outside the 20-mile radius. Because monitors for some pollutants are more prevalent than monitors for others, data availability differs by pollutant. For example, 1,837 counties in our sample have  $O_3$  data, but only 863 counties have  $NO_2$  data. The 1,686 counties for which we can measure  $PM_{2.5}$  represent the area of residence for over 85 percent of the U.S. population.

## 2.3 Weather Data

In sensitivity checks, we flexibly control for weather patterns including temperature, precipitation, and wind patterns. We acquire temperature and precipitation data from the Global Historical Climatology Network of the National Climatic Data Center. The data provide daily, station-level information on minimum temperature, maximum temperature, and total precipitation. To construct weather conditions at the county level, we average daily weather readings from stations that fall within 20 miles of each county’s centroid, weighting readings by the inverse of the distance between the station and the county centroid.

We obtain wind speed and wind direction data from the North American Regional Reanalysis (NARR) of the National Centers for Environmental Information. NARR divides the United States into  $32\text{km} \times 32\text{km}$  grids, and for each grid-day it provides data on the east-west wind vector (“u-wind”) and the north-south wind vector (“v-wind”), which together characterize wind speed and direction. Given the resolution of the data, we construct wind conditions at the county level by first linearly interpolating u-wind and v-wind vectors at the grid centroids to the county centroid, and then converting u-wind and v-wind at the county centroid into wind speed and wind direction.

## **2.4 Labor Market Data**

We measure quarterly labor market outcomes at the county level using data from two main data sources with national coverage. Our primary measures of earnings and employment come from the U.S. Census Bureau Quarterly Workforce Indicators (QWI) dataset, which covers all workers except for those who are members of the armed forces, self-employed, proprietors, and railroad employees. The QWI provides information by age group and by 2-digit NAICS industry, allowing us to measure effects separately for younger and older workers and for workers in different industry sectors. Data on LFP are from the Local Area Unemployment Statistics (LAUS) program of the U.S. Bureau of Labor Statistics. LAUS provides county level labor force counts for each month, which we aggregate to quarterly averages to match the temporal frequency of the QWI earnings and employment measures.

## **3 Research Strategy**

Attempts to identify the causal effects of air pollution on labor markets face at least three primary challenges. First, observational correlations between air pollution and economic activity may partly reflect the causal effects of economic activity on air pollution (reverse causality) or some other factor that affects both economic activity and air pollution. These challenges can potentially be overcome using an instrumental variables strategy, but a valid instrument in this setting must be uncorrelated with unobserved determinants of labor market outcomes. For example, regulatory policies that reduce air pollution may impose direct effects on the regulated markets and are thus unlikely to be valid instruments. Second, transient changes in air pollution may induce short-run effects that reflect intertemporal substitution, rather than true welfare-reducing labor market effects. Third, existing studies of how pollution affects labor markets have generally focused on specific industries or regions. This approach is generally unable to capture effects on labor market exits or shifts in labor market activity from one industry to another, and it also raises questions about whether findings are nationally representative.

### 3.1 Wildfire Smoke and Air Quality

To address these challenges, we use variation in wildfire smoke exposure to identify the causal effects of transient air pollution shocks on labor markets. Wildfire smoke plumes are a natural source of air pollution and travel hundreds or even thousands of miles downwind, allowing us to identify the effects of smoke exposure separately from direct damages caused by wildfire burns.<sup>10</sup> Figure 1 maps the number of days each U.S. county was fully covered in smoke in each year of the sample period 2007–2019. Over this period, counties experience an average of 20.2 smoke days per year, on a population-weighted basis. Smoke exposure tends to be highest in the West North Central states but varies substantially from year to year.

We first characterize how smoke events map to ground-level air quality at the daily level. To do so, we conduct an event study by regressing the ambient fine particulate matter concentration ( $PM_{2.5}$ ) in a county  $c$  and on day  $d$  on a series of indicators for smoke exposure on each day within 20 days of the index day, using the following regression.

$$[PM_{2.5}]_{cd} = \sum_{\tau=-20}^{20} \beta_{\tau} \cdot SmokeDay_{c,d+\tau} + \alpha_{c \times day-of-year} + \alpha_{state \times year} + \epsilon_{cd}. \quad (2)$$

Fixed effects for county by day of the year isolate year-over-year variation in smoke exposure at the county level, absorbing county-specific seasonality. Fixed effects for state by year further account for annual trends in smoke exposure, which may vary by state. The  $\beta_{\tau}$  coefficients trace out the typical footprint of ground-level air quality surrounding a smoke day.

The daily level event study helps illustrate the nature of a typical smoke shock in our data. In part because air pollution may linger even after a smoke plume is no longer detectable by satellite, the results from the daily event study specification may not map directly to the average effect of a smoke event on air quality when measured over a longer time horizon. We therefore also estimate the relationship between smoke exposure and  $PM_{2.5}$  at the quarterly level  $q$ , the time frequency of the labor market analysis, using the following regression, which later will also serve as the first

---

<sup>10</sup>Appendix Figure B.1 depicts an example of smoke exposure across much of North America during the Fort McMurray fires in northern Canada. Fires in the U.S. Southeast also appear in the figure.



stage of our IV estimation.

$$[PM_{2.5}]_{cq} = \beta \cdot SmokeDay_{cq} + \alpha_{c \times quarter-of-year} + \alpha_{state \times year} + \epsilon_{cq}. \quad (3)$$

Wind patterns that carry wildfire smoke to a region may also bring in pollution from other sources. This does not necessarily pose an identification concern because even if this were the case, our research design nevertheless would capture the effects of pollution shocks driven by plausibly exogenous wind patterns. In this case, however, part of the effect we find could stem from upwind pollution sources other than wildfires. To make the distinction between potential pollution sources, we directly examine the extent to which wind patterns can explain the wildfire smoke effects we document. Motivated by the research design in [Deryugina et al. \(2019\)](#), we examine the sensitivity of the daily PM<sub>2.5</sub> event study (Figure 2) to the inclusion of state- or county-specific wind direction bins in 60-arc degree resolution. These flexible wind direction controls help us distinguish downwind wildfire pollution from generally dirty wind patterns. We will conduct the same set of sensitivity checks for the quarterly labor market outcomes analysis (Appendix Tables [B.1](#) and [B.2](#)).

### 3.2 Wildfire Smoke and Labor Market Outcomes

We begin our analysis of the effects of pollution on labor market outcomes by analyzing reduced-form relationships between smoke exposure and labor market outcomes. The main estimation equation we implement is as follows:

$$\Delta Y_{cq} = \beta \cdot SmokeDay_{cq} + \alpha_{c \times quarter-of-year} + \alpha_{state \times year} + \epsilon_{cq}, \quad (4)$$

where the outcome  $\Delta Y_{cq}$  is the change in labor market outcome for county  $c$  in quarter  $q$  from the same quarter-of-year in the previous year. The focal dependent variable,  $SmokeDay_{cq}$ , counts the number of days that the county is fully covered by smoke plumes, and thus  $\beta$  reflects the effect of an additional day of wildfire smoke in the exposed county on the outcome variable. The remaining regression terms are as in equation (3). We weight regressions by county-year level population counts and two-way cluster standard errors at both the county and state-by-quarter levels. Un-

less noted otherwise, we will use the same econometric specification as outlined in equation (4) throughout our analysis of the labor market effects of smoke exposure and air pollution.

Before proceeding, we wish to discuss two key features of the model. Our first comment regards the choice of using annual first difference in labor market outcome ( $\Delta Y_{ct}$ ) as the dependent variable. Our study sample spans a 13-year horizon (2007–2019), covering the 2008–2009 recession and the subsequent decade where both income and employment were recovering. To control for differential time trends in the long panel, we measure labor market response as the *change* in earnings, employment, or LFP from year  $t - 1$  to  $t$  for the same county and the same quarter of the year. An alternative but less parsimonious approach is to use *levels* of labor market outcomes as the dependent variable while controlling for county-specific time trends in the regression. We report this as a robustness specification in Appendix Table B.1, along with specifications where both the outcome and focal dependent variable are first-differenced.

Second, our specification effectively treats the panel unit of our study to be a county by quarter-of-year (e.g., summer season of Orange county). With the inclusion of the county-by-quarter-of-year fixed effects ( $\alpha_{c \times \text{quarter-of-year}}$ ), our estimation equation exploits year-over-year variation in smoke days within the same county *and* during the same season of the year. Note that we do not exploit quarter-over-quarter (e.g., 2015Q1 vs. 2015Q2) variation in smoke because wildfire exhibits strong seasonality, with most smoke days concentrated in summer and early fall. In addition, we include state-by-year fixed effects to control for state-specific common shocks to capture time-varying changes at the state level, such as the Great Recession.

We also perform a range of additional sensitivity checks on our specification choice. Because geographically larger counties have a lower probability of being fully covered by smoke, in Section 4.4 we report a robustness check where the dependent focal dependent variable is the sum of the fraction of the county covered by smoke on each day in the quarter. We also examine dynamic specifications by augmenting the main estimation equation (4) with two leads and two lags of  $SmokeDays_{ct}$ .<sup>11</sup> The dynamic specification coefficients on lagged smoke exposure describe whether the effects of smoke persist after the year of exposure. Coefficients on lead terms provide a “placebo” check on the effect of *next year’s* smoke on *this year’s* pollution and labor market

---

<sup>11</sup>The exact estimation equation we implement is  $\Delta Y_{cq} = \beta_{\tau} \cdot \sum_{\tau \in [-2, 2]} SmokeDay_{cq(y+\tau)} + \alpha_{c \times \text{quarter-of-year}} + \alpha_{state \times year} + \epsilon_{cq}$  where  $SmokeDay_{cq(y+\tau)}$  represents smoke exposure for the same county  $\times$  quarter-of-year but during the  $\tau^{\text{th}}$  year relative to the current year.

responses, which we expect to be close to zero because outcomes should not be influenced by quasi-random future smoke shocks. A disadvantage of the dynamic specification is that we draw down the sample size as we add leads and lags of smoke exposure.

Next, we test whether the reduced-form relationships between outcomes and smoke exhibit a systematic, “dosage” pattern by exploiting variations in the cumulative number of days exposed in a given quarter. This is done by estimating a nonlinear version of the  $\beta$  coefficient in equation (4) via a Frisch–Waugh–Lovell style procedure: we first residualize both the outcome variable ( $\Delta Y_{cq}$ ) and smoke exposure ( $SmokeDay_{cq}$ ) by the fixed effects controls, and then calculate the averages of residualized outcome by ten equal bins of residualized smoke. The resulting nonlinear estimates illustrate how labor market outcomes respond to smoke shocks of varying intensity, thus providing an opportunity to test if the average effect of smoke ( $\beta$ ) is driven by systematic relationships between exposure and outcomes, or by extreme, and potentially outlier, exposure events.

We explore the robustness of our results to a variety of additional specifications including alternative definitions of smoke exposure, the inclusion of flexible weather controls, alternative fixed effects controls, alternative data frequency (annual data analysis), alternative specifications of the outcome variable and time trends controls, and alternative standard errors clustering choices. We repeat the same set of sensitivity checks with the IV estimation. We defer more details to Section 4.4 when we discuss these results.

### 3.3 Instrumental Variables Estimation

Drifting wildfire smoke provides a natural context to estimate the causal effect of air pollution on labor market outcomes using an instrumental variables (IV) framework. Consider the relationship between a labor market outcome  $Y_{cq}$  and ambient air quality as measured by  $PM_{2.5}$  concentration, as given by the following equation:

$$\Delta Y_{cq} = \theta \cdot [PM2.5]_{cq} + \alpha_{c \times quarter-of-year} + \alpha_{state \times year} + e_{cq}. \quad (5)$$

If  $[PM2.5]_{cq}$  is endogenous or measured with error, OLS will produce a biased estimate of  $\theta$ , the effect of air pollution on labor market outcomes. To address these issues, we use an IV estimation strategy which leverages quasi-experimental variation in pollution driven by wildfire smoke

exposure. Our first stage estimation equation is (repeating equation (3)):

$$[PM2.5]_{cq} = \beta \cdot SmokeDay_{cq} + \alpha_{c \times quarter-of-year} + \alpha_{state \times year} + \epsilon_{cq}. \quad (6)$$

This is therefore a just-identified IV model with one excluded instrument (*SmokeDay<sub>cq</sub>*), which we implement using the standard two-stage least squares (2SLS) estimation approach. A central identifying assumption for the IV approach is that the exclusion restriction holds. That is, we assume that, conditional on the fixed effects, the presence of wildfire smoke may only affect earnings, employment, and LFP through its impacts on air pollution. Our identification thus relies on the fact that an area’s year-over-year variation in smoke exposure is driven largely by quasi-random factors (including the location and magnitude of fire events and shifting wind patterns) and are unlikely to be correlated with unobservable determinants of labor market outcomes.

There are two potential counter-arguments to the exclusion restriction assumption. First, while quasi-random smoke shocks are unlikely to be correlated with economic determinants of labor market outcomes, they might interact with local atmospheric conditions, such as air temperature and precipitation which can have independent impacts on worker productivity. In practice, we found that controlling flexibly for weather variables, including bins of air temperature, precipitation, wind direction, and wind speed, has little impact on our smoke effect estimates. The inclusion of many weather controls, however, reduces the strength of the first stage of the IV estimation. In our main analysis, we have chosen to use the parsimonious specification with no weather controls, and we report sensitivity checks with weather controls in the Online Appendix.

A second concern involves the interpretation of the IV estimate as the causal effect of PM<sub>2.5</sub> specifically, as opposed to the effect of bad air quality in general as proxied by PM<sub>2.5</sub>. Wildfire smoke contains a complex mix of air pollutants (e.g., [Urbanski, Hao and Baker, 2008](#)), and it is thus problematic to interpret the IV estimate to be the independent effect of any particular pollutant, an issue that pertains to many studies of the impact of air pollution. To illustrate the empirical variation, we examine the typical pollution mix of smoke exposure by repeating the daily event study analysis of equation (2) for six “criteria air pollutants” (PM<sub>2.5</sub>, PM<sub>10</sub>, O<sub>3</sub>, CO, NO<sub>2</sub>, and SO<sub>2</sub>) recognized by the U.S. EPA to be among the most harmful to human health. To facilitate comparisons across different pollutants, we estimate the event studies where the outcome is the

measured concentration for each pollutant, standardized to have a mean of 0 and a standard deviation (SD) of 1. Appendix Figure B.3 shows PM<sub>2.5</sub> exhibits the largest single-day spike on the smoke day by nearly 40% SD. The next largest increases are observed for PM<sub>10</sub> and O<sub>3</sub>, both increasing by over 25% of SD. Much smaller changes are observed for CO, NO<sub>2</sub>, and SO<sub>2</sub> (less than 10% of SD). These results suggest that particulate matter is the signature emission of wildfires; at the same time, because all six pollutants show significant increases, caution should be taken attributing the effect of smoke on labor market outcomes to the independent effect of any particular pollutant.<sup>12</sup>

Finally, the relevance condition for IV estimation holds in our setting as smoke exposure is a strong predictor of ground-level air pollution. This is true both in the daily event study and at the quarterly level at which we conduct the main labor market analysis. As we will report in more details below, the first stage Kleibergen-Paap F-statistic is over 71 in our preferred IV specification.

## 4 Results

### 4.1 Air Quality Effects

Figure 2 reports the event study coefficients  $\beta_\tau$ 's of equation (2), which trace out the typical footprint of ground-level PM<sub>2.5</sub> levels in the 20 days before and 20 days after a smoke day. Smoke days are associated with elevated levels of PM<sub>2.5</sub> for four days, with an average increase of 2.19  $\mu\text{g}/\text{m}^3$  on the day of exposure, about one-third of a standard deviation in county-daily PM<sub>2.5</sub> concentrations.<sup>13</sup>

The relationship between smoke exposure and PM<sub>2.5</sub> can also be detected at the quarterly level, which is the time frequency at which we conduct the labor market analysis. Column (1) of Table 1, Panel A, reports that increasing cumulative smoke exposure in the quarter by one day increases

---

<sup>12</sup>While it is difficult to find quasi-experimental variation of one pollutant while holding other pollutants constant, in Appendix Table B.3 we report a multivariate OLS exercise that regresses earnings on multiple pollutants. We find evidence that PM<sub>2.5</sub> tends to be the most robust, negative predictor of earnings when estimated jointly with other pollutant(s) as covariates.

<sup>13</sup>In Figure 2, the mild increase in ground-level PM<sub>2.5</sub> on the day prior to measured smoke day is likely due to the temporal frequency at which HMS smoke data were generated: satellites scan for smoke periodically during the daytime, whereas pollution monitors report a 24-hour average. So, when plumes move in overnight, they will show up as an increase in pollution at  $t = -1$ . This feature of the data represents a measurement error that is expected to attenuate our findings, as some of the non-smoke days in our data might in fact see mild increase in wildfire pollution.

quarterly average  $PM_{2.5}$  by  $0.056 \mu\text{g}/\text{m}^3$ . This is equivalent to increasing  $PM_{2.5}$  by  $5 \mu\text{g}/\text{m}^3$ , or more than two times the single-day effect size. Consistent with the pattern of Figure 2, this also implies that particulate matter lingers in the air, increasing pollution levels on days that are not coded as “smoke exposure” days in the satellite data.

The magnitude of our estimates suggests most wildfire smoke events induce modest changes in air quality that are often not visible to the human eye. This underscores that our labor market estimates are not driven by a small number of days during which people are exposed to extremely intense smoke, which can generate substantial news coverage, possibly triggering behavioral responses that would not be present with normal sources of air pollution. Instead, the vast majority of smoke exposure days in our data lie within the normally experienced levels of air quality, helping to allay this concern. From Figure 2, smoke days are associated with increases of just over  $2 \mu\text{g}/\text{m}^3$  on the day of exposure relative to the daily mean of  $10.2 \mu\text{g}/\text{m}^3$ . To put this into context, the EPA’s annual standard for  $PM_{2.5}$  is  $15 \mu\text{g}/\text{m}^3$ , while the daily  $PM_{2.5}$  standard is  $35 \mu\text{g}/\text{m}^3$ , which are far above most exposure levels. Thus, although wildfire smoke is a unique source of pollution, it seems plausible that behavioral responses to smoke—especially far from the fires themselves—will be similar to those caused by other fluctuations in air quality.

## 4.2 Earnings Effect

Panel A of Table 1 reports our main earnings effect estimate in column (1). Each day of wildfire smoke exposure in a county reduces per capita earnings by \$5.20 in the quarter, which represents a 0.097 percent reduction from a quarterly mean earnings of \$5,359.70.

Panels B and C of Table 1 report OLS and IV estimates, respectively, of the effect of  $PM_{2.5}$  on earnings. The number of observations decrease from those in Panel A, as the estimation restricts to counties with pollution monitoring data. Column (1) of Panel B shows that one unit ( $1 \mu\text{g}/\text{m}^3$ ) increase in quarterly  $PM_{2.5}$  concentrations is associated with a significant reduction of \$10.6 in per capita quarterly earnings. Column (1) of Panel C shows the IV estimate is \$103.1 (about 1.81 percent reduction), an order of magnitude larger than the OLS estimate.

Our earnings estimates imply large effects of wildfire smoke on national labor income if one assumes that the effects of marginal smoke days, as estimated here, reflect the average effect of

all smoke days. In 2010, approximately 160 million U.S. workers earned a total of \$6.4 trillion (in 2018 dollars). To estimate the total earnings losses from a typical year of smoke exposure, we multiply annual earnings by both the estimated reduction of 0.097 percent in earnings per day of smoke exposure and by the average number of smoke days per year (20.2) in our sample. This gives total earnings losses of \$125.4 billion (about 1.96 percent of annual earnings) per year of smoke exposure.

Another way to assess the magnitude of our results is to compare our IV estimates to prior studies of the effect of pollution on labor market outcomes. Studies in this area vary substantially in both research design and context, including the study country, time periods, industry focus, measures of labor market outcome, the type of pollutant examined, and background pollution exposure levels. We make a simplifying choice and conduct comparisons using a measure of “pollution elasticity,” that is, the percentage change in a labor market outcome per one percent change in the level of pollution being studied. Our analysis finds that a  $1 \mu\text{g}/\text{m}^3$  (approximately 10 percent) increase in quarterly  $\text{PM}_{2.5}$  concentrations generates per capita earnings losses amounting to \$103, or about 1.81 percent of quarterly earnings. The implied elasticity of our estimate is thus about  $-0.18$ .

Most prior work in this area focuses on the effect of short-term (daily or weekly) variation in air pollution on piece-rate workers. [Graff Zivin and Neidell \(2012\)](#) find that a 10 ppb increase in 9-hour average ozone reduces output by 5.5% among outdoor fruit packers in California (an elasticity of  $-0.26$ ). [Chang et al. \(2016\)](#) show that a  $10 \mu\text{g}/\text{m}^3$  increase in daily  $\text{PM}_{2.5}$  leads to a 6% output reduction for indoor fruit packers in California (an elasticity of  $-0.062$ ). [Chang et al. \(2019\)](#) study call center workers in a large urban city in China and find a 10 unit increase in the city’s daily Air Pollution Index leads to a decrease of 0.35% in worker output (an elasticity of  $-0.023$ ). [Adhvaryu, Kala and Nyshadham \(2022\)](#) study garment manufacturing workers in India, showing each 10 unit increase in hourly  $\text{PM}_{2.5}$  reduces worker output by 0.5% (an elasticity of  $-0.052$ ). [He, Liu and Salvo \(2018\)](#) use data on textile manufacturing workers in a heavily-polluted industrial town in China and show an output reduction of 1% per  $10 \mu\text{g}/\text{m}^3$   $\text{PM}_{2.5}$  of sustained exposure during the previous month (an elasticity of  $-0.30$ ). [Aragón, Miranda and Oliva \(2017\)](#) examine weekly household survey data in Peru and document a 2% reduction of weekly hours worked per 10% increase in  $\text{PM}_{2.5}$  exposure in the previous week (an elasticity of  $-0.20$ ).

Relatively fewer studies have examined longer-term effects of pollution exposure that leverages annual or permanent changes. [Hanna and Oliva \(2015\)](#) leverage changes in air pollution due to the closure of a large refinery in Mexico City and estimate that a 10 percent decrease in  $\text{SO}_2$  concentrations increased hours worked by 1.5 percent (an elasticity of  $-0.15$ ). [Fu, Viard and Zhang \(2021\)](#) study a nationwide sample of manufacturing firms in China and show a  $-0.44\%$  reduction in firm's yearly productivity (measured by value added per worker) per 1% increase in  $\text{PM}_{2.5}$  in the year (an elasticity of  $-0.44$ ). [Isen, Rossin-Slater and Walker \(2017\)](#) exploit total suspended particulates (TSP) regulations under the 1970 Clean Air Act and estimate that a 10% increase in childhood TSP lowers income 30 years later by about 1% (an elasticity of  $-0.10$ ).

While each of these studies and ours differ in many respects, it is interesting that the elasticity of  $-0.18$  in our study aligns very closely to the average elasticity of  $-0.18$  across these 9 prior studies. Because our findings are based on national data covering income from nearly every industry while many of the prior studies focused on narrower industry or output categories, the similarity in findings suggest that air pollution affects labor markets broadly, and not just in narrowly defined settings.

### **4.3 Extensive Margin Responses**

Next, we examine whether transitory air pollution episodes leave lasting impacts on labor markets. Our model in Section 1 highlights two channels through which such lasting impacts could occur. First, air pollution may cause health events, such as asthma episodes or heart attacks, which lead to chronic health conditions. These chronic conditions may reduce workers' productivity and labor supply or may even cause them to leave the labor force altogether. Second, diminished health, whether temporary or chronic, may affect labor market opportunities. A large literature in labor economics documents the lasting effects of job loss, suggesting that particularly large losses may occur with changes in the extensive margin labor force attachment.

We use equation (4) to test for extensive margin responses to smoke exposure. We first estimate the effect of smoke on employment as measured by the QWI. In Table 1, column (3) of Panel A reports that each day of wildfire smoke reduces quarterly employment in the county by 79.6 per million individuals aged 16 and over, a 0.013 percent decline relative to the sample average



employment rate of 62.6 percent. Furthermore, as reported in column (4) of Panel A, each day of wildfire smoke reduces LFP in the county by 38.7 per million people.

The extensive margin results provide additional support for a conclusion of significant income losses due to smoke exposure. If those who lost employment earn average incomes, and if the reduction in labor supply lasts one quarter, the employment effects of a day of smoke exposure would reduce quarterly income by 0.013 percent. By comparison, each day of smoke exposure reduces quarterly income by 0.097 percent (Table 1, Panel A, column (2)). Thus, the employment reductions due to smoke can account for over 13 percent ( $0.013/0.097$ ) of the total income effect of smoke exposure. This calculation illustrates the potential for relatively small but recurring shocks to employment to have sizeable effects on total earnings.

#### 4.4 Robustness Checks

**Dynamic specification.** In Figure 3, for each of the four outcomes ( $PM_{2.5}$ , earnings, employment, and LFP), we report dynamic specifications that include the effect of the next years' exposure to smoke on this year's outcome (thus describing effects in event years  $t - 1$  and  $t - 2$ , providing a placebo check) and the lagged effects of previous years' exposure to smoke (describing effects in event years  $t + 1$  and  $t + 2$ ).

The patterns in Figure 3 reveal significant effects of smoke in the year of exposure (event year  $t$ ). Panels A and B suggest that each day of smoke exposure leads to an increase in  $PM_{2.5}$  of  $0.053 \mu g/m^3$  ( $p$ -value  $< 0.01$ ) and earnings losses of \$7.50 per capita ( $p$ -value  $< 0.01$ ). On the same graph, we superimpose the static estimates from Panel A of Table 1. Overall, the dynamic estimates for year  $t$  resemble their static counterparts. The small point estimates of the effects of smoke in event years  $t + 1$  and  $t + 2$  suggest that the earnings effects of smoke do not have significant lags, but instead concentrated during the year of exposure. Moreover, the estimated effects of future smoke in event years  $t - 1$  and  $t - 2$  are negligible, consistent with quasi-random smoke exposure events. In the case of LFP, the year  $t$  coefficient is no longer statistically significant once conditional on the leads and lags of exposure; the dynamic pattern of LFP effects aligns with that of the earnings and employment effects but are more noisily estimated.

**Nonlinear specification.** Figure 4 reports the decile bin scatterplot version of the first-stage and reduced-form estimates in Panel A of Table 1. By construction, the slopes of the superimposed linear fit lines equal the corresponding coefficients in Table 1. We find that  $PM_{2.5}$  and earnings effects are approximately linear in the number of days of smoke in a year. The patterns for the employment and LFP effects are relatively less clear-cut, although we cannot reject a linear relationship in either case. Overall, we conclude that the labor market effects we identify in this paper are driven by typical pollution shocks rather than by a few extreme exposure events.

**Other robustness specifications.** We report a series of additional robustness checks in Appendix Table B.1. In panel A, we re-code county's smoke exposure on any given day as the fraction of the county's land area covered by smoke plumes (rather than an indicator for whether the county is entirely covered); we then build the quarterly smoke measure by adding up these fractions. In panel B, we estimate models with flexible weather controls. Regressions in the first row include 10-degree Fahrenheit bins of daily temperature, decile bins of quarterly total precipitation, 60-arc-degree bins of daily prevailing wind direction, and decile bins of daily average wind speed. The second and third rows include wind direction controls fully interacted with state and county fixed effects (see discussion in Section 3.1). In panel C, we test sensitivity to fixed effects strategies by replacing the state-by-year fixed effects with Census Division-by-year fixed effects (the second row), Census Region-by-year fixed effects (the third row), and year fixed effects (the fourth row). Note that the relaxation of fixed effects controls increases the overall amount of variation used in the estimation but potentially introduces bias if regional smoke trends are correlated with labor market trends. In panel D, we aggregate quarterly pollution and labor market outcomes to a yearly frequency and estimate the effect of smoke exposure on outcomes at the annual level. In panel E, we report specifications with levels of labor market outcomes (instead of first differences) as the dependent variables, both with and without county-specific linear time trends controls; we also report robustness specifications where all labor market outcomes, pollution, and smoke variables are first differenced. In panel F, we vary our choice of standard errors clustering in various ways. In Appendix Table B.2, we repeat the same set of robustness checks with the IV model.

Our findings are generally robust across these specifications, but we mention a few exceptions from Appendix Table B.1. Panel C shows that in the quarterly analysis, results change little whether

controlling for time patterns (year fixed effects) that are allowed to vary at the state, Census Division, Census Region, or national levels. However, as shown in Panel D, annual-level regressions are more sensitive to this choice. The second row of panel E reports that the estimated effects on earnings and employment become smaller and change sign, respectively, in a model where the outcomes are specified in levels and county time trends are omitted. Both set of findings indicate that while it is important to account for region-specific time trends in the analysis, various ways of doing so produce similar findings.

**Migration responses.** Another potential concern is whether smoke exposure may change the underlying population composition. We believe this is unlikely because smoke exposure causes transient, modest changes in daily air pollution. To directly test whether year-over-year changes in smoke affects migration into and out of a county, we use IRS Statistics of Income (SOI) county-to-county population flow data to measure in- and out-migration at an annual frequency. We also measure changes in population size using the total number of tax exemptions claimed in an area. The results, reported in Appendix Table B.4, indicate that population migration does not respond to smoke exposure to an economically or statistically significant degree. The lack of a population migration response to smoke exposure suggests that our main effects are not artifacts of regional changes in population composition.

## 4.5 IV Estimates by Age and Industry

In this section, we report IV estimates of the effect of  $PM_{2.5}$  on earnings by age and industry. This analysis leverages the QWI's earnings breakdown by 10-year age groups (25-34, 35-44, 45-54, 55-64, and 65 and older) and 2-digit NAICS industry sectors. The estimation follows exactly the 2SLS steps outlined in equations (5) and (6), except that in age group-specific IV estimation we replace all-age population weights by the population of the corresponding age group.

Panel A of Figure 5 reports estimated earnings effects separately by age groups. We find that  $PM_{2.5}$  reduces earnings across all age groups. Not surprisingly, larger absolute effects emerge for middle-age workers who earned the most.<sup>14</sup> However, we also detect precise and disproportionate

---

<sup>14</sup>Average quarterly earnings for each age group are as follows: \$7,178 (ages 25–34), \$10,203 (ages 35–44), \$10,796 (ages 45–54), \$8,342 (ages 55–64), and \$1,671 (ages 65 and above).

earnings losses due to pollution for elderly workers. On a percentage basis, the largest earnings response to pollution is observed for individuals aged 65 and older. Because the health of older workers may be more sensitive to pollution shocks, smoke effects may be strongest among older workers, potentially generating losses associated with labor market transitions and retirements.

Panel B of Figure 5 reports heterogeneity across 20 industries, as delineated by the 2-digit NAICS industry code. To adjust for multiple hypothesis testing, we control for the family-wise error rate based on 100 bootstraps of the free step-down procedure of [Westfall and Young \(1993\)](#), as implemented by [Jones, Molitor and Reif \(2019\)](#). The figure highlights industries with an adjusted  $p$ -value less than 0.05.

We point out two connections between our industry-specific results and the prior literature. First, we find that manufacturing is among the most responsive industry to air pollution shocks. Each  $1 \mu\text{g}/\text{m}^3$  increase in quarterly  $\text{PM}_{2.5}$  reduces earnings by 2.4%, which implies an elasticity of  $-0.24$ . As we discussed in Section 4.2, a significant share of the prior literature has examined the effect of air pollution on labor market outcomes in the manufacturing sector. Perhaps the closest study in terms of scale is [Fu, Viard and Zhang \(2021\)](#) who found an annual pollution-productivity elasticity of  $-0.44$  among a large sample of firms in the Chinese manufacturing sector. Other studies that use high-frequency output measures of manufacturing workers in various contexts have found pollution elasticities ranging from  $-0.05$  to  $-0.30$  ([Aragón, Miranda and Oliva, 2017](#); [He, Liu and Salvo, 2018](#); [Adhvaryu, Kala and Nyshadham, 2022](#)). Our manufacturing sector estimate is therefore broadly in line with the prior literature.

Second, we find little evidence that air pollution reduces earnings in the overall agricultural sector. In contrast, some of the pioneering work in this field has established a significant link between day-to-day changes in air pollution and a reduction in productivity among piece-rate agricultural workers such as fruit packers ([Graff Zivin and Neidell, 2012](#); [Chang et al., 2016](#)). One potential explanation is that the agriculture sector in our data is very broadly defined, spanning sectors such as crop and animal production, logging, and fishing. To further investigate the difference, we use QWI data's 3-digit NAICS breakdown to estimate separate pollution effects for the five subsectors of the agricultural industry: crop production (NAICS 111), animal production and aquaculture (NAICS 112), forestry and logging (NAICS 113), fishing, hunting and trapping (NAICS 114), and support activities for agriculture and forestry (NAICS 115). Because earnings are not available at

3-digit NAICS industry level, we instead use employment as the outcome measure for this analysis. Appendix Table B.5 reports IV estimates by agricultural subsector. Similar to our earnings results, column (1) shows a statistically insignificant effect of air pollution on the overall agricultural sector. However, breaking this effect down by subsector reveals concentrated effects for crop production (column (2)); precise zeroes for animal production, forestry and logging, and fishing and hunting (columns (3)–(5)); and negative but imprecise effects for support activities (column (6)). The effect we detect for crop production, which includes most farming activities, broadly aligns with the prior literature on agricultural workers. The magnitude of the crop sector effect has an implied pollution elasticity of  $-0.18$ . By comparison, [Graff Zivin and Neidell \(2012\)](#) examine the influence of day-to-day fluctuation of ozone pollution on daily productivity among pear packers and find an implied ozone elasticity of  $-0.26$ .

Beyond manufacturing and agricultural, our estimates also reveal significant earnings effects of pollution exposure in other sectors, such as utilities, health care, real estate, administration, and transportation. We do not find any sector to experience significant increases in earnings in response to pollution exposure. However, more research is needed to understand why certain sectors are more vulnerable to pollution exposure than others.

## 4.6 Heterogeneity by County Characteristics

We explore how the effects of wildfire pollution vary with county characteristics to shed light on the conditions under which labor markets are the most sensitive to pollution shocks. To do so, we create indicators for whether a county is above- or below-median with respect to each of five characteristics: urban population share, fraction of population in poverty, median home value, the Black population share, and the sample average  $PM_{2.5}$  concentration (as a proxy for the area's general air quality conditions). For each characteristic, we estimate heterogeneity in the earnings effects of smoke exposure using an augmented version of equation (4) that fully interacts the smoke exposure variable with an indicator for whether the county is above-median for the characteristic.

Table 2 reports the results of this heterogeneity analysis. Columns (1)–(5) report separate regressions where we examine heterogeneity with respect to one characteristic at a time. Column (6) reports a joint regression in which the interaction terms with all five characteristics are included

simultaneously. Among the characteristics we examined, the only statistically significant margin of heterogeneity emerges for the racial composition of the county (column (4)). The point estimates suggest that smoke-induced earnings declines are about 59% larger in counties that are above-median in the fraction that is Black relative to counties that are below median. We obtain similar results in the joint estimation of column (6) which, in addition to the heterogeneity finding on racial composition, suggests that smoke causes more earnings declines in less urban areas, although the point estimate is only marginally significant ( $p$ -value  $< 0.10$ ).

## 5 Welfare

### 5.1 Air Pollution and Welfare

In this section, we provide a back-of-envelope calculation on the social welfare costs associated with lost earnings due to wildfire smoke exposure, and we compare this to the welfare cost of premature deaths caused by smoke exposure. Lost earnings themselves do not necessarily equate to reductions in social welfare for two primary reasons. First, lost earnings coming from reductions in labor supply inflate deadweight losses associated with pre-existing tax distortions in labor markets. Second, some portion of the lost earnings may be explained by increased leisure or by the replacement of market work with home production, such as if workers stay home on high-pollution days or are forced into early retirement by smoke-related illness.

**The double dividend through increased labor income.** Studies in public and environmental economics consider how air pollution regulation interacts with the tax-distorted labor market. While taxes on pollution may or may not generate any benefits in the labor market (Goulder, 1995; Fullerton and Metcalf, 2001), pollution regulations that improve labor incomes through health and productivity channels can produce a “double dividend” (Schwartz and Repetto, 2000; Williams III, 2002, 2003). This source of welfare gains arises because increases in labor supply alleviate pre-existing tax distortions associated with payroll and income taxes.

Calibrating the changes in welfare through this channel is straightforward in partial equilibrium. On the margin, increases in labor supply will reduce the deadweight loss by an amount that equals the change in labor multiplied by the average marginal tax rate for affected individuals.

While we do not directly measure this tax rate in our sample, we can take a moderate value of 25% to calculate that welfare increases by one-quarter of the total loss, or \$31 billion of the \$125 billion.

**Individual welfare.** For individual welfare, we can perform a simple calculation building on the models in Section 1 and in [Dobkin et al. \(2018\)](#) and from estimates reported in Table 1. To focus attention on the labor market costs, we separate workers' losses that occur through consumption and leisure ( $X$  and  $l$ ) from direct losses arising from changes in health and amenities ( $s$  and  $c$ ). We label utility from consumption and leisure as  $U^{LM}(X, l)$ . Normalizing by the marginal utility of consumption gives the labor market component of welfare,  $W^{LM}$ . In the next subsection, we return to the issue of costs arising from illness. We also simplify the model by dropping avoidance behavior, and focusing on longer-run losses we find in the earnings analysis. Individual welfare losses arise from endogenous labor supply responses, reductions in the wage, and reductions in the time endowment due to illness. Social welfare losses include these changes in addition to changes in deadweight loss, i.e., the double dividend channel.

Considering a small change in pollution concentration,  $c$ , the loss in money-metric utility to the worker is

$$\frac{dW^{LM}}{dc} \equiv \frac{dU^{LM}/dc}{MU_x} = h \frac{dw}{dc} - w \frac{ds}{dc}.$$

The first term relates to the change in the wage, which leads to a welfare loss in proportion to labor supply,  $h$ . Intuitively, a lower wage directly subtracts dollars from consumption; then, hours change in response to reflect a re-optimization at this lower utility frontier. The second term reflects the direct loss of time due to illness, valued at the wage. We can then take the ratio of the above individual welfare loss to the lost earnings in order to calibrate the appropriate scaling of the earnings losses.

Absent detailed data on time use and illness, we require some assumptions to calibrate the percentage of share of earnings losses that reflect true welfare costs to individuals. We focus on the case in which all responses arise from changes in the wage, as in [Dobkin et al. \(2018\)](#), but also consider changes in the time endowment to provide an informative upper bound. Specifically, individual welfare losses as a share of earnings losses lie between the wage response,  $\frac{1}{1+\eta_{h,w}}$ , and an upper bound of unity, the case when all earnings losses reflect time spent sick. Should welfare

costs arise entirely due to changes in the wage, we can take a conservative value of the labor supply elasticity,  $\eta_{h,w} = 0.5$  (drawing from Keane (2011), as in Dobkin et al. (2018)), to estimate that two-thirds of the earnings loss reflect true costs to the worker.

**Social welfare.** Social welfare combines both individual welfare losses and changes in deadweight loss from taxation. In the case where earnings losses arise from responses to the wage, social welfare losses are the sum of individual losses and the deadweight loss of the labor supply response due to taxation, which can be calculated by multiplying the marginal tax rate by the difference between earnings responses and the individual welfare loss.<sup>15</sup> Assuming a marginal tax rate of 25% and  $\eta_{h,w} = 0.5$  implies a social welfare effect of 75% (two-thirds from labor supply plus one-twelfth from deadweight loss) of lost earnings.

Applying the above model to the estimates reported in Table 1, we find that the welfare losses working through labor market responses are \$94 billion in 2018 dollars. The lasting damage to labor market opportunities show up as lower wages, but may reflect either reduced health capital following an acute smoke-induced illness (i.e., lower productivity of workers following the health shock), or worker transitions to lower-paid jobs induced by illness or labor-demand effects. Losses may approach an upper bound of \$125 billion, if responses occur entirely through perfectly inelastic responses, as when workers are constrained from working by illness. Alternatively, at a lower bound where all lost income arises from perfectly elastic labor-supply responses, social welfare falls by 25% of lost earnings, or \$31 billion. We regard this scenario as unrealistic; it is informative primarily because it generates important welfare responses entirely through the double dividend channel, and applies under the most pessimistic model of individual behavior. Costs associated with mortality, health care expenditures, the disutility of smoke-induced illness, and other costs would then be added to this figure to reach the total damage done by wildfire smoke.

The calculation above focuses on the cost of wildfire smoke exposure. To facilitate our discussion in the next subsection, we can also use our IV estimate to quantify the welfare impact of a unit increase in  $PM_{2.5}$ . Our preferred IV estimate in Table 1 shows a quarterly loss of per capita earnings of \$103 per one unit increase in  $PM_{2.5}$ . Extrapolated to the annual level, this estimate implies a per capita earnings loss of \$412, or a national total of \$123 billion. Our preferred estimate

---

<sup>15</sup>Intuitively, lost earnings that arise from labor supply response are replaced by leisure in the individual's utility. However, this leisure is subsidized by the government at the marginal tax rate, leading to deadweight loss.



of the social welfare loss of a  $1 \mu\text{g}/\text{m}^3$  increase in  $\text{PM}_{2.5}$  is thus about \$92 billion per year. Our lower-bound estimate of the welfare effect (25% of lost earnings) is \$31 billion per year.<sup>16</sup>

## 5.2 Comparison with Mortality Costs

We now evaluate the importance of incorporating labor market effects into estimates of air pollution costs by benchmarking the costs of lost earnings to those of premature deaths due to pollution. We draw causal  $\text{PM}_{2.5}$ -mortality estimates from [Deryugina et al. \(2019\)](#), who show that a  $1 \mu\text{g}/\text{m}^3$  increase in  $\text{PM}_{2.5}$  for one day causes 0.69 additional deaths per million elderly individuals aged 65+ over the next three days, representing a 0.18% increase relative to the average 3-day mortality rate of the study population. Scaling the daily mortality effects linearly to the annual level, this estimate implies that a  $1 \mu\text{g}/\text{m}^3$  increase in annual  $\text{PM}_{2.5}$  causes 3,383 additional deaths annually among the 40.3 million people 65 and older in 2010.

To convert the number of premature deaths to a mortality cost, we consider two alternative value of statistical life (VSL) estimates. First, the EPA uses a value of \$9.25 million (\$2018) per statistical life regardless of population characteristics such as age, implying annual mortality costs of \$31.3 billion. Second, we use a more conservative value of \$2.4 million per statistical life that accounts for lower-than-average life expectancy among adults ages 60 and older. We calculate this by multiplying \$150,000 per year of life lost ([Cutler and Richardson, 1999](#)) in \$2018 by the average remaining life expectancy of 16.1 among this population.<sup>17</sup> This second VSL value implies annual mortality costs of \$8.1 billion.

In additional analyses reported in the Online Appendix, we also consider a complementary approach to benchmark the costs of lost earnings to those of premature deaths by directly estimating the effect of smoke on mortality. Using county-monthly mortality data from the National Vital Statistics System, we show that smoke exposure elevates elderly mortality, with an implied mortality cost of \$5.2–19.9 billion annually per  $1 \mu\text{g}/\text{m}^3$  increase in  $\text{PM}_{2.5}$ , similar to what we calculate from [Deryugina et al. \(2019\)](#). The mortality effects we estimate are noisy, however, when we ag-

---

<sup>16</sup>Implicitly, we consider a homogeneous treatment effects model in order to extrapolate from our estimates to annual, national effects. Alternatively, our estimates can be interpreted as a LATE for the compliers—those counties which see an increase in particulate matter due to smoke exposure.

<sup>17</sup>We calculate average life expectancy within each age group from the 2014 period life table for the Social Security area population <https://www.ssa.gov/oact/STATS/table4c6.html#ss> (accessed on September, 2017).

gregate the analysis to the quarterly frequency, the temporal level of our labor market analysis. We relegate full details of this analysis to the Online Appendix and use mortality costs derived from [Deryugina et al. \(2019\)](#) as our preferred estimate.

To sum up, we find that the annual mortality costs of air pollution (\$8.1–31.3 billion per 1  $\mu\text{g}/\text{m}^3$  increase in  $\text{PM}_{2.5}$ ) are lower than the lost labor market earnings (\$123 billion) and similar to or lower than our preferred estimate of \$92 billion in welfare cost of these lost earnings. Even our lower bound of \$31 billion in welfare costs due to lost earnings is on par with the highest estimates of the mortality costs. While these calculations are imprecise in nature and are only intended to facilitate an order-of-magnitude comparison, they suggest that labor market responses comprise a large share of the welfare costs of wildfire smoke, and such costs should be taken into account when evaluating the overall costs of air pollution.

## 6 Discussion and Conclusion

Wildfires emit large amounts of smoke that contains harmful pollutants and can drift for hundreds or thousands of miles, regularly affecting populations far from the fires themselves. We analyze variation in wildfire smoke exposure across the United States and find that increases in smoke exposure cause significant decreases in earnings and employment outcomes. We leverage plausibly exogenous variation in smoke exposure to produce national estimates of the causal effect of air pollution on labor market outcomes. Our analysis suggests that the welfare cost of lost earnings is similar to or larger than the cost of increased mortality due to wildfire smoke. Although wildfire smoke has a different chemical composition than industrial pollution or vehicle exhaust, the large labor market costs of wildfire-emitted pollutants—which comprise a significant share of all U.S. particulate matter emissions—suggest that other pollutants that negatively affect health may have similarly large labor market costs.

Our results provide the first quasi-experimental evidence of the effect of air pollution events on labor markets at a national scale. These results have broad implications for environmental policy. Many agencies that engage in environmental policymaking, such as the Organisation for Economic Co-operation and Development, the World Bank, and the U.S. EPA, have traditionally treated pollution damages arising from lost labor market hours and earnings as considerably smaller than

the mortality cost of air pollution. Our findings indicate that environmental policies that ignore or downplay the labor market effects of air pollution fail to take into account significant costs, and such policies may thus be inefficient. Our results also suggest that employment-reducing effects of environmental regulation to improve air quality could be partially offset by earnings and employment gains to workers, in addition to the reduced health costs that are more broadly part of the wider policy calculus.

Our findings also have direct implications for wildfire policy and management. A primary implication of our results is that wildfire smoke creates large externalities. Decisions about land use and fire management in one location can affect those living in distant regions. These widespread effects call for greater coordination of fire policy efforts, including a focus on preventing the start and spread of wildfires. Policies should consider factors that go beyond narrower goals of defending land and property exposed to fires in a given region, such as the amount of smoke produced by the fire and whether the smoke plumes that may reach urban centers. The use of prescribed fires to remove fuel and limit the scope for larger future burns should likely expand, although such fires should be set only after taking into account wind patterns to avoid population exposure. Finally, estimates of the marginal cost of wildfire suppression and prevention, which we hope will receive more attention in future research, should consider the costs of both reducing the acreage burned and reducing the population exposed to smoke. While wildfires and smoke cannot and should not be completely eliminated, policies could better mitigate damages from these events by assessing the full scope of their effects.

## References

- Adhvaryu, Achyuta, Namrata Kala, and Anant Nyshadham.** 2022. "Management and shocks to worker productivity." *Journal of Political Economy*, 130(1).
- Aguilar-Gomez, Sandra, Holt Dwyer, Joshua S Graff Zivin, and Matthew J Neidell.** 2022. "This is Air: The "Non-Health" Effects of Air Pollution." NBER Working Paper 29848.
- Aldy, Joseph E, and Marie-Abele Bind.** 2014. "Life-Saving Information: Mortality Risk Reduction from Air Quality Index Forecasts." Working paper.
- Anderson, Michael L.** 2020. "As the wind blows: The effects of long-term exposure to air pollution on mortality." *Journal of the European Economic Association*, 18(4): 1886–1927.
- Aragón, Fernando M, Juan Jose Miranda, and Paulina Oliva.** 2017. "Particulate matter and labor supply: The role of caregiving and non-linearities." *Journal of Environmental Economics and Management*, 86: 295–309.
- Archsmith, James, Anthony Heyes, and Soodeh Saberian.** 2018. "Air quality and error quantity: Pollution and performance in a high-skilled, quality-focused occupation." *Journal of the Association of Environmental and Resource Economists*, 5(4): 827–863.
- Barwick, Panle Jia, Shanjun Li, Ligu Lin, and Eric Zou.** 2019. "From fog to smog: The value of pollution information." National Bureau of Economic Research.
- Bates, Josephine T, Rodney J Weber, Joseph Abrams, Vishal Verma, Ting Fang, Mitchel Klein, Matthew J Strickland, Stefanie Ebel Sarnat, Howard H Chang, James A Mulholland, et al.** 2015. "Reactive oxygen species generation linked to sources of atmospheric particulate matter and cardiorespiratory effects." *Environmental Science & Technology*, 49(22): 13605–13612.
- Bentayeb, M., M. Simoni, N. Baiz, D. Norback, S. Baldacci, S. Maio, G. Viegi, I. Annesi-Maesano, and Geriatric Study in Europe on Health Effects of Air Quality in Nursing Homes (GERIE) Group.** 2012. "Adverse respiratory effects of outdoor air pollution in the elderly [Review article]." *The International Journal of Tuberculosis and Lung Disease*, 16(9): 1149–1161.
- Borgschulte, Mark, and Paco Martorell.** 2017. "Paying to Avoid Recession: Using Reenlistment to Estimate the Cost of Unemployment." *American Economic Journal: Applied Economics*. Forthcoming.
- Burke, Marshall, Sam Heft-Neal, Jessica Li, Anne Driscoll, Patrick W Baylis, Matthieu Stigler, Joakim Weill, Jennifer Burney, Jeff Wen, Marissa Childs, et al.** 2021. "Exposures and behavioral responses to wildfire smoke." No. w29380. National Bureau of Economic Research.
- Case, Anne, Darren Lubotsky, and Christina Paxson.** 2002. "Economic Status and Health in Childhood: The Origins of the Gradient." *American Economic Review*, 92(5): 1308–1334.
- Chang, Tom, Joshua Graff Zivin, Tal Gross, and Matthew Neidell.** 2016. "Particulate pollution and the productivity of pear packers." *American Economic Journal: Economic Policy*, 8(3): 141–69.
- Chang, Tom Y, Joshua Graff Zivin, Tal Gross, and Matthew Neidell.** 2019. "The effect of pollution on worker productivity: evidence from call center workers in China." *American Economic Journal: Applied Economics*, 11(1): 151–72.

- Chan, Sewin, and Ann Huff Stevens.** 2001. "Job Loss and Employment Patterns of Older Workers." *Journal of Labor Economics*, 19(2): 484–521.
- Chay, Kenneth Y, and Michael Greenstone.** 2003. "The impact of air pollution on infant mortality: Evidence from geographic variation in pollution shocks induced by a recession." *The Quarterly Journal of Economics*, 118(3): 1121–1167.
- Chay, Kenneth Y, and Michael Greenstone.** 2005. "Does Air Quality Matter? Evidence from the Housing Market." *Journal of Political Economy*, 113(2): 376–424.
- Chen, Yuyu, Avraham Ebenstein, Michael Greenstone, and Hongbin Li.** 2013. "Evidence on the impact of sustained exposure to air pollution on life expectancy from China's Huai River policy." *Proceedings of the National Academy of Sciences*, 110(32): 12936–12941.
- Coile, Courtney C.** 2004. "Health shocks and couples' labor supply decisions." National Bureau of Economic Research.
- Cutler, David M., and Elizabeth Richardson.** 1999. "Your Money and Your Life: The Value of Health and What Affects It." *Frontiers in Health Policy Research*, volume 2, 99–132. MIT Press.
- Deryugina, Tatyana, Garth Heutel, Nolan H Miller, David Molitor, and Julian Reif.** 2019. "The mortality and medical costs of air pollution: Evidence from changes in wind direction." *American Economic Review*, 109(12): 4178–4219.
- Deschênes, Olivier, Michael Greenstone, and Joseph S Shapiro.** 2017. "Defensive investments and the demand for air quality: Evidence from the NOx budget program." *American Economic Review*, 107(10): 2958–89.
- Dobkin, Carlos, Amy Finkelstein, Raymond Kluender, and Matthew J Notowidigdo.** 2018. "The economic consequences of hospital admissions." *American Economic Review*, 108(2): 308–52.
- Dockery, Douglas W., C. Arden Pope, Xiping Xu, John D. Spengler, James H. Ware, Martha E. Fay, Benjamin G. Jr. Ferris, and Frank E. Speizer.** 1993. "An Association between Air Pollution and Mortality in Six U.S. Cities." *New England Journal of Medicine*, 329(24): 1753–1759. PMID: 8179653.
- Ebenstein, Avraham, Victor Lavy, and Sefi Roth.** 2016. "The long run economic consequences of high-stakes examinations: evidence from transitory variation in pollution." *American Economic Journal: Applied Economics*.
- Fullerton, Don, and Gilbert E Metcalf.** 2001. "Environmental controls, scarcity rents, and pre-existing distortions." *Journal of Public Economics*, 80(2): 249–267.
- Fu, Shihe, V Brian Viard, and Peng Zhang.** 2021. "Air pollution and manufacturing firm productivity: Nationwide estimates for China." *The Economic Journal*, 131(640): 3241–3273.
- Goulder, Lawrence H.** 1995. "Environmental taxation and the double dividend: a reader's guide." *International Tax and Public Finance*, 2(2): 157–183.
- Graff Zivin, Joshua, and Matthew Neidell.** 2009. "Days of haze: Environmental information disclosure and intertemporal avoidance behavior." *Journal of Environmental Economics and Management*, 58(2): 119–128.
- Graff Zivin, Joshua, and Matthew Neidell.** 2012. "The Impact of Pollution on Worker Productivity." *American Economic Review*, 102(7): 3652–73.

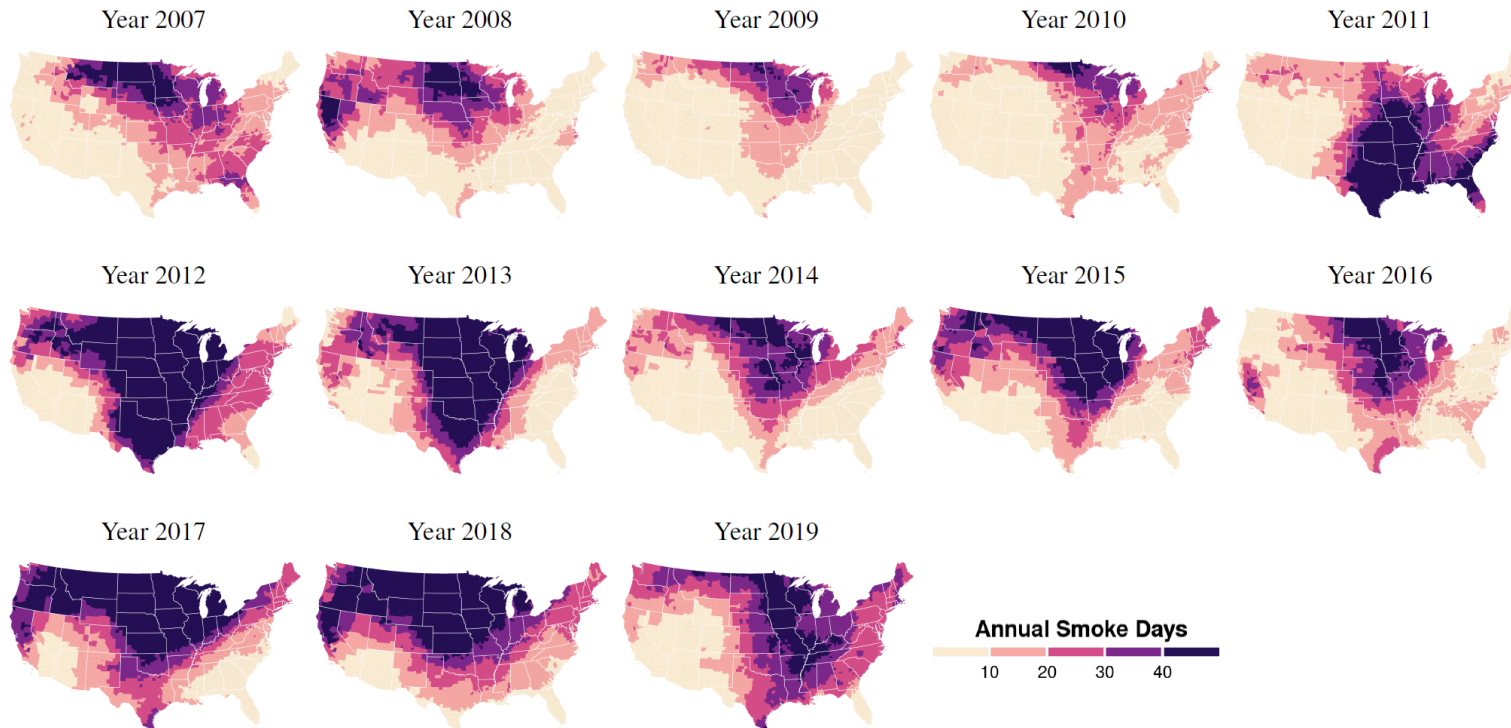
- Graff Zivin, Joshua, and Matthew Neidell.** 2013. “Environment, Health, and Human Capital.” *Journal of Economic Literature*, 51(3): 689–730.
- Hanna, Rema, and Paulina Oliva.** 2015. “The effect of pollution on labor supply: Evidence from a natural experiment in Mexico City.” *Journal of Public Economics*, 122(C): 68–79.
- Hansen, Anett C., and Harald K. Selte.** 2000. “Air Pollution and Sick-leaves.” *Environmental and Resource Economics*, 16(1): 31–50.
- Hausman, Jerry A., Bart D. Ostro, and David A. Wise.** 1984. “Air Pollution and Lost Work.” National Bureau of Economic Research Working Paper 1263.
- He, Jiaxiu, Haoming Liu, and Alberto Salvo.** 2018. “Severe Air Pollution and Labor Productivity: Evidence from Industrial Towns in China.” *American Economic Journal: Applied Economics*, forthcoming.
- Holub, Felix, Laura Hospido, and Ulrich J Wagner.** 2020. “Urban air pollution and sick leaves: Evidence from social security data.” Working paper.
- Isen, Adam, Maya Rossin-Slater, and W Reed Walker.** 2017. “Every breath you take—Every dollar you’ll make: The long-term consequences of the Clean Air Act of 1970.” *Journal of Political Economy*, 125(3): 848–902.
- Jacobson, Louis S, Robert J LaLonde, and Daniel G Sullivan.** 1993. “Earnings losses of displaced workers.” *American Economic Review*, 685–709.
- Jarosch, Gregor.** 2021. “Searching for job security and the consequences of job loss.” Working paper.
- Jayachandran, Seema.** 2009. “Air Quality and Early-Life Mortality: Evidence from Indonesia’s Wildfires.” *Journal of Human Resources*, 44(4): 916–954.
- Jones, Benjamin A., Jennifer A. Thacher, Janie M. Chermak, and Robert P. Berrens.** 2015. “Wildfire smoke health costs: a methods case study for a Southwestern US “mega-fire”.” *Journal of Environmental Economics and Policy*, 0(0): 1–19.
- Jones, Damon, David Molitor, and Julian Reif.** 2019. “What do workplace wellness programs do? Evidence from the Illinois workplace wellness study.” *The Quarterly Journal of Economics*, 134(4): 1747–1791.
- Kahn, Lisa B.** 2010. “The long-term labor market consequences of graduating from college in a bad economy.” *Labour Economics*, 17(2): 303–316.
- Keane, Michael P.** 2011. “Labor supply and taxes: A survey.” *Journal of Economic Literature*, 49(4): 961–1075.
- Klerman, Jacob Alex, Kelly Daley, and Alyssa Pozniak.** 2012. “Family and medical leave in 2012: Technical report.” Cambridge, MA: Abt Associates Inc.
- Knittel, Christopher R., Douglas L. Miller, and Nicholas J. Sanders.** 2016. “Caution, Drivers! Children Present: Traffic, Pollution, and Infant Health.” *The Review of Economics and Statistics*, 98(2): 350–366.
- Kochi, Ikuho, Geoffrey H Donovan, Patricia A Champ, and John B Loomis.** 2010. “The economic cost of adverse health effects from wildfire-smoke exposure: a review.” *International Journal of Wildland Fire*, 19(7): 803–817.
- Langmann, Barbel, Bryan Duncan, Christiane Textor, Jorg Trentmann, and Guido R. van der Werf.** 2009. “Vegetation fire emissions and their impact on air pollution and climate.”

- Atmospheric Environment*, 43(1): 107 – 116. Atmospheric Environment - Fifty Years of Endeavour.
- Lichter, Andreas, Nico Pestel, and Eric Sommer.** 2017. “Productivity effects of air pollution: Evidence from professional soccer.” *Labour Economics*, 48: 54–66.
- Lipscomb, Molly, and Ahmed Mushfiq Mobarak.** 2016. “Decentralization and pollution spillovers: evidence from the re-drawing of county borders in Brazil.” *The Review of Economic Studies*, 84(1): 464–502.
- Liu, Xiaoxi, L. Gregory Huey, Robert J. Yokelson, Vanessa Selimovic, Isobel J. Simpson, Markus Müller, Jose L. Jimenez, Pedro Campuzano-Jost, Andreas J. Beyersdorf, Donald R. Blake, Zachary Butterfield, Yonghoon Choi, John D. Crouse, Douglas A. Day, Glenn S. Diskin, Manvendra K. Dubey, Edward Fortner, Thomas F. Hanisco, Weiwei Hu, Laura E. King, Lawrence Kleinman, Simone Meinardi, Tomas Mikoviny, Timothy B. Onasch, Brett B. Palm, Jeff Peischl, Ilana B. Pollack, Thomas B. Ryerson, Glen W. Sachse, Arthur J. Sedlacek, John E. Shilling, Stephen Springston, Jason M. St. Clair, David J. Tanner, Alexander P. Teng, Paul O. Wennberg, Armin Wisthaler, and Glenn M. Wolfe.** 2017. “Airborne measurements of western U.S. wildfire emissions: Comparison with prescribed burning and air quality implications.” *Journal of Geophysical Research: Atmospheres*, 122(11): 6108–6129.
- McCoy, Shawn J., and Xiaoxi Zhao.** 2016. “Wildfire and Infant Health: A Geo-Spatial Approach to Estimating the Health Impacts of Wildfire Smoke Exposure.” *Applied Economics Letters*, 28(1): 32–37.
- Miller, Nolan, David Molitor, and Eric Zou.** 2021. “A Causal Concentration-Response Function for Air Pollution: Evidence from Wildfire Smoke.” Mimeo.
- Monogan, James E, David M Konisky, and Neal D Woods.** 2017. “Gone with the wind: Federalism and the strategic location of air polluters.” *American Journal of Political Science*, 61(2): 257–270.
- Moretti, Enrico, and Matthew Neidell.** 2011. “Pollution, health, and avoidance behavior evidence from the ports of Los Angeles.” *Journal of Human Resources*, 46(1): 154–175.
- Moritz, Max A, Marc-André Parisien, Enric Batllori, Meg A Krawchuk, Jeff Van Dorn, David J Ganz, and Katharine Hayhoe.** 2012. “Climate change and disruptions to global fire activity.” *Ecosphere*, 3(6): 1–22.
- National Research Council.** 2011. “Climate Stabilization Targets: Emissions, Concentrations, and Impacts over Decades to Millennia.” *Washington DC: National Academies Press.*
- Neal, Derek.** 1995. “Industry-specific human capital: Evidence from displaced workers.” *Journal of Labor Economics*, 13(4): 653–677.
- OECD.** 2016. “The Economic Consequences of Outdoor Air Pollution.” *OECD Publishing.*
- Oreopoulos, Philip, Till von Wachter, Andrew Heisz, et al.** 2012. “The Short-and Long-Term Career Effects of Graduating in a Recession.” *American Economic Journal: Applied Economics*, 4(1): 1–29.
- Pakhtigian, Emily.** 2022. “Where there’s fire, there’s smoke: Forest fire emissions, behavior, and health.” Mimeo.
- Pope, C Arden, Richard T Burnett, Daniel Krewski, Michael Jerrett, Yuanli Shi, Eugenia E Calle, and Michael J Thun.** 2009. “Cardiovascular mortality and exposure to airborne fine

- particulate matter and cigarette smoke shape of the exposure-response relationship.” *Circulation*, 120(11): 941–948.
- Roth, Sefi.** 2016. “The Contemporaneous Effect of Indoor Air Pollution on Cognitive Performance: Evidence from the UK.” Working paper.
- Ruminski, Mark, Shobha Kondragunta, Roland Draxler, and Jian Zeng.** 2006. “Recent changes to the hazard mapping system.” *Proceedings of the 15th International Emission Inventory Conference*, 15: 18.
- Sanders, Nicholas J.** 2012. “What doesn’t kill you makes you weaker prenatal pollution exposure and educational outcomes.” *Journal of Human Resources*, 47(3): 826–850.
- Schlenker, Wolfram, and W. Reed Walker.** 2016. “Airports, Air Pollution, and Contemporaneous Health.” *The Review of Economic Studies*, 83(2): 768–809.
- Schwartz, Jesse, and Robert Repetto.** 2000. “Nonseparable Utility and the Double Dividend Debate: Reconsidering the Tax-Interaction Effect.” *Environmental and Resource Economics*, 15(2): 149–157.
- Stephens Jr, Melvin, and Desmond Toohey.** 2018. “The Impact of Health on Labor Market Outcomes: Experimental Evidence from MRFIT.” National Bureau of Economic Research.
- Urbanski, Shawn P, Wei Min Hao, and Stephen Baker.** 2008. “Chemical composition of wildland fire emissions.” *Developments in environmental science*, 8: 79–107.
- U.S. Environmental Protection Agency.** 2011. “The Benefits and Costs of the Clean Air Act from 1990 to 2020.” U.S. E.P.A. Office of Air and Radiation.
- U.S. Environmental Protection Agency.** 2014. “2011 National Emission Inventory.” <https://www.epa.gov/air-emissions-inventories/2011-national-emission-inventory-nei-report>, accessed May 23, 2018.
- Verma, Vishal, Andrea Polidori, James J Schauer, Martin M Shafer, Flemming R Cassee, and Constantinos Sioutas.** 2009. “Physicochemical and toxicological profiles of particulate matter in Los Angeles during the October 2007 southern California wildfires.” *Environmental Science & Technology*, 43(3): 954–960.
- Verma, Vishal, Ting Fang, Lu Xu, Richard E Peltier, Armistead G Russell, Nga Lee Ng, and Rodney J Weber.** 2015. “Organic aerosols associated with the generation of reactive oxygen species (ROS) by water-soluble PM<sub>2.5</sub>.” *Environmental Science & Technology*, 49(7): 4646–4656.
- Westfall, Peter H, and S Stanley Young.** 1993. *Resampling-based multiple testing: Examples and methods for p-value adjustment*. Vol. 279, John Wiley & Sons.
- Williams III, Robertson.** 2002. “Environmental Tax Interactions when Pollution Affects Health or Productivity.” *Journal of Environmental Economics and Management*, 44(2): 261–270.
- Williams III, Robertson C.** 2003. “Health effects and optimal environmental taxes.” *Journal of Public Economics*, 87(2): 323–335.
- World Bank.** 2016. “The Cost of Air Pollution : Strengthening the Economic Case for Action.” World Bank.
- Yang, Muzhe, and Shin-Yi Chou.** 2017. “The Impact of Environmental Regulation on Fetal Health: Evidence from the Shutdown of a Coal-Fired Power Plant Located Upwind of New Jersey.” *Journal of Environmental Economics and Management*.

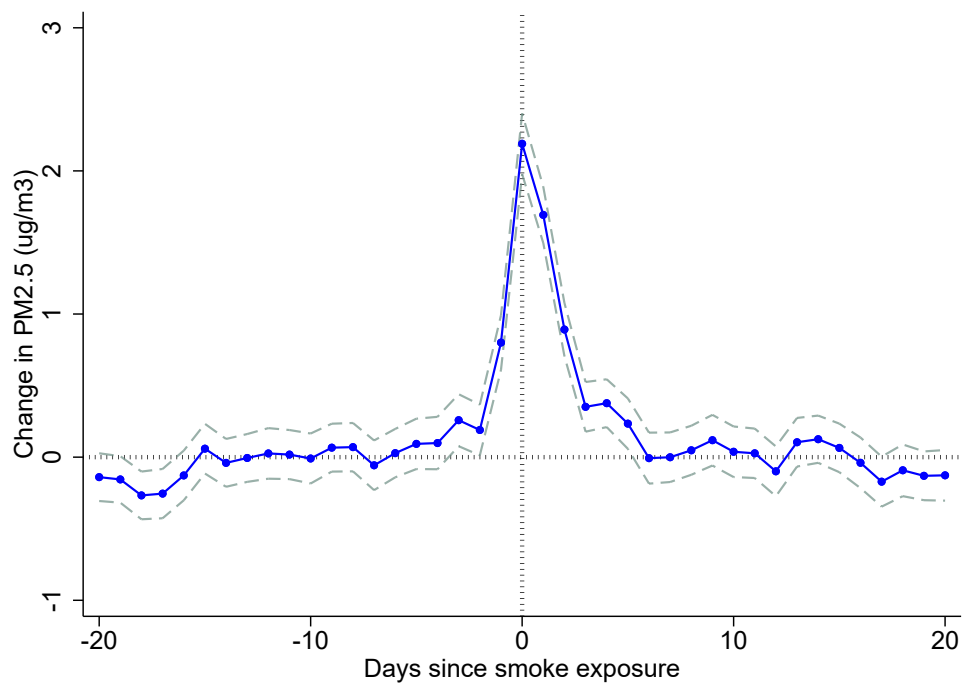


Figure 1: Annual Number of Smoke Days



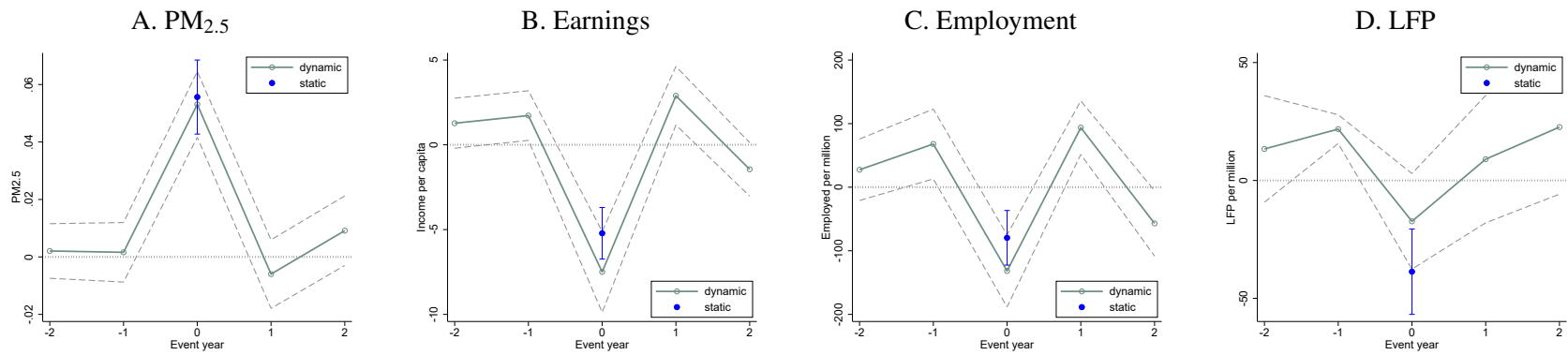
Notes: This figure plots the number of days of smoke exposure in each county in the continental U.S. over the sample period 2007–2019. Average population-weighted exposure during this period was 20.2 days per year.

Figure 2: Wildfire Smoke and Ground-Level PM<sub>2.5</sub>: Daily-Level Event Study



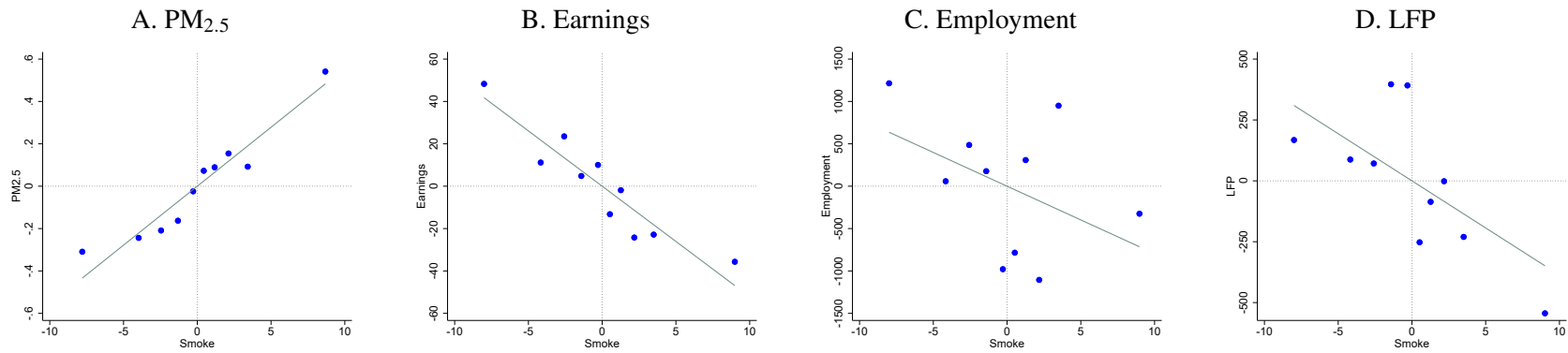
Notes: This figure shows coefficients from a regression of daily PM<sub>2.5</sub> on indicators of daily smoke exposure up to 20 days before and after the day of observation. In addition to the 41 smoke indicators, the regression controls for county-by-day-of-year fixed effects and state-by-year fixed effects. Standard errors are clustered at both the county and the date levels.

Figure 3: Labor Market Effects of Wildfire Smoke: Static vs. Dynamic Estimates



Notes: We augment the baseline regressions of Table 1, panel A with two lead and two lag terms of smoke exposure. The baseline estimates (labelled “static”) are superimposed for comparison. All regressions are weighted by county population (panels A, B, and D) and population aged over 16 (panel C), and include county-by-quarter-of-year fixed effects and state $\times$ year fixed effects. Standard errors are two-way clustered at the county and state-by-quarter levels.

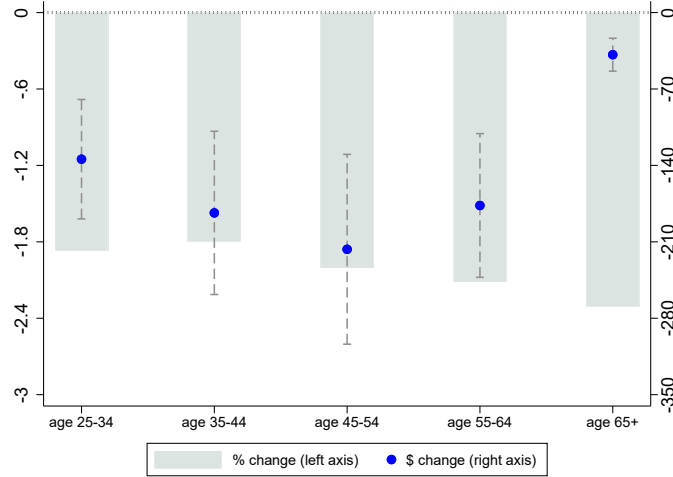
Figure 4: Labor Market Effects of Wildfire Smoke: Linear vs. Nonlinear Estimates



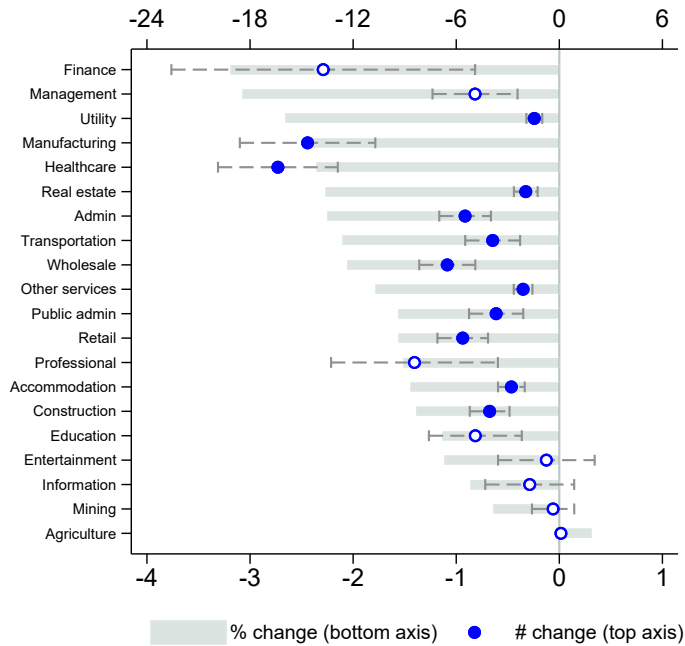
Notes: We residualize outcome variables and smoke exposure by county-by-quarter-of-year fixed effects and state-by-year fixed effects, and then plot a decile binscatter of residualized outcome by residualized smoke. Regressions are weighted by county population (panels A, B, and D) and population aged over 16 (panel C). Slopes of the superimposed linear fit lines represent OLS regression coefficients as reported in panel A of Table 1.

Figure 5: IV Estimation by Subgroups

A. By age group



B. By industry sector



Notes: Point estimates and range plots show the estimates in levels; bars converts the level estimates to percentage term by dividing the estimates by the average per capita earnings of the corresponding group. Regressions in panel A are each weighted by county population in the corresponding age groups. Average quarterly earnings for each age group are as follows: \$7,178 (ages 25–34), \$10,203 (ages 35–44), \$10,796 (ages 45–54), \$8,342 (ages 55–64), and \$1,671 (ages 65 and above). Regressions in panel B are weighted by county total population. In panel B, solid points highlight industries with a family-wise adjusted p-value less than 0.05 based on 100 bootstraps of the free step-down procedure of [Westfall and Young \(1993\)](#). All regressions include county-by-quarter-of-year fixed effects and state-by-year fixed effects. Standard errors are two-way clustered at the county and state-by-quarter levels.

Table 1: Wildfire Smoke, Pollution, and Labor Market Outcomes

	(1)	(2)	(3)	(4)
	PM <sub>2.5</sub>	earnings	employment	LFP
A. First-stage and reduced-form estimates				
Smoke	0.056*** (0.007)	-5.217*** (0.776)	-79.6*** (21.9)	-38.7*** (9.2)
Outcome mean	9.46	5,359.7	625,776	625,434
Observations	75,207	160,346	160,346	161,498
B. OLS estimates				
PM <sub>2.5</sub>	–	-10.566*** (3.089)	-261.0** (113.9)	-95.7* (54.7)
Outcome mean	–	5,687.6	643,597	631,806
Observations	–	74,725	74,725	75,193
C. IV estimates				
PM <sub>2.5</sub> <sup>∧</sup>	–	-103.1*** (20.4)	-1750.1*** (434.8)	-790.9*** (182.1)
Kleibergen-Paap F	–	71.8	71.2	71.7
Outcome mean	–	5,687.6	643,597	631,806
Observations	–	74,725	74,725	75,193

Notes: An observation is a county-quarter. The smoke variable—the focal dependent variable in Panel A—counts the number of days a county is fully covered by a wildfire smoke plume in a quarter. In panel C, the smoke variable is used as an instrument for a county’s quarterly average PM<sub>2.5</sub>. In all panels, the outcome mean reports the mean of the dependent variable before first differencing. All regressions are weighted by county population (columns 1, 2, and 4) and population aged over 16 (column 3), and include county-by-quarter-of-year fixed effects and state-by-year fixed effects. Standard errors are two-way clustered at the county and state-by-quarter levels. \*:  $p < 0.10$ ; \*\*:  $p < 0.05$ ; \*\*\*:  $p < 0.01$ .

Table 2: Wildfire Smoke and Earnings: Heterogeneity by County Characteristics

	(1)	(2)	(3)	(4)	(5)	(6)
Smoke	-5.976*** (0.670)	-5.366*** (0.987)	-5.749*** (0.770)	-4.095*** (1.049)	-6.524*** (1.181)	-6.794*** (1.616)
Smoke $\times$ $1_{\geq \text{median}}(\text{urban})$	0.860 (0.631)	- -	- -	- -	- -	1.244* (0.688)
Smoke $\times$ $1_{\geq \text{median}}(\text{poverty})$	- -	0.343 (0.886)	- -	- -	- -	0.478 (0.953)
Smoke $\times$ $1_{\geq \text{median}}(\text{home price})$	- -	- -	0.658 (0.697)	- -	- -	0.384 (0.763)
Smoke $\times$ $1_{\geq \text{median}}(\text{black})$	- -	- -	- -	-2.414** (0.980)	- -	-2.817** (1.100)
Smoke $\times$ $1_{\geq \text{median}}(\text{avg. PM}_{2.5})$	- -	- -	- -	- -	1.778 (1.180)	1.628 (1.121)
Outcome mean	5,359.7	5,359.7	5,359.7	5,359.7	5,587.1	5,587.1
Observations	160,346	160,346	160,346	160,346	89,020	89,020

Notes: Each column is a separate regression. Indicator variables flag counties with above median: fraction of urban population (Census 2010), fraction of population living under 100% of the Federal Poverty Line (ACS 2007-2016), county median home value (ACS 2007-2016), share of African American population (ACS 2007-2016), and sample-average  $\text{PM}_{2.5}$ . All regressions are weighted by county population, and include county-by-quarter-of-year fixed effects and state-by-year fixed effects. Standard errors are two-way clustered at the county and state-by-quarter levels. \*:  $p < 0.10$ ; \*\*:  $p < 0.05$ ; \*\*\*:  $p < 0.01$ .

# Appendices. For Online Publication Only

## Appendix A: Mortality Effects Estimation

In Section 5.2, we calculate mortality costs of air pollution using established estimates from [Deryugina et al. \(2019\)](#). Here we consider a complementary approach to benchmark the costs of lost earnings to those of premature deaths by directly estimating the effect of smoke (and the resulting pollution increases) on mortality. A conceptual appeal of this approach is that we rely on the same source of variation in deriving the mortality damages as we did in deriving the earnings losses, facilitating a direct comparison of labor market and mortality costs of pollution.

We measure mortality outcomes using micro-data provided by the National Vital Statistics System. The underlying data are taken from death certificates which contain age of death. We use the restricted data files containing month of death and covering all counties in the United States to measuring monthly mortality at the county level. The data are available from 2007 to 2015.

We begin by estimating the mortality effect of smoke exposure at the monthly level, the temporal level of our mortality data, using a regression specification that mirrors that from our earnings analysis. The outcome,  $Mortality_{cm}$ , is measured as deaths per million in county  $c$  and month  $m$ . We regress this outcome on the number of days  $SmokeDay_{cm}$  in which the county was exposed to wildfire smoke that month:

$$Mortality_{cm} = \beta \cdot SmokeDay_{cm} + \alpha_{c \times month-of-year} + \alpha_{state \times year} + \epsilon_{cm}. \quad (A.1)$$

The primary coefficient of interest is  $\beta$ , which describes the effect of an additional day of smoke on mortality in the month of exposure. Analogous to equation (4) we include county-by-month-of-year fixed effects and state-by-year fixed effects to control for county-specific seasonality as well as common shocks at the state-year level. Standard errors are two-way clustered at the county and state by month levels. Like in the labor market analysis, we also report OLS regression where we use monthly average  $PM_{2.5}$  concentration as the key independent variable in equation (A.1). We further implement IV models instrumenting for monthly  $PM_{2.5}$  using  $SmokeDay_{cm}$ .

Panel A of Appendix Table B.6 reports the estimates for all age groups (column (1)), the non-

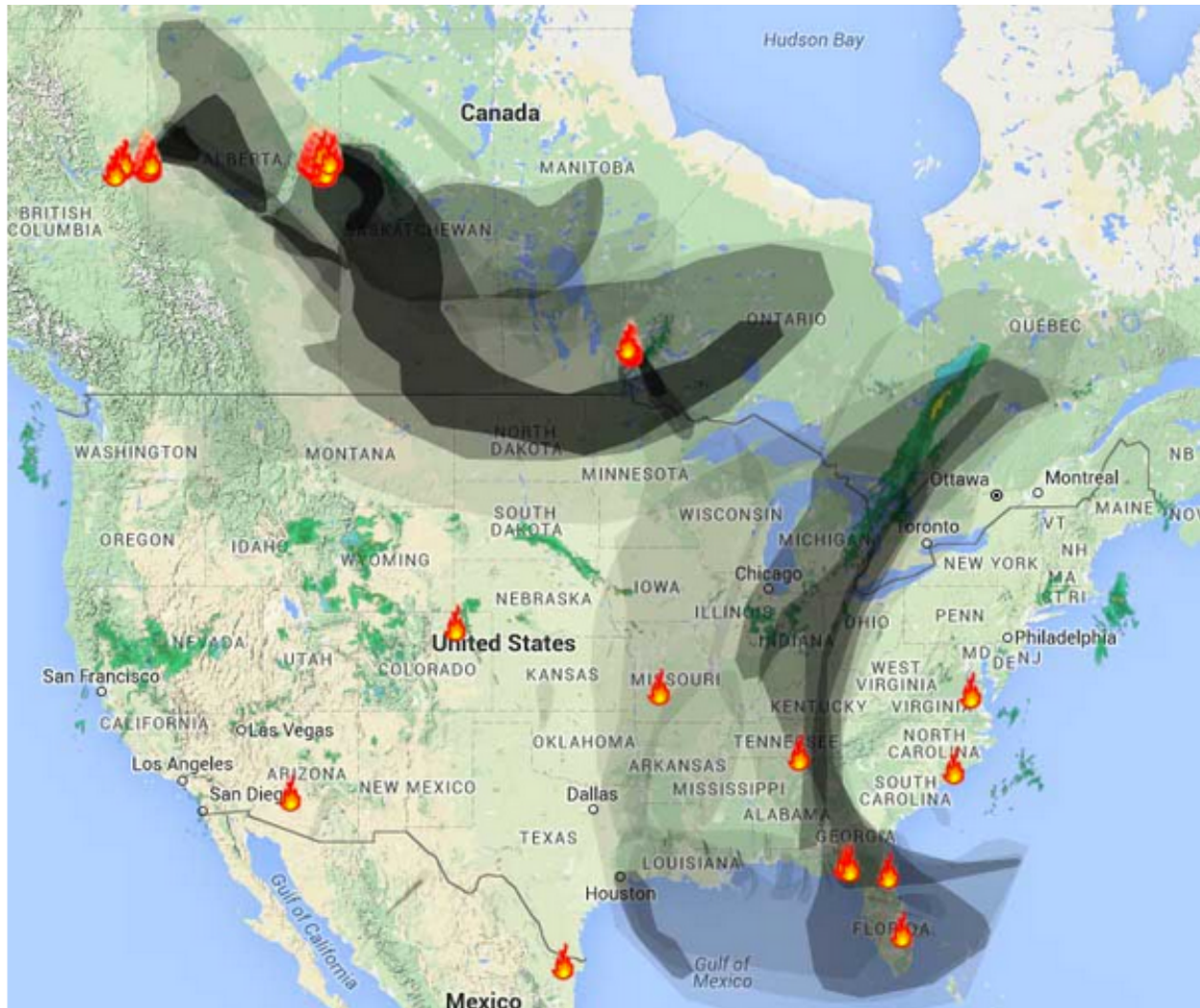


elderly group (column (2)), and the elderly population (column (3)). The mortality estimates allow us to compare the costs of mortality to social welfare losses of a 1 unit increase in  $PM_{2.5}$ , now using IV estimates that come directly out of the smoke quasi-experiment. Column (3), panel A shows that each day of smoke in a month increases elderly mortality rate by 0.972 deaths per million people. This estimate has a standard error of 0.522 and is marginally significant at the 10% level. The corresponding IV estimate is noisily estimated, and suggests a unit increase in monthly  $PM_{2.5}$  increases elderly mortality by 4.45 deaths per million (SE=3.34,  $p$ -value=0.183), or an annual effect of 53.4 additional deaths per million people. The magnitude of our monthly  $PM_{2.5}$ -mortality IV estimate is comparable to the three-day mortality effects reported in [Deryugina et al. \(2019\)](#) who also study the elderly population during a similar study period. The implied monthly effect of a  $1 \mu g/m^3$   $PM_{2.5}$  on elderly mortality is  $(0.69 \div 3) \times 30 = 6.9$  deaths per million. Using the two VSL approaches mentioned earlier in this chapter, we conclude that the annual mortality cost among the elderly is \$5.2–19.9 billion. If we instead use the all-age IV estimate of 0.379 deaths per million people for the calculation (Table B.6, Panel A, column (1)), the implied mortality cost based on the EPA VSL of \$9.25 million per life lost is \$13 billion annually.

In Panel B of Appendix Table B.6, we repeat reduced form, OLS, and IV models but aggregating the monthly level data to the quarterly level, the temporal level of our labor market analysis. Unfortunately, standard errors in the quarterly estimates are too large to draw conclusions. These noisy results may partially reflect the well-known challenge to estimate the effect of transient pollution changes on longer-run mortality outcome, potentially due to issues including harvesting and behavioral responses. Most of the existing literature we are aware of focuses on either the pollution's effect in the short run (e.g., [Knittel, Miller and Sanders, 2016](#); [Schlenker and Walker, 2016](#); [Deryugina et al., 2019](#)) or the longer-run mortality effects of sustained pollution exposure (e.g., [Deschênes, Greenstone and Shapiro, 2017](#); [Anderson, 2020](#); [Ebenstein, Lavy and Roth, 2016](#)).

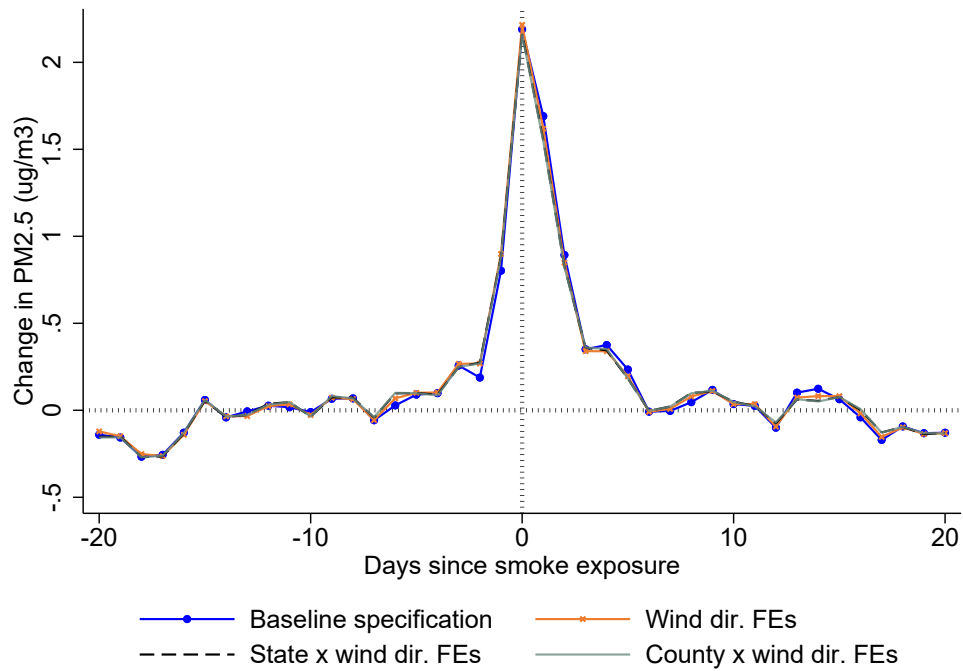
## Appendix B: Online Appendix Figures and Tables

Figure B.1: Fire and Smoke on May 7, 2016



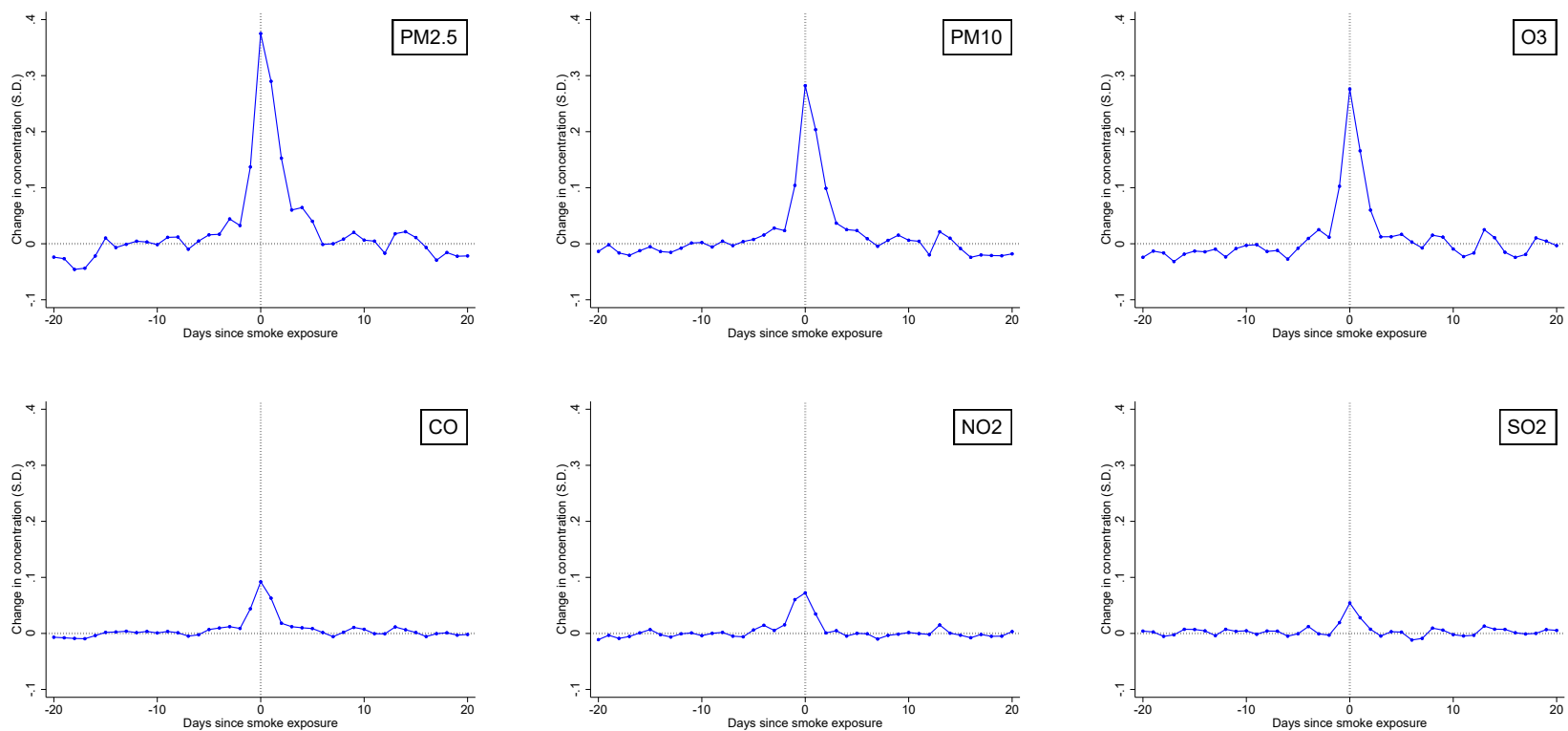
Notes: This map depicts smoke patterns on May 7, 2016 at 9:20 AM. The Fort McMurray fires in Northern Canada can be seen north of Alberta. This large wildfire produces a smoke plume that reaches the upper Midwest. Wildfires in the U.S. Southeast produce plumes reaching Canada. Source: WeatherUnderground.com via WildfireToday.com.

Figure B.2: Wildfire Smoke and Ground-Level PM<sub>2.5</sub>: Robustness to Flexible Wind Controls



Notes: This figure shows coefficients from a regression of daily PM<sub>2.5</sub> on indicators of daily smoke exposure up to 20 days before and after the day of observation. Three specifications show varying degrees of controls of wind direction: no controls, 60-arc degree bins of daily wind direction, 60-arc degree bins of daily wind direction fully interacted with state dummies, and 60-arc degree bins of daily wind direction fully interacted with county dummies. In addition to the 41 smoke indicators, the regression controls for county-by-day-of-year fixed effects and state-by-year fixed effects.

Figure B.3: Wildfire Smoke Shock to Ground-Level Pollution



Notes: Each panel shows coefficients from a regression of daily standardized (mean 0, sd 1) pollutant concentration on indicators of daily smoke exposure up to 20 days before and after the day of observation. In addition to the 41 smoke indicators, the regression controls for county-by-day-of-year fixed effects and state-by-year fixed effects.

Table B.1: Robustness Checks: Reduced-Form Regressions

	(1)	(2)	(3)	(4)
	PM <sub>2.5</sub>	earnings	employment	lfp
<b>A. Smoke measurement</b>				
$\Sigma$ %county smoked	0.053*** (0.006)	-4.102*** (0.779)	-75.0*** (20.0)	-25.3*** (9.6)
<b>B. Weather controls</b>				
Temp. Ppt. Wdir. Wspd.	0.043*** (0.006)	-4.950*** (0.791)	-76.3*** (18.9)	-32.8*** (9.6)
Wdir. $\times$ state	0.048*** (0.006)	-5.019*** (0.793)	-59.6*** (19.0)	-32.0*** (9.3)
Wdir. $\times$ county	0.048*** (0.007)	-5.312*** (0.864)	-63.1*** (20.3)	-32.0*** (9.9)
<b>C. Fixed effects controls</b>				
state-by-year FEs (baseline)	0.056*** (0.007)	-5.217*** (0.776)	-79.6*** (21.9)	-38.7*** (9.2)
division-by-year FEs	0.053*** (0.007)	-5.399*** (0.759)	-100.7*** (26.2)	-27.9 (17.5)
region-by-year FEs	0.054*** (0.007)	-5.212*** (0.773)	-109.2*** (29.6)	-26.0 (20.5)
year FEs	0.057*** (0.008)	-4.421*** (0.797)	-132.9*** (33.2)	13.5 (22.3)
<b>D. Annual data</b>				
state-by-year FEs	0.036*** (0.005)	1.083 (4.252)	-3.5 (37.1)	-30.2 (25.0)
division-by-year FEs	0.016*** (0.004)	-5.902*** (2.075)	-80.0*** (26.1)	15.8 (16.9)
region-by-year FEs	0.017*** (0.003)	-4.139*** (1.454)	-79.1*** (21.8)	11.2 (13.7)
year FEs	0.019*** (0.003)	0.045 (1.377)	-82.8*** (18.3)	51.2*** (10.4)
<b>E. Outcome specification</b>				
Lvl spec. w/ trends	0.060*** (0.006)	-2.454*** (0.596)	-42.7*** (11.1)	-24.7*** (7.4)
Lvl spec. wo/ trends	0.056*** (0.007)	-1.581 (0.965)	10.8 (8.6)	-25.3*** (2.1)
First-diff spec	0.063*** (0.006)	-3.663*** (0.654)	-51.6*** (16.1)	-26.9*** (9.0)
<b>F. Standard errors clustering</b>				
County + division-by-quarter	0.056 (0.009)***	-5.217 (1.062)***	-79.6 (37.7)**	-38.7 (13.1)***
County + region-by-quarter	(0.011)***	(1.432)***	(51.9)	(16.4)**
County + quarter	(0.011)***	(2.077)**	(81.6)	(26.6)
County	(0.004)***	(0.470)***	(10.0)***	(5.7)***
State	(0.013)***	(0.949)***	(23.0)**	(9.5)***

Notes: Each cell is a separate regression. Row names indicate the type of robustness checks performed. All regressions are weighted by county population (columns 1, 2, and 4) and population aged over 16 (column 3), and include county-by-quarter-of-year fixed effects and state-by-year fixed effects. Unless otherwise noted, standard errors are two-way clustered at the county and state-by-quarter levels. \*:  $p < 0.10$ ; \*\*:  $p < 0.05$ ; \*\*\*:  $p < 0.01$ .

Table B.2: Robustness Checks: IV Regressions

		(1)	(2)	(3)
		earnings	employment	lfp
<b>A. Smoke measurement</b>				
$\Sigma$ %county smoked	F=89.9	-83.409*** (19.517)	-1738.9*** (394.1)	-506.3** (205.1)
<b>B. Weather controls</b>				
Temp. Ppt. Wdir. Wspd.	F=45.9	-124.074*** (28.967)	-2065.7*** (544.2)	-814.8*** (231.5)
Wdirx $\times$ state	F=56.0	-113.794*** (25.824)	-1643.9*** (453.2)	-758.3*** (199.7)
Wdirx $\times$ county	F=50.0	-123.416*** (29.247)	-1768.0*** (513.3)	-778.0*** (226.9)
<b>B. Fixed effects controls</b>				
state-by-year FEs (baseline)	F=71.8	-103.1*** (20.4)	-1750.1*** (434.8)	-790.9*** (182.1)
division-by-year FEs	F=62.5	-110.3*** (21.8)	-2183.7*** (561.8)	-637.7* (348.9)
region-by-year FEs	F=61.7	-105.040*** (20.492)	-2191.8*** (596.1)	-715.3* (400.9)
year FEs	F=47.8	-85.368*** (19.977)	-2607.6*** (710.0)	-25.7 (418.9)
<b>C. Annual data</b>				
state-by-year FEs	F=50.2	41.562 (144.336)	-99.6 (1172.0)	-658.9 (753.6)
division-by-year FEs	F=20.1	-357.457* (185.348)	-4851.0** (2350.1)	1048.7 (1233.9)
region-by-year FEs	F=25.7	-219.809* (115.260)	-3929.2** (1849.6)	-171.9 (935.4)
year FEs	F=42.1	14.799 (89.288)	-4585.5*** (1479.2)	2093.1*** (769.0)
<b>D. Outcome specification</b>				
Lvl spec. w/ trends	F=115.8	-43.572*** (12.989)	-848.0*** (201.0)	-492.6*** (157.3)
Lvl spec. wo/ trends	F=71.9	-27.721 (22.200)	206.9*** (68.8)	-451.9*** (73.1)
First-diff spec.	F=97.9	-65.9*** (14.8)	-1069.6*** (291.5)	-462.8*** (153.3)
<b>E. Standard errors clustering</b>				
		-103.077	-1750.1	-790.9
County + division-by-quarter	F=35.9	(27.610)***	(761.5)**	(262.9)***
County + region-by-quarter	F=26.3	(34.802)***	(1012.3)*	(333.9)**
County + quarter	F=25.0	(43.372)**	(1579.7)	(511.1)
County	F=190.5	(13.611)***	(233.4)***	(123.9)***
State	F=18.2	(39.845)**	(503.0)***	(285.1)***

Notes: Each cell is a separate 2SLS regression. Row names indicate the type of robustness checks performed. All regressions are weighted by county population (columns 1, 2, and 4) and population aged over 16 (column 3), and include county-by-quarter-of-year fixed effects and state-by-year fixed effects. Unless otherwise noted, standard errors are two-way clustered at the county and state-by-quarter levels. \*:  $p < 0.10$ ; \*\*:  $p < 0.05$ ; \*\*\*:  $p < 0.01$ .

Table B.3: Air Pollution and Earnings: OLS Regressions with Multiple Pollutants

	(1)	(2)	(3)	(4)	(5)	(6)
PM <sub>2.5</sub>	-10.6*** (3.1)	-13.6*** (3.5)	-11.1*** (3.4)	-14.1*** (4.4)	-10.0** (4.0)	-15.4*** (5.1)
PM <sub>10</sub>	- -	1.9* (1.1)	- -	- -	- -	2.6* (1.4)
O <sub>3</sub>	- -	- -	-1.2 (1.1)	- -	- -	-2.5 (1.7)
SO <sub>2</sub>	- -	- -	- -	-3.6 (2.3)	- -	-7.6* (4.5)
NO <sub>2</sub>	- -	- -	- -	- -	-5.5 (3.9)	-4.2 (3.6)
Outcome mean	5,687.6	5,975.2	5,763.9	6,114.5	6,211.8	6,390.4
Observations	74,725	42,616	64,248	40,363	31,534	23,373

Notes: Each column is a separate regression. Pollutants are measured in  $\mu\text{g}/\text{m}^3$  (PM<sub>2.5</sub> and PM<sub>10</sub>), ppb (O<sub>3</sub>), and ppm (SO<sub>2</sub> and NO<sub>2</sub>). All regressions are weighted by county population, and include county-by-quarter-of-year fixed effects and state-by-year fixed effects. Standard errors are two-way clustered at the county and state-by-quarter levels. \*:  $p < 0.10$ ; \*\*:  $p < 0.05$ ; \*\*\*:  $p < 0.01$ .

Table B.4: Population Flow Responses

	(1)	(2)	(3)
	in-migration (log)	out-migration (log)	tax-exemptions (log)
Smoke	-0.003 (0.015)	0.0001 (0.012)	-0.010 (0.007)
Observations	37,254	37,256	37,284

Notes: The table reports estimated effects of an additional day of wildfire smoke exposure on annual IRS SOI migration outcomes. Each column corresponds to a separate regression using county-year observations and relevant county population weights. The focal independent variables capture the number of days in a year on which a county was exposed to wildfire smoke. All regressions include county fixed effects, and state-by-year fixed effects. Standard errors are clustered at both the county and the state-by-year levels.



Table B.5: Sub-industry IV Estimates for the Agricultural Sector

	(1)	(2)	(3)	(4)	(5)	(6)
NAICS code:	11	111	112	113	114	115
	ag total	crop production	animal production	forestry logging	fishing hunting	support activities
$\widehat{PM}_{2.5}$	-54.2* (29.1)	-44.2*** (15.3)	0.7 (1.6)	1.6 (1.9)	-0.7 (1.6)	-26.9 (23.7)
Outcome mean	5,147.3	2,464.0	735.8	437.5	99.0	2,462.8
Kleibergen-Paap F	186.2	160.0	134.3	138.5	15.1	140.5
Observations	68,846	50,816	43,921	19,841	3,582	38,634

Notes: Each cell is a separate regression following the IV estimation equations (5) and (6). The dependent variable is QWI employment for the corresponding sector indicated by the column title. The smoke variable is used as an instrument for county's quarterly average  $PM_{2.5}$ . All regressions are weighted by county population aged over 16 and include county-by-quarter-of-year fixed effects and state-by-year fixed effects. Standard errors are two-way clustered at the county and state-by-quarter levels. \*:  $p < 0.10$ ; \*\*:  $p < 0.05$ ; \*\*\*:  $p < 0.01$ .

Table B.6: Wildfire Smoke and Mortality

	(1)	(2)	(3)
	all ages	ages 60-	ages 60+
A. Monthly mortality			
Smoke (reduced form)	0.132 (0.110)	0.081* (0.043)	0.972* (0.522)
PM <sub>2.5</sub> (OLS)	0.480*** (0.167)	0.148** (0.061)	1.273 (0.820)
PM <sub>2.5</sub> <sup>∧</sup> (IV)	0.379 (0.648) [F=103.5]	0.270 (0.259) [F=104.2]	4.446 (3.335) [F=97.9]
B. Quarterly mortality			
Smoke (reduced form)	-0.118 (0.186)	0.045 (0.049)	1.162 (0.934)
PM <sub>2.5</sub> (OLS)	0.628 (1.032)	0.247 (0.310)	-2.131 (4.997)
PM <sub>2.5</sub> <sup>∧</sup> (IV)	-5.908 (5.415) [F=42.6]	1.468 (1.480) [F=43.3]	-8.889 (28.206) [F=39.1]
Mean monthly mortality	678.762	168.445	2845.111
Mean quarterly mortality	2033.419	506.850	8600.272
Observations (monthly)	330,442	330,442	330,442
Observations (quarterly)	123,422	123,422	123,422

Notes: Each cell represents a separate regression. Outcome variables are all-age mortality (column 1), mortality among age below 60 (column 2), and mortality among age above 60 (column 3). “Smoke” counts the number of days a county is fully covered by wildfire smoke plumes. In IV estimation, the smoke variable is used as an instrument for county’s quarterly average PM<sub>2.5</sub>. All regressions are weighted by county population in the relevant age groups, and include county × month-of-year fixed effects and census state × year fixed effects. Standard errors are two-way clustered at the county and state-by-month levels (panel A) and county and state-by-quarter levels (panel B). \*:  $p < 0.10$ ; \*\*:  $p < 0.05$ ; \*\*\*:  $p < 0.01$ .