

Canaan, Serena; Fischer, Stefanie; Mouganie, Pierre; Schnorr, Geoffrey C.

Working Paper

Keep me in, coach: The short- and long-term effects of targeted academic coaching

Upjohn Institute Working Paper, No. 22-370

Provided in Cooperation with:

W. E. Upjohn Institute for Employment Research, Kalamazoo, Mich.

Suggested Citation: Canaan, Serena; Fischer, Stefanie; Mouganie, Pierre; Schnorr, Geoffrey C. (2022) : Keep me in, coach: The short- and long-term effects of targeted academic coaching, Upjohn Institute Working Paper, No. 22-370, W.E. Upjohn Institute for Employment Research, Kalamazoo, MI,
<https://doi.org/10.17848/wp22-370>

This Version is available at:

<https://hdl.handle.net/10419/262398>

Standard-Nutzungsbedingungen:

Die Dokumente auf EconStor dürfen zu eigenen wissenschaftlichen Zwecken und zum Privatgebrauch gespeichert und kopiert werden.

Sie dürfen die Dokumente nicht für öffentliche oder kommerzielle Zwecke vervielfältigen, öffentlich ausstellen, öffentlich zugänglich machen, vertreiben oder anderweitig nutzen.

Sofern die Verfasser die Dokumente unter Open-Content-Lizenzen (insbesondere CC-Lizenzen) zur Verfügung gestellt haben sollten, gelten abweichend von diesen Nutzungsbedingungen die in der dort genannten Lizenz gewährten Nutzungsrechte.

Terms of use:

Documents in EconStor may be saved and copied for your personal and scholarly purposes.

You are not to copy documents for public or commercial purposes, to exhibit the documents publicly, to make them publicly available on the internet, or to distribute or otherwise use the documents in public.

If the documents have been made available under an Open Content Licence (especially Creative Commons Licences), you may exercise further usage rights as specified in the indicated licence.

8-5-2022

Keep Me In, Coach: The Short- and Long-Term Effects of Targeted Academic Coaching

Serena Canaan

Simon Fraser University and IZA, scanaan@sfu.ca

Stefanie Fischer

Monash University and IZA, stefanie.fischer@monash.edu

Pierre Mouganie

Simon Fraser University and IZA, pmougani@sfu.ca

Geoffrey C. Schnorr

California Policy Lab at UCLA and California Employment Development Dept., geschnorr@ucdavis.edu

Upjohn Institute working paper ; 22-370

Follow this and additional works at: https://research.upjohn.org/up_workingpapers



Part of the [Labor Economics Commons](#), and the [Scholarship of Teaching and Learning Commons](#)

Citation

Canaan, Serena, Stefanie Fischer, Pierre Mouganie, and Geoffrey C. Schnorr. 2022. "Keep Me In, Coach: The Short- and Long-Term Effects of Targeted Academic Coaching." Upjohn Institute Working Paper 22-370. Kalamazoo, MI: W.E. Upjohn Institute for Employment Research. <https://doi.org/10.17848/wp22-370>

This title is brought to you by the Upjohn Institute. For more information, please contact repository@upjohn.org.

Keep Me In, Coach: The Short- and Long-Term Effects of Targeted Academic Coaching

Upjohn Institute Working Paper 22-370

Serena Canaan
Simon Fraser University and IZA
scanaan@sfu.ca

Stefanie Fischer
Monash University and IZA
stefanie.fischer@monash.edu

Pierre Mouganie
Simon Fraser University and IZA
pmougani@sfu.ca

Geoffrey C. Schnorr
*California Policy Lab at UCLA and
California Employment Development Dept.*
gcschnorr@ucdavis.edu

August 2022

ABSTRACT

To boost college graduation rates, policymakers often advocate for academic supports such as coaching or mentoring. Proactive and intensive coaching interventions are effective, but are costly and difficult to scale. We evaluate a relatively lower-cost group coaching program targeted at first-year college students placed on academic probation. Participants attend a workshop where coaches aim to normalize failure and improve self-confidence. Coaches also facilitate a process whereby participants reflect on their academic difficulties, devise solutions to address their challenges, and create an action plan. Participants then hold a one-time follow-up meeting with their coach or visit a campus resource. Using a difference-in-discontinuity design, we show that the program raises students' first-year GPA by 14.6 percent of a standard deviation, and decreases the probability of first-year dropout by 8.5 percentage points. Effects are concentrated among lower-income students who also experience a significant increase in the probability of graduating. Finally, using administrative data, we provide the first evidence that coaching/mentoring may have substantial long-run effects, as we document significant gains in lower-income students' earnings seven to nine years following entry to the university. Our findings indicate that targeted, group coaching can be an effective way to improve marginal students' academic and early career outcomes.

JEL Classification Codes: I23, I24, J16

Key Words: College graduation, mentoring, college advising, academic coaching

Acknowledgments: This paper has benefitted from helpful conversations with Rachel Baker, Kelly Bedard, Laura Giuliano, Mark Hoekstra, Philip Oreopoulos, Uros Petronijevic, Sarah Reber, Heather Royer, Jesse Rothstein, Bruce Sacerdote, Sally Sadoff, and seminar participants at UCSB, University of Melbourne, Hitotsubashi University, and UCSD's Rady School of Management. We thank participants at the following conferences for providing useful feedback: Society of Labor Economists Annual Meeting (2021), Association for Education, Finance and Policy Annual Meeting (2021), and Montana State University's Applied Micro Workshop (2022). We also thank the W.E. Upjohn Institute for Employment Research for support in conducting this research.

Upjohn Institute working papers are meant to stimulate discussion and criticism among the policy research community. Content and opinions are the sole responsibility of the author.

1 Introduction

The labor market returns to a bachelor’s degree are substantial and have been rising over time, with lower-income students realizing the largest economic gains (Hoekstra, 2009; Zimmerman, 2014; Goodman et al., 2020). At the same time, there exists a large and growing socioeconomic gap in postsecondary attainment (Bailey and Dynarski, 2011). By age 24, degree completion rates are about five times higher for students from the highest income quartile relative to the lowest (Cahalan et al., 2021). There are a number of nonfinancial factors that impede four-year degree completion, including informational and behavioral barriers (Dynarski et al., 2022). In light of these facts, university-level academic supports in the form of mentoring and coaching have been at the forefront of policy discussions as a way to overcome this type of barrier.

In general, coaching programs provide support to students to help them overcome academic and nonacademic obstacles, but evidence of their effectiveness is mixed. At one end of the intensity distribution are low-touch interventions such as virtual coaching delivered via emails and text messages. While these are inexpensive and potentially scalable, they tend to be ineffective (Oreopoulos and Petronijevic, 2018, 2019; Dobronyi et al., 2019). On the other hand, high-touch interventions that include one-on-one and continual support can be highly effective at producing long-lasting improvements in academic performance, but they are expensive and difficult to scale (Bettinger and Baker, 2014; Barr and Castleman, 2018; Canaan et al., 2022).

To address this dilemma, we consider a medium-touch intervention for marginal students that has the potential to be both effective and scalable. We evaluate a coaching program that strategically incorporates two low-cost features that have proven effective at influencing student behaviors in other academic settings. First, the coaching is targeted. We focus on retaining students who are on the margin of dropping out or being dismissed from the institution for poor performance. Targeted interventions have been shown to be highly effective but can be costly to implement as it is often difficult to identify the students who will benefit most (Carrell and Sacerdote, 2017). Our study overcomes this challenge by focusing on first-year students at one university who after their first quarter are placed on academic probation, a near-universal policy in higher education that labels students who are at risk of dropping out. All first-year students placed on academic probation in their first quarter at the university are required to complete the coaching program under study. The program targets this group because the transition to college can be difficult. Capable students often struggle with the shock of more demanding course work, higher grading standards, more autonomy, and less-than-ideal living situations, all while simultaneously trying to find a supportive community in a new environment. For some, these challenges interfere with academic performance and result in their being placed on academic probation. Students put on academic probation early on in college are at the highest risk of dropping out, and thus likely have the most to gain from coaching (Lindo et al., 2010).

Second, the program is conducted in a group setting. Exposure to peers with similar academic

difficulties may allow students to feel supported. Indeed, programs in which group activities are a key component, such as learning communities, have been shown to greatly improve students' academic outcomes (Weiss et al., 2015).

The program is implemented at a large, selective, public four-year university in California and delivers mandatory in-person group coaching to all first-year students who are placed on academic probation. Participants attend a two-hour workshop, where they are divided into small groups led by faculty and staff who are trained as coaches. The primary aim of the program is for coaches to improve participants' self-confidence by normalizing failure and academic probation. The concern is that students, especially those from disadvantaged backgrounds, view the academic probation label as a signal that they do not belong in college. The program aims to rectify this belief. Coaches also facilitate a process whereby students identify the sources of their academic difficulties, find solutions to address their challenges, and create an action plan. The plan includes goal-setting and a time management exercise. Following the workshop, students are required to either use a campus resource once (e.g., office hours or counseling services) or have a follow-up one-on-one meeting with their coach.

We draw on rich administrative data for all first-year students entering the university in fall cohorts from 2007 to 2017. Students' academic outcomes are observed each quarter until they separate from the institution, allowing us to evaluate the impact of coaching on course performance, dropout rates, and degree attainment. We also investigate the program's effect on labor market outcomes, linking student data to administrative files from the state of California's Employment Development Department, which includes quarterly employment and earnings information for all employment covered by unemployment insurance (UI) in California for the years 2000–2020.

To estimate the causal effect of the program, we leverage the fact that first-year students are assigned to the program if their GPA is less than 2.0 during their first quarter. Students who score below this threshold are also placed on academic probation, precluding us from using a standard regression discontinuity design. However, because the coaching program was introduced in 2009, we are able to leverage the fact that cohorts entering after that date were exposed to both academic probation and coaching, while those enrolled before that date were only exposed to academic probation. Consequently, we implement a difference-in-discontinuity (DiRD) design that compares the difference in outcomes for students on either side of the 2.0 GPA eligibility threshold in the 2009 entering cohort and later cohorts (treated cohorts) with this same discontinuity for the cohorts entering prior to 2009 (control cohorts). Intuitively, the DiRD design estimates the discontinuity in outcomes for treated cohorts and differences out any potential discontinuities in control cohorts' outcomes, thereby isolating the impact of the coaching program from that of being placed on academic probation.

We find that students achieve large academic gains from participating in the coaching program. Overall, the program increases participants' first-year GPA by 16.4 percent of a standard deviation, increases credits earned in the remainder of the year by 1.2, and decreases their likelihood of

dropping out at the end of the first year by 8.6 percentage points. We also find a positive, albeit imprecisely estimated, impact on six-year graduation. Effects are more pronounced for groups of students who are expected to benefit most from such programs, such as men and students majoring in science, technology, engineering, and math (STEM). The coaching program is also particularly beneficial to students from lower-income backgrounds, as it increases their probability of graduating in six years by a significant 13.6 percentage points. These findings are unsurprising given that lower-income students and men persist in and complete college at much lower rates than their counterparts (Bailey and Dynarski, 2011), and attrition rates for STEM majors are typically high (National Center for Education Statistics, 2013).

In the full sample, we find that the coaching program has positive but imprecise impacts on students’ earnings seven to nine years following entry to the university.¹ For the subgroups of students who benefit the most from the program academically, we document large and statistically significant earnings gains. Coaching increases male and lower-income students’ earnings by approximately 30 percent. Point estimates among STEM majors are similar but less precisely estimated. These point estimates are consistent with and contribute to a burgeoning body of work showing large earnings gains from attending a relatively more selective four-year institution for academically marginal students (Zimmerman, 2014; Bleemer, 2018; Goodman et al., 2020; Bleemer, 2022). Taken together, our findings indicate that providing marginal students with targeted group coaching largely improves their academic and early labor market outcomes.

We further explore the potential mechanisms underlying the main effects to help uncover which aspects of the coaching program explain its effectiveness. To do this, we utilize data from pre- and postprogram surveys administered in select years to all students who participated in it. Using an individual fixed-effects model, we find that by the end of the program students feel significantly more supported by a faculty or staff member, are less likely to feel that they are the only ones struggling, are more familiar with the university’s student services, and are better at managing their time. On the other hand, we detect no significant changes in their motivation, likelihood of attending class, or feeling that they are connected to a community at the university. Given these findings and the goals of the program, we posit that the main effects are largely operating through improvements in participants’ social-emotional state—in particular, improvements in the level of support they feel from the university. Related, other recent studies have found that support from the university and faculty improves student’s experience and improves outcomes (Oreopoulos et al., 2020; Carrell and Kurlaender, 2020).

Our paper is related to a broad literature that examines ways to effectively boost low college completion rates. A large body of work has considered the role of financial aid in increasing college attainment (Dynarski, 2003; Bettinger, 2015; Cohodes and Goodman, 2014; Bulman and Hoxby, 2015; Bettinger et al., 2019; Angrist et al., 2020). Other work has focused on the myriad of nonfi-

¹We focus on earnings in quarters 25–36 (seven to nine years) after initial enrollment, where quarter 1 is the fall quarter of the student’s first year. The typical student enrolls at age 18, so this corresponds approximately to ages 24–26.

nancial barriers to a college degree (for a review, see Dynarski et al. (2022)). We contribute to the group of studies that considers the role of university-level academic supports in increasing academic attainment, specifically those focused on providing counseling and coaching as a way to change behavior. The most effective programs deliver proactive and individualized coaching (Bettinger and Baker, 2014; Barr and Castleman, 2018; Canaan et al., 2022).² Moreover, comprehensive programs that offer an array of structured student supports are particularly successful (Clotfelter et al., 2018; Page et al., 2019; Weiss et al., 2019; Evans et al., 2020). For example, Weiss et al. (2019) show that ASAP, a multifaceted three-year program in which participants are offered a variety of supports such as proactive one-on-one advising, financial aid, weekly tutoring, and incentives to enroll in similar classes, substantially increases community college graduation rates.

We add to this literature in two important ways. First, we focus on a coaching program that is relatively lower touch and is delivered in a shorter time span (one quarter) than other successful interventions. Students in our setting are required to attend only one group coaching workshop and hold one individualized meeting with their coach or visit an on-campus resource. In contrast, a common feature of all the aforementioned effective programs is that coaches or advisors are proactive, and they regularly initiate contact and schedule one-on-one meetings with their students. Furthermore, most of these interventions are implemented for at least one academic year, with some lasting multiple years.³ While effective, these programs are expensive and often difficult to scale (Oreopoulos and Petronijevic, 2019). Instead, the nature of the coaching program studied in this paper makes it a lower-cost and potentially more scalable way to effectively improve college outcomes, a finding we document in Section 5.1. Understanding which student supports are most cost-effective is important as per-student resources at U.S. postsecondary institutions have been declining over time (Bound et al., 2010; Denning et al., 2021).

Second, beyond the nature of the program, we add to this literature by providing the first estimates of the impact of coaching on later earnings. The existing literature focuses solely on academic outcomes, but understanding if treatment effects persist in the labor market provides a more comprehensive view of the benefits of coaching. Our setting is well suited to study labor market outcomes because the coaching program is mandatory, and we have been able to obtain 10 years of rich administrative earnings files. While we cannot conclusively establish that *all* program participants realize labor market gains, we nonetheless show that our coaching program substantially increases earnings of students who benefit the most from it academically.

²Coaching seems to be most effective when it is proactive. Previous work finds that nonproactive coaching has limited positive effects on students' academic performance, with effects dissipating once the intervention ends (Angrist et al., 2009; Scrivener and Weiss, 2009; Angrist et al., 2014).

³Specifically, Barr and Castleman (2018) report increases in college enrollment and persistence in students enrolled in Bottom Line, a program that offers intensive counseling to students starting their senior year in high school and up to six years after high school. Bottom Line counselors meet one-on-one with first-year college students around three to four times per semester. Bettinger and Baker (2014) document a rise in persistence from InsideTrack, a for-profit coaching service offered to nontraditional college students where coaches regularly initiate contact via phone and keep in touch with students. Oreopoulos and Petronijevic (2018) implement a one-year coaching intervention at a Canadian University in which they instruct coaches to be proactive and offer personalized, regular support. Their coaching intervention substantially increased academic performance.

The rest of this paper is organized as follows: Section 2 details the institutional background. Section 3 describes the data. Section 4 outlines the empirical framework. Section 5 presents results, discusses the mechanisms, and provides context for the magnitudes. Section 6 discusses the plausibility of the identifying assumptions. Section 7 presents labor market results. Section 8 concludes.

2 Background

The setting for this study is a large, selective, public four-year university located on the central coast of California. The university serves approximately 21,000 students, with a focus on undergraduate education, particularly in engineering and agriculture fields. To provide context, for the 2019–2020 academic year, the undergraduate acceptance rate was 28 percent, and tuition and fees (excluding books, supplies, room/board, etc.) totaled nearly \$10,000/year for California residents and \$25,000 for out-of-state and international students. The 2019 entering cohort of first-time freshmen had an average high school GPA of 4.1 (on a 5.0 scale), an average SAT score of 1,375 (among the top 20 percent nationally), and an average ACT score of 29.

2.1 Success Program

Like many institutions, this university is concerned with retention and completion rates. Not only are these factors important inputs in university rankings, but administrators are also aware that it is costly to students both directly and indirectly to begin and not complete a degree, as they are unable to realize the associated wage premium and often accumulate student loans. In an attempt to improve these outcomes, in 2009 the university introduced the Success Program (SP), a mandatory academic coaching program for first-time freshmen who are placed on academic probation at the end of the fall quarter of their first year.⁴ At this university, it has always been the case that students are placed on academic probation if their term GPA or cumulative GPA falls below 2.0.⁵ While the intent of academic probation is to serve as a warning or motivate students to improve their performance, there is a concern that it is ineffective or may even discourage some students. In light of this concern, SP was intentionally designed to take a different approach from the standard academic probation corrective measure. SP curriculum is designed based on psychologist Dr. Albert Bandura’s Theory of Self-Efficacy. The theory posits that individuals with sufficient levels of self-efficacy have confidence in their ability to exert control over their motivation and behavior and, consequently, are able to achieve specific performance benchmarks. As such, SP aims to improve self-efficacy. The program was first implemented as a pilot in the fall of 2009 for four of the university’s six colleges, and was extended to the entire university the following year.

⁴To preserve institution anonymity, we have modified the name of the program to “Success Program.”

⁵Students on probation are subject to dismissal if their cumulative GPA does not exceed the 2.0 threshold by the end of their first year.

This institution operates on a quarter calendar where three 11-week terms make up the academic year: fall quarter, winter quarter, and spring quarter (Q1–Q3). Students who earn below a 2.0 GPA in Q1—their first fall quarter at the institution—are required to complete SP during Q2 (winter quarter). The program consists of two parts: 1) a two-hour workshop led by trained faculty coaches that is held during the first two weeks of Q2, and 2) a mandatory campus engagement assignment to be completed by week five of that quarter. For this assignment, students choose between either visiting a campus resource and completing a reflection assignment or attending a one-on-one follow-up meeting with their workshop coach and completing a reflection assignment. The university typically offers two workshop dates during the first weeks of Q2 to accommodate student and faculty schedules. Roughly 320 students qualify for the program each fall quarter, and almost all of them participate in one of the two workshop sessions. A small share of students are unable to attend the session due to a scheduling conflict and complete the requirement one-on-one with a trained coach. To enforce participation, students are unable to enroll in Q3 (spring quarter) courses until they have completed all parts of the program.

The two-hour workshop is broken into two parts: a 30-minute meeting with all session participants (typically about 150 students), followed by a 90-minute breakout session with a smaller group of six to eight students led by one or two trained faculty or staff coaches. The goal of the large-group portion of the workshop is to normalize failure and academic probation, and to show students that they are not the only ones at the university who experienced academic challenges in their first quarter. During this part of the workshop, students watch a video featuring various high-profile people who have overcome challenges and failure. The SP leadership team presents students with information on campus resources, including tutoring services, health and well-being services, counseling services, and cross-cultural services such as the Gender Equity Center, Pride Center, and Multicultural Center (see Appendix D). They also outline the rules of academic probation in an attempt to remove some of the anxiety surrounding this term.

The second part of the workshop is meant to be more interactive and discussion based. It involves a breakout session with a smaller group, typically six to eight students, led by one or two trained coaches. Coaches are faculty and staff from across the university who have undergone a two-hour training led by the SP leadership team.⁶ In an attempt to reiterate the message that failure is common among successful people, the session opens with coaches sharing a time when they experienced failure. The coaches then facilitate a reflection and goal-setting exercise. Students are allotted time to reflect on factors that may have contributed to their academic struggles in Q1, such as academic challenges (e.g., problems with time management, study skills, class attendance, or school/life balance); college adjustment difficulties (e.g., roommate issues, homesickness, difficulty finding resources, or difficulty fitting in); and personal hardships (e.g., mental or physical health issues, personal or family crises, or identity-based isolation). To guide this process, participants

⁶Faculty and staff who become coaches select into this service role. Faculty receive service credit from their home departments for their participation, and staff’s time spent on coaching is considered part of their typical work day.

work through a worksheet, pausing to discuss their responses with the group. The worksheet, presented in Appendix B, is set up in three steps: identifying weaknesses, identifying solutions or resources that can aid in overcoming these weaknesses, and goal-setting for the current quarter. The intent of this exercise is for students to leave the workshop with a tangible plan to change their academic trajectory going forward. During this time, participants are also required to fill out a time management worksheet where they are encouraged to allocate time for classes, studying, and social activities (Appendix B).

2.2 Academic Probation

Most higher education institutions have some form of academic probation. Such a policy flags students who have fallen below a minimum threshold to remain in good academic standing. At this institution, the threshold is determined by the minimum GPA of 2.0, which is a “C” average. At the end of each quarter, students who have a cumulative GPA or a term GPA below 2.0 are placed on academic probation and are promptly notified of this status via email. Students remain on probation until their term and cumulative GPA are above the 2.0 threshold. First-year students are granted a probationary period of the first year to improve their GPA above this threshold. If they fail to meet this mark by the end of their first year (Q3), they are subject to dismissal and are not eligible to return for their second year.⁷

Though designed to alert students that their academic performance is inadequate, probation has been shown to negatively impact student outcomes. In their seminal study, Lindo et al. (2010) show that probation increases some students’ chances of dropping out of college and reduces graduation rates. In a related vein, Ost et al. (2018) show that university dismissal policies, for which probation is a precursor, lead to substantial losses in future earnings.⁸

3 Data

All data in the main analysis are student level and come from three sources: 1) administrative records from the university office of Institutional Research, 2) SP participation files, and 3) pre- and post-SP survey responses from the SP office, which are discussed in detail in Section 5.3. The full sample includes 11 entering cohorts of first-time freshmen who enrolled at the university in a fall quarter between 2007 and 2017 (45,864 students) and tracks them by quarter through graduation or until they separate from the university. In an auxiliary analysis, these data are then augmented by labor market outcomes from the California Employment Development Department and are described in Section 7.

⁷Students who are placed on academic probation in any other quarter than Q1, are granted only one quarter to improve their academic standing above the 2.0 threshold before being eligible for dismissal.

⁸Other studies find that students on academic probation improve their GPA through strategic course-taking (Casey et al., 2018) and switching majors (Wright, 2020).

The administrative transcript files provide a detailed view of students’ academic progress, allowing for examination of a rich set of outcomes. By student-quarter, we observe enrolled courses, course grades, cumulative GPA, academic major, probation status, and the timing of separation from the university either as a dropout or graduate. As noted above, Q1 is defined as a student’s first fall quarter at the university, Q2 and Q3 as their first winter and spring quarters, respectively. Understanding student performance in year one is of primary interest as students qualify for the coaching program in Q1 and complete it in Q2. As such, the main outcome of interest is dropping out at the end of Q3 (i.e., year one retention). Q3 dropout takes the value of 1 if a student does not appear in the data the following academic year (Q5–Q7), and 0 otherwise.⁹ Q1 and Q2 dropouts are coded in a similar fashion. Other outcomes of interest include graduating: whether a student graduates in four years (on-time graduation) or six years (a proxy for ever graduating). We construct two additional outcomes, Q2 + Q3 GPA and Q2 + Q3 total credits earned, to capture a student’s academic performance in the rest of their first year.¹⁰ These files also contain a rich set of time-invariant background characteristics, including a student’s high school GPA, gender, race/ethnicity, whether they are required to enroll in remedial math and English courses, eligibility for the Federal Pell Grant program, their expected family contribution (EFC) as determined by the Free Application for Federal Student Aid, and parental education.

Probation status is observed in the administrative files and takes the value of 1 if a student is placed on academic probation in Q1, and 0 otherwise. Based on the probation policy assignment rule, students who score below a 2.0 GPA in a given quarter are placed on probation. For this analysis, Q1 probation status is of primary interest. Figure A1 confirms that the probability of Q1 probation is solely determined by Q1 GPA for both treated and control cohorts. The probability of probation changes sharply at the 2.0 threshold.¹¹

The administrative files are merged with SP participation records to identify which students complete the program. Recall that SP assignment is determined by a Q1 GPA of less than 2.0. Figure 1 shows the likelihood of program participation by Q1 GPA for all entering cohorts from fall 2010 to fall 2018 (i.e., since the inception of the coaching program).¹² Indeed, there is a sharp jump at the 2.0 GPA threshold in the likelihood of SP participation. No student with a Q1 GPA above the threshold of 2.0 participates in SP, while virtually all students scoring below the 2.0 cutoff participate.¹³ Together, Figure A1 and Figure 1 confirm that probation status and SP participation

⁹This coding of Q3 dropout allows a student to take several quarters away, perhaps to study abroad or for employment reasons, and not be coded as a dropout. The results, however, are robust to alternative ways of defining Q3 dropout, including coding Q3 equal to 1 if a student never appears in the data again following Q3, or if they don’t appear in the fall quarter of their second year (Q5).

¹⁰While GPA is a common measure of performance used in the literature, it is only defined for students who are enrolled in Q2 and Q3. As a way to circumvent this selection issue, we also analyze total credits earned in Q2 and Q3, as that is defined for all students in the sample.

¹¹Unfortunately, the probation variable indicator is missing for the 2010–2016 entering fall cohorts. As such, our first-stage analysis is based on the freshmen 2007, 2008, 2009, and 2017 fall cohorts.

¹²We exclude from this figure students from the few faculties who were selected for the SP pilot in 2009, as we do not have program participation data for them.

¹³Each fall quarter there are a few students (less than 10) who qualify for the SP but who are granted a waiver by

are binding in practice and are solely a function of Q1 GPA.

Summary statistics are presented in Table 1. While column 1 presents means for the full sample to provide context, column 2 reports summary statistics for the 22,225 students who are part of the analysis sample (i.e., the marginal students with GPAs between 1 and 3 in their first quarter at the university). Relative to the full sample, the analysis sample has more men (56 percent vs. 52 percent), more nonwhite students (42 percent vs. 38 percent), and is lower income. The share of Pell Grant-eligible students is 19 percent compared with 16 percent in the full sample. Moreover, this group experiences relatively worse academic outcomes. More than half of the students in the analysis sample are placed on academic probation at some point during their college career, and 8 percent drop out after their first year. Consequently, the four- and six-year graduation rates for the students around the 2.0 GPA cutoff are 35 percent and 77 percent, respectively—much lower than the full sample.

Columns 3 and 4 report summary statistics for the group of students in the control cohorts. This constitutes a sample of 4,294 students enrolled in all colleges in 2007 and 2008 and the two colleges in 2009 that did not participate in the pilot program.¹⁴ Column 3 includes the students who are placed on probation, $\text{GPA} \in [1, 2)$, and column 4 includes students scoring just above the 2.0 GPA cutoff, $\text{GPA} \in [2, 3]$, and thus not on probation. Columns 5 and 6 present summary statistics for the 16,241 students in the treated cohorts. We split this sample into those eligible for both programs, $\text{GPA} \in [1, 2)$, as presented in column 5, and those who are barely ineligible, $\text{GPA} \in [2, 3]$, as presented in column 6.

4 Empirical Methods

4.1 Visual Motivation for DiRD Design

We begin by presenting graphical motivation for the DiRD design. Figure 2 presents regression discontinuity (RD) plots for several outcomes separately for treated and control cohorts, with first-quarter GPA as the running variable. All figures take similar forms, in that circles represent local averages over a 0.1 GPA score range. All figures are drawn over a bandwidth of 1.0 GPA point on either side of the cutoff using a linear fit. Figures in the left panel summarize effects at the 2.0 GPA cutoff for students in control cohorts (exposed to probation-only policy), while those on the right present effects for those in treated cohorts (exposed to probation + SP).

Figure 2 provides visual evidence of meaningful differences between students exposed exclusively to the probation policy (control cohorts) and those exposed to probation and SP (treated cohorts). Figure 2a and Figure 2b highlight significant first-year dropout differences between control and

the dean of their college and are thus excused from participating. These waivers are typically reserved for extenuating circumstances such as health shocks or family emergencies.

¹⁴The following colleges participated in the 2009 pilot: College of Agriculture, Food, and Environmental Sciences; College of Business; College of Engineering; and College of Architecture and Environmental Design. The College of Science and Mathematics and College of Liberal Arts did not participate.

treated cohorts at the cutoff. Students who just qualify for probation are 10.9 percentage points more likely to drop out after the first year compared to those who just avoid probation. This large and meaningful gap at the cutoff is greatly reduced to a statistically insignificant 2 percentage points for cohorts exposed to probation and SP. Under the assumption that the negative effects of probation are similar for all cohorts, this suggests that students who qualified for the coaching program experienced significantly lower dropout rates compared with those not exposed.

While there is not strong visual evidence that SP changes students' probability of graduating on time, comparing Figure 2c and Figure 2d, there is for six-year graduation as shown in Figure 2e and Figure 2f. We find that students in control cohorts with GPAs just below the threshold are 9.1 percentage points less likely to graduate in six years compared with treated cohorts who are only 4.7 percentage points less likely. Finally, Figure 2g and Figure 2h show that while students exposed to probation alone were not significantly affected in terms of first-year GPA, those exposed to probation and SP experienced a large and significant 16 percent of a standard deviation increase in performance at the cutoff. That is, the coaching program seems to have positive grade impacts on marginal students. While this exercise provides suggestive evidence of positive impacts of the program, we next turn to an econometric framework using a DiRD design to more rigorously probe this possibility.

4.2 Difference-in-Discontinuity Design

To identify the causal effect of coaching, we draw on variation in exposure to the coaching program within cohorts and across cohorts. First, in the spirit of a RD design, we leverage variation in SP participation that arises from the strictly enforced SP assignment rule, which is a function of first-quarter GPA at the university. Students who score below a 2.0 GPA in Q1 are required to complete SP, and those above the threshold are excluded from the program. In a standard RD framework, if this cutoff is orthogonal to student characteristics, any observed discontinuity in outcomes around the threshold can be attributed to SP. However, because the SP assignment rule is identical to the academic probation assignment rule, the interpretation of the standard RD estimate will capture both the effect of SP and probation. To isolate the effect of SP net of the confounding probation policy, we further leverage the fact that some cohorts were exposed to SP and others were not. The SP pilot was introduced in the 2009 academic year for a subset of colleges at the university, and for all cohorts in all colleges from 2010 to the present. Thus, the 2007 and 2008 cohorts and some students in the 2009 cohort (control cohorts) were exposed to the probation rule but not to the SP assignment rule. All other cohorts were exposed to SP and probation (treated cohorts).

Formally, we implement a DiRD design. Intuitively, this design estimates the discontinuity in outcomes across the 2.0 GPA cutoff for cohorts exposed to both SP and probation and then purges the effects of probation by differencing out any discontinuity in outcomes for cohorts exposed to the probation policy only.

The estimation equation is as follows:

$$\begin{aligned}
Y_i = & \beta_1 + \beta_2 GPA_i + \beta_3 Treat_i + \beta_4 Below_i + \beta_5 (Treat_i * GPA_i) \\
& + \beta_6 (Below_i * GPA_i) + \beta_7 (Below_i * Treat_i) + \beta_8 (Below_i * Treat_i * GPA_i) \\
& + \rho_c + \delta_k + \gamma X_i + \epsilon_i,
\end{aligned} \tag{1}$$

Y_i is the outcome of interest for student i . GPA_i is the running variable and represents student i 's normalized first-quarter GPA relative to the cutoff of 2.0. $Treat_i$ is a binary variable that takes the value of 1 for treated cohorts, corresponding to all students exposed to both the probation policy and SP, and 0 for control cohorts exposed only to the probation policy. $Below$ is a binary variable that takes the value of 1 for students scoring below the GPA cutoff of 2.0, and 0 otherwise. The interactions with GPA_i allow slopes to vary on either side of the GPA cutoff as well as across treated and control cohorts.

The parameter of interest is β_7 , which represents the difference between treated and control cohorts in the discontinuous jump in the outcome at the 2.0 GPA cutoff.¹⁵ X_i is a vector of controls composed of students' predetermined characteristics—high school GPA, gender, race, required enrollment in remedial math and English courses, Pell Grant eligibility, EFC, and parental education—and is included to improve precision by reducing residual variation in the outcome variable. ρ_c is cohort fixed effects which control for any common shocks and overall trends in the outcome. δ_k is a college fixed effects. Finally, ϵ_i represents the error term.

In the main tables of results, we report estimates using bandwidths for the running variable of 0.75 and 1.0 GPA points on either side of the cutoff. Unfortunately, our DiRD research design precludes us from implementing a data-driven bandwidth selector often used with standard RD designs. Instead, Figure A2 reports point estimates across a variety of bandwidths ranging from 0.25 to 2.0 GPA points. We report robust standard errors rather than clustering. Clustering with a discrete running variable yields confidence intervals with worse coverage properties and does not resolve specification bias issues (Kolsar & Rothe, 2018).

As formalized in Grembi et al. (2016), when both policies induce sharp RDs, the validity of the DiRD estimate, β_7 , requires that the following three identifying assumptions hold.

- A1. Potential outcomes are smooth across the threshold (standard RD assumption).
- A2. The effect of the confounding policy, probation, is constant over time (akin to the DiD parallel trends assumption).
- A3. Local average treatment effects (LATEs) are additively separable.

Section 6 presents several pieces of evidence in strong support of A1 and A2. Because probation is never observed absent SP, it is difficult to assess the plausibility of A3. If A3 does not hold, it does

¹⁵The parameter β_3 summarizes the average difference in outcomes for students scoring above the 2.0 cutoff in the treated versus control cohorts. The parameter β_4 represents the average difference in outcomes for students scoring below to those scoring above the cutoff in the control cohorts.

not bias the estimate of β_7 but rather shapes its interpretation. We discuss this in more detail in Section 6.

5 Results

5.1 Academic Results

The main results come from estimating Equation (1). Table 2 reports the point estimates using two different bandwidths, 0.75 and 1.0 GPA points. All estimates are reported with and without controls to ensure results are robust to the inclusion of predetermined student characteristics. Columns 1 through 3 present DiRD estimates for Quarter 1 (Q1), Quarter 2 (Q2) and Quarter 3 (Q3) dropout, respectively. As shown in columns 1 and 2, we find no significant treatment effects for Q1 or Q2 dropout indicating that SP had no effect on first-year dropout. The null effect on Q1 and Q2 dropout is reassuring given the timing of the program and the probationary period for first-year students; program participation is in Q2, and university policy states that a student is not subject to dismissal for poor academic performance until the end of the first year (Q3). On the other hand, we find large and statistically significant treatment estimates on dropout directly following first year (column 3). SP decreases marginal students' Q3 dropout by 7.3–8.8 percentage points, an approximate 30 percent decrease from the baseline dropout rate of 30 percent for students placed on probation in preprogram years.

Consistent with the improved first-year retention, SP also positively impacts academic performance in the rest of the first year. Column 4 shows standardized Q2 + Q3 GPA improves by a large and significant 14.6–16.8 percent of a standard deviation, depending on bandwidth choice.¹⁶ Column 5 reveals that the program increases total earned credits in Q2 and Q3 by approximately 1.2, which is 5.5 percent from a baseline mean of 21.9.

Columns 6 and 7 report treatment effects for graduation outcomes. The program does not appear to improve on-time graduation, as the point estimates for four-year graduation are small and indistinguishable from zero (column 6). There is suggestive evidence, however, that six-year graduation is affected (column 7). While the point estimates are imprecise, they are positive and relatively large in magnitude. Given that the program targets students lower down in the grade distribution, it is not surprising that it has no effect on the likelihood of on-time graduation. A more plausible story, one in line with our findings, is that the program reduces dropout at the end of the first year (as shown in column 3), and students who remain because of this are more likely to eventually graduate than those who just missed out on the program. Finally, all estimates are robust to the inclusion of predetermined student characteristics and bandwidth choice (see Figure A2).

¹⁶For comparison purposes, we standardize Q2 + Q3 GPA within cohort to mean zero, standard deviation 1.

5.2 Heterogeneity Analysis

Certain groups may be more likely to respond to academic coaching. To investigate this, we estimate Equation (1) separately by gender, field of study, and socioeconomic status (SES). Results are presented in Table 3.¹⁷ To begin, while we cannot reject that the point estimates for the various outcomes are the same for men and women, comparing effects across gender reveals that the baseline effects presented in Table 2 are largely concentrated among men. Not only does SP attendance result in significantly reduced Q3 dropout for men compared with women, it also produces large and statistically significant effects on men’s academic performance compared with women’s in the remainder of the first year. Q2 + Q3 GPA improves by 30.3 percent (column 4) and Q2 + Q3 earned credits increases by 1.3. These estimates are larger and more statistically significant than for women.

At this university and most, STEM majors tend to have relatively higher dropout rates.¹⁸ Often interventions such as mentoring, advising, and coaching are proposed as ways to combat STEM attrition. Our analysis supports this hypothesis as we find large effects of the program for STEM majors. SP decreases first-year dropout for STEM majors by a substantial 12.5 percentage points (column 3) and improves Q2 + Q3 GPA by 25.2 percent of a standard deviation (column 4). Typically, heterogeneity analyses by major suffer from student sorting that is related to the treatment, but in this setting, major can be viewed as a predetermined characteristic much like high school GPA. At this university, students apply and are admitted to a specific major at a specific college (e.g., an electrical engineering major in the College of Engineering), and switching colleges and majors is quite difficult, particularly in the first year.

The final two rows of Table 3 explore effects by students’ SES. Lower SES takes the value of 1 if a student is eligible for federal financial aid, and 0 otherwise. Higher SES is the complement.¹⁹ We find that the program effects are largely driven by students from lower-income backgrounds (i.e., those who ex ante may be more likely to benefit from advising or coaching). Students from lower SES backgrounds who are marginally exposed to coaching are 12.5 percentage points less likely to drop out after the first year and are 13.8–15.9 percentage points more likely to graduate within six years, depending on the bandwidth. In line with the six-year graduation findings, these students also experience large improvements in their Q2 + Q3 GPA and Q2 + Q3 total earned credits. Overall, the heterogeneity analysis reveals coaching for students on the margin of the 2.0 GPA threshold has substantial impact for men, STEM majors, and especially those who come from lower-income backgrounds.

¹⁷Table B1 reports results using an alternative bandwidth (0.75 GPA point). Results are similar to those reported in Table 3, which uses a bandwidth of 1.0 GPA point.

¹⁸We define a STEM major as a student who is in the College of Engineering or the College of Science and Mathematics.

¹⁹In the administrative files, students with an observed value for EFC are eligible for federal aid and those without are ineligible.

5.3 Mechanism Exploration

Our results indicate that SP improves students’ academic performance, retention, and probability of graduating. Next we seek to understand the channel underlying these positive findings. While the program is designed as a coaching intervention, it includes a bundle of treatments (i.e., emotional support, information, goal-setting, and time management skills) that all have the potential to individually boost students’ academic success. As such, there are several possible channels to consider. First, the program may improve students’ social-emotional state. A primary goal of the program is to combat feelings of self-doubt and anxiety that may have been brought about by failure and the academic probation label. Much like a therapy session, participants spend time reflecting on and discussing their failure in small groups led by their coach. It is possible that this process helps alleviate negative thoughts and replaces them with a growth mindset.²⁰ The program may also improve students’ social-emotional state in other ways. The group aspect likely reduces feelings of isolation, and having in-person contact with a compassionate coach may help students feel more supported by the university.

Second, provision of information about university resources may be an important channel in supporting academic success going forward. Moreover, most students visit a campus resource in the follow-up assignment, which could initiate a habit. Third, goal-setting may provide motivation and focus. Fourth, improvements in time management skills may play an important role in providing necessary structure.

To aid in our assessment of the plausibility of each of these potential mechanisms, we utilize data from surveys conducted by the university’s Success Program Office. These surveys were administered to all SP participants pre- and postprogram completion for eight cohorts of students: those qualifying in the fall quarters of 2013 and 2015–2018 and those qualifying in the winter quarters of 2017–2019.²¹ All surveys were administered through the online platform SurveyMonkey and are included in Appendix E. Given the structure of the data, this exercise is more descriptive in nature as the analysis relies on within-student comparisons of outcomes before and after SP participation. We estimate the following model:

$$Y_{it} = \beta_1 + \beta_2 Post_t + \delta_i + \epsilon_{it}, \quad (2)$$

where Y_{it} is the outcome for individual i in period t ; $Post_t$ takes the value of 1 to indicate the postprogram period, and 0 otherwise; and δ_i is an individual fixed effect. All standard errors are clustered at the individual level.

²⁰The “growth mindset” framework views intelligence as malleable and encourages students to keep negative events in perspective (Oreopoulos and Petronijevic, 2018; Yeager et al., 2016).

²¹SP was first implemented university-wide in fall 2010 (though, there was a pilot in fall 2009 for a subset of faculties) and has been in operation each fall since. For a subset of years, the university also operated a second program in the year for students qualifying in the winter quarter (winter quarters 2014, 2015, and 2017–2019). While we do not use winter quarter participation in our main analysis, we do use survey responses from these cohorts of students in the mechanism analysis.

Results from this analysis are reported in Table 4. In columns 1–5, we focus on outcomes addressing students’ knowledge of academic resources, time management, class attendance, feelings of connectedness, and academic motivation.²² Results in Table 4 suggest that SP impacts these goals in meaningful ways. We find that it significantly increases their awareness and possibly usage of various student resources offered by the university (column 1).²³ Estimates from column 2 further indicate that the program improves students’ time management skills. On the other hand, we detect no significant changes in their self-reported class attendance (column 3), self-reported level of connectedness to a community at the university (column 4), or their self-reported level of motivation (column 5).

Next, we use pre- and postsurvey responses for students qualifying for SP in the fall 2015–2018 and winter 2017–2019 quarters (1,882 observations) to explore whether program participation affects students’ feelings of isolation and faculty support. Estimates from Table 4 indicate that students’ likelihood of feeling that they were not the only ones who experienced academic difficulties increased by 22.8 percentage points following program participation. Additionally, column 7 shows that their ability to identify a faculty or staff member who they felt cares about their academic success increased by 42.5 percentage points.

We draw several conclusions from this analysis. First, while it is reassuring that the program increased participants’ self-reported awareness of campus resources and time management skills, this is somewhat expected. These two survey questions are quite aligned with the intervention, as information about resources and time-management skills are salient components of the program. Moreover, low-touch time management and information interventions on their own generally do not produce large, long-lasting effects (Oreopoulos and Petronijevic, 2018; Oreopoulos et al., 2022). Consequently, we do not view these to be primary channels.

Second, the program seems to have improved students’ morale or social-emotional state, as evidenced by the documented improvements in their feelings of isolation and perceived support from the institution. These findings are consistent with several other recent studies. Carrell and Kurlaender (2020) find that a light-touch faculty support intervention improves course performance and degree attainment for underrepresented students. Similarly, Oreopoulos et al. (2020) find two light-touch behavioral interventions aimed at enhancing participants’ social-emotional state are effective at improving students’ sense of belonging and overall satisfaction with the university. Drawing on the social psychology literature, Yeager and Walton (2011) show that one-time, appropriately timed interventions that are geared toward changing one’s mindset can induce substantial

²²Specifically, using the pre- and postprogram surveys for students who qualified for SP in fall 2013 (434 observations), we construct five binary outcomes: 1) Resources is a dummy variable that is equal to 1 if a student reports that they are familiar with the university’s student services and how to use them, and 0 otherwise; 2) Time Management is equal to 1 if a student indicates that they manage their time well, and 0 otherwise; 3) Attend Class is equal to 1 if a student reports regularly attending classes, and 0 otherwise; 4) Connected is equal to 1 if a student reports feeling connected to a community at the university, and 0 otherwise; and 5) Motivated is equal to 1 if a student reports they are motivated to focus on school, and 0 otherwise.

²³These include faculty office hours, on-campus tutoring services, the writing center, student clubs, the recreation center, counseling services, the health center, the disability resource center, and diversity and inclusion services.

long-lasting academic improvements. Specifically, these psychological interventions aim to change students' beliefs about their ability to improve their intelligence and their belief that they belong in school.

In summary, though it is difficult to conclusively identify which of the program's components are driving the documented improvements in student outcomes, guided by empirical evidence, recent literature, and the features of the coaching program, we speculate that the results are largely driven by improvements in participants' social-emotional state.

5.4 Magnitude Comparisons

Next, to provide context for the impact of SP, we compare our magnitudes to the point estimates obtained from similar interventions that improved retention and completion rates. For each study, we calculate a program cost-effectiveness index in the spirit of Dynarski et al. (2013) for a standardized comparison. This index accounts for both the benefit and cost of a program by dividing the program's costs per student by the proportion of affected students. We summarize this comparison in Appendix C.

The total yearly cost of the SP program is \$64,107.50. This includes a fixed setup cost of \$5,174 to initiate the program and a yearly variable cost of \$58,933 that covers the cost of the program director, staff, and coaches. In the most recent cohort for which we have data (2018 cohort), 442 students were affected by the program, which yields a \$145.04 total cost per student. The main academic outcome affected is first-year student dropout, for which we find an 8.6 percentage point decline. This indicates that the cost of inducing an additional student to remain at the university following the first year is $\$145.04/0.087 = \$1,667$. Repeating this exercise for the imprecisely estimated six-year graduation outcome yields a cost-effectiveness index of \$3,626 ($\$145.04/0.04$) per graduated student.

Bettinger and Baker (2014) study the most comparable intervention to SP, InsideTrack, a for-profit coaching program aimed at nontraditional students that costs \$1,000 per year per student. The authors find it increases students' first-year persistence by 5.2 percentage points; second-year persistence by 3.4 percentage points; and graduation, for a subsample of students, by 4 percentage points. Thus, inducing a single student to persist after the first year costs \$19,230. These costs are higher for two-year persistence (\$29,411) and graduation (\$25,000). Additionally, Barr and Castleman (2018) analyze the Bottom Line advising program, which is far more intensive than SP, beginning in high school and continuing throughout college. They find a 5 percentage point increase in college graduation overall. The program costs \$4,000 per student, resulting in a cost per additional degree completed of \$80,000. Our program's cost-effectiveness is closest to the high school coaching program analyzed in Carrell and Sacerdote (2017), who find that inducing an additional high school student to attend college costs \$2,400.

To summarize, SP is substantially more cost-effective than other successful coaching/mentoring programs because it costs much less while still remaining effective. We speculate that this is largely

because the program is mandatory, targeted to a particularly vulnerable group, and is conducted in a group setting. Previous work posits that students on academic probation, for whom the program is required, may be particularly discouraged (Lindo et al., 2010). As such, this group may be relatively more responsive to a coaching intervention aimed at improving self-confidence. While many of the similar higher-touch programs are also delivered in person (see Appendix C), none are mandatory and none target students who are directly at risk of dropping out. Gordanier et al. (2019) target students midsemester who are at risk of failing a course with a peer-advising intervention, but they focus on final exam scores as the outcome rather than retention and completion. Indeed, they find students who just qualify for the intervention experience significant improvements in their final exam scores. Lastly, SP likely eases feelings of isolation in a cost-saving way because it is conducted in a group setting, rather than one-on-one as the other programs do.

6 Validity of the Research Design

Standard RD assumption (A1). The identifying assumption required for a valid RD design is that individuals are not able to manipulate the running variable. If individuals can influence which side of the cutoff they are on, it will call into question the causal interpretation of the point estimates as it will be difficult to distinguish between student sorting and the true effect of the intervention. In our setting, this could occur if instructors or students strategically manipulate grades in such a manner that the distribution of observable and/or unobservable characteristics of students are discontinuous at the 2.0 GPA cutoff. Although this is a fundamentally untestable assumption, we provide several indirect tests that support its plausibility.

First, it is unlikely that instructors would be able to strategically manipulate a student’s entire quarterly GPA since they are generally responsible for only one of three or four course grades. Second, we check for manipulation around the 2.0 threshold by plotting the distribution of student GPAs for all cohorts, as shown in Figure A3a. While there are two large density spikes at the GPA cutoffs of 2.0 and 3.0, these heaping patterns are similar across treatment (SP-eligible) cohorts and control (pre-SP) cohorts, as shown in Figure A3b and Figure A3c. Since overall GPA patterns did not change with the implementation of SP, any heaping will be differenced out with the DiRD research design, mitigating concerns that heaping is biasing the DiRD estimate.

More generally, heaping at round GPA points is not necessarily indicative of manipulation. It is possible that discontinuities in the GPA distribution are linked to other exogenous factors, such as grade rounding. Natural, nonstrategic, institutional grade bumps are common in many U.S. institutions and have been documented in GPA-based RD settings such as Zimmerman (2014) and Ost et al. (2018). To further alleviate concerns over grade heaping, Table B2 presents results from a donut DiRD design, which involves dropping the heaping points at the 2.0 and 3.0 GPA cutoff following Barreca et al. (2016). This exercise yields similar results to those obtained from our main specification. We conclude that the heaping observed in our data is most likely nonstrategic and

due to natural grade rounding, as observed in previous studies.

Finally, we examine whether observable student characteristics evolve similarly around the 2.0 GPA threshold. If individuals are unable to manipulate the side of the threshold they fall on, we should observe no differences in predetermined characteristics across the cutoff. To implement this, we estimate a series of balance tests using Equation (1). Indeed, for the three different bandwidth windows of 0.5, 0.75, and 1.0 GPA points on either side of the cutoff, we find no evidence of differences in discontinuities for any of the nine observable predetermined student characteristics. Results are reported in Table 5. To summarize these effects, we construct predicted dropout and predicted first-year GPA outcomes for each student based on these nine baseline covariates and estimate our main specification. If no GPA manipulation is present, the estimates should not be statistically different from zero. The DiRD treatment estimates for these predicted outcomes are presented in Table B3 and, in fact, are statistically insignificant at the cutoff. In summary, the fact that observable student characteristics appear to be smooth across the threshold further alleviates concerns over GPA manipulation. Altogether, the findings from these empirical tests indicate that the DiRD design should purge our estimates of any such unobservable bias—assuming the unobservable differences are also constant across cohorts.

The confounding policy is constant over time (A2). For the DiRD estimate to be valid, it is necessary that the effect of the confounding policy (here, academic probation) has the same effect before and after the introduction of the policy of interest (here, SP). Notably, the probation policy did not change over the sample period.²⁴ One way to empirically assess the plausibility of this assumption is to analyze how the effect of probation evolves over time. If the effect is similar across the different control cohorts (i.e., no preexisting trends), then it suggests that the effect of probation is constant over time. To test for this, we separately estimate the RD coefficient for each cohort for the two main outcomes: Q3 dropout and Q2 + Q3 standardized GPA. We focus on these outcomes as this is where we document significant SP impacts. All estimates rely on a bandwidth of 1.0 GPA point, with the treatment defined as scoring below a 2.0 GPA.

To most easily assess the dynamics of the effect of probation and in the spirit of an event study design, Figure 3 plots these RD estimates by cohort. Robust standard errors are reported in bars. The first three estimates, those displayed before the dashed vertical line, are probation effects for students enrolled in our two control cohorts (2007, 2008) and the two colleges that were not exposed to the pilot program in 2009. All estimates after the dashed line represent probation effects for the treated cohorts (i.e., the four pilot colleges in 2009 and the 2010–2017 cohorts).

For both outcomes, the effect of probation is quite similar over time, as evident among the control cohorts. In Figure 3a, the first three estimates show positive and mostly significant effects on dropout rates for students just eligible for probation alone, and these probation effects are similar

²⁴We verified that the academic probation policy did not change by consulting each year’s Student Handbook. We also spoke with administrators from the university’s retention office, which further confirmed this information. Finally, we show that the assignment rule is the same before and after program implementation (see Figure A1).

across the three control cohorts. Once SP is introduced, the positive dropout effects dissipate, suggesting that SP likely has a moderating effect on probation. Figure 3b displays a similar pattern. Q2 + Q3 standardized GPA is unaffected for the three control cohorts on probation alone, while the cohorts also exposed to SP are positively affected. Importantly, the “pre-trend” patterns in both figures seem to indicate that probation had a similar effect on outcomes regardless of cohort.

Perhaps most compelling is comparing the two different RD estimates from 2009 (2009-1 and 2009-2). Here the year is held constant, but two colleges were exposed only to probation while the other four were exposed to both probation and SP. It is unlikely that the probation policy would differ within the same year. As such, it is reasonable to interpret the difference in the two 2009 estimates as the impact of SP. Overall, the weight of the evidence suggests that the confounding probation policy had the same effects before and after the introduction of SP.

LATEs are additively separable (A3). A third assumption is that the two LATEs estimated are additively separable. In other words, A3 will hold if, in expectation, the effect of the treatment does not interact with the confounding policy. An intuitive way to assess this assumption in our setting is to ask, Would the coaching program generate the same LATE if it were mandatory for students around the 2.0 cutoff but who were not also on probation? If A3 holds, our DiRD estimate will capture the effect of coaching. If it does not, then our estimate can be viewed as capturing the impact of coaching in the presence or threat of probation. Unfortunately, we cannot test this empirically as we do not observe SP participation absent of probation. Consequently, we cannot rule out that the estimated effects of the program rely on probation status. In fact, we posit that part of what makes coaching so effective in this setting given the intensity of the treatment, is that it targets students who have low morale from the academic probation label and thus are likely to be more responsive to such an intervention. Given that some form of academic probation is a universal policy in the United States, even if A3 fails to hold, our results have broad implications.

7 Labor Market Analysis

To estimate the impact of the coaching program on labor market outcomes, we link the student-level education files to administrative data from the California Employment Development Department. Specifically, we combine two data sources used to administer the state UI program: quarterly earnings records and the Quarterly Census of Employment and Wages (QCEW).

The quarterly earnings records include total earnings in the relevant quarter for each employer–employee (firm) pair. The QCEW data contain earnings and employment data at the establishment-quarter level, which we aggregate to the firm level (summing across establishments in California) before linking to the earnings data. Both data sets include the universe of UI-covered

employment in the state for the years 2000–2019.^{25,26} As such, we will not observe labor market outcomes for the small share of students who work outside the state of California or for the federal government.²⁷

The labor market data are linked to the education files at the student level via social security number.²⁸ The linked data allow us to construct several labor market outcomes of interest for each student-quarter: an indicator for employment, log of total earnings, the average wage at the firm, and the cumulative quarters of covered work experience since entering the university. We use the Consumer Price Index for All Urban Consumers to adjust dollar amounts to 2019.

To ensure that earnings are measured at similar ages for treated and control cohorts, we limit the data to quarters 25–36 (seven to nine years) after initial enrollment (where Q1 is the fall quarter of the student’s first year).²⁹ Since the typical student is 18 at enrollment, this corresponds roughly to ages 24–26. A caveat of observing wages in one’s midtwenties is that some students are still completing their bachelor’s degree or pursuing graduate studies. Nonetheless, we view our analysis as an important step in understanding the full benefits of academic coaching, given the dearth of evidence on the effects of such interventions on labor market outcomes.

The final data set used in our labor market analyses includes 127,626 student-quarters that meet these criteria and have GPAs within one point of the 2.0 cutoff. Summary statistics for the analysis sample are reported in Table B4. Average quarterly earnings are \$10,857 (approximately \$43,428 annually), and 72 percent of students are employed.

The program has the potential to affect students’ earnings in their midtwenties in different ways. Suppose, in general, that earnings increase in tandem with level of education but also with work experience. On the one hand, the program may increase participants’ level of education. Indeed, we find it increases the likelihood of obtaining a bachelor’s degree for certain groups. On the other hand, the program likely reduces work experience as remaining in school delays entering the labor force, especially relative to the control group who may have dropped out and started working right away. As these two channels are countervailing, the effect of the program on earnings *ex ante* is unclear.

We estimate a variant of Equation (1) but at the student-quarter level. We report DiRD estimates in Table 6. Standard errors are cluster-robust at the student level, and each student-quarter is weighted by the inverse of the number of quarters the student is present in the sample.

²⁵Per Gurantz (2019), the Employment Development Department has estimated that 92 percent of employed Californians are included in the data.

²⁶While more recent data are available, we exclude observations in 2020 to avoid employment and earnings outcomes affected by the Covid-19 pandemic, since only treated cohorts were exposed to this shock in the relevant age range.

²⁷A subset of these data has been used in a series of policy briefs on UI in California during the pandemic (Bell et al., 2022, 2020). Similar and/or related data have also been used in other postsecondary education contexts (e.g., Bleemer and Mehta, 2020; Gurantz, 2019; Hoekstra, 2009; Ost et al., 2018; Zimmerman, 2014).

²⁸Of the 45,864 students in our main sample, 43,081 (94 percent) were employed in at least one quarter following entry to the university.

²⁹In Table B5 we limit the sample to cohorts that enrolled in 2011 or earlier. Since earnings data end in 2019 Q4, this ensures that all students are observed in each year of interest (i.e., a student enrolling in 2011 Q3 would begin their sixth year relative to entry in 2019 Q3, 37 quarters after enrollment).

The top panel of [Table 6](#) reveals that, for the full sample, the coaching program does not appear to produce significant labor market effects. There is suggestive evidence that treated students experience higher earnings as the program leads to a 12 percent earnings gain (column 1) and work for firms with a slightly higher average pay (column 2), but the estimates do not attain statistical significance at conventional levels. These results are broadly similar if we restrict to cohorts entering in or before 2011 (see [Table B5](#)).³⁰ Columns 3 and 4 assess the degree to which the program impacts employment and work experience. If students are in school longer, they likely have less experience. Indeed, we find imprecisely measured negative effects of the program on employment status and cumulative quarters of experience. These results are in line with the predictions outlined above.

To better understand the potential labor market effects of the program, we separately estimate the effect of the program on various subgroups. The bottom panel of [Table 6](#) reports DiRD estimates separately for women, men, STEM and non-STEM majors, and those from lower- and higher-income families. If the program has a meaningful impact on labor market outcomes, we would expect to observe stronger effects for students whose academic outcomes have been most affected: men, STEM majors, and those from lower-income families. Indeed, we find labor market effects concentrated among the marginal students in these groups. The program increases earnings for men and lower-SES students in years seven through nine by 27–30 percent (column 1). While large, the magnitudes of these point estimates are comparable to earnings estimates of the effect among men of attending a four-year university or a higher-quality university (Hoekstra, 2009; Zimmerman, 2014). We also observe similarly positive but less precisely estimated effects on earnings among STEM majors. In line with the earnings results, albeit imprecisely estimated, for these same subgroups, treated students are employed by firms with slightly higher average pay (column 2).³¹ Columns 3 and 4, by and large, show small, noisy, negative effects of the program on employment probability and cumulative quarters of experience.

In summary, while reduced precision precludes us from making definitive conclusions for the overall sample, our results nonetheless highlight that the coaching program substantially increases earnings for certain groups of students seven to nine years following entry to the university. Importantly, the labor market benefits are concentrated among those subgroups that experienced the largest academic gains: male students and lower-income students.

8 Conclusion

In an effort to boost college graduation rates, policymakers often propose providing students with coaching or mentoring. However, evidence for the success of these interventions is mixed. This paper evaluates the effectiveness of a mandatory coaching program targeting students placed on

³⁰This cohort restriction creates a balanced panel across treatment and control groups but reduces the sample size. (Control cohorts are always observed in each year seven to nine relative to entry, while treatment cohorts entering after 2011 are observed in only some of these years (e.g., the 2012 cohort is observed only in years six to eight).)

³¹Results are similar if we restrict the analysis to cohorts in or before 2011, as shown in the bottom panel of [Table B5](#).

academic probation in the first quarter of their first year at a four-year U.S. university. Program participants attend a workshop in which they are provided with group coaching focused on improving self-confidence. They also reflect on their weaknesses, find solutions to address their challenges, and create an action plan. Several weeks later, students are required to meet one-on-one with their coach or use an academic support service.

We find that the coaching program largely boosts targeted students' academic outcomes. Overall, program participants experience substantial improvements in their academic performance and retention. Effects are concentrated among lower-income students who also experience an increase in the probability of graduating. Further heterogeneity analyses reveal that effects are also concentrated among men and students enrolled in STEM majors. For these most affected groups, we find that the program increases earnings seven to nine years following initial enrollment at the university.

Guided by empirical evidence, we speculate that the positive effects of the program are largely driven by improvements in students' morale and social-emotional state. Postprogram, participants report feeling relatively more supported by faculty and less likely to feel that they are the only ones struggling. An interpretation of our results is that the program is highly effective at undoing the documented negative effects of academic probation, particularly for students from more disadvantaged backgrounds. While notifying students of their poor academic performance serves an important purpose and is likely here to stay, our findings suggest that institutions should consider adding a positively toned behavioral intervention alongside the standard academic probation message.

Our findings are timely and relevant as policymakers and researchers aim to address the college "completion crisis" in the United States. We show that a relatively lighter-touch, short-term, but targeted coaching program can be an effective way to increase marginal students' college retention and long-run success. While the degree to which our findings can be replicated at scale remains an open question, results from this coaching program remain quite promising. From a policy perspective, our program's lower-cost and less complex structure makes it potentially easy to implement and scale.

References

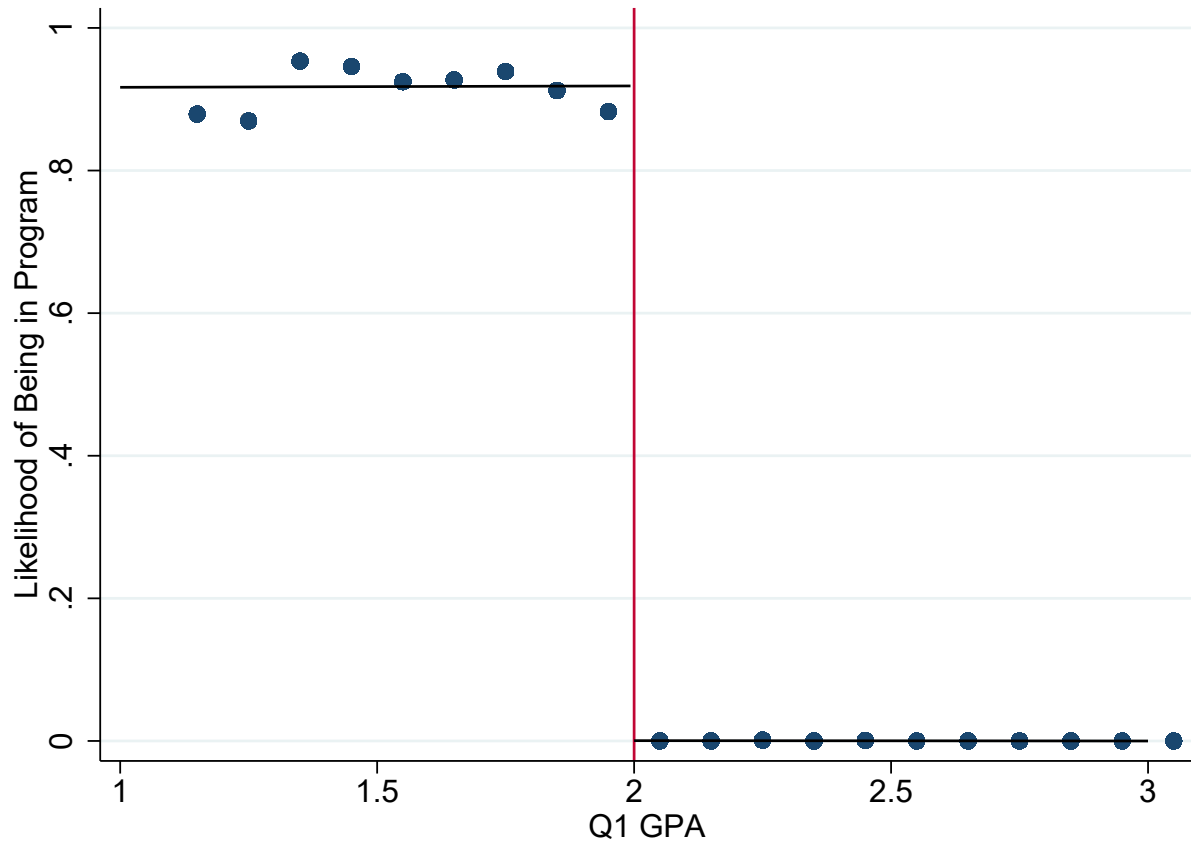
- ANGRIST, J., D. AUTOR, AND A. PALLAIS (2020): “*Marginal Effects of Merit Aid for Low-Income Students.*” Tech. rep., Washington, DC: National Bureau of Economic Research. (Cited on page 4.)
- ANGRIST, J., D. LANG, AND P. OREOPOULOS (2009): “Incentives and Services for College Achievement: Evidence from a Randomized Trial.” *American Economic Journal: Applied Economics*, 1, 136–163. (Cited on page 5.)
- ANGRIST, J., P. OREOPOULOS, AND T. WILLIAMS (2014): “When Opportunity Knocks, Who Answers? New Evidence on College Achievement Awards.” *Journal of Human Resources*, 49, 572–610. (Cited on page 5.)
- BAILEY, M. J. AND S. M. DYNARSKI (2011): “Gains and Gaps: Changing Inequality in US College Entry and Completion.” Tech. rep., Washington, DC: National Bureau of Economic Research. (Cited on pages 2 and 4.)
- BARR, A. AND B. CASTLEMAN (2018): “An Engine of Economic Opportunity: Intensive Advising, College Success, and Social Mobility,” *Texas A&M Working Paper*. (Cited on pages 2, 5, and 17.)
- BARRECA, A. I., J. M. LINDO, AND G. R. WADDELL (2016): “Heaping-Induced Bias in Regression-Discontinuity Designs,” *Economic Inquiry*, 54, 268–293. (Cited on page 18.)
- BELL, A., T. HEDIN, P. MANNINO, R. MOGHADAM, C. ROMER, G. C. SCHNORR, AND T. VON WACHTER (2022): “Estimating the Disparate Cumulative Impact of the Pandemic in Administrative Unemployment Insurance Data.” *AEA Papers and Proceedings*, 112, 78–84. (Cited on page 21.)
- BELL, A., T. J. HEDIN, G. SCHNORR, AND T. VON WACHTER (2020): “An Analysis of Unemployment Insurance Claims in California During the COVID-19 Pandemic.” *California Policy Lab policy brief*. Los Angeles: California Policy Lab. (Cited on page 21.)
- BETTINGER, E. (2015): “Need-Based Aid and College Persistence: The Effects of the Ohio College Opportunity Grant.” *Educational Evaluation and Policy Analysis*, 37, 102S–119S. (Cited on page 4.)
- BETTINGER, E., O. GURANTZ, L. KAWANO, B. SACERDOTE, AND M. STEVENS (2019): “The Long-Run Impacts of Financial Aid: Evidence from California’s Cal Grant.” *American Economic Journal: Economic Policy*, 11, 64–94. (Cited on page 4.)
- BETTINGER, E. P. AND R. B. BAKER (2014): “The Effects of Student Coaching: An Evaluation of a Randomized Experiment in Student Advising.” *Educational Evaluation and Policy Analysis*, 36, 3–19. (Cited on pages 2, 5, and 17.)
- BLEEMER, Z. (2018): “Top Percent Policies and the Return to Postsecondary Selectivity.” *Available at SSRN*, 3272618. (Cited on page 4.)
- (2022): “Affirmative Action, Mismatch, and Economic Mobility after California’s Proposition 209.” *The Quarterly Journal of Economics*, 137, 115–160. (Cited on page 4.)
- BLEEMER, Z. AND A. MEHTA (2020): “Will Studying Economics Make You Rich? A Regression Discontinuity Analysis of the Returns to College Major.” *American Economic Journal: Applied Economics*. (Cited on page 21.)

- BOUND, J., M. F. LOVENHEIM, AND S. TURNER (2010): “Why Have College Completion Rates Declined? An Analysis of Changing Student Preparation and Collegiate Resources.” *American Economic Journal: Applied Economics*, 2, 129–157. (Cited on page 5.)
- BULMAN, G. B. AND C. M. HOXBY (2015): “The Returns to the Federal Tax Credits for Higher Education.” *Tax Policy and Economy*, 29, 13–88. (Cited on page 4.)
- CAHALAN, M. W., M. ADDISON, N. BRUNT, P. R. PATEL, AND L. W. PERNA (2021): “Indicators of Higher Education Equity in the United States: 2021 Historical Trend Report.” *Pell Institute for the Study of Opportunity in Higher Education*. (Cited on page 2.)
- CANAAN, S., A. DEEB, AND P. MOUGANIE (2022): “Advisor Value-Added and Student Outcomes: Evidence from Randomly Assigned College Advisors.” *American Economic Journal: Economic Policy*. (Cited on pages 2 and 5.)
- CARRELL, S. AND B. SACERDOTE (2017): “Why Do College-Going Interventions Work?” *American Economic Journal: Applied Economics*, 9, 124–151. (Cited on page 2.)
- CARRELL, S. E. AND M. KURLAENDER (2020): “My Professor Cares: Experimental Evidence on the Role of Faculty Engagement,” Tech. rep., Washington, DC: National Bureau of Economic Research. (Cited on pages 4 and 16.)
- CASEY, M. D., J. CLINE, B. OST, AND J. A. QURESHI (2018): “Academic Probation, Student Performance, and Strategic Course-Taking.” *Economic Inquiry*, 56, 1646–1677. (Cited on page 8.)
- CLOTFELTER, C. T., S. W. HEMELT, AND H. F. LADD (2018): “Multifaceted Aid for Low-Income Students and College Outcomes: Evidence from North Carolina.” *Economic Inquiry*, 56, 278–303. (Cited on page 5.)
- COHODES, S. R. AND J. S. GOODMAN (2014): “Merit Aid, College Quality, and College Completion: Massachusetts’ Adams Scholarship as an In-Kind Subsidy.” *American Economic Journal: Applied Economics*, 6, 251–285. (Cited on page 4.)
- DENNING, J. T., E. R. EIDE, K. MUMFORD, R. W. PATTERSON, AND M. WARNICK (2021): “Why Have College Completion Rates Increased? An Analysis of Rising Grades.” Tech. rep., Washington, DC: National Bureau of Economic Research. (Cited on page 5.)
- DOBRONYI, C. R., P. OREOPOULOS, AND U. PETRONIJEVIC (2019): “Goal Setting, Academic Reminders, and College Success: A Large-Scale Field Experiment.” *Journal of Research on Educational Effectiveness*, 12, 38–66. (Cited on page 2.)
- DYNARSKI, S., J. HYMAN, AND D. W. SCHANZENBACH (2013): “Experimental Evidence on the Effect of Childhood Investments on Postsecondary Attainment and Degree Completion.” *Journal of policy Analysis and management*, 32, 692–717. (Cited on page 17.)
- DYNARSKI, S., A. NURSHATAYEVA, L. PAGE, AND J. SCOTT-CLAYTON (2022): “Addressing Non-financial Barriers to College Access and Success: Evidence and Policy Implications.” Tech. rep., Washington, DC: National Bureau of Economic Research. (Cited on pages 2 and 5.)
- DYNARSKI, S. M. (2003): “Does Aid Matter? Measuring the Effect of Student Aid on College Attendance and Completion.” *American Economic Review*, 93, 279–288. (Cited on page 4.)

- EVANS, W. N., M. S. KEARNEY, B. PERRY, AND J. X. SULLIVAN (2020): “Increasing Community College Completion Rates among Low-Income Students: Evidence from a Randomized Controlled Trial Evaluation of a Case-Management Intervention.” *Journal of Policy Analysis and Management*, 39, 930–965. (Cited on page 5.)
- GOODMAN, J., M. HURWITZ, AND J. SMITH (2020): “The Economic Impact of Access to Public Four-Year Colleges.” *NBER Working Paper No. w27177*. Washington, DC: National Bureau of Economic Research. (Cited on pages 2 and 4.)
- GORDANIER, J., W. HAUKE, AND C. SANKARAN (2019): “Early Intervention in College Classes and Improved Student Outcomes.” *Economics of Education Review*, 72, 23–29. (Cited on page 18.)
- GREMBI, V., T. NANNICINI, AND U. TROIANO (2016): “Do Fiscal Rules Matter?” *American Economic Journal: Applied Economics*, 1–30. (Cited on page 12.)
- GURANTZ, O. (2019): “Impacts of State Aid for Non-traditional Students on Educational and Labor Market Outcomes.” *Journal of Human Resources*, 0618–9570R2. (Cited on page 21.)
- HOEKSTRA, M. (2009): “The Effect of Attending the Flagship State University on Earnings: A Discontinuity-Based Approach.” *Review of Economics and Statistics*, 91, 717–724. (Cited on pages 2, 21, and 22.)
- LINDO, J. M., N. J. SANDERS, AND P. OREOPOULOS (2010): “Ability, Gender, and Performance Standards: Evidence from Academic Probation.” *American Economic Journal: Applied Economics*, 2, 95–117. (Cited on pages 2, 8, and 18.)
- OREOPOULOS, P., R. W. PATTERSON, U. PETRONIJEVIC, AND N. G. POPE (2022): “Low-Touch Attempts to Improve Time Management among Traditional and Online College Students.” *Journal of Human Resources*, 57, 1–43. (Cited on page 16.)
- OREOPOULOS, P. AND U. PETRONIJEVIC (2018): “Student Coaching: How Far Can Technology Go?” *Journal of Human Resources*, 53, 299–329. (Cited on pages 2, 5, 15, and 16.)
- (2019): “The Remarkable Unresponsiveness of College Students to Nudging and What We Can Learn from It.” Tech. rep., National Bureau of Economic Research. (Cited on pages 2 and 5.)
- OREOPOULOS, P., U. PETRONIJEVIC, C. LOGEL, AND G. BEATTIE (2020): “Improving Non-Academic Student Outcomes Using Online and Text-Message Coaching.” *Journal of Economic Behavior & Organization*, 171, 342–360. (Cited on pages 4 and 16.)
- OST, B., W. PAN, AND D. WEBBER (2018): “The Returns to College Persistence for Marginal Students: Regression Discontinuity Evidence from University Dismissal Policies.” *Journal of Labor Economics*, 36, 779–805. (Cited on pages 8, 18, and 21.)
- PAGE, L. C., S. S. KEHOE, B. L. CASTLEMAN, AND G. A. SAHADEWO (2019): “More Than Dollars for Scholars: The Impact of the Dell Scholars Program on College Access, Persistence, and Degree Attainment.” *Journal of Human Resources*, 54, 683–725. (Cited on page 5.)
- SCRIVENER, S. AND M. J. WEISS (2009): “More Guidance, Better Results? Three-Year Effects of an Enhanced Student Services Program at Two Community Colleges.” *Three-Year Effects of an Enhanced Student Services Program at Two Community Colleges (August 1, 2009)*. New York: MDRC. (Cited on page 5.)

- WEISS, M. J., A. K. MAYER, D. CULLINAN, A. RATLEDGE, C. SOMMO, AND J. DIAMOND (2015): “A Random Assignment Evaluation of Learning Communities at Kingsborough Community College—Seven Years Later.” *Journal of Research on Educational Effectiveness*, 8, 189–217. (Cited on page 3.)
- WEISS, M. J., A. RATLEDGE, C. SOMMO, AND H. GUPTA (2019): “Supporting Community College Students from Start to Degree Completion: Long-Term Evidence from a Randomized Trial of CUNY’s ASAP.” *American Economic Journal: Applied Economics*, 11, 253–297. (Cited on page 5.)
- WRIGHT, N. A. (2020): “Perform Better, or Else: Academic Probation, Public Praise, and Students Decision-Making.” *Labour Economics*, 62, 101773. (Cited on page 8.)
- YEAGER, D. S., C. ROMERO, D. PAUNESKU, C. S. HULLEMAN, B. SCHNEIDER, C. HINOJOSA, H. Y. LEE, J. O’BRIEN, K. FLINT, A. ROBERTS, ET AL. (2016): “Using Design Thinking to Improve Psychological Interventions: The Case of the Growth Mindset during the Transition to High School.” *Journal of Educational Psychology*, 108, 374. (Cited on page 15.)
- YEAGER, D. S. AND G. M. WALTON (2011): “Social-Psychological Interventions in Education: They’re Not Magic.” *Review of Educational Research*, 81, 267–301. (Cited on page 16.)
- ZIMMERMAN, S. D. (2014): “The Returns to College Admission for Academically Marginal Students.” *Journal of Labor Economics*, 32, 711–754. (Cited on pages 2, 4, 18, 21, and 22.)

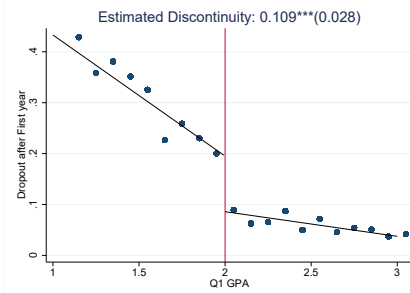
Figure 1: First Stage–Likelihood of Attending Coaching Program



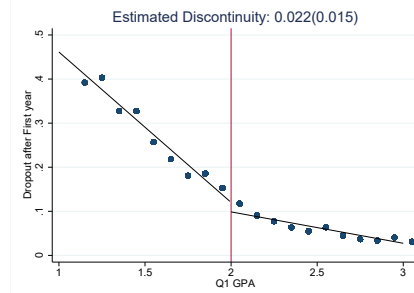
NOTE: The sample includes students enrolled at the university after the implementation of the coaching “Success Program” (SP). This includes all first-year students entering the university in the fall cohorts 2010-2017. Circles represent local averages over a 0.1 GPA range. The figure is drawn using a linear fit on either side of the cutoff.

Figure 2: RD Figures for Academic Outcomes by Control and Treated Cohorts

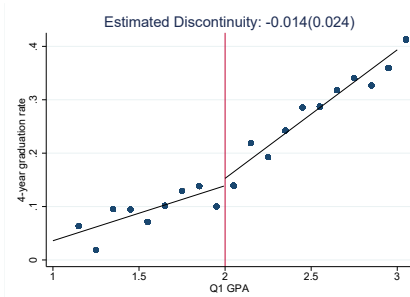
(a) Dropout After First Year (Control Cohorts)



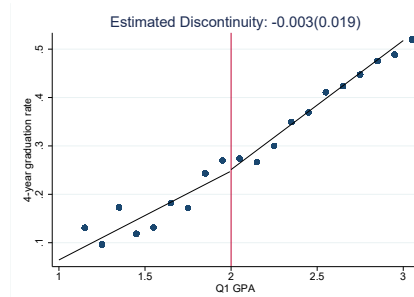
(b) Dropout After First Year (Treatment Cohorts)



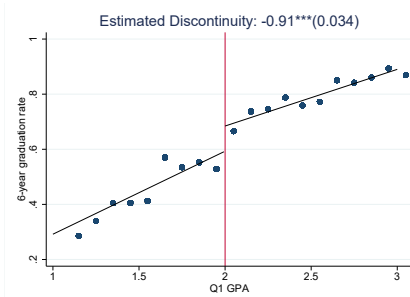
(c) Four-Year Graduation (Control Cohorts)



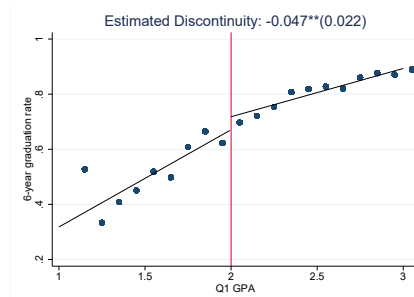
(d) Four-Year Graduation (Treatment Cohorts)



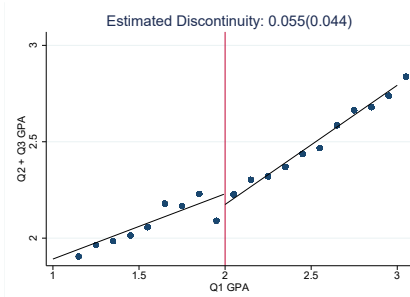
(e) Six-Year Graduation (Control Cohorts)



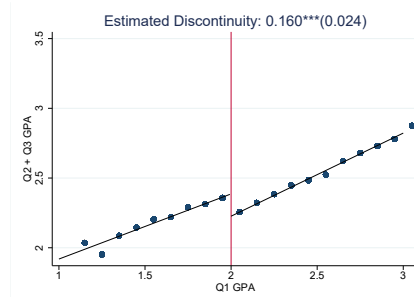
(f) Six-Year Graduation (Treatment Cohorts)



(g) Q2 + Q3 GPA (Control Cohorts)



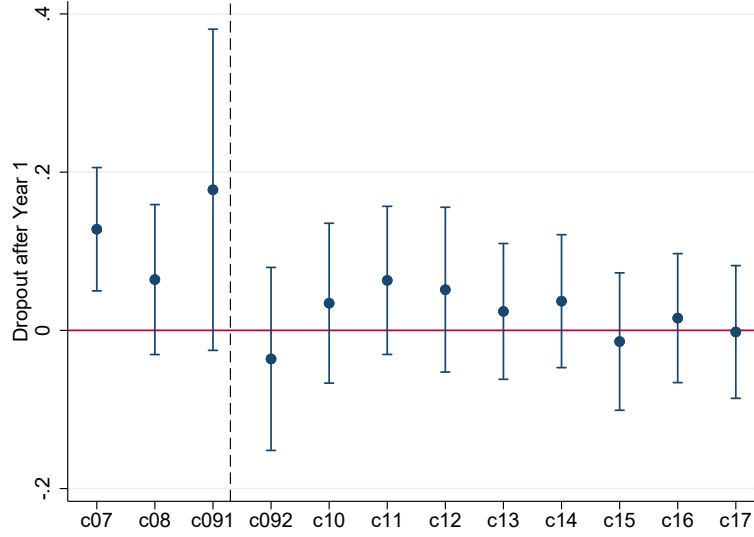
(h) Q2 + Q3 GPA (Treatment Cohorts)



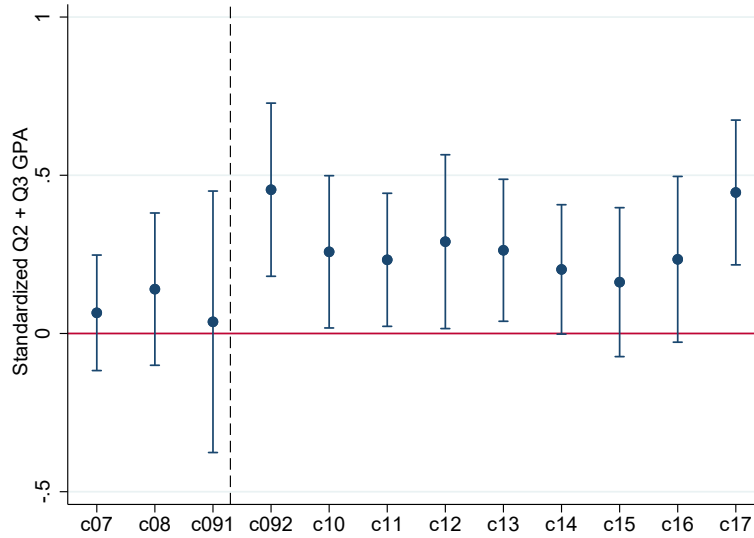
NOTE: Control cohort figures include the sample of students enrolled at the university in 2007, 2008, and a subset of colleges in 2009. Treated cohort figures include the sample of students enrolled at the university in select colleges in 2009 and all cohorts from 2010 to 2017 (except for graduation outcomes which include up to the 2014 cohort). Circles represent local averages over a 0.1 GPA range. Figures are drawn using a linear fit on either side of the cutoff. Estimates and standard errors (in parentheses) are reported above each figure.

Figure 3: RD Estimates by Cohort

(a) Likelihood of Dropout After First Year (Q3)



(b) Standardized Q2 + Q3 GPA



NOTE: Figures include all first-year students enrolled at the university in entering fall cohorts 2007–2017. Each point estimate is derived from a separate RD regression, using a bandwidth of 1.0 GPA point, for each cohort where treatment is defined as scoring below a 2.0 GPA. All point estimates to the left of the dotted line represent control cohorts (first-time freshman students enrolled in 2007, 2008, and two colleges in 2009, i.e., prior to the introduction of the SP). All point estimates to the right of the dotted line represent treated cohorts (first-time freshman students enrolled in four colleges in 2009 and the 2010 to 2017 cohorts, i.e., after the introduction of SP). Bars represent upper and lower 95% confidence intervals for each point estimate.

Table 1: Summary Statistics

	(1) Full Sample	(2) Bandwidth=1 Q1 GPA ∈ [1, 3]	(3) Pre-program yrs. Q1 GPA ∈ [1, 2) Probation	(4) Pre-program yrs. Q1 GPA ∈ [2, 3] No Probation	(5) Program yrs. Q1 GPA ∈ [1, 2) Probation + SP	(6) Program yrs. Q1 GPA ∈ [2, 3] Neither
<u>Covariates</u>						
HS GPA	3.84 [0.45]	3.73 [0.44]	3.50 [0.38]	3.67 [0.42]	3.61 [0.47]	3.78 [0.43]
Female	0.48 [0.50]	0.44 [0.50]	0.30 [0.46]	0.46 [0.50]	0.37 [0.48]	0.46 [0.50]
Nonwhite	0.38 [0.49]	0.42 [0.49]	0.47 [0.50]	0.35 [0.48]	0.50 [0.50]	0.43 [0.49]
Remedial Math	0.02 [0.14]	0.03 [0.17]	0.05 [0.22]	0.05 [0.23]	0.04 [0.19]	0.02 [0.15]
Remedial English	0.04 [0.21]	0.07 [0.25]	0.18 [0.39]	0.12 [0.33]	0.09 [0.28]	0.04 [0.20]
Pell Grant Eligible	0.16 [0.37]	0.19 [0.39]	0.21 [0.41]	0.13 [0.34]	0.26 [0.44]	0.19 [0.39]
EFC Missing	0.59 [0.49]	0.57 [0.50]	0.57 [0.50]	0.66 [0.47]	0.50 [0.50]	0.55 [0.50]
Father College +	0.80 [0.40]	0.77 [0.42]	0.70 [0.46]	0.81 [0.39]	0.71 [0.45]	0.77 [0.42]
Mother College +	0.83 [0.38]	0.80 [0.40]	0.74 [0.44]	0.82 [0.39]	0.74 [0.44]	0.81 [0.40]
Obs.	45,864	22,225	920	3,708	2,430	15,167
<u>Outcomes</u>						
Dropout Q1	0.01 [0.10]	0.01 [0.11]	0.04 [0.20]	0.01 [0.09]	0.03 [0.18]	0.01 [0.10]
Dropout Q2	0.02 [0.14]	0.02 [0.16]	0.07 [0.25]	0.02 [0.13]	0.08 [0.27]	0.02 [0.13]
Dropout Year 1	0.06 [0.24]	0.09 [0.28]	0.30 [0.46]	0.06 [0.23]	0.25 [0.43]	0.05 [0.23]
Obs.	45,864	22,225	920	3,708	2,430	15,167
4-Yr Grad Rate	0.44 [0.50]	0.35 [0.48]	0.09 [0.29]	0.30 [0.46]	0.18 [0.38]	0.41 [0.49]
Obs.	36,523	18,281	920	3,708	1,940	11,713
6-Yr Grad Rate	0.83 [0.37]	0.77 [0.42]	0.46 [0.50]	0.81 [0.40]	0.54 [0.50]	0.83 [0.38]
Obs.	34,438	17,149	920	3,708	1,725	10,796
Q2 + Q3 GPA	2.87 [0.64]	2.53 [0.57]	2.09 [0.63]	2.54 [0.55]	2.21 [0.61]	2.59 [0.53]
Obs.	44,523	21,421	842	3,619	2,178	14,782
Q2 + Q3 Total Credits	27.77 [5.97]	26.20 [6.22]	21.90 [7.86]	26.43 [5.45]	22.68 [8.00]	26.97 [5.68]
Obs.	45,864	22,225	920	3,708	2,430	15,167
<u>Treatment</u>						
Probation Ever*	0.38 [0.48]	0.57 [0.50]	1.00 [0.05]	0.53 [0.50]	0.99 [0.08]	0.43 [0.50]
Probation Yr 1*	0.25 [0.43]	0.41 [0.49]	1.00 [0.06]	0.31 [0.46]	0.99 [0.09]	0.28 [0.45]
Probation Q1*	0.11 [0.31]	0.17 [0.38]	0.99 [0.09]	—	0.98 [0.12]	—
Obs.	45,864	22,225	920	3,708	2,430	15,167
SP Participant Fall**	0.06 [0.24]	0.12 [0.32]	—	—	0.84 [0.37]	—
Obs.	37,244	17,597			2,430	

NOTE: The sample includes all first-time freshmen enrolled at the university in the entering fall cohorts 2007–2017. Standard deviations are in brackets. *The summary statistics reported for the three probation variables (Probation Ever, Probation Yr 1 and Probation Q1) are based only on the 2007–2009 and 2017 entering fall cohorts. The probation variable is not available for the other years. **The reported means for the SP Participant Fall variable are based only on the program years (entering cohorts 2010–2017 and the subset of colleges that participated in the pilot in 2009) as this variable is undefined for the other years.

Table 2: DiRD Estimates for Academic Outcomes

	(1) Dropout Q1	(2) Dropout Q2	(3) Dropout Q3	(4) GPA (Q2 + Q3)	(5) Earned Credits (Q2 + Q3)	(6) Grad. 4 yr.	(7) Grad. 6 yr.
Bandwidth= 0.75	-0.011 (0.016)	0.000 (0.021)	-0.073** (0.037)	0.168* (0.089)	1.305* (0.682)	0.022 (0.036)	0.078 (0.048)
With Controls	-0.011 (0.016)	-0.000 (0.021)	-0.069* (0.037)	0.149* (0.085)	1.266* (0.679)	0.004 (0.034)	0.068 (0.047)
Observations	14,407	14,407	14,407	13,821	14,407	11,895	11,109
Bandwidth= 1	-0.008 (0.014)	0.001 (0.018)	-0.088*** (0.032)	0.165** (0.076)	1.241** (0.589)	0.011 (0.031)	0.044 (0.041)
With Controls	-0.008 (0.014)	0.001 (0.018)	-0.085*** (0.032)	0.146** (0.073)	1.189** (0.584)	-0.012 (0.029)	0.037 (0.040)
Observations	22,225	22,225	22,225	21,421	22,225	18,281	17,149

NOTE: *** $p < 0.01$, ** $p < 0.05$, * $p < 0.1$. The sample includes all first-time freshmen enrolled at the university in the entering fall cohorts 2007-2017. Control variables include high school GPA, gender, nonwhite, math and English remedial status, Pell Grant eligibility status, whether EFC scores are missing, indicators for whether parents attended college, and cohort and college fixed effects. Each point estimate is from a separate regression. DiRD estimates are equivalent to differencing two local linear RD regressions. Robust standard errors reported in parentheses.

Table 3: DiRD Estimates for Academic Outcomes by Gender, Field of Study and SES

	(1) Dropout Q1	(2) Dropout Q2	(3) Dropout Q3	(4) GPA (Q2 + Q3)	(5) Earned Credits (Q2 + Q3)	(6) Grad. 4 yr.	(7) Grad. 6 yr.
Female	-0.021 (0.025)	0.002 (0.031)	-0.077 (0.052)	-0.152 (0.124)	0.838 (1.033)	-0.000 (0.059)	0.034 (0.066)
Male	-0.001 (0.016)	0.001 (0.022)	-0.084** (0.041)	0.303*** (0.091)	1.316* (0.715)	-0.013 (0.031)	0.027 (0.051)
STEM	-0.003 (0.018)	0.010 (0.024)	-0.125*** (0.043)	0.236** (0.097)	0.962 (0.756)	-0.018 (0.033)	0.029 (0.054)
Non-STEM	-0.018 (0.022)	-0.016 (0.027)	-0.022 (0.045)	-0.010 (0.113)	1.449 (0.952)	0.010 (0.052)	0.029 (0.061)
Low SES	-0.013 (0.020)	-0.014 (0.026)	-0.125** (0.049)	0.206* (0.113)	1.930** (0.879)	-0.064 (0.043)	0.138** (0.060)
High SES	-0.005 (0.019)	0.012 (0.025)	-0.057 (0.042)	0.103 (0.096)	0.546 (0.792)	0.033 (0.040)	-0.028 (0.053)
Obs. (Female)	9,798	9,798	9,798	9,465	9,798	7,926	7,536
Obs. (Male)	12,427	12,427	12,427	11,956	12,427	10,355	9,613
Obs. (STEM)	10,735	10,735	10,735	10,339	10,735	8,971	8,348
Obs. (Non-STEM)	11,490	11,490	11,490	11,082	11,490	9,310	8,801
Obs. (Low SES)	9,620	9,620	9,620	9,281	9,620	7,856	7,322
Obs. (High SES)	12,605	12,605	12,605	12,140	12,605	10,425	9,827

NOTE: *** $p < 0.01$, ** $p < 0.05$, * $p < 0.1$. The sample includes all first-time freshmen enrolled at the university in the entering fall cohorts 2007-2017. Control variables include high school GPA, gender, nonwhite, math and English remedial status, Pell Grant eligibility status, whether EFC scores are missing, indicators for whether parents attended college, and cohort and college fixed effects. All regressions use a bandwidth of 1 grade point on either side of the cutoff. The STEM subsample includes students in the College of Engineering, Architecture and Sciences. The non-STEM subsample includes students who are in the college of agriculture, business and liberal arts. Each point estimate is from a separate regression. DiRD estimates are equivalent to differencing two local linear RD regressions. Robust standard errors in parentheses.

Table 4: Mechanism Exploration

	(1) Resources	(2) Time Management	(3) Attend Class	(4) Connected	(5) Motivated	(6) Not Alone	(7) Faculty Cares
Post	0.753*** (0.029)	0.256*** (0.033)	0.037 (0.034)	-0.005 (0.026)	0.009 (0.017)	0.228*** (0.015)	0.425*** (0.017)
Obs.	430	430	430	430	430	1,842	1,842
R-squared	0.742	0.219	0.005	0.000	0.001	0.215	0.402
Pre-program mean	0.19	0.65	0.74	0.87	0.95	0.75	0.48

NOTE: *** $p < 0.01$, ** $p < 0.05$, * $p < 0.1$. The sample uses data taken from pre- and post-SP program surveys. All regressions include a post program indicator “Post” and individual fixed effects. Columns 1-5 include estimates for only fall 2013 participants because the survey was changed after that year to include different questions. Columns 6 and 7 include estimates for fall 2015, 2016, 2017 and 2018 as well as Winter 2017, 2018 and 2019 participants. Standard errors are reported in parentheses and are clustered at the individual level.

Table 5: Baseline Covariates Balance Check for DiRD Research Design

	(1) HS GPA	(2) Female	(3) Nonwhite	(4) Remedial Math	(5) Remedial English	(6) Pell elig.	(7) EFC Missing	(8) Father college	(9) Mother college
Bandwidth= 0.5	-0.070 (0.045)	-0.010 (0.051)	0.047 (0.056)	-0.006 (0.027)	0.022 (0.041)	-0.002 (0.046)	0.001 (0.057)	0.017 (0.052)	0.028 (0.049)
Bandwidth= 0.75	-0.030 (0.037)	-0.022 (0.043)	0.029 (0.047)	-0.029 (0.022)	-0.032 (0.034)	-0.044 (0.038)	0.054 (0.047)	0.031 (0.043)	0.019 (0.041)
Bandwidth= 1	0.005 (0.032)	0.010 (0.037)	0.050 (0.040)	-0.020 (0.018)	-0.008 (0.029)	-0.015 (0.033)	0.021 (0.040)	0.013 (0.037)	-0.028 (0.035)
Observations (BW=0.5)	8,973	8,973	8,973	8,973	8,973	8,973	8,973	8,973	8,973
Observations (BW=0.75)	14,407	14,407	14,407	14,407	14,407	14,407	14,407	14,407	14,407
Observations (BW=1)	22,225	22,225	22,225	22,225	22,225	22,225	22,225	22,225	22,225

NOTE: *** $p < 0.01$, ** $p < 0.05$, * $p < 0.1$. The sample includes all first-time freshmen enrolled at the university in entering fall cohorts 2007-2017. Each point estimate is from a separate regression. The estimation equation is presented in Equation (1). DiRD estimates are equivalent to differencing two local linear RD regressions. Robust standard errors reported in parentheses.

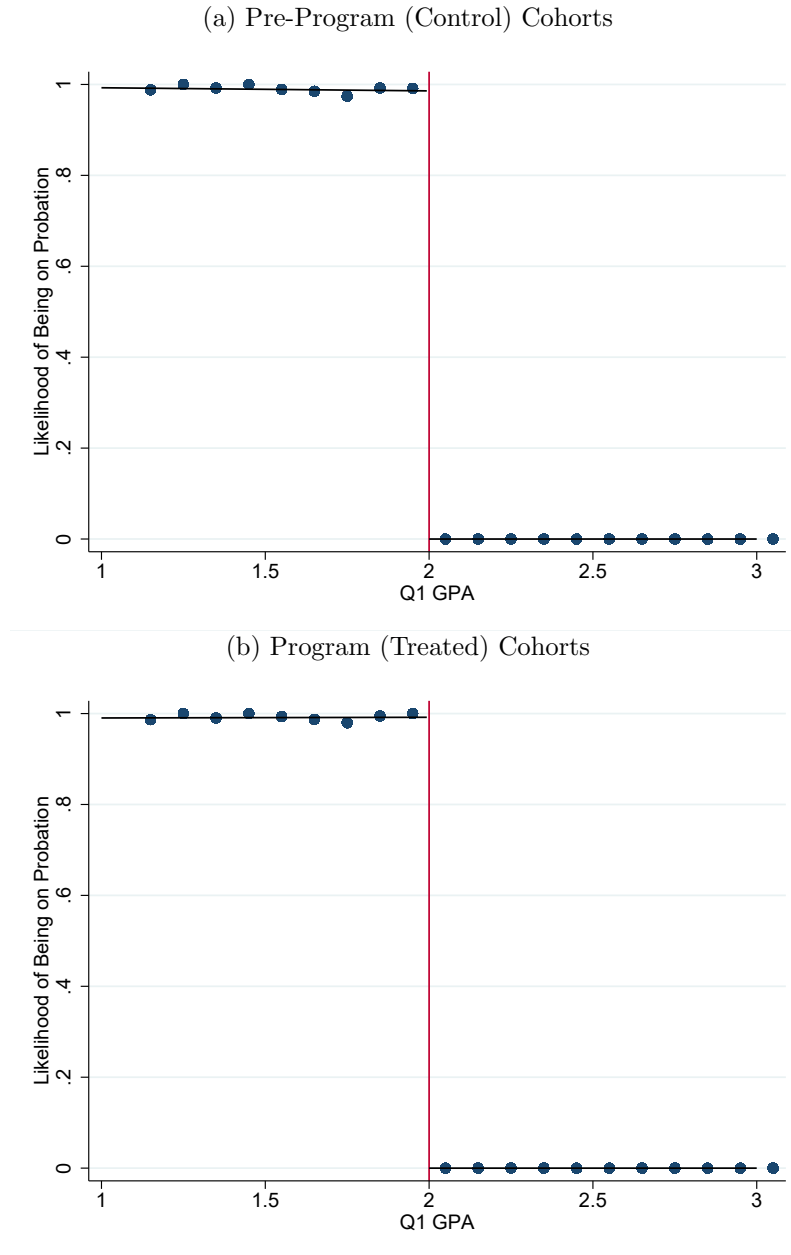
Table 6: DiRD Estimates for Labor Market Outcomes

	(1) Log Earnings	(2) Firm Avg Pay	(3) Employed	(4) Cumulative Experience (Qtrs)
All	0.0951 (0.0961)	-753 (1,727)	-0.0203 (0.0342)	-1.28* (0.699)
Control Mean	12,288	17,876	0.752	18.1
Observations	92,200	90,821	127,626	127,626
Female	-0.182 (0.150)	-3,362 (2,803)	-0.0931* (0.0549)	-2.40** (1.08)
Male	0.257** (0.123)	862 (2,204)	0.0126 (0.0437)	-0.773 (0.901)
STEM	0.148 (0.133)	618 (2,197)	-0.0311 (0.0476)	-1.05 (0.953)
Non-STEM	-0.00221 (0.144)	-2,546 (2,757)	-0.00829 (0.0511)	-1.67 (1.05)
Lower SES	0.313** (0.154)	1,130 (2,471)	0.0178 (0.0516)	0.0717 (1.08)
Higher SES	-0.0751 (0.121)	-2,503 (2,421)	-0.0468 (0.0458)	-2.22** (0.915)
Ctrl Mean (Female)	10,954	16,556	0.740	18.5
Obs. (Female)	39,148	38,662	53,480	53,480
Ctrl Mean (Male)	13,442	19,020	0.769	17.7
Obs. (Male)	53,052	52,159	74,146	74,146
Ctrl Mean (STEM)	14,421	23,125	0.734	15.3
Obs. (STEM)	46,379	45,786	66,038	66,038
Ctrl Mean (Non-STEM)	12,622	18,209	0.772	17.9
Obs. (Non-STEM)	45,821	45,035	61,588	61,588
Ctrl Mean (Lower SES)	11,092	15,290	0.795	19.5
Obs. (Lower SES)	37,386	36,765	51,804	51,804
Ctrl Mean (Higher SES)	13,023	19,408	0.730	17.3
Obs. (Higher SES)	54,814	54,056	75,822	75,822

NOTE: *** $p < 0.01$, ** $p < 0.05$, * $p < 0.1$. The sample is limited to quarters seven to nine years since students enrolled at university where the unit of observation is the student-quarter. The last calendar quarter included in the sample is 2019, Quarter 4. Dollar amounts have been adjusted to 2019 dollars using the Consumer Price Index for All Urban Consumers. Control variables include high school GPA, gender, nonwhite, math and English remedial status, Pell Grant eligibility status, whether EFC scores are missing, indicators for whether parents attended college, and cohort and college fixed effects. All regressions use a bandwidth of 1 grade point on either side of the cutoff. Table B6 reports results using a bandwidth 0.75 grade point on either side of the cutoff. Standard errors are cluster-robust at the student level, and regressions are weighted by one over the number of quarters in which a given student is present in the regression sample.

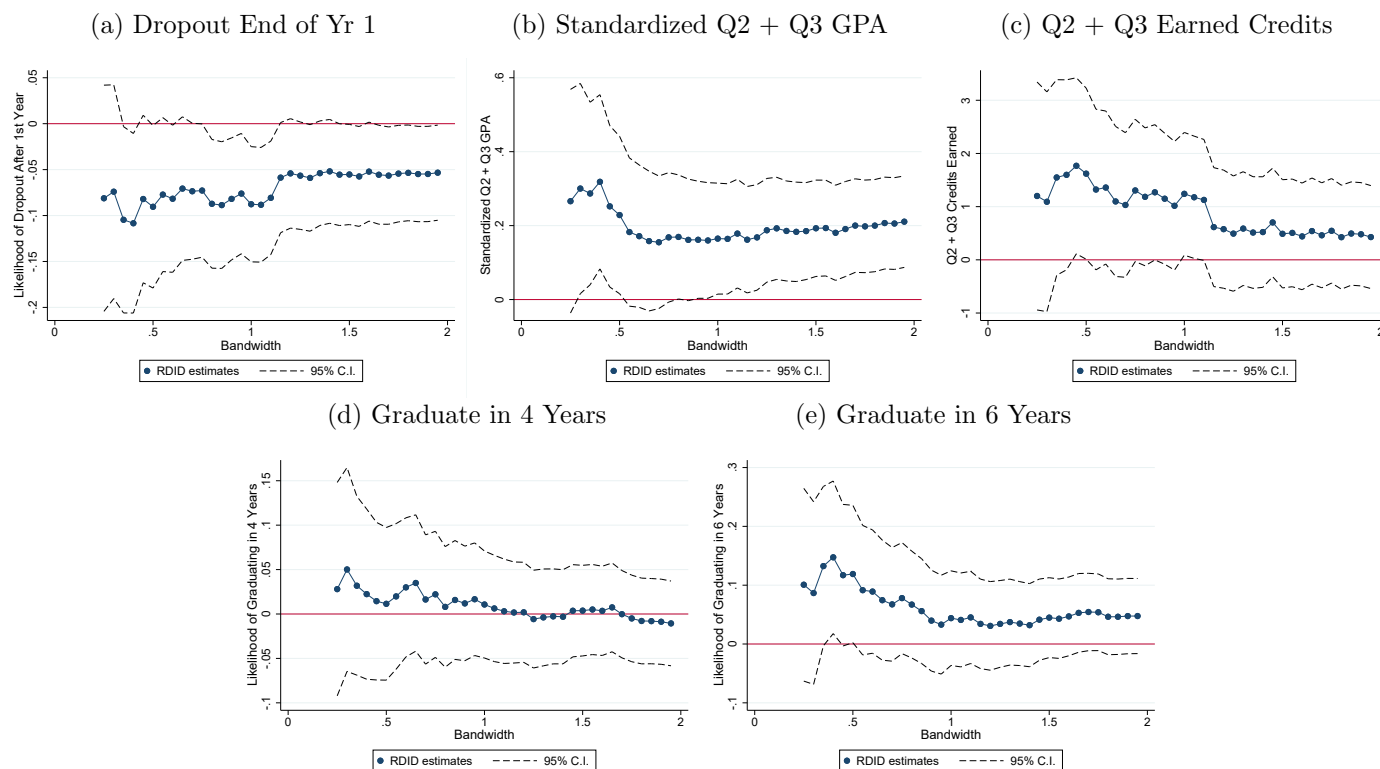
A Appendix Figures

Figure A1: Likelihood of Probation Following Q1



NOTE: The sample includes all first-year students enrolled at the university in entering fall cohorts 2007, 2008, 2009 and 2017. 2010-2016 cohorts are excluded because the probation variable is missing. The running variable is first-quarter GPA in both figures. Circles represent local averages over a 0.1 GPA range. Figures are drawn using a linear fit on either side of the cutoff.

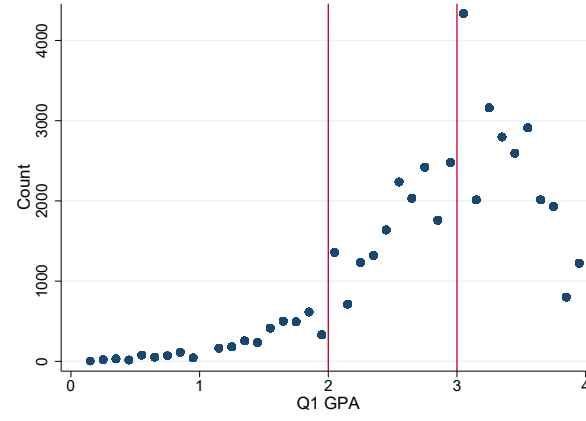
Figure A2: DiRD Estimates for Academic Outcomes by Bandwidth



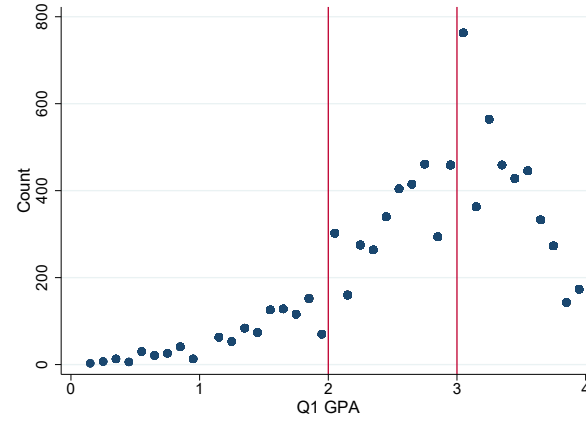
NOTE: The sample includes all first-time freshmen enrolled at the university in the entering fall cohorts 2007–2017. Control variables include high school GPA, gender, nonwhite, math and English remedial status, Pell Grant eligibility status, whether EFC scores are missing, indicators for whether parents attended college, and cohort and college fixed effects. Dashed lines represent 95% confidence intervals. DiRD estimates are equivalent to differencing two local linear RD regressions.

Figure A3: Bunching at Whole GPA Cutoffs

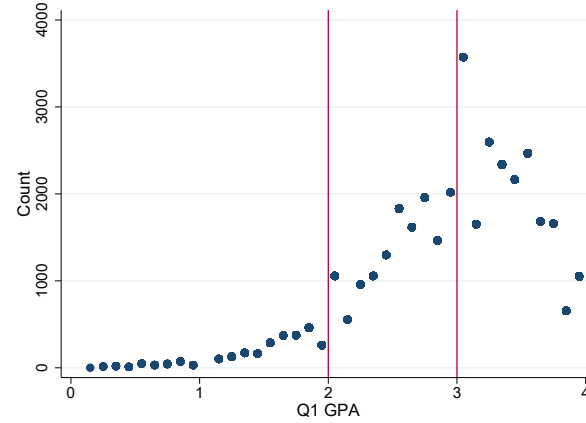
(a) Distribution of Q1 GPA (All Cohorts)



(b) Distribution of Q1 GPA (Control Cohorts)



(c) Distribution of Q1 GPA (Treated Cohorts)



NOTE: The sample used in Panel A includes all first-year students entering the university in fall cohorts 2007–2017. The sample used in Panel B includes cohorts never exposed to SP (2007, 2008 and part of 2009 cohort). The sample in Panel C includes all cohorts exposed to SP (the four colleges of the 2009 cohort and 2010–2017 cohorts).

B Appendix Tables

Table B1: DiRD Estimates for Academic Outcomes by Gender, Field of Study and SES (Alt. Bandwidth)

	(1) Dropout Q1	(2) Dropout Q2	(3) Dropout Q3	(4) GPA (Q2 + Q3)	(5) Earned Credits (Q2 + Q3)	(6) Grad. 4 yr.	(7) Grad. 6 yr.
Female	-0.012 (0.031)	0.011 (0.037)	-0.077 (0.061)	-0.118 (0.150)	0.805 (1.234)	0.013 (0.071)	0.103 (0.079)
Male	-0.012 (0.018)	-0.008 (0.025)	-0.062 (0.046)	0.296*** (0.105)	1.561* (0.824)	0.002 (0.037)	0.051 (0.059)
STEM	-0.004 (0.021)	0.004 (0.028)	-0.120** (0.051)	0.290** (0.113)	1.415 (0.888)	-0.008 (0.038)	0.103 (0.064)
Non-STEM	-0.028 (0.024)	-0.010 (0.031)	-0.006 (0.050)	-0.081 (0.130)	0.966 (1.083)	0.022 (0.061)	0.014 (0.070)
Low SES	-0.012 (0.025)	-0.005 (0.031)	-0.089 (0.058)	0.268** (0.131)	1.703 (1.036)	-0.073 (0.050)	0.159** (0.071)
High SES	-0.010 (0.021)	-0.002 (0.028)	-0.049 (0.048)	0.047 (0.112)	0.911 (0.911)	0.068 (0.046)	0.006 (0.061)
Obs. (Female)	6,004	6,004	6,004	5,780	6,004	4,893	4,625
Obs. (Male)	8,403	8,403	8,403	8,041	8,403	7,002	6,484
Obs. (STEM)	7,032	7,032	7,032	6,743	7,032	5,898	5,476
Obs. (Non-STEM)	7,375	7,375	7,375	7,078	7,375	5,997	5,633
Obs. (Low SES)	6,340	6,340	6,340	6,094	6,340	5,172	4,789
Obs. (High SES)	8,067	8,067	8,067	7,727	8,067	6,723	6,320

NOTE: *** $p < 0.01$, ** $p < 0.05$, * $p < 0.1$. The sample includes all first-time freshmen enrolled at the university in the entering fall cohorts 2007-2017. Control variables include high school GPA, gender, nonwhite, math and English remedial status, Pell Grant eligibility status, whether EFC scores are missing, indicators for whether parents attended college, and cohort and college fixed effects. All regressions use a bandwidth of 0.75 grade points on either side of the cutoff. The STEM subsample includes students in the College of Engineering, Architecture and Sciences. The non-STEM subsample includes students who are in the college of agriculture, business and liberal arts. Each point estimate is from a separate regression. DiRD estimates are equivalent to differencing two local linear RD regressions. Robust standard errors reported in parentheses.

Table B2: ‘Donut’ DiRD Estimates

	(1) Dropout Q1	(2) Dropout Q2	(3) Dropout Q3	(4) GPA (Q2 + Q3)	(5) Earned Credits (Q2 + Q3)	(6) Grad. 4 yr.	(7) Grad. 6 yr.
Bandwidth= 0.5	-0.017 (0.018)	-0.013 (0.024)	-0.094** (0.046)	0.192* (0.114)	1.435* (0.850)	0.034 (0.048)	0.092 (0.062)
With Controls	-0.016 (0.018)	-0.011 (0.024)	-0.094** (0.045)	0.212* (0.110)	1.403* (0.848)	0.035 (0.045)	0.089 (0.060)
Observations	8,369	8,369	8,369	7,989	8,369	6,930	6,427
Bandwidth= 0.75	-0.012 (0.016)	-0.005 (0.021)	-0.080** (0.038)	0.174* (0.093)	1.452** (0.706)	0.041 (0.039)	0.074 (0.050)
With Controls	-0.012 (0.016)	-0.005 (0.021)	-0.075** (0.037)	0.149* (0.089)	1.390** (0.703)	0.026 (0.036)	0.060 (0.048)
Observations	13,803	13,803	13,803	13,238	13,803	11,358	10,601
Bandwidth= 1	-0.009 (0.014)	-0.002 (0.018)	-0.090*** (0.032)	0.165** (0.078)	1.304** (0.599)	0.023 (0.032)	0.041 (0.042)
With Controls	-0.009 (0.014)	-0.002 (0.018)	-0.087*** (0.032)	0.141* (0.075)	1.237** (0.595)	0.002 (0.030)	0.032 (0.041)
Observations	21,621	21,621	21,621	20,838	21,621	17,744	16,641

NOTE: *** $p < 0.01$, ** $p < 0.05$, * $p < 0.1$. The sample includes all first-time freshmen enrolled at the university in the entering fall cohorts 2007–2017. Control variables include high school GPA, gender, nonwhite, math and English remedial status, Pell Grant eligibility status, whether EFC scores are missing, indicators for whether parents attended college, and cohort and college fixed effects. Each point estimate is from a separate regression. ‘Donut’ DiRD estimates are equivalent to differencing two local linear RD regressions after excluding the heaping point at GPA = 2.0. Robust standard errors are reported in parentheses.

Table B3: Predicted Outcomes Based on Baseline Characteristics (Test of RD Assumption)

	(1) Predicted Dropout	(2) Predicted Q2 + Q3 GPA
DiRD Estimates		
Bandwidth= 0.5	0.004 (0.004)	-0.050 (0.042)
Bandwidth= 0.75	-0.002 (0.003)	0.004 (0.035)
Bandwidth= 1	-0.001 (0.003)	0.009 (0.030)
Observations (BW=0.5)	8,973	8,973
Observations (BW=0.75)	14,407	14,407
Observations (BW=1)	22,225	22,225

NOTE: *** $p < 0.01$, ** $p < 0.05$, * $p < 0.1$. The sample includes all first-year students entering the university in the fall cohorts 2007–2017. All outcomes are predicted based on the following control variables: high school GPA, whether a student is nonwhite, gender, math and English remedial status, Pell eligibility status, whether a student as a missing EFC score, indicators for whether parents attended college, and cohort and college fixed effects. Each point estimate is from a separate regression. Robust standard errors are reported in parentheses.

Table B4: Summary Statistics for Labor Market Outcomes

	Full Sample mean/sd	Bandwidth=1 Q1 GPA ∈ [1 – 3] mean/sd	Pre-program yrs. Q1 GPA ∈ [1 – 2) Probation mean/sd	Pre-program yrs. Q1 GPA ∈ [2 – 3] No Probation mean/sd	Program yrs. Q1 GPA ∈ [1 – 2) Probation + FYSP mean/sd	Program yrs. Q1 GPA ∈ [2 – 3] Neither mean/sd
Total earnings this qtr	12077.63 (14498.36)	11323.86 (12214.44)	9235.91 (11563.87)	10962.19 (11526.23)	9118.51 (10780.56)	12336.44 (12781.32)
Log total earnings this qtr	9.46 (0.93)	9.38 (0.94)	9.12 (1.04)	9.34 (0.93)	9.16 (1.01)	9.48 (0.89)
Employed in this qtr	0.71 (0.45)	0.72 (0.45)	0.70 (0.46)	0.73 (0.44)	0.68 (0.47)	0.73 (0.44)
Cumulative qtrs worked	15.87 (8.00)	16.06 (8.10)	16.34 (8.70)	16.77 (8.20)	15.07 (8.36)	15.69 (7.83)
Avg pay at firm this qtr	27307.59 (43132.19)	25178.90 (29622.41)	21237.29 (24299.13)	23488.30 (22075.68)	22463.82 (26452.98)	27368.10 (35602.33)
Age	24.79 (0.91)	24.80 (0.92)	24.93 (0.92)	24.92 (0.92)	24.73 (0.92)	24.71 (0.91)
Student-Qtrs	247,558	127,626	11,016	40,392	11,006	55,642
Students	27,097	13,858	918	3,366	1,363	7,166

NOTE: The sample is limited to years seven to nine after first enrollment at the university. The table reports means and standard deviations in brackets. The last calendar quarter included in the sample is 2019 Q4.

Table B5: DiRD Estimates for Labor Market Outcomes (Cohorts ≤ 2011)

	(1) Log Earnings	(2) Firm Avg Pay	(3) Employed	(4) Cumulative Experience (Qtrs)
All	0.0963 (0.108)	46.7 (1,876)	-0.0642* (0.0387)	-1.86** (0.801)
Control Mean	12,242	17,757	0.751	17.9
Observations	81,213	79,975	112,038	112,038
Female	-0.233 (0.172)	-3,147 (3,004)	-0.159** (0.0629)	-3.66*** (1.28)
Male	0.297** (0.137)	2,148 (2,403)	-0.0117 (0.0490)	-0.754 (1.02)
STEM	0.134 (0.150)	1,075 (2,401)	-0.0625 (0.0547)	-1.26 (1.11)
Non-STEM	0.0227 (0.160)	-1,437 (2,980)	-0.0693 (0.0563)	-2.67** (1.18)
Lower SES	0.340** (0.173)	1,853 (2,777)	-0.00541 (0.0588)	-0.0731 (1.24)
Higher SES	-0.0962 (0.136)	-1,791 (2,574)	-0.108** (0.0516)	-3.04*** (1.05)
Ctrl Mean (Female)	10,924	16,365	0.741	18.4
Obs. (Female)	34,252	33,810	46,630	46,630
Ctrl Mean (Male)	13,393	18,836	0.766	17.6
Obs. (Male)	46,961	46,165	65,408	65,408
Ctrl Mean (STEM)	14,691	22,577	0.713	15.1
Obs. (STEM)	41,140	40,635	58,346	58,346
Ctrl Mean (Non-STEM)	12,528	17,852	0.773	17.9
Obs. (Non-STEM)	40,073	39,340	53,692	53,692
Ctrl Mean (Lower SES)	10,938	15,060	0.785	19.3
Obs. (Lower SES)	31,822	31,298	44,186	44,186
Ctrl Mean (Higher SES)	13,023	19,343	0.733	17.1
Obs. (Higher SES)	49,391	48,677	67,852	67,852

Notes: The sample is limited to quarters 7-9 years since students enrolled at the university and to students who enrolled in or before 2011. The unit of observation is the student-quarter. The last calendar quarter included in the sample is 2019, Quarter 4. Dollar amounts have been adjusted to 2019 dollars using the Consumer Price Index for All Urban Consumers. Control variables include high school GPA, gender, non-white, math and English remedial status, Pell Grant eligibility status, whether EFC scores are missing, indicators for whether parents attended college, and cohort and college fixed effects. All regressions use a bandwidth of 1 grade point on either side of the cutoff. Standard errors are cluster-robust at the student level, and regressions are weighted by one over the number of quarters in which a given student is present in the regression sample. *** $p < 0.01$, ** $p < 0.05$, * $p < 0.1$.

Table B6: DiRD Estimates for Labor Market Outcomes (Alt. Bandwidth)

	(1) Log Earnings	(2) Firm Avg Pay	(3) Employed	(4) Cumulative Experience (Qtrs)
All	0.186* (0.113)	-474 (1,976)	-0.0112 (0.0402)	-1.03 (0.809)
Control Mean	12,333	18,378	0.754	17.7
Observations	60,532	59,558	84,006	84,006
Female	-0.154 (0.181)	-2,126 (3,085)	-0.0571 (0.0653)	-1.89 (1.26)
Male	0.388*** (0.144)	997 (2,582)	0.00848 (0.0510)	-0.531 (1.04)
STEM	0.309* (0.160)	1,437 (2,509)	-0.0396 (0.0562)	-0.804 (1.12)
Non-STEM	0.0563 (0.167)	-2,105 (3,052)	0.0245 (0.0597)	-1.28 (1.20)
Lower SES	0.453** (0.183)	939 (2,791)	0.0428 (0.0621)	0.517 (1.28)
Higher SES	-0.00726 (0.143)	-1,972 (2,766)	-0.0481 (0.0528)	-2.00* (1.04)
Ctrl Mean (Female)	11,305	17,031	0.741	17.9
Obs. (Female)	24,320	23,998	33,222	33,222
Ctrl Mean (Male)	13,204	19,600	0.766	17.4
Obs. (Male)	36,212	35,560	50,784	50,784
Ctrl Mean (STEM)	14,597	24,484	0.727	15.1
Obs. (STEM)	30,717	30,311	44,144	44,144
Ctrl Mean (Non-STEM)	12,313	18,138	0.765	17.4
Obs. (Non-STEM)	29,815	29,247	39,862	39,862
Ctrl Mean (Lower SES)	12,021	16,286	0.796	19.0
Obs. (Lower SES)	24,663	24,220	34,464	34,464
Ctrl Mean (Higher SES)	12,576	19,740	0.729	16.9
Obs. (Higher SES)	35,869	35,338	49,542	49,542

Notes: The sample is limited to quarters 7-9 years since the student enrolled at the university and to students who enrolled in or before 2011. The unit of observation is the student-quarter. The last calendar quarter included in the sample is 2019, Quarter 4. Dollar amounts have been adjusted to 2019 dollars using the Consumer Price Index for All Urban Consumers. Control variables include high school GPA, gender, non-white, math and English remedial status, Pell Grant eligibility status, whether EFC scores are missing, indicators for whether parents attended college, and cohort and college fixed effects. All regressions use a bandwidth of 0.75 grade points on either side of the cutoff. Standard errors are cluster-robust at the student level, and regressions are weighted by one over the number of quarters in which a given student is present in the regression sample. *** p<0.01, ** p<0.05, * p<0.1.

C Comparison to Other Coaching Programs

Findings from recent college access or success coaching studies

College Coaching/Mentoring Study	College Program Name and Characteristics	Assignment method and Program Length	Program Participation	Method of Contact	Coaching Goals	Effect Sizes
Bettinger & Baker (2014)	"Inside Track" coaching program. Students assigned to college coaches who call their students regularly and, in some cases, have access to course syllabi, transcripts, and additional information on students' performance and participation in specific courses.	Students randomly assigned to college coach for two Semesters or less.	Nonmandatory: Students have the option to participate or not when contacted by the coach.	Virtual: Coaches contact students via phone, email, text messages and social networking sites.	Help students find ways to overcome both academic and "real-life" barriers and to identify strategies for success.	- 5 percentage point increase in college persistence rates after 6 and 12 months. -4.3 and 3.4 percentage point increase in college persistence rates after 18 and 24 months. - 4 percentage point increase in 4-year completion rates for a subsample of students.
Barr & Castleman (2021)	" <i>Bottom Line</i> " advising program. Divided into two stages. College access advisors provide individualized advising to students to help get them into college. Advisors have an average caseload of 50-60 students. College success advisors then continue to provide individualized, campus-based support to enrolled students for up to six years following high school.	Students randomly assigned to advisors and meet with each student for an hour every three or four weeks during senior year. Campus-based advisors at each target institution are also available to meet with students.	Nonmandatory: Students need to apply to the program. Once enrolled in program, meeting with advisor is also nonmandatory.	In-Person and virtual: At <i>Bottom Line's</i> office in each community or over the phone.	Advisors provide comprehensive college and financial aid support for students and selecting a college or university that aligns with a student's goals and circumstances.	-9.1 percentage point increase in 4-year college enrollment rates. -9.6 percentage points more likely to earn a bachelor's degree within six years of high school.









Findings from recent college access or success coaching studies (Continued)






College Coaching/Mentoring Study	College Program Name and Characteristics	Assignment method and Program Length	Program Participation	Method of Contact	Coaching Goals	Effect Sizes
Carrell & Sacerdote (2017)	A series of field experiments in college coaching/mentoring. The program is targeted toward high school seniors who are on the verge of failing to apply to college.	Students randomly assigned to mentor during final year of high school. Visits are typically two–three hours in length with a promise up front to keep returning each week until every student has met his or her goals for college applications.	Nonmandatory: Treated Students are told they are enrolled in program by email, letters, phone call and encouraged to participate.	In-Person: in person mentoring by a Dartmouth College student.	Coach makes sure that the Free Application for Federal Student Aid (FAFSA) form is started and the sections other than the parental income portion are completed. Program pays for all application fees (upfront) and in some cohorts they pay treatment students a \$100 bonus in cash for completing the program	-30 percentage point increase in likelihood of attending any college for women. -22 percentage point increase in likelihood of attending a 4-year college for women. -12.9 percentage point increase in college persistence rates for women.

D SP Workshop Materials

Campus Resource Guide

Campus Resources (Scan QR codes to learn more!)

<p>1-3: Study Skills: Find resources and videos on popular topics such as:</p> <ul style="list-style-type: none"> • Study strategies, text anxiety tips and study guides • Flashcards, video tutorials, interactive exercises • Lecture note taking • Memorization • Learning style (Vark Questionnaire)  <p>Study Skills</p>	<p>4-5: Tutoring on Campus (Location Varies)</p> <ul style="list-style-type: none"> • Free 1-1 or group tutoring for a variety of classes • Supplemental Workshops: 1 unit workshop to go alongside certain Science and Math classes. Recap information from class, get help with study skills, test prep, and group studying. • Study sessions: Weekly sessions made of 8-15 students for multiple subjects. Submit a request through the portal  <p>Tutoring</p>
<p>6-7: Office hours can sometimes be intimidating and confusing on what you should ask. Here are some helpful tips:</p> <ul style="list-style-type: none"> • If office hours conflict with your schedule, contact professors for an alternate time to meet. They are more than happy to help out! • Show problems on homework or tests that you were confused about, ask the professor to walk you through each steps. <p>**Professors are very knowledgeable in their field and know of many outside resources and sometimes even internship or research opportunities, get to know them!**</p>	
<p>8-9: Associated Students, Inc. (ASI):</p> <ul style="list-style-type: none"> • Student Government • Clubs and Organization • Craft Center Classes • The Recreation Center • Activities and events  <p>ASI</p>	<p>Dean of Students</p> <ul style="list-style-type: none"> • Club Sports • Center For Service in Action • Center for Leadership • Fraternity & Sorority Life  <p>Dean of Students</p>
<p>10: Cross Cultural Centers (Location varies)</p> <ul style="list-style-type: none"> • Gender Equity Center- Educating and empowering feminist, womxnist, mujerista moments though an intersectional lens and striving for social justice. • Men & Masculinity- Creates spaces to express and evaluate masculinity and intersections with other identities through programs, dialogs and trainings.  <p>CCCs</p>	<p>Student Academic Services (Location Varies)</p> <ul style="list-style-type: none"> • Dream Center- Offers an inclusive space and a multitude of events for all undocumented students, those in mixed-status families and their allies. Stop by for a space to study, or to hang out with friends! • Black Academic Excellence Center (BAEC)- Offers a supportive and enriching environment to promote excellence among Black students on campus. Stop by their center to say hello or attend one of their events!  <p>SAS</p>
<p>11-14: Campus Health and Wellbeing (Bldg. 27):</p> <p>Health Services:</p> <ul style="list-style-type: none"> • Mostly free services • Walk in or make an appointment for medical attention or advice • Educational programs about drugs, alcohol, sexuality and other topics • On site lab testing, X-rays, and Shots (e.g Flu, TB tests) • Discounted Pharmacy • After-hours nurse advice • PULSE peer mentoring health education program, covering topics such as, drugs and alcohol use and/or recovery, physical and sexual health and mental well being.]  <p>Health & Wellbeing</p>	<p>Counseling Services:</p> <ul style="list-style-type: none"> • Individual, couples, group therapy sessions • Emotional Well Being Workshops • End of Quarter Survival Kit Workshops • Clinicians specializing in: Anxiety, Eating Disorders, Multicultural issues, Trauma, Alcohol and Drug Abuse, Suicide Prevention and many more.  <p>Counseling Services</p>

15-18: Basic Needs & Crisis Services (Location Varies) Food Insecurity: <ul style="list-style-type: none"> • CalFresh- Provides monthly payments to eligible students that can be used where food is sold like grocery stores, and farmers markets. • Meal Vouchers- Students experiencing short-term financial need, can dine at 805 Kitchen during the school year and The Avenue for the summer. • Food Pantry (Bldg 27, Lower Level)- Students can access free, packed and canned foods, frozen meals and personal hygiene products. • Food Bank Distribution- Once a week on Mott Lawn, bags of fresh produce and food for free. Financial Hardships: <ul style="list-style-type: none"> • Cares Grant- One-time grant for unexpected emergencies like, paying for tuition, academic supplies, medical expenses, emergency housing and other temporary hardships. • Professional Clothing Closet- Free, high-quality work clothes for interviews and future internships and jobs • Financial Aid Office: Offers daily drop in hours where students can meet with a counselor to discuss ways to cover the cost of college. 		 Basic Needs
15-18 (Cont.): Crisis Services <ul style="list-style-type: none"> • Safer (Bldg 65, Rm 217)- Provides confidential crisis counseling, advocacy and education and support resources by state-certified advocates. Learn about your options, rights, and other resources about sexual assault or misconduct, dating or domestic violence and stalking. 	Reporting Hate Crimes <ul style="list-style-type: none"> • Bias Incident Report- If you believe you have witnessed an act of discrimination or harassment on or off campus, you may file a report online through the Dean of Students. 	 Bias Incident Report
19-20: Career Services (Bldg. 124): Drop in or make an appointment with the Freshman Focus Team or any other Career Counselor to talk about: <ul style="list-style-type: none"> • Career exploration • Major Exploration • Interviewing skills • Resume and Cover letter 		 Career Services
21-22: Advising Centers: Have a question and don't know where to start? Visit an advisor! College Advising Center: CAED, CAFES, CENG, CLA, CSM, OCOB, <ul style="list-style-type: none"> • Course planning • Navigating your curriculum • Major and support related classes • Tracking progress to degree • Concentration Success Center (Bldg 52-D37): <ul style="list-style-type: none"> • Referring you to academic and/or on-campus resources • Understanding university and college-specific policies and procedures • Navigating tools such as PASS and Student Center • Change of Major process • GE Classes • Minors • Transfer courses Specialty Advising <ul style="list-style-type: none"> • Pre-Health Career Advising • International/Study Abroad 		
23-24: Conflict resolution Ombuds (Library 35-113): <ul style="list-style-type: none"> • If you feel that you got an unfair grade in a class • If you feel that you got treated unfairly by someone in the University Community • If you want to discuss a sensitive question or issue 		 Ombuds
25: Disability Resource Center (Bldg. 124): Provides services to those with long-term <u>or</u> short-term disabilities: <ul style="list-style-type: none"> • How to request services • Eligibility • Information on testing for Learning Disabilities • Possible accommodations - in and outside the classroom • Peer Mentor Program 		 DRC

Goal Setting Worksheet

xx

My Success Plan

I decided to attend University X because:

A positive experience I have had at University X:

My favorite part of University X:

During my time at University X, I am most looking forward to:

Creating S.M.A.R.T. Goals

S	M	A	R	T
Specific Make your goal detailed and specific to know what you are working towards	Measurable Set parameters so that you can identify tangible evidence towards achieving your goal	Attainable Draft realistic goals that challenge you but you are confident to achieve	Relevant Make sure each goal is consistent with other goals you have established and fits with your immediate and long-term plans	Time-Bound Set a time that you would like to achieve your goal by

Original Goal:

SMART Goal:

I want to read more	S: 12 books a year M: 1 book a month A: 1 hour at lunch, 1 hour before bed R: More than currently reading T: 1 book a month, 12 a year	I am going to read 1 book a month by reading for an hour during lunch and an hour before bed for a total of 12 books a year.
---------------------	---	--

WINTER QUARTER SMART GOAL:

Action steps:

I will complete the following action steps:

Personal (ex: I will create a calendar/schedule to keep me on track with attending classes & completing assignments)	Academic (ex: I will use time in between classes to study, read, and review notes)	Social (ex: I will refrain from social outings, TV, parties, social media, video games, etc. until all my homework is complete for that day)

Resources:

I will utilize the following resources to help me achieve my goal:

(Example: I will visit the Success Center, _____, by Week 3 to discuss Change of Major)

- I will visit _____ located in _____ by _____
to discuss _____
- I will visit _____ located in _____ by _____
to discuss _____

Challenges: (What could stop/de-motivate me along the way?)

- _____
- _____

Ways to overcome my challenges:

- _____
- _____

Who's got your back? (The person(s) in my life that I will share my action plan with and ask to help keep me accountable for accomplishing my goal & action steps)

I am fully committed to completing this success plan this quarter.

SIGN: _____ DATE: _____

You will receive an email from your Coach in Week 5 to follow up on your goals and action steps. Once you have communicated with your coach and completed a post-survey, your requirements with the First Year Success Program will be fulfilled.

Time Management Exercise

ACADEMIC SKILLS CENTER

Weekly Schedule

	Sun	Mon	Tues	Wed	Thurs	Fri	Sat
6:00 AM							
7:00 AM							
8:00 AM							
9:00 AM							
10:00 AM							
11:00 AM							
12:00 PM							
1:00 PM							
2:00 PM							
3:00 PM							
4:00 PM							
5:00 PM							
6:00 PM							
7:00 PM							
8:00 PM							
9:00 PM							
10:00 PM							
11:00 PM							
12:00 PM							
1:00 AM							
2:00 AM							

Quarter Schedule

	Sun	Mon	Tues	Wed	Thurs	Fri	Sat
Week 1							
Week 2							
Week 3							
Week 4							
Week 5							
Week 6							
Week 7							
Week 8							
Week 9							
Week 10							
Week 11							
Finals							

E SP Pre- and Post-Surveys

All surveys were administered via the online platform SurveyMonkey.

Pre-Survey for Students Qualifying for SP in Fall 2013

Q1: What is your first name?

Q2: What is your last name?

Q3: What is your university email address?

Q4: Which college are you from?

Q5: In the Freshman Success Workshop, you will participate in a small group that will be led by an academic coach. An academic coach will lead a discussion and help group members develop an action plan to achieve success after being put on academic probation. Please check all the ways you wish to work with an academic coach.

- ☐ Identify resources to improve my study skills
- ☐ Generally improve my academic performance
- ☐ Identify ways to achieve my goal GPA
- ☐ Identify why my grades do not reflect my effort
- ☐ Stay motivated and on track to achieve my academic goals
- ☐ Learn about relevant policies
- ☐ Reduce anxiety and stress about my academic performance
- ☐ Complete the Freshman Success Workshop
- ☐ Other, please explain

Q6: On average, how many hours per week do you study?

Q7: On average, how many hours do you sleep each night?

Q8: How many times did you attend faculty office hours last quarter?

Q9: How many hours each day do you spend socializing or doing extracurricular activities?

Q10: How many hours each day do you spend watching TV, going on Facebook, gaming, etc.?

Q11: Please read the below prompts and respond to each with one of the following options: “Always, Sometimes or Rarely”.

- ☐ I feel motivated to focus on school.
- ☐ I complete the assigned reading for all my classes.
- ☐ My class notes help me prepare adequately for a test.
- ☐ I retain the information I read for homework assignments.
- ☐ I feel confident about my writing ability.
- ☐ I take the time to revise my writing to make it clear, correct, and consistent.
- ☐ I easily and effectively communicate my thoughts.

- ☐ When I do not understand my professor, I ask the right questions to clarify.
- ☐ I easily remember things I learn in class.
- ☐ At the end of a lecture, I can summarize what was presented.
- ☐ I feel confident when taking an exam.
- ☐ When I think I did poorly on a test I just finished, I go back to my notes and review all the information I had forgotten.
- ☐ I prepare in advance for a test rather than "cramming" the night before.
- ☐ I manage my time well.
- ☐ I change my other priorities to have enough time for studying and completing course assignments.
- ☐ I can successfully balance many aspects of my life (such as friends, family, school, work, extracurricular, etc.).
- ☐ I study even when less important things distract me.
- ☐ When I have to take a course that doesn't interest me, I find a way to motivate myself to earn a good grade.
- ☐ I attend my classes regularly.
- ☐ I ask for help from family members, friends, or other appropriate individuals when needed.
- ☐ I know about the student services offered by Cal Poly and know how to use them.
- ☐ I easily adjust my learning style to my instructors' teaching styles.
- ☐ I feel connected to a community at Cal Poly.

Post-Survey for Students Qualifying for SP in Fall 2013

Q1: What is your first name?

Q2: What is your last name?

Q3: What is your university email address?

Q4: Which college are you from?

Q5: What day and time did you attend a workshop?

Q6: Please rate your academic coach in the following areas by selecting “Excellent, Average, Below Average, or Not Applicable” for each of the following:

☐ Approachability

☐ Knowledge

☐ Preparation

Q7: Which part of the Freshman Success Program was most effective? (select one)

☐ The presentation at the beginning

☐ The breakout session

☐ Both were equally effective

Q8: What did you find most beneficial from the big session? (please select one)

☐ Identified resources to improve my study skills

☐ Identified ways to achieve my goal GPA

☐ Identified why my grades do not reflect my effort

☐ Learned about relevant policies

☐ Learned how to improve my academic performance

☐ More motivated and on track to achieve my academic goals

☐ Reduced anxiety and stress about my academic performance

☐ I didn't find anything beneficial from this session

☐ Other (please explain)

Q9: What did you find most beneficial from the small group breakout session? (please select one)

☐ Discussion with other students

☐ Learning about resources

☐ SMART goals/goal setting

☐ The Self-Evaluation

☐ I didn't find anything beneficial from this session

☐ Other (please explain)

Q10: As a result of attending the Freshman Success Program, I am more likely to...(check all that apply)

- ☐ Attend class
- ☐ Do the assigned reading
- ☐ Manage my time more efficiently
- ☐ Seek out resources I need
- ☐ None of the above
- ☐ Other (please explain)

Q11: Next year, if we were to incorporate a student panel (video) segment into the big presentation of previous students on academic probation, would you be interested in participating?

Q12: In what area do you think your behavior has changed the most this quarter? (please select one)

- ☐ Increased the number of hours of sleep per night
- ☐ Increased the number of hours spent studying per day
- ☐ Increased the number of visits to office hours
- ☐ Managing my time better
- ☐ Utilizing campus resources

Q13: So far this quarter, how many hours per week do you study?

Q14: So far this quarter, on average, how many hours do you sleep each night?

Q15: So far this quarter, how many times have you been to faculty office hours?

Q16: So far this quarter, how many hours each week do you spend socializing or doing extracurricular activities?

Q17: So far this quarter, how many hours each week do you spend watching TV, going on Facebook, gaming, etc.?

Q18: Please read the below prompts and respond to each with one of the following options: Always, Sometimes or Rarely.

- ☐ I feel motivated to focus on school.
- ☐ I complete the assigned reading for all of my classes.
- ☐ My class notes help me prepare adequately for a test.
- ☐ I retain the information I read for homework assignments.
- ☐ I feel confident about my writing ability.
- ☐ I take the time to revise my writing to make it clear, correct, and consistent.
- ☐ I easily and effectively communicate my thoughts.
- ☐ When I don't understand my professor, I ask the right questions to clarify.
- ☐ I easily remember things I learn in class.
- ☐ At the end of a lecture, I am able to summarize what was presented.
- ☐ I feel confident when taking an exam.

- ☐ When I think I did poorly on a test I just finished, I go back to my notes and locate all the information I had forgotten.
- ☐ I prepare in advance for a test rather than "cramming" the night before.
- ☐ I manage my time well.
- ☐ I change my other priorities to have enough time for studying and completing course assignments.
- ☐ I can successfully balance many aspects of my life (such as friends, family, school, work, extracurricular, etc.).
- ☐ I study even when less important things distract me.
- ☐ When I have to take a course that doesn't interest me, I can find a way to motivate myself to earn a good grade.
- ☐ I attend my classes regularly.
- ☐ I ask for help from family members, friends, or other appropriate individuals when needed.
- ☐ I know about the student services offered by Cal Poly and know how to use them.
- ☐ I easily adjust my learning style to my instructors' teaching styles.
- ☐ Although I exert great effort, my grades are lower than I expect them to be.
- ☐ I feel connected to a community at Cal Poly.

Q19: Do you have any additional comments you would like to add?

Pre-Survey for Students Qualifying for SP in Fall or Winter 2015-2018

Q1: What is your first name?

Q2: What is your last name?

Q3: What is your university email address?

Q4: Which college are you from?

Q5: What is your major?

Q6: After taking the StrengthsFinder assessment, what are your top five strengths?

Q7: Which statement best applies to you?

- ☐ I know I am not the only one on academic probation at Cal Poly.
- ☐ I feel as though I am the only one on academic probation at Cal Poly.

Q8: Which statement best applies to you?

- ☐ I can identify a staff or faculty member at Cal Poly who cares about my success.
- ☐ I am looking for a staff or faculty member at Cal Poly who cares about my success.

Q9: Looking back at Fall Quarter, were there internal factors affecting your academic performance? Mark up to three that apply to you regarding your Fall Quarter academic difficulties.

- ☐ I could not find motivation to focus on academics.
- ☐ I felt like I did not have the appropriate study skills to succeed.
- ☐ I managed my time poorly.
- ☐ I did not attend all my classes.
- ☐ I recognized that I was having difficulty, but I was not comfortable seeking campus resources.
- ☐ I focused on extracurricular activities more than I should have.
- ☐ None of the above (no internal factors affected my academic performance).
- ☐ Other (please explain).

Q10: Looking back at Fall Quarter, were there external factors affecting your academic performance? Mark up to three that apply to you regarding your Fall Quarter academic difficulties.

- ☐ I had roommate issues that kept me from studying.
- ☐ I do not like my major and, therefore, did not do well in my classes.
- ☐ I had mostly General Education classes and was not interested in my classes.
- ☐ I got sick and missed too many classes.
- ☐ I had a personal crisis and had to focus my energy in other areas besides school.
- ☐ I had a bad professor(s) during Fall Quarter, which led to me being on Academic Probation.
- ☐ I did not have a choice in my block enrolled schedule, so I didn't like the times I had classes.

- ☐ None of the above (no external factors affected my academic performance).
- ☐ Other (please explain).

Q11: Which statement best applies to you?

- ☐ I know of at least one campus resource that will help me get back on track.
- ☐ I do not know of at least one campus resource that will help me get back on track.

Q12: List your involvement in campus clubs, organizations, or activities.

Q13: List your interests outside of your academic life.

Q14: Which statement best applies to you?

- ☐ I am motivated to focus on my academics at Cal Poly.
- ☐ I am not motivated to focus on my academics at Cal Poly.

Q15: Which statement best applies to you?

- ☐ I feel connected to Cal Poly.
- ☐ I do not feel connected to Cal Poly.

Q16: Which statement best applies to you?

- ☐ I am confident in my time management skills.
- ☐ I am not confident in my time management skills.

Q17: How confident are you in your decision to attend Cal Poly?

Q18: How confident are you that you will be able to get your grades up enough to be taken off academic probation by the end of Winter Quarter?

Q19: How confident are you that you will graduate from Cal Poly?

Post-Survey for Students Qualifying for SP in Fall or Winter 2015-2018

Q1: What is your first name?

Q2: What is your last name?

Q3: What is your university email address?

Q4: Which college are you from?

Q5: After the First Year Success Program, which statement best applies to you?

☐ I know I am not the only one on academic probation at Cal Poly.

☐ I feel as though I am the only one on academic probation at Cal Poly.

Q6: After the First Year Success Program, which statement best applies to you?

☐ I can identify a staff or faculty member at Cal Poly who cares about my success.

☐ I still have not yet found a staff or faculty member at Cal Poly who cares about my success.

Q7: Looking back at Fall Quarter, were there internal factors affecting your academic performance? Mark up to three that apply to you regarding your Fall Quarter academic difficulties.

☐ I could not find motivation to focus on academics.

☐ I felt like I did not have the appropriate study skills to succeed.

☐ I managed my time poorly.

☐ I did not attend all my classes.

☐ I recognized that I was having difficulty, but I was not comfortable seeking campus resources.

☐ I focused on extracurricular activities more than I should have.

☐ None of the above (no internal factors affected my academic performance).

☐ Other (please explain).

Q8: Looking back at Fall Quarter, were there external factors affecting your academic performance? Mark up to three that apply to you regarding your Fall Quarter academic difficulties.

☐ I had roommate issues that kept me from studying.

☐ I do not like my major and, therefore, did not do well in my classes.

☐ I had mostly General Education classes and was not interested in my classes.

☐ I got sick and missed too many classes.

☐ I had a personal crisis and had to focus my energy in other areas besides school.

☐ I had a bad professor(s) during Fall Quarter, which led to me being on Academic Probation.

☐ I did not have a choice in my block enrolled schedule, so I didn't like the times I had classes.

☐ None of the above (no external factors affected my academic performance).

☐ Other (please explain).

Q9: Do you feel that incorporating your top five strengths helped you come up with a relevant and productive Winter Quarter goal?

☐ Yes

☐ No

☐ Other (please explain)

Q10: After the First Year Success Program, which statement best applies to you?

☐ I know of at least one campus resource that will help me get back on track.

☐ I do not know of at least one campus resource that will help me get back on track.

Q11: Which statement best applies to you?

☐ After identifying a resource (academic advising, Career Services, professor's office hours, etc.) in the First Year Success Program, I have not utilized this resource by the time of completing this survey.

☐ After identifying a resource (academic advising, Career Services, professor's office hours, etc.) in the First Year Success Program, I have utilized this resource by the time of completing this survey.

Q12: After the First Year Success Program, which statement best applies to you?

☐ I am more motivated to focus on my academics at Cal Poly.

☐ I am equally as motivated to focus on my academics at Cal Poly as before the program.

Q13: After the First Year Success Program, which statement best applies to you?

☐ I feel more connected to Cal Poly.

☐ I feel equally as connected to Cal Poly as before the program.

Q14: After the First Year Success Program, which statement best applies to you?

☐ I am more confident in my time management skills.

☐ I am equally as confident in my time management skills as before the program.

Q15: After the First Year Success Program, how confident are you in your decision to attend Cal Poly?

Q16: After the First Year Success Program, how confident are you that you will be able to get your grades up enough to be taken off academic probation by the end of Winter Quarter?

☐ Very confident

☐ Confident

☐ Somewhat confident

☐ Not confident

Q17: After the First Year Success Program, how confident are you that you will graduate from Cal Poly?