

Bentolila, Samuel; Dolado, Juan José; Jimeno, Juan F.

**Working Paper**

## Does immigration affect the Phillips curve?: some evidence for Spain

CESifo Working Paper, No. 2166

**Provided in Cooperation with:**

Ifo Institute – Leibniz Institute for Economic Research at the University of Munich

*Suggested Citation:* Bentolila, Samuel; Dolado, Juan José; Jimeno, Juan F. (2007) : Does immigration affect the Phillips curve?: some evidence for Spain, CESifo Working Paper, No. 2166, Center for Economic Studies and ifo Institute (CESifo), Munich

This Version is available at:

<https://hdl.handle.net/10419/26210>

**Standard-Nutzungsbedingungen:**

Die Dokumente auf EconStor dürfen zu eigenen wissenschaftlichen Zwecken und zum Privatgebrauch gespeichert und kopiert werden.

Sie dürfen die Dokumente nicht für öffentliche oder kommerzielle Zwecke vervielfältigen, öffentlich ausstellen, öffentlich zugänglich machen, vertreiben oder anderweitig nutzen.

Sofern die Verfasser die Dokumente unter Open-Content-Lizenzen (insbesondere CC-Lizenzen) zur Verfügung gestellt haben sollten, gelten abweichend von diesen Nutzungsbedingungen die in der dort genannten Lizenz gewährten Nutzungsrechte.

**Terms of use:**

*Documents in EconStor may be saved and copied for your personal and scholarly purposes.*

*You are not to copy documents for public or commercial purposes, to exhibit the documents publicly, to make them publicly available on the internet, or to distribute or otherwise use the documents in public.*

*If the documents have been made available under an Open Content Licence (especially Creative Commons Licences), you may exercise further usage rights as specified in the indicated licence.*

# DOES IMMIGRATION AFFECT THE PHILLIPS CURVE? SOME EVIDENCE FOR SPAIN

SAMUEL BENTOLILA  
JUAN J. DOLADO  
JUAN F. JIMENO

CESIFO WORKING PAPER NO. 2166  
CATEGORY 5: FISCAL POLICY, MACROECONOMICS AND GROWTH  
DECEMBER 2007

*An electronic version of the paper may be downloaded*

- *from the SSRN website:* [www.SSRN.com](http://www.SSRN.com)
- *from the RePEc website:* [www.RePEc.org](http://www.RePEc.org)
- *from the CESifo website:* [www.CESifo-group.org/wp](http://www.CESifo-group.org/wp)

# DOES IMMIGRATION AFFECT THE PHILLIPS CURVE? SOME EVIDENCE FOR SPAIN

## Abstract

The Phillips curve has flattened in Spain over 1995-2006: unemployment has fallen by 15 percentage points, with roughly constant inflation. This change has been more pronounced than elsewhere. We argue that this stems from the immigration boom in Spain over this period. We show that the New Keynesian Phillips curve is shifted by immigration if natives' and immigrants' labor supply or bargaining power differ. Estimation of the curve for Spain indicates that the fall in unemployment since 1995 would have led to an annual increase in inflation of 2.5 percentage points if it had not been largely offset by immigration.

JEL Code: E31, J64.

Keywords: Phillips curve, immigration.

*Samuel Bentolila*  
*CEMFI*  
*Casado del Alisal 5*  
*28014 Madrid*  
*Spain*  
*bentolila@cemfi.es*

*Juan J. Dolado*  
*Department of Economics*  
*University Carlos III Madrid*  
*C./ Madrid, 126*  
*28903 Getafe (Madrid)*  
*Spain*  
*dolado@eco.uc3m.es*

*Juan F. Jimeno*  
*Bank of Spain*  
*Research Division*  
*C/. Alcalá 48, N10-19*  
*28014 Madrid*  
*Spain*  
*juan.jimeno@bde.es*

3 December 2007

The first author is also affiliated with CEPR and CESifo; the second and third, with CEPR and IZA. We are grateful to Javier Andrés, Olivier Blanchard, Alex Cukierman, Harris Dellas, Jordi Galí, Steve Nickell, and participants in the June 2007 Kiel Institute for the World Economy conference on “The Phillips Curve and the Natural Rate of Unemployment” and in a seminar at the University of Bern for helpful comments.

# 1 Introduction

Over the period 1995-2006, Spanish unemployment has decreased by almost 15 percentage points, from 22% to 8%, while inflation has remained subdued, falling first from 4% to 2% in the run-up to European Monetary Union (EMU) and then moving back again to 3-4% since the 2000s. Thus, as depicted in Figure 1, there have been remarkable changes in the position and slope of the Spanish Phillips curve (henceforth, PC), which has shifted inwards and become much flatter. These trends have been shared by many other countries over that period. For instance, the fall in the inflation rate and its volatility in Spain is very similar to those in the euro area.<sup>1</sup> Spain is however atypical in that the favorable inflation developments have coincided with a fall in unemployment which is much larger than the average 2.5 percentage-point drop in the euro area.

The causes of the reduction in Spanish unemployment since the mid-1990s have been analyzed to some extent in the literature (see, e.g., Bentolila and Jimeno, 2006). However, the changes in the long-run level of inflation and its short-run tradeoff with unemployment remain largely unexplored. Most of the standard stories proposed to explain the recent joint evolution of inflation and unemployment in other countries do not seem very useful in the case of Spain. For instance, while structural unemployment has clearly fallen, it is difficult to identify key labor market reforms that could explain such a large reduction and hence sustain a lower level of long-run inflation at current unemployment rates. Next, a rise in the productivity growth rate, which has been proposed to explain the improved inflation-unemployment tradeoff in the United States (Ball and Moffitt, 2001), does not fit the Spanish experience either. Indeed, over the last decade, productivity growth in Spain, if anything, has fallen, being among the lowest in the European Union nowadays. Likewise, explanations based on the effects of monetary policy on real activity (Karanassou *et al.*, 2002, and Karanassou and Snower, 2007) require extreme assumptions leading to the existence of a non-vertical PC in the long run, and in any event they do not explain why similar developments have not occurred

---

<sup>1</sup>The decline in inflation volatility has happened in many other economies, alongside a decline in the volatility of GDP. This is often referred to as the “Great Moderation” (see Bernanke, 2004, for a survey).

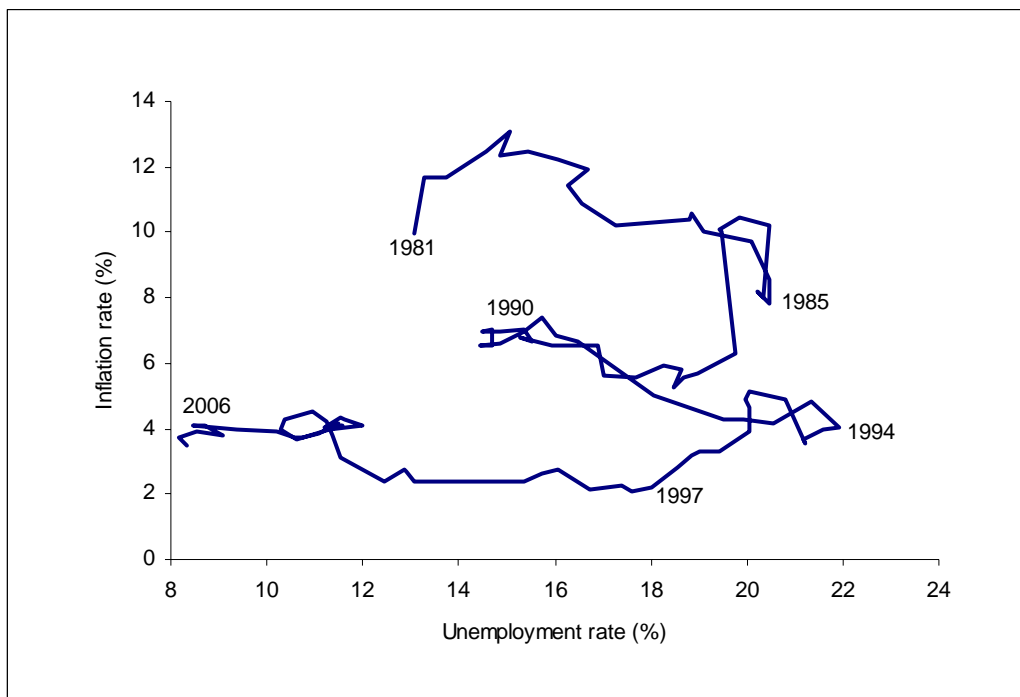


Figure 1: Inflation and unemployment in Spain, 1980-2006

in other European countries. It has also been argued that the opening of both the trade and the capital account lead to a flattening of the PC (Razin and Loungani, 2007), although other authors point out that if globalization increases competition and, hence, makes wages and prices more flexible, the PC ought to become steeper, not flatter.<sup>2</sup> Moreover, although trade openness has noticeably increased since the early 1990s, it seems doubtful that it could sustain low inflation on its own, in the face of such a large reduction in unemployment. Finally, EMU could have contributed to the flattening of the PC, as low inflation expectations became better anchored. Still, why inflation did not surge with the large reduction in unemployment is puzzling.

Recent studies on the inflation rate and its tradeoff with unemployment in Spain have taken three different approaches. First, the sources of the Spanish persistent positive inflation differential vis-à-vis the rest of the Euro area have been analyzed within calibrated dynamic stochastic general equilibrium models. This type of studies concludes that the differential could be explained either by demand shocks biased towards

---

<sup>2</sup>See Ball (2006). Further discussion is found in Rogoff (2003) and Bean (2006).

non-tradable goods combined with real wage rigidities (López-Salido *et al.*, 2005) or by fluctuations in productivity growth in the tradable sector (Rabanal, 2006). Secondly, as mentioned above, there is research on the possibility of a non-zero unemployment-inflation tradeoff in the long-run Spanish PC, which focuses on the interaction between money growth and nominal frictions by estimating reduced form inflation equations (Karanassou *et al.*, 2002). Lastly, and closer to our work, Galí and López-Salido (2001) estimate a New Keynesian PC (NKPC) for the Spanish economy during the disinflation period (1980-1998). They show that it fits the data quite well, though with a relatively high degree of inflation persistence, and that the price of imported intermediate goods and labor market frictions are the key factors driving the dynamics of marginal costs, which determine inflation jointly with inflation expectations.

None of these studies, however, addresses a recent fundamental change affecting the Spanish labor market, namely the immigration boom that has taken place since the mid-1990s. The proportions of foreigners in the Spanish population and labor force were both around 1% in 1995, while in 2006 they reached around 10% and 14%, respectively. As we will discuss later, there have been very large waves of immigrants, specially since 2000, coming mainly from Latin America, North Africa, and Eastern Europe.

In this paper we aim at filling this gap by analyzing the consequences of immigration for the joint behavior of unemployment and inflation. So far this topic has drawn little attention in the literature on the PC. To our knowledge, only two recent papers tackle it directly. On the one hand, Razin and Binyamini (2007) show that immigration and outmigration raise the elasticities of labor supply and labor demand inducing a flatter PC. On the other hand, Engler (2007) finds a similar result, albeit this time via temporary outmigration of natives. Our approach differs from theirs in that we stress other labor-market channels through which immigration can affect inflation determination. To the extent that wages are differently determined for natives and immigrants –for instance if immigrants are less well represented by labor unions than natives– or insofar as the marginal rate of substitution between consumption and leisure is different for each group –immigrants tend to be more mobile and more willing to take low-paid jobs than natives– expected marginal costs can fall as immigration increases. Through

these effects, we embed immigration into an otherwise standard NKPC with real wage sluggishness, as proposed recently by Blanchard and Galí (2007). In this way, we derive microfounded inflation equations that are estimated and used to account for the impact of the immigration boom on the recent evolution of the Spanish PC.

The rest of the paper is structured as follows. In Section 2 we review in more detail several hypotheses used in the literature to explain the changes in the PC in most major economies, and discuss whether they fit the evidence for Spain. In Section 3 we document the changes in the Spanish labor market since the mid-1990s, focusing on immigration. In Section 4 we derive an NKPC when the labor market is composed of two worker types, namely immigrants and natives. In Section 5 we discuss the results from estimating the NKPC with immigration for Spain since the early 1980s. Section 6 contains evidence about how our proposed NKPC performs at the industry level, given that immigration is highly concentrated on some industries. Section 7 concludes. Two Appendices gather some analytical derivations and a description of the data.

## 2 The joint fall of inflation and unemployment

The recent evolution of inflation and unemployment in Spain brings out three stylized features: a reduction in inflationary expectations, a large fall in the structural unemployment rate or NAIRU, and a flatter PC. While the fall in inflationary expectations is clearly due to the change in the monetary policy regime in the late 1990s brought forth by EMU, the factors behind the other two changes are less evident.

According to some estimates, the NAIRU has fallen from about 15% in 1996 to 9% in 2006 (Izquierdo and Regil, 2006). This is remarkable, as structural policy indicators do not exhibit important changes. For instance, the “reform intensity indicator” of Brandt *et al.* (2005) for 1994-2004 ranks Spain in the 24th position out of 30 OECD countries. In fact, considering all institutions usually regarded as relevant in explaining structural unemployment –tax wedge, employment protection legislation (EPL), unemployment benefits, wage setting and industrial relations, working-time flexibility, incentives for labor market participation, and product market regulation– Spain only shows noticeable

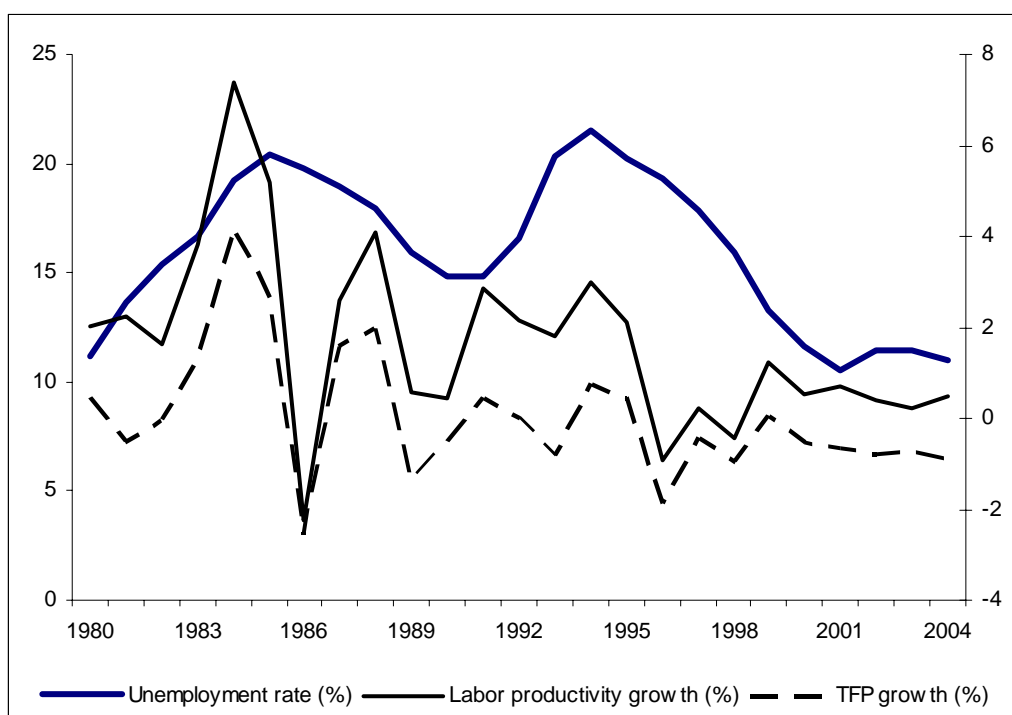


Figure 2: Unemployment rate and productivity growth (right scale), 1980-2004

changes in the strictness of EPL for permanent labor contracts (which has been significantly relaxed between 1994 and 2003 according to the OECD –probably a too benign judgment of a labor reform in 1997) and in product market regulation (an improvement shared by most other OECD countries).<sup>3</sup>

As for the unemployment-inflation tradeoff, it has been argued that higher productivity growth could reduce the level of inflation at given wages. The basic idea is that misalignment between wage aspirations and productivity shift the PC. This explanation has been used to rationalize the inward shift of the PC in the United States since 1995 (Ball and Moffitt, 2001). However, since the mid-1990s, when unemployment began to fall in Spain, the productivity growth rate has also fallen significantly. As seen in Figure 2, both labor productivity and total factor productivity (TFP) showed noticeable deceleration, with the former being barely positive and the latter being even negative since the beginning of the 2000s.<sup>4</sup>

<sup>3</sup>On labor market reforms in Spain see Dolado *et al.* (2002) and Bentolila and Jimeno (2006).

<sup>4</sup>Data on productivity are from the EU KLEMS Database, March 2007, [www.euklems.net](http://www.euklems.net).

Lastly, another potential factor driving the fall in inflation is globalization, which operates through two basic mechanisms: increasing trade integration and global competition, and changes in import prices (International Monetary Fund, 2006). As for trade integration, the degree of openness (exports plus imports divided by GDP) has indeed increased, but along a long-term trend. Thus, it is far from being a new phenomenon although it can be argued that its trend tilts up since 1992, coinciding with the onset of a disinflation episode (see Figure 3). Yet, in our view, the evolution of inflation during 1992-1998 is mostly determined, as in many other European countries, by the nominal convergence process required to join EMU. Secondly, Figure 4 shows that, although the growth rate of nominal imported input prices decelerated up to the early 1990s, with inflation following suit, since then it has fluctuated around a constant mean. This indicates a decoupling from inflation –which keeps declining until 1998 and then goes up again. In our empirical model we will include imported input inflation as a determinant of marginal costs and thus of inflation. In the next section we document another dimension of globalization, widely understood, which has changed more dramatically in Spain, namely immigration.

### 3 The immigration boom

In 1991 there were only about 350.000 foreigners living in Spain, but by 2006 the figure had risen to about 4.1 million, i.e. it went from 1% to 9.3% of total population. The average annual immigrant flow during 2000-2006 was around 485.000 persons, one of the largest among developed countries (cfr. 1 and 1.2 millions, respectively, in the European Union and the United States). This is quite a unique experience. Using comparable data from Eurostat, the Spanish yearly net immigration rate over 2000-2004 is equal to 1.3%. No other large or middle-sized European country has sustained such a large inflow over a 5-year period since 1965 (when data start); the closest figures are 0.9% in Ireland over the same period and 1% in Portugal over 1975-1979.<sup>5</sup>

The geographical distribution of immigrants is roughly 24% from the European Union

---

<sup>5</sup>Very small countries like Cyprus, Luxembourg or Lichtenstein do show similar or even higher rates in certain periods.

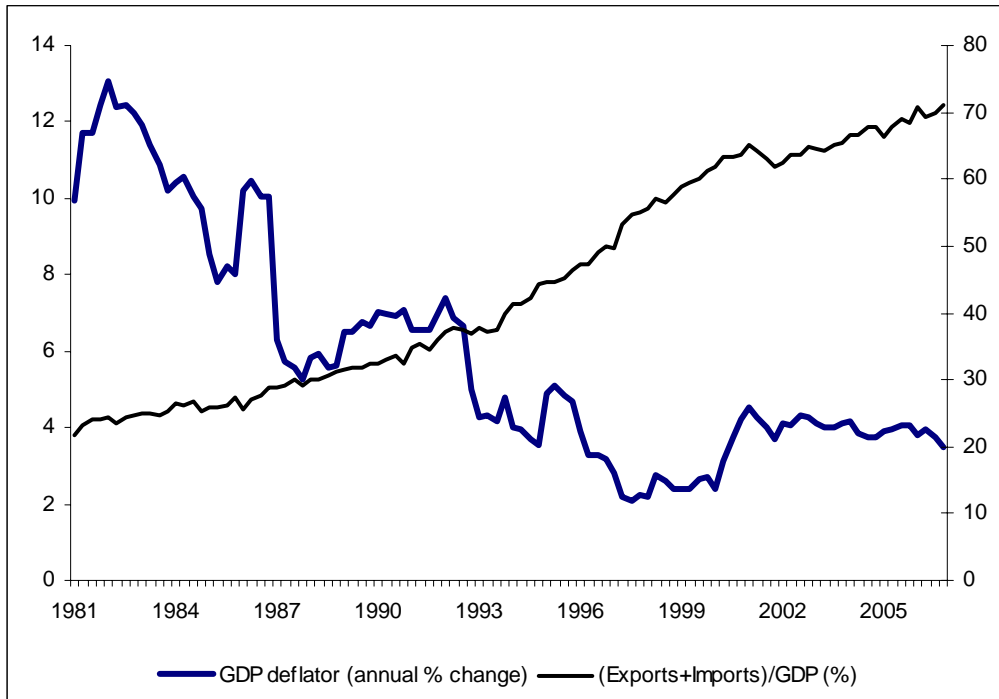


Figure 3: Inflation and the degree of openness (right-scale), 1980-2006

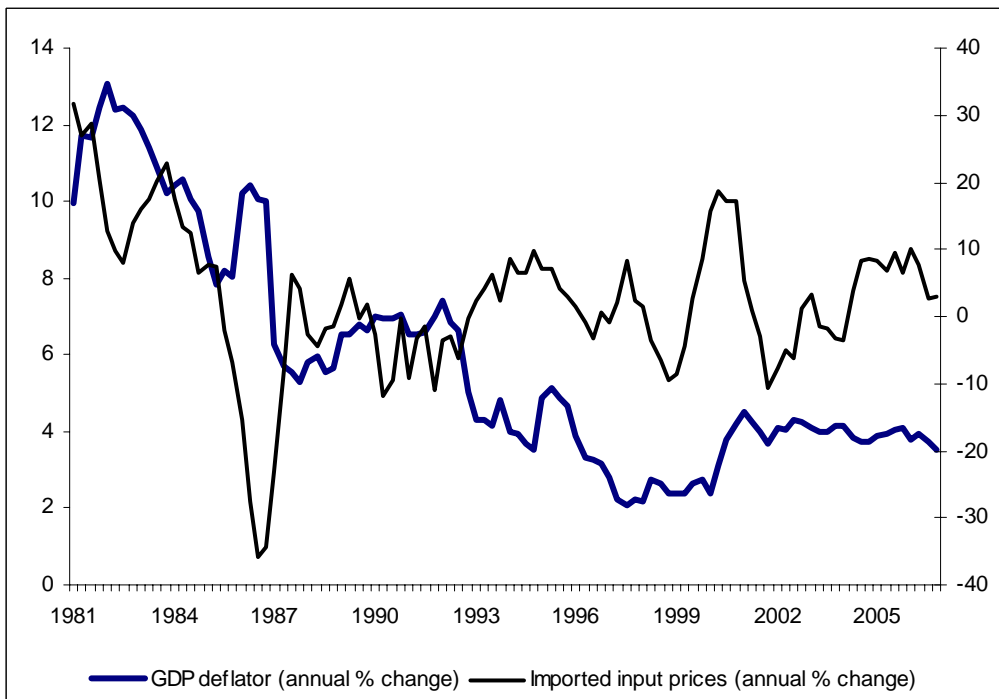


Figure 4: Inflation and the growth rate of imported input prices (right scale), 1980-2006

and 76% from the rest of the world (34% from South America, 20% from Africa, 13% from Eastern Europe, 5% from Asia, and 4% from other areas).<sup>6</sup> Immigrants are over-represented, vis-à-vis natives, in agriculture (7.4% vs. 5.6% in 2000-2006) and construction (17.8% vs. 11.5%), and under-represented in industry and services (though they show high shares in some service industries, like home services, and hotels and catering). For the most representative group of immigrants over the period 1996-2006, namely those aged 20-45 years old from Eastern Europe, Africa, and Latin America, Fernández and Ortega (2007) report that immigrants have slightly less schooling than natives (10.08 vs. 10.35 years, although those from Africa show a significantly lower figure, 7.5 years). Nevertheless, 39% of them take jobs for which they are overqualified, vis-à-vis 17% of natives.<sup>7</sup>

As seen in Figure 5, immigration flows started to increase around 1996 and accelerated from 2000. Why did it happen precisely at those periods? Mostly due to prosperity. The latest Spanish economic boom began in the second half of 1995. Then, in the 2000s, Spain sustained high growth while many other European countries had low growth or stagnation. Since 1995 Spanish GDP growth has surpassed the euro area average by 1.3% per year while the differential in Spanish employment growth has been a staggering 2.9%, implying that Spain has created 48% of all new net jobs in the euro area (*OECD Economic Outlook* database, June 2007). More specifically, the large fall in real interest rates following the adoption of the euro favored industries with long and large investments, like construction, which are intensive in unskilled labor. The progressive rise in female labor force participation<sup>8</sup> also increased the demand for household services which migrants were ready to provide at low wages. Additionally, although there has not been an active policy geared towards attracting immigrants, several amnesties have granted legal residence to illegal immigrants (1996, 2000/2001, and 2005). These forces, alongside the crises in several Latin American countries in the early 2000s and

---

<sup>6</sup>For a more detailed account of the stylised facts of immigration in Spain see Carrasco *et al.* (2007), and Dolado and Vázquez (2007).

<sup>7</sup>A worker is considered to be overeducated when his/her level of education is above the mean plus one standard deviation in his/her occupational category.

<sup>8</sup>For example, the participation rate of native females aged 24 to 54 years old rose from 57.5% in 1996 to 67.8% in 2004.

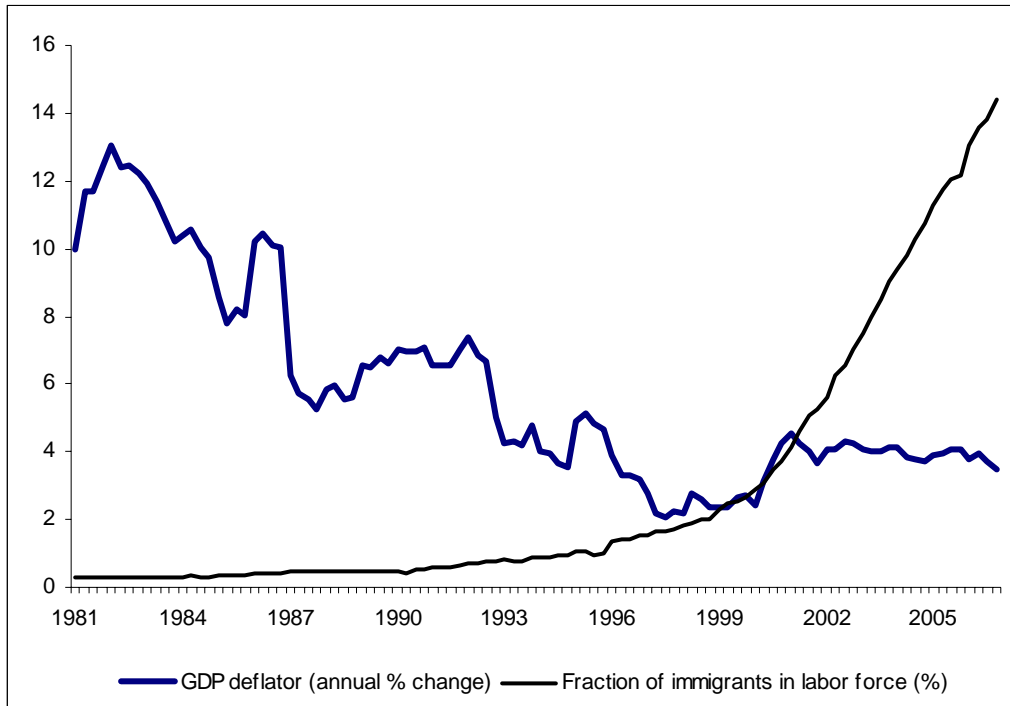


Figure 5: Inflation and the fraction of immigrants in the labor force, 1980-2006

the long-standing decline in Africa, respectively provided strong pull and push effects on immigration. Lastly, growing network effects strengthened the initial forces.

It is also worth stressing that in the 2000s the unemployment rate of immigrants has diverged from the national average, remaining well above that of natives (see Figure 6). The main reason for this phenomenon is the sheer size of the inflows. Fernández and Ortega (2007) examine the labor market assimilation of immigrant workers in Spain, concluding that on average they tend to achieve similar unemployment rates as natives about five years after arrival. Thus, a continuous yearly influx of more than 1% of the labor force was bound to mechanically increase the average unemployment rate of immigrants. Moreover, even after their assimilation period, immigrants tend to be over-represented in temporary jobs, and in construction and certain service industries, all of which are associated with high turnover rates.<sup>9</sup> This means that, even if their labor

<sup>9</sup>Fernández and Ortega (2007) report that over 1996-2006 the proportion of employed immigrants with temporary jobs was 60.7% (versus 33.6% for natives). They also show that immigrants have higher unemployment rates than natives after controlling for personal characteristics, in particular for education and experience.

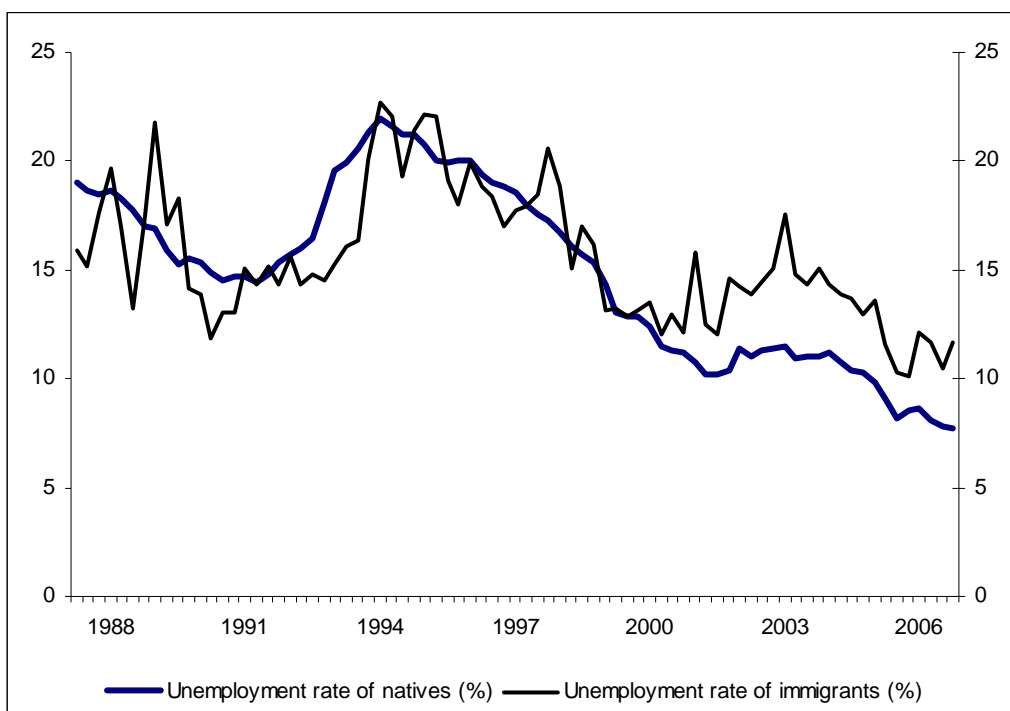


Figure 6: Unemployment rates of natives and immigrants, 1987-2006

supply elasticity is lower than that of natives (as assumed in Section 4 below), we would expect migrants to experience higher frictional unemployment than natives.

Natives are also likely to have lower bargaining power vis-à-vis employers than natives. Apart from any assimilation handicaps (e.g. regarding command of the language), they most often work in industries with a lower coverage of collective wage bargaining.<sup>10</sup> We estimate that their coverage rate is about 8 points lower than the rate for natives. Alternatively, the coefficient of correlation across industries between the coverage rate and the immigrant share of employees is equal to -0.11.

As a rough first-pass indication of the potential impact of immigration on the Spanish labor market, Figure 7 shows a negative correlation between real wage growth and the differential between the unemployment rate of immigrants and the overall unemployment rate. It is noticeable that real wage growth turns negative precisely during the latter period, when the unemployment rate gap accelerates.

<sup>10</sup>The degree of unionization is not available and, moreover, it does not mean much in the Spanish economy, since collective bargains are extended to all employees in the industry.

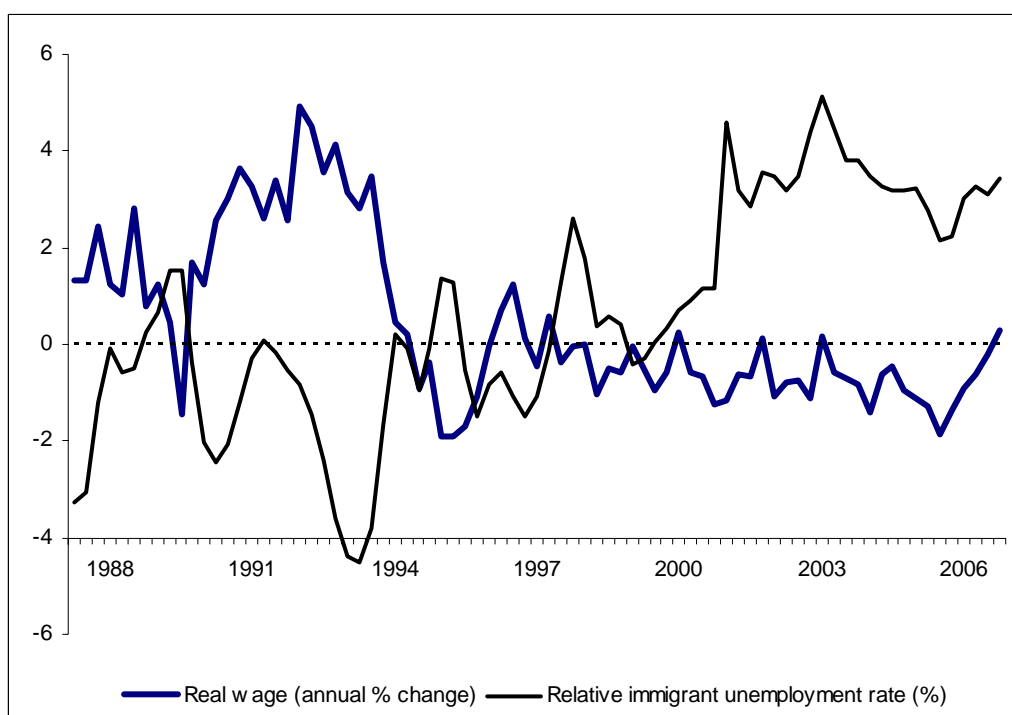


Figure 7: Real wage growth and relative immigrant unemployment rate, 1987-2006

There is a long literature on the effects of immigration on the receiving country's labor market. Most studies analyze the impact on employment rates and wages of native workers.<sup>11</sup> Much less attention has been paid to immigration in the macroeconomic analysis of the labor market and, specifically, to the impact of immigration on the NAIRU and the unemployment-inflation tradeoff. This neglect is probably due to the long-run neutrality of labor supply in standard macroeconomic models of unemployment. However, assuming some differences between immigrants and natives, there are several channels through which immigration may affect labor market outcomes. First, there is an ongoing debate on whether immigrant and native workers are complements (Ottaviano and Peri, 2006) or substitutes (Borjas, 2003) in production. Secondly, the employment patterns of immigrants and, in particular, their industry composition and geographical mobility suggest that they have different preferences regarding consumption and leisure than natives. For instance, as mentioned earlier, Razin and Binyamini (2007) show that

<sup>11</sup>See Card (2001) for the US, Carrasco *et al.* (2007) for Spain, and Borjas (1999) for a survey.

immigration alters the elasticities of labor supply and labor demand, inducing a flatter PC. Lastly, it is also likely that immigrants have a lower bargaining power than natives in noncompetitive labor markets. Hence, a rise in the immigration flow increases the labor intensity of production, changes the elasticity of labor supply, and decreases the markup of wages over the marginal rate of substitution between consumption and leisure. In the next section, we explicitly model how these three effects interact to change the PC.

## 4 An NKPC accounting for immigration

In this section we extend the standard analysis of the NKPC to take into account heterogeneity across two types of workers with different characteristics, namely immigrants and natives. We first present the setup of the model and then solve for equilibrium with real wage rigidity and monopoly power.

### 4.1 Model setup

As is standard in the literature on the NKPC, we start by assuming an economy with a continuum of monopolistically competitive firms, each producing a differentiated product ( $Q$ ) and facing an isoelastic demand with price elasticity  $\epsilon > 1$ . The production function is constant returns to scale (CRS) Cobb-Douglas with two inputs, labor ( $N$ ) and raw materials ( $M$ ). For simplicity, as in Blanchard and Galí (2007) (hereafter BG), we ignore capital in the following analysis, so that  $Q$  should be interpreted *stricto sensu* as final output net of capital compensation. The main novelty here with respect to most models in this literature is the assumption that the labor input consists of two components, to be interpreted as native ( $N_1$ ) and immigrant workers ( $N_2$ ). Since both types of workers are bound to be imperfect substitutes, we aggregate them into the single labor-input index ( $N$ ) through a CES function. Hence,

$$Q_t = N_t^{1-\alpha} M_t^\alpha \quad (1)$$

$$N_t^\rho = \delta_1 N_{1t}^\rho + \delta_2 N_{2t}^\rho, \quad (2)$$

so that  $\sigma = (1 - \rho)^{-1}$  is the elasticity of substitution between native and immigrant workers.<sup>12</sup>

By means of the envelope theorem, marginal costs plus the markup can be expressed as a function of the labor index as follows (hereafter lowercase letters denote logs of variables in levels):

$$mc_Q + \mu^p = \omega - (q - n) - \ln(1 - \alpha) + \mu^p, \quad (3)$$

where  $\omega$  is the average real wage (i.e. the log of the nominal wage,  $w$ , minus the log of the gross output deflator,  $p_Q$ ),  $mc_Q$  is the real marginal cost of producing  $Q$ , and  $\mu^p$  ( $= \log(\epsilon/\epsilon - 1)$ ) is a constant price markup.

We assume that immigrants and native workers are not only different in production, but also in their marginal rate of substitution between consumption and leisure (MRS), as given by the following functions, for  $i = 1, 2$ ,

$$U_i = \ln C_i - e^\xi \frac{N_i^{1+\phi_i}}{1 + \phi_i},$$

where  $C_i$  is composite consumption (with elasticity of substitution equal to  $\epsilon$ ) and  $\xi$  is a preference parameter. Hence, the marginal rate of substitution,  $mrs_i$ , between consumption and labor is given by

$$mrs_i = c_i + \phi_i n_i + \xi. \quad (4)$$

Following the discussion in Section 3, it is assumed that the slopes of the labor supply curves of immigrant and native workers in the wage-employment space differ. In particular, we proceed in the sequel as if  $\phi_2 > \phi_1$ . Since the  $\phi_i$  are the inverses of the respective Frisch elasticities of labor supply, this means that the labor supply of immigrants is taken to be less elastic than that of native workers.<sup>13</sup> This assumption,

---

<sup>12</sup>Notice that the assumption of constant returns to scale in (1) can be relaxed to short-run decreasing returns ( $\alpha_m + \alpha_n < 1$ ), considering that we ignore capital. BG discuss this case and show that the specification of the NKPC in this case only differs from that derived below in (27), with  $\alpha_m + \alpha_n = 1$ , by having the differenced unemployment rate as an additional regressor. This is checked in the empirical estimation below.

<sup>13</sup>This implies that, in the presence of a negative demand shock leading to a positive unemployment gap (i.e.  $u_2 - u > 0$ ), immigrants are more ready to reduce their wages than natives in order to remain employed. By the same token, if a positive demand shock takes place, immigrants' wages would increase by a larger amount, given our linearity assumption. In order to check whether the labour supply curve of immigrant workers is concave, we will allow for a quadratic term in their relative unemployment when estimating the NKPC equation (27) derived below.

however, can be tested later in the empirical section.

Then, taking a log-approximation of equation (2) around the steady-state, we have that average employment and wages (in deviations from steady state) are given by (see Appendix A.1 for a derivation)

$$\begin{aligned} n &= \bar{\lambda}n_1 + (1 - \bar{\lambda})n_2 \\ \omega &= \bar{\lambda}\omega_1 + (1 - \bar{\lambda})\omega_2, \end{aligned} \tag{5}$$

with  $\bar{\lambda} \simeq \delta_1(\frac{\bar{N}_1}{\bar{N}})^\rho = 1 - \delta_2(\overline{IR})^\rho$ , where  $\overline{IR}$  ( $= \bar{N}_2/\bar{N}$ ) denotes the steady-state immigration rate defined in terms of employment.

The expressions in (5) would hold exactly if we had assumed a Cobb-Douglas labor aggregator in equation (2), which is the limit case of the CES function when  $\sigma$  tends to 1. In that case,  $\bar{\lambda}$  and  $1 - \bar{\lambda}$  could be interpreted as the distribution parameters  $\delta_1$  and  $\delta_2$ , respectively. However, the Cobb-Douglas specification poses at least two problems. First, it implies that production cannot be carried out without immigrants, which does not sit well with the very low fraction of employment represented by immigrants at the beginning of our sample period (0.3%). And secondly, the immigration rate has increased steadily over time, which renders its steady-state value  $\overline{IR}$  a not well-defined concept. We could tackle this issue by endogeneizing  $\overline{IR}$  in terms of a Harris-Todaro non-arbitrage wage condition, so that  $\overline{IR}$  would be implicitly defined by the equality of expected wages of immigrants in the countries of origin and destination (see Razin and Binyamini, 2007). However, this route is not feasible, since at the estimation stage we would need long time series of immigrants' wages in all origin countries, which are unavailable. Another possibility would be to adopt the standard approach advocated by Galí and Gertler (1999) of using the labor income share to capture the evolution of the real marginal cost. Given our CES specification in (2), this would imply that the real marginal cost would be equal to a linear combination of the labor income share and the relative wage of native and immigrant workers.<sup>14</sup> Unfortunately, this route is

---

<sup>14</sup>This is akin to the conventional procedure developed by Rotemberg and Woodford (1999) when they discuss the case of a CES production function, instead of (1), with labor and raw materials as inputs. They show that, besides the labor share, the other determinant of real marginal cost is the relative price of the two inputs.

again not feasible, since there is only data on aggregate wages in Spain but not on wages according to workers' nationality.

Given these caveats, we need to account for time variation in the weighting factors used to aggregate employment and wages of the two types of workers in (5). To do so, we take a shortcut by implementing a similar approximation to the one before, but this time around the observed values of the ratio  $N_2/N$  during our sample, rather than around its steady-state value,  $\bar{N}_2/\bar{N}$ . This yields a time-varying parameter given by  $\lambda(IR) = 1 - \delta_2(IR)^\rho$ , where  $IR$  is the observed immigration rate in terms of employment. Next, we approximate  $\lambda(IR)$  (hereafter,  $\lambda$  for short) by a quadratic function in terms of the (logged) employment-based immigration rate  $ir$  ( $= n_2 - n$ ), which arises from using a second-order Taylor approximation of  $\lambda$  around the Cobb-Douglas case of  $\rho = 0$ .<sup>15</sup> In this way, the time variation in  $\lambda$  around  $\bar{\lambda}$  is captured by changes in the variable  $ir$  over the sample period. As shown in Appendix A.2, this Taylor expansion takes the form

$$\lambda \simeq (1 - \bar{\lambda}) - \bar{\lambda}(\rho \, ir + \frac{\rho^2}{2} ir^2), \quad (6)$$

i.e., an expression which will give rise to interaction terms between one of the explanatory variables and the two terms in  $ir$  when we reach the final specification of the NKPC (see Section 4.4 below). Hence, in the sequel, we will proceed by replacing (5) with the alternative approximations

$$\begin{aligned} n &= \lambda n_1 + (1 - \lambda) n_2 \\ \omega &= \lambda \omega_1 + (1 - \lambda) \omega_2, \end{aligned} \quad (7)$$

with  $\lambda$  defined as in (6).

#### 4.1.1 Sluggish wages and markups

As in BG, we consider the case where real wages respond sluggishly to labor market conditions, due to some (unmodeled) imperfection in the labor market. Further, it is assumed that there are gross wage markups (possibly time varying), denoted (in logs) by  $\mu_i^\omega$  ( $i = 1, 2$ ). The markups reflect factors like any monopoly power held by workers in

---

<sup>15</sup>This resembles the procedure advocated by Kmenta (1967) to estimate CES production functions.

the labor market or distorsionary taxes on labor income, which can differ across worker types. Specifically, it is assumed that real wages of both native and immigrant workers follow a partial adjustment model of the form (again for  $i = 1, 2$ ):

$$\omega_i = \gamma\omega_{i,-1} + (1 - \gamma)(mrs_i + \mu_i^\omega). \quad (8)$$

Thus, replacing (4) in (8) yields

$$\omega_i = \gamma\omega_{i,-1} + (1 - \gamma)(c_i + \phi_i n_i + \xi + \mu_i^\omega), \quad (9)$$

where  $\gamma \in [0, 1)$  is the sluggishness parameter.<sup>16</sup> In order to compute the average wage  $\omega$ , using (7), it is useful to notice the following result regarding the weighted sum of the  $n_i$  terms appearing in the aggregation of the two wages in (9),

$$\lambda\phi_1 n_1 + (1 - \lambda)\phi_2 n_2 = \psi n + \phi_{21} ir, \quad (10)$$

where  $\psi = \lambda\phi_1 + (1 - \lambda)\phi_2$ , i.e. the average of the inverse labor supply elasticities, and  $\phi_{21} = (1 - \lambda)(\phi_2 - \phi_1) > 0$ . Then, denoting the lag operator by  $L$  and noting that the partial adjustment equations (8) can be rewritten as  $\omega_i = \frac{(1-\gamma)(mrs_i + \mu_i^\omega)}{1-\gamma L} = mrs_i + \mu_i^\omega - \frac{\gamma\Delta(mrs_i + \mu_i^\omega)}{1-\gamma L}$ , the combination of (4) and (9), yields the average wage

$$\omega = q + \psi n + \phi_{21} ir + \xi + \mu^\omega - \frac{\gamma\Delta(q + \psi n + \phi_{21} ir + \xi + \mu^\omega)}{1 - \gamma L}, \quad (11)$$

where, in our economy with just consumption goods, average consumption is equal to output, that is,  $q = \lambda c_1 + (1 - \lambda)c_2$ , and  $\mu^\omega = \lambda\mu_1^\omega + (1 - \lambda)\mu_2^\omega$  is the average markup.

From (1), the MRS between labor and raw materials implies that labor productivity behaves as

$$q - n = \alpha(m - n) = \alpha(\omega - s_Q) + \alpha \ln \frac{\alpha}{1 - \alpha},$$

---

<sup>16</sup>We also tried an alternative specification where the persistence parameters differ across workers and their preferences are identical, i.e.,

$$\omega_i = \gamma_i \omega_{i,-1} + (1 - \gamma_i)(mrs + \mu^\omega); \quad i = 1, 2.$$

When using the aggregation procedure in (6), this yields the following model for wages

$$\begin{aligned} \omega - (\gamma_1 + \gamma_2)\omega_{-1} + \gamma_1\gamma_2\omega_{-2} &= (1 - \gamma_1)(1 - \gamma_2)(mrs + \mu^\omega) + \\ &\quad [\lambda(\gamma_2 - \gamma_1) + \gamma_1(1 - \gamma_2)]\Delta(mrs + \mu^\omega). \end{aligned}$$

This specification leads to more complicated dynamics in the evolution of the real marginal cost and in the NKPC, which were rejected by our data. Hence, we opted for the model described in the text.

where  $s_Q$  is the real price of raw materials (i.e., the log of its nominal price,  $p_m$ , minus  $p_Q$ ). Thereby, substituting this expression into (11), yields an equation describing the dynamic evolution of real wages from the workers' side:

$$\omega = \Gamma\omega_{-1} + \frac{1-\Gamma}{1-\alpha}[\alpha \ln \frac{\alpha}{1-\alpha} + (1+\psi)n + \phi_{21}ir + \xi - \alpha s_Q + \mu^\omega], \quad (12)$$

with  $\Gamma = \frac{\gamma}{1-\alpha+\gamma\alpha} < 1$ .

## 4.2 First-best equilibrium

The next step is to derive the first-best price equilibrium in this economy. This corresponds to the case where prices and wages are flexible ( $\gamma = 0$ ), and labor and goods markets are perfectly competitive, i.e.  $\mu^\omega = \mu^p = 0$ . In such an equilibrium, from the firms' side, the real aggregate wage would be equal to the marginal product of labor ( $mpn$ ), that is,  $\omega = mpn = q - n + \ln(1 - \alpha)$ . Similarly, from the workers' side, the real wage would be equal to the marginal rate of substitution, that is,  $\omega = q + \psi n + \phi_{21}ir + \xi$ . Therefore, equating both expressions and labeling the first-best equilibrium value of a generic variable  $x$  by  $\bar{x}^F$ , we have that the employment of natives and immigrants in this equilibrium satisfy the following condition

$$(1 + \psi) \bar{n}^F + \phi_{21} \bar{ir}^F = \ln(1 - \alpha) - \xi. \quad (13)$$

## 4.3 Equilibrium with real wage rigidities and monopoly power

Going back to our economy with labor market frictions and monopolistic power in the goods and labor markets, substitution of (13) into (12) yields the evolution of the wage-setting from the workers' side,

$$\omega = \Gamma\omega_{-1} + \frac{1-\Gamma}{1-\alpha}[\alpha \ln \alpha + (1-\alpha) \ln(1-\alpha) - \alpha s_Q + \mu^\omega + (1+\psi)\tilde{n} + \phi_{21}\tilde{ir}], \quad (14)$$

where  $\tilde{n}$  ( $= n - \bar{n}^F$ ) and  $\tilde{ir}$  ( $= ir - \bar{ir}^F$ ) are the deviations of  $n$  and  $ir$  from their corresponding first-best equilibrium values.

From the firms' side we have that  $mc_Q + \mu^p = \omega - mpn + \mu^p$ . Then, inserting (14) into this expression and using (1) yields the following equation describing the corresponding

dynamic evolution of the real marginal cost of gross output

$$(1 - \Gamma L)(mc_Q + \mu^p) = \frac{(1 - \Gamma)(1 + \psi)}{1 - \alpha} \tilde{q} + (1 - \Gamma)\phi_{21}\tilde{ir} + \alpha\Gamma\Delta s_Q + (1 - \Gamma)(\mu^\omega + \mu^p), \quad (15)$$

where  $\tilde{q} = q - \bar{q}^F$ .

#### 4.4 Unemployment and immigration in the marginal cost

In order to express (15) in terms of observables, namely the unemployment ( $u$ ) and immigration rates, we follow BG in assuming that the (logged) labor supplies ( $\ell_i$ ) and the relative labor supply of immigrants vis-à-vis natives ( $irl = \ell_2 - \ell_1$ ) are implicitly defined by:

$$\omega = q + \psi\ell + \phi_{21}irl + \xi + \bar{\mu}^\omega. \quad (16)$$

That is,  $\ell$  and  $irl$  measure the notional quantities of labor that native and immigrant workers would like to supply given their current wage, marginal utility of income, and steady-state wage markup,  $\bar{\mu}^\omega$ . Hence, from the firms' side, substitution of (16) into (3), yields

$$mc_Q + \mu^p = (1 + \psi)\ell - (\ell - n) + \xi - \ln(1 - \alpha) + \phi_{21}irl + \bar{\mu}^\omega + \mu^p. \quad (17)$$

Next, making use of the standard approximation  $u \simeq \ell - n$ , noticing that  $irl = (irl - \bar{ir}^F) + \bar{ir}^F$ , and recalling the first-best equilibrium condition (13), implies that (17) can be rewritten as

$$mc_Q + \mu^p = \frac{1 + \psi}{1 - \alpha} \tilde{q} + \psi u + \phi_{21}(irl - \bar{ir}^F) + \bar{\mu}^\omega + \mu^p. \quad (18)$$

Hence, solving for  $(1 + \psi)\tilde{q}/(1 - \alpha)$  in (18) and replacing it in (15), yields the following equation describing the evolution of  $mc_Q + \mu^p$  in terms of observables

$$\Delta(mc_Q + \mu^p) = -\frac{1 - \Gamma}{\Gamma} [\psi u + \phi_{21}(u_2 - u) - \tilde{\mu}^\omega] + \alpha\Delta s_Q, \quad (19)$$

where  $\tilde{\mu}^\omega = \mu^\omega - \bar{\mu}^\omega$ , and use has been made of the result that  $irl - ir = (\ell_2 - \ell) - (n_2 - n) \simeq u_2 - u$ , i.e. the difference between the unemployment rate of immigrants and the aggregate unemployment rate.

#### 4.4.1 Interaction terms with immigration

The next step is to notice that parameters  $\psi$  and  $\phi_{21}$  depend on the time-varying weight  $\lambda$ , derived in (6). Thus we need to express equation (19) in terms of constant parameters. To do so, it is useful to notice that, since  $\psi = \phi_1 + (1 - \lambda)(\phi_2 - \phi_1) = \phi_1 + \phi_{21}$ , the linear combination of unemployment rates given by  $\psi u + \phi_{21}(u_2 - u)$  in (19), can be rewritten as follows (see Appendix A.2)

$$\psi u + \phi_{21}(u_2 - u) = \bar{\psi}u + \bar{\phi}_{21}(u_2 - u) + \rho\bar{\phi}_{21}u_2ir + \frac{\rho^2}{2}\bar{\phi}_{21}u_2ir^2, \quad (20)$$

where  $\bar{\psi} = \phi_1 + \bar{\phi}_{21}$  and  $\bar{\phi}_{21} = (1 - \bar{\lambda})(\phi_2 - \phi_1)$ , with  $\bar{\lambda}$  interpreted as in (5). Substitution of (20) into (19) yields an alternative specification of (19) in terms of constant rather than changing parameters, in which two new interaction terms of  $u_2$  with  $ir$  and  $ir^2$  appear, namely

$$\Delta(mc_Q + \mu^p) = -\frac{1 - \Gamma}{\Gamma}[\bar{\psi}u + \bar{\phi}_{21}(u_2 - u) + \rho\bar{\phi}_{21}u_2ir + \frac{\rho^2}{2}\bar{\phi}_{21}u_2ir^2 - \tilde{\mu}^w] + \alpha\Delta s_Q. \quad (21)$$

Finally, deviations of the wage markup from its steady-state value, i.e.  $\tilde{\mu}^w \neq 0$ , would also alter the marginal cost (see Galí *et al.*, 2001, for a discussion). As explained in Appendix A.3, in a right-to-manage model of wage determination by firms and unions, among other alternatives, a labor supply shift due to immigration can be captured by a rise in  $u_2 - u$ —since it is likely that immigrants will take longer than natives in finding a job— which, in turn, could be interpreted as implying a fall in  $\tilde{\mu}^w$ . For simplicity, we assume a linear relationship of the form  $\tilde{\mu}^w = -\nu(u_2 - u)$ , so that (21) becomes:

$$\Delta(mc_Q + \mu^p) = -\frac{1 - \Gamma}{\Gamma}[\bar{\psi}u + (\bar{\phi}_{21} + \nu)(u_2 - u) + \rho\bar{\phi}_{21}u_2ir + \frac{\rho^2}{2}\bar{\phi}_{21}u_2ir^2] + \alpha\Delta s_Q. \quad (22)$$

Notice that the term in  $u_2 - u$  plus the two interaction terms in  $u_2$  and  $ir$  are the new variables that our model adds to the specification proposed by BG in a similar model where immigration is ignored. The intuition behind these effects is as follows. First, insofar as the unemployment rate of immigrants is higher than the unemployment rate of natives, this will induce a reduction in the marginal cost both via lower wages—because immigrants have a less elastic labor supply than natives<sup>17</sup>— and through a reduction

---

<sup>17</sup>Think of a negative labor demand shift: wages fall more the less elastic is labor supply. Here the shift is one that reduces immigrants' employment more than natives'.

in the wage markup set by unions. Further, in our model the interaction terms give rise to the convenient property that these effects of the  $u_2 - u$  gap depend on the size of the immigration rate in the economy: the higher is the immigration rate the larger will be the reduction in inflation brought about by the unemployment rate differential. Alternatively, these effects on the marginal cost will more sizeable in economies with large immigration rates than in those with low immigration.

#### 4.4.2 Gross output and GDP deflators

Before turning to the final specification of NKPC equation, a final issue to be addressed is that, according to our interpretation of  $Q$  in (1), equation (22) yields the determinants of the marginal cost of producing gross output, rather than value added (GDP). Since a time series of the gross output deflator,  $p_Q$ , is not available for Spain (only nominal gross output at current prices is available), we need to reinterpret (22) in terms of the GDP deflator,  $p$ , which is the series we will use in the empirical section below to construct the inflation rate in the NKPC. The assumption of a Cobb-Douglas production function in (1) implies separability between raw materials and the labor input used to produce GDP. Hence, it follows that  $\Delta(mc_Q + \mu^p) = \Delta(mc + \mu^p)$ , where  $mc$  is the real marginal cost of producing GDP. Consequently, the only variable in the right-hand-side of (22) that needs to be changed is the real price of raw materials,  $s_Q$ , which was deflated by  $p_Q$ . To replace  $p_Q$  by  $p$  in this real price, we make use of the fact the former price index is implicitly defined by  $p_Q = (1 - \chi)p + \chi p_m$  or  $p_Q = p + \chi s_m$ , where  $s = p_m - p$  and  $\chi$  is the share of the value of imports in nominal gross output, as reported in the national accounts. Hence, the changes in  $s_Q$  and  $s$  are related by

$$\Delta s_Q = \Delta s - (\Delta p_Q - \Delta p) = \Delta s - \chi(\Delta p_m - \Delta p) = (1 - \chi)\Delta s. \quad (23)$$

Substitution of (23) into (22) yields the final specification of the real marginal cost of producing GDP

$$\Delta(mc + \mu^p) = -\frac{1 - \Gamma}{\Gamma} [\bar{\psi}u + (\bar{\phi}_{21} + \nu)(u_2 - u) + \rho\bar{\phi}_{21}u_2ir + \frac{\rho^2}{2}\bar{\phi}_{21}u_2ir^2] + \alpha(1 - \chi)\Delta s. \quad (24)$$

Notice that there is a difference between the shares of raw materials  $\alpha$  and  $\chi$ . As argued above, we have that  $\chi = P_m M / P_Q Q$ , whereas, denoting capital compensation

by  $rK$ ,  $\alpha = P_m M / (P_Q Q - rK)$ , since capital has been ignored as an input of  $Q$  in (1). Therefore,  $\chi < \alpha$ . In any case, the coefficient on  $\Delta s$  in the above equation is positive since  $\alpha(1 - \chi) > 0$ .

An important feature of (23) is that the marginal cost of producing GDP has a unit root as long as  $0 < \Gamma < 1$ , i.e.  $0 < \gamma < 1$ . As will be shown below, this implies that the NKPC has the appealing property that inflation is in the long run independent of real factors, which only influence the change in inflation. As explained in Appendix A.4, the insight behind this property is the presence of real rigidities, either in wages (as in the present model) or in the price-setting rule.

## 4.5 Alternative specifications of the NKPC

Having derived the evolution of the real marginal cost, the last step is to obtain an NKPC linking it to inflation. For that, we use the two well-known alternatives proposed by Galí and Gertler (1999): the forward-looking model (FNPC) and the hybrid (i.e., a combination of forward and backward-looking price-setters) model (HNPC). These two specifications are given (introducing time subscripts), respectively by

$$\pi_t = \beta E_t \pi_{t+1} + \kappa_f (mc_t + \mu^p) \quad (25)$$

$$\pi_t = \frac{\beta\theta}{\tau} E_t \pi_{t+1} + \frac{\varsigma}{\tau} \pi_{t-1} + \frac{\kappa_h}{\tau} (mc_t + \mu^p), \quad (26)$$

where  $\pi_t (\equiv p_t - p_{t-1})$  is the inflation rate in period  $t$ ,  $E_t \pi_{t+1}$  is the (rational) expectation of inflation in  $t+1$  conditional on all information available up to  $t$ ,  $\kappa_f = (1 - \beta\theta)(1 - \theta)/\theta$ ,  $\kappa_h = (1 - \varsigma)(1 - \beta\theta)(1 - \theta)$ , and  $\tau = \theta + \varsigma[1 - \theta(1 - \beta)]$ . In these expressions,  $\beta$  is the discount rate,  $1 - \theta$  is the probability that firms are allowed to optimally reset prices in period  $t$  according to Calvo's (1983) model, and  $\varsigma$  is the proportion of firms which use the simple backward-looking rule of thumb proposed by Galí and Gertler (1999).<sup>18</sup>

Substituting (22) into (25) and (26) yields the two specifications of the NKPC with immigration that we estimate below. The forward-looking PC with immigration (FN-

---

<sup>18</sup> As discussed in Appendix A.4 a similar NKPC can be derived using Rotemberg's (1982) quadratic adjustment cost model of changing prices.

PCI) is

$$\begin{aligned}\pi_t = & \psi_1^f E_t \pi_{t+1} + \psi_2^f \pi_{t-1} - \frac{(1-\Gamma)\kappa_f}{(1+\beta)\Gamma} [\bar{\psi} u_t + (\bar{\phi}_{21} + \nu)(u_{2t} - u_t) \\ & + \rho \bar{\phi}_{21} u_{2t} i r_t + \frac{\rho^2}{2} \bar{\phi}_{21} u_{2t} i r_t^2] + \frac{\alpha(1-\chi)\kappa_f}{1+\beta} \Delta s_t,\end{aligned}\quad (27)$$

with  $\psi_1^f = \beta/(1+\beta)$  and  $\psi_2^f = 1/(1+\beta)$ . Hence, everything else equal, (27) establishes a tradeoff between the change in inflation,  $\Delta\pi$ , and the unemployment rate,  $u$ . It is worth noticing that in this specification both the intercept and the slope (with respect to  $u_t$ ) of the standard PC are shifted by the presence of immigrants. In effect, in the absence of immigration (i.e.  $\bar{\phi}_{21} = \nu = 0$ ,  $\bar{\lambda} = 1$ , and  $ir = 0$ ), the slope of the PC in the  $(\Delta\pi, u)$  plane will be  $-\frac{\kappa_f(1-\Gamma)}{\Gamma(1+\beta)}\phi_1$ , since  $\bar{\psi} = \phi_1$  when  $\bar{\phi}_{21} = 0$ , as in BG. By contrast, with immigration, for given values of  $u_2$  and  $ir$ , the slope becomes  $-\frac{\kappa_f(1-\Gamma)}{\Gamma(1+\beta)}(\bar{\psi} - \bar{\phi}_{21} - \nu) = -\frac{\kappa_f(1-\Gamma)}{\Gamma(1+\beta)}(\phi_1 - \nu)$  so that the PC is flatter than in the previous case. Likewise, with immigration the intercept shifts downwards by  $-\frac{\kappa_f(1-\Gamma)}{\Gamma(1+\beta)}[(\bar{\phi}_{21} - \nu)u_{2t} + \rho\bar{\phi}_{21}u_{2t}ir_t + \frac{\rho^2}{2}\bar{\phi}_{21}u_{2t}ir_t^2]$ . Notice that both changes are therefore in line with the evolution of the Spanish PC during the last decade or so, as shown in Figure 1.

The hybrid PC with immigration (HNPCI), in turn, becomes:

$$\begin{aligned}\pi_t = & \psi_1^h E_t \pi_{t+1} + \psi_2^h \pi_{t-1} + \psi_3^h \pi_{t-2} - \frac{\tau(1-\Gamma)\kappa_h}{(\tau+\beta\theta)\Gamma} [\bar{\psi} u_t + (\bar{\phi}_{21} + \nu)(u_{2t} - u_t) \\ & + \rho \bar{\phi}_{21} u_{2t} i r_t + \frac{\rho^2}{2} \bar{\phi}_{21} u_{2t} i r_t^2] + \frac{\alpha\tau(1-\chi)\kappa_h}{\tau+\beta\theta} \Delta s_t,\end{aligned}\quad (28)$$

with  $\psi_1^h = \beta\theta/(\tau+\beta\theta)$ ,  $\psi_2^h = (\tau+\varsigma)/(\tau+\beta\theta)$ , and  $\psi_3^h = -\varsigma/(\tau+\beta\theta)$ . Thus,  $\psi_1^h + \psi_2^h + \psi_3^h = 1$ , so that, as before, the NKPC is vertical in the long run.

Inspection of (27) shows that this specification leads to the presence of forward and backward components of inflation in the NKPC without having to rely on the existence of firms which use a simple backward-looking rule of thumb to set prices. By contrast, when this type of firms is considered in (28), the backward component of inflation has two lags, the first one with a positive coefficient and the second one with a negative coefficient. These implications will be used to discriminate between the two specifications of the NKPC.

Given the long-run neutrality property, we can define the concept of fundamental change of inflation,  $\Delta\pi_t^*$ , along the lines of Galí and Gertler (1999) and Galí *et al.* (2001), to then integrate forwards this variable in order to calculate the fundamental level of inflation,  $\pi_t^*$ . In what follows we illustrate this procedure with the FNPCI specification, since the approach for the HNPCI is similar but more cumbersome. First, by iterating (27) forward, we obtain

$$\Delta\pi_t^* = (1 + \beta) \sum_{j=0}^{\infty} \beta^j E_t\{\hat{x}_{t+j} \mid z_t\}, \quad (29)$$

where in our empirical application,  $z_t = [\hat{x}_t, \hat{x}_{t-1}, \hat{x}_{t-2}, \pi_t, \pi_{t-1}, \pi_{t-2}]$  and

$$\begin{aligned} \hat{x}_t = & -\frac{(1 - \Gamma)\kappa_f}{(1 + \beta)\Gamma} [\bar{\psi}u_t + (\bar{\phi}_{21} + \nu)(u_{2t} - u_t) \\ & + \rho\bar{\phi}_{21}u_{2t}ir_t + \frac{\rho^2}{2}\bar{\phi}_{21}u_{2t}ir_t^2] + \frac{\alpha(1 - \chi)\kappa_f}{1 + \beta}\Delta s_t. \end{aligned}$$

Next, we construct  $\hat{x}_t$  using the coefficients in our estimated FNPCI and, to compute forecasts of its future values, we run a second-order vector autoregression of the bivariate system formed by  $\Delta\pi_t$  and  $\hat{x}_t$ . Letting  $A$  denote the companion matrix of the VAR(1) representation of  $z_t$ , we have that  $E_t\{\hat{x}_{t+j} \mid z_t\} = e_1' A^j z_t$ , where  $e_1$  is a vector with 1 in its first position and zeros elsewhere. Hence:

$$\Delta\pi_t^* = (1 + \beta)e_1'(I - \beta A)^{-1}z_t, \quad (30)$$

using the standard result that  $\sum_{j=0}^{\infty} \beta^j A^j = (I - \beta A)^{-1}$  for a matrix  $A$  with eigenvalues less than unity.

## 5 Empirical results

In this section we present our estimates of the model. We estimate first the forward-looking specification in equation (27):

$$E_t\{[\pi_t - \alpha_1\pi_{t+1} - \alpha_2\pi_{t-1} - \alpha_3u_t - \alpha_4(u_{2t} - u_t) - \alpha_5u_{2t}ir_t - \alpha_6u_{2t}ir_t^2 - \alpha_7\Delta s_t] \mid Z_t\} \quad (31)$$

by the Generalized Method of Moments (GMM), using a set of instruments,  $Z_t$ , consisting of a constant, four lags of the inflation rate ( $\pi_t$ ), the relative unemployment rate

of immigrants ( $u_{2t} - u_t$ ), the log share of immigrants in employment ( $ir_t$ ), the inflation rate of imported inputs ( $\Delta s_t$ ) –which proxies for the total intermediate input prices that appear in the model–, and the labor income share, plus two lags of cyclical output (with the trend estimated with the Hodrick-Prescott filter using a parameter of 1,600) and of an index of the degree of globalization of the Spanish economy.<sup>19</sup> Detailed definitions of all variables appear in Appendix B. The data start in 1980:1 but given the lead and lags involved, our effective estimation period is 1982:1-2006:3. There is no data on the split of the labor force between natives and immigrants before 1987:2, which forces us to assume that they had the same unemployment rate through that date. However, this is not an important limitation since during that period immigration only represented 0.3% of the labor force on average.

Column (1) in Table 1 presents the estimated coefficients in the unrestricted specification of equation (27). All coefficients are statistically significant and have the expected signs. In particular, the relative immigrant unemployment rate and the interactions of the immigrants' unemployment rate with their (logged) share in employment and its square all have negative effects on inflation, as predicted by the model. In other words, the negative signs on these estimated coefficients indicate that our claim that immigrants have a lower labor supply elasticity than natives ( $\bar{\phi}_{21} > 0$ ) is strongly supported by the data. The unrestricted value of the discount rate  $\beta$  implied by the coefficient on lagged inflation is 0.972, which is higher and more realistic than those found in the literature. For instance, Galí *et al.* (2003) find values between 0.84 and 0.92 for the euro area, and Galí and López-Salido (2001) between 0.75 and 0.85 for Spain over the period 1990-1998. To check whether this model is appropriate, we perform several tests of our proposed specification in (27) against the most relevant modelling alternatives that were discussed before, namely: (i) constant *vs.* decreasing returns to scale in (1) (see footnote 11), (ii) a linear *vs.* a concave shape of immigrant workers' labor supply (see footnote 12), and (iii) the unemployment rate gap against the labor force differential as the determinant of the wage markup (see Appendix A.3). As regards (i), following BG (Appendix 3),

---

<sup>19</sup>The higher the degree of globalization, the higher should be the immigrant flow, e.g. attracted by foreign investment.

we included the first differences of  $u_t$  and  $u_{2t} - u_t$  as additional regressors in (27) and tested for the joint significance of their coefficients; this yielded a  $p$ -value of 0.132 in the corresponding  $\chi^2(2)$  test, so that we are not able to reject the null of constant returns to scale. With regard to (ii), a quadratic term in  $u_{2t} - u_t$  was added; again its estimated coefficient was not statistically significant ( $t$ -ratio=1.35).<sup>20</sup> Finally, regarding (iii), we added the relative labor force,  $\ell_{2t} - \ell_t$ , to the list of regressors, obtaining once more a non-significant effect ( $t$ -ratio=1.13). In view of these results, we keep (27) as our preferred unrestricted model, which we use for testing the remaining restrictions implied by the underlying structural parameters.

In Column (1), the sum of the coefficients on future and lagged inflation is very close to unity, as implied by the model. A Wald test of this null hypothesis yields a  $p$ -value of 0.22. Thus we impose this restriction to gain efficiency, with a value for the coefficient on lagged inflation of 0.490, implying a value for  $\beta$  of 0.961. Column (2) shows the restricted estimates, which are very similar to those in Column (1). This set of results allows us to account for the flattening of the standard PC (i.e. the slope of inflation vis-à-vis unemployment) by the presence of the new term in the relative unemployment rate of immigrants. The slope falls from -0.112 to -0.032, so that the PC becomes significantly flatter. We also saw in Figure 1 that there were shifts in the intercept of the PC. If we take the stable PC traced for the period before the rise in immigration that is apparent in the graph, i.e. from 1990:1 to 1994:1, and compare its intercept to that of the subsequent stable locus, from say 1998:4 to 2006:4, we find that it shifts by 0.44 percentage points, due to the introduction of the three immigration-related variables.<sup>21</sup>

---

<sup>20</sup>As pointed out earlier, immigrant workers in Spain tend to achieve similar unemployment rates as natives five years after arrival. Thus, lack of concavity in the relative unemployment may mean higher inflation pressure in the future. However, as also mentioned, even after their assimilation period, immigrants tend to be over-represented in temporary and low-skilled jobs, for which they are overqualified. This may reduce inflationary pressure since the real unit labor costs associated to these jobs are lower.

<sup>21</sup>Computed as the difference across averages over those two periods of the magnitude:  $\hat{\alpha}_4 u_{2t} + \hat{\alpha}_5 u_{2t} i r_t + \hat{\alpha}_6 u_{2t} i r_t^2$ .

Table 1. Forward-Looking and Hybrid New Keynesian Phillips Curves for Spain

Dependent variable: Inflation rate

	(1)		(2)		(3)	
	FNPCI		FNPCI		HNPCI	
	Unrestricted		Restricted		Unrestricted	
	Coeff.	<i>t</i> -ratio	Coeff.	<i>t</i> -ratio	Coeff.	<i>t</i> -ratio
Future inflation rate	0.493	(7.96)	0.490	(11.34)	0.615	(6.85)
Lagged inflation rate	0.536	(11.35)	0.510	(11.34)	0.354	(4.35)
Twice-lagged inflation					0.119	(2.41)
Unemployment rate rate	-0.116	(3.38)	-0.112	(3.49)	-0.109	(2.31)
Rel. immigrant unemployment r.	-0.100	(4.06)	-0.080	(3.19)	-0.145	(4.52)
Immigrant unemployment rate× Immigration rate	-0.039	(3.52)	-0.031	(2.77)	-0.049	(3.09)
Immigrant unemployment rate× Immigration rate squared	-0.005	(3.57)	-0.003	(2.66)	-0.008	(3.29)
ΔReal imported input prices	0.004	(2.19)	0.005	(2.77)	0.005	(1.99)
J-statistic ( <i>p</i> -value)	0.144		0.146		0.130	
Implied parameters:						
$\beta$	—		0.961	(11.42)	—	
$\theta$	—		0.810	(15.76)	—	
$\rho$	—		0.217	(7.62)	—	
$\nu$			0.706	(2.67)		

Period: 1982:1-2006:3. No. of observations: 99. *t*-ratios in parentheses. The table contains estimates of the Forward-looking (FNPCI) and Hybrid (HNPCI) NKPCs with immigration, estimated by the Generalized Method of Moments. Instruments: a constant, four lags of the inflation rate, the relative unemployment rate of immigrants, the log share of immigrants in employment, the inflation rate of imported inputs, the labor income share, and two lags of cyclical output and of an index of the degree of globalization of the Spanish economy. See Appendix B for variable definitions. The implied parameters are estimated calibrating the following values for the remaining parameters:  $\alpha = 0.536$ ,  $\chi = 0.646$ , and  $\phi_1 = 1$  (see Appendix A.5).

## 5.1 Structural parameters and fundamental inflation

The estimation of equation (31) yields six estimated coefficients (imposing  $\alpha_1 + \alpha_2 = 1$ ), while from (27) we have the following ten free parameters:  $\beta$ ,  $\gamma$ ,  $\alpha$ ,  $\chi$ ,  $\theta$ ,  $\bar{\lambda}$ ,  $\phi_2$ ,  $\phi_1$ ,  $\rho$ , and  $\nu$ . To check how sensible our estimation is, we calibrate  $\alpha$ ,  $\chi$ , and  $\bar{\lambda}$  to their average values in the Spanish economy, plus a range of plausible values of the (inverse) Frisch labor supply elasticities of immigrants and native workers,  $\phi_2$  and  $\phi_1$ . In this way, we

are able to identify some of the underlying structural parameters:  $\beta$ ,  $\theta$ ,  $\rho$ , and  $\nu$  (see Appendix A.4 for details).<sup>22</sup> We obtain a value for  $\theta$ , the fraction of firms that keep their prices unchanged per quarter, of 0.810, which is in line with the estimates of Galí *et al.* (2003) for the Euro area (from 0.78 to 0.87) and of Galí and López-Salido (2001) for Spain (from 0.84 to 0.91). Our quarterly estimate of  $\theta$  implies that the average time over which a price is fixed, given by  $1/(1 - \theta)$ , is 1.3 years. This is close to the survey evidence about the price-setting behavior of Spanish firms at the end of our sample period (2003-2004) reported in Fabiani *et al.* (2006), according to which the average duration of unchanged prices in Spain is one year.

As for the remaining parameters, we obtain an elasticity of substitution between native and immigrant workers of  $\sigma = 1.277$  ( $\rho = 0.217$ ), which implies that they are gross substitutes but not too far from the Cobb-Douglas case ( $\sigma = 1$ ). Under the plausible assumption that  $\phi_1$  is unity, the implied estimate of the effect of immigration on the wage markup is  $\nu \simeq 0.7$ , being rather robust to a wide range of larger values of  $\phi_2$ , so that for each percentage point increase in immigration the wage markup decreases by about 0.7 percentage points. We do not have any other empirical evidence in the literature to check how sensible this finding is, though it agrees with the fact that the growth of real wages has been slightly negative since the mid-1990s, as shown in Figure 7, when the Spanish economy entered a long expansion which still lasts today.

In order to check how the model explains the evolution of inflation, we estimate the fundamental inflation rate as described in Section 4. To compute forecasts of a single right-hand side variable determining inflation we use the coefficients presented in column (2) of Table 1. We then run a second-order vector autoregression of inflation changes and the deviations of  $x_t$  from its sample mean, and then apply equation (30), which is integrated forward. As can be observed, the resulting fundamental inflation, shown in Figure 8, tracks observed inflation surprisingly well.

---

<sup>22</sup>Notice that an estimate of the real wage sluggishness,  $\gamma$ , cannot be directly identified from (27). However, an indirect estimate can be recovered from the coefficient of the lagged dependent variable,  $\omega_{t-1}$ , when estimating by GMM the partial adjustment model for the real wage in (12), with four lags of the regressors as instruments. This yields  $\hat{\Gamma} = 0.713$  ( $t$ -ratio=12.56). Hence, using  $\Gamma = \frac{\gamma}{1-\alpha+\gamma\alpha}$  with the calibrated value for  $\alpha = 0.536$  (see Appendix A.4), we get  $\hat{\gamma} = 0.535$  ( $t$ -ratio=7.43).

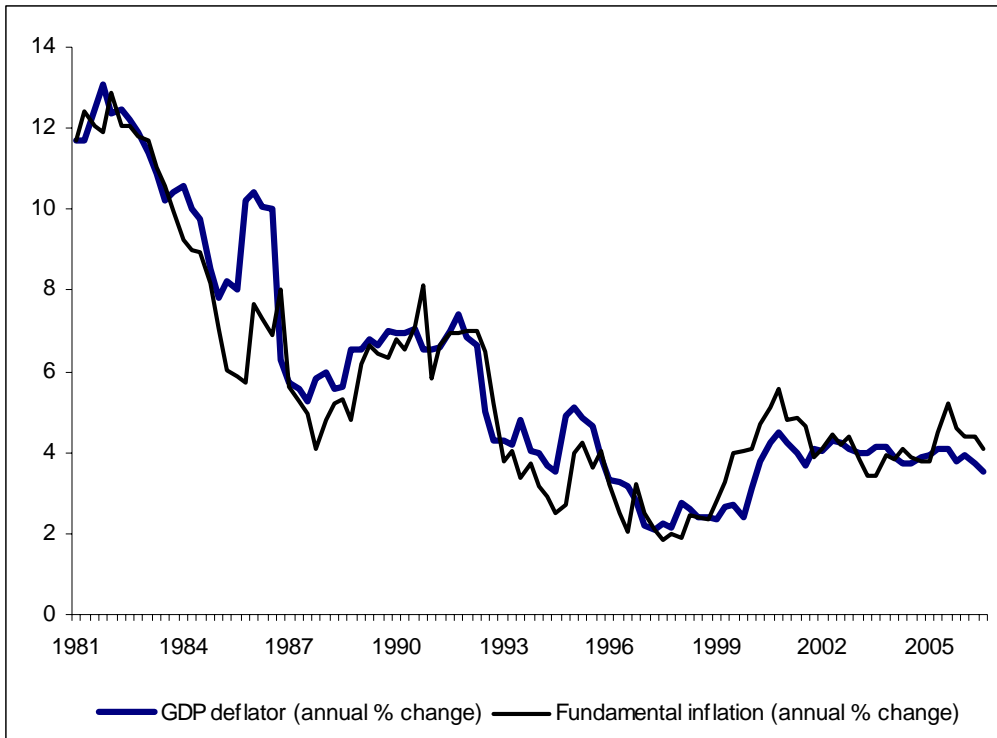


Figure 8: Actual and fundamental inflation, 1981-2006

We now focus on the eight-year period since the beginning of 1999, when Spain joined the Euro alongside ten other countries. Over this period inflation increased from 2.4% in 1998:4 to 4.5% in 2001:1 and then steadily fell to 3.5% in 2006:4, while the unemployment rate fell by 7 percentage points (p.p.), which represents a very favorable tradeoff for the Spanish economy by historical standards. Over the same period, the relative unemployment rate of immigrants rose by 3 p.p., the immigrant share in employment increased by a massive 12 p.p., and the price of imported inputs rose in net by 0.4 p.p., with sharp variations up and down.

Over this period fundamental inflation overpredicts actual inflation by 0.4 p.p. annually. Thus, there is still some extra reason for the moderate behavior of inflation that we have yet to account for. A natural candidate is the anchoring of inflation expectations due to the operation of the single monetary policy in the euro area.<sup>23</sup>

<sup>23</sup>Indeed, recursive estimation of (27) indicates that from 2002 onwards the coefficient on future inflation has been smoothly rising whereas the coefficient on lagged inflation has gone down, without violating the long-run neutrality restriction. However, we have not been able to identify a variable

To compute their contribution to fundamental inflation, we shut out in turn the unemployment rate, the three terms in the immigrant’s unemployment rate, and the imported input inflation rate in the equation determining the fundamental inflation rate. The results from this exercise are quite revealing. Rescaling by the average observed inflation rate of 3.9% per year, we find that without the contribution of the unemployment rate, inflation would have been 2.5 p.p. lower annually, whereas without the composite contribution of the immigrant unemployment terms inflation would have been 2.2 p.p. higher on average every year. Thus, over this particular period, about 85% of the increase in inflation derived from the reduction in the average unemployment rate was compensated by the effects of the increase of the unemployment rate of immigrants and their share in employment. Conversely, the contribution of imported input prices to inflation has been marginal relative to the effect of immigration.

## 5.2 Robustness checks

As a robustness check, to account for variability of the price markup (so far assumed constant) we also introduced cyclical output as an additional regressor in (27), but its coefficient was not significant (with a  $t$ -ratio of 1.20). We also estimate the hybrid NKPC in equation (28). The results are shown in Column (3) of Table 1. While the coefficients on the lead and lags of inflation are very close to adding up to 1, it turns out that the coefficient on  $\pi_{t-2}$  is positive. This coefficient corresponds to  $-\varsigma/(\tau + \beta\theta)$  in the model, thereby implying that the fraction of firms following a rule of thumb,  $\varsigma$ , is negative and therefore meaningless. Imposing the restriction on the sum of coefficients does not solve this problem either. Thus, we discard the HNPCI specification in favour of the FNPCI specification.

Finally, it is worth comparing the performance of our proposed equation with the open economy versions of the standard models of the NKPC popularized by Galí and Gertler (1999). As mentioned above, these are the forward-looking (FNPC) and the hybrid (HNPC) equations in (25) and (26), where the real marginal cost is captured by the (logged) aggregate labor income share,  $s_L$ , and the relative price of imported materials

---

which helps to pin down these effects.

and labor, that is:  $mc = s_L + \xi(p_m - w)$ . As discussed in Rotemberg and Woodford (1999), the parameter  $\xi$  is zero when the production function is Cobb-Douglas whereas, using instead a CES specification, it is positive when the elasticity of substitution between labor and intermediate goods is above unity, as is often found in the literature. These equations were applied by Galí and López-Salido (2001) to estimate the NKPC for Spain over 1980-1998, yielding a good fit and sensible estimates of the underlying structural parameters that we also found with our dataset. Since their estimation period ends before immigration surged, it is interesting to check how these models perform up to the end of our sample period, 2006:3. Estimating by GMM with their instrument set yields, for the FNPC:<sup>24</sup>

$$\pi_t = \underset{(31.10)}{1.050} E_t \pi_{t+1} - \underset{(3.31)}{0.037} s_{Lt} + \underset{(1.65)}{0.004} (pm_t - w_t) \quad (32)$$

and for the HNPC:

$$\pi_t = \underset{(9.41)}{0.410} E_t \pi_{t+1} + \underset{(17.12)}{0.629} \pi_{t-1} + \underset{(1.69)}{0.010} s_{Lt} - \underset{(4.23)}{0.004} (pm_t - w_t) \quad (33)$$

where  $t$ -ratios are reported in parentheses. In both regressions, the implied value of  $\beta$  is above unity, violating the restriction that both the coefficient on  $E_t \pi_{t+1}$  (i.e.,  $\beta$ ) in (25) and the sum of the coefficients on  $E_t \pi_{t+1}$  and  $\pi_{t-1}$  (i.e.,  $(\beta\theta + \zeta)/\tau$ ) in (26) should be smaller than 1. Moreover, the estimated coefficient on  $s_{Lt}$  is negative and significant in (31) and positive but nonsignificant in (32), while the coefficient on the relative price changes sign across the two specifications. These results turn out to be robust to imposing a value of  $\beta$  in a plausible range between, say, 0.90 and 1. For example, for  $\beta = 0.99$ , we get, for the FNPC:

$$\pi_t = \underset{(-)}{0.99} E_t \pi_{t+1} - \underset{(2.92)}{0.029} s_{Lt} + \underset{(5.88)}{0.007} (pm_t - w_t) \quad (34)$$

and for the HNPC:

$$\pi_t = \underset{(9.98)}{0.358} E_t \pi_{t+1} + \underset{(9.98)}{0.639} \pi_{t-1} + \underset{(0.76)}{0.004} s_{Lt} - \underset{(2.40)}{0.002} (pm_t - w_t) \quad (35)$$

---

<sup>24</sup>The instruments set includes a constant plus four lags of price and wage inflation, relative prices, detrended output, and the labor share.

Therefore, applying the standard models of the NKPC –which ignore differences between the preferences of immigrants and native workers– does not work once the sample is extended to include the immigration boom in the Spanish labor market, which provides some further support to our approach.

## 6 Industry-specific NKPCs

Since the previous results for the aggregate economy seem to confirm the moderating effect of immigration on inflation, our reasoning would be reinforced if, when estimating NKPCs at the industry level, this effect was larger for those industries with higher intensity of immigrant labor. Using information from the Spanish Labor Force Survey (EPA), we are able to obtain a breakdown of employment by nationality for three large industries: manufacturing, construction, and services.<sup>25</sup> This, together with the information on industry price deflators and GDP from the Spanish National Accounts, allows us to compute industry inflation measures, plus industry labor shares and cyclical output, to be used as instrumental variables. Since industry unemployment is not a well-defined concept, we use aggregate measures of  $u_t$  and  $u_{2t} - u_t$  in the industry specification of equation (27). Nevertheless, to the extent that there is labor mobility across industries, these aggregate measures of unemployment are bound to capture some of their traditional disciplinary effects on inflation. Furthermore,  $u_{2t}$  is interacted with the immigration rate,  $ir_t$ , measured for each of the industries, and  $s_t$  is computed at the industry level.

Table 2 reports the estimation results for the (restricted) FNPCI in these three industries, where we have imposed the value of the discount factor estimated before, i.e.  $\beta = 0.961$ , which is not statistically rejected in the unrestricted estimation. Interestingly, the effect of the relative unemployment rate and the interaction terms is much larger and significant in the services industry, where 62% of the migrants work (specially in home services, and hotels and catering), than in construction and manufacturing, where 19% and 12% of immigrants work, respectively (over 2000-2006, where the immigrant

---

<sup>25</sup>We exclude agriculture because price-setting in this sector is highly affected by subsidies and supply shocks, and so our model does not describe it well.

stock starts to be significant). Therefore, this fragmentary evidence seems to go in the same direction as our previous results.

Table 2. Industry-Specific Forward-Looking New Keynesian Phillips Curve for Spain

Dependent variable: Industry inflation rate

	(1)		(2)		(3)	
	Manufacturing		Construction		Services	
	Coeff.	<i>t</i> -ratio	Coeff.	<i>t</i> -ratio	Coeff.	<i>t</i> -ratio
Unemployment rate	-0.061	(2.18)	-0.102	(2.52)	-0.093	(2.08)
Rel. immigrant unemployment r.	-0.024	(1.03)	-0.042	(1.21)	-0.061	(2.32)
Immigrant unemployment rate $\times$ Immigration rate	0.019	(0.61)	-0.017	(1.49)	-0.033	(2.36)
Immigrant unemployment rate $\times$ Immigration rate squared	0.003	(1.10)	0.002	(0.96)	-0.006	(1.82)
$\Delta$ Real imported input prices	0.005	(2.76)	0.011	(1.86)	0.008	(2.16)
J-statistic ( <i>p</i> -value)	0.130		0.140		0.150	

Period: 1982:1-2006:3. No. of observations: 99. *t*-ratios in parentheses. The table contains estimates of the Forward-Looking NKPC with immigration (FNPCI), estimated by the Generalized Method of Moments. Instruments: a constant, four lags of the inflation rate, the relative unemployment rate of immigrants, the log share of immigrants in employment, the inflation rate of imported inputs, the labor income share, and two lags of cyclical output and of an index of the degree of globalization of the Spanish economy. See Appendix B for variable definitions. The coefficients on future and lagged inflation rates are imposed to be 0.49 and 0.51, respectively, so that  $\beta = 0.961$ , as found in Table 1.

## 7 Conclusions

This paper examines the evolution of the Phillips curve for the Spanish economy since the early 1980s. In particular, we focus on what has happened since the late 1990s. Starting from 1999 the unemployment rate fell by almost 7 percentage points, while inflation remained relatively subdued around a plateau of 2%-4%. Thus, the slope of the PC has become much flatter. We argue that this favorable evolution is largely due to the impact of the huge rise in the immigration rate, from 1% of the population in 1995 to 9.3% in 2006, on the labor market. We derive a New Keynesian Phillips curve accounting for the effects of immigration, a variable which is found to shift the curve if preferences towards

labor supply or the bargaining power of immigrants and natives differ. In particular, we find that the relative unemployment rate of immigrants with respect to the national unemployment rate and the interaction of the immigrant unemployment rate with their share in employment, in levels and squared, enters the PC, so that both its intercept and slope is shifted by the presence of immigration.

By estimating our NKPC model with quarterly data for Spain over the period 1982-2006, we are able to confirm that the variables in which the immigrant unemployment rate enters are significant determinants of the PC and that conventional models of the NKPC which treat labor as an homogeneous input do not fit the data well. We also find that while the fall in the average unemployment rate over the last 8 years caused the inflation rate to increase by 2.5 percentage points per year, the surge in immigration accounts for an offsetting 2.2 percentage-point drop in the inflation rate per year. Finally, we also estimate industry-specific PCs, finding that the impact of the relative immigrant unemployment rate is larger for the industries with a higher share of immigrant employment. These effects may decay over time, as immigrants integrate and their labor supply behavior becomes closer to that of natives, but it is too soon to detect such evolution in the case of Spain.

In this respect, the effect of immigration on inflation is good news for central banks. Yet, as Bean (2006) argues, the flattening of the PC is rather more of a mixed blessing since, on the one hand, it implies that demand shocks and policy mistakes will not show up in large movements of inflation but, on the other, if inflation remains above target, a deeper slowdown or increasing immigration flows will be needed to bring it down.

## A Appendix A. Some derivations

### A.1 Derivation of $\bar{\lambda}$

Consider the following approximation of the (log) deviation of a variable  $X$  from its steady state value,  $\bar{X}$ , where we omit time subscripts for notational simplicity:  $\hat{x} = \ln(X/\bar{X}) \simeq (X - \bar{X})/\bar{X}$ , so that  $X = \bar{X} \exp(\hat{x}) \simeq \bar{X}(1 + \hat{x})$ , and for any power  $a$  of  $X$ ,  $X^a = \bar{X}^a \exp(a\hat{x}) \simeq \bar{X}^a(1 + a\hat{x})$ . Then, since aggregate employment is given by (2), use of the previous approximation yields

$$\bar{N}^\rho(1 + \rho\hat{n}) = \delta_1 \bar{N}_1^\rho(1 + \rho\hat{n}_1) + \delta_2 \bar{N}_2^\rho(1 + \rho\hat{n}_2).$$

Since, in steady state,  $\bar{N}^\rho = \delta_1 \bar{N}_1^\rho + \delta_2 \bar{N}_2^\rho$  and  $\delta_1 + \delta_2 = 1$ , it is straightforward to show that

$$\hat{n} - \hat{n}_2 = \bar{\lambda}_n(\hat{n}_1 - \hat{n}_2),$$

where  $\bar{\lambda}_n = \delta_1 (\bar{N}_1/\bar{N})^\rho$ .

Next, given (2), the corresponding aggregate wage index,  $W$ , satisfies

$$W^{-\frac{\rho}{1-\rho}} = \delta_1^{\frac{1}{1-\rho}} W_1^{-\frac{\rho}{1-\rho}} + \delta_2^{\frac{1}{1-\rho}} W_2^{-\frac{\rho}{1-\rho}}.$$

Using the same steps as before, we obtain the following expression for the (log) deviations of real wages from steady state,

$$\hat{\omega} - \hat{\omega}_2 = \bar{\lambda}_\omega(\hat{\omega}_1 - \hat{\omega}_2),$$

where  $\bar{\lambda}_\omega = \delta_1^{\frac{1}{1-\rho}} (\widehat{W}_1/\bar{W})^{-\frac{\rho}{1-\rho}}$ .

Finally, taking the marginal products in (1) with respect to  $N$  and  $N_1$  in steady state and equating them to  $\bar{W}$  and  $\bar{W}_1$ , implies that

$$\delta_1 \left(\frac{\bar{N}_1}{\bar{N}}\right)^{-(1-\rho)} = \frac{\bar{W}_1}{\bar{W}},$$

whereby

$$\delta_1 \left(\frac{\bar{N}_1}{\bar{N}}\right)^\rho = \delta_1^{\frac{1}{1-\rho}} \left(\frac{\widehat{W}_1}{\bar{W}}\right)^{-\frac{\rho}{1-\rho}}.$$

Hence,  $\bar{\lambda}_n = \bar{\lambda}_\omega \equiv \bar{\lambda} = \delta_1 (\bar{N}_1/\bar{N})^\rho = 1 - \delta_2 (\bar{N}_2/\bar{N})^\rho = 1 - \delta_2 (\bar{I}\bar{R})^\rho$ , where  $\bar{I}\bar{R} = \bar{N}_2/\bar{N}$ .

### A.2 Second-order approximation to $\lambda(IR)$

Let us now reinterpret the functional form of  $\lambda(\bar{I}\bar{R})$  derived above as the log-linearized approximation of the CES aggregator in (2) around any given value of  $IR$ , not necessarily its steady-state value. This would yield

$$\lambda(IR) = 1 - \delta_2 (IR)^\rho,$$

where  $IR = N_2/N$ . Using of a second-order Taylor expansion of  $(IR)^\rho$  around  $\rho = 0$ , i.e., the Cobb-Douglas case, we get

$$(IR)^\rho \simeq 1 + \rho \, ir + \frac{\rho^2}{2} ir^2 = 1 + q(ir),$$

where  $ir = n_2 - n = \ln(N_2/N)$  and function  $q(ir) = \rho \, ir + \frac{\rho^2}{2} ir^2$ . Notice that, around  $\rho = 0$ , we can interpret the distributional parameters  $\delta_1$  and  $\delta_2$  in (2) as the weighting factors  $\bar{\lambda}$  and  $(1 - \bar{\lambda})$  in (5), since taking logs of the Cobb-Douglas aggregator  $N = N_1^{\bar{\lambda}} N_2^{1-\bar{\lambda}}$  would yield the aggregation rules in (5) in exact terms. Hence, replacing the approximation into the function  $\lambda(IR)$ , implies that

$$\lambda(IR) \simeq \lambda = 1 - (1 - \bar{\lambda})[1 + q(ir)] = \bar{\lambda} - (1 - \bar{\lambda})q(ir),$$

so that  $1 - \lambda$  becomes

$$1 - \lambda = (1 - \bar{\lambda})[1 + q(ir)].$$

Let us now examine the two terms in (27) where  $1 - \lambda$  appears:

(i)  $\phi_{21}(u_2 - u)$ :

$$\begin{aligned} \phi_{21}(u_2 - u) &= (1 - \lambda)(\phi_2 - \phi_1)(u_2 - u) = (1 - \bar{\lambda})[1 + q(ir)](\phi_2 - \phi_1)(u_2 - u) = \\ &= \bar{\phi}_{21}(u_2 - u) + \bar{\phi}_{21}(u_2 - u) \, q(ir), \end{aligned}$$

where  $\bar{\phi}_{21} = (1 - \bar{\lambda})(\phi_2 - \phi_1) > 0$ .

(ii)  $\psi u$ :

$$\begin{aligned} \psi u &= [\lambda \phi_1 + (1 - \lambda) \phi_2] u = \phi_1 u + (1 - \lambda)(\phi_2 - \phi_1) u = \\ &= \phi_1 u + (1 - \bar{\lambda})[1 + q(ir)](\phi_2 - \phi_1) u = (\phi_1 + \bar{\phi}_{21}) u + \bar{\phi}_{21} u \, q(ir). \end{aligned}$$

Finally, the sum of both terms yields:

$$\phi_{21}(u_2 - u) + \psi u = \bar{\phi}_{21}(u_2 - u) + (\phi_1 + \bar{\phi}_{21}) u + \bar{\phi}_{21} u \, q(ir).$$

Thus, the above combination in terms of time-varying parameters, can be written in terms of constant parameters as long as two interaction terms, involving  $u_2 \, ir$  and  $u_2 \, ir^2$ , are added to equation (27).

### A.3 Determinants of the wage markup

To interpret the influence of migration on the (deviations of the) wage markup,  $\tilde{\mu}^w$ , it is useful to consider the right-to-manage of wage setting model, where unions and firms bargain over the wage rate but the firm is free to choose the level of employment unilaterally (see Layard *et al.*, 1991). As is standard in this model, unions maximize the following objective function

$$\max_{\omega} \Omega = \omega N(\omega) + \varsigma [UM - N(w)] \omega^a,$$

where  $N(\omega)$  denotes labor demand (with  $N'(\omega) < 0$ ),  $UM$  the number of union members, and  $\omega^a$  the alternative wage, such that the relative influence of non-employed union members is  $\varsigma < 1$ . The maximization problem results in the following first-order condition:

$$N'(\omega)(\omega - \varsigma\omega^a) + N = 0,$$

which is the wage-setting curve. Exogenous shifts in labor supply ( $L$ ) influences the position of this curve through its effect on the alternative wage, defined as:

$$\omega^a = \frac{N}{L}\omega + (1 - \frac{N}{L})b\omega.$$

That is, a non-employed worker has a chance to find a job and earn  $\omega$  or remain non-employed and get an unemployment benefit which is a fraction  $b$  of the wage. Replacing this expression into the wage-setting curve gives

$$N'(\omega)\omega[1 - b\varsigma - \varsigma(1 - b)\frac{N}{L}] + N = 0,$$

which is upward sloping in the  $\omega - L$  space if  $N''(\omega)\omega + N'(\omega) < 0$ , a condition that is satisfied by linear and concave labor demand functions. The equilibrium values of  $\omega$  and  $N$  ( $\omega^*$  and  $N^*$ ) are determined by equating the above upward-sloping wage-setting curve and the downward-sloping labor demand function  $N'(\omega)$ , where unemployment is given by  $L - N^*(\omega^*)$ . An increase in labor supply gives rise to rightward shifts of both the wage-setting curve and the labor supply curve, inducing an unambiguous fall in wages and an ambiguous effect on unemployment. To the extent that wages are determined in a non-competitive way in this model, we loosely interpret this reduction in wages as a fall in the wage markup.

We assume that the labor supply shift is either captured by the differential in the (logged) labor forces,  $\ell_2 - \ell$ , or by the gap in the unemployment rates,  $u_2 - u$ , since migrants often enter unemployment when they arrive. Since  $\ell_2 - \ell$  had a positive and insignificant estimated coefficient when introduced in the NKPC, we allow  $u_2 - u$  to have an extra effect on inflation via variations in  $\tilde{\mu}^w$ , on top of its direct effect on the marginal cost.

#### A.4 Long-run neutrality in the NKPC

As shown by Batini *et al.* (2005), an isomorphic derivation of the NKPC popularized by Galí and Gertler (1999) stems from the quadratic price adjustment model proposed by Rotemberg (1982), rather than Calvo's (1983) model of constant probability of price changes. This alternative derivation has the advantage of allowing the probability of each firm resetting its prices to depend on the general level of inflation, since the costs of not doing so most certainly rise with this general level (see Ball *et al.*, 1988).

Let us consider the firm's problem as choosing a price path that solves

$$\min_{p_{t+s}} \sum_{s=0}^{\infty} \beta^s E_t \left\{ \frac{1}{2} (p_{t+s} - p_{t+s}^*)^2 - \frac{b}{2} (p_{t+s} - p_{t+s-1} - c\pi_{t+s-1}^a)^2 \right\},$$

where the optimal price is  $p_{t+s}^* = \mu^p + mc_{t+s}^n$ , with  $mc^n$  being the nominal marginal cost,  $\pi^a$  denotes the general level of inflation (taken as given by the firm), and  $b > 0$  and  $0 \leq c \leq 1$  are parameters in the loss function. When  $c = 1$ , price adjustment costs fully depend on the deviations from the general level of inflation. Notice that the quadratic adjustment cost term in price changes implies that the higher is  $\pi_{t+s-1}^a$  the more beneficial is for firms to reset prices more frequently. The Euler equation (in period  $t$ ) of the above minimization yields

$$\beta b E_t p_{t+1} - (1 - b(1 + \beta)) p_t + b p_{t-1} = -\hat{p}_t,$$

where

$$\hat{p}_t = p_t^* + cb\pi_{t-1}^a - \beta cb\pi_t^a.$$

The standard solution to this Euler equation is

$$p_t = \mu_1 p_{t-1} + (1 - \mu_1)(1 - \beta\mu_1) \frac{\hat{p}_t}{1 - \beta\mu_1 L^{-1}},$$

where  $L^{-1}$  is the forward operator (e.g.  $L^{-s}x_t = E_t x_{t+s}$ ) and  $\mu_1$  is the unique stable root of  $\beta b \mu^2 - [1 - b(1 + \beta)]\mu + b = 0$ . If we now subtract from the previous solution the following identity

$$p_{t-1} \equiv \mu_1 p_{t-1} + (1 - \mu_1)(1 - \beta\mu_1) \frac{p_{t-1}}{1 - \beta\mu_1},$$

we obtain a new solution in terms of firm's price inflation,  $\pi_t (= p_t - p_{t-1})$

$$\pi_t = (1 - \mu_1)(1 - \beta\mu_1) \frac{mc + p_t + cb\pi_{t-1}^a - \beta cb\pi_t^a}{1 - \beta\mu_1 L^{-1}} - \frac{p_{t-1}}{1 - \beta\mu_1},$$

where use has been made of  $mc_t^n = mc_t + p_t$ . Then, since in equilibrium all firms are identical (so that  $\pi = \pi^a$ ), straightforward algebra leads to the following NKPC:

$$\pi_t = \frac{\beta}{1 + \beta c} E_t \pi_{t+1} + \frac{c}{1 + \beta c} \pi_{t-1} + \frac{(1 - \mu_1)(1 - \beta\mu_1)}{\mu_1(1 + \beta c)} mc_t.$$

If  $0 < c < 1$ , this NKPC corresponds to the hybrid case of Galí and Gertler (1999) where we find that in the long-run steady state,  $\pi_t = E_t \pi_{t+1} = \pi_{t-1}$ , there is a non-zero relationship between inflation and the real marginal cost, i.e.,  $\pi = \frac{(1 - \mu_1)(1 - \beta\mu_1)}{\mu_1(1 - \beta)(1 - c)} mc$ .

If  $c = 0$ , the NKPC is equivalent to the forward-looking case of Galí and Gertler (1999), such that

$$\pi_t = \beta E_t \pi_{t+1} + \frac{(1 - \mu_1)(1 - \beta\mu_1)}{\mu_1} mc_t,$$

where again, there is a long-run tradeoff given by  $\pi = \frac{(1-\mu_1)(1-\beta\mu_1)}{\mu_1(1-\beta)}mc$ .

Finally, if  $c = 1$ , the NKPC becomes

$$\pi_t = \frac{\beta}{1+\beta}E_t\pi_{t+1} + \frac{1}{1+\beta}\pi_{t-1} + \frac{(1-\mu_1)(1-\beta\mu_1)}{\mu_1(1+\beta)}mc_t,$$

so that inflation is independent of the real marginal cost in the long run, although it influences the change in inflation, i.e.,  $\Delta\pi = \frac{(1-\mu_1)(1-\beta\mu_1)}{\mu_1(1-\beta)}mc$ .

As discussed in Section 4.5, an alternative way of obtaining long-run neutrality in the NKPC is to assume real wage sluggishness.

## A.5 Calibration of the parameters

As mentioned in the main text, the estimation of equation (31) yields 6 estimated coefficients (imposing that  $\alpha_1 + \alpha_2 = 1$ ), while from (27) we have the following 10 free parameters:  $\beta$ ,  $\gamma$ ,  $\alpha$ ,  $\chi$ ,  $\theta$ ,  $\bar{\lambda}$ ,  $\phi_2$ ,  $\phi_1$ ,  $\nu$ , and  $\rho$ . Thus, we can only attempt to identify a subset of the structural parameters. As shown below, through calibration of  $\alpha$ ,  $\chi$ ,  $\bar{\lambda}$ , and the (average) labor supply elasticity of natives,  $\phi_1$ , we are able to identify  $\beta$ ,  $\theta$ ,  $\rho$ , and  $\nu$ . The identification procedure for each of these structural parameters involves the values of the restricted coefficients reported in Table 1 (Column 2) and, in each case, it can be summarized as follows:

(i)  $\beta$ , from the estimated coefficient on  $E_t\pi_{t+1}$ ,  $\hat{\psi}_1^f$ , which is equal to 0.490 ( $t$ -ratio=11.34). Hence, since  $\psi_1^f = \frac{\beta}{1+\beta}$ , the delta method yields  $\hat{\beta} = 0.961$  ( $t$ -ratio=11.42).

(ii)  $\theta$ , from the estimated coefficient of  $\Delta s_t$  which is  $\frac{\alpha(1-\chi)\kappa_f}{(1+\beta)} = 0.005$  ( $t$ -ratio=2.77), with  $\kappa_f = \frac{(1-\beta\theta)(1-\theta)}{\theta}$ , using calibrated values for  $\alpha$  and  $\chi$ , and the estimated value of  $\beta$  obtained in (i). It is easy to check that this yields a quadratic function in  $\theta$ . If we take  $\alpha = 0.536$  and  $\chi = 0.646$  –computed as the average shares of imported intermediate inputs in gross output ( $\alpha$ ) and in gross output net of capital compensation ( $\chi$ ) in the Spanish economy over the period 1980-2003 according to the EU KLEMS database (www.euklems.net)– plus  $\hat{\beta} = 0.961$ , this yields  $\hat{\theta} = 0.810$  ( $t$ -ratio=15.76), whereas the other root in the quadratic function is larger than unity. For this value of  $\theta$ , we also get  $\hat{\kappa}_f = 0.0517$  ( $t$ -ratio=4.07).

(iii)  $\rho$ , from the ratio between the estimated coefficients on the interaction terms  $u_2ir^2$  and  $u_2ir$ . In effect, from (27), this ratio yields  $\hat{\rho} = 2\frac{0.0033}{0.0307} = 0.217$  ( $t$ -ratio=7.62). Hence, the estimated elasticity of substitution in (2) is given by  $\hat{\sigma} = \frac{1}{1-0.217} = 1.277$  ( $t$ -ratio=35.47).

(iv)  $\nu$ , from the ratio of the estimated coefficients on  $u$  and  $u_2 - u$ . This ratio yields  $\frac{\bar{\psi}}{\phi_{21}+\nu} = \frac{\phi_1+(1-\bar{\lambda})(\phi_2-\phi_1)}{(1-\bar{\lambda})(\phi_2-\phi_1)+\nu} = 1.4$ . From equations (1) and (2), with  $\delta_1 + \delta_2 = 1$ , we have that  $\frac{dQ}{dN_1} = \frac{dQ}{dN} \frac{dN}{dN^\rho} \delta_1 \rho N_1^{\rho-1} = \frac{W_1}{P_Q}$  and  $\frac{dQ}{dN_2} = \frac{dQ}{dN} \frac{dN}{dN^\rho} (1 - \delta_1) \rho N_2^{\rho-1} = \frac{W_2}{P_Q}$ , so that  $(\frac{N_1}{N_2})^{\rho-1} = \frac{W_1}{W_2}$ , where respective markup terms would multiply the wage terms under

imperfect competition. If we assume that in steady state  $\frac{N_1}{N_2} = \frac{N_1/N}{N_2/N} = \frac{0.97}{0.03} = 32.33$ , taking  $\rho = 0.217$ , we would have that  $\frac{\delta_1}{1-\delta_1} 0.06576 = \frac{W_1}{W_2}$ . Now, to obtain a value for  $\delta_1$  we need to assume some value for the relative wage (or relative wage plus markup). Let us take three alternatives: (a)  $W_1/W_2 = 1 \Rightarrow \delta_1 = 0.938$ , (b)  $W_1/W_2 = 1.3 \Rightarrow \delta_1 = 0.952$ , and (c)  $W_1/W_2 = 1.5 \Rightarrow \delta_1 = 0.958$ . Thus, since  $\bar{\lambda} = \delta_1 (\frac{N_1}{N})^\rho = \delta_1 (0.97)^{0.217}$ , we have: (a)  $\bar{\lambda} = 0.932$ , (b)  $\bar{\lambda} = 0.946$ , and (c)  $\bar{\lambda} = 0.952$ .

We also need to make some assumption regarding the (inverse) Frisch labor supply elasticities. If we take a value of 1 for native workers, so that  $\phi_1 = 1$ , as is assumed in most of the literature on NKPCs (see, e.g., Galí *et al.*, 2001, and BG), and a value of  $\phi_2 = 2$ , from the above ratio,  $\frac{\bar{\psi}}{\phi_{21} + \nu} = 1.4$ , we get: (a)  $\hat{\nu} = 0.695$ , (b)  $\hat{\nu} = 0.698$ , and (c)  $\hat{\nu} = 0.701$ . Alternatively, if we assume use  $\phi_2 = 4$ , we obtain: (a)  $\hat{\nu} = 0.658$ , (b)  $\hat{\nu} = 0.668$ , and (c)  $\hat{\nu} = 0.672$ . Thus the value given in the text,  $\hat{\nu} \simeq 0.7$ , is quite robust.

## B Appendix B. Variable definitions and sources

*Nominal and Real GDP.* GDP from Spanish National Accounts produced by Instituto Nacional de Estadística (INE, [www.ine.es](http://www.ine.es)) Base 1995, linked forward to Base 2000 at 1995:1 using growth rates. Data are seasonally adjusted and adjusted for calendar effects by INE.

*Inflation.* Change in GDP deflator from Spanish National Accounts by INE. Computed as quarterly change in nominal GDP minus quarterly change in real GDP.

*Employment and unemployment for immigrants and natives.* From the Spanish Labor Force Survey (Encuesta de Población Activa) by INE, linking 1976, 1987, 2001, and 2005 definitions. Data correspond to full-time equivalent jobs. Seasonally adjusted by INE. Workers with double nationality are considered as immigrants throughout the sample. There is no data on immigrants before 1987:2, so we assume that they have the same unemployment rate as natives through that quarter. Seasonally adjusted using Program TSW.

*Imported input prices.* Price index for imported intermediate inputs from Ministerio de Economía y Hacienda, SERSIE Database ([www.meh.es](http://www.meh.es)).

*Labor share.* Remuneration of employees multiplied by the ratio of employment to employees and divided by nominal GDP. This entails assuming that the self-employed earn the same labor income as employees.

*Nominal wage.* Remuneration of employees divided by the number of employees. The latter is constructed following the same procedure as for total employment.

*Degree of openness.* Real imports plus exports divided by real GDP from INE. Same procedures as for real GDP.

*Index of globalization.* This index measures economic globalization, including both actual flows (trade, foreign direct investment, portfolio investment, and income payments to foreigners) and restrictions (hidden import barriers, mean tariff rate, taxes on international trade, and capital account restrictions). Source: Swiss Institute for Business Cycle Research ([globalization.kof.ethz.ch](http://globalization.kof.ethz.ch)), see Dreher (2006).

## References

- Ball, L. (2006), “Has Globalization Changed Inflation?”, NBER working paper 12687.
- Ball, L., N.G. Mankiw, and D. Romer (1988), “The New Keynesian Economics and the Output-Inflation Trade-Off”, *Brookings Papers on Economic Activity* 1, 1-65.
- Ball, L. and R. Moffitt (2001), “Productivity Growth and the Phillips Curve”, mimeo.
- Batini, N., B. Jackson, and S. Nickell (2005), “An Open Economy New Phillips Curve for the UK”, *Journal of Monetary Economics* 52, 1061-1071
- Bean, C. (2006), “Globalisation and Inflation”, *Bank of England Quarterly Bulletin* Q4, 468-475.
- Bentolila, S. and J.F. Jimeno (2006), “Spanish Unemployment: The End of the Wild Ride?” in Martin Werding (ed.), *Structural Unemployment in Western Europe. Reasons and Remedies*, Cambridge, MA: MIT Press.
- Bernanke, B.S. (2004): “The Great Moderation”, Speech at the meetings of the Eastern Economic Association.
- Blanchard, O. and J. Galí (2007), “Real Wage Rigidities and the New Keynesian Model”, *Journal of Money, Credit, and Banking* (forthcoming).
- Borjas, G. (1999), “The Economic Analysis of Immigration” en O. Ashenfelter and D. Card (eds.), *Handbook of Labour Economics vol. 3A*, North Holland.
- Borjas, G. (2003), “The Labor Demand Curve is Downward Sloping: Reexamining the Impact of Immigration on the Labor Market”, *Quarterly journal of Economics* 118, 1335-1370.
- Brandt, N., J.-M. Burniaux, and R. Duval (2005) , “Assessing the OECD Jobs Strategy: Past Development and Reforms”, OECD Economics Department Working Paper No. 429.
- Calvo, G. (1983), “Staggered Prices in a Utility Maximizing Framework”, *Journal of Monetary Economics* 12, 383-398.
- Card, D. (2001), “Immigrants Inflows, Native Outflows, and the Local Labour Market Impacts of Higher Immigration”, *Journal of Labor Economics* 19, 22-64.
- Carrasco, R., J.F. Jimeno, and C. Ortega (2007), “The Effect of Immigration on the Labor Market Performance of Native-Born Workers: Some Evidence for Spain”, *Journal of Population Economics*, forthcoming.
- Dolado, J., C. García-Serrano, and J.F. Jimeno (2002), “Drawing Lesson from the Boom of Temporary Jobs in Spain”, *Economic Journal* 112, 270-295.

- Dolado, J. and P. Vázquez (2007), “Los Efectos Económicos y las Políticas de Inmigración: Panorámica y Reflexiones”, in Dolado, J. and P. Vázquez (eds.), *Ensayos sobre los Efectos Económicos de la Inmigración en España*, Madrid: FEDEA.
- Dreher, A. (2006): “Does Globalization Affect Growth? Evidence from a New Index of Globalization”, *Applied Economics* 38, 1091-1110.
- Engler, P. (2007), “Gains from Migration in a New-Keynesian Framework”, mimeo, Free University of Berlin.
- Fabiani, S. *et al.* (2006), “What Firms’ Surveys Tell Us about Price-Setting Behavior in the Euro Area”, *International Journal of Central Banking* 2, 3-47.
- Fernández, C. and C. Ortega (2007), “Labour Market Assimilation of Immigrants in Spain: Employment at the Expense of Bad-Job Matches?”, *Spanish Economic Review*, forthcoming.
- Galí, J. and M. Gertler (1999), “Inflation Dynamics: A Structural Econometric Analysis”, *Journal of Monetary Economics* 44, 195-222.
- Galí, J., M. Gertler, and J.D. López-Salido (2001), “European Inflation Dynamics”, *European Economic Review* 45, 1237-1279.
- Galí, J., M. Gertler, and J.D. López-Salido (2003), “Erratum to ‘European Inflation Dynamics’”, *European Economic Review* 47, 759-760.
- Galí, J., and J.D. López-Salido (2001), “A New Phillips Curve for Spain”, *BIS Papers 3: Empirical studies of structural changes and inflation*, Bank for International Settlements, Basel.
- International Monetary Fund (2006), “How Has Globalization Affected Inflation?”, *World Economic Outlook*, Spring, 97-134.
- Izquierdo, M. and A.V. Regil (2006), “Actualización de las estimaciones de la tasa de desempleo estructural de la economía española”, *Boletín Económico*, Banco de España, September.
- Karanassou, M., H. Sala, and D.J. Snower (2002), “Long-Run Inflation-Unemployment Dynamics: The Spanish Phillips Curve and Economic Policy”, IZA Discussion Paper 645.
- Karanassou, M. and D.J. Snower (2007), “Inflation Persistence and the Phillips Curve Revisited”, IZA Discussion Paper 2600.
- Kmenta, J (1967), “On Estimation of the CES Production Function”, *International Economic Review* 8, 180-189.
- Layard, R., S. Nickell, and R. Jackman (1991), *Unemployment. Macroeconomics and the Labor Market*, Oxford University Press, Oxford.

- López-Salido, J.D., F. Restoy, and J. Vallés (2005), “Inflation Differentials in EMU: The Spanish Case”, *Moneda y Crédito* 220.
- Ottaviano, G. and G. Peri (2006), “Rethinking the Effects of Immigration on Wages”, NBER working paper 12497.
- Rabanal, P. (2006), “Explaining Inflation Differentials Between Spain and the Euro area”, La Caixa, working paper No. 2, December.
- Razin, A. and Binyamini (2007), “Flattening of the Short-run Trade-off between Inflation and Domestic Activity: The Analytics of the Effects of Globalization”, mimeo, Tel Aviv University.
- Razin, A. and P. Loungani (2007), “Globalization and Equilibrium Inflation-Output Tradeoffs”, *NBER International Seminar on Macroeconomics 2005*, Cambridge, MA: NBER, forthcoming.
- Rogoff, K. (2003), “Globalization and Global Disinflation”, in Federal Reserve Bank of Kansas City, *Monetary Policy and Uncertainty: Adapting to a Changing Economy*, 77-112.
- Rotemberg, J. (1982), “Sticky Prices in the United States”, *Journal of Political Economy* 90, 1187-1211.
- Rotemberg, J. and M. Woodford (1999), “The Cyclical Behavior of Prices and Costs”, in J.B. Taylor and M. Woodford (eds.), *Handbook of Macroeconomics*, Vol. 1B, Amsterdam: North Holland.

# CESifo Working Paper Series

for full list see [www.cesifo-group.org/wp](http://www.cesifo-group.org/wp)

(address: Poschingerstr. 5, 81679 Munich, Germany, [office@cesifo.de](mailto:office@cesifo.de))

---

- 2104 Laszlo Goerke and Marco Runkel, Tax Evasion and Competition, September 2007
- 2105 Scott Alan Carson, Slave Prices, Geography and Insolation in 19<sup>th</sup> Century African-American Stature, September 2007
- 2106 Wolfram F. Richter, Efficient Tax Policy Ranks Education Higher than Saving, October 2007
- 2107 Jarko Fidrmuc and Roman Horváth, Volatility of Exchange Rates in Selected New EU Members: Evidence from Daily Data, October 2007
- 2108 Torben M. Andersen and Michael Svarer, Flexicurity – Labour Market Performance in Denmark, October 2007
- 2109 Jonathan P. Thomas and Tim Worrall, Limited Commitment Models of the Labor Market, October 2007
- 2110 Carlos Pestana Barros, Guglielmo Maria Caporale and Luis A. Gil-Alana, Identification of Segments of European Banks with a Latent Class Frontier Model, October 2007
- 2111 Felicitas Nowak-Lehmann D., Sebastian Vollmer and Immaculada Martínez-Zarzoso, Competitiveness – A Comparison of China and Mexico, October 2007
- 2112 Mark Mink, Jan P.A.M. Jacobs and Jakob de Haan, Measuring Synchronicity and Co-movement of Business Cycles with an Application to the Euro Area, October 2007
- 2113 Ossip Hühnerbein and Tobias Seidel, Intra-regional Tax Competition and Economic Geography, October 2007
- 2114 Christian Keuschnigg, Exports, Foreign Direct Investment and the Costs of Corporate Taxation, October 2007
- 2115 Werner Bönte, Oliver Falck and Stephan Heblich, Demography and Innovative Entrepreneurship, October 2007
- 2116 Katrin Assenmacher-Wesche and M. Hashem Pesaran, Assessing Forecast Uncertainties in a VECX Model for Switzerland: An Exercise in Forecast Combination across Models and Observation Windows, October 2007
- 2117 Ben Lockwood, Voting, Lobbying, and the Decentralization Theorem, October 2007
- 2118 Andrea Ichino, Guido Schwerdt, Rudolf Winter-Ebmer and Josef Zweimüller, Too Old to Work, too Young to Retire?, October 2007

- 2119 Wolfgang Eggert, Tim Krieger and Volker Meier, Education, Unemployment and Migration, October 2007
- 2120 Stefan Napel and Mika Widgrén, The European Commission – Appointment, Preferences, and Institutional Relations, October 2007
- 2121 Bertil Holmlund and Martin Söderström, Estimating Income Responses to Tax Changes: A Dynamic Panel Data Approach, October 2007
- 2122 Doina Maria Radulescu, From Separate Accounting to Formula Apportionment: Analysis in a Dynamic Framework, October 2007
- 2123 Jelle Brouwer, Richard Paap and Jean-Marie Viaene, The Trade and FDI Effects of EMU Enlargement, October 2007
- 2124 Kurt R. Brekke, Luigi Siciliani and Odd Rune Straume, Competition and Waiting Times in Hospital Markets, October 2007
- 2125 Alexis Direr, Flexible Life Annuities, October 2007
- 2126 Johannes Becker and Clemens Fuest, Quality versus Quantity – The Composition Effect of Corporate Taxation on Foreign Direct Investment, October 2007
- 2127 Balázs Égert, Real Convergence, Price Level Convergence and Inflation Differentials in Europe, October 2007
- 2128 Marko Koethenbueger, Revisiting the “Decentralization Theorem” – On the Role of Externalities, October 2007
- 2129 Axel Dreher, Silvia Marchesi and James Raymond Vreeland, The Politics of IMF Forecasts, October 2007
- 2130 Andreas Knabe and Ronnie Schöb, Subsidizing Extra Jobs: Promoting Employment by Taming the Unions, October 2007
- 2131 Michel Beine and Bertrand Candelon, Liberalization and Stock Market Co-Movement between Emerging Economies, October 2007
- 2132 Dieter M. Urban, FDI Technology Spillovers and Wages, October 2007
- 2133 Valentina Bosetti, Carlo Carraro, Emanuele Massetti and Massimo Tavoni, Optimal Energy Investment and R&D Strategies to Stabilise Greenhouse Gas Atmospheric Concentrations, October 2007
- 2134 David-Jan Jansen and Jakob de Haan, The Importance of Being Vigilant: Has ECB Communication Influenced Euro Area Inflation Expectations?, October 2007
- 2135 Oliver Falck, Heavyweights – The Impact of Large Businesses on Productivity Growth, October 2007

- 2136 Xavier Freixas and Bruno M. Parigi, Banking Regulation and Prompt Corrective Action, November 2007
- 2137 Jan K. Brueckner, Partial Fiscal Decentralization, November 2007
- 2138 Silvia Console Battilana, Uncovered Power: External Agenda Setting, Sophisticated Voting, and Transnational Lobbying, November 2007
- 2139 Alan J. Auerbach, Michael P. Devereux and Helen Simpson, Taxing Corporate Income, November 2007
- 2140 Lorenzo Cappellari, Paolo Ghinetti and Gilberto Turati, On Time and Money Donations, November 2007
- 2141 Roel Beetsma and Heikki Oksanen, Pension Systems, Ageing and the Stability and Growth Pact, November 2007
- 2142 Hikaru Ogawa and David E. Wildasin, Think Locally, Act Locally: Spillovers, Spillbacks, and Efficient Decentralized Policymaking, November 2007
- 2143 Alessandro Cigno, A Theoretical Analysis of the Effects of Legislation on Marriage, Fertility, Domestic Division of Labour, and the Education of Children, November 2007
- 2144 Kai A. Konrad, Mobile Tax Base as a Global Common, November 2007
- 2145 Ola Kvaløy and Trond E. Olsen, The Rise of Individual Performance Pay, November 2007
- 2146 Guglielmo Maria Caporale, Yannis Georgellis, Nicholas Tsitsianis and Ya Ping Yin, Income and Happiness across Europe: Do Reference Values Matter?, November 2007
- 2147 Dan Anderberg, Tax Credits, Income Support and Partnership Decisions, November 2007
- 2148 Andreas Irmen and Rainer Klump, Factor Substitution, Income Distribution, and Growth in a Generalized Neoclassical Model, November 2007
- 2149 Lorenz Blume, Jens Müller and Stefan Voigt, The Economic Effects of Direct Democracy – A First Global Assessment, November 2007
- 2150 Axel Dreher, Pierre-Guillaume Méon and Friedrich Schneider, The Devil is in the Shadow – Do Institutions Affect Income and Productivity or only Official Income and Official Productivity?, November 2007
- 2151 Valentina Bosetti, Carlo Carraro, Emanuele Massetti and Massimo Tavoni, International Energy R&D Spillovers and the Economics of Greenhouse Gas Atmospheric Stabilization, November 2007
- 2152 Balázs Égert and Dubravko Mihaljek, Determinants of House Prices in Central and Eastern Europe, November 2007

- 2153 Christa Hainz and Hendrik Hakenes, The Politician and his Banker, November 2007
- 2154 Josef Falkinger, Distribution and Use of Knowledge under the “Laws of the Web”, December 2007
- 2155 Thorvaldur Gylfason and Eduard Hochreiter, Growing Apart? A Tale of Two Republics: Estonia and Georgia, December 2007
- 2156 Morris A. Davis and François Ortalo-Magné, Household Expenditures, Wages, Rents, December 2007
- 2157 Andreas Haufler and Christian Schulte, Merger Policy and Tax Competition, December 2007
- 2158 Marko Köthenbürger and Panu Poutvaara, Rent Taxation and its Intertemporal Welfare Effects in a Small Open Economy, December 2007
- 2159 Betsey Stevenson, Title IX and the Evolution of High School Sports, December 2007
- 2160 Stergios Skaperdas and Samarth Vaidya, Persuasion as a Contest, December 2007
- 2161 Morten Bennedsen and Christian Schultz, Arm’s Length Provision of Public Services, December 2007
- 2162 Bas Jacobs, Optimal Redistributive Tax and Education Policies in General Equilibrium, December 2007
- 2163 Christian Jaag, Christian Keuschnigg and Mirela Keuschnigg, Pension Reform, Retirement and Life-Cycle Unemployment, December 2007
- 2164 Dieter M. Urban, Terms of Trade, Catch-up, and Home Market Effect: The Example of Japan, December 2007
- 2165 Marcelo Resende and Rodrigo M. Zeidan, Lionel Robbins: A Methodological Reappraisal, December 2007
- 2166 Samuel Bentolila, Juan J. Dolado and Juan F. Jimeno, Does Immigration Affect the Phillips Curve? Some Evidence for Spain, December 2007