

Carlsson, Mikael; Eriksson, Stefan; Gottfries, Nils

**Working Paper**

## Testing theories of job creation: does supply create its own demand?

CESifo Working Paper, No. 1866

**Provided in Cooperation with:**

Ifo Institute – Leibniz Institute for Economic Research at the University of Munich

*Suggested Citation:* Carlsson, Mikael; Eriksson, Stefan; Gottfries, Nils (2006) : Testing theories of job creation: does supply create its own demand?, CESifo Working Paper, No. 1866, Center for Economic Studies and ifo Institute (CESifo), Munich

This Version is available at:

<https://hdl.handle.net/10419/25911>

**Standard-Nutzungsbedingungen:**

Die Dokumente auf EconStor dürfen zu eigenen wissenschaftlichen Zwecken und zum Privatgebrauch gespeichert und kopiert werden.

Sie dürfen die Dokumente nicht für öffentliche oder kommerzielle Zwecke vervielfältigen, öffentlich ausstellen, öffentlich zugänglich machen, vertreiben oder anderweitig nutzen.

Sofern die Verfasser die Dokumente unter Open-Content-Lizenzen (insbesondere CC-Lizenzen) zur Verfügung gestellt haben sollten, gelten abweichend von diesen Nutzungsbedingungen die in der dort genannten Lizenz gewährten Nutzungsrechte.

**Terms of use:**

*Documents in EconStor may be saved and copied for your personal and scholarly purposes.*

*You are not to copy documents for public or commercial purposes, to exhibit the documents publicly, to make them publicly available on the internet, or to distribute or otherwise use the documents in public.*

*If the documents have been made available under an Open Content Licence (especially Creative Commons Licences), you may exercise further usage rights as specified in the indicated licence.*

# TESTING THEORIES OF JOB CREATION: DOES SUPPLY CREATE ITS OWN DEMAND?

MIKAEL CARLSSON  
STEFAN ERIKSSON  
NILS GOTTFRIES

CESIFO WORKING PAPER NO. 1866  
CATEGORY 4: LABOUR MARKETS  
DECEMBER 2006

*An electronic version of the paper may be downloaded*

- *from the SSRN website:* [www.SSRN.com](http://www.SSRN.com)
- *from the RePEc website:* [www.RePEc.org](http://www.RePEc.org)
- *from the CESifo website:* [www.CESifo-group.de](http://www.CESifo-group.de)

# TESTING THEORIES OF JOB CREATION: DOES SUPPLY CREATE ITS OWN DEMAND?

## Abstract

Although search-matching theory has come to dominate labor economics in recent years, few attempts have been made to compare the empirical relevance of search-matching theory to efficiency wage and bargaining theories, where employment is determined by labor demand. In this paper we formulate an empirical equation for net job creation, which encompasses search-matching theory and a standard labor demand model. Estimation on firm-level data yields support for the labor demand model, wages and product demand affect job creation, but we find no evidence that unemployed workers contribute to job creation, as predicted by search-matching theory.

JEL Code: E24, J23, J64.

Keywords: job creation, involuntary unemployment, search-matching, labor demand, competitiveness.

*Mikael Carlsson*  
*Research Department*  
*Sveriges Riksbank*  
*10337 Stockholm*  
*Sweden*  
*mikael.carlsson@riksbank.se*

*Stefan Eriksson*  
*Department of Economics*  
*Uppsala University*  
*PO Box 513*  
*Sweden - 75120 Uppsala*  
*stefan.eriksson@nek.uu.se*

*Nils Gottfries*  
*Department of Economics*  
*Uppsala University*  
*PO Box 513*  
*Sweden - 75120 Uppsala*  
*nils.gottfries@nek.uu.se*

7 November 2006

We are grateful for helpful comments from Per-Anders Edin, Peter Fredriksson, Bertil Holmlund, Francis Kramarz, Edmund Phelps, Oskar Nordström Skans, Ronnie Schöb, and seminar participants at CESifo Area Meeting, COST workshop at UCL, EALE, EEA Annual Congress, ESSLE, Sveriges Riksbank, and Stockholm and Uppsala Universities. We thank Björn Andersson and Kerstin Johansson for providing some of the data. We are grateful for financial support from the Jan Wallander and Tom Hedelius Foundation (Carlsson, Gottfries), the Institute for Labour Market Policy Evaluation and the Swedish Council for Working Life and Social Research (Eriksson). The views expressed in this paper are solely the responsibility of the authors and should not be interpreted as reflecting the views of the Executive Board of Sveriges Riksbank.

# 1. Introduction

Efficiency wage and bargaining theories predict wages to be above the market clearing level.<sup>1</sup>

There is excess supply in the labor market, so firms can hire the workers they want.

Unemployment is explained by too high wages and lack of demand. An increase in labor supply will increase employment only if wages fall, or there is some other factor that shifts labor demand.

In the last two decades, these demand-oriented theories have been challenged by search-matching theory, where unemployment arises because it takes time for workers and firms to find each other.<sup>2</sup> Without such frictions, there would be no unemployment. Search-matching theory assigns a minor role to the demand side of the labor market. Instead, supply creates its own demand: if labor supply increases, firms open more vacancies and vacancies are filled more quickly. Importantly, this happens even if wages do not adjust.<sup>3</sup>

While search-matching theory has come to dominate labor economics in recent years, few attempts have been made to compare the empirical relevance of search-matching theory and theories where employment is determined by labor demand. The purpose of this paper is to compare the explanatory power of these two paradigms for thinking about (un)employment. More specifically, we focus on the question whether search-matching theory helps to explain job creation. Do unemployed workers contribute to job creation, as predicted by search-matching theory? Does supply create its own demand?

All leading theories of the labor market imply that, in the long run, supply creates its own demand. If labor supply increases, this will eventually bring about more jobs. But labor market theories differ in their explanations of *how* this adjustment occurs and what drives medium-term variations in employment. Demand-oriented models point to wages and aggregate demand as key factors. Unemployed workers are available, waiting for work, but there are simply too few jobs to go around. In search-matching theory, unemployed workers are not just a passive ‘reserve army’ waiting for jobs, but their search activity contributes to

---

<sup>1</sup> See e.g. Phelps (1968), Salop (1979), Shapiro and Stiglitz (1984), Oswald (1985), Akerlof and Yellen (1986), Blanchard and Summers (1986), Gottfries and Horn (1987), Layard, Nickell and Jackman (1991). Minimum wages is another reason why wages may be above the market clearing level.

<sup>2</sup> See e.g. Mortensen and Pissarides (1994) and Pissarides (2000).

<sup>3</sup> Suppose that the number of vacancies is determined by the zero profit condition  $c = qJ(w)$  where  $c$  is the cost of keeping a vacancy  $J(w)$  is the value of a filled job, and  $q$  is the probability to fill a vacancy. Let the latter be determined by  $q = m(U/V)^\alpha$ . Then we can solve for vacancies:  $V = (mJ(w)/c)^{1/\alpha} U$ . For a given wage, the number of vacancies is *proportional* to unemployment, and so is the number of matches. Assuming a constant separation rate and using the flow equilibrium condition, it is easy to show that if frictions are eliminated, i. e.  $c$  goes to zero or  $\alpha$  goes to infinity, unemployment will disappear.

matches being formed. This, in fact, is the essence of the matching function: hiring depends not only on the number of job openings, but also on unemployment.

The novel prediction from search-matching theory is that an increase in unemployment should bring about more job creation even without any adjustment of wages. To test this prediction, we formulate an empirical equation for net job creation, which encompasses both theories, and estimate it on firm-level data. The equation includes firm-specific measures of real wage cost per worker and product demand, as well as unemployment and vacancies in the local labor market area. The demand variable is constructed by weighing together international demand with domestic aggregate demand components using firm- and industry-specific weights.

Turning to estimation, a basic identification problem arises. Aggregate shocks, which affect employment in all firms, will affect wages and aggregate demand as well as unemployment and vacancies. To deal with this problem, we include time dummies to capture unobserved shocks that affect all firms. There could also be local shocks, which affect all firms, and hence vacancies and unemployment, in a local labor market area. We therefore instrument local unemployment and vacancies by demand and price indexes, which reflect the industry structure in the local labor market area. The sample period is Sweden in the 1990s, a period with large fluctuations in domestic and international demand, as well as in the exchange rate, which should help to identify the effects of supply and demand factors on net job creation.

The results provide strong support for demand-oriented theories of job creation. Wages and demand have statistically significant and quantitatively large effects on job creation. In contrast, unemployment does not have a significant effect on net job creation.<sup>4</sup> Nor do we see any evidence of congestion effects when there are many vacancies in the local labor market. Apparently, search-matching theory offers little value added when it comes to explaining job creation in this period.

The rest of the paper is organized as follows. In Section 2 we derive equations for net job creation from two different models: a labor demand model with adjustment costs, and a search-matching model. We also formulate an encompassing empirical specification. In Section 3 we present the data and discuss identification and estimation issues. The results are presented in Section 4 and the relation other empirical studies is discussed in Section 5.

---

<sup>4</sup> There is a lot of evidence that an increase in unemployment will lead to wage moderation, and this will increase employment, but this effect would arise in any labor market model that we know of.

## 2. Theories of Job Creation and an Empirical Specification

Below we formulate two simple models of job creation: a labor demand model with adjustment costs and a search-matching model. The purpose is to clarify which factors determine job creation in each model and to highlight the differences between the two models. In both models, firms, indexed  $i$ , belong to different sectors and sell in different product markets, but hire in the same local labor market and take the wage as given.<sup>5</sup>

### 2.1 A Labor Demand Model with Adjustment Costs<sup>6</sup>

The wage is above the market clearing level and there are no search frictions, so firms can always hire the workers they want. The production function is  $Q_{i,t} = N_{i,t}$ , where  $Q_{i,t}$  is production, and  $N_{i,t}$  is the number of workers employed in firm  $i$ . Demand for the firm's

product is  $Q_{i,t} = D_{i,t} - \frac{1}{\eta} \frac{P_{i,t}}{P_{i,t}^C} + v_{i,t}$  where  $D_{i,t}$  is a firm-specific demand-shifter,  $P_{i,t}$  is the price

set by firm  $i$ ,  $P_{i,t}^C$  is the average price level of the competitors of firm  $i$  in the relevant markets.

$D_{i,t}$  and  $P_{i,t}^C$  are indexed  $i$  because firms belong to different sectors and sell in different markets.  $v_{i,t}$  is a firm-specific idiosyncratic i. i. d. demand shock. The shock is observed by the firm before it sets employment. It is costly for the firm to adjust its employment level, and the adjustment cost is given by  $cP_{i,t}^C(N_{i,t} - N_{i,t-1})^2 / 2$ .

The profit maximization problem facing firm  $i$  is:

$$\max E_t \sum_{\tau=t}^{\infty} \beta^{\tau-t} \frac{1}{P_{i,\tau}^C} \left[ (P_{i,\tau} - W_{i,\tau}) N_{i,\tau} - \frac{cP_{i,\tau}^C}{2} (N_{i,\tau} - N_{i,\tau-1})^2 \right] \quad (1)$$

$$s.t. N_{i,\tau} = D_{i,\tau} - \frac{1}{\eta} \frac{P_{i,\tau}}{P_{i,\tau}^C} + v_{i,\tau}.$$

<sup>5</sup> We do not model wage setting but we think of the wage as being predetermined because of union contracts and nominal wage rigidity. Forslund, Gottfries and Westermarck (2006) find a very high degree of nominal wage rigidity in all four Nordic countries. What is needed, however, is that the wage does not depend on the employment decision. In the empirical implementation, we instrument for the wage to take account of possible simultaneity.

<sup>6</sup> Models of this type are analyzed by Sargent (1979), Nickell (1986), Hamermesh (1993), and others. It is presented here to simplify the comparison with the search-matching model.

where the wage in firm  $i$  is denoted  $W_{i,t}$ .<sup>7</sup> The first order condition for the optimal employment level in period  $t$  is a second-order difference equation from which we can derive the following equation for net job creation (see the *Appendix*):

$$\Delta N_{i,t} = \frac{\lambda_1}{c} \sum_{\tau=t}^{\infty} \left( \frac{1}{\lambda_2} \right)^{\tau-t} E_t \left( \eta(D_{i,\tau} + v_{i,\tau}) - \frac{W_{i,\tau}}{P_{i,\tau}^C} \right) - (1 - \lambda_1) N_{i,t-1}, \quad (2)$$

where  $\lambda_1$  and  $\lambda_2$  are functions of the parameters  $\beta$ ,  $\eta$  and  $c$ ;  $0 < \lambda_1 < 1$  and  $\lambda_2 > 1$ . Job growth in firm  $i$  is determined by demand and wage cost deflated by an index of competitors' prices. In the following, we denote the latter variable "real wage cost" or "competitiveness." Employment in the previous period enters as a state variable.

## 2.2 A Search-Matching Model

In the textbook search-matching model firms are identical and hire at most one worker. In reality, firms belong to different production sectors and sell in different markets, and most of them hire many workers. To derive an employment equation that can be implemented empirically, we consider a search-matching model with multi-employee firms facing different wages and prices. The model is a large-firm version of the standard search-matching model (e.g. Pissarides, 2000), except that we assume vacancy costs to be quadratic. This assumption is made to avoid the extreme – and counterfactual – implication that all vacancies are opened by the most profitable firm.

Workers and firms are situated in local labor markets and they cannot move between markets. In each local labor market there is a large number of price-taking firms. Again, firms in a local labor market belong to different production sectors and sell in different markets, so they face different competitors' prices,  $P_{i,t}^C$ . Job destruction varies stochastically across firms. The timing of events is as follows:

- (i) At the start of a period, firms choose the number of vacancies to open. Firm  $i$  opens  $V_{i,t}$  vacancies, and incurs total vacancy costs given by  $P_{i,t}^C c V_{i,t}^2 / 2$ .

---

<sup>7</sup> To simplify the model, we assume that the adjustment cost is proportional to the competitors' price and the firm also deflates future profits by this price. With more realistic assumptions, we would have more relative prices entering the decision rule, but these effects would be hard to estimate empirically.

- (ii) Matching of previously unemployed workers ( $U_{n,t-1}$ ) and total vacancies ( $V_{n,t}$ ) takes place in the local labor market, indexed  $n$ . The matching process between vacancies and unemployment is described by a conventional constant-returns matching function:  $M_{n,t} = U_{n,t-1}^\alpha V_{n,t}^{1-\alpha}$  where  $M_{n,t}$  is the total number of matches in period  $t$ . Hence the probability of filling a vacancy is  $q_{n,t} = M_{n,t} / V_{n,t} = (U_{n,t-1} / V_{n,t})^\alpha$ .
- (iii) A firm-specific separation shock is realized. Total separations in firm  $i$  are given by  $(\lambda + \xi_{i,t})N_{i,t}$  where the shock,  $\xi_{i,t}$ , is i.i.d with mean zero.
- (iv) Production takes place.

Firm  $i$  chooses vacancies so as to solve the following profit maximization problem:

$$\begin{aligned} \max \quad & E_t \sum_{\tau=t}^{\infty} \beta^{\tau-t} \frac{1}{P_{i,\tau}^C} \left[ (P_{i,\tau}^C - W_{i,\tau}) N_{i,\tau} - \frac{P_{i,\tau}^C}{2} V_{i,\tau}^2 \right] \\ \text{s.t.} \quad & N_{i,\tau} = q_{n,\tau} V_{i,\tau} + (1 - \lambda - \xi_{i,\tau}) N_{i,\tau} \end{aligned} \quad (3)$$

At the optimum, the marginal cost of opening one more vacancy should be equal to the marginal benefit of opening a vacancy:<sup>8</sup>

$$cV_{i,t} = q_{n,t} \sum_{\tau=t}^{\infty} \left[ \beta^{\tau-t} (1 - \lambda)^{\tau-t} E_t \left( 1 - \frac{W_{i,\tau}}{P_{i,\tau}^C} \right) \right]. \quad (4)$$

Using the constraint in (3) and the expression for  $q_t$  we can express net job creation in firm  $i$  as:

$$\Delta N_{i,t} = \frac{1}{c} \left( \frac{U_{n,t-1}}{V_{n,t}} \right)^{2\alpha} \left( \sum_{\tau=t}^{\infty} \left[ \beta^{\tau-t} (1 - \lambda)^{\tau-t} E_t \left( 1 - \frac{W_{i,\tau}}{P_{i,\tau}^C} \right) \right] \right) - (\lambda + \xi_{i,t}) N_{i,t-1}. \quad (5)$$

---

<sup>8</sup> Alternatively, this condition can be derived by substituting for vacancies in the objective function, maximizing with respect to expected employment, and iterating on the resulting difference equation (see the *Appendix*).

As in the labor demand model, job creation in a firm depends on the firm's real wage cost. Furthermore, it increases with the level of unemployment for two reasons: high unemployment makes it easier to find workers and the firm also opens more vacancies. Job creation should decrease with the total number of vacancies in the local labor market because of congestion. It is harder for firm  $i$  to find workers when there are many vacancies in the local labor market. Again, the previous level of employment is a state variable.

### 2.3. An Encompassing Empirical Specification

Comparing the equations for job creation derived from our two models we see that real wage cost and the previous level of employment play a role in both. The key difference is that according to the labor demand model, demand is important for firms' hiring decisions, while the search-matching model emphasizes labor supply. Unemployed workers contribute to job creation in the search-matching model. Since we want to investigate the relative importance these various factors, our baseline empirical specification encompasses both models:

$$\Delta \ln N_{i,t} = \alpha_i + \beta_1 (\ln W_{i,t} - \ln P_{i,t}^C) + \beta_2 \ln D_{i,t} + \beta_3 \ln U_{n,t-1} + \beta_4 \ln V_{n,t} + \beta_5 \ln N_{i,t-1} + \varepsilon_{i,t}. \quad (6)$$

In the theoretical models above, employment depends on weighted averages of current and expected future real wage costs and demand. Since we have a rather short panel, we simply use current values and include extra lags if necessary in the empirical specification.<sup>9</sup>

Productivity growth is captured by time dummies.

Both models predict  $\beta_1 < 0$  and  $-1 < \beta_5 < 0$ . According to the labor demand model  $\beta_2 > 0$  and  $\beta_3 = \beta_4 = 0$ , while the search-matching model implies  $\beta_2 = 0$ ,  $\beta_3 > 0$  and  $\beta_4 < 0$ . We should note, however, that these differences arise because we made different assumptions in the two models about product *and* labor markets. In the labor demand model, the product market was assumed to be imperfectly competitive and there were no matching frictions in the labor market. In the search-matching model, the product market was assumed to be perfectly competitive and there were frictions in the labor market. These are the typical combinations considered in the literature. Most of the modern bargaining literature treats the product market as imperfectly competitive; it is the firm's market power which creates the surplus, over

---

<sup>9</sup> The period in the models is shorter than one year, which is the frequency of the data. Ideally we would like to have data on higher frequency, but given the high persistence in the explanatory variables, it is very unlikely that such data would lead to qualitatively different results.

which firms and insiders/unions bargain.<sup>10</sup> Almost all search-matching models treat product markets as perfectly competitive, downplaying the role of demand factors.<sup>11</sup>

There are other combinations, however, e.g. efficiency wage models with perfect competition in the product market (Shapiro and Stiglitz (1984)) and search-matching models with imperfect competition in the product market (Ebell and Haefke (2004)). Thus we can have  $\beta_2 > 0$  in a search-matching model and we should be aware that  $\beta_2$  sheds light on the nature of product market competition rather than matching frictions. The real test of whether search-matching theory offers any value added lies in testing whether coefficients  $\beta_3$  and  $\beta_4$  are significantly different from zero, with the signs predicted by search-matching theory.

### 3. Data and Estimation

Firm specific variables are taken from a firm-level dataset provided by Statistics Sweden and administered by Sveriges Riksbank. This dataset contains annual information for the years 1990-2000 on all Swedish *industrial firms* with 20 or more employees and a sample of smaller firms. The database is constructed by merging information from several sources: Registry Based Labor Market Statistics (RAMS), Survey Based Statistics for Industrial Plants (Industristatistiken) and Survey Based Statistics for Firms (Finansstatistiken 1990-1996, Företagsstatistiken 1997-2000). Since we want to identify the labor market area where the firm is situated, we consider only firms with a single plant, which do not move during the sample period. To construct our demand index we use the export share of the firm, and this is available only for firms with 50 employees or more.<sup>12</sup> We use only data for firms for which we have all the relevant information and these constraints limit the sample, leaving us with a sample of 461 ongoing firms. The following variables are included in the equation:

*Employment*  $N_{i,t}$  is the average number of workers employed in firm  $i$  in year  $t$ .

*Real wage cost* is  $\ln W_{i,t} - \ln P_{i,t}^C$  where  $W_{i,t}$  is the firms' total labor cost per employee (including wage and e.g. collective fees). A firm-specific competitor price for firm  $i$  in industry  $j$  is calculated as  $\ln P_{i,t}^C = (1 - \delta_i) \ln P_{j,t}^D + \delta_i \ln P_{j,t}^{IC}$ , where  $\delta_i$  is the average export share over the sample period for firm  $i$  and  $P_{j,t}^D$  is the industry-level producer price index for the domestic market (i. e. domestic deliveries plus imports, SNI92 two-digit industry

<sup>10</sup>See e.g. Calmfors and Driffill (1988), Layard, Nickell and Jackman (1991).

<sup>11</sup>E.g. Pissarides (2000) does not consider the case where there is imperfect competition in the goods market.

<sup>12</sup>An alternative would be to use the export share for the industry but this is less appealing because export shares vary substantially between firms within an industry.

classification). The international competitors' price is calculated as

$$\ln P_{j,t}^{IC} = \sum_m \omega_{j,m} (\ln E_{m,t} + \ln P_{j,m,t}^F), \text{ where } \omega_{j,m} \text{ is the average share of industry } j\text{'s exports}$$

that went to country  $m$  during 1990-1994 ( $j \in \{31, 32, \dots, 38\}$ , SNI69 industry classification).

These shares are computed using the available trade data for the classification of goods (varusni69) matching the SNI69 industry (production) classification. The countries, indexed  $m$ , are Sweden's 13 main trading partners.<sup>13</sup> The competitor product price in foreign currency,  $P_{j,m,t}^F$ , is the implicit value-added deflator for industry  $j$  in country  $m$  taken from the OECD industrial database STAN.  $E_{m,t}$  is the exchange rate (SEK per country  $m$ 's currency) taken from the OECD Annual National Accounts.

The *demand* variable for firm  $i$  in sector  $j$  is constructed as

$$\ln D_{i,t} = (1 - \delta_i) [\phi_j^C \ln C_t + \phi_j^I \ln I_t + (1 - \phi_j^C - \phi_j^I) \ln Y_t] + \delta_i D_{j,t}^I, \text{ where } \delta_i \text{ is again the firm's}$$

average export share,  $\phi_j^C$  is the industry specific share of output going to final consumption in total domestic use,  $\phi_j^I$  is the corresponding share going to investment and  $1 - \phi_j^C - \phi_j^I$  is the corresponding share used as intermediate goods (SNI92 two-digit industry classification). These shares are computed as the average value from the 1995 and 2000 Input-Output tables provided by Statistics Sweden.  $Y$ ,  $C$ , and  $I$  are all aggregate variables.  $Y_t$  is a volume index of industrial production,  $C_t$  is real private consumption and  $I_t$  is real private sector gross fixed investment. The international demand component is calculated as  $\ln D_{j,t}^I = \sum_m \omega_{j,m} \ln Y_{j,m,t}$ ,

where  $Y_{j,m,t}$  is real value-added for industry  $j$  in country  $m$  taken from the OECD industrial database STAN and used as proxy for industry demand; the weights are defined above.

*Unemployment*  $U_{n,t}$  is defined as the total number of unemployed workers in the local labor market area  $n$  and is provided by Swedish Labour Market Board (AMS). Local labor market areas consist of one or more municipalities and are constructed by Statistics Sweden using commuting patterns. We use the 1993 definition with 109 labor market areas. According to Johansson and Persson (2000), 80-90 percent of hired workers come from the local labor market area.

*Vacancies*  $V_{n,t}$  in the local labor market area are constructed using monthly vacancy data from the Swedish Labour Market Board (AMS), which measures the number of unfilled

---

<sup>13</sup> That is, Germany, France, Italy, the Netherlands, Belgium, UK, Denmark, USA, Canada, Japan, Norway, Finland and Austria. These countries absorb about 80 percent of Sweden's exports.

vacancies at the start of the month in each local labor market area. We take the average over the year as our measure of vacancies.

For *productivity* we constructed a firm-specific productivity trend as  $\tau_i T_t$  where  $\tau_i = (\ln(Y_{i,2000}/N_{i,2000}) - \ln(Y_{i,1990}/N_{i,1990}))$ ,  $Y_{i,t}$  is the firm's real sales and  $T_t$  is a linear time trend.

*Table 1* shows how firms in the sample are distributed across industries. We also see that export shares and the composition of demand vary considerably across industries.

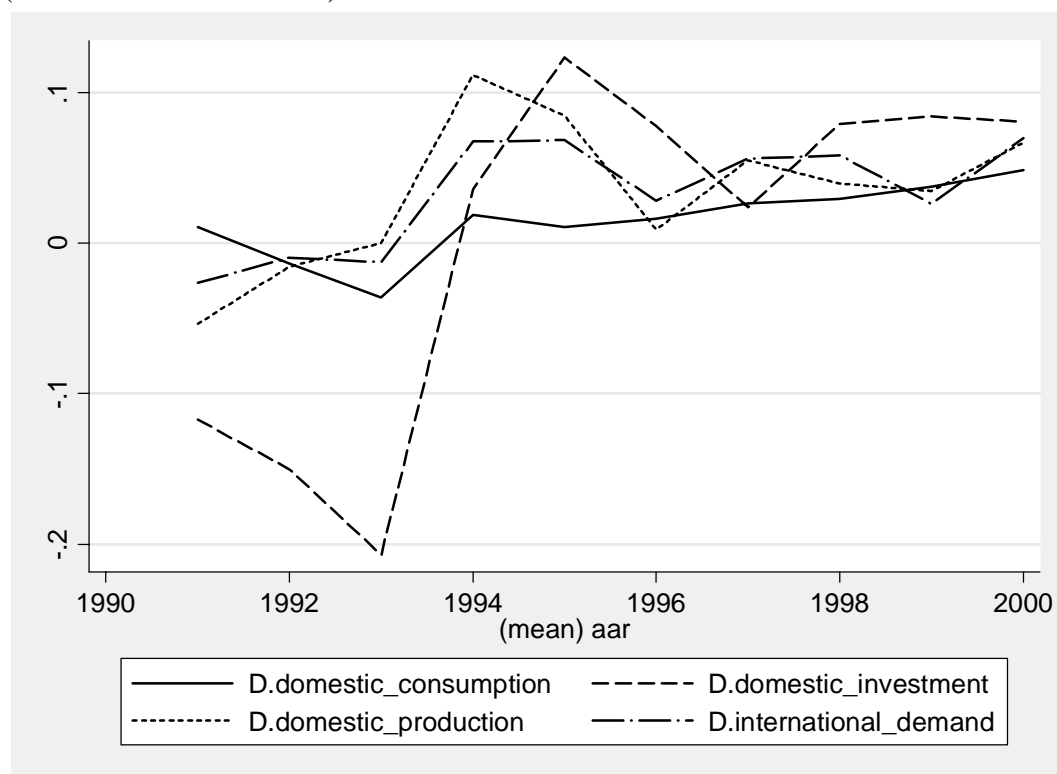
**Table 1. Industry Distribution of Firms in the Sample. Average Export Share and Share Used for Consumption, Investment and Intermediate Goods for each Industry**

Industry (SNI92)	Number of firms	Average export share	Consumption	Investment	Intermediate
15	22	0.11	0.58	0	0.42
16	0	0.06	1	0	0
17	15	0.63	0.28	0	0.72
18	7	0.79	0.89	0	0.11
19	4	0.73	0.39	0	0.61
20	44	0.52	0.02	0	0.98
21	22	0.65	0.03	0	0.97
22	18	0.04	0.16	0	0.84
23	3	0.50	0.40	0	0.60
24	19	0.69	0.28	0	0.72
25	26	0.52	0.07	0	0.93
26	5	0.30	0.03	0	0.97
27	17	0.54	0.01	0	0.99
28	68	0.28	0.02	0.14	0.84
29	92	0.64	0.02	0.40	0.58
30	4	0.74	0.04	0.80	0.16
31	9	0.70	0.06	0.17	0.77
32	7	0.78	0.04	0.35	0.61
33	12	0.62	0.02	0.49	0.49
34	28	0.66	0.28	0.20	0.52
35	9	0.69	0.12	0	0.88
36	29	0.46	0.38	0.20	0.42
37	1	0	0	0	1

*Figure 1* illustrates the severity of the Swedish recession, with investment and consumption falling substantially in 1992-1993. *Figure 2* shows that the large depreciation of the currency in 1992-1993 had a substantial effect on real wage cost (competitiveness) in the machine industry, with a 64 percent export share, but did not much affect the food industry, with an 11 percent export share. *Figure 3* shows that there is considerable co movement of unemployment rates across local labor markets, but also a non negligible cross-sectional variation. Vacancies appear to be more dispersed across local labor markets (*Figure 4*).

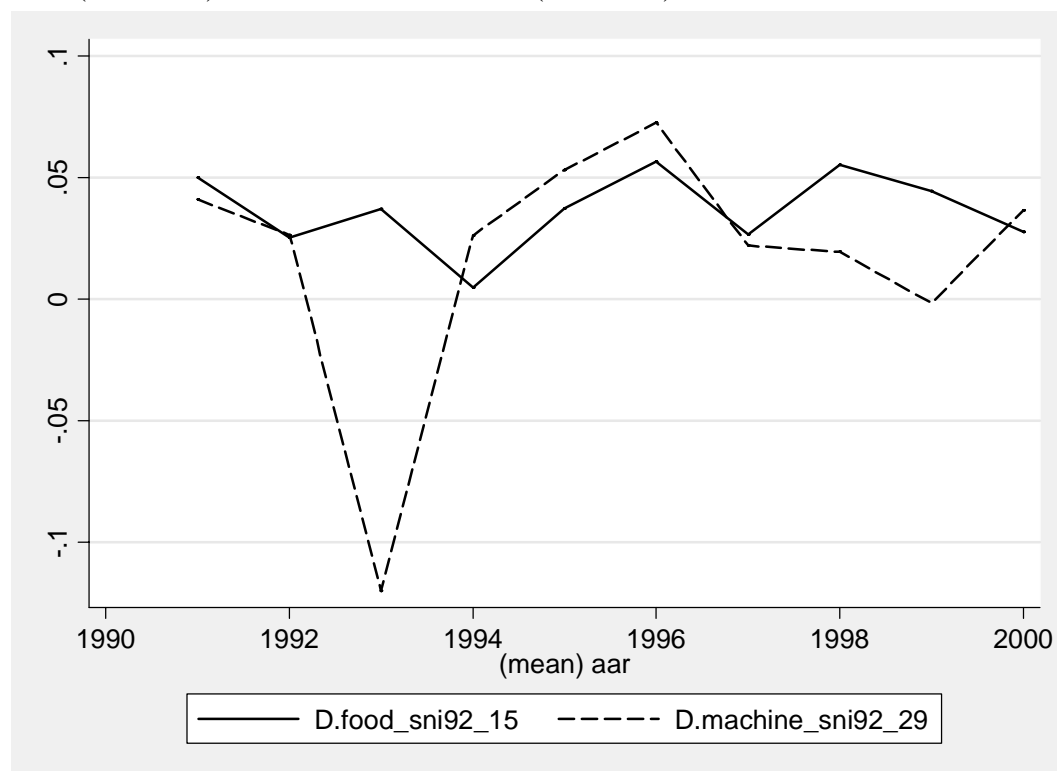
**Figure 1: Changes in Demand Components**

Change in Domestic Consumption, Investment and Production, and International Demand (the latter is for sni69=38)

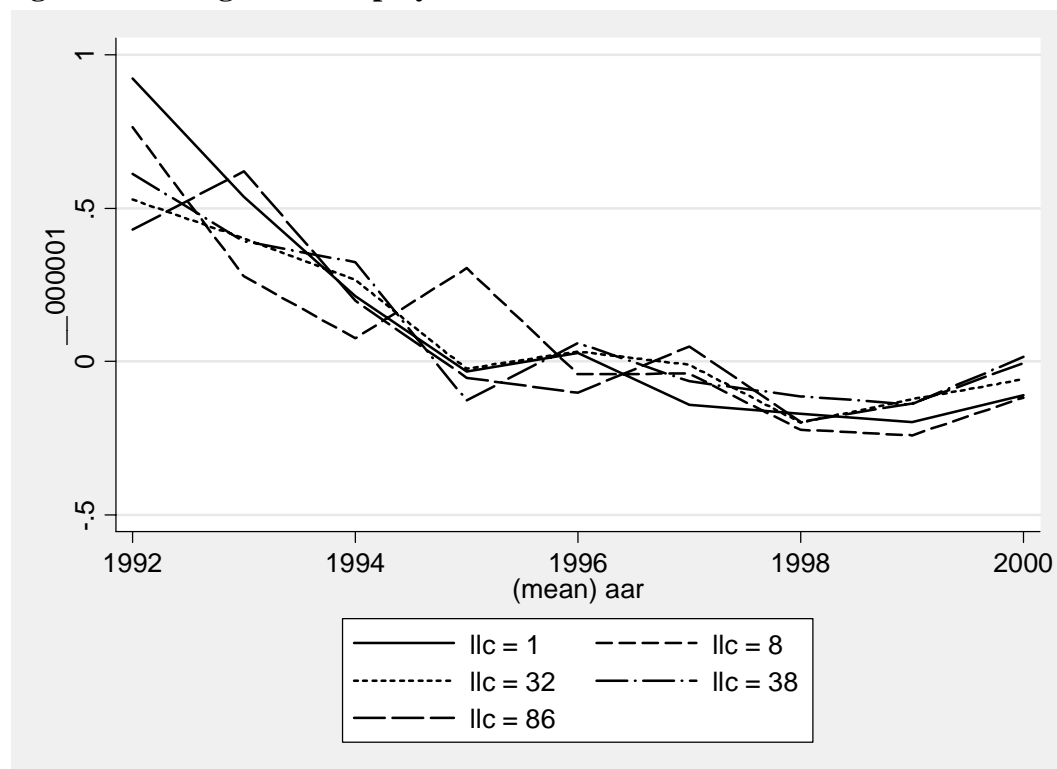


**Figure 2: Changes in Real Wage Cost**

Food (sni92=15) and Machine Industries (sni92=29)

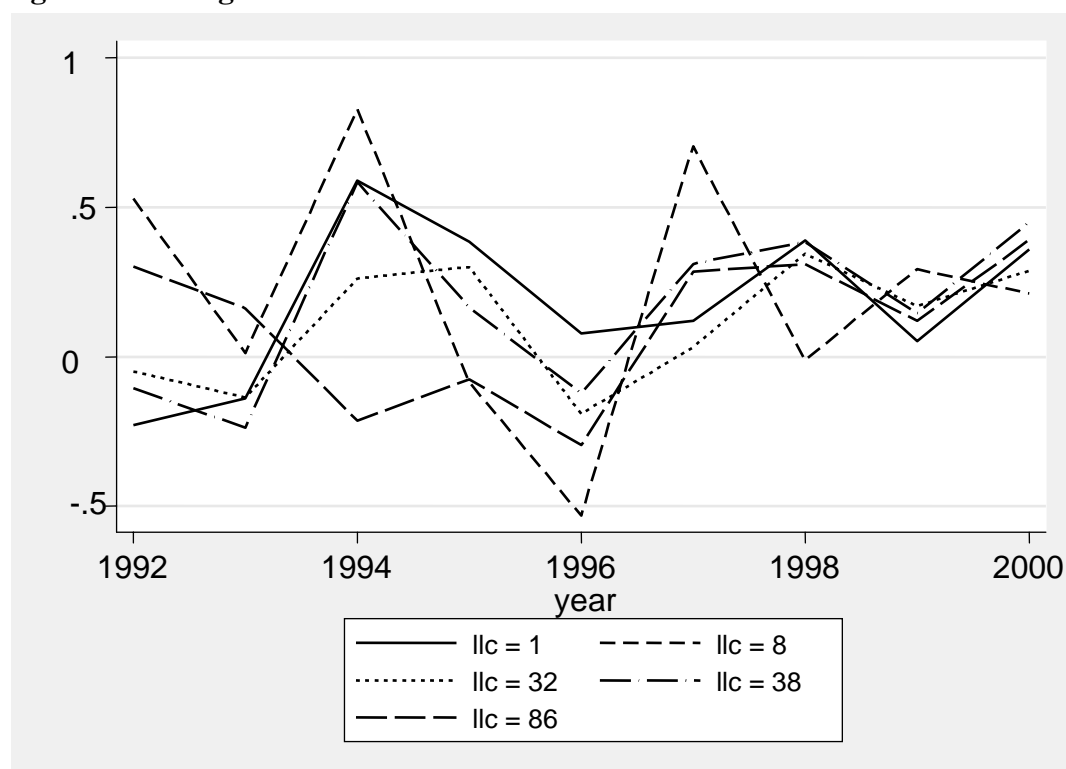


**Figure 3: Change in Unemployment for some Local Labor Markets**



Note: The local labor market areas used for this illustration are Stockholm (llc=1), Gnosjö (llc=8), Malmö (llc=32), Göteborg (llc=38) and Örnköldsvik (llc=86).

**Figure 4: Change in Vacancies for some Local Labor Markets**



Note: The local labor market areas used for this illustration are Stockholm (llc=1), Gnosjö (llc=8), Malmö (llc=32), Göteborg (llc=38) and Örnköldsvik (llc=86).

By regressing our variables on time dummies, we can find out how much of the variation that is cross sectional. Time dummies explain 14 percent of the change in real wage costs, 83 percent of the change in demand, 86 percent of changes in regional unemployment rates, and 30 percent of changes in vacancies. Thus, about the same fraction of the variation is cross-sectional for unemployment changes as for demand changes.

Can we plausibly identify the effects we are interested in? The main problem is that shocks, which affect employment in many firms, may affect wages and aggregate demand as well as unemployment and vacancies in the local labor market area. The shock  $\varepsilon_{i,t}$  in equation (6) may have aggregate, industry-specific, and local components. We include time dummies which absorb the effects of aggregate shocks. Industry-specific shocks are dealt with by not relying on industry-specific time series data to construct demand indices but constructing this variable from aggregate data as described above.<sup>14</sup> The industry price, which is used to calculate the real wage cost, is instrumented using suitably chosen lags (see discussion below). To deal with simultaneity arising from local shocks, we instrument local unemployment and vacancies by demand and (lags of) competitors' price indexes which reflect the industry structure in the local labor market area.

A *demand* variable for the local labor market  $n$  is constructed as  $\ln D_{n,t} = \sum_j \kappa_{j,n} \ln D_{j,t}$  where the weights  $\kappa_{j,n}$  reflect the local labor market's industry composition (SNI92 two-digit industry classification). These weights are constructed by using RAMS data on the number of employees in each sector (by local labor market SNI92 two-digit industry classification). Industry demand is calculated as  $\ln D_{j,t} = (1 - \delta_j)[\phi_j^C \ln C_t + \phi_j^I \ln I_t + (1 - \phi_j^C - \phi_j^I) \ln Y_t] + \delta_j \ln D_{j,t}^I$  where  $\delta_j$  is now the industry's average export share.

*Local competitors' price* is constructed analogously as  $\ln P_{n,t}^C = \sum_j \kappa_{j,n} \ln P_{j,t}^C$  where  $\ln P_{j,t}^C = (1 - \delta_j) \ln P_{j,t}^D + \delta_j \ln P_{j,t}^{IC}$ .

By using instruments for vacancies, we also deal with the problem of measurement errors in vacancy data. As is well known, many job openings are not officially registered, so vacancies are a relatively poor measure of the number of job openings.

Wage data may also suffer from measurement problems because of composition effects and variation in hours. Also, wages and prices may be simultaneously determined. We

---

<sup>14</sup> We assume that unobserved *world-wide* industry shocks are unimportant.

therefore use lagged values of the real wage cost variable,  $\ln W_{i,t} - \ln P_{i,t}^C$ , as instruments for the real wage cost.

Since our empirical specification includes lagged dependent variables as well as fixed effects, we use an Arellano-Bond (1991) estimator.<sup>15</sup> Thus, fixed effects are eliminated by taking first differences. This procedure introduces an MA(1) process in the residual ( $\Delta \varepsilon_{i,t}$ ), so that the first difference of the lagged dependent variable and the residual are correlated. But provided that  $\varepsilon_{i,t}$  is not serially correlated, we can use (suitably chosen) lags of the dependent variable as instruments.

As is generally the case for an asymptotically efficient GMM estimator, the instrument set grows with the number of time periods. However, as the lag order increases, lags become less informative as instruments. To avoid including irrelevant instruments, it is sensible not to include the full history of lags. We do not use instruments further back than five years relative to the variable that is to be instrumented. The results are not sensitive to including the full history of lags, however. Taking account of all the considerations above, we chose the instrument set listed in *Table 2*.

## 4. Results

When we estimate equation (6) as it stands, the AR(2)-test indicates that we have a problem with second-order serial dependence in the residuals. Our stylized theoretical models may not fully capture the dynamic adjustment, or there may be some omitted variables. By including two additional lags of employment in the regressions we are able to remove any signs of serial dependence in the residual.<sup>16</sup> The Hansen test does not reject the joint hypothesis that the model is correctly specified and that the instruments are valid. Examining the relevance of the instrument set, we find that the partial  $R^2$ :s are 0.56 for unemployment, 0.32 for vacancies, and 0.08 for real wage cost.<sup>17</sup> Thus, we should keep in mind that the relevance of the instrument set is somewhat low for the real wage cost.

*Table 2* shows the results.

---

<sup>15</sup> We have also tried using the System-GMM estimator suggested by Blundell and Bond (1998). However, the Hansen test indicates that the data does not square well with the restrictions imposed on the initial conditions process.

<sup>16</sup> We cannot eliminate the serial dependence mentioned above by adding lags of any other explanatory variable than employment.

<sup>17</sup> The relevance statistics are calculated using a static instrument set.

**Table 2: Results**Dependent variable:  $\Delta \ln N_{i,t}$ 

	I	II	III	IV	V
Estimation method	GMM	GMM	GMM	GMM	OLS
$\ln W_{i,t} - \ln P_{i,t}^C$	-0.270** (0.105)	-0.275** (0.105)	-0.263** (0.102)	-0.345** (0.109)	-0.178** (0.044)
$\ln W_{i,t-1} - \ln P_{i,t-1}^C$	-	-	-	0.125 (0.110)	-
$\ln D_{i,t}$	0.302** (0.098)	-	0.319** (0.101)	0.459** (0.160)	0.285** (0.059)
$\ln D_{i,t-1}$	-	-	-	-0.398* (0.159)	-
$\ln U_{n,t-1}$	-	-0.018 (0.059)	-0.012 (0.057)	-0.006 (0.060)	-0.039 (0.027)
$\ln U_{n,t-2}$	-	-	-	-0.031 (0.053)	-
$\ln V_{n,t}$	-	-0.015 (0.020)	-0.020 (0.019)	-0.023 (0.018)	-0.007 (0.008)
$\ln V_{n,t-1}$	-	-	-	0.012 (0.016)	-
$\ln N_{i,t-1}$	-0.264** (0.070)	-0.220** (0.067)	-0.269** (0.071)	-0.218** (0.083)	-0.211** (0.032)
$\ln N_{i,t-2}$	-0.063 (0.037)	-0.062 (0.037)	-0.060 (0.036)	-0.080* (0.039)	-0.071* (0.035)
$\ln N_{i,t-3}$	0.039 (0.030)	0.034 (0.031)	0.035 (0.030)	0.028 (0.028)	0.018 (0.024)
Productivity	0.006 (0.004)	0.007 (0.004)	0.006 (0.004)	0.005 (0.004)	0.006 (0.003)
Time Dummies	Yes	Yes	Yes	Yes	Yes
Period	1994-2000	1994-2000	1994-2000	1994-2000	1993-2000
Number of obs.	3227	3227	3227	3227	3688
AR(2) (P-value)	0.197	0.163	0.170	0.144	-
Hansen(P-value)	0.301	0.168	0.263	0.374	-

Note: The sample is 461 firms. \*\* and \* denote significance at the 1 and 5 percent levels respectively. The estimation in columns I-IV is performed using the Arellano and Bond (1991) GMM estimator calculated with DPD 1.21 for Ox. The GMM-type instruments used are:  $\ln N_{i,t-s}$  where  $s = 2, \dots, 5$ ,  $\ln W_{i,t} - \ln P_{i,t}^C$  where  $s=2, \dots, 5$ ,  $\ln P_{n,t-s}^C$  where  $s = 2, 3, \dots, 6$ ,  $\ln D_{n,t-s}$  where  $s = 0, \dots, 6$ .  $\ln D_{i,t}$  is treated as exogenous and we treat the productivity trend as deterministic. Second-step coefficients with robust Windmeijer (2005) finite-sample corrected standard errors in parenthesis. AR (2) denotes the p-value for the test of second-order autocorrelation in the first differenced residuals. Hansen denotes the p-value of the joint test of the model specification and instrument validity. The estimation in column V is performed using the OLS within estimator and robust standard errors are in parentheses.

Column I shows the results for a pure labor demand model. This model is supported by the data. Real wage cost and demand have the expected effects on job creation and both coefficients are highly significant. Since both variables are relatively crude proxies for the true costs and demand, the estimated coefficients are likely to understate the importance of these factors.<sup>18</sup>

<sup>18</sup> According to the theoretical models, the correct variables would be weighted averages of current and expected future demand and real-wage costs, demand is measured using industry rather than firm-level export composition, wage data does not take account of variation in hours etc.

In contrast, the search-matching model in Column II is not consistent with the data: unemployment and vacancies have insignificant effects on job creation. Column III shows the results for the encompassing model. These results only confirm the results for the labor demand model. Thus we find no evidence that unemployed workers contribute to matches being formed. When we model employment changes in individual firms, we do not gain any explanatory power by including the variables suggested by search-matching theory.<sup>19</sup>

Our theoretical models have relatively simple dynamics. To allow for more complicated dynamics, we estimate the model including one additional lag on real wage cost, demand, unemployment and vacancies. As seen in Column IV in *Table 2*, the only lag that is significant is lagged demand. The coefficient is almost as large as the contemporary effect, but with opposite sign, implying an essentially immediate effect of a demand shock on employment. One interpretation of this result is that customer relations are important in the product market. Customer market theory offers a natural explanation why demand effects are immediate but price effects take time.<sup>20</sup>

To test whether our results are sensitive to our choice of estimation method, we also estimate the model by OLS using a within transformation to handle fixed effects. Column V in *Table 2* shows the results. Wages and demand have significant effects, but the coefficients are somewhat smaller compared to the GMM estimates. This may be due to measurement errors for wages, in which case *all* the coefficients in the regression will be biased.

One possible objection against the results in *Table 2* is that some firms may cater mainly to the local labor market. If so, local-demand and competitiveness variables  $\ln D_{n,t}$  and  $\ln P_{n,t}^C$  are invalid instruments because they actually belong in the equation. Suppose that some firms in the local labor market area are hit by negative shocks and local unemployment increases. If firm  $i$  is a sub-contractor, or caters to the employees of those firms, it will also reduce employment. If the true coefficient for unemployment is positive, this will bias the

<sup>19</sup> Obviously, unemployment and vacancies depend on demand and wages, but this is a problem only if the correlation is so high that there is a multicollinearity problem. The highly significant coefficients for the latter variables suggest that this is not the case.

<sup>20</sup> Following Gottfries (2002), let a firm's customer stock  $x$  be determined by  $x_{i,t} = (1 - \lambda)x_{i,t-1} - \lambda\eta(p_{i,t} - p_{i,t}^c)$ , where,  $\eta$  is the long run elasticity, and  $\lambda$  is the speed of adjustment of the customer stock. All variables are logs. Suppose further that each customer buys  $\exp(\sigma d_t)$  units and there is constant returns to scale so the log of employment equals production:  $n_{i,t} = x_{i,t} + \sigma d_t$ . Let the price be set according to  $p_{i,t} - p_{i,t}^c = a_w(w_{i,t} - p_{i,t}^c)$ . Then we can easily derive the following equation for employment:  

$$\Delta n_{i,t} = -\lambda\eta a_w(w_{i,t} - p_{i,t}^c) + \sigma d_{i,t} - \sigma(1 - \lambda)d_{i,t-1} - \lambda n_{i,t-1}$$
Gottfries (2002, Table 1) estimated  $\eta = 2.88$ ,  $a_w = 0.37$ , and  $\lambda$  corresponding to 0.28 on a yearly frequency. These results are qualitatively in line with the results in Column IV.

coefficient towards zero. One way to check whether such local interdependencies affect the results is to limit the analysis to firms with a substantial export share. Such firms should be less dependent on local demand conditions, so the estimated coefficient on local unemployment should be less biased. Estimating equations for firms with substantial export shares, e. g. 25 or 50 percent, we still do not find any significantly positive effect of local unemployment on net job creation.

## **5. Comparisons with Other Results**

An earlier paper that tries to distinguish empirically between search and labor demand models is Burgess (1993). His paper is, in spirit, similar to ours and he claims support for the search-matching model. The results are hard to compare, however, because his specification is fundamentally different from ours. First, he uses aggregate data and estimates a time series model with a large number of explanatory variables. Second, he argues that the key implication of search-matching is that hiring costs depend on the state of the labor market. A slack labor market will reduce hiring costs and speed up the adjustment towards the desired level of employment. Thus he tests for interaction effects between labor market tightness and the gap between desired and actual employment. This is reasonable when the desired employment adjustment is positive (hiring) but makes little sense when the desired employment change is negative. Also, it differs from the standard search matching model, where labor market slack, by itself, makes it more profitable to open vacancies.

Another related literature is concerned with the labor-market impact of immigration. Card (1990) and others exploit geographical differences in immigration and find small effects of immigration on wages and job opportunities for natives in local labor markets. Taken at face value, such results suggest that supply does indeed create its own demand. But an increase in immigration obviously increases both supply and demand in the local labor market. Further, as emphasized by Borjas (2003), there is a serious simultaneity problem because immigrants are attracted to regions where there are many jobs. In our view, these results are not directly comparable to ours, which are primarily concerned with cyclical fluctuations.

A large number of studies have estimated “matching functions” and found a positive effect of unemployment on hiring (see Petrongolo and Pissarides (2001) for an overview). Blanchard and Diamond (1989), for example, estimate a matching function and conclude that “employment is not simply determined by demand” (p.4). Does the empirical success of the matching function contradict our findings? In our view it does not because an estimated

matching function says very little about *how* employment adjustment actually comes about. Most labor market theories imply that unemployment tends to revert to some natural rate, so hiring tends to be high when unemployment is high. In a regression of hiring on unemployment we should expect a positive coefficient – independently of which is the correct theory of the labor market. If we include vacancies in the regression, the coefficient on unemployment should fall but remain positive because vacancies are a very imperfect measure of actual job openings. Thus, every labor market theory predicts positive coefficients in a regression of hiring on unemployment and vacancies. Most theories would also imply constant returns to scale: hiring is twice as high in a labor market that is twice as big. So an estimated matching function does not say much about the importance of search frictions in the labor market.<sup>21</sup>

To separate different labor market theories, we need to know whether employment adjustment occurs because wages fall when unemployment is high, because of changes in aggregate demand and exchange rates, or because search by unemployed workers in itself contributes to more jobs being filled. We tried to separate these factors and we found clear effects of wages and demand.<sup>22</sup> There was no evidence that unemployment has a *direct* effect on job creation.<sup>23</sup>

We should note, however, that the Swedish labor market was very weak in the 1990s. Open unemployment went up to 8 percent, with another 5 percent in labor market programs. Matching problems may be more important in a tight labor market and to investigate this is an interesting avenue for future research. Still, our results suggest that more attention to the demand side is needed if search-matching models are to be useful for modeling medium term employment dynamics.

---

<sup>21</sup> Since we do not have vacancy data for individual firms, we cannot replicate matching-function estimates using this dataset.

<sup>22</sup> Blanchard and Diamond (1989) motivate the omission of wages from the estimated matching function by assuming that “wages play no allocational role in individual matches, merely dividing rents between firms and workers”. Our results indicate an important allocative role of wages. Gottfries (1992), Oswald (1993), Holden (1994), Gottfries-Sjöström (1999) and Eriksson-Gottfries (2005) provide arguments why wages are rigid and play an allocative role.

<sup>23</sup> There is also a recent literature that investigates whether the search-matching model is capable of generating the observed cyclical fluctuations in unemployment and vacancies. Shimer (2005) finds that the standard search-matching model with continuously renegotiated wages cannot explain such variation. If wages are assumed to be sticky, the fit of the model improves significantly (Shimer (2004)). However, this literature is concerned with wage setting rather than the importance of search-frictions in the labor market.

## References

- Akerlof, G. A. and J. J. Yellen, (1986). *Efficiency Wage Models of the Labor Market*, Cambridge University Press, Cambridge, U. K.
- Arellano, M. and Bond, S. (1991). Some tests of specifications for panel data: Monte Carlo evidence and application to employment equations, *Review of Economic Studies* **58**: 277-297.
- Blanchard, O. J. and P. Diamond, (1989). The Beveridge Curve, *Brookings Papers on Economic Activity* 1989:1 1-60.
- Blanchard, O. J., and L. H. Summers, (1986). Hysteresis and the European Unemployment Problem, *NBER Macroeconomics Annual*, 1, MIT press, Cambridge, MA.
- Blundell, R. and S. Bond, (1998). Initial Conditions and Moment Restrictions in Dynamic Panel Data Models, *Journal of Econometrics*, **87**: 115-143.
- Borjas, G. J. (2003). The Labor Demand Curve IS Downward Sloping: Reexamining the Impact of Immigration on the Labor Market, *The Quarterly Journal of Economics*, **118**: 1335-1374.
- Burgess, S. (1993). Labour Demand, Quantity Constraints or Matching – The Determination of Employment in the Absence of Market-Clearing, *European Economic Review*, **37**: 1295-1314.
- Calmfors, L. and J. Driffill, (1988). Centralisation of Wage Bargaining and Macroeconomic Performance, *Economic Policy*, **6**: 13-61.
- Card, D. (1990). The Impact of the Mariel Boatlift on the Miami Labor Market, *Industrial and Labor Relations Review*, **43**: 245-257.
- Ebell, M. and Haefke, C. (2003) Product Market Deregulation and Labor Market Outcomes, IZA Discussion Paper 957.
- Eriksson, S. and Gottfries, N. (2005), Ranking of Job Applicants, On-the-job Search, and Persistent Unemployment, *Labour Economics* **12**: 407-428.
- Forslund, A., N. Gottfries and A. Westermarck, (2006). *Real and Nominal Wage adjustment in Open Economies*, CESifo working paper 1649.
- Gottfries, N. (1992), Insiders, Outsiders, and Nominal Wage Contracts, *Journal of Political Economy* **100**: 252-270.
- Gottfries, N. (2002), Market Shares, Financial Constraints and Pricing Behaviour in the Export Market, *Economica* **69**, 583-607.
- Gottfries, N. and Horn H. (1987). Wage Formation and the Persistence of Unemployment, *Economic Journal* **97**: 877-884.

- Gottfries, N and Sjöström, T. (1999), Insider Bargaining Power, Starting Wages, and Involuntary Unemployment, *Scandinavian Journal of Economics* **102**: 669-688.
- Hamermesh, D. (1993). *Labor Demand*, Princeton University Press, Princeton, NJ.
- Holden, S. (1994). Wage Bargaining and Nominal Wage Rigidities, *European Economic Review* **38**: 1021-1039.
- Johansson, M. and Persson, L. O. (2000). *Local Labor Markets in Competition*, Report from the Regional Policy Study (in Swedish), SOU 2000:36, Fritzes, Stockholm..
- Layard, R., Nickell, S. and Jackman, R. (1991). *Unemployment - Macroeconomic Performance and the Labour Market*, Oxford University Press, Oxford.
- Mortensen, D. and Pissarides, C. (1994). Job Creation and Job Destruction in the Theory of Unemployment, *Review of Economic Studies* **61**: 397-415.
- Nickell, S. J. (1986). Dynamic Models of Labour Demand, in O. Ashenfelter and R. Layard (eds.) *Handbook of Labour Economics* (North-Holland, Amsterdam).
- Oswald, A. (1985). The Economic Theory of Trade Unions: An Introductory Survey, *Scandinavian Journal of Economics* **87**: 160-193.
- Oswald, A. (1993). Efficient Contracts are on the Labour demand curve: Theory and Facts, *Labour Economics* **1**: 85-113.
- Petrongolo, B. and Pissarides, C. A. (2001). Looking into the Black Box: A Survey of the Matching Function, *Journal of Economic Literature*, **39**: 390-431.
- Phelps, E. S. (1968). Money-Wage Dynamics and Labor-Market Equilibrium, *Journal of Political Economy* **76**: 678-711.
- Pissarides, C. A. (2000). *Equilibrium unemployment theory*, MIT Press, Cambridge MA.
- Salop, S.C. (1979). A Model of the Natural Rate of Unemployment, *American Economic Review* **69**: 117-125.
- Sargent, T. J. (1979). *Macroeconomic Theory*, Academic Press, New York.
- Shapiro, C. and Stiglitz, J.E. (1984). Equilibrium Unemployment as a Worker Disciplinary Device, *American Economic Review* **74**: 433-444.
- Shimer, R. (2004). The Consequences of Rigid Wages in Search Equilibrium, *Journal of the European Economic Association*, **2**: 469-479.
- Shimer, R. (2005). The Cyclical Behavior of Equilibrium Unemployment and Vacancies, *American Economic Review*, **95**: 25-49.
- Windmeijer, F. (2005). A Finite Sample Correction for the Variance of Linear Efficient Two-Step GMM Estimators, *Journal of Econometrics* **126**: 25-51.

## Appendix. Derivation of the Job Creation Equations

*The Labor Demand Model:*

This derivation follows Sargent (1979) closely. Using the constraint to eliminate  $P_{i,\tau}$  in the objective function and taking the first-order condition for period  $t$  we get:

$$E_t \left\{ \eta(D_{i,t} - 2N_{i,t} + v_{i,t}) - \frac{W_{i,t}}{P_{i,t}^C} - c(N_{i,t} - N_{i,t-1}) + \beta c(N_{i,t+1} - N_{i,t}) \right\} = 0$$

By the law of iterated expectations, this holds if we take expectations at time  $t$  for future periods. Since this is linear we can solve the problem as if future variables were known with certainty. Using lag operators, this can be rewritten as:

$$\beta \left[ 1 + \frac{\phi}{\beta} L + \frac{1}{\beta} L^2 \right] N_{i,t+1} = -\frac{\eta}{c} (D_{i,t} + v_{i,t}) + \frac{1}{c} \frac{W_{i,t}}{P_{i,t}^C}.$$

where  $\phi = -[1 + \beta + 2\eta/c]$ . The expression within the brackets can be factorized:

$$\beta[(1 - \lambda_1 L)(1 - \lambda_2 L)] N_{i,t+1} = -\frac{\eta}{c} (D_{i,t} + v_{i,t}) + \frac{1}{c} \frac{W_{i,t}}{P_{i,t}^C},$$

where  $\lambda_1$  and  $\lambda_2$  are functions of  $\beta$ ,  $\eta$  and  $c$ . This can be rewritten as:

$$N_{i,t+1} = \lambda_1 N_{i,t} + \frac{\lambda_1}{c} \sum_{\tau=t}^{\infty} \left( \frac{1}{\lambda_2} \right)^{\tau-t} \left( \eta(D_{i,\tau+1} + v_{i,\tau+1}) - \frac{W_{i,\tau+1}}{P_{i,\tau+1}^C} \right).$$

One can show that the same expression holds for period  $t$ .

### *The Search-Matching Model*

Using the constraint to eliminate  $V_{i,\tau}$  in the objective function and maximizing with respect to planned employment to get the following first-order condition for period  $\tau$  :

$$E_{\tau} \left\{ \left( 1 - \frac{W_{i,\tau}}{P_{i,\tau}^C} \right) - c \left( \frac{N_{i,\tau} - (1 - \lambda - \xi_{i,\tau}) N_{i,\tau-1}}{q_{n,\tau}^2} \right) + (1 - \lambda) \beta c \left( \frac{N_{i,\tau+1} - (1 - \lambda - \xi_{i,\tau+1}) N_{i,\tau}}{q_{n,\tau+1}^2} \right) \right\} = 0.$$

Using the same conditions for subsequent periods and the law of iterated expectations we can derive planned employment in period  $t$ :

$$E_t(N_{i,t}) = \frac{q_{n,t}^2}{c} \sum_{\tau=t}^{\infty} \left[ \beta^{\tau-t} (1 - \lambda - \xi_{i,\tau})^{\tau-t} E_t \left( \frac{P_{i,\tau}^C - W_{i,\tau}}{P_{i,\tau}^C} \right) \right] + (1 - \lambda) N_{i,t-1}$$

# CESifo Working Paper Series

(for full list see [www.cesifo-group.de](http://www.cesifo-group.de))

---

- 1804 David-Jan Jansen and Jakob de Haan, Does ECB Communication Help in Predicting its Interest Rate Decisions?, September 2006
- 1805 Jerome L. Stein, United States Current Account Deficits: A Stochastic Optimal Control Analysis, September 2006
- 1806 Friedrich Schneider, Shadow Economies and Corruption all over the World: What do we really Know?, September 2006
- 1807 Joerg Lingens and Klaus Waelde, Pareto-Improving Unemployment Policies, September 2006
- 1808 Axel Dreher, Jan-Egbert Sturm and James Raymond Vreeland, Does Membership on the UN Security Council Influence IMF Decisions? Evidence from Panel Data, September 2006
- 1809 Prabir De, Regional Trade in Northeast Asia: Why do Trade Costs Matter?, September 2006
- 1810 Antonis Adam and Thomas Moutos, A Politico-Economic Analysis of Minimum Wages and Wage Subsidies, September 2006
- 1811 Guglielmo Maria Caporale and Christoph Hanck, Cointegration Tests of PPP: Do they also Exhibit Erratic Behaviour?, September 2006
- 1812 Robert S. Chirinko and Hisham Foad, Noise vs. News in Equity Returns, September 2006
- 1813 Oliver Huelsewig, Eric Mayer and Timo Wollmershaeuser, Bank Behavior and the Cost Channel of Monetary Transmission, September 2006
- 1814 Michael S. Michael, Are Migration Policies that Induce Skilled (Unskilled) Migration Beneficial (Harmful) for the Host Country?, September 2006
- 1815 Eytan Sheshinski, Optimum Commodity Taxation in Pooling Equilibria, October 2006
- 1816 Gottfried Haber and Reinhard Neck, Sustainability of Austrian Public Debt: A Political Economy Perspective, October 2006
- 1817 Thiess Buettner, Michael Overesch, Ulrich Schreiber and Georg Wamser, The Impact of Thin-Capitalization Rules on Multinationals' Financing and Investment Decisions, October 2006
- 1818 Eric O'N. Fisher and Sharon L. May, Relativity in Trade Theory: Towards a Solution to the Mystery of Missing Trade, October 2006

- 1819 Junichi Minagawa and Thorsten Upmann, Labor Supply and the Demand for Child Care: An Intertemporal Approach, October 2006
- 1820 Jan K. Brueckner and Raquel Girvin, Airport Noise Regulation, Airline Service Quality, and Social Welfare, October 2006
- 1821 Sijbren Cnossen, Alcohol Taxation and Regulation in the European Union, October 2006
- 1822 Frederick van der Ploeg, Sustainable Social Spending in a Greying Economy with Stagnant Public Services: Baumol's Cost Disease Revisited, October 2006
- 1823 Steven Brakman, Harry Garretsen and Charles van Marrewijk, Cross-Border Mergers & Acquisitions: The Facts as a Guide for International Economics, October 2006
- 1824 J. Atsu Amegashie, A Psychological Game with Interdependent Preference Types, October 2006
- 1825 Kurt R. Brekke, Ingrid Koenigbauer and Odd Rune Straume, Reference Pricing of Pharmaceuticals, October 2006
- 1826 Sean Holly, M. Hashem Pesaran and Takashi Yamagata, A Spatio-Temporal Model of House Prices in the US, October 2006
- 1827 Margarita Katsimi and Thomas Moutos, Inequality and the US Import Demand Function, October 2006
- 1828 Eytan Sheshinski, Longevity and Aggregate Savings, October 2006
- 1829 Momi Dahan and Udi Nisan, Low Take-up Rates: The Role of Information, October 2006
- 1830 Dieter Urban, Multilateral Investment Agreement in a Political Equilibrium, October 2006
- 1831 Jan Bouckaert and Hans Degryse, Opt In Versus Opt Out: A Free-Entry Analysis of Privacy Policies, October 2006
- 1832 Wolfram F. Richter, Taxing Human Capital Efficiently: The Double Dividend of Taxing Non-qualified Labour more Heavily than Qualified Labour, October 2006
- 1833 Alberto Chong and Mark Gradstein, Who's Afraid of Foreign Aid? The Donors' Perspective, October 2006
- 1834 Dirk Schindler, Optimal Income Taxation with a Risky Asset – The Triple Income Tax, October 2006
- 1835 Andy Snell and Jonathan P. Thomas, Labour Contracts, Equal Treatment and Wage-Unemployment Dynamics, October 2006

- 1836 Peter Backé and Cezary Wójcik, Catching-up and Credit Booms in Central and Eastern European EU Member States and Acceding Countries: An Interpretation within the New Neoclassical Synthesis Framework, October 2006
- 1837 Lars P. Feld, Justina A.V. Fischer and Gebhard Kirchgaessner, The Effect of Direct Democracy on Income Redistribution: Evidence for Switzerland, October 2006
- 1838 Michael Rauscher, Voluntary Emission Reductions, Social Rewards, and Environmental Policy, November 2006
- 1839 Vincent Vicard, Trade, Conflicts, and Political Integration: the Regional Interplays, November 2006
- 1840 Erkki Koskela and Mikko Puhakka, Stability and Dynamics in an Overlapping Generations Economy under Flexible Wage Negotiation and Capital Accumulation, November 2006
- 1841 Thiess Buettner, Michael Overesch, Ulrich Schreiber and Georg Wamser, Taxation and Capital Structure Choice – Evidence from a Panel of German Multinationals, November 2006
- 1842 Guglielmo Maria Caporale and Alexandros Kontonikas, The Euro and Inflation Uncertainty in the European Monetary Union, November 2006
- 1843 Jan K. Brueckner and Ann G. Largey, Social Interaction and Urban Sprawl, November 2006
- 1844 Eytan Sheshinski, Differentiated Annuities in a Pooling Equilibrium, November 2006
- 1845 Marc Suhrcke and Dieter Urban, Are Cardiovascular Diseases Bad for Economic Growth?, November 2006
- 1846 Sam Bucovetsky and Andreas Haufler, Preferential Tax Regimes with Asymmetric Countries, November 2006
- 1847 Luca Anderlini, Leonardo Felli and Andrew Postlewaite, Should Courts always Enforce what Contracting Parties Write?, November 2006
- 1848 Katharina Sailer, Searching the eBay Marketplace, November 2006
- 1849 Paul De Grauwe and Pablo Rovira Kaltwasser, A Behavioral Finance Model of the Exchange Rate with Many Forecasting Rules, November 2006
- 1850 Doina Maria Radulescu and Michael Stimmelmayer, ACE vs. CBIT: Which is Better for Investment and Welfare?, November 2006
- 1851 Guglielmo Maria Caporale and Mario Cerrato, Black Market and Official Exchange Rates: Long-Run Equilibrium and Short-Run Dynamics, November 2006

- 1852 Luca Anderlini, Leonardo Felli and Andrew Postlewaite, Active Courts and Menu Contracts, November 2006
- 1853 Andreas Haufler, Alexander Klemm and Guttorm Schjelderup, Economic Integration and Redistributive Taxation: A Simple Model with Ambiguous Results, November 2006
- 1854 S. Brock Blomberg, Thomas DeLeire and Gregory D. Hess, The (After) Life-Cycle Theory of Religious Contributions, November 2006
- 1855 Albert Solé-Ollé and Pilar Sorribas-Navarro, The Effects of Partisan Alignment on the Allocation of Intergovernmental Transfers. Differences-in-Differences Estimates for Spain, November 2006
- 1856 Biswa N. Bhattacharyay, Understanding the Latest Wave and Future Shape of Regional Trade and Cooperation Agreements in Asia, November 2006
- 1857 Matz Dahlberg, Eva Mörk, Jørn Rattsø and Hanna Ågren, Using a Discontinuous Grant to Identify the Effect of Grants on Local Taxes and Spending, November 2006
- 1858 Ernesto Crivelli and Klaas Staal, Size and Soft Budget Constraints, November 2006
- 1859 Jens Brøchner, Jesper Jensen, Patrik Svensson and Peter Birch Sørensen, The Dilemmas of Tax Coordination in the Enlarged European Union, November 2006
- 1860 Marcel Gérard, Reforming the Taxation of Multijurisdictional Enterprises in Europe, “Coopetition” in a Bottom-up Federation, November 2006
- 1861 Frank Blasch and Alfons J. Weichenrieder, When Taxation Changes the Course of the Year – Fiscal Year Adjustments and the German Tax Reform 2000/2001, November 2006
- 1862 Hans Jarle Kind, Tore Nilssen and Lars Sørsgard, Competition for Viewers and Advertisers in a TV Oligopoly, November 2006
- 1863 Bart Cockx, Stéphane Robin and Christian Goebel, Income Support Policies for Part-Time Workers: A Stepping-Stone to Regular Jobs? An Application to Young Long-Term Unemployed Women in Belgium, December 2006
- 1864 Sascha O. Becker and Marc-Andreas Muendler, The Effect of FDI on Job Separation, December 2006
- 1865 Christos Kotsogiannis and Robert Schwager, Fiscal Equalization and Yardstick Competition, December 2006
- 1866 Mikael Carlsson, Stefan Eriksson and Nils Gottfries, Testing Theories of Job Creation: Does Supply Create Its Own Demand?, December 2006