

Compernelle, Tine et al.

Article

Investment decisions with two-factor uncertainty

Journal of Risk and Financial Management

Provided in Cooperation with:

MDPI – Multidisciplinary Digital Publishing Institute, Basel

Suggested Citation: Compernelle, Tine et al. (2021) : Investment decisions with two-factor uncertainty, Journal of Risk and Financial Management, ISSN 1911-8074, MDPI, Basel, Vol. 14, Iss. 11, pp. 1-17,
<https://doi.org/10.3390/jrfm14110534>

This Version is available at:

<https://hdl.handle.net/10419/258637>

Standard-Nutzungsbedingungen:

Die Dokumente auf EconStor dürfen zu eigenen wissenschaftlichen Zwecken und zum Privatgebrauch gespeichert und kopiert werden.

Sie dürfen die Dokumente nicht für öffentliche oder kommerzielle Zwecke vervielfältigen, öffentlich ausstellen, öffentlich zugänglich machen, vertreiben oder anderweitig nutzen.

Sofern die Verfasser die Dokumente unter Open-Content-Lizenzen (insbesondere CC-Lizenzen) zur Verfügung gestellt haben sollten, gelten abweichend von diesen Nutzungsbedingungen die in der dort genannten Lizenz gewährten Nutzungsrechte.

Terms of use:

Documents in EconStor may be saved and copied for your personal and scholarly purposes.

You are not to copy documents for public or commercial purposes, to exhibit the documents publicly, to make them publicly available on the internet, or to distribute or otherwise use the documents in public.

If the documents have been made available under an Open Content Licence (especially Creative Commons Licences), you may exercise further usage rights as specified in the indicated licence.



<https://creativecommons.org/licenses/by/4.0/>

Article

Investment Decisions with Two-Factor Uncertainty

Tine Compennolle ^{1,2} , Kuno J. M. Huisman ^{3,4} , Peter M. Kort ³, Maria Lavrutich ^{5,*}, Cláudia Nunes ⁶ and Jacco J. J. Thijssen ⁷ 

- ¹ Department of Engineering Management, University of Antwerp, 2000 Antwerp, Belgium; Tine.Compennolle@uantwerpen.be
- ² Geological Survey of Belgium, Royal Belgian Institute of Natural Sciences, 1000 Brussels, Belgium
- ³ Department of Econometrics and Operations Research, Tilburg University, 5000 LE Tilburg, The Netherlands; k.j.m.huisman@tilburguniversity.edu (K.J.M.H.); kort@tilburguniversity.edu (P.M.K.)
- ⁴ ASML Netherlands B.V., 5500 AH Veldhoven, The Netherlands
- ⁵ Department of Industrial Economics and Technology Management, Norwegian University of Science and Technology, 7491 Trondheim, Norway
- ⁶ Department of Mathematics and CEMAT, Instituto Superior Técnico, 1049-001 Lisbon, Portugal; cnunes@math.tecnico.ulisboa.pt
- ⁷ Department of Mathematics, University of York, York YO10 5DD, UK; jacco.thijssen@york.ac.uk
- * Correspondence: maria.lavrutich@ntnu.no

Abstract: This paper considers investment problems in real options with non-homogeneous two-factor uncertainty. We derive some analytical properties of the resulting optimal stopping problem and present a finite difference algorithm to approximate the firm's value function and optimal exercise boundary. An important message in our paper is that the frequently applied quasi-analytical approach underestimates the impact of uncertainty. This is caused by the fact that the quasi-analytical solution does not satisfy the partial differential equation that governs the value function. As a result, the quasi-analytical approach may wrongly advise to invest in a substantial part of the state space.

Keywords: investment analysis; optimal stopping time problem; two-factor uncertainty



Citation: Compennolle, Tine, Kuno J. M. Huisman, Peter M. Kort, Maria Lavrutich, Cláudia Nunes, and Jacco J. J. Thijssen. 2021. Investment Decisions with Two-Factor Uncertainty. *Journal of Risk and Financial Management* 14: 534. <https://doi.org/10.3390/jrfm14110534>

Academic Editor: Luiz Eduardo T. Brandao

Received: 24 September 2021

Accepted: 1 November 2021

Published: 8 November 2021

Publisher's Note: MDPI stays neutral with regard to jurisdictional claims in published maps and institutional affiliations.



Copyright: © 2021 by the authors. Licensee MDPI, Basel, Switzerland. This article is an open access article distributed under the terms and conditions of the Creative Commons Attribution (CC BY) license (<https://creativecommons.org/licenses/by/4.0/>).

1. Introduction

Since the seminal works of Dixit and Pindyck (1994) and Trigeorgis (1996), it has become clear that real investments should be valued using a real options approach when decision makers are exposed to a significant amount of uncertainty. In these cases, the application of the standard net present value decision rule can lead to investment decisions that are significantly sub-optimal, as is extensively demonstrated in the above books. Since firm investment decisions lie at the basis of economic growth, it is crucial to take these decisions in the right way. From this perspective, it is clear that it is of main importance to work on the development of the theory of real options.

In a basic analysis, the real options model consists of a single firm, having the opportunity to invest in a project of given size, with revenue that is subject to uncertainty, being governed by a single stochastic process. Several authors have extended this framework in different directions. Smets (1991) was the first to consider a scenario where two firms can invest in the same market. The revenue in this market is still governed by one stochastic process, also, after both firms have already invested and, thus, are active in this market. The assumption “project of given size” is relaxed in Bar-Ilan and Strange (1999) and Dangl (1999), in which the firm not only needs to decide the time, but also the size of the investment. Huisman and Kort (2015) combine the two extensions by considering a duopoly market where both firms also have to determine the investment size.

For most real options, the literature uses a single (one-dimensional) stochastic process to model the evolution of random shocks affecting the investment's value. This can be a major shortcoming, especially when analysing problems with, e.g., multiple firms or products. Such investment problems are especially common in the field of energy and

environmental economics (Agaton and Collera 2022; Deeney et al. 2021; Li and Cao 2022; Zhang et al. 2021). The transition to a circular and low-carbon, bio-based economy requires firms to shift to the use of renewable resources, to cooperate with firms in other markets, and to valorize their waste streams (The European Commission 2019, 2021). These decisions expose firms to different types of risks, creating the need for models that account for multiple sources of uncertainty. Therefore, in this paper, we consider a real options problem with multiple uncertain factors, which is an important extension to the basic real options analysis, especially from a practical perspective.

The first real options model with two-factor uncertainty occurs in McDonald and Siegel (1986). Their value function is homogenous of degree one, and the two stochastic processes are the output price and the investment cost. In such cases, the investment threshold level can be determined for the price-to-cost ratio. This allows to reformulate the problem in terms of the relative price, and to reduce the number of stochastic variables to one. In this way, a standard one-factor real options model is obtained for which a closed-form solution exists. The result of this analysis is, however, not a threshold point, but a threshold boundary at which it is optimal to invest (Nunes and Pimentel 2017). Hu and Øksendal (1998) generalize this solution to the n -dimensional case. Armada et al. (2013) consider a problem where the output price and quantity are stochastic. Here, the dimension of the state space can be reduced to a one-dimensional space, because the only relevant payoff variable is revenue (price times quantity). The problem then reduces to finding an optimal revenue threshold that makes investment optimal.

Several authors have tried to use this dimension reduction approach with cases characterized by multiple stochastic processes and a constant sunk cost. Huisman et al. (2013) and Compennolle et al. (2017) consider price and cost uncertainty and determine the investment threshold level for the price-to-cost ratio. However, there are some problems with this approach. In the presence of a constant sunk cost investment, homogeneity does not hold. For this reason, the state space cannot be reduced to a one-dimensional one. This is also revealed in these papers, because two processes (price/cost and cost) remain present in the equations.

For problems of this kind, Adkins and Paxson (2011b) propose a quasi-analytical approach that results in a set of equations to determine the optimal investment boundary. They solve this set of equations simultaneously while keeping one of the stochastic threshold variables fixed. The present paper shows that this methodology can lead to sub-optimal solutions. In fact, the results of the quasi-analytical approach will, generically speaking, be incorrect, and there is no guarantee that it converges in any meaningful sense to the correct solution. To put it succinctly, the main problem is that Adkins and Paxson (2011b) use a “local” approach to solve a “global” problem, which can lead to misleading results. Consequently, while the method is intuitively appealing and relatively easy to implement, we argue that care is required in checking that the results conform to economic intuition.

In this paper, we provide numerical examples for which the quasi-analytical approach violates certain properties of the optimal boundary that can be analytically established. The point is, in a nutshell, that when solving the partial differential equation that governs the value function, two power parameters turn out to be a function of the state variables, where the quasi-analytical approach starts with the assumption that these parameters are constant.

Our contribution to the literature is three-fold. Firstly, we alert the research community to potential pitfalls in a regularly used numerical method. In the literature, we find several papers concerning investment problems where the uncertainty is driven by multi-dimensional stochastic processes, and where no analytical solution can be derived. In such cases, the authors propose ways to circumvent the problem and come out with an approximation of the solution. For instance, we refer to Kauppinen et al. (2018), where the model proposed by Adkins and Paxson (2011b) is extended, by adding time to build to the investment problem. In the context of replacement options, Adkins and Paxson (2013a) examine a premature and postponed replacement in the presence of technological progress,

where revenue and operating costs are treated as geometric Brownian motions. [Adkins and Paxson \(2017a\)](#) use a general replacement model to investigate when it is optimal to replace an asset whose operating cost and salvage value deteriorate stochastically.

The need to take into account multiple sources of uncertainty is also present in problems related with investments in the energy sector. For example, [Adkins and Paxson \(2011a\)](#) solve a switching model for two alternative energy inputs with fixed switching costs. [Boomsma and Linnerud \(2015\)](#) examine investment in a renewable energy project under both market and policy uncertainty. [Fleten et al. \(2016\)](#) study investment decisions in the renewable energy sector, where the revenue comes from selling electricity and from receiving subsidies, both stochastic. [Adkins and Paxson \(2016\)](#) consider the optimal investment policy for an energy facility with price and quantity uncertainty under different subsidy schemes. [Støre et al. \(2018\)](#) determine the optimal timing to switch from oil to gas production in the tail production phase, with the price of oil and gas following (correlated) Geometric Brownian motions. Finally, we refer to [Heydari et al. \(2012\)](#), who extend the quasi-analytical approach proposed in [Adkins and Paxson \(2011b\)](#) to a three-factor model, which is employed to value the choice between two emission reduction technologies, assuming that the value of each option depends on fuel, electricity and CO₂ prices, all following (correlated) Geometric Brownian motions.

Secondly, while it could, a priori, be the case that the approximation obtained by the quasi-analytical approach is close enough to the true solution to be of practical value, we show that for the models under consideration in much of the literature this is not necessarily the case. For example, in the model with two uncertain revenue flows, we find that in some situations the investment boundary *decreases* in an uncertainty environment. This violates one of the major qualitative results from real options theory: “an increase in uncertainty leads to an increase in project value”. We formally prove that this feature also holds for the model under consideration.

Thirdly, we develop a numerical algorithm which is based on a finite difference scheme and we apply this algorithm to a model with two stochastic revenue streams. We determine the optimal timing of investment in the presence of a constant sunk investment cost. Note that this model is different from the one analysed in [Adkins and Paxson \(2011b\)](#), who analyse a stochastic revenue and a (possibly correlated) stochastic cost. Importantly, our finite difference scheme *does* exhibit the expected behaviour in relation to an increase in uncertainty.

In the literature, most finite difference schemes have been developed to solve models with a one-dimensional stochastic process and a finite time horizon. This method typically employs a backward induction argument in the time dimension to approximate the optimal exercise boundary and value function in a step-by-step fashion; see, e.g., ([Dixit and Pindyck 1994](#), Appendix 10.A). For a two-dimensional problem, this approach does not work, because both processes can move up or down in any time step. Therefore, we suggest a finite difference scheme that starts with a hypothesized boundary, after which the value function is approximated at all points in the two-dimensional finite grid at once. A discretized smooth pasting condition (in two dimensions) can then be used to judge the quality of the hypothesized boundary. This procedure is repeated until an acceptable approximation to the optimal boundary is found.

Note that to solve multidimensional optimal stopping problems, other numerical approaches could also be applied. Among the relevant contributions is [Lange et al. \(2020\)](#). In this paper, the authors consider that the decision to stop can only be taken at specific times, generated by an exogenous Poisson process with intensity rate λ . This means that the set of admissible stopping times for the optimization problem is the set of events of a Poisson process, independent of the filtration generated by the state variables. In this setting, the optimization problem may be written as a fixed-point problem, for which the authors propose a numerical scheme, providing the proof and rate of convergence.

In our paper, we prove some analytical properties of the optimal boundary; notably, we prove that it is convex, non-increasing and continuous in \mathbb{R}^+ . In [Dammann and Ferrari \(2021\)](#),

we may find similar results, but using different arguments that rely on a probabilistic representation of the Value Function. Moreover, the authors show that the boundary is the unique solution of an integral condition. By the use of this integral equation, they prove the monotonicity of the value function with respect to the drift and volatility of the involved parameters. Finally, they propose a numerical approach to find the boundary, based on the integral equation using a Monte Carlo simulation.

The remainder of this paper is organized as follows: Section 2 introduces a non-homogeneous investment problem characterized by two uncertain revenue flows. Section 3 applies the methodological approach in Adkins and Paxson (2011b) to solve the model presented in Section 2, and highlights the mathematical problems with the solution. Section 4 proposes an alternative numerical approach to solve the model. Section 5 concludes. Proof of propositions is presented in Appendix A.

2. Investment Decision Given Two Uncertain Revenue Flows

Consider a profit-maximizing, risk-neutral firm that has the opportunity to invest in a production plant by paying a constant investment cost, I . The plant can produce two different products, the prices of which are stochastic and follow correlated geometric Brownian motions X and Y , i.e.,

$$dX_t = \alpha_1 X_t dt + \sigma_1 X_t dW_{X,t}, \quad dY_t = \alpha_2 Y_t dt + \sigma_2 Y_t dW_{Y,t} \quad (1)$$

with

$$X_0 = x, Y_0 = y \quad (2)$$

being the initial values of the processes X and Y , respectively. We noted that, in Equation (1), α_1 (α_2) denotes the drift of the process X (Y), whereas σ_1 (σ_2) is the volatility of X (Y). Following the usual notation, we let $\{W_t, t \geq 0\}$ denote a standard two-dimensional Brownian motion, which we indexed by X and Y , respectively. We allowed these processes to be correlated so that $\mathbb{E}[dW_{X,t}dW_{Y,t}] = \rho dt$ for some $\rho \in (-1, 1)$, where $\rho > 0$ ($\rho < 0$) means that W_X and W_Y are positively (negatively) correlated.

At any instant, if the prices of the two products were x and y , respectively, then the instantaneous profit of the firm was given by:

$$\pi(x, y) = Q_1 x + Q_2 y, \quad (3)$$

where Q_1 and Q_2 denote the quantities of the products produced. Moreover, at that instant, the firm's value was equal to the perpetual revenue flow from selling two products:¹

$$F(x, y) = \mathbb{E}_{(x,y)} \left[\int_0^\infty e^{-rt} \pi(X_t, Y_t) dt - I \right] = \frac{Q_1 x}{\delta_1} + \frac{Q_2 y}{\delta_2} - I, \quad (4)$$

with $\delta_i := r - \alpha_i, i \in \{1, 2\}$, and r being the discount rate. To ensure finite integrals, we assumed that $r > \max\{0, \alpha_1, \alpha_2\}$. Equation (4) gives the expected value of the discounted stream of profits that result from operating the production process forever, given current prices x and y . That is, $\mathbb{E}_{(x,y)}$ denotes the expectation operator, conditional on the initial state being $(X_0, Y_0) = (x, y)$.

The firm needed to determine the optimal time to undertake the investment and, thus, solved the following optimal stopping problem:

$$V(X_t, Y_t) = \sup_{\tau \geq t} \mathbb{E}_{(X_t, Y_t)} \left[e^{-r(\tau-t)} F(X_\tau, Y_\tau) \right] \quad (5)$$

where the supremum is taken over all stopping times τ with respect to the filtration generated by the joint process (W_X, W_Y) . That is, we were looking for the optimal time to invest in the production plant, given the current values for the price of each one of the two types of product, such that we maximized the expected value of the overall profit.

By maximizing over stopping times, we recognized that the optimal time to invest may depend on the stochastic evolution of the product prices.

Using standard calculations from the optimal stopping theory (see, e.g., Øksendal and Sulem 2007), we derived the following Hamilton–Jacobi–Bellman (HJB) equation for this problem:

$$\min\{rV(x, y) - \mathcal{L}V(x, y), V(x, y) - F(x, y)\} = 0, \quad \forall (x, y) \in \mathbb{R}_+ \times \mathbb{R}_+. \quad (6)$$

Here, \mathcal{L} denotes the infinitesimal generator of the process (X, Y) :

$$\mathcal{L}V(x, y) = \lim_{h \downarrow 0} \frac{E[V(x+h, y+h)] - V(x, y)}{h}$$

which is given by (Øksendal and Sulem 2007):

$$\begin{aligned} \mathcal{L}V(x, y) = & \frac{1}{2}\sigma_1^2 x^2 \frac{\partial^2 V(x, y)}{\partial x^2} + \frac{1}{2}\sigma_2^2 y^2 \frac{\partial^2 V(x, y)}{\partial y^2} + \rho\sigma_1\sigma_2 xy \frac{\partial^2 V(x, y)}{\partial x \partial y} \\ & + \alpha_1 x \frac{\partial V(x, y)}{\partial x} + \alpha_2 y \frac{\partial V(x, y)}{\partial y}. \end{aligned} \quad (7)$$

This equation should be understood as follows: before the investment takes place, and assuming that the current prices of the products are x and y , the value of the firm, $V(x, y)$, is such that $V(x, y) > F(x, y)$ (and, thus, investment is not yet optimal) and that the optimality of the function V requires that $rV(x, y) - \mathcal{L}V(x, y) = 0$. The latter equation essentially states that the investment's value today is equal to the discounted expected value of the investment a short amount of time later. Then, as soon as investment is optimal, it holds that $V(x, y) = F(x, y)$ and that the value of immediate investment exceeds the discounted expected value of the investment a short amount of time later, i.e., $rV(x, y) - \mathcal{L}V(x, y) > 0$.

Moreover, we let the set $D := \{(x, y) \in \mathbb{R}_+^2 \mid V(x, y) > F(x, y)\}$ denote the *continuation region*, and $S := \mathbb{R}_+^2 \setminus D = \{(x, y) \in \mathbb{R}_+^2 \mid V(x, y) = F(x, y)\}$ denote the *stopping region*. Following the general theory of optimal stopping, it then follows that τ^* , the time at which the investment should be undertaken, is given by the first exit time of the continuation region, i.e.,

$$\tau^* = \inf\{t \geq 0; (X_t, Y_t) \notin D\}. \quad (8)$$

Therefore, τ^* is the first time that the value function is equal to the expected value from immediately investing in the production plant.

In view of Equation (6), it follows that:

$$rV(x, y) - \mathcal{L}V(x, y) \geq 0 \wedge V(x, y) \geq F(x, y), \quad \forall (x, y) \in \mathbb{R}_+^2.$$

Moreover,

$$rV(x, y) - \mathcal{L}V(x, y) = 0 \wedge V(x, y) \geq F(x, y), \quad \forall (x, y) \in D, \quad (9)$$

whereas

$$rF(x, y) - \mathcal{L}F(x, y) \geq 0 \wedge V(x, y) = F(x, y), \quad \forall (x, y) \in S. \quad (10)$$

The solution of the HJB equation, V , must satisfy the following boundary condition:

$$V(0+, 0+) = 0, \quad (11)$$

which reflects the fact that the value of the firm will be zero if the prices are zero. Furthermore, the following value-matching and smooth-fit conditions should hold (see Pham 1997; Tankov 2003; Alili and Kyprianou 2005):

$$V(x, y) = F(x, y) \quad \text{and} \quad \nabla V(x, y) = \nabla F(x, y), \quad \text{for } (x, y) \in \partial D. \quad (12)$$

Here, ∂D denotes the boundary of D , which we called the *critical boundary*, and ∇ is the gradient operator. Therefore, the solution of the problem is continuous at the critical boundary, not only for itself but also for its derivatives. The resulting threshold is a curve separating the two regions (the continuation and the stopping regions).

Note that $x = 0$ and $y = 0$ are absorbing barriers. Consequently, at these boundaries, the firm only receives revenues from one product and only one stochastic process is in use. Therefore, the threshold at these points corresponds to the standard solution for a one-dimensional problem. It follows that the investment triggers at the y and x axes are:

$$x^* = \frac{\beta_1}{\beta_1 - 1} \delta_1 I, \text{ if } y = 0, \quad \text{and} \quad y^* = \frac{\eta_1}{\eta_1 - 1} \delta_2 I, \text{ if } x = 0, \quad (13)$$

respectively. We refer, for instance, to Dixit and Pindyck (1994), for the derivation of these values.

These thresholds can be interpreted as follows: If $y = 0$, then the firm should still invest in this plant as soon as the price of the other product reaches the value x^* . The intuition is analogous for $x = 0$ and y^* . The parameters $\beta_1 > 1$ and $\eta_1 > 1$ are the positive roots of the quadratic equations:

$$\frac{1}{2} \sigma_1 \beta (\beta - 1) + \alpha_1 \beta - r = 0, \quad \text{and} \quad \frac{1}{2} \sigma_2 \eta (\eta - 1) + \alpha_2 \eta - r = 0,$$

respectively.

Solving problem (5) means, in particular, that we needed to derive the set of values for x and y where stopping was optimal, i.e., where investment should take place. In particular, we wanted to derive the boundary between D and S , as crossing this boundary meant that investment should be undertaken right away. We called it the *threshold boundary*. As we had two state variables, we could define this threshold boundary as a surface in \mathbb{R}^2 , as follows: given that the price of one product is $x \in \mathbb{R}^+$, the firm should undertake the investment if the price of the other product is larger or equal to $b(x)$. If it is smaller, then the firm should wait before investment. The next theorem derives some qualitative features of the threshold boundary for the problem defined in (5).

Theorem 1. *The boundary between D and S can be described by a mapping $x \mapsto b(x)$, where:*

1. $b(x) = \sup\{y \in \mathbb{R}_+ \mid V(x, y) > F(x, y)\}$ for all $x \in (0, x^*)$;
2. b is non-increasing on $(0, x^*)$;
3. b is convex on $(0, x^*)$;
4. b is continuous;
5. $b(x) < y^*$ on $(0, x^*)$, and $b(x) = 0$ on $[x^*, \infty)$.

In addition, the stopping set S is:

1. closed;
2. convex.

Finally, the value function V satisfies:

1. $V > 0$ on \mathbb{R}_{++}^2 ;
2. V is convex;
3. V is continuous;
4. V is increasing in x and y .

Remark 1. *Theorem 1 leads to the following observations.*

1. We can write

$$D = \left\{ (x, y) \in \mathbb{R}_+^2 \mid y < b(x) \right\}, \quad \text{and} \quad S = \left\{ (x, y) \in \mathbb{R}_+^2 \mid y \geq b(x) \right\}.$$

2. The optimal stopping boundary can never lie below the Net Present Value boundary \bar{b} , i.e.,

$$b(x) > \bar{b}(x) := \delta_2(I - x/\delta_1), \quad \text{all } x \in (0, \delta_1 I).$$

Thus, in order to solve (5), we needed to find V and, at the same time, $b(x)$ for $x \leq x^*$, such that the properties enumerated in Theorem 1 held. In particular for V , conditions usually known in the literature as *fit conditions* were checked: the value-matching condition (for the continuity of the value function) and smooth pasting (for the smoothness of the value function).

3. The Quasi-Analytical Approach

Following the approach in Adkins and Paxson (2011b), we started by postulating a solution to Equation (6) of the following form:

$$v(x, y) = Ax^\beta y^\eta, \quad (14)$$

where A , β , and η are constants. Simple calculations led to the conclusion that for (14) to be a solution to (7), it must hold that β and η are the roots of the characteristic root equation:

$$\mathcal{Q}(\beta, \eta) = \frac{1}{2}\sigma_2^2\eta(\eta - 1) + \frac{1}{2}\sigma_1^2\beta(\beta - 1) + \rho\sigma_1\sigma_2\beta\eta + \alpha_1\beta + \alpha_2\eta - r = 0. \quad (15)$$

The set of solutions to (15) defines an ellipse that intersects all quadrants of \mathbb{R}^2 , with β (η) on the horizontal (vertical) axis.

Adkins and Paxson (2011b) hypothesize that the boundary between the continuation and stopping regions is of the form $x \mapsto b(x)$. As Theorem 1 shows, this is correct. In order to find this boundary, Adkins and Paxson (2011b) try to extend the standard value-matching and smooth-pasting conditions to a two-dimensional setting. The way this is performed is as follows: on the boundary, it should hold for every $\hat{x} \in (0, x^*)$, with x^* as given in Equation (13):

$$v(\hat{x}, b(\hat{x})) = \frac{Q_1\hat{x}}{r - \alpha_1} + \frac{Q_2b(\hat{x})}{r - \alpha_2} - I \quad (\text{value matching}) \quad (16)$$

$$\frac{\partial v(x, y)}{\partial x} \Big|_{x=\hat{x}, y=b(\hat{x})} = \frac{Q_1}{r - \alpha_1} \quad (\text{smooth pasting in } x\text{-direction}) \quad (17)$$

$$\frac{\partial v(x, y)}{\partial y} \Big|_{x=\hat{x}, y=b(\hat{x})} = \frac{Q_2}{r - \alpha_2} \quad (\text{smooth pasting in } y\text{-direction}). \quad (18)$$

Now, if the value function is of the form²

$$v(x, y) = Ax^\beta y^\eta,$$

then, it should hold that $\beta, \eta > 0$ since the boundary conditions $\lim_{x \downarrow 0} v(x, y) = \lim_{y \downarrow 0} v(x, y) = 0$ should be satisfied. Therefore, for every $\hat{x} \in (0, x^*)$ we could solve the system of non-linear equations:

$$A\hat{x}^\beta b(\hat{x})^\eta = \frac{Q_1\hat{x}}{r - \alpha_1} + \frac{Q_2b(\hat{x})}{r - \alpha_2} - I \quad (19)$$

$$\beta A\hat{x}^{\beta-1} b(\hat{x})^\eta = \frac{Q_1}{r - \alpha_1} \quad (20)$$

$$\eta A\hat{x}^\beta b(\hat{x})^{\eta-1} = \frac{Q_2}{r - \alpha_2} \quad (21)$$

$$\mathcal{Q}(\beta, \eta) = 0, \quad (22)$$

in b , A , β and η , under the condition that $\beta, \eta > 0$.

Using the approach presented in [Støre et al. \(2018\)](#) to solve this system, we found the explicit solution for the boundary³:

$$\hat{b}(x) = x \frac{\eta(x)(r - \alpha_2)Q_1}{\beta(x)(r - \alpha_1)Q_2}, \quad (23)$$

where

$$\beta(x) = \frac{\sigma_1^2 - 2\alpha_1 + C^*(x)(2\alpha_2 + \sigma_2^2)}{2(\sigma_1^2 + \sigma_2^2 C^*(x))} + \sqrt{\left(\frac{\sigma_1^2 - 2\alpha_1 + C^*(x)(2\alpha_2 + \sigma_2^2)}{2(\sigma_1^2 + \sigma_2^2 C^*(x))} \right)^2 + 2 \frac{r - \alpha_2}{\sigma_1^2 + \sigma_2^2 C^*(x)}}, \quad (24)$$

$$\eta(x) = 1 - \beta(x)C^*(x), \quad (25)$$

$$C^*(x) = 1 - \frac{(r - \alpha_1)I}{xQ_1}. \quad (26)$$

In the previous equations, we used $\beta(x)$ and $\eta(x)$ instead of β and η to emphasize the dependency on the state variable x .

Therefore, solving (20)–(22) led to values of β and η that *do* depend on the value of x and, thus, could not be treated as fixed parameters. This was also the case for the problem in [Adkins and Paxson \(2011b\)](#), as illustrated by their Figure 3.⁴ The same held for A and b .

Let $\mathbf{u} = [\beta(x) \quad \eta(x) \quad A(x) \quad \hat{b}(x)]^T$ denote the vector of solutions resulting from (20)–(22). Then at $\hat{b}(x)$, the value of the firm could be written as:

$$v(x, \hat{b}(x)) = A(x)x^{\beta(x)}\hat{b}^{\eta(x)}(x). \quad (27)$$

Note that from (9), the partial differential equation $rV(x, y) - \mathcal{L}V(x, y) = 0$ must also hold along the threshold boundary, implying that:

$$\begin{aligned} \frac{1}{2}\sigma_1^2 x^2 \left(\frac{\partial^2 v(x, \hat{b})}{\partial x^2} + \frac{\partial}{\partial \mathbf{u}} \left(\frac{\partial v(x, \hat{b})}{\partial x} \right) \frac{\partial \mathbf{u}}{\partial x} + \frac{\partial}{\partial x} \left(\frac{\partial v(x, \hat{b})}{\partial \mathbf{u}} \frac{\partial \mathbf{u}}{\partial x} \right) \right) + \frac{1}{2}\sigma_2^2 \hat{b}^2 \frac{\partial^2 v(x, \hat{b})}{\partial \hat{b}^2} \\ + \alpha_1 x \left(\frac{\partial v(x, \hat{b})}{\partial x} + \frac{\partial v(x, \hat{b})}{\partial \mathbf{u}} \frac{\partial \mathbf{u}}{\partial x} \right) + \alpha_2 \hat{b} \frac{\partial v(x, \hat{b})}{\partial \hat{b}} - rv(x, \hat{b}) = 0. \end{aligned} \quad (28)$$

Using (27) we could rewrite (28) as:

$$\begin{aligned} \frac{1}{2}\sigma_1^2 x^2 \left(\frac{\partial}{\partial \mathbf{u}} \left(\frac{\partial v(x, \hat{b})}{\partial x} \right) \frac{\partial \mathbf{u}}{\partial x} + \frac{\partial}{\partial x} \left(\frac{\partial v(x, \hat{b})}{\partial \mathbf{u}} \frac{\partial \mathbf{u}}{\partial x} \right) \right) + \alpha_1 x \left(\frac{\partial v(x, \hat{b})}{\partial \mathbf{u}} \frac{\partial \mathbf{u}}{\partial x} \right) \\ + Ax^{\beta}\hat{b}^{\eta} \left(\frac{1}{2}\sigma_2^2 \eta(\eta - 1) + \frac{1}{2}\sigma_1^2 \beta(\beta - 1) + \alpha_1 \beta + \alpha_2 \eta - r \right) = 0, \end{aligned} \quad (29)$$

The first two terms in (29) represent the contributions of the partial derivatives of \hat{b} , A , β and η with respect to x , whereas the last term is equal to $Ax^{\beta}\hat{b}^{\eta}Q(\beta, \eta)$. If the solution proposed in (14) is correct, then the latter should be equal to zero, and we could still use system (19)–(22) to determine the threshold boundary. In what follows, we verified whether the contribution of the partial derivatives was negligible for the numerical example in Table 1.

Table 1. The value of the first two terms of Equation (29) for the following set of the parameter values: $\sigma_1 = 0.2$, $\sigma_2 = 0.6$, $\alpha_1 = 0.02$, $\alpha_2 = 0.02$, $r = 0.1$, $\rho = 0$, $Q_1 = 5$, $Q_2 = 10$, and $I = 2000$.

\hat{x}	Contribution of Partial Derivatives
10	−10,841.14
20	−54,856.60
30	−9040.40

For $\hat{x} = 10$, and the set of parameter values in Table 1, $F(\hat{x}, \hat{b}(\hat{x})) = 7281.23$. Therefore, we concluded that the contribution of the partial derivatives could not be neglected. As a result, the substitution of the solution (27) in (7) led to the conclusion that the condition for η and β was no longer (15). In fact, (15) needed to be modified to incorporate terms involving $\beta'(x)$, $\eta'(x)$, $\beta''(x)$, $\eta''(x)$, $A'(x)$, $A''(x)$, $\hat{b}'(x)$ and $\hat{b}''(x)$. The implication was that solving system (19)–(22) for different values of \hat{x} would not result in a correct threshold boundary.

Results of the Quasi-Analytical Approach

After having shown that the boundary \hat{b} , as determined by the quasi-analytical approach, is not the true boundary b , it could still be the case that \hat{b} is a good approximation of b . This section, however, provides an argument that this was not the case, at least for the problem in Section 2.

We started out by presenting the following proposition:

Proposition 1. *The value function, V , is monotonically increasing in both σ_1 and σ_2 .*

Proof. The result follows from Proposition 3 in Olsen and Stensland (1992), using the fact that the optimal value function is convex, as stated in our Theorem 1. \square

In the following, we studied the behaviour of the investment boundary as a function of the volatilities of the involved processes, σ_1 and σ_2 . Thus, we let $b(\sigma_1, \sigma_2; x)$ denote the boundary, given that the current price of the first product was x , and that the volatilities were σ_1 (for X) and σ_2 (for Y).

Corollary 1. *Let $b(\sigma_1, \sigma_2; x)$ denote the optimal investment threshold boundary for a given level of x . Then, it holds that $b(\sigma_1, \sigma_2; x)$ is increasing in both σ_1 and σ_2 .*

Proof. We proved the result by contradiction. Without the loss of generality, we only considered a change in σ_1 . Consider two different values of σ_1 , such that $\hat{\sigma}_1 > \bar{\sigma}_1$, and $b(\hat{\sigma}_1, \sigma_2; x) < b(\bar{\sigma}_1, \sigma_2; x)$ for some x . Let $V(\sigma_1, \sigma_2; x, y)$ denote the optimal value function for a given level of x . Then,

$$V(\hat{\sigma}_1, \sigma_2; x, y) = \begin{cases} > F(x, y) & \text{for } y < b(\hat{\sigma}_1, \sigma_2; x), \\ = F(x, y) & \text{for } y \geq b(\hat{\sigma}_1, \sigma_2; x), \end{cases} \quad (30)$$

$$V(\bar{\sigma}_1, \sigma_2; x, y) = \begin{cases} > F(x, y) & \text{for } y < b(\bar{\sigma}_1, \sigma_2; x), \\ = F(x, y) & \text{for } y \geq b(\bar{\sigma}_1, \sigma_2; x). \end{cases} \quad (31)$$

If $b(\hat{\sigma}_1, \sigma_2; x) < b(\bar{\sigma}_1, \sigma_2; x)$, then for $y \in (b(\hat{\sigma}_1, \sigma_2; x), b(\bar{\sigma}_1, \sigma_2; x))$, it holds that $V(\bar{\sigma}_1, \sigma_2; x, y) > F(x, y) = V(\hat{\sigma}_1, \sigma_2; x, y)$, which contradicts Proposition 1. \square

Figure 1 illustrates the quasi-analytical threshold boundaries for different values of σ_2 .

Evidently, the numerical example violated Corollary 1, since the threshold boundaries intersected. Moreover, this result did not correspond to what we would expect from a real options theory, i.e., that the firm invests for a larger threshold level in a more uncertain environment. In fact, for $x > 32$, the quasi-analytical approach suggested that the firm should invest for a lower threshold level when σ_2 was larger. This clearly led to a sub-optimal decision, so the quasi-analytical solution fell short in being a useful approximation to the optimal solution in this case.

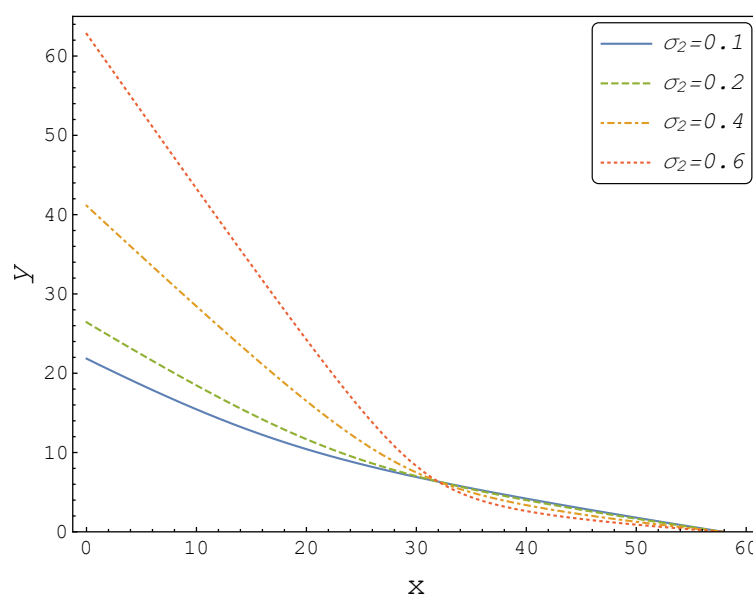


Figure 1. The threshold boundaries, \hat{b} , for the following set of parameter values: $\sigma_1 = 0.2$, $\alpha_1 = 0.02$, $\alpha_2 = 0.02$, $r = 0.1$, $\rho = 0$, $Q_1 = 5$, $Q_2 = 10$, $I = 2000$ and different values of σ_2 .

4. Numerical Solution

This section developed a finite difference algorithm to solve the optimal stopping problem in (5). The results of the numerical approach were different from the results obtained by the analytical approach *and* in line with Theorem 1 and Proposition 1.

We started by generating a discrete grid over the domain of the partial differential equation in (7). Thus, we assumed that the intervals $(0, x^*]$ and $(0, y^*]$ were divided in $N_x + 1$ and $N_y + 1$ equally spaced subintervals, respectively, and we let:

$$x_i = ih \quad i = 0, 1, 2, \dots, N_x, \quad h = \frac{x^*}{N_x}, \quad (32)$$

$$y_j = jg \quad i = 0, 1, 2, \dots, N_y, \quad g = \frac{y^*}{N_y}, \quad (33)$$

where x^* and y^* are the optimal investment triggers in case the other state variable is zero and, thus, are the natural end points of the grid. Moreover, we considered the following notation: $V_{i,j}$ denotes the value of the firm at the grid points (x_i, y_j) :

$$V_{(i,j)} = V(x_i, y_j)$$

with V defined in Equation (5). Finally, we let \mathbf{v} be the vector of unknown grid points, which could be ordered in the following way:

$$\mathbf{v} = \begin{bmatrix} V_{0,0} \\ V_{0,1} \\ \vdots \\ V_{0,N_y} \\ \vdots \\ V_{N_x,N_y} \end{bmatrix} \quad (34)$$

Then, we were able to derive a linear system of equations that allowed to solve for the discrete grid points simultaneously, as follows: We discretized the partial differential equation using a weighted sum of the function values at the neighbouring point approximations to the partial derivatives. This yielded:

$$\begin{aligned} \frac{1}{2}\sigma_1^2 p_1^2 \frac{V_{i+1,j} - 2V_{i,j} + V_{i-1,j}}{h^2} + \frac{1}{2}\sigma_2^2 p_2^2 \frac{V_{i,j+1} - 2V_{i,j} + V_{i,j-1}}{g^2} + \alpha_1 x \frac{V_{i+1,j} - V_{i,j}}{h} + \alpha_2 y \frac{V_{i,j+1} - V_{i,j}}{g} \\ + \rho\sigma_1\sigma_2 xy \frac{V_{i+1,j+1} - V_{i+1,j-1} - V_{i-1,j+1} + V_{i-1,j-1}}{4hg} - rV_{i,j} = 0. \end{aligned} \quad (35)$$

Rearranging the terms, gave:

$$\begin{aligned} V_{i,j} \left(-\sigma_1^2 i^2 - \alpha_1 i h - \sigma_2^2 \frac{j^2 h^2}{g^2} - \alpha_2 \frac{j h^2}{g} - r h^2 \right) + V_{i,j+1} \left(\frac{1}{2}\sigma_2^2 \frac{j^2 h^2}{g^2} + \alpha_2 \frac{j h^2}{g} \right) + \\ V_{i+1,j} \left(\frac{1}{2}\sigma_1^2 i^2 + \alpha_1 i h \right) + V_{i,j-1} \left(\frac{1}{2}\sigma_2^2 \frac{j^2 h^2}{g^2} \right) + V_{i-1,j} \left(\frac{1}{2}\sigma_1^2 i^2 \right) + \\ + \rho\sigma_1\sigma_2 \frac{j h}{4g} (V_{i+1,j+1} - V_{i+1,j-1} - V_{i-1,j+1} + V_{i-1,j-1}) = 0. \end{aligned} \quad (36)$$

Then, the partial differential Equation (35) could be represented as a system of linear equations:

$$B\mathbf{v} = 0, \quad (37)$$

where B is the matrix of coefficients resulting from (36).

This system could be solved by applying appropriate boundary conditions. We used the fact that the value at $(x^*, 0)$ and $(0, y^*)$ had to equal the value of the immediate investment. In addition, if either x_i or y_j was equal to zero, the problem was reduced to one dimension, and the grid points together with the threshold boundary could be found analytically. Given a candidate threshold function, system (37) in combination with the boundary conditions in zero and final nodes, yielded a solution for the unknown grid points. To determine the optimal threshold, we implemented the following procedure: First, we proposed a shape of the exercise boundary. For example, the results that we presented in Figure 2 were based on the quadratic function, i.e., $y = a + bx + cx^2$. The unknown parameters, a and b , could be determined using the analytical threshold boundaries when either x_i or y_j was zero. In order to find c , we computed the derivative of the option value at the candidate threshold boundary at each node and compared it with the derivatives resulting from the smooth-pasting conditions. Next, we computed the sum squared error of the differences and minimized it with respect to unknown parameter c , which allowed to determine the optimal threshold in such a way that the smooth-pasting condition was satisfied.

We now replicated Figure 1 using our finite difference scheme and depicted it in Figure 2.

This numerical example resulted in a more intuitive shape of thresholds boundaries and represented a standard result from the real options theory. Namely, an increase in volatility led to an increase in the optimal investment threshold.

In addition, finite difference also allowed for the calculation of an approximation to the value function that was implied by the quasi-analytical boundary \hat{b} . This could be performed by solving (37) for the boundary in (23). Figure 3 illustrates the comparison between the implied value function and the numerical solution represented by the quadratic boundary for a fixed level of x and different values of y .

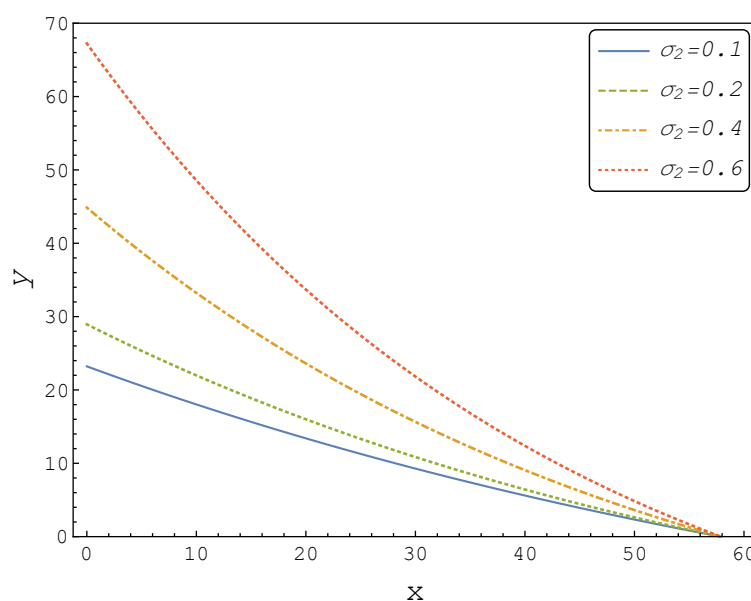


Figure 2. The numerical threshold boundary for the following set of parameter values: $\sigma_1 = 0.2$, $\alpha_1 = 0.02$, $\alpha_2 = 0.02$, $r = 0.1$, $\rho = 0$, $Q_1 = 5$, $Q_2 = 10$, $I = 2000$ and different values of σ_2 .

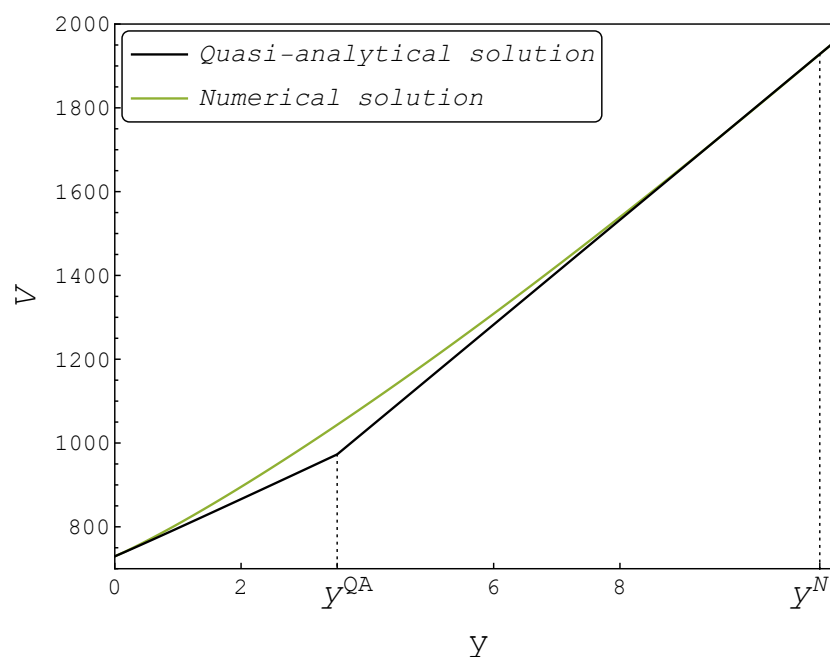


Figure 3. The numerical threshold boundary for the following set of parameter values: $x = 40.52$, $\sigma_1 = 0.2$, $\sigma_2 = 0.6$, $\alpha_1 = 0.02$, $\alpha_2 = 0.02$, $r = 0.1$, $\rho = 0$, $Q_1 = 5$, $Q_2 = 10$, $I = 2000$ and different values of y .

From Figure 3, it is evident that the value function implied by the quasi-analytical solution had a kink at the boundary point $y^{QA} = \hat{b}(40.52) = 2.49$, violating the smooth-pasting condition. Consequently, the quasi-analytical approach underestimated the true value function, which led to a sub-optimal investment decision rule for large values of x . Note that the quasi-analytical approach suggested a much lower trigger than our finite difference scheme. For $x = 40.52$, the numerical procedure based on the finite difference algorithm gave the boundary point $y^{QA} = 10.26$, such that the smooth-pasting condition held. Figure 4 illustrates the value function for different values of x and y , as well as the threshold boundary.

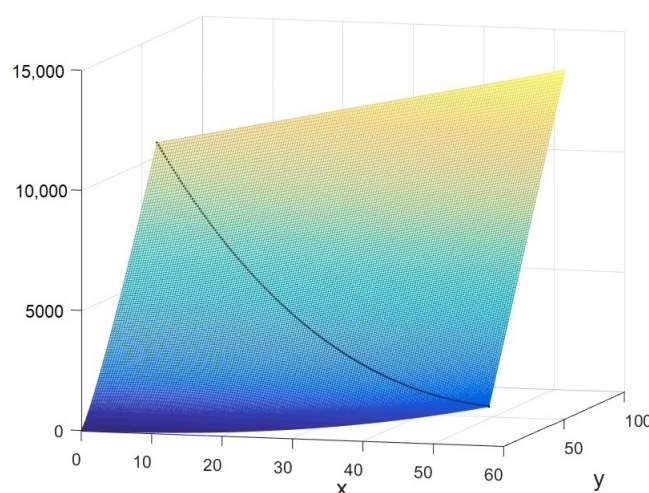


Figure 4. The numerical value function and threshold boundary (solid black curve) for the following set of parameter values: $\sigma_1 = 0.2$, $\sigma_2 = 0.6$, $\alpha_1 = 0.02$, $\alpha_2 = 0.02$, $r = 0.1$, $\rho = 0$, $Q_1 = 5$, $Q_2 = 10$, $I = 2000$ and different values of x and y .

As can be seen, the value appeared to be smooth for different values of x and y in the grid. The average squared error resulting from the numerical procedure was equal to 0.44, which corresponded to 0.17% of the true value of the total derivative of the value function. Therefore, we concluded that the proposed numerical method was a good approximation for the true value function and optimal threshold.

Lastly, in order to give an indication of how often a firm would make a poorly timed investment decision, we simulated the passage time for processes X_t and Y_t to reach the quasi-analytical boundary. We then ran the procedure 5000 times for a specific set of starting values (x_0, y_0) , and calculated the percentage of cases of the threshold being reached within the next 5 years. We performed a similar procedure to determine the investment probabilities for our numerical solution. The results for the different starting points are presented in Table 2.

Table 2b shows that, for example, for the starting values (15,10), the firm should invest in 5.41% of the cases. According to the quasi-analytical approach, however, the firm invests in 42.87% of the cases, implying that the firm invests many times, while it is in fact not optimal to do so.

Table 2. Percentage of cases when a firm undertakes an investment within the next 5 years for the set of parameter values: $\sigma_1 = 0.2$, $\sigma_2 = 0.6$, $\alpha_1 = 0.02$, $\alpha_2 = 0.02$, $r = 0.1$, $\rho = 0$, $Q_1 = 5$, $Q_2 = 10$, $I = 2000$.

(a) Quasi-analytical boundary			
(x_0, y_0)	5	10	15
10	10.06%	23.97%	39.03%
15	21.69%	42.87%	61.69%
20	40.32%	68.34%	90.21%
(b) Numerical boundary			
(x_0, y_0)	5	10	15
10	5.40%	5.56%	5.51%
15	5.57%	5.41%	5.57%
20	5.43%	5.24%	5.59%

5. Conclusions

This paper developed an easy-to-implement finite difference algorithm to solve real options models with two-factor uncertainty. The proposed framework is, thus, highly

relevant for the evaluation of business opportunities involving multiple end-products, a switch in feed-stock or end-product, a cooperation between firms that are operative in different markets and investments in new technologies incentivized by market-based policy instruments.

We applied it to a particular investment problem, where, after investment, the firm was able to produce two different products. The output prices of these products followed two geometric Brownian motion processes, possibly correlated. The investment cost was constant and sank. We contrasted our solution approach to the quasi-analytical approach developed by [Adkins and Paxson \(2011b\)](#) to address such problems. The latter has already been adopted by several other authors, as the overview in Section 1 showed. This paper argued, however, that this quasi-analytical method does not always result in the correct investment decision rule.

From the analysis of this two-factor real options problem, we obtained that the quasi-analytical investment decision rule in some cases also failed to be a reasonable approximation to the optimal decision. In particular, we found that the quasi-analytical solution did not comply with the (analytical) result that the investment threshold boundary had to be monotonically increasing in the volatility parameters of both stochastic processes.

The ultimate conclusion was that non-homogenous real options problems with two-factor uncertainty should be solved using a different numerical procedure, or at the very least, the quality of the quasi-analytical approximation should be discussed. Note, however, that if our two-factor uncertainty problem was homogenous, then a standard (cf. [McDonald and Siegel 1986](#)) reduction in dimensionality could be obtained, leading to an analytical solution.

Author Contributions: Conceptualization, T.C., K.J.M.H., P.M.K., M.L., C.N., J.J.J.T.; formal analysis—T.C., P.M.K., M.L., C.N., J.J.J.T.; methodology—T.C., K.J.M.H., P.M.K., M.L., C.N., J.J.J.T.; software, T.C., M.L., J.J.J.T.; writing—original draft, T.C., K.J.M.H., P.M.K., M.L., C.N., J.J.J.T.; writing—review & editing, T.C., P.M.K., M.L., C.N., J.J.J.T. All authors have read and agreed to the published version of the manuscript.

Funding: Cláudia Nunes was partially supported by the Projects UIDB/04621/2020 and PTDC/EGE-ECO/30535/2017.

Conflicts of Interest: The authors declare no conflict of interest.

Appendix A

Proof of Theorem 1. Throughout the proof, we denoted the unique solution to (1) for given starting point $(X_0, Y_0) \in \mathbb{R}_+^2 \setminus \{0\}$ by (X^x, Y^y) . Note that $(X^x, Y^y) = (xX^1, yY^1)$.

1. ($V > 0$ on \mathbb{R}_{++}^2) On S , the result is trivial. Let $(x, y) \in D \cap \mathbb{R}_{++}^2$. Consider the stopping time:

$$\tau = \inf\{t \geq 0 | F(X_t, Y_t) > 0\}.$$

Since $e^{-rt}F(X_t, Y_t) = 0$ on $\{\tau = \infty\}$ (since $r > \max\{\alpha_1, \alpha_2\}$) and $P(\tau < \infty) > 0$, it holds that:

$$V(x, y) \geq \mathbb{E}[e^{-r\tau}F(X_\tau, Y_\tau)] > 0.$$

2. (Convexity of V) On S , the result is trivial. Take $(x', y'), (x'', y'') \in D$ and $\lambda \in (0, 1)$. Define $(x, y) := \lambda(x', y') + (1 - \lambda)(x'', y'')$. It then holds that:

$$\begin{aligned}
 V(x, y) &= \sup_{\tau} \mathbb{E}[e^{-r\tau} F(x', y')] \\
 &= \sup_{\tau} \mathbb{E}\left[e^{-r\tau} \left(\frac{xX_{\tau}^1}{\delta_1} + \frac{yY_{\tau}^1}{\delta_2} - I\right)\right] \\
 &= \sup_{\tau} \mathbb{E}\left[e^{-r\tau} \left(\frac{(\lambda x' + (1-\lambda)x'')X_{\tau}^1}{\delta_1} + \frac{(\lambda y' + (1-\lambda)y'')Y_{\tau}^1}{\delta_2} - I\right)\right] \\
 &= \sup_{\tau} \mathbb{E}\left[\lambda e^{-r\tau} \left(\frac{x'X_{\tau}^1}{\delta_1} + \frac{y'Y_{\tau}^1}{\delta_2} - I\right) + (1-\lambda)e^{-r\tau} \left(\frac{x''X_{\tau}^1}{\delta_1} + \frac{y''Y_{\tau}^1}{\delta_2} - I\right)\right] \\
 &\leq \lambda \sup_{\tau} \mathbb{E}[e^{-r\tau} F(x', y')] + (1-\lambda) \sup_{\tau} \mathbb{E}[e^{-r\tau} F(x'', y'')] \\
 &= \lambda V(x', y') + (1-\lambda)V(x'', y'').
 \end{aligned}$$

3. (Continuity of V) This property follows from the general theory of stochastic processes: see, e.g., (Krylov 1980, Theorem 3.1.5).
4. (Monotonicity of V) We proved that V is (strictly) increasing in x . Again, the result is trivial on S . Take $(x, y) \in D$ and let $\varepsilon > 0$ be such that $(x + \varepsilon, y) \in D$ (such ε exists since D is open; see below). Take any stopping time τ . It then holds that:

$$\mathbb{E}\left[e^{-r\tau} \left(\frac{(x + \varepsilon)X_{\tau}^1}{\delta_1} + \frac{yY_{\tau}^1}{\delta_2} - I\right)\right] \geq \mathbb{E}\left[e^{-r\tau} \left(\frac{xX_{\tau}^1}{\delta_1} + \frac{yY_{\tau}^1}{\delta_2} - I\right)\right],$$

with equality only when $\{\tau = \infty\}$ a.s. Note that τ with $\{\tau = \infty\}$ a.s. is never optimal. Take $\tau^* = \inf\{t \geq 0 | Y_t \geq \delta_1 I + 1\}$. Then $P(\tau^* < \infty) > 0$ and, thus, we had that $\mathbb{E}[e^{-r\tau^*} F(X_{\tau^*}^x, Y_{\tau^*}^y)] > 0$.] Therefore, $V(x + \varepsilon, y) > V(x, y)$.

5. (Closedness of D) Take a sequence $(x^{(n)}, y^{(n)})_{n \in \mathbb{N}}$ in S with limit (x, y) . Then, $V(x^{(n)}, y^{(n)}) = F(x^{(n)}, y^{(n)})$ for all $n \in \mathbb{N}$. Since $\lim_{n \rightarrow \infty} F(x^{(n)}, y^{(n)}) = F(x, y)$ and V is continuous, it holds that $V(x, y) = F(x, y)$. This implies that $(x, y) \in S$.
6. (Convexity of D) Suppose there exists $(x', y'), (x'', y'') \in S$ and $\lambda \in (0, 1)$ such that $(x, y) := \lambda(x', y') + (1-\lambda)(x'', y'') \in D$. It then holds that:

$$V(x, y) > F(x, y) = \lambda F(x', y') + (1-\lambda)F(x'', y'') = \lambda V(x', y') + (1-\lambda)V(x'', y'').$$

This contradicts convexity of V .

7. ($b(x)$ can be written as a sup) Take $(x, y) \in D$. There exists a stopping time τ^* , such that $(X_{\tau^*}, Y_{\tau^*}) \in D$, a.s. Hence,

$$V(x, y) = \sup_{\tau} \mathbb{E}[e^{-r\tau} F(X_{\tau}, Y_{\tau})] \geq \mathbb{E}[e^{-r\tau^*} F(X_{\tau^*}, Y_{\tau^*})] > F(x, y).$$

Now take $\varepsilon \in (0, y)$. Then:

$$\begin{aligned}
 V(x, y - \varepsilon) &\geq \mathbb{E}\left[e^{-r\tau^*} F(X_{\tau^*}, Y_{\tau^*})\right] \\
 &= \mathbb{E}\left[e^{-r\tau^*} \left(\frac{xX_{\tau^*}^1}{\delta_1} + \frac{(y - \varepsilon)Y_{\tau^*}^1}{\delta_2} - I\right)\right] \\
 &= \mathbb{E}\left[e^{-r\tau^*} \left(\frac{xX_{\tau^*}^1}{\delta_1} + \frac{yY_{\tau^*}^1}{\delta_2} - I\right)\right] - \mathbb{E}\left[e^{-r\tau^*} \frac{\varepsilon Y_{\tau^*}^1}{\delta_2}\right] \\
 &\stackrel{(*)}{\geq} \mathbb{E}\left[e^{-r\tau^*} \left(\frac{xX_{\tau^*}^1}{\delta_1} + \frac{yY_{\tau^*}^1}{\delta_2} - I\right)\right] - \frac{\varepsilon}{\delta_2} \\
 &> \mathbb{E}\left[e^{-r\tau^*} \left(\frac{xX_{\tau^*}^1}{\delta_1} + \frac{yY_{\tau^*}^1}{\delta_2} - I\right)\right] > F(x, y) > F(x, y - \varepsilon),
 \end{aligned}$$

- where $(*)$ follows from the fact that $e^{-rt}Y_t$ is a supermartingale. Therefore, $(x, y - \varepsilon) \in D$.
8. (b is non-increasing) This follows from the fact that for all $(x, y) \in D$ and all $\varepsilon \in (0, x)$ it holds that $(x - \varepsilon, y) \in D$. This can be proved using a similar argument as above.
 9. (b is convex) Convexity of b follows from the fact that its epigraph is the convex set S .
 10. (b is continuous) Continuity of b on $(0, \infty)$ is immediate, because it is a convex function on an open convex set (see, for example, [Berge 1963](#), Theorem 8.5.7). Continuity at $x = 0$ follows from the fact that the stopping set is closed.
 11. (boundedness of b) The boundedness properties follow from continuity and x^* and y^* being the solutions of the optimal stopping problem on $\mathbb{R}_+ \times \{0\}$ and $\{0\} \times \mathbb{R}_+$, respectively.

□

Notes

- ¹ $\mathbb{E}_{(x,y)}$ denotes the expectation conditional on $(X_0, Y_0) = (x, y)$.
- ² Note that [Adkins and Paxson \(2011b\)](#) assume this is the case.
- ³ For simplicity, henceforth we assume that $\rho = 0$.
- ⁴ The same holds for ([Adkins and Paxson 2011a](#)), see Table 2; [Adkins and Paxson \(2017b\)](#), see Table of Figure 1; [Heydari et al. \(2012\)](#), see Equation (19); [Adkins and Paxson \(2013a\)](#), see Equation (9); [Adkins and Paxson \(2013b\)](#), see Figure 2; [Fleten et al. \(2016\)](#), see Equation (17); [Støre et al. \(2018\)](#), see Equation (18); and [Adkins and Paxson \(2017a\)](#), see Table 3.

References

- Adkins, Roger, and Dean A. Paxson. 2011a. Reciprocal energy-switching options. *Journal of Energy Markets* 4: 91–120. [\[CrossRef\]](#)
- Adkins, Roger, and Dean A. Paxson. 2011b. Renewing assets with uncertain revenues and operating costs. *The Journal of Financial and Quantitative Analysis* 46: 785–813. [\[CrossRef\]](#)
- Adkins, Roger, and Dean A. Paxson. 2013a. Deterministic models for premature and postponed replacement. *Omega* 41: 1008–19. [\[CrossRef\]](#)
- Adkins, Roger, and Dean A. Paxson. 2013b. The effect of tax depreciation on the stochastic replacement policy. *European Journal of Operational Research* 229: 155–64. [\[CrossRef\]](#)
- Adkins, Roger, and Dean A. Paxson. 2016. Subsidies for renewable energy facilities under uncertainty. *The Manchester School* 84: 222–50. [\[CrossRef\]](#)
- Adkins, Roger, and Dean A. Paxson. 2017a. Replacement decisions with multiple stochastic values and depreciation. *European Journal of Operational Research* 257: 174–84. [\[CrossRef\]](#)
- Adkins, Roger, and Dean A. Paxson. 2017b. The effects of an uncertain abandonment value on the investment decision. *The European Journal of Finance* 23: 1083–106. [\[CrossRef\]](#)
- Agaton, Casper Boongaling, and Angelie Azcuna Collera. 2022. Now or later? Optimal timing of mangrove rehabilitation under climate change uncertainty. *Forest Ecology and Management* 503: 119739. [\[CrossRef\]](#)
- Alili, Larbi, and Andreas Kyprianou. 2005. Some remarks on first passage of Lévy processes, the American put and pasting principles. *The Annals of Applied Probability* 15: 2062–80. [\[CrossRef\]](#)
- Armada, Manuel R., Artur Rodrigues, and Paulo J. J. Pereira. 2013. Optimal investment with two-factor uncertainty. *Mathematics and Financial Economics* 7: 509–30. [\[CrossRef\]](#)
- Bar-Ilan, Avner, and William C. Strange. 1999. The timing and intensity of investment. *Journal of Macroeconomics* 21: 57–77. [\[CrossRef\]](#)
- Berge, Claude. 1963. *Topological Spaces*. Edinburgh and London: Oliver & Boyd.
- Boomsma, Trine K., and Kristin Linnerud. 2015. Market and policy risk under different renewable electricity support schemes. *Energy* 89: 435–48. [\[CrossRef\]](#)
- Compernelle, Tine, Kuno J. M. Huisman, Kris Welkenhuysen, Kris Piessens, and Peter M. Kort. 2017. Off-shore enhanced oil recovery in the North Sea: The impact of price uncertainty on the investment decisions. *Energy Policy* 101: 123–37. [\[CrossRef\]](#)
- Dammann, Felix, and Giorgio Ferrari. 2021. On an irreversible investment problem with two-factor uncertainty. *Quantitative Finance* Forthcoming.
- Dangl, Thomas. 1999. Investment and capacity choice under uncertain demand. *European Journal of Operational Research* 117: 415–28. [\[CrossRef\]](#)
- Deeney, Peter, Mark Cummins, Katharina Heintz, and Mary T. Pryce. 2021. A real options based decision support tool for R&D investment: Application to CO2 recycling technology. *European Journal of Operational Research* 289: 696–711.
- Dixit, Avinash K., and Robert S. Pindyck. 1994. *Investment Under Uncertainty*. Princeton: Princeton University Press.
- Fleten, Stein-Erik, Kristin Linnerud, Peter Molnár, and Maria Tandberg Nygaard. 2016. Green electricity investment timing in practice: Real options or net present value? *Energy* 116: 498–506. [\[CrossRef\]](#)
- Heydari, Somayeh, Nick Ovenden, and Afzal S. Siddiqui. 2012. Real options analysis of investment in carbon capture and sequestration technology. *Computational Management Science* 9: 109–38. [\[CrossRef\]](#)

- Hu, Yaozhong, and Bernt Øksendal. 1998. Optimal time to invest when the price processes are geometric Brownian motions. *Finance and Stochastics* 2: 295–310. [\[CrossRef\]](#)
- Huisman, Kuno J. M., Peter M. Kort, and Jozef Plasmans. 2013. Investment in high-tech industries: An example from the LCD industry. In *Real options, Ambiguity, Risk and Insurance*. Edited by Alain Bensoussan, Shige Peng and Jaeyoung Sung. Studies in Probability, Optimization and Statistics Series. Amsterdam: IEEE Computer Society, vol. 5, pp. 20–32.
- Huisman, Kuno J. M., and Peter M. Kort. 2015. Strategic capacity investment under uncertainty. *The RAND Journal of Economics* 46: 376–408. [\[CrossRef\]](#)
- Kauppinen, Lauri, Afzal S. Siddiqui, and Ahti Salo. 2018. Investing in time-to-build projects with uncertain revenues and costs: A real options approach. *IEEE Transactions on Engineering Management* 65: 448–59. [\[CrossRef\]](#)
- Krylov, Nicolai V. 1980. *Controlled Diffusion Processes*. New York: Springer.
- Lange, Rutger-Jan, Daniel Ralph, and Kristian Støre. 2020. Real-option valuation in multiple dimensions using Poisson optional stopping times. *Journal of Financial and Quantitative Analysis* 55: 653–77. [\[CrossRef\]](#)
- Li, Longxi, and Xilin Cao. 2022. Comprehensive effectiveness assessment of energy storage incentive mechanisms for PV-ESS projects based on compound real options. *Energy* 239: 121902. [\[CrossRef\]](#)
- McDonald, Robert, and Donald R. Siegel. 1986. The value of waiting to invest. *The Quarterly Journal of Economics* 101: 707–27. [\[CrossRef\]](#)
- Nunes, Cláudia, and Rita Pimentel. 2017. Analytical solution for an investment problem under uncertainties with shocks. *European Journal of Operational Research* 259: 1054–63. [\[CrossRef\]](#)
- Øksendal, Bernt, and Agnes Sulem. 2007. *Applied Stochastic Control of Jump Diffusions*. Berlin: Springer.
- Olsen, Trond E., and Gunnar Stensland. 1992. On optimal timing of investment when cost components are additive and follow geometric diffusions. *Journal of Economic Dynamics and Control* 16: 39–51. [\[CrossRef\]](#)
- Pham, Huyên. 1997. Optimal stopping, free boundary, and American option in a jump-diffusion model. *Applied Mathematics and Optimization* 35: 145–64. [\[CrossRef\]](#)
- Smets, Frank. 1991. *Exporting versus FDI: The Effect of Uncertainty, Irreversibilities and Strategic Interactions*. Working Paper. New Haven: Yale University.
- Støre, Kristian, Verena Hagspiel, Stein-Erik Fleten, and Cláudia Nunes. 2018. Switching from oil to gas production in a depleting field. *European Journal of Operational Research* 271: 710–19. [\[CrossRef\]](#)
- Tankov, Peter. 2003. *Financial Modelling with Jump Processes*. London: CRC Press, vol. 2.
- The European Commission. 2019. *Communication from the Commission to the European Parliament, the European Council, the Council, the European Economic and Social Committee and the Committee of the Regions, the European Green Deal, COM(2019) 640 Final*. Technical Report. Brussels: European Commission.
- The European Commission. 2021. *Communication from the Commission to the European Parliament, the European Council, the Council, the European Economic and Social Committee and the Committee of the Regions 'Fit for 55': Delivering the EU's 2030 Climate Target on the Way to Climate Neutrality, COM/2021/550 Final*. Technical Report. Brussels: European Commission.
- Trigeorgis, Lenos 1996. *Real Options: Managerial Flexibility and Strategy in Resource Allocation*. Cambridge: The MIT Press.
- Zhang, Weiwei, Chunyan Dai, Xuemei Luo, and Xunmin Ou. 2021. Policy incentives in carbon capture utilization and storage (CCUS) investment based on real options analysis. *Clean Technologies and Environmental Policy* 23: 1311–26. [\[CrossRef\]](#)