

Saleem, Adil; Bárczi, Judit; Sági, Judit

Article

Covid-19 and Islamic stock index: Evidence of market behavior and volatility persistence

Journal of Risk and Financial Management

Provided in Cooperation with:

MDPI – Multidisciplinary Digital Publishing Institute, Basel

Suggested Citation: Saleem, Adil; Bárczi, Judit; Sági, Judit (2021) : Covid-19 and Islamic stock index: Evidence of market behavior and volatility persistence, Journal of Risk and Financial Management, ISSN 1911-8074, MDPI, Basel, Vol. 14, Iss. 8, pp. 1-22,
<https://doi.org/10.3390/jrfm14080389>

This Version is available at:

<https://hdl.handle.net/10419/258493>

Standard-Nutzungsbedingungen:

Die Dokumente auf EconStor dürfen zu eigenen wissenschaftlichen Zwecken und zum Privatgebrauch gespeichert und kopiert werden.

Sie dürfen die Dokumente nicht für öffentliche oder kommerzielle Zwecke vervielfältigen, öffentlich ausstellen, öffentlich zugänglich machen, vertreiben oder anderweitig nutzen.

Sofern die Verfasser die Dokumente unter Open-Content-Lizenzen (insbesondere CC-Lizenzen) zur Verfügung gestellt haben sollten, gelten abweichend von diesen Nutzungsbedingungen die in der dort genannten Lizenz gewährten Nutzungsrechte.

Terms of use:

Documents in EconStor may be saved and copied for your personal and scholarly purposes.

You are not to copy documents for public or commercial purposes, to exhibit the documents publicly, to make them publicly available on the internet, or to distribute or otherwise use the documents in public.

If the documents have been made available under an Open Content Licence (especially Creative Commons Licences), you may exercise further usage rights as specified in the indicated licence.



<https://creativecommons.org/licenses/by/4.0/>

Article

COVID-19 and Islamic Stock Index: Evidence of Market Behavior and Volatility Persistence

Adil Saleem ¹, Judit Bárczi ¹ and Judit Sági ^{2,*}¹ Doctoral School of Economics and Regional Sciences, Hungarian University of Agriculture and Life Sciences, H-2100 Gödöllő, Hungary; saleem.adil@phd.uni-szie.hu (A.S.); barczi.judit@uni-mate.hu (J.B.)² Faculty of Finance and Accountancy, Budapest Business School-University of Applied Sciences, H-1149 Budapest, Hungary

* Correspondence: sagi.judit@uni-bge.hu

Abstract: The aftermath of the COVID-19 pandemic is not limited to human lives and health sectors. It has also changed social and economic aspects of the world. This study investigated the Islamic stock market's reaction and changes in volatility before and during this pandemic. The market model of event study methodology was employed to analyze Islamic stock market reactions in nine different markets around the globe. To examine changes in volatility and persistence of risk, the generalized autoregressive conditional heteroscedasticity (GARCH) method was used. Nine Islamic stock indices were selected for this study from the Thomson Reuters data stream. The results suggest that, in the short run, the Islamic Australian stock index and Islamic GCC stock index remained stable for the first 15 days following news of the pandemic. The Islamic stock indexes of Qatar, UAE, ASEAN, MENA, MENASA, and Bahrain were significantly affected by the outbreak in the short-term. On the other hand, the volatility of Islamic stock indices was substantially amplified after the global health crisis was declared by the WHO. Moreover, volatility shocks tended to persist for a longer period after COVID-19.

Keywords: Islamic stocks; COVID-19; abnormal return; volatility**JEL Classification:** G14; G41; F65; I15; H12

Citation: Saleem, Adil, Judit Bárczi, and Judit Sági. 2021. COVID-19 and Islamic Stock Index: Evidence of Market Behavior and Volatility Persistence. *Journal of Risk and Financial Management* 14: 389. <https://doi.org/10.3390/jrfm14080389>

Academic Editors: Zied Ftiti and
Wael Louhichi

Received: 30 June 2021

Accepted: 11 August 2021

Published: 20 August 2021

Publisher's Note: MDPI stays neutral with regard to jurisdictional claims in published maps and institutional affiliations.



Copyright: © 2021 by the authors. Licensee MDPI, Basel, Switzerland. This article is an open access article distributed under the terms and conditions of the Creative Commons Attribution (CC BY) license (<https://creativecommons.org/licenses/by/4.0/>).

1. Introduction

Since the beginning of 2020, the world has been alarmed by a new virus named COVID-19. According to health practitioners, the virus is fatal for up to 2–3% of those infected. According to the Wuhan municipal health committee (WMHC), on 30th December 2019, four patients presenting symptoms similar to pneumonia were admitted to a municipal hospital in Wuhan, and the diagnosis could not be made in time (ProMED 2019; Sohrabi et al. 2020). The cases of this unknown disease increased significantly by mid-January 2020 despite a huge influx of multidisciplinary task force workers, as recommended by WMHC. Keeping in mind the situation in Wuhan, in a press conference conducted by the WHO (2020) in mid-January 2020, the presence of human-to-human spread was disclosed. Furthermore, a special task force (Emergency Committee–EC), based on 15 multinational health experts, was formulated by the WHO to address this issue. Importantly, the WHO (2020) proclaimed COVID-19 a global health emergency as it reached the territories of Germany, Vietnam, the UK, and Japan. Soon after the breakout of COVID-19, several economic and social changes occurred, with immediate effects in China and other parts of the world. In the affected places, economic activities were locked down and social events were limited. Additionally, the virus was found in more than 190 countries by the end of March 2020. Therefore, on 11th March 2020, COVID-19 was announced as a pandemic, affecting millions of people (Dunford et al. 2020). However, it is imperative to note that the long-term economic impact of viral outbreaks is more destructive than

its actual fatality rate (Smith 2006). Similarly, the recent global health crisis triggered by COVID-19 is expected to impart severe economic, social, and financial effects on a global scale (Goodell 2020).

Lee and McKibbin (2004) examined the economic impact of an epidemic outbreak from a virus in the same family as COVID-19, severe acute respiratory syndrome (SARS), in selected countries. They documented a drastic decline in consumption and investment patterns in the corporate sector. As reported in a behavioral finance study by MacKinlay (1997), market news related to risks and contagious disease can make investors passive and ultimately affect investors' sentiments as whole. Conventional stock markets and the history of pandemics have been examined by many authors, including but not limited to: Lee and McKibbin (2004); In et al. (2002); Zhang et al. (2020); Topcu and Gulal (2020); and Liu (2020). Importantly, Donadelli et al. (2017) argued that news-related health issues, especially those sparked by the WHO, have had a detrimental effect on investors' sentiments and affected their decisions. Furthermore, in the past, conventional stock markets experienced major setbacks due to a global health emergency promulgated by the WHO (Wang et al. 2013).

Islamic finance constitutes a substantial part of the global financial and capital market with innovative alternatives. The exponential growth in Islamic finance assets has been remarkable and is still expanding progressively (Paltrinieri et al. 2019; Saleem and Ashfaq 2020). Islamic finance is defined as financing activities based on Islamic principles, which prohibit dealing in interest, speculation, gambling, and uncertain transactions. Apart from permissible business activity, stocks must comply with strict screening criteria in order to be considered in the Islamic index. Thus, a company must have very low or zero interest income, a low debt ratio and small cash holdings (El-Gamal 2000), requirements which are completely ignored in the conventional financial system (Sági et al. 2020).

The structure of Islamic stocks is inherently different from conventional stock markets. Portfolios under Islamic equity are based on real economic activity, which may lead to stocks being less risky (Raza et al. 2016; Varga and Tálos 2016), more stable (Erdogan et al. 2020; Kenourgios et al. 2016; Paltrinieri et al. 2019), safe from turmoil, and tied to the promotion of real assets. However, concerning the new global health crisis, a considerable lack of attention has been given to Islamic stock markets and their reaction and volatility.

From the health crisis to the economic turmoil, COVID-19 has impacted almost every sphere of life; the financial markets are no exception. So far, researchers have only focused on conventional stock markets and the Islamic stock markets have been given limited attention in connection with the current health crisis (see Sherif 2020). In the wake of the COVID-19 crisis, to the best of our knowledge, this study provided the first empirical evidence of volatility and its persistence in Islamic stock markets globally. The study aimed to examine the impact of the global health crisis on nine Islamic stock indices selected from around the world. Furthermore, it also intended to provide evidence of how long this shock is likely to persist in the Islamic stock markets.

The study was intended to add to the existing literature in two ways. First, it analyzed the effects of the COVID-19 crisis on Islamic stock markets around the globe, as there has been scant empirical evidence provided on this. Second, it contributed to the existing body of knowledge in terms of risk and volatility both before and after the outbreak. Thus far, the length of volatility shocks has only been analyzed on conventional stock markets. This study provided evidence on Islamic stock indices around the globe. Additionally, this study examined whether the global Islamic stock markets would be immune to the COVID-19 crisis, as they are intrinsically different from conventional stock markets.

The rest of the paper is organized as follows. The review of literature is organized and summarized in Section 2. Section 3 provides the data and methodology used in this study, as well as the econometric model specifications for this paper. Section 4 provides the results and discussion and explains how Islamic stock markets were affected by the COVID-19 crisis and the accompanying volatility shocks. Section 5 concludes the paper.

2. Literature Review

In the recent outbreak of COVID-19, to stop further transmission of virus, countries implemented lockdowns either at the national or local level. Consequently, the health crises caused global economic turmoil. The spread of COVID-19 affected stock markets in 21 different countries, which produced negative, abnormal returns soon after this outbreak (Al-Awadhi et al. 2020; Liu et al. 2020). The authors also stressed that the effect was worse in Asian stock markets as they could not implement strict health controls set up by their governments. Furthermore, Ashraf (2020) argued that stock markets reacted negatively as the number of cases rose in the first two months of the crisis. Additionally, stock market reactions from 25 different affected countries have been studied by Phan and Narayan (2020), who found that market overreactions were caused by news concerning COVID-19. However, the authors further argued that countries proactively responded to news of the pandemic, resulting in restrictions in travel, social gathering, and economic lockdowns across the globe. Although countries enforced several restrictions to control the spread of this virus, it could not be curbed completely.

In this short period of time, few studies have been conducted to capture the how the conventional stock market behaved in response to the coronavirus. For instance, Mazur et al. (2020) argued for an unpredictable reaction of different sectors in response to COVID-19, and found some showed resilience while others remained precarious. It was evident that the hospitality, petroleum, entertainment, and real estate sectors have been hit badly by the global pandemic. However, healthcare, service sector, and software industries enjoyed huge increases in market capitalization. A recent study by Zhang et al. (2020) documented evidence of a strong negative correlation between stock market returns and the number of infected people in ten countries with a high rate of infection. Furthermore, the study argued that stock markets become highly volatile and risky due to the pandemic and economic losses.

Topcu and Gulal (2020) using Driscoll–Kraay methods examined the impact of COVID-19 on Asian, European, and emerging stock markets. The results indicated that Asian stock markets were badly affected by the global health crisis. However, the study further argued that countries who took timely measures managed to weaken the adverse consequences of the corona virus outbreak. Additionally, the European stock markets were least affected compared to Asian and emerging markets. Similarly, Ashraf (2020) showed that with the increase of virus cases, the stock market became volatile and market returns went down proactively. The study considered 64 stock markets around the globe and found that stock market returns declined in line with the daily increase in the number of cases. Moreover, the author further argued that, in response to the pandemic, stock markets showed a quick response depending upon the intensity of the outbreak in that region. Additionally, Mirza et al. (2020) documented the evidence of a reduction in market capitalization of more than 12,000 non-financial companies in 15 European countries after the COVID-19 pandemic broke out. The authors argued that a global health emergency favored vulnerability in the corporate sector and the capital market. Similarly, Akrofi and Antwi (2020) studied the African energy sector and found a considerable downturn after the COVID-19 pandemic. Furthermore, Jeribi and Manzli (2021) analyzed the post-COVID-19 behavior of the Tunisian stock market and found a strong relationship between the number of confirmed cases (and deaths), and stock market performance. In essence, the authors found that as the number of confirmed cases and deaths increased the stock market performance in almost every sector became vulnerable. Vulnerability, negative shocks, and the dwindling trends of market indices have been documented by many authors so far. However, ever since Islamic stocks became part of financial markets, the research in this sector has been very limited regarding external shocks. Furthermore, it is of great importance to study the reaction of Islamic stock indices globally in response to the COVID-19 crisis.

Assessing the uncertainties relating to the investment portfolio is of paramount importance for financial assets. Uncertainty or risk associated with the financial time series is

referred as volatility, which is an essential component for the smooth functioning of the market, especially from an investor's perspective. The impact of COVID-19 is not only limited to a downturn of performance and economic activities; it also makes financial assets more prone to risk. Similarly, volatility is found to be more persistent in the post-COVID-19 period in conventional stock markets (Fakhfekh et al. 2021). The authors used GARCH family models and opined that investors must secure themselves from future volatility shocks through hedging tools. Likewise, using the EGARCH method, Insaiddoo et al. (2021) found similar evidence in the Ghana stock index. The presence of a longer volatility persistence and asymmetric affect is evident in the Ghana stock index, which also highlighted the adverse impact of COVID-19 crisis on market volatility. The US stock market's volatility behaved in a similar fashion in response to the global health crisis (Baig et al. 2021).

Literature has been enriched with recent empirical evidence indicating a high proportion of volatility persistence irrespective of region. For instance, Guru and Das (2021) found a 69% increase in volatility in the Indian stock market. Albulescu (2021) investigated an increase in volatility in the Dow Jones and S&P500 and offered four key contributions to the literature. Firstly, the US stock market volatility increased with the increase in the number of cases globally. Secondly, the fatality rate appeared to have a positive impact on the volatility of the US stock market, which amplified risk in the market. Furthermore, the authors argued that the COVID-19 pandemic caused a greater detrimental effect on the US stock market compared to other crises in history. Nguyen et al. (2021) examined the volatility changes and volatility persistence of US and Chinese stock markets in pre- and during pandemic periods. The authors used the GARCH (1, 1) model and estimated that volatility persistence is similar for both stock markets. However, they further endorsed a weak spillover effect flowing from US to Chinese stock markets. Izzeldin et al. (2021) studied the stock markets in seven developed countries by sector and found that the UK, US, and Chinese stock markets experienced high volatility after the COVID-19 pandemic. Using GARCH (1, 1), the study suggested that the equity markets in China, the US, and UK suffered longer volatility persistence during the COVID-19 crisis. On the other hand, Engelhardt et al. (2021) conducted a multi-country analysis of 47 national stock markets based on societal trust in the government. The authors argued that in the countries with a high trust factor, market volatility (in reaction to the corona virus pandemic) is less than in low-trust countries. Furthermore, the dreadful impact of the pandemic has not only been observed in the corporate sector, stock market, and other financial assets but has also affected the volatility of bitcoin (Corbet et al. 2021). Concerning the Islamic stock index, Bahloul and Khemakhem (2021) studied the connectedness of returns and volatility of commodities and emerging MSCI Islamic stock indices using the VAR decomposition matrix. The degree of return and volatility spillover varied over time, but the authors claimed there was a strong transmission from commodities to MSCI Islamic indices in the post-COVID-19 period. However, the effect on volatility persistence due to the current pandemic on Islamic stock markets has not been explored.

3. Data and Methods

Thomson Reuter introduced the ideal ratings (IR) Islamic index in April 2009. These indices include the Islamic Australia index, Islamic BRIC index, Islamic MENA, MENASA, GCC, Bahrain, Malaysia, Kuwait, Oman, Qatar, Turkey, Emerging markets, and the ASEAN indices. According to Thomson Reuter's screening criteria, stocks must be in conformity with AAOIFI (Accounting and Auditing Organization for Islamic Financial Institutions) standards to be considered for the relevant index. Table 1 shows the list of Thomson Reuters Islamic indices that are included in this study.

Table 1. Selected Islamic Index.

Indices	Abbreviation	Country/Region
Thomson Reuters IdealRatings Islamic Australia Index	ISAUSX	Australia
Thomson Reuters IdealRatings Islamic Qatar Index	ISQAX	Qatar
Thomson Reuters IdealRatings Islamic UAE Index	ISUX	United Arab Emirates
Thomson Reuters IdealRatings Islamic ASEAN Index	ISASEANX	ASEAN region
Thomson Reuters IdealRatings Islamic BRIC Index	ISBRICX	BRIC countries
Thomson Reuters IdealRatings Islamic GCC Index	ISGCCX	GCC
Thomson Reuters IdealRatings Islamic MENA Index	ISMENAX	MENA Countries
Thomson Reuters IdealRatings Islamic MENASA Index	ISMENSASX	MENASA Countries
Thomson Reuters IdealRatings Islamic Bahrain Index	ISBAHX	Bahrain

Thomson Reuters' IdealRatings Islamic global index is considered as a market reflection. Furthermore, it is used as a benchmark to estimate the expected and abnormal returns of selected indices. Data are collected from the Thomson Reuters Eikon data stream. The daily closing values of selected Islamic stock indices were collected from 1 January 2019 to the end of 10 August 2020 from the mentioned source.

To address our research questions, the data are divided in two ways. Firstly, to study the market reaction, the data is grouped in three windows, i.e., estimation window, event window, and post-event or long-term window. However, to capture the volatility changes due to shocks, the data are divided into three periods: a full-length period, pre-crisis period, and post-crisis period.

3.1. Methodology

The analysis of stock market reactions in response to COVID-19 is conducted using the following two methods:

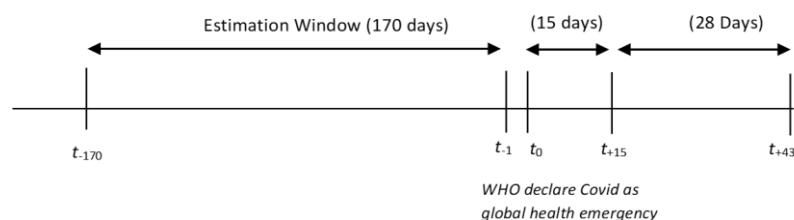
1. Event study methodology
2. Generalized autoregressive conditional heteroskedasticity (GARCH)

3.1.1. Event Study Methodology

The event study methodology is used to capture the effect of COVID-19 on the Islamic stock markets through selected indices. According to the efficient market hypothesis, if the market is efficient, the stock index will reflect the real change in value corresponding to a particular event or information disclosure (Fama et al. 1969; MacKinlay 1997). The market model is implemented using the selected data set, and further data are divided into three windows, i.e., estimation window (−1, −170), event window (0, 15), and post-event or long-term window (16, 43).

We selected 30th January 2020 as an event date as the WHO declared COVID-19 as a global health emergency on this day. To analyze the short window market reaction, we chose 16 days from 31 January to 15 February 2020 (0, 15). The second window was selected for the next 28 days, i.e., (16, 43), from 16th February to 31 March 2020. The last date of the second event window is the date when the WHO confirmed the spread of COVID-19 to 200 countries. Furthermore, for estimating the markets' expected returns, we selected an estimation window of 170 days prior to the event date, as studies suggest 100 to 250 days for setting up the estimation window (Carow and Kane 2002; Cox and Peterson 1994; MacKinlay 1997). However, to test the sensitivity of our results, we also employed different

lengths of estimation windows of $(-1, -130)$, $(-1, -150)$, and $(-1, -180)$ to calculate the abnormal return, following Liu et al. (2020). Moreover, similar results were obtained with different lengths of estimation window.



To estimate the significance of abnormal return on and after the event date, we used t -tests in this study. Furthermore, to ensure the robustness of the results, we also performed a nonparametric test, i.e., the Wilcoxon signed ranked test. Additionally, to analyze the market reaction in the short and long windows, we estimated cumulative abnormal returns (CARs) and cumulative averaged abnormal returns (CAARs).

We used Equation (1) to calculate the actual return. Furthermore, using the market model, we used OLS regression using Equation (2) to measure the market return.

$$R_{i,t} = \ln(I_{i,t}/I_{i,(t-1)}) \quad (1)$$

where $I_{i,t}$ represents the value of i Islamic stock index at time t and $R_{i,t}$ denotes the actual return.

$$\hat{R}_{i,t} = \delta_i + \gamma_i R_{mt} + \varepsilon_{i,t} \quad (2)$$

Expected return is denoted by $\hat{R}_{i,t}$. Each Islamic index intercept is represented as δ_i whereas γ_i is the slope selected index at time t with respect to market return, i.e., R_{mt} . The expected return calculated from Equation (2) using market model is differenced from the respective Islamic stock market return ($R_{i,t}$) to obtain the abnormal return of i Islamic stock market. The difference between normal and expected return can be represented from Equation (3).

$$AR_{i,t} = R_{i,t} - \hat{R}_{i,t} \quad (3)$$

Equations (4)–(6) are used to calculate the average abnormal return (AAR), CARs, and CAARs, respectively.

$$AAR_i = \frac{1}{N} \sum_{i=1}^N AR_{i,t} \quad (4)$$

$$CAR_i(t_i) = \sum_{t=0}^{t(1 \text{ to } 43)} AR_{i,t} \quad (5)$$

$$CAAR_i(t_i) = \sum_{t=0}^{t(1 \text{ to } 43)} AAR_t \quad (6)$$

CAR and CAAR for short (0, 15) and long (16, 43) are calculated and t -test is performed to test the significance at 5%. Furthermore, all the statistics are given in the Tables 2–5 and Table A1.

$$t_{stat} = \frac{CAR_i}{Standard\ Error}$$

3.1.2. Generalized Autoregressive Conditional Heteroskedasticity (GARCH)

The conditional variance in the financial time series was first developed by Engle (1982). Autoregressive conditional heteroskedasticity shows the linearity between volatility changes and lagged squared residuals. The applicability of the ARCH model causes a limitation based on over-parameterization to capture consistent results, which is improved by Bollerslev (1986). The model was refined into a generalized ARCH, explaining the dependence

of conditional variance on its past squared residuals as well as past value of variances in the time series. Furthermore, the GARCH (1, 1) model successfully captures the tendency of volatility clustering and its persistence in the financial data (Choudhry 1996).

Market volatility of the chosen Islamic stock index is modelled through GARCH (1, 1) following the structure used in Choudhry (1996). The data extracted from Thomson Reuters is grouped into three categories, i.e., total sample, pre-COVID, and post-COVID. The total sample period starts from 1 January 2019 to 10 August 2020. The pre-COVID-19 period is taken from 1 January 2019 to 30 January 2020, and last period is chosen from 31 January 2020 to 10 August 2020. The day 30 January 2020 is when the global health emergency was declared by the WHO and is thus taken as the start of the COVID-19 crisis. Concerning the econometric model, a seminal work has been part of the empirical literature where the pre- and post-1987 crisis effect is modelled through GARCH (1, 1) with a limited sample size (Choudhry 1996). The study was conducted concerning 6 markets with 224 total observations (142 in the pre-crisis period and 82 in the post-crisis period). Furthermore, GARCH (1, 1) produced efficient results with the compliance of set restrictions (i.e., $\delta_i > 0$, $\alpha_i \geq 0$, and $\beta_i \geq 0$). A similar model setting has been used in other studies as well (see Choudhry et al. 2015; Rastogi 2014), to study the post-crisis period.

The conditional mean equation is obtained using ordinary least square regression, with the linear function of lagged return of itself. Furthermore, the stationarity of time series suggests that the market returns have constant means and constant variances over time. For instance, if the variance of the time series does not vary over time, a constant variance model is suggested to find the conditional variance in the time series. (Engle 1982). The stock market return is functioned by the lag of itself as represented in Equation (7). Whereas the variance Equation (9) represents GARCH (1, 1) model.

$$R_{i,t} = \mu_t + \theta_i R_{i,t-1} + \epsilon_t \quad (7)$$

$$\frac{\epsilon_t}{y_{t-1}} \sim N(0, \sigma_t) \quad (8)$$

$$\sigma_t = \delta_i + \sum_{i=1}^x \alpha_i (\epsilon_{t-i})^2 + \sum_{i=1}^y \beta_i \sigma_{t-i} \quad (9)$$

The stock market return is denoted by $R_{i,t}$. The mean of the return is represented as the intercept of the Equation (7), i.e., μ_t . Equation (7) shows that the market return is conditional on previous day return, it further shows how well market value is predicted by its prior value, i.e., $R_{i,t-1}$. ϵ_t is the white noise of the system which is dependent on the past value and normally distributed with zero mean and time-varying variance, represented in Equation (8). GARCH (1, 1) models the variance of the system as a function of square lagged residuals and lagged to itself. Conditional variance is denoted as σ_t , Equation (9) shows that variance is conditional on lagged square of residuals and lagged of variance itself. The parameters of GARCH (1, 1) must comply with the given restrictions (i.e., $\delta_i > 0$, $\alpha_i \geq 0$, and $\beta_i \geq 0$), in order to validate the model and ensure positive volatility/variance. In contrast to ARCH (p), GARCH (1, 1) is more parsimonious as it only has three parameters, which are δ_i , α_i , and β_i . In particular, the magnitude and the significance of α_i represent the ARCH effect of the selected stock return. It measures how stock return volatility changes with the lagged shocks (i.e., lagged squared residuals). On the other hand, β_i represents the volatility changes by the momentum within the system itself, i.e., the lagged variance of the index return. The β_i captures the volatility clustering within market returns, which refers to how a period of high volatility tends to follow a period of low volatility (Bollerslev 1986).

However, GARCH (1, 1) mode is parsimonious and efficient in estimating volatility clustering of financial time series without violating the restrictions (i.e., $\delta_i > 0$, $\alpha_i \geq 0$, and $\beta_i \geq 0$) (Tsay 2002). Furthermore, GARCH (1, 1) is expected to produce efficient estimates even with a small sample size from 150 to 200, provided that the positivity constraints of the parameter are not violated (David and Ampah 2018; Leong 2018; Lumsdaine 1995).

Furthermore, as the number of observations falls below 150, the parameters of GARCH (1, 1) violate the positivity restriction. Additionally, the boundary proportion becomes close to unity, which is seen as α_i becomes close to zero (Leong 2018). Estimating the volatility persistence of a stock index can be measured through the sum of ARCH and GARCH coefficients. If $\alpha_i + \beta_i = 1$, it implies that a shock in the financial time series is going to persist for an indefinite period causing volatility persistent for a longer future period (Engle and Bollerslev 1986). However, if the sum of ARCH and GARCH coefficients approaches unity, the volatility persistence is greater (Poterba and Summers 1986). In other words, the sum of $\alpha_i + \beta_i$ represents the response function of the shocks to volatility per period. A value significantly less than unity would show a weaker persistence of volatility, which will decline in the near future, whereas a value close to 1 indicates that the market shock will last for a longer period. However, a value more than 1 will indicate that shocks will have indefinite persistence volatility for an undefined period (Chou 1988; Choudhry 1996).

4. Results and Discussion

4.1. Islamic Stock Market Reaction

Table 2 shows the descriptive statistics of the data in two groups (pre- and post-event groups). According to the mean and standard deviation of the pre-event period (170 trading days before the date of event) of all selected indices, it is evident that the mean is positive, except in the Islamic Bahrain index (ISBAHX), i.e., -0.0001 with st. dev. 0.0114. However, the returns of all indices except that of ISBAHX, do not deviate much from the mean. The minimum dispersion is observed in the Islamic stock GCC index with a standard deviation of 0.0048 and mean value of 0.0003. The maximum mean deviation in the pre-event group is observed in the Islamic stock Australia index (i.e., 0.0078). The mean return from the event date till 31 March 2020 (43rd day post-event) appeared as a negative mean with considerably higher mean dispersion compared with pre-event statistics. The negative mean implies that a negative return occurred in all the selected Islamic stock markets globally. The least percentage decrease happened in the MENA region with a 514% decrease in the mean value from pre- to post-event periods.

Table 2. Differences in mean returns of sample indices.

Index	Number of Trading Days	Event Group's Mean	Event Group's Std. Dev.
Pre-Event Mean and St Deviation			
ISAUSX	170	0.0007	0.0078
ISQAX	170	0.0001	0.0058
ISUX	170	0.0006	0.0066
ISASEANX	170	0.0001	0.0057
ISBRICX	170	0.0005	0.0072
ISGCCX	170	0.0002	0.0048
ISMENAX	170	0.0013	0.0068
ISMENSASX	170	0.0006	0.0071
ISBAHX	170	-0.0001	0.0114
Post-Event Mean and St Deviation			
ISAUSX	43	-0.0067	0.0338
ISQAX	43	-0.0057	0.0179
ISUX	43	-0.0073	0.0280
ISASEANX	43	-0.0073	0.0283
ISBRICX	43	-0.0078	0.0326
ISGCCX	43	-0.0062	0.0204
ISMENAX	43	-0.0065	0.0246
ISMENSASX	43	-0.0066	0.0286
ISBAHX	43	-0.0030	0.0116

Table 3 represent the abnormal returns of all the indices on the event day, 1 day, and 2 days after the event day, represented as t_0 , t_{+1} , t_{+2} , respectively. On 30 January 2020, as news broke out from China, the Islamic stock indices of Australia, UAE, ASEAN region, BRIC, GCC, MENA, MENASA, Bahrain reflected a negative return on the first day. Qatar was the only country which remained stable as an Islamic stock market. However, on the following day, the market reacted in a mixed manner with growth in the Islamic index of Australia at 0.4%, UAE at 0.12%, and MENA at 0.1%. In contrast, there was −1.2% return on the ASEAN Islamic stock market, i.e., a negative return. On the second day after the WHO announced the COVID-19 global emergency, the Islamic stock markets dropped by 1.3%, 1.0%, 0.8%, 0.77%, 1.8%, 0.4%, and 0.1% in Australia, Qatar, UAE, ASEAN region, GCC, MENA, MENASA, and Bahrain, respectively.

Table 3. Abnormal return on event date and one day after.

Index	Abnormal Return		
	Event Day (t_0)	1 Day after Event Day (t_{+1})	2 Day after Event Day (t_{+2})
ISAUSX	−0.0101	0.0041	−0.0131
ISQAX	0.0008	−0.0075	−0.0100
ISUX	−0.0017	0.0013	−0.0080
ISASEANX	−0.0076	−0.0119	−0.0139
ISBRICX	−0.0154	−0.0034	0.0019
ISGCCX	−0.0009	−0.0046	−0.0078
ISMENAX	−0.0019	0.0011	−0.0182
ISMENSASX	−0.0081	−0.0006	−0.0044
ISBAHX	−0.0048	0.0038	−0.0010

Figure 1 represents the graphical plot of abnormal returns (AR) of selected indices. The graph shows the daily abnormal return from 11 days to 43 days until the event. Furthermore, the returns proved to be more volatile and diffuse after the first short event window. The reason for more dispersed AR is the spread of virus in almost all regions of the world including GCC, MENA, ASEAN, and other countries as well. Australia was one of the countries where the first case appeared on 25 January 2020. According to the WHO situation report–71, by the start of March, COVID-19 cases started to grow exponentially in more than 200 countries. Consequently, its effect started to emerge in terms of negative and fluctuating abnormal returns in all Islamic stock markets around the globe. A more accurate picture of COVID-19 crisis is shown in Figure 2. CAR from −11 days to 43 days represents how quickly markets declined around the globe. From day 0 to 31 March, the Islamic stock indexes of Australia, MENA, BRIC, MENASA, UAE, and ASEAN dropped by 27.32%, 31.53%, 23.7%, 26.16%, 29.18%, and 26.16%, respectively. However, the market return for the Bahrain index proved to be most stable among the rest of the Islamic indices. The reason behind this stability appears to be a smaller number of cases till 31 March 2020. In Bahrain, there were only 569 total cases of COVID-19 by the end of March. Furthermore, the Bahrain stock index was the least affected by the COVID-19 pandemic.

Figure 2 represents the cumulative abnormal returns (CAR) of all selected Thomson Reuters Islamic indices. We could draw the conclusion that in most countries or regions the outbreak of the pandemic had occurred after mid-February or the beginning of March 2020. However, the markets responded accordingly soon after the first confirmed COVID-19 case appeared. Furthermore, Islamic stock indices from MENA, MENASA, and BRIC produced negative returns after the short-term window. The outbreak in the region of MENA, MENASA, and BRIC happened as early as 31 December 2019 in China and as late as 1 April in Yemen. As a result, news related to COVID-19 directly affected the investor's sentiments and hence the market reaction.

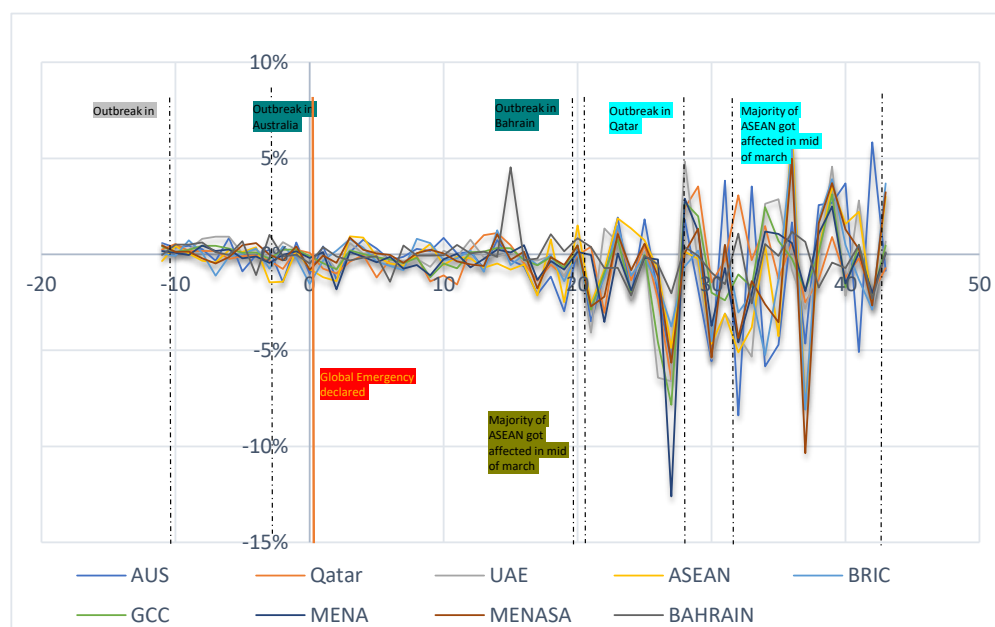


Figure 1. Abnormal return (AR) change of Thomson Reuters Islamic stock indices.

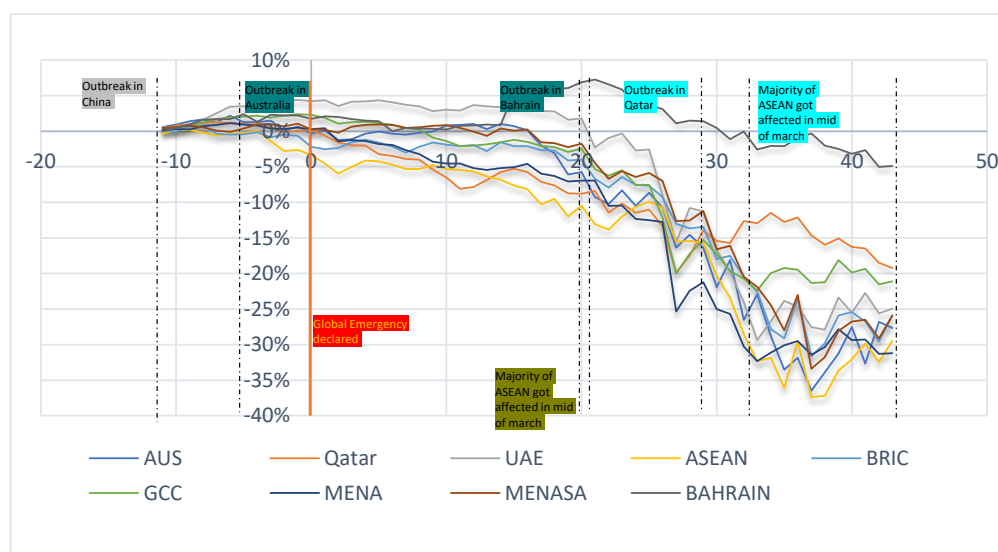


Figure 2. Cumulative abnormal return of Islamic stock markets after event date.

Tables 4 and 5 show the cumulative abnormal returns (CAR) and their level of significance in the short- and long-term event window, respectively. The results show that the CAR of the Islamic Australia index is positive and insignificant, whereas the CAR of the Islamic GCC index is insignificant and negative, which indicates that in the short run ISGCCX and ISAUSX were not significantly affected by COVID-19. However, the value of the CAR is negative but not statistically significant. On the contrary, the CAR of the Islamic Qatar index is -0.0415 significant at 1%, which shows sudden downturn effects soon after the pandemic broke out. In contrast, the CAR of UAE, MENASA, and Bahrain were significantly positive in the short event window (0, 15) at 5% level of significance. During this time (0, 15), the Arab and MENASA (Middle East, North Africa, South Asia) regions were not overcome by COVID-19 cases.

Table 4. Cumulative abnormal return (CAR) in short-term window.

Index	CAR i (0–15)	t-Test	p Value	Willcoxon-Stat	p Value
ISAUSX	0.0003	0.1737	0.3856	−0.052	0.9588
ISQAX	−0.0415 *	−6.3692	0.0000	−3.464	0.0005
ISUX	0.0368 *	28.2823	0.0000	3.516	0.0004
ISASEANX	−0.0529 *	−19.3117	0.0000	−3.516	0.0004
ISBRICX	−0.0206 *	−16.4032	0.0000	−3.516	0.0004
ISGCCX	−0.0004	−0.0935	0.3901	−0.310	0.7564
ISMENAX	−0.0295 *	−5.7347	0.0001	−3.361	0.0008
ISMENSASX	0.0039 *	3.3419	0.0048	2.689	0.0072
ISBAHX	0.0127 *	3.8978	0.0016	3.464	0.0005

Note: * significant at 5%.

Table 5. Cumulative abnormal return in long-term window.

Index	CAR i (16–43)	t Test	p Value	Willcoxon-Stat	p Value
ISAUSX	−0.1864 *	−8.7369	0.0000	−4.600	0.0000
ISQAX	−0.1302 *	−18.3111	0.0000	−4.623	0.0000
ISUX	−0.1379 *	−6.1274	0.0000	−3.848	0.0001
ISASEANX	−0.2147 *	−10.9212	0.0000	−4.623	0.0000
ISBRICX	−0.1627 *	−8.5449	0.0000	−4.602	0.0000
ISGCCX	−0.1390 *	−9.6128	0.0000	−4.620	0.0000
ISMENAX	−0.2071 *	−10.6571	0.0000	−4.623	0.0000
ISMENSASX	−0.1542 *	−7.4663	0.0000	−4.600	0.0000
ISBAHX	0.0121	1.6740	0.0992	1.457	0.1450

Note: * significant at 5%.

The Islamic stock portfolios of ASEAN, BRIC, GCC, MENA showed significantly negative CAR of −0.0529 (at 5% level), −0.0206 (at 5% level), −0.0004 (at 5% level), and −0.0295 (at 5% level), respectively. The results suggest that five out of nine selected Islamic stock indices reacted immediately to the news of the pandemic in the short event window (0, 15). When the COVID-19 spread out to almost every country, the Islamic stock markets reacted in the same way as conventional markets. Our findings are consistent with [Sherif \(2020\)](#), who asserted that the Islamic stock market reacted the same way as the conventional market. However, the Islamic Bahrain index was least affected by the crises (CAR of 0.012 at 5% significance). As shown in Figures 1 and 2, a decline is observed after the first case appeared in Bahrain on 21 February 2020. Even then, the respective Islamic index remained stable compared to other indices. CAR of the Islamic index of Australia is recorded as −0.1864 (5% level), Qatar at −0.1302 (5% level), UAE at −0.1379 (5% level), ASEAN at −0.2147 (5% level), BRIC at −0.1627 (5% level), GCC at −0.1390 (5% level), MENA at −0.2072 (5% level), and MENASA at −0.1542 (5% level) in the long-term event window (16, 43). By this time, the whole world had encountered COVID-19. The results of this paper are consistent with the findings of [Sherif \(2020\)](#).

To see the overall market reaction on the post-event date, cumulative averaged abnormal returns (CAARs) were calculated across all nine selected indices. Table A1 represents the value of daily CAAR and its significance is given on Table 5 from day 0 to day 43. On the event day, the CAAR is positive and significant at 5%; it remained positive but insignificant on day 1 as well. It is evident that the Islamic stock market remained stable on the day the WHO declared COVID-19 as a health emergency. However, a negative CAAR of −0.68% significant at 5% is observed on day 2 of the event, which increased to its highest value of −26% (significant at 5%) on day 37 and ended at −23% (significant at 5%) on the 43rd day of the event. However, previous findings concerning the immunity of Islamic Stocks from external crises ([Erdogan et al. 2020](#); [Kenourgios et al. 2016](#); [Paltrinieri et al. 2019](#)) is not supported by our results. Unlike other crises, this pandemic forcibly required countries to halt their economic activities, set up lock downs, close borders, and limit social or business meetings. Additionally, the essence of the Islamic stock index is based on real economic output. Thus, if the economic activity is barred due to lockdown, then producing a positive return is almost impossible.

Averaged abnormal returns (AARs) and cumulative averaged abnormal returns (CAARs) of nine selected indices are displayed in Figure A1. Until the 15th day of the event, the market's AAR remained stable. Although there is a gradual downturn in the outcome of CAAR since the disease broke out, a significant decline is evident from mid-February 2020. Consequently, the volatility of AAR is much higher in the long-term window (16, 43); hence, there is a drastic decline in CAAR from 0.68% to −23.3%.

4.2. Islamic Stock Market Volatility

4.2.1. Descriptive Statistics

Table 6 illustrates the descriptive statistics of all three periods of the data under study. The mean of the Islamic ASEAN, Australia, and UAE indexes are negative in the full periods, which shows that investors suffered losses more than gains in that period. The standard deviation figures represent the fluctuations in daily returns of all selected Islamic indices. Furthermore, a high value of kurtosis is found in all market indexes, which is more than the normal value (3). The time series of selected stock indexes is not normally distributed, as is evident from Jarque–Bera statistics, which is significant at 1% in all three periods. Additionally, the data series is fat tailed (leptokurtic), as represented by the higher-than-normal value of kurtosis, and the time series of all periods are found to be static at that level. However, the data satisfies the preconditions of ARCH/GRACH modelling for estimating volatility and its persistence (Choudhry 1996; Engle and Bollerslev 1986; Li et al. 2002).

Table 6. Descriptive statistics.

Full Period (1 January 2019–10 August 2020)						
	Mean	Median	SD	Kurtosis	Jarqu Bera	ADF
ASEAN	−0.00001	0.00086	0.01153	18.8732	5113.65 *	0.0000
AUS	0.00045	0.00169	0.01422	13.3198	2204.84 *	0.0000
BAHRAIN	−0.00001	0.00000	0.01707	8.01910	499.973 *	0.0000
BRIC	0.00023	0.00098	0.01320	19.7328	5694.52 *	0.0000
GCC	0.00021	0.00016	0.00866	34.3845	19,772.4 *	0.0000
MENA	0.00054	0.00051	0.00996	72.7178	95,591.6 *	0.0000
MENASA	0.00009	0.00095	0.01417	48.5166	41,394.9 *	0.0000
QATAR	0.00326	0.00023	0.06557	442.894	375,837 *	0.0000
UAE	−0.00002	0.00000	0.01330	18.6795	5087.77 *	0.0000
Pre-Crisis Period: (1 January 2019–30 January 2020)						
ASEAN	0.00016	0.00079	0.00547	4.03954	21.0587 *	0.0000
AUS	0.00081	0.00167	0.00724	5.29287	102.662 *	0.0000
BAHRAIN	−0.00079	0.00000	0.01378	6.18449	143.346 *	0.0000
BRIC	0.00036	0.00082	0.00699	5.41240	69.8254 *	0.0000
GCC	0.00029	0.00000	0.00520	10.2327	688.815 *	0.0000
MENA	0.00084	0.00039	0.00620	19.8784	3573.84 *	0.0000
MENASA	0.00036	0.00055	0.00681	9.15511	457.737 *	0.0000
QATAR	0.00023	0.00000	0.00664	4.96006	49.9837 *	0.0000
UAE	0.00036	0.00000	0.00780	10.5451	704.779 *	0.0000
Post-Crisis Period: (31 January 2020–10 August 2020)						
ASEAN	−0.00027	0.00147	0.01718	9.73290	397.005 *	0.0000
AUS	−0.00011	0.00178	0.02092	7.10878	157.552 *	0.0000
BAHRAIN	0.00121	0.00000	0.02122	6.70326	122.217 *	0.0000
BRIC	0.00002	0.00175	0.01928	10.9754	554.307 *	0.0032
GCC	0.000078	0.00091	0.01227	21.3834	2763.91 *	0.0039
MENA	0.00006	0.00074	0.01395	46.8239	15,163.5 *	0.0084
MENASA	−0.00034	0.00166	0.02107	25.2008	4053.97 *	0.0000
QATAR	0.00802	0.00148	0.10471	173.534	223,220 *	0.0000
UAE	−0.00062	0.00020	0.01897	10.9904	569.489 *	0.0000

* denotes significance at 1%.

In contrast, the mean returns of pre-crisis periods are positive, except for the Islamic Bahrain stock index. Additionally, the returns of the Bahrain stock index greatly deviate from the mean value. The deviation of returns from the mean return is more in the full period compared to the pre-crisis period. However, the time series of the pre-crisis period is leptokurtic and significantly deviated from normal distribution, as evident from Jarque Bera statistics. While considering the post-crisis period, the mean returns of ASEAN, Australia, MENASA, and UAE are negative with a high degree of deviation from mean returns, compared to the pre-crisis period. It shows that the stock market returns were highly volatile after the outbreak of the virus. Furthermore, the time series in post-crisis periods shows fat-tailed distributions and significant Jarque–Bera figures. The descriptive statistics for all periods show evidence of fat-tailed, leptokurtic, highly volatile, and abnormally distributed time series data. Therefore, the results support the application of the ARCH/GARCH model to estimate Islamic stock index volatility before and after the outbreak of COVID-19. Furthermore, Figure 3 shows the stock index trend for the full period of all nine Islamic stock indexes. Unlike Qatar, all stock indexes showed a sharp decline in the first two months of 2020. Furthermore, Figure A2 (Appendix B) shows evidence of volatility clustering in all indexes except the Qatar Islamic index. The period of high volatility and the period of low volatility tend to cluster in all stock indexes except Qatar. Figures A3 and A4 (Appendix B) show the stock index return illustration for pre- and post-crisis. Furthermore, high and low returns fluctuate and tend to cluster more clearly in the post-crisis period, except for the Qatar Islamic index. However, a constant and mean reverting variance can be observed in the GCC, MENA, and MENASA stock indexes for the pre-crisis period.

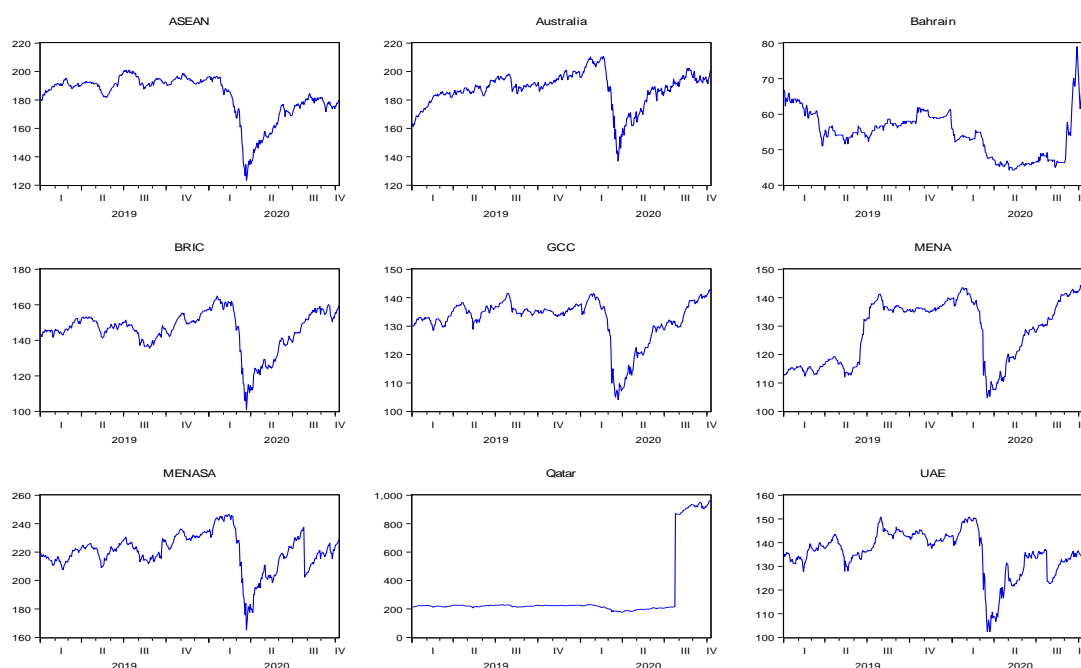


Figure 3. Market trend. Source: authors' calculation using EViews 10.

The presence of volatility clustering in full, pre-, and post-COVID-19 periods is evident from Figures A2–A4 (Appendix B). Additionally, Table 7 shows the test of stationarity of all returns in the full, pre-, and post-crisis periods. The augmented Dickey–Fuller (ADF) test statistics are significant at 1% for all Islamic stock indexes in all periods under study.

Table 7. GARCH (1, 1) full period.

	μ_t	θ_i	δ_i $\times 10^{-5}$	α_i	β_i	$\alpha_i + \beta_i$	LL ¹	ARCH-LM
ISASEANX	0.0003 (0.839)	−0.0048 (−0.089)	0.202 (2.511) ^b	0.1611 (4.910) ^a	0.8193 (22.82) ^a	0.9804	1588.3	0.7307
ISAUSX	0.0010 (2.284) ^b	−0.0927 (−1.91) ^c	0.452 (3.120) ^a	0.1705 (5.313) ^a	0.8008 (21.92) ^a	0.9713	1472.1	0.6326
ISBAHX	−0.0004 (−0.740)	−0.0186 (−0.259)	5.37 (8.814) ^a	0.3277 (7.737) ^a	0.4880 (10.36) ^a	0.8156	1304.7	0.6966
ISBRICX	0.0008 (2.040) ^b	0.1396 (2.25) ^b	0.424 (3.451) ^a	0.1532 (6.444) ^a	0.8123 (28.57) ^a	0.9655	1512.7	0.9509
ISGCCX	0.0006 (1.883) ^c	0.0419 (0.694)	0.407 (5.324) ^a	0.1864 (7.104) ^a	0.7428 (19.69) ^a	0.929	1683.6	0.7944
ISMENAX	0.0011 (0.826)	−0.0146 (−0.078)	6.420 (1.892) ^c	0.150 (0.980)	0.599 (2.964) ^a	0.749	1456.7	0.9470
ISMENSASX	0.0009 (3.26) ^a	0.0579 (1.481)	1.640 (1.921) ^c	0.1690 (1.797)	0.7618 (11.01) ^a	0.931	1401.5	0.8949
ISQAX	0.0044 (0.1254)	−0.0050 (−0.005)	0.0028 (0.837)	−0.0035 (−0.700)	0.5937 (1.217)	0.59722	586.70	0.9982
ISUX	0.0003 (0.513)	0.0649 (0.908)	2.370 (4.795) ^a	0.1636 (3.538) ^a	0.6816 (10.38) ^a	0.8451	1426.0	0.9253

^{a,b,c} denotes significance at 1%, 5%, and 10%; ¹ LL: log likelihood value.

4.2.2. GARCH Results

This section provides the results of the GARCH (1, 1) model, which is explained in Section 3.1.2. The model estimates the mean equation through its lagged value and volatility changes in response to lagged shocks and momentum within the system. Tables 7–9 illustrate the results of the GARCH (1, 1) model for the whole period (2 January 2019 to 10 August 2020), pre-crisis period (2 January 2019 to 30 January 2020), and post-crisis period (31 January 2020 to 10 August 2020), respectively. The significance of the results is calculated on z-stats, which are given by the GARCH (1, 1) estimates using EViews 10. The presence of an ARCH effect in the full period is evident in all Islamic stock indices except the MENA, MENASA, and Qatar Islamic stock indexes. However, descriptive statistical evidence showed the presence of autocorrelation, fat-tailed, volatility clusters in all indices. However, a significant ARCH effect is present for the full period in ASEAN, Australia, BRIC, GCC, UAE, and Bahrain indexes.

The results show that the magnitude of α_i is less than unity, which implies that the results are not explosive. On the other hand, the presence of volatility clustering is significantly evident from the GARCH coefficient of all stock indices, except for the Qatar Islamic stock index. The GARCH (1, 1) model is selected based on the lowest AIC (Akaike Info criteria), maximum log likelihood and a higher value of adjusted R squared. However, we considered other model selection alternatives as well, which includes SIC (Schwarz info criteria) and HC (Hannan–Quinn criteria). AIC appeared to be the lowest figure among other choices. Furthermore, based on the nature of data used in this study, a univariate symmetric GARCH model has been applied in this study. Based on the model selection criteria, in the longest period, all selected time series were modelled with GARCH (1, 1) using normal gaussian error distribution. The value of β_i for all stock returns is not more than unity, which satisfies the GARCH (1, 1) conditions to not be explosive. Furthermore, the ARCH-LM test is performed to diagnose the element of heteroscedasticity in the optimal selected model. Additionally, autocorrelation is estimated using a correlogram of squared residual using 24 lags giving no evidence of autocorrelation.

Table 8. GARCH (1, 1) pre-crisis period.

	μ_t	θ_i	δ_i $\times 10^{-5}$	β_i	β_i	$\alpha_i + \beta_i$	LL ¹	ARCH-LM
ISASEANX	0.0004 (1.362)	−0.0199 (−0.325)	0.925 (1.070) ^b	0.0927 (1.303)	0.6075 (1.960) ^b	0.699	1073.4	0.581
ISAUSX	0.0013 (3.09) ^a	0.00197 (0.0310)	0.941 (0.935)	0.0451 (1.019)	0.7672 (3.500) ^a	0.812	999.2	0.133
ISBAHX	0.0002 (0.0059)	−0.0203 (−0.417)	0.410 (2.675) ^a	0.1608 (4.785) ^a	0.7284 (18.62) ^a	0.889	892.8	0.932
ISBRICX	0.0006 (1.524)	0.1421 (2.24) ^b	1.570 (0.950)	0.1024 (1.218)	0.5731 (1.466)	0.675	1010.8	0.954
ISGCCX	0.0004 (1.066)	−0.0226 (−0.241)	0.620 (1.567)	0.0905 (1.938) ^c	0.6854 (3.66) ^a	0.776	1084.4	0.556
ISMENAX	0.0004 (6.81) ^a	−0.0184 (−1.102)	0.329 (1.319)	0.0657 (1.158)	0.8302 (7.49) ^a	0.895	1133.4	0.884
ISMENSASX	0.0005 (1.396)	0.0659 (1.251)	0.745 (0.840)	0.0516 (0.852)	0.786 (3.43) ^a	0.838	1032.1	0.969
ISQAX	0.0003 (1.160)	0.0400 (0.681)	3.840 (8.902) ^a	0.3166 (3.947) ^a	0.205 (2.86) ^a	0.522	1026.5	0.738
ISUX	0.0005 (0.866)	0.0078 (0.095)	1.270 (1.854) ^c	0.0950 (2.028) ^b	0.694 (4.56) ^a	0.789	976.1	0.898

^{a,b,c} denotes significance at 1%, 5%, and 10%; ¹ LL: log likelihood value.

Comparisons of the volatility changes by shocks and the presence of volatility clustering before and after the pandemic are presented in Tables 8 and 9. The coefficients of ARCH in the pre-crisis period are only significant for Bahrain, Qatar, and the UAE. ASEAN, BRIC, GCC, MENA, MENASA, and Australian Islamic stock markets appear to be less volatile before COVID-19. In the post-crisis period, the ARCH effect is evident in all Islamic stock indices, except the MENA and Qatar Islamic stock indexes. However, a significant increase in the ARCH coefficient is observed from pre- to post-crisis periods, irrespective of the level of significance. The opposite is true from the MENASA and Qatar Islamic stock indexes. On the other hand, β_i of selected stock indices is significant at 1 percent in the post-crisis periods. This implies that due to COVID-19 the market experienced high volatility. Furthermore, the volatility of the current period is significantly dependent on the volatility of the previous period. For instance, the ARCH effect significantly changed from 0.093 to 0.211 for the ASEAN Islamic stock index, from 0.045 to 0.189 for the Australian Islamic index, 0.161 to 0.71 for the Bahrain stock index, 0.10 to 0.183 for the BRIC region, 0.091 to 0.22 in GCC, and 0.065 to 0.077 for the MENA Islamic index. It is also worth noting that the ARCH effects after the COVID-19 break out in the Islamic stock indices were significant at 5%, except for the MENA, MENASA, and Qatar indexes. The GARCH coefficient of the post-crisis period has significantly increased in all stock returns except UAE, MENA, and Bahrain. However, the magnitude of β_i has increased significantly from the pre- to post-crisis period. This implies that due to the pandemic the Islamic stock indexes tend to become more volatile and are dependent on its lagged volatility. Consequently, the GARCH effect is more evident in the post-COVID-19 period, where a period of high stock return follows the pattern of low stock returns in sequence. Furthermore, the optimal GARCH (1, 1) model is selected based on AIC, log likelihood, and adjusted R squared value. Remaining ARCH effects and autocorrelation are diagnosed by ARCH-LM and the correlogram R squared matrix.

Table 9. GARCH (1, 1) post-crisis period.

	μ_t	θ_i	δ_i $\times 10^{-5}$	α_i	β_i	$\alpha_i + \beta_i$	LL ¹	ARCH-LM
ISASEANX	0.0010 (1.241)	−0.0048 (−0.052)	0.984 (1.333)	0.211 (2.253) ^b	0.7473 (7.967) ^a	0.958	529.15	0.3465
ISAUSX	0.0016 (1.493)	−0.231 (−2.78) ^a	1.520 (1.394) ^c	0.1893 (2.179) ^b	0.7719 (7.845) ^a	0.961	489.67	0.8383
ISBAHX	0.0004 (0.388)	0.1823 (1.462)	9.540 (6.901) ^a	0.7091 (6.216) ^a	0.2282 (2.975) ^a	0.937	480.81	0.8572
ISBRICX	0.0020 (2.74) ^a	0.0842 (1.005)	0.887 (1.366)	0.1835 (2.134) ^b	0.7969 (10.94) ^a	0.979	527.26	0.7814
ISGCCX	0.0016 (3.595) ^b	0.0879 (0.876)	0.299 (1.751) ^c	0.2154 (3.237) ^a	0.7427 (10.59) ^a	0.957	595.32	0.4495
ISMENAX	0.0008 (3.38) ^a	0.0087 (0.270)	0.234 (1.171)	0.0774 (1.475)	0.8899 (15.78) ^a	0.966	626.25	0.8872
ISMENSASX	0.0004 (0.016)	−0.099 (−0.674)	6.880 (1.900) ^c	0.0585 (1.802)	0.790 (7.652) ^a	0.848	444.76	0.8334
ISQAX	0.0031 (21.38)	−0.005 (−0.244)	0.0002 (0.227)	−0.0002 (−1.031)	0.5195 (0.244)	0.519	539.21	0.9386
ISUX	0.0002 (0.101)	0.1302 (1.164)	5.680 (3.006) ^a	0.1868 (2.028) ^b	0.6473 (5.540) ^a	0.833	482.94	0.9281

^{a,b,c} denotes significance at 1%, 5%, and 10%; ¹ LL: log likelihood value.

In the GARCH (1, 1) model, the sum of $\alpha_i + \beta_i$ acts as a response function of the persistence of volatility. Volatility persistence measures the extent to which the shocks within the index remain persistent. In the full period, the persistence of the shock to volatility is found to be stable, except for MENA, Qatar, Bahrain, and UAE. The volatility shock tends to remain persistent for a longer period in ASEAN, Australia, BRIC, GCC, and MENASA Islamic stock indexes as the persistence measure is not significantly different from unity. For instance, in the case of the MENA Islamic stock exchange, the volatility response function tends to decay quickly after 30 days ($0.749^{30} = 0.000171$) as compared to the Australian index ($0.971^{30} = 0.414$). Since the response function to volatility will define the persistence of the shock and relative riskier financial series, the closer the value of $\alpha_i + \beta_i$ to 1, the longer the shock will remain in the system.

Comparing the volatility response function among Islamic stock indices in pre- and post-COVID-19 periods reveals that the shocks in the pre-crisis period would likely decline in a shorter period. For the MENA Islamic stock index, after one month, the proportion of the shock remains at 0.0358 (0.895^{30}), which is the highest shock persistence function in pre-crisis periods. However, the Qatar Islamic index is observed to have the weakest persistence factor before the outbreak of COVID-19, i.e., $0.522^{30} = 0.0000000033$. Despite this, the volatility response function has significantly increased from the pre- to post-crisis period in all selected Islamic indices, except for Qatar. The stock return volatility of the Qatar Islamic index is the least and was less affected by this COVID-19 crisis. With the exception of the Qatar Islamic index, our results are consistent with the previous studies, which implied that COVID-19 triggered a substantial increase in stock market volatility (Bahloul and Khemakhem 2021; Corbet et al. 2021; Engelhardt et al. 2021; Fakhfekh et al. 2021; Guru and Das 2021; Jeribi and Manzli 2021; Nguyen et al. 2021). However, the volatility persistence significantly increased from 0.699 to 0.958 for the ASEAN Islamic index, 0.812 to 0.961 for Australian Islamic index, 0.889 to 0.937 for Bahrain, 0.675 to 0.979 in the BRIC Islamic index, 0.776 to 0.957 in GCC, and 0.895 to 0.966 for the MENA Islamic index. The results imply that the volatility shocks in the Islamic stock indexes would prevail for a longer period after COVID-19, making Islamic indexes riskier after COVID-19 (Bahloul and Khemakhem 2021) compared to the pre-COVID-19 era.

5. Conclusions

This study aimed at examining how COVID-19 affected Islamic stock markets around the globe. Using the Thomson Reuters' Islamic stock indexes of Australia, Qatar, Bahrain, UAE, MENA, MENASA, BRIC, and GCC, this study captured the responses of all selected indices in short- and long-term event windows. To analyze if Islamic stock markets are immune to the recent pandemic and how its volatility changes, an event study methodology and GARCH (1, 1) model was employed in this study.

The results suggest that in the short run the Islamic stock markets' price movements diverged throughout the period under consideration. However, the Islamic stock indexes of Australia, UAE, MENASA, and Bahrain remained stable in the first 15 days of the declaration of COVID-19 as a pandemic. Bahrain and Australia were least affected by the crisis until mid-February 2020. However, investors from GCC, MENA, BRIC, Qatar, and ASEAN reacted in a rather pessimistic manner after initial pandemic news. The market showed a significant downturn even in the short-term window, though the CAR of GCC index is negative but insignificant. It is also evident that the spread of virus was not abrupt among all the countries until mid-February 2020. The news tends to play its role in driving investor sentiments across the globe, which leads to a significant downturn in the market index. The research further explores the long-term effect of this pandemic using the long-term event window (16, 43). According to the WHO, the virus reached 200 countries by the end of March 2020. Therefore, it is evident that all the Islamic stock indexes were significantly affected in the long-term window by the crisis. At the same time, the Islamic stock index of Bahrain regained a positively significant cumulative return in the long-term window. The suspected reason behind this recovery is the least number of confirmed COVID-19 cases until 31 March 2020.

Together with our findings, the volatility persistence measure showed a significant increase in the volatility of all selected Islamic stock indices except Qatar, Qatar being the least affected region in terms of an adverse stock market reaction after COVID-19. Additionally, from the time series of the Qatar Islamic index, it is evident that Qatar was among the least traded stock index compared to other Islamic indices. Notably, the BRIC Islamic index suffered the highest degree of volatility persistence (45%) in post-crisis periods. MENASA being the least affected in terms of volatility persistence. Therefore, the markets were drastically affected by COVID-19 around the globe. Finally, it is concluded that due to the severity of the pandemic, the economic activities were affected badly due to the lockdown situation. Consequently, the natural ability of Islamic stocks to absorb external shocks suffered a lot due to limitations imposed due to lockdowns in every country.

The results of this research have implications for policymakers and investors in two ways. Firstly, policymakers should have been signaling their confidence more in the economy turning back to its normal path. Additionally, the role of media and the news agencies should be under strict compliance by the government to avoid panic among investors. Media could have played a significant role in controlling panic across countries. Secondly, investors should be more vigilant and need to spread their risk in a healthy portfolio to deal with such uncertainties.

Our study provides a significant contribution concerning the nature of Islamic stock markets. However, this study has a few limitations due to the availability and lack of data. For instance, market capitalization of Islamic stock markets could not be analyzed, which could provide better insights into investor's behavior in response to the global health emergency. However, there is considerable room for future research to study investors' sentiments with respect to Islamic stock markets. Importantly, the research can be refined in future by comparing the Islamic and conventional stock markets in response to external shocks, i.e., health or economic crises. The impact of the financial crisis of 2007–2009 and COVID-19 could provide a fruitful direction for further research in this field, subject to the availability of data.

Author Contributions: A.S. and J.S. worked on the conceptualization and research design, investigation, data analysis, software, and methodology. J.B. contributed to supervision. However, J.S. contributed in reviewing, supervising, and editing the paper. All authors have read and agreed to the published version of the manuscript.

Funding: This research received no external funding.

Institutional Review Board Statement: Not applicable.

Informed Consent Statement: Not applicable.

Data Availability Statement: Data are sourced from Thomson Reuters data stream, which is available on demand.

Acknowledgments: The authors would like to thank the Hungarian University of Agriculture and Life Sciences, Hungary, Budapest Business School, and Tempus Public Foundation for their support. Furthermore, the authors would like to thank and acknowledge the efforts and time given by Kiss Gábor Dávid (Associate Professor—University of Szeged) and Pejman Ebrahimi (Ph.D. student at MATE, Hungary) for improving the quality of this paper.

Conflicts of Interest: The authors declare no conflict of interest.

Appendix A

Table A1. Daily cumulative average abnormal return across all indices.

Days	CAAR _i	Standard Error	<i>t</i> Test	<i>p</i> Value
0	0.0034 *	0.0017	1.9405	0.0682
1	0.0014	0.0017	0.7945	0.2748
2	−0.0068 *	0.0021	−3.2083	0.0094
3	−0.0036 *	0.0017	−2.1772	0.0476
4	−0.0014	0.0013	−1.1418	0.1960
5	−0.0035 *	0.0015	−2.3790	0.0348
6	−0.0076 *	0.0014	−5.5476	0.0003
7	−0.0115 *	0.0013	−9.1186	0.0000
8	−0.0115 *	0.0013	−9.0715	0.0000
9	−0.0146 *	0.0026	−5.6537	0.0003
10	−0.0165 *	0.0018	−9.0944	0.0000
11	−0.0193 *	0.0020	−9.8770	0.0000
12	−0.0192 *	0.0015	−13.246	0.0000
13	−0.0214 *	0.0020	−10.8505	0.0000
14	−0.0170 *	0.0021	−8.2094	0.0000
15	−0.0129 *	0.0054	−2.4151	0.0329
16	−0.0151 *	0.0012	−12.9465	0.0000
17	−0.0266 *	0.0025	−10.5639	0.0000
18	−0.0272 *	0.0022	−12.4954	0.0000
19	−0.0395 *	0.0032	−12.2235	0.0000
20	−0.0350 *	0.0016	−22.1255	0.0000
21	−0.0546 *	0.0058	−9.4862	0.0000
22	−0.0681 *	0.0048	−14.1733	0.0000
23	−0.0588 *	0.0028	−20.6506	0.0000
24	−0.0728 *	0.0039	−18.7999	0.0000
25	−0.0690 *	0.0021	−32.5069	0.0000
26	−0.0909 *	0.0068	−13.3106	0.0000
27	−0.1526 *	0.0098	−15.5228	0.0000
28	−0.1364 *	0.0059	−23.1252	0.0000
29	−0.1301 *	0.0052	−24.8228	0.0000
30	−0.1676 *	0.0061	−27.648	0.0000

Table A1. Cont.

Days	CAAR _i	Standard Error	<i>t</i> Test	<i>p</i> Value
31	−0.1746 *	0.0073	−23.8701	0.0000
32	−0.2041 *	0.0116	−17.6101	0.0000
33	−0.2215 *	0.0082	−27.1397	0.0000
34	−0.2270 *	0.0107	−21.1689	0.0000
35	−0.2387 *	0.0086	−27.6477	0.0000
36	−0.2163 *	0.0091	−23.6746	0.0000
37	−0.2602 *	0.0121	−21.4901	0.0000
38	−0.2558 *	0.0049	−52.7113	0.0000
39	−0.2286 *	0.0053	−43.4634	0.0000
40	−0.2288 *	0.0065	−35.4653	0.0000
41	−0.2291 *	0.0076	−30.3157	0.0000
42	−0.2444 *	0.0093	−26.3424	0.0000
43	−0.2337 *	0.0059	−39.9243	0.00000

Note: * significant at 5%.

Appendix B

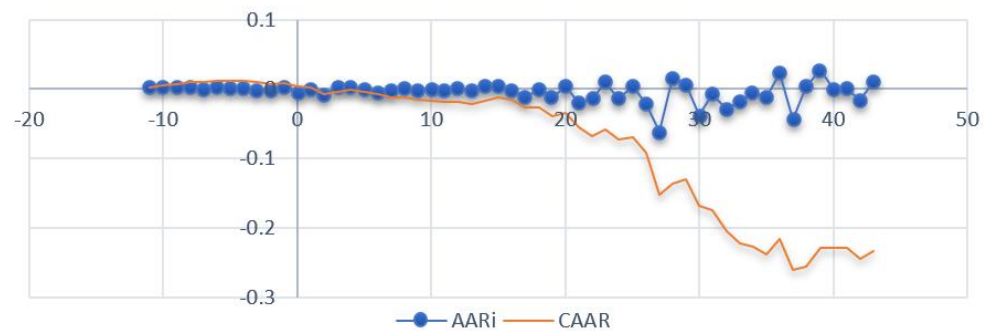


Figure A1. Cumulative abnormal return (CAR) of Thomson Reuters Islamic stock indices.

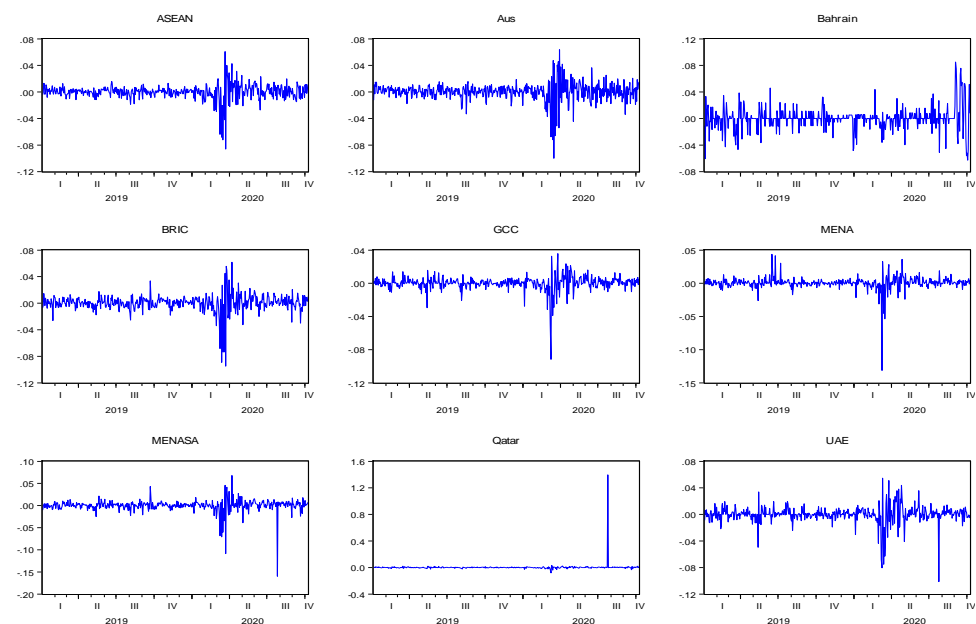


Figure A2. Full period. Source: authors' calculation using EViews 10.

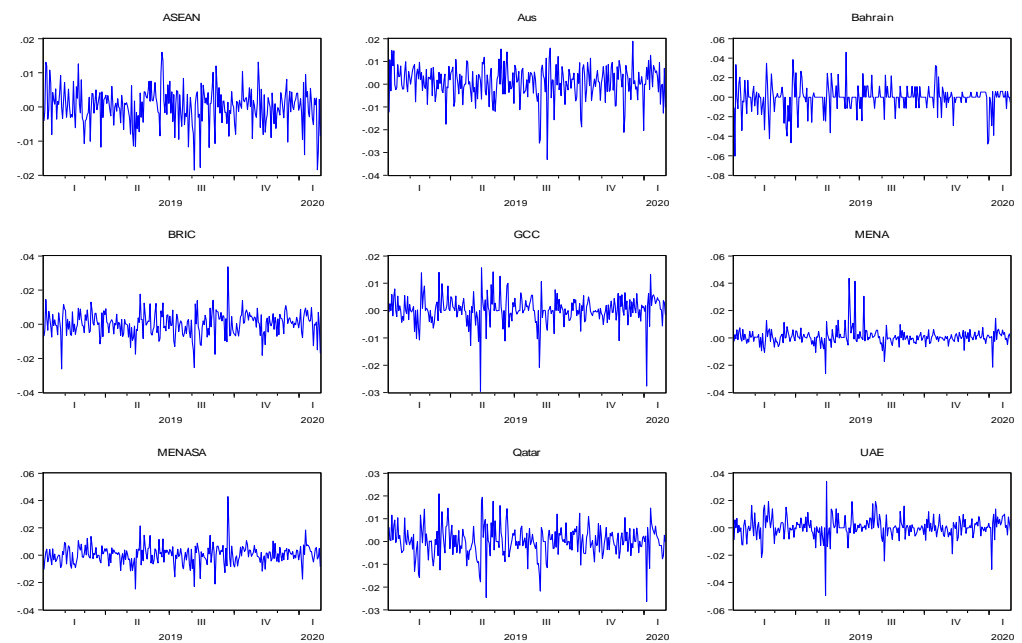


Figure A3. Pre-Crisis Period. Source: Authors' calculation using EViews 10.

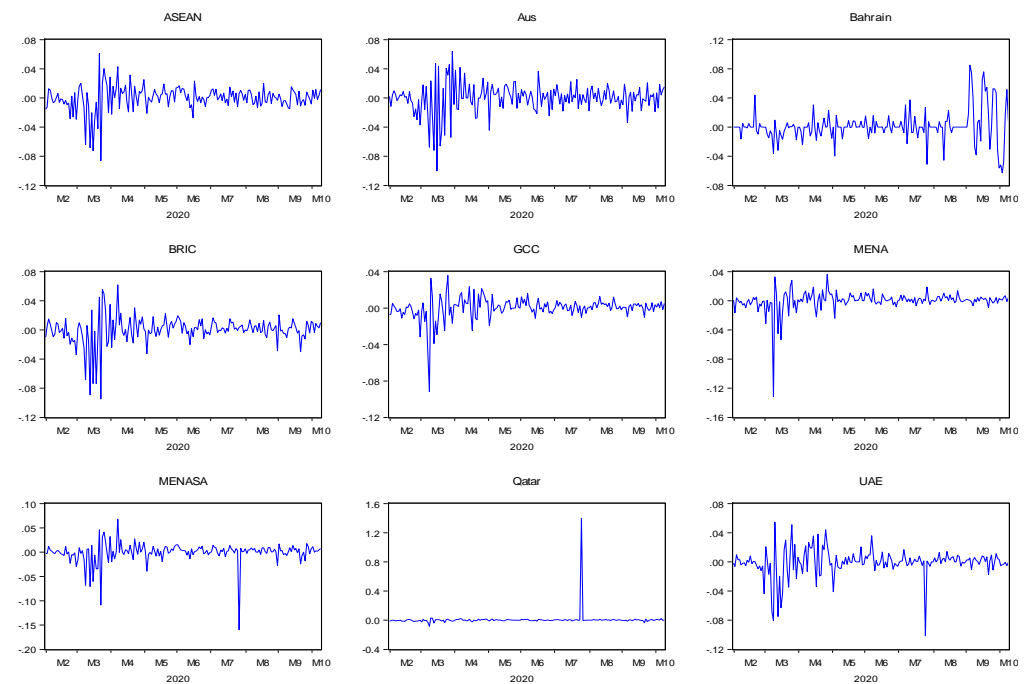


Figure A4. Post-crisis. Source: authors' calculation using EViews 10.

References

- Akrofi, Mark McCarthy, and Sarpong Hammond Antwi. 2020. COVID-19 energy sector responses in Africa: A review of preliminary government interventions. *Energy Research & Social Science* 68: 101681.
- Al-Awadhi, Abdullah M., Khaled Al-Saifi, Ahmad Al-Awadhi, and Salah Alhamadi. 2020. Death and contagious infectious diseases: Impact of the COVID-19 virus on stock market returns. *Journal of Behavioral and Experimental Finance* 27: 100326. [\[CrossRef\]](#)
- Albulescu, Claudiu Tiberiu. 2021. COVID-19 and the United States financial markets' volatility. *Finance Research Letters* 38: 101699. [\[CrossRef\]](#)
- Ashraf, Badar Nadeem. 2020. Stock markets' reaction to COVID-19: Cases or fatalities? *Research in International Business and Finance* 54: 101249. [\[CrossRef\]](#) [\[PubMed\]](#)

- Bahloul, Slah, and Imen Khemakhem. 2021. Dynamic return and volatility connectedness between commodities and Islamic stock market indices. *Resources Policy* 71: 101993. [CrossRef]
- Baig, Ahmed S., Hassan Anjum Butt, Omair Haroon, and Syed Aun R. Rizvi. 2021. Deaths, panic, lockdowns and US equity markets: The case of COVID-19 pandemic. *Finance Research Letters* 38: 101701. [CrossRef]
- Bollerslev, Tim. 1986. Generalized autoregressive conditional heteroskedasticity. *Journal of Econometrics* 31: 307–27. [CrossRef]
- Carow, Kenneth A., and Edward J. Kane. 2002. Event-study evidence of the value of relaxing long-standing regulatory restraints on banks, 1970–2000. *The Quarterly Review of Economics and Finance* 42: 439–63. [CrossRef]
- Chou, Ray Yeutien. 1988. Volatility persistence and stock valuations: Some empirical evidence using GARCH. *Journal of Applied Econometrics* 3: 279–94. [CrossRef]
- Choudhry, Taufiq. 1996. Stock market volatility and the crash of 1987: Evidence from six emerging markets. *Journal of International Money and Finance* 15: 969–81. [CrossRef]
- Choudhry, Taufiq, Syed S. Hassan, and Sarosh Shabi. 2015. Relationship between gold and stock markets during the global financial crisis: Evidence from nonlinear causality tests. *International Review of Financial Analysis* 41: 247–56. [CrossRef]
- Corbet, Shaen, Yang Greg Hou, Yang Hu, Les Oxley, and Danyang Xu. 2021. Pandemic-related financial market volatility spillovers: Evidence from the Chinese COVID-19 epicentre. *International Review of Economics & Finance* 71: 55–81.
- Cox, Don R., and David R Peterson. 1994. Stock returns following large one-day declines: Evidence on short-term reversals and longer-term performance. *The Journal of Finance* 49: 255–67. [CrossRef]
- David, Kiss Gabor, and Isaac Kwesi Ampah. 2018. Macroeconomic volatility and capital flights in Sub-Saharan Africa: A dynamic panel estimation of some selected HIPC countries. *Mediterranean Journal of Social Sciences* 9: 165. [CrossRef]
- Donadelli, Michael, Renatas Kizys, and Max Riedel. 2017. Dangerous infectious diseases: Bad news for Main Street, good news for Wall Street? *Journal of Financial Markets* 35: 84–103. [CrossRef]
- Dunford, Daniel, Becky Dale, Nassos Stylianou, Ed Lowther, Mariam Ahmed, and Irene de la Torre Arenas. 2020. Coronavirus: The World in Lockdown in Maps and Charts. Available online: <https://www.bbc.com/news/world-52103747> (accessed on 19 October 2020).
- El-Gamal, Mahmoud Amin. 2000. *A Basic Guide to Contemporary Islamic Banking and Finance*. Houston: Rice University Houston, vol. 1.
- Engelhardt, Nils, Miguel Krause, Daniel Neukirchen, and Peter N Posch. 2021. Trust and stock market volatility during the COVID-19 crisis. *Finance Research Letters* 38: 101873. [CrossRef]
- Engle, Robert F. 1982. Autoregressive conditional heteroscedasticity with estimates of the variance of United Kingdom inflation. *Econometrica: Journal of the Econometric Society* 50: 987–1007. [CrossRef]
- Engle, Robert F., and Tim Bollerslev. 1986. Modelling the persistence of conditional variances. *Econometric Reviews* 5: 1–50. [CrossRef]
- Erdogan, Seyfettin, Ayfer Gedikli, and Emrah İsmail Çevik. 2020. Volatility Spillover Effects Between Islamic Stock Markets and Exchange Rates: Evidence From Three Emerging Countries. *Borsa Istanbul Review* 20: 322–33. [CrossRef]
- Fakhfekh, Mohamed, Ahmed Jeribi, and Marwa Ben Salem. 2021. Volatility dynamics of the Tunisian stock market before and during the COVID-19 outbreak: Evidence from the GARCH family models. *International Journal of Finance & Economics*. [CrossRef]
- Fama, Eugene F., Lawrence Fisher, Michael C. Jensen, and Richard Roll. 1969. The adjustment of stock prices to new information. *International Economic Review* 10: 1–21. [CrossRef]
- Goodell, John W. 2020. COVID-19 and finance: Agendas for future research. *Finance Research Letters* 35: 101512. [CrossRef]
- Guru, Biplob Kumar, and Amarendra Das. 2021. COVID-19 and uncertainty spillovers in Indian stock market. *MethodsX* 8: 101199. [CrossRef]
- In, Francis, Sangbae Kim, and Jai Hyung Yoon. 2002. International stock market linkages: Evidence from the Asian financial crisis. *Journal of Emerging Market Finance* 1: 1–29. [CrossRef]
- Insaidoo, Michael, Lilian Arthur, Samuel Amoako, and Francis Kwaw Andoh. 2021. Stock market performance and COVID-19 pandemic: Evidence from a developing economy. *Journal of Chinese Economic and Foreign Trade Studies* 4: 60–73. [CrossRef]
- Izzeldin, Marwan, Gulnur Muradoglu, Vasileios Pappas, and Sheeja Sivaprasad. 2021. The impact of Covid-19 on G7 stock markets volatility: Evidence from a ST-HAR model. *International Review of Financial Analysis* 74: 101671. [CrossRef]
- Jeribi, Ahmed, and Yasmin Snene Manzli. 2021. Can cryptocurrencies be a safe haven during the novel COVID-19 pandemic? Evidence from the Tunisian Stock Market. *Journal of Research in Emerging Markets* 3: 14–31. [CrossRef]
- Kenourgios, Dimitris, Nader Naifar, and Dimitrios Dimitriou. 2016. Islamic financial markets and global crises: Contagion or decoupling? *Economic Modelling* 57: 36–46. [CrossRef]
- Lee, Jong-Wha, and Warwick J McKibbin. 2004. Globalization and disease: The case of SARS. *Asian Economic Papers* 3: 113–31. [CrossRef]
- Leong, Wei Ruen. 2018. *GARCH (1, 1) at Small Sample Size and Pairs Trading with Cointegration*. Aarhus: Aarhus BSS, Aarhus University, Department of Economics and Business Economics.
- Li, W. K., Shiqing Ling, and Micheal McAleer. 2002. Recent Theoretical Results for Time Series Models with GARCH Errors. *Journal of Economic Surveys* 16: 245–69. [CrossRef]
- Liu, Yuna. 2020. The importance of trust distance on stock market correlation: Evidence from emerging economics. *Borsa Istanbul Review* 20: 37–47. [CrossRef]
- Liu, HaiYue, Aqsa Manzoor, CangYu Wang, Lei Zhang, and Zaira Manzoor. 2020. The COVID-19 outbreak and affected countries stock markets response. *International Journal of Environmental Research and Public Health* 17: 2800. [CrossRef] [PubMed]

- Lumsdaine, Robin L. 1995. Finite-sample properties of the maximum likelihood estimator in GARCH (1, 1) and IGARCH (1, 1) models: A Monte Carlo investigation. *Journal of Business & Economic Statistics* 13: 1–10.
- MacKinlay, A. Craig. 1997. Event studies in economics and finance. *Journal of Economic Literature* 35: 13–39.
- Mazur, Mieszko, Man Dang, and Miguel Vega. 2020. COVID-19 and the march 2020 stock market crash. Evidence from S&P1500. *Finance Research Letters* 38: 101690. [CrossRef]
- Mirza, Nawazish, Birjees Rahat, Bushra Naqvi, and Syed Kumail Abbas Rizvi. 2020. Impact of Covid-19 on corporate solvency and possible policy responses in the EU. *The Quarterly Review of Economics and Finance* in press. [CrossRef]
- Nguyen, Dat Thanh, Dinh Hoang Bach Phan, and Tee Chwee Ming. 2021. An assessment of how COVID-19 changed the global equity market. *Economic Analysis and Policy* 69: 480–91. [CrossRef]
- Paltrinieri, Andrea, Josanco Floreani, Jeffrey A. Kappen, Matthew C. Mitchell, and Kavilash Chawla. 2019. Islamic, socially responsible, and conventional market comovements: Evidence from stock indices. *Thunderbird International Business Review* 61: 719–33. [CrossRef]
- Phan, Dinh Hoang Bach, and Paresch Kumar Narayan. 2020. Country responses and the reaction of the stock market to COVID-19—A preliminary exposition. *Emerging Markets Finance and Trade* 56: 2138–50. [CrossRef]
- Poterba, James M., and Lawrence H. Summers. 1986. Reporting errors and labor market dynamics. *Econometrica: Journal of the Econometric Society* 54: 1319–38. [CrossRef]
- PromED (International Society for Infectious Diseases). 2019. Undiagnosed Pneumonia—China (HU): RFI. Available online: <https://promedmail.org/promed-post/?id=6864153%20#COVID19> (accessed on 13 October 2019).
- Rastogi, Shailesh. 2014. The financial crisis of 2008 and stock market volatility—analysis and impact on emerging economies pre and post crisis. *Afro-Asian Journal of Finance and Accounting* 4: 443–59. [CrossRef]
- Raza, Naveed, Ahmad Ibn Ibrahimy, Azwadi Ali, and Sajid Ali. 2016. Gold and Islamic stocks: A hedge and safe haven comparison in time frequency domain for BRICS markets. *The Journal of Developing Areas* 50: 305–18. [CrossRef]
- Sági, Judit, Nick Chandler, and Csaba Lentner. 2020. Family businesses and predictability of financial strength: A Hungarian study. *Problems and Perspectives in Management* 18: 476. [CrossRef]
- Saleem, Adil, and Muhammad Ashfaq. 2020. An Analysis of Profitability Determinants of Islamic Banks: Empirical Study of Malaysia vs Pakistan. *International Journal of Business Reflections* 1: 135–57.
- Sherif, Mohamed. 2020. The impact of Coronavirus (COVID-19) outbreak on faith-based investments: An original analysis. *Journal of Behavioral and Experimental Finance* 28: 100403. [CrossRef] [PubMed]
- Smith, Richard D. 2006. Responding to global infectious disease outbreaks: Lessons from SARS on the role of risk perception, communication and management. *Social Science & Medicine* 63: 3113–23. [CrossRef]
- Sohrabi, Catrin, Zaid Alsafi, Niamh O'Neill, Mehdi Khan, Ahmed Kerwan, Ahmed Al-Jabir, Christos Iosifidis, and Riaz Agha. 2020. World Health Organization declares global emergency: A review of the 2019 novel coronavirus (COVID-19). *International Journal of Surgery* 76: 71–76. [CrossRef] [PubMed]
- Topcu, Mert, and Omer Serkan Gulal. 2020. The impact of COVID-19 on emerging stock markets. *Finance Research Letters* 36: 101691. [CrossRef]
- Tsay, Ruey S. 2002. Nonlinear models and forecasting. In *A Companion to Economic Forecasting*. Hoboken: John Wiley & Sons, pp. 453–84.
- Varga, József, and Livia Tálos. 2016. The empirical analysis of the impact of the economic crisis on Turkish Islamic banks using the CAMEL method. *Regional and Business Studies* 8: 77–87.
- Wang, Yi-Hsien, Fu-Ju Yang, and Li-Je Chen. 2013. An investor's perspective on infectious diseases and their influence on market behavior. *Journal of Business Economics and Management* 14: S112–S127. [CrossRef]
- WHO. 2020. WHO Timeline—COVID-19. Available online: <https://www.who.int/news-room/detail/27--04-2020-who-timeline---covid-19> (accessed on 13 October 2020).
- Zhang, Dayong, Min Hu, and Qiang Ji. 2020. Financial markets under the global pandemic of COVID-19. *Finance Research Letters* 36: 101528. [CrossRef]