

Denkowska, Anna; Wanat, Stanisław

Article

A tail dependence-based mst and their topological indicators in modeling systemic risk in the European insurance sector

Risks

Provided in Cooperation with:

MDPI – Multidisciplinary Digital Publishing Institute, Basel

Suggested Citation: Denkowska, Anna; Wanat, Stanisław (2020) : A tail dependence-based mst and their topological indicators in modeling systemic risk in the European insurance sector, Risks, ISSN 2227-9091, MDPI, Basel, Vol. 8, Iss. 2, pp. 1-22, <https://doi.org/10.3390/risks8020039>

This Version is available at:

<https://hdl.handle.net/10419/257994>

Standard-Nutzungsbedingungen:

Die Dokumente auf EconStor dürfen zu eigenen wissenschaftlichen Zwecken und zum Privatgebrauch gespeichert und kopiert werden.

Sie dürfen die Dokumente nicht für öffentliche oder kommerzielle Zwecke vervielfältigen, öffentlich ausstellen, öffentlich zugänglich machen, vertreiben oder anderweitig nutzen.

Sofern die Verfasser die Dokumente unter Open-Content-Lizenzen (insbesondere CC-Lizenzen) zur Verfügung gestellt haben sollten, gelten abweichend von diesen Nutzungsbedingungen die in der dort genannten Lizenz gewährten Nutzungsrechte.

Terms of use:

Documents in EconStor may be saved and copied for your personal and scholarly purposes.

You are not to copy documents for public or commercial purposes, to exhibit the documents publicly, to make them publicly available on the internet, or to distribute or otherwise use the documents in public.

If the documents have been made available under an Open Content Licence (especially Creative Commons Licences), you may exercise further usage rights as specified in the indicated licence.



<https://creativecommons.org/licenses/by/4.0/>

Article

A Tail Dependence-Based MST and Their Topological Indicators in Modeling Systemic Risk in the European Insurance Sector

Anna Denkowska *  and Stanisław Wanat 

Department of Mathematics, Cracow University of Economics, Rakowicka 27, 31-510 Cracow, Poland; wanats@uek.krakow.pl

* Correspondence: anna.denkowska@uek.krakow.pl

Received: 20 March 2020; Accepted: 17 April 2020; Published: 22 April 2020



Abstract: In the present work, we analyze the dynamics of indirect connections between insurance companies that result from market price channels. In our analysis, we assume that the stock quotations of insurance companies reflect market sentiments, which constitute a very important systemic risk factor. Interlinkages between insurers and their dynamics have a direct impact on systemic risk contagion in the insurance sector. Herein, we propose a new hybrid approach to the analysis of interlinkages dynamics based on combining the copula-DCC-GARCH model and minimum spanning trees (MST). Using the copula-DCC-GARCH model, we determine the tail dependence coefficients. Then, for each analyzed period we construct MST based on these coefficients. The dynamics are analyzed by means of the time series of selected topological indicators of the MSTs in the years 2005–2019. The contribution to systemic risk of each institution is determined by analyzing the deltaCoVaR time series using the copula-DCC-GARCH model. Our empirical results show the usefulness of the proposed approach to the analysis of systemic risk (SR) in the insurance sector. The times series obtained from the proposed hybrid approach reflect the phenomena occurring in the market. We check whether the analyzed MST topological indicators can be considered as systemic risk predictors.

Keywords: insurance sector; systemic risk; deltaCoVaR; minimum spanning trees—topological indicators; tail dependence

JEL Classification: G22; C10

1. Introduction

Currently, despite many studies that use different methodological and empirical approaches to identify and analyze systemic risk (SR) in the insurance sector, there is still no consistent theory to monitor it effectively. Ideal methods that could be used for this purpose should support or be associated with the essential elements of macroprudential policy and surveillance (MPS) by providing information on the build-up of system-wide vulnerabilities in time and cross-section, with an acceptable level of accuracy for both the forecast of the occurrence of a systemic event and its financial effects. The subject of this article fits into the current of research focusing on the search for such a method. We focus on the structure of interlinkages between insurance companies, which plays a key role in the spread of systemic risk in this sector.

The article is a response to the clue and task left in the work of [Alves et al. \(2015\)](#), which appeared in the European System Risk Board. This work contains an analysis of the network of 29 largest European insurance groups and their financial contractors. The authors note that insurance companies

have direct exposures to other insurers, banks, and other financial institutions through debt, equity, and other financial instruments. These exposures can cause direct infection and thus spread of systemic risk (SR). The work cited above focuses on direct connections between EU insurers and banks. At the same time, the authors emphasize that their research does not include an analysis of linkages between insurers under reinsurance contracts, indirect connections via market price channels and information channels, nor an analysis of banks' exposure to insurers.

In the present article, we focus on the problem of indirect links between insurance companies that result from market price channels. More specifically, we examine the dynamics of these relationships. In our analysis, we assume that stock market quotations of insurance companies reflect market sentiment, which is a very important systemic risk factor. It is well known that risk infection is always accompanied by a negative market sentiment leading to customer panic in the financial industry. The results will create a vicious circle of risk and emotion. Thus, market sentiment is commonly used to forecast changes in the financial market and can be used as a systemic risk barometer (Kou et al. 2019).

Relationships between insurers and their dynamics have a direct impact on the propagation of systemic risk in the insurance sector. In our work, we propose a new hybrid approach to analyzing the dynamics of interconnections, based on combining the copula-DCC-GARCH and minimum spanning trees (MST). Using the copula-DCC-GARCH model, we determine tail dependence coefficients. Then, based on these coefficients for each analyzed period, we determine the "distance" matrix between insurance companies using the Mantegna metric (Mantegna and Stanley 1999) and construct minimum spanning trees. We analyze the dynamics using selected topological indicators for the MST obtained.

The main purpose of the work and contribution to the literature is:

- (1) To check whether the time series of topological indicators of the network of connections between insurance companies obtained using the proposed hybrid approach reflect the situation on the financial market and whether they can be used as predictors of systemic risk in the insurance sector.
- (2) An empirical analysis of 38 European insurance institutions selected from the top 50 insurance companies in Europe. We indicate which of the largest companies not on the G-SIIs list are of great importance in the context of SR.
- (3) An analysis of the situation in the insurance sector in the context of SR, taking into account the latest political and economic situation in Europe, distinguishing four market states: The normal state, the state related to the subprime mortgage crisis, the state related to the immigration crisis in Europe, and the state related to the crises in France and Italy.
- (4) An analysis of the contribution to the SR of the insurance sector.

The rest of the article is organized as follows. Section 2 reviews the subject literature devoted to systemic risk in the insurance sector. Section 3 presents the methodology and the empirical strategy used in the paper, Section 4 contains the data and a discussion of the results obtained, while Section 5 presents the conclusions.

2. Systemic Risk in the Insurance Sector

For over a decade, scientists have been trying to effectively define, study, and measure the phenomenon of systemic risk, which in the era of globalization of economics is one of the most important concepts in the prediction of economic phenomena. Most scholars base their definition of uncertainty and risk on Knight (1921, p. 233), Tversky and Kahneman (1992), Camerer and Weber (1992), and Zweifel and Eisen (2012, p. 1). In the work of Eling and Pankoke (2016) 43 definitions are given, which indicate a three-stage course of the phenomenon: Causes, events, and effects for the real economy. One of the latest approaches is the concept of systemic risk proposed by De Bandt and Hartmann (2000), in which a distinction is made between the risk of shocks based on their second-round effects (it focuses not on the institutions affected by the shock, but on the consequences on linked institution). In addition, Harrington (2009) distinguishes between systemic risk and the risk of typical shocks. According to him, only the risk of an event associated with

“cross-contagious infection” (p. 802) should be considered systemic. Many researchers analyze the problem of SR in the context of the failure of a significant part of the financial sector and reduction of credit availability, e.g., [Acharya et al. \(2011\)](#). [Adrian and Brunnermeier \(2011\)](#) investigate the negative impact on credit supply; [Bach and Nguyen \(2012\)](#), [Rodríguez-Moreno and Peña \(2013\)](#) financial system failure; [Baur et al. \(2003\)](#), [Chen et al. \(2013c\)](#), [Cummins and Weiss \(2011, 2013\)](#), [Weiß and Mühlnickel \(2014\)](#) the negative impact on the real economy; [Baluch et al. \(2011\)](#) the chain reaction of financial difficulties; [Chen et al. \(2013b\)](#), [Huang et al. \(2009\)](#) many simultaneously defaulted pledges by large financial institutions; [IAIS \(2009\)](#), [Jobst \(2014\)](#), [Radice \(2010\)](#) the disruption of the flow of financial services, the negative impact on the real economy, and impairment of all or part of the financial system; [Klein \(2011\)](#) studies the market in the context of financial system instability, idiosyncratic events, and infection; [Kress \(2011\)](#) studies infection; [Rodríguez-Moreno and Peña \(2013\)](#) malfunctioning in the financial system and the negative impact on the real economy. In recent years, quantitative analysis of systemic risk using the described approaches has been carried out by, among others, [Hautsch et al. \(2015\)](#), [Giglio et al. \(2016\)](#), [Benoit et al. \(2017\)](#), [Jajuga et al. \(2017\)](#), [Bégin et al. \(2017\)](#), [Jurkowska \(2018\)](#).

The various concepts of systemic risk analysis presented above have inspired the creation of a number of different methods for measuring it. In the literature of the subject, several dozen measures can be indicated, which can be determined using mathematical, statistical, econometric, network modeling, and predictive analysis tools (in particular, multidimensional statistical analysis, including methods of learning with and without supervision). A review of systemic risk measures in use can be found, e.g., in the following articles: [Bisias et al. \(2012\)](#), [Giglio et al. \(2016\)](#), [Di Cesare and Picco \(2018\)](#).

It is worth noting that while there is quite extensive literature on the subject of systemic risk analysis in the banking sector, the insurance sector has been analyzed to a distinctly smaller extent. The reason for this was the belief that the group taking over, dispersing, and redistributing the financial effects of risk does not generate a systemic threat.

However, after the financial crisis in 2007–2009 and the European public debt crisis in 2010–2012, a significant increase in the interest in systemic risk in the insurance sector can be seen. Before the crisis, there was a clear belief among researchers that this sector is systemically insignificant. However, in the literature that emerged as a result of the crisis, although previous conviction was maintained in many studies, there appeared articles indicating the possibility of the insurance sector creating systemic risk. Examples include works in which the authors believe that insurance companies have become an unavoidable source of systemic risk (e.g., [Billio et al. 2012](#); [Weiß and Mühlnickel 2014](#)) and in which they claim insurance companies to be systematically significant, but only due to their nontraditional (banking) activities (e.g., [Baluch et al. 2011](#); [Bednarczyk 2013](#); [Cummins and Weiss 2014](#); [Czerwińska 2014](#)) and the overall systemic importance of the insurance sector as a whole is still subdued to the banking sector (e.g., [Chen et al. 2013a](#)). In turn, [Bierth et al. \(2015\)](#) after examining a very large sample of insurers in the long term, believe that the contribution of the insurance sector to systemic risk is relatively small, however, they claim that it peaked during the financial crisis in the period from 2007 to 2008. They also indicate that significant factors affecting the insurer’s exposure to systemic risk are strong linkages between large insurance companies, leverage, losses, and liquidity (the four L’s: Linkages, leverage, losses, liquidity). On the other hand, there are also studies ([Harrington 2009](#)) and ([Bell and Keller 2009](#)) claiming a complete lack of evidence for the systemic importance of the insurance industry.

After the aforementioned crises, supervisory authorities also began to pay more attention to the problem of systemic risk in the insurance industry. The Financial Stability Board (FSB), in consultation with the International Association of Insurance Supervisors (IAIS), identified nine global systemically important insurers (G-SIIs) based on the assessment methodology developed by IAIS, which includes the following five elements: Noninsurance activity of the insurer (45%), assessment of the degree of direct and indirect links of institutions within the financial system (40%), range of global activity (5%), the size of the insurance institution (5%), and product substitutability (5%).

Since the publication of this methodology and the G-SII list, questions have been raised about the appropriateness and effectiveness of the proposed framework by both the insurance sector and academia. The ongoing discussion in the literature to date tends to show that some indicators in the IAS assessment methodology may not be able to explain the insurer's contribution to systemic risk (Weiß and Mühlnickel 2014; Bierth et al. 2015). Looking at the solutions adopted from the insurance industry, one can point to the example of MetLife, which was constantly struggling to remove the label of a “systemically important institution” and obtained a favorable ruling in the US District Court in March 2016 (Tracy and Holm 2016). Following the success of MetLife, the AIG SIFI label was withdrawn by FSOC in September 2017, and Prudential Financial dumped its brand SIFI in October 2018.

To sum up, current literature and real events show that systemic risk in the insurance sector is still a challenge waiting for precise methodological solutions. After 2014, we observe an increased involvement of scientists in the qualitative and quantitative analysis of this issue. Our paper is one of the few quantitative studies on systemic risk in the European and global insurance sector. Although SR in the financial sector is analyzed by: Bierth et al. (2015), Mühlnickel and Weiß (2015), Kanno (2016), Giglio et al. (2016), Adrian and Brunnermeier (2016), Kojien and Yogo (2016), Brownlees and Engle (2017), Kaserer and Klein (2018) and risk infection is studied by Hautsch et al. (2015), Härdle et al. (2016), Fan et al. (2018), nevertheless, none of these approaches is a hybrid approach in which the possibility of combining different measures would be analyzed on such a scale as proposed in our project.

3. Methodology

We carry out the analysis of the dynamics of interconnections between insurance companies using a new hybrid approach based on the combination of the copula-DCC-GARCH model and minimum spanning trees (MST). The construction of minimum spanning trees based on the dependencies in the tails plays a key role in it. To this end, using two-dimensional copula-DCC-GARCH models for each studied period t , ($t = 1, \dots, T$) and each pair of log-returns $r_{i,t}, r_{j,t}$, ($i, j = 1, \dots, k, j > i$) we estimate the bivariate joint distributions:

$$F_t(r_{i,t}, r_{j,t}) = C_{ij,t}(F_{i,t}(r_{i,t}), F_{j,t}(r_{j,t})) \quad (1)$$

where $C_{ij,t}$ denotes the copula, while F_t and $F_{i,t}, F_{j,t}$, respectively, are the joint cumulative distribution function and the cumulative distribution functions (cdf) of the marginal distributions at time t . In turn, making use of the copulas $C_{ij,t}$ we estimate the pairwise lower tail dependence of the log-returns $r_{i,t}, r_{j,t}$:

$$\lambda_t^L(i, j) = \lim_{q \rightarrow 0^+} \frac{C_{ij,t}(q, q)}{q} \quad (2)$$

Then, for each period t , we determine the “distance” matrix between insurance companies using the metric (Mantegna and Stanley 1999):

$$d_t(i, j) = \sqrt{2(1 - \lambda_t^L(i, j))} \quad (3)$$

and using the Kruskal algorithm (Mantegna and Stanley 1999), we construct minimum spanning trees MST_t with k vertices and $k - 1$ edges.

Based on the trees thus obtained MST_t ($t = 1 \dots T$) we determine the time series of the following topological network indicators:

- Average path length—APL,
- Maximum degree—Max.Deg,
- The parameters α of the vertex degree distribution required to follow a power law,
- Network diameter—D,
- Rich club effect—RCE,

- Assortativity,
- Betweenness centrality—BC,
- Vertex strength (centrality),
- Vertex degree,
- Closeness centrality.

It should be mentioned that in the literature the minimum spanning trees that evolve in time are also monitored by many other topological network indicators such as the Eigenvector centrality (Tang et al. 2018), MOL (mean occupation layer) (Onnela et al. 2002, 2003), normalized tree length (Onnela et al. 2003), tree half-life (Onnela et al. 2003); survival ratio of the edges (Onnela et al. 2002; Sensoy and Tabak 2014); and agglomerative coefficient (Matesanz and Ortega 2015).

In the next stage of research, we determine a time series for the deltaCoVaR measure for each insurer. It brings along an information about the insurer’s contribution to the systemic risk in the insurance sector. For this purpose, we also use two-dimensional copula-DCC-GARCH models and the empirical strategy presented in the articles: Denkowska and Wanat (2019), Wanat and Denkowska (2018, 2019). We assume that the European insurance sector is represented by the STOXX 600 Europe Insurance index. We compare the time series of deltaCoVaR measures obtained in this way with the time series of topological indicators of the MST_t from the point of view of the possibility of using the latter as systemic risk predictors in the insurance sector.

The tail dependence coefficients ($\lambda_t^L(i, j)$) and the deltaCoVaR measure, which are key to the empirical strategy presented above, are determined using two-dimensional copula-DCC-GARCH models. In the two-dimensional case in the DCC-GARCH model, the log-returns vector distribution $r_t = (r_{1,t}, r_{2,t})$, which is conditional with respect to the set Ω_{t-1} of information available up to the moment $t - 1$ is modeled using the conditional copulas proposed by Patton (2006). It takes the following form:

$$r_{1,t}|\Omega_{t-1} \sim F_{1,t}(\cdot|\Omega_{t-1}), r_{2,t}|\Omega_{t-1} \sim F_{2,t}(\cdot|\Omega_{t-1}) \tag{4}$$

$$r_t|\Omega_{t-1} \sim F_t(\cdot|\Omega_{t-1}) \tag{5}$$

$$F_t(r_t|\Omega_{t-1}) = C_t(F_{1,t}(r_{1,t}|\Omega_{t-1}), F_{2,t}(r_{2,t}|\Omega_{t-1})), \tag{6}$$

where C_t denotes the copula, while F_t and $F_{i,t}$ ($i = 1, 2$), respectively, the two-dimensional distribution and the marginal distributions at the moment t . In general, one-dimensional log-returns can be modeled using different specifications of the average model and different specifications of the variance model (e.g., sGARCH, fGARCH, eGARCH, gjrGARCH, apARCH, iGARCH, csGARCH). In our study, the following ARMA process was used for all the series of log-returns:

$$r_{i,t} = \mu_{i,t} + y_{i,t}, \quad (i = 1, 2) \tag{7}$$

$$\mu_{i,t} = E(r_{i,t}|\Omega_{t-1}), \tag{8}$$

$$\mu_{i,t} = \mu_{i,0} + \sum_{j=1}^{p_i} \varphi_{ij}r_{i,t-j} + \sum_{j=1}^{q_i} \theta_{ij}y_{i,t-j}, \tag{9}$$

$$y_{i,t} = \sqrt{h_{i,t}}\varepsilon_{i,t}, \tag{10}$$

and the standard GARCH (sGARCH) model for the variance:

$$h_{i,t} = Var(r_{i,t}|\Omega_{t-1}), h_{i,t} = \omega_i + \sum_{j=1}^{p_i} \alpha_{ij}y_{i,t-j}^2 + \sum_{j=1}^{q_i} \beta_{ij}h_{i,t-j} \tag{11}$$

where $\varepsilon_{i,t} = \frac{y_{i,t}}{\sqrt{h_{i,t}}}$ are identically distributed independent random variables (in the empirical analysis we considered the following distributions: Normal, skew normal, t-Student, skew t-Student, and GED).

To describe the dependences between the log-returns $r_{1,t}$ and $r_{2,t}$ we used Student t-copulas, whose parameters were the conditional correlations R_t obtained from the DCC(m, n) model:

$$H_t = D_t R_t D_t, \quad (12)$$

$$D_t = \text{diag}\left(\sqrt{h_{1,t}}, \sqrt{h_{2,t}}\right), \quad (13)$$

$$R_t = (\text{diag}(Q_t))^{-\frac{1}{2}} Q_t (\text{diag}(Q_t))^{-\frac{1}{2}} \quad (14)$$

$$Q_t = \left(1 - \sum_{j=1}^m c_j - \sum_{j=1}^n d_j\right) \bar{Q} + \sum_{j=1}^m c_j (\varepsilon_{t-j} \varepsilon'_{t-j}) + \sum_{j=1}^n d_j Q_{t-j}. \quad (15)$$

In this model, \bar{Q} is the unconditional covariance matrix of the standardized rests ε_t , while c_j ($j = 1, \dots, m$) and d_j ($j = 1, \dots, n$) are scalar values, where c_j describes the impact on current correlations of precedent shocks, and d_j represents the influence on current correlations of the previous conditional correlations.

We estimate the parameters of the above copula-DCC-GARCH model using the inference function for the margins (IFM) method. This method is presented in detail, among others in Joe (1997). We perform the calculations in the R environment, using the “rmgarch” package.

4. Data and Results of Empirical Analysis

The basis of the study are the stock quotes of 38 European insurance institutions. Most of them are on the list of the top 50 insurance companies in Europe based on total assets. AXA, a France-based company, is the largest insurance company in Europe and globally. It is also one of the world’s largest asset managers with total assets under management of over 1.4 trillion euro. Allianz, headquartered in Munich, Germany, is the second largest European insurer in terms of assets. We include insurers analyzed in the work Alves et al. (2015) and nine additional ones¹. We estimate the deltaCoVaR measure assuming that the European insurance sector is represented by the STOXX 600 Europe Insurance index. We analyze weekly logarithmic returns for the period from 7 January 2005 to 20 December 2019.

In order to estimate $\lambda_t^L(i, j)$, we consider various specifications for two-dimensional copula-DCC-GARCH models. Finally, following the information criteria and model adequacy tests, we adopt for all the instruments the ARMA (1,1)—sGARCH (1,1) model with the skew Student distribution. When analyzing the dynamics of the dependences between log-returns, we consider Student copulas and various DCC model specifications. As before, based on information criteria, we select the Student copula with conditional correlations obtained from the DCC (1,1) model and a constant shape parameter. We choose the same specifications for two-dimensional copula-DCC-GARCH models, which we use to estimate the deltaCoVaR measures.

In what follows, we present the results of the analysis of ten topological indicators of the MSTs, divided into two groups according to their specificity. One group consists of those that are a measure of each MST vertex: Node degree, betweenness centrality, vertex strength, and closeness centrality. The other one is formed by those that are a measure of the properties of the entire MST, such as average path length, maximum degree, parameters α of the power distribution of vertex degrees, diameter, rich club effect, and assortativity.

¹ These are: Achmea (Eureko Group), Aegon Group/Unirobe Meeùs Group, AGEAS, Allianz, Aviva, AXA, BNP Paribas, Grupo Catalana Occidente, CNP Assurances, Royal Bank of Scotland Group, Generali, Groupe Crédit Agricole Assurances, HDI/Talans, If P&C Insurance, ING Group, KBC, Legal & General Group plc, Mapfre, Munich Re, Old Mutual plc, Prudential, RSA Insurance Group, SCOR, Lloyds Banking Group, Unipol, UNIQA Insurance Group, Vienna Insurance Group, Zurich Insurance, Swiss Life, Chubb Ltd, Hannover Re, Storebrand, XL Group, Helvetia Holding, Mediolanum, Sampo Oyj, Societa Cattolica di Assicurazione, Topdanmark A/S.

4.1. Degree Distribution

For an undirected network, the degree k_i of node i is defined as the total number of links incident to it, see e.g., [Sensoy and Tabak \(2014\)](#). The degree increases as a node becomes more connected and more central to the network. The degree distribution $P(k)$ measures the frequency of nodes with different degrees in the network.

As depicted in Figure 1, the sample degree distribution of the minimum spanning tree is positively skewed, signaling heterogeneity in the system. Only a small portion of nodes in the network are highly interconnected (core companies), while the majority of other nodes have a relative low number of linkages (periphery companies). Such a configuration suggests the presence of several large star-like structures in the minimum spanning tree. The figure highlights examples of distributions, assigned to relevant dates, which we associated during the study as outstanding. 7 January 2005 is the period preceding the subprime crisis, 3 October 2008 is the crisis, 15 January 2010 is the date of the normal state preceding the crisis of excessive public debt in the euro area, in 3 September 2010 it is a much slender distribution graph of the vertex distribution that shows the distribution during the crisis. 18 September 2015 marks the beginning of the migrant crisis in Europe. 18 August 2017 is the beginning of the crisis related to the protests in France and the “Yellow vests’ movement”. Therefore, periods in which we observe a high maximum value for 1 (see Figure 1) and at the same time low values for the remaining numbers are periods during which there are many companies with only single connections and several others having a large number of links, which is a feature favoring SR. The chart reflects the market situation.

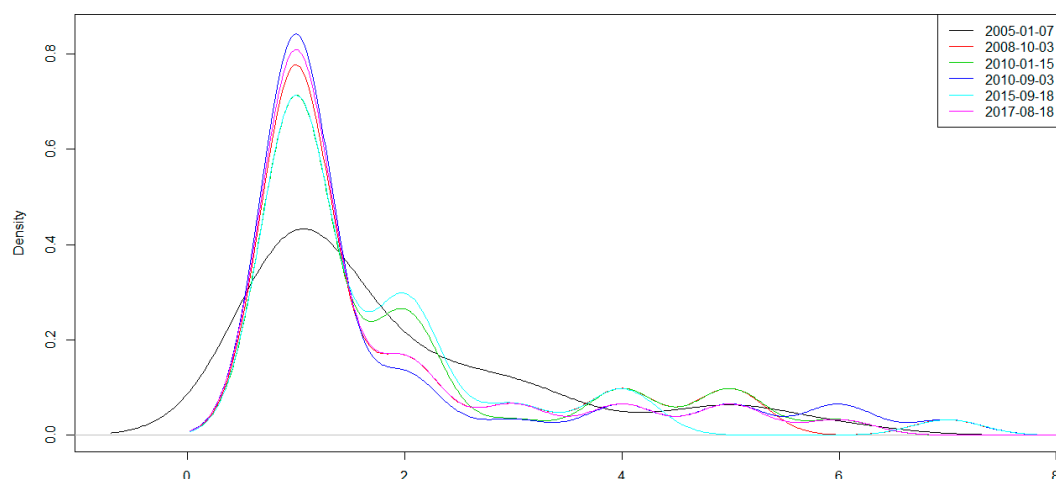


Figure 1. Degree distribution of selected minimum spanning trees. Source: Own study.

4.2. Betweenness Centrality—BC

This indicator is a measure of “being between” defined as the quotient of the number of shortest paths between vertices that pass through a given vertex and the number of all the shortest paths between vertices, see e.g., [Sensoy and Tabak \(2014\)](#). It determines the “most important” vertices of a given graph on a chart based on the shortest paths (e.g., the most influential insurer). For each pair of vertices in a connected graph, there is at least one path between them, so that either the number of edges that you have to pass (for unweighted graphs) or the sum of the weights of the vertices that you go through (for weighted graphs) is minimized. The BC measure of a given vertex is the number of those shortest paths that pass through it. This measure defines to what extent a given node (vertex) serves as an intermediary for other network nodes. A node with a higher BC has more control over the network because more information flows through it. Figure 2 shows the mean BC for the period under consideration and each of the insurance companies studied.

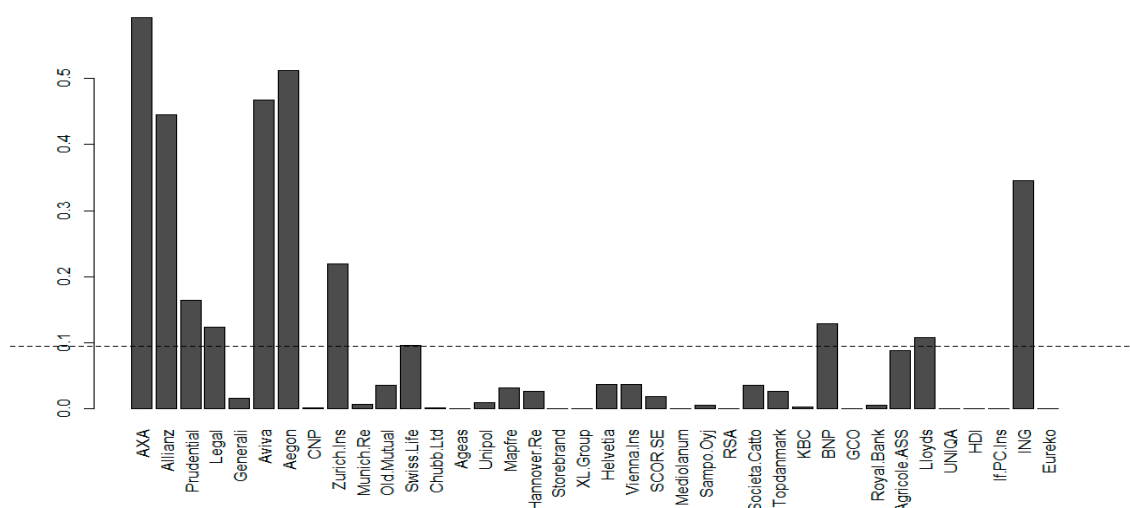


Figure 2. Average value of betweenness centrality (BC) in the period under consideration for individual insurance institutions. Source: Own study.

The analysis shows that the highest BC is held by AXA, Aegon, Allianz, Aviva, Prudential, which are companies appearing on the Financial Stability Board (FSB) 2016 list of systemically important insurers (G-SIIs), ING, and Zurich Insurance.

4.3. Vertex Strength (Centrality)

To identify the most central nodes in the system, we calculate the so-called vertex strength, which represents a weighted measure of centrality: $s_i = \sum_{j \in \psi(i)} \frac{1}{d_{ij}}$, where $\psi(i)$ is the set of all neighbors of the node i and d_{ij} is the length of the edge between two nodes, see e.g., [Lautier and Raynaud \(2013\)](#). It indicates how far one node is from all others in the entire network. The obtained average vertex strength of the selected insurers is presented in Figure 3.

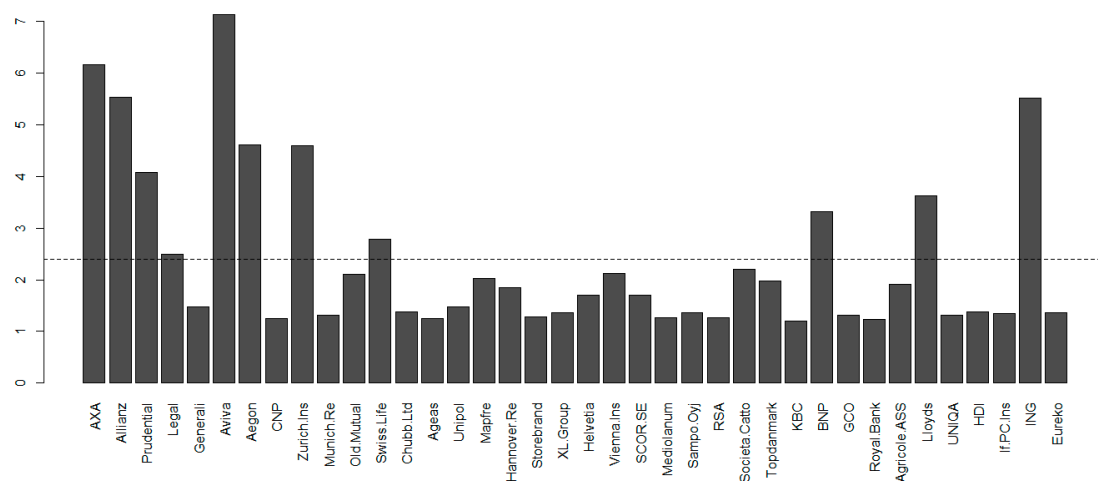


Figure 3. Average insurers strength in the period under consideration. Source: Own study.

The higher the vertex strength, the more systemically important a node is. From the diagram above we can infer that the most important are Aviva, AXA, Allianz, and ING.

4.4. Closeness Centrality

This node proximity measure is a measure calculated as the inverse of the sum of the shortest path lengths between the given node and all nodes in the network, see e.g., [Bavelas \(1950\)](#);

Sensoy and Tabak (2014) For MST, it is the inverse of the sum of the lengths of all edges. The more central the node is, the closer it is to all other nodes, it is thus a measure of the proximity of an insurer to the rest of the network. The average closeness centrality in the period studied and for each insurer considered is given in Figure 4.

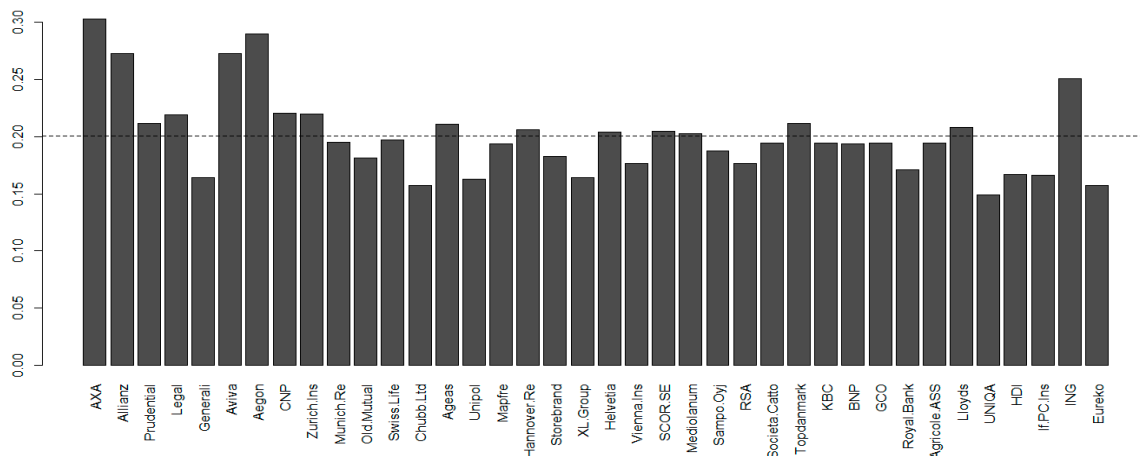


Figure 4. Average closeness centrality in the period under consideration. Source: Own study.

The diagram analysis shows that the vertices are relatively close together. This may foster contagion.

The diagram below (Figure 5) is a summary of the four-dimensional analysis of MST indicators. We present it with the intention to draw the reader’s attention to the fact that there are institutions whose bars are in each case considered among the highest ones, which proves the importance of their corresponding vertex in the MST.

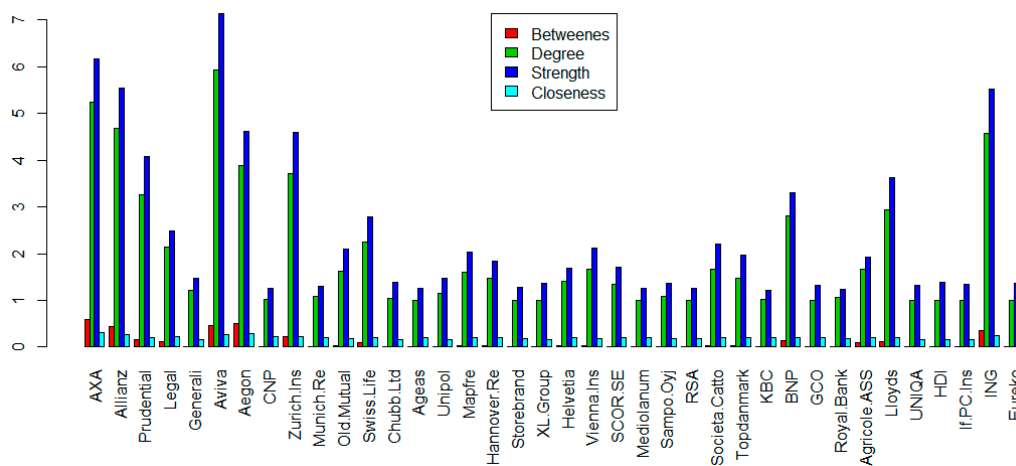


Figure 5. Average betweenness centrality, vertex degree, vertex strength, and closeness centrality. Source: Own study.

4.5. Average Path Length (APL)

This indicator is defined as the average number of steps along the shortest paths for all possible pairs of network nodes. It measures the effectiveness of information flow or mass transport in a given network, see e.g., Wang et al. (2014) APL is one of the strongest measures of network topology, along with its clustering factor and degree distribution. It distinguishes an easy-to-access network from a more complex and inefficient one. The smaller the average path length, the easier the flow of information. Of course, we are talking about an average so the network itself can have several very distant nodes and many adjacent nodes. The times series obtained for the APL is presented in Figure 6.

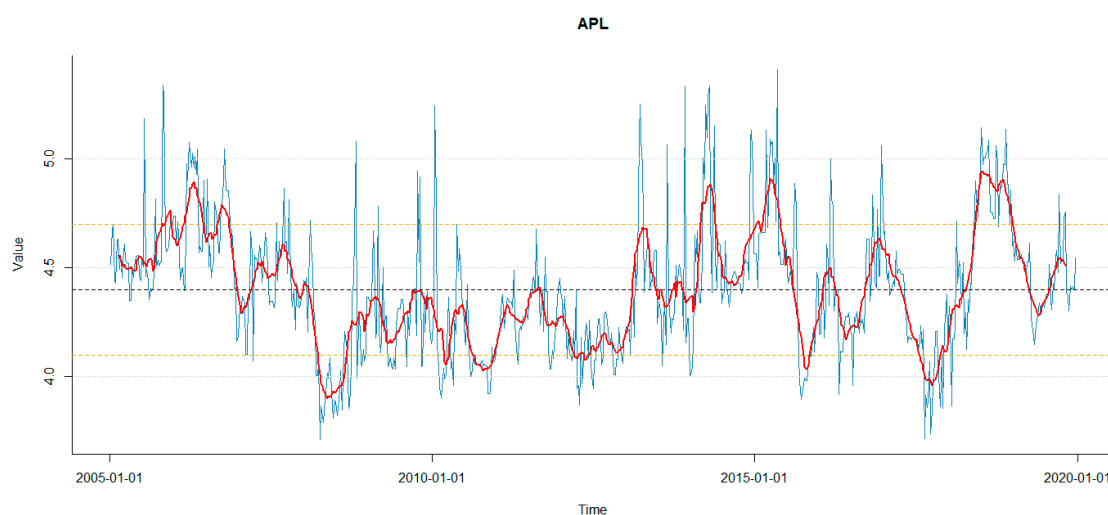


Figure 6. Average path length in the period from 7 January 2005 to 20 December 2019. Red lines depict the 13 periods of the moving average smoothed series. Source: Own study.

Note that during the crisis, the APL indicator decreases in comparison to the normal state, which means that the average path length between any pair of companies decreases.

4.6. Maximum Degree—Max.Deg

This indicator in graph theory is the maximum degree (i.e., the number of edges coming out of it, where loops count double) of a vertex of the graph; thus, it is the number of connections of a central vertex, see e.g., Wang et al. (2014). The times series obtained for the maximum degree is shown in Figure 7. This indicator in graph theory is the maximal number of connections a vertex of the graph has. By connections we mean, of course, the number of edges coming out of a vertex, with loops counting double.

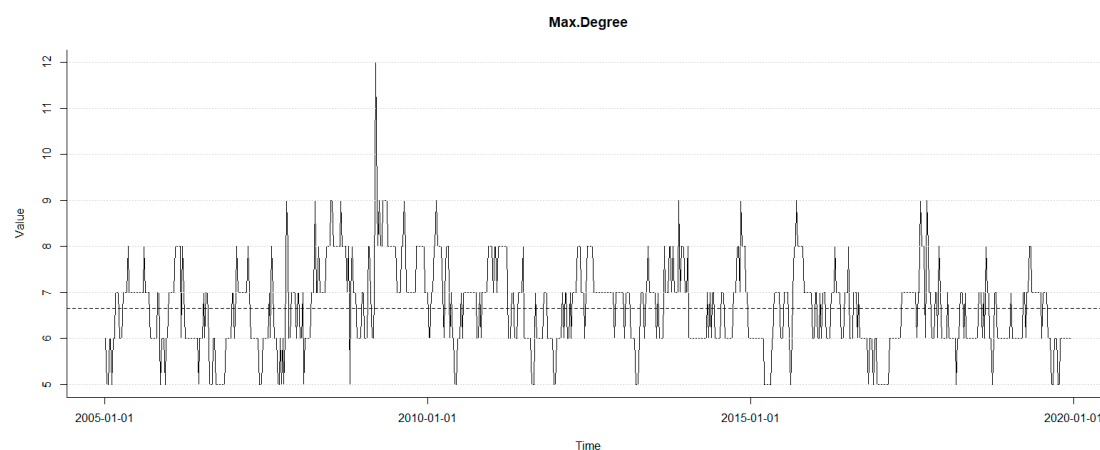


Figure 7. Maximum degree in the period from 7 January 2005 to 20 December 2019. Source: Own study.

Maximum degree grows during periods of crisis, which means that in a group of insurers during a crisis some insurer has many more connections with others than is usual in the normal state.

4.7. Parameter α of the Vertex Degree Distribution Required to Follow a Power Law

This indicator measures the scale-free behavior of a network, see e.g., Wang et al. (2014). The network is scale-free if the distribution, $P(s)$, the number of connections between the vertices, follows a power law, i.e., it has (asymptotically) the form $P(s) = C \cdot s^{-\alpha}$, $\alpha > 0$, where α is a parameter

specific to the given network. The power law followed by the degree distribution gives the network a kind of fractal self-similarity property, which accounts for the name. A scale-free network is characterized by a small number of vertices having a large number of connections (such nodes are called hubs) and many vertices that have only one connection. From the point of view of our analysis, this type of network can be considered as “favorable” to the propagation of information (in our case: Of systemic risk), and the companies/hubs that it has are systemically relevant. The time series obtained for the alpha parameters is shown in Figure 8.

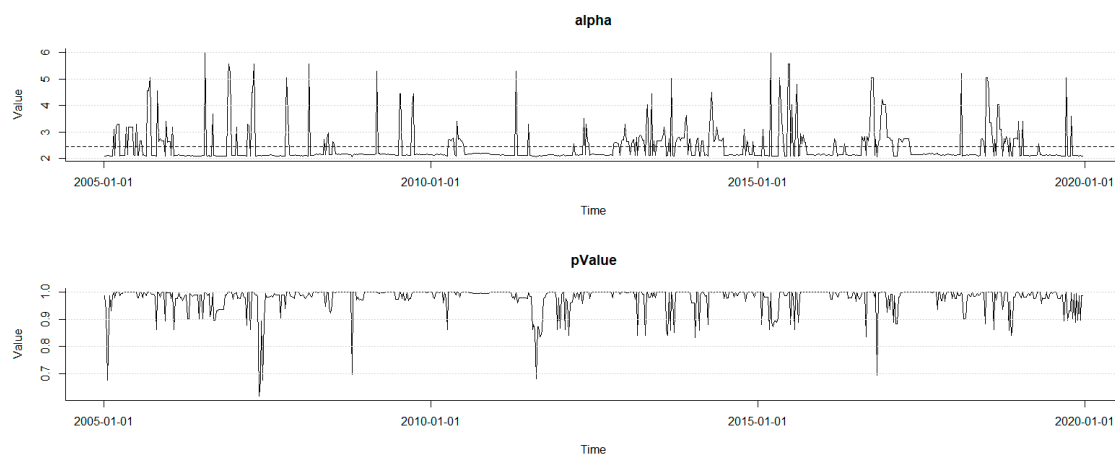


Figure 8. Estimated parameters alpha of power distribution for the minimum spanning trees (MST) from 7 January 2005 to 20 December 2019. Source: Own study.

MSTs are scale-free, but during crises the alpha value is closer to 2, which means that the structure of MST is star-shaped with outstanding hubs having a high degree, i.e., multiple edges that connect the company/hub to several companies with only one edge.

4.8. Diameter of the Network (Diameter)

It is determined by choosing from among all the shortest paths connecting any pair vertices to the longest one. For MST, this is simply the longest path in the MST. The time series obtained for the diameter is shown in Figure 9.

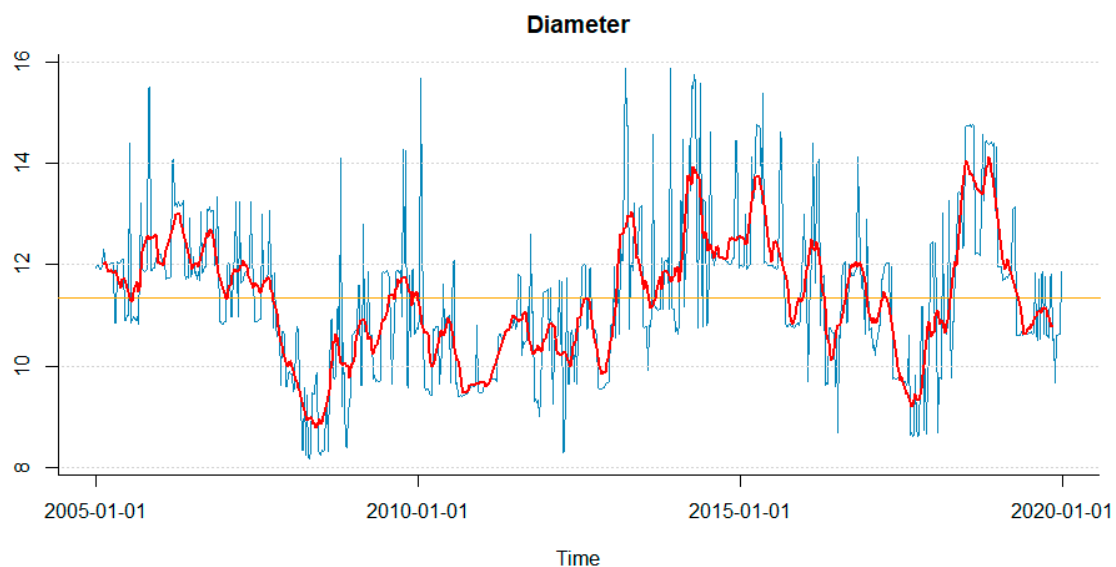


Figure 9. Diameter in the period from 7 January 2005 to 20 December 2019. Red lines depict the 13 periods of the moving average smoothed series. Source: Own study.

The diameter decreases during crises, which means that during these periods the path between the further apart lying MST vertices is shortened.

4.9. Rich Club Effect–RCE

The idea is that well-connected vertices connect also one with one another, see e.g., [Colizza et al. \(2006\)](#) The RCE is defined to be $\phi(k) = \frac{2E_{>k}}{N_{>k}(N_{>k}-1)}$, where $\frac{N_{>k}(N_{>k}-1)}{2}$ is the number of all the possible paths between $N_{>k}$ vertices, $E_{>k}$ is the number of vertices of $N_{>k}$ nodes having degree $>k$. The effect of a rich club reduces system stability, which means that if RCE increases, then a perturbation can be more easily transmitted through the network.

The times series RCE for $k = 4$ obtained in the study is shown in Figure 10, while its distribution in the market states determined is presented in later figure. They show the results for the dynamic MST with $\phi(4)$.

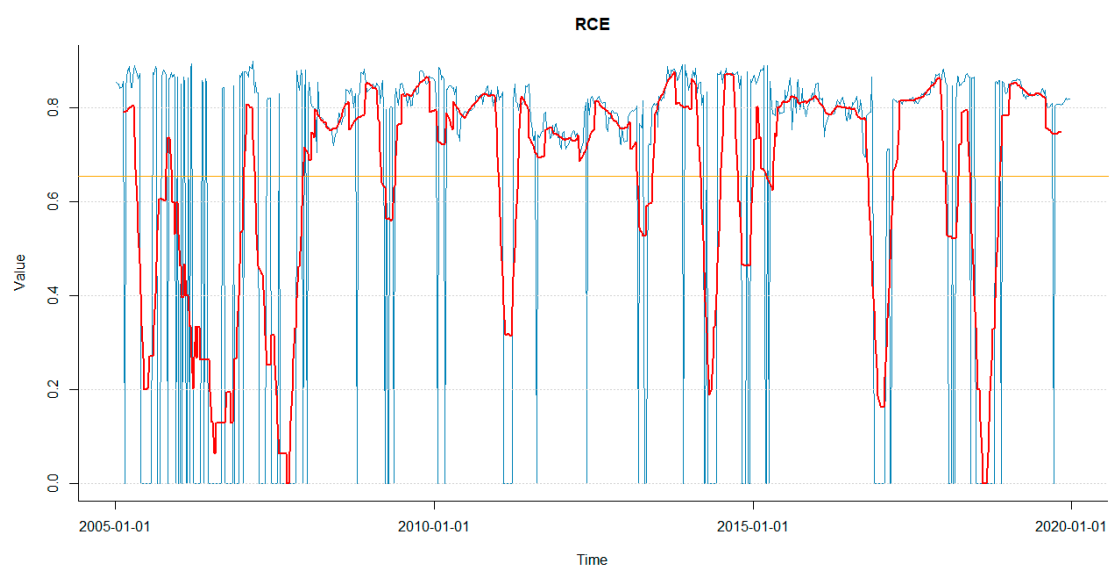


Figure 10. Rich club effect (RCE) during the period from 7 January 2005 to 20 December 2019. Red lines depict the 13 periods of the moving average smoothed series. Source: Own study.

4.10. Assortativity

The concept of assortativity was introduced by [Newman \(2002\)](#) and has been intensively studied since then. Assortativity is a graphic measure. It shows to what extent nodes in the network associate to one another by similarity or opposition (positive or negative mating). Basically, the network's assortativity is determined for the degree (number of direct neighbors) of nodes in the network. Assortativity is expressed as a scalar $-1 \leq \rho \leq 1$. The network is said to be assortative when high-degree nodes are mostly connected to other high-degree nodes while low-degree nodes are mostly connected to other low-degree nodes. The network is said to be non-assortative when high-degree nodes are connected mostly to low-degree nodes and low-degree nodes are mostly connected to high-degree nodes. Assortativity provides information on the structure of the network, but also on its dynamic behavior and robustness.

The assortativity time series is shown in Figure 11.

Assortativity is negative, which means that in each state the tree is rather non-assortative, i.e., the vertices tend to connect rather as negative mating, which also confirms the previously described property of the network to be scale-free.

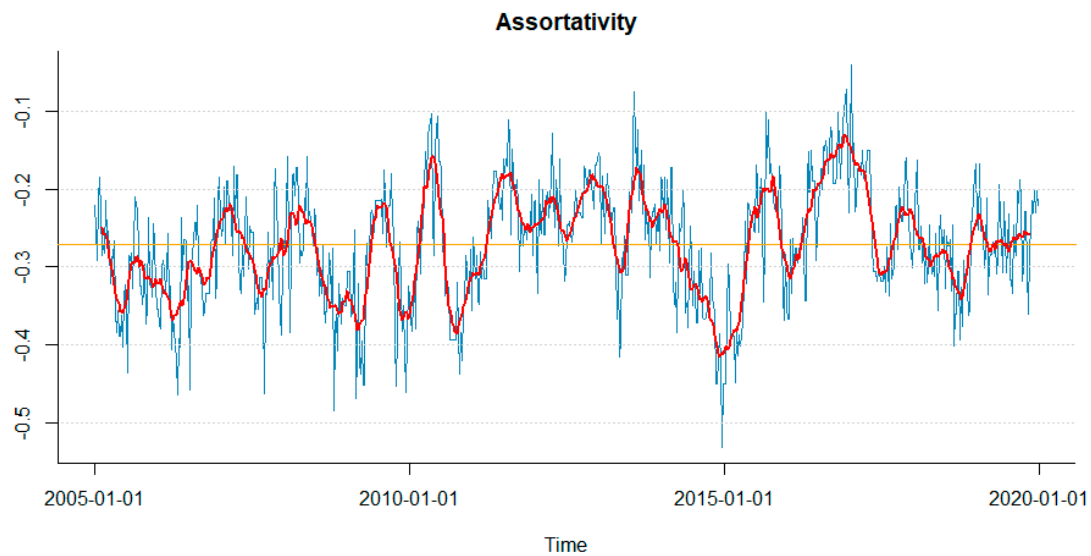


Figure 11. Assortativity during the period from 7 January 2005 to 20 December 2019. Red lines depict the 13 periods of the moving average smoothed series. Source: Own study.

Based on the time series of MST topological indicators, we determined a time partition into four periods:

- The period which we call normal state—normal (N).
- A period of two subprime crises and excessive public debt, which began in 2008 and lasted until around 2013. This period in our time series falls exactly between 8 February 2008 and 1 March 2013—subprime mortgage crisis (SMC).
- The period of crisis associated with the beginning of the migration crisis in Europe, falling on 2015/2016. This period on our time series falls exactly between 7 August 2015 and on 23 September 2016—immigrant (I).
- The period of the beginning of the crisis in the countries of the European Union related to the crisis in France associated with strikes, and in Italy due to the ever-growing public debt (which is now seven times higher than the debt in Greece), falling at the turn of 2017 and 2018. In our case it is exactly the period from 21 April 2017 until 11 May 2018—France and Italy crisis (FIC).

The charts below (Figure 12) present the expected values of the relevant MST topological indicators in the different market states. The results confirm the above description of indicators during crises and in a normal state. Putting together the indicators allows us to compare their behavior in four different states. Clearly, the indicators behave differently during crises. It is clearly apparent from the Kruskal–Wallis rank sum test results (Table 1) and the post-hoc analysis performed using the Conover–Inman test (Table 2)². In the state N, APL and diameter is higher, while maximum degree is lower than in the crisis states. This means MST is stretching. The insurer with the largest number of connections has actually fewer connections than during the crises. RCE varies, but the average—marked with a red dot—is smaller, i.e., the stability of the network is higher. The network assortativity in each state is at a similar, negative level, i.e., the network does not vary, remaining constantly similar. Connections are established by negative mating. High degree companies are linked to low degree ones. Since alpha is close to 2, MSTs are scale-free, but the average alpha increases during the period N.

² We used nonparametric tests since none of the indicators satisfied the normal distribution requirement.

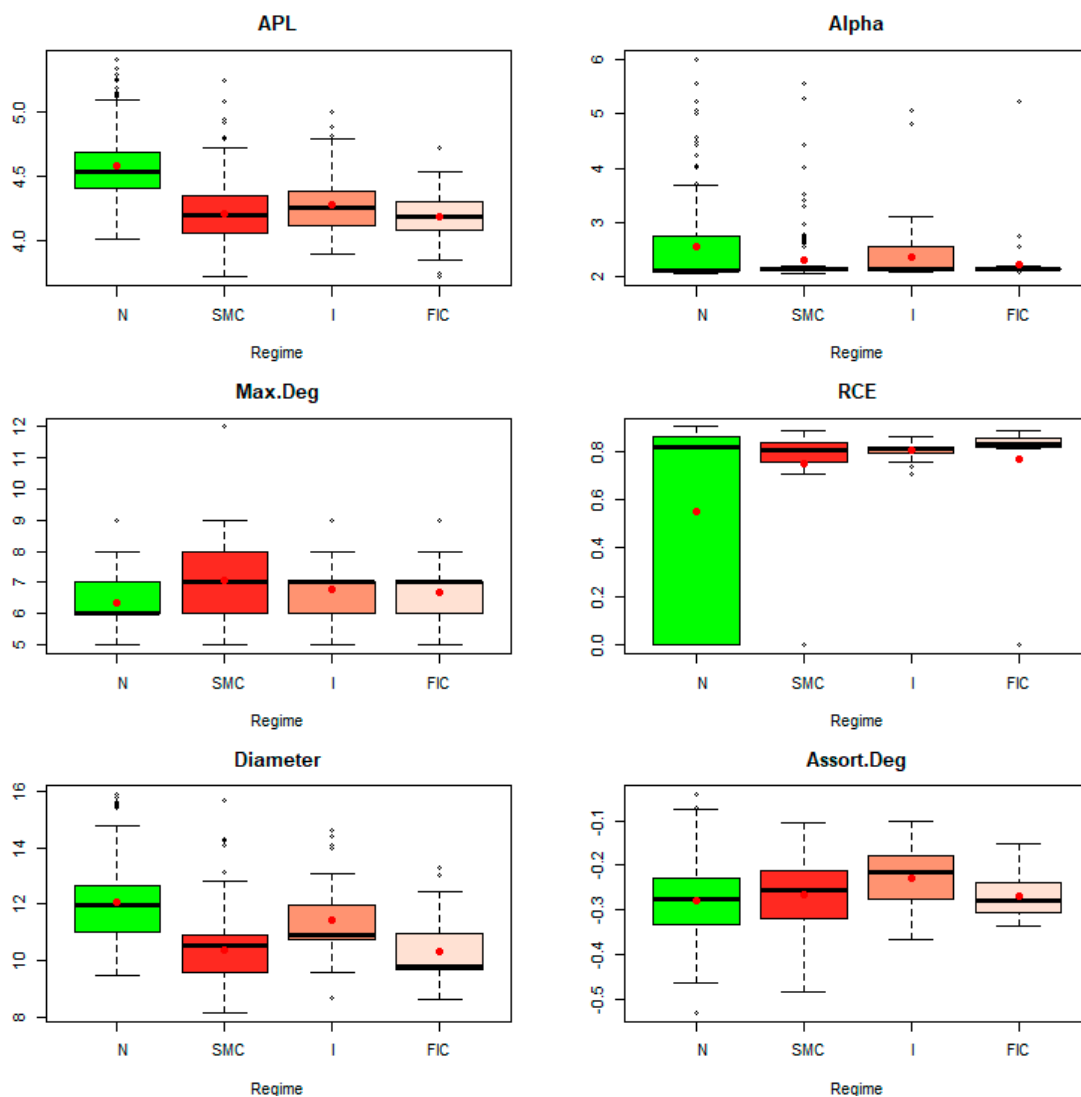


Figure 12. Distribution of MST topological indicators in different market states. Source: Own study.

Table 1. Kruskal–Wallis rank sum test results.

Indicator	Kruskal–Wallis chi-Squared	<i>p</i> -Value
APL	347.78	$<2.2 \times 10^{-16}$
Alpha	9.35	0.02499
Max. Deg	99.63	$<2.2 \times 10^{-16}$
RCE	15.34	0.00155
Diameter	269.03	$<2.2 \times 10^{-16}$
Assort. Deg	25.60	1.155×10^{-5}

Source: Own study.

Special attention is drawn to the RCE indicator (Figure 12), whose average value in the state N is very different from the average in the remaining distinguished states. By analyzing in more detail (Figure 13), we note that in the states presented RCE is high, which means that the way the vertices are connected to one another is such that the highest degree vertices are linked together. Potentially, this creates the possibility of transferring turbulences. In the normal states, the series shows an important variability and the average RCE is high. In the state N, the mean is lower. RCE takes the value zero many times. This means that there are no vertices with four or more edges. MST appears in the form of a stretched chain. It is then more stable than during the SMC, I, or FIC periods.

Table 2. Post-hoc analysis results (Conover–Inman test).

Compared Market States	Difference	p-Value	Signif. ²	LCL	UCL
APL					
N-SMC	307.27	0.0000	***	281.11	333.43
N-I	247.72	0.0000	***	202.00	293.45
N-FIC	318.21	0.0000	***	271.08	365.33
SMC-I	−59.55	0.0135	*	−106.77	−12.33
SMC-FIC	10.93	0.6587		−37.64	59.51
I-FIC	70.48	0.0244	*	9.11	131.85
Alpha					
N-SMC	3.36	0.9135		−57.23	63.94
N-I	−112.92	0.0366	*	−218.81	−7.03
N-FIC	−124.66	0.0252	*	−233.79	−15.53
SMC-I	−116.28	0.0372	*	−225.63	−6.92
SMC-FIC	−128.02	0.0257	*	−240.51	−15.52
I-FIC	−11.74	0.8714		−153.86	130.38
Max.Deg					
N-SMC	−166.35	0.0000	***	−197.31	−135.38
N-I	−108.68	0.0001	***	−162.81	−54.56
N-FIC	−77.98	0.0062	**	−133.76	−22.20
SMC-I	57.66	0.0432	*	1.77	113.56
SMC-FIC	88.36	0.0026	**	30.86	145.86
I-FIC	30.70	0.4070		−41.94	103.34
RCE					
N-SMC	27.31	0.1223		−7.34	61.96
N-I	25.66	0.4058		−34.90	86.23
N-FIC	−99.12	0.0019	**	−161.54	−36.70
SMC-I	−1.64	0.9589		−64.19	60.90
SMC-FIC	−126.43	0.0001	***	−190.77	−62.09
I-FIC	−124.78	0.0027	**	−206.07	−43.50
Diameter					
N-SMC	280.91	0.0000	***	252.47	309.36
N-I	107.97	0.0000	***	58.25	157.69
N-FIC	257.93	0.0000	***	206.69	309.17
SMC-I	−172.94	0.0000	***	−224.29	−121.60
SMC-FIC	−22.99	0.3932		−75.80	29.83
I-FIC	149.95	0.0000	***	83.23	216.68
Assort.Deg					
N-SMC	−46.91	0.0079	**	−81.47	−12.35
N-I	−150.22	0.0000	***	−210.63	−89.81
N-FIC	−27.48	0.3865		−89.74	34.78
SMC-I	−103.31	0.0012	**	−165.70	−40.92
SMC-FIC	19.43	0.5525		−44.75	83.61
I-FIC	122.74	0.0031	**	41.66	203.82

Source: Own study.

² We used nonparametric tests since none of the indicators satisfied the normal distribution requirement.

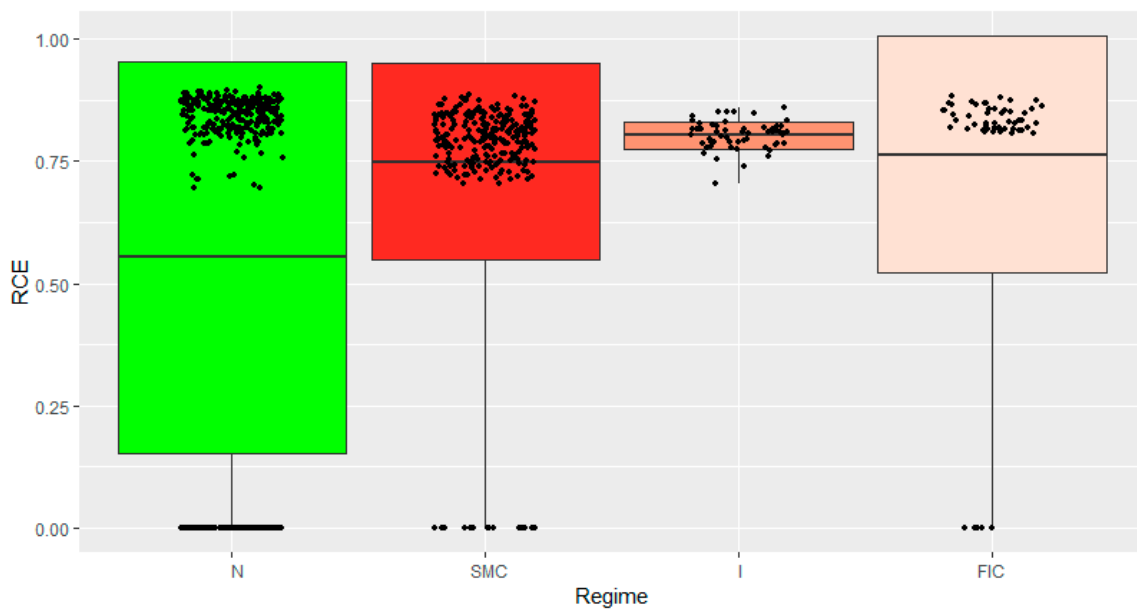


Figure 13. RCE distribution in determined market states based on the mean and the standard deviation for $k = 4$. Source: Own study.

Below (Figure 14) are sample MSTs at selected times: A tree that has a chain-like structure will slow down risk propagation, and one that has a star-shaped structure will foster it.

On Figures 15–17, we present the results obtained for deltaCoVaR. These are, respectively, the average deltaCoVaR value in the period studied, the distribution of this average in the different market states, and the average deltaCoVaR value for each insurer in the period under consideration. They corroborate the fact that insurance companies contribute to systemic risk. This contribution depends on the market state.

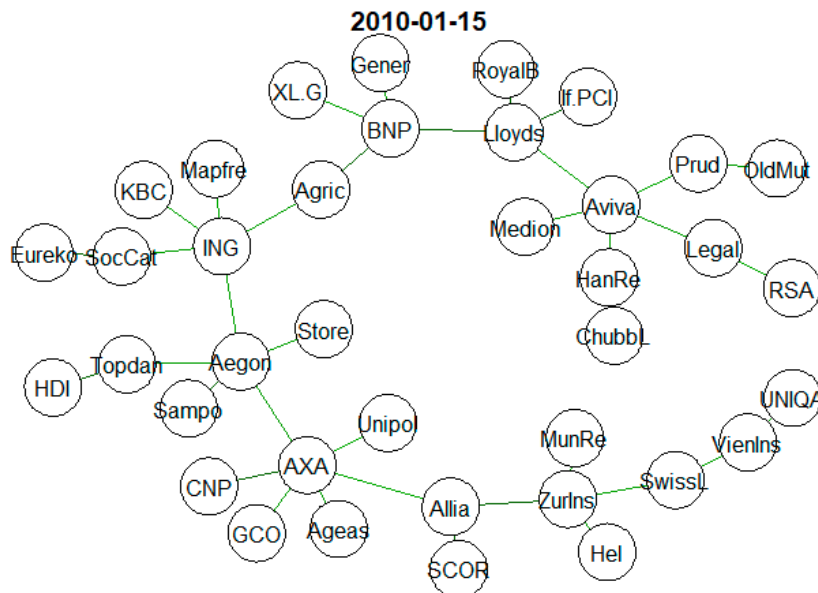


Figure 14. Cont.

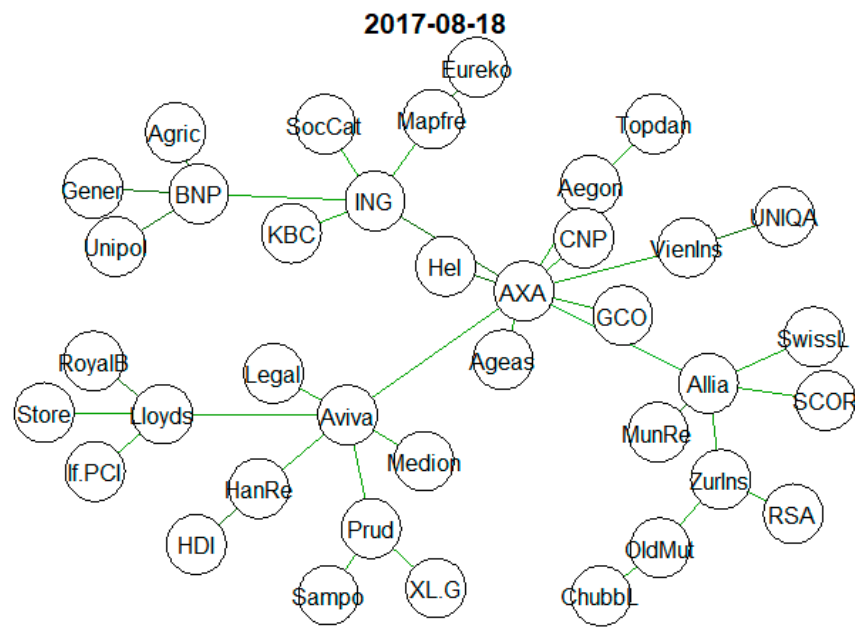


Figure 14. Sample MSTs in two chosen times. Source: Own study.

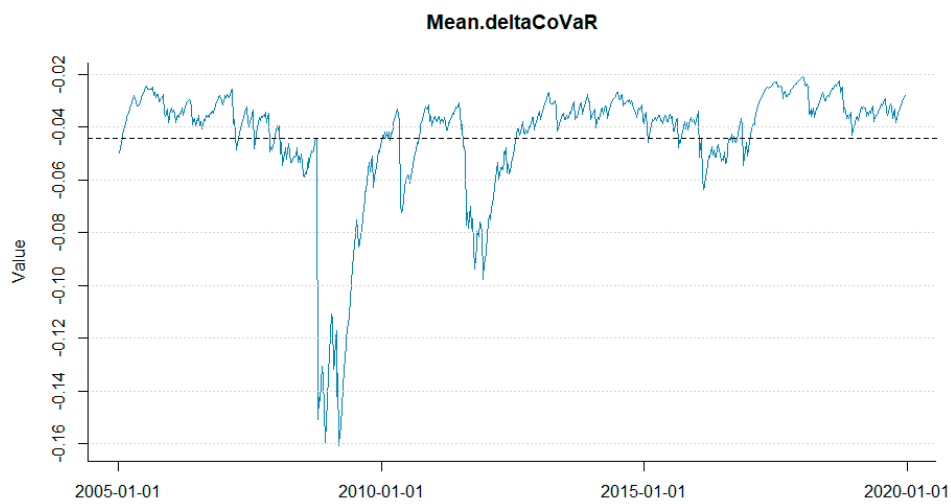


Figure 15. Mean deltaCoVaR. Source: Own study.

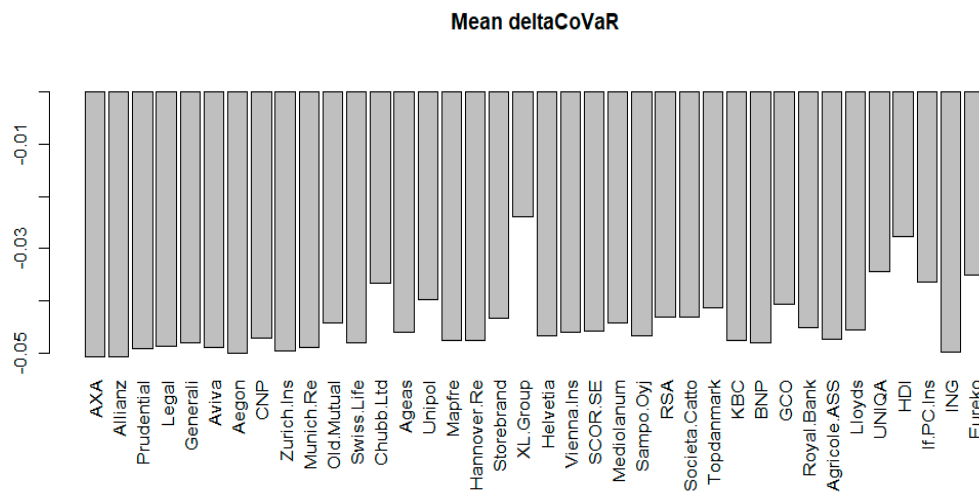


Figure 16. Mean deltaCoVaR for each insurer. Source: Own study.

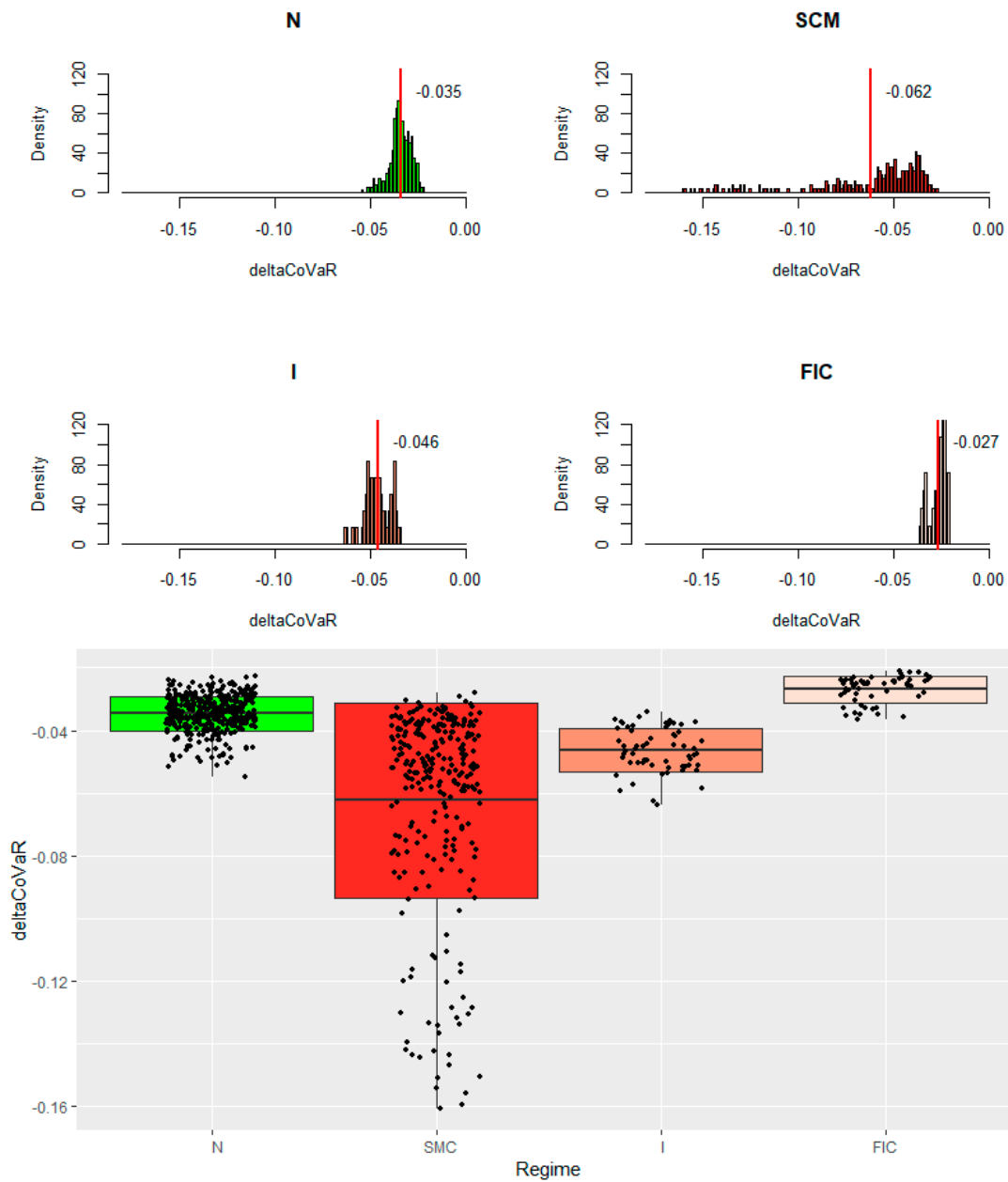


Figure 17. Mean deltaCoVaR distribution in different market states. Source: Own study.

The mean deltaCoVaR chart confirms the fact that insurance companies contribute to systemic risk. deltaCoVaR decreases in highlighted periods of crises.

On average, each company contributes to systemic risk.

The smallest contribution to SR is observed in the FIC and N periods. The largest contribution is in the SMC period. The beginning of immigration was also a period in which we notice an increased contribution to the SR.

5. Conclusions

Empirical results show the usefulness of network topology indicators for detecting and analyzing systemic risk in the insurance sector. In the proposed hybrid model, the analysis of times series, taking into account also the most recent data from the end of 2019, confirms the phenomena occurring on the market. The behavior of the time series reflects each atypical economic or political situation that influenced the insurance market. Periods corresponding to the subprime and excessive public debt

crises stand out, as well as the periods of the beginning of the European immigration crisis, the UE crisis generated by the French strikes' crisis, and the growing sovereign debt crisis in Italy. In the distinguished states, the structure of MST changes along with the market situation. MSTs—their topological indicators are a tool that also allows clustering in the insurance sector and helps determine those companies that are relevant in the entire group. AXA, Allianz, Aegon, Aviva, and non-G-SIIs, ING, and Zurich Insurance play a significant role. These are institutions through which risk may be transferred. They stand out when assessing BC, strength, closeness centrality, and degree. In assessing the indicators for the entire network, we note that in the three periods of crises we have identified, APL and diameter decrease, maximum degree increases, RCE is high, and the assortment is negative. All this means that in the SMC, I, FIC states, MST becomes star-like and compact, which is accompanied by a decrease in system stability, which means that turbulence can be more easily transmitted over the network. Such a network configuration is less resistant to shocks and more susceptible to contagion and transferring the effects of collapses on the financial market. All institutions contribute to SR, and again the largest contribution is due to the previously mentioned companies. When analyzing deltaCoVaR averages, the crisis period again stands out. In the so-called period N, the contribution to SR is the smallest.

Author Contributions: Both authors (A.D., S.W.) contributed to all the sections. All authors have read and agreed to the published version of the manuscript.

Funding: The authors acknowledge support from a subsidy granted to Cracow University of Economics.

Acknowledgments: The authors would like to thank the two anonymous referees for their invaluable comments.

Conflicts of Interest: The authors declare no conflict of interest.

References

- Acharya, Viral V., John Biggs, Hanh T. Le, M. Richardson, and S. Ryan. 2011. Systemic risk and the regulation of insurance companies. In *Regulating Wall Street—The Dodd-Frank Act and the New Architecture of Global Finance*. Edited by V. V. Acharya, T. F. Cooley, M. Richardson and I. Walter. Hoboken: John Wiley & Sons, pp. 241–301.
- Adrian, Tobias, and Markus K. Brunnermeier. 2011. *CoVaR, Working Paper*. New York: Federal Reserve Bank of New York.
- Adrian, Tobias, and Markus K. Brunnermeier. 2016. CoVar. *American Economic Review* 106: 1705–41. [[CrossRef](#)]
- Alves, Ivan, Jeroen Brinkhoff, Stanislav Georgiev, Jean-Cyprien Héam, Iulia Moldovan, and Marco Scotto di Carlo. 2015. *Network Analysis of the EU Insurance Sector*. ESRB Occasional Paper Series 07. Frankfurt: European Systemic Risk Board.
- Bach, Wolfgang, and Tristan Nguyen. 2012. On the systemic relevance of the insurance industry: Is a macroprudential insurance regulation necessary? *Journal of Applied Finance & Banking* 2: 127–49.
- Baluch, Faisal, Stanley Mutenga, and Chris Parsons. 2011. Insurance, systemic risk and the financial crisis. *Geneva Papers on Risk and Insurance—Issues and Practice* 36: 126–63. [[CrossRef](#)]
- Baur, Patrizia, Rudolf Enz, and Aurelia Zanetti. 2003. *Reinsurance—A Systemic Risk?* Zürich: Swiss Reinsurance Company.
- Bavelas, Alex. 1950. Communication patterns in task-oriented groups. *The Journal of the Acoustical Society of America* 22: 725–30. [[CrossRef](#)]
- Bednarczyk, Teresa. 2013. Czy sektor ubezpieczeniowy kreuje ryzyko systemowe? *Studia Oeconomica Posnaniensia* 11: 7–17.
- Bégin, Jean-François, Mathieu Boudreault, Delia A. Doljanu, and Geneviève Gauthier. 2017. Credit and Systemic Risks in the Financial Services Sector: Evidence from the 2008 Global Crisis. *Journal of Risk and Insurance* 86: 263–96. [[CrossRef](#)]
- Bell, Marian, and Benno Keller. 2009. *Insurance and Stability: The Reform of Insurance Regulation*. Zürich: Zurich Financial Services Group.
- Benoit, Sylvain, Jean-Edouard Colliard, Christophe Hurlin, and Christophe Pérignon. 2017. Where the Risks Lie: A Survey on Systemic Risk. *Review of Finance, European Finance Association* 21: 109–52. [[CrossRef](#)]

- Bierth, Christopher, Felix Irresberger, and Gregor N. F. Weiß. 2015. Systemic risk of insurers around the globe. *Journal of Banking & Finance* 55: 232–45. [\[CrossRef\]](#)
- Billio, Monica, Mila Getmansky, Andrew W. Lo, and Liora Pelizzon. 2012. Econometric measures of connectedness and systemic risk in the finance and insurance sectors. *Journal of Financial Economics* 104: 535–59. [\[CrossRef\]](#)
- Bisias, Dimitrios, Mark Flood, Andrew W. Lo, and Stavros Valavanis. 2012. A Survey of Systemic Risk Analytics. *Annual Review of Financial Economics* 4: 255–96. [\[CrossRef\]](#)
- Brownlees, Christian, and Robert F. Engle. 2017. SRISK: A Conditional Capital Shortfall Measure of Systemic Risk. *The Review of Financial Studies* 30: 48–79. [\[CrossRef\]](#)
- Camerer, Colin, and Martin Weber. 1992. Recent developments in modelling preferences: Uncertainty and ambiguity. *Journal of Risk and Uncertainty* 5: 325–70. [\[CrossRef\]](#)
- Chen, Fang, Xuanjuan Chen, Zhenzhen Sun, Tong Yu, and Ming Zhong. 2013a. Systemic risk, financial crisis, and credit risk insurance. *Financial Review* 48: 417–42. [\[CrossRef\]](#)
- Chen, Hua, J. David Cummins, Krupa S. Viswanathan, and Mary A. Weiss. 2013b. Systemic Risk and the Interconnectedness between Banks and Insurers: An Econometric Analysis. *Journal of Risk and Insurance* 81: 623–52. [\[CrossRef\]](#)
- Chen, Hua, J. David Cummins, Krupa S. Viswanathan, and Mary A. Weiss. 2013c. *Systemic Risk Measures in the Insurance Industry: A Copula Approach*. Working Paper. Philadelphia, PA, USA: Temple University.
- Colizza, Vittoria, Alessandro Flammini, M. Angeles Serrano, and Alessandro Vespignani. 2006. Detecting rich-club ordering in complex networks. *Nature Physics* 2: 110–15. [\[CrossRef\]](#)
- Cummins, J. David, and Mary A. Weiss. 2011. *Systemic Risk and the U.S. Insurance Sector*. Working Paper. Philadelphia, PA, USA: Temple University.
- Cummins, J. David, and Mary A. Weiss. 2013. *Systemic Risk and Regulation of the U.S. Insurance Industry*. Working Paper. Philadelphia, PA, USA: Temple University.
- Cummins, J. David, and Mary A. Weiss. 2014. Systemic Risk and the U.S. Insurance Sector. *Journal of Risk and Insurance* 81: 489–528. [\[CrossRef\]](#)
- Czerwińska, Teresa. 2014. Systemic risk in the insurance sector. *Problemy Zarządzania* 12: 41–63. [\[CrossRef\]](#)
- De Bandt, Olivier, and Philipp Hartmann. 2000. *Systemic Risk: A Survey*. Working Paper. Frankfurt, Germany: European Central Bank.
- Denkowska, Anna, and Stanisław Wanat. 2019. A Dynamic MST-deltaCovar Model of Systemic Risk in the European Insurance Sector. *arXiv*, arXiv:2951270.
- Di Cesare, Antonio, and Anna Rogantini Picco. 2018. A Survey of Systemic Risk Indicators. In *Questioni di Economia e Finanza (Occasional Papers)*. Roma: Bank of Italy, p. 458.
- Eling, Martin, and David Antonius Pankoke. 2016. Systemic Risk in the Insurance Sector: A Review and Directions for Future Research. *Risk Management and Insurance Review* 19: 249–84. [\[CrossRef\]](#)
- Fan, Yan, Wolfgang Karl Härdle, Weining Wang, and Lixing Zhu. 2018. Single-Index-Based CoVaR with Very High-Dimensional Covariates. *Journal of Business & Economic Statistics* 36: 212–26.
- Giglio, Stefano, Bryan Kelly, and Seth Pruitt. 2016. Systemic risk and the macroeconomy: An empirical evaluation. *Journal of Financial Economics* 119: 457–71. [\[CrossRef\]](#)
- Härdle, Wolfgang Karl, Weining Wang, and Lining Yu. 2016. TENET: Tail-Event Driven NETWORK Risk. *Journal of Econometrics* 192: 499–513. [\[CrossRef\]](#)
- Harrington, Scott E. 2009. The financial crisis, systemic risk, and the future of insurance regulation. *Journal of Risk and Insurance* 76: 785–819. [\[CrossRef\]](#)
- Hautsch, Nikolaus, Julia Schaumburg, and Melanie Schienle. 2015. Financial Network Systemic Risk Contributions. *Review of Finance* 19: 685–738. [\[CrossRef\]](#)
- Huang, Xin, Hao Zhou, and Haibin Zhu. 2009. A framework for assessing the systemic risk of major financial institutions. *Journal of Banking & Finance* 33: 2036–49.
- IAIS. 2009. *Systemic Risk and the Insurance Sector*. Basel: Bank for International Settlements, International Association of Insurance Supervisors (IAIS), October 25.
- Jajuga, Krzysztof, Marta Karaś, Katarzyna Kuziak, and Witold Szczepaniak. 2017. Ryzyko systemu finansowego. Metody oceny i ich weryfikacja w wybranych krajach. In *Materiały i Studia*. Warszawa: Narodowy Bank Polski, p. 329.

- Jobst, Andreas A. 2014. Systemic risk in the insurance sector: A review of current assessment approaches. *Geneva Papers on Risk and Insurance* 39: 440–70. [\[CrossRef\]](#)
- Joe, Harry. 1997. *Multivariate Models and Dependence Concepts*. London: Chapman-Hall.
- Jurkowska, Aleksandra. 2018. *Polski Sektor Bankowy Wobec Ryzyka Systemowego: Analiza Banków Giełdowych*. Kraków: Wydawnictwo Uniwersytetu Ekonomicznego w Krakowie.
- Kanno, Masayasu. 2016. The network structure and systemic risk in the global non-life insurance market. *Insurance: Mathematics and Economics* 67: 38–53. [\[CrossRef\]](#)
- Kaserer, Christoph, and Christian Klein. 2018. Supplementary Material to ‘Systemic Risk in Financial Markets: How Systemically Important Are Insurers? *Journal of Risk and Insurance* 86: 729–59. [\[CrossRef\]](#)
- Klein, Robert W. 2011. Insurance Market Regulation: Catastrophe Risk, Competition and Systemic Risk. In *Handbook of Insurance*, 2nd ed. Working Paper. Edited by G. Dionne. New York: Springer.
- Knight, Frank H. 1921. *Risk, Uncertainty and Profit*. Chicago: Chicago University Press.
- Koijen, Ralph S. J., and Motohiro Yogo. 2016. Shadow Insurance. *Econometrica* 84: 1265–87. [\[CrossRef\]](#)
- Kou, Gang, Xiangrui Chao, Yi Peng, Fawaz E. Alsaadi, and Enrique Herrera-Viedma. 2019. Machine learning methods for systemic risk analysis in financial sectors. *Technological and Economic Development of Economy* 25: 716–42. [\[CrossRef\]](#)
- Kress, Jeremy C. 2011. Credit default swaps, clearinghouses, and systemic risk: Why centralized counterparties must have access to central bank liquidity. *Harvard Journal of Legislation* 48: 49–93.
- Lautier, Delphine, and Franck Raynaud. 2013. Systemic risk and complex systems: A graph-theory analysis. In *Econophysics of Systemic Risk and Network Dynamics*. Milano: Springer, pp. 19–37.
- Mantegna, Rosario N., and H. Eugene Stanley. 1999. *Introduction to Econophysics: Correlations and Complexity in Finance*. Cambridge: Cambridge University Press.
- Matesanz, David, and Guillermo J. Ortega. 2015. Sovereign public debt crisis in europe. a network analysis. *Physica A: Statistical Mechanics and Its Applications* 436: 756–66. [\[CrossRef\]](#)
- Mühlnickel, Janina, and Gregor N. F. Weiß. 2015. Consolidation and Systemic Risk in the International Insurance Industry. *Journal of Financial Stability* 18: 187–202. [\[CrossRef\]](#)
- Newman, M. 2002. Assortative mixing in networks. *Physical Review Letters* 89: 11. [\[CrossRef\]](#)
- Onnela, Jukka Pekka, Anirban Chakraborti, Kimmo Kaski, and Janos Kertesz. 2002. Dynamic asset trees and portfolio analysis. *The European Physical Journal B-Condensed Matter and Complex Systems* 30: 285–88. [\[CrossRef\]](#)
- Onnela, Jukka Pekka, Anirban Chakraborti, Kimmo Kaski, Janos Kertesz, and Antti Kanto. 2003. Asset trees and asset graphs in financial markets. *Physica Scripta* 2003: 48. [\[CrossRef\]](#)
- Patton, Andrew J. 2006. Modelling asymmetric exchange rate. *International Economic Review* 47: 527–56. [\[CrossRef\]](#)
- Radice, Marc Philippe. 2010. *Systemische Risiken im Versicherungssektor?* Working Paper. Bern, Switzerland: FINMA.
- Rodríguez-Moreno, Maria, and Juan Ignacio Peña. 2013. Systemic Risk Measures: The Simpler the Better? *Journal of Banking & Finance* 37: 1817–31.
- Sensoy, Ahmet, and Benjamin M. Tabak. 2014. Dynamic spanning trees in stock market networks: The case of Asia-Pacific. *Physica A: Statistical Mechanics and Its Applications* 414: 387–402. [\[CrossRef\]](#)
- Tang, Yong, Janson Jie Xiong, Zi-Yang Jia, and Yi-Cheng Zhang. 2018. Complexities in financial network topological dynamics: Modeling of emerging and developed stock markets. *Complexity* 2018: 4680140. [\[CrossRef\]](#)
- Tracy, Ryan, and Erik Holm. 2016. Metlife Wins Bid to Shed ‘Systemically Important’ Label. *Wall Street Journal*, March 30.
- Tversky, Amos, and Daniel Kahneman. 1992. Advances in prospect theory: Cumulative representation of uncertainty. *Journal of Risk and Uncertainty* 5: 297–323. [\[CrossRef\]](#)
- Wanat, Stanisław, and Anna Denkowska. 2018. Dependencies and Systemic risk in the European Insurance Sector: Some New Evidence Based on Copula-DCC-GARCH Model and Selected Clustering Methods. *arXiv*, arXiv:1905.03273.
- Wanat, Stanisław, and Anna Denkowska. 2019. Linkages and Systemic Risk in the European Insurance Sector: Some New Evidence Based on Dynamic Spanning Trees. *arXiv*, arXiv:1908.01142.
- Wang, Gang-Jin, Chi Xie, Peng Zhang, Feng Han, and Shon Chen. 2014. Dynamics of Foreign Exchange Networks: A Time-Varying Copula Approach. In *Hindawi Publishing Corporation Discrete Dynamics in Nature and Society*. London: Hindawi, 11p.

Weiß, Gregor, and Janina Mühlnickel. 2014. Why do some insurers become systemically relevant? *Journal of Financial Stability* 13: 95–117. [\[CrossRef\]](#)

Zweifel, Peter, and Roland Eisen. 2012. *Insurance Economics*. Heidelberg: Springer.



© 2020 by the authors. Licensee MDPI, Basel, Switzerland. This article is an open access article distributed under the terms and conditions of the Creative Commons Attribution (CC BY) license (<http://creativecommons.org/licenses/by/4.0/>).