

Muteba Mwamba, John; Mwambi, Sutene Mwambetania

Article

Assessing market risk in BRICS and oil markets: An application of Markov switching and vine copula

International Journal of Financial Studies

Provided in Cooperation with:

MDPI – Multidisciplinary Digital Publishing Institute, Basel

Suggested Citation: Muteba Mwamba, John; Mwambi, Sutene Mwambetania (2021) : Assessing market risk in BRICS and oil markets: An application of Markov switching and vine copula, International Journal of Financial Studies, ISSN 2227-7072, MDPI, Basel, Vol. 9, Iss. 2, pp. 1-22,
<https://doi.org/10.3390/ijfs9020030>

This Version is available at:

<https://hdl.handle.net/10419/257775>

Standard-Nutzungsbedingungen:

Die Dokumente auf EconStor dürfen zu eigenen wissenschaftlichen Zwecken und zum Privatgebrauch gespeichert und kopiert werden.

Sie dürfen die Dokumente nicht für öffentliche oder kommerzielle Zwecke vervielfältigen, öffentlich ausstellen, öffentlich zugänglich machen, vertreiben oder anderweitig nutzen.

Sofern die Verfasser die Dokumente unter Open-Content-Lizenzen (insbesondere CC-Lizenzen) zur Verfügung gestellt haben sollten, gelten abweichend von diesen Nutzungsbedingungen die in der dort genannten Lizenz gewährten Nutzungsrechte.

Terms of use:

Documents in EconStor may be saved and copied for your personal and scholarly purposes.

You are not to copy documents for public or commercial purposes, to exhibit the documents publicly, to make them publicly available on the internet, or to distribute or otherwise use the documents in public.

If the documents have been made available under an Open Content Licence (especially Creative Commons Licences), you may exercise further usage rights as specified in the indicated licence.



<https://creativecommons.org/licenses/by/4.0/>



Article

Assessing Market Risk in BRICS and Oil Markets: An Application of Markov Switching and Vine Copula

John Weirstrass Muteba Mwamba * and Sutene Mwambetania Mwambi

School of Economics, University of Johannesburg, P.O. Box 524, Auckland Park, Johannesburg 2006, South Africa; sutenem@uj.ac.za

* Correspondence: johnmu@uj.ac.za

Abstract: This paper investigates the dynamic tail dependence risk between BRICS economies and the world energy market, in the context of the COVID-19 financial crisis of 2020, in order to determine optimal investment decisions based on risk metrics. For this purpose, we employ a combination of novel statistical techniques, including Vector Autoregressive (VAR), Markov-switching GJR-GARCH, and vine copula methods. Using a data set consisting of daily stock and world crude oil prices, we find evidence of a structure break in the volatility process, consisting of high and low persistence volatility processes, with a high persistence in the probabilities of transition between lower and higher volatility regimes, as well as the presence of leverage effects. Furthermore, our results based on the C-vine copula confirm the existence of two types of tail dependence: symmetric tail dependence between South Africa and China, South Africa and Russia, and South Africa and India, and asymmetric lower tail dependence between South Africa and Brazil, and South Africa and crude oil. For the purpose of diversification in these markets, we formulate an asset allocation problem using raw returns, MS GARCH returns, and C-vine and R-vine copula-based returns, and optimize it using a Particle Swarm optimization algorithm with a rebalancing strategy. The results demonstrate an inverse relationship between the risk contribution and asset allocation of South Africa and the crude oil market, supporting the existence of a lower tail dependence between them. This suggests that, when South African stocks are in distress, investors tend to shift their holdings in the oil market. Similar results are found between Russia and crude oil, as well as Brazil and crude oil. In the symmetric tail, South African asset allocation is found to have a well-diversified relationship with that of China, Russia, and India, suggesting that these three markets might be good investment destinations when things are not good in South Africa, and vice versa.



Citation: Muteba Mwamba, John Weirstrass, and Sutene Mwambetania Mwambi. 2021. Assessing Market Risk in BRICS and Oil Markets: An Application of Markov Switching and Vine Copula. *International Journal of Financial Studies* 9: 30. <https://doi.org/10.3390/ijfs9020030>

Academic Editor: Tihana Škrinjaric

Received: 28 January 2021

Accepted: 3 May 2021

Published: 31 May 2021

Publisher's Note: MDPI stays neutral with regard to jurisdictional claims in published maps and institutional affiliations.



Copyright: © 2021 by the authors. Licensee MDPI, Basel, Switzerland. This article is an open access article distributed under the terms and conditions of the Creative Commons Attribution (CC BY) license (<https://creativecommons.org/licenses/by/4.0/>).

Keywords: BRICS; Markov-switching; GJR-GARCH; tail dependence; vine copula; conditional value-at-risk

JEL Classification: C20; G10; G15; G19

1. Introduction

Understanding the complex dependence structure and marginal risk characteristics between BRICS stock indices (Brazil, Russia, India, China and South Africa) and the crude oil/energy market (e.g., West Texas Intermediate (WTI) crude oil) is central in empirical finance primarily for risk management. For international investors, researchers and policymakers, this could provide crucial information to construct and allocate wealth to well-diversified asset portfolios. While a number of studies have analyzed this relationship and the impact of oil price changes on equity markets (see, for example, [Lin et al. \(2021\)](#); [Umar \(2017\)](#); [Apergis and Miller \(2009\)](#)), the literature on investigating the combined impact of regime-switching volatility and multivariate copula dependence relationship remains sparse.

By the same token, government regulatory institutions and policymakers have the responsibility of ensuring the financial sustainability of the economy, where crude oil is

one of the most essential global traded commodities driving economic growth. Crude oil functions as the underlying asset class in the pricing of other financial assets. For instance, the current global food supply chain is highly dependent on fuel and the logistics transport systems. Hence, from an economic standpoint, volatility in crude oil prices can have a major impact on the global economy, with the potential to drive food prices higher, thereby inducing inflation and increased volatility in financial markets (see, for example, [Nguyen and Bhatti \(2012\)](#)).

In wealth allocation and risk diversification strategies, investors are more sensitive to portfolio downside risk than the upside risk. Hence, they are more risk-averse to extreme negative returns and negative market sentiments, which induces herd behavior in stock markets, consequently driving market volatility. The current global pandemic caused by the coronavirus (aka COVID-19), coupled with oil price wars, has increased market volatility, impacting portfolio performance and balance sheets gearing (leverage) ratios. Furthermore, this has led to increased uncertainty about the dependence structure between the recent oil price shocks and their impact on stock market performance in developing economies, primarily due to their heavy reliance on oil as a commodity.

It has been well-documented that portfolio embedded risk measures are directly associated with the dependence structure of portfolio risk factors (see, [Brechmann and Czado \(2013\)](#); [Kole et al. \(2007\)](#)). For example, [Junker and May \(2005\)](#) alluded to the fact that, when aggregating financial risk on a portfolio, it is important to understand the dependence structure among risk factors. Since the establishment of BRICS group economies in 2009, several empirical studies have been conducted using novel methodological approaches, to understand the contagion and spillover effects in BRICS economies with other financial markets and, in particular, other alternative asset classes such as precious metals and cryptocurrencies (see, [Jiang et al. \(2019\)](#); [Peng \(2020\)](#); [Thampanya et al. \(2020\)](#)).

At the center of these lie the multivariate generalizations of GARCH models, first introduced by [Bollerslev \(1990\)](#) and [Engle \(2002\)](#), along with a number of other researchers in the field, who have attempted to address the existence and persistence of the conditional volatility problem in financial assets and how it helps in portfolio diversification and asset allocation. These models have undoubtedly emerged as the most popular tools that offer flexibility for capturing the dynamics of conditional variance and covariance between markets and, in turn aid with the interpretation of the multifaceted dependence structure.

For instance, a study by [Morema and Bonga-Bonga \(2020\)](#) used a vector autoregression asymmetric and dynamic conditional correlation generalised autoregressive conditional heteroskedasticity (VAR-ADCC- GARCH) method to assess volatility spillovers and hedge effectiveness between gold, oil, and stock markets. They find significant volatility spillover between the gold and stock markets, oil and stock markets. [Salisu and Gupta \(2020\)](#) employed the GARCH-MIDAS (Generalized Autoregressive Conditional Heteroskedasticity variant of Mixed Data Sampling) model to investigate volatility transmission from BRICS to oil shocks, and found mixed responses of stock volatility to oil shocks. Meanwhile, [Bonga-Bonga \(2018\)](#) assessed the extent of financial contagion between South Africa and other BRICS countries with VAR-DCC-GARCH, and found evidence of cross-transmission and dependence between South Africa and Brazil. [Hassan et al. \(2020\)](#) estimated volatility spillover in Islamic and conventional stock indices and crude oil in BRICS, using Threshold GARCH (TGARCH) and generalized forecast error variance decomposition. They found that significant volatility spillover exists among crude oil, conventional, and Islamic stock, and suggested that investors rebalance portfolios regularly.

Contrary to what others have done, our study contributes to the existing literature on BRICS and oil markets by using novel approaches, in order to overcome some of the weaknesses of traditional methods. These include methods, such as the multivariate-GARCH models which postulate that assets returns follow a multivariate Gaussian distribution or multivariate-Student t distribution (see, for example, [Weiß \(2013\)](#); [Aas and Berg \(2009\)](#)). Multivariate data sets typically presents complex dependence structure, mostly in the lower and upper tails combined with possible structural breaks which cannot simply be

accounted for by the traditional multivariate Student *t* and Gaussian distributions. Furthermore, our approach models portfolio risk by incorporating asset dependence structure under specific market conditions.

Hence, in this study, we employ a Vector Auto Regressive (VAR) model to account for the joint dependence in the mean returns followed by a Markov switching GJR-GARCH to account for regime changing parameters in the volatility dynamics. In addition, we use multivariate vine copula models to account for various dependence patterns in the tail distributions that exist between BRICS economies and the world energy market. The results are then applied to a portfolio optimization problem. Copula models have recently been applied in portfolio optimization (see, for example, [Gatfaoui \(2019\)](#); [Bekiros et al. \(2015\)](#); [Sahamkhadam et al. \(2018\)](#); [Low et al. \(2013\)](#); [de Melo Mendes and Marques \(2012\)](#)).

Given the limitations of the standard symmetric GARCH model which assumes that the variance only depends on the magnitude and not the impact of positive or negative sign of past innovations, we adopt an asymmetric conditional volatility specification. [Nelson \(1991\)](#) proposed the most popular Exponential GARCH (EGARCH) model to capture the asymmetric effects in time-series data. Portfolio asset allocation for risk-averse investors is conducted by minimizing the Conditional Value-at-Risk (CVaR). To achieve optimal asset allocations and risk contribution, a Monte Carlo simulation is performed to forecast asset returns. Portfolio optimization is then achieved by a Particle Swarm Optimization (PSO), a nature inspired evolutionary algorithm adapted from social swarm behaviour which offers the advantage of simplicity and non-derivative (for details, see for example, [Boussaïd et al. \(2013\)](#) and the references therein).

Our combined VAR-MS-GJR-GARCH-vine copula modeling strategy is flexible and is able to account for leverage effects (asymmetry), regime-switching volatility, and the pairwise dependence structure in asset returns. This empirical study also provides a degree of robustness to capture outliers in the return series. Hence, the resulting information obtained could be used to drive policy recommendations, as well as to improve hedging strategies, portfolio risk management, and portfolio rebalancing strategies (see, for example, [Ji et al. \(2018\)](#); [Bouri et al. \(2018\)](#); [Hernandez \(2014\)](#) and [Salisu and Gupta \(2020\)](#)).

There is an abundance of literature that has discussed the theory of short and long run volatilities of stock market returns and the corresponding correlations (see, for example, the study of [Sensoy et al. \(2015\)](#)). A few such studies include the most recent study in [McIver and Kang \(2020\)](#), who proposed a multivariate dynamic equicorrelation model (DECO-GJR-GARCH), introduced by [Engle and Kelly \(2012\)](#) in order to overcome the curse of dimensionality of the Dynamic Conditional Correlation (DCC) GARCH. This study examined the dynamics of spillovers between BRICS and U.S. stock markets, and conclude that the U.S., Brazilian, and Chinese markets are major sources of volatility, whereas the Russian, Indian, and South African markets are mostly on the receiving end.

A different approach has been conducted in [Kocaarslan et al. \(2017\)](#), in which the authors investigated the impact of volatility between BRIC and U.S. stock markets with a combination of quantile regressions and time-varying asymmetric dynamic conditional correlation (aDCC) GARCH, and found volatility asymmetries between BRIC and U.S. equity markets. [Mensi et al. \(2016\)](#) examined the dynamics of spillovers between the BRICS and U.S. stock markets using multivariate Dynamic Conditional Correlation Fractionally Integrated Asymmetric Power ARCH (DCC-FIAPARCH), which features a long-memory property in time-series data, and found that Brazil and China are the major sources of spillover effects. [Bhar and Nikolova \(2009\)](#) found a negative interdependence between the BRICS and other markets.

Since the seminal paper of [Sklar \(1959\)](#), copula models have recently gained popularity as robust tools with which to quantify non-linear dependencies and non-Gaussian returns in financial markets, due to their flexibility in capturing and modeling the dependence structure separately from the distribution margins, without loss of information in the joint distribution. In particular, vine copulas, which are a class of copulas, also known as pairwise copula constructions (PCCs), were first introduced in [Aas et al. \(2009\)](#)

as more efficient techniques built from graph theory, in order to model high-dimensional dependence structures. An early application to financial economics using a GARCH filter can be found in [Brechmann and Czado \(2013\)](#). A study by [Kumar et al. \(2019\)](#) examined the dependence structure between the BRICS stock and foreign exchange markets using dependence-switching copula. They found symmetric tail dependence during negative correlation regimes for all countries (with the exception of Russia) and found asymmetric dependencies for all countries during positive correlation regimes. An application utilizing a combination of GARCH and copula models can be found in [Hou et al. \(2019\)](#), where evidence on the volatility spillover between fuel oil and stock index futures markets in China was examined, using a DCC-GARCH model to quantify the non-linear interdependences.

Another recent similar studies was [BenSaida \(2018\)](#), in which the authors investigated the contagion effect in European sovereign debt markets and demonstrated the better performance of regime-switching copula models, in comparison to the single-regime copula. Meanwhile, [Sui and Sun \(2016\)](#) used a Vector Autoregressive model (VAR) without the volatility structure to test spillover effects. They found U.S. shocks to significantly influence stock markets in Brazil, China, and South Africa. [Chkili and Nguyen \(2014\)](#) complimented this study by adopting a Markov-switching VAR framework with regime shifts in both the mean and variance models. Their model choice allows for the detection of probable regime shifts in stock market returns, and also assess the impact of financial crises on the stock market volatility.

More copula approaches can be found in [Kenourgios et al. \(2011\)](#), where financial contagion in (BRIC) and two developed markets (U.S. and U.K.) were investigated using a regime-switching copula combined with a GARCH model. This study used a multivariate time-varying asymmetric regime-switching copula model, with marginals assumed to follow a GJR-GARCH framework. In another setting, [Mba and Mwambi \(2020\)](#) employed Markov-switching GARCH to quantify risk in a cryptocurrency portfolio selection and optimization problem.

Clearly, there is a vast literature detailing innovative methodological approaches, with mixed findings on the direction and interdependence between BRICS and crude oil markets. However, few studies have taken into account the impact of regime-switching volatility markets and accounted for the joint dependency structure of BRICS and oil markets, in order to assess portfolio diversification benefits and marginal risk contributions. Hence, this study addresses a research gap as an opportunity to contribute to the existing literature, by exploring the construction of an alternative model, which can capture complex dependence structures and correctly account for downside risk in asset portfolios.

The remainder of this paper is organized as follows: Section 2 provides the adopted methodological background. Section 3 outlines the data descriptive statistics of BRICS and crude oil market indices, together with a detailed summary of the empirical findings. Finally, Section 4 concludes the paper.

2. Econometric Modeling Framework

In this section, we present a combination of three econometric methodological approaches to achieve our main objectives of this study. Section 2.1 begins with the theoretical construction of a vector autoregression model (VAR(2)) for the mean equation. This allows us to investigate the return transmission effects between the BRICS and crude oil return series. Section 2.2 builds on the results obtained from the VAR(2) model and specifies the univariate conditional volatility model, based on a two-state Markov-switching GJR-GARCH process to account for series asymmetries, leverage effects and regime changes in the conditional variance thus, relaxing the strict assumption of fitting constant GJR-GARCH parameters. Section 2.4 uses the filtered returns obtained from the MS-GJR-GARCH process to construct the multivariate copula model, which is useful to model the dependence structure (inter-linkages) between asset returns.

2.1. Specification of VAR(2) Model

In the first step of the estimation process, we consider a d -dimensional random vector of asset log-returns, $r_{i,t} = \ln \frac{P_{i,t}}{P_{i,t-1}}$, where $r_{i,t}$ is the return of asset i at time t and $P_{i,t}$ is asset closing price at time t . Then, the vector autoregression model, VAR(2), is a multivariate time-series model that specifies the linear dynamical relationship among assets and satisfies the following equation:

$$\begin{aligned} r_{1,t} &= \alpha_1 + \beta_{11,1}r_{1,t-1} + \dots + \beta_{1d,1}r_{d,t-1} + \beta_{11,2}r_{1,t-2} + \dots + \beta_{1d,2}r_{d,t-2} + \varepsilon_{1,t} \\ r_{2,t} &= \alpha_2 + \beta_{21,1}r_{1,t-1} + \dots + \beta_{2d,1}r_{d,t-1} + \beta_{21,2}r_{1,t-2} + \dots + \beta_{2d,2}r_{d,t-2} + \varepsilon_{2,t} \\ &\vdots \\ r_{d,t} &= \alpha_d + \beta_{d1,1}r_{1,t-1} + \dots + \beta_{dd,1}r_{d,t-1} + \beta_{d1,2}r_{1,t-2} + \dots + \beta_{dd,2}r_{d,t-2} + \varepsilon_{d,t} \end{aligned} \tag{1}$$

where $t \in T$ is the number of observations; T is called the sample size or time-series length; the parameters $\beta_{ij,p}$ ($i = 1, \dots, d, j = (1, \dots, d), p = 1, 2$) are fixed model coefficients, where p denotes the lag length; $\alpha_i = (1, \dots, d)'$ forms a fixed $(d \times 1)$ vector of intercepts; and $\varepsilon_t = (\varepsilon_{1t}, \dots, \varepsilon_{dt})'$ is a d -dimensional vector of white noise or innovation process, such that $\mathbb{E}(\varepsilon_t) = 0$ and the covariance $\mathbb{E}(\varepsilon_t, \varepsilon_t') = \Sigma_{\varepsilon_t}$ and $\mathbb{E}(\varepsilon_s, \varepsilon_t') = 0, t \neq s$. The covariance matrix Σ_{ε_t} is assumed to be non-singular, if not otherwise stated. All variables in the system are simultaneously estimated and each variable r_{it} is expressed as a linear function of the lag 1 and lag 2 values of all other variables in the system.

2.2. Markov-Switching-GJR-GARCH Models

In the second step of estimation, we use the filtered residuals obtained from the VAR(2) model described in Section 2.1 to model the unconditional volatility using an asymmetric time-varying GJR-GARCH process, proposed by Glosten et al. (1993)¹, with skewed Student's t innovations proposed by Hansen (1994). Another popular choice is the fat tailed generalized error distribution (GED) proposed by Nelson (1991) and a standardized skewed Student t distribution proposed by Lambert and Laurent (2001). Specifically, we adopted a two-state Markov-switching GJR-GARCH(1,1) with skewed Student's t innovations to account for regime-switching volatility, fat tails, and skewness (see Ardia et al. (2019); Ardia et al. (2018); Haas et al. (2004)). Thus, the model specification for the conditional variance satisfies the following equation:

$$\begin{aligned} r_{k,i,t} | S_{it}, I_{k,i,t-1} &= \sigma_{k,i,t} z_{k,i,t} \\ z_{k,i,t} &\sim sstd(0, 1, \nu_{k,i}, \zeta_{k,i}) \\ \sigma_{k,i,t}^2 &= \omega_{k,i} + (\alpha_{k,i,1} + \alpha_{k,i,2} \mathbb{I}_{r_{k,i,t-1}}) r_{k,i,t-1}^2 + \beta_{k,i} \sigma_{k,i,t-1}^2, \quad i = 1, \dots, d; k = 1, 2 \\ \text{where } \mathbb{I}_{r_{k,i,t-1}} &= \begin{cases} 0 & \text{if } r_{k,i,t-1} \geq 0 \quad (\text{good news}) \\ 1 & \text{if } r_{k,i,t-1} < 0 \quad (\text{bad news}) \end{cases} \end{aligned} \tag{2}$$

where $r_{k,i,t}$ are pre-filtered residuals (marginals) obtained from the VAR(2) conditional mean Equation (1), $\sigma_{k,i,t}$ is the conditional volatility at time t , the innovations $\{z_{k,i,t}\}$ are i.i.d. random variables distributed according to the skew Student's t distribution with zero mean and unit variance, and $\nu_{k,i}, \zeta_{k,i}$ are shape (degrees of freedom) and scale parameters, respectively. The assumption of skewed Student's t is flexible and suitable when capturing fat tails and skewness (refer to Hansen (1994); Trottier and Ardia (2016)). $I_{k,i,t-1}, l > 0$ is the information set observed at time $t - 1$, the parameters satisfy $\omega_{k,i} > 0, \alpha_{k,i,j} > 0, j = 1, 2$ and $\beta_{k,i} > 0$, in order to guarantee positive variance. The condition for covariance stationarity in each regime is satisfied by ensuring that $\alpha_{k,i,1} + \frac{1}{2} \alpha_{k,i,2} + \beta_{k,i} < 1$ ($k = 1, 2$). $\mathbb{I}_{r_{k,i,t-1}}$ is an indicator function, which controls the leverage effect and takes a value of 1 if the conditions hold, being zero otherwise. The coefficient $\alpha_{k,i,2}$ is a state-dependent variable which captures the degree of asymmetry in the conditional volatility, due to the impact of positive and negative shocks.

Hence, the flexibility of the MS-GJR-GARCH model allows for both good news $r_{k,i,t-1} > 0$ and bad news $r_{k,i,t-1} < 0$ to have different volatility effects on the conditional variance of returns. Thus, good news in the market will have $\alpha_{k,i,1}$ impact on volatility, whereas, bad news will have a combined impact of $\alpha_{k,i,1} + \alpha_{k,i,2}$ and, when $\alpha_{k,i,2} > 0$, a leverage effect exists; hence, negative shocks will increase volatility more than positive shocks and the leverage will increase. When $\alpha_{k,i,2} < 0$, positive shocks will increase volatility more than negative shocks. The model remains acceptable even when $\alpha_{k,i,2} < 0$.

2.3. Transition Probabilities

As we do not know which state the process is in at any given time, we can estimate the probabilities of a series transitioning from one state to another. Using a two-state regime, the Markov probability of switching regime at time t can be formulated as follows:

$$p_{ij} = Pr(s_t = j | s_{t-1} = i), \text{ for } i, j \in s, t = 0, 1, 2, \dots \tag{3}$$

$$P = \begin{bmatrix} p_{11} & p_{12} \\ p_{21} & q_{22} \end{bmatrix} = \begin{bmatrix} p & 1 - p \\ 1 - q & q \end{bmatrix},$$

where the distribution of s_t depends on the distribution of s_{t-1} and $P = (p_{ij})$ denotes a square matrix of transition probabilities, where each row sums to 1. The entry $(p_{i,j})$ is the conditional probability that a series is in state i (regime i) at time t and transitions to state j at time $(t + 1)$.

2.4. Copula Models

In this last step of model specification, we use the standardized filtered innovations, obtained from the univariate Markov-switching MS-GJR-GARCH(1,1) process in Equation (2), to model the joint distribution. Define a d -dimensional random vector $\mathbf{x} = (x_1, \dots, x_d)$ having n independent and identically distributed random samples, such that $\mathbf{x}_1 = (x_{11}, \dots, x_{1d}), \dots, \mathbf{x}_n = (x_{n1}, \dots, x_{nd})$. We use the first part of Sklar’s theorem (Sklar (1959)), which states that any multivariate joint distribution function can be decomposed in terms of cumulative univariate marginal distribution functions and a copula function, such that

$$F(\mathbf{x}) : = F(x_1, \dots, x_d) = C(F_1(x_1), \dots, F_d(x_d)), \mathbf{x} \in \mathbb{R}^d, \tag{4}$$

where the function $C : [0, 1]^d \mapsto [0, 1]$ defines the copula of the distribution function $F(\cdot)$, which connects (couples) the marginals F_1, \dots, F_d and $F_i(x_i) = F(\infty, \dots, x_i, \dots, \infty)$, $x_i \in \mathbb{R}$. Hence, a copula model contains all the necessary information to describe the dependency structure of a set of random variables. This copula representation allows us to model the marginal distribution and the dependency structure in separate ways. The corresponding density, $f(\cdot)$, with univariate densities $f_1(x_1), f_2(x_2), \dots, f_d(x_d)$ can be written as follows:

$$f(\mathbf{x}) : = f(x_1, \dots, x_d) = c(F_1(x_1), \dots, F_d(x_d)) \prod_{i=1}^d f_i(x_i), \mathbf{x} \in \mathbb{R}^d, \tag{5}$$

where $c(u_1, \dots, u_d) = \frac{\partial^d C(u_1, \dots, u_d)}{\partial u_1 \partial u_2 \dots \partial u_d}$ is the density of the d -dimensional copula $C(u_1, \dots, u_d)$ and $u_i = F_i(x_i)$.

Conversely, given a d -dimensional copula $C(\cdot)$ and univariate distribution functions (dfs) $F_1, \dots, F_d, F(\cdot)$ defined by Equation (4) is a d -dimensional df with margins F_1, \dots, F_d , expressed as follows:

$$C(\mathbf{u}) : = C(u_1, \dots, u_d) = F\left(F_1^{-1}(u_1), \dots, F_d^{-1}(u_d)\right), \mathbf{u} \in [0, 1]^d. \tag{6}$$

It is the second part of the theorem that is more attractive in many applications of financial economics, which quantifies the dependency structure. For a complete theoretical treatment of copulas, the reader is referred to the references in [Nelsen \(2007\)](#) and [Cherubini et al. \(2004\)](#).

2.5. Measure of Correlation and Tail Dependence Coefficients

Kendall's tau ($\tau \in [-1, 1]$) and Spearman's rho ($\rho_s \in [-1, 1]$) are dependence measures which are rank-based and, therefore, invariant with respect to monotone transformations of the marginals (see, [Czado \(2019\)](#)). Let x_1, x_2 denote arbitrary continuous random variables. Then, Kendall's (τ) and Spearman's (ρ_s) dependence measures can be expressed in terms of the copula as follows,

$$\tau = 4 \int_{[0,1]^2} C(u_1, u_2) dC(u_1, u_2) - 1 \quad \text{and} \quad \rho_s = 12 \int_{[0,1]^2} u_1, u_2 dC(u_1, u_2) - 3. \quad (7)$$

The coefficients of lower λ_l and upper λ_u tail dependence for x_1, x_2 captures the dependence structure in the (joint) tails of a bivariate distribution with a copula $C(\cdot)$ distribution defined as follows,

$$\begin{aligned} \lambda_u &= \lim_{t \rightarrow 1^-} Pr(x_1 > F_1^{-1}(t) | x_2 > F_2^{-1}(t)) = \lim_{t \rightarrow 1^-} \frac{1 - 2t + C(t, t)}{1 - t} \\ \lambda_l &= \lim_{t \rightarrow 0^+} Pr(x_1 \leq F_1^{-1}(t) | x_2 \leq F_2^{-1}(t)) = \lim_{t \rightarrow 0^+} \frac{C(t, t)}{t}. \end{aligned} \quad (8)$$

2.6. Vine Copula Models

This section follows from Section 2.4 and presents the construction of vine copulas, which are a special type of multivariate copula that describes the dependence structure between a set of random variables. They use bivariate copulas, also known as pair-construction copulas (PCC), to construct multivariate distributions, as well as to specify the dependence and conditional dependence of selected pairs of random variables and all marginal distribution functions (see, for example, [Joe \(1996\)](#); [Aas et al. \(2009\)](#); [Bedford and Cooke \(2001\)](#)). Hence, the standardized residuals for each marginal distribution estimated from Equation (2) are now considered as independent and identically distributed (i.i.d.) samples generated over time.

Following [Bedford and Cooke \(2002\)](#), let $\mathbf{x} = (x_1, \dots, x_d) \sim F(\mathbf{x})$ with joint density function $f(x_1, \dots, x_d)$. Then, from elementary distribution theory and performing recursive conditioning, Equation (5) can be decomposed (factorized) into products of conditional densities, as follows:

$$f(\mathbf{x}) : = f(x_1, \dots, x_d) = f_1(x_1) \cdot f_{2|1}(x_2|x_1) \cdot f_{3|2,1}(x_3|x_1, x_2) \cdots f_{d|1:(d-1)}(x_d|x_1 \cdots x_{d-1}). \quad (9)$$

For the vine copula approach, [Bedford and Cooke \(2001\)](#) proposed graphical models, known as Canonical vine (C-vine) and Drawable vine (D-vine) trees. In a C-vine tree, each variable is represented by a node and nodes are connected by edges. The collection of all connected nodes forms a tree, with the tree structure containing all of the information about the dependency between each variable, where each root node is modeled by a particular type of bivariate copula. The joint distribution of a regular vine is briefly outlined in Appendix A.

3. Empirical Analysis

3.1. Data

We used a data set consisting of daily stock prices, including stock indices for Brazil, Russia, India, China, South Africa, and crude oil, sourced from Yahoo finance and the Eikon Thomson Reuters database. The data samples ranged from 1 January 2014, to 17 July 2020, giving a total of 1300 daily observations for each asset. This sample period included

the 2020 period featuring the current coronavirus-related stock and oil market crashes. Prices were converted to continuous compounded returns using the following relationship: $r_{i,t} = \ln \frac{P_{i,t}}{P_{i,t-1}} \times 100, t = 1, \dots, T = 1300$, where $r_{i,t}$ is return of stock i and $P_{i,t}$ is the closing price of stock i at time t .

Table 1 provides a summary of descriptive statistics based on continuous compounded returns. The sample means are all positive, except for crude oil (−0.0638%), and tall return series exhibit negative skewness and excess kurtosis, indicating a lack of symmetry in the underlying data distribution. This implies a higher probability of incurring extreme losses on the left tail during market downturns. This observation is supported by the small p -values < 5% significance level obtained from the Jarque–Bera test statistic, which leads us to reject the null hypothesis of normality. This indicates the presence asymmetry in asset returns and higher kurtosis in the tails more than the normal distribution (skewness = 0, kurtosis = 3). Our modeling strategy aims to account for this asymmetry by using a skewed Student's t distribution for the innovations in our Markov-Switching GJR-GARCH modeling framework.

Table 1. Descriptive statistics.

	Brazil	Russia	India	China	South Africa	Crude Oil
Mean%	0.0522	0.0487	0.0423	0.0346	0.0149	−0.0638
Min%	−15.99	−8.70	−13.90	−10.83	−10.23	−32.44
Max%	13.02	9.36	8.40	10.05	7.2610	31.33
STD%	1.9250	1.34	1.22	1.62	1.2220	3.48
Ann SD	30.43	21.31	19.44	25.61	19.33	55.08
Kurtosis	13.02	9.32	20.37	8.01	10.69	20.85
Skewness	−0.8886	−0.4062	−1.5740	−0.6850	−0.8625	−0.5184
JB	9393	4764	23,120	3595	6377	23,700
Q(10)	42.92	30.87	59.44	10.03	10.46	35.82
Q ² (10)	1251.0	316.5	798.5	298.9	1374	1196
acf	0.5520	0.2234	0.2038	0.2130	0.2731	0.3166
Kendall's Tau Correlation Matrix						
Brazil	1	0.223	0.124	0.072	0.212	0.217
Russia	0.223	1	0.202	0.116	0.317	0.177
India	0.124	0.202	1	0.140	0.286	0.044
China	0.072	0.116	0.140	1	0.195	0.056
South Africa	0.212	0.317	0.286	0.195	1	0.122
Crude Oil	0.217	0.177	0.044	0.056	0.122	1

Notes: Both the Jarque–Bera (JB) test for normality and Box–Ljung (LJ) test for autocorrelation at lag 10, (Q(10)), and squared returns Q²(10) test statistics were rejected at the 5% significance level. SD stands for standard deviation, Ann SD stands for annualized standard deviation, and acf represents the autocorrelation function at lag 1.

Figure 1 provides basic insight into the BRICS and world oil markets. They all provide further evidence of asymmetric behavior and dependence structures that need further investigation, through use of our proposed framework.

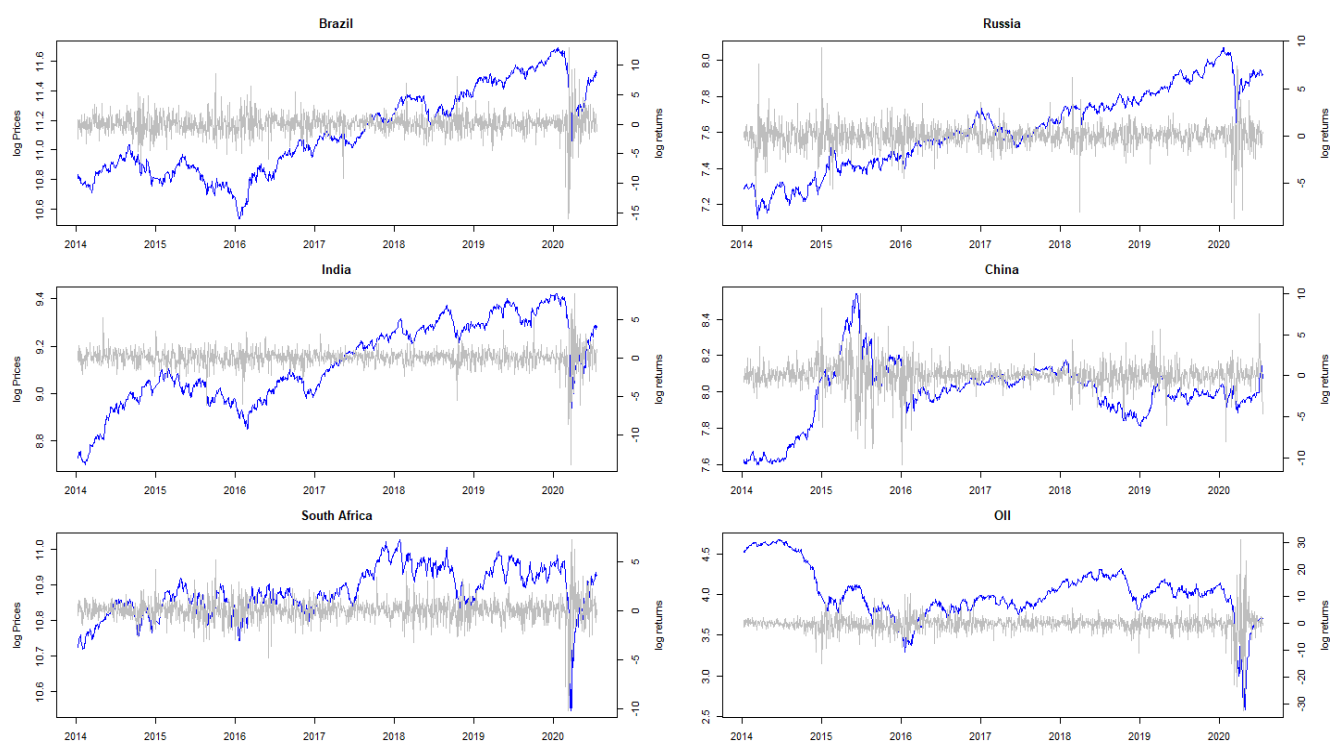


Figure 1. Actual historical closing log-prices and log-returns of BRICS and crude oil from January 2014 to July 2020.

3.2. Estimation Results of VAR(2) Model

Table 2 reports the initial estimation from the vector autoregression VAR(2) model with lag length based on the BIC and AIC information criteria. The results show that the variables were bidirectional in some of the coefficients of the time-series, indicating a strong influence on current values of the dependent variables through lag 1 and lag 2 past values. In summary,

- Brazil's current values were linearly dependent on lag 1 past values of Brazil, India, and crude oil, with p -values statistically significant at the 5% level.
- Russia's current values were linearly dependent on lag 1 past values of Brazil, India, and crude oil and lag 2 values of Russia and South Africa, with p -values statistically significant at the 5% level.
- India's current values were linearly dependent on lag 1 past values of Brazil, Russia, India, and crude oil as well as lag 2 values of Russia and South Africa, with p -values statistically significant at the 5% level.
- China's current values were linearly dependent on lag 1 and lag 2 past values of crude oil, with p -values statistically significant at the 5% level.
- Crude Oil's current values were not linearly dependent on the other BRICS stock returns, with p -values not statistically significant at the 5% level.

These results further highlight that the current BRICS returns are influenced by the past values of crude oil. These findings were also supported by the values of the correlation matrix on residuals, which motivates us to further investigate the overall dependence structure of crude oil with BRICS stock returns.

Table 2. Estimation results of VAR(2) model.

	Dependent Variable					
	Brazil	Russia	India	China	South Africa	Crude Oil
Brazil _{t-1}	-0.084 *** (0.012)	0.083 *** (0.0003)	0.092 *** (0.00001)	0.057 (0.041)	0.064 *** (0.002)	-0.028 (0.640)
Russia _{t-1}	0.033 (0.484)	-0.036 (0.284)	0.068 *** (0.023)	-0.033 (0.414)	0.029 (0.322)	-0.043 (0.620)
India _{t-1}	-0.112 *** (0.037)	-0.124 *** (0.001)	-0.093 *** (0.005)	-0.041 (0.358)	-0.135 *** (0.00005)	0.061 (0.530)
China _{t-1}	-0.032 (0.358)	-0.021 (0.375)	-0.029 (0.177)	0.012 (0.676)	-0.037 (0.082)	-0.048 (0.448)
S.Africa _{t-1}	0.046 (0.442)	0.059 (0.152)	0.039 (0.289)	0.105 *** (0.035)	0.005 (0.902)	0.066 (0.541)
Crude.oil _{t-1}	0.044 *** (0.007)	0.035 *** (0.002)	0.043 *** (0.00003)	0.038 *** (0.006)	0.066 *** (0.000)	-0.017 (0.564)
Brazil _{t-2}	-0.021 (0.526)	-0.001 (0.980)	0.041 (0.047)	0.016 (0.578)	0.043 (0.040)	0.066 (0.283)
Russia _{t-2}	-0.040 (0.405)	0.008 (0.814)	-0.105 *** (0.0004)	0.011 (0.783)	-0.017 (0.563)	0.141 (0.107)
India _{t-2}	0.015 (0.782)	-0.038 (0.300)	0.005 (0.869)	0.005 (0.911)	0.033 (0.322)	-0.058 (0.549)
China _{t-2}	-0.056 (0.107)	-0.013 (0.595)	-0.018 (0.392)	-0.005 (0.864)	-0.011 (0.595)	-0.036 (0.564)
S.Africa _{t-2}	0.105 (0.075)	0.131 *** (0.001)	0.100 *** (0.006)	0.048 (0.336)	0.015 (0.684)	0.136 (0.205)
Crude.oil _{t-2}	0.035 (0.034)	-0.029 ** (0.012)	-0.024 (0.022)	-0.035 *** (0.011)	-0.003 (0.740)	-0.048 (0.115)
Intercept	0.071 (0.182)	0.051 (0.165)	0.042 (0.203)	0.032 (0.481)	0.019 (0.560)	-0.073 (0.451)

Notes: *p*-Values are reported in brackets. ** significant at 5% level; *** significant at 1% level. Portmanteau test: The null hypothesis of no autocorrelation was rejected, as the *p*-value of 0.000 < 0.05 was lower than the significance level.

3.3. Results of Marginal Models Using MS-GJR-GARCH

Table 3 presents in-sample parameter estimates for the MS-GJR-GARCH model with Skew Student's *t* innovations and structural breaks (regime-switching). The table highlights interesting findings, where not all parameter estimates were statistically significant. The results also indicated that the evolution of the volatility process was not homogeneous across the two regimes. The estimated coefficient for the leverage effects, $\alpha_{2,i}$, $i = 1, 2$, was not statistically significant in regime 1 for Brazil, Russia, India, and China. This indicates a lack of leverage effects, which implies the symmetric impact of bad news (negative news) and good news (positive news). Good news had an effect $\alpha_{1,i}$, $i = 1, 2$, while bad news had an impact of $\alpha_{1,i} + \alpha_{2,i}$, $i = 1, 2$. Furthermore, regime 1 was characterized by low unconditional volatility, while regime 2 was characterized by high unconditional volatility. The large degrees of freedom (ν_1, ν_2) suggest that Russia, South Africa, and India could be modeled by normally distributed innovations.

Table 3. Parameter estimates of a two-state MS-GJR-GARCH(1,1) model with skewed Student's t innovations.

	Brazil	Russia	India	China	South Africa	Crude Oil
Regime 1						
α_{01}	0.124 *** (0.002)	0.016 (0.094)	0.008 (0.188)	0.012 (0.024)	0.026 *** (0.001)	0.023 *** (0.000)
α_{11}	0.023 (0.141)	0.046 (0.102)	0.010 (0.201)	0.031 (0.081)	0.00000 (0.493)	0.00002 *** (0.000)
α_{21}	0.046 (0.085)	0.0001 (0.481)	0.006 (0.387)	0.019 (0.265)	0.105 *** (0.0005)	0.050 *** (0.000)
β_1	0.913 *** (0.000)	0.931 *** (0.000)	0.977 *** (0.000)	0.950 *** (0.000)	0.913 *** (0.000)	0.966 *** (0.000)
ν_1	8.890 *** (0.001)	99.800 *** (0.000)	100.000 *** (0.000)	3.670 *** (0.000)	19.200 *** (0.061)	5.550 *** (0.000)
ζ_1	1.110 *** (0.000)	0.436 *** (0.003)	0.708 *** (0.000)	1.010 *** (0.000)	0.848 *** (0.000)	0.869 *** (0.000)
Regime 2						
α_{02}	0.272 *** (0.001)	0.110 ** (0.050)	0.059 ** (0.029)	3.580 *** (0.003)	0.734 ** (0.358)	0.424 *** (0.000)
α_{12}	0.00000 (0.495)	0.0004 (0.496)	0.004 (0.448)	0.0001 (0.495)	0.0002 (0.384)	0.00002 *** (0.000)
α_{22}	0.246 *** (0.012)	0.152* (0.083)	0.470 *** (0.041)	0.728 *** (0.044)	0.056 (0.419)	0.385 *** (0.000)
β_2	0.773 *** (0.000)	0.870 *** (0.000)	0.746 *** (0.000)	0.312 *** (0.011)	0.940 *** (0.000)	0.807 *** (0.000)
ν_2	4.320 *** (0.00000)	3.710 *** (0.00000)	4.420 *** (0.000)	5.300 *** (0.017)	100.000 *** (0.000)	99.800 *** (0.000)
ζ_2	0.870 *** (0.000)	1.110 *** (0.000)	0.988 *** (0.000)	0.866 *** (0.000)	0.402 *** (0.011)	0.994 *** (0.000)
Transition probabilities						
p_{11}	0.996 *** (0.000)	0.424 *** (0.024)	0.487 *** (0.011)	0.996 *** (0.000)	0.990 *** (0.000)	0.992 *** (0.000)
p_{21}	0.005 (0.023)	0.399 *** (0.002)	0.433 *** (0.002)	0.021 *** (0.00000)	1.000 *** (0.091)	0.027 *** (0.000)
Long run stable probabilities						
Regime 1	0.604	0.409	0.457	0.832	0.990	0.763
Regime 2	0.396	0.591	0.543	0.168	0.010	0.237
Unconditional volatility						
Regime 1	26.91	13.03	13.52	17.83	14.78	30.24
Regime 2	26.93	20.77	21.11	53.65	85.66	110.1
Volatility persistence						
Regime 1	0.9590	0.9771	0.9900	0.9905	0.9655	0.9910
Regime 2	0.8960	0.9464	0.9850	0.6761	0.9682	0.9995
Mean recurrence time (days)						
Regime 1	1.656	2.445	2.186	1.202	1.010	1.311
Regime 2	2.524	1.692	1.843	5.940	101.200	4.211

Notes: p -Values are reported in brackets. ** significant at the 5% level. *** significant at the 1% level. Volatility persistence in the two regimes was calculated as $\alpha_{k,i,1} + \frac{1}{2}\alpha_{k,i,2} + \beta_{k,i}$, for regimes $k = 1, 2, i = 1, 2$. Unconditional variance in the two regimes was calculated as $\frac{\alpha_{k,0,i}}{[1 - (\alpha_{k,i,1} + \frac{1}{2}\alpha_{k,i,2} + \beta_{k,i})]}$, for regimes $k = 1, 2; i = 1, 2$. The corresponding probabilities were computed as follows: $p_{22} = 1 - p_{21}$ and $p_{12} = 1 - p_{11}$.

Thus, each stock market can be summarized as follows:

- Brazil: Regime 1 was characterized by (i) lower unconditional volatility, (ii) low and non-significant reaction to past negative returns $\alpha_{21} \approx 0.046$, and (iii) higher persistence of the volatility process. Regime 2 was characterized by (i) higher unconditional volatility, (ii) high and statistically significant volatility reaction to past negative returns $\alpha_{22} \approx 0.246$, and (iii) lower persistence of the volatility process.
- Russia: Regime 1 was characterized by (i) low unconditional volatility, (ii) low and non-significant volatility reaction to past negative returns $\alpha_{21} \approx 0.001$, and (iii) high persistence of the volatility process. Regime 2 was characterized by (i) high unconditional volatility, (ii) high volatility reaction to past negative returns $\alpha_{22} \approx 0.152$, and (iii) low persistence of the volatility process.
- India: Regime 1 was characterized by (i) low unconditional volatility, (ii) low volatility reaction to past negative returns $\alpha_{21} \approx 0.006$, and (iii) high persistence of the volatility process. Regime 2 was characterized by (i) high unconditional volatility, (ii) high volatility reaction to past negative returns $\alpha_{22} \approx 0.470$, and (iii) high persistence of the volatility process.
- China: Regime 1 was characterized by (i) low unconditional volatility, (ii) weak and non-significant volatility reaction to past negative returns $\alpha_{21} \approx 0.019$, and (iii) high persistence of the volatility process. Regime 2 was characterized by (i) high unconditional volatility, (ii) high volatility reaction to past negative returns $\alpha_{22} \approx 0.728$, and (iii) low persistence of the volatility process.
- South Africa: Regime 1 was characterized by (i) low unconditional volatility, (ii) high and significant volatility reaction to past negative returns $\alpha_{21} \approx 0.105$, and (iii) low persistence of the volatility process. Regime 2 was characterized by (i) high unconditional volatility, (ii) low volatility reaction to past negative returns $\alpha_{22} \approx 0.056$, and (iii) high persistence of the volatility process.
- Crude oil: Regime 1 was characterized by (i) low unconditional volatility, (ii) low and non significant volatility reaction to past negative returns $\alpha_{21} \approx 0.050$, and (iii) low persistence of the volatility process. Regime 2 was characterized by (i) high unconditional volatility, (ii) high volatility reaction to past negative returns $\alpha_{22} \approx 0.385$, and (iii) high persistence of the volatility process.

The table also reports the long-run behavior Markov chain and the final matrix, which is called a stationary matrix, represented by long run stable probabilities. Clearly, for Brazil, the process stayed longer in regime 2 (≈ 1.7 days), Russia stayed longer in regime 1 (≈ 2.4 days), India stayed longer in regime 1 (≈ 2.2 days), China stayed longer in regime 2 (≈ 5.9 days), South Africa stayed longer in regime 2 (≈ 101.2 days), and Crude oil stayed longer in regime 2 (≈ 4.2 days). The average amount of time elapsed between visits to state i (called the mean recurrence time)² was given by the reciprocal of the i th component of the long run stable probabilities (fixed probability vector).

3.4. Measuring Dependence with Vine Copula

In this section, we present the analytical estimates of the multivariate copula using regular vine (R-vine) and canonical vine (C-vine) models. Based on the AIC and BIC information criteria (C-vine: logLik: 646, AIC: -1245 , BIC: -1126 ; R-vine: logLik: 643, AIC: -1244 , BIC: -1136), we found that both models were adequate in capturing the dependence structure. However, the C-vine provided slightly better results, in comparison to the R-vine copula. Furthermore, for each variable pair, we first tested for the presence of an independent copula $C(u_1, u_2) = u_1 \cdot u_2$ and the small $p < 0.05$ values leads us to reject the null hypothesis of independence and conclude that there exists pairwise dependence between the variable.

Table 4 shows the parameter estimates for the proposed 6-dimensional C-vine pairwise dependence among the variables, together with detailed information on the number of tree sequences, the family of the fitted bivariate copula ($C(\cdot)$), Kendall's tau (τ), and lower λ_l and upper λ_u tail dependence probabilities.

Figure 2 displays the corresponding Tree 1 and Tree 2 for the C-vine, where the nodes represent random variables (assets); thus, node 1: = Brazil, node 2: = Russia, node 3: = India, node 4: = China, node 5: = South Africa, and node 6: = crude oil. The corresponding edges represent the type and best family copula, fitted with values shown in brackets, which measure the strength of the dependence structure based on the Kendall's tau rank-based correlation.

As can be seen from the plots, South Africa (represented by node 5) was selected as the center root node, as it showed stronger dependence with the other five assets. The pairwise empirical Kendall's τ values ranged from 0.130 to 0.301. We found two types of tail dependence structure: symmetric tail dependence between South Africa and China, South Africa and Russia, and South Africa and India; and asymmetric lower tail dependence between South Africa and Brazil, as well as South Africa and crude oil. However, the dependence in Trees 2–5 were relatively small, preventing us from drawing any meaningful conclusions. The information about the lower tail probability found between South Africa and Brazil (14.6%) and the South Africa and crude oil (17.4%) markets are important indicators for investors, as they may help investors to diversify their portfolios during times of financial distress.

Table 4. Results of C-vine copulas, with Kendall's tau and upper/lower tail dependences.

	Copula C(.)	Edge E_i	Parameter 1 θ_1	Parameter 2 θ_2	Tau τ	Lower Tail λ_l	Upper Tail λ_u
Tree 1	t	5,4	0.293 *** (0.026)	16.600 ** (8.200)	0.189	0.006	0.006
	t	5,3	0.430 *** (0.023)	7.900 *** (1.820)	0.283	0.093	0.093
	t	5,2	0.455 *** (0.023)	7.700 *** (1.690)	0.301	0.106	0.106
	BB1	5,1	0.328 *** (0.053)	1.100 *** (0.029)	0.220	0.146	0.123
	SBB7	6,5	1.150 *** (0.030)	0.125 *** (0.037)	0.129	0.174	0.004
Tree 2	I	1,4 5	0.000	0.000	0.000	0.000	0.000
	t	1,3 5	0.109 *** (0.029)	15.000 ** (6.080)	0.070	0.002	0.002
	t	1,2 5	0.241 *** (0.028)	9.470 *** (2.970)	0.155	0.029	0.029
	F	6,1 5	1.570 *** (0.171)	0.000	0.167	0.000	0.000
Tree 3	I	2,4 1,5	0.000	0.000	0.000	0.000	0.000
	t	2,3 1,5	0.103 *** (0.029)	14.300 *** (5.300)	0.066	0.003	0.003
	BB8	6,2 1,5	1.450 *** (0.299)	0.794 *** (0.180)	0.093	0.000	0.000
Tree 4	t	3,4 2,1,5	0.088 *** (0.030)	11.400 *** (3.930)	0.056	0.007	0.007
	BB7-90	6,3 2,1,5	-1.030 *** (0.018)	-0.067 ** (0.033)	-0.048	0.000	0.000
Tree 5	I	6,4, 3,2,1,5	0.000	0.000	0.000	0.000	0.000

Notes: p -Values are reported in brackets. ** significant at the 5% level. *** significant at the 1% level. I: = Independent copula; t: = t copula; BB1: = Clayton–Gumbel; SBB7: = Joe–Clayton copula; BB8: = Frank–Joe; BB7-90: = rotated Joe–Clayton copula (90 degrees). node 1 = Brazil, node 2 = Russia, node 3 = India, node 4 = China, node 5 = South Africa, node 6 = crude oil.

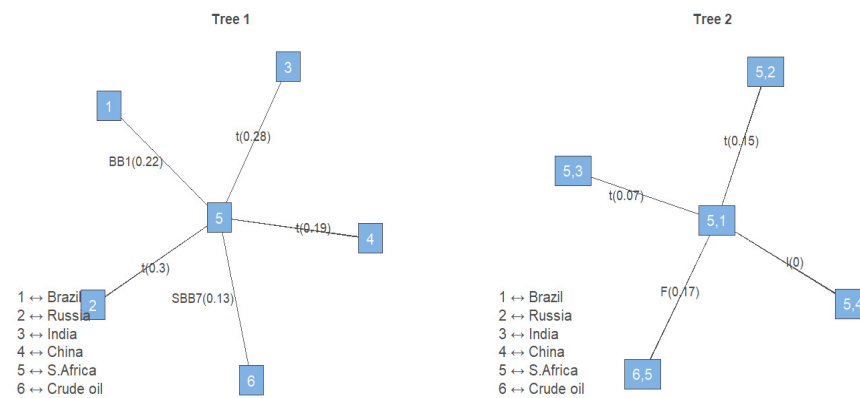


Figure 2. Results of C-vine copula dependency, showing trees 1 and 2, with nodes (variables) and edges (Kendall’s Tau).

The R-vine copula results are reported in Table 5. The dependence was captured using the bivariate elliptical Student’s t copula, with which exhibited symmetric tail dependence between Brazil and crude oil, Brazil and Russia, South Africa and Russia, South Africa and India, and South Africa and China. The dependences in Trees 2–5 were too small to draw any meaningful conclusions. Figure 3 shows the corresponding dependence trees in graphical format.

Table 5. Results of R-vine copulas, with Kendall’s tau and upper/lower tail dependences.

	Copula C(.)	Edge E_i	Parameter 1 θ_1	Parameter 2 θ_2	Tau τ	Lower Tail λ_l	Upper Tail λ_u
Tree 1	t	1,6	0.307 *** (0.026)	10.500 *** (3.250)	0.199	0.030	0.030
	t	2,1	0.358 *** (0.026)	5.420 *** (1.020)	0.233	0.129	0.129
	t	5,2	0.455 *** (0.023)	7.700 *** (1.690)	0.301	0.106	0.106
	t	5,3	0.430 *** (0.023)	7.900 *** (1.820)	0.283	0.093	0.093
	t	5,4	0.293 *** (0.026)	16.600 ** (8.200)	0.189	0.006	0.006
Tree 2	F	2,6 1	1.060 *** (0.167)	0.000	0.116	0.000	0.000
	t	5,1 2	0.215 *** (0.028)	11.000 *** (3.640)	0.138	0.017	0.017
	t	3,2 5	0.124 *** (0.029)	12.400 *** (4.230)	0.079	0.006	0.006
	t	4,3 5	0.096 *** (0.030)	8.470 *** (2.250)	0.061	0.020	0.020
Tree 3	I	5,6 2,1	0.000	0.000	0.000	0.000	0.000
Tree 3	I	3,1 5,2	0.087 *** (0.029)	16.700 ** (7.380)	0.055	0.001	0.001
	t	4,2 3,5	0.000	0.000	0.000	0.000	0.000
Tree 4	BB7-90	3,6 5,2,1	-1.030 *** (0.018)	-0.066 ** (0.032)	-0.047	0.000	0.000
	I	4,1 3,5,2	0.000	0.000	0.000	0.000	0.000
Tree 5	I	4,6 3,5,2,1	0.000	0.000	0.000	0.000	0.000

Notes: p-Values are reported in brackets. ** significant at the 5% level. *** significant at the 1% level. I = Independent copula; t = t copula; F = Frank copulas; BB7-90 = rotated Joe–Clayton copula. node 1 = Brazil, node 2 = Russia, node 3 = India, node 4 = China, node 5 = South Africa, node 6 = crude oil.

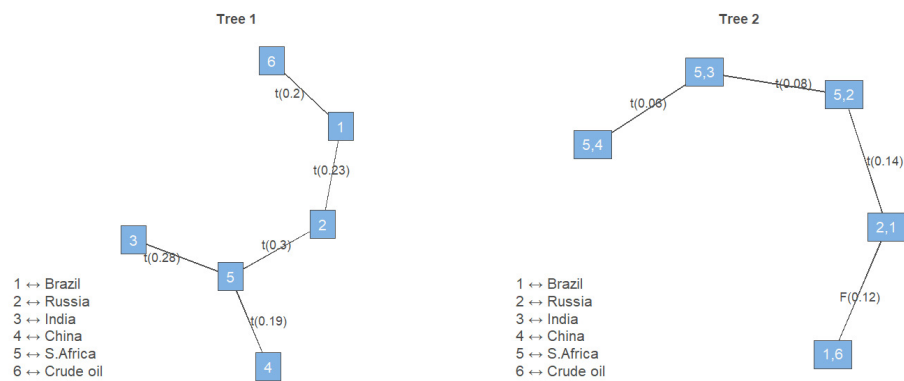


Figure 3. Results of R-vine copulas dependency showing trees 1 and 2, with nodes (variables) and edges (Kendall's Tau).

3.5. Market Risk under Portfolio Rebalancing

In this section, the above results were applied to a portfolio optimization problem and the model performance was compared, based on four data sets: (i) the data with returns that did not account for switching and dependence, (ii) returns with switching but no dependence, (iii) returns with switching and C-vine dependence, and (iv) returns with switching and R-vine dependence. Markowitz's mean variance portfolio [Markowitz \(1959\)](#), which focuses on the variance risk measure, has been criticized by finance practitioners as it penalizes extreme tail losses. This problem has been addressed by using alternative risk measures, such as Value-at-Risk (VaR) and Conditional Value-at-Risk (CVaR) is a coherent risk measure proposed by [Rockafellar and Uryasev \(2000\)](#), which has now replaced VaR in [BCBS \(2019\)](#) under the revised market risk models. Here, we propose an asset allocation model for a portfolio that minimizes 95% of portfolio Conditional Value-at-Risk as the objective function.

Let $w = (w_1, w_2, w_3, w_4, w_5, w_6)$ be the portfolio weights vector representing the number of stocks held in asset i , ($i = 1, \dots, 6$). Thus, w_i are decision (optimization) variable and, $r = (r_1, \dots, r_6)$ denote a random vector of asset returns with a multivariate probability density function denoted by $p(r|w)$. Let the one dimensional loss function $\xi = f(w, r)$ be a random variable observed over time. Then, the cumulative distribution function of the loss for the return vector given a threshold value ξ_0 can be written in integral form as follows,

$$\Psi(w, \xi) = \int_{f(w,r) \leq \xi_0} p(r|w) dr = Pr(\xi \leq \xi_0) \tag{10}$$

Then, for a given confidence level α , VaR_α is the α -quantile of a loss distribution associated with portfolio which can be represented as,

$$VaR_\alpha(\xi) = \inf (\xi \in \mathbb{R} | \Psi(w, \xi) \geq \alpha) \tag{11}$$

However, VaR measure does not take into account losses beyond the threshold ξ_0 and it is nonconvex and not subadditive like CVaR see, [Fabozzi et al. \(2007\)](#).

Accordingly, the investor whose focus is in the lower tail dependence, solves the minimization of the CVaR for the portfolio excess loss function as follows,

$$\begin{aligned} \underset{w}{\text{minimize}} \quad & CVaR_\alpha(\xi) = \mathbb{E}[\xi | \xi > VaR_\alpha(\xi)] \\ & \sum_{i=1}^d w_i = 1, \\ & w_i \geq 0, \quad i = 1, \dots, 6 \end{aligned} \tag{12}$$

where $\mathbb{E}[\zeta | \zeta > VaR_\alpha(\zeta)] = \frac{1}{1-\alpha} \int_{f(w,r) \geq VaR_\alpha(\zeta)} f(w,r) p(r|w) dr$, and $VaR_\alpha(\zeta)$ is defined as the smallest number ζ_0 such that the probability of a negative loss ζ_0 is not higher than the $(1 - \alpha)$ quantile of the distribution set at $\alpha = 95\%$. We assume no short-selling portfolio (long portfolio) thus, $w_i \geq 0$ are non-negative portfolio weights and $\sum_{i=1}^6 w_i = 1$ is the capital budget constraint.

Figure 4 displays four equity plots, highlighting the in-sample relative performance of minimum CVaR, compared with the mean variance (MV) portfolio (also known as the global minimum variance portfolio). The MV finds a trade-off between the expected return, $\mathbb{E}(r)$, and the risk of the portfolio, measured by the variance $w^T \Sigma w$. The performance measurement was based on a starting capital allocation of 100 with a rebalancing strategy. The C-vine portfolio strategy clearly outperformed all other portfolio constructions: Thus, it outperformed the portfolio without regime-switching and without dependence, the portfolio with a two state regime-switching but without dependence, and the R-vine portfolio. We argue that a C-vine portfolio construction strategy can adequately model the portfolio risk and account for the asset dependence structure and draw-downs observed during the COVID-19 financial market crisis in 2020.

Tables 6–9 report the estimated minimum CVaR portfolios with percentage marginal contribution of each return series under a rebalancing framework. It is evident that the C-vine and R-vine portfolios contributed the lowest aggregated risk. We argue that portfolio construction that takes into account both regime-switching and the dependence structure can yield optimal risk diversification. Overall, the C-vine portfolio had the best performance over the rebalancing period, as depicted in Figure 4, when compared to a benchmark global minimum variance (GMV) portfolio.

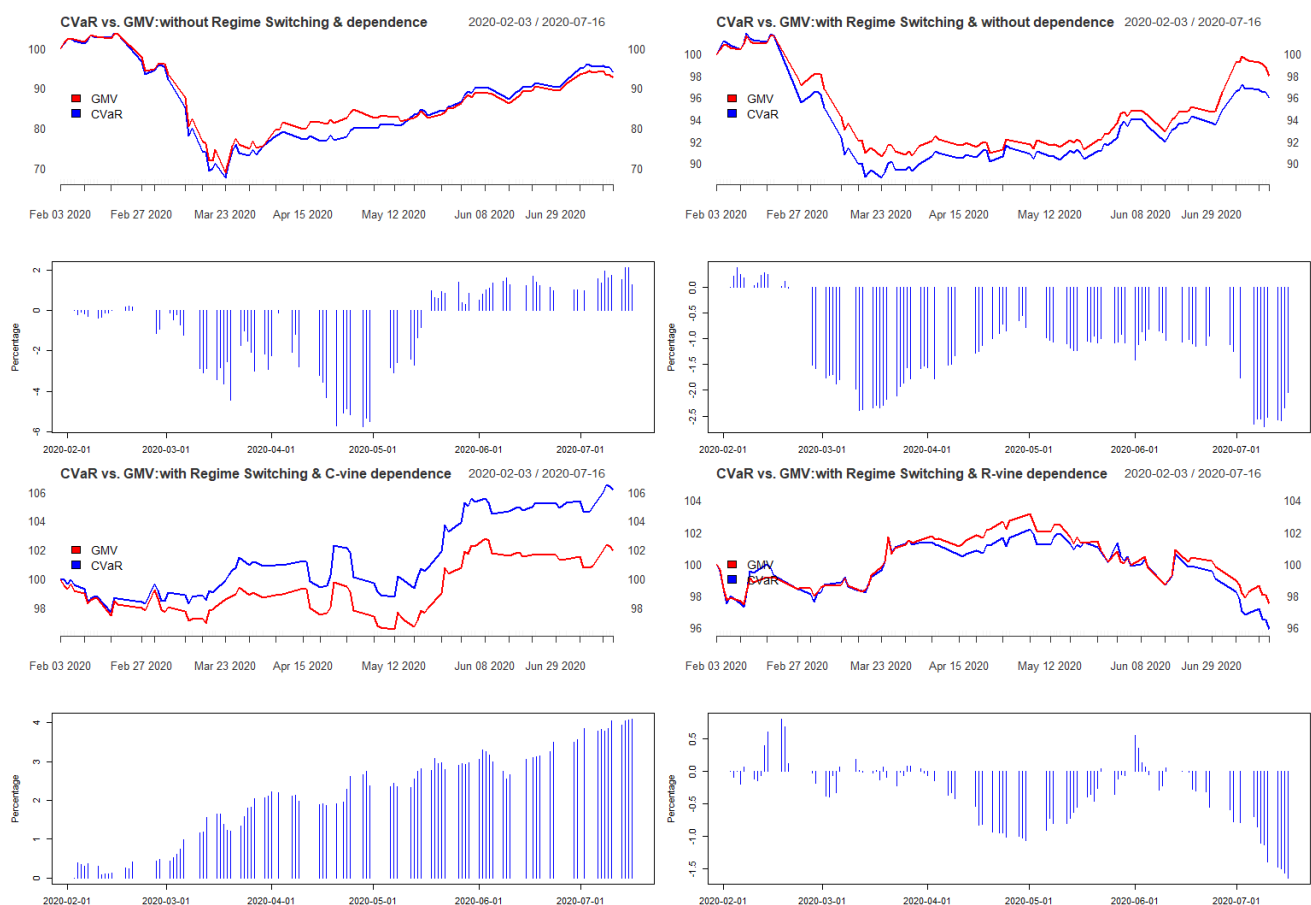


Figure 4. Trajectory of Minimum CVaR vs. Global Minimum Variance (GMV) rebalancing portfolio performance.

Table 6. Risk and weight allocation without regime-switching and dependence.

Period	Cvar	Brazil	Russia	India	China	South Africa	Crude Oil
1	0.01900	0.14545	0.15776	0.18743	0.12297	0.20197	0.18442
2	0.02088	0.13791	0.16760	0.16398	0.14302	0.20625	0.18123
3	0.02785	0.16968	0.16417	0.16575	0.16574	0.20288	0.13177
4	0.03043	0.13701	0.21248	0.14158	0.16319	0.15157	0.19417
5	0.03061	0.10606	0.19845	0.13964	0.15770	0.17669	0.22147
6	0.02924	0.15521	0.18522	0.14004	0.20150	0.17874	0.13928
7	0.02798	0.16008	0.19691	0.10827	0.16227	0.20428	0.16819

Table 7. Risk and weight allocation with regime-switching and without dependence.

Period	Cvar	Brazil	Russia	India	China	South Africa	Crude Oil
1	0.01380	0.16264	0.17232	0.17319	0.13308	0.19422	0.16456
2	0.01504	0.16869	0.16766	0.17844	0.13099	0.17722	0.17701
3	0.01561	0.17285	0.16899	0.17977	0.12241	0.17540	0.18058
4	0.01558	0.17413	0.16835	0.17943	0.12225	0.17490	0.18094
5	0.01551	0.17417	0.16790	0.18037	0.12211	0.17475	0.18070
6	0.01548	0.17370	0.16785	0.18024	0.12263	0.17488	0.18070
7	0.01542	0.17271	0.16791	0.18086	0.12291	0.17543	0.18019

Table 8. Risk and weight allocation with regime-switching and C-vine dependence.

Period	Cvar	Brazil	Russia	India	China	South Africa	Crude Oil
1	0.01060	0.18690	0.18879	0.14672	0.13690	0.19998	0.14071
2	0.01060	0.18687	0.18650	0.14343	0.13857	0.20132	0.14331
3	0.01058	0.18724	0.18578	0.14385	0.13941	0.20130	0.14242
4	0.01070	0.19441	0.18951	0.14296	0.13371	0.20086	0.13856
5	0.01061	0.14386	0.20222	0.15399	0.16276	0.19128	0.14589
6	0.01037	0.15062	0.14601	0.15646	0.17047	0.16127	0.21516
7	0.01060	0.19368	0.19135	0.14334	0.13373	0.19860	0.13931

Table 9. Risk and weight allocation with regime-switching and R-vine dependence.

Period	Cvar	Brazil	Russia	India	China	South Africa	Crude Oil
1	0.01019	0.19888	0.19317	0.14236	0.12400	0.18836	0.15323
2	0.01024	0.19718	0.19220	0.14472	0.12159	0.18990	0.15441
3	0.01023	0.19634	0.19209	0.14445	0.12188	0.19030	0.15494
4	0.01019	0.19646	0.19255	0.14343	0.12192	0.18959	0.15604
5	0.01015	0.19591	0.19213	0.14433	0.12259	0.18945	0.15560
6	0.01018	0.19518	0.19383	0.14415	0.12121	0.19012	0.15551
7	0.01017	0.19608	0.19366	0.14450	0.12074	0.19066	0.15437

Figure 4 displays the four return trajectory plots, together with bar plots (blue) showing the relative performance between the CVaR versus a benchmark GMV portfolio. The C-vine portfolio strategy with re-balancing strategy clearly outperformed both the MS-GJR-GARCH without dependence and the benchmark portfolio with no regime-switching and no dependence. Therefore, the extreme portfolio draw-downs observed during the COVID-19 financial market crisis in 2020 could be adequately captured.

4. Conclusions

In this study, we attempted to analyze the tail dependence structure in BRICS and crude oil markets, as well as to determine optimal investment decisions in these markets, by using a combination of different statistical techniques, including vector autoregression (VAR2), Markov-switching GJR-GARCH, vine copula, and particle swarm optimization techniques. First, the returns series for the indices were pre-filtered using VAR(2) to model the conditional mean and to account for the linear influence of lag 1 and lag 2 of other variables. Second, a Markov-switching Garch (MS-GJR-GARCH) volatility process was adopted, in order to remove the effects of autocorrelation and to account for heteroscedasticity, leveraging effects and regime-switching parameters. The results of modeling the volatility process showed evidence of two separate regimes, indicated by the in-homogenous (different) unconditional volatility. We also found high volatility persistence across all return series, in both regime 1 and regime 2, with the exception of China in regime 2; as well as high persistence in transition probability between the two regimes. That is, the Markov chain showed the propensity to stay equally as long in both regimes, as indicated by the high probabilities of staying in regime 1 and regime 2.

On the other hand, the results of modeling the dependence structure using the Pairwise Copula Construction (PCC) with vine copula provided more insight into the complex relationships among the returns. This multivariate copula approach was adopted to account for different dependence structures between asset returns in the BRICS and crude oil markets. Based on the Akaike Information criteria (AIC), we found that the C-vine copula model was adequate in describing the complex relationships.

As a result, we found two types of tail dependence structures: symmetric tail dependence, captured by an elliptical Student's t copula, between South Africa and China, South Africa and Russia, and South Africa and India; and asymmetric lower tail dependence between South Africa and Brazil, as well as South Africa and crude oil. Therefore, we argue that information about the lower tail probability found between South Africa and Brazil (14.6%) or South Africa and crude oil (17.4%) markets are important indicators for investors, which may help investors to diversify their portfolios during times of financial distress. However, the dependence in exhibited in Trees 3–5 were negligible, preventing us from drawing any meaningful inferences. In addition, the symmetric tail dependence coefficients are also vital, which may help investors to diversify or hedge their portfolios during times of financial distresses.

To determine optimal investment strategies in these markets, we made use of the estimated C-vine and R-vine copulas, in order to simulate returns, and applied the Particle Swam optimization technique to the quantile-transformed innovations, in order to determine the overall minimum CVaR and the corresponding marginal risk contributions of each asset return. The Particle Swam was metaheuristic, requiring few assumptions about the problem being optimized and providing greater flexibility due to being a derivative-free optimization algorithm. It is a naturally inspired technique that finds the optimal solution iteratively, by trying to improve the candidate solution and avoiding sub-optimal investment solutions.

The optimization results under a rebalancing strategy confirmed the existence an inverse relationship between the risk contribution and asset allocation of South Africa and oil, supporting the existence of a higher lower tail dependence between them. We argue that, when the South African stock market is in distress, investors tend to shift their holdings in oil market. Similar results were found between Brazil and crude oil. Furthermore, we found that the rebalancing strategy which accounts for regime-switching and the dependence structure outperformed all other portfolio strategies, including a portfolio without regime-switching and dependency or a portfolio with only regime-switching. In the symmetric tail, South African asset allocation was found to have well-diversified relationships with those of China, Russia, and India, suggesting that these three markets might be good investment destinations when things are not good in South Africa, and vice versa.

These findings are vital for international investors, policymakers, and regulators during both bull and bear markets. However, the limitation of this model is its inability to account for other hidden stylized facts, such as price jumps and long-memory processes in stock returns. In future research, we will try to account for these factors.

Author Contributions: The contribution of each author is as follows: conceptualization, J.W.M.M.; methodology, J.W.M.M. and S.M.M.; software, S.M.M.; validation, J.W.M.M.; formal analysis, S.M.M.; investigation, J.W.M.M. and S.M.M.; resources, S.M.M.; data curation, S.M.M.; writing—original draft preparation, S.M.M.; writing—review and editing, J.W.M.M.; visualization, S.M.M.; supervision, J.W.M.M.; project administration, S.M.M.; funding acquisition, Not Applicable. All authors have read and agreed to the published version of the manuscript.

Funding: This research received no external funding.

Data Availability Statement: The data sets, consisting of daily stock prices and world crude oil for the BRICS countries, are available from Yahoo finance (<https://finance.yahoo.com>, accessed on 30 March 2021) and the Eikon Thomson Reuters database.

Conflicts of Interest: The authors declare no conflict of interest. The authors certify that they have no affiliations with or involvement in any organization or entity with any financial or non-financial interest in the subject matter or materials discussed in this manuscript. The authors declare that there is no conflict of interest.

Appendix A. Regular Vine Distributions

Appendix A.1

Bedford and Cooke (2001) shows the density of an d -dimensional distribution in terms of a regular vine. Thus, the joint probability density function for a d -dimensional C-vine copula can be expressed as follows:

$$f(x_1, \dots, x_d) = \prod_{k=1}^d f_k(x_k) \times \prod_{j=1}^{d-1} \prod_{i=1}^{d-j} c_{j,j+i|1:j-1} \left(F(x_j|x_1, \dots, x_{j-1}), F(x_{j+i}|x_1, \dots, x_{j-1}) | \theta_{j,j+i|1, \dots, j-1} \right),$$

where index j identifies the trees, while i are the edges in each tree, $f_k(x_k)$ denotes the marginal density of the variable x_k , $k = 1, \dots, d$, and $c_{j,j+i|1:j-1}$ are bivariate copula densities of each pair copula. In order to draw statistical inferences, Joe (1996) and Czado (2019) showed that the recursion of the conditional marginal distribution functions $F(x|\mathbf{v})$ of a d -dimensional random vector \mathbf{v} can be expressed as a pair-copula distribution function, as follows:

$$F(x|\mathbf{v}; \theta) = \frac{\partial C_{x, v_j | \mathbf{v}_{-j}}(F(x|\mathbf{v}_{-j}), F(v_j|\mathbf{v}_{-j}) | \theta)}{\partial F(v_j|\mathbf{v}_{-j})}, \quad (1)$$

where, for every j , $C_{x, v_j | \mathbf{v}_{-j}}$ is a bivariate copula distribution function with parameter(s) θ , \mathbf{v} is a d -dimensional vector, v_j is an arbitrarily chosen element of \mathbf{v} , and \mathbf{v}_{-j} denotes the \mathbf{v} excluding v_j .

Vine copulas have links to graph theory. A regular vine copula consists of a sequence of different nested trees (i.e., collections of nodes and edges), of which the C- and D-vine trees are special cases (see Bedford and Cooke (2002); Jaworski et al. (2010)). A graph satisfies the following conditions:

1. A graph is a pair $G = (N, E)$ of sets such that $E \subseteq \{\{x, y\} : x, y \in N\}$.
2. The elements of E are called edges of the graph G , while the elements of N are called nodes.
3. The number of neighbors of a node $v \in N$ is the degree of v , denoted by $d(v)$.

Hence, a regular vine distribution, where all margins are uniformly distributed on $[0, 1]$, is a d -dimensional tree structure $\mathcal{V} = (T_1 \cdots T_d)$ having a tree sequence of $d - 1$ linked trees, which satisfy the following conditions:

1. T_1 is a connected tree with nodes $N_1 = (1, \dots, d)$ and a set of edges denoted by E_1 ;
2. For $i = 2, \dots, d - 1$, T_i is a connected tree with nodes $N_i = E_{i-1}$ and edges E_i ;
3. The edges in tree T_i become nodes in tree T_{i+1} ; that is, if two edges in tree T_i are to be joined as nodes in tree T_{i+1} by an edge, they must share a common node in T_i (Proximity condition).

Thus, a regular vine is called a canonical vine (C-vine) if each tree T_i has a unique node of degree $d - 1$. on the other hand, a regular vine is called a drawable vine (D-vine) if all the nodes in T_1 have degree no greater than 2. Note that the construction of an R-vine is not unique. The number of regular vine tree structures on d variables is $\frac{d!}{2} \times 2^{\binom{d-1}{2}}$ while, for a C-vine, it is $\frac{d!}{2}$.

Notes

- ¹ Other variations of asymmetric volatility models include: Exponential GARCH (EGARCH) of Nelson (1991); Threshold GARCH (TGARCH) of Zakoian (1994); and Asymmetric GARCH (AGARCH) of Engel (1990)
- ² The expected time to return to a recurrent regime (state), in the case that the Markov chain starts in that regime (state).

References

- Aas, Kjersti, and Daniel Berg. 2009. Models for construction of multivariate dependence—A comparison study. *The European Journal of Finance* 15: 639–59. [CrossRef]
- Aas, Kjersti, Claudia Czado, Arnoldo Frigessi, and Henrik Bakken. 2009. Pair-copula constructions of multiple dependence. *Insurance: Mathematics and Economics* 44: 182–98. [CrossRef]
- Apergis, Nicholas, and Stephen M. Miller. 2009. Do structural oil-market shocks affect stock prices? *Energy Economics* 31: 569–75. [CrossRef]
- Ardia, David, Keven Bluteau, Kris Boudt, and Leopoldo Catania. 2018. Forecasting risk with markov-switching garch models: A large-scale performance study. *International Journal of Forecasting* 34: 733–47. [CrossRef]
- Ardia, David, Keven Bluteau, Kris Boudt, Leopoldo Catania, and Denis-Alexandre Trottier. 2019. Markov-switching garch models in r: The msgarch package. *Journal of Statistical Software* 91. [CrossRef]
- BCBS. 2019. Minimum Capital Requirements for Market Risk. BASEL III. Available online: <https://www.bis.org/bcbs/publ/d457.pdf> (accessed on 30 March 2021).
- Bedford, Tim, and Roger M. Cooke. 2001. Probability density decomposition for conditionally dependent random variables modeled by vines. *Annals of Mathematics and Artificial Intelligence* 32: 245–68. [CrossRef]
- Bedford, Tim, and Roger M. Cooke. 2002. Vines: A new graphical model for dependent random variables. *Annals of Statistics* 30: 1031–68. [CrossRef]
- Bekiros, Stelios, Jose Arreola Hernandez, Shawkat Hammoudeh, and Duc Khuong Nguyen. 2015. Multivariate dependence risk and portfolio optimization: An application to mining stock portfolios. *Resources Policy* 46: 1–11. [CrossRef]
- BenSaïda, Ahmed. 2018. The contagion effect in european sovereign debt markets: A regime-switching vine copula approach. *International Review of Financial Analysis* 58: 153–65. [CrossRef]
- Bhar, Ramaprasad, and Biljana Nikolova. 2009. Return, volatility spillovers and dynamic correlation in the bric equity markets: An analysis using a bivariate egarch framework. *Global Finance Journal* 19: 203–18. [CrossRef]
- Bollerslev, Tim. 1990. Modelling the coherence in short-run nominal exchange rates: A multivariate generalized arch model. *The Review of Economics and Statistics* 72: 498–505. [CrossRef]
- Bonga-Bonga, Lumengo. 2018. Uncovering equity market contagion among brics countries: An application of the multivariate garch model. *The Quarterly Review of Economics and Finance* 67: 36–44. [CrossRef]
- Bouri, Elie, Syed Jawad Hussain Shahzad, Naveed Raza, and David Roubaud. 2018. Oil volatility and sovereign risk of brics. *Energy Economics* 70: 258–69. [CrossRef]
- BoussaiD, Ilhem, Julien Lepagnot, and Patrick Siarry. 2013. A survey on optimization metaheuristics. *Information Sciences* 237: 82–117. [CrossRef]
- Brechmann, Eike Christain, and Claudia Czado. 2013. Risk management with high-dimensional vine copulas: An analysis of the euro stoxx 50. *Statistics and Risk Modeling* 30: 307–42. [CrossRef]
- Cherubini, Umberto, Elisa Luciano, and Walter Vecchiato. 2004. *Copula Methods in Finance*. West Sussex: John Wiley & Sons.
- Chkili, Walid, and Duc Khuong Nguyen. 2014. Exchange rate movements and stock market returns in a regime-switching environment: Evidence for brics countries. *Research in International Business and Finance* 31: 46–56. [CrossRef]
- Czado, Claudia. 2019. Analyzing dependent data with vine copulas. In *Lecture Notes in Statistics*. Basel: Springer.
- de Melo Mendes, Beatriz Vaz, and Daniel S. Marques. 2012. Choosing an optimal investment strategy: The role of robust pair-copulas based portfolios. *Emerging Markets Review* 13: 449–64. [CrossRef]
- Engel, Robert F. 1990. Discussion: Stock market volatility and the crash. *Review of Financial Studies* 3: 103–6. [CrossRef]

- Engle, Robert F. 2002. A simple class of multivariate generalized autoregressive conditional heteroskedasticity models. *Journal of Business and Economic Statistics* 20: 339–50. [CrossRef]
- Engle, Robert, and Bryan Kelly. 2012. Dynamic equicorrelation. *Journal of Business & Economic Statistics* 30: 212–28.
- Fabozzi, Frank J., Petter N. Kolm, Dessimslava A. Pachamanova, and Sergio M. Focardi. 2007. *Robust Portfolio Optimization and Management*. Hoboken: John Wiley & Sons.
- Gatfaoui, Hayette. 2019. Diversifying portfolios of us stocks with crude oil and natural gas: A regime-dependent optimization with several risk measures. *Energy Economics* 80: 132–52. [CrossRef]
- Glosten, Lawrence R., Ravi Jagannathan, and David E. Runkle. 1993. On the relation between the expected value and the volatility of the nominal excess return on stocks. *The Journal of Finance* 48: 1779–801. [CrossRef]
- Haas, Markus, Stefan Mittnik, and Marc S. Paoletta. 2004. A new approach to markov-switching garch models. *Journal of Financial Econometrics* 2: 493–530. [CrossRef]
- Hansen, Bruce E. 1994. Autoregressive conditional density estimation. *International Economic Review* 35: 705–30. [CrossRef]
- Hassan, Kamrul, Ariful Hoque, Muammer Wali, and Dominic Gasbarro. 2020. Islamic stocks, conventional stocks, and crude oil: Directional volatility spillover analysis in brics. *Energy Economics* 92: 104985. [CrossRef]
- Hernandez, Jose Arreola. 2014. Are oil and gas stocks from the australian market riskier than coal and uranium stocks? dependence risk analysis and portfolio optimization. *Energy Economics* 45: 528–36. [CrossRef]
- Hou, Yang, Steven Li, and Fenghua Wen. 2019. Time-varying volatility spillover between chinese fuel oil and stock index futures markets based on a dcc-garch model with a semi-nonparametric approach. *Energy Economics* 83: 119–43. [CrossRef]
- Jaworski, Piotr, Fabrizio Durante, Wolfgang Karl Hardle, and Tomasz Rychlik. 2010. *Copula Theory and Its Applications*. London: Springer, vol. 198.
- Ji, Qiang, Bing-Yue Liu, Wan-Li Zhao, and Ying Fan. 2018. Modelling dynamic dependence and risk spillover between all oil price shocks and stock market returns in the brics. *International Review of Financial Analysis* 68: 101238. [CrossRef]
- Jiang, Yonghong, Yuyuan Fu, and Weihua Ruan. 2019. Risk spillovers and portfolio management between precious metal and brics stock markets. *Physica A: Statistical Mechanics and its Applications* 534: 120993. [CrossRef]
- Joe, Harry. 1996. Families of m-variate distributions with given margins and m (m-1)/2 bivariate dependence parameters. *Lecture Notes-Monograph Series* 28: 120–41.
- Junker, Markus, and Angelika May. 2005. Measurement of aggregate risk with copulas. *The Econometrics Journal* 8: 428–54. [CrossRef]
- Kenourgios, Dimitris, Aristeidis Samitas, and Nikos Paltalidis. 2011. Financial crises and stock market contagion in a multivariate time-varying asymmetric framework. *Journal of International Financial Markets, Institutions and Money* 21: 92–106. [CrossRef]
- Kocaarslan, Baris, Ramazan Sari, Alper Gormus, and Ugur Soytas. 2017. Dynamic correlations between bric and us stock markets: The asymmetric impact of volatility expectations in oil, gold and financial markets. *Journal of Commodity Markets* 7: 41–56. [CrossRef]
- Kole, Erik, Kees Koedijk, and Marno Verbeek. 2007. Selecting copulas for risk management. *Journal of Banking & Finance* 31: 2405–23.
- Kumar, Satish, Aviral Kumar Tiwari, Yogesh Chauhan, and Qiang Ji. 2019. Dependence structure between the brics foreign exchange and stock markets using the dependence-switching copula approach. *International Review of Financial Analysis* 63: 273–84. [CrossRef]
- Lambert, Philippe, and Sébastien Laurent. 2001. Modelling Skewness Dynamics in Series of Financial Data Using Skewed Location-Scale Distributions. Discussion Paper No. 01-25, Institut de Statistique, Université Catholique de Louvain, Louvain-la-Neuve, Belgium. Available online: http://www.statsoc.ulg.ac.be/workingpapers_pl.html (accessed on 30 March 2021).
- Lin, Ling, Zhongbao Zhou, Yong Jiang, and Yangchen Ou. 2021. Risk spillovers and hedge strategies between global crude oil markets and stock markets: Do regime switching processes combining long memory and asymmetry matter? *The North American Journal of Economics and Finance* 57: 101398. [CrossRef]
- Low, Rand Kwong Yew, Jamie Alcock, Robert Faff, and Timothy Brailsford. 2013. Canonical vine copulas in the context of modern portfolio management: Are they worth it? *Journal of Banking & Finance* 37: 3085–99.
- Markowitz, Harry. 1959. *Portfolio Selection*. New Haven: Yale University Press.
- Mba, Jules Clement, and Sutene Mwambi. 2020. A markov-switching cogarch approach to cryptocurrency portfolio selection and optimization. *Financial Markets and Portfolio Management* 34: 199–214. [CrossRef]
- McIver, Ron P., and Sang Hoon Kang. 2020. Financial crises and the dynamics of the spillovers between the us and brics stock markets. *Research in International Business and Finance* 54: 101276. [CrossRef]
- Mensi, Walid, Shawkat Hammoudeh, Duc Khuong Nguyen, and Sang Hoon Kang. 2016. Global financial crisis and spillover effects among the us and brics stock markets. *International Review of Economics & Finance* 42: 257–76.
- Morema, Kgotso, and Lumengo Bonga-Bonga. 2020. The impact of oil and gold price fluctuations on the south african equity market: Volatility spillovers and financial policy implications. *Resources Policy* 68: 101740. [CrossRef]
- Nelsen, Roger B. 2007. *An Introduction to Copulas*. New York: Springer Science & Business Media.
- Nelson, Daniel B. 1991. Conditional heteroskedasticity in asset returns: A new approach. *Econometrica: Journal of the Econometric Society* 59: 347–70. [CrossRef]
- Nguyen, Cuong C., and M. Ishaq Bhatti. 2012. Copula model dependency between oil prices and stock markets: Evidence from china and vietnam. *Journal of International Financial Markets, Institutions and Money* 22: 758–73. [CrossRef]
- Peng, Xiaofan. 2020. Do precious metals act as hedges or safe havens for china's financial markets? *Finance Research Letters* 37: 101353. [CrossRef]

- Rockafellar, R. Tyrrell, and Stanislav Uryasev. 2000. Optimization of conditional value-at-risk. *Journal of Risk* 2: 21–42. [[CrossRef](#)]
- Sahamkhadam, Maziar, Andreas Stephan, and Ralf Östermark. 2018. Portfolio optimization based on garch-evt-copula forecasting models. *International Journal of Forecasting* 34: 497–506. [[CrossRef](#)]
- Salisu, Afees A., and Rangan Gupta. 2020. Oil shocks and stock market volatility of the brics: A garch-midas approach. *Global Finance Journal* 48: 100546. [[CrossRef](#)]
- Sensoy, Ahmet, Erk Hacıhasanoglu, and Duc Khuong Nguyen. 2015. Dynamic convergence of commodity futures: Not all types of commodities are alike. *Resources Policy* 44: 150–60. [[CrossRef](#)]
- Sklar, A. 1959. Fonctions de repartition an dimensions et leurs marges. *Publications de l'Institut Statistique de l'Université de Paris* 8: 229–31.
- Sui, Lu, and Lijuan Sun. 2016. Spillover effects between exchange rates and stock prices: Evidence from brics around the recent global financial crisis. *Research in International Business and Finance* 36: 459–71. [[CrossRef](#)]
- Thampanya, Natthinee, Muhammad Ali Nasir, and Toan Luu Duc Huynh. 2020. Asymmetric correlation and hedging effectiveness of gold & cryptocurrencies: From pre-industrial to the 4th industrial revolution. *Technological Forecasting and Social Change* 159: 120195.
- Trottier, Denis-Alexandre, and David Ardia. 2016. Moments of standardized fernandez–steel skewed distributions: Applications to the estimation of garch-type models. *Finance Research Letters* 18: 311–16. [[CrossRef](#)]
- Umar, Zaghum. 2017. The demand of energy from an optimal portfolio choice perspective. *Economic Modelling* 61: 478–94. [[CrossRef](#)]
- Weiße, Gregor N. F. 2013. Copula-garch versus dynamic conditional correlation: An empirical study on var and es forecasting accuracy. *Review of Quantitative Finance and Accounting* 41: 179–202. [[CrossRef](#)]
- Zakoian, Jean-Michel. 1994. Threshold heteroskedastic models. *Journal of Economic Dynamics and control* 18: 931–55. [[CrossRef](#)]