

Gonçalves, Tiago Cruz; Quiñones Borda, Jorge Victor; Vieira, Pedro Rino; Matos, Pedro Verga

Article

Log periodic power analysis of critical crashes: Evidence from the Portuguese stock market

Economies

Provided in Cooperation with:

MDPI – Multidisciplinary Digital Publishing Institute, Basel

Suggested Citation: Gonçalves, Tiago Cruz; Quiñones Borda, Jorge Victor; Vieira, Pedro Rino; Matos, Pedro Verga (2022) : Log periodic power analysis of critical crashes: Evidence from the Portuguese stock market, *Economies*, ISSN 2227-7099, MDPI, Basel, Vol. 10, Iss. 1, pp. 1-19, <https://doi.org/10.3390/economies10010014>

This Version is available at:

<https://hdl.handle.net/10419/257377>

Standard-Nutzungsbedingungen:

Die Dokumente auf EconStor dürfen zu eigenen wissenschaftlichen Zwecken und zum Privatgebrauch gespeichert und kopiert werden.

Sie dürfen die Dokumente nicht für öffentliche oder kommerzielle Zwecke vervielfältigen, öffentlich ausstellen, öffentlich zugänglich machen, vertreiben oder anderweitig nutzen.

Sofern die Verfasser die Dokumente unter Open-Content-Lizenzen (insbesondere CC-Lizenzen) zur Verfügung gestellt haben sollten, gelten abweichend von diesen Nutzungsbedingungen die in der dort genannten Lizenz gewährten Nutzungsrechte.

Terms of use:

Documents in EconStor may be saved and copied for your personal and scholarly purposes.

You are not to copy documents for public or commercial purposes, to exhibit the documents publicly, to make them publicly available on the internet, or to distribute or otherwise use the documents in public.

If the documents have been made available under an Open Content Licence (especially Creative Commons Licences), you may exercise further usage rights as specified in the indicated licence.



<https://creativecommons.org/licenses/by/4.0/>

Article

Log Periodic Power Analysis of Critical Crashes: Evidence from the Portuguese Stock Market

Tiago Cruz Gonçalves ^{1,*}, Jorge Victor Quiñones Borda ², Pedro Rino Vieira ¹ and Pedro Verga Matos ¹

¹ Advance/CSG, ISEG—Lisbon School of Economics & Management, Universidade de Lisboa, 1200-781 Lisboa, Portugal; rinovieira@iseg.ulisboa.pt (P.R.V.); pvmatos@iseg.ulisboa.pt (P.V.M.)

² Facultad de Ciencias Económicas, Unidad de Posgrado, Ciudad Universitaria, Universidad Nacional Mayor de San Marcos, Lima 15081, Peru; jquinonesb@unmsm.edu.pe

* Correspondence: tiago@iseg.ulisboa.pt; Tel.: +351-213-925-800

Abstract: The study of critical phenomena that originated in the natural sciences has been extended to the financial economics' field, giving researchers new approaches to risk management, forecasting, the study of bubbles and crashes, and many kinds of problems involving complex systems with self-organized criticality (SOC). This study uses the theory of self-similar oscillatory time singularities to analyze stock market crashes. We test the Log Periodic Power Law/Model (LPPM) to analyze the Portuguese stock market, in its crises in 1998, 2007, and 2015. Parameter values are in line with those observed in other markets. This is particularly interesting since if the model performs robustly for Portugal, which is a small market with liquidity issues and the index is only composed of 20 stocks, we provide consistent evidence in favor of the proposed LPPM methodology. The LPPM methodology proposed here would have allowed us to avoid big loses in the 1998 Portuguese crash, and would have permitted us to sell at points near the peak in the 2007 crash. In the case of the 2015 crisis, we would have obtained a good indication of the moment where the lowest data point was going to be achieved.

Keywords: financial bubble; self-organized criticality; stock crash; log-periodic power law; financial crisis



Citation: Gonçalves, Tiago Cruz, Jorge Victor Quiñones Borda, Pedro Rino Vieira, and Pedro Verga Matos. 2022. Log Periodic Power Analysis of Critical Crashes: Evidence from the Portuguese Stock Market. *Economies* 10: 14. <https://doi.org/10.3390/economies10010014>

Academic Editors:
Wing-Keung Wong and
Faridul Islam

Received: 31 October 2021
Accepted: 28 December 2021
Published: 4 January 2022

Publisher's Note: MDPI stays neutral with regard to jurisdictional claims in published maps and institutional affiliations.



Copyright: © 2022 by the authors. Licensee MDPI, Basel, Switzerland. This article is an open access article distributed under the terms and conditions of the Creative Commons Attribution (CC BY) license (<https://creativecommons.org/licenses/by/4.0/>).

1. Introduction

The importance of bubbles and crashes in the stock market has always attracted a large amount of interest, given how wealth is created quickly, just to end abruptly when most economists, forecasters, and experts expected the positive trend to continue in an indefinite way (see Harsha and Ismail 2019; Ziemann 2021) for a review on the mechanisms behind bubbles and crashes). Although most of this interest comes from behavioral areas that explore the psychological mechanisms behind such phenomena (e.g., Andraszewicz 2020; Pan 2019), it is not limited to so (e.g., Zheng 2020). In this paper, we adopted an alternative approach, based on Johansen et al. (2000) that is considered to have the potential to produce promising results (Harsha and Ismail 2019). We present the theory of self-similar oscillatory finite-time in finance and its application to the prediction of crashes. We test the Log Periodic Power Law/Model (LPPM) to analyze the Portuguese stock market, in its crises in 1998, 2007, and 2015. Parameter values are in line with those observed in other markets. The model performs robustly for Portugal, which is a small market with liquidity issues and the index is only composed of 20 stocks. Thus, we provide consistent evidence in favor of the proposed LPPM methodology.

Our results were robust and consistent with previous literature: predictions of critical time appear to be stable regarding the last data point included. The number of oscillations required to verify that the log-periodicity is not coming from noise ($N_{osc} = 3$), thus, signaled robust results. Regarding the fitting, the minimization of SRSD (sum of root squared deviations) or RMSD (root of the sum of the squared differences) led to similar results.

By using artificial series, we were able to provide a measure of how stable our critical time predictions are relative to small perturbations, and to generate bands that could be expected to land around the real critical time.

The LPPM methodology proposed here would have allowed us to avoid big losses in the 1998 Portuguese crash, and would have permitted us to sell at points near the peak in the 2007 crash. In the case of the 2015 crisis, we would have obtained a good indication of the moment where the lowest data point was going to be achieved.

The paper is organized as follows: in the Literature Review, we will discuss market rationality and its relationship with self-organized criticality (SOC). Next, we will present the model behind the Log Periodic Power Law (LPPL) and some guidelines for its application. The following section will present the results obtained from the analysis of the Portuguese stock market in three critical periods—1997, 2007–2008, and 2015. Lastly, we conclude and present recommendations and suggestions for future research.

2. Literature Review

In our framework, markets are considered open and non-linear complex systems that exhibit emanating patterns (Bastiaensen et al. 2009) and include evolutionary adaptive characteristics populated by bounded rational agents interacting with each other (Sornette and Andersen 2002).

An important property of complex systems is the possible manifestation of coherent large-scale collective behaviors with a very rich structure, resulting from the repeated nonlinear interactions among its constituents. Most complex systems cannot be solved and instead should be explored using numerical methods. In most cases, given that the systems are computationally irreducible, their dynamical future time evolution would not be predictable. Even with the continuous increasing computing power, a prediction of critical events could still be difficult due to the under sampling of extreme situations. However, it should be noted that the interest is not in predicting the detailed evolution of systems, but in trying to detect the arrival of critical times and extreme events (Sornette 2003).

Self-Organized Criticality (SOC) is defined as “the spontaneous organization of a system driven from the outside into a globally stationary state, which is characterized by self-similar distributions of event sizes and fractal geometrical properties” (Sornette 2007, p. 7013). This stationary state is dynamical and characterized by the emergence of statistical fluctuations that are usually called ‘avalanches’. In this context ‘criticality’ refers to the state of a system at a critical point at which the correlation length and the susceptibility become infinite in the infinite size limit, while self-organized is related to pattern formation among many interacting elements. The concept is that the structuration, the patterns, and the large-scale organization appear spontaneously. The notion of self-organization refers to the absence of control parameters (Sornette 2007). Critical points are points in time where we observe the explosion to infinity of a normally well-behaved quantity (Johansen et al. 2000), which could be a common occurrence. The ‘Dragon King’ concept, proposed by Sornette (2007), where the term ‘king’ is used to refer to events which are even beyond the extrapolation of the fat-tail distribution of the rest of the population. Inside the SOC framework, stock market crashes are due to the slow build-up of long-range correlations (Johansen et al. 2000), and the markets eventually land into a crash since those correlations lead to a global cooperative behavior (Kaizoji and Sornette 2008). This theory can be applied equally to bubbles ending in a crash as well as to those that land smoothly (Johansen et al. 1999).

The forecasting of crashes is compatible with rational markets since even if investors know that there is a high risk of a crash, this crash could still happen and investors would not be able to earn any abnormal risk-adjusted return by the use of this information (Johansen et al. 2000), as investors must be compensated by the chance of a higher return in order to be induced to hold an asset that might crash (Johansen and Sornette 1999b). As such, the price of the assets moves up, but that is rational due to the risk of a crash increasing. The similar patterns arising before crashes at different times have been attributed to the

stable nature of humans, since they are essentially driven by greed and fear in the process of trading. Even when technology changes the ways of interaction, the human elements remain (Sornette 2003). Two characteristics usually associated with crashes are: (1) the later come unexpectedly and (2) financial collapses never occur when the future looks bad (Sornette 2003). A possible explanation is that people tend to forecast the future as a linear continuation of the present (e.g., Gonçalves et al. 2020).

Self-Organizing Criticality theory is consistent with a weaker form of the weak efficient market hypothesis (Sornette 2004) that purports market prices contain not only easily accessible public information (information that has been demonstrated to disseminate in an efficient way under controlled circumstances (Sornette and Andersen 2002)), but also more subtle information formed by the global market that most or all individual traders have not yet learned to decipher and use (Sornette 2003). It was also proposed that the market as a whole can exhibit an emergent behavior not shared by any of its constituents (Sornette 2003), in a process compared to the behavior of an ant colony. The aggregate effect of market participants could take the price to the level expected by the rational expectations theory, even when every participant traded in a sub-optimal way. Prices could not be in a journey to an equilibrium point, but in a self-adaptive dynamical state emerging from traders' actions (Johansen et al. 2000).

News could be unnecessary in order to provoke movement in financial prices, given that self-organization of the market dynamics is sufficient to create complexity endogenously (Sornette and Andersen 2002). In this case, it would not be necessary to match every price movement to different news; in contrast to the efficient market theory, where crashes are caused by the revelation of a dramatic piece of information (Johansen et al. 2000). Furthermore, typical analysis after crashes usually have conflicted conclusions as to what that information could have been.

A market will be in a bubble state when faster-than-exponential accelerating price behavior appears (Zhou and Sornette 2009), and a crash will be defined as an extraordinary event with an amplitude above 15% (Johansen and Sornette 1999a). Controversy regarding the existence of bubbles appears since we never know with certainty which are the fundamentals (Youssefmir et al. 1998), and since bubbles can be reinterpreted as unobserved market fundamentals (Sornette and Andersen 2002). Another point of discussion is if bubbles should appear if market participants are rational or if that demonstrates that they are irrational. There has been analysis providing rational explanations for the South Sea Bubble, the Mississippi Bubble and the Tulipmania, using analysis with omitted variables where the crash did not occur. However, it is mentioned that it is difficult to find a rational explanation based on news for the 19 October 1987 crash, where US stocks went down around 22%.

Bubbles and crashes could also be understood on the context of business cycles. These depend on many small factors that are difficult to measure and control, instead of a few large controllable parameters of what makes business cycles essentially uncontrollable (Black 1986). An additional complication is that speculative bubbles may take all kinds of shapes. Detecting their presence or rejecting their existence is likely to prove very hard (Blanchard 1979).

The definition of a bubble as a transient upward acceleration of prices above fundamental value brings us to another problem, given that we cannot differentiate easily between a growing bubble price and a growing fundamental price, as mentioned by Yan et al. (2011). A more direct approach to bubble identification would be to consider that markets are in a bubble when prices accelerate at a faster-than-exponential rate, also known as 'super-exponential'. In those cases, the growth rate itself keeps growing, something that is inevitable and unsustainable (Zhou and Sornette 2009). A super-exponential growth process would lead to finite-time singularities; at that point the bubble dynamics have to end, and the market has to change to a different regime (Kaizoji and Sornette 2008).

A recurrent characteristic of stock prices during bubbles is their accelerating oscillations roughly organized according to a geometrically convergence series of characteristic

time scales decorating the power law acceleration. Such patterns have been coined “log-periodic power law” (LPPL) (Zhou and Sornette 2009). Another observed fact during bubbles is the reduced liquidity as we approach the top of the bubble. This occurs due to an increase in the rate of the market order submission reducing the liquidity and thus increasing the price (Farmer et al. 2005).

Johansen and Sornette (2002) analyzed the most important financial indices, currencies, gold, and a sample of individual stocks in the US, finding fat-tails in all series (except for the CAC40). In addition to that, they found that 98% of drawdowns and draw-ups could be fitted to an exponential model, 98% of the time. These 98% could be produced by a financial market following a GARCH process, while approximately 1–2% of the largest drawdowns could not be fitted to the exponential or Weibull functions. This could indicate that the largest drawdowns are outliers, even when most of the time the very largest daily drops are not outliers. An explanation for this could be the emergence of a sudden persistence of consecutive daily drops, with a correlated magnification of the amplitude of drops (Johansen and Sornette 2002). Their main result was the existence of the emergence of transient correlations across daily returns. These have been found in emerging markets (reflecting the low volume) but also in the October 1987 crash. Such would lead us to analyze the problems related to the extended use of Value-at-Risk (VaR) and extreme value theory (EVT). In the case of VaR, this is focused on the analysis of one-day extreme events happening during a specified timeframe. However, the bigger losses occur due to the emergence of transient correlation, which in turn will lead to runs of cumulative losses. These correlations would make the drawdowns much more frequent than expected when independence between daily returns is assumed. Regarding EVT, if large drawdowns are outliers, extrapolating the tails from smaller values cannot be correct.

Drastic price changes without a change in economic fundamentals could be explained by panicked uninformed traders that sell, causing prices to drop (Barlevy and Veronesi 2003). However, those sells could be rational if they are acting in response to perceived information that they received from the market. If that is the original cause of crashes, there would not be a need of an exogenous cause. Eguiluz and Zimmermann (2000) mention that the occurrence of crashes could be explained by the mechanisms of information dispersion and herding.

Threshold models, where outcomes depend on how people react to other people’s actions, apply to a multitude of situations, including the stock market. These models start with the initial distribution of thresholds and try to estimate how many will end choosing each of the two alternatives presented (Granovetter 1978); that is, to find the equilibrium that will arise over time. Finding these equilibria is difficult, since people have different thresholds regarding how many people would have to hold an opinion for them to consider changing their own opinion. Threshold models and mimetic contagion processes are related, since these processes can be identified, for as the imitation disseminates, it reinforces itself given that individuals show an increasing tendency to imitate (Orlean 1989). An opinion shared by a great number of people would be very attractive, increasing the chances that those that ignored it at first, could change their mind. Devenow and Welch (1996) mention that influential market participants highlight the high influence that other market participants have in their decisions, which could lead to mimetic contagion whenever there is a bubble or crash.

It has been considered by Orlean (1989) that a trader that analyses information considering the Walrasian general equilibrium would decide if this were relevant or not, in an objective way, according to market fundamentals. However, in his framework, the speculator would only consider how other traders think and act, drawing a parallelism between this situation and the beauty contest example created by Keynes. In cases of mimetic contagion, investors are not interested in fundamentals, but only in the information they can obtain from market participants; they could just copy the actions of their neighbors (Orlean 1989). This could help explain bubbles and crashes, but received little attention since it was considered akin to irrationality. However, when an agent has no information,

it could end better off by copying somebody with information, or simply end in the same situation (in case the copied agent has no information).

Between the two extreme positions, where one extreme sees herding as an example of irrational behavior, and the other sees it as an example of rationality, but considers externalities, information, and incentives, there is an intermediate view that holds that decision-makers are near-rational, economizing on information processing or information acquisition costs by using heuristics, and that rational activities by third-parties cannot eliminate this influence (Devenow and Welch 1996; Gonçalves et al. 2021).

Orlean's model is compatible with the model proposed by Graham (1999), where there are two types of traders: smart ones, who receive informative signals, and dumb ones, who receive uninformative signals. Given that the smart analysts' signals are positively correlated, they would tend to act in a similar way, as a consequence, in certain circumstances, an analyst can look smart by herding. On the other hand, an analyst would have a bigger tendency to ignore leaders' opinions and trust his own personal information if he has a bigger perceived ability (or high confidence). This point of view is shared by Zhou and Sornette (2009, p. 869), who add that "it is actually rational to imitate when lacking sufficient time, energy, and information to take a decision based only on private information and processing, that is (...), most of the time".

Bubbles are more likely to appear in isolated industries or markets (Krause 2004), given that analysts and traders in the sector are usually interacting amongst themselves most of the time, and that those industries or markets could be not well integrated into the rest of the economy, magnifying the effects of biases. Johansen and Sornette (1999b) mention that traders do not maintain a fixed position with respect to their colleagues, instead they are in constant change, creating new interactions and correlations.

The effects of herding behavior in financial markets can be seen as positive or negative feedback mechanisms causing price accelerations or decelerations and (anti)-bubble formation, where asset prices become detached from the underlying fundamentals (Bastiaansen et al. 2009). This phenomenon is closely related to the concept of positive and negative feedbacks; the latter tend to regulate systems towards an equilibrium, while positive feedbacks make high prices or returns even higher (Sornette 2003). In the stock market's context, positive feedback would be referred to as trend-chasing (Johansen and Sornette 1999b); however, it is also noted that, at some point, not only technical analysts but also fundamentalists will have to act as trend-chasers to increase benefits. Positive feedbacks, caused among others by derivative hedging, portfolio insurance, and imitative trading, are considered an essential cause for the appearance of non-sustainable bubble regimes. Specifically, the positive feedbacks give rise to power law (i.e., faster than exponential) acceleration of prices (Zhou and Sornette 2009).

Using tools to quantify the degree of endogeneity, it has been determined that it has increased from 30% in the 1990s to at least 80% as of today, showing that due to technological advances that make possible to trade several times in a short period of time, we develop bubbles and crashes that can develop and evolve increasingly over time scales of seconds to minutes (Sornette and Cauwels 2014).

3. The Model: The Log-Periodic Power Law (LPPL)

The proposed framework, following Lin et al. (2014), Li (2017), and Ko et al. (2018) considers the existence of two types of traders: Perfectly Rational Investors (Fundamental Value Investors) with rational expectations, and Irrational Traders (Trend Followers/Noise Traders/Technical Traders that exhibit herding behavior). From their interaction we develop the characteristic periodic oscillations in the stock market that are visible in the logarithm of the price in periods before crashes. These oscillations will provide evidence towards the increasingly greater frequencies that eventually reach a point of no return, where the unsustainable growth has the highest probability of ending in a violent crash or gentle deflation of the bubble (Yan et al. 2011). In a crash, "there is a steady build-up of tension in

the system (...) and without any exogenous trigger a massive failure of the system occurs. There is no need for big news events for a crash to happen" (Bastiaensen et al. 2009, p. 1).

Accelerating prices at the end of bubbles occurs due to the higher the probability of a crash, the faster the price must increase (conditional on having no crash) (Johansen et al. 2000). This happens since investors expect higher prices in order to be compensated for the higher risk of a crash. That way prices are driven by the hazard rate of a crash, defined as the probability per unit of time that the crash will happen in the next instant if it has not happened yet (Johansen et al. 2000). We will represent the hazard rate conditional on time as $h(t)$. The higher the hazard rate, the higher the price, since this is the only result consistent with rational expectations.

Two characteristics of critical systems have been observed in the stock market by Johansen et al. (2000): "(a) local influences [that] propagate over long distances that makes the average state of the system very sensible to small perturbations (that is, it becomes highly correlated) and (b) self-similarity across scales at critical points where big concentrations of bearish traders may have within it several islands of traders who are mostly bullish, each of which in turn surrounds lakes of bearish traders with islets of bullish traders; the progression continues all the way down to the smallest possible scale: a single trader" (Johansen et al. 2000, p. 234).

Local imitation cascades through the scales into global coordination due to critical self-similarity (Johansen et al. 2000). Given that similar crashes have happened during this century, we will have to consider that maybe it is the structure of markets that leads to crashes, since almost everything else have changed during the years. The origin of the crashes could lay on the organization of the system itself (Johansen and Sornette 1999a).

According to Crutchfield (2009), when you add intelligence to a group, this starts to behave in more complicated ways, since agents try to anticipate each other creating oscillations in the market; something that would not happen with simple agents without big memories or complex strategies. He concludes that dynamical systems consisting of adaptive agents typically do not tend to a mutually beneficial global condition—they cannot find the Nash Equilibrium. The lesson is that dynamical instability is inherent to collectives of adaptive agents.

Traders are inserted inside a network of contacts, and it is from these interactions that they will be influenced and take decisions, either buy or sell. Traders tend to imitate their closest neighbors; in periods where imitation is high, there would be an increased order in the market (e.g., people agreeing to sell), and that would lead to a crash (Johansen et al. 2000). However, the normal state of the market is a disordered one where buyers and sellers disagree with each other and roughly balance each other out (Johansen et al. 2000). Despite the usual characterization of chaos as something negative, it is the predominance of order that brings bubbles and crashes to the market.

Another dynamical explanation of the emergence of oscillatory patterns in prices considers the competition between positive feedback (self-fulfilling sentiment), negative feedbacks (contrarian behavior and fundamental value analysis) and inertia (everything takes time to adjust) (Zhou and Sornette 2009). According to the later, the competition between these market participants, plus the effect of inertia, would lead to nonlinear oscillations approximating log-periodicity. Another point to have in mind, as to what provokes the log-periodic behavior, is the fact that most investment strategies followed by trend followers are not linear, they tend to under-react for small price changes and over-react for large ones (Ide and Sornette 2002).

The log-periodicity observed in the stock market before crashes has been interpreted as "the observable signature of the developing discrete hierarchy of alternating positive and negative feedbacks culminating in the final 'rupture', which is the end of the bubble often associated with a crash" (Zhou and Sornette 2009, p. 870).

Initial crash rates are exogenous, and investors receive this information and translate it into prices. Later, there could be (or not) a feedback between agent actions and the hazard rate. The crash itself is an exogenous event, even when everybody knows that it

could be coming, nobody knows exactly why, so even when they can be compensated for it in the form of high prices, they cannot obtain abnormal returns (after adjusting risk) by anticipating the crash (Johansen and Sornette 2002). However, the specific way the market collapsed is not the most important problem, since a crash occurs due to the market entering an unstable phase, and any small disturbance or process may trigger the instability (Sornette 2003). Once a system is unstable, many situations could trigger the reaction (the crash), and as such that is why sometimes it is so difficult to find the exact origin of a crash, and many different news points could be indicated as the origin of the crisis, even when the real origin was that the hazard rate was already high and the log-periodic price oscillations had no room to keep accelerating.

It has been suggested by Sornette and Johansen (1997, p. 420) that “the market anticipates the crash in a subtle self-organized and cooperative fashion, hence releasing precursory ‘fingerprints’ observable in the stock market prices.” They consider that there is information to be picked up by investors from prices; however, this subtle information has not been discovered by most.

Specific events can act as revelators rather than the deep sources of the instability (Johansen et al. 1999). Even political events can be considered revelators of the state of a bigger dynamical system in which the stock market is included. Endogenous crashes can be understood as the natural deaths of self-organized, self-reinforcing, speculative bubbles giving rise to specific precursory signatures in the form of log-periodic power laws accelerating super-exponentially (Johansen and Sornette 2010). However, there have been some exogenous crashes identified. In those cases, crashes can be related to some extraordinary events (Johansen and Sornette 2010).

The LPPL Equation

The Log Periodic Power Law (LPPL) equation used in this document has been dubbed the “Linear” Log-Periodic Formula (even when it is not linear):

$$\log[p(t)] = A + B(t_c - t)^\beta \{1 + C \cos[\omega \log(t_c - t) + \phi]\} \quad (1)$$

where t_c = critical time, ω = log-periodic angular frequency, ϕ = phase, β = exponent, and other important quantities that do not appear in the equation are t_{first} and t_{last} , which represent the first and last data point used for the fit.

Originally, the LPPL equation, designed to predict the critical time, used the market index as a measure of the level of the market. However, to avoid getting distorted signals due to the exponential rise of price (and avoiding the need to de-trend and getting additional distortion), the logarithm of the index was preferred (Sornette and Johansen 1997). Another advantage of this specification is due to investors being concerned with relative changes in stock prices rather than absolute changes (Feigenbaum 2001). Correct specification depends on the initial assumptions regarding the expected size of the crash. If we expect it to be proportional to the current price level, we would need to use the logarithm of the price (preferred for longer time scales, such as eight years). However, if we expect the crash to be proportional to the amount earned during the bubble, the price itself should be used. This could be better suited for shorter time scales, such as two years (Johansen and Sornette 1999a).

An interesting relationship is:

$$\lambda \equiv e^{\frac{2\pi}{\omega}}, \quad (2)$$

which represents the ratio of consecutive time intervals. This is important since it is a constant and permits us to identify the oscillations that contain the critical date t_c . This is possible since the time intervals tend to zero at the critical date and complete it in a geometric progression (Johansen et al. 1999). A curious observation with regards to λ is that it tends to be around two in a wide variety of systems, including growth processes, rupture, and earthquakes (Sornette 1998). In this representation, ω is encoding the information

on discrete scale invariance, and thus is on the preferred scaling ratio between successive peaks.

With regards to t_c , we can say that it is determined by initial conditions (Johansen and Sornette 1999a) and marks the estimated end of a bubble, which could take the form of a significant correction or a crash 66% of the time (Zhou and Sornette 2009). However, there is a finite probability of a phase transition to a different regime (without a crash), such as a slow correction. This finite probability is given by:

$$1 - \int_{t_0}^{t_c} h(t) dt > 0 \quad (3)$$

It is important to stress the residual probability for the coherence of the model, since otherwise agents would anticipate the crash and not remain in the market (Johansen and Sornette 1999b).

Tests of sensitivity and robustness found that t_c and ω are very robust, with respect to the choice of the starting time (t_{first}) of the fitting interval (Zhou and Sornette 2009). They found similar results analyzing the sensitivity of t_{last} . These results confirmed that fits are robust and predictions reliable.

Using parameters obtained from fitting the LPPL equation (t_c and ω), it is possible to calculate the number of oscillations (represented as N_{osc}) appearing in the time series by using an equation presented by Zhou and Sornette (2009):

$$N_{osc} = \frac{\omega}{2\pi} \ln \left| \frac{t_c - t_{first}}{t_c - t_{last}} \right| \quad (4)$$

Zhou and Sornette (2009) mention that multiplicative noise on a power law accelerating function has a most probable value of $N_{osc} \approx 1.5$, and that, if $N_{osc} \geq 3$, we can reject with 95% of confidence that the log-periodicity observed comes from noise.

To model LPPL equation, we will use the usual restrictions suggested by Sornette (2004):

$$\beta \rightarrow 0.2-0.8, \quad (5)$$

(The exponent needs to be between 0 and 1, in order to accelerate and to remain finite, but we will use a more stringent suggested range):

$$\omega \rightarrow 5-15, \quad (6)$$

(This corresponds to $1.5 < \lambda < 3.5$):

$$t_c \rightarrow t_c > t_{last}, \quad (7)$$

$$\phi \rightarrow \text{No restriction}. \quad (8)$$

After fitting the Portuguese stock market index to the LPPL equation, it could be expected to obtain reasonable fits with low errors, as well as post-dictions of critical dates close to the real observed dates. However, it would be unrealistic to expect that the predicted t_c coincides exactly with the time of the crash, since the not fully deterministic nature of crashes (Johansen et al. 2000). Another point considered by the latter is that false alarms could be unavoidable, but most endogenous crashes will be predicted. As a way to calculate the significance of the values for β and ω in the usual range, Johansen and Sornette (1999a) analyzed 400-week random intervals from 1910 to 1996 of the Dow Jones average and tried to fit the log-periodic equation. They only were able to find six data sets in the usual ranges, and all corresponded to periods before crashes: 1929, 1962, and 1987. These results strengthened the case for the reliability of this method of analysis.

Regarding the log-periodic angular frequency, a fundamental has been identified in a different analysis in the range $\omega_1 \approx 6.4 \pm 1.5$, with other peaks having been found on its harmonics:

$$\omega_n = n\omega_1. \tag{9}$$

However, even when the importance of the harmonics is expected to decrease exponentially, ω_2 and ω_3 have been observed to be very significant, with this being something more prevalent in individual stocks rather than in aggregate indexes, due to the additional noise of the data (Zhou and Sornette 2009).

4. Data and Methodology

Data comprises the prices of PSI-20 Index from the Portuguese stock market retrieved from DataStream, starting at 31 December 1993. We use the linear log-periodic defined in Equation (1), and we created post-dictions of the 1998, 2007, and 2015 crashes using data from the start of the new trend, until 8 months before the crash. Then, we created a new sample with the same starting point and advancing to the last data point in 2 weeks. We repeated the procedure until 2 months before the crash point. In this way, we analyzed if the results were robust to the sample changes, and if they tended to converge to the same critical date, (the date with the highest probability of a crash), or if it continued changing, making the results not reliable.

We restricted parameters following the usual conventions mentioned in Section 3, and fitted the model by minimizing the sum of root squared deviations (SRSD), using the Generalized Reduced Gradient (GRG2) Algorithm for optimizing nonlinear problems. We allowed for a search with a high precision (small convergence value: 0.00001), that converged in probability to globally optimal solutions. As an additional security step, we analyzed it from 400 different random starting points (different values for the multiple variables) to avoid being trapped in local minima.

5. Results and Discussion

5.1. Analysis of the 1998 Crash

For the 1998 Crash, we use as our first data point $t_{first} = 96.01$ (2 January 1996), since it is the moment the upward trend began, and our earlier last data point considered for the fitting process will be $t_{last} = 98.08$ (29 January 1998). The global maximum for the period is located at 98.57 (22 April 1998). There is another peak before the big crash on 98.55 (20 July 1998). The minimum point after the crash is located at 98.76 (2 October 1998), as shown in Figure 1.

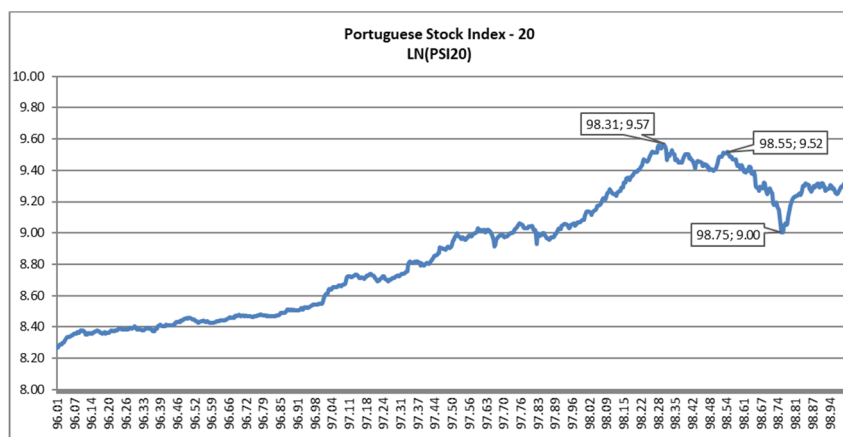


Figure 1. Log(PSI20) for the 1996–1998 period.

The data series for this period can be fitted to a GARCH (2, 2) model, where the main model is an autoregressive distributed lagged model with lag 1. The model was fitted to

the differences of the log of the PSI20 index. Using these parameters, all the ARCH effects and correlations were included into the model, while one differentiation of the data was enough to achieve stationarity in the series. However, the histogram of the residuals was leptokurtic. Figure 2 presents the histogram of the Standardized Residuals for the GARCH (2, 2) model.

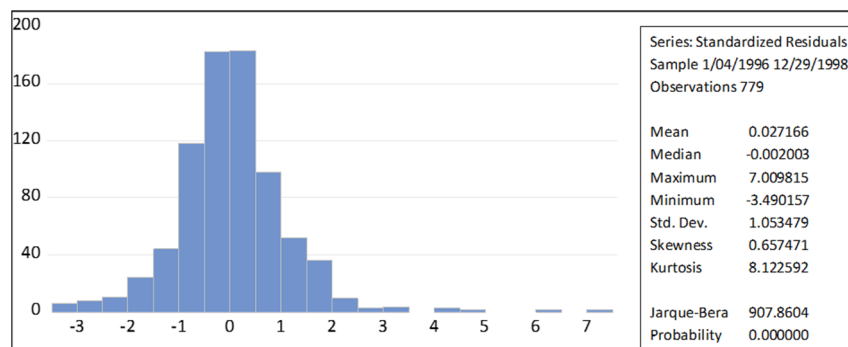


Figure 2. Histogram of the Standardized Residuals of GARCH (2, 2) model for the 1996–1998 period.

In Table 1, we present the results of all the minimization processes, where SRSD is the sum of root squared deviations, NDP is the number of data points, and *tlast* is the last data point. All other parameters are defined in the model section. In all cases, the analysis started in 96.01 (2 January 1996). Highlighted in the table is the post-diction realized 3 months before the lowest point, which means that the *tlast* was 98.50 (the lowest data point in the period was 98.75, and there was a tenuous local peak at 98.55).

Table 1. Fitting of the Log-Periodic Linear Model for the 1996–1998 period, for samples with different ending points (*tlast*).

	A	B	C	β	φ	<i>tc</i>	ω	λ	SRSD	SRSD/NDP	<i>Tlast</i>	<i>Tlast Natural</i>	<i>Nosc</i>	NDP
1	9.41	−0.68	0.14	0.51	199.91	98.18	7.35	2.35	12.57	0.02	98.08	29 January 1998	3.60	542
2	9.41	−0.68	0.14	0.51	199.91	98.18	7.35	2.35	12.74	0.02	98.12	13 February 1998	4.23	553
3	9.41	−0.69	0.14	0.51	199.91	98.18	7.42	2.33	12.88	0.02	98.17	2 March 1998	6.05	564
4	9.69	−0.93	0.09	0.42	199.42	98.28	8.91	2.02	13.53	0.02	98.21	17 March 1998	4.84	575
5	11.78	−2.86	−0.02	0.20	74.86	98.64	14.09	1.56	13.69	0.02	98.25	1 April 1998	4.27	586
6	11.79	−2.86	−0.02	0.20	74.91	98.64	13.96	1.57	14.09	0.02	98.29	16 April 1998	4.49	597
7	10.94	−1.99	0.03	0.30	109.37	98.66	15.00	1.52	14.83	0.02	98.33	1 May 1998	4.95	608
8	10.94	−1.99	0.03	0.30	109.36	98.66	15.00	1.52	15.36	0.02	98.38	18 May 1998	5.33	619
9	10.87	−1.92	0.03	0.30	109.35	98.66	15.00	1.52	16.12	0.03	98.42	2 June 1998	5.70	630
10	10.61	−1.65	0.04	0.35	109.26	98.68	15.00	1.52	17.93	0.03	98.46	17 June 1998	5.97	641
11	10.57	−1.60	0.04	0.36	109.13	98.70	15.00	1.52	20.63	0.03	98.50	2 July 1998	6.21	652
12	9.61	−0.71	−0.08	0.74	194.99	98.55	15.00	1.52	22.95	0.03	98.54	17 July 1998	12.93	663
13	9.61	−0.68	−0.08	0.77	194.77	98.60	15.00	1.52	24.27	0.04	98.59	3 August 1998	13.05	674

We can observe that, when our analysis has samples ending from 98.08 to 98.17, the critical time is calculated as 98.18, well before the time of the crash (and almost immediately after the last data point); that seems to be a usual occurrence. It seems as if the log-periodic fit is coupling to some structure in the data that does not represent the complete series. A similar situation can be observed when the last data point is 98.21. However, a totally different result is obtained when the last data point is between 98.25 and 98.50, when the critical time starts being predicted at a period between 99.64 and 98.70 (the lowest data point is at 98.75), which is consistent with the fact that usually the predicted critical point is before the real data of the crash. For samples ending in 98.54 and 98.59, we end again in a situation where the critical time is predicted immediately after the last data point.

Considering that the lowest level of the stock market was in 98.75, we would have been able to prevent with some anticipation the upcoming crash, considering that we were able to obtain reasonable predictions, while restricting the parameters to the conventional ranges for the method used, (namely β between 0.2 to 0.8 and ω between 5 and 15). The value of λ ranged from 1.52 to 2.35, showing values around 2, as expected.

As an additional point, we can mention that $N_{osc} > 3$, which would show with 95% of confidence that the log-periodic oscillations are not coming from noise. We will see similar results regarding oscillations in the following results tables.

Sensitivity Analysis of the Critical Times (t_c) for 1996–1998: The Impact of T_{last}

The fitting was realized with multiple t_{last} points to test the stability of the solutions, such that they tend to converge to some value, which would be expected if the fitting was able to capture correctly the log-periodic frequency of the stock market.

In this case, it is possible to observe on Figure 3 how the forecasts for t_c tend to be grouped between 98.64 and 98.70, since a peak was registered at 98.55 and the lowest point at 98.76. It appears that the results are consistent with the real data and among them. Despite seven changes of last data point, the forecasts were around the same values.

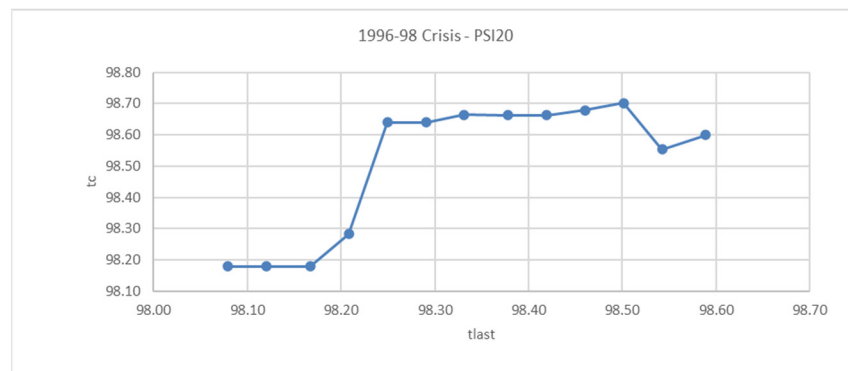


Figure 3. Sensitivity analysis of the critical times t_c —1996–1998 crisis.

5.2. Analysis of the 2007 Crash

For the analysis of the 2007 crash in the PSI-20, we take $t_{first} = 103.15$ (24 February 2003) as the first data point of the sample, since it is the point where the bullish trend started. Our earlier last data point t_{last} is equal to 106.96 (15 December 2006). It can be observed as a global peak at 107.54 (17 July 2007), a local minimum after the first downward movement at 107.74 (26 September 2007), and another lower minimum at 108.06 (23 January 2008), as observed in Figure 4.

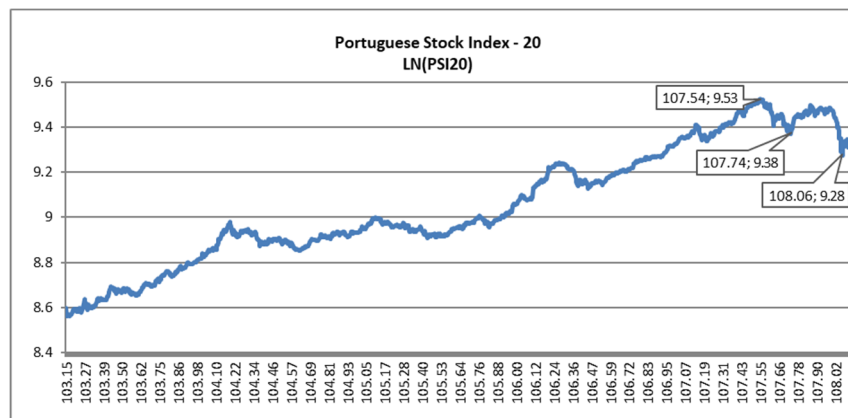


Figure 4. Log(PSI20) for the 2003–2008 period.

As in the previous case, we will first run a time series analysis of the data, before proceeding with Log-Periodic Analysis of the data series. In the sample from 24 March 2003 to 17 May 2007, we were able to incorporate all the significant ARCH effects and correlation using a GARCH (1, 1) to model the variance and an ARIMA (1, 1, 1) model with intercept

as the main equation. As in the previous analysis, our residuals are leptokurtic. Figure 5 presents the histogram of the Standardized Residuals for the GARCH (1, 1) model for the 2003–2007 period.

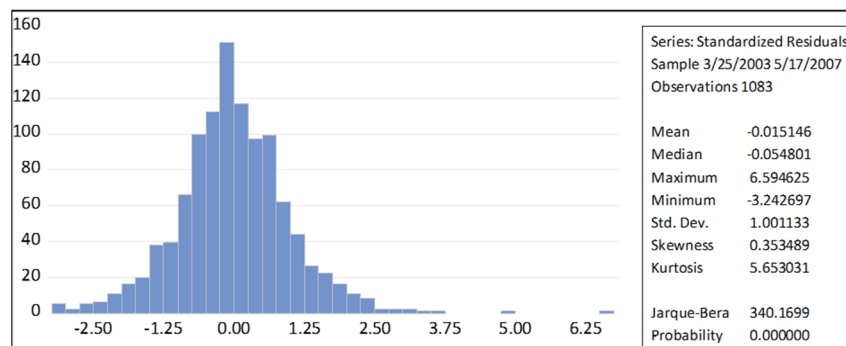


Figure 5. Histogram of the standardized residuals of GARCH (1, 1) model for the 2003–2007 period.

In the case of the 2007 crash, we stress that the peak before the crash was registered at 107.54, while the lowest point was registered at 108.06. We highlighted in Table 2 the last data point is 3 months before the peak at 107.29.

Table 2. Fitting of the Log-Periodic Linear Model for the 2003–2007 period, for samples with different ending points (*tlast*).

	A	B	C	β	φ	<i>tc</i>	ω	λ	SRSD	SRSD/NDP	<i>Tlast</i>	<i>Tlast Natural</i>	<i>Nosc</i>	NDP
1	9.33	−0.25	0.16	0.76	−20.35	107.02	11.59	1.72	23.00	0.02	106.96	15 December 2006	7.65	994
2	9.33	−0.25	0.16	0.75	−20.29	107.01	11.50	1.73	23.09	0.02	107.00	1 January 2007	11.11	1005
3	9.35	−0.27	0.16	0.72	−20.64	107.05	12.23	1.67	23.32	0.02	107.04	16 January 2007	12.55	1016
4	9.37	−0.28	0.15	0.70	−20.90	107.10	12.57	1.65	23.87	0.02	107.09	1 February 2007	11.54	1028
5	9.52	−0.35	0.11	0.64	−22.52	107.44	14.48	1.54	25.43	0.02	107.13	15 February 2007	6.02	1038
6	9.54	−0.36	0.11	0.63	−22.71	107.47	14.72	1.53	25.79	0.02	107.16	1 March 2007	6.18	1048
7	9.54	−0.36	0.11	0.63	−22.72	107.47	14.75	1.53	25.89	0.02	107.21	16 March 2007	6.52	1059
8	9.54	−0.35	0.11	0.63	−22.88	107.50	14.97	1.52	26.00	0.02	107.25	2 April 2007	6.85	1070
9	9.54	−0.35	0.11	0.64	−22.92	107.51	15.00	1.52	26.25	0.02	107.29	17 April 2007	7.20	1081
10	9.54	−0.35	0.11	0.64	−22.95	107.51	15.00	1.52	26.33	0.02	107.33	2 May 2007	7.62	1092
11	9.53	−0.35	0.11	0.64	−22.94	107.51	15.00	1.52	26.47	0.02	107.38	17 May 2007	8.32	1103

We can observe that when *tlast* ranges from 106.96 to 107.09, the predicted critical time is shortly after the last data point. However, from 107.13 to 107.38 we observe how the predicted critical time starts ranging from 107.44 to 107.60. Those results would have allowed us to be aware of the upcoming crash, and retreat of the market at near peak prices. In this group of forecasts, it can be seen that λ ranges from 1.52 to 1.73, similar to those in the 1998, and closer to 2, the usual expected value.

Sensitivity Analysis of the Critical Times (*tc*) for 2007: The Impact of *Tlast*

Eleven forecasts were included in Figure 6. We can identify four data points where the forecast would end shortly after *tlast*; later forecasts start to become grouped in the range 107.44–107.51.

Considering that the peak before the crash was at 107.54, this range would have allowed us to exit the market in a safe way. It is common that predicted dates are earlier than the realized crash dates.



Figure 6. Sensitivity analysis of the critical times t_c —2007 crisis.

5.3. Analysis of the 2015 Crash

For the analysis of the 2015 crash, the data starts at $t_{first} = 112.45$ (13 June 2012) and our earliest last data point will be $t_{last} = 115.09$ (2 February 2015).

In Figure 7, we focused on the data after 115.09, where we can observe the existence of local valleys at 115.02 (7 January 2015), 115.52 (7 July 2015), and 115.65 (24 August 2015), while there are local peaks at 115.27 (9 April 2015) and 115.54 (14 July 2015). Later, the peaks and valleys from the real data will be compared with the results obtained from the LPPL fit.

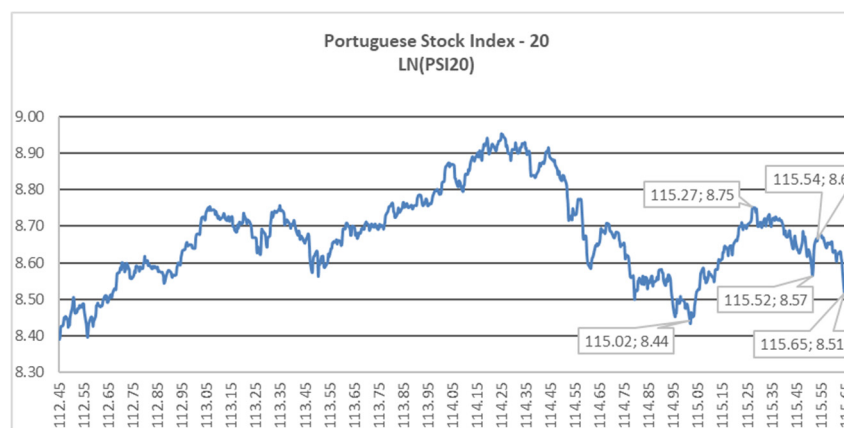


Figure 7. Log(PSI20) for the 2012–2015 period.

We fitted an Autoregressive Distributed Lag Model with one lag, to remove correlation, and one level of differentiation, to remove stationarity. We do not include an intercept, since it was statistically significant. The modelling of the variance was a GARCH (2, 2) that removed all the significant ARCH effects from the data. As in the previous two cases, the residuals showed excessive kurtosis. Figure 8 shows the histogram of the Standardized Residuals for the GARCH (2, 2) model for the 2012–2015 period.

The 2014–2015 period is interesting since it shows different peak points, where we obtain critical times not long after the last data point, but not immediately after either. There is a local maximum in the stock market at 115.30 (25 April 2015), and the lowest point after that peak is achieved at 115.65 (24 August 2015). Table 3 presents the results of our fittings.

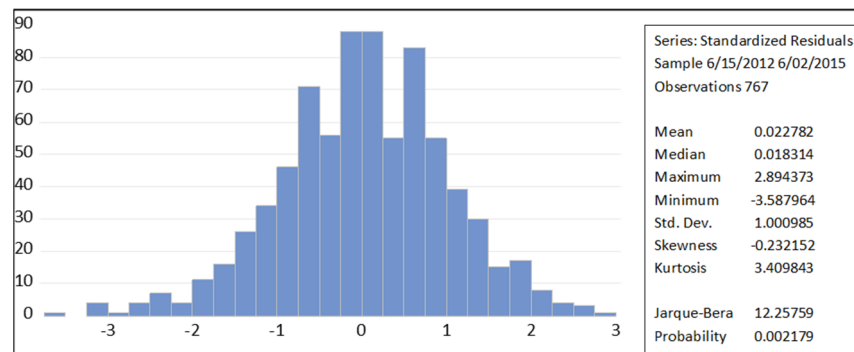


Figure 8. Histogram of the standardized residuals of GARCH (2, 2) model for the 2012–2015 period.

Table 3. Fitting of the Log-Periodic Linear Model for the 2012–2015 period, for samples with different ending points (*tlast*).

	<i>A</i>	<i>B</i>	<i>C</i>	β	φ	<i>tc</i>	ω	λ	<i>SRSD</i>	<i>SRSD/NDP</i>	<i>Tlast</i>	<i>Tlast Natural</i>	<i>Nosc</i>	<i>NDP</i>
1	8.37	0.31	0.56	0.20	31.84	115.20	5.64	3.05	34.15	0.05	115.09	2 February 2015	2.88	685
2	8.37	0.31	0.55	0.20	31.67	115.25	5.92	2.89	34.61	0.05	115.13	16 February 2015	2.99	695
3	8.37	0.31	0.55	0.20	31.54	115.28	6.19	2.76	34.90	0.05	115.17	2 March 2015	3.13	705
4	8.40	0.28	0.60	0.25	0.17	115.28	6.23	2.74	35.05	0.05	115.21	16 March 2015	3.63	715
5	8.63	0.01	−21.10	0.23	53.27	115.29	5.25	3.31	36.56	0.05	115.25	2 April 2015	3.57	728
6	8.30	0.39	0.40	0.20	−13.07	115.47	8.41	2.11	36.86	0.05	115.29	16 April 2015	3.81	736
7	8.65	0.01	−20.07	0.23	52.95	115.39	6.10	2.80	37.54	0.05	115.34	4 May 2015	3.95	747
8	8.42	0.26	0.57	0.20	−13.45	115.54	8.53	2.09	37.86	0.05	115.38	18 May 2015	4.03	757
9	8.42	0.27	0.53	0.20	30.04	115.65	9.72	1.91	38.77	0.05	115.42	2 June 2015	4.09	768
10	8.45	0.24	0.59	0.20	−13.96	115.65	9.55	1.93	39.31	0.05	115.46	16 June 2015	4.29	778
11	8.66	0.01	−19.07	0.27	52.50	115.51	7.21	2.39	40.29	0.05	115.50	2 July 2015	6.70	790

When the last data point ranges from 115.09 to 115.25, the critical time ranges from 115.20 to 115.29, around the local peak at 115.30. Nevertheless, when the last data point is around 3 months before the lowest data point but after the local peak (115.42 and 115.46), the critical time is indicated as 115.65, the point of the lowest data point. In this group of tests, λ ranges from 1.91 to 3.31, and the *Nosc* is greater than three starting with *tc* = 115.28.

Sensitivity Analysis of the Critical Times (*tc*) for 2015: The Impact of *Tlast*

In the case of the 2015 crisis, results seemed to vary more frequently. However, the stock market behavior showed many curves and the *tc* seem to converge to two different local peaks, as shown in Figure 9.



Figure 9. Sensitivity analysis of the critical times *tc*—2015 crisis.

Considering that the peak at 115.27 was not a global maximum, it is possible that the bubble had already started to become deflated, which caused the fits to be not so stable. An analysis considering a sample ending before the global peak in the 2012–2015 period could shed additional light. However, in this case, we intended to include as much information as possible, to see how good the fits were adjusted to the latest real data.

5.4. Robustness Analysis

5.4.1. Log-Periodic Analysis of the Data Minimizing the Root Mean Squared Deviation

In the previous optimization processes, we obtained the best fit by minimizing the sum of the root of the squared deviations between the log linear model and the log of the data. However, the root mean squared deviation measure requires the minimization of the root of the sum of the squared differences divided by the number of data points:

$$RMSD = \sqrt{\frac{\sum_{t=1}^n (\hat{y}_t - y)^2}{n}} \quad (10)$$

where \hat{y}_t are the predicted values, y are the market values, and n are the number of data points included in the sample. In this case, the number to minimize is going to be normalized around zero (and not around a random number, dependent on the number of data points). However, the results of both processes must be similar and equivalent.

To test this approach, we conducted the minimization procedure in three selected data points for the stock market in 1998, 2007, and 2015. The *tlast* selected are 98.50, 107.29, and 115.42, respectively. Table 4 presents our results.

Table 4. Fitting of the Log-Periodic Linear Model minimizing the RMSD—1998, 2007, and 2015 Crisis.

Parameters	1998	2007	2015
<i>A</i>	10.58	9.55	8.55
<i>B</i>	−1.58	−0.37	0.13
<i>C</i>	0.04	−0.11	1.20
β	0.36	0.61	0.20
φ	108.75	11.45	30.48
<i>tc</i>	98.75	107.51	115.54
ω	15.00	15.43	7.76
<i>RMSD</i>	0.04	0.03	0.06
<i>tlast</i>	98.50	107.29	115.42
<i>tlast natural</i>	2 July 1998	17 April 2007	2 June 2015
<i>NDP</i>	652	1081	768

For the 1998 crisis, we obtained $tc = 98.75$, while in our original analysis we obtained 98.70 (the lowest data point in the period was 98.75). In the case of the 2007 crisis, we obtained $tc = 107.51$, the same as in our original result (in this case, the lowest data point occurred in 107.54). For the 2015 crisis, we obtained $tc = 115.54$, while the original result was 115.65 (and the peak occurred at 115.65). Results were robustly similar. In the 1998 crisis, the minimization of the RMSD gave us a closer result to the lowest data point, while for 2007 and 2015, the results were closer with our original method of analysis.

5.4.2. Artificial Series and Critical Time Sensitivity

In order to test how sensitive the calculated tc to small variations in the series was, we created new artificial series based on real prices, and refitted the LPPL equation for the three time periods analyzed in this work.

The procedure to generate the new series was partly based on suggestions by [Sornette et al. \(2013\)](#). We used the residuals obtained from the fitting of the equations with $tlast = 98.50, 107.29, \text{ and } 115.42$. In each case, we reshuffled the residuals in blocks of 27 days, at least up to a month, in order to generate variability, but preserved the local transient correlations that emerged in critical times. Later, we added it to the log-price of that day (New Log-Price = Log-Price + Reshuffled Residual). We generated 10 series for each time period and refitted the LPPL equation. Our results, not tabulated, are as follows:

For the 1998 Crash, the tc for the artificial series goes from 98.65 to 98.70. In the real series, the estimated tc was 98.70, showing that even when there was some variation in the

results, these were not that different, and the obtained result was inside the band of the values obtained in the artificial series.

For the 2007 Crash, the tc ranges from 107.50 to 107.51. In the real time series, the tc was 107.51. In this case, the band that appeared was very narrow, showing little alteration of the tc after small variations to the real data.

For the 2015 Crash, the tc ranges from 115.54 to 115.55. In the real time series, the tc was 115.65. However, there is a local peak at 115.54 (14 July 2015), that the equation could be predicting correctly. The difference, in this case, could arise from the fact that we were already predicting the later drawdowns, and not the most critical crash that had already happened. In fact, we were already in a downward trend, and a different data set, (starting in 115.02, the beginning of the new mini-trend), could be more appropriate to use.

Recent studies proposing similar approaches add additional support to our model. For example, [Contessi and Pace \(2021\)](#) identified some instability in the stock markets from 18 countries during the first wave of COVID 19. Their evidence suggested a contagion from the crash of the Chinese stock market, associated in the literature to the COVID-19 Pandemic ([Liu et al. 2021](#)). [Song et al. \(2022\)](#) further explored this instability with Log-Periodic Power Low Singularity, concluding that from the 18 markets studied, the crashes identified in London, Tokyo, and Hong Kong were the only ones that might have been caused by COVID-19.

[Shu et al. \(2020\)](#) conducted a study based in LPPM but focused only in the U.S. Stock Market. Interestingly, the authors found that COVID-19 was not the main cause of the crash in 2020, with the data supporting the pre-existence of a bubble. However, the rise of the COVID-19 pandemic might have been the trigger that unleashed the stock crash.

Evidence clearly supported LPPM as a high value technique to identify bubbles and anticipate crashes, even if it would hardly help to understand the true nature of the trigger: just a trigger, a fundamental reason to the crash, or just one of many interrelated factors that explain the stock market behavior. [Dai et al. \(2021\)](#) reported that the uncertainty in the economic policy in the U.S. associated to COVID-19 increased the risk of a crash. [Dai et al. \(2021\)](#) results suggested that many other reasons contributed to the unexpected stock prices jumps. In a sense, these results support the random walk hypothesis. Regardless of the natural conditions for a disaster (which LPPM successfully identifies), its occurrence depended on the new information arriving to the stock markets.

6. Conclusions

Bubbles and the way these develop have been presented in different markets during different eras showing common features, despite technological changes or differences among countries. In all cases, when the bubble ends analysts would look for what caused the crash, and they will usually use hindsight some piece of news. However, it seems to be that financial markets are unstable by design, and that the oscillations of prices before crashes could be caused by the way markets are organized. It is possible that the cause of the crashes are the bubbles itself, and the news are just triggers, but the instability must exist to begin with.

In this work, we present the theory of self-similar oscillatory finite-time in finance and its application to the prediction of crashes. First, we discussed some terms and concepts, followed by a brief introduction to the theory, to analyze its different aspects and the challenges concerning the prediction aspect.

We test the Log Periodic Power Law/Model (LPPM) to analyze the Portuguese stock market in its crises in 1998, 2007, and 2015. Parameter values were in line with those observed in other markets. The model performs robustly for Portugal, which was a small market with liquidity issues and the index was only composed of 20 stocks. Thus, we provided consistent evidence in favor of the proposed LPPM methodology.

The LPPM methodology proposed here would have allowed us to avoid big loses in the 1998 Portuguese crash, and would have permitted us to sell at points near the peak in

the 2007 crash. In the case of the 2015 crisis, we would have obtained a good indication of the moment where the lowest data point was going to be achieved.

Predictions of critical time appeared to be stable, regarding the last data point included. We obtained a string of values of t_c surrounding some specific number consistent with real data. The number of oscillations required to verify that the log-periodicity was not coming from noise ($N_{osc} = 3$) signaled robust results that assured to take into consideration results from the model.

Parameter values were in line with those observed in other markets. Regarding the fitting procedure, the minimization of SRSD or RMSD led to similar results. By using artificial series, we were able to provide a measure of how stable are our critical time predictions relative to small perturbations, and to generate bands that could be expected to land around the real critical time.

Altogether, these results supported the potential of our approach to study bubbles and crashes. If the model performed robustly for Portugal, which was a small market with liquidity issues and the index was only composed of 20 stocks, then our evidence provided consistent support in favor of the proposed LPPM methodology.

The use of LPPM methodology could be helpful in order to prevent major losses in diversified stocks portfolios, whenever we are at a bubble situation. LPPM can help to identify in advance the signs of a bubble that are becoming increasingly unstable and that can blow to any unexpected trigger. This is of relevance for policy makers and market supervisors, in the sense that it can help to implement risk mitigating actions.

Expectably, we can also apply LPPM to smaller crashes. Baker et al. (2021) used small ranges of variation ($+/-2.5\%$) to identify small but out of ordinary jumps. It is relevant to test LPPM in smaller crashes and investigate eventual differences. LPPM can be extended to other phenomena. For example, it can be applied to individual stocks. In this case it is necessary to remember that the series are going to be much noisier, and it could be necessary to allow more degrees of freedom for the parameters to achieve a good fit. Given that Log-Periodic Analysis can be applied to the Gross National Product, a joint analysis of both conditions can be undertaken.

Our research is limited to the study of critical crashes in the Portuguese stock market during the latest three crisis. Our results could be extended to study the impact of COVID-19 induced stock returns. The data is still difficult to analyze, in the case of Portuguese market, since it is unclear whether we have reached the critical point. Further research can look at the predictive ability of LPPM in this context.

Author Contributions: Conceptualization: all authors; methodology: J.V.Q.B. and P.R.V.; software: J.V.Q.B.; validation: all authors.; formal analysis: T.C.G., J.V.Q.B. and P.R.V.; investigation: all authors; resources: T.C.G., P.R.V. and P.V.M.; data curation: J.V.Q.B., T.C.G. and P.R.V.; writing—original draft preparation: T.C.G. and J.V.Q.B.; writing—review and editing: all authors; visualization: all authors; supervision: P.R.V. and P.V.M.; project administration: T.C.G.; funding acquisition: T.C.G., P.R.V. and P.V.M. All authors have read and agreed to the published version of the manuscript.

Funding: This research was funded by FCT—Fundação para a Ciência e Tecnologia (Portugal), grant number UID/SOC/04521/2020, via Advance/CSG.

Data Availability Statement: Restrictions apply to the availability of these data. Data was obtained from DataStream (Thomson Reuters) and are available from the authors with their permission.

Conflicts of Interest: The authors declare no conflict of interest.

References

- Andrzejewicz, Sandra. 2020. Stock Markets, Market Crashes, and Market Bubbles. In *Psychological Perspectives on Financial Decision Making*. Berlin: Springer, pp. 205–31. [\[CrossRef\]](#)
- Baker, Scott R., Nicholas Bloom, Steven J. Davis, and Marco C. Sammon. 2021. *What Triggers Stock Market Jumps?* Cambridge: National Bureau of Economic Research, No. w28687. [\[CrossRef\]](#)
- Barlevy, Gadi, and Pietro Veronesi. 2003. Rational panics and stock market crashes. *Journal of Economic Theory* 110: 234–63. [\[CrossRef\]](#)

- Bastiaensen, Ken, Peter Cauwels, Didier Sornette, Ryan Woodard, and Wei-Xing Zhou. 2009. The Chinese Equity Bubble: Ready to Burst. *arXiv* arXiv:0907.1827.
- Black, Fisher. 1986. Noise. *The Journal of Finance* 41: 529–43. [\[CrossRef\]](#)
- Blanchard, Olivier J. 1979. Speculative bubbles, crashes and rational expectations. *Economics Letters* 3: 387–89. [\[CrossRef\]](#)
- Contessi, Silvio, and Pierangelo De Pace. 2021. The international spread of COVID-19 stock market collapses. *Finance Research Letters* 42: 101894. [\[CrossRef\]](#)
- Crutchfield, James P. 2009. *The Hidden Fragility of Complex Systems: Consequences of Change, Changing Consequences*. Santa Fe: Santa Fe Institute.
- Dai, Peng Fei, Xiong Xiong, Zhifeng Liu, Toan Luu Duc Huynh, and Jianjun Sun. 2021. Preventing crash in stock market: The role of economic policy uncertainty during COVID-19. *Financial Innovation* 7: 1–15. [\[CrossRef\]](#)
- Devenow, Andrea, and Ivo Welch. 1996. Rational herding in financial economics. *European Economic Review* 40: 603–15. [\[CrossRef\]](#)
- Eguiluz, Victor M., and Martin G. Zimmermann. 2000. Transmission of Information and Herd Behavior: An Application to Financial Markets. *Physical Review Letters* 85: 5659–62. [\[CrossRef\]](#)
- Farmer, J. Doyne, Paolo Patelli, and Iliya I. Zovko. 2005. The predictive power of zero intelligence in financial markets. *Proceedings of the National Academy of Sciences* 102: 2254–59. [\[CrossRef\]](#)
- Feigenbaum, James. 2001. A Statistical Analysis of Log-Periodic Precursors to Financial Crashes. *Quantitative Finance* 1: 346–60. [\[CrossRef\]](#)
- Gonçalves, Tiago, Cristina Gaio, and Carlos Lélis. 2020. Accrual mispricing: Evidence from European sovereign debt crisis. *Research in International Business and Finance* 52: 101111. [\[CrossRef\]](#)
- Gonçalves, Tiago, Diego Pimentel, and Cristina Gaio. 2021. Risk and Performance of European Green and Conventional Funds. *Sustainability* 13: 4226. [\[CrossRef\]](#)
- Graham, John R. 1999. Herding Among Investment Newsletters: Theory and Evidence. *The Journal of Finance* 49: 237–68. [\[CrossRef\]](#)
- Granovetter, Mark. 1978. Threshold Models of Collective Behavior. *The American Journal of Sociology* 83: 1420–43. [\[CrossRef\]](#)
- Harsha, S., and Bahadou Ismail. 2019. Review on financial bubbles. *Statistical Journal of the IAOS* 35: 501–10. [\[CrossRef\]](#)
- Ide, Kayo, and Didier Sornette. 2002. Oscillatory Finite-Time Singularities in Finance, Population and Rupture. *Physica A* 307: 63–106. [\[CrossRef\]](#)
- Johansen, Anders, and Didier Sornette. 1999a. Critical Crashes. *Risk* 12: 91–94.
- Johansen, Anders, and Didier Sornette. 1999b. Modeling the Stock Market prior to large crashes. *The European Physical Journal B* 9: 167–74. [\[CrossRef\]](#)
- Johansen, Anders, and Didier Sornette. 2002. Large Stock Market Price Drawdowns Are Outliers. *Journal of Risk* 4: 69–110. [\[CrossRef\]](#)
- Johansen, Anders, and Didier Sornette. 2010. Shocks, Crashes and Bubbles in Financial Markets. *Brussels Economic Review* 53: 201–53.
- Johansen, Anders, Didier Sornette, and Olivier Ledoit. 1999. Predicting Financial Crashes Using Discrete Scale Invariance. *Journal of Risk* 1: 5–32. [\[CrossRef\]](#)
- Johansen, Anders, Olivier Ledoit, and Didier Sornette. 2000. Crashes as Critical Points. *International Journal of Theoretical and Applied Finance* 3: 219–55. [\[CrossRef\]](#)
- Kaizoji, Taisei, and Didier Sornette. 2008. *Market Bubbles and Crashes*. MPRA Paper 40798. Munich: MPRA.
- Ko, Bonggyun, Jae Wook Song, and Woojin Chang. 2018. Crash forecasting in the Korean stock market based on the log-periodic structure and pattern recognition. *Physica A: Statistical Mechanics and Its Applications* 492: 308–23. [\[CrossRef\]](#)
- Krause, Andreas. 2004. Herding Behavior of Financial Analysts: A Model of Self-Organized Criticality. In *The Complex Dynamics of Economic Interaction*. Edited by Mauro Gallegat, Alan P. Kirman and Matteo Marsili. Berlin: Springer, pp. 257–67.
- Li, Chong. 2017. Log-periodic view on critical dates of the Chinese stock market bubbles. *Physica A: Statistical Mechanics and Its Applications* 465: 305–11. [\[CrossRef\]](#)
- Lin, Li, Ruo En Ren, and Didier Sornette. 2014. The volatility-confined LPL model: A consistent model of ‘explosive’ financial bubbles with mean-reverting residuals. *International Review of Financial Analysis* 33: 210–25. [\[CrossRef\]](#)
- Liu, Zhifeng, Toan Luu Duc Huynh, and Peng Fei Dai. 2021. The impact of COVID-19 on the stock market crash risk in China. *Research in International Business and Finance* 57: 101419. [\[CrossRef\]](#) [\[PubMed\]](#)
- Orlean, Andre. 1989. Mimetic Contagion and Speculative Bubbles. *Theory and Decision* 27: 63–92. [\[CrossRef\]](#)
- Pan, Wei-fong. 2019. Does Investor Sentiment Drive Stock Market Bubbles? Beware of Excessive Optimism! *Journal of Behavioral Finance* 21: 27–41. [\[CrossRef\]](#)
- Shu, Min, Ruiqiang Somng, and Wei Zhu. 2020. The ‘COVID’ crash of the 2020 U.S. Stock market. *North American Journal of Economics and Finance* 58: 101497. [\[CrossRef\]](#)
- Song, Ruiqiang, Min Shu, and Wei Zhu. 2022. The 2020 global stock market crash: Endogenous or exogenous? *Physica A: Statistical Mechanics and Its Applications* 585: 126425. [\[CrossRef\]](#)
- Sornette, Didier. 1998. Discrete scale invariance and complex dimensions. *Physics Reports* 297: 239–70. [\[CrossRef\]](#)
- Sornette, Didier. 2003. Critical market crashes. *Physics Reports* 378: 1–98. [\[CrossRef\]](#)
- Sornette, Didier. 2004. *Why Stock Markets Crash? Critical Events in Complex Financial Systems*, 5th Printing and 1st Paperback Printing ed. Princeton: Princeton University Press.
- Sornette, Didier. 2007. Probability Distributions in Complex Systems. In *Encyclopedia of Complexity and System Science*. New York: Springer, pp. 7009–24. [\[CrossRef\]](#)

- Sornette, Didier, and Jørgen Vitting Andersen. 2002. A Nonlinear Super-Exponential Rational Model of Speculative Financial Bubbles. *International Journal of Modern Physics C* 13: 171–88. [[CrossRef](#)]
- Sornette, Didier, and Peter Cauwels. 2014. 1980–2008: The Illusion of the Perpetual Money Machine and What It Bodes for the Future. *Risks* 2: 103–31. [[CrossRef](#)]
- Sornette, Didier, and Anders Johansen. 1997. Large financial crashes. *Physica A: Statistical Mechanics and Its Applications* 245: 411–22. [[CrossRef](#)]
- Sornette, Didier, Ryan Woodard, Wanfeng Yan, and Wei-Xing Zhou. 2013. Clarifications to questions and criticisms on the Johansen–Ledoit–Sornette financial bubble model. *Physica A* 392: 4417–28. [[CrossRef](#)]
- Yan, Wanfeng, Ryan Woodard, and Didier Sornette. 2011. Diagnosis and Prediction of Market Rebounds in Financial Markets. *Physica A: Statistical Mechanics and Its Applications* 391: 1361–80. [[CrossRef](#)]
- Youssefmir, Michael, Bernardo A. Huberman, and Hogg Tad. 1998. Bubbles and Market Crashes. *Computational Economics* 12: 97–114. [[CrossRef](#)]
- Zheng, Huanhuan. 2020. Coordinated bubbles and crashes. *Journal of Economic Dynamics and Control* 120: 103974. [[CrossRef](#)]
- Zhou, Wei-Xing, and Didier Sornette. 2009. A case study of speculative financial bubbles in the South African stock market 2003–6. *Physica A: Statistical Mechanics and Its Applications* 388: 869–80. [[CrossRef](#)]
- Ziemann, Volker. 2021. Bubbles, Crashes, Fat Tails and Lévy-Stable Distributions. In *Physics and Finance*. Berlin: Springer, pp. 113–43. [[CrossRef](#)]