

Machasio, Immaculate; Tillmann, Peter

Working Paper

Remittance flows and U.S. monetary policy

MAGKS Joint Discussion Paper Series in Economics, No. 40-2021

Provided in Cooperation with:

Faculty of Business Administration and Economics, University of Marburg

Suggested Citation: Machasio, Immaculate; Tillmann, Peter (2021) : Remittance flows and U.S. monetary policy, MAGKS Joint Discussion Paper Series in Economics, No. 40-2021, Philipps-University Marburg, School of Business and Economics, Marburg

This Version is available at:

<https://hdl.handle.net/10419/254235>

Standard-Nutzungsbedingungen:

Die Dokumente auf EconStor dürfen zu eigenen wissenschaftlichen Zwecken und zum Privatgebrauch gespeichert und kopiert werden.

Sie dürfen die Dokumente nicht für öffentliche oder kommerzielle Zwecke vervielfältigen, öffentlich ausstellen, öffentlich zugänglich machen, vertreiben oder anderweitig nutzen.

Sofern die Verfasser die Dokumente unter Open-Content-Lizenzen (insbesondere CC-Lizenzen) zur Verfügung gestellt haben sollten, gelten abweichend von diesen Nutzungsbedingungen die in der dort genannten Lizenz gewährten Nutzungsrechte.

Terms of use:

Documents in EconStor may be saved and copied for your personal and scholarly purposes.

You are not to copy documents for public or commercial purposes, to exhibit the documents publicly, to make them publicly available on the internet, or to distribute or otherwise use the documents in public.

If the documents have been made available under an Open Content Licence (especially Creative Commons Licences), you may exercise further usage rights as specified in the indicated licence.

MAGKS



**Joint Discussion Paper
Series in Economics**

by the Universities of
Aachen · Gießen · Göttingen
Kassel · Marburg · Siegen

ISSN 1867-3678

No. 40-2021

Immaculate Machasio and Peter Tillmann

Remittance Flows and U.S. Monetary Policy

This paper can be downloaded from:

<https://www.uni-marburg.de/en/fb02/research-groups/economics/macroeconomics/research/magks-joint-discussion-papers-in-economics>

Coordination: Bernd Hayo • Philipps-University Marburg
School of Business and Economics • Universitätsstraße 24, D-35032 Marburg
Tel: +49-6421-2823091, Fax: +49-6421-2823088, e-mail: hayo@wiwi.uni-marburg.de

Remittance Flows and U.S. Monetary Policy*

Immaculate Machasio
World Bank

Peter Tillmann
University of Giessen

This version: October 27, 2021

Abstract: Remittance inflows are driven by macroeconomic conditions in the home and the host economies, respectively. In this paper, we study the effect of U.S. monetary policy on remittance flows into economies in Latin American and the Caribbean. The role of Fed policy for remittances has not yet been studied. We estimate a series of panel local projections for remittance inflows into eight countries. A surprise change in U.S. monetary conditions has a strong and highly significant negative effect on inflows. Our finding remains robust if we change the sample period or include additional variables. Hence, our paper establishes a remittance-channel through which the Fed affects the business cycle abroad.

Keywords: remittances, migration, business cycle, monetary policy, spillovers

JEL classification: F24, F41, E52, O11

* The views expressed in this paper are solely those of the authors and do not reflect the views of the institutions they are associated with. We are very grateful to David Finck for sharing his Matlab toolbox for local projections and for insightful comments on a first draft of the paper.

Contact: Immaculate Machasio, The World Bank Group (imachasio@worldbank.org), and Peter Tillmann, Justus-Liebig-University Giessen, Germany (peter.tillmann@wirtschaft.uni-giessen.de).

1. Introduction

The inflow of remittances is an important source of financing for many emerging market economies. Remittance flows are considered more stable than other forms of private capital flows.¹ Nevertheless, remittances exhibit a cyclical pattern. Migrant workers respond to macroeconomic conditions in both their home as well as their host economy.² One key driver of the business cycle in the host economy is monetary policy. Hence, monetary policy shocks should be a source of fluctuations of remittance flows. A large literature shows that if the Fed tightens its policy stance, income falls and unemployment increases. Both variables should also drive migrant workers' ability to transfer money to their families at home. A monetary tightening of the Fed could lower the inflows of remittances, thus contributing to business cycle volatility in developing economies. We refer to this as the remittance-channel of cross-border monetary policy transmission.

Against this backdrop, this paper studies the effect of U.S. monetary policy on remittance inflows into economies in Latin America and the Caribbean. We concentrate on Latin America and the Caribbean because for our eight sample countries, the majority of overseas workers reside in the U.S., such that we can clearly identify the U.S. as the host economy. We use quarterly data on remittance inflows between 2000 and 2020 into Mexico, Guatemala, El Salvador, Costa Rica, Panama, Ecuador, Jamaica and Colombia. A second criterion for the selection of countries is the availability of quarterly remittance data. Since the U.S. is the main source of flows, we can treat inflows into, say, Mexico, as U.S. outflows. We estimate a series of panel local projection models. This class of models is used widely in order to quantify the impact of U.S. monetary policy and other shocks on business cycle variables. Hence, we draw on the established literature and investigate the sensitivity of remittance inflows to unexpected changes in U.S. monetary conditions. The monetary policy shock is the surprise reflected in the high-frequency response of financial variables to decisions of the Federal Open Market Committee.

We find that remittance inflows are highly sensitive to monetary policy shocks. An unexpected tightening of Fed policy reduces the inflow of remittances. A policy surprise one standard deviation in size reduces the inflow of remittances by about 0.8%. Hence, monetary policy affects foreign business cycles through its effect on remittance flows.

¹ See Chami et al. (2008) for a survey on the properties, determinants and consequences of remittance flows.

² The impact of remittances on long-run economic growth is disputed; see Gapen et al. (2009).

This result survives when we end the sample in 2019, i.e. before the Great Lockdown imposed to fight the COVID-19 pandemic, or when we use an alternative definition of the dependent variable. We also show that the results remain unchanged if we control for natural disasters in migrants' home countries. The impact of monetary policy is also symmetric with respect to tightening and easing shocks. Hence, we establish firm evidence for an economically relevant remittance-channel of monetary policy.

The remainder of this paper proceeds as follows: in section 2, we survey the related literature. Section 3 provides stylized facts on remittance flows for your sample countries. The empirical model is introduced in Section 4, while section 5 discusses the results. Section 6 concludes.

2. Related literature

Our study is related to the huge body of literature on the cyclical properties of remittance flows. Studying remittance patterns over business cycle is important since it would create a platform to leverage remittances for mitigation of negative effects occasioned by shocks. Countercyclical remittances potentially facilitate the process of smoothing economic fluctuations while procyclical flows are likely to amplify cycles. Remittance theory suggests that migrants' motives to remit shape the behavior pattern of remittances over cycles because altruism results into countercyclical remittances while self-interest leads to procyclical flows (Lucas and Stark, 1985).

In examining business cycle effects of immigration to the U.S. using panel data on Mexican workers in U.S. states between 2011 and 2014, Mendoza and Ashby (2019) provide evidence to suggest that immigrants are attracted by stronger performance of the U.S. economy while a booming economy in source countries tends to decrease emigration. They also find that increased remittances to Mexico is associated with reduction in outward migration from Mexico. Other studies attribute remittance inflows to consumption smoothing. Mandelman and Zlate (2012) demonstrate this using a model, which captures business cycle effects in the United States and Mexico. They suggest that remittance inflows to Mexico serve as an insurance mechanism and enhance consumption smoothing. Studies that shed light on the cyclical nature of remittances with respect to domestic macroeconomic variables typically provide mixed results. Frankel (2011) expounds on the smoothing hypothesis and suggests that remittances are procyclical in nature when income in migrant's destination country is taken into consideration and countercyclical

with respect to income in migrants' home country.³ In contrast, Lueth and Ruiz-Arranz (2008) find that remittances fall when exports dwindle and GDP growth slows, a feature highlighting the procyclicality of remittances. Their findings suggest that altruism is not necessarily the prime reason for remittances since remittances do not seem to respond to natural disasters in migrants' home countries.

Research results on determining whether remittances reduce the probability of current account reversals by Bugamelli and Paterno (2009) also support the notion of countercyclical properties of remittance inflows. In the same vein, De et al. (2019) evaluate remittance behavior over business cycle and their findings show that remittances exhibit stability during high volatility episodes in business cycles thus suggesting that remittances can facilitate the process of consumption smoothing during economic hardships.

Other authors find more mixed results and their results are inconclusive (Vargas-Silva, 2008; Durdu and Sayan, 2010; Mughal and Ahmed, 2014). A recent study by De., et al, 2019 shows that remittances are predominantly acyclical. Their research also suggests that remittances are more resilient and less volatile than other types of inflows compared to FDI and Official Development Assistance (ODA) as well as they comparatively exhibit less procyclicality though more procyclical than ODA. In explaining the procyclical and countercyclical nature of remittances, Machasio and Tillmann (2017) distinguish between North-South and South-South flows and show that an increased share of remittances from low-income countries significantly affects the cyclical nature of flows.

There is no systematic evidence yet on the responsiveness of remittances to U.S. monetary policy. Hence, we contribute to this literature by studying a specific channel through which the business cycle conditions in the host economy affect worker remittances. By doing so, we also add to the literature on cross-border spillovers of U.S. monetary policy (see, among others, Tillmann, 2016; Dahlhaus and Vasishtha; 2020; Ahmed et al. 20219).

3. Descriptive statistics

Our findings stem from a series of local projections for remittance flows from the U.S. into eight Latin American and the Caribbean economies.

³ Buch and Kuckulenz (2010) show that remittances respond less to macroeconomic conditions than other types of private capital inflows.

The United States is the top destination country for immigrants worldwide, with about 51 million international migrants residing within US borders in 2019 (UNDESA, 2019). This accounts for about 19 percent of the total worldwide international migrant stock which was about 272 million in 2019. Top 10 migrant source countries include: Mexico, China, India, the Philippines, Puerto Rico, Vietnam, El Salvador, Cuba, the Republic of Korea and the Dominican Republic. The U.S. is the largest remittance source country with an estimated remittance outflow of \$178 billion in 2019.

This study uses quarterly observations available for all variables that cover the period from 2000Q1 to 2020Q4 for Mexico, Guatemala, El Salvador, Costa Rica and Panama, Ecuador, Jamaica and Colombia. The selection of sample countries in our study is dictated by the availability of quarterly remittances data. Moreover, we selected the eight countries situated in Latin America and the Caribbean because a considerably high percentage of migrants originating from these countries reside in the U.S. Quarterly remittances flow data for Colombia, Ecuador and Jamaica is retrieved from the respective central bank websites and the remaining remittance data is taken from the IMF BOP statistics.

Table (1) depicts a number of descriptive observations for our sample countries. In particular, we sketch the recipient countries' migration patterns with respect to the U.S. We use bilateral remittances data provided by the World Bank-KNOMAD and bilateral migration matrix data drawn from UNDESA to compute the share of remittances emanating from the U.S. as well as the percentage of migrants residing in the U.S. The table also reports per capita income obtained from WDI. To measure the income gap between the U.S. and recipient countries, we subtract the GDP per capita value of the U.S. from an individual country's GDP per capita amount.

As of 2019, the percentage of emigrants residing in the U.S. and originating from the eight countries in our sample accounted for more than 65 percent of total migrants. The high proportion of migrant stocks coupled with huge income gaps between the U.S. and the recipient countries explains the immense volume of remittance inflows received by the sample countries.

Figure (1) shows that in 2019, remittance inflows topped official development assistance in most of the countries in the sample, ranked second to FDI in Costa Rica, Colombia and Panama and accounted for the highest percentage of GDP in El Salvador, Guatemala, Mexico, Ecuador and Jamaica. This underscores the importance of remittance inflows in the recipient economies situated in the Latin America and the Caribbean region.

4. The empirical model

We estimate a series of panel local projections following the work of Jordà (2005) and Jordà et al. (2020). Recently, local projections have become a standard tool to estimate the dynamic causal impact of shocks on economic time series. In our application, the time series dimension is relatively short. We use quarterly data between 2000Q1 and 2020Q4. Due to fact that we have only 84 observations per country, we exploit the cross-country dimensions and estimate the local projections for a panel of eight economies.

Our key variable of interest is the inflow of remittances in quarter t to country i , $y_{i,t}$, with $i = 1, \dots, N$. In our case, we include $N = 8$ countries. We are particularly interested in the response of inflows h quarters after a monetary policy shock occurring in t . Thus, the dependent variable is $y_{i,t+h}$, which is regressed on the U.S. monetary policy shock ε_t^{mon}

$$y_{i,t+h} = \alpha_{i,h} + \beta_h \varepsilon_t^{mon} + \gamma_h \mathbf{X}_{i,t} + \delta_{i,h} t + u_{i,t+h}. \quad (1)$$

The estimate of β_h gives us the response of inflows h periods after the shock. As we expect a monetary policy tightening to reduce remittance inflows, our prior is $\beta_h^{mon} < 0$. Importantly, we impose the restriction that the slope coefficient β_h^{mon} is identical across the sample countries. In this regression model, $\alpha_{i,h}$ is a county fixed-effect and $\delta_{i,h}$ is the country-specific coefficient on the time trend. The vector $\mathbf{X}_{i,t}$ collects a number of control variables, which enter with a coefficient vector γ_h , which we also assume to be equal across countries in order to reduce the number of parameters to be estimated. The error term is given by $u_{i,t+h}$.

The local projections are estimated with least squares. Since the errors will not just be correlated over time, but also in the cross-section, we calculate standard errors following Driscoll and Kraay (1998).

The series of monetary policy shocks driving the endogenous variable reflects unexpected changes in U.S. monetary conditions. Hence, we need to use a series that is properly identified. We use the monetary policy shock provided by Bu et al. (2021). These authors compute the surprise change in monetary conditions from high-frequency changes of financial variables on meeting days of the Federal Open Market Committee. Importantly, their shock series reflects both conventional monetary policy, i.e. interest rate adjustments, and unconventional monetary policy, i.e. Quantitative Easing and Forward Guidance. We standardize the shock series such that it is scaled in standard deviations.

The dependent variable $y_{i,t}$ is expressed as the log of seasonally adjusted remittance inflows to selected countries in Latin America and the Caribbean minus the log of the U.S. Consumer Price Index (CPI). Hence, we deflate inflows with the U.S. price level. A fall in the dependent variable following a restrictive monetary policy shock implies that remittance flows fall in real terms. Hence, migrant workers cut their remittance transfers. In an alternative specification, we use the log of remittance inflows in current U.S. dollar. The data source for remittance inflows is the IMF BOP statistics, World Bank-KNOMAD database and the websites of the respective central banks.

Our model includes the contemporaneous realization and six lags of the following control variables: first, log real GDP in the recipient country. This variable is taken from the World Bank and interpolated to quarterly frequency. Lower income in the recipient country should motivate migrant workers to increase their transfers. Second, log U.S. disposable income. An increase in disposable income should lead to higher remittances. Third, the unemployment rate and the log level of employment for the Hispanic part of the U.S. workforce. A higher level of employment and a lower Hispanic unemployment rate should raise remittance inflows into Latin American and the Caribbean economies.⁴ We draw these U.S. data series from the FRED database at the Federal Reserve Bank of St. Louis. Below, we show alternative specifications in which we modify the set of control variables.

The data covers a period from 2000Q1 to 2020Q4 and thus includes the COVID-19 recession. Below, we show how the observations from 2020 affect our findings. We include the countries introduced before, i.e. Colombia, Costa Rica, Ecuador, El Salvador, Guatemala, Jamaica, Mexico and Panama.

5. Results

Figure (2) presents the resulting impulse response functions following a monetary policy tightening of the Federal Reserve, i.e. the estimated slope coefficient as a function of the horizon h . Since the model is symmetric, we can obtain the responses to a monetary easing by flipping the impulse response functions. We show the point estimate and confidence bands that cover 68% and 90% of the estimates.

⁴ Existing research using local projections (Bennani, 2021; Bartscher et al., 2021) shows that U.S. monetary policy has an unequal effect on unemployment of white, black or Hispanic workers. Ritter and Taylor (2011) and Hoynes et al. (2012) study the different effects of recessions for white, black and Hispanic workers.

The figure contains our key result: The inflow of remittances falls significantly after the monetary tightening. A surprise policy tightening of one standard deviation causes a drop in remittance inflows of 0.8% after six quarters. This effect is highly statistically significant. Furthermore, the effect is quantitatively relevant. Given the large volume of remittance flows and their role for business cycles in recipient countries, even a significant but small drop in flows causes strong macroeconomic adjustments. The response is relatively persistent with flows returning to their mean after about 10 quarters. The delay in the peak response does not come as a surprise: the transmission of monetary policy shocks to the real economy needs between four and eight quarters. Workers' income levels and job perspectives do not deteriorate immediately after the shock, such that the response of remittances is also delayed.

The sample covers the Covid-19 pandemic since February 2020 and the subsequent Great Lockdown, i.e. the deliberate reduction in economic activity in the U.S. and most other countries. In order to find out whether this period of extreme fluctuations affects our findings, we estimate the model over a shorter sample that ends in 2019Q4.⁵ The resulting point estimates are also shown in Figure (2). Compared to the baseline results, the estimates remain almost unaffected by the reduction in the sample size. Hence, our findings are robust with respect to the disruptions in 2020.

Our dependent variable is deflated by the U.S. consumer price index. The U.S. price level should itself respond to the monetary tightening, which could translate into an adjustment of the deflated series of remittances. We now estimate the model with the (log) level of inflows in current U.S. dollar as the dependent variable, that is, we skip the denominator. The resulting estimates are shown as a green line in Figure (2). Again, the response of remittances is almost indistinguishable from our baseline estimates, which suggests that deflating the series is an innocuous transformation.

Countries in Latin America and the Caribbean are frequently plagued by natural disasters ranging from hurricanes to earthquakes. A natural disaster that affects people's income, jobs and houses should trigger additional remittance inflows from family members or relatives working abroad.⁶ In a separate specification, we control for this effect using data

⁵ See Kpodar et al. (2021) for an analysis of the behavior of remittance flows during the COVID-19 pandemic.

⁶ Bettin and Zazzaro (2018) suggest that remittances facilitate the process of reconstruction after natural disasters.

from the International Disaster Database.⁷ In particular, we retrieve all disasters in our sample countries with their exact dates and aggregate the number of affected people to a quarterly time series. We then include this series as well as six lags of it in our vector of control variables. Figure (3) reports the estimated coefficients. The response of remittances to monetary policy shocks remains virtually unchanged compared to the baseline result. Hence, our results are not affected by natural disasters driving remittances.

In the model discussed before, we impose the restriction of equal slope coefficients across countries. The drawback of this assumption is that we cannot learn about the country-specific responses. In order to shed light on the potential cross-country heterogeneity, we re-estimate the model but allow country-specific slope coefficients β_{ih}^{mon} for country i . As a result, we obtain eight impulse responses, one for each country, which are shown in Figure (4).

After the tightening in the U.S., remittance inflows fall in all sample countries. Furthermore, the magnitude of the responses is not too different across countries. Remittances fall between 0.5% and 1%, with some responses (e.g. El Salvador, Costa Rica, Jamaica) exhibiting highly significant estimates, while the results for Mexico, Guatemala, Panama and Colombia are significant on the 68% level only. Inflows to Ecuador do not respond significantly. Overall, the results support the constraint of an equal slope coefficient for all countries in the panel.

In the final specification, we re-estimate the model but separate positive from negative shocks. Hence, we split the Bu et al. (2021) shock into two depending on the sign of the shock: a tightening shock and an easing shock. The literature (see Tenreyro and Thwaites, 2016) shows that shocks of opposite signs could have different absolute effects on macroeconomic variables.

The estimated coefficients of this specification are reported in Figure (5). The coefficient on tightening shocks is significantly negative after six quarters. Hence, a tightening of one percentage point reduces inflows by about one percent. Likewise, the coefficient on the easing shock is also negative. If the Fed unexpectedly eases monetary conditions by one percentage point, inflows would increase by about one percent. Put differently, we do not find evidence for an asymmetric response of remittances. The only difference in the re-

⁷ See <https://www.emdat.be/>.

sponses is the persistence: the effect of a tightening shock is short-lived, while remittances remain higher for up to 12 quarters after an accommodative monetary policy shock.

The impulse responses reveal the effect of an unexpected marginal change in the stance of U.S. monetary policy on remittance flows. In order to get an impression of the overall role of the Fed for remittances flows, we present the results not only in terms of impulse response functions, but also as forecast error variance decomposition. We follow Gorodnichenko and Lee (2020) and estimate the model without the monetary policy shock. Therefore, we regress the residual dated $t+h$ on shocks occurring between t and $t+h$. The R^2 of this regression provides us with the share of fluctuations due to monetary policy. Figure (6) shows the fraction of unexpected fluctuations of remittance inflows that is explained by monetary policy shocks.

The numbers suggest that after one year monetary policy shocks explain between one and three percent of remittance fluctuations. In fact, the role of monetary policy is small relative to all other driving factors. This does not come as a surprise as shocks to income and employment other than monetary policy shocks explain the bulk of fluctuations of remittances. While the relative contribution of monetary policy as a driver of remittances remains small, we have established that the responses to policy shocks are statistically significant and economically relevant.

6. Conclusions

Remittance flows respond to economic developments in both the home country and the host country of migrant workers. In this paper, we address one specific driver of remittances to economies in Latin America and the Caribbean: the monetary policy of the U.S. Federal Reserve. Our key result is that a monetary tightening significantly reduces remittance inflows. The results contribute to the understanding of the cross-border transmission of monetary policy and shed light on monetary conditions as a driver of remittance inflows, which has not yet been studied in the literature. As a matter of fact, the remittance-channel of monetary policy is only one channel through which the Fed affects countries in Latin America and the Caribbean. Among them are the Fed's impact on the demand for exports from Latin America and the Caribbean, the value of the exchange rate or the reallocation of other forms of private capital flows.

One limitation of the current study is that we cannot distinguish between the extensive and the intensive margin. After a policy tightening and, as a consequence, a contraction in the U.S., migrant workers have less income available to send home. This is the intensive margin. In addition, the contraction of the U.S. economy attracts fewer migrants from Latin America, this resulting in a smaller flow of remittances. This is the extensive margin. We leave an empirical analysis of this distinction for future research.

References

- Ahmed, S., O. Akinici and A. Queralto (2021): "U.S. monetary policy spillovers to emerging markets: both shocks and vulnerabilities matter", *Federal Reserve Bank of New York Staff Reports* No. 972.
- Bartscher, A., M. Kuhn, M. Schularick and P. Wachtel (2021): "Monetary policy and racial inequality", *Federal Reserve Bank of New York Staff Reports* No. 959.
- Bennani, H. (2021): "Monetary policy and the racial unemployment rates in the US", *unpublished manuscript*, University Paris Nanterre.
- Bettin, G. and A. Zazzaro (2018): "The impact of natural disasters on remittances to low- and middle-income countries. *The Journal of Development Studies* 54, 481-500.
- Bu, C., J. Rogers and W. Wu (2021): "A unified measure of Fed monetary policy", *Journal of Monetary Economics* 118, 331-349.
- Buch, C. M. and A. Kuckulenz (2010): "Worker remittances and capital flows to developing countries", *International Migration* 48, 89-117.
- Bugamelli, M. and F. Paterno (2011): "Output growth volatility and remittances", *Economica* 78, 480-500.
- Chami, R., A. Barajas, T. Cosimano, C. Fullenkamp, M. Gapen and P. Montiel (2008): "Macroeconomic consequences of remittances", *IMF Occasional Paper* No. 259, International Monetary Fund.
- Dahlhaus, T. and G. Vasishta (2020). Monetary policy news in the US: Effects on emerging market capital flows, *Journal of International Money and Finance* 109, 102251.
- De, S., E. Islamaj, M. A. Kose and S. R. Yousefi (2019): "Remittances over the business cycle: Theory and evidence, *Economic Notes* 48, e12143.
- Durdu, C. B. and S. Sayan (2010): "Emerging market business cycles with remittance fluctuations", *IMF Staff Papers* 57, 303-325.
- Driscoll, J. and A. Kraay (1998): "Consistent covariance matrix estimation with spatially dependent data", *The Review of Economics and Statistics* 80, 549-560.

Frankel, J. (2011): "Are bilateral remittances countercyclical?", *Open Economies Review* 22, 1-16.

Gapen, M. T., M. R. Chami, M. P. Montiel, M. A. Barajas and C. Fullenkamp (2009): "Do workers' remittances promote economic growth?", *IMF Working Paper* No. 09/153, International Monetary Fund.

Gorodnichenko, Y. and B. Lee (2020): "A note on variance decomposition with local projections", *Journal of Business and Economic Statistics* 37, 921-933.

Hoynes, H., D. L. Miller and J. Schaller (2012): "Who suffers during recessions?", *Journal of Economic Perspectives* 26, 27-48.

Jordà, O. (2005): "Estimation and inference of impulse response functions by local projections", *American Economic Review* 90, 161-182.

Jordà, O., M. Schularick and A. M. Taylor (2020): "The effects of quasi-random monetary experiments", *Journal of Monetary Economics* 112, 22-40.

Kpodar, K., M. Mlachila, S. Quayyum and V. Gammadigbe (2021): "Defying the odds: remittances during the COVID-19 pandemic", *IMF Working Paper* No. 21/186, International Monetary Fund.

Lucas, R. E. and O. Stark (1985): "Motivations to remit: evidence from Botswana", *Journal of Political Economy* 93, 901-918.

Lueth, E. and M. Ruiz-Arranz (2008): "Determinants of bilateral remittance flows". *The BE Journal of Macroeconomics* 8, 1-23.

Machasio, I. and P. Tillmann (2017): "Are remittances cyclical? The role of South-South flows", *Journal of International Trade, Politics and Development* 1, 33-48.

Mandelman, F. S. and A. Zlate (2012): "Immigration, remittances and business cycles", *Journal of Monetary Economics* 59, 196-213.

Mendoza, J. and N. Ashby (2019): "Mexican migration flows to the United States: the impact of business cycles on unauthorized immigration to the United States," *Economics Bulletin* 39, 798-815.

Mughal, M. Y. and J. Ahmed (2014): "Remittances and business cycles: comparison of South Asian Countries", *International Economic Journal* 28, 513-541.

Ritter, J. and L. J. Taylor (2011): "Racial disparity in unemployment", *The Review of Economics and Statistics* 93, 30-42.

Tenreyro, S. and G. Thwaites (2016): "Pushing on a string: US monetary policy is less powerful in recessions", *American Economic Journal: Macroeconomics* 8, 43-74.

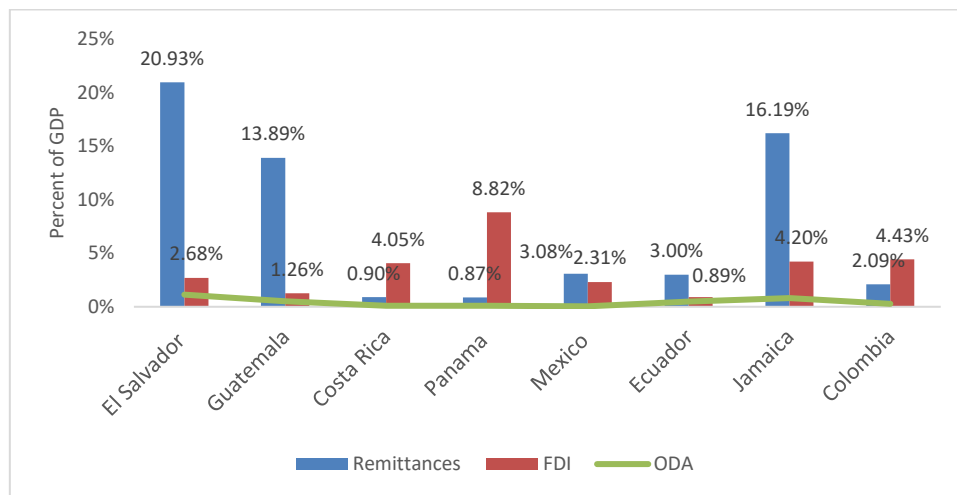
Tillmann, P. (2016): "Unconventional monetary policy and the spillovers to emerging markets", *Journal of International Money and Finance* 66, 136-156.

Vargas-Silva, C. (2008): "Are remittances manna from heaven? A look at the business cycle properties of remittances", *North American Journal of Economics and Finance* 19, 290-303.

Table 1: Some facts about our sample countries

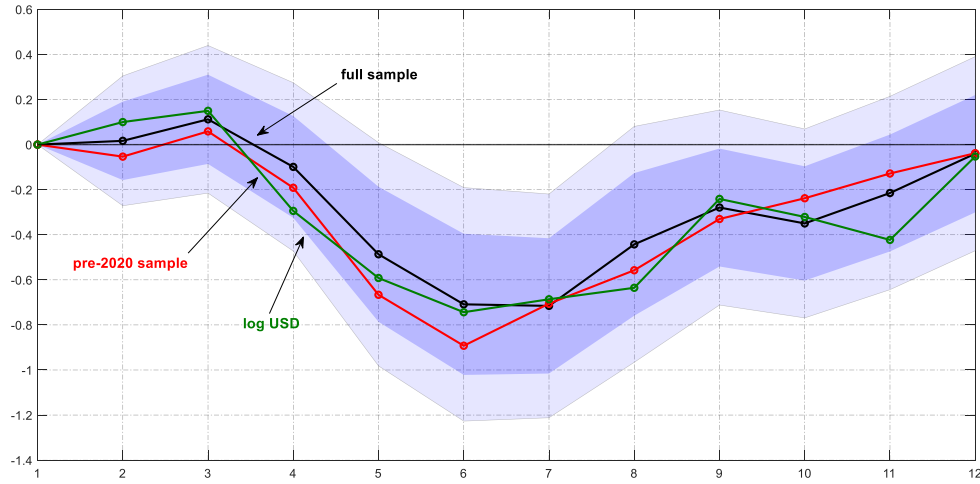
Country	Number of emigrants worldwide (2019)	Share of migrant stock in the U.S.	Share of remittance inflows from the U.S.	GDP per capita (current USD, 2019)	Income gap per capita (current USD, 2019)
Mexico	11,796,178	97%	98%	9,946	-55,334
Guatemala	1,205,644	89%	91%	4,639	-60,641
El Salvador	1,600,739	89%	91%	4,168	-61,112
Costa Rica	150,400	66%	69%	12,670	-52,610
Panama	161,107	78%	79%	15,728	-49,552
Ecuador	1,183,685	44%	47%	6,223	-59,057
Jamaica	1,111,021	68%	73%	5,370	-59,910
Colombia	2,869,032	28%	37%	6,425	-58,855

Notes: The data is taken from World Bank-KNOMAD, UNDESA and WDI. Countries are ordered with respect to the share of remittances from the U.S.

Figure 1: Remittance inflows and other sources of inflows in 2019

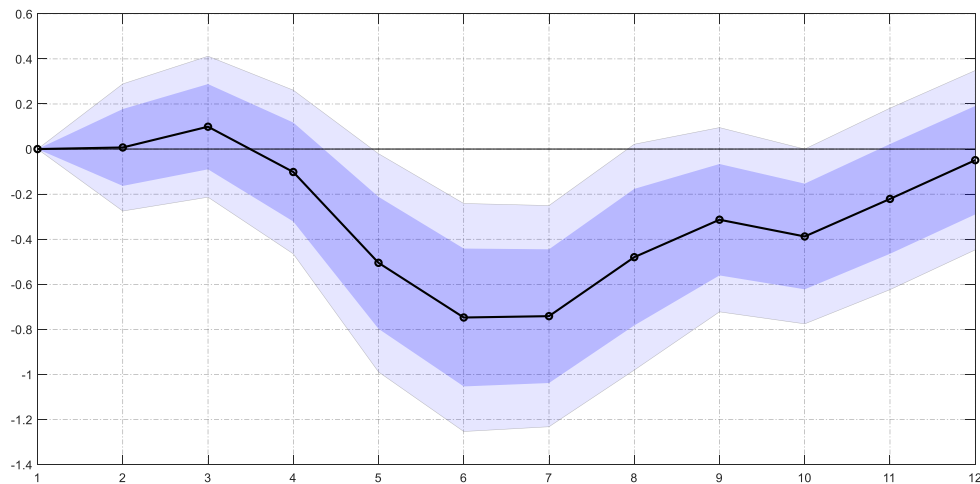
Notes: The data is taken from World Bank-WDI. Countries are ordered with respect to the share of remittances from the U.S.

Figure 2: Response of remittance inflows to a U.S. monetary policy shock



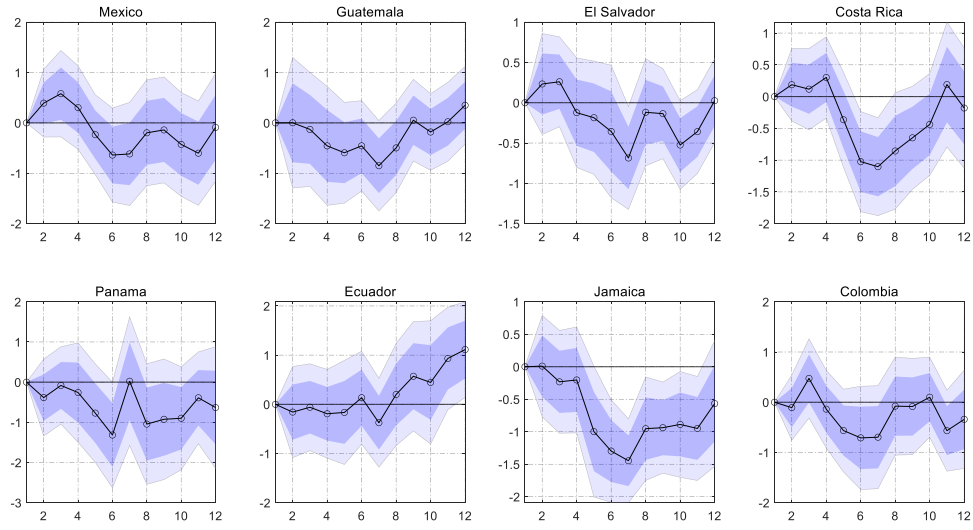
Notes: The graph shows the estimated β_h^{mon} for the baseline model (black line), the baseline model estimated over the 2000-2019 sample (red line) and the model with the dependent variable expressed in current U.S. dollar (green line). The dark (light) blue areas reflect 68% and 90% confidence intervals around the baseline estimates obtained from Driscoll and Kraay (1998) standard errors.

Figure 3: Response of remittance inflows to a U.S. monetary policy shock when controlling for natural disasters



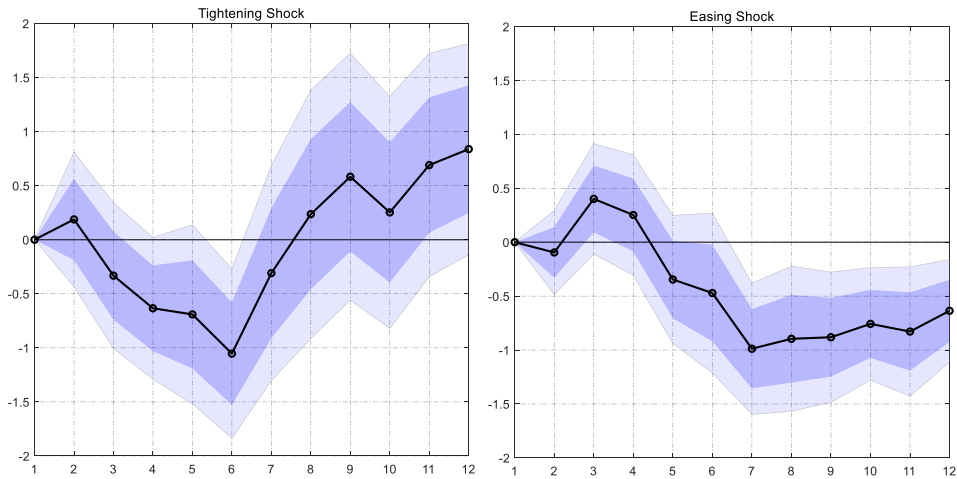
Notes: The graph shows the estimated β_h^{mon} for the baseline model augmented by a series of natural disasters as an additional control variable (black line). The dark (light) blue areas reflect 68% and 90% confidence intervals obtained from Driscoll and Kraay (1998) standard errors.

Figure 4: Country-specific response of remittance inflows to a U.S. monetary policy shock



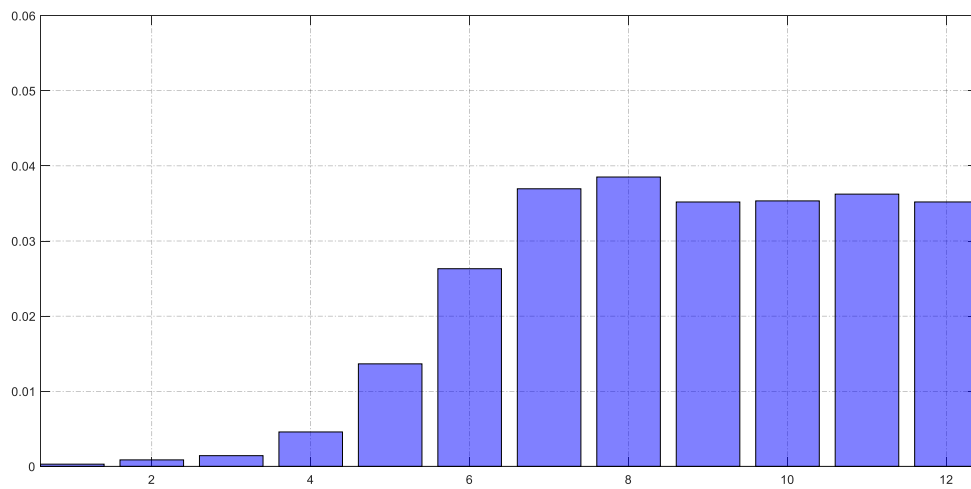
Notes: The graph shows the estimated country-specific β_{ih}^{mon} coefficients (black line). The dark (light) blue areas reflect 68% and 90% confidence intervals obtained from Driscoll and Kraay (1998) standard errors.

Figure 5: Response of remittance inflows to a U.S. monetary policy shock when distinguishing between tightening and easing



Notes: The graph shows the estimated β_h^{mon} for a model in which we separate tightening and easing shocks (black line). The dark (light) blue areas reflect 68% and 90% confidence intervals obtained from Driscoll and Kraay (1998) standard errors.

Figure 6: Contribution of U.S. monetary policy shocks to remittance inflows



Notes: The bars show the share of unexpected fluctuations of remittance inflows at time $t+h$ that is attributable to a U.S. monetary policy shock occurring between t and $t+h$. This Forecast Error Variance Decomposition is obtained from the baseline model.