

Christl, Michael; De Poli, Silvia; Hufkens, Tine; Peichl, Andreas; Ricci, Mattia

Working Paper

The role of short-time work and discretionary policy measures in mitigating the effects of the COVID-19 crisis in Germany

JRC Working Papers on Taxation and Structural Reforms, No. 04/2021

Provided in Cooperation with:

Joint Research Centre (JRC), European Commission

Suggested Citation: Christl, Michael; De Poli, Silvia; Hufkens, Tine; Peichl, Andreas; Ricci, Mattia (2021) : The role of short-time work and discretionary policy measures in mitigating the effects of the COVID-19 crisis in Germany, JRC Working Papers on Taxation and Structural Reforms, No. 04/2021, European Commission, Joint Research Centre (JRC), Seville

This Version is available at:

<https://hdl.handle.net/10419/252320>

Standard-Nutzungsbedingungen:

Die Dokumente auf EconStor dürfen zu eigenen wissenschaftlichen Zwecken und zum Privatgebrauch gespeichert und kopiert werden.

Sie dürfen die Dokumente nicht für öffentliche oder kommerzielle Zwecke vervielfältigen, öffentlich ausstellen, öffentlich zugänglich machen, vertreiben oder anderweitig nutzen.

Sofern die Verfasser die Dokumente unter Open-Content-Lizenzen (insbesondere CC-Lizenzen) zur Verfügung gestellt haben sollten, gelten abweichend von diesen Nutzungsbedingungen die in der dort genannten Lizenz gewährten Nutzungsrechte.

Terms of use:

Documents in EconStor may be saved and copied for your personal and scholarly purposes.

You are not to copy documents for public or commercial purposes, to exhibit the documents publicly, to make them publicly available on the internet, or to distribute or otherwise use the documents in public.

If the documents have been made available under an Open Content Licence (especially Creative Commons Licences), you may exercise further usage rights as specified in the indicated licence.



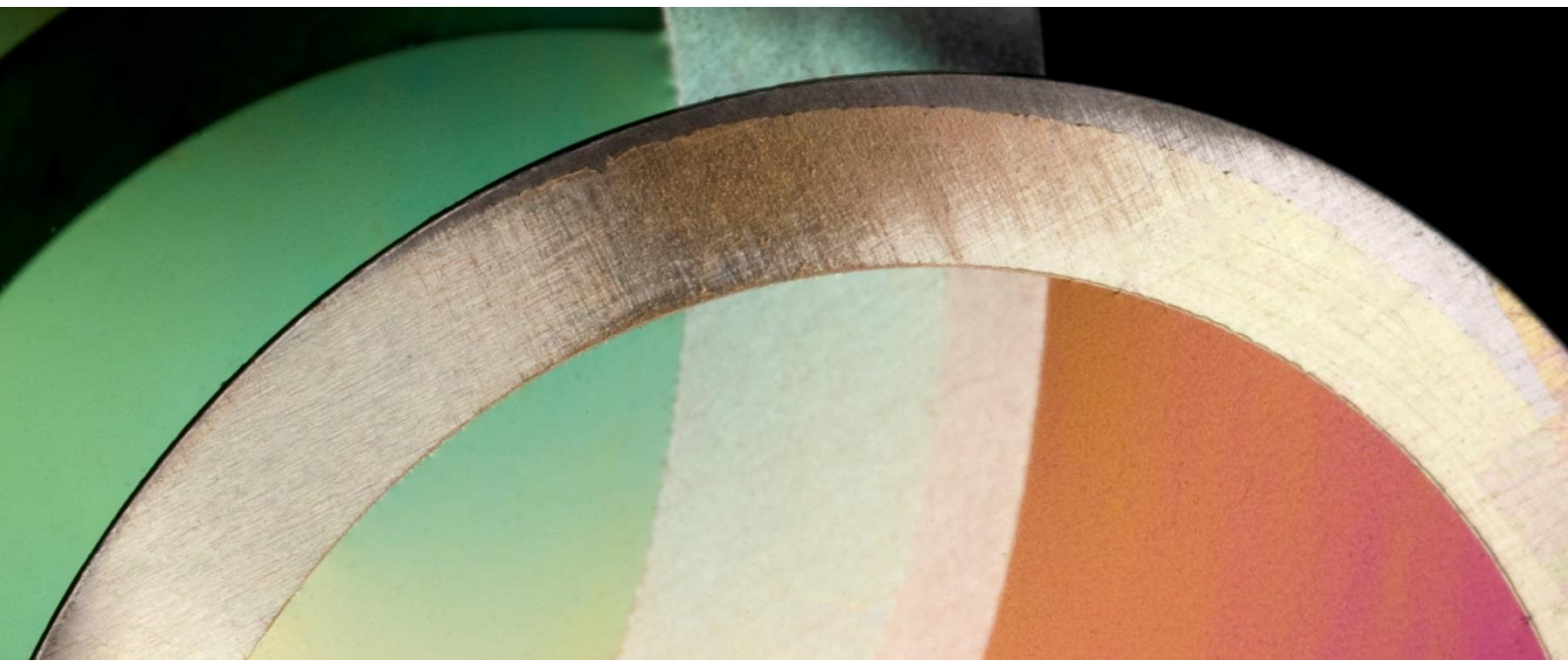
<https://creativecommons.org/licenses/by/4.0/>

JRC TECHNICAL REPORT

The role of short-time work and discretionary policy measures in mitigating the effects of the COVID-19 crisis in Germany

*JRC Working Papers on
Taxation and Structural
Reforms No 04/2021*

Michael Christl, Silvia De Poli, Tine Hufkens,
Andreas Peich & Mattia Ricci



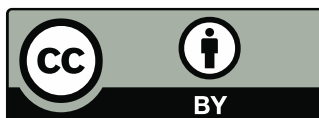
This publication is a Technical report by the Joint Research Centre (JRC), the European Commission's science and knowledge service. It aims to provide evidence-based scientific support to the European policymaking process. The scientific output expressed does not imply a policy position of the European Commission. Neither the European Commission nor any person acting on behalf of the Commission is responsible for the use that might be made of this publication. For information on the methodology and quality underlying the data used in this publication for which the source is neither Eurostat nor other Commission services, users should contact the referenced source. The designations employed and the presentation of material on the maps do not imply the expression of any opinion whatsoever on the part of the European Union concerning the legal status of any country, territory, city or area or of its authorities, or concerning the delimitation of its frontiers or boundaries.

EU Science Hub
<https://ec.europa.eu/jrc>

JRC124935

Seville: European Commission, 2021

© European Union, 2021



The reuse policy of the European Commission is implemented by the Commission Decision 2011/833/EU of 12 December 2011 on the reuse of Commission documents (OJ L 330, 14.12.2011, p. 39). Except otherwise noted, the reuse of this document is authorised under the Creative Commons Attribution 4.0 International (CC BY 4.0) licence (<https://creativecommons.org/licenses/by/4.0/>). This means that reuse is allowed provided appropriate credit is given and any changes are indicated. For any use or reproduction of photos or other material that is not owned by the EU, permission must be sought directly from the copyright holders.

All content © European Union, 2021.

How to cite this report: Christl M., De Poli S., Hufkens T., Peichl A. & Ricci M. (2021), The role of short-time work and discretionary policy measures in mitigating the effects of the COVID-19 crisis in Germany, JRC Working Papers on Taxation and Structural Reforms No 04/2021, European Commission, Joint Research Centre, Seville. JRC124935

Executive Summary

- The COVID-19 crisis led to a strong fall in economic activity and, consequently, to a severe drop in GDP and an increase in unemployment across Europe. In Germany, the recession in 2020 was about as significant as the financial crisis in 2008/2009, with a drop in GDP of about 4.9% and severe consequences on the labour market. While the macroeconomic impact of the COVID-19 crisis has already been well documented, the evidence of the impact on household income at the micro level is more limited. This is largely due to missing up-to-date information.
- The German government tried to stabilize household income during the COVID-19 crisis with a Short-Time Work (STW) scheme that already proved its worth during the financial crisis of 2008/2009. Additionally, several discretionary policy measures (DPM), such as a COVID-related child benefit and the increase of the tax allowance for single parents were introduced. Both, STW and DPMs had the goal to cushion against the income loss of households and to prevent a strong drop in private consumption.
- In this paper, we use EUROMOD, the microsimulation model of the European Union, to analyse the impact of the COVID-19 crisis in Germany on micro level. Additionally, we analyse the role of the Short-Time Work scheme (STW) and discretionary policy measures (DPM) in cushioning its effects on households' income. We employ a labour market transition approach to update the EU-SILC microdata underpinning EUROMOD. Individuals in the microdata are selected for labour market transition using a probit model estimated on detailed information on the use of the STW scheme from the HOPP database of the Institute of Employment Research (IAB).
- The probit model allows us to order each individual by their probability of changing their labour market status in response to the COVID-19 crisis. Individuals with higher probabilities will be the ones who are then transitioned to STW or unemployment status, until the observed shares of unemployed and of workers in the STW scheme in each sector of the economy is met. Following the probit model, we proportionally move more low-income earners, as well as more males and individuals without children to STW.
- We find that the COVID-19 crisis had a large impact on household income across the whole spectrum of the income distribution, with the average drop of market income in excess of 5%. The effect is largely regressive, indicating a significant increase in income inequality. However, the regressive impact on income is nearly entirely offset by automatic stabilizers (such as unemployment benefits and STWs) and discretionary policy measures (notably, child-related COVID-19 benefits and a tax allowance for single parents) introduced during the crisis.
- We explore the cushioning effects played by the discretionary policy measures, the STW scheme and other automatic stabilizers. We find that the STW scheme and discretionary policy measures played a much greater role in stabilizing the income of households located in the bottom half of the income distribution than of those sitting in the upper half. Indeed,

in the absence of STW and DPM, richer households would have seen their disposable income mostly unaffected, while the poorest households would have faced the largest loss in disposable income.

- Overall, we find that growing income inequality as a result of COVID19 as well as the increase of the At-risk-of-poverty rate can be largely offset by the tax-benefit system and especially by STW and discretionary policy measures. We conclude that, STW schemes and discretionary policy measures are key in counteracting the negative income effect of the COVID-19 pandemic, in particular for single-parent families and for households with children.

The role of short-time work and discretionary policy measures in mitigating the effects of the COVID-19 crisis in Germany*

Michael Christl¹, Silvia De Poli^{1,3}, Tine Hufkens¹, Andreas Peichl², and Mattia Ricci¹

¹European Commission (JRC), Seville, Spain

²ifo Institute and LMU, Munich, Germany

³Corresponding author, Email: silvia.de-poli@ec.europa.eu

July 9, 2021

Abstract

In this paper, we investigate the impact of the COVID-19 pandemic on German household income using a micro-level approach. We combine a microsimulation model with labour market transition techniques to simulate the COVID-19 shock on the German labour market. We find the consequences of the labour market shock to be highly regressive with a strong impact on the poorest households. However, this effect is nearly entirely offset by automatic stabilisers and discretionary policy measures. We explore the cushioning effect of these policies in detail, showing that short-time working schemes and especially the one-off payments for children are effective in cushioning the income loss of the poor.

Keywords: COVID-19, EUROMOD, microsimulation, STW, automatic stabilisers **JEL**

Classification: D31, E24, H24

*The content of this article does not reflect the official opinion of the European Commission. Responsibility for the information and views expressed in the article lies entirely with the author(s).

1 Introduction

The COVID-19 crisis led to a strong fall in economic activity and, consequently, to a severe drop in GDP and an increase in unemployment across Europe. In Germany, the recession in 2020 was about as significant as the financial crisis in 2008/2009, with a drop in GDP of about 5%. The labour market impact of the COVID-19 crisis was severe. While in February 2020 only about 133,000 workers were registered in short-time work (STW), this number rose sharply in March and April, with almost 6 million workers being moved to this scheme. In comparison to STW, the increase in unemployment during 2020 was less dramatic. In August 2020, the number of unemployed rose to almost 3 million, compared to about 2.3 million in March of the same year.

To counteract the consequences of the COVID-19 pandemic, the German government strengthened and extended the existing STW scheme that already proved its worth during the financial crisis of 2008/2009. Moreover, several discretionary policy measures (DPM), such as a COVID-related child benefit and the increase of the tax allowance for single parents were introduced. Both, STW and DPM had the goal to cushion against the income loss of households and to prevent a strong drop in private consumption.

While the macroeconomic impact of the COVID-19 crisis has already been well-documented (almost in real-time), evidence of the impact on household income at the micro level is more limited. This is largely due to missing up-to-date information. In this study, we address this issue by simulating the impact of COVID-19 on the labour market and on household income across the income distribution in Germany.

So far, the literature has employed two main approaches to overcome time lags in micro data when assessing the impact of macroeconomic shocks. The first is a static approach that typically consists of updating the weights of individual observations in the micro data to mirror up-to-date aggregate labour market statistics. For example, [Almeida et al. \(2021\)](#) use re-weighting techniques to update EU-SILC data and estimate the impact of COVID-19 on household income in EU countries. [Beznoska et al. \(2020\)](#) combine pre-crisis survey data with a questionnaire on subjective assessment of the labour market and the income loss of households via matching in order to estimate the impact of COVID-19 on household income in Germany. The second is a dynamic approach that employs labour market transition techniques to change the employment status of individuals in the micro data to replicate labour market developments. For individuals who change their labour market status, taxes and benefits are updated consistently with the tax-benefit rules in place in each country. Such an exercise is conducted by [Brewer and Tasseva \(2020\)](#) and [Figari and Fiorio \(2020\)](#), who use labour market transition techniques for the UK and Italy, respectively. [Christl et al. \(2021\)](#) also used the labour market transition approach to estimate the impact of COVID-19 related policy measures in a cross-country setup, showing that policy measures were cushioning substantially the income loss and the inequality increasing feature of the COVID-19 pandemic.

[Bruckmeier et al. \(2020\)](#) extend the approach of [Bargain et al. \(2012\)](#) and combine macro and micro modelling to nowcast the macroeconomic effect of COVID-19 in Germany in 2020. Similar to our analysis, they analyse the impact on the labour market

and household income. The key advantage of the labour market transition approach with respect to re-weighting/matching is that this approach does not need to assume that the characteristics of the affected subgroup of the population (e.g., individuals in STW) remain unchanged. Moreover, by re-calculating the taxes and benefits, it can account for changes in legislation including, for example, benefits amount or eligibility conditions.

In this paper, we use EUROMOD, the microsimulation model of the European Union, to analyse the impact of the COVID-19 crisis in Germany, as well as the role of STW in cushioning its effects on household income. We extend the labour market transition approach and combine it with a probit model estimated using detailed information on the use of the STW scheme from the HOPP database of the Institute of Employment Research (IAB)¹ to update the EU-SILC microdata underpinning EUROMOD. We then employ this model to investigate the impact of COVID-19 on household income across the income distribution in Germany and, thus, its effect on inequality and poverty. We find that the COVID-19 crisis had a large impact on household income across the whole spectrum of the income distribution, with the average drop of market income in excess of 5%. The effect is largely regressive, indicating a significant increase in income inequality.

However, the regressive impact on income is nearly entirely offset by automatic stabilisers (such as unemployment benefits and STW) and DPM introduced during the crisis (notably, child-related COVID-19 benefits and a tax allowance for single parents). We find that the STW scheme and DPM played a much greater role in stabilizing the income of households located in the bottom half of the income distribution than of those sitting in the upper half. Indeed, in the absence of STW and DPM, richer households would have seen their disposable income mostly unaffected, while the poorest households would have faced the largest loss in disposable income.

Our work contributes to the literature along several lines. First, we simulate wage compensation schemes on a micro level using a methodology of labour market transition based on micro-simulation techniques. This allows us to transit individuals to both unemployment and STW schemes; in standard models, the second transition is usually not modelled. Second, we use detailed administrative data on the number of people in STW schemes and unemployment in 2020. For workers in STW schemes, these data also allow us to model the duration and reduction of working hours for a more precise assessment of the impact of the COVID-19 crisis on the German labour market. Third, we compare different modelling approaches for selecting individuals in the micro data who change their labour market status in response to the crisis. We show that such a modelling choice substantially affects the estimation of the impact of the COVID-19 crisis across the income distribution. Fourth, we add to the discussion on the cushioning effect of STW and discretionary policy measures. In particular, we show that STW and DPM in Germany are increasing the automatic stabilizing mechanism, especially for low-income earners.

The literature for Germany in general is scarce. [Bruckmeier et al. \(2020\)](#) combine several models to estimate the shock of the COVID crisis in a general equilibrium framework.

¹Special thanks to Christopher Osiander and Thomas Kruppe for providing us with the relevant information.

They show that the impact of COVID-19 leads to a substantial decrease in gross labor income all across the income distribution. However, the the tax benefit system and discretionary policy responses to the crisis are able to cushion this effect, leading to a progressive effect of the COVID crisis.

The rest of the paper is structured as follows. Section 2 provides a brief description of the STW scheme and discretionary policy measures in Germany. Section 3 outlines our methodology as well as the data we employ for our analysis. Section 4 presents the results, while Section 5 offers some concluding remarks.

2 Short-time work and discretionary policy measures in Germany

In this section, we briefly describe the features of the STW scheme and of the main DPM that were active during the COVID-19 crisis in 2020. The role played by these policies in cushioning the impact on household income will then be at the core of our analysis in the remainder of the paper.

2.1 Short-time work scheme

The STW scheme has been an essential tool for containing the extent of job destruction in the ongoing COVID-19 crisis in Germany. This scheme has already been in place for many years; for example, it played an important role in cushioning the impact of the financial crisis of 2008-2009, see [Bargain et al. \(2012\)](#).

STW consists of a contributory benefit paid by the social security unemployment insurance. The benefit compensates employees for wage losses due to an involuntary decrease in working hours. All employees subject to social insurance contributions are entitled to the scheme if the employers applies (and qualifies) for reduced working hours. The benefit amount is calculated based on the difference in net earnings before and after the reduction of working hours. In more detail, the amount is set to 60% of the difference in net earnings for individuals without children and 67% for individuals with children. Importantly, the system of STW that existed before the pandemic was further expanded at the beginning of the pandemic, both in terms of access and monthly rates. More specifically, employees who received the compensation for more than four months in 2020 (and provided that their working hours were reduced by at least 50%) had their compensation rate increased to 70% in the fifth and in the sixth month (77% for beneficiaries with children). From the seventh month, the rate increased to 80% for individuals without children and to 87% for parents. In addition, from March 2020 on, temporary employees were also entitled to the compensation. Employers could use the scheme already if 10% or more of their employees were affected by the lack of work, while before the pandemic this limit was set to 30%. Another change due to the COVID-19 pandemic is that the basic social security contributions to be paid by the employer are paid by the unemployment insurance. Finally, the

German government decided to prolong the current scheme until December 2021, whereas originally this benefit was only paid for a maximum of 12 months.

In EUROMOD, the eligibility for the benefit is based on net earnings, the reduction of hours worked, the duration of the benefit and if the individual has children. The net earnings are calculated using a simplified tax schedule and simplified computations of social insurance contributions. The difference in earnings before and after the reduction of working hours is used to calculate the monthly benefit².

2.2 Discretionary policy measures

On top of the extension of the STW scheme, several DPM were put in place in 2020 to alleviate the social consequences of COVID-19. One of their main goals was to protect the income of families with children. Indeed, this group was hit especially hard by the lockdowns, which imposed the closure of schools and the related need of homeschooling for children (as also highlighted by Blömer et al. (2021)). In our analysis, we consider the most relevant (in monetary terms) of these policies³, i.e: (i) the COVID-related child bonus, and (ii) the tax allowance for single parents.

The COVID-19 related child bonus is a one-off payment to support families with children. The same eligibility rules apply as for the standard child benefit in Germany. However, the age limit is extended to 24 years for children who are still in tertiary education, and there is a limit on hours worked by the child.⁴ Moreover, differently from the standard child benefit, the child bonus is not deducted from any means-tested benefits. The parents of the eligible child receive 300 euro per child. As discussed by Beznoska et al. (2020), this instrument is especially relevant for low-income families.

The tax allowance for single parents ("Alleinerziehendenentlastungsbetrag"), already existed before COVID-19 but was increased in 2020 and 2021. In more detail, the tax allowance was increased from 1,908 euro per year in 2019 to 4,008 euro in 2020 and 2021. The goal of this policy is to compensate single parents for the higher costs of living during the COVID-19 crisis.⁵

Finally, another important class of policies are those introduced to sustain self-employed and small businesses. These notably include the "Soforthilfe", i.e. the immediate assistance program for small businesses and self-employed. Soforthilfe is a one-off benefit which was introduced to pay for current expenses and to compensate for the operating losses during the lockdown.⁶ Despite these measures are implemented in EUROMOD, we do not include

²More detail can be found in the [EUROMOD Country Report for Germany](#).

³Other discretionary policies included the emergency child benefit supplement for parents who lost earnings because of the COVID-19 pandemic, as well as the simplified access to basic income support and support to cover the cost of heating and housing for low-income families. We could not simulate these benefits in EUROMOD due to limited information in the data. However, these measures are small compared to the other discretionary policy measures simulated.

⁴For more details, see the [EUROMOD Country Report for Germany](#)

⁵Again, for more details on these policies and on their simulation in EUROMOD, we refer the interested reader to the [EUROMOD Country Report for Germany](#).

⁶Self-employed or small firms with up to five employees can apply for a maximum of 9,000 euro, and

them in our analysis because of the lack of information on operating losses and on the number of individuals using the scheme.

3 Methodology and Data

In this section, we discuss the methodology underpinning our analysis as well as the data we use to estimate our probit model and to calibrate the labour market transition in EU-ROMOD. In subsection 3.1, we review the techniques the literature has employed to update micro data. We explain why in times of rapid changes, such as the ongoing pandemic, our dynamic labour market transition approach is preferable to static approaches. We then provide a detailed description of the scenarios we simulate in our analysis and of the automatic stabiliser coefficient we assess in these scenarios. In subsection 3.2, we then move to review the data we used for calibrating our scenarios and present the estimation of our probit model.

3.1 Methodology

3.1.1 Extended microsimulation technique

The timely analysis of economic shocks is an important task for academics but is especially important for policy makers. At the time of writing, available micro data sets for Germany do not include information on the effects of the COVID-19 pandemic in 2020. Given the substantial time lags in survey data, microsimulation models are largely used to assess the impact of rapid changes in the population and labour market conditions on income, poverty and inequality. Microsimulation models, which are typically based on representative household data (or on administrative data), allow us to assess the detailed impact of demographic changes and policy changes in a timely manner, as also highlighted by [Immervoll et al. \(2006\)](#) and [Peichl \(2009\)](#).

Generally speaking, two main approaches are employed to introduce demographic and labour market shocks in the micro data. The first approach is a static technique, which typically consists of updating individual observations in the micro data to mirror up-to-date labour market statistics. This is typically achieved by re-weighting, that is, by updating the weights of individual observations in the micro data to meet target statistics, such as the updated unemployment rate (see e.g., [Creedy \(2004\)](#), [Dolls et al. \(2019\)](#) or [Almeida et al. \(2021\)](#)). Alternatively, this can be achieved by matching procedures that combine older micro data with individual-level information on the effects of a labour market shock, for example, income-loss questionnaires as in [Beznoska et al. \(2020\)](#). However, such a static approach has significant shortcomings when the characteristics of the relevant population groups (e.g., the unemployed population) change substantially. That is because by re-weighting/matching existing observations, it is implicitly assumed that the characteristics of this subgroup of the population remain largely unchanged. Moreover, policy changes,

firms with up to 10 employees can apply for a maximum of 15,000 euro.

such as a change in the benefit amount or the eligibility conditions, cannot be taken into account in detail. The second approach is a dynamic technique, which is based on the implementation of the labour market transition of individuals, as explained in detail in [Gasior and Rastrigina \(2017\)](#). More specifically, this method alters the employment status of individual observations in the micro data consistently with up-to-date statistics and updates their incomes and labour market variables accordingly. For individuals affected by the transition, taxes and benefits are recalculated consistently with the tax-benefit rules in place in a given country. For example, if an individual “is transited” from employment to unemployment, the underlying microsimulation model will apply the policy rules in place to determine her unemployment benefits entitlement, as well as to reevaluate her entitlement for any other benefits and liability for taxes. This dynamic approach is preferable to the static one especially in times of rapid changes in the labour market and when policy changes have taken place. Hence, it is arguably better suited for the analysis of the COVID-19 crisis.

For our empirical analysis, we use the data from the EU Statistics on Income and Living Conditions (EU-SILC) in combination with EUROMOD for the simulation of taxes and benefits. EUROMOD is the microsimulation model of the European Union (see [Sutherland and Figari \(2013\)](#) for more information), and its latest version features the policy rules in force in 2020 and input data based on EU-SILC 2018. Monetary values in input data, for example incomes, have been updated to the 2020 policy year using appropriate uprating factors.⁷ We then simulate the COVID-19 labour market using the Labour Market Adjustment (“LMA”) add-on, which implements in EUROMOD the labour market transition techniques described above. The detailed description of the Add-on can be found in the technical annex of [Christl et al. \(2021\)](#)⁸. In more detail, similar to what was done by [Christl et al. \(2021\)](#) in a cross-country framework, we update the labour market by adjusting the labour market characteristics and market incomes of the selected individuals. Using EUROMOD, we are then able to simulate taxes and benefits taking into account the changes in the labour market.

In order to select the observations which experience a labour market shock, we estimate a probit model that identifies the likelihood that individuals change their labour market status following the COVID-19 shock. Given the nature of the COVID-19 shock, the two relevant transitions are: (i) from employment to unemployment, and (ii) from employment to STW. In the first case, employment income is adjusted proportionally to the numbers of months left in employment. The add-on generates the variables needed to assess the entitlement to unemployment benefits, such as the contributions paid toward the unemployment insurance in the two previous years. In the second case, employment income and the number of months in employment are adjusted proportionally in consideration of the time spent in STW.⁹ Due to lack of information on self-employed, our analysis is limited to employees.

⁷For the details about the uprating factors used in each case, refer to the latest [EUROMOD country report for Germany](#).

⁸See also the [Summary Note For EUROMOD: Labour Market Adjustment Add-on](#).

⁹Because our main interest is to see the effect of the net flow from employment to unemployment and the cushioning effect of STW and discretionary policy measures, we do not include transitions to employment.

3.1.2 Simulation scenarios in detail

Using EUROMOD, we simulate the impact of COVID-19 on disposable household income under three different scenarios. Let t be the tax-benefit function that depends on: (i) the tax-benefit structure, P , which may include the COVID-related policy (P^{Covid}), or may not ($P^{NoCovid}$), and (ii) the labour market condition, LM , including COVID-related labour market transitions (LM^{Trans}), or not ($LM^{NoTrans}$). We can then define our three scenarios as follows:

- **Baseline (no-COVID-19 scenario):** Our baseline is a hypothetical COVID-19 free scenario. It is based on the 2020 tax-benefit system in EUROMOD that excludes DPM, as well as any transition to STW. For this scenarios, we use EUROMOD underlying input data without introducing any changes in the labour market situation. In more formal terms, $t(P_{2020}^{NoCovid}, LM_{2020}^{NoTrans})$.
- **COVID-19 scenario:** The COVID-19 scenario is based on the 2020 tax-benefit system, including the STW scheme and the DPM introduced in response to the pandemic. In this scenario, we update the micro data using labour market transition to account for the labour market shock generated by the COVID-19 crisis. In more formal terms, $t(P_{2020}^{Covid}, LM_{2020}^{Trans})$.
- **COVID-19 scenario w/o STW and DPM:** This counterfactual scenario simulates the COVID-19 shock assuming that STW scheme and DPM were not in place in 2020. In this scenario, we therefore assume the same reduction in working hours as in the “COVID-19 scenario” above, but with workers transiting to unemployment instead of entering STW. More specifically, a corresponding number of workers in STW, in full-time equivalent terms, are assumed to move to unemployment instead. In more formal terms, $t(P_{2020}^{NoCovid}, LM_{2020}^{Trans})$.

To measure the direct impact of COVID-19, while accounting for the cushioning effect of the STW scheme and of the DPM, we analyse the changes between the first two scenarios, Δ^{PM} , defined as:

$$\Delta_X^{PM} = X\left(t(P_{2020}^{Covid}, LM_{2020}^{Trans})\right) - X\left(t(P_{2020}^{NoCovid}, LM_{2020}^{NoTrans})\right). \quad (1)$$

Where the function, X , can either return a certain income concept (disposable income or market income) or an inequality/poverty indicator (such as the at-risk-of-poverty rate or the Gini coefficient).

To analyse the impact of COVID-19 in absence of STW and DPM, Δ^{NoPM} , we compare instead the first and the third scenario:

$$\Delta_X^{NoPM} = X\left(t(P_{2020}^{NoCovid}, LM_{2020}^{Trans})\right) - X\left(t(P_{2020}^{NoCovid}, LM_{2020}^{NoTrans})\right). \quad (2)$$

Finally, to evaluate the cushioning effect of the STW scheme and DPM, we compare the impact of COVID-19 with and without these policies in place, respectively Δ_X^{PM} and Δ_X^{NoPM} .

3.1.3 Automatic stabilisation coefficient

To assess the automatic stabilizing effect of the German tax-benefit system, as well as of any of its components, we follow the approach of [Dolls et al. \(2012\)](#), that was also employed by [Christl et al. \(2021\)](#) in a cross-country set up and by [Kyyrä et al. \(2021\)](#) for Finland. They define the automatic stabilising coefficient (ASC) as:

$$ASC = 1 - \frac{\sum_i \Delta Y_i^D}{\sum_i \Delta Y_i^M} = \frac{\sum_i \Delta Y_i^M - \sum_i \Delta Y_i^D}{\sum_i \Delta Y_i^M}, \quad (3)$$

where ΔY_i^D is the change in disposable income and ΔY_i^M is the change in market income for an individual i . Therefore, an $ASC = 0.8$ would imply that 80% of a shock to the market income is absorbed by the tax-benefit system. Following this approach, we can further decompose the effect of several tax-benefit instruments, such as taxes, social security contributions and benefits. Particularly, we can analyse the impact of STW and discretionary policy measures on the automatic stabilisation mechanisms. We therefore decompose further:

$$ASC = \frac{\sum_i \Delta Y_i^M - \sum_i \Delta Y_i^D}{\sum_i \Delta Y_i^M} = \frac{\sum_i \Delta T_i + \sum_i \Delta SIC_i - \sum_i \Delta B_i - \sum_i \Delta STW_i - \sum_i \Delta DPM_i}{\sum_i \Delta Y_i^M}, \quad (4)$$

where T_i are taxes paid by individual i , SIC_i social insurance contributions, B_i benefits, STW_i short time work and DPM_i additional discretionary policy measures.

3.2 Data

3.2.1 Calibrating the “COVID-19 scenario”

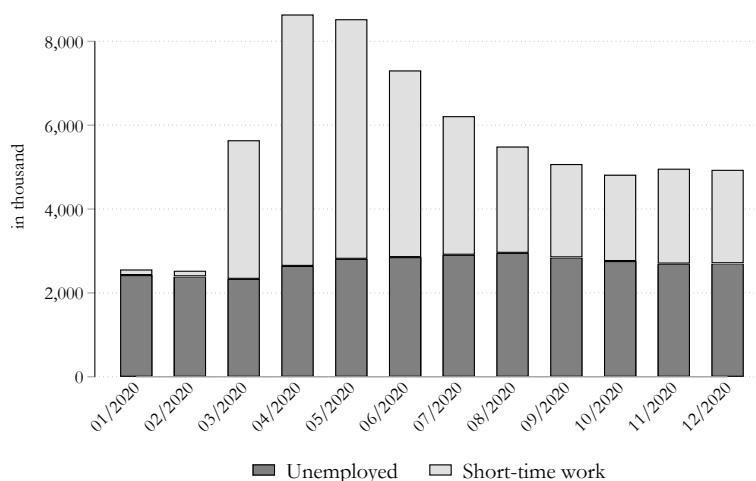
We construct our COVID-19 scenario in two main steps. Firstly, we measure the number of workers who transit to STW and unemployment in each sector of the economy during 2020. This allows us to calibrate the number of individuals who experience a labour market transition in our microsimulation model. Secondly, we estimate a probit model, which orders each individual in our micro data by their probability of changing their labour market status. Individuals with higher probabilities will then be the ones who are transited to STW or unemployment until the shares of unemployed and STW in each sector of the economy are met. Such a second step allows us to account for the fact that the impact of lockdown measures was unequal across the economy for a number of reasons, including differences in home-office possibilities.

In step one, we calibrate the number of individuals who experience a labour market transition using administrative data from the Federal Employment Agency (“Bundesagentur für Arbeit”). These data provide us with statistics on the number of workers in unemployment and on STW. Given that information on STW for November and December are not yet available, we complement these data with estimates from the ifo Institute.¹⁰

¹⁰See <https://www.ifo.de/sites/default/files/2021-02/ifo-kurzarbeit-uebergabe.pdf>

In Figure 1, we plot the number of workers in unemployment and STW in each month of 2020. As can be appreciated from the figure, when the COVID-19 crisis hit the German labour market in March 2020, firms reacted by moving people to STW schemes. This is an expected development, given the long tradition of STW in Germany. In February 2020 only about 133,000 workers were registered in STW, although this number rose sharply in March and April, with almost 6 million workers being moved to STW. Their number started decreasing in May and stabilised by the end of the year. In December, about 2.2 million employees were registered in STW. In comparison to STW, the increase in unemployment during 2020 appears less dramatic; nonetheless, its increase was significant. In March, about 2.3 million people were registered as unemployed, with this number rising to almost 3 million in August, an increase of nearly one-third.

Figure 1: Number of workers in unemployment and STW in 2020



Note: Number (in thousands) of employees in short-time work and unemployment. Information from January to October comes from administrative data, while statistics for November and December are based on estimates from the ifo Institute.

Source: ifo Institute and IAB

Because of the different impact of the COVID-19 crisis and lockdown measures across the economy, STW and unemployment were not equally distributed across sectors. Table 6 in the Appendix shows data on employees in STW by sector. During the first wave of the COVID-19 crisis, the manufacturing sector was especially hit in Germany. In April, about 36% of all workers in STW schemes were active in the manufacturing sector, followed by wholesale and retail (about 15%), and accommodation and food services (about 11%). Instead, in the third and fourth wave, it was mainly the accommodation and food service sector that was hit. In December, more than one-quarter of the workers covered by STW schemes were employed in this sector. This mainly reflects the strong lockdown measures taken by the German government in November and December, when bars and restaurants were shut down. On top of the variation across sectors, we need information on the

reduction of hours for workers in STW. Therefore, we use information provided by [Kruppe and Osiander \(2020\)](#) on the duration of people in STW in May and report them in Table 1. There we can appreciate that about 21.3% of workers in STW schemes reduced their hours only slightly (by less than 25%), 31.3% worked only about 25 to 49%, 15.4% reduced working time by between 50 and 74% and 8% by between 75 and 99%. Additionally, almost one-quarter of the workers (24.1%) reduced their working hours to zero. Unfortunately, the data on the reduction of hours is not available on a sector level. We therefore assume the same pattern in the reduction of working hours across all sectors of economic activity.

Table 1: Distribution of hours reduction for workers in STW

hour reduction	<25%	25% - 49%	50% - 74%	75% - 99%	100%
share of workers	21.3	31.3	15.4	8.0	24.1

Note: Share of people in short-time work with a reduction in the number of hours worked by less than 25%, between 25% and 49%, between 50% and 74%, between 75% and 99%, and 100% (working 0 hours).

Source: [Kruppe and Osiander \(2020\)](#)

After calibrating the number of workers that experience a labour market transition to STW and unemployment, and the reduction of working hours for those in STW, we select the individuals who make a transition. We therefore estimate a probit model that allows us to order each individual in our micro data by their probability of changing their labour market status in response to the COVID-19 crisis. For this purpose, we use information obtained by the Institute of Employment Research (IAB) through the online survey “Leben und Erwerbstätigkeit in Zeiten von Corona (HOPP)”. This is a representative random sample, including individuals at least 18 years old at the time of the interview. The data were collected at four different points in time in 2020. We use the total information of the survey to estimate the average probability across the year 2020 to transit to STW. The sample is drawn from register data, which allows us to add additional information related to the characteristics of individuals. For a more detailed description and a summary of the HOPP survey, see [Haas et al. \(2021\)](#) and [Sakshaug et al. \(2020\)](#). The IAB then used the HOPP data to estimate probit model that estimates the probability of being in STW schemes depending on an individuals’ characteristics.¹¹ Table 2 shows the marginal effects of the probit estimation for Germany and highlights that there are substantial differences across individuals.¹²

Similar to what [Brewer and Tasseva \(2020\)](#) found for the UK, also in Germany, individuals in low-income households are significantly more likely to transit to STW. A disposable household income below 1500 euro monthly increases the probability of being in STW by almost 10 percentage points compared to the reference category (someone with a dispos-

¹¹See also [Kruppe and Osiander \(2020\)](#) for an estimation for May 2020, detailed data description can be found in [Haas et al. \(2021\)](#).

¹²Please note that the results for 2020 are very similar to the results obtained in each subsample in 2020. The probit estimates are very stable across the year 2020.

Table 2: Probability of being in STW (Probit model - marginal effects)

VARIABLES	marginal effect		SE
household disposable income (ref: 2000-3000 Euro)			
below 1,500 euro	0.104	***	0.028
1,500 - 2,000 euro	0.027		0.020
3,000 - 4,000 euro	-0.035	***	0.014
4,000 - 5,000 euro	-0.066	***	0.014
5,000 euro or more	-0.076	***	0.014
gender (ref: male)	-0.039	***	0.008
age (ref: 40-49)			
18-29	-0.003		0.017
30-39	0.016		0.013
50-59	0.010		0.012
60 or above	-0.026	*	0.015
partner (ref: no)	0.033	***	0.011
children (ref:no)	0.010		0.010
education (ref: upper-secondary)			
primary or below	0.207		0.126
lower-secondary	0.009		0.014
post-secondary	0.024		0.016
tertiary	-0.036	***	0.013
citizenship (ref: only German)			
German and other	0.018		0.030
other	0.066	**	0.028
Observations	16,053		

Note: */**/** means significant at 10%/5%/1% level; Reading example: A marginal effect of -0.039 for females means that cet. par. women are 3.9 percentage points less likely to be in STW than the reference category (men).

Source: Calculations of the Institute for Employment Research (IAB), based on HOPP Panel (Hochfrequentes Online-Personen-Panel “Leben und Erwerbstätigkeit in Zeiten von Corona”, see [Haas et al. \(2021\)](#)).

able household income between 2,000 and 3,000 euro). Additionally, it is less likely for women to be in STW compared to men. Also, there seems to be no significant difference in the probability of being in STW across age groups, except for people above 60, who are less likely to be in STW. Having a partner as well as having a foreign citizenship also significantly increase the probability for people to be in STW.

Based on the estimated coefficients of the probit model, we predict the probability of each individual in the EU-SILC data being in STW (adding a random error term). Instead of randomly choosing people that transition to STW schemes in each sector, we chose those individuals with the highest probability of being in STW. Table 5 in the Appendix highlights the detailed characteristics of the individuals that transit to STW. Following the probit model, we proportionally move more low-income earners as well as more males and individuals without children to STW.

It is worth mentioning that this modelling choice has consequences for the results presented later. In the Appendix A, we highlight the differences compared to choosing individuals at random by sector (as done in previous work) in more detail.

To macro-validate our model calibration, we estimate the increase in the costs for STW schemes when modelling the transition on the labour market. Our model suggests an additional cost for the government of about 19.7 billion euro. The Federal Employment Agency (“Bundesagentur für Arbeit”) reported costs of about 21 billion euro, which is

slightly above our estimates.¹³

3.2.2 Calibrating the “COVID-19 scenario w/o STW and DPM”

For this scenario without the STW scheme and DPM, we model the same shock on the labour market as in the COVID-19 scenario. Namely, we impose the same reduction of working hours, but we assume that workers who would have been transited to STW move to unemployment instead. Given that for unemployed individuals the hours reduction is complete, we translate the reduction of working hours into full-time equivalents (FTE) jobs that are lost by sector. Therefore, differently from the scenarios where STW are in place, the same reduction of working hours is not longer spread among a broader set of workers but rather concentrated among fewer individuals who become fully unemployed.

4 Results

We now move to present the main results of our analysis. In subsection 4.1, we analyse the impact of the COVID-19 crisis on household income and investigate the cushioning effects of the STW scheme and DPM. In subsection 4.2, we then turn to explore the stabilizing role played by the German tax-benefit system during the COVID-19 crisis. We decompose this stabilisation effect and analyse in greater detail the role played by specific policy instruments. Finally, in subsection 4.3, we analyse the impact of the COVID-19 crisis on inequality and poverty in Germany.

4.1 The cushioning effect of STW and DPM

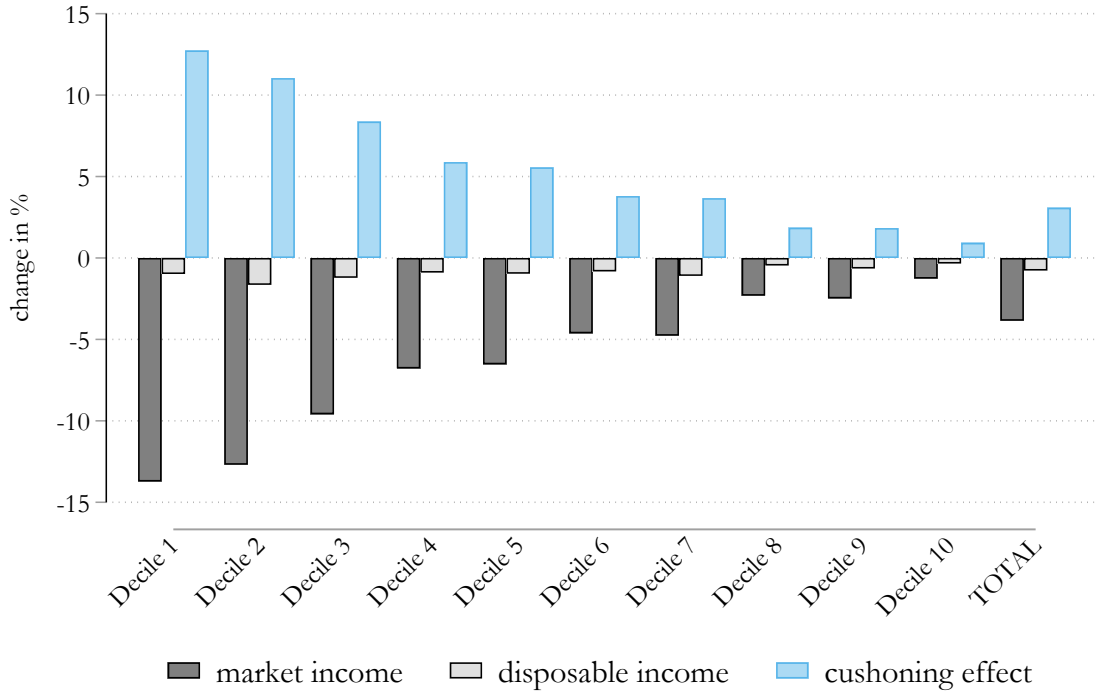
In this subsection, we investigate the impact of the COVID-19 crisis on German household income and explore the income cushioning effect of STW and of DPM. To measure the impact of COVID-19 on German household income, we compare different COVID-19 scenarios with the no-COVID-19 scenario, which assumes no DPM nor labour market changes due to the COVID-19 crisis (see description in subsection 3.1.1).

In Figure 2, we plot the percentage changes in market income and disposable income under the COVID-19 scenario with respect to the no-COVID-19 scenario. We observe that the COVID-19 crisis caused a significant reduction of market income across the whole spectrum of the income distribution, with an overall drop of almost 5%. Such an effect is largely regressive, with households in the lowest deciles of the income distribution losing a substantially higher share of their market income than those in the highest deciles. This is not surprising given that higher-skilled workers have been far less disrupted by the COVID-19 crisis (e.g., because they can work from home, their sectors of activities have been less exposed to the crisis, etc.).

Once taxes and benefits are accounted for, the drop in income is greatly mitigated, with an average fall in disposable income in the order of 0.8%. However, the regressive

¹³See [Federal Employment Agency \(2021\)](#).

Figure 2: Impact of the COVID-19 crisis on household income



Note: Percentage change in household market and disposable income by income deciles. Income deciles are based on the baseline (no-COVID-19 scenario) distribution of equivalised disposable income. The equivalent income is calculated based on the modified OECD scale.

Source: Own calculations using EUROMOD I3.0+.

effect is only partially reversed. Indeed, while the impact on disposable income is somehow flattened across the distribution, the income loss remains larger for poorer households. Our estimated impact is close to the one estimated by [Bruckmeier et al. \(2020\)](#), who predict a fall in disposable income of a similar magnitude. However, differently from us, they find the effect of the COVID-19 crisis to be slightly progressive. In this regard, it should be noted that this would have also been the case in our analysis had we selected at random the individuals who experience the labour market transition in each sector of the economy (see Figure 5 in the Appendix). Instead, by using a probit model, we can account for the fact that individuals in the lower part of the income distribution are more likely to enter in the STW schemes. This shows the importance of accounting for a broader set of worker characteristics¹⁴ when simulating labour market transitions in micro data instead of using the sector of activity alone.

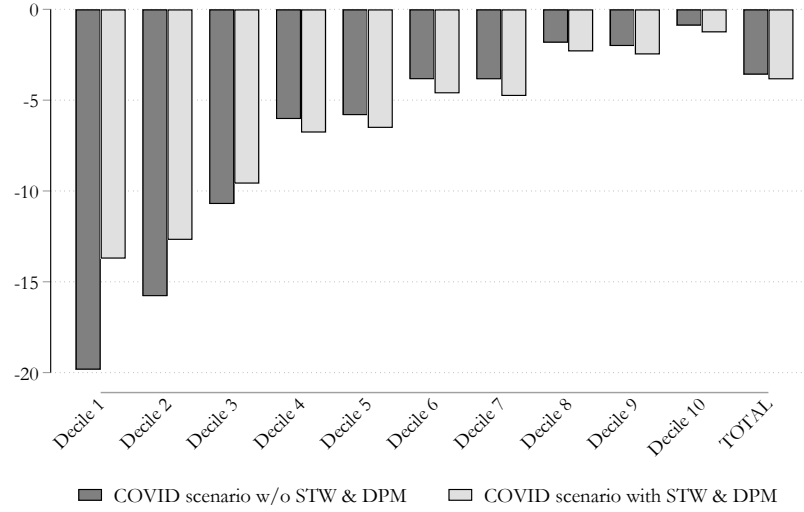
We now turn to explore the contribution of STW and DPM in cushioning the effect of

¹⁴This is in line with the insight of [Alipour et al. \(2020\)](#), who found that low-skilled and low-wage earners are most vulnerable to the consequence of the COVID-19 crisis.

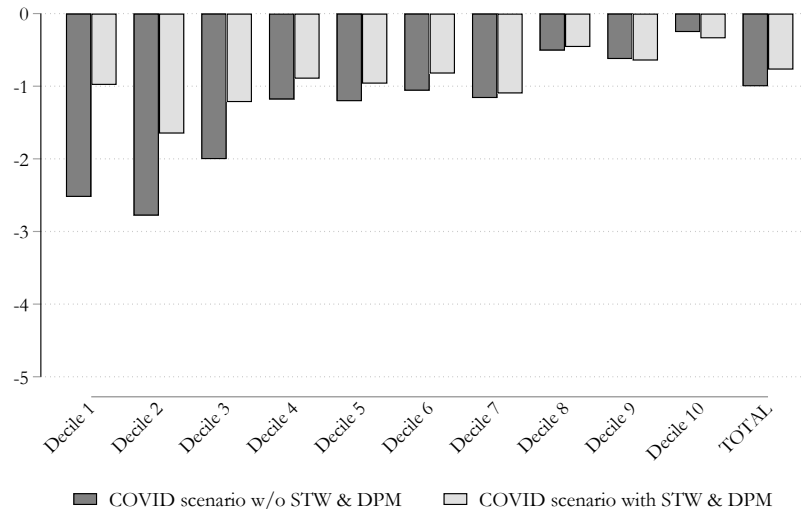
the COVID-19 crisis on household income. For this purpose, we construct a counterfactual scenario without the STW scheme and the DPM. We then compare it with the COVID-19 scenario where these policies are instead in place (see the detailed description of the scenarios in subsection 3.1.2).

In Figure 3, we analyse the impact of the COVID-19 crisis on household market income (panel a) and disposable income (panel b) for the scenario with STW and DPM (as opposed to the scenario where these are not in place).

Figure 3: Impact of the COVID-19 crisis on household income



(a) Market income



(b) Disposable income

Note: Percentage change in household market and disposable income by income deciles. Income deciles are based on the baseline (no-COVID-19 scenario) distribution of equivalised disposable income. The equivalent income is calculated based on the modified OECD scale.

Source: Own calculations using EUROMOD I3.0+.

Starting with market income, we observe that its reduction is similar in both scenarios; that result is expected given that we are assuming the same reduction of hours of work.

However, when STW and DPM are not in place, the income loss is stronger in the lowest deciles of the distribution. That is because, without STW, hours of work reduction are no longer spread among a broader set of workers but rather concentrated among fewer individuals who become fully unemployed (i.e., workers who are laid off cannot have their working hours only partially reduced). Those individuals are mostly concentrated in the lowest deciles of the distribution because our probit model typically assigns low-skill/low-income workers a higher probability of changing labour market status. Moving to analyse the effect on disposable income, we can appreciate that in both scenarios the tax-benefit system largely offsets the impact of the COVID-19 crisis on households. However, in the COVID-19 scenario (with STW and DPM), the regressive impact of the crisis is largely reversed, while this is not the case in the scenario where these are not in place. In particular, without STW and DPM, the impact on disposable income remains largely regressive, with the lowest three deciles suffering an income reduction that is twice as large. This highlights the central role of STW and DPM in cushioning the income of poorer households.

4.2 Automatic stabilisation in times of COVID-19

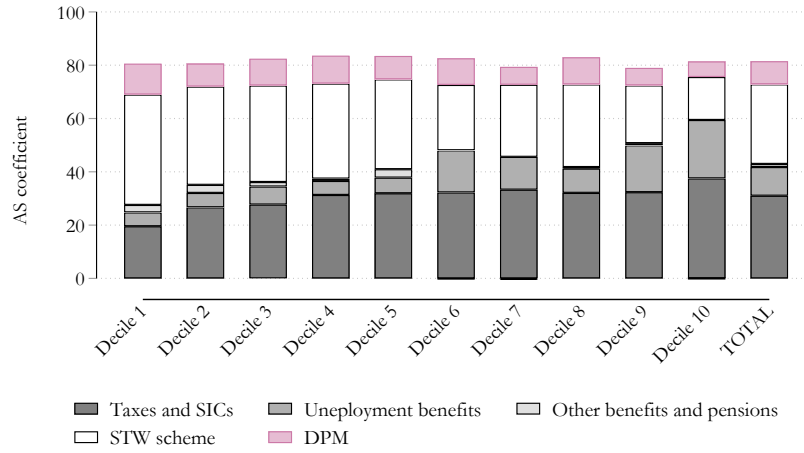
Having analysed the role of STW and DPM in cushioning the effects of the COVID-19 crisis, we now turn to explore the contribution of the various components of the tax-benefit system in stabilizing household income. For this purpose, we calculate the automatic stabiliser coefficients (ASC) proposed by [Dolls et al. \(2012\)](#) for our COVID-19 scenarios with and without STW and DPM. This indicator will allow us to assess the effectiveness of the German tax-benefit system and of the DPM as automatic stabiliser.

In more detail, we decompose the automatic stabilisation coefficient into five main components, including: (i) taxes (including social security contributions), (ii) unemployment benefits, (iii) STW, (iv) discretionary policy measures and (v) other benefits (including pensions).

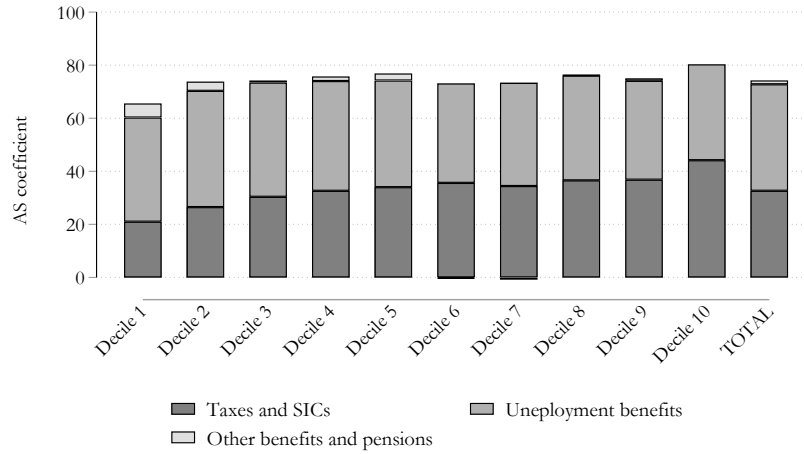
Figure 4 shows the stabilisation coefficient and its breakdown for the COVID-19 scenario with STW and DPM and for the scenario where they are not in place (respectively, in panel a and panel b). Starting with [4a](#), we can appreciate that the German tax-benefit system, including STW and DPM, was able to absorb about 80% of the income shock caused by the COVID-19 crisis in 2020. In other words, a loss of 100 euro in market income only translated into a loss of 20 euro of disposable income. Moreover, income stabilisation was very similar across the income distribution, ranging between 79% and 83%, and indicating that the tax-benefit system in Germany equally protected poorer and richer households. Looking at the individual components of the tax-benefit system, it appears that for poorer households, income stabilisation is largely driven by STW and DPM, whereas for richer households the reverse effect of the progressive income taxation plays the most important role.

Moving to [4b](#), we analyse what the automatic stabilisation capacity of the German tax-benefit system would have been had STW and DPM not been in place. We find that the automatic stabilisation capacity substantially reduces, especially for low-income earners. In more detail, the ASC drops to about 65% for low-income earners. Also, for households

Figure 4: Automatic stabilisers during the COVID-19 crisis



(a) COVID-19 scenario with STW and DPM



(b) COVID-19 scenario without STW and DPM

Note: Income deciles are based on the baseline (no-COVID-19 scenario) distribution of equivalised disposable income. The equivalised income is calculated based on the modified OECD scale.

Source: Own calculations using EUROMOD I3.0+.

in the middle of the income distribution, the stabilisation effect drops below 80% (ranging between 72% and 75%). This is explained by the fact that individuals in the lower decile are more likely to have a discontinuous working history. Therefore, in the COVID-19 scenario

without STW and DPM they might be not eligible to unemployment benefit. Moreover, the lack of DPM (mainly the COVID-related child benefit) and the slightly lower income stabilisation that unemployment benefits offers compared to STW schemes, appears to play a significant role.

Overall, our analysis suggests that automatic stabilisers were somewhat effective in cushioning the income loss caused by the COVID-19 crisis in Germany in 2020, and that, as far as low-income earners are concerned, STW and DPM played a key role.

4.3 The impact of the COVID-19 crisis on inequality and poverty

In this subsection, we consider the impact of the COVID-19 crisis on inequality and poverty. We begin analysing the impact of COVID-19 on inequality measures in Table 3. There we can observe the Gini coefficient for four different income concepts, from market income (A) to disposable income inequality (D). Consistent with our findings on the impact of household income, we find that the Gini of market income features a significant increase of about 1.7 percentage points. COVID-19 has therefore led to a large increase in income inequality before taxes and benefits are accounted for.

Table 3: Impact of the COVID-19 crisis on inequality

	Inequality across scenarios			Diff. w.r.t. Baseline	
	Baseline	COVID-19 (w/o)	COVID-19 (with)	COVID-19 (w/o)	COVID-19 (with)
Gini					
A = market income	0.5056	0.5251	0.5225	0.0195	0.0169
B = A - taxes and SIC	0.5373	0.5607	0.5578	0.0234	0.0205
C = B + pension	0.3167	0.3367	0.3335	0.0200	0.0168
D = C + benefits (disp. inc)	0.2759	0.2815	0.2787	0.0055	0.0028
Additional measures					
Redistribution index	0.2297	0.2437	0.2438	0.0140	0.0142
Quantile share ratio (S80/S20)	4.0654	4.1609	4.0982	0.0955	0.0328
Inter-decile ratio (D5/D1)	1.8622	1.9308	1.8864	0.0686	0.0242

Note: We show results for 3 different scenarios: “baseline”: no-COVID-19 scenario; “COVID-19 (w/o)”: COVID-19 scenario without STW and DPM; “COVID-19 (with)”: COVID-19 scenario (with STW and DPM). Gini coefficients are based on equivalised income using the modified OECD scale.

Source: Own calculations using EUROMOD I3.0+.

As taxes and benefits are introduced into the equation (see Gini B to D), we note that taxes do not seem to play an important role in closing this gap; the benefit system on the other hand has the effect of largely cushioning the increase in market income inequality caused by the COVID-19 crisis. Therefore, while inequality in market income increases substantially, the effect on disposable income inequality is rather small, highlighting the importance of the benefit system in protecting poorer households.

Additionally, if we compare the impact of the COVID-19 crisis in the absence of STW schemes and DPM, we see that the Gini coefficient of disposable income would have risen

substantially more than in the COVID-19 scenario where these policies are in place. This shows the importance of STW schemes and DPM in protecting against a large increase of inequality.

Table 3 shows additional inequality measures, beyond the Gini coefficient. The quantile share ratio as well as the inter-decile ratio confirm the insights offered by the Gini, particularly the inequality cushioning effect of STW schemes and DPM.

Finally, we consider the impact of the COVID-19 crisis on poverty risks. Table 4 presents the at-risk-of-poverty (AROP) rate (using 60% of median equivalised household disposable income as the poverty line) for various household types, both for the scenario with and without the COVID-19 crisis.

Table 4: Impact of the COVID-19 crisis on poverty

Household type	Poverty across scenarios			Diff. w.r.t. Baseline	
	Baseline	COVID-19 (w/o)	COVID-19 (with)	COVID-19 (w/o)	COVID-19 (with)
One adult <65, no children	28.6	32.0	31.1	3.4	2.5
One adult 65+	26.3	26.9	26.6	0.5	0.2
One adult with children	37.6	38.6	36.8	1.0	-0.8
Two adults <65, no children	10.9	11.9	11.7	0.9	0.8
Two adults, at least one 65+, no children	10.3	10.4	10.4	0.2	0.2
Two adults with one child	8.0	9.5	9.5	1.6	1.5
Two adults with two children	4.9	6.5	6.4	1.5	1.5
Two adults with three or more children	11.5	14.3	11.5	2.8	0.0
Three+ adults, no children	6.5	7.1	6.7	0.6	0.2
Three+ adults with children	6.2	7.2	6.6	1.0	0.4
All	14.0	15.3	14.8	1.3	0.9

Note: We show results for 3 different scenarios: “baseline”: no-COVID-19 scenario; “COVID-19 (w/o)”: COVID-19 scenario without STW and DPM; “COVID-19 (with)”: COVID-19 scenario (with STW and DPM). Poverty line is EUR 14,430.48 (60% of median equivalised annual disposable income) anchored to the value of the baseline. Differences (with respect to the baseline) highlighted in grey are not statistically significant.

Source: Own calculations using EUROMOD I3.0+.

The overall AROP rate in Germany is about 14.0%, with one parent households (37.6%) and single households (about 28%) displaying the highest AROP rates. On the contrary, households with more than one adult (including those with more children) have lower poverty rates. The labour market shock caused by COVID-19 is expected to increase these poverty rates substantially. In the COVID-19 scenario without STW and DPM, the overall AROP rate increases significantly to 15.3%. The increase is particularly large for single-person households of working age (ie. 3.4 p.p), mostly because when these individuals lose their jobs, they cannot count on income received by other household members. Also, for families with children, the increase in poverty is significant. Even in the COVID-19 scenario where STW and DPM are in place, the overall AROP rate increases, although

to a smaller extend (14.8%). In this scenario, AROP rates for families with more than 2 children and for single-parent families do not increase. This result is expected given they are the target groups of the discretionary policy measures (child bonus and a higher tax allowance for single-parents) and because of the higher replacement rate of STW for individuals with children. It suggests that discretionary policy measures were essential in protecting single-parent households, which is the group with the highest AROP.

Altogether, our findings suggests that, in spite of the regressive nature of the COVID-19 crisis, STW and DPM have largely offset its impact of the pandemic on inequality and poverty.

5 Conclusion

In this paper, we employ EUROMOD to analyse the impact of the COVID-19 crisis on German households. In particular, we use detailed up-to-date administrative data on STW and unemployment, together with labour market transition techniques, to model the impact of the COVID-19 crisis on household income and, therefore, on inequality and poverty. Additionally, by setting up a hypothetical scenario where STW and DPM are not in place, we are able to evaluate the cushioning effect of these policies during the COVID-19 crisis in Germany.

Our analysis estimates that German households lost almost 5% of their market income in 2020, due to the COVID-19 crisis. The effect was regressive and households in the lower part of the income distribution were affected more severely because low-income earners are more likely to enter in STW schemes. However, the fall in market income was largely offset by the tax-benefit system, which softened the reduction in disposable income to a more modest 0.8%. Indeed, the German tax-benefit system, together with the DPM introduced in response to the COVID-19 crisis, are estimated to absorb about 80% of the income shock, with a similar effect across the income distribution.

Our study highlights the importance of STW and DPM (the COVID-19 one-off child benefit and the increase in the tax allowance for single parents) in cushioning the impact of the COVID-19 crisis. These policies play a crucial role in income stabilisation for low-income earners, therefore counteracting the expected increase in inequality and at-risk-of poverty in 2020. This is especially true for single-parent families and for households with more than two children who benefit from the DPM, as well as from the higher replacement rate of STW for individuals with children.

This work contributes to the literature of modelling the socio-economic impacts of the COVID-19 pandemic by showing that the modelling approach is key for the estimation results. The absence of real-time data can lead to severe problems in evaluating the impact of such a crisis, especially when it comes to income inequality. Contrary to the results found using traditional approaches (which are based on either re-weighting or stochastic labour market transitions), we find that the impact of the COVID-19 crisis on disposable household income is regressive. Therefore, using the extended labour market transition approach provides a technique also for the analysis of future macroeconomic shocks.

References

- Alipour, J.V., Falck, O., Schüller, S., 2020. Germany’s capacities to work from home. CESifo Working Paper .
- Almeida, V., Cobos, S.B., Christl, M., De Poli, S., Tumino, A., Van Der Wielen, W., 2021. The impact of covid-19 on households’ income in the eu. *Journal of Economic Inequality* (forthcoming) .
- Bargain, O., Immervoll, H., Peichl, A., Siegloch, S., 2012. Distributional consequences of labor-demand shocks: The 2008–2009 recession in Germany. *International Tax and Public Finance* 19, 118–138.
- Beznoska, M., Niehues, J., Stockhausen, M., 2020. Stabil durch die krise? verteilungsfolgen der corona-pandemie-eine mikrosimulationsanalyse. IW-Report .
- Blömer, M., Brandt, P., Mosler, M., Peichl, A., 2021. Verteilungswirkungen des kinderbonus und der temporären mehrwertsteuersenkung im jahr 2020. *ifo Schnelldienst* 74, 45–50.
- Brewer, M., Tasseva, I., 2020. Did the UK policy response to COVID-19 protect household incomes? EUROMOD Working Paper, No. EM12/20 .
- Bruckmeier, K., Peichl, A., Popp, M., Wiemers, J., Wollmershäuser, T., 2020. Distributional effects of macroeconomic shocks in real-time: A novel method applied to the COVID-19 crisis in Germany. CESifo Working Paper .
- Christl, M., De Poli, S., Figari, F., Hufkens, T., Papini, A., Tumino, A., 2021. The cushioning effect of fiscal policy in the EU during the COVID-19 pandemic. *JRC Working Papers on Taxation and Structural Reforms* No 02/2021 .
- Creedy, J., 2004. Survey reweighting for tax microsimulation modelling. Emerald Group Publishing Limited.
- Dolls, M., Doorley, K., Paulus, A., Schneider, H., Sommer, E., 2019. Demographic change and the European income distribution. *The Journal of Economic Inequality* 17, 337–357.
- Dolls, M., Fuest, C., Peichl, A., 2012. Automatic stabilizers and economic crisis: US vs. Europe. *Journal of Public Economics* 96, 279–294.
- Figari, F., Fiorio, C.V., 2020. Welfare resilience in the immediate aftermath of the covid-19 outbreak in Italy. EUROMOD Working Paper .
- Gasior, K., Rastrigina, O., 2017. Nowcasting: Timely indicators for monitoring risk of poverty in 2014–2016. EUROMOD Working Paper .

- Haas, G.C., Müller, B., Osiander, C., Schmidtke, J., Trahms, A., Volkert, M., Zins, S., 2021. Development of a new COVID-19 panel survey: The IAB High-frequency Online Personal Panel (HOPP). *Journal for Labour Market Research* (forthcoming) .
- Immervoll, H., Levy, H., Lietz, C., Mantovani, D., Sutherland, H., 2006. The sensitivity of poverty rates to macro-level changes in the European Union. *Cambridge Journal of Economics* 30, 181–199.
- Kruppe, T., Osiander, C., 2020. Kurzarbeit in der Corona-Krise: Wer ist wie stark betroffen? IAB-Forum, 30 June 2020 .
- Kyyrä, T., Pirttilä, J., Ravaska, T., 2021. The corona crisis and household income: The case of a generous welfare state. *VATT Institute for Economic Research* .
- Peichl, A., 2009. The benefits and problems of linking micro and macro models – evidence from a flat tax analysis. *Journal of Applied Economics* 12, 301–329.
- Sakshaug, J.W., Beste, J., Coban, M., Fendel, T., Haas, G.C., Hülle, S., Kosyakova, Y., König, C., Kreuter, F., Küfner, B., et al., 2020. Impacts of the COVID-19 pandemic on labor market surveys at the German Institute for Employment Research, in: *Survey Research Methods*, pp. 229–233.
- Sutherland, H., Figari, F., 2013. Euromod: the European Union tax-benefit microsimulation model. *International journal of microsimulation* 6, 4–26.

Appendix

A Selection of short-time workers

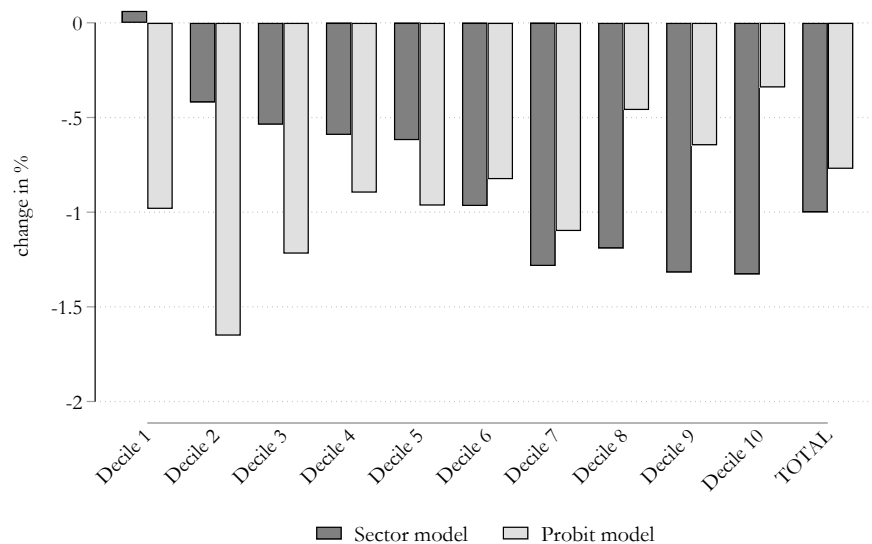
There are two approaches taken in the literature to define people that are moving to STW. In the first approach, detailed aggregate statistics on the amount of workers in STW schemes are used (usually by sector) based on the argument that a sector-specific random allocation (or even more detailed components) might cover well the heterogeneity in characteristics of workers that transit to STW schemes.¹⁵ Since the COVID-19 shock in 2020 was strongly defined by a sectorial component that was mainly driven by lockdowns that hit specific sectors more than others, such as tourism, hotels and bars, this assumption seems to be reasonable on first glance. On the other hand, other approaches, such as that employed by [Brewer and Tasseva \(2020\)](#), use specific micro data to estimate the probability of a worker moving to STW schemes. This approach allows for the estimation of the risk of a worker moving to short-time work.

We compare both approaches in our paper on Germany using the probit model (discussed in subsection 3.2) to analyse the impact of the modelling choice related to transition to STW. We compare the random allocation by sectors with the allocation where those workers with the highest risk of being sent to STW transit. Figure 5 already highlights the strong distributional impact of the modelling assumption. While according to the probit model low-income earners have a higher risk of being sent to STW schemes, the sectorial approach, where people are randomly sent to STW in each sector, does not cover this fact well.

As we have shown, when using the detailed information on worker heterogeneity in STW schemes, the effect on disposable income is regressive. By contrast, when using the simpler sector approach, as often used in the literature, the effect turns out to be progressive. Our results clearly highlight the importance of the modelling choice in controlling for characteristics of those people that move to STW schemes when estimating the impact of the pandemic on household income and inequality.

¹⁵see, e.g., [Almeida et al. \(2021\)](#) or [Figari and Fiorio \(2020\)](#)

Figure 5: Impact of the model choice on disposable income



Note: Income deciles are based on the baseline (no-COVID-19 scenario) distribution of equivalised disposable income. The equivalent income is calculated based on the modified OECD scale.

Source: Own calculations using EUROMOD I3.0+.

B Additional tables and graphs

Table 5: Share of people that transit to STW schemes, by characteristics

income	share	children	share
below 1500 euro	33.93%	no children	62.83%
1500 to 2000 euro	14.56%	children	37.17%
2000 to 3000 euro	24.52%		
3000 to 4000 euro	16.43%		
4000 to 5000 euro	5.65%		
above 5000 euro	4.91%		
Total	100.00%	Total	100.00%

Note: Percentage share of people that move to STW schemes during the COVID-19 crisis.

Source: Own calculations using EUROMOD I3.0+.

Table 6: Number and share of people in STW across sectors in Germany 2020

	March	April	May	June	July	August	September	October	November	December
Manufacturing	1,100,157 (33.3%)	1,869,069 (31.2%)	2,027,961 (35.5%)	1,773,324 (39.8%)	1,390,025 (42.0%)	1,038,743 (41.0%)	927,287 (41.6%)	835,298 (40.6%)	723,663 (32.0%)	611,261 (27.4%)
Construction	77,071 (2.3%)	150,741 (2.5%)	122,262 (2.1%)	88,711 (2.0%)	64,878 (2.0%)	52,083 (2.1%)	46,362 (2.1%)	44,950 (2.2%)	46,188 (2.0%)	45,563 (2.0%)
Wholesale and retail	530,070 (16.0%)	1,035,969 (17.3%)	841,670 (14.7%)	594,690 (13.4%)	403,587 (12.2%)	299,785 (11.8%)	265,669 (11.9%)	232,683 (11.3%)	241,709 (10.7%)	260,446 (11.7%)
Transport and storage	183,856 (5.6%)	331,524 (5.5%)	319,738 (5.6%)	256,269 (5.8%)	200,354 (6.1%)	173,248 (6.8%)	152,387 (6.8%)	148,884 (7.2%)	142,613 (6.3%)	147,834 (6.6%)
Accommodation and food services	367,182 (11.1%)	665,678 (11.1%)	634,970 (11.1%)	445,667 (10.0%)	321,536 (9.7%)	252,673 (10.0%)	219,530 (9.9%)	233,151 (11.3%)	526,767 (23.3%)	574,332 (25.8%)
Information and communication	79,682 (2.4%)	130,998 (2.2%)	151,255 (2.6%)	135,588 (3.0%)	111,346 (3.4%)	89,909 (3.5%)	75,349 (3.4%)	62,923 (3.1%)	46,862 (2.1%)	63,041 (2.8%)
Professional& scientific activities	243,981 (7.4%)	454,831 (7.6%)	409,409 (7.2%)	321,646 (7.2%)	238,737 (7.2%)	192,734 (7.6%)	164,963 (7.4%)	148,029 (7.2%)	135,331 (6.0%)	120,445 (5.4%)
Administrative services	233,033 (7.0%)	424,609 (7.1%)	400,852 (7.0%)	321,515 (7.2%)	248,913 (7.5%)	202,353 (8.0%)	183,335 (8.2%)	175,078 (8.5%)	161,866 (7.1%)	167,685 (7.5%)
Rest	490,856 (14.8%)	932,010 (15.5%)	806,725 (14.1%)	514,875 (11.6%)	326,511 (9.9%)	233,895 (9.2%)	191,800 (8.6%)	177,602 (8.6%)	239,272 (10.6%)	238,637 (10.7%)
Total	3,305,887	5,995,428	5,714,842	4,452,285	3,305,887	2,535,423	2,226,680	2,058,598	2,264,269	2,229,244

C Acknowledgement

We are indebted to the many people who have contributed to the development of EURO-MOD and the LMA add-on. We are especially thankful to Chrysa Leventi, Andrea Papini and Alberto Tumino as well as to Salvador Barrios. Excellent research assistance by Sophie Friebe is gratefully acknowledged. Additionally, we are very grateful to Christopher Osiander and Thomas Kruppe from IAB for providing the probit estimations based on the HOPP data base.

GETTING IN TOUCH WITH THE EU

In person

All over the European Union there are hundreds of Europe Direct information centres. You can find the address of the centre nearest you at: https://europa.eu/european-union/contact_en

On the phone or by email

Europe Direct is a service that answers your questions about the European Union. You can contact this service:

- by freephone: 00 800 6 7 8 9 10 11 (certain operators may charge for these calls),
- at the following standard number: +32 22999696, or
- by electronic mail via: https://europa.eu/european-union/contact_en

FINDING INFORMATION ABOUT THE EU

Online

Information about the European Union in all the official languages of the EU is available on the Europa website at: https://europa.eu/european-union/index_en

EU publications

You can download or order free and priced EU publications from EU Bookshop at: <https://publications.europa.eu/en/publications>. Multiple copies of free publications may be obtained by contacting Europe Direct or your local information centre (see https://europa.eu/european-union/contact_en).



The European Commission's science and knowledge service

Joint Research Centre

JRC Mission

As the science and knowledge service of the European Commission, the Joint Research Centre's mission is to support EU policies with independent evidence throughout the whole policy cycle.



EU Science Hub

ec.europa.eu/jrc



@EU_ScienceHub



EU Science Hub - Joint Research Centre



EU Science, Research and Innovation



EU Science Hub