

Zhang, Yang; Suchanek, Lena; Swarbrick, Jonathan M.; Wagner, Joel;
Schlanger, Tudor

Working Paper

Sequencing extended monetary policies at the effective lower bound

Bank of Canada Staff Discussion Paper, No. 2021-10

Provided in Cooperation with:

Bank of Canada, Ottawa

Suggested Citation: Zhang, Yang; Suchanek, Lena; Swarbrick, Jonathan M.; Wagner, Joel;
Schlanger, Tudor (2021) : Sequencing extended monetary policies at the effective lower bound,
Bank of Canada Staff Discussion Paper, No. 2021-10, Bank of Canada, Ottawa,
<https://doi.org/10.34989/sdp-2021-10>

This Version is available at:

<https://hdl.handle.net/10419/251023>

Standard-Nutzungsbedingungen:

Die Dokumente auf EconStor dürfen zu eigenen wissenschaftlichen
Zwecken und zum Privatgebrauch gespeichert und kopiert werden.

Sie dürfen die Dokumente nicht für öffentliche oder kommerzielle
Zwecke vervielfältigen, öffentlich ausstellen, öffentlich zugänglich
machen, vertreiben oder anderweitig nutzen.

Sofern die Verfasser die Dokumente unter Open-Content-Lizenzen
(insbesondere CC-Lizenzen) zur Verfügung gestellt haben sollten,
gelten abweichend von diesen Nutzungsbedingungen die in der dort
genannten Lizenz gewährten Nutzungsrechte.

Terms of use:

*Documents in EconStor may be saved and copied for your
personal and scholarly purposes.*

*You are not to copy documents for public or commercial
purposes, to exhibit the documents publicly, to make them
publicly available on the internet, or to distribute or otherwise
use the documents in public.*

*If the documents have been made available under an Open
Content Licence (especially Creative Commons Licences), you
may exercise further usage rights as specified in the indicated
licence.*

Sequencing Extended Monetary Policies at the Effective Lower Bound

by Yang Zhang,¹ Lena Suchanek,² Jonathan Swarbrick,¹ Joel Wagner¹ and Tudor Schlanger¹

¹Canadian Economic Analysis Department
Bank of Canada, Ottawa, Ontario, Canada K1A 0G9

²International Economic Analysis Department
Bank of Canada, Ottawa, Ontario, Canada K1A 0G9

YangZhang@bank-banque-canada.ca, LSuchanek@bank-banque-canada.ca,
JSwarbrick@bank-banque-canada.ca, JWagner@bank-banque-canada.ca



Bank of Canada staff discussion papers are completed staff research studies on a wide variety of subjects relevant to central bank policy, produced independently from the Bank's Governing Council. This research may support or challenge prevailing policy orthodoxy. Therefore, the views expressed in this paper are solely those of the authors and may differ from official Bank of Canada views. No responsibility for them should be attributed to the Bank.

Acknowledgements

We would like to thank Christian Pavilanis and Houji Yao for excellent research assistance. Jonathan Witmer, Tamara Gomes, Narayan Bulusu, Antonio Diez de los Rios, Marie Gabreau, Jose Dorich, Rhys Mendes, James MacGee, Robert Amano, Marc-André Gosselin, Russell Barnett, Erik Ens, Stefano Gnocchi and Paul Corrigan provided helpful discussions and suggestions. We would also like to thank Maren Hansen and Nicole van de Wolfshaar for editorial assistance.

Abstract

In response to the global COVID-19 pandemic, the Bank of Canada aggressively lowered its policy interest rate and provided additional easing using forward guidance and quantitative easing. In this analysis, we use simulations in the Bank of Canada's projection model—the Terms-of-Trade Economic Model—to consider a suite of extended monetary policies (EMPs) to support the economy following the COVID-19 crisis. We focus on the implementation sequencing of three EMP options when the policy rate is at the effective lower bound: credit easing, forward guidance and quantitative easing. We find that the policy mix that delivers the best outcome for the Canadian economy calls for immediately implementing forward guidance and quantitative easing, followed by credit easing when containment measures are lifted. Furthermore, going “full scale” and implementing all available EMP options effectively helps stabilizing the economy because each of these tools reinforces the others. We also quantify the fiscal response needed to offset the gap in gross domestic product created by the effective lower bound, given operational limitations in scaling up EMPs.

Topics: Coronavirus disease (COVID-19), Monetary policy, Monetary policy transmission

JEL codes: E3, E4, E5, E52, E58

Résumé

En réaction à la pandémie de COVID-19, la Banque du Canada a abaissé vigoureusement son taux directeur et accru la détente monétaire en recourant aux indications prospectives et à l'assouplissement quantitatif. Dans notre analyse, nous menons des simulations au moyen du modèle de projection de la Banque du Canada, TOTEM (Terms-of-Trade Economic Model), pour étudier une gamme élargie d'outils de politique monétaire visant à soutenir l'économie dans le contexte de la crise née de la pandémie. Nous mettons l'accent sur la mise en œuvre, par étapes, de trois de ces outils quand le taux directeur est à la valeur plancher : assouplissement direct du crédit, indications prospectives et assouplissement quantitatif. Nous constatons que le meilleur ensemble de politiques pour l'économie canadienne consiste à mettre en place, dans l'immédiat, les indications prospectives et l'assouplissement quantitatif, suivis de l'assouplissement direct du crédit dès que les restrictions sanitaires sont levées. Par ailleurs, une mise en œuvre « tous azimuts » de l'ensemble des outils disponibles aide à stabiliser l'économie parce que chacun de ces outils renforce les autres. En outre, nous quantifions les mesures budgétaires requises pour compenser l'écart du produit intérieur brut causé par la valeur plancher, compte tenu des limites opérationnelles empêchant le déploiement accru des outils de la gamme élargie.

Sujets : Maladie à coronavirus (COVID-19); Politique monétaire; Transmission de la politique monétaire

Codes JEL : E3, E4, E5, E52, E58

1. Introduction

When the global COVID-19 pandemic caused a sharp contraction in economic activity, the Bank of Canada took a highly accommodative stance. Easing monetary conditions through conventional monetary policy, in March 2020 the Bank aggressively cut the overnight rate to 25 basis points (bps) to reduce borrowing costs, where it remains as of today (June 2021). The Bank's immediate policy response also included various measures aimed at improving market functioning.¹ In parallel, the federal and provincial governments also rapidly provided extraordinary fiscal support during the pandemic.

Despite the rapid fiscal and monetary policy responses, plausible economic projections at the peak of the crisis (April 2020) suggested that real gross domestic product (GDP) could remain below pre-pandemic levels for a prolonged period.² While the government's fiscal stimulus and the Bank's liquidity provision offered important support, the measures were clearly not enough to fully make up for the drop in activity given the pandemic's widespread economic impacts. However, implementing additional accommodative monetary policy by continuing to lower policy rates was not feasible because it would have resulted in negative interest rates. To support the recovery, the Bank implemented extended monetary policy (EMP) tools, in particular, forward guidance, credit easing and quantitative easing.³

The rapid evolution of the COVID-19 pandemic and the swift response from central banks created an important gap in the literature. Observers and market participants generally judge that aggressive policies helped prevent a worst-case economic collapse, but little is known about the transmission, impact and

¹Examples include the [Commercial Paper Purchase Program](#), [Provincial Money Market Purchase program](#) and the [Standing Term Liquidity Facility](#). The secondary market purchases of Government of Canada securities ([Government of Canada Bond Purchase Program](#)) announced on March 27, 2020, also initially aimed at ensuring liquidity. As market functioning normalized, the program's objective shifted toward more traditional quantitative easing, as announced by the Bank in July (Bank of Canada 2020d). In this paper, we use the term "quantitative easing" for such large-scale asset purchase programs aimed principally at bringing down longer-term yields.

² See, for instance, the Bank's central scenario presented in the July 2020 *Monetary Policy Report* (Bank of Canada 2020d).

³ Previously termed "unconventional monetary policies," tools such as negative interest rates, large-scale asset purchases, quantitative easing, credit easing and forward guidance have become part of central banks' regular toolkits and in some cases remain in place for extended periods. The unconventional has become conventional, which is why they are now known as "extended" monetary tools.

relative gains from such policies. For instance, how large are the benefits from implementing EMPs at the effective lower bound (ELB)? Which EMP sequence works best to reduce the output and inflation fallout? The context of the pandemic also raises questions on the optimal implementation of such tools, for instance, is it advantageous to delay their use until the recovery takes hold to provide continued easing and avoid a pre-emptive increase in long-term rates?⁴ Rigorous assessments of policy tools and implementation options are important to inform policy-makers to help shape the best possible policy response.

While a few researchers have provided an initial assessment of policies in the United States, to our knowledge, no research has been done on the mechanisms and efficacy of EMPs in small open economies such as Canada.^{5, 6} We address this gap by assessing different EMP tools and their implementation, specifically regarding how to best sequence such tools. We use the Bank's projection model, the Terms-of-Trade Economic Model (ToTEM), to explore the effectiveness of EMPs in COVID-19 scenarios where the ELB constrains the policy interest rate.⁷ We assess different combinations of EMP tools by their ability to help maintain demand near the economy's productive potential and inflation near the 2 percent inflation target.

Specifically, we consider three types of EMPs:⁸

⁴ This argument may be further motivated by the fact that some tools aimed at reducing longer-term yields, including forward guidance and quantitative easing, may have had limited impact immediately following the shock because the yield curve was already flat.

⁵ See, for instance, Hartley, Rebucci and Jiménez (2020) for a cross-country analysis of financial market impacts and Vissing-Jørgensen (2020) for the United States. Chung et al. (2019), while not assessing the policy response of COVID-19 specifically, assess the power of the US Federal Reserve Bank's monetary policy toolkit in the 2020 environment, in response to a hypothetical large shock.

⁶ Arora et al. (2020) study the effect of the Bank's announcement of the Bankers' Acceptance Purchase Facility.

⁷ See Dorich et al. (2013) and Corrigan et al. (2021).

⁸ Note that these policies are chosen for illustrative purposes and are not meant to project any future actions of the Bank. The Bank's web page on its actions in response to COVID-19 refers to possible additional tools in its monetary policy toolkit (Bank of Canada 2020a, 2015), which include the above three policies. Moreover, the conclusions about their effectiveness estimated here do not represent the Bank's view. Finally, note that the toolkit, published in 2015, includes negative interest rates. The technical ELB that reflects a switch-to-cash rate is estimated to be approximately -50 bps (Witmer and Yang 2016). However, Lane (2020) states this policy comes with important costs, and the Bank considers its ELB to be +25 bps (Bank of Canada 2020c).

- **Credit easing:** purchase of short- and long-term corporate debt to compress the spread of different risky assets
- **Forward guidance:** commitment to keep the overnight interest rate at the ELB until the quarter-over-quarter inflation rate reaches the 2 percent target
- **Quantitative easing:** purchase of long-term government debt to lower long-term interest rates and control the yield curve

We also briefly discuss implementation considerations, such as estimating the fiscal gap left after we implement the suite of EMPs and whether it is possible for the Bank to scale up EMPs to reduce the need for the government to provide fiscal stimulus.

Our research provides several insights that are relevant to monetary policy in response to a shock as disruptive as COVID-19. First, the EMP sequence that delivers the best macroeconomic outcome in ToTEM begins with a combination of state-contingent forward guidance and a quantitative easing program, followed by credit easing.⁹ Even though the labour supply and domestic demand do not respond to monetary policy stimulus during the containment period, quantitative easing can raise inflation through the exchange rate channel and higher inflation expectations. Second, model simulations suggest that immediately implementing the EMP tools simultaneously is a powerful option, achieving almost the same macroeconomic outcome: the tools complement each other as they work through different channels. Forward guidance helps to reduce uncertainty about the monetary policy reaction function, credit easing restores transmission channels by lowering the spread on risky bonds faced by firms, and quantitative easing lowers long-term rates and anchors the yield curve. Third, such front-loaded implementation of all EMPs can make up about 35 percent of the GDP decline and about 45 percent of the inflation decline created by the ELB under a moderate scenario of the crisis and subsequent recovery. Finally, EMPs alone

⁹ Due to model limitations, the efficacy of some policy tools may be understated. In particular, credit easing can play important roles in restoring financial intermediation and reducing default risk, which are not captured in ToTEM III.

cannot fully mitigate the effects of the ELB in the severe pandemic scenario. Thus, a large complementary fiscal package is required to fully offset the impact on output and inflation.

The paper is organized as follows: Section 2 discusses the EMP options and the calibration of their effects. Section 3 describes two underlying macroeconomic scenarios: a moderate scenario of the crisis and recovery and a severe and much more persistent scenario.¹⁰ This is followed by an evaluation of six different EMP sequencing options in Section 4. Section 5 discusses implementation issues and the role for fiscal policy. Lastly, we present our conclusions and discuss some avenues for future work in Section 6.

2. The suite of monetary policy tools

We consider four categories of monetary policy tools in this paper:¹¹

- **Conventional monetary policy:** The quarterly overnight rate is subject to a lower bound of 25 bps. Known as the ELB, this reflects the view that rates below this level would become less effective in providing stimulus as they start to impair market functioning. We thus rule out negative interest rate policy.
- **State-contingent forward guidance:** The central bank commits to holding interest rates low, conditional on the inflation outlook (e.g., until quarter-over-quarter inflation reaches 2 percent).¹²
- **Quantitative easing:** The central bank purchases long-term government bonds, funded by increases in central bank reserves (or settlement balances in the case of the Bank of Canada). This bids up the price of the government securities, thereby lowering their yields. Through arbitrage and asset substitution,

¹⁰ Concretely, we use two economic scenarios considered among the range of possible outcomes at the Bank of Canada when the COVID-19 crisis struck. The first scenario corresponds approximately to a profile in the middle of the range presented in the Bank's April 2020 *Monetary Policy Report*, while the second scenario approximates the more severe and prolonged profile. This choice of scenarios is relevant because it represents the information Canadian policy-makers considered plausible when they decided which EMP tools to implement.

¹¹ The Bank publicly laid out possible strategies in 2015 (Bank of Canada 2015).

¹² The statement may be conditional on other economic variables or on inflation but with a different level target. Exploring time-dependent forward guidance is left for future work.

these reduced yields transmit to lower borrowing costs more broadly, increase asset prices and depreciate the currency.

- **Implementation:** The easiest way to implement quantitative easing in ToTEM is to model yield curve control. In other words, central bank asset purchases are conditional on a target for the long-term yield spread. Equivalent necessary purchases can then be backed out with simple estimates from the literature.
- **Quantifying purchases:** In small open economies, quantitative easing has a more limited impact on long-term yields.¹³ We use the following estimate: \$5 billion weekly purchases of five-year government bonds (i.e., \$260 billion per year, or around 10 percent of GDP) reduce the five-year term premium by 30 bps.¹⁴ Corporate spreads at the five-year horizon are assumed to fall by 60 percent of the compression in government bond yields. Given the importance of terms-of-trade shocks in ToTEM, the exchange rate is a key channel for quantitative easing, in line with the literature on small open economies (Kabaca 2016; Drought, Perry and Richardson 2018; Fontaine, Suchanek and Yang 2017).
- **Credit easing:** This tool aims to restore the transmission channel by purchasing impaired assets. In this paper, we only consider purchases of short-term corporate debt (e.g., commercial paper or corporate bonds) with the aim to reduce spreads and improve liquidity.¹⁵ There are two credit

¹³ This is because quantitative easing is unlikely to affect the global term premium, given the high substitutability between home and foreign assets (see Kabaca 2016; Diez de los Rios and Shamloo 2017).

¹⁴ This estimate is based on several considerations. First, international experience of small open economies suggests that purchases of 10 percent of GDP have been able to reduce 10-year yields by about 30 bps (an average of estimates in Diez de los Rios and Shamloo 2017; De Rezende, Kjellberg and Tysklind 2015; Joyce et al. 2011; Joyce, Tong and Woods 2011; Breedon, Chadha and Waters 2012; and Meaning and Warren 2015 for Sweden, Switzerland and the United Kingdom). Second, upon announcement on March 27, 2020 of the Government of Canada Bond Purchase Program in Canada, 10-year government yields declined about 15 bps within two days (Fontaine et al. 2021). Third, quantitative easing can be interpreted as an offset to government debt issuance. Laubach (2009) estimates 10 percent of GDP debt issuance increases the forward rate by 30 to 40 bps. Finally, the impact of quantitative easing is state-contingent in the sense that quantitative easing is less powerful in compressing long-term yields when the yield curve is already flat. Immediately following the COVID-19 shock, achieving a greater impact would be difficult given the already compressed term premium; we thus consider 30 bps to be the maximum. Note that while the Bank of Canada's large-scale program was initially implemented with \$5 billion weekly purchases in March 2020, which we use here in the simulations, the Bank recalibrated the quantitative easing purchases in October 2020 toward long-term bonds. The recalibration reduced the amount to \$4 billion a week, although it did not reduce its impact.

¹⁵ In addition, funding for lending schemes can boost lending. This topic is left to be considered in future work.

spreads in ToTEM that are subject to asset purchase programs: long- and short-term corporate spreads.

Purchasing corporate bonds: The five-year, long-term corporate spread in ToTEM is constructed based on the weighted average of a basket of three- to seven-year Canadian investment-grade bonds. A degree of uncertainty surrounds the precise quantitative effects, but recent experience of similar purchase programs offers some benchmarks. The effect of a purchase program on credit spreads depends on how much of the spread results from heightened default risk versus a higher liquidity premium. Based on the assumption that 50 bps of the 150-bps spike at the start of the COVID-19 pandemic was due to higher default risk,¹⁶ we estimate that \$40 billion in purchases could lower the five-year corporate spread by up to 80 bps.¹⁷

Purchasing commercial paper: Short-term spreads in ToTEM correspond to short-term commercial paper. We assume that commercial paper purchases reduce the short-term (three-month) corporate spread by about 80 bps.¹⁸ Based on the literature and the Bank's experience with its Commercial Paper Purchase Program, such a reduction in spread would require purchases of about \$3 billion to \$6 billion of commercial paper.¹⁹

¹⁶ This rough estimation is based on the methodology in Leboeuf and Hyun (2018).

¹⁷ For example, the Bank of Canada's Banker's Acceptance Purchase Facility is estimated to have compressed bankers' acceptance yields by 15 bps upon announcement and by up to 70 bps over the following weeks (Arora et al. 2020). Moreover, the effect of a \$30 billion sale of corporate bonds in a stress scenario is estimated to increase corporate spreads by about 90 bps (Arora et al. 2019). Evidence from recent corporate bond purchase programs at the European Central Bank (ECB) (De Santis et al. 2018; ECB 2016; Zaghini 2019; Abidi and Miquel-Flores 2018; and Cecchetti 2020) and Bank of England (Belsham, Rattan and Maher 2017; Boneva, de Roure and Morley 2018) suggests that purchasing 10 percent of outstanding corporate bonds can reduce the spread by 69 bps. This translates into up to 90 bps for \$40 billion in Canada, or 13 percent of corporate bonds outstanding.

¹⁸ The actual compression depends on the current spread. In the first quarter of 2020, the spread is reduced by around 80 bps, but it falls to about half of this by the first quarter of 2021.

¹⁹ In Canada, since the announcement of the Commercial Paper Purchasing Program, spreads have dropped sharply, declining by around 80 bps on an average volume-weighted basis for Canadian corporate issuers. The decline happened amid a peak size of the program of \$3 billion, or 5 percent of outstanding commercial paper (\$62 billion in February 2020). The literature for the Bank of England (Bank of England 2009), Bank of Japan (Hirose and Ohyama 2010) and the United States (Boyarchenko, Crump and Kovner 2020; Adrian, Kimbrough and Marchioni 2011; and Duygan-Bump et al. 2013) suggest a somewhat smaller impact of about 64 bps on average for purchases of 10 percent of outstanding commercial paper.

3. Description of scenarios

We conduct our analysis using ToTEM, a large-scale New Keynesian macroeconomic model that features optimizing agents in a dynamic stochastic general equilibrium (DSGE) framework with rational expectations.²⁰ The simulation for EMP sequencing options is done in two steps. First, we use two scenarios of pandemic development, one moderate and one severe. In the second step, we introduce six different EMP sequence plans that can be implemented to stabilize the economy during the three years after the onset of the pandemic.

Short description of the Terms-of-Trade Economic Model

ToTEM contains several key ingredients that are empirically relevant for explaining Canadian data. The model features more disaggregation than in prominent DSGE models used in the literature, such as Christiano, Eichenbaum and Evans (2005) and Smets and Wouters (2007). ToTEM includes producers of four distinct types of final products: core consumption goods, business investment goods, government goods and non-commodity export goods. ToTEM also contains a separate commodity-producing sector because of the importance of commodities in the Canadian economy.

The standard New Keynesian model has no role for quantitative easing. The household side of ToTEM is defined in a similar spirit to Andrés, López-Salido and Nelson (2004) and Chen, Cúrdia and Ferrero (2012), introducing a particular type of asset market segmentation. This allows for the long-term interest rate to affect aggregate demand distinct from the expected path of short-term rates. A fraction of restricted households can trade only in long-term bonds.²¹ A fraction of the remaining households is unrestricted because they trade in both short- and long-term bonds. The final fraction is current-income households that neither borrow nor save but live hand-to-mouth.

²⁰ For details on ToTEM, see Dorich et al. (2013) and Corrigan et al. (2021).

²¹ These households could be motivated by a preferred habitat. See Vayanos and Vila (2009) for details.

The asset market segmentation in ToTEM allows aggregate household spending to depend on both short- and long-term interest rates. In ToTEM, conventional monetary policy is governed by a Taylor rule with interest rate smoothing that reacts to both the expected year-over-year inflation four quarters ahead and the output gap. To match the data, the model contains 33 structural shocks.

Importantly, ToTEM includes features that make it less susceptible to the so-called forward guidance puzzle—the fact that standard New Keynesian models exhibit excessively large reactions to anticipated monetary policy shocks. The model allows for rule-of-thumb (ROT) price setters (as in Galí and Gertler 1999) and habit persistence in consumption.²² This significantly dampens the responses of output and inflation to these shocks. ToTEM is thus well suited to analysis involving forward guidance.²³

Step 1: Identifying two scenarios driven by the global COVID-19 pandemic

We begin by creating an environment featuring a deep downturn. This downturn results from the large negative global health shock (COVID-19) hitting the Canadian economy in the first quarter of 2020. We rely on the Bank’s scenario analysis in April 2020, as published in its *Monetary Policy Report* (Bank of Canada 2020b). This analysis allows us to concretely mimic the range of outcomes that policy-makers considered plausible at the time and based on the information available when they decided whether to implement EMP tools. The two resulting environments serve as the starting point for analyzing the impact of the EMP sequencing:²⁴

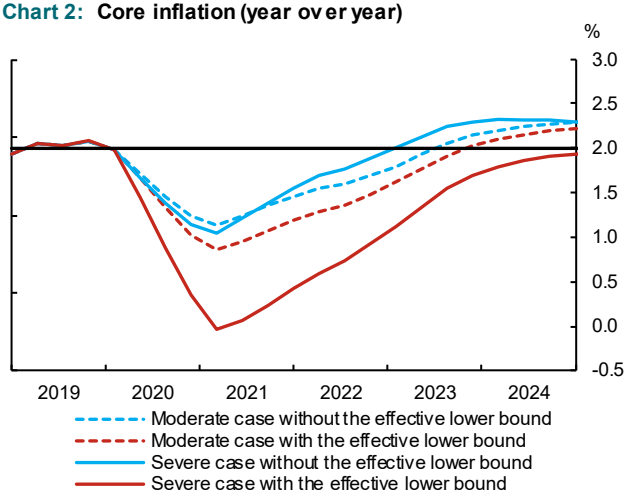
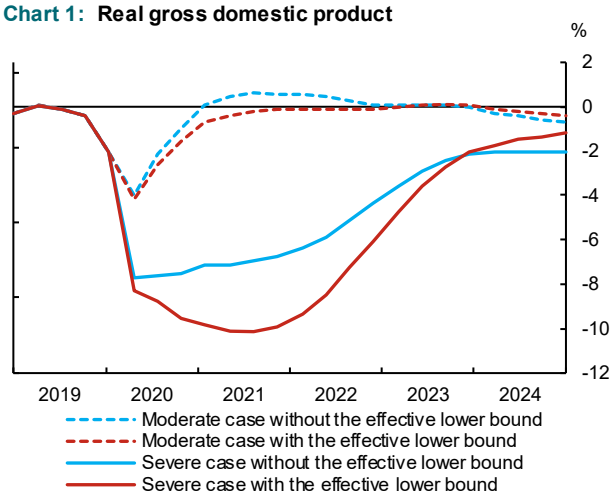
- A **moderate scenario** in which the conventional monetary policy following the historical rule calls for significant accommodation in response to the shock, leading the Bank to lower its overnight rate to its ELB of 25 bps over the near term
- A **severe scenario** with a prolonged duration of the overnight rate at the ELB

²² ROT price setters choose their prices based on either lagged inflation or a constant inflation target. The estimated share of ROT price setters in the consumption goods sector is 54 percent; see Corrigan et al. (2021).

²³ This is further demonstrated in Dorich et al. (2018).

²⁴ The first scenario corresponds approximately to a profile in the middle of the range presented in the Bank’s April 2020 *Monetary Policy Report*, while the second scenario approximates the more severe and prolonged scenario.

The COVID-19 shock is characterized by a significant global and domestic demand contraction, decline of oil prices and sharp decline of the labour supply. In the moderate scenario, output and core inflation fall by about 4 percent and 1 percent, respectively (**Chart 1** and **Chart 2**). The widening of the output gap in the severe scenario is far more pronounced, reaching a peak contraction of 10 percent, and is accompanied by a persistent decline in inflation.



Step 2: Introducing extended monetary policy tools in sequence

In the second step, we consider the implementation of EMP tools. To mimic the economic context at the onset of the COVID-19 crisis, we restrict specific transmission channels of low policy rates to the real economy in the short term—the assumed containment period. Although EMPs can lower borrowing costs faced by firms and households, both domestic demand and labour supply remain unresponsive during the containment period in the simulation.²⁵ This assumption models the reality that consumers and firms either cannot or do not want to spend during the containment period, even though interest rates are low. In the moderate scenario, we assume the containment period limits transmission from the second quarter

²⁵ In addition, the labour supply is also held fixed to capture the fact that labour input does not change during the containment period.

to the third quarter of 2020, whereas in the severe scenario, containment measures get lifted only in the first quarter of 2021.

We consider six different sequence plans as summarized in **Table 1**:

0. **Implement state-contingent forward guidance:** In all sequence plans, the central bank commits in the second quarter of 2020 to holding interest rates at the ELB until quarter-over-quarter inflation reaches 2 percent.²⁶
1. **Sequence 1:** In addition to implementing forward guidance, the central bank starts one EMP tool immediately and the second tool after the containment period is over. Both policies are in place for two years from their respective implementations. We consider two versions of sequence 1:
 - a. Start credit easing first and delay the start of quantitative easing until the two-quarter containment period is over
 - b. Start quantitative easing first and delay the start of credit easing until the two-quarter containment period is over
2. **Sequence 2:** The central bank delays the implementation of both credit easing and quantitative easing until containment measures are eased. This sequence is motivated by a desire to boost the recovery only after it kicks in. We consider no EMP policies during the containment period and implement the same two variations as in sequence 1, starting only in the fourth quarter of 2020.
3. **Sequence 3:** The central bank implements all EMP tools at once, either immediately (sequence 3a) or after the containment period is over (sequence 3b).

²⁶ In our simulations, all the sequencing of EMP tools is known in the first quarter, including interest rate lift-off conditions, because agents are forward-looking. Forward guidance is therefore implemented in the first quarter in all simulations; it does not matter when it is actually implemented because agents know it is coming. Note also that, as announced in the Bank's July 2020 interest rate announcement, the Bank did indeed implement forward guidance: "The Governing Council will hold the policy interest rate at the effective lower bound until economic slack is absorbed so that the 2 percent inflation target is sustainably achieved" (Bank of Canada 2020c). The specific lift-off dates in the moderate and severe scenarios are conditional on the set of future unexpected shocks to the Canadian economy.

Table 1: Sequence plans for extended monetary policy tools in response to the COVID-19 shock

Sequence plans		FG* + CE or QE	2020			2021				2022				2023	
			Q2	Q3	Q4	Q1	Q2	Q3	Q4	Q1	Q2	Q3	Q4	Q1	Q2
			Containment period			Recovery period									
			Containment period (severe)			Recovery period (severe)									
0	FG only	-													
1 Start early and stagger policies	1a	CE													
		QE													
	1b	CE													
		QE													
2 Delay and stagger	2a	CE													
		QE													
	2b	CE													
		QE													
3 Implement all at once	3a	CE													
		QE													
	3b	CE													
		QE													

* Forward guidance is applied throughout all simulation periods in each sequence plan.
 Note: FG is forward guidance; CE is credit easing; QE is quantitative easing.

4. Evaluating sequence plans of extended monetary policy tools

We evaluate the marginal impact of each sequence plan on GDP and core inflation relative to the benchmark cases, which feature no lower bound on the policy interest rate. This allows us to weigh the benefits and economic costs of different EMP sequence plans.

A hypothetical base case: no effective lower bound

This benchmark is a best-case (albeit unrealistic) scenario where the policy rate can fall as far below zero (and transmit normally) as needed. The path of the policy rate is determined by the Taylor rule to stabilize output and inflation, ignoring the ELB. This option—the monetary policy rate cut—is shown by the solid red line in **Charts 3a and 3b**. In this scenario, short- and long-term corporate rates fall along with the policy rate below the lower bound constraint, as do household and mortgage rates. The real and nominal

effective exchange rates depreciate sharply and rapidly by as much as 5 percent each in 2021 (relative to the case where the ELB binds), which triggers a faster improvement in Canadian exports and thus the current account balance than when the ELB binds.

Compared with the ELB case, total hours worked also improves more rapidly from the negative pandemic shock, reaching its pre-pandemic level faster, i.e., early 2021. This is accompanied by a moderate wage growth, boosted by more than 1 percent at its peak in early 2022. Together, the faster recoveries in hours and wages boost real disposable income by up to 1.5 percent toward the end of 2021. Finally, in addition to supporting aggregate demand, the wealth channel of accommodative monetary policy is also at play: financial wealth increases and real house prices rise sharply in 2020. Taken together, the economy returns to pre-pandemic levels within a year from the time COVID-19 struck in early 2020, driven largely by a bounce back in consumption that supports the closing of the output gap in early 2021. Year-over-year core inflation is boosted by more than one-quarter percentage point at peak (early 2021), though its return to target is sluggish until early 2023.

Finally, the speedy recovery of the economy also yields a more favourable fiscal outcome: the debt-to-GDP ratio, spiking with the hit of the crisis, improves much faster in a world where the policy rate can go deeply negative. Note that the path of fiscal policy variables (such as government expenditure and the income tax rate) in all sequencing options remains unchanged at the levels in the “no ELB” case to abstract from differential responses in these fiscal policies.

Certainly, a world without a binding ELB is an unrealistic scenario, but it serves as a useful comparison. The area below the red line in **Charts 3a and 3b** indicates the improvement of GDP and inflation, respectively, relative to the case where the ELB is binding.

The impact of sequencing options when the effective lower bound binds

We can now evaluate the different policy options against the base case of no ELB. The remaining lines in **Charts 3a and 3b** show the degree to which each of the six EMP sequencing options (from **Table 1**) can improve GDP and inflation outcomes, respectively, that would arise under the moderate scenario, compared with a case with no policy intervention where the ELB is binding. For example, the grey line shows the GDP improvement under sequence 1b.

Sequence plans that immediately implement quantitative easing and forward guidance (1b, 3a) yield the fastest response of GDP and the best inflation outcomes. Even though the short-term rate is constrained at the ELB, these policies immediately decrease long-term interest rates effectively through both the term structure of the future path of short-term rates and the term premium. Lower effective interest rates faced by both households and firms support consumption, residential investment and business investment more than in scenarios where EMP policies are absent.

As a result of postponing credit easing for two quarters in sequence 1b, the decline of long-term corporate rates under 1b is less pronounced. Nevertheless, this has little real impact on investment in the short term because the economy and labour supply are constrained by containment measures. This also explains why sequence 1a, which starts with credit easing, is among the least effective sequences in terms of stimulating GDP and inflation: it effectively and immediately lowers corporate rates but fails to lift consumption by as much as quantitative easing does. Lifting consumption has a more widespread impact on interest rates in the economy. Also, sequence 1a does not lead to a more front-loaded response of investment.

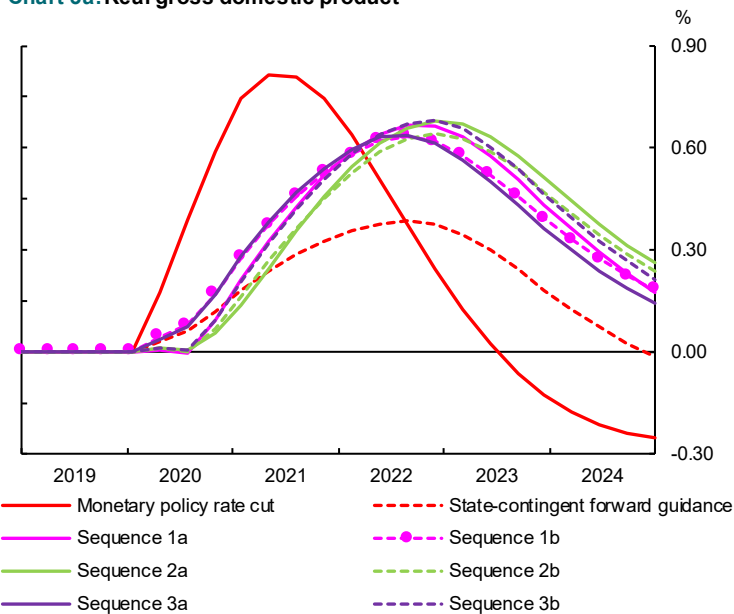
Finally, sequences that delay the implementation of EMPs (2a, 2b) yield sub-par outcomes for GDP and inflation. Saving monetary policy power for later does not improve the overall outcome—it simply delays its beneficial effects. In sequences 2a and 2b, interest rates relevant for agents' decisions, such as the

corporate rate and mortgage rates, only fall in the fourth quarter of 2020 and the second quarter of 2021, delaying and limiting the impact of lower rates on consumption. Moreover, the delayed response of interest rates also means the exchange rate depreciates only slightly and late in the game compared with more front-loaded sequences. As a result, these sequences do little to help export performance or only do so in 2022 and 2023, whereas more front-loaded sequences result in an earlier boost to exports, thereby supporting the recovery.

To provide an alternative metric to quantify the degree of improvement in macroeconomic outcomes delivered by different sequencing options, we also report and compare how cumulative GDP and the average inflation improve after implementing each sequence plan at the ELB. This comparison allows us to measure the efficacy of each EMP sequence. Details of this comparison can be found in **Table 2** in the **Appendix**.

Chart 3: Comparison of macroeconomic improvement from extended monetary policy sequence plans
 (Percentage difference relative to outcomes under an effective lower bound, no extended policy scenario)

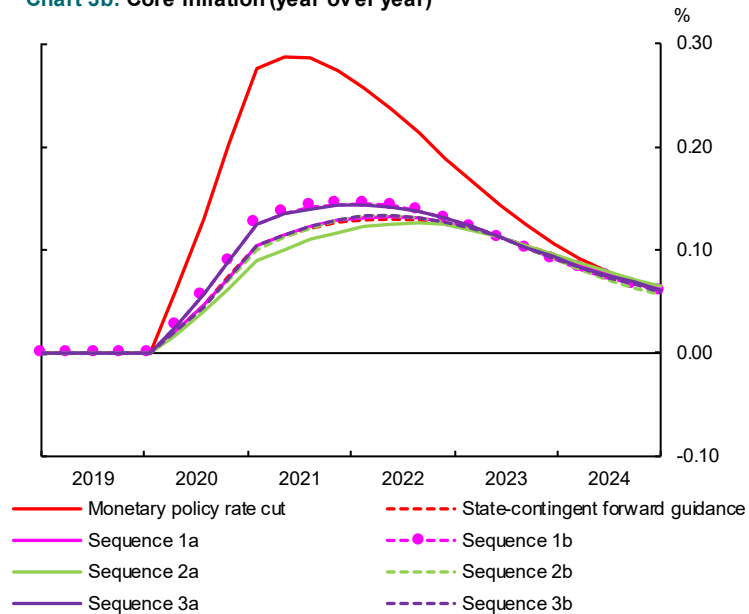
Chart 3a: Real gross domestic product



Source: Bank of Canada calculations

Last observation: 2024Q4

Chart 3b: Core inflation (year over year)



Source: Bank of Canada calculations

Last observation: 2024Q4

Key findings from **Chart 3** and **Table 2**:

- Starting forward guidance and quantitative easing early and staggering credit easing policies (sequence 1b) or immediately implementing all EMP options (sequence 3a) stabilizes GDP and inflation better in the near term than the delayed sequence plans.
- In the moderate scenario, the maximum effect of EMPs reduces the GDP loss due to ELB by about 35 percent and inflation loss by about 45 percent.²⁷ In contrast, the same EMP package in the severe case would reduce the GDP loss due to ELB by about 15 percent and that of year-over-year inflation by about 16 percent.
- Even with immediate implementation of all EMP options, about 65 percent of the GDP loss remains in the moderate scenario and 85 percent in the severe scenario. Fiscal policy would need to fill this loss to completely offset the COVID-19 shock.
- In the moderate scenario, state-contingent forward guidance by itself (sequence 0) reduces nearly 25 percent of the GDP loss and 38 percent of the inflation loss due to the ELB. In contrast, in a severe macroeconomic scenario, forward guidance can only make up about 10 percent of the GDP loss and about 13 percent of the inflation loss that rate cuts below the ELB could deliver. By introducing state-contingent forward guidance, the ELB duration is prolonged in both the moderate and severe scenarios.

As shown in **Chart 3** and **Table 2**, one of the most effective strategies is a front-loaded approach (sequence 1b) where quantitative easing is enacted immediately and credit easing is delayed until the containment period (for two quarters) has ended. Using the credit easing policy in the near term does not achieve a reduction in the overall macroeconomic loss relative to the ELB. It is important to note that our simulations in ToTEM may underestimate the potential importance of credit easing given model

²⁷ This translates to about a 0.9 percent impact on quarterly GDP and an increase of about 14 percentage points in the year-over-year inflation (for more details, see **Table 2** in the **Appendix**).

limitations. Credit easing is assumed to work only through the credit channel by focusing on lowering firms' borrowing costs. In practice, credit easing may also have important effects by restoring financial intermediation, reducing default risk and lifting consumer and business confidence, which are not captured in ToTEM III. In addition, due to the containment measures, both business and residential investment are unresponsive in the near term, thereby limiting some of credit easing's immediate effect.²⁸ The elevated uncertainty and labour supply contraction during the containment period also greatly limit the effect of the credit easing policy on household spending.

We also find that a delayed all-at-once strategy (sequence 3b) reduces the potential benefit delivered by sequence 1b because the exchange rate adjustment is postponed. Importantly, if monetary policy delays implementation so that it can ease policy support for when the economy recovers, as in sequence 2, the marginal impact of EMPs on GDP is also smaller than it is when measures are implemented earlier, such as in sequence 1. This suggests that there are some costs to not acting aggressively when the shock hits, particularly on stabilizing inflation.

Lastly, we find that when forward guidance is implemented first, EMPs can improve macroeconomic outcomes even in the severe scenario. This is an important takeaway. Our results demonstrate that, because uncertainty around how the COVID-19 shock resolves itself remains high, having a mechanism that helps to anchor inflation expectations is effective.

Robustness analysis

To analyze the robustness of our findings, we investigate how sensitive results are to a variation in the parameter that determines the degree of ROT behaviour of price setters in the consumption goods sector.

Intuitively, a higher share of ROT price setters in the consumption goods sector would be expected to

²⁸ In ToTEM firms seek credit to make capital purchases only. Credit easing may have a greater role in a model with heterogeneity, fixed costs and default because in such a model firms may seek additional credit to cover running costs as well as capital purchases. In practice, credit easing can have important effects by limiting firm defaults and helping firms bridge the containment period.

dampen the economic impact of sequence options that delay policy implementation. When there are fewer forward-looking firms, expected future economic activity has a reduced role in current inflation and, thus, policies that are delayed will have a weaker impact.

In this robustness analysis, we vary the share of ROT price setters around a 90 percent confidence interval based on its posterior distribution. We obtain two results: first, when the share of ROT price setters in the consumption goods sector increases by approximately 7 percent, all sequencing options lead to a relatively worse economic outcome. In contrast, when we lower the share of ROT price setters, the economic outcome under all sequencing options improves because the expectation channel is stronger. Second, a front-loaded sequence plan continues to be the most effective strategy regardless of the degree of ROT behaviour. More specifically, sequence plans 1b and 3a continue to yield the best responses of GDP and inflation outcomes.

5. Policy considerations for implementation

This section discusses the complementarity of fiscal policy and EMPs as well as their implementation limits.

The role of complementary fiscal policy

We have shown that an immediate deployment of all EMP tools offsets 35 percent of the GDP gap created by the presence of an ELB on interest rates. This leaves about 65 percent of the gap to be potentially filled by fiscal policy if the objective is to completely offset the COVID-19 shock. Importantly, these estimates hinge on the underlying scenarios and could vary significantly should the economy evolve differently. Nevertheless, for illustrative purposes, we can quantify the increase of fiscal stimulus required to complement the EMP tools at the ELB in order to fully offset the loss the ELB creates.

We find that under the moderate scenario, \$7 billion of additional fiscal stimulus would be required for the first year to fill the gap. Under the severe scenario, however, the gap left for fiscal spending is much

bigger: about 87 percent of the GDP loss, or \$28 billion.²⁹ In addition, under the severe case, if we use universal transfers to fill the remaining GDP loss due to the ELB, we would need up to \$113 billion, or up to \$68 billion if we consider targeted transfers to borrowers and hand-to-mouth households. The moderate scenario would require between \$30 billion and \$113 billion of fiscal stimulus to fill the remaining 65 percent of the GDP loss due to the ELB. This amount depends on the type of fiscal instrument used once the EMP package has had its maximum effect. For details of the estimated magnitude of fiscal policy, see **Table 3** in the **Appendix**.

Scalability of extended monetary policy tools

Given that the sequences we present can reduce the gaps in GDP created by the ELB by up to only 35 percent under the moderate scenario, we now discuss if it is possible to implement even more aggressive EMPs and scale the stimulus.

Forward guidance

Rather than conditioning the guidance on reaching the 2 percent inflation target, the Bank could *temporarily* commit to holding rates at the ELB until inflation reaches a higher target. While this should provide more monetary easing in the short term, there is a trade-off. On the one hand, a temporarily higher target would result in an overshoot of inflation above that target, which would provide stimulus by lowering the real interest rate. On the other hand, as inflation increases above the Bank's core target, the Bank would need to bring inflation expectations back to 2 percent by quickly raising interest rates.

Quantitative easing

In practice, quantitative easing has diminishing returns and price and quantitative limits. As well, sizable programs would increase costs beyond the benefits they generate.

²⁹ This assumes a fiscal multiplier of 1 in the moderate scenario and 1.2 in the severe scenario. Fiscal multipliers are generally higher in recessions and when the nominal interest rate is constrained by the ELB (Office of the Parliamentary Budget Officer 2016). Note that the estimates of required fiscal measures are in addition to amounts already committed to and integrated into the scenarios at the time of the April *Monetary Policy Report* (Bank of Canada 2020b), amounting to roughly \$120 billion. Since then, the government enacted additional measures for a total of about \$400 billion (International Monetary Fund 2021).

First, in the context of an already flat yield curve at the onset of the crisis, it is reasonable to assume that quantitative easing would be unable to compress yields by more than 30 bps. While in practice the yield curve could steepen as the recovery takes hold, simulations show only a slight increase in the term premium, suggesting that quantitative easing could have only small additional effects on long-term rates even later.

Second, there is a quantitative limit to how much the central bank wants to buy before it becomes too dominant in the government debt market.³⁰ For Canada, the quantitative easing assumption (weekly purchases of \$5 billion each) implied holdings of government bonds of about 40 percent of outstanding marketable government bonds by the end of the fiscal year 2020–21.³¹ To the extent that marketable debt continued to increase thereafter, the assumption of a two-year quantitative easing program was not expected to result in issues in the government debt market. However, liquidity issues could start to arise if purchases were expanded further to reach or surpass a certain quantitative limit in terms of percent of outstanding debt.

Credit easing

Purchases of corporate bonds and commercial paper could be further scaled up and expanded to other asset classes. Beyond the purchases considered in the simulations, the Bank could also scale up purchases of other impaired assets, such as provincial government bonds. That said, the amount and effectiveness of scaled-up purchases are also subject to limits.

First, returns to scale are decreasing. In fact, spreads can likely not be compressed beyond a certain point. If we assume that 100 bps of the 150-bps spike at the peak of the crisis in spreads are due to a higher

³⁰ See Santor and Suchanek (2016). From international experience, dominance in debt markets causes liquidity strains. For example, the Bank of Japan owns 45 percent of the Japanese Government Bond market (Sano and Uetake 2018) and the Sveriges Riksbank owns up to 45 percent of the Swedish Government Bond market, causing some liquidity strains. If the United Kingdom experience is a guide, purchases of up to 40 percent of government bonds should not materially hamper market functioning (Reuters 2018).

³¹ The government's July Economic and Fiscal Snapshot 2020 projects domestic bonds outstanding to increase to \$915 billion by the end of the fiscal year 2020–21. The Bank's holdings of government bonds increased to about \$350 billion by March 2021, given the purchases of \$5 billion per week.

liquidity premium (as opposed to default risk), further asset purchases would not be able to reduce spreads more than that. Our simulations already assume the risk spread declines by 80 bps, which implies that asset purchases could be scaled up to achieve an additional 20 bps. In practice, credit easing also becomes less effective as market functioning improves. This would limit the efficacy of credit easing once spreads fall back as the recovery kicks in.

Second, even if it were possible to scale up CE, the credit risk on the Bank's balance sheet would increase. Concerns about the exposure to such risk or even actual losses could potentially affect credibility and public perception of central bank independence if the nature of purchases is not well communicated to and fully understood by the public. This, in turn, could affect the Bank's ability to steer inflation toward its target.

6. Discussion and conclusion

Using ToTEM simulations of two scenarios (moderate and severe) in response to the COVID-19 pandemic, our analysis suggests that EMPs can help improve economic outcomes when the policy rate is constrained at the ELB. *Gradual* sequencing of EMP tools, including forward guidance, credit easing and quantitative easing, can provide some support to inflation and GDP at the ELB. However, more front-loaded scenarios where quantitative easing is implemented immediately (starting in the second quarter of 2020) achieve a larger reduction of the economic loss. Indeed, quantitative easing supports the economic recovery through both broader interest rate channels and the exchange rate channel. Quantitative easing provides stimulus to both firms and households, the latter benefiting from lower effective long-term mortgage rates. The relative speed and magnitude of the additional exchange depreciation generated by quantitative easing also play a vital role in considering appropriate sequencing options. Due to containment measures, implementing credit easing to lower borrowing costs faced by firms and households offers limited advantages in the short term. Credit easing can, however, provide some support when used after the containment period.

Several caveats warrant mentioning. First, the modelling framework we use has some important limitations. ToTEM has no endogenous precautionary savings channel as in Heterogeneous Agent New Keynesian models. Therefore, our analysis may underestimate the importance of labour market adjustments. Following a pandemic with a global impact, precautionary savings motives could potentially amplify the shock and further reduce aggregate output.

Also, the results may understate the benefits of credit easing. This EMP tool can play a key role in restoring financial intermediation and reducing default risk. ToTEM III does not capture either of these channels.

Moreover, the scope of our analysis has some limitations. For example, the estimated effects of EMPs rely on an assumption of perfect foresight in which the sequence of policies is known to agents; i.e., agents know that the central bank will implement additional measures (e.g., credit easing) in a subsequent quarter. This implies that the Bank would need to announce the sequence before implementing it for it to achieve the documented benefit. In the absence of perfect foresight (or Bank communication informing the public of the policies it will implement), the quantified effects could be smaller.³²

Finally, our analysis is conditional on two specific scenarios. We do not account for the complex evolution of the pandemic and the endogenous effect of the containment measures on the probability and severity of further economic weakness. For instance, we do not explicitly focus on the implications of COVID-19 for financial vulnerabilities in Canada given the elevated level of household indebtedness. As the economy evolves, we will continue to analyze the roles of different monetary policy strategies and of complementary fiscal policy, particularly in anticipation of possible courses of the recovery ahead.

³² In addition, forward guidance will be less effective if the markets incorrectly expect inflation to return to target earlier than projected.

References

- Abidi, N. and I. Miquel-Flores. 2018. “[Who Benefits from the Corporate QE? A Regression Discontinuity Design Approach.](#)” European Central Bank Working Paper No. 2145.
- Adrian, T., K. Kimbrough and D. Marchioni. 2011. “[The Federal Reserve’s Commercial Paper Funding Facility.](#)” Federal Reserve Bank of New York *Economic Policy Review* (May): 25–39. Available at SSRN 1361163.
- Andrés, J., J. D. López-Salido and E. Nelson. 2004. “[Tobin’s Imperfect Asset Substitution in Optimizing General Equilibrium.](#)” *Journal of Money, Credit and Banking* 36 (4): 665–690.
- Arora, R., G. Bédard-Pagé, G. Ouellet Leblanc and R. Shotlander. 2019. “[Could Canadian Bond Funds Add Stress to the Financial System?](#)” Bank of Canada Staff Analytical Note No. 2019-9.
- Arora, R., S. Gungor, K. McRae and J. Witmer. 2020. “[Announcing the Bankers’ Acceptance Purchase Facility: A COVID-19 Event Study.](#)” Bank of Canada Staff Analytical Note No. 2020-23.
- Bank of Canada. 2015. [Framework for Conducting Monetary Policy at Low Interest Rates.](#)
- Bank of Canada. 2020a. [COVID-19: Actions to Support the Economy and Financial System.](#)
- Bank of Canada. 2020b. [Monetary Policy Report](#) (April).
- Bank of Canada. 2020c. “[Bank of Canada Will Maintain Current Level of Policy Rate until Inflation Objective Is Achieved, Continues Program of Quantitative Easing](#)” (press release, Ottawa, July 15, 2020).
- Bank of Canada. 2020d. [Monetary Policy Report](#) (July).
- Bank of England. 2009. “[Markets and Operations.](#)” Bank of England *Quarterly Bulletin* (2019 Q3): 154–175.
- Belsham, T., A. Rattan and R. Maher. 2017. “[Corporate Bond Purchase Scheme: Design, Operation and Impact.](#)” Bank of England *Quarterly Bulletin* (2017 Q3): 170–181.
- Boneva, L., C. de Roure and B. Morley. 2018. “[The Impact of the Bank of England’s Corporate Bond Purchase Scheme on Yield Spreads.](#)” Bank of England Working Paper No. 719.
- Boyarchenko, N., R. Crump and A. Kovner. 2020. “[The Commercial Paper Funding Facility.](#)” *Liberty Street Economics*, Federal Reserve Bank of New York, May 15, 2020, <https://libertystreeteconomics.newyorkfed.org/2020/05/the-commercial-paper-funding-facility.html>.
- Breedon, F., J. S. Chadha and A. Waters. 2012. “[The Financial Market Impact of UK Quantitative Easing.](#)” *Oxford Review of Economic Policy* 28 (4): 702–728.

- Cecchetti, S. 2020. "A Quantitative Analysis of Risk Premia in the Corporate Bond Market." *Journal of Risk and Financial Management* 13 (1): 1–33.
- Chen, H., V. Cúrdia and A. Ferrero. 2012. "The Macroeconomic Effects of Large-scale Asset Purchase Programmes." *The Economic Journal* 122 (564): F289–F315.
- Chung, H., E. Gagnon, T. Nakata, M. Paustian, B. Schlusche, J. Trevino, D. Vilán and W. Zheng. 2019. "Monetary Policy Options at the Effective Lower Bound: Assessing the Federal Reserve's Current Policy Toolkit." Board of Governors of the Federal Reserve System Finance and Economics Discussion Series 2019-003.
- Christiano, L. J., M. Eichenbaum and C. L. Evans. 2005. "Nominal Rigidities and the Dynamic Effects of a Shock to Monetary Policy." *Journal of Political Economy* 113 (1): 1–45.
- Corrigan, P., H. Desgagnés, J. Dorich, V. Lepetyuk, W. Miyamoto and Y. Zhang. 2021. "ToTEM III: The Bank of Canada's Main DSGE Model for Projection and Policy Analysis." Bank of Canada Technical Report No. 119.
- De Rezende, R. B., D. Kjellberg and O. Tysklind. 2015. "Effects of the Riksbank's Government Bond Purchases on Financial Prices." Sveriges Riksbank *Economic Commentaries* No. 13.
- De Santis, R. A., A. Geis, A. Juskaite and L. V. Cruz. 2018. "The Impact of the Corporate Sector Purchase Programme on Corporate Bond Markets and the Financing of Euro Area Non-financial Corporations." European Central Bank *Economic Bulletin Articles* 3.
- Diez de los Rios, A. and M. Shamloo. 2017. "Quantitative Easing and Long-Term Yields in Small Open Economies." Bank of Canada Staff Working Paper No. 2017-26.
- Dorich, J., M. Johnston, R. Mendes, S. Murchison and Y. Zhang. 2013. "ToTEM II: An Updated Version of the Bank of Canada's Quarterly Projection Model." Bank of Canada Technical Report No. 100.
- Dorich, J., N. Labelle St-Pierre, V. Lepetyuk and R. R. Mendes. 2018. Could a higher inflation target enhance macroeconomic stability? *Canadian Journal of Economics* 51 (3): 1029–1055
- Drought, S., R. Perry and A. Richardson. 2018. "Aspects of Implementing Unconventional Monetary Policy in New Zealand." Reserve Bank of New Zealand *Bulletin* 81 (4): 3–22.
- Duygan-Bump, B., P. Parkinson, E. Rosengren, G. A. Suarez and P. Willen. 2013. "How Effective Were the Federal Reserve Emergency Liquidity Facilities? Evidence from the Asset-Backed Commercial Paper Money Market Mutual Fund Liquidity Facility." *The Journal of Finance* 68 (2): 715–737.

- European Central Bank. 2016. “[Box 2: The Corporate Bond Market and the ECB’s Corporate Sector Purchase Programme.](#)” *ECB Economic Bulletin* (5).
- Fontaine, J.-S., C. Garriott, J. Johal, J. Lee and A. Uthemann. 2021. “[COVID-19 Crisis: Lessons Learned for Future Policy Research.](#)” Bank of Canada Staff Discussion Paper No. 2021-2.
- Fontaine, J.-S., L. Suchanek and J. Yang. 2017. “[Unconventional Monetary Policy: The Perspective of a Small Open Economy.](#)” *Bank of Canada Review* (Spring): 19-30.
- Galí, J. and M. Gertler. 1999. “[Inflation Dynamics: A Structural Econometric Analysis.](#)” *Journal of Monetary Economics* 44 (2): 195–222.
- Hartley, J. S., A. Rebucci and D. Jiménez. 2020. “[An Event Study of COVID-19 Central Bank Quantitative Easing in Advanced and Emerging Economies.](#)” National Bureau of Economic Research Working Paper No. 27339.
- Hirose, Y. and S. Ohyama. 2010. “[Identifying the Effect of the Bank of Japan’s Liquidity Facilities: The Case of Commercial Paper Operations During the Financial Turmoil.](#)” *International Finance* 13 (3): 461–483.
- International Monetary Fund. 2021. “[Policy Responses to COVID-19.](#)” PolicyTracker.
- Joyce, M., A. Lasasosa, I. Stevens and M. Tong. 2011. “[The Financial Market Impact of Quantitative Easing in the United Kingdom.](#)” *International Journal of Central Banking* 7 (3): 113–161.
- Joyce, M., M. Tong and R. Woods. 2011. “[The United Kingdom’s Quantitative Easing Policy: Design, Operation and Impact.](#)” Bank of England *Quarterly Bulletin* (2011 Q3): 200–212.
- Kabaca, S. 2016. “[Quantitative Easing in a Small Open Economy: An International Portfolio Balancing Approach.](#)” Bank of Canada Staff Working Paper No. 2016-55.
- Lane, T. 2020. “[Our COVID-19 Response: Policy Actions.](#)” Bank of Canada.
- Laubach, T. 2009. “[New Evidence on the Interest Rate Effects of Budget Deficits and Debt.](#)” *Journal of the European Economic Association* 7 (4): 858–885.
- Leboeuf, M. and D. Hyun. 2018. “[Is the Excess Bond Premium a Leading Indicator of Canadian Economic Activity?](#)” Bank of Canada Staff Analytical Note 2018-4.
- Meaning, J. and J. Warren. 2015. “[The Transmission of Unconventional Monetary Policy in UK Government Debt Markets.](#)” *National Institute Economic Review*, 234 (1): R40–R47.
- Office of the Parliamentary Budget Officer. 2016. “[Budget 2016: Key Issues for Parliamentarians.](#)” Ottawa, April 6, 2016.

- Reuters staff. 2018. "Update 1—[Swedish Debt Office Says Debt Market under Growing Strain from QE.](#)" *Reuters*, January 23, 2018.
- Sano, H. and T. Uetake. 2018. "[Bank of Japan's Balance Sheet Now Larger than Country's GDP.](#)" *Reuters*, November 12, 2018.
- Santor, E. and L. Suchanek. 2016. "[A New Era of Central Banking: Unconventional Monetary Policies.](#)" *Bank of Canada Review* (Spring): 29–42.
- Smets, F. and R. Wouters. 2007. "[Shocks and Frictions in US Business Cycles: A Bayesian DSGE Approach.](#)" *American Economic Review* 97 (3): 586–606.
- Vayanos, D. and J.-L. Vila. 2009. "[A Preferred-Habitat Model of the Term Structure of Interest Rates.](#)" National Bureau of Economic Research Working Paper No. 15487.
- Vissing-Jørgensen, A. 2020. "[Bond markets in Spring 2020 and the response of the Federal Reserve](#)" (presentation at the Bank of Canada workshop *Towards the 2021 Renewal of the Bank of Canada's Monetary Policy Framework*, Ottawa, August 26, 2020).
- Witmer, J. and J. Yang. 2016. "[Estimating Canada's Effective Lower Bound.](#)" *Bank of Canada Review* (Spring): 3–14.
- Zaghini, A. 2019. "[The CSPP at Work: Yield Heterogeneity and the Portfolio Rebalancing Channel.](#)" *Journal of Corporate Finance* 56 (C): 282–297.

Appendix

**Table 2: A comparison of marginal improvement of using policy options at the effective lower bound
(Moderate scenario, severe scenario)**

Scenario	Detail	Cumulative GDP impact over the first 5 quarters (pp)	Relative GDP improvement to offset ELB (%)	Average y/y inflation impact over the first 5 quarters (pp)	Relative inflation improvement to offset ELB (%)
ELB	No additional policy	(0, 0)	(0%, 0%)	(0, 0)	(0%, 0%)
No ELB	Impact of allowing interest rates below ELB	(2.71, 9.37) *	(100%, 100%)	(0.19, 0.75)	(100%, 100%)
0	FG only	(0.64, 0.79)	(23%, 8%)†	(0.07, 0.1)	(38%, 13%)
1 Start early and stagger policies	1a: First FG and CE, then QE	(0.62, 0.82)	(23%, 9%)	(0.07, 0.1)	(37%, 13%)
	1b: First FG and QE, then CE	(0.94, 1.20)‡	(35%, 13%)	(0.09, 0.12)	(45%, 16%)
2 Delay and stagger	2a: First FG, then CE, then QE	(0.46, 0.65)	(17%, 7%)	(0.06, 0.09)	(33%, 12%)
	2b: first FG, then QE, then CE	(0.50, 0.74)	(19%, 8%)	(0.07, 0.1)	(36%, 14%)
3 Implement all at once	3a: All options (immediate)	(0.93, 1.17)	(35%, 13%)	(0.09, 0.12)	(45%, 16%)
	3b: All options (delayed)	(0.63, 0.85)	(23%, 9%)	(0.07, 0.1)	(37%, 14%)

Note: These numbers are based on simulations around a proxy of moderate and severe scenarios in the April 2020 *Monetary Policy Report* (Bank of Canada 2020b). Options in green font denote the best performing policy options. FG is forward guidance; CE is credit easing; QE is quantitative easing. GDP is gross domestic product, and ELB is the effective lower bound.

* The first entry of 2.71 indicates the percent improvement in the level of GDP if the rate is allowed to go below the ELB, under the moderate case.

† The effect of 23 percent means that, by itself, forward guidance can achieve 23 percent of the gain that is delivered by a rate cut (second row); i.e., forward guidance can compensate for nearly 25 percent of the GDP loss due to the ELB.

‡ The GDP effect in the moderate scenario would be about 0.8 percent if evaluated over the next four quarters.

Table 3: Estimated amount of fiscal policy required to make up for the GDP loss due to the effective lower bound *
(Moderate scenario, severe scenario)

Economic impact of different sequence options					Additional fiscal policy required		
Scenario	Detail*	Cumulative GDP impact over the first 5 quarters (pp)	Relative GDP improvement to offset ELB (%)	% GDP improvement required from fiscal to offset ELB (%)	Government spending required to offset ELB (\$bn/year)	Universal transfers required to offset ELB (\$bn/year)	Transfers to borrowers and hand-to-mouth households required to offset ELB (\$bn/year)
ELB	No additional policy	(0, 0)	(0%, 0%)	(100%, 100%)	(11, 32)	(56, 129)	(22, 77)
No ELB	Impact of allowing interest rates below ELB	(2.71, 9.37)	(100%, 100%)	(0%, 0%)	(0, 0)	(0, 0)	(0, 0)
0	FG only	(0.64, 0.79)	(23%, 8%)	(77%, 92%)	(9, 30)	(43, 118)	(17, 71)
1 Start early and stagger policies	1a: First FG and CE, then QE	(0.62, 0.82)	(23%, 9%)	(77%, 91%)	(9, 30)	(43, 117)	(17, 70)
	1b: First FG and QE, then CE	(0.94, 1.20)	(35%, 13%)	(65%, 87%)	(7, 28)	(36, 112)	(15, 67)
2 Delay and stagger	2a: First FG, then CE, then QE	(0.46, 0.65)	(17%, 7%)	(83%, 93%)	(9, 30)	(46, 120)	(19, 72)
	2b: First FG, then QE, then CE	(0.50, 0.74)	(19%, 8%)	(81%, 92%)	(9, 30)	(45, 119)	(18, 71)
3 Implement all at once	3a: All options (immediate)	(0.93, 1.17)	(35%, 13%)	(65%, 87%)	(7, 28)	(37, 113)	(15, 68)
	3b: All options (delayed)	(0.63, 0.85)	(23%, 9%)	(77%, 91%)	(9, 29)	(43, 117)	(17, 70)

Note: Forward guidance is applied throughout all simulation periods in each sequence plan. Options in green font denote the best performing policy options. FG is forward guidance; CE is credit easing; QE is quantitative easing. GDP is gross domestic product. ELB is the effective lower bound.