

Heidenreich, Tobias; Eisele, Olga; Watanabe, Kohei; Boomgaarden, Hajo G.

Article — Published Version

Exploring Engagement With EU News on Facebook: The Influence of Content Characteristics

Politics and Governance

Provided in Cooperation with:
WZB Berlin Social Science Center

Suggested Citation: Heidenreich, Tobias; Eisele, Olga; Watanabe, Kohei; Boomgaarden, Hajo G. (2022) : Exploring Engagement With EU News on Facebook: The Influence of Content Characteristics, Politics and Governance, ISSN 2183-2463, Cogitatio, Lisbon, Vol. 10, Iss. 1, pp. 121-132,
<https://doi.org/10.17645/pag.v10i1.4775>

This Version is available at:
<https://hdl.handle.net/10419/250895>

Standard-Nutzungsbedingungen:

Die Dokumente auf EconStor dürfen zu eigenen wissenschaftlichen Zwecken und zum Privatgebrauch gespeichert und kopiert werden.

Sie dürfen die Dokumente nicht für öffentliche oder kommerzielle Zwecke vervielfältigen, öffentlich ausstellen, öffentlich zugänglich machen, vertreiben oder anderweitig nutzen.

Sofern die Verfasser die Dokumente unter Open-Content-Lizenzen (insbesondere CC-Lizenzen) zur Verfügung gestellt haben sollten, gelten abweichend von diesen Nutzungsbedingungen die in der dort genannten Lizenz gewährten Nutzungsrechte.

Terms of use:

Documents in EconStor may be saved and copied for your personal and scholarly purposes.

You are not to copy documents for public or commercial purposes, to exhibit the documents publicly, to make them publicly available on the internet, or to distribute or otherwise use the documents in public.

If the documents have been made available under an Open Content Licence (especially Creative Commons Licences), you may exercise further usage rights as specified in the indicated licence.



<http://creativecommons.org/licenses/by/4.0>

Appendix: Exploring Engagement with EU News on Facebook: The Influence of Content Characteristics

Section A1.

The search string used to retrieve articles for this study contains the words “eu, europäisch* union, europawahl*, europa-wahl*, europäisch* gerichtshof*, eugh*, europaparlament*, europa-parlament*, europäisch* parlament, europa-spitzenkandidat*, europa-abgeordnete*, europaabgeordnete*, europa-politiker*, europapolitiker*, europäisch* kommiss*, europäisch* zentralbank*, ezb*, eurozone*, euro-zone*, euroland*, euro-land*, euroländer*, euro-länder*, euroraum*, euro-raum*, eurostaat*, euro-staat*, europäisch* gemeinschaftswährung*, europäisch* rat*, rat der eu*, europäisch* ebene, europäisch* rechnungshof*, europäisch* auswärtig* dienst*, europäisch* investitionsbank*, europol*, frontex*, europäisch* agentur*, eurogruppe*, eurorettungsschirm*, europäisch* rettungsschirm, brexit*”.

Table A1. Estimated Fixed Effects Parameters for Different Types of User Engagement

	Reactions			Shares			Comments		
	[95% Credibility Interval]			[95% Credibility Interval]			[95% Credibility Interval]		
Intercept	3.8	[2.93	4.61]	1.84	[0.97	2.65]	2.79	[1.79	3.81]
<i>Proximity</i> (Reference Category: EU Level)									
EU Country	-0.09	[-0.16	-0.01]	0.1	[0	0.2]	-0.18	[-0.27	-0.08]
Bordering Country	-0.01	[-0.11	0.09]	-0.02	[-0.16	0.11]	-0.11	[-0.23	0.01]
Austria	0.13	[0.03	0.24]	0.08	[-0.06	0.22]	0.29	[0.16	0.42]
Conflict	-0.27	[-0.32	-0.22]	-0.57	[-0.63	-0.51]	-0.01	[-0.07	0.05]
Negativity	0.27	[0.2	0.34]	0.58	[0.48	0.67]	-0.11	[-0.2	-0.02]
Emotionality	-0.04	[-0.1	0.01]	-0.15	[-0.22	-0.08]	0.13	[0.06	0.2]
Article length	0.03	[0.02	0.04]	0.03	[0.02	0.05]	0.04	[0.02	0.06]
Group effects									
Outlet level	1.44	[0.94	2.27]	1.46	[0.96	2.3]	1.71	[1.12	2.7]
NB shape parameter	0.67	[0.65	0.68]	0.42	[0.41	0.43]	0.45	[0.44	0.47]
<i>N</i>	10,380			10,380			10,380		

Notes: All parameters are estimated based on 4,000 MCMC posterior draws. Modes of parameter distributions and 95% CIs are reposted. Flat priors are used throughout, therefore parameter estimates are equivalent to MLE parameters.

Table A2. Estimated Fixed Effects Parameters for Different Types of User Engagement

	Reactions			Shares			Comments		
		[95% Credibility Interval]			[95% Credibility Interval]			[95% Credibility Interval]	
Intercept	3.52	[2.78	4.26]	1.57	[0.84	2.31]	2.71	[1.78	3.64]
<i>Proximity</i>									
<i>(Reference Category:</i>									
<i>EU Level)</i>									
EU Country	-0.04	[-0.11	0.03]	0.15	[0.06	0.24]	-0.2	[-0.3	-0.11]
Bordering Country	0	[-0.1	0.1]	0.1	[-0.02	0.23]	-0.11	[-0.23	0.01]
Austria	0.17	[0.07	0.27]	0.08	[-0.05	0.21]	0.31	[0.18	0.44]
Conflict	-0.2	[-0.25	-0.16]	-0.5	[-0.55	-0.44]	0.05	[-0.01	0.11]
Negativity	0.13	[0.06	0.19]	0.4	[0.31	0.48]	-0.15	[-0.24	-0.06]
Emotionality	0.09	[0.03	0.14]	0.01	[-0.05	0.07]	0.15	[0.09	0.22]
Article length	0.04	[0.03	0.05]	0.03	[0.02	0.05]	0.04	[0.03	0.06]
Group effects									
Outlet level	1.28	[0.85	2.01]	1.24	[0.8	1.95]	1.63	[1.08	2.55]
NB shape parameter	0.75	[0.73	0.77]	0.49	[0.47	0.5]	0.47	[0.46	0.49]
<i>N</i>		10,224			10,224			10,224	

Notes: All parameters are estimated based on 4,000 MCMC posterior draws. Modes of parameter distributions and 95% CIs are reposted. Flat priors are used throughout, therefore parameter estimates are equivalent to MLE parameters.

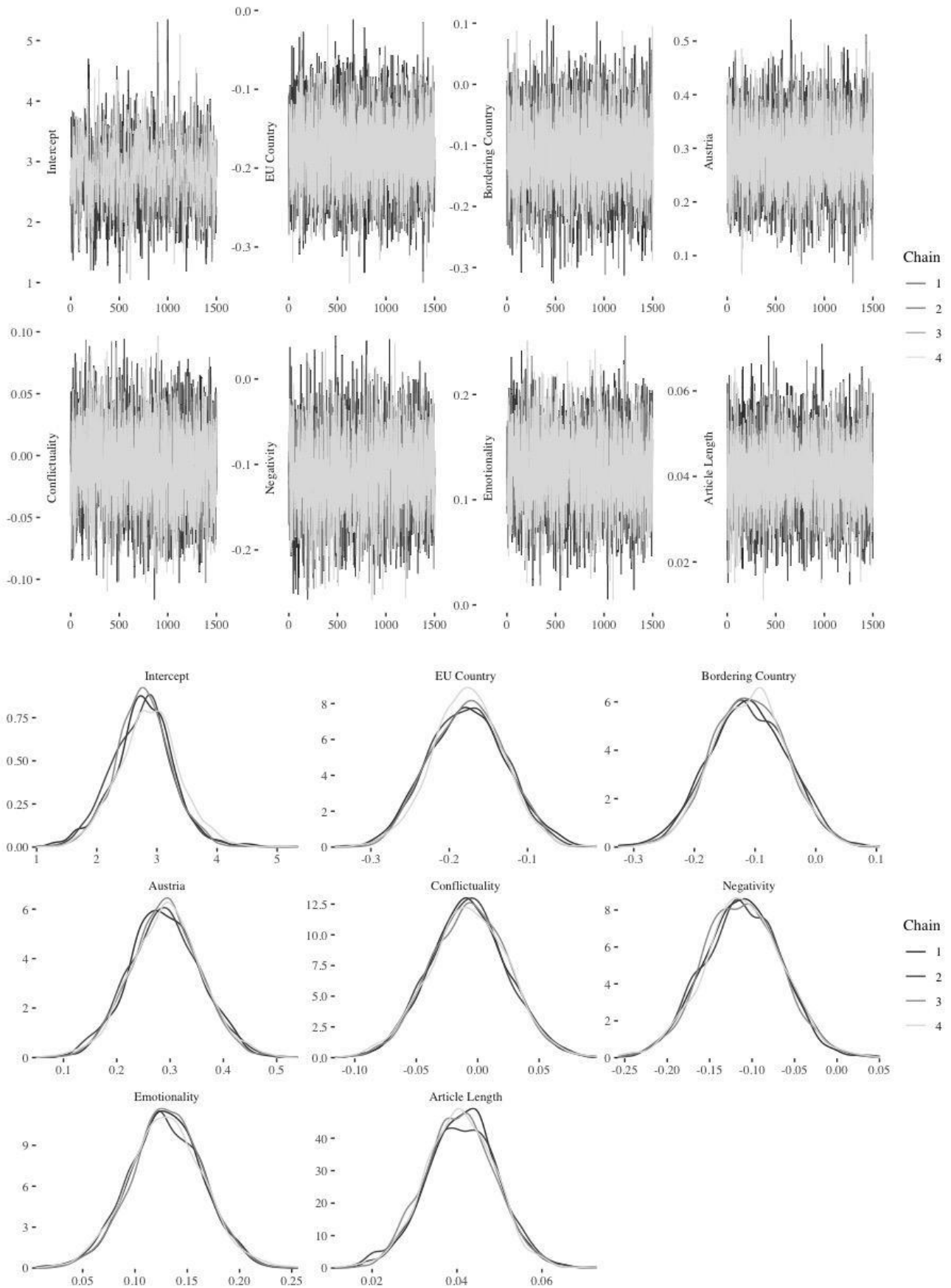


Figure A1. MCMC Trace plots and Posterior Parameter Densities (Model for Interactions). Trace plots show a good mixture of the Markov Chains. Posterior densities indicate that parameters are distributed roughly normally.

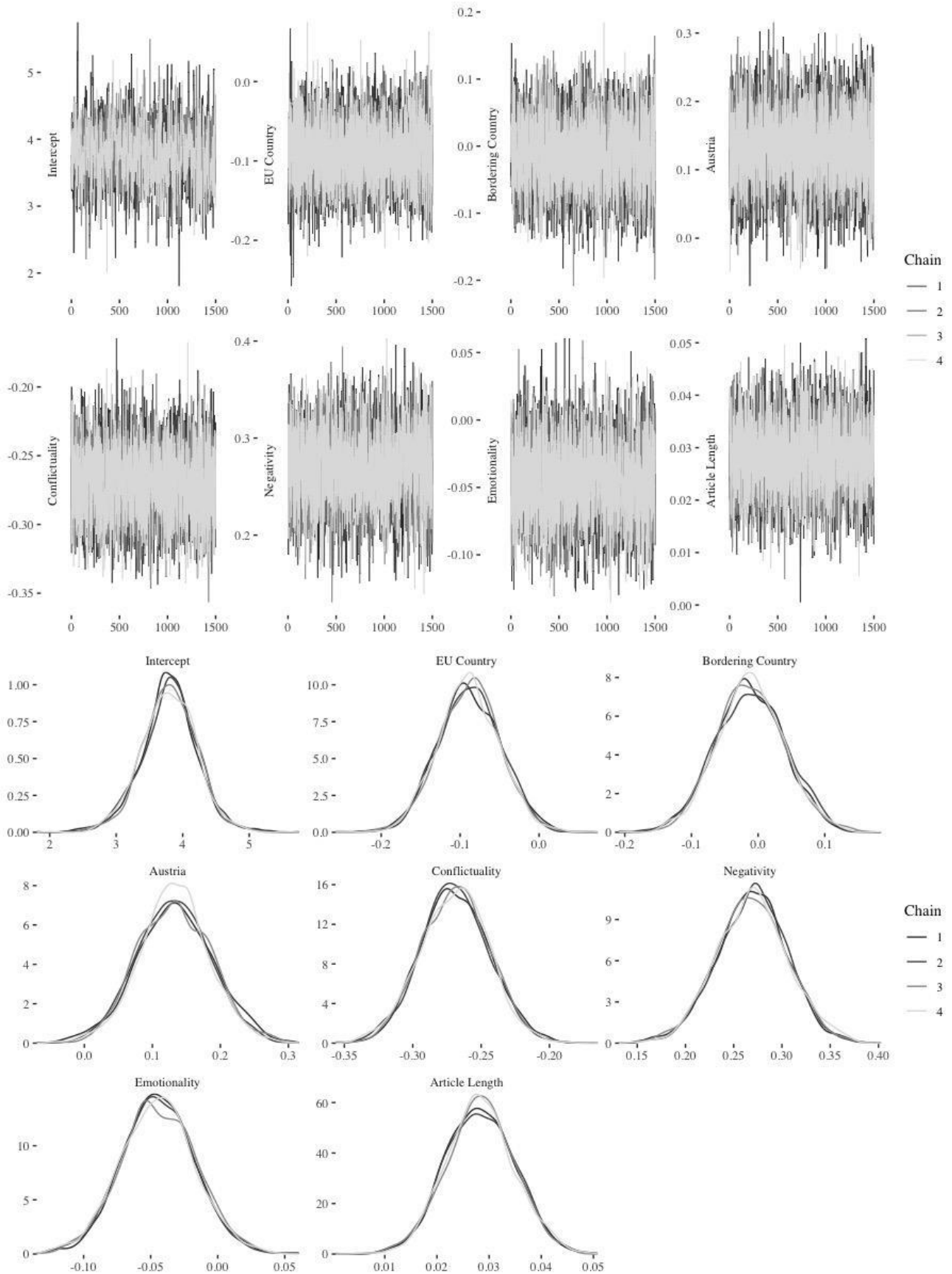


Figure A2. MCMC Trace plots and Posterior Parameter Densities (Model for Shares). Trace plots show a good mixture of the Markov Chains. Posterior densities indicate that parameters are distributed roughly normally.

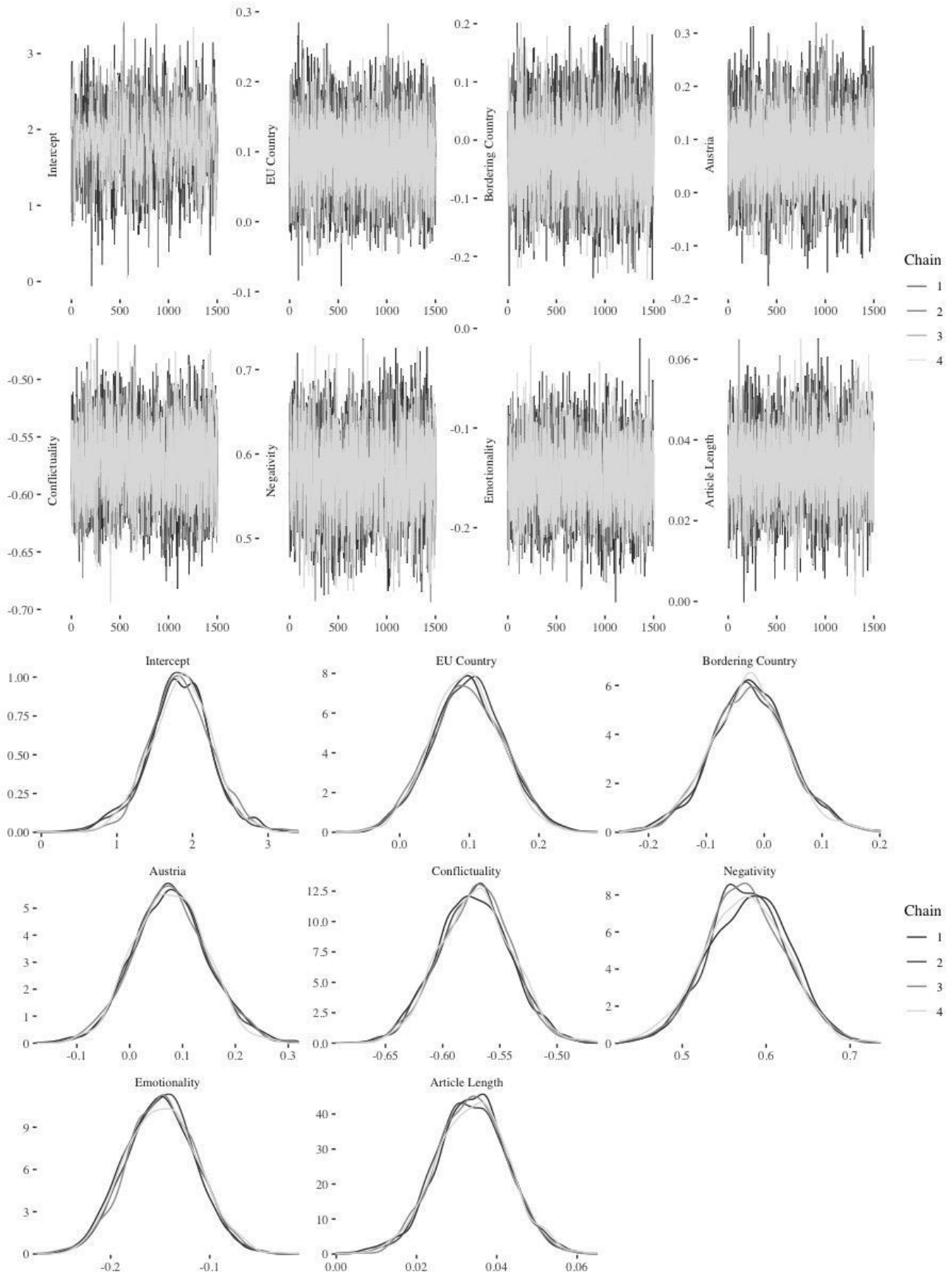


Figure A3. MCMC Trace plots and Posterior Parameter Densities (Model for Comments). Trace plots show a good mixture of the Markov Chains. Posterior densities indicate that parameters are distributed roughly normally.