

Apascaritei, Paula; Demel, Simona; Radl, Jonas

Article — Published Version

The Difference Between Saying and Doing: Comparing Subjective and Objective Measures of Effort Among Fifth Graders

American Behavioral Scientist

Provided in Cooperation with:
WZB Berlin Social Science Center

Suggested Citation: Apascaritei, Paula; Demel, Simona; Radl, Jonas (2021) : The Difference Between Saying and Doing: Comparing Subjective and Objective Measures of Effort Among Fifth Graders, American Behavioral Scientist, ISSN 1552-3381, Sage Publications, Thousand Oaks, CA, Vol. 65, Iss. 11, pp. 1457-1479,
<https://doi.org/10.1177/0002764221996772>

This Version is available at:
<https://hdl.handle.net/10419/250893>

Standard-Nutzungsbedingungen:

Die Dokumente auf EconStor dürfen zu eigenen wissenschaftlichen Zwecken und zum Privatgebrauch gespeichert und kopiert werden.

Sie dürfen die Dokumente nicht für öffentliche oder kommerzielle Zwecke vervielfältigen, öffentlich ausstellen, öffentlich zugänglich machen, vertreiben oder anderweitig nutzen.

Sofern die Verfasser die Dokumente unter Open-Content-Lizenzen (insbesondere CC-Lizenzen) zur Verfügung gestellt haben sollten, gelten abweichend von diesen Nutzungsbedingungen die in der dort genannten Lizenz gewährten Nutzungsrechte.

Terms of use:

Documents in EconStor may be saved and copied for your personal and scholarly purposes.

You are not to copy documents for public or commercial purposes, to exhibit the documents publicly, to make them publicly available on the internet, or to distribute or otherwise use the documents in public.

If the documents have been made available under an Open Content Licence (especially Creative Commons Licences), you may exercise further usage rights as specified in the indicated licence.

The Difference Between Saying and Doing: Comparing Subjective and Objective Measures of Effort Among Fifth Graders

American Behavioral Scientist

2021, Vol. 65(11) 1457–1479

© 2021 SAGE Publications

Article reuse guidelines:

sagepub.com/journals-permissions

DOI: 10.1177/0002764221996772

journals.sagepub.com/home/abs

Paula Apascaritei¹, Simona Demel¹ ,
and Jonas Radl^{1,2}

Abstract

The first goal of this study is to examine the capacity of prominent survey-based effort proxies to predict real effort provision in children. Do children who “talk the talk” of hard work also “walk the walk” and make costly effort investments? The second goal is to assess how objective and subjective effort measures are related under two conditions: intrinsic (nonincentivized) motivation and extrinsic (incentivized) motivation. We measure objective “real” effort using three tasks and subjective self-reported effort using four psychological characteristics (conscientiousness, need for cognition, locus of control and delay of gratification) to understand to what extent material incentives affect the cognitive effort of children with different self-reported personalities. Data stem from real-effort experiments carried out with 420 fifth grade students from primary schools in Madrid, Spain. We find that some of the subjective and objective effort measures are positively correlated. Yet the power of personality to predict real effort is only moderate, but greater and more so in the extrinsic than the intrinsic motivation condition. In particular, need for cognition and conscientiousness are the most relevant correlates of objective effort. Overall, we find there is a big difference between saying and doing when it comes to exerting effort, and this difference is even larger when there are no direct material incentives in place to reward effort provision.

¹Universidad Carlos III de Madrid, Getafe, Spain

²WZB Berlin Social Science Center, Berlin, Germany

Corresponding Author:

Jonas Radl, Department of Social Sciences, Universidad Carlos III de Madrid, Calle de Madrid 126, Getafe 28903, Spain.

Email: jradl@clio.uc3m.es

Keywords

cognitive effort, personality, incentives, laboratory experiment

Background and Motivation

Personality traits have been argued to be crucial for socio-economic achievement (Kautz et al., 2014), making them an important factor in understanding social mobility (Doren & Grodsky, 2016; Hsin & Xie, 2017; also see Holtmann et al., this issue). There is evidence that personality traits are more predictive of relevant life outcomes than IQ, especially when it comes to health (Borghans et al., 2016). A recent meta-analysis suggests that personality is as decisive for achievement as family background (Roberts et al., 2007). Moreover, childhood personality is especially malleable, rendering social interventions especially effective at an early age (Kautz et al., 2014). However, the precise mechanisms by which childhood personality traits affect life outcomes remain nebulous as the proper way to measure personality traits continues to be disputed (Lechner et al., 2019; Rimfeld et al., 2016). Similarly, there are concerns about social desirability bias in survey-based personality measures (cf. Radl & Miller, this issue) and recent evidence suggests that the long-term impact of psychological traits such as delay of gratification is less robust when fully accounting for unobserved heterogeneity (Watts et al., 2018).

We propose that theoretically, the impact of children's characteristics like conscientiousness or delay of gratification should be largely mediated by actual behavior, particularly effort (Cubel et al., 2016). This implies that there may be certain personality profiles that are more willing to engage in effort (Cassar & Meier, 2018). Children with such a profile would also have higher self-control and be more likely to keep their goals in mind, thus achieving superior educational outcomes. Hence, it is important to understand the ability of (subjectively measured) personality to predict (objectively measured) real effort. Do children who "talk the talk" of hard work also "walk the walk" and make costly effort investments?

Furthermore, previous studies have shown that individuals with certain personality traits may respond differently to incentives (Borghans et al., 2008; Cubel et al., 2016). Based on standard economic theory, we propose that incentivizing task performance has a positive effect on exerted effort. Moreover, given individual heterogeneity, we further theorize that children with specific personality configurations will respond stronger to incentives.

This article presents first evidence from a large-scale study on cognitive effort carried out in Spain. We examine the capacity of four prominent psychological scales (conscientiousness, need for cognition, locus of control (LOC), and delay of gratification) to explain real effort provision. Participants performed three different tasks: the Slider (Gill & Prowse, 2012), AX (Gonthier et al., 2016) and Simon tasks (Cespón et al., 2016) in two conditions. In the extrinsic motivation condition, they were offered material incentives and in the intrinsic motivation condition, performance was not linked to rewards.

Our contribution is threefold. First, we show to which extent the selected survey-based effort proxies predict observed effort intensities under laboratory conditions.¹ Second, we test to which extent effort provisions depend on whether material incentives are provided for task performance. Third, we assess whether children with certain personality profiles are more susceptible to incentive effects.

Literature Review and Conceptual Considerations

Real Effort

In economics, effort is usually defined in opposition to ability. Mostly, it refers to how hard people try in a given task, in contrast to the skill needed for its completion. Real-effort tasks “measure the behavior of participants given specific observable tasks” (Charness et al., 2018, p. 75). While some effort tasks depend on cognitive capacity, such as performing mathematical operations, other tasks, such as sorting gravel by color into pots (Demel et al., 2019) or adjusting the position on a digital slider (Gill & Prowse, 2012), are considered mostly independent of it.

In psychology, effort is a subjective phenomenon referring to “the degree of engagement with demanding tasks” employing executive functions (Westbrook & Braver, 2015, p. 396; Duckworth et al., 2019). Cognitive effort is similar to the concept of “cognitive load” (Paas et al., 2003), but also explicitly includes motivation. Executive functions are “processes that control and regulate thought and action” (Friedman et al., 2006, p. 172), and are underpinned by processing speed, attention, impulse control, and similar characteristics. They enable flexible thinking and inhibitory control and allow individuals to exert self-control during effortful tasks (Miyake & Friedman, 2012).

Combining the approaches to effort from psychology and economics, in this study, objective effort is considered as an individual’s performance in real-effort tasks demanding minimal ability, while engaging various executive functions. After controlling for fluid intelligence, this approach provides an objective observable assessment of an individual’s effort behavior in a laboratory setting.

Personality Traits as Effort Proxies

Previous research has assessed the relationship between self-reported personality traits and effort, as measured by task performance on executive functions, but the amassed evidence is inconsistent. In some studies, personality and effort in executive function tasks are positively correlated (Duckworth & Kern, 2011; Malanchini et al., 2019), while in others, this relationship is mostly indistinguishable from zero (Buchanan, 2016; Unsworth et al., 2009). The meta-analysis by Duckworth and Kern (2011) reports correlations among executive function tasks and various self-reported personality traits that are weak, yet, statistically significant. Unsworth et al. (2009) find almost no correlation between self-reported conscientiousness and executive functions. Buchanan (2016) describes how certain personality dimensions are correlated to self-reported executive functions, but not particularly to actual performance on executive function tasks.

In this study, we consider four different personality traits²: (a) conscientiousness, (b) need for cognition, (c) LOC, and (d) delay of gratification. These particular scales are chosen because the theoretical concepts they are designed to capture are directly relevant to effort. Although each scale emphasizes additional aspects that go beyond effort as such, close associations with real effort should be expected.

One of the most widely used models of personality is the Big Five model specifying five personality dimensions: extraversion, agreeableness, conscientiousness, neuroticism, and openness (John et al., 2008). Among these traits, *conscientiousness* “describes socially prescribed impulse control that facilitates task- and goal-directed behavior” (John et al., 2008, p. 138). Thus, conscientiousness is the Big Five personality factor directly related to self-control and goal maintenance. Similar to the related concept of grit, it is seen as a determinant of the attainment of goals that require effortful self-control, such as academic achievement (Duckworth et al., 2019).

Need for cognition is a personality characteristic used in psychology to assess the “tendency to engage in and enjoy thinking” (Cacioppo & Petty, 1982, p. 116), referring to the intrinsic motivation of individuals toward cognitive effort. Individuals with high need for cognition are, therefore, more likely to engage in cognitive effort willingly (Inzlicht et al., 2018; Sandra & Otto, 2018). Indeed, need for cognition has been shown to predict academic performance in children and high school students (Keller et al., 2019). Malanchini et al. (2019) pool various measures to create “superfactors” of openness, which is composed of multiple measures including need for cognition, and also of conscientiousness, which is composed of grit and related scales. These “superfactors” of openness and conscientiousness have a moderate association with executive function performance. A different study reports that need for cognition predicts cognitive effort, and concludes that it is an important component of intrinsic motivation (Sandra & Otto, 2018).

In addition, motivation is related to an individual’s perception of control. This perception is captured by *LOC* (Rotter, 1990): if internal attributions are made, one believes that events and experiences depend on one’s choices and actions, which encourages one to actively pursue goals. If external attributions are made, one believes that outcomes depend on uncontrollable elements, such as luck or fate (Rotter, 1990). An internal LOC is associated with positive outcomes that require effortful self-discipline, such as educational achievement and better health (Murasko, 2007) as well as more inequality acceptance (see Aguiar et al., this issue). A related construct, meritocratic beliefs, refers to people’s casual conceptions about social mobility in society at large (Mijis, 2019).

LOC has been linked to various executive functions, from working memory to impulse control, based on the hypothesis of shared biological antecedents (Declerck et al., 2006). Individuals with an internal LOC have superior self-regulation abilities (Declerck et al., 2006). Internality of LOC is not very different to high self-esteem and low neuroticism (Judge et al., 2002), making it fundamental in achieving results. Even so, some researchers find that LOC does not predict accuracy of responses or reaction time in executive function tasks (Muir et al., 2019).

Another aspect of personality related to self-regulation is *delay of gratification*. It allows individuals to be patient and to keep their focus on long-term goals instead of momentary pleasure. One of the early mechanisms proposed to capture this measure was the famous marshmallow test (Mischel et al., 1972). In our survey, children were asked to answer the question: “Imagine someone wants to give you a gift. Would you prefer receiving one gift today or two next week?” (Blossfeld & Roßbach, 2019). Although the reward is hypothetical in our case, studies show that real and hypothetical rewards in intertemporal choice decisions yield comparable results (Bickel et al., 2009; Brañas-Garza et al., 2020). Delay of gratification correlates with positive outcomes in life, such as better health or less crime (Moffitt et al., 2011). Similar to the related concept of patience, delay of gratification increases with age, and correlates with educational outcomes (Sutter et al., 2019). In economics, there is a closely related literature on time preferences (or future discounting; see the contribution by Bortolotti et al., this issue).

Failing to account for cognitive ability when studying the relation between personality and executive functions can confound results (Malanchini et al., 2019; Unsworth et al., 2009). Fluid intelligence has a separate effect on academic ability even after controlling for processing speed (Malanchini et al., 2019). Researchers also found that the relation between executive functions and intelligence in early childhood ranges from low to moderate depending on the executive function considered (Willoughby et al., 2010). Fluid intelligence is positively related to inhibition, shifting and working memory (Friedman et al., 2006, 2008). For this reason, fluid intelligence is an important factor to be considered when studying the relation between personality traits and effort.

Taken together, there is mixed evidence of the multifaceted relationship between personality and effort. Therefore, there is a need for an in-depth assessment of whether personality scales related to self-regulation are indeed reliable indicators of effort as behavior. To this end, we select established measures, such as conscientiousness, LOC and delay of gratification, which are often used as proxies of effort, and also a less studied measure—need for cognition—that is closely linked theoretically. Overall, we expect that these subjective measures of effort, are positively associated with objective effort, measured as task performance.

Hypothesis 1: The correlation between subjective and objective measures of effort is positive.

Rewarding Effort

Cognitive effort is costly. An approach integrating economic and psychological insights posits that individuals will engage in cost-benefit analyses to choose optimal cognitive effort engagement (Westbrook & Braver, 2015). The costs of effort include biological (energy expenditure), emotional (boredom) and opportunity costs (of foregoing other rewarding activities; Kurzban, 2016; Sandra & Otto, 2018). The benefits

of effort include the emotional pleasure found in achieving goals and solving difficult tasks, especially among intellectually curious individuals (Ryan & Deci, 2000; Sandra & Otto, 2018; Segal, 2012).

One way to increase the benefit side of this cost-benefit analysis is through piece-rate rewards (Sandra & Otto, 2018). Based on standard economic theory, contingent rewards have a motivational effect on individuals (Benabou & Tirole, 2003). Once extrinsic rewards are tied to the successful realization of a task that has a clearly defined and measurable goal, individuals will strive to increase their output.

Extrinsic rewards boost performance by facilitating cognitive control during task completion (Van Steenbergen et al., 2009). When incentives are attached to performance in executive function tasks, younger individuals respond faster and make fewer mistakes (Schmitt et al., 2015).

Hypothesis 2: Objective effort is higher in the extrinsic condition as compared with the intrinsic condition.

However, evidence also shows that extrinsic rewards may crowd out intrinsic motivation (Benabou & Tirole, 2003; Sandra & Otto, 2018). Indeed, individuals respond differently to incentives depending on their personality traits, for example, intellectually curious individuals are less responsive to incentives (Borghans et al., 2008). Similarly, conscientiousness has also been shown to positively affect productivity (Cubel et al., 2016).

Based on the literature briefly summarized above, we expect individuals with a perception of control to have superior performance in the extrinsic condition. If they believe that rewards depend on their own effort and if they have the ability to control their impulses, they will respond to the piece-rate incentives and engage effortful self-regulation for task performance. In contrast, individuals who have intrinsic motivation when it comes to orderliness, focus and consistency, and who find pleasure in thinking will also make an effort in the absence of incentives. To sum up, we propose that:

Hypothesis 3: Conscientiousness (Hypothesis 3a) and need for cognition (Hypothesis 3b) have stronger associations with intrinsic effort, as compared with (Hypothesis 3c) LOC and (Hypothesis 3d) delay of gratification, which conversely have stronger associations with extrinsic effort.

Data and Methods

Experimental Design

Real-effort experiments were carried out from October 2019 to February 2020. The target population was 5th-grade primary school students in the broader urban area of Madrid, Spain. Schools were randomly selected from a sampling frame stratified by neighborhood income quartile and school type (public, private, mixed). We approached school administrations by sending them a letter of invitation to participate in our

project and followed up via telephone. The study was framed as an extracurricular activity where children visit the university campus and learn about higher education, while also performing fun activities and tasks. Each parent signed a consent form and data protection agreement prior to child participation in the experiment. The entire experimental process was reviewed by the ethics board and data protection officer at University Carlos III of Madrid, and approved. The response rate at the school level was approximately 30%. The sample comprises of 420 students, the vast majority between 10 and 11 years of age.³

All participants carried out three real-effort tasks chosen to address the differences between the interdisciplinary approaches to defining and understanding effort and taking into account that measuring effort involves “task impurity” (Miyake & Friedman, 2012). Thus, we proposed a multidimensional assessment of effort, with three tasks focusing on different executive functions. By assessing these various types of executive functions, as well as controlling for cognitive ability, our framework should allow for the mitigation of variance not relating to actual effort.

The first of these tasks was the “Slider Task,” one of the most popular real-effort tasks used in experimental economics, focusing on processing speed and goal maintenance (Gill & Prowse, 2012). In this task, participants saw 48 lines on their computer screens with sliders positioned at the left extreme of the line. The objective of the task was to move as many sliders as possible to the middle of the line in 2 minutes. The countdown timer was visible at the top of each computer screen.

The “AX-Continuous Performance Task” (AX-CPT) is used in psychology to assess switching between proactive and reactive cognitive control (Gonthier et al., 2016). In this task, a trial consists of a pair of letters appearing one at a time. If participants saw the letter “A” followed by the letter “X” (or the sequence A – X), they were instructed to press the blue key on their keyboard, if they saw any other sequence, they were told to press the orange key.⁴

The “Simon Task” is a cognitive psychology task focused on inhibition and attention (Cespón et al., 2016). In this task, participants saw an arrow on their computer screen, pointing either left or right. These arrows randomly appeared on different sides of the screen (left, middle, or right). If the arrow pointed left, participants were instructed to press the orange key on the left-hand side of the keyboard, and if the arrow pointed right, they were asked to press the blue key on the right-hand side of the keyboard, regardless of the arrow’s position on the screen. Arrows were presented until a response was registered or timed out.

The objective of both the AX-CPT and the Simon task was to respond correctly to as many trials as possible in 120 seconds. For both tasks, subjects were told that the faster they responded, the more trials they would see, but were cautioned not to sacrifice accuracy for the sake of speed.

The experimental setup included an intrinsic and an extrinsic condition. In the intrinsic condition, participants did not receive any points for responding correctly to trials, yet were instructed to try their best. In the extrinsic condition, material incentives were provided in the form of points to be accrued for successful task completion. At the end of the experimental session, students could spend the accumulated points

Table 1. Outline of the Experimental Setup.

Outline	Time
Task 1:	
• Instructions + Control Questions + Practice Round(s)	Approx. 15 min
Leisure task:	
• Instructions + Practice Rounds	1 Round of 1.5 min for each leisure task
Task 1:	
• Intrinsic condition	2 Rounds of 2 min each
• Extrinsic condition	2 Rounds of 2 min each
Task 2:	
• Instructions + Control Questions + Practice Round(s)	Approx. 10 min
• Extrinsic condition	2 rounds of 2 min each
Task 3:	
• Instructions + Control Questions + Practice Round(s)	Approx. 10 min
• Extrinsic condition	2 Rounds of 2 min each

on a menu of toys (ranging from a widget spinner to a Lego set). Children were informed they could take home the selected toys at the end of the day when the extrinsic condition was introduced.

Many studies have found that including a leisure task in the experimental design uncovers incentive effects which are otherwise undetectable (Araujo et al., 2016; Corngnet et al., 2015; Goerg et al., 2019). Without a leisure task alternative, participants might exert effort in the lab simply because there is no opportunity cost of working on the tasks. This is not reflective of effortful tasks in the real world, since people almost always have the option to spend their time doing something else. Therefore, we decided to include leisure tasks in our experimental design. At the beginning of each 2-minute round, participants had to choose between completing the task or playing one of two mouse-based leisure tasks (a puzzle or a ball-bouncing game).

The order in which participants received the tasks varied by group. Participants always performed the first task under the intrinsic scheme first, and then carried out the first task, along with the remaining two tasks, under the extrinsic scheme, as can be seen in Table 1. Thus, for each participant we have one observation of her objective effort measure under the intrinsic condition and three observations of her objective effort measure under the extrinsic condition. Data in Table 2 further illustrate the sample size for each task order. To sum up, 164 (75 + 89) subjects performed the slider task in the intrinsic condition, 186 (71 + 115) performed the AX task, and, finally, 70 subjects performed the Simon task for the intrinsic condition. Note that all subjects performed all of the three tasks in the extrinsic condition, thus rendering a sample size of 420 for this condition.

After the experimental session, children had a break that lasted approximately 45 minutes, where they visited the university campus, had a snack, and had time to play freely. After this leisure break, they returned to the laboratory and performed a

Table 2. Sample Size by Task Order.

Task order	Sample size
Slider-AX-Simon	75
Slider-Simon-AX	89
AX-Slider-Simon	115
AX-Simon-Slider	71
Simon-AX-Slider	70
Total	420

5-minute fluid intelligence test followed by a survey with questions about their sociodemographic status, effort-related psychological scales and personality traits, among others.

Measures

Conscientiousness is a measure of three items from the Pictorial Personality Traits Questionnaire for Children (Mackiewicz & Ciecuch, 2016). *Need for cognition* is a measure of four items assessing enjoyment and engagement in knowledge pursuit (Beißert et al., 2014). *LOC* is measured through six items (Jakoby & Jacob, 1999). Three items reflect internal LOC, and three items reflect external LOC. Both subscales are included as separate measures with higher values representing internal control.

Conscientiousness, need for cognition and LOC were each measured on 5-point labeled Likert scales. Items were averaged to obtain the final measures and standardized prior to estimation. The dichotomous measure for *delay of gratification* is used in the German National Educational Panel Study (Blossfeld & Roßbach, 2019). All personality measures have been previously validated in the original studies mentioned above and have been found to be reliable. Items depart somewhat from the original scales due to translation into Spanish and simplification into a child-friendly form (see Table B1 in Appendix, available in the online supplement).

Cognitive ability is measured by fluid intelligence using Raven’s progressive matrices test (Raven et al., 1996). Children were asked to complete as many matrices as possible in 5 minutes. This measure was standardized for use in the regression models. Other variables included as controls in the regression analyses are the age of the participants measured in months and their sex. Since participants had to use a mouse in the Slider task, we determine children’s familiarity with the use of keyboards and computer mice on a 4-point scale. Socioeconomic status is controlled for via dummy variables measuring the neighborhood income where the children’s school is located (in quartiles within the overall income distribution of the Madrid region). Task order is controlled for via dummy variables.

We used multiple imputation via chained equations for missing values. In addition to the variables used in the analytical models, indicator variables containing teacher observations for each student regarding potential learning or behavioral difficulties

were also included in the imputation procedure. While descriptive analyses are performed using nonimputed data only, 25 sets of imputed data are employed in the multivariate model estimations.

Model Design

We estimate multilevel linear mixed models, with pupils nested in 18 school classes, clustering standard errors at the class level, to analyze whether survey-based effort proxies predict real effort provision. The model is as follows:

$$y_{ij} = \alpha + \beta x_{ij} + u_j + \varepsilon_{ij}, \quad (1)$$

where y_{ij} is the effort measure, x_{ij} is a vector with the survey-based effort proxies and control variables of student i in class j , and β is a vector of the corresponding fixed effects. Furthermore, u_j is the random effect of class j , a residual component capturing the unobservable values characterizing the class, shared by all its students. Therefore, $\alpha + u_j$ is the random intercept of class j . Lastly, ε_{ij} are the residual components at the student level, assumed to be independent among students and among u_j .

The effort measure in the intrinsic incentive scheme is the number of total correct responses standardized within each task. Since each participant has three observations of effort in the extrinsic incentive scheme, we sum the standardized values of the number of total correct responses for each of the three tasks, and restandardize the measure. In both incentive schemes, effort measures for participants who played the game instead of doing the task were coded as having zero total correct responses in that round. In the Appendix (available in the online supplement), we show model estimates for two additional outcomes related to the AX and Simon tasks: (a) the response accuracy and (b) the average reaction times of the correct responses, as commonly used in the psychology literature.

Results

In Figure 1, correlations between real effort in the intrinsic and the extrinsic motivation conditions and personality traits are presented. The associations between the objective and subjective measures of effort present a heterogeneous pattern: only need for cognition and conscientiousness are significantly associated with performance in the extrinsic scheme. These findings lend only very partial support to Hypothesis 1, especially considering the surprisingly low magnitudes of the coefficients.

Figure 2 shows the average number of total correct responses in one round in the intrinsic versus extrinsic incentive schemes within each task. The samples in the extrinsic schemes are restricted to the participants who did the same task as in the intrinsic scheme, therefore our total sample is divided across the three tasks.⁵ The main difference between the intrinsic and extrinsic scheme is driven by choosing to play a game or not, with far more participants playing a game in the intrinsic scheme

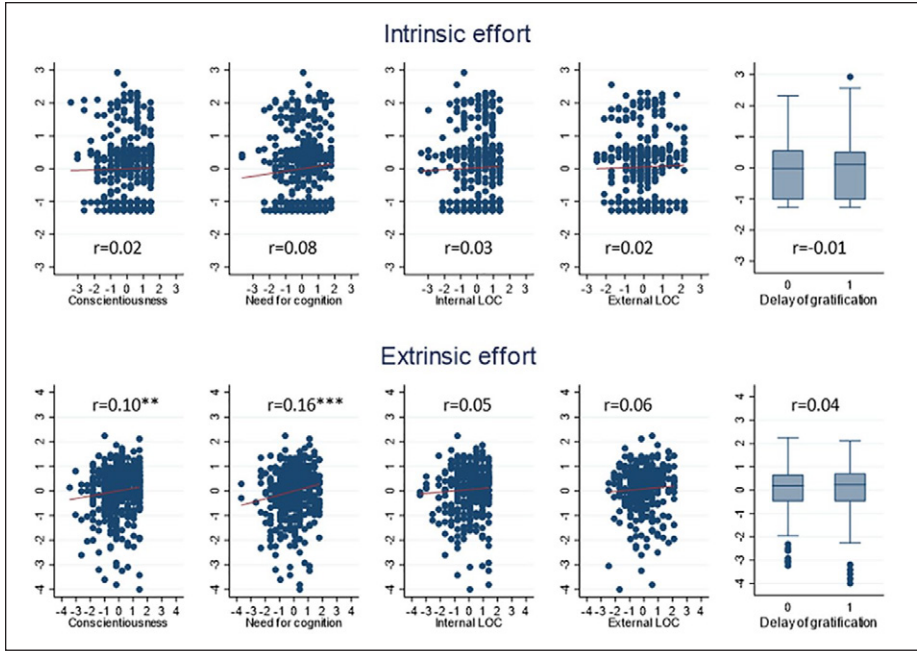


Figure 1. Correlations of main variables.

Note. Correlations reported in each panel. Correlations with delay of gratification are point-biserial correlations. Delay of gratification coded as follows: 0 = prefers one gift today, 1 = prefers two gifts in 1 week.

* $p < .10$. ** $p < .05$. *** $p < .01$.

than in the extrinsic scheme. This difference is statistically significant at the 5% significance level or better, across the three tasks. When we compare only the level of effort in the tasks by looking at the version without subjects doing leisure tasks, we can see that while the difference in effort between the incentive schemes is much smaller, it is still significant at the 1% significance level for the Slider and AX tasks. However, the difference in effort between the incentive schemes is not statistically significantly different for the Simon task, which could be due to the small sample size. In sum, we find a clear incentivization effect on real effort, in line with Hypothesis 2.

To check if this increase in total correct responses in the extrinsic scheme could be due to a learning effect, we analyze the change in either the total correct responses or the accuracy between rounds. As can be seen from Table D1 in the Appendix (available in the online supplement), we can safely say that participants make more of an effort in the extrinsic scheme than in the intrinsic scheme (apart from in the Simon task), and that this is not driven by a learning effect.

Table 3 presents regression results from the multilevel model in Equation (1) for the intrinsic effort measure. Personality variables are introduced separately in Models 1 to

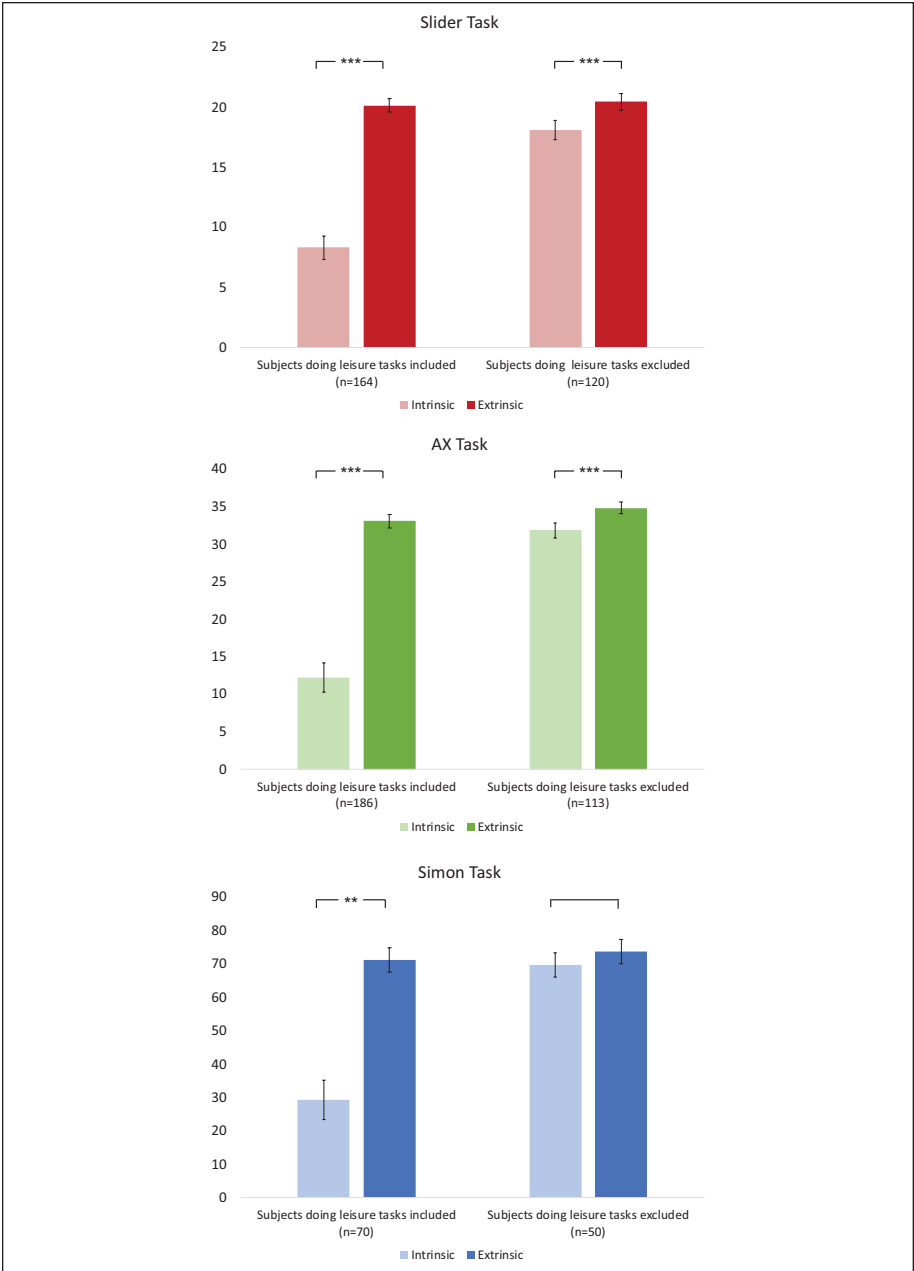


Figure 2. Difference in effort by incentive scheme for each task.

Note. For comparability, all scores refer to one round. The difference between the incentive schemes was calculated using a paired t-test clustering standard errors at the class level. The error bars refer to the standard error, after clustering standard errors at the class level.

* $p < .10$. ** $p < .05$. *** $p < .01$.

4, and jointly in Model 5. Examining the associations between objective and subjective effort, we only find a (marginally) statistically significant effect for need for cognition in Model 2, confirming Hypothesis 3b.

Table 4 is the analog of Table 3 for the extrinsic condition, where participants were rewarded points for each trial correctly answered, and each slider correctly placed. In terms of subjective effort, both conscientiousness (although only marginally) and need for cognition are associated with objective effort in Models 1 and 2, respectively. Once introduced jointly in Model 5, only need for cognition preserves a marginally statistically significant, yet diminished, association. These results are contrary to our expectations in Hypothesis 3c and Hypothesis 3d, as the effect of LOC and delay of gratification do not reach statistical significance neither in the intrinsic nor in the extrinsic condition. Notably, fluid intelligence is strongly associated with task performance in the extrinsic condition. The fact that this was not the case in the intrinsic condition suggests that rewards effectively incentivize effort among more intelligent children.

In the first half of Table 5, similar regressions are presented for both the intrinsic effort measure, as well as performance by task in the intrinsic condition.⁶ The only statistically significant association, although only marginally significant, is that between the intrinsic effort measure and need for cognition. The lower half of Table 5 presents the estimation results for the extrinsic incentive scheme. The effect of conscientiousness and need for cognition on task performance are driven by the AX-CPT and Simon tasks. Additionally, delay of gratification has a marginally statistically significant effect for the Slider task performance, thus lending partial support to Hypothesis 3d. From Tables 4 and 5, it becomes clear that subjective effort is a better predictor of objective effort in the extrinsic condition. However, results should be interpreted cautiously when referring to specific task performance, as the sample size varies for each model in the intrinsic condition (see Table 2).

We performed various sensitivity analyses (see Appendix, available in the online supplement) and found that the reported results remain qualitatively similar and are robust to treatment of missingness and outlier exclusion.⁷ As an alternative outcome variable, we ran models on the difference in effort levels between the intrinsic and extrinsic incentive schemes. We found that none of the measures were statistically significantly different from zero, suggesting that the additional effort provided in the piece-rate condition was not systematically related to personality. Additionally, we considered interactive effects between sex and personality traits and find that, for most personality characteristics, there were no significant gender differences in the way they affect effort provisions, although subjective and objective effort seems to be somewhat more closely related among boys than among girls.

Discussion

What difference is there between self-reported and exerted effort? We report novel evidence from a large-scale study about the factors contributing to real effort provision among primary school children. We draw on novel data from laboratory experiments

Table 3. Results of Analyses for the Intrinsic Condition.

	(1)	(2)	(3)	(4)	(5)
	Intrinsic effort	Intrinsic effort	Intrinsic effort	Intrinsic effort	Intrinsic effort
Age in months	0.017* (0.009)	0.017* (0.009)	0.017* (0.009)	0.017* (0.009)	0.017* (0.009)
Boy	-0.101 (0.098)	-0.098 (0.098)	-0.084 (0.100)	-0.091 (0.100)	-0.098 (0.102)
Fluid intelligence	0.039 (0.032)	0.024 (0.032)	0.032 (0.032)	0.036 (0.032)	0.026 (0.035)
Mouse use	0.056* (0.031)	0.056* (0.031)	0.060** (0.030)	0.057* (0.032)	0.061* (0.034)
Conscientiousness	0.053 (0.061)				0.039 (0.063)
Need for cognition		0.069* (0.040)			0.060 (0.037)
Internal LOC			0.018 (0.046)		-0.005 (0.047)
External LOC			0.031 (0.053)		0.023 (0.056)
Delay of gratification				-0.029 (0.107)	-0.032 (0.109)
Constant	-2.106** (0.984)	-2.139** (1.003)	-2.125** (0.981)	-2.081** (0.964)	-2.085** (0.994)
Controlled for task order	YES	YES	YES	YES	YES
Controlled for neighbor income	YES	YES	YES	YES	YES
SD (u_j)	0.314*** (0.052)	0.316*** (0.052)	0.315*** (0.053)	0.315*** (0.052)	0.315*** (0.052)
SD (ε_{ij})	0.925** (0.028)	0.924*** (0.028)	0.925*** (0.027)	0.926*** (0.027)	0.922*** (0.028)
Observations	420	420	420	420	420

Note. Robust standard errors in parentheses. LOC = locus of control.

* $p < .10$. ** $p < .05$. *** $p < .01$.

Table 4. Results of Analyses for the Extrinsic Condition.

	(1)	(2)	(3)	(4)	(5)
	Extrinsic effort	Extrinsic effort	Extrinsic effort	Extrinsic effort	Extrinsic effort
Age in months	0.009 (0.009)	0.009 (0.008)	0.008 (0.008)	0.009 (0.008)	0.010 (0.008)
Boy	0.332*** (0.093)	0.343*** (0.094)	0.363*** (0.093)	0.350*** (0.097)	0.326*** (0.096)
Fluid intelligence	0.251*** (0.044)	0.221*** (0.045)	0.238*** (0.041)	0.239*** (0.041)	0.229*** (0.045)
Mouse use	0.081** (0.033)	0.083*** (0.032)	0.088** (0.037)	0.076** (0.035)	0.077** (0.036)
Conscientiousness	0.143* (0.085)				0.126 (0.094)
Need for cognition		0.119** (0.051)			0.094* (0.055)
Internal LOC			0.033 (0.055)		-0.005 (0.056)
External LOC			0.036 (0.064)		0.013 (0.066)
Delay of gratification				0.107 (0.082)	0.113 (0.083)
Constant	-1.749 (1.096)	-1.807* (1.040)	-1.742 (1.067)	-1.923* (1.025)	-1.972* (1.023)
Controlled for task order	YES	YES	YES	YES	YES
Controlled for neighbor income	YES	YES	YES	YES	YES
SD (ν_i)	0 (0.000)	0 (0.000)	0 (0.000)	0 (0.000)	0 (0.000)
SD (ε_{ij})	0.887** (0.048)	0.890** (0.050)	0.896** (0.050)	0.897** (0.049)	0.880** (0.048)
Observations	419	419	419	419	419

Note. Robust standard errors in parentheses. LOC = locus of control.
 * $p < .10$. ** $p < .05$. *** $p < .01$.

Table 5. Results of Analyses by Task for the Intrinsic and Extrinsic Conditions.

	(1)	(2)	(3)	(4)
	Effort	Slider	AX-CPT	Simon
<i>Intrinsic incentive scheme</i>				
Conscientiousness	0.053 (0.061)	0.061 (0.108)	0.096 (0.095)	-0.072 (0.140)
Need for cognition	0.069* (0.040)	0.087 (0.075)	0.044 (0.067)	0.141 (0.098)
Internal LOC	0.018 (0.046)	0.059 (0.082)	-0.023 (0.056)	0.077 (0.158)
External LOC	0.031 (0.053)	0.094 (0.067)	-0.003 (0.075)	-0.015 (0.205)
Delay of gratification	-0.029 (0.107)	0.029 (0.095)	-0.087 (0.231)	0.061 (0.128)
<i>Extrinsic incentive scheme</i>				
Conscientiousness	0.143* (0.085)	0.007 (0.090)	0.255** (0.107)	0.050 (0.082)
Need for cognition	0.119** (0.051)	0.043 (0.057)	0.087** (0.034)	0.133*** (0.050)
Internal LOC	0.033 (0.055)	0.002 (0.053)	-0.001 (0.055)	0.076 (0.048)
External LOC	0.036 (0.064)	0.074 (0.058)	0.033 (0.055)	-0.044 (0.063)
Delay of gratification	0.107 (0.082)	0.115* (0.067)	0.054 (0.103)	0.079 (0.087)

Note. Models estimated with each scale separately (except internal and external LOC together), controlling for: sex, age, fluid intelligence, neighborhood income, task order, and mouse use (for Models 1 and 2 only). Robust standard errors in parentheses. AX-CPT = AX-Continuous Performance Task; LOC = locus of control.

* $p < .10$. ** $p < .05$. *** $p < .01$.

carried out in Spain with a sample of 420 subjects aged around 10 to 11 years. We assess the interplay between personality characteristics and incentivization in determining the effort displayed in three different cognitive tasks. The study delivers five contributions to the existing literature.

First, personality characteristics overall are demonstrated to have a limited capacity to explain children's real effort provision in the laboratory. Most bivariate correlations are not statistically significant and the largest measured correlation is only $r = .17$. After controlling for potential confounders, need for cognition and conscientiousness have robust significant effects on real effort, while LOC (internal and external) and delay of gratification do not. In terms of magnitude, the largest effect is found for conscientiousness: for example, an increase of one standard deviation in this personality trait increases average extrinsic effort by 14% of a standard deviation. These findings are broadly in line with previous meta-analyses indicating that executive functions and self-reported personality traits are moderately correlated, at best (Duckworth & Kern, 2011). This may indicate that many children are poor evaluators of their own effort engagement, or that their survey answers are subject to social desirability bias.

Second, providing material incentives—in the form of accrued points convertible into chosen toys—led to a significant increase in effort as compared with when no rewards were offered. Our study adds to the literature showing substantive incentive effects (Borghans et al., 2008; Dellavigna & Pope, 2018; Sandra & Otto, 2018; Schmitt et al., 2015), which underpin the proposed interpretation of task performance as effort.

Third, looking for the specific personality profiles related to the willingness to exert effort, the subjective personality scale showing the most consistent association with objective effort is need for cognition, in both the intrinsic and extrinsic condition. Sociologists and economists should take note of the proxy ability of need for cognition (Cacioppo & Petty, 1982), a personality scale that is relatively unknown outside of psychology. Unexpectedly, conscientiousness has a significant influence on effort provision only when rewards were in place, but not in the intrinsic condition. Neither delay of gratification nor internal or external LOC can consistently predict students' effort.

Fourth, we propose a synthetic effort measure that averages performance across three standard tasks requiring the use of different executive functions—and control for the score on a matrix-based (nonincentivized) fluid intelligence test, to neutralize the residual influence of any cognitive abilities. When comparing the three tasks employed in the study, there were a few notable differences. The AX-CPT was slightly more affected by personality—specifically by need for cognition and conscientiousness—than the other two and, as additional analyses show, also less affected by fluid intelligence. All considered, we conclude that conscientiousness and need for cognition are more relevant for those tasks underpinned by effort invested in proactive and inhibitory control (AX-CPT task), while delay of gratification could be a better predictor of effort put into processing speed (Slider task).

Fifth, the study contains some specific lessons for cross-disciplinary dialogue. Real-effort tasks are employed in behavioral economics with the purpose of minimizing the influence of ability. However, performance in the Slider task, developed and

mostly used by economists, is significantly correlated with fluid intelligence, but only when material incentives are in place (as is typically the case in experimental economics, but rarely in psychological studies). On the other hand, psychological personality scales such as conscientiousness and LOC have stronger associations with incentivized than with nonincentivized effort, again at odds with the dominant disciplinary paradigm.

This study has several limitations. First, the experimental design limited the sample size for the intrinsic condition, requiring a careful interpretation of these results. This decision was driven by the need to avoid participant fatigue, especially since executive function performance can be affected by excessively long sessions. Thus, our sample is not balanced across the incentive schemes (we have more observations in the extrinsic condition), and it is also not balanced across the three tasks (we have fewer observations for the Simon task). Second, despite our effort to make the questionnaire as child-friendly as possible, we cannot rule out that null results were driven by measurement error. Third, since this is a cross-sectional study, we cannot assess the longitudinal effects of personality or the stability of effort across the life course, which should be assessed in future studies.

Conclusion

The main goals of this study were (a) to understand to which extent psychological scales, which are often used as proxies of effort, are able to predict children's observed effort intensities and (b) to test just how much the association between subjective and objective effort depends on material incentives. The key conclusion is that there is a big difference between saying and doing when it comes to exerting effort, and this difference is even larger when there are no direct material incentives in place to reward effort provision.

Declaration of Conflicting Interests

The author(s) declared no potential conflicts of interest with respect to the research, authorship, and/or publication of this article.

Funding

The author(s) disclosed receipt of the following financial support for the research, authorship, and/or publication of this article: This research has received funding from the European Research Council (ERC) under the European Union's Horizon 2020 research and innovation programme (grant agreement No 758600).

ORCID iD

Simona Demel  <https://orcid.org/0000-0001-6305-1401>

Supplemental Material

Supplemental material for this article is available online.

Notes

1. For stylistic purposes, we use different terms (personality scales, subjective effort measures, survey-based effort proxies) to refer to the selected personality traits that are conceived as relevant for effort. We call them subjective, because they are purely self-assessed whereas objective effort (also referred to as exerted or real effort) is measured through observable behaviors.
2. Please note that throughout the article, the terms noncognitive/soft skills, personality/psychological traits, self-reported effort, effort proxies, and subjective effort refer to these four personality variables.
3. One participant is excluded from the analyses of the extrinsic condition due to technical issues experienced during the experiment.
4. In order to make it easier for the participants, a blue sticker was placed on the “L” key of the computer keyboard and an orange sticker was placed on the “S” key and these keys were referred to by their color instead of their letter. Please see the Appendix (available in the online supplement) for additional details regarding the tasks and the experimental design.
5. In the first two bars, or in the “subjects doing leisure tasks included” version, the total correct responses are averaged across both rounds, with participants who played games coded as having zero total correct responses in that round. In the second two bars, or in the “subjects doing leisure tasks excluded” version, we removed the effect of game playing and only analyzed the effort in the tasks. This was done by only studying the total correct in one round of each incentive scheme. If participants played a game in one of the rounds, the number of total correct responses from the other round was included. If no game was played, the total correct was averaged across both rounds, and only if participants played games in both rounds were they excluded.
6. For comparability purposes, results in column 1 of Table 5 show a stacked version of the results in Models 1 through 4 in Tables 3 and 4. Columns 2, 3 and 4 present the equivalent coefficients for the task performance in the Slider, AX-CPT, and Simon tasks, respectively.
7. We also checked if the number of times a child chooses to perform the task instead of play one of the games was related to one of the subjective measures. We found that need for cognition was the only measure that was statistically significant at the 5% level or better.

References

- Araujo, F. A., Carbone, E., Conell-Price, L., Dunietz, M. W., Jaroszewicz, A., Landsman, R., Lamé, D., Vesterlund, L., Wang, S. W., & Wilson, A. J. (2016). The slider task: An example of restricted inference on incentive effects. *Journal of the Economic Science Association*, 2(1), 1-12. <https://doi.org/10.1007/s40881-016-0025-7>
- Beißert, H., Köhler, M., Rempel, M., & Beierlein, C. (2014). *Eine deutschsprachige Kurzskaala zur Messung des Konstrukts Need for Cognition* [A German short-scale for measuring the construct need for cognition] (GESIS-Working Papers No. 32). <https://nbn-resolving.org/urn:nbn:de:0168-ssoar-403157>
- Benabou, R., & Tirole, J. (2003). Intrinsic and extrinsic motivation. *Review of Economic Studies*, 70(3), 489-520. <https://doi.org/10.1111/1467-937X.00253>
- Bickel, W. K., Pitcock, J. A., Yi, R., & Angtuaco, E. J. C. (2009). Congruence of BOLD response across intertemporal choice conditions: Fictive and real money gains and losses. *Journal of Neuroscience*, 29(27), 8839-8846. <https://doi.org/10.1523/JNEUROSCI.5319-08.2009>

- Blossfeld, H.-P., & Roßbach, H.-G. (Eds.). (2019). *Education as a lifelong process: The German National Educational Panel Study (NEPS)* (Vol. 3). Springer VS.
- Borghans, L., Golsteyn, B. H. H., Heckman, J. J., & Humphries, J. E. (2016). What grades and achievement tests measure. *Proceedings of the National Academy of Sciences*, 113(47), 13354-13359. <https://doi.org/10.1073/pnas.1601135113>
- Borghans, L., Meijers, H., & Ter Weel, B. (2008). The role of noncognitive skills in explaining cognitive test scores. *Economic Inquiry*, 46(1), 2-12. <https://doi.org/10.1111/j.1465-7295.2007.00073.x>
- Brañas-Garza, P., Jorrat, D., Espín, A. M., & Sánchez, A. (2020). *Paid and hypothetical time preferences are the same* (MPRA Paper No. 103660). https://mpra.ub.uni-muenchen.de/103660/1/MPRA_paper_103660.pdf
- Buchanan, T. (2016). Self-report measures of executive function problems correlate with personality, not performance-based executive function measures, in nonclinical samples. *Psychological Assessment*, 28(4), 372-385. <https://doi.org/10.1037/pas0000192>
- Cacioppo, J. T., & Petty, R. E. (1982). The need for cognition. *Journal of Personality and Social Psychology*, 42(1), 116-131. <https://doi.org/10.1037/0022-3514.42.1.116>
- Cassar, L., & Meier, S. (2018). Nonmonetary incentives and the implications of work as a source of meaning. *Journal of Economic Perspectives*, 32(3), 215-238. <https://doi.org/10.1257/jep.32.3.215>
- Cespón, J., Galdo-Álvarez, S., & Díaz, F. (2016). Cognitive control activity is modulated by the magnitude of interference and pre-activation of monitoring mechanisms. *Scientific Reports*, 6(1), 1-11. <https://doi.org/10.1038/srep39595>
- Charness, G., Gneezy, U., & Henderson, A. (2018). Experimental methods: Measuring effort in economics experiments. *Journal of Economic Behavior & Organization*, 149(May), 74-87. <https://doi.org/10.1016/j.jebo.2018.02.024>
- Corgnet, B., Hernán-González, R., & Schniter, E. (2015). Why real leisure really matters: Incentive effects on real effort in the laboratory. *Experimental Economics*, 18(2), 284-301. <https://doi.org/10.1007/s10683-014-9401-4>
- Cubel, M., Nuevo-Chiquero, A., Sanchez-Pages, S., & Vidal-Fernandez, M. (2016). Do personality traits affect productivity? Evidence from the laboratory. *Economic Journal*, 126(592), 654-681. <https://doi.org/10.1111/ecoj.12373>
- Declerck, C. H., Boone, C., & De Brabander, B. (2006). On feeling in control: A biological theory for individual differences in control perception. *Brain and Cognition*, 62(2), 143-176. <https://doi.org/10.1016/j.bandc.2006.04.004>
- Dellavigna, S., & Pope, D. (2018). What motivates effort? Evidence and expert forecasts. *Review of Economic Studies*, 85(2), 1029-1069. <https://doi.org/10.1093/restud/rdx033>
- Demel, S., Barr, A., Miller, L., & Ubeda, P. (2019). Commitment to political ideology is a luxury only students can afford: A distributive justice experiment. *Journal of Experimental Political Science*, 6(1), 33-42. <https://doi.org/10.1017/XPS.2018.14>
- Doren, C., & Grodsky, E. (2016). What skills can buy: Transmission of advantage through cognitive and noncognitive skills. *Sociology of Education*, 89(4), 321-342. <https://doi.org/10.1177/0038040716667994>
- Duckworth, A. L., & Kern, M. L. (2011). A meta-analysis of the convergent validity of self-control measures. *Journal of Research in Personality*, 45(3), 259-268. <https://doi.org/10.1016/j.jrp.2011.02.004>
- Duckworth, A. L., Taxer, J. L., Eskreis-Winkler, L., Galla, B. M., & Gross, J. J. (2019). Self-control and academic achievement. *Annual Review of Psychology*, 70(1), 373-399. <https://doi.org/10.1146/annurev-psych-010418-103230>

- Friedman, N. P., Miyake, A., Corley, R. P., Young, S. E., DeFries, J. C., & Hewitt, J. K. (2006). Not all executive functions are related to intelligence. *Psychological Science, 17*(2), 172-179. <https://doi.org/10.1111/j.1467-9280.2006.01681.x>
- Friedman, N. P., Miyake, A., Young, S. E., DeFries, J. C., Corley, R. P., & Hewitt, J. K. (2008). Individual differences in executive functions are almost entirely genetic in origin. *Journal of Experimental Psychology: General, 137*(2), 201-225. <https://doi.org/10.1037/0096-3445.137.2.201>
- Gill, D., & Prowse, V. (2012). A structural analysis of disappointment aversion in a real effort competition. *American Economic Review, 102*(1), 469-503. <https://doi.org/10.1257/aer.102.1.469>
- Goerg, S. J., Kube, S., & Radbruch, J. (2019). The effectiveness of incentive schemes in the presence of implicit effort costs. *Management Science, 65*(9), 4063-4078. <https://doi.org/10.1287/mnsc.2018.3160>
- Gonthier, C., Macnamara, B. N., Chow, M., Conway, A. R. A., & Braver, T. S. (2016). Inducing proactive control shifts in the AX-CPT. *Frontiers in Psychology, 7*, Article 1882. <https://doi.org/10.3389/fpsyg.2016.01822>
- Hsin, A., & Xie, Y. (2017). Life-course changes in the mediation of cognitive and non-cognitive skills for parental effects on children's academic achievement. *Social Science Research, 63*(March), 150-165. <https://doi.org/10.1016/j.ssresearch.2016.09.012>
- Inzlicht, M., Shenhav, A., & Olivola, C. Y. (2018). The effort paradox: Effort is both costly and valued. *Trends in Cognitive Sciences, 22*(4), 337-349. <https://doi.org/10.1016/j.tics.2018.01.007>
- Jakoby, N., & Jacob, R. (1999). Messung von internen und externen Kontrollüberzeugungen in allgemeinen Bevölkerungsumfragen [Measurement of internal and external locus of control in general population surveys]. *ZUMA Nachrichten, 23*(45), 61-71. <https://nbn-resolving.org/urn:nbn:de:0168-ssoa-208124>
- John, O. P., Naumann, L. P., & Soto, C. J. (2008). Paradigm shift to the integrative Big Five Trait taxonomy: History, measurement, and conceptual issues. In O. P. John, R. W. Robins, & L. A. Pervin (Eds.), *Handbook of personality: Theory and research* (3rd ed., pp. 114-158). The Guilford Press.
- Judge, T. A., Erez, A., Bono, J. E., & Thoresen, C. J. (2002). Are measures of self-esteem, neuroticism, locus of control, and generalized self-efficacy indicators of a common core construct? *Journal of Personality and Social Psychology, 83*(3), 693-710. <https://doi.org/10.1037/0022-3514.83.3.693>
- Kautz, T., Heckman, J. J., Diris, R., Weel, B. T., & Borghans, L. (2014). *Fostering and measuring skills: Improving cognitive and non-cognitive skills to promote lifetime success* (OECD Education Working Papers No. 110). <https://www.nber.org/papers/w20749>
- Keller, U., Strobel, A., Wollschläger, R., Greiff, S., Martin, R., Vainikainen, M.-P., & Preckel, F. (2019). A need for cognition scale for children and adolescents. *European Journal of Psychological Assessment, 35*(1), 137-149. <https://doi.org/10.1027/1015-5759/a000370>
- Kurzban, R. (2016). The sense of effort. *Current Opinion in Psychology, 7*(February), 67-70. <https://doi.org/10.1016/j.copsyc.2015.08.003>
- Lechner, C. M., Danner, D., & Rammstedt, B. (2019). Grit (effortful persistence) can be measured with a short scale, shows little variation across socio-demographic subgroups, and is associated with career success and career engagement. *PLOS ONE, 14*(11), 1-29. <https://doi.org/10.1371/journal.pone.0224814>
- Mackiewicz, M., & Ciecuch, J. (2016). Pictorial Personality Traits Questionnaire for Children (PPTQ-C): A new measure of children's personality traits. *Frontiers in Psychology, 7*, 498. <https://doi.org/10.3389/fpsyg.2016.00498>

- Malanchini, M., Engelhardt, L. E., Grotzinger, A. D., Harden, K. P., & Tucker-Drob, E. M. (2019). "Same but different": Associations between multiple aspects of self-regulation, cognition, and academic abilities. *Journal of Personality and Social Psychology, 117*(6), 1164-1188. <https://doi.org/10.1037/pspp0000224>
- Mijs, J. J. B. (2019). The paradox of inequality: Income inequality and belief in meritocracy go hand in hand. *Socio-Economic Review*. Advance online publication. <https://doi.org/10.1093/ser/mwy051>
- Mischel, W., Ebbsen, E. B., & Raskoff Zeiss, A. (1972). Cognitive and attentional mechanisms in delay of gratification. *Journal of Personality and Social Psychology, 21*(2), 204-218. <https://doi.org/10.1037/h0032198>
- Miyake, A., & Friedman, N. P. (2012). The nature and organization of individual differences in executive functions: Four general conclusions. *Current Directions in Psychological Science, 21*(1), 8-14. <https://doi.org/10.1177/0963721411429458>
- Moffitt, T. E., Arseneault, L., Belsky, D., Dickson, N., Hancox, R. J., Harrington, H. L., Houts, R., Poulton, R., Roberts, B. W., Ross, S., Sears, M. R., Thomson, M., & Caspi, A. (2011). A gradient of childhood self-control predicts health, wealth, and public safety. *Proceedings of the National Academy of Sciences, 108*(7), 2693-2698. <https://doi.org/10.1073/pnas.1010076108>
- Muir, A. M., Carbine, K. A., Goodwin, J., Hedges-Muncy, A., Endrass, T., & Larson, M. J. (2019). Differentiating electrophysiological indices of internal and external performance monitoring: Relationship with perfectionism and locus of control. *PLoS ONE, 14*(10), 1-21. <https://doi.org/10.1371/journal.pone.0219883>
- Murasko, J. E. (2007). A lifecourse study on education and health: The relationship between childhood psychosocial resources and outcomes in adolescence and young adulthood. *Social Science Research, 36*(4), 1348-1370. <https://doi.org/10.1016/j.ssresearch.2007.01.001>
- Paas, F., Tuovinen, J. E., Tabbers, H., & Van Gerven, P. W. M. (2003). Cognitive load measurement as a means to advance cognitive load theory. *Educational Psychologist, 38*(1), 63-71. https://doi.org/10.1207/S15326985EP3801_8
- Raven, J. C., Court, J. H., & Raven, J. (1996). *Raven matrices progresivas* [Raven progressive matrices]. TEA Ediciones.
- Rimfeld, K., Kovas, Y., Dale, P. S., & Plomin, R. (2016). True grit and genetics: Predicting academic achievement from personality. *Journal of Personality and Social Psychology, 111*(5), 780-789. <https://doi.org/10.1037/pspp0000089>
- Roberts, B. W., Kuncel, N. R., Shiner, R., Caspi, A., & Goldberg, L. R. (2007). The power of personality: The comparative validity of personality traits, socioeconomic status, and cognitive ability for predicting important life outcomes. *Perspectives on Psychological Science, 2*(4), 313-345. <https://doi.org/10.1111/j.1745-6916.2007.00047.x>
- Rotter, J. B. (1990). Internal versus external control of reinforcement: A case history of a variable. *American Psychologist, 45*(4), 489-493. <https://doi.org/10.1037/0003-066X.45.4.489>
- Ryan, R. M., & Deci, E. L. (2000). Intrinsic and extrinsic motivations: Classic definitions and new directions. *Contemporary Educational Psychology, 25*(1), 54-67. <https://doi.org/10.1006/ceps.1999.1020>
- Sandra, D. A., & Otto, A. R. (2018). Cognitive capacity limitations and need for cognition differentially predict reward-induced cognitive effort expenditure. *Cognition, 172*(March), 101-106. <https://doi.org/10.1016/j.cognition.2017.12.004>

- Schmitt, H., Ferdinand, N. K., & Kray, J. (2015). The influence of monetary incentives on context processing in younger and older adults: An event-related potential study. *Cognitive, Affective & Behavioral Neuroscience, 15*(2), 416-434. <https://doi.org/10.3758/s13415-015-0335-x>
- Segal, C. (2012). Working when no one is watching: Motivation, test scores, and economic success. *Management Science, 58*(8), 1438-1457. <https://doi.org/10.1287/mnsc.1110.1509>
- Sutter, M., Zoller, C., & Glätzle-Rützler, D. (2019). Economic behavior of children and adolescents: A first survey of experimental economics results. *European Economic Review, 111*(January), 98-121. <https://doi.org/10.1016/j.eurocorev.2018.09.004>
- Unsworth, N., Miller, J. D., Lakey, C. E., Young, D. L., Meeks, J. T., Campbell, W. K., & Goodie, A. S. (2009). Exploring the relations among executive functions, fluid intelligence, and personality. *Journal of Individual Differences, 30*(4), 194-200. <https://doi.org/10.1027/1614-0001.30.4.194>
- Van Steenbergen, H., Band, G. P. H., & Hommel, B. (2009). Reward counteracts conflict adaptation: Evidence for a role of affect in executive control. *Psychological Science, 20*(12), 1473-1477. <https://doi.org/10.1111/j.1467-9280.2009.02470.x>
- Watts, T. W., Duncan, G. J., & Quan, H. (2018). Revisiting the marshmallow test: A conceptual replication investigating links between early delay of gratification and later outcomes. *Psychological Science, 29*(7), 1159-1177. <https://doi.org/10.1177/0956797618761661>
- Westbrook, A., & Braver, T. S. (2015). Cognitive effort: A neuroeconomic approach. *Cognitive, Affective, & Behavioral Neuroscience, 15*(2), 395-415. <https://doi.org/10.3758/s13415-015-0334-y>
- Willoughby, M. T., Blair, C. B., Wirth, R. J., & Greenberg, M. (2010). The measurement of executive function at age 3 years: Psychometric properties and criterion validity of a new battery of tasks. *Psychological Assessment, 22*(2), 306-317. <https://doi.org/10.1037/a0018708>

Author Biographies

Paula Apascaritei is a postdoctoral researcher at Universidad Carlos III de Madrid (IC3JM), working on the project “Effort and Social Inequality”. She completed her PhD in Management at IESE Business School. Her research interests include social inequality and human capital management.

Simona Demel is a postdoctoral researcher at Universidad Carlos III de Madrid (IC3JM), working on the project “Effort and Social Inequality”. After completing her PhD in Economics at the University of the Basque Country, she worked as a postdoctoral researcher at Queen’s University Belfast. Her main areas of research interest are in behavioural and experimental economics.

Jonas Radl is an Associate Professor of Sociology in the Department of Social Sciences at Universidad Carlos III de Madrid and Head of the Research Group “Effort and Social Inequality” at WZB Berlin Social Science Center. He obtained his PhD at the European University Institute in Florence. His research focuses on social stratification and the life course.