

Facchini, Giovanni; Hatton, Timothy J.; Steinhardt, Max F.

**Working Paper**

## Opening Heaven's Door: Public Opinion and Congressional Votes on the 1965 Immigration Act

IZA Discussion Papers, No. 14934

**Provided in Cooperation with:**

IZA – Institute of Labor Economics

*Suggested Citation:* Facchini, Giovanni; Hatton, Timothy J.; Steinhardt, Max F. (2021) : Opening Heaven's Door: Public Opinion and Congressional Votes on the 1965 Immigration Act, IZA Discussion Papers, No. 14934, Institute of Labor Economics (IZA), Bonn

This Version is available at:

<https://hdl.handle.net/10419/250595>

**Standard-Nutzungsbedingungen:**

Die Dokumente auf EconStor dürfen zu eigenen wissenschaftlichen Zwecken und zum Privatgebrauch gespeichert und kopiert werden.

Sie dürfen die Dokumente nicht für öffentliche oder kommerzielle Zwecke vervielfältigen, öffentlich ausstellen, öffentlich zugänglich machen, vertreiben oder anderweitig nutzen.

Sofern die Verfasser die Dokumente unter Open-Content-Lizenzen (insbesondere CC-Lizenzen) zur Verfügung gestellt haben sollten, gelten abweichend von diesen Nutzungsbedingungen die in der dort genannten Lizenz gewährten Nutzungsrechte.

**Terms of use:**

*Documents in EconStor may be saved and copied for your personal and scholarly purposes.*

*You are not to copy documents for public or commercial purposes, to exhibit the documents publicly, to make them publicly available on the internet, or to distribute or otherwise use the documents in public.*

*If the documents have been made available under an Open Content Licence (especially Creative Commons Licences), you may exercise further usage rights as specified in the indicated licence.*

DISCUSSION PAPER SERIES

IZA DP No. 14934

**Opening Heaven's Door: Public Opinion  
and Congressional Votes on the 1965  
Immigration Act**

Giovanni Facchini  
Timothy J. Hatton  
Max F. Steinhardt

DECEMBER 2021

## DISCUSSION PAPER SERIES

IZA DP No. 14934

# Opening Heaven's Door: Public Opinion and Congressional Votes on the 1965 Immigration Act

**Giovanni Facchini**

*University of Nottingham and IZA*

**Timothy J. Hatton**

*University of Essex, Australian National  
University and IZA*

**Max F. Steinhardt**

*John F. Kennedy Institute, Free University of  
Berlin and IZA*

DECEMBER 2021

Any opinions expressed in this paper are those of the author(s) and not those of IZA. Research published in this series may include views on policy, but IZA takes no institutional policy positions. The IZA research network is committed to the IZA Guiding Principles of Research Integrity.

The IZA Institute of Labor Economics is an independent economic research institute that conducts research in labor economics and offers evidence-based policy advice on labor market issues. Supported by the Deutsche Post Foundation, IZA runs the world's largest network of economists, whose research aims to provide answers to the global labor market challenges of our time. Our key objective is to build bridges between academic research, policymakers and society.

IZA Discussion Papers often represent preliminary work and are circulated to encourage discussion. Citation of such a paper should account for its provisional character. A revised version may be available directly from the author.

ISSN: 2365-9793

**IZA – Institute of Labor Economics**

Schaumburg-Lippe-Straße 5–9  
53113 Bonn, Germany

Phone: +49-228-3894-0  
Email: [publications@iza.org](mailto:publications@iza.org)

[www.iza.org](http://www.iza.org)

## ABSTRACT

---

# Opening Heaven's Door: Public Opinion and Congressional Votes on the 1965 Immigration Act\*

The Immigration Act of 1965 marked a dramatic shift in policy and one with major long term consequences for the volume and composition of immigration to the United States. Here we explore the political economy of a reform that has been overshadowed by the Civil Rights and Great Society programs. We find that public opinion was against expanding immigration, but it was more favorable to abolishing the old country of origin quota system. Votes in the House of Representatives and the Senate were more closely linked to opinion on abolishing the country of origin quotas than to public opinion on the volume of immigration. Support for immigration reform initially followed in the slipstream of civil rights legislation both among members of Congress and their constituents. The final House vote, on a more restrictive version of the bill, was instead more detached from state-level public opinion on civil rights and gained more support from those whose constituents wanted to see immigration decreased.

**JEL Classification:** N12, F22, J68

**Keywords:** US immigration policy, 1965 Immigration Act, congressional voting

**Corresponding author:**

Timothy J. Hatton  
Department of Economics  
University of Essex  
Colchester CO4 3SQ  
United Kingdom  
E-mail: [hatton@essex.ac.uk](mailto:hatton@essex.ac.uk)

---

\* We would like to thank Jason Kehrberg for sharing information on how to implement MRP for predicting opinions on immigrant at the state level. We also thank Sebastian Garcia-Torres for excellent research assistance. Financial support for data acquisition was provided by the Research School of Economics, Australian National University.

## 1. Introduction

The passing of the 1965 Amendments to the Immigration Act is widely believed to have been the most radical change in US immigration policy in the last century. It abolished the country of origin quotas that were first imposed in 1921 and that had been little altered since then. This landmark shift in policy is often credited with dramatically changing the ethnic composition of immigration to the United States and with opening the gates to a massive increase in the number of immigrants (Borjas 1999, Ch. 3). To many observers, it had demographic, economic and political consequences that echo right down to the present. As immigration historians Alba and Nee put it: “the Immigration Act of 1965 has probably had, in the long run, an impact on American Society as deep as the initially more acclaimed civil rights laws of the decade” (2003, p. 174).

In this paper we re-examine the congressional votes on the 1965 Immigration Act and their links with public opinion. Existing studies focus principally on the trends in federal politics, in particular the influence of interest groups, political alliances and above all on the tortuous negotiations that took place in the House of Representatives and the Senate (Hutchinson 1981; Reimers 1992; Graham 1998; Tichenor 2002; Daniels 2004; Yang 2020). As one historian observes “It was an inside the beltway adjustment engineered by liberal elites” (Graham 1998, p. 56). These accounts provide extensive insights into the positions of key players, the mechanics of how the Act came to pass, and above all on party politics. Insofar as they embrace wider opinion, they focus on political movements and pressure groups, which may not be representative of average opinion at the grass roots level. The Immigration Act followed in the slipstream of the 1964 Civil Rights Act and the 1965 Voting Rights Act and is often seen as part of a package of inter-linked anti-discrimination legislation. Yet these are very different issues and while they may have been linked in the legislature, immigration reform had a much lower profile in wider society.

In this paper we explore the association between congressional votes on the bill that became the 1965 Immigration Act and public opinion at the state level. Was this landmark reform simply the result of political machinations ‘inside the beltway’ on a piece of unpopular legislation (Marinari 2014)? Or did voting on it correspond with public sentiment, which varied widely across the nation? Were the votes cast by legislators consistent with the opinions of those that they represented, and if so with which particular views? How were public attitudes on immigration related (if at all) to opinion on civil rights legislation? And how can voting on the bill be reconciled with its specific provisions and with subsequent trends in immigration? To answer these questions, we use a unique national survey of public opinion taken just prior to the debate in the House. This contains the responses to two questions that have important implications for understanding the links between popular opinion and congressional voting on immigration. One elicits the overall strength of anti-immigration feeling whereas the other focuses on the country of origin quota system, which had previously favoured immigrants from Northwest Europe over Southern and Eastern Europe and

effectively blocked immigration from elsewhere in the Eastern Hemisphere. While one third of respondents wanted to reduce immigration, more than half were in favour of abolishing the quota system.

There is a large literature that quantitatively analyses roll-call votes in Congress over a wide range of issues. Several studies have analysed votes on immigration policy (e.g. Gonzalez and Kamdar 2000; Milner and Tingley 2009; Facchini and Steinhardt 2011; Casarico et al. 2018; Facchini et al. 2022) but only one focuses specifically on the 1965 Act (Gimpel and Edwards 1999). While it is widely recognised that members of Congress have to pay heed to the opinions of their constituents (Gerber and Lewis 2004; Facchini and Mayda 2010), the existing literature rarely links votes in Congress with local public opinion. Instead, most studies implicitly solve out for public opinion as an intervening variable between the characteristics of a district and its representative's vote on an issue. One reason for the lack of direct tests is that public opinion surveys that cover the whole country typically provide too few observations at the state or district level to be reliably connected with congressional votes. However, recent studies in political science have adopted Multi-level Regressions with Post-stratification (MRP) to produce reasonably accurate estimates of state-level public opinion using as little as a single large national poll (Lax and Phillips 2009b; Kestellec et al. 2019; Hanretty 2020). We adopt this approach in order to produce state-level estimates on the two key dimensions of public opinion.

Studies linking public opinion to voting in national, state and local legislatures typically characterise local opinion along a uni-dimensional scale (e.g. Gerber and Lewis 2004). While this may be appropriate for some issues, this approach does not necessarily capture the more-subtle dimensions of opinion that are directly relevant to the legislation at hand (Lax and Phillips 2012). In contrast, we analyse the responses to two questions that are related directly to the provisions of the bill that became the 1965 Immigration Act, namely opinion on the scale of immigration and on abolishing the country of origin quotas. Some studies have included measures of representatives' ideological stance to see whether opinion directly influences representatives' votes or if local opinion matters only indirectly through the choice of candidates in elections (Levitt 1996; Gerber and Lewis 2004; Lee et al. 2004; Facchini and Steinhardt 2011; Fowler and Hall 2016; Caughey and Warshaw 2018). Hence we also explore the effects of adding characteristics of the representative and the locality to see how far this attenuates the coefficients on opinion. It is important to stress, however, that – given that we are not able to exploit an exogenous shift in preferences – our analysis will not be able to answer the question on whether opinion *causes* voting behaviour. More modestly, we will explore whether and to what extent the votes cast are *consistent* with opinion at the state level.

Our key finding is that congressional votes cast in favour of reform are strongly and positively associated with the share of respondents in the legislator's state who favoured abolishing the country of origin quotas. The coefficient remains significant when we account for key district

level characteristics as well as personal attributes of the representative, including party affiliation and left-right ideology. In contrast, there is no evidence of a negative association between voting and the proportion of respondents wishing to decrease immigration. These results hold, both when we consider the first vote in the House and in the Senate. On the other hand, there is some evidence that, in the presence of other variables, House votes in favour of the final version of the bill (the conference report) were positively associated with opinion on decreasing immigration. Not surprisingly, voting for reform was negatively associated with the district being in the South and positively with the share of its population urban. Among the characteristics of the representatives, the most important is the individual's political ideology score. But even with the full set of controls there is still a significant association between the votes for the bill and public opinion in favor of abolishing the country of origin quotas.

How do we interpret these results? First, the strong association between voting and opinion on abolishing the country of origin quotas indicates that anti-discrimination sentiment was not only an issue for legislators 'inside the beltway' but it also resonated with opinion among their electors. We find that the first vote on the bill in the House is also strongly correlated across states with public opinion approving the Civil Rights Act of 1964. This suggests that these two issues were linked, not only within the legislature but also across the nation and that both these reforms are associated with the groundswell of opinion against racial and ethnic discrimination. The Immigration Act followed hard on the heels of the passage of the 1964 Civil Rights Act and the 1965 Voting Rights Act, which provided an initial impetus for reform. But the immigration debate subsequently took on a life of its own. While abolishing the country of origin quotas remained a central issue, immigration reform became decoupled from public opinion on civil rights in the final House vote on an amended and more restrictive version of the bill.

The lack of a negative association between votes in Congress and state-level public opinion on decreasing immigration is more puzzling, particularly given the subsequent history of immigration. Anti-immigration sentiment was at an all-time low in the mid-1960s and immigration had less political salience than civil rights, so this may explain the lack of association between anti-immigration sentiment and the initial vote. As the final version of the bill was also more restrictive than the original House version, this helps to explain why it was supported by those representing electorates where anti-immigrant sentiment was relatively strong. Perhaps equally important, much of the massive subsequent increase in immigration often attributed to the 1965 Act was, in fact, due to side effects which would have been hard to predict in 1965, or to policies implemented in the 1970s and beyond (Reimers 1983, p. 10; Daniels 2004, pp. 135,139; Zolberg 2006, pp. 337-338; Hatton 2015).

The rest of the paper proceeds as follows. We first outline the developments that led up to the final passage of the 1965 Act and we discuss the political economy of immigration reform. We then examine the responses to a Gallup public opinion survey taken just prior to and the

congressional debate and show how they link with the personal characteristics of the respondents. We then use the survey results to generate state-level MRP predictions of two key elements of opinion on immigration policy. This is followed by an econometric analysis of the voting patterns on two votes in the House and one in the Senate, using our predicted measures of opinion together with a range of other variables. We then turn to interpreting the results in the context of the civil rights movement and in the light of assessments of the likely effects of the Act on the volume of immigration. This is followed by a short concluding section.

## **2. The 1965 Immigration Act**

### *2.1 The passing of the Act*

The Hart-Celler Act of 1965 (effective 1st July 1968), named after its sponsors Senator Philip Hart (D-MI) and Representative Emmanuel Celler (D-NY), was a set of amendments to the Immigration Act of 1952 and in order to appreciate its importance it must be compared with what went before. The Immigration Act of 1952, known as the McCarran-Walter Act after its sponsors Senator Patrick A. McCarran (R-NV) and Representative Francis E. Walter (D-PA), had largely reaffirmed the status quo in immigration policy. In particular, it retained country of origin quotas in proportion to the ancestry of the US population in the 1920 census. As a result, 81.6 percent of the total numerical annual quota of 156,000 was allocated to three countries, the UK (43.2%), Germany (16.7%) and Ireland (11.5%), with a further 16 percent allocated to the countries of Southern and Eastern Europe. Unused quota could not be transferred from one origin country to another. One small relaxation was the introduction of a quota of just 2,000 in total for immigrants from the so-called Asia-Pacific Triangle, which had been completely excluded by earlier Acts.<sup>1</sup> The Act also introduced a hierarchy of preferences for immigrants admitted under the quota. The first preference was for immigrants admitted on the basis of employment (50% of the total) followed by three preferences for different classes of relatives. As in the previous legislation there was no numerical limit on immediate relatives of US citizens. There was no quota or preference system for immigrants from the Western Hemisphere, who were admitted under a labor certification system but with no route to permanent residency for those from contiguous countries.<sup>2</sup>

The Hart-Celler Act was a radical break with the past largely because it abolished the country of origin quotas. These were replaced with an overall numerical limit of 170,000 per annum

---

<sup>1</sup> The 1917 Immigration Act, which introduced a literacy test, also prohibited immigration from the “Asiatic Barred Zone”. It extended the Chinese Exclusion Act of 1882 and its successors and the Gentlemen’s Agreement of 1907, which proscribed immigration from Japan and Korea. The 1924 Johnson-Reed Act prohibited immigration from the Asia-Pacific Triangle, which covered much the same area as the Asiatic Barred Zone, on the grounds of preventing the immigration of those who would not be permitted to naturalize.

<sup>2</sup> The 1952 Act counted in the Western Hemisphere the countries of Central and South America that had become independent, having previously been included in Eastern Hemisphere quota of the colonial power. Immigrants from Caribbean colonies were still included in the quota of the governing country (notably the UK).



for the Eastern Hemisphere, which now included the countries formerly comprising the Asia-Pacific Triangle, with a maximum of 20,000 for any one country. Thus for the first time since the early 1920s each source country had equal numerical access. Another major change was the introduction of a numerical limit of 120,000 for the Western Hemisphere, initially without a system of preferences or a cap for individual countries and subject to labor certification.<sup>3</sup> As in the earlier legislation, the admission of spouses and unmarried minor children was exempt from the quota, and this was extended to include parents of US citizens. The Hart-Celler Act also reorganized the system of preferences that were applied to the Eastern Hemisphere. It established preferences for four classes of relatives, including one (the 5<sup>th</sup> preference) for brothers and sisters, and one preference for refugees (the 7<sup>th</sup>). There were two employment-based preferences, one for professional and scientific workers and one for skilled and unskilled manual occupations. The employment preferences were demoted in the order (to the 3<sup>rd</sup> and 6<sup>th</sup> preferences) and they amounted to only 20 percent of the total. This represents a substantial shift in the composition of visas away from employment towards family reunion. There was also a change in the procedure for gaining labor certification. Under the McCarran-Walter Act the burden of proof lay with the Secretary of Labor to show cause to deny entry. Now the burden of proof lay with applicants (and for manual workers with their prospective employers) to show no adverse labor market consequences. This was seen as a tougher labor test that would most affect prospective immigrants from the Western Hemisphere (Schwartz 1966, pp. 99-102; Keely 1971, p. 160).

Although there had been a number of proposals for abolishing or reforming the country of origin quota system<sup>4</sup> the immediate origin of the 1965 Act lies with proposals put forward in 1963 by President Kennedy (see Kennedy 1964). It proposed the abolition of the national origins system (and the Asia-Pacific Triangle quota) to be replaced with an individual country cap of 10 percent of the overall quota. Under the proposed preference system up to 50 percent of the quota was allocated to highly skilled or trained workers with subsequent preferences for occupations in demand, non-immediate relatives and refugees. And there was to be no numerical cap on the Western Hemisphere. Although Kennedy's bill did not reach the floor of the House or the Senate, essentially the same proposals were put forward after his death by President Johnson.<sup>5</sup> The legislative history of the Act is far from straightforward and what emerged at the end of the process differed significantly from the administration's original bill. The two most important differences were, first, that the balance of preferences was shifted radically away from employment towards family reunion. And second, the version that was finally passed imposed a cap of 120,000 on immigration from the Western Hemisphere.

---

<sup>3</sup> A preference system was applied to the Western Hemisphere in 1976 and in 1978 the two hemispheric quotas were merged into one worldwide numerical limit of 290,000.

<sup>4</sup> The proposals included pooling unused quota and altering the base year for the national origins formula. In 1962 a bill sponsored by Philip Hart proposed a formula based on the pattern of immigration in the last 15 years adjusted by the population of source countries.

<sup>5</sup> The fate of the 1963 Administration Bill is described in detail by Stern (1975, pp. 35 -50).

The Bill, HR 2580, was introduced by House Judiciary Committee chairman Celler in January 1965 and it was sent to be considered by a subcommittee of the Judiciary Committee.<sup>6</sup> During the deliberations several alternative bills were introduced and some of their provisions were incorporated into HR 2580. The most important was that introduced by subcommittee chair Michael Feighan (D-OH), which amended the administration bill, introducing a system of seven preferences and increasing the share allocated to relatives of American citizens.<sup>7</sup> On the floor of the House, an amendment to place a numerical limit on the Western Hemisphere, proposed by Clark MacGregor (R-MN), was narrowly defeated, with a majority of Republicans voting for the amendment and a majority of Democrats against. The House proceeded to vote on the un-amended bill, which was approved by a large majority of both parties (Table 1).

In the Senate, the Judiciary Committee's subcommittee on Immigration and Naturalization heard a wide range of testimony. Eventually the House version of the bill was approved, subject to a number of amendments, the most important of which was a numerical limit of 120,000 on immigration from the Western Hemisphere.<sup>8</sup> After some negotiations in the Senate Judiciary Committee the bill was reported out and approved by the Senate on a vote of 76 to 18. The conference report (essentially the Senate's version of the bill) was then passed by the House with a slightly larger majority than previously despite the addition of the Western Hemisphere cap. The Act was signed into law by President Johnson on 3<sup>rd</sup> October 1965 and it came fully into effect on 1<sup>st</sup> July 1968.

## *2.2 The political economy of immigration reform*

Ever since the McCarran-Walter Act, and even before it, the country of origin quota system had been criticized as discriminatory. It was seen as particularly harmful in foreign relations where the United States was concerned to forge closer strategic ties with cold war allies and with newly independent developing countries. The fact that the immigration quotas discriminated strongly against some of the nation's key allies (and potential allies) was seen as a major obstacle (FitzGerald and Cook-Martin 2014, Ch. 3). This was one of the reasons that successive presidents had sought to abolish the quota system: Truman in 1952, Eisenhower in 1956 and 1960 and then Kennedy in 1963.<sup>9</sup> In domestic politics, the anti-communist scares of McCarthyism that formed the background to the McCarran-Walter Act had receded by the mid-1960s. And the landslide victory of the Democrats in 1964 created the conditions for

---

<sup>6</sup> In that role, Celler had previously steered through the House the 1964 Civil Rights Act and the 1965 Voting Rights Act.

<sup>7</sup> Feighan's bill largely shaped the version that came to the floor of the House (Hutchinson 1981, pp. 370-373). It also incorporated a stricter requirement for certification (by the Secretary of Labor) for Eastern Hemisphere immigrants under preferences 3 and 6 and all Western Hemisphere immigrants. And it denied adjustment to the status of resident alien by temporary visitors from the Western Hemisphere (Keely 1975).

<sup>8</sup> The cap would go into effect on the date that the Act became fully into force unless a select commission set up to study the issue prompted Congress to amend it. Also, the preference system was not to be applied to the Western Hemisphere (this came eventually in 1976).

<sup>9</sup> The McCarran Walter Act was passed on an override of President Truman's veto. Interestingly Lyndon Johnson, then a senator, voted *for* the override.

liberal reforms, not least through changes to Congressional rules and by sidelining of some of the leading supporters of the national origins system (Stern 1975, pp. 60-63). Thus influential historians of immigration policy have placed the emphasis on external causes and threats, distinct political coalitions and the role of institutional forces and professional experts (Tichenor 2002, pp. 212-218; Daniels 2004, pp. 130-136).

The rise of the Democrats could have been important and likewise generational change. With a majority of Democrats in the House of 295 to only 140 Republicans, Democrats from the Eastern and Northern States were less dependent on their colleagues from the South. And, of the 48 democrats who replaced Republicans in 1965, 47 voted in favor of the final passage of HR 2580. In 1965 three fifths of the House of Representatives were aged under 55 and were therefore members of what Putnam calls the 'civic generation' (Putnam 2000, p. 254). It was also important in the membership of the key subcommittees, both in the House and the Senate (Stern 1975, pp. 63, 66-71; Tichenor 2002, Ch. 7). In the Senate, the subcommittee that considered the 1965 bill was chaired by Edward Kennedy (D-MA) and it included Hiram Fong (R-HI), the first Asian-American to be elected to the Senate, and Philip Hart, who had long campaigned against the quotas, and who had introduced the 1963 Administration Bill to the Senate. In the House the relevant Judiciary subcommittee (No. 1) was chaired by Michael Feighan (D-OH), who became a convert to reform and who replaced Francis Walter who had died in 1963.

The 1965 Act has often been seen as part of the program of radical reforms undertaken in the Kennedy-Johnson era with popular support from the so-called civic generation. Among these were reforms in foreign policy and international trade and domestic reforms that include the 'war on poverty' and, above all, the Civil Rights Act of 1964 and the Voting Rights Act of 1965. As attorney general Robert Kennedy put it in 1964, "Everywhere else in our national life, we have eliminated discrimination based on one's place of birth. Yet this system is still the foundation of our immigration law" (Statement to subcommittee no. 1 of the House Judiciary Committee, July 22, 1964). But the process that brought about the immigration reform is often seen to be very different from that of civil rights. As one historian put it:

The Civil Rights struggle, featuring violent conflict, sectional cleavage, and fundamental constitutional confrontation, was high drama, a televised morality play, watched closely around the globe, ending in triumph when reformers defeated the longest Senate filibuster in history. Immigration reform, on the other hand, was covered only routinely in the press and was scarcely noticed in television newscasts. Unlike civil rights it was not a significant factor in the polarized presidential election of 1964. The 1965 immigration law was a low profile reform, featuring compromise and consensus in Washington. It was an inside-the-beltway adjustment engineered by liberal elites who pledged, and by all evidence sincerely expected, that its important *symbolic* reforms would bring little change in the number and origin of immigrants. Strikingly there was virtually no organised opposition to the immigration bill (Graham 1998, p. 56).

This account suggests that, while immigration may have ridden on the coat tails of the civil rights movement in Congress, it meant little to the average voter. The combined AFL-CIO endorsed the bill whereas in 1952 the AFL had supported maintaining the national origins quotas. But it is far from clear that this reflected the views of its grass roots members. While there were a number of lobby groups that favored reform, such as the National Committee for Immigration Reform, these were not broad-based. Others include religious organizations, notably Jewish and Catholic but also some Protestants such as the Lutherans. There were also a number of organizations based on ancestry, notably Italian, Greek, Japanese and Polish. Some, like the American Committee for Italian Immigration and the Order of the Sons of Italy in America, testified before the immigration subcommittee of the Senate Judiciary Committee and campaigned more widely (Stern 1975, pp. 201-224). But it is unclear how far this was reflected in popular support for immigration reform.

Some observers see the divisions over civil rights and those over immigration as arising from a common groundswell of anti-discrimination opinion (Chin 1996; DeLaet 2000; Chin and Spencer 2015). For civil rights reform, it has been convincingly argued that grassroots organization and local activism pressed the demand for change into the public consciousness, and only then into the agendas of legislators (Lee 2002). Nothing like this happened in the case of immigration reform and much less attention has been paid to assessing public opinion on immigration and its potential influence in Congress. Nevertheless, according to DeLaet (2000, p. 24):

A significant shift in public attitudes from widespread acceptance of racist policies to growing support for civil rights has altered the immigration policy debate dramatically. The change from an immigration policy based on racial exclusion to one founded on non-discrimination is to a great extent the product of this shift in attitudes.

While the civil rights movement may have provided the initial support for immigration reform, it took on a separate identity as the debate progressed. As Marinari (2014, p. 24) puts it:

[T]he final version of the 1965 immigration bill was ultimately the product of late-round negotiations that largely excluded reformers and pitted the Johnson Administration, eager to pass an unpopular piece of legislation swiftly, against intransigent Southern Democrats and their conservative allies in Congress.

However, such arguments have yet to be quantitatively assessed.

### **3. Public opinion on immigration**

#### *3.1 The 1965 Gallup Poll*

We can gain a unique window into the climate of public opinion from range of questions asked in a Gallup poll, which was taken on 24<sup>th</sup>-29<sup>th</sup> June, 1965, at the time when the immigration bill was being debated and two months prior to the initial vote on the bill. A representative sample of 3536 persons of voting age was polled in 38 states plus Washington DC. The excluded states are Connecticut, New Hampshire, Delaware, North and South Dakota, Arizona, Idaho, Nevada, New Mexico, Utah, Alaska and Hawaii. Thus the western states are somewhat underrepresented. In the remaining states the numbers polled were broadly in

proportion to their populations. Further details of the dataset are provided in Appendix 1. The results are summarized in Table 3. As the first panel shows, there was very little popular support for an increase in immigration. A third of respondents wanted to see immigration decreased while almost two fifths wanted to see no change. However, the second panel reveals rather more support for abolishing the national origins system, with just over half in favor and less than a third opposed. Thus the desire for no increase in the numbers was somewhat mitigated by the support for reforming the country of origin quota system. This is all the more impressive given that respondents were explicitly told what the existing system entailed.

The remaining questions relate to the criteria for admission. Most respondents expressed support for bringing refugees into the immigration system. As we have seen, this was one of the provisions of the 1965 Act. With regard to immigrant admissions, over 70 percent thought that occupational skills were a very important criterion, while a more modest majority thought that having relatives in the United States was very important. More than half also thought that country of origin was not very important, which is consistent with opinion on abolishing the country of origin quota system. The impression gained from these attitudes is that there would have been stronger support for the original Kennedy/Johnson proposals, which gave much more weight to employment and skills and much less weight to family reunification than did the final legislation.

### *3.2 Explaining attitudes to immigration*

There is now a large literature on the relationship between attitudes to immigration and a range of personal and contextual characteristics (for surveys see Ceobanu and Escandell 2010; Hainmueller and Hopkins 2014). The strongest and most consistent finding is that more educated individuals tend to have attitudes that are less anti-immigration, either because they face less labor market competition from unskilled immigrants (Scheve and Slaughter 2001; Mayda 2006; Facchini and Mayda 2012) or because those with more education tend to hold more liberal views, are more tolerant towards minorities and are more positive about ethnic and cultural diversity (Hainmueller and Hiscox 2007; 2010). Other variables often included are income and labor market participation, which are linked to the presence or absence of labor market threat but may also related to the potential fiscal impact of immigration (Hanson et al. 2007; Facchini and Mayda 2009).

Personal characteristics such as age, sex and ethnic minority or immigrant status often matter, with younger people, females and minorities often found to be more pro-immigration. Much of the literature, particularly in political science, has emphasized ‘sociotropic’ concerns over individual self-interest. This stems from identification with certain groups or communities, which may run along the lines of class, ethnicity, region or locality, cultural traits or political affiliation (Citrin et al. 1997; Sides and Citrin 2007; Rustenbach 2010; Manevska and Achterberg 2013). Such sociotropic concerns may be manifested as racial intolerance and opposition to immigrants by color, creed or country of origin (Dustmann and

Preston 2007; Card et al. 2012). A variety of individual and contextual variables have been used to capture these motivations although the inferences drawn from the results are often a matter of interpretation.

We model the responses to the 1965 questionnaire in the light of the existing literature, but subject to the constraints of the variables that are available. We capture the civic generation in a dummy for the younger cohort in the data, specifically those born after 1910, and who reached adulthood in the Great Depression, the Second World War and early postwar periods (the minimum age in the data is 20). We also include a dummy for college education (differences among groups with less than college education were never significant). The income variable is annual household income and is the mid-point of each of 11 categories. Dummies are included for being protestant (relative to all others but mainly Catholic), male and white. A dummy for urban takes that value 1 if the individual was living in an urban area with population greater than 10,000 (using 50,000 as the cutoff makes little difference). Finally, we include a dummy for those that profess to be democrats and one for those living in the South (the eleven states that seceded from the Union prior to the Civil War).

Table 3 provides the results of probit regressions where the coefficients are reported as marginal probabilities and the standard errors are clustered at the state level. We lose 104 observations, mainly for lack of information on income. In column (1) the dependent variable is to favor abolition of the country of origin quota system, relative to 'oppose' or 'no opinion'. The high educated tended to favor abolition while those residing in the South tended not to. In column (2) the dependent variable is for wanting immigration to be decreased. The high-educated were less likely to want immigration decreased, although the effect is not strong. Protestants and whites were significantly more likely to want a decrease in immigration while the other explanatory variables, including the South dummy, are insignificant. Overall, the results paint a rather traditional picture of opposition to immigration. In the responses to both of these policy-related questions it is notable that the coefficients on the dummies for civic generation, household income and democrat are small and insignificant. Thus while the growth in college education may have shifted attitudes towards reform, the idea that more liberal public attitudes to immigration were driven by the coming of age of the civic generation, postwar economic prosperity, or the decisive shift towards the democrats receives little support—at least in the cross section.

Turning to the questions about the criteria for admitting immigrants, column (3) shows that protestants and whites tended to think that country of origin was an important criterion. While this echoes the desire to decrease immigration in column (2) it does not translate very strongly into resistance against abolishing the quota system, as shown in column (1). Column (4) shows that those with higher education and higher incomes were more likely to think that skills were very important. This is contrary to what would be expected if immigrants were seen as a labor market threat but it could be consistent with concerns about the welfare burden of low-skilled immigrants. However, the coefficients on these two variables are

negative in the equation for the importance of family in column (5). As the question relates specifically to support from relatives, this suggests that the welfare motive might not be uppermost. It is worth noting also that this is the one question for which the dummy for the civic generation is significantly negative, suggesting perhaps a weakening of the emphasis on family support mechanisms. Finally, attitudes towards providing a formal channel for the admission of refugees was strongest among those with higher education and incomes—the mirror image of attitudes towards the importance of relatives. Interestingly support for a refugee channel was also strong among whites, urban residents, democrats and those residing in the South.

The two responses most directly related to policy are ‘abolish the quota system’ and ‘decrease immigration’. These tend to give opposite signs although the coefficients are not always significant. Broadly speaking, they suggest greater support for reform among the more educated and among non-protestants and non-whites. As with civil rights reforms, opposition to abolishing the quotas was strongest in the South. But perhaps the most striking finding is the lack of significance for party allegiance, which suggests that partisanship was not a major influence on attitudes to immigration. It remains to be seen how, if at all, such mixed messages conformed with congressional votes.

#### **4. Congressional votes on HR2580**

##### *4.1 Explaining votes in Congress*

Among the wide range of quantitative studies analyzing congressional votes a number have focused on immigration bills. Some of these have examined each vote individually (Gimpel and Edwards 1999; Gonzalez and Kamdar 2000; Fetzner 2006) while others pool different immigration bills (Milner and Tingley 2009; Facchini and Steinhardt 2011; Conconi et al. 2020). The focus is chiefly on skills and immigration policy as well as on regional and ethnic composition differences across congressional districts. Only Gimpel and Edwards (1999) have analyzed votes on HR 2580, the bill that became the Hart-Celler Act. In their study they linked the votes in the House of Representatives with characteristics of both the member of congress and of the district that he/she represented. The main findings were that a pro-reform vote was less likely for representatives from southern states and more likely from districts with higher shares of foreign-born and lower shares of rural population (Gimpel and Edwards 1999, pp. 106-109, 146). However, it remains unclear how far this reflects public opinion, as distinct from other characteristics of the district or of the congressional representative.

Although a number of studies have considered the relationship between public opinion and congressional voting, little is known about how it shapes immigration policy specifically (see Monroe 1998; Burstein 2003; Shapiro 2011). One reason is that nationwide polls usually contain too few cases to provide a reliable indicator at the state or district level. One way to overcome this limitation is to use the two-stage Multilevel Regression and Post-stratification

(MRP) method developed by political scientists (Park et al. 2004; Lax and Phillips 2009a; Kastellec et al. 2010). In the first stage, we estimate a multi-level model for individual responses using range of individual-level socioeconomic and geographical predictors. The resulting estimates for each socioeconomic/geographic cell are then weighted (post-stratified) by the proportions of each type in the state population using census data. This method has been found to produce accurate and robust predictions (Lax and Phillips 2009b). We use it to estimate at the state level the two dimensions of public opinion that are closely related to reform: the proportion favoring decreased immigration and the proportion wishing to abolish the system of quotas. For the choice of variables in the first stage, we rely mainly on the work of Butz and Kehrberg (2016), who used MRP to estimate anti-immigration preferences in US states in the 2000s. As individual predictors we use gender, race, age, education and interactions of race and gender and age and education. At the state level, we include the religious composition of the population, the proportion of foreign-born and the Presidential vote for Johnson in 1964. In the second stage, we use data from the 1965 Census for poststratification. Further details are provided in Appendix 2.

We examine two roll call votes in the House of Representatives and one in the Senate. These are taken from Keith Poole's 'Voteview' compilation (Poole and Rosenthal 1997; 2007), which in addition to the votes cast includes the representative's name, party affiliation and congressional district. From the same source we also include DW-NOMINATE, a continuous variable that places the representative on a spectrum between conservative and liberal, based on past voting behavior. This reflects the individual's revealed ideology, which differs within parties, notably between the northern and southern democrats. Other individual characteristics matched to the name of the representative are taken from Swift et al. (2009). We also include as explanatory variables a dummy for the South, district level variables for the share of population urban and median family income and the share of Western Hemisphere immigrants at the state level. Further details can be found in the Appendix 1.

#### *4.2 The first House vote on HR2580*

We first examine the original House vote on HR 2580, which is the most important, as its passage opened the way for progress toward final approval of the bill. Table 4 presents marginal probabilities from probit regressions with standard errors clustered by state. The dependent variable is the representative's vote where *yea* = 1 and *nay* = 0, including paired and announced votes. We drop states that are not represented in the public opinion survey and we also drop the votes of representatives of 'at large' (whole state) districts and cases where no vote was cast, leaving 397 observations.<sup>10</sup> The first column of Table 4 reports the results of a parsimonious specification, accounting for only the two public opinion shares generated by MRP. Public opinion in favor of abolishing the national origin quota system is

---

<sup>10</sup> Out of 435 seats in the House, 26 are dropped by excluding the states not covered by the public opinion survey, a further three 'at large' districts (representing the whole state rather than one district within the state) are dropped and 9 are dropped where no vote was cast.



positively and strongly correlated with support for the bill, indicating that voting was highly consistent with public opinion. In contrast, public opinion on decreasing immigration takes a small and insignificant coefficient.<sup>11</sup> The second column additionally controls for district level characteristics that are not included in the MRP calculation. Support for the bill was much stronger among representatives of districts outside the South and among those representing more urban constituencies. Accounting for these variables, the coefficient on abolish quotas falls in size by more than half, but it is still significant at the 1 percent level, while decrease immigration remains insignificant.

The specification reported in the third column of Table 4 accounts for individual characteristics of the representative. Not surprisingly democrats were more likely to vote in favor of the bill, although the effect of political affiliation is modest in size – and much smaller than in later periods when voting on immigration policy often followed party lines (Facchini and Steinhardt 2011; Mayda et al. 2021). Being from the ‘civic generation’ is positively associated voting in favor of the bill, as is a background in business, which may reflect an employers’ perspective. Having held previous office at the state level is associated with voting against, which could be consistent with being inured to the pre-existing immigration policy. In column (4) we add a more precise measure of the representative’s left-right political orientation, using the DW-NOMINATE score (increasing from left to right on a scale of -1 to +1). The coefficient is strongly negative, indicating that right-leaning representatives were much more likely to vote against. Not surprisingly the coefficients most affected by this addition are South and Democrat, both of which lose significance.

Overall the results indicate that voting in the House on the original version of the bill was highly consistent with state-level opinion on abolishing the country of origin quota system, but not with opinion on restricting immigration. Adding district and representative characteristics attenuates the coefficient, as it would be expected if local opinion is reflected in the characteristics of the elected representative. These results are thus consistent with the idea that voting on HR2580 was conditioned to some degree on state-level public opinion.

#### *4.3 Subsequent votes on HR2580*

The patterns in subsequent roll call votes in the Senate and the House are likely to differ from those of the original House vote for at least three reasons. One is that these votes were on a significantly amended version of the bill, as noted previously. Another is that the process of negotiation and persuasion could have induced some members of Congress to change their initial votes (Binder and Lee 2013). And third there are structural differences between votes in the House and in the Senate, not least in the type of constituencies that they represent. There was a single roll call vote in the Senate on HR2580, which took place after lengthy deliberations in committee. The Senate Judiciary Subcommittee on Immigration and Naturalization heard a wide range of testimony and engaged in an intensive internal debate

---

<sup>11</sup> Even if ‘abolish quotas’ is excluded from the specification, ‘decrease immigration’ remains insignificant.

(Hutchinson 1981, p. 376). As is often noted, in this debate, members of the subcommittee and its witnesses produced some of the most widely quoted statements about the likely results of the proposed reform. The version of the bill that was reported out contained a number of modifications and compromises, the most important of which was the cap on Western Hemisphere immigration. In the event the amended bill was passed by a comfortable majority.

Table 5 presents the results of the roll call vote in the Senate. As before, they include announced and paired votes, but as we omit senators who did not vote and states for which we lack opinion data, we have just 76 observations. Because the public opinion variables are measured at the state level, they exactly match the Senate constituencies. In the first column the coefficient on ‘abolish quotas’ is large and significantly positive while that on ‘decrease immigration’ is not, results that are in line with those for the House reported in Table 4. Similarly also, senators from the South tended to vote against the bill, while those representing more urban states tended to vote in favor. In columns (3) and (4) the coefficients on the representatives’ characteristics are less robust, as might be expected with so few observations. But the coefficient on the DW-NOMINATE score is negative, highly significant and similar in magnitude to that for the House in Table 4. Even in the presence of the full set of controls, including senator ideology, the coefficient on abolish quotas remains positive and significant at the 1 percent level while that on ‘decrease immigration’ remains insignificant.

In Table 6 we turn to the vote in the House on the conference report, which as previously noted was essentially the Senate’s version of the bill. As fewer members cast a vote, the number of observations drops to 380. Similar to the result for the original passage of the bill, when public opinion is included with no other controls the coefficient on ‘abolish quotas’ is strongly positive while that on ‘decrease immigration’ is insignificant. In columns (2) to (4) the negative coefficients on the South and positive coefficients on the share urban are similar to those reported in Table 4. One difference is that the share of Western Hemisphere immigrants in the district population now gives significant negative coefficients in columns (2) and (4). This suggests that the addition of the cap on Western Hemisphere immigration may have made the final bill less attractive to representatives from districts with more Western Hemisphere immigrants. Another difference is that in columns (3) and (4) the coefficient in decrease immigration becomes significantly positive, notably in the presence of the ideology variable DW-Nominate. But as in Table 4, the coefficients on ‘abolish quotas’ remains positive and significant at the 1 percent level in all four columns, although the coefficients are reduced in magnitude by about one third.

The results for the vote in the Senate and the House vote on the conference report differ in some respects from those on the earlier version of the bill. But in all three votes the coefficient on abolishing country of origin quotas remains large and significant even when controlling for key characteristics of the state and of the individual representative. This suggests a strong link between local attitudes towards a less discriminatory immigration policy and Congressional

votes, which is not simply mediated through the characteristics of the representative and the state. In contrast, there is little evidence that congressional votes conformed with public opinion on decreasing the number of immigrants, which is often seen as one of the key connections between public opinion and immigration policy. Indeed, for the House vote on the final version of the bill that became the Hart-Celler Act, the association between votes and anti-immigration opinion becomes significantly positive. In the next section we explore two questions raised by these results. First, to what extent did support for abolishing the quotas follow directly from attitudes over Civil Rights reform? And second, how, if at all, can we reconcile the passing of the Hart-Celler Act with local opinion on the scale of immigration?

## **5. Interpreting the links between public opinion and congressional votes.**

### *5.1 The influence of the civil rights movement*

As noted above, many observers see the immigration reform as driven by the same popular imperatives that underlay the Civil Rights Act of 1964 and the Voting Rights Act of 1965. Not surprisingly, racial issues ranked highly as one of the most salient political issues in the mid-1960s. One indicator of these concerns is illustrated in Figure 1, where we plot the proportion of respondents in the American National Election Studies (ANES) who listed “racial problems” as the most important issue (among nine alternatives) that the government in Washington should take care of. This question was asked in 1960 and then every two years from 1964 until 2000. As Figure 1 shows it reached a peak in the mid-1960s which was not matched before or after. But even though both civil rights reform and immigration reform fall loosely under the anti-discrimination umbrella it is far from clear that opinions on these issues are closely linked.

In the 1964 election campaign immigration as an issue was massively overshadowed by civil rights (and also by the Vietnam War). Nevertheless, the Immigration Act which followed in the wake of the landmark civil rights acts is seen as embodying the same fundamental principle of anti-discrimination (Chin 1996; Chin and Spencer 2015). However, it is far from clear that precisely the same sentiments that underpinned the civil rights revolution applied equally to immigration or that they applied with the same force across the nation. For one thing, most African-Americans, who were the focus of the Civil Rights Act, were in the South whereas most immigrants were in the northern states. Indeed, the correlation between the share of African Americans and the share of foreign born is -0.46 across states and -0.18 across congressional districts. Here we examine the links between the Civil Rights Act and the Hart-Celler Act, first by examining the correspondence across districts of votes on these two pieces of legislation and second by examining directly the correlation across states between public opinion on civil rights and House votes in favor of immigration reform.

How did House votes on immigration by congressional district correlate with votes on the civil rights acts? Table 7 reports the correspondence by district between the first House vote on what became the Civil Rights Act of 1964 and two House votes on immigration in 1965. Not

surprisingly there is a fairly strong correspondence between these votes and the value of Cramér's  $V$  is 0.49 for the first House vote and 0.44 for votes on the conference report. But there are some differences. Of the 43 districts whose representatives voted against civil rights reform but in favor of immigration reform in the first House vote, 12 were districts that switched from Republican to Democrat in the 1964 election. And of the 13 who switched from yea on civil rights to nay on immigration reform, two switched from Democrat to Republican. While the changing composition of the House may account for some of the differences between the initial votes on civil rights and on immigration, there were also differences between the two House votes on immigration reform where a total of 58 representatives changed their votes. 21 of those who supported the bill in the first vote abstained in the second, while another 27 shifted from nay to yea. This somewhat weakened the correspondence across districts between votes for civil rights and for immigration reform.<sup>12</sup>

The correspondence between congressional votes may simply reflect political opinion 'within the beltway' rather than any spatial consistency between these issues in grass roots public opinion. However, we may shed some light on this issue by examining the correlations across states between support for civil rights and opinion on abolishing the immigration quotas. In late 1964 two Gallup Polls surveyed opinion about the Civil Rights Act which had been passed just a few months earlier. These polls asked: "As you know, a civil rights law was recently passed by Congress and signed by the President. In general, do you approve or disapprove of this law?" For comparison with opinion on abolishing the quotas we combine the results of these two polls and apply MRP using the same variables that were applied to opinion on immigration.<sup>13</sup> Figure 2 shows the scatterplot of predictions for the proportion of respondents who, in 1965, wished to abolish the country of origin quotas and the proportion who, a year earlier, stated their approval of the Civil Rights Acts. This is for the 34 states covered in all surveys. There is a clear positive correlation (0.48) but nevertheless there are some differences. Not surprisingly, approval of the Civil Rights Act was lower among southern states, but also in Montana and Wyoming, while the proportion wishing to abolish the quotas varies more widely. Among other states there is considerable variation in the responses to both questions.

Even though opinion on abolishing the quotas does not move in lockstep with attitudes on civil rights the latter may still have been linked with congressional votes as suggested by the correspondence between votes on civil rights and on immigration in Table 7. In order to assess this hypothesis, we use the MRP prediction on approval of Civil Rights legislation in regressions for the House votes on HR 2580. As the regressions reported in Table 8 are

---

<sup>12</sup> This is reflected in the content of the House debate as reported in the *Congressional Record*. In the debate on 25<sup>th</sup> August that immediately preceded the first vote on HR 2580 the word 'discrimination' (and its variants, discriminate and discriminatory) occurred 17.5 times per 10,000 words. In the shorter debate on 30<sup>th</sup> September that preceded the approval of the conference report it appeared only 3.5 times per 10,000 words.

<sup>13</sup> The alternatives to approve (coded 1) are 'disapprove' 'don't know' and 'not answer' (coded 0). The two surveys cover 40 states, however we only have 34 states for which we have both information on attitudes towards civil rights and migration.

estimated over the 34 states for which we have opinion on both immigration and civil rights, there are slightly fewer observations than in the comparable regressions in Tables 4 and 6. The first column is otherwise similar to column (4) of Table 4 except that ‘civil rights approve’ is used in place of ‘abolish quotas’. The positive and significant coefficient is consistent with the idea that the first vote in the House rode on the coat-tails of civil rights reform. When both ‘civil rights approve’ and ‘abolish quotas’ are included in the regression (column 2) the former is larger, although the coefficient on the latter remains positive and significant.

The results for conference report in columns (3) and (4) of Table 8 provide a sharp contrast. Here the coefficient on ‘civil rights approve’ is small and insignificant whether or not ‘abolish quotas’ is also included. So while the first round of voting in the House was consistent with grass roots attitudes on civil rights, that impetus seems to have faded by the time of the conference report more than a month later. As mentioned earlier, 58 representatives changed their votes, which largely reflected negotiations in the Senate and the debate on the floor of the House. Gimpel and Edwards note that “the legislation lost the support of many minority members of Congress—Blacks, Hispanics and Asians—as roughly half of them voted against the legislation” (1999, p. 108). This was mainly due to the cap placed on Western Hemisphere immigration, a change that also helped to swing some of those with the strongest anti-immigration constituencies behind the Act.<sup>14</sup>

## *5.2 Immigration reform and anti-immigration pressures*

While the votes of members of Congress clearly corresponded with the opinions of their constituents on abolishing the country of origin quotas, equally intriguing is the role of anti-immigration attitudes. Our results indicate that local opinion on whether immigration should be decreased is not associated with votes on the initial House version of the bill or with the votes in the Senate. On the other hand, local anti-immigration sentiment was positively associated with the votes on representatives on the final version of the bill, but only in the presence of the full set of controls. Observers have often commented on the apparently anomalous fact that a reform that is credited with leading to an unprecedented increase in immigration met with so little resistance in Congress. In just two decades, total immigration almost doubled, from an annual average of 290,000 in 1961-5 to 573,000 in 1981-5. Many would agree with Daniels who observed that “it is doubtful if any drafter or supporter of the 1965 Act envisaged this result” (2002, p. 341; Hatton 2015). Here we look at three issues. First, were public attitudes on immigrant numbers uniquely permissive in the mid-1960s? Second to what extent did legislators anticipate that the reform would increase immigration? And third, what contribution did the 1965 reforms actually make to subsequent dramatic increase in immigration?

---

<sup>14</sup> Among the representatives of districts covered by our data on public opinion, those who voted in favour of the first passage of the bill represented districts where 52 percent wished to abolish the quotas and 33 percent wanted to decrease immigration. Among the 26 districts whose representatives switched from nay on the first vote to yea on the final vote, these percentages are, respectively 41 and 39.

Evidence on trends in public attitudes is limited. Figure 3 depicts the responses to a series of Gallup polls taken between 1946 and 2000. In 1946 and 1953 the proportion of respondents wishing to see immigration decreased was a little higher than in 1965. More striking is the sharp increase in anti-immigration opinion from one third in 1965 to two thirds in the early 1980s with the share remaining above half through the early 1990s. Figure 3 also shows that the trough in anti-immigration opinion corresponds with a uniquely low proportion of foreign born in the population following four decades of restrictive policy. From this it has been inferred that attitudes towards immigration were more permissive in the 1950s and 1960s than either before or after, partly because immigration was relatively low (Harwood 1986). Perhaps more important, the salience of immigration as a policy issue was also low, as reflected by the lack of coverage in prominent news outlets (Simon 1985, pp. 134-160). In light of muted opposition to immigration and of its low salience, perhaps it is not so surprising that commentators have seen immigration reform as stemming largely from 'inside the beltway' and largely decoupled from public opinion.

Yet, as has often been noted, the leading proponents of the bill went to some lengths to reassure their colleagues that it would bring about only modest increases in immigration. In the Senate Judiciary Subcommittee on 10th February 1965 Edward Kennedy famously stated that "The bill will not flood our cities with immigrants. It will not upset the ethnic mix of our society. It will not relax the standards of admission. It will not cause American workers to lose their jobs." Attorney General, Nicholas Katzenbach, assured the committee that the bill would not increase or accelerate immigrant arrivals by more than a small fraction. Speaking in the House debate Emmanuel Celler argued that:

The thrust of this bill is no appreciable increase in numbers. . . . With the end of discrimination due to place of birth, there will be shifts to countries other than those of northern and western Europe. Immigrants from Asia and Africa will have to compete and qualify in order to get in, quantitatively and qualitatively, which, itself will hold the numbers down. There will not be, comparatively, many Asians or Africans entering this country. . . . since the people of Africa and Asia have very few relatives here, comparatively few could immigrate from those countries because they have no family ties in the United States. . . . no one can come without the individual certificate from the Secretary of Labor guaranteeing that the American workman will not be displaced. . . . few of them can even pay the cost of the ticket to come here. There is no danger whatsoever of an influx from the countries of Africa and Asia (Congressional Record, Aug. 25, 1965, p. 21757-8).

Such statements have often been cited in retrospect with considerable irony but they do seem to have been believed at the time (Reimers 1992, pp. 76, 81, 92). By contrast, dissenting voices were very much in the minority (Graham 2004, p. 88).<sup>15</sup>

---

<sup>15</sup> According to one senior State Department official: "When the Immigration Act of 1965 was being debated in the Congress last fall, it was generally estimated that the potential total immigration authorized by the bill would be 350,000 annually," (Schwartz 1966, p. 100). This would imply an increase of about 21 percent over the average of the previous five years.

From the perspective of 1965, was it reasonable to believe that there would be only a modest increase in the numbers? Before the 1965 Act came into force the Eastern Hemisphere quota stood at 158,561 per annum and so the increase in the numerical limit to 170,000 represents an increase of just 7 percent. But under the McCarran-Walter Act, the severely skewed country of origin quotas meant that the number admitted subject to the numerical limit had been only two thirds of the overall quota; in 1961-5 it averaged just over 98,000. At first sight, it would seem reasonable to anticipate that once the Act became effective the quota would be filled which would imply an increase of 73 percent. Reassurances such as that of Emmanuel Celler, while often interpreted as focusing principally on the ethnic mix of future immigration, also imply that the numerical limit would not be filled, at least not in the near future. But the numerical cap was filled almost immediately. How far this could or should have been anticipated by members of Congress is a moot point.<sup>16</sup>

Perhaps more difficult to anticipate was the growth in the number of immigrants not subject to numerical limitation. Those admitted from the Eastern Hemisphere but not subject to the numerical limit increased from around 54,000 in 1961-5 to more than 207,000 in 1981-5, so the ratio of those exempt from the numerical limit to those subject to it increased from 0.55 in 1961-5 to 1.37 in 1981-5. An important reason for this is that the family reunion multiplier was much larger for immigrants from poor countries than for those from richer countries (Hatton 2015). While this might seem self-evident in retrospect, it might not have been so clear at the time, as past immigrants had been overwhelmingly from countries for which the multiplier was low. Another important factor is that a significant number of the original immigrants who, once settled, eventually brought in their immediate relatives (both within and outside the numerical limit) were admitted as refugees outside the Act, and rather than as primary immigrants under the Act.<sup>17</sup>

Much of the debate focused on immigration from the Western Hemisphere, which had not previously been subject to numerical limitation. These immigrants were admitted through a process of labor certification and could bring immediate family members but were not permitted to adjust to permanent resident status (and therefore could not sponsor other family members). In 1961-5 an average of 137,000 were admitted per annum (only two percent of whom were spouses and children). With the ending in 1964 of the Bracero programme, which in its last five years had admitted an average of 254,000 temporary laborers (92 percent from Mexico), a substantial increase in the number of Western Hemisphere immigrants might have been expected. The introduction of a numerical limit of 120,000 in the final version of the Act helps to explain why those representing districts with a higher proportion of population wishing to see immigration decreased voted in favour of it.

---

<sup>16</sup> The debate sometimes focused on the modest backlog of applicants from Eastern Hemisphere countries with small country of origin quotas. This failed to recognise that the size of these backlogs largely reflected the low probability of gaining admission (Yang 2020, p.238).

<sup>17</sup> The number of refugees, most of whom were admitted outside the Immigration Acts rose from a total of 213,000 in the 1960s to 539,000 in the 1970s and then exceeded a million in both the 1980s and the 1990s.

Indeed, in the absence of a system of preferences, and with a (tighter) procedure for labor certification and the ban on adjustment remaining in place, the 1965 Act could be seen as highly restrictive on immigration from the Western Hemisphere.<sup>18</sup> As Massey and Pren put it: "the 1965 legislation in no way can be invoked to account for the [subsequent] rise in immigration from Latin America" (2012, p. 2).

So perhaps the massive increase in migration from Mexico could not have been easily foreseen. While the dramatic rise in undocumented migration across the southern border has attracted most of the attention there was also a substantial increase in legal immigration from the Western Hemisphere, which rose from an average of 137,000 in 1961-4 to 210,000 in 1981-4. To a large extent the rise in Western Hemisphere immigration up to the 1980s and beyond was not due to the Hart-Celler Act itself but to subsequent Acts which were beyond the purview of the legislators of 1965. In particular, the 1976 Amendments introduced to the Western Hemisphere the same system of preferences (weighted towards family reunion) that were applied to the Eastern Hemisphere and, importantly, also conferred the right to adjust to permanent residency.<sup>19</sup> Later, the Immigration Reform and Control Act of 1986 legalised 2.7 million undocumented immigrants of whom more than 90 percent were from the Western Hemisphere.

To summarise, three factors help to explain why anti-immigration sentiment failed to galvanise more resistance in Congress to an Act, which according to later accounts opened the door to a massive increase in immigration. The first is that anti-immigration sentiment in public opinion was at an all-time low in the mid-1960s, consistent with the decline in the share of foreign born in the population. The second is that members of Congress may have underestimated the effects of the Act on the likely number of immigrants, and especially the number not subject to numerical limitation. Thirdly the 1965 Act itself accounts for only a part of the increase in immigration that is often attributed to it.

## **6. Conclusion**

In this paper we have reexamined the congressional votes on HR 2580, the bill that became the Hart-Celler Act. Although this landmark legislation has been credited with profound and far reaching consequences there has been relatively little quantitative analysis of the votes in Congress that brought it about. Perhaps one reason is that studies documenting the political wrangling which took place within the political establishment have left the impression that

---

<sup>18</sup> The labor certification requirement was that such immigrants could only be admitted if the Labor Secretary certified that, at the place where the alien was destined, there were insufficient workers "able, willing, qualified, and available" to fill the position, and in addition that the employment of an alien for the job involved would not "adversely affect the wages and working conditions of U.S. workers similarly employed." (See US Select Commission on Western Hemisphere Immigration 1968, p. 9).

<sup>19</sup> The 1976 Amendments to the Immigration Act also provided that Cuban refugees arriving under the 1966 Cuban Refugee Act would no longer be changed to the Western Hemisphere quota. On the other hand, the limit of 20,000 per country placed a binding constraint on the number of Mexicans. The 1978 Amendments merged the Eastern and Western Hemispheres into a worldwide quota of 290,000.



the process was largely decoupled from grass roots concerns. Immigration policy reform took place in the slipstream of the more prominent civil rights legislation to which it was seen to be only loosely related. The evidence of persuasion and reassurance by congressional leaders combined with the subsequent transformation in the volume and composition of immigration has strongly supported the narrative that this was an 'inside the beltway' compromise on an unpopular issue, which turned out to have dramatic consequences that were unintended by most of the legislators.

We investigate the connection between immigration reform and public opinion using a Gallup poll taken on the eve of the debate in Congress. Only one third of respondents wished to see immigration reduced, indicating that anti-immigration sentiment was at an all-time low. More important, a majority supported the abolition of the country of origin quota system which had been in place since the 1920s. Majority opinion also favored occupational skills and close family ties as criteria for admission. Our principal focus is to ask how far congressional voting on HR 2580 was consistent with state-level opinion and, if so, in what dimensions. In order to make this viable we use MRP to create state-level estimates of opinion on the two policy related questions 'abolish the quotas' and 'decrease immigration'.

Our econometric results reveal a strong positive association between congressional votes cast in favor of the reform and the popular support in the legislator's state for abolishing the country of origin quotas. This applied to both votes in the House and to the vote in the Senate, and it remains strong even in the presence of key characteristics of the representative/senator and the district. While abolishing the quota system may have been an important to the Act's sponsors and supporters, voting on it corresponded closely with public opinion at the state level. There is also evidence that the first House vote was consistent with grass roots approval of the 1964 Civil Rights Act. So the initial momentum did follow in the slipstream of the civil rights movement, not only among members of Congress but also among their constituents. This suggests a deeper link between civil rights and immigration reform than has sometimes been believed. As the legislative process evolved, attitudes on abolishing the quotas remained congruent with the pattern of voting but the association with opinion on civil rights waned.

In contrast, support for decreasing immigration had little correspondence with the initial House vote in favor of HR 2850 and on the final passage the association appears to have been positive. This reflects a weakening of support among representatives from pro-immigration states and a strengthening support among those whose constituents were more anti-immigration. The *change* in voting is consistent with the fact that the final version of the bill was more restrictive. Nevertheless, the final vote could be seen as reflecting compromise within the beltway and largely independent of spatial differences in public opinion. But unlike civil rights and anti-discrimination more generally, the scale of immigration had relatively low public salience in 1965 and hence could be less aligned with congressional votes. While members of Congress may have underestimated the effect of passing Hart-Celler Act on the

total numbers and on the change in the composition of immigration, much of the subsequent increase was not directly due to its provisions. But rising numbers soon changed the public mood and so, in that sense, 1965 did provide a unique opportunity for reform.

## References

- Adler, E. S. (2013), "Congressional District Data File," [congressional term], University of Colorado, Boulder, CO.
- Alba, R. D. and Nee, V. (2003), *Remaking the American Mainstream: Assimilation and Contemporary Immigration*, Cambridge, MA: Harvard University Press.
- Binder, S. A. and Lee, F. E. (2013), "Making Deals in Congress," in J. Mansbridge and C. J. Martin (eds.), *Negotiating Agreement in Politics*, Washington DC: American Political Science Association.
- Borjas G. J. (1999), *Heaven's Door: Immigration Policy and the American Economy*, Princeton, NJ: Princeton University Press.
- Burstein, P. (2003), "The Impact of Public Opinion on Public Policy: A Review and an Agenda," *Political Research Quarterly*, 56 (1), pp. 29-40.
- Butz, A. M. and Kehrberg, J. E. (2016) "Estimating Anti-immigrant Sentiment for the American States using Multi-level Modeling and Post-stratification, 2004–2008", *Research & Politics*, 3, pp. 1-7.
- Card, D., Dustmann, C. and Preston, I. P. (2012), "Immigration, Wages, and Compositional Amenities," *Journal of the European Economic Association*, 10, pp. 78-119.
- Casarico A., G. Facchini and T. Frattini (2018) "What Drives the Legalization of Immigrants? Evidence from IRCA," *Regional Science and Urban Economics*, 70, pp. 258-273.
- Caughey, D. and Warshaw, C. (2018), "Policy Preferences and Policy Change: Dynamic Responsiveness in the American States, 1936–2014," *American Political Science Review*, 112 (2), pp. 249–266.
- Ceobanu, A. M. and Escandell, X. (2010), "Comparative Analyses of Public Attitudes Toward Immigrants and Immigration Using Multinational Survey Data: A Review of Theories and Research," *Annual Review of Sociology*, 36, pp. 309–328.
- Chin, G. J. (1996), "The Civil Rights Revolution Comes to Immigration Law: A New Look at the Immigration and Nationality Act of 1965," *North Carolina Law Review*, 75 (1), pp. 273-345.
- Chin, G. J. and Spencer, D. M. (2015), "Did Multicultural America Result from A Mistake? The 1965 Immigration Act and Evidence from Roll Call Votes," *University of Illinois Law Review*, 3, pp. 1239-1257.
- Citrin, J., Green, D., Muste, C. and Wong, C. (1997), "Public Opinion toward Immigration Reform: The Role of Economic Motivations," *Journal of Politics*, 59 (3), pp. 858-881.

Conconi, P., Facchini, G., Steinhardt, M. F. and Zanardi, M. (2020), "The Political Economy of Trade and Migration: Evidence from the U.S. Congress," *Economics and Politics*, 32 (2), pp. 250-278.

Daniels, R. (2002), *Coming to America: A History of Immigration and Ethnicity in American Life* (2<sup>nd</sup> Ed.), New York, NY: Harper.

Daniels, R. (2004), *Guarding the Golden Door: American Immigration Policy and Immigrants since Immigrants since 1882*, New York, NY: Hill and Wang.

DeLaet, D. L. (2000), *U.S. Immigration Policy in an Age of Rights*, Westport, CT: Praeger.

Dustmann, C. and Preston, I. P. (2007), "Racial and Economic Factors in Attitudes to Immigration," *Berkeley Electronic Journal of Economic Analysis & Policy*, Advances 7, Art 62.

Facchini, G., Frattini, T. and Signorotto, C. (2022), "Mind What your Voters Read: Media Exposure and International Policy Making," in R. M. Sauer (ed.) *World Scientific Encyclopedia of Global Migration, Vol. 2*, World Scientific Publishing Co (forthcoming).

Facchini, G. and Mayda, A. M. (2009), "Does the Welfare State Affect Individual Attitudes toward Immigrants?" *Review of Economics and Statistics*, 91 (2), pp. 295–314.

Facchini, G. and Mayda, A. M. (2010), "What drives Immigration Policy? Evidence Based on a Survey of Governments' Officials" Chapter 25 in G. Epstein and I. Gang (eds.), *Migration and Culture*, Emerald Books, Wingley, United Kingdom.

Facchini, G. and Mayda, A. M. (2012), "Individual Attitudes towards Skilled Migration: An Empirical Analysis across Countries," *World Economy*, 35 (2), pp. 183-196.

Facchini, G. and Steinhardt, M. F. (2011), "What Drives U.S. Immigration Policy? Evidence from Congressional Roll Call Votes," *Journal of Public Economics*, 95 (7), pp. 734–743.

Fetzer, J. S. (2006), "Why did House Members Vote for H.R.4437?" *International Migration Review*, 40 (3), pp. 698–706.

FitzGerald, D. S. and Cook-Martín, D. (2014), *Culling the Masses: The Democratic Origins of Racist Immigration Policy in the Americas*, Cambridge, MA: Harvard University Press.

Fowler, A. and Hall, A. B. (2016), "The Elusive Quest for Convergence," *Quarterly Journal of Political Science*, 11 (1), pp. 131–149.

Gerber E. R. and Lewis, J. B. (2004), "Beyond the Median: Voter Preferences, District Heterogeneity and Political Representation," *Journal of Political Economy*, 112(6), pp. 1364-1383.

Gibson, C., and Jung, K. (2006). *Historical census statistics on the foreign-born population of the United States, 1850 to 2000*. Population Division, US Census Bureau.

Gimpel, J. G. and Edwards, J. R. (1999), *The Congressional Politics of Immigration Reform*, Needham Heights, MA: Allyn and Bacon.

Gonzalez, J. G. and Kamdar, N. (2000), "Do not give me your Tired, your Poor! Determinants of Legislator Voting on Immigration Issues," *Eastern Economic Journal*, 26 (2), pp. 127–143.

Graham, H. D. (1998), Affirmative Action for Immigrants? The Unintended Consequences of Reform," in J. D. Skrentny (ed.), *Color Lines: Affirmative Action, Immigration, and Civil Rights Options for America*, Chicago, IL: University of Chicago Press.

Graham, O. L. (2004), *Unguarded Gates: A History of America's Immigration Crisis*, Lanham, MD: Rowman and Littlefield.

Hainmueller, J. and Hiscox, M. J. (2007), "Educated Preferences: Explaining Individual Attitudes toward Immigration in Europe," *International Organization*, 61, pp. 399–442.

Hainmueller, J. and Hiscox, M. J. (2010), "Attitudes toward Highly Skilled and Low-Skilled Immigration: Evidence from a Survey Experiment," *American Political Science Review*, 104 (1), pp. 61-84.

Hainmueller, J. and Hopkins, D. (2014), "Public Attitudes toward Immigration," *Annual Review of Political Science*, 17, pp. 225-249.

Hanretty, C. (2020), "An Introduction to Multilevel Regression and Post-Stratification for Estimating Constituency Opinion," *Political Studies Review*, 18 (4), pp. 630–645.

Hanson G. H., Scheve, K. F. and Slaughter, M. J. (2007), "Public Finance and Individual Preferences over Globalization Strategies," *Economics and Politics*, 19 (1), pp. 1-33.

Harwood E. (1986), "American Public Opinion and U. S. Immigration," *The Annals of the American Academy of Political and Social Science*, 487, pp. 201-212.

Hatton, T. J. (2015), "United States Immigration Policy: The 1965 Act and its Consequences," *Scandinavian Journal of Economics*, 117 (2), pp. 347-368.

Hutchinson, E. P. (1981), *Legislative History of American Immigration Policy, 1798-1965* Princeton, NJ: Princeton University Press.

Kastellec, J. P., Lax, J. R., and Phillips, J. H. (2010), "Public Opinion and Senate Confirmation of Supreme Court Nominees," *Journal of Politics*, 72 (3), pp. 767–784.

Kastellec, J. P., Lax, J. R., and Phillips, J. H. (2019), "Estimating State Public Opinion with Multi-level Regression and Post-stratification using R," Unpublished paper; Princeton University.

- Keely, C. B. (1971), "Effects of the Immigration Act of 1965 on Selected Population Characteristics of Immigrants to the United States," *Demography*, 8 (2), pp. 157-169.
- Keely, C. B. (1975), "United States Immigration Legislation: The Development of Present Policies," *International Migration Review*, 9 (1, Supplement), pp. 1-10 & 73-78.
- Kennedy, J. F. (1964), *A Nation of Immigrants* (2<sup>nd</sup> Edn.), New York, NY: Harper and Row.
- Lax, J. R. and Phillips, J. H. (2009a), "Gay Rights in the States: Public Opinion and Policy Responsiveness," *American Political Science Review*, 103(3), pp. 367–386.
- Lax, J. R. and Phillips, J. H. (2009b), "How Should We Estimate Public Opinion in the States?" *American Journal of Political Science*, 53(1), pp. 107–121.
- Lax, J. R. and Phillips, J. H. (2012), "The Democratic Deficit in the States," *American Journal of Political Science*, 56 (1), pp. 148-166.
- Lee, D. S., Moretti, E. and Butler, M J. (2004), "Do Voters Affect or Elect Policies? Evidence from the U.S. House," *Quarterly Journal of Economics*, 119 (3), pp. 807–859.
- Lee, T. (2002), *Mobilizing Public Opinion: Black Insurgency and Racial Attitudes in the Civil Rights Era*, Chicago, IL: University of Chicago Press.
- Levitt, S. D. (1996), "How Do Senators Vote? Disentangling the Role of Voter Preferences, Party Affiliation, and Senator Ideology," *American Economic Review*, 86 (3), pp. 425–441.
- Lewis, J. B., Poole, K., Rosenthal, H., Boche, A., Rudkin, A. and Sonnet, L. (2021), "Voteview: Congressional Roll-Call Votes Database," <https://voteview.com/>.
- Lynch, J. P. and Simon, R. J (2003), *Immigration the World Over: Statutes, Policies, and Practices*, Lanham, MD: Rowan and Littlefield.
- Manevska, K. and Achterberg, P. (2013), "Immigration and Perceived Ethnic Threat: Cultural Capital and Economic Explanations," *European Sociological Review*, 29 (3), pp. 437–449.
- Marinari, M. (2014), "Americans Must Show Justice in Immigration Policies Too": The Passage of the 1965 Immigration Act," *Journal of Policy History*, 26(2), pp. 219-245
- Massey, D. S. and Pren, K. A. (2012), "Unintended Consequences of US Immigration Policy: Explaining the Post-1965 Surge from Latin America," *Population and Development Review* 38(1), pp. 1–29.
- Mayda, A. M. (2006), "Who is Against Immigration? A Cross-Country Investigation of Attitudes towards Immigrants," *Review of Economics and Statistics*, 88 (3), pp. 510–530.

- Mayda, A.M., Peri, G. and Steingress, W. (2021), "The Political Impact of Immigration: Evidence from the United States," *American Economic Journal: Applied Economics* (forthcoming).
- Milner, H. V. and Tingley, D. (2009), "The Economic and Political Influences on Different Dimensions of United States Immigration Policy," Princeton University: unpublished paper.
- Monroe, A. D. (1998), "Public Opinion and Public Policy, 1980-1993," *Public Opinion Quarterly*, 62 (1), pp. 6–28.
- Park, D. K., Gelman A. and Bafumi, J. (2004), "Bayesian Multilevel Estimation with Poststratification: State-level Estimates from National Polls," *Political Analysis*, 12(4), pp. 375–385.
- Poole, K. T. and Rosenthal, H. (1997), *A Political-economic History of Roll Call Voting*, New York, NY: Oxford University Press.
- Poole, K. T. and Rosenthal, H. (2007), "On Party Polarization in Congress," *Daedalus*, 136, pp. 104-107.
- Putnam, R. D. (2000), *Bowling Alone*, New York, NY: Simon and Schuster.
- Reimers, D. M. (1983), "An Unintended Reform: The 1965 Immigration Act and Third World Immigration to the United States," *Journal of American Ethnic History*, 3 (1), pp. 9-28.
- Reimers, D. M. (1992), *Still the Golden Door: The Third World Comes to America*, New York, NY: Columbia University Press.
- Rustenbach, E. (2010), "Sources of Negative Attitudes toward Immigrants in Europe: A Multi-Level Analysis," *International Migration Review*, 44 (1), pp. 53–77.
- Scheve, K. F. and Slaughter, M. J. (2001), "Labor Market Competition and Individual Preferences over Immigration Policy," *Review of Economics and Statistics*, 83 (1), pp. 133–145.
- Schwartz, A. P. (1966), "The Role of the State Department in the Administration and Enforcement of the New Immigration Law," *Annals of the American Academy of Political and Social Science*, 367, pp. 93-104.
- Shapiro, R. Y. (2011) "Public Opinion and American Democracy," *Public Opinion Quarterly* 75 (5), pp. 982–1017.
- Sides, J. and Citrin, J. (2007), "European Opinion about Immigration: The Role of Identities, Interests and Information," *British Journal of Political Science*, 37 (3), pp. 477–504.
- Simon, R. J. (1985), *Public Opinion and the Immigrant: Print Media Coverage, 1880-1980*, Lexington, MA: Lexington Books.

Stern, W. S. (1975), "HR 2580: The Immigration and Nationality Amendments of 1965: A Case Study," unpublished dissertation, New York University.

Swift, E. K., Brookshire, R. G., Canon, D. T., Fink, E. C., Hibbing, J. R., Humes, B. D., Malbin, M. J. and Martis. K. C. (2009), "Database of [United States] Congressional Historical Statistics, 1789-1989" Ann Arbor, MI: Inter-university Consortium for Political and Social Research.

Tichenor, D. (2002), *Dividing Lines: The Politics of Immigration Control in America*, Princeton, NJ: Princeton University Press.

United States (1968), "Report of the Select Commission on Western Hemisphere Immigration," Washington D.C.: U.S. G.P.O.

Yang, J. L. (2020), *One Mighty and Irresistible Tide: The Epic Struggle Over American Immigration, 1924-1965*, New York, NY: W. W. Norton & Co.

Zolberg, A. (2006), *A Nation by Design: Immigration Policy in the Fashioning of America*, Cambridge, MA: Harvard University Press.



**Table 1: Roll Call Votes on HR 2580**

House vote	Democrat	Republican	Total
House passage	Y = 209; N = 71	Y = 109; N = 24	Y = 318; N = 95
Senate passage	Y = 52; N = 15	Y = 24; N = 3	Y = 76; N = 18
House conference report	Y = 202; N = 60	Y = 118; N = 10	Y = 320; N = 70

Source: Lewis et al. (2021).

Notes: Not including announced and paired votes. The dates of the votes are, respectively, August 25, September 22 and September 30, 1965.

**Table 2: Results of Gallup Poll 713, taken June 24-29 1965**

		No	%
Should immigration be kept at its present level, increased or decreased?	Present	1375	38.9
	Increased	265	7.5
	Decreased	1172	33.1
	Don't know	724	20.5
Would you favor or oppose changing [the quota system] so that people would be admitted on the basis of their occupational skills rather than on the basis of the country they come from?	Favor	1793	50.7
	Oppose	1145	32.4
	No opinion	598	16.9
US immigration policy should or should not have provisions for admitting people who escape from communism.	Should	2262	64.0
	Should not	798	22.6
	No opinion	476	13.5
How important do you think each of the following factors should be in determining whether a person from another country should be admitted to live in the United States?			
That he have occupational skills.	Very important	2511	71.0
	Not very important	744	21.0
	No opinion	281	7.9
That he have relatives, who are American citizens, with whom he can live.	Very important	1958	55.4
	Not very important	1339	37.9
	No opinion	239	6.8
The country in which he was born.	Very important	1145	32.4
	Not very important	1990	56.3
	No opinion	401	11.3

Source: Gallup Poll 713, supplied by the Roper Center on Public Opinion Research.

**Table 3: Explaining Public Opinion on Immigration**

	(1)	(2)	(3)	(4)	(5)	(6)
	Abolish quota system (Yes = 1)	Decrease immigra- tion (Yes = 1)	Country very important (Yes = 1)	Skills very important (Yes = 1)	Relatives very important (Yes = 1)	Provide for refugees (Yes = 1)
Civic generation (age <55)	0.027 (0.031)	0.003 (0.029)	-0.025 (0.029)	-0.001 (0.023)	-0.086*** (0.026)	0.053 (0.037)
High education (college)	0.093** (0.040)	-0.077* (0.040)	-0.062 (0.038)	0.053** (0.025)	-0.198*** (0.036)	0.116*** (0.039)
Log household income (000s)	0.028 (0.022)	-0.014 (0.022)	-0.029 (0.024)	0.080*** (0.021)	-0.057** (0.027)	0.070*** (0.024)
Protestant	-0.025 (0.040)	0.113*** (0.036)	0.059** (0.030)	0.038 (0.026)	-0.005 (0.032)	0.012 (0.027)
White	-0.084* (0.047)	0.150*** (0.056)	0.096** (0.045)	-0.028 (0.048)	-0.063 (0.073)	0.132** (0.055)
Male	0.031 (0.023)	0.058* (0.032)	-0.035 (0.029)	0.012 (0.026)	-0.016 (0.032)	0.001 (0.024)
Urban (>10,000 population)	0.053 (0.043)	-0.043 (0.043)	-0.050 (0.032)	-0.007 (0.030)	0.072 (0.053)	0.146*** (0.038)
Democrat	-0.025 (0.028)	0.012 (0.025)	-0.019 (0.027)	-0.043 (0.033)	-0.015 (0.031)	0.075*** (0.025)
South	-0.095*** (0.033)	0.030 (0.045)	0.042 (0.042)	-0.009 (0.040)	-0.095** (0.045)	0.063* (0.036)
Wald $\chi^2(9)$	32.19	30.59	27.17	54.95	136.37	120.35
Pseudo-R <sup>2</sup>	0.023	0.030	0.023	0.024	0.043	0.059
Observations	3,432	3,432	3,432	3,432	3,432	3,432

Note: The coefficients are marginal probabilities from probit regressions; standard errors in parentheses clustered at the state level. \*\*\* p<0.01, \*\* p<0.05, \* p<0.1.

**Table 4: House Votes on the Original Passage of the 1965 Immigration Bill**

(Marginal effects; dependent variable: Yea = 1, Nay = 0)

	(1)	(2)	(3)	(4)
<i>Opinion (MRP predicted)</i>				
Abolish quotas	1.67*** (0.28)	0.67*** (0.25)	0.61*** (0.24)	0.53*** (0.19)
Decrease immigration	0.09 (0.26)	0.04 (0.15)	0.08 (0.14)	0.15 (0.13)
<i>District/State characteristics</i>				
South		-0.44*** (0.11)	-0.49*** (0.11)	-0.14** (0.06)
Share of population urban		0.31*** (0.07)	0.28*** (0.07)	0.19*** (0.06)
Log median income		-0.04 (0.23)	-0.02 (0.22)	0.20 (0.12)
Western Hemisphere immigrant share of popn.		0.04 (0.06)	0.06 (0.07)	-0.08 (0.05)
<i>Representative characteristics</i>				
Democrat			0.07* (0.04)	-0.15 (0.10)
Civic generation (age <55)			0.08** (0.03)	0.05* (0.03)
Business background			0.06* (0.03)	0.05* (0.03)
Previous political office			-0.06** (0.03)	-0.02 (0.02)
DW-NOMINATE score				-0.49*** (0.12)
Pseudo-R <sup>2</sup>	0.239	0.508	0.546	0.652
Wald $\chi^2$ (2,6,10,11)	25.70	86.69	180.8	287.5
Observations	397	397	397	397

Notes: The coefficients are marginal probabilities from probit regressions; robust standard errors in parentheses are clustered at the state level; \*\*\* p<0.01, \*\* p<0.05, \* p<0.1.

**Table 5: Senate Votes on the Passage of the 1965 Immigration Bill**

(Marginal effects; dependent variable: Yea = 1, Nay = 0)

	(1)	(2)	(3)	(4)
<i>Opinion (MRP predicted)</i>				
Abolish quotas	1.36*** (0.29)	1.01*** (0.35)	1.06*** (0.40)	1.03*** (0.31)
Decrease immigration	0.04 (0.22)	-0.22 (0.17)	-0.27 (0.21)	-0.21 (0.19)
<i>District/State characteristics</i>				
South		-0.64*** (0.12)	-0.60*** (0.12)	-0.24* (0.13)
Share of population urban		0.94*** (0.34)	0.66* (0.40)	0.27 (0.29)
Log median income		-0.21 (0.71)	-0.12 (0.93)	-1.58* (0.86)
Western Hemisphere immigrant share of popn.		-0.75* (0.38)	-0.52 (0.39)	0.23 (0.47)
<i>Representative characteristics</i>				
Democrat			0.06 (0.09)	-0.23** (0.09)
Civic generation (age <55)			-0.05 (0.05)	-0.10 (0.06)
Business background			-0.09 (0.12)	-0.11 (0.09)
Previous political office			-0.17** (0.08)	-0.17*** (0.06)
DW-NOMINATE score				-0.48*** (0.17)
Pseudo-R <sup>2</sup>	0.254	0.591	0.650	0.693
Wald $\chi^2$ (2,6,10,11)	13.96	49.26	65.02	110.9
Observations	76	76	76	76

Notes: The coefficients are marginal probabilities from probit regressions; robust standard errors in parentheses are clustered at the state level; \*\*\* p<0.01, \*\* p<0.05, \* p<0.1.

**Table 6: House Votes on the Conference Report of the 1965 Immigration Bill**

(Marginal effects; dependent variable: Yea = 1, Nay = 0)

	(1)	(2)	(3)	(4)
<i>Opinion (MRP predicted)</i>				
Abolish quotas	1.32*** (0.26)	0.42*** (0.16)	0.42*** (0.13)	0.32*** (0.09)
Decrease immigration	0.22 (0.22)	0.17 (0.10)	0.23* (0.12)	0.28*** (0.10)
<i>District/State characteristics</i>				
South		-0.37*** (0.10)	-0.38*** (0.10)	-0.16*** (0.05)
Share of population urban		0.28*** (0.07)	0.26*** (0.07)	0.17*** (0.07)
Log median income		-0.02 (0.14)	-0.09 (0.13)	0.05 (0.08)
Western Hemisphere immigrant share of popn.		-0.13** (0.07)	-0.09 (0.07)	-0.15** (0.06)
<i>Representative characteristics</i>				
Democrat			-0.03 (0.04)	-0.18** (0.09)
Civic generation (age <55)			0.07** (0.03)	0.05 (0.03)
Business background			0.06 (0.04)	0.06 (0.03)
Previous political office			-0.04 (0.02)	-0.02 (0.02)
DW-NOMINATE score				-0.28*** (0.09)
Pseudo-R <sup>2</sup>	0.207	0.508	0.544	0.588
Wald $\chi^2$ (2,6,10,11)	26.04	154.7	277.1	214.5
Observations	380	380	380	380

Notes: The coefficients are marginal probabilities from probit regressions; robust standard errors in parentheses are clustered at the state level; \*\*\* p<0.01, \*\* p<0.05, \* p<0.1.

**Table 7: Voting by Congressional District on Civil Rights and on Immigration**

		First votes on Immigration Act, 1965 (89 <sup>th</sup> Congress)			Final votes on Immigration Act, 1965 (89 <sup>th</sup> Congress)		
		Yea	Nay	No vote	Yea	Nay	No vote
First votes on the Civil Rights Act, 1964 (88 <sup>th</sup> Congress)	Yea	275	13	6	267	7	20
	Nay	43	86	2	55	71	5
	No vote	6	2	2	7	1	2

*Notes:* Calculated from the 'Voteview' at database at: <https://voteview.com/data>. To compare votes between the 88<sup>th</sup> and the 89<sup>th</sup> Congresses it was necessary to match districts. Where representatives were elected at large in the 88<sup>th</sup> Congress they were matched to the 89<sup>th</sup> Congress by name. In the case of the eight seats in Alabama, all elected at large in the 88<sup>th</sup> Congress but not in the 89<sup>th</sup>, only three were the same members, but as all eight voted against the Civil Rights Bill it does not affect the comparison.

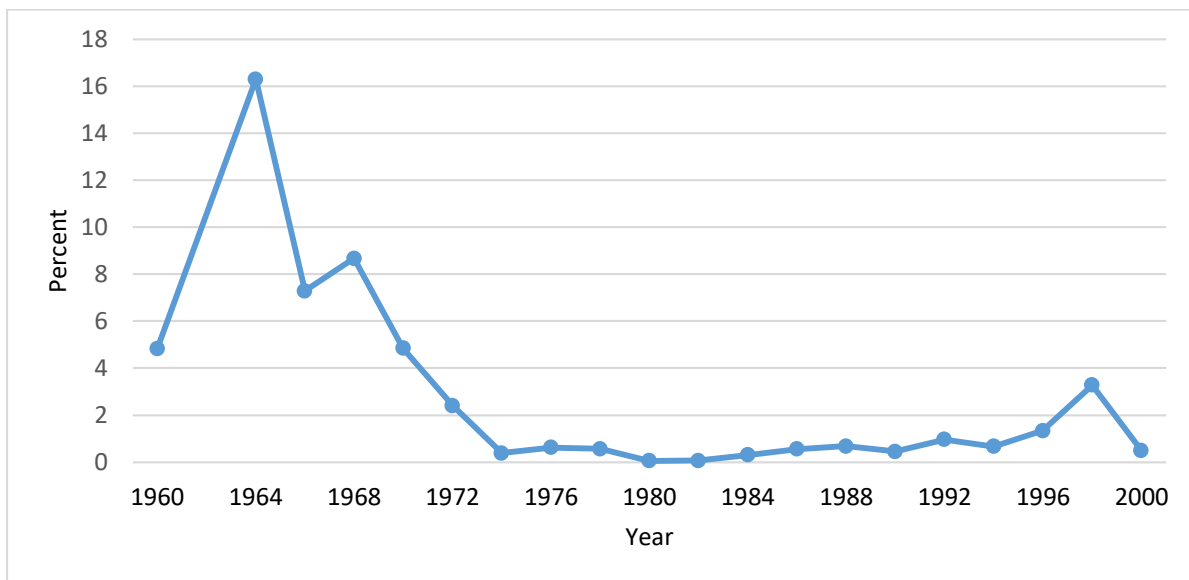
**Table 8: House Votes on the 1965 Immigration Bill and Opinion on Civil Rights Legislation**

(Marginal effects; dependent variable: Yea = 1, Nay = 0)

	(1)	(2)	(3)	(4)
	Original House Vote		House vote on the Conference Report	
<i>Opinion (MRP predicted)</i>				
Civil Rights approve	0.74**	0.58**	0.062	-0.092
	(0.30)	(0.26)	(0.225)	(0.218)
Abolish quotas		0.42**		0.303**
		(0.19)		(0.118)
Decrease immigration	0.23	0.21	0.264**	0.223**
	(0.14)	(0.15)	(0.106)	(0.112)
<i>District/State characteristics</i>				
South	-0.01	-0.08*	-0.093*	-0.160***
	(0.04)	(0.05)	(0.054)	(0.052)
Share of population urban	0.18***	0.20***	0.151**	0.171***
	(0.07)	(0.06)	(0.068)	(0.066)
Log median income	0.23	0.04	0.265**	0.131
	(0.17)	(0.16)	(0.126)	(0.120)
Western Hemisphere immigrant share of popn.	-0.19**	-0.13**	-0.189**	-0.146**
	(0.07)	(0.06)	(0.083)	(0.072)
<i>Representative characteristics</i>				
Democrat	-0.13	-0.14	-0.170*	-0.166*
	(0.09)	(0.09)	(0.091)	(0.086)
Civic generation (age <55)	0.07**	0.06*	0.059*	0.055
	(0.03)	(0.03)	(0.034)	(0.034)
Business background	0.05*	0.05	0.057*	0.057*
	(0.03)	(0.03)	(0.032)	(0.033)
Previous political office	-0.02	-0.03	-0.026	-0.030
	(0.02)	(0.02)	(0.021)	(0.020)
DW-NOMINATE score	-0.49***	-0.47***	-0.283***	-0.261***
	(0.12)	(0.12)	(0.098)	(0.088)
Pseudo-R <sup>2</sup>	0.648	0.660	0.586	0.595
Wald $\chi^2$ (11,12,11,12)	284.9	250.8	258.2	269
Observations	388	388	371	371

Notes: The coefficients are marginal probabilities from probit regressions; robust standard errors in parentheses are clustered at the state level; \*\*\* p<0.01, \*\* p<0.05, \* p<0.1.

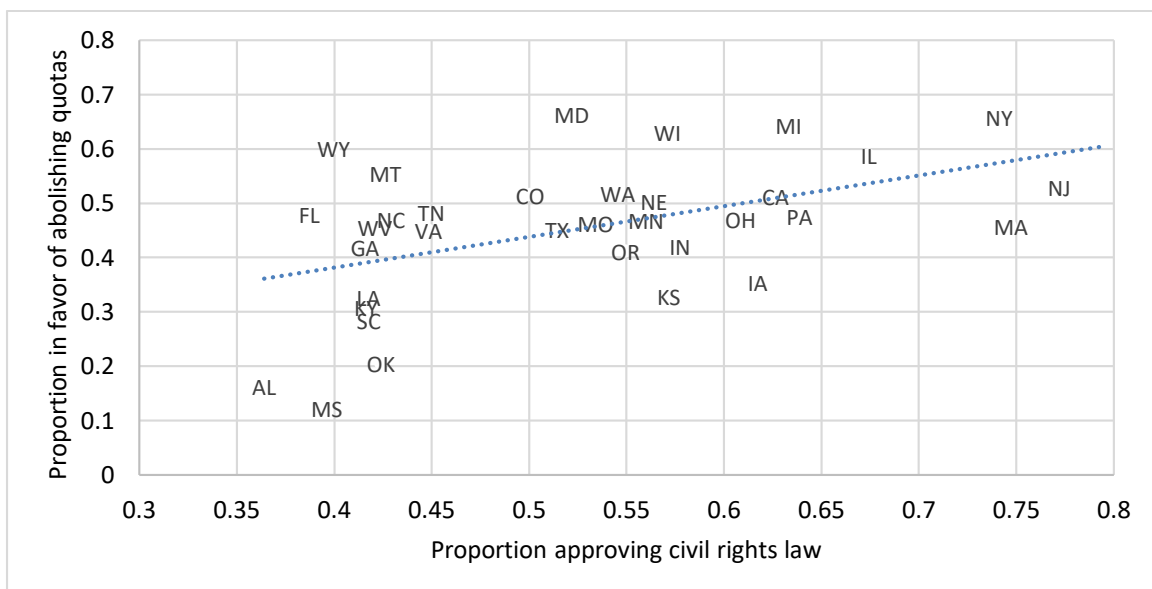
**Figure 1: Salience of Racial Issues in ANES Polls**



Source: American National Election Studies Cumulative file.

Notes: Responses to question VCF0875: "What are the most important problems the government in Washington should try to take care of?" The graph shows the proportion of respondents listing 'racial problems' as the most important issue.

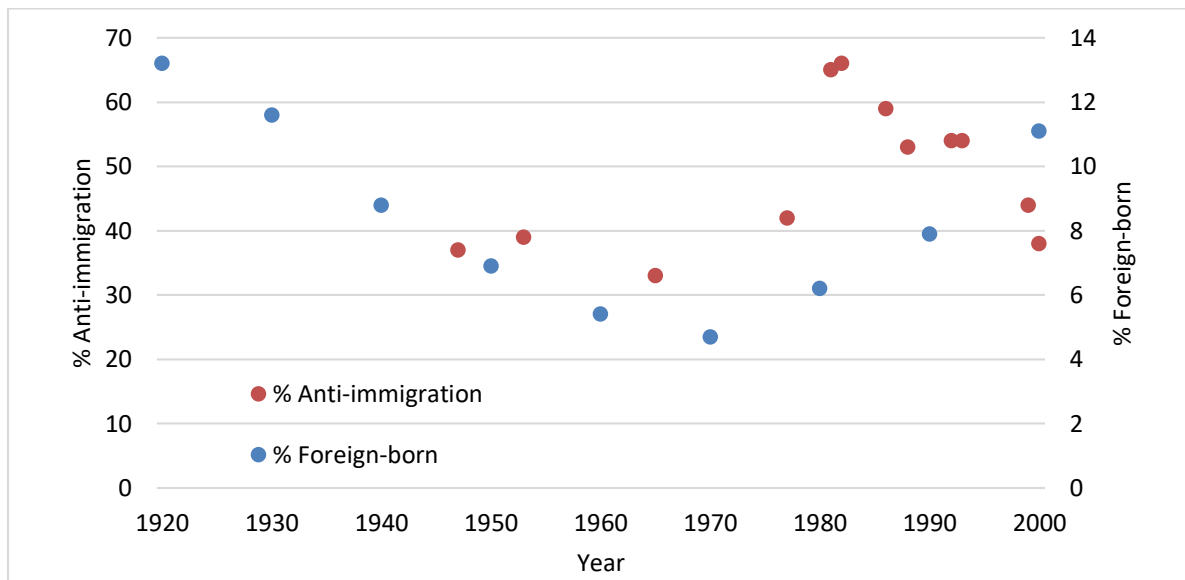
**Figure 2: State-level Opinion on Abolish Quotas and Approval of Civil Rights Legislation (predicted values)**



Notes: MRP predictions of the proportion of survey respondents who approved of the 1964 Civil Rights Act and the proportion who supported the abolition of the country of origin immigration quotas.



**Figure 3: Anti-immigration Opinion and Percent Foreign-born**



*Sources:* Anti-immigration opinion: percent responding ‘fewer’ or ‘decrease’ in Gallup polls (left scale), from Lynch and Simon (2003) p. 47. Percent of population foreign-born (right scale) from Gibson and Jung (2006), Table 1.

## Appendix 1. Data Sources

### *Public Opinion Data*

Data for opinion on immigration come from a Gallup survey of 3,536 respondents across 38 states and Washington DC. The survey was carried out on June 24-29 1965. The survey was carried out by face-to-face interviews using the stratification methodology used by all Gallup surveys from 1950. The data was obtained from the Roper Public Opinion Research Center as survey number AIPO 713. The means and standard deviations of the explanatory variables used in the regressions are as follows:

Individual characteristics of respondents	Mean	S.D.
Civic generation: age < 55	0.672	0.469
High education: some college or university, complete or incomplete	0.191	0.394
Income: banded household income, midpoints of 11 bands (\$000 p.a.)	6.245	4.203
Protestant: alternatives are Jewish, Catholic, other and none.	0.656	0.475
White: alternatives are Negro and other.	0.877	0.328
Male	0.471	0.499
Urban: living in city or urban area with population of at least 10,000	0.665	0.472
Democrat: alternatives are Republican, other, undecided, none.	0.538	0.499
South: computed from state of residence	0.260	0.439

Data for opinion on civil rights legislation comes from two Gallup/Potomac surveys taken in September 1964 (1611 observations) and October 1964 (1564 observations), which asked exactly the same question about opinion on the Civil Rights Act. The sampling method was the same as for the 1965 survey that was used for opinion on immigration policy. The two surveys also contain the same demographic variables as the 1965 survey and so they were merged into one file. The data was obtained from the Roper Public Opinion Research Center as survey numbers 1964-633POS and 1864-637POS.

### *District/State Characteristics*

Variables for district populations, the number living in urban areas and income were taken from Adler (2013) "Congressional District Data File". These are based on counts in the 1960 census and are derived from the U.S. Census's Congressional District Databooks. For immigrant origins at the state level we used data from the National Historical Geographic Information System (NHGIS). Those with immigrant origins are either foreign born or have one or both parents foreign born. Western Hemisphere immigrants are defined as follows: Canada, Mexico and Other America. The means and standard deviations of these variables for the set of states used in our regression analysis for the original House vote and for the Senate vote are as follows:

	House		Senate	
District/State characteristics	Mean	S.D.	Mean	S.D.
South: Calculated from state	0.277	0.448	0.318	0.468
Urban: share in areas > 10,000 population	0.687	0.251	0.622	0.147
Median income: median family income (\$000)	5.585	0.986	5.194	0.993
Western Hemisphere: share of population	0.025	0.039	0.028	0.40
Number of members	397		76	

*Note:* The South is defined as the original eleven secession states: Alabama, Arkansas, Florida, Georgia, Louisiana, Mississippi, North Carolina, South Carolina, Tennessee, Texas and Virginia.

*Personal characteristics of members of Congress*

These characteristics are from Swift et al. (2009) obtained as a computer file from the ICPSR as study number ICPSR03371-v2. The DW-NOMINATE score comes from Lewis et al. (2021). The means and standard deviations of the variables used (across the districts in the 38 states used in estimation) are as follows:

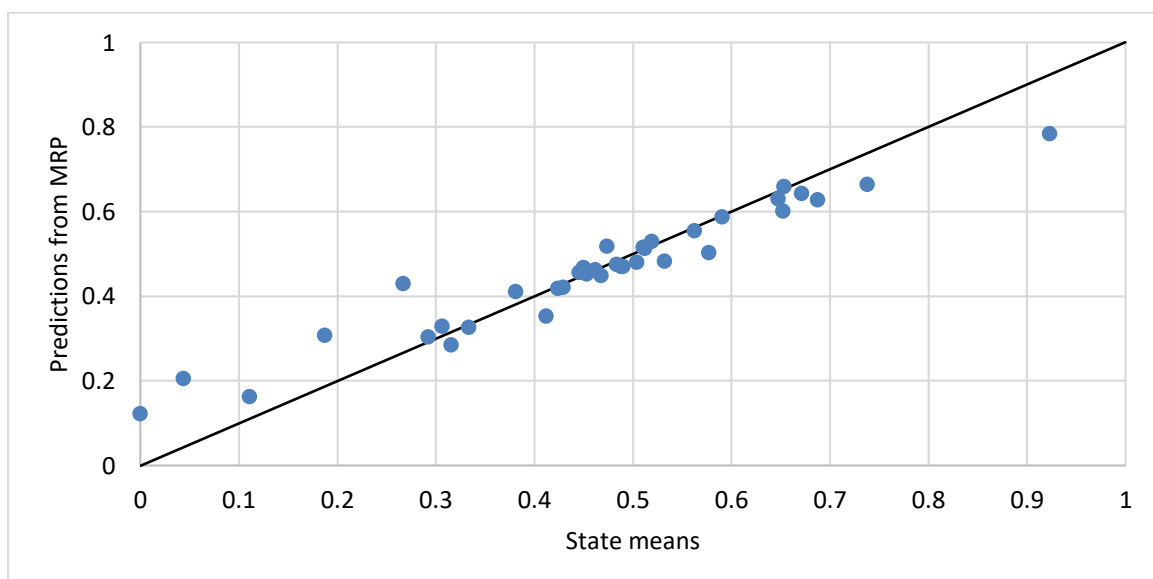
	House		Senate	
Individual characteristic of member	Mean	S.D.	Mean	S.D.
Democrat	0.534	0.499	0.697	0.462
Civic generation: age < 55	0.614	0.487	0.368	0.487
Business background	0.181	0.386	0.092	0.291
Previous political office	0.484	0.500	0.605	0.492
DW-NOMINATE score	-0.096	0.230	-0.130	0.330
Number	397		76	

## Appendix 2. Multilevel Regression and Post-stratification (MRP)

In the first stage of MRP, in which we estimate a multi-level regression model, we use micro data from three Gallup polls. With respect to our two measures of attitudes towards migration we use data from the Gallup Poll # 713, which covers 38 states. For our measure of attitudes towards civil rights, we rely on two Gallup Polls from 1964 (#633 and #637) which cover a total of 40 states. To predict individual attitudes, we build on Butz and Kehrberg (2016) and use the following individual level variables: Gender (male or female), race (White or Black), age (four categories: 21-29, 30-44, 45-64, 65+) and education (four categories: less than high school, high school graduate, some college, college graduate). We code respondents with certificates or diplomas from vocational, technical, trade, or business schools as having "some college". Moreover, we include interactions of race and gender and age and education. The model also includes state level effects which are themselves modeled as a function of region (Midwest, Northeast, South, and West), the religious affiliation of the state population (e.g. the share of residents identifying themselves as Mormons and Evangelicals, Catholics and Jews), the state level share of foreign-born and the Presidential vote for Johnson in 1964. In the second stage, we weight the first-stage estimates for each socioeconomic/geographic cell (post-stratification) by the proportions of each type in the state population using data from the 1960 census.

Figure A1 provides a comparison between average state opinion towards abolishing quotas and predictions from MRP. The pattern shows a strong association between the two measures, which is in particular driven by states with a large number of respondents in the Gallup poll such as California/CA (N=365). For states with relative few respondents such as Maine/ME (N=25) the difference between the raw percentage and MRP prediction is, as expected, larger. Similar results are found in Figure A2 for the comparison between average state opinion towards decreasing immigration and predictions from MRP.

**Figure A1: State Means and MRP Predictions for the Proportion Wishing to Abolish the Country of Origin Quotas**



**Figure A2: State Means and MRP Predictions for the Proportion Wishing to Decrease Immigration**

