

Viana de Carvalho, Carlos; Kryvtsov, Oleksiy

Working Paper
Price selection

Texto para discussão, No. 685

Provided in Cooperation with:

Departamento de Economia, Pontifícia Universidade Católica do Rio de Janeiro

Suggested Citation: Viana de Carvalho, Carlos; Kryvtsov, Oleksiy (2021) : Price selection, Texto para discussão, No. 685, Pontifícia Universidade Católica do Rio de Janeiro (PUC-Rio), Departamento de Economia, Rio de Janeiro

This Version is available at:

<https://hdl.handle.net/10419/249733>

Standard-Nutzungsbedingungen:

Die Dokumente auf EconStor dürfen zu eigenen wissenschaftlichen Zwecken und zum Privatgebrauch gespeichert und kopiert werden.

Sie dürfen die Dokumente nicht für öffentliche oder kommerzielle Zwecke vervielfältigen, öffentlich ausstellen, öffentlich zugänglich machen, vertreiben oder anderweitig nutzen.

Sofern die Verfasser die Dokumente unter Open-Content-Lizenzen (insbesondere CC-Lizenzen) zur Verfügung gestellt haben sollten, gelten abweichend von diesen Nutzungsbedingungen die in der dort genannten Lizenz gewährten Nutzungsrechte.

Terms of use:

Documents in EconStor may be saved and copied for your personal and scholarly purposes.

You are not to copy documents for public or commercial purposes, to exhibit the documents publicly, to make them publicly available on the internet, or to distribute or otherwise use the documents in public.

If the documents have been made available under an Open Content Licence (especially Creative Commons Licences), you may exercise further usage rights as specified in the indicated licence.

TEXTO PARA DISCUSSÃO

No. 685

Price selection

Carlos Carvalho
Oleksiy Kryvtsov.



Price Selection*

Carlos Carvalho[†]
PUC-Rio

Oleksiy Kryvtsov[‡]
Bank of Canada

May 2021

Abstract

Price selection is a simple, model-free measure of selection in price setting and its contribution to inflation dynamics. It exploits comovement between inflation and the level from which adjusting prices departed. Prices that increase from lower-than-usual levels tend to push inflation above average. Using detailed micro-level consumer price data for the United Kingdom, the United States, and Canada, we find robust evidence of strong price selection across goods and services. At a disaggregate level, price selection accounts for 37% of inflation variance in the United Kingdom, 36% in the United States, and 28% in Canada. Price selection is stronger for goods with less frequent price changes or with larger average price changes. Aggregate price selection is considerably weaker. A multisector sticky-price model accounts well for this evidence and demonstrates a monotone relationship between price selection and monetary non-neutrality.

JEL classification codes: E31, E51.

Keywords: Consumer Price Index, Inflation, Prices, Selection Effect, Money Non-neutrality.

*The views expressed herein are the authors' and not necessarily those of the Bank of Canada. We thank Ainslie Restieaux and Rowan Kelsoe in the Prices Division at the Office for National Statistics for valuable feedback regarding the U.K. CPI data. We thank Statistics Canada, Danny Leung and Claudiu Motoc for facilitating confidential access to Statistics Canada's Consumer Price Research Database. We thank Information Resources Inc. for making their data available. All estimates and analysis in this paper, based on data provided by ONS, Statistics Canada, and Information Resources Inc., are by the authors and not by the U.K. Office for National Statistics, Statistics Canada, or Information Resources Inc. For helpful comments and suggestions, we would like to thank Yuriy Gorodnichenko, an anonymous referee, Mikhail Golosov, Brent Neiman, Ricardo Reis, Joe Vavra, Peter Karadi (discussant at the Cleveland Fed's 2019 "Inflation: Drivers and Dynamics" Conference), and participants at the Bank of Canada Fellowship Learning Exchange 2015, World Congress of Econometric Society 2015, Canadian Economics Association Meetings 2016, Econometric Society North American Summer Meetings 2016, Society of Economic Dynamics Meetings 2016, 2nd Annual Carleton Macro-Finance Workshop 2017, ECB Conference "Understanding Inflation: Lessons from the Past, Lessons for the Future?" 2017, Banque de France, PBCSF Tsinghua University, SAIF Jao Tong University, University of Alberta, Insper, NBER Summer Institute 2018 Monetary Economics Workshop, Central Bank of Chile and PUC-Chile 2018 Workshop, Cleveland Fed's 2019 "Inflation: Drivers and Dynamics" Conference, Bank of Portugal, Richmond Fed, and UT-Austin. We thank Nicole van de Wolfshaar for superb editorial assistance. Alex Carrasco, Amy Li, Rodolfo Rigato, André Sztutman, and Shane Wood provided outstanding research assistance. All errors are our own.

[†]Email: cvianac@econ.puc-rio.br.

[‡]Email: okryvtsov@bankofcanada.ca.

1 Introduction

The extent to which prices respond to shocks is a key determinant of inflation dynamics. In leading sticky-price theories of inflation determination, that sensitivity depends critically on the degree of price rigidity. The more sticky prices are, the less inflation tends to respond to the state of the economy. For a given degree of nominal price rigidity, however, inflation can be more or less responsive to shocks depending on the behavior of prices that do change. For example, in response to a shock that increases firms' desired prices, aggregate inflation will rise relatively more if prices that respond to the shock increase by a significant amount. This can arise, for instance, if the pool of prices that change after the shock features a high share of prices that were relatively low to begin with.

The possibility that adjusting prices differ systematically from the overall population of prices is associated with the statistical concept of *selection*. In Statistics, selection exists whenever a sample drawn from a given population is *not* representative of that population. In our context, selection exists whenever prices that change (think of them as the “sample”) are not representative of the distribution of pre-existing prices (“population”). The existence of selection in this general statistical sense can be tested directly given a microdata panel of individual prices. For example, one can identify prices that change between periods $t - 1$ and t and statistically test for differences between the distribution of the overall population of $t - 1$ prices and the distribution of $t - 1$ prices that change going into period t .

Given our focus on inflation dynamics, however, our interest goes beyond testing whether selection in such general form exists. The empirical question of interest here is whether selection exists in a form that matters for inflation dynamics. To address this question, we propose a simple, model-free way of measuring selection in price setting using micro price data. Rather than testing for the presence of selection in general, we design a measure of selection that matters for inflation dynamics. To differentiate it from other forms of selection, we name it *price selection*.

Our measure of price selection explores the following idea, based on comovement. Consider a shock that increases firms' desired prices. This shock tends to produce an uptick in aggregate inflation.¹ If the uptick in inflation is associated with price increases that depart from lower-than-usual levels, those price increases tend to be larger than average, and the inflation response is greater. Hence, selection of this kind amplifies inflation fluctuations. We design our measure of selection to quantify the extent of such comovement. For the subset of prices that change between periods $t - 1$ and t , we compute their average level at $t - 1$ relative to the average level of *all* prices in the relevant population at $t - 1$. We call this average price-relative the *preset price* or *preset price-relative*. If the preset price covaries negatively with inflation, there is price selection of the kind just described. In particular, strong negative comovement between the preset price and inflation implies that upward movements in inflation are largely driven by prices that increase from lower-than-usual levels. In

¹Klenow and Kryvtsov (2008) provide empirical evidence that the bulk of inflation variance is due to variation in the average size of price changes (the intensive margin of inflation) rather than variation in the fraction of prices that change (the extensive margin of inflation). Hence, our measure of selection is designed to help us make sense of variation in the intensive margin of inflation. For expositional convenience, we often omit the expression “intensive margin” and refer directly to inflation.

other words, the underlying price increases tend to be larger than average because they involve prices that were relatively low to begin with.² Note that if adjusting prices are drawn at random from the overall population of prices, as in the workhorse sticky-price model due to Calvo (1983), the preset price-relative equals zero and does not comove with inflation. In that case, our measure yields zero price selection. More generally, our measure yields zero selection if changes in the preset price are uncorrelated with inflation fluctuations.

We employ three detailed micro price datasets to measure price selection. For the United Kingdom, we use the dataset underlying construction of the Consumer Price Index (CPI) by the U.K. Office for National Statistics (ONS). The dataset provides unit prices for goods and services that are included in the consumption expenditure component of the U.K. National Accounts, representing about 57% of the U.K. CPI basket. Prices are collected locally for more than 1,100 categories of goods and services a month and more than 14,000 retail outlets across the United Kingdom. The sample period includes 236 months, from February 1996 to September 2015. Likewise, for Canada we employ the Consumer Price Research Database (CPRD), compiled by Statistics Canada from price surveys used to construct the non-shelter portion of the Canadian CPI. The dataset contains information about prices posted by retail outlets across Canada during 143 months from February 1998 to December 2009, spanning more than 700 categories of goods and services representing about 61% of the consumption basket underlying the CPI. Finally, for the United States, the Information Resources Inc (IRI) scanner dataset provides weekly expenditures and quantities for individual products across 31 product categories over 132 months from January 2001 to December 2011. The product categories cover food and personal care goods sold by grocery stores in 50 U.S. metropolitan areas.

We first compute the average price change and preset price-relative for each month, product category, and sampling stratum (given by location and store type). This level of disaggregation accords with sample design for collecting prices and constructing the CPI in the United Kingdom, the United States, and Canada (ILO, 2004). We measure the extent of price selection at the stratum level by the coefficient of a least squares regression of the preset price-relative on the average size of price changes. A standard inflation variance decomposition establishes that the absolute value of this coefficient is equal to the share of the variance of the average size of price changes explained by the preset price-relative, thus providing a convenient gauge for the economic significance of price selection. Zero price selection means that changes in the preset price are uncorrelated with inflation fluctuations.

For our baseline panel specification, we exclude price changes associated with price discounts and product substitutions and control for stratum and calendar-month fixed effects. The weighted mean price selection across strata is -0.371 for the United Kingdom, -0.360 for the United States, and -0.285 for Canada, all highly statistically significant and robust to different empirical specifications.

²It is worth emphasizing that our measure of selection does *not* require products' desired prices to be the same. For example, there can be firms or products whose prices are usually below-average, and others whose prices are usually above-average. Because our measure of selection is based on comovement, what matters is whether there is systematic covariation between the departing levels of adjusting prices—relative to their “typical” position in the relative-price distribution—and inflation.

Including price changes associated with price discounts or substitutions does not materially influence price selection at a stratum level.

By exploiting rich variation in price adjustment across product strata, we document that price selection is stronger for strata where prices change less frequently. A 10 percentage point decrease in the frequency of price changes is associated with an additional 1.9 to 6.7 percentage points of inflation variance explained by preset prices. Furthermore, we find that price selection is stronger in strata with a larger size of price changes.

Finally, we measure the degree of price selection at the *aggregate* level. We find that regular-price selection is substantially weakened. For the baseline case—no discounts or substitutions—price selection is -0.197 for the United Kingdom, and it is not significantly different from zero for the United States and Canada. Similar to the stratum-level evidence, including substitutions does not change price selection at the aggregate level. By contrast, including price discounts restores a substantial degree of price selection in the United Kingdom (-0.394) and meaningful price selection in the United States (-0.140). Hence, aggregation largely washes out price selection for regular price changes, but not for price discounts. This finding reflects a special nature of price discounts as an additional margin of price flexibility and underscores their role for amplifying cyclical variation of the aggregate price level, as recently emphasized for the United Kingdom and United States by [Kryvtsov and Vincent \(2021\)](#). In Canada, aggregate price selection is close to zero for either regular or all posted prices, consistent with less cyclical variation in price discounts and coarser strata in the Canadian sample.

In exploring micro data to perform a variance decomposition of inflation, our paper is related to [Klenow and Kryvtsov \(2008\)](#), who decompose inflation into components due to extensive and intensive margins of price adjustment. Our paper is also related to [Bils, Klenow, and Malin \(2012\)](#), who use microdata to construct what they call a “reset price inflation” measure, which they employ to assess sticky-price models. Their measure relies on observations of individual reset prices of adjusters, which are then used to impute unobserved reset prices for non-adjusters. We provide complementary results by exploiting price selection, which relies on (observed) *preset* prices of adjusters. Our findings are also complementary to those of [Campbell and Eden \(2014\)](#), who show evidence that a store’s price is more likely to adjust when it differs substantially from the average price of other stores.

In the second part of the paper, we study the implications of our empirical evidence for business cycle models with pricing frictions. The sticky-price literature has emphasized so-called “selection effects” as a key determinant of the inflation-output trade-off. Selection effects tend to increase the sensitivity of aggregate inflation to economic slack for a given degree of microeconomic price stickiness, and hence they often lead to a lower degree of monetary non-neutrality (e.g., [Caballero and Engel, 2007](#)). [Caplin and Spulber \(1987\)](#), [Danziger \(1999\)](#) and [Goloso and Lucas \(2007\)](#) emphasize selection effects in menu-cost models, where firms can choose to incur a menu cost to change their prices. Selection effects also arise in models with time-dependent price adjustment, where after a shock some prices are expected to take longer to adjust than others ([Carvalho and Schwartzman, 2015](#)). Under specific assumptions, some models yield sufficient statistics for selection effects that can be computed from moments estimated from price micro data ([Carvalho and Schwartzman, 2015](#); [Alvarez, Le Bihan, and Lippi, 2016](#)). The extent of selection effects can also be estimated indirectly

from applied theoretical models matched to observed micro price behavior. Recent papers by [Vavra \(2013\)](#), [Coibion, Gorodnichenko, and Hong \(2015\)](#), [Sheremirov \(2020\)](#) use time variation in price- or price-change dispersion to discriminate across models with different degrees of selection effects. Other examples in the literature show that the degree of selection effects may be affected by factors such as product-level disturbances ([Gertler and Leahy, 2008](#)), economies of scale in price-adjustment technology ([Midrigan, 2011](#); [Bonomo et al., 2020](#)), stochastic volatility of idiosyncratic shocks ([Karadi and Reiff, 2019](#)), the number of products per retailer ([Bhattarai and Schoenle, 2014](#); [Alvarez and Lippi, 2014](#)), the risk of pricing mistakes ([Costain and Nakov, 2011b](#)), the slope of the hazard rate of price adjustment ([Carvalho and Schwartzman, 2015](#)), and sectoral heterogeneity in price stickiness ([Carvalho, 2006](#); and [Nakamura and Steinsson, 2010](#)).³ The most widely used [Calvo \(1983\)](#) sticky-price model with random and exogenous timing of price adjustments represents an extreme case with no selection effects. In sum, sticky-price models predict a wide range for the size of selection effects and the associated monetary non-neutrality.

We rely on a standard sticky-price model as a laboratory to study our measure of price selection. In particular, we study whether aggregation affects price selection, how price selection relates to selection effects, and what our estimates of price selection imply for the response of the aggregate price level to nominal shocks—and, hence, for the extent of monetary non-neutrality. Although our measure is model free and does not rely on any of the aforementioned model features that are material for selection effects in sticky-price models, we show price selection accurately captures the macroeconomic implications of selection effects in the most commonly used sticky-price models.

We rely on a multisector sticky-price model that nests the [Golosov and Lucas \(2007\)](#) and [Calvo \(1983\)](#) models, calibrated to match price-setting statistics for a number of consumption sectors in the U.K. data. In the model, price selection at the sector level can be calibrated by a proper choice of the nesting parameter that controls for the occurrence of random (“Calvo”) price changes. Using numeric simulations, we first show that aggregation weakens price selection in the model, in line with our empirical evidence. We then show that, conditional on the frequency of price changes, the degree of monetary non-neutrality is monotone in our measure of price selection. The tight link between price selection and monetary non-neutrality underscores that our proposed measure is useful not only because it is model free, but also because it captures the key role of selection effects in determining the inflation-output trade-off in standard sticky-price models. Finally, we study whether price selection interacts with real rigidities in the sense of [Ball and Romer \(1990\)](#) and [Kimball \(1995\)](#). For a given degree on nominal price stickiness, real rigidities are known to increase the degree of monetary non-neutrality. We demonstrate that these effects of real rigidities on monetary non-neutrality are orthogonal to the effects induced by selection.

These findings offer important insights for our understanding of monetary non-neutrality in sticky-

³Some related empirical work focuses on the price pass-through of firm- or product-level shocks to marginal costs and also provides a wide range of estimates: from none or very small ([Carlsson, 2017](#)) to virtually full pass-through ([Eichenbaum, Jaimovich, and Rebelo, 2011](#)). [Gagnon, López-Salido, and Vincent \(2012\)](#) study the effect of large inflationary shocks on the timing of price changes using Mexican CPI data: they provide evidence for the response of the timing of price changes to inflation shocks, although they do not identify how much of this response is due to selection effects.

price models. In a large class of such models, non-neutrality can be thought of as a function of the frequency of price changes, the degree of selection, and the strength of real rigidities. The frequency of price changes can be measured directly from micro price data without the need to identify either selection effects or real rigidities. We show that price selection can also be estimated directly from micro price data. This reinforces the importance of identifying real rigidities. While the literature provides indirect estimates based on applied theoretical models matched to observed micro price behavior (e.g., [Gopinath and Itskhoki, 2011](#); [Kryvtsov and Midrigan, 2013](#); [Klenow and Willis, 2016](#)), it may be possible to develop a model-free approach for identifying real rigidities, similar to what we do in regards to price selection.

The paper proceeds as follows. The concept of price selection is introduced in Section 2. Section 3 explains the data sources and empirical definitions. Section 4 discusses how we identify and measure price selection in U.K., U.S. and Canadian micro data. Section 5 distills the implications of the empirical findings for sticky-price models. Section 6 concludes.

2 Definition of price selection

2.1 Inflation decomposition and price selection

Consider an economy with a continuum of goods, and let $G_t(p)$ denote the distribution of prices in period t (all prices are in logs). The aggregate price level in period t , P_t , can be defined as the mean of G :

$$P_t = \int_{-\infty}^{\infty} p dG_t(p).$$

Inflation, therefore, can be fully characterized by the sequence of price distributions $\{G_t(p)\}$:

$$P_t - P_{t-1} = \int_{-\infty}^{\infty} p d[G_t(p) - G_{t-1}(p)]. \quad (1)$$

We can simplify this expression by focusing on prices that change from $t - 1$ to t . Let $\Lambda_{t|t-1}(p)$ denote the measure of prices in the interval $[p, p + dp]$ in period $t - 1$ that adjust between periods $t - 1$ and t ; and let $H_{t|t-1}(p' | p)$ denote their distribution in period t . The measure of prices in the interval $[p, p + dp]$ in period t is

$$G_t(p) dp = (1 - \Lambda_{t|t-1}(p)) dG_{t-1}(p) + \left[\int_{-\infty}^{\infty} H_{t|t-1}(p | \tilde{p}) \Lambda_{t|t-1}(\tilde{p}) dG_{t-1}(\tilde{p}) \right] dp. \quad (2)$$

The first term on the right-hand side is the measure of prices that were in the interval $[p, p + dp]$ in period $t - 1$ and did not change. The second term is the measure of prices that did change to the level in the interval $[p, p + dp]$ in period t . To obtain this measure, first, for each price \tilde{p} in the domain, compute the measure of prices from an interval $[\tilde{p}, \tilde{p} + dp]$ in period $t - 1$ that are adjusted to a point in the interval $[p, p + dp]$ in period t . This measure is given by $H_{t|t-1}(p | \tilde{p}) \Lambda_{t|t-1}(\tilde{p}) dG_{t-1}(\tilde{p})$.

Second, sum across all prices \tilde{p} . Using (2) to substitute for $G_t(p) dp$ in (1) yields

$$P_t - P_{t-1} = - \int_{-\infty}^{\infty} p \Lambda_{t|t-1}(p) dG_{t-1}(p) + \int_{-\infty}^{\infty} p \left[\int_{-\infty}^{\infty} H_{t|t-1}(p|\tilde{p}) \Lambda_{t|t-1}(\tilde{p}) dG_{t-1}(\tilde{p}) \right] dp. \quad (3)$$

The first term on the right-hand side is (the negative of) the weighted mean of time- $(t-1)$ level of those prices that change between periods $t-1$ and t , and the second term is their weighted mean time- t level, with both means weighted by the measure of adjusting prices.

It is convenient to rewrite expression (3) in terms of price levels conditional on price adjustment. Let Fr_t denote the measure of price changes in period t . P_t^{pre} is the preset price-relative, i.e., the average time- $(t-1)$ level of prices that adjust between periods $t-1$ and t relative to the aggregate price level at $t-1$, and P_t^{res} is their average time- t level relative to the aggregate price level at $t-1$, which we call the *reset price*:

$$\begin{aligned} Fr_t &= \int_{-\infty}^{\infty} \Lambda_{t|t-1}(p) dG_{t-1}(p), \\ P_t^{pre} &= \int_{-\infty}^{\infty} p \Lambda_{t|t-1}(p) Fr_t^{-1} dG_{t-1}(p) - P_{t-1}, \\ P_t^{res} &= \int_{-\infty}^{\infty} p \left[\int_{-\infty}^{\infty} H_{t|t-1}(p|\tilde{p}) \Lambda_{t|t-1}(\tilde{p}) Fr_t^{-1} dG_{t-1}(\tilde{p}) \right] dp - P_{t-1}. \end{aligned}$$

Inflation decomposition (3) can be written as

$$\pi_t \equiv P_t - P_{t-1} = Fr_t (P_t^{res} - P_t^{pre}), \quad (4)$$

where $DP_t \equiv P_t^{res} - P_t^{pre}$ is the average size of price changes, or intensive margin of inflation.

In this inflation-accounting framework, testing for selection in the general statistical sense amounts to testing for differences between the distribution of the population of time- $(t-1)$ prices, $G_{t-1}(p)$, and the distribution of those time- $(t-1)$ prices that change from $t-1$ to t , $\int_{-\infty}^p \Lambda_{t|t-1}(\tilde{p}) dG_{t-1}(\tilde{p})$. Note that the two distributions are equal when $\Lambda_{t|t-1}(\cdot)$ is the uniform distribution—i.e., when adjusters are randomly drawn from the population of prices, as in the [Calvo \(1983\)](#) model.

Our empirical research question, however, is whether there exists a form of selection that matters for inflation dynamics. Hence, we propose to identify price selection from comovement between preset price-relative P_t^{pre} and the intensive margin of inflation DP_t . More concretely, our measure of price selection is the coefficient of an Ordinary Least Squares regression of the preset price-relative on the average size of price changes:

$$P_t^{pre} = \gamma DP_t + error_t. \quad (5)$$

From inflation decomposition (4), it takes only a little algebra to establish that the absolute value of the γ coefficient in (5) gives the share of the variance of the average size of price changes explained by the preset price-relative, thus providing a convenient gauge for the economic significance of price

selection.⁴

2.2 Comparisons to alternative inflation decompositions

Decomposition (4) provides a novel take on the decomposition in [Klenow and Kryvtsov \(2008\)](#), who cast inflation as the product of the average fraction of price changes and their average size conditional on adjustment. Our decomposition represents the average size of price changes, DP_t , as the difference between the average price level of newly set prices and their average level prior to adjustment, $DP_t \equiv P_t^{res} - P_t^{pre}$.⁵

[Bils, Klenow, and Malin \(2012\)](#) study the relationship between inflation and reset price inflation. They define reset price inflation as the estimated rate of change of new prices (set by the subset of price changers) relative to new prices in the previous period (set by price changers in that period). Since the subset of price changers varies from month to month, reset price inflation depends on both selection effects and strategic pricing complementarities. Using simulations of the [Smets and Wouters \(2007\)](#) business cycle model, [Bils, Klenow, and Malin \(2012\)](#) show that the model is inconsistent with joint dynamics of inflation and reset price inflation in the U.S. data. [Kara \(2015\)](#) shows that these dynamics can be partially reconciled if business cycle models incorporate different degrees of price flexibility across consumption sectors. Price selection makes inflation more sensitive to shocks, and thus may partly drive [Bils et al.](#)'s reset price inflation.

Following a model-based approach, [Caballero and Engel \(2007\)](#), [Costain and Nakov \(2011a\)](#), and [Dotsey and Wolman \(2020\)](#), propose decompositions of the inflation response to a monetary shock. This response is due to the cumulative impact of desired log price adjustments (price gaps), $p_i - p_i^*$, and can be decomposed into the contributions from changes in the size of adjustments by those prices that adjust regardless of the shock (the intensive margin) and from the changes in the fraction of price increases and decreases caused by the shock (the extensive margin). These definitions rely on assumptions about the process for desired price levels, p_i^* , and the conditional probability of adjustment as a function of the price gap. While this approach is well suited for demonstrating theoretical implications of selection effects, it is less useful for empirical assessment because the unobserved desired price level is difficult to measure in the micro data.⁶ [Caballero and Engel \(2007\)](#)

⁴Because $Var(DP_t) = Var(P_t^{res}) + Var(P_t^{pre}) - 2Cov(P_t^{res}, P_t^{pre}) = Cov(P_t^{res}, DP_t) - Cov(P_t^{pre}, DP_t)$, the share of variance of DP_t explained by P_t^{pre} is $\frac{-Cov(P_t^{pre}, DP_t)}{Var(DP_t)}$, which is the expression for (the absolute value of) coefficient γ in (5). In general, selection effects—captured by how P_t^{pre} and DP_t respond to a sequence of shocks—vary over time. For example, in a state-dependent pricing model, very large shocks will drive almost all firms to change prices, driving selection toward zero. But for smaller shocks, selection is stronger and may depend on the distribution of price gaps at the time of such shocks. The price selection statistic captures the *average* relationship between P_t^{pre} and DP_t . Therefore, the error term in (5) picks up variation in selection effects around the average. We illustrate this explanation using the [Taylor \(1980\)](#) model as an analytical example (Section C in Supplementary Material).

⁵[Klenow and Kryvtsov \(2008\)](#) and [Nakamura and Steinsson \(2008\)](#) decompose the variance of DP_t into terms due to price increases and decreases. Using U.S. CPI micro data, they find that price increases play an important role in inflation fluctuations, while the role of price decreases may depend on the definitions of the time series and other controls.

⁶[Carlsson \(2017\)](#) uses producer price and cost micro data from Sweden to estimate firm-specific marginal cost changes; he finds a weak response of the timing of individual price changes to firms' marginal costs. In contrast, [Eichenbaum, Jaimovich, and Rebelo \(2011\)](#) find an almost perfect pass-through of cost to prices using scanner data for retail prices.

argue selection effects are neither necessary nor sufficient to increase the response of inflation to a nominal shock and propose instead focusing on the extensive margin. They clarify, however, that the effect of the extensive margin stems from a combination of selection of price adjustments and their respective impacts on the average price response to a common nominal shock.⁷

In contrast to these approaches, our method is model free, requiring only information about price adjustments at the micro level, and it does not mix in the other adjustment margins, such as reset price changes or the extensive margin. Decomposition (4) focuses solely on selection of prices that adjust from month to month and their average starting and ending price levels relative to the aggregate price—i.e., preset and reset price-relatives. The difference between price-relatives, multiplied by the fraction of price adjustments, is identically equal to inflation. The contribution of movements in the preset price-relative to inflation dynamics then identifies price selection.⁸

3 U.K., U.S. and Canadian micro data

Measuring inflation, reset, and preset price levels requires price data at the level of individual goods and services. We employ three datasets for the United Kingdom, the United States, and Canada. The datasets from the U.K. Office for National Statistics (ONS) and Statistics Canada provide prices for goods and services collected monthly from retail outlets used for the construction of the consumer price index (CPI) in these countries. The IRI dataset provides weekly scanner transactions data for grocery stores in the United States. Unlike ONS and Statistics Canada datasets that provide prices posted by retailers, the IRI dataset provides transaction prices. To the extent possible, our treatments of these datasets make the statistics comparable. The U.K. dataset has a broader coverage than the IRI dataset, and it is also available online, unlike the Canadian dataset, for which we have confidential access. We therefore rely extensively on the U.K. dataset for the multitude of our robustness checks. We also describe it in more detail below. The three datasets provide rich coverage of micro price adjustment in three advanced economies (see Table 1).

3.1 U.K. CPI micro data

The dataset is compiled from the survey of prices for goods and services that are included in the household final monetary consumption expenditure component of the U.K. National Accounts. The survey includes prices for more than 1,100 individual goods and services a month, collected from more than 14,000 retail stores across the United Kingdom. The survey excludes the housing portion of consumer prices, such as mortgage interest payments, house depreciation, insurance and other house purchase fees. Expenditures for purposes other than final consumption are also excluded, e.g., those

⁷Gagnon, López-Salido, and Vincent (2012) provide evidence of the quantitative importance of the extensive margin using Mexican CPI data in response to large nominal shocks—peso devaluation in 1994 and VAT hikes in 1994 and 2010.

⁸In Supplementary Material (Section D) we provide intuition on the workings of selection effects in sticky-price models using the Calvo and Golosov-Lucas models as examples. We also illustrate how our model-free measure of price selection accurately captures the implications of selection effects in these models.

for capital and financial transactions, direct taxes, or cash gifts. The portion of the data published on the ONS website includes only locally collected prices, covering about 57% of the U.K. CPI basket.

Most prices are collected monthly, except for some services in household and leisure groups, and seasonal items. The sample period covers 236 months, from February 1996 to September 2015. The total number of observations is over 24 million, or about 100,000 per month.⁹ Prices are collected across 12 geographical regions, e.g., London, Wales, East Midlands. There are four levels of sampling for local price collection: locations, outlets within location, product categories, and individual product varieties. For each geographical region, locations and outlets are based on a probability-proportional-to-size systematic sampling, with a size based on the number of employees in the retail sector (locations) and the net retail floor space (outlets). The dataset contains prices collected locally in around 150 locations with an average of more than 90 outlets per location.

Product or service categories—or “representative items”—are selected based on a number of factors, including expenditure size and product diversity, variability of price movements, and availability for purchase throughout the year (except for certain goods that are seasonal). There are currently more than 1,100 categories in the basket. Examples of categories include onions, Edam, envelopes, men’s suit (ready-made), electric heater, single beds. Finally, for each category-outlet-location, individual products and varieties are chosen by price collectors based on their shelf size and regular stock replenishment.

For each category, ONS stratifies the sample by 24 strata, given by region and shop type pairing. For each category and stratum, the ONS dataset provides sampling weights that reflect that category-stratum’s relative importance in households’ consumption expenditures.¹⁰ For constructing the CPI, ONS first constructs elementary price indices for each product category-stratum bin by taking geometric means of all prices within the bin, with equal weights. These elementary indices are then aggregated into the CPI using consumption expenditure weights.¹¹

Throughout the paper, we provide two alternative treatments of price changes at the individual product level. First, we distinguish price changes associated with temporary price discounts (sales). While sales are relatively infrequent—4.6% per month in the United Kingdom—they usually come with much larger and shorter-lived price swings than regular prices. We adopt ONS’ definition of sale prices as temporary reductions on goods that are likely to be available again at regular prices

⁹A detailed description of the CPI data sampling and collection can be found in [ONS \(2014\)](#) and [Clews, Sanderson, and Ralph \(2014\)](#). The price quote data are available via the ONS website: <http://www.ons.gov.uk/ons/datasets-and-tables/index.html>. Recent related work and additional details on data cleaning can be found in [Kryvtsov and Vincent \(2021\)](#) and [Chu et al. \(2018\)](#).

¹⁰Categories in the CPI are classified into 71 classes, according to the international classification of household expenditure, Classification of Individual Consumption by Purpose (COICOP). A CPI class represents a basic group category, such as meat, liquid fuels, or new cars. Category and class weights are calculated based on the Household Final Monetary Consumption Expenditure (HFMCCE) and the ONS Living Costs and Food Survey (LCF). Changes in the expenditure weights over time reflect changes in the expenditure composition of households’ consumption baskets. Using class, category, stratum and shop type weights, we follow ONS methodology to construct observation-specific weights for our sample.

¹¹The geometric mean, also known as the Jevons index, is used for calculating an elementary price index for CPI in the United States and Canada, whereas in the United Kingdom, a mixture of geometric mean and average of price relatives (the Dutot index) is used. See [Diewert \(2012\)](#) for a detailed discussion of various CPI measures in the United Kingdom. To keep our statistics directly comparable across country datasets, we use geometric mean elementary indices everywhere.

or as end-of-season reductions. When the posted price is discounted, the unobserved regular price equals to the posted price in the month preceding the first month of the sale; it is equal to the posted price if there is no sale. These definitions are reliable for describing sales behavior and are commonly used in the literature.¹²

Second, we differentiate price changes associated with product substitutions. When a previously collected price-product is no longer available to field agents, they make a substitution for another product from the same category. Such substitutions—5.6% per month in the United Kingdom—are more commonly associated with price increases (68% of price changes during substitutions).¹³ IRI data contain prices for uniquely defined products, and therefore we do not apply this treatment to these data.

3.2 Statistics Canada CPI data

The Consumer Price Research Database (CPRD) is compiled by Statistics Canada from price surveys used to construct the non-shelter portion of the Canadian CPI. The dataset contains information about prices for goods and services posted by retail outlets across Canada from February 1998 to December 2009, or 143 months. Overall, the CPRD contains more than 8.4 million observations (almost 60,000 per month) and covers about 61% of the consumption basket underlying the CPI. Since the CPRD is a dataset of individual prices, it excludes goods for which prices are aggregated indexes, such as utility rates, insurance premiums, transportation fares, sport and theater tickets, books and newspapers, entertainment CDs and DVDs, and computer equipment.

Similar to ONS, Statistics Canada defines a product category (representative item)—a single commodity, such as potatoes, yogurt, gas barbecues, women’s gloves, oil filters—selected to represent a basic class of goods and services in the index. There are 705 specific product categories in the dataset. The selection of these items takes into account the following criteria: the price movement of the item should represent the price movement of the given class, and the item has to be available on the market for a reasonable length of time.

Prices are collected from a variety of retail outlets, including supermarkets, specialty shops, department stores, garages, dental offices, and salons. In most cases, the main determining factor in the selection of outlets is the value of sales revenues for the items being priced. However, geographic dispersion and outlet type are also important factors taken into consideration. Pricing information is collected in up to 92 urban centres across Canada, generally in urban centres with a population of 30,000 or more. Due to confidentiality restrictions for this dataset, strata are defined by a coarser geographical definition, spanning 13 Canadian provinces and territories.

Like the U.K. dataset, the Canadian dataset provides flags for observations that correspond to a sale (9.0% of monthly observations) or to a product substitution (3.5%). We therefore treat those

¹²Nakamura and Steinsson (2008) show that sales affect the measurement of the extent of nominal price stickiness in the U.S. CPI data. Kryvtsov and Vincent (2021) provide evidence of the countercyclical variation in the number of sales in the United Kingdom and United States; they also discuss different definitions of sales in the data.

¹³Klenow and Malin (2010) provide an overview of the incidence of sales and substitutions and their implications for price adjustment. Bils (2009) and Kryvtsov (2016) document the occurrence of price substitutions and assess the extent of the associated quality bias in the U.S. and Canadian CPI data, respectively.

observations the same way we treat the U.K. dataset.

3.3 IRI data for the United States

IRI is a marketing and market research dataset that contains scanner data, product description data, store data and household data.¹⁴ The scanner data are provided at a weekly frequency for a panel of 31 grocery products, such as beer, coffee, milk, razors, laundry detergent, and frozen pizza. To make the IRI dataset comparable to the CPI datasets, we convert weekly observations into monthly by using the first available weekly observations from that month. In all, the dataset contains around 1.5 billion observations, or 36.2 million monthly observations, covering the span of 132 months, from January 2001 to December 2011, or around 274,000 per month.

The data are provided for grocery stores in 50 U.S. metropolitan areas. Each store has a unique identifier, so its prices and quantities can be tracked over time. Scanner data include the revenue and quantity for weekly purchases for each product, identification for the product, display indicator and sale indicator. For each individual product in a product category, we define a unique product identifier by matching UPC codes for that product with product description (e.g., Budweiser lager 355ml). We include only stores belonging to chains that exist throughout the entire sample period. We exclude products that belong to a store’s private label (their coding was changed by IRI in 2007 and 2008), products that have fewer than two observations per week, and observations with a unit price less than \$0.10.

Similar to strata in the ONS and Statistics Canada data, we define an elementary bin in IRI data to be represented by a category and metropolitan location. The share of nominal revenues over the sample period in total revenues over the sample period is used as a stratum weight. In a given week, unit prices for each UPC are constructed by dividing weekly revenue by the quantity sold. For weeks in which transactions occur during price discounts, regular unit prices are equal to the last observed regular unit price. Around 9.0% of monthly observations are price discounts.¹⁵

3.4 Empirical definitions

The micro data used in this paper present us with two challenges for accurate measurement of price selection: heterogeneity across products, locations and stores, and measurement error. These issues are known to affect the estimates of price moments in the data and may as well apply to measurement of price selection.¹⁶

To deal with these issues, we apply inflation decomposition (4) at the category-stratum level—the most disaggregate available level in our datasets. We also exclude observations in the top percentile

¹⁴More details are provided in [Bronnenberg, Kruger, and Mela \(2008\)](#).

¹⁵[Coibion, Gorodnichenko, and Hong \(2015\)](#) use the IRI dataset to study retail prices and household expenditures across metropolitan areas, finding that reallocation of expenditures across retailers during local recessions lowers average prices paid by consumers.

¹⁶For example, [Alvarez, Le Bihan, and Lippi \(2016\)](#) show how heterogeneity and measurement error introduce an upward bias in measured kurtosis of price changes. Heterogeneity of price behavior across products, stores, and locations has been well documented, including not only the differences in the frequency and size of price changes, but also the incidence of price discounts, product churning, and stockouts. [Klenow and Malin \(2010\)](#) and [Nakamura and Steinsson \(2013\)](#) provide detailed reviews of microeconomic evidence on price dynamics and the extent of heterogeneity.

of absolute log price changes within each category-stratum; this helps to filter out coding errors or other outliers in month-to-month price movements (see [Alvarez, Le Bihan, and Lippi, 2016](#)). Finally, we exclude strata with less than 10 price changes over the sample period.

The empirical counterparts of the four variables entering inflation decomposition (4) are constructed as follows. Let p_{ist} denote log price of product i in category-stratum s and in month t , where subscript i uniquely identifies an individual product in a particular location (and also the type of retail outlet in the U.K. data). Denote by Ω_{st} the set of products in stratum s with price observations in both periods t and $t - 1$, and let $P_{s,t-1}$ denote the arithmetic mean of log prices in month $t - 1$ for all products in Ω_{st} . Let N_{st} be the number of price observations in stratum s in month t , and I_{ist} be an indicator of a price change for product i in month t —i.e. $I_{ist} = 1$ if $p_{ist} - p_{is,t-1} \neq 0$, and 0 otherwise. Noting that $p_{ist} - p_{is,t-1} \equiv I_{ist} (p_{ist} - P_{s,t-1} + P_{s,t-1} - p_{is,t-1})$, we can write inflation in category-stratum s in month t as the mean of log price changes in that bin and month, and express it identically as follows:

$$\begin{aligned} \pi_{st} &\equiv \frac{\sum_{i \in \Omega_{st}} (p_{is,t} - p_{is,t-1})}{N_{st}} \\ &\equiv \underbrace{\frac{\sum_{i \in \Omega_{st}} I_{is,t}}{N_{st}}}_{Fr_{st}} \times \left[\underbrace{\frac{\sum_{i \in \Omega_{st}} I_{is,t} (p_{ist} - P_{s,t-1})}{\sum_i I_{is,t}}}_{P_{st}^{res}} - \underbrace{\frac{\sum_{i \in \Omega_{st}} I_{is,t} (p_{is,t-1} - P_{s,t-1})}{\sum_i I_{is,t}}}_{P_{st}^{pre}} \right]. \end{aligned} \quad (6)$$

Equation (6) takes the same form as (4):

$$\pi_{st} \equiv Fr_{st} \cdot \underbrace{[P_{st}^{res} - P_{st}^{pre}]}_{DP_{st}}, \quad (7)$$

where Fr_{st} is the mean fraction of products in category-stratum s changing price in month t ; reset price P_{st}^{res} is the mean of log prices that changed in month t relative to the corresponding stratum population mean log price in month $t - 1$; and preset price P_{st}^{pre} is their corresponding mean level *prior* to change, in period $t - 1$, relative to stratum s population mean log price level in month $t - 1$. The term in brackets is the average size of non-zero price changes in month t , $DP_{st} \equiv P_{st}^{res} - P_{st}^{pre}$. Decomposition (7) nests the breakdown of inflation into extensive and intensive margins (represented by Fr_{st} and DP_{st} , respectively), proposed by [Klenow and Kryvtsov \(2008\)](#), namely, $\pi_{st} \equiv Fr_{st} \cdot DP_{st}$. In the empirical analysis in the next section, we assess price selection for stratum-level time series, using the variables defined in (7).

Table 1 provides descriptive statistics for the U.K., U.S. and Canadian data for the case that excludes price changes due to sales and substitutions.¹⁷ Regular price inflation in both the United Kingdom and Canada averaged 0.12% and 0.18% per month, or around 1.5% and 2.2% per year, during respective sample periods. In the U.S. grocery data, it was twice as high, at 0.29% per month, or 3.5% per year. In a given month, 12.7% of regular prices change in the United Kingdom, or around

¹⁷Section A in Supplementary Material provides descriptive statistics for different treatments of sales and substitutions.

once every 8 months. Prices in Canada and grocery prices in the United States change 21.7% and 22.3% of the time, or once in every 4 to 5 months on average. Table 1 also reports auxiliary statistics that we use for calibrating and evaluating sticky-price models.

4 Price selection in the U.K., U.S. and Canadian micro data

4.1 Evidence at the category-stratum level

We start by providing visual evidence of price selection. Figure 1 shows scatter plots for the largest strata in nine selected product categories in the United Kingdom, including oil, milk, and cigarettes, for regular prices and excluding substitutions. For each category, each point on the plot represents a monthly observation for the average size of non-zero price changes (x -axis) and preset price level (y -axis). Hence, each plot demonstrates joint variation of P_{st}^{pre} and DP_{st} across months for a given stratum. There is substantial variation in both variables for each category-stratum and across strata, and they tend to correlate negatively—i.e., above-average inflation is associated with price changes that come from below-average levels.¹⁸ This indicates the prevalence of price selection that amplifies stratum-level inflation variation.

To quantify the degree of price selection at a category-stratum level, we estimate the following baseline empirical specification:

$$P_{st}^{pre} = \gamma DP_{st} + \delta_{cal} + \delta_s + error_{st}, \quad (8)$$

where the dependent variable, P_{st}^{pre} , is the preset price-relative for a product category-stratum s in month t , and the independent variable of interest is the average size of non-zero price changes for category-stratum s in month t , DP_{st} . Since, by definition, $DP_{st} \equiv P_{st}^{res} - P_{st}^{pre}$, the absolute value of the estimated regression coefficient γ is equal to the estimated fraction of DP_{st} variance accounted for by variation in preset price P_{st}^{pre} , with the remaining fraction due to reset price. Hence, we adopt the estimated $\hat{\gamma}$ as our measure of price selection. Values of $\hat{\gamma}$ that are significantly different from zero are interpreted as evidence of price selection; negative (positive) values indicate that price selection amplifies (attenuates) inflation fluctuations in response to the underlying shocks. Our baseline specification (8) also includes calendar-month fixed effects δ_{cal} , and category fixed effects δ_s . Equation (8) is estimated by a pooled weighted least squares regression, with weights given by the share of expenditures in category-stratum s in month t (ω_{st}).¹⁹

¹⁸Variation in the average size of price changes, DP_{st} , accounts for most of the variation in inflation, as pointed out by Klenow and Kryvtsov (2008)—71% for the United Kingdom at a category level. Hence, if we regress P_{st}^{pre} (multiplied by the mean fraction of price changes Fr_c) on inflation π_{ct} , instead of the average size of price changes DP_{ct} , the estimated coefficients remain significant and negative. We also experimented taking out stochastic trends at a category-stratum level—price selection is stronger by about a third. Finally, we gauged the extent of a high-frequency component of price selection by bandpass-filtering regression variables using the Baxter-King (12, 96, 24) filter. As a result, price selection remains highly statistically significant, although its magnitude is roughly half of the magnitude estimated with unfiltered data.

¹⁹We exclude strata with price selection in the top and bottom 0.5 percentile from the analysis. Stratum-specific estimates of price selection are presented below.

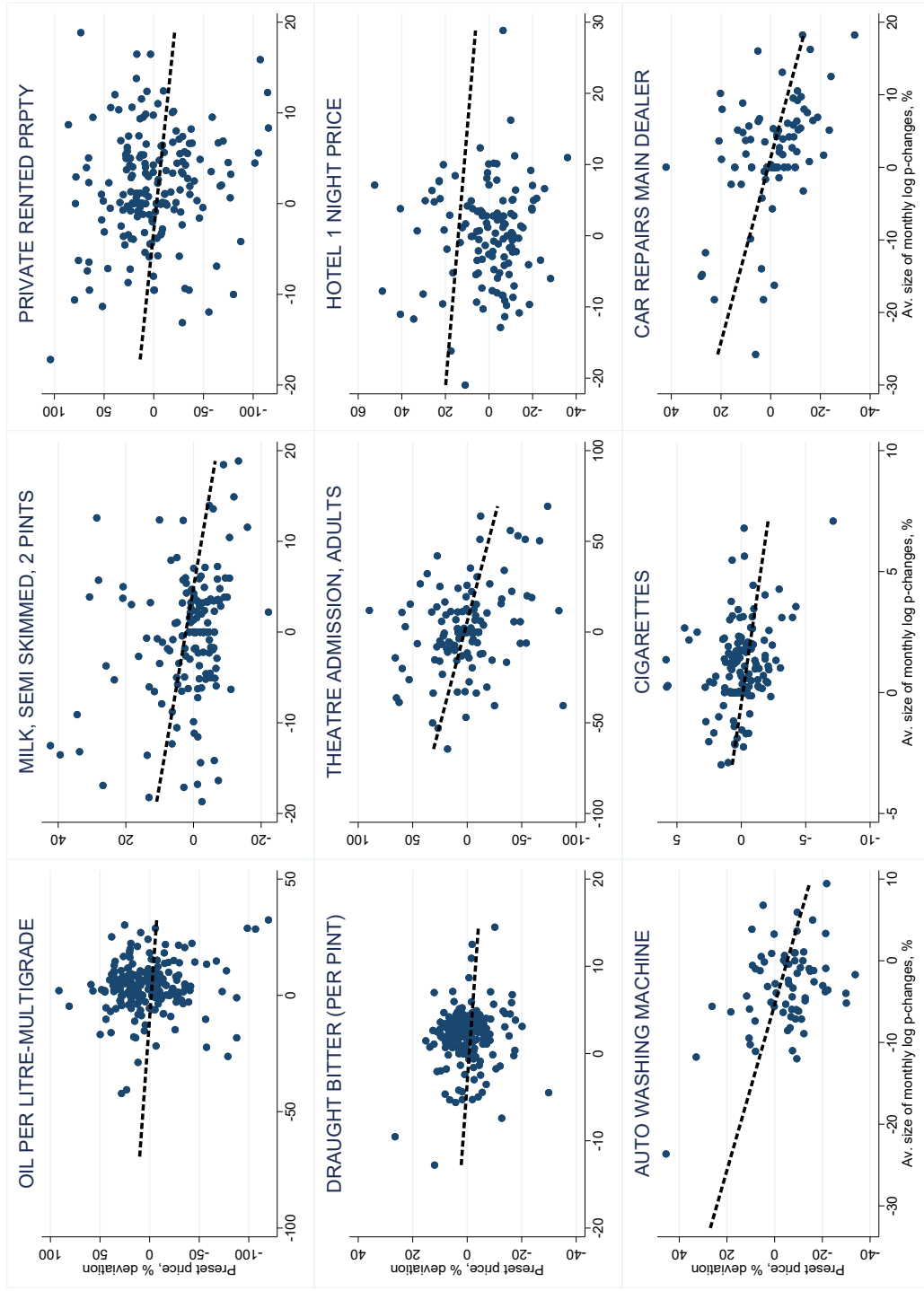
Table 1: Descriptive statistics

Statistic	U.K.	Canada	U.S.
Consumption coverage	Non-shelter goods and services	Non-shelter goods and services	Grocery products
Sample	1996:02–2015:09	1998:02–2009:12	2001:01–2011:12
# of months	236	143	132
# of obs/month	102,801	58,670	274,369
# of categories	1,152	705	31
# of strata/category	24 (12 regions x 2 store types)	13 provinces and territories	50 metropolitan locations
(1) π	0.121	0.182	0.291
(2) Fr	0.127	0.217	0.223
(3) $DP = \pi/Fr$	0.955	0.842	1.306
(4) adp	12.22	8.25	8.43
(5) $corr$	-0.032	0.164	-0.027
(6) $frac\ of\ sales$	5.6	9.0	9.0
(7) $frac\ of\ subs$	4.6	3.5	N/A

Notes: Data are from the U.K. Office for National Statistics CPI database, available at <http://www.ons.gov.uk/ons/datasets-and-tables/index.html>, the Statistics Canada's Consumer Price Research Database, and the Symphony IRI Inc. Sample period: [UK]: from February 1996 to September 2015; [Canada]: from February 1998 to December 2009; [U.S.]: from January 2001 to December 2011.

The entries are weighted means of stratum-level monthly variables. Observations across strata are based on consumption expenditure weights; observations across months are weighted equally. For computing statistics in rows (1) to (7), price changes due to sales or substitutions are excluded (Tables 1-3 in Supplementary Material provide statistics for other cases). π - inflation, in %; Fr - the fraction of items with changing prices; DP - the size of price changes, in %; adp - the average absolute size of price changes, in %; $corr$ - serial correlation of newly set prices for an individual product; $frac\ of\ sales$ - fraction of observations with discounted price, in %; $frac\ of\ subs$ - mean fraction of observations with product substitutions, in %.

Figure 1: Preset price level and average size of price changes, variation over time for largest strata in selected product categories, U.K. CPI data



Notes: Figure provides scatter plots for largest strata in nine selected product categories in the United Kingdom (including oil, milk, hotel, and cigarettes), for regular prices and excluding substitutions. For each category, each point on the plot represents a monthly observation for the average size of price changes (x -axis) and preset price level (y -axis). Each plot demonstrates joint variation of P_{st}^{pre} and DP_{st} across months for a given category-stratum s . The slope of the trend line is equal to $\hat{\gamma}_s$, representing the estimated degree of price selection corresponding to the stratum.

Table 2 provides the results of this estimation for all three datasets. For our baseline, we consider the case with regular prices and exclude price changes due to product substitutions. The estimated price selection is -0.371 for the United Kingdom, -0.360 for the United States, and -0.285 for Canada, all statistically significant at a 1% level (column 1).²⁰ The estimates are largely consistent across the three countries; a somewhat lower absolute value for Canada (i.e., weaker selection) can be attributed to aggregation across locations within a province (see Section 4.3). The degree of price selection is virtually unchanged with different configurations of fixed effects, inclusion of category-specific linear trends, or in unweighted regressions (columns 2 through 4).

Column 5 in Table 2 provides the results for all price changes—both regular and those associated with price discounts. Including price discounts makes price selection at a category-stratum level slightly weaker for the United Kingdom and the United States, -0.333 and -0.303 , respectively, and slightly stronger for Canada, -0.327 . Including price changes associated with product substitutions, shown in column 6, makes price selection a bit stronger in the United Kingdom, and slightly weaker in Canada, -0.415 and -0.268 ; substitutions do not arise in the IRI dataset. Hence, price discounts and substitutions do not appear to materially influence price selection at a stratum level.

Because variation of prices at the micro level is substantial, one may be concerned that price selection at a stratum level can be measured inaccurately due to potentially small sizes of strata and the dominance of large idiosyncratic shocks. We assess this concern directly using the U.K. data (see Supplementary Material Section A for details).²¹ For the baseline case (regular prices, no substitutions), we split all price change observations into two random subsamples of roughly equal sizes. First, for each subsample, we estimate price selection at a stratum level using the same specification (8) as for the full subsample. We find that price selection coefficients for subsamples 1 and 2, -0.387 and -0.388 , are highly significant and very close to -0.371 estimated for the full sample. Second, we use DP_{st} from one subsample as an instrumental variable for DP_{st} in the other subsample. Such instrumental variable is valid because the (classical) measurement error and idiosyncratic shocks are uncorrelated across two randomly assigned subsamples. Price selection is -0.341 in both cases, which is close to the baseline for the full sample. Hence, measurement error and idiosyncratic shocks are unlikely to drive the results.

To what extent does price selection differ across categories? Figure 2 shows the weighted histogram of price selection coefficients estimated individually for each category-stratum in the United Kingdom, for the case with regular prices and no substitutions and allowing calendar-month effects. The empty red bars show the weights for all estimated coefficients. The histogram shows negative selection coefficients for 89.3% of strata. The weighted mean (median) across all price selection values is -0.392 (-0.400), which is close to the estimate of stratum-level price selection obtained in the baseline panel specification (8). Positive coefficients are predominantly those that are not statistically different from zero. We also plot the weighted histogram for the coefficients that are statistically different from zero at 95% significance level (solid bars). Virtually all of these coefficients

²⁰Section A in Supplementary Material provides comparisons with alternative standard errors: Driscoll and Kraay (1998), clustered by strata, and clustered by month. The results remain highly significant.

²¹We thank Yuriy Gorodnichenko for suggesting this exercise.

(99.5% of the weight) are negative, indicating pervasive price selection that increases sensitivity of stratum-level inflation to shocks; the remaining 0.5% of strata exhibit price selection of the opposite sign.²²

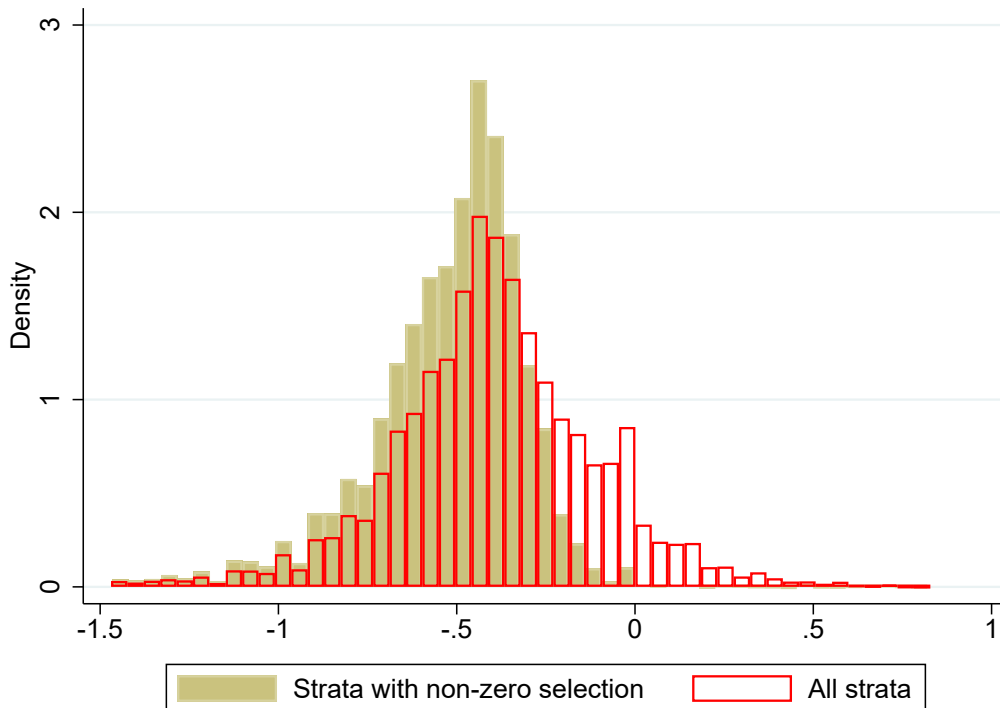
Table 2: Price selection at a category-stratum level

	Regular prices, excluding subs			Unweighted	All prices	Incl. subs
	(1)	(2)	(3)	(4)	(5)	(6)
A. U.K.						
Price selection	-0.371*** (0.002)	-0.371*** (0.002)	-0.369*** (0.002)	-0.357*** (0.002)	-0.333*** (0.002)	-0.415*** (0.002)
Calendar-month effects	Y	N	Y	Y	Y	Y
Stratum linear trend	N	N	Y	N	N	N
Number of observations	1,073,089	1,073,089	1,073,089	1,073,089	1,075,108	1,077,371
R^2	0.032	0.032	0.032	0.046	0.039	0.055
B. Canada						
Price selection	-0.285*** (0.003)	-0.284*** (0.003)	-0.283*** (0.002)	-0.310*** (0.002)	-0.327*** (0.001)	-0.268*** (0.003)
Calendar-month effects	Y	N	Y	Y	Y	Y
Stratum linear trend	N	N	Y	N	N	N
Number of observations	568,264	568,264	568,264	568,264	619,489	604,027
R^2	0.022	0.022	0.022	0.027	0.073	0.018
C. U.S.						
Price selection	-0.360*** (0.000)	-0.363*** (0.000)	-0.361*** (0.000)	-0.369*** (0.000)	-0.303*** (0.000)	N/A
Calendar-month effects	Y	N	Y	Y	Y	
Stratum linear trend	N	N	Y	N	N	
Number of observations	18,402,238	18,402,238	18,402,238	18,402,238	22,930,586	
R^2	0.198	0.200	0.198	0.233	0.281	

Notes: Data sources are described in notes for Table 1. The entries in "Price selection" are the estimated values of the coefficient in the weighted panel regression (8) of monthly stratum preset price levels on the monthly average stratum size of price changes, with stratum fixed effects. Columns (1) to (3) provide estimates for the sample excluding price discounts and product substitutions; column (4) - unweighted regression. Column (5) uses all prices and excludes substitutions. Column (6) includes substitutions, regular prices. Standard errors are in parentheses. *** $p < 0.01$, ** $p < 0.05$, * $p < 0.1$.

²²We find that 21 out of 45 strata with positive and significant price selection coefficients are in Food and Beverage sectors. High-volume, perishable food products, such as milk, bread, eggs and soda, tend to have flexible and volatile prices as they respond to sector/stratum-specific disturbances or to manufacturer's costs in case of direct-to-store products. It is possible that such disturbances trigger adjustments of prices that adjusted only recently and/or adjustments in the direction opposite to average adjustment in that stratum or sector. Also, selection coefficient for *Liquid Fuels* is small positive and statistically significant. This is not surprising, since prices are virtually flexible in this sector, and therefore we would expect selection to be close to zero.

Figure 2: Price selection across product strata, U.K. CPI data



Notes: Figure shows the weighted histogram of price selection coefficients estimated for each stratum using regression (11), in the United Kingdom, for the case with regular prices and no substitutions, controlling for calendar-month effects. We exclude values in top/bottom 0.5%. The empty red bars show the weights for all estimated coefficients. Solid bars show the weights for coefficients that are statistically different from zero at 95% confidence level.

4.2 Price selection and price-setting moments

How does price selection vary with pricing behavior? To answer this question, we first explore wide product coverage of the datasets and follow with insights from business cycle models in Section 5. We modify the panel regression (8) by allowing price selection to vary with price adjustment moments computed at a stratum level, so that $\gamma = \gamma_1 + \gamma_2 \Gamma_{st}$, where Γ_{st} are price adjustment moments for category-stratum s in month t :

$$P_{st}^{pre} = \gamma_1 DP_{st} + \gamma_2 DP_{st} \times \Gamma_{st} + \delta_t + error_{st}, \quad (9)$$

where $DP_{st} \times \Gamma_{st}$ are the interaction terms between DP_{st} and Γ_{st} , and δ_t are time fixed effects. For the interaction terms, we consider three price adjustment moments commonly reported in the empirical literature: the frequency and average size of price changes, Fr_{st} and DP_{st} , and the average absolute size of individual price changes ADP_{st} .

Table 3 provides the estimation results. For the baseline case with regular prices and no substitutions, price selection across strata is consistent with price selection obtained by exploiting time variation, reported above: -0.367 for the United Kingdom, -0.373 for the United States, and -0.295 for Canada, all highly statistically significant. We visualize our cross-sectional findings in Figure 3,

which provides scatter plots for nine selected months in the United Kingdom, for regular prices and excluding substitutions. For each month, each point on the plot represents an observation for the largest stratum in a particular category, giving the average size of price changes (x -axis) and preset price level (y -axis). The size of each circle represents that stratum’s consumption weight. Hence, each plot shows joint variation of P_{st}^{pre} and DP_{st} across strata in a given month. Similar to the case for time variation, there is substantial variation in both variables across strata in a given month, and they tend to correlate negatively for most months, pointing to common incidence of price selection that amplifies inflation fluctuations.

The other columns in Table 3 provide the results for the full specification (9), including all three interaction terms, for the baseline case and for alternative cases incorporating price discounts and product substitutions.²³

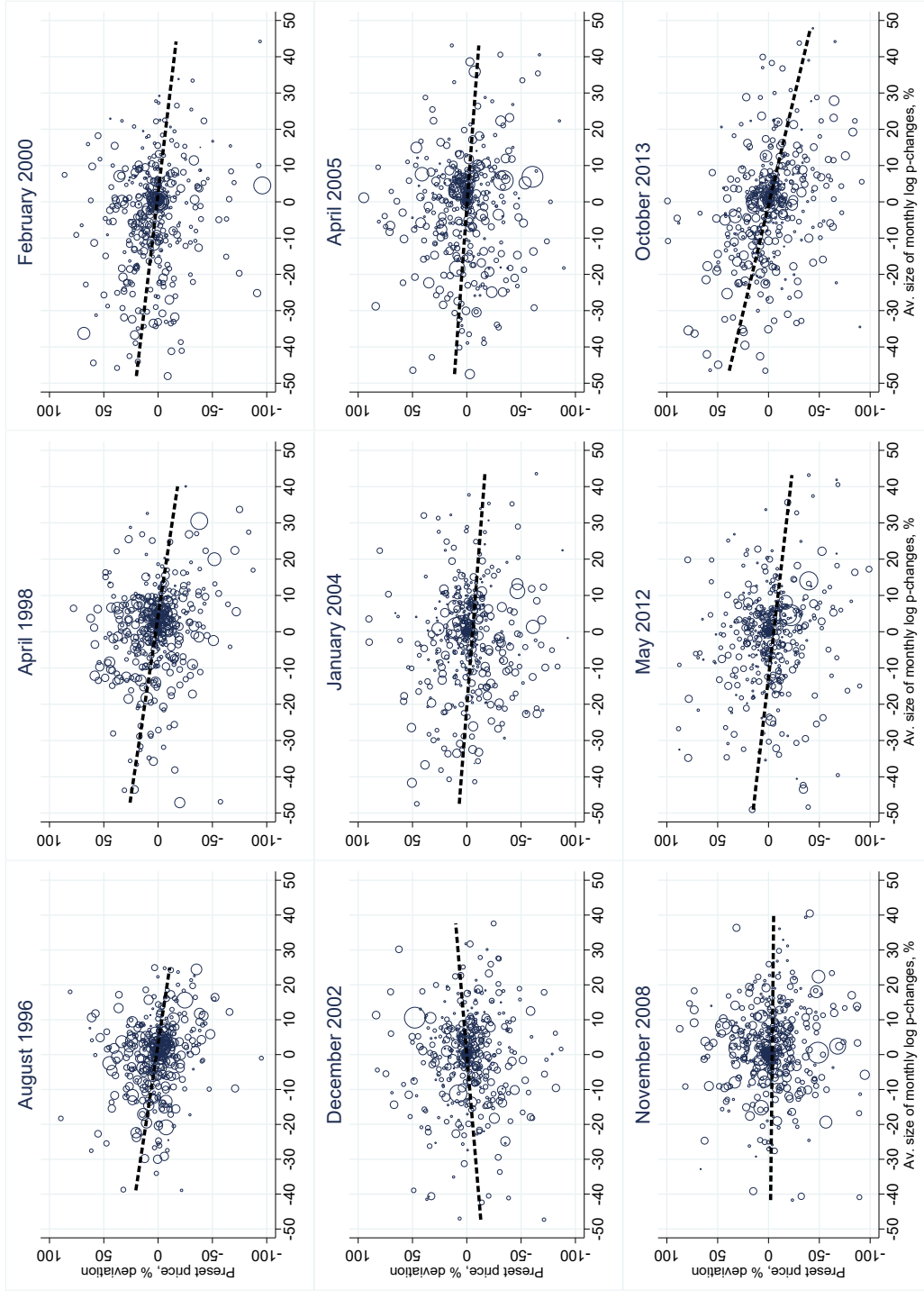
Two robust results emerge for all specifications and across all three datasets. First, price selection is stronger for category-strata where price changes are less frequent, given by the estimated elasticity $\hat{\gamma}_2$ for the interaction term $DP_{st} \times Fr_{st}$. For the baseline case, the estimates imply that in a category-stratum with a 10 percentage point lower fraction of price changes, price selection accounts for a higher fraction of its inflation variance: by 2.2 percentage points for the United Kingdom (from -0.367 to -0.389), by 6.7 percentage points for the United States (from -0.373 to -0.440), and by 5.7 percentage points for Canada (from -0.295 to -0.352). Across all datasets and all treatments, the range of additional price selection due to a 10 percentage point lower frequency of price adjustment lies between 1.9 and 6.7 percentage points, with an average around 4.5 percentage points.

The second robust finding is that price selection is stronger (weaker) when average price changes DP_{st} are above (below) average, given by $\hat{\gamma}_2$ for the interaction term $DP_{st} \times DP_{st}$. If the average size of price changes is higher by 5 percentage points, price selection strengthens by 1.5 percentage points for the United Kingdom (from -0.367 to -0.382) and for the United States (from -0.373 to -0.388) and by 2.5 percentage points for Canada (from -0.295 to -0.320). We also find that price selection becomes stronger with ADP_{st} although the effects are weak quantitatively; this is consistent with predictions of non-linear menu cost models, where a response to a larger monetary shock leads to a disproportionately larger response of inflation (Burstein, 2006; Alvarez, Lippi, and Passadore, 2017).

To glean further into possible determinants of price selection across sectors, we compare price selection by sector groups and by sector characteristics (see details in Supplementary Material Section A). We find that *Services* and *Non-durables* feature the strongest and the weakest price selection, respectively, and *Durables* and *Semi-durables* have intermediate selection values. This ranking of price selection is in line with the ranking of the degree of price rigidity in those sectors: prices in *Services* (*Non-durables*) are *least* (*most*) flexible, and prices in *Durables* and *Semi-durables* are in between. Moreover, *Food* and *Fuel* sectors, where prices are flexible and volatile, exhibit price selection below average. Hence, price selection across sector groups is roughly aligned with price rigidity and volatility.

²³Estimating interaction coefficients separately, instead of all together, does not alter the conclusions. Results are available upon request.

Figure 3: Preset price level and average size of price changes, variation over product categories for selected months, U.K. CPI data



Notes: Figure provides scatter plots for nine selected months in the United Kingdom for regular prices and excluding substitutions. For each month, each point on the plot represents an observation for the largest stratum in a particular category, giving the average size of price changes (x -axis) and preset price level (y -axis). The size of each point represents that stratum's consumption weight. Each plot demonstrates joint variation of P_{st}^{pre} and DP_{st} across strata in a given month. The slope of the trend line is equal to $\hat{\gamma}_s$, representing the estimated degree of price selection.

Table 3: Price selection and price changes across product strata

Independent variables	U.K.			Canada			U.S.				
	Baseline	All prices	Incl. subs	Baseline	All prices	Incl. subs	Baseline	All prices	All prices		
	With interaction terms			With interaction terms			With interaction terms				
DP_{st}	-0.367*** (0.002)	-0.370*** (0.010)	-0.368*** (0.009)	-0.437*** (0.008)	-0.295*** (0.003)	-0.560*** (0.013)	-0.561*** (0.013)	-0.467*** (0.009)	-0.373*** (0.000)	-0.546*** (0.000)	-0.490*** (0.000)
Interaction terms											
$DP_{st} \times Fr_{st}$	0.220*** (0.012)	0.193*** (0.010)	0.396*** (0.011)	0.566*** (0.011)	.617*** (0.011)	0.456*** (0.007)	0.566*** (0.011)	0.456*** (0.007)	0.668*** (0.001)	0.474*** (0.000)	0.474*** (0.000)
$DP_{st} \times DP_{st}$	-0.003*** (0.000)	-0.003*** (0.000)	-0.001*** (0.000)	-0.005*** (0.000)	-0.004*** (0.000)	-0.003*** (0.000)	-0.005*** (0.000)	-0.003*** (0.000)	-0.003*** (0.000)	-0.004*** (0.000)	-0.004*** (0.000)
$DP_{st} \times ADP_{st}$	0.001** (0.000)	0.001*** (0.000)	-0.001*** (0.000)	0.003*** (0.000)	0.002*** (0.000)	-0.001*** (0.000)	0.003*** (0.000)	-0.001*** (0.000)	-0.001*** (0.000)	-0.001*** (0.000)	-0.001** (0.000)
Number of obs	1,073,089	1,072,899	1,075,029	1,077,315	568,264	567,573	600,427	619,303	18,402,238	18,393,701	1,072,899
R^2	0.033	0.036	0.049	0.059	0.023	0.033	0.027	0.086	0.182	0.224	0.036

Notes: Data sources are described in notes for Table 1. The entries are coefficients in the weighted panel regression (9) of monthly stratum preset price levels on independent variables, with month fixed effects. The column "Baseline" corresponds to the case when price changes due to sales or substitutions are excluded. Other columns break down price selection via interaction with stratum-level variables: Fr_{st} - mean fraction of price changes in stratum s month t , DP_{st} - mean average size of price changes, ADP_{st} - mean absolute size of price changes in stratum s . *** $p < 0.01$, ** $p < 0.05$, * $p < 0.1$.

To explore other sector characteristics that affect price selection, we merge the results by sector with four types of sector-specific information. First, we add the data on life expectancy for durable goods, obtained from [Bils and Klenow \(1998\)](#) for the United States (we mapped 18 U.K. basic classes to this measure). Second, we add 5-firm concentration ratios for the United Kingdom in 2004 from [Mahajan \(2006\)](#) (we mapped 50 U.K. basic classes to this measure). Finally, we add quarterly real consumption expenditures from the Household Final Consumption Expenditures database from the U.K. Office for National Statistics, for the period from 1996Q1 to 2014Q3 (we mapped 65 U.K. sectors). For each sector, we construct the standard deviation of the quarterly change in the log of real consumption and a measure of sector cyclicalilty—the regression coefficient of sector log consumption growth on aggregate log consumption growth ([Klenow and Malin, 2010](#)).

We find that cyclicalilty and volatility of sector consumption growth, or life expectancy (for durable goods) do not correlate with price selection. By contrast, there is a statistically significant positive correlation between price selection and sectors’ 5-firm concentration ratios, i.e., more concentrated sectors tend to exhibit weaker selection, even after controlling for price rigidity. Examples of sectors with high 5-firm concentration ratios and weak selection are *Tobacco* and *Liquid Fuels*, and sectors with low concentration ratios and strong selection include *Dry-cleaning, Repair and Hire of Clothing, Tools and Equipment for House and Garden, Passenger Transport by Road*, and *Canteens*. This relationship is intuitive: firms with more market power have less need to move their prices in response to competitors’ prices.

4.3 Aggregate price selection

We have provided evidence of significant price selection at elementary levels—for products in the same category and location. This evidence implies that in response to shocks that move stratum-level inflation up, the subset of prices that adjust tend to originate from lower-than-usual levels. The key question then is to what degree price selection matters for the response of aggregate inflation to shocks.

Similar to inflation identity at a stratum level (equations (6)–(7)), we can write aggregate inflation in month t as the product of the aggregate fraction of adjusting prices and their average size in month t , and where the latter is represented as the difference between aggregate reset and preset price levels:

$$\pi_t \equiv Fr_t \cdot \underbrace{[P_t^{res} - P_t^{pre}]}_{DP_t}, \quad (10)$$

where $Fr_t = \sum_s \omega_{st} Fr_{st}$ is the weighted mean fraction of price changes in month t , with stratum expenditure weights ω_{st} , and aggregate reset and preset price levels, $P_t^{res} = \sum_s \omega_{st} \frac{Fr_{st}}{Fr_t} P_{st}^{res}$ and $P_t^{pre} = \sum_s \omega_{st} \frac{Fr_{st}}{Fr_t} P_{st}^{pre}$ are given by the *frequency-weighted* means. Weighting stratum-level price indices by their relative frequency—in addition to expenditure shares—reflects the fact that strata with more frequent price adjustments contribute a relatively larger fraction of price changes in the computation of the average size DP_t , as explained in [Klenow and Kryvtsov \(2008\)](#).

To estimate aggregate selection, we apply the regression of preset price level on the average size of

price changes to aggregate variables:

$$P_t^{pre} = \gamma DP_t + \delta_{cal} + error_t, \quad (11)$$

where as before δ_{cal} denotes calendar-month fixed effects.

Table 4 provides the results of this estimation (row “Aggregate”). For regular prices and no substitutions, aggregate price selection is substantially weakened: -0.197 for the United Kingdom (versus -0.371 at a stratum level), 0.061 for the United States (-0.360), and -0.003 for Canada (-0.285); and for the United States and Canada the estimates are not statistically significant. Results are very similar when we include price changes due to product substitutions.

We dissect how aggregation weakens price selection by reporting estimated selection coefficients for two intermediate levels of aggregation using the U.K. data. We aggregate stratum-level variables by 1,044 product categories and by 67 COICOP product classes. We then estimate regression (8) with subscript s now denoting product category or class, with and without fixed effects δ_s . Table 4 reports estimated coefficients. The effects of aggregation depend on whether category fixed effects δ_s are included in the regression. When they are included, selection at product (class) level, -0.385 (-0.361), is similar to -0.371 selection at stratum level. But when fixed effects are not included in the regression, price selection gradually weakens with aggregation. For regular prices and no substitutions, selection decreases from -0.365 at a stratum level, to -0.317 at product category level, to -0.268 at basic class level, and to -0.197 at the aggregate level. Hence, the weakening of price selection is due to product heterogeneity, captured by category/class fixed effects.²⁴ These results underscore the importance of incorporating sector heterogeneity in sticky-price models. In the next Section, we analyze price selection in a relatively standard multisector model and show that sector heterogeneity in the frequency of price changes can account for roughly half of the attenuation of selection effects induced by aggregation.

When variables in regression (11) are constructed using all prices—both regular and sale prices—a substantial degree of price selection remains at the aggregate level for the United Kingdom: -0.394 (versus -0.371 at a stratum level). For the United States, aggregate selection is also meaningful: -0.140 (versus -0.36 at a stratum level). In both cases, aggregate selection is statistically significant at the 1% level. For Canada, it is still close to zero, -0.039 (versus -0.327 at a stratum level), and it is not statistically significant. Hence, while aggregation of stratum-level regular price changes largely washes out price selection, that is not the case for the United States and the United Kingdom when price discounts are included. This suggests that price discounts represent an important margin of price flexibility in response to macroeconomic shocks.²⁵

²⁴Aggregation results may also be explained by other factors, such as seasonality or regulated prices. For example, positive selection in *Furniture/Furnishings* is affected by seasonality. When we control for seasonality, this selection coefficient becomes negative, although still statistically near zero. At basic class level, controlling for seasonality reduces selection coefficients for 34 sectors, and lowers the weighted mean across all sectors from -0.289 to -0.322 . Because seasonal adjustments are in part pre-determined, seasonal effects are expected to weaken measured price selection. Regulated goods, such as *Tobacco* are also expected to exhibit weaker selection.

²⁵This conclusion is consistent with Kryvtsov and Vincent (2021), who use U.K. and U.S. CPI micro data and find that the incidence of price discounts is strongly countercyclical, amplifying fluctuations in the price of aggregate consumption. For the United States, Sheremirov (2020) finds that at a city-category level regular price dispersion is positively correlated with inflation, but when sale prices are included, this correlation is negative. He uses time variation in price dispersion to discriminate across models with different degrees of selection effects. For Canada, price discounts may not have had their

In the United Kingdom, higher inflation is associated with less frequent and smaller price discounts. The change in the frequency and size of price discounts alters the composition of the population of price changes between regular-to-regular and sale-related price changes, creating additional selection effects. Concretely, when retailers want to increase prices, they scale down the frequency and size of price discounts by decreasing the proportion of regular-to-sale (and some sale-to-sale) price changes and increasing the proportion of regular-to-regular price changes. Essentially, retailers appear to replace some large regular-to-sale price decreases with smaller regular-to-regular price increases, resulting in additional inflationary push (see Section A in Supplementary Material).

Table 4: Price selection, aggregate time series

Level of aggregation	Number of groups	Regular prices, excluding subs		All prices		Incl. subs	
		FE	No FE	FE	No FE	FE	No FE
<u>A. U.K.</u>							
Stratum	9030	-0.371*** (0.002)	-0.365*** (0.002)	-0.333*** (0.002)	-0.354*** (0.002)	-0.415*** (0.002)	-0.415*** (0.002)
Product	1044	-0.385*** (0.006)	-0.317*** (0.006)	-0.359*** (0.005)	-0.305*** (0.005)	-0.404*** (0.005)	-0.368*** (0.005)
Basic class	67	-0.361*** (0.016)	-0.268*** (0.015)	-0.357*** (0.013)	-0.273*** (0.012)	-0.330*** (0.014)	-0.275*** (0.014)
Aggregate	1	-0.197*** (0.072)		-0.394*** (0.065)		-0.188*** (0.069)	
<u>B. Canada</u>							
Stratum	9165	-0.285*** (0.003)		-0.327*** (0.001)		-0.268*** (0.003)	
Aggregate	1	-0.003 (0.021)		-0.039 (0.028)		0.013 (0.020)	
<u>C. U.S.</u>							
Stratum	1550	-0.360*** (0.000)		-0.303*** (0.000)		N/A	
Aggregate	1	0.061* (0.035)		-0.140*** (0.021)			

Notes: Data sources are described in notes for Table 1. For row "Stratum" the entries are price selection coefficients estimated using regression regression (8). "Aggregate" rows provide the estimated values of the coefficient in the time-series regression (11) of aggregate preset price level on the aggregate size of price changes, with calendar-month fixed effects. For the U.K., price selection is computed for two intermediate levels of aggregation, using regression (8) with and without category fixed effects. For row "Product", for each product category, we compute frequency-weighted means of reset and preset price levels across 24 strata in the category. For row "Basic class", we compute the variables by COICOP class. Standard errors are in parentheses. *** p<0.01, ** p<0.05, * p<0.1.

full influence on price selection since the sample ends in 2009, before the period when sales had their largest swings in the United States and United Kingdom.

5 Price selection in sticky-price models

In this section, we compare predictions of standard sticky-price models with our empirical findings and perform additional model analyses. First, we calibrate a relatively standard multisector model to the U.K. data and assess the degree to which aggregation weakens price selection in the model. We then show that the degree of monetary non-neutrality is monotone in our measure of price selection, keeping the frequency of price changes constant. We also use the model to gauge potential differences between price selection conditional on particular shocks and unconditional price selection, which is the measure we use in the empirical analysis. In addition, the model provides an assessment of potential small-sample bias in the empirical analysis. We also study whether price selection interacts with real rigidities in the sense of [Ball and Romer \(1990\)](#) and [Kimball \(1995\)](#). Finally, in Supplementary Material (Sections B and C), we provide detailed derivations of price selection in several other models.

5.1 Multisector model

We analyze a multisector model that nests [Goloso and Lucas \(2007\)](#) and [Calvo \(1983\)](#) as limiting cases; we refer to it as the “generalized Goloso-Lucas model.” We calibrate the model to match price-setting statistics for 64 basic consumption classes in the U.K. data. Similar models have been analyzed by [Nakamura and Steinsson \(2010\)](#) and [Gautier and Le Bihan \(2021\)](#). For brevity, we provide here a brief description of the model and leave the complete exposition and derivations to Sections B and C of the Supplementary Material.

The economy is populated by a large number of infinitely lived households and monopolistically competitive producers of intermediate goods. The shocks in the baseline case are aggregate shock to the money supply, and idiosyncratic and sectoral productivity shocks. Money supply follows a random walk with drift, with normally distributed i.i.d. innovations. Firm’s productivities follow AR(1) processes with two normally distributed innovations: firm- and sector-specific. The demand for product varieties is derived under assumptions of constant elasticity of substitution between consumption goods within and across consumption sectors; we set this elasticity to 3, in line with recent evidence by [Hobijn and Nechio \(2019\)](#) and with studies of retail price behavior (e.g., [Midrigan, 2011](#)). Firms usually need to incur a menu cost to change each price, as in [Goloso and Lucas \(2007\)](#). Occasionally, however, they obtain random opportunities to change prices at no cost, as in the [Calvo \(1983\)](#) model. These opportunities are dictated by a parameter that we refer to as the “Calvo weight”, which takes on values in the unit interval. Hence, our generalization of the standard menu-cost model is in the tradition of [Dotsey, King, and Wolman \(1999\)](#), who study a sticky-price model with random menu costs.²⁶ For the baseline case, we also make assumptions on preferences and technology that lead to strategic neutrality of pricing decisions, as often done in the literature ([Goloso and Lucas, 2007](#); [Alvarez, Le Bihan, and Lippi, 2016](#)). This significantly reduces computational costs and makes it feasible to calibrate the model.

For each basic consumption class in the data, we calibrate five parameter values—menu cost, Calvo weight, volatility and persistence of idiosyncratic productivity shocks, and volatility of common sectoral productivity innovations—to match five moments in the data—mean fraction of adjusting prices, mean

²⁶Menu-cost models with some Calvo price adjustments have also been analyzed by [Nakamura and Steinsson \(2010\)](#) and [Alvarez, Le Bihan, and Lippi \(2016\)](#), among others.

absolute price change, autocorrelation of newly set prices, standard deviation of sectoral inflation, and price selection. We use regular price changes (excluding substitutions) to compute the weighted mean absolute size of price changes. To compute serial correlation of adjusted prices, we compute a linear trend for each regular price quote line and express prices in terms of percent deviations from the trend. For each month, we then compute a weighted AR(1) correlation coefficient between such prices across months in which they changed. Price selection for each consumption class is obtained by estimating specification (11) with class-level data. We set the size of monetary shocks to match the standard deviation of regular-price inflation in the U.K. data, 0.23%. The remaining parameters are assigned as follows: the discount factor is $0.96^{1/12}$, corresponding to a 4% annualized average real rate of interest; mean rate of the money growth is 0.12% to have the model match the mean monthly rate of regular price inflation of 0.12%, or 1.5% per year. To handle sampling error, in our baseline calibration the number of simulated firms in each sector matches the average number of price quote lines in the corresponding consumption class in the data.²⁷

5.2 Model results: aggregation and price selection

The model has enough flexibility to fit the moments well, although with some differences across statistics (details provided in Section B, Supplementary Material). The fit for price rigidity (inverse of the mean frequency of price changes), mean absolute price change, and sectoral inflation volatility is almost perfect. The fit for the two remaining statistics—autocorrelation of newly set prices and price selection—is not as tight, but the model still accounts for 84% and 73% of variation across classes, respectively.

Weighted mean price selection across classes in the calibrated model equals -0.275 . This compares well with -0.289 in the U.K. data.²⁸ Recall, aggregate price selection is weaker in the data: for the United Kingdom it equals -0.197 (Table 4). We compute aggregate price selection implied by the calibrated model using model-simulated data, as follows. For each of the 100 simulations, we compute aggregate variables using frequency-weighted sectoral variables, exactly as we did in the empirical analysis explained in Section 4.3. We then measure aggregate price selection by applying regression (11) to these time series. The average across simulations yields aggregate price selection of -0.233 . Hence, the calibrated model can account for almost half of the difference between sector-average and aggregate price selection.²⁹

²⁷We simulate equilibrium dynamics over 235 months and run 100 simulations. Sectors are calibrated separately to make computation feasible. This separation can be exploited because, under strategic neutrality in price setting, firms’ marginal costs are exogenous and general-equilibrium feedback effects on firms’ optimal policies are small (see Golosov and Lucas, 2007 and Alvarez and Lippi, 2014). Hence, sectors essentially do not interact, and to approximate the general equilibrium we only need to feed the same sequence of monetary shocks for all sectors in a given simulation. Monetary shocks are drawn anew for each simulation. For each simulation, we compute the time series for the components of inflation decomposition (7) and the model counterparts of the empirical moments that we target in the calibration. All moments are computed by applying the same procedure as in Section 3.4 to the model-generated data. For each sector, we take means across the 100 simulations and pick parameters to minimize the distance between these means and data moments.

²⁸Mean price selection across classes is virtually identical to the estimated selection coefficient at basic class level in the U.K. data for regular prices and no substitutions, with calendar month fixed effects and not including class fixed effects. In calibrating the model, out of 67 basic classes, we exclude three basic classes for which estimates of price selection are extreme: *Recreational and Sporting Services* (1.52), *Education* (-3.34), *Canteens* (-1.35).

²⁹In Section C in Supplementary Material, we derive the aggregation result analytically for a 2-sector Taylor model.

5.3 Price selection, real rigidities, and monetary non-neutrality

Next, we use the model to study the relationship between price selection and monetary non-neutrality. Due to computational constraints, for this analysis we abstract from cross-sectoral heterogeneity and work with a one-sector version of the model. We exploit the flexibility of the generalized model to generate a range of price selection values. When the Calvo weight is zero, the model coincides with Golosov and Lucas (2007) model with strong price selection; selection is zero when the Calvo weight equals one.

We study a sequence of economies, varying the Calvo weight between zero and one. For each value of the Calvo weight, we re-calibrate the model to match aggregate price-setting statistics for the United Kingdom (Table 5). In particular, we pick the menu cost, volatility and persistence of idiosyncratic productivity shocks to match mean fraction of adjusting prices, mean absolute price change, and auto-correlation of newly set prices. For each economy, we compute price selection and different measures of monetary non-neutrality. Importantly, all economies feature strategic neutrality in price setting and the same frequency of price changes, and thus, differences in the degree of monetary non-neutrality can be traced to selection. We run 100 simulations of each economy and report averages across simulations.

Table 5: Price selection in the generalized multisector Golosov-Lucas model

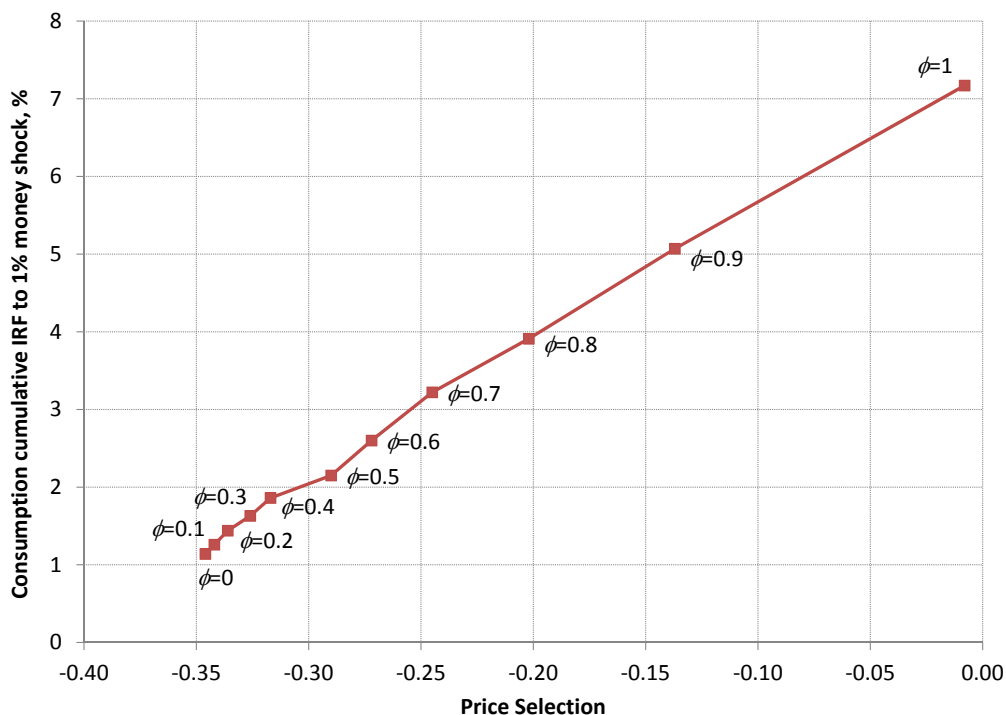
Moments	Data	Multisector model
	(1)	(2)
Fraction of p-changes		
weighted mean	0.121	0.120
min	0.033	0.033
max	0.914	0.921
Sector-level selection		
weighted mean	-0.289	-0.275
min	-0.848	-0.481
max	0.380	-0.005
Aggregate selection	-0.197	-0.233
Aggregation effect	0.092	0.042

Notes: Data entries correspond to statistics from the 64 basic classes in the U.K. data. Price selection entries in Column (1) correspond to estimates obtained by running regression (11) for each basic class. Aggregation effect is the difference between aggregate selection and weighted mean selection. Column (2) reports results from the generalized 64-sector Golosov-Lucas model. We simulate equilibrium dynamics in each sector over 235 months for a given draw of money growth shocks. The number of firms in each sector matches the average number of price quote lines in the corresponding consumption class in the data. For each simulation, we compute the relevant moments by applying the same procedure as in Section 3.4 to the model-generated data. We report means across 100 simulations.

Results are reported in Figure 4 and Table 6. They show that the size of monetary non-neutrality across re-calibrated models varies monotonically with price selection. For each additional 10 percentage points of the share of inflation variance explained by price selection, the cumulative response of consumption to a +1% monetary impulse decreases by about 1 percentage point. Hence, despite its model-free nature, the price selection measure captures the key role of selection effects for the inflation-output trade-off in standard sticky-price models. Price selection is close to -0.35 in the Golosov and Lucas (2007) model, which is close to our panel-based estimates of price selection at the disaggregated level (Table 2). Matching the level of aggregate price selection that we estimate for the United Kingdom (-0.197) requires a Calvo weight of approximately 0.8. This implies larger monetary non-neutralities, but not proportionally: the model with a Calvo weight of 0.8 closes less than 50% of the difference in non-neutrality between the two limiting models. In other words, adding some selection to the Calvo model reduces non-neutrality considerably.

Finally, we ask whether price selection interacts with real rigidities, in the sense of Ball and Romer (1990) and Kimball (1995), in determining monetary non-neutrality. For a given frequency of price changes, real rigidities are known to mute the response of prices to monetary shocks, and thus to increase the degree of monetary non-neutrality. More generally, non-neutrality can be thought of as a function of the frequency of price changes, the degree of selection, and the strength of real rigidities. We show that the effects of real rigidities on monetary non-neutrality are orthogonal to selection effects. For brevity, results are presented in Supplementary Material, Section E.

Figure 4: Price selection and monetary non-neutrality in the generalized Golosov-Lucas model



Notes: Figure provides the mapping between price selection and the extent of monetary non-neutrality in the generalized Golosov-Lucas model. We vary price selection by changing the “Calvo weight” parameter ϕ , from zero (which yields the Golosov-Lucas model) to one (which delivers the Calvo model). All economies feature the same frequency of price changes. Monetary non-neutrality is measured as the consumption cumulative IRF to a 1% permanent impulse to the level of money supply.

Table 6: Price selection and monetary non-neutrality in the generalized Golosov-Lucas model

Moments	Weight on Calvo adjustment in generalized Golosov-Lucas model										
	0	0.1	0.2	0.3	0.4	0.5	0.6	0.7	0.8	0.9	1
Fraction of price changes per month, %	12.0	12.2	12.0	12.1	12.1	12.1	12.1	12.1	12.1	12.1	12.1
Weight on Calvo in nested model	0.0	0.1	0.2	0.3	0.4	0.5	0.6	0.7	0.8	0.9	1.0
Price selection	-0.346	-0.342	-0.336	-0.326	-0.317	-0.290	-0.272	-0.245	-0.202	-0.137	-0.008
Consumption st.dev., %	0.27	0.28	0.31	0.33	0.36	0.39	0.44	0.49	0.55	0.62	0.74
Consumption ser. corr	0.52	0.55	0.59	0.61	0.64	0.67	0.71	0.75	0.78	0.82	0.86
Half-life of consumption IRF to 1% shock, months	1.07	1.17	1.30	1.41	1.54	1.74	2.02	2.39	2.80	3.48	4.64
Consumption cumulative IRF to 1% shock	1.14	1.26	1.44	1.63	1.86	2.15	2.60	3.22	3.91	5.07	7.17

Notes: Entries are results of simulations of generalized Golosov-Lucas model, which nests the Calvo model. Columns correspond to simulations for different weight on Calvo pricing. Each economy is simulated over 235 months for a given draw of a money growth shocks and 10000 draws of idiosyncratic productivity shock. For each simulation we compute the time series for each of the variables. We repeat this simulation 100 times and report the means of model moments over these simulations.

5.4 Unconditional versus conditional price selection, and sample size

In this section, we use our calibrated models to study two potential issues associated with our empirical analysis: the use of unconditional data moments and small sample size.

In our analysis, we mainly rely on unconditional moments computed from micro price data. In doing this, we follow essentially all of the literature on price setting, which routinely uses unconditional data moments to calibrate models in which there is typically only one aggregate shock—the monetary shock. While absolutely widespread, this approach may be criticized for the disconnect between empirical targets and their theoretical counterparts. We take a step toward addressing this criticism by analyzing conditional and unconditional price selection in a model with two aggregate shocks—monetary and productivity shocks.³⁰ For brevity, we leave details of the model and calibration to the Supplementary Material, Section B. The bottom line is that conditional and unconditional price selection are quite similar.

The second issue is a potential small-sample bias in several smaller U.K. consumption classes. Small sample bias may arise because, in a sector with small number of price changes, idiosyncratic shocks might account for a large share of the variation in both the preset price-relative and the average size of price changes. In this case, comovement between the preset price-relative and inflation may be overstated and price selection may appear stronger.³¹ In Section 4, we provided empirical evidence that our estimates were not driven by idiosyncratic price changes, by splitting the sample at each stratum and using the time series of the size if price changes estimated with one half of the sample to instrument for the size of price changes in the other sub-sample. In this Section, we address the small sample concern using numeric simulations of the multisector model.

In the baseline calibration of the multisector model, we choose the number of firms in each sector to match the average number of individual price quote lines in the corresponding U.K. consumption class. Because we fit the frequency of price changes in each class, the calibrated model also matches the number of price changes observed for each class. To study small sample bias, we run new simulations of the calibrated model with a large number of firms (fifteen thousand) in *all* sectors. If sample size is indeed an issue, we would obtain different results for sectors with a small number of firms. We find that small samples do induce a bias toward stronger price selection (i.e., more negative estimates). The magnitude of the bias, however, is small. For instance, in the model with a large number of firms in all sectors, weighted average price selection equals -0.249 , compared to -0.275 in the baseline model. Aggregate price selection is -0.226 in the model with a large number of firms, compared to -0.233 in the baseline model.

³⁰An alternative approach would be to compute conditional empirical moments given some series of identified monetary shocks. Implementing this approach, however, is not straightforward. It usually involves projecting the time series of interest onto the identified monetary shocks and then working with the projected series. This is a sound approach to obtain conditional, counterfactual series in linear models. When the underlying model involves non-linearities and lumpy behavior, however, this approach can be quite problematic. For example, linear methods may yield significantly biased estimates of structural parameters in the presence of lumpy behavior and small samples (Berger, Caballero, and Engel, 2018). In the context of our analysis, however, the problem is even more fundamental because the degree of price selection depends on the identities of prices that do or do not adjust after shocks. Therefore, the construction of the conditional time series would also need to take into account the effect of the shock on the identities of adjusters and non-adjusters.

³¹We thank Peter Karadi—our discussant at the Cleveland Fed’s 2019 “Inflation: Drivers and Dynamics” Conference—for raising this issue.

6 Conclusions

We draw several conclusions for sticky-price models. First, multisector models with selection at disaggregated levels have a better chance of accounting for the evidence we provide. [Nakamura and Steinsson \(2010\)](#) and, more recently, [Gautier and Le Bihan \(2021\)](#), show that implications of such models for the sources of business cycles and the effectiveness of monetary policy can differ in important ways from the implications of models without price selection or sectoral heterogeneity.

Second, aggregation can significantly reduce selection. Our calibrated model can account for about half of the drop in price selection that we estimate with the U.K. data when moving from stratum-level selection to aggregate price selection. Making full sense of the effects of aggregation requires uncovering new mechanisms that weaken aggregate price selection beyond the effects of heterogeneity in the frequency of price changes.

In addition, we note that standard sticky-price models can account only for variation of price selection in a range between around 0 and -0.5 . This covers approximately 60% of the weight in the empirical distribution of price selection that we estimate at the stratum level. Models that exploit additional dimensions of heterogeneity across goods and retailers might be able to expand that range and better fit the facts we uncover.

Finally, appropriately measuring price selection allows us to more accurately identify the determinants of monetary non-neutrality. For example, we show that real rigidities and price selection essentially do not interact—at least under standard assumptions—and so their effects on non-neutrality can be studied independently. Given the evidence we provide, studying mechanisms that can help reconcile observed micro price flexibility and aggregate price sluggishness becomes an even more important endeavor. Real rigidities and information frictions are two such mechanisms that should benefit from additional empirical research.

References

- Alvarez, Fernando, Hervé Le Bihan, and Francesco Lippi. 2016. “The Real Effects of Monetary Shocks in Sticky Price Models: A Sufficient Statistic Approach.” *American Economic Review* 106 (10):2817–2851.
- Alvarez, Fernando and Francesco Lippi. 2014. “Price Setting with Menu Cost for Multiproduct Firms.” *Econometrica* 82 (1):89–135.
- Alvarez, Fernando, Francesco Lippi, and Juan Passadore. 2017. “Are State- and Time-Dependent Models Really Different?” *NBER Macroeconomics Annual* 31 (1):379–457.
- Ball, Laurence and David Romer. 1990. “Real rigidities and the non-neutrality of money.” *Review of Economic Studies* 57 (2):183–203.
- Berger, David, Ricardo Caballero, and Eduardo Engel. 2018. “Missing Aggregate Dynamics and VAR Approximations of Lumpy Adjustment Models.” *mimeo* .
- Bhattarai, Saroj and Raphael Schoenle. 2014. “Multiproduct firms and price-setting: Theory and evidence from U.S. producer prices.” *Journal of Monetary Economics* 66:178–192.
- Bils, Mark. 2009. “Do Higher Prices for New Goods Reflect Quality Growth or Inflation?” *Quarterly Journal of Economics* 124 (2):637–675.
- Bils, Mark and Peter J. Klenow. 1998. “Using Consumer Theory to Test Competing Business Cycle Models.” *Journal of Political Economy* 106 (2):233–261.
- Bils, Mark, Peter J. Klenow, and Benjamin A. Malin. 2012. “Reset Price Inflation and the Impact of Monetary Policy Shocks.” *American Economic Review* 102 (6):2798–2825.
- Bonomo, Marco, Carlos Carvalho, Oleksiy Kryvtsov, Sigal Ribon, and Rodolfo Rigato. 2020. “Multi-Product Pricing: Theory and Evidence from Large Retailers in Israel.” Staff Working Papers 20-12, Bank of Canada.
- Bronnenberg, Bart J., Michael W. Kruger, and Carl F. Mela. 2008. “Database Paper—The IRI Marketing Data Set.” *Marketing Science* 27 (4):745–748.
- Burstein, Ariel T. 2006. “Inflation and output dynamics with state-dependent pricing decisions.” *Journal of Monetary Economics* 53 (7):1235–1257.
- Caballero, Ricardo J. and Eduardo M.R.A. Engel. 2007. “Price stickiness in Ss models: New interpretations of old results.” *Journal of Monetary Economics* 54 (Supplement):100–121.
- Calvo, Guillermo A. 1983. “Staggered Prices in a Utility-Maximizing Framework.” *Journal of Monetary Economics* 12 (3):383–398.
- Campbell, Jeffrey R. and Benjamin Eden. 2014. “Rigid Prices: Evidence from U.S. Scanner Data.” *International Economic Review* 55 (2):423–442.

- Caplin, Andrew S. and Daniel F. Spulber. 1987. “Menu Costs and the Neutrality of Money.” *Quarterly Journal of Economics* 102 (4):703–726.
- Carlsson, Mikael. 2017. “Microdata Evidence on the Empirical Importance of Selection Effects in Menu-Cost Models.” *Journal of Money, Credit and Banking* 49 (8):1803–1830.
- Carvalho, Carlos. 2006. “Heterogeneity in Price Stickiness and the Real Effects of Monetary Shocks.” *The B.E. Journal of Macroeconomics* 2.
- Carvalho, Carlos and Felipe Schwartzman. 2015. “Selection and Monetary Non-Neutrality in Time-Dependent Pricing Models.” *Journal of Monetary Economics* 76:141–156.
- Chu, Ba M., Kim P. Huynh, David T. Jacho-Chavez, and Oleksiy Kryvtsov. 2018. “On the Evolution of the United Kingdom Price Distributions.” *Annals of Applied Statistics* 1 (4):2618–2646.
- Clews, Gareth, Ria Sanderson, and Jeff Ralph. 2014. “Calculating a Retrospective Superlative Consumer Prices Index for the UK.” Technical report, Office for National Statistics.
- Coibion, Olivier, Yuriy Gorodnichenko, and Gee Hee Hong. 2015. “The Cyclicity of Sales, Regular and Effective Prices: Business Cycle and Policy Implications.” *American Economic Review* 105 (3):993–1029.
- Costain, James and Anton Nakov. 2011a. “Distributional dynamics under smoothly state-dependent pricing.” *Journal of Monetary Economics* 58:646–665.
- . 2011b. “Price Adjustments in a General Model of State-Dependent Pricing.” *Journal of Money, Credit and Banking* 43:385–406.
- Danziger, Leif. 1999. “A Dynamic Economy with Costly Price Adjustments.” *American Economic Review* 89:878–901.
- Diewert, Erwin W. 2012. “Consumer Price Statistics in the UK.” Tech. rep., Office for National Statistics. Report for the UK. Office for National Statistics, 2012.
- Dotsey, Michael, Robert King, and Alexander Wolman. 1999. “State-Dependent Pricing and the General Equilibrium Dynamics of Money and Output.” *Quarterly Journal of Economics* 114 (2):655–690.
- Dotsey, Michael and Alexander L. Wolman. 2020. “Investigating Nonneutrality in a State-Dependent Pricing Model With Firm-Level Productivity Shocks.” *International Economic Review* 61 (1):159–188.
- Driscoll, John C. and Aart C. Kraay. 1998. “Consistent Covariance Matrix Estimation with Spatially Dependent Panel Data.” *The Review of Economics and Statistics* 80 (4):549–560.
- Eichenbaum, Martin, Nir Jaimovich, and Sergio Rebelo. 2011. “Reference Prices, Costs, and Nominal Rigidities.” *American Economic Review* 101 (1):234–62.

- Gagnon, Etienne, David López-Salido, and Nicolas Vincent. 2012. “Individual Price Adjustment along the Extensive Margin.” In *NBER Macroeconomics Annual 2012, Volume 27*, NBER Chapters. National Bureau of Economic Research, Inc, 235–281.
- Gautier, Erwan and Hervé Le Bihan. 2021. “Shocks vs Menu Costs: Patterns of Price Rigidity in an Estimated Multi-Sector Menu-Cost Model.” *forthcoming in The Review of Economics and Statistics*.
- Gertler, Mark and John Leahy. 2008. “A Phillips Curve with an Ss Foundation.” *Journal of Political Economy* 116:533–572.
- Golosov, Mikhail and Robert E. Lucas. 2007. “Menu Costs and Phillips Curves.” *Journal of Political Economy* 115:171–199.
- Gopinath, Gita and Oleg Itskhoki. 2011. *In Search of Real Rigidities*. University of Chicago Press, 261–309.
- Hobijn, Bart and Fernanda Nechio. 2019. “Sticker Shocks: Using VAT Changes to Estimate Upper-Level Elasticities of Substitution.” *Journal of the European Economic Association* 17 (3):799–833.
- ILO. 2004. *Consumer Price Index Manual: Theory and Practice*. International Labour Office.
- Kara, Engin. 2015. “The reset inflation puzzle and the heterogeneity in price stickiness.” *Journal of Monetary Economics* 76 (C):29–37.
- Karadi, Peter and Adam Reiff. 2019. “Menu Costs, Aggregate Fluctuations, and Large Shocks.” *American Economic Journal: Macroeconomics* 11 (3):111–146.
- Kimball, Miles S. 1995. “The Quantitative Analytics of the Basic Neomonetarist Model.” *Journal of Money, Credit and Banking* 27 (4):1241–1277.
- Klenow, Peter J. and Oleksiy Kryvtsov. 2008. “State-Dependent or Time-Dependent Pricing: Does It Matter for Recent U.S. Inflation?” *Quarterly Journal of Economics* 123 (3):863–904.
- Klenow, Peter J. and Benjamin A. Malin. 2010. “Microeconomic Evidence on Price-Setting.” *Handbook of Monetary Economics* 16 (1):231–284.
- Klenow, Peter J. and Jonathan L. Willis. 2016. “Real Rigidities and Nominal Price Changes.” *Economica* 83:443–472.
- Kryvtsov, Oleksiy. 2016. “Is There a Quality Bias in the Canadian CPI? Evidence from Micro Data.” *Canadian Journal of Economics* 49 (4):1401–1424.
- Kryvtsov, Oleksiy and Virgiliu Midrigan. 2013. “Inventories, Markups, and Real Rigidities in Menu Cost Models.” *Review of Economic Studies* 80 (1):249–276.
- Kryvtsov, Oleksiy and Nicolas Vincent. 2021. “The Cyclicalities of Sales and Aggregate Price Flexibility.” *Review of Economic Studies* 88 (1):334–377.

- Mahajan, S. 2006. “Concentration ratios for businesses by industry in 2004.” *Economic Trends* 635, Office for National Statistics.
- Midrigan, Virgiliu. 2011. “Menu Costs, Multi-Product Firms and Aggregate Fluctuations.” *Econometrica* 79:1139–1180.
- Nakamura, Emi and Joñ Steinsson. 2008. “Five Facts About Prices: A Reevaluation of Menu Cost Models.” *Quarterly Journal of Economics* 123 (4):1415–1464.
- . 2010. “Monetary Non-neutrality in a Multi-Sector Menu Cost Model.” *Quarterly Journal of Economics* 125 (3):961–1013.
- . 2013. “Price Rigidity: Microeconomic Evidence and Macroeconomic Implications.” *Annual Review of Economics* 213 (5):133–163.
- ONS. 2014. “Consumer Price Indices: Technical Manual.” The Office of National Statistics, Prices Division, Newport, United Kingdom.
- Sheremirov, Viacheslav. 2020. “Price dispersion and inflation: New facts and theoretical implications.” *Journal of Monetary Economics* 114:59–70.
- Smets, Frank and Rafael Wouters. 2007. “Shocks and Frictions in US Business Cycles: A Bayesian DSGE Approach.” *American Economic Review* 97 (3):586–606.
- Taylor, John. 1980. “Aggregate Dynamics and Staggered Contracts.” *Journal of Political Economy* 88 (1):1–23.
- Vavra, Joseph S. 2013. “Inflation Dynamics and Time-Varying Volatility: New Evidence and an Ss Interpretation.” *The Quarterly Journal of Economics* 129 (1):215–258.