

Beirne, John; Renzhi, Nuobu; Volz, Ulrich

Working Paper

When the United States and the People's Republic of China sneeze: International real and financial spillovers in Asia

ADB Working Paper, No. 1288

Provided in Cooperation with:

Asian Development Bank Institute (ADBI), Tokyo

Suggested Citation: Beirne, John; Renzhi, Nuobu; Volz, Ulrich (2021) : When the United States and the People's Republic of China sneeze: International real and financial spillovers in Asia, ADB Working Paper, No. 1288, Asian Development Bank Institute (ADBI), Tokyo

This Version is available at:

<https://hdl.handle.net/10419/249467>

Standard-Nutzungsbedingungen:

Die Dokumente auf EconStor dürfen zu eigenen wissenschaftlichen Zwecken und zum Privatgebrauch gespeichert und kopiert werden.

Sie dürfen die Dokumente nicht für öffentliche oder kommerzielle Zwecke vervielfältigen, öffentlich ausstellen, öffentlich zugänglich machen, vertreiben oder anderweitig nutzen.

Sofern die Verfasser die Dokumente unter Open-Content-Lizenzen (insbesondere CC-Lizenzen) zur Verfügung gestellt haben sollten, gelten abweichend von diesen Nutzungsbedingungen die in der dort genannten Lizenz gewährten Nutzungsrechte.

Terms of use:

Documents in EconStor may be saved and copied for your personal and scholarly purposes.

You are not to copy documents for public or commercial purposes, to exhibit the documents publicly, to make them publicly available on the internet, or to distribute or otherwise use the documents in public.

If the documents have been made available under an Open Content Licence (especially Creative Commons Licences), you may exercise further usage rights as specified in the indicated licence.



<https://creativecommons.org/licenses/by-nc-nd/3.0/igo/>



ADB Working Paper Series

**WHEN THE UNITED STATES AND
THE PEOPLE'S REPUBLIC OF CHINA
SNEEZE: INTERNATIONAL REAL AND
FINANCIAL SPILLOVERS IN ASIA**

John Beirne, Nuobu Renzhi,
and Ulrich Volz

No. 1288
November 2021

Asian Development Bank Institute

John Beirne is a research fellow at the Asian Development Bank Institute, Japan. Nuobu Renzhi is an assistant professor at the Capital University of Economics and Business, People's Republic of China. Ulrich Volz is director of the Centre for Sustainable Finance and professor of economics at SOAS, University of London, United Kingdom; and senior research fellow at the German Development Institute, Germany.

The views expressed in this paper are the views of the author and do not necessarily reflect the views or policies of ADBI, ADB, its Board of Directors, or the governments they represent. ADBI does not guarantee the accuracy of the data included in this paper and accepts no responsibility for any consequences of their use. Terminology used may not necessarily be consistent with ADB official terms.

Working papers are subject to formal revision and correction before they are finalized and considered published.

The Working Paper series is a continuation of the formerly named Discussion Paper series; the numbering of the papers continued without interruption or change. ADBI's working papers reflect initial ideas on a topic and are posted online for discussion. Some working papers may develop into other forms of publication.

The Asian Development Bank refers to "China" as the People's Republic of China.

Suggested citation:

Beirne, J., N. Renzhi, and U. Volz. 2021. When the United States and the People's Republic of China Sneeze: International Real and Financial Spillovers in Asia. ADBI Working Paper 1288. Tokyo: Asian Development Bank Institute.

Available: <https://www.adb.org/publications/when-united-states-prc-sneeze-financial-spillovers-asia>

Please contact the authors for information about this paper.

Email: jbeirne@adbi.org, renzhinuobu@gmail.com, uv1@soas.ac.uk

Asian Development Bank Institute
Kasumigaseki Building, 8th Floor
3-2-5 Kasumigaseki, Chiyoda-ku
Tokyo 100-6008, Japan

Tel: +81-3-3593-5500
Fax: +81-3-3593-5571
URL: www.adbi.org
E-mail: info@adbi.org

© 2021 Asian Development Bank Institute

Abstract

This paper examines real and financial spillovers from monetary policy shocks originating in the US and the People's Republic of China (PRC) to advanced and emerging economies in Asia over the period 2000 to 2020. Using a structural panel vector autoregression approach, we find that Asian economies overall are more susceptible to spillovers to GDP, inflation, and the current account emanating from monetary policy shocks in the PRC than to those from the US. This is related to high inter-regional trade integration in Asia and is in line with previous research findings. However, while the prevailing literature has highlighted the dominant role of US monetary policy as a transmitter of shocks to global and Asian financial markets, we find more persistence in the response of advanced Asian interest rates to PRC monetary policy shocks. In addition, emerging Asian economies are found to be more susceptible to shocks emanating from the PRC in respect of equity markets and exchange rates. The rising synchronization of Asian financial markets in relation to the PRC as the financial account in the PRC has gradually opened as well as indirect effects via trade and regional value chains help to rationalize our findings.

Keywords: monetary policy, global financial cycle, international spillovers, US, People's Republic of China

JEL Classification: E44, E52, F33, F42

Contents

1.	INTRODUCTION.....	1
2.	RELATED LITERATURE	3
3.	DATA AND METHODOLOGY	5
4.	EMPIRICAL RESULTS	7
4.1	Baseline: US and PRC Monetary Policy Shocks	7
4.2	Robustness: US and PRC Monetary Policy Uncertainty Shocks	11
5.	CONCLUSIONS.....	11
	REFERENCES	13
	APPENDIX.....	16

1. INTRODUCTION

The susceptibility of emerging economies to financial spillovers from advanced economies (mainly the US), particularly during crisis periods, is a well-established strand of the international finance literature. The dominant role of US monetary policy in affecting global financial market conditions is largely understood, given the position of the US as the world's largest economy as well as the role of the US dollar as a global reserve currency and its importance in international invoicing in trade and investment (e.g., Obstfeld 2020). That said, the rapid emergence of the People's Republic of China (PRC) as a global economic and financial heavyweight over the past decade or so may have had implications for the dynamics of global real and financial spillovers. In a recent paper, Miranda-Agrippino, Nenova, and Rey (2020) found that US monetary policy dominates global spillovers via the financial channel, while the PRC's monetary policy influence outweighs that of the US on the real side at the global level, transmitting through international trade, commodity prices, and global value chains. This paper builds on that analysis by investigating advanced and emerging Asian economy groups in greater depth, testing monetary policy uncertainty shocks, and conducting an empirical examination of relative exposure to real and financial spillovers in relation to the US and the PRC over the period 2000 to 2020.

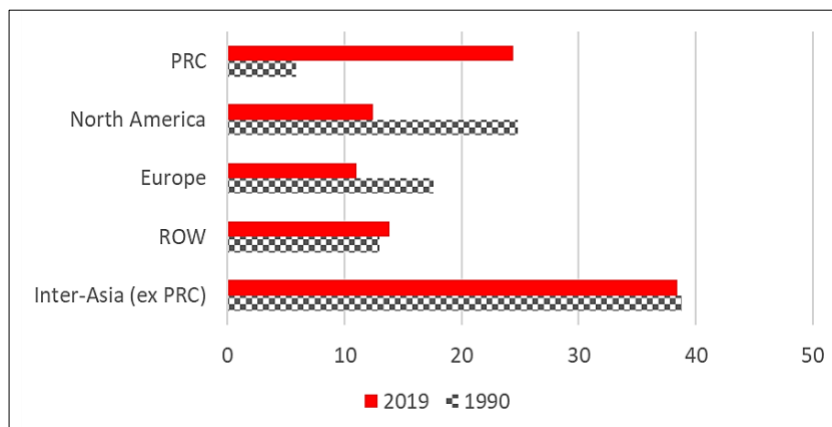
Examining the transmission of shocks to Asia is of interest given its diversity, involving both advanced and emerging economies. In addition, as an asset class, emerging Asia does not fit the profile of a typical emerging market economy (EME). Rooted in the aftermath of the Asian crisis of 1997–1998, Asian economies have built up large foreign reserves, and many emerging Asian economies have run current account surpluses in recent years coupled with lower reliance on foreign currency-denominated external debt. Moreover, local currency bond markets have continued to develop strongly over the past 15 years or so (e.g., Beirne, Renzhi, and Volz 2021), which has helped to insulate the economies from negative external financial shocks. However, financial integration has increased in these economies, while financial markets have also become deeper and more liquid. The question remains of whether these economies should be concerned about monetary policy shocks that emanate from the PRC.

Trade integration in Asia has increased steadily over the past 30 years, with the PRC having a more prominent role over time. Trade between the PRC and the rest of Asia increased substantially from 1990 to 2019, from around 6% to 25% of its global trade, respectively. By contrast, the share of trade between Asia and the US decreased over this period (see Figure 1). In value terms, exports to Asia from the PRC and imports from Asia to the PRC outweigh those relating to the US by a factor of around two, demonstrating the strong role of trade as a transmission channel to Asia for shocks originating from the PRC (see Figure A1 in the Appendix).

By exploiting interest rate differentials abroad relative to the US and through arbitrage trading, investors activate the financial channel via capital flows as a transmission mechanism. The prevailing literature has downplayed the financial channel as a propagator of monetary policy shocks emanating from the PRC at the global level. Mwase et al. (2016) ascribed this partly to capital controls in the PRC, which have limited the extent of its financial integration globally. It is worth noting, however, that inflows and outflows of capital from the PRC remain substantial, particularly in relation to those of other Asian economies. After the global financial crisis, the PRC experienced net capital inflows due to a combination of the gradual liberalization of its capital account and higher interest rates relative to the US, while equity returns in the

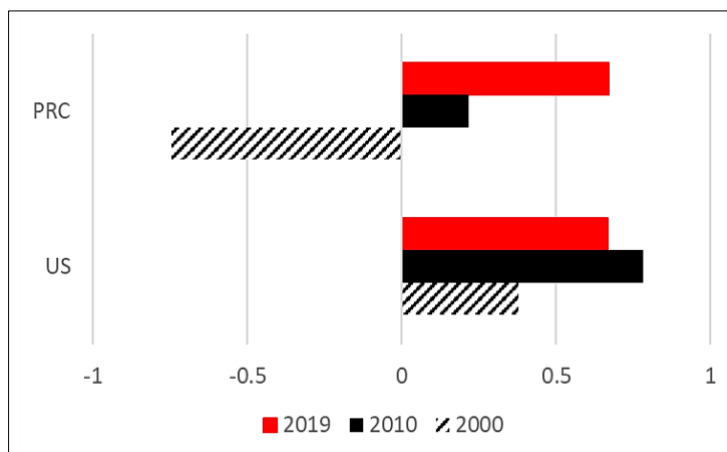
PRC have exhibited rising correlations with equity returns in other Asian markets over the past 20 years (e.g., Arslanalp et al. 2016). Therefore, although the main channel through which the PRC affects financial markets in other parts of Asia has tended to be trade, there is increasing evidence of growing direct financial linkages.

Figure 1: Trade Integration in Asia



Note: The figure reports the shares of total trade (exports plus imports) by region.
Source: IMF Direction of Trade Statistics.

Figure 2: Financial Integration in Asia



Note: The figure reports the correlations of equity market indices in the PRC and the US using a simple average of equity market indices in Asia (excluding the PRC) based on daily data.
Source: Bloomberg.

Unlike trade integration, historically, Asia has been more financially integrated at the global level than at the regional level (e.g., Kim, Lee, and Shin 2008; García-Herrero, Wooldridge, and Yang 2009). This is partly due to the large current account surpluses in some Asian economies with respect to the US, with an accumulation of large shares of US financial assets. Nevertheless, there is some evidence to show that there are wide variations depending on the nature of financial investment, with intra-regional FDI integration being stronger in the Asian region than other more volatile types of flows (e.g., Didier, Montanes, and Schmukler 2017). Greater financial integration through growing direct investment linkages may amplify the role of monetary policy spillovers via the financial channel for these economies. Furthermore, Chinese banks

have significantly increased their exposure to other Asian economies in recent years, providing an avenue for the transmission of monetary policy shocks from the PRC. It is also worth noting that, in more recent years, cross-border portfolio capital flows into the PRC have risen substantially to around RMB5.7 trillion (\$837 billion) at the end of 2020, around eight times higher than the 2014 level (Lardy and Huang 2020).

As regards financial integration, Figure 2 depicts a rising correlation between the equity returns in the PRC and those in the rest of Asia, similar in magnitude to the correlation of US equity returns with those of Asia (excluding the PRC) in 2019. In addition, while the global level of portfolio investment assets and liabilities in the PRC is much lower than that in the US (Miranda-Agrippino, Nenova, and Rey 2020), portfolio inflows from Asia to the PRC have risen significantly over time (see Figure A2 in the Appendix). In addition, the PRC has greater exposure than the US to Singapore and Hong Kong, China, two of the major international financial centers in Asia. This suggests an increasing importance of direct financial linkages between the PRC and the rest of Asia, affecting some key markets more substantially than others. While the prevailing literature has focused on the global propagation of monetary policy shocks, typically originating in the US, this paper provides an analysis of real and financial spillovers from monetary policy shocks by isolating the transmission to Asian economies both from the US and from the PRC. This approach allows us to perform a comparative assessment of the vulnerability of Asian economies to US-originating relative to PRC-originating monetary policy shocks. The structure of the remainder of the paper is as follows: Section 2 provides an overview of the related literature; Section 3 describes the data and methodology; Section 4 discusses the empirical findings; and, finally, Section 5 concludes.

2. RELATED LITERATURE

This paper contributes to the literature on global real and financial integration and the transmission of international real and financial spillovers. Early work on these issues tended to focus on advanced economies only, in particular following major crisis episodes such as the 1987 US stock market crash (e.g., Hamao, Masulis, and Ng 1990; King and Wadhvani 1990; Schwert 1990). As financial markets in emerging economies became more developed and integrated globally, studies were carried out on the transmission of shocks among emerging stock markets (e.g., Bekaert and Harvey 1997; Bekaert, Harvey, and Ng 2005) as well as from mature to emerging stock markets (e.g., Beirne et al. 2010). In the case of Asia, and in the aftermath of the Asian financial crisis of 1997, a number of papers analyzed financial contagion effects via Asian stock markets (e.g., Ng 2000; Tay and Zhu 2000; Li and Rose 2008). These early papers showed that developments in advanced economies' financial markets, particularly in the US, drive the global transmission of financial shocks. More recent studies have also highlighted the important role of the US in affecting global markets. Bagliano and Morana (2012) found that the real effects of financial shocks in the US transmit abroad via asset prices. Georgiadis (2016) identified significant output spillovers from US monetary policy shocks at the global level, the magnitude of which depended on the level of trade and financial integration, de jure financial openness, exchange rate regime, financial market development, labor market rigidities, industry structure, and participation in global value chains.¹

¹ See also Aizenman, Chinn, and Ito (2017) and Apostolou and Beirne (2019) for other studies of US monetary policy spillovers.

This paper also relates to the literature that has emerged on the global financial cycle (Rey 2013), indicating that a global factor that correlates with the VIX, a measure of global risk aversion in financial markets, underpins fluctuations in asset prices and capital flows across countries. Moreover, studies have shown that US monetary policy is the main driver of the global financial cycle, including via the leveraging of global banks (Bruno and Shin 2015). Furthermore, Miranda-Agrippino and Rey (2020) highlighted the US as the primary transmitter of financial spillovers abroad given the dominance of the US dollar in the international monetary system. In a study of financial cycle synchronization, Jorda et al. (2019) found that fluctuations in risk appetite in global equity markets are closely linked with US monetary policy, particularly for economies with fixed exchange rate regimes. Habib and Venditti (2019) provided further evidence showing that economies that are more open and operate with strictly pegged exchange rates are the most vulnerable to global risk via capital flows.

While developments in the US economy and US monetary policy have arguably been the main origins of real and financial shock propagations since the Great Depression of the 1930s, the emergence of the PRC as an economic powerhouse in the more recent period has called into question the global dominance of the US. Some literature has emerged on the role of the PRC and its monetary policy as an important underpinning of macroeconomic and financial developments in other parts of Asia and globally. Miranda-Agrippino, Nenova, and Rey (2020) examined the global transmission of US and PRC monetary policy shocks. Supporting the prevailing literature, which has indicated that US monetary policy transmits globally via asset markets and capital flows, it is also found that monetary policy shocks from the PRC transmit globally through the effect on global value chains, international trade, and commodity prices. Belke, Dubova, and Volz (2018) investigated bond yield spillovers from major advanced economies as well as the PRC to emerging Asia and found that, despite the PRC's weight in the regional and global economy, international spillovers from its bond markets appear to be limited, a result that they ascribed to the still comprehensive controls on portfolio investment flows. Earlier work by Kozluk and Mehrotra (2009) examined the impact of monetary policy shocks from the PRC to East and Southeast Asian economies, finding some evidence of real spillovers, with output and inflation responding positively and significantly to a PRC monetary expansion.

Research on the integration of the PRC at the global level has been a feature of other recent studies. Fang et al. (2021) examined spillovers and spillbacks from the PRC and other advanced G7 economies. While they found that the influence of the PRC on global financial markets has increased over time, the magnitude of the G7 spillovers to the PRC remains larger than that of spillbacks from the PRC. This is consistent with the previous literature that stressed the dominance of the US in affecting global financial conditions. In related work, Zhou, Zhang, and Zhang (2012) showed that Asian financial markets have become increasingly more interdependent over time, with a strong role for the PRC's stock market. Moreover, Mwase et al. (2016) noted the influential role of the PRC at the global level due to its centrality in commodities and international trade. In addition, these authors reported that the external effects of financial market developments in the PRC are most closely related to foreign exchange markets in emerging Asia and commodity exporters. However, in line with the work of Shu et al. (2015), the magnitude of these external effects is notably smaller than that of the effects that emanate from the US.

Arslanalp et al. (2016) found that financial spillovers from the PRC to other Asian economies have increased since the global financial crisis of 2007/08 and are more pronounced for higher levels of trade integration with the PRC. In more recent work, Ahmed et al. (2019) highlighted the large stock of non-financial corporate debt and

local government debt in the PRC as a financial vulnerability that could have negative repercussions for financial markets globally, including those in EMEs, with the financial channel, specifically equity markets, playing an important role. In addition, the financial channel as a shock transmitter may be activated due to real disturbances, as occurred during the “China scare” episode of 2015–16, when concerns about the growth outlook in the PRC triggered equity market tensions that spread globally. Ahmed et al. (2019) found that, overall, direct financial linkages between the PRC and abroad could manifest through investor sentiment but that indirect effects, i.e., financial spillovers emanating from real shocks, would outweigh them.

Yang, Yu, and Ma (2019) examined international spillovers of the PRC’s financial sector, noting that the PRC has the second-largest stock market in the world, while the four largest state-owned banks in the PRC are among the top 10 at the global level. They found that the financial sector in the PRC is particularly responsive to monetary policy in times of financial stress and that the systemic nature of the PRC’s financial institutions is an important channel for transmission abroad. More specifically, they concluded that the financial sector in Japan is particularly interconnected with that of the PRC. While the stock market in the PRC can be subject to bouts of volatility, Carpenter, Lu, and Whitelaw (2015) made the point that financial reforms over the past decade have contributed to stronger external financial integration, with developments in the PRC stock market influencing corporate profitability in the US and similarities being apparent in the pricing of risk.

3. DATA AND METHODOLOGY

In this section, we describe the data and methodology used to examine the response of real and financial sectors in Asia to monetary policy shocks from the US and the PRC. Using a monthly data frequency, we estimate a structural panel vector autoregressive (VAR) model over the period 2000M01 to 2020M12 across 11 Asian economies, specifically Hong Kong, China; India; Indonesia; Japan; the Republic of Korea; Malaysia; the Philippines; Singapore; Taipei,China; Thailand; and Viet Nam. The sample is separated into two sub-panels, advanced Asia and emerging Asia.² The core focus of the paper is on examining the response of real and financial variables in advanced and emerging Asia to monetary policy shocks and shocks to monetary policy uncertainty in the US and the PRC.

The variables of the real and financial sectors in Asia include the growth rate of real GDP; the ratio of the current account balance to GDP; the log of the consumer price index (CPI); the short-term interest rate; the log of stock prices; the log of the real effective exchange rate; capital flow volatility, measured as the ratio of the standard deviation to the absolute value of the mean of the net flows; and net capital flows (relative to GDP). Table A1 in the Appendix provides details of all the variables that we used as well as their sources.

² Economies in advanced Asia include Japan; Hong Kong, China; the Republic of Korea; Singapore; and Taipei,China. Economies in emerging Asia include India, Indonesia, Malaysia, Thailand, the Philippines, and Viet Nam.

We build a panel VAR model, which can be denoted in its reduced form as follows:

$$Y_{i,t} = A(L)Y_{i,t-1} + \alpha_i + \mu_{i,t}; i = 1, \dots, N \quad (1)$$

where $Y_{i,t} = [X_{i,t}, E_{i,t}]'$ refers to a vector of our selected variables of country i with $N = 11$; $X_{i,t}$ is a vector of domestic real and financial variables; $E_{i,t}$ denotes the US or Chinese monetary policy variable; $A(L) = A_0 - A_1L - \dots - A_pL^p$ is a matrix of p^{th} polynomial in the lag operator L ; α_i denotes country-specific fixed effects to account for unobserved time-invariant heterogeneity across countries; and $\mu_{i,t}$ is a vector of the reduced form shocks. Hence, the panel VAR can be rendered in the following structural form:

$$B^{-1}Y_{i,t} = B^{-1}A(L)Y_{i,t-1} + B^{-1}\alpha_i + \epsilon_{i,t}; i = 1, \dots, N \quad (2)$$

where B refers to a matrix of parameters containing identification information and $\epsilon_{i,t} = B^{-1}\mu_{i,t}$ is the vector of structural shocks. The goal of this paper is to examine the spillover effects of US and PRC monetary policy on real and financial factors in Asia. As such, we faced the usual identification problem for monetary policy changes. Instead of relying on a recursive restriction (Christiano, Eichenbaum, and Evans 1999), we use an external instrument (Stock and Watson 2018) to identify monetary policy shocks, specifically the column B , following Klein and Linnemann (2021). We assume that the external instrument is correlated with monetary policy shocks but not with other shocks. For the US, as the external instrument variable we use the new monetary policy shock series from Bu, Rogers, and Wu (2021), which is a summary measure of all monetary policy actions on Federal Open Market Committee (FOMC) announcement days. This shock series is appealing as it not only stably bridges conventional and unconventional policy regimes but also embodies no significant role for the central bank information effect on transmission, which can affect market expectations and is relatively unpredictable.

Identifying an accurate monetary policy shock series for the PRC is rather challenging. The main reason is that the People's Bank of China (PBoC) uses multiple policy instruments, including the required reserve ratio, central bank lending rate, and money supply (Reade and Volz 2012; Kamber and Mohanty 2018). Therefore, simply selecting a quantity or interest rate variable makes it hard to gauge the monetary policy stance accurately. To reflect the co-existence of quantity and price targeting in the PRC's monetary policy, this paper follows the concept of a "shadow policy rate" (Wu and Xia 2016), using the money supply and an estimated natural interest rate to construct the shadow policy rate (Xu and Jia 2019).³ We then obtain the monetary policy shock series by assuming a Taylor-type rule for the monetary authority as an innovation of the shadow policy rate in a separate recursively identified VAR (Christiano, Eichenbaum, and Evans 1999).⁴ We also check the strength of instruments for both US and PRC monetary policy shocks and find that the likelihood of weak instruments is low.⁵

³ The estimated natural interest rate is a compilation of information on various interest rates. For details of the estimation, please refer to Xu and Jia (2019).

⁴ We assumed that the output, unemployment rate, and inflation rate do not react to the monetary policy simultaneously.

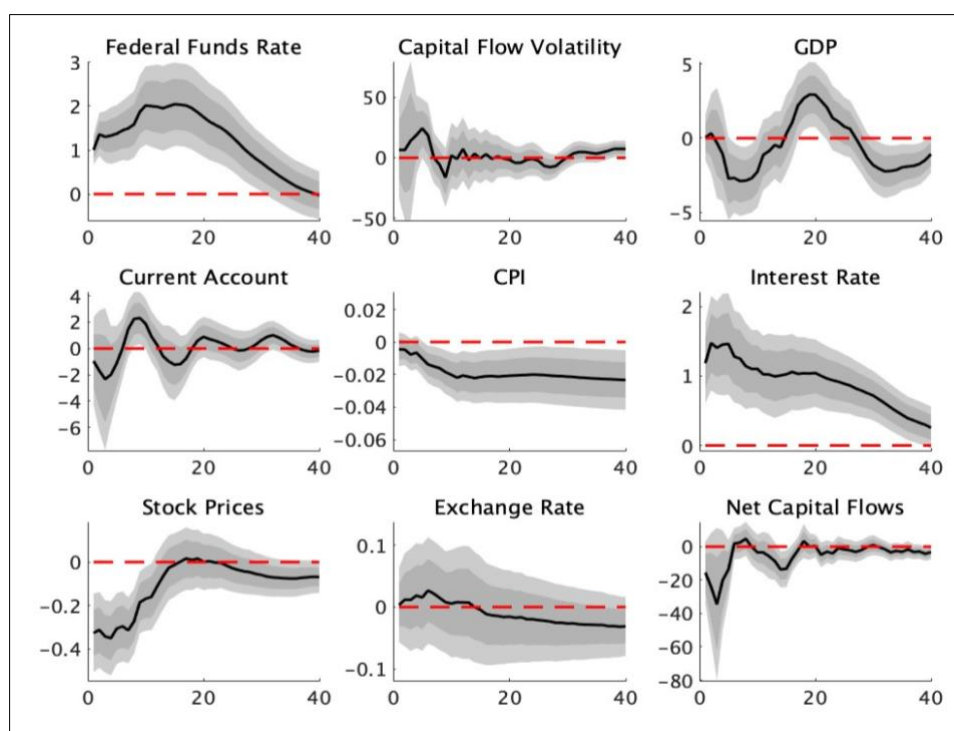
⁵ A first-stage F-statistic below 10 is an indication of potentially weak instruments (Stock, Wright, and Yogo, 2002). The first-stage F-statistic for US and PRC monetary policy shocks is 10.38 and 19.24, respectively.

4. EMPIRICAL RESULTS

4.1 Baseline: US and PRC Monetary Policy Shocks

Figures 1 to 4 show the impulse responses of real and financial variables of advanced and emerging Asia to US and PRC monetary policy shocks. While the discussion focuses on the transmission to Asian economies, in order to illustrate the magnitude and direction of the shock imposed, as well as its duration, also shown is the response of the US Federal Funds rate and the PRC policy rate, as appropriate. We estimated the panel VAR with 12 lags and normalized the scale of the monetary policy shock such that it increases the policy rate by 1 percentage point. The figures also report 68% (dark shaded areas) and 90% (light shaded areas) confidence bands, which are generated by 5,000 bootstrap repetitions. We first consider the transmission of US monetary policy shocks to advanced Asian economies, as shown in Figure 3.

Figure 3: Impulse Responses to a US Monetary Policy Shock: Advanced Asia

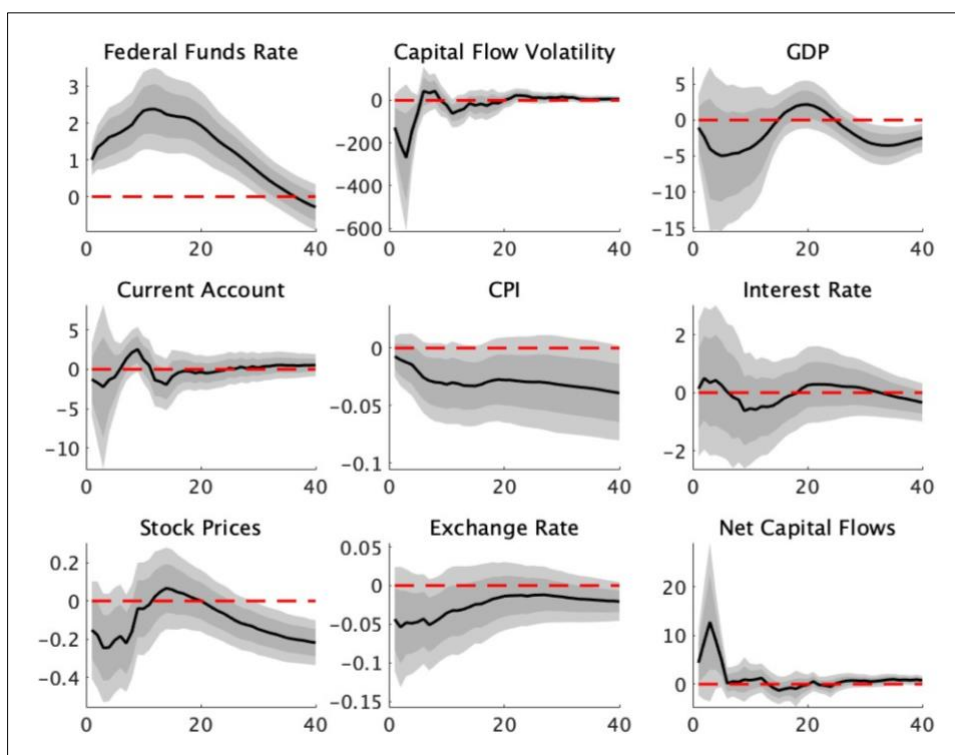


Notes: The figure reports the median responses with 68% and 90% confidence bands. The vertical axis unit is percentage points, and the unit of the horizontal axis refers the number of months.

Figure 3 shows that, for the transmission to interest rates in advanced Asia, the magnitude of the response to the US monetary policy shock is proportional to the shock itself during the first 20 months or so. This implies strong interconnectedness between financial markets in the US and advanced Asia, although the magnitude of the response declines sharply over the duration horizon. Regarding spillovers to advanced Asian stock markets, a US monetary policy shock has a dampening and statistically significant effect until around 18 months after the shock, at which point the effect largely dissipates. In relation to the capital flows in advanced Asia, a tightening of US rates leads to net capital outflows, in line with expectations, although the effect becomes insignificant after around 6 months. Similarly, the response of capital flow

volatility in advanced Asia disappears after around 6 months. A US monetary policy shock has little effect on the real exchange rate in terms of significance. This may relate to the fundamental level of the exchange rate, with greater elasticity in the exchange rate to a tightening monetary policy shock evident where the exchange rate is overvalued (e.g., Aizenman, Binici, and Hutchison 2016). As regards real spillovers, the CPI drops persistently and significantly in advanced Asia after a US monetary policy tightening shock while the effects on GDP growth and current account balance are time varying and ambiguous. Turning to emerging Asian economies, Figure 4 shows the responses of emerging Asia to US monetary policy shocks.

Figure 4: Impulse Responses to a US Monetary Policy Shock: Emerging Asia

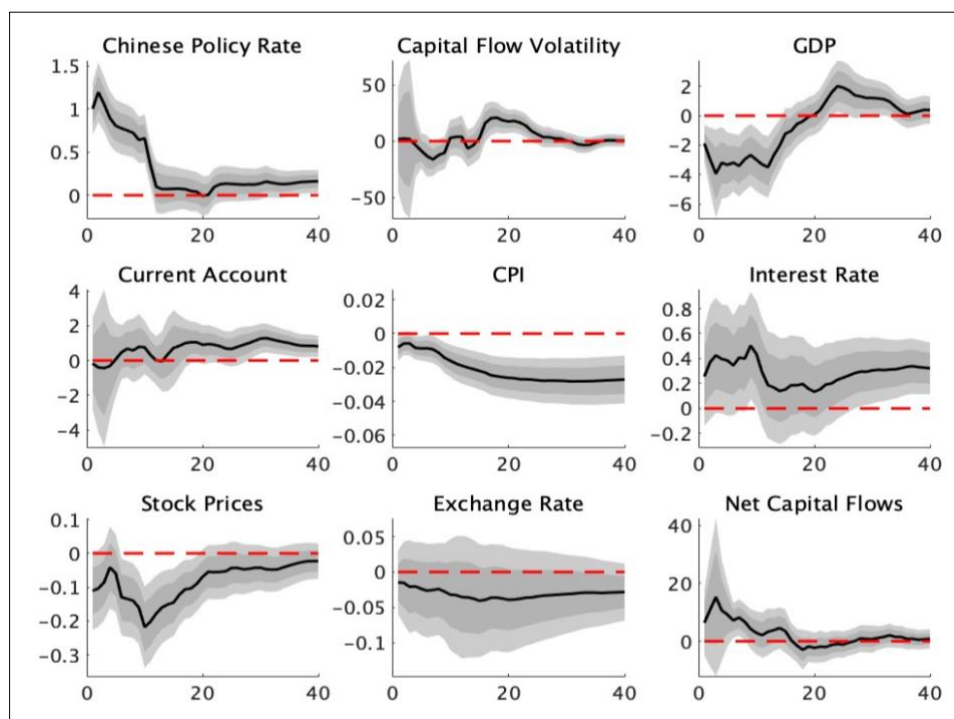


Notes: The figure reports the median responses with 68% and 90% confidence bands. The vertical axis unit is percentage points, and the unit of the horizontal axis refers to the number of months.

Unlike the case for advanced Asia, local short-term interest rates in emerging Asia do not exhibit a statistically significant response to a tightening US monetary policy shock. The real exchange rate depreciates significantly, albeit marginally and with a low magnitude. The lack of more prominent exchange rate effects may also be related to mean-reverting properties over the long term. Regarding capital flows, unlike advanced Asia, we found that capital flow volatility initially declines, net capital inflows rise for a short period after the shock, before becoming insignificant. While this result opposes expectations, a possible explanation relates to higher real interest rate differentials in Asian EMEs relative to the US, thereby protecting the capital account. Equity markets are negatively affected, albeit to a much lesser extent in emerging than in advanced Asia. In addition, equity market responses show some statistical significance during the first 6 months, which then dissipates, before returning in the long-term. As regards real spillovers, there is little evidence of a transmission of US monetary policy shocks to GDP or the current account in emerging Asia. There is some evidence, however, of a pass-through to domestic inflation, with US monetary policy tightening leading to a

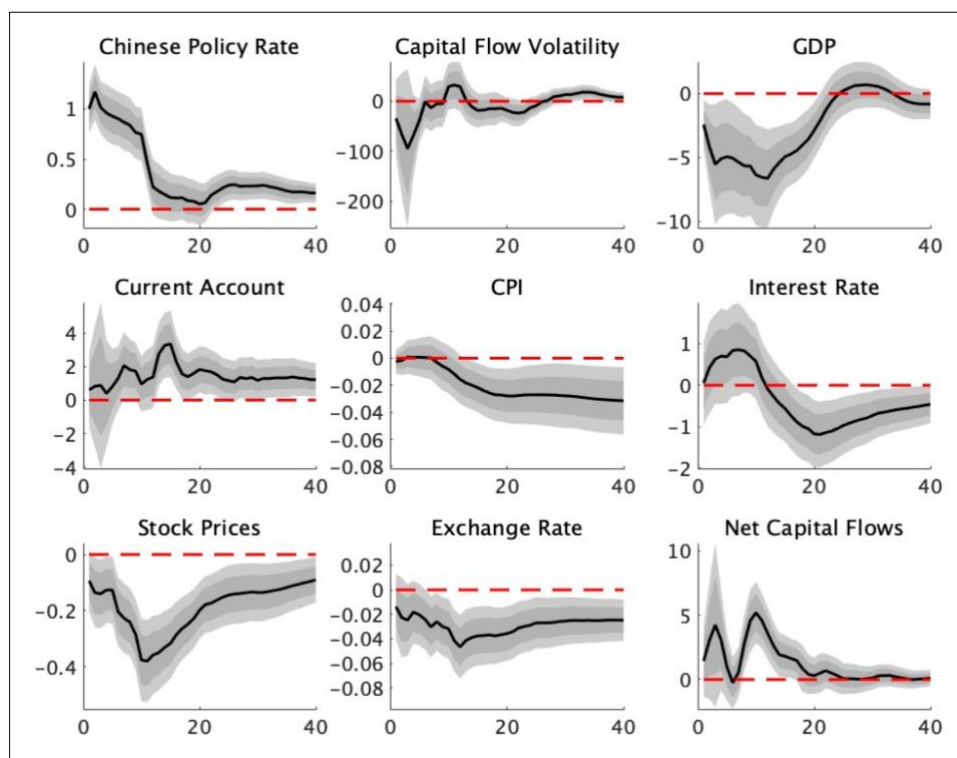
dampening of inflation in Asia EMEs. The effect on inflation in Asian EMEs is broadly similar to that of advanced Asian economies, although with less pronounced statistical significance. Turning to monetary policy shocks that emanate in the PRC, Figure 5 shows the spillover effects of a PRC monetary policy shock on advanced Asia.

Figure 5: Impulse Responses to a PRC Monetary Policy Shock: Advanced Asia



Notes: The figure reports the median responses with 68% and 90% confidence bands. The vertical axis unit is percentage points, and the unit of the horizontal axis refers to the number of months.

Similar to the case of the US, a tightening monetary policy shock in the PRC persistently increases local short-term interest rates in advanced Asia. While the magnitude of the response by advanced Asian interest rates to a US shock is stronger at the initial stages, the effect wanes over time. In contrast the response to a PRC monetary policy shock exhibits persistence. In addition, the PRC shock has a significantly negative impact on stock prices, and this impact lasts comparatively longer than in the case of the US. The responses of net capital flows are largely insignificant due to the PRC's more restricted capital account. For the exchange rate, we did not find a significant response, as in the case of the US monetary shock for advanced Asia. For real spillovers, the shock persistently and significantly decreases the CPI, while GDP growth drops significantly before returning to baseline after around 20 months. On the other hand, the current account balance responds only marginally, with some upward trajectory at longer horizons. Figure 6 shows the responses of emerging Asia to a PRC monetary policy shock.

Figure 6: Impulse Responses to a PRC Monetary Policy Shock: Emerging Asia

Notes: The figure reports the median responses with 68% and 90% confidence bands. The vertical axis unit is percentage points, and the unit of the horizontal axis refers to the number of months.

Unlike interest rates in advanced Asia, those in emerging Asia respond significantly and downward after around 18 months, while the exchange rate significantly and persistently depreciates immediately after the shock. The effect on the exchange rate is consistent with the appreciating impact on the renminbi of the tightening of monetary policy in the PRC, with close linkages via trade and regional value chains acting as important transmission channels. The effect on capital flows is mostly not statistically significant. The negative impact on stock prices is stronger than that for advanced Asia as well as that from shocks originating from the US. For spillovers to the real economy in emerging Asia, monetary policy shocks from the PRC significantly decrease GDP growth and CPI, showing a more effectiveness transmission than responses to US monetary policy shocks. In addition, the current account responds positively but with statistical significance only at longer horizons.

The exposure of emerging equity markets in Asia to monetary policy shocks from the PRC seems to be more important than US monetary policy shocks, both in terms of the size of the response to the shock and its statistical significance. As shown previously, equity markets in the PRC have become increasingly correlated with equity markets in the rest of Asia. Emerging Asian economies may be particularly susceptible to shifts in investor sentiment emanating from the PRC. Our estimates suggest an important role of both trade linkages and direct financial linkages via portfolio investment exposure vis-à-vis the PRC. While Miranda-Agrippino, Nenova, and Rey (2020) found that US monetary policy shocks dominate financial spillovers globally, this does not necessarily appear to be the case for Asia. The responses of stock prices and exchange rates to monetary policy shocks in emerging Asia are stronger and more persistent when the PRC is the origin rather than the US. For advanced Asia, interest rate responses to PRC monetary policy shocks also exhibit more persistence than US monetary policy

shocks. Moreover, monetary policy shocks from the PRC affect output in Asia substantially, and this is to be expected given the high level of inter-regional trade in Asia and the scale of participation of Asian economies in regional trade-based supply chains. These findings on output spillovers are in accordance with those of Miranda-Agrippino, Nenova, and Rey (2020) in the sense that real spillovers from monetary policy shocks seem to be more pervasive for those originating from the PRC than for those originating from the US.

4.2 Robustness: US and PRC Monetary Policy Uncertainty Shocks

As a form of robustness check, we examined the spillover effect of monetary policy uncertainty shocks from the US and the PRC to advanced and emerging Asian economies. For the US, we obtained the monthly monetary policy uncertainty (MPU) series from the Baker–Bloom–Davis MPU Indices, which implement the approach that Baker, Bloom, and Davis (2016) developed. For the PRC, we used the MPU series of Huang and Luk (2020). We updated both MPU indices to 2020M12.

Figures A3 to A6 in the Appendix show the impulse responses of real and financial variables of advanced and emerging Asia to US and PRC monetary policy uncertainty shocks, respectively. While the transmission of uncertainty in monetary policy entails different dynamics than those of our baseline shocks, particularly in terms of the direction of interest rate responses, consistent with the findings for monetary policy shocks, our results indicate that Asian stock markets are particularly vulnerable to spillovers from a rise in monetary policy uncertainty in the PRC compared with the US. Moreover, the magnitude of the effect is more pronounced for emerging Asia. Exchange rate responses are more muted to MPU shocks overall compared to monetary policy shocks. In addition, we find that capital flow volatility in emerging Asia is particularly sensitive to MPU shocks from both the US and PRC, with higher persistence evident for the latter.

5. CONCLUSIONS

This paper examines real and financial spillovers to emerging and advanced Asian economies due to monetary policy shocks in the US and the PRC. Research has widely documented the historical dominance of US monetary policy as a transmitter of shocks abroad, reflecting the role of the US dollar as a global reserve currency and safe haven. In recent years, however, the influence of the PRC on global financial markets has become more prominent, notably during the “China scare” episode of 2015–16, when concerns about the growth outlook in the PRC triggered an equity market downturn that spread to other EMEs globally. Our findings indicate that emerging Asian economies have become more susceptible to equity market and exchange rate vulnerabilities emanating from monetary policy shocks in the PRC compared with those that originate in the US, reflecting growing PRC clout in the monetary and financial domain in the Asian region. In addition, for advanced Asia, interest rate responses to PRC monetary policy shocks exhibit more persistence than US monetary policy shocks. Moreover, in line with the prevailing literature as well as the expectations, Asian economies are more susceptible to real spillovers from the PRC than to US monetary policy shocks. Our findings are broadly consistent with an alternative measure of financial transmission, namely monetary policy uncertainty in the US and the PRC.

Our paper sheds light on the real and financial decoupling of Asian economies from the US. Given the increasingly dominant role of spillovers from the PRC, particularly for emerging Asian stock markets and currencies, this implies greater dependency of these economies on macroeconomic developments in the PRC. While Asian economies have built up substantial cross-border financial holdings since the Asian crisis, which would imply higher levels of financial integration but also greater exposure to foreign financial shocks, understanding the origin and magnitude of these shocks is important from an international risk-sharing perspective. The growing intra-regional interdependencies and increasing relevance of macroeconomic spillovers from the PRC also highlight the importance of regional monetary and financial cooperation to mitigate financial stability risks. Finally, our paper also provides important insights into the relative exposure of advanced compared with emerging Asia to real and financial shocks in the US and the PRC, helping policymakers to understand the elasticity of foreign shocks as well as their shock-absorbing capacities.

REFERENCES

- Ahmed, S., R. Correa, D. A. Dias, N. Gornemann, J. Hoek, A. Jain, E. Liu, and A. Wong. 2019. Global Spillovers of a Hard Landing. International Finance Discussion Paper No. 1260. Washington, DC: Board of Governors of the Federal Reserve System.
- Aizenman, J., M. Binici, and M. H. Hutchison. 2016. The Transmission of Federal Reserve Tapering News to Emerging Financial Markets. *International Journal of Central Banking* 12(2): 317–56.
- Aizenman, J., M. D. Chinn, and H. Ito. 2017. Balance Sheet Effects on Monetary and Financial Spillovers: The East Asian Crisis Plus 20. *Journal of International Money and Finance* 74: 258–82.
- Apostolou, A., and J. Beirne. 2019. Volatility Spillovers of Unconventional Monetary Policy to Emerging Market Economies. *Economic Modelling* 79(C): 118–29.
- Arslanalp, S., W. Liao, S. Piao, and D. Seneviratne. 2016. China's Growing Influence on Asian Financial Markets. IMF Working Paper No. 2016/173. Washington, DC: International Monetary Fund.
- Bagliano, F. C., and C. Morana. 2012. The Great Recession: US Dynamics and Spillovers to the World Economy. *Journal of Banking and Finance* 36(1): 1–13.
- Baker, S. R., N. Bloom, and S. J. Davis. 2016. Measuring Economic Policy Uncertainty. *Quarterly Journal of Economics* 131(4): 1593–636.
- Beirne, J., G. M. Caporale, M. Schulze-Ghattas, and N. Spagnolo. 2010. Global and Regional Spillovers in Emerging Stock Markets—A Multivariate Garch-in-Mean Analysis. *Emerging Markets Review* 11(3): 250–60.
- Beirne, J., N. Renzhi, and U. Volz. 2021. Local Currency Bond Markets, Foreign Investor Participation and Capital Flow Volatility in Emerging Asia. *Singapore Economic Review* forthcoming.
- Bekaert, G., and C. R. Harvey. 1997. Emerging Equity Market Volatility." *Journal of Financial Economics* 43: 29–77.
- Bekaert, G., C. R. Harvey, and A. Ng. 2005. Market Integration and Contagion. *Journal of Business* 78(1): 39–69.
- Belke, A., I. Dubova, and U. Volz. 2018. Bond Yield Spillovers from Major Advanced Economies to Emerging Asia. *Pacific Economic Review* 23(1): 109–26.
- Bruno, V., and H.-S. Shin. 2015. Capital Flows and the Risk-Taking Channel of Monetary Policy. *Journal of Monetary Economics* 71(C): 119–32.
- Bu, C., J. Rogers, and W. Wu. 2021. A Unified Measure of Fed Monetary Policy Shocks. *Journal of Monetary Economics* 118: 331–49.
- Carpenter, J. N., F. Lu, and R. F. Whitelaw. 2015. The Real Value of China's Stock Market. NBER Working Paper No. 20957. Cambridge, MA: National Bureau of Economic Research.
- Christiano, L. J., M. Eichenbaum, and C. L. Evans. 1999. Monetary Policy Shocks: What Have We Learned and to What End?. In *Handbook of Macroeconomics* 1: 65–148, edited by J. B. Taylor and M. Woodford. North Holland: Netherlands.

- Didier, T., R. L. Montanes, and S. L. Schmukler. 2017. International Financial Integration of East Asia and Pacific. *Journal of the Japanese and International Economies* 44: 56–66.
- Fang, Y., Z. Jing, Y. Shi, and Y. Zhao. 2021. Financial Spillovers and Spillbacks: New Evidence from China and G7 Countries. *Economic Modeling* 94: 184–200.
- García-Herrero, A., P. Wooldridge, and D.Y. Yang. 2009. Why Don't Asians Invest in Asia? The Determinants of Cross-Border Portfolio Holdings. *Asian Economic Papers* 8(3): 228–46.
- Georgiadis, G. 2016. Determinants of Global Spillovers from US Monetary Policy. *Journal of International Money and Finance* 67: 41–61.
- Habib, M. M., and F. Venditti. 2019. The Global Capital Flows Cycle: Structural Drivers and Transmission Channels. ECB Working Paper No. 2280. Frankfurt: European Central Bank.
- Hamao, Y., R. W. Masulis, and V. Ng. 1990. Correlations in Price Changes and Volatility across International Stock Markets. *Review of Financial Studies* 3(2): 281–307.
- Huang, Y., and P. Luk. 2020. Measuring Economic Policy Uncertainty in China. *China Economic Review* 59: 101367.
- Jorda, O., M. Schularick, A. M. Taylor, and F. Ward. 2019. Global Financial Cycles and Risk Premiums. *IMF Economic Review* 67: 109–50.
- Kamber, G., and M. S. Mohanty. 2018. Do Interest Rates Play a Major Role in Monetary Policy Transmission in China? BIS Working Paper No. 714. Basel: Bank for International Settlements.
- Kim, S., J. W. Lee, and K. Shin. 2008. Regional and Global Financial Integration in East Asia. In *China, Asia, and the New World Economy*, edited by B. Eichengreen, Y. C. Park, and C. Wyplosz. New York: Oxford University Press.
- King, M., and S. Wadhvani. 1990. Transmission of Volatility between Stock Markets. *Review of Financial Studies* 3(1): 5–33.
- Klein, M., and L. Linnemann. 2021. Real Exchange Rate and International Spillover Effects of US Technology Shocks. *Journal of International Economics* 129: 103414.
- Kozluk, T., and A. Mehrotra. 2009. The Impact of Chinese Monetary Policy Shocks on East and South-East Asia. *Economics of Transition* 17(1): 121–45.
- Lardy, N. R., and T. Huang. 2020. China's Financial Opening Accelerates. PIIE Policy Brief 20-17. Washington, DC: Peterson Institute for International Economics.
- Li, X.-M., and L. C. Rose. 2008. Market Integration and Extreme Co-movements in APEC Emerging Equity Markets. *Applied Financial Economics* 18(2): 99–113.
- Miranda-Agrippino, S., T. Nenova, and H. Rey. 2020. Global Footprints of Monetary Policies. CFM Discussion Paper No. 2020-04. London: Centre for Macroeconomics.
- Miranda-Agrippino, S., and H. Rey. 2020. US Monetary Policy and the Global Financial Cycle. *Review of Economic Studies* 87(6): 2754–76.
- Mwase, M., M. P. M. N'Diaye, M. H. Oura, M. F. Ricka, K. Svirydzhenka, and M. Y. S. Zhang. 2016. Spillovers from China: Financial Channels. Spillover Note 5. Washington, DC: International Monetary Fund.

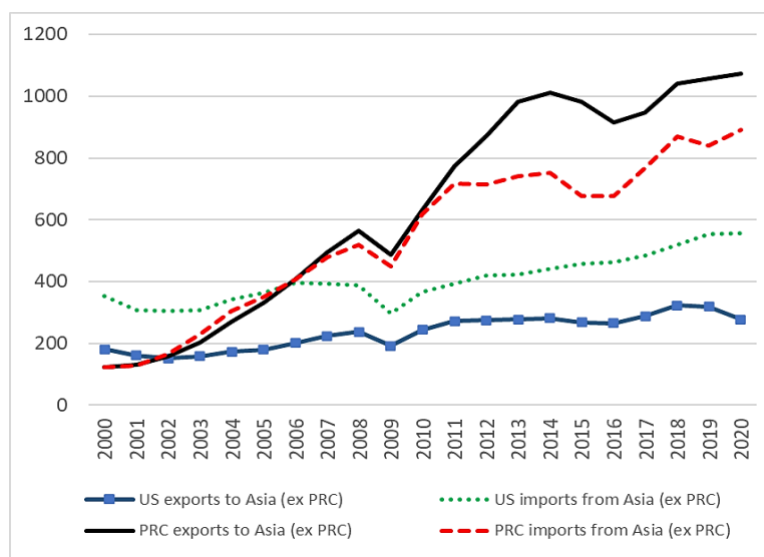
- Ng, A. 2000. Volatility Spillover Effects from Japan and the US to the Pacific Basin. *Journal of International Money and Finance* 19: 207–33.
- Obstfeld, M. 2020. Global Dimensions of U.S. Monetary Policy. *International Journal of Central Banking* 16(1): 73–132.
- Reade, J.J., and U. Volz. 2012. Chinese Monetary Policy and the Dollar Peg. In *The Evolving Role of China in the Global Economy*, edited by Y.-W. Cheung and J. de Haan. Cambridge, MA: MIT Press.
- Rey, H. 2013. Dilemma not Trilemma: The Global Financial Cycle and Monetary Policy Independence. In *Proceedings—Economic Policy Symposium—Jackson Hole* 285–333. Kansas: Federal Reserve of Kansas City.
- Schwert, G. W. 1990. Stock Volatility and the Crash. *Review of Financial Studies* 3: 77–102.
- Shu, C., D. He, H. Wang, and J. Dong. 2015. The Influence of Chinese and US Financial Markets on Asia Pacific. BIS Paper 82: 171–81. Basel: Bank for International Settlements.
- Stock, J. H., and M. W. Watson. 2018. Identification and Estimation of Dynamic Causal Effects in Macroeconomics Using External Instruments. *Economic Journal* 128(610): 917–48.
- Stock, J. H., J. H. Wright, and M. Yogo. 2002. A Survey of Weak Instruments and Weak Identification in Generalized Method of Moments. *Journal of Business & Economic Statistics* 20(4): 518–529.
- Tay, N. S. P., and Z. Zhu. 2000. Correlations in Returns and Volatilities in Pacific-Rim Stock Markets. *Open Economies Review* 11: 27–47.
- Wu, J. C., and F. D. Xia. 2016. Measuring the Macroeconomic Impact of Monetary Policy at the Zero Lower Bound. *Journal of Money, Credit and Banking* 48(2–3): 253–91.
- Xu, Z., and Y. Jia. 2019. Natural Interest Rate and Choice of the Macro Policies in China. *Economic Research Journal* 6.
- Yang, J., Z. Yu, and J. Ma. 2019. China's Financial Network with International Spillovers: A First Look. *Pacific-Basin Finance Journal* 58: 101222.
- Zhou, X., W. Zhang, and J. Zhang. 2012. Volatility Spillovers between the Chinese and World Equity Markets. *Pacific Basin Finance Journal* 20(2): 247–70.

APPENDIX

Table A1: Overview of the Variables Used in the Empirical Analysis

Variable	Data Source	Definition
US monetary policy shock	Bu, Rogers, and Wu (2021)	A summary measure of all monetary policy actions on FOMC announcement days
Chinese monetary policy shock	Xu and Jia (2019)	Using the monetary supply and an estimated natural interest rate to construct the shadow policy rate; the estimated natural interest rate is a compilation of information on various interest rates
Capital flow volatility	Authors	The ratio of the standard deviation to the absolute value of the mean of the net flows
Net capital flows	IMF	The net capital flows (relative to the GDP)
GDP growth	IMF and Bloomberg	The growth rate of the real GDP
Exchange rate	BIS and Bloomberg	The log of the real effective exchange rate
Short-term interest rate	Bloomberg	The short-term interest rate
CPI	Bloomberg	The log of the consumer price index
Current account balance/GDP	IMF	The ratio of the current account balance to the GDP
Stock prices	Bloomberg	The average regional LCBM yield in the sample excluding country <i>i</i>
US monetary policy uncertainty	Baker, Bloom, and Davis (2016)	US monetary policy uncertainty index series
Chinese monetary policy uncertainty	Huang and Luk (2020)	Chinese monetary policy uncertainty index series

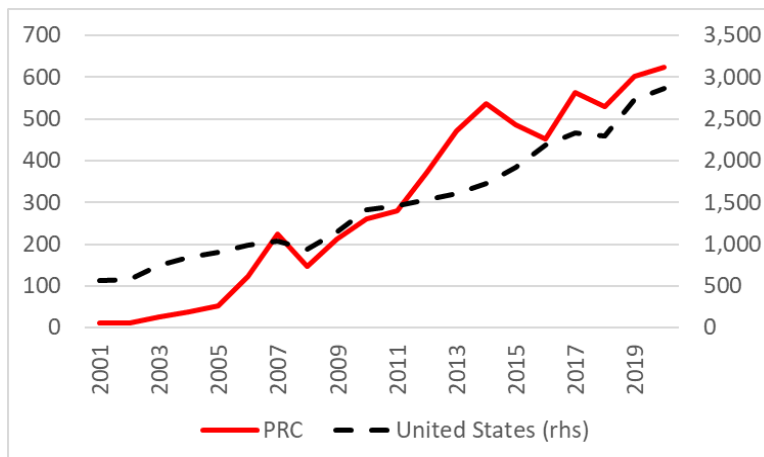
Figure A1: Exports and Imports in Asia (ex PRC) vis-à-vis the PRC and the US



Note: Total values in US\$ billion.

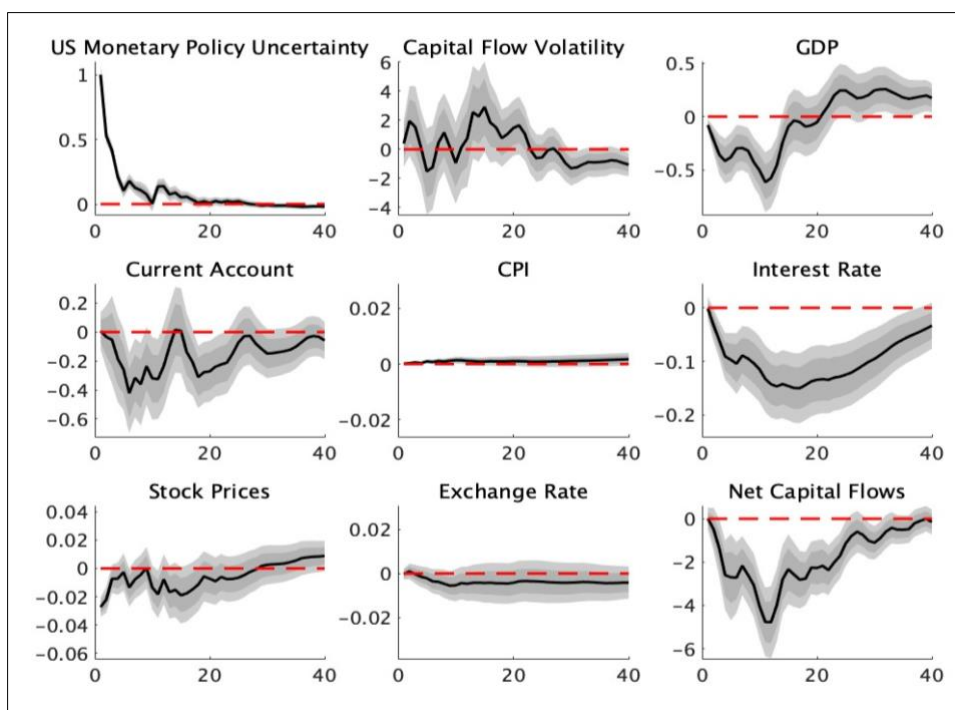
Source: IMF Direction of Trade Statistics (DOTS).

Figure A2: Portfolio Investment Flows from Asia (excluding the PRC) to the PRC and the US



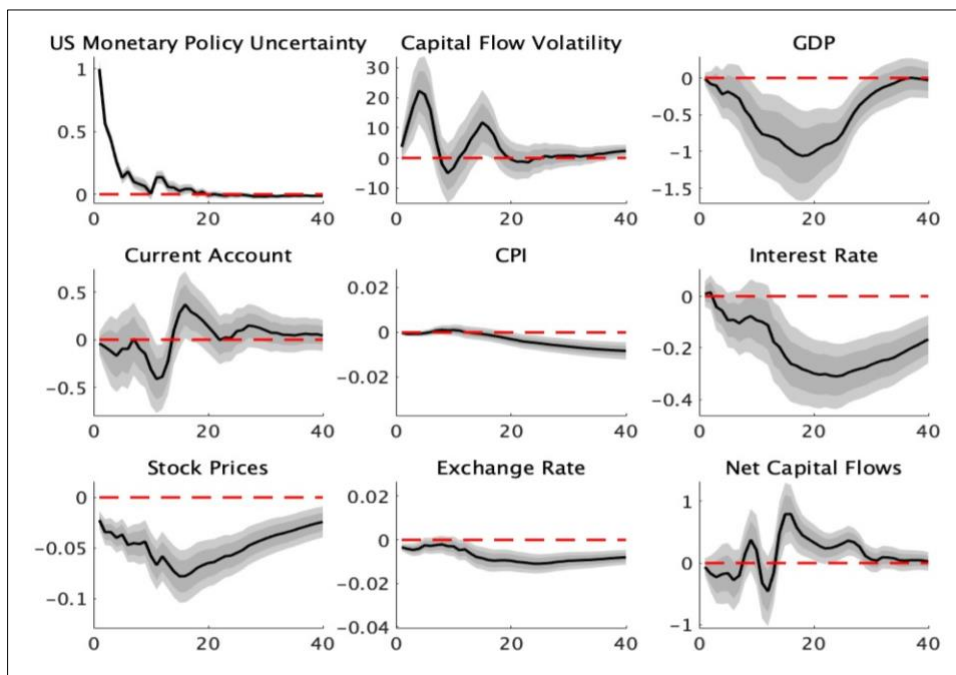
Note: The total portfolio liability exposures (US\$ billion) of the PRC and the US to Asia (excluding the PRC).
 Source: IMF Coordinated Portfolio Survey (CPIS).

Figure A3: Impulse Responses to a US Monetary Policy Uncertainty Shock: Advanced Asia



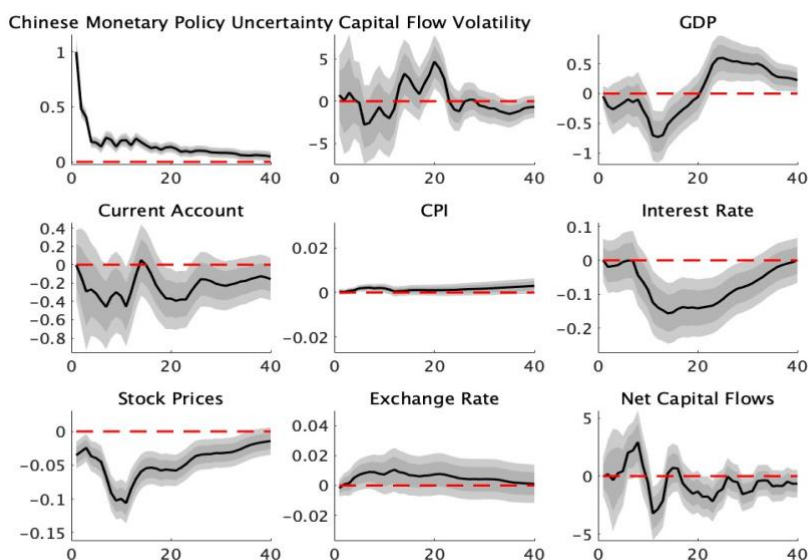
Notes: The figure reports the median responses with 68% and 90% confidence bands. The vertical axis unit is percentage points, and the unit of the horizontal axis refers to the number of months.

Figure A4: Impulse Responses to a US Monetary Policy Uncertainty Shock: Emerging Asia



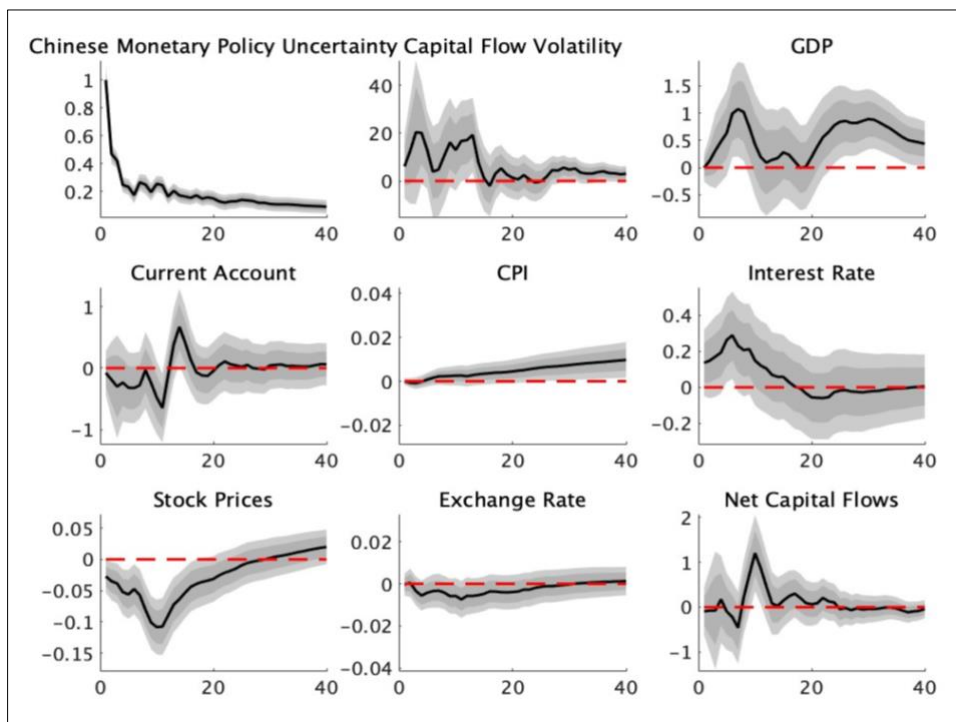
Notes: The figure reports the median responses with 68% and 90% confidence bands. The vertical axis unit is percentage points, and the unit of the horizontal axis refers to the number of months.

Figure A5: Impulse Responses to a PRC Monetary Policy Uncertainty Shock: Advanced Asia



Notes: The figures report the median responses with 68% and 90% confidence bands. The vertical axis unit is percentage points, and the unit of the horizontal axis refers to the number of months.

Figure A6: Impulse Responses to a PRC Monetary Policy Uncertainty Shock: Emerging Asia



Notes: The figure reports the median responses with 68% and 90% confidence bands. The vertical axis unit is percentage points, and the unit of the horizontal axis refers to the number of months.