

Elosegui, Pedro; Forte, Federico D.; Montes-Rojas, Gabriel

Working Paper

Network structure and fragmentation of the Argentinean interbank markets

Economic Research Working Papers, No. 96

Provided in Cooperation with:

Economic Research Department (ie), Central Bank of Argentina

Suggested Citation: Elosegui, Pedro; Forte, Federico D.; Montes-Rojas, Gabriel (2021) : Network structure and fragmentation of the Argentinean interbank markets, Economic Research Working Papers, No. 96, Banco Central de la República Argentina (BCRA), Investigaciones Económicas (ie), Buenos Aires

This Version is available at:

<https://hdl.handle.net/10419/249241>

Standard-Nutzungsbedingungen:

Die Dokumente auf EconStor dürfen zu eigenen wissenschaftlichen Zwecken und zum Privatgebrauch gespeichert und kopiert werden.

Sie dürfen die Dokumente nicht für öffentliche oder kommerzielle Zwecke vervielfältigen, öffentlich ausstellen, öffentlich zugänglich machen, vertreiben oder anderweitig nutzen.

Sofern die Verfasser die Dokumente unter Open-Content-Lizenzen (insbesondere CC-Lizenzen) zur Verfügung gestellt haben sollten, gelten abweichend von diesen Nutzungsbedingungen die in der dort genannten Lizenz gewährten Nutzungsrechte.

Terms of use:

Documents in EconStor may be saved and copied for your personal and scholarly purposes.

You are not to copy documents for public or commercial purposes, to exhibit the documents publicly, to make them publicly available on the internet, or to distribute or otherwise use the documents in public.

If the documents have been made available under an Open Content Licence (especially Creative Commons Licences), you may exercise further usage rights as specified in the indicated licence.

Working Paper N 96 | 2021
*Network structure and fragmentation
of the Argentinean interbank markets*



ie | BCRA
INVESTIGACIONES ECONÓMICAS

Economic Research Working Papers | 2021 | N 96

Network structure and fragmentation of the Argentinean interbank markets

Pedro Elosegui
Banco Central de la República Argentina

Federico D. Forte
BBVA Research, Banco BBVA Argentina

Gabriel Montes-Rojas
IIEP-BAIRES-UBA & CONICET

December 2021



ie | BCRA
INVESTIGACIONES ECONÓMICAS

Working Papers, N 96

Network structure and fragmentation of the Argentinean interbank markets

Pedro Elosegui
Banco Central de la República Argentina

Federico D. Forte
BBVA Research, Banco BBVA Argentina

Gabriel Montes-Rojas
IIEP-BAIRES-UBA & CONICET

December 2021
ISSN 1850-3977
Electronic Edition

Reconquista 266, C1003ABF
Ciudad Autónoma de Buenos Aires, Argentina
Phone | 54 11 4348-3582
Email | investig@bcra.gob.ar
Website | www.bcra.gob.ar

The opinions expressed in this paper are the sole responsibility of its authors and do not necessarily represent the position of the Central Bank of Argentina. The Working Papers series is comprised of preliminary material intended to stimulate academic debate and receive comments. This paper may not be referenced without authorization from the authors.

NON-TECHNICAL SUMMARY

Research Question

The objective of this study is to analyze, from the perspective of complex networks theory, the level of fragmentation of interbank markets in Argentina and to study its potential implications in terms of monetary policy, financial stability and development of debt markets. We use an unpublished database and propose a novel methodology to study its fragmentation, considering the different market sub-segments: unsecured (CALL) and guaranteed (REPO), dividing the latter by the segment of operations guaranteed by Treasury bonds (“REPO-T”) and transactions guaranteed by Central Bank debt securities (“REPO-BC”). The underlying behavior in the interaction dynamics of participating banks in the different market sub-segments is studied by examining the structure and dynamics of the transaction network that they executed between 2015 and 2018, to infer through their topological characteristics, the level of fragmentation of the markets involved and the potential implications for the financial system and economic policy.

Contribution

The work contributes to the literature that analyzes the network dynamics of interbank markets, complementing the traditional approach to assess the presence of fragmentation (which is generally based on estimating econometric regressions on spreads), with a analysis of the topological structures of the operations networks. The methodology allows detecting and describing diverse behaviors of the participating banks in the different market segments, in terms of the market participation objectives, the instruments used and the level of interaction in the underlying networks. The analysis is developed on an unpublished database that allows considering the different sub-segments of the Argentine interbank market. Thus, the underlying network structure is considered for each one, both the unsecured and the guaranteed, and, in the latter, operations are discriminated according to whether they are guaranteed by debt securities of the Non-Financial Public Sector or by those of the Central Bank, which allows evaluating the level of market fragmentation and finding relevant results both in terms of financial stability, supervision and implementation of monetary policy, as well as for the potential implementation of interest rate hedging instruments.

Results

The study finds evidence of the existence of different network structures within the Argentine interbank market, with implications and differences in terms of access to liquidity and in the resulting interbank interest rate in each market. Fragmentation is not only present between the unsecured market (CALL) and the guaranteed market (REPO), but also exists within the latter. In fact, the analysis identifies two different “sub-networks” within the REPO Market: one based on transactions guaranteed by National Treasury bonds (“REPO-T”) and another with different qualities derived from the operation of guaranteed debt securities of the Central Bank (“REPO-CB”). The connectivity indicators behave significantly more stable in the market REPO-T than in the segment guaranteed by Central Bank securities REPO-CB. Changes in policy and monetary conditions appear to have significantly less impact on the REPO-T market than on the REPO-CB. Therefore, the connectivity levels of the REPO-T market show less volatility in periods where the other segment undergoes significant modifications. The presence of two sub-markets with different structures indicates that the average rate that arises from said market is difficult to interpret and extrapolate as a reference rate for the REPO market in general.

In fact, the evidence indicates that two different behaviors are observed within this market: one related to the management of bank liquidity (REPO-CB) and the other more associated with the search for specific financial assets or conducting arbitrage operations. Both types of decisions, inherently different, would then be condensed into the same average market price. In contrast, the Unsecured Market (CALL) assumes an interest rate that would reflect a clearer reference to the “cost of money” in the interbank system. Fragmentation has implications for the potential development of an interest rate futures market (or broader derivatives) based on said interest rate, a pending challenge in the Argentine financial market.

Network structure and fragmentation of the Argentinean interbank markets

Pedro Elosegui*

Banco Central de la República Argentina

Federico D. Forte

BBVA Research, Banco BBVA Argentina

Gabriel Montes-Rojas

IIEP-BAIRES-UBA & CONICET

Abstract

This paper studies the network structure and fragmentation of the Argentine interbank market. Both the unsecured (CALL) and the secured (REPO) markets are examined. The aim of this study is to understand their actual fragmentation, as well as its potential implications for monetary policy and financial stability. Applying network analysis, different underlying segments within the market are identified. We approximate the theoretical distribution that better fits the empirical degree distribution of the interbank loan networks. Based on standard topological metrics, it is found that, although the secured market has less participants, its nodes are more densely connected than in the unsecured market. In addition, the interrelationships in the unsecured market are less stable, as it was witnessed during the 2018 currency crisis, making its structure more volatile and vulnerable to negative shocks. The analysis identifies two “hidden” underlying sub-networks within the REPO market: one based on the transactions collateralized by Treasury bonds (REPO-T) and other based on the operations collateralized by Central Bank (CB) securities (REPO-CB). The connectivity indicators were significantly more stable in the REPO-T market than in the REPO-CB segment. The changes in monetary policy stance and monetary conditions seem to have a substantially smaller impact in former than in the latter “sub-market”. Hence, the connectivity levels within the REPO-T market remain relatively unaffected by the (in some period pronounced) swings in the other segment of the market. These results have implications in terms of the interpretation of the interest rates that arise from these markets.

Resumen

El trabajo estudia la estructura de red y la fragmentación del mercado interbancario de Argentina, considerando tanto el segmento no garantizado (CALL) como el garantizado (REPO). El objetivo es determinar si existe fragmentación en el mercado interbancario, y sus potenciales

* *Corresponding author:* Banco Central de la República Argentina. Email: pelosegui@bcra.gov.ar. The authors appreciate the valuable comments of anonymous reviewers who have contributed to improve the original manuscript with their suggestions. The *Gerencia Principal de Estadísticas Monetarias* of BCRA and the *Gerencia de Mercado* MAE, provided the information and valuable technical support. The information was anonymized and protected under strict confidentiality. The opinions expressed in this work are the responsibility of the authors and do not necessarily reflect those of the BCRA or its authorities.

implicancias en términos de política monetaria y estabilidad financiera. Aplicando teoría de redes, se identifican distintas estructuras y comportamientos en las redes de transacciones al interior de los diferentes segmentos del mercado. Asimismo, se aproxima la distribución teórica que mejor ajusta a la distribución empírica de grados de las redes de préstamos interbancarios. En base a métricas topológicas tradicionales, se encuentra que, aunque el mercado garantizado tiene menos participantes, sus nodos están más conectados que en el no garantizado. Adicionalmente, las relaciones en el no garantizado tienden a ser menos estables, tal como se observa durante la crisis cambiaria de 2018, con una estructura más volátil y vulnerable a shocks negativos. El análisis identifica dos “sub-redes” que conviven al interior del mercado de REPO: una basada en las transacciones garantizadas por bonos del Tesoro (REPO-T) y otra distinta basada en las operaciones garantizadas por letras del banco central (REPO-CB). Los indicadores de conectividad son significativamente más estables en el mercado REPO-T que en el mercado REPO-CB. Los cambios en el sesgo de política y condiciones monetarias parecen tener un impacto más pronunciado en el segundo que en el primer mercado. Los niveles de conectividad dentro del mercado REPO-T se mantienen relativamente menos afectados ante los movimientos (en ocasiones pronunciados) de los otros segmentos del mercado, que están más intensamente correlacionados con los cambios en la política monetaria.

Keywords: network analysis, interbank market, fragmentation, central bank, monetary policy, Argentina.

JEL: C2, C12, G21, G28.

1. Introduction

Interbank markets play a central role in financial systems. They are key for the monetary policy implementation by enhancing liquidity management operations of central banks and financial entities. The interest rates arising from interbank markets, which are in general short-term rates (usually, overnight), act as “reference” or benchmark for the rest of the interest rates in the economy.

A significant distinction between different types of interbank markets lies on whether their operations are secured or unsecured, that is, if a collateral asset backs the transactions or not. This difference has implications in terms of both the interest rates and on the maturities of the market operations. On this line, interbank markets constitute an important pillar for capital market depth and its development, since the secured operations with government and/or central bank securities provide market liquidity and price reference for those instruments.

Despite their centrality and importance in the financial system, interbank markets are sometimes “*fragmented*”. In the case of well-functioning interbank markets, from an individual bank's risk perspective, there should be no difference between segments of the same market. However, as stated by Gabrieli and Labonne (2018a,b) the interbank market fragmentation can have significant welfare costs, because, by affecting the funding capacity of banks, it can hinder the smooth transmission of monetary policy and thus impair the provision of credit to the real economy. The evidence shows that banks may face differential funding costs in separate segments of interbank markets. Motivated by this, it is possible to shed light on this phenomenon by considering that interbank markets are complex in many senses, both in developed and developing countries (although for different reasons in each case).

First, the interbank markets can be understood as complex networks that connect multiple banks and other financial institutions through different types of exposures.² Systemic risk in interbank networks arises from the possibility that a shock affecting the stability of a bank (or group of banks) spreads through network interconnections affecting a significant fraction of the system, possibly causing its entire collapse. For this reason, from the regulator's point of view, it is relevant not only to examine the topological structure of the network and its stability, but also the actual behavior of the network in terms of liquidity access and its potential degree of fragmentation. Furthermore, the complexity grows when it is considered that banks can simultaneously interact in both an unsecured (no collateral) and in a secured segment (collateralized with treasury or central bank instruments) of the market.

Second, each market has different participants. For example, central banks usually intervene only in the secured segment of the market, through either open market

² In order to prevent potential macrofinancial risks and considering their systemic relevance, prudential regulations emphasize the importance of monitoring the degree of interconnectedness in the network to ensure financial stability (BCBS, 2018).

operations (using government and/or central bank bonds) and/or directly implementing monetary policy and liquidity management operations using interest-bearing liabilities.

Finally, the secured and unsecured interbank markets have different institutional frameworks and procedures. Moreover, they have different market entry conditions and may be affected by particular market and banking regulations, if not different taxation treatments.

In Argentina, the interbank market is comprised of a secured market, called *REPO* market, and an unsecured market, known as *CALL* market. As mentioned, the Central Bank of Argentina (*Banco Central de la República Argentina*, BCRA) intervenes only in the REPO market. Both CALL and REPO interest rates represent important benchmark interest rates in the domestic financial system. Previous studies analyzed the structure and described the main characteristics of both markets. For instance, Anastasi, Blanco, Elosegui and Sangiácomo (2010) analyzed the impact of interbank relationships on access to liquidity, focusing on *CALL* market. Forte (2020) analyzed the fundamental aspects of the unsecured market's network topology. In a recent work, Elosegui and Montes-Rojas (2020) studied the effect of local and global network measures on the interest rate spreads, finding heterogeneous effects in both, *secured* and *unsecured* markets.

The aim of this study is to understand the actual fragmentation of the interbank market in Argentina, as well as its potential implications for monetary policy and financial stability. Therefore, we go beyond heterogeneity in interest rates faced by individual banks to analyze the empirical network degree distribution corresponding to the different segments: the unsecured CALL market, the secured REPO market with the Central Bank (CB), and the secured REPO market excluding the CB, discriminating different collateral assets (CB securities and treasury bills). The approach allows a new perspective on how Argentinean banks interact in each segment and how regulations and market structures affect such behavior, with potentially relevant implications for aggregate interest rates in the markets and prudential regulation, liquidity management as well as financial market development.

In our approach we make use of the relevant literature on network fragility. In the case of the interbank network, the literature indicates that its "degree distribution" has meaningful implications in terms of its stability and potential systemic risk. This aspect may be more important in markets where interbank liquidity is traded predominantly in unsecured markets or in secured markets but with potentially illiquid and/or risky underlying assets. Moreover, potential liquidity shocks or a fall in the market value of a collateral are not minor in these types of networks. Also, the access and interaction of banks with markets having different degree distributions may be reflecting their adaptive behavior to the segmented interbank market operation.

In particular, and for better understanding the potential fragmentation in the local interbank market, our objective is to assess network fragility in the interbank market by studying the underlying characteristics of their network structures. We approximate the

theoretical distribution that better fits the empirical degree distribution for both, secured and unsecured market. For that purpose, we apply the methodology developed by Clauset et al. (2009). Random networks' degree distributions tend to follow a Poisson (or exponential), while scale-free networks' degree distributions are best fitted by a Power Law (Barabási and Albert, 1999, Albert and Barabási, 2002). This paper extends previous results in Forte (2020) that studied the degree distribution of the CALL market, which proved to be more compatible with a Lognormal than with Poisson or Power Law distributions.

This paper is organized as follows. Section 2 presents a succinct literature review on the study of network effects in interbank markets and presents the theory behind the analysis of the degree distribution as a proxy of network fragility. Section 3 presents the Argentinean interbank markets structure, considering the different segments and their main characteristics. Section 4 analyze the stylized empirical facts of interbank unsecured and secured market in Argentina. Section 5 presents the empirical results. Finally, section 6 discusses and summarizes the main conclusions.

2. Network topology and fragility of interbank markets

There is a large literature that applies network analysis to study interbank markets, and more recently extended to capture the systemic exposure of financial institutions. As mentioned before, the interbank network plays a key role in the financial system and from a macroprudential perspective, it is relevant for both the CB and the financial supervisor to determine its robustness and/or fragility to shocks. Furthermore, the relative fragility can be analyzed through the network underlying distribution characterization. In this sense, our work contributes to various related financial economic literature with special focus on interbank markets in developing economies.

First, network analysis of the degree of interconnectedness in the financial system can inform policymakers on how regulation can prevent and/or reduce banking instability as well as on optimal bank resolutions mechanisms. Empirical networks have been used for stress test exercises³. Network centrality measures, developed to assess centrality in other contexts and markets and adapted to the context of financial networks, can guide policy makers in their evaluation of the systemic importance of financial and non-financial institutions.

A number of papers investigate the interplay between financial distress and topological characteristic of interbank networks, focusing on the network resilience to different kinds of shocks.⁴ In the case of Argentina, Forte (2020) analyses the network structure of the unsecured CALL market. The author found a short average distance between

³ See Upper (2011) for a comprehensive review.

⁴ See Iori, Jafarey and Padilla (2006); Nier, Yang, Yorulmazer and Alentorn (2007); Gai, Haldane and Kapadia (2011); Battiston, Puliga, Kaushik, Tasca and Caldarelli (2012); Karik, Gai and Marsili (2012); Lenzu and Tedeschi (2012); Georg (2013); Roukny, Bersini, Pirotte, Caldarelli, and Battiston (2013); Acemoglu, Ozdaglar and Tahbaz-Salehi (2015).

nodes and concluded that the network structure cannot be characterized as a random graph. In this market, centrality variables lead to results compatible with the presence of embedded relationships among banks.⁵ While some authors argue that a more interconnected architecture enhances the resilience of the system to the failure of an individual bank because credit risk is shared among more creditors, others suggest that a higher density of connections may function as a destabilizing force, facilitating financial distress to spread through the banking system. The overall picture that emerges from this literature is that the density of linkages has a non-monotonic impact on systemic stability and its effect varies with the nature of the shock, the heterogeneity of the players and the state of the economy. Thus, no optimal network structure that is more resilient under all circumstances can be identified.⁶

Network positioning could affect banks' interest rates through various mechanisms. First, in line with Acemoglu, Ozdaglar and Tahbaz-Salehi (2015), dense interconnections serve as a mechanism for the propagation of shocks, leading to a more fragile financial system. As such, banks that are more connected may be perceived by the market as fragile. The same banks can be perceived as *too-interconnected-to-fail* such that rather than fragile, those banks are perceived as more likely to be bailout.⁷ This is similar to the *too-big-to-fail* effect observed in other interbank markets. Second, as argued by Booth, Gurun and Zhang (2014), financial institutions with more extensive and strategic financial networks, can more efficiently acquire and process information due to their better access to order flows. Third, banks with higher centrality within the network have better access to liquidity and are able to charge larger intermediation spreads; see for instance, Temizsoy, Iori, and Montes-Rojas (2015, 2017).⁸

The structure of interbank networks has been mapped for several countries, where the topology of interbank markets has been characterized and the stylized facts and regularities have been identified.⁹ The most common findings reported in this literature are: (i) interbank networks are sparse; (ii) degree and transaction volume distributions are fat tailed, revealing heterogeneous players characteristics; (iii) the networks show

⁵ Indeed, in a previous work, Anastasi, Blanco, Elozegui and Sangiácomo (2010) reported similar empirical results for the same market.

⁶ For a recent survey on systemic risk and financial contagion see Chinazzi and Fagiolo (2013).

⁷ See for instance Battiston, Puliga, Kaushik, Tasca and Caldarelli (2012).

⁸ Previous empirical evidence as Angelini, Nobili and Picillo (2011), Bech, Chapman and Garratt (2010), Temizsoy, Iori and Montes-Rojas (2017) suggest that being systemically more important, in term of size or connectedness, can explain part of the cross-sectional variation in banks' borrowing costs before and during the global financial crisis.

⁹ Examples include Boss et al. (2004) for the Austrian interbank market, Soramaki et al. (2007) and Bech and Atalay (2010) for the US Federal funds market, De Masi et al. (2006), Iori et al. (2008) and Fricke and Lux (2015) for the Italian-based e-MID, Degryse and Nguyen (2007) for Belgium, Craig and Von Peter (2014) for the German interbank market, Langfield et al. (2014) for the UK and in Veld and van Lelyveld (2014) for the Dutch market. Billio et al. (2012) studies the time-series properties of interconnectedness measures in financial markets. Specifically, in the case of Latin American countries, Poledna et al. (2015) studied the multi-layer network of exposures among Mexican banks, including interbank credit, securities, foreign exchange and derivative markets, Usi-Lopez, Martinez-Jaramillo and López-Gallo (2017) analyzed the repo market in Mexico, Caceres-Santos, Rodriguez-Martinez, Caccioli and Martinez-Jaramillo (2020) examined the case of Bolivia, and Cuba et al. (2021) the interbank exposures of Perú.

disassortative mixing with respect to the bank size, so small banks tend to trade with large banks and vice versa; (iv) clustering coefficients are usually quite small; (v) interbank networks satisfy the small-world property;¹⁰ (vi) interbank networks have a tiering structure with a tightly connected core of money-center banks to which all other periphery banks connect.

Second, the study of the markets' network structure provides some key insights about their stability when facing different kind of shocks. This issue leads us to another important literature strand related to the empirical degree distribution of the network, which is one of the most important elements that define the underlying topological structure of the system.

In random networks, the nodes' degree distribution tends to behave similarly to a Poisson (or exponential) distribution, while scale-free networks are better described by a Power Law (Albert and Barabási, 2002). A fat-tailed degree distribution (like the Power Law or the lognormal) implies that in such network a few highly connected nodes coexist with a myriad of low-connected agents. This fact has strong implications in terms of the resilience of the system, as those networks can be characterized as *robust-yet-fragile* structures (Albert and Barabási, 2000): they are surprisingly resilient against random errors, that is, to random failures or removals of a large number of nodes (robustness), even when the networks are faced with high failure rates, but this error tolerance is coupled with a high weakness to targeted attacks to the most central nodes of the network, as it rapidly breaks into isolated fragments when a few of the most connected nodes are removed (vulnerability). In contrast, networks that do not have such strong dominant central nodes tend to be more resistant to targeted shocks. In fact, random graphs present this converse risk structure. They easily absorb targeted attacks but tend to fall apart rapidly with random failures. This happens because those networks do not have particularly central nodes of systemic relevance that provide cohesion to the network structure.

Hence, in the context of interbank networks, this attribute has key implications regarding the assessment of systemic fragility and potential risks. If an empirical financial network displays a fat-tailed behavior, then a rigorous identification of the central agents in the graph should become a priority task for central banks and regulators.

In terms of market fragmentation, it is interesting to note that Gabrieli and Labonne (2018a) showed for the case of European banks in the 2011-2015 period that the fragmentation in the interbank market was mainly explained by two sources: bank idiosyncratic risk and sovereign-dependence risk. In 2011, the ECB announced interventions with open market operations in secondary government bonds markets, the so called Outright Monetary Transactions (OMT) on sovereign debt securities. As a result of the increased secondary market liquidity and the ECB implicit collateral, the fragmentation in the interbank market declined. In fact, both sovereign and idiosyncratic risks identified by the authors were reduced by these two factors.

¹⁰ A network is *small-world* if the mean geodesic distance between pairs of nodes is small relative to the total number of nodes in the network, that is, this distance grows no faster than logarithmically as the number of nodes tends to infinity.

In this paper, we apply a statistical procedure developed by Clauset et al. (2009) to assess which is the theoretical distribution that best fits the empirical degree distribution of each market network. The authors consider the relative relevance of different fat-tailed distributions for the degree distribution at hand. For instance, the most crucial consequences of the Power Law or the Lognormal distribution of degrees derive from the fact that they are fat-tailed, in comparison with Poisson or Exponential distributions. Taking that issue into account, the authors test other types of fat-tailed distributions in addition to Power Laws, not limiting themselves just to that latter alternative. These distributions show histograms with a slower decay compared to an exponential distribution as the variable of interest increases (in our case, the node degree):

$$\lim_{x \rightarrow \infty} \frac{f(x)}{e^{-x}} \neq 0$$

Therefore, in order to assess the network fragility in the Argentinean interbank market, we identify the theoretical distribution that better fit to the empirical degree distribution of both the secured and the unsecured market. In addition, we examine potential differences *within* the REPO market, including or excluding the CB from the network. Finally, we investigate if structural differences arise when considering the operations using Treasury bonds as collateral or those backed by CB securities. Results showing significantly different empirical distributions in the markets may be not only an indication of different risks from the macroprudential point of view, but also an evidence of market fragmentation in the interbank market.

3. The Argentinean interbank markets

The interbank market of Argentina, as in many other countries, is a complex network where the interaction between banks and the BCRA¹¹ determines the main reference interest rates: the unsecured or CALL rate, the secured or REPO rate and the Central Bank's interest rates including the reference monetary policy interest rate.¹² The monetary policy is transmitted through the interbank interest rate to all the interest rates of the financial system (deposit rates, loan rates and others) impacting on economic activity level and/or the inflation rate.

The unsecured or CALL market is an over-the-counter market where banks can informally transact bilaterally and directly.¹³ The participants have counterparty

¹¹ The participant banks use the interbank market to negotiate temporary reserve positions (surplus or deficit), as well as securities (in secured markets), and to manage liquidity that may eventually be channeled to the non-financial sector. Also, the BCRA's monetary (and FX) operations, carried out for the fulfillment of their objectives (including bonds operations, passive and active repos, open market operations, loans to financial institutions, and others), are implemented through debits and/or credits in the current accounts of the banks affecting the same reserves positions and their minimum reserves requirements compliance.

¹² The primary issuances of the BCRA's securities and the cut-off rate of these issues together with the REPOs rates (passive and active) are the reference or monetary policy interest rates in Argentina.

¹³ See Elozegui and Montes-Rojas (2020) for a complete description and a network characterization of this market. Also, the work by Anastasi et al. (2010) describes the special role of bank relationships in this market.

exposure limits that frame the bilateral transactions, subject to the general limits imposed by Central Bank regulations. The transactions are compensated on the *Medio Electrónico de Pagos* (MEP) platform of BCRA.¹⁴ Most of the activity is concentrated in overnight loans, with only a small number of transactions maturing beyond three days (the weekends or extended holidays). The majority of the banks, including the smaller and specialized ones, operate in this market. In fact, some of them only have access to the CALL market and do not operate in the REPO market. As mentioned before, the CB does not operate in this unsecured segment of the market. The overnight CALL rate is published by BCRA and it is a traditional benchmark rate for the financial market.

On the other hand, the secured or collateralized market, called REPO market, functions through the electronic trading platform SIOPEL of the *Mercado Abierto Electrónico* (MAE).¹⁵ Only banks and financial entities that are members (or adherents) to MAE can participate in this platform, which explains why there are significantly less participants in this market compared to the CALL market. The platform is anonymous and bilateral with all positions visible by the participants. It is an order-driven system with no market-making arrangements. The transactions are not compensated through a central clearing counterparty and each participant establishes counterparty limits, although the credit risk is limited by the use of collateral (treasury and/or central bank securities) and haircuts.¹⁶ In fact, the system is settlement-risk free, since there is an online validation of the portfolio limits for each transaction between the parties.

The BCRA actively participates in the secured market through its lending and deposit facilities called “*Pases*” (the active transactions -loans to banks- are known as “REPOs”, while the deposit facilities used by financial entities are called “Reverse REPOs”). Additionally, the Central Bank conducts open market operations (non-systematic and sparse). The BCRA issues its own debt securities, to absorb or provide liquidity from/to the market, affecting therefore the interest rates and monetary conditions of the economy.¹⁷

Hence, in Argentina, for analytical purposes, the REPO market can be divided in different “segments”, according to the participating agents and the type of asset involved as collateral, including transactions: (i) settled by banks and the CB; (ii) between banks (excluding the CB) secured with Treasury bonds and, (iii) between banks (excluding the CB) secured with central bank securities.

¹⁴ The MEP is a Real Time Gross Settlement (RTGS) platform. Also, the net transactions are daily informed through SISCEN Information Task Requirement of the bank regulator (*Superintendencia de Entidades Financieras y Cambiarias*). The information of the CALL market used in this study comes from that source.

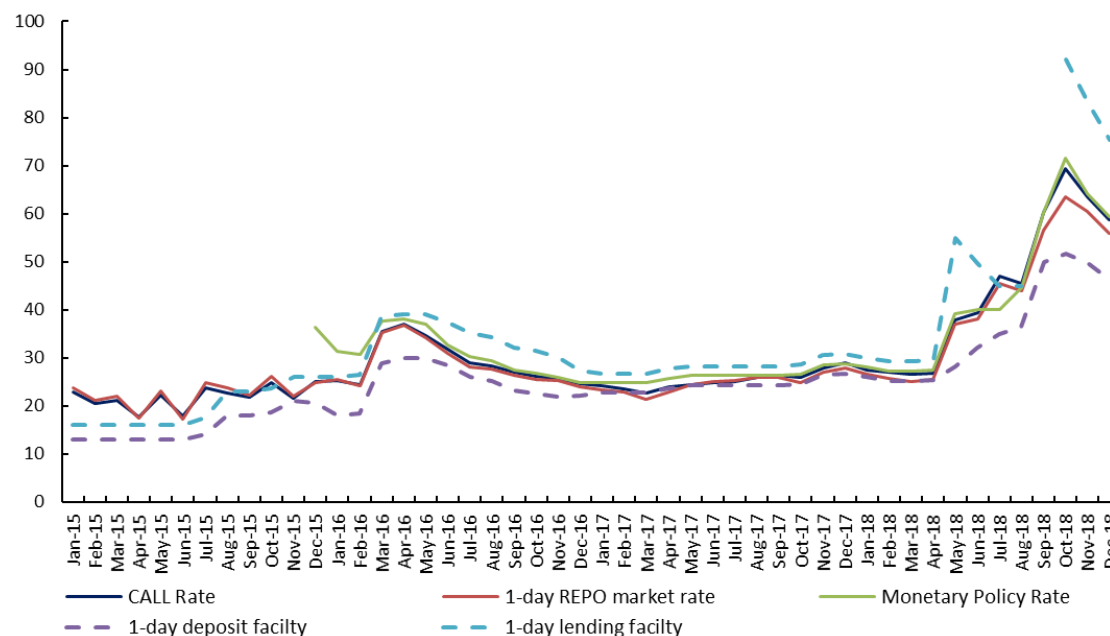
¹⁵ The MAE is an electronic negotiation market created in 1989. It is the main electronic market for the negotiation of securities, foreign currency and repos in Argentina.

¹⁶ The collateral can be either treasury or central bank securities and the haircut is calculated daily by MAE based on their volatility and liquidity, usually ranging from 10 percent to 30%. It is usually around 10 percent for government securities.

¹⁷ Since 2002 (in a context of a public debt default), the monetary authority started to issue its own short- and middle-term securities, called LEBAC and NOBAC. These securities were used until 2018, when they were replaced by other Central Bank debt instrument called LELIQ, with a 7-day maturity and that can only be transacted by banks.

Figure 1 summarizes the interbank interest rates and BCRA's policy interest rates during the period. The CB REPO and reverse REPO interest rates define an "interest rate corridor". In general, both CALL and REPO interest rates are located within the corridor limits. However, for the analyzed period and during several episodes the interbank interest rates crossed that rate corridor limits. It can also be noted that REPO secured market interest rate is usually below the CALL unsecured interest rate.

Figure 1. Interbank interest rates and Central Bank's interest rates corridors -%-



Source: BCRA.

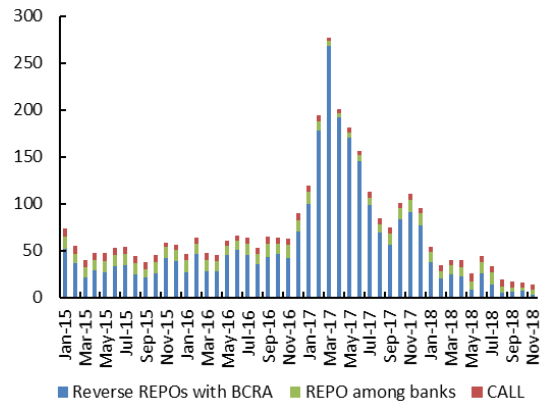
Figure 2 shows the relative importance of each interbank segment. As can be seen, the market volume is mostly explained by the REPOs between banks and the CB. In this particular segment, most of the transactions are explained by "reverse REPOs", a deposit facility used by the monetary authority to sterilize excess liquidity from the interbank market. In general, banks are not normally willing to participate in REPO operations (lending facility) with the Central Bank as these transactions are considered a bad reputational sign for the market.¹⁸

On the other hand, Figure 3 indicates the relative importance of the CALL vis-à-vis the banks REPO market (excluding the CB) during the period under analysis. It can be noted that REPO market was more important than the traditional CALL market during most of the period.

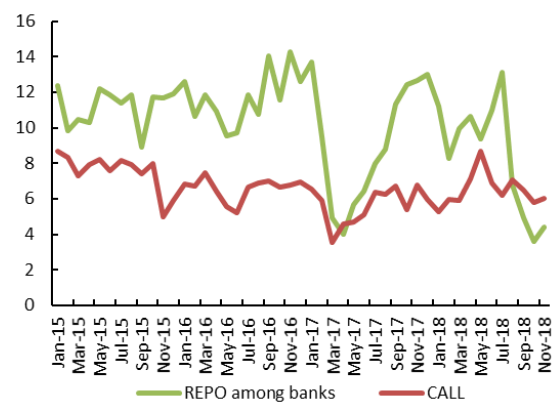
¹⁸ In fact, in the period under analysis some of these operations were registered, but they were negligible: only 0,9% of total reverse REPO operations in the 2015-2018 period.

Figure 2. Interbank Markets Volume

- Monthly average of daily values in Billions of \$, constant purchasing power of 2018 -

**Figure 3. CALL and REPO Markets Volume**

- Monthly average of daily values in Billions of \$, constant purchasing power of 2018 -



Source: BCRA.

The database includes 78,168 unsecured (CALL) and 150,296 secured (REPO) daily transactions from January 1st, 2015 and December 31st, 2018. Approximately 92% of the transactions in the CALL market and 98% in the REPO market were overnight. In the case of the unsecured market, we use information from the *Siscen* CB database that includes operations among banks on a net daily basis, lender and borrow id (anonymized), volume, maturity, interest rate and currency. On the other hand, the secured market database includes daily information for each transaction pair in the MAE market, including time of the transaction (hour, minute and second), maturity and specific collateral (bond or security), volume and implicit interest rate. In order to analyze the interest rate determinants in both markets controlling for the relevant variables we use a bank balance sheet database, a money market database (with interest rates and regulatory requirements) and also the current account balance at the CB and the minimum liquidity requirement of each bank.

As can be seen in Table 1 below, a remarkable feature of the time period under analysis is that it includes significantly different monetary policy regimes. In 2015, the first year of the sample, interest rate and capital account controls prevailed.¹⁹ However, both types of controls were liberalized for the rest of the period. The government implemented an inflation targeting regime using the interest rate as the main monetary policy instrument from 2016 onwards. By the end of the sample, in October 2018, the BCRA implemented a monetary base control monetary policy. The primary issuance of BCRA's securities²⁰ and their interest rate, together with the Pases (active and passive) interest rate corridor represented the monetary policy (or reference) rates between 2016 and 2018.

¹⁹ See Forte (2020, p.4).

²⁰ The LEBAC or CB securities were used for monetary policy implementation during almost the entire period. In mid-August 2018, the BCRA initiated a LEBAC rescue and cancellation program. These instruments were replaced by "LELIQ" (see footnote 19). The rescue process was completed in December 2018. In August 7, the Monetary Policy Committee defined the LELIQ 7-day rate as the monetary policy rate.

Table 1. Main monetary and macroeconomic events on the period under analysis.

Period	Main Events
1 January 2015 - 16 December 2015	Interest rate controls, FX restrictions
9 August 2015	Primary presidential elections
25 October 2015	Presidential elections (1st round)
22 November 2015	Presidential elections (2nd round/Runoff)
10 December 2015	New Government takes office
17 December 2015 - September 2018	Inflation Targeting regime progressive implementation
17 December 2015 - 31 December 2016	Removal of capital controls and interest rate liberalization Monetary Policy Rate: 35-day LEBAC (short-term CB securities)
1 January 2017 - September 2018	Monetary Policy Rate: 7-day REPO interest rate corridor (mid-point between deposit and lending facilities)
August - October 2017	Midterm elections (primary and general elections)
28 December 2017	Change in Inflation Target: triggers volatility in the exchange rate market
April 2018 - September 2018	Currency crisis: MPR increased 37.75 p.p. and the peso depreciated 50%
September 2018 - December 2018	Monetary policy regime change: Monetary aggregates control Main monetary policy rate: 7-day LELIQ (short-term CB securities)

As aforementioned, both CB securities and Treasury bonds can be used as collateral assets in REPO market operations. The predominance of Central Bank's securities as the main monetary policy instrument is not the standard international practice, but it is more usual in emerging markets with underdeveloped local debt markets.²¹ In the Argentine case, these securities represent the most important banks' tool to manage its liquidity levels, while Treasury bonds are traded in the interbank markets with other objectives (for example, arbitrage transactions, or to exploit carry trade opportunities).

As Figure 4 shows, between 2015 and 2018, 38% of the REPO market operations had Treasury bonds as collateral, while the remaining 62% used CB securities. The CB was involved in 14.5% of the transactions, nearly always using its own securities as guarantee. If these specific operations with the CB are not considered, actually 45% of the transactions carried out between commercial banks were collateralized by Treasury bonds.

²¹ Rule (2011).

Figure 4. Collateral assets used in the REPO market operations

- Quantity of operations in which each type of collateral was used, as % of total number of operations during the year-

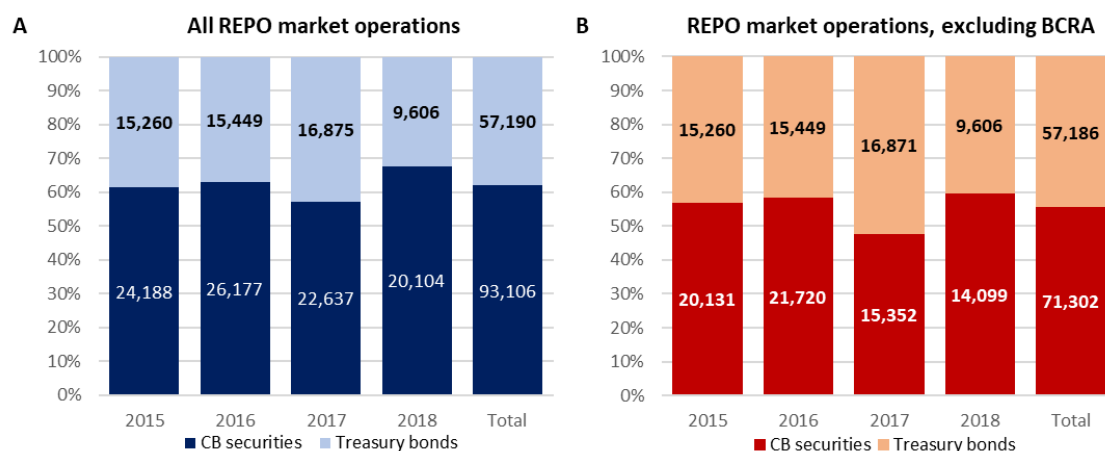


Fig 4. (LHS) Distribution of assets used as collateral in the REPO market. (RHS) Distribution of assets used as collateral in the REPO market, without taking into account the operations in which the CB was involved.

In practice, this could mean that nearly half of the REPO market transactions between banks (the ones collateralized by T-bonds) are settled with intrinsically different purposes than the other half (collateralized by CB securities, which are usually meant for liquidity management). In fact, the difference within the REPO market transactions also arises in terms of the bilateral rates settled in each type of operation, as shown by Figure 5. The bilateral rates of the operations collateralized by Treasury bonds tend to be, on average, lower and more fat-tailed distributed than the transactions backed with CB securities. Additionally, in the latter case the interest rates are more concentrated around the mean interest rate.²²

²² One of the many reasons behind these differences is that in the REPO market sometimes so-called “special” operations are settled, which essentially are “securities-driven” REPOs. In those cases, the agents are interested in the specific collateral asset, so they are willing to provide cheaper liquidity to obtain it. As the Central Bank consistently intervenes with its own securities as collateral, the “exceptionally far-from-the-mean” bilateral interest rates usually appear when the collateralized assets are Treasury Bonds.

Figure 5. REPO market: Interest rate differentials, according to the collateral asset

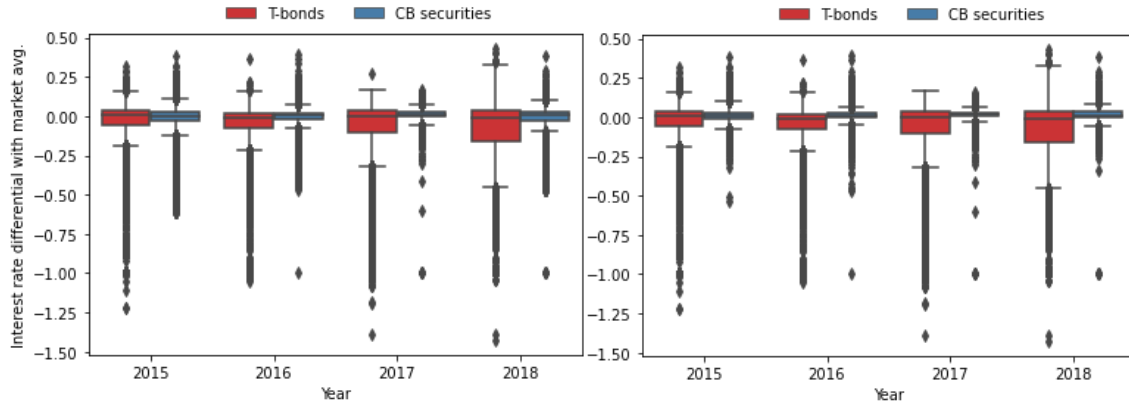


Fig. 5. (LHS) Distribution of the differences between the bilateral rates and the market average rate of the same day in the REPO market. (RHS) Distribution of the interest rate differentials, excluding the transactions in which the CB was involved. (0=T-bonds, 1=CB securities).

The differences in liquidity conditions of the REPO transactions are statistically significant, depending on whether they have Treasury bonds or CB securities as collateral. To test the difference, we consider a panel data regression model:

$$r_{ijt} = \beta \text{type}_{ijt} + \gamma X_{ijt} + \mu_i + \delta_j + \theta_t + \varepsilon_{ijt},$$

where r is the interest rate of the overnight REPO transaction, type is a dummy variable that takes the value 0 if the collateral is a T-bond while it is 1 if it is a CB security, X is a set of control variables used in Elosgui and Montes-Rojas (2020) to control for liquidity requirements of lender and borrowers, amount and maturity.²³ The model has lender (i), borrower (j) and day-specific (t) fixed-effects and is estimated for each month separately for 2015-2018. We also use a different specification where r is replaced by $\log(r)$. The results are summarized in Fig. 6 for r (left panel) and $\log(r)$ (right panel).

²³ In the case of Gabriele and Labonne (2018a), the authors also regress an interest rate *spread* equation, considering the difference between the annualized (amount-weighted) average interest rate paid in interbank transactions and the deposit facility rate. They found that a larger exposure to higher sovereign risk was associated with higher spreads in their analysis.

Figure 6. Regression coefficient for interest rate differentials depending on the collateral

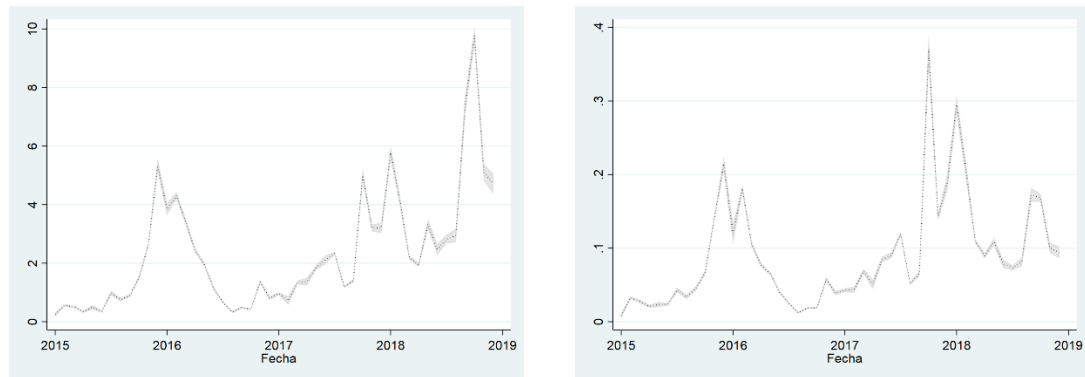


Fig. 6. Regression coefficient of the effect of a dummy variable (0=T-bonds, 1=CB securities) together with 95% confidence interval (robust standard errors clustered by day). (LHS) Dependent variable is interest rate. (RHS) Dependent variable is log-rate.

Initially assuming no difference by type of collateral in 2015, the econometric results show that macroeconomic uncertainty and episodes of monetary policy tightening are associated with a positive premium of CB securities over T-bonds. For example, the 2015-2016 change of government ruling party at the national level is associated with an average 5 percentage points premium or 15% higher interest rate. The 2017 midterm elections and the government's announcements of changes in the Inflation targets during December 2017 are also reflected in a higher premium. In 2018, Argentina suffered a severe currency crisis (the Argentinian peso lost 50% of its value that year) triggered by a sudden stop of capital inflows. Coincidentally, the larger premium change is observed in August 2018 (10 percentage points, 19% difference), precisely the month in which the exchange rate tensions peaked. Overall, the results show a positive premium for the entire sample, with larger differences in times of political uncertainty and macroeconomic volatility. A plausible interpretation of these results is that the transactions collateralized by CB securities are driven by intrinsically different purposes (e.g., liquidity management) than the operations secured with T-bonds (e.g., arbitrage opportunities).

In sum, the results indicate that changes in monetary conditions have a significantly different impact on the segment of CB-backed REPO transactions comparing with the impact on the T-bonds-secured transactions. This evidence points to the fact that the REPO market is fragmented according to the type of collateral involved in the transactions. In the next sections, we further analyze this divergence between the market segments, considering the underlying network distributions. As we will observe, the fragmentation of the markets is also reflected in significantly different underlying network distributions.

4. Empirical results

The interbank market can be represented as a directed network, where the nodes are the banks (including the BCRA, that only operates in the REPO market), while the links

are constituted by the transactions among them, in each of the markets. Following the usual practice, the direction of the flows is taken into consideration (therefore, an edge is incoming to the borrower and outgoing from the lender).

The network structures seem to exhibit differences not only between both markets (REPO vs CALL), but also *within* the REPO market (Fig. 7). In the latter case, the structure of the interrelationships apparently differs depending on the participation of the BCRA and according to the collateral asset involved in the transactions (CB securities or Treasury bonds).

Figure 7. Argentinean interbank markets: Network representations

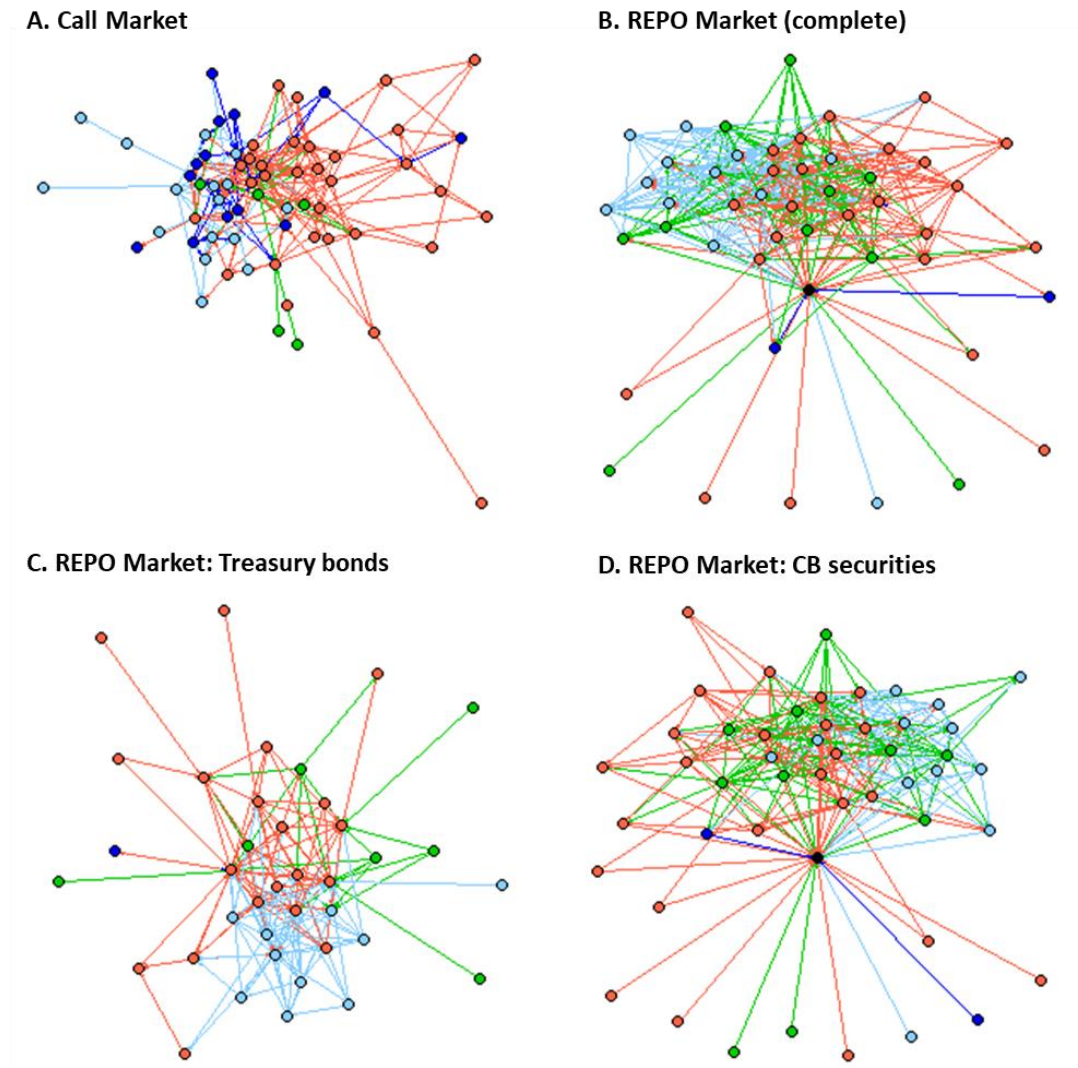


Fig 7. Each node represents a financial entity (green: State-Owned Banks; red: Domestic Private Banks; light blue: Subsidiaries of Foreign Banks; dark blue: Non-Bank Financial Institutions; black: Central Bank). Each edge denotes the existence of at least one loan settled between a pair of entities during the month, and its color is defined by the lender entity. The monthly networks of June 2017 are depicted, as the number of nodes and edges in that month were the most similar to the average of the period under analysis (CALL market: $N=65$, $M=233$; REPO market: $N=49$, $M=380$). Figures 7C (Lower LHS) and 7D (Lower RHS) display the REPO market network, but only considering in each case the operations collateralized by Treasury bonds or CB securities, respectively. The visualization layout was computed by using the Fruchterman-Reingold algorithm.

In the CALL market network, 64 ± 5 entities (N) established an average of 232 ± 49 links (M) on a monthly basis, while in the REPO market only 49 ± 3 participants were involved, with 398 ± 70 edges (Figure 8). The unsecured market always maintained a higher number of participants than the secured market because of more restrictive barriers to entry in the latter. N remained stable in both markets between 2015 and 2017, but fell significantly since the beginning of 2018 (Figure 8-A).

The number of participants in the REPO market was on average 23% lower than in the CALL market, but nearly 72% more monthly links were created in the former. Hence, the

connectivity levels in the REPO networks are significantly higher: the average degree of the nodes (\hat{k}) in the REPO market nearly doubles the average degree in the call market, while the density²⁴ levels in the former are three times higher than in the latter (Figure 8- B and Figure 8-C). Thus, although the unsecured market has more participants, it is not as well connected as the secured market.²⁵ These conclusions do not substantially change when the operations with the Central Bank are not considered. One plausible interpretation of this result is that the fact that REPO market transactions are secured encourages the establishment of connections between agents which do not necessarily know and trust each other. Instead, the unsecured market demands the creation of “trust” between the agents (after rigorous counterparty risk analysis) before establishing formal links. In addition, the blind electronic platform through which REPO market operations are conducted facilitates transactions among all the participants, while in the case of the CALL market this type of marketplace is absent.

Also, as can be seen in Figure 8-D, the clustering coefficient averaged 51% in the REPO market, substantially above that of the CALL market (16%). In fact, it always remained larger than the clustering levels which would emerge in comparable random networks of the same size²⁶. The CALL market’s clustering coefficient was not only markedly lower but also fell sharply in 2018, even below the levels expected for a random network of the same size, simultaneously with the crisis that Argentina experienced that year. This points to the conclusion that the lattice of interrelationships in the unsecured market is less stable than in the REPO market, particularly during hard times. Hence, the former market shows signs of being less resilient to negative shocks than the latter.

²⁴ The “density” (δ) of a network quantifies the percentage of the potential links that actually exist, given the number of nodes of the graph: $\delta = \frac{\sum_{ij} a_{ij}}{N(N-1)}$ (where a_{ij} is 1 if there is a link between the bank i and the bank j in the given network, and 0 otherwise).

²⁵ These results are in line, for example, with those obtained by Schumacher (2017) for the Swiss interbank markets.

²⁶ The average clustering coefficient of a random network with N nodes and \hat{k} average degree is equal to: \hat{k}/N (Albert & Barabási, 2002).

Figure 8. Monthly topological indicators of the REPO and CALL market networks

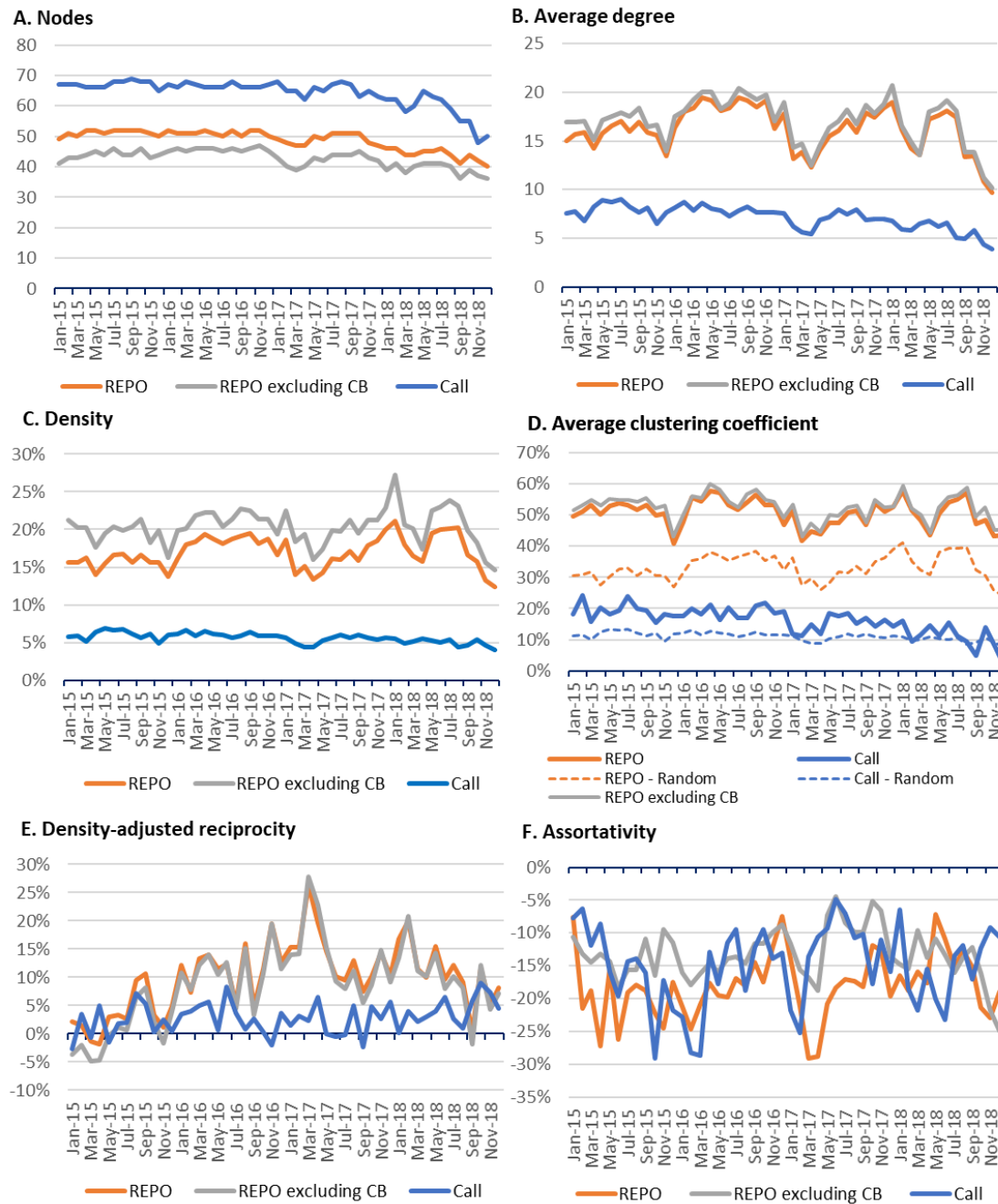


Fig. 8. (A) Number of participants in the network. (B) Average total degree of the nodes. (C) Density. (D) Average clustering coefficient of the nodes in the network, and the expected clustering levels which would emerge from random graphs with the same number of nodes (N) and with the same average degree \hat{k} (the average clustering coefficient of a random network is equal to: \hat{k}/N). (E) Reciprocity levels adjusted by the density of the network: $(\text{Reciprocity} - \text{density}) / (1 - \text{density})$, if it is above 0: more reciprocal than a random network, below 0: anti-reciprocal. (F) Assortativity coefficient, computed by using the Pearson correlation coefficient between the degrees of nodes that share links.

Both networks are, on average, more reciprocal than comparable random graphs, which means that banks tend to establish two-way relationships for other reasons than mere randomness (Figure 8 - E). However, the secured market shows higher reciprocity levels

than the unsecured market, another indicator of the more embedded relationships in the former.

As it is usual in real-world financial networks (Forte, 2020; Hüser, 2015), both markets are prominently disassortative throughout the period (Figure 8 - F), which means that low-connected banks are more likely to interact with high-degree banks than with other low-degree ones, and vice versa.

Nevertheless, the network structure of the REPO market can be understood as the result of two different underlying networks within that market: one derived from the interactions collateralized by CB securities and other which emerge from the transactions collateralized by Treasury bonds. From Figures 7 - C and 7 - D it is clear that both segments or “sub-markets” present structural differences that deserve to be examined.

First, as mentioned in the introduction, the CB only operates in the REPO market and using its own liabilities. The monetary authority is the main agent which defines liquidity levels in the market. Consistently, less entities participate in the REPO market using Treasury bonds (37 ± 3) than using CB securities (48 ± 4) (Figure 9 - A.). The average degree of the nodes is higher in the network based on CB securities, especially during 2016 (Figure 9 - B). The connectivity levels in both segments, measured by the average density and clustering coefficient, remained similar throughout the period (Figure 9 – C and 9 - D). However, the network based on Treasury bonds showed more stable metrics, while the market based on CB securities suffered several episodes of volatility: for example, Sep’15-Jan’16 (in coincidence with the change of government ruling party), Nov’16-Jun’17 (a period with a change in the monetary policy framework, from using LEBACs as main instrument to REPOs), and 2018 (a period characterized by the exchange rate volatility and a sharp reversal of foreign financial flows). Clustering levels remained always above those of a random graph of the same size. In both cases the networks were disassortative, with comparable indicators in this regard (Figure 9 - F).

The most remarkable difference in this topological metrics is related to the Reciprocity: the network based on the transactions collateralized by Treasury bonds is highly reciprocal, with banks establishing numerous two-way links, while, if the transactions collateralized only by CB securities are considered, the network turns out to be nearly neutral or even anti-reciprocal (Figure 9 – E.). This fact is derived from the active presence of the BCRA and the related impact in terms of the network structure of that segment of the market.

Figure 9. Monthly topological indicators of the REPO market, distinguishing transactions depending on its collateral: CB securities or Treasury bonds.

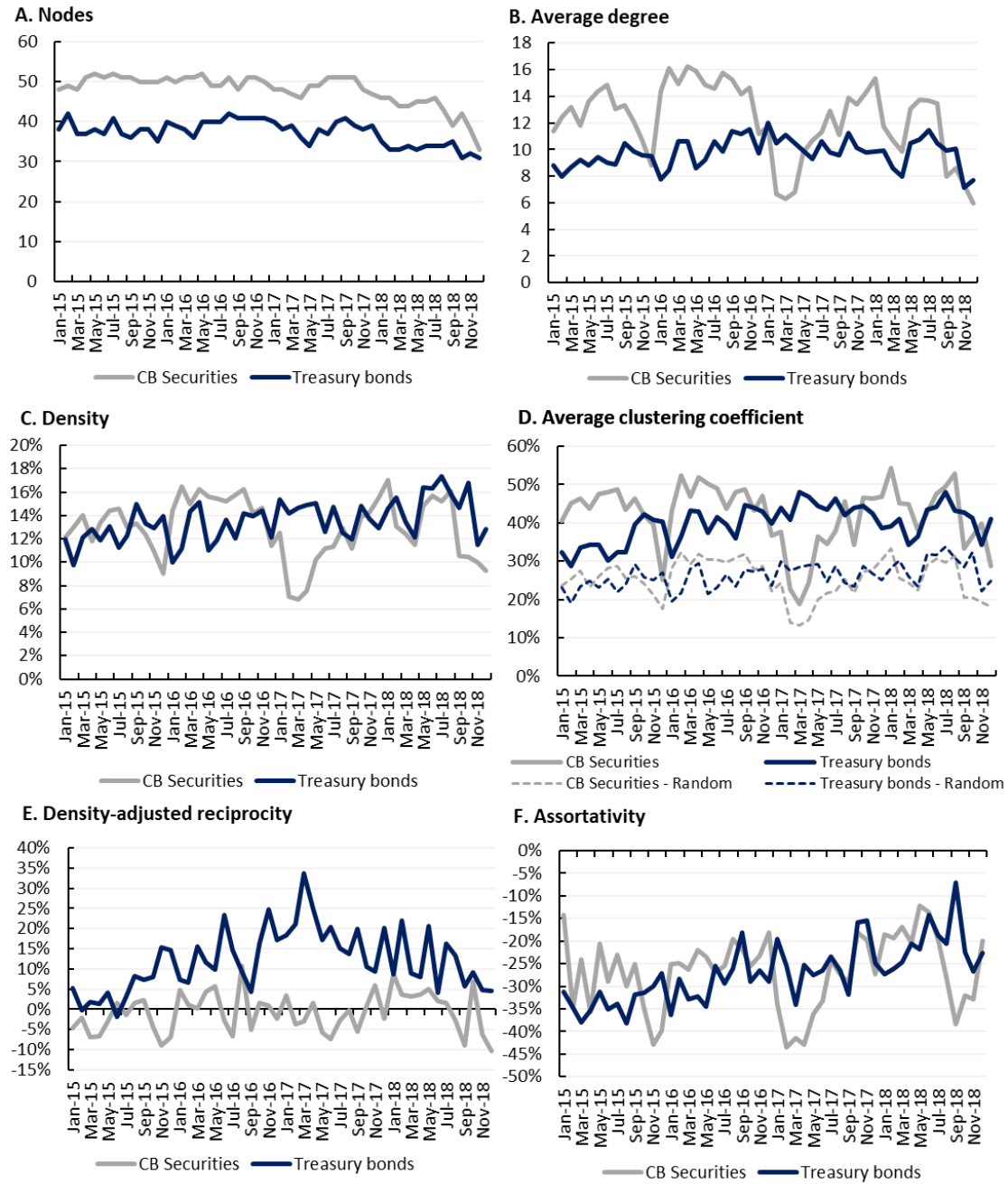


Fig. 9. (A) Number of participants in each sub-network. (B) Average total degree of the nodes. (C) Density. (D) Average clustering coefficient of the nodes in the network, and the expected clustering levels which would emerge from comparable random graphs. (E) Reciprocity levels adjusted by the density of the network (above 0: more reciprocal than a random network, below 0: anti-reciprocal). (F) Assortativity coefficient.

As can be seen in Figure 10, a preliminary analysis of the network degree distribution reflects that they are fat-tailed. After applying the tests developed by Clauset et al. (2009), it can be concluded that the lognormal distribution tends to be the one that best fits the empirical degree distributions of both the CALL and REPO market, outperforming

the Poisson and Power Law distributions in the majority of the monthly networks (Table 1). The Lognormal fit is not rejected in 89.6% of the cases in the CALL market, while in the REPO market this hypothesis is not rejected in 91.7% of the cases. This implies that the degree distributions derived from both markets can be characterized as heavy-tailed. That means that they are composed by a few highly connected banks interacting with a myriad of less-connected entities, making both structures vulnerable to targeted attacks or failures of the main agents in the network. This result stresses the relevance of detecting and supervising the central nodes in order to improve the resilience of both networks.

Figure 10. Complementary Cumulative Distribution Functions of the nodes' degrees

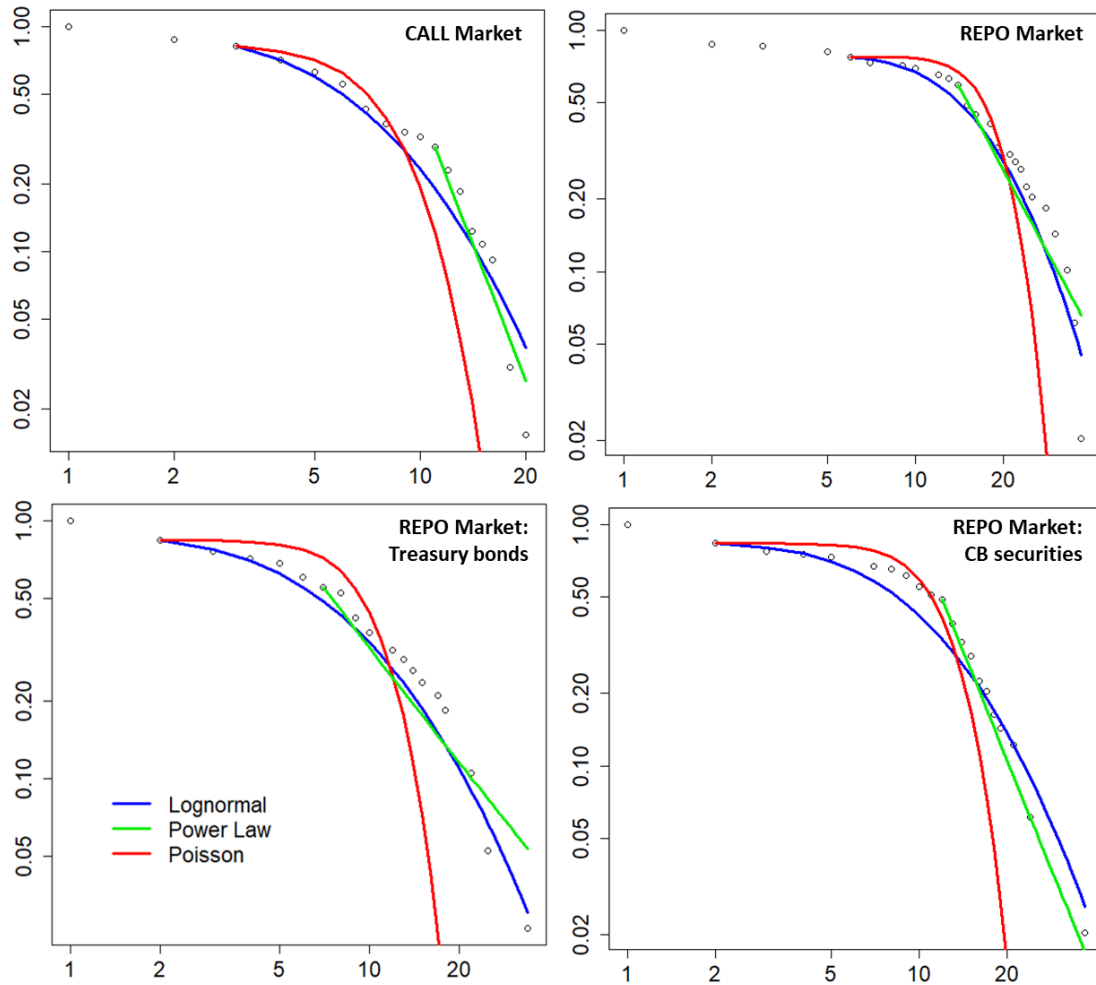


Fig. 10. Networks of June 2017, which were selected for the same reasons detailed in Fig. 7. The best-fit stylized distribution functions are depicted in each chart. Axis are in log-scale.

When the transactions with the BCRA are not taken into consideration, the Poisson hypothesis is rejected in a higher number of months. This evidence points to the fact that the degree distributions of the networks *without* the BCRA are less similar to random graphs and more like fat-tailed than in the case when all the market operations are considered. In fact, when the CB is not an active participant in the networks, those networks become more dependent of a few highly connected nodes. Therefore, as it would be expected, the segment that may be more vulnerable to the failure of its main participants is the one in which the CB is not involved.

Table 2. CALL and REPO markets: Percentage of monthly networks with a degree distribution that does not reject each null hypothesis

	Call			REPO total			REPO without BCRA		
	Lognormal	Power Law	Poisson	Lognormal	Power Law	Poisson	Lognormal	Power Law	Poisson
	p>10%	p>10%	p>10%	p>10%	p>10%	p>10%	p>10%	p>10%	p>10%
2015	91.7%	91.7%	66.7%	91.7%	75.0%	75.0%	83.3%	91.7%	50.0%
2016	83.3%	66.7%	83.3%	100.0%	100.0%	75.0%	100.0%	91.7%	50.0%
2017	91.7%	75.0%	66.7%	83.3%	66.7%	75.0%	100.0%	91.7%	50.0%
2018	91.7%	83.3%	41.7%	91.7%	66.7%	91.7%	100.0%	75.0%	75.0%
Total	89.6%	79.2%	64.6%	91.7%	77.1%	79.2%	95.8%	87.5%	56.3%
Avg. Xmin	4.4	9.1	10.4	11.5	21.2	24.0	12.4	20.2	19.9

Some conclusions from Table 2 are reinforced by the results shown in Table 3. The network based on transactions collateralized by Treasury bonds within the REPO market tends to reject de Poisson distribution as the best fit to its degree distribution in more cases than the network based on CB collateral. The participation of the CB in the network, either directly or indirectly (through its liabilities used as collateral by entities) makes the network structure less similar to a pure fat-tailed distribution, smoothing the *robust-yet-fragile* aspect of that type of networks and hence limiting that type of systemic risk to which the market is subject.

Table 3. Repo monthly networks, by collateral asset.
% on which the distribution under the null hypothesis is not rejected

	REPO - collateral CB			REPO - collateral Treasury		
	Lognormal	Power Law	Poisson	Lognormal	Power Law	Poisson
	p>10%	p>10%	p>10%	p>10%	p>10%	p>10%
2015	91.7%	91.7%	91.7%	100.0%	100.0%	50.0%
2016	83.3%	100.0%	41.7%	91.7%	75.0%	41.7%
2017	100.0%	100.0%	50.0%	100.0%	83.3%	75.0%
2018	91.7%	83.3%	100.0%	83.3%	91.7%	75.0%
Total	91.7%	93.8%	70.8%	93.8%	87.5%	60.4%
Avg. Xmin	11.6	17.4	15.1	4.3	11.5	12.4

The results indicate that in the network of REPO operations collateralized by T-bonds, the key participation of central agents is relatively more important to the well-functioning of the market than in the case of the transactions backed by CB securities.

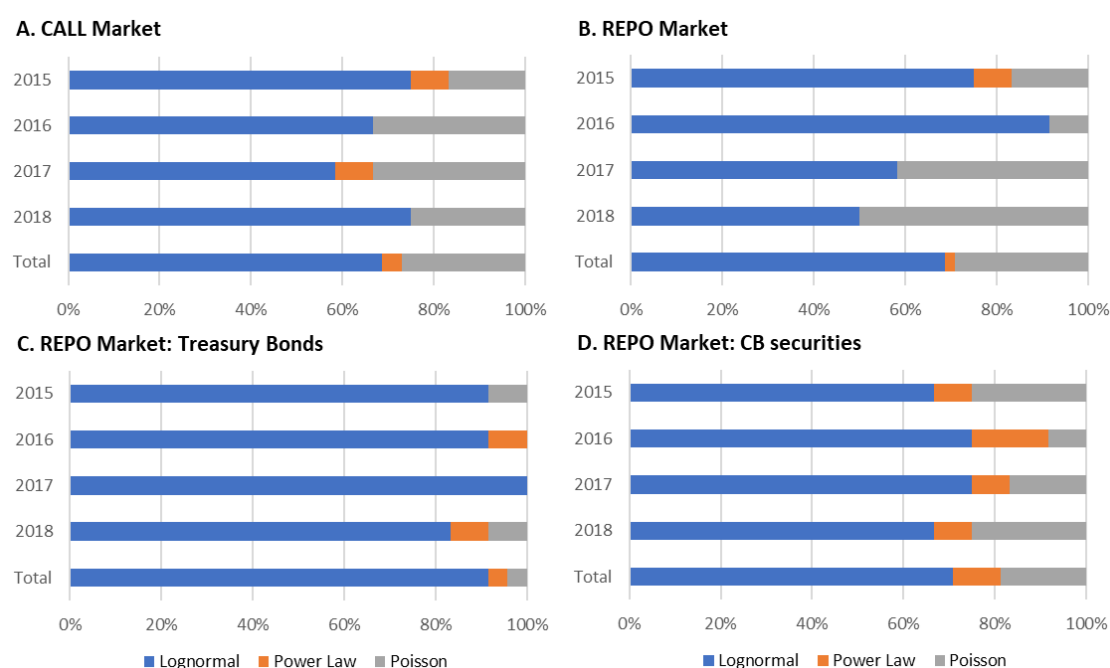
Finally, in order to confirm these findings, we introduce an additional procedure, to address the issue of detecting the best fit for each monthly degree distribution. The procedure can be summarized in three steps:

- (i) Apply the method described by Clauset et al. (2009) to the empirical degree distributions, as it was done in Tables 1 and 2.

- (ii) If more than one theoretical distribution is not rejected, a classical Vuong Test is performed to define which the better fit is.
- (iii) If Vuong Test does not provide enough evidence to select one or other distribution, then the log-likelihood associated to each fit is compared to decide the better one.

The results of this procedure for each (monthly) network of both markets are summarized in Figure 11. The evidence reinforces the outperformance of the lognormal fit over the others. Considering the total period under analysis, the Call market and the REPO market network structure does not differ significantly in this regard: in nearly 70% of the months the best fit is achieved by the Lognormal distribution, while in the other 30% the Poisson distribution is better.

Figure 11. Interbank (monthly) networks best described by each parametric distribution function (in % of total months).



It should be noted that the REPO market network shows signs of having experienced a structural change during 2018, as its topology seems to have partially “randomized” in an economic period characterized by a Balance of Payment crisis and several exchange rate depreciations episodes. Conversely, during the same period the CALL market rejects most of the time the Poisson hypothesis. It is clear that both segment of the markets reacted in different ways under similarly stressful events.²⁷

Figures 11 C and D, indicate that the network based on the REPO market transactions collateralized by Treasury bonds is significantly better described by fat-tailed

²⁷ The observed changes under a stress event may deserve better attention from the financial stability perspective that is beyond the present analysis.

distributions than the network based on CB-securities-backed transactions. In fact, for the latter, in some more cases the random network performs better. The difference has implications in terms of the fragility of these segments of the interbank market. The former is more vulnerable to the failure of its main agents, while the market based on CB securities seems to be slightly more resilient to these types of events. In the latter, the participation of the BCRA (directly or indirectly, through its securities) proves to be important in terms of stability.

5. Concluding remarks and discussion

This paper examines the secured (REPO) and unsecured (CALL) interbank markets of Argentina applying a complex networks approach to analyze market fragmentation. The empirical analysis is performed using a unique database spanning from 2015 to 2018, a particularly volatile period for the Argentinean economy.

Based on standard topological metrics (like the average degree, density and clustering coefficients), it is found that, although the secured market has less participants, its nodes are more densely connected than in the unsecured market. In addition, the interrelationships in the latter are less stable, as it was witnessed during the 2018 currency crisis, making its structure more volatile and vulnerable to negative shocks.

The analysis identifies two “hidden” underlying sub-networks within the REPO market: one based on the transactions collateralized by Treasury bonds (REPO-T) and other based on the operations collateralized by CB securities (REPO-CB). The connectivity indicators were significantly more stable in the REPO-T market than in the REPO-CB segment, as the latter is evidently more correlated with the liquidity swings defined by the Central Bank. The changes in monetary policy stance and monetary conditions seem to have a substantially smaller impact in former than in the latter “sub-market”. Hence, the connectivity levels within the REPO-T market remain relatively unaffected by the (in some period pronounced) swings in the other segment of the market.

The reciprocal relationships in the REPO-T segment are significantly more frequent than in the REPO-CB, showing that BCRA’s “one-way operations” in the REPO market crucially shapes the type of relationships established in the latter sub-network. Meanwhile, the fact that relationships are highly reciprocal in the subset of transactions collateralized by Treasury bonds reflects that this sub-network is significantly less affected by the participation of the BCRA.

In terms of financial stability, the distribution function that best fits the empirical degree distributions in both the secured and the unsecured market is the lognormal, a fat-tailed distribution. As a result, the networks are composed by a few highly connected banks jointly with multiple entities with a significantly lower degree. Given this network structure, the highly interconnected banks are key for the stability of the markets, hence the regulation and supervision should focus on the well-functioning of these central agents to preserve the system’s stability. However, the participation of the Central Bank in the REPO market subdues somewhat this conclusion. When the transactions with the BCRA are not considered, the REPO market degree distribution becomes closer to a fat-

tailed distribution. But when the transactions with the BCRA are considered, this conclusion is less categorical, and the Poisson hypothesis gains some support. This evidence implies that the participation of the Central Bank in the REPO market alters the structure and the underlying risks of the network. In this sense, the markets in which the Central Bank does not intervene directly (the CALL market and REPO-T) would deserve a different treatment from the point of view of financial stability supervisors. Nevertheless, it is important to note that the direction of the “causality” between the markets’ risk structure and the Central Bank active participation (or not) is not straightforward. An extensive presence of the monetary authority in these markets could also undermine the development of a denser lattice of interrelationships among private entities, which could, in turn, mitigate the risks of a fat-tailed degree distribution in the networks.

Overall, these differences seem to be reflecting that the transactions collateralized with CB securities may have different motivation than those collateralized by T-bonds. In fact, the REPO-CB market appears to be more related to liquidity management activities, while the REPO-T market could be mainly motivated by arbitrage operations or the demand of certain bonds for specific reasons, not necessarily related to liquidity management decisions.

The existence of two sub-markets with different structure makes it difficult to fully interpret or extrapolate the implications of the average interest rate that emerges from the REPO market as a whole. In fact, two very different types of decisions are condensed in that same price. In contrast, the CALL unsecured market is more homogeneous, with an interest rate reflecting a “clearer” reference of the “cost of money” in the financial system. This “fragmentation” of the REPO market has multiple implications. For example, the dichotomy posed by this “fragmented market” behind the formation of the REPO market interest rate jeopardizes the development of an “interest rate forward market” for this rate (or broader derivative markets of this rate in general), a pending task in Argentina. This issue could be solved if the Central Bank computes (and publishes) an interest rate trying to capture the average rate of the operations that are settled only for liquidity management purposes, which should be “near” to the monetary policy rate, defined by a certain (empirically defined) threshold of distance from it. Such indicator could be used as a reference to settle contracts, avoiding the biases introduced by, for example, special REPO market operations and/or arbitrage transactions derived from extraordinary conditions or attributes of specific collateral assets. This issue requires further research.

References

- Acemoglu, D., A. Ozdaglar, and A. Tahbaz-Salehi (2015). "Systemic risk and stability in financial networks," *American Economic Review*, 105(2), 564–608.
- Afonso, G., and R. Lagos (2015). "Trade dynamics in the market for Federal Funds," *Econometrica*, 83, 263–313.
- Albert, R., and A.-L. Barabási (2002). "Statistical mechanics of complex networks," *Reviews of Modern Physics*, 74(1), 47–97.
- Albert, R., H. Jeong, H. and A.-L. Barabási (2000). "Error and attack tolerance of complex networks," *Nature*, 406, 378–382.
- Aldasoro, I., and I. Alves (2015). "Multiplex interbank networks and systemic importance: An application to European data," SAFE Working Paper No. 102, House of Finance-Goethe University.
- Anastasi, A., E. Blanco, P. Elosegui, and M. Sangiácomo (2010). "Determinantes de la tasa interbancaria de préstamos en Argentina," *Ensayos Económicos*, 60, 137–209.
- Angelini, P., A. Nobili, and C. Picillo (2011). "The interbank market after August 2007: What has changed and why?," *Journal of Money, Credit and Banking*, 43(5), 923–958.
- Ashcraft, A., and D. Duffie (2007). "Over the counter search frictions: A case study of the Federal Funds market," 2007 Meeting Papers 999, Society for Economic Dynamics.
- Barabási, A.-L., and R. Albert (1999). "Emergence of scaling in random networks," *Science*, 286, 509–512.
- Bargigli, L., G. di Iasio, L. Infante, F. Lillo, and F. Pierobon (2015). "The multiplex structure of interbank networks," *Quantitative Finance*, 15(4), 673–691.
- Battiston, S., M. Puliga, R. Kaushik, P. Tasca, and G. Caldarelli (2012). "Debt rank: Too central to fail? Financial networks, the FED and systemic risk," *Scientific Reports*, 2(541).
- BCBS - Basel Committee on Banking Supervision (2018). "Global systemically important banks: revised assessment methodology and the higher loss absorbency requirement." Accessed: <https://www.bis.org/bcbs/publ/d445.pdf>.
- Bech, M. L., J. T. E. Chapman, and R. J. Garratt (2010). "Which bank is the central bank?," *Journal of Monetary Economics*, 57(3).
- Billio, M., M. Getmansky, A. W. Lo, and L. Pelizzon (2012). "Econometric measures of connectedness and systemic risk in the finance and insurance sectors," *Journal of Financial Economics*, 104(3), 535–559.
- Bonacich, P. (1972). "Factoring and weighting approaches to clique identification," *Journal of Mathematical Sociology*, 2.
- _____ (1987). "Power and centrality: A family of measures," *American Journal of Sociology*, 92.
- Booth, G. G., U. G. Gurnun, and H. Zhang (2014). "Financial networks and trading in bond markets," *Journal of Financial Markets*, 18, 126–157.
- Boss, M., H. Elsinger, M. Summer, and S. Thurner (2004). "Network topology of the interbank market," *Quantitative Finance*, 4, 677–684.

Caceres-Santos, J., A. Rodriguez-Martinez, F. Caccioli, and S. Martinez-Jaramillo (2020). "Systemic risk and other interdependencies among banks in Bolivia," *Latin American Journal of Central Banking*, 1.

Chinazzi, M., and G. Fagiolo (2013). "Systemic risk, contagion, and financial networks: A survey," LEM Papers Series 2013/08, Laboratory of Economics and Management (LEM), Sant'Anna School of Advanced Studies, Pisa, Italy.

Clauset, A., C.R. Shalizi, and M.E.J. Newman (2009). "Power-law distributions in empirical data," *SIAM Review*, 51(4), 661-703.

Craig, B., and G. von Peter (2014). "Interbank tiering and moneycenter banks," *Journal of Financial Intermediation*, 23, 322-347.

Cuba, W., A. Rodriguez-Martinez, D. Chavez, F. Caccioli, and S. Martinez-Jaramillo (2021). "A network characterization of the interbank exposures in Peru," *Latin American Journal of Central Banking*, 2(3).

de Masi, G., G. Iori, and G. Caldarelli (2006). "Fitness model for the Italian interbank market," *Physical Review*, 74(6).

Degryse, H., and G. Nguyen (2007). "Interbank exposures: An empirical examination of systemic risk in the Belgian banking system," *International Journal of Central Banking*, 3(2), 123-171.

Elosegui, P., and G. Montes-Rojas (2020) "Efectos de red en mercados interbancarios de Call y Repo de Argentina," *Ensayos Económicos*, 75, 55-81.

Forte, F. (2020). "Network topology of the Argentine interbank money market," *Journal of Complex Networks*, 8(4).

Freeman, L. C. (1979). "Centrality in social networks: Conceptual clarification," *Social Networks*, 1, 215-239.

Fricke, D., and T. Lux (2015). "Core-periphery structure in the overnight money market: Evidence from the e-mid trading platform," *Computational Economics*, 45(3), 359-395.

Gabrieli, S., and C. Labonne (2018a). "Bad Sovereign or Bad Balance Sheets? Euro Interbank Market Fragmentation and Monetary Policy, 2011-2015," FRB Boston Risk and Policy Analysis Unit Paper No. RPA 18-3.

_____. (2018b) "Euro area interbank market fragmentation: New evidence on the roles of bad banks versus bad sovereigns," VOX, CEPR Policy Portal. November.

Gai, P., A. Haldane, and S. Kapadia (2011). "Complexity, concentration and contagion," *Journal of Monetary Economics*, 58, 453-470.

Georg, C.-P. (2013). "The effect of the interbank network structure on contagion and common shocks," *Journal of Banking and Finance*, 37, 2216-2228.

Hüser, A.-C. (2015). "Too interconnected to fail: A survey of the interbank networks literature," *Journal of Network Theory in Finance*, 1(3), 1-50.

Iori, G., G. de Masi, O. V. Precup, G. Gabbi, and G. Caldarelli (2008). "A network analysis of the Italian overnight money market," *Journal of Economic Dynamics & Control*, 32, 259-278.

Iori, G., S. Jafarey, and F. G. Padilla (2006). "Systemic risk on the interbank market," *Journal of Economic Behavior & Organization*, 61(7), 525–542.

Karik, A., P. Gai, and M. Marsili (2012). "Rollover risk, network structure and systemic financial crises," *Journal of Economic Dynamics & Control*, 36(8), 1088–1100.

Katz, L. (1953). "A new status index derived from sociometric analysis," *Psychometrika*, 18, 39–43.

Kobayashi, T., and T. Takaguchi (2017). "Understanding the fundamental dynamics of interbank networks," Discussion Papers N° 1711. Graduate School of Economics, Kobe University.

Kolaczyk, E. (2009). *Statistical Analysis of Network Data*. Springer-Verlag, London.

Langfield, S., Z. Liu, and T. Ota (2014). "Mapping in the UK interbank system," *Journal of Banking & Finance*, 45, 288–303.

Lenzu, S., and G. Tedeschi (2012). "Systemic risk on different interbank network topologies," *Physica A: Statistical Mechanics and its Applications*, 391, 4331–4341.

Leon, C., J. Perez, and L. Renneboog (2014). "A multi-layer network of the sovereign securities market," *Borradores de Economía* 840, Banco de la República de Colombia.

Molina-Borboa, J.-L., S. Martínez-Jaramillo, F. López-Gallo, and M. van der Leij (2015). "A multiplex network analysis of the Mexican banking system: Link persistence, overlap and waiting times," *Journal of Network Theory in Finance*, 1(1), 99–138.

Nier, E., J. Yang, T. Yorulmazer, and A. Alentorn (2007). "Network models and financial stability," *Journal of Economic Dynamics & Control*, 31, 2033–2060.

Page, L., S. Brin, R. Motwani, and T. Winograd (1999). "The PageRank Citation Ranking: Bringing Order to the Web," Technical Report 66, Stanford InfoLab.

Poledna, S., J. L. Molina-Borboa, S. Martínez-Jaramillo, M. van der Leij, and S. Thurner (2015). "The multi-layer network nature of systemic risk and its implications for the costs of financial crises," *Journal of Financial Stability*, 20, 70–81.

Roukny, T., H. Bersini, H. Pirotte, G. Caldarelli, and S. Battiston (2013). "Default cascades in complex networks: Topology and systemic risk," *Nature Scientific Reports*, 5(2759).

Rule, Garreth. (2011). "Issuing Central Bank Securities," Centre for Central Banking Studies. Bank of England. Accessed: <https://www.bankofengland.co.uk/-/media/boe/files/ccbs/resources/issuing-central-bank-securities.pdf>.

Sala, A., S. Gaito, G. Rossi, H. Zheng, and B. Zhao (2011). "Revisiting degree distribution models for social graph analysis," arXiv:1108.0027.

Schumacher, S. (2017). "Networks and lending conditions: Empirical evidence from the Swiss franc money markets," *Journal of Network Theory in Finance*, 3(2), 69–101.

Soramaki, K., M. L. Bech, J. Arnold, R. J. Glass, and W. E. Beyeler (2007). "The topology of interbank payment flows," *Physica A: Statistical Mechanics and its Applications*, 379(1), 317–333.

't Veld, D. in, and I. van Lelyveld (2014). "Finding the core: Network structure in interbank markets," *Journal of Banking & Finance*, 49, 27–40.

Temizsoy, A., G. Iori, and G. Montes-Rojas (2015). "The role of bank relationship in the interbank market," *Journal of Economic Dynamics & Control*, 59, 118–141.

_____ (2017) "Network centrality and funding rates in the e-MID inter-bank market," *Journal of Financial Stability*, 33, 346–365.

Usi-Lopez, M., S. Martinez-Jaramillo, and F. López-Gallo (2017). "The repo market in Mexico: Empirics and stylized facts," *Neurocomputing*, 264.