

Murach, Michael; Wagner, Helmut; Kim, Jungsuk; Park, Donghyun

Working Paper

Trajectories to high income: Growth dynamics in Japan, the People's Republic of China, and the Republic of Korea

ADB Economics Working Paper Series, No. 622

Provided in Cooperation with:

Asian Development Bank (ADB), Manila

Suggested Citation: Murach, Michael; Wagner, Helmut; Kim, Jungsuk; Park, Donghyun (2020) : Trajectories to high income: Growth dynamics in Japan, the People's Republic of China, and the Republic of Korea, ADB Economics Working Paper Series, No. 622, Asian Development Bank (ADB), Manila,
<https://doi.org/10.22617/WPS200276-2>

This Version is available at:

<https://hdl.handle.net/10419/246699>

Standard-Nutzungsbedingungen:

Die Dokumente auf EconStor dürfen zu eigenen wissenschaftlichen Zwecken und zum Privatgebrauch gespeichert und kopiert werden.

Sie dürfen die Dokumente nicht für öffentliche oder kommerzielle Zwecke vervielfältigen, öffentlich ausstellen, öffentlich zugänglich machen, vertreiben oder anderweitig nutzen.

Sofern die Verfasser die Dokumente unter Open-Content-Lizenzen (insbesondere CC-Lizenzen) zur Verfügung gestellt haben sollten, gelten abweichend von diesen Nutzungsbedingungen die in der dort genannten Lizenz gewährten Nutzungsrechte.

Terms of use:

Documents in EconStor may be saved and copied for your personal and scholarly purposes.

You are not to copy documents for public or commercial purposes, to exhibit the documents publicly, to make them publicly available on the internet, or to distribute or otherwise use the documents in public.

If the documents have been made available under an Open Content Licence (especially Creative Commons Licences), you may exercise further usage rights as specified in the indicated licence.



<https://creativecommons.org/licenses/by/3.0/igo/>

TRAJECTORIES TO HIGH INCOME

GROWTH DYNAMICS IN JAPAN, THE PEOPLE'S REPUBLIC
OF CHINA, AND THE REPUBLIC OF KOREA

Michael Murach, Helmut Wagner, Jungsuk Kim, and Donghyun Park

NO. 622

October 2020

ADB ECONOMICS
WORKING PAPER SERIES

ADB Economics Working Paper Series

Trajectories to High Income: Growth Dynamics in Japan, the People's Republic of China, and the Republic of Korea

Michael Murach, Helmut Wagner, Jungsuk Kim,
and Donghyun Park

No. 622 | October 2020

Michael Murach (Michael.Murach@fernuni-hagen.de) is a research and teaching assistant at FernUniversität in Hagen, Germany. Helmut Wagner (Helmut.Wagner@fernuni-hagen.de) is a professor of Economics and President of CEAMeS at FernUniversität in Hagen, Germany. Jungsuk Kim (js_kim@sejong.ac.kr) is a professor at Sejong University, Seoul. Donghyun Park (dpark@adb.org) is a principal economist at the Asian Development Bank, Manila.

We would like to thank participants of the 15th Annual Conference of the European Economics and Finance Society, 2016, Amsterdam; the 2nd CEAMeS Workshop on East Asia Macroeconomic Studies, 2018, Xiamen; the 3rd CEAMeS Workshop on Macroeconomic Development and Trade in East Asia, 2019, Hagen; and members of the Chair of Macroeconomics at the FernUniversität in Hagen.



Creative Commons Attribution 3.0 IGO license (CC BY 3.0 IGO)

© 2020 Asian Development Bank
6 ADB Avenue, Mandaluyong City, 1550 Metro Manila, Philippines
Tel +63 2 8632 4444; Fax +63 2 8636 2444
www.adb.org

Some rights reserved. Published in 2020.

ISSN 2313-6537 (print), 2313-6545 (electronic)
Publication Stock No. WPS200276-2
DOI: <http://dx.doi.org/10.22617/WPS200276-2>

The views expressed in this publication are those of the authors and do not necessarily reflect the views and policies of the Asian Development Bank (ADB) or its Board of Governors or the governments they represent.

ADB does not guarantee the accuracy of the data included in this publication and accepts no responsibility for any consequence of their use. The mention of specific companies or products of manufacturers does not imply that they are endorsed or recommended by ADB in preference to others of a similar nature that are not mentioned.

By making any designation of or reference to a particular territory or geographic area, or by using the term “country” in this document, ADB does not intend to make any judgments as to the legal or other status of any territory or area.

This work is available under the Creative Commons Attribution 3.0 IGO license (CC BY 3.0 IGO) <https://creativecommons.org/licenses/by/3.0/igo/>. By using the content of this publication, you agree to be bound by the terms of this license. For attribution, translations, adaptations, and permissions, please read the provisions and terms of use at <https://www.adb.org/terms-use#openaccess>.

This CC license does not apply to non-ADB copyright materials in this publication. If the material is attributed to another source, please contact the copyright owner or publisher of that source for permission to reproduce it. ADB cannot be held liable for any claims that arise as a result of your use of the material.

Please contact pubsmarketing@adb.org if you have questions or comments with respect to content, or if you wish to obtain copyright permission for your intended use that does not fall within these terms, or for permission to use the ADB logo.

Corrigenda to ADB publications may be found at <http://www.adb.org/publications/corrigenda>.

Note:

ADB recognizes “China” as the People’s Republic of China and “Korea” as the Republic of Korea.

The ADB Economics Working Paper Series presents data, information, and/or findings from ongoing research and studies to encourage exchange of ideas and to elicit comment and feedback about development issues in Asia and the Pacific. Since papers in this series are intended for quick and easy dissemination, the content may or may not be fully edited and may later be modified for final publication.

CONTENTS

TABLES AND FIGURES	iv
ABSTRACT	vi
I. INTRODUCTION	1
II. LITERATURE REVIEW	2
III. EMPIRICAL ANALYSES	6
A. Developing Theoretical Hypotheses	6
B. Data Description and Historical Events	7
C. Univariate Properties of the Data	12
D. Structural Break Tests	12
E. Econometric Framework	13
F. Estimation	14
IV. CONCLUSION	31
APPENDIX	33
REFERENCES	39

TABLES AND FIGURES

TABLES

1	Summary of Potential Structural Breakpoints	4
2	Residual Analysis—Diagnostic Testing of the Unrestricted Vector Autoregression (1) Model, People’s Republic of China	15
3	The Just-Identified Long-Run Cointegration Relations for $r = 1$, People’s Republic of China	16
4	The Overidentified Long-Run Cointegration Relation for $r = 1$, People’s Republic of China	16
5	Residual Analysis—Diagnostic Testing of the Unrestricted Vector Autoregression (1) Model, Republic of Korea	21
6	Likelihood-Ratio Trace Test for the Unrestricted Vector Autoregression (1) Model, Republic of Korea	21
7	The Just-Identified Long-Run Cointegration Relations for $r = 1$, Republic of Korea	22
8	The Overidentified Long-Run Cointegration Relations for $r = 1$, Republic of Korea	22
9	Residual Analysis—Diagnostic Testing of the Unrestricted Vector Autoregression (1) Model, Japan	26
10	Likelihood-Ratio Trace Test for the Unrestricted Vector Autoregression (1) Model, Japan	26
11	The Just-Identified Long-Run Cointegration Relations for $r = 1$, Japan	27
12	The Overidentified Long-Run Cointegration Relations for $r = 1$, Japan	27
A1	Structural Break Tests	33

FIGURES

1	Catching-Up Potential of Japan, the People’s Republic of China, and the Republic of Korea to the United States	3
2	Growth Trajectories of Japan, the People’s Republic of China, and the Republic of Korea	8
3	Gross Domestic Product per Capita, Capital–Employment Ratio, and Inverse of the Employment Rate, People’s Republic of China	9
4	Gross Domestic Product per Capita, Capital–Employment Ratio, and Inverse of the Employment Rate, Republic of Korea	10
5	Gross Domestic Product per Capita, Capital–Employment Ratio, and Inverse of the Employment Rate, Japan	11
6	Cointegrating Relationship for the People’s Republic of China	17
7	Test of Beta Equal to the ‘Known Beta’, People’s Republic of China	18
8	One-Step Prediction Test for the Concentrated Model, People’s Republic of China	18
9	Test of Coefficient Constancy, People’s Republic of China	19

10	Cointegrating Relation for the Republic of Korea	23
11	Test of Beta Equal to the 'Known Beta', Republic of Korea	24
12	One-Step Prediction Test for the Concentrated Model, Republic of Korea	24
13	Test of Coefficient Constancy, Republic of Korea	25
14	Second Cointegrating Relation for Japan	28
15	Test of Beta Equal to the 'Known Beta', Japan	28
16	One-Step Prediction Test for the Concentrated Model, Japan	29
17	Test of Coefficient Constancy, Japan	30
A1	Time Series of Capital and Employment	35
A2	First Cointegration Relation, Japan	36
A3	Coefficient Stability for the First Cointegration Relation, Japan	37

ABSTRACT

We analyze and compare the patterns of economic growth and development in the Japan, the People's Republic of China, and the Republic of Korea in the postwar period. The geographical proximity and cultural affinity between the three countries, as well as the key role of the development state in the economies, suggest that an analytical comparison would be a meaningful and valuable exercise. Furthermore, Japan and the Republic of Korea are two of the few economies that have jumped from middle income to high income in a short period and thus offer potentially valuable lessons for the PRC. We use Cobb–Douglas production functions to assess the long-run equilibrium relationships between per capita gross domestic product, capital, and labor by means of cointegrated vector autoregressive models. We show that such equilibrium relationships cannot be rejected for all three countries, while the evidence is stronger for the PRC and the Republic of Korea than for Japan. Our hypothesis tests show that the estimated Cobb–Douglas production functions display coefficients of capital and employment that sum up to 1 and broken linear trends that can be attributed to structural breaks and (changes in) total factor productivity growth. We observe a striking similarity between the experience in the Republic of Korea and the PRC, which gives some optimism that the PRC may be capable of graduating to high income, like the Republic of Korea.

Keywords: aggregate production function, comparative economic growth, economic development, Japan, People's Republic of China, Republic of Korea

JEL codes: E23, O47, O53, O57, P52

I. INTRODUCTION

Since the introduction of market reforms in 1978, decades of world-topping economic growth have transformed the People's Republic of China (PRC) into the world's second-biggest economy and an upper-middle-income economy. The PRC's remarkable economic transformation, triggered by a systemic shift from a centrally planned economy to a more market-oriented economy, may indeed be the most significant development in the global economic landscape since the Second World War. However, since the global financial crisis of 2008–2009, the PRC's growth has slowed down visibly, although it continues to grow at a healthy pace. While the slowdown is partly due to a less benign external environment, it is largely due to structural factors, such as rebalancing toward domestic demand and consumption, rapid income convergence toward high-income countries, population aging, and tertiarization. The PRC is already an upper-middle-income country with an income level at which growth typically slows down (see, for example, Eichengreen, Park, and Shin 2012; 2014). Therefore, to some extent, the slowdown is a necessary transition to a more balanced and sustainable growth paradigm, not least against the many imbalances that built up during the high-growth decades.¹

At the same time, there is no guarantee that the PRC's transition from middle income to high income will be as smooth and fast as its transition from low income to middle income. In fact, economic theory suggests that sustaining rapid growth will be difficult because marginal returns to capital eventually decline as an economy grows richer and acquires a larger stock of capital. The gains from shifting workers from low-productivity agriculture to higher-productivity manufacturing also eventually decline. Furthermore, as countries approach the global technology frontier, they must begin to develop new technology on their own instead of relying exclusively on importing advanced technology from abroad. Generally, the essence of economic growth shifts from input accumulation—that is, deploying more capital, labor, and other inputs—to total factor productivity growth—that is, using all those inputs more efficiently.

Empirically, a large number of middle-income countries have failed to graduate to high-income status in a reasonable period. This well-known stylized fact has given rise to the concept of the middle-income trap. Of 101 middle-income countries in 1960, only 13 proceeded to high-income status by 2008.² Will the PRC be able to follow in their footsteps? Of the 13 economies mentioned, only a few appear to be comparable with the PRC. Albert, Jude, and Rebillard (2015) point out that only Japan; the Republic of Korea; Taipei,China; and Israel followed a growth strategy similar to that of the PRC: export-led growth paired with strong investment. Of special interest and relevance to the PRC is the experience of Japan and the Republic of Korea, which are relatively large countries. Although both economies are nowhere near as large as the PRC, they are much larger than Singapore and Hong Kong, China and substantially larger than Taipei,China.

The central objective of our paper is to assess empirically the PRC's prospects for transcending the middle-income range by looking in the rearview mirror and comparing the PRC's past experiences with those of Japan and the Republic of Korea. Accordingly, we analyze and compare the economic growth and structural transformation trajectory of the PRC, the Republic of Korea, and Japan on the macroeconomic level by estimating Cobb–Douglas production functions in a multivariate

¹ See Wagner (2017) and Maliszewski and Zhang (2015).

² See World Bank (2013).

cointegration framework. To identify our models, we use *ex ante* knowledge about historical events as well as the results of Bai and Perron's (2003) structural break tests of the time series.

The rest of this paper is organized as follows. Section II reviews the relevant literature and describes the economic growth experiences of the PRC, the Republic of Korea, and Japan. The section divides the experiences of these countries into different stages of economic development and structural transformation. Section III derives our theoretical hypotheses for the equilibrium relationships and analyzes and compares the growth experiences of the PRC, the Republic of Korea, and Japan more rigorously based on econometric analysis performing structural break tests and cointegration analysis. Section IV concludes the paper.

II. LITERATURE REVIEW

Will the PRC be able to close the gap to the high-income economies? Some convergence theories predict that this will be the case. Lee (2016) argues that the PRC's growth experience overall resembles the experience of Japan and the Republic of Korea. Figure 1 compares the status quo of the PRC, the Republic of Korea, and Japan in terms of catching up with the United States (US).³ Every value expresses gross domestic product (GDP) per capita in relation to the US.⁴ Hence, the difference between the countries' graphs and the y-axis can be interpreted as the remaining catching-up potential.

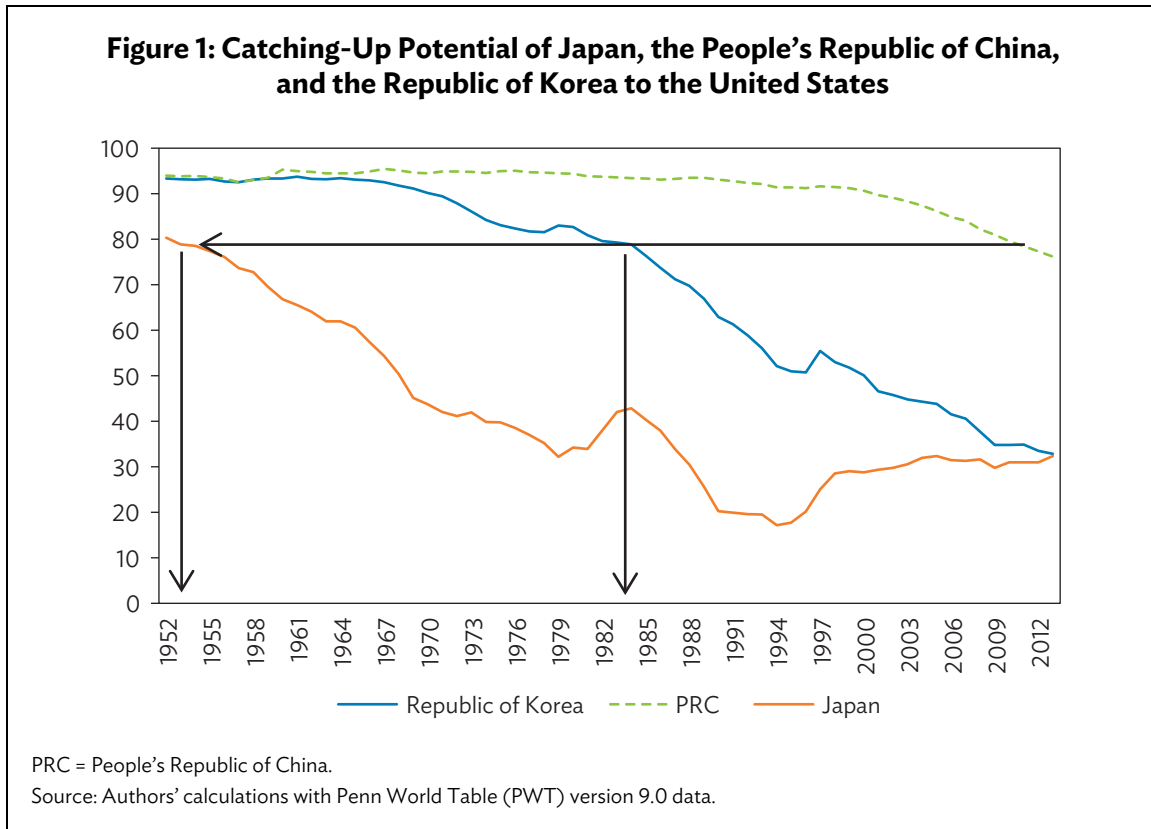
We can observe that all three countries are converging toward the US's GDP per capita level, yet the remaining catching-up potential is different for the three economies. Japan caught up quickly with the US and graduated to high-income status by the late 1960s.⁵ After the nation-building phase in the Republic of Korea had ended in the early 1960s, it grew dynamically until the early 1980s and then entered several stabilization processes, which are continuing until today. High-income status was reached around the turn of the millennium. By about 2014, the Republic of Korea had caught up with Japan. Due to its specific circumstances, the fast-growth phase in the PRC only started in the late 1970s. The remaining catching-up potential for the PRC is still high. Based on Figure 1, we can argue that the developments in each country lead those of the 'following' countries by about 27–30 years. The arrows in Figure 1 show that the PRC's recent state of catching-up with the US was achieved by the Republic of Korea in the early 1980s and by Japan in the early 1950s. The clear interpretation of this figure is that the three countries started from different initial conditions and thus have also undergone different phases of growth. Roughly, we can characterize these phases as follows.

The PRC's postwar economic development can be divided broadly into three different stages: the centrally planned economy (1949–1977); the transition to a more market-oriented economy and economic takeoff (1978–2000); and post-WTO globalization, technological upgrading, and transition toward a high-income economy (2001–present) (see Chow 2015).

³ See Lee (2016) for a similar comparison, albeit with a different representation.

⁴ We use Penn World Table version 9.0 data and calculate the ratio between the US per capita GDP and the per capita GDP in Japan, the Republic of Korea, and the PRC. One (100% respectively) minus these values delivers what we interpret as catching-up potential.

⁵ High income can be defined as > 50% of the US GDP (see Glawe and Wagner 2016).



The Republic of Korea's postwar economic development can be divided roughly into four stages: nation building and the beginning of a modern market economy (1948–1959); economic takeoff (1960s–1979); stabilization and transition toward a high-income economy (1980–1997); and restructuring, reinvention, and maturation (1998–present) (see Moon 2016).

Japan's postwar economic development can be divided into five different stages: a postwar reconstruction phase (1945–1954), a fast-growth phase (1955–1972), the oil shock phase (1973–1984), the bubble economy phase (1985–1990), the lost decade (1990–2000), and a revitalization phase (2004–present) (see Ifo Institute for Economic Research and Sakura Institute of Research 1997; Inkster 2001; Syed, Kang, and Tokuoka 2009; Yoshino and Taghizadeh-Hesary 2015).

Looking at the drivers of the convergence observed in Figure 1, the related literature points toward growth theories and structural change. Lewis (1954) argues that structural change in the sense of reallocation of labor between sectors is an important driver of economic growth. In Japan, the service sector share in employment surpassed the agricultural share in 1956 (the industry sector surpassed the agriculture sector in 1962); the corresponding intersections happened in 1980 (1984) in the Republic of Korea and in 2011 (2014) in the PRC. Thus, structural change in Japan leads that in the Republic of Korea by 24 years and the Republic of Korea's structural change leads the PRC's by 31 years (Murach and Wagner 2017). Thus, the difference in the catching-up process seems to be mimicked by the respective process of structural change.

Dalgaard and Strulik (2013) merge unified growth theory and neoclassical growth theory to explain income differences between countries. They argue that the beginning of the fertility decline is an important indicator for the takeoff of an economy. This takeoff can be defined as the transition from a phase of economic stagnation to a phase in which these countries grow persistently in terms of income per capita. To time the takeoff, two measures are proposed, the first of which is the year of fertility decline. The point of fertility decline can be defined as the point at which the population growth decreases. The second measure proposed by Dalgaard and Strulik (2013) is the year of industrialization, which measures the first year when the industry share in the total employment is greater than that of agriculture. For Japan, the Republic of Korea, and the PRC, the initial years of fertility decline were 1950, 1960, and 1970 (as reported by Reher 2004). The year of industrialization corresponds to the years in brackets in the previous paragraph. Table 1 summarizes our findings.

Table 1: Summary of Potential Structural Breakpoints

	Japan	Republic of Korea	PRC
Year of fertility decline (see Reher 2004)	1950	1960	1970
Structural change (see Murach and Wagner 2017)	1956 (1962)	1980 (1984)	2011 (2014)
Year of industrialization (see Dalgaard and Strulik 2013)	1962	1984	2014

PRC = People's Republic of China.

Source: Authors' representation.

Dalgaard and Strulik (2013) argue that neoclassical growth theory is valid especially in the post-takeoff phase. Neoclassical growth theory considers, in particular, the effects of input factors on economic growth. In this modeling framework, the Solow (1956) model explains growth as a function of capital, labor, and technological progress. The seminal work by Mankiw, Romer, and Weil (1992) empirically proves the general explanatory power of such models. They show in a first step that the standard Solow model indicates a share of 0.60 of physical capital in income, which, explicitly including a measure of human capital, decreases to 0.31.⁶ Applying a different methodology, Barossi-Filho, Silva, and Diniz (2005) find support for a capital share of one-third. By contrast, Hamilton and Monteagudo (1998) argue that physical capital may indeed have a greater impact on growth than in the original analysis by Mankiw, Romer, and Weil (1992). They assert that capital may also be able to include technological improvements. Besides the impact of physical capital, they find that population growth and the initial level of output are important in the analysis. Other works continue to extend this fundamental framework in different directions, promoting a differentiated view on the sources of economic growth, for example, an open-economy model or the effects of health capital (see, for example, Barro, Mankiw, and Sala-i-Martin 1995; Knowles and Owen 1995). This augmented model type is also applied to the PRC in recent research to evaluate the growth prospects of the economy (see Barro 2016, Lee 2016).

Besides cross-country comparisons like that undertaken by Mankiw, Romer, and Weil (1992), some authors focus solely on the growth dynamics in one or two countries. Durlauf, Kourtellos, and Minkin (2001) recommend considering local Solow models, as country-specific heterogeneity is likely

⁶ See Mankiw, Romer, and Weil (1992, Tables I and II).

to exist. This shows that examining the dynamics of individual countries can be a helpful exercise in analyzing the common drivers of economic growth. Chow (1993, 2015) analyzes the growth dynamics for the PRC. Chow and Lin (2002) compare the developments in the PRC with those in Taipei, China, arguing that the initial conditions were different and hence the analysis of the growth dynamics is an interesting exercise. Obviously, the initial conditions in which one economy is nested are important and have implications for its future growth prospects.

Chow (1993) estimates production functions for the economy of the PRC and its sectors. For this purpose, he constructs a measure of capital formation. He analyzes the effects of important political campaigns, like the Great Leap Forward (1958–1962) and the Cultural Revolution (1966–1976). Based on a figure that plots $\log(\text{national income/labor})$ against $\log(\text{capital/labor})$ for the period 1952–1985, he argues in favor of the exclusion of the years 1958–1969 because they are ‘abnormal because of the great leap upheavals of the Great Leap Forward movement and the Cultural Revolution’.⁷ For the aggregate economy, capital coefficients of about 0.60 are estimated. A further finding of his paper is the absence of technological progress between 1952 and 1980. Chow explains this finding by pointing out that the PRC concentrated on central planning and investments in heavy industries. Thus, incentives for private enterprises were scarce during this period. He argues further that technological progress is an important feature of market economies but is unlikely to be visible in an economy in which private initiatives and the adoption of new technologies from abroad are not present.

Cheremukhin et al. (2015) support this view, as they find in their review of the related literature that total factor productivity (TFP) growth accelerated moderately between 1978 and 1985. Of the industrial TFP growth in the 1980s, 87% can be explained by improved incentives, intensified product market competition, and improved factor allocation (see also Li 1997).

Chow and Lin (2002) perform a comparative analysis of the PRC and Taipei, China. For the PRC, the sample is now 1952–1998. They estimate a Cobb–Douglas production function with a trend beginning with $t = 1$ in 1979. The coefficient of $\ln(K/L)$ and the time trend t are estimated with 0.64 and 0.0262 remaining unchanged over the sample period. In comparison with Taipei, China, Chow and Lin comment on the relatively small exponent of labor in the PRC. This is explained by the relative abundance of labor in the PRC. Chow and Lin argue that, over time, labor will be less abundant as the economy grows and the ratio of capital to labor increases. They add that, in their sample, the abundance of labor has persisted, which is explained by still-poor regions in Western PRC with lower wages.⁸

In a third approach, Chow (2015) investigates the Cobb–Douglas production function for the PRC between 1952 and 2012. For this sample, the coefficient of $\ln(K/L)$ is estimated as 0.59 and the trend is estimated as 0.298. Chow basically reproduces the arguments of Chow and Lin (2002) to support his results. He additionally argues that Mankiw, Romer, and Weil (1992) estimate a coefficient of 0.6 with data for many developing countries. The analyses by Chow will be our roadmap for our estimations in section III.

⁷ Figure 2 in Section III.B, which plots $\log(\text{income/population})$ against $\log(\text{capital/labor})$ displays the same pattern of nonlinearity of the years 1958–1969 (see also Chow 1993, Figure I, p. 821).

⁸ It is noteworthy that the comparison between Taipei, China and the PRC is based on different estimations. For Taipei, China, human capital is considered, which reduces the coefficient of various capital stock measures in relation to labor to about one-third. This is consistent with the results obtained by Mankiw, Romer, and Weil (1992).

Finally, we would like to comment briefly on some similar inner dynamics and characteristics of the three countries that we investigate to support the similarity of the growth dynamics. Morck and Yeung (2017) review the financial and economic developments in East Asia, focusing on Japan, the Republic of Korea, and the PRC. As common characteristics of the three countries, they identify, among others, the following. i) A weakening in traditional institutions is observed before the phases of rapid economic development.⁹ Thus, a serious obstacle to growth-generating reforms was reduced. ii) Literacy in the three countries was high early on, which was helpful for building up human capital later. iii) Moreover, relative openness due to the export- and investment-led growth model brought about early international competition and supported the state-directed process of foreign technology adaption. iv) Product diversification was reached via business groups, like the zaibatsu in Japan, chaebols in the Republic of Korea, and state control over huge sectors of the economy in the PRC. v) Lastly, Japan's zaibatsu, the Republic of Korea's chaebols, and the PRC's state machinery were able to create a 'Big Push'.

These similar inner characteristics of the three countries make it an interesting exercise to compare whether these similarities have manifested themselves in similar results of our estimations of their respective production functions.

III. EMPIRICAL ANALYSES

A. Developing Theoretical Hypotheses

As our analysis is motivated by the works of Chow (1993, 2015), we orientate ourselves toward his procedure. Chow (2015) suggests a Solow (1956)-type model of economic growth. In this framework, one equation explains the aggregate output through capital and labor inputs in the form of a Cobb–Douglas production function:

$$Y_t = A \cdot e^{\gamma t} \cdot K_t^{(1-\alpha)} \cdot L_t^{\alpha} \quad (1)$$

The exponents $(1 - \alpha)$ and α measure the rate of change of output vis-à-vis changes in capital (stock) K_t and labor L_t (employed persons). γ measures the change in output per unit over time even if the inputs of capital and labor are not changed. This may be the consequence of institutional or technological change due to economic reform policies. For $\gamma = 0$, this change is not present. If $\gamma = 0.01$, this can be interpreted as TFP growth of 1% per year. A can be interpreted as the initial level of technology in the economy (see Chow 2015).

As we are especially interested in the evolution of the *per capita* GDP, we have to include the following changes. We would like to have Y_t/N_t on the left-hand side of equation (1), where N_t is the economy's total population. Thus, we divide (1) by N_t on both sides. However, on the right-hand side, we would rather like to express N_t by different variables to avoid a direct source of collinearity.

⁹ This is not necessarily identical to the definition of the fast-growth phases earlier in this section.

Hence, we express N_t by L_t : $N_t = G_t \cdot L_t$. With $G_t \geq 1$. This is the inverse of the employment rate.

This gives

$$\frac{Y_t}{N_t} = \frac{A \cdot e^{\gamma t} \cdot K_t^{(1-\alpha)} \cdot L_t^\alpha}{G_t \cdot L_t} \quad (2)$$

or

$$G_t \cdot L_t \cdot Y_t = N_t \cdot A \cdot e^{\gamma t} \cdot K_t^{(1-\alpha)} \cdot L_t^\alpha \quad (3)$$

Taking natural logarithms, we obtain

$$g_t + l_t + y_t = n_t + a + \gamma \cdot t + (1 - \alpha)k_t + \alpha \cdot l_t \quad (4)$$

Rearranging terms leaves us with a linear equation with testable hypothesis for the coefficients, where we add ε_t as the error term. Specifically, we will estimate and test

$$(y_t - n_t) = a + (1 - \alpha) \cdot (k_t - l_t) + \gamma \cdot t - g_t + \varepsilon_t \quad (5)$$

B. Data Description and Historical Events

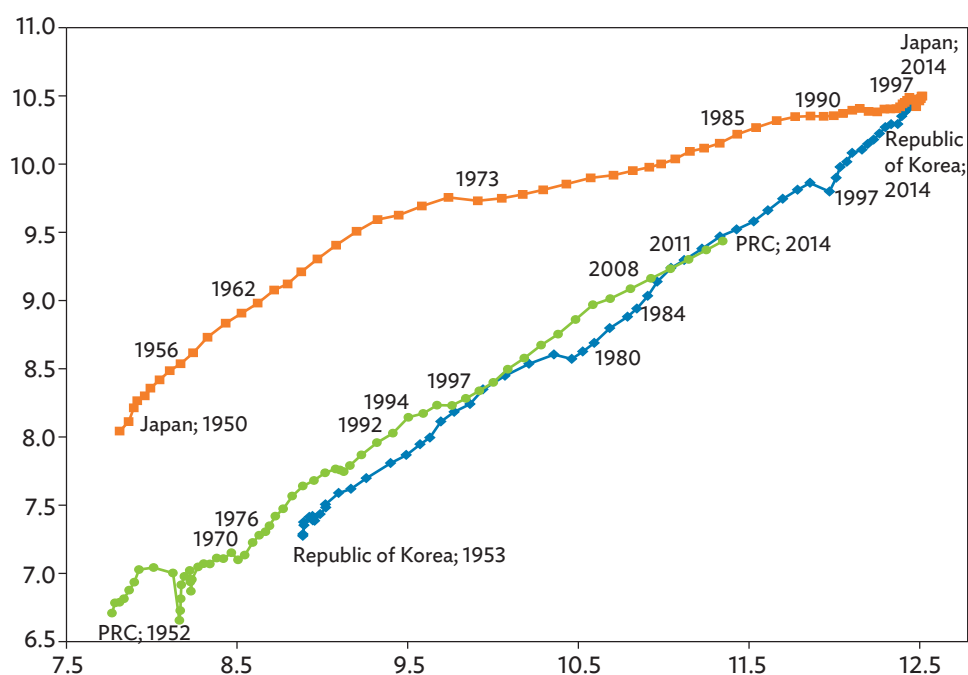
We use Penn World Tables (PWT) of the version 9.0 for our estimations. For the PRC, the Republic of Korea, and Japan we collect data for GDP, capital, employment, and population. Data are available from 1952 to 2014 for the PRC, from 1953 to 2014 for the Republic of Korea, and from 1950 to 2014 for Japan. Chow (2015) constructs capital data for the PRC from publications of the China Statistical Yearbook. However, Holz (2006) discusses an earlier version of Chow's dataset and lists a number of shortcomings of Chow's measures. In a recent publication, he proposes some newly constructed capital measures for the PRC (see Holz and Yue 2017). We do not try to construct capital measures for the PRC, the Republic of Korea, and Japan ourselves but instead rely on the time series provided by the PWT (see Feenstra, Inklaar, and Timmer 2015). This naturally causes difficulties, as research shows that conclusions drawn under one version of the PWT may not hold under another version (see Ponomareva and Katayama 2010).

Figure 2 displays prima facie evidence of the relationships between capital intensity (on the x-axis) and per capita GDP (on the y-axis) both in logarithms in the PRC, the Republic of Korea, and Japan. The circles refer to data from the PRC, the diamonds refer to the Republic of Korea, and the squares in light grey represent data for Japan.

The relationships for the PRC and the Republic of Korea especially appear to be fairly linear and very similar. Japan seems to present about the same slope as the Republic of Korea and the PRC until about 1973. From a relative perspective, the PRC seems, for an extended period, to follow a path that is very close to the previous experience of the Republic of Korea. Japan seems to be a different case, presenting much less linearity and a different average slope. At the beginning of the PRC's development path (around the years 1958–1969), we observe the same irregularities as Chow (1993). That is why Chow (2015) excludes these data from his estimations.¹⁰

¹⁰ See also section II.

Figure 2: Growth Trajectories of Japan, the People's Republic of China, and the Republic of Korea



GDP = gross domestic product, PRC = People's Republic of China.

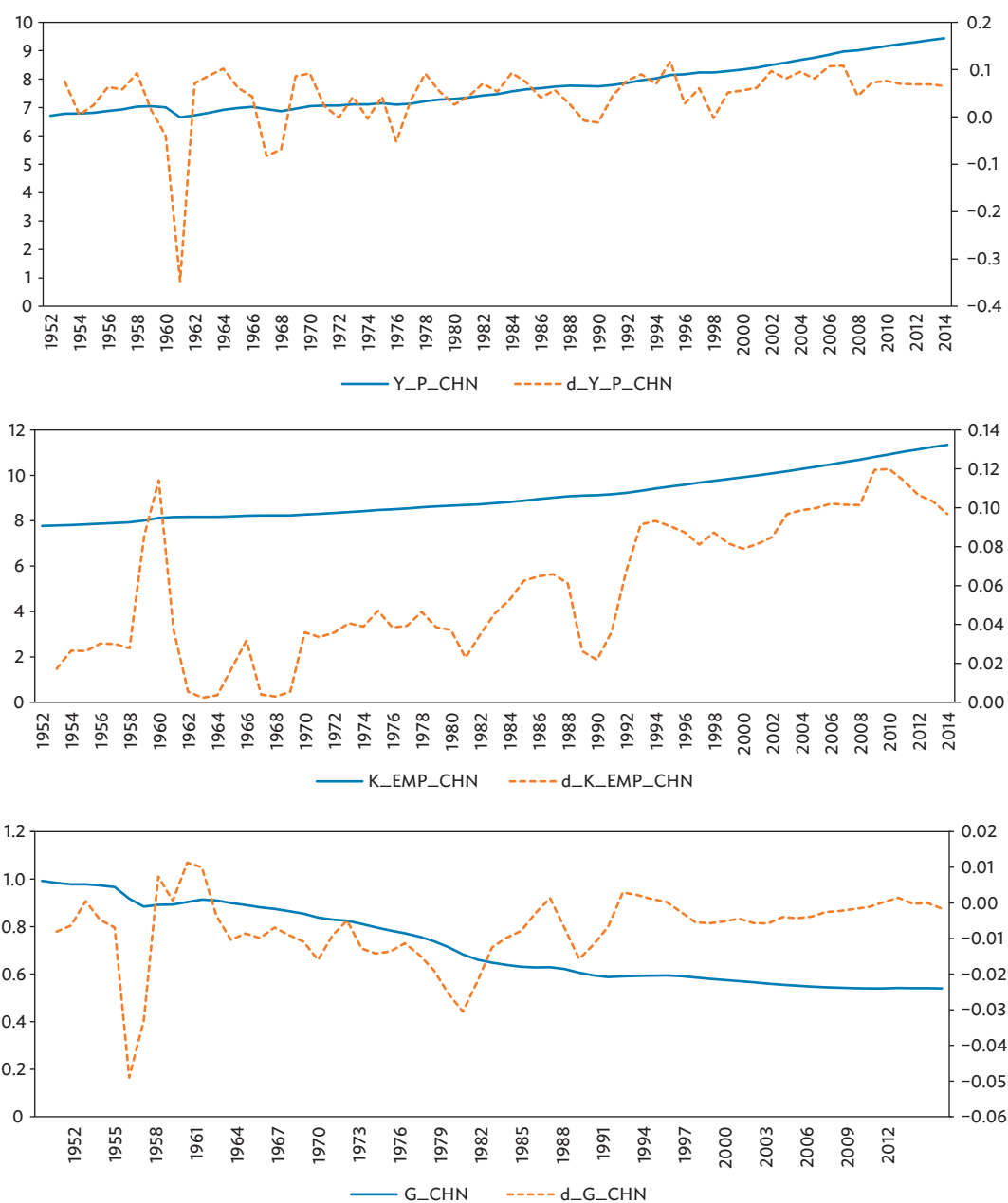
Note: The x-axis is the logarithms of capital intensity (K/L), and the y-axis is the logarithms of per capita GDP (Y/N).

Source: Authors' calculation with Penn World Table version 9.0 data.

A more detailed view of the individual country time series is presented in Figures 3–5. The variables Y_P_CHN , K_EMP_CHN , and G_CHN are the logarithms of the PRC's per capita GDP, the logarithms of the capital–employment ratio, and the logarithms of the inverse of the employment rate in the PRC. For each variable, we present the level values (continuous lines; left axis) and the first differences (dashed lines; right axis). In the following, we refer to the respective country with the variable endings CHN for the PRC, KOR for the Republic of Korea, and JP for Japan. Figure 3 shows that the PRC's per capita growth was comparably volatile before 1979. The same is true for the growth in the capital–employment ratio, which became increasingly strong over the sample period, with the exception of a strong slump around the end of the 1980s.¹¹ The inverse of the employment rate decreased over the whole sample period, indicating that the overall employment in the population increased.

¹¹ This is also in line with the assessment by Chow and Lin (2002) in section II.

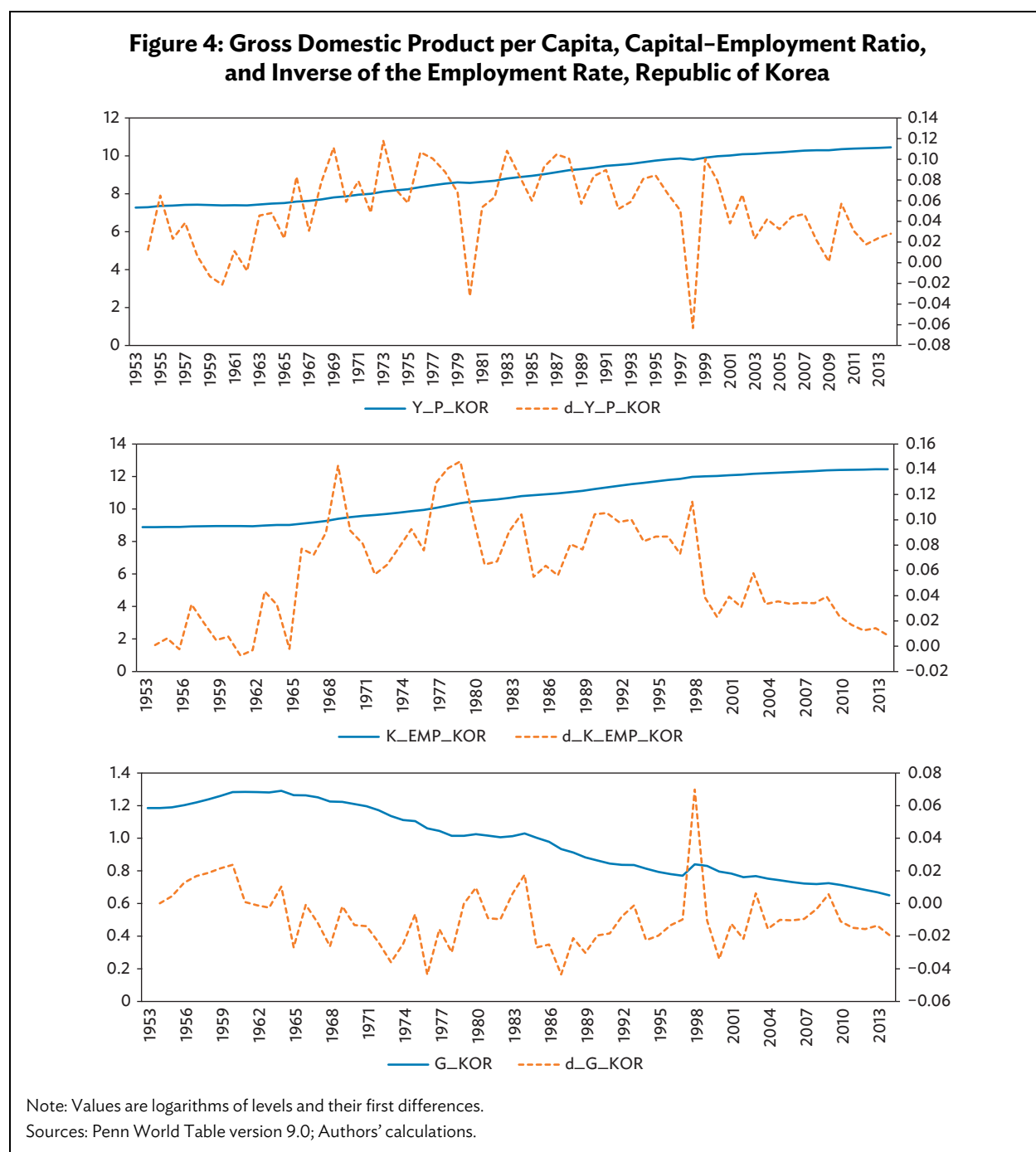
Figure 3: Gross Domestic Product per Capita, Capital–Employment Ratio, and Inverse of the Employment Rate, People’s Republic of China



Note: Values are logarithms of levels and their first differences.

Sources: Penn World Table version 9.0; Authors' calculations.

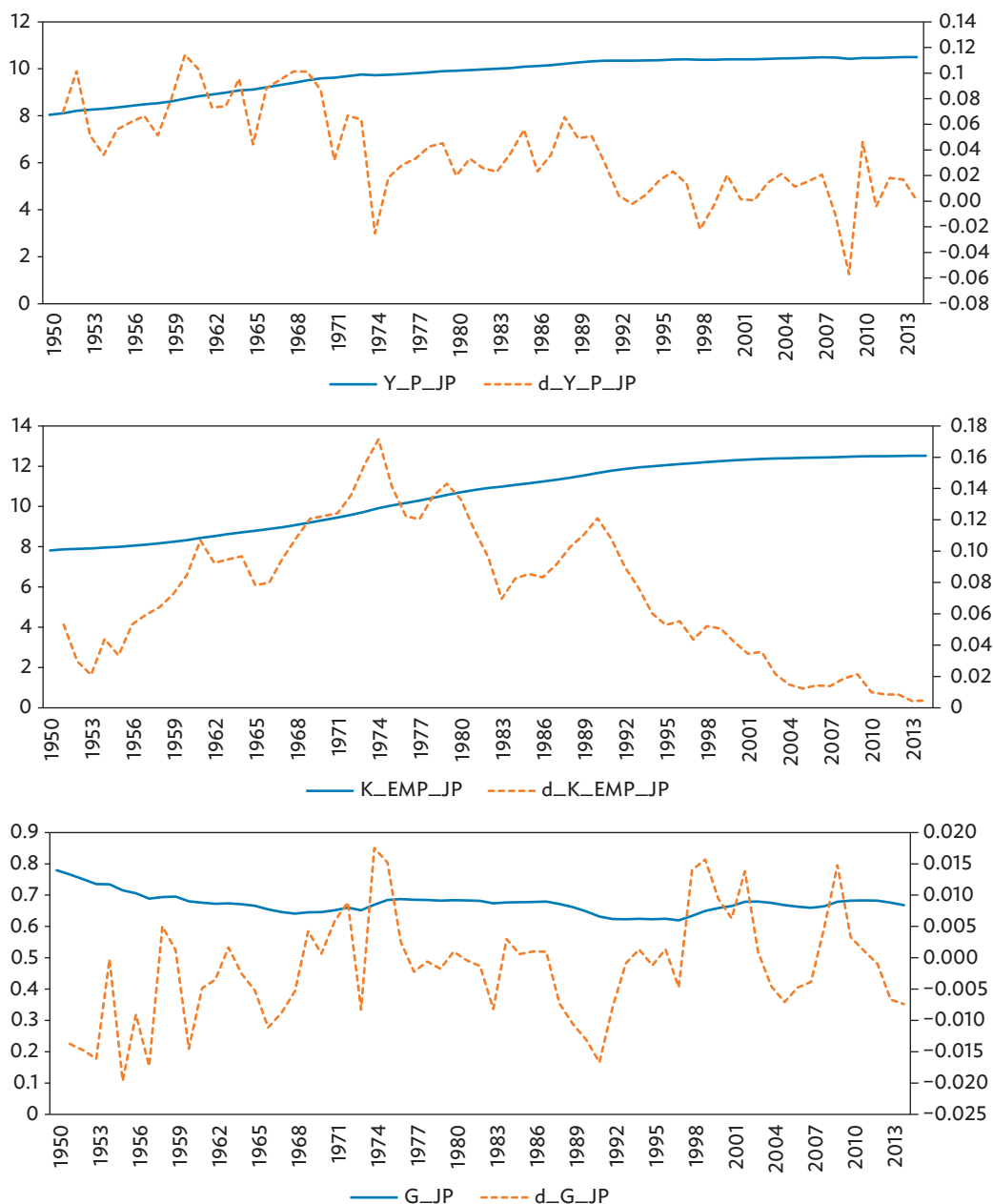
Figure 4 displays the developments in the Republic of Korea. The per capita GDP growth rates peaked around 1980 and then decreased. Important recessions happened in 1980 and during the Asian Crisis. Altogether, the per capita GDP growth rates display a humped-shaped pattern. The capital–employment ratio rose strongly in the 1960s (the fast-growth phase), and the growth rates were very high until the 1980s, when they experienced a strong cutback and decreased further throughout the Asian Crisis.¹² The inverse of the employment rate shows the same behavior as in the PRC.



¹² For separate time series of capital and employment for Japan, the PRC, and the Republic of Korea, we refer the interested reader to Figure A1 in the Appendix.

In Japan (see Figure 5), we observe a more or less stable decrease in the per capita growth rates over the whole sample period. Higher per capita growth rates corresponded to fast increases in capital intensity until the oil crisis in 1973. Afterwards, the capital–employment ratio decreased, although we observe a short-lived boom during the second half of the 1980s. The inverse of the employment rate rose until the oil crisis and then seems to have followed the Japanese business cycle. Figure A1 in the Appendix shows the separate time series for capital and employment for the three countries.

Figure 5: Gross Domestic Product per Capita, Capital–Employment Ratio, and Inverse of the Employment Rate, Japan



Note: Values are logarithms of levels and their first differences.

Sources: Penn World Table version 9.0; Authors' calculations.

C. Univariate Properties of the Data

For the unit root tests, we analyze the period from 1956 to 2014. In the previous section, we saw that the growth rates decreased or increased over time. We thus assume that the time series under consideration present deterministic trends and hence test especially for unit roots of the most general form, allowing for a constant and a deterministic trend. According to the unit root tests, the per capita GDP can be assumed to be integrated of order one (I(1)) for all three countries. The same is valid for the employment time series. The tests lead to less convincing results for the capital and capital–employment ratio series. We conclude that the levels of the time series are at least integrated of order one (I(1)). The capital and capital–employment ratio time series may even be I(2).¹³

The I(2) properties of the capital–employment ratio time series could require an I(2) analysis. However, Juselius (2006) points out that the behavior of an I(2) trend can be mimicked with an I(1) stochastic trend around a broken linear deterministic trend. Thus, it is possible to avoid an I(2) analysis by including an appropriate number of deterministic (linear, broken linear, or quadratic) trends in the data. Our estimations will rely on the variables in levels. This is the procedure that we choose for this section. To obtain a better understanding of where deterministic components could be fitted into our models, we analyze the time series for potential structural breaks in the next section.

D. Structural Break Tests

From a visual inspection of the time series growth rates, we can assume the occurrence of some structural breaks in the time series. These could also contribute to the results of the unit root tests. To obtain further information about the occurrence of structural breaks in the data, we apply the Bai and Perron (2003) structural break tests, which allow us to obtain a number of interesting details about whether, when, and in which way structural breaks are present in the data. We assume that the time series values evolve in the following way:

$$x_t = \alpha_1 + \alpha_2 x_{t-1} + \varepsilon_t \quad (6)$$

If α_2 is equal to 1, this process characterizes a random walk plus drift, which can be assumed to be the data-generating process of many macroeconomic time series. The test identifies two breaks. The results for the three countries are displayed in Table A1.

In the PRC, structural breaks are first present around the high tide of the Cultural Revolution (1966–1968). The second period during which breaks are found is the end of the Cultural Revolution in 1976 and the beginning of the first reform period (1979). Finally, the breaks in the early 1990s could be associated with Deng Xiaoping’s Southern Tour (in 1992).

For the Republic of Korea, we observe structural breaks during the high-growth phase from the mid-1960s to the mid-1970s. The beginning of the stabilization phase in 1980 appears to have had permanent effects on employment and output. The final period of structural breaks is related to the Asian Crisis.

For Japan, a relatively clear point to take away from the tests is that we observe structural breaks in the early 1970s. These are most likely related to the end of the fast-growth phase in 1972 and the beginning of the oil shock phase in 1973. The second break seems to occur toward the end of the

¹³ The unit root tests are not displayed but are available from the authors on request.

bubble economy phase and at the beginning of the lost decade in the late 1980s. The employed persons' time series indicates instability during the Asian Crisis in 1997 but could also point toward the lost decade. The tests provide some evidence that the Japanese economy began to stagnate from about the late 1990s onward, as the coefficient of α_2 is well below 1.

E. Econometric Framework

To determine whether the respective countries were following comparable growth paths toward high income, we use the concept of cointegration. Cointegration appears to be especially appropriate for our research question, as the notion of cointegration states that, between two or more nonstationary time series, a linear combination exists that generates residuals that are stationary (see Engle and Granger 1987). The error correction representation of the cointegrated vector autoregressive (CVAR) model in the multivariate case is

$$\Delta X_t = \Pi X_{t-1} + \sum_{i=1}^{p-1} \Gamma_i \Delta X_{t-i} + \phi D_t + \varepsilon_t \quad (7)$$

X_t is a vector that contains the variables included in the model. D_t is a vector of the deterministic components of the model. The Γ_i matrices contain the short-run information of the model, while Π contains the information about long-run relationships (which we are especially interested in) and can be rewritten as a vector product of $\alpha \cdot \beta'$. Here β' comprises the long-run information, while α contains the information on how and how quickly deviations from the long-run relations are corrected. Cointegration emerges when two or several nonstationary time series are driven by the same persistent shocks (Juselius 2006). In our case, we assume that the shocks driving our cointegrating relationships derive from economic policy measures implemented in the corresponding reform periods. Long-run relations can then be interpreted as economic steady-state relations. Extraordinary events can lead to outliers violating the normality assumption, as they lead to excess skewness and kurtosis (see Juselius 2018). Some of these problems can be resolved by including intervention dummies to account for significant political or institutional events. Less feasible seems to be the possibility to split the sample into more homogeneous periods, as only yearly data for our variables are available. A subsample analysis would hence suffer from problems associated with small samples.

Even if the residuals of the VAR pass the misspecification tests sufficiently well, this does not rule out the possibility that the model suffers from parameter nonconstancy. For this reason, Juselius (2006) provides a description of several tests to assess the parameter constancy of the CVAR model. In the next section, we will discuss three selected tests for each model that we estimate to identify any remaining signs of parameter instability.

First, we are especially interested in the stability of the long-run relationships, that is, the stability of $\hat{\beta}$. $\hat{\beta}$ can be seen as the average of the related coefficients over the sample period. It could be assumed that structural breaks induced by reforms affected not only the TFP growth but also the output elasticity of inputs. The optimal capital intensity could hence have changed (see Stijepic and Wagner 2011). Theoretically this is also proved by the work of Acemoglu (2003). To test this, we perform a test of the 'known beta'. This test checks for the consistency of $\hat{\beta}$, that is, the stability of the long-run relations. The basic idea is that the model is estimated for a subsample period 1 to T_1 , with $T_1 < T$, and then the recursive sample is extended until T is reached (see Juselius 2006).

Second, we apply recursive calculated prediction tests for the long-run relation. If the test value is above 1, the model is not able to predict the observation for this period within the 95%

confidence bands. This can be a helpful test to diagnose systematic predictive failure of the model (Juselius 2006).

Third, we can test the stability of the estimated coefficients over a sample period. This can give us additional insights into the stability of the long-run relations (Juselius 2006).

F. Estimation

The variable set that we use is relatively small. It is difficult to obtain data in sufficient quality that reach back far enough. Multivariate cointegration analysis allows for multiple equilibrium relationships. Hence, with n variables in the system, up to $n-1$ cointegrating relations are possible. (Over-) identification of these relationships requires a sufficient amount of theoretical assumptions on what the concrete cointegrating relationships are. With a rising number of variables, it becomes more and more difficult to identify the ‘true’ structure of the data. In any case, cointegrating relationships that have already been identified should remain stable when additional variables are added. Hence, what we detect in the following should remain present in a richer information environment.

As mentioned in the previous section, we assume a simple Cobb–Douglas production function as the starting point of our analysis. Our vectors X_t for the PRC, the Republic of Korea, and Japan are

$$X_{j_t} = (Y_P_j_t, K_EMP_j_t, G_j_t, D_j_t) \quad (8)$$

for each country j . As mentioned earlier $Y_P_j_t$ stands for the respective countries per capita GDP, $K_EMP_j_t$ is the capital–employment ratio, G_j_t refers to the inverse of the employment rate. All variables are in logarithms. D_j_t captures deterministic components like dummy variables and (broken) linear trends.

We start by specifying the model for the PRC. To test for cointegration, we first have to obtain a well-specified VAR model of the data. As TFP is usually captured by the residuals of the equation, we take into consideration the need to capture technological progress and other variables that are not accounted for by the introduction of deterministic trends. Juselius (2006) generally proposes two approaches to identifying cointegrating relationships: the general-to-specific and the specific-to-general approaches. As we face a relative lack of restrictions and theories, we find it appropriate to start with a narrow model like that motivated by Chow (2015). Imposing restrictions on the model is crucial to decide how well the data fit our theoretical assumptions. We hence rearrange our baseline theoretical model to obtain a representation that allows us to impose overidentifying restrictions. Chow (2015) estimates several specifications of his production function. The most specific is one with a fixed capital–labor ratio (k/l), which corresponds to capital intensity.

1. Analysis for the People’s Republic of China

Lag Length Selection and Diagnostic Testing of the Unrestricted Vector Autoregressive

As we have yearly data, a lag length of order 1 appears to be appropriate, as it not very likely that information further back than 1 year is included in the investment and employment decisions. Lag reduction tests support this assumption. A lag length of 1 is superior to lag lengths of 2 or more. As the test statistics for the CVAR rely on the assumption of Gaussian residuals, deviation from the normality assumptions may distort the results. We hence must establish the necessary residual properties before we test for possible long-run relationships. From sections III.B to III.D, we already have a certain idea

about possible outliers, trends, or (structural) breakpoints in the data. For the PRC, we choose the sample period of 1969–2014. This excludes the ‘abnormal’ years of the Cultural Revolution (see Figure 2 in section II). The Cultural Revolution was officially announced to be complete in 1969. We thus only miss out four values included by Chow (2015), whose sample is 1952–2012, omitting (1958–1969).¹⁴ From our theoretical hypotheses in (7), we assume that we will have to include a deterministic trend in the model that allows for economic growth even if the input factors remain constant. We will, however, test the validity of this assumption. Chow (2015) argues that such a trend would catch increases in TFP. Including a deterministic trend in the CVAR model is also the most general specification that one can choose. Hence, we include a deterministic trend over the whole sample period, additionally allowing for a break in this trend that mirrors a structural break induced by reforms or political events. Chow (1993) finds no evidence of TFP prior to 1980 and thus includes a broken linear trend beginning with $t = 1$ in 1979 (Chow 2015). With our data, a break in the deterministic trend appears in 1976 (often seen as the de facto end of the Cultural Revolution) such that $t = 1$ in 1977 seems to be more in line with the data. We additionally include intervention dummies for 1976, 1989, 1990, and 1991. We also include a shift dummy for 1990. With this specification, we obtain a relatively well-specified VAR model, as can be seen from the residual diagnostic tests in Table 2 as there are no signs of autocorrelation, and heteroscedasticity. Skewness and kurtosis are also in line with the assumption of normally distributed residuals

Table 2: Residual Analysis—Diagnostic Testing of the Unrestricted Vector Autoregression (1) Model, People’s Republic of China

Multivariate test				
Residual autocorrelation:				
LM (1):	ChiSqr(4) = 5.742 [0.219]			
LM (2):	ChiSqr(4) = 0.879 [0.970]			
Test for ARCH:				
LM (1):	ChiSqr(9) = 11.875 [0.220]			
LM (2):	ChiSqr(18) = 16.430 [0.563]			
Univariate tests				
	ARCH(1)	Normality	Skewness	Kurtosis
Y_P_CHN	0.391 [0.532]	0.840 [0.657]	0.297	2.685
K_EMP_CHN	1.277 [0.258]	0.856 [0.652]	−0.160	3.050

ARCH = autoregressive conditional heteroskedasticity, VAR = vector autoregression.

Note: p-values in brackets.

Source: Authors’ calculations.

Rank Determination and Testing Restrictions on the Cointegrated Vector Autoregression

A likelihood-ratio (LR) test of long-run exclusion indicates that g_t is not part of the equilibrium relationship and hence we exclude it from the information set. Any external influences that are not accounted for by the variables in the system are caught by either the deterministic components or the residuals. The trace tests propose one cointegrating relationship, which we would also expect from the

¹⁴ Using a longer sample including earlier years leads to more dummy variables in our model and to a smaller, though significant, coefficient of the capital–employment ratio.

theory. We thus restrict the rank to be equal to 1. This gives the following just-identified model (see Table 3). At this stage of our identification of the long-run relations, we test whether the data is in line with our theoretical hypothesis, that is, the long-run relation between per capita GDP and the capital–employment ratio should be positive, and deterministic trends which account for technological change should also have a positive relation with per capita GDP growth. Table 3 displays the stationary relationship. The first line gives the stationary long-run relationship. Hence, to see how the capital–employment ratio and the deterministic trends are connected with per capita GDP in the PRC, we have to invert the signs of the former. All variables then would have the expected (positive) signs. Besides the long-run relation in the first line, Table 3 (as well as the following tables) also presents the short-run adjustment coefficients in the second row. We refrain from interpreting these in the following, but nonetheless present them for the sake of completeness.

Table 3: The Just-Identified Long-Run Cointegration Relations for $r = 1$, People's Republic of China

	Y_P_CHN	K_EMP_CHN	T(1976:01)	Trend
$\hat{\beta}_1$	1.000	-0.453	-0.033	0.013
	(.NA)	(-7.189)	(-3.456)	(1.445)
$\hat{\alpha}_1$	-0.075	0.114		
	(-1.494)	(8.932)		

Source: Authors' calculations.

All the variables have the expected sign, and the GDP per capita and the capital–employment ratio commove in a positive long-run relationship. TFP growth, proxied by the broken linear trend, has a positive effect on output and a significant coefficient of 0.033. In the next step, we relax the implicitly imposed restriction that the coefficients of capital and employment sum up to 1 by including capital and employment separately. By including the same dummy variables, we obtain a rather well-specified model without autocorrelation and mild skewness. The trace test indicates one cointegrating relationship. We continue to assume that the rank of Π is equal to 1, which means that there is one single equilibrium relationship among the variables. Again, the trend is insignificant, as displayed in Table 3. We thus exclude the deterministic trend by imposing a 0 on the corresponding coefficient. Additionally, we explicitly test the coefficients of capital and labor to be of the same size. In this way, we impose more restrictions on the data and may be able to obtain overidentified cointegrating relationships. This overidentified cointegrating relation is displayed in Table 4.

Table 4: The Overidentified Long-Run Cointegration Relation for $r = 1$, People's Republic of China

	Y_P_CHN	K_CHN	EMP_CHN	T(1976:01)	Trend
$\hat{\beta}_1$	1.000	-0.417	0.417	-0.022	0.000
	(.NA)	(-7.278)	(7.278)	(-4.349)	(.NA)
$\hat{\alpha}_1$	-0.075	0.104	-0.031		
	(-1.534)	(8.079)	(-5.951)		

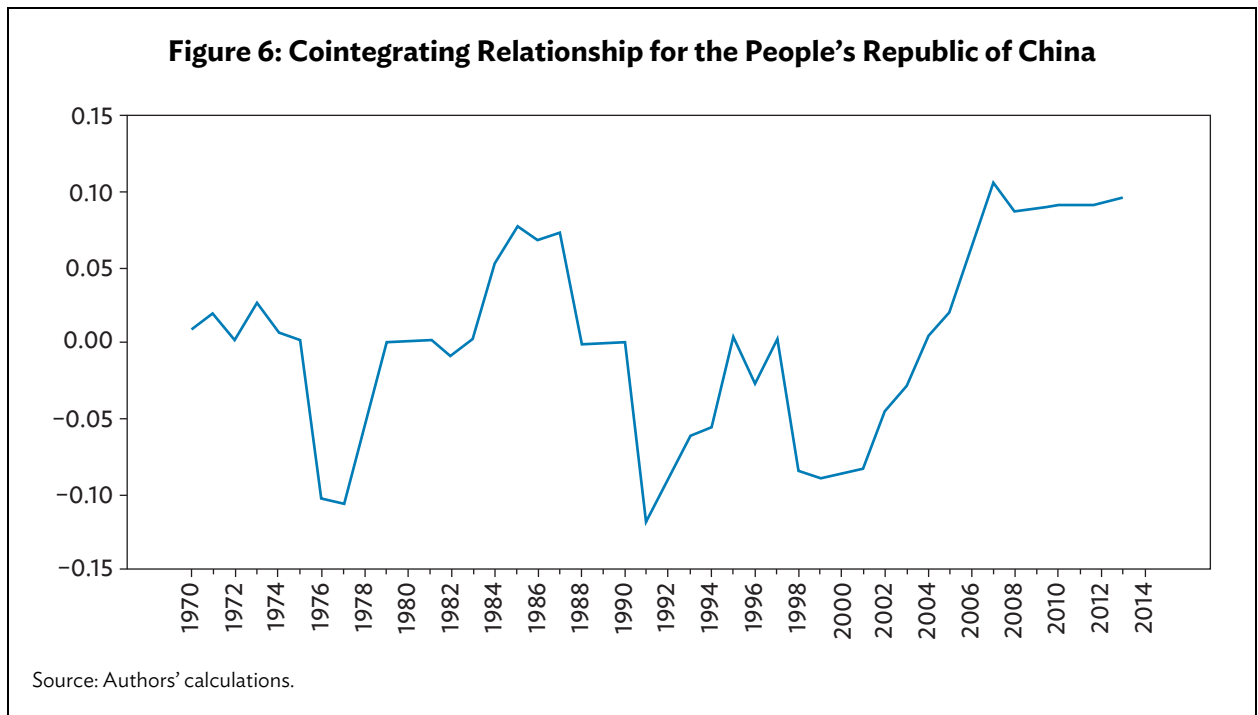
Source: Authors' calculations.

The overidentifying restrictions are accepted with a p-value of 0.135 and a $\chi^2(2)$ of 4.010.¹⁵ This shows that the restrictions we have imposed on the data are not rejected hence the PRC's growth path in our sample can be represented by a long-run equilibrium relationship of the form:

$$Y_{P_{CHN_t}} - 0.417 \cdot (K_{CHN_t} - EMP_{CHN_t}) - 0.022 \cdot trend76 \sim I(0) \quad (9)$$

Our empirical results show that the coefficient of capital intensity, given by the difference between capital stock and employed persons in the PRC has a coefficient of 0.42. Additionally, the data are in line with a positive deterministic trend which could be interpreted as 2.2% annual TFP growth.

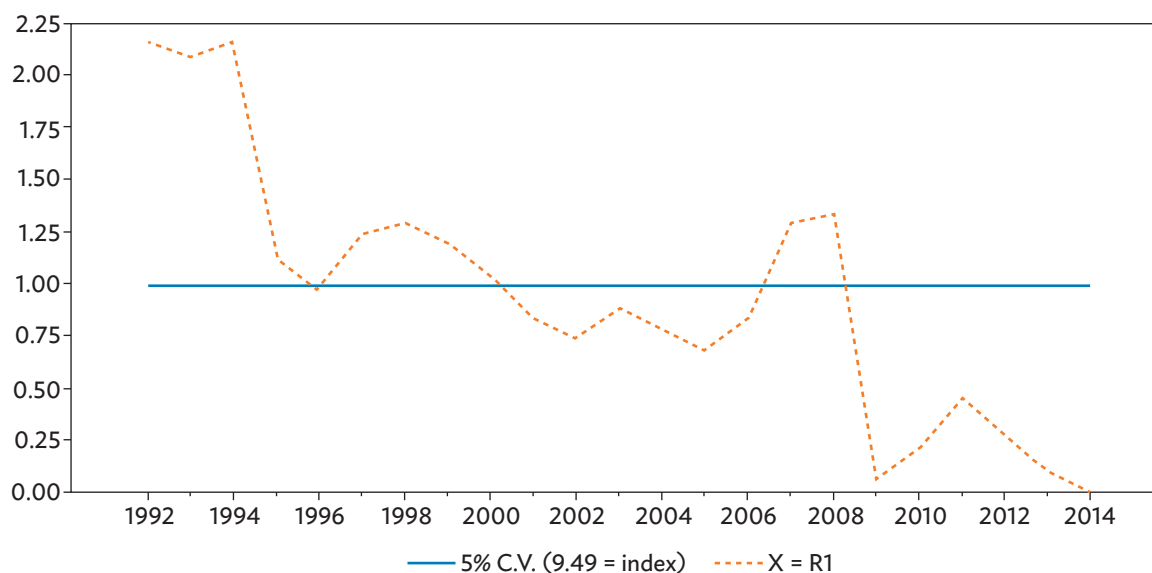
Figure 6 displays the corresponding cointegrating relationships. The residuals of the concentrated model (Figure 6) show that the relationship is stable.



Tests of Constancy

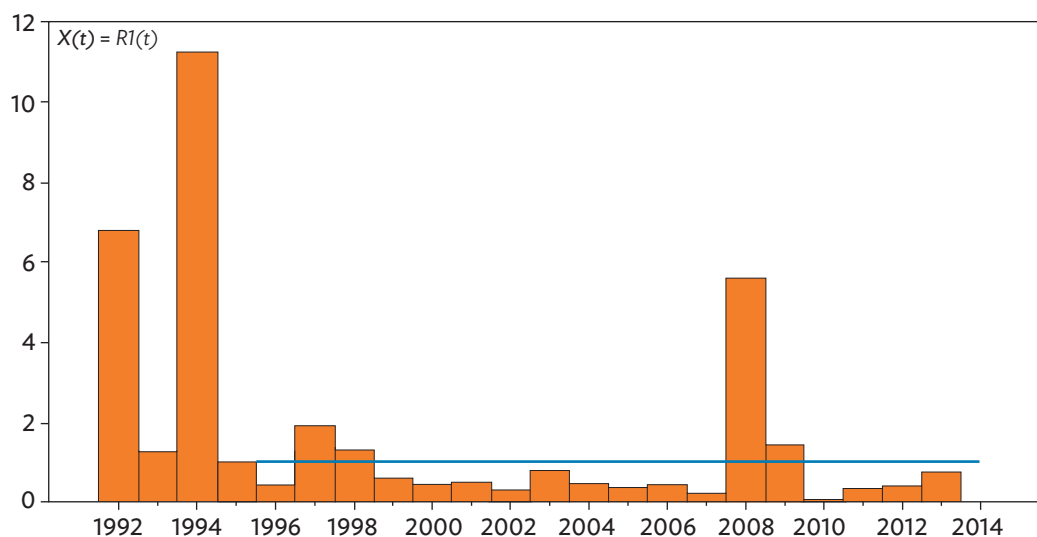
The test of beta constancy is displayed in Figure 7. As we can see from Table A1, this is a very challenging test, as 1992 (the beginning of the subsample for the test in Figure 7) is actually an important breakpoint in the PRC data. The forward recursive calculated test shows that the model performs fairly well. After the assumed breakpoint in 1992 (Deng Xiaoping's Southern Tour of 1992), there is some instability, but the test statistic approaches its critical value of 1 relatively quickly. The Asian Crisis of 1997 and the Global Financial Crisis of 2007–2009 seem to have introduced some instability, but altogether we can assume that the coefficients remain stable after the Asian Crisis.

¹⁵ Juselius (2006) suggests applying the small-sample Bartlett correction in moderately sized samples of 50–70 observations, which applies in our case (45 observations). The noncorrected values are $p = 0.063$ and a chi-square (2) of 5.537 (correction factor: 1.381).

Figure 7: Test of Beta Equal to the 'Known Beta', People's Republic of China

Source: Authors' representation.

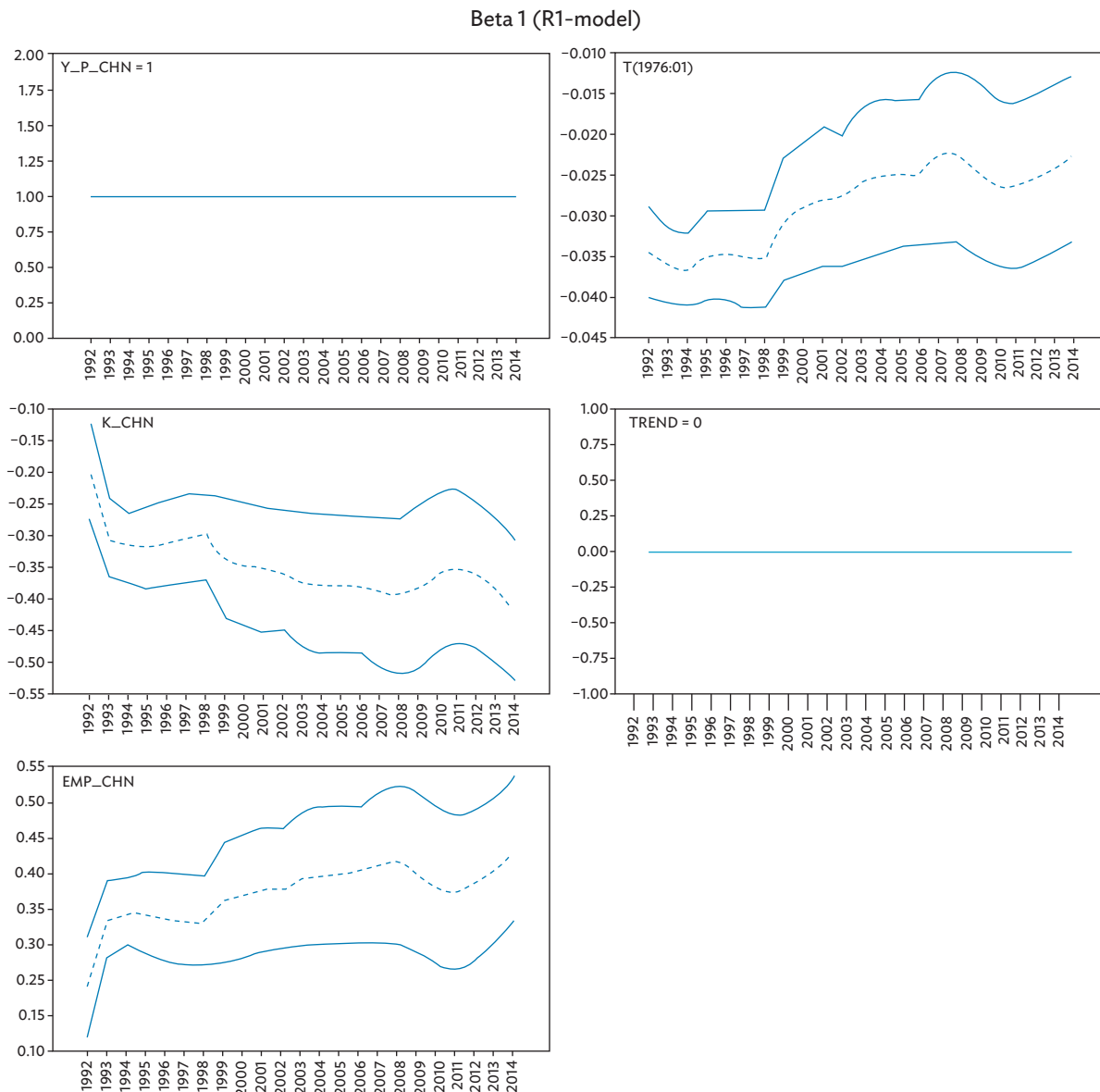
The one-step prediction tests in Figure 8 show that major prediction errors can again be related to Deng Xiaoping's Southern Tour of 1992, a major reform in 1994 (see Cheremukhin et al. 2015), and the Asian and the Global Financial Crisis.

Figure 8: One-Step Prediction Test for the Concentrated Model, People's Republic of China

Source: Authors' calculations.

As can be seen in Figure 9, the coefficients of capital and labor remain relatively stable. We cannot deny that there seems to be a visible shift in all the coefficients roughly after the end of the Asian Crisis in 1998, as the coefficient of capital intensity is somewhat higher for the later part of the sample. There are two explanations for this fact. Following the arguments of Chow (2015), a higher coefficient for capital could be explained by the still relative abundance of labor in the PRC. Another explanation could be that capital was actually invested more efficiently over time and hence received a larger share of production. TFP growth also seems to have profited from the PRC's World Trade Organization (WTO) entry in 2001. However, this is somewhat speculative, as all three coefficients only show minor fluctuations.

Figure 9: Test of Coefficient Constancy, People's Republic of China



Source: Authors' calculations.

We find that the long-run evolution of per capita GDP, capital stock, and employment in the PRC can be reconciled with Cobb–Douglas production functions, which is the first notable result. Coefficients of capital stock and labor that sum up to 1 are not rejected. We find evidence of a (broken) linear trend in the cointegrating relations that can point to changes in TFP growth. The structure of the data is reconcilable with the hypothesis that TFP growth in the PRC started around 1977.

For the PRC, our model in (11) is able to reproduce the main features of Chow (2015). We estimate a coefficient of 0.41 for the capital share. This coefficient is smaller than Chow’s estimates but relatively close. Chow (1993) also estimates production functions for nonagriculture sectors. The coefficients are highest for the industry sector but much smaller for service-related sectors, like commerce and transportation.¹⁶ Given that our sample includes 2 more years in which the service sector share in employment in the PRC has increased strongly, this result seems to be acceptable.¹⁷

However, the choice of sample has a strong impact on the coefficient size, as the inclusion of some of the abnormal years leads directly to a lower coefficient for the capital share. Our coefficient for TFP growth of 0.022 is similar in size to the estimates in Chow (2015), which range between 0.025 and 0.030.¹⁸ In addition, our use of Y/N instead of Y or Y/L in our estimations may lead to lower estimates. As pointed out by Chow (2015), a higher coefficient for capital points toward relative abundance of labor relative to capital. We could hence also argue that, although still considerable in an international comparison, the reservoir of labor is slowly dropping relative to earlier periods.

To obtain (11), we make extensive use of the ex ante information of section III.B and section III.D. We exclude most of the abnormal years of the 1950s and 1960s, and our sample thus starts in 1969. This year appears to signal a structural break (see Table A1) that could be an indication of the economic takeoff, as the point of fertility decline in the PRC is reported as 1970. TFP growth from 1977 onward could also be justified with the results from Table A1, which indicates a structural break between the years 1976 and 1979. The one-step prediction test in Figure 8 shows that the breakpoint in 1991/1992 (possibly related to the Southern Tour) is (only) of a transitory nature. We hence feel that we have convincingly modeled the major features of the PRC economy. The fact that the cointegration relation for the concentrated model in Figure 6 increases between 2001 and 2007 could be interpreted as the positive effect of the PRC’s WTO entry in 2001. However, this does not become a break in TFP, because the financial crisis halted it. We are a little disappointed with the estimated alpha coefficients of the long-run relationships. Table 4 indicates that capital and employment show error-correcting behavior to deviations from the long-run relationship, but the per capita GDP appears to be weakly exogenous.

2. Republic of Korea

Lag Length Selection and Diagnostic Testing on the Unrestricted Vector Autoregression

For the Republic of Korea model, the lag reduction tests point to a lag length of 1. There is some controversy about the sources of growth in the Republic of Korea. For instance, Young (1995) argues that most of the dynamic growth in the so-called Four Asian Tigers can be explained by factor accumulation and labor reallocation between sectors. Accounting for these explanatory variables would lead to much lower estimates of the TFP growth. In a more recent analysis by Jeong (2017), the results are similar, as it is explained that human capital was the main driver of growth during the 1960s

¹⁶ See Chow (1993, Table XII, p. 833).

¹⁷ See Murach and Wagner (2017, Figure 1, p. 273).

¹⁸ See Chow (2015, Table 5.2, p. 100); values rounded to three decimals.

and capital deepening in the 1970s. Productivity growth was then the main driver of growth in the 1980s, 1990s, and 2000s. This would justify two possible specifications of deterministic components. Either we could include a deterministic trend over the whole sample period, or we could include such a trend only from 1980 onward with the initiation of the stabilizing stage in the Republic of Korea.

We start with the most general setting concerning deterministic components in our model. We allow the data to be trend stationary and to have nonzero intercepts to see whether trends persist or disappear in the cointegrating relations. We first analyze the specific relation between the GDP per capita and the capital–employment ratio. In this model, we decide to use four dummy variables for the years 1968, 1969, 1980, and 1998. The diagnostic tests are presented in Table 5. The model can be regarded as being well specified.

Table 5: Residual Analysis—Diagnostic Testing of the Unrestricted Vector Autoregression (1) Model, Republic of Korea

Multivariate test				
Residual autocorrelation:				
LM (1):	ChiSqr(4) = 7.570 [0.109]			
LM (2):	ChiSqr(4) = 3.874 [0.423]			
Test for ARCH:				
LM (1):	ChiSqr(9) = 7.939 [0.540]			
LM (2):	ChiSqr(18) = 9.929 [0.934]			
Univariate tests				
	ARCH(1)	Normality	Skewness	Kurtosis
Y_P_KOR	0.043 [0.835]	0.480 [0.787]	0.056	2.346
K_EMP_KOR	1.627 [0.202]	2.003 [0.367]	-0.380	3.304

ARCH = autoregressive conditional heteroskedasticity.

Note: p-values in brackets.

Source: Authors' calculations.

Rank Determination and Testing Restrictions on the Cointegration Vector Autoregression

The trace test indicates one cointegrating relationship, as displayed in Table 6.

Table 6: Likelihood-Ratio Trace Test for the Unrestricted Vector Autoregression (1) Model, Republic of Korea

r	p-r	Eigenvalue	Trace	95% crit. value	p-value
2	0	0.792	95.414	36.970	0.000
1	1	0.232	13.704	18.547	0.218

Source: Authors' calculations.

Normalizing on the per capita GDP, we obtain the following just-identified model (see Table 7).

Table 7: The Just-Identified Long-Run Cointegration Relations for $r = 1$, Republic of Korea

	Y_P_KOR	K_EMP_KOR	T(1980:01)	Trend
$\hat{\beta}_1$	1.000	-0.560	-0.032	-0.001
	(.NA)	(-6.378)	(-8.634)	(-0.112)
$\hat{\alpha}_1$	0.130	0.221		
	(5.604)	(13.091)		

Source: Authors' calculations.

Assuming that TFP growth set in around 1980 supports the assumption that the forces that drove the Republic of Korea's growth actually changed during this period. Introducing a broken linear trend in 1980 actually renders the TFP growth over the whole period (close) to 0 and more importantly insignificant (while still having the correct sign).

In the next step, we loosen our restrictions by allowing capital and employment to move independently. We assume that TFP growth only set in significantly around 1980. With the same dummy variables as in the previous modeling cycle, we obtain a fairly well-specified model of the data. Table 8 displays the diagnostic test of the residuals of the VAR(1) with three variables.

Table 8: The Overidentified Long-Run Cointegration Relations for $r = 1$, Republic of Korea

	Y_P_KOR	K_KOR	EMP_KOR	T(1980:01)	Trend
$\hat{\beta}_1$	1.000	-0.667	0.667	-0.022	0.000
	(.NA)	(-36.866)	(36.866)	(-17.461)	(.NA)
$\hat{\alpha}_1$	0.160	0.326	0.031		
	(4.973)	(20.176)	(1.789)		

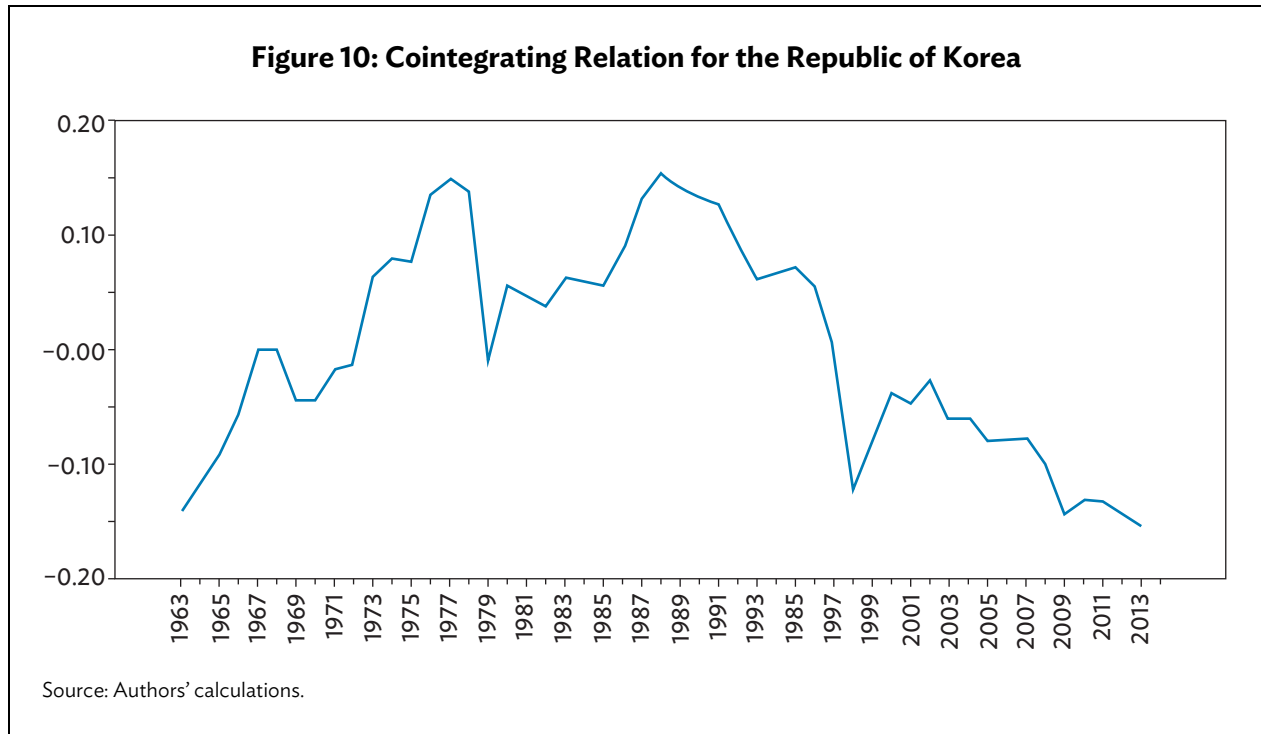
Source: Authors' calculations.

The overidentifying restrictions are accepted with a p-value of 0.324 and a $\chi^2(2)$ of 0.324.¹⁹ The long-run equilibrium relationship for the Republic of Korea is thus:

$$Y_{P_{KOR_t}} - 0.667 \cdot (K_{KOR_t} - EMP_{KOR_t}) - 0.022 \cdot trend80 \sim I(0) \quad (10)$$

Figure 10 displays the corresponding cointegration graph.

¹⁹ This is the Bartlett corrected value.

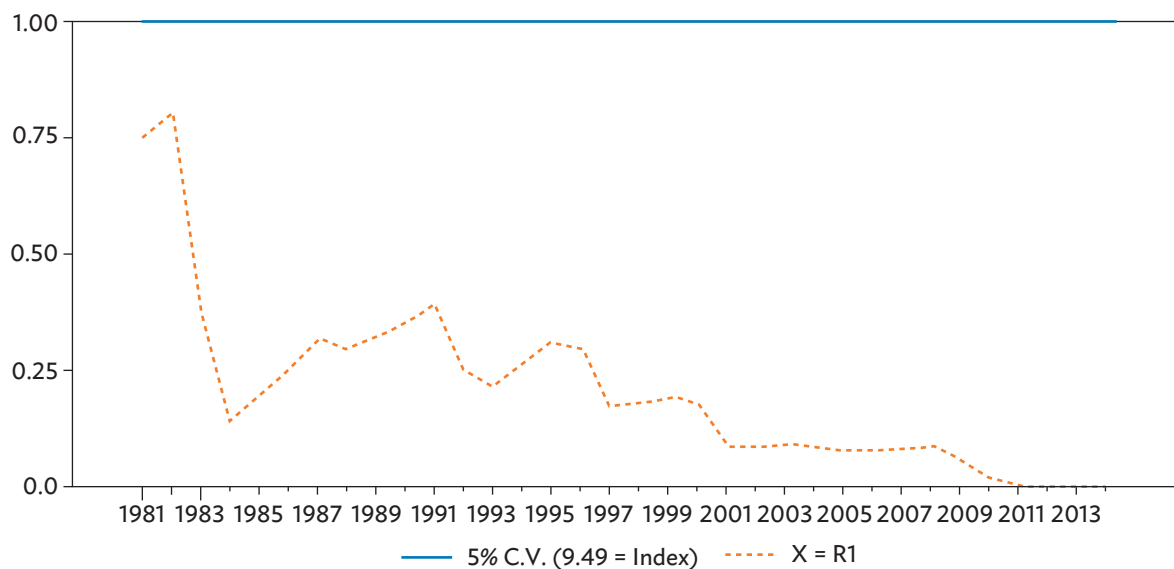


The residuals of the concentrated model appear to be fairly stationary. A visual inspection cannot rule out the possibility that some TFP growth was also present prior to the early 1980s.

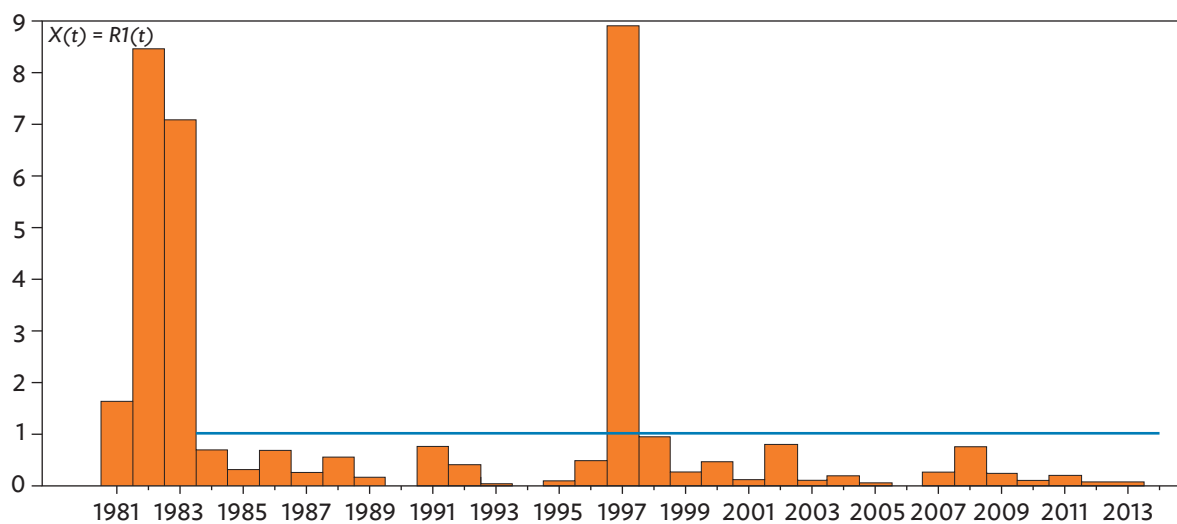
Tests of Constancy

The test of beta constancy in Figure 11 shows that there was some instability in the long-run relations at the beginning of the stabilization stage in the 1980s. However, the test statistics remain under the critical value of 1 and hence the beta coefficients were stable over this subsample period.

The one-step prediction test (see Figure 12) for the concentrated model performs quite well. At the beginning of the stabilizing stage in the early 1980s, it shows a few noticeable prediction errors. The Asian Crisis in 1997 generated a single and very high prediction error. For the remaining years, the model is able to predict the developments very well.

Figure 11: Test of Beta Equal to the 'Known Beta', Republic of Korea

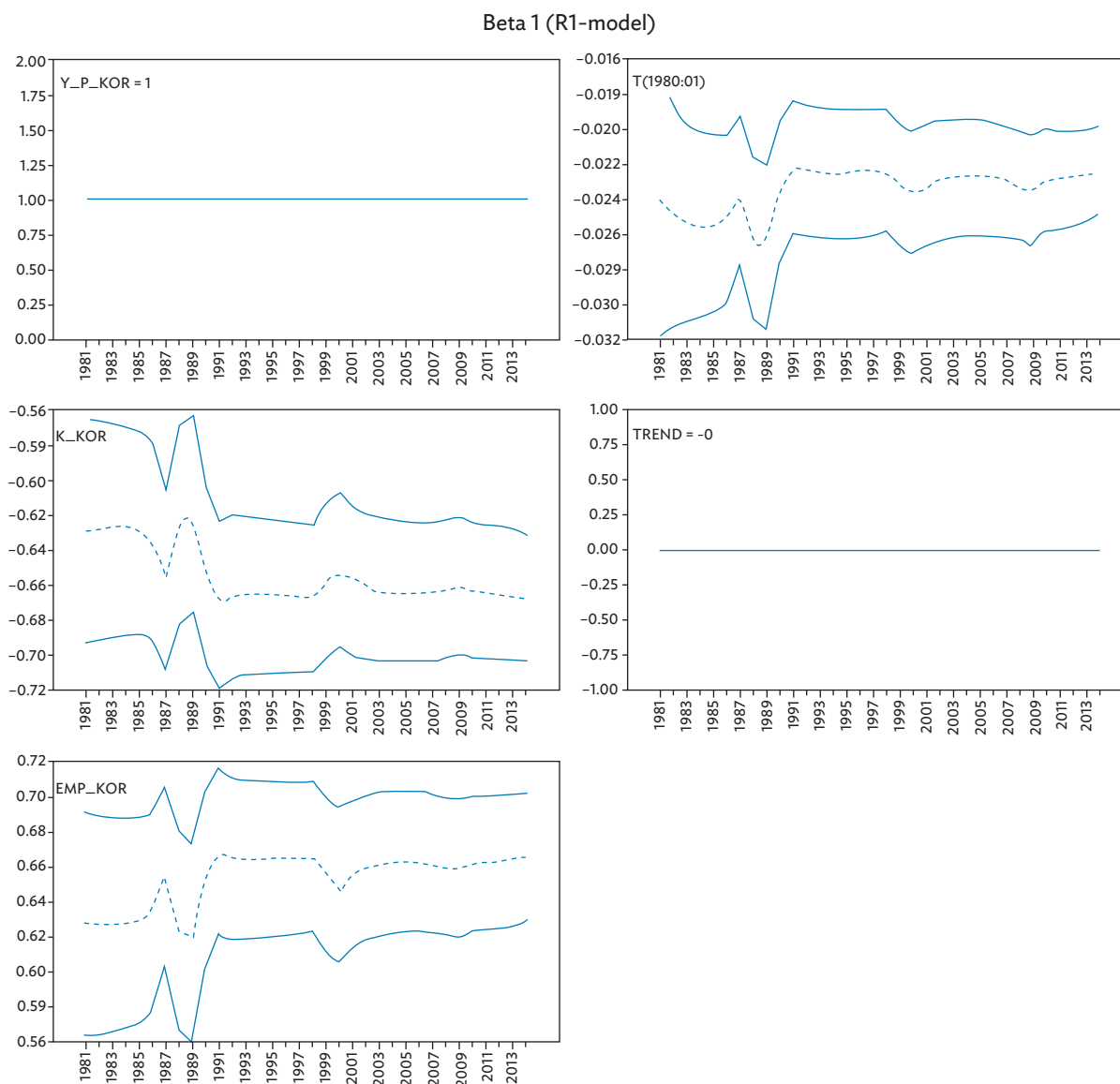
Source: Authors' representation.

Figure 12: One-Step Prediction Test for the Concentrated Model, Republic of Korea

Source: Authors' calculations.

The coefficients displayed in Figure 13 of the long-run relations in the case of the Republic of Korea remained relatively stable over the subsample period. There was some instability from around 1987 until 1990.

Figure 13: Test of Coefficient Constancy, Republic of Korea



Source: Authors' calculations.

3. Analysis for Japan

Lag Length Selection and Diagnostic Testing of the Unrestricted Vector Autoregression

For Japan, the lag reduction tests point towards a lag order of 1. Additionally to the deterministic trend, we include one breakpoint ($t = 1$ in 1973) to account for changes in the light of the oil crisis. Additionally, we include dummies for 1973 and 1997 (shift dummies) as well as an intervention dummy for 2009. We thus obtain a fairly well-specified model, as displayed in Table 9.

Table 9: Residual Analysis—Diagnostic Testing of the Unrestricted Vector Autoregression (1) Model, Japan

Multivariate test				
Residual autocorrelation:				
LM (1):	ChiSqr(9) = 31.703 [0.000]			
LM (2):	ChiSqr(9) = 20.288 [0.016]			
Test for ARCH:				
LM (1):	ChiSqr(36) = 52.761 [0.035]			
LM (2):	ChiSqr(72) = 84.896 [0.142]			
Univariate tests				
	ARCH(1)	Normality	Skewness	Kurtosis
Y_P_JP	1.583 [0.208]	1.007	−0.048	3.157
K_EMP_JP	0.245 [0.621]	[0.604]	−0.021	3.173
DG_JP	0.127 [0.721]	1.057	−0.261	3.107

ARCH = autoregressive conditional heteroskedasticity.

Note: p-values in brackets.

Source: Authors' calculations.

Rank Determination and Testing Restrictions on the Cointegration Vector Autoregression

The rank test indicates one or two cointegrating relationships (see Table 10). Additionally, this time, the test of long-run exclusion does not suggest that g_t is not part of the cointegrating relationships. We assume a rank of 1.

Table 10: Likelihood-Ratio Trace Test for the Unrestricted Vector Autoregression (1) Model, Japan

R	p-r	Eigenvalue	Trace	95% crit. value	p-value
3	0	0.828	143.722	58.737	0.000
2	1	0.431	41.084	37.115	0.015
1	2	0.144	8.941	18.800	0.631

Source: Authors' calculations.

This model gives the long-run relationship displayed in Table 11.

Table 11: The Just-Identified Long-Run Cointegration Relations for $r = 1$, Japan

	Y_P_JP	K_EMP_JP	G_JP	T(1972:01)	Trend
$\hat{\beta}_1$	1.000	-0.283	0.829	0.037	-0.046
	(.NA)	(-17.209)	(4.245)	(22.066)	(-23.745)
$\hat{\alpha}_1$	-0.004	0.422	0.044		
	(-0.093)	(15.554)	(2.694)		

Source: Authors' calculations.

The capital–employment coefficient is comparably small. The trend points to overall TFP growth over the whole sample. The break in 1973 sets off most of it. Afterward, TFP growth would only be as high as 0.08 on average. We also note that g_t is significant and very close to the theoretical value of 1 that we derived in section III.A.

In the model including capital and employment separately, the inclusion of g_t is not rejected as well. Here, the trace test indicates two cointegrating relationships, and we try to impose the theoretical relation developed in (7) on the second relation. This gives the following overidentified model (see Table 12).

Table 12: The Overidentified Long-Run Cointegration Relations for $r = 1$, Japan

	Y_P_JP	K_JP	EMP_JP	G_JP	T(1972:01)	Trend
$\hat{\beta}_1$	0.000	-0.048	1.000	0.832	0.009	-0.008
	(.NA)	(-22.433)	(.NA)	(29.930)	(40.292)	(-27.272)
$\hat{\beta}_2$	1.000	-0.264	0.264	1.000	0.044	-0.051
	(.NA)	(-23.069)	(23.069)	(.NA)	(36.361)	(-33.139)

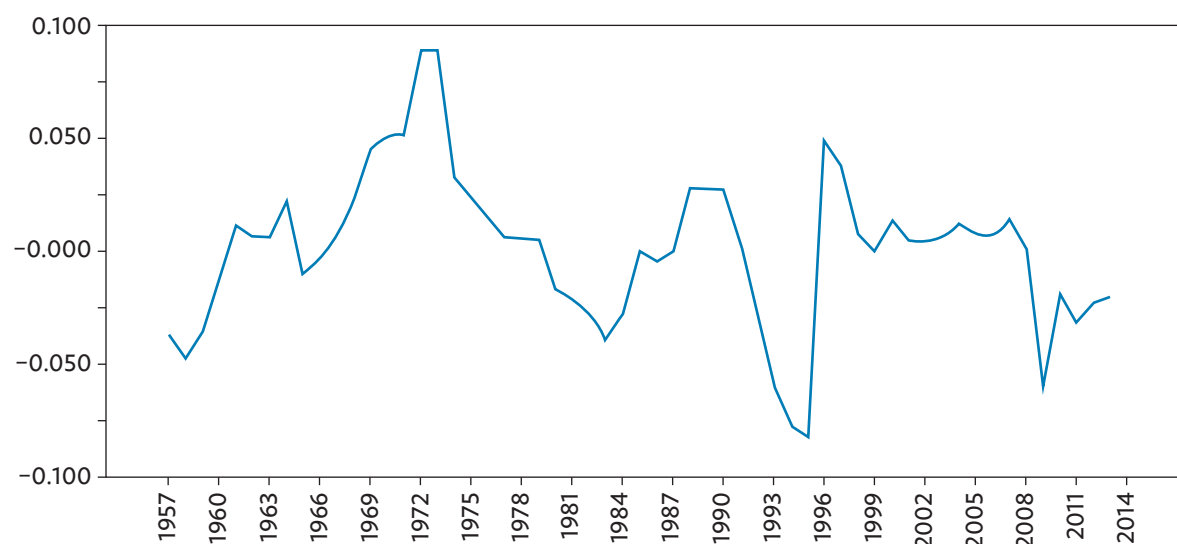
Source: Authors' calculations.

These restrictions are accepted with a p-value of 0.493 and a CHISQR (1) of 0.493. The second cointegrating relationship is our estimate for the production function.

$$Y_{JP_t} - 0.264 \cdot (K_{JP_t} - EMP_{JP_t}) - 1.000 \cdot G_{JP_t} - 0.051 \cdot trend + 0.044 \cdot trend72 \sim I(0)(11)$$

Figure 14 displays the corresponding cointegration graph.²⁰

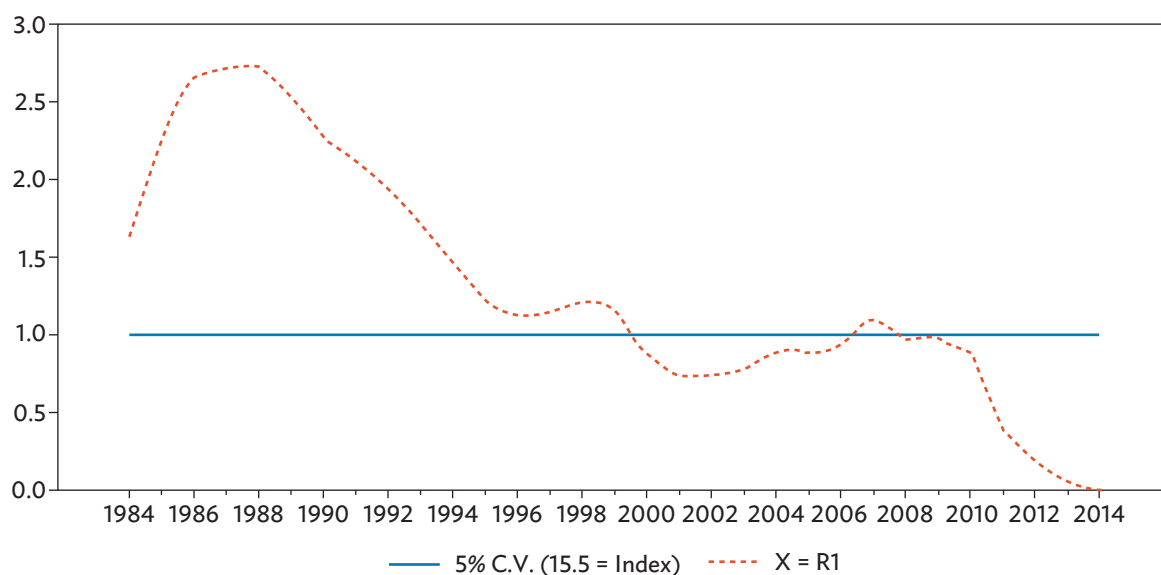
²⁰ For the sake of completeness, the first cointegration graph is displayed in Figure A2 in the Appendix.

Figure 14: Second Cointegrating Relation for Japan

Source: Authors' calculations.

Tests of Constancy

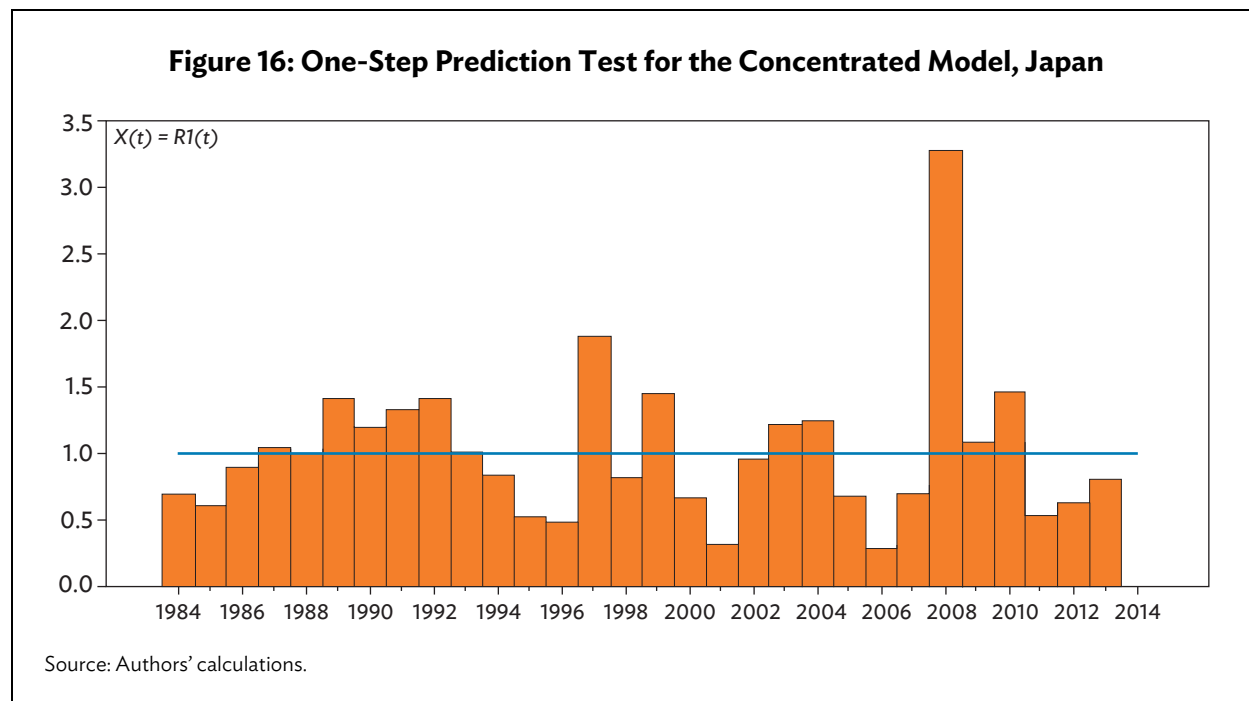
The test of beta constancy indicates extended periods of instability of the beta coefficients from the mid-1980s onward. Toward the Asian Crisis, instability decreased considerably but remained significant. The revitalization phase fits with the overall stable beta coefficients (see Figure 15).

Figure 15: Test of Beta Equal to the 'Known Beta', Japan

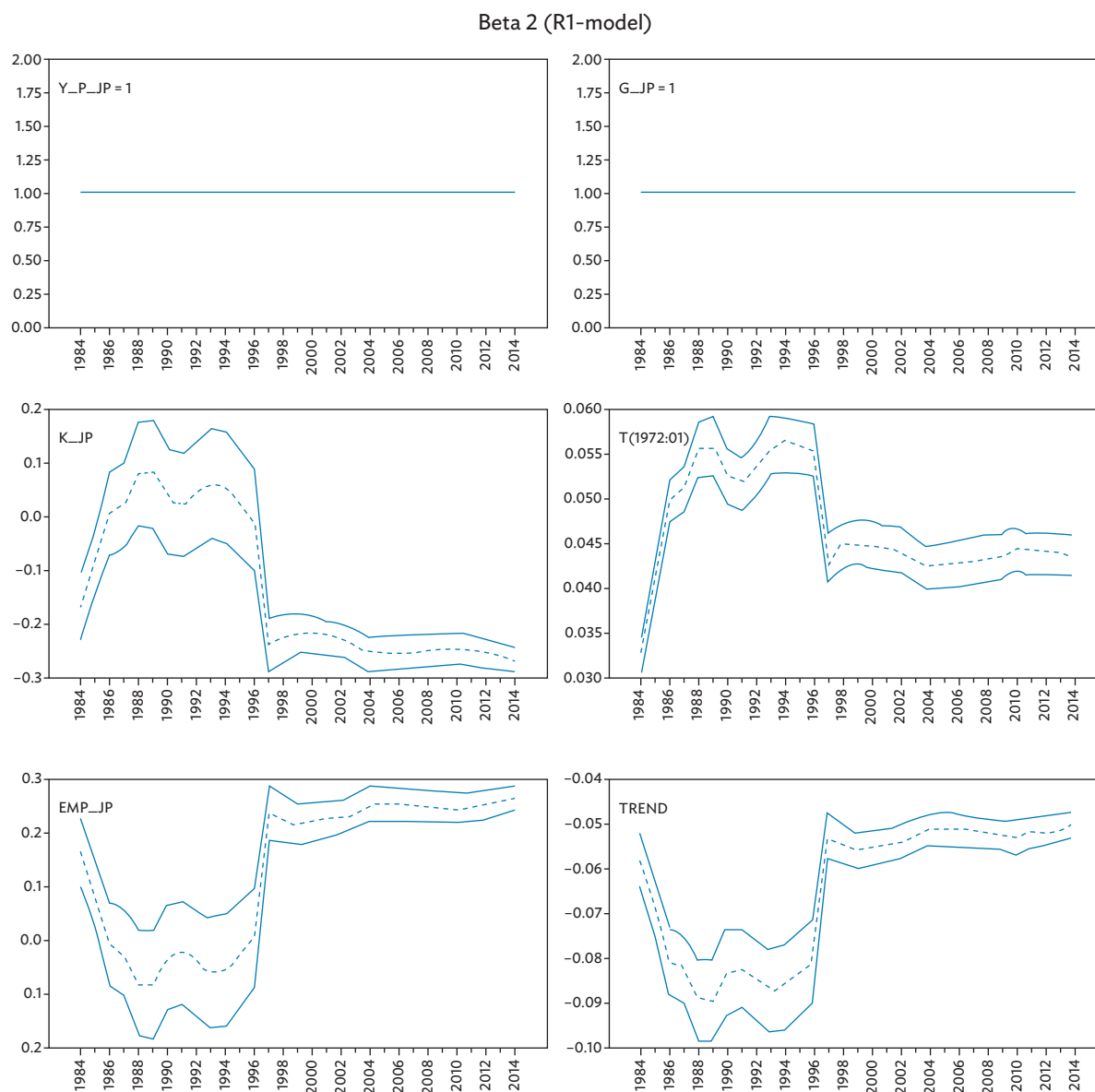
Source: Authors' representation.

The one-step prediction tests in Figure 16 give the impression that the model fails to make trustworthy predictions for the sample period. While the two largest prediction errors are related to the Asian Crisis and the Global Financial Crisis, the model also has increasing difficulties in predicting the developments during the bubble economy phase of 1985–1990 and the beginning of the lost decade.

The coefficients displayed in Figure 17 of the long-run relations in the case of Japan remained very unstable over the phase of the bubble economy in the 1980s. They give a clear indication that the Japanese economy was not on its equilibrium path during this period.²¹



²¹ The corresponding test for the first cointegrating relation is displayed in Figure A3 in the Appendix.

Figure 17: Test of Coefficient Constancy, Japan

Source: Authors' calculations.

IV. CONCLUSION

Sustained rapid growth has transformed the PRC from a low-income economy into a middle-income economy in a remarkably short period of time. The next challenge for the PRC is to graduate from middle income to high income. How well and smoothly the PRC tackles this difficult challenge has sizable ramifications not only for the PRC but, given the PRC's large and growing footprint on the global economy, for the rest of the world.

In this paper, we sought to obtain some clues about the future dynamics of the PRC's economic growth by looking at Japan's, the Republic of Korea's, and the PRC's past patterns of growth. Accordingly, we analyzed and compared the growth experiences of the three countries, which share many similarities. Section II pointed out these similarities. Perhaps the most significant common denominator was capable bureaucracy and a developmental state that prioritized economic growth (favoring export- and investment-led growth) and played the role of a catalyst in the rapid growth and structural transformation of the three countries. As such, structural policies and reform played a major role.

Our analysis and comparison of the patterns of economic growth and structural breaks in Japan, the Republic of Korea, and the PRC yielded a number of interesting findings. The descriptive analysis of section II and the more in-depth econometric analysis of section III both support the view that many features of the PRC's economic development mirror the earlier experiences of Japan and the Republic of Korea. The GDP growth and capital-labor ratio moved together in a positive long-run relationship in all countries, which can be brought into line with the hypotheses derived from section III.A. An interesting finding is hence that the export- and investment-led growth models that all three countries followed for an extensive period are reconcilable with Cobb-Douglas production functions with broken linear trends.

However, there is one interesting and significant difference between the three countries in their economic growth trajectory. Specifically, our analysis indicates that the PRC experienced growth based on TFP gains at a much earlier stage in its development path than the Republic of Korea. If the PRC shifted toward TFP growth at a similar stage to the Republic of Korea, the shift would have occurred around 2011. In fact, the shift in the PRC began as early as the late 1970s. In comparison with Japan, there are no visible signs that TFP growth in the PRC slowed down significantly in our sample period.

The broader question that we sought to address through our comparative analysis of the growth experiences of the PRC, Japan, and the Republic of Korea is whether the PRC can replicate especially the Republic of Korea's success in graduating smoothly from middle income to high income in a relatively short period of time. At a broader level, the balance of evidence from our analysis provides cautious grounds for optimism about the PRC's prospects for a smooth and quick transition to high income. Above all, the fact that the PRC's growth has been led by TFP growth in addition to factor accumulation suggests that it may be sustainable.

However, to continue its enviable track record of rapid TFP growth, the PRC must forcefully implement structural reforms, such as state-owned enterprise reform and reducing the role of the state in the financial system. Structural challenges, such as population aging, and new risks, such as rising global protectionism, further strengthen the case for such TFP-promoting reforms.

APPENDIX

Table A1: Structural Break Tests

Japan						
Y_P_JP	Lower 95%	Upper 95%		≤ 1970	≤ 1987	> 1987
1970	1969	1972	α_1	-0.103	0.134	1.956
1987	1976	1988	α_2	1.021	0.990	0.813
K_JP	Lower 95%	Upper 95%		≤ 1972	≤ 1988	> 1988
1972	1971	1973	α_1	-0.333	0.764	2.035
1988	1987	1989	α_2	1.035	0.956	0.878
EMP_JP	Lower 95%	Upper 95%		≤ 1988	≤ 1997	> 1997
1988	1984	1989	α_1	0.155	0.843	1.546
1997	1991	1998	α_2	0.964	0.800	0.629
K_EMP_JP	Lower 95%	Upper 95%		≤ 1972	≤ 1988	> 1988
1972	1971	1973	α_1	-0.303	0.602	1.350
1988	1987	1989	α_2	1.046	0.954	0.893
G_JP	Lower 95%	Upper 95%		≤ 1988	≤ 1997	> 1997
1988	1986	1991	α_1	0.116	0.171	0.220
1997	1994	1998	α_2	0.823	0.723	0.674
Republic of Korea						
Y_P_KOR	Lower 95%	Upper 95%		≤ 1967	≤ 1982	> 1982
1967	1965	1969	α_1	-1.103	0.411	0.487
1982	1981	1986	α_2	1.151	0.958	0.956
K_KOR	Lower 95%	Upper 95%		≤ 1969	≤ 1997	> 1997
1969	1968	1970	α_1	-1.103	0.411	0.487
1997	1996	2008	α_2	1.151	0.958	0.956
EMP_KOR	Lower 95%	Upper 95%		≤ 1975	≤ 1984	> 1984
1975	1974	1976	α_1	-0.079	0.639	0.196
1984	1983	1985	α_2	1.052	0.761	0.942
K_EMP_KOR	Lower 95%	Upper 95%		≤ 1965	≤ 1998	> 1998
1965	1964	1966	α_1	0.639	0.097	0.646
1998	1997	2002	α_2	0.930	0.999	0.950
K_EMP_KOR	Lower 95%	Upper 95%		≤ 1964	≤ 1984	> 1984
1964	1962	1965	α_1	0.214	0.052	0.051
1984	1977	1989	α_2	0.838	0.943	0.921

continued on next page

Table A1 *continued*

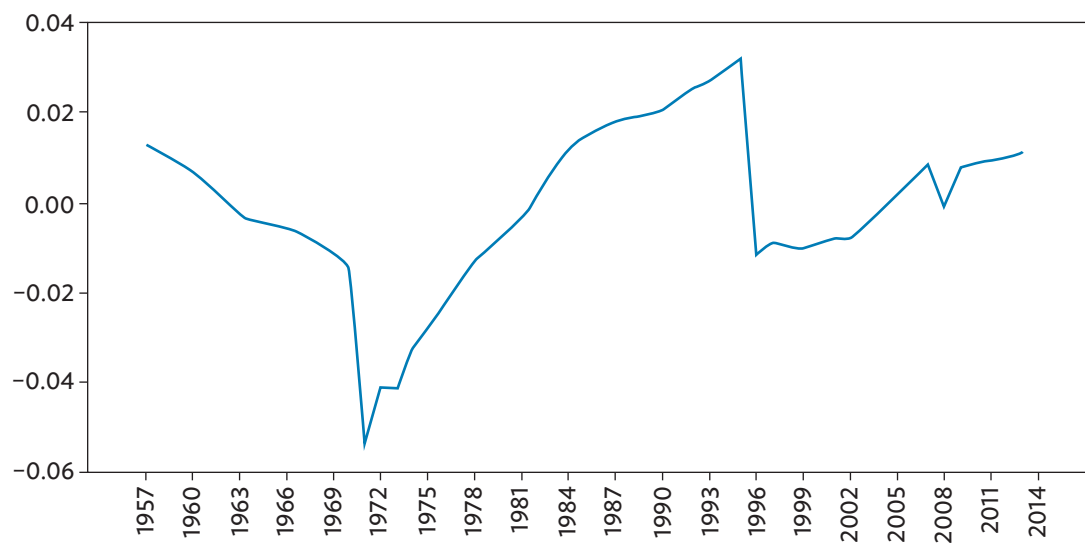
People's Republic of China						
Y_P_CHN	Lower 95%	Upper 95%		≤ 1968	≤ 1976	> 1976
1968	1968	1990	α_1	3.645	3.103	-0.046
1976	1975	1978	α_2	0.473	0.564	1.013
K_CHN	Lower 95%	Upper 95%		≤ 1969	≤ 1992	> 1992
1969	1968	1982	α_1	0.966	0.090	-0.054
1992	1990	2005	α_2	0.933	0.999	1.010
EMP_CHN	Lower 95%	Upper 95%		≤ 1963	≤ 1979	> 1979
1963	1963	1970	α_1	1.394	0.121	0.430
1979	1977	1980	α_2	0.751	0.985	0.936
K_EMP_CHN	Lower 95%	Upper 95%		≤ 1969	≤ 1991	> 1991
1969	1968	1978	α_1	0.989	-0.031	-0.061
1991	1990	1996	α_2	0.881	1.008	1.015
G_CHN	Lower 95%	Upper 95%		≤ 1964	≤ 1982	> 1982
1964	1963	1979	α_1	0.258	-0.080	0.035
1982	1981	1983	α_2	0.712	1.081	0.933

Source: Authors' calculations (sample: 1956–2014).

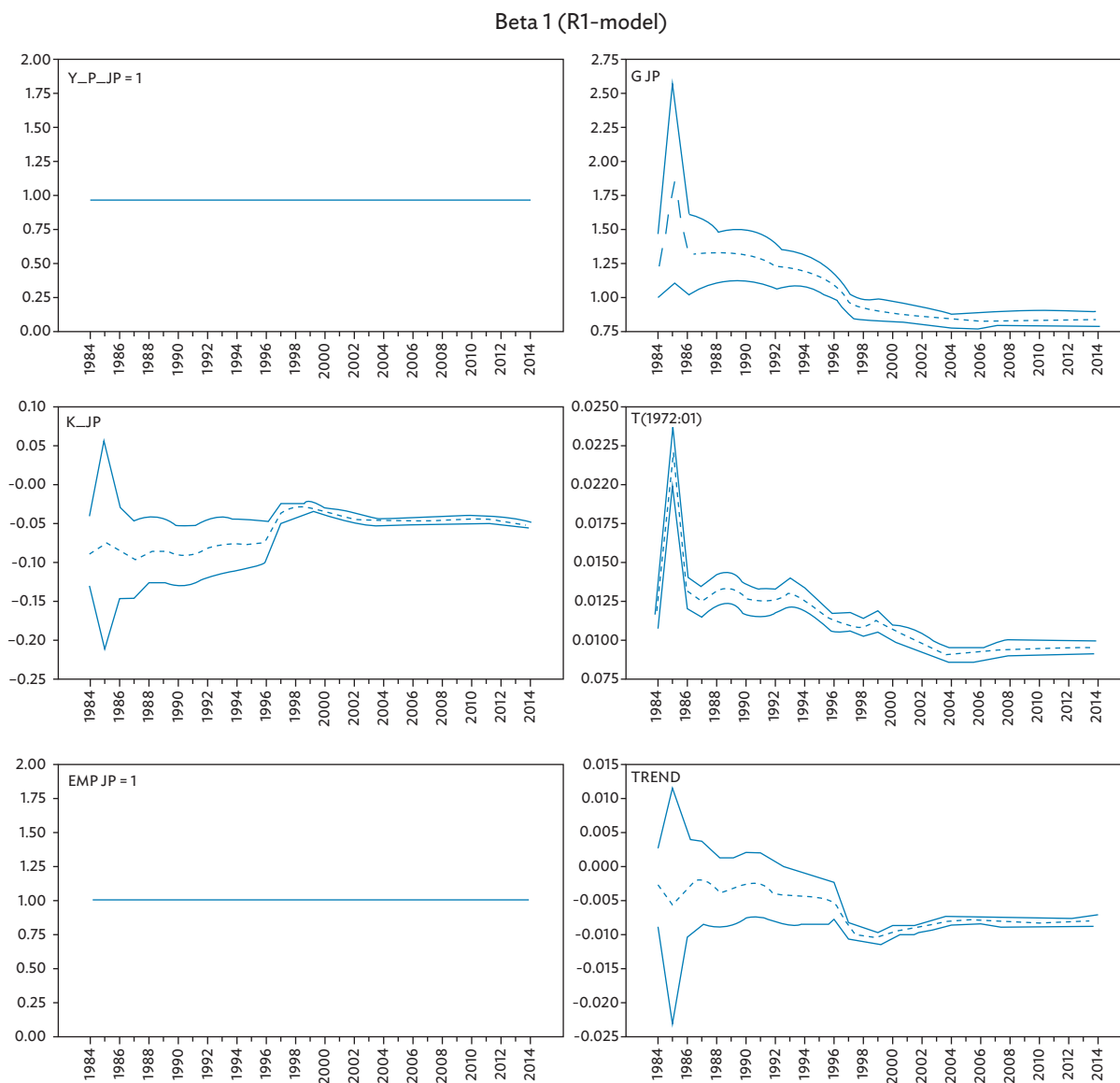
Figure A1: Time Series of Capital and Employment



Source: Authors' calculations.

Figure A2: First Cointegration Relation, Japan

Source: Authors' calculations.

Figure A3: Coefficient Stability for the First Cointegration Relation, Japan

Source: Authors' calculations.

REFERENCES

- Acemoglu, Daron. 2003. "Labor- and Capital-Augmenting Technical Change." *Journal of the European Economic Association* 1 (1): 1–37.
- Albert Marie, Jude Cristina, and Cyril Rebillard. 2015. "The Long Landing Scenario: Rebalancing from Overinvestment and Excessive Credit Growth, and Implications for Potential Growth in China." Banque de France Working Paper 572.
- Bai, Jushan, and Pierre Perron. 2003. "Computation and Analysis of Multiple Structural Change Models." *Journal of Applied Econometrics* 18 (1): 1–22. <https://doi.org/10.1002/jae.659>.
- Barossi-Filho, Milton, Ricardo Gonçalves Silva, and Eliezer Martins Diniz. 2005. "The Empirics of the Solow Growth Model: Long-Term Evidence." *Journal of Applied Economics* 8 (1): 31–35. <https://ssrn.com/abstract=743306>.
- Barro, Robert J. 2016. "Economic Growth and Convergence, Applied to China." *China & World Economy* 24 (5): 5–19. <http://dx.doi.org/10.1111/cwe.12172>.
- Barro, Robert J., N. Gregory Mankiw, and Xavier Sala-i-Martin. 1995. "Capital Mobility in Neoclassical Models of Growth." *American Economic Review* 85 (1): 103–15.
- Cheremukhin, Anton, Mikhail Golosov, Sergei Guriev, and Aleh Tsyvinski. 2015. "The Economy of People's Republic of China from 1953." NBER Working Paper No. 21397.
- Chow, Gregory C. 1993. "Capital Formation and Economic Growth in China." *The Quarterly Journal of Economics* 108 (3): 809–42. <https://doi.org/10.2307/2118409>.
- . 2015. *China's Economic Transformation*, 3rd edition. Malden. Wiley-Blackwell.
- Chow, Gregory C., and An-loh Lin. 2002. *Journal of Comparative Economics* 30 (3): 507–30. <https://doi.org/10.1006/jcec.2002.1786>.
- Dalgaard, Carl-Johan, and Holger Strulik. 2013. "The History Augmented Solow Model." *European Economic Review* 63: 134–49. <https://doi.org/10.1016/j.euroecorev.2013.07.001>.
- Durlauf, Steven, Andros Kourtellos, and Artur Minkin. 2001. "The Local Solow Growth Model." *European Economic Review* 45: 928–40. [http://www.sciencedirect.com/science/article/pii/S0014-2921\(01\)00120-9](http://www.sciencedirect.com/science/article/pii/S0014-2921(01)00120-9).
- Eichengreen, Barry, Donghyun Park, and Kwanho Shin. 2012. "When Fast Growing Economies Slow Down: International Evidence and Implications for China." *Asian Economic Papers* 11 (1): 42–87. <https://doi.org/10.2139/ssrn.1883962>.
- . 2014. "Growth Slowdowns Redux." *Japan and the World Economy* 32 (C): 65–84. <https://doi.org/10.1016/j.japwor.2014.07.003>.

- Engle, Robert, and Clive Granger. 1987. "Cointegration and Error Correction: Representation, Estimation and Testing." *Econometrica* 55 (2): 251–76. <http://links.jstor.org/sici?sici=0012-9682%2819870...O%3B2-T&origin=repec>.
- Feenstra, Robert C., Robert Inklaar, and Marcel P. Timmer. 2015. "The Next Generation of the Penn World Table." *American Economic Review* 105 (10): 3150–82. <https://www.aeaweb.org/articles?id=10.1257/aer.20130954>.
- Glawe, Linda, and Helmut Wagner. 2016. "The Middle-Income Trap – Definitions, Theories, and Countries Concerned: A Literature Survey." *Comparative Economic Studies* 58 (4): 507–38. <https://doi.org/10.13140/RG.2.1.2968.4080>.
- Hamilton, James D., and Josefina Monteagudo. 1998. "Solow Model and the Productivity Slowdown." *Journal of Monetary Economics* 42 (3): 495–509. [https://doi.org/10.1016/S0304-3932\(98\)00036-1](https://doi.org/10.1016/S0304-3932(98)00036-1).
- Holz, Carsten. 2006. "Response to Gregory C. Chow's 'New Capital Estimates for China: Comment'." *China Economic Review* 17 (2): 193–97. <https://doi.org/10.1016/j.chieco.2006.02.002>.
- Holz Carsten, and Yue Sun. 2017. "Physical Capital Estimates for China's Provinces, 1952–2015 and Beyond." CESifo Working Paper 6472. <https://doi.org/10.1016/j.chieco.2017.06.007>.
- Ifo Institute for Economic Research, Sakura Institute of Research. 1997. *A Comparative Analysis of Japanese and German Economic Success*. Tokyo, Springer.
- Inkster, Ian. 2001. *Japanese Industrialization – Historical and Cultural Perspectives*. London. Routledge.
- Jeong, Hyeok. 2017. "Korea's Growth Experience and Long-Term Growth Model." World Bank Policy Research Working Paper No. 8240.
- Juselius, Katarina. 2006. *The Cointegrated VAR Model: Econometric Methodology and Macroeconomic Applications*. Oxford University Press, Oxford.
- . 2018. *The Cointegrated VAR Methodology*. Oxford Research Encyclopedia of Economics and Finance. <https://doi.org/10.1093/acrefore/9780190625979.013.247>.
- Kiichi Tokuoka, Murtaza Syed, and Kenneth Kang. 2009. "'Lost Decade' in Translation: What Japan's Crisis Could Portend about Recovery from the Great Recession." IMF Working Paper No. 09/282.
- Knowles, Stephen P. and Dorian Owen. 1995. "Health Capital and Cross-Country Variation Income per Capita in the Mankiw–Romer–Weil Model." *Economics Letters* 48 (1): 99–106. [https://doi.org/10.1016/0165-1765\(94\)00577-O](https://doi.org/10.1016/0165-1765(94)00577-O).
- Lee, Jong Wha. 2016. "Korea's Economic Growth and Catch-Up: Implications for China." *China & World Economy* 24 (5): 71–97. <https://doi.org/10.1111/cwe.12175>.
- Lewis, W. Arthur. 1954. "Economic Development with Unlimited Supplies of Labour." *The Manchester School* 22 (2): 139–91. <https://doi.org/10.1111/j.1467-9957.1954.tb00021.x>.

- Li, Wei. 1997. "The Impact of Economic Reform on the Performance of Chinese State Enterprises 1980–1989." *Journal of Political Economy* 105 (5): 1080–106. <https://doi.org/10.1086/262106>.
- Maliszewski, Wojciech, and Longmei Zhang. 2015. "China's Growth: Can Goldilocks Outgrow Bears?" IMF Working Paper No. 15/113. <http://dx.doi.org/10.5089/9781513504643.001>.
- Mankiw, N. Gregory, David H. Romer, and David N. Weil. 1992. "A Contribution to Empirics of Economic Growth." *The Quarterly Journal of Economics* 107 (2): 407–37. <https://doi.org/10.2307/2118477>.
- Moon, Hwy-Chang. 2016. *The Strategy for Korea's Economic Success*, 1st edition. Oxford University Press, Oxford.
- Morck, Randall, and Bernard Yeung. 2017. "East Asian Financial and Economic Development." NBER Working Paper No. 23845. <https://doi.org/10.3386/w23845>.
- Murach, Michael, and Helmut Wagner. 2017. "How Severe Will the Growth Slowdown in China Caused by the Structural Change Be? An Evaluation Based on the Experiences from Japan and Korea." *Journal of Chinese Economic and Business Studies* 15 (3): 269–87. <https://doi.org/10.1080/14765284.2017.1346930>.
- Ponomareva, Natalia, and Hajime Katayama. 2010. "Does the Version of the Penn World Tables Matter? An Analysis of the Relationship between Growth and Volatility." *Canadian Journal of Economics* 43 (1): 152–79. <https://doi.org/10.1111/j.1540-5982.2009.01567.x>.
- Reher, . 2004. "The Demographic Transition Revisited as a Global Process." *Population, Space and Place* 10: 19–41. <https://doi.org/10.1002/psp.313>.
- Solow, Robert M. 1956. "A Contribution to the Theory of Economic Growth." *Quarterly Journal of Economics* 70 (1): 65–94. <http://www.jstor.org/stable/18845>.
- Stijepic, Denis, and Helmut Wagner. 2011. "Implementation of Technological Breakthroughs at Sector Level and the Technology-Bias." MPRA Paper No. 33352. <https://doi.org/10.2139/ssrn.2020279>.
- Wagner, Helmut. 2017. "The Building Up of New Imbalances in China: The Dilemma with 'Rebalancing'." *International Economics and Economic Policy* 14 (4): 701–22. <https://doi.org/10.1007/s10368-016-0360-4>.
- World Bank. 2013. *China 2030: Building a Modern, Harmonious, and Creative High-Income Society*. Washington, DC.
- Yoshino, Naoyuki, and Farhad Taghizadeh-Hesary. 2015. "Japan's Lost Decade: Lessons for Other Economies." ADBI Working Paper Series No. 521.
- Young, Alwyn. 1995. "The Tyranny of Numbers: Confronting the Statistical Realities of the East Asian Growth Experience." *The Quarterly Journal of Economics* 110 (3): 641–80. <https://doi.org/10.2307/2946695>, <https://www.jstor.org/stable/2946695>.

Trajectories to High Income

Growth Dynamics in Japan, the People's Republic of China, and the Republic of Korea

Japan and the Republic of Korea quickly graduated from middle-income to high-income status and thus offer valuable lessons for the People's Republic of China (PRC). This paper analyzes the economic growth patterns of the PRC, Japan, and the Republic of Korea in the postwar period. The authors use Cobb–Douglas production functions to assess the long-run equilibrium relationships between per capita gross domestic product, capital, and labor by means of cointegrated vector autoregressive models. The analysis uncovers a striking similarity between the growth experiences of the PRC and the Republic of Korea.

About the Asian Development Bank

ADB is committed to achieving a prosperous, inclusive, resilient, and sustainable Asia and the Pacific, while sustaining its efforts to eradicate extreme poverty. Established in 1966, it is owned by 68 members—49 from the region. Its main instruments for helping its developing member countries are policy dialogue, loans, equity investments, guarantees, grants, and technical assistance.



ASIAN DEVELOPMENT BANK

6 ADB Avenue, Mandaluyong City

1550 Metro Manila, Philippines

www.adb.org