

Farnè, Matteo; Vouldis, Angelos

Working Paper

Banks' risk-taking within a banking union

ECB Working Paper, No. 2595

Provided in Cooperation with:

European Central Bank (ECB)

Suggested Citation: Farnè, Matteo; Vouldis, Angelos (2021) : Banks' risk-taking within a banking union, ECB Working Paper, No. 2595, ISBN 978-92-899-4818-0, European Central Bank (ECB), Frankfurt a. M., <https://doi.org/10.2866/85240>

This Version is available at:

<https://hdl.handle.net/10419/246172>

Standard-Nutzungsbedingungen:

Die Dokumente auf EconStor dürfen zu eigenen wissenschaftlichen Zwecken und zum Privatgebrauch gespeichert und kopiert werden.

Sie dürfen die Dokumente nicht für öffentliche oder kommerzielle Zwecke vervielfältigen, öffentlich ausstellen, öffentlich zugänglich machen, vertreiben oder anderweitig nutzen.

Sofern die Verfasser die Dokumente unter Open-Content-Lizenzen (insbesondere CC-Lizenzen) zur Verfügung gestellt haben sollten, gelten abweichend von diesen Nutzungsbedingungen die in der dort genannten Lizenz gewährten Nutzungsrechte.

Terms of use:

Documents in EconStor may be saved and copied for your personal and scholarly purposes.

You are not to copy documents for public or commercial purposes, to exhibit the documents publicly, to make them publicly available on the internet, or to distribute or otherwise use the documents in public.

If the documents have been made available under an Open Content Licence (especially Creative Commons Licences), you may exercise further usage rights as specified in the indicated licence.



EUROPEAN CENTRAL BANK
EUROSYSTEM

Working Paper Series

Matteo Farnè, Angelos Vouldis

Banks' risk-taking within a banking union

No 2595 / October 2021

Disclaimer: This paper should not be reported as representing the views of the European Central Bank (ECB). The views expressed are those of the authors and do not necessarily reflect those of the ECB.

Abstract

We study the relationship between banks' size and risk-taking in the context of supranational banking supervision. Consistently with theoretical work on banking unions and in contrast to analyses emphasising incentives underpinned by the too-big-to-fail effect, we find an inverse relationship between banks' size and non-performing loan growth for a sample of European banks. Evidence is provided that the mechanism operates through the enhanced organisational efficiency of the supranational set-up rather than incentives alignment among the supervisors and the banks.

Keywords: Supervision, euro area, non-performing loans, banking union, too-big-to-fail

JEL: F33, G21, G28, G32, C20

Non technical summary

In this paper we investigate empirically the relationship between banks' size and risk-taking in the context of a banking union with a supranational banking supervisor. Economic theory predicts that large banks are expected by the markets to be supported by their home sovereigns if they find themselves in distress, due to the repercussions that their failure could have on the domestic economy (i.e. they are 'too-big-to-fail'). This would prompt larger banks to undertake more risk compared to smaller banks. On the other hand, the inauguration of a supranational banking supervisor has been proposed as a way to address such incentives, especially in the context of a

monetary union whereby domestic authorities may strategically count on the support of foreign creditors in the case that risk to a domestic large bank materialises.

During the first half of the last decade, the sovereign-bank nexus sparked a number of financial and economic crises in European countries, leading to substantial welfare costs. The European Union inaugurated in 2014 the Single Supervisory Mechanism (SSM), which entails the centralised supervision of the largest European banks by the European Central Bank (ECB), to address the vulnerability posed by the interlinkages between banks and sovereigns. The rationale is that setting-up a supranational banking supervisor decouples banks' risk taking incentives from the expectation of foreign assistance towards a sovereign that will embark on the bailout of its banks. In this paper we also explore the alternative hypothesis that this set-up may work effectively also due to its enhanced organisational efficiency.

The econometric analysis shows that, in the aftermath of the euro area financial crisis and the setting up of a supranational supervisor, banks' size is negatively related to risk-taking. On average, larger banks tend to reduce their non-performing loans ratio more compared to smaller banks after controlling for other country- and bank-specific factors. The pure size effect turns to be statistically significant unlike the effect attributed to the type of supervisor responsible for each bank (supranational or national). This is interpreted as an indication that a supranational supervisor is effective in reducing banks' risk-taking due to its enhanced organisational capacity rather than through incentive alignment of banks with the supervisors. Future research could analyse whether risk reduction can be observed also in other dimensions e.g. as regards the extent of the home bias in the banks' sovereign bond holdings.

1. Introduction

During the first half of the last decade, the sovereign-bank nexus sparked a number of financial and economic crises in European countries, leading to substantial welfare costs. In most cases (Ireland, Spain, Cyprus, Portugal) the realisation of risks in the banking sector was transmitted subsequently to the sovereign creditworthiness, requiring sizeable financial assistance programmes.¹ The European Union has responded with extended institution-building to address the vulnerability posed by the interlinkages between banks and sovereigns. The Single Supervisory Mechanism (SSM) was inaugurated in 2014 and entails the centralised supervision of the largest European banks by the European Central Bank (ECB). The SSM represents the first pillar of a European banking union and aims to address the transmission channel moving from ailing banks towards their home sovereigns.

The literature on the channels through which supervision by a supranational authority could address the sovereign-bank loop within a monetary union is scarce. According to Farhi and Tirole (2018), the centralisation of banking supervision represents an optimal policy response that decouples banks' risk taking incentives from the expectation of foreign assistance towards a sovereign that will embark on the bailout of its banks. As a corollary, centralised supervision is expected to be 'tougher' compared to the supervision exercised by the national supervisors, leading to lower risk-taking on the part of banks that can have systemic impact. Altavilla et al. (2020) identify the enhanced organisational capacity and the presence of scale economies as the main reason behind the effectiveness of centralised supervision to limit banks' risk taking. According to this argument, the cause of lower risk-taking on the part of the banks does not lie with the supervisors' incentives but with the efficiency of the centralised organisational structure. Both channels however would predict that the large banks which have come under the supervision of a supranational authority exhibit lower risk-taking compared to the banks which have remained under the supervision of their national authorities.

Large banks on the other hand are assumed to enjoy implicit government subsidies when tail risk materialises, enabling these institutions to undertake more risk compared to banks that are not systemically important (Gandhi and Lustig (2015)). Therefore, contrary to the previous hypotheses, the too-

¹Greece was a case where the opposite direction of transmission was dominant.

big-to-fail effect predicts that larger banks would tend to undertake more risk. Higher risk-taking by larger banks could also be due to the higher liquidity of large banks' bonds which compensates for increased credit risk. Both mechanisms predict that the largest banks, which in the euro area are supervised by the ECB, would engage in riskier activities compared to smaller banks.

In this paper, we test these contradicting predictions on the relationship between banks' size and their risk-taking behaviour as reflected in the non-performing loans (NPL) ratio.² We utilise the setting-up of the SSM in 2014 as a natural experiment whereby the significant institutions in each euro area country came under the direct supervision of the ECB while the remaining banks continued to be supervised by the national supervisors. To this purpose, we study the growth of non-performing loans (NPLs) from 2014 to 2019 focusing on the differences between the large and the small banks, in order to assess whether the centralisation or the size effect dominate. The smaller banks in the sample, which did not undergo a change in their direct supervisor, provide a benchmark against which the risk of the larger banks, which underwent a supervisory regime change, is to be assessed.

2. Data and empirical methodology

2.1. Data

We utilise a dataset with the largest $N = 270$ banks operating in the euro area³ and examine how banks' credit risk evolved starting from the centralisation of supervision in 2014 until 2019, i.e. the period following the severe stress which engulfed a number of euro area countries. This period mainly featured the efforts of banks to clean their balance sheets from NPLs that had been accumulated during the peak of the crisis.

Following the SSM regulation, the 'Significant institutions' (SIs),⁴ of the participating member states are supervised directly by the ECB. The remaining banks are characterised as 'Less significant institutions' (LSIs) and remain under national supervision.

²According to the supervisory banking statistics published by the ECB, credit risk represents consistently more than 80% of the total risk exposures of euro area banks.

³During the period examined the euro area coincided with the countries participating in the SSM.

⁴Based on features such as their size and interconnectedness.

The data are harmonised across countries, following common risk and solvency definitions.⁵ This is especially important when conducting cross-country analyses on NPLs, as the definitions generally differ across jurisdictions.

During the period examined, the NPL ratio of the euro area banks exhibits overall a clear downward trend. According to ECB data, the NPL ratio for the total euro area stood at 8.1% in end-2014 and stood equal to 3.3% at the end of our sample in 2019. The same trend can be observed in our sample of banks, both for the SIs and the LSIs (Table 1), however the downward trend is visibly stronger for the SIs. Fig. 1 plots NPL growth rate over the 2014-19 period with the NPL ratio of 2014. The SIs that started in 2014 with a high NPL ratio exhibited the largest risk reduction, while this relationship is weaker for the LSIs.

Table 1: Descriptive statistics. Reference date is end-2014 except where mentioned otherwise.

Variable	mean	st. dev	median	25th perc.	75th perc.
SIs					
NPL ratio	0.07	0.06	0.05	0.03	0.10
NPL growth (2014-19)	-0.27	0.35	-0.25	-0.59	-0.05
Total assets (bn euros)	150.49	298.22	42.64	12.43	144.93
Observations	151				
LSIs					
NPL ratio	0.09	0.08	0.06	0.02	0.14
NPL growth (2014-19)	-0.17	0.41	-0.23	-0.52	0.10
Total assets (bn euros)	5.76	6.99	2.63	1.15	8.04
Observations	119				

2.2. Model specification

We model the growth rate of NPLs between 2014 and 2019 as a function of bank- and country-specific variables. The specification takes the following form:

⁵Due to the EU-wide regulation framework, this applies also to the smaller banks whose supervision remains a national responsibility.

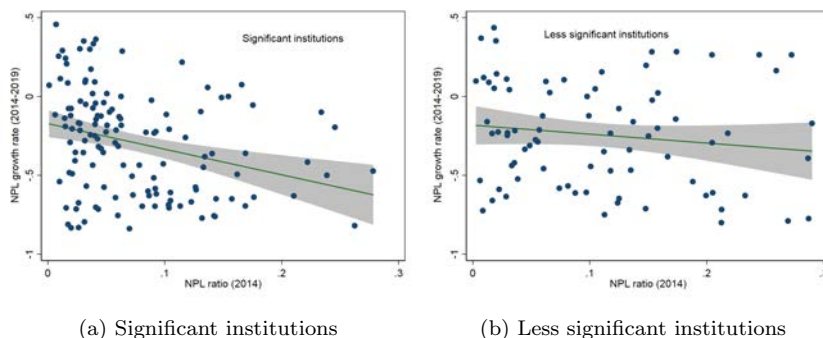


Figure 1: NPL growth (2014-2019) versus NPL ratio at 2014 for systemically important banks. 95% confidence intervals are shown.

$$y_j = \alpha + \beta X_{i(j)} + \gamma Y_j + \delta I(j) + \epsilon_j \quad (1)$$

where $X_{j(i)}$ refers to country-specific variables for bank j residing in country i , Y_j to bank-specific credit risk determinants, $I(j)$ is an indicator for SI banks and ϵ_j is an error term. Macroeconomic developments are accounted for by the average GDP growth rate over the examined period (source: Eurostat). Country-specific fixed effects are used to account for institutional features of a country which may affect the NPL growth, such as borrower's protection. Leverage is used to account for the banks' loss-absorbing capacity. Relative size is measured by dividing the logarithm of a bank's total assets with the logarithm of the total assets of the largest bank in that country. We also use the logarithm of the total assets of each bank to refer to the absolute size of a bank.

3. Results

Table 2 presents the estimation results. The SI dummy is statistically significant and negative in Models 1 and 2, consistently with the centralisation hypothesis. When running the relative size (a variable which is correlated with the SI indicator) against the SI indicator, the effect is absorbed by the size variable (Model 3). The marginal effect of the supranational supervision in this specification is not statistically significant, as shown by the interaction term between the SI indicator and the relative size variable. The fact that the relative size rather than the SI indicator seems to be the critical variable, related negatively with risk reduction, seems to suggest that the

Table 2: Estimation results

NPLs growth (2014-2019)	(All loans)			Household loans			NFC loans		
	(1)	(2)	(3)	(4)	(5)	(6)	(7)	(8)	(9)
GDP	-0.040** (0.017)					-0.015 (0.014)		0.019 (0.044)	
Fixed effects ^a	No	Yes	Yes	Yes	Yes	No	Yes	No	Yes
NPL ratio	-1.102*** (0.362)	-0.833* (0.424)	-0.544 (0.374)	-0.694* (0.361)	-1.243* (0.577)	-0.255 (0.354)	-0.420 (0.439)	-1.081** (0.462)	-0.827*** (0.247)
Leverage	-0.393 (0.575)	-0.739 (0.636)	-1.307* (0.630)	-1.272** (0.577)	-1.311** (0.575)	-1.035* (0.527)	-1.763*** (0.508)	-0.698 (1.128)	-1.065 (0.811)
SI	-0.118** (0.0525)	-0.143** (0.0525)	-0.448 (0.637)	-2.214*** (0.375)					
Size ^b			-1.830** (0.750)	-0.126*** (0.018)	-2.638*** (0.794)	-1.210*** (0.334)	-1.101** (0.430)	-2.673* (1.485)	-2.703** (1.015)
SI*Size ^b			0.509 (0.787)	0.0974*** (0.018)					
Constant	0.107 (0.0839)	-0.287*** (0.0621)	1.316** (0.621)	2.575*** (0.459)	2.006** (0.668)	1.005*** (0.305)	0.897** (0.396)	2.487 (1.475)	2.138** (0.990)
Clustered residuals ^a	No	Yes	Yes	Yes	Yes	Yes	Yes	Yes	Yes
Wald test	(4,216)= 5.05***	(3,17)= 4.50**	(5,17)= 24.41***	(5,17)= 27.18***	(3,13)= 19.04***	(4,17)= 5.41***	(3,17)= 11.17***	(4,17)= 2.98**	(3,17)= 4.14**
<i>N</i>	221	221	221	221	85	230	230	236	236
Adj. <i>R</i> ²	0.301	0.331	0.336	0.362	0.342	0.245	0.273	0.435	0.441

Standard errors in parentheses, * $p < 0.10$, ** $p < 0.05$, *** $p < 0.01$

^a Fixed effects and clustering of residuals refer to the country level.

^b Size is relative size within the country, except from model (4) where the absolute size $\ln(\text{assets})$ is used.

effectiveness of supranational supervision works through the more efficient organisation of the supranational supervisor, rather than through incentives for tougher supervision compared to the national supervisors. This result is consistent with the findings of Altavilla et al. (2020). According to this estimation, a bank having total assets equal to 88% of the largest bank in its country (the mean in the sample) is expected to experience NPL growth which is higher by 0.21 (0.15) for an LSI (SI) compared to the largest bank in the same country, which is equivalent to a 0.56 (0.45) standard deviation difference. When the absolute size of the bank is used (Model 4) the negative relationship between size and NPLs holds both for SIs and LSIs. Model 5 uses only the LSI sample and confirms a statistically significant and negative relationship between NPL and relative size. Therefore, it seems that also the largest banks that remained under national supervision managed to achieve larger risk-reduction, potentially reflecting increased efficiency also at the national supervision level e.g. due to resources freed up at the country level.

As a further robustness test we run the same specification separately for household and non-financial corporation (NFCs) NPLs. The negative relationship between relative size and NPL growth still persists. According to Model 7 (9) a one-standard deviation increase in relative size would lead to a decrease in the household (NFC) NPL growth by a factor of 0.21 (0.26) standard deviations.

4. Robustness checks

We have performed additional robustness checks to examine the sensitivity of our conclusions to the sample of banks considered.

First, one could argue that the so-called Systemically Important Financial Institutions (SIFIs) should be distinguished from the other large institutions that came under the supervision of the SSM. This is because SIFIs may have received increased supervisory scrutiny when compared to the other SIs and therefore the inverse relationship between size and NPLs could be driven by the sub-sample of SIFIs. To examine whether there is a SIFI-specific effect, we have constructed a SIFI indicator variable (SIFI) that adopts a wide definition of SIFIs i.e. considering as SIFIs also their subsidiaries in order to account for potentially higher supervisory attention paid also to SIFIs' subsidiaries.⁶ In Model 1 it can be seen that the NPL reduction for SIFIs is

⁶A narrower definition of SIFIs, focusing only on the parent institutions, yielded similar results.

Table 3: Robustness checks

NPLs growth (2014-2019)	(SIFI)		Government		Core-periphery	
	All (1)	Excl SIFIs (2)	All (3)	Excl gov. (4)	All (5)	Excl dist. (6)
NPL ratio	-0.618 (0.400)	-0.642* (0.350)	-0.510 (0.366)	-0.420 (0.370)	-0.968 (1.085)	-0.422 (0.393)
Leverage	-1.273* (0.627)	-1.413* (0.706)	-1.332** (0.592)	-1.894*** (0.616)	-1.342** (0.687)	-1.128 (0.651)
SI	-0.491 (0.652)	-0.0560 (0.689)	-0.480 (0.629)	-0.441 (0.632)	-0.456 (0.635)	-0.169 (0.897)
Size	-1.710** (0.693)	-1.874** (0.686)	-1.871** (0.738)	-2.084** (0.778)	-1.803* (0.765)	-2.037* (1.084)
SI*Size	0.558 (0.815)	0.114 (0.820)	0.540 (0.776)	0.519 (0.786)	0.518 (0.782)	0.269 (1.086)
SIFI	-0.0984 (0.0996)					
GOV			0.094 (0.092)			
GOV *NPL ratio			-0.387 (0.546)			
ND					0.369** (0.169)	
ND *NPL ratio					0.563 (1.254)	
Constant	1.212** (0.571)	1.375** (0.575)	1.350** (0.607)	1.572** (0.637)	1.651** (0.615)	1.457 (0.930)
Wald test	(6,17)= 16.44***	(5,17)= 11.16***	(7,17)= 20.88***	(5,15)= 23.06***	(6,17)= 23.40***	(5,13)= 6.81***
<i>N</i>	221	200	221	194	221	173
adj. <i>R</i> ²	0.264	0.267	0.263	0.226	0.260	0.311

Standard errors in parentheses. * $p < 0.10$, ** $p < 0.05$, *** $p < 0.01$. Clustered residuals.

not statistically different in comparison to the remaining institutions in our sample, conditional on the other explanatory variables (the specification is otherwise the same as with Model 3 of Table 2). Similarly for Model 2 in which SIFIs have been removed from the sample.

Second, we investigate whether our results are driven by banks that became government-owned as a result of the crisis. It could be argued that such banks may have been more conservative due to their change in ownership. We have constructed a list of government-owned institutions using the statistical work of Véron (2017) who combines a number of sources. Our focus is on central governments, as there are banks which were traditionally owned by regional governments prior to the crisis. In addition, we took into consideration the ownership of the parent when labelling banks as government-owned i.e. the subsidiaries were indicated as government-owned when the parent was owned by the government.⁷ The estimated coefficients for Model 3 (where a dummy GOV for government-owned banks has been added) and Model 4 (where the government-owned banks have been removed from the sample) feature also a negative and statistically significant coefficient for banks' size.

Finally, Models 5 and 6 distinguish between banks headquartered in distress and non-distress countries. We define the set of distress-countries as comprising all countries that received international financial assistance during the European financial crisis i.e. Greece, Ireland, Portugal, Cyprus and Spain.⁸ The negative size effect remains statistically significant when an indicator ND for the non-distress countries is included (Model 5). Therefore, our results are not driven by the risk reduction effort of the distressed countries to reduce their large stock of NPLs which was left as a legacy of the turbulent early years of 2010's. Similar results are obtained when the banks headquartered in distress countries are removed from the sample.

⁷We also experimented with a narrower definition of government-owned banks, focusing only on the direct owner. This approach also yielded similar results.

⁸We also experimented with including Italy and Slovenia in the set of distressed countries, as these countries faced severe financial stress even if they did not request financial support. This modification did not affect the results.

5. Conclusions

Overall, our results show that, in the aftermath of the euro area financial crisis and the setting up of a supranational supervisor, banks' size is negatively related to risk-taking. On average, larger banks tend to reduce their NPL ratios more compared to smaller banks after controlling for other country- and bank-specific factors. A supranational supervisor seems to be effective in reducing banks' risk-taking due to enhanced organisational capacity rather than through incentive alignment of banks with the supervisors. Future research could analyse whether risk reduction can be observed also in other dimensions e.g. as regards the extent of the home bias in the banks' sovereign bond holdings.

References

- Altavilla C., Boucinha M., Peydró J., Smets F., 2020. Banking supervision, monetary policy and risk-taking. ECB WP Series 2349
- Farhi E., Tirole J., 2018. Deadly Embrace: Sovereign and Financial Balance Sheets Doom Loops. *Review of Economic Studies* 85, 1781-1823
- Gandhi P., Lustig H., 2015. Size anomalies in U.S. bank stock returns. *Journal of Finance* 70, 733-768
- Véron N., 2017. The governance and ownership of significant euro-area banks. Bruegel Policy Contribution 14, May 2017

Acknowledgements

We thank the participants in the 2019 workshop on Bank Business Models (Cass Business School) and 2020 European Economic Association conference for their comments.

Matteo Farnè

University of Bologna, Bologna, Italy; email: matteo.farne@unibo.it

Angelos Vouldis

European Central Bank, Frankfurt am Main, Germany; email: angelos.vouldis@ecb.europa.eu

© European Central Bank, 2021

Postal address 60640 Frankfurt am Main, Germany

Telephone +49 69 1344 0

Website www.ecb.europa.eu

All rights reserved. Any reproduction, publication and reprint in the form of a different publication, whether printed or produced electronically, in whole or in part, is permitted only with the explicit written authorisation of the ECB or the authors.

This paper can be downloaded without charge from www.ecb.europa.eu, from the [Social Science Research Network electronic library](#) or from [RePEc: Research Papers in Economics](#). Information on all of the papers published in the ECB Working Paper Series can be found on the [ECB's website](#).

PDF

ISBN 978-92-899-4818-0

ISSN 1725-2806

doi:10.2866/85240

QB-AR-21-086-EN-N