

Ferreira, Moniki; Cunha, Alexandre dos Santos; Lucio, Paulo

Article

Short-term forecast of wind speed through mathematical models

Energy Reports

Provided in Cooperation with:

Elsevier

Suggested Citation: Ferreira, Moniki; Cunha, Alexandre dos Santos; Lucio, Paulo (2019) : Short-term forecast of wind speed through mathematical models, Energy Reports, ISSN 2352-4847, Elsevier, Amsterdam, Vol. 5, pp. 1172-1184, <https://doi.org/10.1016/j.egyr.2019.05.007>

This Version is available at:

<https://hdl.handle.net/10419/243661>

Standard-Nutzungsbedingungen:

Die Dokumente auf EconStor dürfen zu eigenen wissenschaftlichen Zwecken und zum Privatgebrauch gespeichert und kopiert werden.

Sie dürfen die Dokumente nicht für öffentliche oder kommerzielle Zwecke vervielfältigen, öffentlich ausstellen, öffentlich zugänglich machen, vertreiben oder anderweitig nutzen.

Sofern die Verfasser die Dokumente unter Open-Content-Lizenzen (insbesondere CC-Lizenzen) zur Verfügung gestellt haben sollten, gelten abweichend von diesen Nutzungsbedingungen die in der dort genannten Lizenz gewährten Nutzungsrechte.

Terms of use:

Documents in EconStor may be saved and copied for your personal and scholarly purposes.

You are not to copy documents for public or commercial purposes, to exhibit the documents publicly, to make them publicly available on the internet, or to distribute or otherwise use the documents in public.

If the documents have been made available under an Open Content Licence (especially Creative Commons Licences), you may exercise further usage rights as specified in the indicated licence.



<https://creativecommons.org/licenses/by-nc-nd/4.0/>



Research paper

Short-term forecast of wind speed through mathematical models

Moniki Ferreira^a, Alexandre Santos^b, Paulo Lucio^{c,*}^a Postgraduate Program in Climate Sciences, Department of Atmospheric Sciences and Climate, Federal University of Rio Grande do Norte, Brazil^b Applied Research Unit, Centre for Gas Technology and Renewable Energy (UNPA/CTGAS-ER), Natal, Brazil^c Department of Atmospheric Sciences and Climate, Federal University of Rio Grande do Norte, Brazil

ARTICLE INFO

Article history:

Received 9 October 2018

Received in revised form 4 January 2019

Accepted 27 May 2019

Available online xxxx

Keywords:

Wind speed

Forecasting

ANN model

Hybrid model

ABSTRACT

The predictability of wind information in a given location is essential for the evaluation of a wind power project. Predicting wind speed accurately improves the planning of wind power generation, reducing costs and improving the use of resources. This paper seeks to predict the mean hourly wind speed in anemometric towers (at a height of 50 m) at two locations: a coastal region and one with complex terrain characteristics. To this end, the Holt–Winters (HW), Artificial Neural Networks (ANN) and Hybrid time-series models were used. Observational data evaluated by the Modern-Era Retrospective analysis for Research and Applications-Version 2 (MERRA-2) reanalysis at the same height of the towers. The results show that the hybrid model had a better performance in relation to the others, including when compared to the evaluation with MERRA-2. As such, the hybrid models are a good method to forecast wind speed data for wind generation.

© 2019 Published by Elsevier Ltd. This is an open access article under the CC BY-NC-ND license (<http://creativecommons.org/licenses/by-nc-nd/4.0/>).

1. Introduction

In recent years researches from several nations have warmed of the possible consequences of global warming across the planet, encouraging the use of font's renewable energy resources, for examples wind energy, is one of the strategies used to mitigate greenhouse gases from human activities in the atmosphere (Fontoura et al., 2015; Crate and Nuttall, 2016). The wind energy capacity installed at the end of 2016 in Brazil was approximately of 11 GW, with estimate for 2020 will have around 18 GW of installed wind energy capacity, which will contribute to the country's energy security (Camelo et al., 2018b).

Most research in the field of wind is being applied to wind power (conversion of kinetic energy into electrical energy) for the planning and development of wind farms (set of wind turbines) (Emeis, 2013). Wind power is a renewable and clean source of energy, available with variable behavior in each part of the world because of the different climatic and geographical characteristics of each region (Emeis, 2013). Wind is caused by solar energy hitting the earth's surface and atmosphere, which together with the planetary rotation results in an uneven heating of the atmosphere and, consequently, differentials in atmospheric pressures (Pinto, 2013).

The predictability of wind information at a particular location is essential for the assessment of a wind energy exploitation

project. In this context, accurately predicting the wind speed means improving the planning of wind power generating facilities, thus reducing mistakes and economic costs (Emeis, 2013).

The development of Artificial Intelligence (AI) with various methods for forecast wind speed was also created. The methods were: Artificial Neural Network (ANN); adaptive neuro-fuzzy inference system (ANFIS); fuzz logic methods; support vector machine (SVM), ν -support vector machine (ν -SVM) and neuro-fuzzy network. Accurate forecasts of short-term wind speed and generation of energy are essential for the effective operation of a wind farm. The short-term forecast of wind speed is also critical to the operation of wind turbines so that dynamic controls can be accomplished to increase the energy conversion efficiency (Pinto, 2013). Chang et al. (2017) proposed a method using improved radial basis function neural network-based model with an error feedback scheme (IRBFNN-EF) for forecasting short-term wind speed and power of a wind farm. Results showed that the proposed model IRBFNN-EF leads to better accuracy for forecasting wind speed and wind power, compared with those obtained by four other artificial neural network-based forecasting methods. Camelo et al. (2018a) compared the performances of autoregressive integrated moving average (ARIMA), Auto-Regressive Integrated Moving Average with Exogenous (ARIMAX), ANN and hybrids (ARIMA+ANN and ARIMAX+ANN) models in wind speed predictions in the Brazilian Northeast region (Fortaleza, Natal and Paraiba). The hybrid model proposed in this study was efficient in reducing statistical errors, especially when compared to traditional models (ARIMA, ARIMAX and ANN), with lowest percentage error between the observed and the adjusted series,

* Corresponding author.

E-mail addresses: monikidara@gmail.com (M. Ferreira), alexandretorres@ctgas-er.com.br (A. Santos), pslucio@ccet.ufrn.br (P. Lucio).

of only about 8%. The literature appears to agree that wind speed short-term forecasts to a few hours of prediction horizon for which data-driven statistical models are known to be more effective than the physics-based numerical weather prediction models (Ezzat et al., 2018; Pourhabib et al., 2016).

Some recent studies have been developed about the short-term predictability of wind speeds with the use of dynamic, mathematical and statistical tools using Numerical Weather Prediction (NWP) (Cheng et al., 2017; Martinez-Arellano and Nolle, 2013), stochastic (Monteiro and Souza, 2013) and hybrid (Camelo et al., 2018b,a; Krishnaveny et al., 2017) models. Ramos et al. (2013) investigated the prediction of hourly wind speeds at 30 m above ground with the atmospheric model WRF (Weather Research Forecasting) for the State of Alagoas-Brazil. The difficulties encountered in this study included: (i) forecasting extreme values; (ii) minimums and maximums and (iii) forecasts in rainy periods. In the study, the same difficulties were also found for the forecast of wind speed for wind power generation through the outputs of mesoscale weather models in the Northeast Region of Brazil (NEB). Other feasible wind speed studies can be found in Ferreira et al. (2017), which proposed methods to fill gaps in wind speed data – located in Rio Grande do Norte (Brazilian Northeast region) – reducing the propagation of residuals in the results. Monteiro and Souza (2013) studied and developed forecasting models, of short-term wind speed. The methods of exponential smoothing, in particular the method Holt–Winters (stochastic model) and its variations, are suitable in this context because of its high adaptability and robustness for apply the methodology in the wind speed data anemometric tower in city of São João do Cariri (State of Paraíba-Brazil), which will be compared with models: persistence and neuro-fuzz (ANFIS). Results showed that the proposed Holt–Winters additive model were satisfactory, compared with those obtained by two tested models (persistence and neuro-fuzzy) in the same wind speed time-series for short-term forecasting. Hu et al. (2015) proposed a hybrid model that consists of the EWT (Empirical Wavelet Transform), CSA (Coupled Simulated Annealing) and LSSVM (Least Square Support Vector Machine) for enhancing the accuracy of short-term wind speed forecasting. Results suggest that the developed forecasting method better compared with those other models, which indicates that the hybrid model exhibits stronger forecasting ability.

The spatial and temporal variability of the wind is difficult to simulate with precision. This is a result of the heterogeneity of regions regarding such factors as: surface roughness, vegetation variability and soil use and occupation (Brower, 2012). In addition, several meteorological and climatic phenomena may influence the atmospheric dynamics of the NEB region (Santos et al., 2016). Systematic errors occur with a certain frequency in the simulations of dynamic models, which means models with greater accuracy need to be developed for the short-term wind speed forecasting of a particular site (Operador Nacional do Sistema Elétrico (ONS), 2017). Zhao et al. (2012) presented a system consists of a numerical weather prediction model and ANN of a novel day-ahead wind power forecasting in China, in addition Kalman filter integrated to reduce the systematic errors in wind speed from WRF and enhance the forecasting accuracy. Results showed the Normalized Root Mean Square Error (NRMSE) has a month average value of 16.47%, which is an acceptable error margin. To reduce these systematic errors in the outputs of an NWP, lots of approaches have been derived from model output statistics (MOS) based on statistical methods (Zhao et al., 2012). This type of statistical relationship could be modeled by various methods for wind speed variable, including the ANNs (Chang et al., 2017; Crate and Nuttall, 2016; Souza, 2014), Kalman filter (Zhao et al., 2012), ARIMA (Camelo et al., 2018a) and hybrid

method (Krishnaveny et al., 2017; Hu et al., 2015; Jiang et al., 2017; Tatinati and Veluvolu, 2013).

Wind energy is considered to be technically feasible when its power density is greater than or equal to 500 W/m², for a height equal to or exceeding 50 m above the ground, which requires a minimum wind speed between 7–8 m/s. Only 13% of the earth's surface has average wind speeds greater than or equal to 7 m/s at the height of 50 m above ground (Agência Nacional de Energia Elétrica (Org), 2005; Wu and Hong, 2007).

In this context, this study seeks to present different methodologies that may assist in this regard, while at the same time proposing a model that has less error in relation to the dynamic models (more systematic errors) in the short term wind speed forecasts at a height of 50 m above ground in two localities with different geographic and climatic characteristics in the NEB region. One of these locations can be found in the heartland of the continent with a complex terrain (Anemometric Tower 1 - TA01) and the other is located in the coastal region with a flat terrain (Anemometric Tower 2 - TA02). The objective of this study is to present mathematical and statistical models as suitable tools for the forecasting of wind speed variability during the diurnal cycle (24 h), which could be used as an early warning system for wind power generation in the same time scale.

The content of this paper is organized as follows: Section 1 reviews the current status of wind speed variable for short-term forecasting with applicability in wind power; Section 2 describes the regions of study, dataset and theory of the Holt–Winters method (stochastic process), ANN, hybrid model and its working principles; Section 3 analyzes the errors of the short-term predicted results; Section 4 description of discussion to explore the significance of the study; Section 5 the conclusions of the study.

2. Proposed forecasting approach methodology

In this section we comment on the data of the regions of study, as well as on the forecasting models. The measurement data is used to identify the accuracy of the forecast calculated by the mathematical models, by comparing the output of each model to the time series observed. All the calculations produced in this paper as well as the graphical part were executed with the software R (The R Project for statistical computing, available online: <https://www.r-project.org/> and accessed on 10 August 2017). R is an open source programming language and software environment, commonly used in statistical computing and graphics. R is free and open source, unlike its rivals such as SAS or Matlab. This is extremely beneficial for statistical programming languages and environments.

2.1. Region of study and dataset

The measured wind data were obtained from the TA-01 and TA-02 towers, the first located in Belo Jardim – state of Pernambuco, and the second in Camocim – state of Ceará, all located in the Northeast of Brazil, as shown Fig. 1. The Belo Jardim data were obtained through the Sistema de Organização Nacional de dados Ambientais (System for the National Organization of Environmental Data, SONDA, Available online: <http://sonda.ccst.inpe.br/> and accessed on 22 January 2018) and the Camocim data through the Infrastructure department of the state of Ceará (SEINFRA/CE, Available: www.seinfra.ce.gov.br/ and accessed on 16 February 2016).

The anemometric sensors were installed at heights of 25 and 50 m from the ground, taking measurements every 10 min, within the period from October 01 to December 31, 2004, selected for this study in both locations. The wind speed and direction sensor of the TA-01 tower is the Wind Monitor-MA model 05106 (R. M.

Young Company) - it takes measurements of horizontal speeds between 0 to 60 m/s and resists gusts of up to 100 m/s. For the TA-02 tower, the data was recorded with a computerized anemometer; model NRG 9200Plus, manufactured by NRG Systems Inc. The temporal series were integrated in an interval of 1 h at a height of 50 m above ground level – agl (TA-01 and TA-02) to validate the models evaluated in this study, without missing values or inconsistencies in database. The anemometric data obtained by the SONDA-INPE and SEINFRA-CE networks were submitted to a quality control, which criteria follow international standards of The Meteorological Resource Center (WebMET) and National Renewable Energy Laboratory (NREL). [Table 1](#) presents the criteria used to qualify wind speed data in this study.

[Table 2](#) presents the local characteristics and the geographical coordinates of the used wind towers.

2.2. Methods

The forecasts for 24 h were made with the Holt–Winters, Artificial Neural Networks (ANN) and hybrid models, applying them to the temporal series of the TA-01 and TA-02 towers with the use of the R software. The forecasting methodology consisted in making a division in the series in three steps: (i) the first step used 30 days of data observed in the period from October 01 to 30, 2004, to predict the daily wind speed cycle for the day of October 31, 2004; (ii) The second step used 60 days of data observed in the period from October 01 to November 29, 2004, to predict the day of November 30, 2004; and (iii) the third and last step used 90 days of data observed in the period from October 01 to December 29, 2004, to forecast the day of December 30, 2004. According to the period of days applied for the time series training of each short-term wind speed forecasts model, previous studies confirmed that using a long-term time series of wind speed measurements is not necessarily useful, as apparent by the low time lag order used in the time series models ([Pourhabib et al., 2016](#)).

There are numerous techniques to forecast wind speeds, such as the NWP methods, statistical methods, ANN and hybrid approaches. The NWP methods may be the most accurate technique for forecasting in the short term. In general, however, statistical methods, ANNs or hybrid approaches have smaller errors in short term forecasts ([Tatinati and Veluvolu, 2013](#)).

2.2.1. Holt–Winters model

In the year of 1957, Holt expanded the simple exponential smoothing model to deal with the data that showed a linear tendency, thus making predictions that were more accurate than those performed ([Holt, 1957](#)). In year 1960, Winters extended the Holt model, which included a new equation that predicts the behavior of the data's seasonal component, transforming at Holt–Winters model ([Camelo et al., 2018b](#); [Winters, 1960](#)).

Holt–Winters is one of the most used methods for the prediction of meteorological variables due to its simplicity, low operating costs, good accuracy and ability to make automatic adjustments and quick changes to the temporal series. This model has the following smoothing coefficients: level, linear trend, seasonal factor and an unpredictable residual element called random error. The exponential adjustment method, also called “exponential smoothing”, is used for the estimation of these factors. The name “smoothing” comes from the fact that after its reduction to structural components, a series will have a smaller number of abrupt variations, revealing a smoother behavior. The term “exponential” is used because the smoothing processes involve the weighted arithmetic mean, where the weights decrease exponentially as you progress into the past ([Monteiro and Souza, 2013](#)).

The prediction equations are allocated in two ways: additively or multiplicatively, according to the nature of the series. To calculate the forecasts of future values of a series, the level and the trend of the series in the current period have to be estimated, just as the seasonal factor values corresponding to the last period of seasonality. These estimates are performed through the following equations:

Additive Seasonality – The equation referring to the exponential smoothing method with seasonality and linear tendency, with seasonal component being treated in an additive way, is represented as follows:

$$y_{t+h} = (a_t + h.b_t) + s_{(t-p+1+(h-1)mod p)} \quad (1)$$

where: a_t is level of the series, whose unit in this particular work is of m/s, shows how the expected time series evolves over time; b_t is tendency, unit here is m/s, this relates to the fact that the predicted time series can have increasing or decreasing motions in different time intervals; s_t is seasonal component, represented here by m/s, which is related to the fact that the expected time series has cyclical patterns of variation that repeat at relatively constant time intervals, h is forecast for period and p is seasonal period with $h = 1, 2, 3, \dots, n$ (horizontal forecast). where a_t , b_t and s_t are given by:

$$a_t = \alpha (y_t - s_{t-p}) + (1 - \alpha)(a_{t-1} + b_{t-1}) \quad (2)$$

$$b_t = \beta (a_t - a_{t-1}) + (1 - \beta)b_{t-1} \quad (3)$$

$$s_t = \gamma (y_t - a_t) + (1 - \gamma)s_{t-p} \quad (4)$$

Multiplicative Seasonality: – Is similar to the Holt–Winters additive. Holt–Winters Multiplicative method also calculates exponentially smoothed values for level, trend, and seasonal adjustment to the forecast. This method is best for data with trend and with seasonality that increases over time. It results in a curved forecast that reproduces the seasonal changes in the data. The multiplicative Holt–Winters prediction function is:

$$y_{t+h} = (a_t + h.b_t)s_{(t-p+1+(h-1)mod p)} \quad (5)$$

where a_t , b_t and s_t are given by:

$$a_t = \alpha \left(\frac{y_t}{s_{t-p}} \right) + (1 - \alpha)(a_{t-1} + b_{t-1}) \quad (6)$$

$$b_t = \beta (a_t - a_{t-1}) + (1 - \beta)b_{t-1} \quad (7)$$

$$s_t = \gamma \left(\frac{y_t}{a_t} \right) + (1 - \gamma)s_{t-p} \quad (8)$$

where α , β and γ are damping constants. At the end of each period t , the estimate of the “step” (trend) and the seasonal component are given by b_t and s_t , respectively. The level component, on the other hand, is denoted by a_t .

The additive Holt–Winters model was used in the Camocim/CE data for the temporal series of 30, 60 and 90 days and the Belo Jardim/PE data for the series of 30 and 60 days. For the Belo Jardim dataset with 90 days, therefore, the multiplicative Holt–Winters model was used, since the additive prediction produced negative values.

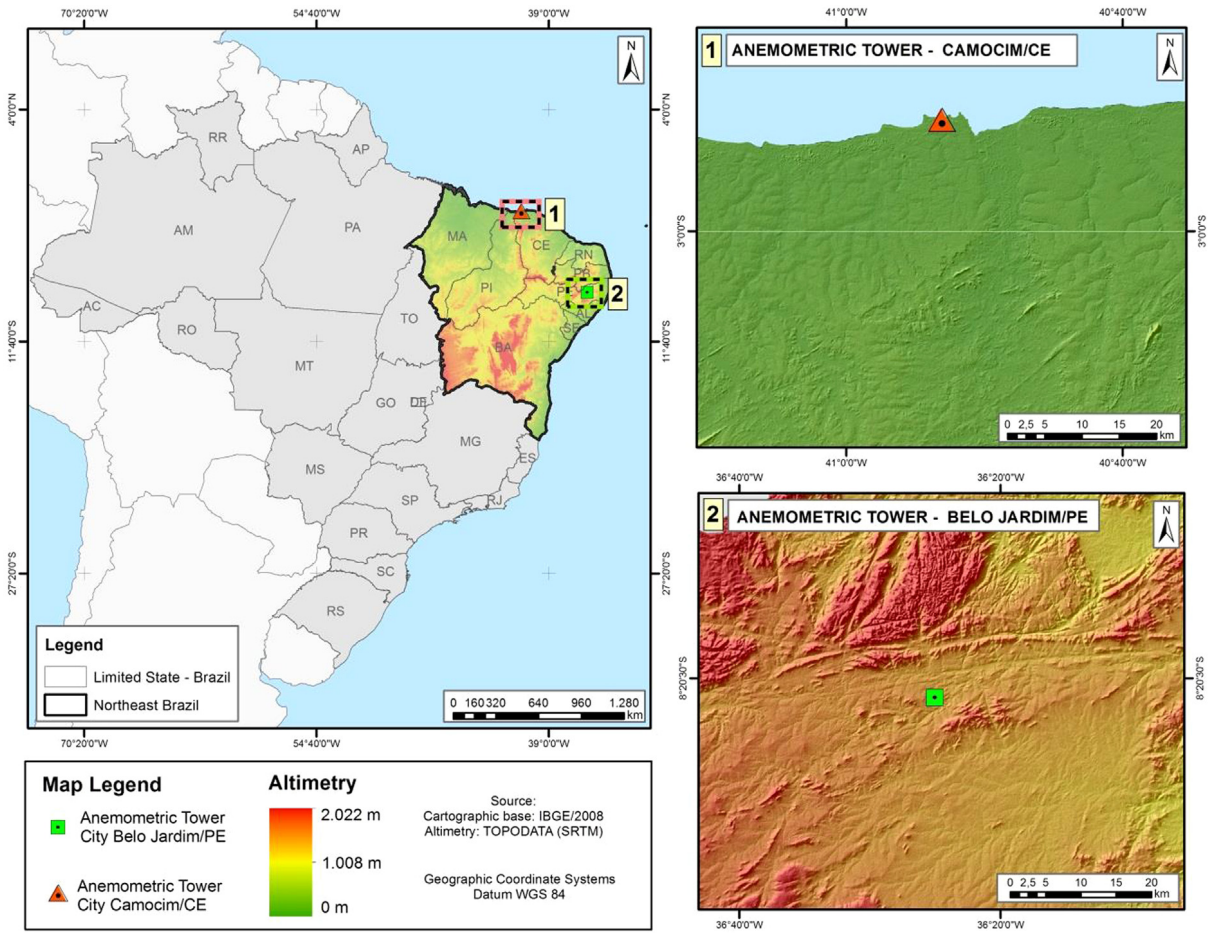


Fig. 1. Location of each anemometric tower (TA) used in the presented study in Northeast Brazil.

Table 1

Criteria applied to wind speed for anemometric towers data.

Number	Criteria/Values (m.s ⁻¹)	Description
1	Minimum (V) > 0	Inferior limit
2	Maximum (V) < 25	Upper limit
3	Maximum [V (Δ ₃)] – Minimum [V (Δ ₃)] > 0.1	Variability in 3 h
4	Maximum [V (Δ ₂₄)] – Minimum [V (Δ ₂₄)] > 0.5	Variability in 24 h
5	V (Δ ₁) < 5.0	Variability in 1 h
6	0 < σ < 3	Standard deviation between 0 and 3 m.s ⁻¹
7	offset < Average (V) < 25	Average offset and 25 m.s ⁻¹

Table 2

Local characteristics and geographical location of the wind towers.

City/State	Altitude (m)	Terrain	Vegetation	Geographic coordinates
Belo Jardim/PE	718	Plateau	Caatinga	8°22'S/36°25'W
Camocim/CE	8	Lowland	Caatinga	2°51'56,7°S/40°53'09,2°W

2.2.2. Artificial neural network model

Artificial Neural Networks (ANNs) are computational models based on the neural structure of intelligent organisms (Camelo et al., 2018a). Their behavior emerges from the interactions between processing units, which compute certain mathematical (usually non-linear) functions. These processing neurons can be distributed in one or more layers and are linked by a large number of connections, which store the knowledge in the model and weigh each input received over the network.

An ANN can be thought of as a network of “neurons” organized in layers. The predictors (or inputs) form the bottom layer, and the forecasts (or outputs) form the top layer. There may be intermediate layers that contain “hidden neurons”. The predictors (or

inputs y_{t+i}) form the lower layer, and the predictions (or outputs y_{t+h}) form the upper layer. There may be intermediate layers containing hidden neurons (Camelo et al., 2018a). Fig. 2 shows an example of an ANN structure with 4 inputs and 1 hidden layer. The coefficients related to the predictors are called “weights” and commonly represented by w_i . The weights are selected through a “learning algorithm”. This study used the backpropagation algorithm, which is based on the backpropagation of errors to adjust the weights of the intermediate layers, which minimizes the error between the predicted and observed temporal series (Brower, 2012).

In terms of use of the ANN by software R, the *forecast* package also allows for this possibility through the use of the function

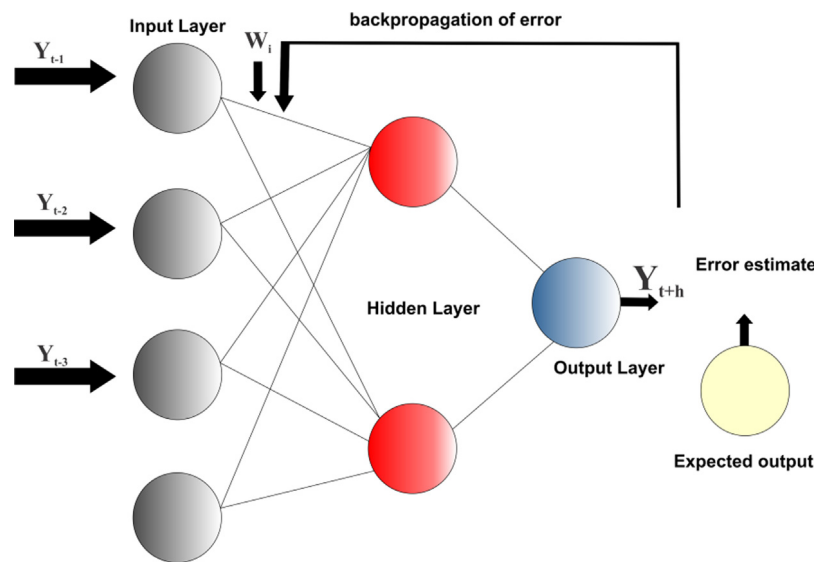


Fig. 2. Example of an ANN structure with 4 inputs layers, 1 hidden layer and 1 output layer.

nnetar() (Holt, 1957). This study used R's *forecast* package based on the *nnetar()* function, which in turn is symbolized by notation $NNAR(p, P, k)_m$, where p represents lagged inputs (the quantity of inputs), for example, $y_{t-1}, y_{t-2}, y_{t-3}, \dots, y_{t-p}, y_{t-m}, y_{t-2m}, y_{t-pm}$, refers to seasonal data, k represents the number of neurons in the hidden layer and P refers to seasonal data. This function $NNAR(p, P, k)_m$ model based on observed wind speed data, if the values of p and P are not specified, they are automatically selected (Camelo et al., 2018b).

The number of network to fit with different random starting weights was equivalent to 20 and is based on the backpropagation learning algorithm for dynamic processing. These are then averaged when producing forecasts. For example, $NNAR(9,1,4)_{24}$ model has inputs $y_{t-1}, y_{t-2}, y_{t-3}, \dots$, and y_{t-24} , and four neurons in the hidden layer.

2.2.3. Hybrid model

The hybrid model used the *hybridModel(y_t, models)* function of R's *forecastHybrid* package, with multiple adjustments of the individual models to generate ensemble forecasts. Where y_t is a numeric vector or time series (this work was wind speed time series) and models (k it is a combination of model types) by default, the models forecasts generated are from the *auto.arima()*, *ets()*, *thetam()*, *nnetar()*, *stlm()*, and *tbats()* functions, can be combined with equal weights, weights based on in-sample errors (Winters, 1960). Cross validation for time series data and user-supplied models and forecasting functions is also supported to evaluate model accuracy.

The default setting of this package, which works well in most cases, allows for the combination of two to five models through the following arguments:

- *n.args*: adjusts a univariate neural network model using the *nnetar()* function by forecast package (Khandakar and Hyndman, 2008);
- *a.args*: fit best ARIMA model to univariate time series using the *auto.arima()* function by *forecast* package. The function conducts a search over possible model within the order constraints provided (Khandakar and Hyndman, 2008).
- *s.args*: is based on the *stlm* model, which combines the forecast with the adjusted seasonal decomposition in the series. The *stlm()* function takes a time series y , applies an STL decomposition, and models the seasonally adjusted data

using the model passed or specified using method. It returns an object that includes the original STL decomposition and a time series model fitted to the seasonally adjusted data (Khandakar and Hyndman, 2008);

- *t.args*: the *tbats()* function couples the exponential smoothing model with the Box–Cox transformation, ARMA (Autoregressive Moving Average) and the seasonal and trend components (Shaub and Ellis, 2018).
- *e.args*: Exponential smoothing state space model. Based on the classification of methods as described in Hyndman et al. (2008). The only required argument for *ets()* is the time series (Khandakar and Hyndman, 2008). The model is chosen automatically if not specified.

In this work, three “*nst*” models were adjusted for wind speed forecasting short-term, which were coupled with the arguments: *n.args*, *s.args* and *t.args*. After adjustment of the models by *hybridModel()* function used the *forecast()* function with h (horizontal forecast) equal to 24 (24 h) for short-term forecast of wind speed at each time series proposed in this study.

2.2.4. Modern-era retrospective analysis for research and applications-version 2 reanalysis dataset

The MERRA-2 reanalysis is generated by combining the data assimilation techniques of the models that use dynamic numerical prediction models with the data observed by the global meteorological observation network. The MERRA-2 reanalysis was introduced in the study to evaluate its results in relation to the data observed by the wind towers and predicted by the statistical and mathematical models proposed in this study. The MERRA-2 reanalysis is a freely-available product through the MDISC (Modeling and Assimilation Data and Information Services Center) portal and it is an update to the MERRA project (Global Modeling and Assimilation Office (GMAO), 2016).

The wind speed data at 50 m agl of MERRA-2 were obtained for the period from October 01 to December 31, 2004 to compare with predicted data from the mathematical and statistical models and observed data (TA-01 and TA-02).

2.3. Evaluation of the models

The evaluation of the performance of the forecasting techniques was done through the Pearson correlation coefficient (r), the Mean Absolute Error (MAE) and the Root Mean Square Error (RMSE) (Wilks, 2011).

Table 3

Statistical description of wind speed for the 3 months sampling period of the available data of Belo Jardim(TA-01).

Possible data points	Valid data points	Recovery rate (%)	Mean (m/s)	Median (m/s)	Minimum (m/s)	Maximum (m/s)	Standard deviation
13.249	13.249	100	5.780	5.730	0.250	11.650	1.725

Table 4

Statistical description of wind speed for the 3 months sampling period of the available data of Camocim (TA-02).

Possible data points	Valid data points	Recovery rate (%)	Mean (m/s)	Median (m/s)	Minimum (m/s)	Maximum (m/s)	Standard deviation
13.249	13.249	100	7.771	7.747	1.789	14.579	2.773

2.3.1. Pearson correlation coefficient

The Pearson Correlation Coefficient is calculated mathematically thus:

$$r = \frac{\sum_{i=1}^n (y_i - \bar{y})(x_i - \bar{x})}{\left(\sqrt{\sum_{i=1}^n y_i - \bar{y}}\right) \left(\sqrt{\sum_{i=1}^n x_i - \bar{x}}\right)} \tag{9}$$

where

- **r** represents the linear correlation coefficient for a sample;
- **n** is number of paired values considered;
- **y_i** is prediction value (wind speed - m/s);
- **ȳ** is mean of prediction value;
- **x_i** is observed value (wind speed - m/s);
- **x̄** is mean of observed value.

The magnitude of the Pearson correlation coefficient ranges between the values of -1 and 1. This magnitude measures the “intensity” of the relationship between two variables. As such, a coefficient equal to 0.6 has a greater degree of linear dependence than one equal to 0.3. A coefficient with the value of zero indicates the total absence of a linear relationship between the variables and coefficients with the values 1 and -1 suggest a perfect linear dependence. It is therefore used to measure the correlation between the observed and modeled data in order to obtain the degree of linear relationship between both.

2.3.2. Mean absolute error

To evaluate the degree of dispersion between modeled (**y_i**) and observed (**x_i**) values, they are used as indexes that provide the performance of the model in relation to the observation. The closer the value is to zero, the greater the accuracy of the model and, consequently, the lower its error. The mean absolute error is a measure of the forecasting skill between the observed and predicted series. It is given as a module and is represented mathematically by:

$$MAE = \frac{1}{n} \sum_{i=1}^n |y_i - x_i| \tag{10}$$

2.3.3. Root mean square error

The RMSE was another error index used. It represents the difference between the prediction (**y_i**) and the observed value (**x_i**), presenting error values in the same dimensions as the analyzed variable (which in this case is m/s). It can be mathematically defined by:

$$RMSE = \sqrt{\frac{\sum_{i=1}^n (y_i - x_i)^2}{n}} \tag{11}$$

3. Case study and results

3.1. Available observational data

These placed of study have anemometric towers in Camocim-Ceará and Belo Jardim-Pernambuco, located in Brazil. Fig. 1 shows

Table 5

Residues of the models and the reanalysis with the observations (TA-01) for 30 days of forecasting, in m/s.

	Holt–Winters	ANN	Hybrid	MERRA-2
RMSE	1.14	1.73	0.74	2.07
MAE	0.90	1.35	0.62	1.53
r	0.73	0.46	0.81	0.07

the topography of Camocim (coastal region) and Belo Jardim (complex topography) and the location of the study site. The dataset used in paper was collected from an anemometer tower, which measuring height is 50 m agl. The available data are from 00:00, 2004-10-01 to 23:50, 2004-12-31, with a time interval of 10 min (Figs. 3 and 5). Tables 3 and 4 presented the basic statistical description of the available data. Figs. 4 and 6 displays the frequencies distributions of the available data and the probability distribution function by the two-parameter Weibull distribution *k* and *c*, where are of shape and scale parameters, respectively. Applying the maximum likelihood method (ML), the shape and scale parameters are 3.702/6.406 m/s and 3.096/11.337 m/s for TA-01 (Belo Jardim) and TA-02 (Camocim), respectively.

3.2. Quantitative and qualitative analysis of the 24-hour forecast

3.2.1. Based on 30 days of data

Figs. 7 and 8 present the forecast for the day 31/10/2004 using 30 days of observations (01/10/2004 to 30/10/2004) for the locations of the TA-01 and TA-02 towers, respectively. The Holt–Winters, Artificial Neural Network and Hybrid models and the MERRA-2 reanalysis are shown in Figs. 3 and 4 along with the observations.

For the TA-01 tower (Fig. 7), it is possible to identify that the models follow the diurnal behavior of the observations, but they do not adequately capture the extreme values for minimum variation at certain times, showing a smoother pattern. The MERRA-2 reanalysis overestimates the observations between the 2 h to 19 h range and at other times it fits with the observations. The ANN model underestimates the first hours and overestimates results from 5 h to 19 h. The Holt–Winters model approximates the observed data after 7 h. The hybrid model was the one with the best fit with the observations in the whole series, satisfactorily capturing the wind speed variability during the diurnal cycle.

Table 5 shows the forecast skills between the models and reanalysis with observations for TA-01. The best results, according to the errors indexes, are presented by the hybrid model.

For the TA-02 tower (Fig. 8), one can see that the models can represent the behavior of the observations, unlike the MERRA-2 reanalysis. The models still have difficulty capturing the extreme values (minimum and maximum), except for the ANN and hybrid models, but, in general, the diurnal variability is well represented. The Holt–Winters model underestimates most observations, approaching them in the first hours and also near 6:00 and 18:00 h. The ANN model is able to identify extreme variability in the

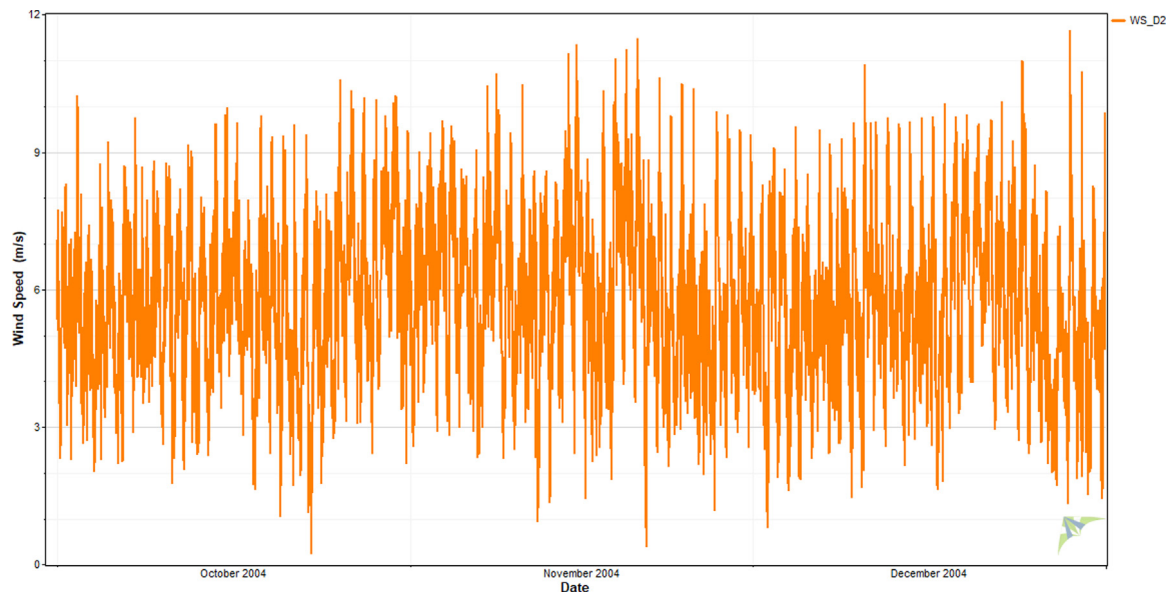


Fig. 3. Time series of wind speed (interval of 10 min) measurements by the anemometer at a height of 50 m agl of TA-01 (Belo Jardim) for the period from 01/10/2004 to 31/12/2004.

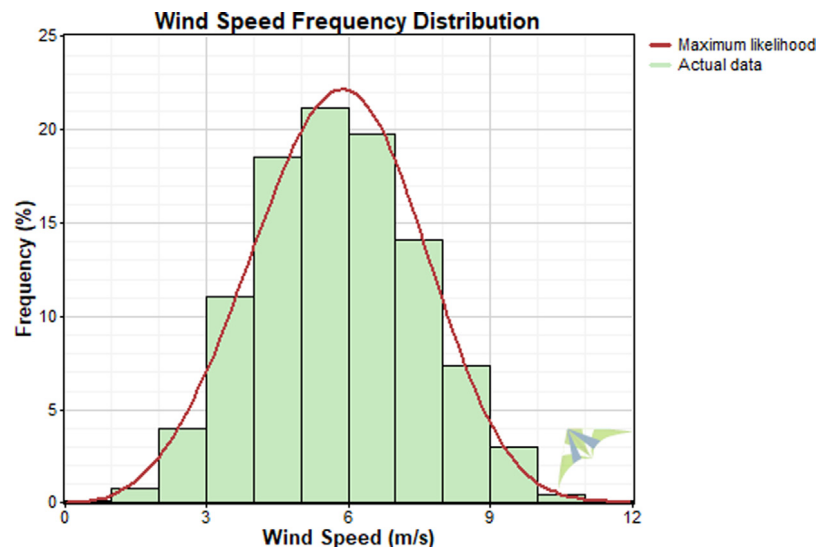


Fig. 4. Histogram derived from the estimate Weibull probability density function (PDF) by maximum likelihood method compared with the histogram of the wind speed data (bar diagram) for the period of 3 months at wind site Belo Jardim (TA-01). Applying the ML method, the shape and scale parameters are $k = 3.702$ and $c = 6.406$ m/s.

range of 6:00 and 9:00am. In the remaining time, the ANN model can track the variability of the wind for the period of one day. The hybrid model fits the observations properly, capturing the extreme value signals in the predicted range of 6 h to 9 h.

Table 6 shows the forecast skills between the models and the MERRA-2 reanalysis data with the observations. The Pearson correlation coefficient reveals that the values had excellent correlations (0.96). The MERRA-2 data had a low correlation coefficient (-0.10). The residuals were reasonable, with the result of the hybrid model having the lowest errors. The MERRA-2 reanalysis, with low correlation, obtained larger errors (RMSE: 3.9 /s and MAE: 3.25 m/s).

3.2.2. Based on 60 days of data

Figs. 9 and 10 present the forecast for the day 31/11/2004 using 60 days of the temporal series (01/10/2004 to 29/11/2004) for the measurements of the TA-01 and TA-02 towers, respectively.

Table 6

Residuals of the models and the reanalysis with the observations (TA-02) for 30 days of forecasting, in m/s.

	Holt–Winters	ANN	Hybrid	MERRA-2
RMSE	1.06	1.07	1.00	3.90
MAE	0.88	0.90	0.84	3.25
r	0.96	0.96	0.96	-0.10

For the TA-02 tower, the ANN model can be seen to follow the variability of the observed wind speed data for up to 8 predicted hours. The model is unable to capture the small wind speed variations that occur during the day, smoothing its results. The stochastic Holt–Winters model overestimates after 11 predicted hours, but it follows the trends of the observations until 18 predicted hours, capturing the variability of wind. The hybrid model, therefore, showed a smoothed pattern of the predicted

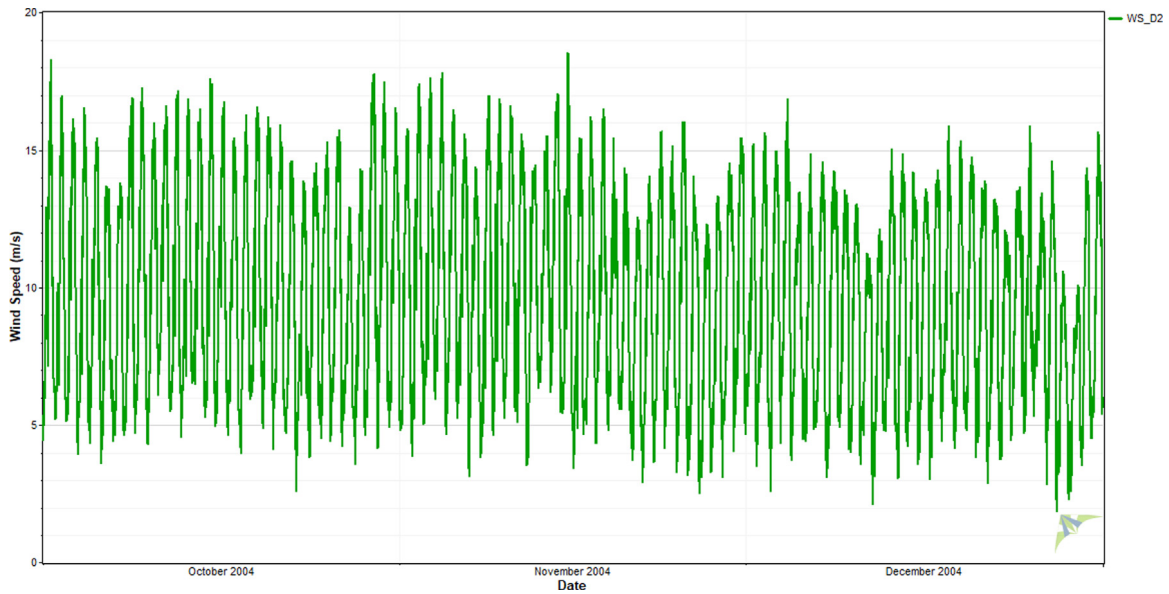


Fig. 5. Time series of wind speed (interval of 10 min) measurements by the anemometer at a height of 50 m agl of TA-02 (Camocim) for the period from 01/10/2004 to 31/12/2004.

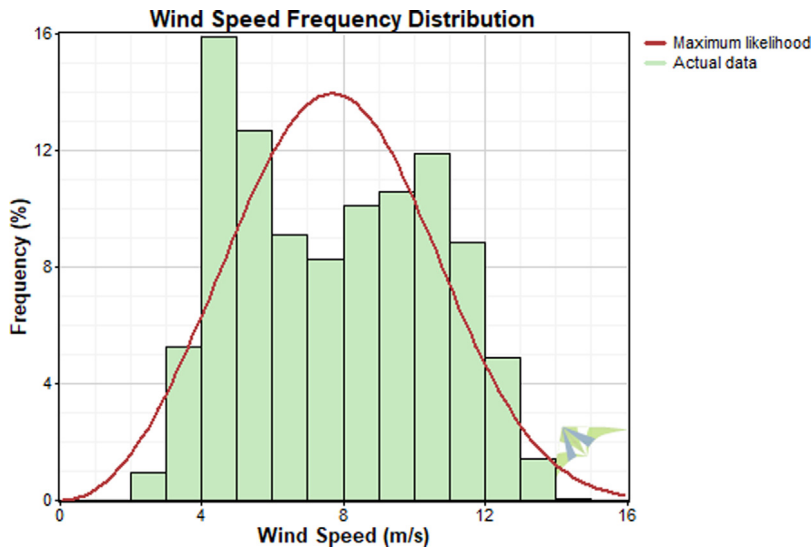


Fig. 6. Histogram derived from the estimate Weibull probability density function (PDF) by maximum likelihood method compared with the histogram of the wind speed data (bar diagram) for the period of 3 months at wind site Camocim (TA-02). Applying the ML method, the shape and scale parameters are $k = 3.096$ and $c = 11.337$ m/s.

wind speed with respect to the observations, and even so it underestimated results most of the time. MERRA-2 overestimates results in relation to the observed data in the temporal series, representing the behavior only in the first hours (until 6am) and last hours (after 21pm) predicted for the day 30/11/2004.

Table 7 shows the forecast skills of the models and the reanalysis with the observations. The lowest values can be found in the hybrid model, whose RMSE and MAE were 0.91 and 0.80 m/s. The largest results were found in the Holt–Winters model (RMSE: 2.09 and MAE: 1.68 m/s). The correlation coefficient was also high in the hybrid model and low in the MERRA-2 reanalysis.

For the TA-02 tower (Fig. 10), one can see that the models follow the observed diurnal wind speed data, but they underestimate and overestimate them at certain specific times. The ANN model underestimates the first hours and overestimates the predicted wind speeds from 11:00am to 18:00pm. The Holt–Winters model underestimates most of the period and follows a

Table 7

Residuals of the models and the reanalysis with the observations (TA-01) for 60 days of forecasting, in m/s.

	Holt–Winters	ANN	Hybrid	MERRA-2
RMSE	2.09	1.39	0.91	1.75
MAE	1.68	1.19	0.80	1.41
r	0.47	0.66	0.80	0.23

behavior consistent with the observed data between 8:00am and 20:00pm. The hybrid model approximates the observed data most of the time, mainly between 5:00am and 8:00am.

Table 8 shows the forecast skills of the models and the MERRA-2 reanalysis with the wind speed observations. The lowest values can be found in the hybrid model, whose RMSE and MAE were 1.12 and 0.81 m/s. The highest values were found in the MERRA-2

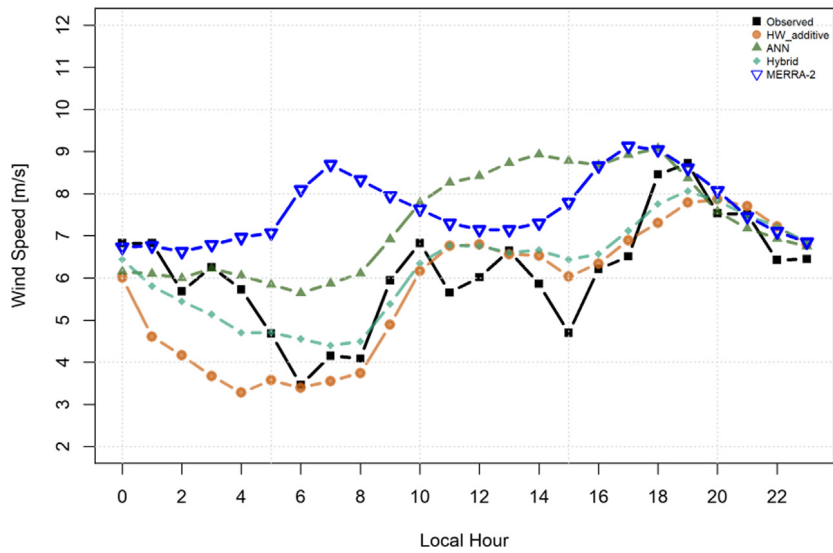


Fig. 7. Comparison between the observed series, those predicted by the models and the MERRA-2 reanalysis for the TA-01 tower on 31/10/2004.

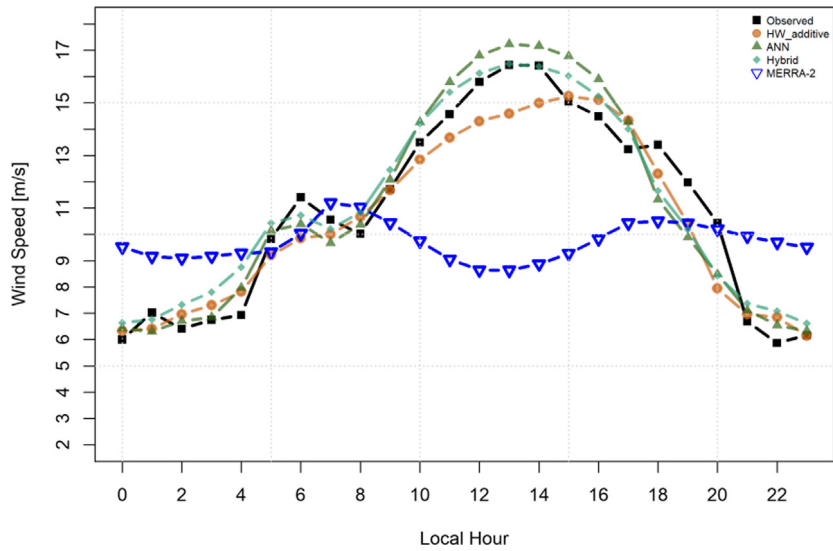


Fig. 8. Comparison between the observed series, those predicted by the models and the MERRA-2 reanalysis for the TA-02 tower on 31/10/2004.

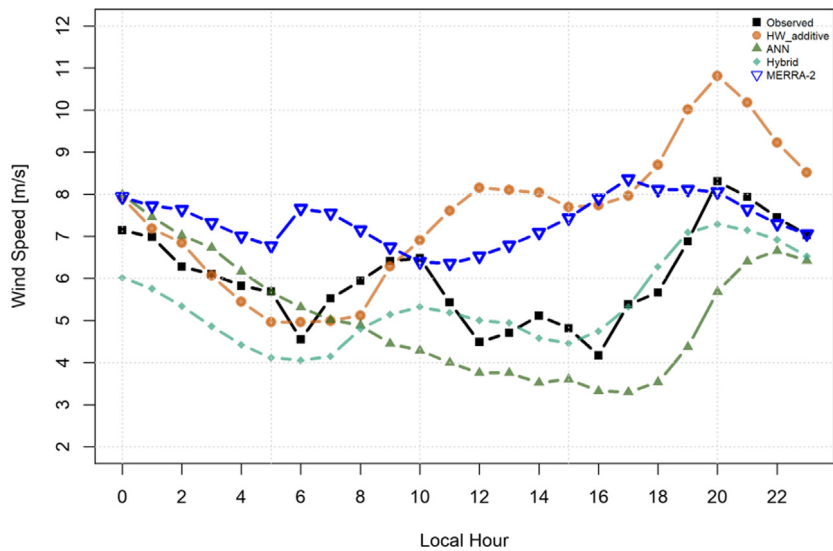


Fig. 9. Comparison between the observed series, those predicted by the models and the MERRA-2 reanalysis for the TA-01 tower on 31/11/2004.

Table 8

Residuals of the models and the reanalysis with the observations (TA-02) for 60 days of forecasting, in m/s.

	Holt–Winters	ANN	Hybrid	MERRA-2
RMSE	1.61	1.41	1.12	3.60
MAE	1.25	1.22	0.81	2.92
r	0.95	0.94	0.95	0.89

Table 9

Residuals of the models and the reanalysis with the observations (TA-01) for 90 days of data, in m/s.

	Holt–Winters	ANN	Hybrid	MERRA-2
RMSE	1.76	1.70	1.52	1.90
MAE	1.45	1.48	1.13	1.57
r	0.51	−0.31	0.27	0.13

Table 10

Residuals of the models and the reanalysis with the observations (TA-02) for 90 days of data, in m/s.

	Holt–Winters	ANN	Hybrid	MERRA-2
RMSE	2.14	4.36	2.27	3.87
MAE	1.62	3.21	1.84	3.03
r	0.93	0.71	0.93	0.48

reanalysis, with RMSE and MAE values of 3.60 and 2.92 m/s. The correlation coefficients were higher for all models in this period.

3.2.3. Based on 90 days of data

Figs. 11 and 12 present the forecast for the day 31/12/2004 using 90 days of observations (01/10/2004 to 29/12/2004) for the locations of the TA-01 and TA-02 towers, respectively.

For the TA-01 tower (Fig. 11), the hybrid model underestimates the data observed in the early hours and comes close to the observations between 11:00am and 14:00pm. The ANN model overestimates the observations between the predicted hours of 7:00am and 20:00pm. The Holt–Winters model underestimates the observed data until 15:00pm, coinciding with the original series between 16:00pm and 19:00pm, after which it underestimates results again. The MERRA-2 reanalysis overestimates the original data in most of the time series.

Table 9 shows the residuals of the models and the reanalysis with the observed data. The lowest errors can be found in the hybrid model and the largest in the MERRA-2 reanalysis. The Holt–Winters model showed a large error in this assessment.

For the TA-02 tower, the Holt–Winters model overestimates the observed data at all times, but it follows the behavior of the observations. Between the predicted hours of 23:00pm and 24:00pm, the model coincides with the observed data. The hybrid and RNA models underestimate the observed data during most of the time series and do not follow the behavior as well as the Holt–Winters model (Fig. 12).

Table 10 shows the residuals of the models and the reanalysis with the observations. The smallest forecast skills are of the Holt–Winters model, with a RMSE and MAE of 2.14 and 1.62 m/s, followed by the hybrid model with 2.27 and 1.84 m/s, respectively. The highest correlations are found in the Holt–Winters and hybrid models.

4. Discussion

4.1. Comparison with literature results

It is important to verify that these results of the errors in wind speed prediction this paper are in agreement with the values found in similar literature studies. Camelo et al. (2018b) presented a study involving the modeling of the monthly and

hourly wind speed averages at a height of 10 m in the coastal Northeast region of Brazil for the prediction of wind speed for power generation with the additive Holt–Winters model. According to the authors, when compared to the observed data, this model showed a good fit with errors of RMSE and MAE of 0.50/0.57 m/s and 0.40/0.45 m/s for monthly average wind speed forecasting, 1.38/1.55 m/s and 1.03/1.19 m/s for hourly average wind speed forecasting, respectively. However, in studies like these applied to wind power generation, the positioning of the measuring equipment must be installed at the top of the station (upper anemometer) at a height from the ground equal to the axes of the wind park turbines and at least 50 m from the ground, in accordance with the technical standards (EPE-Empresa, 2016). MEASNET indicate the measurement level of the primary wind speed measurement, which is mainly relevant for determining the hub height wind conditions, shall be at least 2/3 of the planned hub height. Currently the wind turbines in Brazil are being implanted at over 100 m height. Monteiro and Souza (2013) utilized the method of exponential smoothing, in particular the methods Holt–Winters additive and multiplicative for 6 h wind speed prediction at a height 50 m agl in the city São João Cariri (Paraíba-Brazil) in order to apply the methodology. According author, the additive Holt–Winters model presented better result than the multiplicative Holt–Winters model for 6 h prediction in the same series and data period of wind speed with errors of RMSE 2.0365 and 2.6197 m/s.

Camelo et al. (2018a) compare the performance of the ARIMA, ARIMAX and ANN models in an attempt to forecast monthly wind speed averages at 3 locality's in the coastal Northeast region of Brazil (Fortaleza, Natal and Paraíba). According to the authors, the ARIMAX model presented greater sensitivity to the wind speed adjustment and prediction, the RMSE and MAE values found were 0.48 (Fortaleza)/0.45 (Natal)/0.71 (Paraíba) m/s and 0.37 (Fortaleza)/0.37 (Natal)/0.54 (Paraíba) m/s, respectively. The authors proposed that, likely, with the increase in the number of training vectors for the ANN model, its performance will improve and its statistical errors. Chang et al. (2017) proposed an improved radial basis function neural network with an error feedback scheme to forecast short-term wind speed and wind power, with parameter initialization method and the inclusion of the shape parameter in the Gaussian basis function of each hidden neuron, used to search better initial center and standard deviation values. Results show that the forecast accuracy by proposed model is better compared to the other neural network-based models. Fadare (2010) used wind speed monthly average data at 10 m agl of 28 meteorological stations operated by the Nigeria Meteorological Services (NIMET) where were used as training (18 stations) and testing (10 stations) in the ANN model. The ANN model consisted of 3-layered, feed-forward, back-propagation network with different configurations. The proposed is used ANN model in the predicting of wind speed monthly average. The results indicate high accuracy in the predicting of wind speed, with the correlation coefficient between the predicted and the observed of 0.938, which shows the effectiveness of this model.

In Operador Nacional do Sistema Elétrico (ONS) (2017) developed a methodology for the short-term forecasting of wind power generation (in megawatts) with the modified ARIMAX model, which is based on the Box–Jenkins methodology, through which an adjustment of models is obtained for the time series of observations so that the residuals are around zero. The predicted and observed wind data as well as the actual wind power data were used as inputs of the dynamic models. No satisfactory result was found among the models used, and this has made the Operador Nacional do Sistema Elétrico (ONS), 2017) develop more research on wind forecasting geared to wind power generation.

In the study (Tatinati and Veluvolu, 2013), the authors proposed a hybrid modeling method for the short-term wind speed

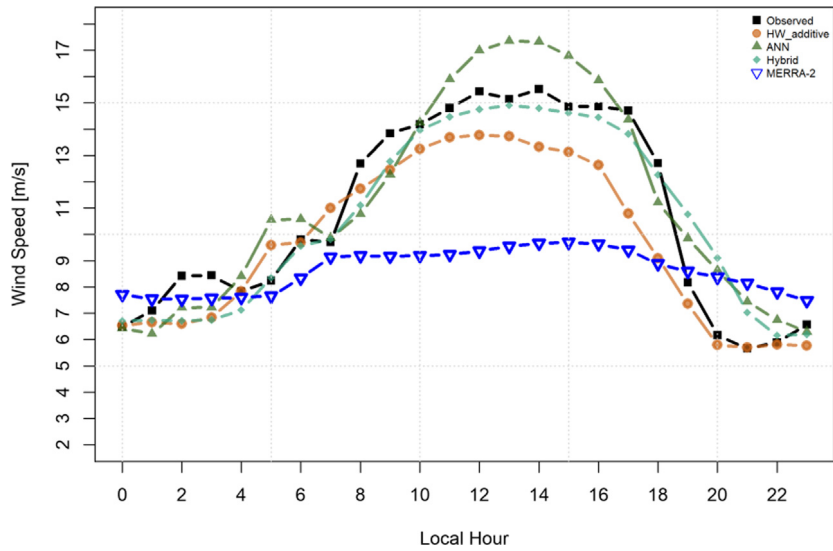


Fig. 10. Comparison between the observed series, those predicted by the models and the MERRA-2 reanalysis for the TA-02 tower on 31/11/2004.

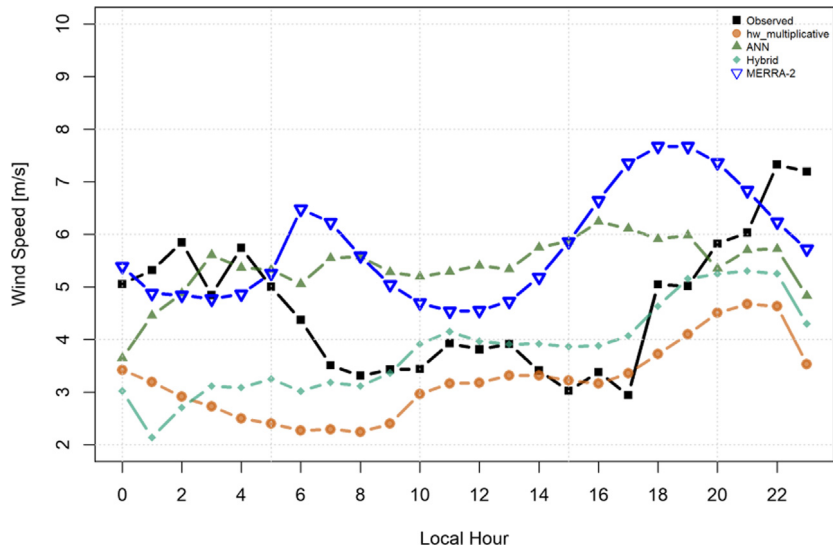


Fig. 11. Comparison between the series observed by TA-01, those predicted by the models and the MERRA-2 reanalysis for the day 30/12/2004.

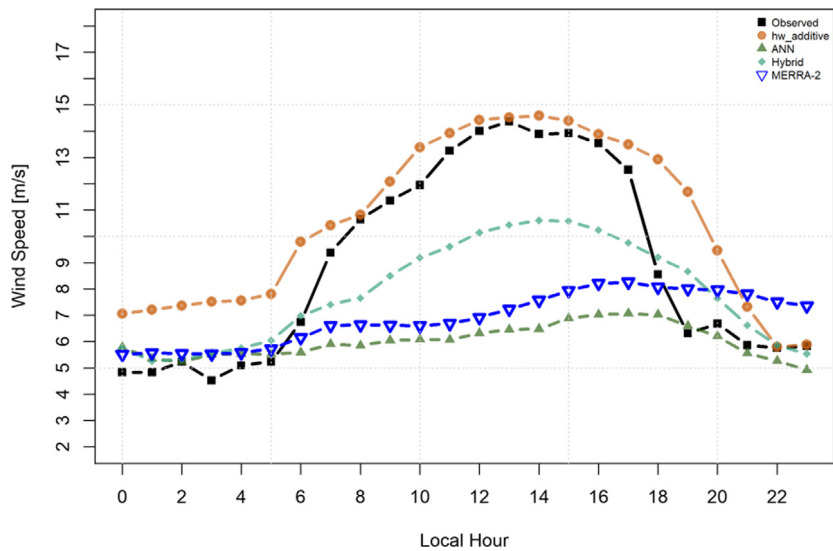


Fig. 12. Comparison between the observed series, those predicted by the models and the MERRA-2 reanalysis for the TA-02 tower on 30/12/2004.

forecast for wind power generation, using data collected from an anemometric tower at a height of 20 m of (which also does not follow the standard) located in Beloit (Kansas/USA) in the period from 2003 to 2004. The results showed that the hybrid modeling method for this variable provides better predictions when compared to other methods, resulting in a MAE (m/s) ranging from 0.016 to 0.52 in this study. In our study, the hybrid methodology also produced satisfactory results. [Camelo et al. \(2018b\)](#) presented a combined hybrid model of the ARIMAX-ANN and Holt-Winters-ANN models to predict the wind speed in terms of hourly means, being efficient in the producing adjustments to the observed data of the studied regions. The authors showed the quality of the proposed hybrid model is the low statistical analysis of errors values, for example, the RMSE and MAE of 0.46/0.41 m/s and 0.35/0.32 m/s (locality: Fortaleza/Natal), especially when compared to the ARIMAX, ANN and Holt-Winters models with errors values high for the RMSE e MAE. In [Jiang et al. \(2017\)](#) proposed a hybrid short-term wind speed forecasting model at two cases studies. The results from two cases show that the proposed hybrid model offers greater accuracy which relationship to the other compared models (Persistent and ARIMA) in short-term wind speed forecasting. The hybrid model (G – [v – SVM] – CS (cuckoo search)) showed the lowest values of error statistics, for example, for the MAE it was possible to find values of 0.5132 m/s, versus that of 0.582 m/s and 0.5242 m/s, for the models of Persistent and ARIMA, respectively. [Hu et al. \(2015\)](#) proposed a hybrid forecasting approach involving the statistics techniques EWT-CSA-LSSVM for short-term wind speed prediction from a windmill farm located in northwestern China. The hybrid model showed results suggest that the developed for wind speed forecasting method yields better predictions compared with those of other models with the lower RMSE and MAE of 0.58 and 0.57 m/s errors.

[Ezzat et al. \(2018\)](#) presented a study involving hybrid model ASYM (Asymmetric non-separable model) with SVM to achieve a further accuracy in short-term wind speed forecast, showing the additional benefit by the spatio-temporal models. The results showed that local wind speed is strongly asymmetric at the fine scale spatio-temporal resolutions and perform well in the short-term forecasts. The errors computed showed hybrid model improves of 22.5% in RMSE and 24.3% in MAE, RMSE: 19.5% and MAE: 19.0% over Persistence model and RMSE: 21.2% and MAE: 24.5% over ARMA model. This results found in study showed that the proposed model overcomes the commonly used short-term forecast methods based on Persistence, time series, machine learning and separable spatio-temporal models.

5. Conclusions

Most research with wind data in Brazil is done through data bases with little coverage, especially with wind towers. Most of these studies are done by private companies and are not publicly available for research. On the other hand, the monitoring via meteorological stations features a series of errors. These facts contributed to make the development of this study difficult, since there are no long wind speed time series available observed at 50 m in height.

Given the difficulty of obtaining good temporal series and likely good results in the studies, this article eventually became a mechanism for discovery and the exploration of alternative methods. As for the modeling of the diurnal wind variability, the MERRA-2 reanalysis, which is the most recent version, did not capture this variability well. The Holt-Winters model, which models the seasonality and trend components, showed a good fit, but time series of several years are needed to better capture these parameters and thus provide more satisfactory results. Finally, the best fits for the forecast were found using the hybrid

Table A.1

Main characteristics of ANNs and hybrid (*nnetar-stlm-tbats* functions) models produced in R software.

Belo Jardim – Hour					
Based on 30 days of data					
p	P	Size(k)	m	Weights	Average of Network
1	1	2	24	9	20
Based on 60 days of data					
p	P	Size(K)	m	Weights	Average of Network
27	1	14	24	407	20
Based on 90 days of data					
p	P	Size(K)	m	Weights	Average of Network
27	1	14	24	407	20
Camocim – Hour					
Based on 30 days of data					
p	P	Size(k)	m	Weights	Average of Network
11	1	6	24	85	20
Based on 60 days of data					
p	P	Size(k)	m	Weights	Average of Network
27	1	14	24	407	20
Based on 90 days of data					
p	P	Size(k)	m	Weights	Average of Network
27	1	14	24	407	20

methodology. The results in [Tables 5–8](#) indicated that the hybrid model presented smaller errors in relation to the other models proposed in this study.

This method can be applied for the planning of operations, maintenance and deployment of wind turbines, since accurate predictions minimize technical and financial risks.

CRedit authorship contribution statement

Moniki Ferreira: Conceptualization, Methodology, Project administration. **Alexandre Santos:** Conceptualization, Methodology, Project administration. **Paulo Lucio:** Conceptualization, Methodology, Project administration.

Acknowledgments

This article was supported by the Federal University of Rio Grande do Norte, Brazil and the Center for Technologies of Gas and Renewable Energies, Brazil.

Declaration of competing interest

The authors declare that there is no conflict of interest.

Appendix

See [Table A.1](#).

References

- Agência Nacional de Energia Elétrica (Org). 2005. Atlas de Energia Elétrica do Brasil. 2 ed. Brasília. Available online: [http://www2aneel.gov.br/aplicacoes/atlas/pdf/06-energia_eolica\(3\).pdf](http://www2aneel.gov.br/aplicacoes/atlas/pdf/06-energia_eolica(3).pdf). (Accessed 22 2017).
- Brower, M.C., 2012. Wind Resource Assessment: A Practical Guide To Developing a Wind Project, Vol. 280. John Wiley & Sons, New York.
- Camelo, H.N., Lucio, P.S., Junior, J.B.V.L., De Carvalho, P.C.M., 2018a. A hybrid model based on time series models and neural network for forecasting wind speed in the Brazilian northeast region. *Sust. Energy Technol. Assess.* 28, 65–72.

- Camelo, H.N., Lucio, P.S., Junior, J.B.V.L., De Carvalho, P.C., Santos, D. von G., 2018b. Innovative hybrid models for forecasting time series applied in wind generation based on the combination of time series models with artificial neural networks. *Energy* <http://dx.doi.org/10.1016/j.energy.2018.03.077>.
- Chang, G.W., Lu, H.J., Chang, Y.R., Lee, Y.D., 2017. An improved neural network-based approach for short-term wind speed and power forecast. *Renew. Energy* 107, 301–311.
- Cheng, W.Y.Y., Liu, Y., Bourgeois, A.J., Wu, Y., Haupt, S.E., 2017. Short-term wind forecast of a data assimilation/weather forecasting system with wind turbine anemometer measurement assimilation. *Renew. Energy* 107, 340–351.
- Crate, S.A., Nuttall, M., 2016. *Anthropology and Climate Change: From Encounters To Actions*. London: Routledge.
- Emeis, S., 2013. *Wind Energy Meteorology, Green Energy and Technology*. Springer-Verlag Berlin Heidelberg, http://dx.doi.org/10.1007/978-3-642-30523-8_1.
- EPE-Empresa de Pesquisa Energética. 2016. Estudos para a Licitação Expansão da Geração – Leilões de Energia: Instruções para as medições anemométricas e climatológicas em parques eólicos. EPE-DEE-RE-057/2016-r0, 17, Brasília.
- Ezzat, A.A., Jun, M., Ding, Y., 2018. Spatio-temporal asymmetry of local wind fields and its impact on short-term wind forecasting. *IEEE Trans. Sustain. Energy* 9, 1437–1447. <http://dx.doi.org/10.1109/TSTE.2018.2789685>.
- Fadare, D.A., 2010. The application of artificial neural networks to mapping of wind speed profile for energy application in Nigeria. *Appl. Energy* 87 (3), 934–942.
- Ferreira, M.D.M., Lucio, P.S., Santos, A.T.S., 2017. Desempenho de métodos de preenchimento de falhas para velocidade do vento sobre o Rio Grande do Norte. *O Setor Elétrico* 138 (21), 1–116.
- Fontoura, C.F., Brandão, L.E., Gomes, L.L., 2015. Elephant grass biorefineries: towards a cleaner Brazilian energy matrix?. *J. Clean. Prod.* 96, 85–93. <http://dx.doi.org/10.1016/j.jclepro.2014.02.062>.
- Global Modeling and Assimilation Office (GMAO), 2016. Available online: <http://disc.sci.gsfc.nasa.gov/daac-bin/FTPSubset2.pl> (Accessed on 16 august 2017).
- Holt, C.C., 1957. Forecasting seasonals and trends by exponentially weighted moving averages. *ONR Research Memorandum*, Carnegie Institute of Technology, p. 52. <http://dx.doi.org/10.1016/j.ijforecast.2003.09.015>, Reprint.
- Hu, J., Jianzhou, W., Ma, Kailiang, 2015. A hybrid technique for short-term wind speed prediction. *Energy* 81, 563–574.
- Hyndman, R.J., Akram, M.D., Archibald, B., 2008. The admissible parameter space for exponential smoothing models. *Ann. Statist. Math.* 60 (2), 407–426.
- Jiang, P., Wang, Y., Wang, J., 2017. Short-term wind speed forecasting using a hybrid model. *Energy* 119, 561–577.
- Khandakar, Y., Hyndman, R.J., 2008. Automatic time series forecasting: the forecast package for R. *J. Stat. Softw.* 27, 1–22.
- Krishnaveny, R., Nair, V., Vanitha, M.J., 2017. Forecasting of wind speed using ANN, ARIMA and Hybrid models, Intelligent Computing Instrumentation and Control Technologies (ICICT). In: 2017 International Conference on, pp. 170–175.
- Martinez-Arellano, G., Nolle, L., 2013. Short-term wind power forecasting with WRF-ARW model and genetic programming. *Medel*.
- MEASNET-Measuring Network of Wind Energy Institutes. 2016. MEASNET Procedure: Evaluation of Site-Specific Wind Conditions, Version 2, p. 56.
- Monteiro, C.M.N., Souza, R.C., 2013. Modelo para previsão de curto prazo de velocidade usando Holt-Winters. Rio de Janeiro. Dissertação de Mestrado – Departamento de Engenharia Elétrica, Pontifícia Universidade Católica do Rio de Janeiro, p. 95 <https://doi.org/10.17771/PUCRio.acad.23270>.
- Operador Nacional do Sistema Elétrico (ONS), 2017. *Desenvolvimento Metodológico Para Previsão de Geração de Fonte Eólica*. Rio de Janeiro: ONS, p. 152.
- Pinto, M.O., 2013. *Fundamentos de Energia Eólica, first ed. Livros Tecnicos e Científicos: São Paulo, Brazil, p. 392.*
- Pourhabib, A., Huang, J.Z., Ding, Y., 2016. Short-term wind speed forecast using measurements from multiple turbines in a wind farm. *Technometrics* 58, 138–147. <http://dx.doi.org/10.1080/00401706.2014.988291>.
- Ramos, D.N.S., Lyra, R.F.F., Silva, J.R.S., 2013. Previsão do vento utilizando o modelo atmosférico WRF para o estado de Alagoas. *Rev. Brasil. Meteorol.* 28, 163–172.
- Santos, A.T.S., Santos e Silva, C.M., Lemos, D.F.A., Oliveira, L.L., Bezerra, L.A.C., 2016. Assessment of wind resources in two parts of northeast Brazil with the use of numerical models. *Meteorol. Appl.* 23, 563–573.
- Shaub, D., Ellis, P., 2018. Convenient functions for ensemble time series forecasts. In: R package version 2212 Available online: <https://cran.r-project.org/web/packages/forecastHybrid/forecastHybrid.pdf> (Accessed on 10 may 2018).
- Souza, Ramon Bezerra de, 2014. Avaliação de modelos de inteligência artificial para previsão da velocidade de vento em curto prazo. 2014 112 f. Dissertação (Mestrado) - Curso de Engenharia Elétrica, Centro de Tecnologia e Geociências, Universidade Federal de Pernambuco, Recife.
- Tatinati, S., Veluvolu, K.C., 2013. A hybrid approach for short-term forecasting of wind speed. *Sci. World J.* 2013, 1–8.
- Wilks, D.S., 2011. *Statistical Methods in the Atmospheric Sciences, third ed.* Academic Press, Amsterdam, p. 676.
- Winters, P.R., 1960. Forecasting sales by exponentially weighted moving averages. *Manage. Sci.* 6 (3), <http://dx.doi.org/10.1287/mnsc.6.3.324>, 324–242.
- Wu, Yuan-kang., Hong, Jing-shan, 2007. A literature review of wind forecasting technology in the world. 2007 IEEE Lausanne Power Tech. [s.l.]. IEEE 1–8. <http://dx.doi.org/10.1109/pct.2007.4538368>.
- Zhao, P., Wang, J., Xia, J., Dai, Y., Sheng, Y., Yue, J., 2012. Performance evaluation and accuracy enhancement of a day-ahead wind power forecasting system in China. *Renew. Energy* 43, 234–241.