

Merrino, Serena

**Working Paper**

## State-dependent fiscal multipliers and financial dynamics: An impulse response analysis by local projections for South Africa

WIDER Working Paper, No. 2021/77

**Provided in Cooperation with:**

United Nations University (UNU), World Institute for Development Economics Research (WIDER)

*Suggested Citation:* Merrino, Serena (2021) : State-dependent fiscal multipliers and financial dynamics: An impulse response analysis by local projections for South Africa, WIDER Working Paper, No. 2021/77, ISBN 978-92-9267-015-3, The United Nations University World Institute for Development Economics Research (UNU-WIDER), Helsinki, <https://doi.org/10.35188/UNU-WIDER/2021/015-3>

This Version is available at:

<https://hdl.handle.net/10419/243403>

**Standard-Nutzungsbedingungen:**

Die Dokumente auf EconStor dürfen zu eigenen wissenschaftlichen Zwecken und zum Privatgebrauch gespeichert und kopiert werden.

Sie dürfen die Dokumente nicht für öffentliche oder kommerzielle Zwecke vervielfältigen, öffentlich ausstellen, öffentlich zugänglich machen, vertreiben oder anderweitig nutzen.

Sofern die Verfasser die Dokumente unter Open-Content-Lizenzen (insbesondere CC-Lizenzen) zur Verfügung gestellt haben sollten, gelten abweichend von diesen Nutzungsbedingungen die in der dort genannten Lizenz gewährten Nutzungsrechte.

**Terms of use:**

*Documents in EconStor may be saved and copied for your personal and scholarly purposes.*

*You are not to copy documents for public or commercial purposes, to exhibit the documents publicly, to make them publicly available on the internet, or to distribute or otherwise use the documents in public.*

*If the documents have been made available under an Open Content Licence (especially Creative Commons Licences), you may exercise further usage rights as specified in the indicated licence.*



UNITED NATIONS  
UNIVERSITY  
**UNU-WIDER**

WIDER Working Paper 2021/77

## **State-dependent fiscal multipliers and financial dynamics**

An impulse response analysis by local projections for South Africa

Serena Merrino\*

May 2021

**Abstract:** The aim of this paper is to assess South Africa's fiscal multiplier across different states of the economy, with a focus on the financial accelerator mechanism of fiscal policy shocks, by estimating impulse response functions from both linear and non-linear local projections. The model finds evidence of strong business cycle effects such that, while the average multiplier is below 0.5, it reaches 1.2 during recessions and that, while credit volume diminishes during periods of positive output gap, it expands otherwise. Results suggest that a fiscal expansion crowds out private economic activity in good times only, while it holds a positive balance-sheet effect on liquidity-constrained agents during bad times. Evidence of a state-dependent financial accelerator mechanism of fiscal expansion is confirmed by the positive response of the Financial Times Stock Exchange/Johannesburg Stock Exchange All-Share Index during times of slack.

**Key words:** fiscal multiplier, local projections, state-dependent multiplier, credit, South Africa

**JEL classification:** C32, E44, E62

**Acknowledgements:** I am grateful to Prof. Laurence Harris (SOAS, UNU-WIDER) and Dr Konstantin Makrelov (SARB) for their mentorship and guidance.

---

\* UNU-WIDER, Helsinki, Finland and University College London, UK; [serena.merrino@ucl.ac.uk](mailto:serena.merrino@ucl.ac.uk)

This study has been prepared within the UNU-WIDER project [Southern Africa—Towards Inclusive Economic Development \(SA-TIED\)](#).

Copyright © UNU-WIDER 2021

UNU-WIDER employs a fair use policy for reasonable reproduction of UNU-WIDER copyrighted content—such as the reproduction of a table or a figure, and/or text not exceeding 400 words—with due acknowledgement of the original source, without requiring explicit permission from the copyright holder.

Information and requests: [publications@wider.unu.edu](mailto:publications@wider.unu.edu)

ISSN 1798-7237 ISBN 978-92-9267-015-3

<https://doi.org/10.35188/UNU-WIDER/2021/015-3>

Typescript prepared by Siméon Rapin.

United Nations University World Institute for Development Economics Research provides economic analysis and policy advice with the aim of promoting sustainable and equitable development. The Institute began operations in 1985 in Helsinki, Finland, as the first research and training centre of the United Nations University. Today it is a unique blend of think tank, research institute, and UN agency—providing a range of services from policy advice to governments as well as freely available original research.

The Institute is funded through income from an endowment fund with additional contributions to its work programme from Finland, Sweden, and the United Kingdom as well as earmarked contributions for specific projects from a variety of donors.

Katajanokanlaituri 6 B, 00160 Helsinki, Finland

The views expressed in this paper are those of the author(s), and do not necessarily reflect the views of the Institute or the United Nations University, nor the programme/project donors.

## 1 Introduction

Interest in both the effectiveness of discretionary fiscal policy as a counter-cyclical tool and the importance of financial markets over the business cycle has resurged in the aftermath of the global financial crisis. In advanced economies, discussions have rotated around the delicate balance between fiscal discipline and stimulus at the zero lower bound (ZLB). In developing countries, attempts to fuel economic recovery have clashed with the need to preserve monetary credibility and attract foreign capital.

Since 2008, the South African economy has been slowly deteriorating. In 2019, real GDP growth plunged to 0.2 per cent and the unemployment rate exceeded 28 per cent (World Bank 2020). In an attempt to mitigate the slowdown, fiscal expenditure was systematically increased until reaching 30 per cent of GDP in 2019 (*ibid.*). As growth fell below real interest rates and revenues contracted, budget deficits were mostly financed by foreign savings, rapidly swelling the country's sovereign debt. The latter grew from 26 per cent in 2008 to 63 per cent of GDP in 2019, and it is forecasted to exceed 100 per cent of GDP by 2025 (Loewald et al. 2019). According to IMF (2020), South Africa's economic growth is mostly constrained by supply-side factors, including bottlenecks in infrastructure and electricity provision, over-regulated labour markets, and increases in market concentration. In light of these constraints and the tight fiscal policy space, higher public spending is believed to crowd out private borrowing. Instead, debt consolidation could reverse the prevailing dynamics by lowering South Africa's risk premium and yields (Loewald et al. 2019; NT 2019; IMF 2020). By contrast, Schroeder and Storm (2020) criticize the idea that the fiscal belt-tightening proposed in South Africa's 2020 budget may be expansionary. They argue that, beyond the aforementioned microeconomic constraints, the South African economy is also performing considerably below potential due to low domestic and foreign demand, which indicates that there is considerable space for non-inflationary stimulus. Based on this, Schroeder and Storm (2020) predict instead that—under the current stagnation at a high unemployment rate, a negative output gap, and inflation maintained below its middle-point target—a rigid adherence to fiscal discipline might rather contract output and deteriorate the debt-to-GDP ratio further. In this context, accurate estimates of fiscal multipliers can help settling these controversies and designing optimal fiscal actions.

Lamentably, extant research presents mixed views on the effectiveness of fiscal policy, whereby the size of the multipliers depends on a number of conjunctural aspects such as the responsiveness of interest rates, the health of public finances, and the state of the business cycle (Perotti 1999; Christiano et al. 2011; Corsetti et al. 2012). More recently, the New Keynesian literature has shifted attention to the agency of financial markets in the fiscal policy transmission mechanism (Fernández-Villaverde 2010; Makrelov et al. 2020). In particular, Makrelov et al. (2020) explore how government expenditure shocks can prompt a financial accelerator mechanism that has the ability to amplify the initial demand shock through changes in asset valuations and the external finance premium faced by firms. Along the same lines, this paper emphasizes the link between fiscal shocks, financial sector dynamics, and the business cycle. By estimating impulse response functions from both linear and non-linear local projections, the first contribution of this work is to shed new light on the effect of discretionary fiscal policy in stimulating output and its components in South Africa. In the case of South Africa, this paper is the first one to adopt Ramey and Zubairy (2018)'s data transformation and impulse response specifications for reducing biases when estimating fiscal multipliers. Given there is little empirical research on the financial accelerator mechanism resulting from unexpected fiscal actions, the second contribution is to assess how the size of the fiscal multiplier varies by taking into account changes in financial conditions.

The following section presents a selected survey of the literature on fiscal policy that highlights the most recent and influential academic developments. Given the scope of this paper, Section 2 will also introduce the links between fiscal policy and financial markets with a focus on the balance sheet effects modelled by Makrelov et al. (2020). Section 3 summarizes the modest body of studies that advance estimates of fiscal multipliers in South Africa. The second part of the paper presents the data, the specification of the linear and non-linear local projections, and the resulting impulse response functions. The last section discusses estimates of state-dependent fiscal multipliers in light of financial sector dynamics in South Africa.

## 2 Financial market dynamics and the fiscal multiplier

Standard New Keynesian models are built around an essentially neoclassical framework, whereby private consumption is governed by intertemporal optimization, and macroeconomic policies have a short-run effect on output. As a result of the specification of agents' preferences, fiscal multipliers hardly exceed the unity due to crowding out of private activity, therefore distorting the efficient composition of aggregate expenditure. In contrast to Keynesian macroeconomics, these models have generally supported the view that output-gap stabilization should be left to monetary policy (Monacelli and Perotti 2008).

However, the global financial crisis has spurred new research on the effectiveness of fiscal policy shocks that has suggested the idea that the zero lower nominal interest bound may make multipliers large during recessions. In such an event, as the recession takes hold, the central bank's policy rate reaches the lower bound of zero, and a vicious cycle of weak demand, deflationary pressures, and higher real rates further slow the economy down. Christiano et al. (2011) find that a multiplier above three is possible when the output loss due the ZLB is severe: a surge in government spending counteracts the deflationary spiral associated with the ZLB, therefore lowering real rates and eventually driving up consumption. Similarly, Woodford (2010) estimates relatively large fiscal multipliers: when the recession is perceived as persistent and the policy rate hits the ZLB, temporary increases in government purchases raise expected utility and reduce the output gap. Based on a panel of OECD countries, Corsetti et al. (2012) empirically confirm that, in an economy with flexible exchange rates, the macroeconomic effects of fiscal loosening are generally weak in normal times, while they are more potent during times of financial crisis. Nevertheless, historical data show that, during financial crises, countries have generally cut back government spending, presumably out of concern over debt sustainability. In fact, in the case of weak public finances (i.e. public debt higher than 100 per cent of GDP), the impact response of output and investment to a fiscal policy shock is lower than it would be otherwise.

In effect, another important argument concerning fiscal policy is that the size of the multiplier depends on the state of public finances: given the government intertemporal budget constraint, spending and taxation may respond to the degree of country's indebtedness that will prevail after the fiscal shock. In particular, fiscal loosening that deteriorates a country's debt level and threatens a reversal consolidation in the future can potentially be contractionary. Perotti (1999) builds a model in which the correlation between private consumption and fiscal shocks changes, from Keynesian to neoclassical, depending on whether the size of public debt or deficit is low or high. Adding a dummy variable that captures bad versus good regimes, he also finds strong evidence in support of this argument. Favero and Giavazzi (2007) demonstrate that including the debt-to-GDP ratio in the vector autoregression (VAR) system of endogenous variables allows capturing the feedback effect from debt to fiscal policy. The empirical literature generally finds that high sovereign debt levels are associated with small or negative multipliers (Ilzetzki et al. 2013; Huidrom et al. 2016; Nickel and Tudyka 2014). Based on United States (US) data, Mountford and Uhlig

(2009) estimate a higher output response in case fiscal shocks are deficit-financed tax cuts, relative to both deficit-financed and a balanced-budget tax-financed spending expansion. In all instances, the output response is short-lived, and investment is crowded out. According to Ilzetzi (2011), tax cuts—particularly to personal income—have a stimulative and persistent effect on economic growth in developing countries, while government expenditure is more effective in high-income countries, closed economies, and fixed exchange rate regimes—including South Africa. Moreover, using Favero and Giavazzi’s structural VAR (SVAR) methodology with debt-dynamics, Ilzetzi demonstrates that linear time-series methods typically overstate the effects of fiscal policy by ignoring the negative effect of excessive debt. In his model, government spending responds negatively to its own shock after five quarters, indicating a reversal towards fiscal contraction. In the case of South Africa, however, this effect is not statistically significant. Additionally, despite increases in debt levels, he does not find evidence of interest rate rise following an increase in government expenditure. Clearly, this substantive strand of work on fiscal policy and debt has accompanied the public debate in the US and other OECD countries as policy-makers shifted from stimulus to austerity.

With respect to capturing the cyclical asymmetries in multipliers, Mitnik and Semmler (2013) show that the standard linear VAR methodology is inappropriate for analysing multi-regime processes and suggest a regime-dependent VAR specification. Adopting this alternative model, the multiplier is considerably higher in a regime of a low economic activity than in a regime of high activity. Auerbach and Gorodnichenko (2013)’s regime-switching VAR methodology finds Keynesian-type fiscal multipliers that reach 2.48 during economic downturns in several industrialized OECD countries, which indeed increase private spending. These empirical results challenge the mainstream belief that fiscal stimulus is ineffective unless the ZLB binds and debt is sustainable; hence, they insinuate the urgency of developing new theoretical models that relax this constraint and envisage instead fiscal mechanisms for crowding in private activity. In particular, following the outbreak of the global financial crisis, New Keynesian models have been criticized for the omission of financial sector dynamics given how decisive these are in shaping economic downturns, the sustainability of government debt, and so the effectiveness of fiscal policy.

In light of these views, Fernández-Villaverde (2010) builds a dynamic stochastic general equilibrium (DSGE) model with financial frictions in the form of information asymmetries between lenders and borrowers . A shock to government expenditure that rises inflation expectations cuts real rates and the intrinsic cost of capital associated with asymmetric information. That, in turn, generates a feedback loop between investment and overall economic activity that outweighs crowding out effects. Carrillo and Poilly (2013) add that the capital accumulation channel amplifies fiscal multipliers particularly during a liquidity trap, when the ZLB binds the nominal rate for a few periods. Aside from impairing the central bank’s ability to take counter-cyclical actions, a constant feature of financial distress is that access to credit becomes severely restricted. In this respect, Eggertsson and Krugman (2012) build a simple model of an economy in a private debt-driven recession and a liquidity trap, where a fraction of agents is debt-constrained. They show that deficit-financed temporary fiscal spending can be an effective expansionary tool, owing to a balance sheet strengthening of liquidity-constrained debtors through the Fisher effect. In addition, their model suggests a Keynesian-type multiplier, with the size of that multiplier depending positively on the share of debt-constrained borrowers in the economy. Tax cuts and transfer payments are equally effective as long as they fall on debt-constrained agents—whom would be difficult to target in the implementation stage of fiscal policy. Notably, in this model, public debt is ‘a solution to a problem caused by too much (private) debt’ (Eggertsson and Krugman 2012: 20) only under the assumption of sustainable debt levels, such that the government is able to repay its new debt once the deleveraging period for private sector debtors has terminated. Canzoneri et al. (2012) model an economy featuring financial

intermediation costs, rather than borrowing constraints, such that the interest rate spread between deposits and loans is increasing in recessions and falling in expansions. During recessions, fiscal stimulus considerably reduces the spread that benefits financially stressed households and firms, and so the multiplier exceeds two.

By addressing the issue of firms' financing in the presence of financial frictions associated to a negative output gap, such as asymmetric information and credit constraints, the size of the fiscal multiplier is bigger than previously found. In other words, fiscal policy is effective when credit frictions matter irrespective of the interest-rate regime, although it becomes even more potent during a liquidity trap.

Among the empirical studies that employ VAR techniques, some explore the link between fiscal policy and financial markets through a focus on sovereign debt risk. According to Ardagna (2009), better fiscal positions decrease long-term rates on government bonds and increase stock prices, while Afonso and Sousa (2012) and Agnello and Sousa (2013) show that government spending shocks have contractionary and crowding out effects on economic activity and a negative but temporary impact on stock prices. For emerging markets, Akitoby and Stratmann (2008) find that rises in tax-financed spending lowers spreads, while debt-financed spending increases sovereign risk; in terms of tightening, revenue-based adjustment lowers spreads more than spending-based adjustment. Moreover, financial markets generally react less to cuts in investment.

Despite representing a significant advancement in macroeconomic theory, one limitation of DSGE models with financial frictions is the lack of a proper representation of the financial sector in the fiscal policy transmission dynamics. In order to allow for disaggregated balance sheet effects of fiscal actions, Makrelov et al. (2020) propose a richer representation of financial dynamics in a stock-and-flow consistent (SFC) model including various instruments and agents. The key of the model is the fact that public expenditure, by reducing the perceived probability of default of private sector debtors, strengthens their balance sheets. On one side, positive wealth effects induce private consumption growth. On the other side, this interaction creates financial accelerator effects through changes on lending behaviour: stronger borrowers' balance sheets also improve the net worth of monetary institutions that will be able to extend more loans, reducing the bank lending-deposit spread. Moreover, assuming current investment is sensible to both changes in the equity to sales price ratio<sup>1</sup> and the real rate on loans, increases in asset valuation and inflationary expectations generate induced investment growth. Based on the features of the South African economy around the 2008 crisis, Makrelov et al. (2020)'s model shows that financial markets play a significant role in the transmission of the fiscal expenditure shock to the real economy. It estimates that financial market dynamics amplify the multiplier during recessionary periods, when debt is sustainable and capital inflows are positive, but, under different conditions, the fiscal multiplier can even turn negative due to higher risk premia and bond yields that further crowd out the private sector.

Melina and Villa (2014) estimate the response of lending and the bank spread to a government spending expansion in a SVAR model of the US economy and provide evidence that the bank spread significantly falls in response to a government spending expansion, while lending increases.

---

<sup>1</sup> Corporate bonds are not included in the model.

### 3 Fiscal multipliers in South Africa

Reflecting the indecisiveness of the broader literature, existing estimates of fiscal multipliers in South Africa are sensitive to the modelling approach used, particularly to the extent it can capture both the structural and contingent characteristics of the South African economy.

To begin with, in the supply-constrained economy represented in Mabugu et al. (2013)'s intertemporal computable general equilibrium (CGE) model, fiscal policy actions have no immediate effect while only interventions in public investment lead to long-term, albeit smaller than one, multipliers, because they increase the total factor productivity of the economy. Conversely, increases in the government current expenditure will have a long-lasting effect on the debt-to-GDP ratio. Although evidence of a larger investment multiplier is in line with the literature on emerging economies (Estevão and Samake 2013; Arizala et al. 2017), Mabugu et al. (2013) do not capture the effect current spending may have on total factor productivity—including by means of the risk-taking channel—or the presence of a negative output gap. Akanbi (2013) develops a supply-side versus a demand-side macro-econometric model and finds that, when the output gap is negative, the expenditure multiplier will be stronger than the tax multiplier, as previously asserted by Ilzetki (2011). In particular, Akanbi estimates that a spending cut that is equal to 1 per cent of GDP will decrease output by 1 per cent over the first year if there are no supply constraints, or have no impact otherwise. This result suggests that South African households are generally Ricardian and it is confirmed by subsequent data-driven models. For example, Jooste et al. (2013)'s structural vector error correction (SVEC) model shows that, while tax increases distort private consumption, an expenditure shock increases both consumption and GDP per capita. Jooste et al. (2013) also develop a closed-economy DSGE model and demonstrate that these results in South Africa clearly depend on the presence of a large share of liquidity-constrained consumers that are unable to save extra income. However, an increase in government expenditure also increases interest rates by 0.35 percentage points, which could crowd out investments. Nuru (2019) proposes a SVAR model to identify the joint effect of monetary and fiscal policy action in South Africa between 1994 and 2014. He obtains a government spending multiplier of a rather small magnitude that peaks at 0.40 after nine quarters, whereas the tax multiplier is almost zero on impact and statistically insignificant.

The state of public finances also play an important role in South Africa's fiscal policy: results from Jooste et al (2013)'s non-linear time-varying parameter vector autoregressions (TVP-VAR) model show that the strongest multipliers were in the build-up to the 2008's global financial crisis, when South Africa run budget surpluses, and that persistent increases seem to reduce the effectiveness of spending. This is in line with Ilzetki (2011), who follows the methodology proposed by Favero and Giavazzi (2007) to account for debt dynamics in a set of emerging economies and concludes: 'only in the case of South Africa do debt dynamics appear to diminish the effects of fiscal policy, due to future policy reversals, but this effect is not statistically significant' (Ilzetki 2011: 29) Moreover, Kemp and Hollander (2020) show that a spending shock results in a persistent deviation of debt from its steady-state level and that cuts in government consumption combined with tax increases present the most effective instrument for fiscal consolidation.

Using a variety of identification approaches to reduced-form model specifications, Kemp (2020) finds that overall government spending multipliers are positive but always smaller than one and larger during recessionary states. In general, consumption responds positively and investment negatively to a government spending shock. By extending the framework, he also finds that, when the spending shock is associated to higher interest rates, the response of output and consumption will be milder.



Kemp and Hollander (2020) extend a fiscal DSGE to an open-economy framework and show that spending multipliers are indeed smaller in open-economy settings. The same result was achieved by Jooste et al. (2013) in a SVEC model extended to include an uncovered interest parity condition. Furthermore, in their DSGE model, government spending crowds out both private investment and consumption, supposedly due to a low share of rule-of-thumb consumers, while the output response is larger following a shock to public sector investment.

Overall, the evidence suggests that fiscal multiplier estimates are lower in South Africa than in OECD countries, consistent with research on emerging markets that stresses the presence of large informal sectors, inefficiency in public expenditure and revenue administration, and positive output gaps due to supply constraints (Estevão and Samake 2013; Arizala et al. 2017).

Exceptionally high estimates of the South African fiscal multiplier come from closed input-output models, which capture the flow of money across industries in a closed economy under the assumption of no supply-side constraints. Burrows and Botha (2013)'s model only accounts for direct, indirect, and induced consumption effects of a demand shock and calculates a multiplier that declines over time—from 1.82 in 1980 to 1.60 in 2010. Using the same methodology but allowing both induced consumption and investment effect, Schroeder and Storm (2020) estimate that a multiplier was equal to 1.87 in 2018, and therefore subject to conditions of a negative output gap and high unemployment. However, other aspects are neglected—such as South Africa's increasing propensity to import, debt dynamics, and the response of monetary policy—that can substantially weaken the multiplier effect. Moreover, in contrast to emerging market economies, the South African economy features a very well-developed financial sector and high tax compliance.

In an attempt to account for all aforementioned aspects in an SFC model, Makrelov et al. (2020) further emphasize the investment growth induced by budgetary shocks through liquidity effects. As a result, inflows of foreign capital relax the constraint imposed by the large domestic savings–investment gap and, thus, bolster credit extension and boost asset prices, amplifying the fiscal expansion. Makrelov et al. (2020) provide the largest estimates of fiscal multiplier in South-Africa: under the conditions of a large and negative output gap, a well-functioning financial sector, and relatively low government debt levels, the fiscal multiplier takes a value of 2.5 after three years from the fiscal policy shock.

Table 1: Fiscal multiplier estimates for South Africa

<b>Authors (date)</b>	<b>Methodology</b>	<b>Peak (horizon)</b>	<b>Sample</b>
Akanbi (2013)	Macroeconometric model	1% (one year, recession)	1970–2011
Burrows and Botha (2013)	Input-output model	1.82 (1980); 1.60 (2010)	1980; 2010
Jooste et al. (2013)	SVEC model	> 1 (Q2)	1970–2010
Jooste and Naraidoo (2017)	DSGE	0.6	
Kemp (2020) <sup>2</sup>	Baseline SVAR model local projections	0.36 (Q4) 0.58 (Q4, recession)	1970–2018
Mabugu et al. (2013)	CGE model	0.49 <sup>3</sup>	2005
Makrelov et al. (2020)	SFC model	2.5 (Q12, recession)	2001–12
Nuru (2019)	SVAR model	0.4 (Q9)	1994–2014
Schroeder and Storm (2020)	Input-output model	1.87	2018

Source: author's elaboration.

<sup>2</sup> Kemp (2020) also calculates present-value fiscal multipliers (discounted by the average policy rate of the sample) that, for the sake of comparison, are not reported here.

<sup>3</sup> This multiplier estimate refers to public investment spending only.

## 4 Econometric methodology

### 4.2 Linear and non-linear model specification by local projections

In order to empirically assess the effect of fiscal policy shocks on real and financial variables under different regimes of the economy, I employ impulse response functions (IRFs) estimated by the local projections method. This was introduced by Jordá (2005) and has been recently applied to estimate state-dependent fiscal multipliers (Auerbach and Gorodnichenko 2013; Ramey and Zubairy 2018; Kemp 2020). The model requires ordinary least squares (OLS) estimation of a series of regressions for each horizon  $h$  and each variable. The linear version of the model is described by Equation (1):

$$y_{t+h} = \alpha_h + \Pi_h(L)x_{t-1} + \beta_h shock_t + u_{t+h} \quad h = 0, 1, \dots, H - 1 \quad (1)$$

where  $y$  is the dependent variable,  $\alpha_h$  is the constant,  $x_{t-1}$  denotes the vector of lagged control variables described in the following section, and  $shock_t$  represents the exogenous shock. The slope  $\beta_h$  reflects the response of variable  $y$  at horizon  $h$  to the  $shock_t$ 's variable impulse happening at time  $t$ . The impulse responses relative to  $y$  are then constructed from all estimated  $\beta_h$ . As in Jordá (2005), the Newey–West correction is employed to predict robust standard errors that account for the serial correlation in  $u_{t+h}$ .

In order to capture the unanticipated effect of fiscal actions on GDP, government spending shocks are identified through the view proposed by Blanchard and Perotti (2002) that government spending is unable to react to output and other unexpected shocks within a quarter due to implementation and decision lags typical of the fiscal measures. This equals to impose a Cholesky identification scheme in a SVAR model with four lags of real government spending, tax revenues, and GDP and to obtain the reduced form innovations of government spending, which will be used as an instrument for the unobservable structural shocks.

Linear projections can be easily accommodated to estimate non-linear models<sup>4</sup> where the system of endogenous variables switches across two regimes or states, A and B—as in equation (3), according to a logistic probability function  $F(z_t)$ , described below:

$$F(z_t) = \frac{e^{(-\gamma z_t)}}{1 + e^{(-\gamma z_t)}} \quad \text{and} \quad \gamma > 0 \quad (2)$$

$$y_{t+h} = F(z_{t-1})[\alpha_{A,h} + \Pi_{A,h}(L)x_{t-1} + \beta_{A,h}shock_t] + F(z_{t-1})[\alpha_{B,h} + \Pi_{B,h}(L)x_{t-1} + \beta_{B,h}shock_t] + u_{t+h} \quad (3)$$

In Equation (2),  $z_t$  is a standardized variable that determines the two regimes. In this case, the switching variable, which measures the state of the business cycle, is the cyclical component of GDP computed by the Hodrick-Prescott filter. The parameter  $\gamma$  in Equation (2) defines the smoothness of the regime transition, such that a higher value of  $\gamma$  corresponds to periods of economic slack. While Kemp (2020)'s calibration where  $\gamma$  is equal to four is consistent with South

---

<sup>4</sup> For a deep explanation of the non-linear features of the model, see Auerbach and Gorodnichenko (2013).

Africa’s business cycles duration since 1970, the current application sets  $\gamma = 3$  to reflect smaller recessionary regimes after 1994.<sup>5</sup>

## 4.2 Data

Given the local projections method only estimates the equations relative to dependent variables of interest (e.g. GDP), the number of parameters to be estimated is significantly lower than in VAR models. For this reason, a system of eight endogenous variables is considered that includes GDP, government expenditure, tax revenues,<sup>6</sup> total credit volume extended to the private sector, private consumption and investment, the South African Reserve Bank (SARB) repurchase rate, and the debt-to-GDP ratio. In particular, government expenditure includes both current expenditure (on wages and on goods and services of a non-capital nature) and gross capital formation by the general government and public corporations. The dataset—entirely sourced from the SARB (2020)—begins in the second quarter of 1969 and goes through the last quarter of 2019, but it is restricted to account for the fall of the apartheid regime in 1994, which generated substantial structural changes in the South African economy that may bias estimation.

All national accounts variables are in real terms, seasonally adjusted, and measured as a ratio over real potential GDP, which is computed using the traditional Hodrick-Prescott filter. This last transformation, that follows Ramey and Zubairy (2018), avoids using the natural logs of the variables and so rescaling the estimated IRFs from elasticities to currency units-equivalent multipliers. For example, converting the output response of log-output to a fiscal spending shock requires multiplying the elasticity of output by the ratio of the sample mean of the impulse variable over the response variable. In the current dataset, the ex-post conversion factor that multiplies the elasticity of a variable to a fiscal impulse is sensible to the sample period: the ratio of the output-spending sample averages takes a value as low as one in the period 1969q2–94q2 and a value as high as 3.9 in the period 1994q2–2019q4. As such, the multiplier estimated through log-transformed variables, which is the prevailing method in the South African literature, is highly distorted by the time span chosen. This bias may be even more acute in non-linear models (see Ramey and Zubairy 2018, for a detailed explanation on the issue of calculating multipliers).

## 4.3 Impulse response functions

The most common way to quantify fiscal multipliers from IRFs is to calculate the ratio of the output response at peak to the government spending increase at horizon zero.<sup>7</sup> According to Ramey (2019), this methodology is inappropriate to capture the dynamic effects of fiscal policy on output, because it does not account for ‘the multi-year path of spending’ (2019: 94). This paper therefore proposes both the traditional and the alternative method developed by Mountford and Uhlig (2009). These authors suggest the computation of cumulative multipliers. At any given horizon  $h$ , the multiplier corresponds to the cumulative output response relative to the cumulative government spending up to that horizon:

---

<sup>5</sup> Auerbach and Gorodnichenko (2013) and Ramey and Zubairy (2018) set  $\gamma$  equal to 1.5 and 3, respectively.

<sup>6</sup> Total tax revenues are the sum of personal income tax, corporate income tax, tax on goods and services, and other direct and indirect taxes.

<sup>7</sup> Then, this number shall be multiplied by the ad-hoc conversion factor to derive currency-unit multipliers, as explained in Section 4.1.

$$multiplier_h = \frac{\sum_{j=0}^h y_{t+j}}{\sum_{j=0}^h g_{t+j}} \quad (4)$$

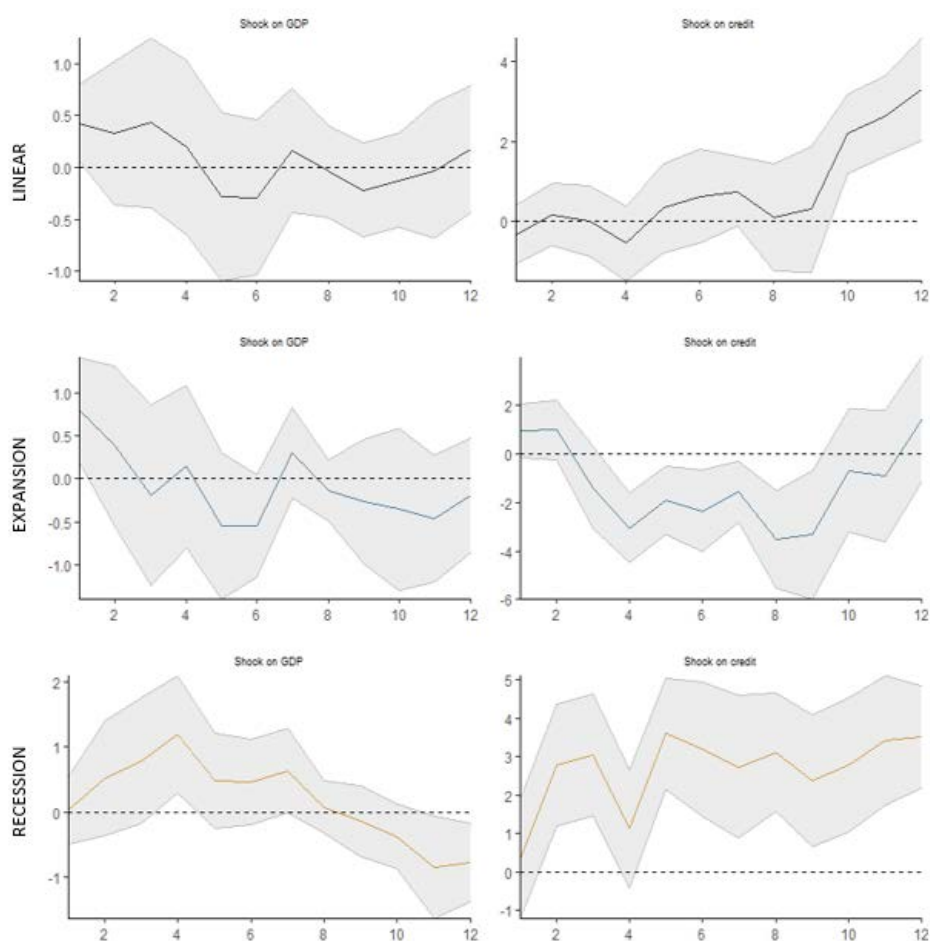
To derive linear and state-dependent multipliers, four lags are included and 16-quarter-ahead impulse responses of  $\mathbf{y}$  are estimated from Equations (1) and (3).

*Fiscal multiplier (1994q2–2019q4)*

The results are depicted in Figure 1. It shows the Rand-response of GDP and credit volume to a one-Rand government spending shock in the linear case (first row) as well as during periods of economic expansion and recession (second and third rows, respectively). The shaded area shows the 90 per cent confidence bands. Both output and credit responses to a spending shock are positive and persistent during recessionary states. According to Table 2 that reports cumulative multipliers, derived as in Equation (4), the fiscal multiplier peaks at 1.2 in the sixth quarter after the shock, while credit keeps expanding over time. During an expansion, the fiscal multiplier at impact is significantly positive but has a temporary effect and is lower than one, while credit diminishes in response to one-Rand increase in government spending.

A fiscal stimulus is thought to be less effective in an expansion, because at full capacity it crowds out private economic activity, whereas during periods of slack the additional resources allow credit-constrained agents to borrow to smooth consumption and investment levels. The response of private consumption and investment to a government spending shock is reported in Figure 2. Clearly, the linear model in the first row hides state-dependent effects, and both consumption and investment responses are almost symmetrically opposite between states of expansion and recession.

Figure 1: IRFs from linear and state-dependent local projections—GDP and credit volume



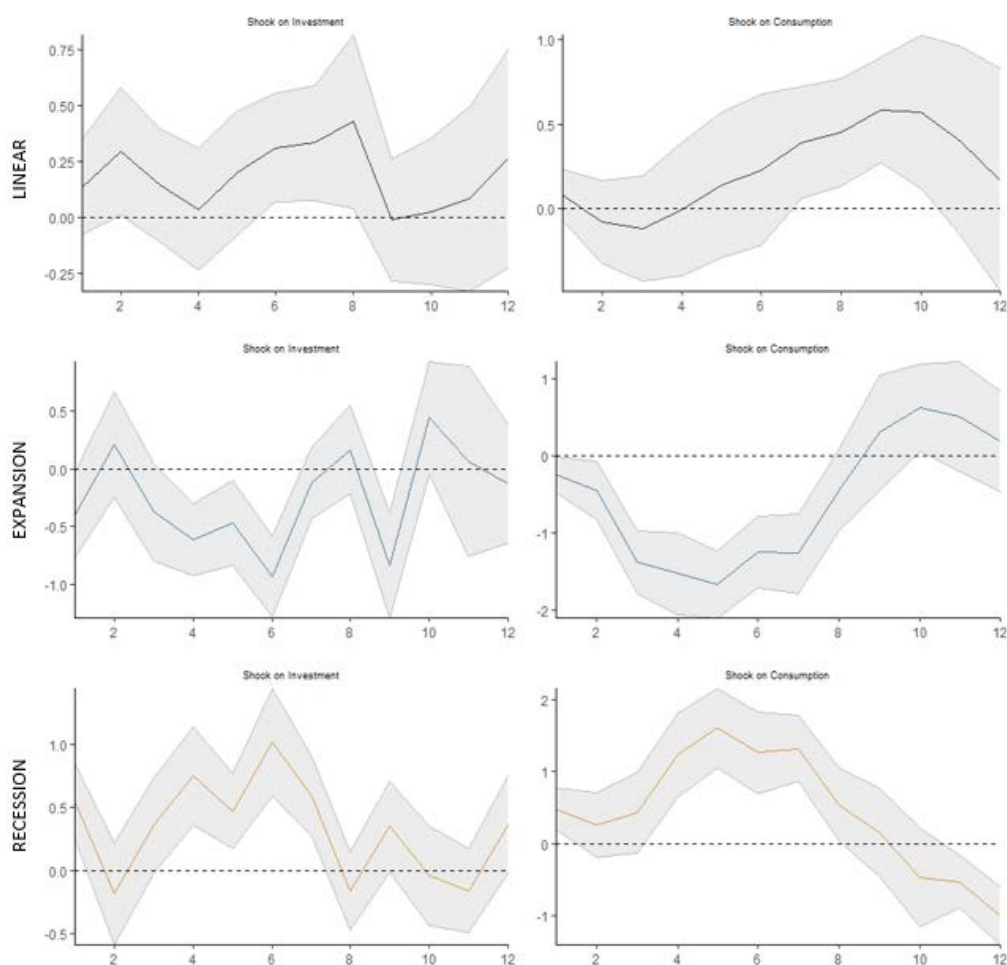
Source: author's calculation using data from SARB (2020).

Table 2: Cumulative multipliers at different horizons—GDP and credit volume

Model	Response variable	Q1	Q3	Q6	Q9	Q12
<i>Linear</i>	GDP	0.43	0.40	0.19	0.14	0.12
	Credit volume	-0.32	-0.05	0.06	0.68	1.57
<i>Expansion</i>	GDP	0.80	0.29	0.01	0	-0.18
	Credit volume	0.95	0.16	-1.72	-2.76	-2.58
<i>Recession</i>	GDP	0.02	0.52	1.20	1.08	0.34
	Credit volume	0.33	2.42	4.91	6.03	5.52

Source: author's calculation based on Equation (4) and IRFs in Figure 1.

Figure 2: IRFs from linear and state-dependent local projections—private consumption and private investment



Source: author's calculation using data from SARB (2020).

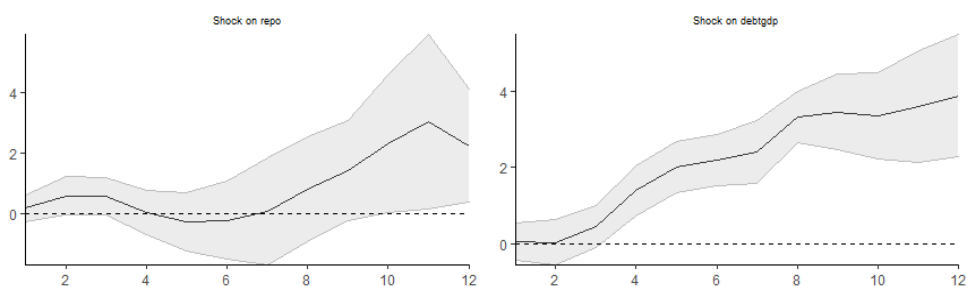
Table 3: Cumulative multipliers at different horizons—private consumption and private investment

Model	Response variable	Q1	Q3	Q6	Q9	Q12
Linear	Consumption	0.13	0.19	0.25	0.38	0.36
	Investment	0.08	-0.04	0.06	0.35	0.46
Expansion	Consumption	-0.40	-0.16	-0.65	-0.61	-0.50
	Investment	-0.24	-0.60	-1.38	-1.44	-1.10
Recession	Consumption	0.55	0.28	1.03	1.01	0.67
	Investment	0.48	0.46	1.83	1.97	0.91

Source: author's calculation based on Equation (4) and IRFs in Figure 2.

The degree of monetary accommodation to fiscal shocks is another key component of the transmission of fiscal policy, as lower interest rates would accommodate higher demand for credit and so allow financial market dynamics to amplify the fiscal multiplier effects on output, as described in Section 2. By contrast, Figure 3 reveals a lack of coordination between fiscal and monetary policy such that spending shocks tend to be accompanied by increases in the SARB's repo rate, particularly during expansionary states. In the same model, a one-Rand increase in government spending is shown to raise the debt-to-GDP ratio permanently, particularly during periods of slack.

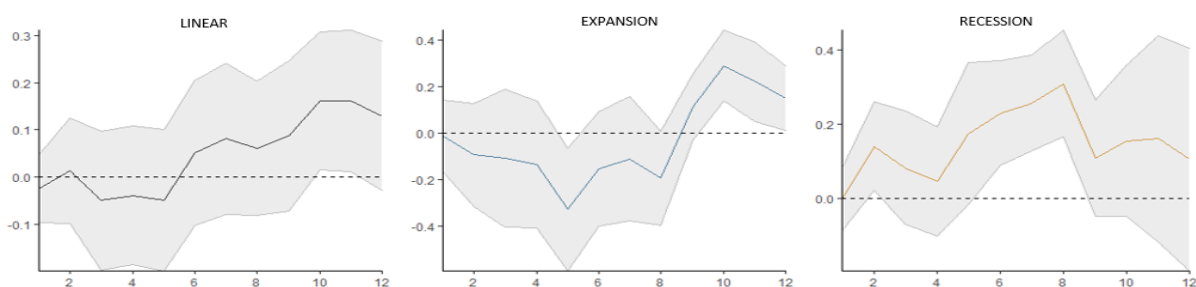
Figure 3: IRFs from linear local projections—repurchase rate and debt-to-GDP ratio



Source: author's calculation using data from SARB (2020).

Replacing credit volume with the bank risk premium, computed as the difference between the three-month bank prime loan rate and the quarterly Treasury bill rate, delivers not significant results. A possible explanation for this is the lack of variability in the South African risk premium, as the lending rate follows a similar trajectory as other interest rates in the economy. Figure 4 shows IRFs of the Financial Times Stock Exchange (FTSE) / Johannesburg Stock Exchange (JSE) All-Share Index: under recessionary states, a government spending shock has a positive effect on stock prices of companies listed in the JSE that peaks at 0.3 after two years. As a robustness check, I also estimate a SVEC with the same variables and four lags, obtaining only negligible differences with respect to the linear impulse responses reported (available on request).

Figure 4: IRFs from linear local projections—FTSE/JSE All-Share Index

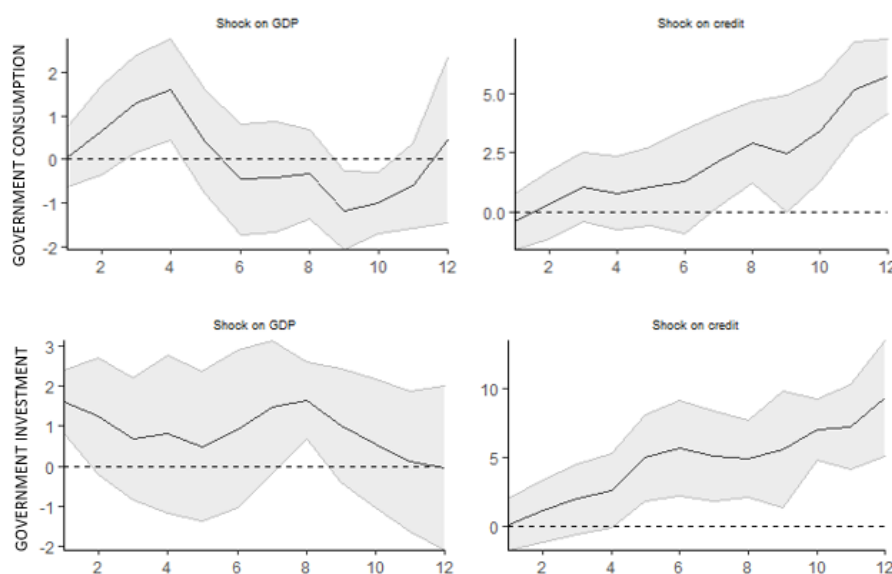


Source: author's calculation using data from SARB (2020).

### *Fiscal multiplier by instrument*

To assess which component of fiscal spending has a greater multiplier effect, reduced-form innovations are again derived from a VAR(4) and used as instruments of the shocks of public investment and public current spending. Linear local projections are then used to estimate the dynamic impact of the shock in one specific component on both GDP and credit volume. Resulting IRFs are shown in Figure 5: while both components have positive effects, a fiscal stimulus that targets investment has a more pronounced and persistent effect on GDP and a stronger effect on credit volume.

Figure 5: IRFs from linear local projections—shock on government consumption and investment

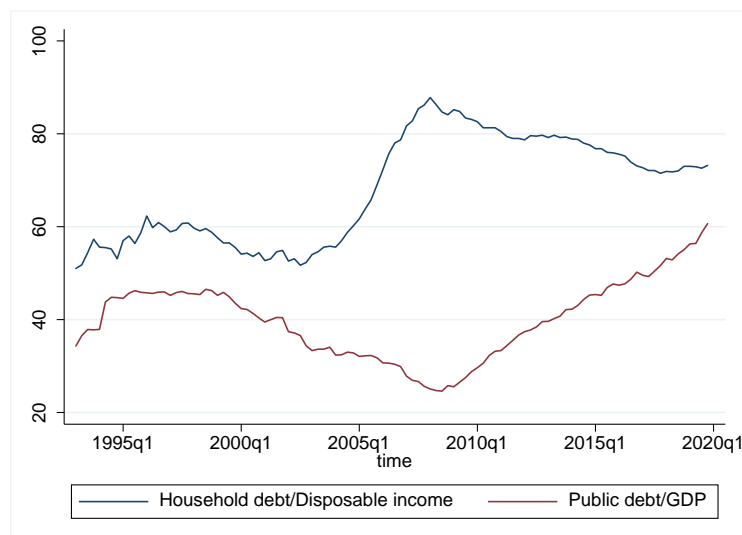


Source: author's calculation using data from SARB (2020).

### *Fiscal multiplier and sovereign debt*

Historically, the sovereign debt-to-GDP ratio in South Africa has been low and sustainable, except for two periods, (i) 1990–94 and (ii) 2010–present, during which it soared swiftly—as plotted in the figure below. Figure 6 also shows that, since early 2000s, public debt has followed a trajectory that is symmetrically opposite to the evolution of private debt.

Figure 6: Household debt/Disposable income ratio and public debt-to-GDP ratio over time



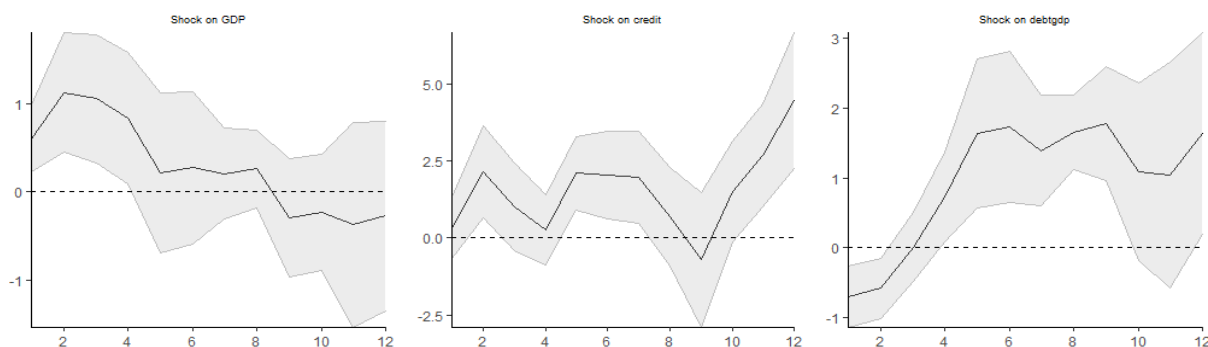
Source: author's calculation using data from SARB (2020).

In light of the fact that South Africa's public debt has been generally low except for relatively short periods of time, estimating Equation (3) under different debt regimes does not reveal any significant non-linearity. Similarly, separating the sample between low- and high-debt regimes is simply not feasible, as the number of observations in the higher-debt regime (e.g. debt-to-GDP ratio > 40 per cent) would be too small.



The next figure shows IRFs from the benchmark model with a shorter sample size that goes through the last quarter of 2009: this reduced sample (1994q2–2009q4) should allow us to, on one side, overlook South Africa’s last decade of public debt-build up and, on the other side, account for the households’ increasing liquidity constraints that preceded the 2008 financial crisis. By comparing IRFs in Figure 7 (reduced sample) and Figure 1–3 (full sample), it can be observed that both the output and the credit response to a fiscal spending shock are stronger, while the debt response is still positive but weaker than previously found. This suggests that, in the last decade, the fiscal multiplier effect may have not only substantially weakened, but also contributed to the public debt accumulation.

Figure 7: IRFs from linear local projections—reduced sample size (1994q2–2009q4)



Source: author’s calculation using data from SARB (2020).

## 5 Conclusions

The key question of this paper is whether in South Africa the fiscal multiplier depends on the state of the economy, with a focus on private credit conditions during times of slack.

The average value of the multiplier since 1994 is found to be below 0.5, suggesting substantial crowding out effects. However, it is important to differentiate between recessions, where the average multiplier peaks at 1.2, and non-recession periods, where the highest multiplier is 0.8 at impact. The business cycle effect to a spending shock is even more pronounced in the response of private credit volume. IRFs from local projections show that while credit volume diminishes during periods of positive output gap, it expands otherwise. This result suggests that fiscal expansion crowds out private economic activity in good times only, while it holds a positive balance-sheet effect on liquidity-constrained agents during bad times. Evidence of a state-dependent financial accelerator mechanism of fiscal expansion is confirmed by the positive response of the FTSE/JSE index during times of slack. In addition, the transmission of fiscal shocks to output and credit is stronger in a model driven by data up until 2010, suggesting that the fiscal multiplier in South Africa has weakened during the last decade, probably due to deteriorating public finances. The feedback effect of rising public debt could also be the cause of the negative reversal of the output response after 6–8 quarters from the shock.

The difference in fiscal multiplier estimates across the two regimes of the economy is better reflected by estimates of the cumulative multipliers that capture the persistence of the shock on GDP, credit volume, private consumption, and private investment. In South Africa, the fiscal multiplier appears to be Keynesian overall, and particularly in recessions, crowding in both consumption and investment. This finding may be interpreted in conjunction with the response observed in the SARB repurchase rate and the fact that monetary policy contracts to a fiscal shock particularly during expansions.

The paper has also found that spending multipliers depend on the instrument used: in particular, public investment has a positive and more persistent effect on output than current spending. If the fiscal shock is driven by gross capital formation, then the output response will never turn negative as it happens with other types of fiscal shock. On the other side, a shock to government current spending triggers relatively more debt and fewer benefits to credit expansion.

Finally, while these results are in line with the rest of the literature on South Africa, it is important to note that Ramey and Zubairy (2018) showed that estimates of fiscal multipliers by linear projections, used in this paper, are much smaller when the impulse responses are estimated by VARs, as most of existing literature.

Overall, the paper has shown that the effectiveness of fiscal expansions in South Africa depends on a series of contingencies: the output gap, the monetary policy stance, the fiscal instrument, and the liquidity constraints of private lenders.

## References

- Akanbi, O.A. (2013). 'Macroeconomic Effects of Fiscal Policy Changes: A case of South Africa'. *Economic Modelling*, 35: 771–85. <https://doi.org/10.1016/j.econmod.2013.08.039>
- Akitoby, B., and T. Stratmann (2008). 'Fiscal Policy and Financial Markets'. *The Economic Journal*, 118(533): 1971–85. <https://doi.org/10.1111/j.1468-0297.2008.02198.x>
- Afonso, A., and R.M. Sousa (2012). 'The Macroeconomic Effects of Fiscal Policy'. *Applied Economics*, 44(34): 4439–54. <https://doi.org/10.1080/00036846.2011.591732>
- Agnello, A., and R.M. Sousa (2013). 'Fiscal Policy and Asset Prices'. *Bulletin of Economic Research*, 65(2): 154–77. <https://doi.org/10.1111/j.0307-3378.2011.00420.x>
- Ardagna, S. (2009). 'Financial Markets' Behaviour around Episodes of Large Changes in the Fiscal Stance'. *European Economic Review*, 53(1): 37–55. <https://doi.org/10.1016/j.euroecorev.2008.07.003>
- Arizala, F., J.R. Gonzalez-Garcia, C.G. Tsangarides, and M. Yenice (2017). 'The Impact of Fiscal Consolidations on Growth in Sub-Saharan Africa'. IMF Working Paper 2017/281. Washington, DC: IMF. <https://doi.org/10.5089/9781484333112.001>
- Auerbach, A.J., and Y. Gorodnichenko (2013). 'Output Spillovers from Fiscal Policy'. *American Economic Review*, 103(3): 141–46. <https://doi.org/10.1257/aer.103.3.141>
- Blanchard, O., and R. Perotti (2002). 'An Empirical Characterization of the Dynamic Effects of Changes in Government Spending and Taxes on Output'. *The Quarterly Journal of Economics*, 117(4): 1329–68. <https://doi.org/10.1162/003355302320935043>
- Burrows, L.R., and A.P. Botha (2013). 'Explaining the Changing Input-Output Multipliers in South Africa: 1980-2010'. Presented at the *Biennial Conference of the Economic Society of South Africa*, 25–27 September, Bloemfontein, South Africa.
- Canzoneri, M., F. Collard, H. Dellas, and B. Diba (2016). 'Fiscal Multipliers in Recessions'. *The Economic Journal*, 126(590): 75–108. <https://doi.org/10.1111/eoj.12304>
- Carrillo, J.A., and C. Poilly (2013). 'How do Financial Frictions Affect the Spending Multiplier during a Liquidity Trap?' *Review of Economic Dynamics*, 16(2): 296–311. <https://doi.org/10.1016/j.red.2013.01.004>
- Christiano, L., M. Eichenbaum, and S. Rebelo (2011). 'When is the Government Spending Multiplier Large?' *Journal of Political Economy*, 119(1): 78–121. <https://doi.org/10.1086/659312>
- Corsetti, G., A. Meier, and G.J. Müller (2012). 'What Determines Government Spending Multipliers?' IMF Working Paper 2012/150. Washington, DC: IMF. <https://doi.org/10.5089/9781475504217.001>

- Eggertsson, G., and P. Krugman (2012). 'Debt, Deleveraging, and the Liquidity Trap: A Fisher-Minsky-Koo Approach'. *The Quarterly Journal of Economics*, 127(3): 1469–513. <https://doi.org/10.1093/qje/qjs023>
- Estevão, M., and I. Samake (2013). 'The Economic Effects of Fiscal Consolidation with Debt Feedback'. IMF Working Paper 2013/136. Washington, DC: IMF. <https://doi.org/10.5089/9781484304488.001>
- Favero, C., and F. Giavazzi (2007). 'Debt and the Effects of Fiscal Policy'. FRB of Boston Working Paper 07-4. Boston: Federal Reserve Bank.
- Fernández-Villaverde, J. (2010). 'Fiscal Policy in a Model with Financial Frictions'. *American Economic Review*, 100(2): 35–40. <https://doi.org/10.1257/aer.100.2.35>
- Huidrom, R., A. Kose, J. Lim, and F. Ohnsorge (2016). 'Do Fiscal Multipliers Depend on Fiscal Positions?' World Bank Policy Research Working Paper 7724. Washington, DC: World Bank. <https://doi.org/10.1596/1813-9450-7724>
- IMF (2020). 'South Africa: 2019 Article IV Consultation-Press Release; and Staff Report; and Statement by the Executive Director for South Africa'. IMF Country Report 20/33. Washington, DC: IMF. <https://doi.org/10.5089/9781513528502.002>
- Ilzetzki, E. (2011). 'Fiscal Policy and Debt Dynamics in Developing Countries'. World Bank Policy Research Working Paper 5666. Washington DC: World Bank. <https://doi.org/10.1596/1813-9450-5666>
- Ilzetzki, E., E. Mendoza, and C. Vegh (2013). 'How Big (Small?) are Fiscal Multipliers?' *Journal of Monetary Economics*, 60(2): 239–54. <https://doi.org/10.1016/j.jmoneco.2012.10.011>
- Jooste, C., L. Guangling, and R. Nairadoo (2013). 'Analysing the Effects of Fiscal Policy Shocks in the South African Economy'. *Economic Modelling*, 32: 215–24. <https://doi.org/10.1016/j.econmod.2013.02.011>
- Jooste, C., and R. Naraidoo (2017). 'The Macroeconomics Effects of Government Spending under Fiscal Foresight'. *South African Journal of Economics*, 8(1): 68–85. <https://doi.org/10.1111/saje.12151>
- Jordá, Ò. (2005). 'Estimation and Inference of Impulse Responses by Local Projections'. *American Economic Review*, 95(1): 161–82. <https://doi.org/10.1257/0002828053828518>
- Kemp, J.H. (2020). 'Empirical Estimates of Fiscal Multipliers for South Africa'. WIDER Working Paper 2020/91. Helsinki: UNU-WIDER. <https://doi.org/10.35188/UNU-WIDER/2020/848-1>
- Kemp, J.H., and H. Hollander (2020). 'A Medium-Sized, Open-Economy, Fiscal DSGE Model of South Africa'. WIDER Working Paper 2020/92. Helsinki: UNU-WIDER. <https://doi.org/10.35188/UNU-WIDER/2020/849-8>
- Loewald, C., D. Faulkner, and K. Makrelov (2019). 'Macroeconomic Policy Options for a Savings Constrained Economy: The Case of South Africa'. *Journal of Development Perspectives*, 3(1–2): 220–41. <https://doi.org/10.5325/jdevepers.3.1-2.0220>
- Mabugu, R., V. Robichaud, H. Maisonnave, H., and M. Chitiga (2013). 'Impact of Fiscal Policy in an Intertemporal CGE Model for South Africa'. *Economic Modelling*, 31: 775–82. <https://doi.org/10.1016/j.econmod.2013.01.019>
- Makrelov, K., C. Arndt, R. Davies, and L. Harris (2020). 'Balance Sheet Changes and the Impact of Financial Sector Risk-taking on Fiscal Multipliers'. *Economic Modelling*, 87: 322–43. <https://doi.org/10.1016/j.econmod.2019.08.006>
- Melina, G., and S. Villa (2014). 'Fiscal Policy and Lending Relationships'. *Economic Inquiry*, 52(2): 696–712. <https://doi.org/10.1111/ecin.12051>
- Mittnik, S., and W. Semmler (2013). 'The Real Consequences of Financial Stress'. *Journal of Economic Dynamics and Control*, 37(8): 1479–99. <https://doi.org/10.1016/j.jedc.2013.04.014>

- Monacelli, T., and R. Perotti (2008). 'Fiscal Policy, Wealth Effects, and Mark-Ips'. NBER Working Paper 14584. Cambridge, MA: National Bureau of Economic Research. <https://doi.org/10.3386/w14584>
- Mountford, A., and H. Uhlig (2009). 'What are the Effects of Fiscal Policy Shocks?' *Journal of Applied Economics*, 24(6): 960–92. <https://doi.org/10.1002/jae.1079>
- NT (2019). 'Economic Transformation, Inclusive Growth, and Competitiveness: Towards an Economic Strategy for South Africa'. Pretoria: South African National Treasury.
- Nickel, C., and A. Tudyka (2014). 'Fiscal Stimulus in Times of High Debt: Reconsidering Multipliers and Twin Deficits'. *Journal of Money, Credit and Banking*, 46(7): 1313–44. <https://doi.org/10.1111/jmcb.12148>
- Nuru, N.Y. (2019). 'Monetary and Fiscal Policy Effects in South African Economy'. *African Journal of Economic and Management Studies*, 11(4): 625–38. <https://doi.org/10.1108/AJEMS-08-2019-0308>
- Perotti, R. (1999). 'Fiscal Policy in Bad and Good Times'. *The Quarterly Journal of Economics*, 114(4): 1399–436. <https://doi.org/10.1162/003355399556304>
- Ramey, V., and S. Zubairy (2018). 'Government Spending Multipliers in Good Times and in Bad: Evidence from US Historical Data'. *Journal of Political Economy*, 126(2): 850–901. <https://doi.org/10.1086/696277>
- Ramey, V. (2019). 'Ten Years after the Financial Crisis: What Have We Learned from the Renaissance in Fiscal Research?' *Journal of Economic Perspectives*, 33(2): 89–114. <https://doi.org/10.1257/jep.33.2.89>
- SARB (2020). 'Statistics'. Pretoria: South African Reserve Bank. Available at: <https://www.resbank.co.za/en/home/what-we-do/statistics> (accessed December 2020).
- Schroeder, E., and S. Storm (2020). 'Fiscal Policy in South Africa: Closed Input-Output Income and Employment Multipliers'. Institute for Economic Justice Research Note 1. Johannesburg: Institute for Economic Justice.
- Woodford, M. (2010). 'Simple Analytics of the Government Expenditure Multiplier'. NBER Working Paper 15714. Cambridge, MA: National Bureau of Economic Research. <https://doi.org/10.3386/w15714>
- World Bank (2020). 'World Bank Open Data'. Washington, DC: World Bank. Available at: <https://data.worldbank.org> (accessed March 2021).