

Walk, Paula et al.

Working Paper

Strengthening gender justice in a just transition: A research agenda based on a systematic map of gender in coal transitions

DIW Discussion Papers, No. 1963

Provided in Cooperation with:

German Institute for Economic Research (DIW Berlin)

Suggested Citation: Walk, Paula et al. (2021) : Strengthening gender justice in a just transition: A research agenda based on a systematic map of gender in coal transitions, DIW Discussion Papers, No. 1963, Deutsches Institut für Wirtschaftsforschung (DIW), Berlin

This Version is available at:

<https://hdl.handle.net/10419/243192>

Standard-Nutzungsbedingungen:

Die Dokumente auf EconStor dürfen zu eigenen wissenschaftlichen Zwecken und zum Privatgebrauch gespeichert und kopiert werden.

Sie dürfen die Dokumente nicht für öffentliche oder kommerzielle Zwecke vervielfältigen, öffentlich ausstellen, öffentlich zugänglich machen, vertreiben oder anderweitig nutzen.

Sofern die Verfasser die Dokumente unter Open-Content-Lizenzen (insbesondere CC-Lizenzen) zur Verfügung gestellt haben sollten, gelten abweichend von diesen Nutzungsbedingungen die in der dort genannten Lizenz gewährten Nutzungsrechte.

Terms of use:

Documents in EconStor may be saved and copied for your personal and scholarly purposes.

You are not to copy documents for public or commercial purposes, to exhibit the documents publicly, to make them publicly available on the internet, or to distribute or otherwise use the documents in public.

If the documents have been made available under an Open Content Licence (especially Creative Commons Licences), you may exercise further usage rights as specified in the indicated licence.

1963

Discussion Papers

Deutsches Institut für Wirtschaftsforschung

2021

Strengthening Gender Justice in a Just Transition: A Research Agenda Based on a Systematic Map of Gender in Coal Transitions

Paula Walk, Isabell Braunger, Josephine Semb, Carolin Brodtmann, Pao-Yu Oei, Claudia Kemfert

Opinions expressed in this paper are those of the author(s) and do not necessarily reflect views of the institute.

IMPRESSUM

© DIW Berlin, 2021

DIW Berlin
German Institute for Economic Research
Mohrenstr. 58
10117 Berlin

Tel. +49 (30) 897 89-0
Fax +49 (30) 897 89-200
<http://www.diw.de>

ISSN electronic edition 1619-4535

Papers can be downloaded free of charge from the DIW Berlin website:
<http://www.diw.de/discussionpapers>

Discussion Papers of DIW Berlin are indexed in RePEc and SSRN:
<http://ideas.repec.org/s/diw/diwwpp.html>
<http://www.ssrn.com/link/DIW-Berlin-German-Inst-Econ-Res.html>

Strengthening Gender Justice in a Just Transition: A Research Agenda Based on a Systematic Map of Gender in Coal Transitions

Paula Walk^{1*}, Isabell Braunger^{1,2,3}, Josephine Semb¹, Carolin Brodtmann¹, Pao-Yu Oei^{1,2,3}, Claudia Kemfert³

Abstract

For climate change mitigation a rapid phase-out of fossil fuels such as coal is necessary. This has far-reaching gender-specific consequences. This paper presents a systematic map of the literature that examines the impact of historical coal phase-out processes on women and their role in these processes. The search process consists of screening 2,816 abstracts and reading 247 full-text studies. The analysis of the 73 publications ultimately included in the systematic map shows that past coal phase-outs meant, both opportunities (e.g. increased labour market participation) as well as burdens for women (e.g. double burden of job and household). It becomes clear that agency within coal transitions was also gendered. For example, it was difficult for women to gain access to union structures, which led them to organise themselves into grassroots movements. Our research shows that policies aiming for a just sustainability transition should always be explicitly gender-responsive. However, the impact of sustainability transitions on women's lives remains largely under-researched. Therefore, we propose a research agenda based on our findings containing six key issues that need to be addressed scientifically.

Keywords

Gender, Coal Phase-Out, Just Transition, Systematic Map

JEL

O13, Q52, B54

¹ Workgroup for Economic and Infrastructure Policy (WIP), TU Berlin. Straße des 17. Juni 135, 10623, Berlin, Germany.

² Europa-Universität Flensburg, Center for Sustainable Energy Systems (ZNES), Munketoft 3b, 24937 Flensburg, Germany.

³ Department of Energy, Transportation, Environment, DIW Berlin, Mohrenstraße 58, 10117 Berlin, Germany

*Corresponding author at: Workgroup for Economic and Infrastructure Policy (WIP), TU Berlin. Straße des 17. Juni 135, 10623, Berlin, Germany. E-mail address: pw@wip.tu-berlin.de (P.Walk).

Acknowledgements

We thank Biljana Macura for her very helpful feedback on our search protocol. We are grateful to Jürgen-Michael Loch for his support in the development of our search string. We want to thank Nora Stognief for her support and Felipe Corral-Montoya, Marius Koepchen, Katharina Wrohlig, Julia Schmieder and Virginia Sondergeld for their very helpful feedback. We thank Teresa Gehrs and Matt Rees for language corrections. All potentially remaining errors are ours.

Funding

We gratefully acknowledge support granted from the German Ministry of Education and Research (BMBF) by financing the research group “CoalExit” [grant number 01LN1704A] as part of the “Global Change” funding priority and from the European Union’s Horizon 2020 research and innovation programme funding the CINTRAN project [grant agreement No. 884539]. Isabell Braunger and Paula Walk gratefully acknowledge funding from the graduate program “the great transformation” from the Heinrich-Böll-Stiftung.

Declaration of Competing Interests

The authors declare that they have no known competing financial interests or personal relationships that could have appeared to influence the work reported in this paper.

1 Gender Justice and the Concept of a Just Transition

The idea of a “just transition” was born in the labour movement in the late 1970s, as trade unions in the USA tried to reconcile the need for decent work with the need to increase environmental protection (Piggot et al. 2019; Gambhir, Green, and Pearson 2018). In November 2015, the International Labour Organisation (ILO) officially adopted the seven “Guidelines for a just transition towards environmentally sustainable economies and societies for all” (ILO 2015). By using and propagating the term, the ILO has reinforced the central concern of advocates for a just transition on the international political stage – namely, to ensure that low-carbon transitions take into account social and economic inequalities. Although the ILO’s concept of just transition has many shortcomings, it has been successfully anchored in important international policy documents by the UN and the EU, such as in the Paris Agreement (United Nations 2018; García-García, Carpintero, and Buendía 2020) (UNFCCC 2015, p. 2). For this reason, we use the ILO’s concept in our analysis. The ILO’s just transition guidelines emphasise that a just transition should promote the creation of decent jobs and provide social protection in the event of job losses due to environmental and climate regulations. The ILO emphasises that there is no “one-size-fits-all” solution, which means that policies and programmes should be designed appropriately for the specific country context (ILO 2015). In the following, we refer to this diversity of just transition pathways with the term “just transition”.

One principle in the guidelines explicitly highlights the gender dimension of equitable transition policies: “Policies and programmes need to take into account the strong gender dimension of many environmental challenges and opportunities. Specific gender policies should be considered in order to promote equitable outcomes” (ILO 2015, p. 6). Women generally have fewer resources (e.g. finances, influence) than men, and societies ascribe them with different tasks (e.g. unpaid care work) (Young 2002). The ILO recognises that these different basic conditions mean that profound economic and social changes associated with low-carbon transitions affect women – and other vulnerable groups, such as indigenous people – differently. This difference in conditions also means that women have less agency and opportunity to promote their interests and viewpoints in the political arena, where transition policies are decided (Lieu et al. 2020).

All sectors of the economy (e.g. agriculture, transport, industry) will need to undergo deep decarbonisation to achieve a limit of global warming below 1.5 or 2 degrees as stipulated in the Paris Agreement (IPCC 2018). Low-carbon transitions in all sectors have a gender dimension (Spitzner et al. 2020). The changes might affect women adversely, but also have the potential to improve social, environmental and economic outcomes for all members of society (Piggot et al. 2019). For example, the sustainability transition in the building sector might have adverse effects on women. Poor population groups, including a disproportionate number of women, single parents and the elderly, have less financial capacity to retrofit their homes and are more likely to live in rented housing, meaning they are unable to influence investment decisions. Thus, higher heating costs, that can arise from higher CO₂

prices, will affect them particularly dramatically.⁴ On the other hand, there is evidence that in the transport sector, the sustainability transition towards greater use of public transport and increased development of cycling and walking infrastructure benefits women; men use cars more often, while women are more likely to walk, cycle and use public transport (Spitzner et al. 2020). Such examples show that a better understanding of the gender dynamics of low-carbon transitions is very much needed (Lieu et al. 2020). The UN has also recognised the urgency of considering the gender dimension of climate impacts and has included gender equality as a goal in their Sustainable Development Goals.⁵ However, research looking at the social outcome of low-carbon transitions is often limited to calculating net employment effects (García-García, Carpintero, and Buendía 2020). As most workers in the coal industry are male and direct job losses mainly affect them (e.g. in 2017, 78.4% of the workforce in the US coal industry was male; National Association of State Energy Officials and Energy Futures Initiative 2018), this emphasis on employment effects implies an indirect focus on the coal transition's effect on men. "While the ILO states that gender is an important variable for just energy transition analysis, as it could widen inequalities, gender worries are hardly present in the research" (García-García, Carpintero, and Buendía 2020, p. 12).

Our paper is an attempt to start filling in this research gap by systematically examining the impact of low-carbon transitions on women and the role that women played – referred to as agency – within these transitions using coal transitions as historical case studies. In this paper, we answer the research question: What evidence exists about the effects of coal transitions on women in contrast to men, and about female agency during coal transitions? Based on our research results, we develop a research agenda that shows where research is still lacking concerning the gendered aspects of low-carbon transitions and, on this basis, how researchers and policymakers can include gender aspects more properly in policies aimed to design a just transition.

We focus on the example of coal transitions, because they are essential building blocks on the way to a sustainable economy. Coal is still responsible for more than 40% of global CO₂ emissions.⁶ There will only be a chance to comply with the Paris Agreement if a global coal phase-out is achieved in a timely manner (Yanguas Parra, Hauenstein, and Oei 2021; IEA 2021). Therefore, there are many more coal transitions ahead of us and these must incorporate gender implications from the outset if a socially successful transition is to be achieved. At the same time, some countries, especially in the Global North, have already completed or almost completed their coal phase-out processes and are therefore very well suited as research subjects.

To collect what scientific work has been done on the topic so far, we conducted a systematic map (Haddaway and Macura 2018; Haddaway et al. 2018) of the existing research on the nexus between gender and coal transitions across a wide range of disciplines, such as anthropology, sociology and

⁴ Genanet. "Energiewende geschlechtergerecht": <https://www.genanet.de/themen/energie> (last accessed 27 April 2021)

⁵ United Nations. "Goal 5: Achieve Gender Equality and Empower all Women and Girls": <https://sdgs.un.org/goals/goal5> (last accessed 15 June 2021)

⁶ International Energy Agency. "CO₂ emissions by energy source, World 1990-2018 in percent": <https://www.iea.org/data-and-statistics/data-browser?country=WORLD&fuel=CO2%20emissions&indicator=CO2BySource> (last accessed 13 July 2021)

economics. Our search strategy consisted of a database search in Scopus, EBSCO, Web of Science and ProQuest, a grey literature search, and a call for relevant literature in the scientific community; this was supplemented by snowballing the references of relevant publications. The literature search, and the subsequent full-text reading of 247 publications, yielded 73 relevant studies, mostly focusing on countries in the Global North (mainly the UK, the USA and Germany). We systematically extracted all information in the publications according to what impact historical coal transitions had on women, and what role women played in the transition. Based on our results, we show where more scientific knowledge is still needed for policymakers to be able to make just transition policies that adequately account for varying gendered outcomes.

As results, we found that across country contexts, the long-term employment effects of past coal transitions were that the (mostly male) miners in coal regions increasingly left the labour force due to early retirement or redundancy, while women increasingly sought employment – giving them a degree of financial independence. However, many of them had to take up precarious jobs which were mainly located in the service sector and provided little financial and planning security. Future research should ask about policies designed to improve working conditions in the service sector and create well-paid jobs for all genders in the Green Economy sectors. In addition, many studies reported an increased total workload for women, as their domestic responsibilities remained, but a new responsibility as wage earners was added. One important area of research to inform policymakers is the availability of care services in carbon-intensive regions and the extent to which missing support infrastructure prevents women from planning their own careers.

Turning towards women's agency, our analysis showed that women active in the political struggle around various historical coal transitions tended to organise themselves in less institutionalised ways compared to men (partly because institutions such as unions were difficult for women to enter). Their activism, for example in the miners' strike in the UK or in anti-coal activism opposing Mountain-Top Removal (MTR) in the USA, usually took place in self-organised grassroots movements or through involvement in community work. Future research should investigate the main interests, needs and concerns of the women affected by the transition, and the kinds of activities and forms of organisation they choose. First, this would make women's activism more visible, and second it would inform state institutions how to make the transition process more inclusive. Furthermore, it is important to investigate how women's access to resources, such as adequate funding or access to policymakers and institutions, could be improved so that they are able to better integrate their interests into the political process.

The remainder of the paper is structured as follows: Section 2 presents our methodological approach – the systematic map. Section 3 summarises the information we have extracted from the publications. Based on those results, Section 4 presents our research agenda on how future research on just transition pathways can more comprehensively take into account gender dimensions. Section 5 concludes.

2 Methodology – Systematic Map

We answer our research question “what evidence exists about the effects of coal transitions on women in difference to men and about female agency within coal transitions?” using a systematic map. A systematic map is well suited to answer this question, since it is designed to collect, describe and catalogue existing evidence on a specific topic in a comprehensive and repeatable way. In doing so, it provides information about the current scientific state of the field of interest, such as the amount of existing literature as well as geographical foci, methodological approaches, and scientific disciplines. A systematic map can also help to identify research gaps or controversies in the existing literature (Haddaway and Macura 2018; Haddaway et al. 2018; James, Randall, and Haddaway 2016). The results of our systematic map therefore provide a good basis for developing a research agenda.

Starting our research process, we developed a systematic map protocol, which included the research idea, question and aim, inclusion and exclusion criteria, and search strategy. After having received feedback on it from experts in the field, it became the basis of our methodological procedure. In the following, we describe the four stages of our methodological approach.

Development of the Search String

Our research question includes the two basic terms: *coal transition* and *agency*. Before we present our methodological approach, it is important to provide a definition of these two terms and present our concept of *gender*, which is also essential to our work.

We define a *coal transition* as a (regional) decline in the extraction or combustion of coal, or a substantial loss of jobs in the coal industry. This definition allows us to include smaller, regional coal transitions and honours the social significance they bear. We define the concept of *agency* as “the property or capacity of actors to make things happen” (Coole 2010, 11). We conceptualise actors not merely as individuals, separate from their society, but as unique parts of a collective, who make choices based on the structurally presupposed rationales surrounding them, rather than simply autonomously (B. Davies 1991, 42–46).

In our study, we use *gender* as an analytical tool to make socioeconomic inequalities that affect women visible.⁷ This is a very simplified approach to gender, but we consider it appropriate for our research interest. It would be beyond the scope of this paper to comprehensively present the findings of gender research (for a more elaborate and differentiated discussion of gender, see for example Butler 1999; Alaimo and Hekman 2008). Being assigned to the category “woman” generally goes along with gendered norms that lead to constraints, while being assigned to the category “man” commonly brings more privileges (Young 2002). One of the assumptions that goes along with the category “woman” is being a caregiver and socially oriented. Thus, women are expected to do most of the unpaid care work, both related to the physical as well as the emotional well-being of people. Care work is essential for the

⁷ We share the notions of modern feminist theories on the relationship between sex and gender. However, to be able to extract the relevant information from existing literature for this study, we had to conceptualize the category “women” as a socially constructed but direct consequence of the female sex.

functioning of a society, however its value is barely recognized, neither in economic terms nor as an high-skilled and energy-intensive activity. The time and energy women invest in care work is no longer available for other activities, which could bring higher status, therefore limiting their own life chances in comparison to men. If a person does not fulfil gendered norms, this behaviour is accompanied by social sanctions. It is essential to note that women are not a homogeneous group, but have very different life situations depending e.g. on age, socioeconomic background, place of origin and race. Still, women have on average less access to resources (e.g. finances, influence on decision-making) than men and consequently different opportunities in life. Women’s social positioning not only influences how transitions affect them, but also their agency within coal transitions, for example regarding their political articulation, their forms of organisation or their representation in decision-making bodies.

In an iterative process, we developed a search string based on these three central terms. A search string is designed to find as many relevant publications as possible when using it in databases. It consists of several categories including synonyms or similar terms. We used one category for coal (e.g. lignite, mining), one for gender (e.g. women, woman) and one for transition & agency (see Table 1). Transition and agency were grouped into one category to ensure that a transition moment is either directly covered or questions of agency are addressed, which might point towards a transition in process (e.g. strike, activis*).

Table 1: Search terms by research category

Transition and Agency	Coal	Gender
transition* transformation* change* Reform closure* decreas* declin* collaps* crises crisis strik* resistance protest* agency activis* oppos*	coal lignite* mining anthracite* (anthracites) miner miners coalfield* coalmin* coalface AND NOT “data mining” AND NOT “text mining”	gender* woman* women* female* mother* femini* *wives *wife

Note: Terms within a category are connected using the Boolean operator OR. The categories are connected by AND, requiring each record to refer to all three categories. Additionally, wildcards (*) serve to include different endings to the same word stem.

We collected a broad range of relevant search terms for all three categories, which allows us to detect records across disciplines and times of publication – these might differ starkly in their terminology while still addressing the same topics. A preliminary search was conducted to evaluate the relevance of the terms, and a benchmark test with five relevant publications was established (test list). Text mining software was used to analyse the results of the test search and identify further relevant search terms. With this process, we came up with a comprehensive as well as consistent search string (see Table 1).

Inclusion and Exclusion Criteria

At first, unsystematic pre-tests allowed us to grasp an idea of the scope of existing literature and the exact inclusion and exclusion criteria needed to identify relevant literature. Following the PICO (Population, Intervention, Comparator⁸, Outcome) format, we identified the key inclusion and exclusion criteria (O'Connor, Green, and Higgins 2008): *Population* encompasses people living in coal-intensive regions worldwide, *Interventions* includes coal transitions as defined above, and *Outcome* relates to gender-related social, political, economic and demographic effects, as well as gendered agency within these transitions. To gather a comprehensive literature base, books, reports, conference papers, theses and working papers as well as journal articles were included in the systematic map.

Combining this with the aforementioned PICO categories, we identified the following inclusion/exclusion criteria:

Table 2: Inclusion and exclusion criteria

Inclusion	Exclusion
<ul style="list-style-type: none"> - <i>Population</i>: focus on coal regions - <i>Intervention</i>: historical coal transition moment (decline in coal production or coal related employment) covered - <i>Outcome</i>: gendered information – effects on women or female agency - Publication in English, German or Spanish 	<ul style="list-style-type: none"> - Only information on masculinity or male perspectives - Exclusively natural-science-based research - Scenarios or policy recommendations for future transitions - Non-scientific literature, e.g. newspaper articles, personal accounts such as diaries - Publication not retrievable⁹

Search for Literature

Based on their scientific disciplines, four databases were selected to build the basis of our literature search: Scopus, EBSCO, Web of Science and ProQuest.¹⁰ Since we were only interested in literature with a particular focus on coal transitions and gender, and in light of the broad selection of search terms per category, we limited the search to titles, abstracts and keywords of publications. CADIMA, an open-source review management software, was used to organise the data.¹¹

The search in the databases yielded 3,530 results. After removing 714 duplicates, 2,816 potentially relevant records were screened for relevance at title-abstract level. To ensure agreement among the four reviewers on inclusion decisions, we conducted a consistency check using the kappa test after all reviewers had read 10% of the abstracts. The result of the kappa test was 0.62; this is acceptable according to common scientific practice. Any disagreements were discussed and rectified. We judged 205 records to be read at full-text level, and 43 of those proved to be both retrievable and relevant to

⁸ Since our research is mostly based on qualitative case studies, a *Comparator* is not applicable.

⁹ Primarily, we retrieved full texts through access provided by Technische Universität Berlin (TU Berlin). In the next step, we drew on library subscriptions at Freie Universität Berlin and Humboldt-Universität zu Berlin. Where full texts were still missing, we requested articles directly from corresponding authors or made requests through Researchgate.org.

¹⁰ JStor would also be relevant, but could not be used due to its significant restrictions on the length of search strings.

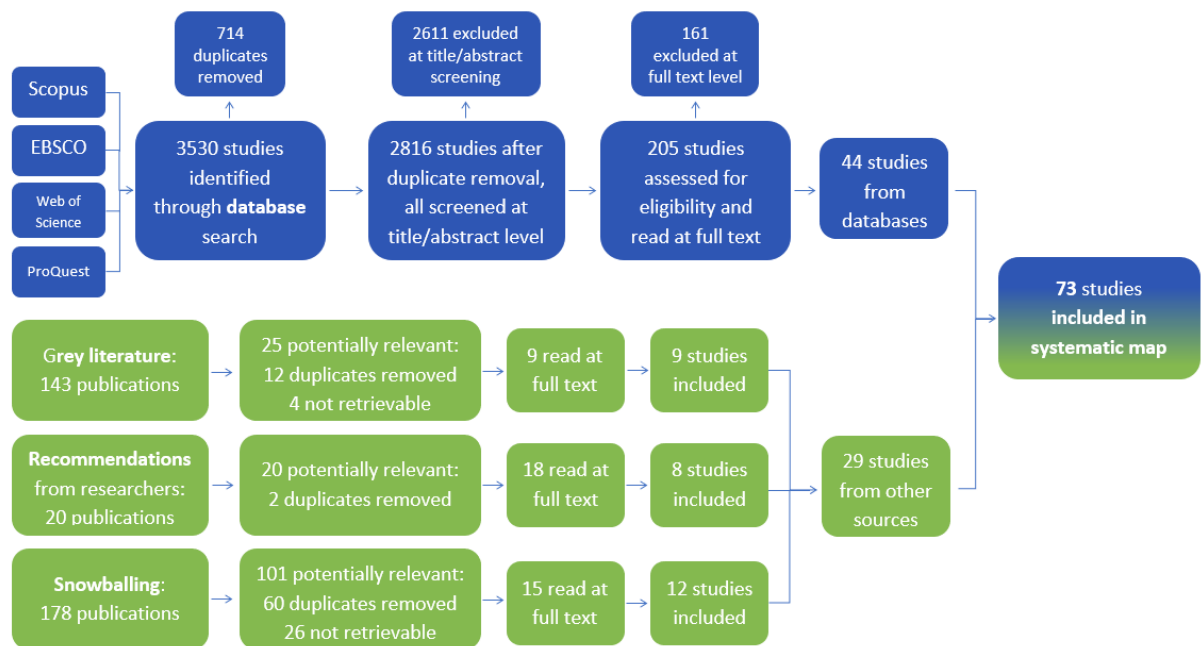
¹¹ <https://www.cadima.info/>

our research question; they were thus included in the systematic map. We complemented our database search with a three-step approach to searching publications not available in our databases:

- 1) The search for grey literature consisted of two parts (Mahood et al. 2014) and rendered nine publications for inclusion in the map:
 - The use of two grey literature indexes operated by the Institute for Scientific and Technical Information (France) and by the European Institute for Gender Equality.
 - A search using Google Scholar using a shortened search string, screening the first 100 results.¹²
- 2) To ask for additional literature recommendations, we established contact with the research community via email and social media. From this, eight additional records were added to the map.
- 3) Furthermore, we screened all bibliographies of previously included texts for potentially relevant publications (snowballing); this resulted in twelve additional publications.

A total of 25 relevant records were identified through the non-database searches, leading to total of 68 publications. Publications were split into multiple studies if they a) treated coal transitions in different nations or b) various chapters of one book were found to be relevant. Ultimately, 73 studies were captured systematically in the codebook.

Figure 1: Detailed description of search for literature



Source: Own depiction.

Note: Publications were split into multiple studies if they a) treated coal transitions in different nations or b) various chapters of one book were found to be relevant.

For our database search, we only used the above search string in English. We developed and tested a search string in German, but it did not yield any relevant results. We refrained from testing search strings

¹² Additional results did not prove to be relevant.

in other languages. However, the search in English and some literature recommendations included publications in German or Spanish which were included in our analysis. Our search string in English is certainly one reason why the publications in our systematic map predominantly deal with coal transitions in the Global North and especially in the UK and USA. It is possible that a search string in Spanish, for example, would have yielded more results on countries in the Global South (e.g. Chile has experienced a decline in coal production in recent years¹³). Moreover, it is very likely that scientific institutions in the Global North have more resources to facilitate research on this topic.

Data-Coding Strategy

We developed a comprehensive codebook in a multi-staged process including a test-coding phase. Table 3 presents a list of all categories and subcategories of the codebook. In addition to containing general information about the studies and coal transitions at hand (metadata), the codebook is split into two main sections to reflect the twofold research question. The first section includes information on gendered outcomes of coal transitions in five subcategories: ranging from the individual level, to the household, to the community, as well as information on gendered effects on job markets and the political sphere. The second part of the codebook focuses on female agency in coal transitions, and is split into different groups of female stakeholders. Moreover, we collected information on climate and environmental aspects – which ultimately proved to be disregarded in the literature we read – as well as on concepts of gender, and reported intersectionality with class, race and more. The subcategories featured a mix of fixed dropdown menus and open answer fields, so that the collected data was both highly detailed and consistent among the coding team.

Table 3: Categories and Subcategories

Category	Subcategory
Metadata	Study basics (scientific discipline, methodological design, focus of inquiry) Transition basics (dates, geography, type and scale of transitions, etc.)
Gender-related outcomes	Job market and economic outcomes (primary, secondary and tertiary sectors) Political sphere Social/community level Household level Individual level
Participation in coal transition	Women as workers Women as male miners' relatives Women as community members Other female stakeholders Effects of female participation in transition process Men's agency and interest
Environmental and climate aspects	Environmental or climate aspects as drivers or outcome of transition
Diversity and intersectionality	Concepts of gender Intersectionality

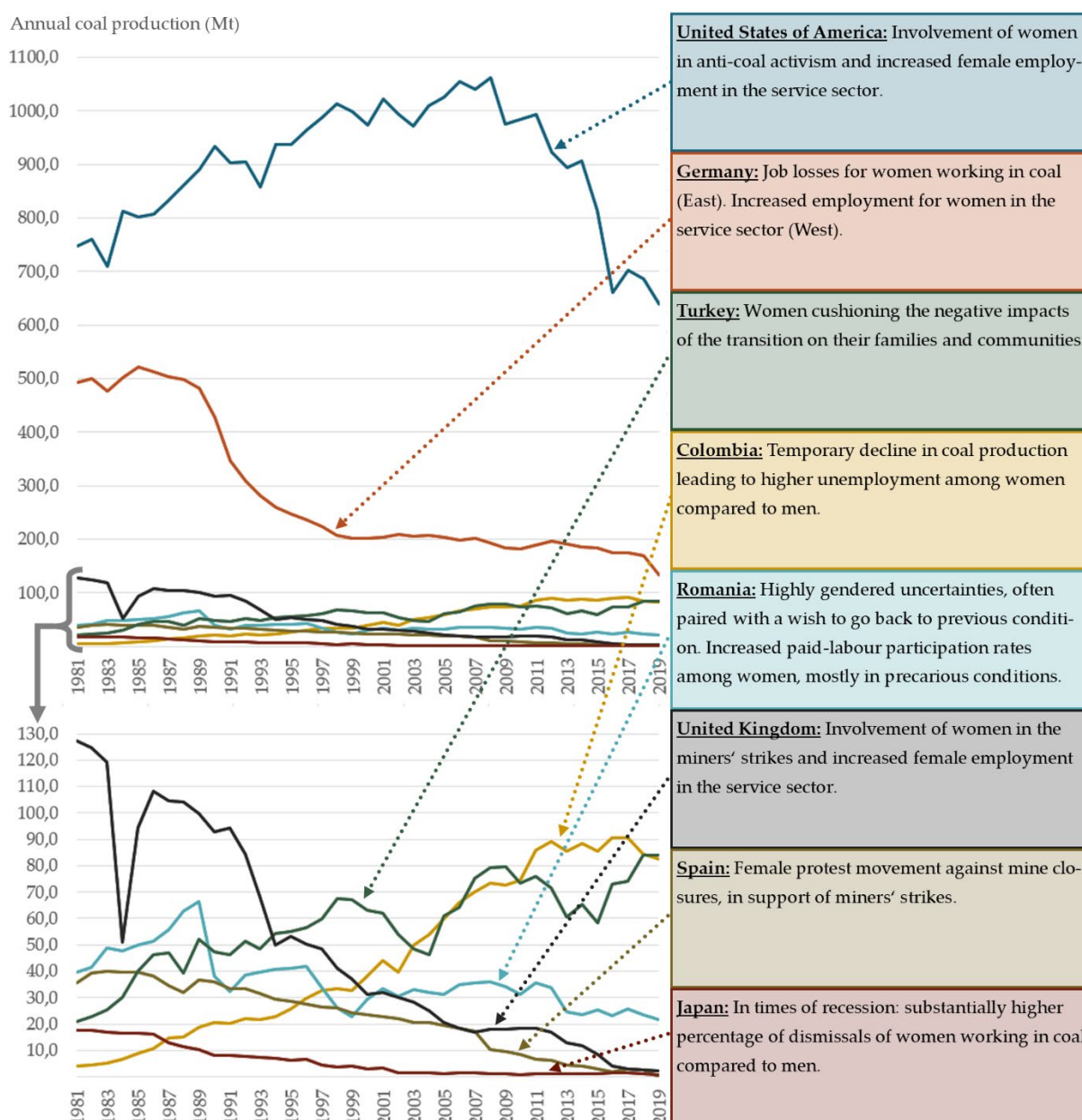
¹³ Statista. 2020. "Coal production in Chile from 2010 to 2019": <https://www.statista.com/statistics/1174991/chile-coal-production-volume/> (last accessed 28 April 2021)

After we had read 10% of the texts from the database search, we discussed inconsistencies in the coding strategies, and identified any missing or unclear categories. The codebook was adjusted slightly to ensure it included all relevant information.

3 Gender in Historical Coal Transitions

The 73 studies recorded in the systematic map covered gender aspects of coal transitions in eight countries: the USA, Colombia, Germany, Romania, Spain, Turkey, the UK and Japan. Figure 2 provides an overview of the historical coal-production developments in the respective countries and summarises the main gender-related findings detailed in the following sections. It must be noted that Turkey and Colombia did not undergo a national or lasting coal transition. In the case of Turkey, the reduction in coal production remained confined to the region of Zonguldak near the Black Sea, while the decline in coal production in Colombia was only a temporary phenomenon in 2014. Nevertheless, both countries experienced a substantial decline in coal production and thereby met our inclusion criteria. Before we present our results, we would like to point out that the coal transitions in these various countries have played an important role in explaining the developments we describe below. However, there have been other social, political and economic changes (e.g. increasing neoliberalisation in the 1980s and 1990s in the USA (Smith 2015) and the UK (Dalingwater 2018)) that have influenced the situation of women, and therefore there is not always a clear causality between the coal phase-outs and the developments described.

Figure 2: Transitions' overview and main reported gender aspects per country



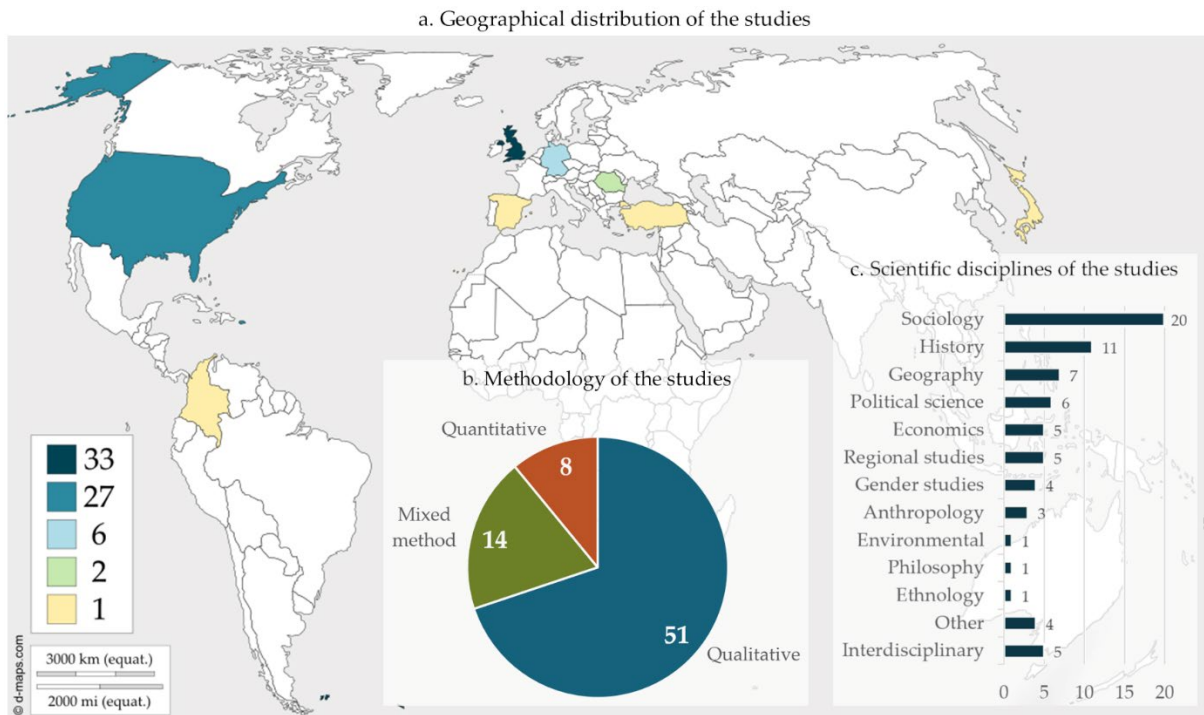
Source: Own depiction, based on BP (2020) and information collected in the codebook.

3.1 Background Information on Studies and Coal Transitions

Most of the studies addressed transitions in the Global North (see Figure 3, a), with 33 addressing the 1920s and 1980s coal transitions in the United Kingdom (e.g. Beckwith 1998; Gier-Viskovatoff and Porter 1998; Aragón, Rud, and Toews 2018), while studies concerning coal transitions in the USA follow, with 27 (e.g. Miewald and McCann 2004; Oberhauser 1993; Bell, Fitzgerald, and York 2019). For a more detailed qualitative analysis of the research on gender aspects in the USA and UK coal transitions, see Braunger and Walk (forthcoming). Regarding Colombia, Spain, Turkey and Japan, there is only one study each (Sanz Hernández and López Rodríguez 2017; Sengül and Aytakin 2012; Mathias 1993; Arango, Flórez, and Olarte-Delgado 2019) as well as a study by Botta (2019), which covers more than one country. In our research, countries of the Global North are disproportionately represented due to

our focus on historical coal transitions. Most studies stem from sociology (20/73), followed by history, geography and political science (see Figure 3, b). The majority of studies conducted were qualitative (51/73, see Figure 3, c). 48 out of the 73 studies were published in journals. Another 15 were book chapters and the rest were grey literature. The vast majority of studies were written by female authors,¹⁴ with 31 (42%) written by single female authors, 21 (29%) by multiple female authors, and only 16 from single or multiple male authors (22%). An additional five studies (7%) appeared to have mixed authorship.

Figure 3: Country distribution, scientific disciplines & methodologies of the studies



Source: Own depiction, global map from d-maps¹⁵

The years of publication span from 1984 to 2020, covering transitions starting in Japan after the First World War (Mathias 1993) up to today. Studies on the effects of coal transitions in the UK and the USA, as well as on the UK's miners' strikes have been published throughout the whole period (see Figure 4, a).

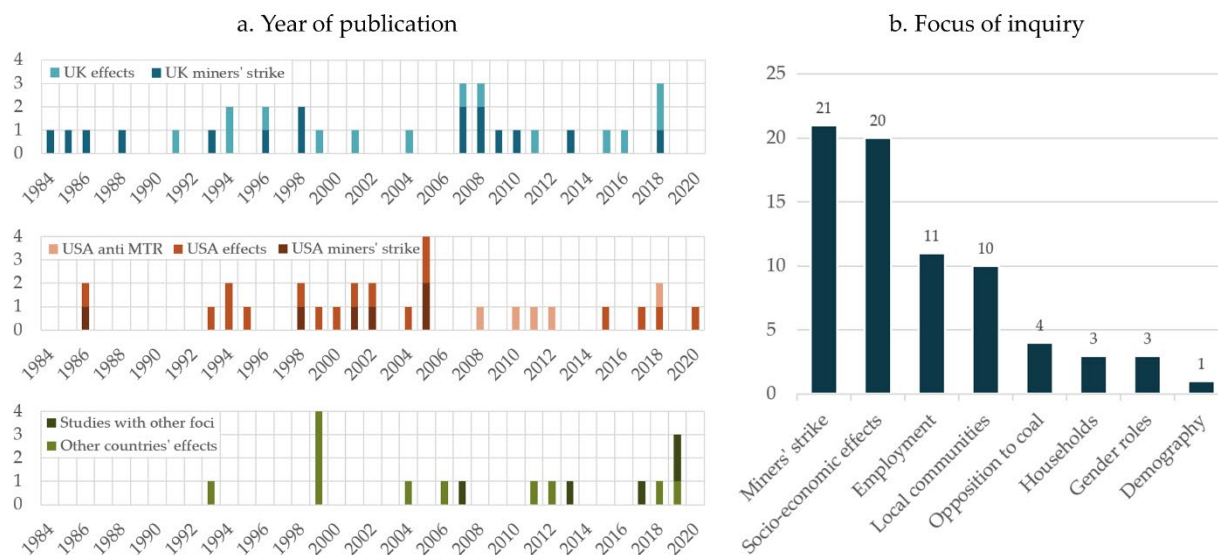
Turning towards the focus of inquiry (see Figure 4, b), the miners' strikes in the USA and especially the UK (e.g. Miller 1985; Beckwith 1996; Spence and Stephenson 2007; R. Davies 2010; Sutcliffe-Braithwaite and Thomlinson 2018) received broad attention, suggesting the great historical significance of these events. Despite the majority of the studies being based around pro-coal movements, our investigation also found four studies that focused on anti-coal activism by women living in coal regions,

¹⁴ Please note that when coding the authors sex, we made a binary categorisation (m/f) based on the authors' first names. This assignment is based on our Western European cultural experiences and may additionally misgender people with queer identities.

¹⁵ d-maps. 2021. "Map Planisphere World (Europe Africa)": https://d-maps.com/carte.php?num_car=13181&lang=en (last accessed 01 July 2021)

which started to be published around 15 years ago (Barry 2008; 2012; Bell and Braun 2010; McNeil 2011). Socioeconomic effects as well as outcomes on community level were also frequently discussed in the studies; this will be described in detail in Section 3.2.

Figure 4: Year of publication & focus of inquiry



Source: Own depiction.

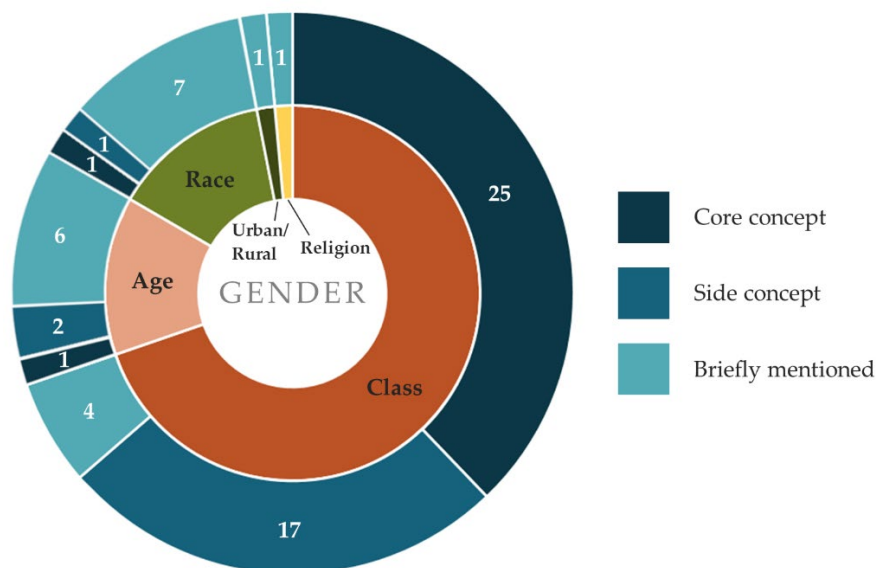
Gender interacts with other social statuses and identities, such as class, race, age or religion. Together, they strongly influence a person’s position in society and, consequently, the discrimination they face or privileges they enjoy. Introduced by Kimberlé Crenshaw (1991) and further developed by many feminist scholars, the analytical framework of intersectionality has been widely used to describe the overlapping advantages and disadvantages that go in hand with the above-mentioned statuses and identities.

Figure 5 shows which categories were considered together with gender in the studies. It also shows whether the categories were taken into account comprehensively as a core concept in the study and thus play an overriding role alongside gender, or whether they were treated secondarily to gender as a side concept or were only mentioned in passing. Together with gender, class was an analytical lens in 46 out of the 73 studies, making it a highly relevant intersectional category for coal transitions. Especially in the miners’ strikes in the UK 1983-1984, class was essential to women’s identities: “Class identity remains intact as a greater ‘us’, but women are now included within that” (Stephenson and Spence 2013, 230). Also beyond the UK, class was a relevant category in coalmining communities across national borders and emerged in studies about almost all countries represented in the map (e.g. Maggard 1994a; Clemens and Rauhut 1999; Kideckel 2004; Bennett 2015; Smith 2015; Sanz Hernández and López Rodríguez 2017).

Further relevant intersectional categories are race and age, both of which were addressed in nine out of the 73 studies (see Figure 5). Most studies were concerned with the experiences of “white working class women” both for participation in miners’ strikes as well as the transition’s outcomes (e.g. Beckwith 1996; Seitz 1998; Schell and Silva 2020). However, the situation for women of colour was also treated in some texts, with Joyce Barry noting that “race has been a major framing device for Environmental

Justice thought and activism, and [in anti-MTR activism,] people of colour have been at the forefront of this movement” (Barry 2012, 47). Age was also a relevant factor in the coal transitions. A women’s age entails different child care duties, working experiences and educational opportunities, and therefore leads to different coping strategies and possibilities in transition moments (e.g. Ali 1986; Jung 2006).

Figure 5: Intersectionality in the studies



Source: Own depiction.

3.2 Reported Transition Effects on Women

The following chapter reports the transition effects on women we found in the literature. The evidence was grouped into four areas of impact: gendered labour market effects, and effects at the community, household and individual levels.

Gendered Labour Market Effects

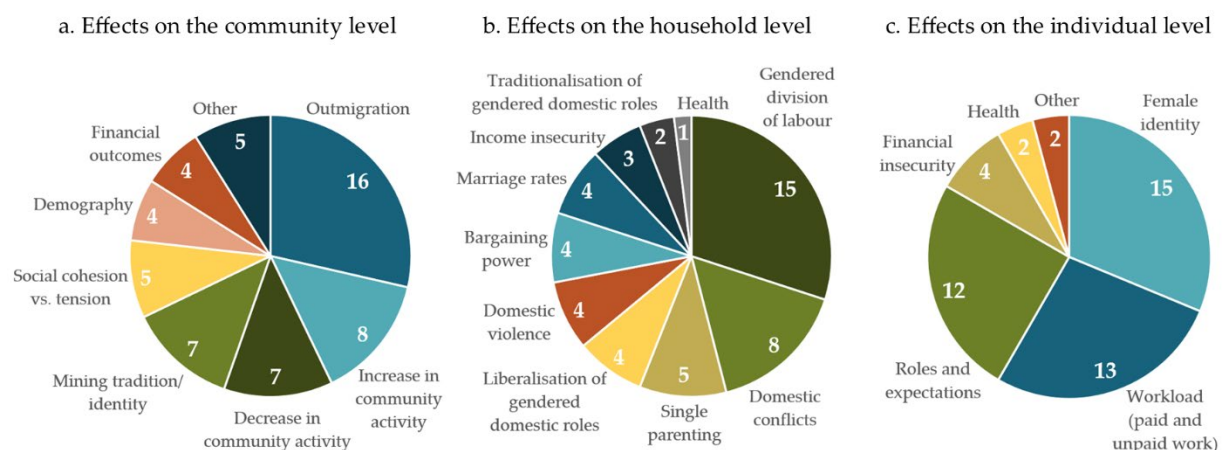
In wide-scale transition moments, the effects on local job markets hold particular relevance. In accordance with this, 40 studies reported outcomes within the primary job market – in our case the coal industry – of which 24 reported job losses in general (usually mentioning that these mining jobs were largely occupied by men, e.g. Dublin and Licht 2000), 8 specifically reported job losses for men and 2 reported reduced employment for women in the coal industry (Mathias 1993; Clemens and Rauhut 1999). Furthermore, various studies emphasise the stark gender segregation of occupations with men working in heavy industry while women predominantly held factory jobs or performed care-based activities (e.g. Dublin and Licht 2000; Oberhauser, Turnage, and Smith 1999). Before the transitions gender differences in tasks and skills were rigid, as some of the coal regions had little other industry and thus scarce alternative employment opportunities for women, leading them to mainly perform unpaid work (e.g. Barry 2001; Spence and Stephenson 2009). In sum, in the course of the transitions the predominantly male workers were subject to massive layoffs, while the impact on women occurred on the secondary and tertiary job markets. In order to compensate for the decrease in household income,

women increasingly took up paid jobs (e.g. Beatty 2016). 35 studies reported outcomes on the secondary and tertiary job market. 20 of those 35 showed increased female employment rates in the aftermath of the transition (e.g. Maggard 1994a; Bennett 2004; Phillips 2018). Additionally, seven studies reported job gains in general, which – again due to gendered segregation of occupations – also meant an increase in female employment (e.g. Oberhauser 1993; Measham and Allen 1994; Miewald and McCann 2004). The conditions in these jobs are usually reported to be more precarious, low-paid and insecure compared to the relatively secure mining jobs (e.g. Oberhauser 1995; Spence 1998; Miewald and McCann 2004; Phillips 2018). In contrast to the above findings, one study for the UK reported that after the mines closed, women lost employment in the manufacturing service sector, due to male ex-mine workers pushing them out of the job market (Aragón et al. 2018; similar but less substantiated findings in Arango et al. 2019).

Effects on Community Level

Since mining was often a large part of community life, social changes from the transitions were vast. 56 of the 73 studies in the systematic map reported effects at the community level (see Figure 6, a).

Figure 6: Studies reporting transition effects on women



Source: own depiction.

The most prevalent effect of a coal transition was the deterioration of the corresponding locality due to outmigration. This was reported in 29% of the studies we examined and we found different gendered outmigration patterns. For example, in Appalachia (USA) in the 1980s and 1990s, men migrated in high numbers in search of employment in construction or factory work (Oberhauser 1995). In contrast, in Lusatia, former East Germany, it was mostly young women who left after the fall of the Iron Curtain (which was accompanied by a huge decline of the coal industry) to find employment outside their home region (Jacobsen and Winkler 2011). However, outmigration already affected some of the coal mining areas before the transitions took place. For example, Barry (2001) reported in a study focused on the USA that coalmining operations were very loud and environmentally destructive, causing many people to move away; this in turn left mostly empty villages with deteriorating social and economic infrastructure.

The second most affected area is community activity. Here we found nearly equal reports on increases and decreases in community activity due to the coal transition, with eight studies reporting an increase while seven studies investigated a decrease (see Figure 6, a). Often, an increase of community activity was reported during and after miners' strikes where women were involved (e.g. Sanz Hernández and López Rodríguez 2017). People developed a stronger sense of community as they collectively (especially women) made the strike possible, for example, by supporting each other financially or with housework (e.g. Miller 1985; Measham and Allen 1994; Spence and Stephenson 2009; Seitz 1998). As one study on the UK miners' strikes put it: "The discrepancies between activism and ideological support for the strike confirm that people were active in the dispute as much because they had the time, the material resources and the opportunities to allow the possibility of giving support and wanted to help friends and neighbours in the close-knit community, as because of their commitment to the strike itself." (Measham and Allen 1994, 38)

Other studies argued that the necessity for women to become wage earners put heavy strains on community involvement, leading to reported decreases of community activity. This development was attributed to women being traditionally in charge of organising community events and maintaining social networks that they subsequently had no time for after entering the job market (e.g. Miewald and McCann 2004). Furthermore, de-unionisation throughout the transition processes and conflicts during the strike weakened the community bond among former miners and led to further defragmentation within communities (Kideckel 2004; 2018; Smith 2015; Spence 1998). Hence, the development of social life remained unique to each community, and there was no unifying trend in social life accompanying these transitions.

13% of the studies reporting effects at the community level mentioned direct effects on the mining communities' identities. Coal communities often followed an especially patriarchal pattern. According to Maggard (1994a), this was connected to the coal industry itself, as gender inequality was exacerbated by the arrival of the industry in Appalachia. A historical study of the extent to which the arrival of the coal industry exacerbated gender segregation and by what mechanisms would be interesting, but is beyond the scope of our research. Multiple studies reported that the transition away from coal weakened these traditional structures, as women broke out of their assigned sphere of the private (e.g. Spence and Stephenson 2007; 2009; Miller 1985) (see below). In many cases, the image of mining communities became heavily romanticised after the coal transition, leading to the founding of institutions and clubs to preserve a long-gone mining identity and tradition (Dawson 2000). Spence and Stephenson (2009) argued that the strong patriarchal tradition also influenced the way women were portrayed in British strikes. They showed that women were presented as only becoming politically active with the miners' strike. However, they found that this misrepresented women's participation in society before the transition. Many of them were already active before, for example, in community work. Mining as an identity was also affected in other ways, however. In the case of Romania, the transition destroyed trust among community members, by pitting active miners that broke the strike (for various, often financial, reasons) against their former colleagues, who were then out of work (Kideckel 2004).

Effects at the Household Level

While the two levels of affectedness elaborated on above reflect wide-ranging effects, transition moments also change more small-scale structures, such as household dynamics. For an overview of the different effects found in 50 of our 73 studies, see Figure 6, b.

15 out of 50 (30%) studies reported a change in the gendered division of labour, making it the most prominent effect at the household level. Some studies on households in former coal communities in the UK reported that the new employment situation changed the division of labour, as men started to spend more time at home and women went out to work. As one study put it, “research suggest[s] subtle changes regarding the intersection of class and gender regimes in households that shape this former coalfield. [...] there was growing intolerance of men doing nothing in the way of childcare and housework” (Bennett 2015, 1296). Four studies reported a general liberalisation of gender roles (Miewald and McCann 2004; Stephenson and Spence 2013; Shaw and Mundy 2005; Miller 1985). In another study on the coal transition in the USA it is said “Men can no longer be the sole breadwinners and, because of declining birth rates, increasing access to education, and modern conveniences, women are less tied to the home. [...] They [the women] can attempt to renegotiate a new ‘gender contract’ or leave the relationship all together.” (Miewald and McCann 2004, 1055–57). However there is no clear pattern as other studies also looking at the UK and the USA argued that the patriarchal gender division remained largely the same during and after the transition, often leaving the domestic work to women in addition to their paid jobs (Measham and Allen 1994; Schell and Silva 2020). Various studies stated that the total workload for women increased, as their domestic tasks remained, but a new responsibility as wage earner was added (e.g. Measham and Allen 1994; Dublin and Licht 2016; Williams 1999). In these cases domestic tasks did not seem to have decreased substantially, as men started to be unemployed. Williams noted, “if a man did help out around the house, his assistance was given ‘behind closed doors’ and ‘covertly in order to avoid embarrassment, and what might be interpreted as an affront to his manhood’.” (Williams 1999, 69).

The second most reported outcome of coal transitions at the household level were domestic conflicts (e.g. Kideckel 2004; Barry 2001; Miller 1985). Four of the studies we evaluated even mentioned increases in domestic violence during the transition (Maggard 1994a; 1994b; Kideckel 2004; Bennett 2004). While the causes of domestic conflicts are manifold, the juxtaposition between women’s traditional responsibilities in households and the changing nature of women’s social positions through employment or political engagement and the resulting erosion of the traditional gendered order has to be seen as one of them (Dublin and Licht 2000; Kideckel 2004). One study mentioned that after the strikes against the mine closures in the UK were over, women were expected to return to their domestic roles as carers, which many refused to do (Shaw and Mundy 2005).

Effects at the Individual Level

Effects on women at an individual level were reported in 48 studies (see Figure 6, c). As already mentioned in the section on Effects on Community Level, restructuring due to a coal transition had significant effects on the inhabitants’ identities. 15 out of the 48 studies addressing the impact on women

at the individual level focused on how female identity changed during the transition (e.g. Measham and Allen 1994; Clemens and Rauhut 1999; R. Davies 2010). Since *identity* is a broad concept, the aspects of female identity treated in each study vary greatly. In the UK miners' strikes, for example, traditional female gender norms changed abruptly. This forced a change in women's social identity, and how they were seen within their community (Spence 1998). As Peter put it, "Instead of occupying a prominent position only within the female community hierarchy, their role in the strike was acknowledged by their recognition as important individuals by both women and men" (1988, 182). Another study, focusing on coping strategies of women in the face of economic challenges in Appalachia, recorded a fundamental change in the way women saw themselves through "increased self-esteem, confidence, and [in] gaining some financial independence" (Oberhauser 1995, 64) by generating income, which in turn gave them a perception of themselves as role models for their daughters. Sometimes identity was not simply remodelled; one study from Spain reported a loss of identity for women based on class and their social status as "miners' wives", who due to the economic restructuring had to replace their role as the reproducing and caring counterpart to the male miners with new roles, based on a new sense of self. Young women in particular, recognising that the return to coal would only work in the short term, started to demand a more future-oriented perspective, and a search for alternative ways to sustain their communities (Sanz Hernández and López Rodríguez 2017).

We can identify the clear pattern across studies and transitions that more women entered the labour market (see section on gendered labour market effects). Regarding the gendered division of labour there is not such a clear pattern – some studies reported an increasing liberalisation of gender roles after the coal transition while others reported that the paid additionally to the unpaid labour led to a double burden for many women (see section on the effects on household level). That the division of labour remained largely the same is likely to be due to the gender norms and expectations in the coal transition areas dealt with in 12 out of 48 studies (see Figure 6, c). The highly gendered societal demands placed on women as care-givers and community upholders often remained (e.g. Bell, Fitzgerald, and York 2019; Marshall 2008). These norms had been internalised over centuries, explaining cases in the UK where women remained content with traditional gender norms and avidly supported preserving the pre-transition social order. "Many [women of the support groups in UK] were keen to disassociate themselves from the more militant feminist groups who also became involved in strike support, and preferred to be seen as ordinary women from mining communities. They did not want to change their status within their communities; they were fighting for the stability of the world they knew" (R. Davies 2010, 246–47).

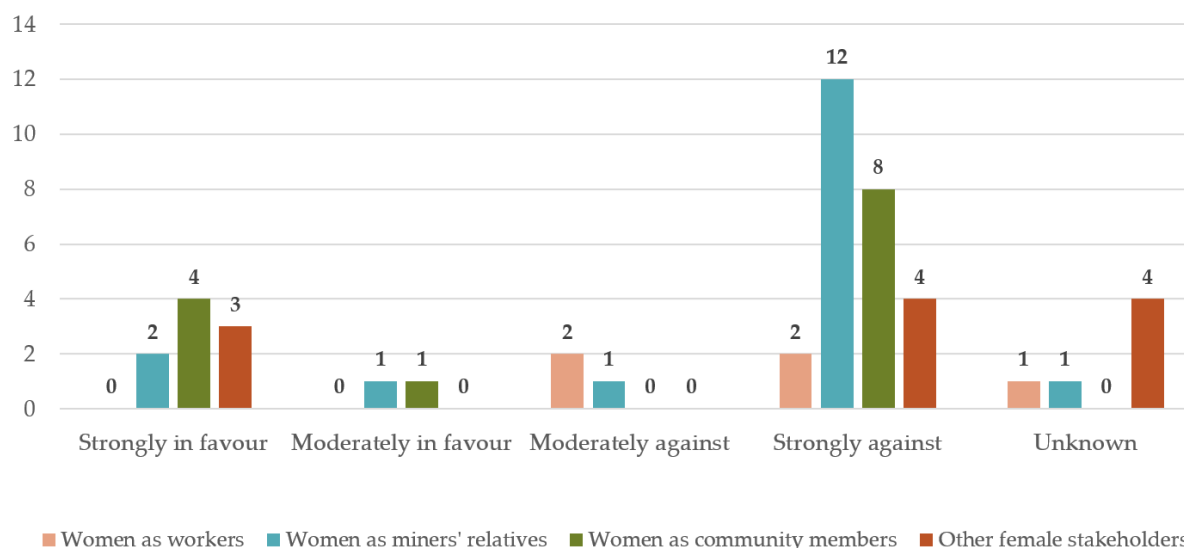
3.3 Female Agency in Historical Coal Transitions

Just as women's social positioning influences outcomes, agency itself is also gendered within coal transitions. This is reflected in women's forms of organisation, their representation in decision-making bodies and their visibility within coal transitions. Based on the definition of the term "agency" laid out in Chapter 2, we systematically analysed the information on female agency presented in the studies. 26 out of the 73 studies treated agency as their main or sole focus, showing that female agency was a

relevant aspect of coal transitions. As the following section shows, female agency both shapes, and is shaped by, transition processes.

Overall, 63% of the 26 studies reported that female actors were moderately or strongly against the coal transition in which they were involved, while 24% studies found women moderately or strongly in favour of it (see Figure 7). The other 13% reported on female agency without explicitly stating their opinion.

Figure 7: Female stakeholders' opinion on coal transition



Source: Own depiction.

Five studies from three publications covered the agency of women as coal workers. This particularly low number of studies reflects the predominance of male workers in coal mines in industrialised countries (e.g. 96.2% of the workforce in the USA coal industry is male (McWilliams et al. 2012)). This group of women were against or strongly against the transition, as it would inevitably entail losing their current jobs. Various studies reported that female miners tended to be dismissed (Mathias 1993) or demoted (Clemens and Rauhut 1999) before their male colleagues, indicating that coal transitions might hit female workers harder or earlier than male workers.

The agency of male miners' female relatives was covered in 17 publications, reporting mostly negative attitudes towards the transitions. For many women involved, saving the mines meant saving their homes and communities: "*Salvar la mina es salvar los pueblos mineros*"¹⁶ (Sanz Hernández and López Rodríguez 2017, 94). In the UK, the USA and Spain women supported miners' strikes in informal, but highly organised grassroots movements and thereby substantially increased the visibility of the male strikers (e.g. Seitz 1998; Spence and Stephenson 2007; Sanz Hernández and López Rodríguez 2017; Sutcliffe-Braithwaite and Thomlinson 2018). Their activities ranged from collecting strike money, picketing or establishing community kitchens, to more radical forms of action, such as occupation. Miners' support groups in the UK maintained close contacts with the National Union of Miners (NUM),

¹⁶ Translation from Spanish: Saving the mine is saving the mining villages.

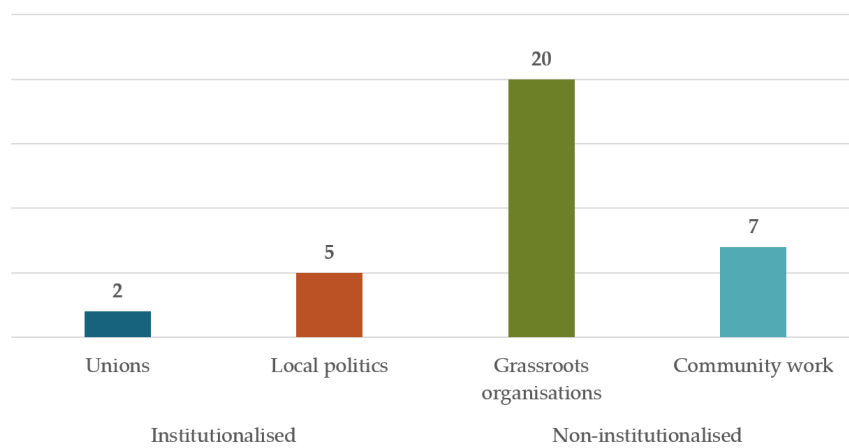
although the form and intensity of cooperation were contentious among the women (Sutcliffe-Braithwaite and Thomlinson 2018). Most of the women's groups distanced themselves from feminist movements, identifying themselves as miners' relatives or working-class women rather than as feminists (e.g. Beckwith 1996; Seitz 1998; Spence 1998). However, some texts mentioned ties to contemporary feminist movements or stated that the miners' wives were at least influenced by them (Miller 1985; Measham and Allen 1994; Sutcliffe-Braithwaite and Thomlinson 2018). Both women in pro-coal and anti-coal activism made arguments based on their identities as mothers or wives: their feelings of responsibility for the community and desire to preserve a living basis for their children incentivised them to become active. It was solely their judgements about what was best for their community that differed – either maintaining the current coal-based economy (e.g. Sutcliffe-Braithwaite and Thomlinson 2018) or protecting the natural environment (e.g. Bell and Braun 2010).

We also collected information on women who were not directly affected by mine closures in their family environment but were still involved in the process. 13 studies contained information on the agency of women living in coal communities, and 11 studies treated the situation of women who were concerned with coal transition processes as stakeholders in other ways. Five of these publications examined female participation and leadership in environmental activism against MTR in the USA (e.g. Bell and Braun 2010; McNeil 2011; Barry 2012). The activist women fought to protect their families from floods, toxins, air pollution and other dangers caused by the MTR mining technique. They were driven to political action by direct threats to their families and communities, and often had no former experience in activism (McNeil 2011; Barry 2008). West Virginia, where MTR has been particularly prevalent since the 1990s, constituted a prominent example, with women forming organisations such as the “Coal River Mountain Watch”. They educated themselves about the functioning of the coal industry in West Virginia and the supporting political conditions. Barry (2008) reported that their personal self-esteem, their confidence to speak up for their interests, and their identity, apart from their traditional one as wife and mother, were strengthened due to their political activism. In contrast, other women were engaged in pro-coal lobbying in the same regions. Bell et al. (2019) analysed the activities of the “Friends of Coal Ladies' Auxiliary”, founded in 2007 as a sub-organisation of the “Friends of Coal”. The female members were mostly white and middle class, and their husbands had ties to the coal industry. Through their activities, for example at school events or in support of local residents with everyday problems, they tried to represent the coal industry positively in their communities. Further observations came from Kideckel (2018), who directly addressed the absence of female agency in the transition process in the Jiu Valley in Romania, attributing this to institutional barriers as well as the responsibility of women to support their families, which increased as the economy declined.

Figure 8 summarises our findings regarding the political spheres of female agency in coal transition processes, and reflects the fact that due to a lack of access to institutions and therefore structural power, women have mostly organised themselves informally in grassroots movements and community work (e.g. Gier-Viskovatoff and Porter 1998; Sutcliffe-Braithwaite and Thomlinson 2018; Peter 1988). In the UK, for example, barriers to access to the institutionalised power of the NUM were high; the women were not allowed to participate in union meetings. Four years after the beginning of the strike, in 1987,

some women were eventually granted associate membership – without voting rights. Most of the women’s contact to the NUM was therefore based on family ties (Sutcliffe-Braithwaite and Thomlinson 2018). Beckwith argued that the women’s “indirect movement location [not being directly part of the NUM] also facilitated their activism” (1996, 1050). Members of the NUM were threatened with punishment, such as dismissal without compensation, while the women could mobilise and voice their opinion freely and thereby shape the anti-pit-closure discourse. Similar forms of organisation arose in the support of coal strikes in Spain and the USA (Seitz 1998; Sanz Hernández and López Rodríguez 2017). The activism against MRT in the USA, mostly led by women, can also be considered grassroots work. It is to be noted that Coal River Mountain Watch or other anti-MTR groups were nowhere near as institutionalised and powerful as the UMWA (United Mine Workers of America) – even in its weakening state – particularly concerning the union’s standing in formal institutions like the government (McNeil 2011). The forms of protest women chose varied widely, from more traditionally gendered tasks such as community kitchens, to non-violent protests, and even some accounts of violent protests. Moreover, some women engaged in local politics to pursue their interests and “create the conditions and policies that meet their multiple, yet overlapping, aspirations and responsibilities” (Miewald and McCann 2004, 1060) or chose this form of organisation after the initial protests against mine closures were over (Phillips 2018).

Figure 8: Political spheres of female agency



Source: Own depiction.

Various authors elaborated on the question of how increased female visibility and activism during coal transitions affected gender relations. Concerning the transition in Appalachia, Dublin and Licht (2000) found that “gender roles were both reinforced and reconfigured during the collapse of the anthracite region’s economy. The system of separate spheres for men and women persisted and even contributed to family survival, although certain role reversals occurred” (85-86) and Maggard (1994b, 20) noted that traditional understandings of gender were disrupted and women who had not worked previously took up education and job training after participating in the strikes. Sanz Hernández and López Rodríguez (2017) stated that in Spain, the women moved from the private to the public sphere and from a passive role to an active one during their participation in the coal strikes. This changed their overall position in their communities. In the UK, female strike participation was reported to have had only a temporary effect on

gender relations (Beckwith 1996; Waddington et al. 1991 cited in Spence and Stephenson 2007). Phillips (2018, 46) on the contrary stated that “[m]any women remained active politically after the strike [...] and acquired formal educational qualifications”, while still acknowledging that this was a slow, procedural process.

4 Discussion and Research Agenda

While there has been extensive academic research on coal transitions in general, there has only been a limited amount of academic literature from a gender perspective. Nevertheless, the existing research shows that women have been affected differently by historical coal phase-outs than men, and that women have chosen their own forms of participation in the transition processes.

A central question is if these results can be transferred to today's coal phase-out processes. Many socio-economic conditions have changed. In general, climate change considerations, as prevalent today, were not the reason for the historical coal transitions analysed in this paper; these coal phase-outs were mainly caused by economic factors. Moreover, the transitions were hardly cushioned by social policy. This could be one of the reasons why these transition processes were mainly opposed by the female stakeholders we analysed and why the tenor of the studies was mostly negative. Today, the climate crisis makes the coal phase-out urgent. Furthermore, there is a growing recognition of the need to support coal regions to develop alternative industries (e.g. through the European Just Transitions Fund¹⁷).

Our analysis of historical coal transitions shows that gender had a major impact on how a person was affected by the transition and to what extent she was involved in decision making. Even though many initial conditions have changed, we can conclude from our analysis and from the fact that gender is still very powerful in assigning men and women different positions in most areas of life, that gender is also relevant for today's sustainability transitions (Spitzner et al. 2020). We see a considerable lack of both quantitative and qualitative gender-aggregated data, and a need for more research to fully understand the gender dimension of today's sustainability transitions. Furthermore, novel policy instruments are needed to cushion the impacts of the transition on women, and consideration should be given to offering them more forms of participation besides their involvement in social dialogue¹⁸.

Only one of the ILO's just transition guidelines directly addresses the aspect of gender equality. However, we argue that gender should not be treated as just one aspect of the transition, but that the gender dimension runs through all aspects of transitions and should therefore be seen as an integral part of all the guidelines. Based on our findings on women in historical coal transitions, we have therefore developed a research agenda addressing all of the ILO's guidelines. This research agenda should

¹⁷ European Commission. “Just Transition funding sources”: https://ec.europa.eu/info/strategy/priorities-2019-2024/european-green-deal/actions-being-taken-eu/just-transition-mechanism/just-transition-funding-sources_en (last accessed 06 July 2021)

¹⁸ “Social dialogues include all types of negotiation, consultation or simply exchange of information between, or among, representatives of governments, employers and workers, on issues of common interest relating to economic and social policy” In: International Labour Organization. “Social dialogue”: [%20%20a](https://www.ilo.org/ifpdial/areas-of-work/social-dialogue/lang-en/index.htm) (last accessed 01 July 2021)

facilitate a systematic scientific exploration of the gender perspective on today's just transitions away from carbon-intensive industries. Such research would contribute significantly to shaping gender-sensitive transition policies as well as gender-aware forms of participation. We recognize that meeting the ILO criteria alone would not lead to a just transition in the broader sense, as the ILO perspective merely focuses on carbon-intensive regions, and fails to address other important aspects of just transitions, such as energy and climate justice (Carley and Konisky 2020). Nonetheless, meeting these criteria would be a first step towards a gender just transition.

a) Participation

The ILO's first principle of a just transition refers to the participation of all relevant stakeholders to ensure social consensus on the goals and pathways to a sustainability transition. This procedural dimension of justice is indeed key when it comes to the question of distributing the costs and benefits of transition processes in a fair way. Our research shows that women in the coal regions have borne a relevant share of the transition costs and had, for example, economic self-interests in transitions. However, due to their limited access to institutionalised decision-making processes and resources, their interests have not fully been taken into account.

To fulfil this ILO principle in future transition processes, greater efforts should be made to include the interests of women (and other marginalised groups). However, to fully integrate gender perspectives into transition processes, it is not enough to involve more women in decision-making processes. To develop gender-sensitive policies, the involvement of actors who are knowledgeable about gender aspects is necessary (Kronsell 2013). Future research on gender and sustainability transitions will be crucial for generating the required knowledge. This includes questions such as the following: What are the main interests, needs and concerns of women affected by transitions? Which type of activities and form of organisation do politically active women choose? What issues do they prioritize? Do they have access to resources (e.g. financial means or access to policymakers)? Has there been a shift in women's political activity in recent decades away from grassroots structures towards more formalised types of organisation because of improved access to such structures (e.g. unions, parties)? If not, how can the work of informally organised women be better transmitted to political bodies that shape transformation processes? Are there still barriers for women to join formal political organisations, such as unions or parties?

b) Rights at Work

Policies must respect, promote and bring about fundamental rights at work. This is the ILO's second principle. From a gender perspective, this principle is of great interest. Our research has shown that during and after the transition, more women entered the labour market, mainly taking up precarious and low-paid jobs in the service sector. Such a shift from industrial jobs to a more service-oriented regional economy can be expected in many future sustainability transitions. A fundamental question in this context is how to improve working conditions in the service sector. Another question concerns how women can be involved in the planning process at an early stage, before the transformation process is

in full swing (see Guideline a) above), to ensure that they have time to participate in training programmes, for example.

c) Gender Equality

The third ILO principle directly addresses gender within sustainability transitions, and states that policies and programmes must take into account the significant gender dimension of many environmental challenges and opportunities. We hope our research will help broaden the focus of this important point: not only environmental degradation, but the transitions itself and its consequences affect women differently than men. Historical coal transitions illustrate that the double burden of (usually unpaid) care work and paid work increased for women due to the transition. An interesting and important area of research to inform policymakers is the availability of care services in carbon-intensive regions. Does the existing care infrastructure differ from other regions? To what extent does this care infrastructure depend on financial support from the carbon-intensive industry (e.g. corporate daycare centres)? Do the existing childcare services meet the needs of families/women? What is missing and to what extent does this influence women's career planning and their ability to participate in the transition process?

We found multiple evidence in the literature that patriarchal structures are more pronounced in coal regions and thus traditional gender norms are more persistent than in other regions. Further research could develop and test indicators of this relationship. A starting point could be to compare the distribution of care work between male and female household members or the identification with traditional role models between carbon-intensive and other regions. If this correlation is confirmed, the causes for this discrepancy should also be researched further.

d) Coherence

Energy policy and policymaking processes are dominated by a technocratic perspective. Economic perspectives are limited to energy prices, jobs and labour, while social aspects are often neglected entirely (Lieu et al. 2020; García-García, Carpintero, and Buendía 2020). This one-sidedness is also reflected in the ILO's mention of coherence, which states that policies in all areas should focus on the creation of an enabling environment for "enterprises, workers, investors and consumers to embrace and drive the transition towards environmentally sustainable and inclusive economies and societies." (ILO 2015, 6). What about the citizens, the community members, those who have left the workforce, or future generations? Coal phase-out processes have multiple social as well as economic impacts on these groups. Existing research mentions, for example, increased intra-household conflict, domestic violence, social tensions in communities, and outmigration. However, the scientific evidence is particularly thin concerning these aspects, and much more research is needed to understand what impacts (in addition to economic ones) low-carbon transitions have on communities and families, as well as how these impacts could be prevented or compensated for. On the other hand, research also provides examples of positive effects of coal transitions on women (intra-household empowerment, shifting traditional role models). The loss of (regional) identity is another aspect that is often discussed in the context of coal transitions. However, we did not find a significant amount of literature addressing this aspect from a female perspective. Future research could explore the question of whether women and men see the

fossil-fuel industry as equally important for a given region. From studies on the attitudes of men and women to the climate crisis, it can generally be said that women on average perceive the climate crisis as a greater threat (Spitzner et al. 2020). Therefore, one research hypothesis would be that they also rate the coal phase-out as more urgent in order to overcome the climate crisis. Further research questions could be: Is the decline of the fossil-fuel industry accompanied by a loss of identity? Do women and men view it differently? It would also be of interest to better understand what empowering moments coal transitions have on women, and how this could be considered in policymaking processes.

e) Employment

The ILO's employment dimension emphasises the need to create a just transition for all. So far, however, transition policies have focused on compensating workers and communities directly affected by transitions away from fossil fuels (Piggot et al. 2019). This approach falls short, as indirectly affected workers in supporting sectors (e.g. the service sector) are not compensated, and job (re)training programmes are not designed for those who had mainly been engaged in unpaid care work or non-primary sectors before the transition. Since those working in the coal industry (and other carbon-intensive industries) are mainly men, while those working in the service sector and responsible for care work are mainly women, the gender-based injustice of this approach becomes clear. Further research should address this issue by collecting comprehensive data on the status quo in carbon-intensive regions, such as female employment rates and part-time employment rates in carbon-intensive regions compared to the respective national average. Are there differences between such regions, and if so, what are the reasons for this? It would also be of great value to have data on whether women want to enter the labour market, what barriers they have to overcome to do so, what skills and educational backgrounds women have, and what training opportunities are needed to give them better access to well-paid and secure jobs. A closer look at the career paths of women in energy companies would also be of value. Interesting cases could be, for example, whether there are gender differences in career paths after the closure of power plants or after the restructuring of energy companies towards more climate-friendly business fields (e.g. renewable energies).

Another relevant aspect related to employment is the integration of women into the social dialogue around sustainability transitions. Our research of historical transitions shows that it has been difficult for women to participate in union structures. Is this still the case, and if so, how can unions open their doors to women, and how can unions better represent the rights of workers in female-dominated professions?

f) No "one size fits all"

The ILO's sixth principle underscores that there is no blueprint for a just transition, and that the appropriateness of certain policy instruments varies according to the specific conditions in each region. Likewise, women are not a homogeneous group of actors, but have very different life situations depending on their age, race, abilities, socioeconomic status and educational background. This was at least somewhat reflected in the research we analysed for this study, and should always be taken into consideration when raising these research questions. For example, it would be worthwhile to conduct a detailed study on the different life situations of women from different backgrounds (e.g. in terms of class,

race, age) and compare the ways they have been affected differently by energy transitions. Furthermore, it would be interesting to compare the situations of women working in the service sector across different countries that are either facing an energy transition or are in the middle of one. What differences exist among countries? How have some countries managed to build better working conditions in female-dominated professions? Which policy instruments are effective, and why?

g) International Cooperation

The last ILO principle focuses on international cooperation. In this respect, our research has its limitations. Due to our focus on historical coal transitions, we ended up with a dataset that focused on industrialised countries in the Global North. This limits the validity of our research to the Global North, which means we do not take into account the specific circumstances faced by women in the Global South. However, in the first phase of our literature search we came across a number of studies that we ultimately had to exclude from our analysis in a later step that dealt with ongoing coal transitions or with transitions in other mining sectors such as gold mining. It is likely that this literature provides some insights into transition processes in the Global South that could lead to recommendations for just transition policies. It would be an interesting future research project to, for example, compile the literature on agency of women in current coal disputes in another systematic map. In Colombia, for example, Afro-Colombian and indigenous women play an important role in grassroots movements fighting for better protection of their land from dangerous and polluting coal mining (Mohr et al. 2020).

5 Conclusion

The low-carbon transition that needs to be implemented in all sectors of the economy to mitigate the catastrophic effects of unlimited global warming affects different social groups differently and creates unequal chances for these groups to voice their opinions depending on their position in society. It is the task of science to examine the different needs and interests of these various groups – for example women, who unfortunately still have different starting conditions and resource endowments than men – and thus develop a basis for fair structural policies for all social groups.

The conviction that low-carbon transitions should be implemented as fairly as possible for all parties involved (i.e. a just transition) has gained ground in international discourse in recent years. The gender dimension of climate and environmental policies is also recognised by major international political organisations such as the UN in its SDGs (Sustainable Development Goals). However, there is little scientific basis so far for gender-sensitive transition policies, because scholars looking at the consequences of low-carbon transitions often merely analyse broader economic effects (e.g. net employment effects) on entire regions, rather than the effects that transitions have on actor groups other than predominantly male miners. Addressing this issue, we developed a research agenda which leads to a better understanding of the interrelationship between gender and low-carbon transitions.

To develop such a research agenda, it was essential to gain an overview of all existing empirical information on this topic. To this end, we have conducted a systematic map that was as comprehensive as possible, containing publications dealing with our research question – the impact of historical coal transitions on women and their role in it. In the process of compiling the systematic map, we read over

3100 abstracts of potentially relevant publications obtained through a systematic literature search. After title and abstract screening, we identified 247 texts that could be relevant to our research question and read them in full text. 73 studies contained relevant results, which we then analysed. Based on these studies, we identified the most important links between coal transitions and gender, and developed a research agenda corresponding to the ILO guidelines for just transitions with essential questions that need to be investigated to make structural policies more gender-sensitive in the future.

We found various effects that historical coal phase-out processes had on women; these very much depended on the country context and the living reality of each woman. However, there are still some general statements we can make.

Previous coal transitions have often led to women entering the labour market, as many men in the coal industry lost their jobs and thus income. These women found employment especially in the service sector where, on average, the pay was significantly lower and the working conditions worse than in male-dominated sectors. Even though the economic situation for many families in former coal-mining regions worsened in general, women in those families gained some financial independence due to their increased employment; this strengthened their self-esteem and confidence. However, the lack of childcare services also led to an increased double burden and limited women's career opportunities. The coal phase-out process additionally changed community life within coal regions. Often whole communities participated, for example, in miners' strikes, which strengthened their sense of community. Women contributed significantly to these activities and networked the community members. On the other hand, with the advancing coal phase-out, women in former coal regions had less and less time to do community work as they traditionally had done due to their increased double work burden. In addition, structural change in the context of the coal phase-out had an impact on household cohabitation. In some cases, men and women were able to reorganise the division of labour in the household, as women increasingly took up employment. In other cases, however, the increasing change in the male breadwinner model had negative effects and led to intra-family conflicts and even violence.

Just as women's social positioning influences the effects that coal transitions have on them, agency within coal transitions is also gendered. Women have been active in both pro-coal and anti-coal movements. Regarding pro-coal movements, we found information on women's roles in miners' strikes in the UK, the USA and Spain. It was difficult for women to gain access to union structures, which led them to organise themselves into grassroots movements. They took up a variety of actions, from fundraising and setting up community kitchens to more radical actions, such as occupation. Women also played a large role in anti-coal movements, such as in the fight against MTR (Mountain Top Removal) in the USA. These grassroots groups were largely established by women. One reason for this is that men had closer ties to the coal industry. Activism in both pro-coal and anti-coal movements – even though this activism has been restricted by patriarchal structures in society – has often empowered women and increased their self-confidence.

Based on these findings, we identified the following key issues that need to be addressed scientifically in order to achieve a gender-just transition.

Strengthening Gender Justice in a Just Transition

1. How can women's interests be better integrated into low-carbon transition processes?
2. How can working conditions be improved in female-dominated sectors?
3. How can care work be distributed more fairly (within families and within society)?
4. What non-economic effects (e.g. identity loss, conflicts, domestic violence) do transitions have on carbon-intensive regions, and how do these affect women differently than men?
5. How can the restructuring of local employment opportunities be designed to lead to more gender equity?
6. How can the different, intersecting life situations (age, class, race) of women affected by low-carbon transitions better be taken into account?

Furthermore, we found only a relatively small number of relevant studies in spite of a complex and extensive research process, which shows that the topic is still underresearched. In general, much more gender-aggregated qualitative and quantitative data is needed. In sum, we agree with Garcia-Garcia et al. (2020) that failing to consider "the gender implications of the energy transition is an analytical bias we can no longer afford" (13) since women, due to their social positioning in society, are very differently affected by low-carbon transitions and have different opportunities to shape it politically compared to men. Understanding their needs and positions more thoroughly is key to ensuring an economically and socially successful transition.

6 Bibliography

- Alaimo, Stacy, and Susan J. Hekman, eds. 2008. *Material Feminisms*. Bloomington: Indiana University Press.
- Ali, Moiram. 1986. 'The Coal War: Women's Struggle during the Miners' Strike'. In *Caught up in Conflict: Women's Responses to Political Strife*, edited by Rosemary Ridd and Helen Callaway, 84–105. Women in Society. London: Macmillan Education UK. https://doi.org/10.1007/978-1-349-18380-7_5.
- Aragón, Fernando M., Juan Pablo Rud, and Gerhard Toews. 2018. 'Resource Shocks, Employment, and Gender: Evidence from the Collapse of the UK Coal Industry'. *Labour Economics* 52 (June): 54–67. <https://doi.org/10.1016/j.labeco.2018.03.007>.
- Arango, Luis, Luz Flórez, and María Olarte-Delgado. 2019. 'Precio Del Carbón y Dinámica Laboral En Valledupar'. *Revista de Economía Del Rosario* 22 (2): 313–70. <https://doi.org/10.12804/revistas.urosario.edu.co/economia/a.8146>.
- Barry, Joyce. 2001. 'Mountaineers Are Always Free?: An Examination of the Effects of Mountaintop Removal in West Virginia'. *Women's Studies Quarterly* 29 (1): 116–30.
- . 2008. "A Small Group of Thoughtful, Committed Citizens": Women's Activism, Environmental Justice, and the Coal River Mountain Watch'. *Environmental Justice* 1 (1): 25–33. <https://doi.org/10.1089/eNV.2008.0502>.
- . 2012. *Standing Our Ground: Women, Environmental Justice, and the Fight to End Mountaintop Removal*. Athens: Ohio University Press.
- Beatty, Christina. 2016. 'Two Become One: The Integration of Male and Female Labour Markets in the English and Welsh Coalfields'. *Regional Studies* 50 (5): 823–34. <https://doi.org/10.1080/00343404.2014.943713>.
- Beckwith, Karen. 1996. 'Lancashire Women against Pit Closures: Women's Standing in a Men's Movement'. *Signs* 21 (4): 1034–68.
- . 1998. 'Collective Identities of Class and Gender: Working-Class Women in the Pittston Coal Strike'. *Political Psychology* 19 (1): 147–67. <https://doi.org/10.1111/0162-895X.00097>.
- Bell, Shannon Elizabeth, and Yvonne A. Braun. 2010. 'Coal, Identity, and the Gendering of Environmental Justice Activism in Central Appalachia'. *Gender and Society* 24 (6): 794–813.
- Bell, Shannon Elizabeth, Jenrose Fitzgerald, and Richard York. 2019. 'Protecting the Power to Pollute: Identity Co-Optation, Gender, and the Public Relations Strategies of Fossil Fuel Industries in the United States'. *Environmental Sociology* 5 (3): 323–38. <https://doi.org/10.1080/23251042.2019.1624001>.
- Bennett, Katy. 2004. 'A Time for Change? Patriarchy, the Former Coalfields and Family Farming'. *Sociologia Ruralis* 44 (2): 147–66. <https://doi.org/10.1111/j.1467-9523.2004.00268.x>.
- . 2015. 'Women and Economy: Complex Inequality in a Post-Industrial Landscape'. *Gender, Place & Culture* 22 (9): 1287–1304. <https://doi.org/10.1080/0966369X.2014.958066>.
- Botta, Enrico. 2019. 'A Review of "Transition Management" Strategies: Lessons for Advancing the Green Low-Carbon Transition'. 4. OECD Green Growth Papers. Paris: OECD.
- BP. 2020. 'Statistical Review of World Energy 2020', 68.
- Braunger, Isabell, and Paula Walk. forthcoming. 'Gender Implications of Sustainability Transitions: Women's Living Realities in UK and US Historical Coal Transitions'.
- Butler, Judith. 1990. *Gender Trouble Feminism and the Subversion of Identity*. New York: Routledge.
- Carley, Sanya, and David M. Konisky. 2020. 'The Justice and Equity Implications of the Clean Energy Transition'. *Nature Energy* 5 (8): 569–77. <https://doi.org/10.1038/s41560-020-0641-6>.
- Clemens, Petra, and Simone Rauhut. 1999. *Rapportbuch: Frauen Im Kraftwerk Und in Der Kohle, 1957 Bis 1996*. Berlin: Trafo.
- Coole, Diana. 2010. 'Agency'. In *Encyclopedia of Political Theory.*, 3:11–13. Thousand Oaks, California.
- Crenshaw, Kimberle. 1991. 'Mapping the Margins: Intersectionality, Identity Politics, and Violence against Women of Color'. *Stanford Law Review* 43 (6): 1241–99.
- Dalingwater, Louise. 2018. 'Neo-Liberalism and Gender Inequality in TheWorkplace in Britain'. *French Journal of British Studies* 1 (23). <https://doi.org/10.4000/rfcb.1802>.

- Davies, Bronwyn. 1991. 'THE CONCEPT OF AGENCY: A Feminist Poststructuralist Analysis'. *Social Analysis: The International Journal of Social and Cultural Practice*, no. 30: 42–53. <https://www.jstor.org/stable/23164525>.
- Davies, Rebecca. 2010. "'Not Just Supporting But Leading": The Involvement of the Women of the South Wales Coalfield in the 1984-85 Miners' Strike'. Glamorgan: University of Glamorgan.
- Dawson, A. 2000. 'The Poetics of Self-Depreciation: Images of Womanhood amongst Elderly Women in an English Former Coal Mining Town'. *Anthropological Journal of European Cultures* 9 (1): 37–51.
- Dublin, Thomas, and Walter Licht. 2000. 'Gender and Economic Decline: The Pennsylvania Anthracite Region, 1920-1970'. *The Oral History Review* 27 (1): 81–81.
- . 2016. *The Face of Decline*. Ithaca, NY: Cornell University Press. <https://www.degruyter.com/document/doi/10.7591/9781501707308/html>.
- Gambhir, Ajay, Fergus Green, and Peter J.G. Pearson. 2018. 'Towards a Just and Equitable Low-Carbon Energy Transition.' Grantham Institute Briefing Paper No 26, Imperial College London. <https://www.imperial.ac.uk/media/imperial-college/grantham-institute/public/publications/briefing-papers/26.-Towards-a-just-and-equitable-low-carbon-energy-transition.pdf>.
- García-García, Pablo, óscar Carpintero, and Luis Buendía. 2020. 'Just Energy Transitions to Low Carbon Economies: A Review of the Concept and Its Effects on Labour and Income'. *Energy Research & Social Science*, no. 70: 101664.
- Gier-Viskovatoff, Jaclyn J., and Abigail Porter. 1998. 'Women of the British Coalfields on Strike in 1926 and 1984: Documenting Lives Using Oral History and Photography'. *Frontiers: A Journal of Women Studies* 19 (2): 199–230. <https://doi.org/10.2307/3347166>.
- Haddaway, Neal R., Biljana Macura, Paul Whaley, and Andrew S. Pullin. 2018. 'ROSES RepOrting Standards for Systematic Evidence Syntheses: Pro Forma, Flow-Diagram and Descriptive Summary of the Plan and Conduct of Environmental Systematic Reviews and Systematic Maps'. *Environmental Evidence* 7 (7). <https://doi.org/10.1186/s13750-018-0121-7>.
- Haddaway, Neal Robert, and Biljana Macura. 2018. 'The Role of Reporting Standards in Producing Robust Literature Reviews'. *Nature Climate Change* 8 (6): 444–47. <https://doi.org/10.1038/s41558-018-0180-3>.
- IEA. 2020. 'Data and Statistics'. [Www.iea.Org. 2020. https://www.iea.org/data-and-statistics?country=WORLD&fuel=CO2%20emissions&indicator=CO2%20emissions%20by%20energy%20source](https://www.iea.org/data-and-statistics?country=WORLD&fuel=CO2%20emissions&indicator=CO2%20emissions%20by%20energy%20source).
- . 2021. 'Net Zero by 2050: A Roadmap for the Global Energy Sector'. Paris, France: International Energy Agency. <https://www.iea.org/reports/net-zero-by-2050>.
- ILO. 2015. 'Guidelines for a Just Transition towards Environmentally Sustainable Economies and Societies for All'. Geneva, Switzerland: International Labour Organization. http://www.ilo.org/global/topics/green-jobs/publications/WCMS_432859/lang--en/index.htm.
- IPCC. 2018. 'Global Warming of 1.5°C. An IPCC Special Report on the Impacts of Global Warming of 1.5°C above Pre-Industrial Levels and Related Global Greenhouse Gas Emission Pathways, in the Context of Strengthening the Global Response to the Threat of Climate Change, Sustainable Development, and Efforts to Eradicate Poverty'. New York, NY, USA: IPCC. <https://www.ipcc.ch/sr15/download/>.
- Jacobsen, Heike, and Andrea Winkler. 2011. 'Gewinnerinnen Und Verlierer. Strukturbrüche Auf Dem Arbeitsmarkt Im Transformationsprozess Am Beispiel Der Stadt Cottbus – Eine Erste Analyse.' Lehrstuhl für Wirtschafts- und Industriesoziologie, BTU Cottbus.
- James, Katy L., Nicola P. Randall, and Neal R. Haddaway. 2016. 'A Methodology for Systematic Mapping in Environmental Sciences'. *Environmental Evidence* 5 (1): 7. <https://doi.org/10.1186/s13750-016-0059-6>.
- Jung, Yong-Sook. 2006. 'Just a Housewife? Miners' Wives between Household and Work in Postwar Germany'. In *Mining Women: Gender in the Development of a Global Industry, 1670 to 2005*, edited by Jaclyn J. Gier and Laurie Mercier, 262–79. New York: Palgrave Macmillan.
- Kideckel, David. 2004. 'Miners and Wives in Romania's Jiu Valley: Perspectives on Postsocialist Class, Gender, and Social Change'. *Identities* 11 (1): 39–63. <https://doi.org/10.1080/725289024>.

- . 2018. 'Coal Power: Class, Fetishism, Memory, and Disjuncture in Romania's Jiu Valley and Appalachian West Virginia.' *ANUAC* 7 (1): 67–88. <https://doi.org/10.7340/anuac2239-625X-3291>.
- Kronsell, Annica. 2013. 'Gender and Transition in Climate Governance'. *Environmental Innovation and Societal Transitions* 7 (June): 1–15. <https://doi.org/10.1016/j.eist.2012.12.003>.
- Lieu, Jenny, Alevgul H. Sorman, Oliver W. Johnson, Luis D. Virla, and Bernadette P. Resurrección. 2020. 'Three Sides to Every Story: Gender Perspectives in Energy Transition Pathways in Canada, Kenya and Spain'. *Energy Research & Social Science* 68 (October): 101550. <https://doi.org/10.1016/j.erss.2020.101550>.
- Maggard, Sally Ward. 1994a. 'From Farm to Coal Camp to Back Office and McDonald's: Living in the Midst of Appalachia's Latest Transformation'. *Journal of the Appalachian Studies Association*, no. 6: 14–38.
- . 1994b. 'Gender and Schooling in Appalachia: Historical Lessons for an Era of Economic Restructuring.' Research Paper 9411. West Virginia University, Regional Research Institute.
- Mahood, Quenby, Dwayne Van Eerd, and Emma Irvin. 2014. 'Searching for Grey Literature for Systematic Reviews: Challenges and Benefits'. *Research Synthesis Methods* 5 (3): 221–34. <https://doi.org/10.1002/jrsm.1106>.
- Marshall, Judith. 2008. 'Imagining Futures in Changing Locales: De-Industrialisation and Education Work Interfaces'. Phd, Cardiff University. <http://orca.cf.ac.uk/54927/>.
- Mathias, Regine. 1993. 'Female Labour in the Japanese Coal-Mining Industry'. In *Japanese Women Working*, edited by Janet Hunter, Repr, 99–121. London: Routledge.
- McNeil, B.T. 2011. *Combating Mountaintop Removal: New Directions in the Fight against Big Coal*. Urbana, Chicago, and Springfield: University of Illinois Press.
- McWilliams, Linda Jansen, Patricia J Lenart, Jamie L Lancaster, and John R Zeiner. 2012. 'National Survey of the Mining Population Part I: Employees'. Information Circular 9527. Pittsburgh PA: Department of Health and Human Services. <https://www.cdc.gov/niosh/mining/userfiles/works/pdfs/2012-152.pdf>.
- Measham, Fiona, and Sheila Allen. 1994. 'In Defence of Home and Hearth? Families, Friendships and Feminism in Mining Communities[1]'. *Journal of Gender Studies* 3 (1): 31–45. <https://doi.org/10.1080/09589236.1994.9960550>.
- Miewald, Christiana E, and Eugene J McCann. 2004. 'Gender Struggle, Scale, and the Production of Place in the Appalachian Coalfields'. *Environment and Planning A* 26: 1045–64. <https://doi.org/DOI:10.1068/a35230>.
- Miller, Susan. 1985. "'The Best Thing That Ever Happened to Us": Women's Role in the Coal Dispute'. *Journal of Law and Society* 12 (3): 355–64. <https://doi.org/10.2307/1410128>.
- Mohr, Kerstin, Silvia Rojas Castro, Kathrin Meyer, Ana María Mahecha Groot, Daza Nino Natalia, and Rojas Vallejo María Laura. 2020. 'Gender Responsive Climate Policy. A Case Study of the Colombian Coal Sector'. Berlin: Polis 180. <https://drive.google.com/file/d/1By3ppf761RVA5VjwHWABHGybXx4nUMX/view>.
- National Association of State Energy Officials, and Energy Futures Initiative. 2018. 'U.S Energy and Employment Report'. <https://static1.squarespace.com/static/5a98cf80ec4eb7c5cd928c61/t/5afb0ce4575d1f3cdf9eb e36/1526402279839/2018+U.S.+Energy+and+Employment+Report.pdf>.
- Oberhauser, Ann M. 1993. 'Industrial Restructuring and Women's Homework in Appalachia: Lessons from West Virginia'. *Southern Geographer*, no. 23: 23–43.
- . 1995. 'Gender and Household Economic Strategies in Rural Appalachia'. *Gender, Place and Culture - A Journal of Feminist Geography* 2 (1): 51–70. <https://doi.org/10.1080/09663699550022080>.
- Oberhauser, Ann M., Anne-Marie Turnage, and BE Smith. 1999. 'A Coalfield Tapestry: Weaving the Socioeconomic Fabric of Women's Lives'. In *Neither Separate Nor Equal: Women, Race and Class in the South*, 109–22. Philadelphia, USA: Temple University Press.
- O'Connor, Denise, Sally Green, and Julian PT Higgins. 2008. 'Defining the Review Question and Developing Criteria for Including Studies'. In *Cochrane Handbook for Systematic Reviews of Interventions*, edited by Julian PT Higgins and Sally Green, 81–94. Chichester, UK: John Wiley & Sons, Ltd. <https://doi.org/10.1002/9780470712184.ch5>.

- Peter, Gibbon. 1988. 'Analysing the British Miners' Strike of 1984–5'. *Economy and Society* 17 (2): 139–94. <https://doi.org/10.1080/03085148800000008>.
- Phillips, Jim. 2018. 'The Meanings of Coal Community in Britain since 1947'. *Contemporary British History* 32 (1): 39–59. <https://doi.org/10.1080/13619462.2017.1408533>.
- Piggot, Georgia, Michael Boyland, Adrian Down, and Andreea Raluca Torre. 2019. 'Realizing a Just and Equitable Transition Away from Fossil Fuels'. Discussion brief. Stockholm Environment Institute. <https://cdn.sei.org/wp-content/uploads/2019/01/realizing-a-just-and-equitable-transition-away-from-fossil-fuels.pdf>.
- Sanz Hernández, A., and M.E López Rodríguez. 2017. 'Mujeres Del Carbón. Protestas y Emociones En La Reestructuración Minera Española'. *Aposta. Revista de Ciencias Sociales*, no. 74: 84–110.
- Schell, Kait Smeraldo, and Jennifer M. Silva. 2020. 'Resisting Despair: Narratives of Disruption and Transformation among White Working-Class Women in a Declining Coal-Mining Community'. *Gender & Society* 34 (5): 736–59. <https://doi.org/DOI: 10.1177/0891243220948218>.
- Seitz, Virginia Rinaldo. 1998. 'Class, Gender and Resistance in the Appalachian Coalfields'. In *Community Activism and Feminist Politics. Organizing across Race, Class and Gender.*, edited by Nancy Naples, 213–36. New York and London: Routledge.
- Sengül, H.Tarik, and Attila E. AYTEKIN. 2012. 'Zonguldak Coalfield and the Past and Future of Turkish Coal-Mining Communities'. In *Changing Work and Community Identities in European Regions Perspectives on the Past and Present*, edited by John Kirk, Sylvie Contrepois, and Steve Jefferys, 154–84. New York and Hampshire: Palgrave Macmillan.
- Shaw, Monica, and Mave Mundy. 2005. 'Complexities of Class and Gender Relations: Recollections of Women Active in the 1984-5 Miner's Strike'. *Capital & Class* 29 (3): 151–74. <https://doi.org/10.1177/030981680508700110>.
- Smith, Barbara Ellen. 2015. 'Another Place Is Possible? Labor Geography, Spatial Dispossession, and Gendered Resistance in Central Appalachia'. *Annals of the Association of American Geographers* 105 (3): 567–82. <https://doi.org/10.1080/00045608.2014.924731>.
- Spence, Jean. 1998. 'Women, Wives and the Campaign against Pit Closures in County Durham: Understanding the Vane Tempest Vigil'. *Feminist Review*, no. 60: 33–60.
- Spence, Jean, and Carol Stephenson. 2007. 'Female Involvement in the Miners' Strike 1984-1985: Trajectories of Activism'. *Sociological Research Online* 12 (1): 1–11. <https://doi.org/10.5153/sro.1461>.
- . 2009. "'Side by Side With Our Men?" Women's Activism, Community, and Gender in the 1984–1985 British Miners' Strike'. *International Labor and Working-Class History* 75 (1): 68–84. <https://doi.org/10.1017/S0147547909000064>.
- Spitzner, Meike, Diana Hummel, Immanuel Stieß, Gotelind Alber, and Ulrike Röhr. 2020. 'Interdependente Genderaspekte Der Klimapolitik'. Dessau - Roßlau: Bundesministerium für Umwelt, Naturschutz und Reaktorsicherheit (BMU).
- Stephenson, Carol, and Jean Spence. 2013. 'Pies and Essays: Women Writing through the British 1984–1985 Coal Miners' Strike'. *Gender, Place & Culture* 20 (2): 218–35. <https://doi.org/10.1080/0966369X.2012.674926>.
- Sutcliffe-Braithwaite, Florence, and Natalie Thomlinson. 2018. 'National Women Against Pit Closures: Gender, Trade Unionism and Community Activism in the Miners' Strike, 1984–5'. *Contemporary British History* 32 (1): 78–100. <https://doi.org/10.1080/13619462.2017.1408540>.
- UNFCCC. 2015. 'Paris Agreement'. Paris: United Nations Framework Convention on Climate Change.
- United Nations. 2018. 'Just Transition of the Workforce, and the Creation of Decent Work and Quality Jobs'. Technical Paper. Bonn: United Nations Framework Convention on Climate Change.
- Williams, Mari A. 1999. 'Aspects of Women's Working Lives in the Mining Communities of South Wales, c 1891–1939'. *Folk Life* 38 (1): 56–70. <https://doi.org/10.1179/flk.1999.38.1.56>.
- Yanguas Parra, Paola, Christian Hauenstein, and Pao-Yu Oei. 2021. 'The Death Valley of Coal – Modelling COVID-19 Recovery Scenarios for Steam Coal Markets'. *Applied Energy* 288 (April): 116564. <https://doi.org/10.1016/j.apenergy.2021.116564>.
- Young, Iris Marion. 2002. 'Lived Body vs Gender: Reflections on Social Structure and Subjectivity'. *Ratio* 15 (4): 410–28. <https://doi.org/10.1111/1467-9329.00200>.

7 Appendix

Table 4: Queries to databases on 3 June 2020

Portal	Databases	Access provided by	Search Term	Further Limitation	Date of query	# of results
Scopus (Elsevier)	Not applicable	Humboldt-Universität zu Berlin (HU Berlin)	(TITLE-ABS-KEY ((gender*) OR (women*) OR (woman*) OR (female*) OR (mother*) OR (femini*) OR (*wives) OR (*wife))) AND (TITLE-ABS-KEY (((coal) OR (lignite*) OR (mining) OR (anthracite*) OR (miner) OR (miners) OR (coalfield*) OR (coalmin*) OR (coalface)) AND NOT ("data mining") AND NOT ("text mining"))) AND (TITLE-ABS-KEY ((transition*) OR (transformation*) OR (change*) OR (reform) OR (closure*) OR (decreas*) OR (declin*) OR (collaps*) OR (crisis) OR (crises) OR (strik*) OR (resistance) OR (protest*) OR (agency) OR (activis*) OR (oppos*))) AND (LIMIT-TO (SUBJAREA , "ENVI") OR LIMIT-TO (SUBJAREA , "SOC") OR LIMIT-TO (SUBJAREA , "ARTS") OR LIMIT-TO (SUBJAREA , "EART") OR LIMIT-TO (SUBJAREA , "BUSI") OR LIMIT-TO (SUBJAREA , "MULT") OR LIMIT-TO (SUBJAREA , "ECON") OR LIMIT-TO (SUBJAREA , "PSYC") OR LIMIT-TO (SUBJAREA , "ENER") OR LIMIT-TO (SUBJAREA , "Undefined"))	Search limited to Title, Abstracts, Keywords; Subject areas limited to Environmental Sciences ,Social Sciences, Arts and Humanities, Earth and Planetary Sciences, Business Management and Accounting, Multidisciplinary, Economics Econometrics and Finance, Psychology , Energy, Undefined	3 June 2020	1,256

Strengthening Gender Justice in a Just Transition

<p>Web of Science</p>	<p>Science Citation Index Expanded (SCI-EXPANDED) Social Sciences Citation Index (SSCI) Arts & Humanities Citation Index (A&HCI) Conference Proceedings Citation Index-Science (CPCI-S) Conference Proceedings Citation Index-Social Science & Humanities (CPCI-SSH) Book Citation Index- Science (BKCI-S) Book Citation Index- Social Sciences & Humanities (BKCI-SSH) Emerging Sources Citation Index (ESCI)</p>	<p>Technische Universität Berlin (TU Berlin)</p>	<p>not applicable (sum of single searches, not generated automatically)</p>	<p>List too long for table, see below: *</p>	<p>3 June 2020</p>	<p>520</p>
<p>ProQuest</p>	<p>ABI/INFORM Collection Applied Social Sciences Index & Abstracts (ASSIA) British Periodicals Digital National Security Archive ERIC PAIS Index Periodicals Archive Online Periodicals Index Online Sociological Abstracts Worldwide Political Science Abstracts</p>	<p>Technische Universität Berlin (TU Berlin)</p>	<p>((noft(transition*) OR noft(transformation*) OR noft(change*) OR noft(reform) OR noft(closure*) OR noft(decreas*) OR noft(declin*) OR noft(collaps*) OR noft(crises) OR noft(crisis) OR noft(strik*) OR noft(resistance) OR noft(protest*) OR noft(agency) OR noft(activis*) OR noft(oppos*)) AND ((noft(coal) OR noft(lignite*) OR noft(mining) OR noft(anthracite*) OR noft(miner) OR noft(miners) OR noft(coalfield*) OR noft(coalmin*) OR noft(coalface)) NOT noft("data mining") NOT noft("text mining")) AND (noft(gender*) OR noft(woman*) OR noft(women*) OR noft(female*) OR noft(mother*) OR noft(femini*) OR noft(wives) OR noft(housewives) OR noft(wife) OR noft(housewife))) NOT stype.exact("Wire Feeds"))</p>	<ul style="list-style-type: none"> - noft=all fields excluding full text - newspaper feeds excluded - does not allow for * before word, *wife/wives supplemented by wife/wives and housewife/wives 	<p>3 June 2020</p>	<p>1,632</p>
<p>EBSCO</p>	<p>EconLit</p>	<p>Freie Universität Berlin (FU Berlin)</p>	<p>(transition*+OR+transformation*+OR+change*+OR+reform+OR+closure*+OR+decreasing+OR+decrease*+OR+declin*+OR+collaps*+OR+cris*s+OR+strik*+OR+resistance+OR+protest*+OR+agency+OR+activis*+OR+oppos*)+AND+(mining+OR+lignite*+OR+anthracite*+OR+coal+OR+miner+OR+miners+OR+coalfield*+OR+coalface+OR+((NOT+"data mining"))+OR+((NOT+"text+mining")))+AND+(gender*+OR+woman*+OR+women*+OR+female*+OR+mother*+OR+femini*+OR+*wives+OR+*wife)&type=1&searchMode=And&site=e host-live</p>	<p>no limitations applied</p>	<p>3 June 2020</p>	<p>122</p>

Strengthening Gender Justice in a Just Transition

* Additional parameters **Refined by:** [excluding] **WEB OF SCIENCE CATEGORIES:** (HEALTH CARE SCIENCES SERVICES OR PUBLIC ENVIRONMENTAL OCCUPATIONAL HEALTH OR BIOTECHNOLOGY APPLIED MICROBIOLOGY OR TOXICOLOGY OR NUCLEAR SCIENCE TECHNOLOGY OR ENTOMOLOGY OR IMMUNOLOGY OR PHYSIOLOGY OR NEUROSCIENCES OR SPORT SCIENCES OR PARASITOLOGY OR SURGERY OR WATER RESOURCES OR VETERINARY SCIENCES OR ENDOCRINOLOGY METABOLISM OR ONCOLOGY OR PSYCHIATRY OR GEOCHEMISTRY GEOPHYSICS OR COMPUTER SCIENCE INFORMATION SYSTEMS OR NURSING OR ZOOLOGY OR ORNITHOLOGY OR ORTHOPEDICS OR BIOCHEMISTRY MOLECULAR BIOLOGY OR EVOLUTIONARY BIOLOGY OR BIOLOGY OR TROPICAL MEDICINE OR RESPIRATORY SYSTEM OR UROLOGY NEPHROLOGY OR MEDICINE GENERAL INTERNAL OR METALLURGY METALLURGICAL ENGINEERING OR CHEMISTRY ANALYTICAL OR PHARMACOLOGY PHARMACY OR METEOROLOGY ATMOSPHERIC SCIENCES OR CHEMISTRY MULTIDISCIPLINARY OR COMPUTER SCIENCE THEORY METHODS OR CLINICAL NEUROLOGY OR MEDICINE RESEARCH EXPERIMENTAL OR COMPUTER SCIENCE INTERDISCIPLINARY APPLICATIONS OR DERMATOLOGY OR AGRONOMY OR ENGINEERING CHEMICAL OR INFECTIOUS DISEASES OR BIOCHEMICAL RESEARCH METHODS OR FISHERIES OR RADIOLOGY NUCLEAR MEDICINE MEDICAL IMAGING OR BIOPHYSICS OR FORESTRY OR GENETICS HEREDITY OR CARDIAC CARDIOVASCULAR SYSTEMS OR EDUCATION EDUCATIONAL RESEARCH OR COMPUTER SCIENCE ARTIFICIAL INTELLIGENCE OR MICROBIOLOGY OR PLANT SCIENCES OR HORTICULTURE OR OBSTETRICS GYNECOLOGY OR PSYCHOLOGY MULTIDISCIPLINARY OR MEDICINE LEGAL OR MARINE FRESHWATER BIOLOGY OR REPRODUCTIVE BIOLOGY OR PEDIATRICS OR BIODIVERSITY CONSERVATION OR AGRICULTURE MULTIDISCIPLINARY OR CELL BIOLOGY OR CHEMISTRY APPLIED)