

Lu, Zhentong; Zhang, Sisi; Hong, Jian

Working Paper

Examining the impact of home purchase restrictions on China's housing market

Bank of Canada Staff Working Paper, No. 2021-18

Provided in Cooperation with:

Bank of Canada, Ottawa

Suggested Citation: Lu, Zhentong; Zhang, Sisi; Hong, Jian (2021) : Examining the impact of home purchase restrictions on China's housing market, Bank of Canada Staff Working Paper, No. 2021-18, Bank of Canada, Ottawa, <https://doi.org/10.34989/swp-2021-18>

This Version is available at:

<https://hdl.handle.net/10419/241241>

Standard-Nutzungsbedingungen:

Die Dokumente auf EconStor dürfen zu eigenen wissenschaftlichen Zwecken und zum Privatgebrauch gespeichert und kopiert werden.

Sie dürfen die Dokumente nicht für öffentliche oder kommerzielle Zwecke vervielfältigen, öffentlich ausstellen, öffentlich zugänglich machen, vertreiben oder anderweitig nutzen.

Sofern die Verfasser die Dokumente unter Open-Content-Lizenzen (insbesondere CC-Lizenzen) zur Verfügung gestellt haben sollten, gelten abweichend von diesen Nutzungsbedingungen die in der dort genannten Lizenz gewährten Nutzungsrechte.

Terms of use:

Documents in EconStor may be saved and copied for your personal and scholarly purposes.

You are not to copy documents for public or commercial purposes, to exhibit the documents publicly, to make them publicly available on the internet, or to distribute or otherwise use the documents in public.

If the documents have been made available under an Open Content Licence (especially Creative Commons Licences), you may exercise further usage rights as specified in the indicated licence.

Examining the Impact of Home Purchase Restrictions on China's Housing Market

by Zhentong Lu,¹ Sisi Zhang² and Jian Hong³

¹Financial Stability Department,
Bank of Canada, Ottawa, Ontario, Canada K1A 0G9

²Institute for Economic and Social Research
Jinan University, Guangzhou, 510632, China

³School of Economics
Shanghai University of Finance and Economics

zlu@bankofcanada.ca, sisi.zhang@gmail.com, hongjian1206@163.com



Bank of Canada staff working papers provide a forum for staff to publish work-in-progress research independently from the Bank's Governing Council. This research may support or challenge prevailing policy orthodoxy. Therefore, the views expressed in this paper are solely those of the authors and may differ from official Bank of Canada views. No responsibility for them should be attributed to the Bank.

Acknowledgements

We would like to thank the participants at the 2019 Econometric Society China Meeting, 2017 Singapore Management University Conference on Urban and Regional Economics as well as seminar participants at Bank of Canada, Brock University for their many helpful comments and questions.

Abstract

This paper studies the impact of home purchase restrictions on China's housing market. We estimate a structural model of household preference for housing, real estate developers' pricing decisions, and equilibrium market outcome in five large cities. By comparing the estimation results from pre- and post-policy intervention, we find that after home purchase restrictions are implemented, overall housing demand in most cities becomes weaker and less price elastic; meanwhile, real estate developers face higher holding costs and thus are willing to lower prices and sell more quickly. Counterfactual analyses show that in some cities, alternative policy designs that cause less structural change of demand could improve consumer welfare and social welfare better than the implemented policy.

Topics: Housing; Market structure and pricing

JEL codes: R31; R38; O18

1 Introduction

Housing is a basic need as well as an important asset for many families, and the real estate market plays an integral role in an economy. Market failure problems are prominent in housing markets, and many governments impose various regulations and interventions to promote affordable housing, protect homeownership, and reduce speculation. Specifically, policies to reduce and stabilize housing prices, known as “cooling measures” or “home purchase restrictions,” have been implemented in several countries.¹

In China, housing prices have increased dramatically since the housing privatization reforms in the late 1990s. The average price of commercial housing in urban China has increased from 1,854 RMB per square meter in 1998 to 9,310 RMB per square meter in 2019, more than tripling in the past 20 years. The rapid increase in housing prices has aroused the Chinese government’s concern about housing affordability and potential financial risks such as an asset bubble in the real estate sector. In 2010–2011, the central and local governments started to implement a set of austere housing market interventions, a policy known as home purchase restrictions (HPR), which includes directly restricting the number of real estate properties that a household can purchase based on household registration (*Hukou*) and the number of years of continuous deposit in the social security account, as well as other regulations such as increasing the minimum down payment ratio.

Most existing studies on the HPR focus on its impact on equilibrium outcomes of housing prices and sales. However, little is known about how such policy interventions separately affect demand and supply, such as consumers’ preference and real estate developers’ pricing strategy, which, in turn, determine the eventual market outcome. In this paper we analyze the impact of the HPR on real estate developers and consumers and how their responses affect equilibrium prices and sales in the housing market. Specifically, we evaluate the effectiveness of the HPR by estimating a structural model of housing demand and supply using project-level sales data on newly constructed condominium units sold by developers to individual buyers in five large

¹ For example, Toronto (Canada) has implemented Fair Housing Plan since April 2017, which imposes a 15% non-resident speculation tax for foreign housing purchasers. New Zealand passed the Overseas Investment Amendment Bill in August 2018, which states that foreigners are not eligible to purchase resale houses. Between September 2009 and December 2013, Singapore implemented a series of government interventions to cool down its housing market, such as introducing and increasing the Seller’s Stamp Duty and Buyer’s Stamp Duty (Deng et al., 2018).

Chinese cities: Beijing, Shanghai, Guangzhou, Hangzhou, and Wuhan.² We also conduct counterfactual analysis to quantify the contributions of various factors to the market outcome and examine the associated welfare implications.³

Our model applies the standard empirical industrial organization framework to housing markets (Berry, 1994; Berry and Jia, 2010). On the demand side, we treat projects as differentiated products and apply a discrete choice model to describe households' home purchase decisions. On the supply side, our baseline model assumes that real estate developers compete with one another by playing a standard Bertrand pricing game on offered residential projects. We also experiment with alternative assumptions on firms' conduct: assuming the market is more competitive or less competitive than the baseline model. Supply and demand jointly determine the housing market's equilibrium price and quantities. Following the comparative static analysis approach of Berry and Jia (2010), we estimate the equilibrium model using data from the pre-policy period and the post-policy period and then evaluate changes in the estimation results and their implications.

Our estimation results show that the overall housing demand in most cities becomes less price elastic after the policy intervention, which suggests that the policy might meet its goal of driving out speculative investors in the housing market. Also, our estimation results in the real estate developers' cost structure suggest that they are eager to sell homes more quickly through lower pricing, which might indicate that they face tighter financial constraints after the HPR is implemented. Our counterfactual analysis suggests that the implemented HPR may lead to substantial consumer welfare loss because it changes the structure of demand and hence developers' incentives. Alternative policies that keep the structure of demand unchanged, such as a random lottery, would improve consumer and social welfare in some cases. The findings shed light on how to design housing market interventions that are effective without incurring significant welfare loss.

Our study contributes to the literature on the HPR (or other policies) in housing market. Existing studies on the HPR in China or cooling measures in other countries mostly focus on its

² Although the data contain many cities, we only use these five cities in structural estimation for two reasons. First, most cities' data do not contain sufficient observations from the pre-HPR period. Second, our market size calculation partly relies on the assumption that the HPR imposes different restrictions for migrants and local residents. Smaller cities usually do not have sufficient numbers of migrants in the household survey data we use to calibrate market size change. We acknowledge that housing price patterns could be different in other parts of China.

³ A "project," also called a residential complex, comprises a building or group of buildings, and each building has more than one single residential unit. These buildings share common areas, services, and facilities.

overall effects on the equilibrium outcome, i.e., housing price and sales quantity (Deng et al., 2018; Jia et al., 2018; Sun et al., 2017), and very few look at the impact on supply and demand separately (except Somerville et al., 2020). The general finding is that implementing HPR immediately “freezes” the housing market: the quantity sold is reduced sharply and the price increase is slowed down in the short run. For example, Sun et al. (2017) use regression discontinuity to find that the HPR in Beijing caused a 17%–24% decrease in resale price and a 50%–75% reduction in transaction volume. Deng et al. (2018) use a regression discontinuity method and find that cooling measures in Singapore reduce housing price by 10%–15%. Jia et al. (2018) investigate the effect of the HPR on housing prices in Guangzhou using a hedonic housing price model. Du and Zhang (2015) develop a theoretical model and used a counterfactual analysis to examine the treatment effect of the HPR and trial property taxes in Shanghai and Chongqing on housing prices. The most recent paper by Somerville et al. (2020) is among one of the few that have looked at the effect from both demand side and supply side in four cities. They measure the effect of the HPR on supply using government land auction data and a difference-in-differences approach. They find that the HPR works mainly through demand but not through the land market or developer supply response because there is no change in land prices or the number of land auctions. Our study differs from theirs by uncovering the intermediate channels through which how consumers and firms adjust their behavior in response to policy change, which in turn affects housing market prices and quantity sales.

Our study also contributes to the empirical study of housing markets using a structural model. Although structural models are widely used in many industries, such as automotive or airline, few are applied to housing markets, and most of these models only focus only on either housing demand or supply, but not both. For example, Bajari et al. (2013) estimated a dynamic model of housing demand with nonconvex adjustment costs, credit constraints, and income and housing price uncertainties using the Panel Study of Income Dynamics. Bayer et al. (2007) developed a sorting model of household discrete choices of residence to describe household preferences for school and neighborhood attributes. They find that households are willing to pay about 1% more in housing when local school performance increases by 5%. Patrick et al. (2016) developed a dynamic model of neighborhood choice and examined marginal willingness to pay for air pollution, crime, and racial composition using housing transaction data in San Francisco from 1994 to 2004. The literature on housing supply is relatively scarce. Murphy (2018) developed a dynamic

model of housing supply with forward-looking landowners and find that forward-looking behavior significantly reduced the housing supply elasticity. The Chinese new home market provides a unique opportunity for us to investigate the incentives of both buyers (demand) and developers (supply) using a structural model.

The rest of the paper is organized as follows. In Section 2, we provide institutional background on China's housing market and the HPR. We describe the data in Section 3 and show reduced-form analyses in Section 4. Section 5 presents our model specification and estimation strategy. Section 6 shows estimation results and counterfactual analyses. Section 7 concludes.

2 Background

2.1 China's Housing Market Overview

China experienced nationwide privatization of public housing stocks in the late 1990s. Soon after the housing reform, China embraced a remarkable housing market boom that lasted for about two decades. As the urban housing stock in China has been estimated at around 33.6 billion square meters at the end of 2019, one can roughly set the total housing market value in urban China at around 130 trillion CNY. This number is nearly twice China's GDP in 2015, which was 67 trillion CNY. These factors make Chinese housing market one of the largest in the world. The Chinese housing market consists of both the new home market and resale market. Unlike many developed countries, in China the new home market has dominated the resale market in terms of market size: new construction accounted for over 80% of total housing sales in the early 2000s right after the housing privatization reforms, and in 2017 it still accounted for about 60% of total sales.

In this paper we focus on the new home market. New homes are built by real estate developers who obtain land from the government.⁴ Once a real estate developer pays to acquire a land parcel (for residential development), it starts to build residential complexes (mostly condos) and sell to households.

⁴ The Chinese government owns all urban lands and can lease them to other stakeholders in the housing market (see Wu et al., 2012). Every five years, the central government issues a five-year master plan to allocate agricultural land to local governments and designates the specific usage for each land parcel, such as residential, commercial, or industrial land. Then local governments transfer land usage rights to developers through negotiations or public land auctions. Transactions via public auctions can be done by regular English auctions, two-stage auctions, or sealed bidding auctions (see Cai et al., 2013). The 1988 constitutional amendment allowed a purchase of land parcel for up to 70 years for residential projects (Deng et al., 2012). In 2004 the central government required all residential, commercial, or industrial land sold by auctions, and by 2014, 93% of land sales were conducted by auction. The upper limit of floor-to-area ratio and designated usage are specified before the auction. The winning bidder is announced publicly and posted to the government website.

During housing boom periods, real estate developers have strong incentives to acquire land parcels in areas where they expect a large housing price appreciation, especially in first-tier cities. However, because it takes several years from purchasing the land parcel to eventually completing the housing projects, many developers face stringent financial constraints in the development/sales process. To get over the financial hurdle, developers use various ways to raise funds (e.g., pre-sale, borrow from commercial banks, trusts, peer-to-peer lending, etc.). Given the high financial leverage ratio, the developers may have strong incentives to sell housing projects quickly to avoid financial cost. However, on the other hand, developers may want to hold housing inventory and wait for price appreciation so that they can earn more profit. Which incentive dominates is an empirical question that the following analysis will explore.

2.2 Housing Market Interventions in China

On April 17, 2010, the State Council of the People's Republic of China issued a public announcement that it had decided to take firm action to control prices. On April 30, 2010, Beijing was the first city to announce HPR policies. This was unanticipated because the HPR had never been implemented in China, it has rarely been instituted in other countries, and there was no pilot program before the announcement.

Under Beijing's initial HPR, only one home purchase was allowed for each household after April 30, 2010; on February 15, 2011, the Beijing government amended the HPR that imposed distinct restrictions on households with Beijing *Hukou* and those without.⁵ For a household with a Beijing *Hukou*, two home purchases were allowed. For a household without a Beijing *Hukou*, only one home purchase was allowed⁶ and at least one household member was required to have five years' continuous deposit record in a social security account (amounting to five years' work experience without a gap).

Following Beijing, many other cities started to implement HPR policies: by the end of 2010, 19 cities, including Shanghai, Guangzhou, and Hangzhou, implemented HPR policies; and by November 2011, 46 cities implemented them. Although HPR policies varied across different cities

⁵ *Hukou* is a permit for permanent residency in the city, which gives an individual access to various welfare benefits such as medical insurance, social security, and children's education in public school.

⁶ On March 30, 2013, another policy intervention was introduced: those who were single and had a Beijing *Hukou* were only allowed to purchase one house instead of two. On October 22, in the same year, each family with a Beijing *Hukou* could only purchase one house regardless of marital status. These harsh restrictions were not relaxed until September 30, 2016, when the government announced that families with a Beijing *Hukou* would be allowed to purchase two houses again.

in certain aspects, they were largely similar to the one in Beijing: households with a local *Hukou* were only allowed to make one home purchase if they already owned a home, and they were not allowed to purchase any more homes if they already owned two or more; households without a local *Hukou* could only purchase one home if they had made continuous deposits to a social security account for at least one year.⁷ The fact that the HPR applied different rules to non-residents and residents could cause a structural change in the demand; for instance, if non-residents tended to purchase for speculative purposes, then driving them out would imply that the overall market demand could become more inelastic after the HPR was implemented.

In addition to limiting the number of homes a household could purchase, local governments also tightened the regulations on down payment ratios and mortgage interest rates. For example, the down payment ratio of the second home had to exceed 60% of the baseline interest rate in most cities, and the mortgage loan interest rate had to be at least 110%. Moreover, anecdotal evidence suggests there were some new regulations imposed on the supply side (i.e., real estate developers), such as higher deposit rates when acquiring land parcels and direct price caps on newly released condos. Because all these policy changes happened at about the same time, we treat them in our study as a part of the HPR and analyze their overall effects.

3 Data Overview

3.1 Data Source

The primary data we use for this study are project-level aggregation of new home transaction records from the Chinese Real Estate Index System (CREIS). The raw data cover more than 100 cities from 2009 to 2015; however, most cities' data do not contain sufficient observations from the pre-HPR period. Thus, we use data from only five cities—Beijing, Shanghai, Guangzhou, Hangzhou, and Wuhan—that cover both pre- and post-HPR periods in our structural analysis. Two administrative districts in Guangzhou—Zengcheng district and Conghua district—were not subject to HPR policies in 2010, and we exclude these two districts from all our analysis in Guangzhou. When performing the reduced-form analysis using difference-in-differences approach, we include another seven cities—Chongqing, Dongguan, Gu'an, Langfang,

⁷ In 2014, China's real estate market began to cool down. In some underdeveloped cities, there was even a risk of a housing bubble bust. Thus, several local governments relaxed their HPR policies: by October 2014, about 40 cities had abolished or relaxed their HPR policies. Only Beijing, Shanghai, Guangzhou, Shenzhen, Zhuhai, and Sanya continued to impose the same restrictions. Although HPRs are generally considered temporary policies designed to cool down the housing market, because of a resurgence in housing prices, several cities, including Hangzhou and Nanjing, re-implemented HPR policies in the third quarter of 2016.

Lianyungang, Tangshan, and Xianghe—to construct control groups.⁸

For each city–project–month observation, the data contain total square meters sold, number of units sold, and total sales revenue. The data also include project characteristics such as the name of the project, the name of the real estate developer, project location, construction area, floor-to-area ratio (FAR), greenness ratio, and property fee. We further aggregate data into city-project-quarter level averages because the project–month level quantity sales data contain many zeros that can lead to substantial biases to the structural estimation (see Gandhi et al. 2019 for details).

We complement the primary data with the China Family Panel Studies (CFPS) 2010. CFPS consists of biannual national representative panel data that covered around 15,000 households in 2010. It contains various information on demographics, whether an individual has a *Hukou* or not, and the number of houses a household owns. We use this data to measure the changes in market size and residence demographics after the HPR policy. Finally, we calibrate the market size using the total number of households each year in each city from the China Statistical Yearbook 2018 (compiled by National Bureau of Statistics of China).

3.2 Summary Statistics

In this section, we document some basic patterns in the aggregate transaction data and demographics data.

Table 1 provides summary statistics for the project characteristics and transactions in each of the five cities (Beijing, Shanghai, Guangzhou, Hangzhou, and Wuhan) for the pre-HPR period and the post-HPR period.⁹ First, there are large variations in project characteristics across the five cities. For example, FAR in Shanghai is much lower than in the other four cities, which suggests that lower-rise condo buildings are more popular in Shanghai. Second, most project characteristics—including FAR, the property fee, the green ratio, and whether the condo is decorated—do not change much (and there seems no clear pattern in the direction of changes) after the HPR is implemented, suggesting that the overall quality of homes remains rather stable after the HPR. Third, the last three rows of transaction information show significant changes in prices and sales after the HPR. In particular, average prices in Beijing, Shanghai, and Wuhan increase

⁸ As a result of data availability, the starting period varies by city. The starting quarter is 2009 Q1 for Beijing, Gu’an, and Langfang. The starting quarter is 2008 Q1 for Hangzhou, 2008 Q4 for Wuhan, 2009 Q4 for Guangzhou, 2010 Q1 for Dongguan and Xianghe, 2010 Q2 for Tangshan and Lianyungang, and 2010 Q3 for Chongqing and Zhenjiang. The ending period for all cities is 2015 Q3.

⁹ The HPR starting quarter in each city is as follows: 2010 Q2 for Beijing; 2010 Q4 for Shanghai, Guangzhou and Hangzhou; and 2011 Q1 for Wuhan.

more than 35%, and the corresponding quantities shrink substantially; both price and quantity increase in Guangzhou; and Hangzhou sales shrink substantially but price changes little. These changes in the equilibrium outcome suggest that demand- and supply-side conditions adjusted after the HPR was implemented.

Table 1
Summary Statistics of Projects

	Beijing		Shanghai		Guangzhou		Hangzhou		Wuhan	
	Before	After	Before	After	Before	After	Before	After	Before	After
Floor-to-area ratio	2.29	2.05	1.47	1.53	2.84	2.72	2.27	2.14	2.45	2.57
Property fee (CNY/m ²)	3.01	2.92	2.26	2.70	1.96	2.39	2.98	2.37	1.51	1.94
Green ratio (%)	0.34	0.32	0.40	0.39	0.32	0.39	0.30	0.31	0.34	0.34
Total number of units per project	2,043	1,871	1,164	1,010	2,173	2,506	1,569	1,426	2,207	2,691
Whether decorated	0.37	0.29	0.25	0.26	0.62	0.44	0.29	0.22	0.17	0.14
Total area transacted (square meter)	43809	39678	30420	20286	32716	41327	34893	19716	29979	26002
Number of units transacted per project	482	456	294	189	296	401	336	188	304	273
Sales price (CNY/m ²)	13686	18077	15498	23146	12396	14520	14947	15496	5930	8436

Notes: (a) For each city, the “before” (“after”) column shows the average of each variable among all the projects and quarters before (after) HPR is implemented. (b) Property fee and sales price are CNY per square meter.

Table 2 shows the overall changes of market structure after HPR. Total numbers of both projects and developers decreased substantially in Beijing, Shanghai, Guangzhou, and Wuhan but increased in Hangzhou. To examine changes in market concentration, we further calculate the Herfindahl-Hirschman Index (HHI) before and after HPR.¹⁰ From the HHI results, we can see that, although HPR drives out some developers in Beijing, Shanghai, Guangzhou and Wuhan, the markets become less concentrated, suggesting that the surviving developers may not necessarily have gained more market power after HPR. These changes in market structure could affect each developer’s pricing and sales strategies, which in turn affect equilibrium price and quantity.

¹⁰ HHI is calculated as the summing of the square of the market share of each firm (or each project) in the market.

Table 2*Summary Statistics of Market Structure*

	Beijing		Shanghai		Guangzhou		Hangzhou		Wuhan	
	Before	After	Before	After	Before	After	Before	After	Before	After
No. of projects	110	50	96	51	72	26	22	30	64	55
No. of developers	63	28	62	33	48	17	16	22	33	29
Project HHI	81	132	70	62	203	181	340	115	73	45
Developer HHI	212	254	164	138	438	347	410	207	292	153

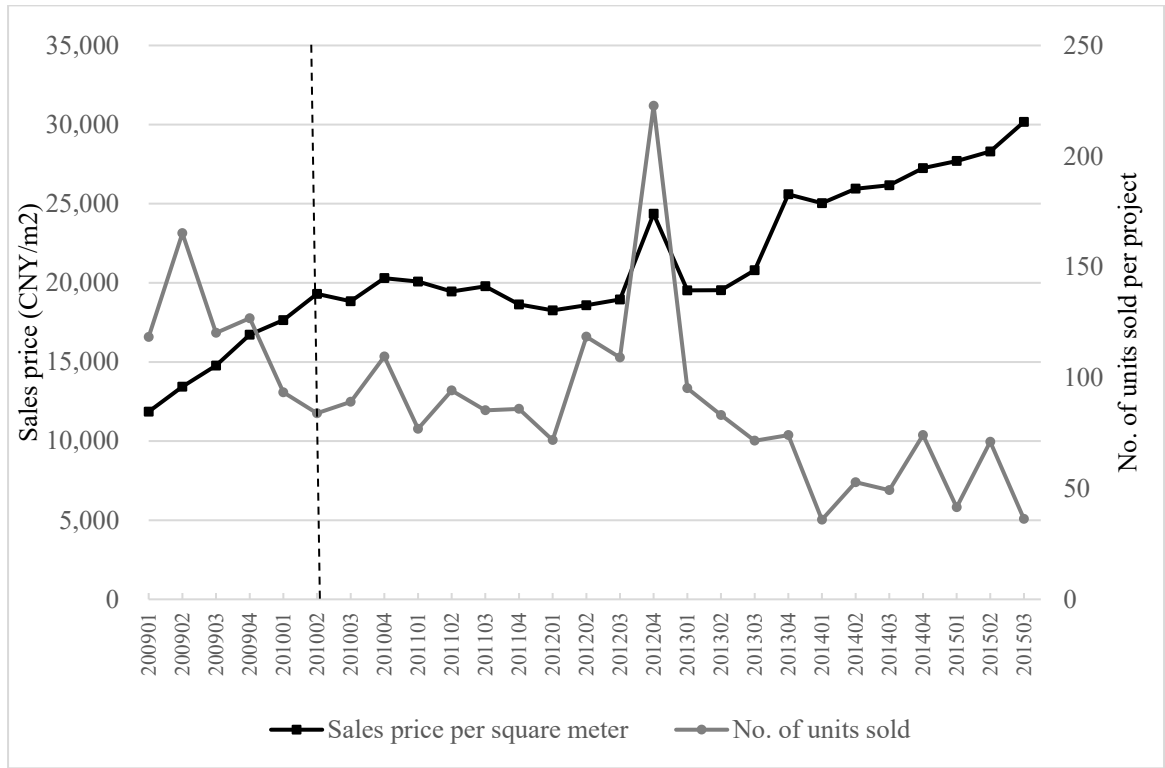
Notes: (a) The numbers are averages across quarters. (b) The Herfindahl-Hirschman Index (HHI) is calculated as the sum of squares of market shares of projects or developers and is scaled up by 10,000.

Figure 1 presents quarterly time series of average price per square meter and average transaction volumes across all projects in Beijing between 2009 Q1 and 2015 Q3. Graphs for the other four cities are presented in Figures A1–A4 in the Appendix. The vertical line indicates the starting quarter of HPR. Transaction volumes in all five cities declined sharply immediately after the HPR implementation, while prices continued to increase except in Hangzhou. This suggests that although the HPR cools down the market by reducing transactions, it does not effectively achieve the primary policy goal of stabilizing housing prices.¹¹

¹¹ The unusual increase in transaction volumes in the fourth quarter of 2012 is probably due to a high discount in interest rate of housing provident fund loans. The sudden drop in sales of the subsequent quarter could be due to the changes in capital gains tax announced in February 2013, when the government increase the capital gains tax with a holding period less than five years.

Figure 1

Trends in Sales Prices and Transaction Volumes in Beijing



Next, we summarize information from the CFPS data that will be used for our analysis. Table 3 presents the fractions of local and migrant households that own no house, one house, or two or more houses.¹² This information will be used to calibrate the change in market size after HPR in our structural estimation.

¹² There are few migrants in Hangzhou, and because the sample size is small, no migrants own houses. The overall samples for Beijing and Wuhan are also small. However, this is the only publicly available dataset that covers all five sample cities, contains information on the number of houses owned, and was available in the year before the HPR. Other data either do not provide information on number of houses owned (e.g., census data), were not available before 2010 (e.g., China Household Finance Survey), or do not cover the five sample cities (e.g., Urban Household Survey). Note that we use CFPS only to get the fraction of each category, which is used to calculate the percentage change of market size. Then we multiply the actual total number of households obtained from Statistical Yearbook by the percentage change calculated from CFPS.

Table 3*Distribution of Households by Hukou Status and Number of Houses Purchased*

<i>Hukou</i>	No. of	Beijing	Shanghai	Guangzhou	Hangzhou	Wuhan
Migrant	0	16%	7%	7%	2%	8%
Migrant	1	17%	11%	9%	-	23%
Migrant	2 or more	5%	4%	4%	-	3%
Native	0	26%	12%	12%	-	11%
Native	1	30%	55%	56%	88%	45%
Native	2 or more	5%	11%	12%	10%	11%

Notes: (a) This table is based on the China Family Panel Study (CFPS) 2010. (b) Each column sums up to 100%. (c) The total number of households in the CFPS sample are 76 in Beijing, 1,120 in Shanghai, 60 in Hangzhou, 113 in Guangzhou, and 66 in Wuhan.

We group all households into the six categories in Table 3, then indicate which groups are no longer eligible for home purchase after the HPR, based on the city specific HPR rules. The rules are the strictest in Beijing, and we specify that all migrants and native with two or more homes are not eligible for home purchase after HPR. Therefore, after the HPR, the sample only includes natives with zero or one home. In Shanghai, Guangzhou, and Wuhan, after the HPR, only natives with zero or one home and migrants with zero homes are eligible for home purchase. Hangzhou has relatively relaxed HPR policies compared with the other four cities. As the rule suggests, regardless of *Hukou* status, any household is eligible to purchase only one new home. Therefore, we assume that migrants with two homes and natives with two homes drop out of the market after HPR.

Table 4 displays changes in several important demographics before and after HPR in each city based on the sample of households from the CFPS data. We find that after HPR, potential buyers remaining on the market generally are older, have lower income, and are less educated than the pre-HPR period.

Table 4*Demographic Characteristics Before and After HPR*

		Age	Total family	Family size	% married	% some college or above
Beijing	Before	45.7	87,322	2.6	76%	40%
	After	57.8	61,730	2.9	78%	20%
Shanghai	Before	48.7	71,720	3.1	84%	22%
	After	51.2	60,599	3.0	82%	17%
Guangzhou	Before	42.5	60,258	3.7	91%	24%
	After	44.4	58,036	3.6	88%	27%
Hangzhou	Before	51.9	39,029	3.7	84%	6%
	After	52.1	37,256	3.7	86%	4%
Wuhan	Before	42.8	49,195	3.4	90%	31%
	After	45.2	45,005	3.4	88%	22%

Notes: (a) This table is based on the China Family Panel Study (CFPS) 2010. (b) The total number of households in the CFPS sample are 76 in Beijing, 1,120 in Shanghai, 60 in Hangzhou, 113 in Guangzhou, and 66 in Wuhan.

4 Reduced-Form Analysis

Before introducing the structure model, we first provide some empirical evidence concerning the impact of the HPR on housing prices and sales using the time-varying difference-in-differences (DID) approach. The treatment group includes all five cities summarized in Table 1. The control group includes the following seven cities that had not implemented HPR: Chongqing, Dongguan, Gu'an, Langfang, Lianyungang, Tangshan, and Xianghe.¹³

We estimate the following DID regression model:

$$y_{jt} = \beta_0 + \beta_1 \text{Treat}_j * \text{After}_t + \beta_2 X_{jt} + \mu_j + \delta_t + \varepsilon_{it}, \quad (1)$$

where y_{jt} is outcome variable, either log price or log transaction volume for project j in year-quarter t . The dummy variable Treat_j indicates whether a project belongs to a city with HPR implemented during the sample period. The dummy variable After_t indicates whether the transaction quarter follows the policy implementation dates in each city. μ_j is project-level fixed effect, and δ_t is year-quarter fixed effects. The key variable of interest is the interaction term $\text{Treat}_j * \text{After}_t$. The standard DID variable After_t is absorbed by year-quarter dummies δ_t , and

¹³ As most non-HPR cities are small and lack good transaction data in early years, our choice of control cities is rather limited.

$Treat_j$ is absorbed by project dummies. X_{jt} controls for average condominium size. In an alternative specification, we further control time trend D , which equals to 1, 2, ... if the transaction is one quarter, two quarters, ..., after policy implementation, and equals to 0 for pretreatment periods. Standard errors are clustered at the city level.

Table 5

Impact of HPR on Prices and Transactions, Difference-in-Differences Analysis

	log (P)	log (P)	log (Q)	log (Q)
Treatment*after	0.508*** (4.92)	0.412*** (3.88)	-0.401*** (-3.81)	-0.341*** (-4.00)
Log (home size)	0.370*** (7.30)	0.367*** (7.41)	-0.617*** (-4.24)	-0.615*** (-4.20)
Post		0.010* (1.89)		-0.007 (-0.54)
Constant	7.276*** (29.79)	7.288*** (30.26)	5.452*** (8.10)	5.445*** (8.06)
Project FE	✓	✓	✓	✓
Year-quarter FE	✓	✓	✓	✓
Observations	80,167	80,167	80,167	80,167
R-squared	0.712	0.713	0.360	0.360

Notes: (a) This table presents DID regression results using quarterly aggregate of transaction data. (b) Columns log (P) reports regression results on log price (CNY per square meter), and columns log (Q) reports results on log quantity (number of units sold each quarter). (c) *Treatment*After* is the interaction between treatment dummy and implementation dummy. *Post* is implementation quarter dummy, which equals to 1, 2, ... if one quarter, two quarters, ..., after the HPR implementation, and equals to 0 for pretreatment periods. All regressions control for log home size, project fixed effects, and year-quarter fixed effects. (d) The standard errors are clustered at the city level and are shown in parenthesis. (e) *** significant at 1% level.

Table 5 presents estimation results. We find that the effects of the HPR are consistent with existing studies in that transaction volumes decreased significantly. We find the housing price does not decrease as the government expected. We further examine how the effect of the HPR on housing prices and transactions evolves over time using the following regression model:

$$y_{jt} = \sum_{s=-6}^6 \beta_s Treat_j * After_{t+s} + \gamma X_{jt} + \mu_j + \delta_t + \varepsilon_{it} \quad (2)$$

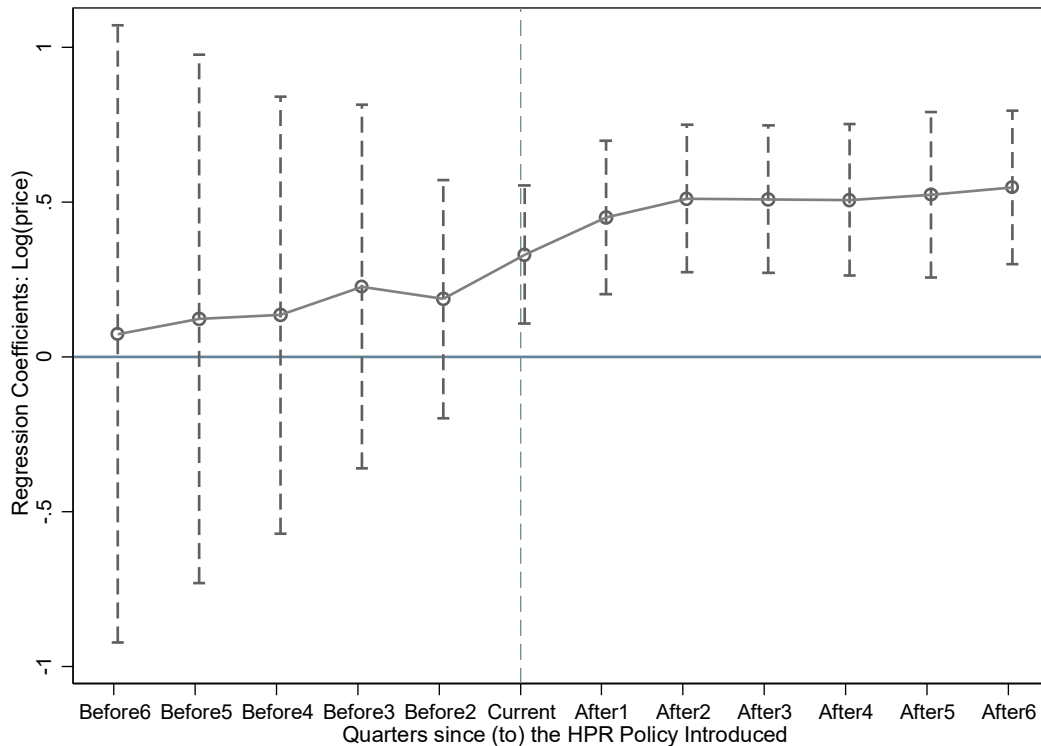
The coefficients β_s ($s = 0, \dots, 6$) capture the additional marginal response of the announcement quarter, one quarter, two quarters, ..., six quarters after the enforcement of the HPR. The coefficients β_s ($s = -6, \dots, -1$) measure the differences in trends on prices or quantities between

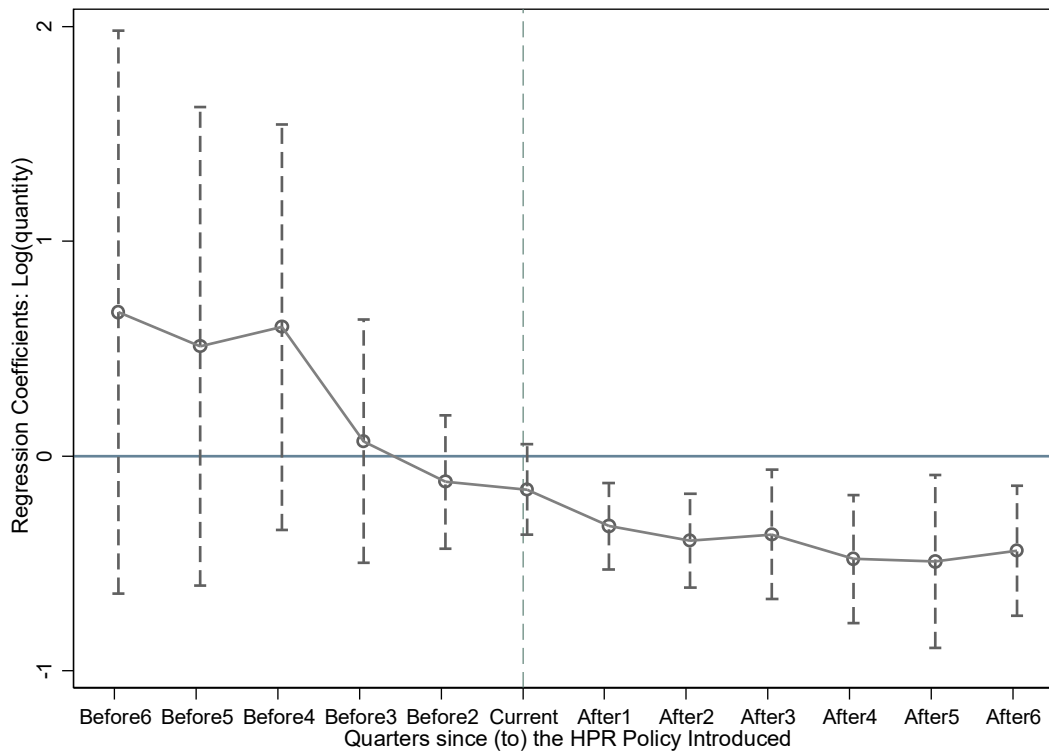
the HPR cities and non-HPR cities in the pretreatment quarters. The estimates of pretreatment coefficients provide a test on whether the parallel trend assumption of the DID approach is satisfied.

Figure 2 plots the paths of the coefficients estimated from equation (2), and the brackets shows the corresponding 95% confidence intervals. Prior to the HPR enforcement, there is no significant difference between the treatment cities and control cities at the 5% confidence intervals. This supports the validity of using the DID approach. After the HPR enforcement, we find significant increases in prices and decreases in quantities sold in the five cities that implemented the HPR, compared with the seven cities that did not implement the HPR.

We acknowledge the limitation of our DID analysis: the HPR treatment is not random. Cities with larger housing price increases are more likely to implement the HPR, and those are generally cities with faster economic growth. In the next section, we move forward by estimating a structural model of the market, which also allows us to examine the underlying mechanisms of the observed equilibrium changes.

Figure 2: The Dynamic Evolution of Prices and Quantities.





Notes: The figures plot the paths of coefficients along with their corresponding 95% confidence intervals of prices and quantities as estimated from equation (2).

5 Structural Model and Estimation

In this section, we analyze the equilibrium outcomes before and after the HPR policy shock in China’s housing market using the standard empirical IO framework for differentiated products market in the spirit of Berry et al. (1995); in particular, we follow Berry and Jia’s (2010) approach to compare the ex-ante and ex-post market equilibrium.

5.1 Demand Side

For a given city, a resident’s (or household’s) decision on which home to purchase is inherently a discrete choice problem once a choice set (i.e., “market”) is properly defined. Here we define a market as all the homes available for sale in a city–quarter pair. Market definition has implications for interpreting the single-choice model in the presence of multiple purchases. For example, if a household bought two homes within a quarter or in different quarters, then the model would treat it as two separate purchases by two ex-ante identical households.

To set up the discrete choice model, we define a product in any market as a “project–year” pair, which is mainly driven by our data structure. Given this product definition, a resident’s decision on home purchase becomes a project choice problem. Also, our product definition treats one project in two years as two different products. This enables us to control any slow-varying characteristics of a project via product fixed effects in the estimation.

Let $\mathcal{T}_t = \{0, 1, \dots, J_t\}$ denote the set of products in market t , where the one labeled 0 refers to the “outside option,” (i.e., not purchasing a new home [including not purchasing any home or purchasing a second-hand home]), and those labeled $j > 0$ are the “inside goods.”

The demand for a new home in a residential project is derived from a standard nested-logit random utility model (following Berry 1994). In other words, resident i ’s utility of buying a home in project j in market t is

$$\begin{aligned} u_{ijt} &= \delta_{jt} + \zeta_{igt} + (1 - \lambda)\epsilon_{ijt} \\ &= x'_{jt} \beta - \alpha p_{jt} + \xi_{jt} + \zeta_{igt} + (1 - \lambda)\epsilon_{ijt}, \end{aligned} \quad (3)$$

where δ_{jt} is the mean utility that is common to all residents, x_{jt} is a vector of observed characteristics (including project dummies, year-quarter dummies, etc.), p_{jt} is the average price per square meter, ξ_{jt} is an unobserved characteristic, ζ_{igt} is a random variable common to all products in nest g ,¹⁴ $\lambda \in [0, 1)$ is the “nesting parameter” capturing the within-nest correlation between the choices, and

¹⁴The distribution function of ζ_{igt} depends on the parameter λ .

ϵ_{ijt} is an i.i.d. idiosyncratic preference shock following the standard Type I extreme value distribution. We normalize the mean utility of “outside option” as $\delta_{0t} = 0$ and let $\delta_t = (\delta_{1t}, \dots, \delta_{Jt})$. We define a nest as all the projects in an administrative district of a city and the outside option is the only member in group 0.

The random utility model (1) implies the following demand system for each market t :

$$\begin{aligned} s_{jt} &= \sigma_j(\delta_t, \lambda) \\ &= \sigma_{j|g}(\delta_t, \lambda) \sigma_g(\delta_t, \lambda), \forall j \in \mathcal{J}_t, \end{aligned} \quad (4)$$

where s_{jt} is the observed market share of product j in market t and $\sigma_j(\delta_t, \lambda)$ is the market share predicted by the model, and where $\sigma_j(\delta_t, \lambda)$ comprises the two components

$$\begin{aligned} \sigma_{j|g}(\delta_t, \lambda) &= \frac{\exp[\delta_{jt}/(1-\lambda)]}{\sum_{k \in \mathcal{J}_g} \exp[\delta_{kt}/(1-\lambda)]} \\ &\text{and} \\ \sigma_g(\delta_t, \lambda) &= \frac{\left(\sum_{k \in \mathcal{J}_g} \exp[\delta_{kt}/(1-\lambda)]\right)^{1-\lambda}}{\sum_g \left(\sum_{k \in \mathcal{J}_g} \exp[\delta_{kt}/(1-\lambda)]\right)^{1-\lambda}} \end{aligned}$$

which are the within-group share of product j and the group share of nest g , respectively.

In our application, the observed market share of each new residential complex is measured as:

$$s_{jt} = \frac{q_{jt}}{M_t},$$

where q_{jt} is the number of homes sold in project j in market t , and M_t is the potential market size (number of consumers who make a choice from \mathcal{J}_t) calibrated using data from the Statistical Yearbook and CFPS. Specifically, for the pre-HPR period, we use the total number of households in a city to measure market size. After HPR, some households are no longer eligible for buying homes. According to HPR rules (which differ across cities), we calculate the proportion of households that remains on the market after the HPR based on the sample of households in the CFPS data summarized in Table 3. For example, in Beijing, we define the HPR-unaffected group as local residents with one home or fewer, as households with two or more homes cannot buy

another because of the HPR.¹⁵

Following Berry (1994), we invert the demand system (4) to obtain the following estimation equation:

$$\log\left(\frac{s_{jt}}{s_{ot}}\right) = x_{jt}'\beta - \alpha p_{jt} + \lambda \log(s_{j|g,t}) + \xi_{jt}, \quad (5)$$

where $s_{j|g,t}$ is the observed within-group share of product j in market t . And we impose the standard identifying assumption

$$E[\xi_{jt} | Z_{jt}] = 0, \forall j \in \mathcal{J}_t, \forall t, \quad (6)$$

where Z_{jt} is a vector of instrumental variables.

Combining (5) and (6), we estimate the demand parameters using the standard 2SLS. The IVs are employed to address the endogeneity issue caused by the within-group share $s_{j|g,t}$ and price p_{jt} . The instrument for $s_{j|g,t}$ is standard: the number of products in nest g . For the price endogeneity issue, we apply “differential IVs” proposed by Gandhi and Houde (2019), which measure the relative location of a product in the characteristics space.¹⁶ In particular, we use $\sum_{k \neq j} (x_{kt} - x_{jt})^2$ to construct IVs for price, and the summation is over the projects within the administrative district that product j locates.

5.2 Supply Side: Baseline Case

After we estimate the demand model, we move on to consider the supply-side problem. As we focus on the new home market, the supply side comprises a group of competing real estate developers (firms) labeled by $f = 1, \dots, F_t$, each of which produces and sells multiple residential projects (products). The profit function of a firm f in market t is

$$\pi_{jt} = M_t \sum_{j \in \mathcal{F}_f} A_{jt} (p_{jt} - mc_{jt}) s_{jt},$$

where \mathcal{F}_f is the set of projects developed by firm f , A_{jt} is the average square meter per unit of project j in market t , and mc_{jt} is the associated marginal cost per square meter.

To complete the supply-side model, we need to make assumptions on the firms’ conduct (i.e.,

¹⁵ More accurate measures require information on social security deposits, or at least the number of years of work experience in the city. These are not available in the CFPS data. Therefore, we only proxy the HPR policy using migrant status and the number of houses owned.

¹⁶ We also tried standard BLP (Berry, Levinsohn and Pakes, 1995) instruments (i.e., sum of product characteristics of other products owned by the same firm and sum of product characteristics of products owned by other firms); however, they fail to pass the standard weak IV test and typically generate implausible estimates (e.g., positive price coefficient).

how the firms in a market compete). In the baseline case, we follow the most commonly used specification in the literature (see Berry et al., 1995 and subsequent studies) to assume that the firms set prices that maximize profit and are consistent with a static Bertrand-Nash equilibrium for differentiated products: in other words, the equilibrium prices (in matrix form) can be written as

$$p_t = mc_t - \underbrace{[D_p \sigma(\delta_t, \lambda) \circ I]^{-1}}_{\text{markup}} (A_t \circ s_t) \quad , \quad (7)$$

where p_t , mc_t , A_t , and s_t are vectors of the corresponding product level variables in market t (e.g., $p_t = (p_{1t}, \dots, p_{Jt})$), $D_p \sigma(\delta_t, \lambda)$ is the matrix of derivatives of market shares with respect to prices

$$D_p \sigma(\delta_t, \lambda) = \begin{pmatrix} \frac{\partial \sigma_1(\delta_t, \lambda)}{\partial p_{1t}} & \dots & \frac{\partial \sigma_J(\delta_t, \lambda)}{\partial p_{1t}} \\ \vdots & \ddots & \vdots \\ \frac{\partial \sigma_1(\delta_t, \lambda)}{\partial p_{Jt}} & \dots & \frac{\partial \sigma_J(\delta_t, \lambda)}{\partial p_{Jt}} \end{pmatrix} \quad , \quad (8)$$

I is the ownership matrix

$$I_{jk} = \begin{cases} 1, & j, k \in \mathcal{F}_f \\ 0, & \text{otherwise,} \end{cases}$$

and \circ denotes the Hadamard (element-wise) product.

The firm's first-order condition (7) summarizes the pricing rule implied by the assumed model in an intuitive way: a project's price is jointly determined by its marginal cost and markup that measures the market power of the associated firm. Based on (7) and given the demand estimates, we can calculate the marginal costs for each product (defined by "project-year"):

$$mc_t = p_t + [D_p \sigma(\hat{\delta}_t, \hat{\lambda}) \circ I]^{-1} (A_t \circ s_t),$$

where $\hat{\delta}_t$ and $\hat{\lambda}$ are obtained from the demand estimates. And the derivatives matrix $D_p \sigma(\hat{\delta}_t, \hat{\lambda})$ can be calculated based on the demand model (2):

$$\frac{\partial \sigma_j(\delta_t, \lambda)}{\partial p_{kt}} = \begin{cases} -\frac{\alpha}{1-\sigma} s_{jt} \left[1 - \sigma \frac{s_{jt}}{s_{gt}} - (1-\sigma) s_{jt} \right] & j = k \\ \frac{\alpha}{1-\sigma} s_{kt} \left[\sigma \frac{s_{jt}}{s_{gt}} + (1-\sigma) s_{jt} \right] & k \neq j \text{ are in the same group } g \\ \alpha s_{kt} s_{jt} & k \neq j \text{ are in different groups} \end{cases} \quad (9)$$

5.3 Supply Side: Alternative Assumptions on Firms' Conduct

One concern is that the baseline supply model with the assumed Bertrand competition (for differentiated products) does not reflect actual developer conduct in the market. On the one hand, the market may be more competitive than what the static Bertrand-Nash equilibrium predicts,

which may be due to forward-looking behavior (i.e., dynamic pricing and investment [see Topel and Rosen, 1988] and/or contestable market hypothesis [see Baumol, 1986]). On the other hand, the actual market may be less competitive than the assumed Bertrand competition because of developers' tacit collusion, implicit financial affiliations, etc. To address this concern, we deviate from the baseline assumption of Bertrand competition and consider two alternative competition structures.

The first assumes that the market is more competitive (i.e., the markup is lower than the price equilibrium characterized by (7)). A simple way to account for this increased competitiveness is to add a “conduct parameter” $\gamma_1 \in [0,1]$ in front of the markup term in (7):

$$p_t = mc_t - \gamma_1 [D_p \sigma(\delta_t, \lambda) \circ I]^{-1}(A_t \circ s_t), \quad (10)$$

where a smaller γ_1 means a more competitive environment and $\gamma_1 = 0$ represents the extreme case of perfect competition with no markup. Note that adding a conduct parameter has a long tradition in the empirical IO literature; see, among others, Bresnahan (1989) and Genesove and Mullin (1998). Although it is usually considered a “reduced-form” way of introducing more flexible strategy interactions beyond the static Bertrand (or Cournot) competition, it seems sufficient for our current analysis, which serves as a robustness check for the baseline results.

The second competition structure is that the market is less competitive than the baseline case. This amounts to assuming that the firms not only care about their own profits but also internalize others' profits to a certain extent, with the extreme case being that all the firms in a market jointly maximize their total profit (i.e., full collusion). To account for such cases, we follow the literature on firm conduct and market structure (e.g., Nevo, 2001; Sudhir, 2001; Ciliberto and Williams, 2014, among others), to modify the ownership matrix I in the pricing equation (7) such that

$$I_{jk} = \begin{cases} 1, & j, k \in \mathcal{F}_f \\ \gamma_2, & otherwise, \end{cases}$$

where $\gamma_2 \in [0,1]$ measures how much each firm internalizes other firms' profits, with $\gamma_2 = 1$ being the full collusion case.

To take these alternative assumptions of firms' conduct to data, we fix the conduct parameter γ_1 (or γ_2) at a particular value¹⁷ and then perform the empirical analysis (i.e., uncover the marginal costs and simulate counterfactual scenarios) in a way similar to the baseline case.

¹⁷ Here, we do not estimate the conduct parameter because it is not clear how they can be separately identified in our setting (without cost side information); see Genesove and Mullin (1998) for more discussion on this issue.

5.4 Some Remarks on the Model

We acknowledge that the model has several limitations. First, it is a static model and thus cannot explicitly account for potential dynamic incentives of households and real estate developers. This may generate biases to our estimates. For example, a household's home purchase decision may be driven by both the current and future housing prices (i.e., forward-looking behavior). Heuristically, the static demand model ignores the effects of expected future price on buyer's choice and this is similar to the omitted variable problem in a standard linear regression. Hence, if the omitted variable, e.g., expected future price, is positively correlated with the current price, then an OLS estimate of the price coefficient tends to bias toward zero. However, since we treat price (and within-group share) as an endogenous variable and form moment conditions using instrumental variables, this omitted variable will lead to biased estimates only when it is not (mean) independent of the instrumental variables.

Despite the above potential risk, the static model is sufficient to answer the questions we are after in this paper because all we want to do is compare the pre- and post-policy market equilibria and thus evaluate the policy impact. A dynamic model would help us to understand the transition better but add only limited value to our problem. Moreover, estimating a dynamic equilibrium model will pose computational challenges and thus may limit our ability to include a rich set of covariates (mostly fixed effects) in the empirical model. Nevertheless, analyzing the housing market with a fully dynamic competition model is an important direction for future research.

Also, we model the supply side as standard oligopolistic competition among profit maximization firms. Although we have considered alternative assumptions on firms' conduct, they are not sufficient to capture the potentially rich incentives that developers face in the market. For example, some state-owned developers in China might have other incentives beyond profit maximization (e.g., political responsibility) that could affect the nature of competition in the market. However, given that we do not have additional information/data, we decide to move forward with the standard model, and the results should be interpreted as a benchmark, with caveats.

Finally, in our demand estimation, we use nested logit instead of random coefficient logit. Though the latter can potentially capture richer preference heterogeneity and more flexible substitution patterns, it is computationally more challenging to estimate and more importantly requires more (and strong) instrumental variables to achieve identification. Unfortunately, we

cannot find or construct such IVs from our available data.

6 Estimation Results and Counterfactual Analysis

6.1 Estimation Results

We divide the sample of each city into before- and after-HPR periods and estimate the demand model for each subsample separately based on equation (5) and (6). Table 6 presents the estimation results.¹⁸

The results are heterogenous across different cities. The price coefficient, which measures home buyers' price sensitivity, moves towards zero after the HPR for Beijing, Shanghai, Guangzhou, and Wuhan but becomes more negative for Hangzhou. Also, the estimates of the nesting parameter are quite large, with most greater than 0.5, which means that residential complexes located in the same administrative district are close substitutes, whereas the substitution effects between homes located in different administrative districts are weak. The changes in the estimated nesting parameters caused by HPR show that the within-district correlation becomes weaker in Beijing, Shanghai, Hangzhou, and Wuhan, whereas it is the opposite for Guangzhou. Moreover, note that we include the product (project–year) and year–quarter fixed effects to control time-invariant and slow-varying project characteristics, as well as market level common shocks. Finally, the first-stage Sanderson-Windmeijer F-test shows that the instruments are not weak in general (except for the pre-HPR period of Guangzhou).

Next, we examine the fitness of our model by comparing the model-predicted prices and sales volume with transaction data. Figure A5 in the Appendix presents the fitted quarterly series of aggregate quantity versus the actual data. We find that the predicted values match the actual data reasonably well in most cases, although the model seems to slightly underestimate the actual demand (especially in Beijing and Wuhan). This may be due to the model limitations we discussed in the previous section.

Using the demand-side estimates, we calculate the price elasticities and show them in Table 7. Overall, demand becomes much less price elastic after HPR in all the cities except Guangzhou. This could have two related but different interpretations. One interpretation is that the composition or structure of aggregate demand has changed. As some consumers are not eligible for home

¹⁸ Since it takes time for the market to adjust to the equilibrium status, as a robustness check, we drop the quarter when the policy implemented, or drop two quarters that include the policy implementation quarter and one quarter right after that and re-estimate demand model. The results are very similar to baseline results in Table 4 and thus, to conserve space, are not shown.

purchase because of HPR regulation, consumers remaining on the market after the HPR are more price inelastic than those who are no longer on the market after the policy change. Another interpretation is that the consumers' preferences for housing attributes have changed after the HPR, even if the composition has not changed. Changes in price elasticity could be due to either interpretation or to both.

Table 6*Demand Estimation Results*

	Beijing		Shanghai		Guangzhou		Hangzhou		Wuhan	
	Before	After	Before	After	Before	After	Before	After	Before	After
Price coefficient	-0.214*** (0.056)	-0.333 (0.208)	-0.252*** (0.0698)	-0.0447 (0.150)	-1.392*** (0.722)	-0.188 (0.163)	-0.836*** (0.260)	-1.533*** (-0.392)	-2.593*** (-0.447)	-0.479* (0.248)
Nesting parameter	0.956*** (0.048)	0.432*** (0.096)	0.900*** (0.027)	0.558*** (0.062)	0.881*** (0.091)	0.980*** (0.050)	0.865*** (0.091)	0.501*** (0.100)	0.766*** (0.074)	0.750*** (0.045)
Project FE	✓	✓	✓	✓	✓	✓	✓	✓	✓	✓
Year-quarter FE	✓	✓	✓	✓	✓	✓	✓	✓	✓	✓
1st-stage SW F for <i>price</i> (p-value)	3.03 (.0000)	1.69 (.0336)	14.02 (.0000)	1.90 (.0121)	1.06 (.3890)	2.15 (.0032)	1.77 (.0163)	1.79 (.0212)	5.26 (.0000)	1.83 (.0175)
1st-stage SW F for <i>Log(s_jg)</i> (p-value)	2.74 (.0000)	2.97 (.0000)	14.90 (.0000)	4.38 (.0000)	3.03 (.0002)	1.82 (.0183)	2.29 (.0007)	3.15 (.0000)	2.71 (.0001)	4.01 (.0000)
No. of obs	2661	12501	10384	14146	850	5099	1250	6131	3552	13910

Notes: For parameter estimates, robust standard errors are in parentheses. * p<0.10 ** p<0.05 *** p<0.01. For the first-stage test statistics, p-values are in parentheses.

Table 7*Price Elasticities Before and After HPR*

		Beijing		Shanghai		Guangzhou	
		Before	After	Before	After	Before	After
Avg. own elasticity		-7.280	-1.219	-3.818	-0.269	-14.380	-16.263
Cross Elasticity	Within	-0.168	-0.015	-0.116	-0.005	-0.484	-0.495
	Across	-0.000025	-0.000056	-0.000016	-0.000005	-0.000171	-0.000028
		Hangzhou		Wuhan			
		Before	After	Before	After		
Avg. own elasticity		-9.998	-5.205	-6.644	-1.588		
Cross Elasticity	Within	-0.529	-0.107	-0.168	-0.024		
	Across	-0.000166	-0.000244	-0.000230	-0.000072		

Notes: (a) This table presents the price elasticities before and after HPR in each of the five cities. (b) “Within” refers to within nest cross-elasticity and “Across” refers to across-nest cross-elasticity, both are defined based on the derivatives in (7).

The first interpretation of composition change is partially supported by the demographic changes of potential buyers summarized in Table 4 in Section 3.2, which shows that the average buyer in the post-HPR period is older, has lower income, and is less educated (in terms of college degree) than in the pre-HPR period. To see this link more closely, we pool data from all five cities together and regress product-level price elasticities on the summary statistics on demographic variables shown in Table 4. The regression results, shown in Table A2 in the Appendix, suggest that older, lower income, and less-educated families’ demand tends to be more inelastic to price changes in housing.

There are alternative explanations of why the demographics affect price elasticities in this particular way. For example, older and less-educated people may have less access to alternative options of financial investments (e.g., because of lack of financial literacy) and thus are willing to allocate more money to the housing market, which implies that their demand for housing is inelastic to price adjustments. Alternatively, given that the HPR limits the number of homes a household can purchase (depending on their residence and employment status), many speculative purchases, which are more likely to come from people with higher education and income, are driven out of the market. These people are usually more price sensitive as their primary purpose

of home purchase is investment rather than actual need. In this case, HPR policy intervention does meet its goal of reducing speculative housing demand.

Given the limited and aggregated information on demographics, we cannot obtain clear evidence on whether the preference of the same group of buyers changes after HPR and thus cannot quantify the second interpretation. This is a limitation of the current analysis and we shall revisit this point in the counterfactual analysis.

Now let us turn to the supply-side estimates that inform us about the changes in the cost structure of real estate developers after HPR. Table 8 presents the changes in average marginal costs and markups for the three alternative assumptions on firms' conduct described in Section 5.2 and 5.3. In particular, "More Competitive" and "Joint Profit Maximization" refer to the two cases described in Section 5.3 with $\gamma_1 = .5$ and $\gamma_2 = 1$, respectively.¹⁹ We can see that, despite the different conduct assumptions, the results are qualitatively similar: corresponding to the changes in demand elasticities, the marginal costs in four cities fall after the policy intervention, whereas Guangzhou is the opposite. Note that there are a few cases, mostly for Shanghai in the after-HPR period, for which we cannot obtain marginal costs because of the inelastic price (absolute value of elasticity less than 1).²⁰ However, these marginal costs would be 0 if we impose a nonnegative constraint, so this does not change the pattern regarding the direction of adjustments in the marginal costs resulting from HPR.

In Section 2.1 we mention that developers' construction cost is small and stable relative to the financial cost (of holding housing units). A decrease in marginal cost suggests that there is an increase in holding cost because of financial constraints. Developers have stronger incentive to lower the price and sell more quickly to maintain sufficient capital flow and repay debts. An alternative explanation for the increased financial costs is that the HPR implementation is associated with other policies that strengthen regulations in the financial sector, which leads to tightened liquidity. The exception is Guangzhou, where the overall demand becomes more elastic after the HPR (different from other cities). One potential interpretation is that since two administrative districts in Guangzhou did not implement the HPR (which we exclude from our analysis), developers may not face the same financial pressure or tightening of liquidity that other

¹⁹ We also tried several other values of γ_1 and γ_2 . They yield qualitatively similar results in terms of deviations from the baseline case results.

²⁰ For these cases, the firms' profit maximization problem is not well-defined (not concave) and thus we cannot use the first-order condition (5), which does not hold, to back out marginal costs.

cities do because they can borrow money from the non-HPR districts. Another potential reason is that Guangzhou sets an explicit price ceiling.²¹ Thus, the observed prices do not reflect the optimal pricing decisions of developers.

Table 8

Average Marginal Cost and Markup Before and After HPR

Firm's conduct		Beijing		Shanghai		Guangzhou		Hangzhou		Wuhan	
		Before	After	Before	After	Before	After	Before	After	Before	After
Baseline	Marginal Cost	1.30	0.38	1.15	-	1.18	1.64	1.53	1.40	0.52	0.31
	Markup (%)	23.10	156.52	40.96	-	9.38	8.66	12.83	25.24	18.63	85.32
	Marginal Cost	1.4	1.26	1.36	-	1.22	1.7	1.61	1.56	0.57	0.57
More competitive	Markup (%)	11.55	78.26	20.48	-	4.69	4.33	6.41	12.62	9.31	42.66
	Marginal Cost	0.97	-	0.71	-	1.08	1.52	1.35	1.22	0.44	-
Joint profit maximization	Markup (%)	56.17	-	83.06	-	19.04	18.43	25.45	38.88	34.95	-

Notes: “More competitive” refers to the first case described in Section 5.3 with $\gamma_1 = .5$. “Joint profit maximization” refers to the second case described in Section 5.3 with $\gamma_2 = 1$. The missing values correspond to the cases with inelastic demand, where we cannot use the first-order condition to obtain marginal costs and markups. However, with a nonnegative constraint on marginal costs, the marginal costs for these cases would be 0 (with markups being 100%).

We conducted several robustness checks on demand estimates and firms’ conduct. First, for market size calculation, we tried alternative ways of calculating the proportions of residence by migration status and number of houses owned, e.g., using individual-level rather than household-level data, or using the province-level sample to proxy the city-level sample to enlarge the sample size for less noise in calculating the categorical probabilities (but potentially more biased because a province may not be representative for one particular city in it). The results are all very similar, so in the main analysis we used a household-level sample. Second, we modified the rules according to which groups of individuals would drop out of the sample after the HPR. Third, for firms’

²¹ The government provides the upper limit of transaction price of different types of housing. If the actual price exceeds the price guidance, a formal contract will not be signed or its signing will be postponed. According to the data, some houses sell more slowly than before.

conduct, we tried several other values of γ_1 , which yielded qualitatively similar results.

6.2 Counterfactual Analysis

In this section we conduct three counterfactual analyses to illustrate the implications of our estimation results. The first two counterfactual analyses quantify the contributions of changes on the demand and supply side, respectively. In the first counterfactual, we assume that the developer's cost structure is fixed so that the HPR only affects demand. The second counterfactual assumes that only the developer's cost structure adjusts while the demand side remains unchanged. In the third counterfactual analysis, we try to mimic a scenario where the current HPR is replaced by a housing lottery scheme (i.e., the eligibility of purchasing a house is determined by a random lottery instead of the current restrictions that rely on *Hukou* status and the number of years of deposits to social security account). To do this, we let the market size and supply side change while keeping the demand parameters unchanged because, under a lottery scheme, consumers randomly drop out of the market; thus, the market size shrinks by the same amount, but the demand parameters do not change.

For each of the counterfactual designs, we compute the new after-HPR equilibrium prices and quantities by jointly solving the demand and supply system. Then, we calculate the changes resulting from the HPR and compare them with the actual changes. Table 9 summarizes the results for the counterfactual simulations given the baseline case specification of the supply side (see Section 5.2). The results for Beijing are based on two quarters before and after the HPR (because the Beijing sample covers only two quarters before the HPR); and for other cities, we use four quarters before and after the HPR implementation quarter for calculating the results.

In the first counterfactual experiment, we allow demand to adjust while holding the supply side fixed. The results are rather heterogeneous across cities. For example, in Beijing, compared with the actual changes after the HPR, the counterfactual price goes up more and the transaction volume goes down less. This exercise illustrates the role of supply-side adjustment after the HPR: firms could have set higher prices in response to the more inelastic demand if the supply side (i.e., marginal cost) did not change. However, in reality the decreased marginal cost after the HPR led to a lower price level than the counterfactual case. To see this, note that because holding cost becomes higher after the HPR, developers are willing to set a lower price to sell quickly. Another possible explanation is the following: Given that the central government is very concerned with housing price bubbles, and in response, some local governments directly impose implicit price

ceilings as part of HPR.²² Regarding the welfare results, we can see that the consumer surplus change is less negative and that the total profit change is lower than in the actual case. These results for Shanghai, Hangzhou, and Wuhan are similar to those for Beijing. However, as expected (given the estimation results), Guangzhou's results are quite different: price decreases (quantity is slightly smaller) and welfare improves in comparison to the actual case.

The second set of counterfactual results show that the counterfactual prices are lower than the actual ones in all cities except Guangzhou. The counterfactual sales are higher in Guangzhou, Hangzhou, and Wuhan but lower in Beijing and Shanghai. Note that the decrease in price does not necessarily lead to increased quantity, because the overall market size shrinks. Regarding the welfare results, except for in Guangzhou, buyers are better off than in the actual case mainly because of the decreased price; however, the social welfare changes, which account for both buyers' and developers' interests, are ambiguous and different across cities.

The third counterfactual exercise mimics the lottery scheme as the allocation rule, where we keep the demand parameters fixed but allow market size to shrink. The supply side (marginal cost) also adjusts to reflect the changes in the financial holding cost. Under the random lottery, price changes are virtually the same as in the second counterfactual simulation; however, the quantity of sales are much lower (except in Hangzhou) because of the decreased market size. In general, the lottery scheme benefits overall consumer surplus but tends to reduce developer profits. Again, the overall changes in social welfare vary across cities, which highlights the importance of tailoring specific housing policy design to each city.

In this counterfactual design, we implicitly assume that the changes in estimated demand are exclusively due to the composition change in the population of buyers (the first interpretation of changes in price elasticities due to the HPR in Subsection 6.1). Put differently, even though the lottery scheme does not change the composition of buyers (in terms of demographics), buyers' preferences can still change. If this is the case, then our simulation may underestimate the price increase and thus overstate the welfare benefits to consumers. Hence, we should keep this mind when interpreting the simulation results.

²² Homes sold above the price ceiling sometimes take longer or encounter difficulties in completing transactions online, according to anecdotal evidence.

Table 9

Baseline Counterfactual Results: Changes in Price, Quantity and Welfare One Year Before and After HPR

		Ave. Price	Ave. Quantity	Total Quantity	Consumer Surplus	Developer Profit	Social Welfare
Beijing	Actual	0.169	-26.355	-42,528	-159,387	197,759	38,372
	Counterfactual I	0.453	-8.146	-24,331	-17,317	-47,712	-65,029
	Counterfactual II	-0.367	-28.784	-85,976	47,772	-193,817	-146,045
	Counterfactual III	-0.367	-31.946	-95,423	27,039	-200,886	-173,847
Shanghai	Actual	0.328	-4.482	-13,330	-84,369	1,415,387	1,331,018
	Counterfactual I	4.234	-8.001	-45,885	-23,937	-470,798	-494,735
	Counterfactual II	-0.041	-22.673	-130,027	613	-1,346,176	-1,345,563
	Counterfactual III	-0.041	-23.385	-134,114	455	-1,384,874	-1,384,419
Guangzhou	Actual	0.259	6.068	11,541	-120,502	3,021	-117,481
	Counterfactual I	-0.239	3.235	7,179	35,129	1,021	36,149
	Counterfactual II	0.019	6.425	14,258	-3,904	5,107	1,204
	Counterfactual III	0.019	-4.392	-9,746	-2,936	905	-2,031
Hangzhou	Actual	0.081	-17.589	7,402	171,906	13,427	185,333
	Counterfactual I	0.080	-4.978	-8,204	-3,502	-2,855	-6,358
	Counterfactual II	-0.130	71.92	118,520	84,218	7,428	91,646
	Counterfactual III	-0.129	-4.543	-7,487	8,289	-8,410	-120
Wuhan	Actual	0.118	-22.715	1,064	-1,710,640	115,273	-1,595,508
	Counterfactual I	0.120	-3.935	-18,948	-23,544	-11,949	-35,472
	Counterfactual II	-0.201	-5.367	-25,851	82,953	-95,130	-12,248
	Counterfactual III	-0.201	-20.990	-101,109	52,758	-111,415	-58,702

Notes: (a) All numbers refer to the changes between 4-quarter average before HPR and 4-quarter average after HPR, except for Beijing, which is based on 2 quarters before and after HPR due to data limitations. (b) All the price and welfare numbers (consumer surplus, firm profit, and social welfare) are in 10,000 CNY. (c) “Actual” refers to the changes in the transaction data. Counterfactual I adjusts demand and fixes supply. Counterfactual II adjusts supply and fixes demand. Counterfactual III mimics lottery scheme, fixes demand, and lets market size and supply change.

As a sanity check, we compare our model’s general prediction about the lottery scheme with some high-level summary statistics from a couple of cities that do implement the lottery rule. After our sample period, some cities indeed carry out the lottery scheme. For new housing projects in which demand exceeds supply, the government initiates random draws to ensure less rent seeking.

Among our sample cities, Shanghai implemented a lottery in May 2017, and Hangzhou implemented a lottery in April 2018. Table A1 in the Appendix shows the average monthly housing price for new home sales in 2017–18. We find that housing prices drop right after the lottery implementation in both Shanghai and Hangzhou. This is consistent with our counterfactual III results, where housing price also declines. The magnitude of the decline differs, as the actual lotteries in Shanghai and Hangzhou are only for projects with excess demand, and the counterfactual assumes lottery for all projects. In addition, counterfactual III assumes that the magnitude of market size change is the same as that of actual change, where in the actual lottery scheme this need not be the case.

Finally, we run these counterfactual simulations under the two alternative assumptions on firms' conduct. Table 10 shows the results for the case of a more competitive market (than the baseline case) described in Section 5.3 with $\gamma_1 = 0.5$. In this case, developers' (static) market power is weaker and depends less on the demand elasticity than the baseline case. So, as shown by the first counterfactual design, the equilibrium price/quantity adjustments due to demand change are smaller. Also, the second and third counterfactual results are similar to those for the baseline case but with smaller welfare loss in most cases. Overall, in a more competitive market environment, the compositional change in demand has less impact on the equilibrium outcome and causes less welfare loss for most cases.

Table 11 shows the results for the case in which all the firms form a monopoly and jointly maximize the total profit (i.e., full collusion), as described in Section 5.3 with $\gamma_2 = 1$. This is an extreme case without competition in which developers have maximum market power. As expected, compared with the baseline case, the price is higher and the quantity is lower for most cases, which leads to worsened consumer and social welfare. However, the results from this extreme case are rather close to the baseline case, so again our results seem not very sensitive to the supply-side assumption regarding firm conduct.

Table 10*Counterfactual Results: More Competitive Market*

		Ave. Price	Ave. Quantity	Total Quantity	Consumer Surplus	Developer Profit	Social Welfare
Beijing	Counterfactual I	0.062	-1.665	-4,975	-1,836	-4,510	-6,346
	Counterfactual II	-0.252	3.238	9,671	18,560	-57,303	-38,742
	Counterfactual III	-0.252	-13.549	-40,471	10,644	-72,825	-62,181
Shanghai	Counterfactual I	1.805	-3.837	-22,007	-16,351	-112,900	-129,251
	Counterfactual II	-0.187	-17.619	-101,025	2,884	-597,507	-594,625
	Counterfactual III	-0.187	-19.689	-112,898	2,161	-637,153	-634,993
Guangzhou	Counterfactual I	-0.239	3.306	7,335	33,102	522	33,624
	Counterfactual II	0.012	14.248	31,616	-2,247	5,387	3,140
	Counterfactual III	0.012	1.418	3,148	-1,704	2,551	846
Hangzhou	Counterfactual I	0.031	-2.101	-3,462	-1,058	-602	-1,661
	Counterfactual II	-0.051	15.496	20,548	55,979	-482	55,497
	Counterfactual III	-0.051	4.309	6,791	12,887	-148	12,739
Wuhan	Counterfactual I	-0.003	0.133	639	676	178	853
	Counterfactual II	-0.104	14.797	71,275	38,057	-35,355	2,664
	Counterfactual III	-0.104	-8.707	-41,942	24,204	-45,067	-20,887

Note: (a) All numbers refer to the changes between 4-quarter average before HPR and 4-quarter average after HPR, except for Beijing which is based on 2 quarters before and after HPR due to data limitations. (b) All the price and welfare numbers (consumer surplus, firm profit, and social welfare) are in 10,000 CNY. (c) “Actual” refers to the changes in the transaction data. Counterfactual I adjusts the demand and fixes the supply. Counterfactual II adjusts the supply and fixes the demand. Counterfactual III mimics the lottery scheme, fixes the demand, and lets market size and supply change.

Table 11*Counterfactual Results: Joint Profit Maximization*

		Ave. Price	Ave. Quantity	Total Quantity	Consumer Surplus	Developer Profit	Social Welfare
Beijing	Counterfactual I	0.608	-13.271	-39,640	-10,976	-104,492	-115,468
	Counterfactual II	-0.253	2.557	7,638	18,490	-162,858	-144,367
	Counterfactual III	-0.253	-13.922	-41,585	11,257	-209,702	-198,445
Shanghai	Counterfactual I	6.912	-11.828	-67,833	-16,863	-1,098,838	-1,115,701
	Counterfactual II	-0.008	-18.393	-105,392	0	-1,717,006	-1,717,006
	Counterfactual III	-0.008	-20.260	-116,091	0	-1,887,694	-1,887,694
Guangzhou	Counterfactual I	-0.218	3.006	6,669	29,628	1,777	31,405
	Counterfactual II	0.057	9.349	20,745	-8,675	19,270	10,595
	Counterfactual III	0.057	-2.216	-4,917	-6,578	8,887	2,309
Hangzhou	Counterfactual I	0.079	-5.016	-8,266	-2,509	-4,266	-6,775
	Counterfactual II	-0.136	19.73	25,532	180,785	583	181,368
	Counterfactual III	-0.136	-5.27	-8,692	6,456	-10,811	-4,355
Wuhan	Counterfactual I	0.344	-11.524	-55,486	-53,566	-56,720	-110,231
	Counterfactual II	-0.192	21.023	101,269	85,028	-84,236	707
	Counterfactual III	-0.192	-4.935	-23,774	54,078	-138,073	-84,050

Note: (a) All numbers refer to the changes between 4-quarter average before HPR and 4-quarter average after HPR, except for Beijing which is based on 2 quarters before and after HPR due to data limitations. (b) All the price and welfare numbers (consumer surplus, firm profit and social welfare) are in 10,000 CNY. (c) “Actual” refers to the changes in the transaction data. Counterfactual I adjusts the demand and fixes the supply. Counterfactual II adjusts the supply and fixes the demand. Counterfactual III mimics the lottery scheme, fixes the demand, and lets market size and supply change.

6.3 Further Discussions

In this subsection we compare our results with the existing literature. As most related studies focus on the effect of the HPR on percentage changes in price and quantity, we calculate the percentage changes in the actual and counterfactuals in Table A3 in the Appendix. Our comparison mainly focuses on the studies that use DID or regression discontinuity design (RDD) approach using transaction data.

Existing studies using DID or RDD have consensus that the HPR reduces transaction volume, while there is less agreement on the effect on prices. Some find small or insignificant reduction in prices; others find prices increased after the HPR. Somerville et al. (2020), using monthly project-level new home sales in four cities (Chengdu, Guangzhou, Hefei, and Qingdao) and a DID approach, find there is no significant effect on prices and that the size of point magnitude is very

small. They find a large decline in sales volume: about 40% in the first six months following the HPR implementation and less than 30% after 12 months. We provide estimates separately for each city, and we add a simple average over five-city's estimates in the last column of Table A3. Our average 12-month quantity change after the HPR ranges from 6.75% to 19.12%, a smaller effect than Somerville et al. (2020).

Using transactions on resales in Guangzhou between January 2008 and December 2011, Jia et al. (2017) find that implementing the HPR increased prices by about 6%. Our findings also show prices increased after HPR in Guangzhou, but with a larger magnitude (20%) compared with their estimates. The main difference is that they use transactions on resales while we use project-level transaction data on new home sales. Also, they did not exclude the two administrative districts Zengcheng and Conghua, where the HPR was not implemented.

Sun et al. (2017) find a 17% to 24% decline in resale price and 50% to 75% reduction in transaction volume, using resale transaction data in Beijing. Our estimate on quantity is much smaller than theirs. We find the reduction in transaction volume ranges from 9.5% to 38%. Again, the HPR could differ in its effect on new home market and resale market.

Besides the above literature using project-level or housing-unit-level transaction data, some studies use city-level panel data. For example, Cao et al. (2015) found that housing price on average declined by 18.3% and sales volume dropped by 60%, four quarters after implementing HPR, using 70-city quarterly panel data on various real estate market indicators in 2008–13.²³ Our results are based on several large cities and thus not directly comparable with this literature, and also indicates that heterogeneity across cities is fundamentally important and policy designs should be city specific.

The only reduced-form analysis that tries to distinguish demand side and supply side is Somerville et al. (2020). Their supply-side estimate is based on price bid of land rather than the price of new home. The point estimate of bid price reduction is between 2% and 11% but the effect is not statistically significant. Our counterfactual II suggests that holding consumers' behavior constant and allowing firms to adjust their behavior, the supply-side adjustments reduce price by 10.86% and reduce quantity by 15.16%. The main difference is that our supply-side model focuses on the short-run pricing behavior while their study is more about the long-run land acquiring

²³ There are other studies that use such city level panel and publish in Chinese, so our comparison with the literature is not exhaustive.

decisions. Hence, we think our results complement theirs in understanding the supply side of the Chinese new home market.

7 Conclusion

Housing accounts for a large portion of household assets; government intervention in the housing market could affect the economy in various ways. This paper examines the impact of a policy of home purchase restrictions (HPR) on China's housing market. The policy restricts the number of houses that a household can purchase based on its *Hukou* status and the number of years of continuous deposits into a social security account. It also strengthened regulations on the down payment ratio and mortgage interest rate. We analyze changes in consumer behavior and firms' responses after policy intervention by estimating a structural model of demand, supply, and market equilibrium. Using project-level sales data on China's newly constructed homes in five large cities—Beijing, Shanghai, Guangzhou, Hangzhou, and Wuhan—between 2008 and 2017, we find that for all the cities except Guangzhou, after HPR implementation, consumers become less price elastic and real estate developers have stronger incentives to sell quickly by lowering prices. This suggests that the HPR does partly meet its policy goal of reducing speculative housing purchases and stabilizing housing prices. Because of data availability, we only use three tier-1 cities and two tier-2 cities in our structural estimation, and we acknowledge that our conclusions might not hold for other parts of China, as housing price patterns could be different in smaller cities.

However, government intervention might also have unintended consequences for individual or firm behavior and could lead to welfare loss. Our counterfactual analyses suggest that implemented HPR leads to substantial consumer welfare loss by changing the structure of demand and developer response. Our counterfactual analyses also show that alternative housing market interventions that keep demand unchanged and only affect firms' strategies might be better in terms of social welfare; however, the conclusions also differ across cities, which emphasizes the importance of city-specific policies.

References

- Bajari, P., P. Chan, D. Krueger, and D. Miller (2013). A dynamic model of housing demand: Estimation and policy implications. *International Economic Review* 54(2), 409–442.
- Baumol, William J. (1986). Contestable markets: an uprising in the theory of industry structure. *Microtheory: Applications and Origins*, 40–54.
- Bayer, P., F. Ferreira, and R. McMillan (2007). A unified framework for measuring preferences for schools and neighborhoods. *Journal of Political Economy* 115(4), 588–638.
- Berry, S. (1994). Estimating discrete-choice models of product differentiation. *The RAND Journal of Economics*, 242–262.
- Berry, S. and P. Jia (2010). Tracing the woes: An empirical analysis of the airline industry. *American Economic Journal: Microeconomics* 2(3), 1–43.
- Berry, S., J. Levinsohn, and A. Pakes (1995). Automobile prices in market equilibrium. *Econometrica: Journal of the Econometric Society*, 841–890.
- Bresnahan, T., 1989. Empirical studies of industries with market power. In: Schmalensee R., Willig, R. (Eds.), *The Handbook of Industrial Organization*, vol. 2. Elsevier, Amsterdam.
- Cai, H., J. V. Henderson, and Q. Zhang (2013). China's land market auctions: evidence of corruption?. *The Rand journal of economics*, 44(3), 488-521.
- Ciliberto, Federico and Jonathan W. Williams (2014). Does multimarket contact facilitate tacit collusion? Inference on conduct parameters in the airline industry. *The RAND Journal of Economics* 45(4), 764–791
- Deng, Y., J. Gyourko, and T. Li (2018). Singapore's cooling measures and its housing market. *Journal of Housing Economics* 45, 101573.
- Deng, Y., J. Gyourko, and J. Wu (2012). Land and house price measurement in China. National Bureau of Economic Research Working Paper No. 18403.
- Du, Z. and L. Zhang (2015). Home-purchase restriction, property tax and housing price in china: A counterfactual analysis. *Journal of Econometrics* 188(2), 558–568.
- Gandhi, A. and J.-F. Houde (2019). Measuring substitution patterns in differentiated products industries. National Bureau of Economic Research Working Paper No. w26375.
- Gandhi, A., Z. Lu and X. Shi (2019). Estimating demand for differentiated products with zeroes in market share data. Working Paper.
- Genesove, D., and W. P. Mullin (1998). Testing static oligopoly models: conduct and cost in the

- sugar industry, 1890-1914. *The RAND Journal of Economics*, 355–377.
- Jia, S., Y. Wang, and G.-Z. Fan (2018). Home-purchase limits and housing prices: Evidence from china. *The Journal of Real Estate Finance and Economics* 56(3), 386–409.
- Murphy, A. (2018). A dynamic model of housing supply. *American Economic Journal: Economic Policy*, 243–267.
- Nevo, Aviv (2001), Measuring market power in the ready-to-eat cereal industry. *Econometrica* 69(2), 307–342.
- Patrick, B., M. Robert, M. Alvin, and T. Christopher (2016). A dynamic model of demand for houses and neighborhoods. *Econometrica* 84(3), 893–942.
- Somerville, T., L. Wang, and Y. Yang. (2020), Using purchase restrictions to cool housing markets: A within-market analysis. *Journal of Urban Economics*, 115, 103189.
- Sudhir, K. (2001), Competitive Pricing Behavior in the Auto Market: a Structural Analysis, *Marketing Science*.
- Sun, W., S. Zheng, D. M. Geltner, and R. Wang (2017). The housing market effects of local home purchase restrictions: evidence from Beijing. *The Journal of Real Estate Finance and Economics* 55(3), 288–312.
- Topel, R., and S. Rosen, S (1988). Housing investment in the United States. *Journal of Political Economy* 96(4), 718–740.
- Wu, J., J. Gyourko, and Y. Deng (2012). Evaluating conditions in major Chinese housing markets. *Regional Science and Urban Economics* 42(3), 531–543.

Appendix

Table A1

Average Housing Price in Shanghai and Hangzhou, Jan 2017–Sep 2018

	Shanghai	Hangzhou
	i	u
Jan-17	46,197	21,829
Feb-17	46,513	18,389
Mar-17	47,420	20,328
Apr-17	47,110	21,080
May-17	50,401	21,174
Jun-17	49,179	21,625
Jul-17	46,183	25,449
Aug-17	48,978	26,643
Sep-17	45,764	26,674
Oct-17	48,191	28,147
Nov-17	49,105	27,638
Dec-17	49,317	25,066
Jan-18	43,399	27,032
Feb-18	42,544	27,528
Mar-18	45,655	28,207
Apr-18	46,960	28,717
May-18	51,331	26,880
Jun-18	50,839	28,512
Jul-18	53,698	27,899
Aug-18	55,918	27,586
Sep-18	54,085	25,611

Notes: (a) Data are obtained from Wind Economic Database. (b) This table shows average monthly price for new home sales in the cities of Shanghai and Hangzhou. (c) The numbers in bold indicate the timing of the lottery implementation: May 2017 for Shanghai and April 2018 for Hangzhou.

Table A2: Demand Elasticities Explained by Demographics

	Own Elasticity	Cross Elasticity	
		Within Nest	Across Nest
Age	3.480*** (0.314)	0.255*** (0.0269)	0.000116*** (0.00000442)
Total family income	8.498*** (0.786)	0.647*** (0.0683)	0.000379*** (0.0000115)
Family size	-100.1*** (6.881)	-6.887*** (0.652)	-0.00222*** (0.000107)
Married	270.9*** (18.23)	22.81*** (1.854)	0.00161*** (0.000308)
College or above	-63.43*** (2.977)	-2.075*** (0.142)	-0.000905*** (0.0000218)
Constant	-160.4*** (17.30)	-15.99*** (1.527)	-0.00372*** (0.000252)
	Yes	Yes	Yes
City FE	Yes	Yes	Yes
Year-quarter FE	17406	17406	17406
No. of Obs	0.538	0.239	0.907
R-squared	3.480***	0.255***	0.000116***

Notes: Robust standard errors are in parentheses, * p<0.10 ** p<0.05 *** p<0.01

Table A3: Percentage Changes in Prices and Quantities, Actual and Counterfactuals

	Beijing		Shanghai		Guangzhou		Hangzhou		Wuhan		Five-city average	
	Avg Price	Avg Quantity	Avg Price	Avg Quantity	Avg Price	Avg Quantity	Avg Price	Avg Quantity	Avg Price	Avg Quantity	Avg Price	Avg Quantity
Actual	10.07	-26.68	14.55	-8.11	20.23	9.66	4.16	-28.16	17.78	-22.20	13.35	-15.10
Counterfactual I	25.70	-9.50	175.10	-15.09	-16.90	4.90	3.97	-9.67	16.46	-4.39	40.87	-6.75
Counterfactual II	-20.80	-38.17	-1.72	-45.08	1.32	-9.52	-5.72	38.88	27.40	-21.91	-10.86	-15.16
Counterfactual III	-20.80	-37.25	-1.71	-44.11	1.32	-6.66	-5.69	15.85	27.50	-23.44	-10.88	-19.12

Notes: (a) Authors' calculations of percentage changes in average prices and quantities one year before and after HPR was implemented. (b) All numbers are in %. (c) The last two columns report simple averages of the estimates in each city.

Figure A1

Trends in Housing Prices and Transactions in Shanghai

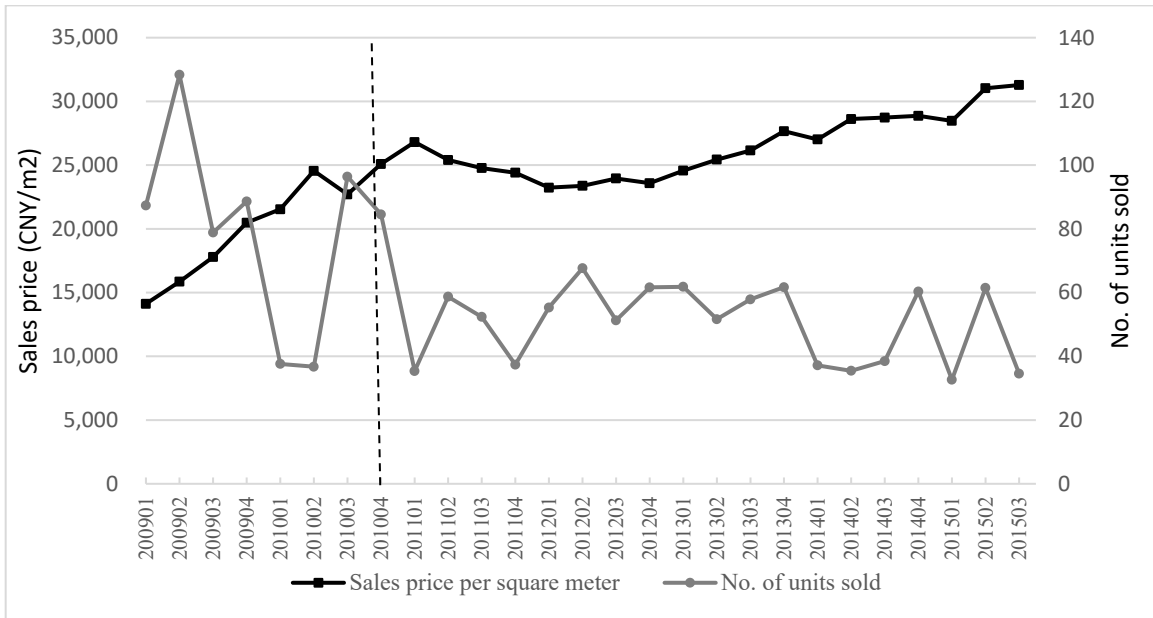


Figure A2

Trends in Housing Prices and Transactions in Guangzhou

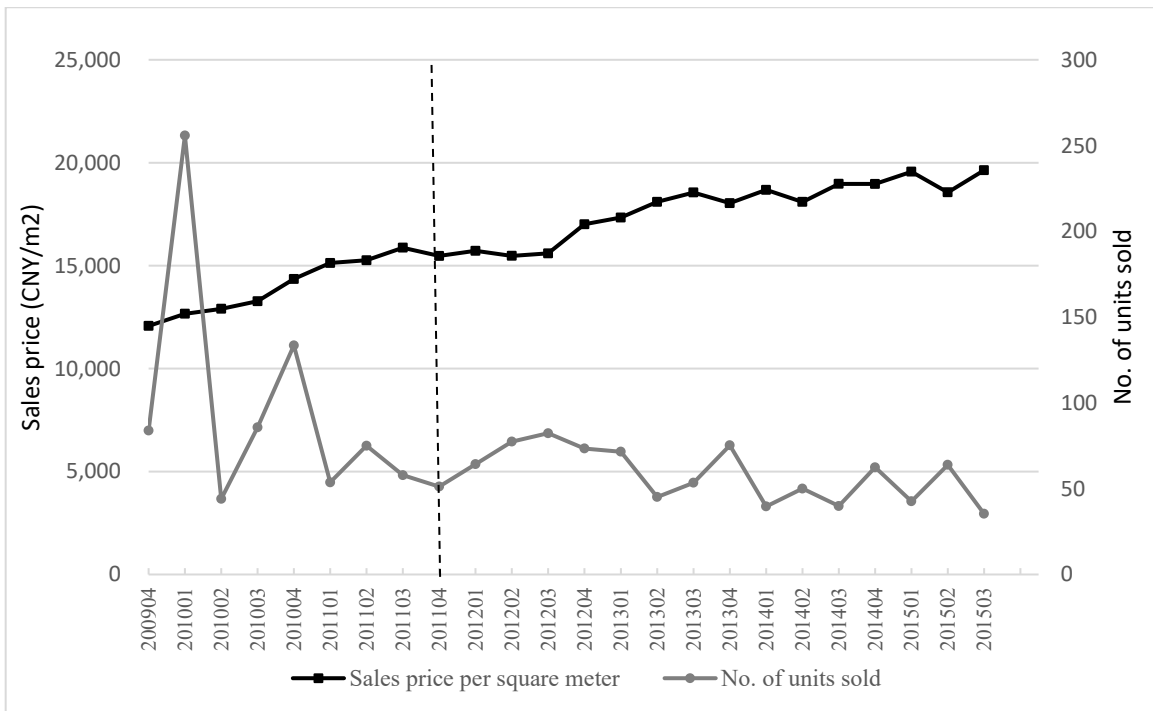


Figure A3

Trends in Housing Prices and Transactions in Hangzhou

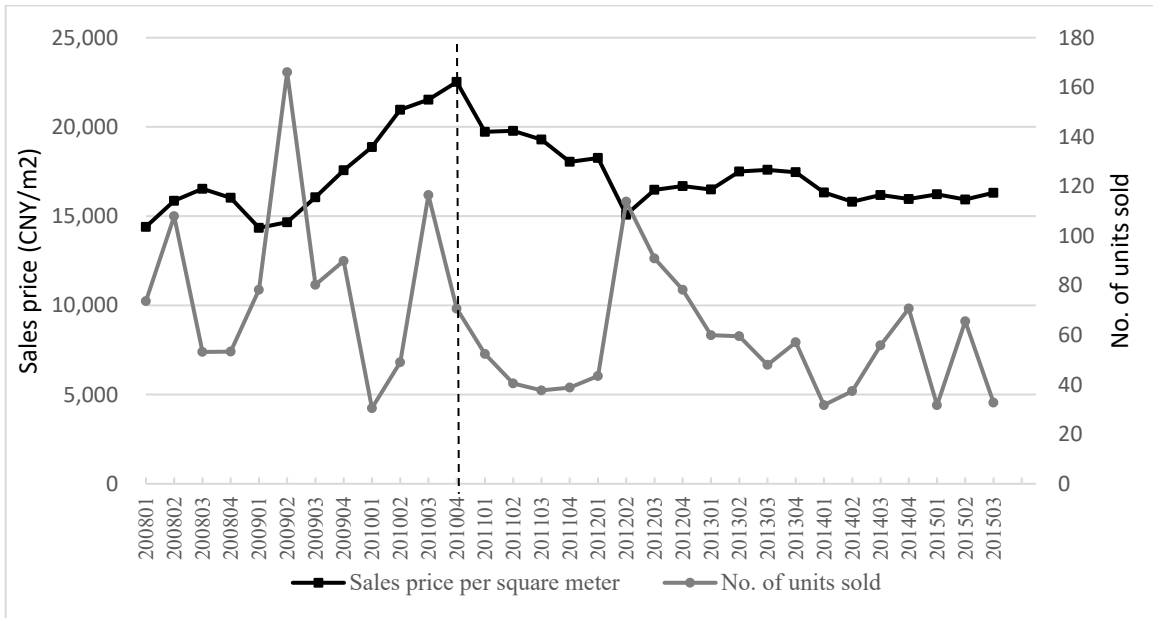


Figure A4

Trends in Housing Prices and Transactions in Wuhan

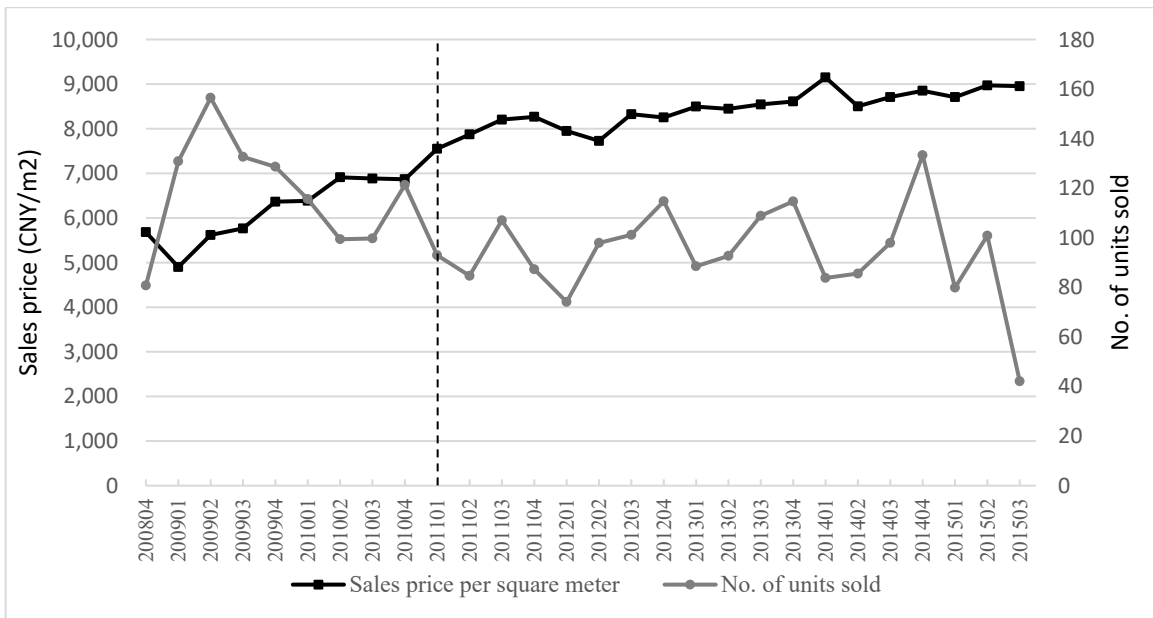


Figure A5

Model Fit: Prediction vs Actual Transaction Volume

