

Kovalenko, Dmytro; Afanasieva, Olga; Zabuta, Nani; Boiko, Tetiana; Rosenov Baltov, Rosen

Article

Model of assessing the overdue debts in a commercial bank using neuro-fuzzy technologies

Journal of Risk and Financial Management

Provided in Cooperation with:

MDPI – Multidisciplinary Digital Publishing Institute, Basel

Suggested Citation: Kovalenko, Dmytro; Afanasieva, Olga; Zabuta, Nani; Boiko, Tetiana; Rosenov Baltov, Rosen (2021) : Model of assessing the overdue debts in a commercial bank using neuro-fuzzy technologies, Journal of Risk and Financial Management, ISSN 1911-8074, MDPI, Basel, Vol. 14, Iss. 5, pp. 1-20, <https://doi.org/10.3390/jrfm14050216>

This Version is available at:

<https://hdl.handle.net/10419/239632>

Standard-Nutzungsbedingungen:

Die Dokumente auf EconStor dürfen zu eigenen wissenschaftlichen Zwecken und zum Privatgebrauch gespeichert und kopiert werden.

Sie dürfen die Dokumente nicht für öffentliche oder kommerzielle Zwecke vervielfältigen, öffentlich ausstellen, öffentlich zugänglich machen, vertreiben oder anderweitig nutzen.

Sofern die Verfasser die Dokumente unter Open-Content-Lizenzen (insbesondere CC-Lizenzen) zur Verfügung gestellt haben sollten, gelten abweichend von diesen Nutzungsbedingungen die in der dort genannten Lizenz gewährten Nutzungsrechte.

Terms of use:

Documents in EconStor may be saved and copied for your personal and scholarly purposes.

You are not to copy documents for public or commercial purposes, to exhibit the documents publicly, to make them publicly available on the internet, or to distribute or otherwise use the documents in public.

If the documents have been made available under an Open Content Licence (especially Creative Commons Licences), you may exercise further usage rights as specified in the indicated licence.



<https://creativecommons.org/licenses/by/4.0/>



Article

Model of Assessing the Overdue Debts in a Commercial Bank Using Neuro-Fuzzy Technologies

Dmytro Kovalenko ^{1,*}, Olga Afanasieva ², Nani Zabuta ³, Tetiana Boiko ⁴ and Rosen Rosenov Baltov ⁵

¹ Department of Finance and Financial and Economic Security, Kyiv National University of Technologies and Design, Nemyrovycha-Danchenka Street, 2, 01011 Kyiv, Ukraine

² Department «Management of the Hi-Tech Enterprises», Moscow Aviation Institute, National Research University, Volokolamskoe Shosse, 4, 125993 Moscow, Russia; olafan@mail.ru

³ Department of Finance and Accounting, Open International University of Human Development “UKRAINE”, 23 Lvovskaya Street, 01001 Kiev, Ukraine; zabnani@i.ua

⁴ Department of Finance, Accounting and Marketing, Prydniprovsk State Academy of Civil Engineering and Architecture, 24 a, Chernyshevsky Street, 49600 Dnepro, Ukraine; boiko_t@fm.ua

⁵ Bulgarian Academy of Sciences, 1 “15 Noemvri” Str., 1040 Sofia, Bulgaria; rosenbal@abv.bg

* Correspondence: dmkov_77@ukr.net

Abstract: This article considers the problems of overdue credit debt and the creation of effective methods to manage problem debts in banks. The purpose of this paper is to study the problem of overdue credit debt and create effective methods to manage problem debts in financial institutions. Based on a combination of tools of fuzzy logic theory and artificial neural networks, an economic-mathematical model of collection scoring was built. Kohonen self-organizing maps were used to set the parameters of membership functions in the process of fuzzification of quantitative variables of the built model. Data were taken from the official websites of four Bulgarian banks for 2015–2019. The volume of the prepared sample amounted to 1000 credit agreements with active overdue payments. The practical value of the built model of collection scoring for the recovery of overdue debt lies in the possibility to make recommendations for work with each segment of the portfolio of overdue loans in accordance with the calculated level of credit risk. The introduction of credit risk assessment models based on neuro-fuzzy technologies in the work of financial institutions will have a positive impact on the financial results of lending activities of banks.

Keywords: collections scoring; credit risk; financial stability; cluster; neuro-even technology



Citation: Kovalenko, Dmytro, Olga Afanasieva, Nani Zabuta, Tetiana Boiko, and Rosen Rosenov Baltov. 2021. Model of Assessing the Overdue Debts in a Commercial Bank Using Neuro-Fuzzy Technologies. *Journal of Risk and Financial Management* 14: 216. <https://doi.org/10.3390/jrfm14050216>

Academic Editor:
Svetlana Drobyazko

Received: 30 March 2021
Accepted: 6 May 2021
Published: 10 May 2021

Publisher's Note: MDPI stays neutral with regard to jurisdictional claims in published maps and institutional affiliations.



Copyright: © 2021 by the authors. Licensee MDPI, Basel, Switzerland. This article is an open access article distributed under the terms and conditions of the Creative Commons Attribution (CC BY) license (<https://creativecommons.org/licenses/by/4.0/>).

1. Introduction

For most Eastern European developing countries (and Bulgaria is no exception), the financial crisis of 2008–2011 was the first since the beginning of the transition to a market economy, which was caused by mass defaults on credit obligations. Thus, it has become a threat to the stability of the banking system and confidence in it, and, hence, sustainable economic development. The resumption of economic growth in Bulgaria directly depends on the activation of the main function of the banking system—crediting the real sector of the economy, i.e., on solving a number of problems to improve the management of problem credits, a significant amount of which put pressure on the capitalization of banks, thereby reducing the propensity for new risks and reducing the supply of new credits.

The banking system is one of the most important components of the macroeconomic system of any country, and crediting is the main function of the bank (Moradi and Rafiei 2019). For some credits, there is a problem of quality deterioration inevitably emerging, which potentially leads to losses and damages, given that the issue of effective management of problem credits is relevant for all times of banking (Ye et al. 2018).

Today, the management of overdue credit debt portfolios remains an acute issue for Bulgarian banks. Numerous observations on the activity of commercial banks on

the recovery of overdue debts indicate the effectiveness of personal contact with such borrowers. However, in such work, a commercial bank incurs significant costs: salaries of bank staff; court costs; commissions to collectors (Gilchrist and Mojon 2017). Eventually, the bank's employees, who have to sell credit products, are involved in the work, due to which the bank receives less profit from lending activities (Shen et al. 2019).

Over time, commercial banks increase their credit portfolios and, accordingly, the number of overdue credits increases. Some credits are repaid, others are extended, and some turn into bad debts. With the activation of a negative economic "cyclone" (for example, the crisis of 2008), the number of problem debts in the portfolios of commercial banks increases exponentially (Mou et al. 2018). Under these conditions, individual work for each borrower who has an overdue payment on the credit becomes not just difficult but impossible.

The solution to this, today an acute problem, is possible by automating the overdue debts recovery process (Li and Zinna 2018). Thus, the development of scoring systems provides an opportunity to automate this work through the introduction of collector scoring systems in the practice of commercial banks. The variety of approaches to the implementation of scoring technologies, particularly at different stages of lending, encourages creative "experiments" of banking practitioners in the implementation of tasks such as application, behavioral, fraud, and collection scoring (Sun and Miklos Antal 2018).

The need for further research aimed at improving methodological approaches to the problem credit management system and to address a number of practical issues (including the development of scientifically sound approaches to assessing the degree of problem credit and choosing an effective method of managing it) determined the purpose, objectives, and the relevance of the chosen research topic.

The scientific novelty of the obtained results lies in solving the current problem of updating the concept of banking risk management and developing scientific and practical recommendations for improving the effectiveness of banking risk management in a crisis. Thus, the areas of updating the concept of banking risk management are substantiated, which is based on a comprehensive approach to determining zonal levels of banking risk management, the formation of organizational and economic areas of improving risk management in a financial crisis, and developing new external tools to influence the efficiency of banking risk management, which will allow eliminating the "imitative" nature of risk management and increasing the level of financial stability of the banking system. The practical value of the built model of collection scoring for the recovery of overdue debt lies in the possibility to make recommendations for work with each segment of the portfolio of overdue loans in accordance with the calculated level of credit risk.

Thus, the development and introduction of effective credit scoring systems into the business processes of a commercial bank are some of the important tasks of risk management.

One of the priority tasks facing commercial banks today is the competent management of problem debts for the purpose of ensuring their financial stability and competitiveness, in compliance with the standards of external regulators.

Doubtful debt is a debt of which repayment to the commercial bank is not certain. Overdue debt is a debt which was not repaid within the period specified in the loan agreement. As for problem loans, these are loans for which one or more payments were not made, the liquidity ratio of the collateral decreased, and there appeared doubts about the repayment of the bank debt. The article analyzes overdue credit debts of individuals to the bank for the purpose of using collection services.

The aim of this work is to study the problem of overdue credit debt and to create effective methods of managing bad debts in financial institutions. The main objectives of this article are the construction of models of scoring evaluation of overdue credits based on a combination of tools of fuzzy logic theory and technologies of artificial neural networks; and the development of recommendations for managing the portfolio of problem credits to minimize losses caused by defaults on credit agreements.

2. Literature Survey

Scientists in their works have studied the issue of scoring system tools from different points of view.

The Altman model is one of the first models of analysis of the probability of bankruptcy of an enterprise, which was based on discriminant analysis (Altman 1968). The Altman analytical model is an algorithm for integrated assessment of the threat of bankruptcy of an insolvent enterprise based on the integrated recording of the most important indicators helping to identify the financial crisis of an enterprise (Altman Edward et al. 1977).

Thus, the study of Fonseca et al. (2020) was devoted to the development of scoring technologies as a tool for credit risk management of commercial banks. Hájek and Olej (2015) highlighted a number of practical studies aimed at assessing the financial condition and diagnosis of corporate bankruptcy with the use of tools from fuzzy logic theory, discriminant and regression analysis, and neural networks. Yamori (2019) argued that risk management in banks has changed significantly over the last ten years. This is due to the fact that the regulations issued during the global financial crisis and the fines levied after it caused a wave of changes in the functions of risk. These included more detailed and stringent capital, liquidity, and financing requirements. Non-financial risk management has become more important as compliance and behavior standards have been strengthened. Baron and Xiong (2017) stated that stress testing has become a key surveillance tool along with growing expectations of bank statements about risk and appetite. Banks have also invested in strengthening the culture of risk and have become more active in taking risks into account in decision making. Jiménez et al. (2017) argued that banks sought to define and delineate their lines of defense in more detail. Given the scale of these and other developments, most risk functions in banks are still amid transformations that meet these heightened requirements. Mian and Santos (2018) argued that risk management is fundamental in banking. The key elements for effective risk prediction are a well-developed credit policy and related procedures; effective portfolio management (cash, credit, real estate); effective credit control; and, most importantly, well-trained and trained staff to work in this system. Chen et al. (2018) agreed that all banks try to minimize their risks, as this is necessary to minimize losses and further the development of the financial institution. In the opinion of these authors, risk minimization consists of the anticipation of risks and losses that may cause risk, sizes, consequences, and measures to prevent and minimize or eliminate losses. Leo et al. (2019) took the position that aggregation of risk ratings should be taken into account to measure and assess concentrations within portfolios. Risk ratings are also a factor in determining the level of assigned economic capital and the provision for credit losses. Schwaab et al. (2017) conducted a study on relative risk management in a commercial portfolio—many financial institutions use the participation or syndication of the influence of other financial institutions or organizations, credit sales and securitization, and credit derivatives to manage the size of the credit portfolio and the relative credit risk associated with it. These activities can play an important role in reducing credit risk to reduce risk or where it has been determined that the concentration of credit risk is undesirable.

As practice shows, the Monte Carlo method is one of the most effective statistical methods based on the modeling of random processes with given characteristics. The method allows analyzing and evaluating different “scenarios” of project implementation and taking into account different factors within one approach (Peña et al. 2018). Each type of project has its own specific vulnerability to risks, which is clarified in the modeling process (Anghel et al. 2017). The disadvantage of this method is that it uses probable characteristics for evaluations, which is not very convenient in practice.

The VaR method is used to quantify stock and currency risks. This method, which is based on statistics of volatility (variability) of market indicators and their mutual correlation, makes it possible to calculate the market value of open positions with a certain level of probability (Baltes and Cozma 2019).

The method of expert assessments is similar to the statistical method. The fundamental difference is that the method of expert assessments involves the study of assessments made by different experts (internal or external experts) (Apătăchioae 2015). Expert assessment can be obtained both after conducting special studies and using the experience of leading specialists (Salleo et al. 2020).

The Delphi method is a variant of the method of expert assessments, which is characterized by anonymity and controlled feedback (Infante et al. 2020). Anonymity is achieved through an individual survey of experts, which does not allow them to discuss answers to questions. After processing the data through controlled feedback, the generalized results are communicated to each expert (Levrel et al. 2017). This allows being acquainted with the assessments of other leading experts. After that, you can repeat the survey of experts.

The “decision tree” method is another type of method of expert assessments. This method involves graphical construction of possible solutions (Pousttchi and Dehnert 2018). Using special methods of probability calculation, experts assess each vector and then choose a less risky one.

The method of coefficient analysis consists in expert analysis and comparison of economic coefficients characterizing the financial condition of the bank with the average indicators of the corresponding group of banks for a specific period of time (Lock and Seele 2015).

According to the ranking method, each bank using a certain method calculates a ranking and draws a conclusion about the creditworthiness and financial condition of a counterparty (Khedmatgozar 2021).

In our opinion, the main disadvantage of all the above methods of expert assessments is the subjective nature of assessments.

In contrast with them, the analytical method is based on game theory and involves the following steps:

- (1) Selection of a key indicator (for example, profitability rate);
- (2) Identification of environmental factors affecting the key indicator;
- (3) Calculation of values of the key indicator at a change in environmental factors.

The method of stress testing is used to analyze interest rate and currency risks in banking (Kim et al. 2017). This method allows analyzing the dynamics of changes in important quantitative indicators of risk. Stress testing is designed to assess the degree of change in key risk indicators in cases of significant changes in environmental factors.

The duration method can also be used to quantify stock risk (Harnay and Scialom 2016). The duration reflects the sensitivity of the current value of a financial instrument to changes in interest rates. The larger the duration of a financial instrument, the more sensitive its present value is to changes in interest rates. The difference between the average duration of assets and liabilities characterizes the position chosen by the bank in relation to market and interest rate risks (Roper and Tapinos 2016). A positive duration imbalance leads to a change in the economic value of the bank in the opposite direction of a change in interest rates. A negative duration imbalance leads to a change in the economic value in the same direction as a change in interest rates.

GAP analysis is used to assess interest rate risk and liquidity risk. According to this method, first, certain assets and liabilities are divided into time periods, and then an analysis is conducted—concerning whether there are enough flows received from the placed assets to meet the obligations for each time period (Ntarmah et al. 2019).

The method of analogy is used in the analysis of new products or business lines. The essence of this method consists in transferring a similar situation to the object of study (Raut et al. 2017). The main disadvantage of this method is that it is very difficult to create conditions in which past experience would be repeated.

The advantage of the combined method is that it uses the advantages of all the above methods (Ntseme et al. 2016). Thus, the statistical method, as a result of the assessment of the past, can be combined with elements of the analytical method and the methods of expert assessments.

Thus, the variety of risks and methods of their assessment indicates the complexity of the banking sector as an object of analysis, which requires continuous improvement of the banking risk management system. At the same time, it should be noted that the existence of banking risks should not be considered only as a negative phenomenon. On the contrary, the presence of risk can be considered as a factor in the dynamic and efficient development of the banking sector of the economy.

Despite the considerable amount of scientific research on the issue of management of bank assets, the problem of managing overdue credits remains extremely relevant today.

3. Materials and Methods

The scoring method allows making a quick analysis of the loan application in the presence of the client. In the analysis of business loans, various methods of credit scoring are also used—from the simplest formulas to complex mathematical models. Scoring, as one of the main tools in credit risk management, is recognized in the world as one of the most effective methods. With that, the level of this efficiency varies depending on the factors taken into account in it. The developed scoring models require constant improvement due to the appearance of new factors influencing the credit risk of banks.

A scoring model allows a bank to determine the value of the probability that a particular borrower will repay the loan within a certain period of time on the basis of classification and determination of the characteristics of reliable, unreliable, and bad clients for loan repayment obtained by analyzing the credit histories of previous borrowers. This is done by calculating an integrated indicator, based on which value the distribution of borrowers relative to the reliability barrier is carried out—clients with a value above the barrier are reliable and are granted a loan; those with a value below the barrier are included in the list of unreliable clients.

The problem of qualitative forecasting for economic and financial processes requires the use of new modern methods based on a systematic approach to the development of appropriate software. More often, this software is implemented in the form of modern forms of decision support systems, which are becoming widespread as a tool and means of solving a large number of practical problems (Vo and Zhang 2019).

Mathematical modeling has been widely used in solving problems in economics, biology, ecology, etc. (Tang et al. 2019).

A systematic approach to modeling and forecasting is aimed at reducing or eliminating the uncertainty of different types, filling gaps, processing extreme values, taking into account possible types of statistical data distributions, and using statistical criteria to improve data processing at each stage of calculation (Schwarz 2018).

Most of the published methods (Appendix A) are based on the same characteristics for the analysis of the financial condition of the borrower, namely, the financial characteristics of its activities (Dell'Araccia et al. 2017).

The main stages of selection and construction of a model consist of selecting the input data and determining the independent variables on which the model will be built. The main source for obtaining data about the client is their personal data at the time of filing the credit application, as well as information available to the client in the credit bureaus, for example:

- Demographic indicators (age, nationality, sex, education, place of residence, duration of residence in the actual place of residence, profession, length of service, availability of property, marital status, presence of children, etc.) (Li et al. 2020);
- Data relating to the requested credit (credit purpose, initial payment, total credit amount, a term of financing, a ratio of credit amount to funds secured by the credit, etc.) (Damrongsakmethee and Neagoie 2017);
- Financial indicators (taking into account quantitative characteristics in the model, it is not recommended to use absolute values, but rather to use coefficients, for example, amount of debt to income, monthly freely available budget to monthly

income, monthly credit payments to monthly income, monthly credit payments to the monthly free budget) (Ignatius et al. 2018);

- Marketing indicators: the motive that encourages one to apply to the bank, the source of the credit application, the program, etc.

Banks should implement credit scoring technologies that would allow centralized storage of all information about borrowers (Peña et al. 2018). Over time, data accumulation would provide opportunities to automatically update scoring models and optimize them according to retrospective data. These technologies should allow making changes in the model by a human.

The ability to monitor and evaluate credit cases will provide positive results from the implementation of these scoring technologies (Zhang 2020). Under such conditions, the management of the portfolio of overdue credits is simplified. Debt collection costs are being optimized, decision making deadlines are being reduced, overdue debt is being managed, and credit risk is being managed.

The successful integration of credit scoring technologies depends on the availability of retrospective data on the bank's borrowers, including the results of working with problem credits both during credit booms and in the conditions of economic recession (Teles et al. 2020).

Furthermore, to build adequate models of collector scoring, it is important to exchange information between commercial banks such as blacklists, as well as extracting information from credit bureaus, etc.

Taking into account all the above, the authors decided to develop a tool for estimating problem debts as part of building a model of collector scoring.

The task of the collector scoring model is to classify (group) borrowers with overdue credit payments for further debt collection. Borrowers will be grouped according to a point scored, which is the result of an integrated assessment of a number of qualitative and quantitative characteristics of borrowers based on the hierarchical model presented in Figure 1.

To assess problem debt in the framework of building a model of collector scoring, the authors chose the tools of the theory of fuzzy logic and neural networks. This choice is explained by the heterogeneity of input information, multicriteria, lack of basis for comparing the resulting integral variables of the model, etc.

The process of modeling the collector scoring with the involvement of these tools is carried out in the following stages:

1. Formation of a training sample in relation to the input criteria for the evaluation of borrowers.
2. Linguistic description of the input criteria for evaluation of the IV level of the hierarchy, establishing the parameters of their membership functions based on the use of Kohonen maps with subsequent fuzzification of these criteria.
3. Convolution of input criteria for evaluation of the IV level of the hierarchy in the corresponding intermediate integrated indicators of evaluation of the III level of the hierarchy.
 - 3.1. Calculation of integrated indicators based on quantitative variables of the IV level of the hierarchy in the context of intermediate integrated indicators of the III level of the hierarchy.
 - 3.2. Calculation of linguistic variables in relation to input qualitative variables.
 - 3.3. Convolution of quantitative and qualitative indicators into intermediate integrated indicators.
4. Linguistic description of intermediate integral indicators of evaluation of the III level of the hierarchy, and the establishment of parameters of their membership functions based on the use of Kohonen maps with the subsequent fuzzification of these indicators.

5. Convolution of intermediate integrated indicators of assessment of the III level of the hierarchy into the corresponding integrated indicators of assessment of the II level of the hierarchy.
6. Linguistic description of integrated indicators of evaluation of the I level of the hierarchy, and establishment of parameters of their membership functions based on the use of Kohonen maps with subsequent fuzzification of these indicators.
7. Convolution of integrated indicators of assessment of the II level of the hierarchy in the resulting point scored (an integrated indicator of the I level of the hierarchy).
8. Analysis of evaluation results.

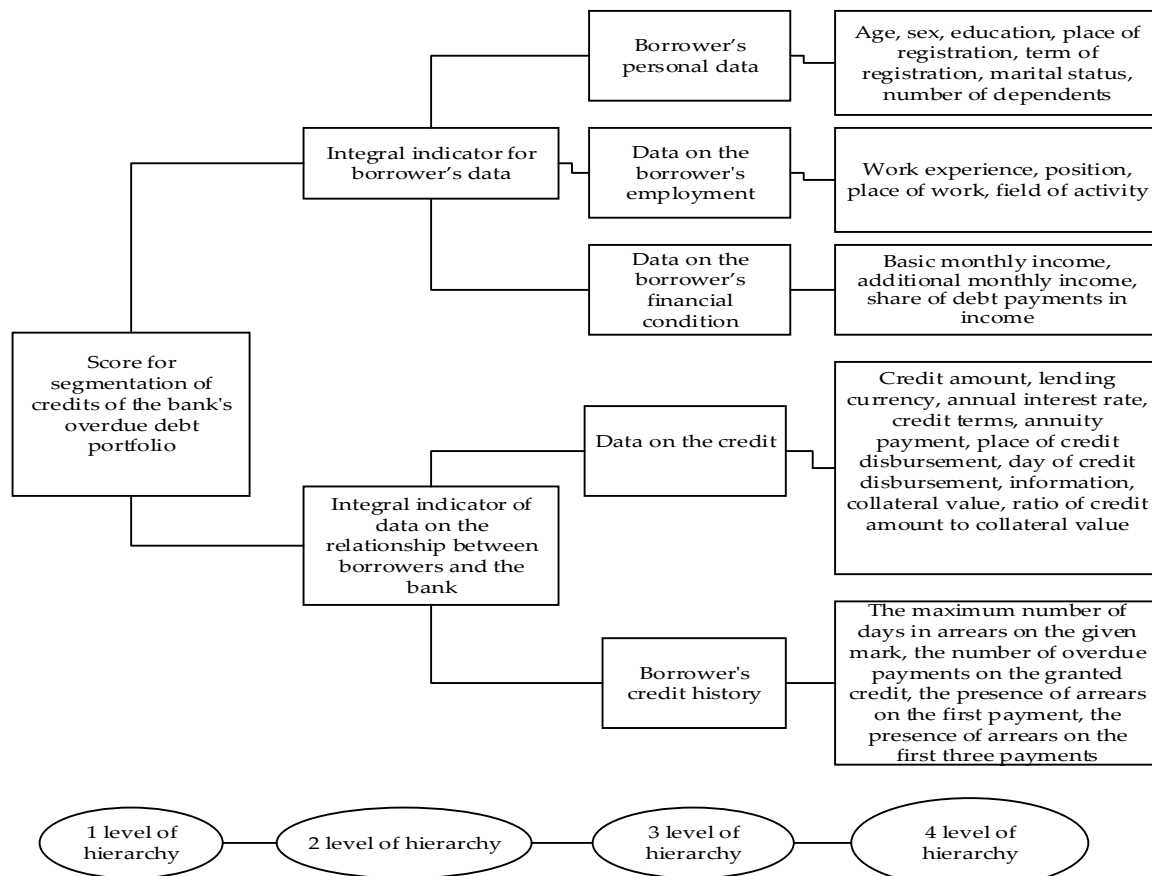


Figure 1. Hierarchy tree of the economic-mathematical model of risk assessment of credits of a bank’s overdue debt portfolio by the segment of lending to individuals (author development).

The simulated credit portfolio of a commercial bank for credit agreements of individuals served as a sample for building the model. The volume of the prepared sample was 1000 credit agreements with active overdue payments. Thus, a debtor’s pool was formed, i.e., a portfolio of credits with overdue debts.

Data were taken from the official websites of 4 Bulgarian banks for 2015–2019: Bulgarian National Bank, Fibank, Raiffeisenbank, UniCredit Bulbank.

Information about the borrower was used as input variables of the model (evaluation criteria of the IV level of the hierarchy), particularly data on qualitative and quantitative characteristics. The universal set (ranges) of a variable model is the value it can take. For example, the variable “sex” is defined on the universal set (“male”; “female”).

The selection of input variables of the model was carried out in such a way that the point scored (the resulting integrated indicator) took into account such characteristics of the borrower as: socio-demographic data; employment; financial position; information on the credit; overdue information.

The initial (result) variable is the point scored (Score) for the distribution of credit agreements by the following segments of outstanding overdue debts—“uncritical”, “average”, “bad”, “very bad”, and “write-off” (classes C_1, C_2, C_3, C_4, C_5, respectively).

It should be noted that the name of a linguistic variable and its universal set usually correspond to the name and set of values of a certain quantitative evaluation criterion.

For example, for each incoming continuous variable such as age ($i_{b_{11}}$), passport registration period ($i_{b_{15}}$), work experience ($i_{b_{21}}$), basic monthly income ($i_{b_{31}}$), additional monthly income ($i_{b_{32}}$), DTI indicator—the share of debt payments in income ($i_{b_{33}}$), amount of credit ($i_{b_{41}}$), annual interest rate ($i_{b_{43}}$), credit term ($i_{b_{44}}$), annuity payment ($i_{b_{45}}$), collateral value ($i_{b_{49}}$), LTV valuation indicator—the ratio of the credit amount to the collateral value ($i_{b_{410}}$), the maximum number of days in arrears on the credit granted ($i_{b_{51}}$), and the number of overdue payments on the credit granted ($i_{b_{52}}$), the linguistic variable $i_{b_{52}}^g$ is determined (where g is the index indicating the integrated indicator of the II level of the hierarchy, i is the index indicating the intermediate integrated indicator of the III level of the hierarchy, and j is the index indicating the corresponding input variable), the name of which coincides with the name of the corresponding variable, and a term set of values $T_{ij}^g \{t_{ij1}^g, t_{ij2}^g, t_{ij3}^g\}$ is formed. Here, t_{ij1}^g is a term of a linguistic variable called “Low” (L); t_{ij2}^g —“Medium” (M); t_{ij3}^g —“High” (H).

The membership of the values of the input variables to the terms of the corresponding term sets is determined by the membership functions. Quasi-bell-shaped functions were chosen as the basis for constructing membership functions in the presented study.

Thus, the system of quasi-bell-shaped membership functions for a term set of a linguistic variable i_{ij}^g will have the following analytical form:

$$f^{t_{ij1}^g}(i_{bij}^g) = \begin{cases} 1, & i_{bij}^g \leq l_{2ij1}^g \\ \frac{1}{1 + \left(\frac{i_{bij}^g - l_{2ij1}^g}{z_{2ij1}^g}\right)^2}, & l_{2ij1}^g < i_{bij}^g \end{cases} \quad (1)$$

$$f^{t_{ij2}^g}(i_{bij}^g) = \begin{cases} \frac{1}{1 + \left(\frac{i_{bij}^g - l_{1ij2}^g}{z_{1ij2}^g}\right)^2}, & i_{bij}^g < l_{1ij2}^g \\ 1, & l_{1ij2}^g \leq i_{bij}^g \leq l_{2ij2}^g \\ \frac{1}{1 + \left(\frac{i_{bij}^g - l_{2ij2}^g}{z_{2ij2}^g}\right)^2}, & l_{2ij2}^g < i_{bij}^g \end{cases} \quad (2)$$

$$f^{t_{ij3}^g}(i_{bij}^g) = \begin{cases} \frac{1}{1 + \left(\frac{i_{bij}^g - l_{1ij3}^g}{z_{1ij3}^g}\right)^2}, & i_{bij}^g < l_{1ij3}^g \\ 1, & l_{1ij3}^g \leq i_{bij}^g \end{cases} \quad (3)$$

where i_{bij}^g is the j -th variable of the i -th intermediate integral of the g -th integral; ji —the number of input variables related to the i -th intermediate integral; $f^{t_{ijn}^g}$ —membership function of the variable n -th term of the term set of values $T_{ij}^g \{t_{ij1}^g, t_{ij2}^g, t_{ij3}^g\}$; l_{1ijn}^g —left coordinate of the maximum of the function ($f^{t_{ijn}^g}(l_{1ijn}^g) = 1$); z_{1ijn}^g —compression/stretching coefficient of the left arc of the membership function; l_{2ijn}^g —the right coordinate of the maximum of the function ($f^{t_{ijn}^g}(l_{2ijn}^g) = 1$); z_{2ijn}^g —coefficient of compression/stretching of the right arc of the membership function.

To establish the parameters of membership functions, the authors of this article used self-organizing neural networks (Kohonen maps). The advantages of this approach are that the process of constructing Kohonen maps does not require (Gersbach and Rochet 2017): the availability of a priori information about cluster parameters, and in contrast to statistical clustering methods, “cluster standards” are formed in the neural network learning process solely based on input information; known values of the “output” of the model; involvement of expert opinion.

In the process of repaying overdue debt to the bank, there often arise such problems as the cost of repaying the debt exceeding the amount returned, determining the order and priority of working with borrowers, effective choice of tools to influence borrowers, and assessing the real cost of selling a portfolio of bad loans to a debt recovery firm. The use of mathematical models in the analytical systems of a commercial bank and adaptation of these systems to the set business tasks will provide an opportunity to significantly improve the quality of the loan portfolio management process, including measures to repay (recover) overdue debt.

Collection scoring divides borrowers into separate groups, which is convenient for collectors and allows segmenting borrowers regardless of the type of loan product (type of loan). It is important to note that the segmentation of borrowers is an important separate stage in the organization of the process of repayment of overdue loans. After segmentation, different strategies are applied to the work with each separate group of borrowers, which allows making the work on recovery (repayment) of overdue debt most effective.

Thus, when working on the collection of overdue loans, collection scoring helps to solve such problems as performing segmentation of clients, determining their priority and priority of actions of bank employees in relation to a borrower, and identifying the relevant tools of influence. Moreover, such scoring makes it possible to obtain an estimate of the portfolio of overdue loans for sale to another structure (for example, a debt recovery firm).

4. Results and Discussion

As a result of neural processing of statistical sampling of values of input indicators and analysis of profiles of the constructed Kohonen maps, we obtained the following parameters of membership functions: $l_{1ijn}^g, l_{2ijn}^g, z_{1ijn}^g, z_{2ijn}^g$ (Appendix B).

When experimentally constructing self-organizing maps, it was determined that dimensional maps (25×25) provide the most accurate result for the variables age, registration period, and work experience. For the variables basic monthly income, additional monthly income, DTI, credit amount, annual interest rate, credit term, annuity payment, collateral value, LTV valuation indicator, the maximum number of days in arrears on the credit, and number of overdue payments on the credit, we used topological dimension maps (30×30). It is at such dimensions of self-organizing maps that the maximum values of quantization matrix errors have a permissible level of 0.036. Additionally, the given topological dimensions are explained by the large sample size (1000 credit agreements).

The next stage of modeling collector scoring is the convolution of the input criteria for evaluating the IV level of the hierarchy into the corresponding intermediate integrated indicators for evaluating the III level of the hierarchy.

Among the variety of rules of fuzzy inference, the rules of Mamdani, Sugeno, hierarchical, compositional rule Zade, and others are the most used.

The use of Mamdani convolution in the given case is not appropriate due to the large number of possible combinations of linguistic terms of the input variables. Indeed, only for quantitative variables were there about half a thousand options. Involving an expert analyst in the formation of such a set of rules will give the wrong result in the segmentation of problem clients to manage problem debt.

The involvement of fuzzy inference in the process of modeling hierarchical systems is one of the most acceptable in the case of modeling on samples with thousands of observations and a wide range of variables. The use of such a system of fuzzy inference

makes it possible to overcome the problems of high dimensionality in the modeling of multidimensional dependencies.

Thus, with a large number of inputs, it is difficult for an expert analyst to state cause-and-effect relationships with fuzzy rules. The advantage of using a hierarchical system of fuzzy inference is also its compactness. However, the disadvantage of using this type of conclusion in the given case is the influence of the human factor on the outcome of the grouping of borrowers, which is associated with the expert establishment of decision making rules.

If the task is to segment the set of debtors to establish an appropriate strategy for the relationship between the lending institution and the borrower to repay overdue debts, it is necessary to summarize the indicators that characterize borrowers (such as age, education, family, children, work experience, place of registration, and others) to identify the dependence of “input variables → non-return risk”.

Thus, according to the authors, to obtain more adequate results of credit risk assessment, it is appropriate in this case to apply a hierarchical approach, involving at the stages of convolution an additive composition rule with subsequent neural processing of the set of values of the resulting integrated indicator using Kohonen maps.

To determine the vectors of correction factors, the latter conducted numerous experiments separately for each variable.

Since the input variables have a positive or negative ingredient, the correction vectors must take this property into account. Thus, the variables with a positive ingredient include the registration period, work experience, basic monthly income, additional monthly income, and the value of the collateral. That is, the greater the value of these variables, the better it is (less risky). It is expected that these borrowers are more likely to settle with the creditor. For these variables, the elements of the vector of correction factors take positive values and are arranged in ascending order.

For such quantitative variables as DTI, credit amount, annual interest rate, credit term, annuity payment, LTV valuation rate, the maximum number of days in arrears on the credit, and the number of overdue payments on the credit, with the increase in their values, the chances of repaying the debt to the creditor decrease. These variables have a negative ingredient. For these variables, the elements of the correction factor vectors can take both positive and negative values but are arranged in descending order.

The results of experimental studies on the establishment of correction vectors are shown in Table 1.

Table 1. Correction factor vectors for continuous numerical variables of the collector scoring model.

Vector Adjustment Factors	Vector Adjustment Factors
{1,1,5}	Variable name
{1,1,2}	Age
{1,2,3}	Term of registration on the passport
{1,2,3}	Work experience
{1,2,3}	Basic monthly income
{3,2,1}	Additional monthly income
{2,1,5}	DTI indicator
{2,1,1}	Credit amount
{3,2,1}	Annual interest rate
{2,1,1}	Credit term
{1,2,3}	Annuity payment
{3,2,1}	Cost of collateral
{−1,−5,−10}	LTV evaluation indicator
{−1,−2,−3}	Maximum number of days in arrears on the credit

Qualitative input variables, which form the intermediate integrated indicators of the III level of the hierarchy, are involved in neural processing by one array. A numerical value to each value of the qualitative variable is assigned to process the Kohonen self-

organizing maps. Thus, a group of variables {"Gender", "Level of education", "Place of registration", "Marital status", "Number of dependents"} are simultaneously involved to cluster observations to calculate the intermediate integral indicator "Borrower's personal data". The result of the calculation will be a linguistic variable that contains an integrated assessment of the corresponding input qualitative variables, with a term set of values "Low", "Medium", and "High". The input variable "Number of dependents" will be conditionally considered a qualitative indicator, as the borrower's behavior, depending on the number of dependents, is not clearly traced. Therefore, the variable is involved in simultaneous processing with qualitative variables.

Groups of variables {"Position", "Place of work", and "Field of activity"} (the result will be a linguistic variable with a term set of values "Low", "Medium", and "High"), {"Lending currency", "Region credit disbursement", "Credit issuance day", "Credit security information"} (the result will be a linguistic variable with a term set of values "Low", "Medium", and "High"), and {"Presence of delay on the first payment", "Presence of arrears on the first three payments"} (the result will be a linguistic variable with a term set of values "Low", "Medium", and "High") are also processed simultaneously. The result of this processing of arrays of input quality variables is the formation of four bases of rules, a fragment of which is given in Appendix C.

The total number of rules for qualitative variables of the intermediate integrated indicator for the borrower's personal data based on the results of neural processing is 322 rules. The database of rules for qualitative variables of the intermediate integrated indicator on the data on the borrower's employment based on the results of neural processing contains 159 rules. The base of rules for qualitative variables of the intermediate integrated indicator on the data on the credit based on the results of neural processing has 215 rules.

As a result of neural processing of vectors of data of intermediate integral indicators, one will obtain the membership of each observation to a certain cluster (one of three that characterize the corresponding linguistic value "Low", "Medium", and "High"), and the distance of a neuron to the certain center of a cluster on the corresponding topological map. Using the results obtained after neural processing, the parameters of membership functions for all intermediate integral indicators of evaluation of the third level of the hierarchy are calculated— $l_{1in}^g, l_{2in}^g, z_{1in}^g, z_{2in}^g$ (Table 2).

Table 2. Parameters of clusters and parameters of membership functions of intermediate integral indicators based on the results of their neural processing.

Variable Name	Cluster Name	Centroid Cluster	Values of Membership Function Parameters			
			l_{1in}^g	l_{2in}^g	z_{1in}^g	z_{2in}^g
Personal data	L	3.60	—	3.78	—	0.36
	M	4.68	4.44	4.91	0.29	0.29
	H	5.75	5.46	—	0.23	—
Employment data	L	2.63	—	2.76	—	0.37
	M	3.85	3.66	4.05	0.37	0.45
	H	5.09	4.83	—	0.30	—
Data on the financial condition	L	3.43	—	3.60	—	0.66
	M	5.10	4.84	5.35	0.55	0.77
	H	7.08	6.73	—	0.59	—
Credit details	L	8.91	—	9.36	—	0.76
	M	11.34	10.77	11.91	0.64	0.57
	H	13.62	12.94	—	0.45	—
Data on arrears	L	−8.94	—	−9.39	—	2.64
	M	−4.49	−4.27	−4.72	2.40	2.07
	H	−0.28	−0.27	—	2.11	—

The following correction factor vectors were determined experimentally for intermediate integrated indicators of the III level of the hierarchy: {1,1,5} for the intermediate integrated indicator on the borrower's personal data, employment data, and data on the

granted credit; {1,2,3} for the intermediate integrated indicator on the financial condition of the borrower and arrears of payments on the credit.

Similar to the previous stages of modeling, linguistic variables for integral indicators of the II level of the hierarchy and term sets of values of linguistic variables are determined, and membership functions are constructed. To determine the parameters of membership functions, as in the previous stages, vectors of numerical values calculated on the indicators of the training sample are involved in neural processing. The result of neural processing is that each borrower belongs to one of the three clusters in terms of integrated indicators. As a result of processing the data on the distribution of borrowers in these clusters, the parameters of the membership functions of all terms of these integrated indicators, which are summarized in Table 3, are obtained.

Table 3. Parameters of clusters and parameters of membership functions of integrated indicators based on the results of their neural processing.

Variable Name	Cluster Name	Centroid Cluster	Values of Membership Function Parameters			
			l_{1n}^g	l_{2n}^g	z_{1n}^g	z_{2n}^g
Integral indicator for borrower data	L	3.57	—	3.75	—	0.39
	M	4.74	4.50	4.98	0.33	0.32
	H	5.83	5.54	—	0.23	—
Integral indicator of the data on the relationship between borrower and creditor	L	2.13	—	2.24	—	0.36
	M	3.09	2.93	3.24	0.29	0.40
	H	4.23	4.02	—	0.34	—

As a result of a series of numerical experiments for integral indicators, the following vector of correction factors was determined: {1,2,3}.

The linguistic variable that describes the score is defined by a term set of values with three terms: “Low”, “Medium”, and “High”. To determine the parameters of the membership functions of the scoring indicator, the vector of its numerical values, calculated for borrowers of the training sample, is subjected to neural processing, as a result of which data on the parameters of clusters are obtained (Table 4).

Table 4. Cluster parameters and parameters of scoring index membership functions based on the results of neural processing.

Variable Name	Cluster Name	Centroid Cluster	Values of Membership Function Parameters			
			l_1	l_2	z_1	z_2
Scoring indicator	L	2.02	—	2.12	—	0.27
	M	2.79	2.65	2.93	0.24	0.20
	H	3.48	3.31	—	0.16	—

The topological image of the clustering of scores of borrowers is shown in Figure 2. When constructing the Kohonen map for the scoring indicator, the dimensions of the topological map were established (30 × 30).



Figure 2. Kohonen topological map of borrowers' scores.

The result of fuzzy clustering will be the segmentation of borrowers with overdue credit repayment terms, based on which one can determine the most adequate strategy for interaction with each individual debtor. The segment of the overdue credit portfolio of a commercial bank is determined based on the calculated values of the scoring indicator (S), as shown in Table 5.

Table 5. The ratio of results obtained and segments of the bank’s overdue credit portfolio.

Condition	Name of the Term	The Name of the Segment of the Overdue Credit Portfolio
$C \leq 2.38$	L	C_5—“Write-off”
$2.38 < C < 2.41$	L-M	C_4—“Very bad”
$2.41 \leq C \leq 3.12$	M	C_3—“Bad”
$3.12 < C < 3.14$	M-H	C_2—“Average”
$3.14 \leq C$	H	C_1—“Uncritical”

The result of the segmentation of borrowers with overdue credit indebtedness is presented in Table 6, and the diagram is shown in Figure 3.

Table 6. Results of neuro-fuzzy segmentation of bank borrowers with active overdue payments.

Debt Portfolio Segment	Number of Credit Agreements	Share of the Segment in the Portfolio, %
C_1	536	54%
C_2	36	4%
C_3	65	7%
C_4	260	26%
C_5	103	10%
Total	1000	100 %

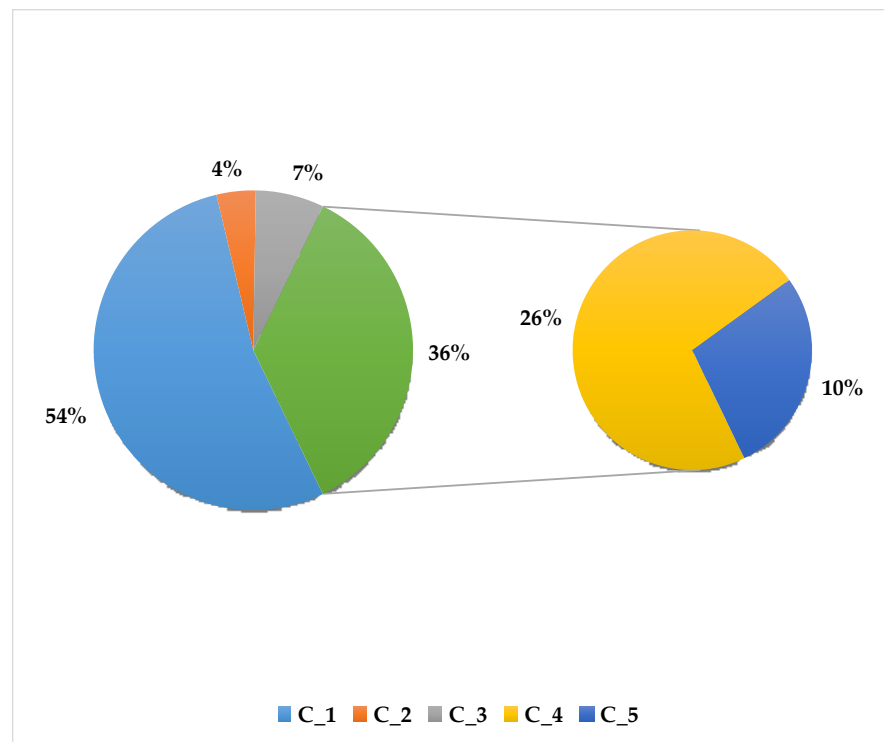


Figure 3. Portfolio of overdue credits based on the results of neural processing (in quantitative terms), %.

The results of Table 6 characterize only a separate portfolio of overdue credits. It should be recalled that scoring systems are developed separately for each specific task. Thus, scoring models developed on data on customers who have used consumer credits for small amounts cannot work adequately, for example, on the credit portfolio of car credits.

The constructed model of collector scoring for recovery of overdue debt makes it possible to develop recommendations for working with each segment of the portfolio of overdue credits in accordance with the level of credit risk, which are summarized in Table 7.

Table 7. Recommendations for managing a problem credit portfolio.

Score of the Borrower	Description of Actions to Recover Overdue Debt from Borrowers of a Commercial Bank
L	Working with such borrowers includes a phone call from a bank employee, and sending an e-mail reminding about the debts in arrears and the possible consequences of evading obligations.
L-M	Phone calls and text messages with the demand for debt repayment. A phone call to the contact person of the borrower from a commercial bank with a request to assist the debtor in repaying the debt.
M	Personal meetings with the debtor, and the involvement of a contact person in the process of repayment of overdue debt. In some cases, the requirement of early repayment of debt.
M-H	Phone calls to debtors demanding early repayment of debt. Involvement of the debtor's contact person. Legal cases. In some cases, the transfer of credit cases to a collection agency.
H	Transfer/sale (assignment) of credit cases to collection agencies/other credit institutions. In some cases—write-off as a bad debt.

The priority of cases in the third group should be determined according to the level of risk. More “dense” work with such debtors can be effective.

Akkoç (2019) conducted a study to find the most effective approach to the pre-processing of the characteristics of borrowers for the purpose of improving the accuracy of forecasts of defaults on credit obligations. Akkoç (2019) analyzed three main methods to present data to the inputs of credit scoring models: the use of initial explanatory variables without transformation, the translation of categorical characteristics into a set of fictitious variables, binning of indicators with the calculation of the weight of evidence (WOE) for each category.

To obtain conclusions on the systematic influence of characteristics of borrowers, Janková and Dostál (2020) carried out 10 repeated iterations to build neural network models of the perceptron type for each of these three methods of preparation of input factor SB . Each scoring model was evaluated using a wide range of indicators of integrated and point efficiency.

According to Ashokkumar and Babu (2020), the results of their conducted experiments confirmed, almost by all criteria, the advantage of the methodological approach, suggested by the authors, to data processing by way of dividing the quantitative variables into categories and ensuring the trend of their indicators of weight of evidence and compliance with limits on the number of observations in each group.

Moradi and Rafiei (2019) determined that the highest accuracy is provided by a fuzzy system based on Sugeno logical inference, and the best transparency is provided by a system based on Mamdani fuzzy inference. Hybrid evolutionary-neuro-fuzzy credit scoring technologies were developed for both fuzzy inference models.

Regarding the fourth segment, it is worth determining how effective it can be to collect an overdue debt. That is, whether it will not exceed the cost of work of debt collection of credit funds repaid in this way. If a negative financial result is found, it is recommended to write off such debt as bad. Comparing recovery costs with the amount of debt and the expected amount of repayment is an important step in building a strategy for repaying overdue payments.

It is recommended to become clear of debts that formed the fifth segment (assignment, write-off).

It should be noted that the considered fuzzy credit scoring models are not ideal, as they have certain disadvantages and limitations. The sets of characteristics that are associated with payment delays or loan defaults vary from country to country. Here, one should take into account national, cultural, and economic features. The scoring model will be more accurate the more homogeneous the sample the forecast is based on, and provided that all subsequent clients will also fall into this category of clients. Therefore, a model cannot be transferred with its weights and thresholds from one country to another so that it remains effective. Additionally, even within one bank, it will be advisable to apply different models for different groups of clients and banking products.

Based on the experience of the banking system, it is clear that, along with the rapid development of consumer lending, increases in the number of defaults and fraud, and taking into account the convenience and usefulness of the scoring method for assessment of the creditworthiness of an individual borrower, it is necessary to improve the scoring model. While the quantitative indicators are sufficiently developed and take into account the economic condition of a borrower, qualitative indicators, due to their narrow range, do not fully cover all aspects of the client activities exposing the bank to losses from delays in payments or non-repayment of a loan.

In addition, many software products used by banks apply only one of the above-mentioned analytical methods to make a decision. As a wide range of indicators that must be taken into account for a complete and thorough assessment of the creditworthiness of an individual client require the simultaneous use of different methods of decision making, it is advisable to use hybrid expert scoring systems. These issues and taking into account the time factor when building fuzzy credit scoring models will be considered in further studies.

5. Conclusions

Fuzzy credit scoring models are appropriate when historical data are insufficient to build a statistical model, or when qualitative factors are introduced into the model, which can only be assessed expertly. In a financial crisis, such models can be used by banks due to the lack of a necessary statistical base and unpredictable changes in environmental factors.

Thus, the suggested neuro-fuzzy credit scoring model of credit risk assessment of an individual borrower provides the bank the opportunity of: lending to individuals in a crisis; operational monitoring of the level and quality of demand for credit services on the part of the population; timely and adequate management of banking risks in consumer lending; reduction in operating costs for the analysis of creditworthiness of borrowers; expansion of the range of banking products.

The results of calculating the matrices of quantization errors are one of the criteria for assessing the adequacy of the constructed scoring model. Thus, in the process of adjusting the parameters of membership functions, this maximum error did not exceed the value of 0.1, which is a satisfactory result.

Additionally, it is necessary to take into account the expediency of adapting such models to the assessment of various credit risks and adjusting the parameters of the models to the statistical data in each individual bank.

Author Contributions: Conceptualization, D.K. and R.R.B.; methodology, O.A.; software, T.B.; validation, N.Z. and T.B.; formal analysis, D.K.; investigation, O.A.; resources, R.R.B.; data curation, N.Z.; writing—original draft preparation, O.A.; writing—review and editing, N.Z.; visualization, D.K.; supervision, R.R.B.; project administration, T.B.; funding acquisition, N.Z. All authors have read and agreed to the published version of the manuscript.

Funding: This research received no external funding.

Institutional Review Board Statement: Not applicable.

Informed Consent Statement: Not applicable.

Data Availability Statement: Not applicable.

Conflicts of Interest: The authors declare no conflict of interest.

Appendix A

Table A1. Description of methods for assessing credit risks of banks.

Method Name	General Characteristics	Indicators
Scoring models and methods for credit risk analysis	Scoring is a mathematical or statistical model by which a bank tries to determine the probability of repayment of credit by a particular borrower based on credit history.	Integral indicators are used for each client: age, profession, income, length of stay of the bank's client, and more.
Monte Carlo method	Modeling of random processes according to given characteristics.	Different options for project implementation are analyzed. Probable characteristics: the probable credit interest rate.
Decision tree method	Graphical construction of decision options that can be made.	Risk indicators for the bank's credit portfolio.
Rating method	The bank according to a certain method calculates the rating and draws a conclusion about the creditworthiness of the borrower.	Indicators of the borrower's financial condition.
Taxonomic analysis	Taxonomic procedures are used to group objects that are characterized by a large number of features. The indicator makes it possible to organize the elements of this set.	Risk indicators of the current credit portfolio; credit portfolio profitability indicators.
Coefficient analysis method	Expert analysis of the dynamics of economic ratios that characterize the creditworthiness of the borrower by comparing its indicators with industry averages.	Indicators of creditworthiness and financial condition of the borrower
Stress test	Allows analyzing the dynamics of changes in quantitative indicators of risk.	Credit portfolio risk indicators.

Appendix B

Table A2. Parameters of clusters and parameters of membership functions of input variables in relation to quantitative characteristics of borrowers based on the results of neural processing of the sample.

Variable Name	Cluster Name	Centroid of the Cluster	Values of Membership Function Parameters			
			μ_{1ijn}^g	μ_{2ijn}^g	z_{1ijn}^g	z_{2ijn}^g
Age	L	25	—	26.25	—	0.75
	M	31	29.45	32.55	1.45	0.45
	H	37	35.15	38.85	1.15	0.15
	M	43	40.85	45.15	0.85	0.85
	L	50	47.5	—	0.5	—
Registration deadline	L	56	—	59	—	59
	M	182	173	191	54	62
	H	325	309	—	55	—
Work experience	L	83	—	87	—	53
	M	198	188	208	47	50
	H	320	304	—	45	—
Basic monthly income	L	5841	—	6133	—	1229
	M	8914	8468	9360	1085	1221
	H	12,322	11,706	—	1091	—

Table A2. Cont.

Variable Name	Cluster Name	Centroid of the Cluster	Values of Membership Function Parameters			
			l_{1ijn}^g	l_{2ijn}^g	z_{1ijn}^g	z_{2ijn}^g
Additional monthly income	L	2621	—	2752	—	1210
	M	5311	5045	5577	1075	1055
	H	8000	7600	—	939	—
DTI	L	2.49	—	2.61	—	1.00
	M	4.74	4.50	4.97	0.88	0.81
	H	6.83	6.49	—	0.70	—
Credit amount	L	33,360	—	35,028	—	14,492
	M	65,920	62,624	69,216	12,704	11,984
	H	97,200	92,340	—	10,340	—
Annual interest rate	L	10	—	10.5	—	2.5
	M	16	15.2	16.8	1.2	1.2
	H	22	20.9	—	1.9	—
Credit term	L	830	—	872	—	155
	M	1229	1168	1290	138	122
	H	1600	1520	—	105	—
Annuity	L	1533	—	1609	—	795
	M	3288	3124	3453	710	974
	H	5547	5270	—	812	—
Cost of collateral	L	99,000	—	103,950	—	36,050
	M	182,000	172,900	191,100	31,900	51,900
	H	306,000	290,700	—	46,700	—
LTV	L	0.38	—	0.40	—	0.21
	M	0.84	0.80	0.88	0.19	0.47
	H	1.91	1.81	—	0.44	—
Maximum number of overdue days	L	253	—	266	—	153
	M	587	558	616	137	161
	H	973	924	—	144	—
Number of overdue payments	L	10	—	10.5	—	5.5
	M	23	21.85	24.15	4.85	4.85
	H	37	35.15	—	5.15	—

Appendix C

Table A3. Fragment of the rules base for qualitative variables of the intermediate integrated indicator on the borrower’s personal data based on the results of neural processing.

The Term of the Resulting Linguistic Variable	Input Variables				
	Sex	Educational Level	Place of Registration	Marital Status	Number of Dependents
L
	man	secondary	Northern	unmarried	1
	woman	secondary	Northern	married	1
	man	higher	Sofia	married	0
	man	incomplete higher	West	civil marriage	1
...	

Table A3. Cont.

The Term of the Resulting Linguistic Variable	Input Variables				
	Sex	Educational Level	Place of Registration	Marital Status	Number of Dependents
M
	man	incomplete higher	Southern	married	2
	woman	higher	Sofia	married	2
	man	higher	Northern	unmarried	0
	man	higher	Northern	married	0
H
	man	higher	Central	married	0
	man	incomplete higher	Northern	married	4
	woman	specialized secondary	Southern	divorced	1
	woman	incomplete higher	West	widower	1
...	

References

- Akkoç, Soner. 2019. Exploring the nature of credit scoring: A neuro fuzzy approach. *Fuzzy Economic Review* 24: 3–24. Available online: <https://search.proquest.com/openview/aa0a9dc6c9a061aa97ed66b39df164f8/1?pq-origsite=gscholar&cbl=52206> (accessed on 10 January 2021).
- Altman, Edward I. 1968. Financial Ratios. Discriminant Analysis and the Prediction of Corporate Bankruptcy. *The Journal of Finance* 23: 589–609. [CrossRef]
- Altman Edward, I., G. Haldeman Robert, and Paul Narayanan. 1977. ZETA analysis: A new model to identify bankruptcy risk of corporations. *Journal of Banking and Finance* 10: 29–54. [CrossRef]
- Anghel, Madalina-Gabriela, Marian Sfetcu, Gyorgy Bodo, and Doina Burea. 2017. Bank Risk Management. *Romanian Statistical Review Supplement* 65: 87–94. Available online: <https://ideas.repec.org/a/rsr/supplm/v65y2017i1p87-94.html> (accessed on 10 January 2021).
- Apătăchioae, Adina. 2015. The performance, banking risks and their regulation. *Procedia Economics and Finance* 20: 35–43. Available online: <https://www.sciencedirect.com/science/article/pii/S2212567115000441> (accessed on 10 January 2021).
- Ashokkumar, S. R., and G. Mohan Babu. 2020. Extreme learning adaptive neuro-fuzzy inference system model for classifying the epilepsy using Q-Tuned wavelet transform. *Journal of Intelligent & Fuzzy Systems*, 1–16, (Preprint). Available online: <https://content.iospress.com/articles/journal-of-intelligent-and-fuzzy-systems/ifs191015> (accessed on 10 January 2021).
- Baltes, Nicolae, and Maria-Daciana Cozma. 2019. Technical analysis in estimating currency risk portfolios: Case study: Commercial banks in Romania. *Economic Research-Ekonomska Istraživanja* 32: 622–34. Available online: https://hrcak.srce.hr/index.php?show=clanak&id_clanak_jezik=332529 (accessed on 10 January 2021).
- Baron, Matthew, and Wei Xiong. 2017. Credit expansion and neglected crash risk. *The Quarterly Journal of Economics* 132: 713–64. [CrossRef]
- Chen, Yi-Kai, Chung-Hua Shen, Lanfeng Kao, and Chuan-Yi Yeh. 2018. Bank liquidity risk and performance. *Review of Pacific Basin Financial Markets and Policies* 21: 1850007. [CrossRef]
- Damrongsakmethee, Thitimanan, and Victor-Emil Neagoe. 2017. Data mining and machine learning for financial analysis. *Indian Journal of Science and Technology* 10: 1–7. [CrossRef]
- Dell’Ariccia, Giovanni, Luc Laeven, and Gustavo A. Suarez. 2017. Bank leverage and monetary policy’s risk-taking channel: Evidence from the United States. *The Journal of Finance* 72: 613–54. [CrossRef]
- Fonseca, Diego Paganoti, Peter Fernandes Wanke, and Henrique Luiz Correa. 2020. A two-stage fuzzy neural approach for credit risk assessment in a Brazilian credit card company. *Applied Soft Computing* 92: 106329. [CrossRef]
- Gersbach, Hans, and Jean-Charles Rochet. 2017. Capital regulation and credit fluctuations. *Journal of Monetary Economics* 90: 113–24. [CrossRef]
- Gilchrist, Simon, and Benoit Mojon. 2017. Credit risk in the euro area. *The Economic Journal* 128: 118–58. [CrossRef]
- Hájek, Petr, and Vladimír Olej. 2015. Intuitionistic fuzzy neural network: The case of credit scoring using text information. In *International Conference on Engineering Applications of Neural Networks*. Cham: Springer, pp. 337–46. Available online: https://link.springer.com/chapter/10.1007/978-3-319-23983-5_31 (accessed on 10 January 2021).
- Harnay, Sophie, and Laurence Scialom. 2016. The influence of the economic approaches to regulation on banking regulations: A short history of banking regulations. *Cambridge Journal of Economics* 40: 401–26. Available online: <https://academic.oup.com/cje/article-abstract/40/2/401/2605116> (accessed on 10 January 2021).

- Ignatius, Joshua, Hatami-Marbini Adel, Rahman Amirah, Dhamotharan Lalitha, and Khoshnevis Pegah. 2018. A fuzzy decision support system for credit scoring. *Neural Computing and Applications* 29: 921–937. Available online: <https://link.springer.com/article/10.1007/s00521-016-2592-1> (accessed on 10 January 2021).
- Infante, Luigi, Stefano Piermattei, Raffaele Santioni, and Bianca Sorvillo. 2020. Diversifying away risks through derivatives: An analysis of the Italian banking system. *Economia Politica* 37: 621–57. Available online: <https://link.springer.com/article/10.1007/s40888-020-00180-x> (accessed on 10 January 2021).
- Janková, Zuzana, and Petr Dostál. 2020. Prediction of European stock indexes using neuro-fuzzy technique. *Trends Economics and Management* 14: 45–58. Available online: <https://trends.fbm.vutbr.cz/index.php/trends/article/view/trends.2020.35.45> (accessed on 10 January 2021).
- Jiménez, Gabriel, Steven Ongena, José-Luis Peydró, and Jesús Saurina. 2017. Macroprudential policy, countercyclical bank capital buffers, and credit supply: Evidence from the Spanish dynamic provisioning experiments. *Journal of Political Economy* 125: 2126–77. Available online: <https://www.journals.uchicago.edu/doi/abs/10.1086/694289> (accessed on 10 January 2021).
- Khedmatgozar, Hamid Reza. 2021. The impact of perceived risks on internet banking adoption in Iran: A longitudinal survey. *Electronic Commerce Research* 21: 147–67. Available online: <https://link.springer.com/article/10.1007/s10660-021-09475-y> (accessed on 10 January 2021).
- Kim, Sung Hyun, Si Young Jang, and Kyung Hoon Yang. 2017. Analysis of the determinants of software-as-a-service adoption in small businesses: Risks, benefits, and organizational and environmental factors. *Journal of Small Business Management* 55: 303–25. Available online: <https://www.tandfonline.com/doi/full/10.1111/jsbm.12304> (accessed on 10 January 2021).
- Leo, Martin, Suneel Sharma, and Koilakuntla Maddulety. 2019. Machine Learning in Banking Risk Management: A Literature Review. *Risks* 7: 29. [CrossRef]
- Levrel, Harold, Pierre Scemama, and Anne-Charlotte Vaissière. 2017. Should we be wary of mitigation banking? Evidence regarding the risks associated with this wetland offset arrangement in Florida. *Ecological Economics* 135: 136–49. Available online: <https://www.sciencedirect.com/science/article/abs/pii/S0921800916304402> (accessed on 10 January 2021).
- Li, Junye, and Gabriele Zinna. 2018. How much of bank credit risk is sovereign risk? Evidence from Europe. *Journal of Money, Credit and Banking* 50: 1225–69. [CrossRef]
- Li, Chenggang, Qing Liu, and Lei Huang. 2020. Credit risk management of scientific and technological enterprises based on text mining. *Enterprise Information Systems*, 1–17. [CrossRef]
- Lock, Irina, and Peter Seele. 2015. Analyzing sector-specific CSR reporting: Social and environmental disclosure to investors in the chemicals and banking and insurance industry. *Corporate Social Responsibility and Environmental Management* 22: 113–28. Available online: <https://onlinelibrary.wiley.com/doi/abs/10.1002/csr.1338> (accessed on 10 January 2021).
- Mian, Atif, and João AC Santos. 2018. Liquidity risk and maturity management over the credit cycle. *Journal of Financial Economics* 127: 264–84. [CrossRef]
- Moradi, Somayeh, and Farimah Mokhatab Rafiei. 2019. A dynamic credit risk assessment model with data mining techniques: Evidence from Iranian banks. *Financial Innovation* 5: 1–27. Available online: <https://jfin-swufe.springeropen.com/articles/10.1186/s40854-019-0121-9> (accessed on 10 January 2021).
- Mou, WeiMing, Wing-Keung Wong, and Michael McAleer. 2018. Financial credit risk evaluation based on core enterprise supply chains. *Sustainability* 10: 3699. [CrossRef]
- Ntarmah, Albert Henry, Yusheng Kong, and Michael Kobina Gyan. 2019. Banking system stability and economic sustainability: A panel data analysis of the effect of banking system stability on sustainability of some selected developing countries. *Quantitative Finance and Economics* 3: 709–38. Available online: <http://awstest-alb.aimspress.com/article/doi/10.3934/QFE.2019.4.709?viewType=HTML> (accessed on 10 January 2021).
- Ntseme, Onneile Juliet, Alicia Nametsagang, and Joshua Ebere Chukwuere. 2016. Risks and benefits from using mobile banking in an emerging country. *Risk Governance and Control: Financial Markets & Institutions* 6: 35–63. Available online: http://www.virtusinterpress.org/IMG/pdf/10-22495_rgcv6i4c2art13.pdf (accessed on 10 January 2021).
- Peña, Alejandro, Isis Bonet, Christian Lochmuller, Francisco Chiclana, and Mario Góngora. 2018. An integrated inverse adaptive neural fuzzy system with Monte-Carlo sampling method for operational risk management. *Expert Systems with Applications* 98: 11–26. Available online: <https://www.sciencedirect.com/science/article/abs/pii/S0957417418300010> (accessed on 10 January 2021).
- Pousttchi, Key, and Maik Dehnert. 2018. Exploring the digitalization impact on consumer decision-making in retail banking. *Electronic Markets* 28: 265–86. Available online: <https://link.springer.com/article/10.1007/s12525-017-0283-0> (accessed on 10 January 2021).
- Raut, Rakesh, Naoufel Cheikhrouhou, and Manoj Kharat. 2017. Sustainability in the banking industry: A strategic multi-criterion analysis. *Business Strategy and the Environment* 26: 550–68. Available online: <https://onlinelibrary.wiley.com/doi/abs/10.1002/bse.1946> (accessed on 10 January 2021).
- Roper, Stephen, and Efstathios Tapinos. 2016. Taking risks in the face of uncertainty: An exploratory analysis of green innovation. *Technological Forecasting and Social Change* 112: 357–63. Available online: <https://www.sciencedirect.com/science/article/pii/S0040162516301974> (accessed on 10 January 2021).
- Salleo, Carmelo, Alberto Grassi, and Constantinos Kyriakopoulos. 2020. A Comprehensive Approach for Calculating Banking Sector Risks. *International Journal of Financial Studies* 8: 69. Available online: <https://www.mdpi.com/2227-7072/8/4/69> (accessed on 10 January 2021).

- Schwaab, Bernd, Siem Jan Koopman, and André Lucas. 2017. Global credit risk: World, country and industry factors. *Journal of Applied Econometrics* 32: 296–317. [CrossRef]
- Schwarz, Krista. 2018. Mind the gap: Disentangling credit and liquidity in risk spreads. *Review of Finance* 23: 557–97. [CrossRef]
- Shen, Kao-Yi, Sakai Hiroshi, and Tzeng Gwo-Hshiung. 2019. Multi-graded Hybrid MRDM Model for Assisting Financial Performance Evaluation Decisions: A Preliminary Work. *International Joint Conference on Rough Sets*; Cham: Springer, pp. 439–453. Available online: https://link.springer.com/chapter/10.1007/978-3-030-22815-6_34 (accessed on 10 January 2021).
- Sun, Ting, and Vasarhelyi Miklos Antal. 2018. Embracing textual data analytics in auditing with deep learning. *International Journal of Digital Accounting Research* 18: 1–10. [CrossRef]
- Tang, Lingxiao, Fei Cai, and Yao Ouyang. 2019. Applying a nonparametric random forest algorithm to assess the credit risk of the energy industry in China. *Technological Forecasting and Social Change* 144: 563–72. [CrossRef]
- Teles, Gernmanno, Rodrigues Joel, Saleem Kashif, Kozlov Sergei, and Rabêlo Ricardo. 2020. Machine learning and decision support system on credit scoring. *Neural Computing and Applications* 32: 9809–9826. [CrossRef]
- Vo, Duc Hong, and Zhaoyong Zhang. 2019. Exchange rate volatility and disaggregated manufacturing exports: Evidence from an emerging country. *Journal of Risk and Financial Management* 12: 12. [CrossRef]
- Yamori, Nobuyoshi. 2019. The Effects of the Financing Facilitation Act after the Global Financial Crisis: Has the Easing of Repayment Conditions Revived Underperforming Firms? *Journal of Risk and Financial Management* 12: 63. [CrossRef]
- Ye, Xiaoqing, Li Jiamao, Huang Hexiao, Du Liang, and Zhang Xiaolin. 2018. 3d recurrent neural networks with context fusion for point cloud semantic segmentation. Presented at the European Conference on Computer Vision (ECCV), Munich, Germany, September 8–14; pp. 403–417. Available online: https://openaccess.thecvf.com/content_ECCV_2018/html/Xiaoqing_Ye_3D_Recurrent_Neural_ECCV_2018_paper.html (accessed on 10 January 2021).
- Zhang, Jiboning. 2020. Investment risk model based on intelligent fuzzy neural network and VAR. *Journal of Computational and Applied Mathematics* 371: 112707. [CrossRef]