

Hu, Yuan; Lindquist, W. Brent; Račev, Svetlozar T.

Article

Portfolio optimization constrained by performance attribution

Journal of Risk and Financial Management

Provided in Cooperation with:

MDPI – Multidisciplinary Digital Publishing Institute, Basel

Suggested Citation: Hu, Yuan; Lindquist, W. Brent; Račev, Svetlozar T. (2021) : Portfolio optimization constrained by performance attribution, Journal of Risk and Financial Management, ISSN 1911-8074, MDPI, Basel, Vol. 14, Iss. 5, pp. 1-12, <https://doi.org/10.3390/jrfm14050201>

This Version is available at:

<https://hdl.handle.net/10419/239617>

Standard-Nutzungsbedingungen:

Die Dokumente auf EconStor dürfen zu eigenen wissenschaftlichen Zwecken und zum Privatgebrauch gespeichert und kopiert werden.

Sie dürfen die Dokumente nicht für öffentliche oder kommerzielle Zwecke vervielfältigen, öffentlich ausstellen, öffentlich zugänglich machen, vertreiben oder anderweitig nutzen.

Sofern die Verfasser die Dokumente unter Open-Content-Lizenzen (insbesondere CC-Lizenzen) zur Verfügung gestellt haben sollten, gelten abweichend von diesen Nutzungsbedingungen die in der dort genannten Lizenz gewährten Nutzungsrechte.

Terms of use:

Documents in EconStor may be saved and copied for your personal and scholarly purposes.

You are not to copy documents for public or commercial purposes, to exhibit the documents publicly, to make them publicly available on the internet, or to distribute or otherwise use the documents in public.

If the documents have been made available under an Open Content Licence (especially Creative Commons Licences), you may exercise further usage rights as specified in the indicated licence.



<https://creativecommons.org/licenses/by/4.0/>



Article

Portfolio Optimization Constrained by Performance Attribution

Yuan Hu , W. Brent Lindquist * and Svetlozar T. Rachev

Department of Mathematics and Statistics, Texas Tech University, Lubbock, TX 79409-1042, USA;
yuan.hu@ttu.edu (Y.H.); zari.rachev@ttu.edu (S.T.R.)

* Correspondence: brent.lindquist@ttu.edu

Abstract: This paper investigates performance attribution measures as a basis for constraining portfolio optimization. We employ optimizations that minimize conditional value-at-risk and investigate two performance attributes, asset allocation (AA) and the selection effect (SE), as constraints on asset weights. The test portfolio consists of stocks from the Dow Jones Industrial Average index. Values for the performance attributes are established relative to two benchmarks, equi-weighted and price-weighted portfolios of the same stocks. Performance of the optimized portfolios is judged using comparisons of cumulative price and the risk-measures: maximum drawdown, Sharpe ratio, Sortino–Satchell ratio and Rachev ratio. The results suggest that achieving SE performance thresholds requires larger turnover values than that required for achieving comparable AA thresholds. The results also suggest a positive role in price and risk-measure performance for the imposition of constraints on AA and SE.

Keywords: portfolio optimization; performance attribution; asset allocation; selection effect



Citation: Hu, Yuan, W. Brent Lindquist, and Svetlozar T. Rachev. 2021. Portfolio Optimization Constrained by Performance Attribution. *Journal of Risk and Financial Management* 14: 201. <https://doi.org/10.3390/jrfm14050201>

Academic Editor: Tihana Škrinjarić

Received: 8 March 2021
Accepted: 28 April 2021
Published: 2 May 2021

Publisher's Note: MDPI stays neutral with regard to jurisdictional claims in published maps and institutional affiliations.



Copyright: © 2021 by the authors. Licensee MDPI, Basel, Switzerland. This article is an open access article distributed under the terms and conditions of the Creative Commons Attribution (CC BY) license (<https://creativecommons.org/licenses/by/4.0/>).

1. Introduction

How well a portfolio performs is always the major concern for investors, and is usually the major metric reflecting investor confidence in the portfolio's management. In common terms, a good portfolio delivers satisfactory return with low risk. Attribution analysis provides measures for how well an portfolio is being managed. Paraphrasing from Bacon (2008), performance attribution is a technique used to quantify the excess return (relative to a benchmark) of a portfolio and explain that performance in terms of investment strategy and market conditions. From a management perspective, attribution analysis has been used to monitor performance, to identify early indications of underperformance, and gain investor confidence by demonstrating a thorough understanding of the performance drivers. As far as we are aware, performance attribution measures are currently used exclusively as a diagnostic, in the sense that if today's attribute values underperform, then changes are implemented in the portfolio with the goal of improving tomorrow's attribute values. In this work, we investigate the imposition of performance attribute constraints to guarantee that tomorrow's portfolio achieves the required attribute values.

Following the fundamental work on performance attribution by Brinson and Fachler (1985) and Brinson et al. (1986), we decompose excess return into two quantities that reflect investment strategy: asset allocation (AA), which measures the contribution of each asset class in a portfolio to total performance of the portfolio, and the selection effect (SE), which measures the impact of choice of assets within each class in the portfolio. As is apparent from their definitions in the next section, AA and SE measure the differences between mean performance of asset classes in a managed portfolio and those of a market benchmark, and are therefore 'blind' to volatility effects, i.e., to tail-risk. Motivated by this and by the work of Biglova and Rachev (2007) and Rachev et al. (2009), we investigate the impact on portfolio optimization using AA and SE as additional constraints on asset weights as a method of combining performance and tail-risk control. We apply this methodology to a test portfolio of stocks comprising a major market index; specifically the Dow Jones

Industrial Average. Optimization is performed by minimizing conditional value-at-risk (CVaR) at a specified quantile level, α . For the required market benchmark we consider two options, an equi-weighted portfolio and a price-weighted portfolio, comprised of the same assets. Performance of the resulting optimal portfolios is measured in terms of cumulative portfolio price and standard risk-measures.

Section 2 of the paper discusses performance attribution, the constrained CVaR portfolio optimizations and the risk-measures employed to gauge their performance. Section 3 presents the results of the methodology applied to the test portfolio. Section 4 summarizes our conclusions.

2. Description of the Approach

Consider a managed portfolio p comprised of N assets, consisting of M asset classes with n_i assets in class i ; $i = 1, \dots, M$, such that $\sum_{i=1}^M n_i = N$. Let b denote a benchmark portfolio composed of Q assets comprising the same M asset classes, with q_i assets in class i ; $i = 1, \dots, M$, such that $\sum_{i=1}^M q_i = Q$. Let the index pair, ij ; $i = 1, \dots, M$; $j = 1, \dots, n_i$, identify portfolio asset j in class i , with the analogous identification for benchmark assets. Denote the daily closing price of an asset as $S_{ij}(t)$ and its corresponding log-return as $r_{ij}(t) = \ln(S_{ij}(t)/S_{ij}(t-1))$. For brevity, we will suppress the time variable for most of the discussion in this section. Let $w_{ij}^{(p)}$ denote the weight of asset ij in portfolio p , and $w_{ij}^{(b)}$ denote asset weight in the benchmark. We assume all weights are non-negative; that is, all portfolios considered take long-only positions. Let $w_i^{(p)} = \sum_{j=1}^{n_i} w_{ij}^{(p)}$ and $w_i^{(b)} = \sum_{j=1}^{q_i} w_{ij}^{(b)}$ represent the total weights of the assets in class i in the portfolio and benchmark respectively. Note that for any portfolio fully invested in its component assets (which we assume is the case in this study), $\sum_{i=1}^M w_i^{(p)} = \sum_{i=1}^M w_i^{(b)} = 1$.

The quantities AA and SE for asset class i are defined as follows (Biglova and Rachev 2007):¹

$$AA_i = (w_i^{(p)} - w_i^{(b)}) (R_i^{(b)} - R^{(b)}), \tag{1}$$

$$SE_i = w_i^{(b)} (R_i^{(p)} - R_i^{(b)}), \tag{2}$$

where

$$R_i^{(p)} = \sum_{j=1}^{n_i} \frac{w_{ij}^{(p)}}{w_i^{(p)}} \mathbb{E}[r_{ij}], \quad R_i^{(b)} = \sum_{j=1}^{q_i} \frac{w_{ij}^{(b)}}{w_i^{(b)}} \mathbb{E}[r_{ij}], \quad R^{(b)} = \sum_{i=1}^M \sum_{j=1}^{q_i} w_{ij}^{(b)} \mathbb{E}[r_{ij}], \tag{3}$$

and $\mathbb{E}[\cdot]$ denotes expected value. In (3), the ratio $w_{ij}^{(p)}/w_i^{(p)}$ represents the fractional weight held by asset j in class i in portfolio p . (That is $\sum_{j=1}^{n_i} (w_{ij}^{(p)}/w_i^{(p)}) = 1$.) Thus $R_i^{(p)}$ (similarly $R_i^{(b)}$) represents an expected log-return for asset class i considered as a fully-invested portfolio by itself. In contrast, $R^{(b)}$ represents the usual expected log-return for the entire benchmark portfolio.² From (3) we have $R^{(b)} = \sum_{i=1}^M w_i^{(b)} R_i^{(b)}$. Similarly we have the usual expected log-return for portfolio p ,

$$R^{(p)} = \sum_{i=1}^M \sum_{j=1}^{n_i} w_{ij}^{(p)} \mathbb{E}[r_{ij}] = \sum_{i=1}^M w_i^{(p)} R_i^{(p)}. \tag{4}$$

The excess return, $S = R^{(p)} - R^{(b)}$, can be viewed as the value added by portfolio management. From (1) through (4),

$$S = \sum_{i=1}^M (AA_i + SE_i + I_i) = AA + SE + I, \tag{5}$$

where $I_i = (w_i^{(p)} - w_i^{(b)})(R_i^{(p)} - R_i^{(b)})$ is an “interaction” term. AA, SE and I are, respectively, the total asset allocation, total selection effect, and total interaction terms for portfolio p . The contribution to the total value added to the excess return, S , from asset class i is AA_i , while SE_i represents the contribution to S determined by the choice of assets within class i . To understand these interpretations, consider first the sign of the value of AA_i in (1).

- If $R_i^{(b)} - R^{(b)} > 0$, the expected return from asset class i in the benchmark is outperforming the total expected return for the benchmark. Therefore if $w_i^{(p)} - w_i^{(b)} > 0$, the weight of asset class i in portfolio p is larger than in the benchmark, capitalizing further on the better return from class i . Otherwise, if $w_i^{(p)} - w_i^{(b)} < 0$, the class i weighting in portfolio p is hurting the potential performance of that class (as determined by the benchmark).
- If $R_i^{(b)} - R^{(b)} < 0$, the expected return from asset class i in the benchmark is underperforming the total expected return for the benchmark. Therefore if $w_i^{(p)} - w_i^{(b)} < 0$, the weight of asset class i in portfolio p is smaller than in the benchmark, further suppressing the poorer return from that class. Otherwise, if $w_i^{(p)} - w_i^{(b)} > 0$, the class i weighting in portfolio p is overweighting the poor performance of that class.

Thus, a positive sign for the value of AA_i indicates a “correct” decision in the management of portfolio p relative to the benchmark while a negative sign indicates a “poor” decision. The magnitude of AA_i quantifies how good or poor the decision is.

Similarly, as we assume³ $w_i^{(b)} > 0$; $i = 1, \dots, M$, a positive sign for the value of SE_i in (2) indicates that the expected return from the choice of assets in class i in portfolio p is outperforming that class in the benchmark, while a negative sign indicates that the expected return from the choice of assets in class i in portfolio p is underperforming.

The interaction term, I_i , captures the part of the excess return unexplained by asset allocation and selection effect. Written as

$$I_i = \frac{AA_i SE_i}{w_i^{(b)}(R_i^{(b)} - R^{(b)})}, \tag{6}$$

it can be viewed as the product of the asset allocation and selection effect contributions of class i to portfolio p compared to the weighted excess return of class i in the benchmark b . Alternatively, written as

$$I_i = \left(\frac{w_i^{(p)}}{w_i^{(b)}} - 1 \right) SE_i, \tag{7}$$

it can be interpreted as the product of the asset selection effect and the over- or under-weighted part of asset class i . The relationship (7) between I_i and SE_i reveals a simple form for the sum of the selection effect and interaction terms,

$$\overline{SE}_i := SE_i + I_i = w_i^{(p)}(R_i^{(p)} - R_i^{(b)}). \tag{8}$$

Equation (8) provides a way to incorporate a constraint on the sum of the selection and interaction effects for class i ; however, we will not consider such a combined constraint in this study.

Portfolio optimizations that maximize return while minimizing risk (subject to additional constraints) require specification of a proxy measure for risk. Common examples of risk proxy include: the variance of the portfolio (Markowitz 1952); value-at-risk (VaR) (JP Morgan 1996); expected tail loss (ETL); conditional value-at-risk (CVaR) (Rockafellar and Uryasev 2000);⁴ and mean absolute-deviation (Konno and Yamazaki 1991). Measures, such as VaR and CVaR, that focus on tail-risk became very popular as the result of the need to understand exposure to loss under ‘extreme’ market events. (See Gava et al. (2021) for a recent study demonstrating that consideration of tail risk can suc-

cessfully reduce sharp losses in multi-asset portfolios). However VaR has undesirable mathematical characteristics; except when the underlying random process is Gaussian, VaR is not a coherent risk measure as it lacks the properties of subadditivity and convexity (Artzner et al. 1999). As a risk measure, CVaR is coherent (Pflug 2000); its use as a standard has grown to the point that the Basel III regulatory framework for banks requires it. We therefore use CVaR as the risk measure for our portfolio optimizations.

The random return Y of a portfolio is expressed as realizations, y , of a profit(+) - loss(-) function $f(\mathbf{w}, r)$ of the (column vectors of) asset weights \mathbf{w} and returns r . Let $p(r)$ denote the probability density function determining the daily asset returns r . For any fixed value of \mathbf{w} , the cumulative distribution of the daily portfolio return is given by

$$P(\mathbf{w}, Y \leq y) \equiv F(\mathbf{w}, y) = \int_{f(\mathbf{w}, r) \leq y} p(r) dr. \tag{9}$$

The value-at-risk is⁵

$$\text{VaR}_\alpha(\mathbf{w}) = \inf\{y \in \mathbb{R} \mid F(\mathbf{w}, y) \geq \alpha\}, \tag{10}$$

where $\alpha \in (0, 1)$ is a prescribed tail risk probability; equivalently $1 - \alpha$ is a prescribed quantile level, typically having value of $1 - \alpha = 0.95, 0.99$ or 0.995 . Assuming $F(\mathbf{w}, y)$ is continuous, conditional value-at-risk can be expressed as⁶

$$\text{CVaR}_\alpha(\mathbf{w}) = \frac{1}{\alpha} \int_{f(\mathbf{w}, r) \leq \text{VaR}_\alpha(\mathbf{w})} f(\mathbf{w}, r) p(r) dr. \tag{11}$$

Rockafellar and Uryasev (2000) show that the function⁷

$$F_\alpha(\mathbf{w}, \gamma) = \gamma - \frac{1}{\alpha} \int_{\mathbb{R}^n} (\gamma - f(\mathbf{w}, r))^+ p(r) dr, \tag{12}$$

where $(x)^+ = \max(x, 0)$, has the following properties: (1) for fixed \mathbf{w} , $\gamma = \text{VaR}_\alpha(\mathbf{w})$ minimizes $F_\alpha(\mathbf{w}, \gamma)$; (2) $F_\alpha(\mathbf{w}, \text{VaR}_\alpha(\mathbf{w})) = \text{CVaR}_\alpha(\mathbf{w})$; and (3) $F_\alpha(\mathbf{w}, \gamma)$ is convex in γ (and convex with respect to (\mathbf{w}, γ) if $f(\mathbf{w}, r)$ is convex in \mathbf{w}).

When evaluated for a portfolio consisting of a finite sample of asset returns, $r(t), t = 1, \dots, T$, with $f(\mathbf{w}, r) = \mathbf{w}'r$, the discrete form of (12) results in the following minimization problem,

$$\min_{\mathbf{w}} \text{CVaR}_\alpha(\mathbf{w}) = \min_{\mathbf{w}, \gamma} \left\{ \gamma - \frac{1}{\alpha T} \sum_{t=1}^T (\gamma - \mathbf{w}'r(t))^+ \right\}. \tag{13}$$

The approach by Rockafellar and Uryasev proceeds by converting (13) to a linear objective function by introducing the variable $y_t \geq \gamma - \mathbf{w}'r(t) \geq 0$. This conversion is particularly appropriate if all constraints are also linear, in which case the constrained minimization problem can be solved by linear programming. As we will be dealing with nonlinear constraints, we leave the objective function in the form (13) and solve using nonlinear optimization.

We describe our approach for solving (13) with a general constraint here, and discuss the specific constraints below. Consider optimization of (13) under the constraint $c_1(\mathbf{w}) \leq 0$. If, for any day t , the feasible set to the constrained optimization is null, the constraint is removed and replaced for that day by a quadratic penalty term in (13),

$$\min_{\mathbf{w}} \text{CVaR}_\alpha(\mathbf{w}) = \min_{\mathbf{w}, \gamma} \left\{ \gamma - \frac{1}{\alpha T} \sum_{t=1}^T (\gamma - \mathbf{w}'r(t))^+ + \beta ((c_1(\mathbf{w}))^+)^2 \right\}. \tag{14}$$

The coefficient β can be set by the user. If k constraints need to be removed, they are replaced in (14) by the sum $\beta \sum_{i=1}^k ((c_i(\mathbf{w}))^+)^2$.

We consider four portfolio optimization problems, $P_{\alpha}^k, k = 0, \dots, 3$, based upon constrained minimization of (13) or, in case of a null feasible set, (14):

$$P_{\alpha}^0: \text{ (a) } w_{ij}^{(p)} \geq 0, \sum_{i,j} w_{ij}^{(p)} = 1; \text{ and (b) } TO \leq C_{TO}$$

$$P_{\alpha}^1: \text{ (a) } w_{ij}^{(p)} \geq 0, \sum_{i,j} w_{ij}^{(p)} = 1; \text{ (b) } TO \leq C_{TO}; \text{ and (c) } a_1 \leq AA \leq b_1.$$

$$P_{\alpha}^2: \text{ (a) } w_{ij}^{(p)} \geq 0, \sum_{i,j} w_{ij}^{(p)} = 1; \text{ (b) } TO \leq C_{TO}; \text{ and (d) } a_2 \leq SE \leq b_2.$$

$$P_{\alpha}^3: \text{ (a) } w_{ij}^{(p)} \geq 0, \sum_{i,j} w_{ij}^{(p)} = 1; \text{ (b) } TO \leq C_{TO}; \text{ (c) } a_1 \leq AA \leq b_1; \text{ and (d) } a_2 \leq SE \leq b_2.$$

Here $TO \leq C_{TO}$ is a turnover constraint,

$$TO = \frac{1}{2} \sum_{i=1}^M \sum_{j=1}^{n_i} |w_{ij}^{(p)}(t) - w_{ij}^{(p)}(t-1)| \leq C_{TO}, \tag{15}$$

used as a proxy to control transaction costs. The ‘base case’ portfolio P_{α}^0 considers no performance attribute constraints and is therefore independent of the benchmark portfolio. Optimization problems P_{α}^1 through P_{α}^3 , successively add further performance attribute constraints to the long-only, fully invested, CVaR $_{\alpha}$ -minimized base portfolio.

The constants a_i, b_i can be user-specified to meet particular goals. For example, the constraint $AA \geq 0$ requires that, on average, the asset classes in the optimized portfolio p equal-or-outperform those in the benchmark. A constraint $SE_i \geq 0$ requires that the weights of the portfolio assets in class i be adjusted to perform as well as, or better than, class i in the benchmark. Since individual asset weights can be zero, this is equivalent to choice of assets in the class. The constraint $SE \geq 0$ requires that this be true averaged over classes. As $R_i^{(p)}(t)$ involves the ratio $w_{ij}^{(p)}(t)/w_i^{(p)}(t)$, constraints involving SE_i terms are nonlinear. In contrast, constraints involving terms AA_i and \overline{SE}_i are linear.⁸ Our implementation is done in MatLab using the constrained, nonlinear multivariate function `fmincon()` and the solver `sqp()`.

Performance of these four optimized portfolios, relative to each other, will be judged based upon cumulative price and four common risk measures. Let $w_{ij}^{(p)}(t), i = 1, \dots, M, j = 1, \dots, n_i, t = 1, \dots, T$ denote daily weights obtained from one of these optimizations.⁹ Recalling that $r_{ij}(t)$ is the log-return based upon the closing price of asset ij on day t , the portfolio log-return¹⁰ and cumulative price are $r^{(p)}(t) = \sum_{i=1}^M \sum_{j=1}^{n_i} w_{ij}^{(p)}(t)r_{ij}(t)$ and $S^{(p)}(t) = S_0 \exp\left(\sum_{s=1}^t r^{(p)}(s)\right)$. The four measures used are:

1. maximum drawdown (MDD),

$$MDD(T) = \sup_{t \in [0, T]} \left[\sup_{s \in [0, t]} (S^{(p)}(s) - S^{(p)}(t)) \right],$$

which characterizes the maximum loss incurred from peak to trough during the time period $[0, T]$;

2. Sharpe ratio (Sharpe 1994),

$$Sharpe(T) = \frac{\mathbb{E}[r^{(p)}(t) - r_f(t)]_{[0, T]}}{\sqrt{\text{var}[r^{(p)}(t) - r_f(t)]_{[0, T]}}} = \frac{\mu_p|_{[0, T]}}{\sigma_p|_{[0, T]}}$$

where $r_f(t)$ is a risk-free rate, and μ_p and σ_p are the expected mean and standard deviation of the portfolio’s excess return, $r^{(p)}(t) - r_f(t)$;

3. Sortino–Satchell ratio (Sortino and Satchell 2001),

$$SS_2(T) = \frac{\mathbb{E}[(r^{(p)}(t) - r_f(t))^+]_{[0, T]}}{\| (r_f(t) - r^{(p)}(t))^+ \|_{2[0, T]}}$$

- and
 4. Rachev ratio (Rachev et al. 2008),

$$\text{Rachev}_{\beta,\gamma}(T) = \frac{\text{CVaR}_{\beta}(r_f(t) - r^{(p)}(t))}{\text{CVaR}_{\gamma}(r^{(p)}(t) - r_f(t))},$$

which represents the reward potential for positive returns compared to the risk potential for negative returns at quantile levels defined by the user. In our analysis, we set $\beta = \gamma = 0.95$.

The choice of these reward-to-risk ratios was influenced by the work of Chertido and Kromer (2013) who classified reward-to-risk measures and considered their properties relative to monotonicity, quasi-concavity, scale invariance and whether distribution-based. Their stance was that every performance measure should be at least monotonic (a measure of “more” is better than a measure of “less”) and quasi-concave (the measure prefers averages to extremes and encourages diversification of risk rather than concentration). The (most commonly used) Sharpe ratio does not guarantee monotonicity; perhaps the most critical property a risk-measure should have. The Rachev ratio, used by hedge funds which seek excessive returns and insure against big losses, does not guarantee quasi-concavity. The Sortino–Satchell ratio guarantees both.

3. Application to a Test Portfolio

To illustrate portfolio optimization under performance attribution constraints, we consider a specific portfolio comprised of stocks from the Dow Jones Industrial Average (DJIA). As a limited-information index of the performance of the U.S. stock market, the DJIA consists of the weighted stock price of 30 large, publicly-traded companies. The stock composition of the DJIA and their weights in the index, as of 1 February 2021, are presented in Table A1 of Appendix A. To preserve a sufficiently long trading history, our test portfolio comprises 29 of the 30 stocks from the DJIA.¹¹ Daily closing price data for all 29 stocks were available¹² covering the period 19 March 2008 through 1 February 2021. We grouped the stocks in our test portfolio into six classes based upon their weighted value in the DJIA. Class composition and their total weight in the DJIA are presented in Table 1. As is apparent from Equations (1)–(7), results from an attribution analysis depend on the choice of benchmark. We separately consider two benchmarks. For ease of assignment to asset classes, both benchmarks comprise the same assets as the test portfolios¹³ but one benchmark (EQW) is equi-weighted while the other (PW) is price-weighted. The 10-year U.S. Treasury yield curve rate was used as the risk-free rate.

Table 1. Breakdown of the asset classes in the test portfolio.

Class	Stock Ticker	Class Weight in DJIA(%)
1	UNH, GS, HD, AMGN, MSFT	29.59
2	CRM, MCD, V, BA, HON	22.35
3	CAT, MMM, DIS, JNJ, WMT	18.13
4	TRV, NKE, AAPL, JPM, PG	14.52
5	IBM, AXP, CVX, MRK, INTC	9.97
6	VZ, WBA, KO, CSCO	4.29

Daily return data for the stocks covered 3240 trading days. Using a standard rolling-window strategy for optimization with a window size of 1008 days (four years), optimized portfolio weights were computed for an in-sample period of $T = 2233$ days. The historic return sample distribution in each window was used for the computation of CVaR_{α} . We optimized at two separate quantile levels, $\alpha \in \{0.95, 0.99\}$. Daily turnover constraints were set to one of three values: $C_{TO} = \infty$ (no turnover constraint), 4% and 0.4%. For the attribution constraints in optimizations P_{α}^1 , P_{α}^2 , and P_{α}^3 , we set the lower bounds $a_1 = a_2 = 0$ and set no upper bounds ($b_1 = b_2 = \infty$). Thus, for example, optimization P_{α}^1

minimizes $CVaR_\alpha$ for the long-only portfolio while requiring that, on average, its asset classes outperform the benchmark.

If the constrained optimization problem resulted in a null feasible set for day t , constraints were replaced by penalty terms in the following order.

- P_α^0 : The turnover constraint was replaced by a penalty term.
- P_α^1 : The turnover constraint was replaced by a penalty term. If the feasible set was still null, the asset allocation constraint was then additionally replaced by a penalty term.
- P_α^2 : The turnover constraint was replaced by a penalty term; if necessary, the selection effect constraint was also replaced.
- P_α^3 : The order of additional conversion to penalty terms was turnover constraint, selection effect, and finally asset allocation.

If the feasible set was still null after all indicated hard constraints were converted to penalty terms for day t , the optimized weights obtained for day $t - 1$ were used for day t .

For the optimization of $CVaR_{0.95}$ when the PW benchmark was used to determine values for AA and SE, Table 2 summarizes the frequency of conversion of a ‘hard’ constraint to a penalty term. For example, for optimization of $P_{0.95}^3$ under the turnover constraint $C_{TO} = 4\%$: 45.54% of the timesteps resulted in a feasible solution to the fully constrained problem; 19.03% of the timesteps required converting the turnover constraint to a penalty term; 34.39% of the timesteps required converting both the turnover and SE constraints to penalty terms; 1.03% of the timesteps required conversion of turnover, SE and AA constraints; and there were no timesteps for which a null feasible set was never obtained under this rubric. The results when the EQW benchmark was used differ from those in Table 2 by only a few percent.

Table 2. Frequency of conversion of hard constraints to penalty terms.

Portfolio	All ‘Hard’	TO	TO+AA	TO+SE	TO+SE+AA	no Solution for t
$TO < \infty$						
$P_{0.95}^0$	100.00%					0.00%
$P_{0.95}^1$	100.00%		0.00%			0.00%
$P_{0.95}^2$	44.11%			55.84%		0.04%
$P_{0.95}^3$	54.90%			42.99%	1.93%	0.18%
$TO \leq 4\%$						
$P_{0.95}^0$	99.87%	0.13%				0.00%
$P_{0.95}^1$	98.61%	1.39%	0.00%			0.00%
$P_{0.95}^2$	41.24%	12.58%		46.13%		0.04%
$P_{0.95}^3$	45.54%	19.03%		34.39%	1.03%	0.00%
$TO \leq 0.4\%$						
$P_{0.95}^0$	78.15%	21.85%				0.00%
$P_{0.95}^1$	51.68%	48.32%	0.00%			0.00%
$P_{0.95}^2$	6.85%	87.51%		5.64%		0.00%
$P_{0.95}^3$	6.76%	90.06%		3.00%	0.18%	0.00%

The results in Table 2 provide support for the TO, SE, AA order of conversion of hard constraints to penalty terms. Note that, when the turnover constraint is not imposed or is ‘relatively mild’ (i.e., $C_{TO} = 4\%$), a large percentage of the time the SE constraint had to be converted to a penalty term in optimizations $P_{0.95}^2$ and $P_{0.95}^3$. However, when the turnover constraint is 0.4%, the TO constraint needed to be converted essentially every 9 of 10 days in order to produce a feasible solution, and conversion rates for the SE constraint dropped to a few percent. Note, in all optimizations, frequency of conversion of the AA constraint never exceeds 2%.

Figure 1 displays the box-whisker plot summaries of the distribution of TO, AA, and SE values observed in the resulting optimized portfolios when the EQW benchmark was

used to determine values for AA and SE. For the base portfolio $P_{0.95}^0$ (with similar results for $P_{0.99}^0$), 58% of the daily AA values were negative, while 93% of the daily SE values were negative. Thus imposition of the constraints $AA \geq 0$ and $SE \geq 0$ are ‘strong’ requirements. As we saw from Table 2, the AA constraint was achieved ‘easily’; this is confirmed in Figure 1 (plots labeled $P_{0.95}^1$ and $P_{0.99}^1$), which show 100% of the daily AA values to be non-negative. However achieving the SE constraint requires softening of either the daily turnover constraint or the SE constraint itself. For the value $C_{TO} = 0.4\%$, as indicated in Table 2¹⁴ and summarized in Figure 1, 88% of the daily TO values for P_{α}^2 required softening. As a result, less than 6% of the SE values remained negative in $P_{0.95}^2$ and $P_{0.99}^2$. For P_{α}^3 , less than 0.2% of the AA values were negative, while fewer than 3% of the SE values were negative.

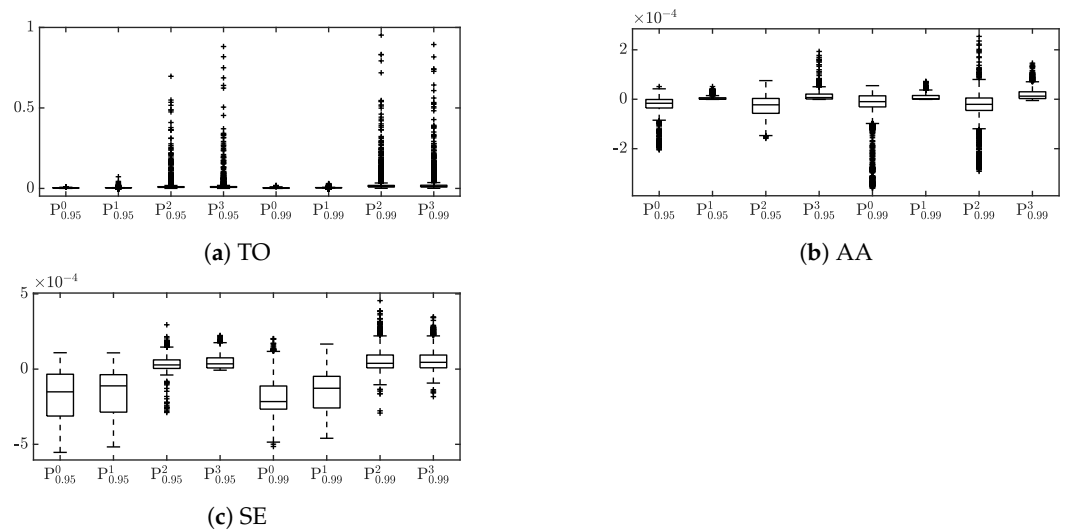


Figure 1. Box-whisker plots of the observed distributions of (a) TO, (b) AA, and (c) SE values for the optimized portfolios P_{α}^0 through P_{α}^3 .

Figure 2 shows the price performance of the base portfolios, $P_{0.95}^0$ and $P_{0.99}^0$, under change of turnover constraint. We note the relative insensitivity of price performance of $P_{0.95}^0$ to the changing TO constraint. The price performance is more sensitive at the $\alpha = 0.99$ quantile level.

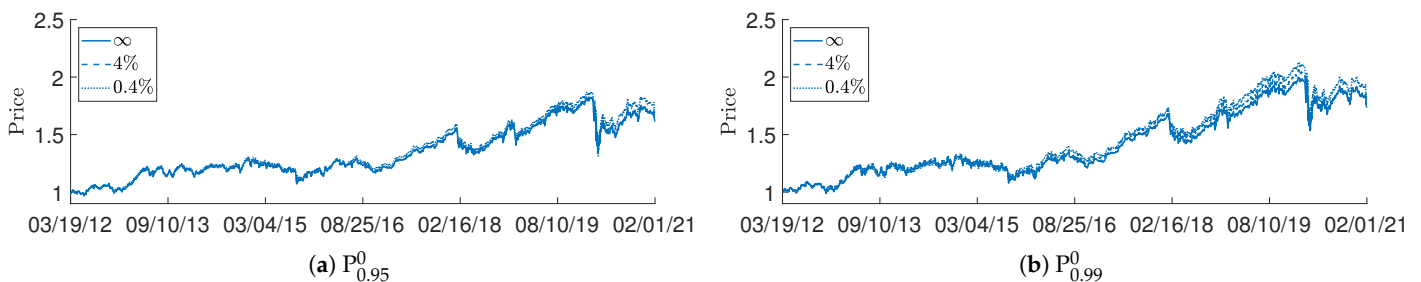


Figure 2. Cumulative price performance of the $P_{0.95}^0$ and $P_{0.99}^0$ portfolios under changing TO constraint level.

Figure 3 shows the cumulative price performance of each of the performance attribute constrained, CVaR_{0.95} minimized portfolios under changing TO constraint level computed using both the EQW (left plots) and PW (right plots) benchmarks to determine AA and SE values. As with the base portfolio, the price performance of the AA-constrained portfolio $P_{0.95}^1$ is relatively insensitive to changing the TO constraint level. Much greater sensitivity is seen in the price performance of the SE-constrained portfolio $P_{0.95}^2$ for the EQW benchmark. In contrast, the price performance is relatively insensitive to C_{TO} for $P_{0.95}^2$ computed with the PW benchmark. Since the SE constraint affects the sensitivity of the total excess return to the weighting of assets within each individual asset class we

ascribe this sensitivity difference as due to the difference in asset weighting between the EQW and a PW benchmark portfolios. The sensitivity of P_{α}^3 to changing the TO constraint level reflects a “compromise” between the sensitivity of the AA-constrained P_{α}^1 and the SE constrained P_{α}^2 . For both $\alpha = 0.95$ and $\alpha = 0.99$, the result is that the price performance of the doubly constrained portfolio improves under tighter daily TO constraint.

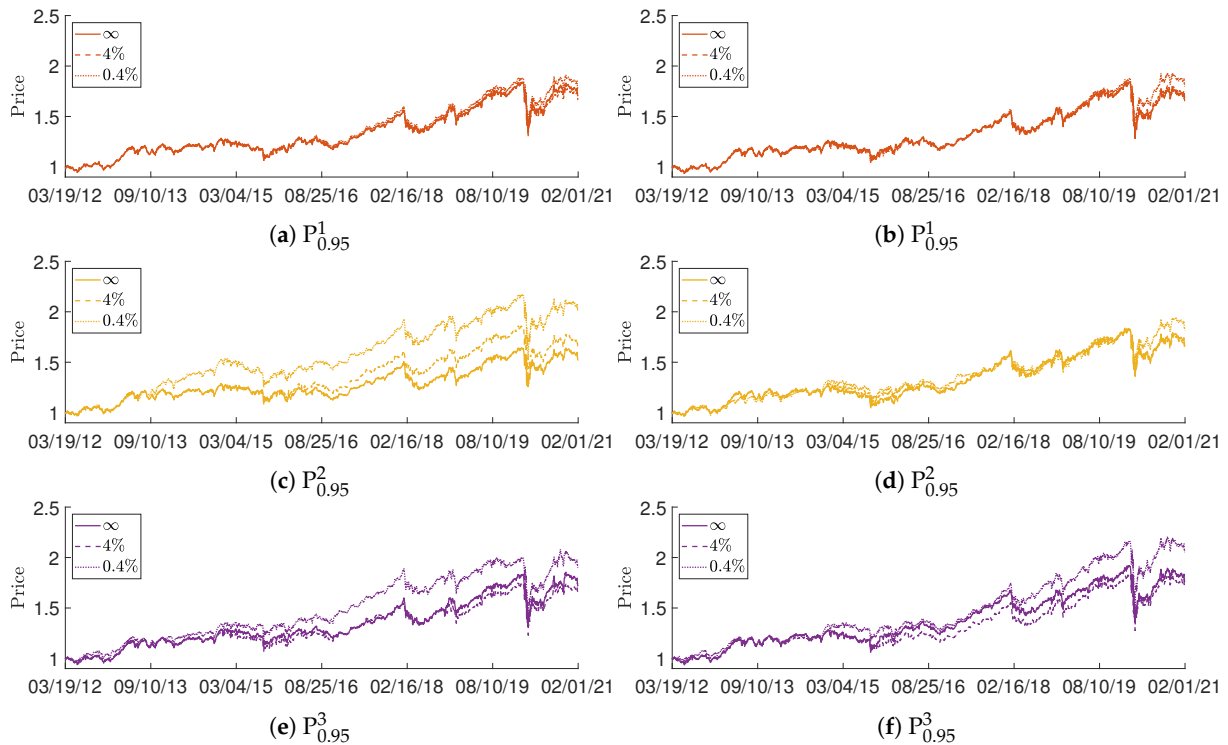


Figure 3. Cumulative price performance of each of the $CVaR_{0.95}$ minimized portfolios under changing TO constraint level; (left) equi-weighted benchmark, (right) price-weighted benchmark.

Figure 4 summarizes the cumulative price performance of the $CVaR_{0.95}$ minimized portfolios under the $TO \leq 0.4\%$ constraint level for both the EQW and PW benchmarks. For both benchmark valuations, we see that the AA-constrained portfolio, $P_{0.95}^1$, produces only slight price performance improvement compared to the base portfolio. For both benchmarks, the AA and SE constrained portfolio, $P_{0.95}^3$, produces strong improved price performance compared to the base portfolio. For the reason attributed above, the price performance improvement for the SE-constrained portfolio, $P_{0.95}^2$, is different between the EQW and PW portfolios.

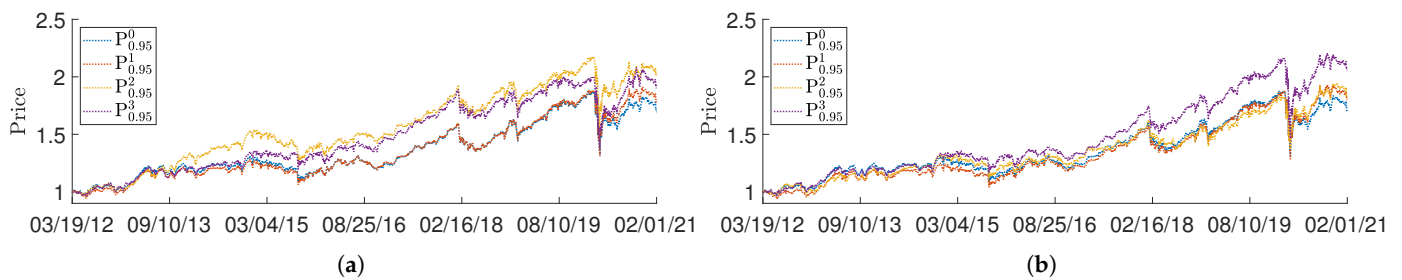


Figure 4. Cumulative price performance of the $CVaR_{0.95}$ minimized portfolios under the $TO \leq 0.4\%$ constraint level; (a) equi-weighted benchmark, (b) price-weighted benchmark.

Figure 5 summarizes total time period risk measures for the $\alpha = 0.95$ portfolios constrained by a daily turnover of 0.4%. The reported maximum drawdowns all reflect behavior related to the onset of the Covid-19 pandemic. Our optimized portfolios all outperform the

benchmarks in MDD, but only the $P_{0.95}^2$ portfolio using PW benchmark valuations for SE outperforms the base portfolio $P_{0.95}^0$. Surprisingly, the benchmarks have better Sharpe ratios than any of the optimized portfolios. However, all of the performance attribute constrained portfolios outperform the base portfolio. For the EQW benchmark, all optimized portfolios have better Sortino–Satchell ratios than the benchmarks. For both EQW and PW, the SE-constrained portfolios also outperform those of the base portfolio. All optimized portfolios equal or are better than the Rachev ratios of the benchmarks. The SE-constrained portfolio using PW benchmark valuation also outperforms that of the base portfolio.

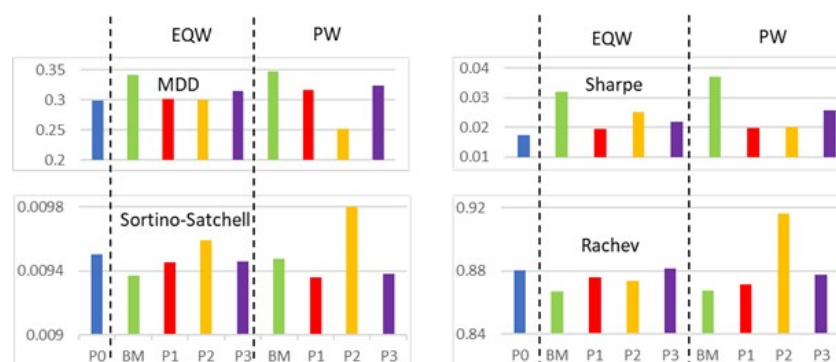


Figure 5. Total time period risk measures for the $\alpha = 0.95$ portfolios constrained by a daily turnover of 0.4%. (BM = benchmark; $P_0 = P_{0.95}^0$, etc.).

4. Discussion

It is well-known that no single optimization method can achieve all goals. Compared with the CVaR optimizations P_{α}^0 which impose no performance attribution constraints, the price and risk measure performances of the three performance-constrained $CVaR_{\alpha}$ optimizations, each computed at two values of $\alpha = 0.95, 0.99$, considered in this study lead to the following observations.

- The constraint $AA \geq 0$ is easiest to impose in the following sense. The base case had $\sim 60\%$ negative daily AA values, while AA-constrained portfolios achieved essentially 100% non-negative AA values with minimal frequency of “softening” of either the AA or TO constraint.
- The constraint $SE \geq 0$ is harder to impose; there was significant coupling between the turnover and SE constraints. The base case had $\sim 90\%$ negative daily SE values. Achieving $< 5\%$ negative daily SE values required significantly frequent softening of the daily turnover constraint.
- Price performance improvement compared to the base portfolio was best achieved by imposing both AA and SE constraints.
- The SE-constrained portfolio P_{α}^2 tended to perform best with respect to the four risk measures considered.

Author Contributions: Conceptualization, S.T.R.; formal analysis, Y.H., S.T.R. and W.B.L.; methodology, Y.H., S.T.R. and W.B.L.; software, Y.H.; supervision, W.B.L.; validation, W.B.L.; visualization, Y.H.; writing—original draft preparation, Y.H.; writing—review and editing, W.B.L. All authors have read and agreed to the published version of the manuscript.

Funding: This research received no external funding.

Data Availability Statement: As acknowledged in the text, asset data was obtained under license from Bloomberg Professional Services. Parties interested in the asset data should contact Bloomberg Professional Services directly. U.S. Treasury 10-year yield curve rate data was obtained from the public site <https://www.treasury.gov/resource-center/data-chart-center/interest-rates/pages/textview.aspx?data=yield> (accessed on 1 February 2021).

Conflicts of Interest: The authors declare no conflict of interest.

Appendix A

Table A1. The 30 companies comprising the DJIA ^a.

Ticker	Company	Inception Date	Weight (%)	Ticker	Company	Inception Date	Weight (%)
UNH	UnitedHealth	10/16/1984	7.27	TRV	Travelers Cos.	11/16/1975	3.01
GS	Goldman Sachs	05/03/1999	5.98	NKE	NIKE	12/01/1980	2.96
HD	Home Depot	09/21/1981	5.88	APPL	Apple	12/11/1980	2.92
AMGN	Amgen	07/16/1983	5.23	JPM	JPMorgan Chase	03/16/1990	2.82
MSFT	Microsoft	03/12/1986	5.21	PG	Procter and Gamble	01/01/1962	2.81
CRM	salesforce.com	07/22/2004	4.97	IBM	Int'l Business Mach.	01/01/1962	2.63
MCD	McDonald's	07/04/1966	4.52	AXP	American Express	03/31/1972	2.55
V	Visa	03/18/2008	4.31	CVX	Chevron	01/01/1962	1.88
BA	Boeing	01/01/1962	4.26	MRK	Merck and Co.	01/01/1970	1.68
HON	Honeywell Int'l.	01/01/1970	4.25	INTC	Intel	03/16/1980	1.23
CAT	Caterpillar	01/01/1962	4.02	VZ	Verizon Commun.	11/20/1983	1.18
MMM	3M	01/01/1970	3.8	DOW	Dow	03/20/2019	1.15
DIS	Walt Disney	01/01/1962	3.72	WBA	Walgreens Boots All.	03/16/1980	1.06
JNJ	Johnson and Johnson	01/01/1962	3.54	KO	Coca-Cola	01/01/1962	1.06
WMT	Walmart	08/24/1972	3.03	CSCO	Cisco Systems	02/15/1990	0.99

^a From Bloomberg Professional Services, as of 02/01/2021, 19:57 EST.

Notes

- ¹ In the original formulation by Brinson et al. (1986) (see also Chapter 5 in Bacon (2008)), AA_i is defined as $AA_i = (w_i^{(p)} - w_i^{(b)})R_i^{(b)}$. The definition in Biglova and Rachev (2007), which we follow here, uses the excess return $R_i^{(b)} - R^{(b)}$ for benchmark class i relative to the entire benchmark return in the definition (1) of AA_i . While this modifies the values for AA_i relative to that of the original Brinson et al. formulation, we note that the total value, $AA = \sum_{i=1}^M (w_i^{(p)} - w_i^{(b)}) (R_i^{(b)} - R^{(b)}) = \sum_{i=1}^M (w_i^{(p)} - w_i^{(b)}) R_i^{(b)} - \sum_{i=1}^M (w_i^{(p)} - w_i^{(b)}) R^{(b)} = \sum_{i=1}^M (w_i^{(p)} - w_i^{(b)}) R_i^{(b)} - 0$, is in agreement with the total value of AA in the Brinson et al. approach.
- ² If $R_i^{(p)}, R_i^{(b)}, R^{(b)}$ and r_{ij} were simple (i.e., discrete) returns, formulas of the form (3) are exact. However, as they are log-returns, such formulas are approximate. For example, the formula for $R^{(b)}$ incurs an error term which, to leading order in a Taylor series expansion, is $\frac{1}{2} \left[\sum_{i=1}^M \sum_{j=1}^{q_i} w_{ij}^{(b)} \mathbb{E}[r_{ij}]^2 - \left(\sum_{i=1}^M \sum_{j=1}^{q_i} w_{ij}^{(b)} \mathbb{E}[r_{ij}] \right)^2 \right]$.
- ³ A requirement for class i to be in the portfolio.
- ⁴ If the underlying profit-loss distribution is continuous, then the definitions of ETL (also known as tail conditional expectation (TCE) or tail value-at-risk (TVaR)) and CVaR (also known as expected shortfall (ES) or average value-at-risk (AVaR)) coincide. In the general case however, CVaR is a coherent risk measure while ETL is not (Stoyanov 2005).
- ⁵ We adopt the convention that loss is negative valued and that VaR_α and $CVaR_\alpha$ have negative values in the case of loss.
- ⁶ see Note 5.
- ⁷ see Note 5.
- ⁸ This assumes that benchmark weight values can be obtained in a timely manner and are not part of the optimization.

- ⁹ Specifically $w_{ij}^{(p)}(t)$ is the optimized weight to be applied to the portfolio at the beginning of (and throughout the entire) day t .
- ¹⁰ see Note 2.
- ¹¹ We exclude Dow Inc. which was spun off of DowDuPont on 1 April 2019. Its stock, under the ticker symbol “DOW”, began trading on 20 March 2019. It was added to the DJIA on 2 April 2019.
- ¹² Bloomberg Professional Services.
- ¹³ Thus $Q = N$ and $q_i = n_i$, $i = 1, \dots, M$.
- ¹⁴ Table 2 shows the results for the PW benchmark; as noted, the results for the EQW benchmark are essentially the same.

References

- Artzner, Philippe, Freddy Delbaen, Jean-Marc Eber, and David Heath. 1999. Coherent measures of risk. *Risk* 10: 203–28. [\[CrossRef\]](#)
- Bacon, Carl R. 2008. *Practical Portfolio Performance: Measurement and Attribution*, 2nd ed. West Sussex: John Wiley and Sons.
- Biglova, Almira, and Svetlozar T. Rachev. 2007. Portfolio performance attribution. *Investment Management and Financial Innovations* 4: 7–22.
- Brinson, Gary P., and Nimrod Fachler. 1985. Measuring non-United-States equity portfolio performance. *The Journal of Portfolio Management* 11: 73–76. [\[CrossRef\]](#)
- Brinson, Gary P., L. Randolph Hood, and Gilbert L. Beebower. 1986. Determinants of portfolio performance. *Financial Analysts Journal* 42: 39–44. [\[CrossRef\]](#)
- Cheridito, Patrick, and Eduard Kromer. 2013. Reward-risk ratios. *Journal of Investment Strategies* 3: 1–16. [\[CrossRef\]](#)
- Gava, Jerome, Francisco Guevara, and Julien Turc. 2021. Turning tail risks into tailwinds. *The Journal of Portfolio Management 'Multi-Asset' Special Edition* 47: 41–70. [\[CrossRef\]](#)
- JP Morgan. 1996. *Risk Metrics Technical Manual*, 4th ed. New York: JP Morgan.
- Konno, Hiroshi, and Hiroaki Yamazaki. 1991. Mean-absolute deviation portfolio optimization model and its application to Tokyo stock market. *Management Science* 37: 519–31. [\[CrossRef\]](#)
- Markowitz, Harry. 1952. Portfolio selection*. *Journal of Finance* 7: 77–91.
- Pflug, George C. 2000. Some remarks on the value-at-risk and the conditional value-at-risk. In *Probabilistic Constrained Optimization*. Edited by Stanislav P. Uryasev. Nonconvex Optimization and Its Applications; Boston: Springer, Vol. 49, pp. 272–81.
- Rachev, Svetlozar T., R. Douglas Martin, Borjana Racheva, and Stoyan Stoyanov. 2009. Stable ETL optimal portfolios and extreme risk management. In *Risk Assessment*. Heidelberg: Physica-Verlag HD, pp. 235–62.
- Rachev, Svetlozar T., Stoyan Stoyanov, and Frank J. Fabozzi. 2008. *Advanced Stochastic Models, Risk Assessment, and Portfolio Optimization*. Hoboken: John Wiley and Sons.
- Rockafellar, R. Tyrrell, and Stanislav Uryasev. 2000. Optimization of conditional value-at-risk. *Journal of Risk* 2: 21–41. [\[CrossRef\]](#)
- Sharpe, William F. 1994. The Sharpe ratio. *Journal of Portfolio Management* 21: 49–58. [\[CrossRef\]](#)
- Sortino, Frank A., and Stephen Satchell. 2001. *Managing Downside Risk in Financial Markets*. Oxford: Butterworth-Heinemann.
- Stoyanov, Stoyan V. 2005. Optimal Portfolio Management in Highly Volatile Markets. Ph.D. thesis, Karlsruhe Institute of Technology, Karlsruhe, Germany.