

Horny, Guillaume; Manganelli, Simone; Mojon, Benoît

Article

Measuring financial fragmentation in the euro area corporate bond market

Journal of Risk and Financial Management

Provided in Cooperation with:

MDPI – Multidisciplinary Digital Publishing Institute, Basel

Suggested Citation: Horny, Guillaume; Manganelli, Simone; Mojon, Benoît (2018) : Measuring financial fragmentation in the euro area corporate bond market, Journal of Risk and Financial Management, ISSN 1911-8074, MDPI, Basel, Vol. 11, Iss. 4, pp. 1-19, <https://doi.org/10.3390/jrfm11040074>

This Version is available at:

<https://hdl.handle.net/10419/238915>

Standard-Nutzungsbedingungen:

Die Dokumente auf EconStor dürfen zu eigenen wissenschaftlichen Zwecken und zum Privatgebrauch gespeichert und kopiert werden.

Sie dürfen die Dokumente nicht für öffentliche oder kommerzielle Zwecke vervielfältigen, öffentlich ausstellen, öffentlich zugänglich machen, vertreiben oder anderweitig nutzen.

Sofern die Verfasser die Dokumente unter Open-Content-Lizenzen (insbesondere CC-Lizenzen) zur Verfügung gestellt haben sollten, gelten abweichend von diesen Nutzungsbedingungen die in der dort genannten Lizenz gewährten Nutzungsrechte.

Terms of use:

Documents in EconStor may be saved and copied for your personal and scholarly purposes.

You are not to copy documents for public or commercial purposes, to exhibit the documents publicly, to make them publicly available on the internet, or to distribute or otherwise use the documents in public.

If the documents have been made available under an Open Content Licence (especially Creative Commons Licences), you may exercise further usage rights as specified in the indicated licence.



<https://creativecommons.org/licenses/by/4.0/>

Article

Measuring Financial Fragmentation in the Euro Area Corporate Bond Market

Guillaume Horny ^{1,*}, Simone Manganelli ² and Benoit Mojon ³

¹ DGEI, Banque de France, 75001 Paris, France

² DG-Research, European Central Bank, Financial Research, 60314 Frankfurt am Main, Germany; simone.manganelli@ecb.int

³ Monetary and Economic Department, Bank for International Settlements, 4002 Basel, Switzerland; Benoit.Mojon@bis.org

* Correspondence: Guillaume.Horny@banque-france.fr

Received: 30 September 2018; Accepted: 24 October 2018; Published: 29 October 2018



Abstract: This paper analyses the determinants of euro area non-financial corporate bonds since the early 2000s, so as to gauge deviations from the law of one price. We decompose the spread between the yield of German, French, Italian and Spanish corporate bonds vis-à-vis the German Bund of similar maturity into country, credit and duration risk premia components via dummy regressions. We highlight three main findings. First, the initial phase of the financial crisis (2008–2009) caused an overall increase in credit risk premia. Since the beginning of 2013 credit risk premia are back to levels comparable to those preceding the financial crisis. Second, at the height of the euro area sovereign crisis (2011–2012), high credit risk premia were accompanied by strong and persistent signs of market fragmentation in Italy and Spain (but not in France). This fragmentation has reached its peak in the second half of 2012 and has started to recede only after the announcement of the OMT. Third, we provide a simple measure of financial integration across the big 4 member states of the euro area.

Keywords: financial integration; credit risk; country premia; fragmentation index

JEL Classification: E43; G12; G24; C23

1. Introduction

The purpose of this paper is to build price indicators of deviation from the law of one price for corporate bonds within the euro area. According to the law of one price, two securities with identical cash flows and risk profiles should command the same price. We will equivalently refer to systematic and statistically significant deviations from the law of one price either as financial fragmentation or lack of financial integration. The yield on corporate bonds with similar credit rating and maturity structure (our main proxies for risk profiles) should not be significantly affected by the country where the bond is issued. The main contribution of this paper is to estimate country risk premia in the yields of non-financial corporate bonds for a panel of 719 individual bonds issued by 153 non-financial corporates, controlling for credit and maturity risk.

Our results show that while financial fragmentation has remained fairly limited during the post Lehman Great Recession, from 2008 to 2009, it reaches very high levels at the heights of the euro area sovereign crisis in 2011 and 2012. Corporate bonds issued in Italy and Spain bear higher yields than similar bonds issued in France and Germany. Fragmentation has receded gradually since the announcement of the Outright Monetary Transaction (OMT thereafter) program that the ECB announced in September 2012. Hence, during the most acute periods of the sovereign debt crisis, corporate bondholders have required higher yields to hold corporate bonds issued in Italy and Spain.

To the extent that this increased the cost of funding for firms in these countries, it is likely to have dampened the effectiveness of the accommodative stance pursued by the ECB.

These country premia appear to be correlated with the credit premia of their respective sovereign. Such correlations show that corporate issuers are not fully insulated from the domestic economy and financial turmoil associated with a sovereign default. This can be due to several reasons including the difficulty to diversify portfolio against a sovereign default in Italy or Spain, risks of financial repression (Becker and Ivashina 2014), redenomination risk (De Santis 2015) or concerns on the funding of a public bailout of the finance industry (Acharya et al. 2014; Bofondi et al. 2013).

These results are useful for the analysis and implementation of monetary policy. Since 2010, the European Central Bank (ECB) has frequently referred to the financial fragmentation within the euro area as an impediment to the transmission of its monetary policy to bank lending rates and thus a major obstacle to the conduct of monetary policy (see for instance ECB 2013 and Coeuré 2014). Our measure of financial fragmentation, which we update on a quarterly frequency and publish on an online appendix, can be used to assess this impediment to the transmission of the ECB monetary policy.

Our results relate to at least three strands of empirical finance: credit risks of sovereigns, credit risk on corporate and the measurement of financial fragmentation in the euro area.

The first one is on the determinants of sovereign interest rates. This literature relates interest rates on sovereign debt to macroeconomic fundamentals (Bayoumi et al. 1995; Bernoth et al. 2012; Faini 2006). Analyses of the European sovereign debt crisis show a sharp break in the relation between sovereign yields and “fundamentals” (Borgy et al. 2011; Aizenman et al. 2013; Dewachter et al. 2015). Other factors not directly connected to “fundamentals” may be at play, including change in risk aversion over the business cycle (Manganelli and Wolswijk 2009), spill over from other countries (De Santis 2012; Ehrmann and Fratzscher 2015; Giordano et al. 2013) and more generally on turbulences on the financial markets (Ang and Longstaff 2013) but also redenomination risk (De Santis 2015) or political risk (Manzo 2013).

Second, this paper is related to the literature on the credit spread. Studies using either reduced form models or calibrated models obtain that default probabilities explain only one third of the variations in credit spreads for investment grade bonds (Collin-Dufresne et al. 2001; Duffie et al. 2007; Giesecke et al. 2011; Huang and Huang 2012). The remaining part of the spread can include tax asymmetries (Elton et al. 2001) or dispersed information (Albagli et al. 2014). Most of the literature focuses however on credit risk premia and liquidity premia.¹ A credit risk premium is asked by the investors because of the tendency for defaults to cluster in bad states of the economy and the ensuing difficulty to hedge against such risk. Liquidity premia are asked for bonds that, in some state of the economy, are not fully liquid and therefore costly to sell. The role of the corporate bond illiquidity on corporate bond prices is emphasized in both theoretical (Lo et al. 2004; Acharya and Pedersen 2005; Gârleanu and Pedersen 2013) and empirical analyses emphasize (Bao et al. 2011; Dick-Nielsen et al. 2012; Friewald et al. 2012). Our results highlight that both credit risk and liquidity premia peaked during the sovereign debt crisis for Italy and Spain.

Third, a growing literature investigates financial fragmentation in the euro area and their impact on the business cycle. Gilchrist and Mojon (2018) compute credit risk indices for the euro area banks and non-financial corporate issuers following the methodology of Gilchrist and Zakrajšek (2012). They show instead that their aggregate, security-specific measure of credit risk is a useful leading indicator of real activity. Bleaney et al. (2012) extend Gilchrist and Zakrajšek (2012) for non-financial corporate bonds issued in 8 European countries. They also estimate excess bond premia, defined as the difference between the credit spread and a measure of credit risk proxied by distance to default and relate it indicators of economic activity. Using prices at issuance, Pianeselli and Zaghini (2014) estimate the

¹ The credit risk and liquidity premia can be interconnected. He and Milbradt (2014) model the endogenous interplay between default and liquidity: liquidity dries up when solvency becomes a concern, which amplifies issuers' defaults.

risk premia of non-financial long-term corporate bonds for a sample of euro area, US and UK bonds, whereas Zaghini (2016) focuses on euro area bonds. Unlike our paper, they focus on the primary market. Because issuances are not frequent events, they cannot identify developments in the fragmentation within a year. Previous crises however highlighted that the financial market can vary dramatically within a few weeks. Furthermore, by considering only a yearly time scale, their estimates are sensitive to differences in the seasonality in the issuance from one country to the other. For these two reasons, we prefer to focus on the secondary market. Our approach is closely related to the one of Baele et al. (2004). They estimate a series of cross-sectional regressions of corporate bond yield spreads against bond specific characteristics (coupon, liquidity, time to maturity) and a set of dummies proxying for rating and sectors. Next, they test for integration by checking whether the residuals from these regressions still contain systematic country components. Their analysis focuses on the 1995–2003 period, which can be viewed as a time of convergence of financial conditions across euro-area countries. Our study also complements De Santis (2018), who regresses credit spreads on various controls for issuer credit risk and country specific macroeconomic and financial variables. Similar to the law of one price which motivates our measure, his test for financial integration is constructed using the assumption that the country component of the excess bond premia should equal across all countries. Unlike our paper, however, he carries out a Wald test on the cross-sectional equality of the unobservable country risk in each period. The results of this approach are sensitive to the specification of the credit spread regression in the first stage and especially to omitted variables. Furthermore, coefficients in the credit spread regression are known to change during crises (Dick-Nielsen et al. 2012), because changes in the excess bond spread are also driven by time-varying pricing of the credit risk (Gilchrist and Zakrajšek 2012). De Santis (2018) accommodates it using a different set of coefficient for the times before and after the crisis. Our model, based on dummy variables and monthly time-varying coefficients, is less sensitive to model specification. In addition, the measurement of market fragmentation we propose is freely available on line and easy to implement, once the data is available.

The paper proceeds as follows. Section 2 is devoted to the data, corporate bond main characteristics as well as the computation of the spreads. Section 3 presents the reduced-form model for panel data. Results of the benchmark model are reported in Section 4. Section 5 presents a series of robustness checks. Section 6 concludes.

2. Data

Our empirical analysis builds on a new database of comparable interest rates on corporate bonds. In this section, we first describe the source of our data and next we discuss in detail the summary statistics of our key variables.

2.1. Source

We collect data on individual corporate bonds over the period from January 2004 to August 2018. The dataset has been constructed at the security level from Datastream, Bloomberg and Dealogic. We impose several restrictions to ensure the data are homogeneous. The sample is restricted to fixed coupon, non-callable securities issued by non-financial corporations, for which Moody's rating is available at all dates. We observe the yield of each bond, which we measure with the yield to maturity, on the last day of the month. We follow bonds from their issuance to their maturity. However, since the market price is volatile for bonds close to their maturity, we discard bonds with a residual maturity less than eighteen months.

The identification of a firm's country requires special care, as the location of a firm does not necessarily match the nationality of its' owner.² Furthermore, large firms sometime hold finance vehicle in charge of corporate debt issuance and these branches can be located in other countries.

² For instance, if a company owned by a German car manufacturer issue bonds in Italy, we relate these bonds to Germany.

The location of the issuer, namely the branch, should not be confused with the location of its’ parent company. The country we will refer to hereafter is the location of the parent company, since it reflects the market in which the firm evolves and the sovereign to which it is mostly related to. Our sample contains data on securities whose issuer parent company are located either in Germany, France, Italy or Spain.

We complement the data on yields with the ratings of the parent company as provided by Moodys.’

2.2. Descriptive Statistics

The key variable we use in our empirical analysis is the corporate bond spread over the German government bond with similar maturity. More precisely, let the i index denote a corporate bond. The corresponding spread S_{it} is the difference between the yield R_{it} of the corporate debt security and the German Bund zero coupon of a similar duration $ZCR_t^{DE}(Dur(i, t))$. Hence:

$$S_{it} = R_{it} - ZCR_t^{DE}(Dur(i, t)) \tag{1}$$

These spreads are by construction free of term risk premia and should therefore capture credit risk premia vis-à-vis the German Bund (see also Gilchrist and Zakrajšek 2012; and Gilchrist and Mojon 2018).

Asset swap spreads (ASW spreads) are sometime used in the literature instead of a yield-to-maturity spread such S_{it} . An ASW spread is a derivative price that is measuring credit spreads vis-à-vis the EURIBOR curve. It is traded by investors over the counter, often large investment banks, so as to hedge against both default risk and interest rate risk. Because asset swaps and a risk-free sovereign bond are both free of default risk, arbitrage among markets leads to similar spreads dynamics. Results provided by De Santis (2018) over the period 1999–2015 using both spreads are hence very close.

The sample is of about 40,000 monthly observations, relative to 719 corporate securities and 153 issuers. Details on the number of observations along with summary statistics on their main characteristics, including the size of the issuance, maturity and durations, are in Table 1. About two third of the observations come from issuers located in France or Germany. Nonetheless, the average issuances, close to 1 billion dollars and the maturities, around 9 years, are quite similar across countries. The most noticeable difference is that Italian yields 60 basis points higher than their counterparts in Germany or France. This is partly explained by the maturity of Italian bonds, which is longer by about 1 year.

Table 1. Descriptive statistics of the micro data.

	DE		FR		IT		SP	
Number of observations	14,200		13,646		7,583		4,898	
Number of securities	277		218		127		97	
Number of issuers	61		47		26		19	
Characteristics of the securities	Mean	Median	Mean	Median	Mean	Median	Mean	Median
Market value at the issuance (millions €)	971	850	987	914	1 165	1 048	936	900
Maturity at issuance	9.3	7.5	9.6	10.0	10.9	10.0	9.8	8.5
Residual maturity	5.9	4.4	5.8	4.9	7.0	5.4	6.0	4.7
Nominal yield	2.54	2.47	2.59	2.47	3.10	3.11	2.72	2.6
Spread	1.10	0.95	1.11	0.93	1.77	1.33	1.56	1.17

Note: The sample is of about 40,000 monthly observations, relative to 719 corporate securities and 153 issuers. It runs from January 2004 to August 2018. The table reports the number of observations, securities and issuer by country, along with the amount issued and the maturity at the issuance. We also provide information on residual maturity, yields and spreads, computed using the full trajectories and not only information at the issuance.

Figure 1 provides further information on the depth of the markets. The relative proportions of bonds issued in each country are quite stable over time. Germany and France have about twice more

bonds on the market than Italy and Spain. However, the gap in outstanding amounts get narrower over time.

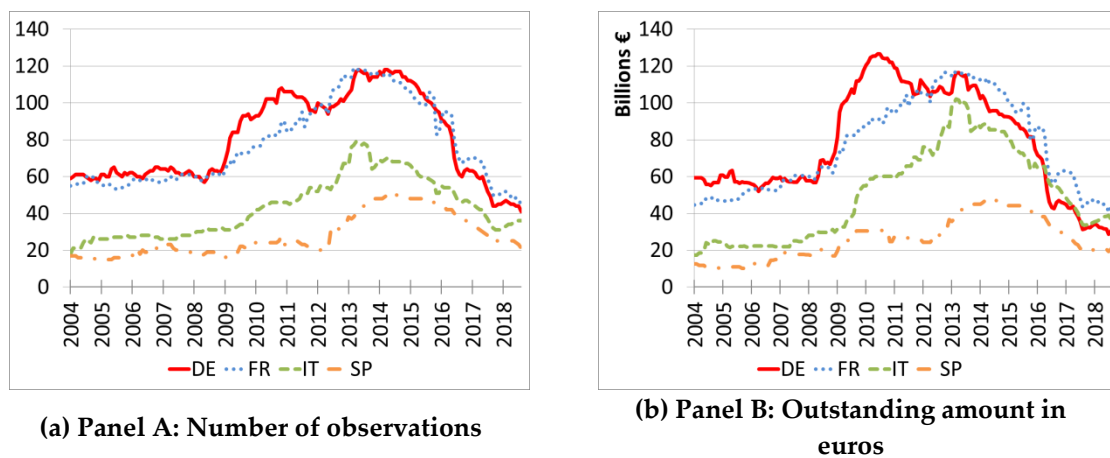


Figure 1. Main Features of the Sample of Corporate Bonds.

Figure 2 displays the evolution of the average spread in the countries under review. They co-move remarkably up to 2010 and split into two groups afterwards. For France and Germany, they stabilise at levels which are about 50 to 100 basis points above those observed before 2008. For Italy and Spain, they increase first mildly and temporarily in 2010 and then sharply from early 2011 to mid-2012. After that, they decrease. For Italy, the spread reaches at the end of the period levels similar to those observed for France and Germany, whereas for Spain, it remains greater by about 50 basis points.

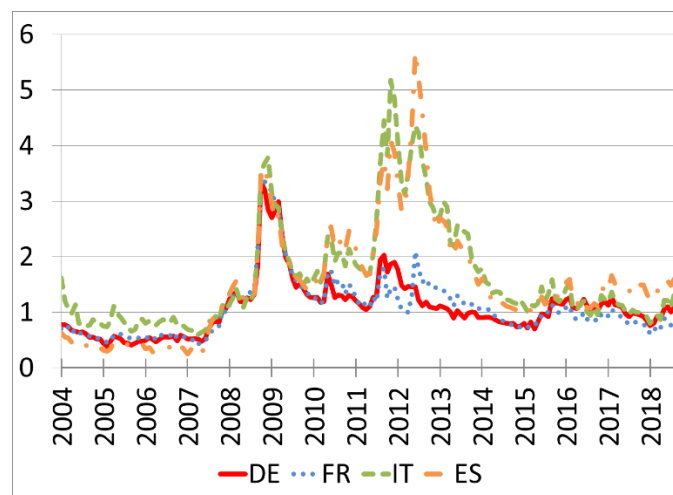


Figure 2. Average Spread by Country.

2.3. Rating Dynamics

Differences in the cross-country averages could be explained by differences in firms' characteristics. The widening in spreads observed between 2011 and 2014 for Italian and Spanish firms could be due to a composition effect, triggered for instance by an increase in the firms' risk of default relative to their German and French counterparts. Indeed, the price of a bond without default risk is equal to the net present value of its' future cash flows. It is a weighted average of the bond future payments. In the case where the bond presents a default risk that cannot be diversified, the weights are proportional to the default probability and hence decrease relative to the risk-free case. This why bonds with default risk trade at lower prices than risk-free bonds. This discount compensates investors for default risk and the losses they would incur in case a default would occur.

We control for individual default risks using the security credit ratings from Moodys'.³ While ratings are only an imperfect measure of default risks, they remain the most widely used measures of credit risk. Banks can use ratings provided by rating agencies to compute their risk-weighted assets. This is a major driver of banks' capital ratios, which is especially monitored by the supervisory authorities. Ratings are also used by the monetary authorities to define the lists of assets that can be pledged, as well as by the financial agents that engage in repo transactions. In addition, recent papers have showed that the accuracy of ratings improves in periods of financial stress like the one we consider in our sample (Bar-Isaac and Shapiro 2013; Koopman et al. 2009; Broto and Molina 2014). One concern for our analysis is that the ratings of corporates can mechanically reflect the ratings of their sovereign (Almeida et al. 2014; Adelino and Ferreira 2016), without a direction connection with firms' fundamentals. Figure 3 shows that this is rarely to be the case in our sample. Clearly, whereas sovereign and bonds series display a tendency toward more default risk, sovereign ratings deteriorate much more than security ratings. The Spanish sovereign was downgraded 9 notches, from Aaa to Baa3, over the period from 2010 to 2013, while securities issued by Spanish firms were on average downgraded by only 1 notch, from Baa1 to Baa2. A similar phenomenon can be observed in Italy. The so-called glass ceiling seems therefore fairly weak in our sample. This may be due to the abandon of such policies by the rating agencies in the early 2000s'.

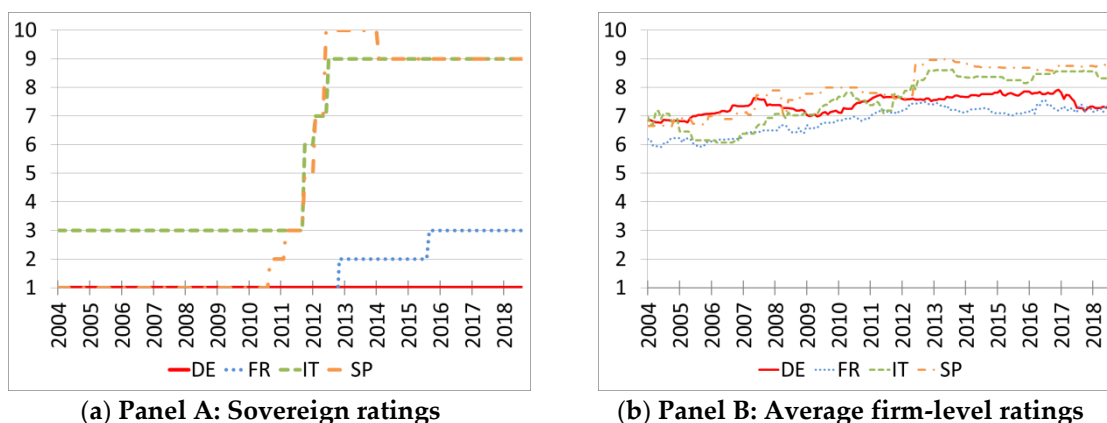


Figure 3. Developments in Moodys' Ratings. Note: Moody's ratings are here numeric, where Aaa = 1, Aa1 = 2, Aa2 = 3, Aa3 = 4, A1=5, A2 = 6, A3 = 7, Baa1 = 8, Baa2 = 9, Baa3 = 10.

Ratings in our sample are stable not only at the aggregate level but also at the security level. We show in Table 2A that transition intensities from the current rating to another never exceed 5%.

To ensure that we have a sufficient number of observations within each rating category at every point in time, we aggregated the ratings in two broad categories: a highly rated group, including all companies rated between Aaa and A3 and a lower rated group, including ratings between Baa and B3.⁴ Figure 4 reports the evolution of the number of observations within each rating category. For Italy and Spain, the number of observations belonging to the group with the best rating dropped sharply in May and June 2012, which is mirrored by an increase in the group with the lowest ratings. In the case of Italy, the downgrades are magnified on Figure 4 by the choice of the threshold at A3. The downgrades are of a relatively small magnitude on average, as can be seen on Figure 4 but were enough to push below it many bonds which enjoyed rating of A3 or just above. Something similar occurred in France at the end of 2014. Even with these broad groups, there are no observations relative to Spain in the

³ Alternatives measures of credit rating could be used, such as CDS spreads or accounting based measures. We do not use these variables as they are available for only a small subsample of bonds that. Furthermore, these bonds are often issued by firms among the largest ones and tend to be very liquid. Such bonds are unlikely to be representative of the whole corporate security market.

⁴ We discarded bonds with junk rating because they were too few.

safest group after June 2012. The developments in 2012 notwithstanding, the transitions in and out of our two rating categories are rare (see Table 2B). Downgrades are more likely than upgrades for bonds whose issuer parent is located in Italy (probability of an upgrade about 0.002, of a downgrade of 0.010) or Spain (probability of an upgrade lesser than 0.001, of a downgrade of 0.012).

Table 2. Transition intensities.

Table 2A. Transitions intensities across Moodys' ratings.

	Aaa	Aa1	Aa2	Aa3	A1	A2	A3	Baa1	Baa2	Baa3
Aaa	99.75	0.0	0.0	0.0	0.0	0.3	0.0	0.0	0.0	0.0
Aa1	0.0	98.6	0.0	1.4	0.0	0.0	0.0	0.0	0.0	0.0
Aa2	0.0	1.5	97.4	0.7	0.0	0.0	0.4	0.0	0.0	0.0
Aa3	0.0	0.3	0.1	98.0	1.6	0.0	0.0	0.0	0.0	0.0
A1	0.0	0.0	0.0	0.4	97.3	1.6	0.0	0.0	0.0	0.0
A2	0.0	0.0	0.0	0.2	0.4	97.7	1.9	0.2	0.0	0.0
A3	0.0	0.0	0.0	0.0	0.0	0.4	98.3	1.1	0.1	0.0
Baa1	0.0	0.0	0.0	0.0	0.0	0.0	0.8	98.6	0.5	0.0
Baa2	0.0	0.0	0.0	0.0	0.0	0.0	0.0	0.7	98.4	0.7
Baa3	0.0	0.0	0.0	0.0	0.1	0.0	0.0	0.2	2.2	97.4

Table 2B. Transition intensities across broad rating categories.

	DE		FR		IT		ES	
	Aaa-A3	Baa1-Baa3	Aaa-A3	Baa1-Baa3	Aaa-A3	Baa1-Baa3	Aaa-A3	Baa1-Baa3
Aaa-A3	99.5	0.5	99.5	0.5	98.6	1.4	98.2	1.8
Baa1-Baa3	0.7	99.3	0.6	99.4	0.6	99.4	0.0	99.9

Note: We report the transition intensities across ratings, from one month to the other, at the security-level. Overall, we observe 407 upgrades and 317 downgrades on 719 securities.

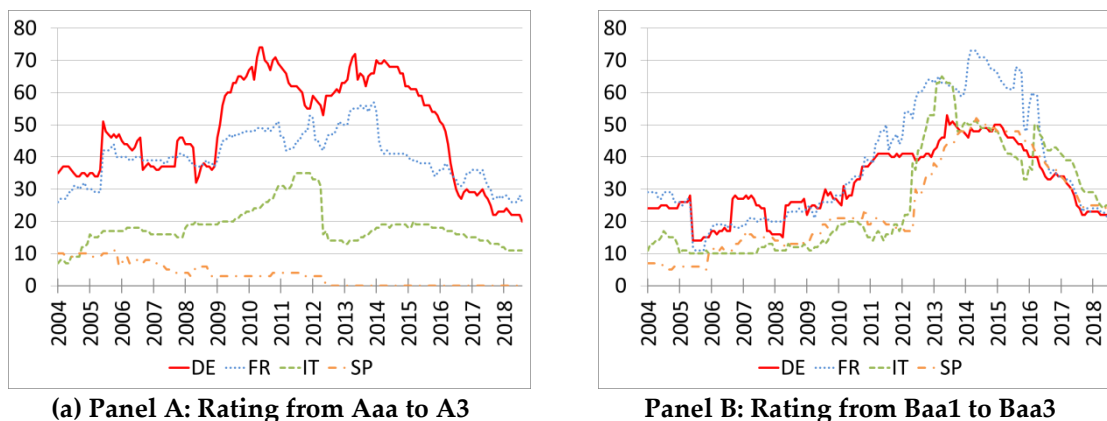


Figure 4. Number of Observations by Rating Categories.

Altogether, the rating structure is fairly stable throughout our sample.

3. Empirical Strategy

Our goal is to identify whether similar issuers in terms of risk and maturity but located in different member states pay similar or different premia. The most general specification would allow credit and term premia to vary with countries:

$$S_{it} = \delta_i + \delta_t + \delta_{C,R,M,t} + e_{it} \tag{2}$$

where S_{it} is the difference between the yield to maturity of corporate bond i and the zero coupon German Bund of equivalent maturity, as explained in the preceding section, δ_i is the bond

fixed effect, δ_t is a monthly time dummy and $\delta_{C,R,M,t}$ are dummies which identify each possible country-rating-maturity combination. In our sample, we have:

- i. four different countries: $C = \{DE, FR, IT, ES\}$;
- ii. two broad rating categories: high if the bond is rated A3 or higher and low if it is rated between Baa1 and Baa3, $R = \{HR, LR\}$;
- iii. three types of maturities: short if the maturity of the bond is between 1 and 3 years, medium if it is between 3 and 6 years and long if it is more than 6 years, $M = \{ST, MT, LT\}$.

Taking a German bond with high rating and short maturity as reference, there would be a total of 23 possible combinations: $\{DE, FR, IT, ES\} \times \{HR, LR\} \times \{ST, MT, LT\} \setminus \{DE, HR, ST\}$. However, as discussed in the previous section and reported in Table 1, many of these combinations involve only a few observations and sometimes no observation at all. This implies that the coefficients of some of the dummies would be at best poorly identified.

We therefore impose the following identification assumptions:

1. credit risk premia are identical across countries;
2. durations risk premia are identical across countries;
3. credit, country and durations risk premia are separable.

The resulting specification becomes:

$$S_{it} = \delta_t + \delta_{c,t} + \delta_{r,t} + \delta_{m,t} + \delta_i + e_{it}, \tag{3}$$

where $\delta_{c,t}$ is associated to a set of country dummies identifying bonds issued by corporates residing in France, Italy or Spain ($c \in \{FR, IT, SP\}$), $\delta_{r,t}$ to dummies identifying lower rated bonds ($r \in \{LR\}$) and $\delta_{m,t}$ to dummies for bonds with medium or long durations ($m \in \{MT, LT\}$). The reference bond spread estimated by the intercept δ_t is a German bond with high rating and short maturity. Fixed effects capture bond characteristics that are constant over time. This includes characteristics such as the amount issued or the coupon rate, which are often used as liquidity proxies in the cross-section.

It is easy to see that the default risk of a bond in this specification is fully captured by $\delta_{r,t}$, which is independent of the country. Allowing for different country specific risk premia for a given probability of default would amount to allow for arbitrage opportunities. To see it, consider the spread of an Italian medium-term bond i with a low rating. This would be $\delta_t + \delta_{IT,t} + \delta_{LR,t} + \delta_{MD,t} + \delta_i$, while a high rating bond i' would instead be $\delta_t + \delta_{IT,t} + \delta_{MD,t} + \delta_{i'}$. The difference in yields between the two bonds is of $\delta_{LR,t} + (\delta_i - \delta_{i'})$ and reflects only differences in bond-level default risk. If the same computation would lead to a different premium in another country, then one could engage in contracts buying the cheapest bond and selling the most expensive one to generate profit without taking any risk.

Our main object of interest is the estimated coefficient $\hat{\delta}_{c,t}$, which can be interpreted as the additional cost that non-German corporations have to pay compared to their German counterparts with similar risk profiles. Risk profiles are characterized here by both the observed and unobserved characteristics. In an integrated euro area, wide financial market and provided our risk controls are comprehensive, the country specific time fixed effects should not be significantly different from zero.

We estimate the above panel regression with the within estimator, that uses variations in the explanatory variables over time. Standard errors are clustered at the issuer level.

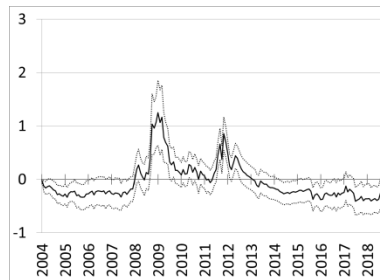
4. Main Results

This section presents the estimates of our main model and introduces our corporate bond market fragmentation index for the euro area. We report in the figures the estimated quantities at monthly frequency, together with the associated 95% confidence intervals derived from standard errors clustered at the level of the bond. We first report three main sets of results, the credit risk premia, the term spread and the country risk premia. We then introduce our corporate bond market fragmentation index.

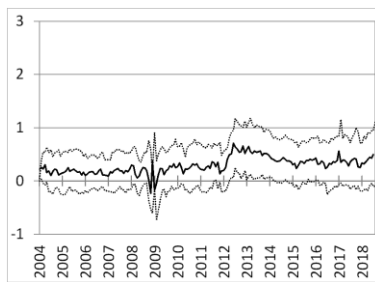
4.1. Credit Risk Premia

Credit risk premia are measured by $\delta_{LR,t}$, which depend only on the difference in the default probabilities among the two rating categories defined in Section 2.3. Figure 5, panel A, plots the evolutions of the estimated credit risk premia, which are normalized at 0 at their beginning in January 2004.

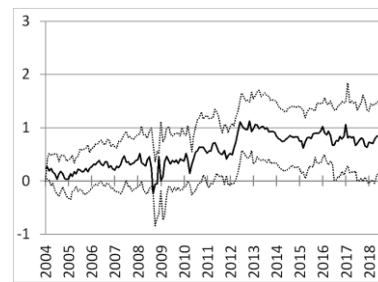
Panel A – Estimated credit risk premium ($\hat{\delta}_{LR,t}$)



Panel B – Estimated duration effect ($\hat{\delta}_{m,t}$)

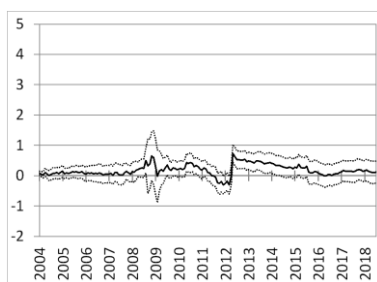


(a) Medium term (3 to 6 years)

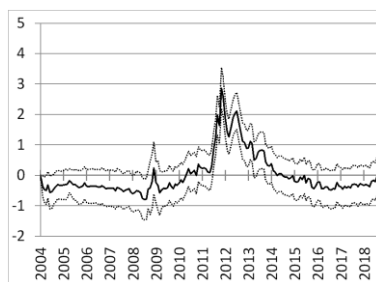


(b) Long term (more than 6 years)

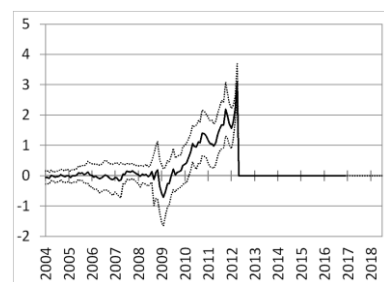
Panel C – Estimated country risk premia ($\hat{\delta}_{c,t}$)



(a) France



(b) Italy



(c) Spain

Figure 5. Main Results. Note: The estimated credit risk premium is based on bonds rated from Baa1 to Baa3 relative to those rated from Aaa to A3. The estimated duration effect is to be interpreted for bonds of maturity longer than 6 years relative to those with maturity less than 3 years. Estimated standard errors are clustered at the bond level. Full lines represent the estimated coefficients and dotted lines represent their confidence intervals at the 5% level.

Credit risk premia started to increase in the first months of 2008, suggesting that a substantial re-pricing of risk was already under way before the Lehman default. Credit risk premia reached their peak in the aftermath of the Lehman bankruptcy, at more than 120 basis points above their level of January 2004. There was a second peak at the end of 2011, associated with the euro area sovereign

debt crisis. However, this second peak is, at about 70 basis points more than the level of January 2004, much smaller than the one observed at the end of 2008. The decrease in the risk premia since summer 2012 indicates that the yields on securities rated from Aaa to A3 gets closer to those on bonds rated from Baa1 to Baa3. Since 2014, the credit risk premia are stable and close to the levels achieved before the 2008 financial crisis. No specific variations are observed in January or March 2015, dates at which the European QE has been announced and implemented.

4.2. Maturity Structure

We now turn to the maturity structure of credit risk⁵. We divide bonds in three categories with maturity of, 1 to 3 years, 3 to 6 years and more than 6 years. Figure 5, panel B, plots the evolution of difference in yields with respect to the 1 to 3 years, that is specific to corporate bonds term structure. These differences have remained relatively stable around zero well into the crisis. The striking development revealed by the estimation is the substantial increases during the first half of 2012, especially for bonds of maturity superior to 6 years. Since the yield curve of the German sovereign remain quite stable at that time, this result indicates a steepening in the yield curve of corporate bonds relative to the yield curve of risk-free securities. It may in particular reflect the impact of 3 years Long Term Refinancing Operations (LTROs thereafter)⁶ put in place on the first quarter of 2012 and the Outright Monetary Transactions (OMTs thereafter)⁷, which would target bonds with maturity up to 3 years, announced in September 2012.

4.3. Country Risk Premia

The coefficient associated with the country dummy represents our main measure of financial fragmentation. Fragmentation was not an issue in 2004 and we set January 2004 as a reference for financial integration in our estimates. The charts in Figure 5, panel C, show that country risk premia did not differ from zero until 2010. That is, even after the start of the financial crisis, following the Lehman Brothers default in September 2008. Sizable country risk premia started to be priced for Italy and Spain (but not for France), only at the start of the euro area sovereign debt crisis in 2010. The observed country risk premia peaked at more than 180 basis points for Italy and at 300 basis points for Spain, during Summer 2012. There is a noticeable decline after the famous “whatever it takes” speech by Mario Draghi on July 2012 and the following announcement of the OMT program by the ECB in September 2012. It is also interesting to notice that according to our measure, there was no major sign of fragmentation for French non-financial corporate bonds. Finally, it is the country risk premia and not the credit risk that dominate spread during sovereign debt crisis. At that time, Italian and Spanish corporates were penalized by the rising defiance of investors toward their sovereign if compared to German and French firms of similar maturity and default risk.

Towards the end of the sample, in August 2018, the country coefficients for Italy have dropped close to pre-sovereign crisis level. Issuers located in Italy face however a progressive increase of their premia, of about 15 bp compared to 2017, since the beginning of 2018. Altogether, financial fragmentation has receded substantially with respect to 2012 and 2013.

4.4. A Corporate Bond Market Fragmentation Index

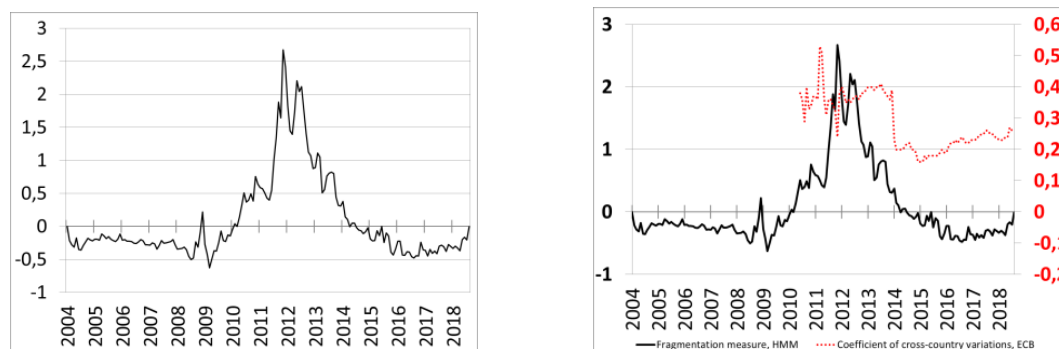
So as to as measure the gap in the yields between similar issuers located either in Germany or in a stressed country such as Italy or Spain, we derive a synthetic index of corporate bond market

⁵ Given that our yields are already defined as differences between corporate bonds and Bunds of similar maturity (see Definition in Section 2), the term structure we analyse here in one of the credit risk which may arise in addition to the term structure of the Bund, our benchmark which we assume to be free of credit risk.

⁶ The 3-years LTROs are announced in December 2011 (ECB (2011)).

⁷ The modalities for the OMTs are described in ECB (2012).

fragmentation as the average of the country premia for Italy and Spain, as described in Section 4.3.⁸ It is interpreted as the additional yield to maturity required by the market for a bond issued by a firm located in Italy or Spain, compared to a bond with the same rating category and the same residual maturity whose issuer is located in Germany.⁹ Figure 6 shows the index (Panel A) and compares it to an alternative measure of fragmentation which is constructed by the ECB (Panel B).



(a) Panel A: Fragmentation index

(b) Panel B: Comparison with the coefficient of cross-country variation computed on bank loan data (dotted red line)

Figure 6. Fragmentation Index. Note: The fragmentation index measures the average premia for bonds with a credit rating above A3 located in either Italy or Spain, compared to bonds of similar credit rating and similar residual maturity whose issuer is located in Germany. The fragmentation index is hence the average of country risk premia for Italy and Spain before June 2012 and country risk premia for Italy afterward. It is normalized at 0 in January 2004. In panel B, we compare it with the coefficient of cross-country variations computed by the ECB using interest rates on new bank loans: <https://www.ecb.europa.eu/stats/money/interest/coeff/html/index.en.html>.

Financial fragmentation has remained negligible until 2010 when the sovereign debt crisis began. The Greek budget deficit was subject to large corrections in October 2009 and the Greek sovereign bonds were downgraded to “junk” status in April 2010. By early 2010, corporate bond markets in Italy and Spain showed signs of contagion that ultimately peaked in summer 2012. It is only after the announcement of the OMTs that fragmentation receded. It reached the pre-crisis levels only in 2014.

Figure 6 also reports the dispersion of bank interest rates on new loans to NFCs (Panel B). It is the ratio of the cross-country standard deviation of bank interest rates on new loans divided by their average level.¹⁰

Both fragmentation indices highlight the increase in the heterogeneity across funding costs from mid-2011. However, our measure which directly reflects market sentiment, peaked in mid-2012 and decrease afterward. The ECB indicator, which reflects self-reported interest rates bank loans, peaked in 2013 and showed a much more gradual decline. This suggests at least that the effects of fragmentation on the cost of issuing corporate debt securities receded much faster. It also indicates that Italian

⁸ Because we do not observe bonds with ratings in the best category for Spain after June 2012, we remove the corresponding country premia of the computation of the index after that date.

⁹ One could think about adding France in one of the two groups. To the extent that estimated country premia for France are close to 0 overall, it would fit in the same group as Germany over the time period studied. The fragmentation index derived this way would be an average of the deviation in bonds’ yields for issuer located in Italy or Spain, with respect to the yield of a risk-free security, the latter being an average return on bonds issued either by the German sovereign or French corporates. This would not be in line with the definition of the credit spread described in Section 2.2, which is computed with respect to the Bund only.

¹⁰ Decomposition of the coefficient of variation according to various dimensions, including loan maturity and borrowers type, can be found at: <https://www.ecb.europa.eu/stats/money/interest/coeff/html/index.en.html>.

and Spanish firms that are too small to issue bonds are more likely to have suffered from financial fragmentation much longer.

5. Further Analyses of the Country Risk Premia

5.1. Robustness

We examine the sensitivity of our results to the measurement of default risk, its endogeneity, the liquidity of each bond.

5.1.1. Finer Rating Grids

A too coarse rating scale can introduce some noise in the estimated country risk premia. A first risk is that the crises induced downgrades of a too limited magnitude to be discernible on a broad rating grid. This occurs for instance if many bonds would be downgraded within the broad rating categories used thus far. The increase in spreads could thus be erroneously attributed to country premia. We address this issue in three ways: first, we use a more detailed set of rating dummies, second, we use all the different ratings and assume the yields are linear in the ratings and third, we use cubic splines.

We measure the rating at a finer level and distinguish now three categories: bonds rated from Aaa to Aa3, those rated from A1 to A3 and those rated from Baa1 to Baa3. Figure 7, panel A, shows the estimated risk premia and Panel B the associated country premia. The latter is consistent with the estimates reported in Figure 5.

Panel A – Estimates assuming 3 rating categories

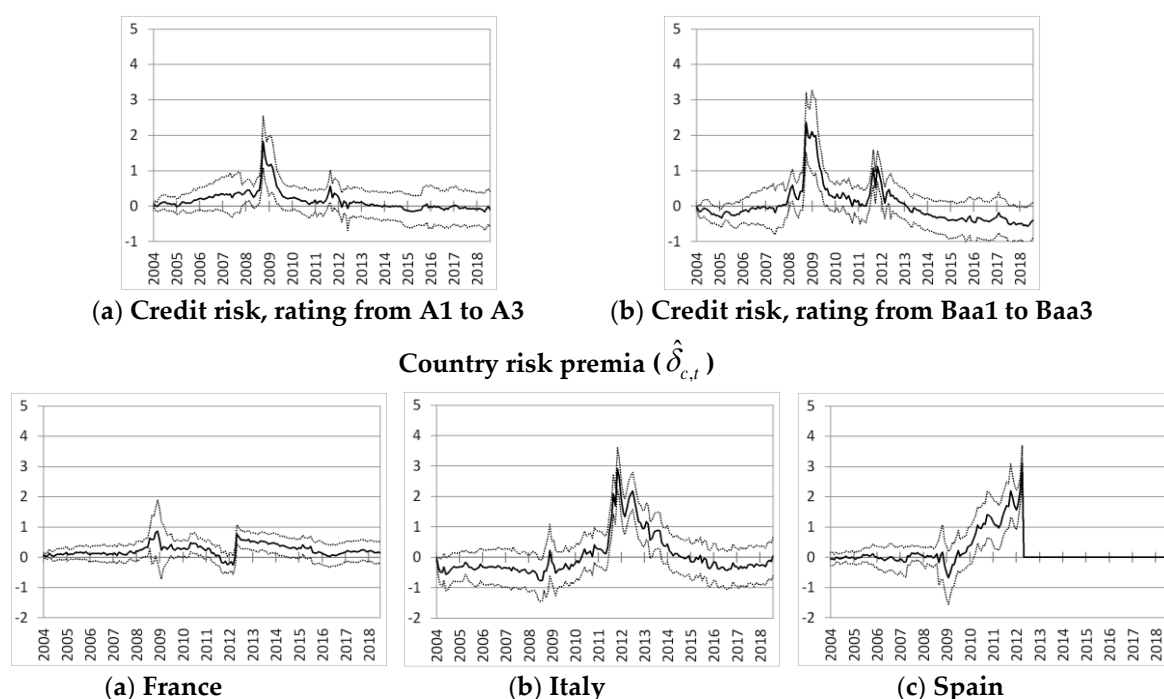
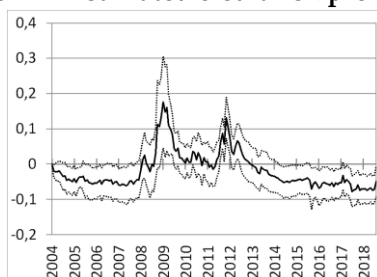


Figure 7. Results with a finer rating grid. Note: The estimated credit risk premium relative to those rated from Aaa to Aa3. Estimated standard errors are clustered at the bond level. Full lines represent the estimated coefficients and dotted lines represent their confidence intervals at the 5% level.

In the same spirit, we estimate the model with a continuous rating grid. We therefore assign numeric values to each rating category, from 1 for Aaa to 10 for Baa3. The ensuing variable is assumed to influence corporate spreads in a linear way. The estimated credits risk effects are reported in Figure 8.

Again, the country risk premia are very similar to their estimates in reported above. The stability of the results is in line with the design of the two rating categories, which induces transition intensities similar to the one obtained with Moody's ratings.

Panel A – Estimated credit risk premium



Panel B – Estimated country risk premia ($\hat{\delta}_{c,t}$)

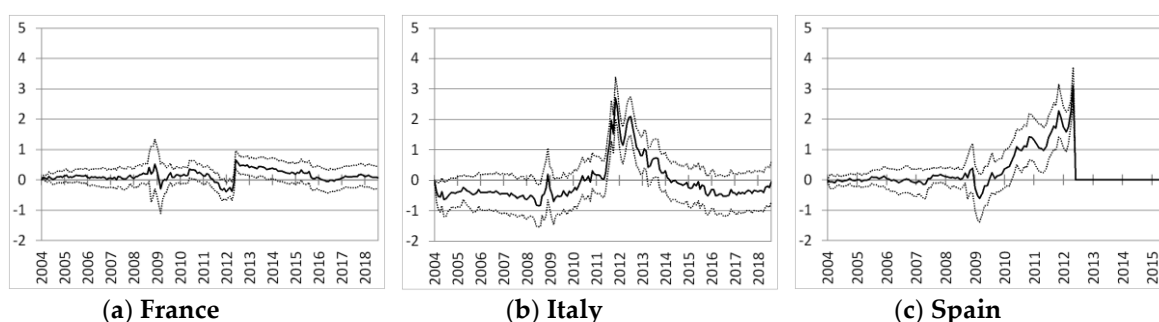


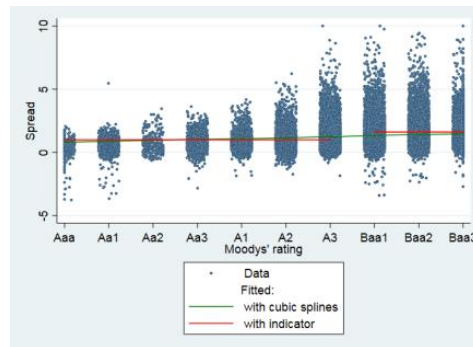
Figure 8. Results with a continuous rating scale. Note: Moody's ratings are here numeric, where Aaa = 1, Aa1 = 2, Aa2 = 3, Aa3 = 4, A1=5, A2 = 6, A3 = 7, Baa1 = 8, Baa2 = 9, Baa3 = 10. Estimated standard errors are clustered at the bond level. Full lines represent the estimated coefficients and dotted lines represent their confidence intervals at the 5% level.

Finally, we estimate a semi-parametric model where the spreads depend on the qualitative information represented by the rating categories through cubic splines. This accrued flexibility comes at the cost of restricting the influence of the ratings on the spread to be constant over time. A cubic spline is a function that is defined by 3-order polynomials over rating categories. Intuitively, fitting a spline function is like outlining the shape of a scatter plot painted on a wooden panel by placing a few nails and connecting them with a flexible metal strip. Figure 9, panel A, represents the scatter plot of our data along with the spreads, averaged over time, predicted either under our benchmark model with two rating categories or under a spline function. We can see that the two modelling strategies provide a very similar estimate of the country premia.

5.1.2. The Role of Liquidity

One important determinant of yields is the liquidity of the bond. In principle, this is controlled for by a bond fixed effect. However, the latter is, by definition fixed throughout the sample. We therefore re-estimate model [1] including as additional control for the time varying depth of market for each bond, measured by the amount outstanding not yet repaid. Figure 10 reports the estimated country premia, that are globally unaffected by the proxy for liquidity.

Panel A – Estimated dependence of the spreads on the ratings



Panel B: Estimated country risk premia ($\hat{\delta}_{c,t}$)

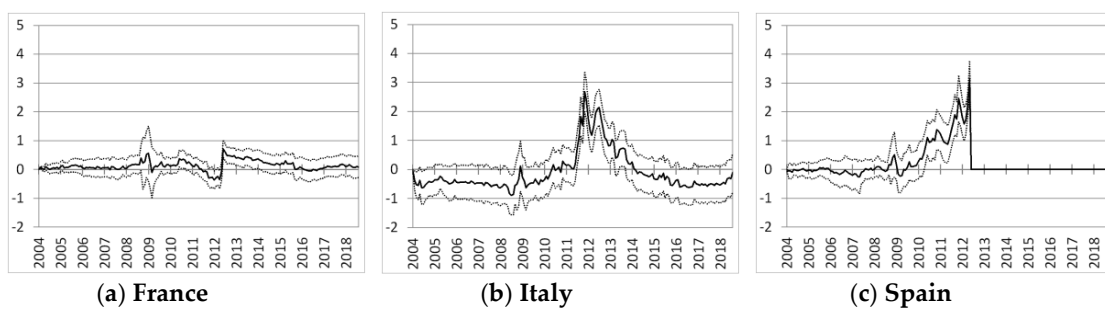


Figure 9. Semiparametric influence of the ratings. Note: Spreads depend on the ratings through a cubic spline function, with knots at Aa2, A2 and Baa2. Estimated standard errors are clustered at the bond level. Full lines represent the estimated coefficients and dotted lines represent their confidence intervals at the 5% level.

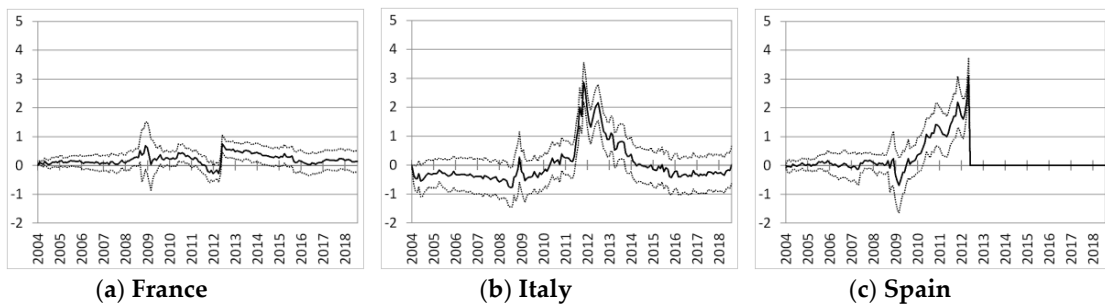


Figure 10. Estimated country risk premia ($\hat{\delta}_{c,t}$) while controlling for liquidity at the bond level. Note: Estimated standard errors are clustered at the bond level. Full lines represent the estimated coefficients and dotted lines represent their confidence intervals at the 5% level.

5.1.3. Endogeneity of the Default Probability

Changes in the rating can be correlated with shocks on the spread. For instance, this occurs if the ratings are revised due to changes in the bond market value. It raises a potential endogeneity concern that we assess by retaining the first observed rating for each bond. The ensuing variable is constant over time and thus uncorrelated with the errors.¹¹

¹¹ The rating variable does not vary over time for a given bond. Nonetheless, since the corresponding dummies are monthly, they take different values from one month to the other. The within estimator can thus estimate the corresponding coefficients, despite the underlying variable is constant.

The coefficients on credit risk premia reported in Figure 11 are very similar to the baseline estimates. Again, the credit risk premia increase mostly during the 2008 crisis and to a lesser extent in 2012. Country premia are reported in Figure 11, panel B. They are close to the estimates obtained under the benchmark model.

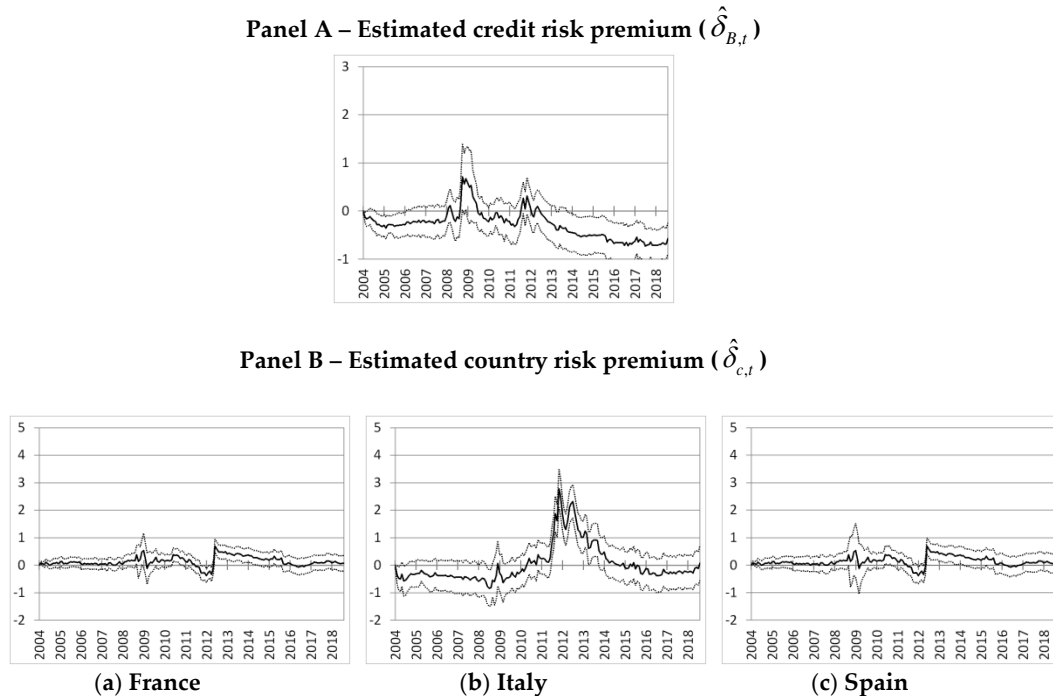


Figure 11. Results controlling for endogeneity in the default probability. Note: We retain the first observed rating for each bond so as to control for the endogeneity of the rating. Estimated standard errors are clustered at the bond level. Full lines represent the estimated coefficients and dotted lines represent their confidence intervals at the 5% level.

5.1.4. Sensitivity to Transitions from One Dummy Variable to Another

Parameters $\delta_{r,t}$ and $\delta_{m,t}$ measure changes in the spread when: (i) time passes from $t - 1$ to t for bonds with same rating or maturity class at both dates, (ii) a bond is downgraded at t or (iii) its' class of residual maturity changes from LT to MT , or from MT to the reference category, at time t . We ensure now the estimated parameters measure solely the effect of time and are not driven by transitions from a rating category or a maturity category to another (cases (ii) and (iii) above). To this aim, we drop the observations where a transition occurs. Again, Figure 12 shows that the results are very similar to those obtained with our baseline specification.

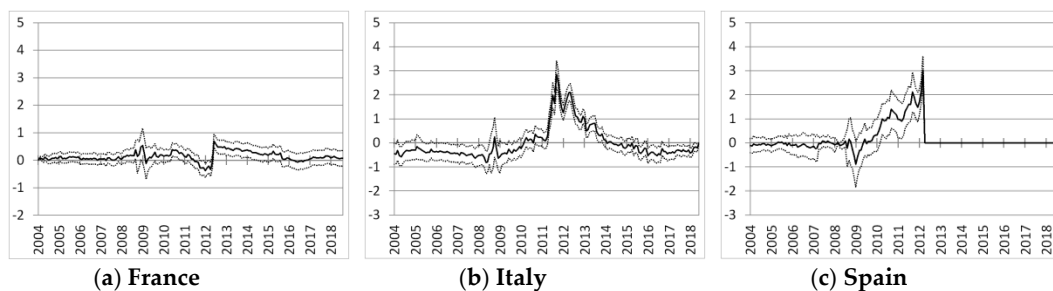


Figure 12. Estimated country risk premia ($\hat{\delta}_{c,t}$) excluding transition dates. Note: Subsample excluding rating or maturity migrations. Estimated standard errors are clustered at issuer level. Full lines represent the estimated coefficients and dotted lines represent their confidence intervals at the 5% level.

5.1.5. Selection Biases

One can wonder whether the increase in the country risk premia during the sovereign debt crisis and then its decrease documented in the previous part of the paper is an artefact driven by a tightening in the access to the financial markets. If the only corporate able to issue bonds after the sovereign debt crisis are those in a very good financial situation, a decrease in the premia could indicate only an increase in the quality of the new issuers.

We therefore estimate the main specification using a subsample restricted to bonds issued before December 2007. Intuitively, if the access to the bond market was easier before the crisis, we would expect these bonds to still face a higher risk premia than bonds issued after 2008. Their impact on the estimates obtained with the full sample could nonetheless be negligible if their influence is outweighed by the influence of bonds issued since the crisis by firms with better financial statements.

The country risk premia estimated for bonds issued before the crisis (Figure 13) have the same profile than those obtained with the full sample. The confidence intervals estimated over 2014 widen vastly for issuers located in Spain. It highlights that there are very few bonds issued in Spain prior to 2008 with a maturity of more than 6 years.

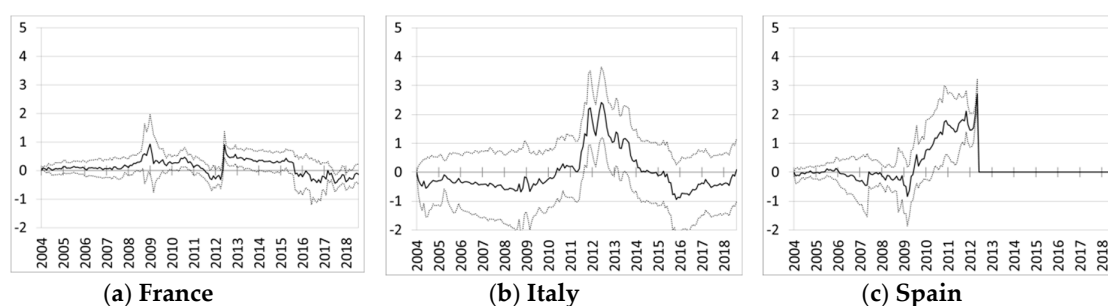


Figure 13. Estimated country risk premia ($\hat{\delta}_{c,t}$) on the sample of bonds issued before the December 2007. Note: Estimated standard errors are clustered at issuer level. Full lines represent the estimated coefficients and dotted lines represent their confidence intervals at the 5% level.

6. Conclusions

This article uses corporate bond markets to assess the fragmentation of the euro area financial markets. We decompose yields of non-financial corporate bonds to disentangle country-specific premia from other observable determinants of risk. We examine the performance of our approach under various changes in the modelling strategy and provide simple measure of financial fragmentation.

Financial fragmentation in the corporate bond market began in the first half of 2010 at the start of the sovereign debt crisis. The fragmentation peaked in 2011 and 2012. It receded gradually following the OMT in September 2012. Our results show that the large changes in the country premia over 2011–2012 were driven by differences in the expectations of a sovereign default rather than by changes in corporate issuer fundamentals, such as their creditworthiness. Because high sovereign interest rates increase their debt burden, sovereign default probabilities go in the same direction than sovereign funding costs. This may lead to multiple equilibria, one equilibria with both a low sovereign funding cost and a low probability of default and a second equilibria with both a high sovereign funding cost and a high probability of default (Calvo 1988). From this point of view, the OMTs are a success to the extent that their announcement removed the self-fulfilling expectations that could have led some Euro area countries to the adverse equilibrium.

These results show clear evidence that the European sovereign debt crisis has reversed the process of financial integration in the Euro area. Bondholders asked the Italian and Spanish issuer to pay a significant premium with respect to their German (and to a lesser extent French) counterparts to hold their bonds, even if they display similar risk profiles (including default probability).

Our results confirm that the sovereign debt crisis has introduced heterogeneity in the transmission of monetary policy in the euro area. The adoption and the implementation of non-standard monetary policy measures in the euro area could take this additional piece of information into account. Our synthetic indicator can also be used to monitor the effectiveness of the non-standard measures in addressing the heterogeneity on funding conditions in the various countries of the euro area.

Supplementary Materials: The following are available online: http://horny.economics.free.fr/donnees/fragmentation_indicator.xlsx.

Author Contributions: G.H., S.M. and B.M.; Methodology, G.H. and S.M.; Software, G.H.; Validation, G.H., S.M. and B.M.; Formal Analysis, G.H., S.M. and B.M.; Investigation, G.H., S.M. and B.M.; Resources, B.M.; Data Curation, G.H.; Writing-Original Draft Preparation, G.H.; Writing-Review & Editing, S.M. and B.M.; Visualization, G.H., S.M. and B.M.; Supervision, G.H., S.M. and B.M.; Project Administration, G.H., S.M. and B.M.

Funding: This research received no external funding.

Acknowledgments: We would like to thank Bo Becker, Ralph Koijen, Philippe Mueller, Jean-Paul Renne, Martin Wagner, Andrea Zaghini and participants in Banque de France seminar, Asymmetries in the European Union workshop, European Economic Association (EEA) conference, International Association for Applied Econometrics (IAAE) conference, European Central Banking Network policy research conference, for detailed and helpful suggestions. The views expressed in this article are those of the authors and do not necessarily reflect the views of BIS, ECB or Banque de France.

Conflicts of Interest: The authors declare no conflict of interest.

References

- Acharya, Viral V., and Lasse Heje Pedersen. 2005. Asset pricing with liquidity risk. *Journal of Financial Economics* 77: 375–410. [CrossRef]
- Acharya, Viral, Itamar Drechsler, and Philipp Schnabl. 2014. A Pyrrhic Victory? Bank bailouts and sovereign credit risk. *Journal of Finance* 69: 2689–739. [CrossRef]
- Adelino, Manuel, and Miguel A. Ferreira. 2016. Bank Ratings and Lending Supply: Evidence from Sovereign Downgrades. *The Review of Financial Studies* 29: 1709–46. [CrossRef]
- Aizenman, Joshua, Michael Hutchison, and Yothin Jinjark. 2013. What is the risk of European sovereign debt defaults? Fiscal space, CDS spreads and market pricing of risk. *Journal of International Money and Finance* 34: 37–59. [CrossRef]
- Albagli, Elias, Christian Hellwig, and Aleh Tsyvinski. 2014. Dynamic Dispersed Information and the Credit Spread Puzzle. Available online: <https://www.nber.org/papers/w19788> (accessed on 24 June 2014).
- Almeida, Heitor, Igor Cunha, Miguel A. Ferreira, and Felipe Restrepo. 2014. The Real Effects of Sovereign Downgrades. Available online: https://papers.ssrn.com/sol3/papers.cfm?abstract_id=2349051 (accessed on 11 May 2015).
- Ang, Andrew, and Francis A. Longstaff. 2013. Systemic sovereign credit risk: Lessons from the U.S. and Europe. *Journal of Monetary Economics* 60: 493–510. [CrossRef]
- Baele, Lieven, Annalisa Ferrando, Peter Hördahl, Elizaveta Krylova, and Cyril Monnet. 2004. Measuring European Financial Integration. *Oxford Review of Economic Policy* 20: 509–30. [CrossRef]
- Bao, Jack, Jun Pan, and Jiang Wang. 2011. The Illiquidity of Corporate Bonds. *The Journal of Finance* 66: 911–46. [CrossRef]
- Bar-Isaac, Heski, and Joel Shapiro. 2013. Ratings quality over the business cycle. *Journal of Financial Economics* 108: 62–78. [CrossRef]
- Bayoumi, Tamim, Morris Goldstein, and Geoffrey Woglom. 1995. Do credit markets discipline sovereign borrowers? Evidence from U.S. states. *Journal of Money, Credit and Banking* 27: 1046–59. [CrossRef]
- Becker, Bo, and Victoria Ivashina. 2014. Financial repression in the European sovereign debt crisis. *Review of Finance* 22: 83–115. [CrossRef]
- Bernoth, Kerstin, Jürgen Von Hagen, and Ludger Schuknecht. 2012. Sovereign risk premiums in the European government bond market. *Journal of International Money and Finance* 31: 975–95. [CrossRef]
- Bleaney, Michael, Paul Mizen, and Veronica Veleanu. 2012. Bond Spreads as Predictors of Economic Activity in Eight European Economies. *The Economic Journal* 126: 2257–91. [CrossRef]

- Bofondi, Marcello, Luisa Carpinelli, and Enrico Sette. 2013. Credit Supply during a Sovereign Debt Crisis. Available online: https://papers.ssrn.com/sol3/papers.cfm?abstract_id=2259657 (accessed on 31 July 2015).
- Borgy, Vladimir, Thomas Laubach, Jean-Stéphane Mésonnier, and Jean-Paul Renne. 2011. Fiscal sustainability, default risk and euro area sovereign bond spreads. Available online: https://papers.ssrn.com/sol3/papers.cfm?abstract_id=1955936 (accessed on 15 January 2012).
- Broto, Carmen, and Luis Molina. 2014. Sovereign ratings and their asymmetric response to fundamentals. *Journal of Economic Behavior & Organization* 130: 206–24.
- Calvo, Guillermo A. 1988. Servicing the Public Debt: The Role of Expectations. *American Economic Review* 78: 647–61.
- Coeuré, Benoît. 2014. Current challenges for the conduct of monetary policy in the euro area. Paper presented at the Conference ECB and its Watchers, Frankfurt, Germany, March 12.
- Collin-Dufresne, Pierre, Robert S. Goldstein, and J. Spencer Martin. 2001. The Determinants of Credit Spread Changes. *The Journal of Finance* 56: 2177–207. [CrossRef]
- De Santis, Roberto A. 2012. The Euro Area Sovereign Debt Crisis: Safe Haven, Credit Rating Agencies and the Spread of the Fever from Greece, Ireland and Portugal. Available online: <https://www.ecb.europa.eu/pub/pdf/scpwps/ecbwp1419.pdf> (accessed on 31 March 2015).
- De Santis, Roberto A. 2015. A Measure of Redenomination Risk. Available online: https://papers.ssrn.com/sol3/papers.cfm?abstract_id=2620732 (accessed on 18 March 2015).
- De Santis, Roberto A. 2018. Unobservable country bond premia and fragmentation. *Journal of International Money and Finance* 82: 1–25. [CrossRef]
- Dewachter, Hans, Leonardo Iania, Marco Lyrío, and Maite de Sola Perea. 2015. A macro-financial analysis of the euro area sovereign bond market. *Journal of Banking and Finance* 50: 308–25. [CrossRef]
- Dick-Nielsen, Jens, Peter Feldhütter, and David Lando. 2012. Corporate bond liquidity before and after the onset of the Subprime Crisis. *Journal of Financial Economics* 103: 471–92. [CrossRef]
- Duffie, Darrell, Leandro Saita, and Ke Wang. 2007. Multi-period corporate default prediction with stochastic covariates. *Journal of Financial Economics* 83: 635–65. [CrossRef]
- ECB. 2011. Introductory statement to the press conference. Paper Presented at Press Conferences in 2011, Frankfurt, Germany, December 8.
- ECB. 2012. Introductory statement to the press conference. Paper Presented at Press Conferences in 2012, Frankfurt, Germany, September 6.
- ECB. 2013. *Annual Report 2012*. Frankfurt: European Central Bank, March 1.
- Ehrmann, Michael, and Marcel Fratzscher. 2015. Euro Area Government Bonds - Integration and Fragmentation during the Sovereign Debt Crisis. Available online: https://papers.ssrn.com/sol3/papers.cfm?abstract_id=2603271 (accessed on 11 May 2015).
- Elton, Edwin J., Martin J. Gruber, Deepak Agrawal, and Christopher Mann. 2001. Explaining the rate spread on corporate bond. *The Journal of Finance* 56: 247–77. [CrossRef]
- Faini, Riccardo. 2006. Fiscal policy and interest rates in Europe. *Economic Policy* 21: 443–89. [CrossRef]
- Friewald, Nils, Rainer Jankowitsch, and Marti G. Subrahmanyam. 2012. Illiquidity or credit deterioration: A study of liquidity in the US corporate bond market during financial crises. *Journal of Financial Economics* 105: 18–36. [CrossRef]
- Gârleanu, Nicolae, and Lasse Heje Pedersen. 2013. Dynamic trading with predictable returns and transaction costs. *The Journal of Finance* 68: 2309–40. [CrossRef]
- Giesecke, Kay, Francis A. Longstaff, Stephen Schaefer, and Ilya Strebulaev. 2011. Corporate bond default risk: A 150-year perspective. *Journal of Financial Economics* 102: 233–50. [CrossRef]
- Gilchrist, Simon, and Benoit Mojon. 2018. Credit risk in the Euro area. *The Economic Journal* 128: 118–58. [CrossRef]
- Gilchrist, Simon, and Egon Zakrajšek. 2012. Credit Spreads and Business Cycle Fluctuations. *American Economic Review* 102: 1692–720. [CrossRef]
- Giordano, Raffaella, Marcello Pericoli, and Pietro Tommasino. 2013. Pure or wake-up-call contagion? Another look at the EMU sovereign debt crisis. *International Finance* 16: 131–60. [CrossRef]
- He, Zhiguo, and Konstantin Milbradt. 2014. Endogenous liquidity and defaultable bonds. *Econometrica* 82: 1143–508.
- Huang, Jing-Zhi, and Ming Huang. 2012. How much of the corporate-treasury yield spread is due to credit risk? *Review of Asset Pricing Studies* 2: 153–202. [CrossRef]

- Koopman, Siem Jan, Roman Kräussl, André Lucas, and André B. Monteiro. 2009. Credit cycles and macro fundamentals. *Journal of Empirical Finance* 16: 42–54. [CrossRef]
- Lo, Andrew W., Harry Mamaysky, and Jiang Wang. 2004. Asset prices and trading volume under fixed transaction costs. *Journal of Political Economy* 112: 1054–90. [CrossRef]
- Manganelli, Simone, and Guido Wolswijk. 2009. What drives spreads in the euro area government bond market? *Economic Policy* 24: 191–240. [CrossRef]
- Manzo, Gerardo. 2013. Political Uncertainty, Credit Risk Premium and Default Risk. Available online: <http://ssrn.com/abstract=2376608> (accessed on 23 April 2014).
- Pianeselli, Daniele, and Andrea Zaghini. 2014. The cost of firms' debt financing and the global financial crisis. *Finance Research Letter* 11: 74–83. [CrossRef]
- Zaghini, Andrea. 2016. Fragmentation and heterogeneity in the euro-area corporated bond market: Back to normal? *Journal of Financial Stability* 23: 51–61. [CrossRef]



© 2018 by the authors. Licensee MDPI, Basel, Switzerland. This article is an open access article distributed under the terms and conditions of the Creative Commons Attribution (CC BY) license (<http://creativecommons.org/licenses/by/4.0/>).