

Toyoshima, Yuki

**Article**

## Testing for causality-in-mean and variance between the UK housing and stock markets

Journal of Risk and Financial Management

**Provided in Cooperation with:**

MDPI – Multidisciplinary Digital Publishing Institute, Basel

*Suggested Citation:* Toyoshima, Yuki (2018) : Testing for causality-in-mean and variance between the UK housing and stock markets, Journal of Risk and Financial Management, ISSN 1911-8074, MDPI, Basel, Vol. 11, Iss. 2, pp. 1-10,  
<https://doi.org/10.3390/jrfm11020021>

This Version is available at:

<https://hdl.handle.net/10419/238868>

**Standard-Nutzungsbedingungen:**

Die Dokumente auf EconStor dürfen zu eigenen wissenschaftlichen Zwecken und zum Privatgebrauch gespeichert und kopiert werden.

Sie dürfen die Dokumente nicht für öffentliche oder kommerzielle Zwecke vervielfältigen, öffentlich ausstellen, öffentlich zugänglich machen, vertreiben oder anderweitig nutzen.

Sofern die Verfasser die Dokumente unter Open-Content-Lizenzen (insbesondere CC-Lizenzen) zur Verfügung gestellt haben sollten, gelten abweichend von diesen Nutzungsbedingungen die in der dort genannten Lizenz gewährten Nutzungsrechte.

**Terms of use:**

*Documents in EconStor may be saved and copied for your personal and scholarly purposes.*

*You are not to copy documents for public or commercial purposes, to exhibit the documents publicly, to make them publicly available on the internet, or to distribute or otherwise use the documents in public.*

*If the documents have been made available under an Open Content Licence (especially Creative Commons Licences), you may exercise further usage rights as specified in the indicated licence.*



<https://creativecommons.org/licenses/by/4.0/>



Article

# Testing for Causality-In-Mean and Variance between the UK Housing and Stock Markets

Yuki Toyoshima

Shinsei Bank, Limited, 4-3, Nihonbashi-muromachi 2-chome, Chuo-ku, Tokyo 103-8303, Japan;  
Yuki.Toyoshima@shinseibank.com

Received: 24 March 2018; Accepted: 6 April 2018; Published: 26 April 2018



**Abstract:** This paper employs the two-step procedure to analyze the causality-in-mean and causality-in-variance between the housing and stock markets of the UK. The empirical findings make two key contributions. First, although previous studies have indicated a one-way causal relation from the housing market to the stock market in the UK, this paper discovered a two-way causal relation between them. Second, a causality-in-variance as well as a causality-in-mean was detected from the housing market to the stock market.

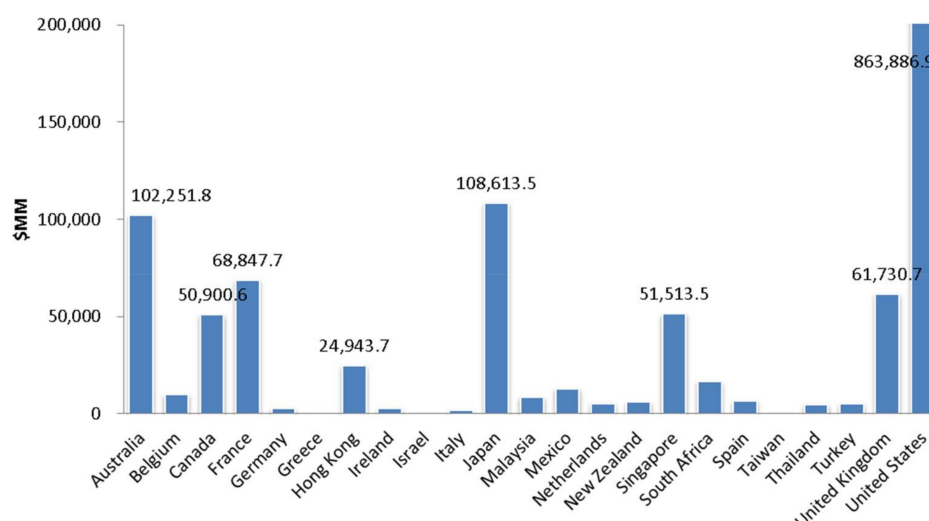
**Keywords:** causality-in-variance; cross-correlation function; housing and stock markets

**JEL Classification:** C22; E44; G11

## 1. Introduction

Although major financial institutions experienced the subprime mortgage crisis and Lehman Brothers went out of business, the market for real estate has grown steadily in the last decade. As indicated in Figure 1, the UK is one of the largest markets in the world, followed by the US, Japan, Australia, and France. In addition, since the UK decided to withdraw from the European Union (“Brexit”), based on a referendum conducted on 23 June 2016, market participants and macroeconomic policymakers have focused more on its impact on the UK real estate market. Therefore, examining the relation between the UK real estate and other financial markets is useful for both practitioners and academic researchers. Many previous empirical studies have explored the relation between the real estate and stock markets. Regarding this relation, we need to understand the following two effects. First, researchers who support the “wealth effect” claim that households benefiting from unanticipated gains in stock prices tend to increase housing demand. Second, researchers who support the “credit price effect” claim that an increase in real estate prices can stimulate economic activity and the future profitability of companies by raising the value of collateral and reducing the cost of borrowing for both companies and households. Thus, identifying the direction of causality between the real estate and stock markets as well as the number of lags is essential.

As mentioned above, many previous empirical studies have analyzed the relation between the real estate and stock markets (e.g., [Gyourko and Keim \(1992\)](#); [Ibbotson and Siegel \(1984\)](#); [Ibrahim \(2010\)](#); [Kapopoulos and Siokis \(2005\)](#); [Lin and Fuerst \(2014\)](#); [Liow \(2006\)](#); [Liow \(2012\)](#); [Liow and Yang \(2005\)](#); [Louis and Sun \(2013\)](#); [Okunev and Wilson \(1997\)](#); [Okunev et al. \(2000\)](#); [Quan and Titman \(1999\)](#); [Su \(2011\)](#); and [Tsai et al. \(2012\)](#)). To the best of our knowledge, no studies have analyzed the causality-in-variance between the real estate and stock markets. As indicated by [Ross \(1989\)](#), volatility provides useful data on the flow of information. For institutional investors such as banks, life insurance companies, hedge funds, and pension funds, deeper knowledge of spillover mechanisms for volatility can be useful for diversifying investments and hedge risk.



**Figure 1.** Market capitalization of the S&P Global REIT (Real Estate Investment Trust) Index in August 2016. Data Source: S&P Capital IQ.

Table 1 summarizes the previous studies. Academic research on the relation between the real estate and stock markets has been undertaken since the 1980s. In this research, almost all studies have focused on the cointegration relation between the two markets. In recent years, not only a linear cointegration method but also a nonlinear cointegration method has been undertaken (e.g., [Liow and Yang \(2005\)](#); [Okunev et al. \(2000\)](#); [Su \(2011\)](#); and [Tsai et al. \(2012\)](#)). Using data from four major Asian countries (Japan, Hong Kong, Singapore, and Malaysia), [Liow and Yang \(2005\)](#) analyzed the relation between the securitized real estate and stock markets. Moreover, they conducted a fractional cointegration analysis of two asset markets. Furthermore, they revealed that fractional cointegration exists between the securitized real estate and stock markets of Hong Kong and Singapore. [Okunev et al. \(2000\)](#) examined the dynamic relation between the US real estate and S&P 500 stock index from 1972 to 1998 by conducting both linear and nonlinear causality tests. While the linear test results generally indicate a unidirectional relation from the real estate market to the stock market, nonlinear causality tests indicate a strong unidirectional relation from the stock market to the real estate market. [Su \(2011\)](#) used a nonparametric rank test to empirically investigate the long-run nonlinear equilibrium relation within Western European countries. Nonlinear causality test results demonstrated that unidirectional causality from the real estate market to the stock market exists in the Germany, the Netherlands, and the UK. Unidirectional causality from the stock market to the real estate market was observed in Belgium and Italy, and feedback effects were discovered in France, Spain, and Switzerland. [Tsai et al. \(2012\)](#) used nonlinear models to analyze the long-term relation between the US housing and stock markets. Empirical results demonstrated that the wealth effect between the stock and housing markets is more significant when the stock price outperforms the housing price by an estimated threshold level.

This paper uses the cross-correlation function (CCF) approach developed by [Cheung and Ng \(1996\)](#) to examine the causal relation between the housing and stock markets in the UK. This empirical technique has been widely applied in the examination of stock, fixed income, and commodities markets, business cycles, and derivatives.<sup>1</sup> While the test of Granger causality techniques examines the causality-in-mean, the CCF approach detects both the causality-in-mean and causality-in-variance.<sup>2</sup>

<sup>1</sup> Some examples include studies by [Hamori \(2003\)](#), [Alagandar and Bhar \(2003\)](#), [Bhar and Hamori \(2005, 2008\)](#), [Hoshikawa \(2008\)](#), [Nakajima and Hamori \(2012\)](#), [Miyazaki and Hamori \(2013\)](#), [Tamakoshi and Hamori \(2014\)](#), and [Toyoshima and Hamori \(2012\)](#).

<sup>2</sup> See [Hafner and Herwartz \(2008\)](#) and [Chang and McAleer \(2017a\)](#) for the causality-in-variance analysis using multivariate GARCH models.

The CCF approach can detect the direction of causality as well as the number of leads/lags involved.<sup>3</sup> Furthermore, it permits flexible specification of the innovation process and nondependence on normality.<sup>4</sup>

**Table 1.** Summaries of previous studies.

Authors	Empirical Technique	Country	Principal Results
Gyourko and Keim (1992)	Market regression model	the US	Lagged equity REIT and stock return are predictors of property index.
Ibbotson and Siegel (1984)	Correlation, Regression	the US	Low correlation between the real estate and stocks, bonds is found.
Ibrahim (2010)	VAR model, Granger causality tests	Thailand	Unidirectional causality from stock prices to house prices is found.
Kapopoulos and Siokis (2005)	VAR model, Granger causality tests	Greece	Unidirectional causality from stock prices to house prices is found.
Lin and Fuerst (2014)	Johansen, Gregory-Hansen, Nonlinear cointegration tests	9 Asian countries	Market segmentation is observed in China, Japan, Thailand, Malaysia, Indonesia and South Korea.
Liow (2006)	ARDL cointegration tests	Singapore	Contemporaneous long-term relationship between the stock market, residential and office property prices is found.
Liow (2012)	Asymmetric DCC model	8 Asian countries	Conditional real estate-stock correlations are time varying and asymmetric in some cases.
Liow and Yang (2005)	FIVEC model, VEC model	4 Asian countries	FIVECM improves the forecasting performance over conventional VECM models.
Louis and Sun (2013)	Fama–MacBeth procedure	the US	Firms' long-term abnormal stock returns are negatively related to past growth in housing prices.
Okunev and Wilson (1997)	Cointegration tests	the US	Weak and nonlinear relationship between the stock and real estate markets is found.
Okunev et al. (2000)	Linear and nonlinear causality tests	the US	Strong uni-directional relationship from the stock market to the real estate market is found in nonlinear causality test.
Quan and Titman (1999)	Cross-sectional regression	17 countries	Positive relation between real estate values and stock returns is found.
Su (2011)	TEC model, Non-parametric rank test	8 Western European countries	Unidirectional causality from the real estate markets to the stock market is found in the Germany, Netherlands and the UK.
Tsai et al. (2012)	M-TAR cointegration model	the US	Threshold cointegration relationship between the housing market and the stock market is found.

The remainder of this paper is organized as follows. The next section presents the CCF approach. In the following sections, we discuss the data, descriptive statistics, and results of the unit root tests and provide a description of the autoregressive-exponential generalized autoregressive conditional heteroskedasticity (AR-EGARCH) specification. Thereafter, we present the empirical results and discuss the findings. Finally, a summary and conclusion are presented in the closing section.

## 2. Empirical Techniques

Following Cheung and Ng (1996), suppose there are two stationary and ergodic time series,  $X_t$  and  $Y_t$ . When  $I_{1,t}$ ,  $I_{2,t}$ , and  $I_t$  are three information sets defined by  $I_{1,t} = (X_t, X_{t-1}, \dots)$ ,  $I_{2,t} = (Y_t, Y_{t-1}, \dots)$ , and  $I_t = (X_t, X_{t-1}, \dots, Y_t, Y_{t-1}, \dots)$ ,  $Y$  is said to cause  $X$  in the mean if

$$E[X_t | I_{1,t-1}] \neq E[X_t | I_{t-1}]. \quad (1)$$

<sup>3</sup> One purpose of this paper is to detect the number of leads/lags, so we do not adopt Hong (2001) approach.

<sup>4</sup> See also Hamori (2003).

Similarly,  $X$  is said to cause  $Y$  in the mean if

$$E[Y_t|I_{2,t-1}] \neq E[Y_t|I_{t-1}]. \quad (2)$$

Feedback effect in the mean occurs if  $Y$  causes  $X$  in the mean and  $X$  causes  $Y$  in the mean. On the other hand,  $Y$  is said to cause  $X$  in the variance if

$$E[(X_t - \mu_{X,t})^2|I_{1,t-1}] \neq E[(X_t - \mu_{X,t})^2|I_{t-1}], \quad (3)$$

where  $\mu_{X,t}$  denotes the mean of  $X_t$  conditioned on  $I_{1,t-1}$ . Similarly,  $X$  is said to cause  $Y$  in the variance if

$$E[(Y_t - \mu_{Y,t})^2|I_{2,t-1}] \neq E[(Y_t - \mu_{Y,t})^2|I_{t-1}], \quad (4)$$

where  $\mu_{Y,t}$  denotes the mean of  $Y_t$  conditioned on  $I_{2,t-1}$ . Feedback effect in the variance occurs if  $X$  causes  $Y$  in the variance and  $Y$  causes  $X$  in the variance.

We impose the following structure in Equation (1) through Equation (4) to detect causality-in-mean and causality-in-variance. Suppose  $X_t$  and  $Y_t$  are written as

$$X_t = \mu_{X,t} + \sqrt{h_{X,t}}\varepsilon_t, \quad (5)$$

$$Y_t = \mu_{Y,t} + \sqrt{h_{Y,t}}\zeta_t, \quad (6)$$

where  $\{\varepsilon_t\}$  and  $\{\zeta_t\}$  are two independent white noise processes with zero mean and unit variance.

For the causality-in-mean test, we have the standardized innovation as follows:

$$u_t = (X_t - \mu_{X,t})^2 / h_{X,t} = \varepsilon_t^2, \quad (7)$$

$$v_t = (Y_t - \mu_{Y,t})^2 / h_{Y,t} = \zeta_t^2, \quad (8)$$

with  $\varepsilon_t$  and  $\zeta_t$  being the standardized residuals. Since these residuals are unobservable, we use their estimates. Next, using their estimates, we calculate the sample cross-correlation of the squared standardized residual series,  $r_{uv}(k)$ , and the sample cross-correlation calculated using the standardized residual series,  $r_{\varepsilon\zeta}(k)$ , at time lag  $k$ .

The quantities  $r_{\varepsilon\zeta}(k)$  and  $r_{uv}(k)$  are used to detect causality-in-mean and causality-in-variance, respectively, using the CCF approach.

First, we can detect the null hypothesis that there is no causality-in-mean using the following CCF statistic:

$$CCF = \sqrt{T} \cdot r_{\varepsilon\zeta}(k). \quad (9)$$

If the CCF test statistic is below the critical value calculated using the standard normal distribution, then we cannot reject the null hypothesis.

Second, we can detect the null hypothesis that there is no causality-in-variance using the test statistic, which is given by

$$CCF = \sqrt{T} \cdot r_{uv}(k). \quad (10)$$

If the CCF test statistic is below the critical value calculated using the standard normal distribution, then we cannot reject the null hypothesis.

The CCF approach is divided into two steps. First, we estimate univariate time-series models that consider the time variant conditional means and conditional variances. In this paper, we adopt the AR-EGARCH formulation.<sup>5</sup> Second, from the estimated AR-EGARCH model, we calculate the

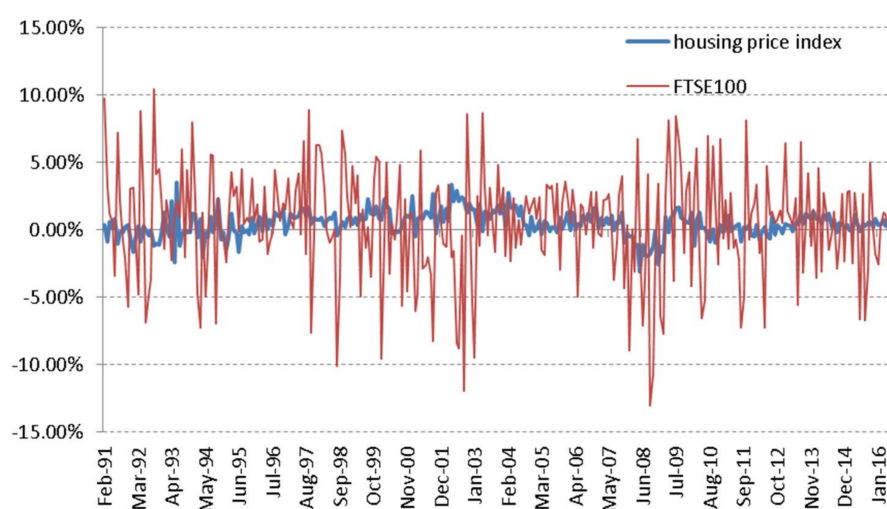
<sup>5</sup> See Nelson (1991).

standardized residuals of estimated model and calculate the series of standardized squared residuals by conditional variances. As mentioned above, we use the CCF of these standardized residuals to test the null hypotheses of no causality-in-mean and no causality-in-variance.

### 3. Data, Descriptive Statistics, and Results of an Augmented Dickey–Fuller Test

We employ monthly data on the UK housing and stock markets from January 1991 to August 2016. This sample period was chosen based on the availability of data obtained from *The Nationwide Building Society*.<sup>6</sup>

Table 2 presents the descriptive statistics for the monthly change rate in stock and housing prices. As indicated in Figure 2, the volatility of the stock market is higher than that of the housing market. The measure for skewness and kurtosis, Jarque–Bera statistics, are used to detect whether the housing and the stock monthly change rates are normally distributed.<sup>7</sup> The Jarque–Bera statistics reject normality at a 10% significance level in both variables.



**Figure 2.** Rates of change in the stock and housing indexes. *Data Source:* Nationwide Building Society, Yahoo Finance.

**Table 2.** Descriptive Statistics: Rates of change in the stock and housing indexes.

Statistics	Housing	Stock
Sample Size	307	307
Mean	0.4421%	0.4527%
Std. Dev.	0.9544%	4.0076%
Skewness	−0.2221	−0.4557
Kurtosis	1.1434	0.5011
Maximum	3.4912%	10.3952%
Minimum	−3.1084%	−13.0247%
Jarque-Bera	19.2472	13.8362
Probability	0.0066%	0.0990%

Table 3 indicates the results of the Augmented Dickey–Fuller test. The results reveal that, while the null hypothesis that the variables have a unit root is accepted in both variables in the level, the null hypothesis is rejected at the first difference.

<sup>6</sup> We obtained the data from the URL below: <http://www.nationwide.co.U.K./about/house-price-index/download-data#tab:Downloaddata>.

<sup>7</sup> See Jarque and Bera (1987).

**Table 3.** Results of an augmented Dickey–Fuller test.

Variable		Auxiliary Model		
		Const	Const & Trend	None
housing	Level	−0.2988	−2.3811	1.5701
	First difference	−4.5065 ***	−4.5019 ***	−3.8047 ***
stock	Level	−1.8598	−2.2418	0.7945
	First difference	−17.3975 ***	−17.4146 ***	−17.2370 ***

Notes: \*\*\* indicates significance at 1%.

#### 4. Estimation of an AR-EGARCH Model

The first step of the CCF approach is to model the monthly change rates in the housing and stock prices. We estimate the AR( $k$ )-EGARCH( $p,q$ ) model as follows:

$$y_t = a_0 + \sum_{i=1}^k a_i y_{t-i} + b_0 \text{Crisis}_t + \varepsilon_t, \quad \varepsilon_t / \sigma_t \sim N(0, \sigma_t^2), \quad (11)$$

$$\text{Crisis}_t = \begin{cases} 0 & (t = \text{Jan } 91, \dots, \text{May } 07) \\ 1 & (t = \text{Jun } 07, \dots, \text{Aug } 16) \end{cases}, \quad (12)$$

$$\log(\sigma_t^2) = \omega + \sum_{i=1}^q (\alpha_i |z_{t-i}| + \gamma_i z_{t-i}) + \sum_{i=1}^p \beta_i \log(\sigma_{t-i}^2), \quad (13)$$

where  $z_t = \varepsilon_t / \sigma_t$ . Note that the left-hand side of Equation (13) is the log of the conditional variance. Using the log form of the EGARCH( $p,q$ ) model, it is possible to guarantee the non-negativity constraints without imposing the constraints of the coefficients.<sup>8</sup> By including the term  $z_{t-i}$ , the EGARCH( $p,q$ ) model reflects the asymmetric effect of positive and negative shocks. If  $\gamma_i > 0$  then  $z_{t-1} = \varepsilon_{t-1} / \sigma_{t-1}$  is positive. The persistence of shocks to the conditional variance is given by  $\sum_{i=1}^p \beta_i$ .

Equation (11), which is the conditional mean, is formulated as an autoregressive model of order  $k$ . To determine the optimal lag length  $k$  for each variables, we use the Schwartz–Bayesian Information Criterion (SBIC).<sup>9</sup> The SBIC is also applied in Equation (13) to determine the optimal lag length  $p$  and  $q$ .<sup>10</sup>

Table 4 presents the estimates for the AR( $k$ )-EGARCH( $p,q$ ) model. Regarding the standard error, this paper accepts the robust standard error developed by [Bollerslev and Wooldridge \(1992\)](#). First, the EGARCH(1,1) model is chosen for both variables. While all parameters of the EGARCH model in the monthly change rate in the stock price are significant, all parameters excluding  $\gamma_1$  in the monthly change rate in the housing price are significant at the conventional significance levels.

Furthermore, Table 4 reports the estimates of the coefficient  $\beta_1$ , which measures the degree of volatility persistence. We find that  $\beta_1$  is significant at conventional significance levels, and the value of  $\beta_1$  is close to 1. These estimates lead to the conclusion that the persistence in shocks to volatility is relatively large. Table 2 also indicates the diagnostics of the empirical results of the AR-EGARCH model. While  $Q(24)$  is a test statistic for the null hypothesis that there is no autocorrelation up to order 24 for standardized residuals,  $Q^2(24)$  is a test statistic for the null hypothesis that there is no autocorrelation up to order 24 for standardized residuals squared.<sup>11</sup> These tables show that both statistics are statistically significant at 5% level for all cases. Thus, the null hypothesis that there is no autocorrelation up to order 24 for standardized residuals and the standardized residuals squared is accepted. These results empirically support the formulation of the AR-EGARCH model.

<sup>8</sup> The EGARCH model suffers from a number of fundamental problems, including the lack of regularity conditions and hence the absence of any asymptotic properties. See [McAleer and Hafner \(2014\)](#) and [Chang and McAleer \(2017b\)](#) for details.

<sup>9</sup> See [Schwarz \(1978\)](#).

<sup>10</sup> We selected the final models from EGARCH(1,1), EGARCH(1,2), EGARCH(2,1), and EGARCH(2,2).

<sup>11</sup> See [Ljung and Box \(1978\)](#).



**Table 4.** AR-EGARCH (autoregressive-exponential generalized autoregressive conditional heteroskedasticity) model.

Parameters	Housing		Stock	
	AR(3)-EGARCH(1,1)		AR(1)-EGARCH(1,1)	
	Estimate	SE	Estimate	SE
$a_0$	0.0021 ***	(0.0007)	0.0088 ***	(0.0024)
$a_1$	0.0321	(0.061)	−0.0791	(0.0602)
$a_2$	0.4095 ***	(0.0518)		
$a_3$	0.2522 ***	(0.0582)		
$b_0$	−0.0011	(0.0007)	−0.007 *	(0.0037)
$\omega$	−0.4465 *	(0.2485)	−1.3275 ***	(0.4386)
$\alpha_1$	0.2362 ***	(0.0818)	0.3162 ***	(0.1148)
$\gamma_1$	−0.0074	(0.0476)	−0.1191 *	(0.0614)
$\beta_1$	0.9741 ***	(0.0224)	0.8365 ***	(0.058)
Log Likelihood	1074.4320		571.2161	
SBIC	−6.8994		−3.6025	
$Q(24)$	35.4320		11.6550	
$P$ -value	0.0620		0.9840	
$Q^2(24)$	0.0000		19.3240	
$P$ -value	0.0000		0.7350	

Notes: \*\*\*, \* indicate significance at 1% and 10%, respectively.  $Q(24)$  and  $Q^2(24)$  are the Ljung–Box (LB) statistics with 24 lags for the standardized residuals and their squares. In addition, we checked the lag of LB statistics from 1 to 24.

## 5. Testing for Causality-In-Variance

The second step is to detect causality-in-mean and causality-in-variance, using the calculated sample cross-correlations. Table 4 indicates the empirical results. Lags are measured in months, which range from 1 to 24. For example, in the case of “housing and stock ( $-k$ ),” the significance of positive lags implies that the causal direction is from the stock market to the housing market.

Table 5 presents significance lags causality for both cases. First, in the case of “housing and stock ( $-k$ ),” the causality-in-mean exists in lag 6 and the causality-in-variance exists in lags 5 and 9. Second, in the case of “housing and stock ( $+k$ ),” the causality-in-mean exists in lags 21 and the causality-in-variance exists in lags 4 and 12. The above results provide two interesting findings. First, although Su (2011) indicated a one-way causal relation from the housing market to the stock market in the UK, this paper discovered a two-way causal relation between them. This supports the idea that both a wealth effect and a credit price effect exist between the housing and stock markets. Second, both causality-in-mean and causality-in-variance are detected from the housing market to the stock market. This finding has never been referred to in previous studies and it is useful for both practitioners and academic researchers.

**Table 5.** Cross-correlation for levels and squares of the standardized residuals.

Lag $k$	Housing and Stock ( $-k$ )		Housing and Stock ( $+k$ )	
	Mean	Variance	Mean	Variance
1	−0.0271	0.0067	0.0011	0.0320
2	−0.0262	0.0549	0.0651	−0.0196
3	−0.0675	0.0259	0.0363	−0.0358
4	0.0037	0.0589	0.0709	0.0920 *
5	−0.0390	0.1460 ***	0.0322	−0.0423
6	0.1366 ***	−0.0407	−0.0797	0.0530
7	0.0016	0.0007	−0.0380	0.0256
8	−0.0386	0.0050	0.0105	−0.0298
9	0.0410	0.1444 ***	−0.0114	−0.0154
10	0.0375	0.0101	0.0179	0.0630



Table 5. Cont.

Lag $k$	Housing and Stock ( $-k$ )		Housing and Stock ( $+k$ )	
	Mean	Variance	Mean	Variance
11	0.0269	0.0238	−0.0132	0.0012
12	−0.0728	0.0150	−0.0204	0.1879 ***
13	−0.0695	−0.0248	−0.0084	0.0257
14	−0.0648	0.0234	−0.1309	0.0503
15	−0.0835	0.0087	−0.0859	−0.0555
16	−0.0120	−0.0113	−0.0087	−0.1055
17	0.0301	0.0263	−0.0620	−0.0064
18	−0.0497	0.0383	−0.0341	0.0603
19	−0.0406	0.0092	−0.0573	0.0592
20	−0.0200	0.0175	0.0051	0.0288
21	−0.0161	−0.0574	0.0944 **	0.0129
22	−0.0141	−0.0669	−0.0235	0.0560
23	−0.0868	−0.0501	0.0720	0.0092
24	−0.1098	−0.0152	−0.0469	−0.0259

Notes: \*\*\*, \*\*, \* indicate significance at 1%, 5%, and 10%, respectively.

## 6. Conclusions

This paper analyzes the causality-in-mean and causality-in-variance between the UK stock and housing markets using monthly data from January 1991 to August 2016. A CCF approach developed by Cheung and Ng (1996) and a causality-in-variance test applied to financial market prices are used as tests (Cheung and Ng 1996). The empirical findings make two key contributions. First, although Su (2011) showed a one-way causal relation from the housing market to the stock market in the UK, this paper discovered a two-way causal relation between them. Thus, both a wealth effect and a credit price effect exist between the housing and stock markets. This paper also detected a causality-in-mean and causality-in-variance from the housing market to the stock market. This point has never been referred to in previous studies and is useful for both practitioners and academic researchers.

**Acknowledgments:** We would like to thank three anonymous reviewers, whose valuable comments helped to improve an earlier version of this paper.

**Conflicts of Interest:** The author declares no conflict of interest.

## References

- Alaganar, V. T., and Ramaprasad Bhar. 2003. An International Study of Causality-in-Variance: Interest Rate and Financial Sector Returns. *Journal of Economics and Finance* 27: 39–55. [\[CrossRef\]](#)
- Bhar, Ramaprasad, and Shigeyuki Hamori. 2005. Causality in Variance and the Type of Traders in Crude Oil Futures. *Energy Economics* 27: 527–39. [\[CrossRef\]](#)
- Bhar, Ramaprasad, and Shigeyuki Hamori. 2008. Information Content of Commodity Futures Prices for Monetary Policy. *Economic Modelling* 25: 274–83. [\[CrossRef\]](#)
- Bollerslev, Tim, and Jeffrey. M. Wooldridge. 1992. Quasi-Maximum Likelihood Estimation and Inference in Dynamic Models with Time Varying Covariances. *Econometric Reviews* 11: 143–72. [\[CrossRef\]](#)
- Chang, Chia-Lin, and Michael McAleer. 2017a. A simple test for causality in volatility. *Econometrics* 5: 15. [\[CrossRef\]](#)
- Chang, Chia-Lin, and Michael McAleer. 2017b. The correct regularity condition and interpretation of asymmetry in EGARCH. *Economics Letters* 161: 52–55. [\[CrossRef\]](#)
- Cheung, Yin-Wong, and Lilian K. Ng. 1996. A Causality-in-Variance Test and Its Applications to Financial Market Prices. *Journal of Econometrics* 72: 33–48. [\[CrossRef\]](#)
- Gyourko, Joseph, and Donald B. Keim. 1992. What Does the Stock Market Tell Us about Real Estate Returns? *Journal of the American Real Estate Finance and Urban Economics Association* 20: 457–86. [\[CrossRef\]](#)

- Hafner, Christian M., and Helmut Herwartz. 2008. Testing for Causality in Variance Using Multivariate GARCH Models. *Annals of Economics and Statistics* 89: 215–41. [\[CrossRef\]](#)
- Hamori, Shigeyuki. 2003. *An Empirical Investigation of Stock Markets: The CCF Approach*. Dordrecht: Kluwer Academic Publishers.
- Hong, Yongmiao. 2001. A Test for Volatility Spillover with Application to Exchange Rates. *Journal of Econometrics* 103: 183–224. [\[CrossRef\]](#)
- Hoshikawa, Takeshi. 2008. The Causal Relationships between Foreign Exchange Intervention and Exchange Rate. *Applied Economics Letters* 15: 519–22. [\[CrossRef\]](#)
- Ibbotson, Roger G., and Laurence B. Siegel. 1984. Real Estate Returns: A Comparison with Other Investments. *Real Estate Economics* 12: 219–42. [\[CrossRef\]](#)
- Ibrahim, Mansor H. 2010. House Price-Stock Price Relations in Thailand: An Empirical Analysis. *International Journal of Housing Markets and Analysis* 3: 69–82. [\[CrossRef\]](#)
- Jarque, Carlos M., and Anil K. Bera. 1987. Test for Normality of Observations and Regression Residuals. *International Statistical Review* 55: 163–72. [\[CrossRef\]](#)
- Kapopoulos, Panayotis, and Fotios Siokis. 2005. Stock and Real Estate Prices in Greece: Wealth versus Credit-Price Effect. *Applied Economics Letters* 12: 125–28. [\[CrossRef\]](#)
- Lin, Pin-te, and Franz Fuerst. 2014. The Integration of Direct Real Estate and Stock Markets in Asia. *Applied Economics* 46: 1323–34. [\[CrossRef\]](#)
- Liow, Kim Hiang, and Haishan Yang. 2005. Long-Term Co-Memories and Short-Run Adjustment: Securitized Real Estate and Stock Markets. *The Journal of Real Estate Finance and Economics* 31: 283–300. [\[CrossRef\]](#)
- Liow, Kim Hiang. 2006. Dynamic Relationship between Stock and Property Markets. *Applied Financial Economics* 16: 371–76. [\[CrossRef\]](#)
- Liow, Kim Hiang. 2012. Co-Movements and Correlations Across Asian Securitized Real Estate and Stock Markets. *Real Estate Economics* 40: 97–129. [\[CrossRef\]](#)
- Ljung, Greta M., and George E. P. Box. 1978. On a Measure of Lack of Fit in Time Series Models. *Biometrika* 66: 265–70. [\[CrossRef\]](#)
- Louis, Henock, and Amy X. Sun. 2013. Long-Term Growth in Housing Prices and Stock Returns. *Real Estate Economics* 41: 663–708. [\[CrossRef\]](#)
- McAleer, Michael, and Christian M. Hafner. 2014. A one line derivation of EGARCH. *Econometrics* 2: 92–97. [\[CrossRef\]](#)
- Miyazaki, Takashi, and Shigeyuki Hamori. 2013. Testing for causality between the gold return and stock market performance: Evidence for gold investment in case of emergency. *Applied Financial Economics* 23: 27–40. [\[CrossRef\]](#)
- Nakajima, Tadahiro, and Shigeyuki Hamori. 2012. Causality-in-Mean and Causality-in-Variance among Electricity Prices, Crude Oil Prices, and Yen-US Dollar Exchange Rates in Japan. *Research in International Business and Finance* 26: 371–86. [\[CrossRef\]](#)
- Nelson, Daniel B. 1991. Conditional Heteroskedasticity in Asset Returns: A New Approach. *Econometrica* 59: 347–70. [\[CrossRef\]](#)
- Okunev, John, and Patrick J. Wilson. 1997. Using Nonlinear Tests to Examine Integration between Real Estate and Stock Markets. *Real Estate Economics* 25: 487–503. [\[CrossRef\]](#)
- Okunev, John, Patrick Wilson, and Ralf Zurbrugg. 2000. The Causal Relationship between Real Estate and Stock Markets. *Journal of Real Estate Finance and Economics* 21: 251–61. [\[CrossRef\]](#)
- Quan, Daniel C., and Sheridan Titman. 1999. Do Real Estate Prices and Stock Prices Move Together? An International Analysis. *Real Estate Economics* 27: 183–207. [\[CrossRef\]](#)
- Ross, Stephen A. 1989. Information and Volatility: No-Arbitrage Martingale Approach to Timing and Resolution Irrelevancy. *Journal of Finance* 44: 1–17. [\[CrossRef\]](#)
- Su, Chi-Wei. 2011. Non-Linear Causality between the Stock and Real Estate Markets of Western European Countries: Evidence from Rank Tests. *Economic Modelling* 28: 845–51. [\[CrossRef\]](#)
- Schwarz, Gideon. 1978. Estimating the Dimension of a Model. *Annals of Statistics* 6: 461–64. [\[CrossRef\]](#)
- Tsai, I-Chun, Cheng-Feng Lee, and Ming-Chu Chiang. 2012. The Asymmetric Wealth Effect in the U.S. Housing and Stock Markets: Evidence from the Threshold Cointegration Model. *Journal of Real Estate Finance and Economics* 45: 1005–20. [\[CrossRef\]](#)

- Tamakoshi, Go, and Shigeyuki Hamori. 2014. Causality-in-variance and causality-in-mean between the Greek sovereignbond yields and Southern European banking sector equity returns. *Journal of Economics and Finance* 38: 627–42. [[CrossRef](#)]
- Toyoshima, Yuki, and Shigeyuki Hamori. 2012. Volatility Transmission of Swap Spreads among the United States, Japan, and the United Kingdom: A Cross-Correlation Function Approach. *Applied Financial Economics* 22: 849–62. [[CrossRef](#)]



© 2018 by the author. Licensee MDPI, Basel, Switzerland. This article is an open access article distributed under the terms and conditions of the Creative Commons Attribution (CC BY) license (<http://creativecommons.org/licenses/by/4.0/>).