

Furceri, Davide; Ganslmeier, Michael; Ostry, Jonathan David; Yang, Naihan

Working Paper

Initial output losses from the Covid-19 pandemic: Robust determinants

ADB Working Paper Series, No. 1255

Provided in Cooperation with:

Asian Development Bank Institute (ADBI), Tokyo

Suggested Citation: Furceri, Davide; Ganslmeier, Michael; Ostry, Jonathan David; Yang, Naihan (2021) : Initial output losses from the Covid-19 pandemic: Robust determinants, ADB Working Paper Series, No. 1255, Asian Development Bank Institute (ADBI), Tokyo

This Version is available at:

<https://hdl.handle.net/10419/238612>

Standard-Nutzungsbedingungen:

Die Dokumente auf EconStor dürfen zu eigenen wissenschaftlichen Zwecken und zum Privatgebrauch gespeichert und kopiert werden.

Sie dürfen die Dokumente nicht für öffentliche oder kommerzielle Zwecke vervielfältigen, öffentlich ausstellen, öffentlich zugänglich machen, vertreiben oder anderweitig nutzen.

Sofern die Verfasser die Dokumente unter Open-Content-Lizenzen (insbesondere CC-Lizenzen) zur Verfügung gestellt haben sollten, gelten abweichend von diesen Nutzungsbedingungen die in der dort genannten Lizenz gewährten Nutzungsrechte.

Terms of use:

Documents in EconStor may be saved and copied for your personal and scholarly purposes.

You are not to copy documents for public or commercial purposes, to exhibit the documents publicly, to make them publicly available on the internet, or to distribute or otherwise use the documents in public.

If the documents have been made available under an Open Content Licence (especially Creative Commons Licences), you may exercise further usage rights as specified in the indicated licence.



<https://creativecommons.org/licenses/by-nc-nd/3.0/igo/>



ADB Working Paper Series

INITIAL OUTPUT LOSSES FROM THE COVID-19 PANDEMIC: ROBUST DETERMINANTS

Davide Furceri, Michael Ganslmeier,
Jonathan D. Ostry, and Naihan Yang

No. 1255
April 2021

Asian Development Bank Institute

Davide Furceri is Deputy Division Chief in the Asia and Pacific Department of the International Monetary Fund (IMF) and Senior Research Fellow at the Rimini Center for Economic Analysis (RCEA). Michael Ganslmeier is a DPhil student at the University of Oxford and Visiting Research Fellow at University College, London. Jonathan D. Ostry is Acting Director of the Asia and Pacific Department of the IMF and a Research Fellow at the Center for Economic Policy Research (CEPR) in London. Naihan Yang is a Research Analyst in the Asia and Pacific Department of the IMF.

The views expressed in this paper are the views of the author and do not necessarily reflect the views or policies of ADBI, ADB, its Board of Directors, or the governments they represent. ADBI does not guarantee the accuracy of the data included in this paper and accepts no responsibility for any consequences of their use. Terminology used may not necessarily be consistent with ADB official terms.

Working papers are subject to formal revision and correction before they are finalized and considered published.

The Working Paper series is a continuation of the formerly named Discussion Paper series; the numbering of the papers continued without interruption or change. ADBI's working papers reflect initial ideas on a topic and are posted online for discussion. Some working papers may develop into other forms of publication.

Suggested citation:

Furceri, D., M. Ganslmeier, J. D. Ostry, and N. Yang. 2021. Initial Output Losses from the COVID-19 Pandemic: Robust Determinants. ADBI Working Paper 1255. Tokyo: Asian Development Bank Institute. Available: <https://www.adb.org/publications/initial-output-losses-covid-19-pandemic-robust-determinants>

Please contact the authors for information about this paper.

Email: dfurceri@imf.org, michael.ganslmeier@spi.ox.ac.uk, jostry@imf.org, nyang@imf.org

Asian Development Bank Institute
Kasumigaseki Building, 8th Floor
3-2-5 Kasumigaseki, Chiyoda-ku
Tokyo 100-6008, Japan

Tel: +81-3-3593-5500
Fax: +81-3-3593-5571
URL: www.adbi.org
E-mail: info@adbi.org

© International Monetary Fund. Reprinted with
Permission.

Abstract

While the COVID-19 pandemic is affecting all countries, output losses vary considerably across countries. We provide a first analysis of robust determinants of the observed initial output losses using model-averaging techniques—Weighted Average Least Squares and Bayesian Model Averaging. The results suggest that countries that experienced larger output losses are those with lower GDP per capita, more stringent containment measures, higher deaths per capita, higher tourism dependence, more liberalized financial markets, higher pre-crisis growth, lower fiscal stimulus, higher ethnic and religious fractionalization, and more democratic regimes. With respect to the first factor, lower resilience of poorer countries reflects the higher economic costs of containment measures and deaths in such countries and less effective fiscal and monetary policy stimulus.

Keywords: COVID-19, recession, resilience, WALs, BMA, model averaging

JEL Classification: E02, G01

Contents

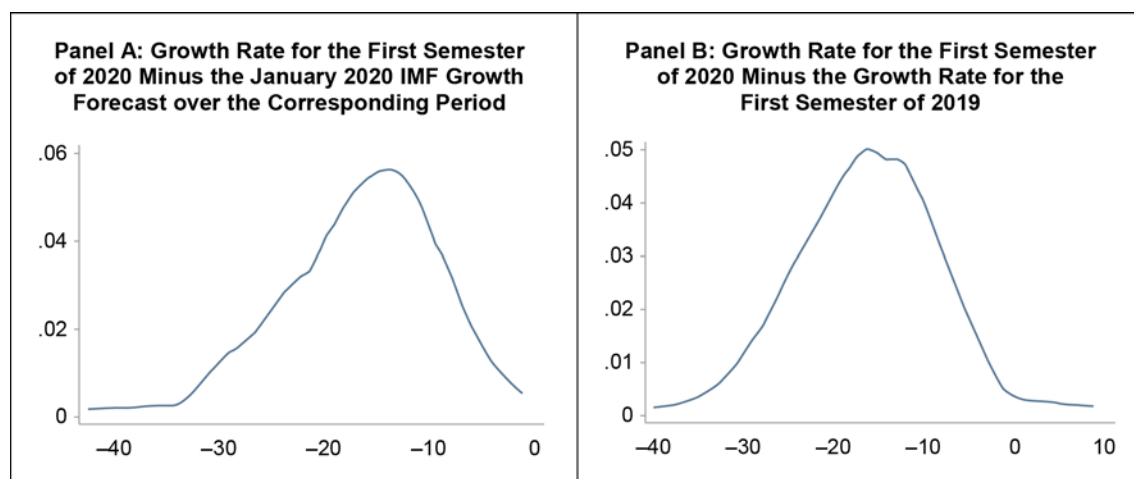
1.	INTRODUCTION	1
2.	EMPIRICAL FRAMEWORK.....	3
3.	POTENTIAL DETERMINANTS.....	4
3.1	Public Health Indicators	4
3.2	Industry Shares	6
3.3	Fiscal and Monetary Policies.....	7
3.4	Regulation.....	9
3.5	Macroeconomic Characteristics.....	10
3.6	Development Level, Demographics, and Institutions.....	12
4.	ROBUST DRIVERS	14
4.1	Robustness Checks.....	16
4.2	Cross-Country Heterogeneity: Mediating Channels	21
5.	CONCLUSION.....	22
	REFERENCES	23
	ANNEX A	29
	ANNEX B	36

© International Monetary Fund. Reprinted with Permission. This paper is a revised version of “[Initial Output Losses from the Covid-19 Pandemic: Robust Determinants](#)”, published in 2021 by the International Monetary Fund.

1. INTRODUCTION

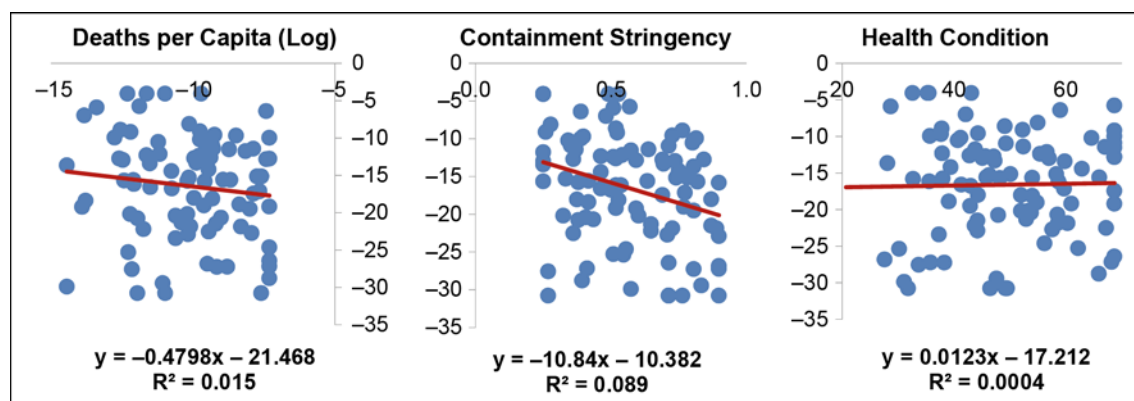
The magnitude of the COVID-19 recession is unprecedented, and it easily dwarfs the blow from the Global Financial Crisis (IMF 2020). Initial output losses, however, vary considerably across countries. Figure 1a shows, for a sample of 60 advanced, emerging, and developing economies, a density plot of growth in the first semester of 2020 minus the IMF pre-pandemic growth forecast. While all countries had a negative surprise, there is considerable variation. Unexpected growth is but a few percentage points in the Republic of Korea but ranges to more than 30 percentage points in Peru. Such heterogeneity is also evident when comparing first semester growth in 2020 versus 2019 (Figure 1b).

Figure 1: Distribution of Output Performances (%)—Density Plots



What drives this heterogeneity? Because the pandemic is foremost a health crisis, a natural candidate is the severity of health-related factors measured for example by: deaths per capita; degree of health preparedness; and stringency of containment. These factors, however, explain only a small fraction of observed output performance (Figure 2), suggesting that researchers need to look elsewhere for a fuller explanation.

Figure 2: Output Performances (%) and Public Health



Note: Output performance is defined the difference between the observed cumulative real GDP growth in 2020H1 and the cumulative growth that was expected before the onset of the pandemic for the same period—based on the IMF World Economic Outlook 2020 January forecast for 2020H1.

Assessing which factors drive the heterogeneous outcomes is not an easy task for three interrelated reasons. First, the number of observations is relatively small and limited by the number of countries with available quarterly data. Second, the number of potential factors affecting economic resilience is large. Third, many of the country characteristics are correlated with one other: the level of regulation in product and financial markets is likely to be correlated with the level of development, for example (Alesina et al. 2020).

We address these issues by considering a large set of explanatory variables and analyzing all the regressors jointly by averaging outcomes for all possible combinations of regressors (more than 1.07 billion regressions) using model-averaging techniques: Weighted Average Linear Squared (WALS) developed by Magnus, Powell, and Prüfer (2010); and Bayesian Model Averaging (BMA) developed by Fernandez, Ley and Steel (2001a). WALS and BMA share similar foundations. There are two main differences. First, WALS relies on a preliminary orthogonal transformation of the auxiliary regressors and their parameters, whose advantage is to increase speed of computation. Second, while WALS uses a Laplace distribution to reduce the risk of excessive influence of the prior on final estimates, BMA uses a Gaussian distribution prior for the auxiliary parameters. Reflecting these trade-offs, we use WALS as our baseline technique and adopt BMA as a robustness check.

We focus on the acute phase of the crisis because most countries are already recording positive growth in the third quarter of 2020 and the factors affecting recovery are different from those driving the downturn.¹ We consider two measures of output performance: (i) actual growth in the first semester of 2020 minus the January 2020 IMF growth forecast for this period; and (ii) growth in the first semester of 2020 minus the growth rate for the first semester of 2019.

We find that larger output losses are experienced by countries with lower GDP per capita, more stringent containment, higher deaths per capita, a larger tourism share, more liberalized credit markets, higher pre-crisis growth, and more democratic regimes. We also find that lower fiscal stimulus and higher social fractionalization are positively correlated with one measure of output loss. GDP per capita is particularly important: a country at the 75th percentile of the per capita GDP distribution (such as Portugal) has a 7-percentage-point smaller growth surprise than a country at the 25th percentile (such as Bangladesh). This result reflects higher economic costs of containment and deaths in poorer countries and less effective macro policy stimulus.

Our paper contributes to two strands of the literature. The first is on resilience following major crises, such as the GFC: Obstfeld, Shambaugh, and Taylor (2009); Blanchard et al. (2010); Rose and Spiegel (2010, 2011, 2012); Giannone, Lenza, and Reichlin (2011); Rose (2011); and Devereux and Dwyer (2016). In contrast to these studies, we do not find that trade and financial openness have been important drivers of output

¹ While, for many countries, the peak of the economic crisis was observed in the second quarter, the pandemic had inflicted significant human losses already in the first quarter of 2020 for most countries in our sample. In addition, most countries had already introduced travel restrictions—one important factor behind the output losses for countries relying on tourism—in response to the initial outbreak in the People's Republic of China (PRC) and Asia (Deb et al. 2020a). Finally, by including the first quarter, we also take into account the potential growth spillovers from the downturn in the PRC in the first quarter. As we show in the robustness checks, the results are similar when restricting the analysis to the second quarter of 2020.

surprises in our study. The second is on use of Bayesian model-averaging techniques in the macroeconomic literature, including studies focusing on robust drivers of growth (e.g., Brock and Durlauf 2001; Fernandez, Ley, and Steel 2001b; Sala-i-Martin, Doppelhofer, and Miller 2004); inequality (Furceri and Ostry 2019); and reforms (Duval, Furceri, and Miethe 2020).

The rest of the paper is structured as followed. In Section 2, we provide an overview of our empirical approach. In Section 3, we introduce potential determinants of COVID-19 output losses. In Section 4, we summarize these results and provide an overall assessment of the statistical robustness of the determinants. Section 5 concludes, highlighting policy implications and issues for future research.

2. EMPIRICAL FRAMEWORK

Although there is voluminous literature on the determinants of economic recessions, cross-sectional information has not been fully exploited to study the drivers of the COVID-19 recession, and theory provides little guidance on appropriate model specification. Therefore, we start from a simple linear reduced-form specification:

$$Y_i = \alpha + \beta X_i + \mu_i \quad (1)$$

where X is a vector of k covariates reflecting the characteristics of economy i along different dimensions and Y is a measure of output performance. Such an approach needs to confront two econometric challenges: (i) the large number of potential explanatory factors and the correlations among them; and (ii) the lack of an a priori “true” statistical model to test. With an unknown true model, the number of possible independent variables is very large. Depending on the model selection procedure, the conclusions could vary significantly.

To meet these concerns, the literature has turned to model-averaging techniques.² Model-averaging addresses the challenges by: (i) running the maximum combination of models; and (ii) providing estimates that take into account the performance of each potential driver not only in the final “reported” model but over the whole set of possible specifications. Formally, assuming that we are faced with M different models and that β_x is the coefficient related to variable X in each model, a final estimate of β_x is computed as $\beta_x = \sum_1^M \omega_i \beta_{x,i}$, where the weights ω_i denote a measure of the goodness of fit of each model.

In this paper, we rely on two model-averaging techniques: Weighted Average Linear Squares (WALS) developed by Magnus, Powell, and Prüfer (2010), and Bayesian Model Averaging (BMA) developed by Fernandez, Ley and Steel (2001a). WALS and BMA share similar foundations. There are, however, two main differences. First, WALS relies on a preliminary orthogonal transformation of the auxiliary regressors and their parameters. The key advantage of this transformation is that the space over which model selection is performed rises linearly rather than exponentially with the model size, as in BMA (2^{K2} , where $K2$ is the number of “auxiliary” regressors to be tested). Second, while WALS uses a Laplace distribution to reduce the risks of excessive influence of the prior on the final estimates, BMA uses a Gaussian prior for the auxiliary

² Brock and Durlauf (2001), Fernandez, Ley, and Steel (2001b), and Sala-i-Martin, Doppelhofer, and Miller (2004) used BMA to investigate the robustness of growth determinants in cross-country regressions. Furceri and Ostry (2019) used BMA to identify robust determinants of income inequality across and within countries. Duval, Furceri, and Miethe (2020) used Bayesian averaging of maximum likelihood estimates (BAMLE) to identify robust drivers of structural reforms.

parameters (see Annex B). Reflecting these considerations, we use WALS as our baseline technique and adopt BMA as a robustness check.

To decide which regressors are robust determinants of output loss, we follow the literature. For WALS, Magnus, Powell, and Prüfer (2010) suggested using a threshold value of the t-statistic—greater than 1 (in absolute value)—to determine that a regressor is robust. Using such a threshold means including regressors which improve the model fit (measured by the adjusted R^2) and the precision of the estimators measured by the MSE. For BMA, the procedure involves estimating the posterior probability that a given variable belongs in the “true” model and selecting variables with high posterior probabilities as the robust determinants.

While model averaging addresses model uncertainty and omitted variable bias, it does not address reverse-causality issues—where event studies may be appropriate. While reverse causality is not an issue for many of the more structural characteristics used in our analysis, it may be a valid concern for policies implemented in response to the pandemic.

3. POTENTIAL DETERMINANTS

Variable selection is driven to an important extent by data availability. Given the small number of quarterly GDP growth observations (96), we constrain the choice and number of variables so that we are left with enough degrees of freedom for estimation. The set of regressors in the baseline includes 30 variables grouped into six categories: (i) public health; (ii) sectoral composition; (iii) fiscal and monetary response; (iv) macroeconomic characteristics; (v) regulation; and (vi) development level, demographics, and institutions. In the robustness section, where we extend the set of regressors to 34, the results based on the more limited (full-model) sample of 48 observations are qualitatively similar but less precise. Data sources and key descriptive statistics are reported in Table A1 of Annex A.

3.1 Public Health Indicators

Countries with higher per capita deaths should experience greater output losses through reduced labor supply and greater demand-reducing social distancing (Maloney and Taskin 2020). Hasell (2020) found a negative relationship between deaths per capita and year-over-year growth in the second quarter of 2020, supporting this prior.

Stringency of non-pharmaceutical (containment) measures, designed to avoid overwhelming the medical system while effective treatments and vaccines are developed, is associated with short-term output loss. The main measures include (i) school closures; (ii) workplace closures; (iii) cancellation of public events; (iv) restrictions on size of gatherings; (v) closures of public transport; (vi) stay-at-home orders; (vii) restrictions on internal movement; and (viii) restrictions on international travel.³ Likewise, countries with better health systems in terms of epidemic management and prevention are expected to suffer smaller economic losses (Deb et al. 2020b).

³ A growing economic literature has looked at the economic impact of containment measures using high-frequency indicators: Baek and Bouzinov (2020); Baker et al. (2020); Béland, Brodeur, and Wright (2020); Carvalho et al. (2020); Chernozhukov, Kasahara, and Schrimpf (2020); Chronopoulos, Lukas, and Wilson (2020); Coibion, Gorodnichenko, and Weber (2020); Deb et al. (2020a); Demirgüç-Kunt, Lokshin, and Torre (2020); Gupta et al. (2020).

To test the empirical relevance of these factors, we use the following three variables: (i) the log of deaths per capita—cumulative deaths as of 30 June relative to the population; (ii) the Containment Stringency Index from the Oxford Coronavirus Government Response Tracker, normalized from 0 to 1;⁴ and (iii) the Global Health Security Index from Johns Hopkins University.⁵ Figure 2 presents scatter plots between these measures and our first measure of output loss (the second measure is shown in the Appendix). Output loss is larger for countries with higher mortality and containment, while no relation is found with the Health Security Index or any of its sub-indicators. OLS and WALS regressions confirm these findings (Table 1).

Table 1: Regression Results of Public Health, OLS and WALS

	Output Performance 1		Output Performance 2	
	OLS	WALS	OLS	WALS
Deaths per capita (log)	−0.434 (−0.895)	−0.380 (−0.974)	−0.655 (−1.076)	−0.496 (−1.075)
Containment stringency	−11.110** (−2.756)	−8.428* (−2.319)	−10.041 (−1.891)	−7.460 (−1.734)
Health condition	−1.011 (−0.834)	−0.602 (−0.578)	−1.080 (−0.817)	−0.639 (−0.518)
N	85	85	85	85

Note: Output performance 1 is the difference between the observed cumulative real GDP growth in 2020H1 and the cumulative growth that was expected before the onset of the pandemic for the same period—based on the IMF World Economic Outlook 2020 January forecast for 2020H1. Output performance 2 is the difference in cumulative real GDP growth between the first half of 2020 (2020H1) and the first half of 2019 (2019H1). t-statistic reported in parentheses. In bold those regressors that can be considered “robust”—that is, with a t-value in absolute value greater than 1.

* p<0.05, ** p<0.01, *** p<0.001.

3.2 Industry Shares

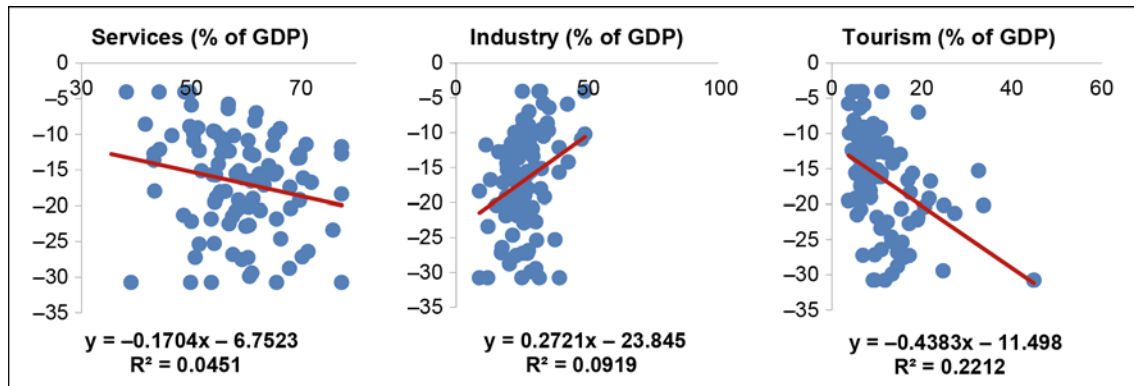
Recessions tend to have heterogeneous effects across industries. Evidence from past recessions and financial crises in advanced economies suggests that finance and manufacturing tend to contract more than other sectors during downturns (Aaronson, Rissman, and Sullivan 2004; Furceri et al. 2020) while services tend to be more resilient (Kopelman and Rosen 2016). However, because this crisis is foremost a health crisis and has been met with strong containment measures, high-contact sectors (such as tourism and retail) and non-teleworkable industries (mining, manufacturing, and construction) have been the ones to experience relatively large drops in activity (Stephany et al. 2020).

⁴ The Oxford Coronavirus Government Response Tracker collects information on government policy responses across the eight dimensions given above. The database scores the stringency of each measure ordinally, for example depending on whether the measure is a recommendation or a requirement and whether it is targeted or nationwide. We normalize each measure to range between 0 and 1 to make them comparable.

⁵ Index based on health scores for the following six categories: (i) prevention of the emergence or release of pathogens; (ii) early detection and reporting for epidemics of potential international concern; (iii) rapid response to and mitigation of the spread of an epidemic; (iv) a sufficient and robust health system to treat the sick and protect health workers; (v) commitments to improving the national capacity, financing plans to address gaps, and adhering to global norms; and (vi) the overall risk environment and country vulnerability to biological threats.

To test the role of sectoral composition, we consider three indicators (for 2019) from the World Development Indicators: the shares of services, manufacturing, and tourism in value added (we exclude agriculture to avoid perfect collinearity). The scatter plot in Figure 3, as well as the OLS and WALS results in Table 2, confirms that services, and particularly tourism, have been hit the hardest during this crisis.

Figure 3: Output Performances (%) and Sectoral Composition



Note: Output performance is defined the difference between the observed cumulative real GDP growth in 2020H1 and the cumulative growth that was expected before the onset of the pandemic for the same period—based on the IMF World Economic Outlook 2020 January forecast for 2020H1.

Table 2: Regression Results of Sectoral Composition, OLS and WALS

	Output Performance 1		Output Performance 2	
	OLS	WALS	OLS	WALS
Services	-0.126 (-0.900)	-0.111 (-1.064)	-0.168 (-1.081)	-0.148 (-1.257)
Industry	0.052 (0.481)	0.064 (0.561)	0.074 (0.607)	0.091 (0.710)
Tourism	-0.889** (-3.083)	-0.798*** (-7.632)	-0.825** (-2.912)	-0.723*** (-6.133)
N	96	96	96	96

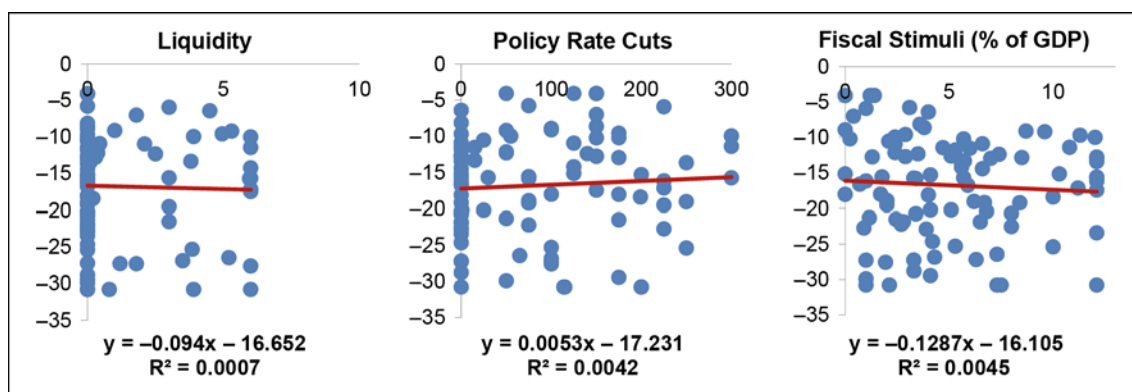
Note: Output performance 1 is the difference between the observed cumulative real GDP growth in 2020H1 and the cumulative growth that was expected before the onset of the pandemic for the same period—based on the IMF World Economic Outlook 2020 January forecast for 2020H1. Output performance 2 is the difference in cumulative real GDP growth between the first half of 2020 (2020H1) and the first half of 2019 (2019H1). t-statistic reported in parentheses. In bold those regressors that can be considered “robust”—that is, with a t-value in absolute value greater than 1. * $p < 0.05$, ** $p < 0.01$, *** $p < 0.001$.

3.3 Fiscal and Monetary Policies

Governments and central banks have implemented unprecedented support measures in response to the pandemic. As of 30 June 2020, more than 90 countries had announced fiscal packages ranging in size from 1% to 23% of GDP (the IMF’s COVID-19 Policy Tracker). In addition, monetary policy rates have been cut in 97 countries from December 2019 to June 2020, and many central banks have deployed unconventional tools. Preliminary evidence suggest that these measures have been effective in reducing the depth of the recession, especially in advanced economies, where the fiscal multipliers are higher and the monetary policy transmission is more effective (Bayer et al. 2020; Faria-e-Castro 2020; Fornaro and Wolf 2020; Jinjarak et al. 2020).

To test the role of policy stimulus, we use the IMF's COVID-19 Policy Tracker measures of (i) total fiscal stimulus (above and below the line) deployed (or announced); (ii) the cumulative change in the policy interest rate from December 2019 to June 2020; and (iii) the amount of liquidity (as a percentage of the GDP) injected by central banks from December 2019 to June 2020. Figure 4 shows that only policy rate cuts seem to be associated with lower output loss. Moreover, none of the variables is statistically significant when performing the OLS and WALS regressions (Table 3). While the lack of significance could be due to omitted variable bias or reverse causality—as countries may provide more support in response to weak activity—it could also reflect the lack of a causal impact for two reasons: first, some of the fiscal measures have been announced but not yet implemented; and second, it may take time for policy stimulus to affect activity. In addition, it is likely that impacts are heterogeneous across countries, an issue explored below.

Figure 4: Output Performances (%) and Fiscal and Monetary Response



Note: Output performance is defined the difference between the observed cumulative real GDP growth in 2020H1 and the cumulative growth that was expected before the onset of the pandemic for the same period—based on the IMF World Economic Outlook 2020 January forecast for 2020H1.

Table 3: Regression Results of Fiscal and Monetary Response, OLS and WALS

	Output Performance 1		Output Performance 2	
	OLS	WALS	OLS	WALS
Fiscal stimulus	-0.079 (-0.486)	-0.047 (-0.364)	-0.094 (-0.586)	-0.057 (-0.416)
Liquidity	0.071 (0.369)	0.042 (0.173)	0.034 (0.175)	0.020 (0.078)
Policy rate cuts	0.002 (0.322)	0.001 (0.122)	0.008 (0.896)	0.005 (0.492)
N	96	96	96	96

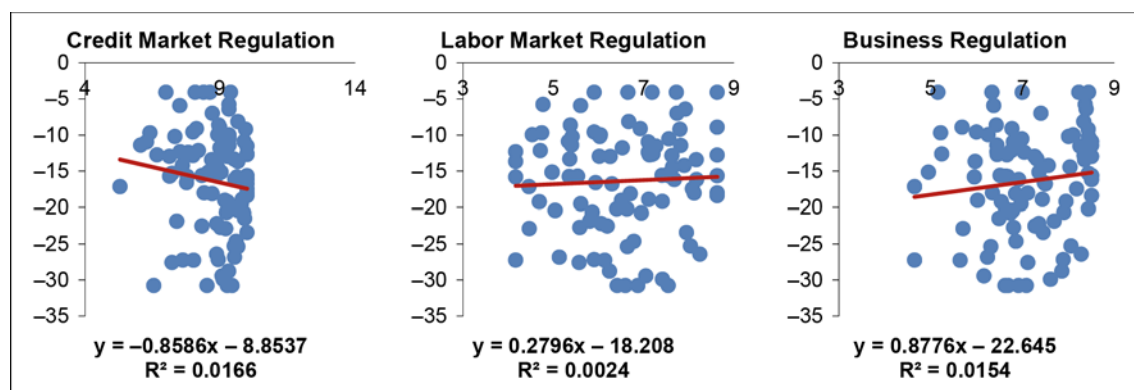
Note: Output performance 1 is the difference between the observed cumulative real GDP growth in 2020H1 and the cumulative growth that was expected before the onset of the pandemic for the same period—based on the IMF World Economic Outlook 2020 January forecast for 2020H1. Output performance 2 is the difference in cumulative real GDP growth between the first half of 2020 (2020H1) and the first half of 2019 (2019H1). t-statistic reported in parentheses. In bold those regressors that can be considered “robust”—that is, with a t-value in absolute value greater than 1. * p<0.05, ** p<0.01, *** p<0.001.

3.4 Regulation

Labor and product market regulations can affect realized output losses given the shifts of labor across industries in response to the pandemic. Evidence from past recessions and financial crises suggest that countries with more flexible product and labor market regulations are more resilient (Eichhorst, Feil, and Marx 2010; Artha and de Haan 2011; Bernal-Verdugo et al. 2012; Bluedorn et al. 2019).⁶ The relationship between resilience and credit market regulation is less settled. While liberalized markets contribute to financial deepening and lower volatility (Beck and Demirgüç-Kunt 2009), in the short term, they may amplify volatility: Caprio and Honohan (2002) found that banking systems less subject to monitoring exhibit more procyclicality; and Giannone, Lenza, and Reichlin (2011) found a negative correlation between credit market liberalization and output growth during the GFC.

To test the role of regulatory variables, we consider the most recent observation (typically 2019) for the following indicators from the Fraser Institute Index of Economic Freedom: (i) credit market deregulation, which includes ownership of banks, competition, and extension of credit; (ii) labor market deregulation, a composite index of hiring and firing practices; and (iii) business deregulation, which assesses the difficulty in starting a new business, including administrative rules and government bureaucracy.⁷ The indicators range from 0 to 10, with higher values indicating less regulation.⁸ The scatter plots in Figure 5, as well as the WALS results in Table 4, confirm that countries with freer financial markets are less resilient. In contrast, we do not find robust significant relationships between other regulatory measures and both measures of output performance.

Figure 5: Output Performances (%) and Regulation



Note: Output performance is defined the difference between the observed cumulative real GDP growth in 2020H1 and the cumulative growth that was expected before the onset of the pandemic for the same period—based on the IMF World Economic Outlook 2020 January forecast for 2020H1.

⁶ Another channel through which a more flexible labor market can reduce the depth of the COVID-19 recession is by amplifying the effectiveness of fiscal stimulus (Cacciatore et al. 2020).

⁷ We use the Fraser Institute dataset as it provides greater country and time coverage than the alternatives. The results are similar when using the indicators in Alesina et al. (2020)—see Table 10.

⁸ The indicator of credit market regulation covers private ownership of banks, exposure to foreign competition, depth of private credit, and interest rate controls. The labor market indicator covers minimum wage regulation, hiring and firing practices, centralization of collective bargaining, unemployment benefits, and the use of military conscription. Business regulation includes price controls, regulations for starting new businesses, government bureaucracy, import and export permits and exchange controls, tax assessments, and police protection.

Table 4: Regression Results of Regulation, OLS and WALS

	Output Performance 1		Output Performance 2	
	OLS	WALS	OLS	WALS
Credit market regulation	-1.207 (-1.707)	-0.798 (-1.186)	-1.840 (-1.922)	-1.200 (-1.509)
Labor market regulation	-0.057 (-0.093)	-0.025 (-0.043)	-0.307 (-0.422)	-0.162 (-0.245)
Business regulation	1.297 (1.457)	0.820 (1.141)	0.632 (0.583)	0.398 (0.483)
N	94	94	94	94

Note: Output performance 1 is the difference between the observed cumulative real GDP growth in 2020H1 and the cumulative growth that was expected before the onset of the pandemic for the same period—based on the IMF World Economic Outlook 2020 January forecast for 2020H1. Output performance 2 is the difference in cumulative real GDP growth between the first half of 2020 (2020H1) and the first half of 2019 (2019H1). t-statistic reported in parentheses. In bold those regressors that can be considered “robust”—that is, with a t-value in absolute value greater than 1. * p<0.05, ** p<0.01, *** p<0.001.

3.5 Macroeconomic Characteristics

Macroeconomic fundamentals can play a substantial role in mitigating output losses during a crisis. One reason is that crises usually come with excess volatility and increases in uncertainty (Ahir, Bloom, and Furceri 2018), which can lead to significant outflows of capital in countries with large imbalances (Aizenman and Pasricha 2010; McQuade and Schmitz 2017). Domestic imbalances, such as high debt-to-GDP ratios, can also affect resilience by reducing fiscal space and constraining countercyclical policies (Ostry et al. 2010; Kim and Ostry 2018).

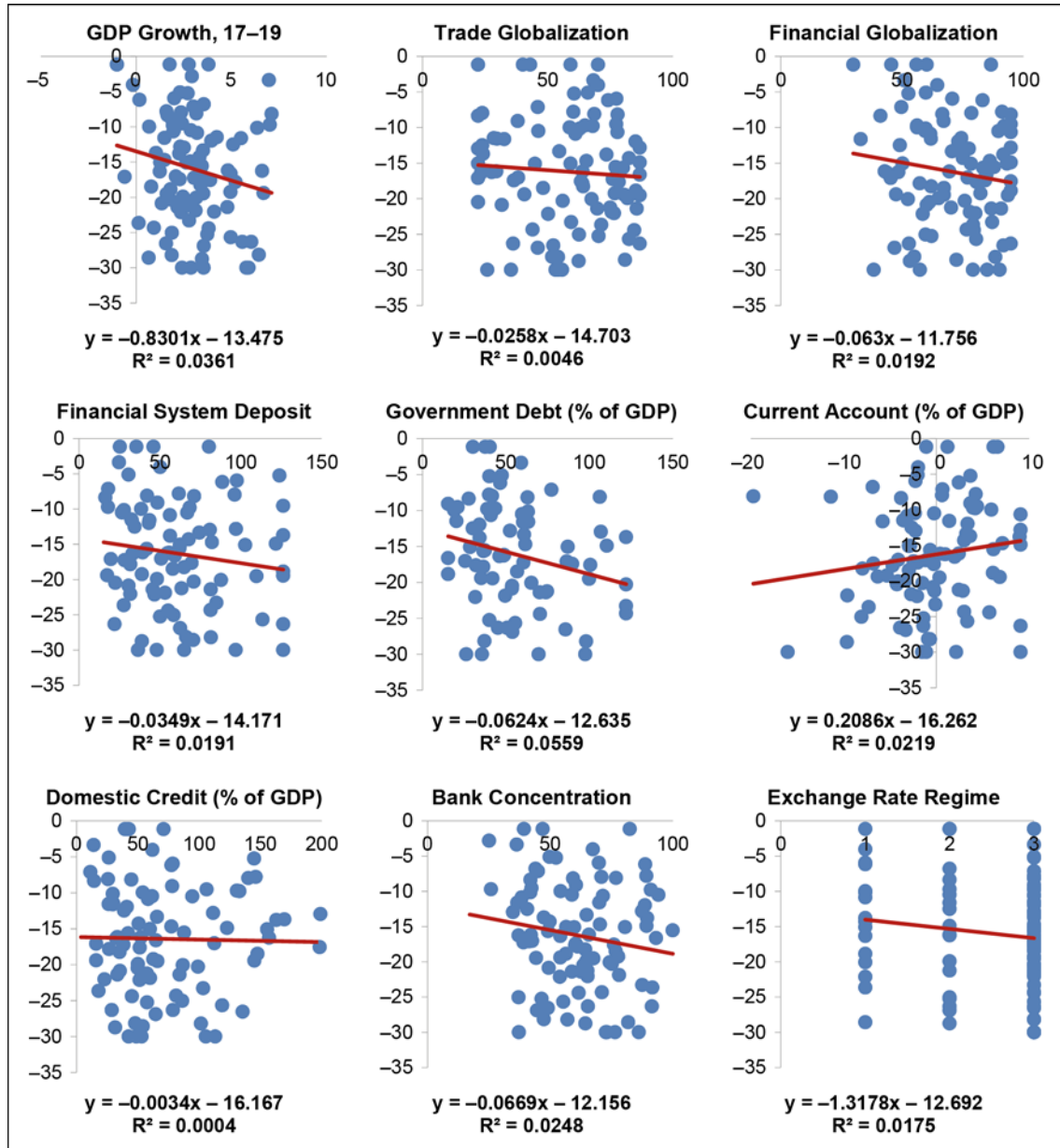
Financial markets can also affect resilience. On the one hand, financial depth can foster risk sharing across economic agents, enhance consumption smoothing, and dampen the effect of cyclical shocks (Beck and Demirgüç-Kunt 2009; Ostry, Prati, and Spilimbergo 2009). On the other hand, excess leverage can lead to larger output losses during periods of financial stress (Frankel and Saravelos 2010; Cecchetti, King, and Yetman 2011; Babecký et al. 2012, 2013; Berkmen et al. 2012; Caprio et al. 2014; Feldkircher 2014; Devereux and Dwyer 2016).

Trade and financial linkages have also played an amplification role in past crises. Blanchard et al. (2010) found that the economic performance of trading partners was a strong predictor of output loss during the GFC, while Claessens, Tong, and Wei (2012) concluded that the GFC exerted a larger impact on trade-dependent firms; Ho (2010), Levchenko, Lewis, and Tesar (2010), Groot et al. (2011), and Demir and Javorcik (2020) also stressed the role of the trade channel. In a similar vein, Bhagwati (1998), Rodrik (1998), and Stiglitz (2002) argued that financial integration induces volatility in times of recession and endangers financial stability (see Kose et al. 2009), while Rose (2011) and Rose and Spiegel (2012) showed that greater financial exposure to the United States was not associated with larger output losses in the GFC. Exchange rate flexibility may also affect resilience in the face of external shocks (Ghosh, Ostry, and Wolf 1997; Ghosh, Ostry, and Tsangarides 2011; Ghosh, Ostry, and Qureshi 2015).

To test the role of these factors, we consider the most recent pre-crisis value of the following variables: (i) the current account balance as a share of the GDP; (ii) the general government debt-to-GDP ratio; (iii) financial system deposits as a percentage of the GDP; (iv) bank concentration; (v) domestic credit as a percentage of the GDP; (vi) and (vii) trade and financial globalization indices developed by the KOF Swiss Economic Institute; and (viii) an exchange rate regime variable—which assumes 1 for

fixed; 2 for intermediate and 3 for flexible—from the IMF. We also consider the three-year average GDP growth preceding the COVID-19 crisis to control for cross-country heterogeneity in pre-crisis growth. Figure 6 presents scatter plots between output loss and each of these variables. Output performance seems weaker for countries with higher pre-crisis growth, greater financial development and openness, higher pre-crisis debt-to-GDP ratios, and current account deficits. Among these variables, however, only the debt-to-GDP ratio and pre-crisis growth appear to be robust determinants of output performance (Table 5).

Figure 6: Output Performances (%) and Macroeconomic Characteristics



Note: Output performance is defined the difference between the observed cumulative real GDP growth in 2020H1 and the cumulative growth that was expected before the onset of the pandemic for the same period—based on the IMF World Economic Outlook 2020 January forecast for 2020H1.

Table 5: Regression Results of Macroeconomic Characteristics, OLS and WALS

	Output Performance 1		Output Performance 2	
	OLS	WALS	OLS	WALS
Financial globalization	0.0266 (0.238)	0.0209 (0.278)	−0.0695 (−0.552)	−0.0430 (−0.511)
Trade globalization	0.0601 (0.875)	0.0396 (0.798)	0.0707 (0.963)	0.0430 (0.780)
Current account (% of GDP)	0.0481 (0.253)	0.0248 (0.158)	0.0570 (0.216)	0.0410 (0.243)
Financial system deposit (% of GDP)	−0.0235 (−1.385)	−0.0164 (−0.995)	−0.0154 (−0.800)	−0.0104 (−0.599)
Government debt (% of GDP)	−0.0362 (−1.404)	−0.0232 (−1.115)	−0.0384 (−1.471)	−0.0248 (−1.092)
Domestic credit (% of GDP)	0.0224 (1.042)	0.0151 (0.737)	0.0243 (1.028)	0.0160 (0.708)
Bank concentration	−0.0873 (−1.369)	−0.0601 (−1.092)	−0.0744 (−1.113)	−0.0489 (−0.838)
Exchange rate regime	−0.231 (−0.160)	−0.157 (−0.117)	0.262 (0.172)	0.192 (0.129)
Average GDP growth (17–19)	−1.055* (−1.682)	−0.677 (−1.444)	−1.740** (−2.369)	−1.124** (−2.172)
N	70	70	70	70

3.6 Development Level, Demographics, and Institutions

Development level (per capita GDP) may influence resilience as containment measures may be costlier in poorer countries because of the limited social safety nets and larger shares of financially constrained households and firms. In addition, there is evidence that fiscal and monetary policies are more effective in advanced economies (see Ilzetki, Mendoza, and Végh 2013 on fiscal policy; Brandao-Marques et al. 2020 on monetary policy). On the other hand, resilience could be enhanced in poorer economies as larger informal sectors reduce nominal rigidities (Mitra 2013).

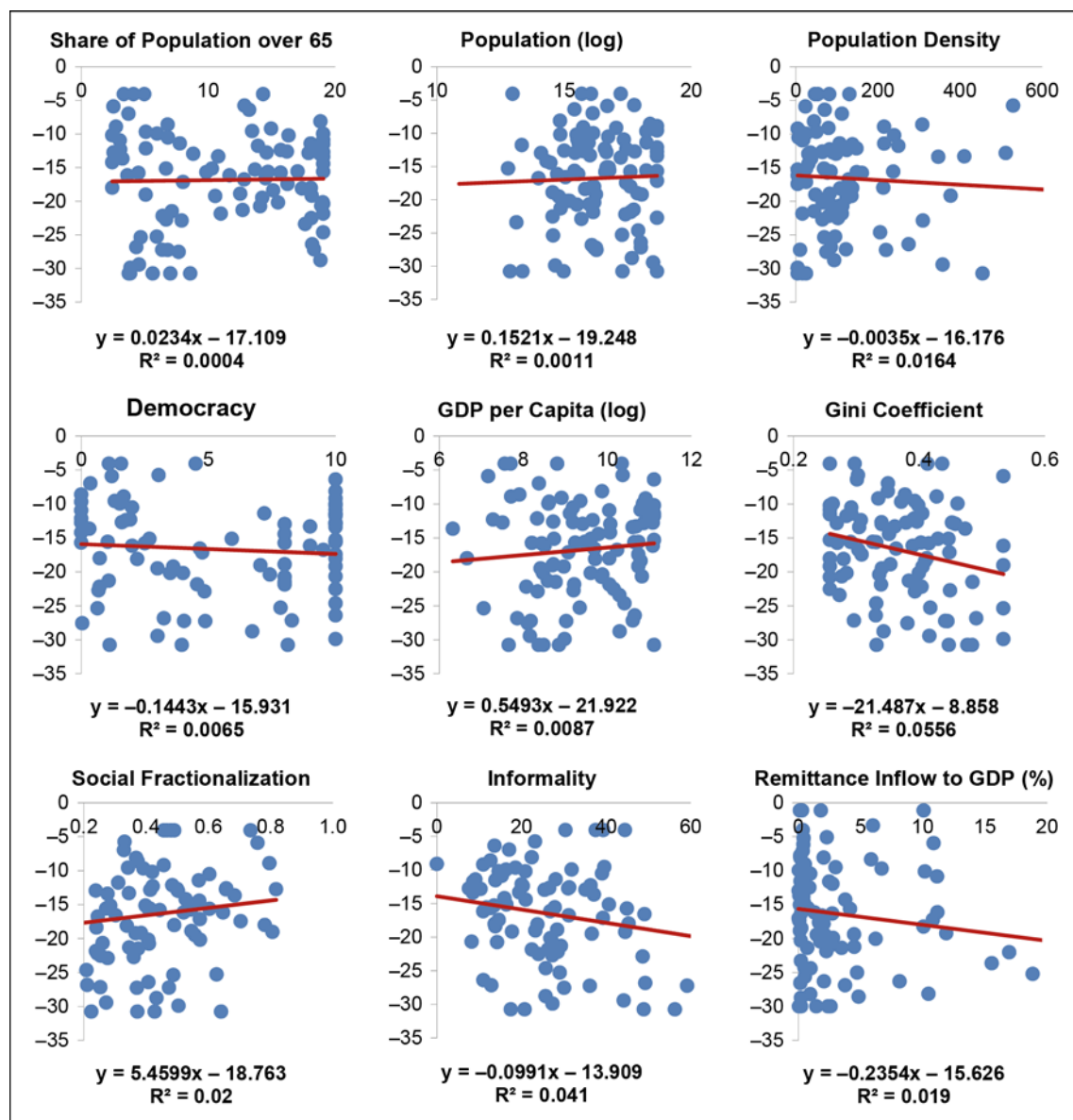
Income distribution may affect resilience: Wright et al. (2020) found that shelter-in-place policies are more effective in reducing virus spread in richer countries. Weill et al. (2020) showed that social distancing measures reduce mobility more in wealthier areas. In addition to its effects through compliance with social distancing, inequality can affect resilience if more unequal societies have larger shares of vulnerable workers.

Turning to demographic characteristics, the pandemic is more serious in terms of symptoms and death for the elderly: Ioannidis, Axfors, and Contopoulos-Ioannidis (2020) reported that 88–96% of people dying with or because of COVID-19 are 65 or above. In addition, the effect of the crisis on labor force dropouts is larger for older workers. Thus, countries with older populations are likely to suffer more from job loss due to injury, death, or labor force dropout. Country size may also play a role: smaller economies are typically more volatile (Furceri and Karras 2007), while larger economies may find it more difficult and costly to manage public health services (Alesina, Spolaore, and Wacziarg 2005). Finally, virus spread runs through social proximity, which is why high population density is associated with high case numbers.

Other factors we consider include remittances; social fractionalization; and the nature of the political regime. The effect of remittances on resilience during a crisis is unclear as they tend to be countercyclical in the worker's country of origin and procyclical in the

migrant's host country (Frankel 2011). Ethnic and religious fractionalization can also affect output performance during a crisis by impairing the quality of the government and its policy response (Alesina et al. 2003). Finally, the type of political regime may shape both pandemic management and readiness of the public health system: democratic countries tend to have better public health systems (Sen 1999; Ruger 2005), which can give them an edge in fighting the disease (Kavanagh and Singh 2020), but authoritarian governments may react faster and adopt drastic policy measures without fearing popular resistance. Cepaluni, Dorsch, and Branyiczki (2020) showed that more democratic countries face higher per capita deaths than less democratic countries.

Figure 7: Output Performances (%) and Development, Demographics, and Institutions



Note: Output performance is defined the difference between the observed cumulative real GDP growth in 2020H1 and the cumulative growth that was expected before the onset of the pandemic for the same period—based on the IMF World Economic Outlook 2020 January forecast for 2020H1.

To assess the role of these factors, we consider the most recent pre-crisis value of: (i) the (log) of GDP per capita from the World Development Indicators (WDI); (ii) the Gini coefficient of after-tax income from the Standardized World Income Inequality Database; (iii) the share of the population over 65; (iv) and (v) the (log of) the population and population density from the World Development Indicators; (vi) the share of remittances to GDP from the World Bank Financial Structure Database; (vii) a composite indicator of ethnic and religious fractionalization from Alesina et al. (2003); (viii) an indicator of informality from the WDI; and (vii) the level of democracy from Polity IV. Figure 7 suggests larger output losses in countries with lower GDP per capita, higher inequality, larger informal sectors, higher remittances, and more democratic regimes. The evidence for inequality and informality are confirmed by the WALs results (Table 6).

Table 6: Regression Results of Development, Demographics, and Institutions, OLS and WALs

	Output Performance 1		Output Performance 2	
	OLS	WALS	OLS	WALS
Share of population over 65	-0.182 (-0.847)	-0.107 (-0.511)	-0.333 (-1.213)	-0.218 (-0.887)
Population (log)	-0.0445 (-0.0668)	-0.0472 (-0.0862)	-0.107 (-0.129)	-0.126 (-0.193)
GDP per capita (log)	-0.381 (-0.185)	-0.290 (-0.235)	-0.479 (-0.222)	-0.330 (-0.222)
Democracy	-0.254 (-0.567)	-0.228 (-0.771)	-0.283 (-0.578)	-0.198 (-0.569)
Population density	-0.00463 (-0.619)	-0.00361 (-0.567)	-0.00626 (-0.748)	-0.00382 (-0.494)
Gini coefficient	-41.40** (-2.569)	-29.44** (-2.113)	-28.36 (-1.354)	-18.08 (-1.127)
Social fractionalization	10.45** (2.114)	7.895* (1.792)	6.586 (1.082)	4.540 (0.873)
Informality	-0.158 (-1.388)	-0.117 (-1.599)	-0.166 (-1.355)	-0.118 (-1.369)
Remittance to GDP (%)	0.0132 (0.0590)	0.0302 (0.144)	-0.126 (-0.472)	-0.0624 (-0.244)
	85	85	85	85

Note: Output performance 1 is the difference between the observed cumulative real GDP growth in 2020H1 and the cumulative growth that was expected before the onset of the pandemic for the same period—based on the IMF World Economic Outlook 2020 January forecast for 2020H1. Output performance 2 is the difference in cumulative real GDP growth between the first half of 2020 (2020H1) and the first half of 2019 (2019H1). t-statistic reported in parentheses. In bold those regressors that can be considered “robust”—that is, with a t-value in absolute value greater than 1. * p<0.05, ** p<0.01, *** p<0.001.

4. ROBUST DRIVERS

Scatter plots and estimates based on a few covariates suggest that several factors are associated with output losses. But which factors are robust? To answer this question, we report the WALs estimates of the most robust drivers for the two alternative measures of output loss mentioned earlier. To remind, a regressor is considered robust if the t-statistic in absolute value is larger than 1—broadly speaking, this corresponds to a statistically significant increase in the adjusted R² due to the inclusion of that variable.

The results confirm the associations highlighted earlier. Output performance is negatively related to: more stringent containment measures; higher death rates; a larger tourism share; less stringent credit market regulation; higher pre-crisis growth; and more democratic political regimes. Lower fiscal stimulus and higher social fractionalization are negatively correlated with at least one measure of output performance (Table 7).

Table 7: Robust Drivers of Output Performance across Countries—WALS

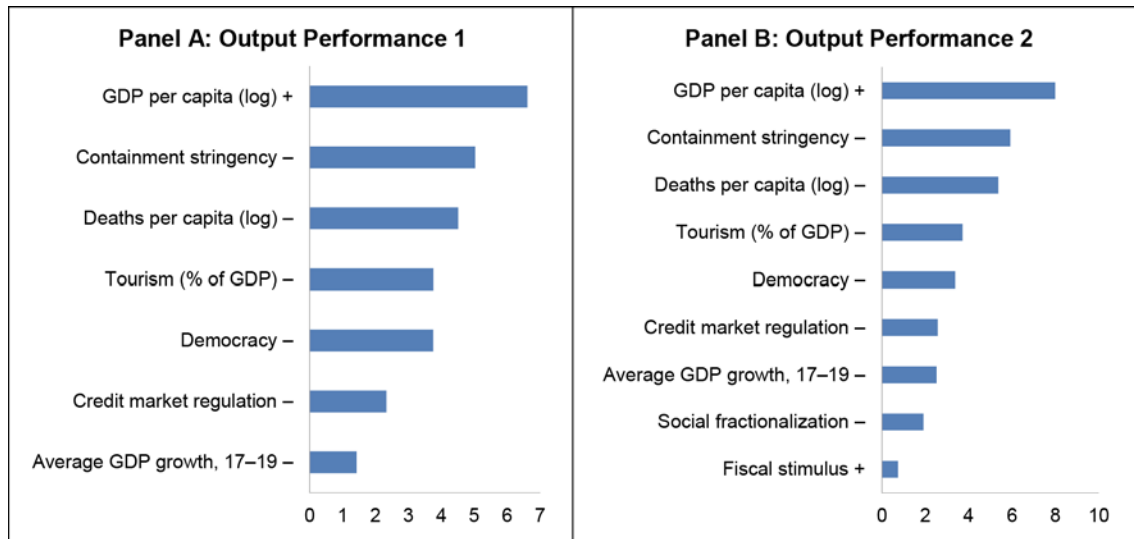
	Output Performance 1	Output Performance 2
Health condition	0.41	0.27
Containment stringency	−2.23	−2.38
Deaths per capita (log)	−2.44	−2.65
Liquidity	−0.81	−0.84
Policy rate cuts	0.37	0.48
Fiscal stimulus	0.85	1.20
Labor market regulation	−0.07	−0.02
Credit market regulation	−1.59	−1.63
Business regulation	−0.28	−0.40
Financial globalization	0.75	0.66
Trade globalization	−0.28	−0.36
Current account (% of GDP)	−0.88	−0.78
Financial system deposit (% of GDP)	−0.83	−0.47
Government debt (% of GDP)	−0.92	−0.95
Domestic credit (% of GDP)	−0.05	−0.29
Bank concentration	0.19	0.46
Exchange rate regime	−0.93	−0.60
Average GDP growth, 17–19	−1.05	−1.71
Tourism (% of GDP)	−3.01	−2.75
Services (% of GDP)	−0.10	−0.40
Industry (% of GDP)	−0.28	−0.55
Share of population over 65	−0.29	−0.79
Population (log)	−0.20	0.03
GDP per capita (log)	1.14	1.24
Democracy	−1.67	−1.38
Population density	0.50	0.54
Gini coefficient	0.65	0.86
Social fractionalization	−0.71	−1.25
Informality	0.23	0.32
Remittance inflow to GDP (%)	0.31	0.5
N	60	60

Note: t-statistic reported in the table. In bold those regressors that can be considered “robust”. Estimates based on equation (1).

In Figure 8, we present the effect on output performance from moving from the 25th to the 75th percentile of each variable’s distribution—that is, we multiply the WALS coefficient by the inter-quartile range. The results show that GDP per capita is quantitatively the largest player in driving output loss: a country at the 25th percentile of the GDP per capita distribution (such as Bangladesh) has, on average, a 7 percentage point lower-than-expected output growth than a country at the 75th percentile (such as Portugal). The next two positions in the ranking are containment measures and deaths,

with similar magnitudes: an increase from the 25th to the 75th percentile of their distributions is associated with an increase in output losses of 4.5–5 percentage points. While these results confirm the large economic cost associated with containment, they also highlight the close relation between “saving lives” and “saving the economy.”

Figure 8: Robust Drivers of Output Performance across Countries, Magnitude of the Effects



Note: Output performance 1 is the difference between the observed cumulative real GDP growth in 2020H1 and the cumulative growth that was expected before the onset of the pandemic for the same period—based on the IMF World Economic Outlook 2020 January forecast for 2020H1. Output performance 2 is the difference in cumulative real GDP growth between the first half of 2020 (2020H1) and the first half of 2019 (2019H1). The chart shows the differential effect on output performance, moving the level of the variable from the 25th percentile to the 75th percentile of its distribution, based on the coefficients of the variables that are robust in columns (I–II) of Table 7. – (+) denotes a negative (positive) effect on output. Estimates based on equation (1).

Two other economically important drivers of resilience are tourism dependence and the democracy score. Countries with a large share of tourism—notably Caribbean and Pacific islands—experience a 3.5 percentage point smaller than expected output growth along the inter-quartile range. In contrast, countries that score low in the Polity IV democracy index (such as the People’s Republic of China and Viet Nam) are associated with significantly higher resilience (reductions of about 4 percentage points in output growth losses) than more democratic countries. As suggested by Cepaluni, Dorsch, and Branyiczki (2020), this may reflect better enforcement of containment measures and compliance with social distancing as well as faster interventions in pandemic outbreaks.

4.1 Robustness Checks

4.1.1 Outliers

Do outlier observations influence the results? To check, we winsorize the upper and lower 5 percentiles of the distribution of the dependent variables and show in Table 8 (Figure A7) results to be broadly in line with the baseline in Table 7.⁹ For the first measure of output performance (column I), we confirm the same robust drivers, but

⁹ To avoid further reducing sample size, winsorizing seems preferable to dropping observations. If we choose instead to drop outlying data, the results are similar but effects are less precisely estimated.

higher fiscal stimulus becomes a robust driver of output performance. The results are also similar for the second output performance measure (column II), except that higher government debt is also robustly associated with lower output performance.

Table 8: Robust Drivers of Output Performance across Countries—Controlling for Outliers

	Output Performance 1	Output Performance 2
Health condition	0.42	0.22
Containment stringency	-2.11	-1.89
Deaths per capita (log)	-2.45	-2.74
Liquidity	-0.56	-0.62
Policy rate cuts	0.83	0.98
Fiscal stimulus	1.05	1.20
Labor market regulation	0.38	0.24
Credit market regulation	-1.72	-1.87
Business regulation	0.03	0.04
Financial globalization	0.67	0.42
Trade globalization	-0.47	-0.33
Current account (% of GDP)	-0.76	-0.96
Financial system deposit (% of GDP)	-0.63	-0.20
Government debt (% of GDP)	-0.97	-1.10
Domestic credit (% of GDP)	-0.07	-0.37
Bank concentration	0.42	0.67
Exchange rate regime	-0.92	-0.70
Average GDP growth, 17–19	-1.24	-1.90
Tourism (% of GDP)	-3.24	-2.73
Services (% of GDP)	-0.19	-0.38
Industry (% of GDP)	-0.13	-0.38
Share of population over 65	-0.34	-0.78
Population (log)	-0.59	-0.16
GDP per capita (log)	1.08	1.31
Democracy	-1.95	-1.37
Population density	0.63	0.56
Gini coefficient	0.55	0.67
Social fractionalization	-0.86	-1.29
Informality	0.30	0.44
Remittance inflow to GDP (%)	0.05	0.20
N	60	60

Note: t-statistic reported in the table. In bold those regressors that can be considered “robust”. Estimates based on equation (1).

4.1.2 BMA

As discussed earlier, WALS is theoretically superior to BMA because, while BMA uses a Gaussian prior for the auxiliary parameters, WALS uses a Laplace distribution, which reduces the risk of the prior overly influencing the final estimates. WALS is also practically superior because the space over which model selection is performed increases linearly rather than exponentially with size. At the same time, a key advantage of BMA is the larger number of models considered. To check the robustness of our results, we repeat the analysis using BMA and consider the entire model space

(2^{30} models). In Table 9, we report the posterior inclusion probability of each regressor—that is, the probability that a variable belongs to the true model. Similar to the baseline, the variables with the highest posterior probabilities are containment stringency, tourism, and deaths per capita. Other variables that would enter in at least 10% of the 2^{30} (1,073,741,824) models are typically those found to be robust in WALs such as pre-crisis growth, credit market regulation, the level of GDP per capita, and democracy. In addition, we find that the share of the elderly seems to be robust in BMA—with a 35% posterior probability to enter in all models for the second output loss measure.

Table 9: Robust Drivers of Output Performance across Countries—BMA

	Output Performance 1	Output Performance 2
Tourism (% of GDP) (–)	0.99	0.85
Containment stringency (–)	0.97	0.88
Deaths per capita (log) (–)	0.56	0.54
Government debt (% of GDP) (–)	<i>0.17</i>	<i>0.17</i>
Democracy (–)	<i>0.14</i>	0.08
GDP per capita (log) (+)	<i>0.11</i>	<i>0.1</i>
Share of population over 65 (–)	<i>0.1</i>	<i>0.35</i>
Fiscal stimulus (+)	0.08	0.08
Credit market regulation (–)	0.07	<i>0.11</i>
Trade globalization (–)	0.07	0.09
Domestic credit (% of GDP) (+)	0.07	0.09
Exchange rate regime (–)	0.07	0.05
Average GDP growth, 17–19 (–)	0.07	<i>0.32</i>
Population (log) (–)	0.07	0.06
Business regulation (+)	0.06	0.06
Financial system deposit (% of GDP) (–)	0.06	0.04
Remittance inflow to GDP (%) (–)	0.06	0.06
Informality (–)	0.06	0.05
Health condition (–)	0.05	0.05
Policy rate cuts (+)	0.05	0.06
Financial globalization (–)	0.05	0.06
Services (% of GDP) (–)	0.05	0.06
Industry (% of GDP) (+)	0.05	0.05
Population density (–)	0.05	0.04
Gini coefficient (–)	0.05	0.06
Social fractionalization (–)	0.05	0.05
Liquidity (+)	0.04	0.04
Labor market regulation (+)	0.04	0.05
Current account (% of GDP) (–)	0.04	0.05
Bank concentration (+)	0.04	0.05
N	60	60

Note: posterior-inclusion-probability reported in the table. In bold those regressors with a posterior inclusion probability above 0.50; in italic those with a posterior inclusion probability above 0.1. Estimates based on equation (1). – (+) denotes a negative (positive) effect on output.

Table 10: Robust Drivers of Output Performance across Countries—Additional Covariates

	Output Performance 1	Output Performance 2
Health condition	0.11	0.10
Containment stringency	−1.59	−1.90
Deaths per capita (log)	−2.56	−2.65
Liquidity	0.10	−0.12
Policy rate cuts	−0.02	−0.17
Fiscal stimulus	2.18	1.79
Labor market regulation	−0.75	−0.39
Credit market regulation	−1.88	−2.09
Business regulation	0.42	0.09
Financial globalization	1.08	0.87
Trade globalization	−0.49	−0.33
Current account (% of GDP)	−0.96	−1.16
Financial system deposit (% of GDP)	0.88	0.41
Government debt (% of GDP)	−1.96	−2.10
Domestic credit (% of GDP)	−0.02	0.37
Bank concentration	0.44	0.58
Exchange rate regime	−0.72	−0.32
Average GDP growth, 17–19	−1.92	−2.49
Tourism (% of GDP)	−1.45	−0.75
Services (% of GDP)	0.53	0.15
Industry (% of GDP)	0.41	0.00
Share of population over 65	0.04	−0.75
Population (log)	−0.94	−0.50
GDP per capita (log)	1.49	1.64
Democracy	0.03	0.55
Population density	0.50	0.69
Gini coefficient	−0.61	−0.58
Social fractionalization	−1.28	−1.28
Informality	−1.94	−1.47
Remittance inflow to GDP (%)	−0.24	−0.13
Rule of law	−2.01	−1.82
Average tariff rates	−1.73	−1.18
Normalized current account index	0.25	0.63
Non-performing loans	0.04	0.15
Poverty rate	0.99	0.59
Reserve (% of imports)	−0.72	0.63
N	48	48

Note: t-statistic reported in the table. In bold those regressors that can be considered “robust”. Estimates based on equation (1).

4.1.3 Additional Determinants

As mentioned earlier, the selection of the variables is partly dictated by data availability. To check the robustness to the inclusion of additional factors, we expanded the set of controls to include additional measures of regulation pertaining to trade, current and capital accounts, and indicators of rule of law; the share of non-performing loans (NPL); a measure of poverty; and the amount of central bank reserves as a percentage of imports. The results with this larger set of (36) controls, based on a more limited sample of observations (and 11 degrees of freedom), confirm the baseline findings that GDP per capita, containment measures, deaths, and tourism are the most robust

determinants of output performance (Table 9 and Figure A8). Additionally, we also find that countries with higher rule of law, higher debt-to-GDP ratios, and smaller fiscal stimulus suffer higher output losses. In contrast, democracy is no longer significant, reflecting that, in this restricted sample, most countries have a similar democracy score and the democracy variable has a high negative correlation with the rule of law indicator.

4.1.4 Alternative Period

For many countries, the peak of the economic crisis has been observed in the second quarter of 2020. It is useful to check, therefore, the validity of our results when considering only economic performance in the second quarter alone. Results reported in Table 11 (Figure A9) confirm our previous findings and also suggest that countries with higher debt-to-GDP ratio, larger current account surpluses, and more flexible exchange rates tend to experience weaker economic performance.

Table 11: Robust Drivers of Output Performance across Countries—Using only Q2 Data

	Output Performance 1	Output Performance 2
Health condition	−0.07	−0.19
Containment stringency	−1.80	−1.71
Deaths per capita (log)	−2.89	−3.20
Liquidity	−0.69	−0.63
Policy rate cuts	0.00	0.08
Fiscal stimulus	0.68	1.01
Labor market regulation	−0.79	−0.85
Credit market regulation	−1.98	−2.04
Business regulation	−0.05	0.01
Financial globalization	0.69	0.46
Trade globalization	−0.11	−0.06
Current account (% of GDP)	−1.01	−1.04
Financial system deposit (% of GDP)	−0.97	−0.90
Government debt (% of GDP)	−1.08	−1.20
Domestic credit (% of GDP)	−0.02	−0.21
Bank concentration	0.56	0.71
Exchange rate regime	−1.19	−1.14
Average GDP growth, 17–19	−1.00	−1.49
Tourism (% of GDP)	−2.69	−2.48
Services (% of GDP)	0.53	0.54
Industry (% of GDP)	0.40	0.40
Share of population over 65	−0.09	−0.24
Population (log)	0.26	0.35
GDP per capita (log)	1.17	1.18
Democracy	−1.61	−1.40
Population density	0.26	0.30
Gini coefficient	0.00	−0.03
Social fractionalization	−0.02	−0.30
Informality	−0.10	−0.06
Remittance inflow to GDP (%)	0.58	0.54
N	60	60

Note: t-statistic reported in the table. In bold those regressors that can be considered “robust”. Estimates based on equation (1).

4.2 Cross-Country Heterogeneity: Mediating Channels

The results suggest that differences in GDP per capita are the most robust and important drivers of cross-country differences in output loss. What drives this result? Potential mediating channels could be the higher economic costs of health crises and less effective macroeconomic stimulus in poorer countries. To shed light on this, we extend the specification to include interaction terms between three alternative measures of economic development and deaths per capita, the stringency of containment measures, and the monetary and fiscal policy response variables. The measures of economic development that we consider are the following: (i) the level of GDP per capita; (ii) a dummy which takes value 1 for countries with a level of GDP per capita above the sample average; and (iii) a dummy which takes value 1 for advanced economies (IMF definition).

Table 12: Robust Drivers of Output Performance across Countries—Interaction with Income Level

	Continuous		Dummy 1		Dummy 2	
	OP1	OP2	OP1	OP2	OP1	OP2
Covariates						
Health condition	0.15	−0.06	0.07	0.00	0.30	0.15
Containment stringency	−1.66	−1.22	−1.00	−1.60	−1.62	−1.93
Deaths per capita (log)	−1.78	−2.54	−2.71	−2.63	−2.26	−2.49
Liquidity	−1.88	−2.06	−0.46	−0.59	−1.25	−1.31
Policy rate cuts	−0.72	−0.73	0.22	−0.23	0.53	0.65
Fiscal stimulus	0.29	0.91	−1.19	−0.56	0.31	0.66
Labor market regulation	−0.30	−0.03	−0.46	−0.47	−0.23	−0.23
Credit market regulation	−1.94	−1.97	−1.25	−1.18	−1.97	−1.97
Business regulation	0.13	0.09	−0.51	−0.47	−0.15	−0.19
Financial globalization	−0.01	−0.58	0.65	0.55	0.39	0.24
Trade globalization	−0.59	−1.00	0.25	−0.18	−0.13	−0.35
Current account (% of GDP)	−0.08	0.13	−0.20	−0.21	−0.62	−0.54
Financial system deposit (% of GDP)	−0.45	0.00	−1.15	−0.71	−0.30	0.19
Government debt (% of GDP)	−0.42	−0.42	−0.49	−0.59	−0.53	−0.59
Domestic credit (% of GDP)	−0.05	−0.05	0.15	0.05	−0.34	−0.55
Bank concentration	0.18	0.51	−0.06	0.11	0.53	0.88
Exchange rate regime	−0.49	0.12	−0.22	−0.07	−0.94	−0.59
Average GDP growth, 17–19	−0.95	−1.49	−0.37	−0.83	−0.98	−1.54
Tourism (% of GDP)	−3.21	−3.21	−3.24	−2.94	−3.02	−2.84
Services (% of GDP)	0.09	−0.46	0.80	0.15	0.23	−0.09
Industry (% of GDP)	0.31	0.02	0.57	−0.13	0.28	0.03
Share of population over 65	0.24	−0.38	0.44	−0.01	−0.20	−0.75
Population (log)	−0.67	−0.62	−0.95	−0.58	−0.38	−0.19
GDP per capita (log)	1.54	2.27	1.64	1.57	1.05	1.20
Democracy	−1.08	−0.64	−1.76	−0.93	−1.52	−1.31
Population density	−0.02	−0.31	0.08	0.32	0.04	0.02
Gini coefficient	0.63	0.68	1.26	1.23	0.64	0.77
Social fractionalization	0.13	−0.19	−0.35	−0.74	−0.21	−0.55
Informality	−0.06	−0.12	−0.12	0.12	−0.07	−0.03
Remittance inflow to GDP (%)	1.15	1.95	0.10	0.63	0.42	0.74
Containment*income level	1.01	1.00	0.21	0.57	0.42	0.75
Deaths per capita*income level	1.44	2.18	1.53	1.39	0.39	0.57
Liquidity*income level	1.84	2.01	0.43	0.52	1.40	1.47
Policy rate cuts*income level	0.77	0.79	0.73	1.10	0.35	0.30
Fiscal stimulus*income level	−0.29	−0.90	1.22	0.60	−0.15	−0.45
N	60	60	60	60	60	60

Note: t-statistic reported in the table. In bold those regressors that can be considered robust. Estimates based on equation (1). Dummy 1 uses the average of GDP per capita as reference, 1 denotes above average, otherwise 0; Dummy 2 uses the definition of income level in the World Economic Outlook, 1 is advanced economies, otherwise 0; OP stands for output performance.

The WALs results in Table 12 (Figure A10) highlight mediating channels that are consistent with our priors. First, the output costs associated with containment measures and deaths are larger in lower-income countries, probably because of the more limited social safety nets and larger shares of financially constrained households and firms. Second, monetary stimulus—specially liquidity provisions—has been less effective in poorer countries, consistent with the literature on the more limited transmission of monetary policy in emerging market and developing economies. Third, there is some evidence that the effectiveness of fiscal stimulus is lower in poorer countries.

5. CONCLUSION

This paper has explored the factors that drive the heterogeneity of output losses across countries in the first phase of the COVID-19 recession. Using model-averaging techniques to address model uncertainty, we find that the countries experiencing smaller output losses are those with higher GDP per capita; less stringent containment measures; smaller number of deaths per capita; smaller tourism sectors; less flexible credit markets; lower pre-crisis growth; higher fiscal stimulus; less social (ethnic and religious) fractionalization; and less democratic regimes. Among these factors, the level of GDP per capita has the largest quantitative effect on resilience among the robust factors: a country at the 75th percentile of the GDP per capita distribution (such as Portugal) has, on average, a 7 percentage point smaller output loss than a country at the 25th percentile (such as Bangladesh). Our analysis suggests two key reasons why less-developed economies may be less resilient: the higher economic costs of containment measures—probably because of more limited social safety nets—and less effective fiscal and monetary policy stimulus.

We also find that death rates and containment stringency have similar effects on resilience, which suggests that rollback of containment should be implemented in a way that minimizes health risks. This implies relaxing containment only when new infections are declining and implementing strong testing and contact tracing policies. Second, fiscal stimulus has helped to reduce economic losses, underscoring that premature withdrawal of such stimulus is self-defeating. Our results indicate that monetary stimulus enhanced resilience more in advanced than in non-advanced economies, underscoring the criticality of improving transmission in the latter. Third, reflecting that this is foremost a health crisis, the economic fallout has been particularly acute in high-contact sectors such as tourism and retail. This underscores the need for targeted rather than generalized support, particularly in the later stages of the crisis.

Our findings also speak to the more general literature on resilience. In contrast to studies on the GFC, we do not find that trade and financial openness have been important drivers of output loss during the pandemic. Whether such factors will play a key role going forward, including during the recovery, is an important question for future research.

REFERENCES

- Aaronson, D., Rissman, E.R. and Sullivan, D.G., 2004. Can sectoral reallocation explain the jobless recovery?. *Economic Perspectives—Federal Reserve Bank of Chicago*, 28, pp. 36–49.
- Ahir, Hites, Bloom, N., and Furceri, D., 2018. World Uncertainty Index, *Stanford University, mimeo*.
- Aizenman, J., and Pasricha, G. K., 2010. Selective swap arrangements and the global financial crisis: Analysis and interpretation. *International Review of Economics & Finance*, 19(3), pp. 353–365.
- Alesina, A., Devleeschauwer, A., Easterly, W., Kurlat, S. and Wacziarg, R., 2003. Fractionalization. *Journal of Economic Growth*, 8(2), pp. 155–194.
- Alesina, A., Spolaore, E., and Wacziarg, R., 2005. Trade, Growth and the Size of Countries, *Handbook of Economic Growth*, ed. by P. Aghion, and S. Durlauf, 1 (23), pp. 1499–1542. Elsevier.
- Alesina, A.F., Furceri, D., Ostry, J.D., Papageorgiou, C. and Quinn, D.P., 2020a. Structural reforms and elections: Evidence from a world-wide new dataset (No. w26720). *National Bureau of Economic Research*.
- Artha, I. K. D. S., and de Haan, J., 2011. Labor market flexibility and the impact of the financial crisis. *Kyklos*, 64(2), pp. 213–230.
- Babecký, J., Havranek, T., Mateju, J., Rusnák, M., Smidkova, K., and Vasicek, B., 2012. Banking, debt and currency crises: early warning indicators for developed countries. *No 1485, Working Paper Series, European Central Bank*.
- . 2013. Leading indicators of crisis incidence: Evidence from developed countries. *Journal of International Money and Finance*, 35, pp. 1–19.
- Baek, I. and Bouzinov, M., 2020. Does democratic progress deter terrorist incidents? *European Journal of Political Economy*, pp. 101951.
- Baker, Scott R., Farrokhnia, R.A., Meyer, S., Pagel, M., and Yannelis, C., 2020. How does household spending respond to an epidemic? Consumption during the 2020 COVID-19 pandemic. *NBER Working Paper 26949, National Bureau of Economic Research*.
- Bayer, C., Born, B., Luetticke, R., and Müller, G. J., 2020. The coronavirus stimulus package: How large is the transfer multiplier? *CEPR Discussion Papers 14600, C.E.P.R. Discussion Papers*.
- Beck, T. and Demirguc-Kunt, A., 2009. Financial institutions and markets across countries and over time-data and analysis. *The World Bank*.
- Béland, L.P., Brodeur, A. and Wright, T., 2020. The short-term economic consequences of Covid-19: exposure to disease, remote work and government response.
- Berkmen, S. P., Gelos, G., Rennhack, R., and Walsh, J. P., 2012. The global financial crisis: Explaining cross-country differences in the output impact. *Journal of International Money and Finance*, 31(1), pp. 42–59.
- Bernal-Verdugo, Lorenzo E., Furceri, D., and Guillaume, D., 2013. Banking crises, labor reforms, and unemployment, *Journal of Comparative Economics, Elsevier*, 41(4), pp. 1202–1219.

- Bhagwati, J., 1998. The capital myth: the difference between trade in widgets and dollars. *Foreign Affairs*, pp. 7–12.
- Blanchard, O. J., Faruqee, H., Das, M., Forbes, K. J., and Tesar, L. L., 2010. The initial impact of the crisis on emerging market countries [with comments and discussion]. *Brookings Papers on Economic Activity*, pp. 263–323.
- Bluedorn, J., Aiyar, S., Duval, R., Furceri, D., Garcia-Macia, D., Ji, Y., Malacrino, D., Qu, H., Siminitz, J., and Zdzienicka, A., 2019. Strengthening the euro area; The role of national structural reforms in building resilience, *IMF Staff Discussion Notes*, 2019/005.
- Brandao-Marques, L., Gelos, G., Harjes, T., Sahay, R. and Xue, Y., 2020. Monetary policy transmission in emerging markets and developing economies. *IMF Working Papers 2020/035*, International Monetary Fund.
- Brock, W. A., and Durlauf, S. N., 2001. What have we learned from a decade of empirical research on growth? Growth empirics and reality, *The World Bank Economic Review*, 15(2), pp. 229–272.
- Cacciatore, M., Duval, R., Furceri, D., and Zdzienicka, A., 2020. Fiscal multipliers and job-protection regulation, *European Economic Review*, forthcoming.
- Caprio, G. and Honohan, P., 2002. Banking policy and macroeconomic stability: An exploration. *The World Bank*.
- Caprio Jr., G., D'Apice, V., Ferri, G., and Puopolo, G. W., 2014. Macro-financial determinants of the great financial crisis: Implications for financial regulation. *Journal of Banking & Finance*, 44, 114–129.
- Carvalho, V.M., Hansen, S., Ortiz, A., García, J.R., Rodrigo, T., Mora, S.R., and Ruiz, J., 2020. Tracking the COVID-19 crisis with high-resolution transaction data.” *CEPR Discussion Paper 14642*, Centre for Economic Policy Research.
- Cecchetti, S. G., King, M., and Yetman, J., 2011. Weathering the financial crisis: good policy or good luck? *BIS Working Papers 351*, Bank for International Settlements.
- Cepaluni, G., Dorsch, M., and Branyiczki, R., 2020. Political regimes and deaths in the early stages of the COVID-19 pandemic. *Social Science Research Network 3586767*.
- Chernozhukov, V., Kasahara, H. and Schrimpf, P., 2020. Mask mandates and other lockdown policies reduced the spread of COVID-19 in the US.
- Chronopoulos, D.K., Lukas, M. and Wilson, J.O., 2020. Consumer spending responses to the COVID-19 pandemic: An assessment of Great Britain. *Social Science Research Network 3586723*.
- Claessens, S., Tong, H., and Wei, S. J., 2012. From the financial crisis to the real economy: Using firm-level data to identify transmission channels. *Journal of International Economics*, 88(2), pp. 375–387.
- Coibion, O., Gorodnichenko, Y. and Weber, M., 2020. The cost of the covid-19 crisis: Lockdowns, macroeconomic expectations, and consumer spending No. w27141. *National Bureau of Economic Research*.
- Correia, S., Luck, S., and Verner, E., 1918. Pandemics depress the economy, public health interventions do not: Evidence from the 1918 flu.

- Cuaresma, J. C., and Feldkircher, M., 2012. Drivers of output loss during the 2008–09 crisis: a focus on emerging Europe. *Focus on European Economic Integration*, 2(12), pp. 46–64.
- Deb, P., Furceri, D., Ostry, J. D., and Tawk, N., 2020a. The economic effects of Covid-19 containment measures. *IMF Working Paper* No. 20/158.
- . 2020b. The effect of containment measures on the COVID-19 pandemic. *IMF Working Paper* No. 20/159.
- Demir, B., and Javorcik, B., 2020. Trade finance matters: evidence from the COVID-19 crisis. *Oxford Review of Economic Policy*, 36(Supplement_1), S397–S408.
- Demirguc-Kunt, A., Lokshin, M. and Torre, I., 2020. The sooner, the better: The early economic impact of non-pharmaceutical interventions during the COVID-19 pandemic. *World Bank Policy Research Working Paper*, 9257.
- Devereux, J., and Dwyer, G. P., 2016. What determines output losses after banking crises?. *Journal of International Money and Finance*, 69, pp. 69–94.
- Duval, R., Furceri, D., and Miethe, J., 2020. Robust political economy correlates of major product and labor market reforms in advanced economies: Evidence from BAMLE for Logit Models. *Journal of Applied Econometrics*. <https://onlinelibrary.wiley.com/doi/10.1002/jae.2791>
- Eichhorst, W., Feil, M. T., and Marx, P., 2010. Crisis, what crisis? Patterns of adaptation in European labor markets. *Applied Economics Quarterly (formerly: Konjunkturpolitik)*, Duncker & Humblot, Berlin, vol. 61(Supplement), pages 29–64.
- Faria-e-Castro, M., 2020. Fiscal policy during a pandemic. *FRB St. Louis Working Paper*, (2020–006).
- Feldkircher, M., 2014. The determinants of vulnerability to the global financial crisis 2008 to 2009: Credit growth and other sources of risk. *Journal of international Money and Finance*, 43, pp. 19–49.
- Fernandez, C., Ley, E., and Steel, M. F., 2001a. Benchmark priors for Bayesian model averaging. *Journal of Econometrics*, 100(2), pp. 381–427.
- . 2001b. Model uncertainty in cross-country growth regressions. *Journal of applied Econometrics*, 16(5), pp. 563–576.
- Fornaro, L. and Wolf, M., 2020. Covid-19 coronavirus and macroeconomic policy. *CREI/UPF and University of Vienna*
- Frankel, J.A., 2011. Are Bilateral Remittances Countercyclical?. *Open Economies Review*, 22(1), pp. 1–16.
- Frankel, J. A. and Saravelos, G., 2010. Are leading indicators of financial crises useful for assessing country vulnerability? Evidence from the 2008–09 global crisis (No. w16047). *National Bureau of Economic Research*.
- Furceri, D. and Ostry, J., 2019. Robust determinants of income inequality. *Oxford Review of Economic Policy*, 35(3), pp. 490–517.
- Furceri, D., Celik, S. K., Jalles, J. T., and Koloskova, K., 2020. Recessions and total factor productivity: Evidence from sectoral data. *Economic Modelling*.
- Furceri, D. and Karras, G., 2007. Country size and business cycle volatility: Scale really matters, *Journal of the Japanese and International Economies*, 21(4), pp. 424–434.

- Ghosh, A.R., Ostry, J., and Qureshi, M.S., 2015. Exchange rate management and crisis susceptibility: A reassessment." *IMF Economic Review*, 63(1), pp. 238–276.
- Ghosh, A.R., Ostry, J., and Tsangarides, C.G., 2011. Exchange rate regimes and the stability of the international monetary system, *IMF Occasional Paper* 270.
- Ghosh, A.R., Ostry, J., and Wolf, H., 1997. Does the nominal exchange rate regime matter? *NBER Working Paper* 5874.
- Giannone, D., Lenza, M., and Reichlin, L., 2011. Market freedom and the global recession, *IMF Economic Review*, 59(1), pp. 111–135.
- Groot, S. P., Möhlmann, J.L., Garretsen, J. H., and de Groot, H. L., 2011. The crisis sensitivity of European countries and regions: stylized facts and spatial heterogeneity. *Cambridge Journal of Regions, Economy and Society*, 4(3), pp. 437–456.
- Gupta, S., Montenegro, L., Nguyen, T.D., Rojas, F.L., Schmutte, I.M., Simon, K.I., Weinberg, B.A. and Wing, C., 2020. Effects of social distancing policy on labor market outcomes No. w27280. *National Bureau of Economic Research*.
- Hasell, J., 2020. Which countries have protected both health and the economy in the pandemic. *Our World in Data*, 1.
- Ho, T. K., 2010. Looking for a needle in a haystack: Revisiting the cross-country causes of the 2008–09 crisis. *Economica*.
- Ilizetzi, E., Mendoza, E.G. and Végh, C.A., 2013. How big (small?) are fiscal multipliers?. *Journal of monetary economics*, 60(2), pp. 239–254.
- International Monetary Fund (IMF). 2020. *World Economic Outlook: A Long and Difficult Ascent*. Washington, DC, October.
- Ioannidis, J.P., Axfors, C., and Contopoulos-Ioannidis, D.G., 2020. Population-level COVID-19 mortality risk for non-elderly individuals overall and for non-elderly individuals without underlying diseases in pandemic epicenters. *medRxiv*.
- Jinjarak, Y., Ahmed, R., Nair-Desai, S., Xin, W., and Aizenman, J., 2020. Pandemic shocks and fiscal-monetary policies in the Eurozone: COVID-19 dominance during January-June 2020 No. w27451. *National Bureau of Economic Research*.
- Kavanagh, M. M., and Singh, R., 2020. Democracy, capacity, and coercion in pandemic response—COVID 19 in comparative political perspective. *Journal of Health Politics, Policy and Law*, 45(6): pp. 997–1012.
- Kim, J.I. and Ostry, J., 2018. Boosting fiscal space: The role of GDP-linked debt and longer maturities, *IMF Discussion Paper* 18/04. Forthcoming *Economic Policy*.
- Kopelman, J.L. and Rosen, H.S., 2016. Are public sector jobs recession-proof? Were they ever?. *Public Finance Review*, 44(3), pp. 370–396.
- Kose, M. A., Prasad, E., Rogoff, K., and Wei, S., 2009. Financial globalization: a reappraisal. *IMF Staff papers*, 56(1), pp. 8–62.
- Levchenko, A. A., Lewis, L. T., and Tesar, L. L., 2010. The collapse of international trade during the 2008–09 crisis: in search of the smoking gun. *IMF Economic Review*, 58(2), pp. 214–253.
- Magnus, J. R., Powell, O., and Prüfer, P., 2010. A comparison of two model averaging techniques with an application to growth empirics. *Journal of econometrics*, 154(2), pp. 139–153.

- Maloney, W. and Taskin, T., 2020. Determinants of social distancing and economic activity during COVID-19: A global view. *Policy Research Working Paper Series 9242, The World Bank*.
- McQuade, P. and Schmitz, M., 2017. The great moderation in international capital flows: A global phenomenon?. *Journal of International Money and Finance*, 73, pp. 188–212.
- Mitra, S., 2013. Informality, financial development and macroeconomic volatility. *Economics Letters*, 120(3), pp. 454–457.
- Obstfeld, M., Shambaugh, J. C., and Taylor, A. M., 2009. Financial instability, reserves, and central bank swap lines in the panic of 2008. *American Economic review*, 99(2), pp. 480–86.
- Ostry, J., Prati, A., and Spilimbergo, A., 2009. “Structural Reforms and Economic Performance in Advanced and Developing Countries,” *IMF Occasional Paper* 268.
- Ostry, J., Ghosh, A.R., Kim, J.I., and Qureshi, M.S., 2010. Fiscal Space. *IMF Staff Position Note* 2010/11.
- Rodrik, D., 1998. Who needs capital-account convertibility?. *Essays in International Finance*, edited by P. Kenen, Princeton University Press, pp. 55–65.
- Rose, A. K., 2011. International financial integration and crisis intensity. *Macroeconomics Working Paper 23195, East Asian Bureau of Economic Research*.
- Rose, A. K., and Spiegel, M. M., 2010. Cross-country causes and consequences of the 2008 crisis: International linkages and American exposure. *Pacific Economic Review*, 15(3), pp. 340–363.
- . 2011. Cross-country causes and consequences of the crisis: An update. *European Economic Review*, 55(3), pp. 309–324.
- . 2012. Cross-country causes and consequences of the 2008 crisis: early warning. *Japan and the World Economy*, 24(1), pp. 1–16.
- Ruger, J. P., 2005. Democracy and health. *Qjm*, 98(4), pp. 299–304.
- Sala-i-Martin, X., Doppelhofer, G., and Miller, R. I., 2004. Determinants of long-term growth: A Bayesian averaging of classical estimates (BACE) approach. *American economic review*, pp. 813–835.
- Sen, A. K., 1999. Democracy as a universal value. *Journal of Democracy*, 10(3), pp. 3–17.
- Stephany, F., Stoehr, N., Darius, P., Neuhäuser, L., Teutloff, O., and Braesemann, F., 2020. The CoRisk-Index: A data-mining approach to identify industry-specific risk assessments related to COVID-19 in real-time. *arXiv preprint arXiv:2003.12432*.
- Stiglitz, J.E., 2002. Globalization and its Discontents Vol. 500. *Norton: New York*.

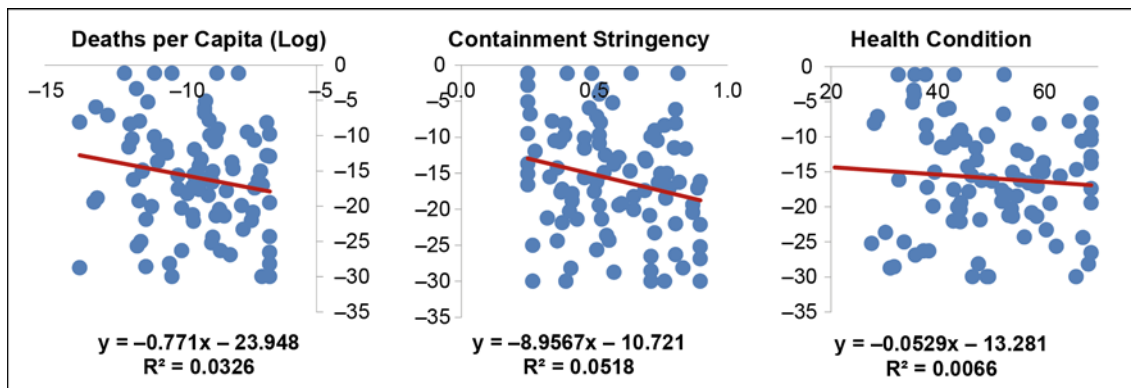
- Weill, J. A., Stigler, M., Deschenes, O., and Springborn, M. R., 2020. Social distancing responses to COVID-19 emergency declarations strongly differentiated by income. *Proceedings of the National Academy of Sciences*, 117(33), pp. 19658–19660.
- Wright, A. L., Sonin, K., Driscoll, J., and Wilson, J., 2020. Poverty and economic dislocation reduce compliance with covid-19 shelter-in-place protocols. *University of Chicago, Becker Friedman Institute for Economics Working Paper*, 2020-40.

ANNEX A

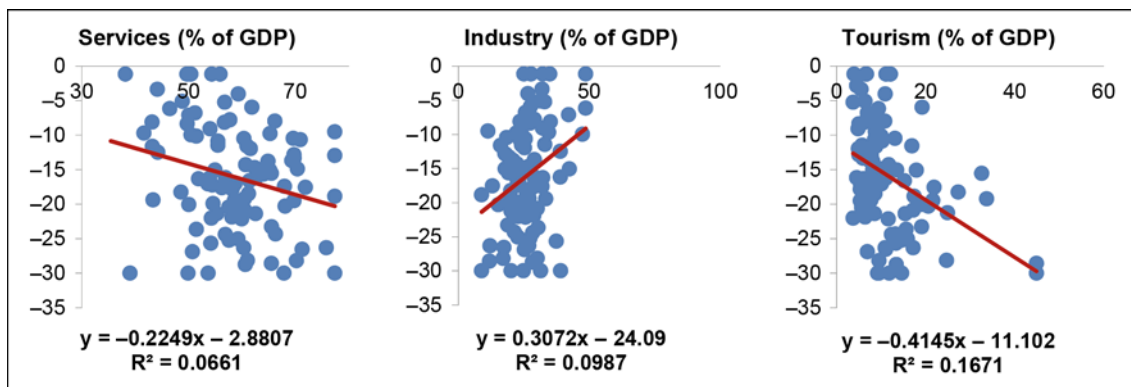
Table A1: Sources and Descriptive Statistics of the Variables Used in the Analysis

Category	Description	Source	Obs.	Mean	Std Dev.
Measure of output performance	Output performance 1	IMF	97	-17.60	12.44
	Output performance 2	IMF	97	-16.67	13.15
Health factors	Health condition	JHU	191	40.58	14.41
	Containment stringency	OxCGRT	183	0.59	0.20
	Deaths per capita (log)	JHU	175	-11.02	1.95
Policy support	Liquidity	IMF	194	1.25	3.50
	Policy rate cuts	IMF	194	87.29	134.04
	Fiscal stimulus	IMF	194	4.26	6.09
Regulation	Labor market regulation	FI	157	6.46	1.36
	Credit market regulation	FI	157	8.18	1.55
	Business regulation	FI	157	6.75	1.27
Macroeconomic factors	Financial globalization	KOF	180	63.19	19.67
	Trade globalization	KOF	183	56.41	20.37
	Current account (% of GDP)	IMF	132	-1.72	8.36
	Financial system deposit (% of GDP)	FSD	163	59.93	50.73
	Government debt (% of GDP)	FSD	115	56.34	37.13
	Domestic credit (% of GDP)	FSD	165	57.31	43.31
	Bank concentration	FSD	160	65.69	19.30
	Exchange rate regime	IMF	192	2.07	0.87
	Average GDP growth, 17–19	IMF	199	2.97	3.60
Sectorial composition	Tourism (% of GDP)	WTTC	174	13.96	13.07
	Services (% of GDP)	WDI	193	56.60	13.36
	Industry (% of GDP)	WDI	202	25.43	12.45
Development and others	Share of population over 65	WDI	190	8.34	5.88
	Population (log)	WDI	211	15.29	2.41
	GDP per capita (log)	WDI	208	8.83	1.50
	Democratization	Polity IV	152	3.87	3.92
	Population density	WDI	209	454.25	2,085
	Gini coefficient	SWIID 7.1	165	0.39	0.08
	Social fractionalization	Alesina et al. (2003)	179	0.44	0.19
	Informality	WDI	143	29.30	14.25
	Remittance inflow to GDP (%)	FSD	180	4.68	6.61

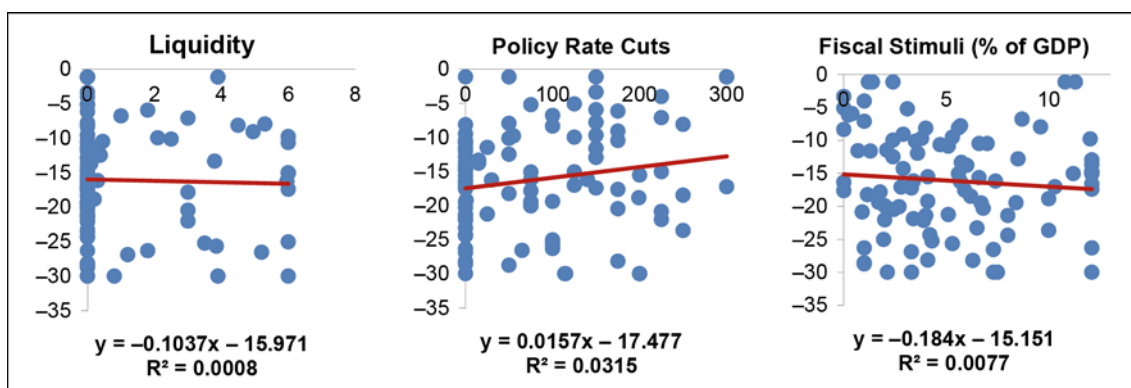
Notes: Output performance 1 is the difference between the observed cumulative real GDP growth in 2020H1 and the cumulative growth that was expected before the onset of the pandemic for the same period—based on the IMF World Economic Outlook 2020 January forecast for 2020H1. Output performance 2 is the difference in cumulative real GDP growth between the first half of 2020 (2020H1) and the first half of 2019 (2019H1). IMF is International Monetary Fund; JHU is Johns Hopkins University Coronavirus Resource Center; OxCGRT is Oxford COVID-19 Government Response Tracker; FI is Fraser Institute Economic Freedom Network; KOF is Swiss Economic Institute; FSD is World Bank Financial Structure Database; WDI is World Development Indicators; WTTC is World Tourist & Tourism Council.

Figure A1: Output Performances (%) and Public Health

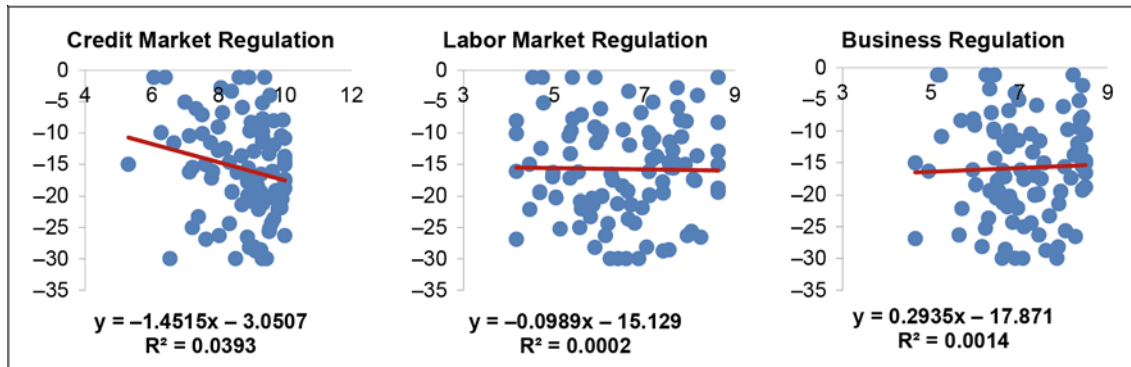
Note: Output performance is defined as the difference in cumulative real GDP growth between the first half of 2020 (2020H1) and the first half of 2019 (2019H1).

Figure A2: Output Performances (%) and Sectoral Composition

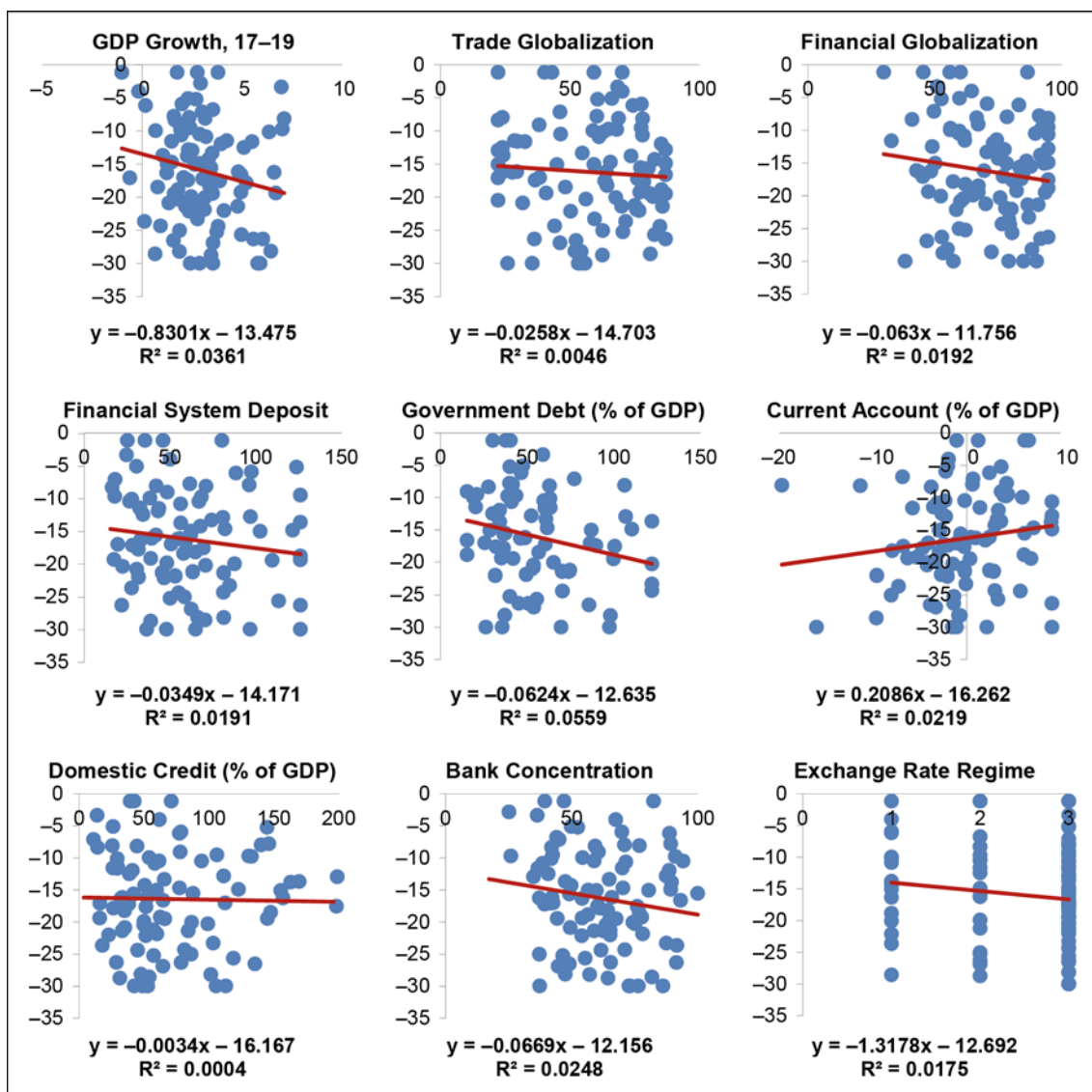
Note: Output performance is defined as the difference in cumulative real GDP growth between the first half of 2020 (2020H1) and the first half of 2019 (2019H1).

Figure A3: Output Performances (%) and Fiscal and Monetary Response

Note: Output performance is defined as the difference in cumulative real GDP growth between the first half of 2020 (2020H1) and the first half of 2019 (2019H1).

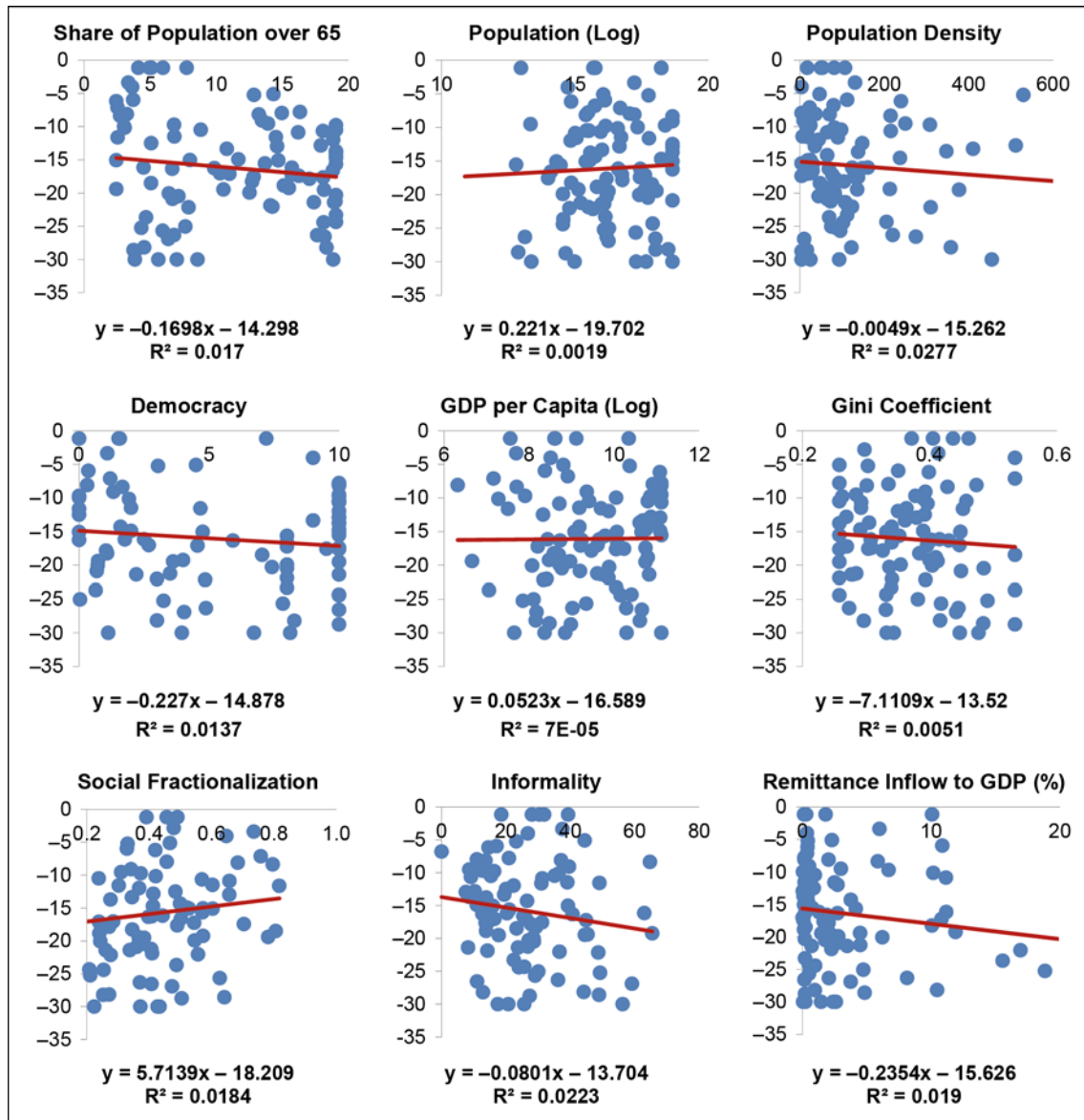
Figure A4: Output Performances (%) and Regulation

Note: Output performance is defined as the difference in cumulative real GDP growth between the first half of 2020 (2020H1) and the first half of 2019 (2019H1).

Figure A5: Output Performances (%) and Macroeconomic Characteristics

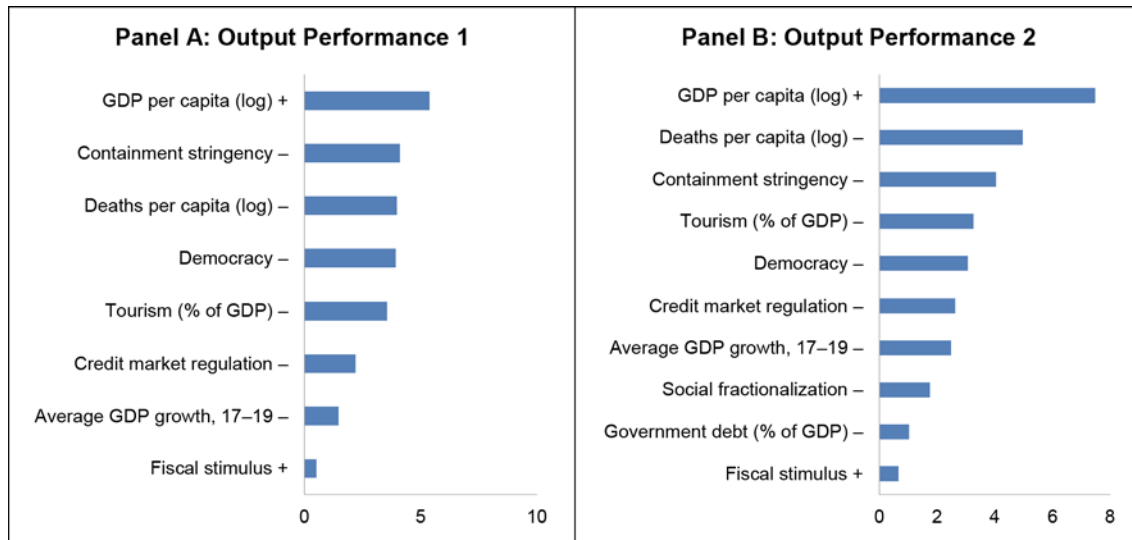
Note: Output performance is defined as the difference in cumulative real GDP growth between the first half of 2020 (2020H1) and the first half of 2019 (2019H1).

Figure A6: Output Performances (%) and Development, Demographics, and Institutions



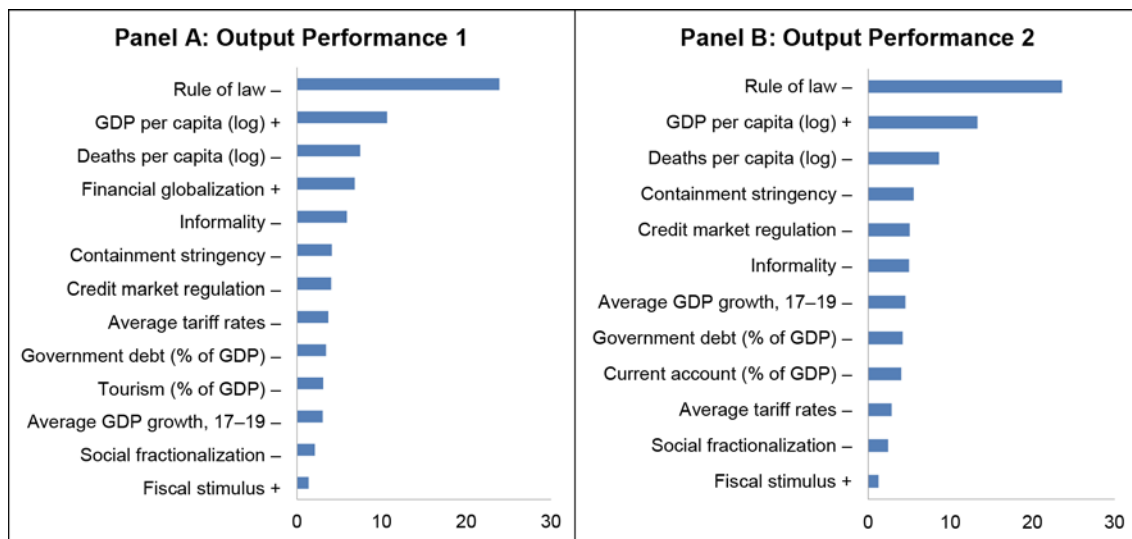
Note: Output performance is defined as the difference in cumulative real GDP growth between the first half of 2020 (2020H1) and the first half of 2019 (2019H1).

Figure A7: Robust Drivers of Output Performance across Countries—Controlling for Outliers, Magnitude of the Effects



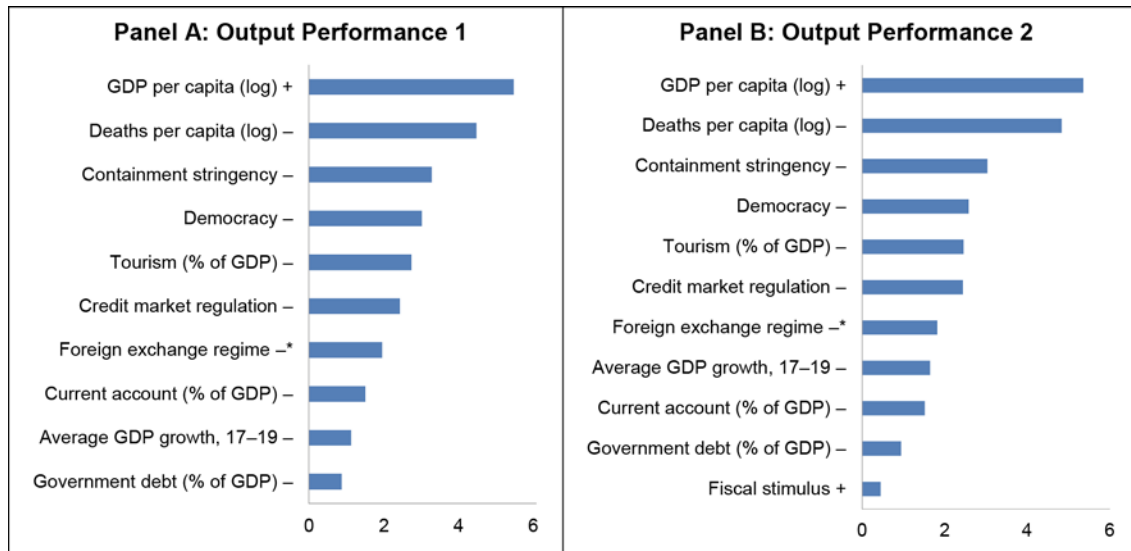
Note: Output performance 1 is the difference between the observed cumulative real GDP growth in 2020H1 and the cumulative growth that was expected before the onset of the pandemic for the same period—based on the IMF World Economic Outlook 2020 January forecast for 2020H1. Output performance 2 is the difference in cumulative real GDP growth between the first half of 2020 (2020H1) and the first half of 2019 (2019H1). The chart shows the differential effect on output performance, moving the level of the variable from the 25th percentile to the 75th percentile of its distribution, based on the coefficients of the variables that are robust in columns (I–II) of Table 7. – (+) denotes a negative (positive) effect on output. Estimates based on equation (1).

Figure A8: Robust Drivers of Output Performance across Countries—Additional Covariates, Magnitude of the Effects



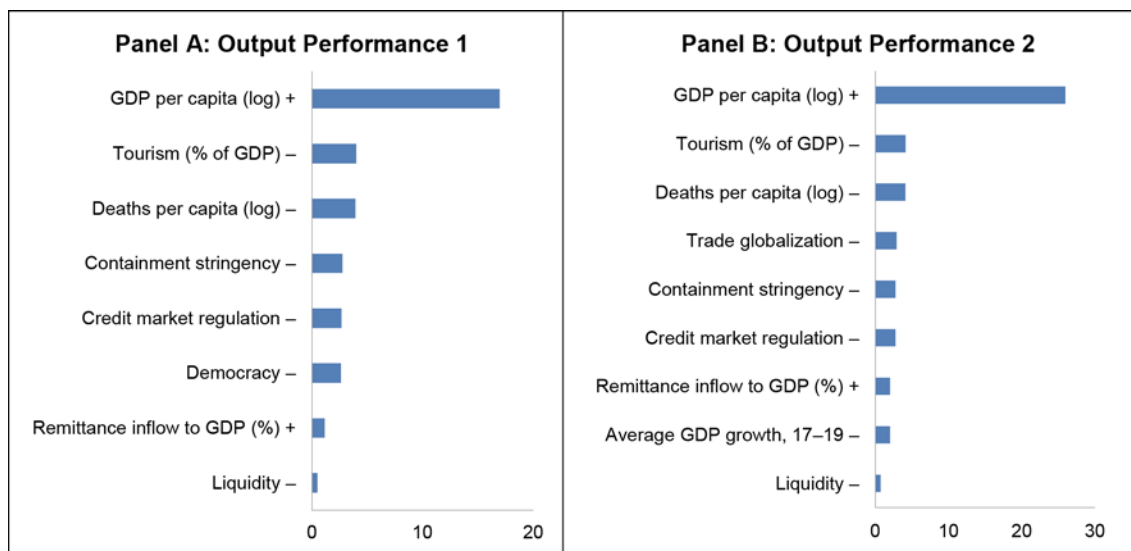
Note: Output performance 1 is the difference between the observed cumulative real GDP growth in 2020H1 and the cumulative growth that was expected before the onset of the pandemic for the same period—based on the IMF World Economic Outlook 2020 January forecast for 2020H1. Output performance 2 is the difference in cumulative real GDP growth between the first half of 2020 (2020H1) and the first half of 2019 (2019H1). The chart shows the differential effect on output performance, moving the level of the variable from the 25th percentile to the 75th percentile of its distribution, based on the coefficients of the variables that are robust in columns (I–II) of Table 7. – (+) denotes a negative (positive) effect on output. Estimates based on equation (1).

Figure A9: Robust Drivers of Output Performance across Countries—Using the Q2 Deviation as a Dependent Variable



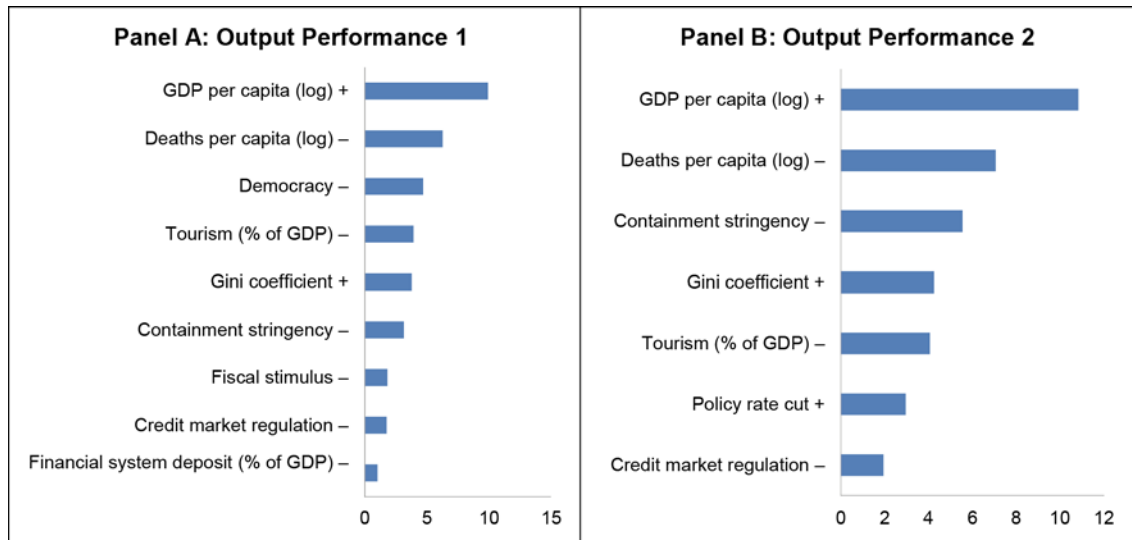
Note: Output performance 1 is the difference between the observed cumulative real GDP growth in 2020H1 and the cumulative growth that was expected before the onset of the pandemic for the same period—based on the IMF World Economic Outlook 2020 January forecast for 2020H1. Output performance 2 is the difference in cumulative real GDP growth between the first half of 2020 (2020H1) and the first half of 2019 (2019H1). The chart shows the differential effect on output performance, moving the level of the variable from the 25th percentile to the 75th percentile of its distribution, based on the coefficients of the variables that are robust in columns (I–II) of Table 7. – (+) denotes a negative (positive) effect on output. Estimates based on equation (1). For foreign exchange regime, its interquartile value is 0, instead we use the variation from the 10th percentile to the 90th percentile of its distribution.

Figure A10: Robust Drivers of Output Performance across Countries—Interaction with Income Level (Continuous), Magnitude of the Effects



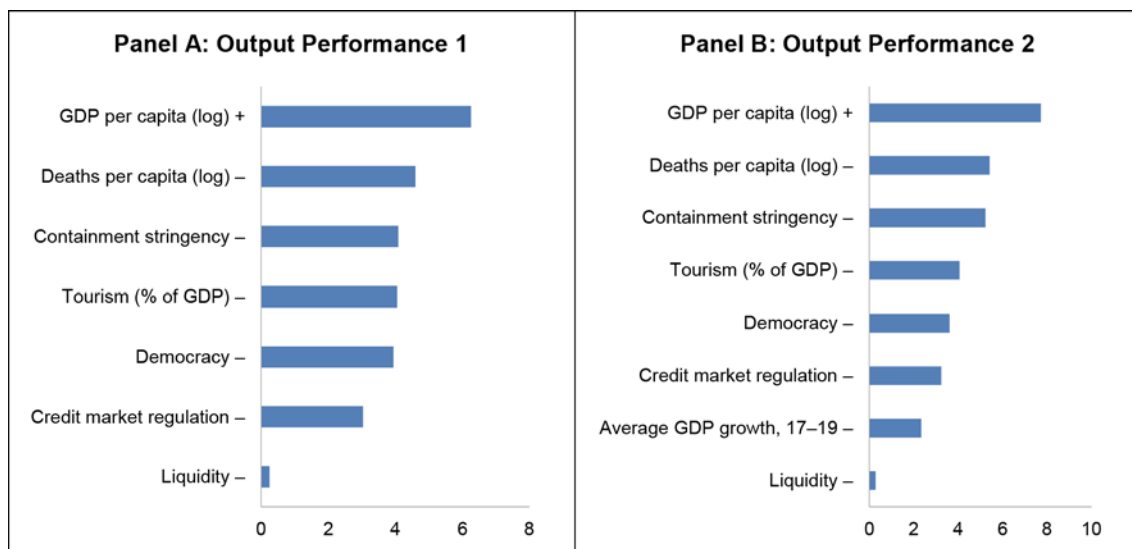
Note: Output performance 1 is the difference between the observed cumulative real GDP growth in 2020H1 and the cumulative growth that was expected before the onset of the pandemic for the same period—based on the IMF World Economic Outlook 2020 January forecast for 2020H1. Output performance 2 is the difference in cumulative real GDP growth between the first half of 2020 (2020H1) and the first half of 2019 (2019H1). The chart shows the differential effect on output performance, moving the level of the variable from the 25th percentile to the 75th percentile of its distribution, based on the coefficients of the variables that are robust in columns (I–II) of Table 7. – (+) denotes a negative (positive) effect on output. Estimates based on equation (1).

Figure A11: Robust Drivers of Output Performance across Countries—Interaction with Income Level (Dummy 1), Magnitude of the Effects



Note: Output performance 1 is the difference between the observed cumulative real GDP growth in 2020H1 and the cumulative growth that was expected before the onset of the pandemic for the same period—based on the IMF World Economic Outlook 2020 January forecast for 2020H1. Output performance 2 is the difference in cumulative real GDP growth between the first half of 2020 (2020H1) and the first half of 2019 (2019H1). The chart shows the differential effect on output performance, moving the level of the variable from the 25th percentile to the 75th percentile of its distribution, based on the coefficients of the variables that are robust in columns (I–II) of Table 7. – (+) denotes a negative (positive) effect on output. Estimates based on equation (1). Dummy 1 uses the average of GDP per capita as reference, 1 denotes above average, otherwise 0.

Figure A12: Robust Drivers of Output Performance across Countries—Interaction with Income Level (Dummy 2), Magnitude of the Effects



Note: Output performance 1 is the difference between the observed cumulative real GDP growth in 2020H1 and the cumulative growth that was expected before the onset of the pandemic for the same period—based on the IMF World Economic Outlook 2020 January forecast for 2020H1. Output performance 2 is the difference in cumulative real GDP growth between the first half of 2020 (2020H1) and the first half of 2019 (2019H1). The chart shows the differential effect on output performance, moving the level of the variable from the 25th percentile to the 75th percentile of its distribution, based on the coefficients of the variables that are robust in columns (I–II) of Table 7. – (+) denotes a negative (positive) effect on output. Estimates based on equation (1). Dummy 2 uses the definition of income level in the World Economic Outlook, 1 is advanced economies, otherwise 0.

ANNEX B

The objective of model averaging is to address model uncertainty by (i) running the maximum combination of possible models and (ii) providing estimates and inference results that take into account the performance of the variable not only in the final “reported” model but over the whole set of possible specifications. In practice, these two steps consist of estimating a parameter of interest conditional on each model in the model space and computing the unconditional estimate as a weighted average of conditional estimates. Formally, assuming that we are faced with M different models and that β^x is the coefficient related to the variable X , the final estimate of this coefficient is computed as:

$$\hat{\beta}^x = \sum_{i=1}^M \omega_i \hat{\beta}_i^x \quad (\text{B1})$$

where the weights ω_i denote a measure of the goodness of fit of each model.

The Moving Averaging technique used in this paper is the Weighted Average Least Squares (WALS) proposed by Magnus, Powell, and Prüfer (2010) and generalized by De Luca and Magnus (2011) to introduce the distinction between focus and auxiliary regressors. Focus regressors are those that are forced to enter in each model based on priors guided by theory, while auxiliary regressors are those whose significance and model inclusion is tested. Given the lack of strong theoretical foundations on the drivers of COVID-19 output losses, we only consider the constant to be a focus regressor in the analysis.

Let us assume that the general statistical framework is a linear regression model of the form:

$$y = X_1\beta_1 + X_2\beta_2 + \varepsilon \quad (\text{B2})$$

where y is vector of observations on the outcome of interest (output performance), X_1 is a matrix of observations and k_1 focus regressors, X_2 is a matrix of observations and k_2 auxiliary regressors, and β_1 and β_2 are their respective coefficients. Conditional on model M_i being the true model, the sample likelihood function implied by B2 is $p(y|\beta_1, \beta_2, \sigma^2, M_i)$. Compared with Bayesian Model Averaging (BMA), which uses a Gaussian distribution prior for the auxiliary parameters, WALS uses a Laplace distribution, which reduces the risk of the prior influencing heavily the final estimates (Magnus, Powell, and Prüfer 2010). WALS relies on preliminary orthogonal transformation of the auxiliary regressors and their parameters. This consists of computing an orthogonal $k_2 \times k_2$ matrix P and a diagonal $k_2 \times k_2$ matrix Δ such that $P^T X_2^T M_1 X_2 P = \Delta$. The key advantage of this transformation is that the space over which model selection is performed increases linearly rather than exponentially in size (as in the BMA).

Denoting \bar{t} the Laplace estimator of the vector of theoretical t-ratios of the auxiliary regressors ($t = [t_1, t_2, \dots, t_{k_2}]$), the WALS estimators of the coefficients β_1 and β_2 are given respectively by:

$$\widehat{\beta}_1 = (X_1^T X_1)^{-1} X_1^T (y - X_2 \widehat{\beta}_2) \quad (\text{B3})$$

$$\widehat{\beta}_2 = s P \Delta^{-1/2} \bar{t} \quad (\text{B4})$$

To decide whether a given auxiliary regressor is a robust determinant of the outcome of interest, Magnus, Powell, and Prüfer (2010) suggested an absolute value of the t -ratio greater than 1 for a variable to qualify as robust. This choice is motivated by the fact that including a given auxiliary regressor variable increases the model fit (as measured by the adjusted R^2) and the precision of the estimators of focus regressors (measured by a lower MSE) if and only if the t -ratio of the additional auxiliary regressor is in absolute value greater than 1.