

Khan, Muhammad Kamran; Teng, Jian-Zhou; Khan, Muhammad Imran

Article

Cointegration between macroeconomic factors and the exchange rate USD/CNY

Financial Innovation

Provided in Cooperation with:

Springer Nature

Suggested Citation: Khan, Muhammad Kamran; Teng, Jian-Zhou; Khan, Muhammad Imran (2019) : Cointegration between macroeconomic factors and the exchange rate USD/CNY, Financial Innovation, ISSN 2199-4730, Springer, Heidelberg, Vol. 5, Iss. 1, pp. 1-15, <https://doi.org/10.1186/s40854-018-0117-x>

This Version is available at:

<https://hdl.handle.net/10419/237152>

Standard-Nutzungsbedingungen:

Die Dokumente auf EconStor dürfen zu eigenen wissenschaftlichen Zwecken und zum Privatgebrauch gespeichert und kopiert werden.

Sie dürfen die Dokumente nicht für öffentliche oder kommerzielle Zwecke vervielfältigen, öffentlich ausstellen, öffentlich zugänglich machen, vertreiben oder anderweitig nutzen.

Sofern die Verfasser die Dokumente unter Open-Content-Lizenzen (insbesondere CC-Lizenzen) zur Verfügung gestellt haben sollten, gelten abweichend von diesen Nutzungsbedingungen die in der dort genannten Lizenz gewährten Nutzungsrechte.

Terms of use:

Documents in EconStor may be saved and copied for your personal and scholarly purposes.

You are not to copy documents for public or commercial purposes, to exhibit the documents publicly, to make them publicly available on the internet, or to distribute or otherwise use the documents in public.

If the documents have been made available under an Open Content Licence (especially Creative Commons Licences), you may exercise further usage rights as specified in the indicated licence.



<https://creativecommons.org/licenses/by/4.0/>

RESEARCH

Open Access



Cointegration between macroeconomic factors and the exchange rate USD/CNY

Muhammad Kamran Khan , Jian-Zhou Teng* and Muhammad Imran Khan

* Correspondence:
tengjz270@nenu.edu.cn
School of Economics, Northeast
Normal University, Changchun, Jilin,
China

Abstract

This research paper investigates the effect of macroeconomic variables on the exchange rate USD/CNY using yearly time series data for China economy from 1980 to 2017. ARDL bounds test approach for cointegration is applied to test the long-run relation between the dependent and the independent variables. The results of long-run ARDL indicate that gross domestic product growth and trade openness have a positive effect on the exchange rate USD/CNY while interest and inflation rates have a negative effect on the exchange rate. Based on the results of this study, it is recommended that the policymakers of the Chinese government should implement vital monetary and fiscal policies to determine the less volatile and productive exchange rate for China to manage sustainable economic growth for a long time with its trading partners.

Keywords: Exchange rate, Macroeconomic factors, ARDL

JEL classification: F62, F31, C22

Introduction

Exchange rate is the value of one country's currency into another country's currency. Different economists argue that a flexible exchange rate is considered to be an important factor for any economy. Moffett et al. (2017) categorized exchange rate into four types. The fixed exchange rate is controlled by the government, which is using country's reserves for a specific time period. Managed floating exchange rate is the rate based on the demand and supply of specific currencies under certain interaction of the government. Freely floating rate is the exchange rate that fully relies on the force of demand and supply at an open market, without any government interaction. The last type of exchange rate is pegged exchange rate - when home currency is pegged as compared to the currency of another country, and both countries are similar as compared to other countries' currencies (Moffett et al., 2016; Piana 2001). Nowadays floating and pegged exchange rates are the most popular exchange rates. The floating exchange rate is adopted by the US, Europe, Japan for international trade and the currencies of these countries depend on how the currency trades in foreign exchange markets.

Countries having international trade relation with other countries should maintain the stability of their currencies. To protect against the currency depreciation countries will choose to peg their currency for their exported goods and services. Saudi Arabia,

Qatar, Oman and Jordan with different Middle East countries that export oil to other countries has pegged their country currencies to USD since the US is the largest oil importing country in the world. Morrison and Labonte (2013) stated that China started to peg CNY to dollar at 8.2770 CNY per USD back in 1995. The CNY exchange rate against USD remained to be constant from August 1995 to July 2005. Starting in 1995, CNY has been appreciating over the next 3 years since some of its major trading partners have forced the country to switch to the managed peg system. China stopped CNY appreciation in July 2008 because the global economic crisis was impacting China's exporters. However, it was appreciated again in June 2010. The consequences of China's currency policy for the US economy are complicated. When CNY is depreciated - it makes China's products become cheaper as compared to the United States product. Therefore, it encourages US consumers demand more Chinese products and US firms import Chinese products.

One of the most important factors affecting exchange rate is the gross domestic product growth rate. Azid et al. (2005) revealed that economic growth affects positively the exchange rate. The exchange rate of any country can be affected by its inflation rate. Purchasing power parity theory endeavored to find that in different countries having fluctuating exchange rates, equilibrium in exchange will happen when buyers in these countries hold similar buying power. Engel and Rogers (2001) study show that if any country has a greater price level of different commodities, the home currency of that country will be facing depreciation in exchange rates as compared to other countries. Smith (1999) stated that higher inflation rates minimalize the competitiveness of the country in international market with its trading partners. High inflation rate minimalizes the country's export and minimalize the demand of local currency. Kulkarni and Ishizaki (2002) pointed out that the high inflation rate causes a lower value of the home currency. Fisher (1930) revealed that nominal interest rates and inflation rate have association with each other. High interest rate boosts inflation in any country and higher inflation rate causes depreciation in a host country currency. Drine and Rault (2006), Hau (2002), Lartey et al. (2008) and Xiaopu (2002) revealed that trade openness shows the margin of trade between different countries and economies. Trade openness has positive and negative impacts on the exchange rate of any country with its trading country. MacDonald and Ricci (2005) stated that high imports from other countries decrease the supply of foreign currencies, thus depreciating home currency.

In this research, United States Dollar is treated as a home currency as compared to Chinese Yuan because both countries have trading relationship with each other. China is the top exporter to the United States and it has been ranked the first largest trading partner of the USA in 2015 according to the United States Census Bureau. Annual time series data is applied for the analysis of data from 1980 to 2017. The main objective of this research paper is to investigate the macroeconomic factors which affect the exchange rate in China. ARDL bond testing is used for cointegration to determine the long- and short-run relationship between the dependent and independent variables of the study. This research contributes to the literature in different unique ways of analysing the key macroeconomic factors of the exchange rate in China for the first time. This research study is a pioneering effort to examine exchange rate's macroeconomic factors of China. From the start of the floating exchange rate regime, China is facing depreciation in its home currency. Therefore, this is very important to investigate in

detail, the reasons of such impulsiveness of the exchange rate in China. In this research paper, we applied newly developed statistical method autoregressive distributed lag (ARDL) cointegration framework to investigate the long run and short run relationship among the study variables. Autoregressive distributed lag (ARDL) cointegration method has different advantages as compared to traditional cointegration methods. Autoregressive distributed lag (ARDL) approach makes its application possible, regardless the considered variables are stationary at level or at first difference $I(0)$, $I(1)$ or both of them cointegrated (Pesaran & Shin, 1999). Haug (2002) stated that Autoregressive distributed lag (ARDL) approach has also processed better properties of small samples.

Literature review

Exchange rate

Zeileis et al. (2007) investigated exchange rate regime and pointed out that China fixed the exchange rate of Chinese Yuan (CNY) against the USD for the time period 1995–2005 and the exchange rate for that time duration remain constant. Zeileis et al. (2005) studied Chinese Yuan regime and pointed out that the exchange rate between CNY and USD remained fixed at 8.2770 from August 1995 to July 2005. Authors stated that different elements include inflation, nominal interest rate and government debt having an effect on the exchange rate.

Inflation rate

Demand pull theory

Inflation is the unremitting and unrepressed increasing in price level of goods and services that subsequently decrease the purchasing power of currency and economic growth of any economy. Demand pull theory stated that inflation increases when demand of goods and services increase as compared to aggregate demand for goods and services. Namjour et al. (2014) categorized inflation into three different types. Creeping Inflation is that type of inflation, which increase within the range of 1 to 6% or 4 to 8% in 1 year. The other type of inflation is severe inflation in this type of Inflation, the price level increases rapidly as compared to Creeping Inflation, it ranges within 15 to 25% per year. The last type of inflation is very severe Inflation also known as hyperinflation is the most dangerous type of inflation; in this type of inflation the prices of goods and services increases up to 50% every six months. Inflation is very essential.

Argyrou and Pourpourides (2016); Ebiringa and Anyaogu (2014); Nucu (2011) indicated that the increase in inflation rate decreases the value of home country and which will effect to increase the exchange rate. The inflation rate has negative effect on exchange rate according to (Necşulescu and Şerbănescu 2013; Namjour et al. 2014). Different researcher stated that the increase in the inflation rate will increase the country's currency value and the exchange rate will decrease the country. Abbas et al. (2012) conducted research on the exchange rate of African Countries and pointed out inflation rate have non-significant effect on the exchange rate.

Purchasing power parity (PPP) theory

Argyrou and Pourpourides (2016) revealed the irregularities in the exchange rate are caused by inflation, they stated inflation and exchange rate have direct association.

They revealed that increase in inflation rate having positively effect on any country's nominal interest rate and exchange rate. Fisher effect Theory investigated the association of inflation and interest rate, the author pointed out that the nominal interest rate and inflation rate are increasing at the same rate. They pointed out that inflation causes to boost the nominal interest rate and due to this situation in the economy the home country currency depreciate its value so the exchange rate of other countries will appreciate as compared to other countries.

Ebiringa and Anyaogu (2014) conducted a research study to investigate cointegration between the exchange rate and inflation by using time series data from 1971 to 2010 in Nigeria. They pointed out inflation rate have a positive significant effect on exchange rate in Nigeria both in the short run and long run. ARDL results indicated that exchange rate affected by inflation in a positive manner; due to growth in inflation rate support to increase exchange rate.

Namjour et al. (2014) conducted research to know the association between the inflation rate and exchange rate for Iran. They pointed out that the results of correlation and least square estimation shows that inflation and exchange rate having a negative variable relationship in the short run. They pointed out that increases in inflation rate appreciate the home country currency and that causes the decrease in the value of the home country as compared to other countries currency. Namjour et al. (2014) revealed that inflation rate having different effects on exchange rate in a different country's economy with a different economic system. An increase in the value of the home country is due to higher imports to other trading countries and when the imported of different goods and services increase as compared to exports so the country currency devalue its value and which causes inflation in the economy.

Interest rate

Different researchers investigated interest rate and exchange rate, and pointed out a positive association regarding interest rate and exchange rate. Appreciation in interest rates causes to increase inflation rate and which decrease the value of home currency and boost the exchange rate. Gente and León-Ledesma (2006); Tafa (2015); Chowdhury and Hossain (2014); Khan (2010) stated that increase in interest rate having an effect on exchange rate due to which the home country currency value decrease and exchange rate increase. Ebiringa and Anyaogu (2014) stated that the interest rate and exchange rate have a negative association.

Fisher (1930) conducted research to investigate the association between interest rate and exchange rate. He revealed that inflation having a positive effect on the exchange rate. He stated that an increase in interest rate will cause to increase the inflation rate in the economy and high inflation will tend to devalue the home country currency.

Tafa (2015) studied the effect of interest rate on the exchange rate. He pointed out that the interest rate and exchange rate have positive associations with each other in Albania. He argues that domestic currency increases, so interest rate also increase that causes that the home country currency value will boost against foreign currency.

Liew et al. (2009) investigated the association between exchange rates and its elements by using monthly time series data from 1977/01 to 2006/03. They revealed the results of the Johansen cointegration technique show that the interest rate and GDP have a negative effect on exchange rate in Thailand.

Chowdhury and Hossain (2014) studied the association of interest rate and exchange rate of Bangladesh. They revealed that a positive association exists among interest rate and exchange rate in Bangladesh.

Gente and León-Ledesma (2006) examined the basic elements of exchange rates for four countries by using panel data from 1980 to 2001. They used the Johansen cointegration method for estimation and revealed that increase in World's interest rates have a negative effect on the exchange rate.

Wong (2013) endeavored to find the association between exchange rate and economic growth in Malaysia, by using time series data from 1971 to 2008. ARDL model is used to investigate the short run and the long run relation between variables of the study. The Results of ARDL approach show that the decrease in the value of exchange rate helps in the growth of the Malaysian economy. He also pointed out that higher interest rates positively affect the home country currency.

Trade openness

Siddiqui et al. (1996) assessed the exchange rate behavior for the time period 1960–1994 for Pakistan by applying the two-stage least square method for estimation. They pointed out that the openness of trade helps to grow the exchange rate in Pakistan, but terms of trade have negative effect on the real exchange rate.

Kumar (2010) examines the factors of the exchange rate in India by applying autoregressive distributed lag (ARDL) approach. He used time series data from 1997 Q2 to 2009 Q2. He pointed out that the terms of trade have negative significant effect on the exchange rate while trade openness has a positive and significant effect on Indian exchange rates in the long run.

Elbadawi and Soto (1997) investigated macroeconomic elements of real exchange rate by applying panel data of different countries for the period 1960–1994. They used (ECM) with cointegration method to investigate association of trade openness and real exchange rates. They pointed out that trade having a positive significant effect on exchange rates.

Bahmani-Oskooee and Tanku (2006) investigated the elements of the exchange rate by using time series data from 1970 to 1990 to 38 for African countries. They used panel data for analysis and pointed out that the results of panel regression shows that the decreases in import prices appreciate the exchange rate in the home country while an increase in export prices depreciate the exchange rates.

Joyce and Kamas (2003) used productivity and terms of trade to investigate the exchange rate, in three Latin American countries by applying annual data from 1971 to 1995. They pointed out that Johansen's cointegration result shows a long run relationship of the exchange rate with terms of trade and productivity in Colombia, Argentina and Mexico.

Lane and Milesi-Ferretti (2012) investigated the elements the real exchange rate in Ireland by using time series data from 1970 to 1997, they pointed out that there is no connection between terms of trade and exchange rate. Johansen cointegration results show that strong and positive association between relative output and real exchange rates exists.

Mallick (2010) examines the elements of the exchange rate in India by using monthly time series data from 1994 to 2007. They used fully modified ordinary least squares for

analysis, results of FMOLS show that real output growth has a significant effect on the appreciation of Indian rupee.

Algieri (2011) revealed the elements of Russian Ruble exchange rate by applying time series data from 1993 to 2010, VECM and Johansen cointegration method are used for estimation. He pointed out that the trade openness has a negative effect on Russian Ruble in long run. He suggested that open economies tend to decrease the value the Russian Ruble. Hau (2002) investigated the movements of the exchange rate by using a panel data for 48 countries and pointed out that trade openness is inversely associated with the real exchange rate.

Gross domestic product growth

McPherson and Rakovski (2000) studied the association between economic growth and exchange rate. They applied time series data for econometric analysis from 1970 to 1996 for Kenya. They investigated direct and indirect association between the real and nominal exchange rates and GDP growth. Results of co-integration indicated that there is no evidence of a strong direct relationship between changes in the exchange rate and GDP growth.

Estimation techniques

Empirical framework

After investigating the theoretical and empirical work, this research intends to investigate the effect of macroeconomic factors on the exchange rate that is derived by using the purchasing power parity theory and interest rate parity theory. Purchasing power parity regulates exchange rate through inflation. Purchasing power parity theory revealed that in different countries following fluctuating exchange rates, equilibrium will occur in these countries when similar buying power hold in these countries. Engel and Rogers (2001) study show that if any country has a greater price level of different commodities, the home currency of that country will be facing depreciation in exchange rates as compared to other countries. Interest rate parity theory stated that the growing interest rate experiences intensification in the value of their domestic currency as compared to the country's regulating lower rates and faces depreciation (Clostermann and Schnatz 2000). High exchange rate resulting from higher rates motivates investors that cause increases in capital invasions that result to improve demand for the home currency and appraises its value (Bailliu et al. 2003; Neumeyer and Perri 2005). Following the theoretical and empirical framework this model is derived:

$$EXCR_t = \beta_0 + \beta_1 GDPG_t + \beta_2 INFR_t + \beta_3 INTR_t + \beta_4 TRDO_t + \varepsilon_t$$

In the above model ε_t is the error term, EXCR is the currency exchange rate of Chinese Renminbi (CYN) against the United State dollar, GDPG is the percentage of gross domestic product used as a proxy of economic growth, INFR is annual inflation rate, which is computed by using the consumer price index, INTR is average annual interest rate and TRDO is trade openness which is measured by import plus export divide by GDP. All macroeconomic variables used in this study are in percentage form by using annual time-series data for the period of 1987–2016. All data used in this research paper are gathered from Federal Reserve Economic data.

Unit root test

Stationarity of data is checked with conventional stationarity tests such as the augmented (ADF) by Dickey Fuller (1979) and Phillips and Perron (PP) (1988) tests. The null hypothesis is

the unit root with a drift against the two alternative hypotheses: the series has no unit root with a linear time trend, or the series has stationary trend having non-zero mean with no time trend.

Autoregressive distributed lag (ARDL)

Autoregressive Distributed Lag (ARDL) bounds testing approach is used to investigate the long and the short run relationship between dependent and independent variables of the study. Pesaran et al. (2001) developed ARDL. Different researchers used different popular cointegration models in literature for different situations: Engle and Granger (1987) cointegration method is the first method that is applicable for two variables in I (1) order. Johansen and Juselius (1990) is the second method of cointegration that is used for large size of data and all series have the same order of integration. These two methods have some limitation that all series should be integrated at the same level. Researcher urged to introduce a novel technique that treats the variables with different series of I(0) and I(1). At last Pesaran et al. (2001) developed Autoregressive Distributed Lag (ARDL) cointegration model to solve the issue. ARDL method is applied to deal with the variables having stationary of series mixture of I(0) and I(1). ARDL model is superior to the other cointegration model and provides reliable results for small sample size. Autoregressive Distributed Lag (ARDL) model having problem of endogeneity during estimations. Endogeneity problem can be solved by taking lags of variables and make the model dynamic as in Pesaran et al. (2001), while Engle-Granger cointegration and Johansen cointegration are not able to apply different lags of variables. However, the ARDL model has the ability to utilize different lags of variables (Ozturk and Acaravci 2011). Following is the bound test cointegrations models.

$$\begin{aligned} \Delta EXCR_t = & \beta_o + \beta_1 \sum_{i=1}^P \Delta EXCR_{t-1} + \beta_2 \sum_{i=1}^P \Delta GDPG_{t-1} + \beta_3 \sum_{i=1}^P \Delta INFR_{t-1} \\ & + \beta_4 \sum_{i=1}^P \Delta INTR_{t-1} + \beta_5 \sum_{i=1}^P \Delta TRDO_{t-1} + \lambda_1 EXCR_{t-i} + \lambda_2 GDPG_{t-i} \\ & + \lambda_3 INFR_{t-i} + \lambda_4 INTR_{t-i} + \lambda_5 TRDO_{t-i} + \varepsilon_t \end{aligned}$$

$$\begin{aligned} \Delta GDPG_t = & \beta_o + \beta_1 \sum_{i=1}^P \Delta GDPG_{t-1} + \beta_2 \sum_{i=1}^P \Delta EXCR_{t-1} + \beta_3 \sum_{i=1}^P \Delta INFR_{t-1} \\ & + \beta_4 \sum_{i=1}^P \Delta INTR_{t-1} + \beta_5 \sum_{i=1}^P \Delta TRDO_{t-1} + \lambda_1 GDPG_{t-i} + \lambda_2 EXCR_{t-i} \\ & + \lambda_3 INFR_{t-i} + \lambda_4 INTR_{t-i} + \lambda_5 TRDO_{t-i} + \varepsilon_t \end{aligned}$$

$$\begin{aligned} \Delta INFR_t = & \beta_o + \beta_1 \sum_{i=1}^P \Delta INFR_{t-1} + \beta_2 \sum_{i=1}^P \Delta EXCR_{t-1} + \beta_3 \sum_{i=1}^P \Delta GDPG_{t-1} \\ & + \beta_4 \sum_{i=1}^P \Delta INTR_{t-1} + \beta_5 \sum_{i=1}^P \Delta TRDO_{t-1} + \lambda_1 INFR_{t-i} + \lambda_2 EXCR_{t-i} \\ & + \lambda_3 DGDP_{t-i} + \lambda_4 INTR_{t-i} + \lambda_5 TRDO_{t-i} + \varepsilon_t \end{aligned}$$

$$\begin{aligned}\Delta \text{INTR}_t &= \beta_0 + \beta_1 \sum_{i=1}^P \Delta \text{INTR}_{t-1} + \beta_2 \sum_{i=1}^P \Delta \text{INFR}_{t-1} + \beta_3 \sum_{i=1}^P \Delta \text{EXCR}_{t-1} \\ &+ \beta_4 \sum_{i=1}^P \Delta \text{GDPG}_{t-1} + \beta_5 \sum_{i=1}^P \Delta \text{TRDO}_{t-1} + \lambda_1 \text{INTR}_{t-i} + \lambda_2 \text{INFR}_{t-i} \\ &+ \lambda_3 \text{EXCR}_{t-i} + \lambda_4 \text{GDPG}_{t-i} + \lambda_5 \text{TRDO}_{t-i} + \varepsilon_t\end{aligned}$$

$$\begin{aligned}\Delta \text{TRDO}_t &= \beta_0 + \beta_1 \sum_{i=1}^P \Delta \text{TRDO}_{t-1} + \beta_2 \sum_{i=1}^P \Delta \text{INTR}_{t-1} + \beta_3 \sum_{i=1}^P \Delta \text{INFR}_{t-1} \\ &+ \beta_4 \sum_{i=1}^P \Delta \text{EXCR}_{t-1} + \beta_5 \sum_{i=1}^P \Delta \text{GDPG}_{t-1} + \lambda_1 \text{TRDO}_{t-i} + \lambda_2 \text{INTR}_{t-i} \\ &+ \lambda_3 \text{INFR}_{t-i} + \lambda_4 \text{EXCR}_{t-i} + \lambda_5 \text{GDPG}_{t-i} + \varepsilon_t\end{aligned}$$

Where EXCR is the exchange rate, GDPG is the gross domestic product growth rate, INFR is the inflation rate, INTR is the interest rate, TRDO is the trade openness, β_0 is the constant term and ε_t is the error term. The dynamics for error correction in the short run are represented by the terms with summation signs while the long-run relation is shown in the next half of the equation represented by λ . Autoregressive distributed lag (ARDL) technique applies Wald test (F -statistics) to decide the existence of cointegration among variables. The null hypothesis of cointegration states that there is no cointegration against the alternative hypothesis of there exists cointegration between variables. Pesaran et al. (2001) present the critical values of F -statistics and also two types of bounds: lower bound and upper bound. If the Wald test statistics are less than the lower bound, it indicates that there is no long-term cointegration existing among variables. In contrast, the test value is higher than the upper bound range; it means there is a long-term cointegration between variables. If the F -statistics is within the bounds, it indicates the inconclusive result. In this study, we apply Akaike Information Criterion (AIC) for our optimal lag length selections. After selection of the lag length and model estimation, if there exists the cointegration relationship so the short run and the long run ARDL model equations are the following:

$$\begin{aligned}\Delta \text{EXCR}_t &= \beta_0 + \beta_1 \sum_{i=1}^P \Delta \text{EXCR}_{t-i} + \beta_2 \sum_{i=1}^P \Delta \text{GDPG}_{t-i} + \beta_3 \sum_{i=1}^P \Delta \text{INFR}_{t-i} \\ &+ \beta_4 \sum_{i=1}^P \Delta \text{INTR}_{t-i} + \beta_5 \sum_{i=1}^P \Delta \text{TRDO}_{t-i} + \theta_1 \text{ECT}_{t-1} + \varepsilon_t\end{aligned}$$

$$\begin{aligned}\Delta \text{GDPG}_t &= \beta_0 + \beta_1 \sum_{i=1}^P \Delta \text{GDPG}_{t-i} + \beta_2 \sum_{i=1}^P \Delta \text{EXCR}_{t-i} + \beta_3 \sum_{i=1}^P \Delta \text{INFR}_{t-i} \\ &+ \beta_4 \sum_{i=1}^P \Delta \text{INTR}_{t-i} + \beta_5 \sum_{i=1}^P \Delta \text{TRDO}_{t-i} + \theta_2 \text{ECT}_{t-1} + \varepsilon_t\end{aligned}$$

$$\Delta INFR_t = \beta_0 + \beta_1 \sum_{i=1}^P \Delta INFR_{t-i} + \beta_2 \sum_{i=1}^P \Delta EXCR_{t-i} + \beta_3 \sum_{i=1}^P \Delta GDPG_{t-i} + \beta_4 \sum_{i=1}^P \Delta INTR_{t-i} + \beta_5 \sum_{i=1}^P \Delta TRDO_{t-i} + \theta_3 ECT_{t-1} + \epsilon_t$$

$$\Delta INTR_t = \beta_0 + \beta_1 \sum_{i=1}^P \Delta INTR_{t-i} + \beta_2 \sum_{i=1}^P \Delta INFR_{t-i} + \beta_3 \sum_{i=1}^P \Delta EXCR_{t-i} + \beta_4 \sum_{i=1}^P \Delta GDPG_{t-i} + \beta_5 \sum_{i=1}^P \Delta TRDO_{t-i} + \theta_4 ECT_{t-1} + \epsilon_t$$

$$\Delta TRDO_t = \beta_0 + \beta_1 \sum_{i=1}^P \Delta TRDO_{t-i} + \beta_2 \sum_{i=1}^P \Delta INTR_{t-i} + \beta_3 \sum_{i=1}^P \Delta INFR_{t-i} + \beta_4 \sum_{i=1}^P \Delta EXCR_{t-i} + \beta_5 \sum_{i=1}^P \Delta GDPG_{t-i} + \theta_5 ECT_{t-1} + \epsilon_t$$

In the above equations, error correction term (ECT_{t-1}) represents the long-run equilibrium speed of adjustment. Serial correlation and Heteroskedasticity test applied to check the goodness of fit of the model. Cumulative sum (CUSUM) and the cumulative sum of squares (CUSUMSQ) tests are applied for checking stability.

Results and discussion

Table 1 indicates the results of the Unit Root test for checking the stochastic properties of the data are assessed on the basis of the series of each variable through Augmented Dickey Fuller and Phillips-Perron tests. Results indicate that inflation and interest rate are stationary at level with ADF unit root test, also interest rate is stationary at level with PP while the remaining variables are non-stationary at level. All the time series variables stationarity are again checked at the first difference with both ADF and PP. The result of the first difference indicates that all variables are stationary. Thus, it

Table 1 Unit Root Test

Variables	ADF		PP	
	Intercept	Trend & Intercept	Intercept	Trend & Intercept
Level				
EXCR	-2.1617	-0.9660	-2.1196	-0.9762
GDPG	-4.4096	-4.7044 ^b	-2.8107	-2.5251
INFR	-3.3827 ^a	-3.8371 ^a	-2.4424	-2.5542
INTR	-3.5806 ^a	-3.5232	-3.6007 ^a	-3.6311
TRDO	-0.7895	-1.4466	-1.8110	-0.0517
First Difference				
EXCR	-5.1581 ^c	-5.7296 ^c	-4.2031 ^c	-5.7286 ^c
GDPG	-5.9176 ^c	-5.8603 ^c	-5.9144 ^c	-6.2571 ^c
INFR	-4.8311 ^c	-4.8610 ^b	-6.8773 ^c	-7.3084 ^c
INTR	-6.3198 ^c	-6.2267 ^c	-6.6417 ^c	-7.4399 ^c
TRDO	-3.3199 ^c	-4.4918 ^a	-4.3199 ^b	-4.5144 ^b

^{a,b} and ^c shows 1, 5 and 10% level of significance respectively

indicates that the order of integration is a mixture of I (0) and I (1), making it valid to use Autoregressive distributed lag (ARDL) bound test approach.

Table 2 indicates the result of lag selection criteria for Autoregressive distributed lag (ARDL) model. Before applying ARDL model it is necessary to determine the optimal lag length of variables of the study. Akaike Information Criterion (AIC) and Schwarz Bayesian Criterion (SBC) are two famous methods to select best lags for variables. In this study, we used AIC for lags selection; lags two are selected for this study.

Table 3 indicates the results of bound test. Results of F-statistics revealed that cointegration exist among variables if the value of calculated F-Statistics is greater than the upper bound value at 5% level of significance. We checked cointegration of all variables by changing dependent variable one by one. The results of first equation F_{EXCR} (EXCR | GDPG, INFR, INTR, TRDO) indicate that cointegration exist among variables when dependent variable was the exchange rate. In the second equation, we used GDP growth as dependent variable F_{GDPG} (GDPG | EXCR, INFR, INTR, TRDO), results indicates that co-integration exists among variables. Third equation also indicates long-run relationship between variable when the dependent variable is used as Inflation F_{INFR} (INFR | GDPG, EXCR, INTR, TRDO). Fourth revealed that co-integration exist amongst variables when interest rate is used as dependent variable F_{INTR} (INTR | GDPG, INFR, EXCR, TRDO). The last equation F_{TRDO} (TRDO | GDPG, INFR, INTR, EXCR) showed that cointegration is present among the study variables.

Table 4 indicates the result of the long run ARDL approach. Exchange rate USD/CNY is used as dependent variable and Gross domestic product growth, Inflation rate, Interest rate and Trade openness are used as independent variables in this research paper.

Results of ARDL model indicate that Gross domestic product growth has positive and significant effect on exchange rate USD/CNY in the long run. Coefficient of gross domestic product growth indicates that 1% increase in gross domestic product growth, increase exchange rate USD/CNY 0.68%. Our results of gross domestic product growth are consistent with Azid et al. (2005) and Mirchandani (2013) while to contradict with results of Harberger (2003). Mirchandani (2013) investigated the association between GDP and exchange rates in India and pointed out a significant positive relationship of India's economy growth with exchange rate. Azid et al. (2005) stated that that volatility in economic growth affects the exchange rate positively and significantly; the government apply non-consistent exchange rate policies in the economy. Harberger (2003) stated that economic growth and exchange rate have no relationship and economic growth non-significantly affect exchange rates.

Coefficient of inflation rate shows the negative and significant effect on exchange rate USD/CNY in China in the long run. High rate of inflation minimalize effectiveness of

Table 2 VAR Lag Order Selection Criteria

Lag	LogL	LR	FPE	AIC	SC	HQ
0	-478.6142	NA	320.6609	26.8674	27.0873	26.9442
1	-346.5227	220.1524	849.1512	20.9179	22.2375	21.3785
2	-313.2510	46.2107 ^a	583.9447 ^a	20.4583 ^a	22.8776 ^a	21.3027 ^a

LR is sequential modified LR test statistic (5% level of each test), FPE is Final prediction error. AIC is Akaike information criterion, SC is Schwarz information criterion, HQ is Hannan Quinn information criterion

^ashows orders of lag selected by the criterion

Table 3 ARDL Bounding Test

Equations	F-Statistics	
$F_{EXCR}(EXCR GDPG, INFR, INTR, TRDO)$	10.5852	Co-Integration
$F_{GDPG}(GDPG EXCR, INFR, INTR, TRDO)$	5.7123	Co- Integration
$F_{INFR}(INFR GDPG, EXCR, INTR, TRDO)$	6.7119	Co-Integration
$F_{INTR}(INTR GDPG, INFR, EXCR, TRDO)$	5.1682	Co-Integration
$F_{TRDO}(TRDO GDPG, INFR, INTR, EXCR)$	5.4659	Co-Integration

country in international market. Results of inflation rate indicated that 1% increase in inflation in China economy causes the downfall of Chinese currency up to 0.62%. Smith (1999) stated that the high inflation rate reduces export of home country due to which the demand of home country's currency decrease in international trade. Kulkarni and Ishizaki (2002) revealed that ultimately results in a lower value of the home currency due to high inflation and low demand of local currency as compared to other country.

Interest rate coefficient results indicate negative and statistically non-significant effect on exchange rate USD/CNY in the long run in China. Interest rate results indicated that the decrease in the Yuan value is caused by high interest rate in the economy, about 0.18% devaluation in exchange rate is due to 1% increase in interest rate in China economy. Results of interest rate are in line with the results of previous researchers. Khan and Qayyum (2011) stated that the interest rate has negatively and statistically non-significant affect exchange rates in Pakistan. Iqbal et al. (2012) revealed that GDP and interest rate have a negative effect on exchange rates in Pakistan.

Long run coefficient of trade openness indicates positive and statistically non-significant to determine exchange rates. Trade openness results indicate that 1% increase will boost up the exchange rate up to 0.45% per annum in China, because with trade openness China exports its products to other country through which China economy earn foreign exchange and the level and when the level of foreign exchange reserve increase in economy so the value of home currency increase. Raza and Afshan (2017) investigated elements of the exchange rate in Pakistan by using time series data from 1972 to 2013. They used autoregressive distributed lag bound testing cointegration approach, the Johansen and Juselius cointegration approach for checking long run relationship among the study variables. The result of long run cointegration shows that term of trade and trade openness have a significant and negative effect on exchange

Table 4 ARDL Long Run Approach

Variable	Coefficient	Std. Error	t-Statistic	Prob.
<i>GDPG</i>	0.6845	0.2895	2.8559	0.0019
<i>INFR</i>	-0.6220	0.2022	-3.0761	0.0074
<i>INTR</i>	-0.1822	0.2748	-0.6630	0.5221
<i>TRDO</i>	0.4538	0.0882	5.1451	0.0000
C	21.2878	16.0625	-1.3253	0.1971
R-squared		0.9940	Akaike info criterion	1.5944
Adjusted R-squared		0.9849	Schwarz criterion	1.0759
F-statistic		18.9986	Durbin-Watson stat	1.9956
Prob (F-statistic)		0.0000		

Table 5 ARDL Short Run Approach

Variables	Coefficient	Std. Error	t-Statistic	Prob.
D (GDPG (-1))	0.7010	0.1620	4.4280	0.0008
D (INFR)	0.1588	0.0466	3.4077	0.0060
D (INTR)	-0.1118	0.0608	-1.8388	0.3868
D (TRDO)	0.6880	0.2466	-2.4257	0.0368
ECT (-1)	-0.5786	0.1867	3.0990	0.0083

rate in Pakistan while money supply and inflation have a positive and significant effect on the exchange rate.

Results of descriptive statistics indicate that R-square indicates 99% variation in exchange rates is explained by the independent variables of the study. AIC and SIC values show that the model fits for analysis. Durbin Watson value is 1.99 which indicates that there is no problem of autocorrelation in the data. F statistics values show that the model is fit (Gujarati, 2003).

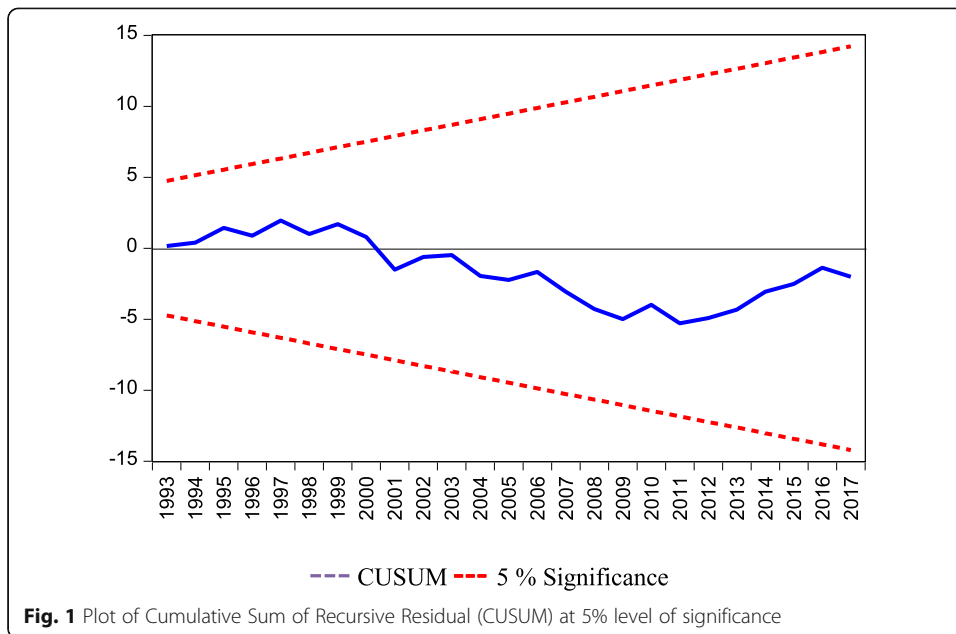
Table 5 indicates the results of the short run ARDL approach. Exchange rate USD/CNY is used as the dependent variable. Results of short run cointegration indicate that gross domestic product growth has positive and statistically significant effect on exchange rate USD/CNY in China. The Short run ARDL results of Gross domestic product are consistent with long run results. The inflation rate has positive and statistically significant effect on exchange rate USD/CNY in china. Results of inflation rate indicate that 1% increase in inflation boost up exchange rate USD/CNY 0.1599% in the short run, which is not consistent with the result of the long run ARDL model. The interest rate has positive and non-significant effect on exchange rate in China in the short run. A reason for this could be that the Banks in China did not apply the appropriate interest rate policy to control the exchange rate, and that Chinese economic conditions are hard to estimate. Trade openness has positive and statistically significant effect on exchange rate USD/CNY in China. This authorizes a valid short-run association between exchange rate and the determinants of this study in China. The coefficient of the error term value -0.5886 suggests that about 58% of disequilibrium is corrected in the current year.

Table 6 shows the result of Breusch-Godfrey and Breusch Pagan Godfrey test for serial correlation and Heteroskedasticity respectively. The Breusch Godfrey test result indicates that there is no problem of serial correlation in the data because the P Value of F statistics is higher than 0.05 and results of Breusch Pagan Godfrey P value is also greater than 0.05 which indicate that there is no problem of Heteroskedasticity in our data.

Figures 1 & 2 shows the graphs of CUSUM and CUSUM square respectively. CUSUM and CUSUM of square test on recursive residuals are used to check the

Table 6 Serial Correlation and Heteroskedasticity Test

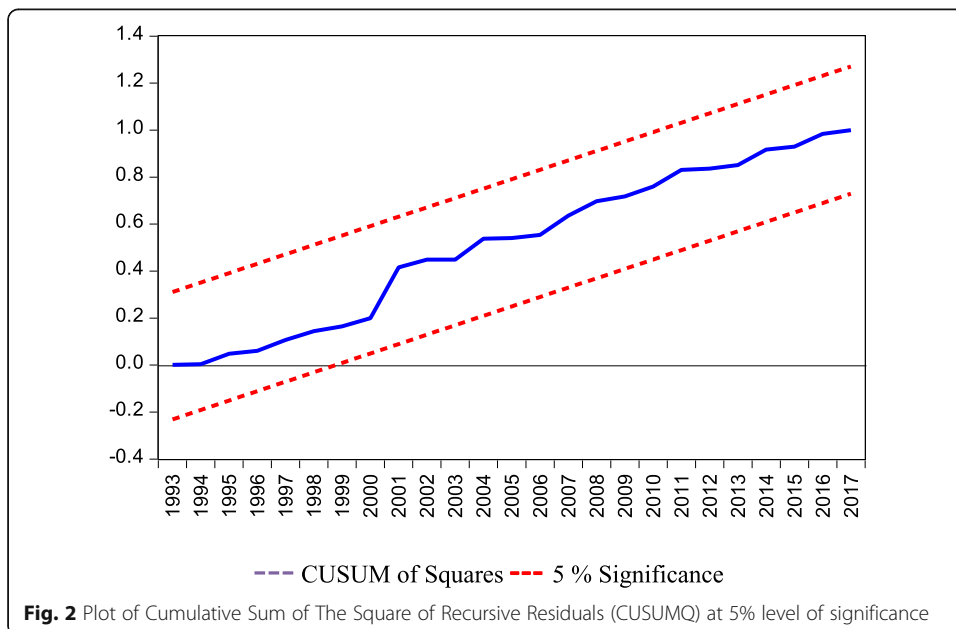
Breusch-Godfrey Serial Correlation LM Test			
F-statistic	1.0810	Prob. F(223)	0.3559
Obs [*] R-squared	3.093239	Prob. Chi Square (2)	0.2130
Heteroskedasticity Test: Breusch-Pagan-Godfrey			
F-statistic	2.5439	Prob. F (25,6)	0.1236
Obs [*] R-squared	29.2413	Prob. Chi Square (12)	0.2540



constancy of the coefficient of the long-run model in the sample period. CUSUM and CUSUM of square test results indicate that the coefficient of the long run ARDL is stable. The results of the above figures show that the blue line is in the range of critical bonds, so it indicates that the ARDL model is stable.

Conclusions and recommendations

This research paper investigated the effect of different macroeconomic factors on the exchange rate of the Chinese Yuan. Time series data were used from 1980 to 2017 for statistical analysis. Results of Co-integration indicated that long run association exists between gross domestic product growth, inflation rate, interest rate, trade openness



and exchange rate USD/CNY. Long run ARDL approach results indicate that inflation and interest rate have a negative effect on exchange rate while gross domestic product growth and trade openness have a positive effect on exchange rate USD/CNY in China. Trade openness plays a very important role to appreciate the value of the Chinese Yuan because with trade openness China exports its products to other developed and developing countries that is a source of foreign reserve for China economy. Based on the results of this study, the policymakers of the Chinese government should motivate its government to assign such monetary and fiscal policies that cause less volatile and productive exchange rate for China to manage sustainable economic growth for a long time with its trading partners.

Abbreviations

ADF: Augmented dickey fuller; ARDL: Autoregressive distributed lag; ECM: Error correction model; EXCR: Exchange rate; GDPG: Gross domestic product growth; INFR: inflation rate; INTR: Interest rate; PP: Phillips and perron; TRDO: Trade openness

Acknowledgements

We are very thankful to all friends for their help and suggestion their valuable comments regarding this research paper. We are very thankful to Editorial Board of the *Financial Innovation* for their editorial efforts. We are also thankful to three *anonymous reviewers* for their careful reading of our manuscript and their valuable suggestions. Currently this research paper did not receive any financial aid from any source.

Availability of data and materials

The data used in this research paper were obtained from Federal reserve bank of ST. Louis website: <https://fred.stlouisfed.org/>

Authors' contributions

JZT is the corresponding author and provides the ideas of this paper. MKK is the first author to complete the construction and writing of this paper. MIK is the third author and collected the data. All authors read and approved the final manuscript.

Competing interests

The authors declare that they have no competing interests.

Publisher's Note

Springer Nature remains neutral with regard to jurisdictional claims in published maps and institutional affiliations.

Received: 27 August 2018 Accepted: 27 December 2018

Published online: 31 January 2019

References

- Abbas Q, Iqbal J, Ayaz L (2012) Relationship between GDP, inflation and real interest rate with exchange rate fluctuation of African countries. *Int J Acad Res Account Finance. Manage Sci* 2(3):132–141
- Algieri B (2011) The Dutch disease: evidences from Russia. *Econ Chang Restruct* 44(3):243–277
- Arghyrou MG, Pourpourides P (2016) Inflation announcements and asymmetric exchange rate responses. *J Int Financ Mark Inst Money* 40:80–84
- Azid T, Jamil M, Kousar A, Kemal MA (2005) Impact of exchange rate volatility on growth and economic performance: a case study of Pakistan, 1973–2003 [with comments]. *Pak Dev Rev* 44(4):749–775
- Bahmani-Oskooee M, Tunku A (2006) Black market exchange rate, currency substitution and the demand for money in LDCs. *Econ Syst* 30(3):249–263
- Bailliu J, Lafrance R, Perrault JF (2003) Does exchange rate policy matter for growth? *Int Finance* 6(3):381–414
- Chowdhury M, Hossain MT (2014) Determinants of exchange rate in Bangladesh: a case study. *J Econ Sustain Dev* 5:1. Available at SSRN: <https://ssrn.com/abstract=2668804>
- Clostermann J, Schnatz B (2000) The determinants of the euro-dollar exchange rate—Synthetic fundamentals and a non-existing currency. Deutsche bundesbank working paper No. 02/00. <https://doi.org/10.2139/ssrn.229472> Available at SSRN: <https://ssrn.com/abstract=229472>
- Dickey DA, Fuller WA (1979) Distribution of the estimators for autoregressive time series with a unit root. *J Am Stat Assoc* 74(366a):427–431
- Drine I, Rault C (2006) Learning about the long-run determinants of real exchange rates for developing countries: A panel data investigation. In: *Panel Data Econometrics Theoretical Contributions and Empirical Applications (Contributions to Economic Analysis, Volume 274)*. Emerald group publishing limited, pp 307–325
- Ebiringa OT, Anyaogu NB (2014) Exchange rate, inflation and interest rates relationships: Autogressive distributive lag analysis. *J Econ Dev Stud* 2:263–279
- Elbadawi IA, Soto R (1997) Real exchange rates and macroeconomic adjustments in sub-Saharan Africa and other developing countries. *J Afr Econ* 6(3):74–120

- Engel C, Rogers JH (2001) Deviations from purchasing power parity: causes and welfare costs. *J Int Econ* 55(1):29–57
- Engle RF, Granger CW (1987) Co-integration and error correction: representation, estimation, and testing. *Econometrica*:251–276
- Fisher I (1930) *The theory of interest*, vol 43. The Macmillan Company, New York
- Gente K, León-Ledesma MA (2006) Does the world real interest rate affect the real exchange rate? The south east Asian experience. *J Int Trade Econ Dev* 15(4):441–467
- Gujarati DN (2003) *Basic Econometrics*. McGraw-Hill, New York. <https://doi.org/10.1186/s40854-018-0117-x>
- Harberger A (2003) Economic growth and the real exchange rate. Revisiting the balassa-samuelson effect, conferencia presentada en the higher school of economics, Moscú
- Hau H (2002) Real exchange rate volatility and economic openness: theory and evidence. *J Money, Credit, Bank* 34(3):611–630
- Haug AA (2002) Temporal aggregation and the power of cointegration tests: a Monte Carlo study. *Oxf Bull Econ Stat* 64(4):399–412
- Iqbal N, Khattak SR, Khattak MA, Ullah I (2012) Testing the arbitrage pricing theory on Karachi stock exchange. *Interdiscip J Contemp Res Bus* 4(8):839–853
- Johansen S, Juselius K (1990) Maximum likelihood estimation and inference on cointegration—with applications to the demand for money. *Oxf Bull Econ Stat* 52(2):169–210
- Joyce J, Kamas L (2003) Real and nominal determinants of real exchange rates in Latin America: short-run dynamics and long-run equilibrium. *J Dev Stud* 39(6):155–182
- Khan MA, Qayyum A (2011) Exchange rate determination in Pakistan: role of monetary fundamentals. *J Econ Coop Dev* 32(2):67
- Khan SA (2010) Empirical study on impact of interest rate on exchange rate. <https://doi.org/10.2139/ssrn.1625492>. Available at SSRN: <https://ssrn.com/abstract=1625492>
- Kulkarni KG, Ishizaki M (2002) Purchasing power parity theory revisited: recent evidence from US Dollar and Japanese yen. *Glob Bus Rev* 3(1):53–61
- Kumar S (2010) Determinants of real exchange rate in India: an ARDL approach. *Reserv Bank India Occas Pap* 31(1):33–64
- Lane PR, Milesi-Ferretti GM (2012) External adjustment and the global crisis. *J Int Econ* 88(2):252–265
- Lartey EK, Mandelman FS, Acosta PA (2008) Remittances, exchange rate regimes and the Dutch disease: a panel data analysis. *Rev Int Econ* 20(2):377–395
- Liew VKS, Baharumshah AZ, Pua CH (2009) Monetary model of exchange rate for Thailand: long-run relationship and monetary restrictions. *Glob Econ Rev* 38(4):385–395
- MacDonald R, Ricci LA (2005) The real exchange rate and the Balassa–Samuelson effect: the role of the distribution sector. *Pac Econ Rev* 10(1):29–48
- Mallick H (2010) Factors determining the exchange rate movement under a partial capital mobility regime. *Int Econ J* 24(2):249–266
- McPherson MF, Rakovski T (2000) Exchange rates and economic growth in Kenya: an econometric analysis
- Mirchandani A (2013) Analysis of macroeconomic determinants of exchange rate volatility in India. *Int J Econ Financ Issues* 3(1):172–179
- Moffett MH, Stonehill AI, Eiteman DK (2016) *Fundamentals of multinational finance*, 5th edn. Addison-Wesley, Pearson (The Pearson Series in Finance)
- Moffett MH, Stonehill AI, Eiteman DK (2017) *Fundamentals of multinational finance*, 6th edn. Addison-Wesley, Pearson (The Pearson Series in Finance)
- Morrison WM, Labonte M (2013) China's currency policy: an analysis of the economic issues. *Curr Pol Econ North West Asia* 22(4):507
- Namjour RP, Gholizadeh MH, Haghighi MBN (2014) Survey the relationship between exchange rates and inflation rate in the first two years of fifth development plan. *Universal J Manage Soc Sci* 4(3):31–40
- Neçşulescu Ci, Şerbănescu LL (2013) Impact of the inflation on the exchange rate and on the average salary. *Cross Cult Manage J* 29:222–227
- Neumeyer PA, Perri F (2005) Business cycles in emerging economies: the role of interest rates. *J Monet Econ* 52(2):345–380
- Nucu AE (2011) The relationship between exchange rate and key macroeconomic indicators. Case study: Romania. *The Romanian. Econ J* 41:127–145
- Ozturk I, Acaravci A (2011) Electricity consumption and real GDP causality nexus: evidence from ARDL bounds testing approach for 11 MENA countries. *Appl Energy* 88(8):2885–2892
- Pesaran MH, Shin Y (1999) An autoregressive distributed-lag modelling approach to cointegration analysis. *Econ Soc Monogr* 31:371–413
- Pesaran MH, Shin Y, Smith RJ (2001) Bounds testing approaches to the analysis of level relationships. *J Appl Econ* 16:289–326 <https://doi.org/10.1002/jae.616>
- Phillips PC, Perron P (1988) Testing for a unit root in time series regression. *Biometrika* 75(2):335–346
- Piana V (2001) Exchange rate. Retrieved April 20:2010
- Raza SA, Afshan S (2017) Determinants of exchange rate in Pakistan: revisited with structural break testing. *Glob Bus Rev* 18(4):825–848
- Siddiqui R, Afridi U, Mahmood Z, Bhatti RH (1996) Exchange rate determination in Pakistan: a simultaneous equation model [with comments]. *The. Pak Dev Rev*:683–692
- Smith CE (1999) Exchange rate variation, commodity price variation and the implications for international trade. *J Int Money Financ* 18(3):471–491
- Tafa J (2015) Relationship between exchange rates and interest rates: case of Albania. *Mediterr J Soc Sci* 6(4):163
- Wong HT (2013) Real exchange rate misalignment and economic growth in Malaysia. *J Econ Stud* 40(3):298–313
- Xiaopu Z (2002) Equilibrium and misalignment: an assessment of the RMB exchange rate from 1978 to 1999. Centre for research on economic development and policy reforms. Working Paper No. 127, Stanford, pp 1–27
- Zeileis A, Shah A, Ila P (2007) Exchange rate regime analysis using structural change Methods. Research Report Series / Department of Statistics and Mathematics. Department of Statistics and Mathematics. WU Vienna University of Economics and Business, Vienna, p 56
- Zeileis A, Shah A, Patnaik I (2005) What is the new Chinese currency regime? Research Report Series / Department of Statistics and Mathematics. Department of Statistics and Mathematics. WU Vienna university of economics and business, Vienna, p 23